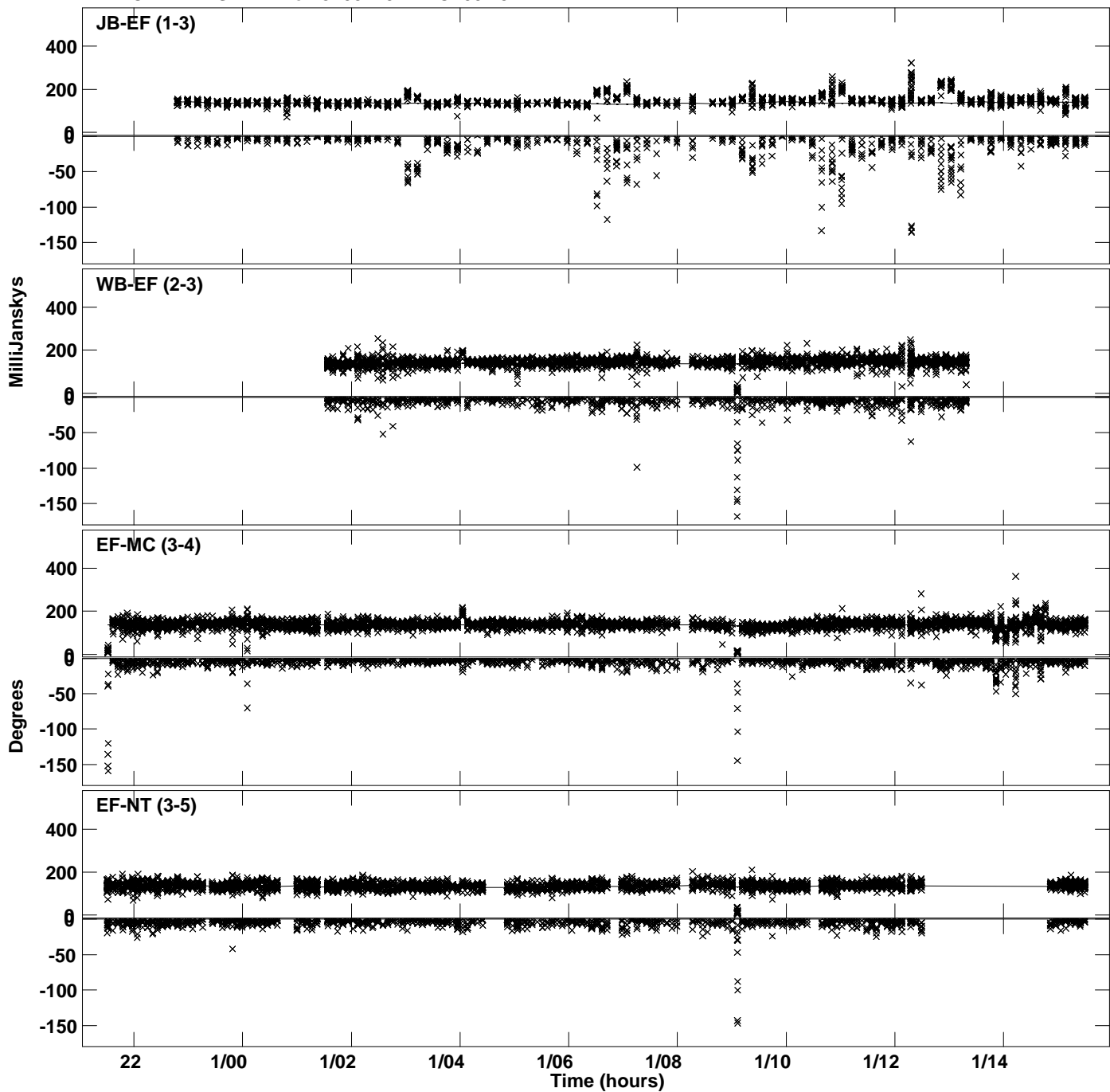
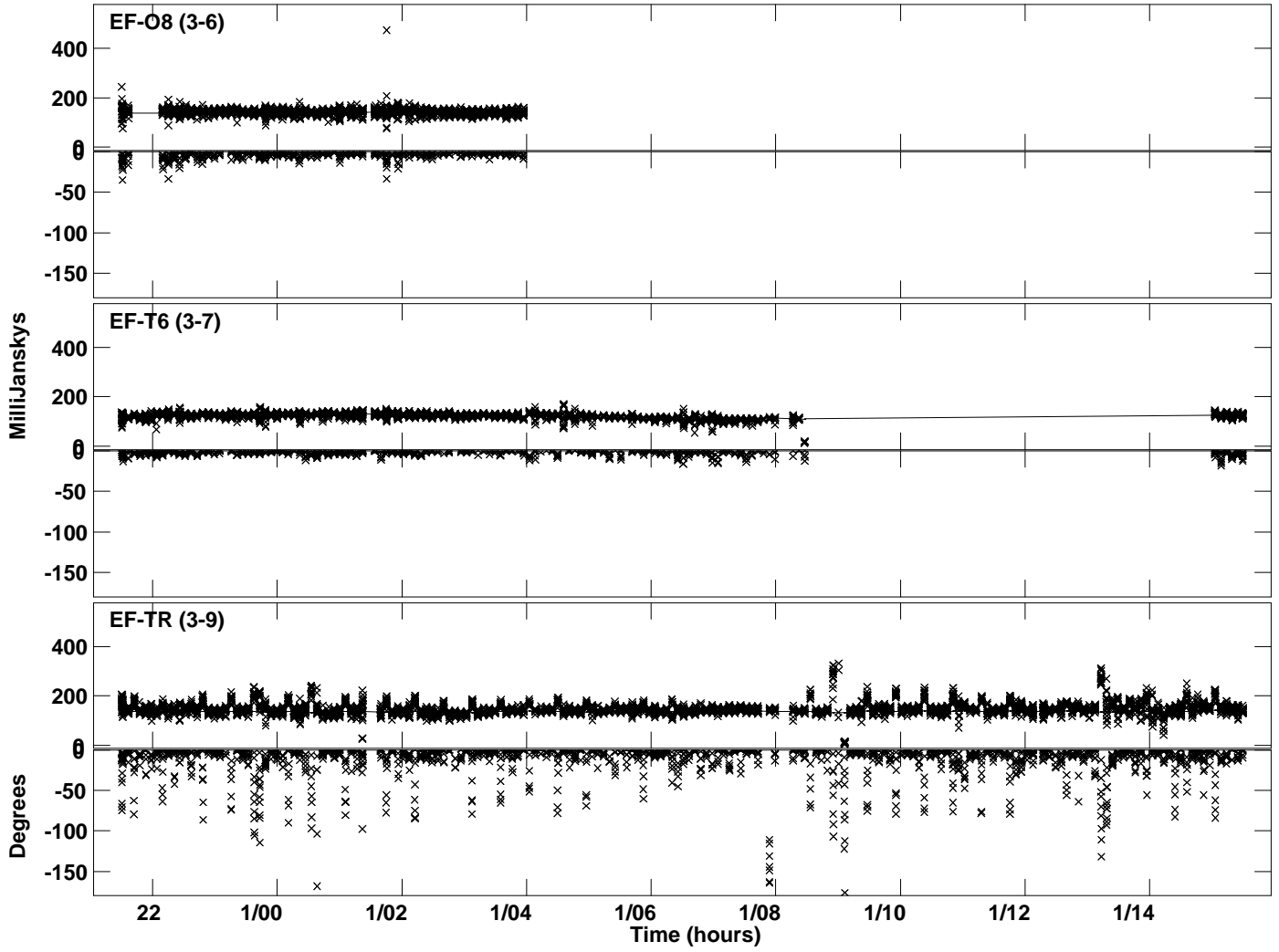


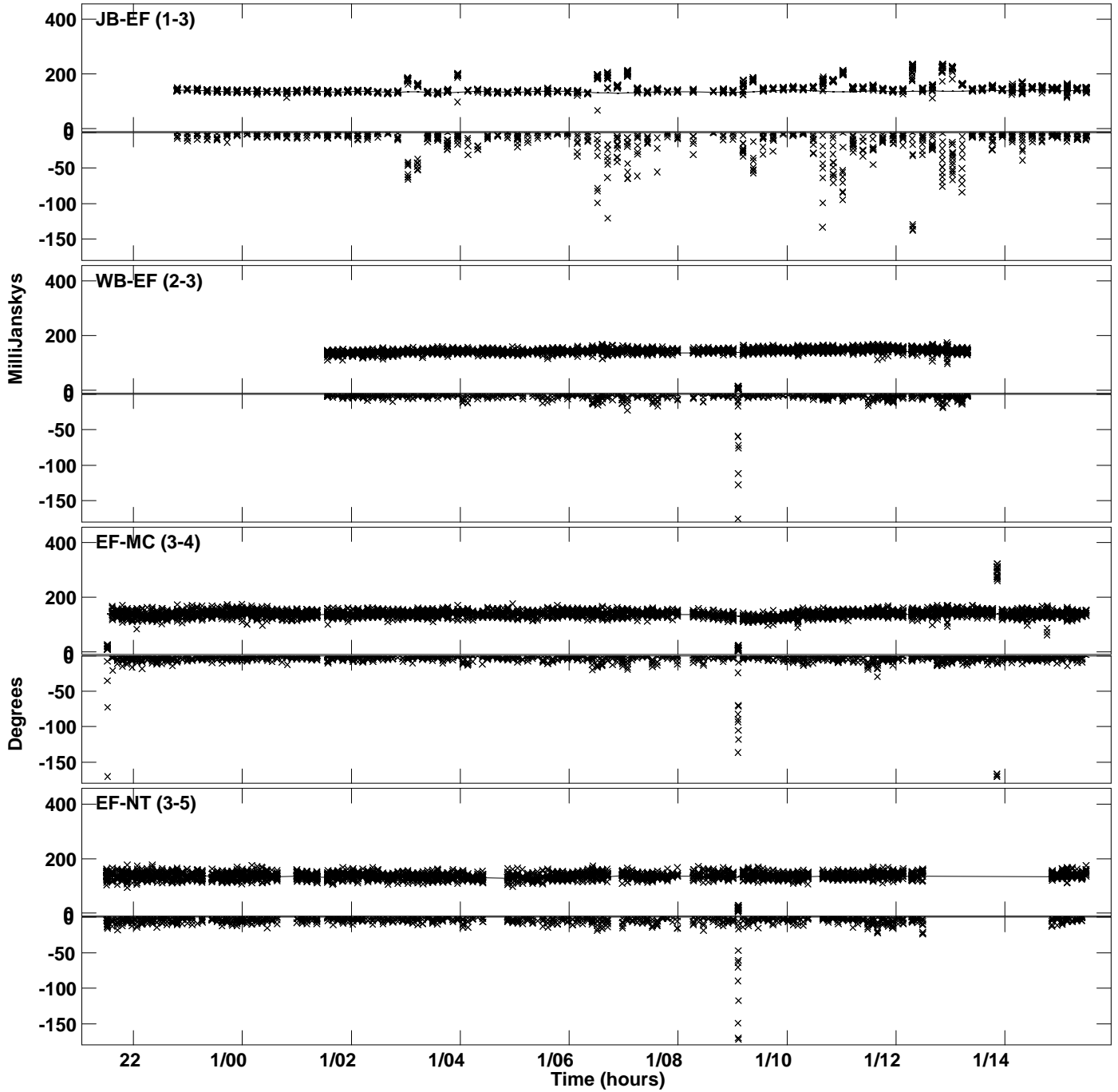
Plot file version 1 created 02-MAY-2024 18:07:55
Amplitude andPhase vs Time for J1037+5711.MULTI.1 CL # 3
IF 1 CHAN 1 STK LL of J1037+5711.ICL001.3



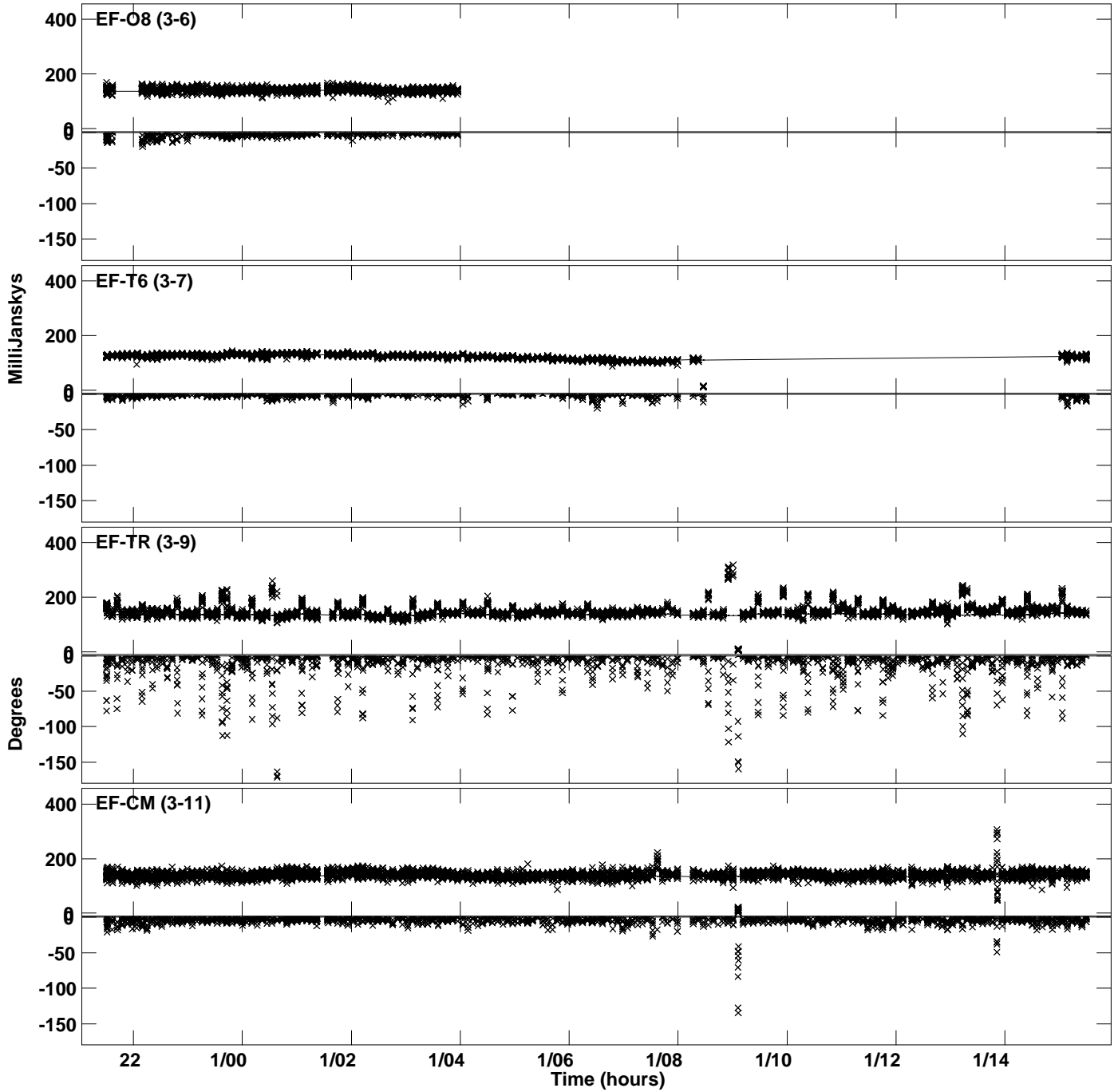
Plot file version 2 created 02-MAY-2024 18:07:55
Amplitude and Phase vs Time for J1037+5711.MULTI.1 CL # 3
IF 1 CHAN 1 STK LL of J1037+5711.ICL001.3



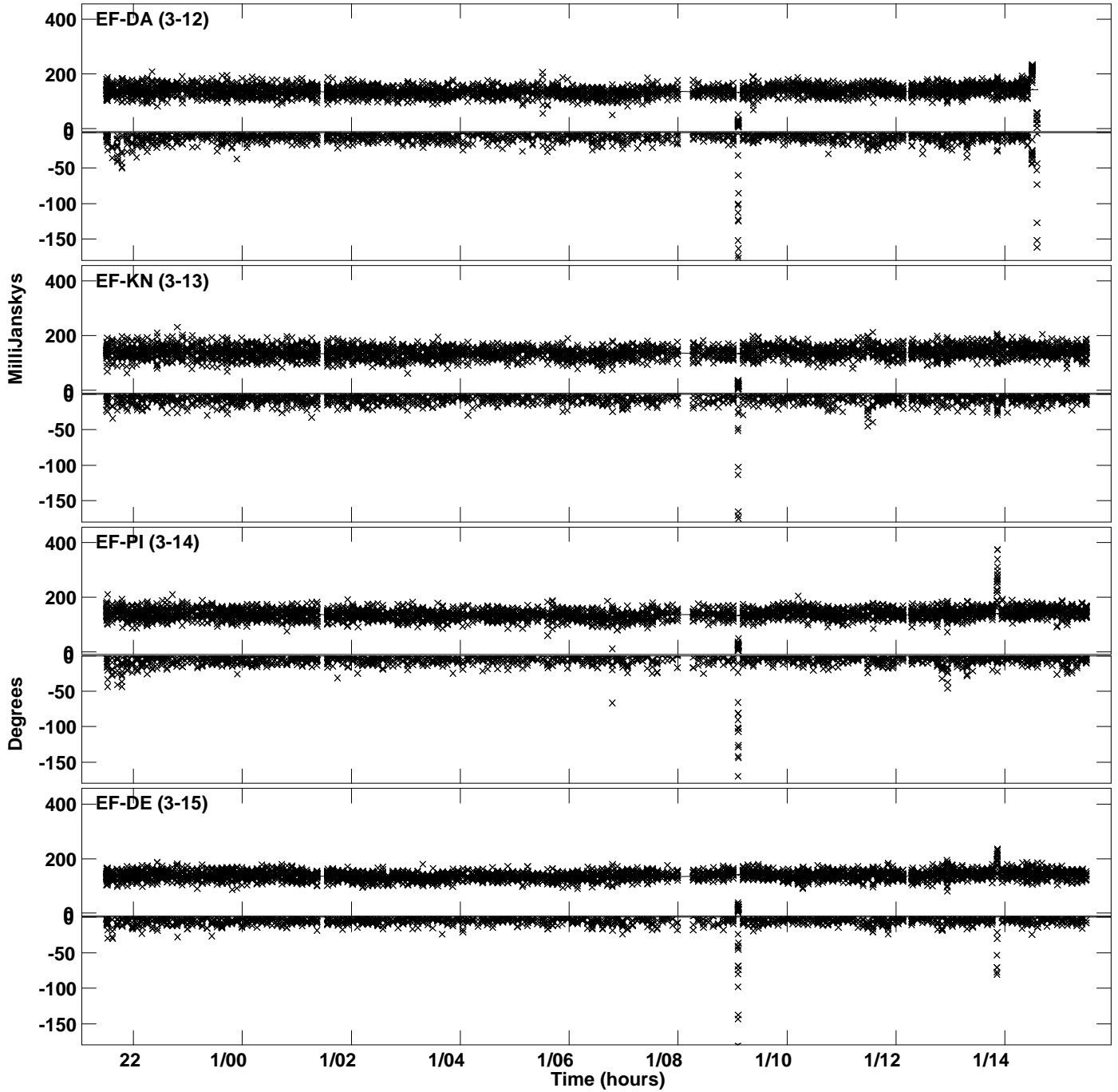
Plot file version 3 created 02-MAY-2024 18:07:56
Amplitude andPhase vs Time for J1037+5711.MULTI.1 CL # 3
IF 2 CHAN 1 STK LL of J1037+5711.ICL001.3



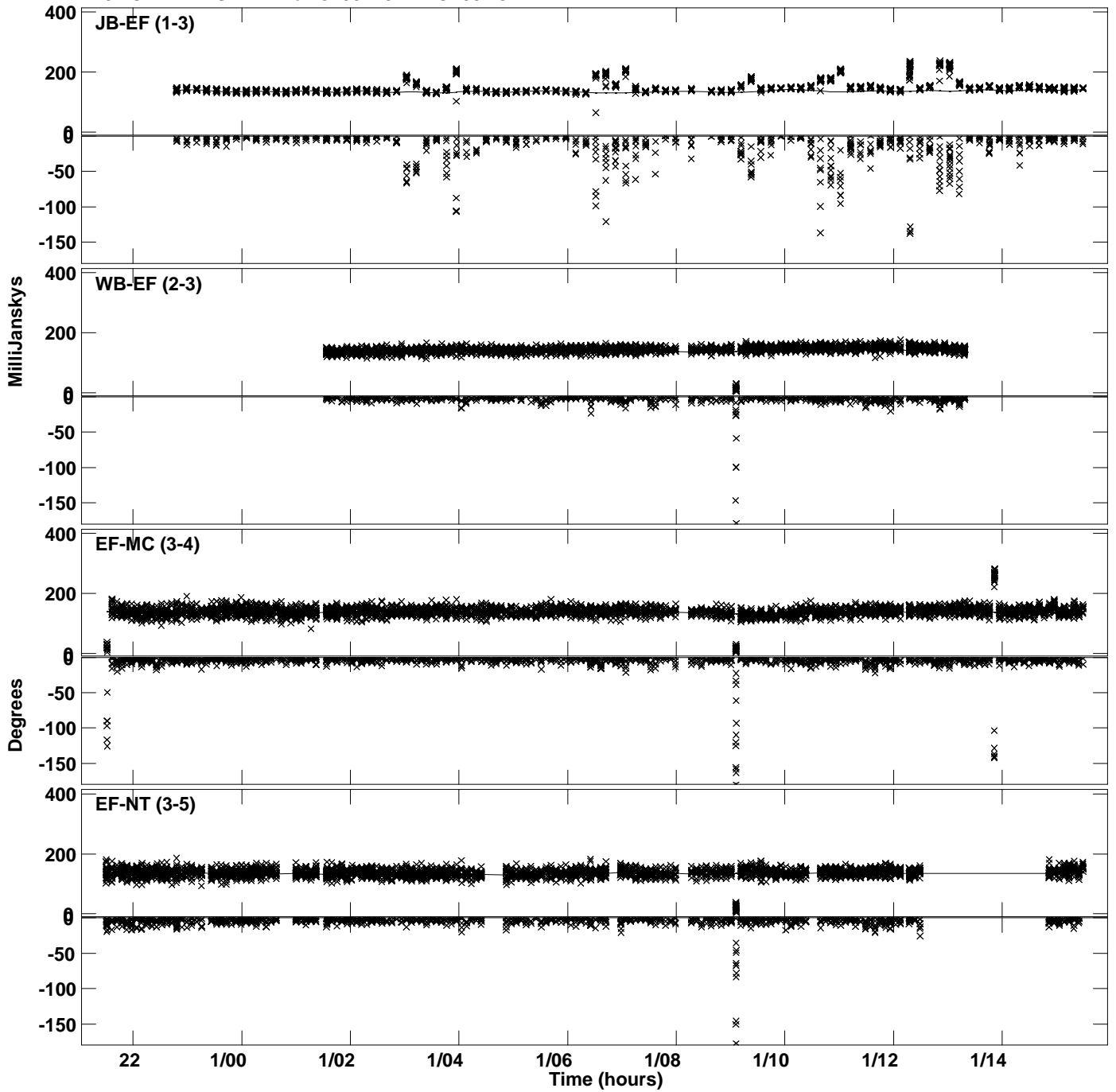
Plot file version 4 created 02-MAY-2024 18:07:56
Amplitude andPhase vs Time for J1037+5711.MULTI.1 CL # 3
IF 2 CHAN 1 STK LL of J1037+5711.ICL001.3



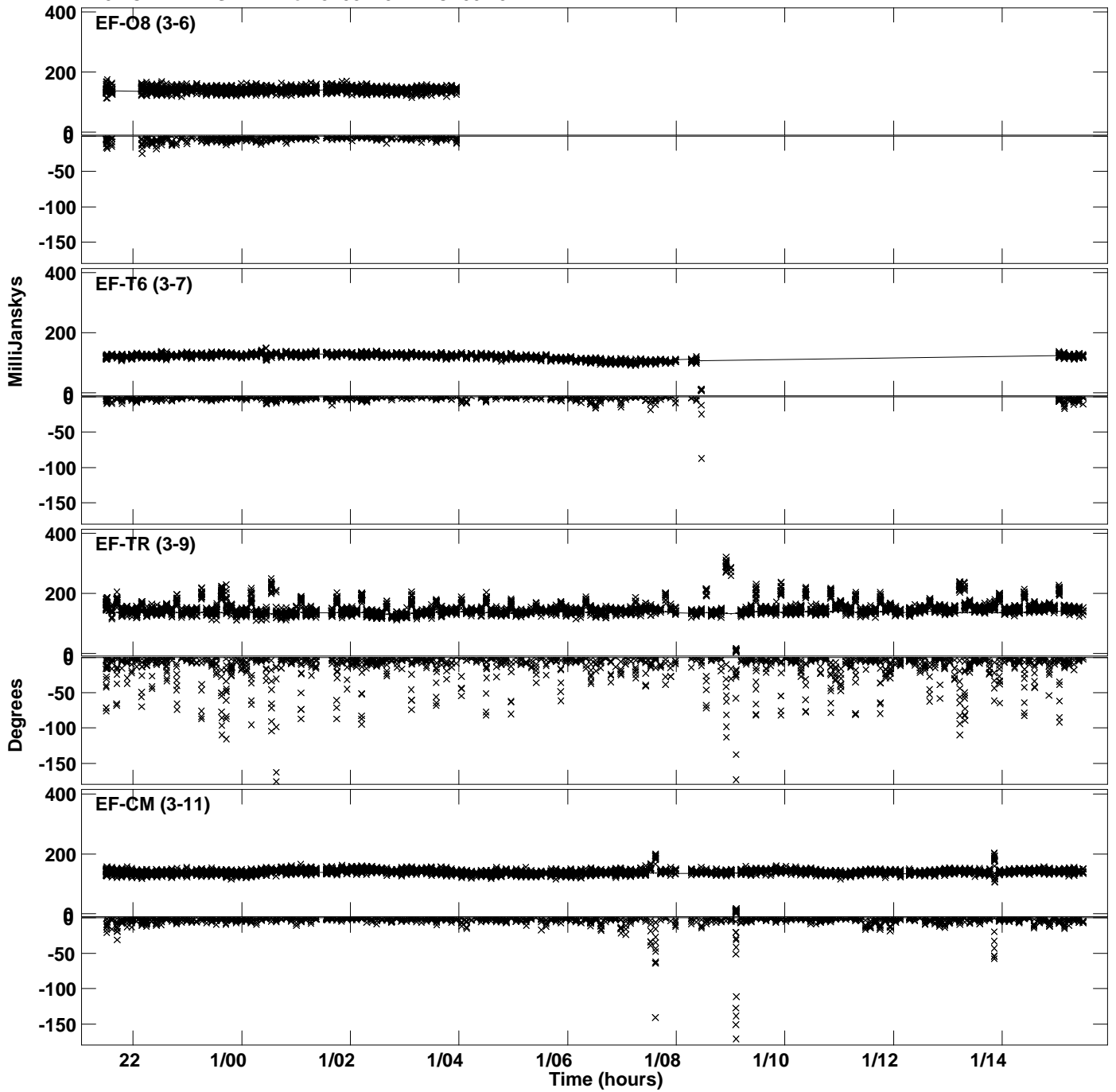
PLot file version 5 created 02-MAY-2024 18:07:56
Amplitude andPhase vs Time for J1037+5711.MULTI.1 CL # 3
IF 2 CHAN 1 STK LL of J1037+5711.ICL001.3



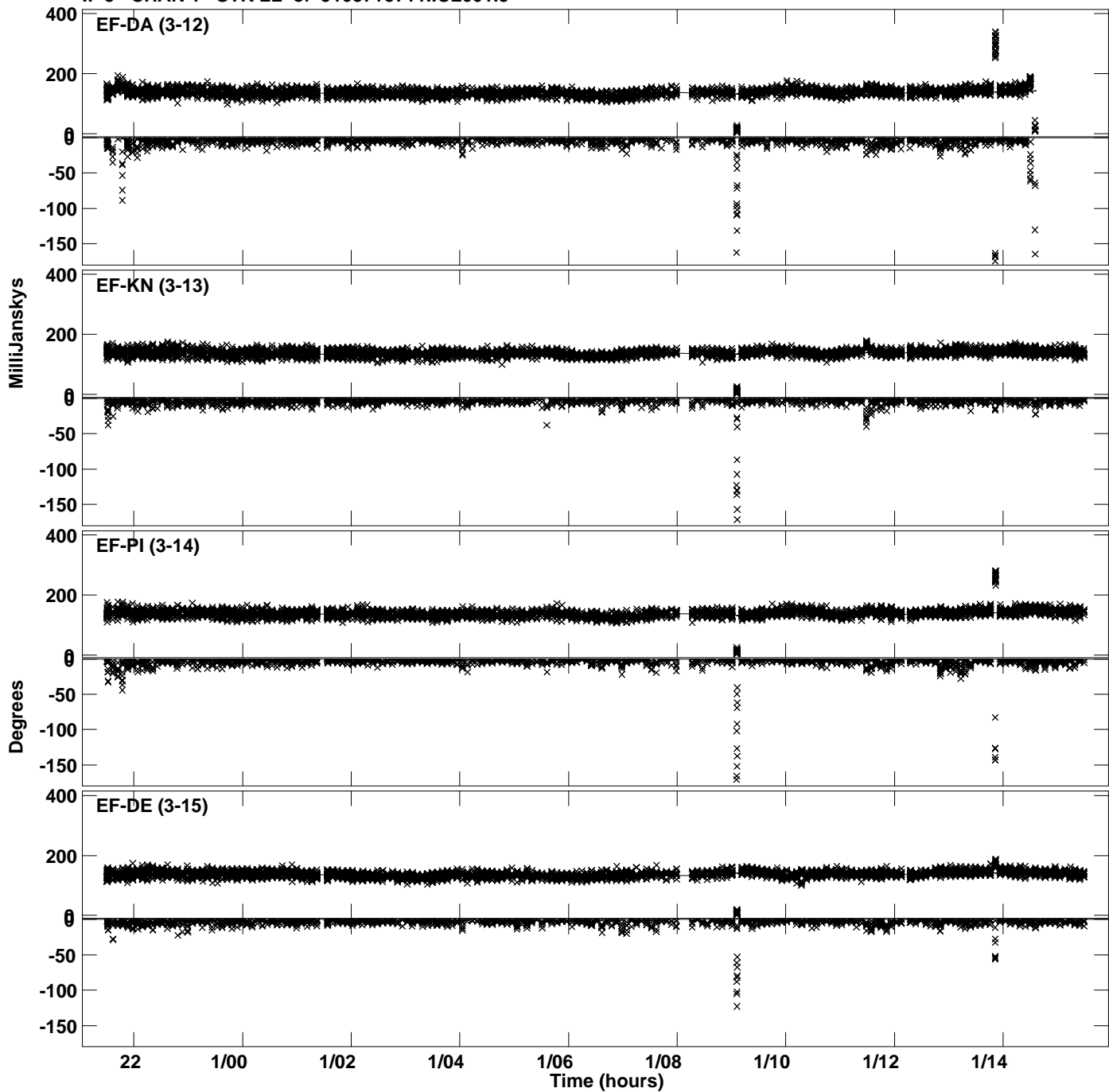
Plot file version 6 created 02-MAY-2024 18:07:56
Amplitude andPhase vs Time for J1037+5711.MULTI.1 CL # 3
IF 3 CHAN 1 STK LL of J1037+5711.ICL001.3



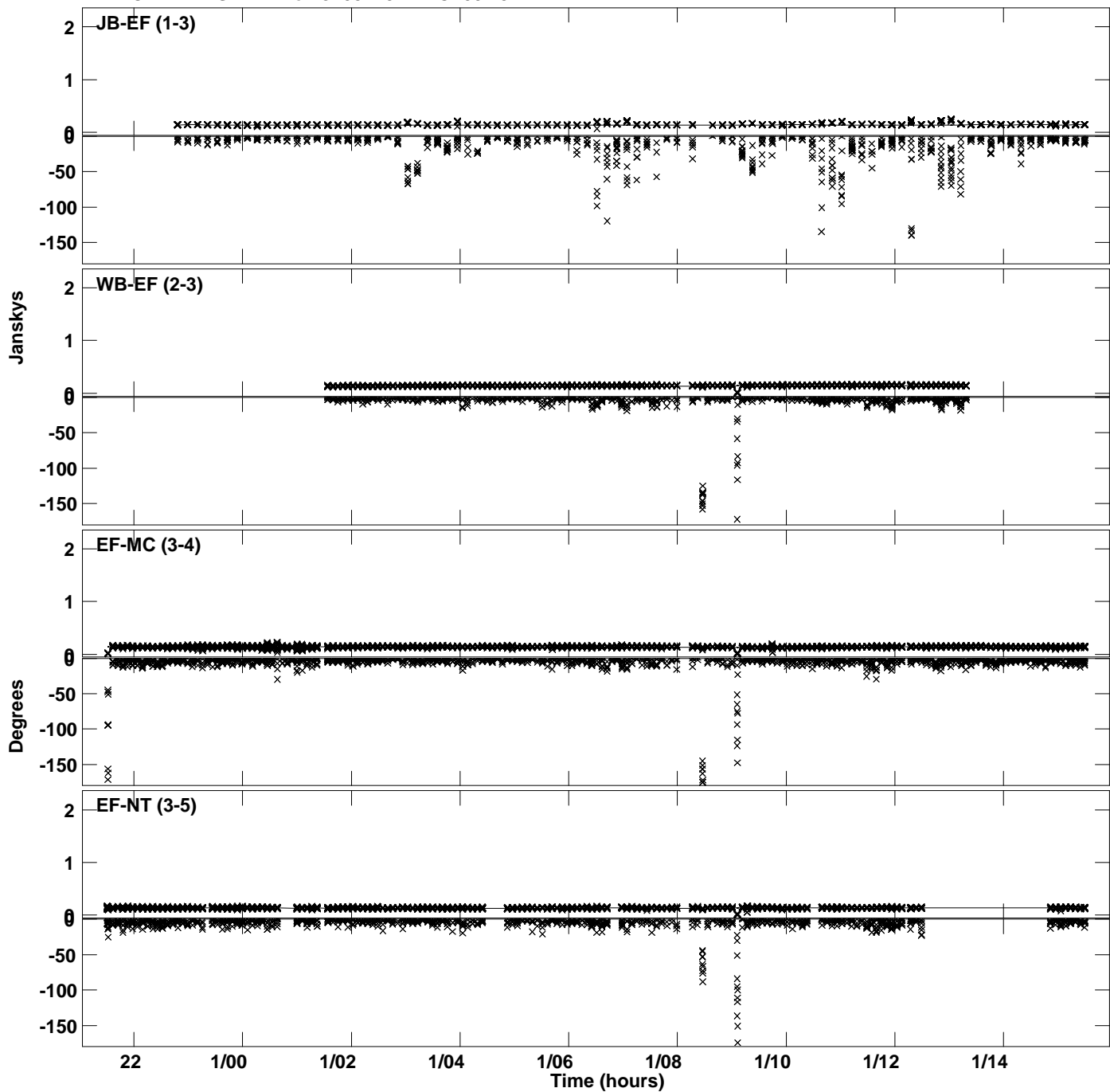
PLot file version 7 created 02-MAY-2024 18:07:56
Amplitude andPhase vs Time for J1037+5711.MULTI.1 CL # 3
IF 3 CHAN 1 STK LL of J1037+5711.ICL001.3



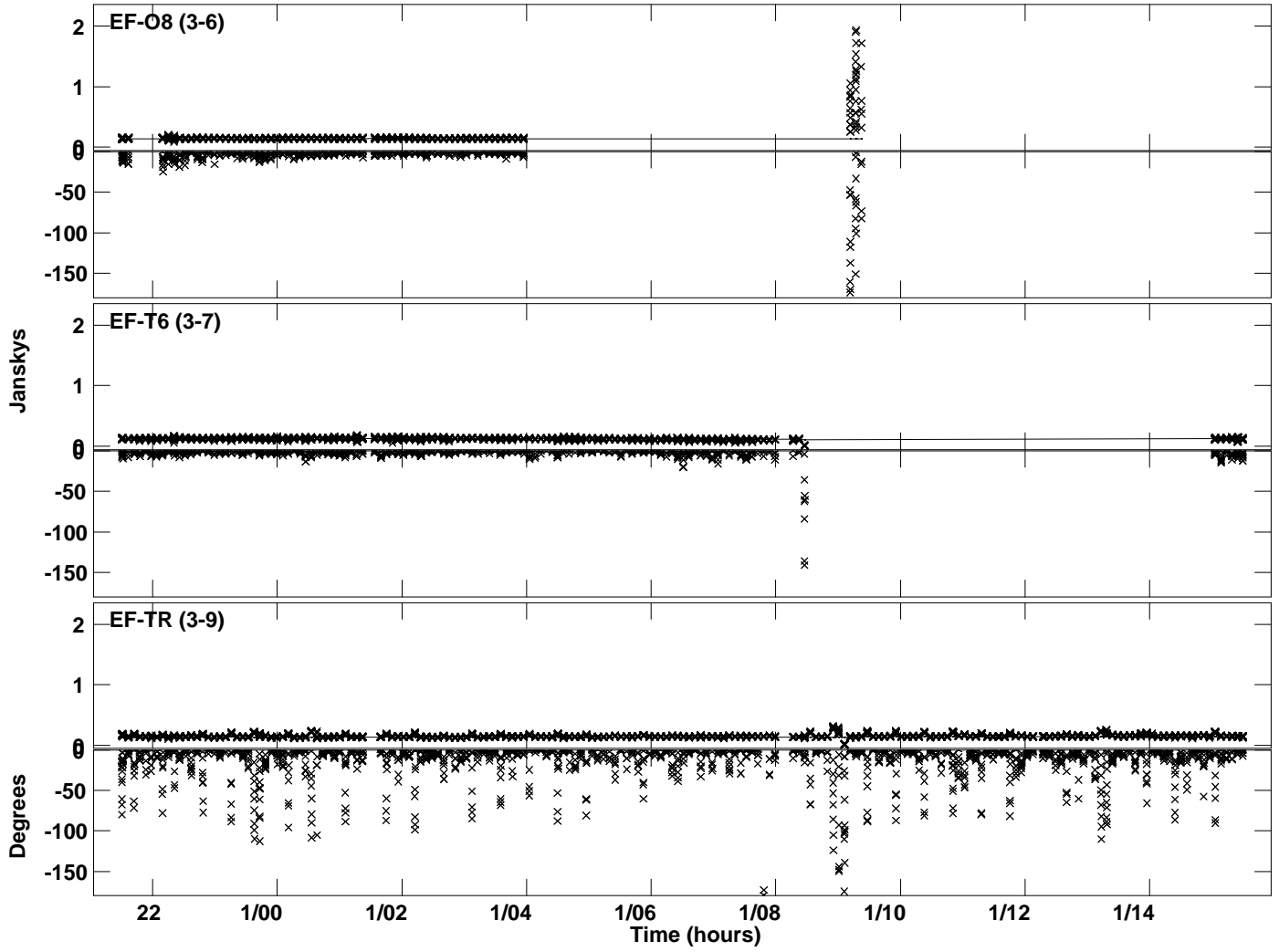
Plot file version 8 created 02-MAY-2024 18:07:56
Amplitude andPhase vs Time for J1037+5711.MULTI.1 CL # 3
IF 3 CHAN 1 STK LL of J1037+5711.ICL001.3



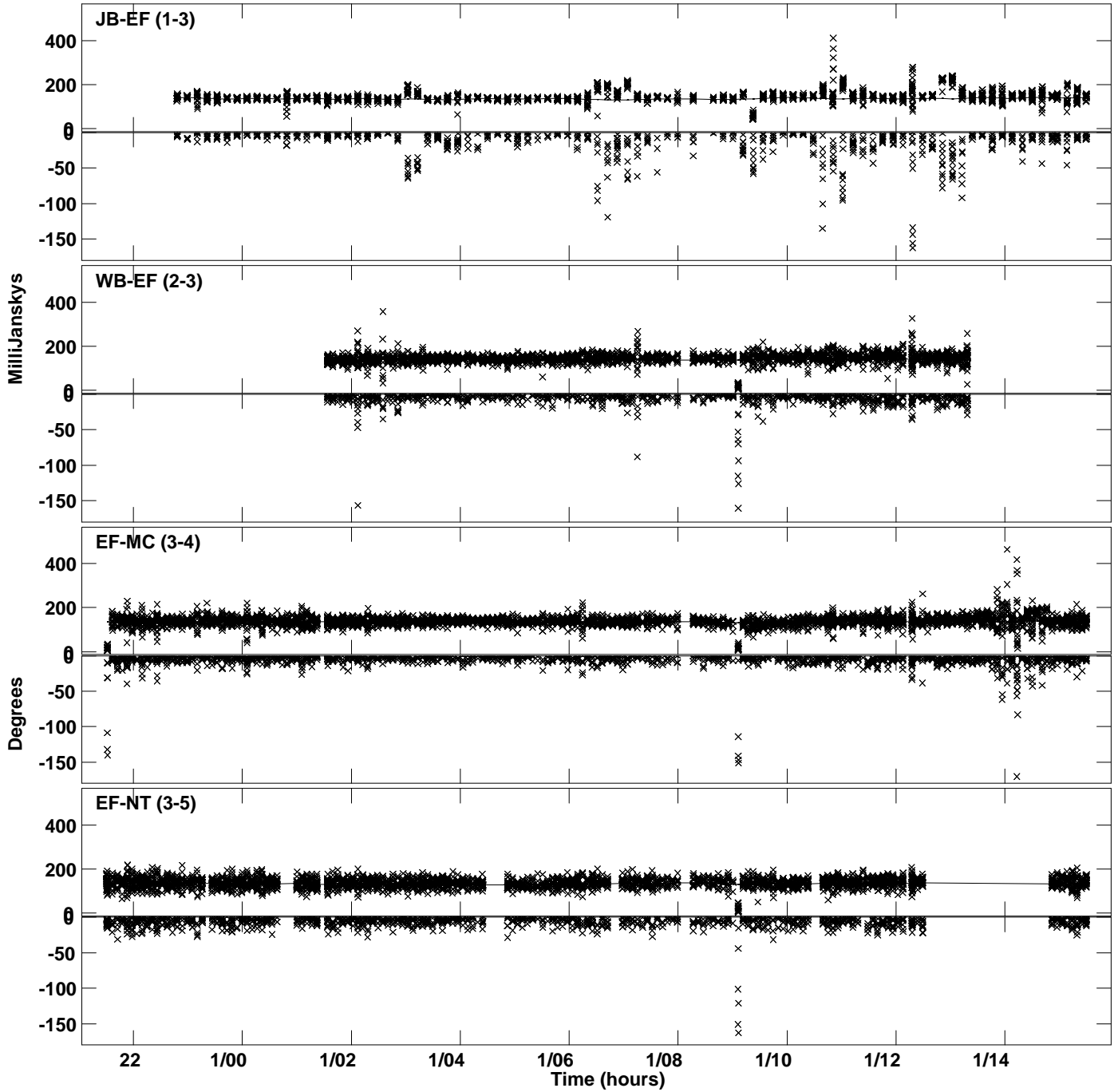
Plot file version 9 created 02-MAY-2024 18:07:57
Amplitude and Phase vs Time for J1037+5711.MULTI.1 CL # 3
IF 4 CHAN 1 STK LL of J1037+5711.ICL001.3



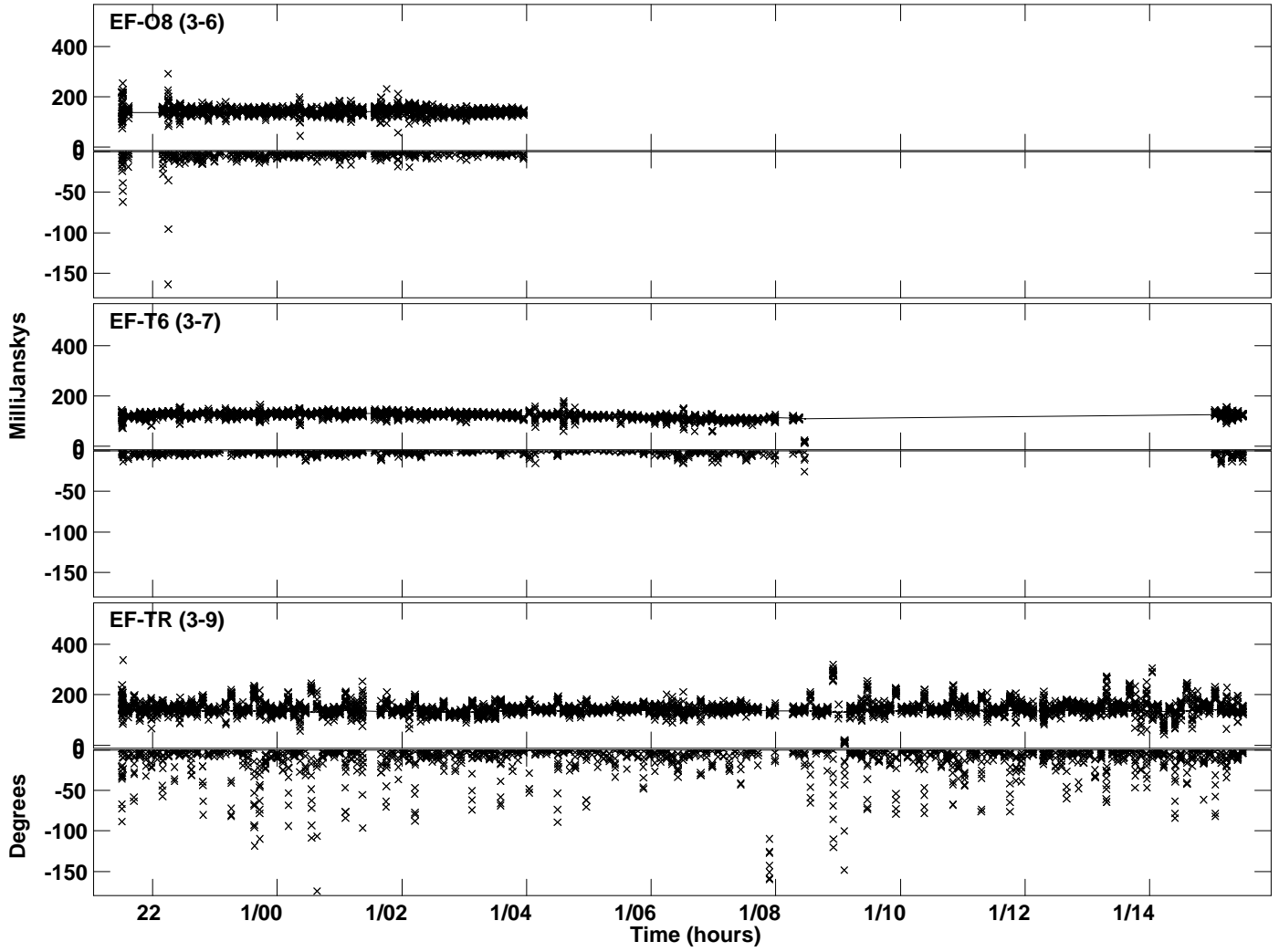
PLot file version 10 created 02-MAY-2024 18:07:57
Amplitude and Phase vs Time for J1037+5711.MULTI.1 CL # 3
IF 4 CHAN 1 STK LL of J1037+5711.ICL001.3



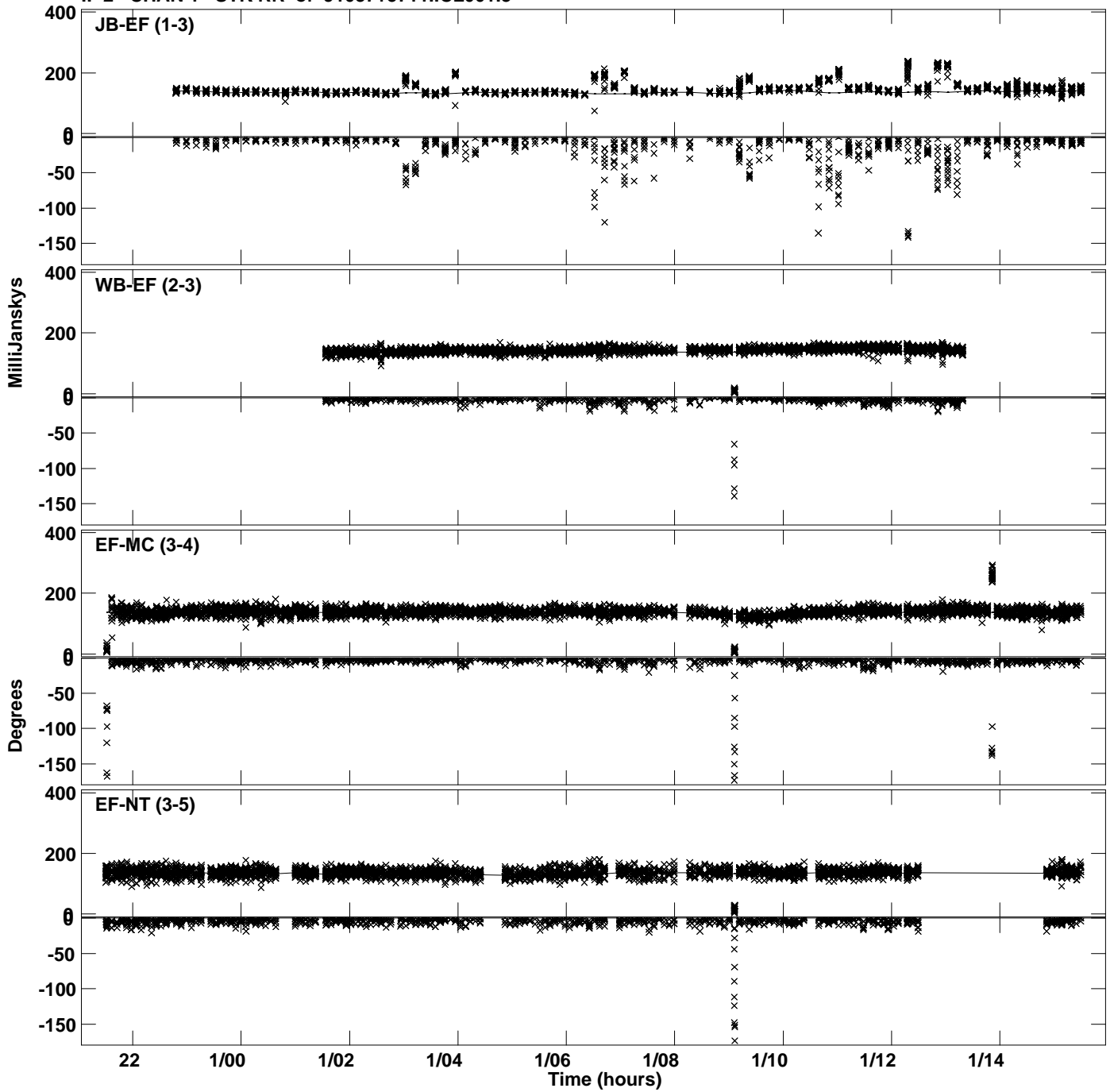
Plot file version 11 created 02-MAY-2024 18:07:57
Amplitude and Phase vs Time for J1037+5711.MULTI.1 CL # 3
IF 1 CHAN 1 STK RR of J1037+5711.ICL001.3



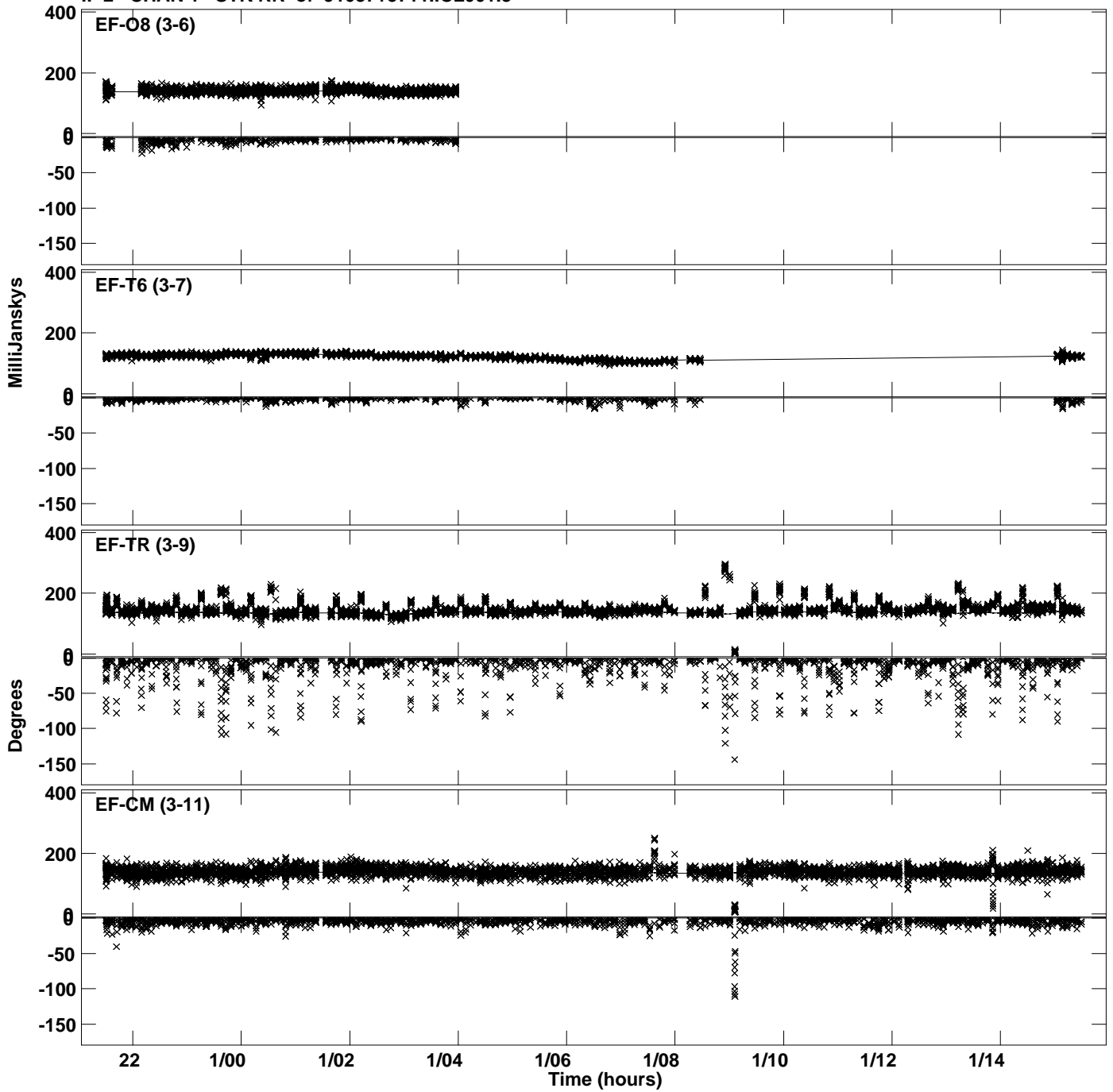
Plot file version 12 created 02-MAY-2024 18:07:57
Amplitude andPhase vs Time for J1037+5711.MULTI.1 CL # 3
IF 1 CHAN 1 STK RR of J1037+5711.ICL001.3



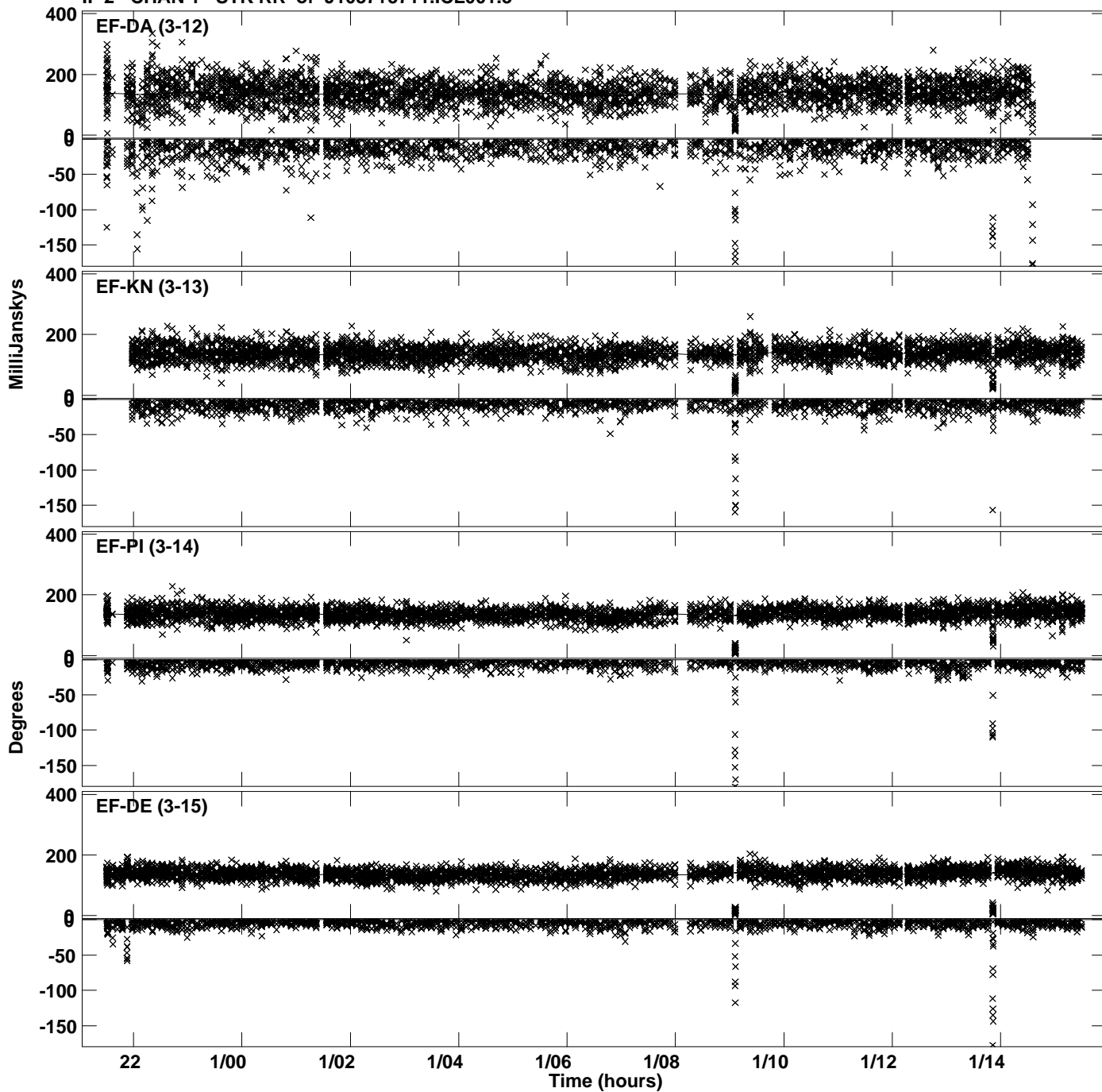
Plot file version 13 created 02-MAY-2024 18:07:58
Amplitude andPhase vs Time for J1037+5711.MULTI.1 CL # 3
IF 2 CHAN 1 STK RR of J1037+5711.ICL001.3



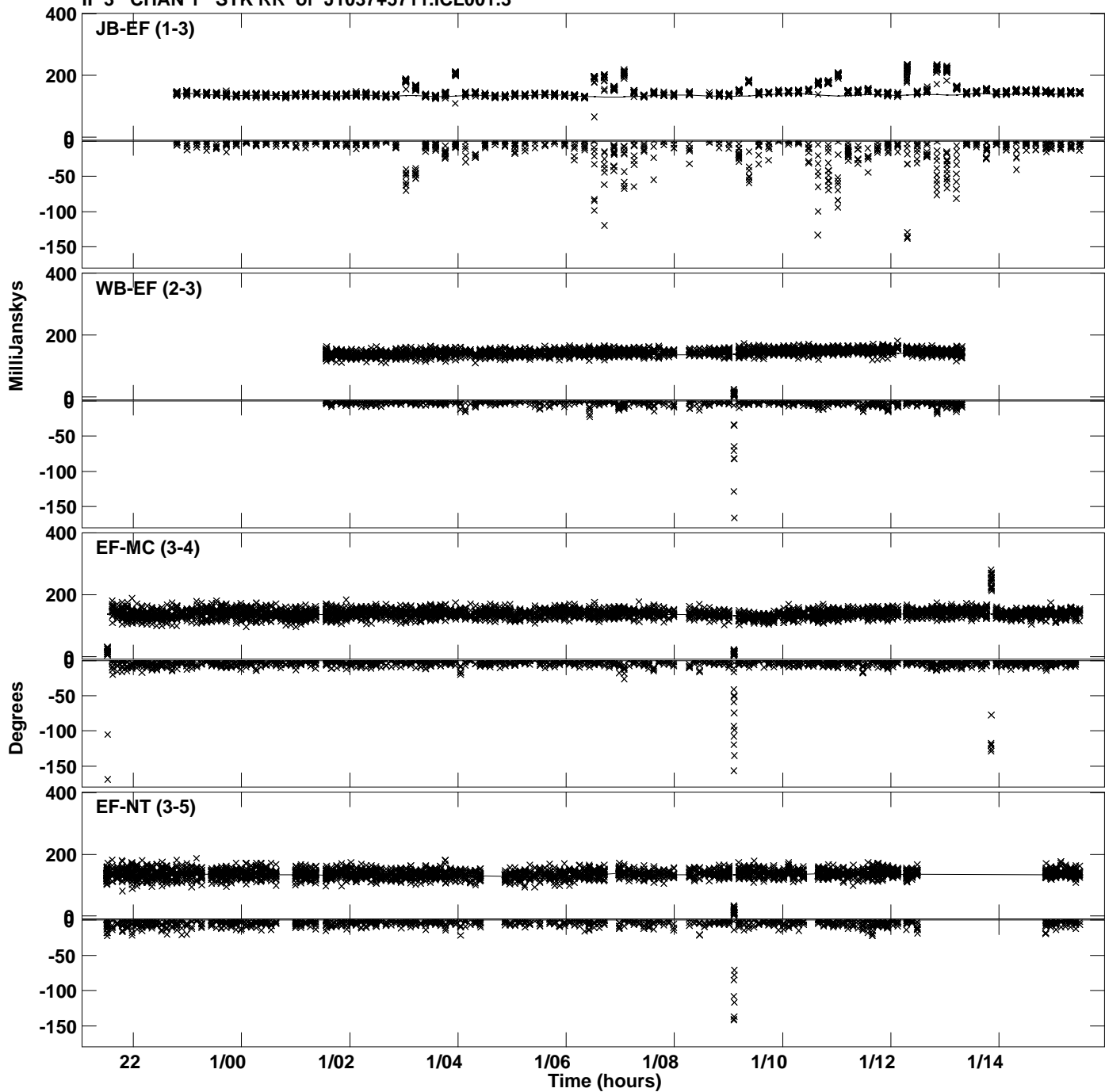
Plot file version 14 created 02-MAY-2024 18:07:58
Amplitude andPhase vs Time for J1037+5711.MULTI.1 CL # 3
IF 2 CHAN 1 STK RR of J1037+5711.ICL001.3



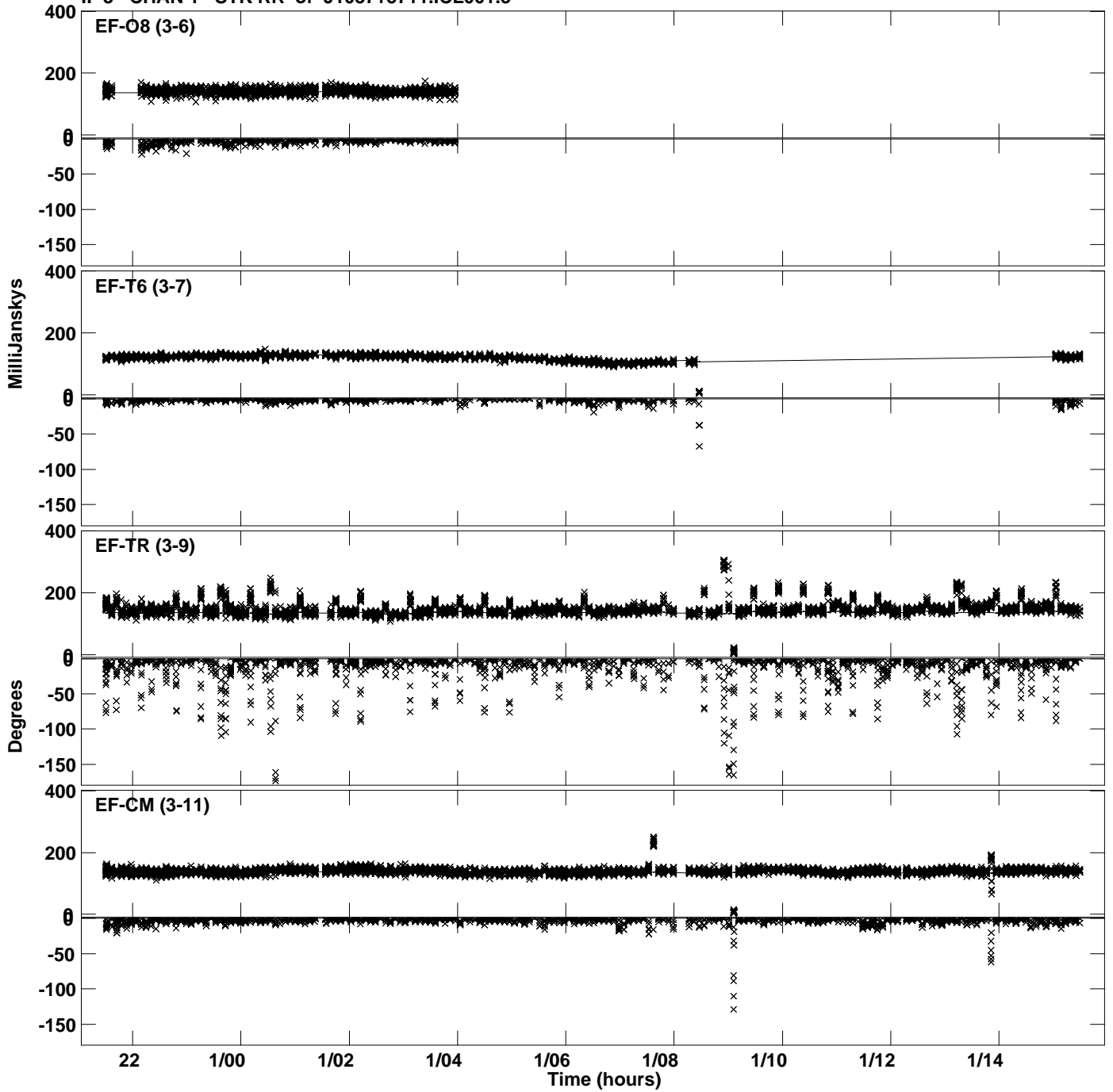
Plot file version 15 created 02-MAY-2024 18:07:58
Amplitude andPhase vs Time for J1037+5711.MULTI.1 CL # 3
IF 2 CHAN 1 STK RR of J1037+5711.ICL001.3



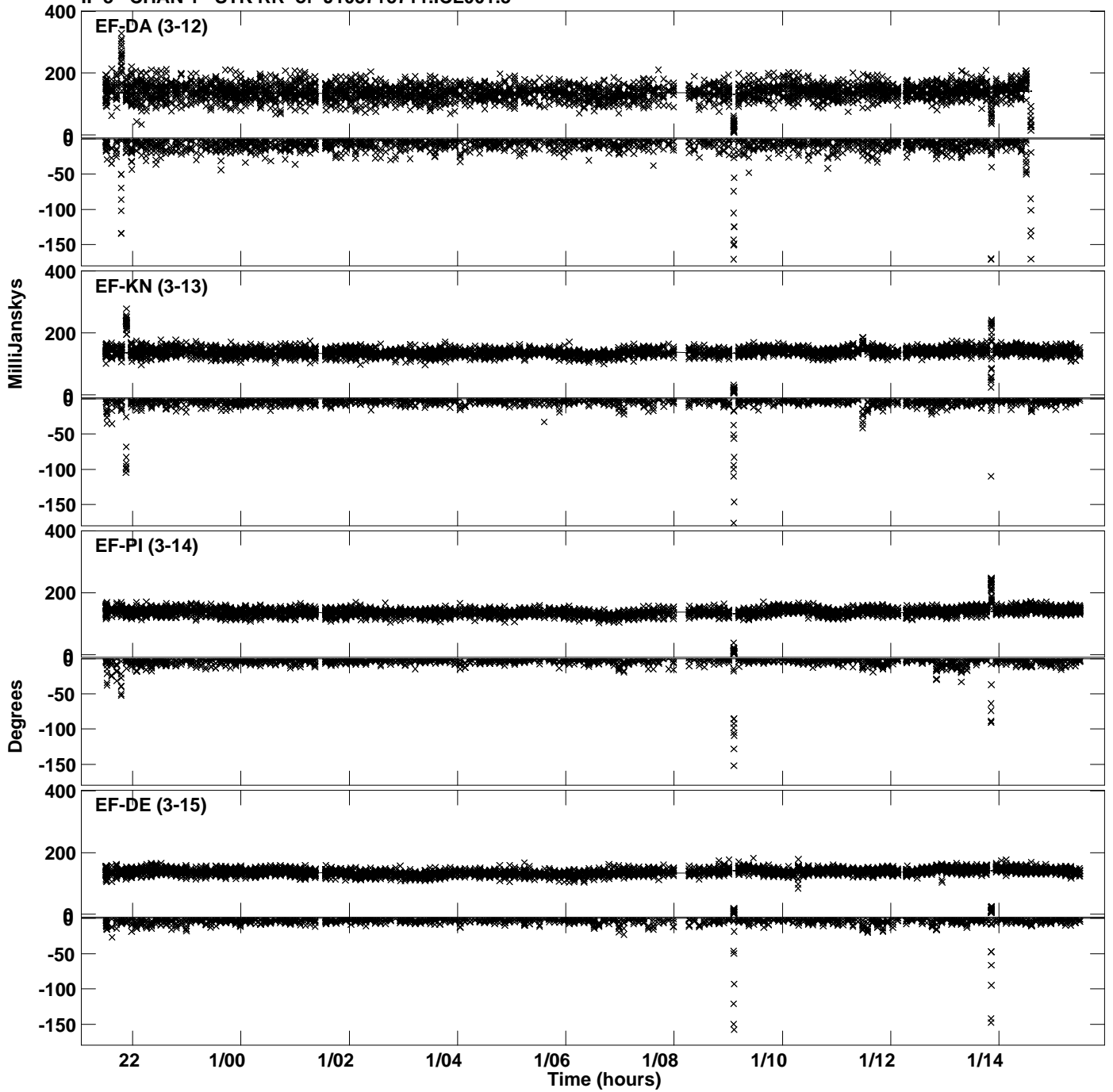
Plot file version 16 created 02-MAY-2024 18:07:58
Amplitude andPhase vs Time for J1037+5711.MULTI.1 CL # 3
IF 3 CHAN 1 STK RR of J1037+5711.ICL001.3



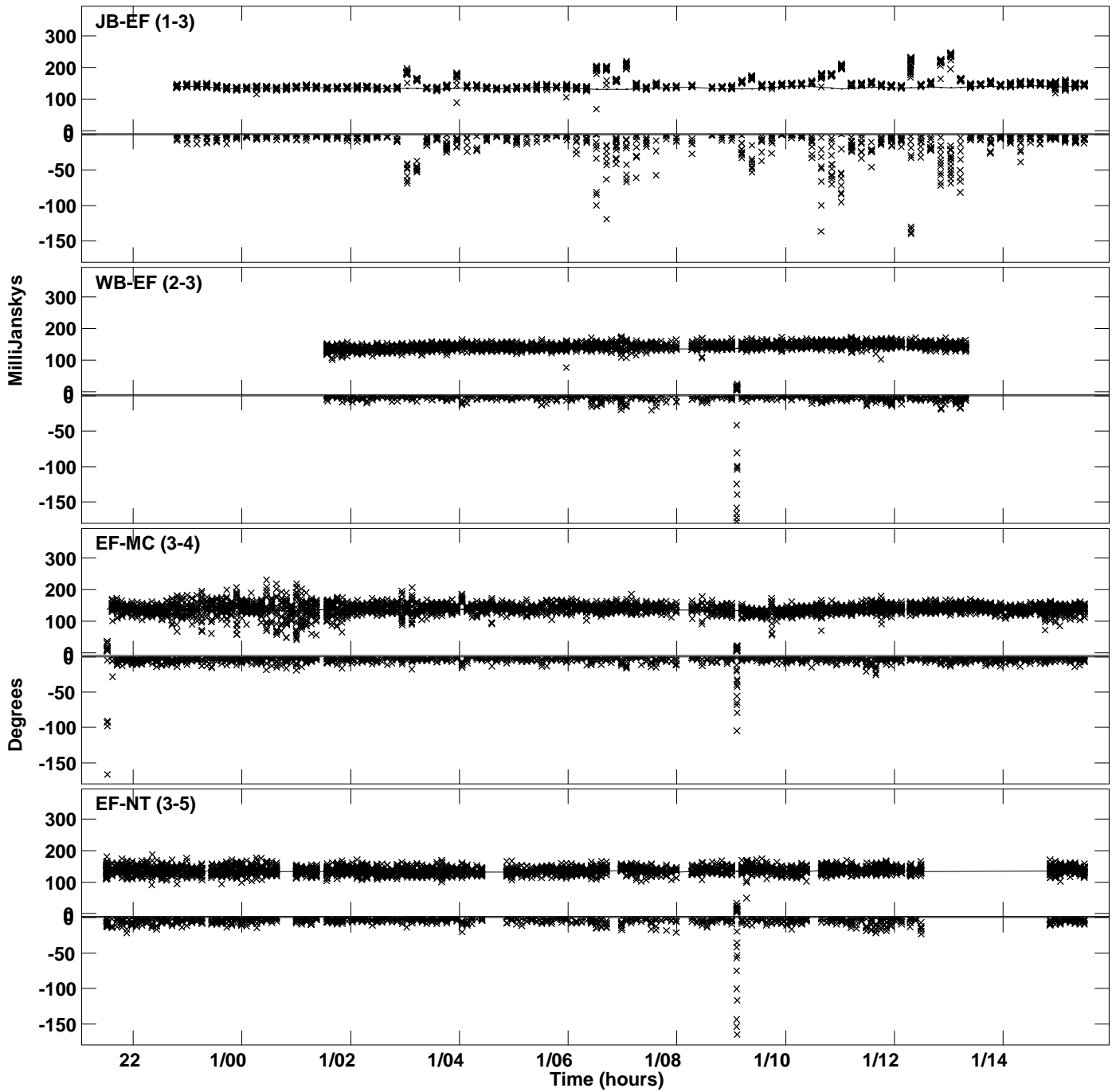
Plot file version 17 created 02-MAY-2024 18:07:58
Amplitude and Phase vs Time for J1037+5711.MULTI.1 CL # 3
IF 3 CHAN 1 STK RR of J1037+5711.ICL001.3



Plot file version 18 created 02-MAY-2024 18:07:58
Amplitude and Phase vs Time for J1037+5711.MULTI.1 CL # 3
IF 3 CHAN 1 STK RR of J1037+5711.ICL001.3



Plot file version 19 created 02-MAY-2024 18:07:59
Amplitude andPhase vs Time for J1037+5711.MULTI.1 CL # 3
IF 4 CHAN 1 STK RR of J1037+5711.ICL001.3



Plot file version 20 created 02-MAY-2024 18:07:59
Amplitude andPhase vs Time for J1037+5711.MULTI.1 CL # 3
IF 4 CHAN 1 STK RR of J1037+5711.ICL001.3

