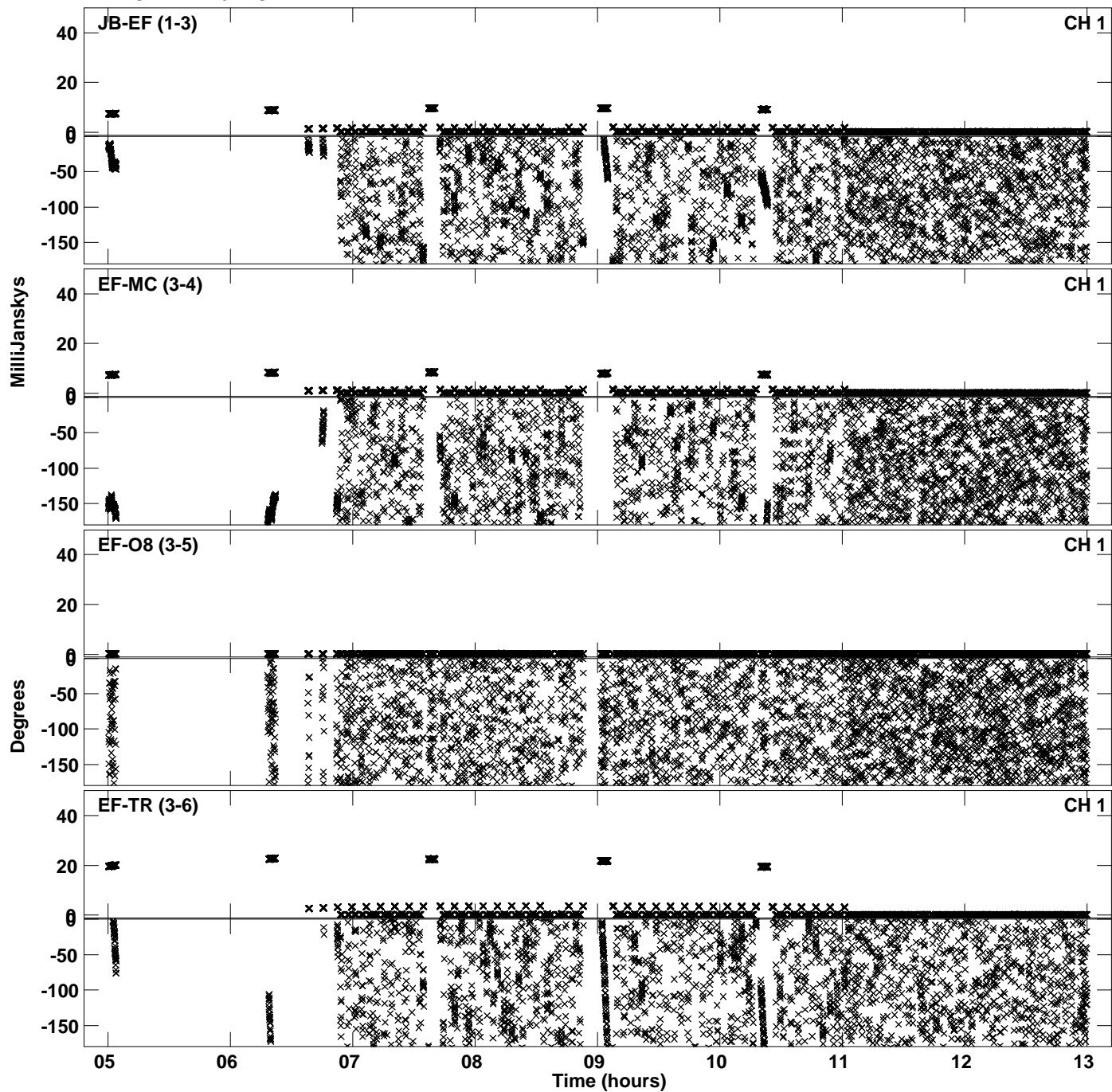
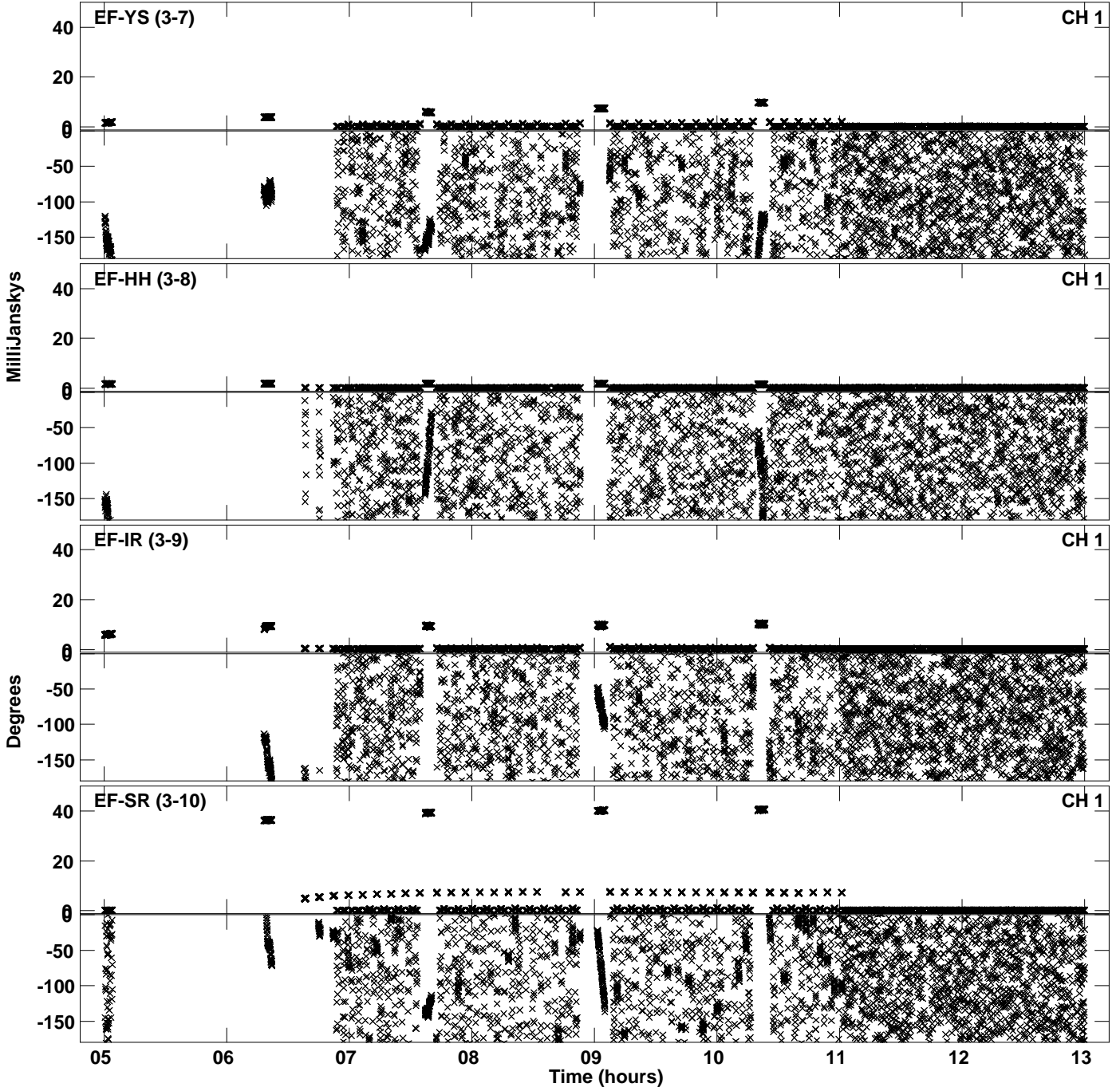


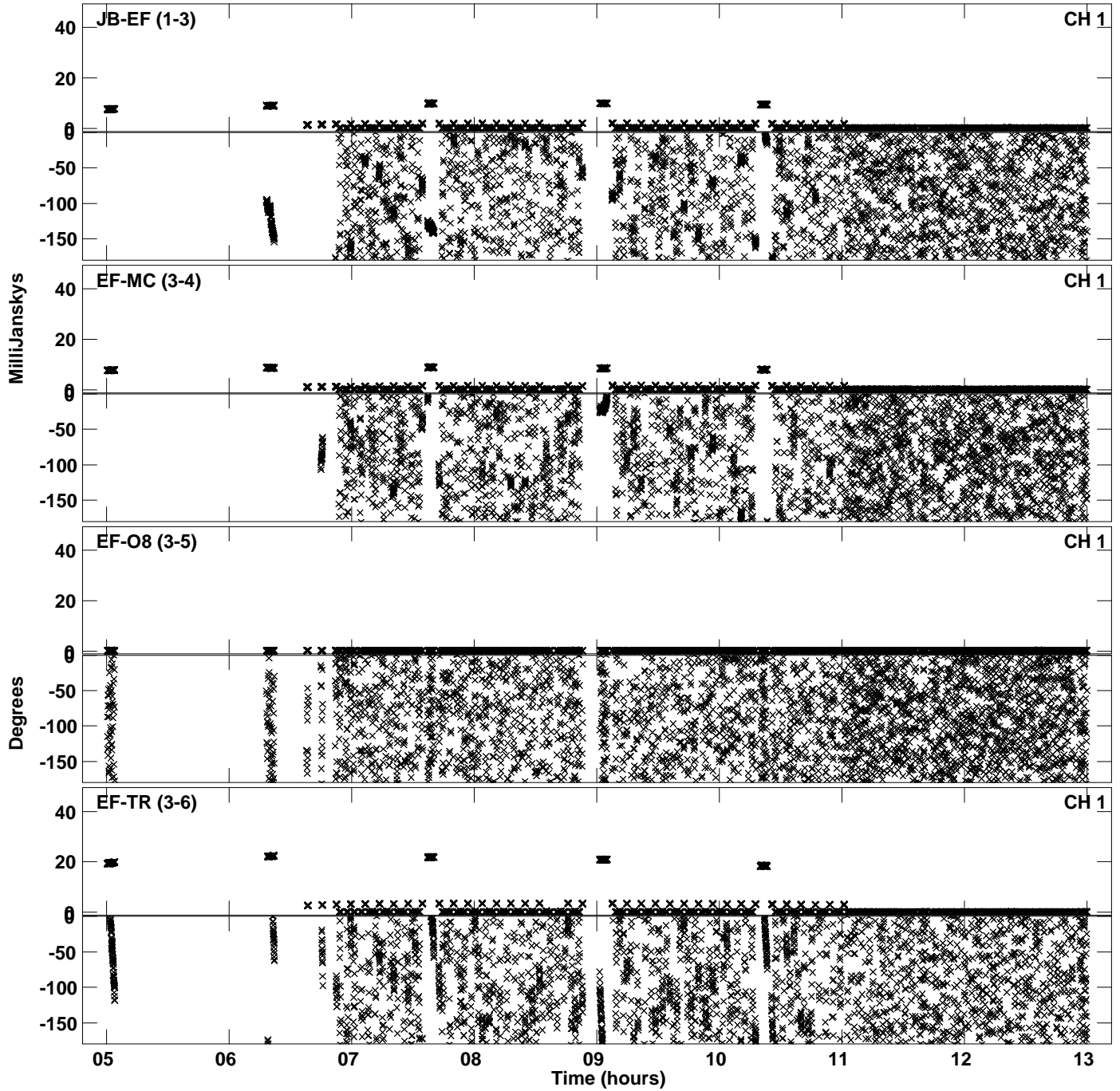
Plot file version 1 created 19-JAN-2024 00:40:12
Amplitude andPhase vs Time for EM165B.UVDATA.1 Vect aver.
IF 1 CHAN 1 - 64 STK LL



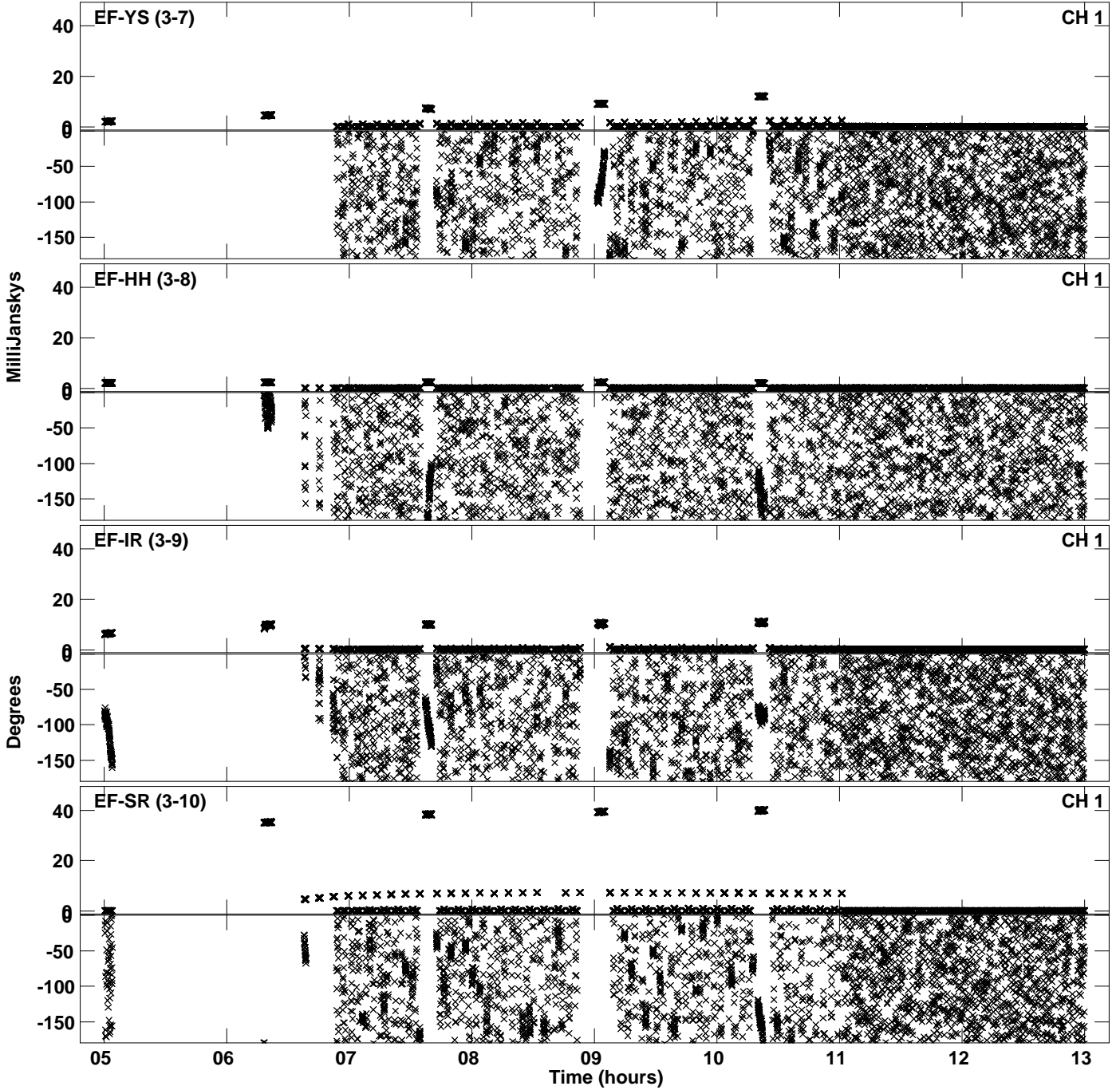
Plot file version 2 created 19-JAN-2024 00:40:12
Amplitude andPhase vs Time for EM165B.UVDATA.1 Vect aver.
IF 1 CHAN 1 - 64 STK LL



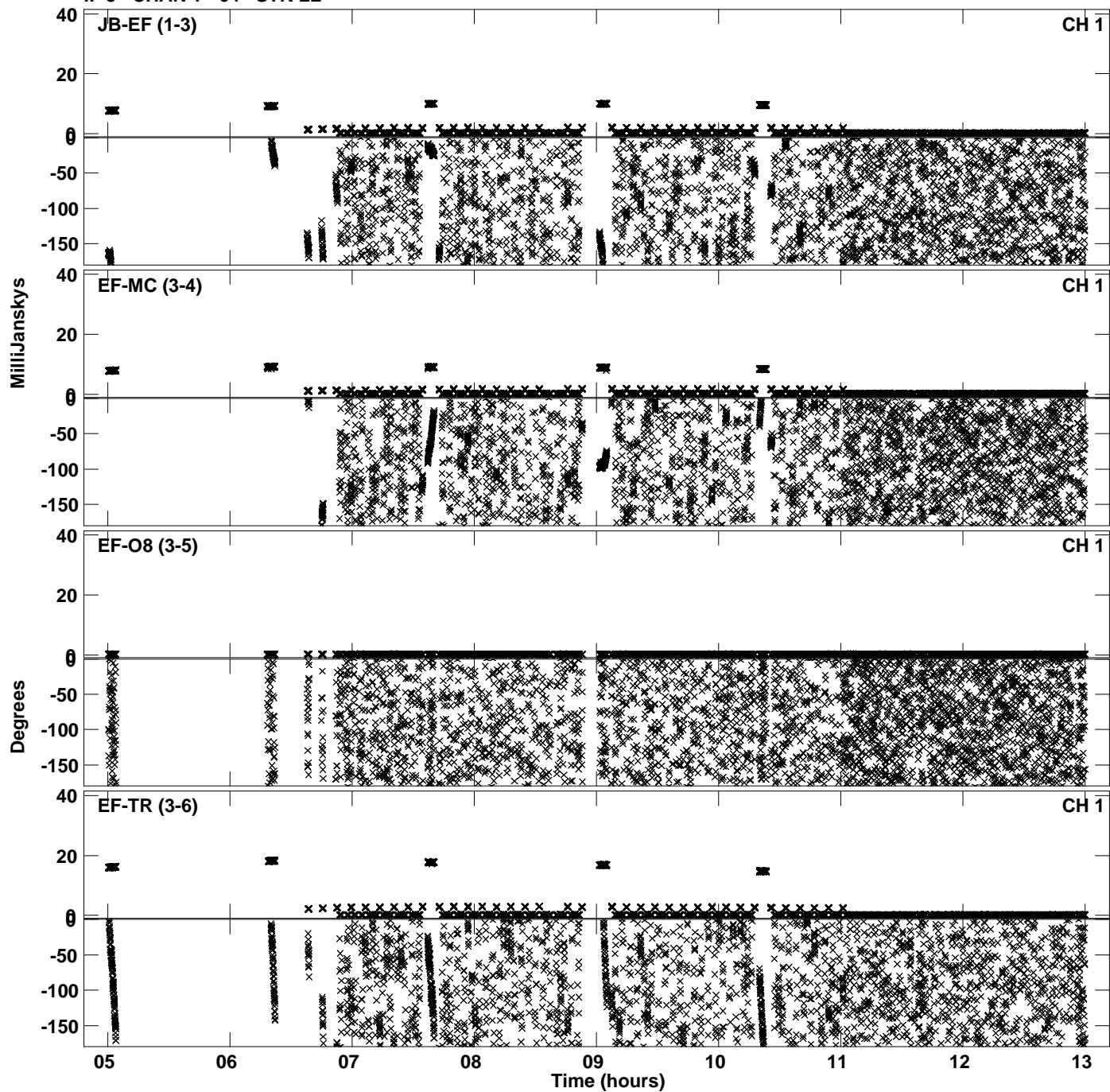
Plot file version 3 created 19-JAN-2024 00:40:19
Amplitude and Phase vs Time for EM165B.UVDATA.1 Vect aver.
IF 2 CHAN 1 - 64 STK LL



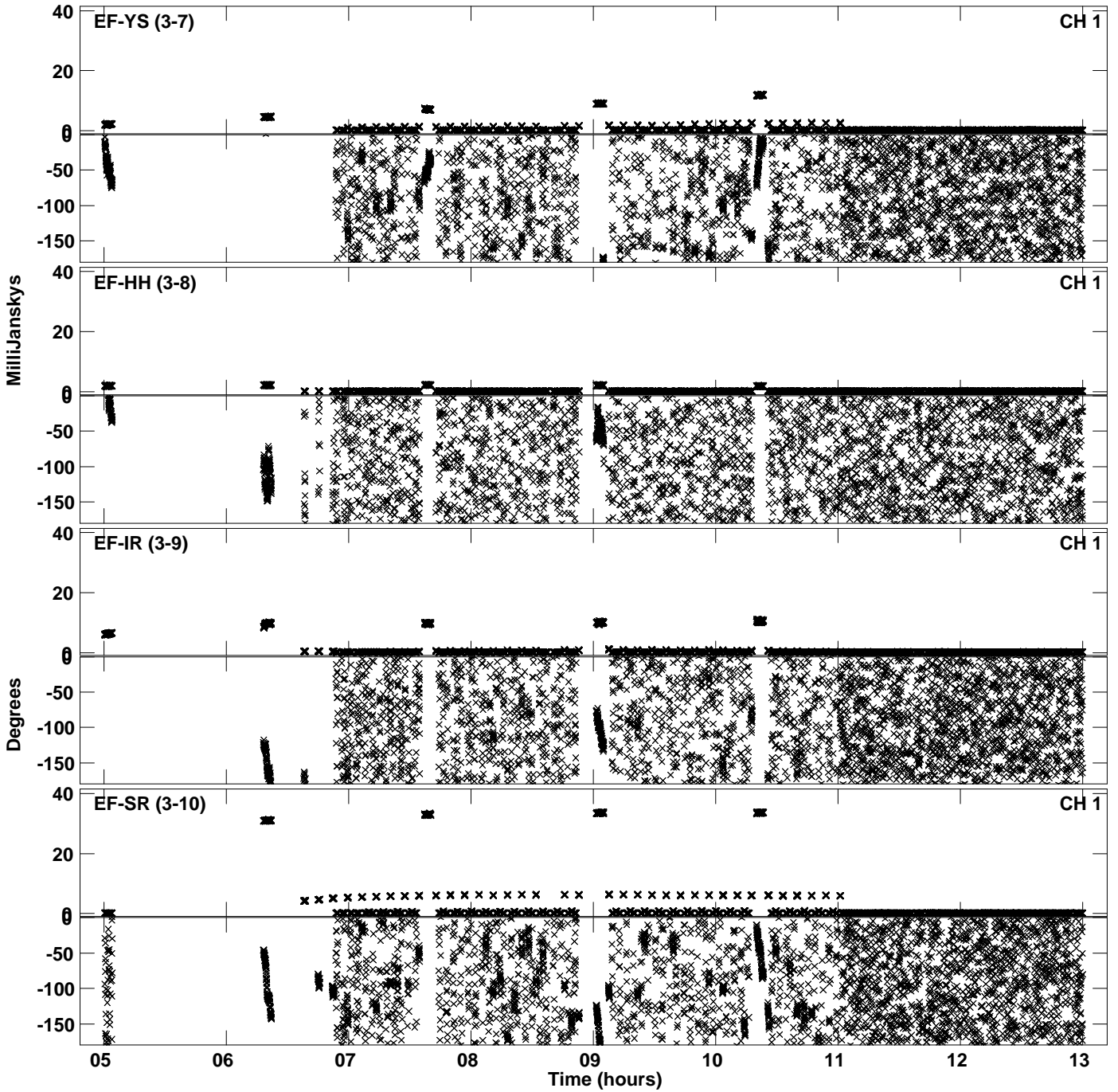
Plot file version 4 created 19-JAN-2024 00:40:19
Amplitude andPhase vs Time for EM165B.UVDATA.1 Vect aver.
IF 2 CHAN 1 - 64 STK LL



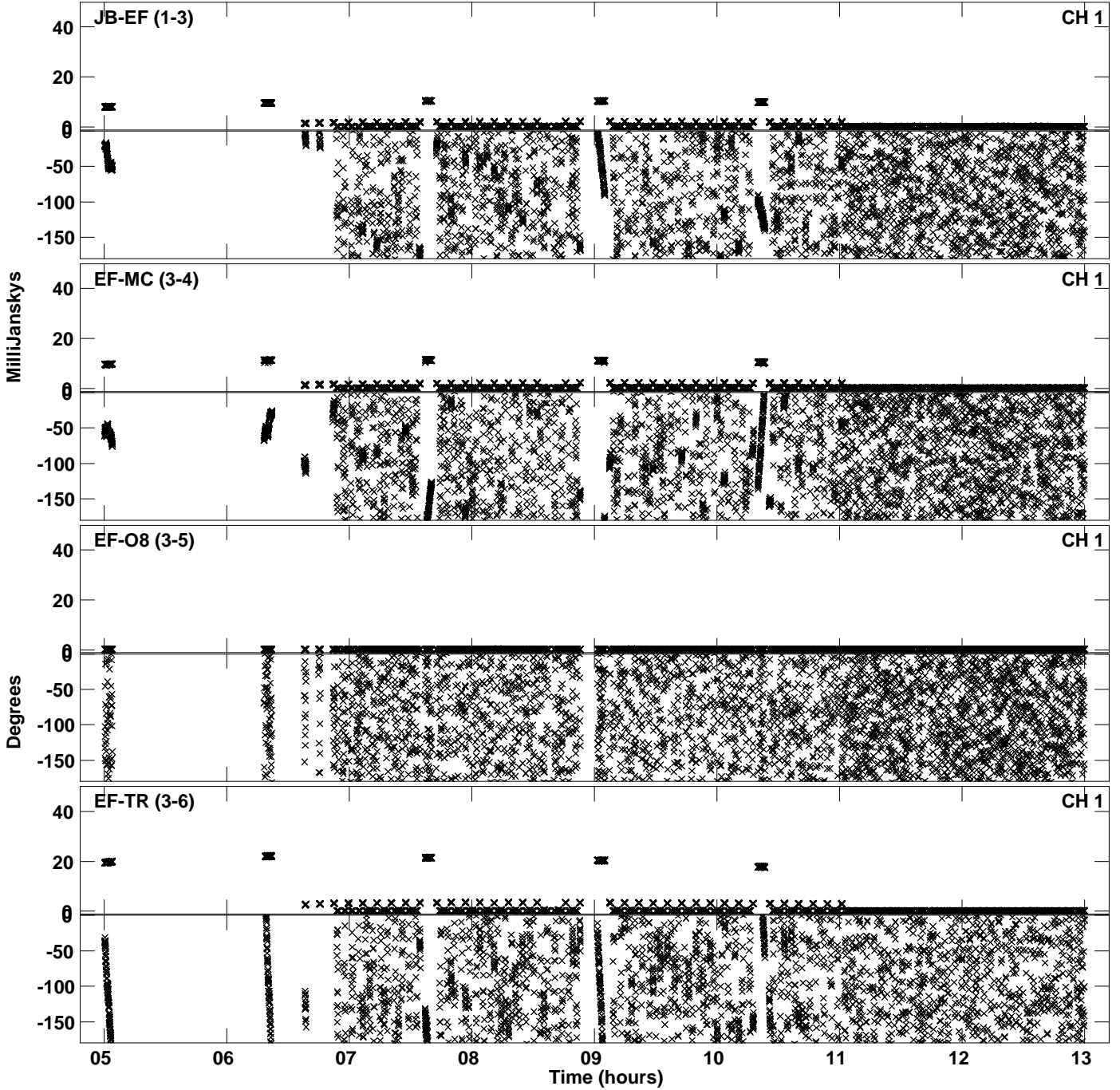
Plot file version 5 created 19-JAN-2024 00:40:26
Amplitude andPhase vs Time for EM165B.UVDATA.1 Vect aver.
IF 3 CHAN 1 - 64 STK LL



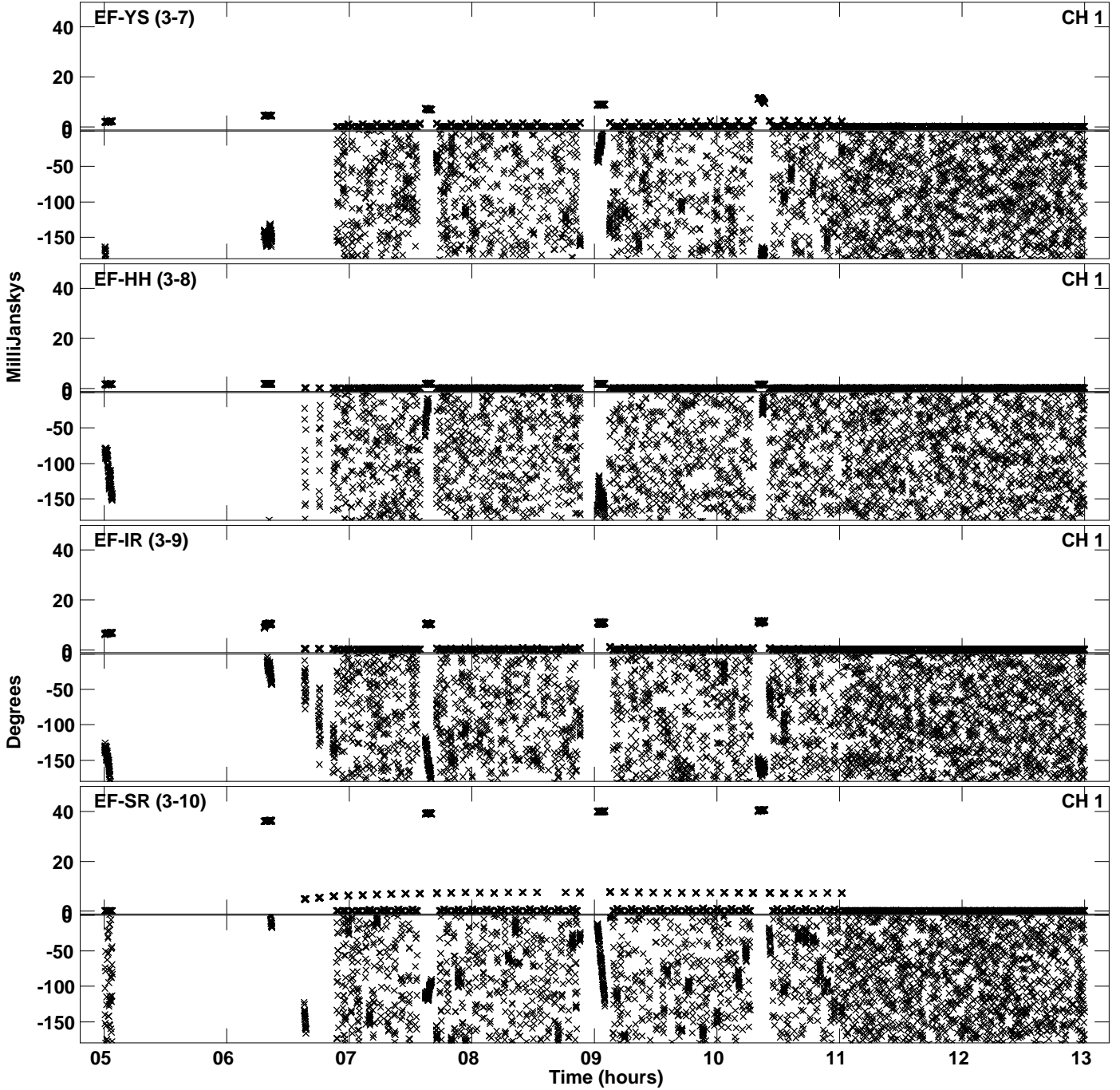
Plot file version 6 created 19-JAN-2024 00:40:27
Amplitude andPhase vs Time for EM165B.UVDATA.1 Vect aver.
IF 3 CHAN 1 - 64 STK LL



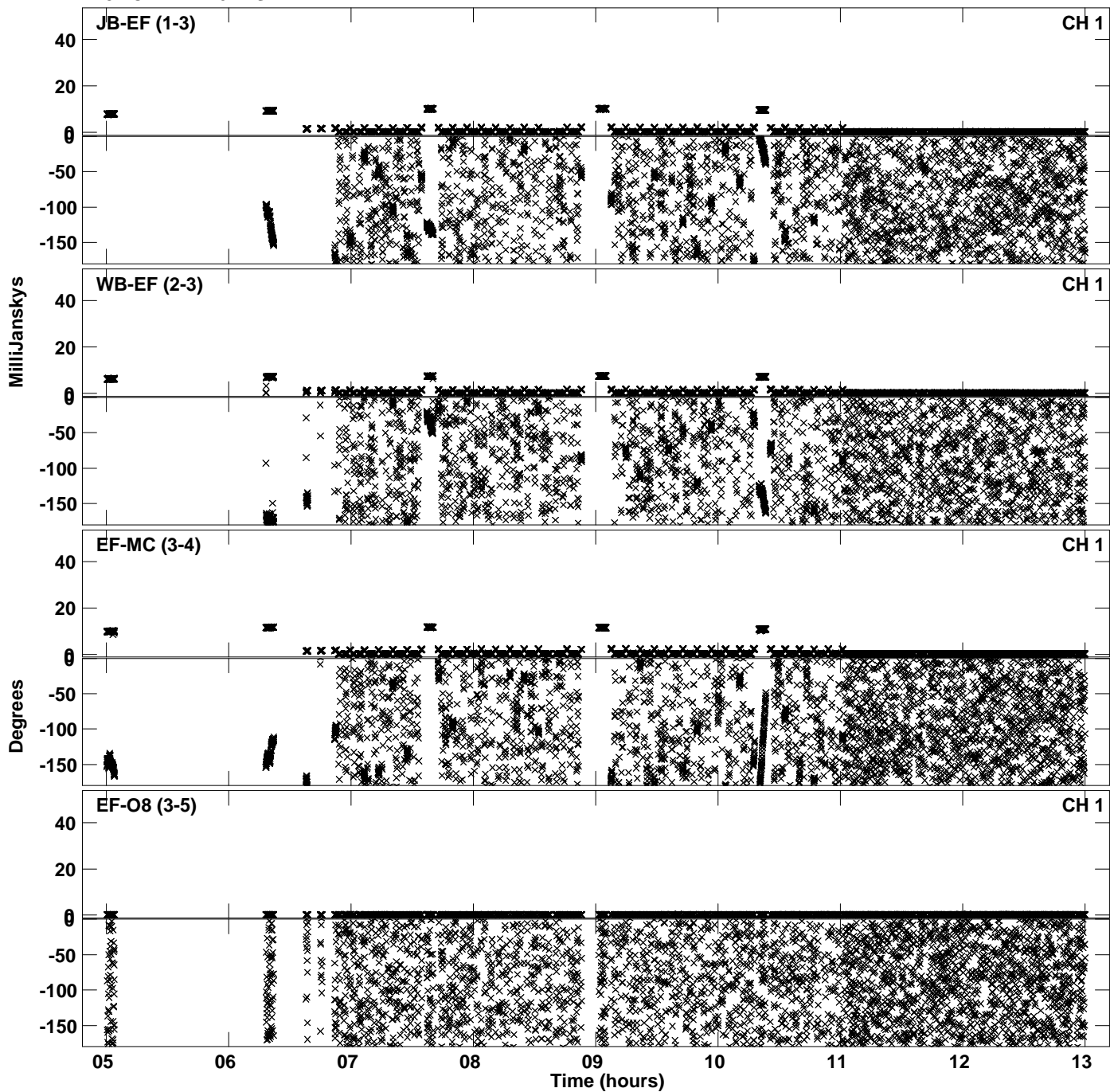
Plot file version 7 created 19-JAN-2024 00:40:34
Amplitude andPhase vs Time for EM165B.UVDATA.1 Vect aver.
IF 4 CHAN 1 - 64 STK LL



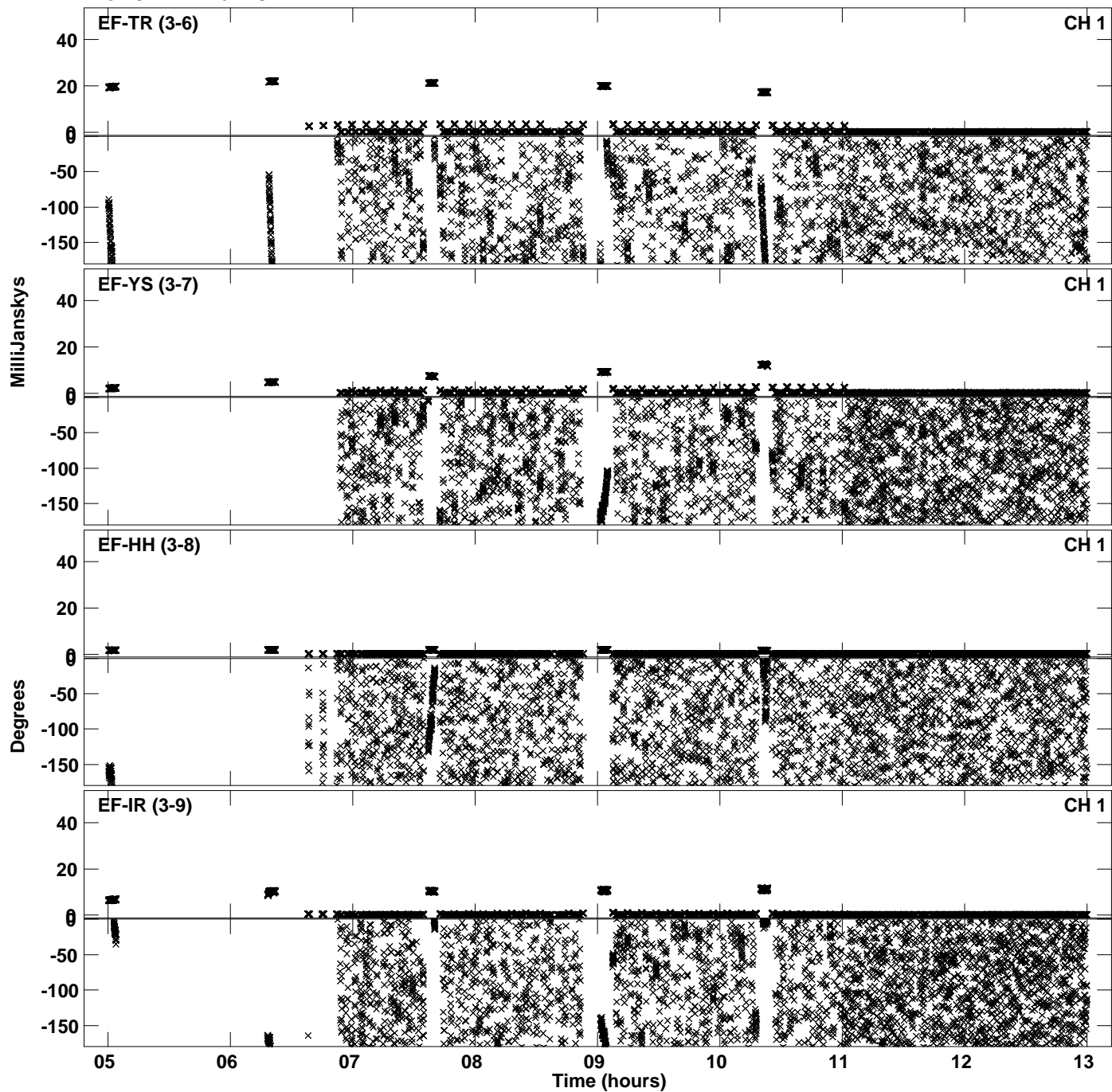
Plot file version 8 created 19-JAN-2024 00:40:34
Amplitude and Phase vs Time for EM165B.UVDATA.1 Vect aver.
IF 4 CHAN 1 - 64 STK LL



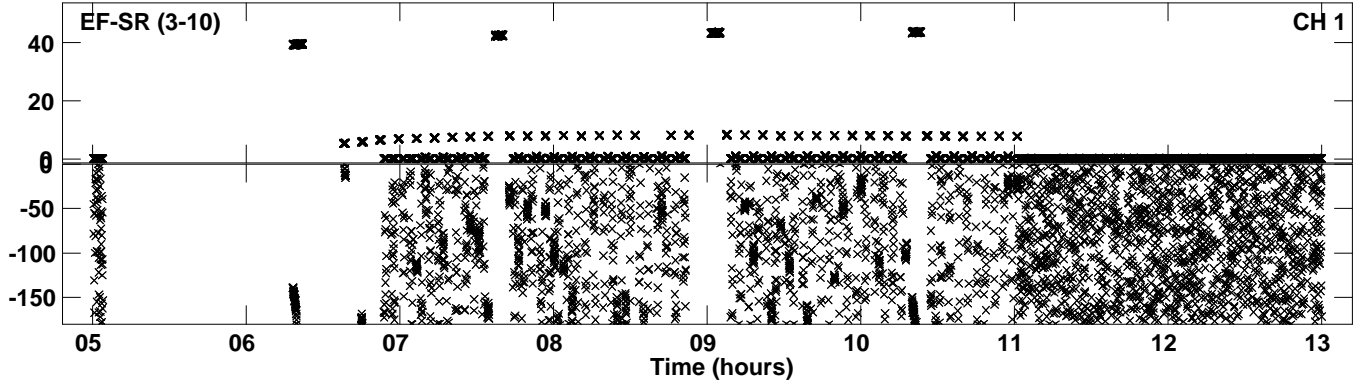
Plot file version 9 created 19-JAN-2024 00:40:42
Amplitude andPhase vs Time for EM165B.UVDATA.1 Vect aver.
IF 5 CHAN 1 - 64 STK LL



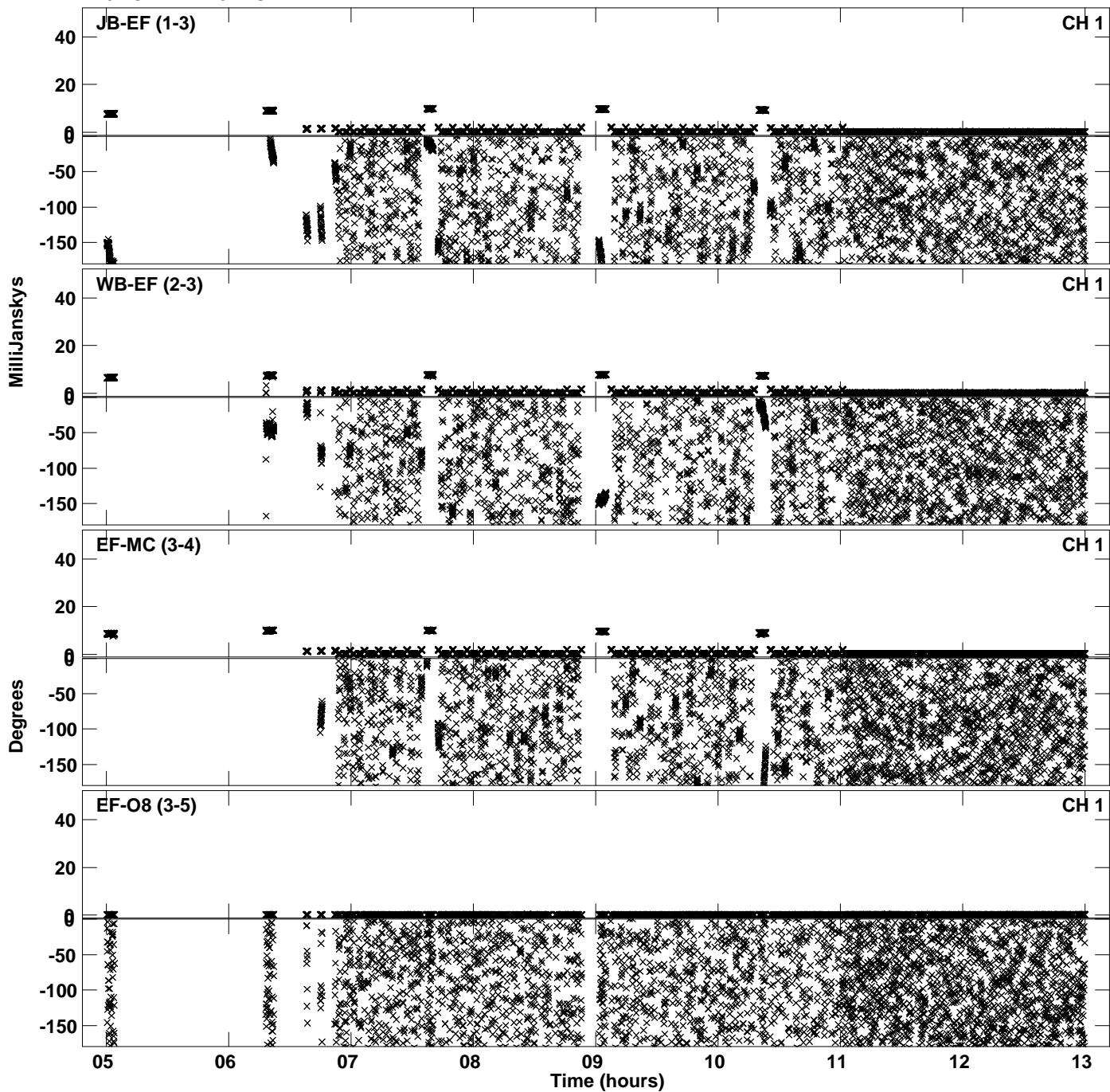
Plot file version 10 created 19-JAN-2024 00:40:42
Amplitude andPhase vs Time for EM165B.UVDATA.1 Vect aver.
IF 5 CHAN 1 - 64 STK LL



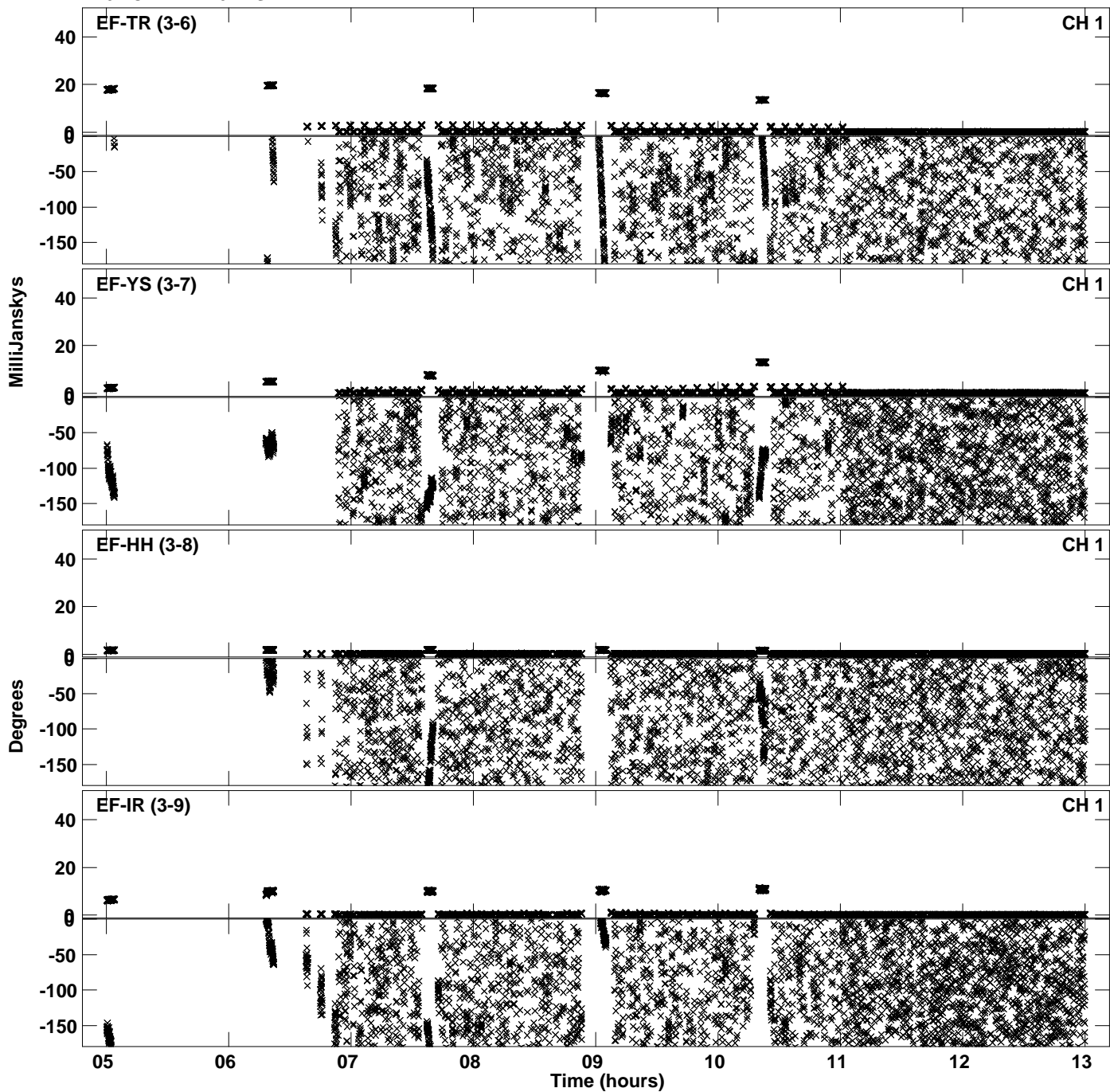
Plot file version 11 created 19-JAN-2024 00:40:42
Amplitude and Phase vs Time for EM165B.UVDATA.1 Vect aver.
IF 5 CHAN 1 - 64 STK LL



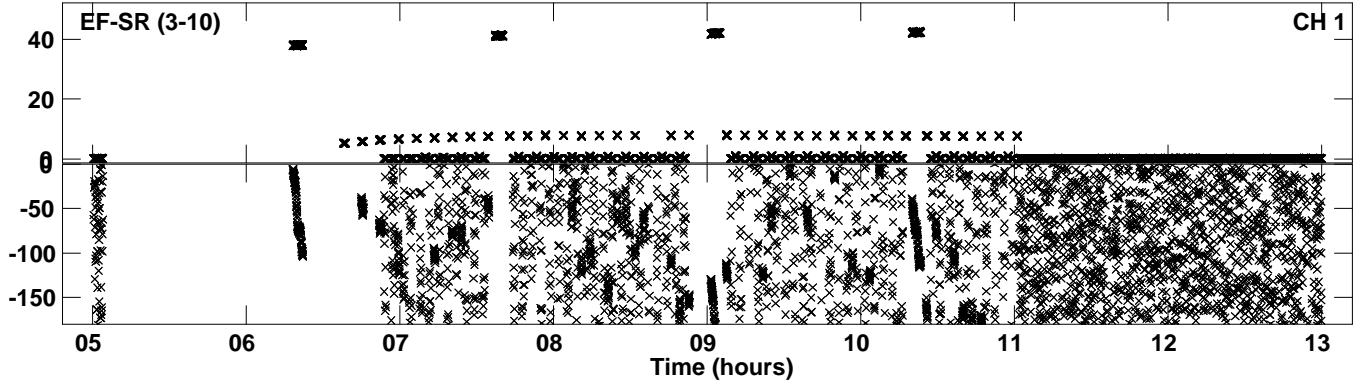
Plot file version 12 created 19-JAN-2024 00:40:49
Amplitude andPhase vs Time for EM165B.UVDATA.1 Vect aver.
IF 6 CHAN 1 - 64 STK LL



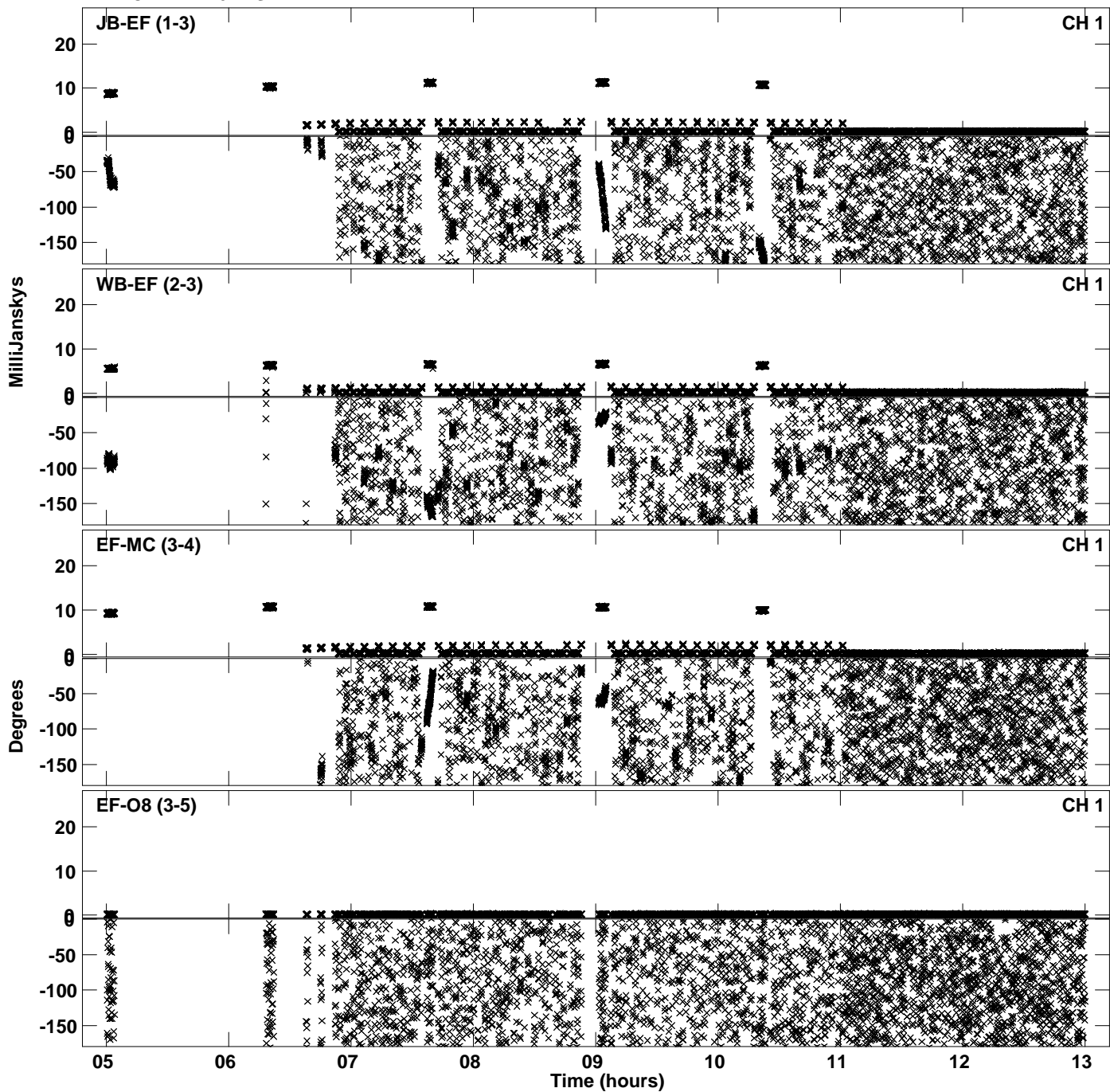
PLot file version 13 created 19-JAN-2024 00:40:49
Amplitude andPhase vs Time for EM165B.UVDATA.1 Vect aver.
IF 6 CHAN 1 - 64 STK LL



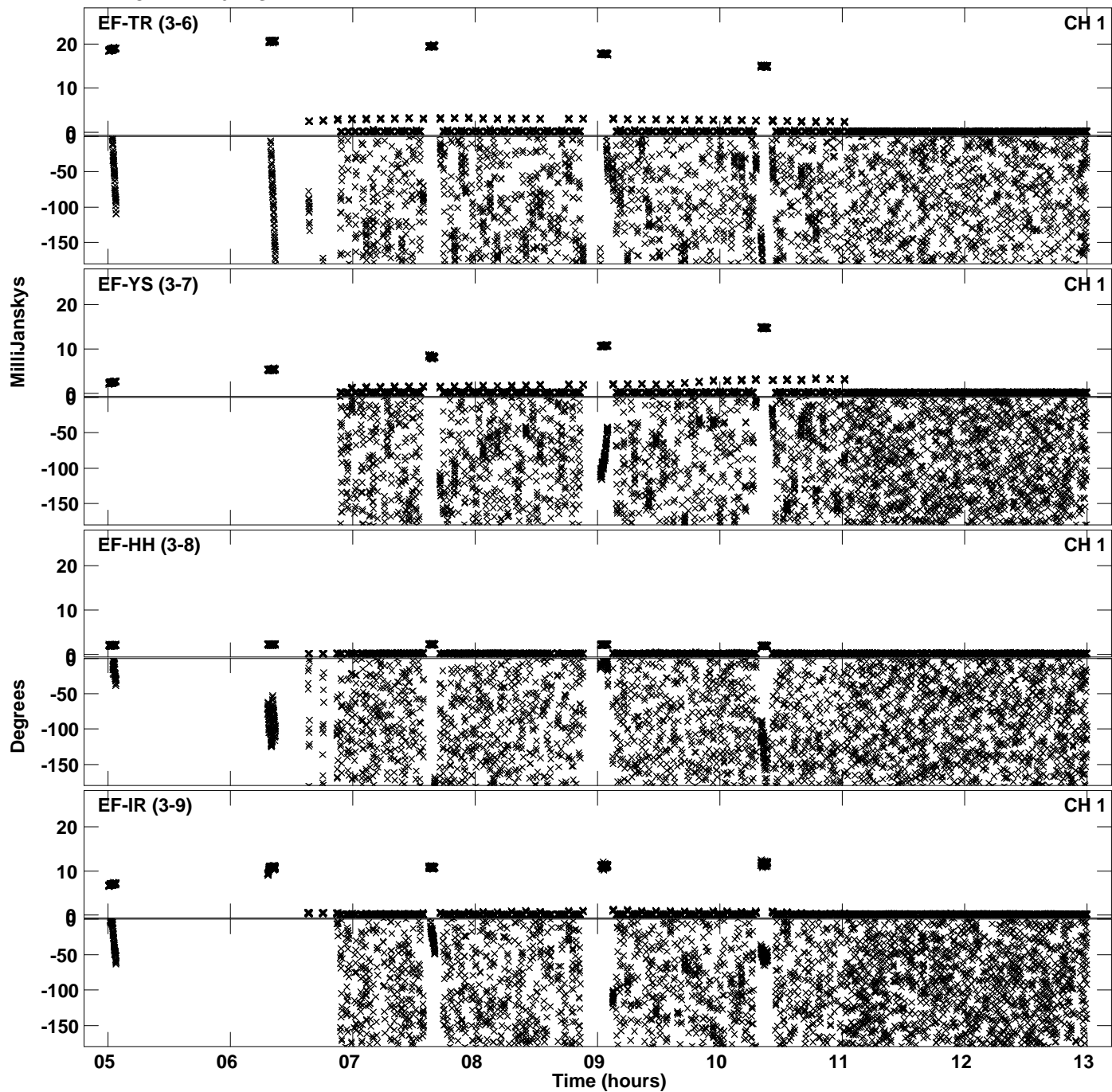
PLot file version 14 created 19-JAN-2024 00:40:49
Amplitude andPhase vs Time for EM165B.UVDATA.1 Vect aver.
IF 6 CHAN 1 - 64 STK LL



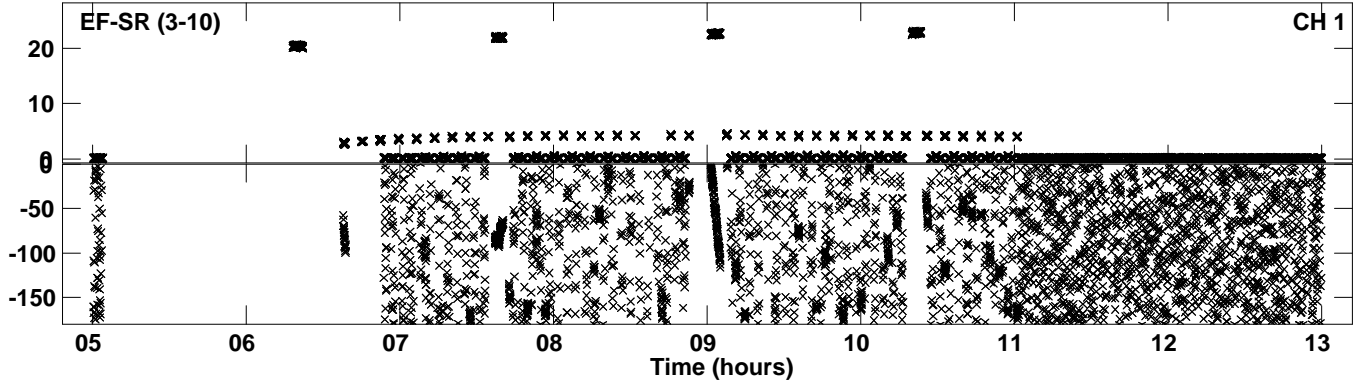
PLot file version 15 created 19-JAN-2024 00:40:57
Amplitude andPhase vs Time for EM165B.UVDATA.1 Vect aver.
IF 7 CHAN 1 - 64 STK LL



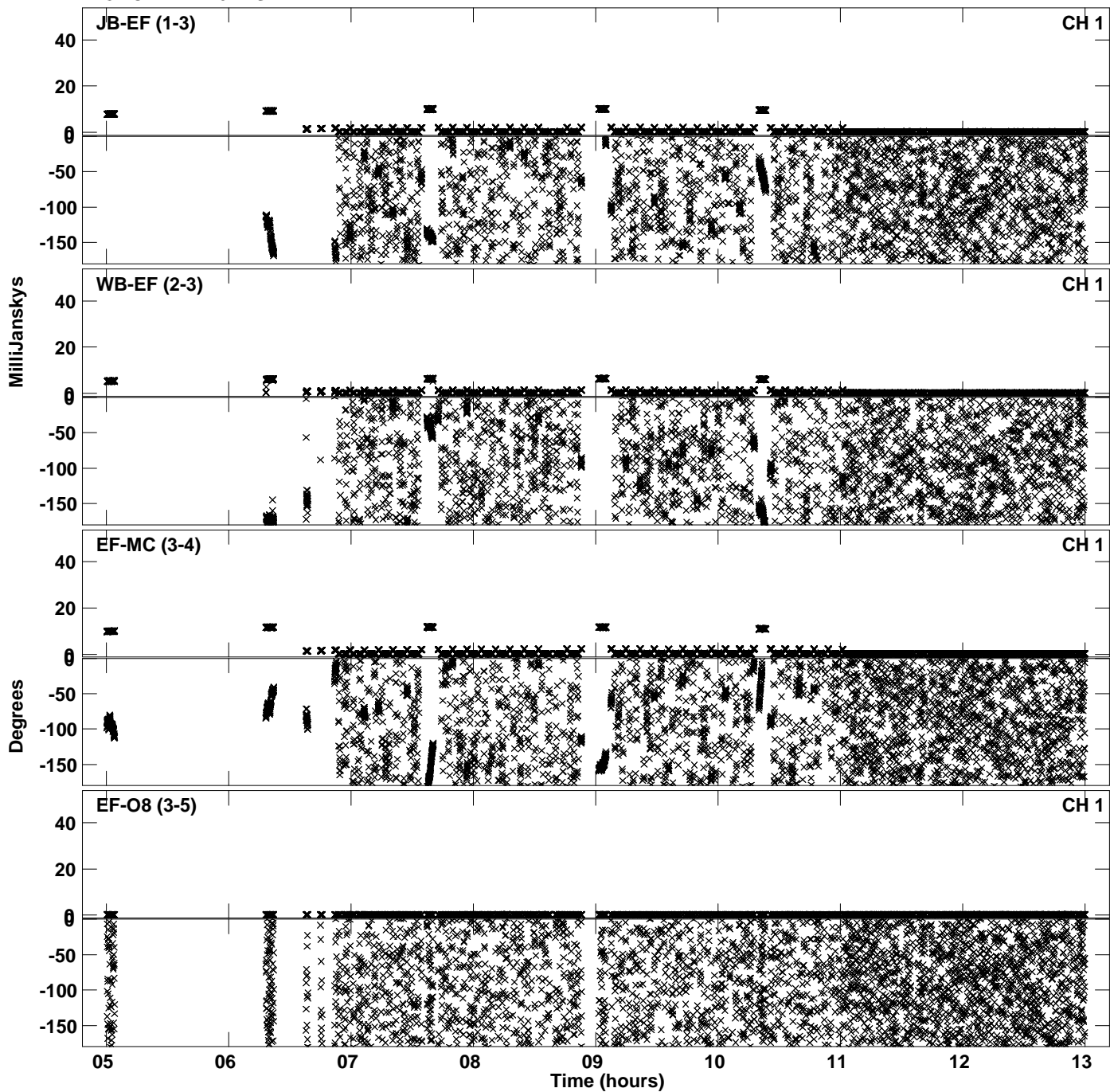
Plot file version 16 created 19-JAN-2024 00:40:57
Amplitude andPhase vs Time for EM165B.UVDATA.1 Vect aver.
IF 7 CHAN 1 - 64 STK LL



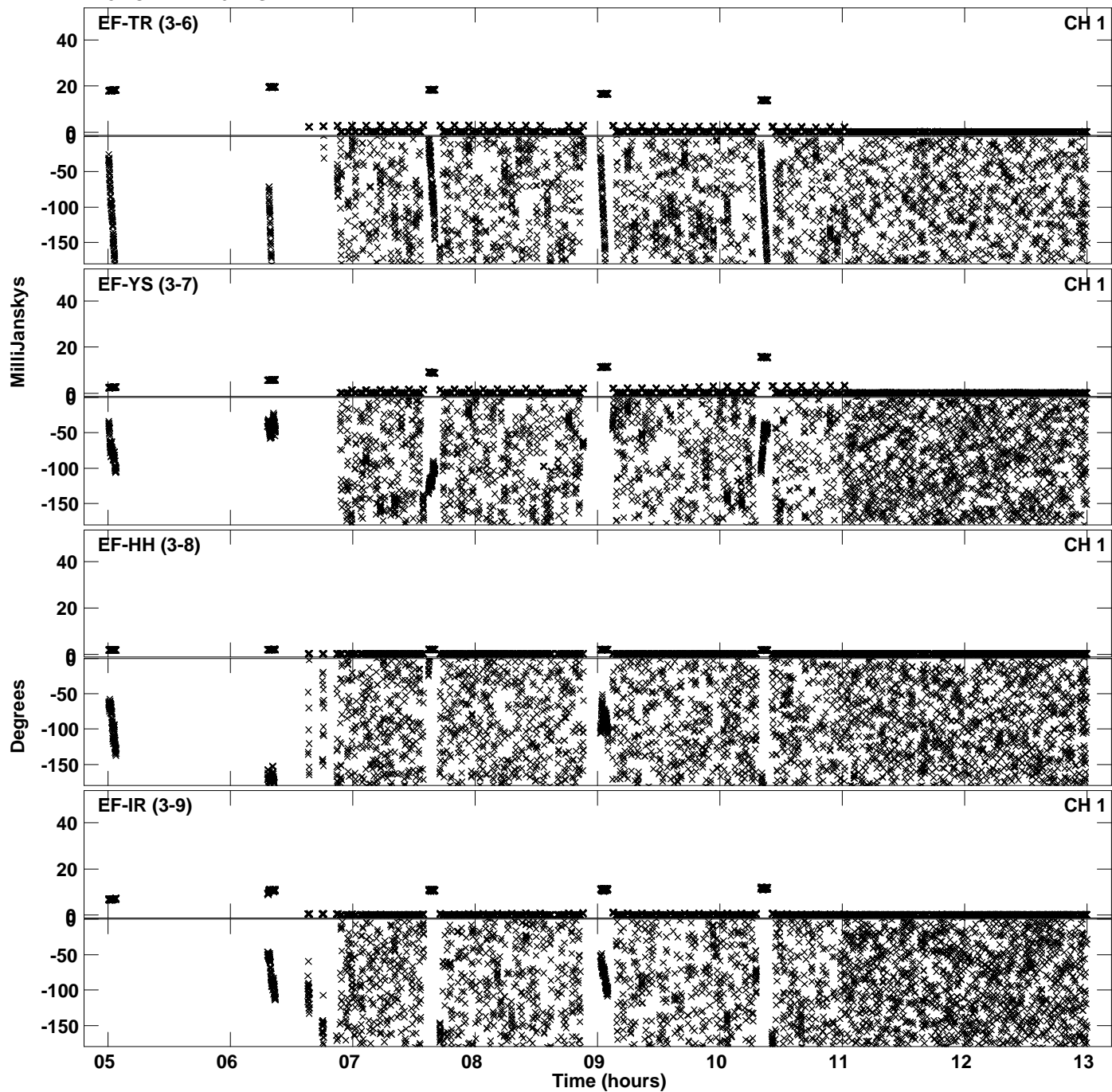
PLot file version 17 created 19-JAN-2024 00:40:57
Amplitude andPhase vs Time for EM165B.UVDATA.1 Vect aver.
IF 7 CHAN 1 - 64 STK LL



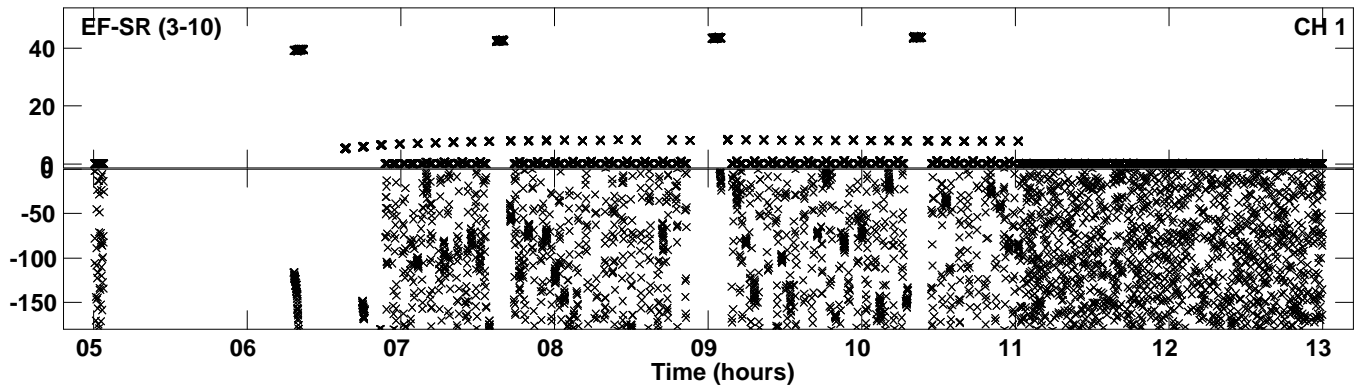
Plot file version 18 created 19-JAN-2024 00:41:04
Amplitude andPhase vs Time for EM165B.UVDATA.1 Vect aver.
IF 8 CHAN 1 - 64 STK LL



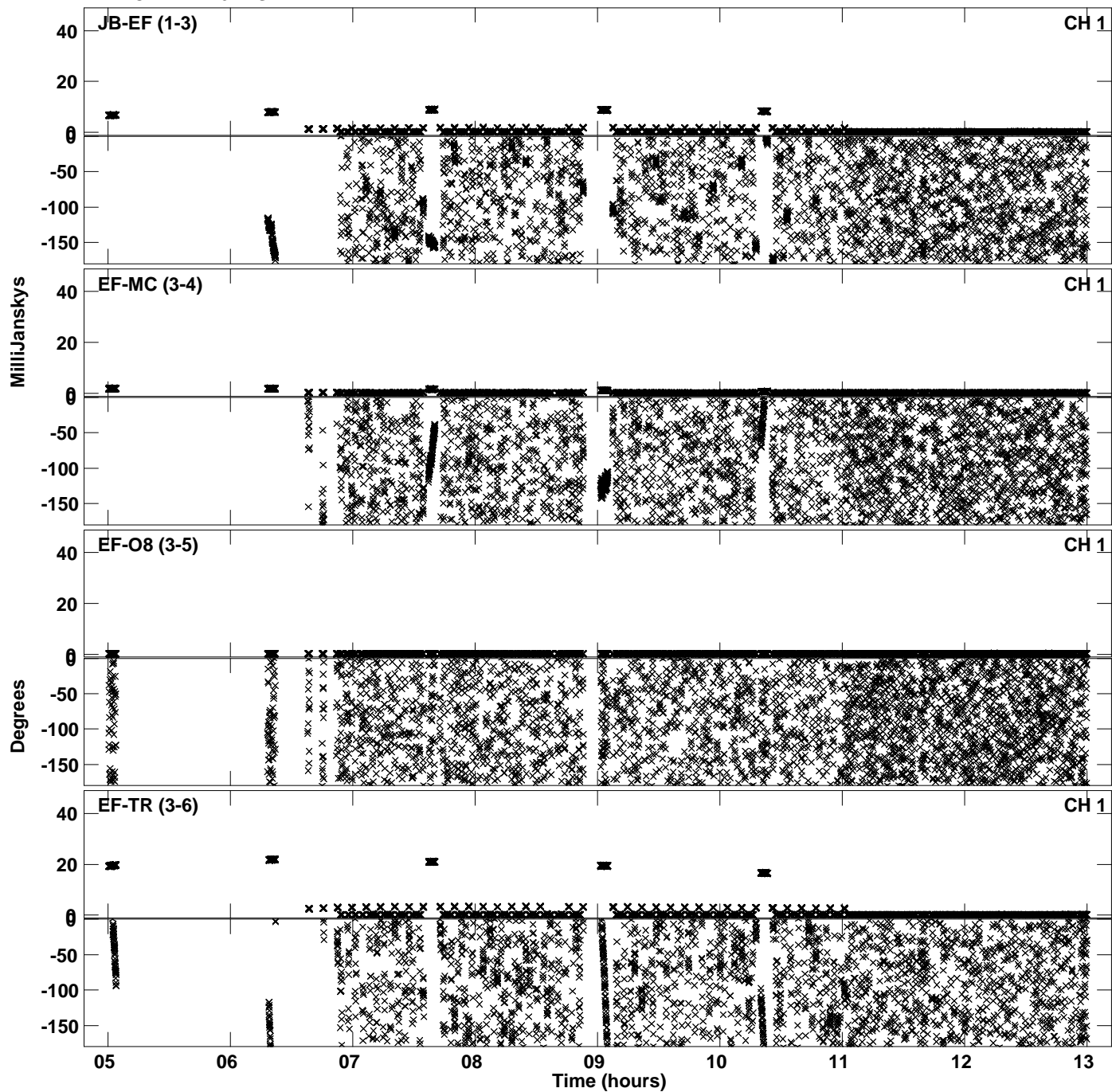
Plot file version 19 created 19-JAN-2024 00:41:04
Amplitude andPhase vs Time for EM165B.UVDATA.1 Vect aver.
IF 8 CHAN 1 - 64 STK LL



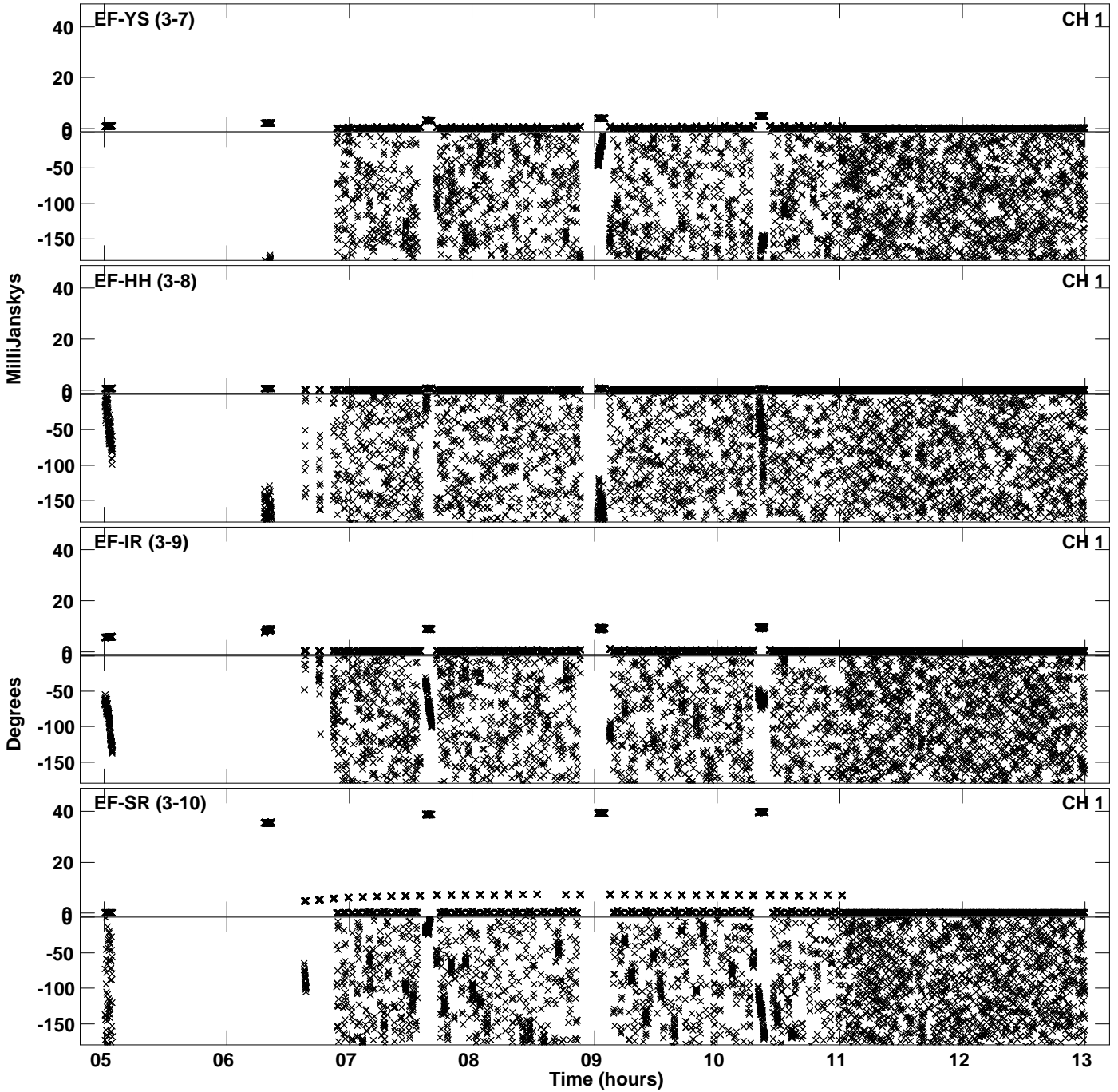
Plot file version 20 created 19-JAN-2024 00:41:04
Amplitude andPhase vs Time for EM165B.UVDATA.1 Vect aver.
IF 8 CHAN 1 - 64 STK LL



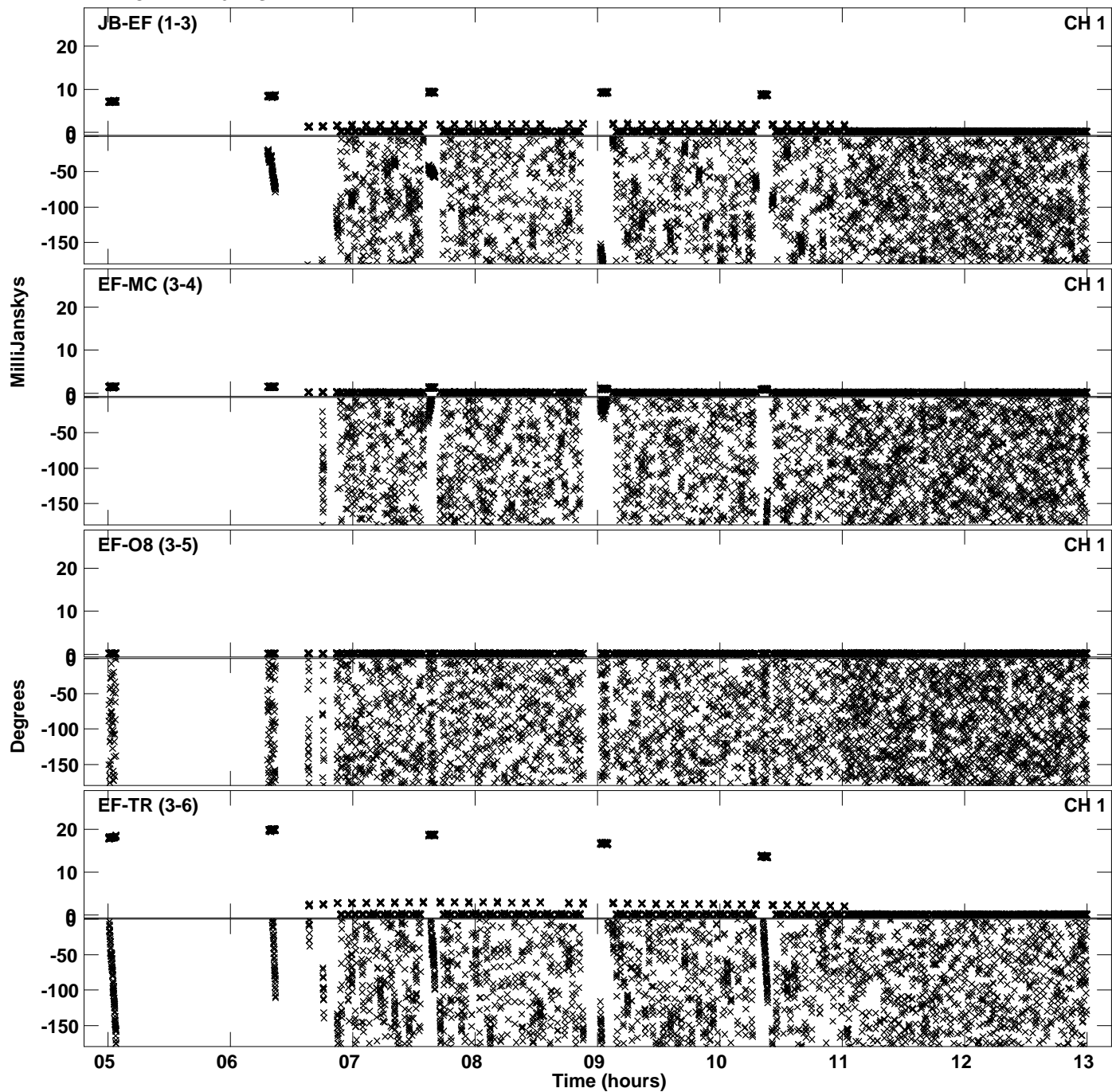
Plot file version 21 created 19-JAN-2024 00:41:11
Amplitude andPhase vs Time for EM165B.UVDATA.1 Vect aver.
IF 1 CHAN 1 - 64 STK RR



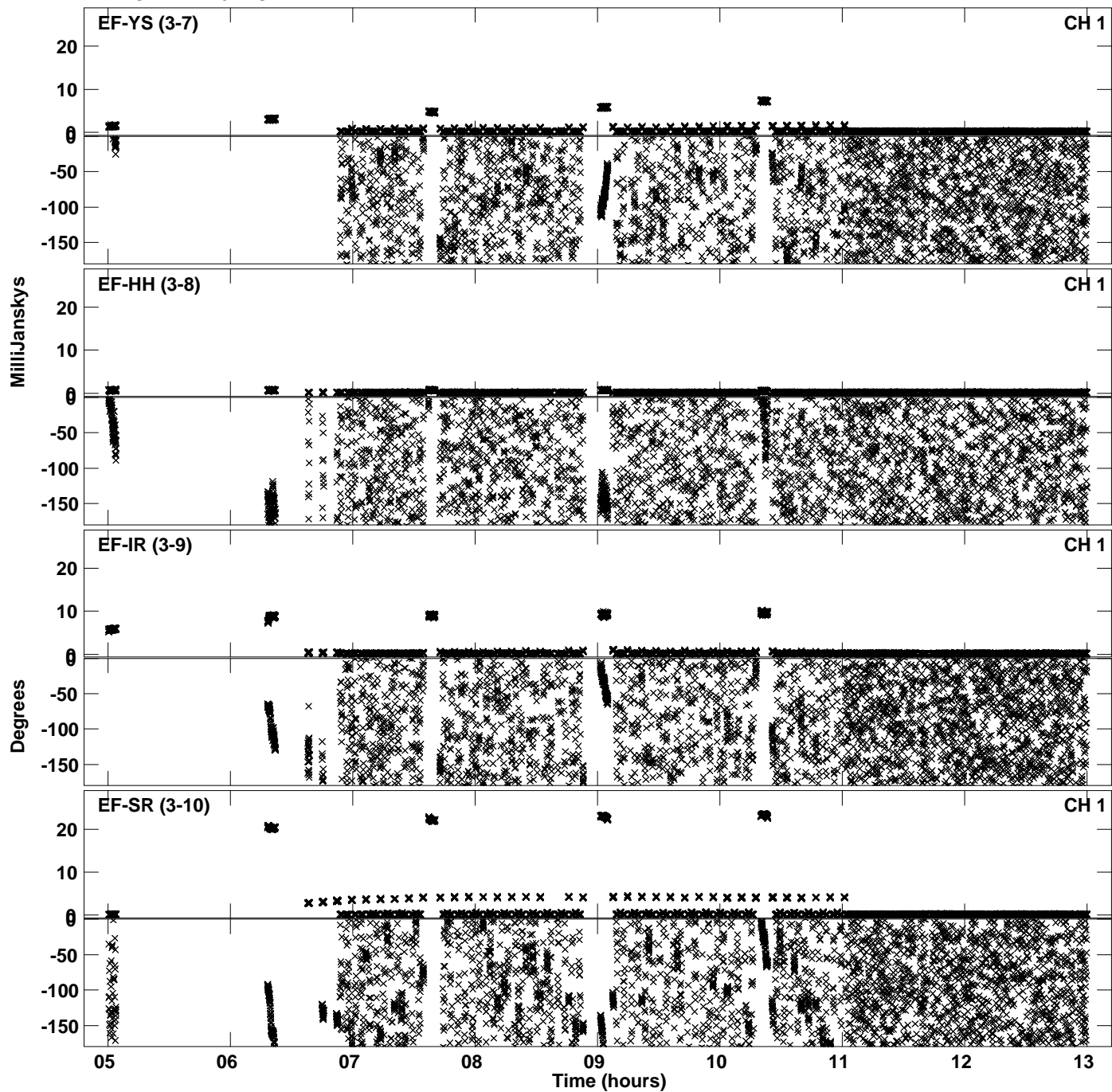
Plot file version 22 created 19-JAN-2024 00:41:11
Amplitude and Phase vs Time for EM165B.UVDATA.1 Vect aver.
IF 1 CHAN 1 - 64 STK RR



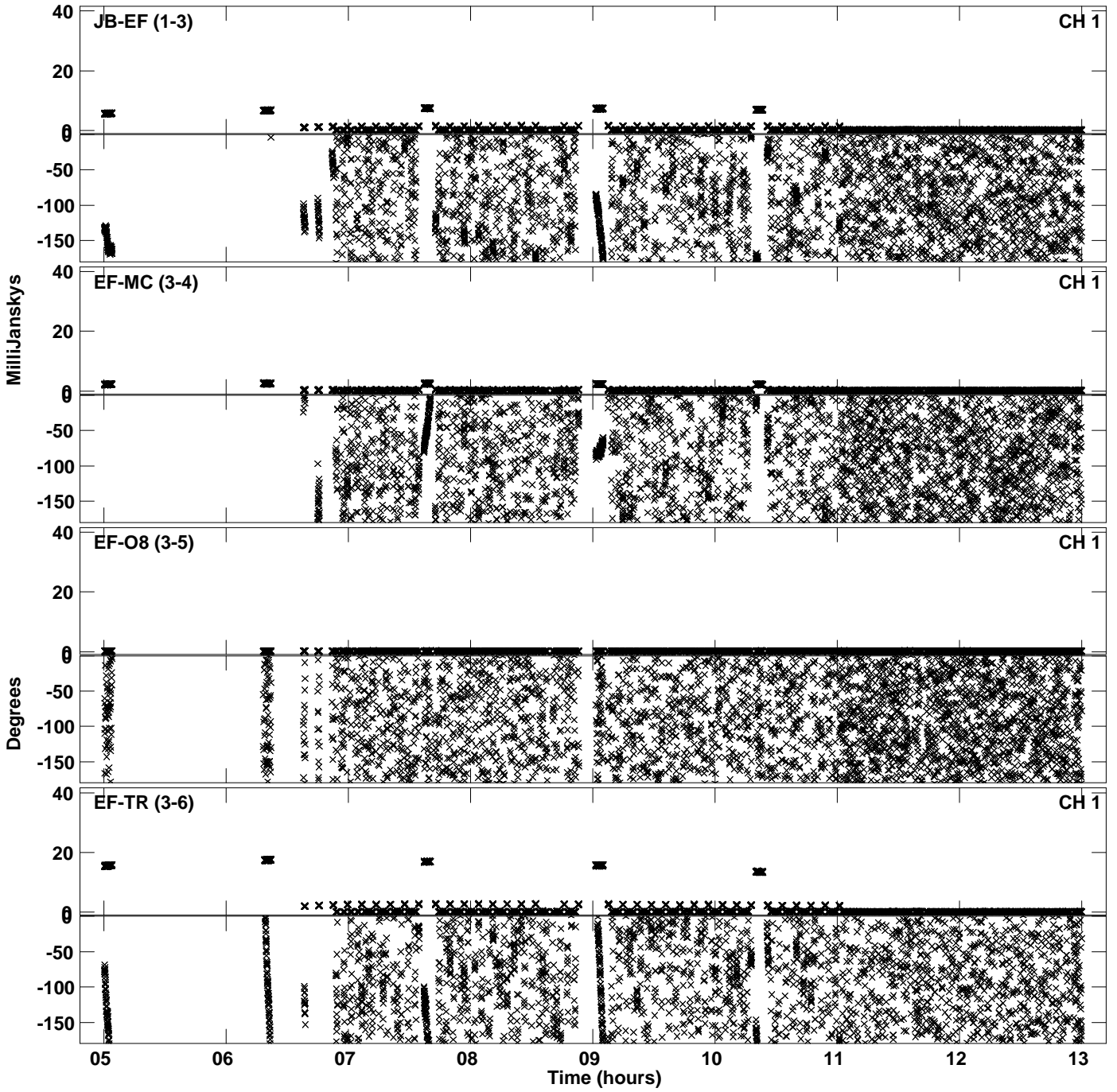
PLot file version 23 created 19-JAN-2024 00:41:18
Amplitude andPhase vs Time for EM165B.UVDATA.1 Vect aver.
IF 2 CHAN 1 - 64 STK RR



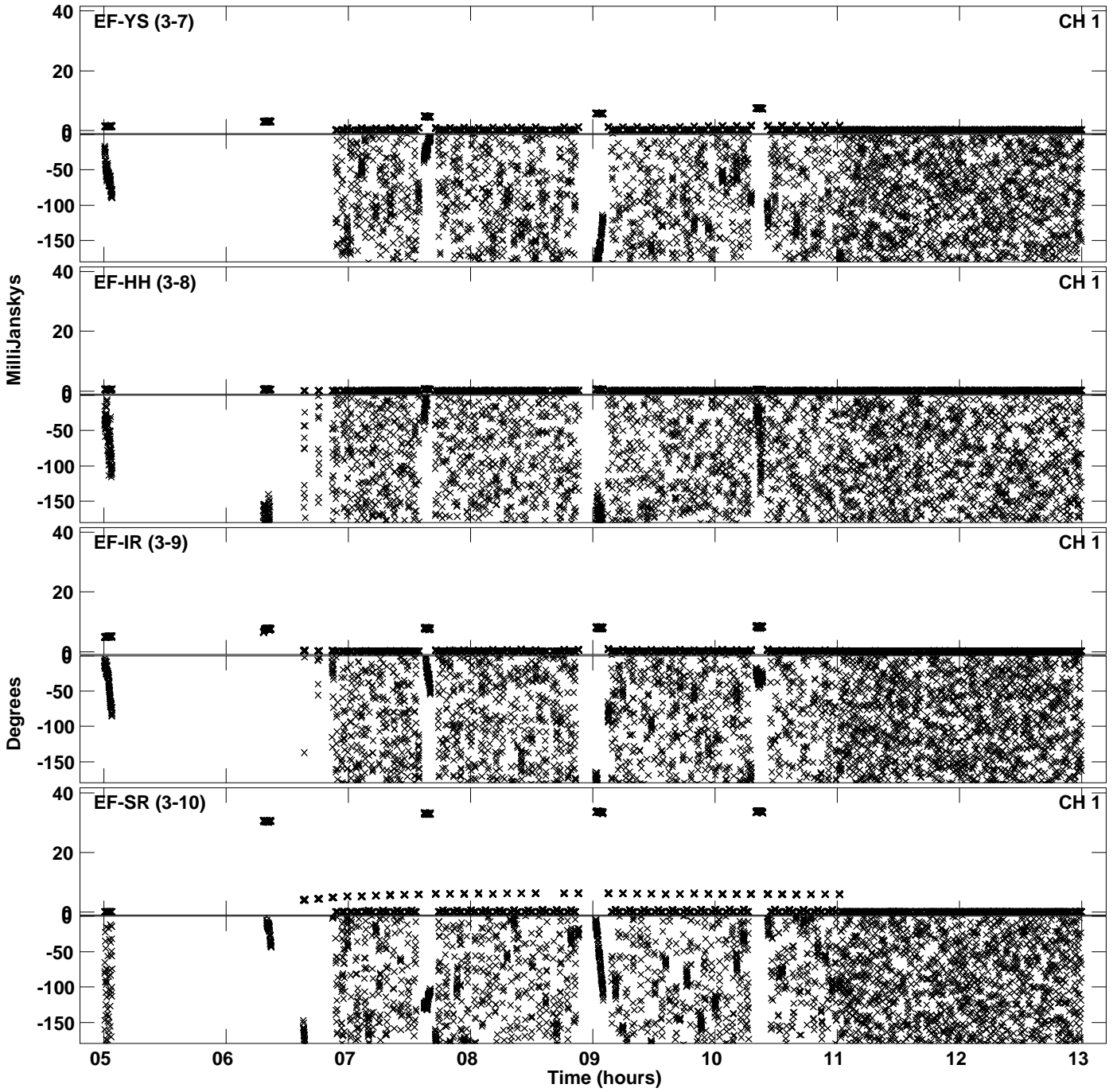
Plot file version 24 created 19-JAN-2024 00:41:18
Amplitude andPhase vs Time for EM165B.UVDATA.1 Vect aver.
IF 2 CHAN 1 - 64 STK RR



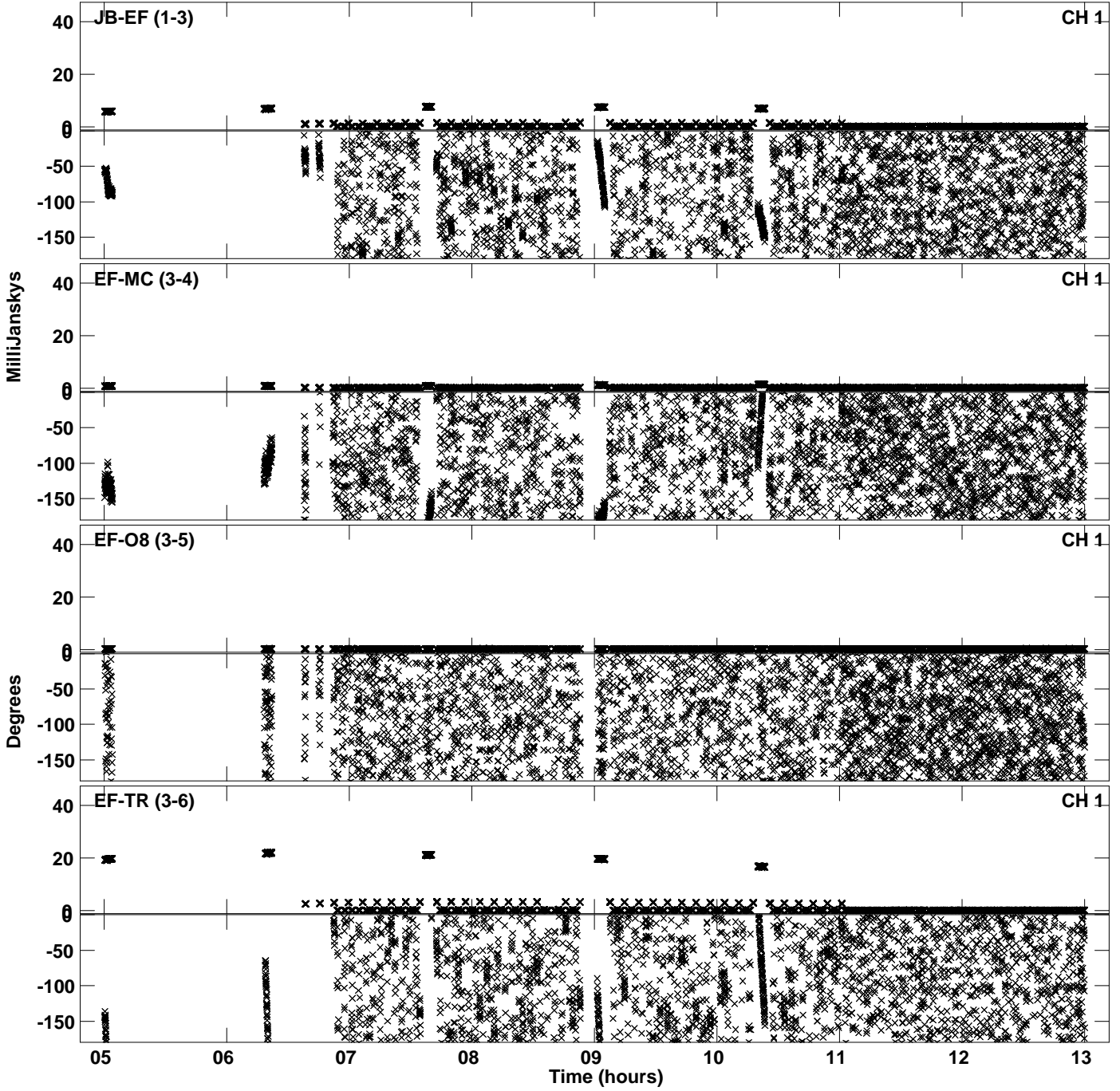
Plot file version 25 created 19-JAN-2024 00:41:25
Amplitude andPhase vs Time for EM165B.UVDATA.1 Vect aver.
IF 3 CHAN 1 - 64 STK RR



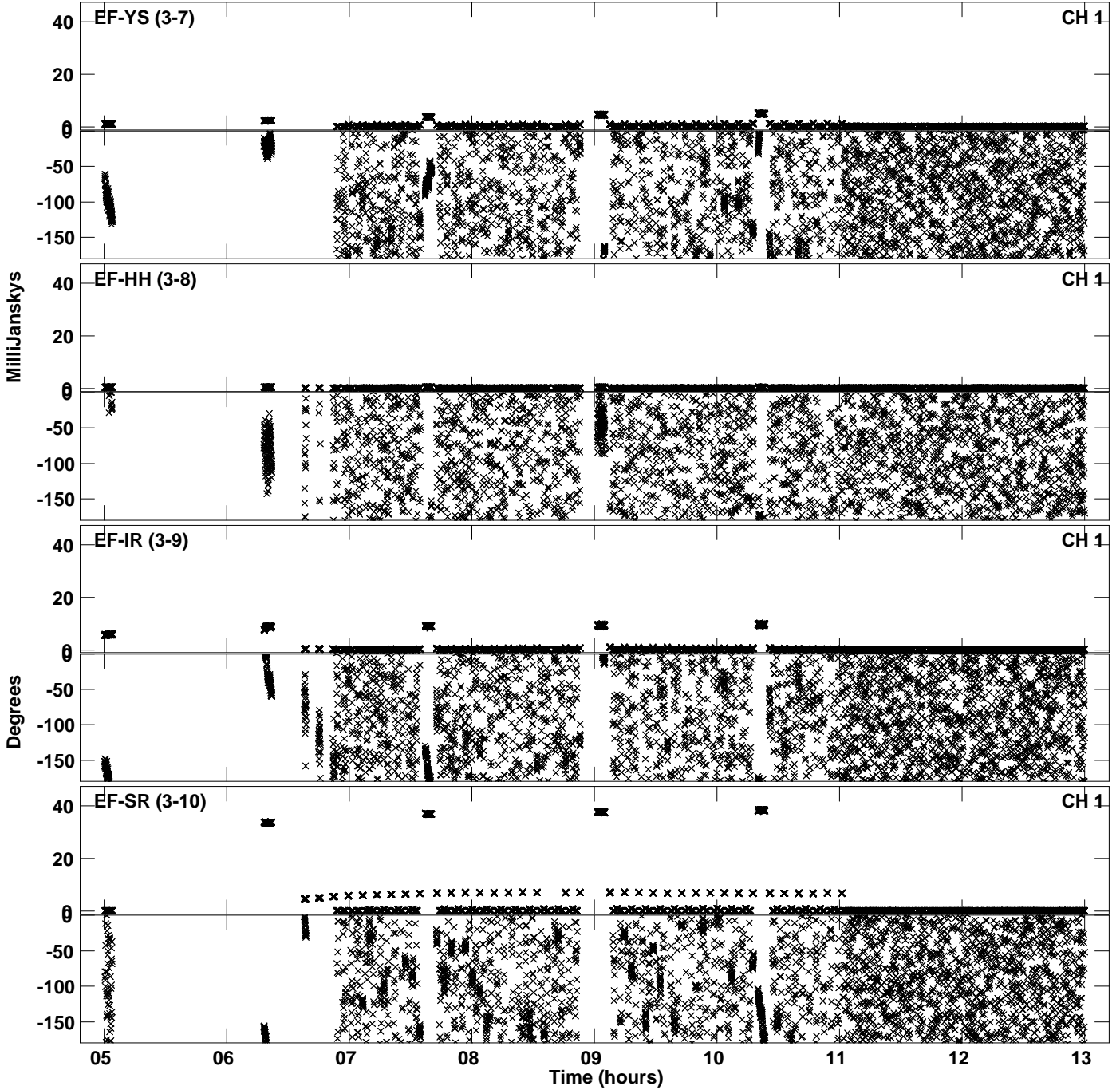
PLot file version 26 created 19-JAN-2024 00:41:25
Amplitude andPhase vs Time for EM165B.UVDATA.1 Vect aver.
IF 3 CHAN 1 - 64 STK RR



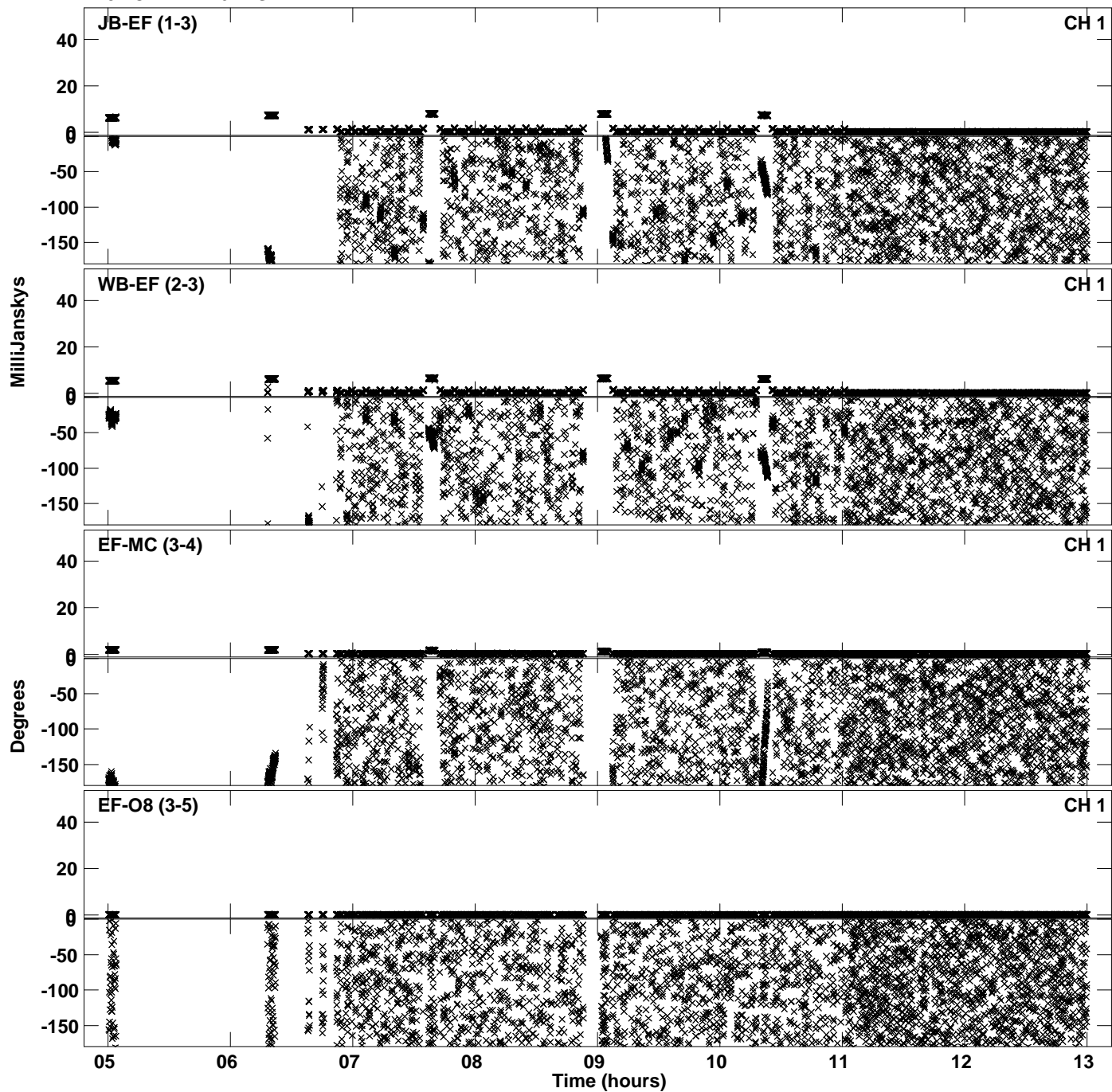
PLot file version 27 created 19-JAN-2024 00:41:32
Amplitude andPhase vs Time for EM165B.UVDATA.1 Vect aver.
IF 4 CHAN 1 - 64 STK RR



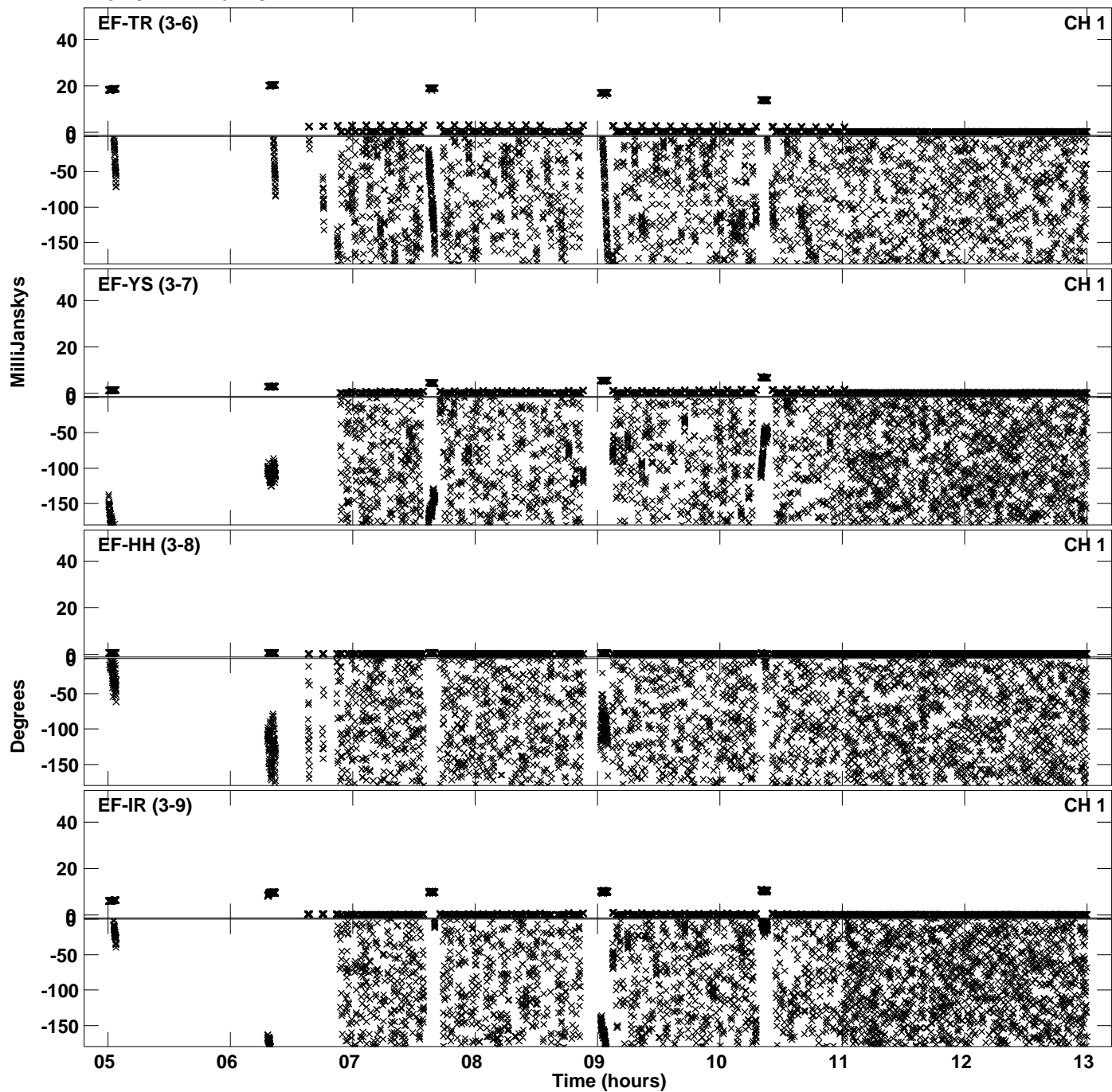
Plot file version 28 created 19-JAN-2024 00:41:32
Amplitude and Phase vs Time for EM165B.UVDATA.1 Vect aver.
IF 4 CHAN 1 - 64 STK RR



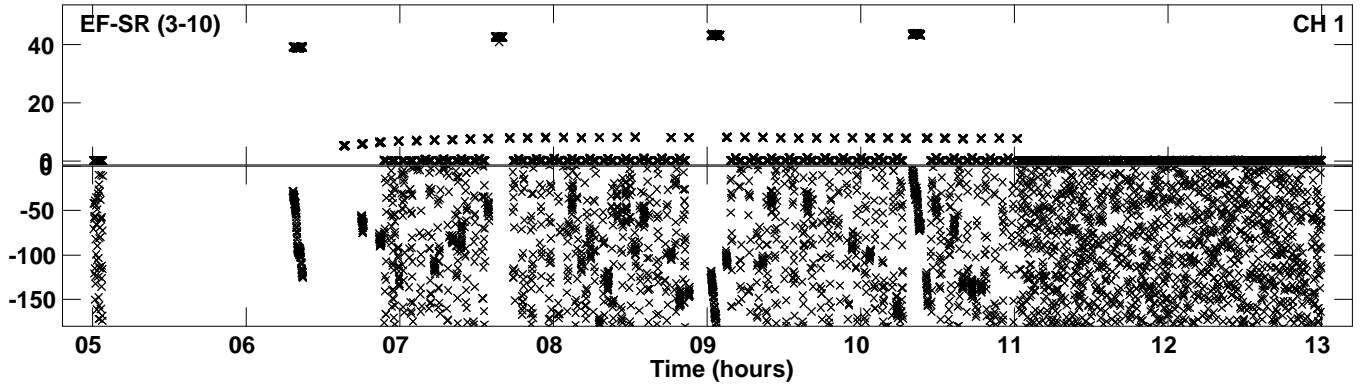
Plot file version 29 created 19-JAN-2024 00:41:39
Amplitude andPhase vs Time for EM165B.UVDATA.1 Vect aver.
IF 5 CHAN 1 - 64 STK RR



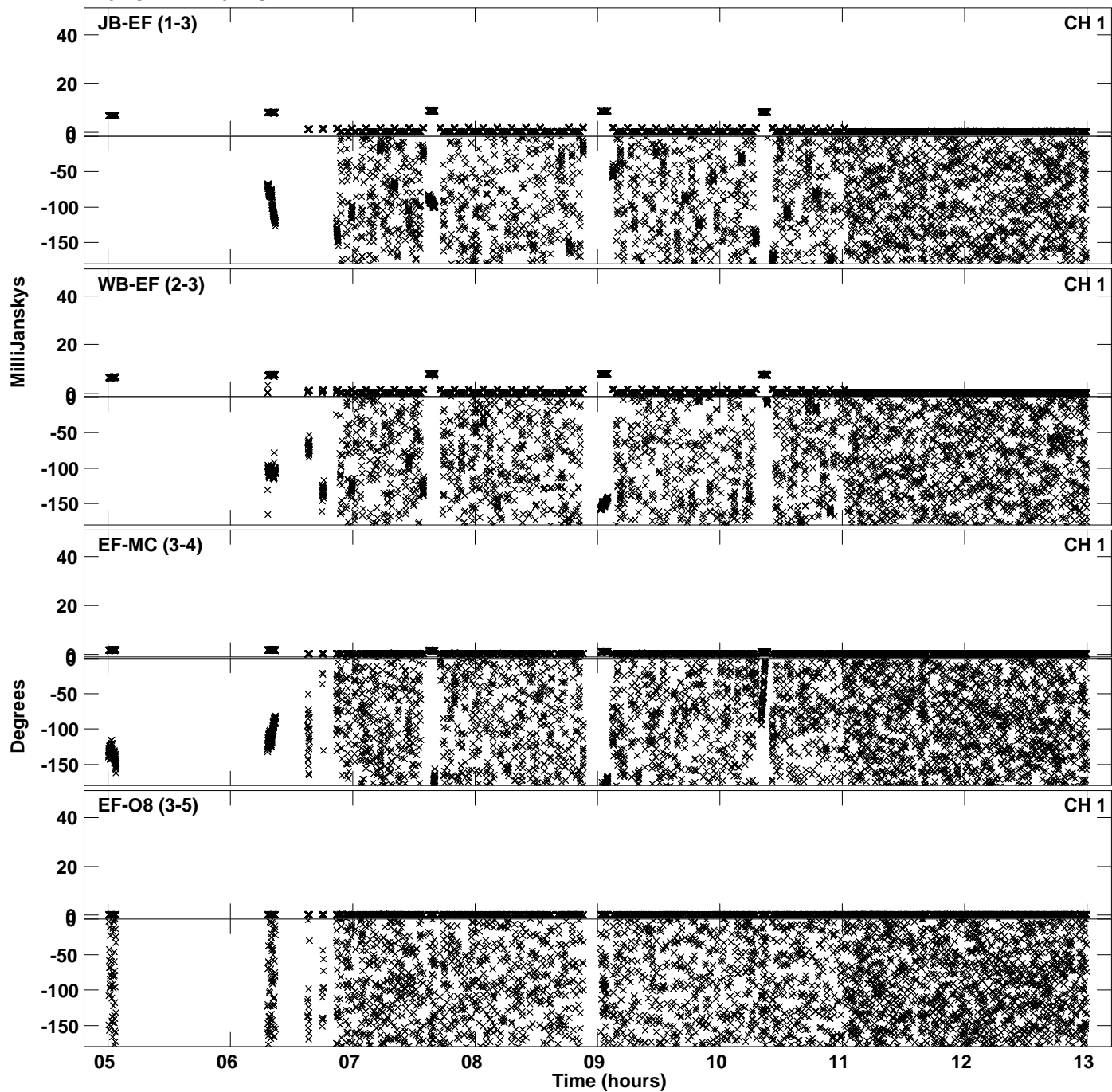
Plot file version 30 created 19-JAN-2024 00:41:39
Amplitude andPhase vs Time for EM165B.UVDATA.1 Vect aver.
IF 5 CHAN 1 - 64 STK RR



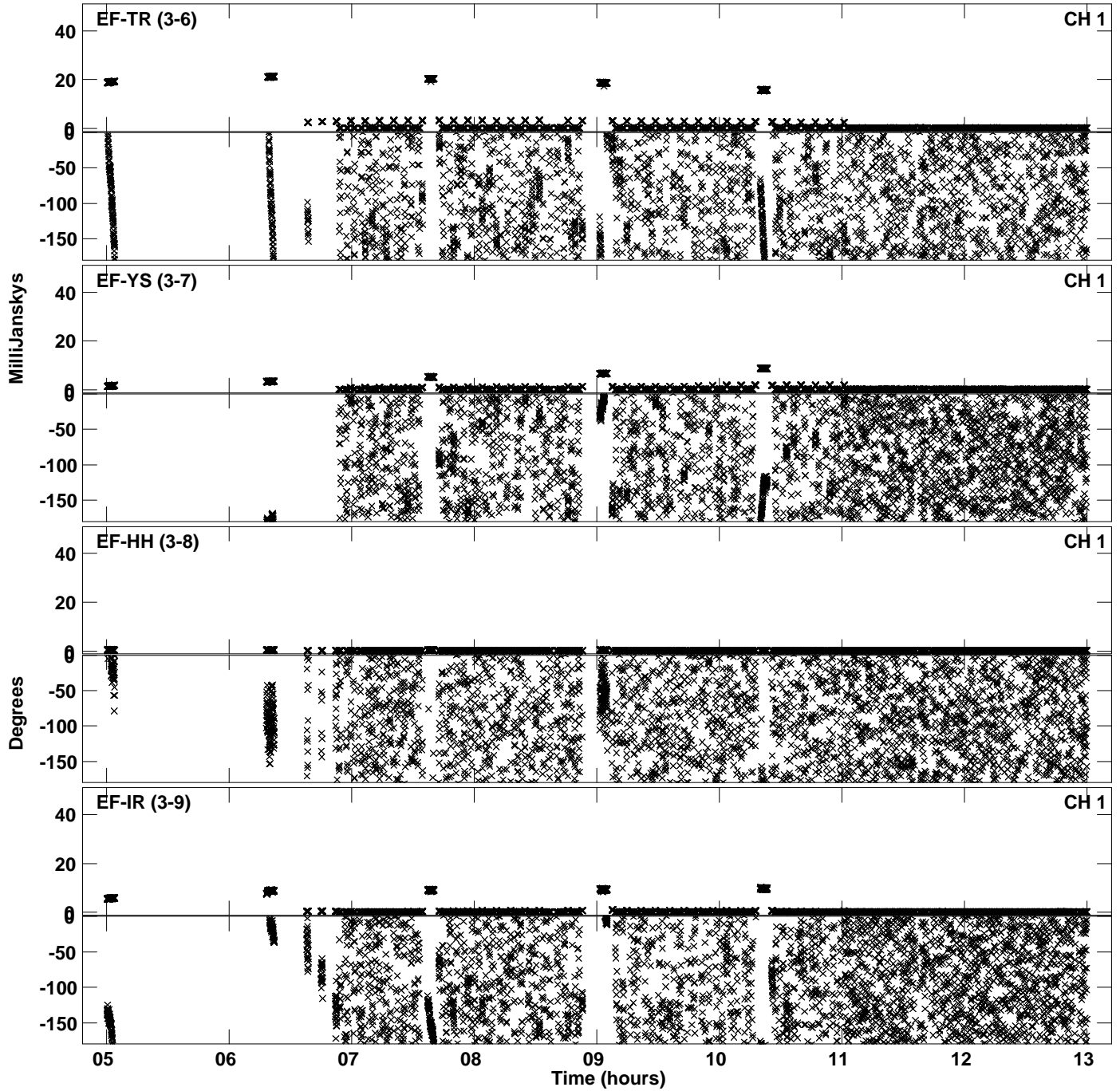
PLot file version 31 created 19-JAN-2024 00:41:39
Amplitude andPhase vs Time for EM165B.UVDATA.1 Vect aver.
IF 5 CHAN 1 - 64 STK RR



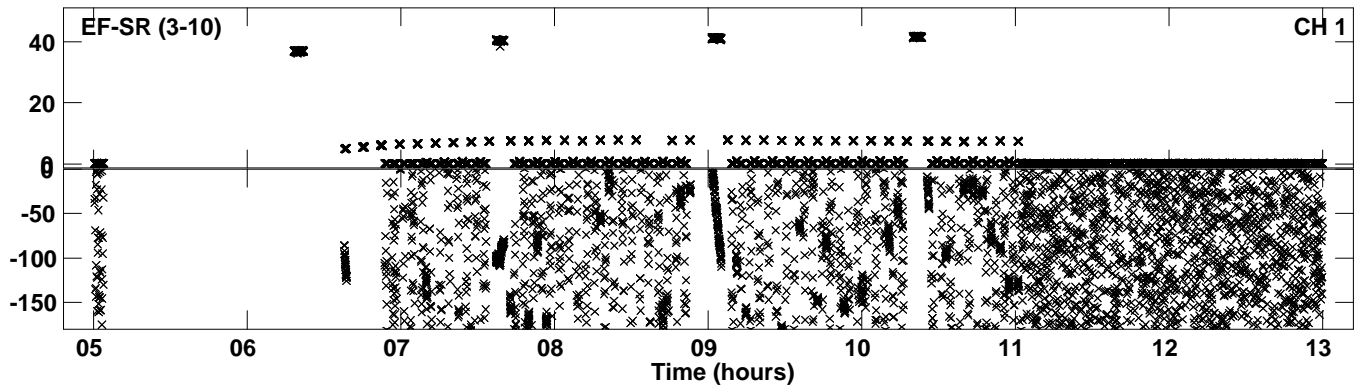
PLot file version 32 created 19-JAN-2024 00:41:46
Amplitude andPhase vs Time for EM165B.UVDATA.1 Vect aver.
IF 6 CHAN 1 - 64 STK RR



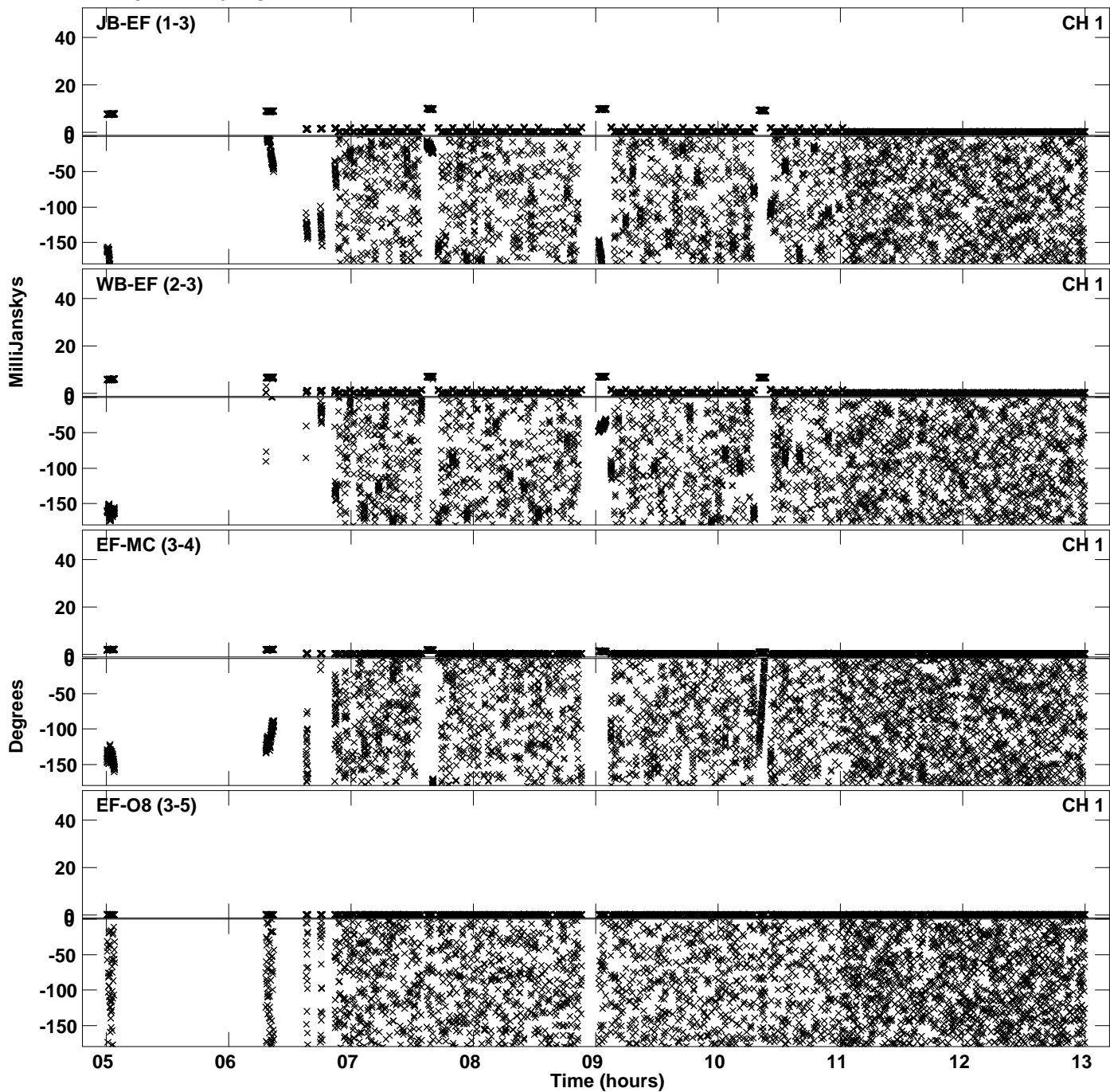
PLot file version 33 created 19-JAN-2024 00:41:46
Amplitude andPhase vs Time for EM165B.UVDATA.1 Vect aver.
IF 6 CHAN 1 - 64 STK RR



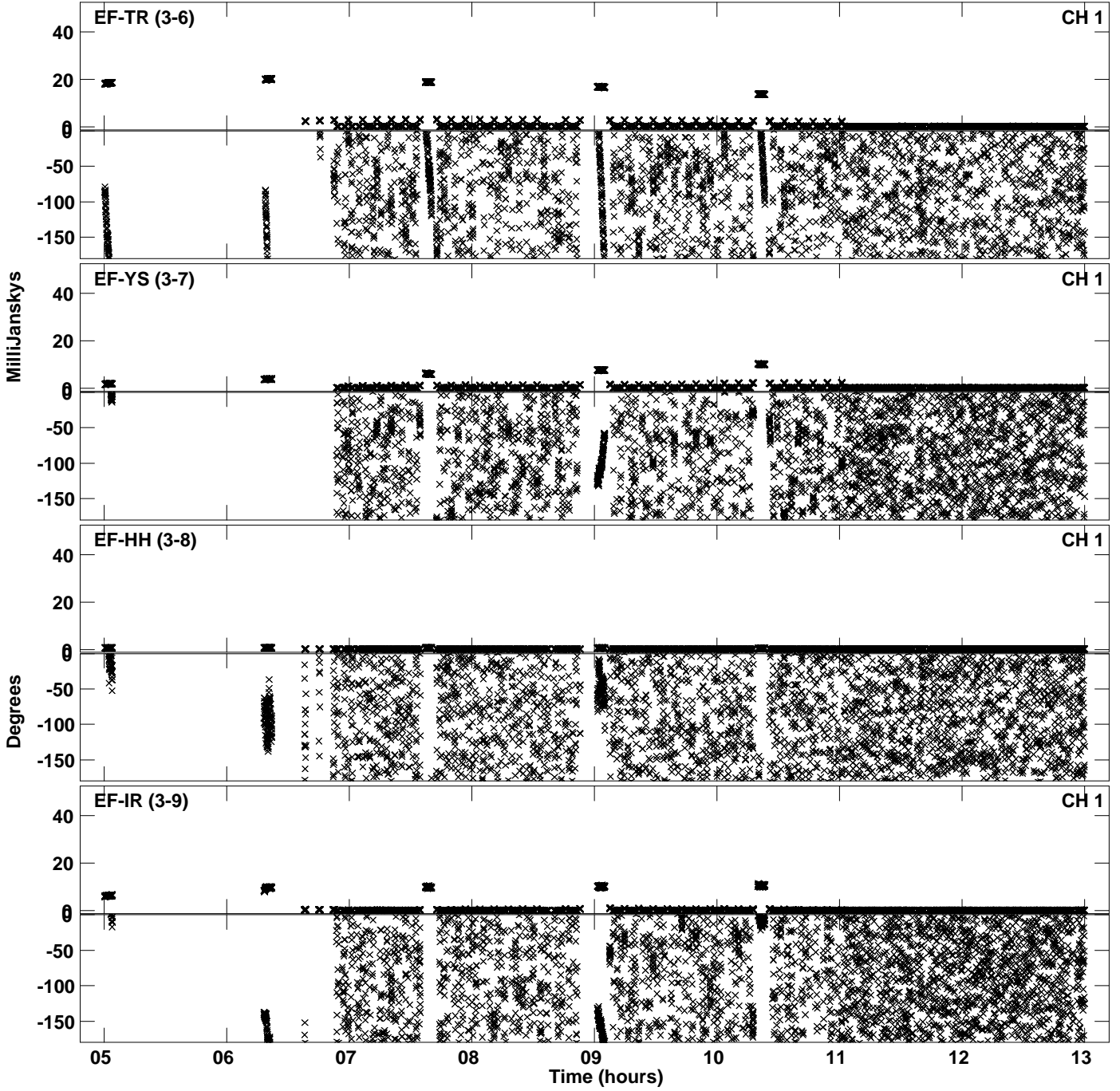
Plot file version 34 created 19-JAN-2024 00:41:46
Amplitude and Phase vs Time for EM165B.UVDATA.1 Vect aver.
IF 6 CHAN 1 - 64 STK RR



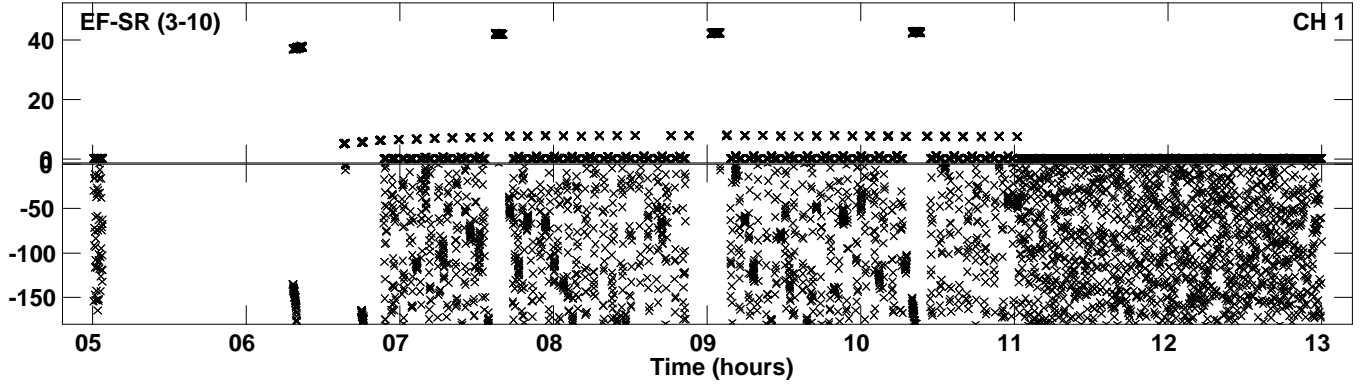
PLot file version 35 created 19-JAN-2024 00:41:53
Amplitude andPhase vs Time for EM165B.UVDATA.1 Vect aver.
IF 7 CHAN 1 - 64 STK RR



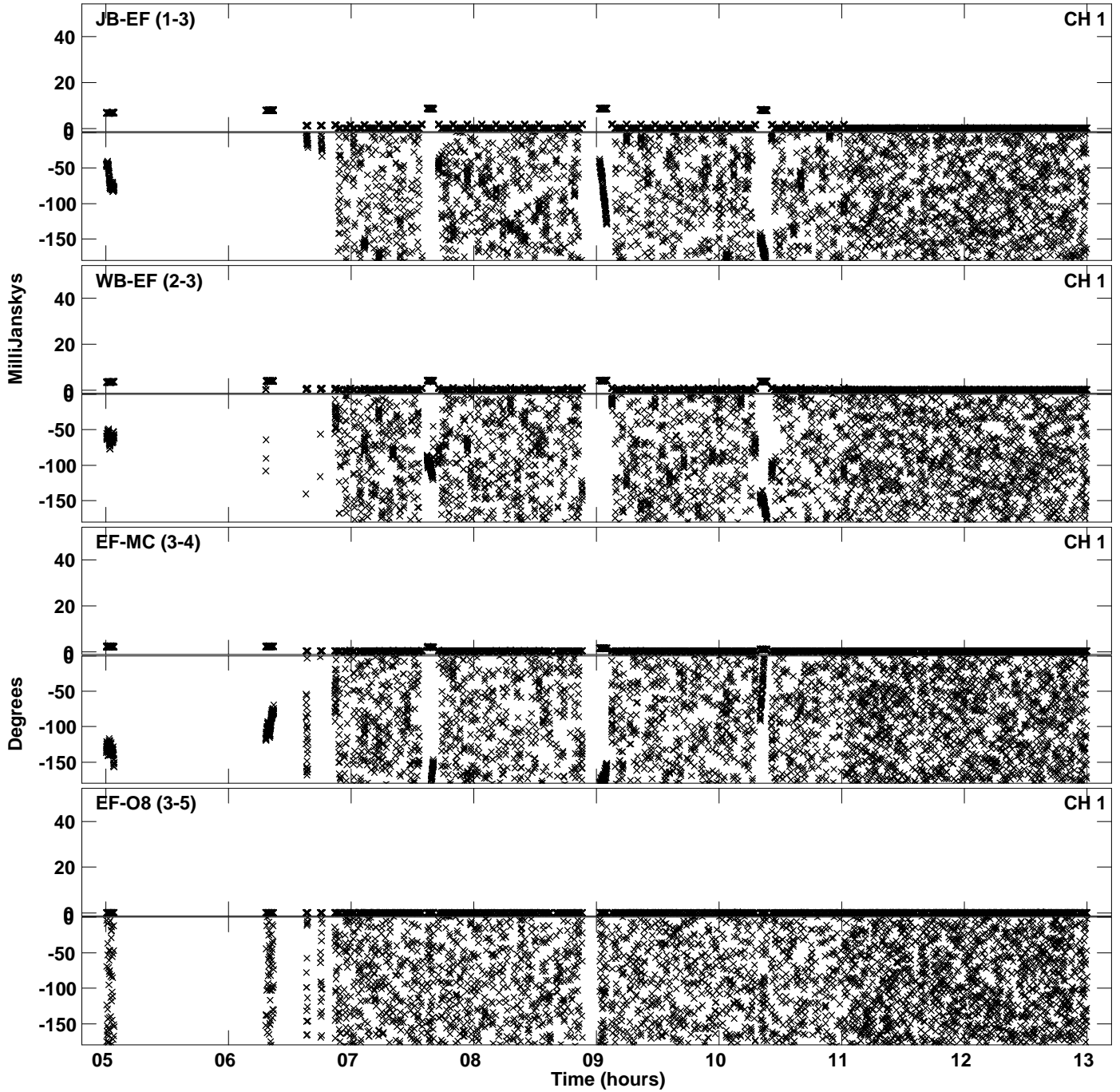
PLot file version 36 created 19-JAN-2024 00:41:53
Amplitude andPhase vs Time for EM165B.UVDATA.1 Vect aver.
IF 7 CHAN 1 - 64 STK RR



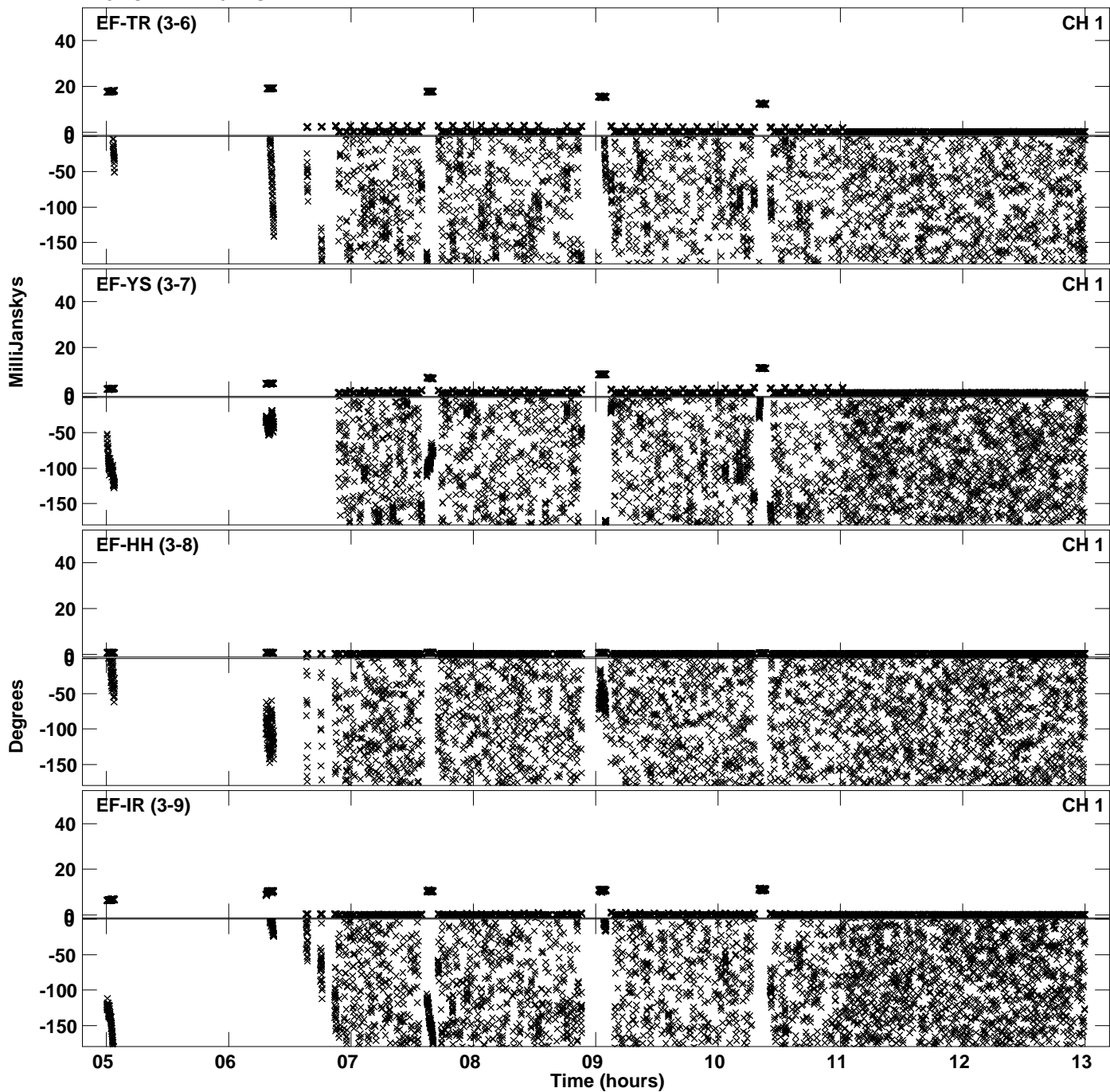
Plot file version 37 created 19-JAN-2024 00:41:53
Amplitude andPhase vs Time for EM165B.UVDATA.1 Vect aver.
IF 7 CHAN 1 - 64 STK RR



PLot file version 38 created 19-JAN-2024 00:42:00
Amplitude andPhase vs Time for EM165B.UVDATA.1 Vect aver.
IF 8 CHAN 1 - 64 STK RR



PLot file version 39 created 19-JAN-2024 00:42:00
Amplitude andPhase vs Time for EM165B.UVDATA.1 Vect aver.
IF 8 CHAN 1 - 64 STK RR



PLot file version 40 created 19-JAN-2024 00:42:00
Amplitude andPhase vs Time for EM165B.UVDATA.1 Vect aver.
IF 8 CHAN 1 - 64 STK RR

