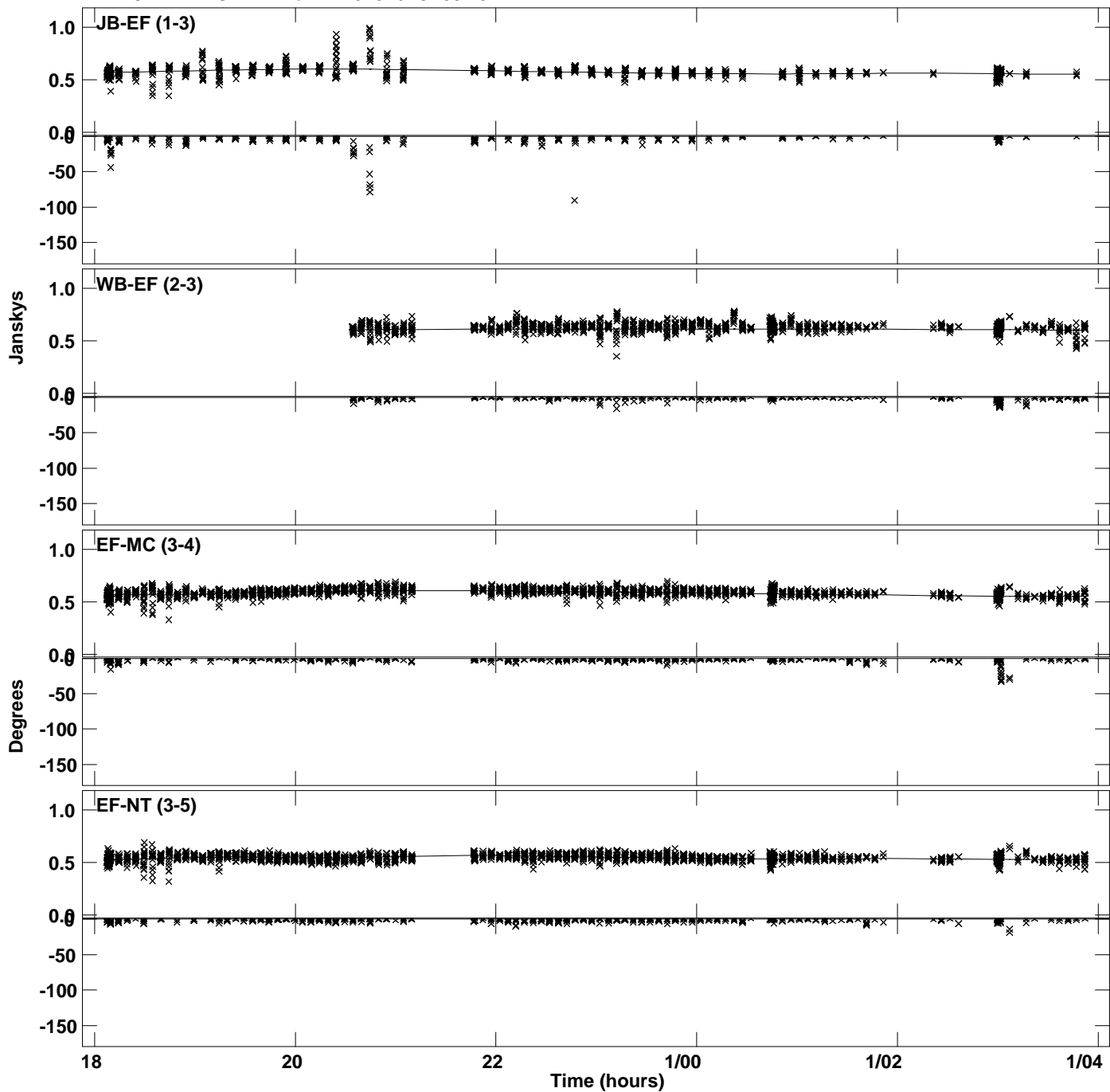
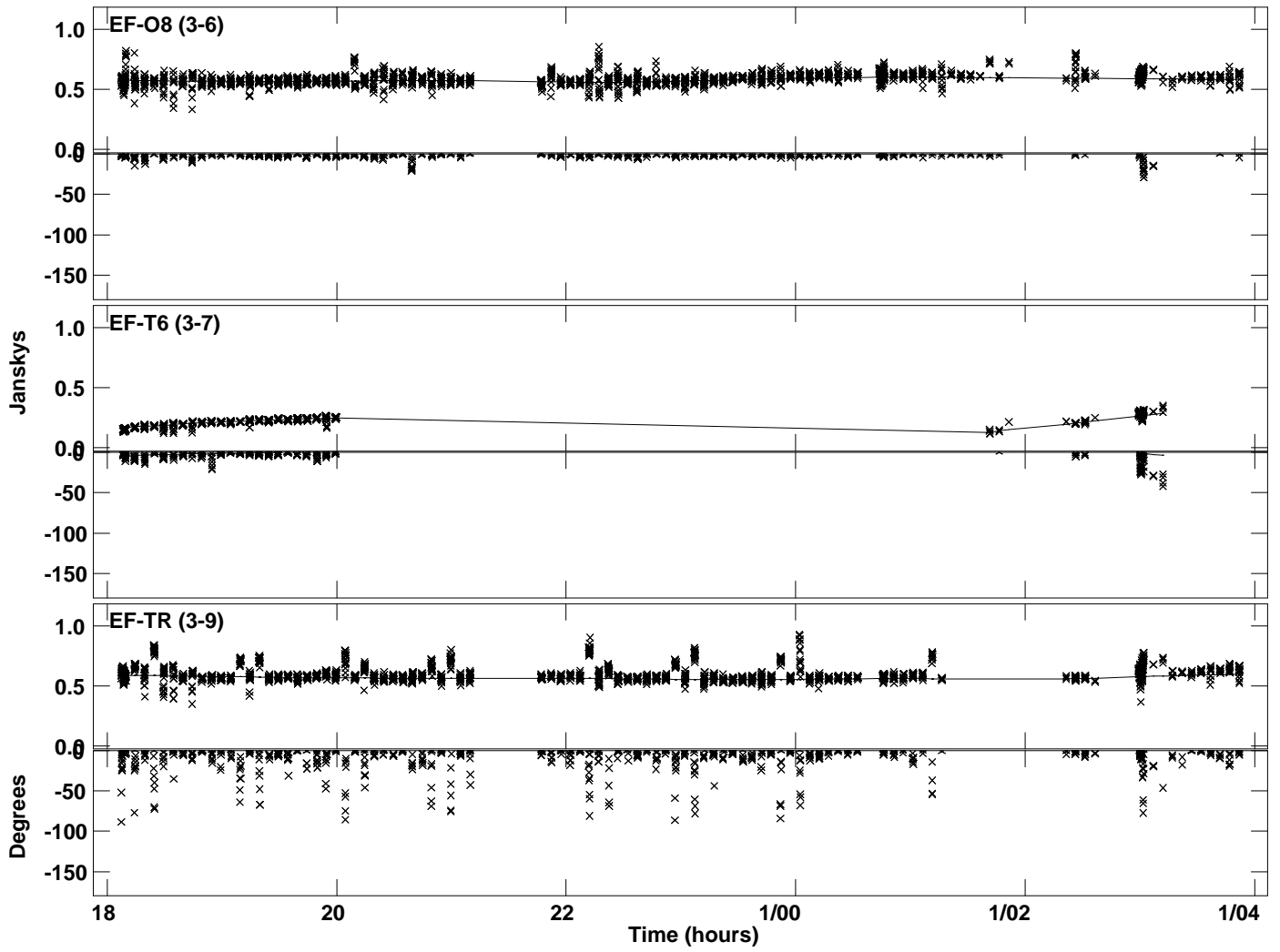


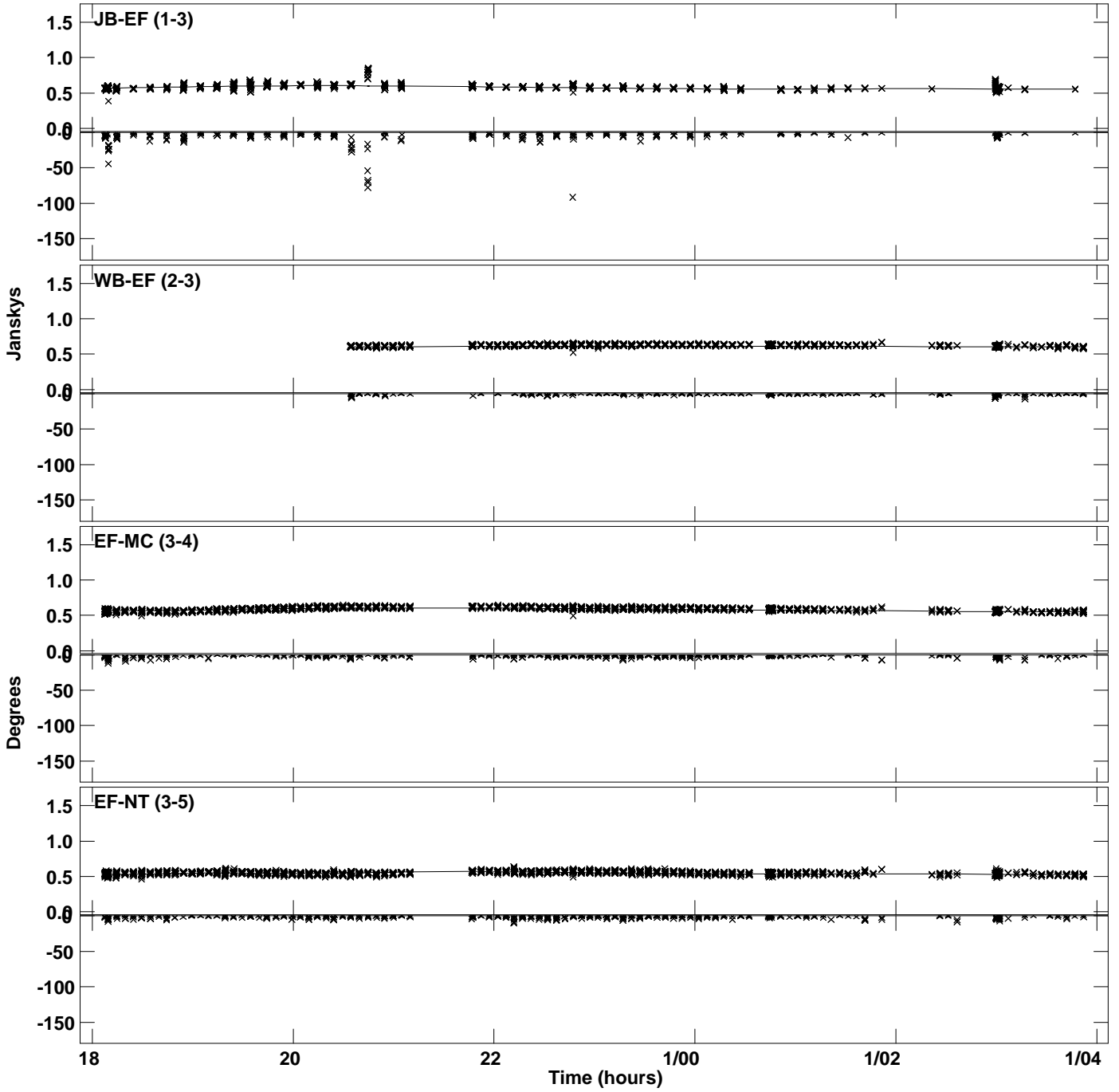
Plot file version 1 created 02-OCT-2023 12:04:02  
Amplitude and Phase vs Time for 1418+546.MULTI.1 CL # 3  
IF 1 CHAN 1 STK LL of 1418+546.ICL001.3



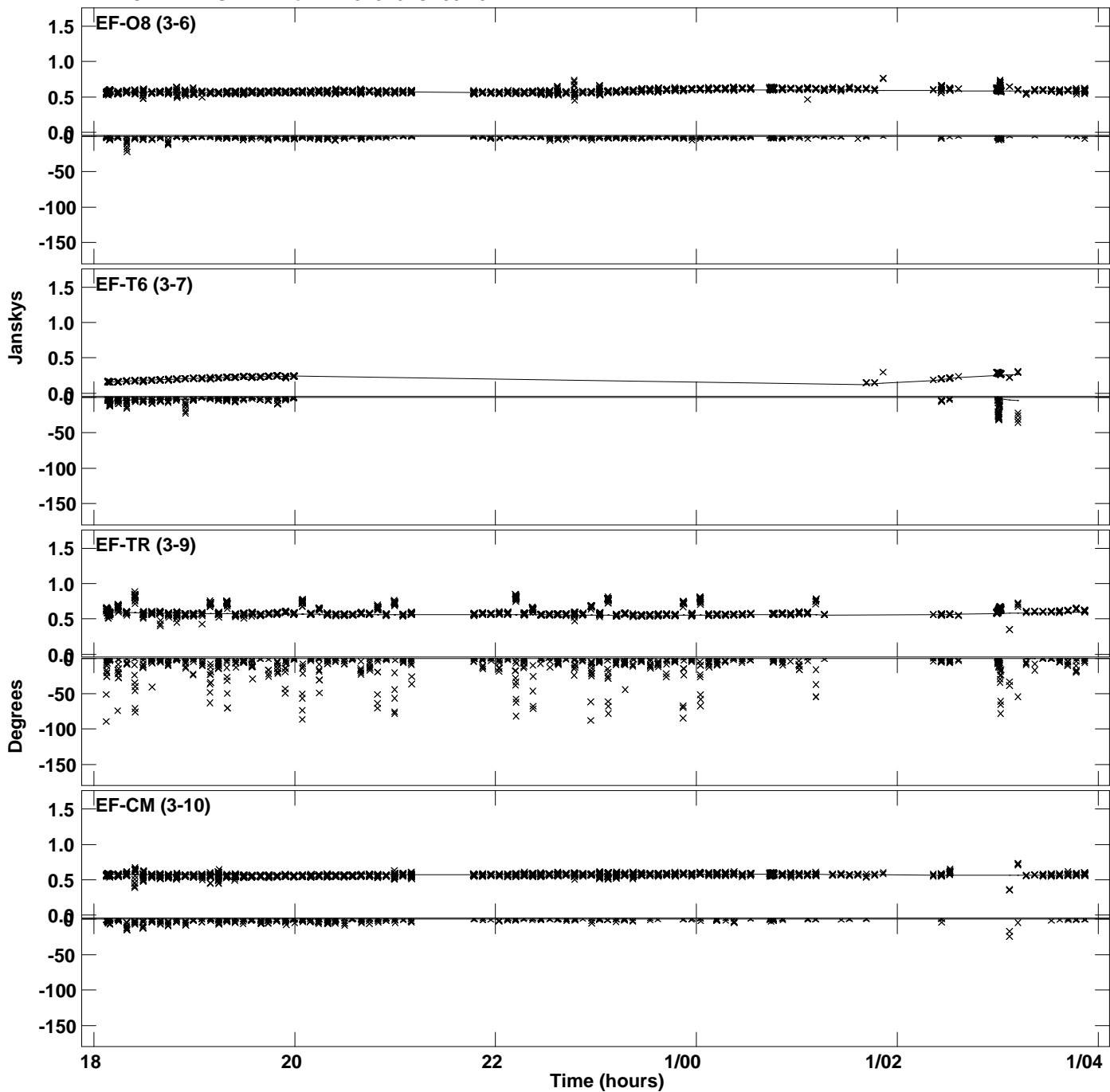
Plot file version 2 created 02-OCT-2023 12:04:02  
Amplitude and Phase vs Time for 1418+546.MULTI.1 CL # 3  
IF 1 CHAN 1 STK LL of 1418+546.ICL001.3



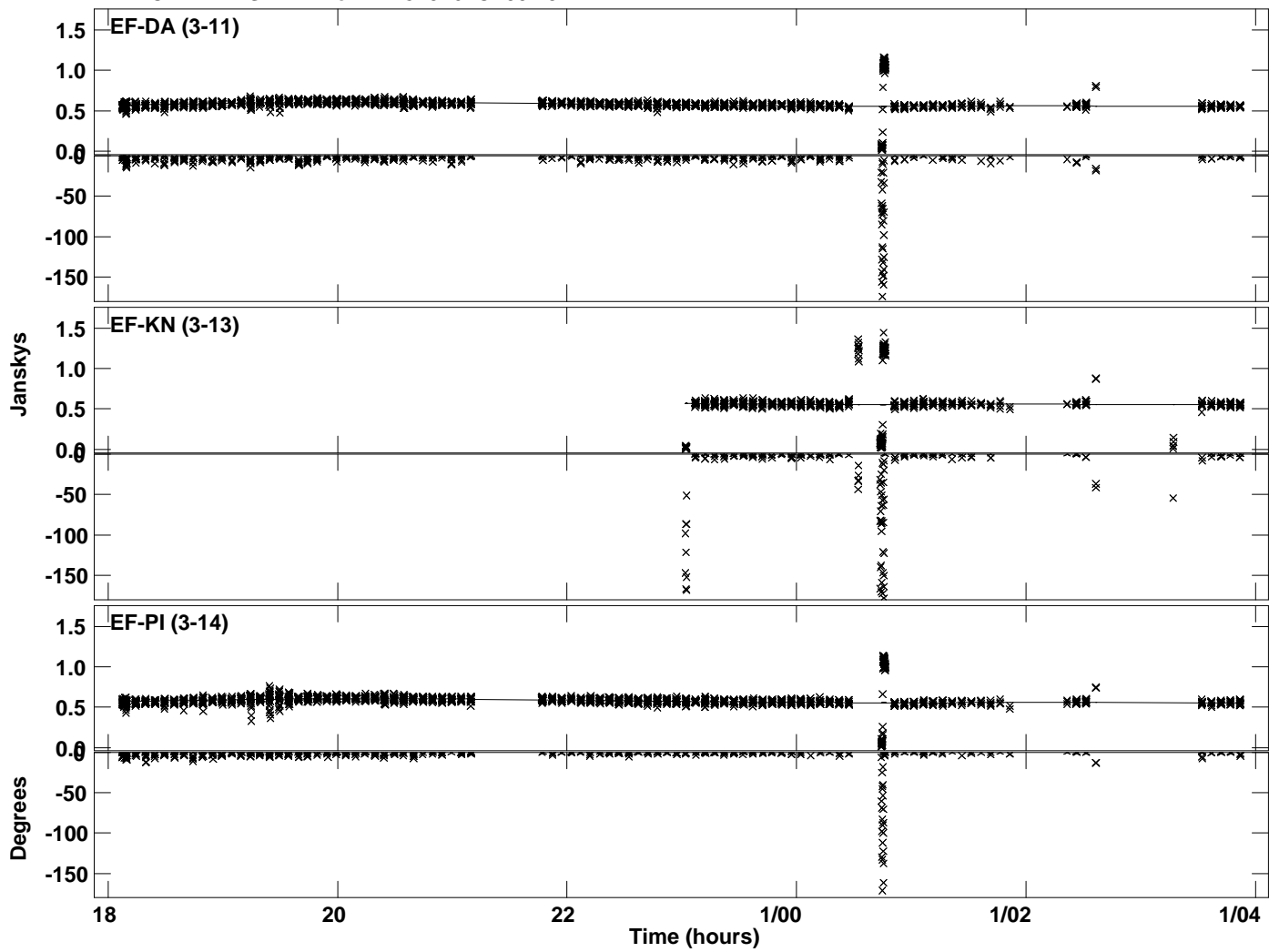
Plot file version 3 created 02-OCT-2023 12:04:04  
Amplitude andPhase vs Time for 1418+546.MULTI.1 CL # 3  
IF 2 CHAN 1 STK LL of 1418+546.ICL001.3



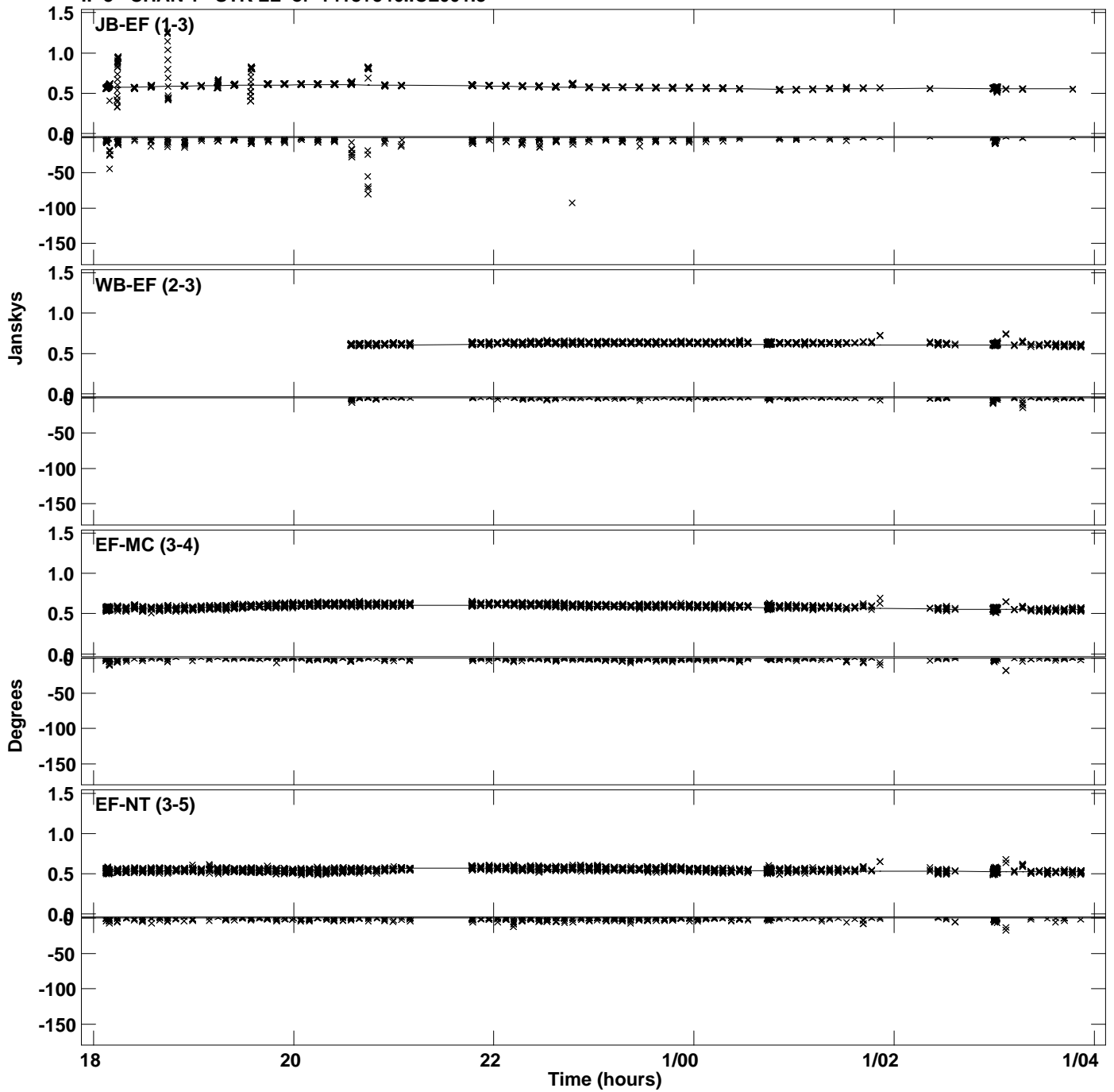
Plot file version 4 created 02-OCT-2023 12:04:04  
Amplitude and Phase vs Time for 1418+546.MULTI.1 CL # 3  
IF 2 CHAN 1 STK LL of 1418+546.ICL001.3



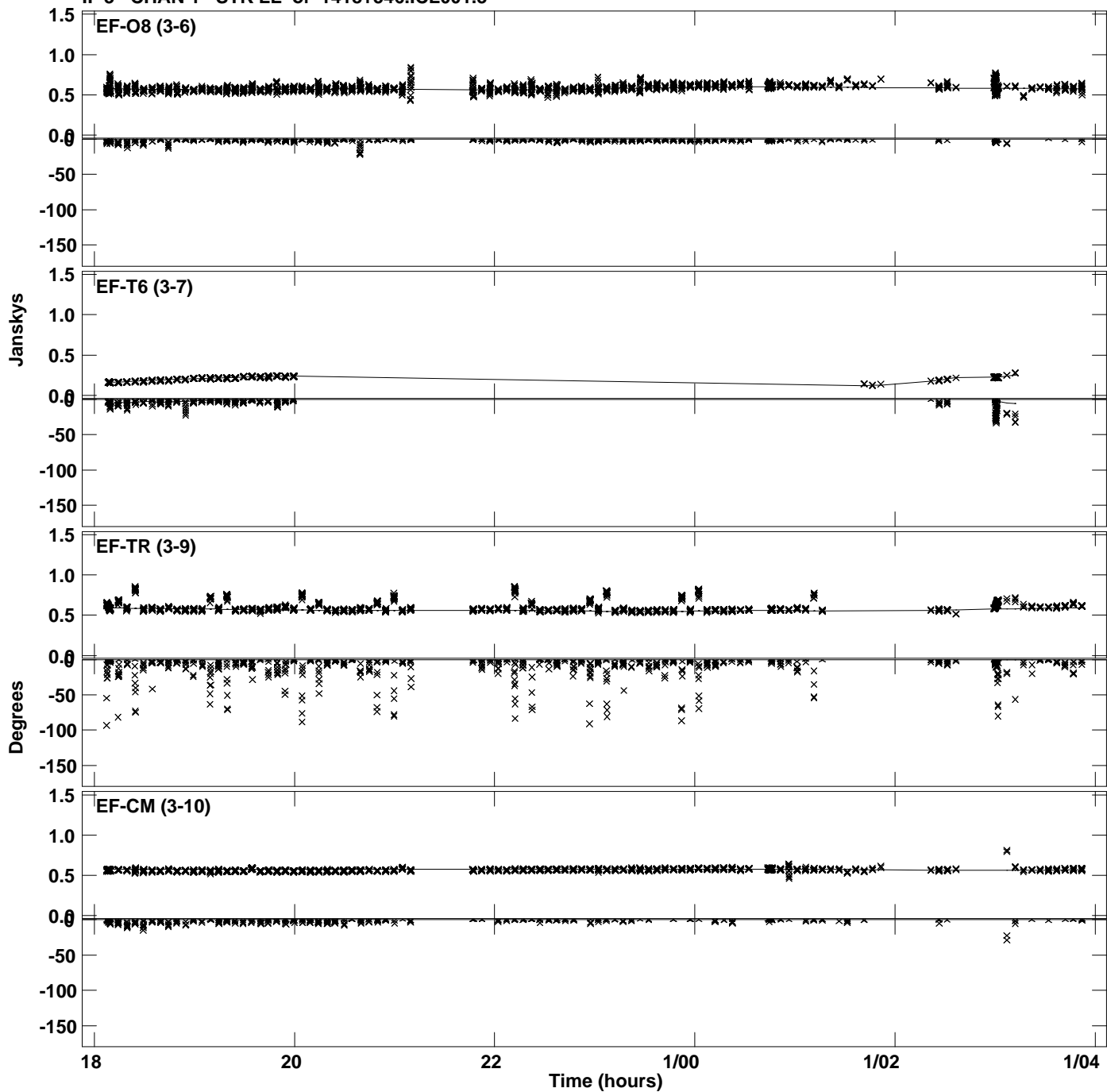
Plot file version 5 created 02-OCT-2023 12:04:04  
Amplitude and Phase vs Time for 1418+546.MULTI.1 CL # 3  
IF 2 CHAN 1 STK LL of 1418+546.ICL001.3



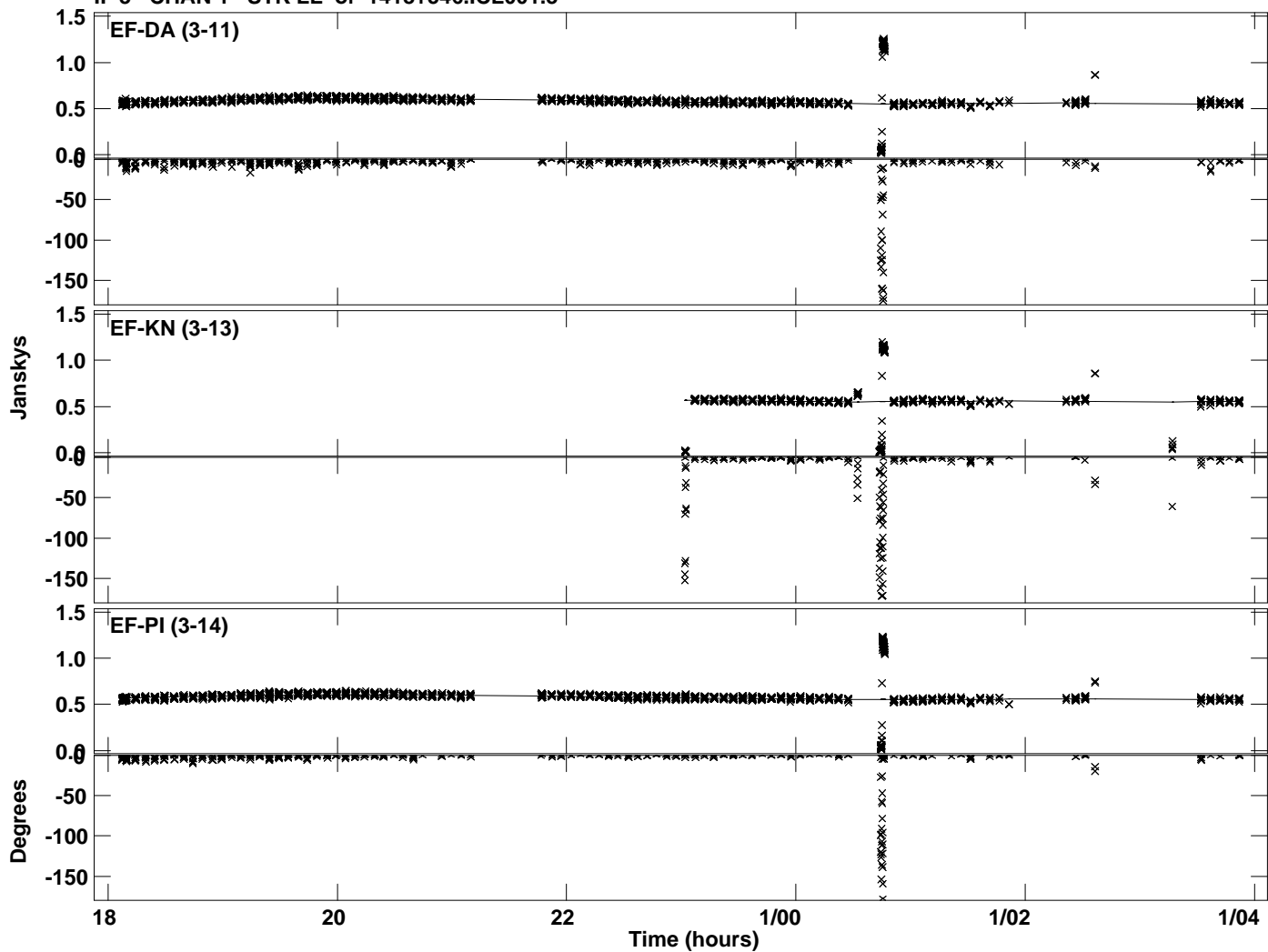
Plot file version 6 created 02-OCT-2023 12:04:07  
Amplitude and Phase vs Time for 1418+546.MULTI.1 CL # 3  
IF 3 CHAN 1 STK LL of 1418+546.ICL001.3



Plot file version 7 created 02-OCT-2023 12:04:07  
Amplitude and Phase vs Time for 1418+546.MULTI.1 CL # 3  
IF 3 CHAN 1 STK LL of 1418+546.ICL001.3

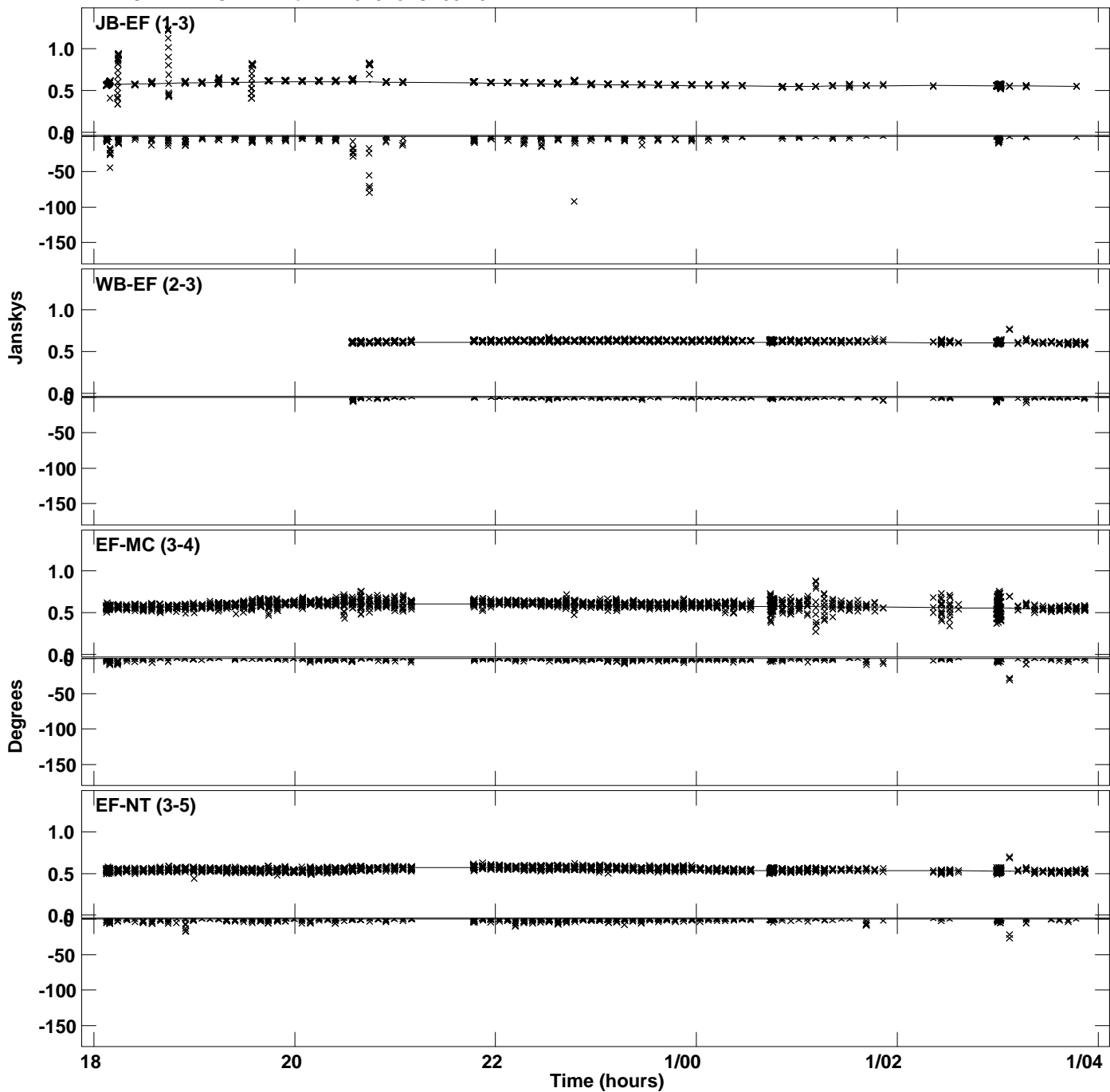


Plot file version 8 created 02-OCT-2023 12:04:07  
Amplitude and Phase vs Time for 1418+546.MULTI.1 CL # 3  
IF 3 CHAN 1 STK LL of 1418+546.ICL001.3

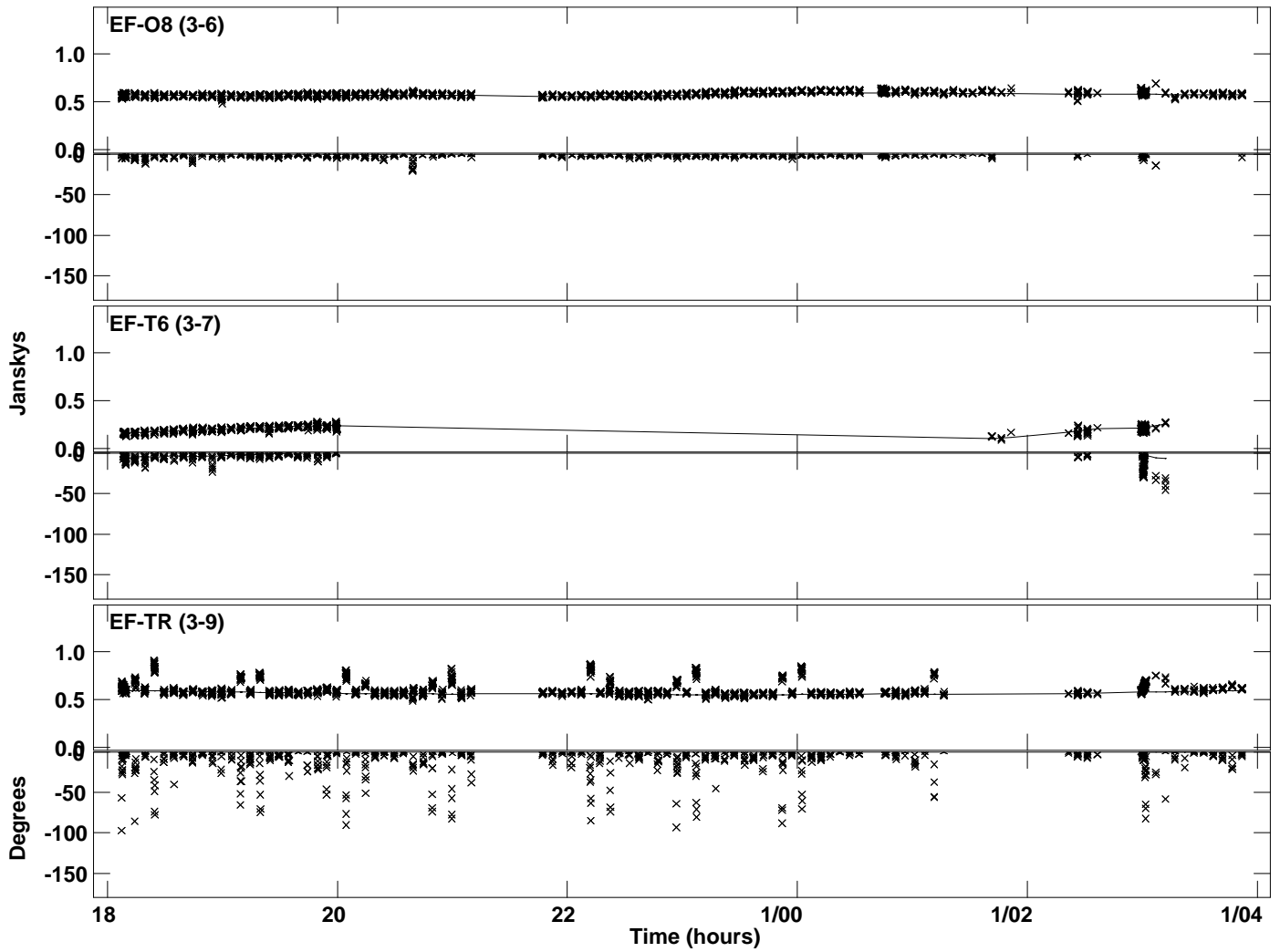




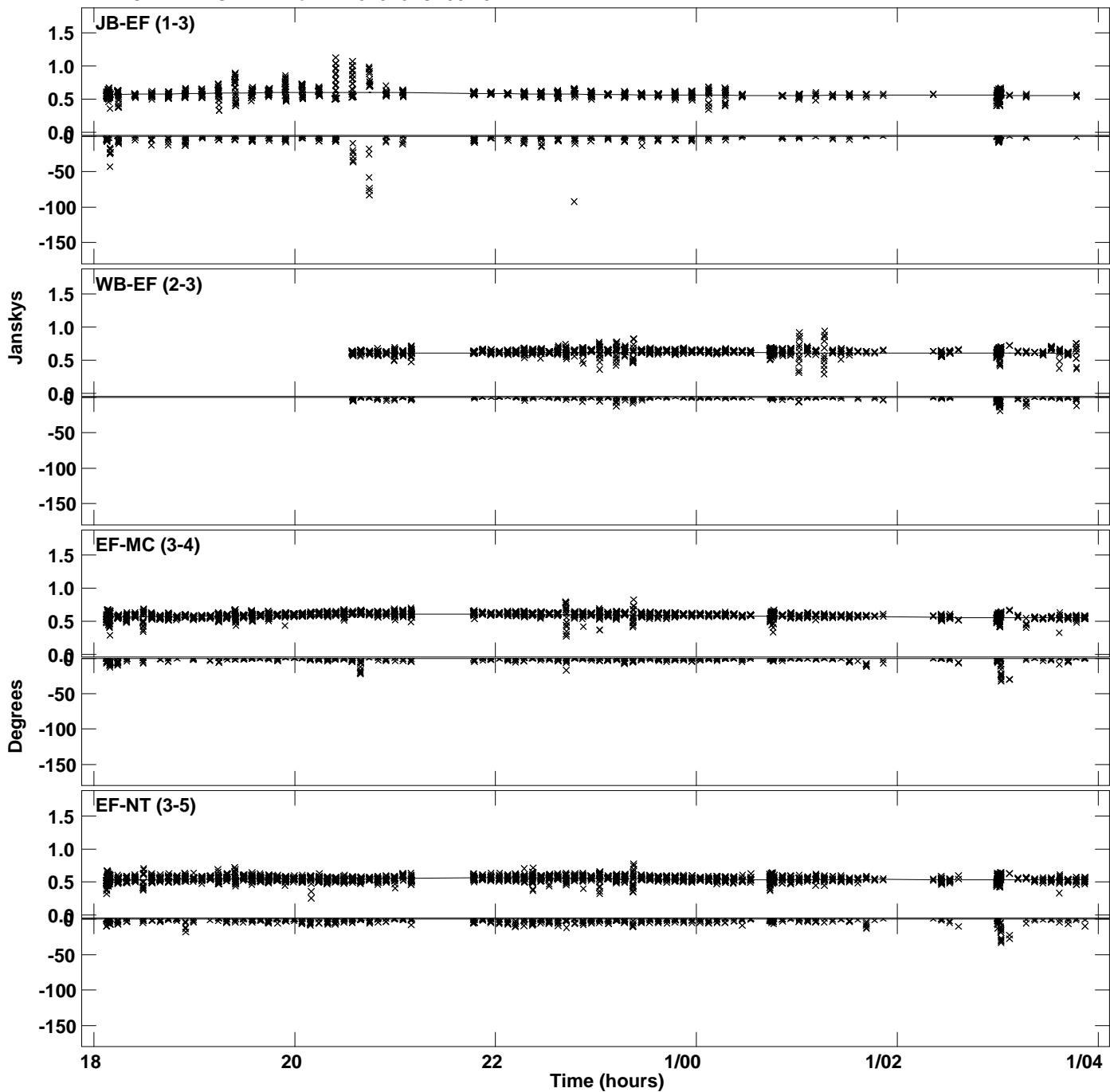
Plot file version 9 created 02-OCT-2023 12:04:09  
Amplitude and Phase vs Time for 1418+546.MULTI.1 CL # 3  
IF 4 CHAN 1 STK LL of 1418+546.ICL001.3



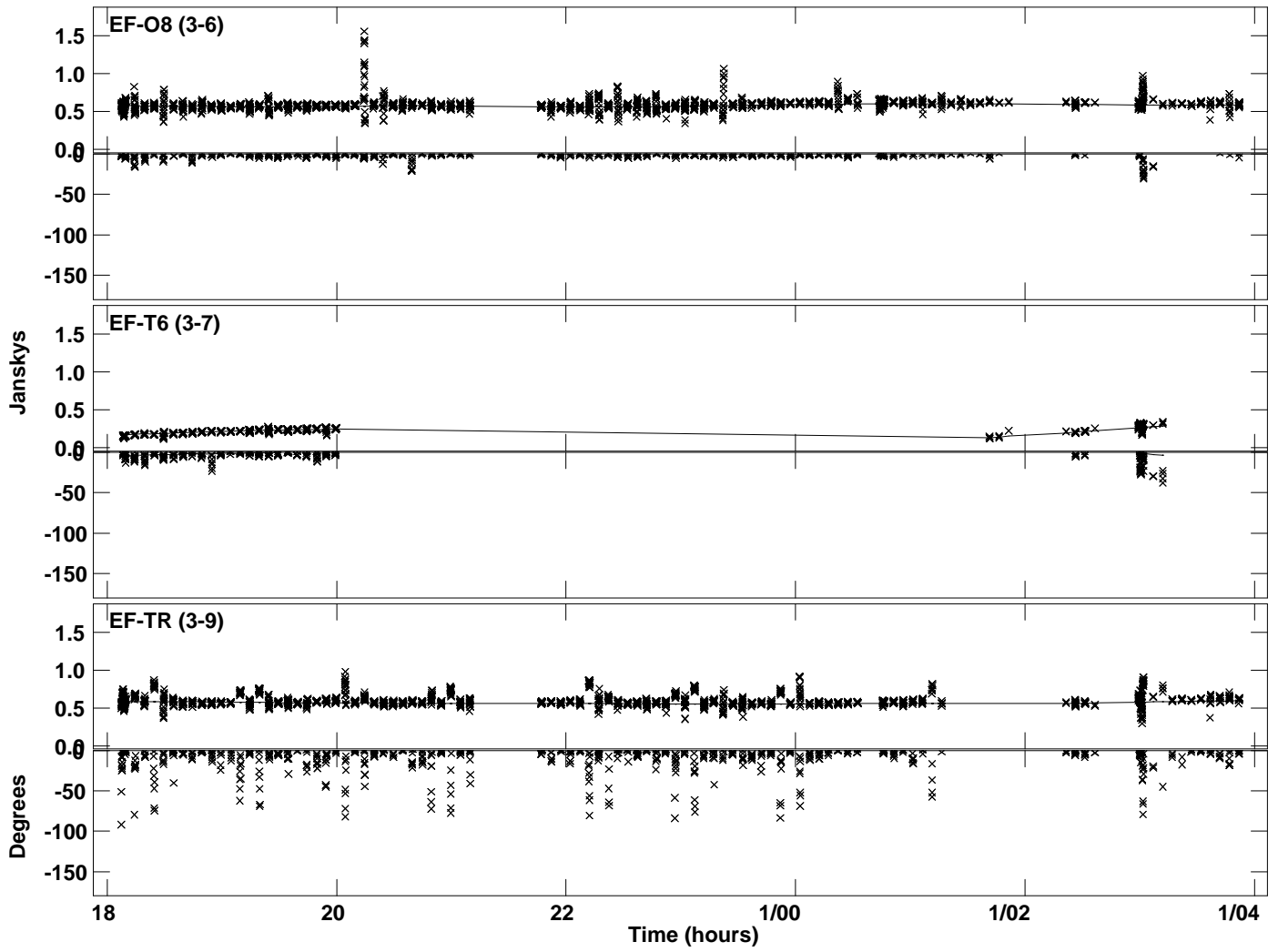
Plot file version 10 created 02-OCT-2023 12:04:09  
Amplitude and Phase vs Time for 1418+546.MULTI.1 CL # 3  
IF 4 CHAN 1 STK LL of 1418+546.ICL001.3



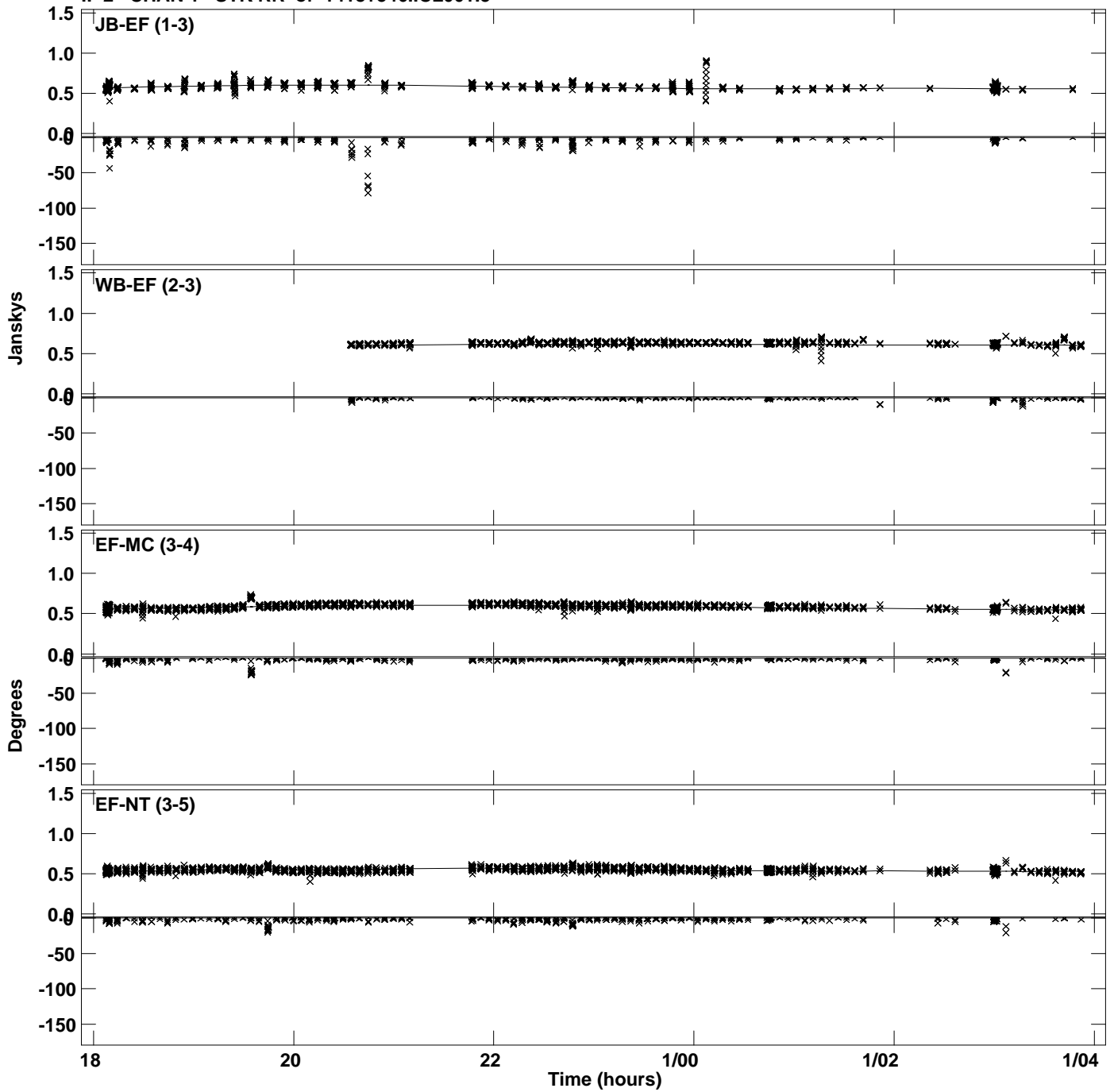
Plot file version 11 created 02-OCT-2023 12:04:12  
Amplitude and Phase vs Time for 1418+546.MULTI.1 CL # 3  
IF 1 CHAN 1 STK RR of 1418+546.ICL001.3



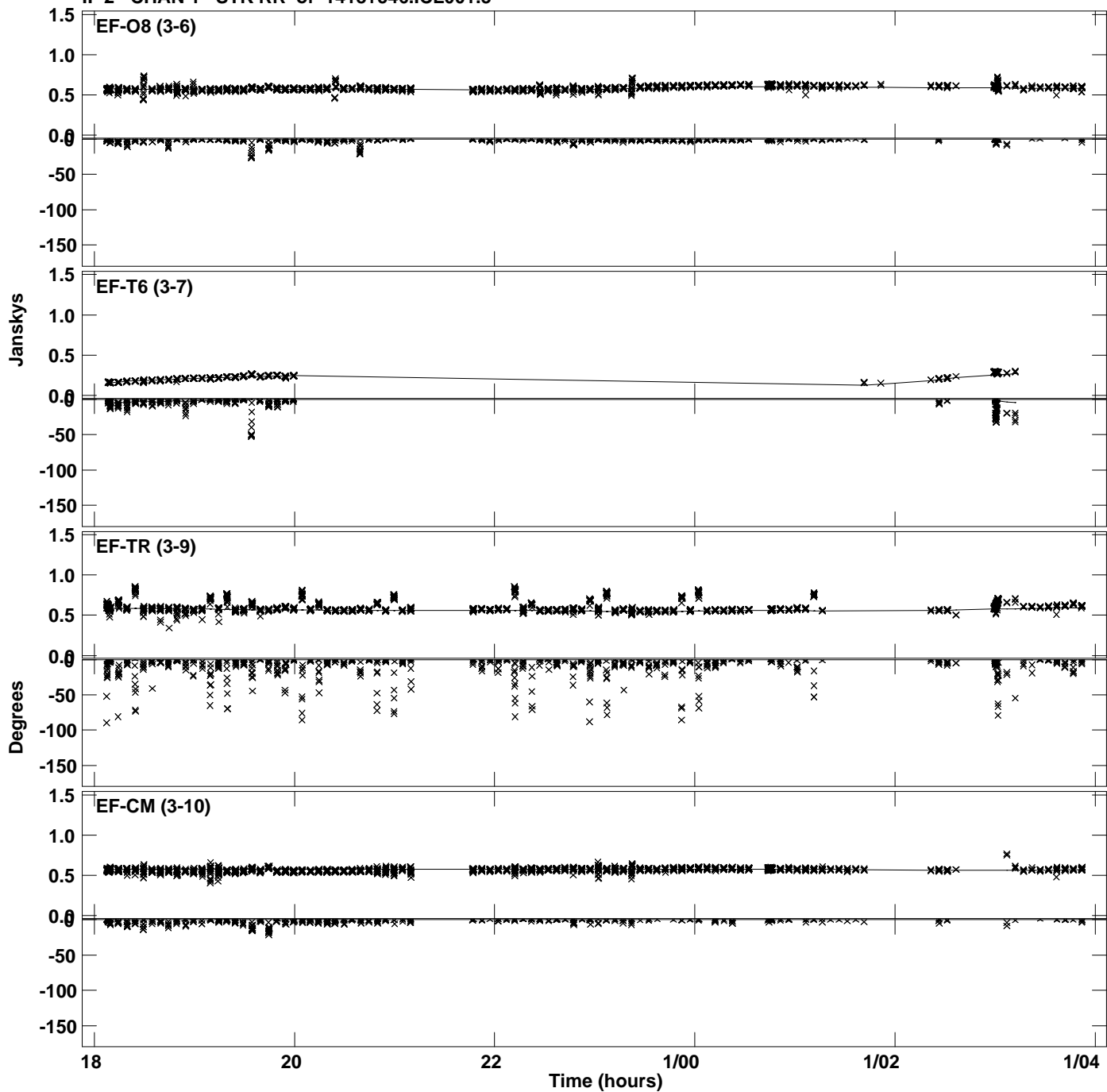
Plot file version 12 created 02-OCT-2023 12:04:12  
Amplitude and Phase vs Time for 1418+546.MULTI.1 CL # 3  
IF 1 CHAN 1 STK RR of 1418+546.ICL001.3



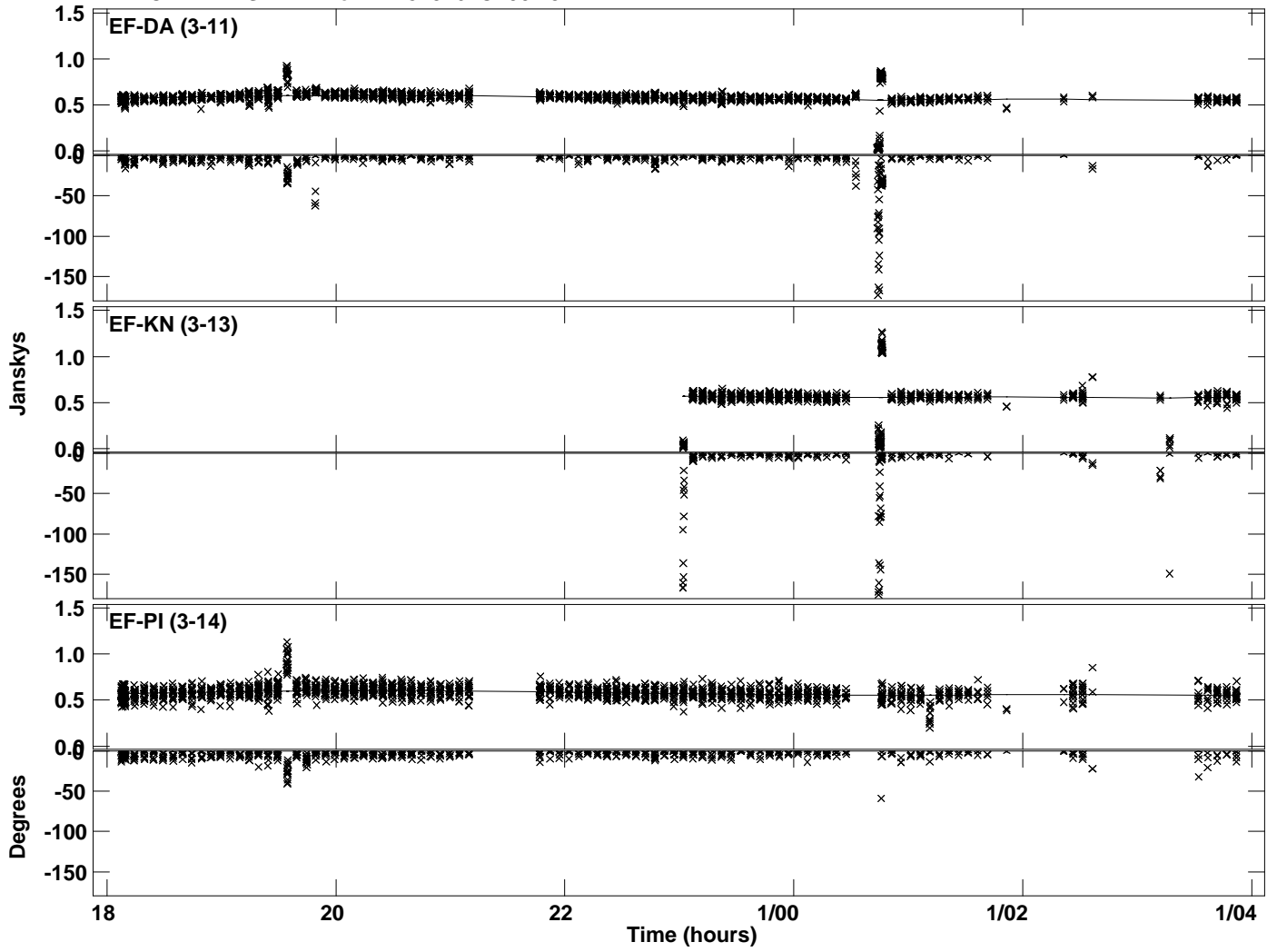
Plot file version 13 created 02-OCT-2023 12:04:14  
Amplitude and Phase vs Time for 1418+546.MULTI.1 CL # 3  
IF 2 CHAN 1 STK RR of 1418+546.ICL001.3



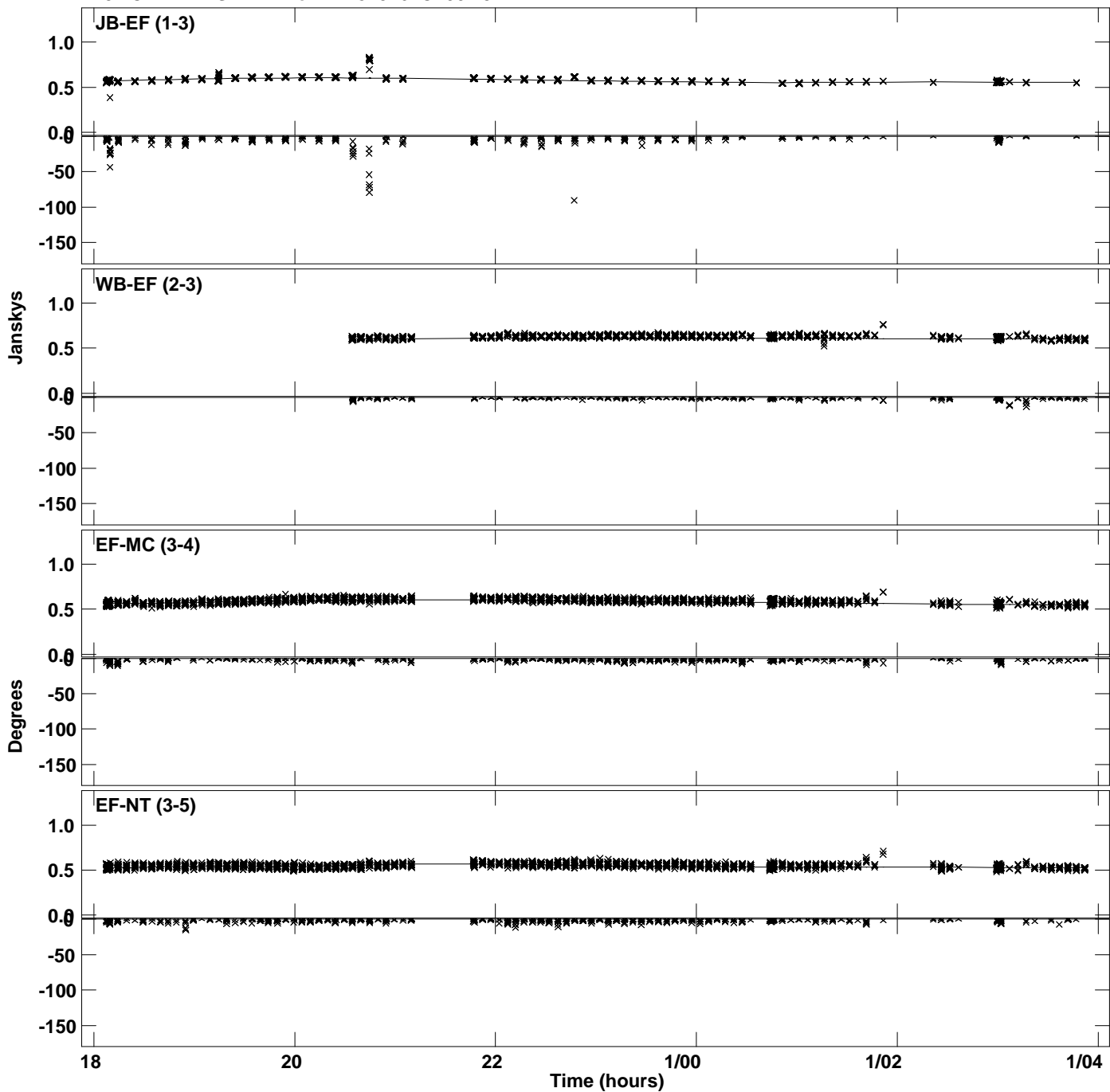
Plot file version 14 created 02-OCT-2023 12:04:14  
Amplitude and Phase vs Time for 1418+546.MULTI.1 CL # 3  
IF 2 CHAN 1 STK RR of 1418+546.ICL001.3



Plot file version 15 created 02-OCT-2023 12:04:14  
Amplitude and Phase vs Time for 1418+546.MULTI.1 CL # 3  
IF 2 CHAN 1 STK RR of 1418+546.ICL001.3

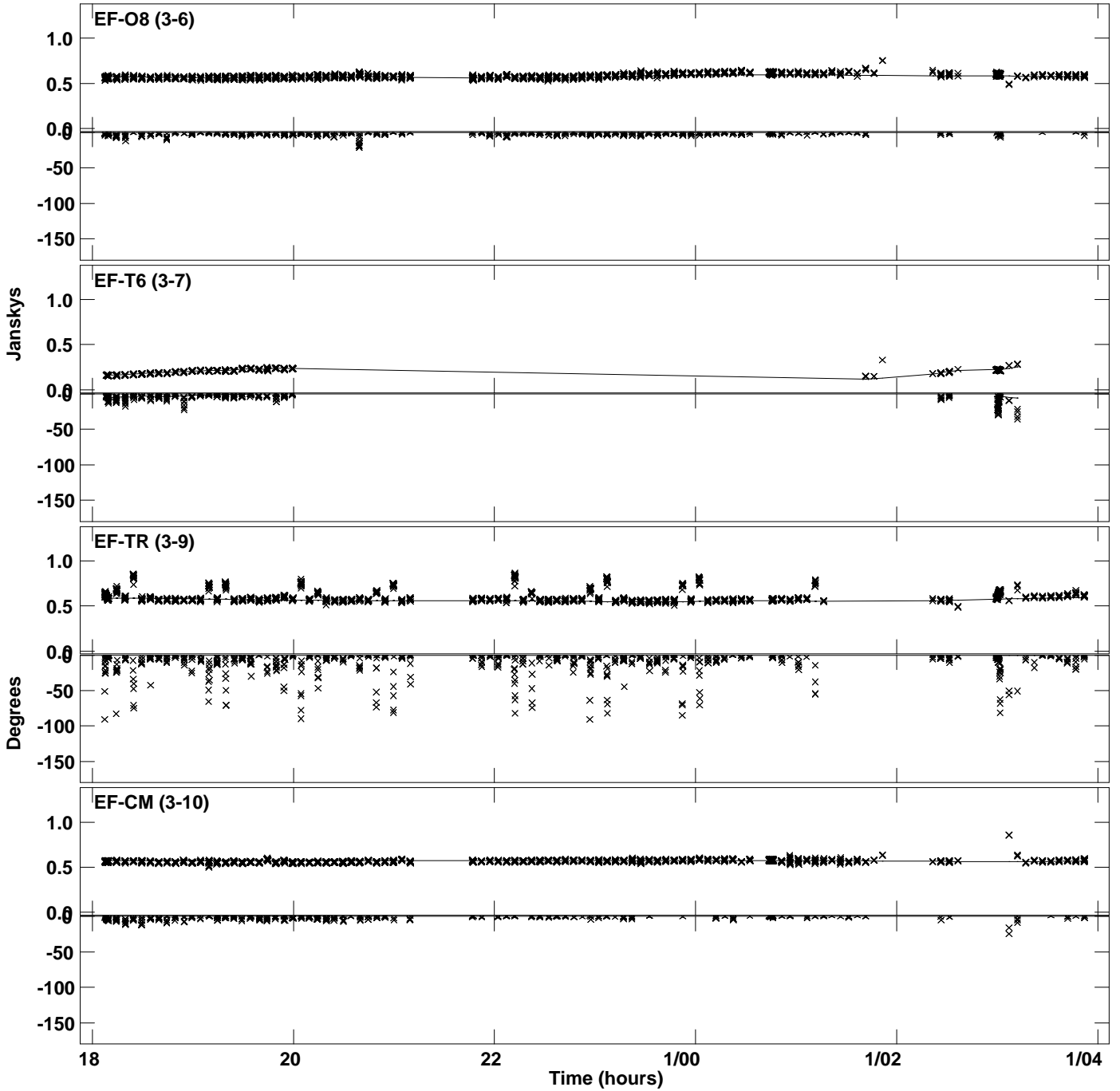


Plot file version 16 created 02-OCT-2023 12:04:17  
Amplitude and Phase vs Time for 1418+546.MULTI.1 CL # 3  
IF 3 CHAN 1 STK RR of 1418+546.ICL001.3

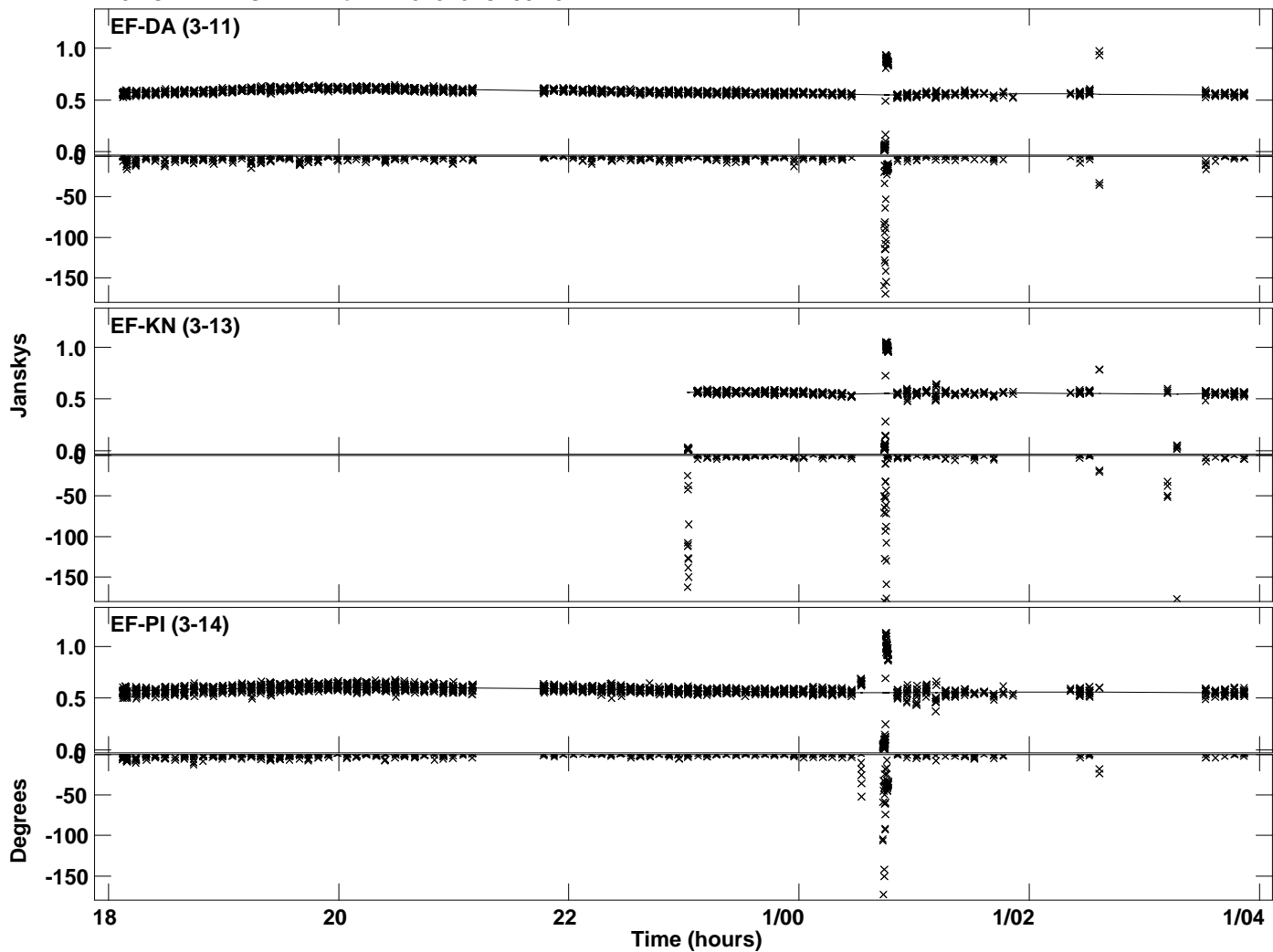




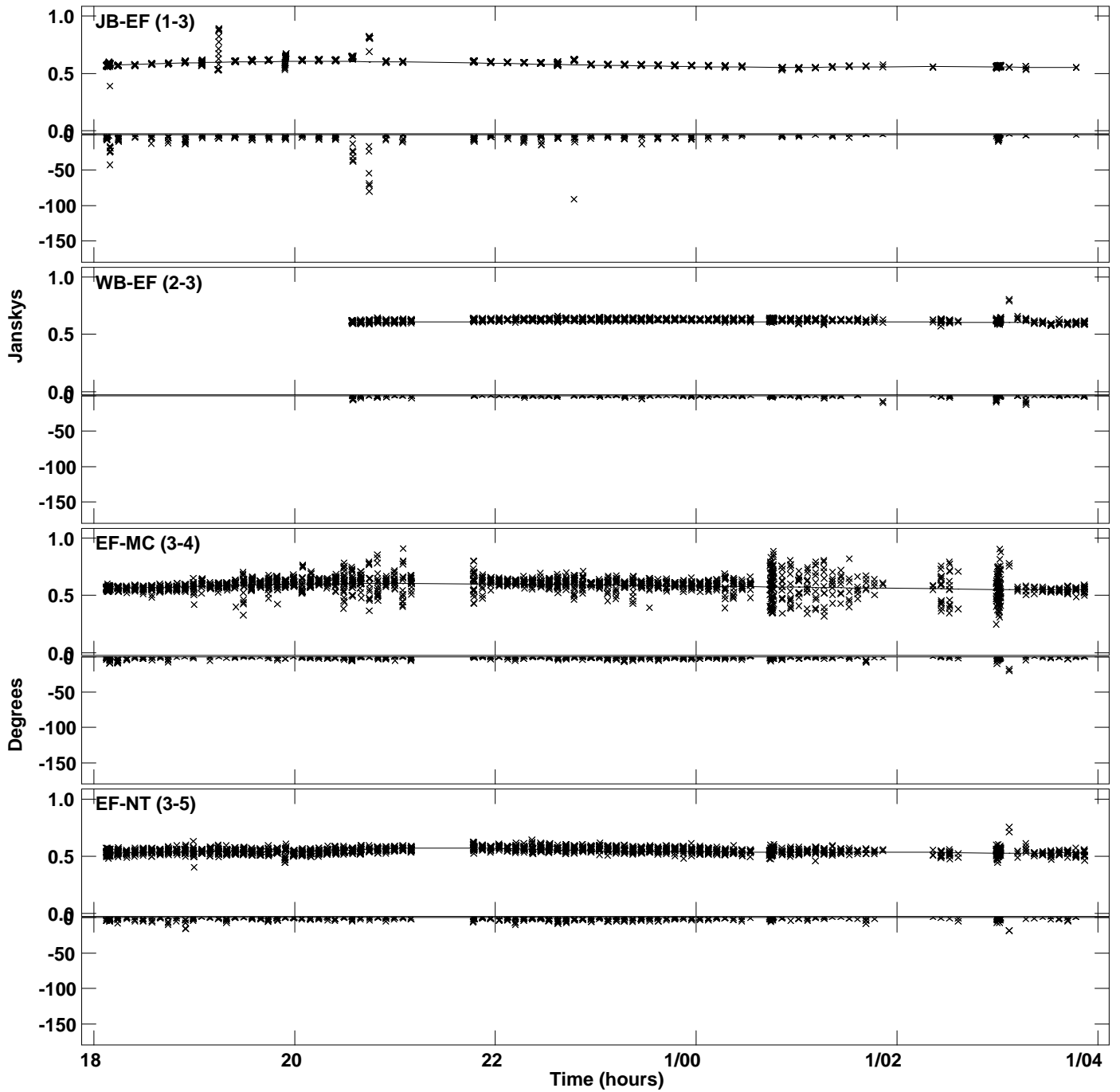
Plot file version 17 created 02-OCT-2023 12:04:17  
Amplitude and Phase vs Time for 1418+546.MULTI.1 CL # 3  
IF 3 CHAN 1 STK RR of 1418+546.ICL001.3



Plot file version 18 created 02-OCT-2023 12:04:17  
Amplitude and Phase vs Time for 1418+546.MULTI.1 CL # 3  
IF 3 CHAN 1 STK RR of 1418+546.ICL001.3



Plot file version 19 created 02-OCT-2023 12:04:19  
Amplitude and Phase vs Time for 1418+546.MULTI.1 CL # 3  
IF 4 CHAN 1 STK RR of 1418+546.ICL001.3



Plot file version 20 created 02-OCT-2023 12:04:19  
Amplitude and Phase vs Time for 1418+546.MULTI.1 CL # 3  
IF 4 CHAN 1 STK RR of 1418+546.ICL001.3

