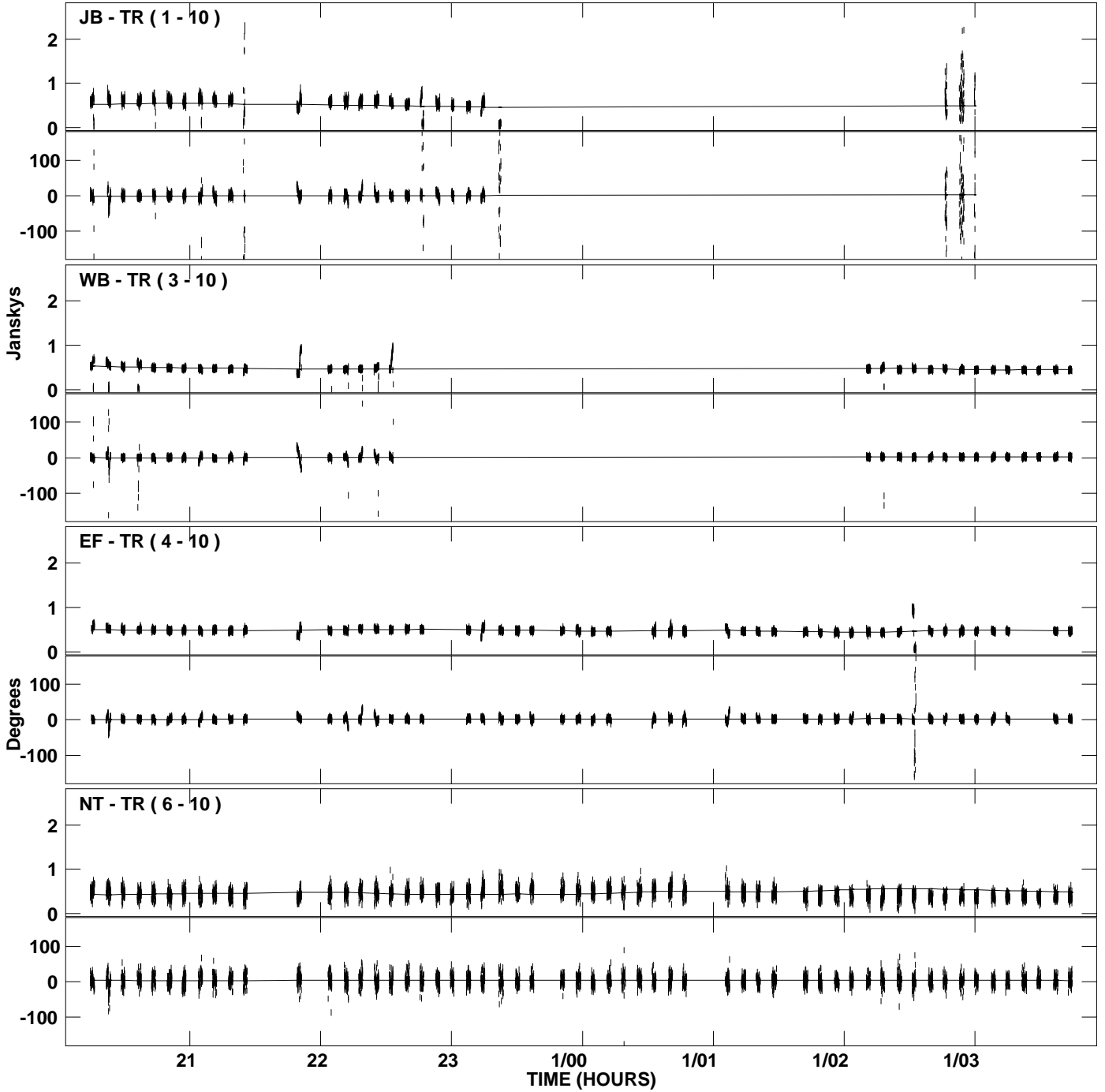
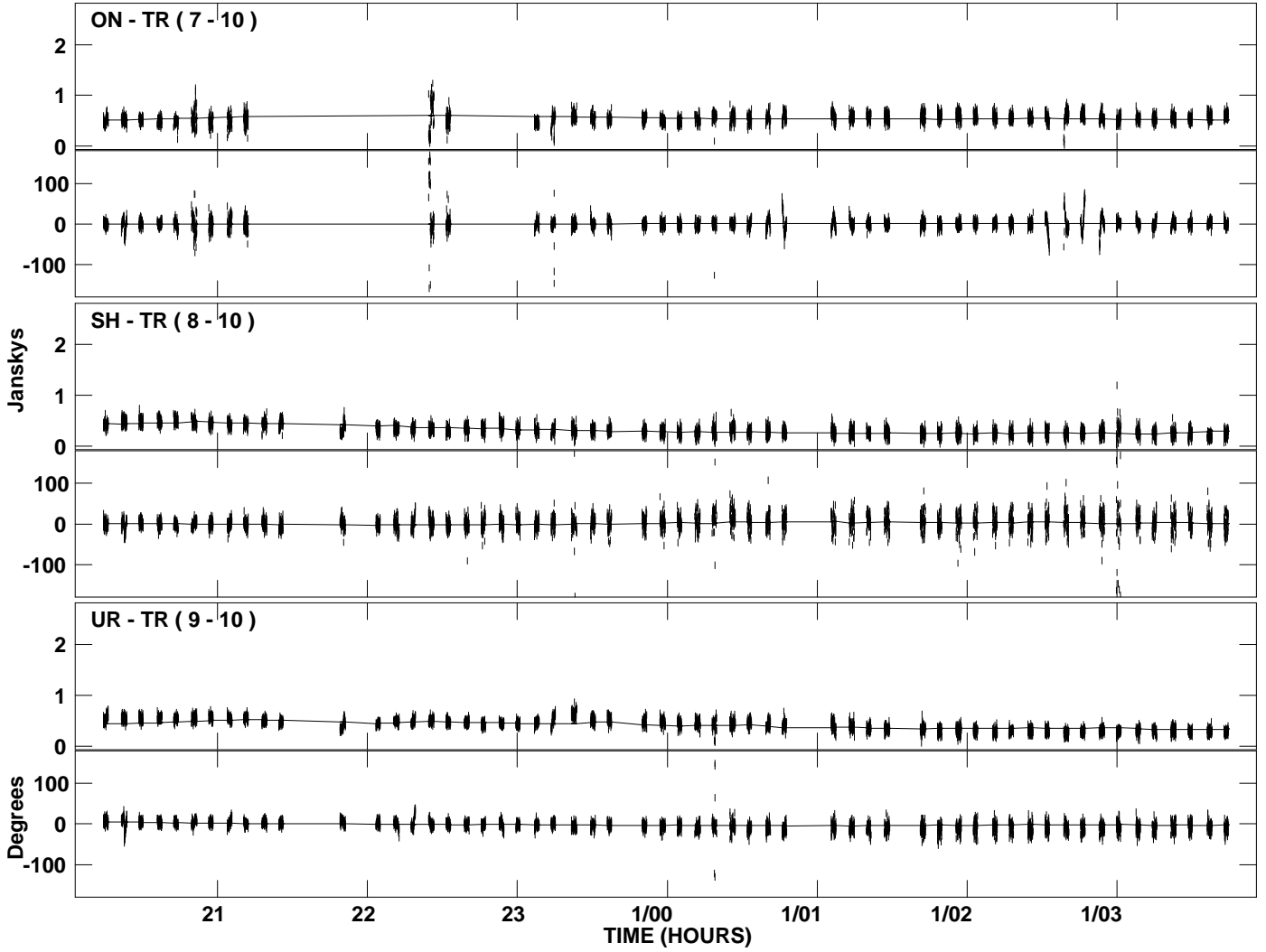


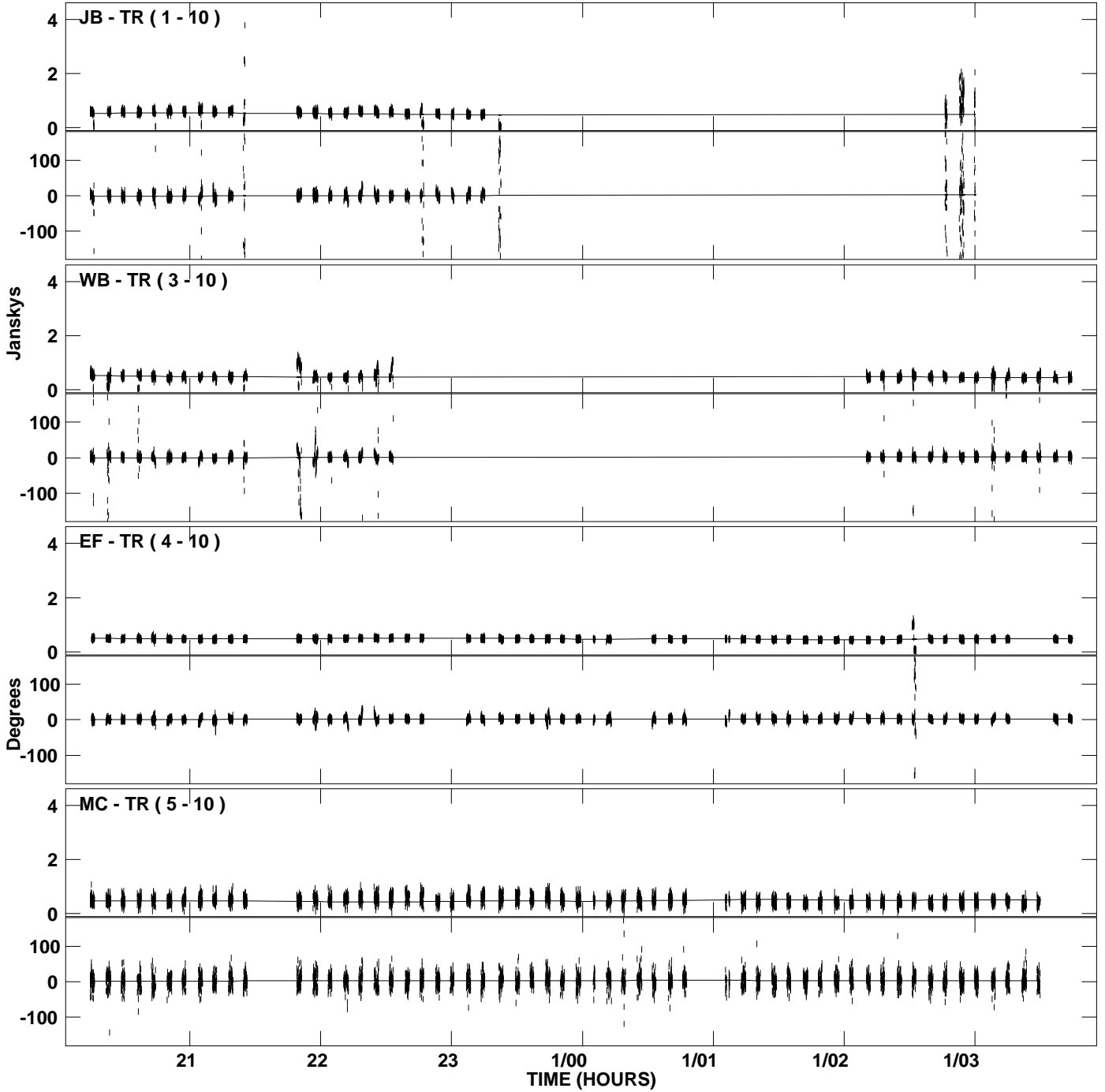
PLot file version 1 created 24-AUG-2007 14:20:02
Amplitude and Phase vs Time for 1337+637.MULTI.1 CL # 3
IF 1 CHAN 1 STK LL of 1337+637.ICL001.3



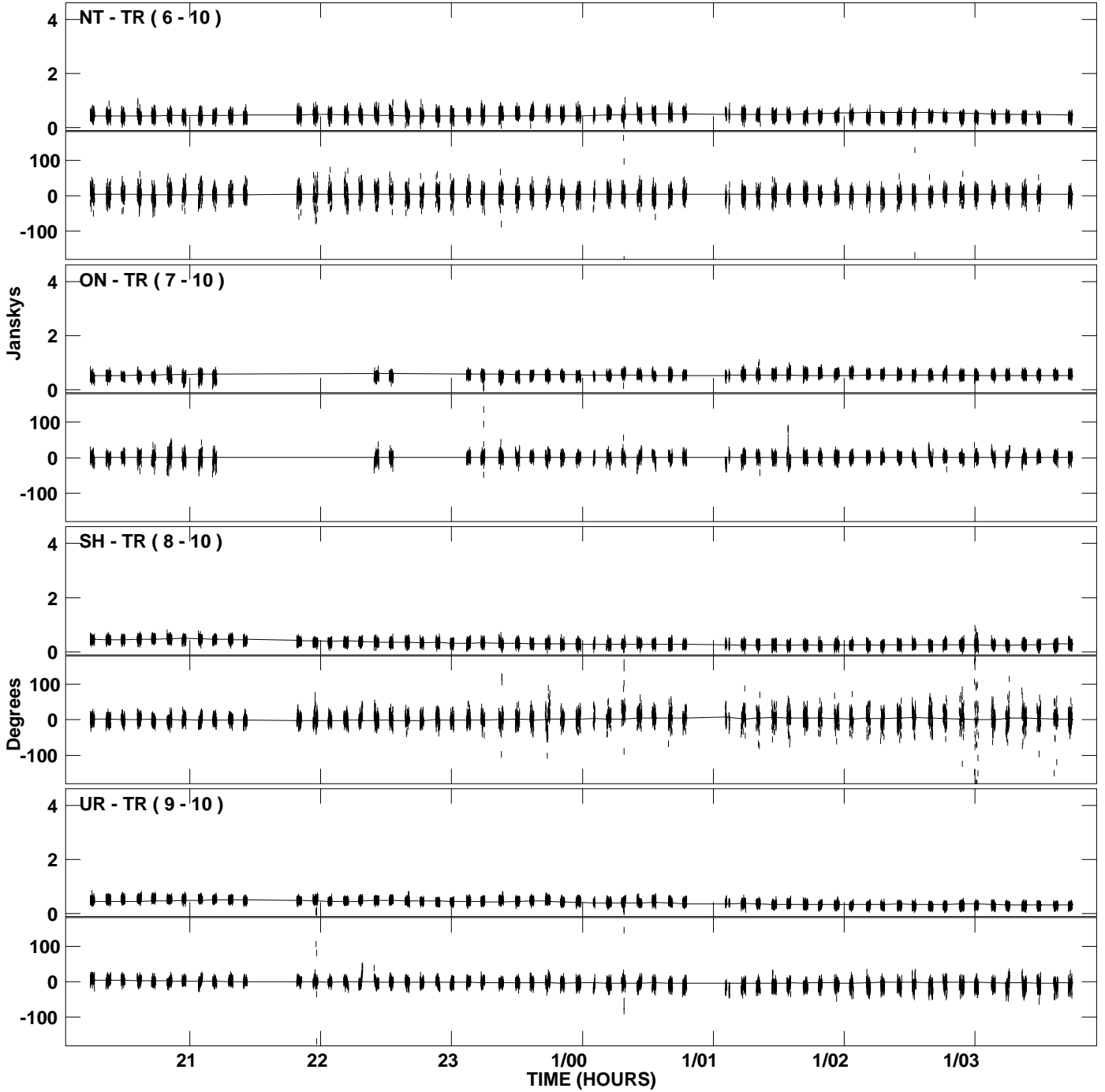
PLot file version 2 created 24-AUG-2007 14:20:02
Amplitude and Phase vs Time for 1337+637.MULTI.1 CL # 3
IF 1 CHAN 1 STK LL of 1337+637.ICL001.3



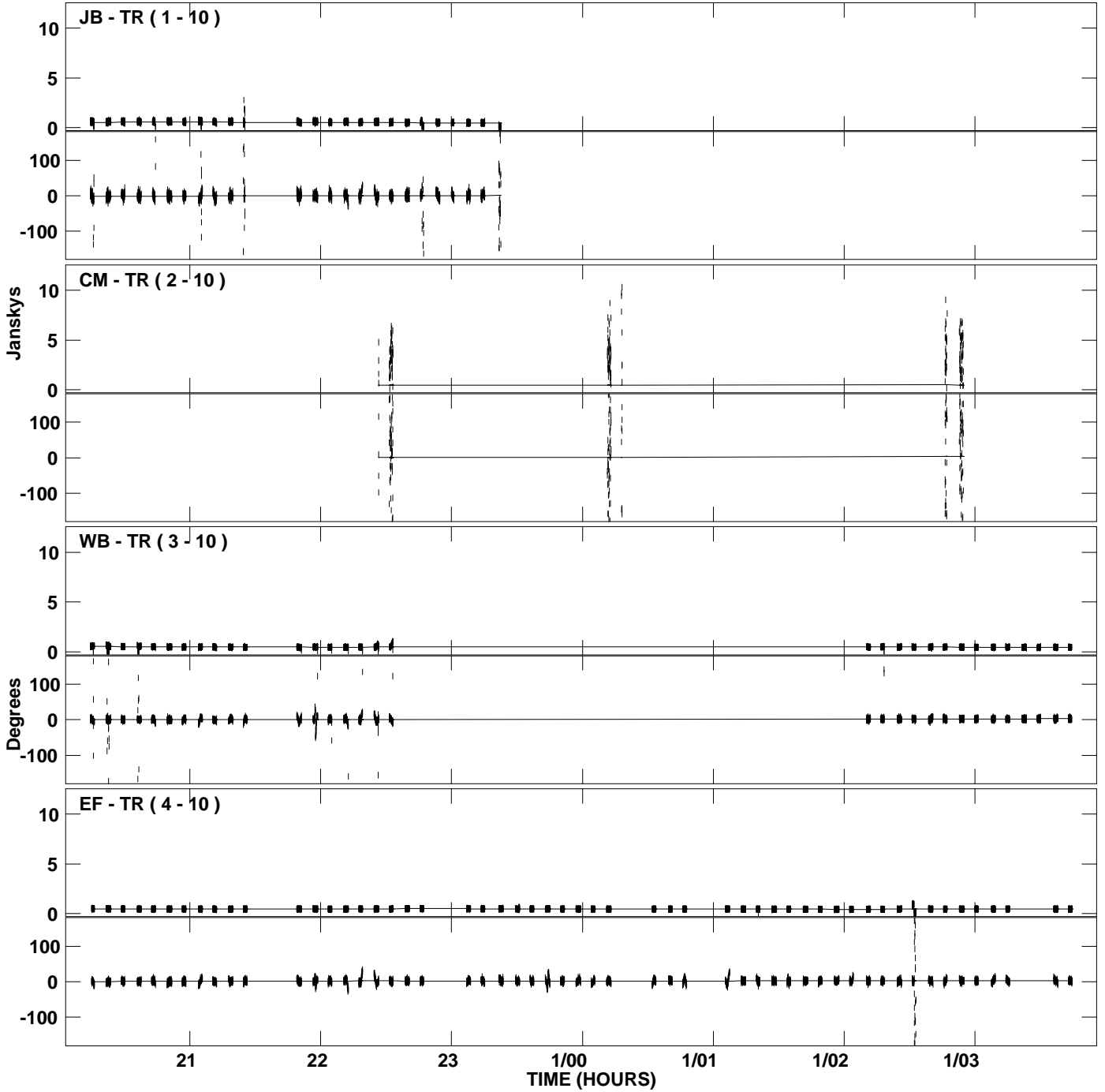
PLot file version 3 created 24-AUG-2007 14:20:08
Amplitude and Phase vs Time for 1337+637.MULTI.1 CL # 3
IF 2 CHAN 1 STK LL of 1337+637.ICL001.3



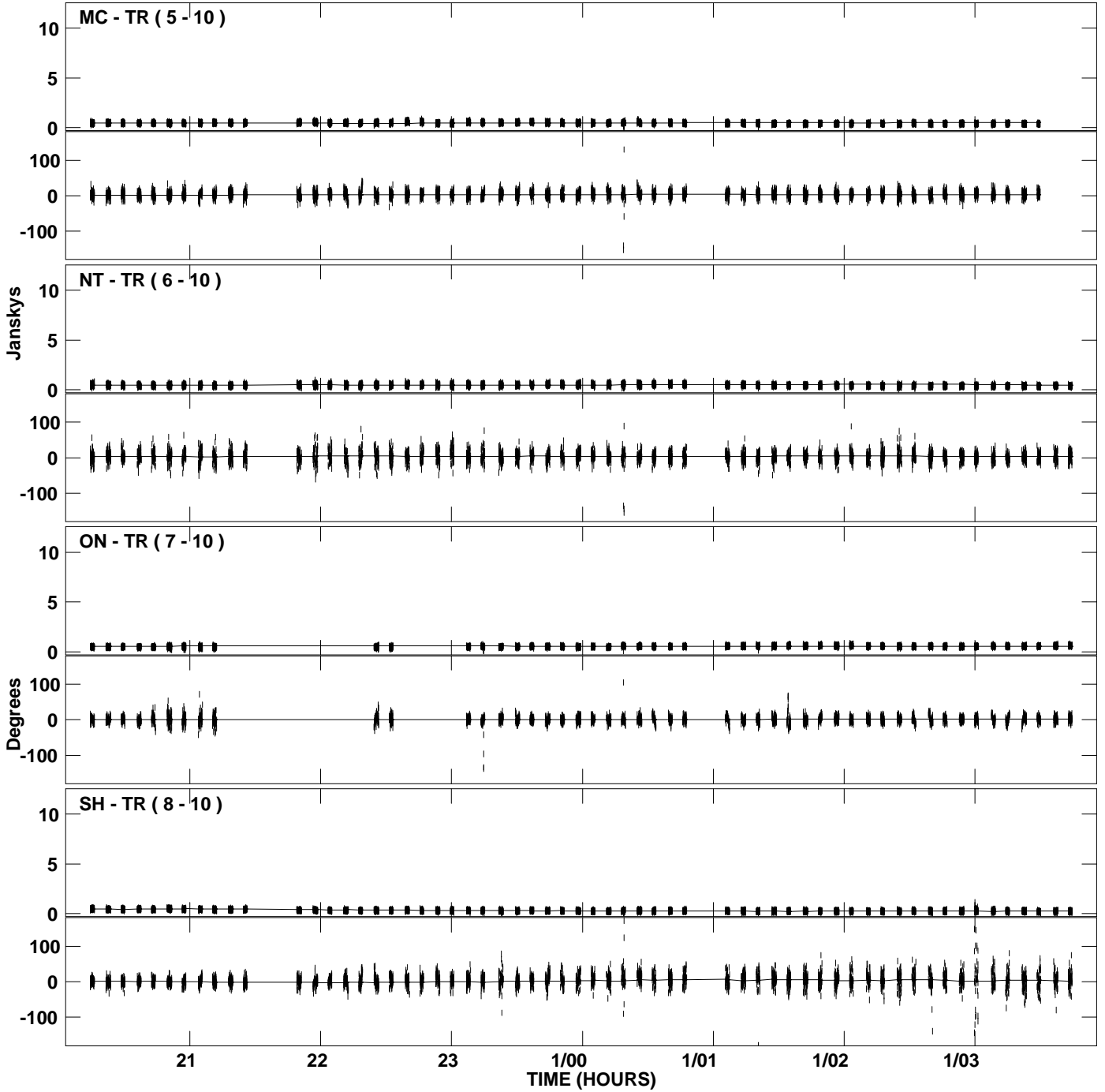
PLot file version 4 created 24-AUG-2007 14:20:08
Amplitude andPhase vs Time for 1337+637.MULTI.1 CL # 3
IF 2 CHAN 1 STK LL of 1337+637.ICL001.3



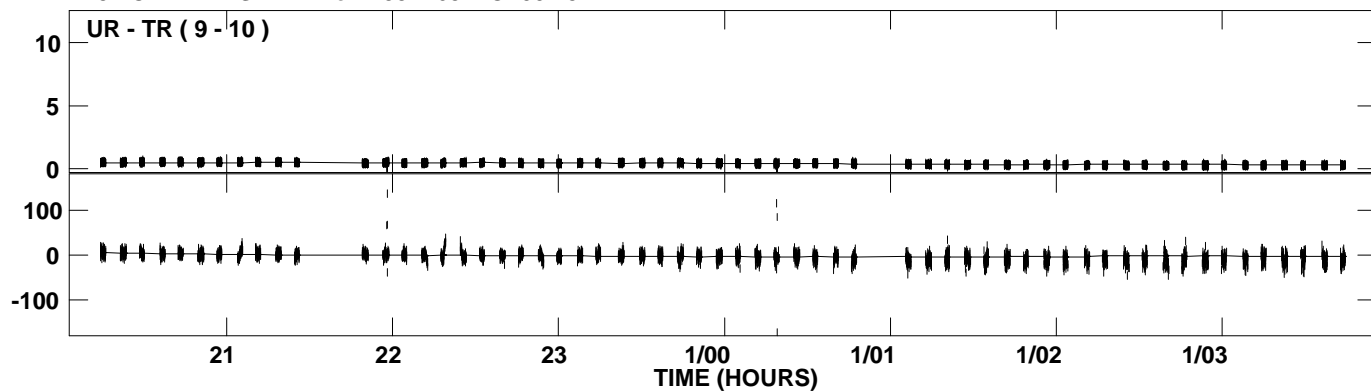
PLot file version 5 created 24-AUG-2007 14:20:13
Amplitude and Phase vs Time for 1337+637.MULTI.1 CL # 3
IF 3 CHAN 1 STK LL of 1337+637.ICL001.3



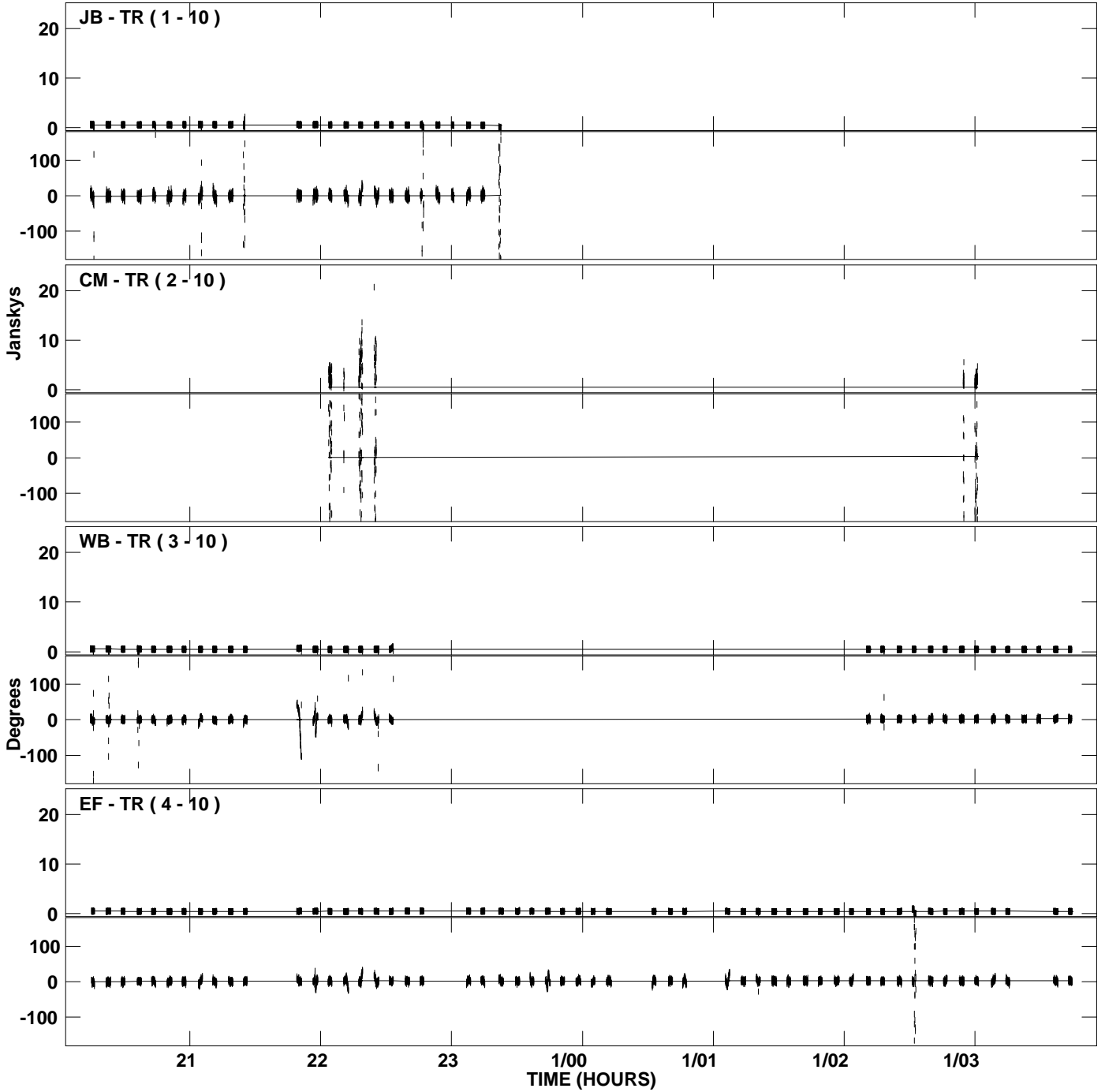
PLot file version 6 created 24-AUG-2007 14:20:13
Amplitude and Phase vs Time for 1337+637.MULTI.1 CL # 3
IF 3 CHAN 1 STK LL of 1337+637.ICL001.3



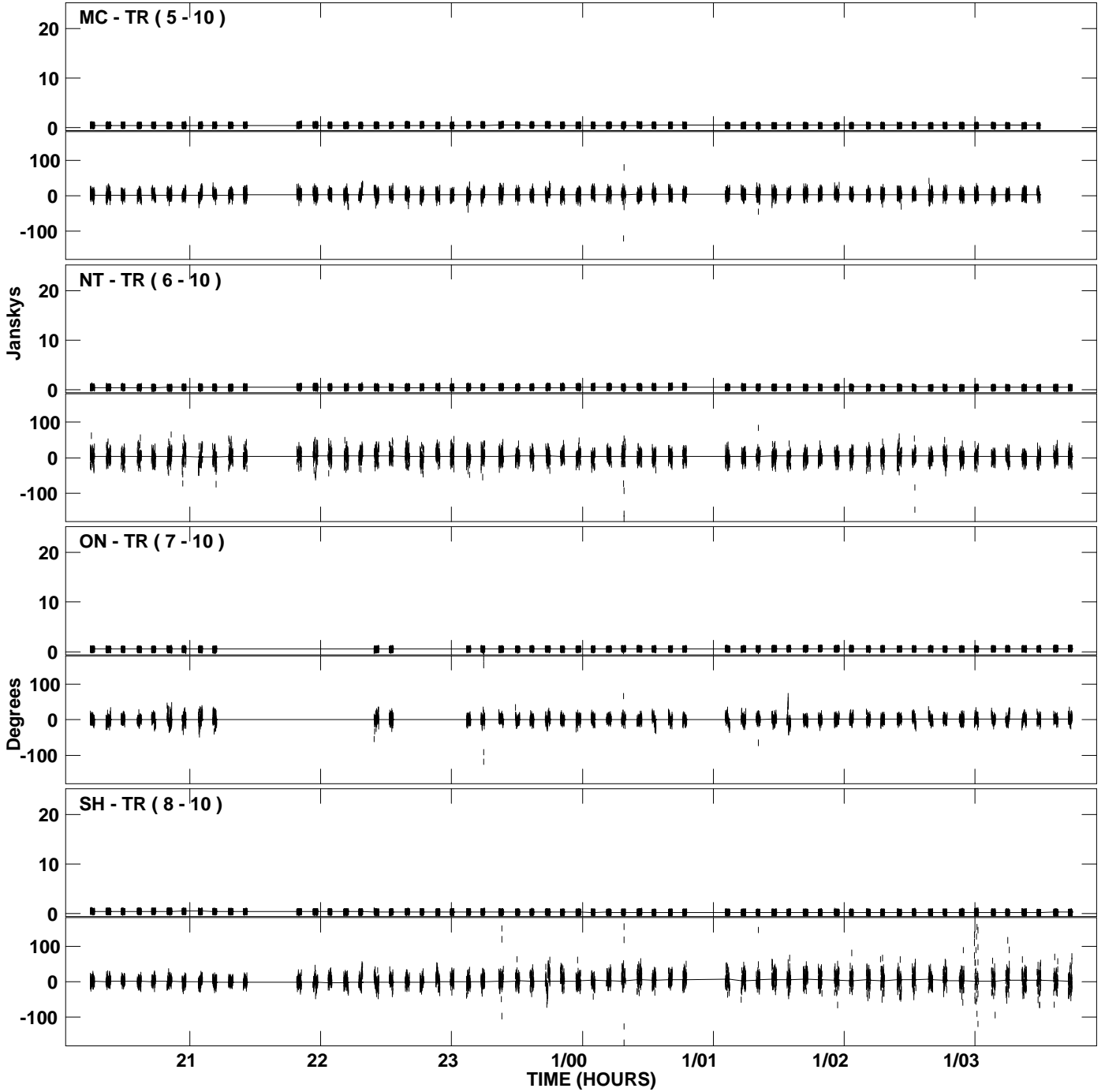
PLot file version 7 created 24-AUG-2007 14:20:14
Amplitude andPhase vs Time for 1337+637.MULTI.1 CL # 3
IF 3 CHAN 1 STK LL of 1337+637.ICL001.3



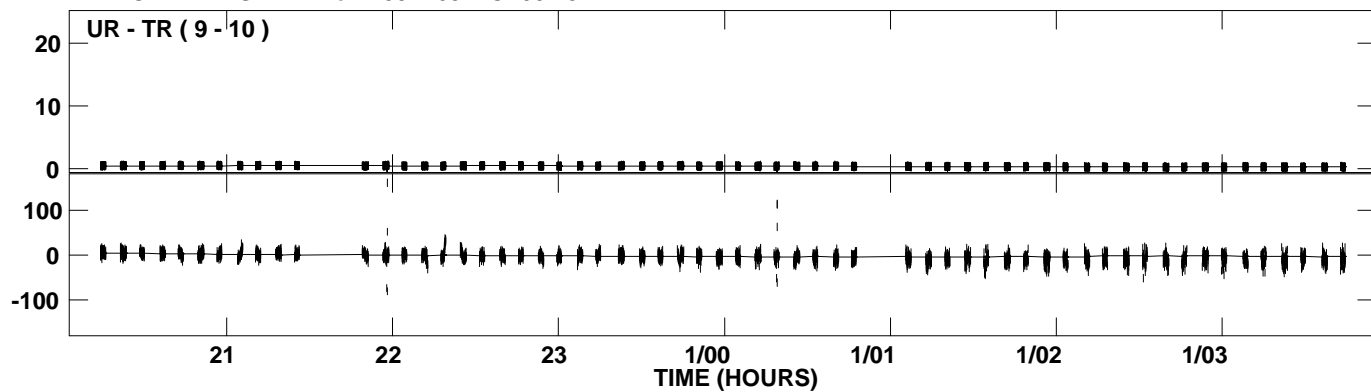
PLot file version 8 created 24-AUG-2007 14:20:16
Amplitude and Phase vs Time for 1337+637.MULTI.1 CL # 3
IF 4 CHAN 1 STK LL of 1337+637.ICL001.3



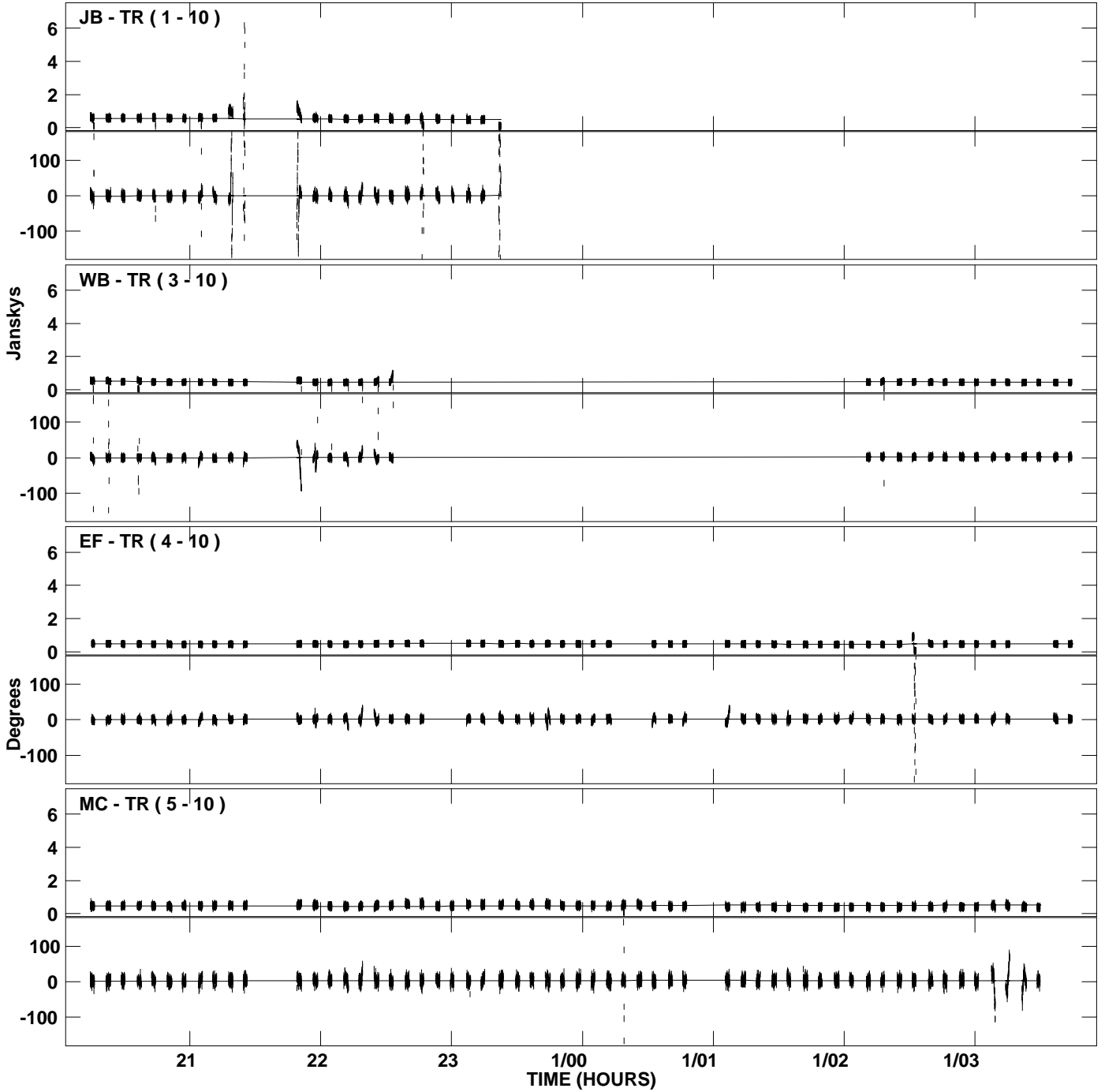
PLot file version 9 created 24-AUG-2007 14:20:16
Amplitude and Phase vs Time for 1337+637.MULTI.1 CL # 3
IF 4 CHAN 1 STK LL of 1337+637.ICL001.3



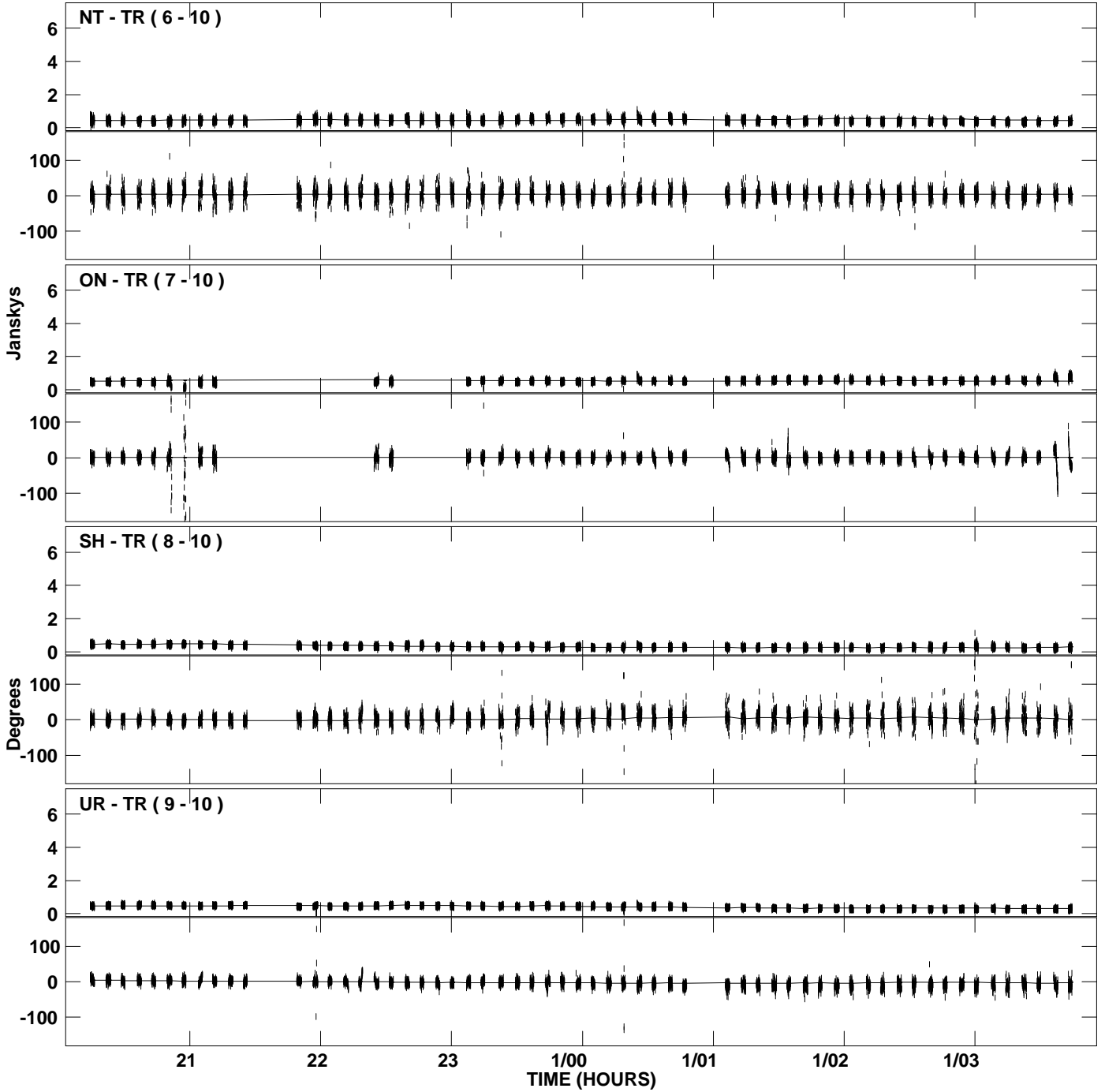
PLot file version 10 created 24-AUG-2007 14:20:16
Amplitude andPhase vs Time for 1337+637.MULTI.1 CL # 3
IF 4 CHAN 1 STK LL of 1337+637.ICL001.3



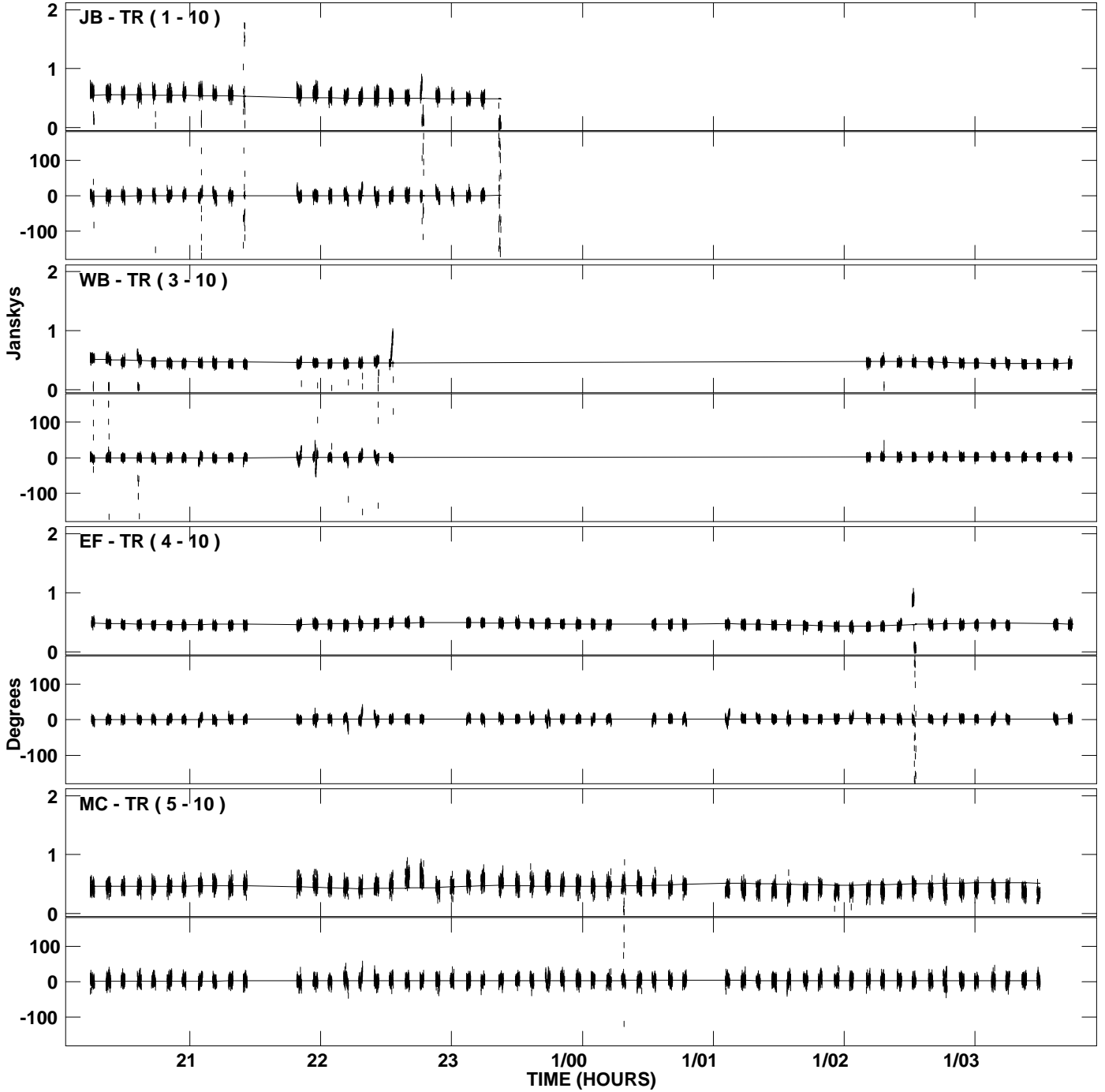
PLot file version 11 created 24-AUG-2007 14:20:20
Amplitude and Phase vs Time for 1337+637.MULTI.1 CL # 3
IF 5 CHAN 1 STK LL of 1337+637.ICL001.3



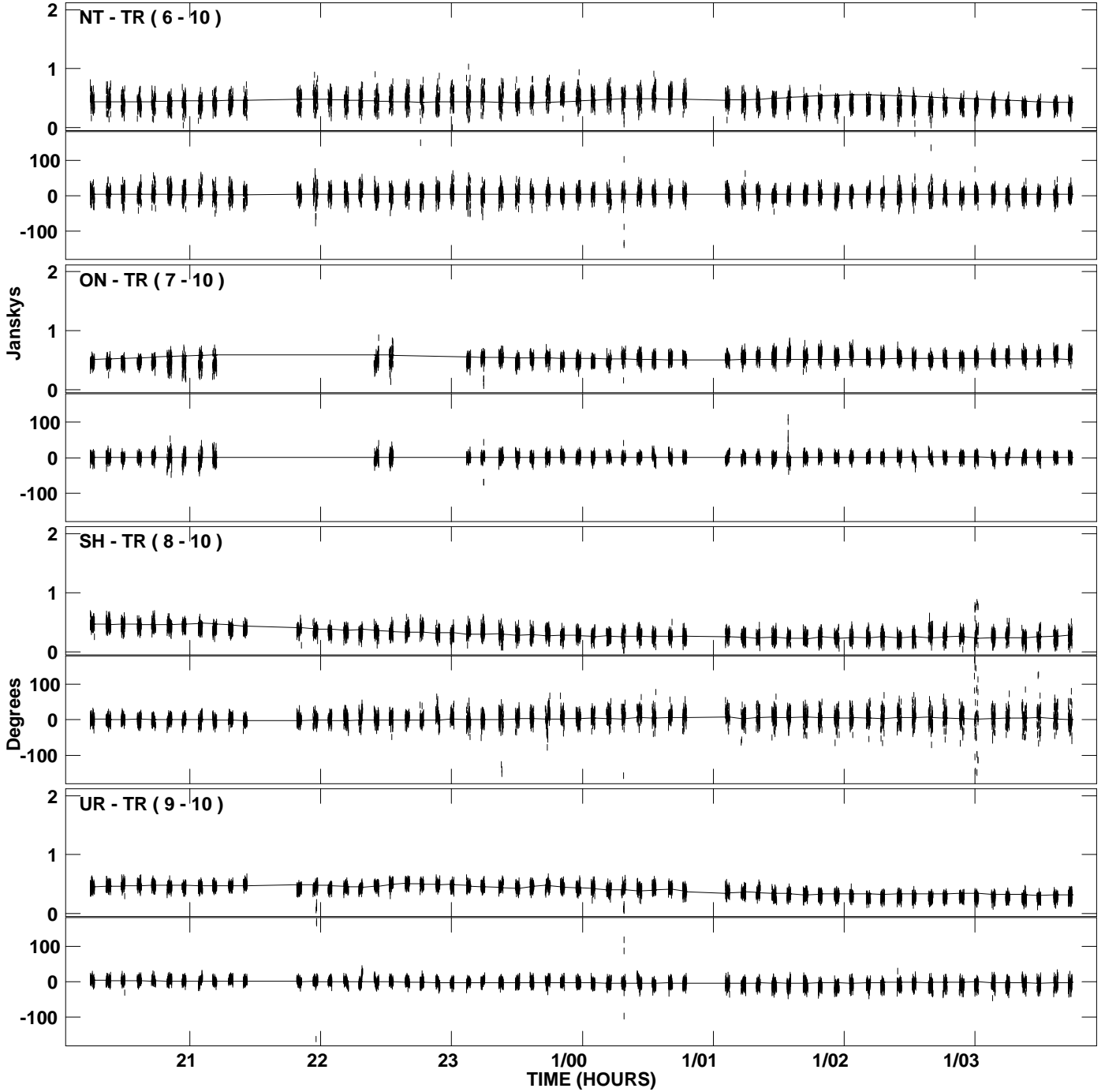
PLot file version 12 created 24-AUG-2007 14:20:20
Amplitude and Phase vs Time for 1337+637.MULTI.1 CL # 3
IF 5 CHAN 1 STK LL of 1337+637.ICL001.3



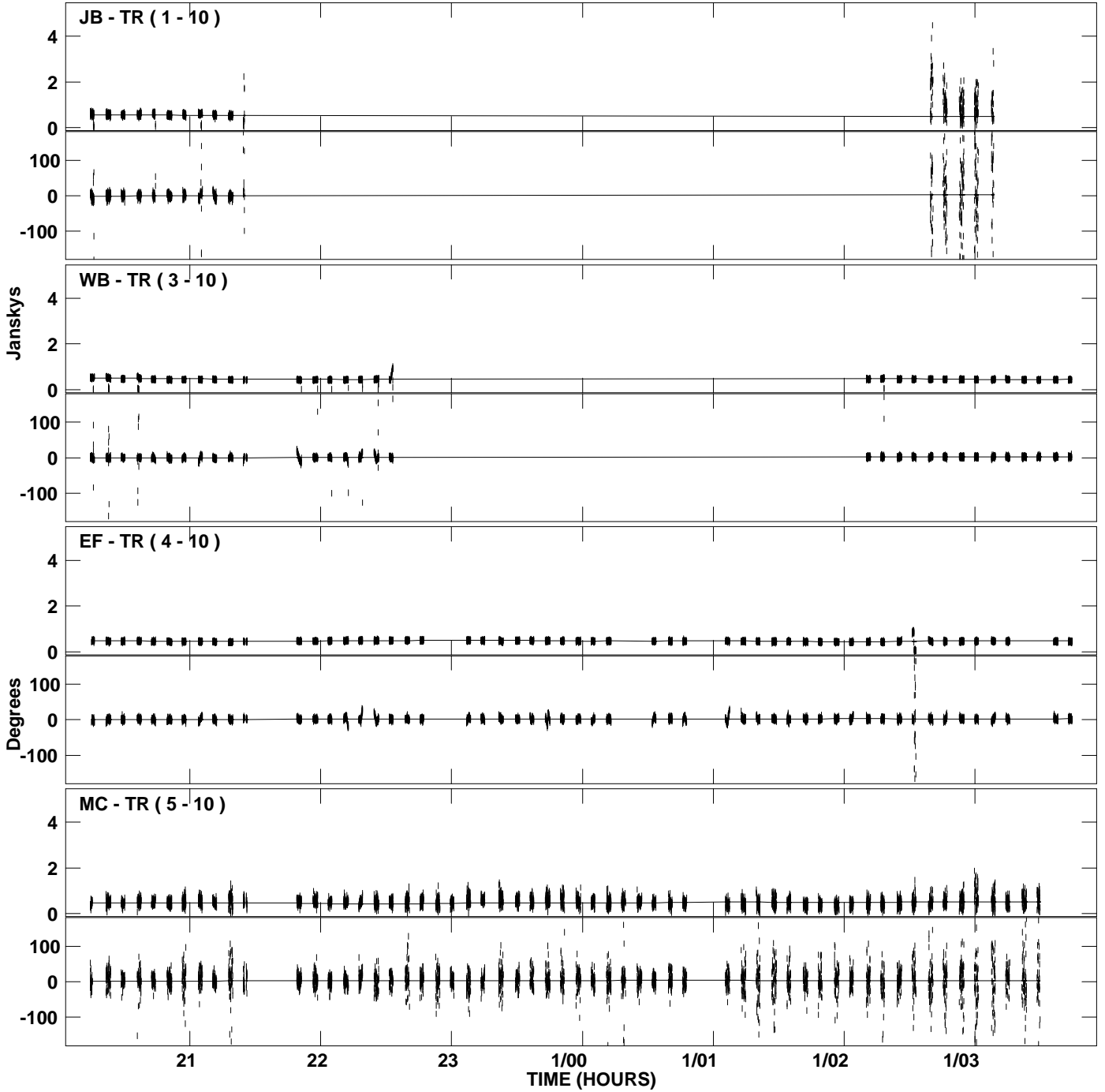
PLot file version 13 created 24-AUG-2007 14:20:25
Amplitude and Phase vs Time for 1337+637.MULTI.1 CL # 3
IF 6 CHAN 1 STK LL of 1337+637.ICL001.3



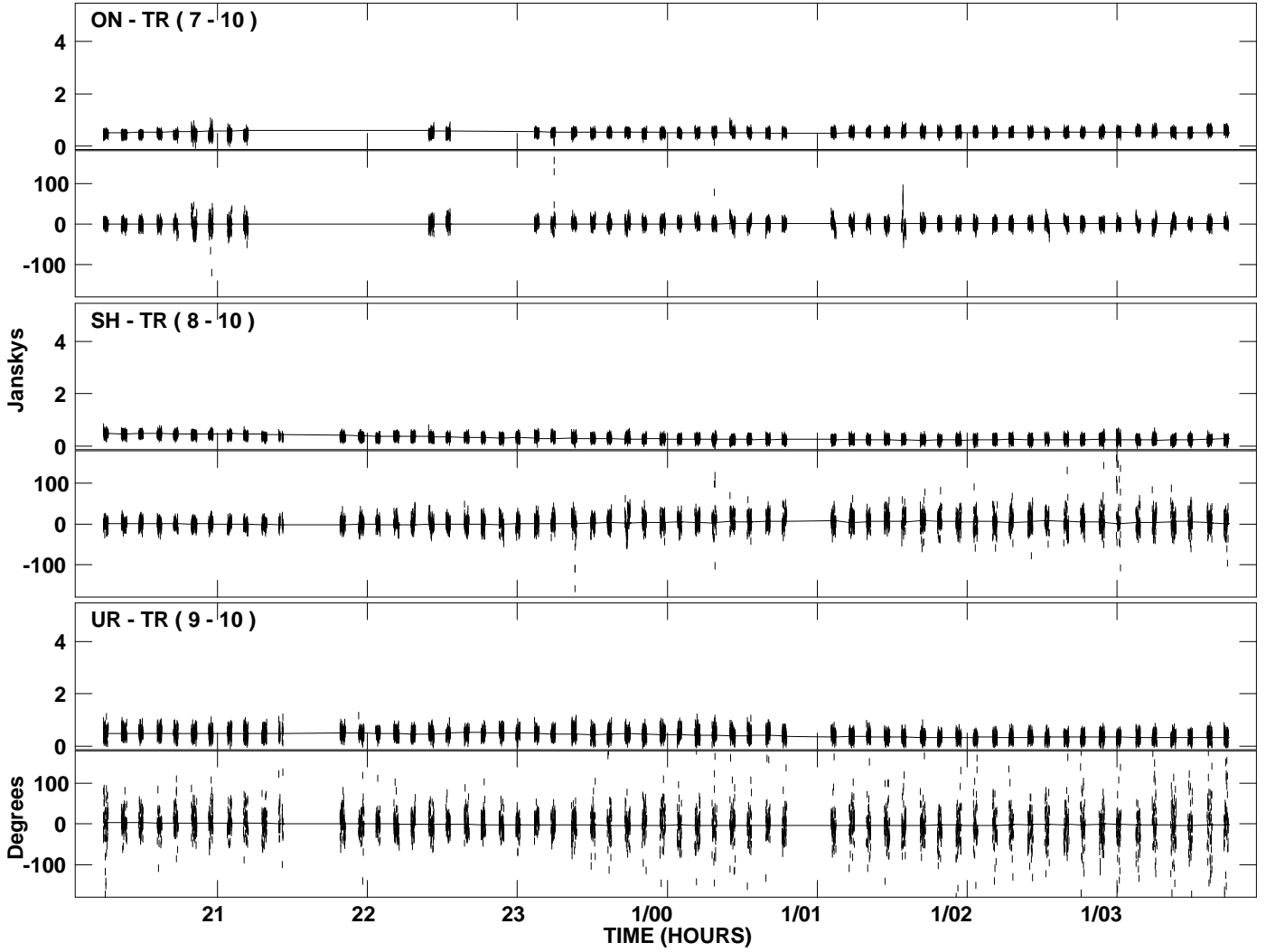
PLot file version 14 created 24-AUG-2007 14:20:25
Amplitude and Phase vs Time for 1337+637.MULTI.1 CL # 3
IF 6 CHAN 1 STK LL of 1337+637.ICL001.3



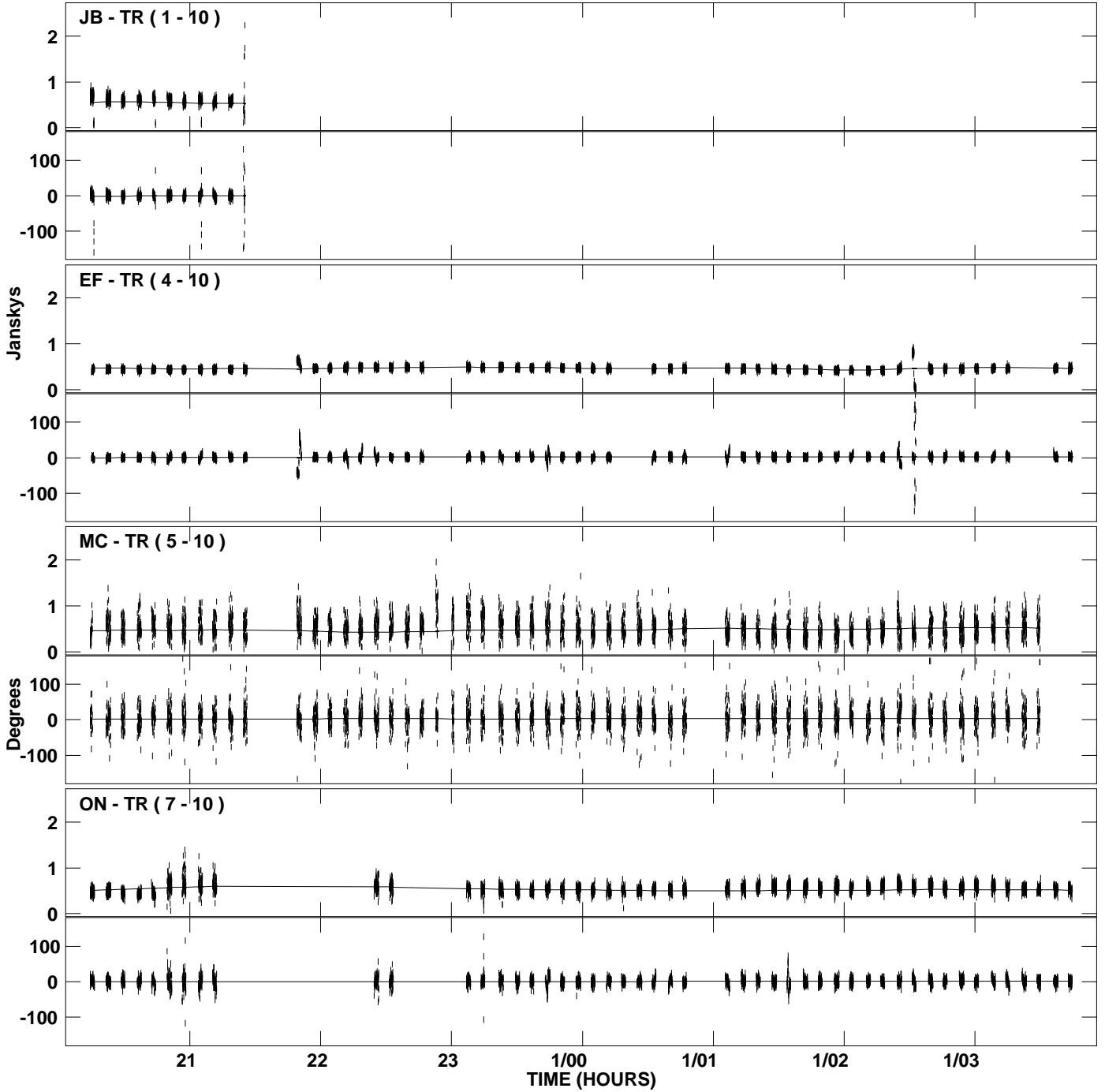
PLot file version 15 created 24-AUG-2007 14:20:30
Amplitude and Phase vs Time for 1337+637.MULTI.1 CL # 3
IF 7 CHAN 1 STK LL of 1337+637.ICL001.3



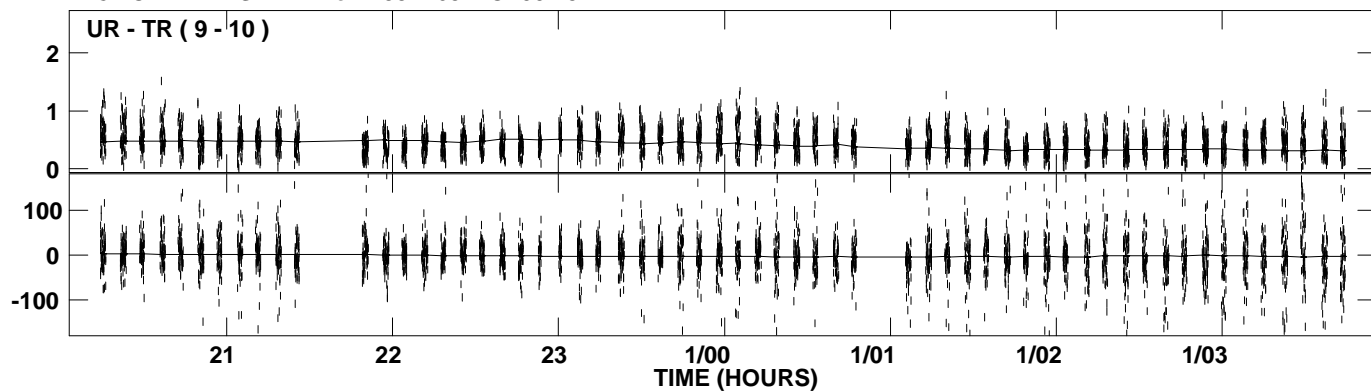
PLot file version 16 created 24-AUG-2007 14:20:31
Amplitude and Phase vs Time for 1337+637.MULTI.1 CL # 3
IF 7 CHAN 1 STK LL of 1337+637.ICL001.3



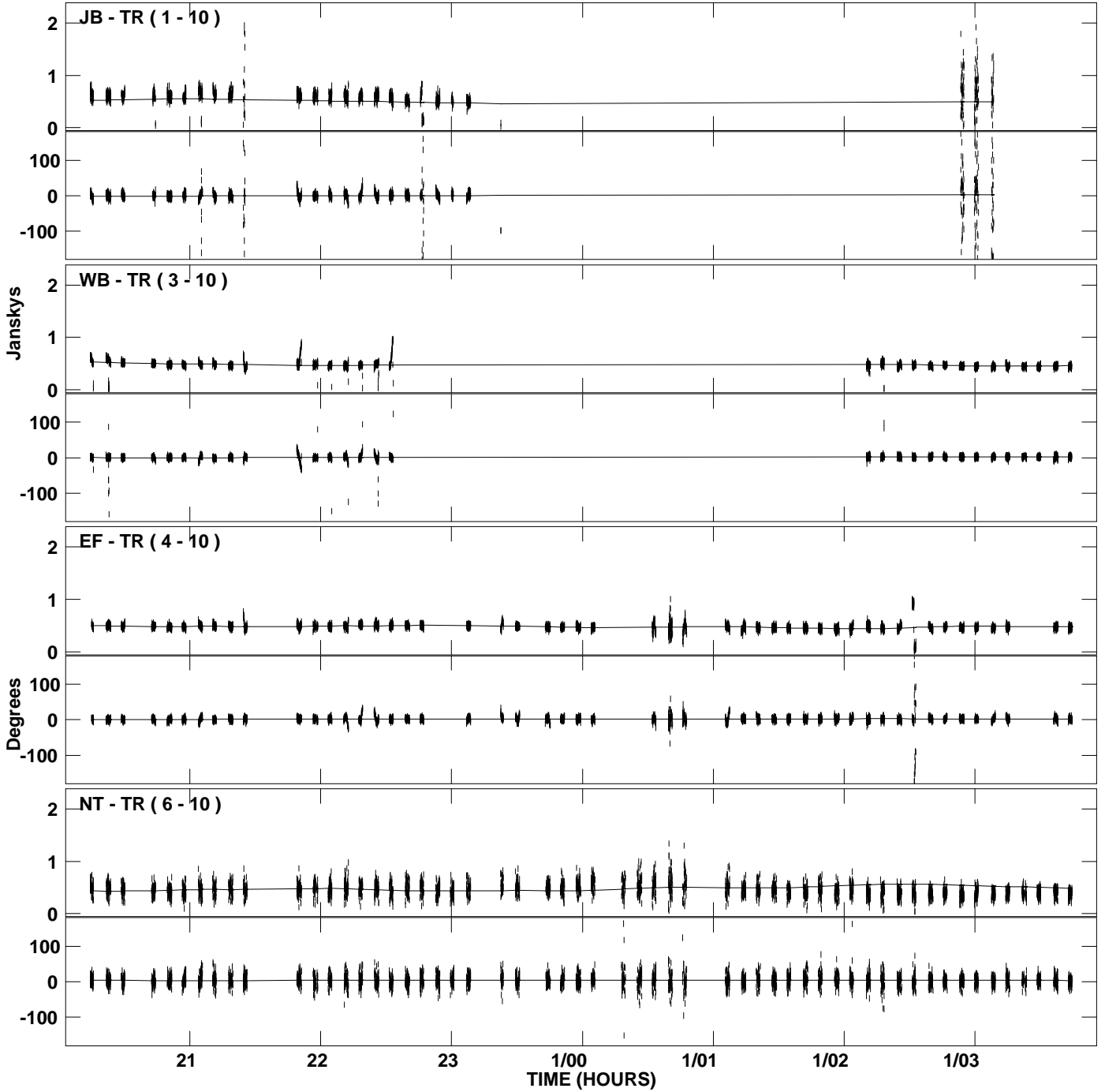
PLot file version 17 created 24-AUG-2007 14:20:35
Amplitude and Phase vs Time for 1337+637.MULTI.1 CL # 3
IF 8 CHAN 1 STK LL of 1337+637.ICL001.3



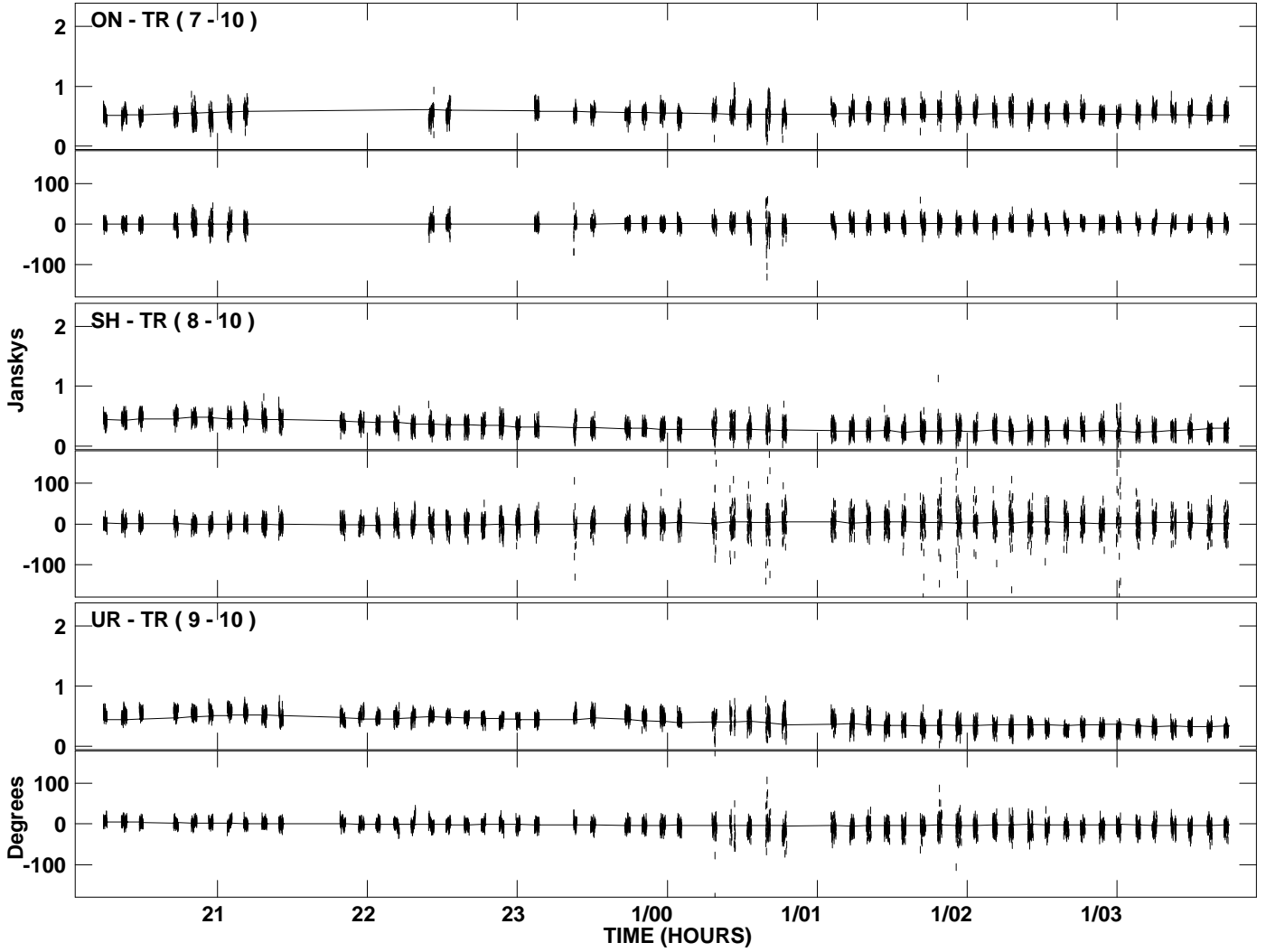
PLot file version 18 created 24-AUG-2007 14:20:35
Amplitude andPhase vs Time for 1337+637.MULTI.1 CL # 3
IF 8 CHAN 1 STK LL of 1337+637.ICL001.3



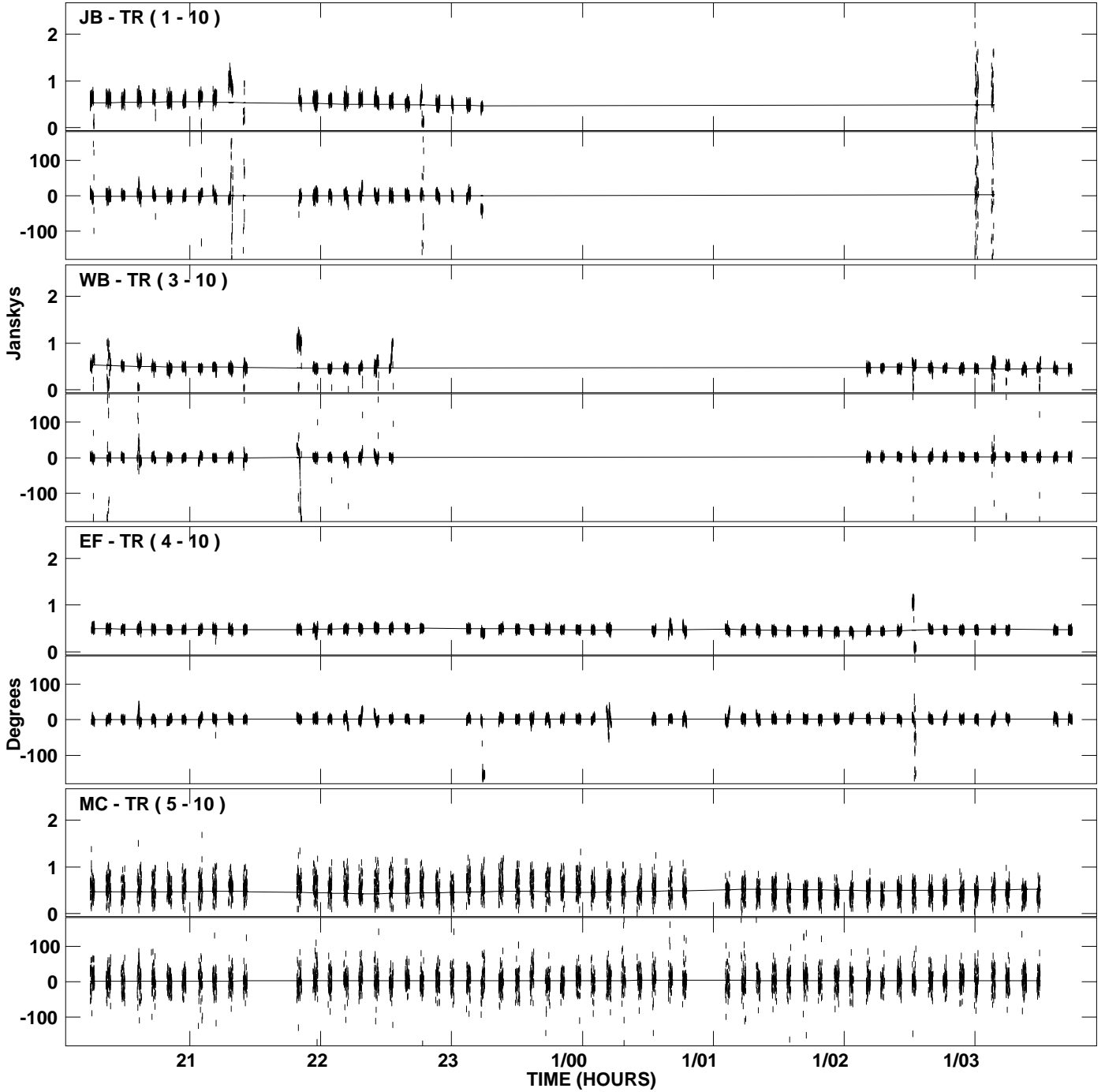
PLot file version 19 created 24-AUG-2007 14:20:40
Amplitude and Phase vs Time for 1337+637.MULTI.1 CL # 3
IF 1 CHAN 1 STK RR of 1337+637.ICL001.3



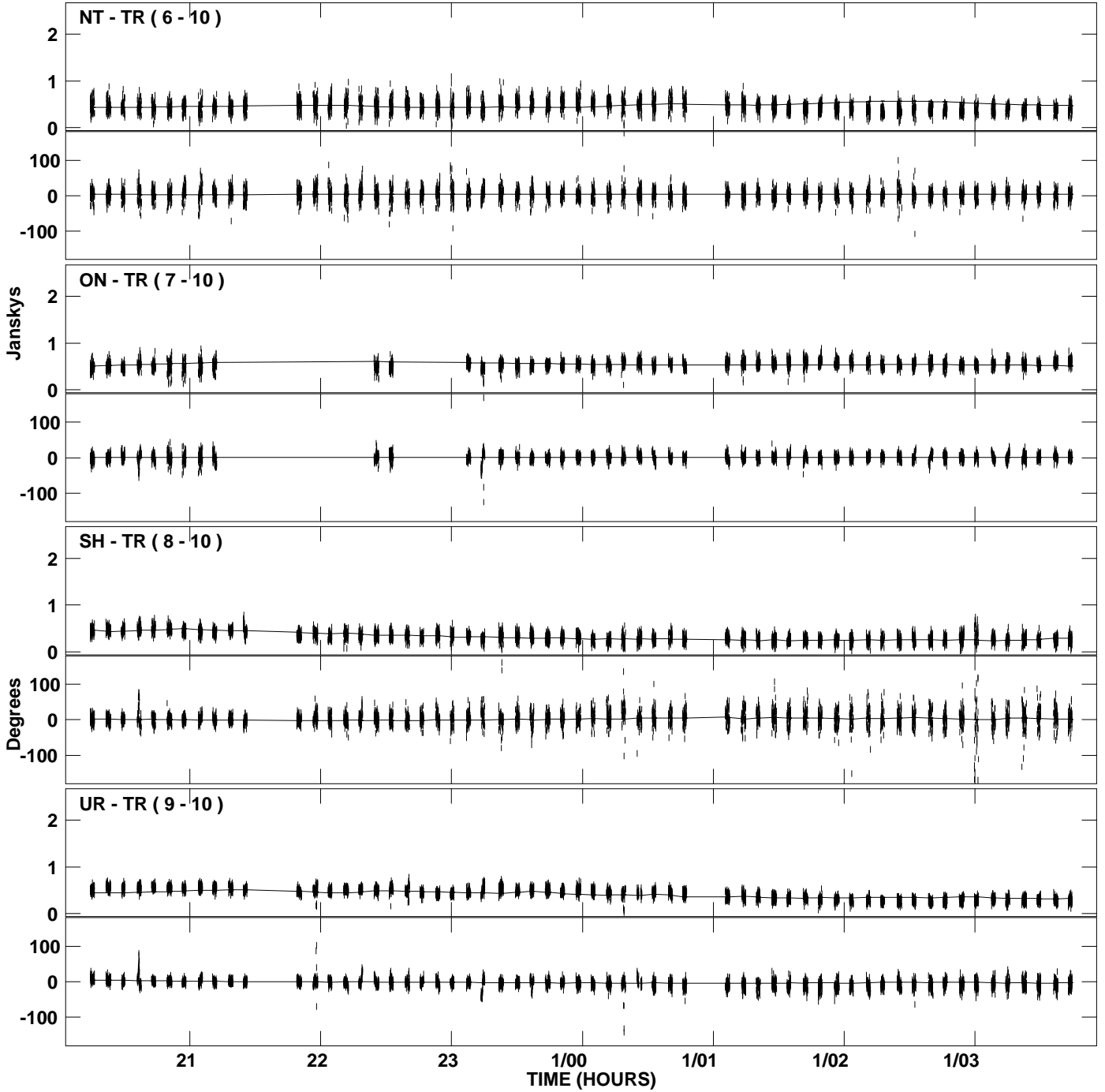
PLot file version 20 created 24-AUG-2007 14:20:40
Amplitude and Phase vs Time for 1337+637.MULTI.1 CL # 3
IF 1 CHAN 1 STK RR of 1337+637.ICL001.3



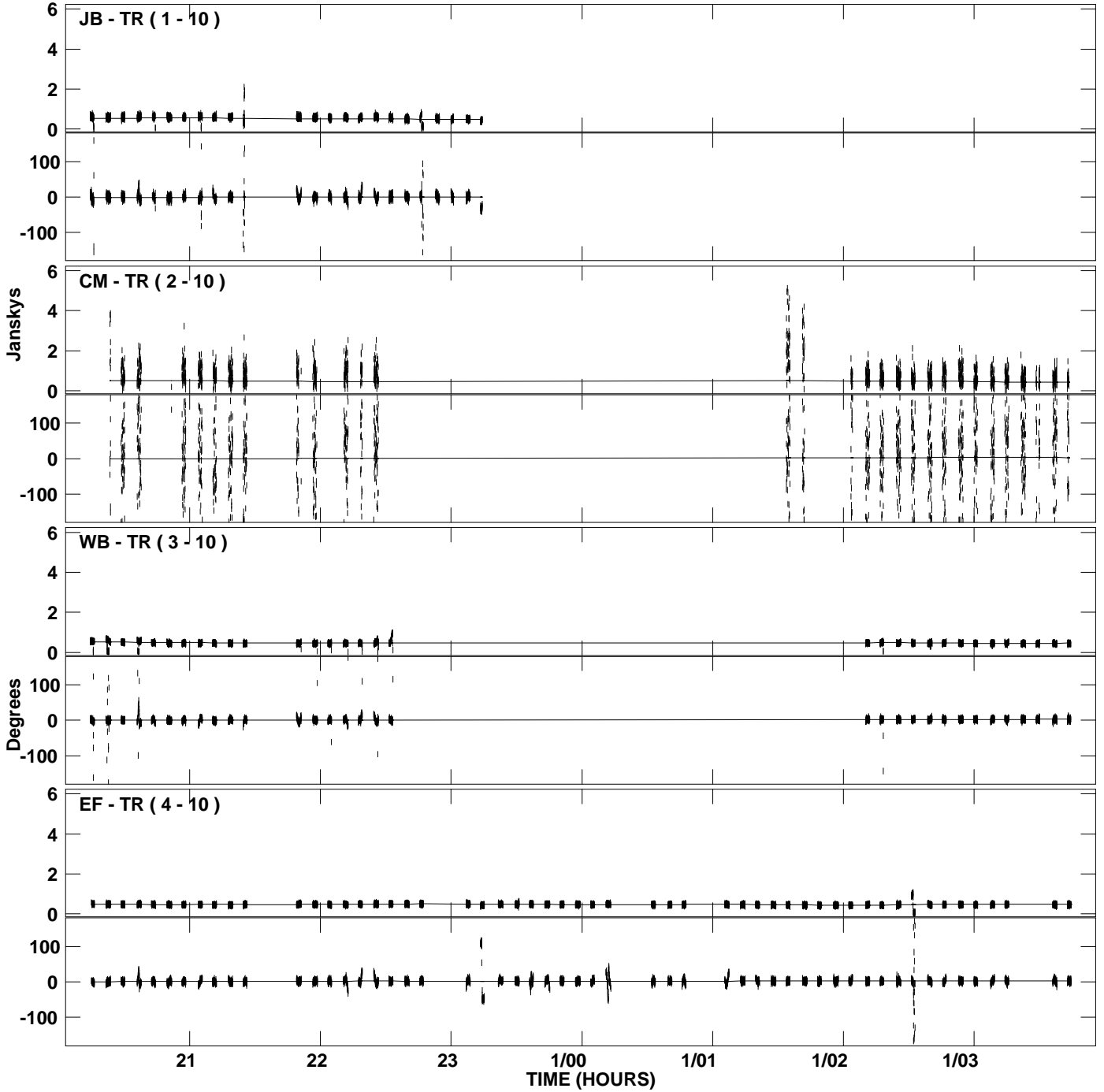
PLot file version 21 created 24-AUG-2007 14:20:45
Amplitude and Phase vs Time for 1337+637.MULTI.1 CL # 3
IF 2 CHAN 1 STK RR of 1337+637.ICL001.3



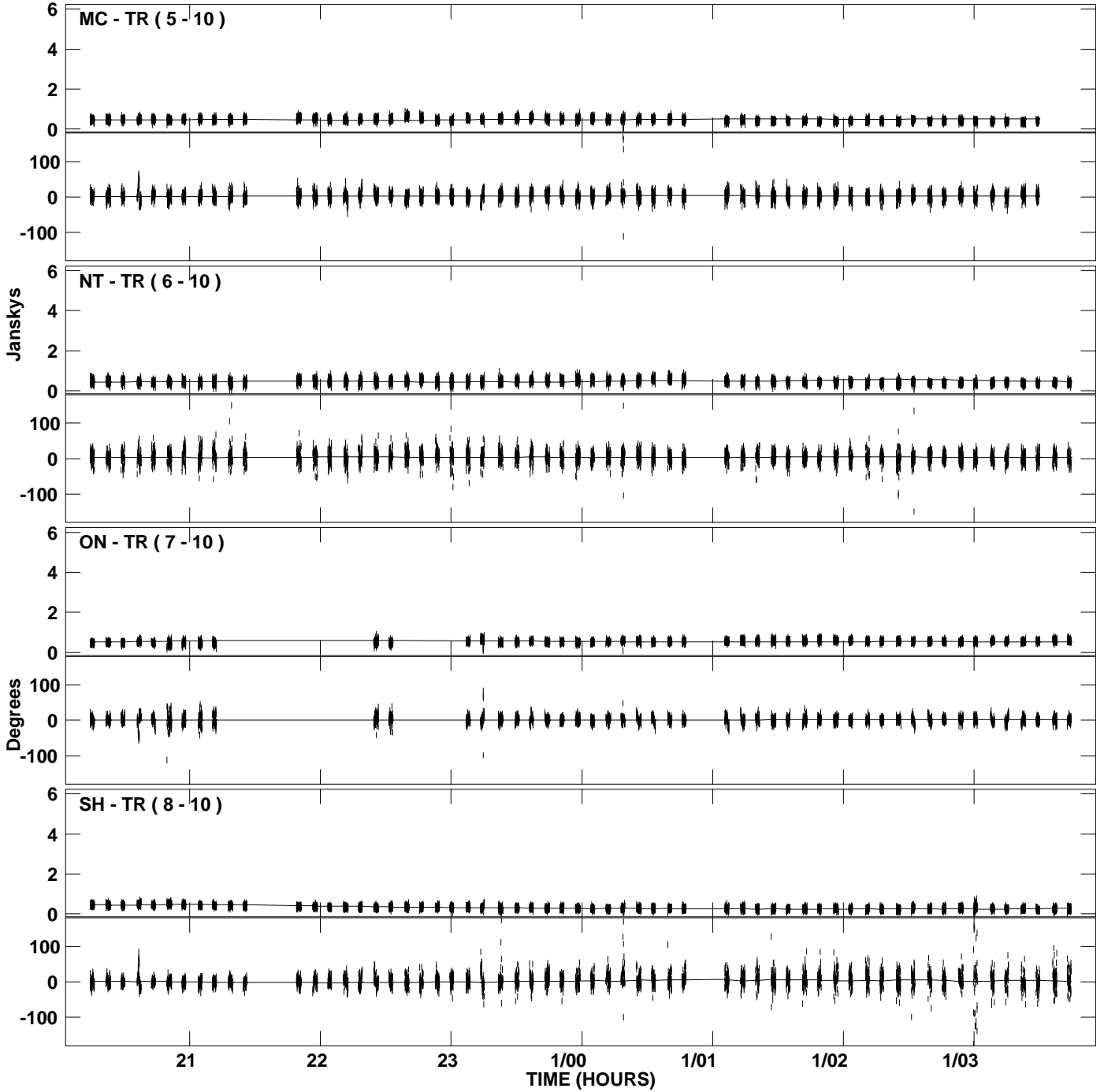
PLot file version 22 created 24-AUG-2007 14:20:46
Amplitude and Phase vs Time for 1337+637.MULTI.1 CL # 3
IF 2 CHAN 1 STK RR of 1337+637.ICL001.3



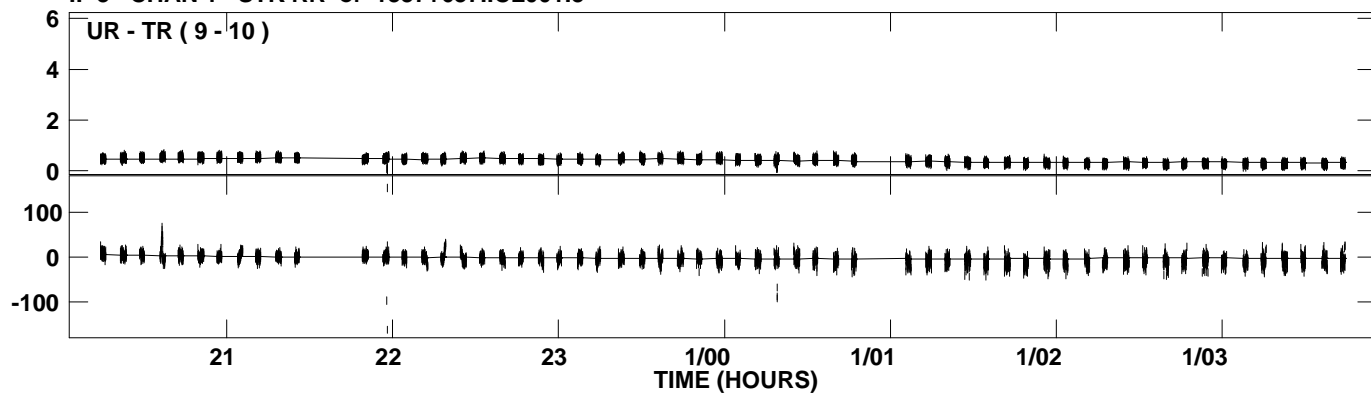
PLot file version 23 created 24-AUG-2007 14:20:55
Amplitude and Phase vs Time for 1337+637.MULTI.1 CL # 3
IF 3 CHAN 1 STK RR of 1337+637.ICL001.3



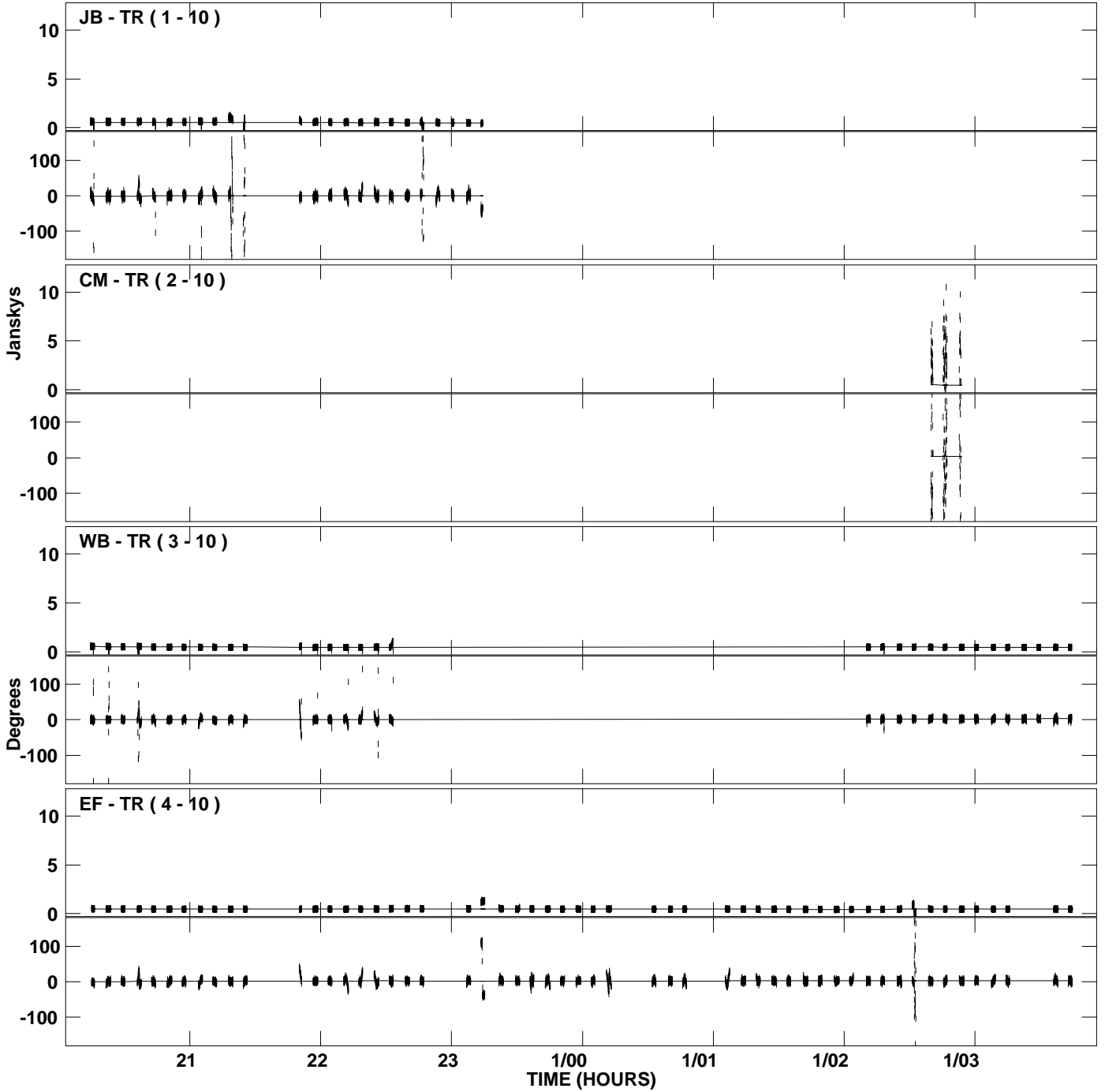
PLot file version 24 created 24-AUG-2007 14:20:56
Amplitude and Phase vs Time for 1337+637.MULTI.1 CL # 3
IF 3 CHAN 1 STK RR of 1337+637.ICL001.3



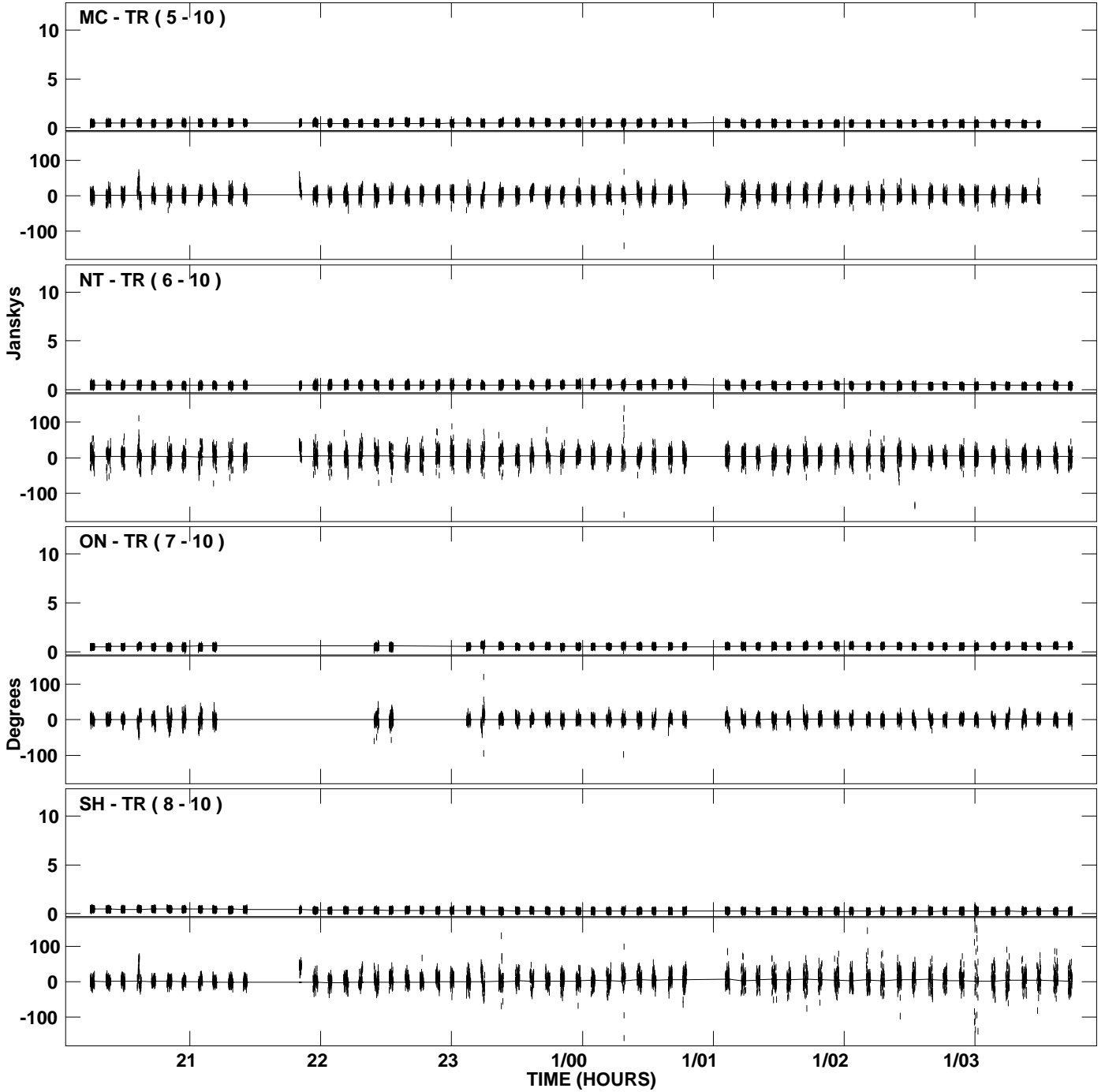
PLot file version 25 created 24-AUG-2007 14:20:56
Amplitude and Phase vs Time for 1337+637.MULTI.1 CL # 3
IF 3 CHAN 1 STK RR of 1337+637.ICL001.3



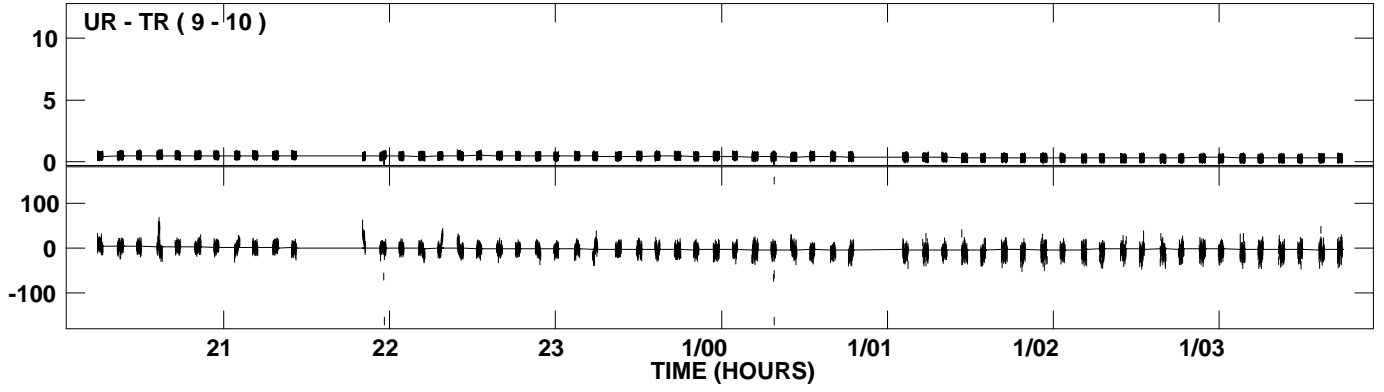
PLot file version 26 created 24-AUG-2007 14:21:01
Amplitude and Phase vs Time for 1337+637.MULTI.1 CL # 3
IF 4 CHAN 1 STK RR of 1337+637.ICL001.3



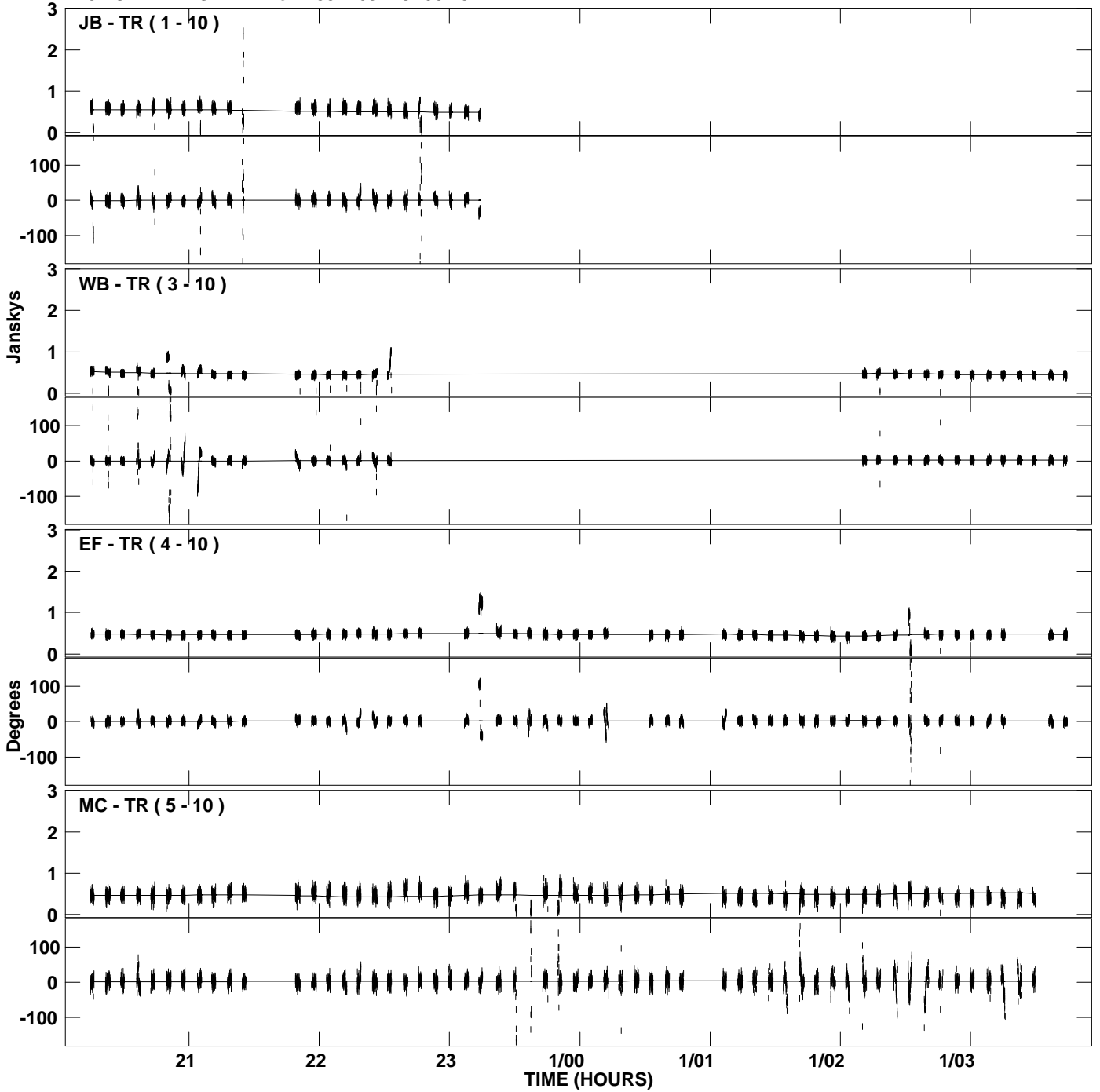
PLot file version 27 created 24-AUG-2007 14:21:01
Amplitude and Phase vs Time for 1337+637.MULTI.1 CL # 3
IF 4 CHAN 1 STK RR of 1337+637.ICL001.3



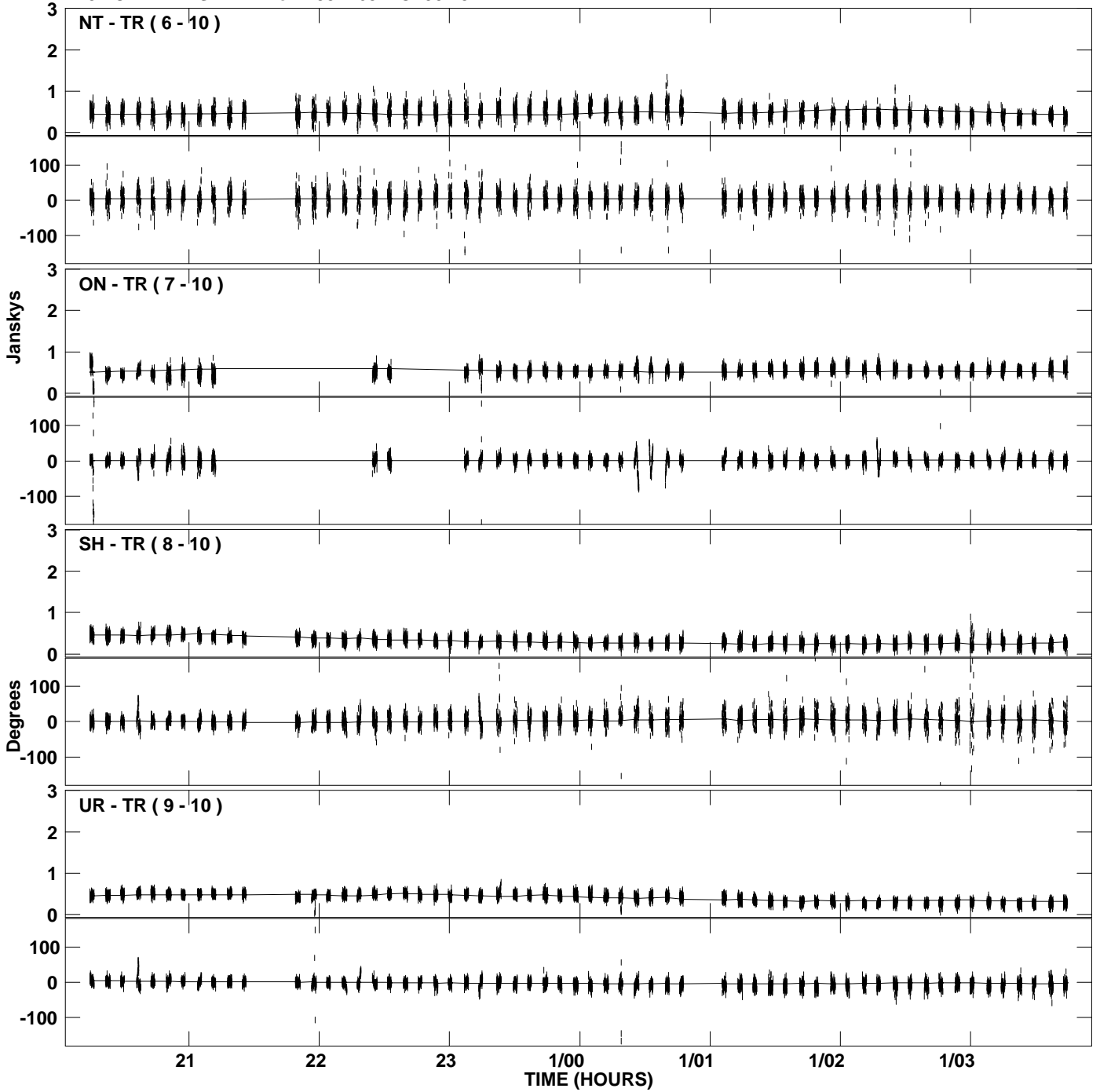
PLot file version 28 created 24-AUG-2007 14:21:01
Amplitude andPhase vs Time for 1337+637.MULTI.1 CL # 3
IF 4 CHAN 1 STK RR of 1337+637.ICL001.3



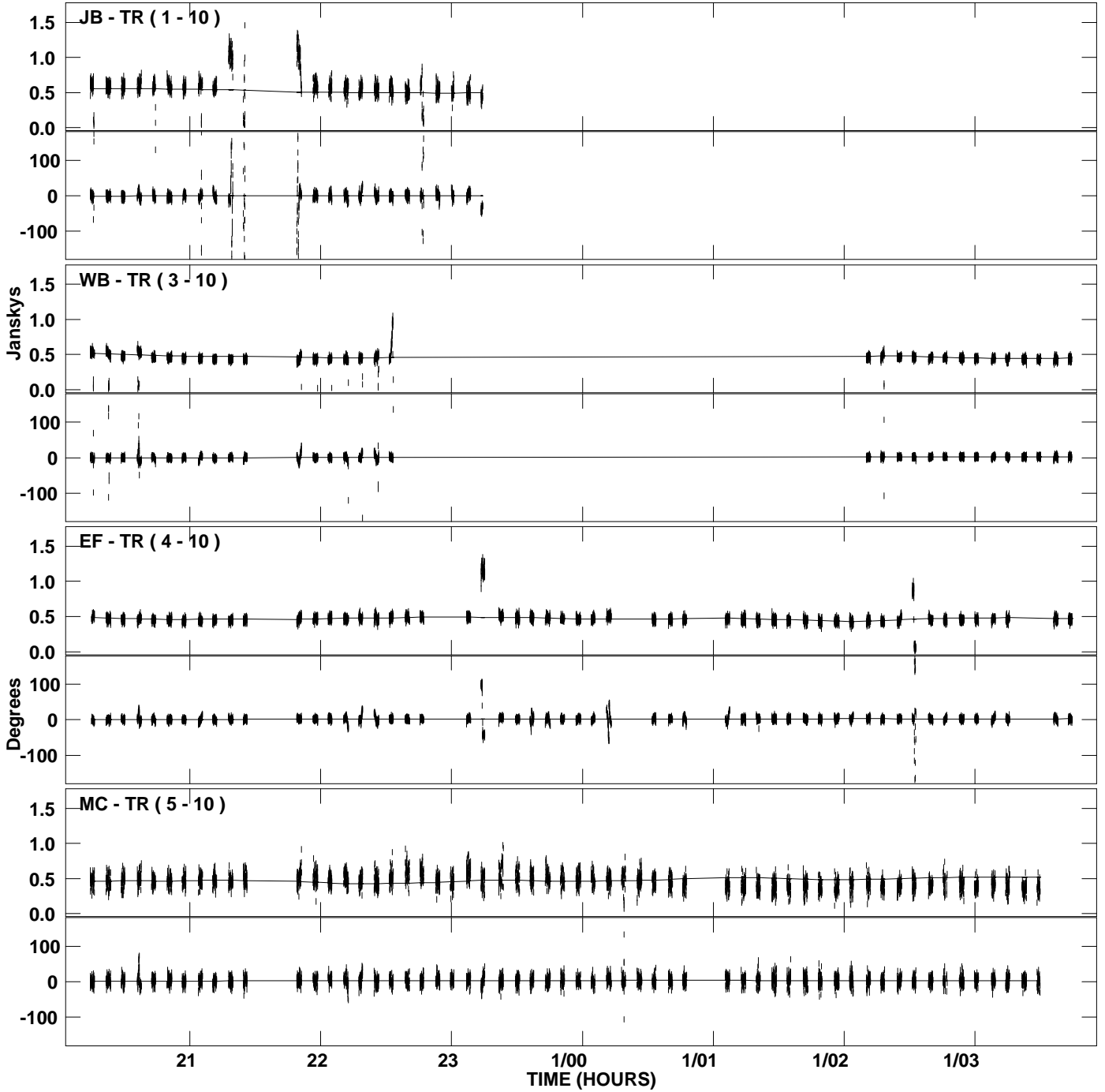
PLot file version 29 created 24-AUG-2007 14:21:07
Amplitude and Phase vs Time for 1337+637.MULTI.1 CL # 3
IF 5 CHAN 1 STK RR of 1337+637.ICL001.3



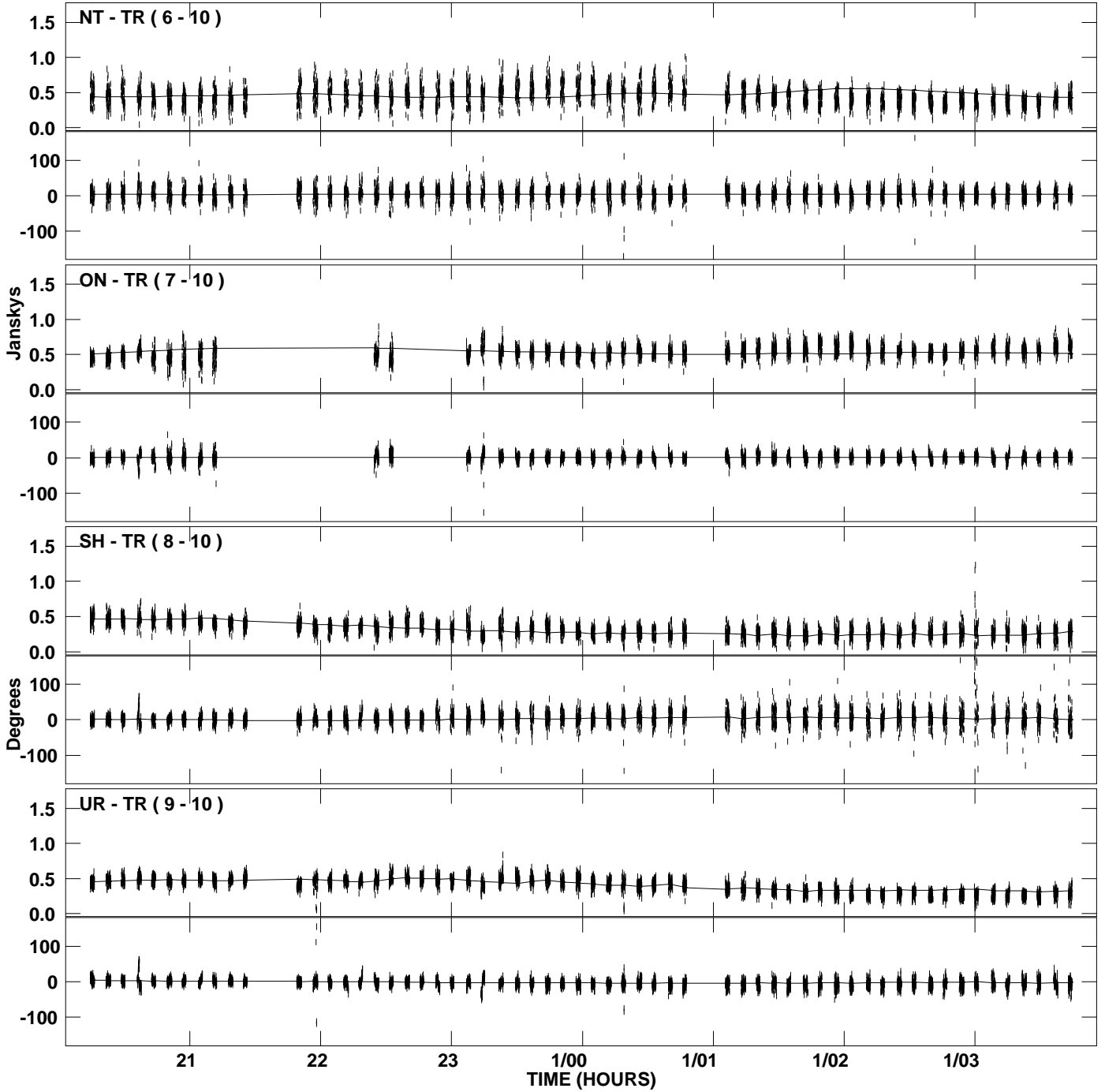
PLot file version 30 created 24-AUG-2007 14:21:07
Amplitude and Phase vs Time for 1337+637.MULTI.1 CL # 3
IF 5 CHAN 1 STK RR of 1337+637.ICL001.3



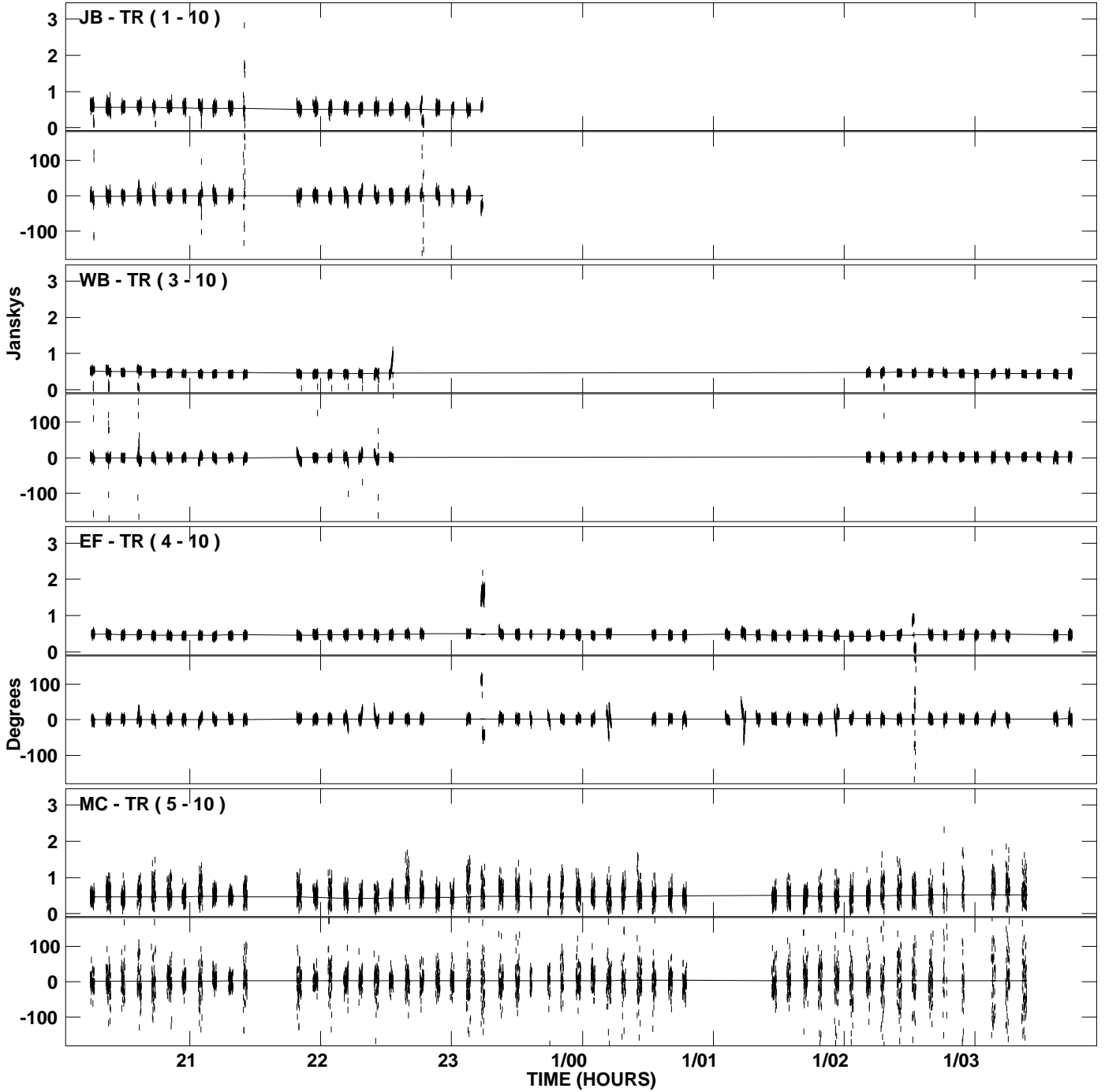
PLot file version 31 created 24-AUG-2007 14:21:13
Amplitude and Phase vs Time for 1337+637.MULTI.1 CL # 3
IF 6 CHAN 1 STK RR of 1337+637.ICL001.3



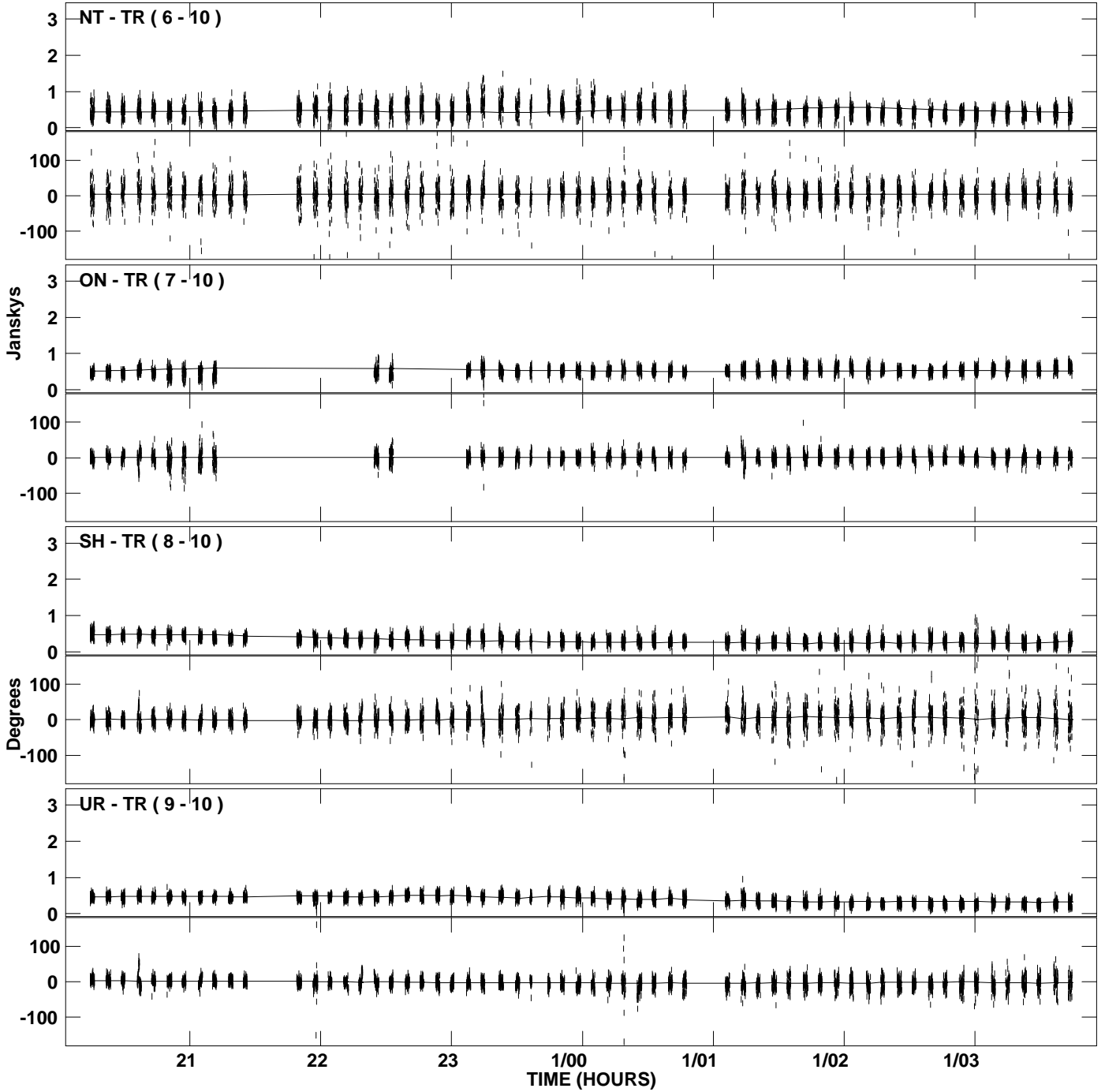
PLot file version 32 created 24-AUG-2007 14:21:13
Amplitude and Phase vs Time for 1337+637.MULTI.1 CL # 3
IF 6 CHAN 1 STK RR of 1337+637.ICL001.3



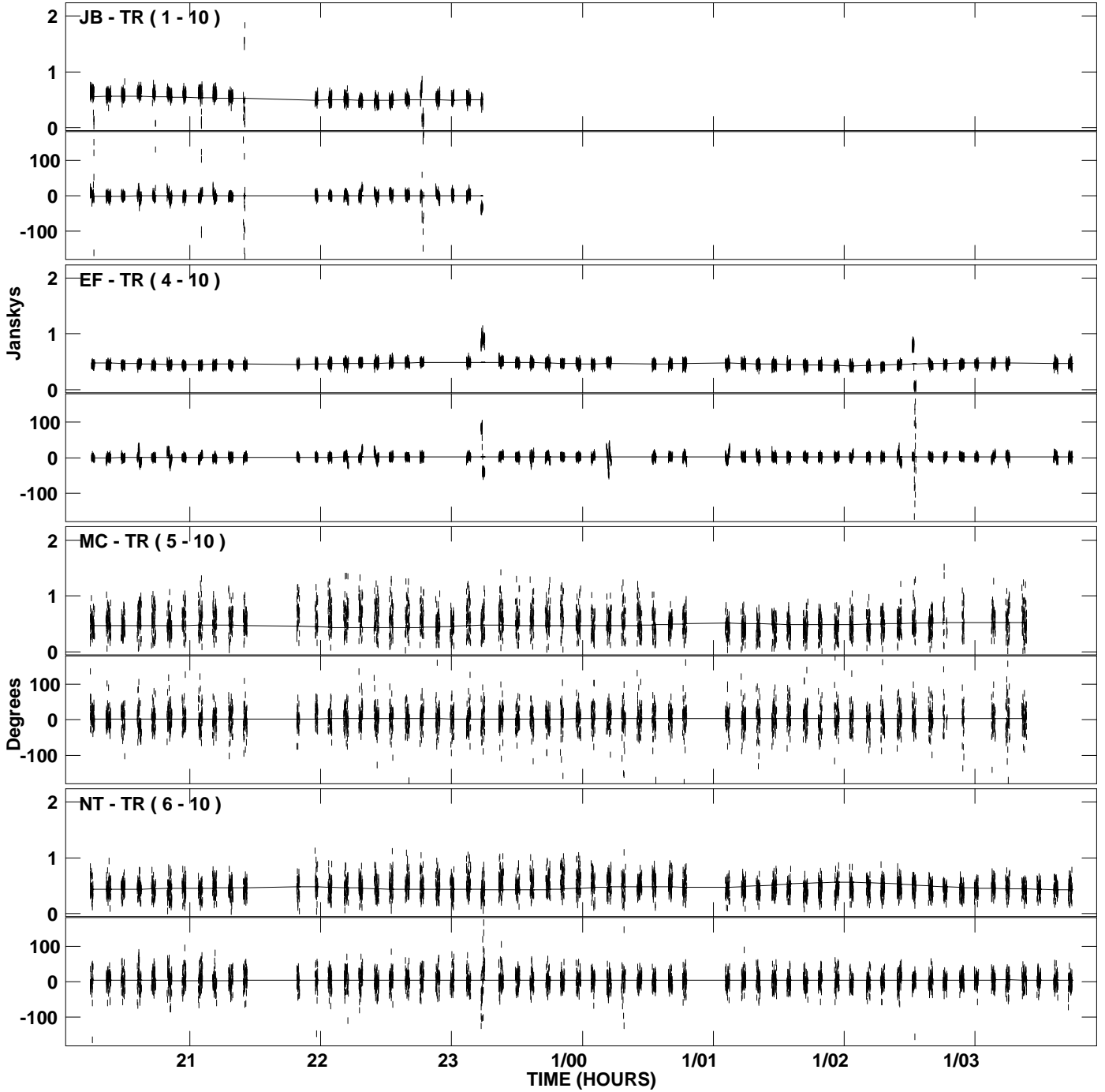
PLot file version 33 created 24-AUG-2007 14:21:19
Amplitude and Phase vs Time for 1337+637.MULTI.1 CL # 3
IF 7 CHAN 1 STK RR of 1337+637.ICL001.3



PLot file version 34 created 24-AUG-2007 14:21:19
Amplitude and Phase vs Time for 1337+637.MULTI.1 CL # 3
IF 7 CHAN 1 STK RR of 1337+637.ICL001.3



PLot file version 35 created 24-AUG-2007 14:21:25
Amplitude and Phase vs Time for 1337+637.MULTI.1 CL # 3
IF 8 CHAN 1 STK RR of 1337+637.ICL001.3



PLot file version 36 created 24-AUG-2007 14:21:25
Amplitude and Phase vs Time for 1337+637.MULTI.1 CL # 3
IF 8 CHAN 1 STK RR of 1337+637.ICL001.3

