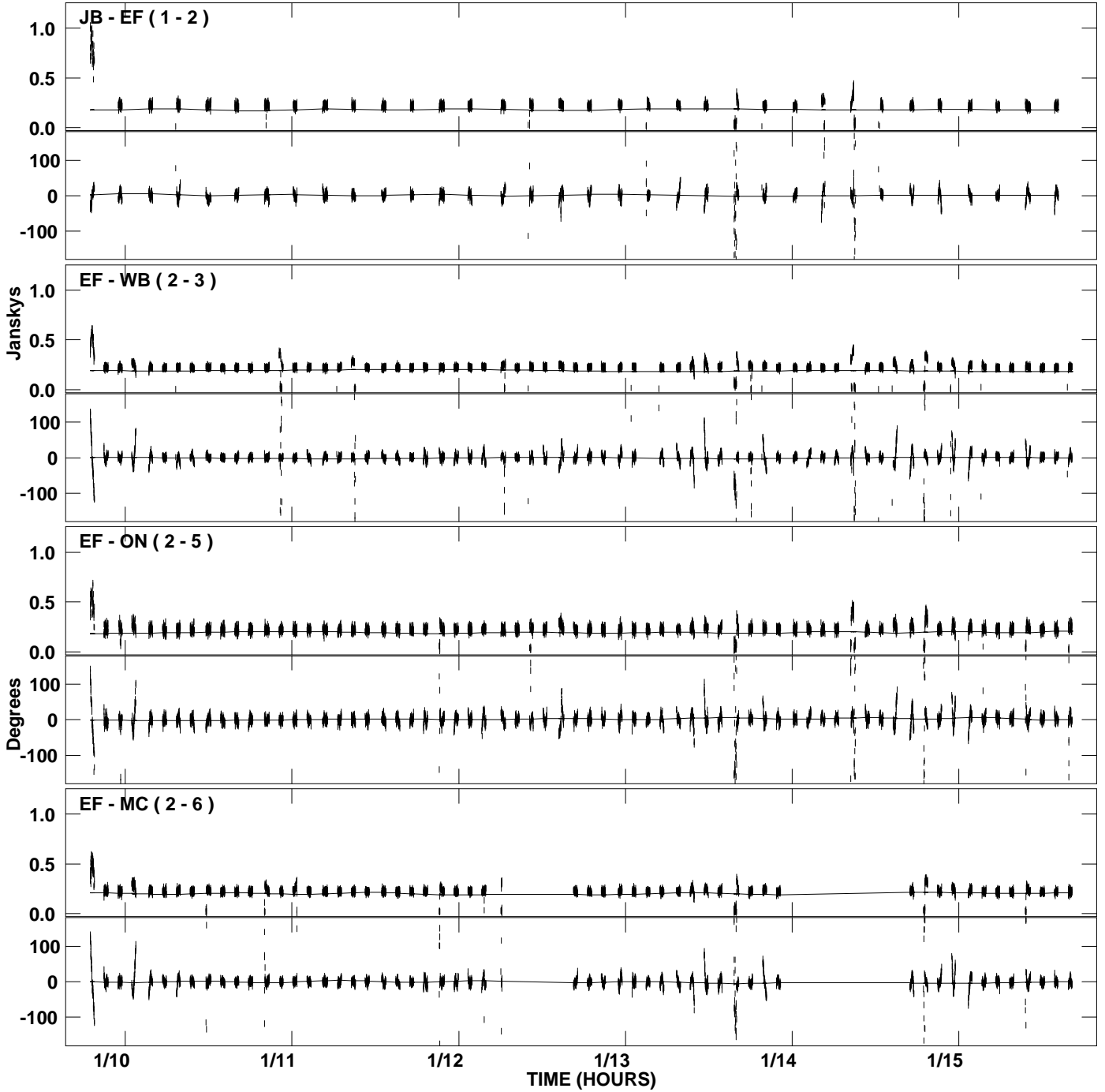
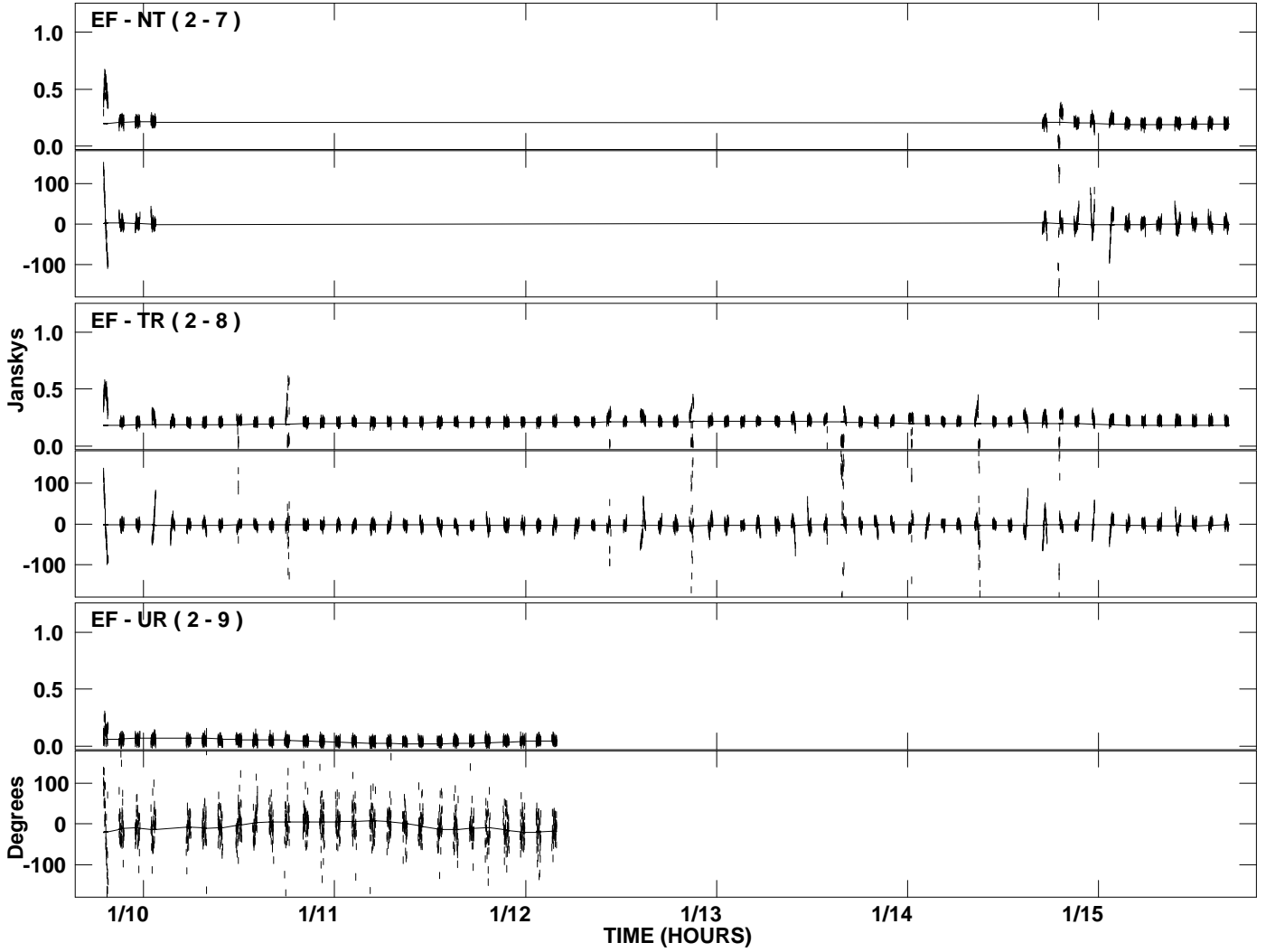


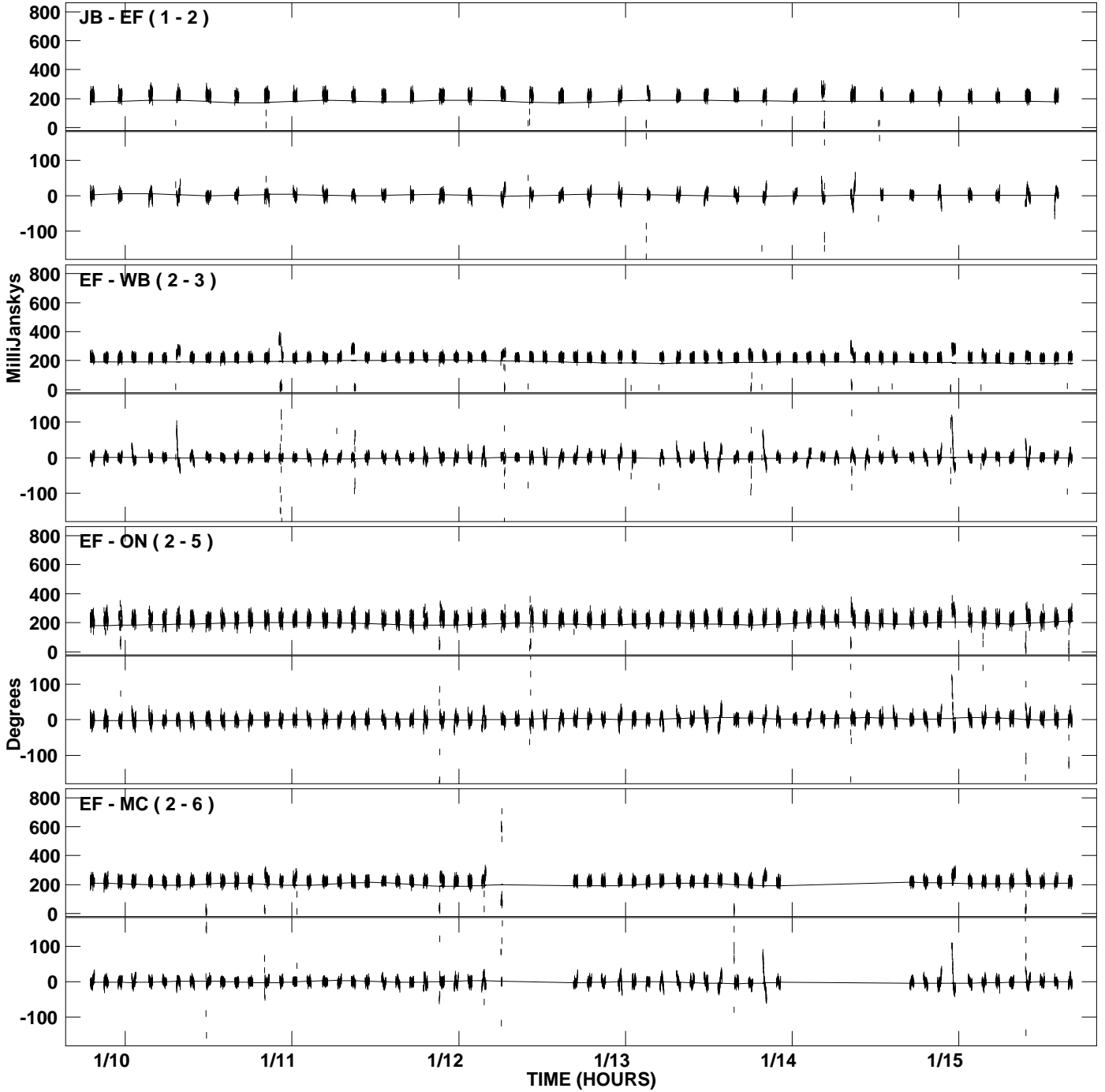
PLot file version 1 created 26-JAN-2007 13:39:54
Amplitude and Phase vs Time for J0730-0241.MULTI.1 CL # 3
IF 1 CHAN 1 STK LL of J0730-0241.ICL001.3



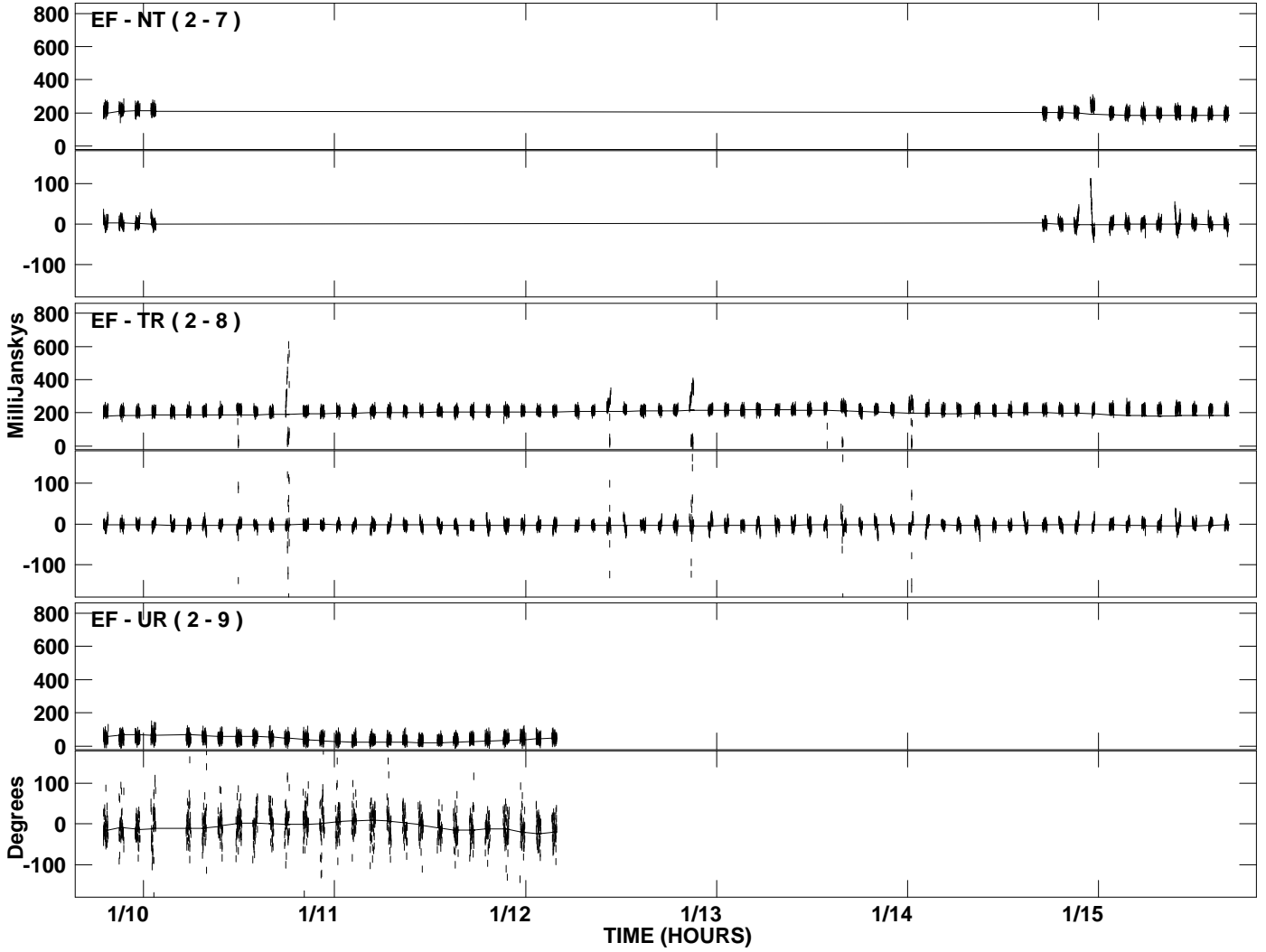
PLot file version 2 created 26-JAN-2007 13:39:54
Amplitude and Phase vs Time for J0730-0241.MULTI.1 CL # 3
IF 1 CHAN 1 STK LL of J0730-0241.ICL001.3



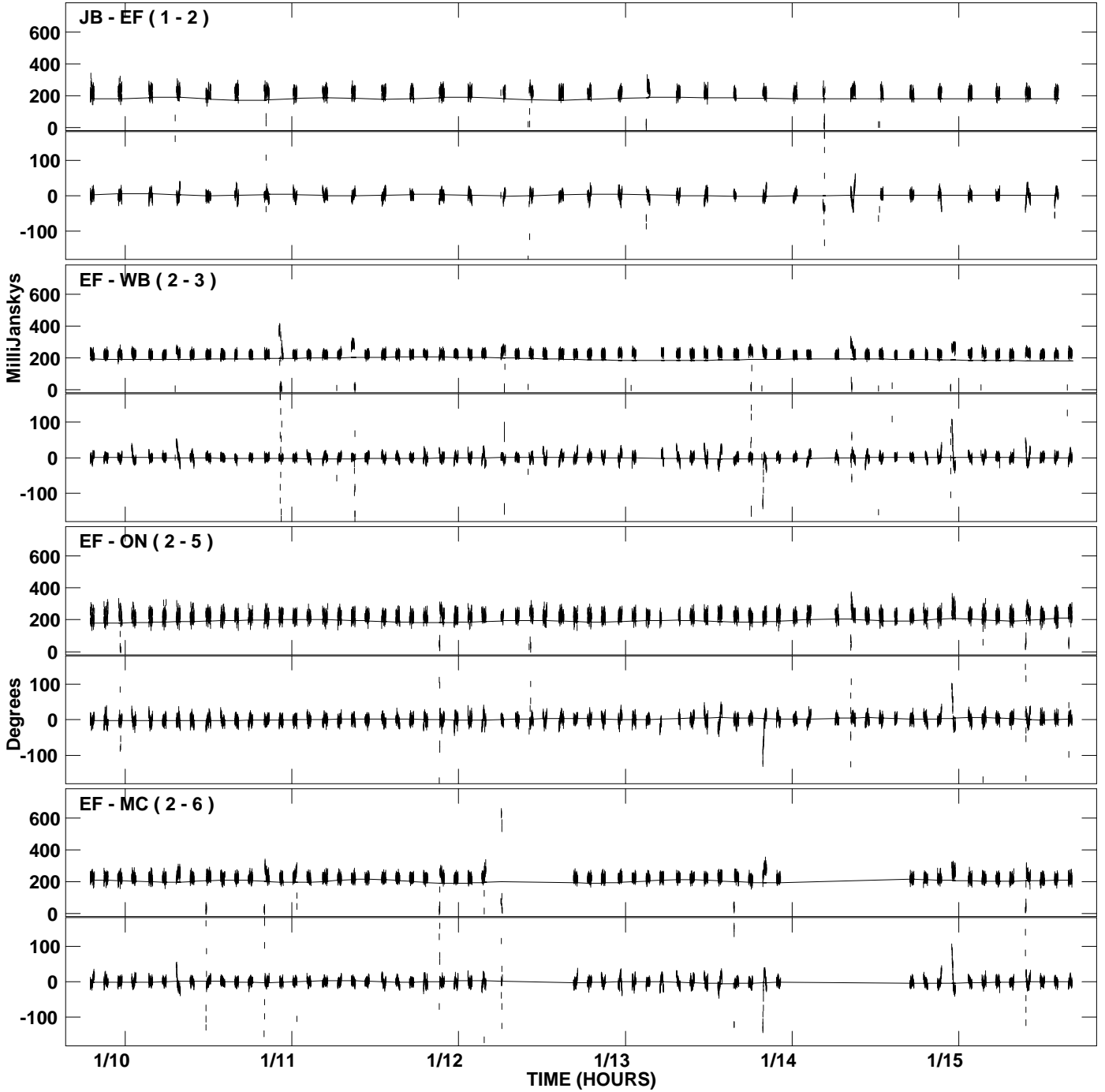
PLot file version 3 created 26-JAN-2007 13:40:19
Amplitude andPhase vs Time for J0730-0241.MULTI.1 CL # 3
IF 2 CHAN 1 STK LL of J0730-0241.ICL001.3



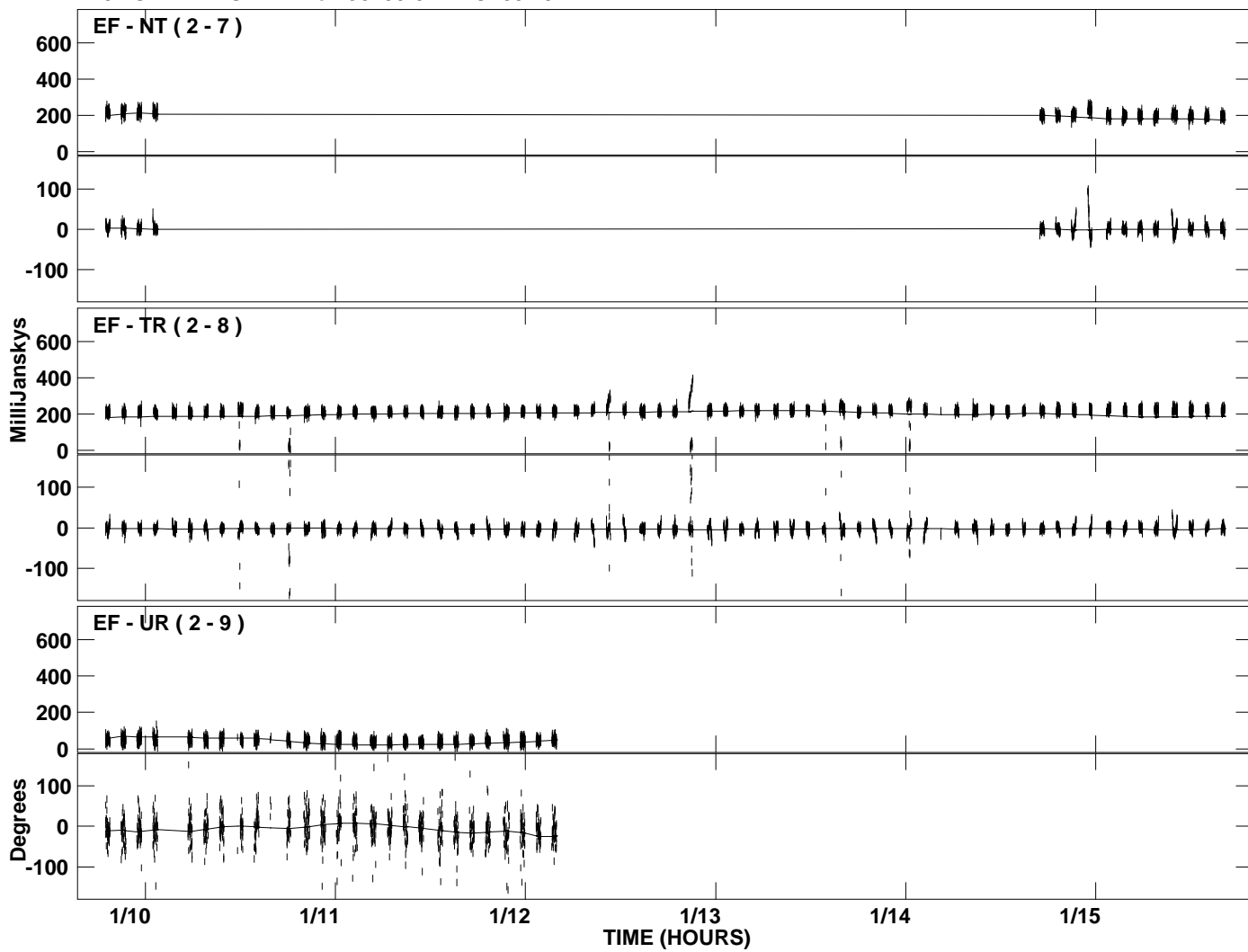
PLot file version 4 created 26-JAN-2007 13:40:19
Amplitude andPhase vs Time for J0730-0241.MULTI.1 CL # 3
IF 2 CHAN 1 STK LL of J0730-0241.ICL001.3



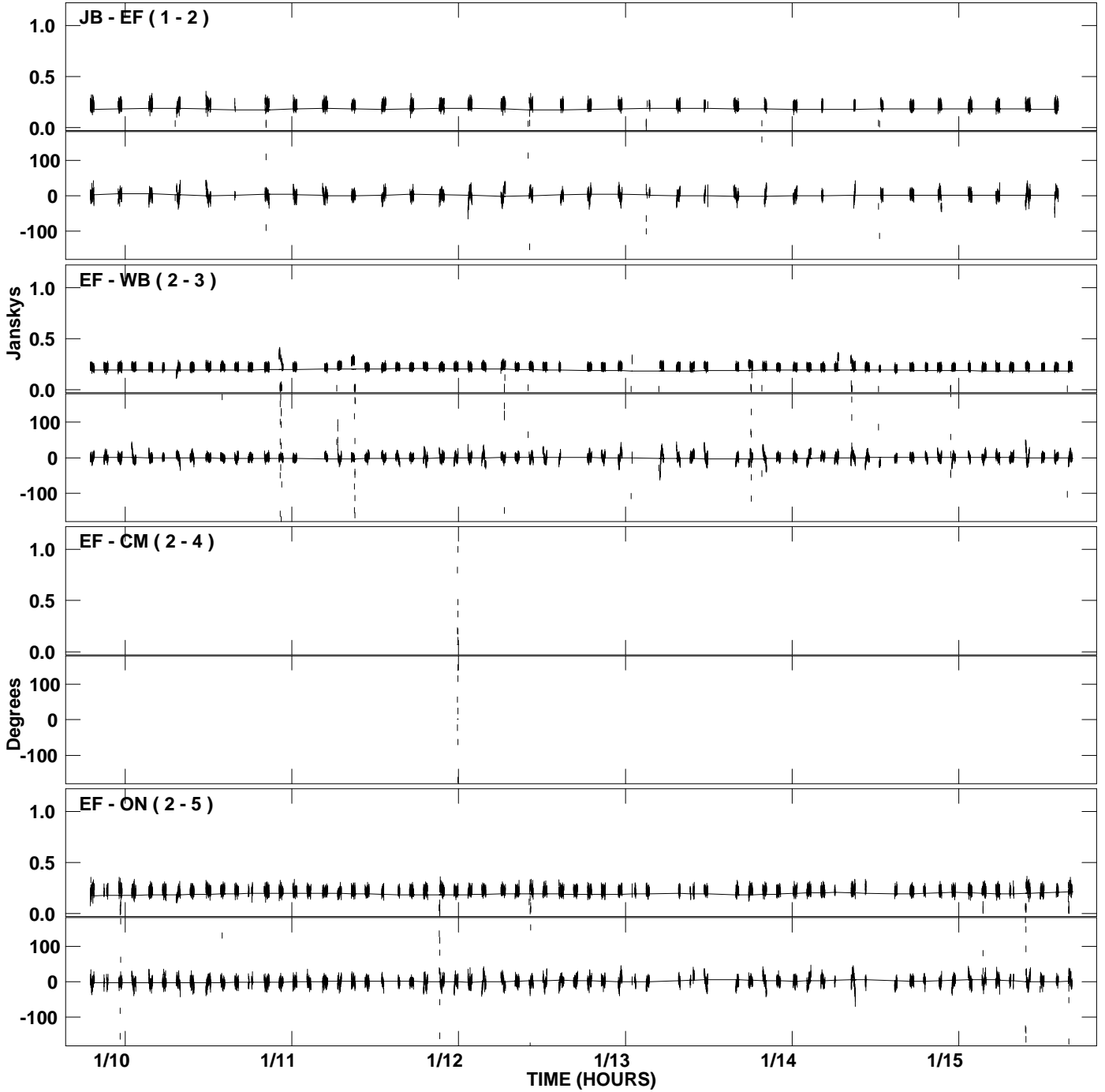
PLot file version 5 created 26-JAN-2007 13:40:53
Amplitude and Phase vs Time for J0730-0241.MULTI.1 CL # 3
IF 3 CHAN 1 STK LL of J0730-0241.ICL001.3



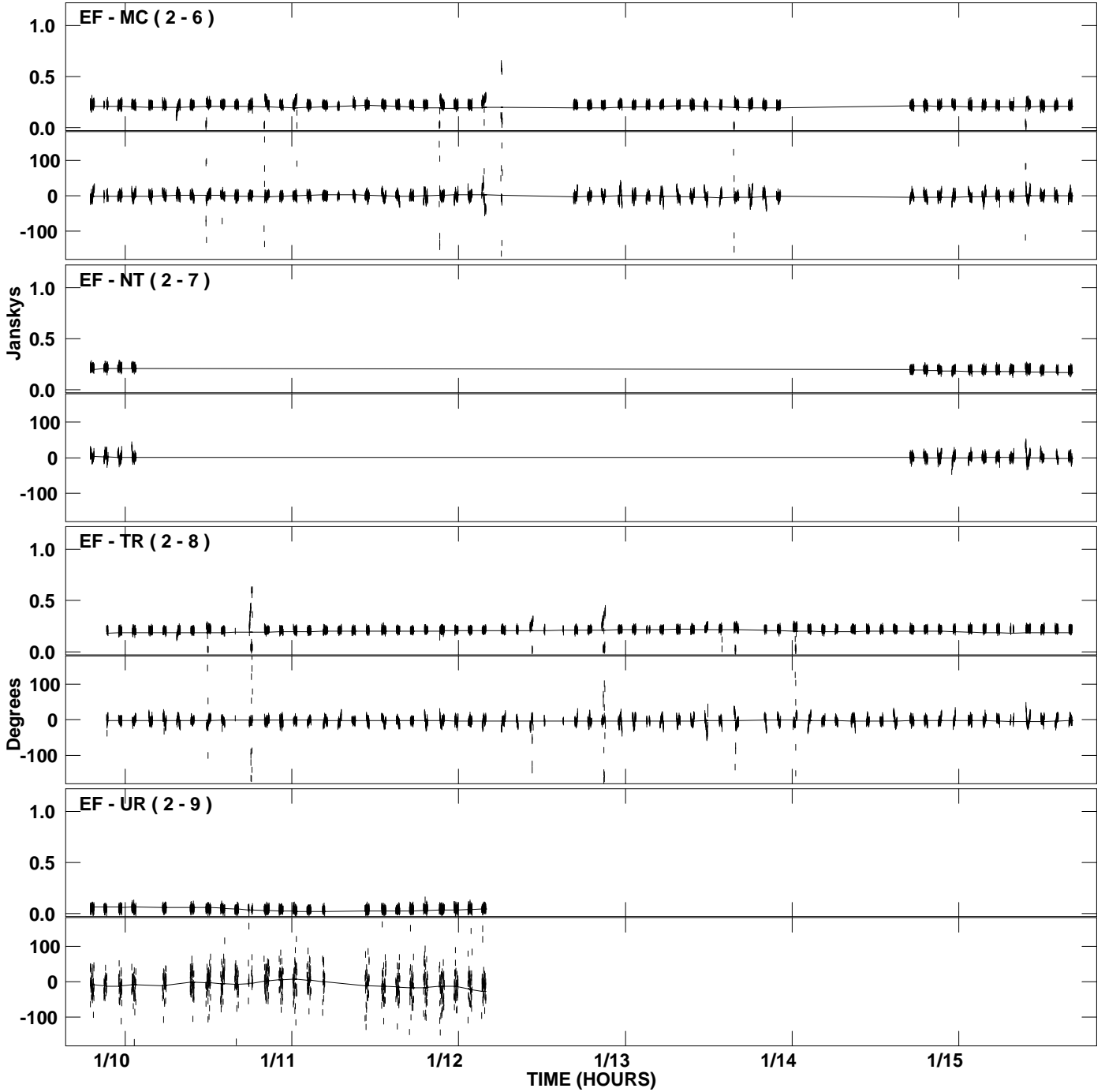
PLot file version 6 created 26-JAN-2007 13:40:53
Amplitude and Phase vs Time for J0730-0241.MULTI.1 CL # 3
IF 3 CHAN 1 STK LL of J0730-0241.ICL001.3



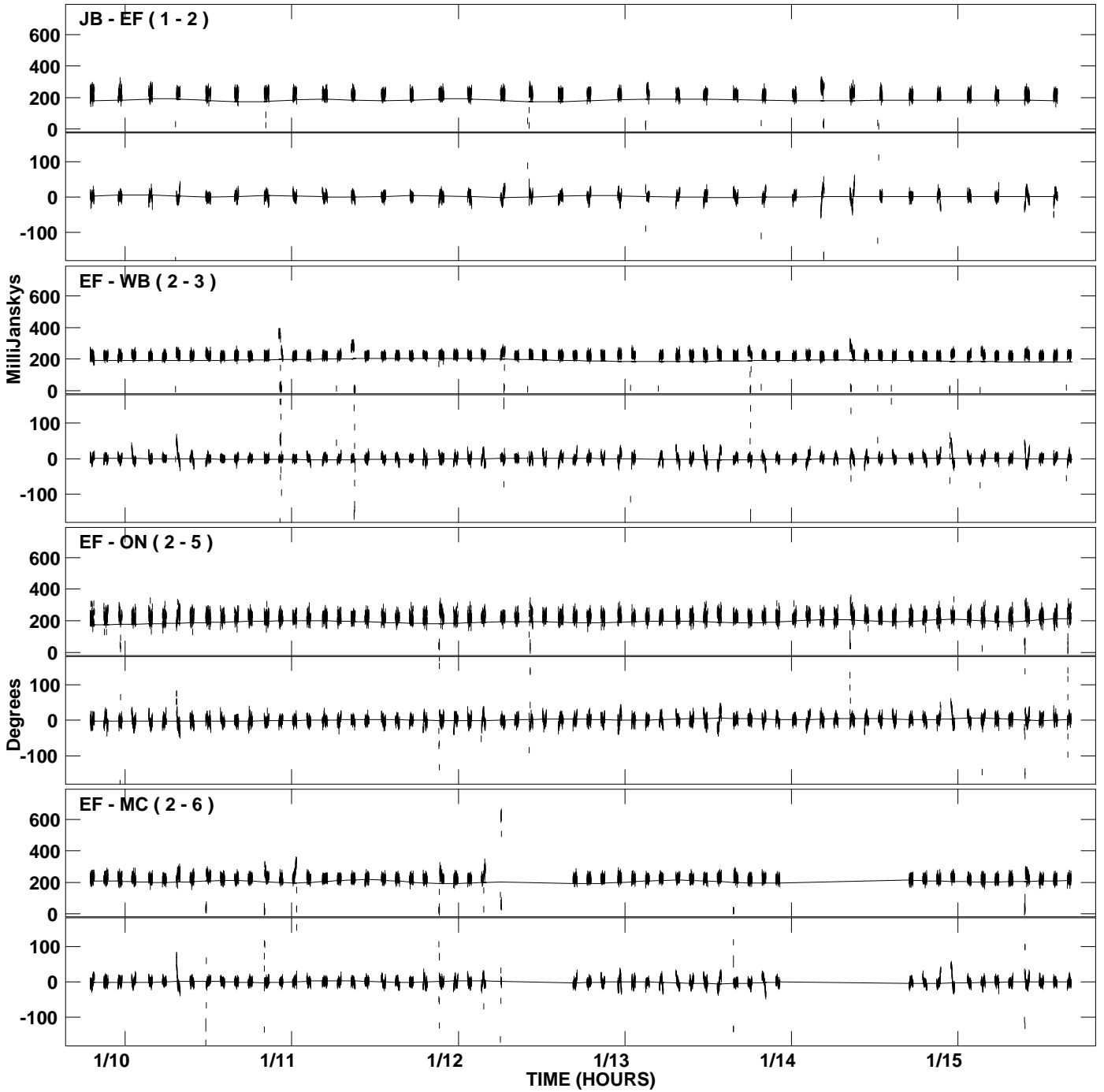
PLot file version 7 created 26-JAN-2007 13:41:08
Amplitude and Phase vs Time for J0730-0241.MULTI.1 CL # 3
IF 4 CHAN 1 STK LL of J0730-0241.ICL001.3



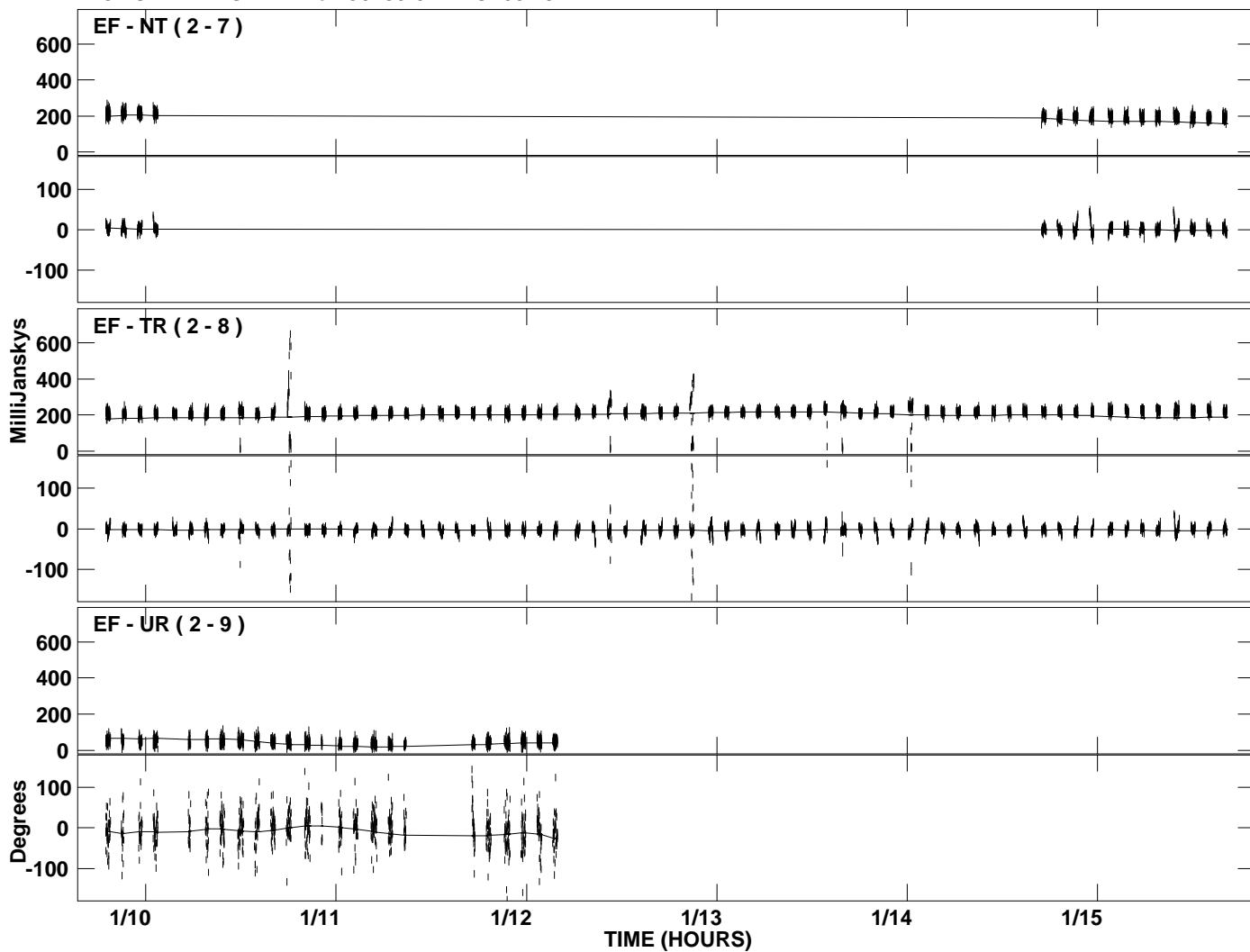
PLot file version 8 created 26-JAN-2007 13:41:08
Amplitude and Phase vs Time for J0730-0241.MULTI.1 CL # 3
IF 4 CHAN 1 STK LL of J0730-0241.ICL001.3



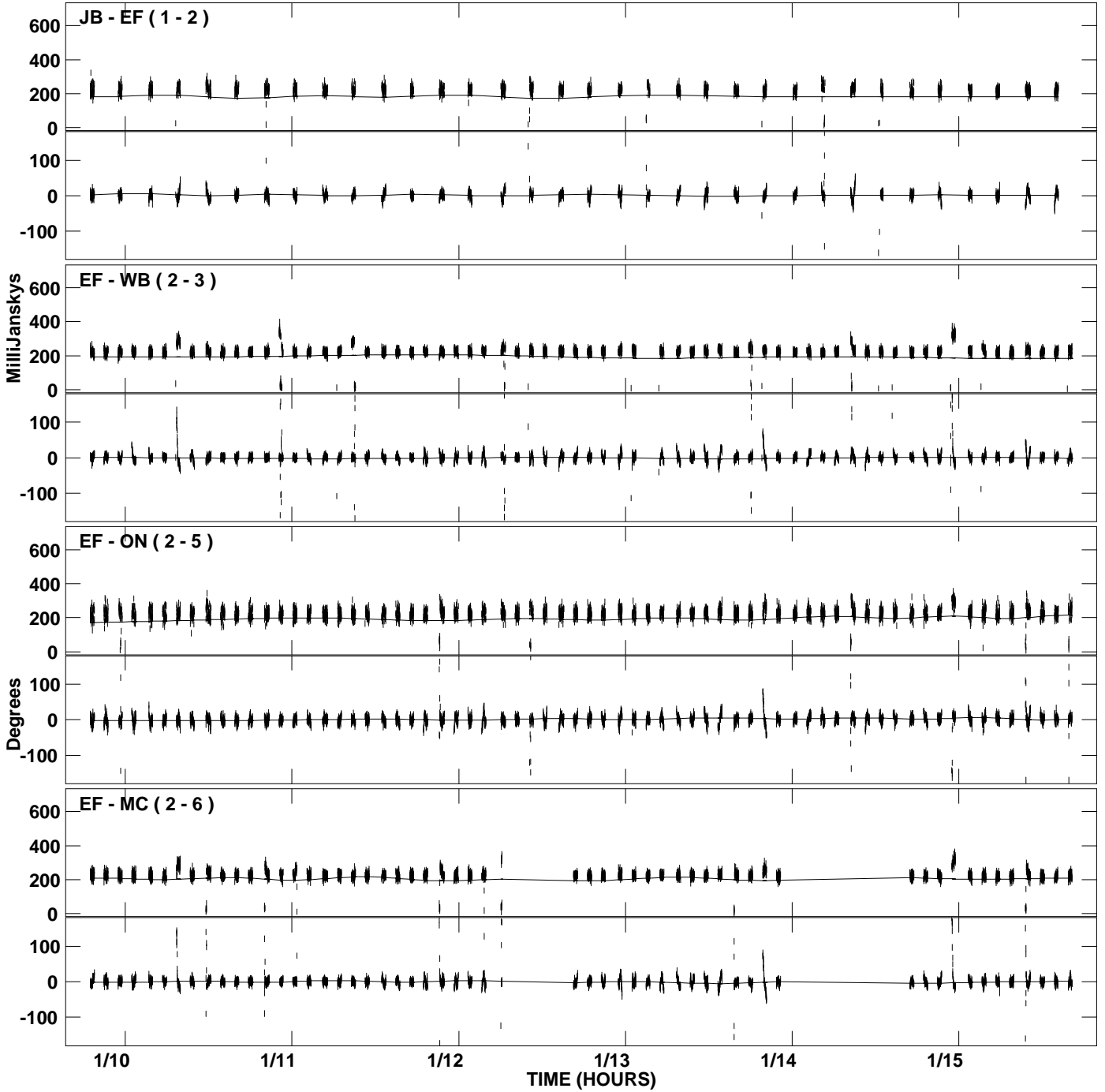
PLot file version 9 created 26-JAN-2007 13:41:24
Amplitude andPhase vs Time for J0730-0241.MULTI.1 CL # 3
IF 5 CHAN 1 STK LL of J0730-0241.ICL001.3



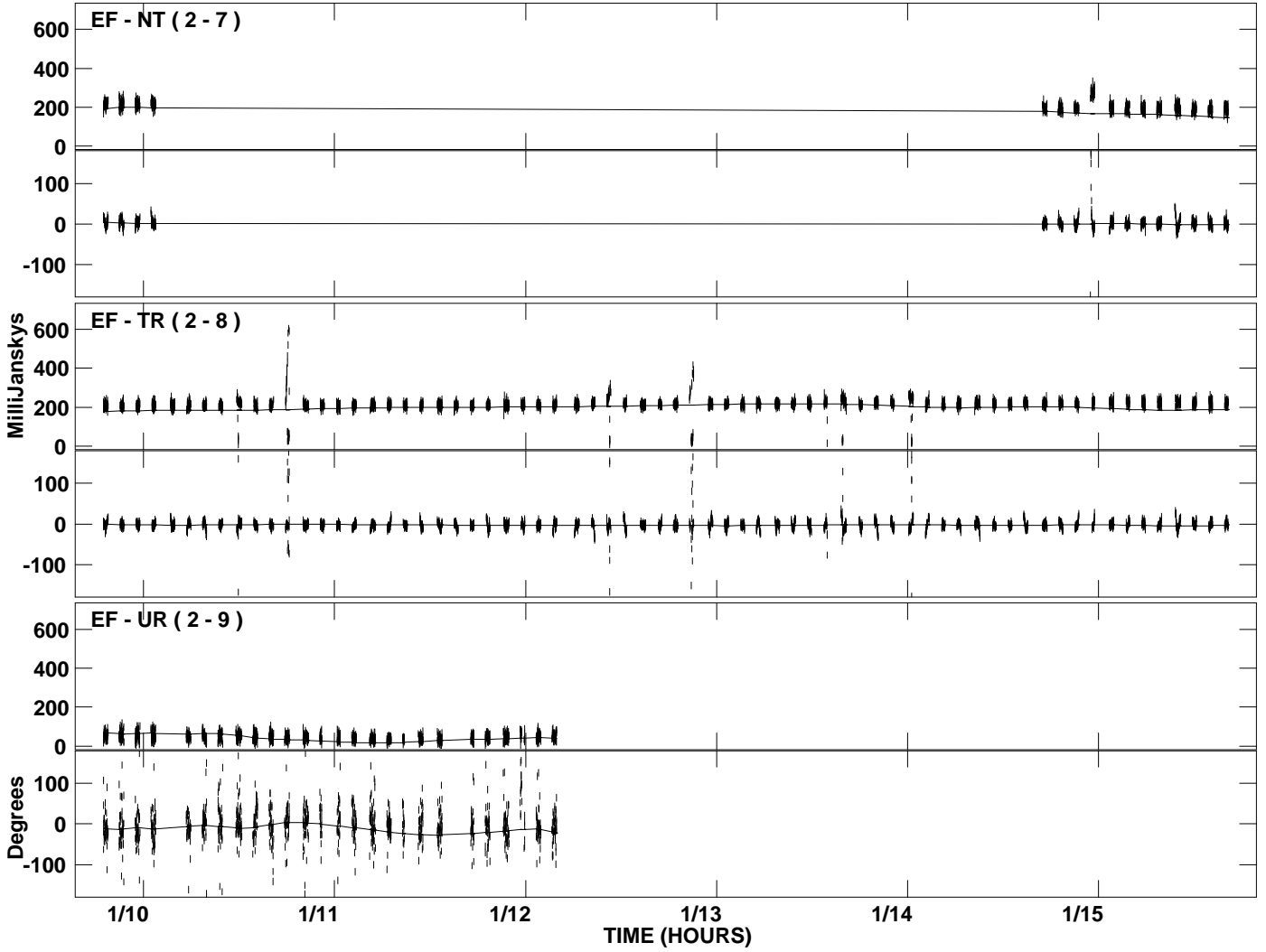
PLot file version 10 created 26-JAN-2007 13:41:24
Amplitude and Phase vs Time for J0730-0241.MULTI.1 CL # 3
IF 5 CHAN 1 STK LL of J0730-0241.ICL001.3



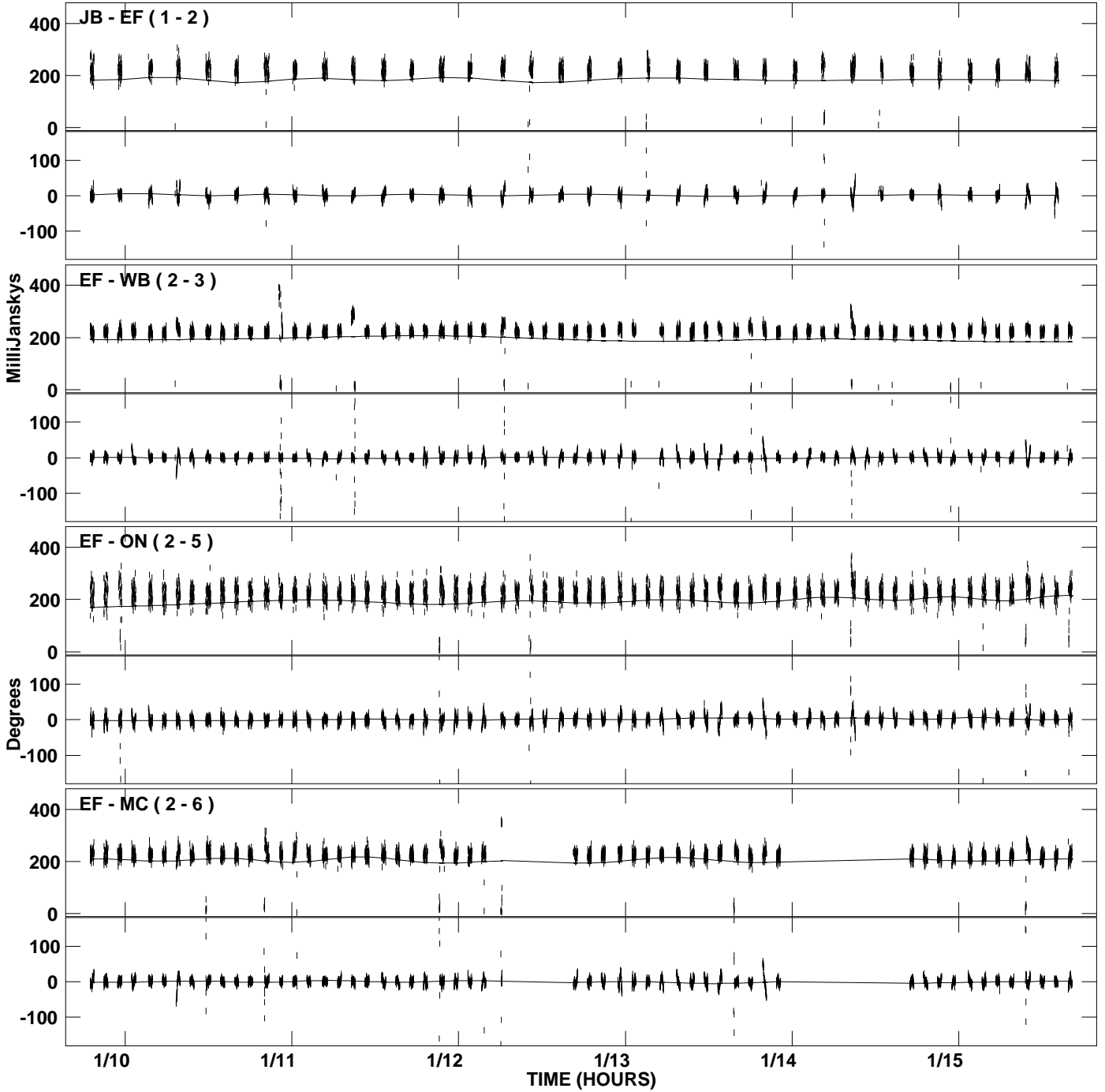
PLot file version 11 created 26-JAN-2007 13:41:42
Amplitude and Phase vs Time for J0730-0241.MULTI.1 CL # 3
IF 6 CHAN 1 STK LL of J0730-0241.ICL001.3



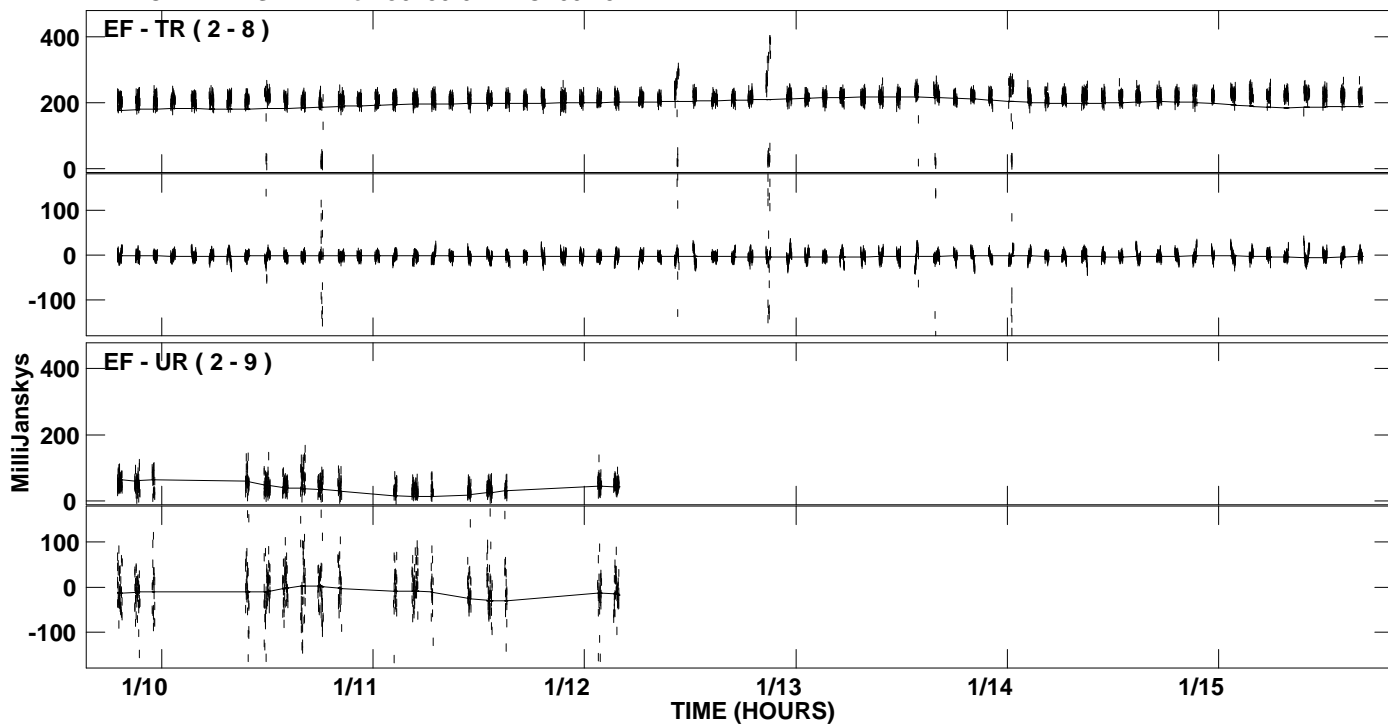
PLot file version 12 created 26-JAN-2007 13:41:42
Amplitude and Phase vs Time for J0730-0241.MULTI.1 CL # 3
IF 6 CHAN 1 STK LL of J0730-0241.ICL001.3



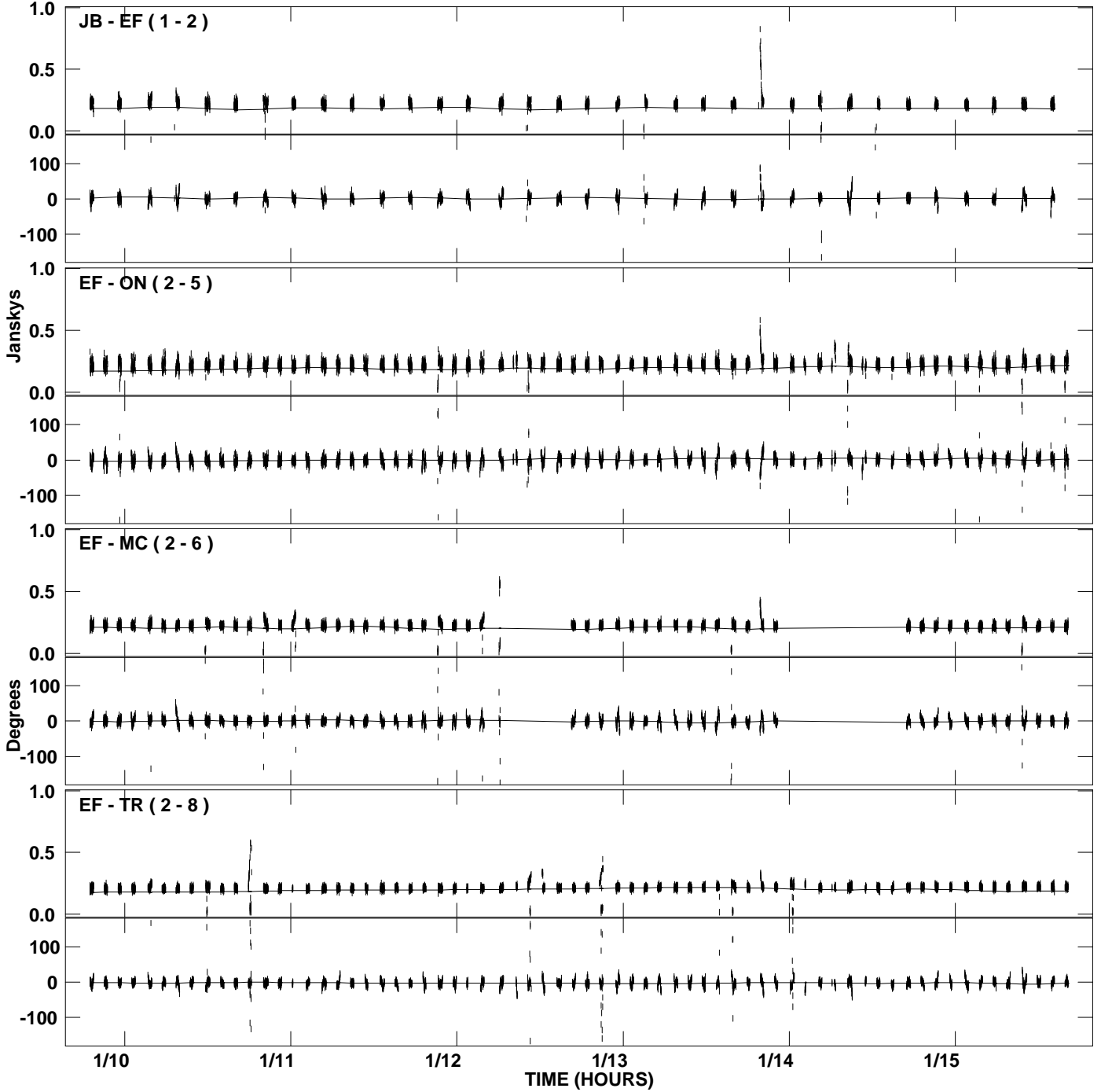
PLot file version 13 created 26-JAN-2007 13:41:57
Amplitude andPhase vs Time for J0730-0241.MULTI.1 CL # 3
IF 7 CHAN 1 STK LL of J0730-0241.ICL001.3



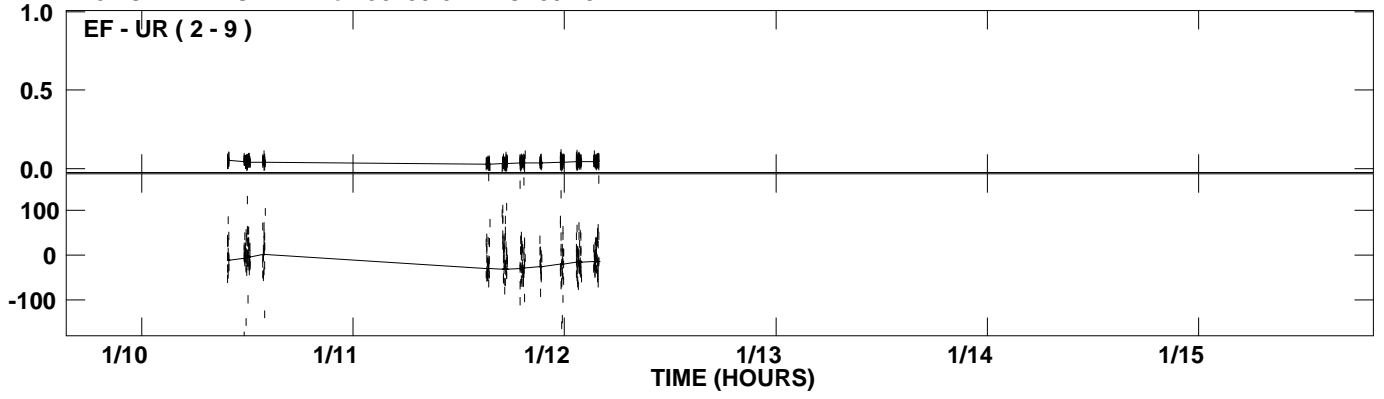
PLot file version 14 created 26-JAN-2007 13:41:57
Amplitude andPhase vs Time for J0730-0241.MULTI.1 CL # 3
IF 7 CHAN 1 STK LL of J0730-0241.ICL001.3



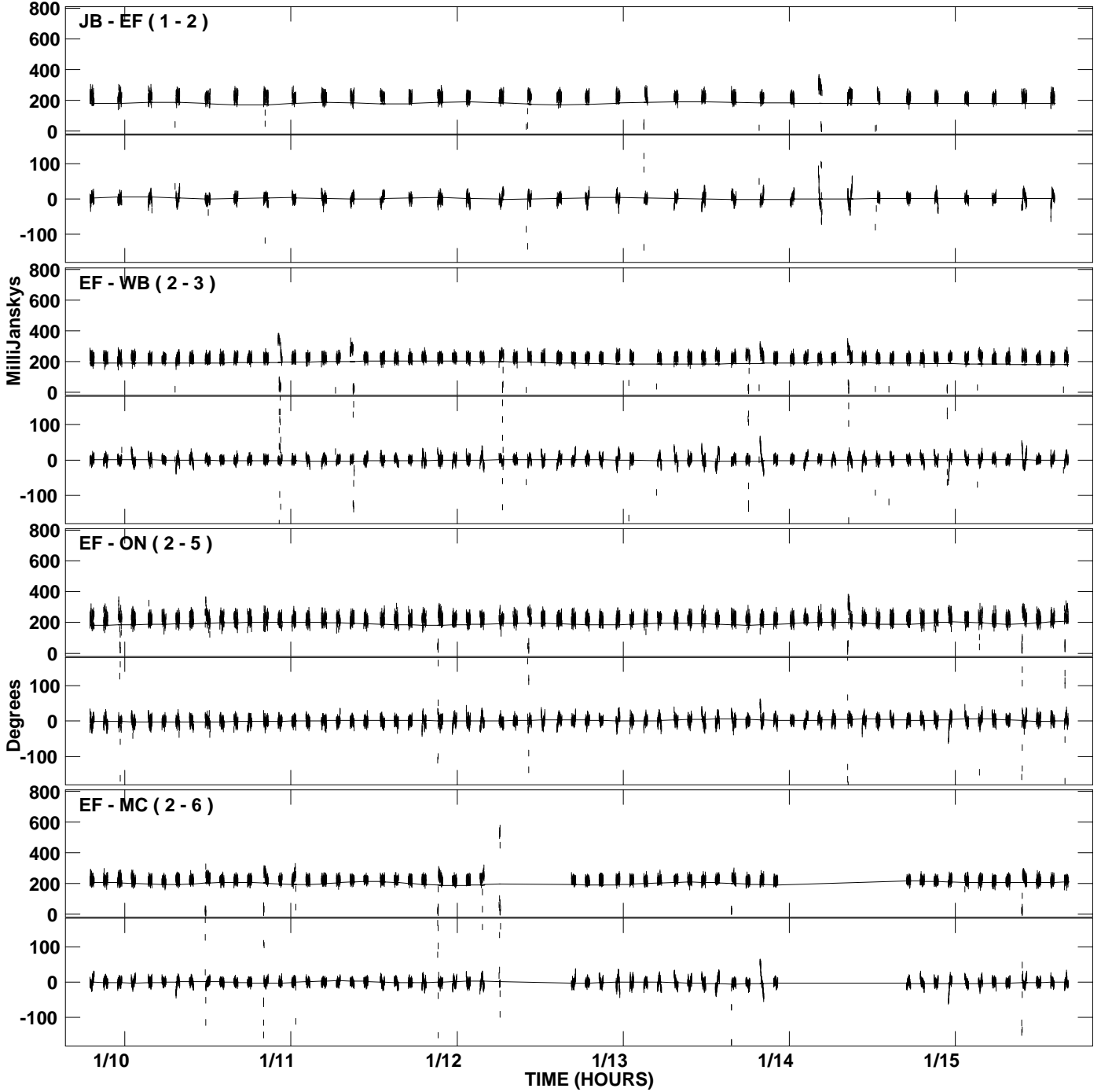
PLot file version 15 created 26-JAN-2007 13:42:09
Amplitude and Phase vs Time for J0730-0241.MULTI.1 CL # 3
IF 8 CHAN 1 STK LL of J0730-0241.ICL001.3



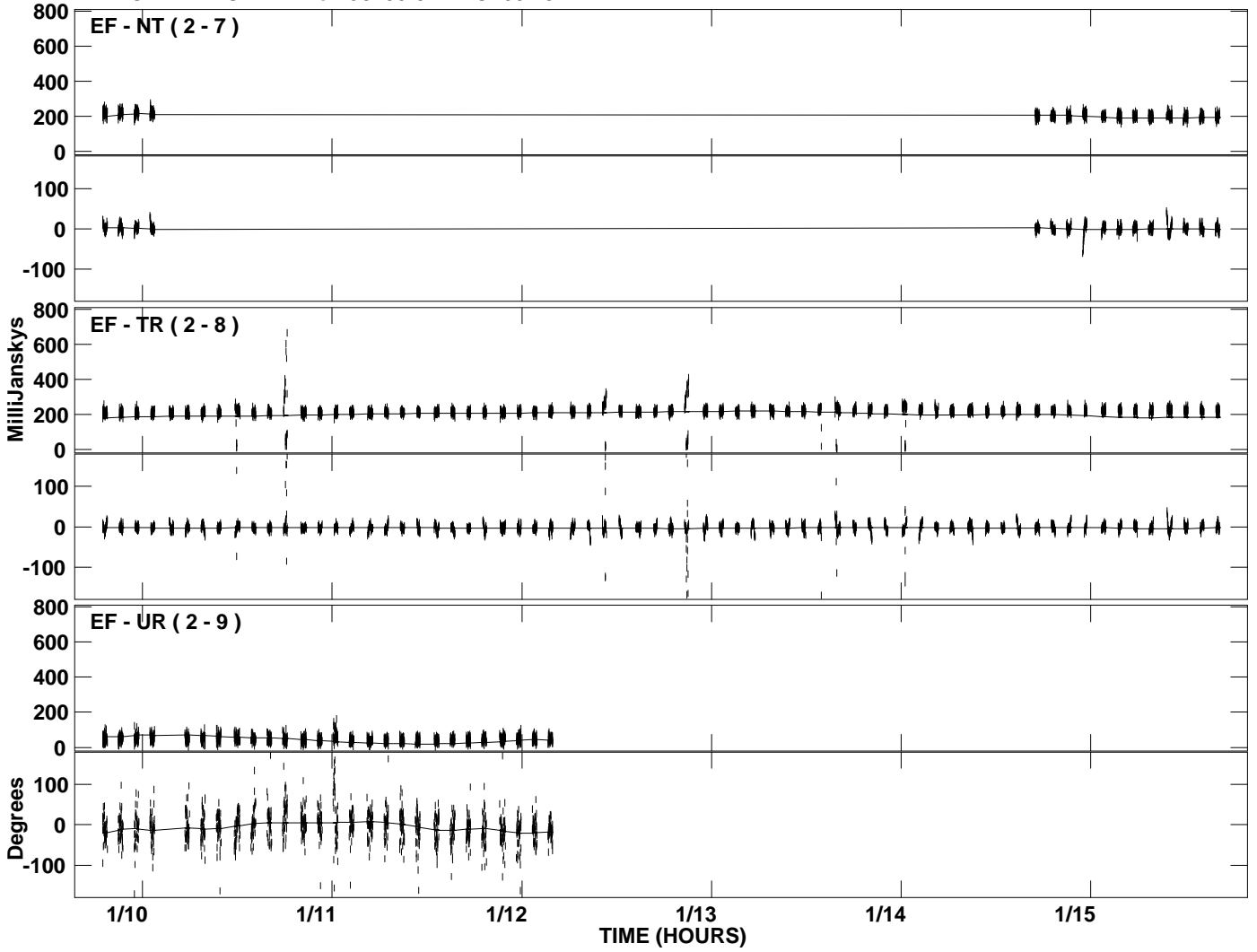
PLot file version 16 created 26-JAN-2007 13:42:09
Amplitude and Phase vs Time for J0730-0241.MULTI.1 CL # 3
IF 8 CHAN 1 STK LL of J0730-0241.ICL001.3



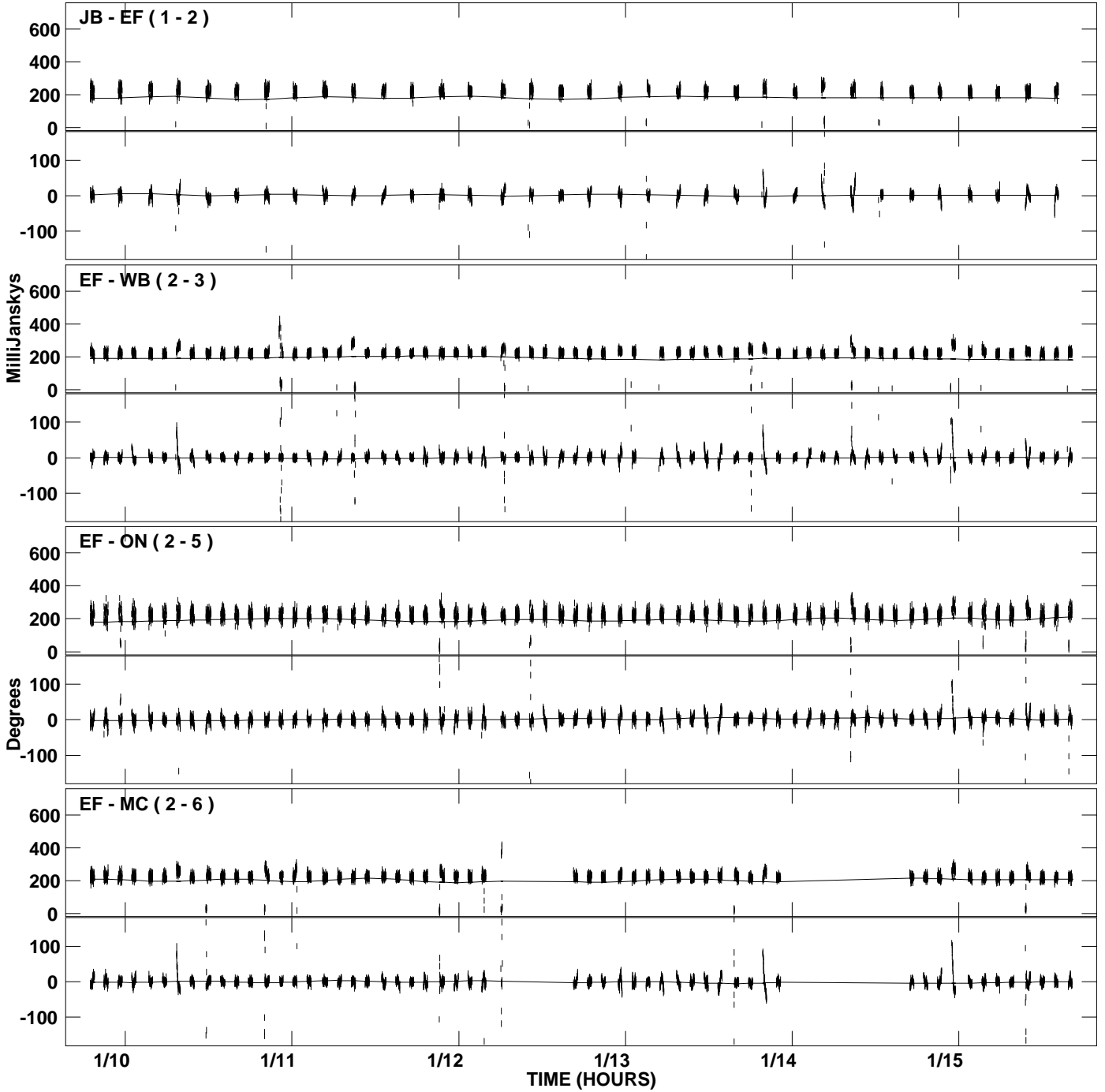
PLot file version 17 created 26-JAN-2007 13:42:27
Amplitude andPhase vs Time for J0730-0241.MULTI.1 CL # 3
IF 1 CHAN 1 STK RR of J0730-0241.ICL001.3



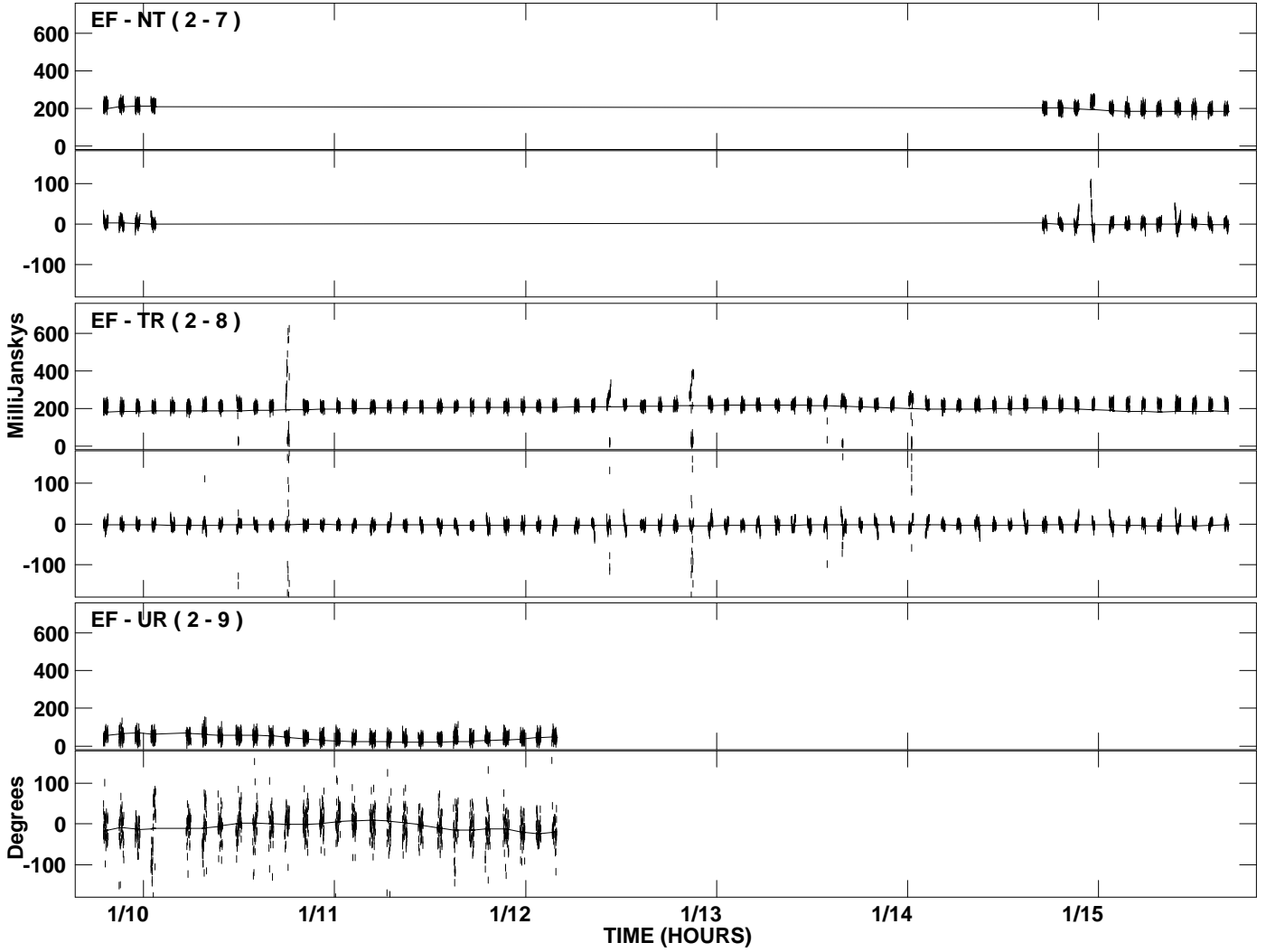
PLot file version 18 created 26-JAN-2007 13:42:27
Amplitude andPhase vs Time for J0730-0241.MULTI.1 CL # 3
IF 1 CHAN 1 STK RR of J0730-0241.ICL001.3



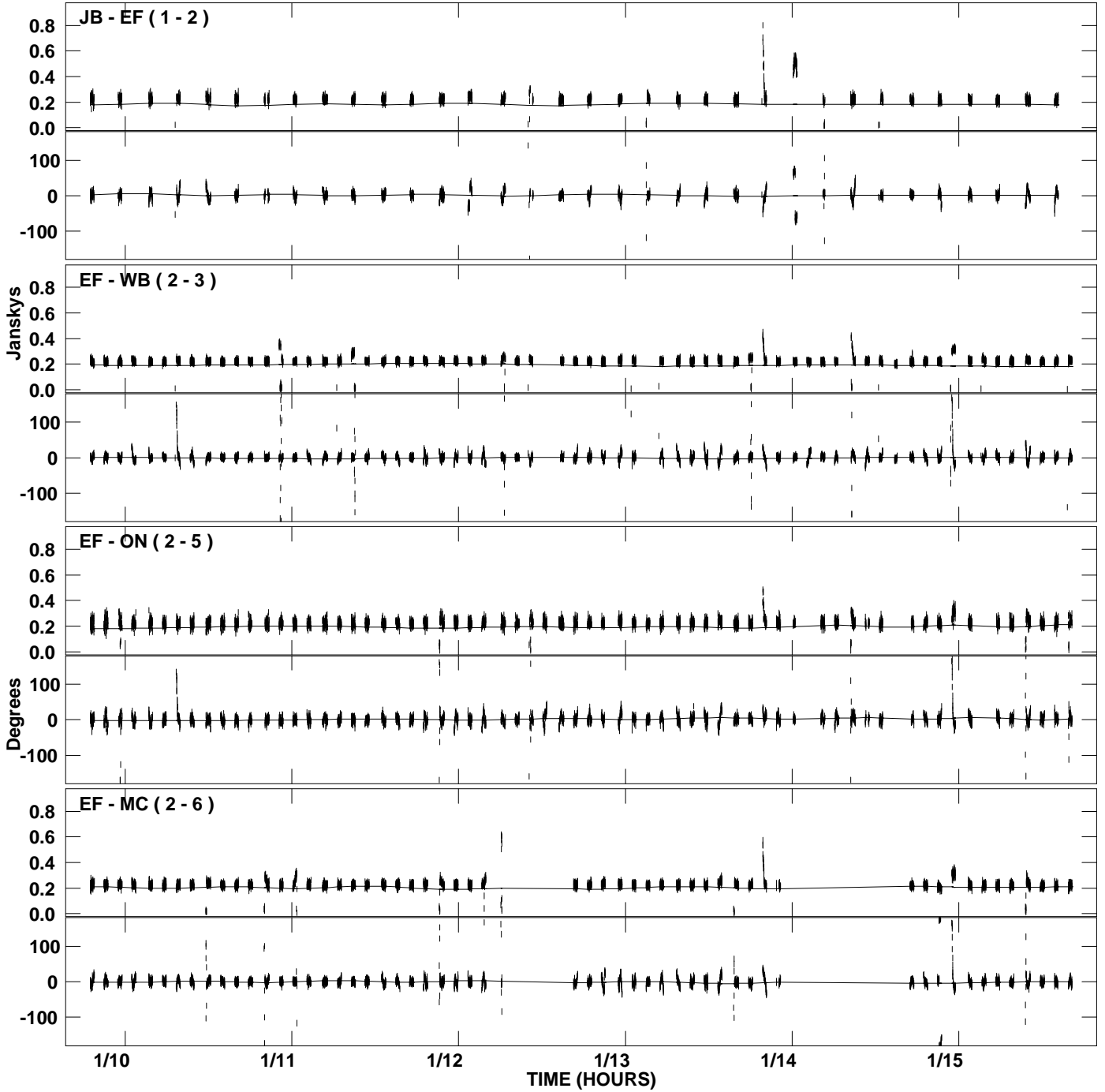
PLot file version 19 created 26-JAN-2007 13:42:44
Amplitude and Phase vs Time for J0730-0241.MULTI.1 CL # 3
IF 2 CHAN 1 STK RR of J0730-0241.ICL001.3



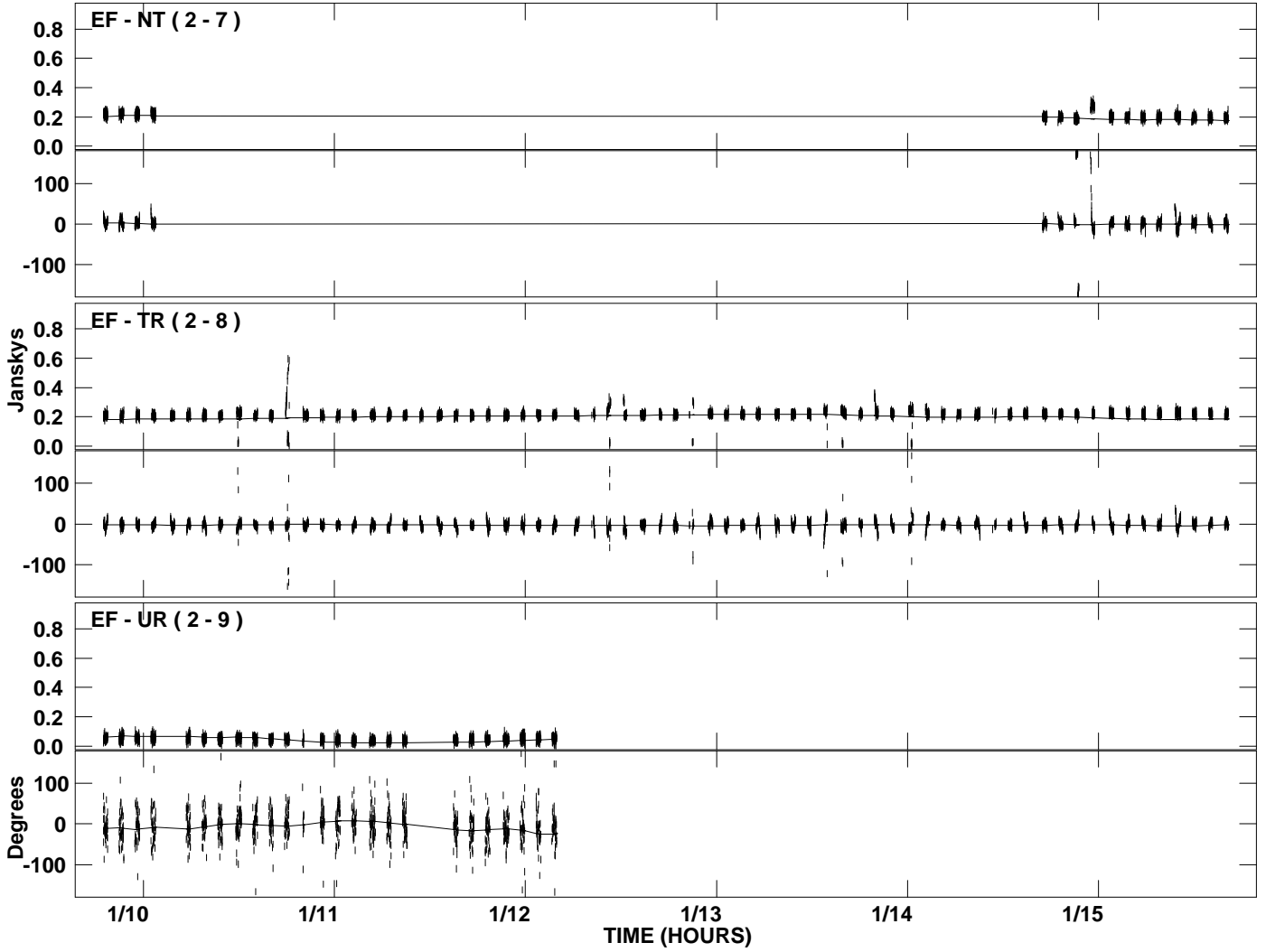
PLot file version 20 created 26-JAN-2007 13:42:44
Amplitude andPhase vs Time for J0730-0241.MULTI.1 CL # 3
IF 2 CHAN 1 STK RR of J0730-0241.ICL001.3



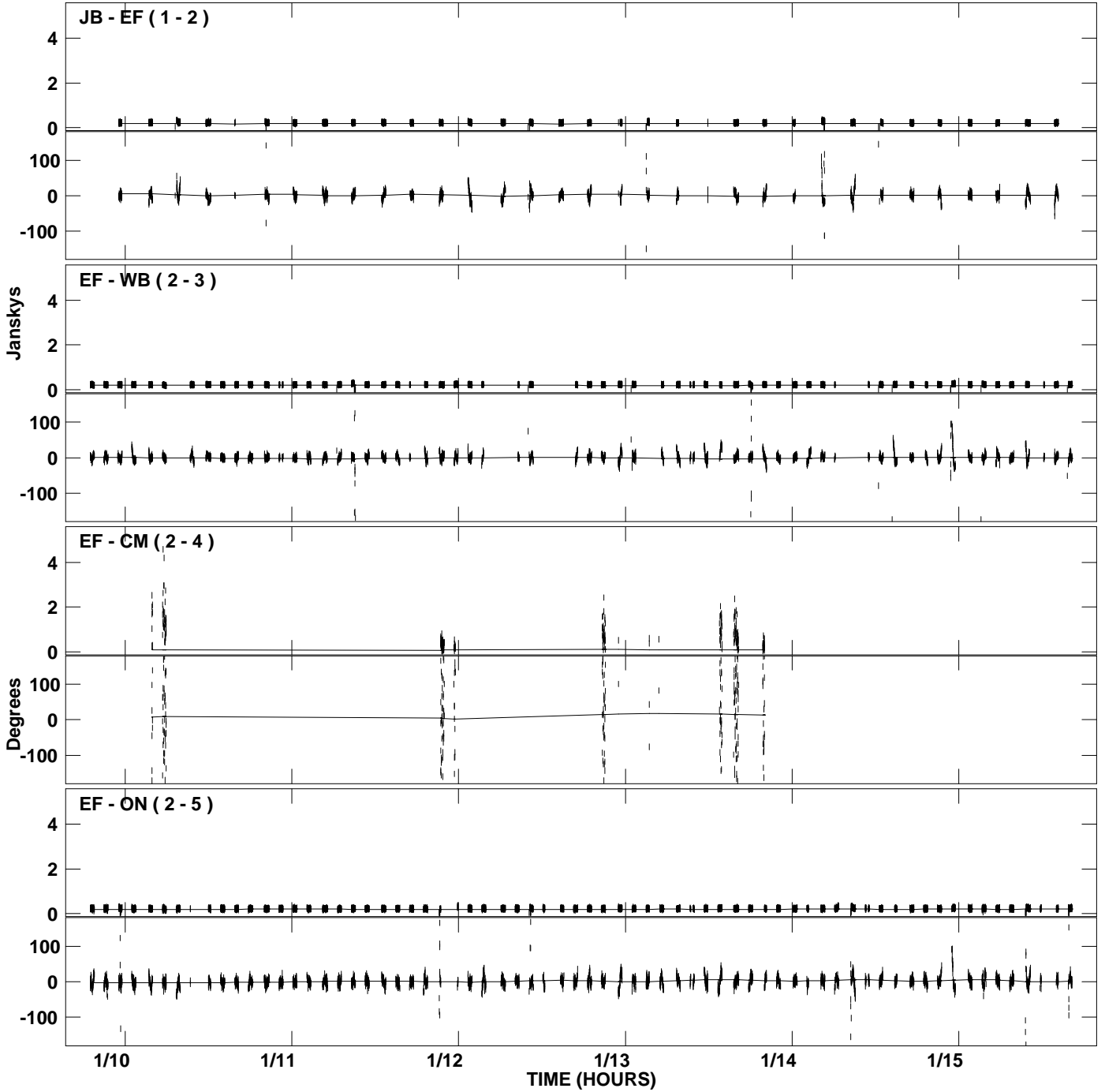
PLot file version 21 created 26-JAN-2007 13:43:02
Amplitude and Phase vs Time for J0730-0241.MULTI.1 CL # 3
IF 3 CHAN 1 STK RR of J0730-0241.ICL001.3



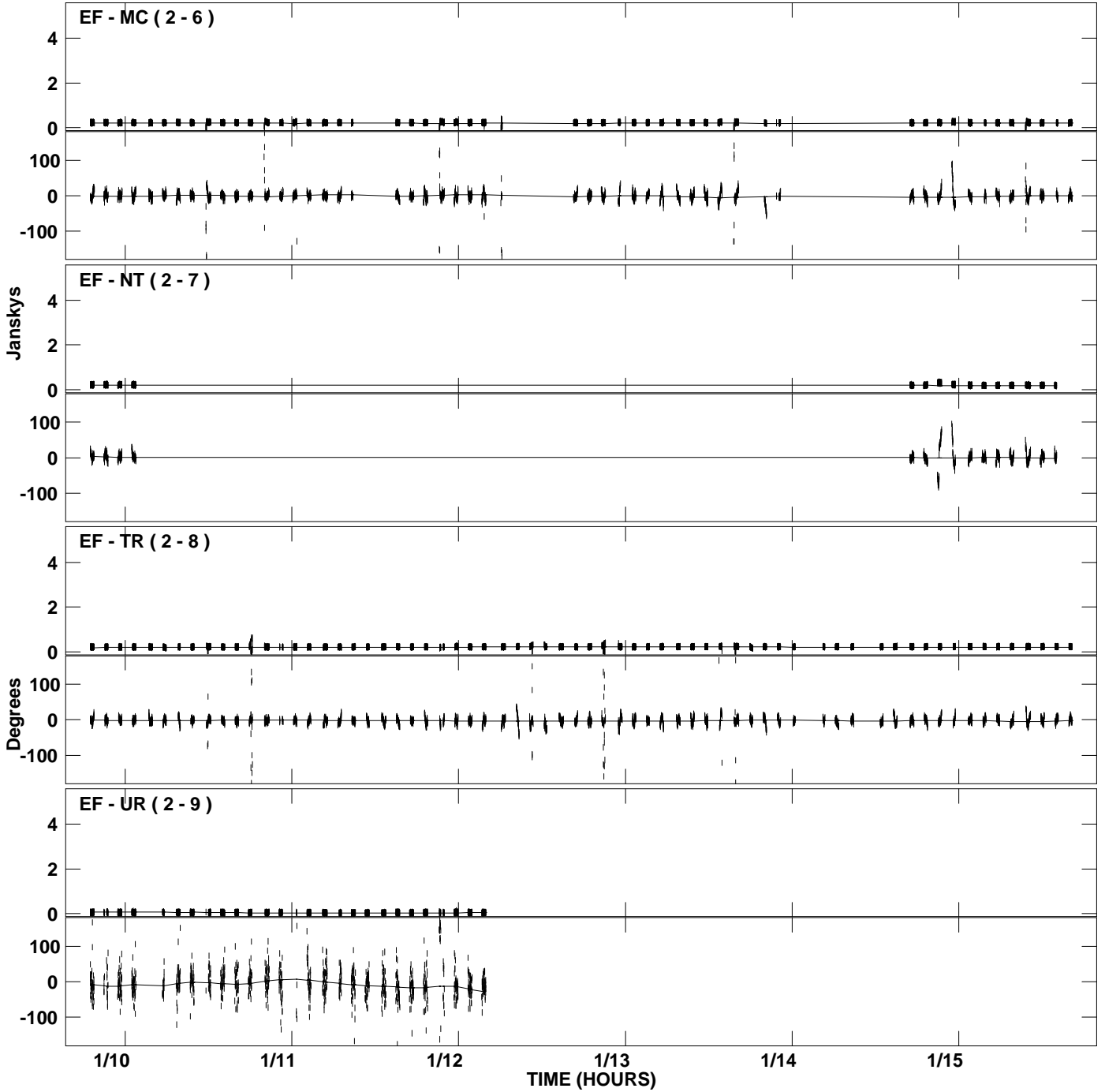
PLot file version 22 created 26-JAN-2007 13:43:02
Amplitude andPhase vs Time for J0730-0241.MULTI.1 CL # 3
IF 3 CHAN 1 STK RR of J0730-0241.ICL001.3



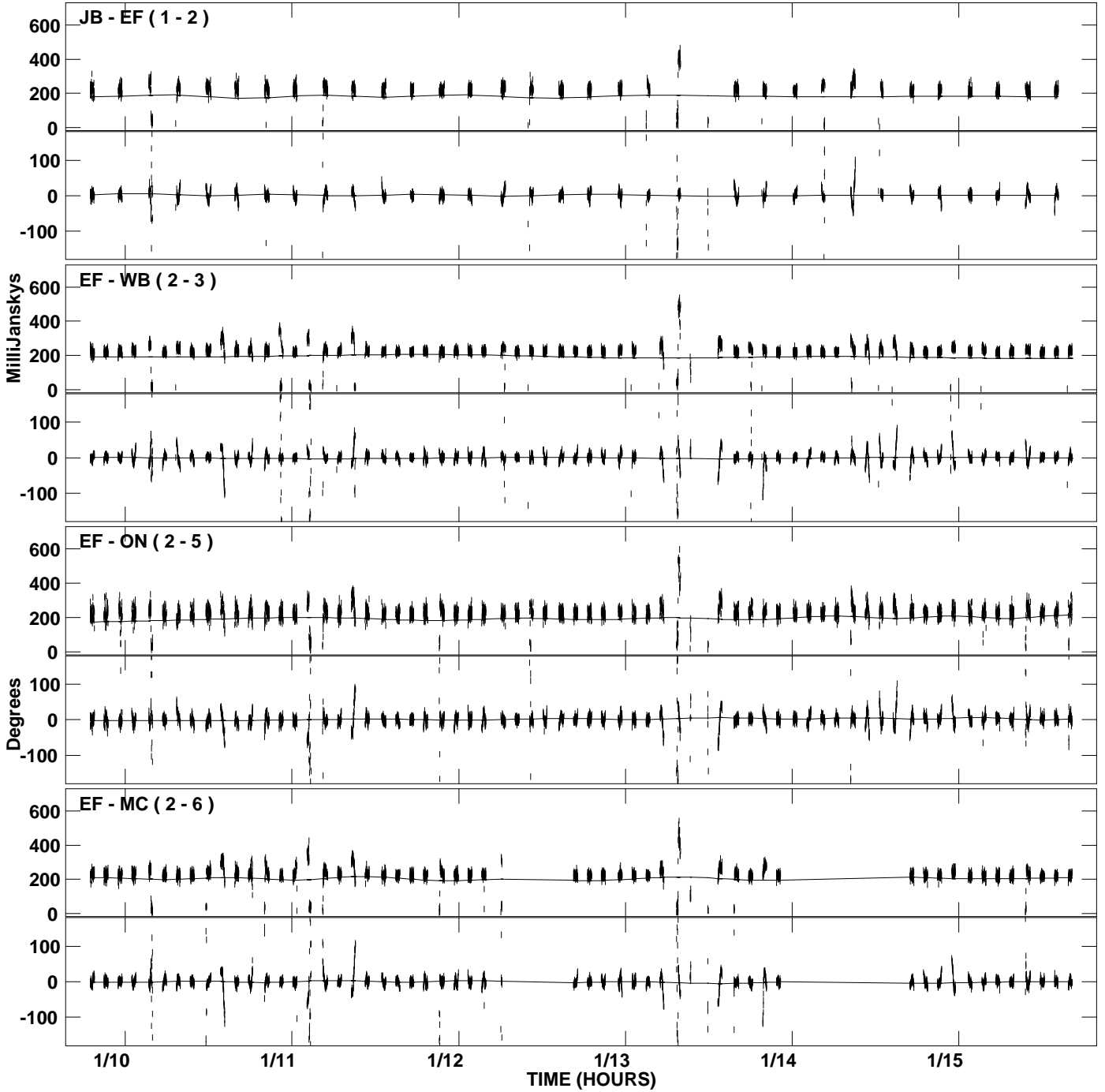
PLot file version 23 created 26-JAN-2007 13:43:14
Amplitude andPhase vs Time for J0730-0241.MULTI.1 CL # 3
IF 4 CHAN 1 STK RR of J0730-0241.ICL001.3



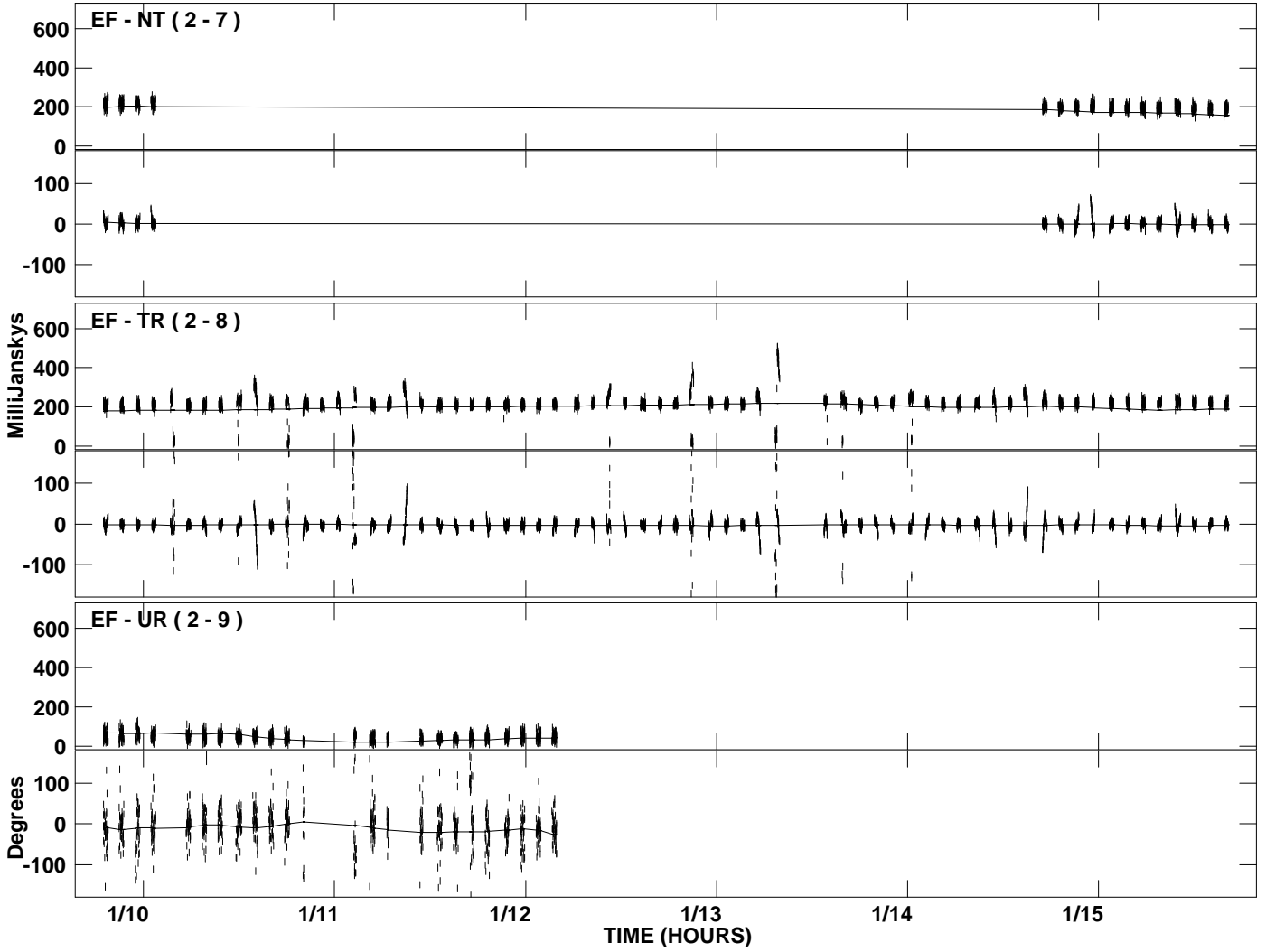
PLot file version 24 created 26-JAN-2007 13:43:14
Amplitude and Phase vs Time for J0730-0241.MULTI.1 CL # 3
IF 4 CHAN 1 STK RR of J0730-0241.ICL001.3



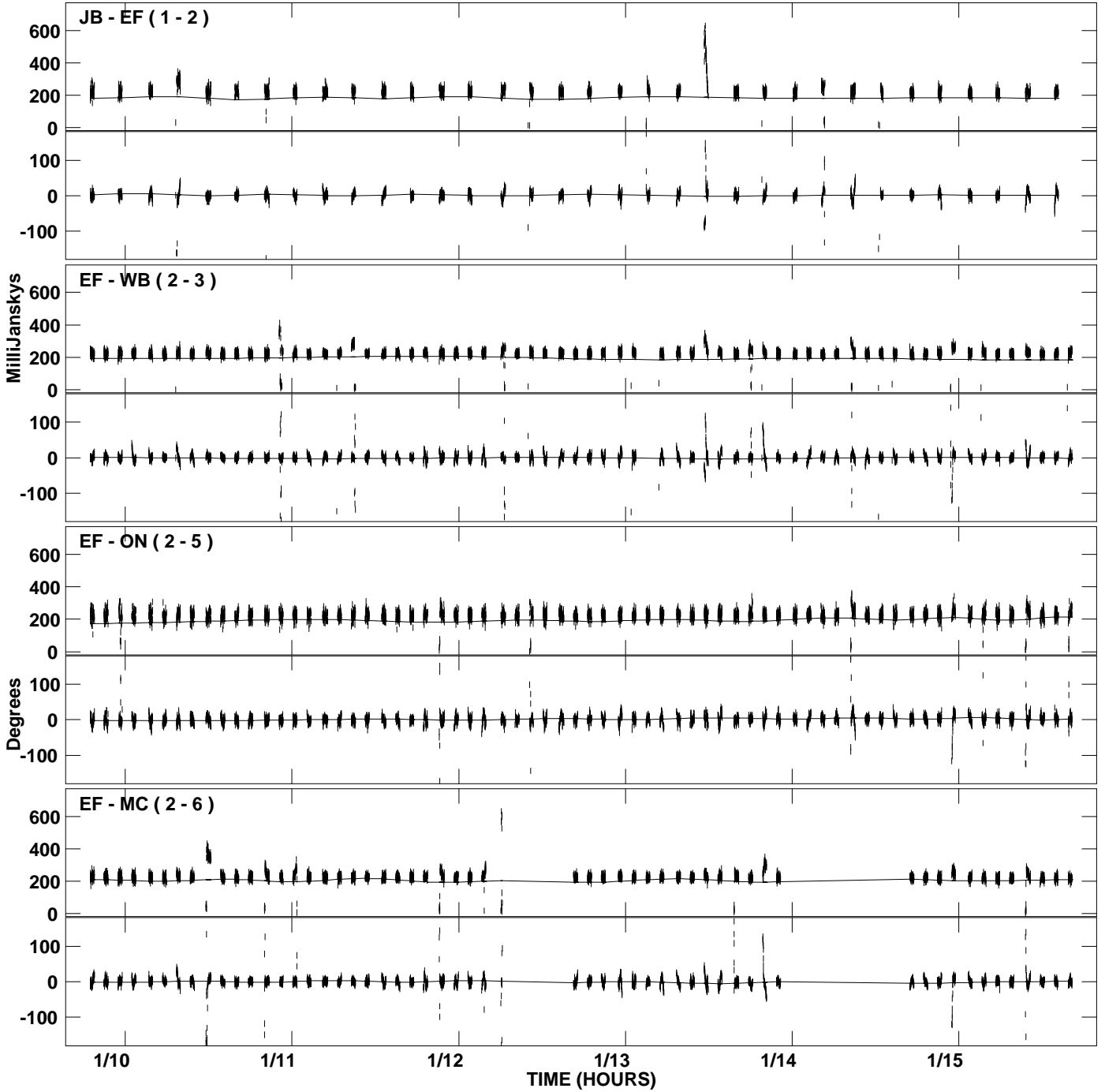
PLot file version 25 created 26-JAN-2007 13:43:32
Amplitude andPhase vs Time for J0730-0241.MULTI.1 CL # 3
IF 5 CHAN 1 STK RR of J0730-0241.ICL001.3



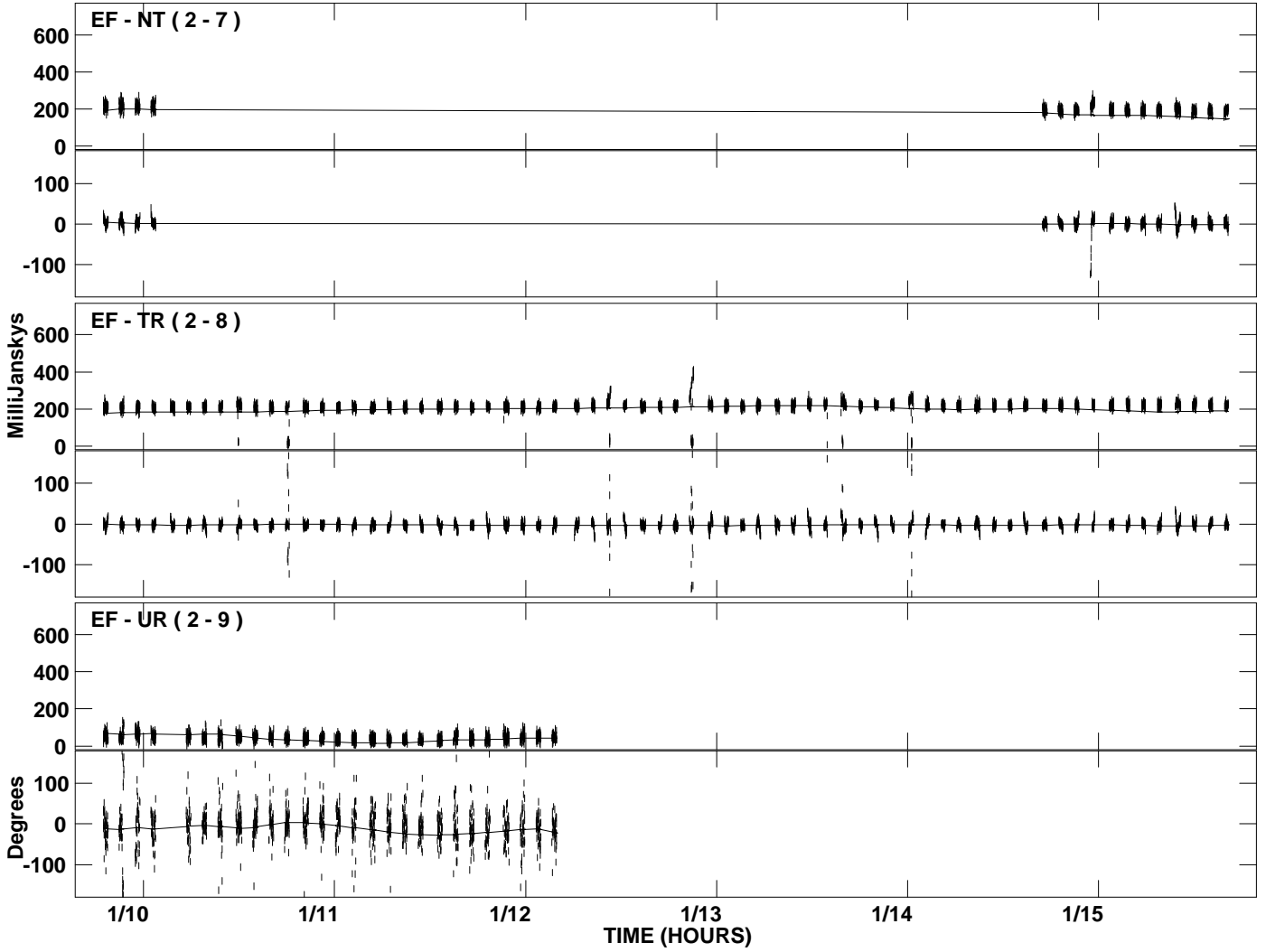
PLot file version 26 created 26-JAN-2007 13:43:32
Amplitude andPhase vs Time for J0730-0241.MULTI.1 CL # 3
IF 5 CHAN 1 STK RR of J0730-0241.ICL001.3



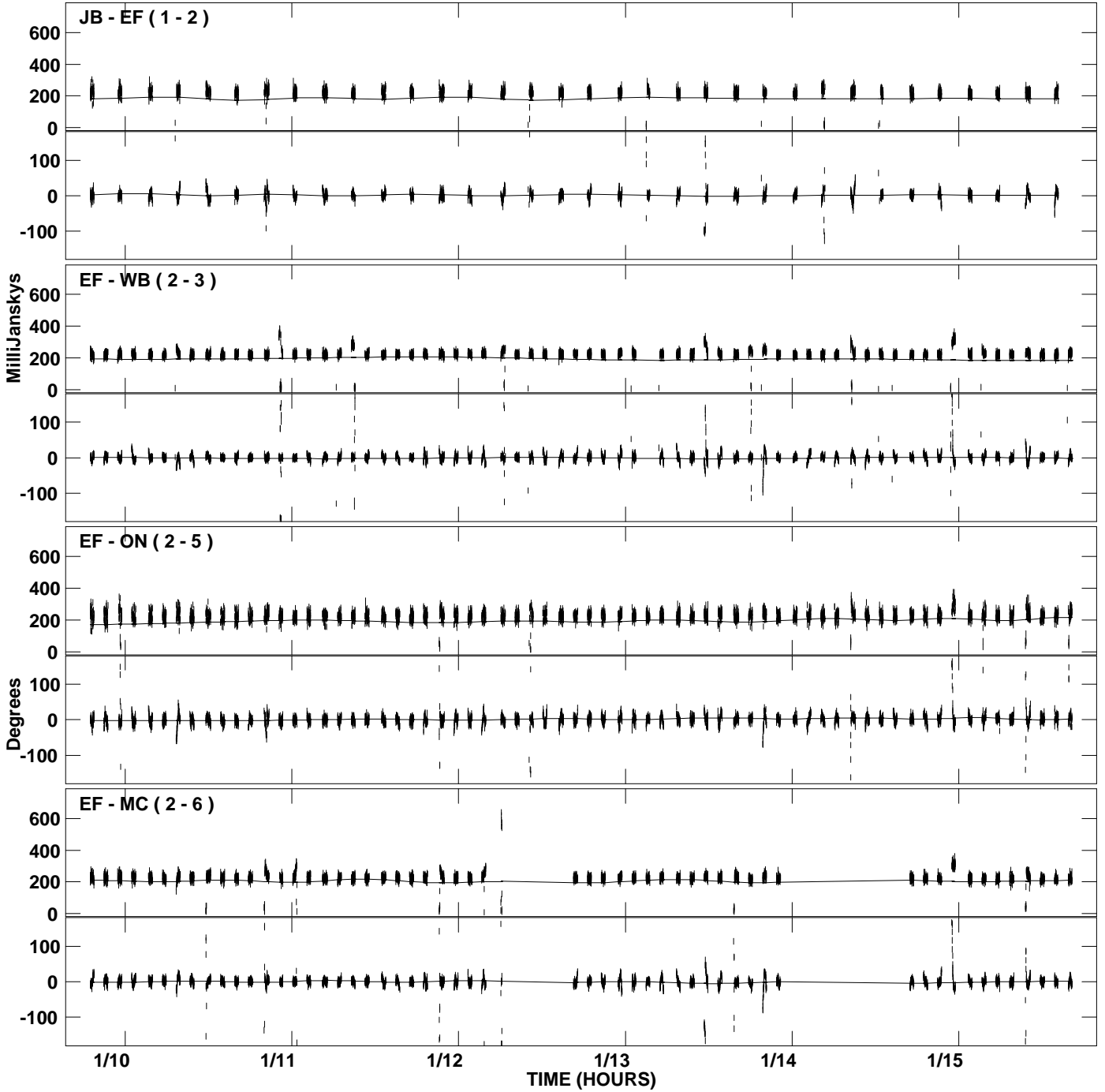
PLot file version 27 created 26-JAN-2007 13:43:50
Amplitude andPhase vs Time for J0730-0241.MULTI.1 CL # 3
IF 6 CHAN 1 STK RR of J0730-0241.ICL001.3



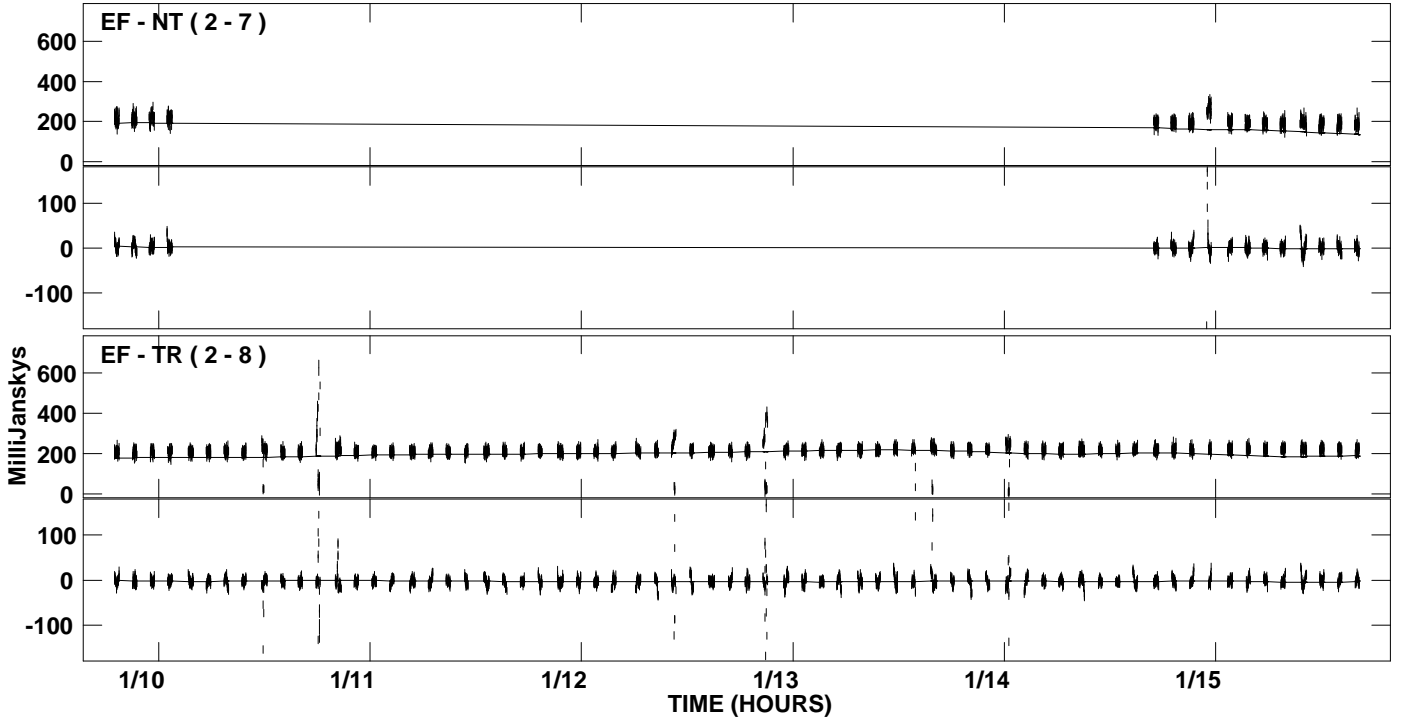
PLot file version 28 created 26-JAN-2007 13:43:50
Amplitude andPhase vs Time for J0730-0241.MULTI.1 CL # 3
IF 6 CHAN 1 STK RR of J0730-0241.ICL001.3



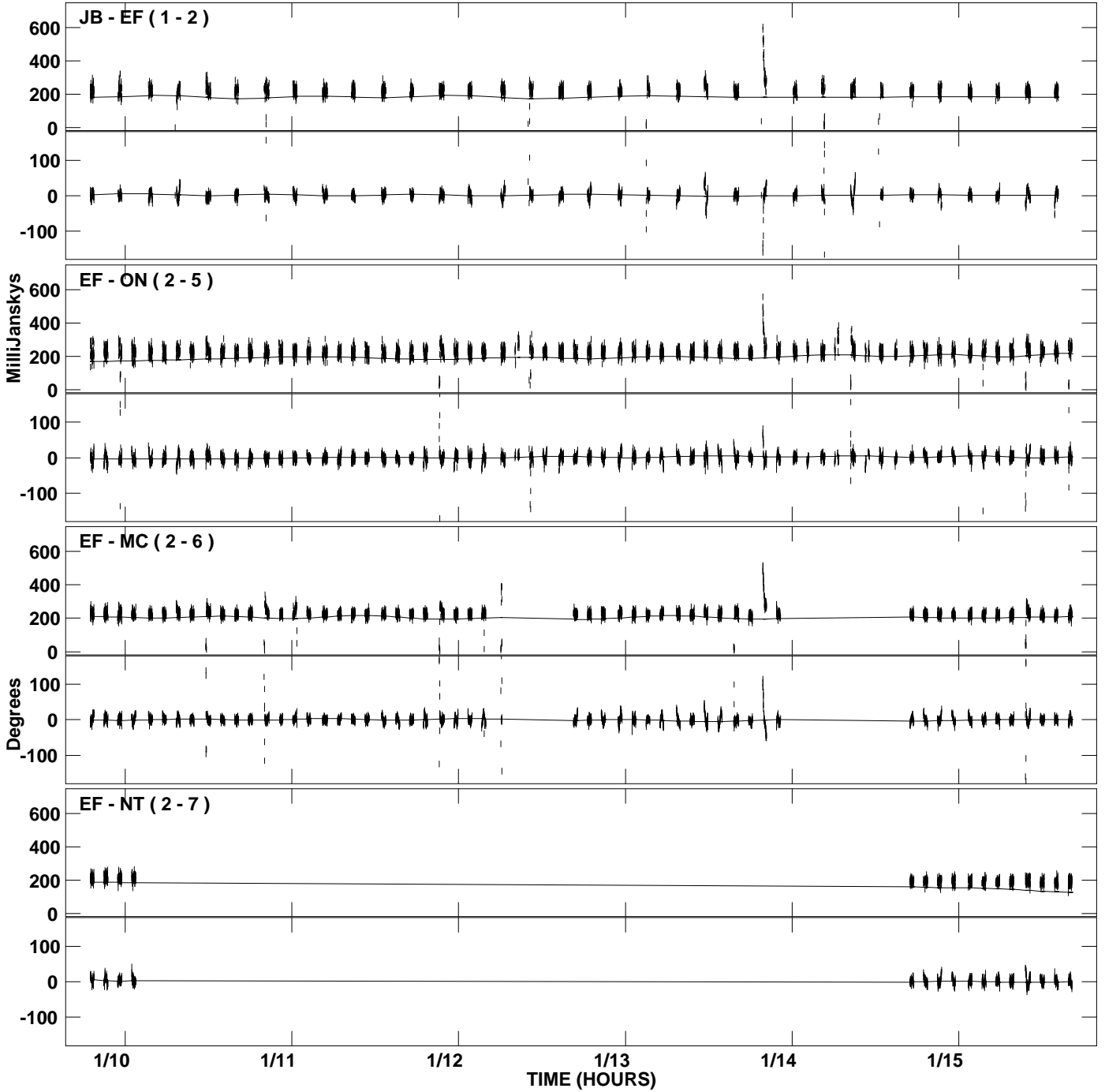
PLot file version 29 created 26-JAN-2007 13:44:04
Amplitude andPhase vs Time for J0730-0241.MULTI.1 CL # 3
IF 7 CHAN 1 STK RR of J0730-0241.ICL001.3



PLot file version 30 created 26-JAN-2007 13:44:04
Amplitude andPhase vs Time for J0730-0241.MULTI.1 CL # 3
IF 7 CHAN 1 STK RR of J0730-0241.ICL001.3



PLot file version 31 created 26-JAN-2007 13:44:19
Amplitude andPhase vs Time for J0730-0241.MULTI.1 CL # 3
IF 8 CHAN 1 STK RR of J0730-0241.ICL001.3



PLot file version 32 created 26-JAN-2007 13:44:19
Amplitude andPhase vs Time for J0730-0241.MULTI.1 CL # 3
IF 8 CHAN 1 STK RR of J0730-0241.ICL001.3

