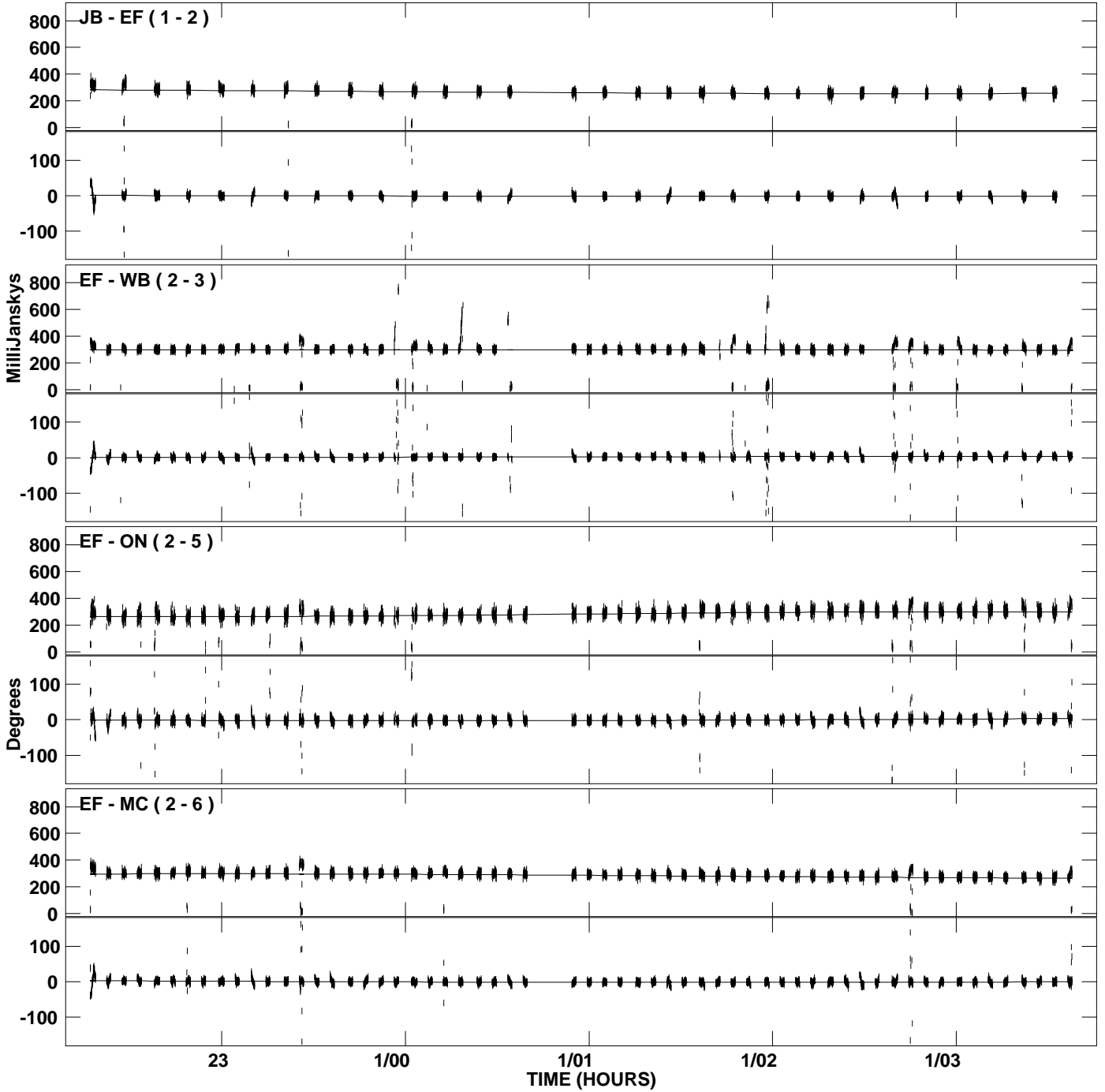
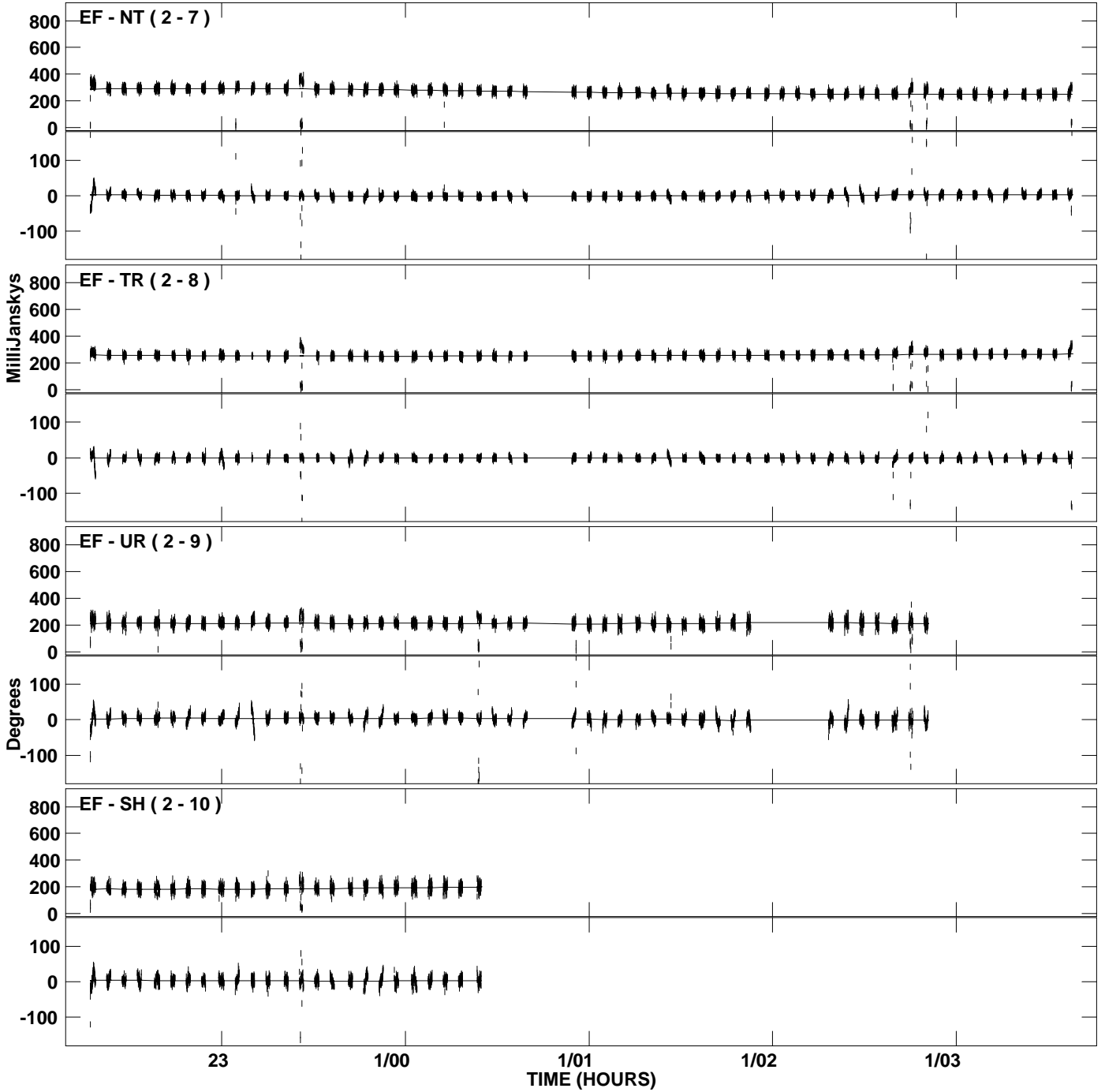


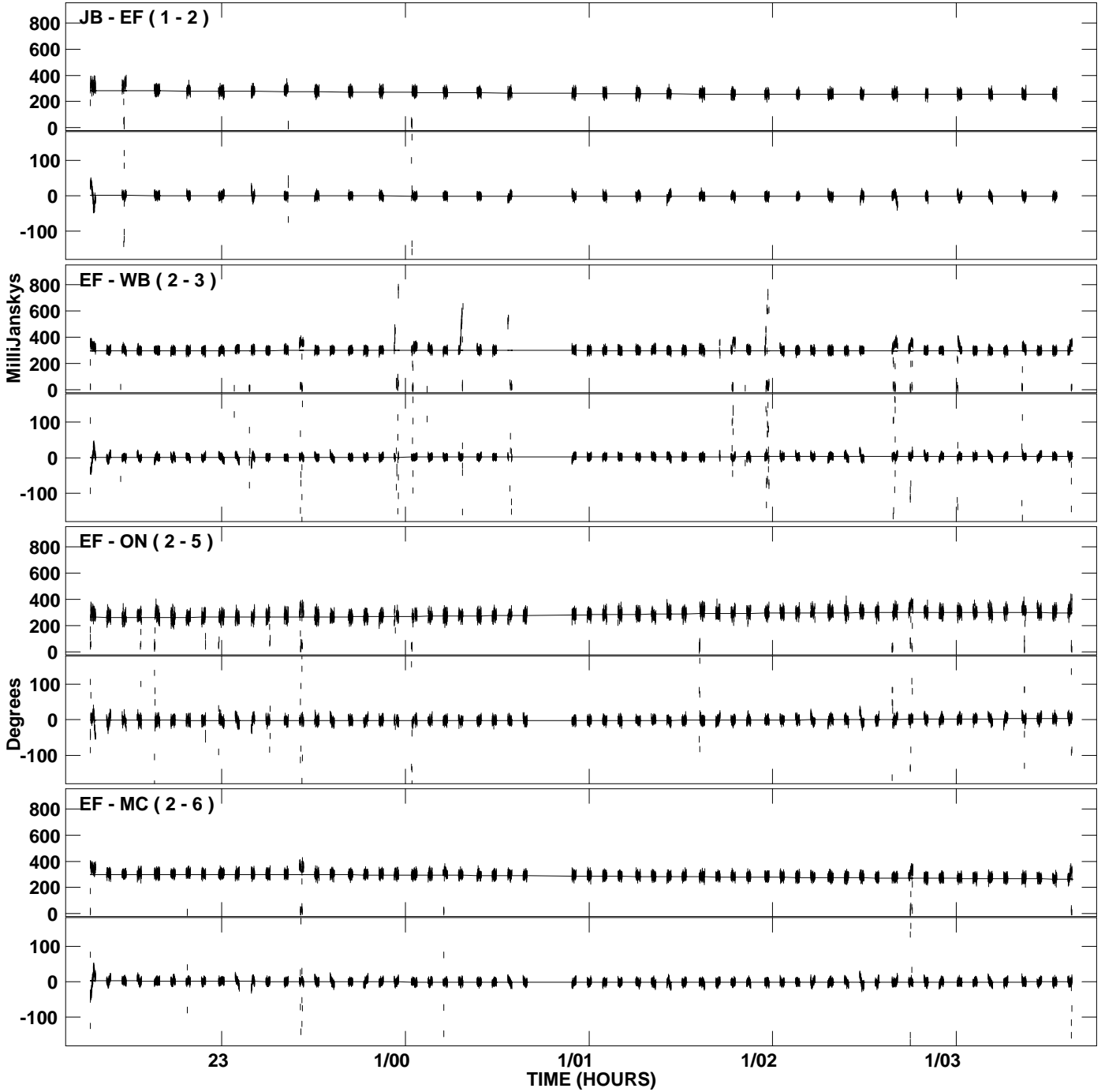
PLot file version 1 created 26-JAN-2007 13:46:33  
Amplitude andPhase vs Time for J2001+1027.MULTI.1 CL # 3  
IF 1 CHAN 1 STK LL of J2001+1027.ICL001.3



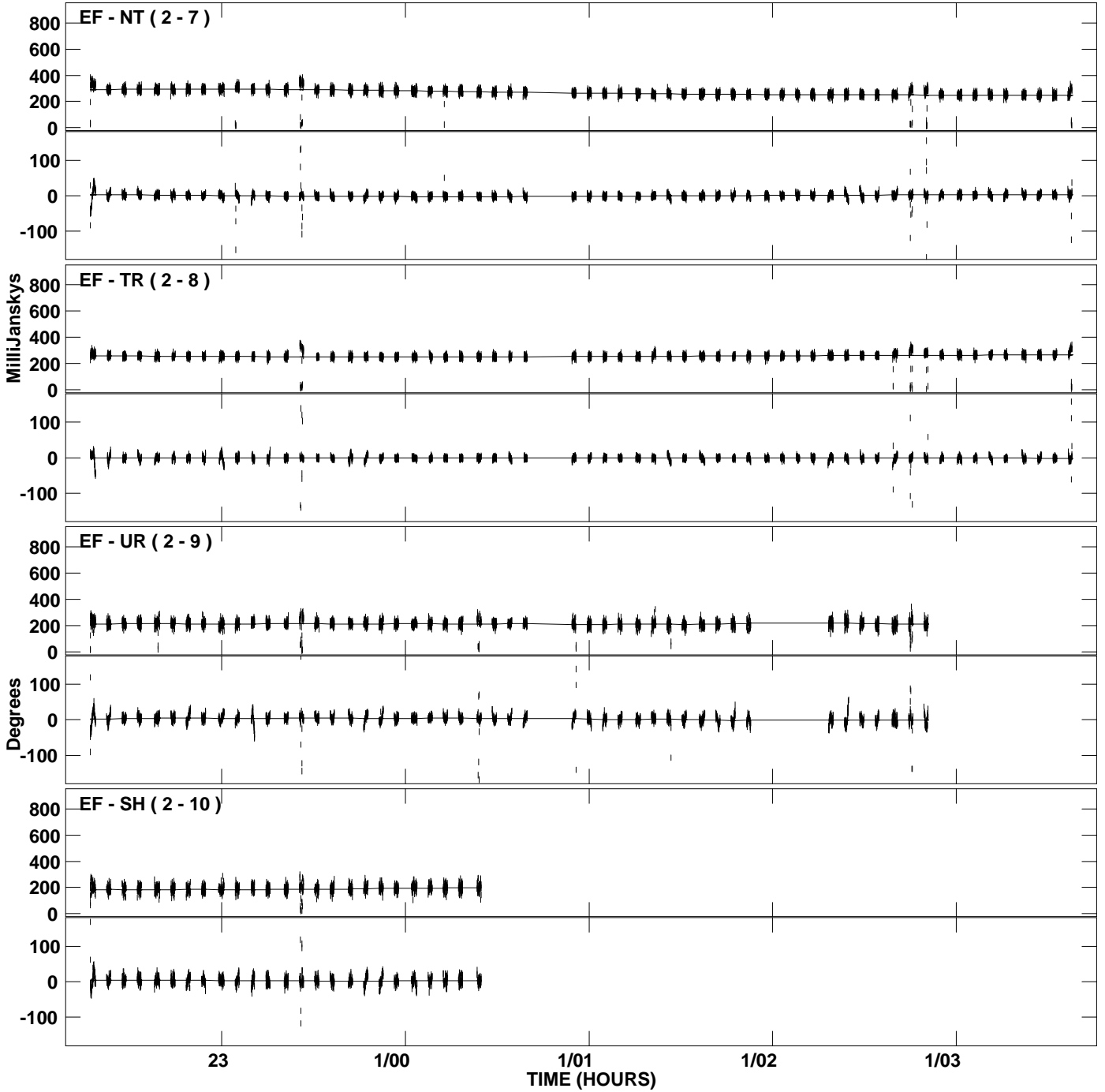
PLot file version 2 created 26-JAN-2007 13:46:33  
Amplitude and Phase vs Time for J2001+1027.MULTI.1 CL # 3  
IF 1 CHAN 1 STK LL of J2001+1027.ICL001.3



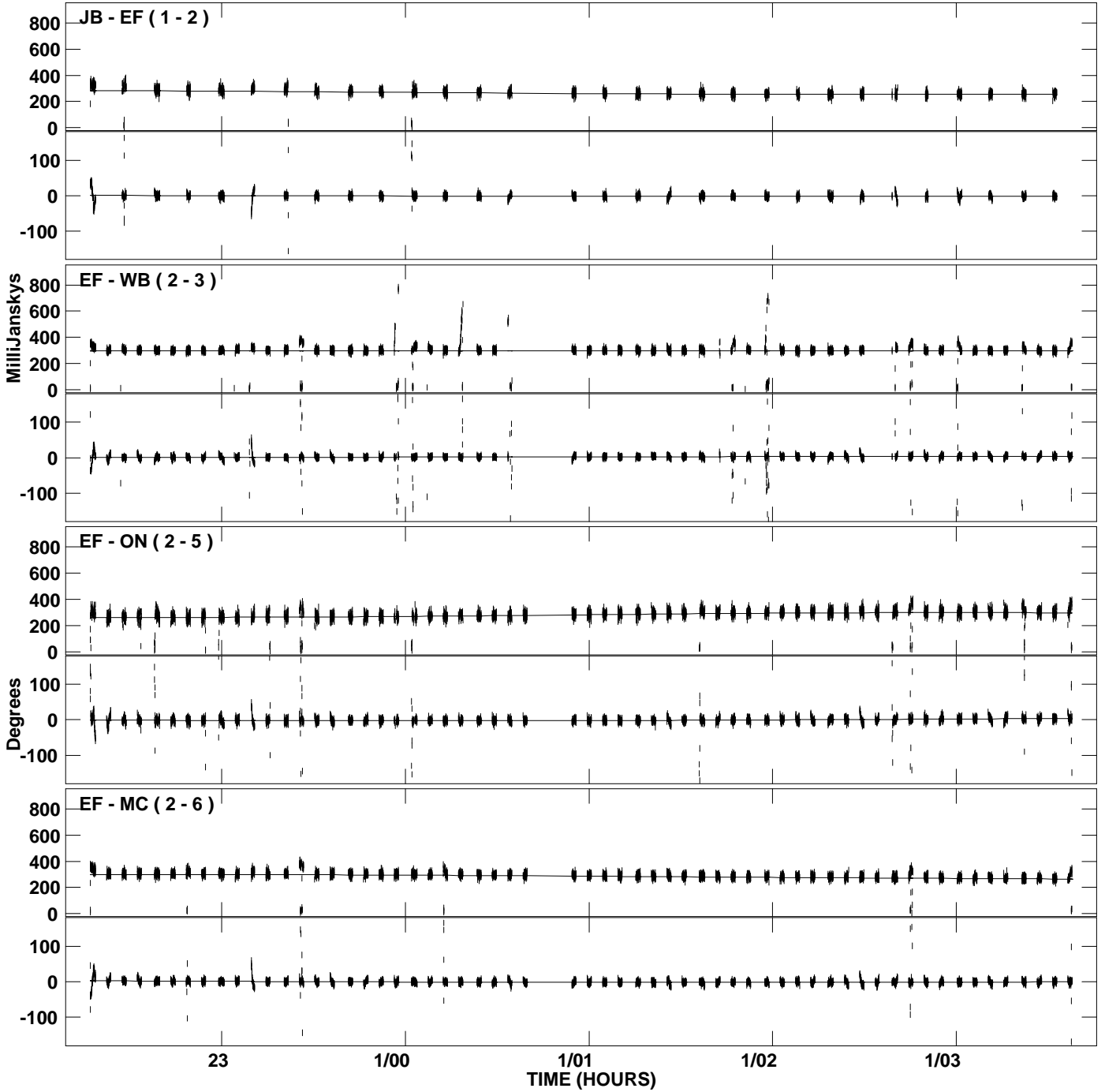
PLot file version 3 created 26-JAN-2007 13:46:47  
Amplitude and Phase vs Time for J2001+1027.MULTI.1 CL # 3  
IF 2 CHAN 1 STK LL of J2001+1027.ICL001.3



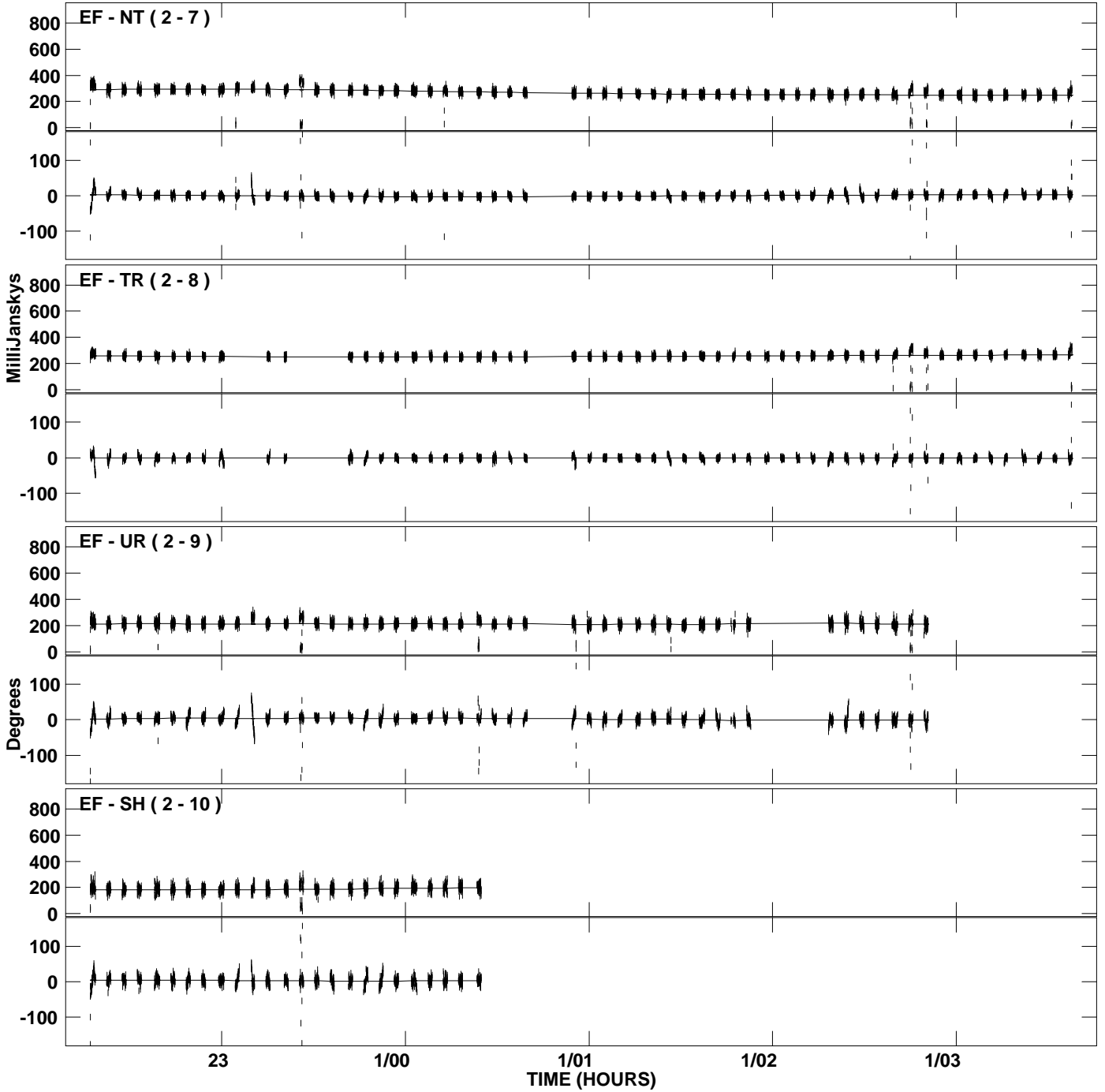
PLot file version 4 created 26-JAN-2007 13:46:47  
Amplitude and Phase vs Time for J2001+1027.MULTI.1 CL # 3  
IF 2 CHAN 1 STK LL of J2001+1027.ICL001.3



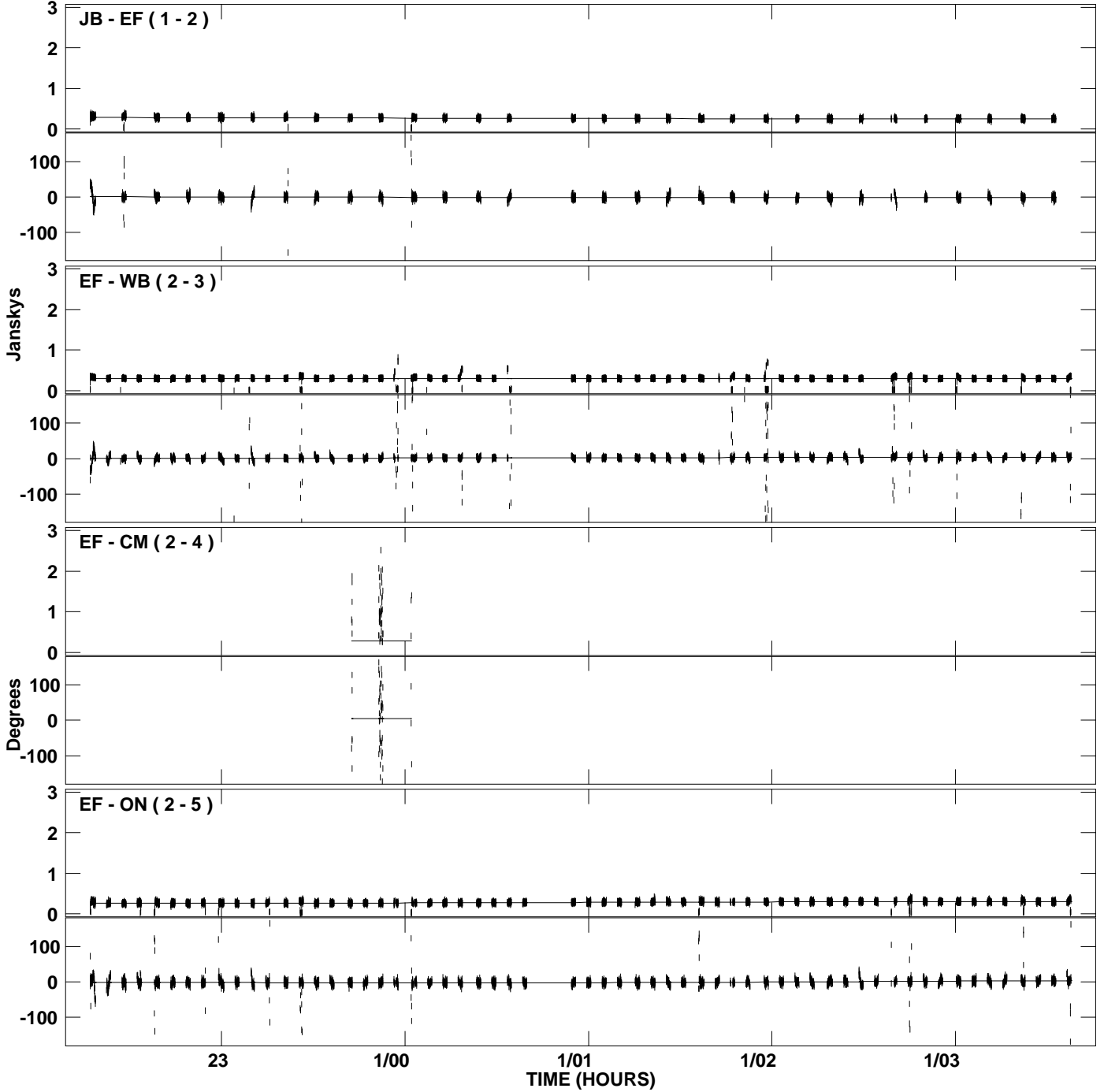
PLot file version 5 created 26-JAN-2007 13:47:00  
Amplitude and Phase vs Time for J2001+1027.MULTI.1 CL # 3  
IF 3 CHAN 1 STK LL of J2001+1027.ICL001.3



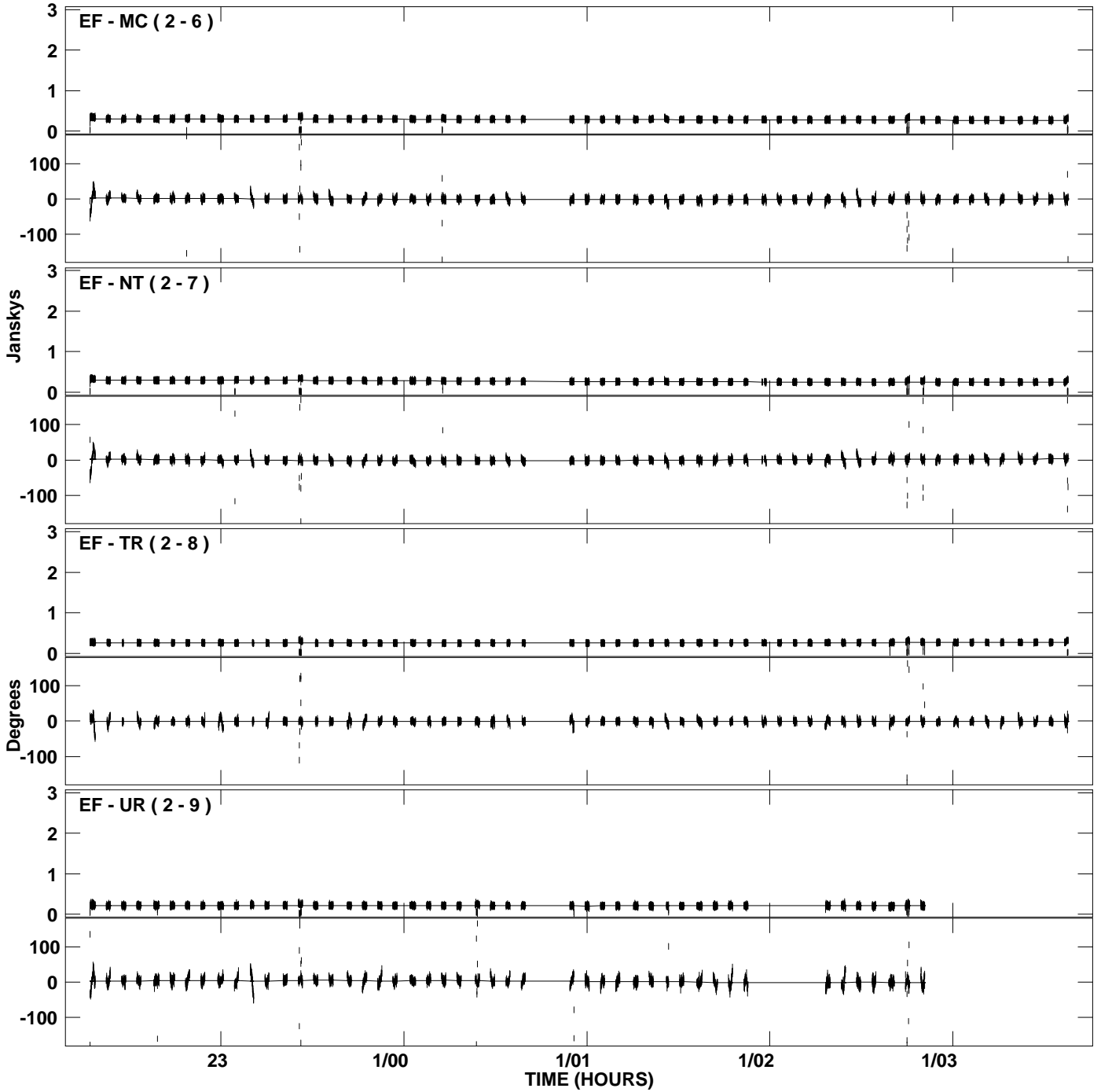
PLot file version 6 created 26-JAN-2007 13:47:00  
Amplitude and Phase vs Time for J2001+1027.MULTI.1 CL # 3  
IF 3 CHAN 1 STK LL of J2001+1027.ICL001.3



PLot file version 7 created 26-JAN-2007 13:47:14  
Amplitude and Phase vs Time for J2001+1027.MULTI.1 CL # 3  
IF 4 CHAN 1 STK LL of J2001+1027.ICL001.3

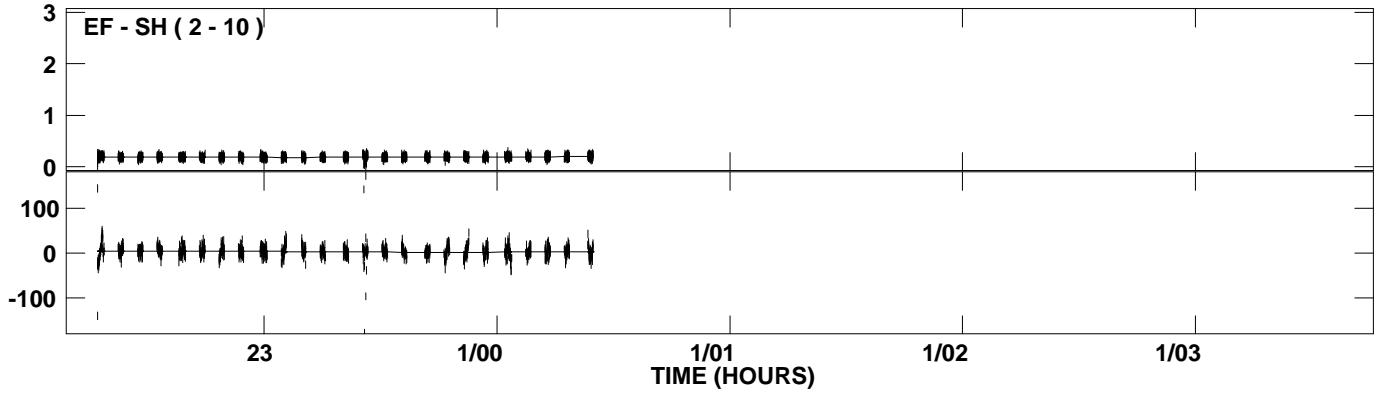


PLot file version 8 created 26-JAN-2007 13:47:14  
Amplitude and Phase vs Time for J2001+1027.MULTI.1 CL # 3  
IF 4 CHAN 1 STK LL of J2001+1027.ICL001.3

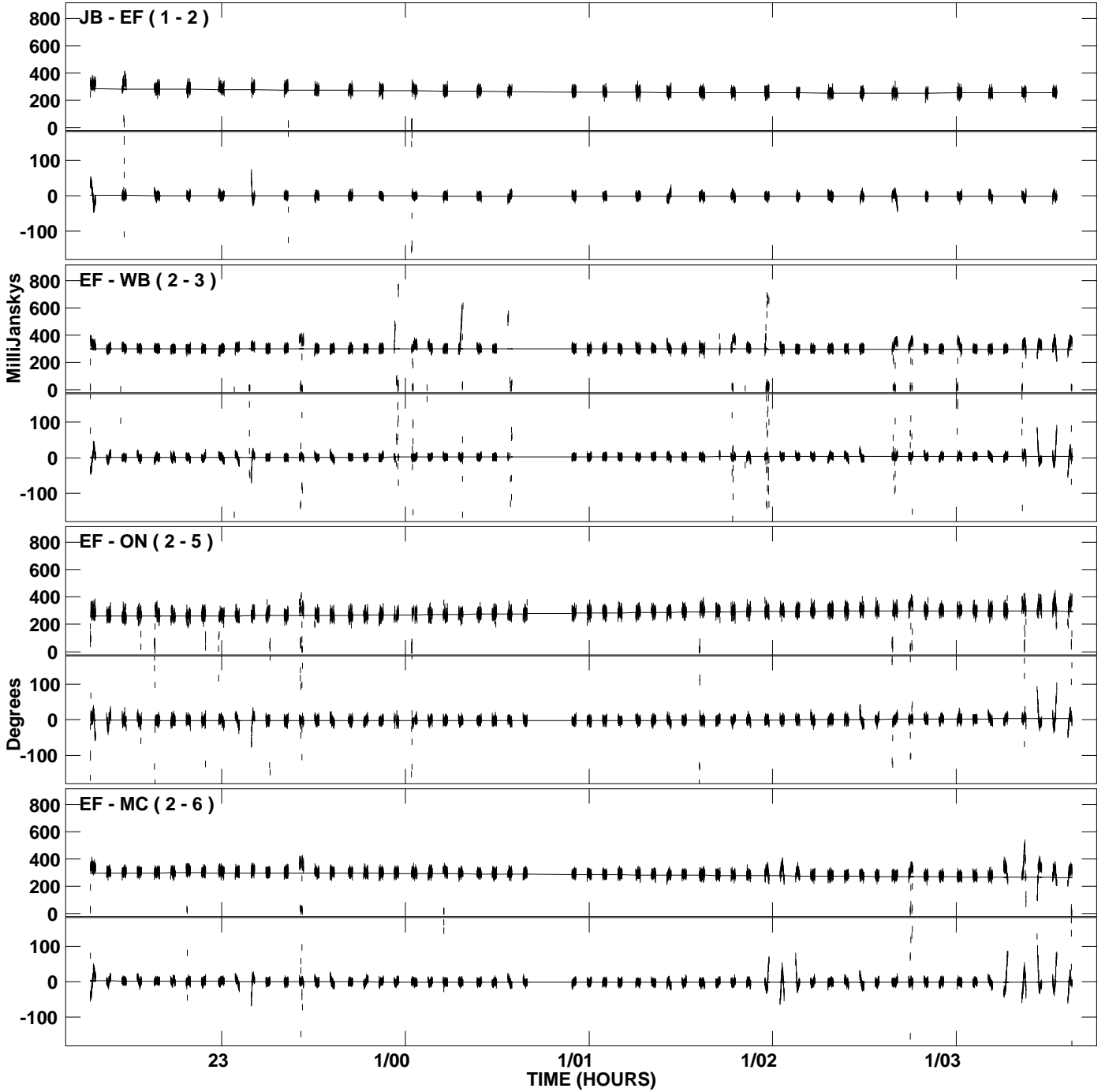




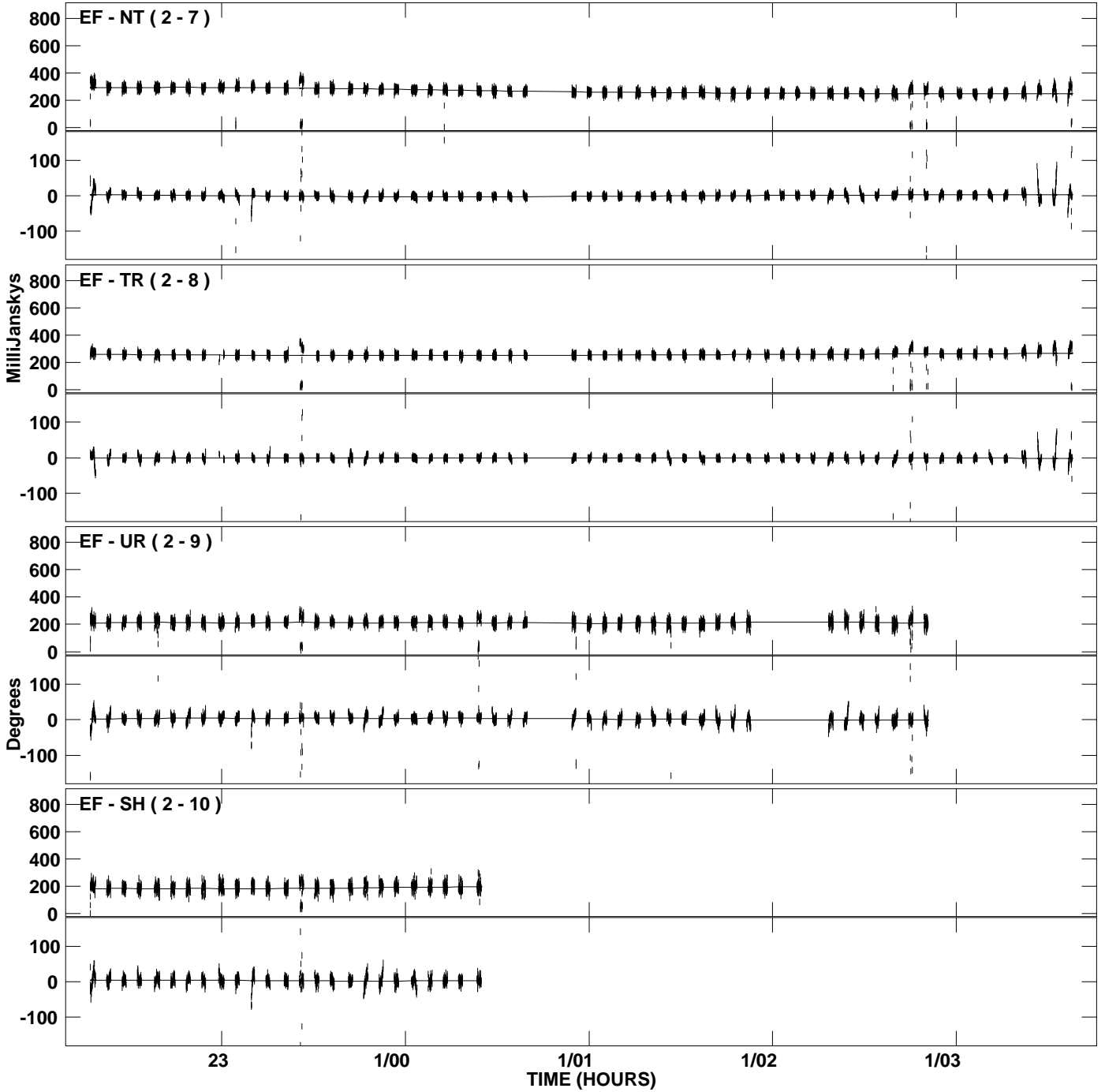
PLot file version 9 created 26-JAN-2007 13:47:14  
Amplitude andPhase vs Time for J2001+1027.MULTI.1 CL # 3  
IF 4 CHAN 1 STK LL of J2001+1027.ICL001.3



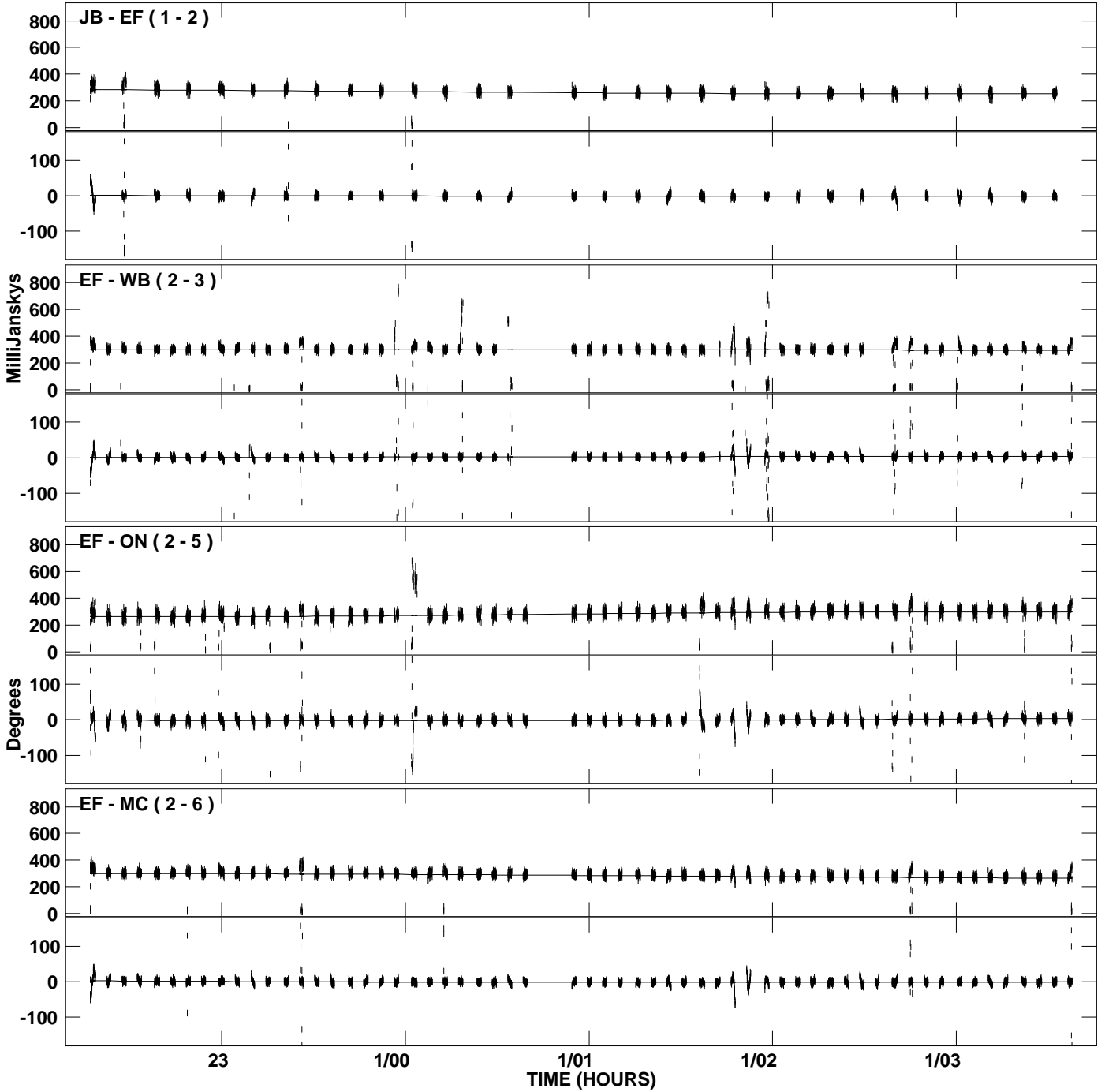
PLot file version 10 created 26-JAN-2007 13:47:23  
Amplitude andPhase vs Time for J2001+1027.MULTI.1 CL # 3  
IF 5 CHAN 1 STK LL of J2001+1027.ICL001.3



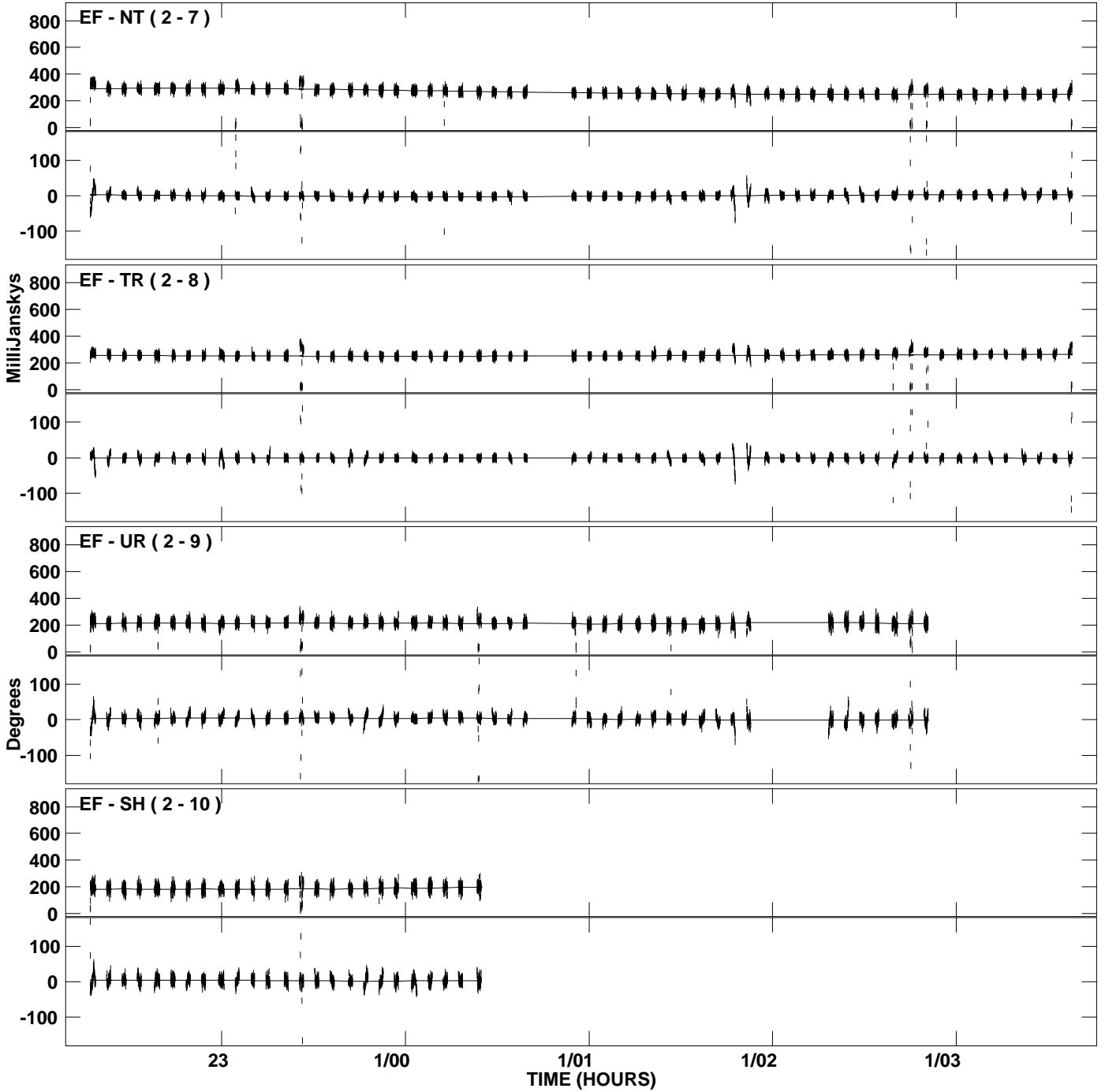
PLot file version 11 created 26-JAN-2007 13:47:23  
Amplitude and Phase vs Time for J2001+1027.MULTI.1 CL # 3  
IF 5 CHAN 1 STK LL of J2001+1027.ICL001.3



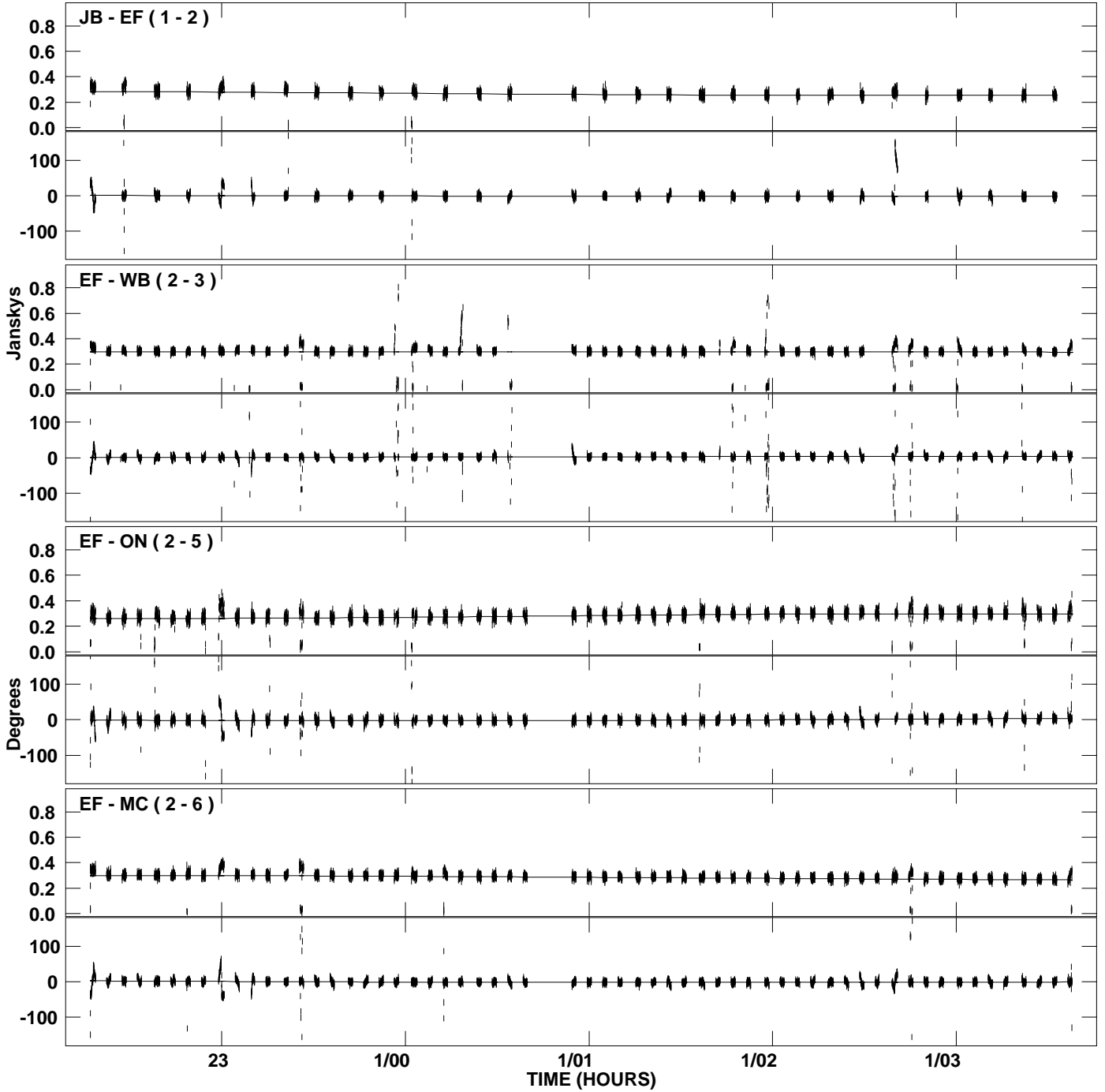
PLot file version 12 created 26-JAN-2007 13:47:37  
Amplitude andPhase vs Time for J2001+1027.MULTI.1 CL # 3  
IF 6 CHAN 1 STK LL of J2001+1027.ICL001.3



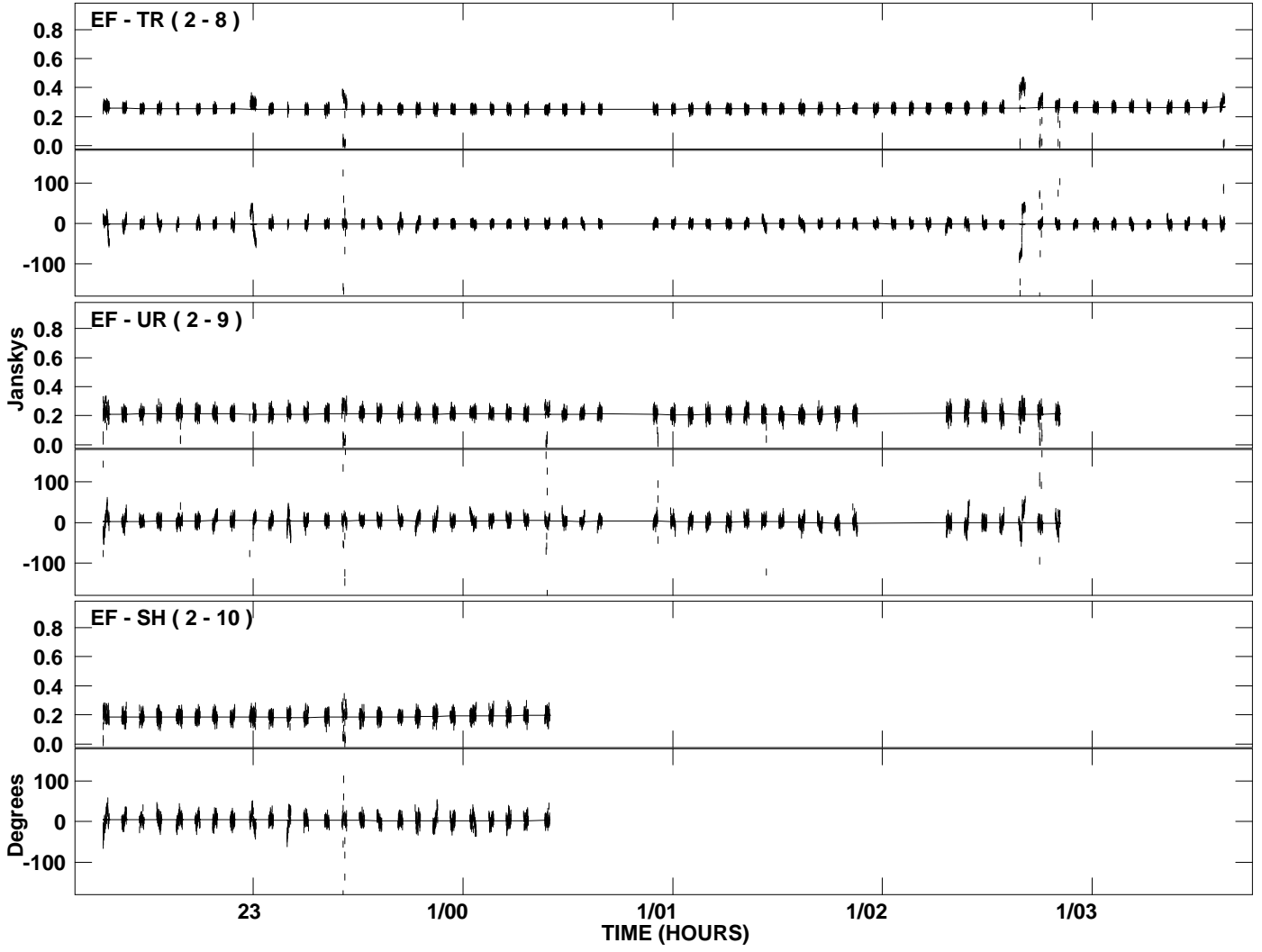
PLot file version 13 created 26-JAN-2007 13:47:37  
Amplitude and Phase vs Time for J2001+1027.MULTI.1 CL # 3  
IF 6 CHAN 1 STK LL of J2001+1027.ICL001.3



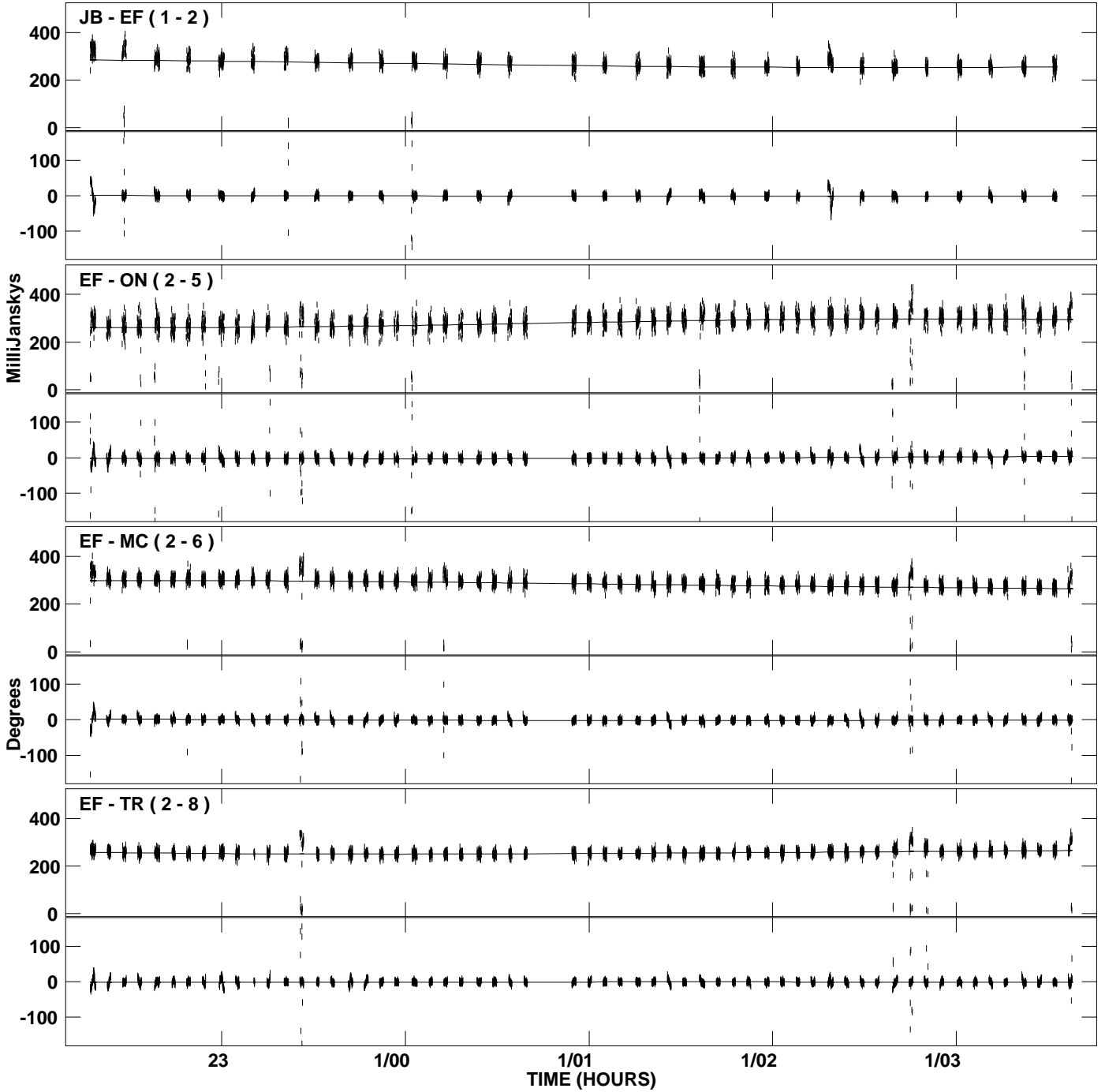
PLot file version 14 created 26-JAN-2007 13:47:51  
Amplitude and Phase vs Time for J2001+1027.MULTI.1 CL # 3  
IF 7 CHAN 1 STK LL of J2001+1027.ICL001.3



PLot file version 15 created 26-JAN-2007 13:47:51  
Amplitude and Phase vs Time for J2001+1027.MULTI.1 CL # 3  
IF 7 CHAN 1 STK LL of J2001+1027.ICL001.3

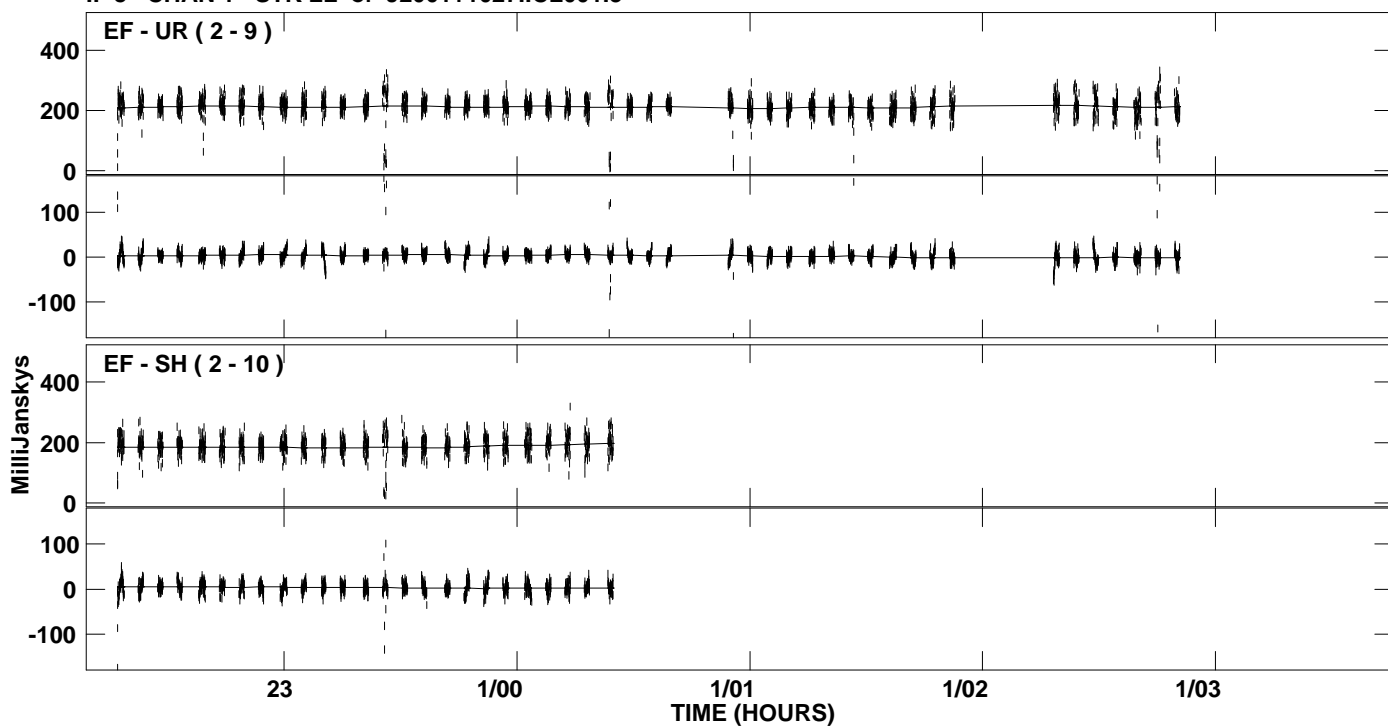


PLot file version 16 created 26-JAN-2007 13:48:04  
Amplitude andPhase vs Time for J2001+1027.MULTI.1 CL # 3  
IF 8 CHAN 1 STK LL of J2001+1027.ICL001.3

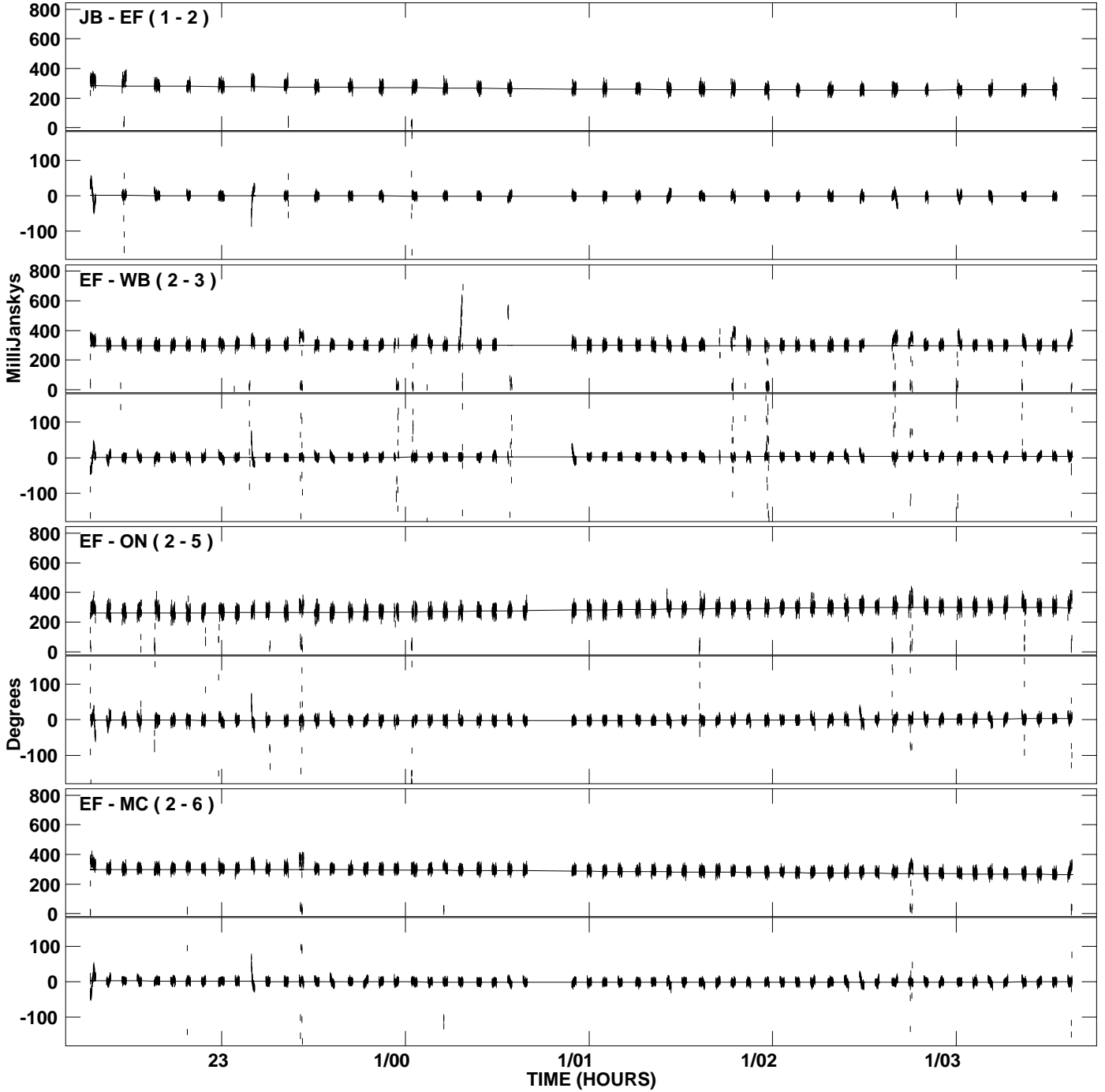




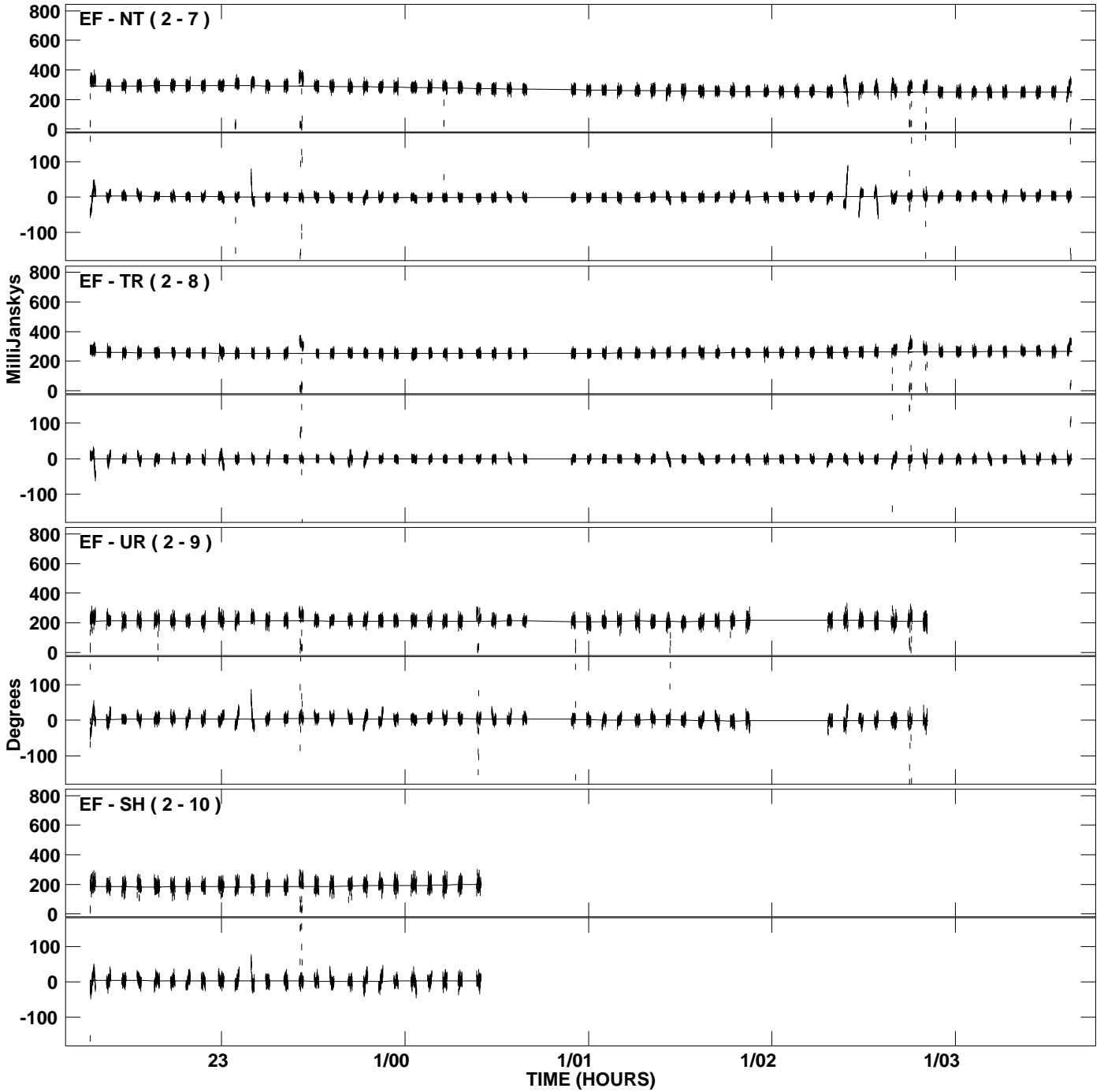
PLot file version 17 created 26-JAN-2007 13:48:04  
Amplitude andPhase vs Time for J2001+1027.MULTI.1 CL # 3  
IF 8 CHAN 1 STK LL of J2001+1027.ICL001.3



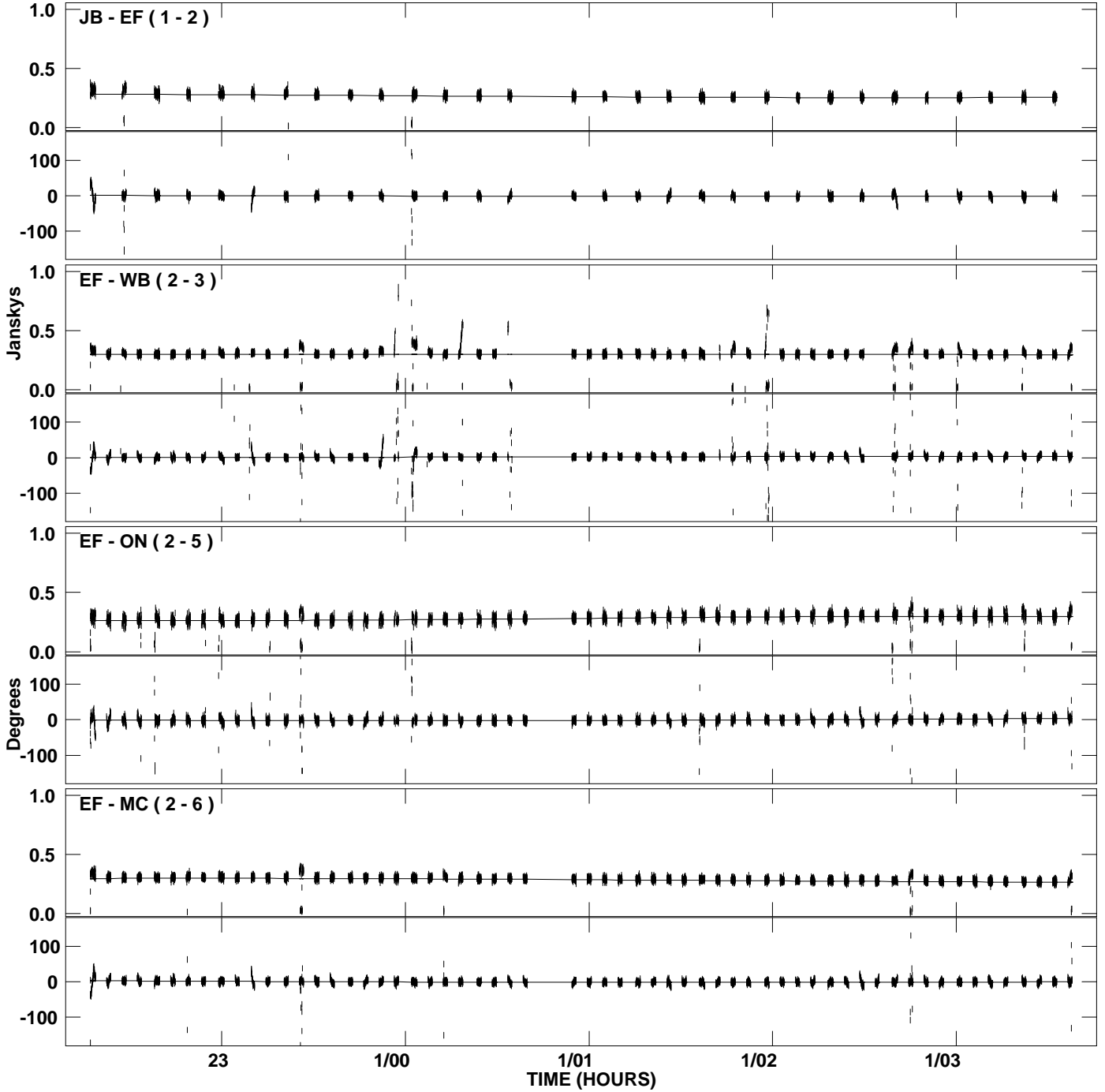
PLot file version 18 created 26-JAN-2007 13:48:18  
Amplitude andPhase vs Time for J2001+1027.MULTI.1 CL # 3  
IF 1 CHAN 1 STK RR of J2001+1027.ICL001.3



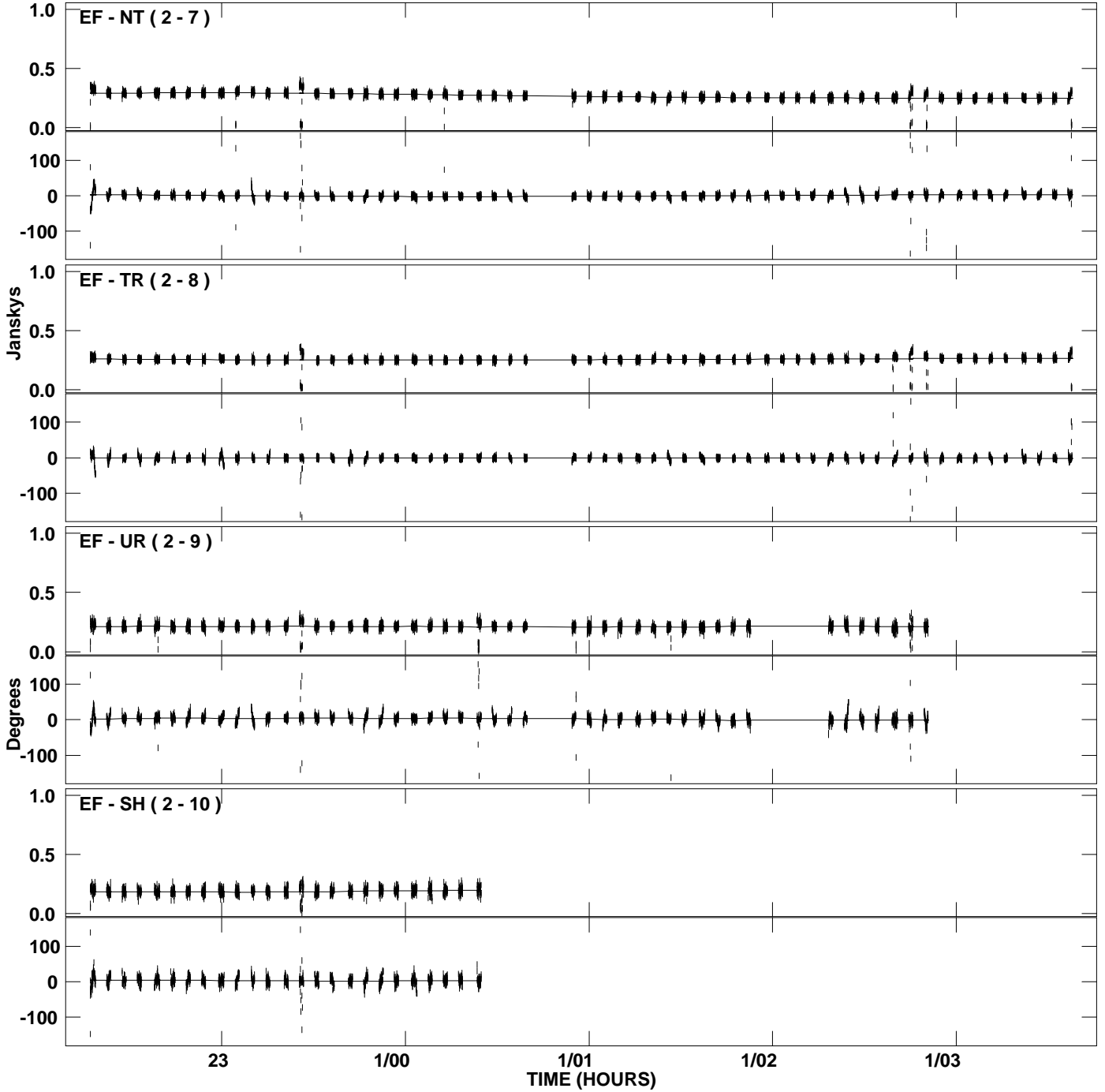
PLot file version 19 created 26-JAN-2007 13:48:18  
Amplitude andPhase vs Time for J2001+1027.MULTI.1 CL # 3  
IF 1 CHAN 1 STK RR of J2001+1027.ICL001.3



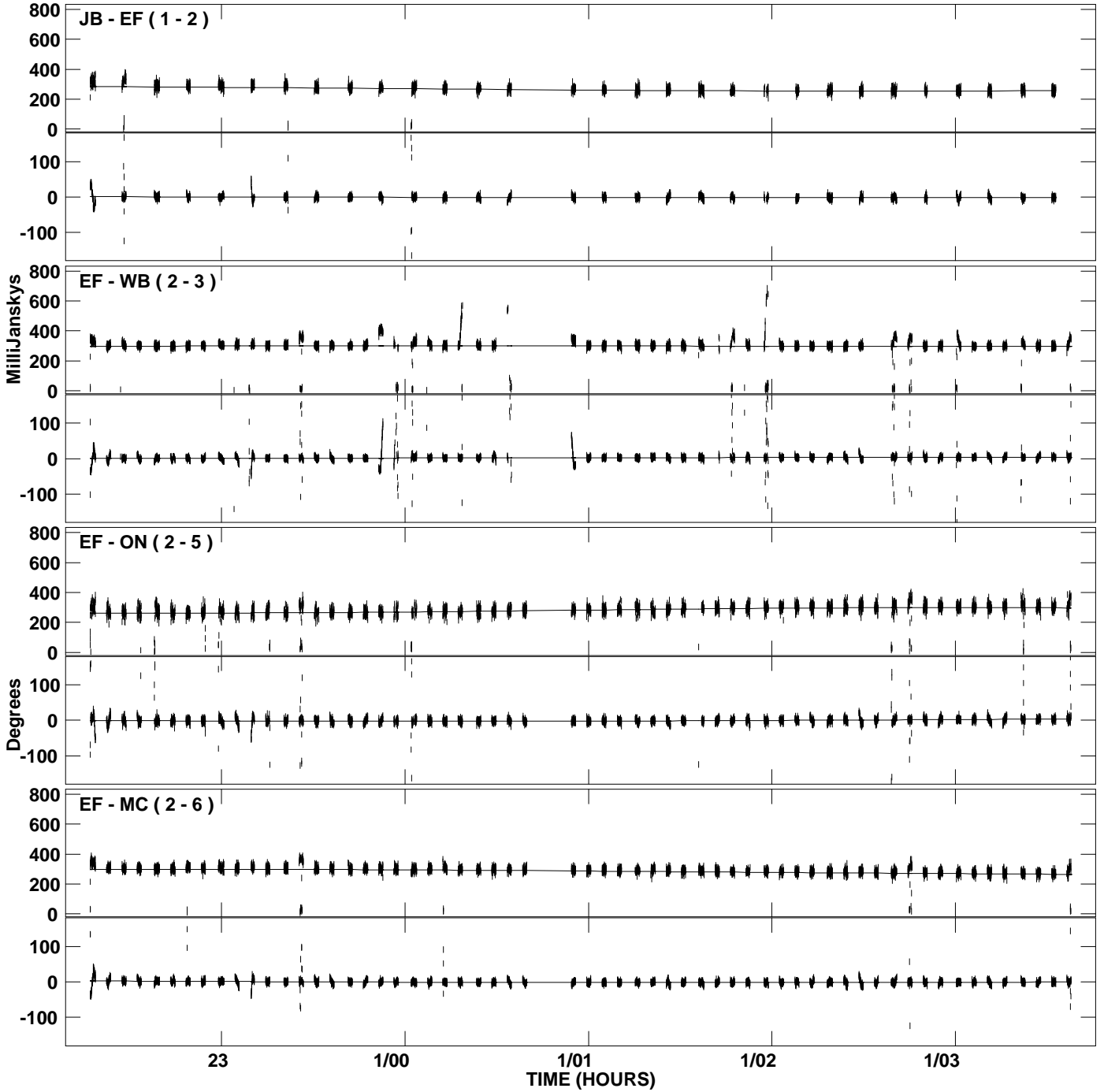
PLot file version 20 created 26-JAN-2007 13:48:31  
Amplitude and Phase vs Time for J2001+1027.MULTI.1 CL # 3  
IF 2 CHAN 1 STK RR of J2001+1027.ICL001.3



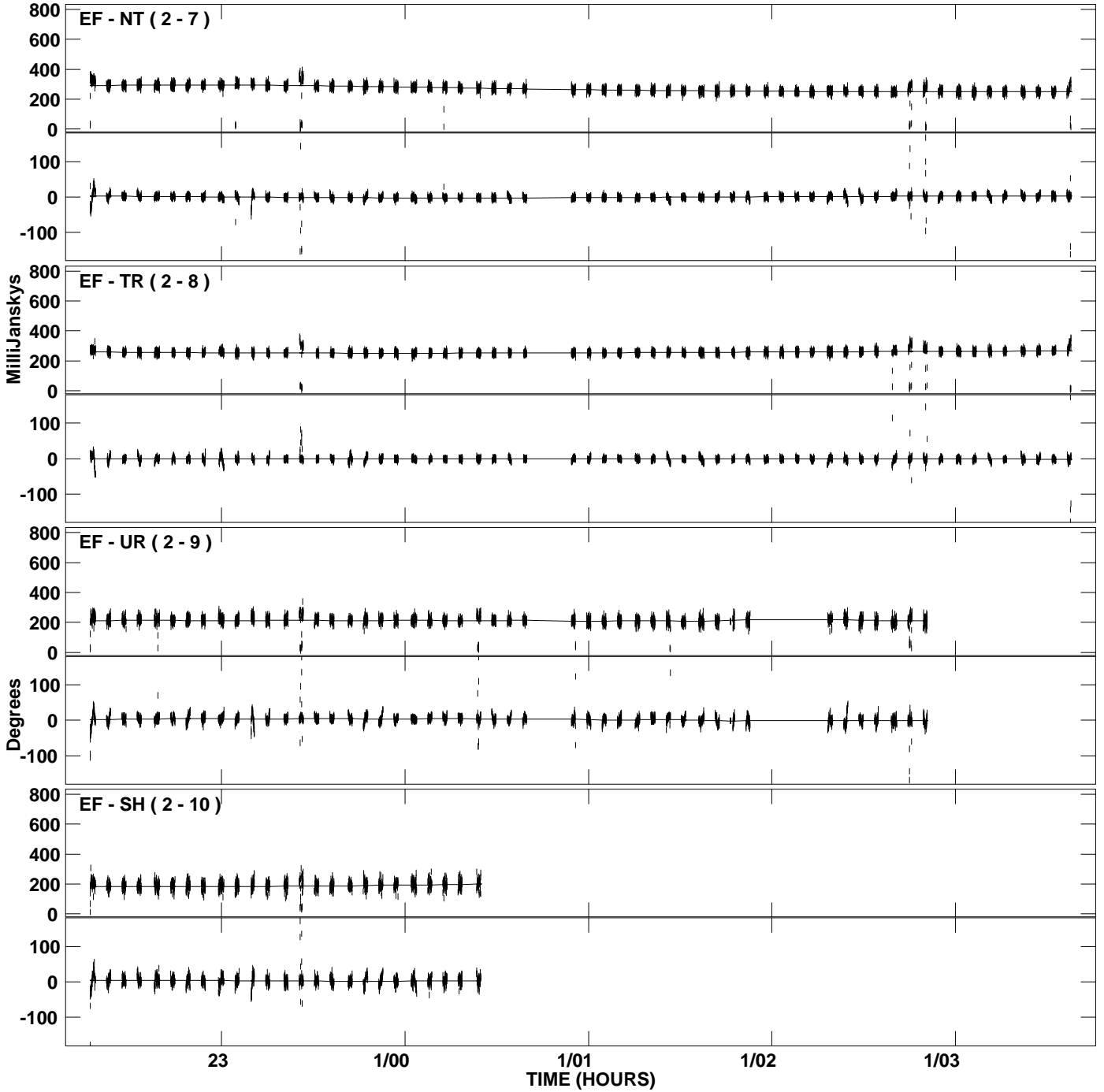
PLot file version 21 created 26-JAN-2007 13:48:32  
Amplitude and Phase vs Time for J2001+1027.MULTI.1 CL # 3  
IF 2 CHAN 1 STK RR of J2001+1027.ICL001.3



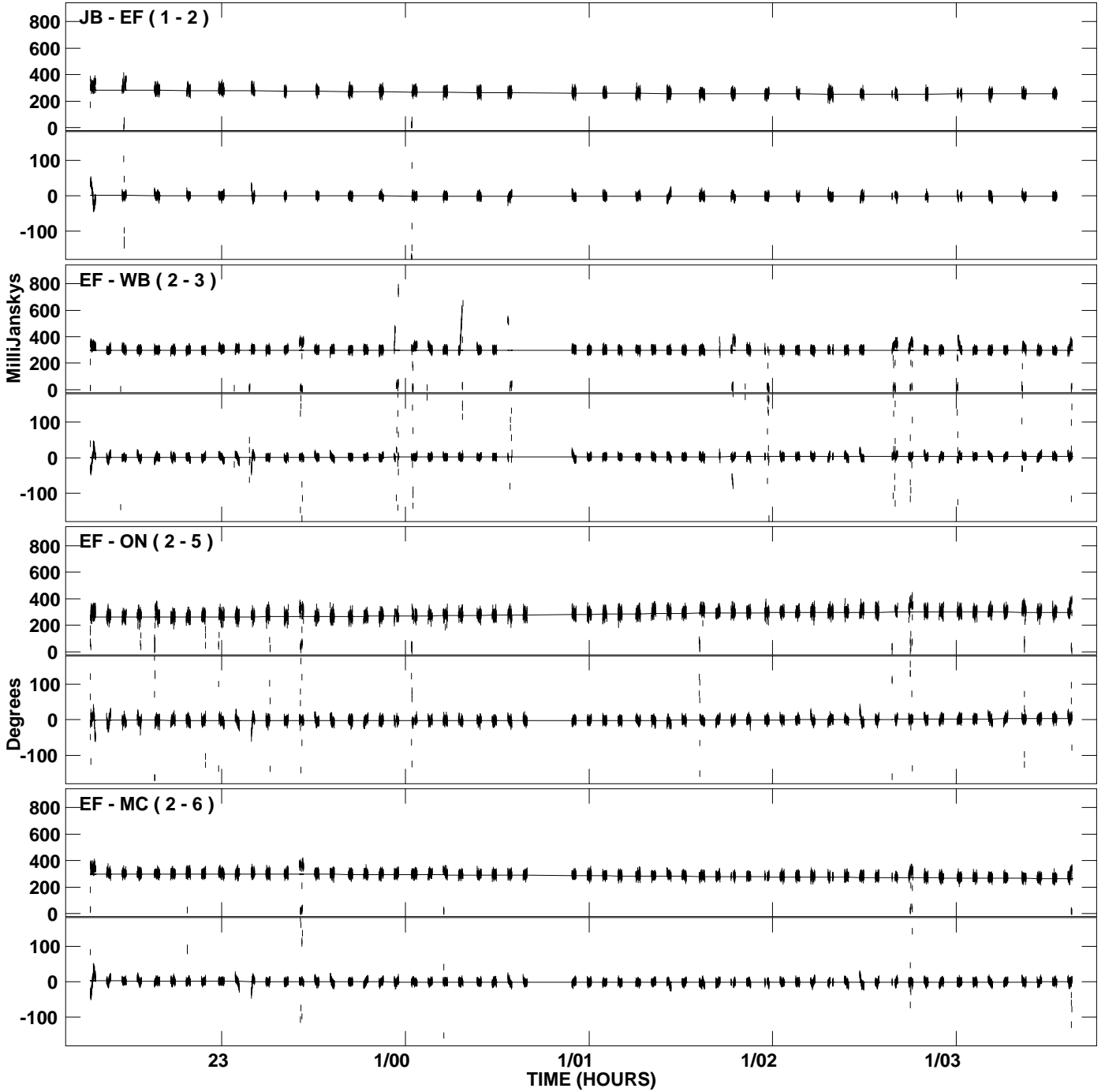
PLot file version 22 created 26-JAN-2007 13:48:45  
Amplitude andPhase vs Time for J2001+1027.MULTI.1 CL # 3  
IF 3 CHAN 1 STK RR of J2001+1027.ICL001.3



PLot file version 23 created 26-JAN-2007 13:48:45  
Amplitude and Phase vs Time for J2001+1027.MULTI.1 CL # 3  
IF 3 CHAN 1 STK RR of J2001+1027.ICL001.3

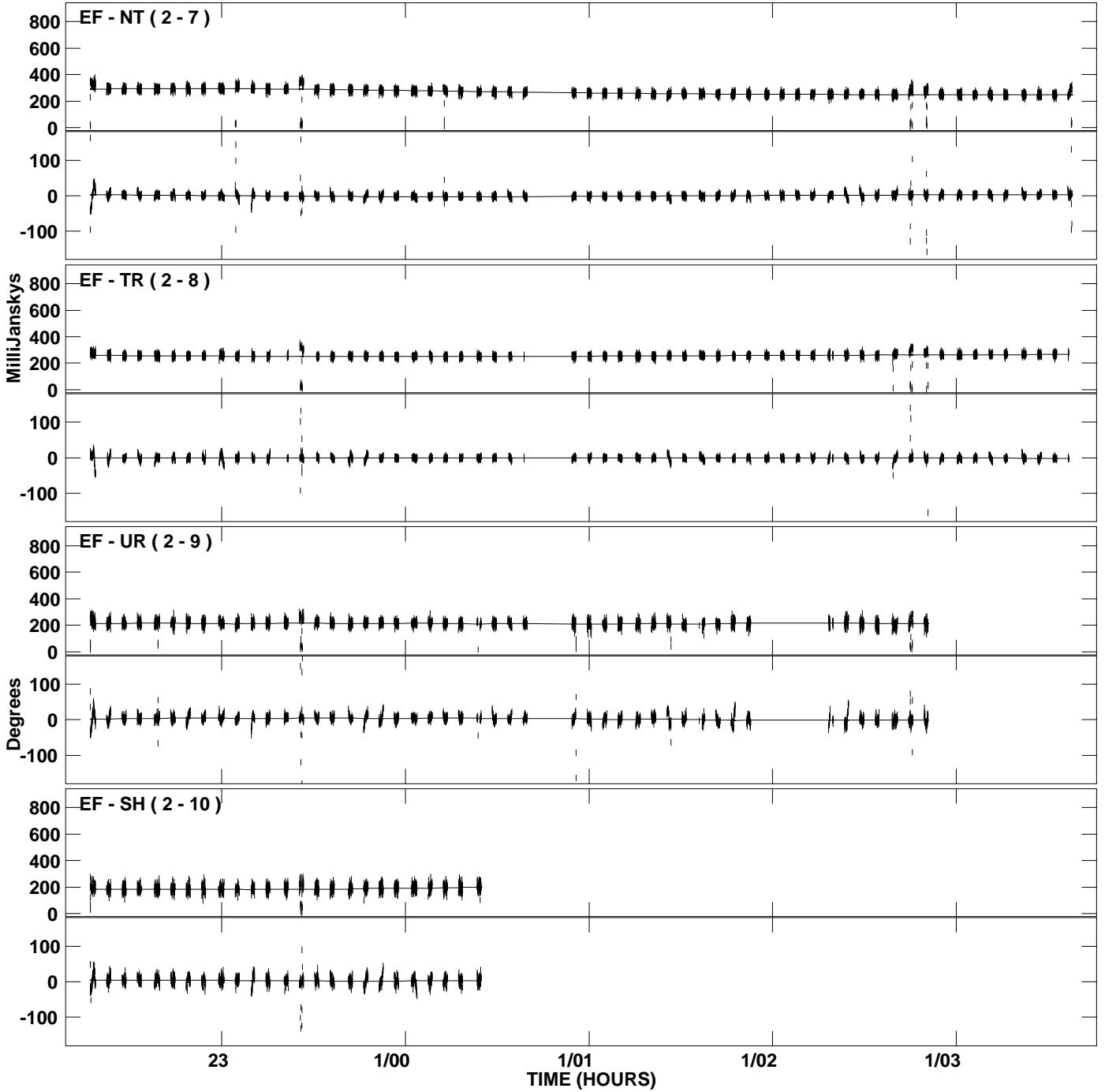


PLot file version 24 created 26-JAN-2007 13:48:59  
Amplitude and Phase vs Time for J2001+1027.MULTI.1 CL # 3  
IF 4 CHAN 1 STK RR of J2001+1027.ICL001.3

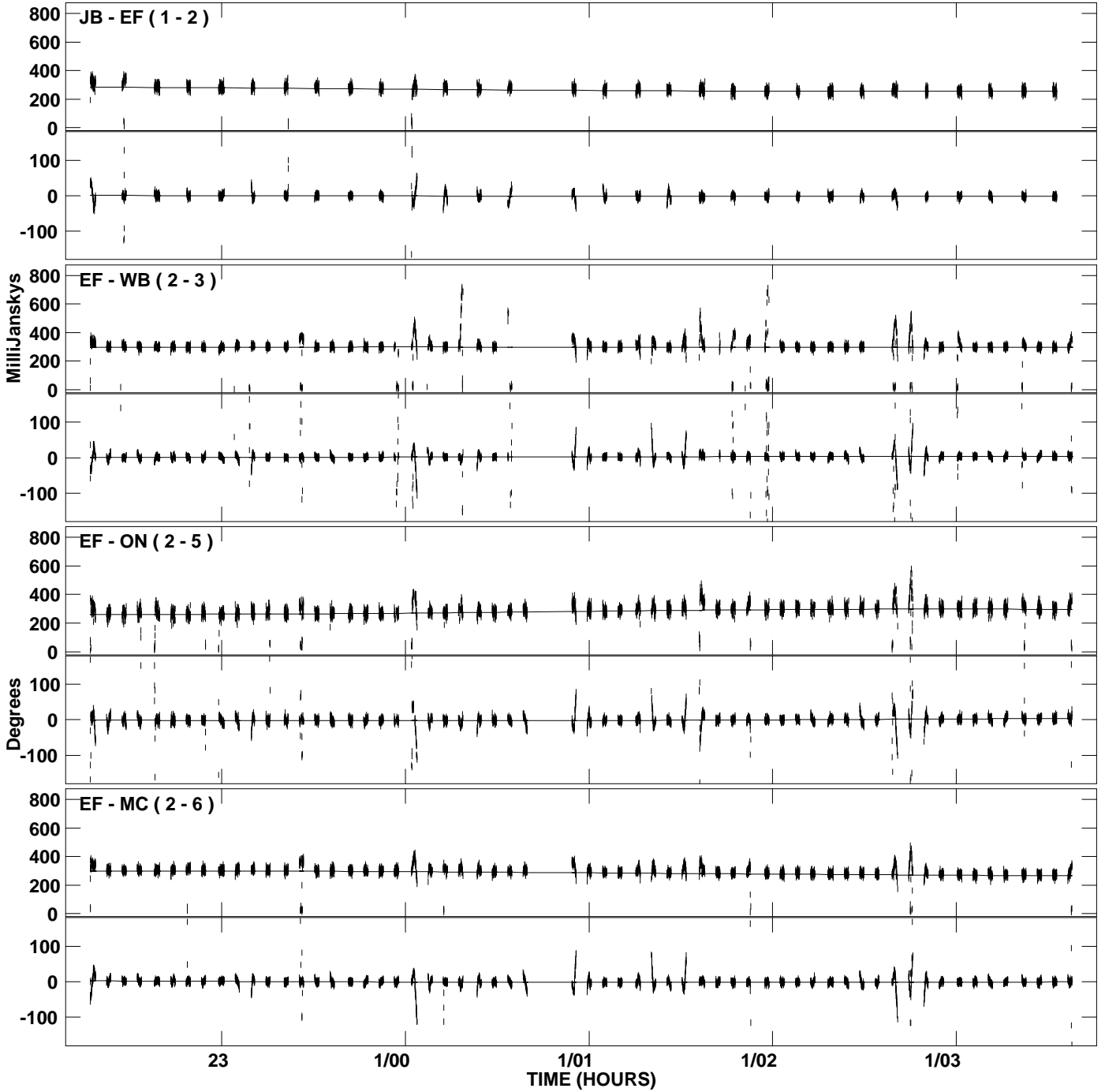




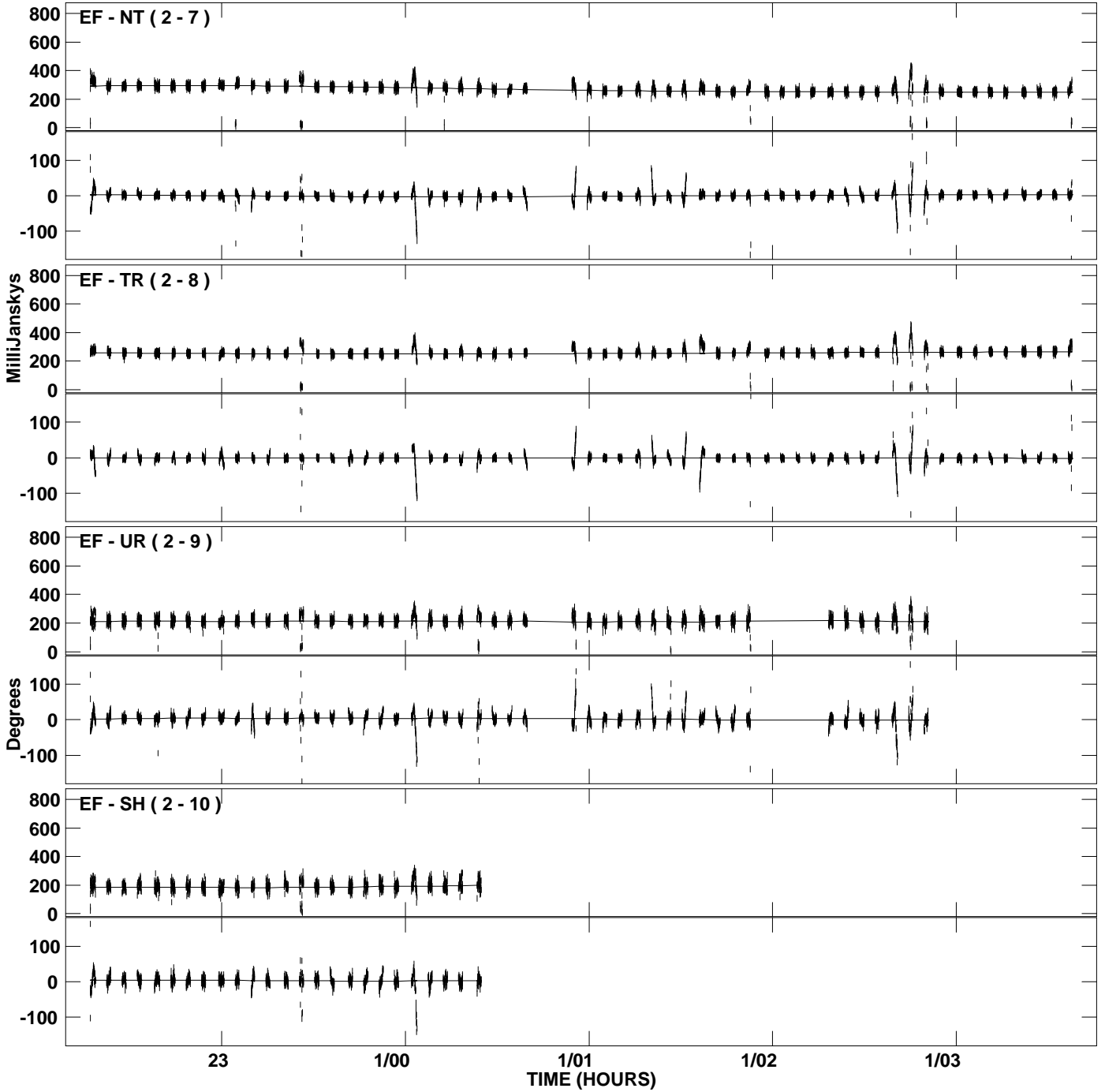
PLot file version 25 created 26-JAN-2007 13:48:59  
Amplitude andPhase vs Time for J2001+1027.MULTI.1 CL # 3  
IF 4 CHAN 1 STK RR of J2001+1027.ICL001.3



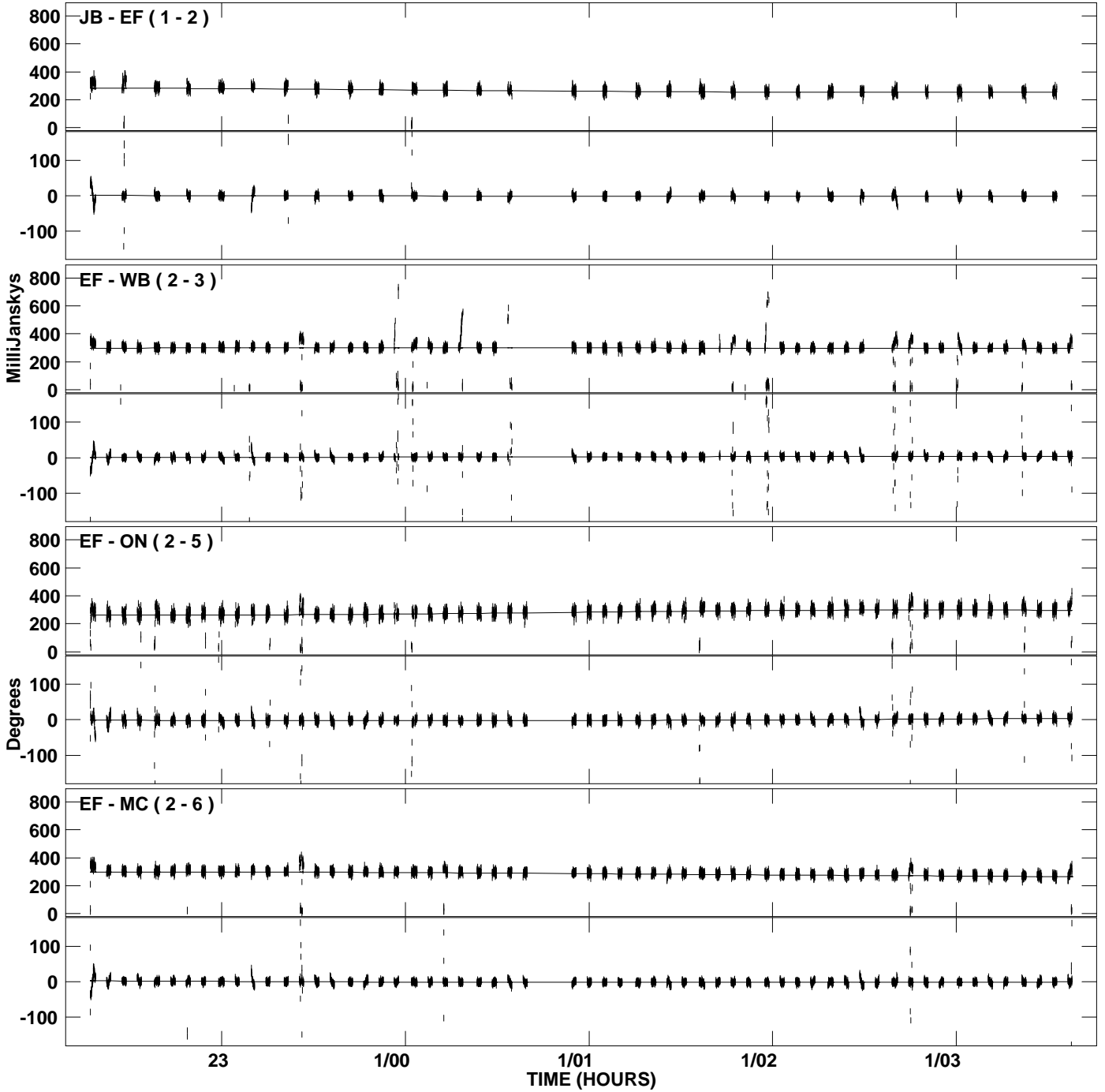
PLot file version 26 created 26-JAN-2007 13:49:12  
Amplitude andPhase vs Time for J2001+1027.MULTI.1 CL # 3  
IF 5 CHAN 1 STK RR of J2001+1027.ICL001.3



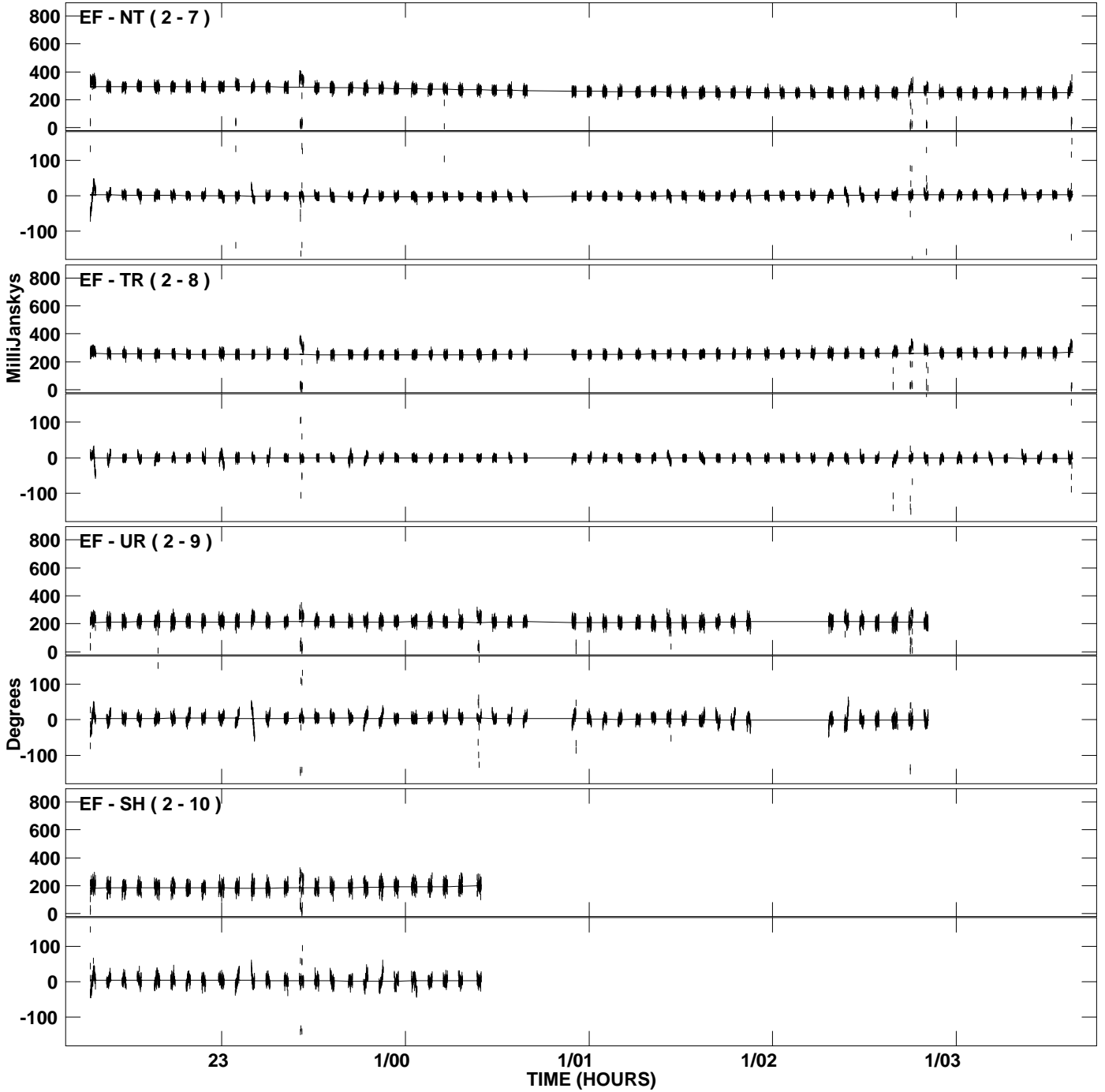
PLot file version 27 created 26-JAN-2007 13:49:12  
Amplitude andPhase vs Time for J2001+1027.MULTI.1 CL # 3  
IF 5 CHAN 1 STK RR of J2001+1027.ICL001.3



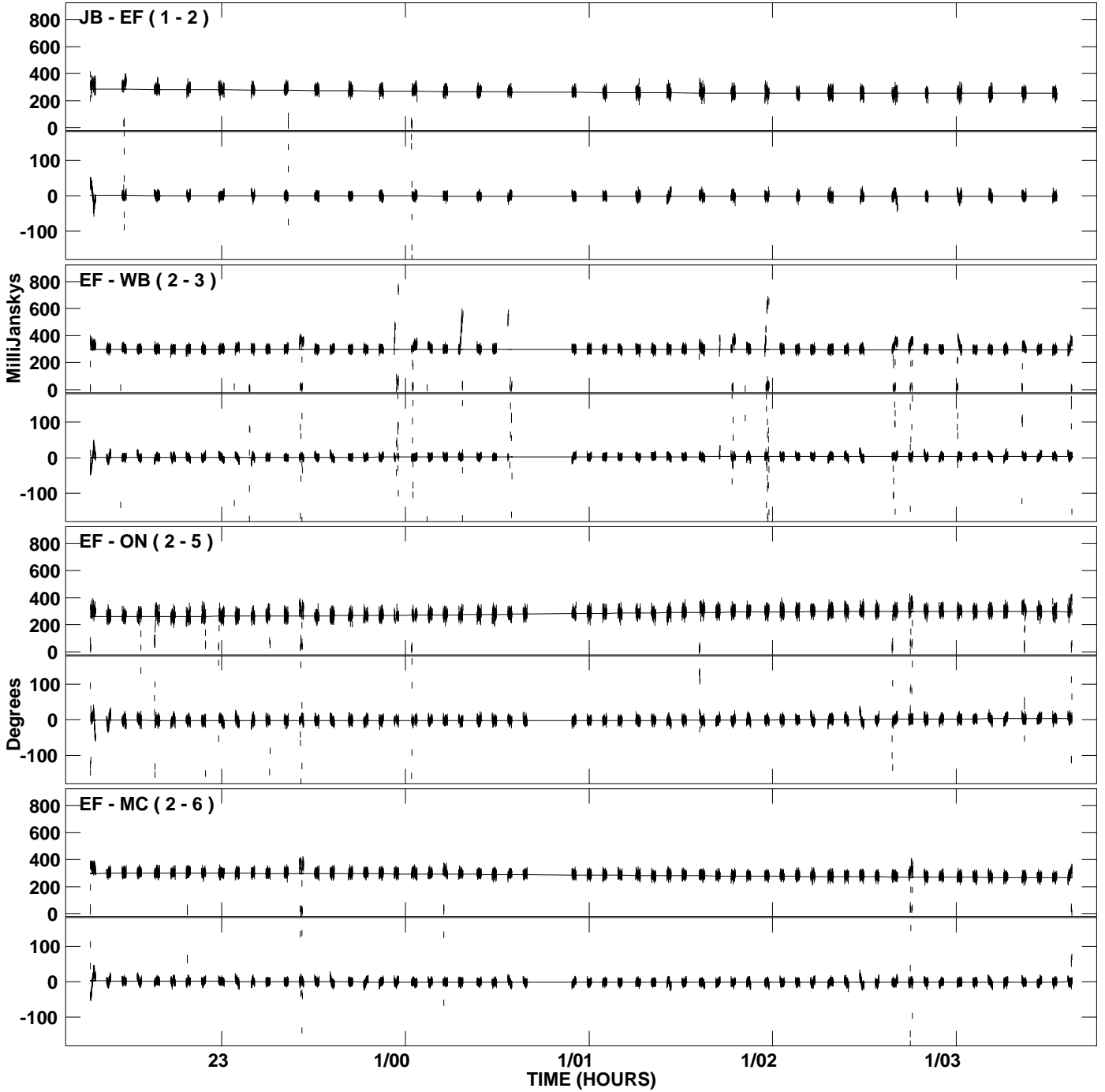
PLot file version 28 created 26-JAN-2007 13:49:21  
Amplitude andPhase vs Time for J2001+1027.MULTI.1 CL # 3  
IF 6 CHAN 1 STK RR of J2001+1027.ICL001.3



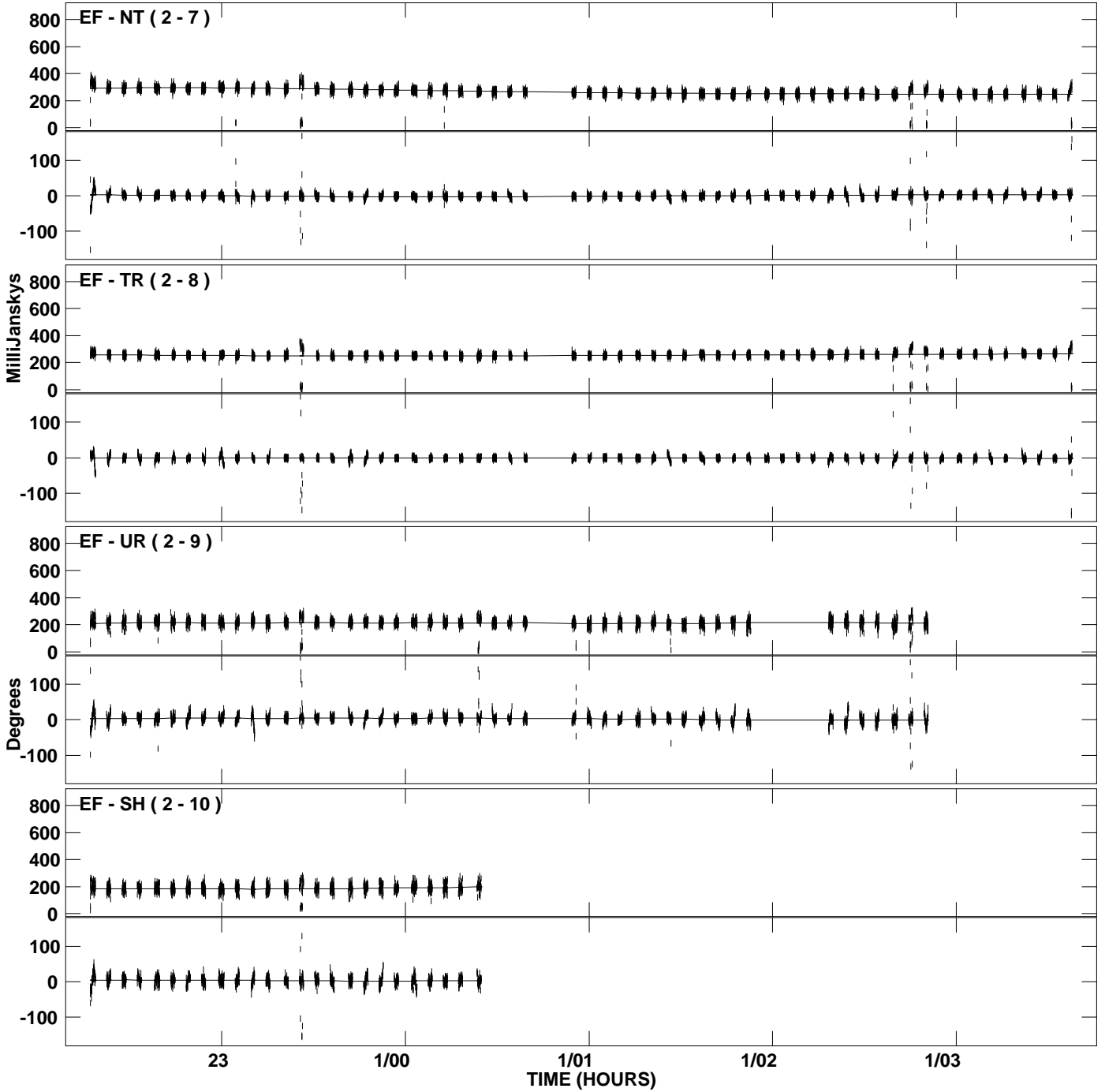
PLot file version 29 created 26-JAN-2007 13:49:21  
Amplitude and Phase vs Time for J2001+1027.MULTI.1 CL # 3  
IF 6 CHAN 1 STK RR of J2001+1027.ICL001.3



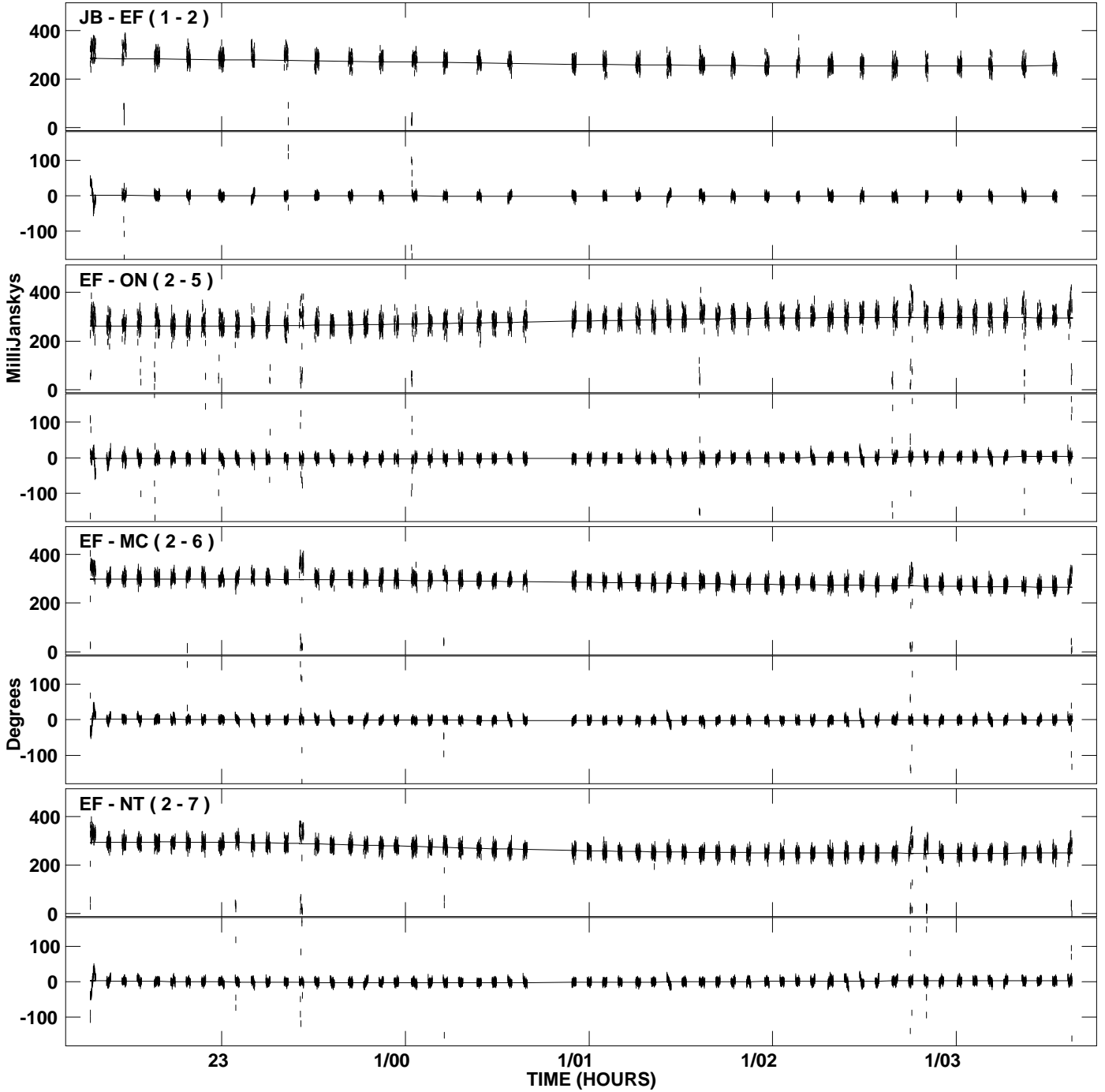
PLot file version 30 created 26-JAN-2007 13:49:33  
Amplitude andPhase vs Time for J2001+1027.MULTI.1 CL # 3  
IF 7 CHAN 1 STK RR of J2001+1027.ICL001.3



PLot file version 31 created 26-JAN-2007 13:49:33  
Amplitude andPhase vs Time for J2001+1027.MULTI.1 CL # 3  
IF 7 CHAN 1 STK RR of J2001+1027.ICL001.3



PLot file version 32 created 26-JAN-2007 13:49:43  
Amplitude and Phase vs Time for J2001+1027.MULTI.1 CL # 3  
IF 8 CHAN 1 STK RR of J2001+1027.ICL001.3





PLot file version 33 created 26-JAN-2007 13:49:43  
Amplitude andPhase vs Time for J2001+1027.MULTI.1 CL # 3  
IF 8 CHAN 1 STK RR of J2001+1027.ICL001.3

