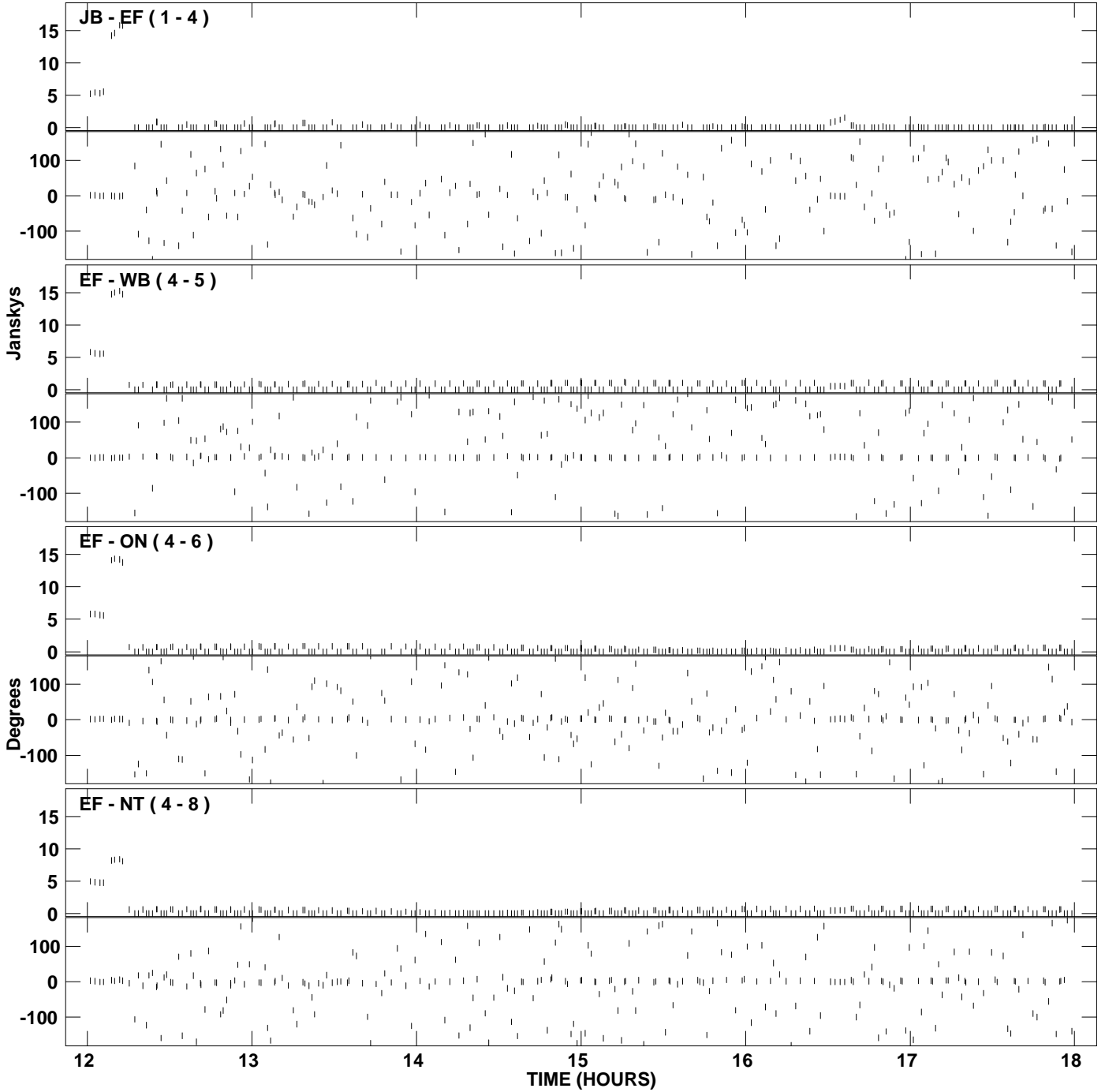
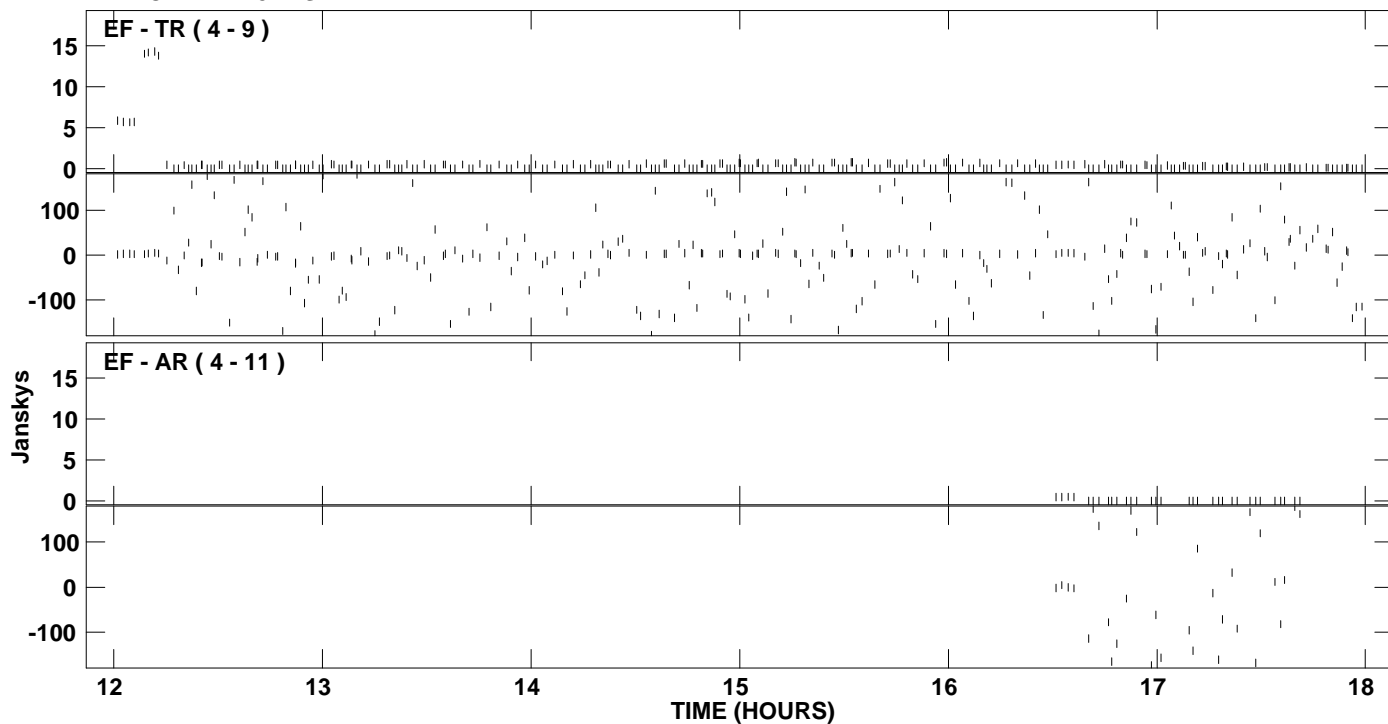


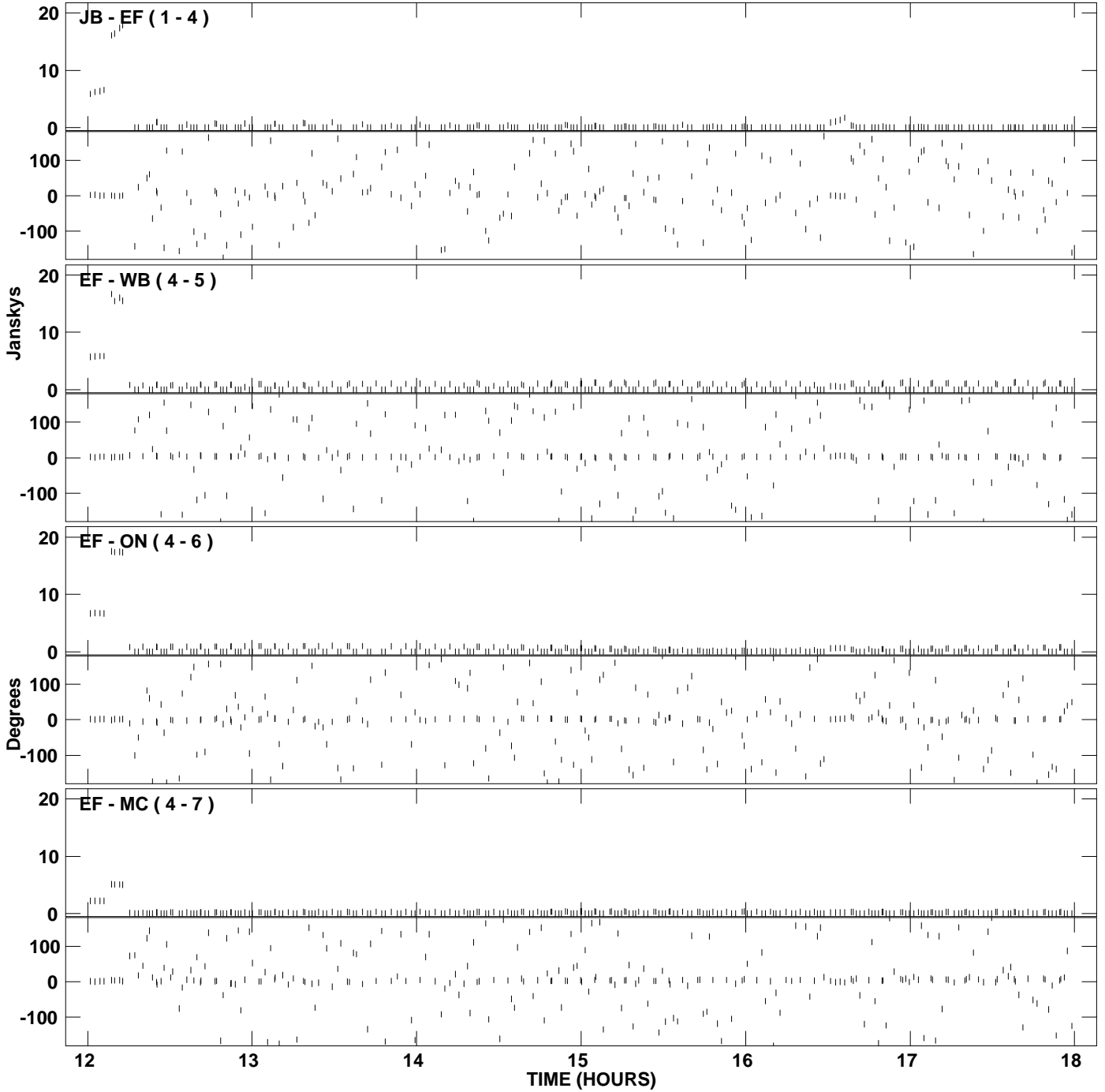
PLot file version 1 created 29-APR-2009 14:35:42
Amplitude andPhase vs Time for EP064D.UVDATA.1 Vect aver. CL # 3
IF 1 CHAN 1 - 32 STK LL



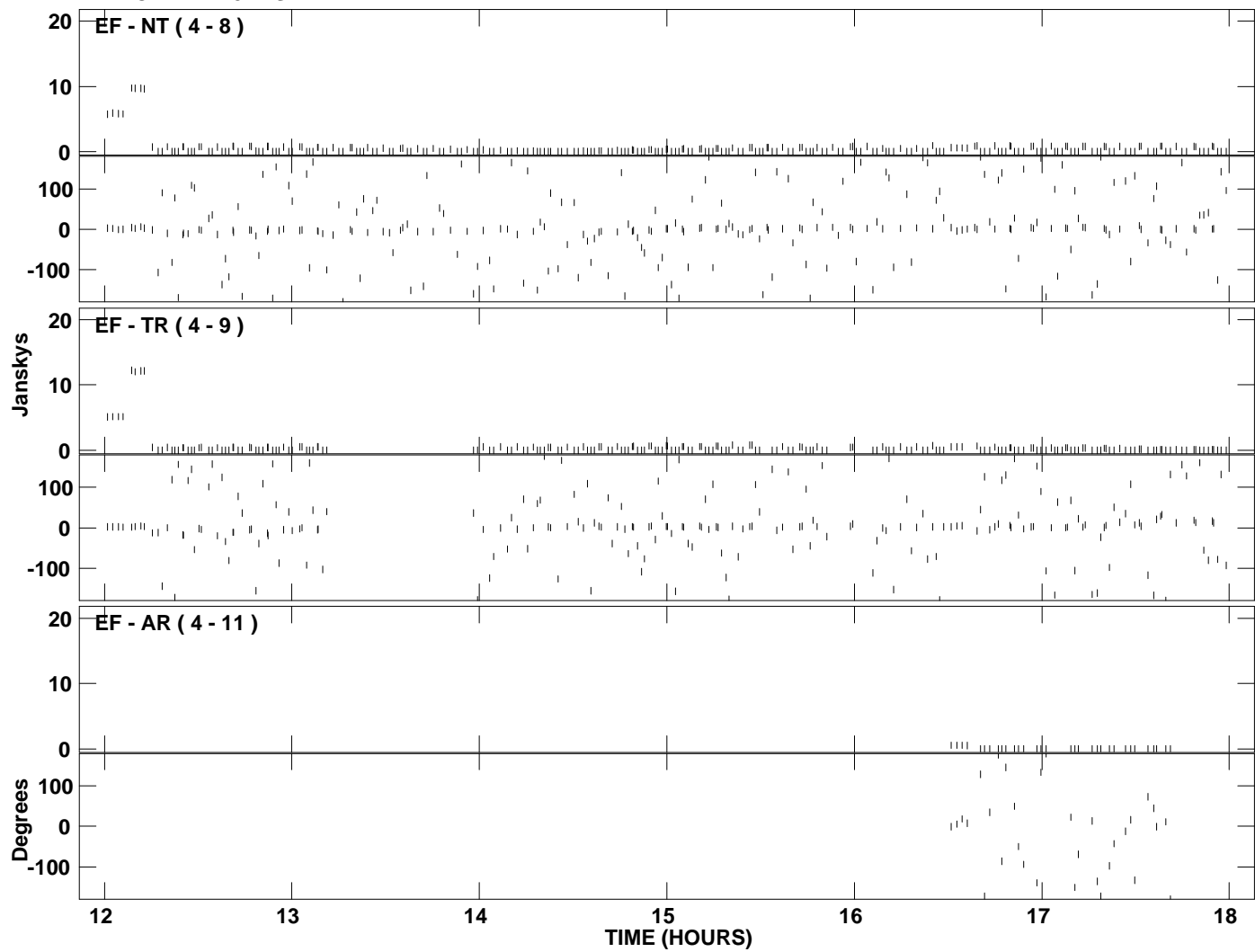
PLot file version 2 created 29-APR-2009 14:35:42
Amplitude andPhase vs Time for EP064D.UVDATA.1 Vect aver. CL # 3
IF 1 CHAN 1 - 32 STK LL



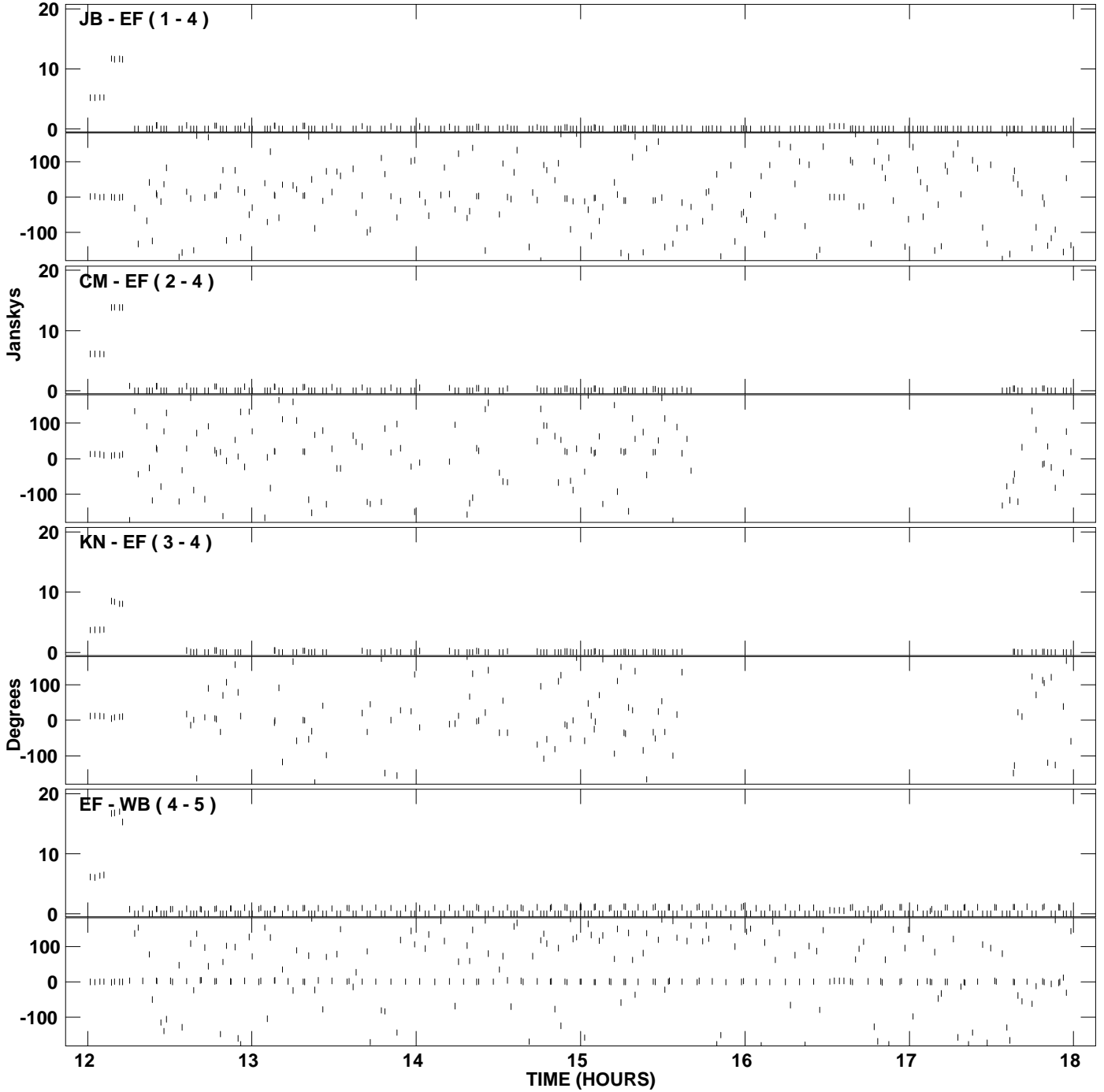
PLot file version 3 created 29-APR-2009 14:35:51
Amplitude and Phase vs Time for EP064D.UVDATA.1 Vect aver. CL # 3
IF 2 CHAN 1 - 32 STK LL



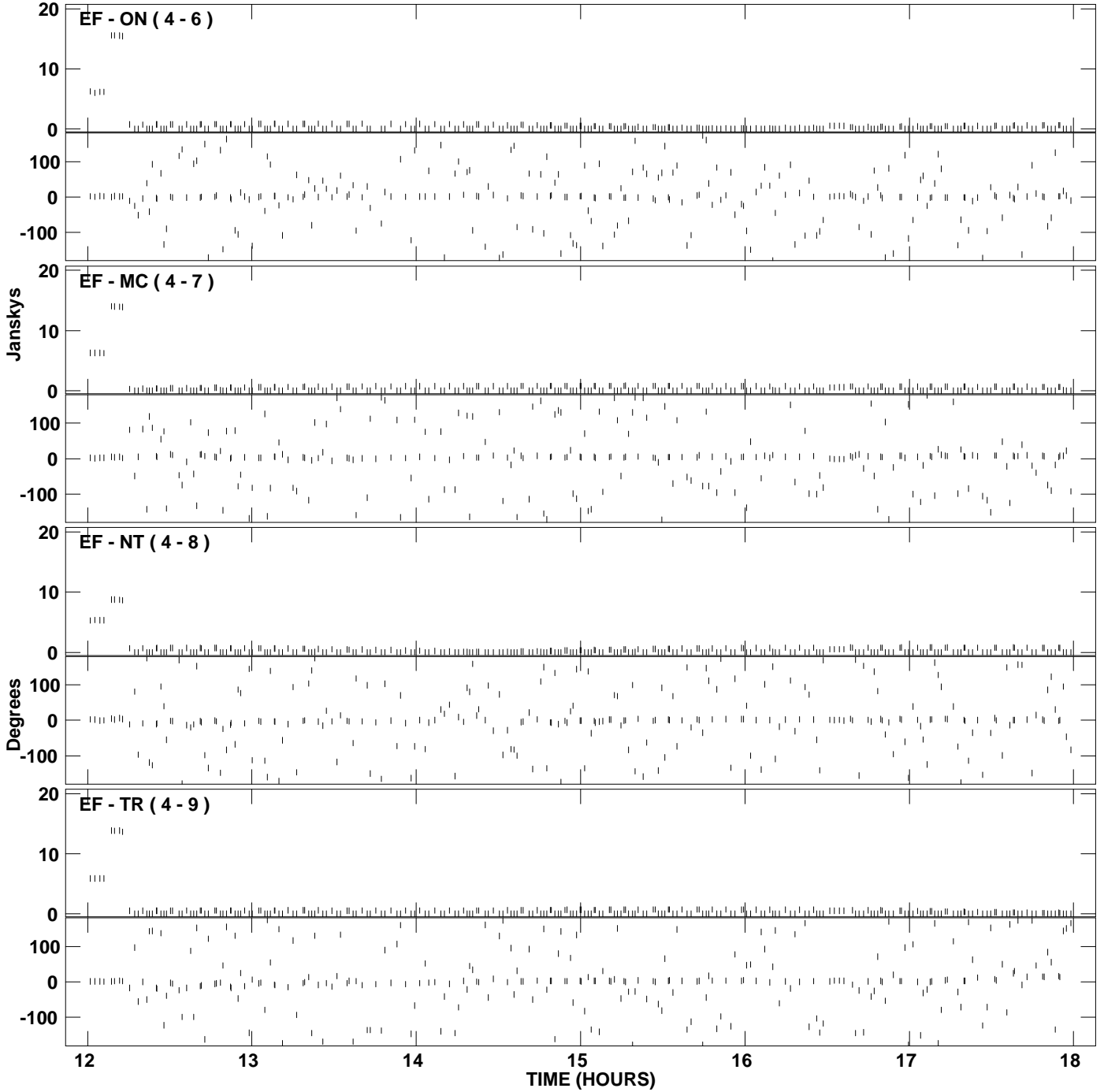
PLot file version 4 created 29-APR-2009 14:35:51
Amplitude and Phase vs Time for EP064D.UVDATA.1 Vect aver. CL # 3
IF 2 CHAN 1 - 32 STK LL



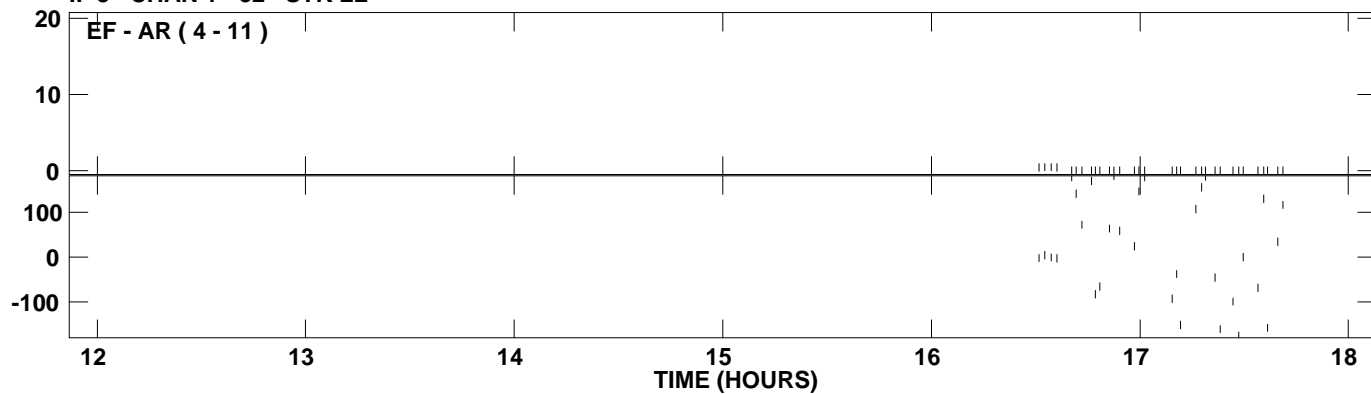
PLot file version 5 created 29-APR-2009 14:36:00
Amplitude and Phase vs Time for EP064D.UVDATA.1 Vect aver. CL # 3
IF 3 CHAN 1 - 32 STK LL



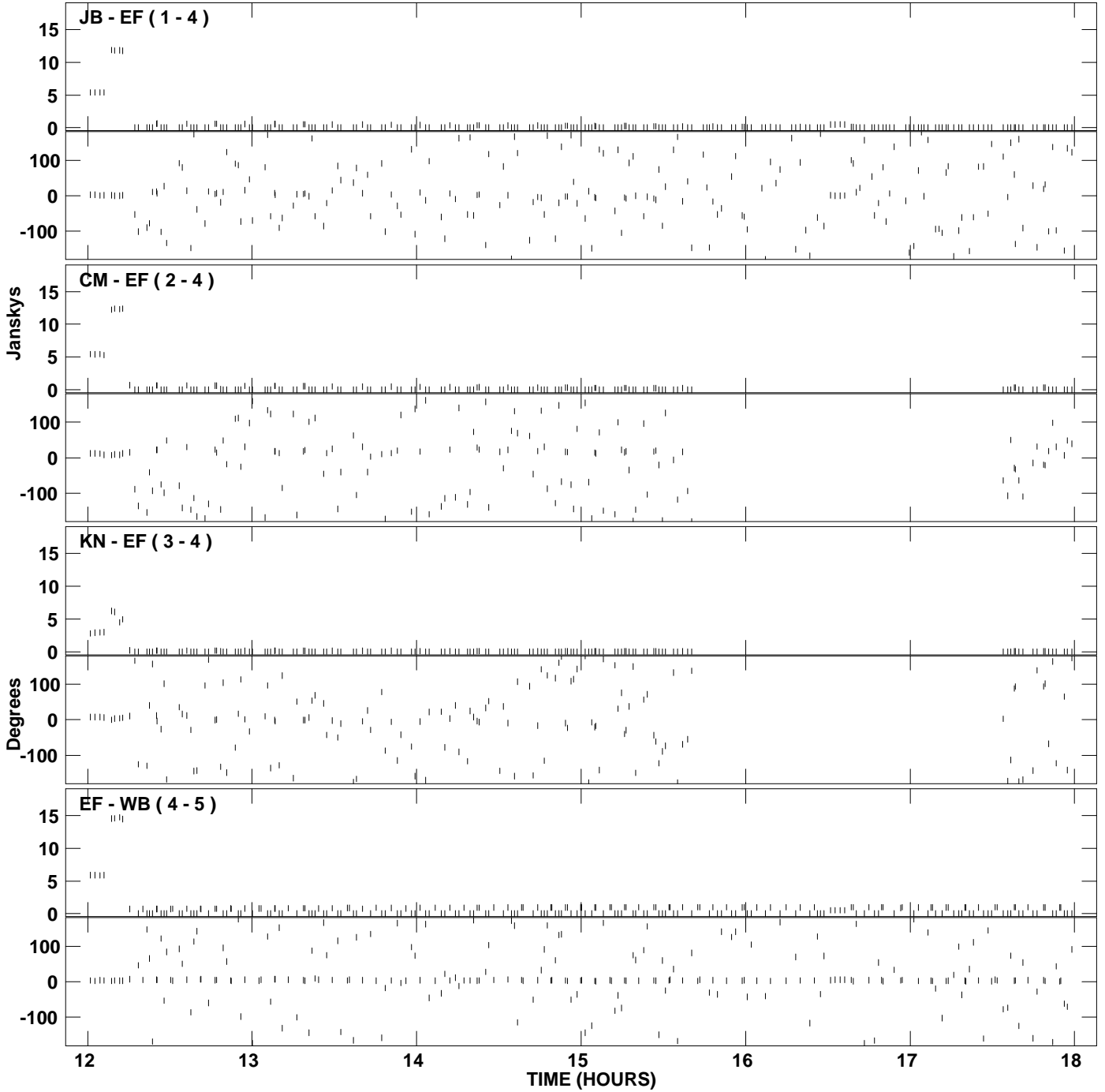
PLot file version 6 created 29-APR-2009 14:36:00
Amplitude andPhase vs Time for EP064D.UVDATA.1 Vect aver. CL # 3
IF 3 CHAN 1 - 32 STK LL



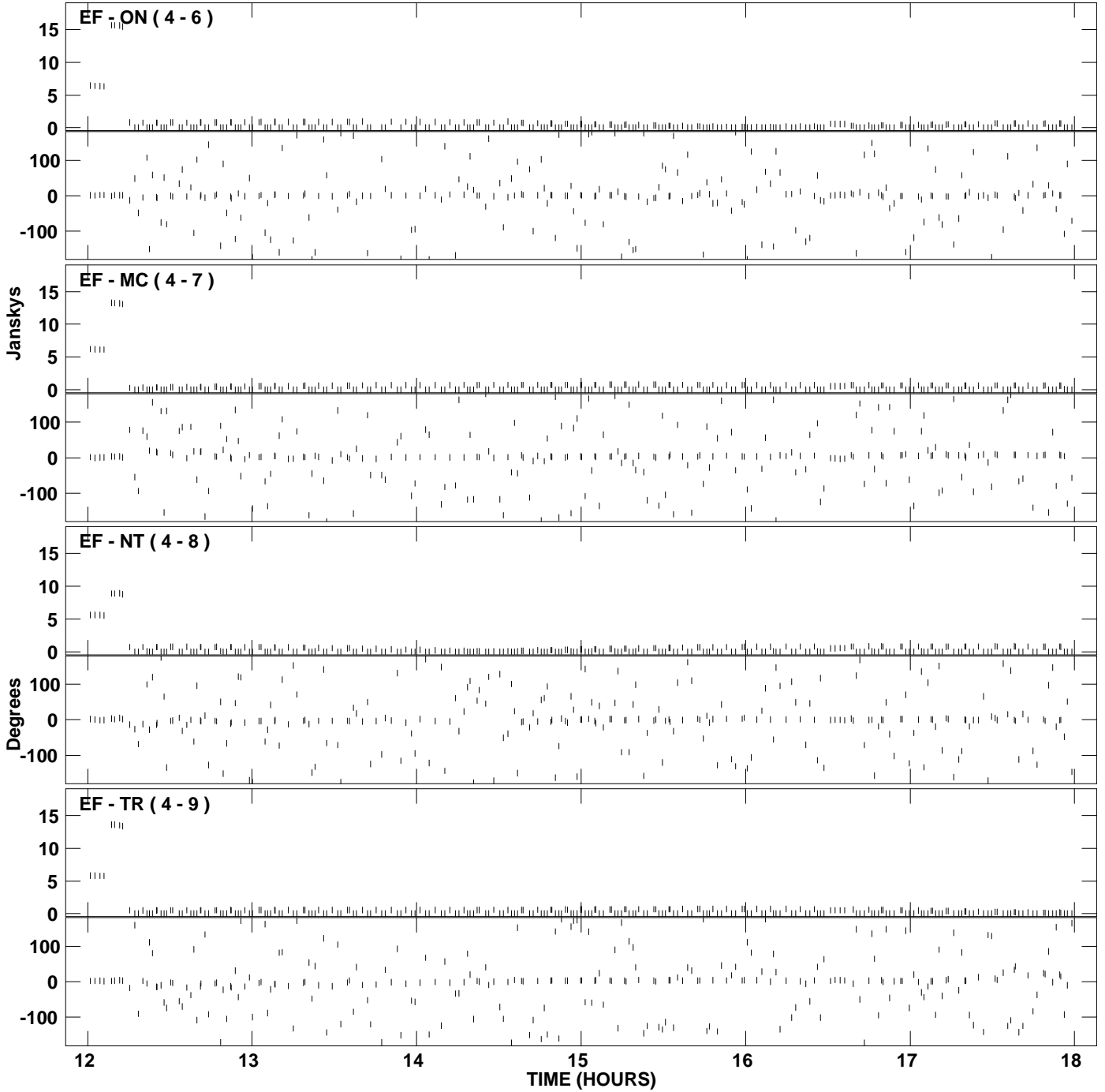
PLot file version 7 created 29-APR-2009 14:36:00
Amplitude andPhase vs Time for EP064D.UVDATA.1 Vect aver. CL # 3
IF 3 CHAN 1 - 32 STK LL



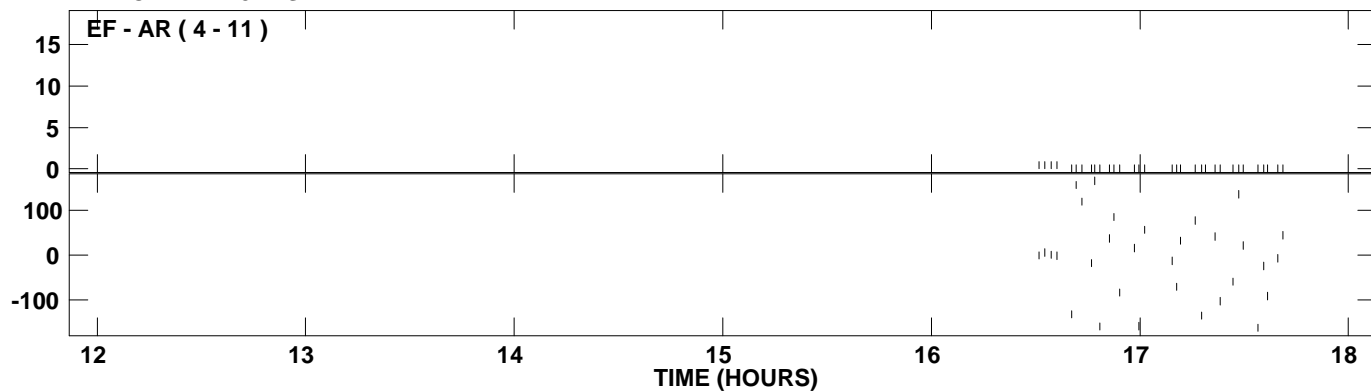
PLot file version 8 created 29-APR-2009 14:36:10
Amplitude andPhase vs Time for EP064D.UVDATA.1 Vect aver. CL # 3
IF 4 CHAN 1 - 32 STK LL



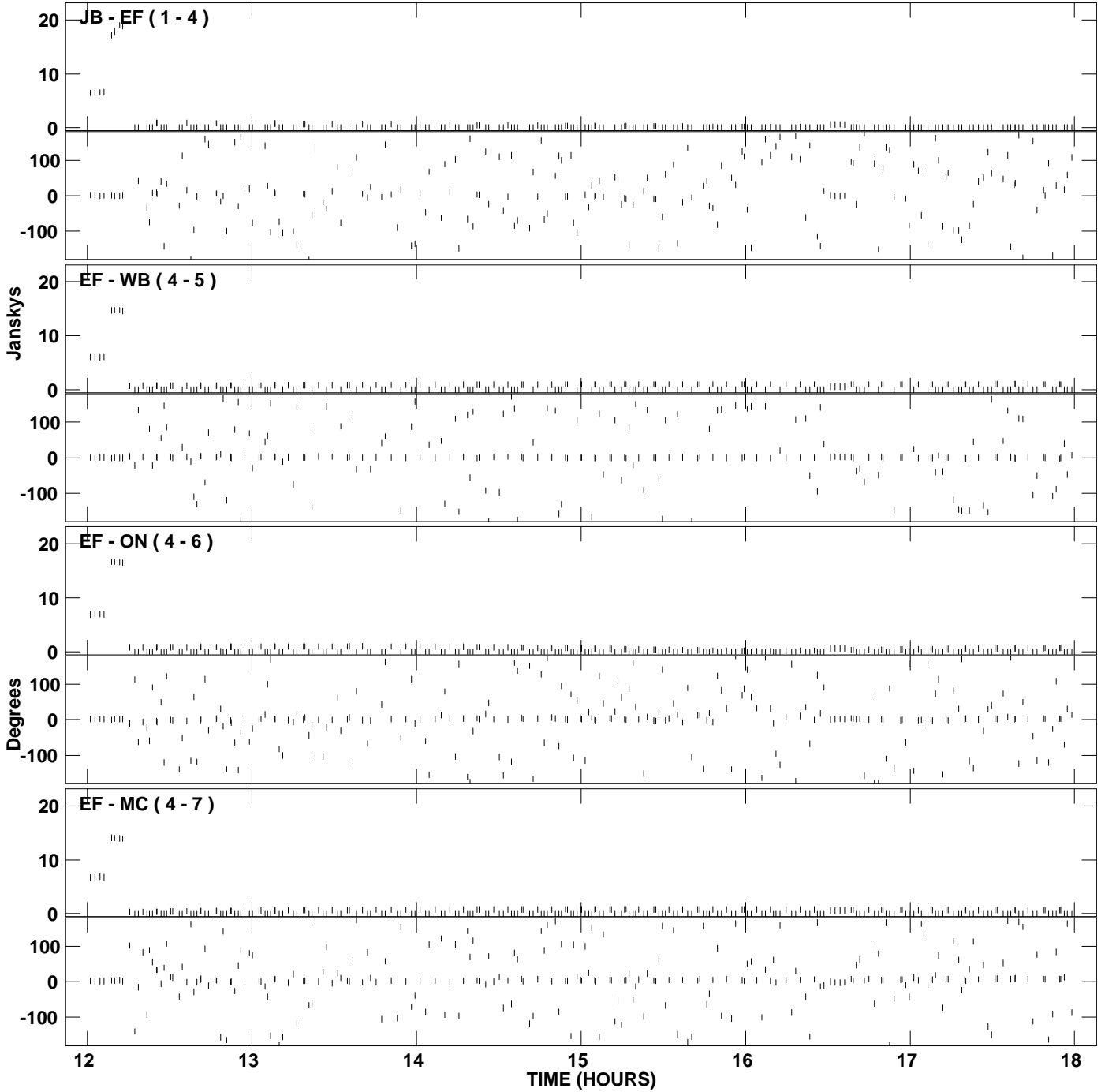
PLot file version 9 created 29-APR-2009 14:36:10
Amplitude and Phase vs Time for EP064D.UVDATA.1 Vect aver. CL # 3
IF 4 CHAN 1 - 32 STK LL



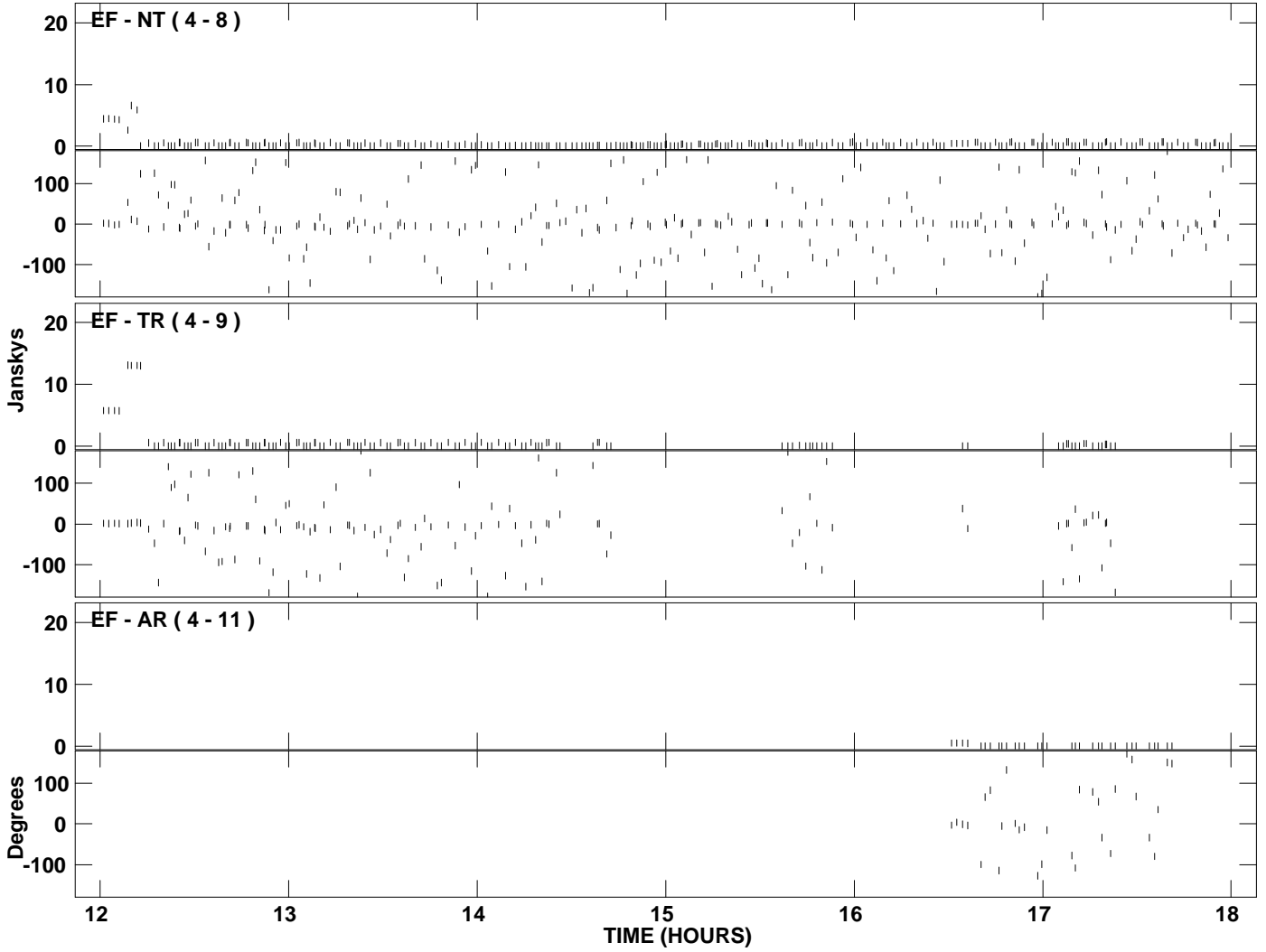
PLot file version 10 created 29-APR-2009 14:36:10
Amplitude and Phase vs Time for EP064D.UVDATA.1 Vect aver. CL # 3
IF 4 CHAN 1 - 32 STK LL



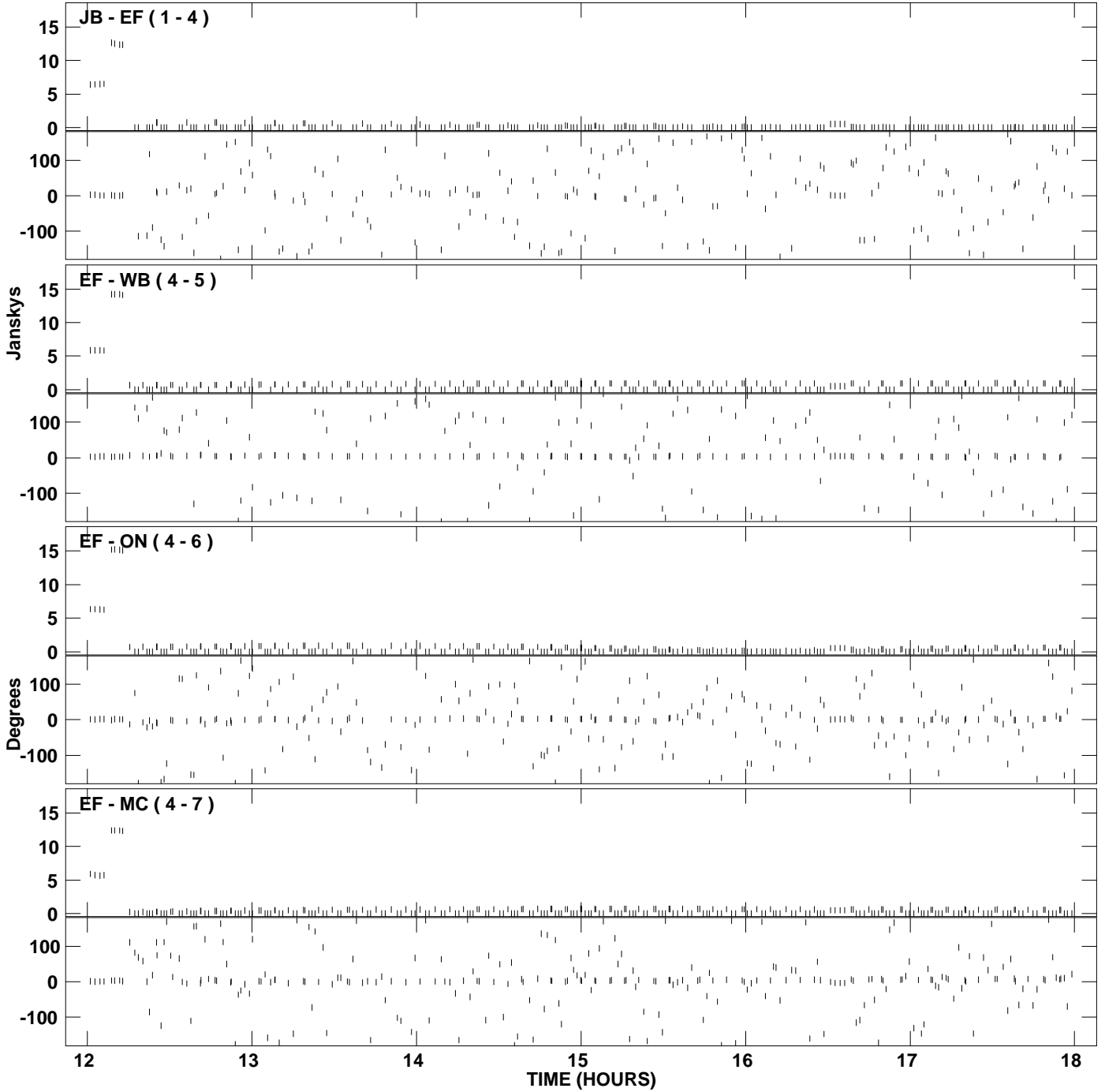
PLot file version 11 created 29-APR-2009 14:36:19
Amplitude and Phase vs Time for EP064D.UVDATA.1 Vect aver. CL # 3
IF 5 CHAN 1 - 32 STK LL



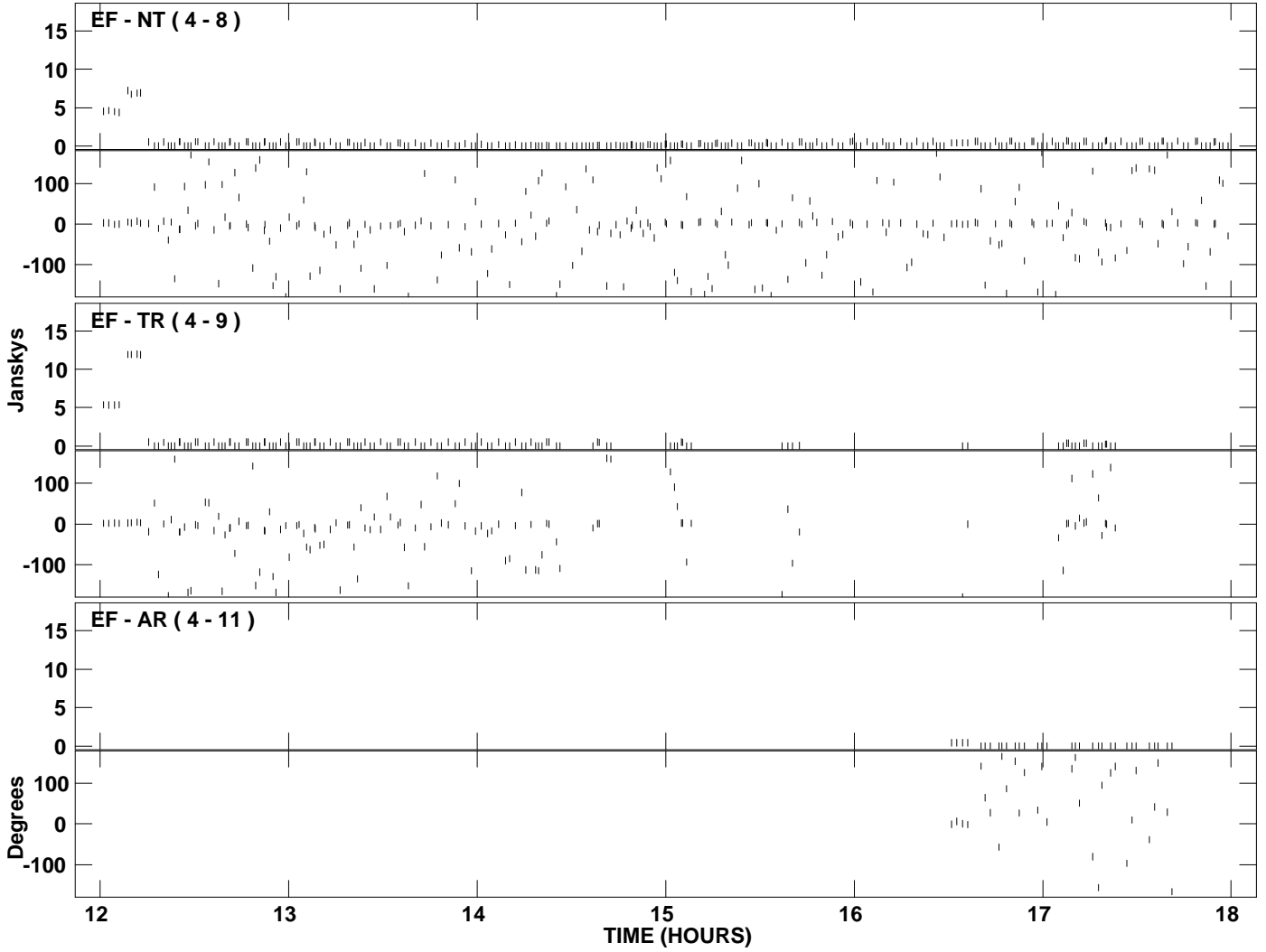
PLot file version 12 created 29-APR-2009 14:36:19
Amplitude and Phase vs Time for EP064D.UVDATA.1 Vect aver. CL # 3
IF 5 CHAN 1 - 32 STK LL



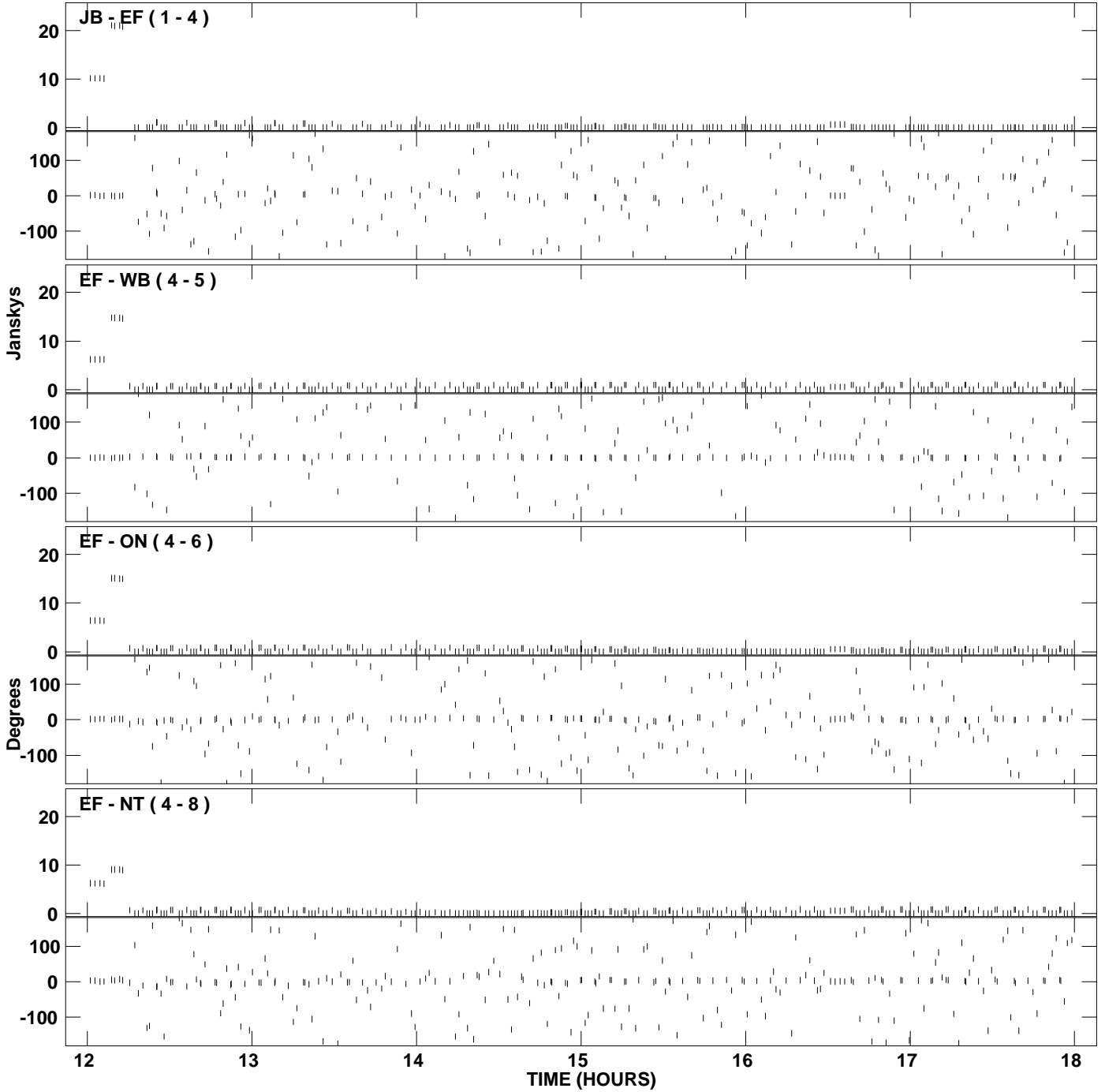
PLot file version 13 created 29-APR-2009 14:36:27
Amplitude and Phase vs Time for EP064D.UVDATA.1 Vect aver. CL # 3
IF 6 CHAN 1 - 32 STK LL



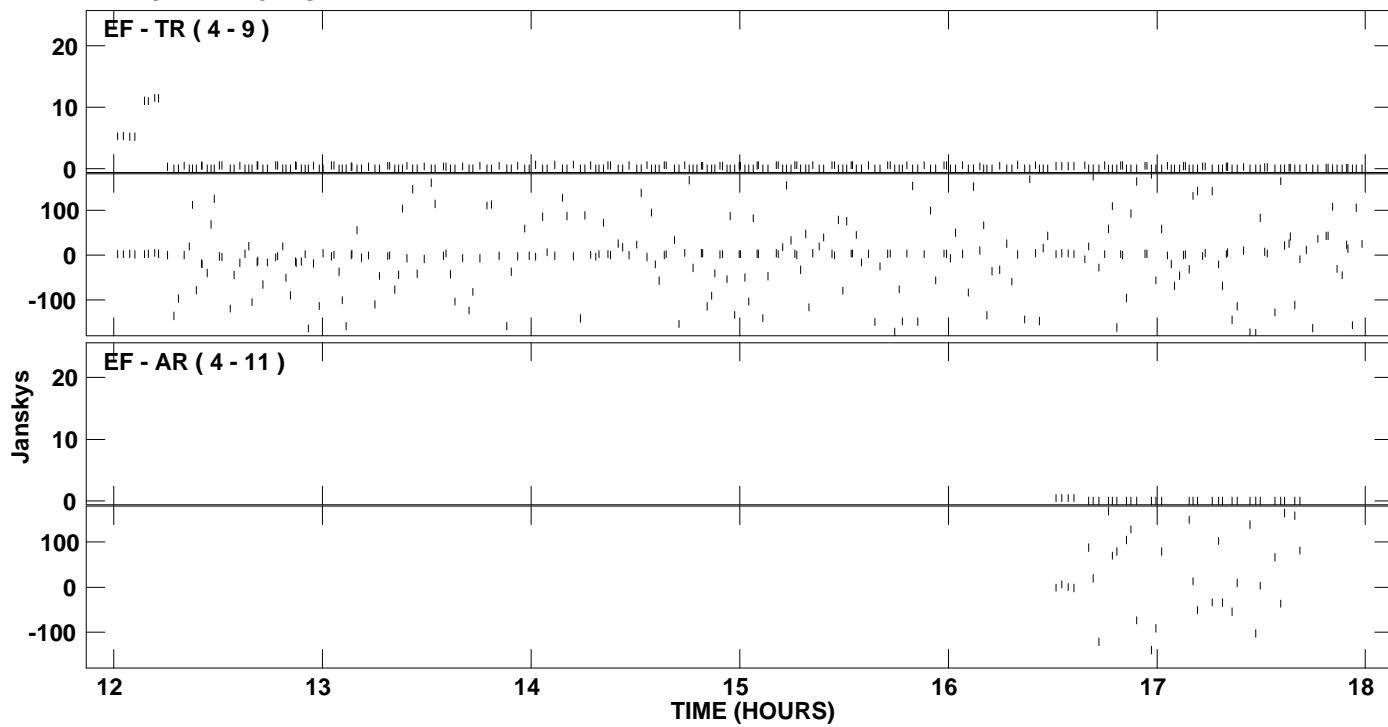
PLot file version 14 created 29-APR-2009 14:36:27
Amplitude and Phase vs Time for EP064D.UVDATA.1 Vect aver. CL # 3
IF 6 CHAN 1 - 32 STK LL



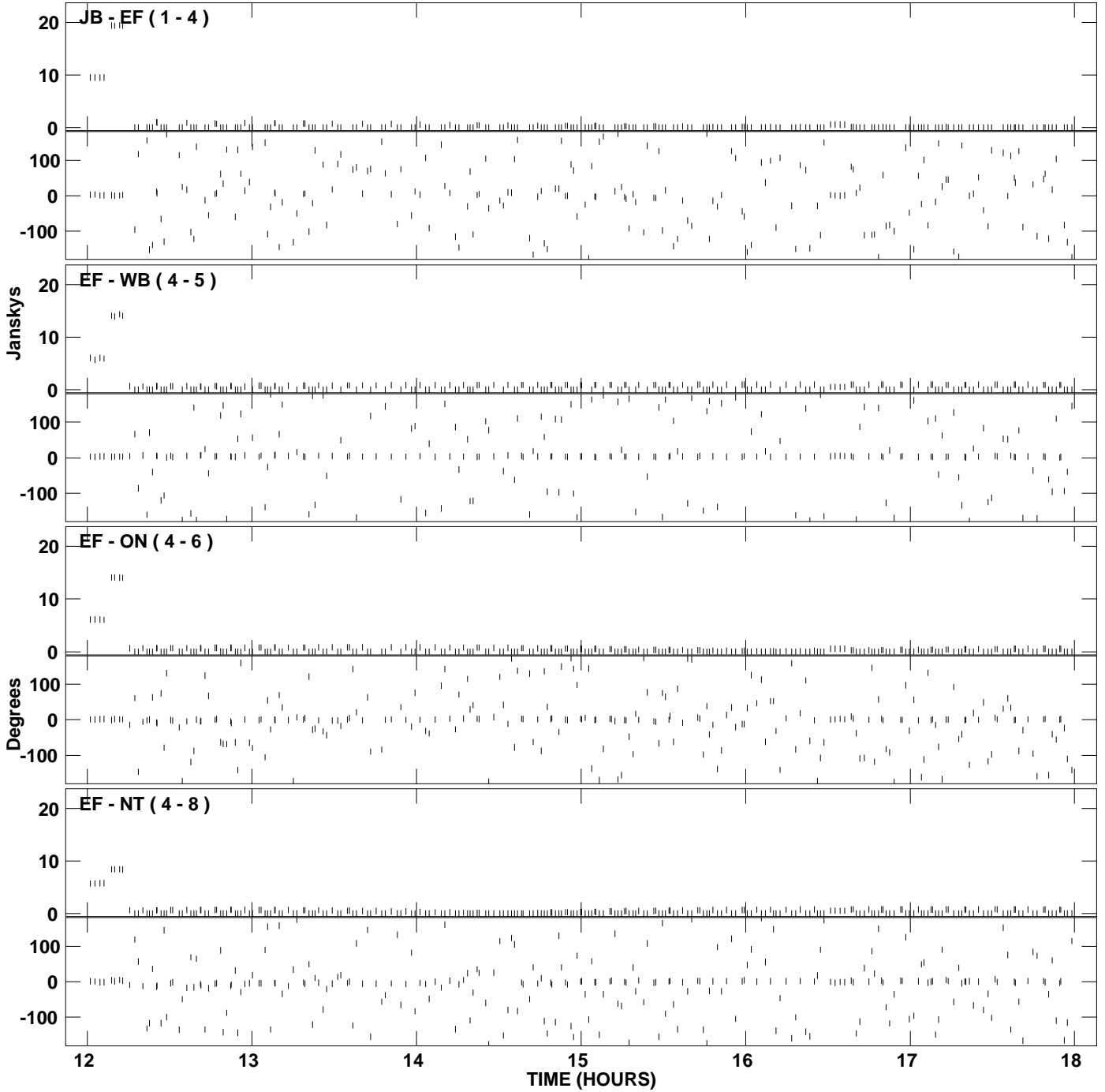
PLot file version 15 created 29-APR-2009 14:36:36
Amplitude and Phase vs Time for EP064D.UVDATA.1 Vect aver. CL # 3
IF 7 CHAN 1 - 32 STK LL



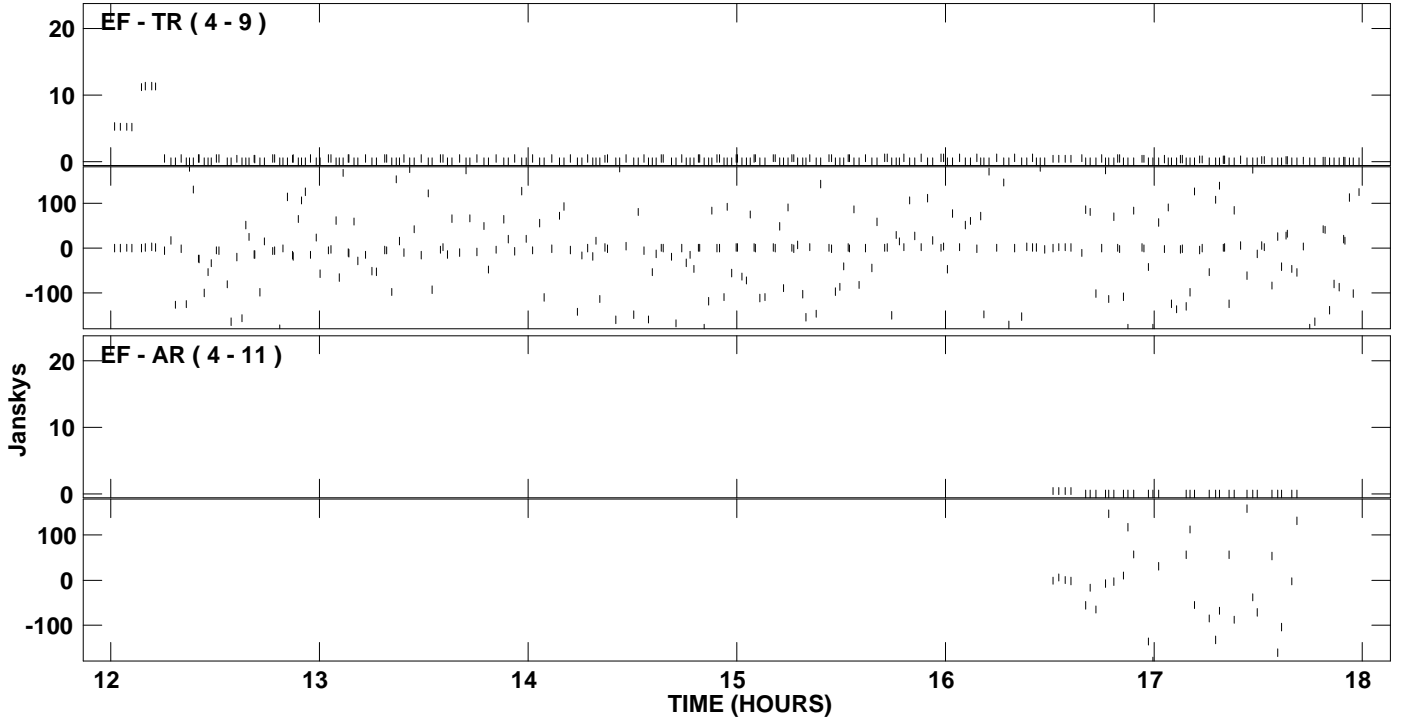
PLot file version 16 created 29-APR-2009 14:36:36
Amplitude andPhase vs Time for EP064D.UVDATA.1 Vect aver. CL # 3
IF 7 CHAN 1 - 32 STK LL



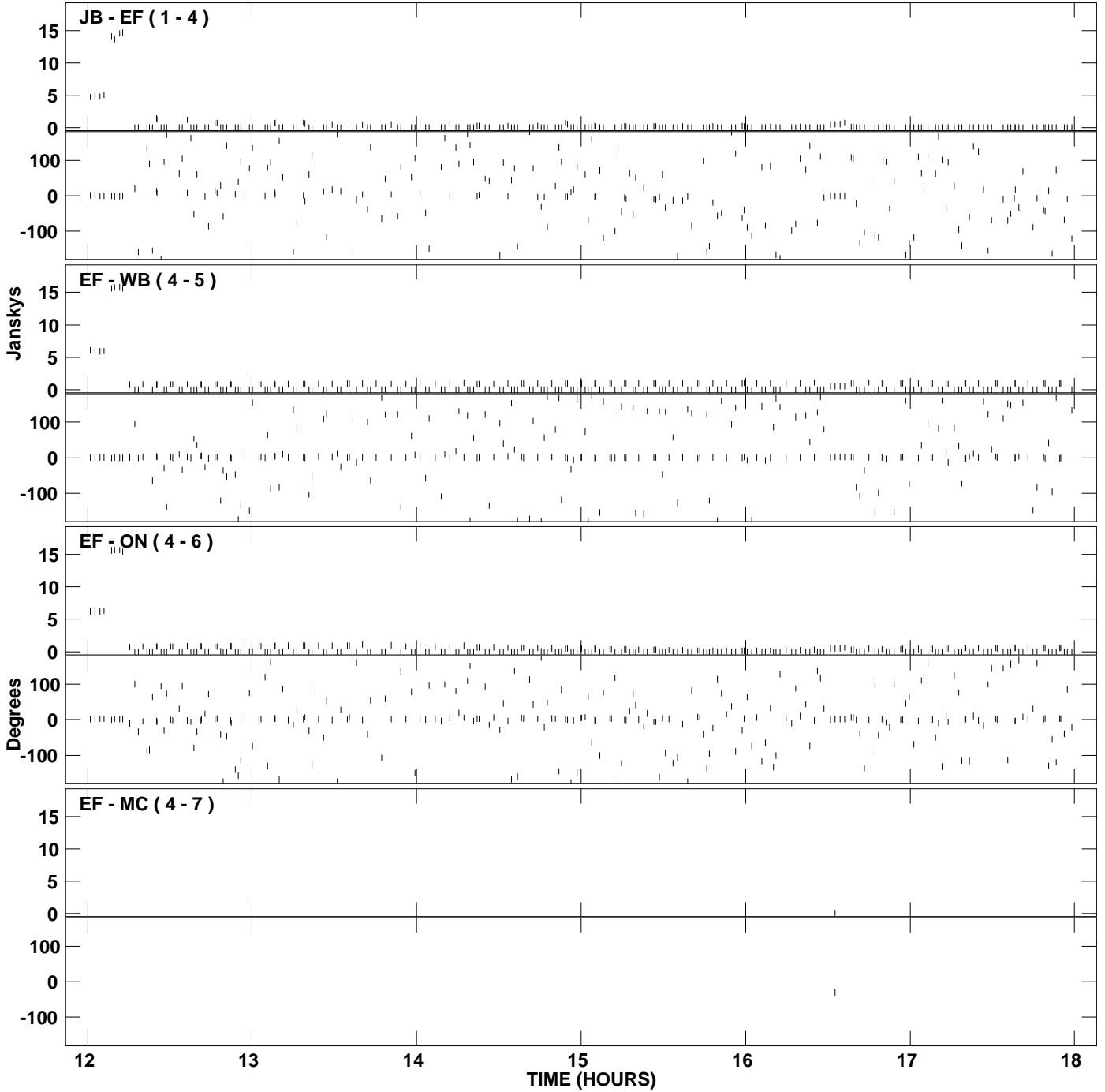
PLot file version 17 created 29-APR-2009 14:36:44
Amplitude and Phase vs Time for EP064D.UVDATA.1 Vect aver. CL # 3
IF 8 CHAN 1 - 32 STK LL



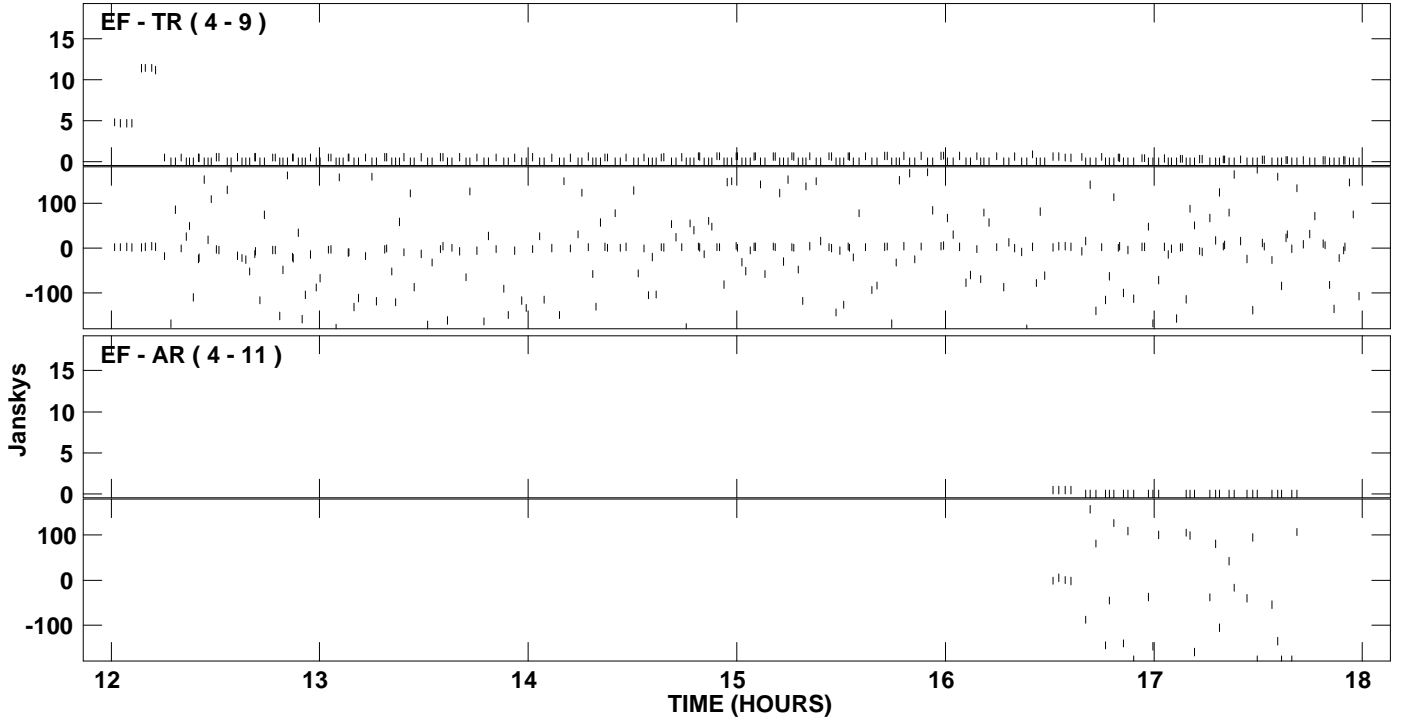
PLot file version 18 created 29-APR-2009 14:36:44
Amplitude andPhase vs Time for EP064D.UVDATA.1 Vect aver. CL # 3
IF 8 CHAN 1 - 32 STK LL



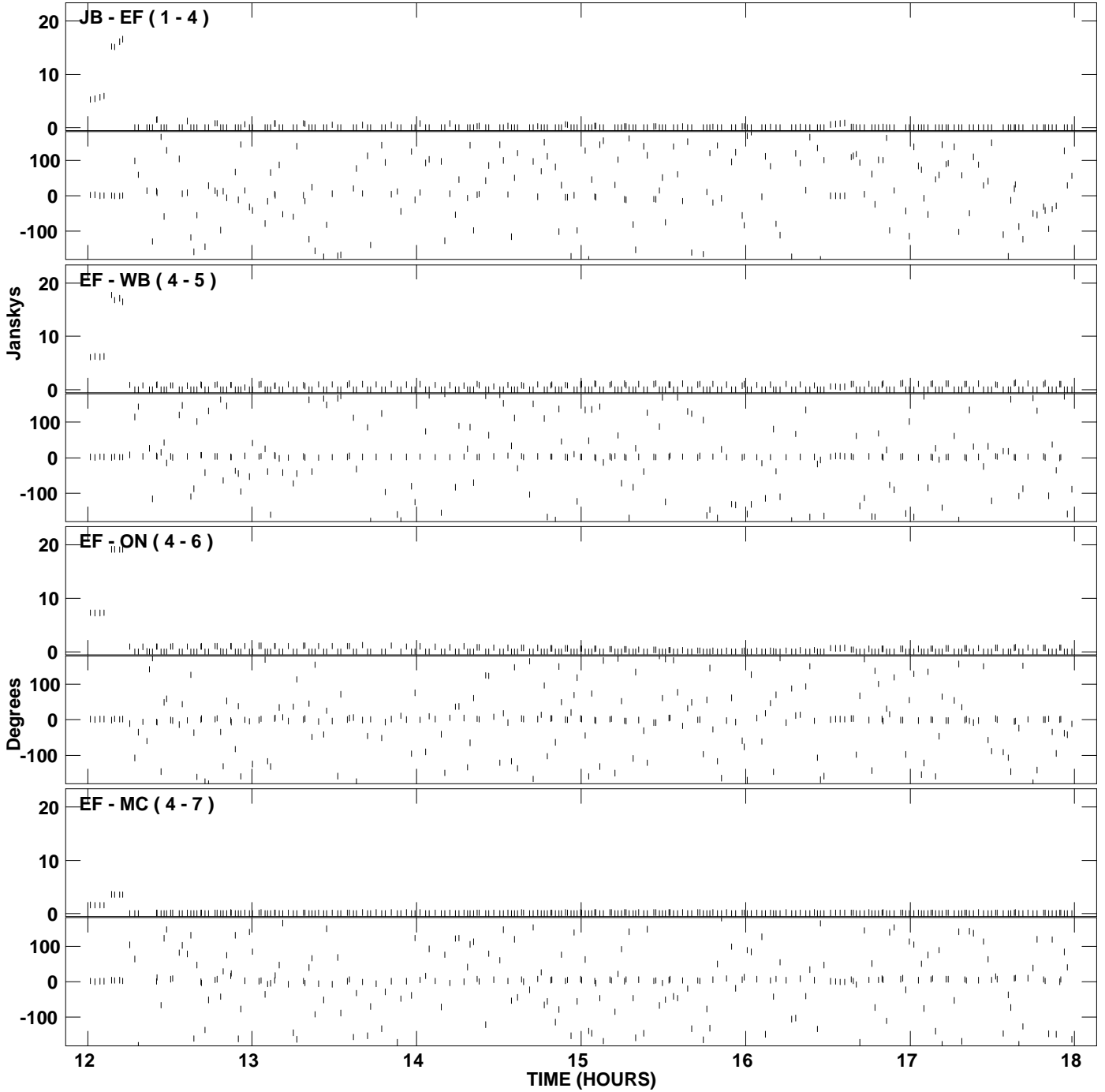
PLot file version 19 created 29-APR-2009 14:36:51
Amplitude andPhase vs Time for EP064D.UVDATA.1 Vect aver. CL # 3
IF 1 CHAN 1 - 32 STK RR



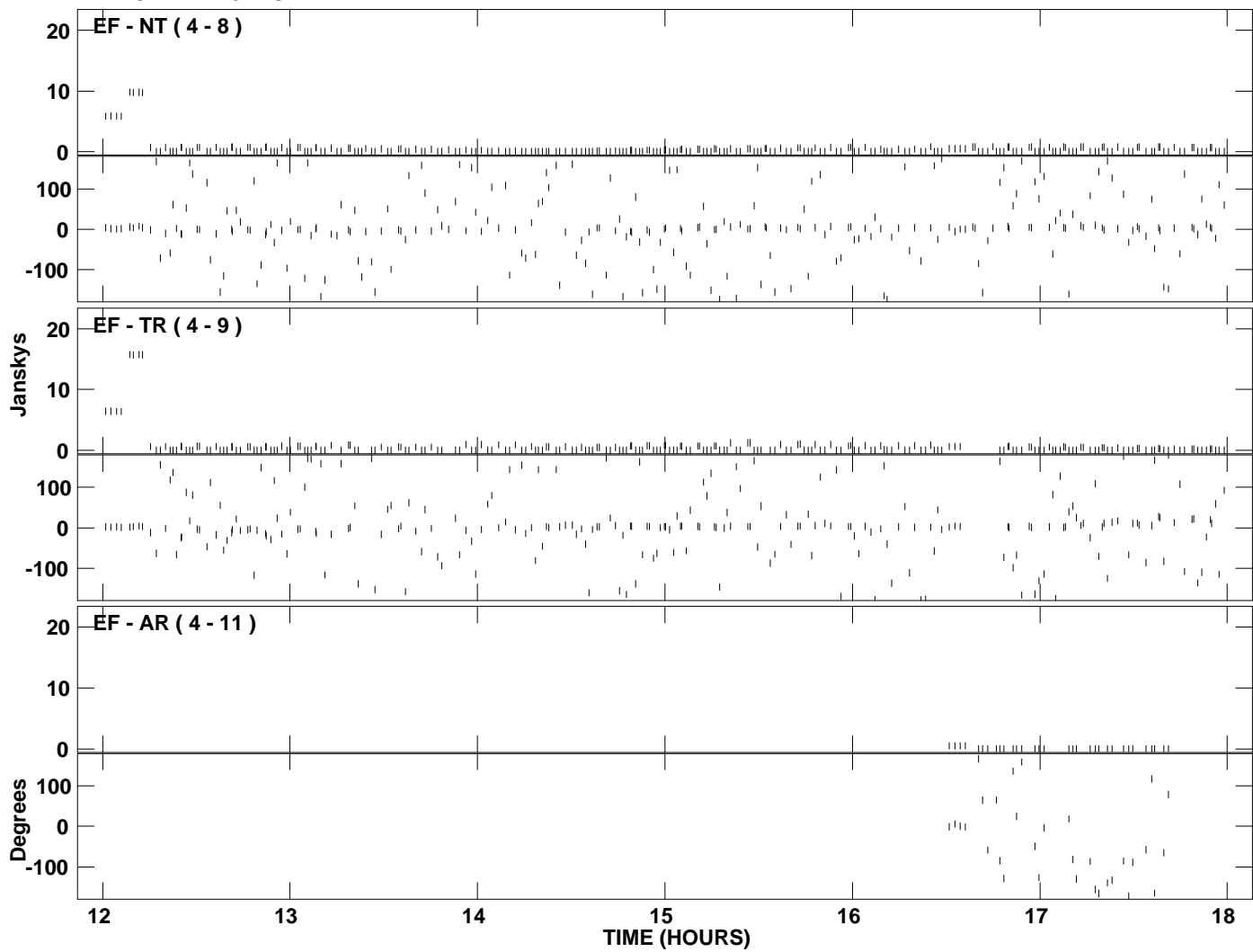
PLot file version 20 created 29-APR-2009 14:36:51
Amplitude andPhase vs Time for EP064D.UVDATA.1 Vect aver. CL # 3
IF 1 CHAN 1 - 32 STK RR



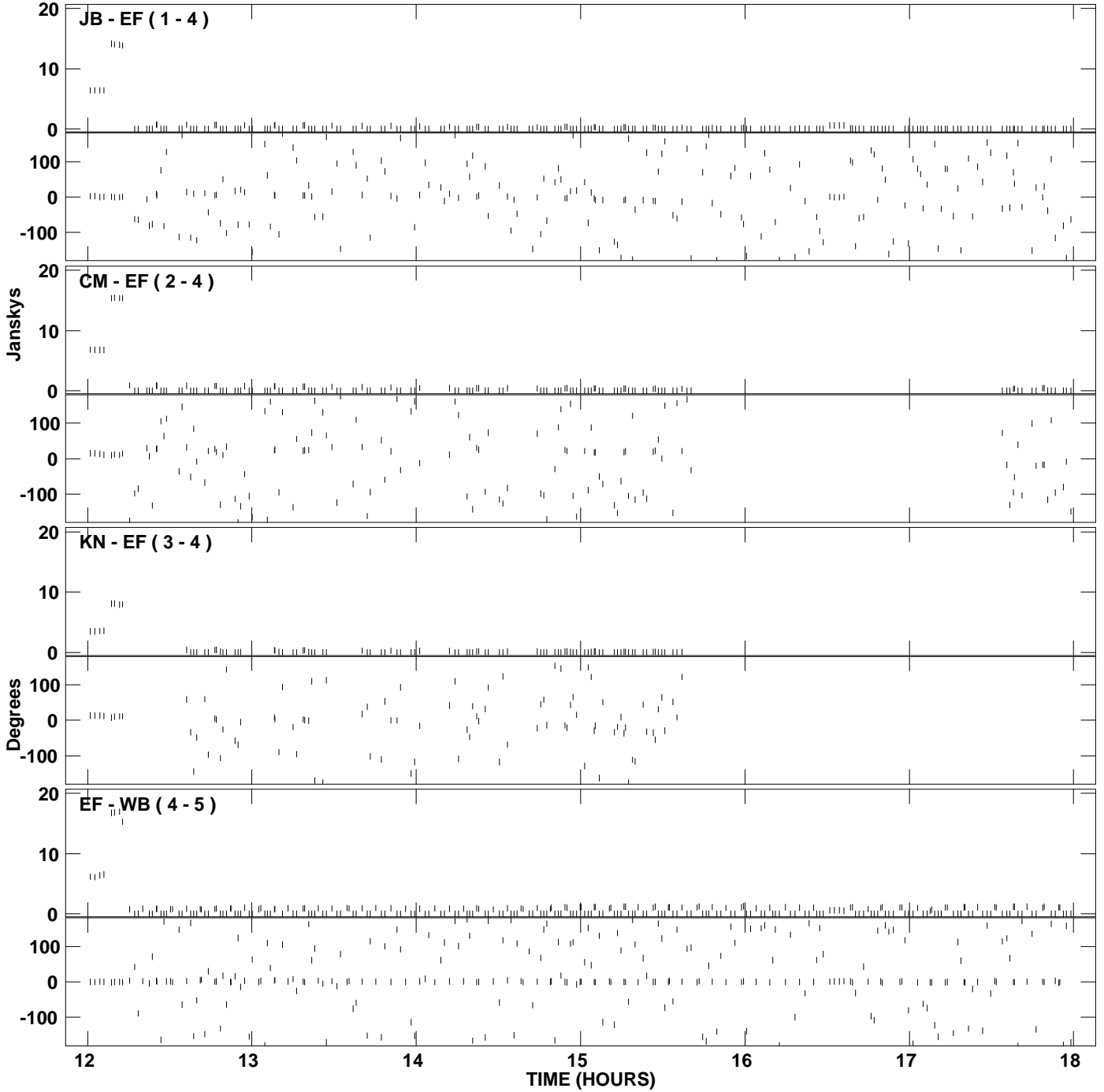
PLot file version 21 created 29-APR-2009 14:36:59
Amplitude and Phase vs Time for EP064D.UVDATA.1 Vect aver. CL # 3
IF 2 CHAN 1 - 32 STK RR



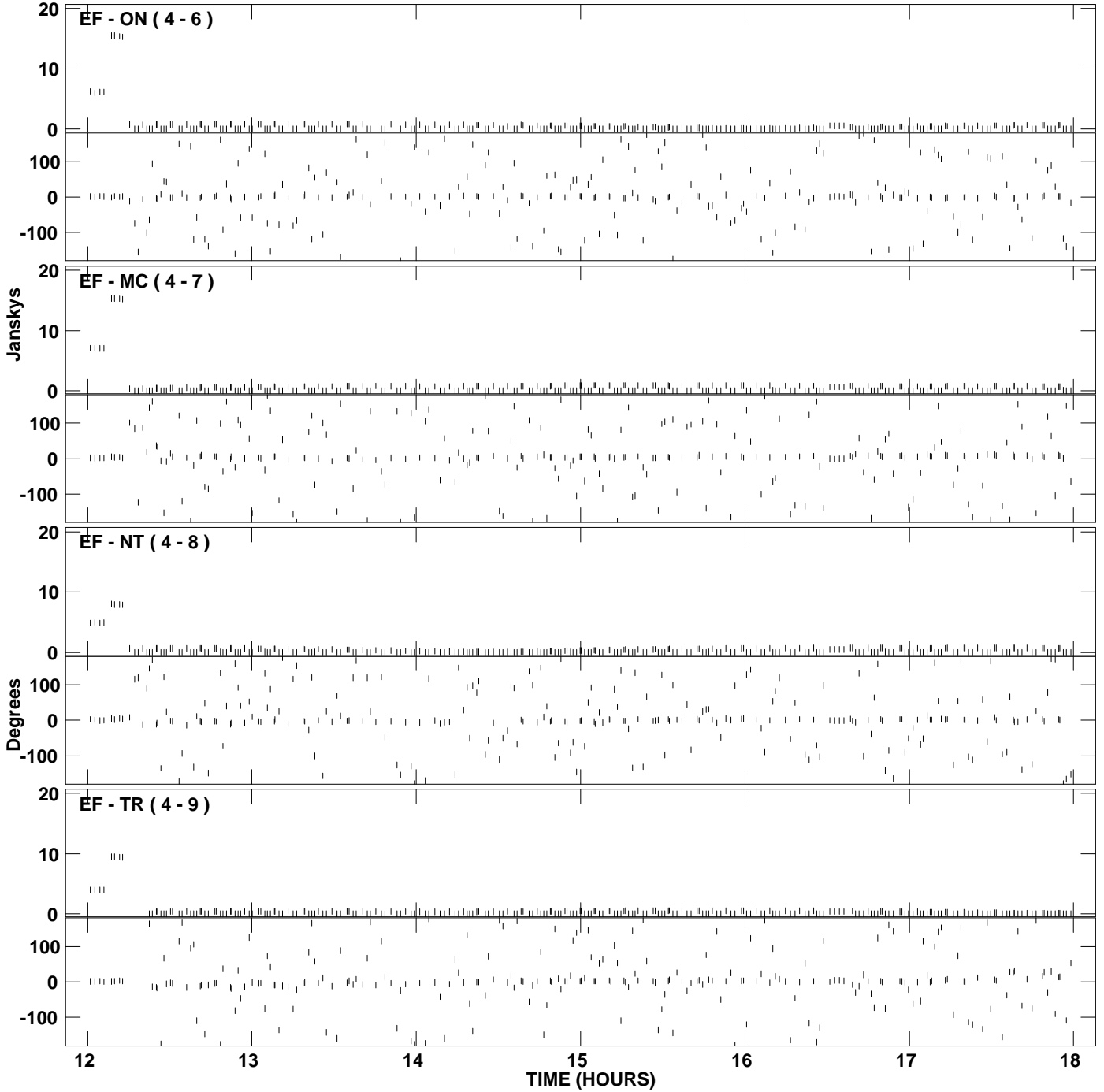
PLot file version 22 created 29-APR-2009 14:36:59
Amplitude andPhase vs Time for EP064D.UVDATA.1 Vect aver. CL # 3
IF 2 CHAN 1 - 32 STK RR



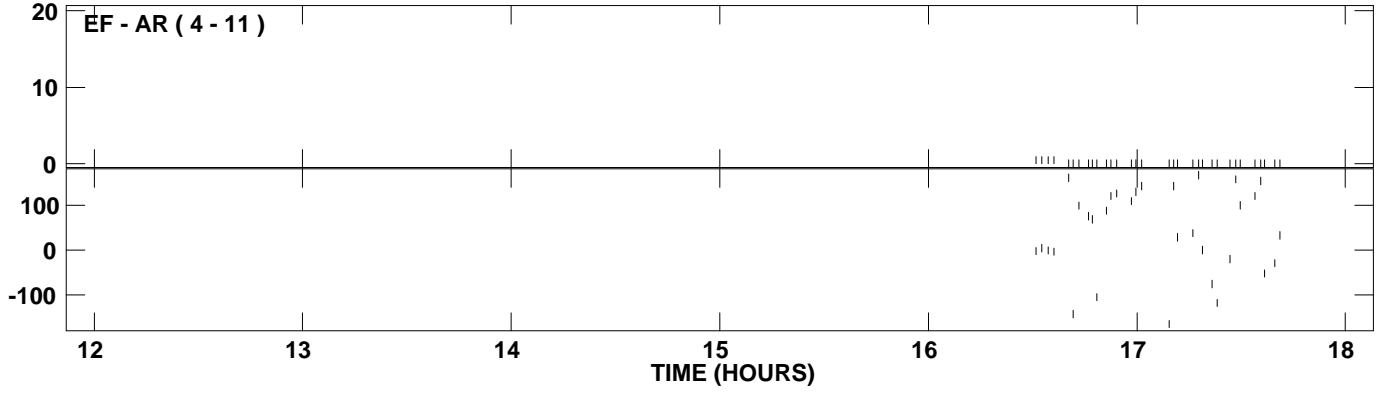
PLot file version 23 created 29-APR-2009 14:37:08
Amplitude andPhase vs Time for EP064D.UVDATA.1 Vect aver. CL # 3
IF 3 CHAN 1 - 32 STK RR



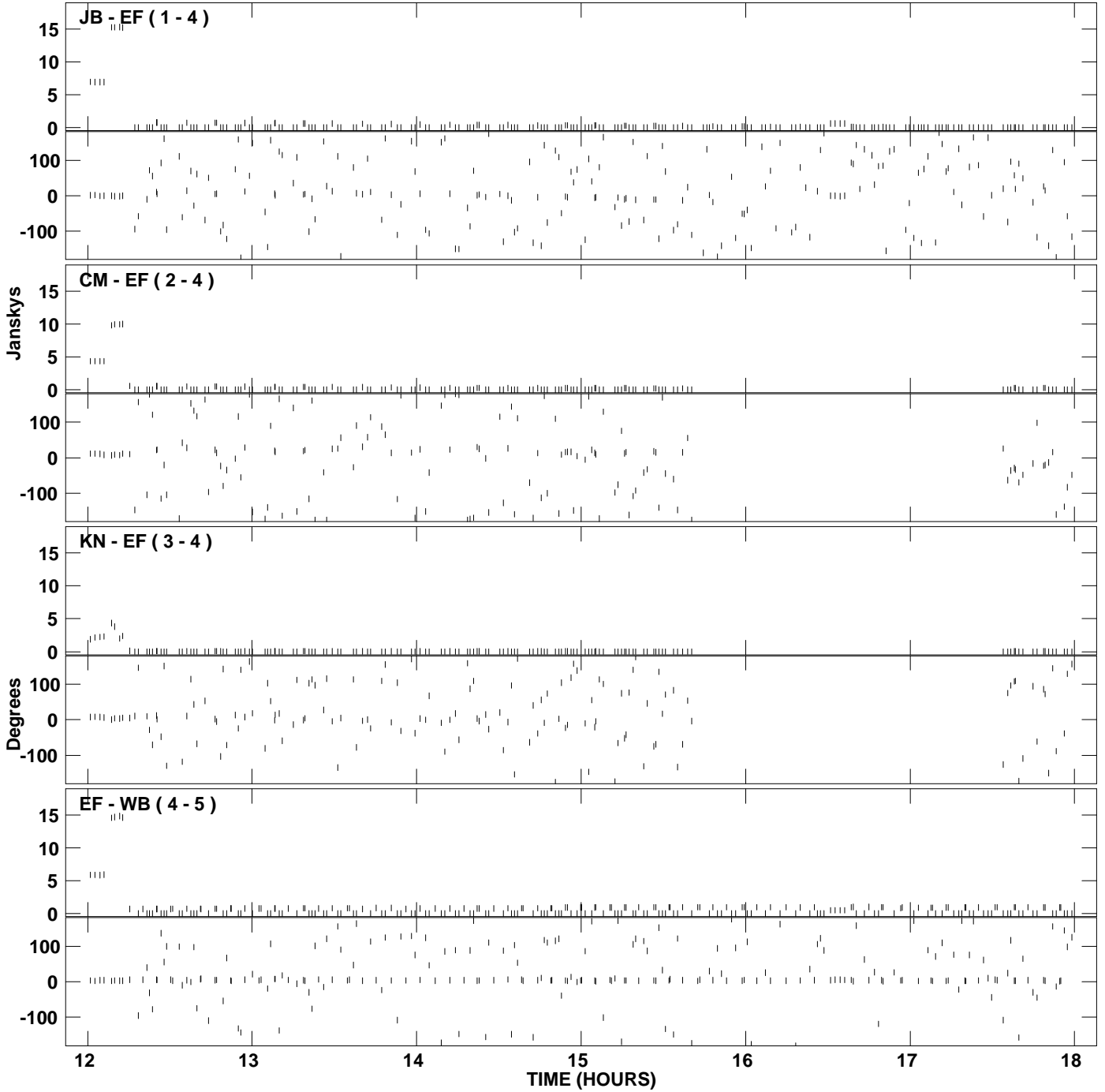
PLot file version 24 created 29-APR-2009 14:37:08
Amplitude andPhase vs Time for EP064D.UVDATA.1 Vect aver. CL # 3
IF 3 CHAN 1 - 32 STK RR



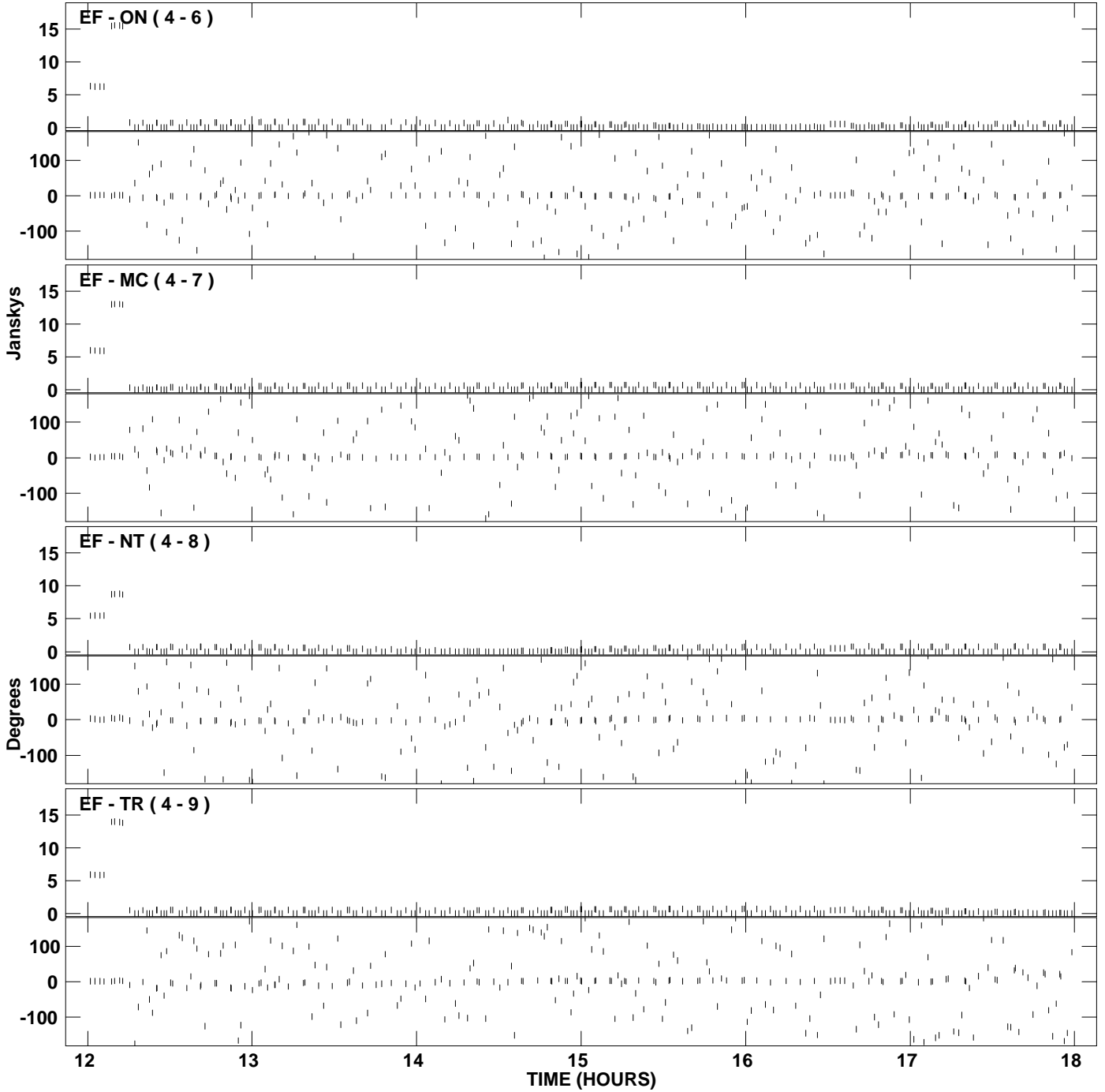
PLot file version 25 created 29-APR-2009 14:37:08
Amplitude andPhase vs Time for EP064D.UVDATA.1 Vect aver. CL # 3
IF 3 CHAN 1 - 32 STK RR



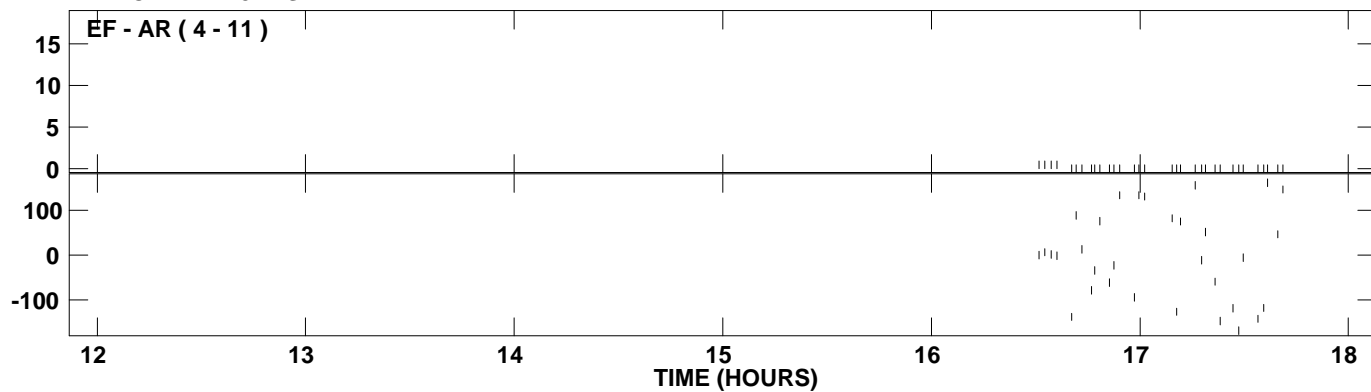
PLot file version 26 created 29-APR-2009 14:37:17
Amplitude and Phase vs Time for EP064D.UVDATA.1 Vect aver. CL # 3
IF 4 CHAN 1 - 32 STK RR



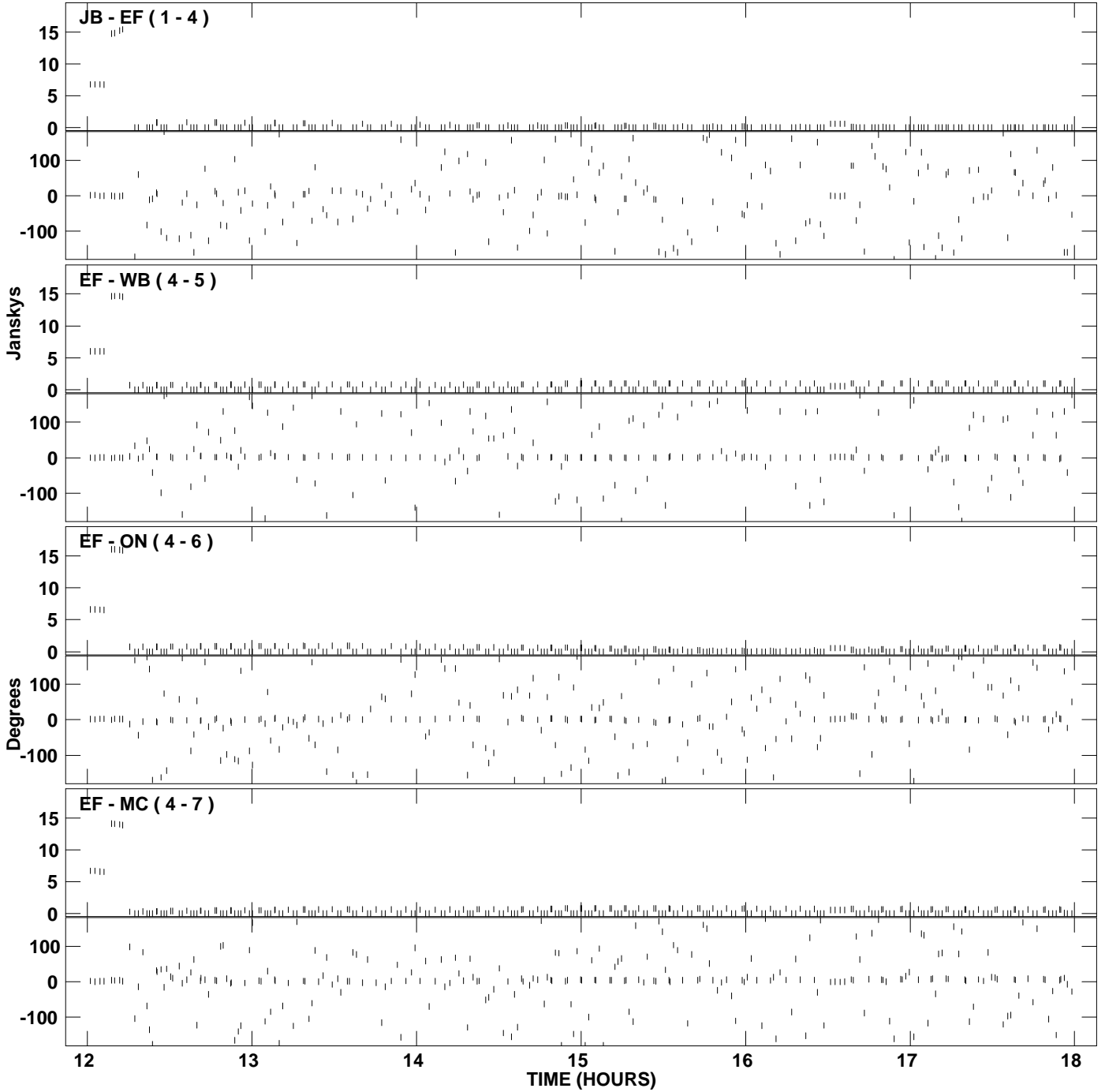
PLot file version 27 created 29-APR-2009 14:37:17
Amplitude and Phase vs Time for EP064D.UVDATA.1 Vect aver. CL # 3
IF 4 CHAN 1 - 32 STK RR



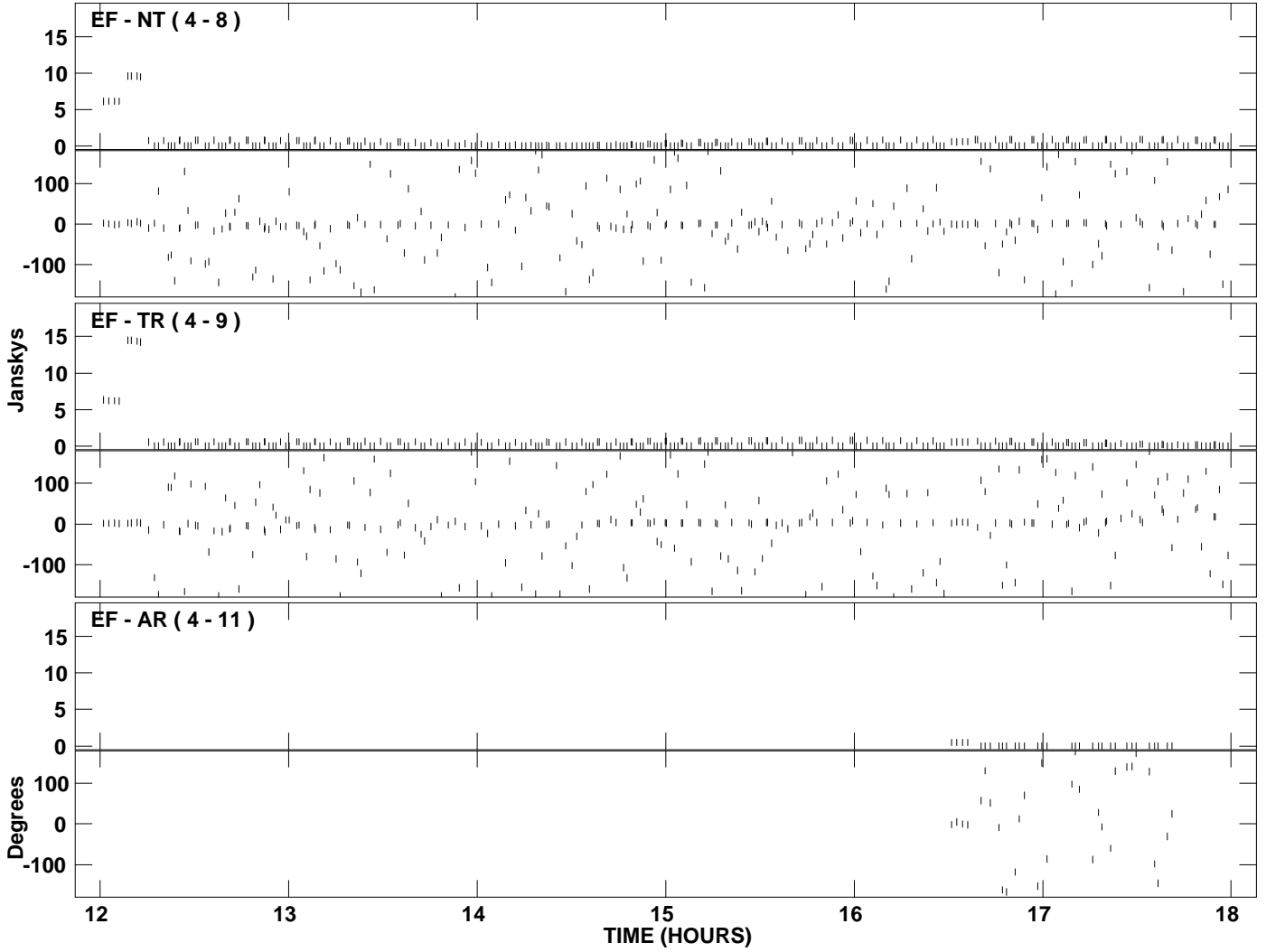
PLot file version 28 created 29-APR-2009 14:37:17
Amplitude and Phase vs Time for EP064D.UVDATA.1 Vect aver. CL # 3
IF 4 CHAN 1 - 32 STK RR



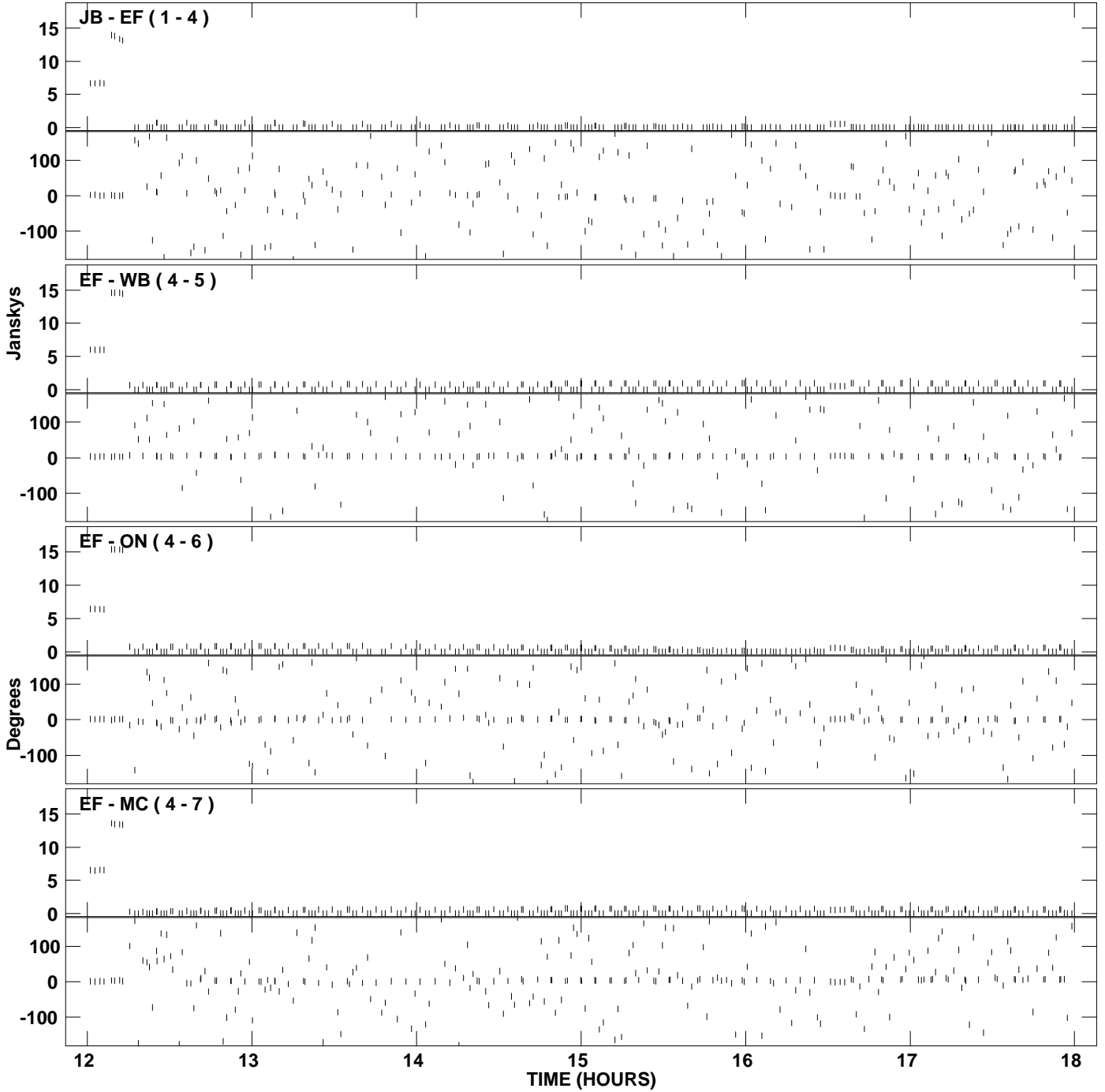
PLot file version 29 created 29-APR-2009 14:37:25
Amplitude and Phase vs Time for EP064D.UVDATA.1 Vect aver. CL # 3
IF 5 CHAN 1 - 32 STK RR



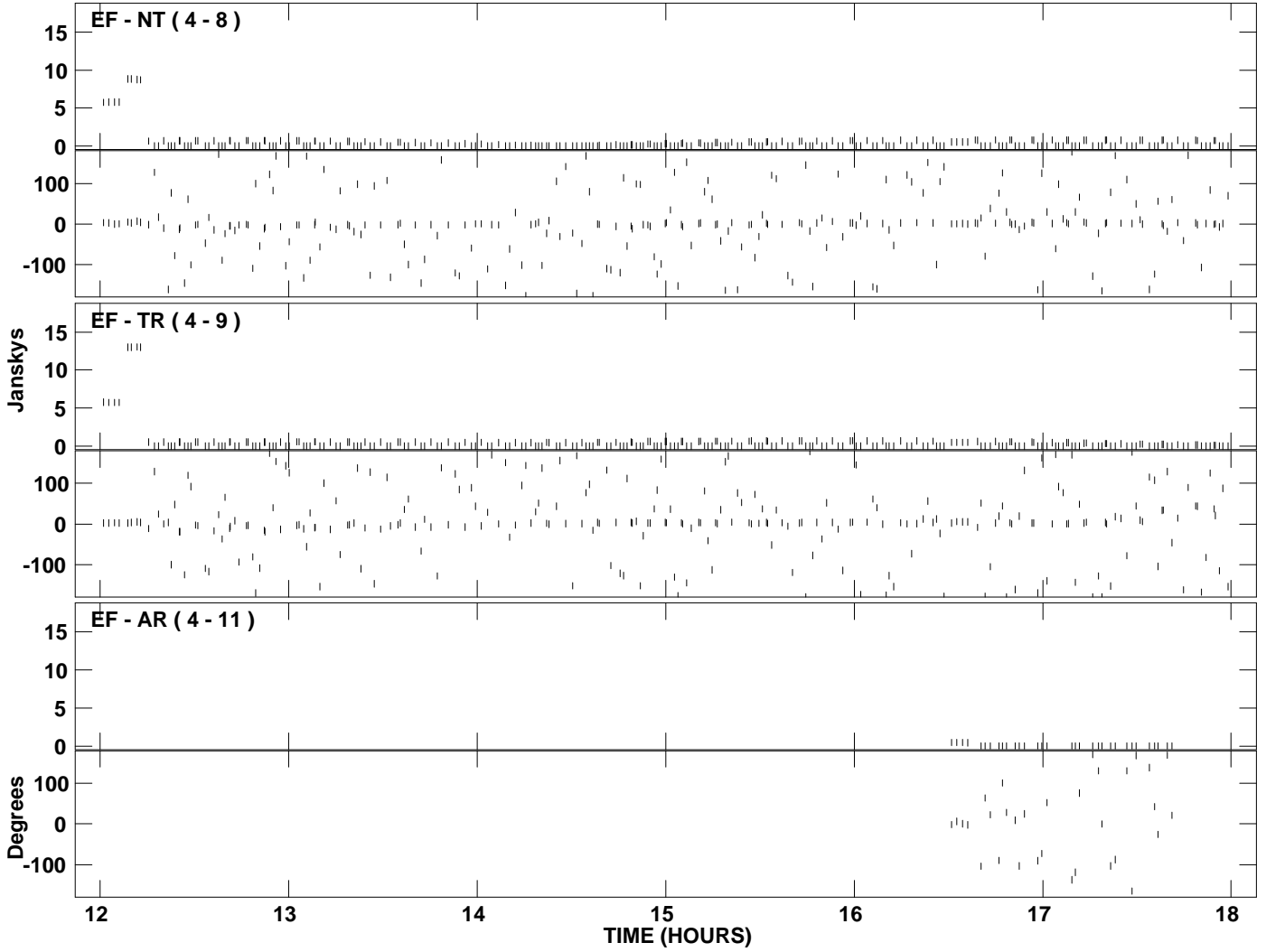
PLot file version 30 created 29-APR-2009 14:37:25
Amplitude andPhase vs Time for EP064D.UVDATA.1 Vect aver. CL # 3
IF 5 CHAN 1 - 32 STK RR



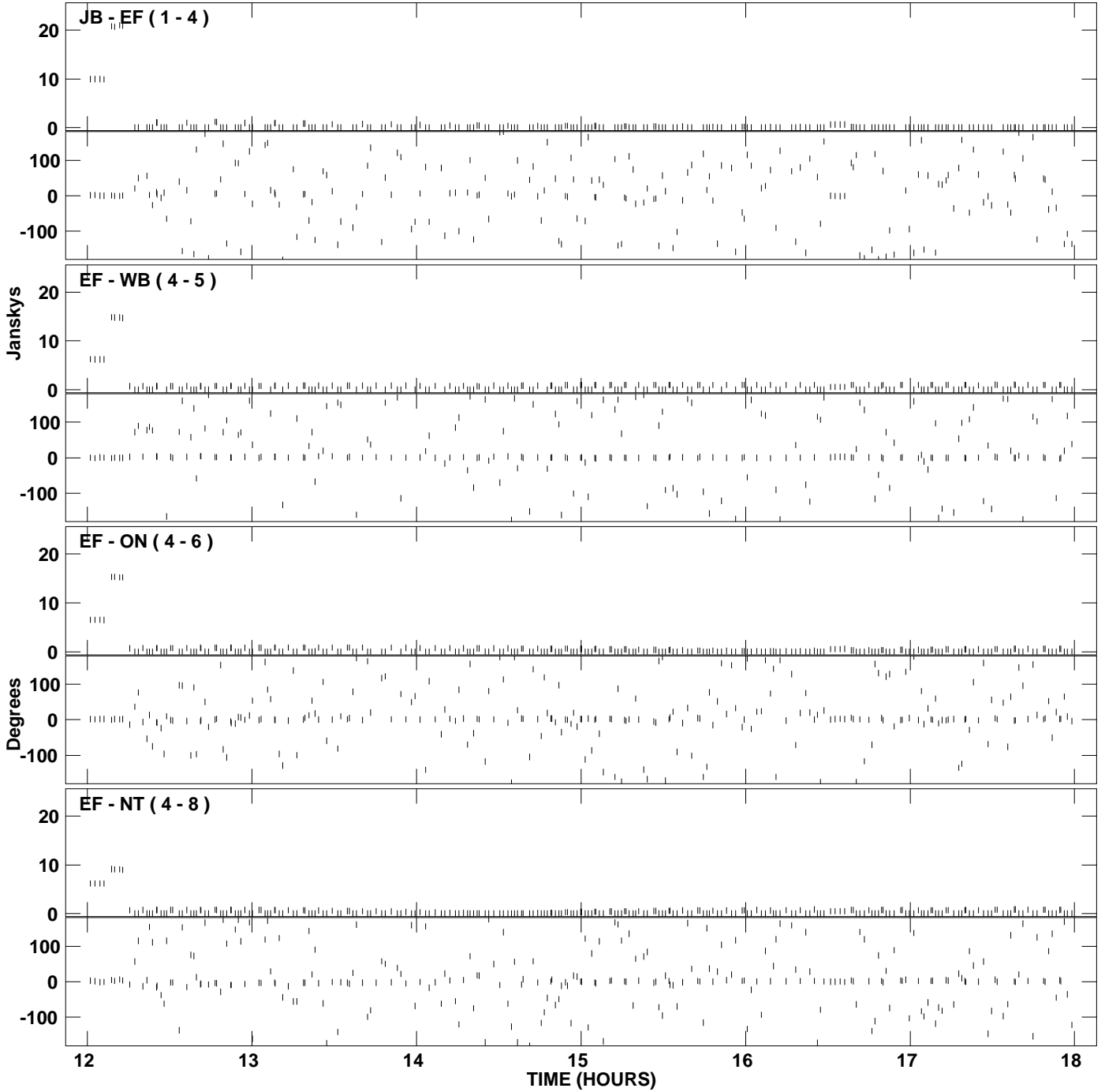
PLot file version 31 created 29-APR-2009 14:37:33
Amplitude and Phase vs Time for EP064D.UVDATA.1 Vect aver. CL # 3
IF 6 CHAN 1 - 32 STK RR



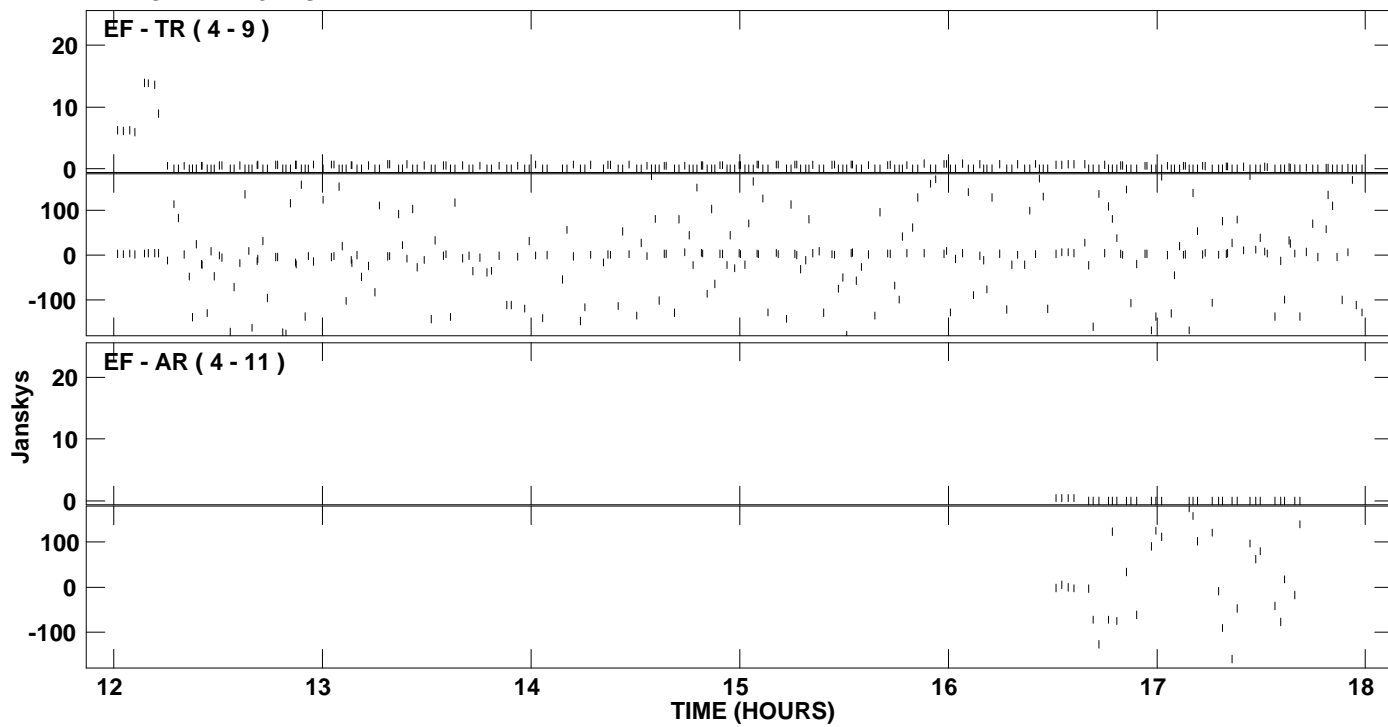
PLot file version 32 created 29-APR-2009 14:37:33
Amplitude andPhase vs Time for EP064D.UVDATA.1 Vect aver. CL # 3
IF 6 CHAN 1 - 32 STK RR



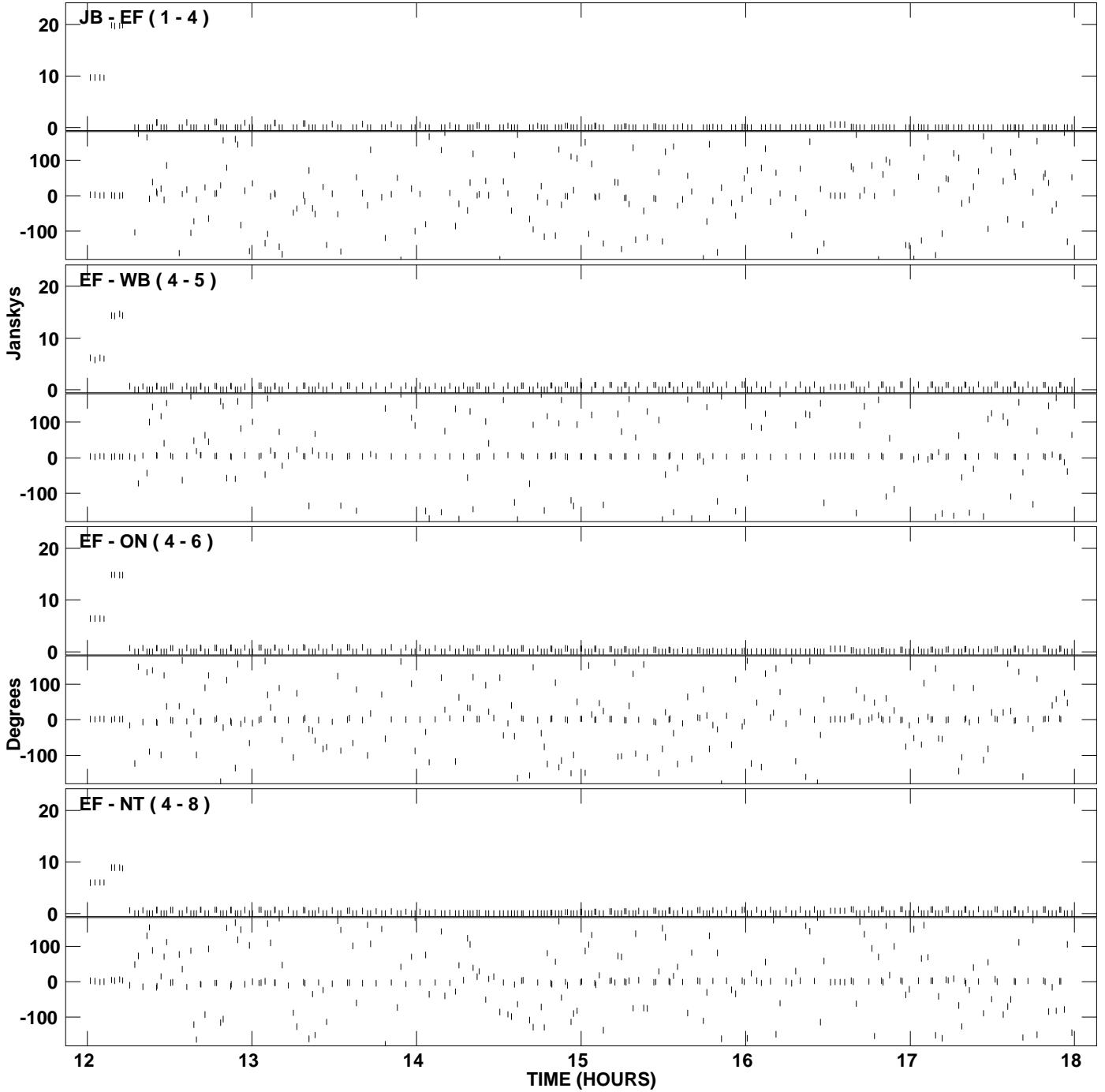
PLot file version 33 created 29-APR-2009 14:37:41
Amplitude and Phase vs Time for EP064D.UVDATA.1 Vect aver. CL # 3
IF 7 CHAN 1 - 32 STK RR



PLot file version 34 created 29-APR-2009 14:37:41
Amplitude and Phase vs Time for EP064D.UVDATA.1 Vect aver. CL # 3
IF 7 CHAN 1 - 32 STK RR



PLot file version 35 created 29-APR-2009 14:37:48
Amplitude and Phase vs Time for EP064D.UVDATA.1 Vect aver. CL # 3
IF 8 CHAN 1 - 32 STK RR



PLot file version 36 created 29-APR-2009 14:37:48
Amplitude andPhase vs Time for EP064D.UVDATA.1 Vect aver. CL # 3
IF 8 CHAN 1 - 32 STK RR

