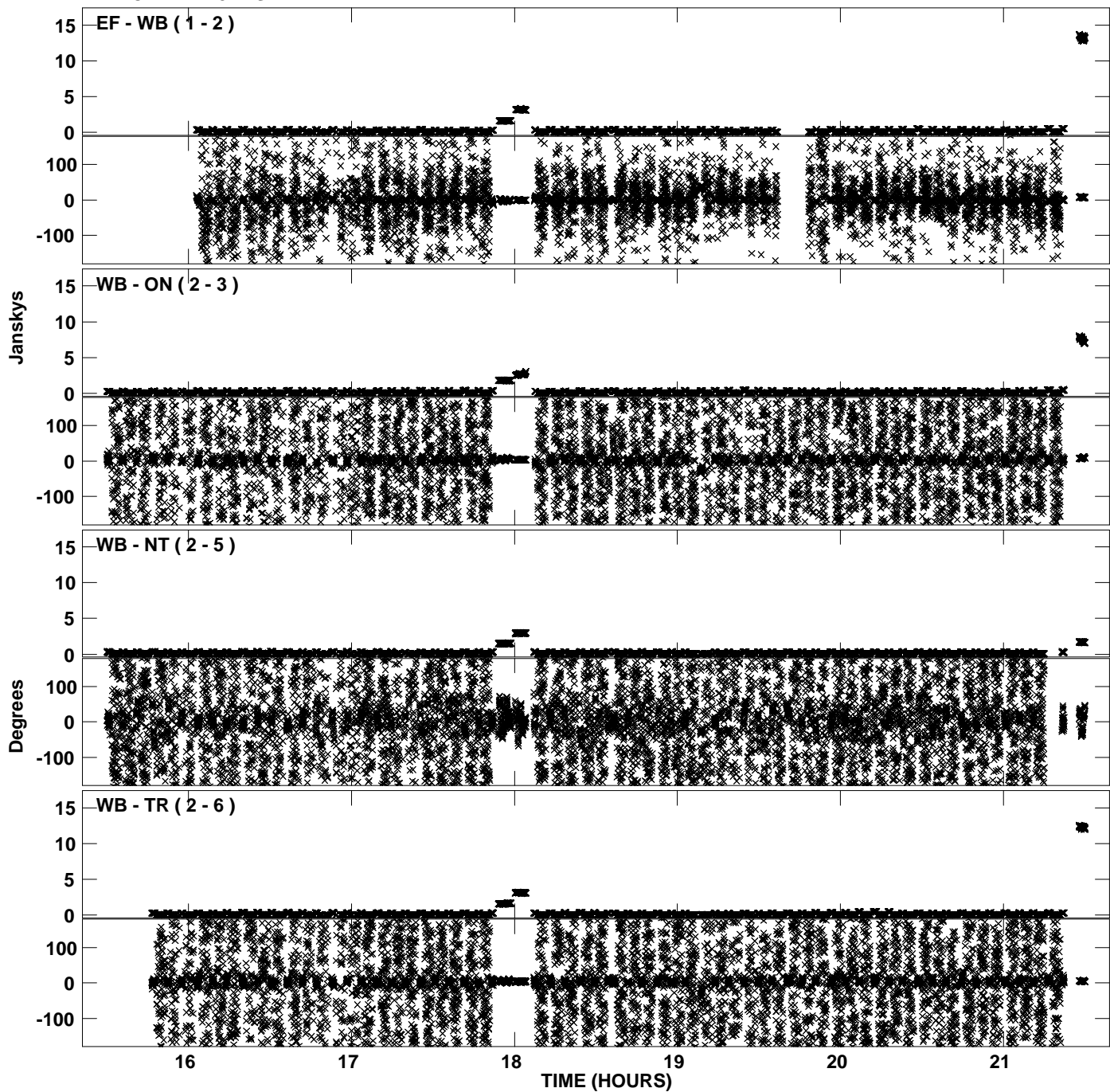
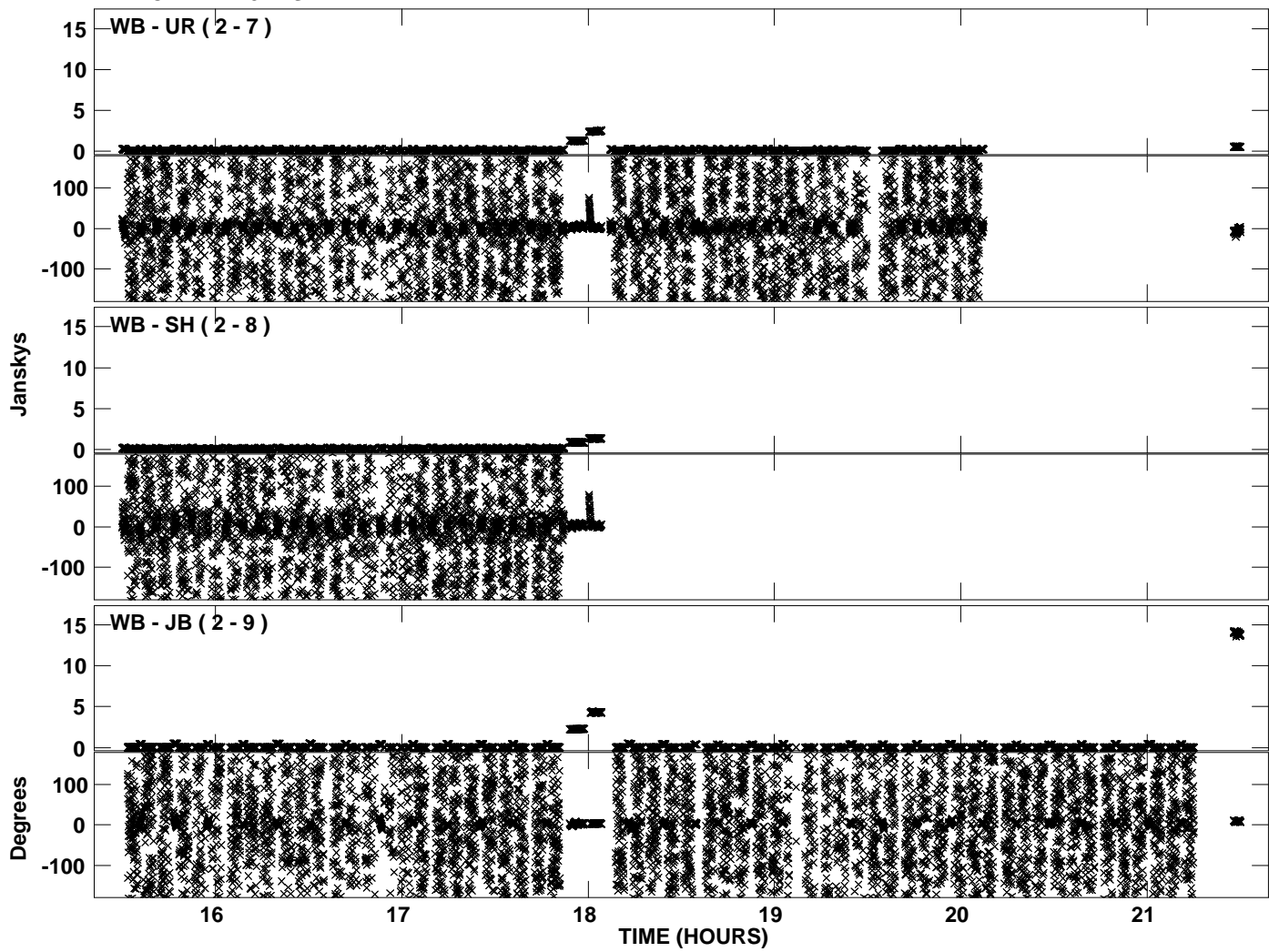


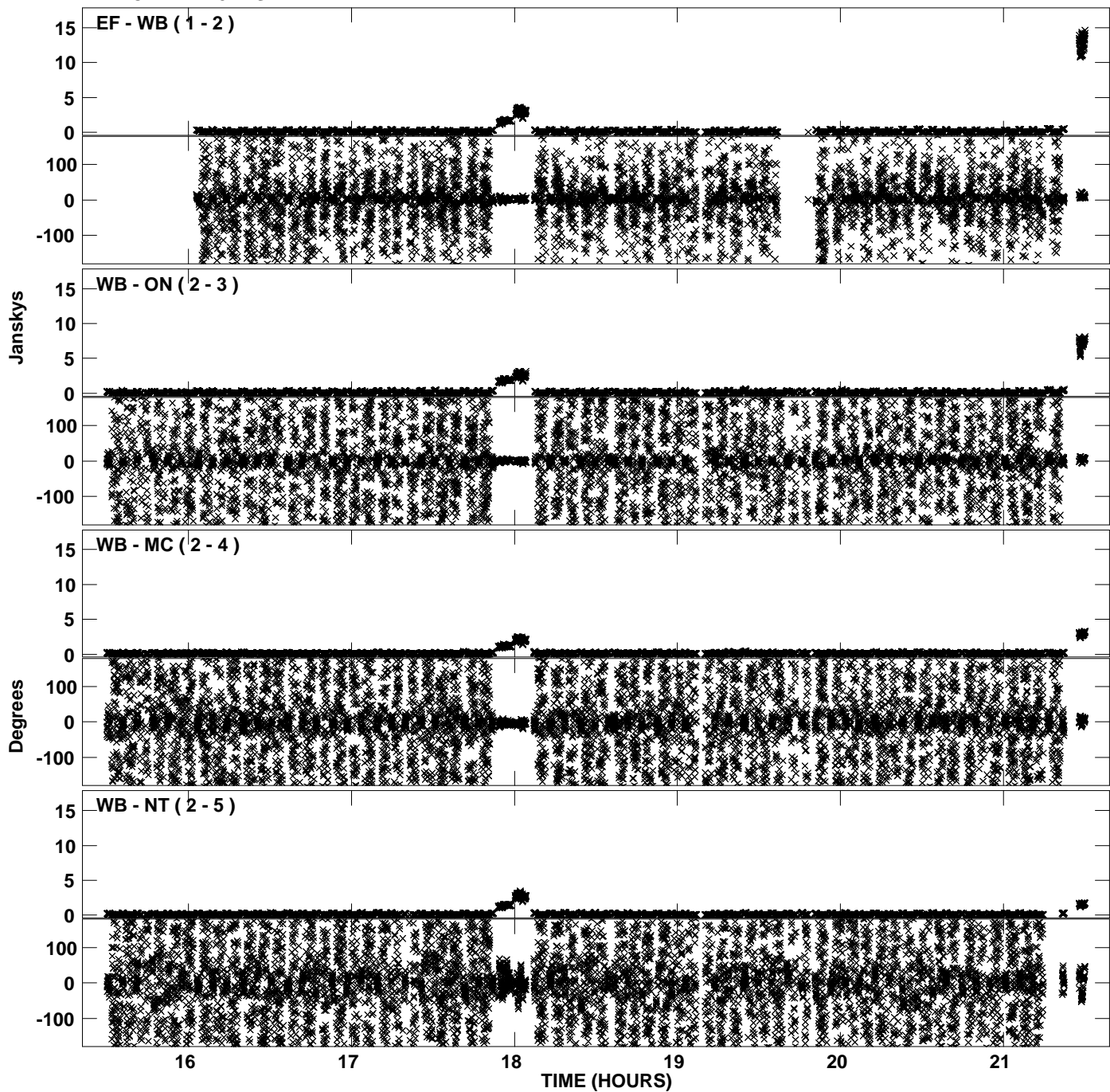
PLot file version 1 created 25-MAY-2010 14:40:37  
Amplitude andPhase vs Time for EP064I.UVDATA.1 Vect aver. CL # 3  
IF 1 CHAN 1 - 32 STK LL



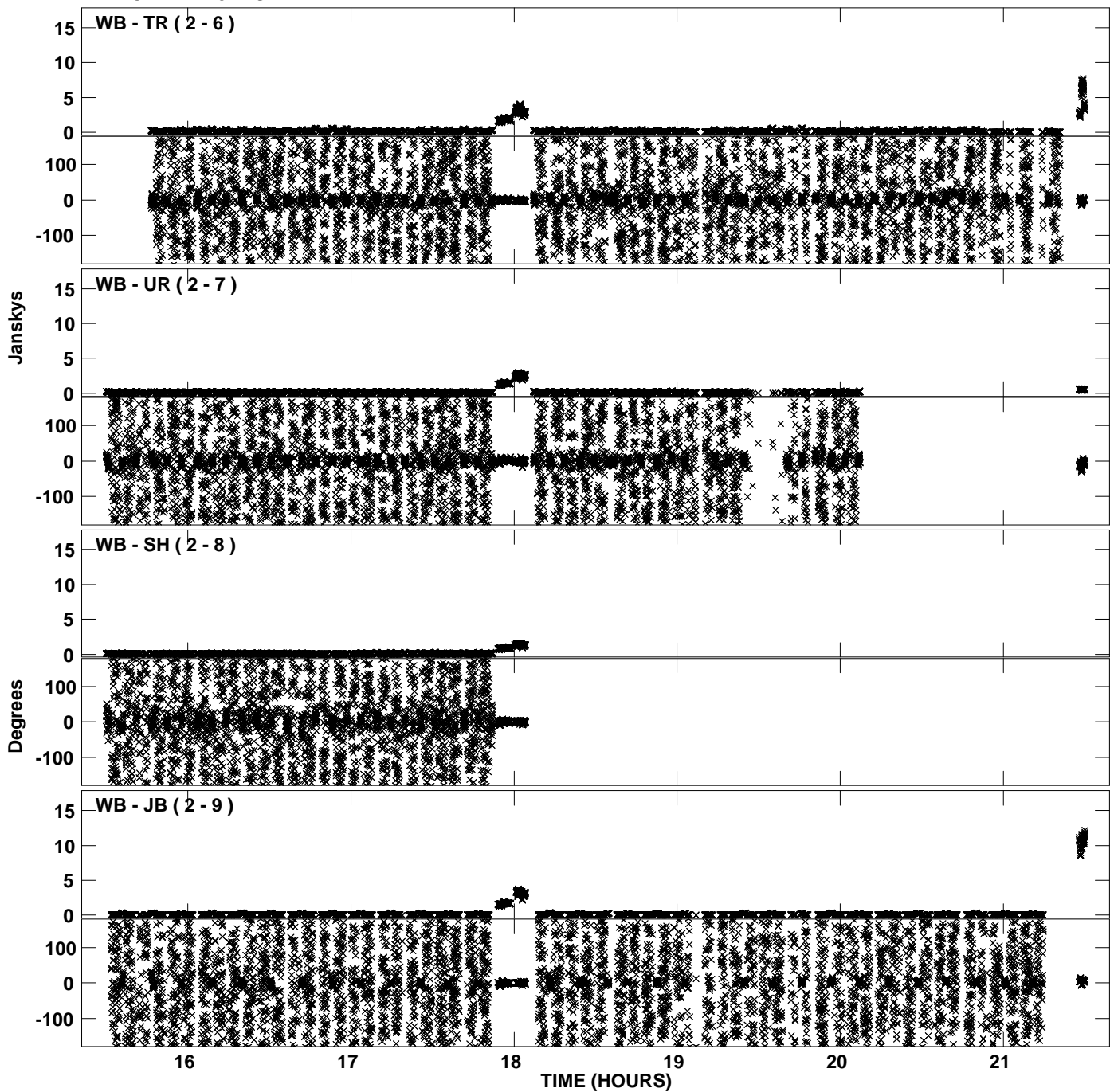
Plot file version 2 created 25-MAY-2010 14:40:37  
Amplitude andPhase vs Time for EP064I.UVDATA.1 Vect aver. CL # 3  
IF 1 CHAN 1 - 32 STK LL



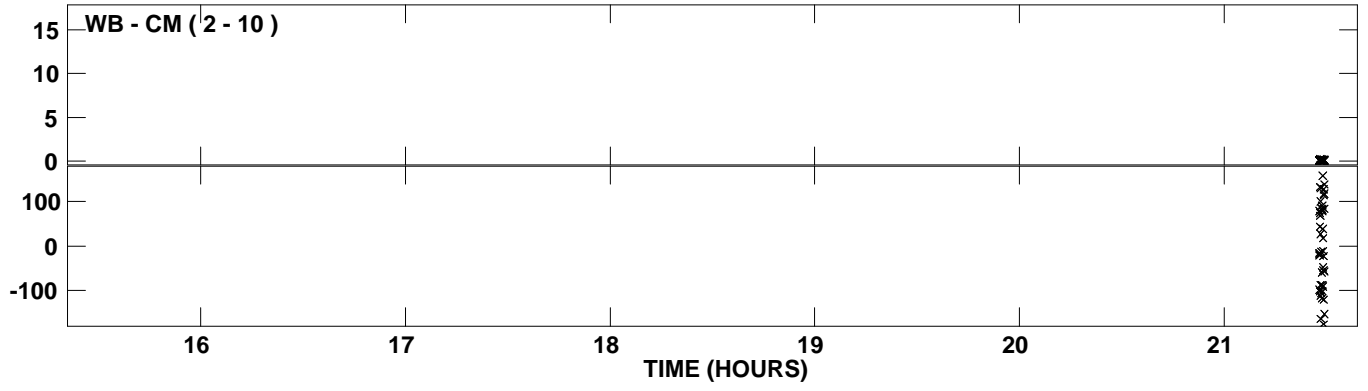
PLot file version 3 created 25-MAY-2010 14:40:47  
Amplitude andPhase vs Time for EP064I.UVDATA.1 Vect aver. CL # 3  
IF 2 CHAN 1 - 32 STK LL



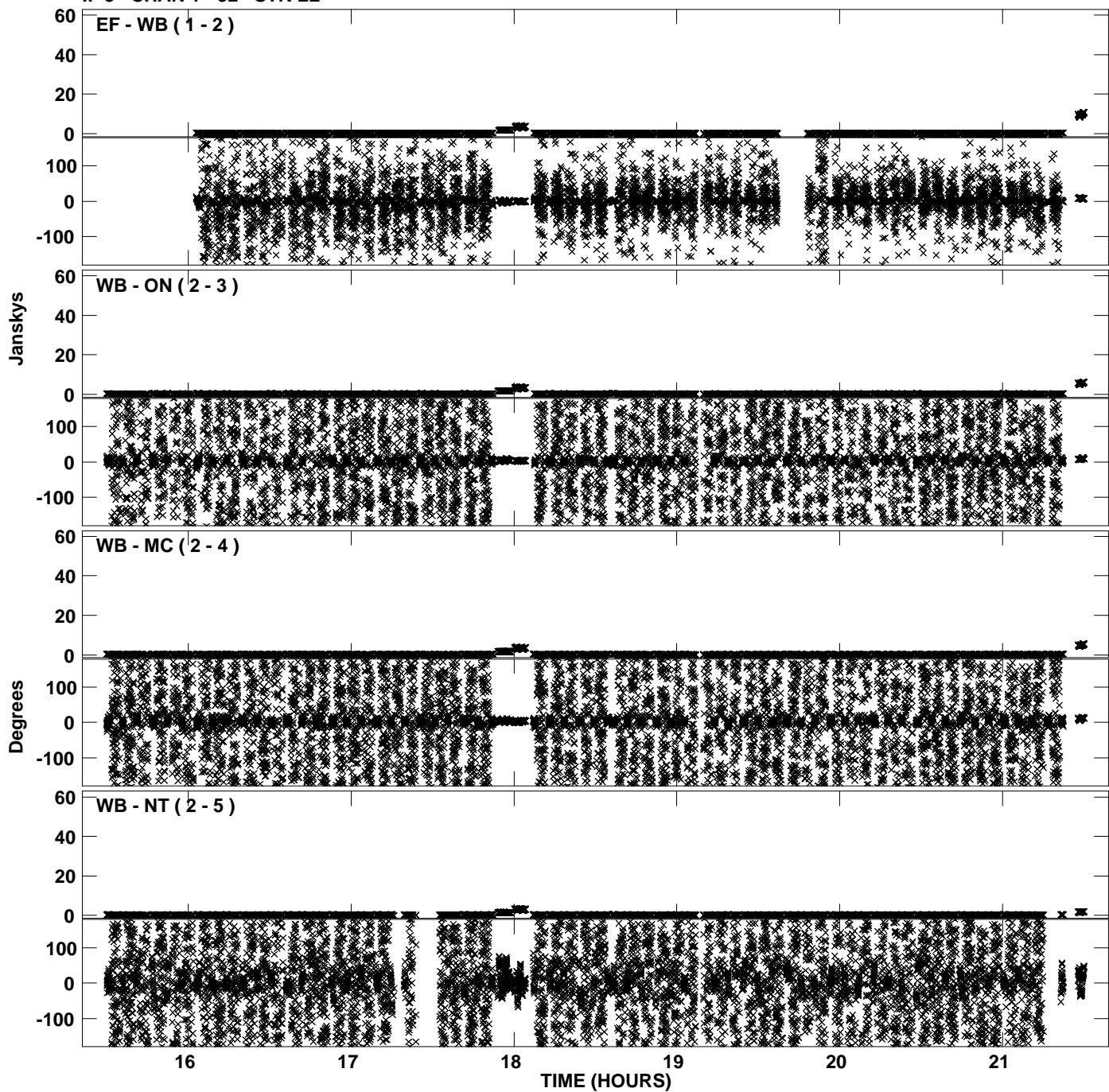
Plot file version 4 created 25-MAY-2010 14:40:47  
Amplitude andPhase vs Time for EP064I.UVDATA.1 Vect aver. CL # 3  
IF 2 CHAN 1 - 32 STK LL



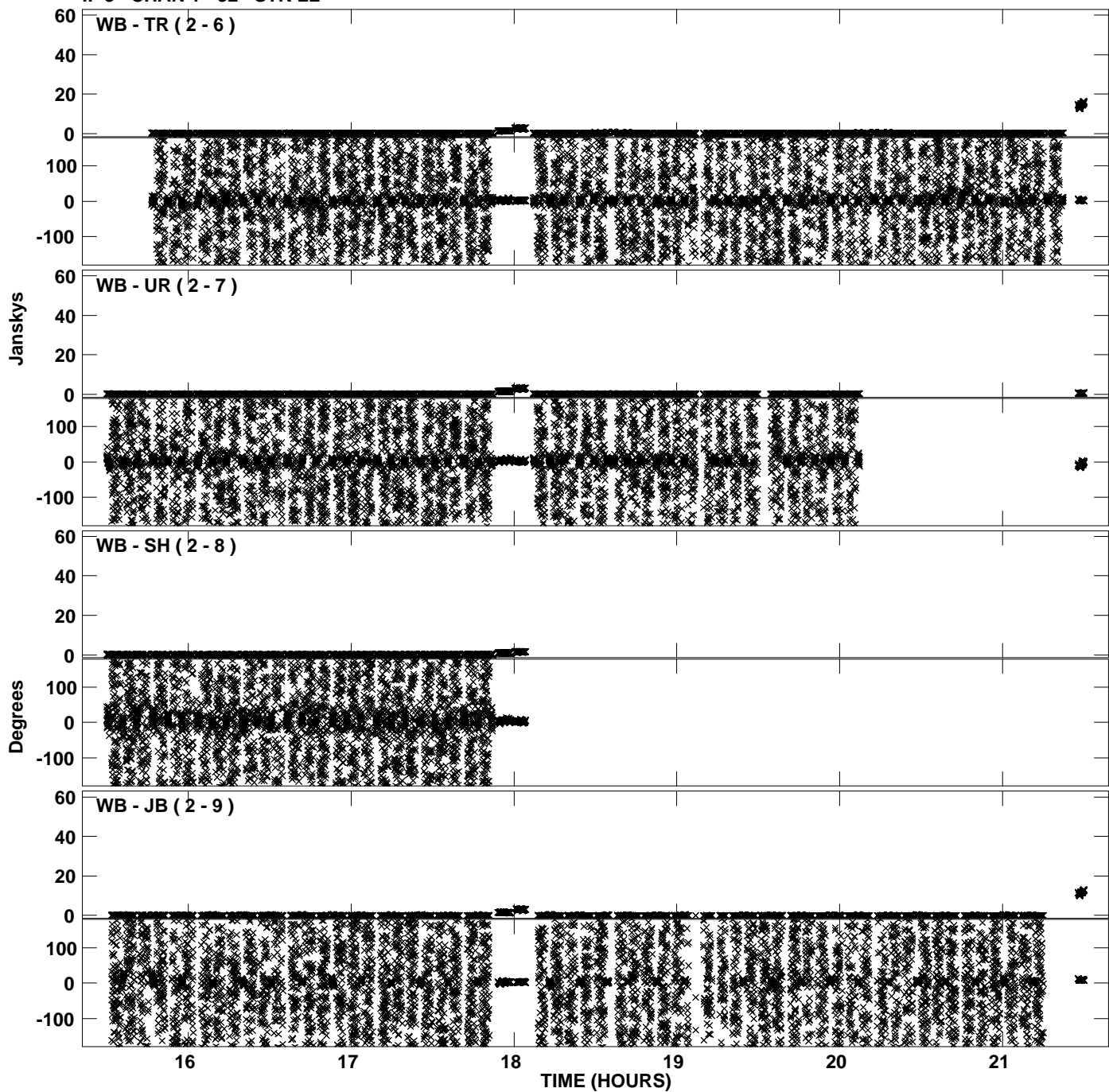
PLot file version 5 created 25-MAY-2010 14:40:47  
Amplitude andPhase vs Time for EP064I.UVDATA.1 Vect aver. CL # 3  
IF 2 CHAN 1 - 32 STK LL



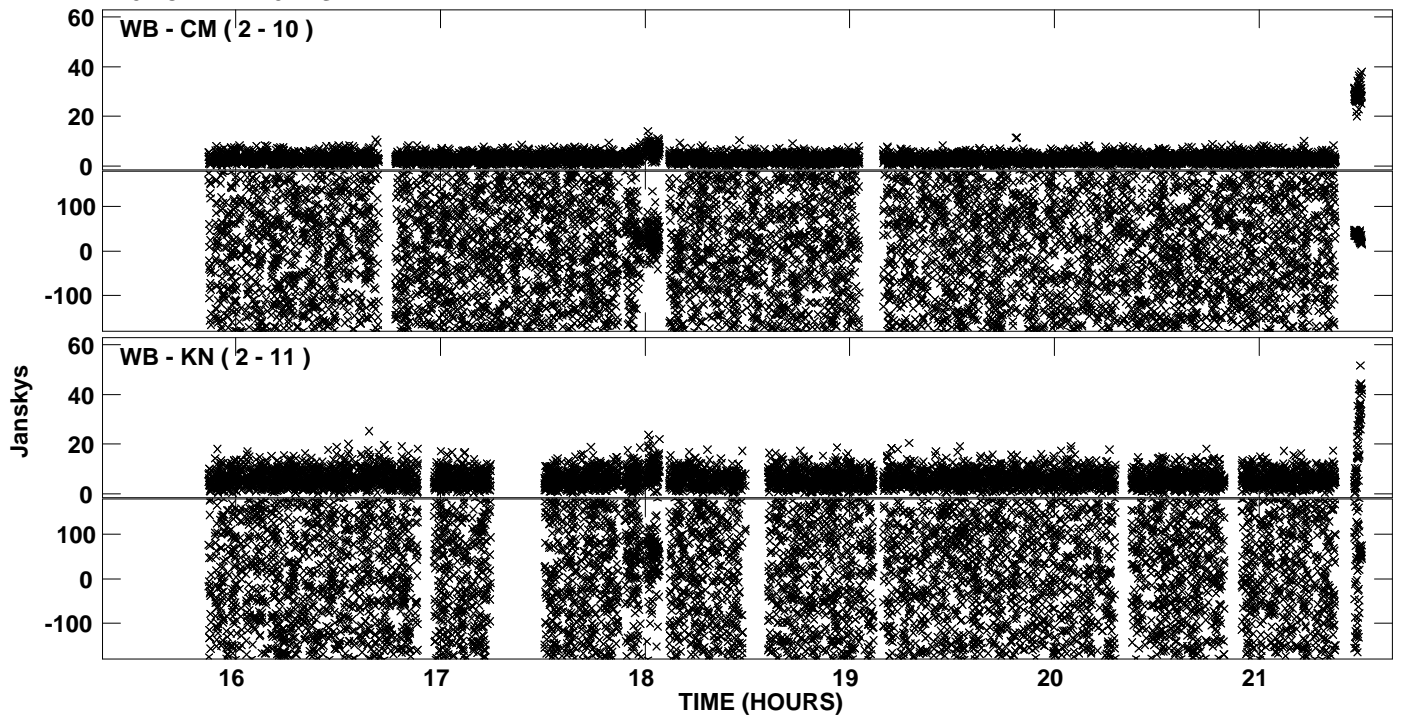
PLot file version 6 created 25-MAY-2010 14:40:58  
Amplitude andPhase vs Time for EP064I.UVDATA.1 Vect aver. CL # 3  
IF 3 CHAN 1 - 32 STK LL



PLot file version 7 created 25-MAY-2010 14:40:58  
Amplitude andPhase vs Time for EP064I.UVDATA.1 Vect aver. CL # 3  
IF 3 CHAN 1 - 32 STK LL

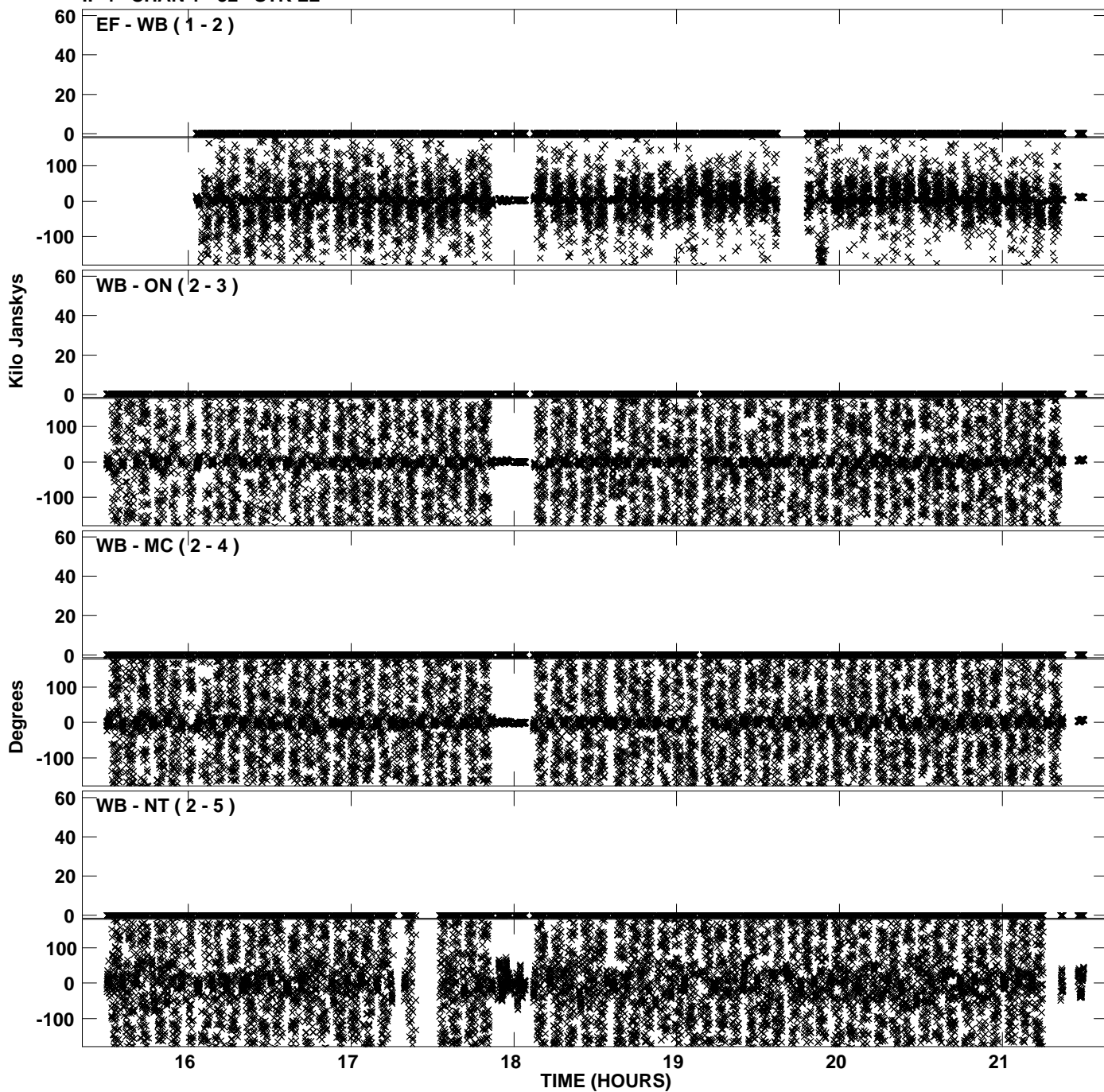


PLot file version 8 created 25-MAY-2010 14:40:58  
Amplitude andPhase vs Time for EP064I.UVDATA.1 Vect aver. CL # 3  
IF 3 CHAN 1 - 32 STK LL

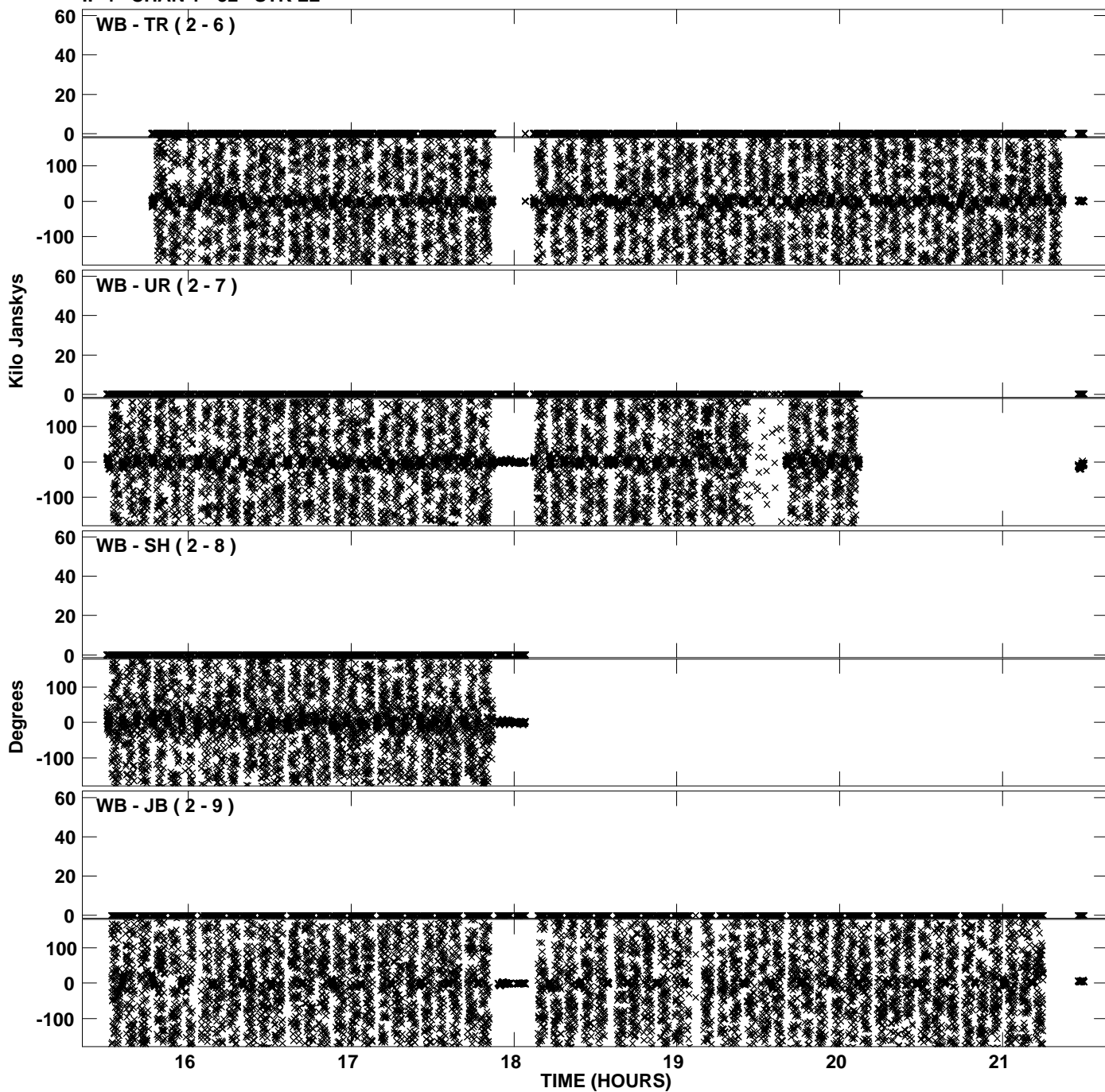




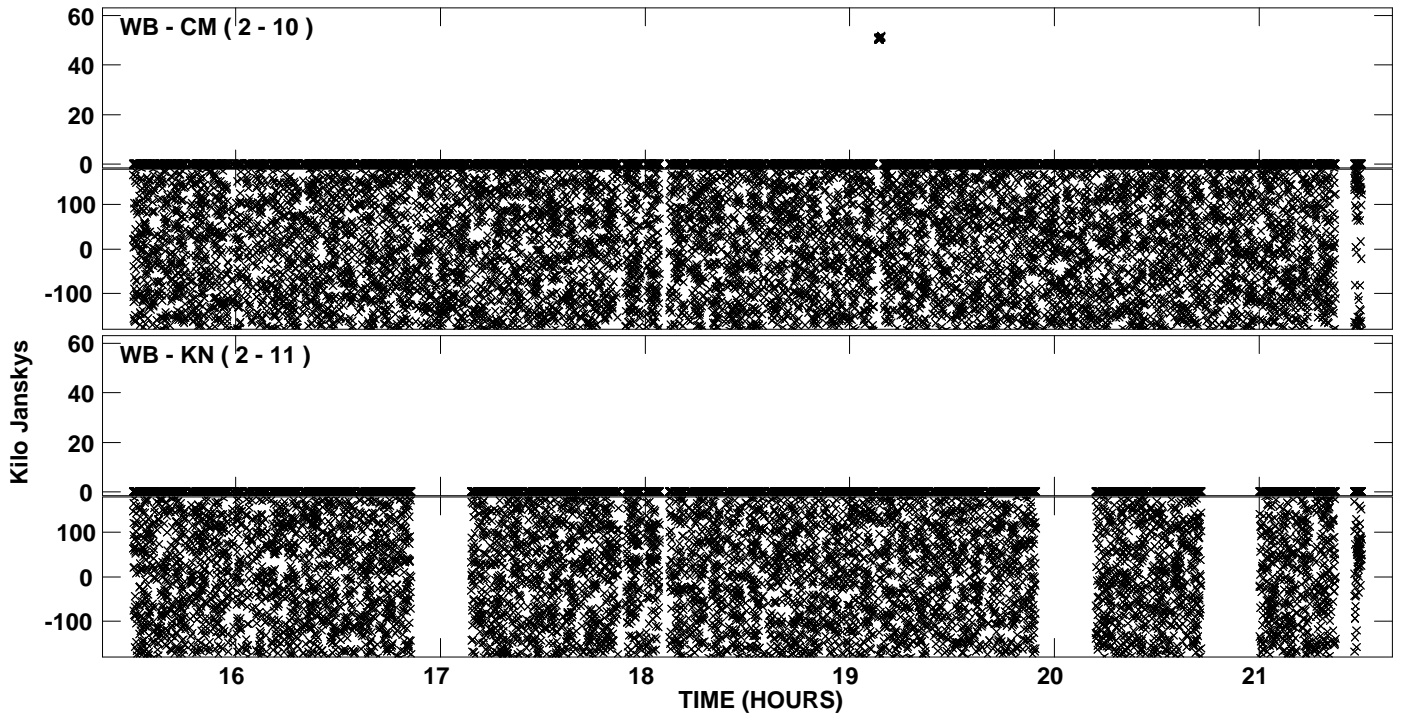
PLot file version 9 created 25-MAY-2010 14:41:09  
Amplitude andPhase vs Time for EP064I.UVDATA.1 Vect aver. CL # 3  
IF 4 CHAN 1 - 32 STK LL



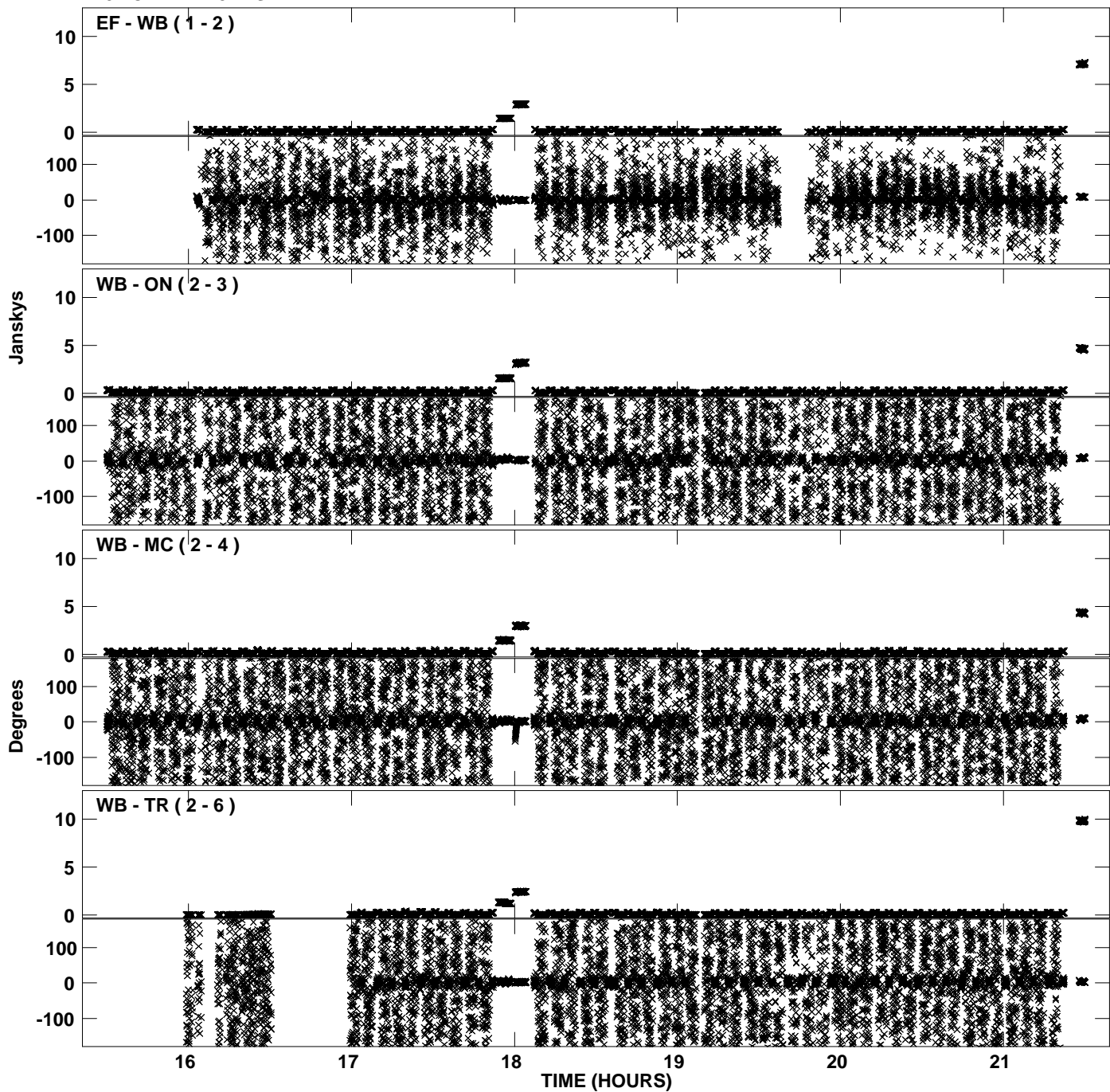
PLot file version 10 created 25-MAY-2010 14:41:09  
Amplitude andPhase vs Time for EP064I.UVDATA.1 Vect aver. CL # 3  
IF 4 CHAN 1 - 32 STK LL



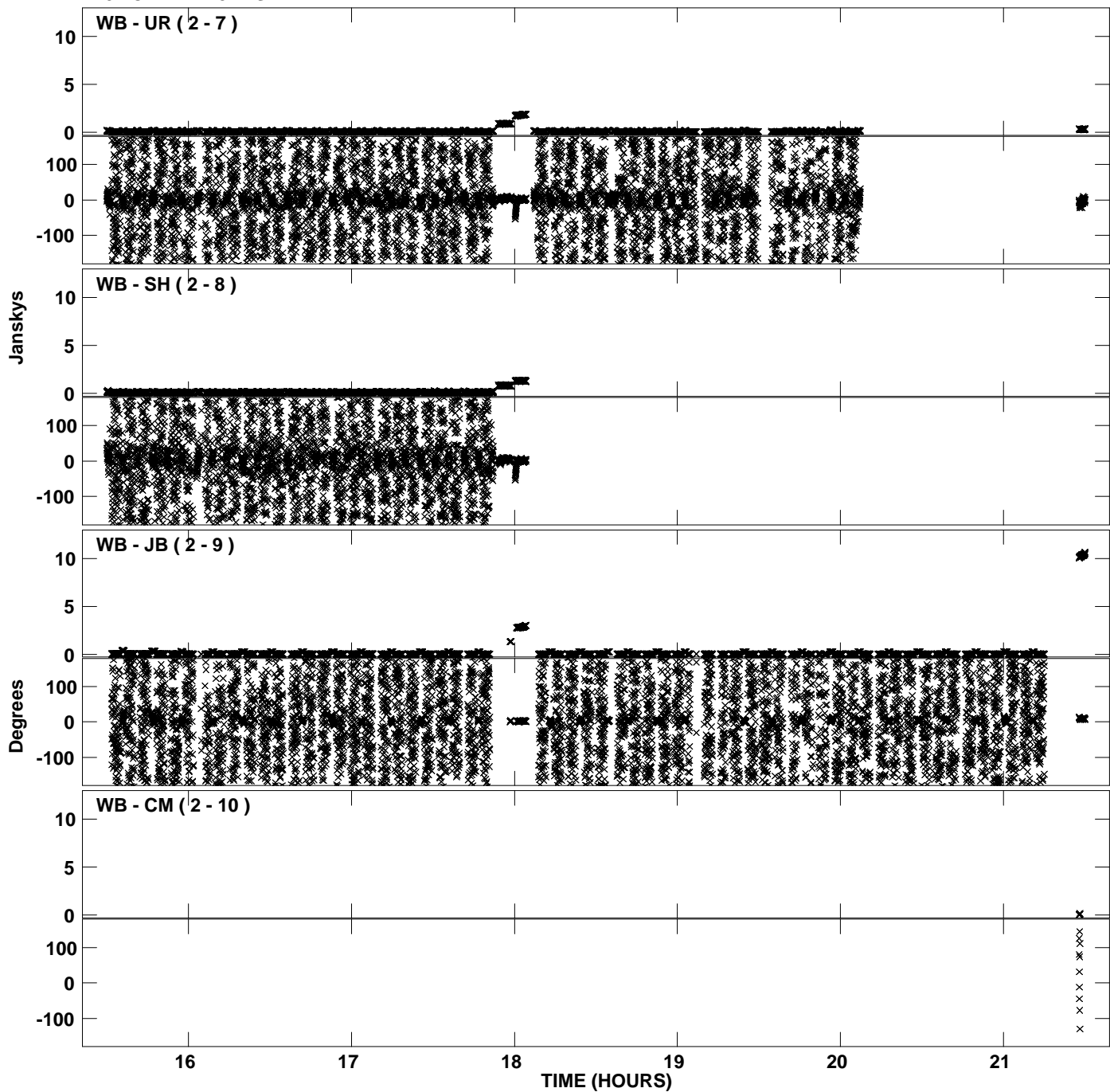
PLot file version 11 created 25-MAY-2010 14:41:09  
Amplitude andPhase vs Time for EP064I.UVDATA.1 Vect aver. CL # 3  
IF 4 CHAN 1 - 32 STK LL



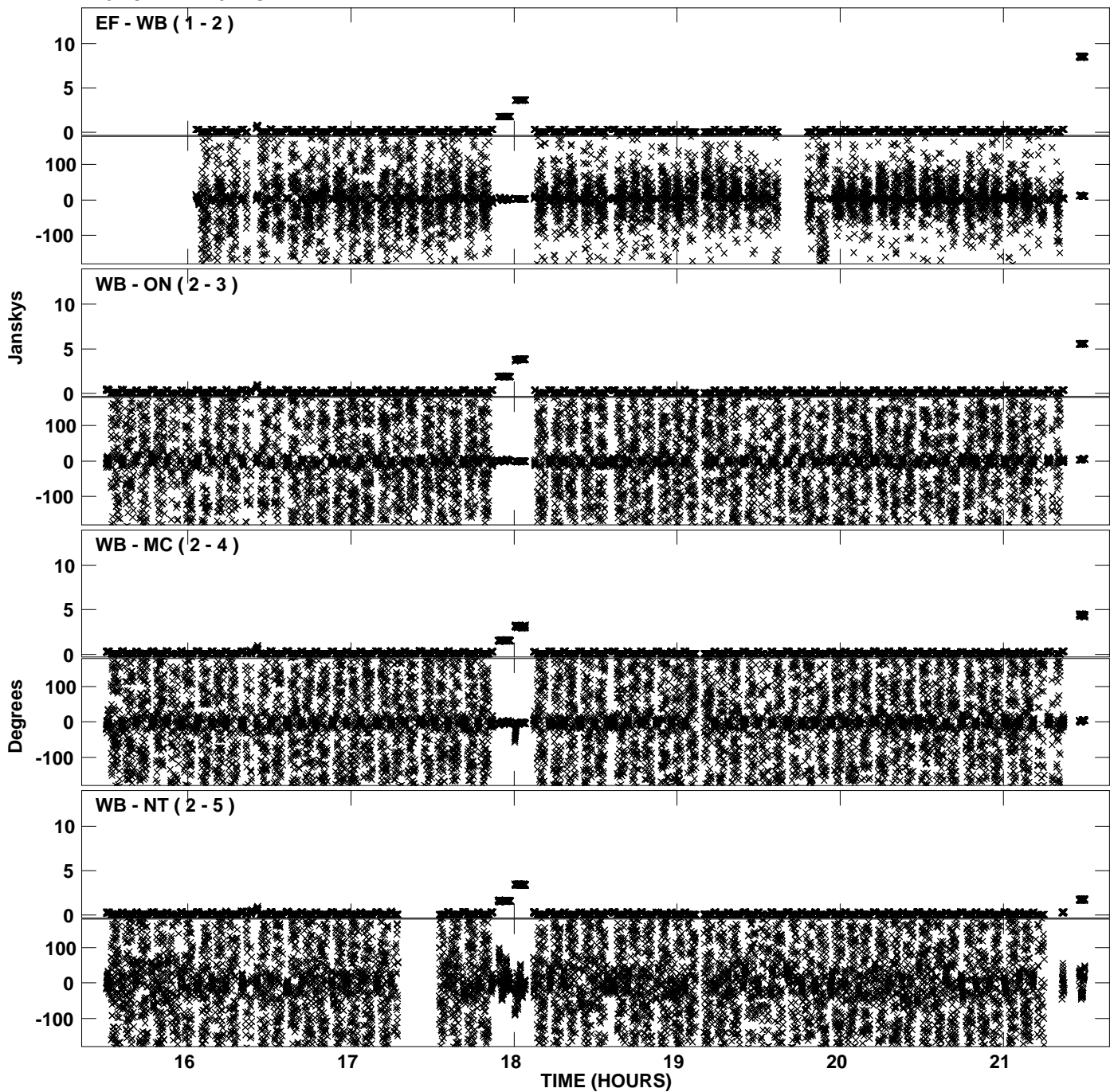
PLot file version 12 created 25-MAY-2010 14:41:18  
Amplitude andPhase vs Time for EP064I.UVDATA.1 Vect aver. CL # 3  
IF 5 CHAN 1 - 32 STK LL



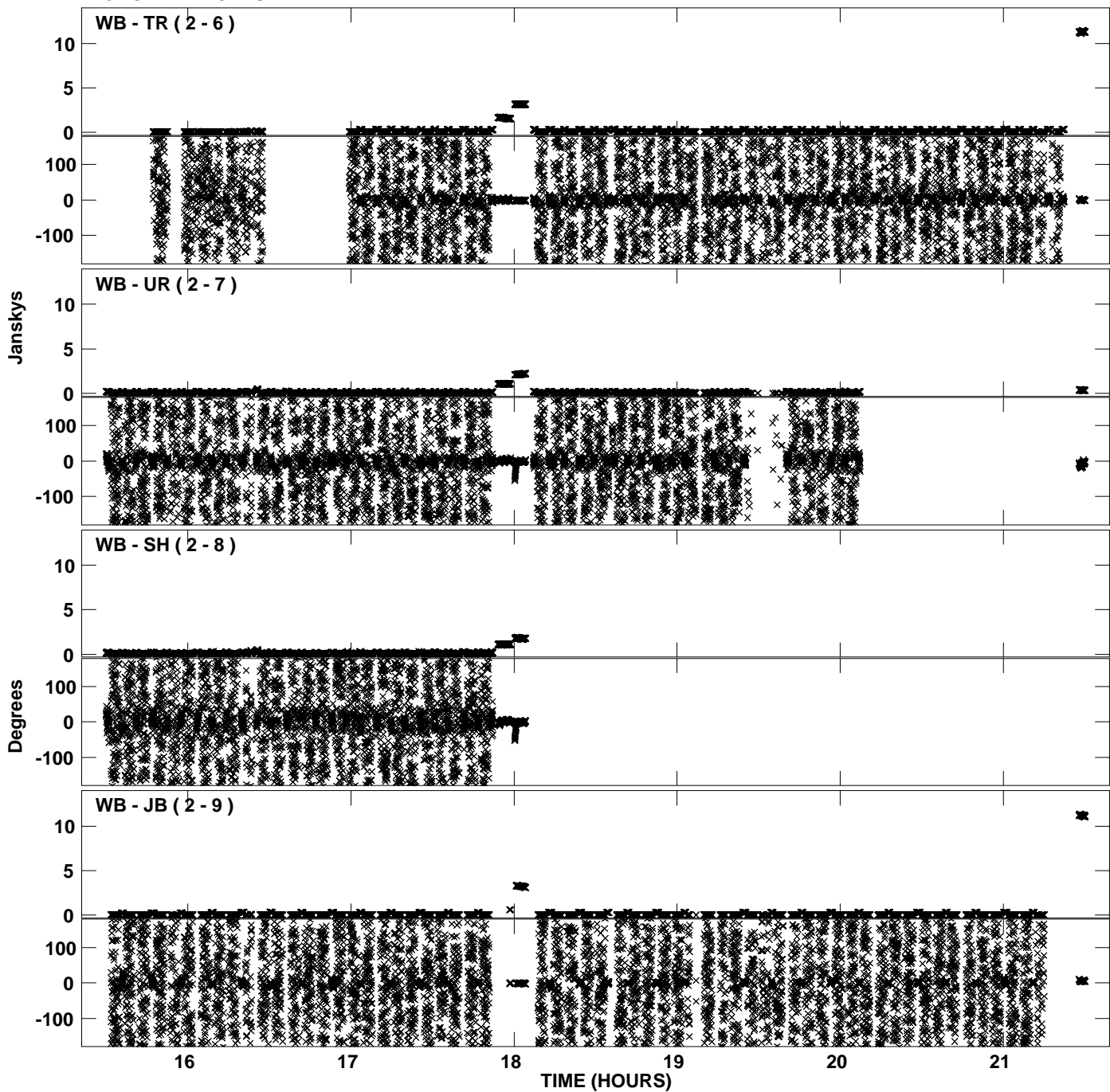
PLot file version 13 created 25-MAY-2010 14:41:19  
Amplitude andPhase vs Time for EP064I.UVDATA.1 Vect aver. CL # 3  
IF 5 CHAN 1 - 32 STK LL



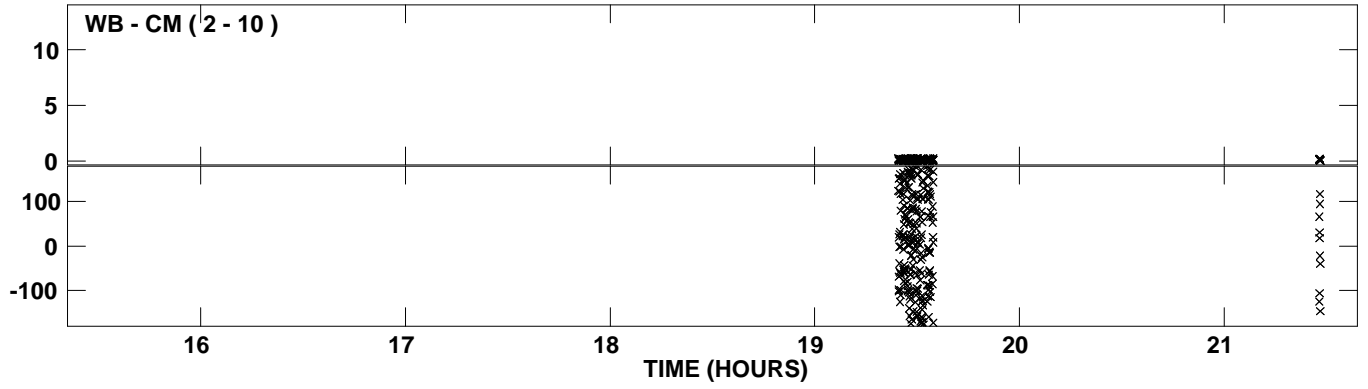
PLot file version 14 created 25-MAY-2010 14:41:28  
Amplitude andPhase vs Time for EP064I.UVDATA.1 Vect aver. CL # 3  
IF 6 CHAN 1 - 32 STK LL



PLot file version 15 created 25-MAY-2010 14:41:28  
Amplitude andPhase vs Time for EP064I.UVDATA.1 Vect aver. CL # 3  
IF 6 CHAN 1 - 32 STK LL

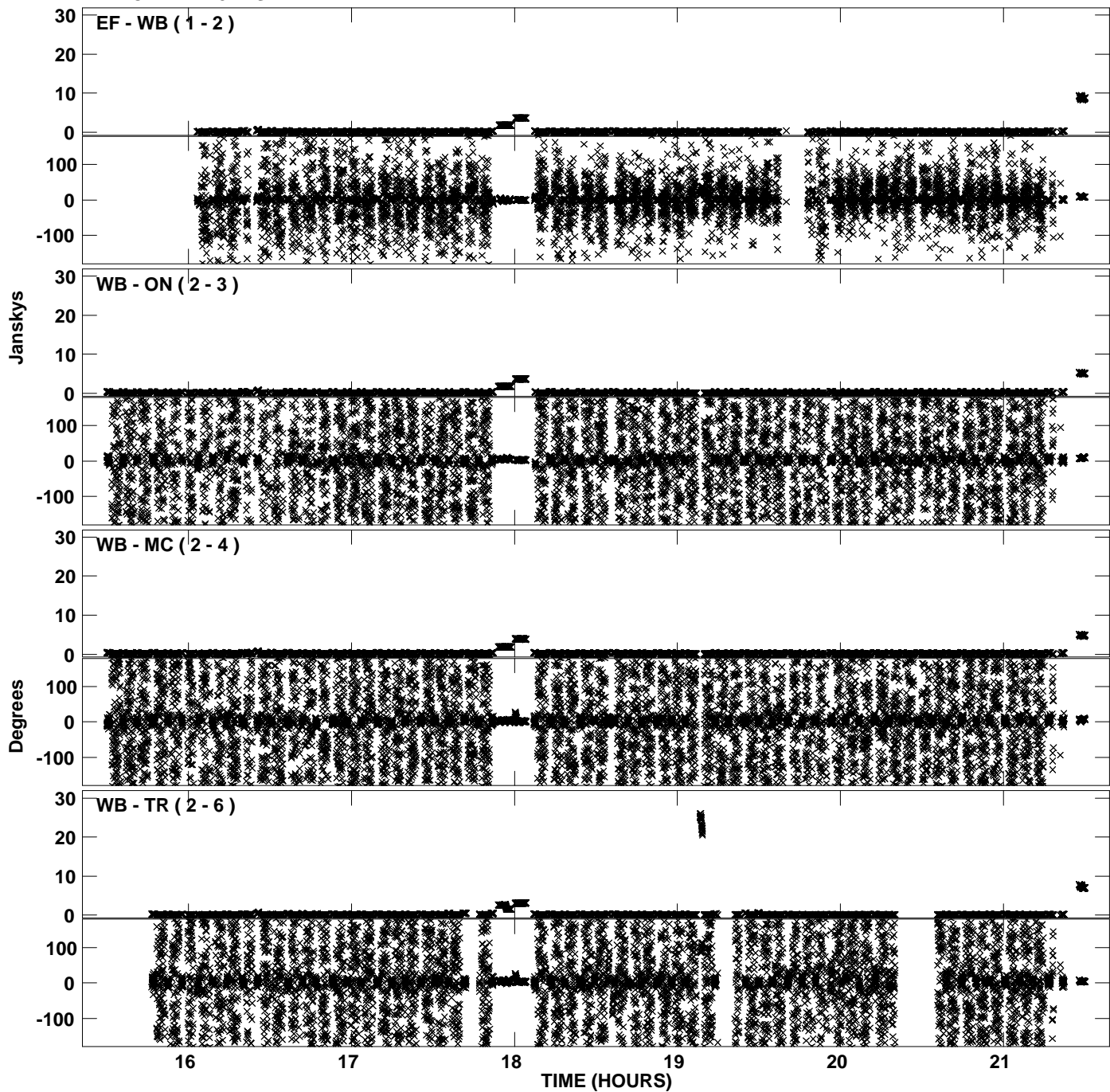


PLot file version 16 created 25-MAY-2010 14:41:28  
Amplitude andPhase vs Time for EP064I.UVDATA.1 Vect aver. CL # 3  
IF 6 CHAN 1 - 32 STK LL

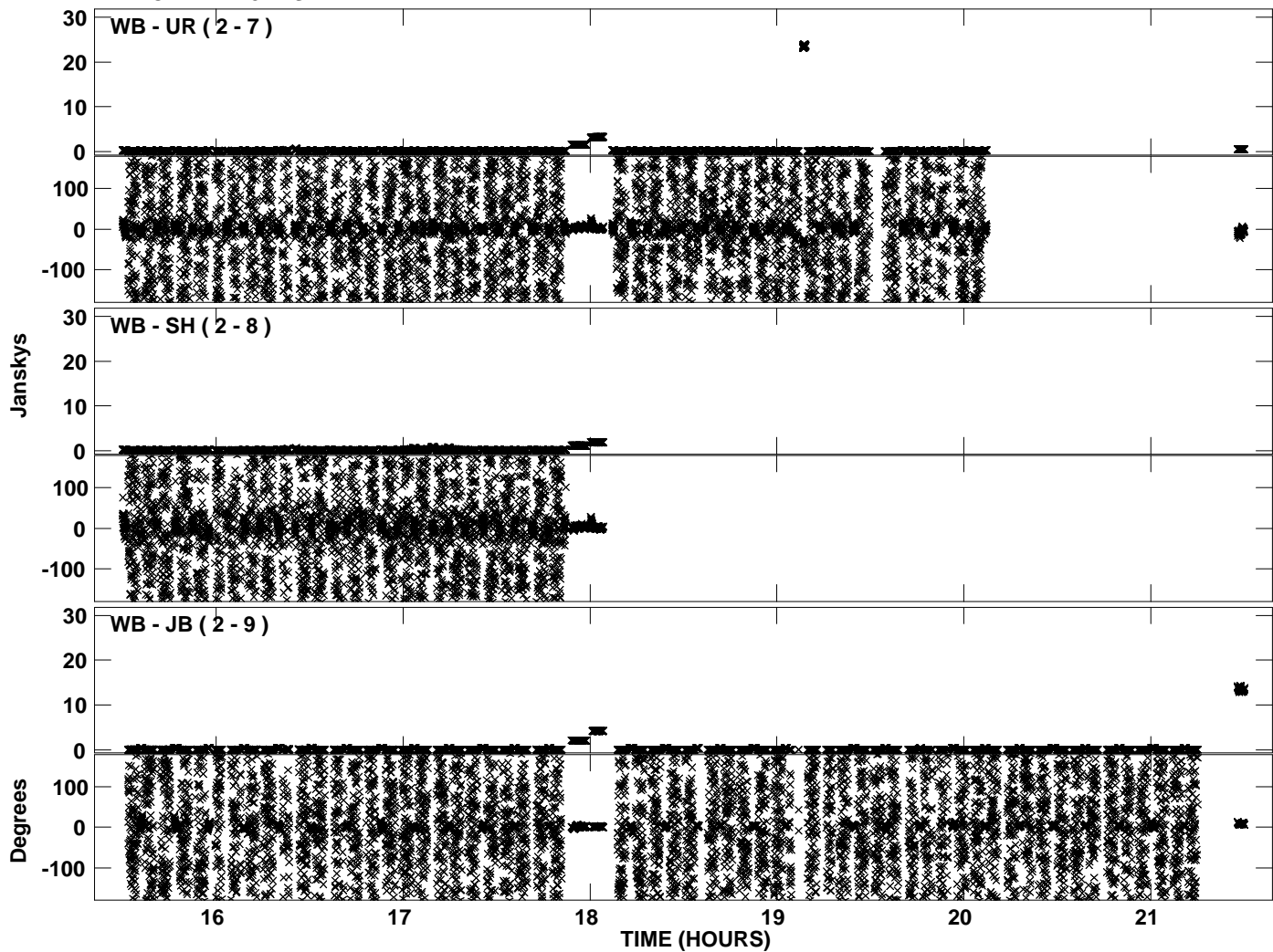




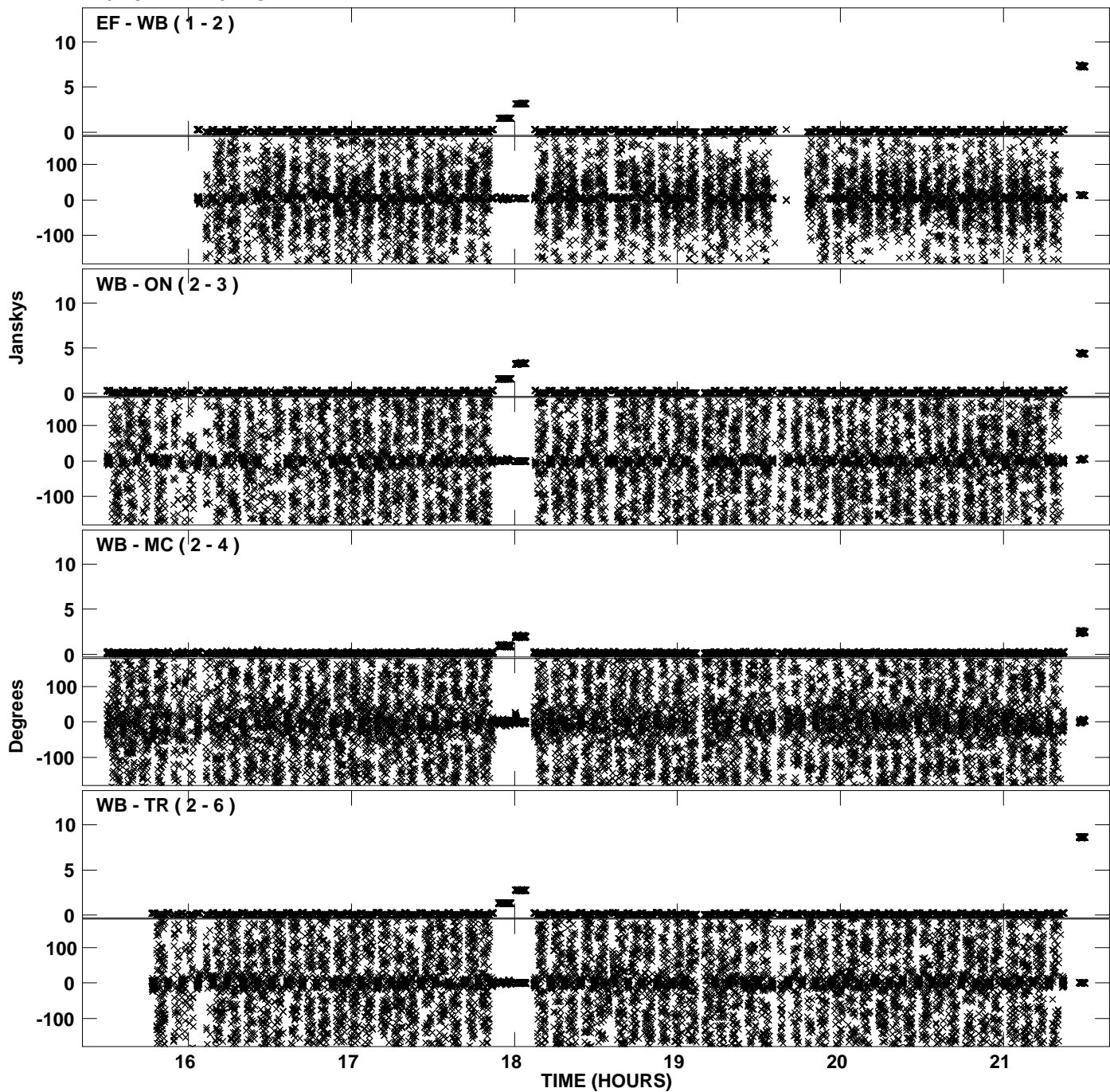
PLot file version 17 created 25-MAY-2010 14:41:38  
Amplitude andPhase vs Time for EP064I.UVDATA.1 Vect aver. CL # 3  
IF 7 CHAN 1 - 32 STK LL



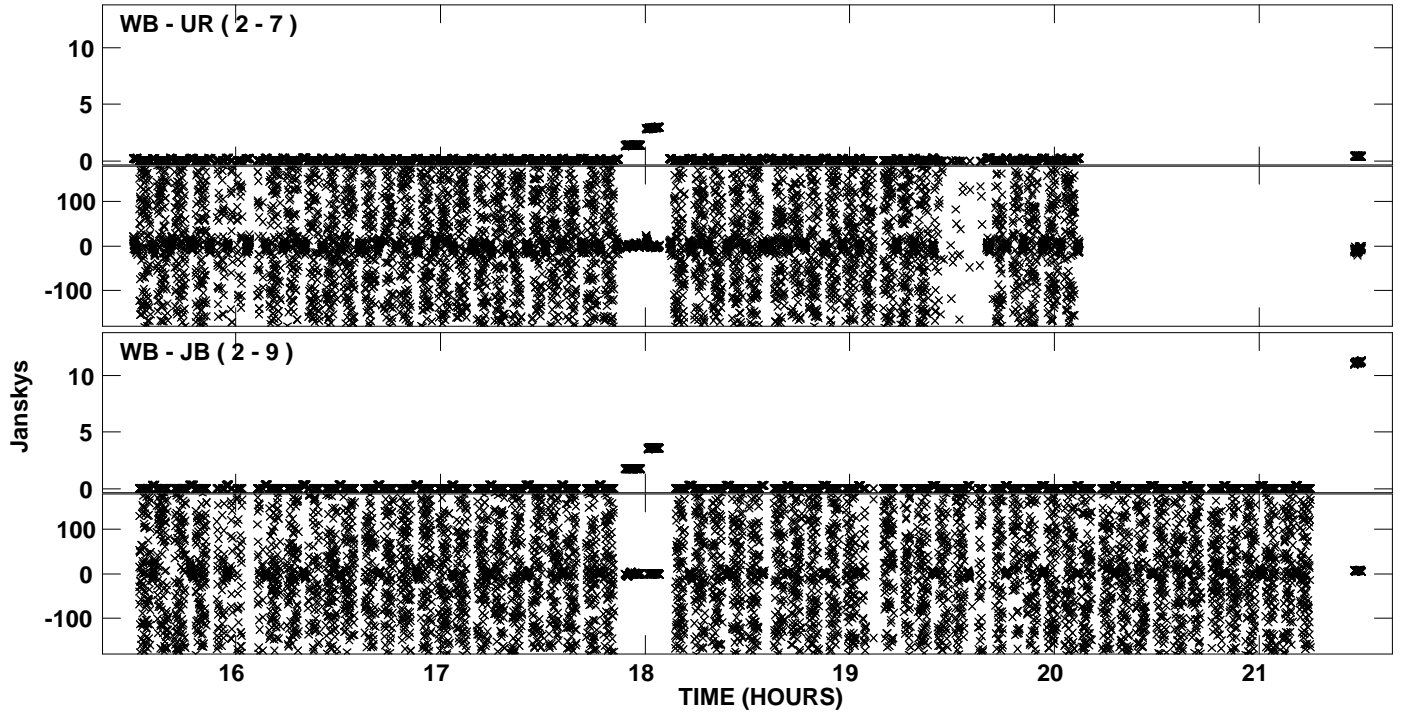
PLot file version 18 created 25-MAY-2010 14:41:38  
Amplitude andPhase vs Time for EP064I.UVDATA.1 Vect aver. CL # 3  
IF 7 CHAN 1 - 32 STK LL



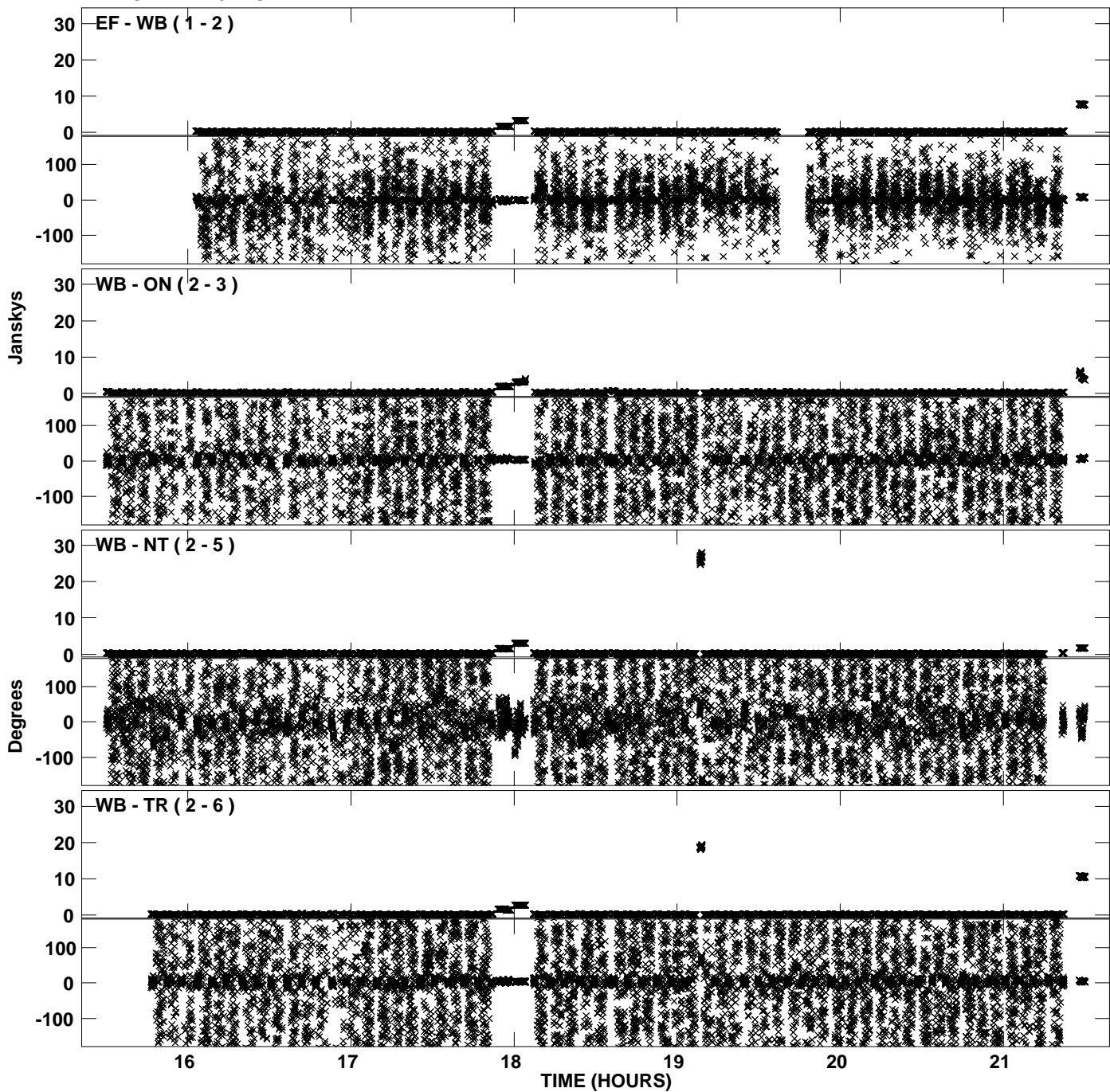
PLot file version 19 created 25-MAY-2010 14:41:47  
Amplitude andPhase vs Time for EP064I.UVDATA.1 Vect aver. CL # 3  
IF 8 CHAN 1 - 32 STK LL



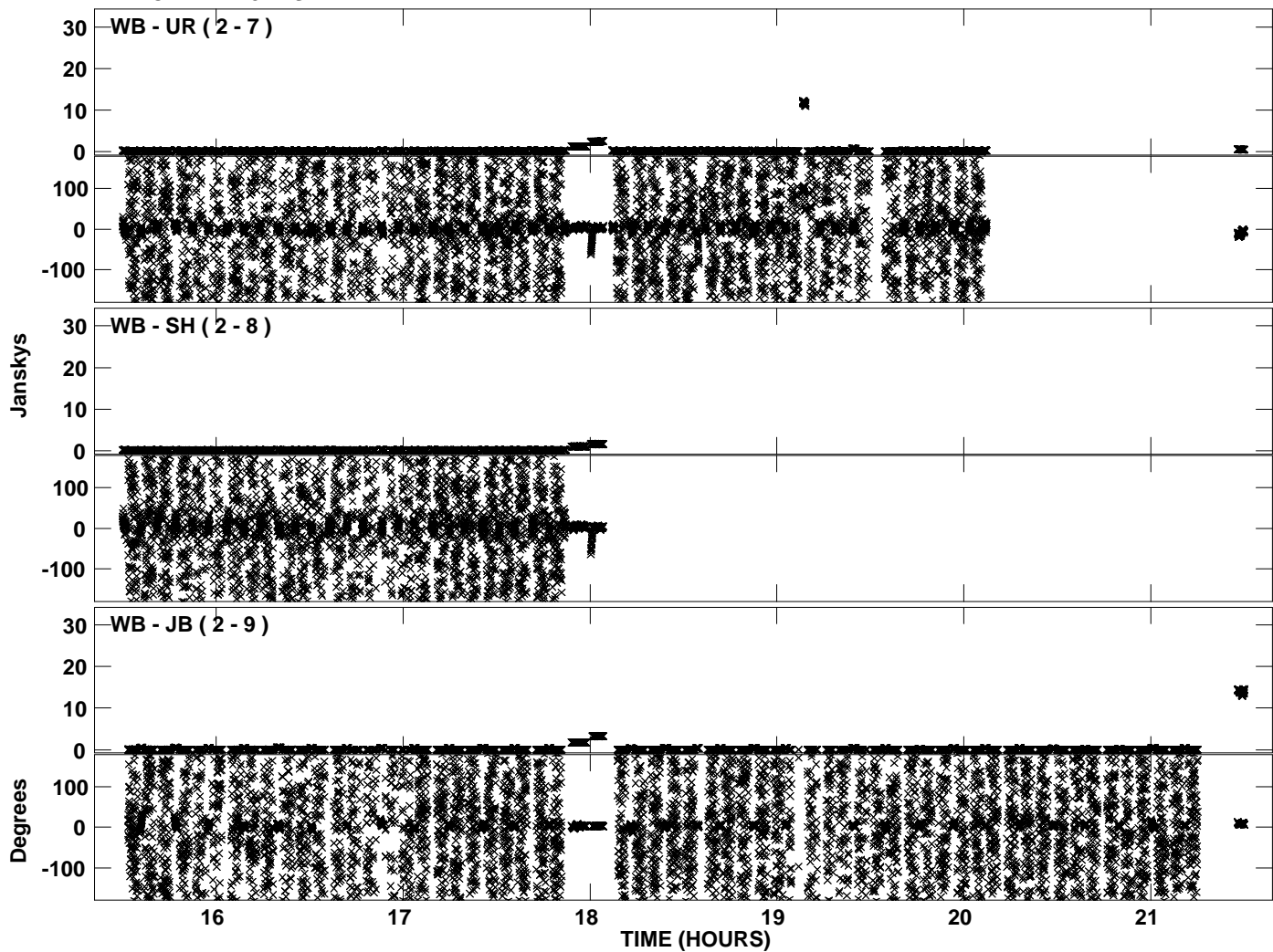
PLot file version 20 created 25-MAY-2010 14:41:47  
Amplitude andPhase vs Time for EP064I.UVDATA.1 Vect aver. CL # 3  
IF 8 CHAN 1 - 32 STK LL



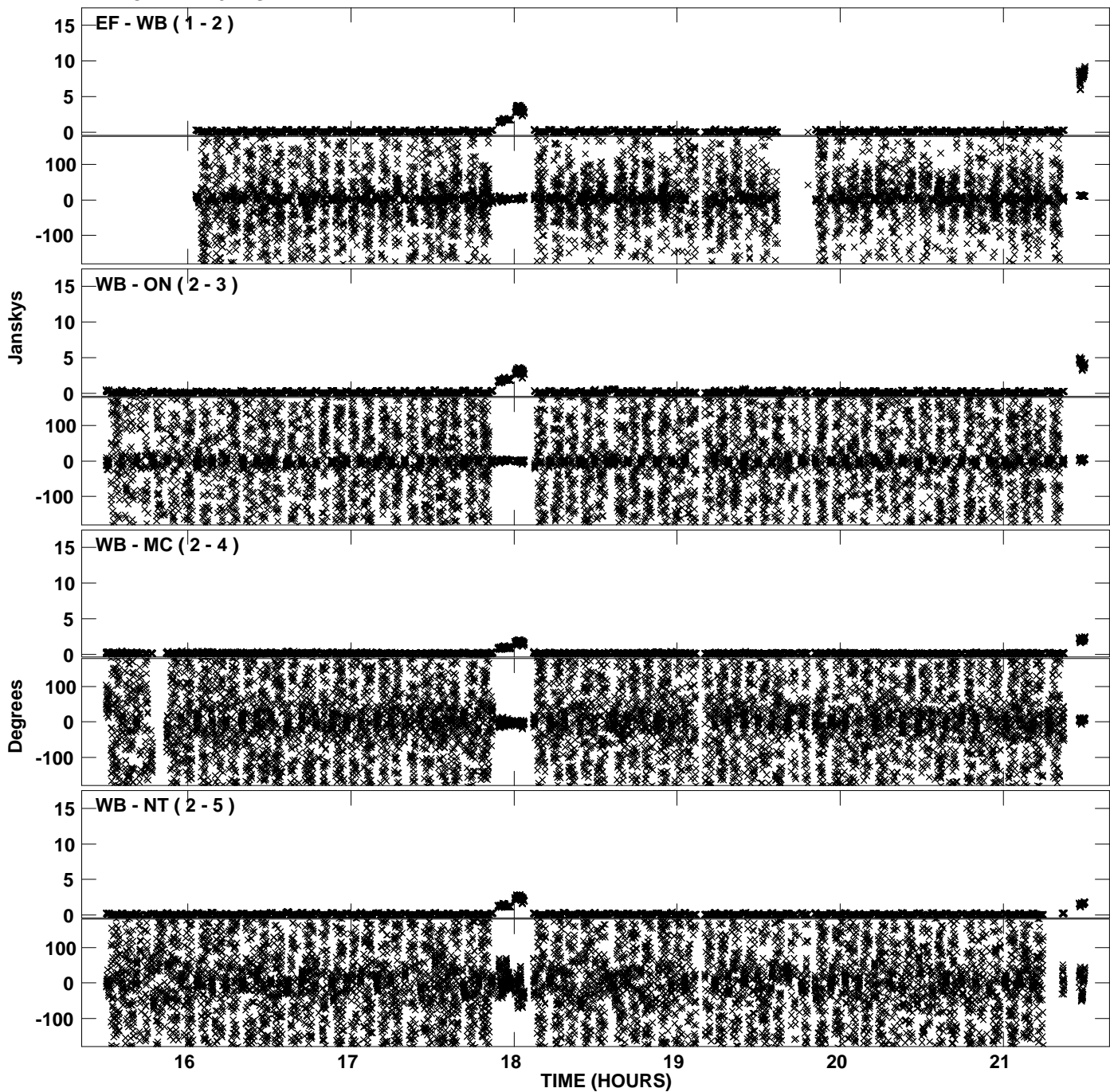
PLot file version 21 created 25-MAY-2010 14:41:56  
Amplitude andPhase vs Time for EP064I.UVDATA.1 Vect aver. CL # 3  
IF 1 CHAN 1 - 32 STK RR



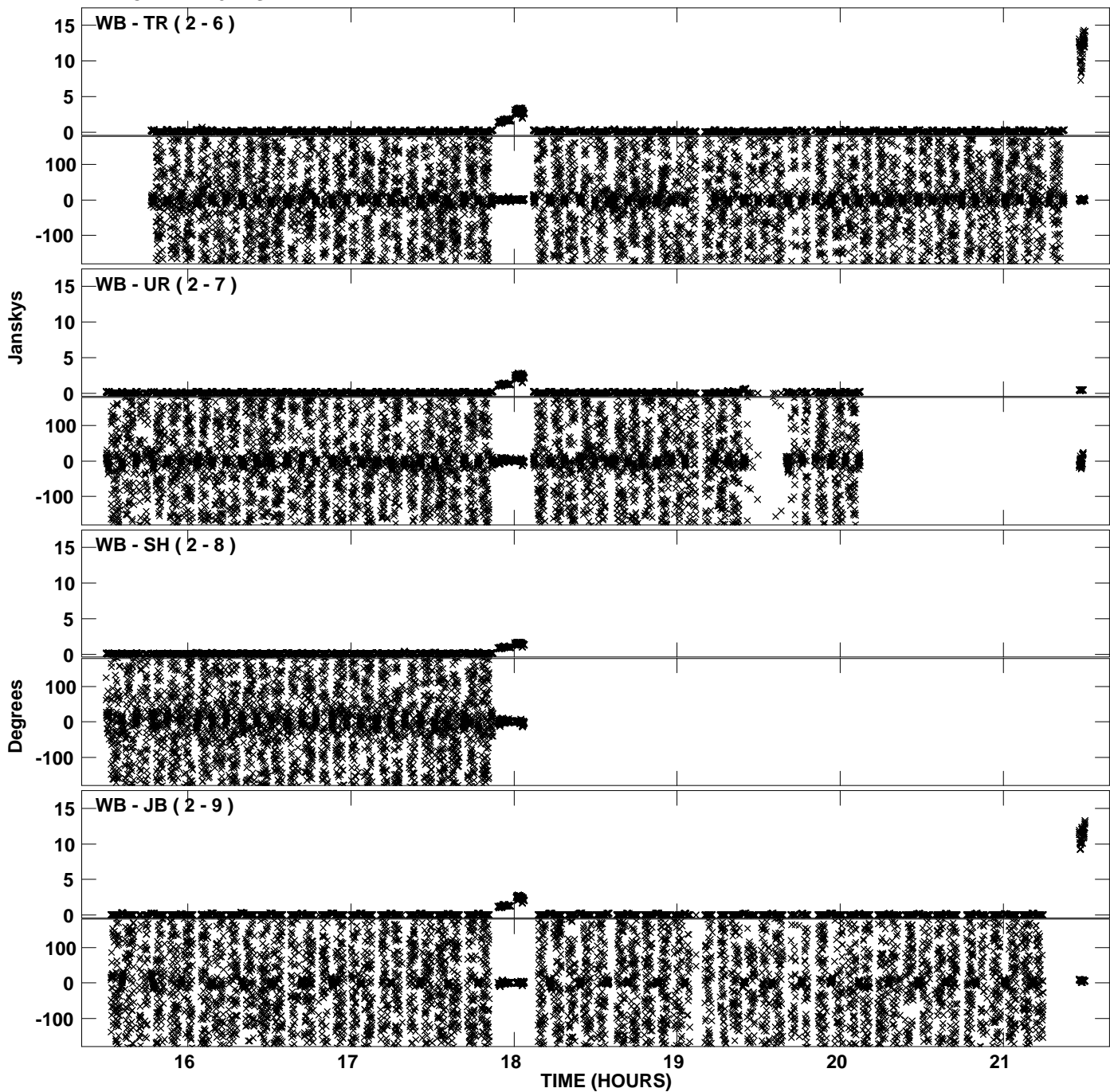
PLot file version 22 created 25-MAY-2010 14:41:56  
Amplitude andPhase vs Time for EP064I.UVDATA.1 Vect aver. CL # 3  
IF 1 CHAN 1 - 32 STK RR



PLot file version 23 created 25-MAY-2010 14:42:05  
Amplitude andPhase vs Time for EP064I.UVDATA.1 Vect aver. CL # 3  
IF 2 CHAN 1 - 32 STK RR

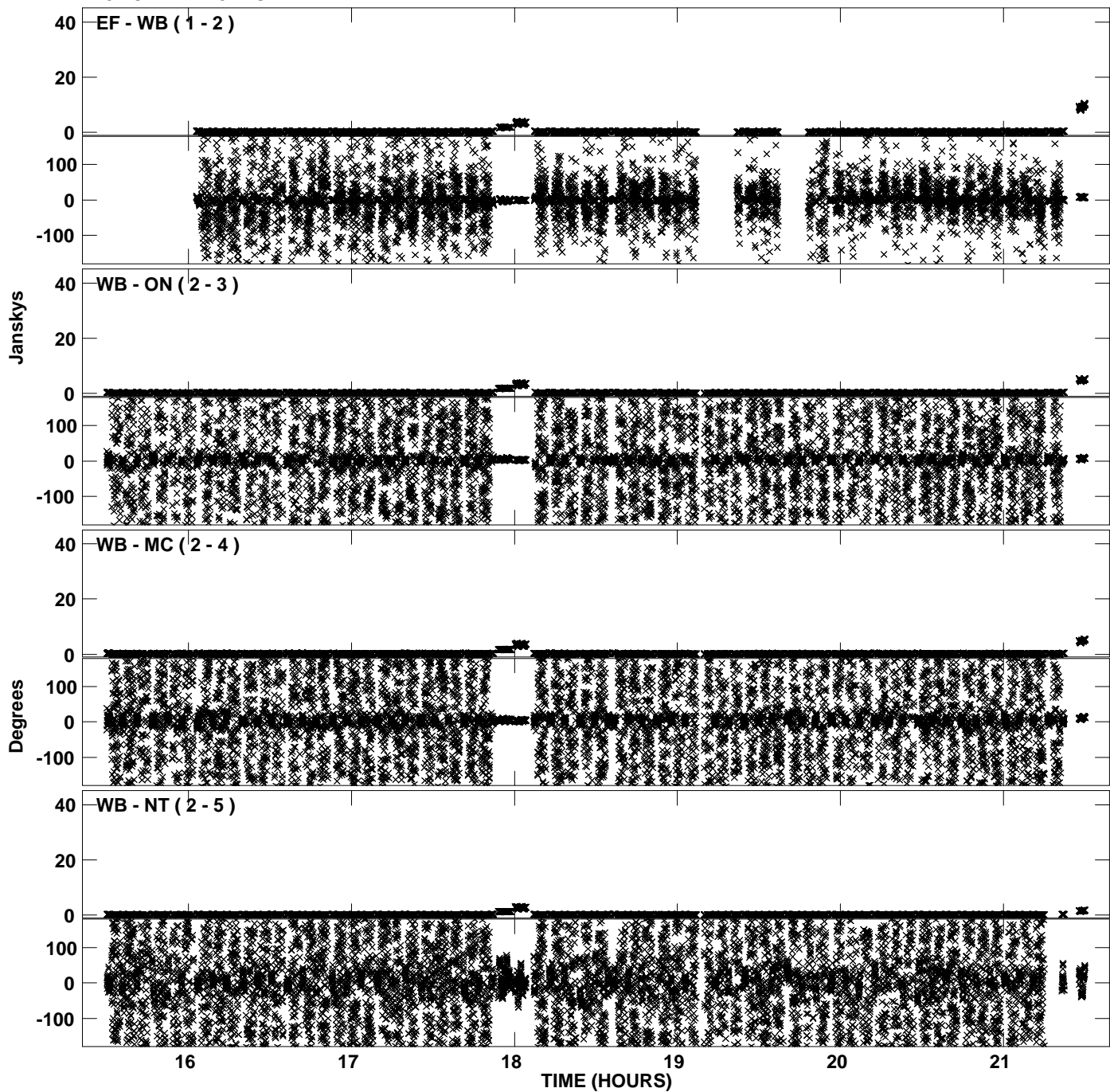


PLot file version 24 created 25-MAY-2010 14:42:05  
Amplitude andPhase vs Time for EP064I.UVDATA.1 Vect aver. CL # 3  
IF 2 CHAN 1 - 32 STK RR

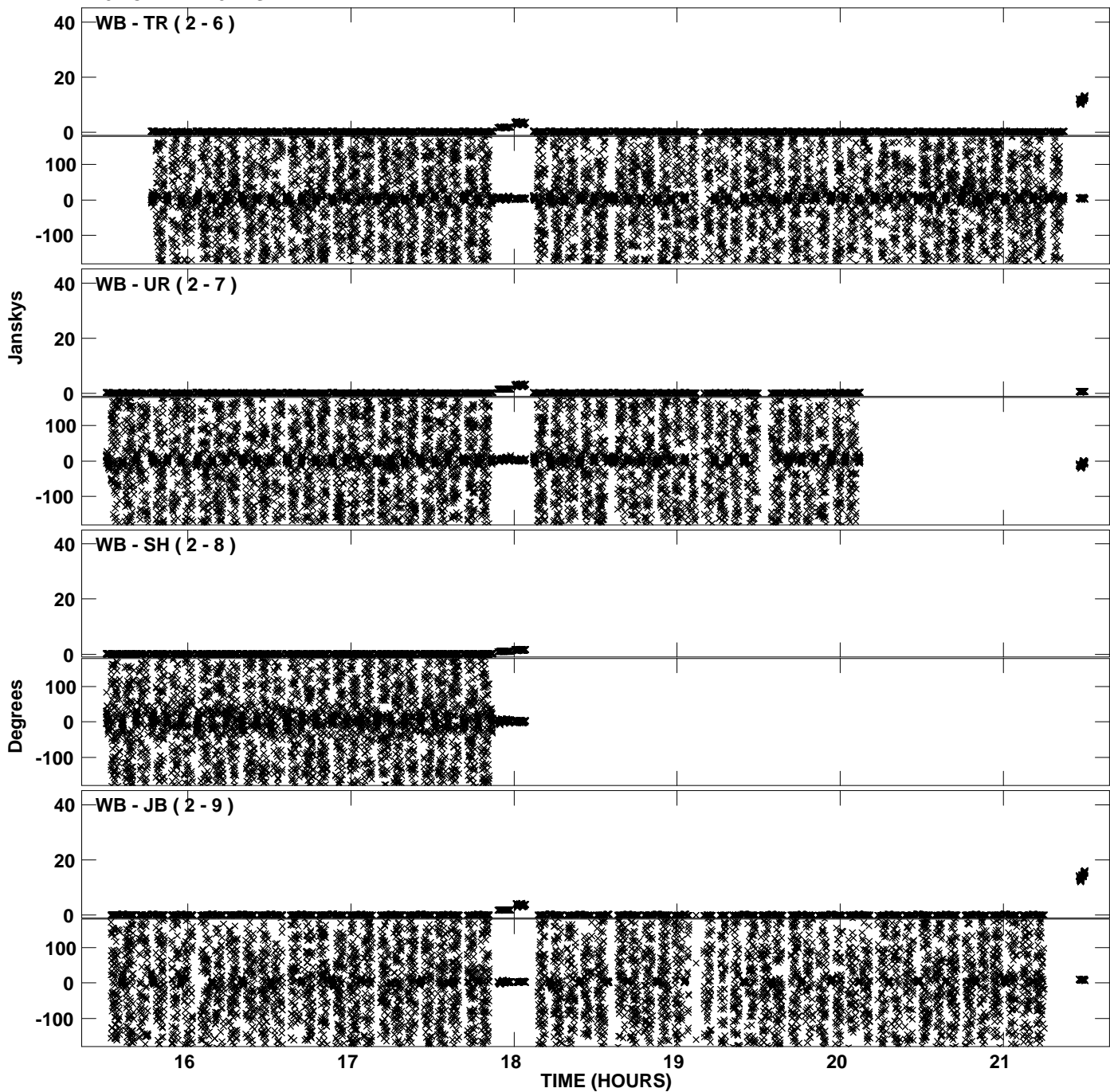




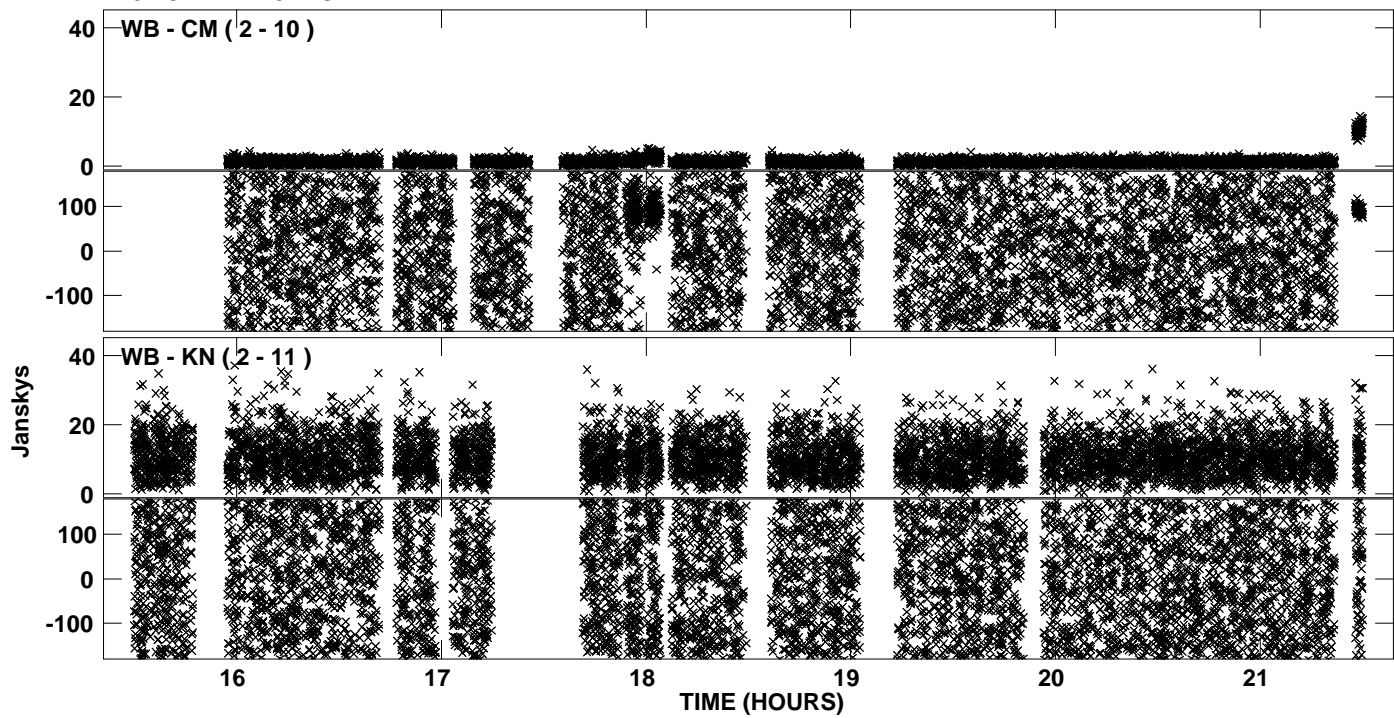
PLot file version 25 created 25-MAY-2010 14:42:15  
Amplitude andPhase vs Time for EP064I.UVDATA.1 Vect aver. CL # 3  
IF 3 CHAN 1 - 32 STK RR



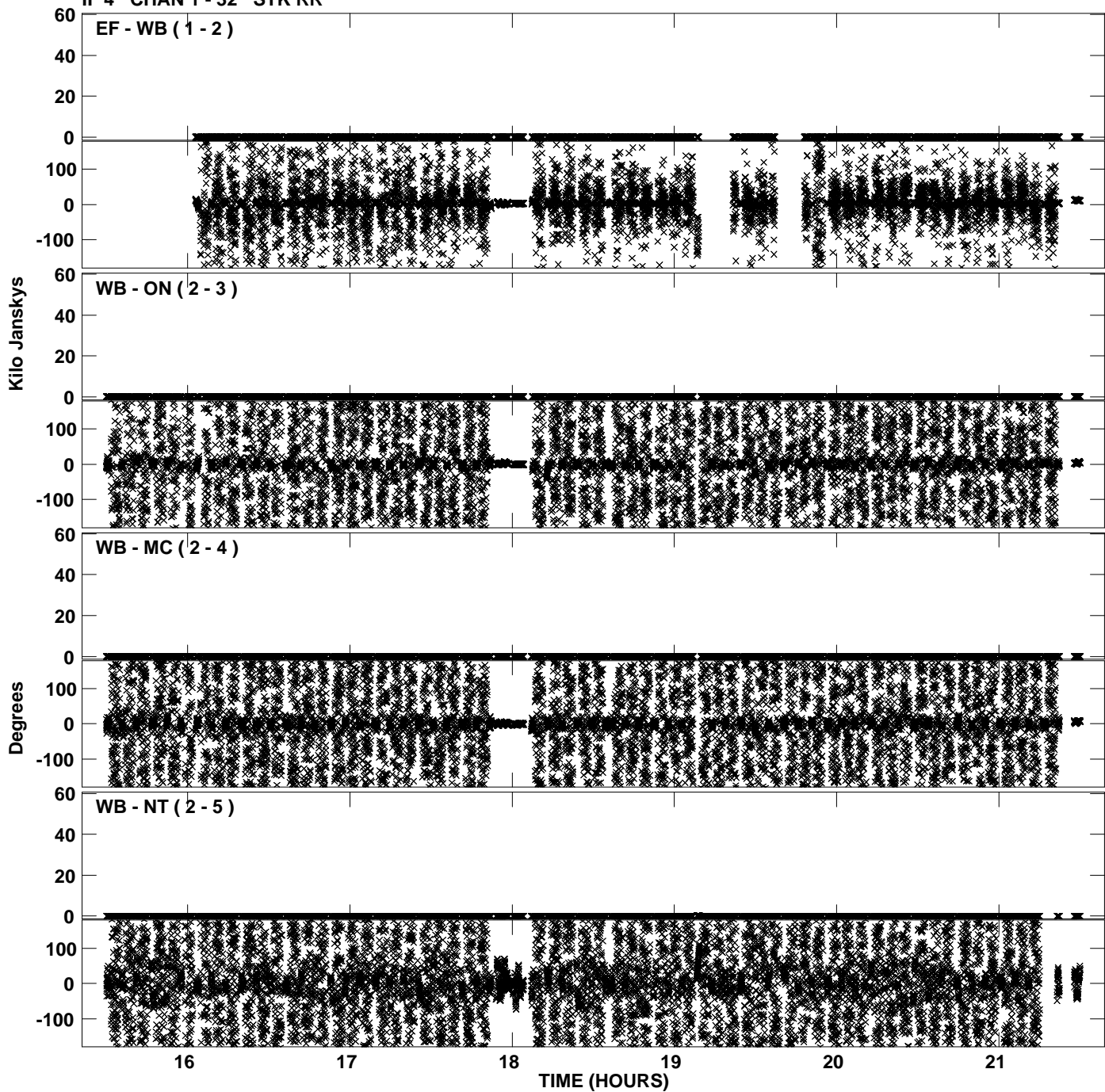
PLot file version 26 created 25-MAY-2010 14:42:15  
Amplitude andPhase vs Time for EP064I.UVDATA.1 Vect aver. CL # 3  
IF 3 CHAN 1 - 32 STK RR



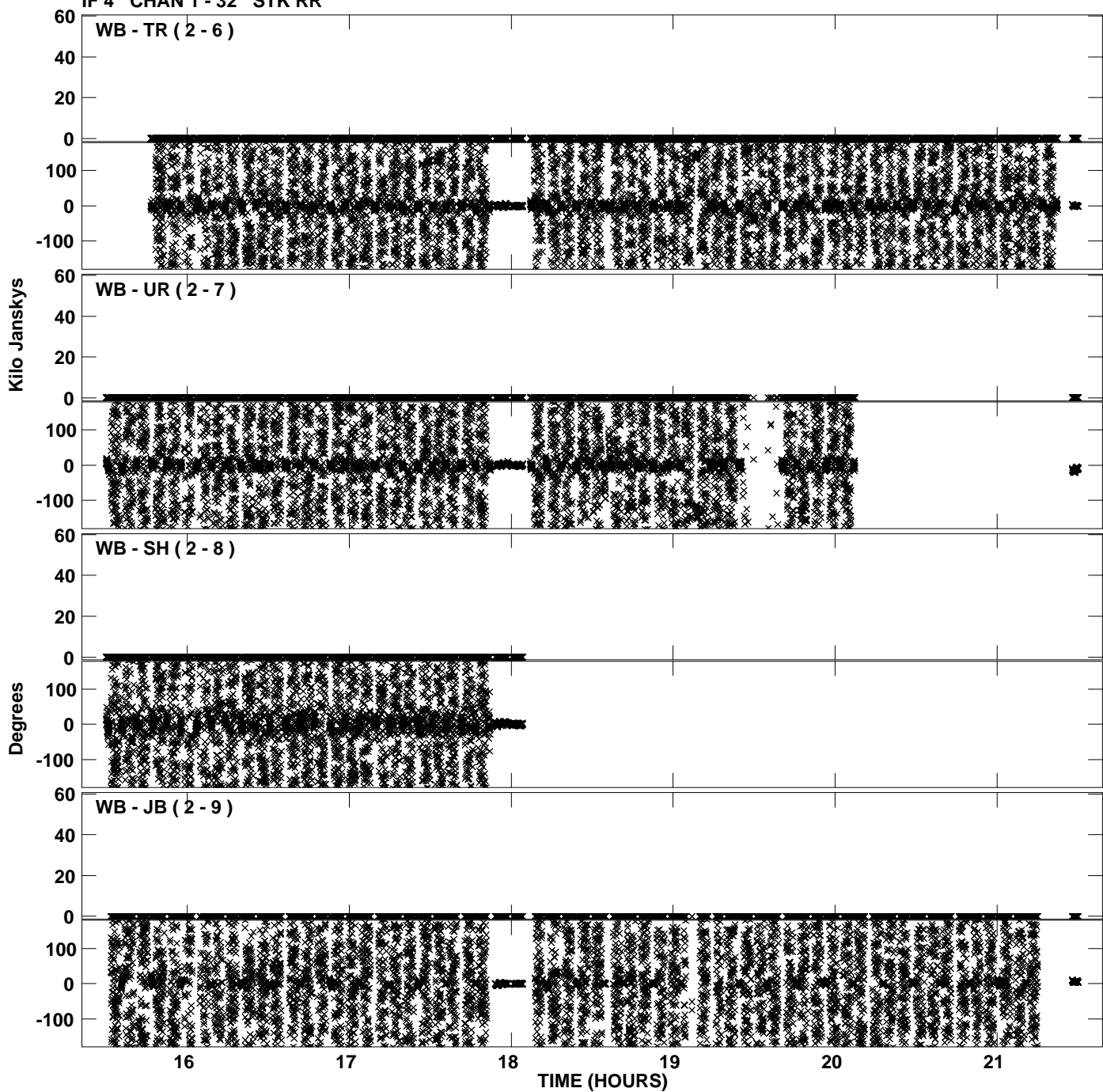
PLot file version 27 created 25-MAY-2010 14:42:15  
Amplitude andPhase vs Time for EP064I.UVDATA.1 Vect aver. CL # 3  
IF 3 CHAN 1 - 32 STK RR



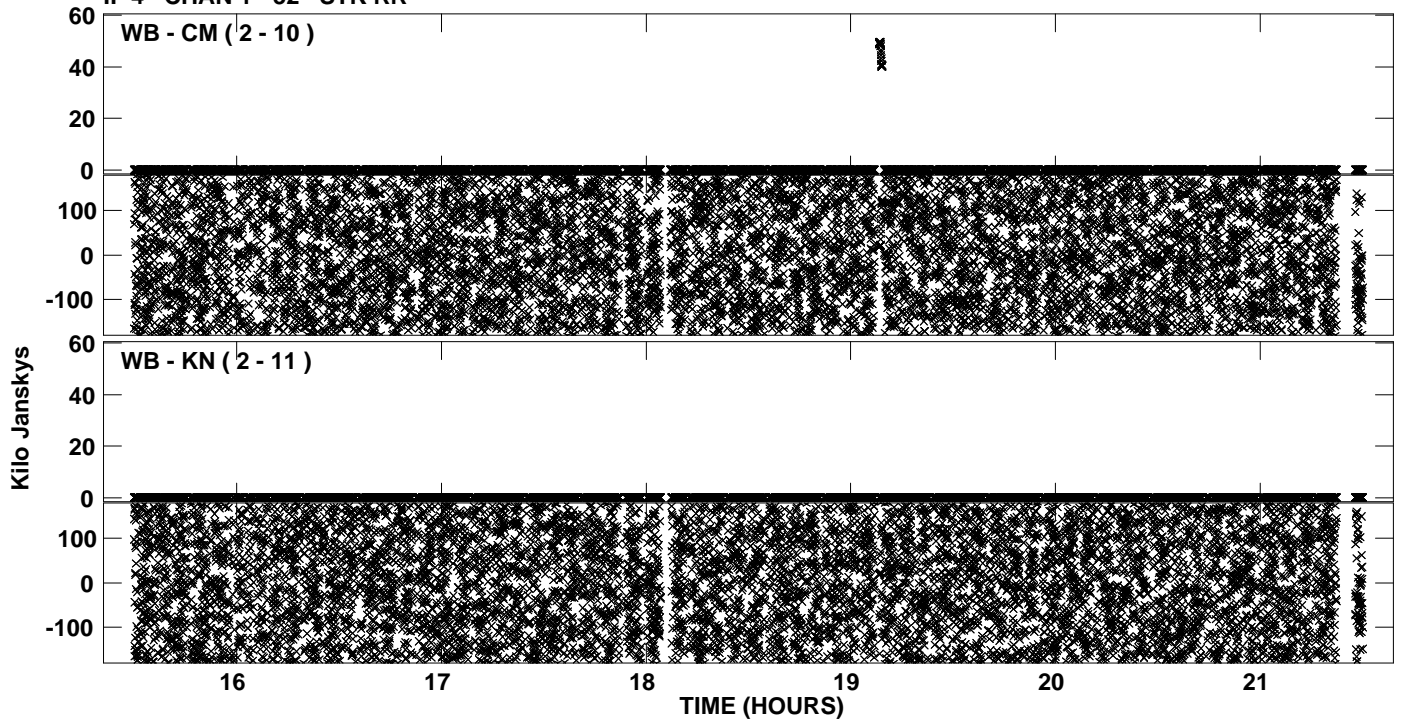
PLot file version 28 created 25-MAY-2010 14:42:26  
Amplitude andPhase vs Time for EP064I.UVDATA.1 Vect aver. CL # 3  
IF 4 CHAN 1 - 32 STK RR



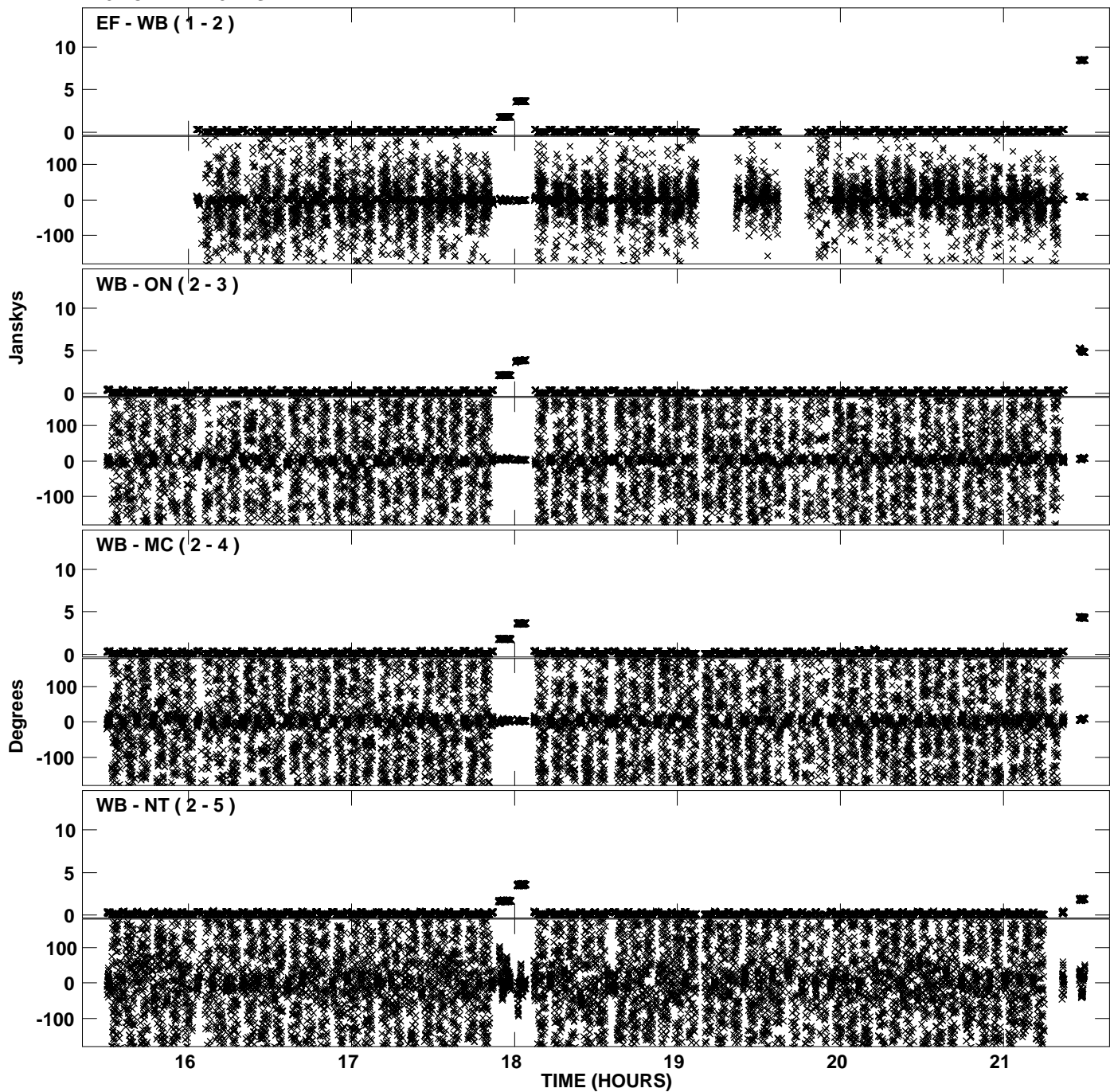
PLot file version 29 created 25-MAY-2010 14:42:26  
Amplitude andPhase vs Time for EP064I.UVDATA.1 Vect aver. CL # 3  
IF 4 CHAN 1 - 32 STK RR



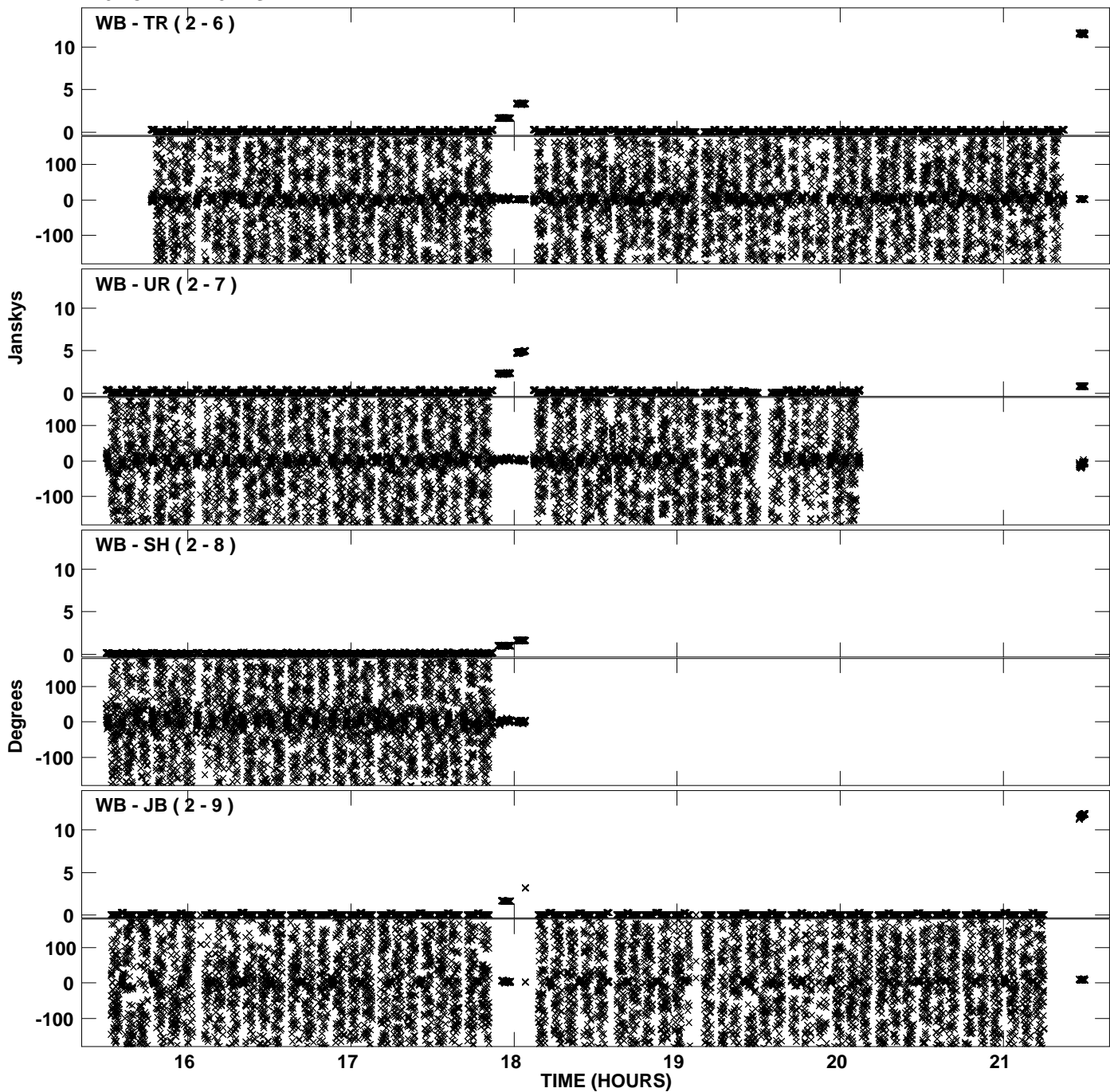
PLot file version 30 created 25-MAY-2010 14:42:26  
Amplitude andPhase vs Time for EP064I.UVDATA.1 Vect aver. CL # 3  
IF 4 CHAN 1 - 32 STK RR



PLot file version 31 created 25-MAY-2010 14:42:35  
Amplitude andPhase vs Time for EP064I.UVDATA.1 Vect aver. CL # 3  
IF 5 CHAN 1 - 32 STK RR

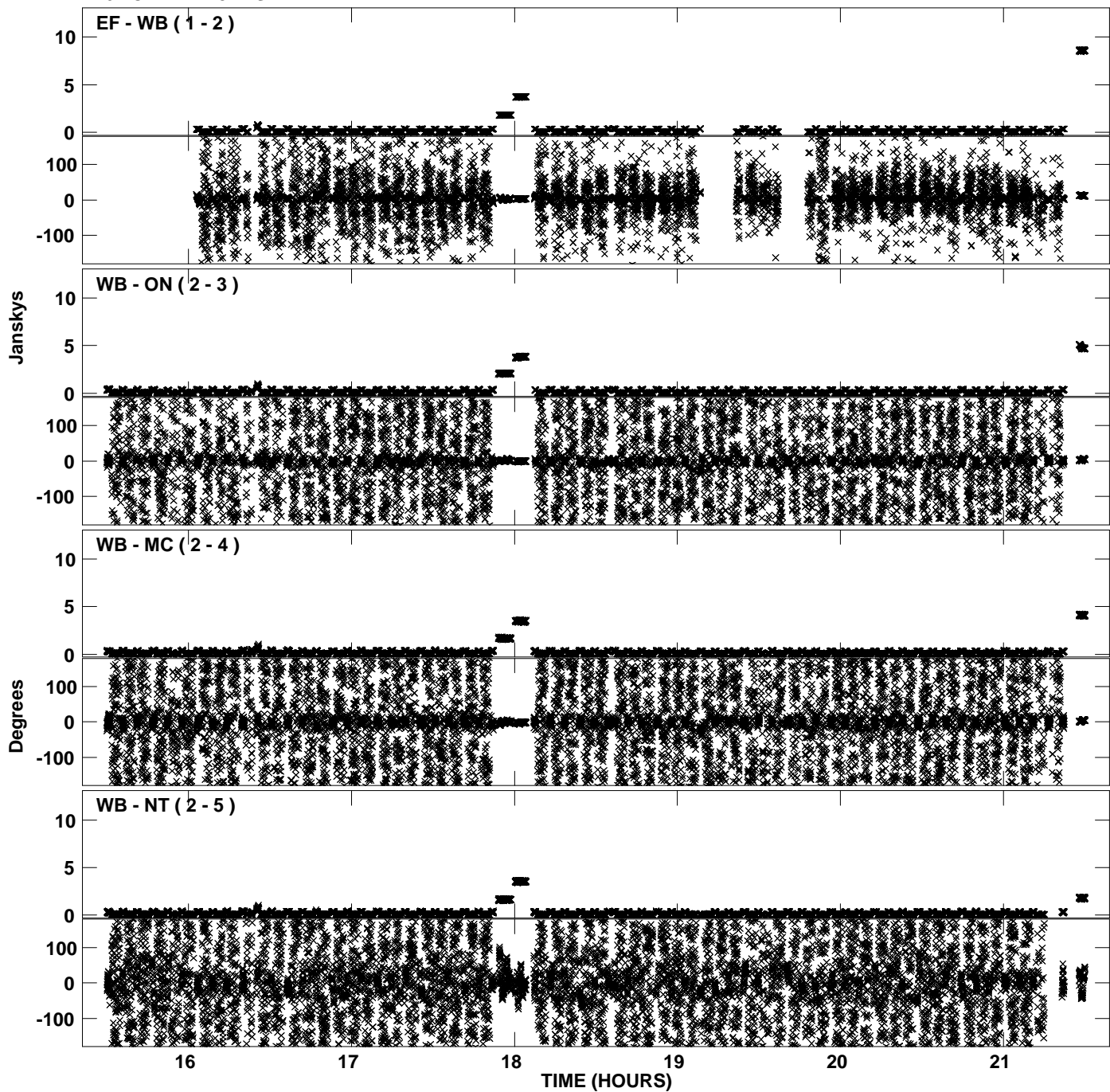


PLot file version 32 created 25-MAY-2010 14:42:35  
Amplitude andPhase vs Time for EP064I.UVDATA.1 Vect aver. CL # 3  
IF 5 CHAN 1 - 32 STK RR

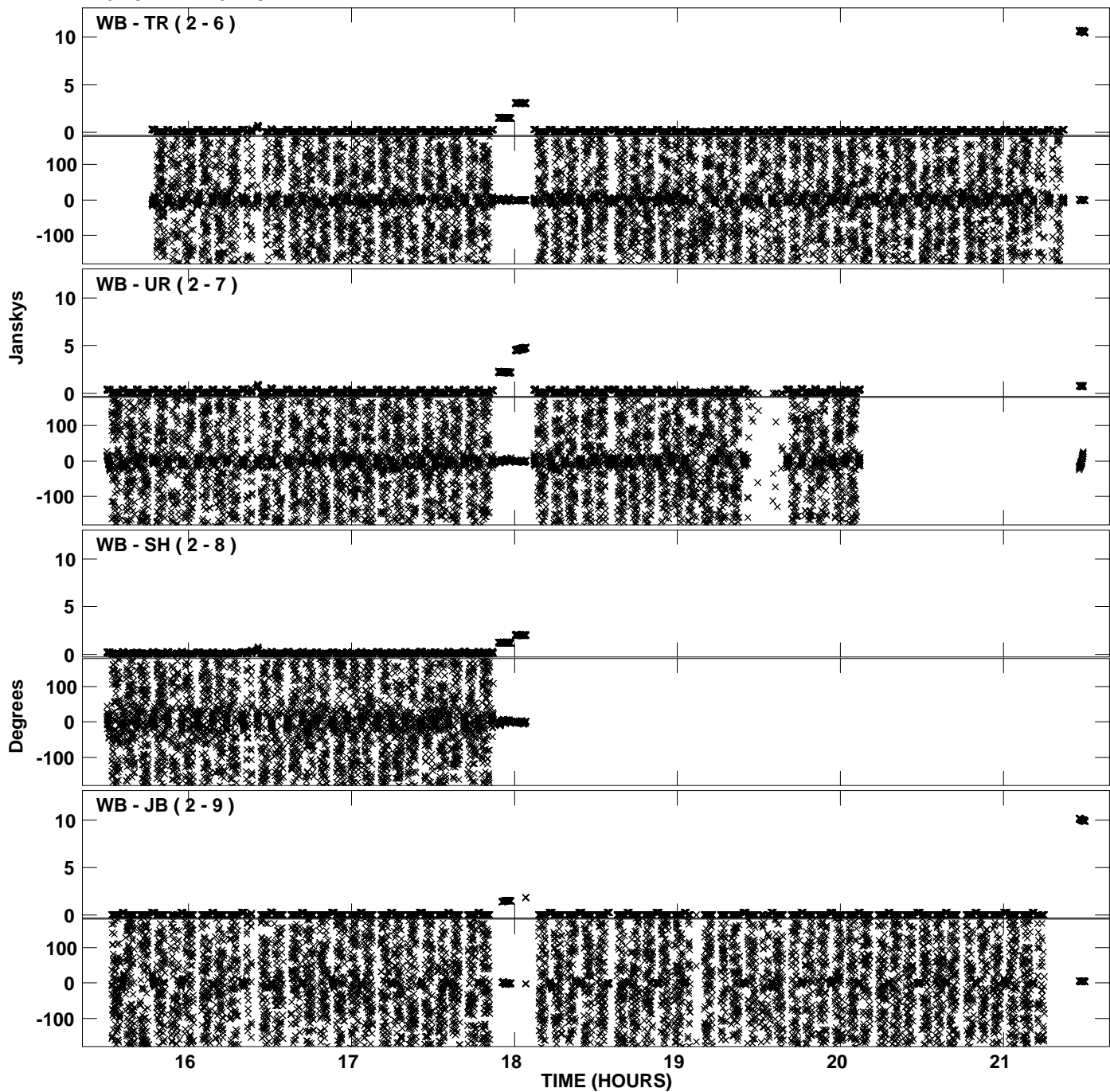




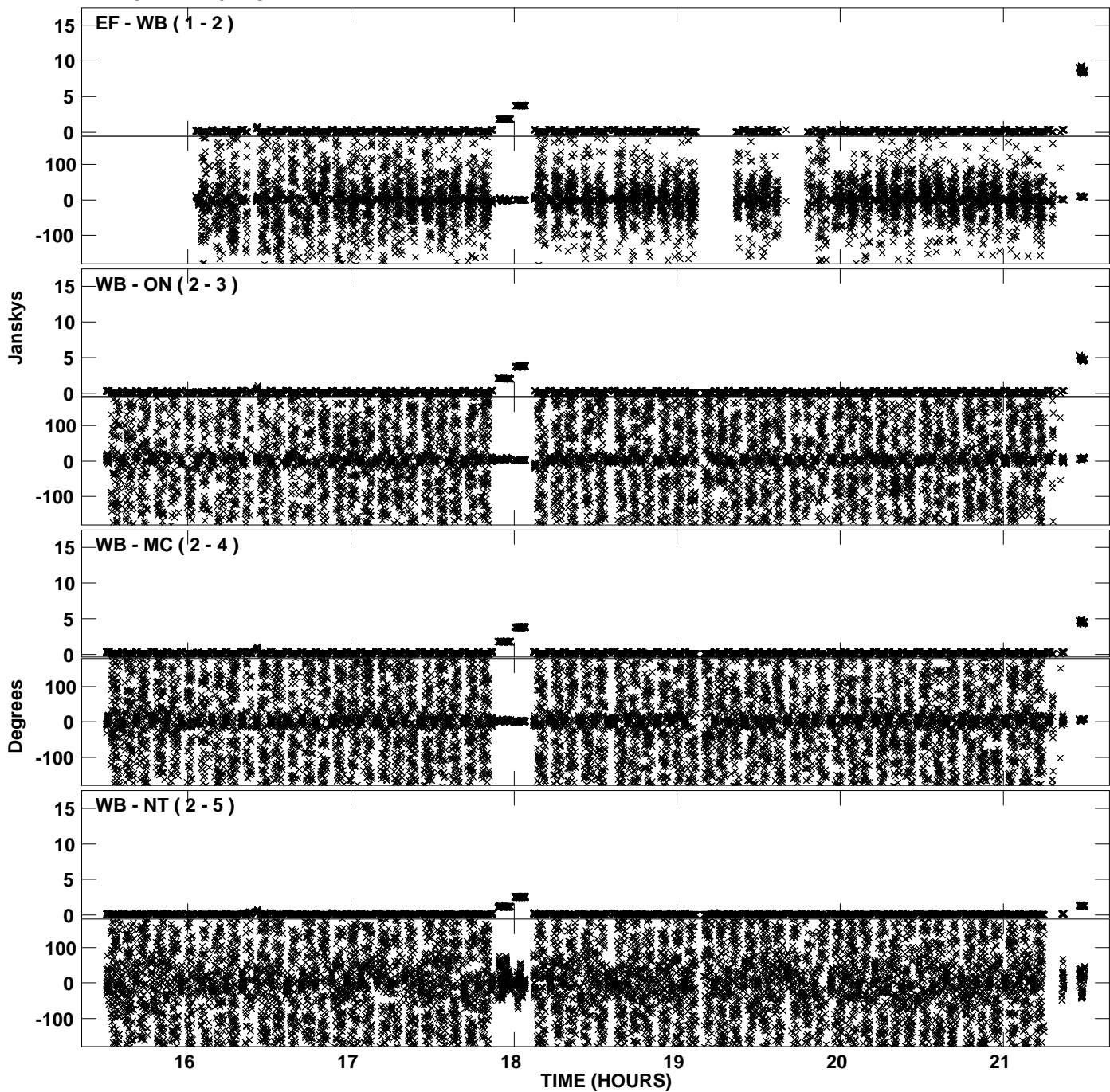
PLot file version 33 created 25-MAY-2010 14:42:44  
Amplitude andPhase vs Time for EP064I.UVDATA.1 Vect aver. CL # 3  
IF 6 CHAN 1 - 32 STK RR



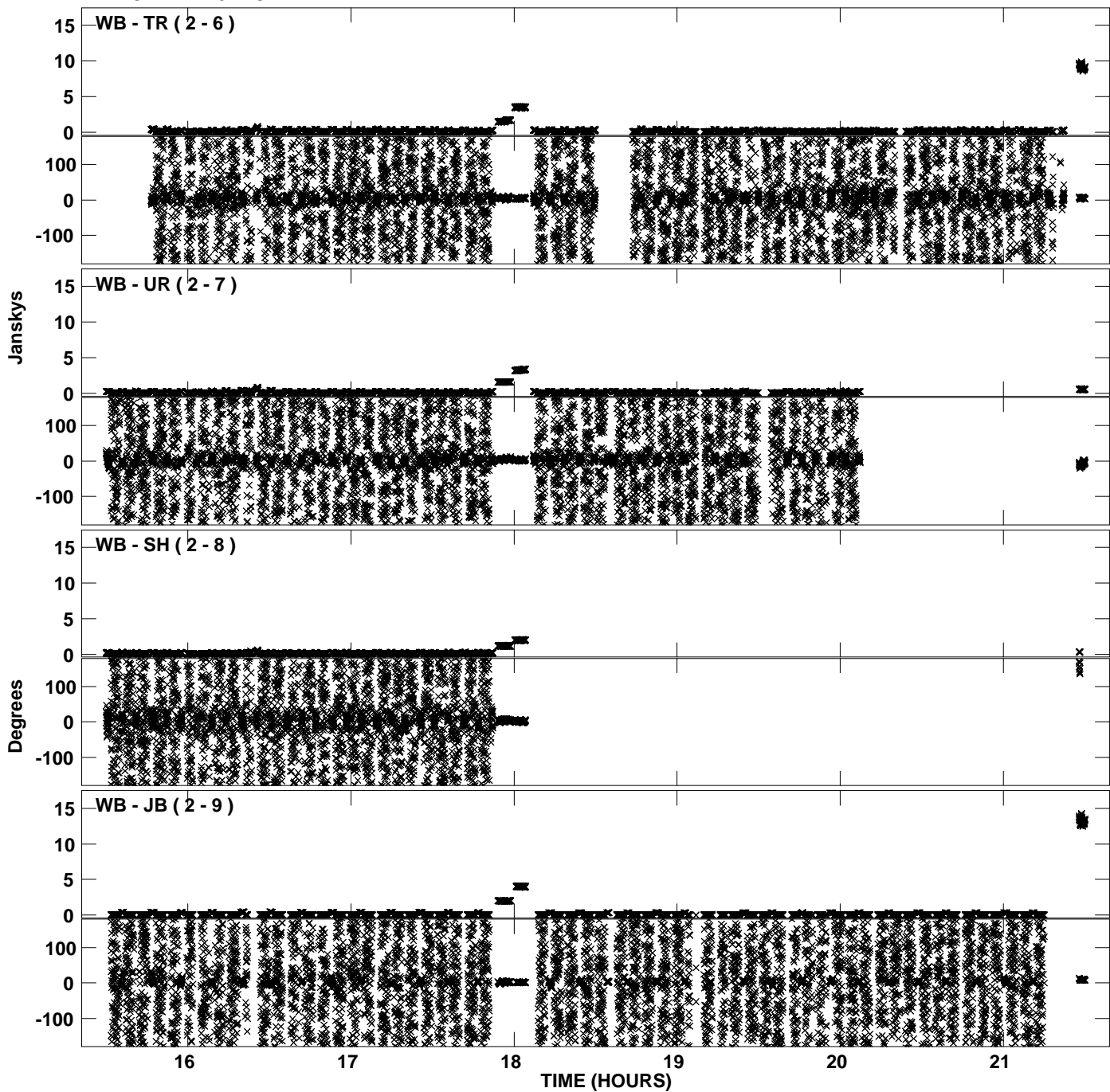
PLot file version 34 created 25-MAY-2010 14:42:44  
Amplitude andPhase vs Time for EP064I.UVDATA.1 Vect aver. CL # 3  
IF 6 CHAN 1 - 32 STK RR



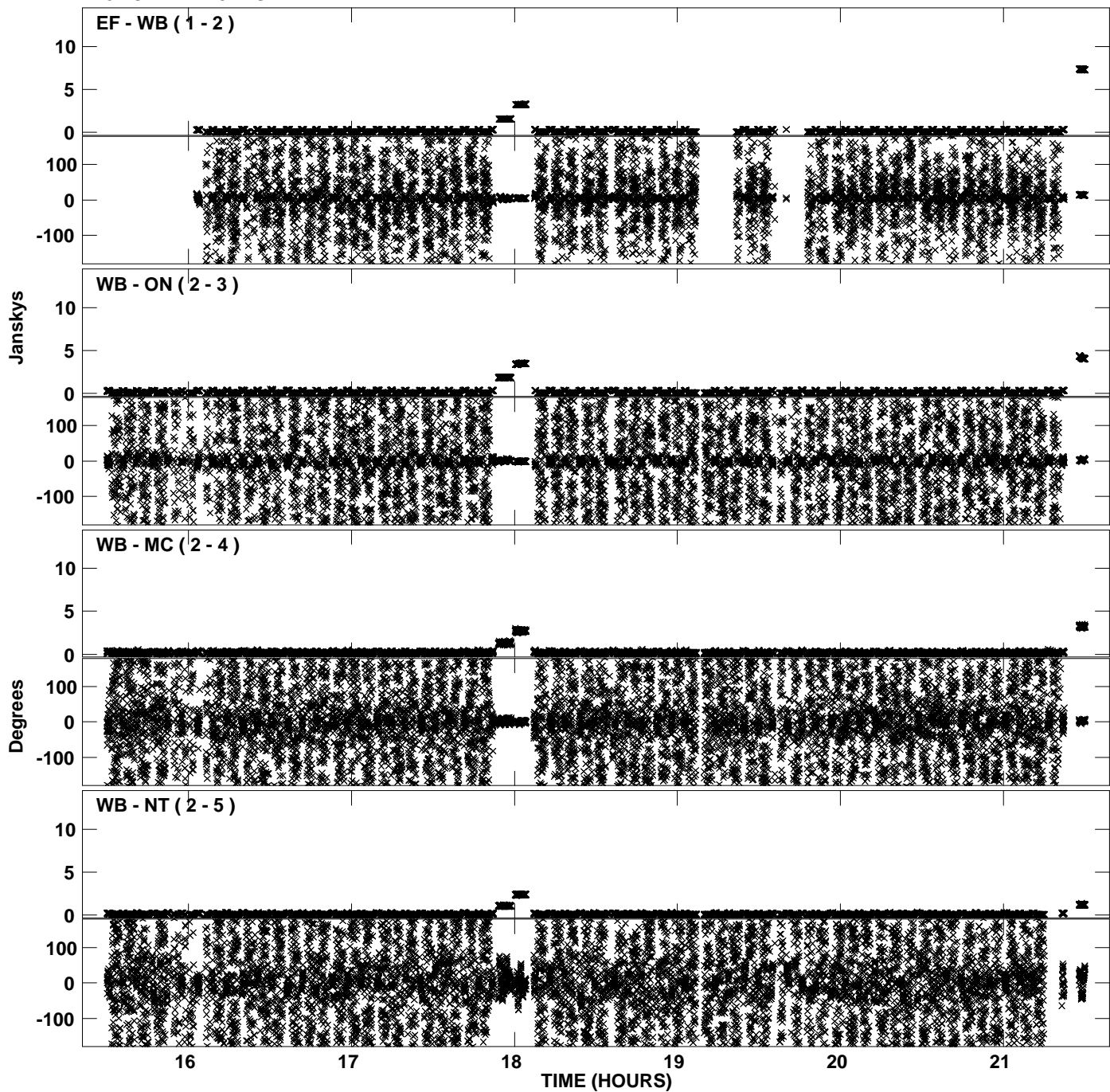
PLot file version 35 created 25-MAY-2010 14:42:54  
Amplitude andPhase vs Time for EP064I.UVDATA.1 Vect aver. CL # 3  
IF 7 CHAN 1 - 32 STK RR



Plot file version 36 created 25-MAY-2010 14:42:54  
Amplitude and Phase vs Time for EP064I.UVDATA.1 Vect aver. CL # 3  
IF 7 CHAN 1 - 32 STK RR



PLot file version 37 created 25-MAY-2010 14:43:03  
Amplitude andPhase vs Time for EP064I.UVDATA.1 Vect aver. CL # 3  
IF 8 CHAN 1 - 32 STK RR



PLot file version 38 created 25-MAY-2010 14:43:03  
Amplitude andPhase vs Time for EP064I.UVDATA.1 Vect aver. CL # 3  
IF 8 CHAN 1 - 32 STK RR

