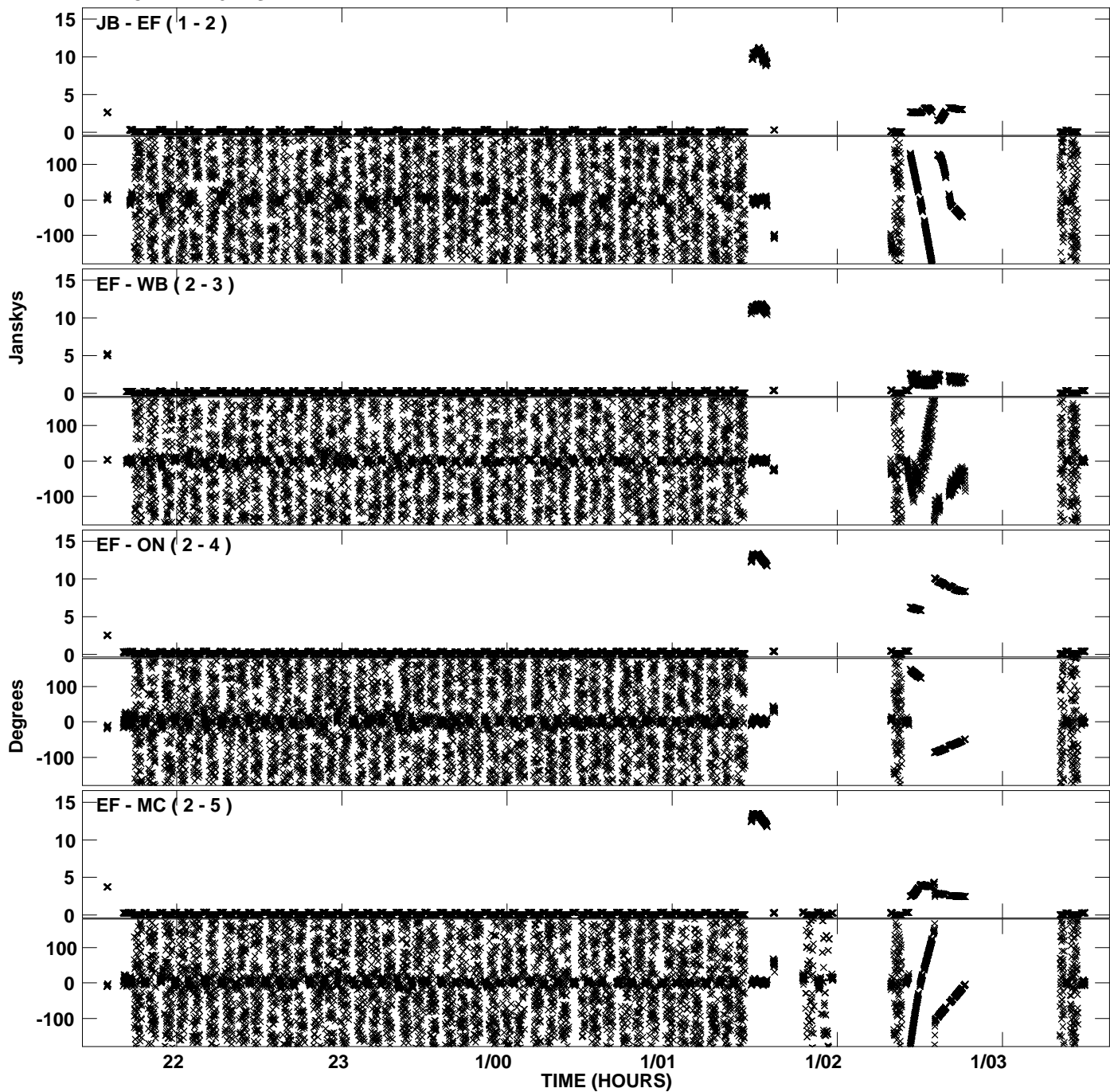
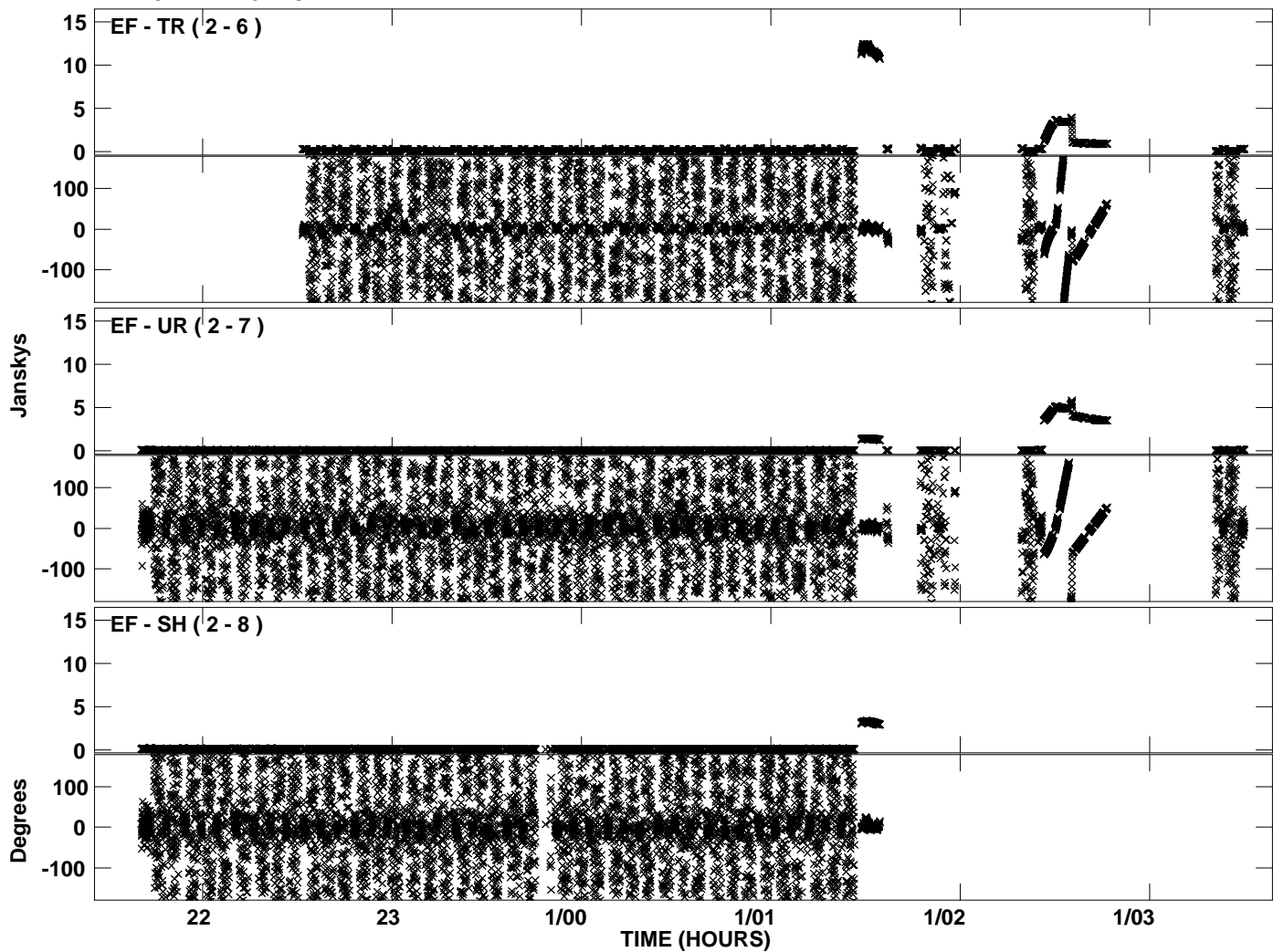


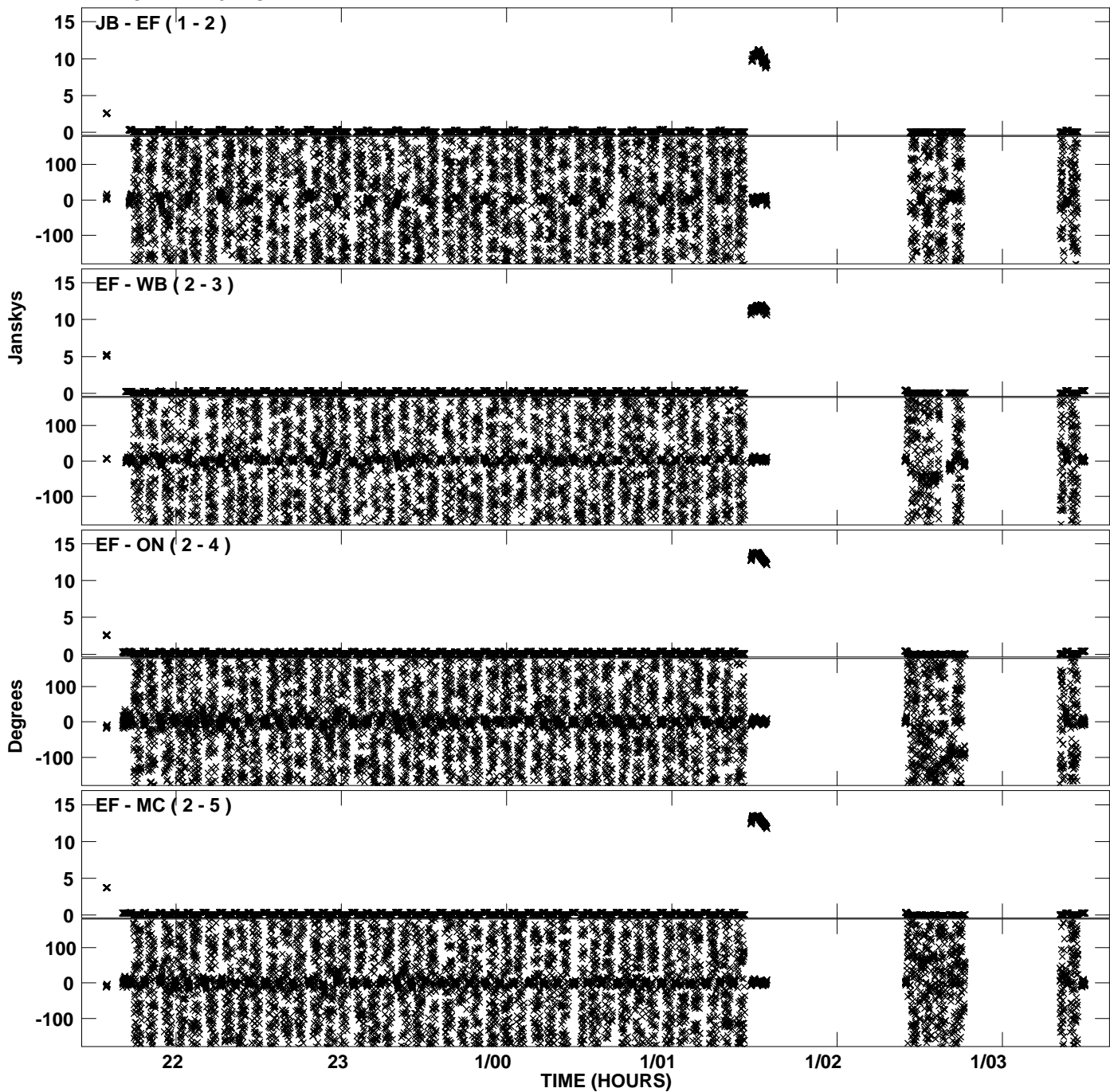
Plot file version 1 created 13-OCT-2010 18:49:46
Amplitude andPhase vs Time for EP064N.UVDATA.1 Vect aver. CL # 3
IF 1 CHAN 1 - 32 STK LL



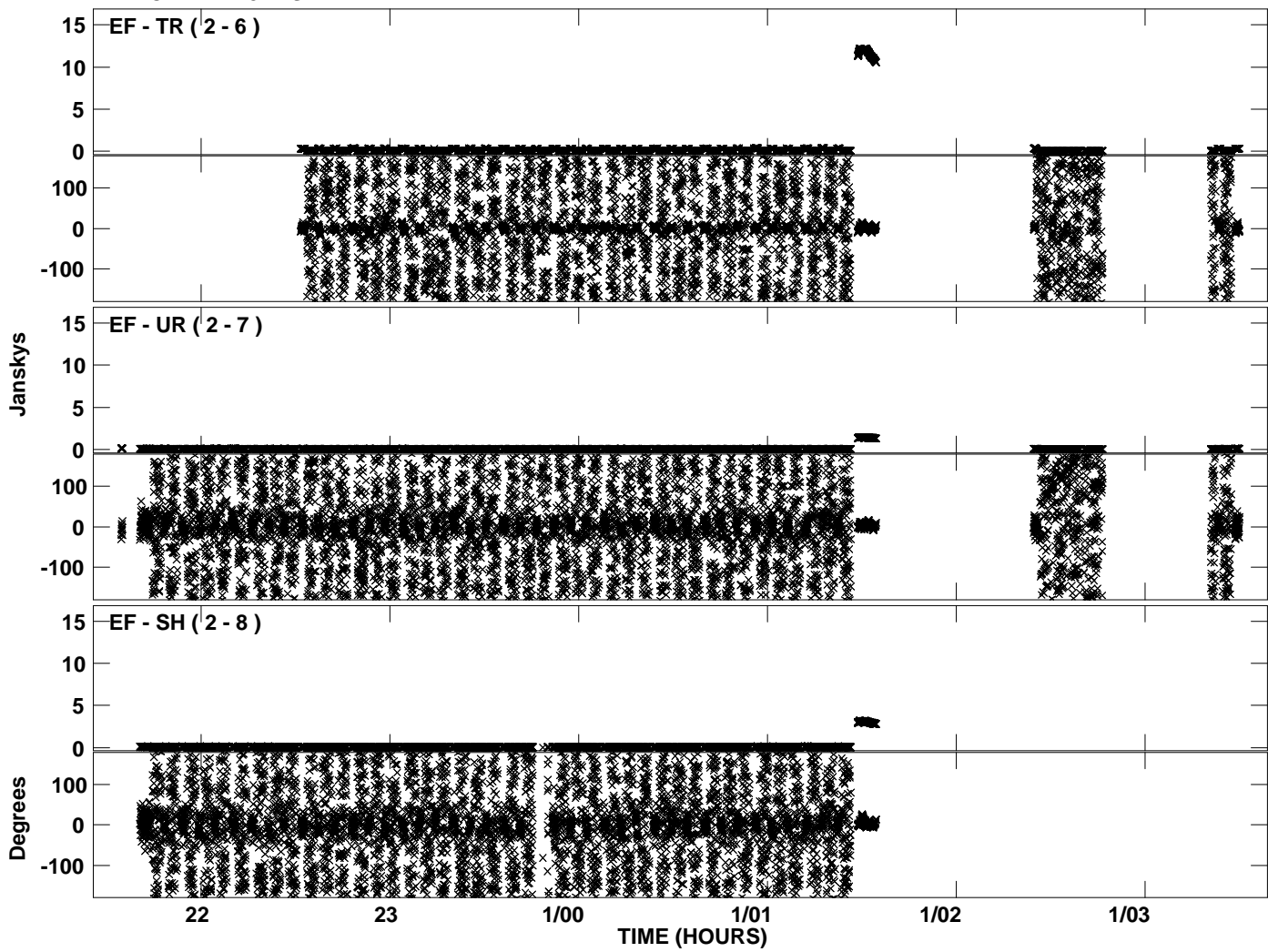
PLot file version 2 created 13-OCT-2010 18:49:46
Amplitude andPhase vs Time for EP064N.UVDATA.1 Vect aver. CL # 3
IF 1 CHAN 1 - 32 STK LL



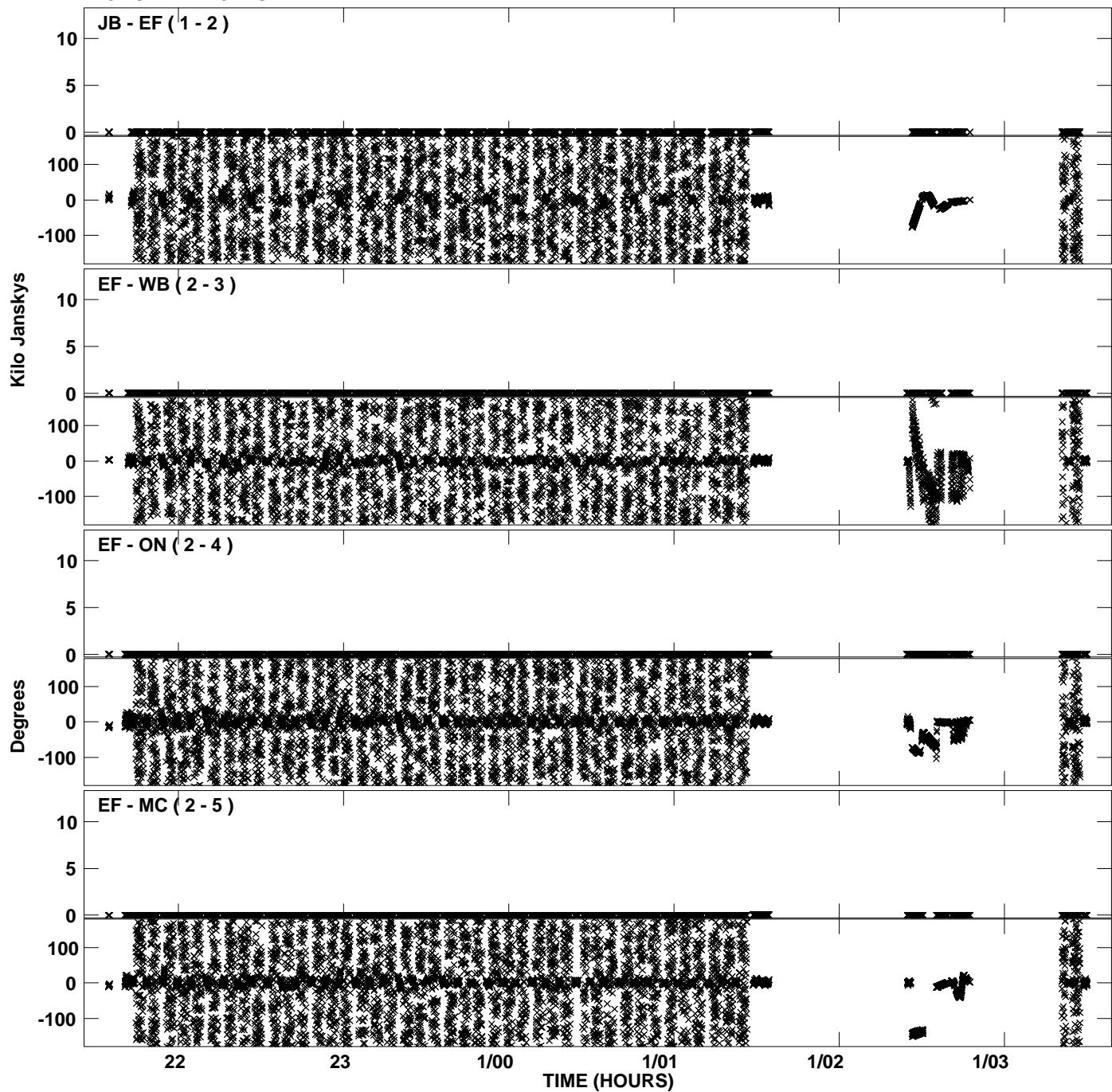
PLot file version 3 created 13-OCT-2010 18:49:58
Amplitude andPhase vs Time for EP064N.UVDATA.1 Vect aver. CL # 3
IF 2 CHAN 1 - 32 STK LL



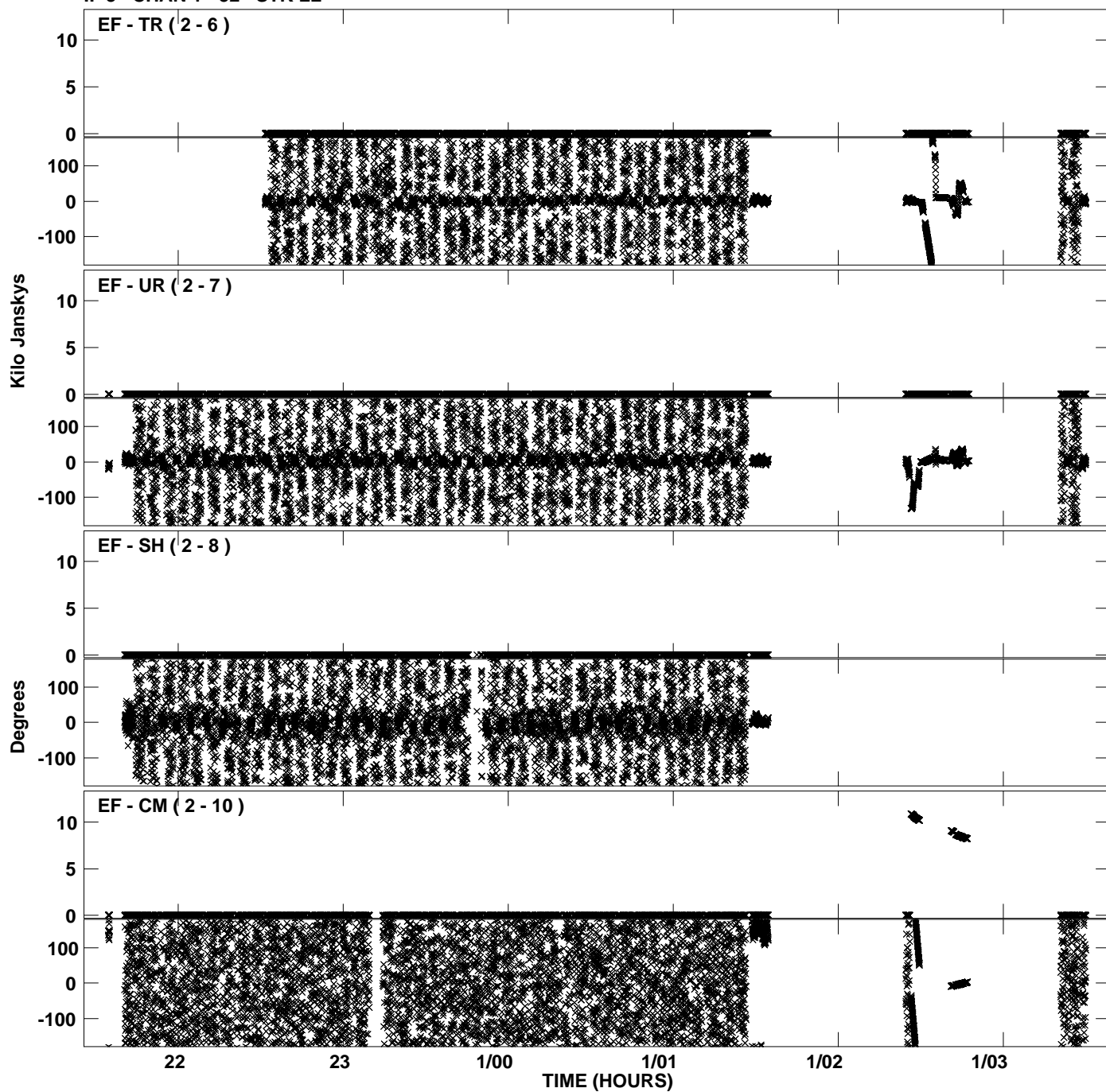
Plot file version 4 created 13-OCT-2010 18:49:58
Amplitude andPhase vs Time for EP064N.UVDATA.1 Vect aver. CL # 3
IF 2 CHAN 1 - 32 STK LL



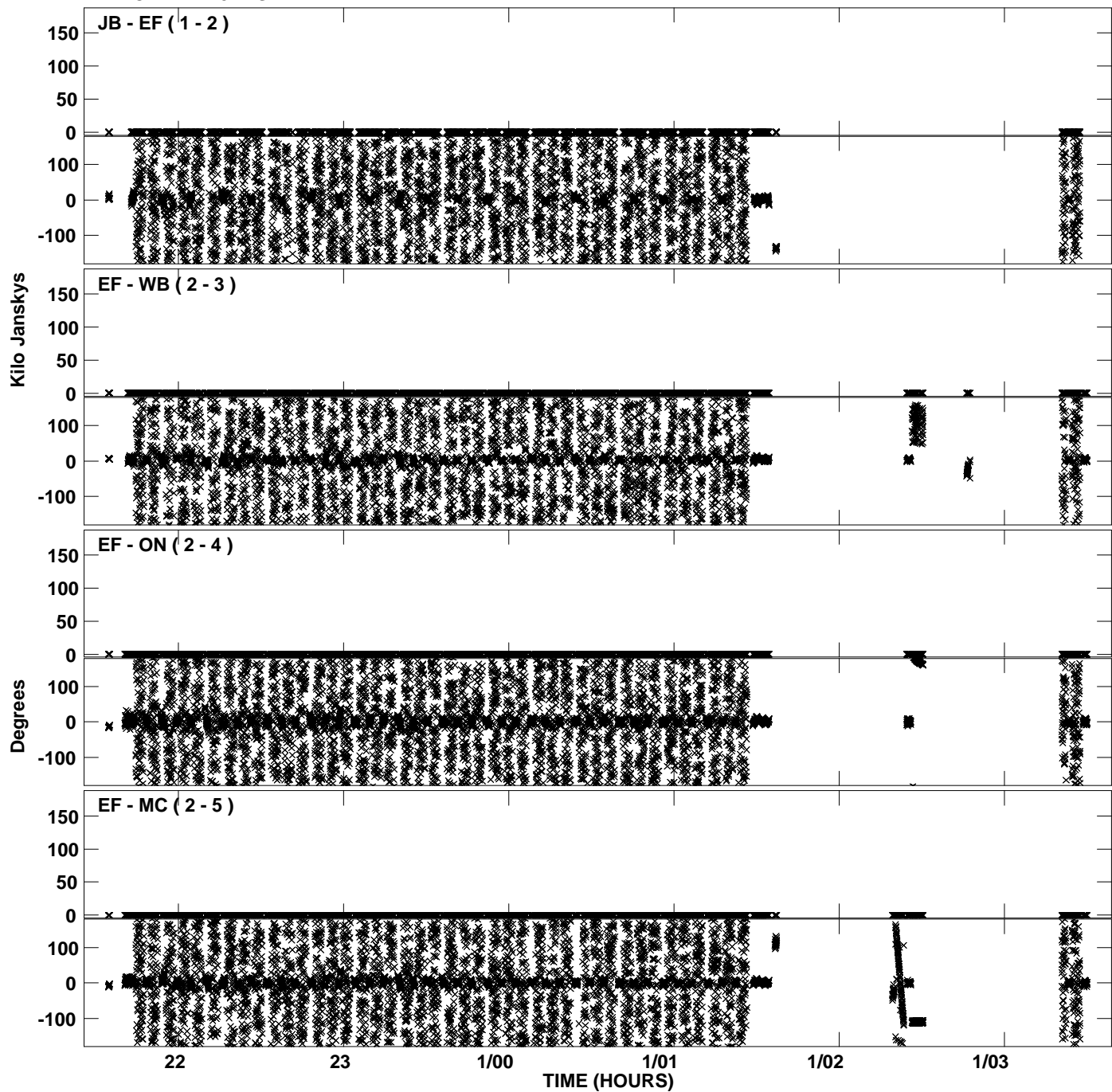
Plot file version 5 created 13-OCT-2010 18:50:11
Amplitude andPhase vs Time for EP064N.UVDATA.1 Vect aver. CL # 3
IF 3 CHAN 1 - 32 STK LL



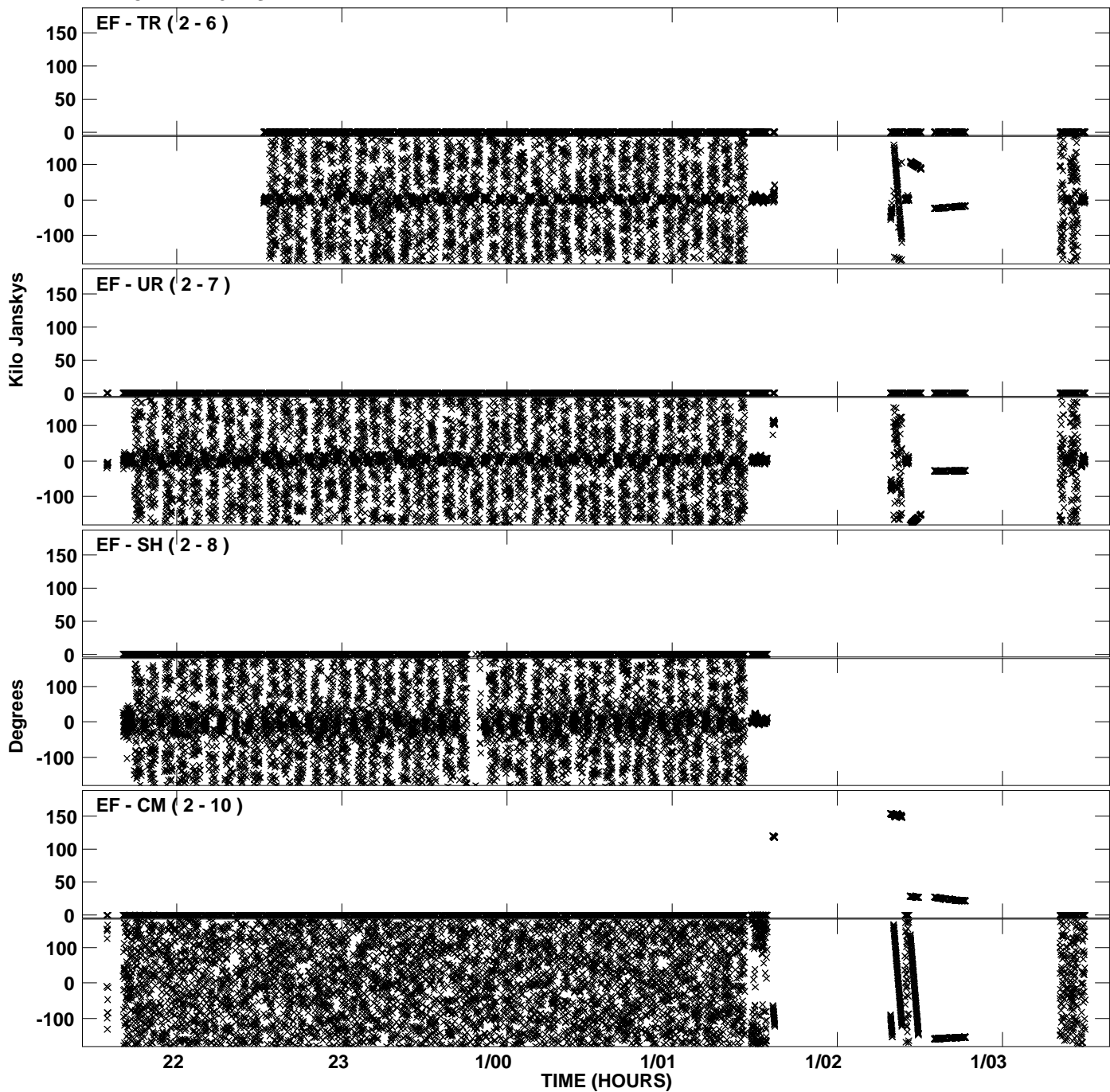
Plot file version 6 created 13-OCT-2010 18:50:12
Amplitude and Phase vs Time for EP064N.UVDATA.1 Vect aver. CL # 3
IF 3 CHAN 1 - 32 STK LL



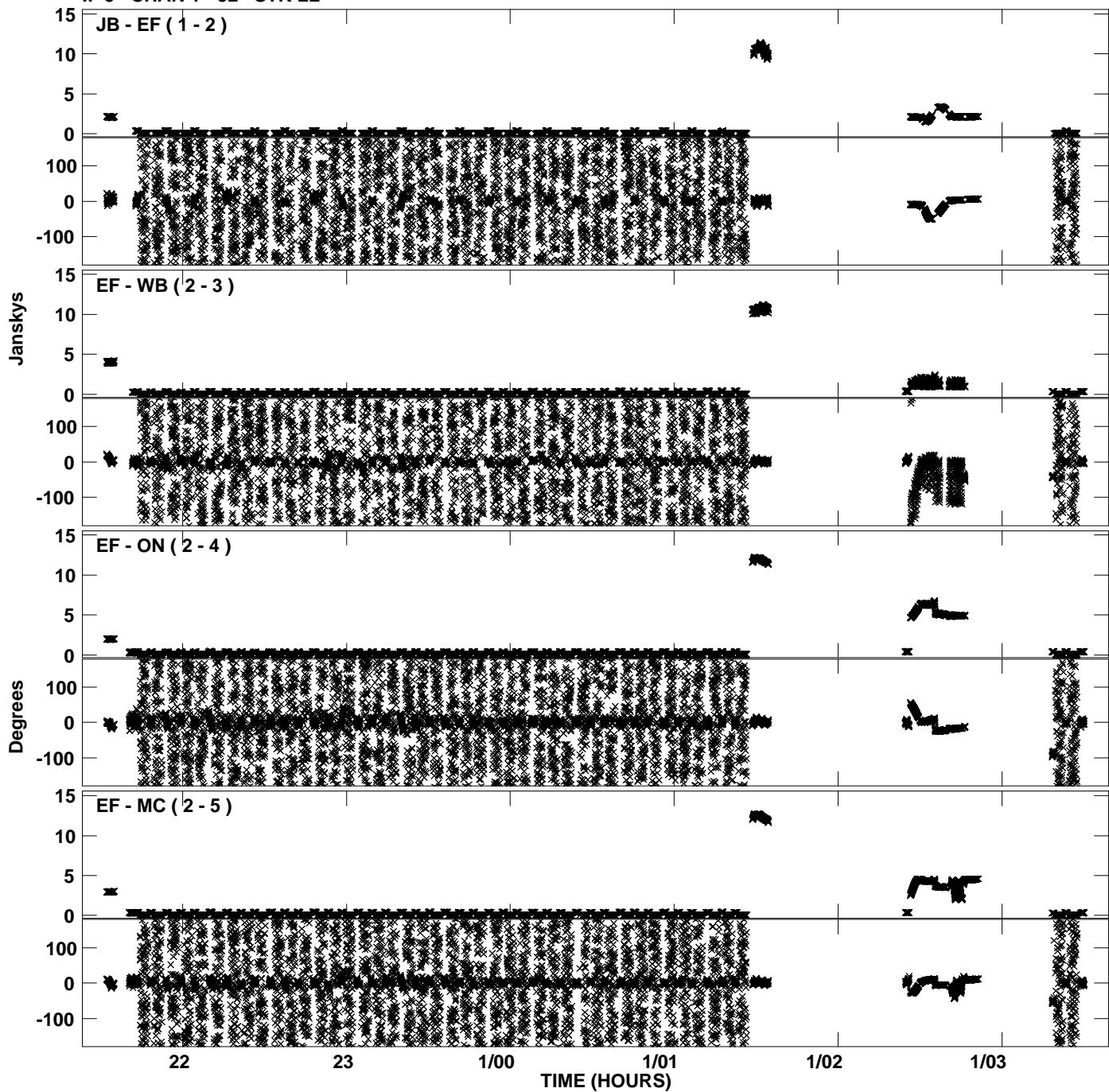
Plot file version 7 created 13-OCT-2010 18:50:25
Amplitude andPhase vs Time for EP064N.UVDATA.1 Vect aver. CL # 3
IF 4 CHAN 1 - 32 STK LL



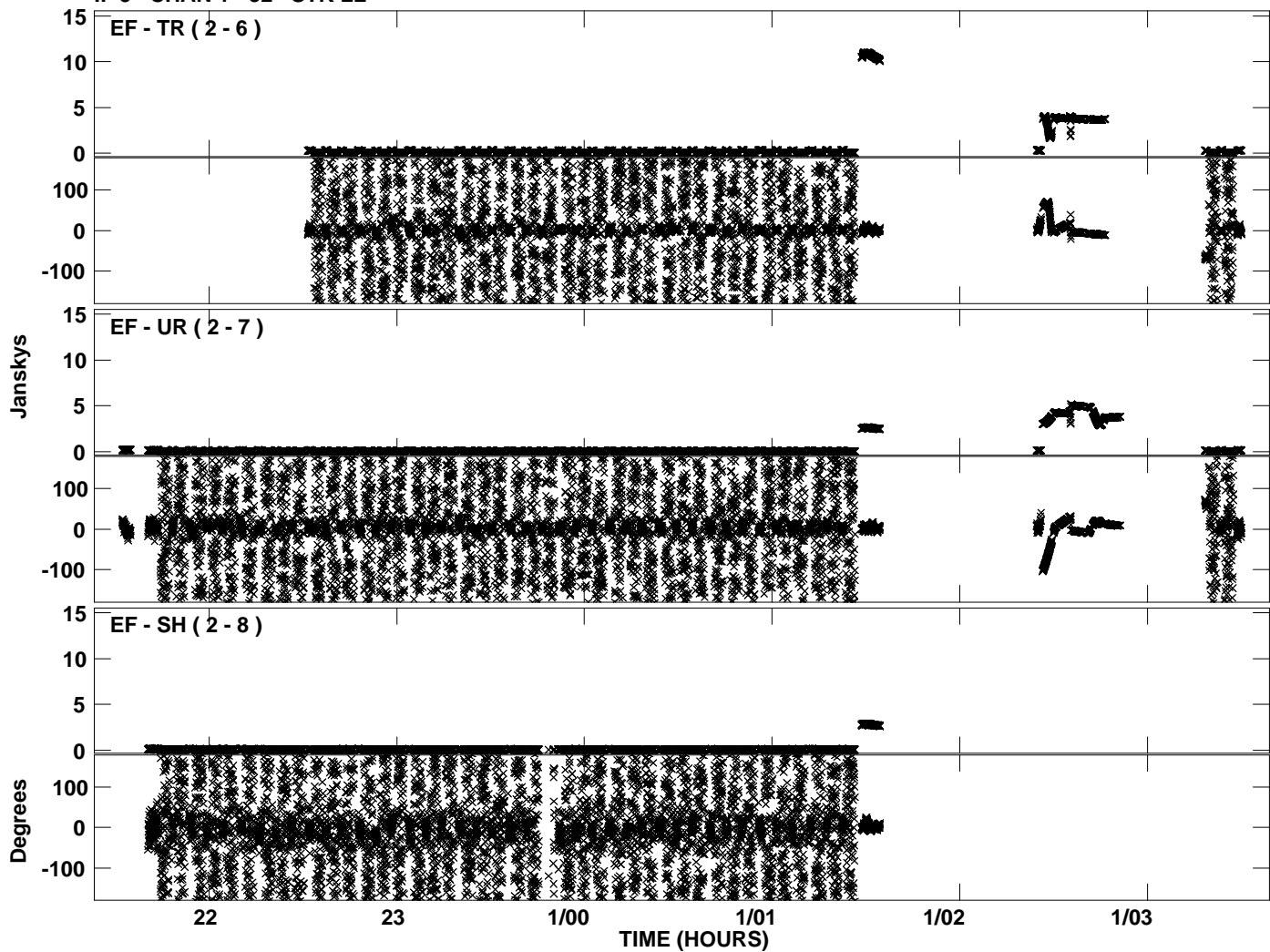
Plot file version 8 created 13-OCT-2010 18:50:25
Amplitude andPhase vs Time for EP064N.UVDATA.1 Vect aver. CL # 3
IF 4 CHAN 1 - 32 STK LL



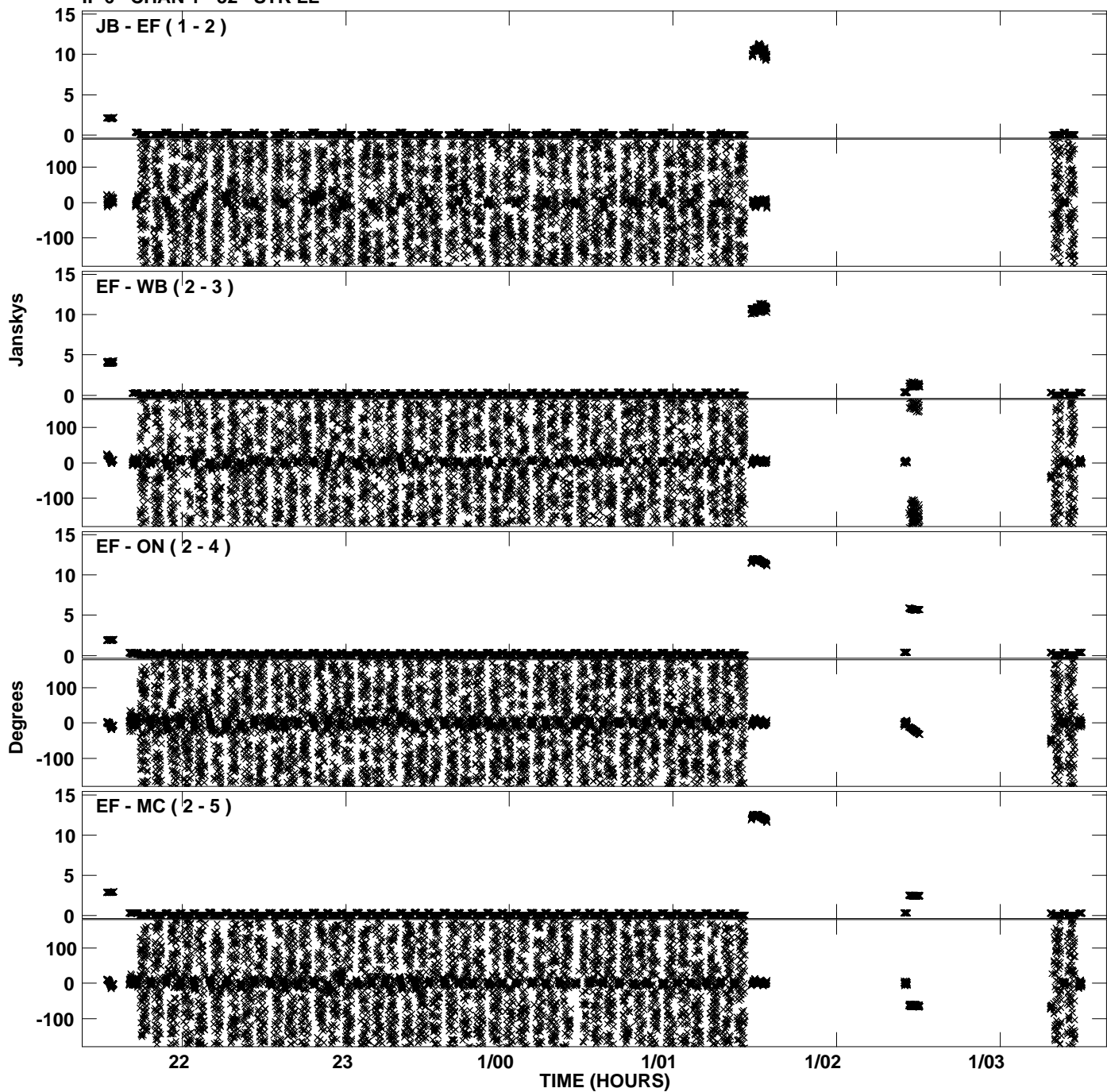
Plot file version 9 created 13-OCT-2010 18:50:37
Amplitude andPhase vs Time for EP064N.UVDATA.1 Vect aver. CL # 3
IF 5 CHAN 1 - 32 STK LL



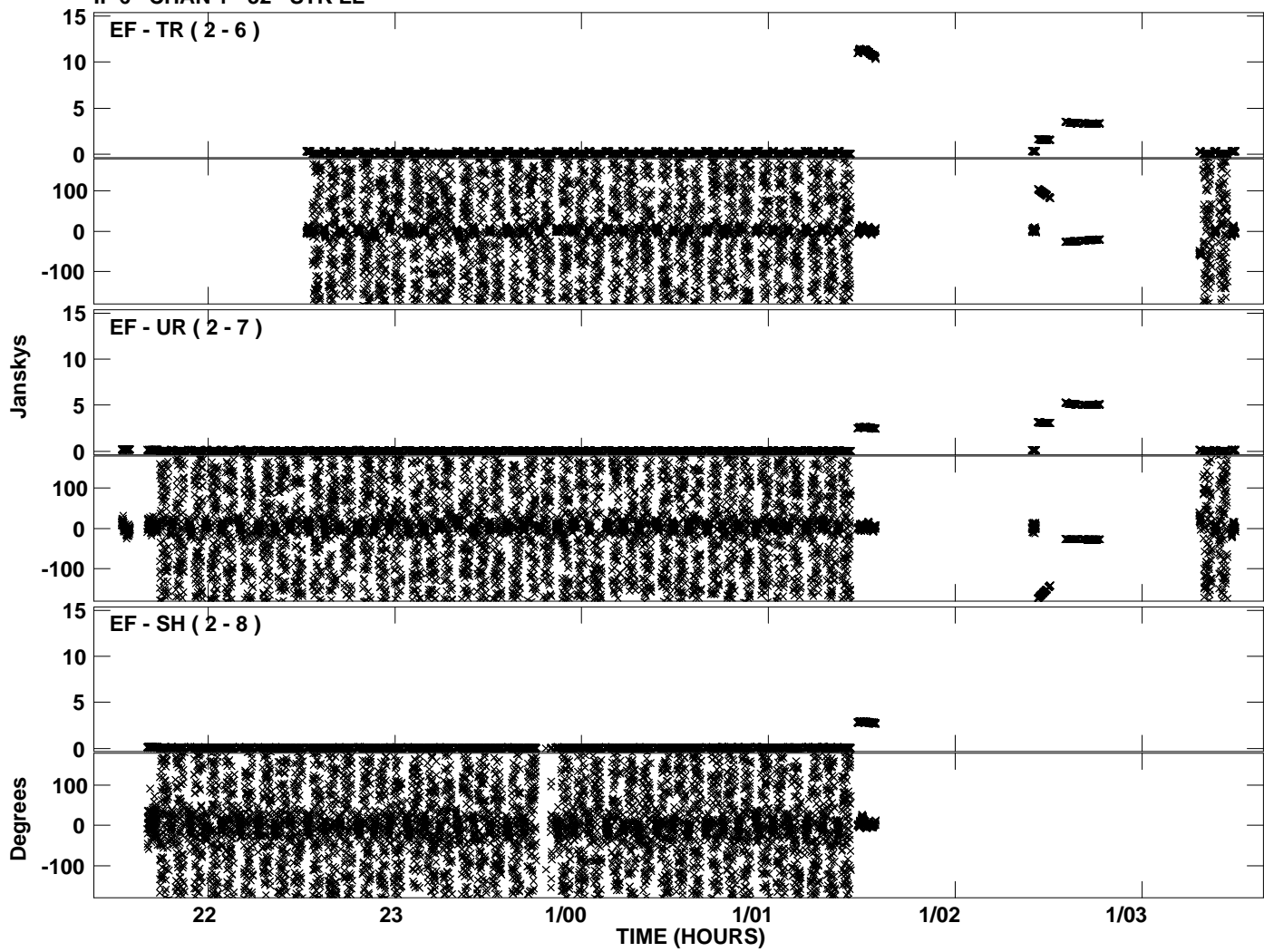
PLot file version 10 created 13-OCT-2010 18:50:37
Amplitude andPhase vs Time for EP064N.UVDATA.1 Vect aver. CL # 3
IF 5 CHAN 1 - 32 STK LL



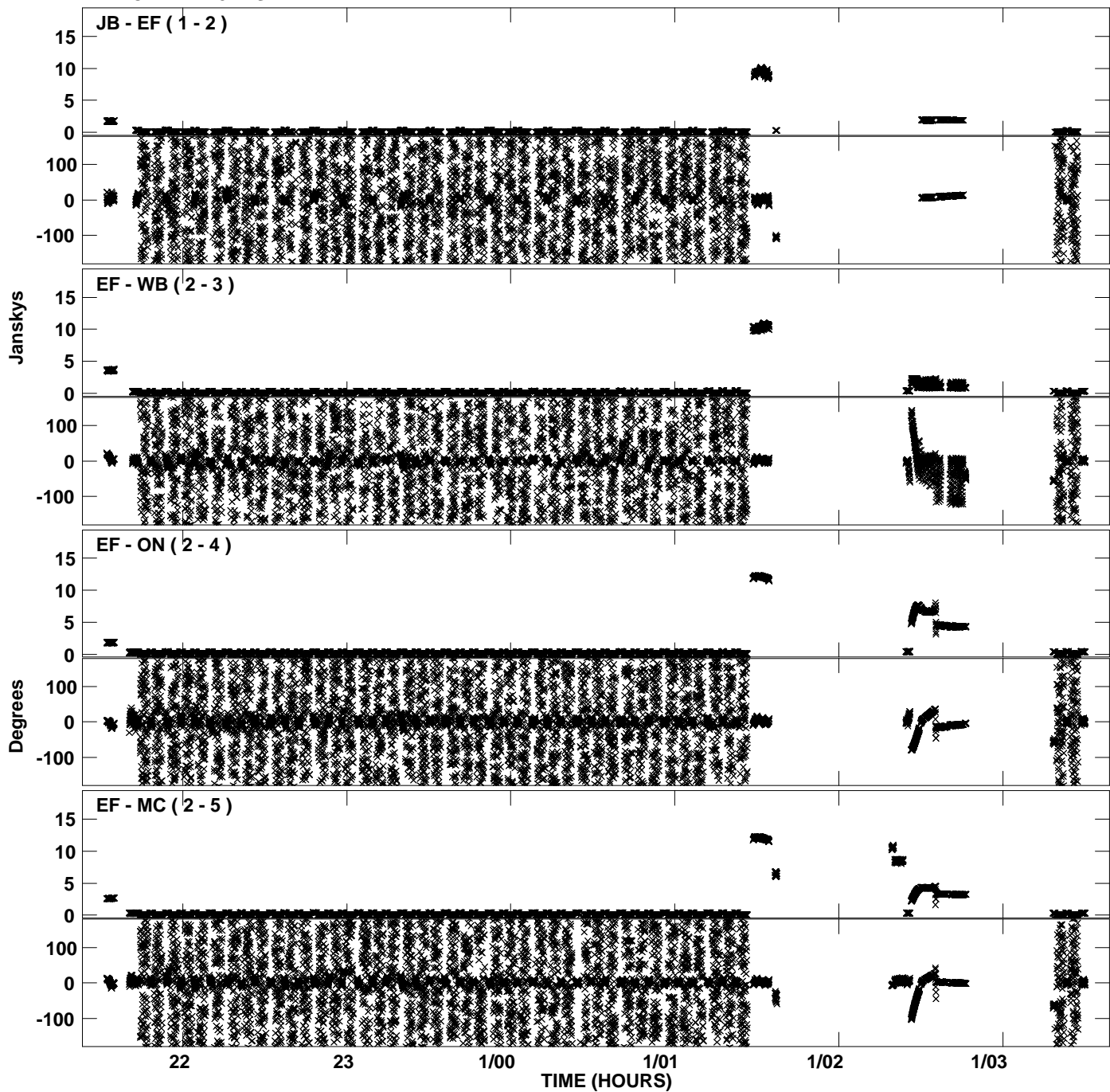
PLot file version 11 created 13-OCT-2010 18:50:49
Amplitude andPhase vs Time for EP064N.UVDATA.1 Vect aver. CL # 3
IF 6 CHAN 1 - 32 STK LL



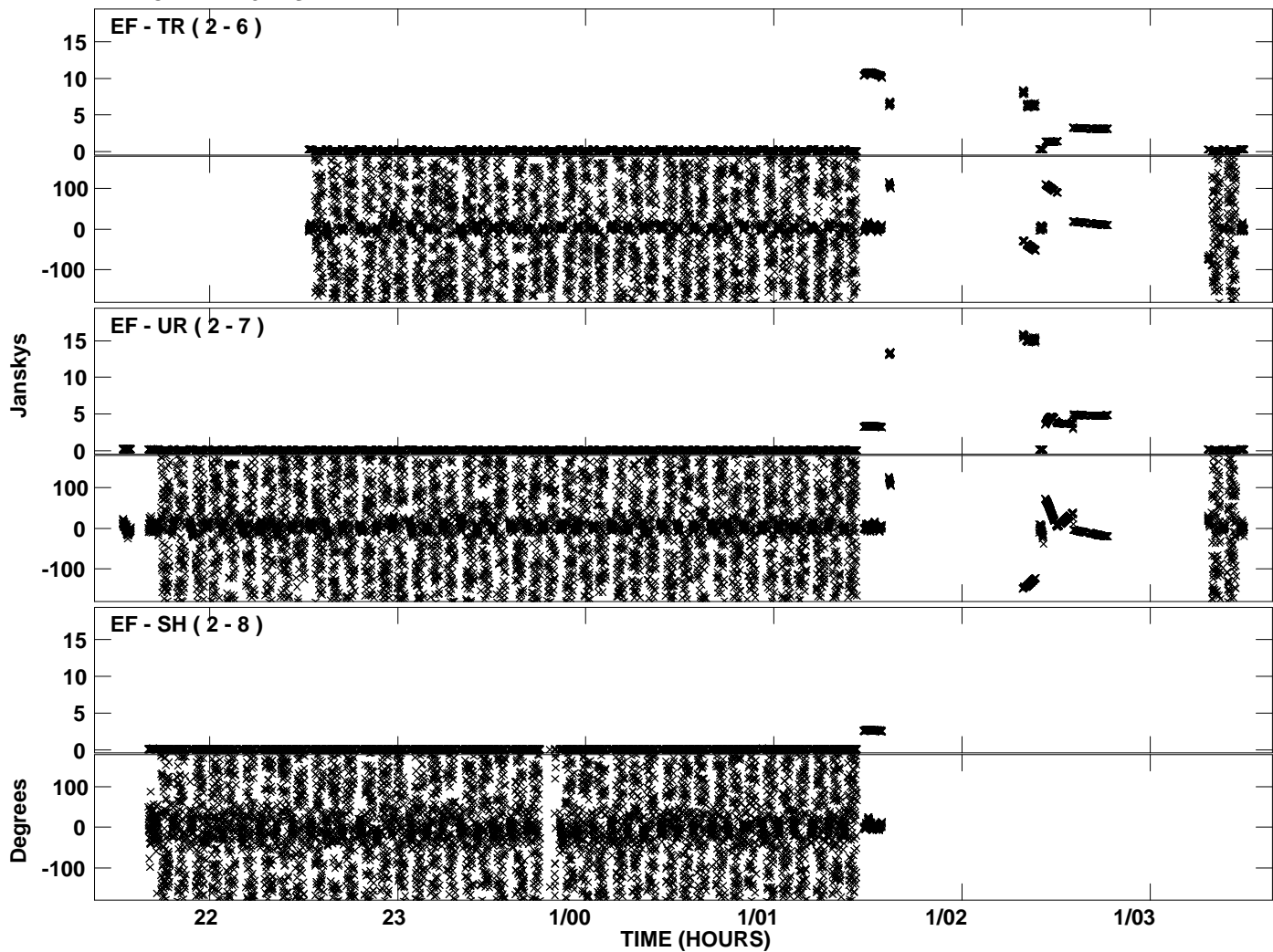
PLot file version 12 created 13-OCT-2010 18:50:49
Amplitude andPhase vs Time for EP064N.UVDATA.1 Vect aver. CL # 3
IF 6 CHAN 1 - 32 STK LL



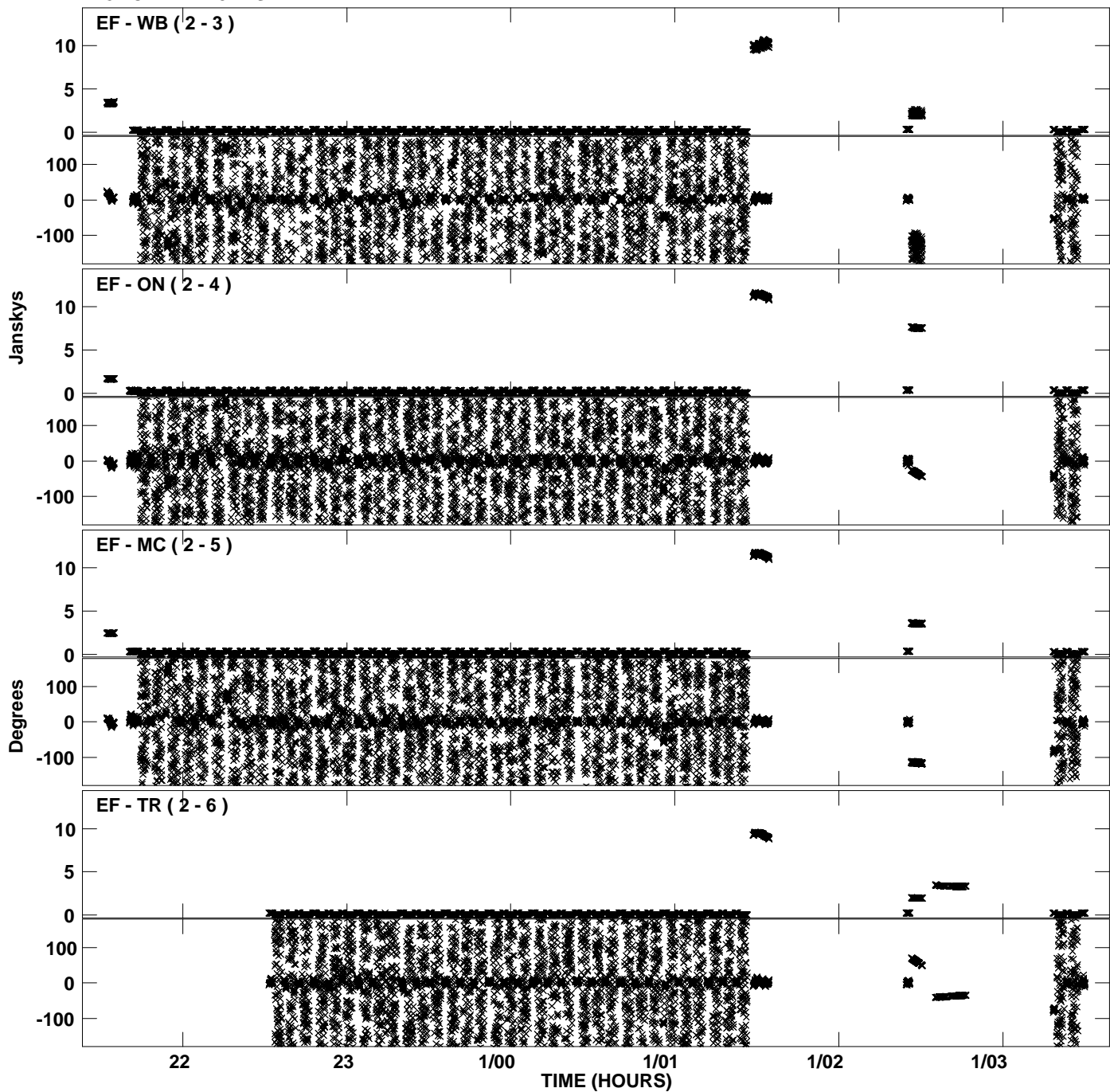
Plot file version 13 created 13-OCT-2010 18:51:02
Amplitude and Phase vs Time for EP064N.UVDATA.1 Vect aver. CL # 3
IF 7 CHAN 1 - 32 STK LL



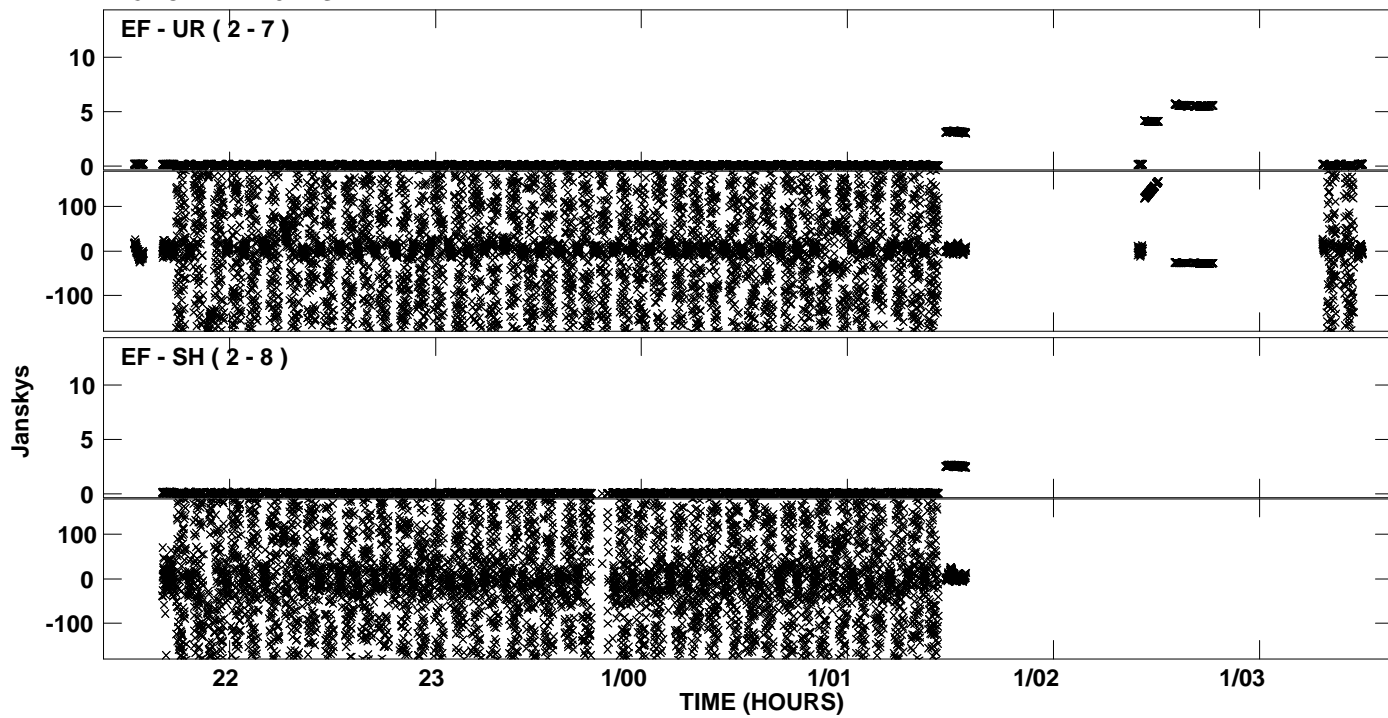
PLot file version 14 created 13-OCT-2010 18:51:02
Amplitude andPhase vs Time for EP064N.UVDATA.1 Vect aver. CL # 3
IF 7 CHAN 1 - 32 STK LL



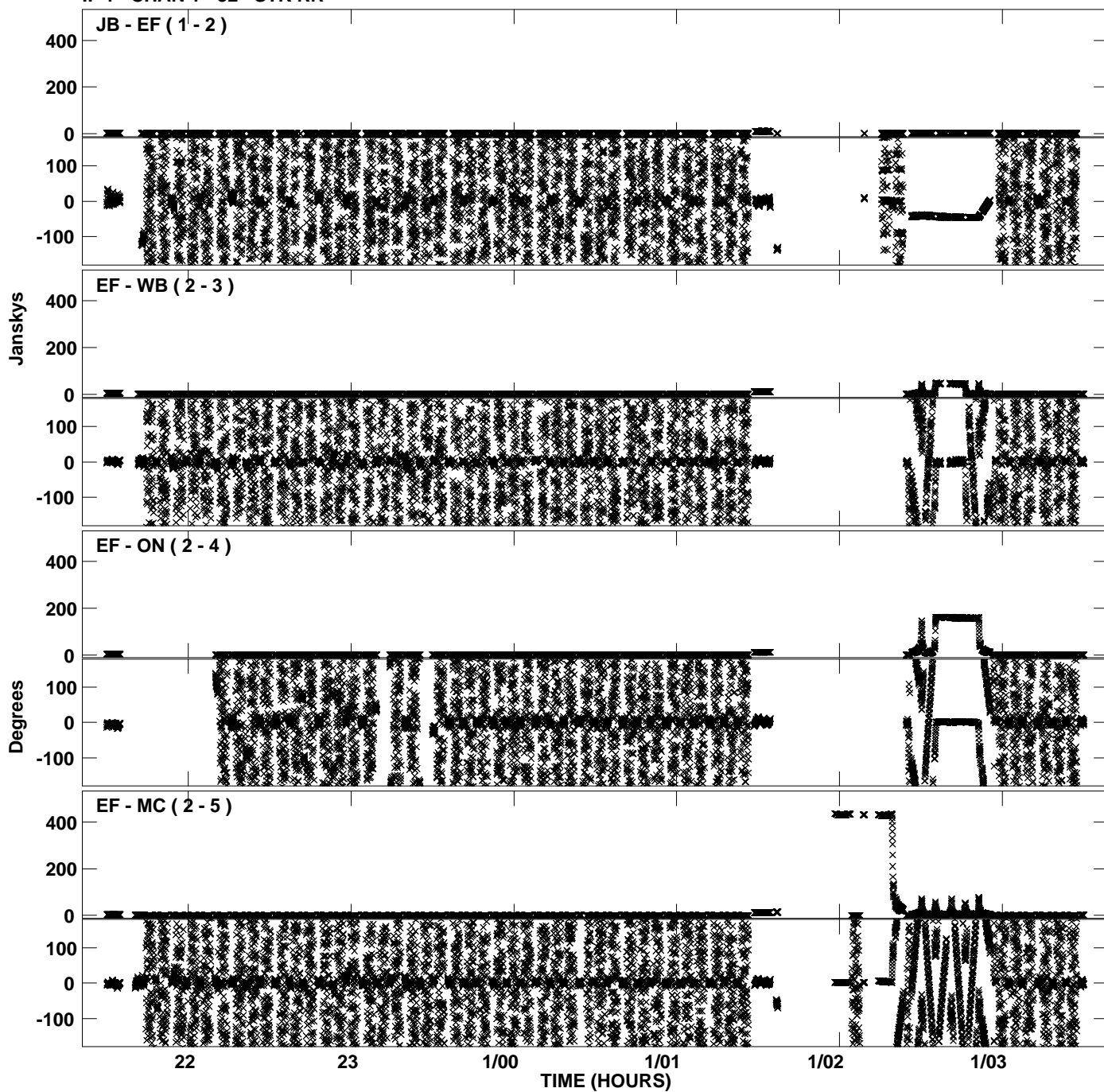
Plot file version 15 created 13-OCT-2010 18:51:14
Amplitude andPhase vs Time for EP064N.UVDATA.1 Vect aver. CL # 3
IF 8 CHAN 1 - 32 STK LL



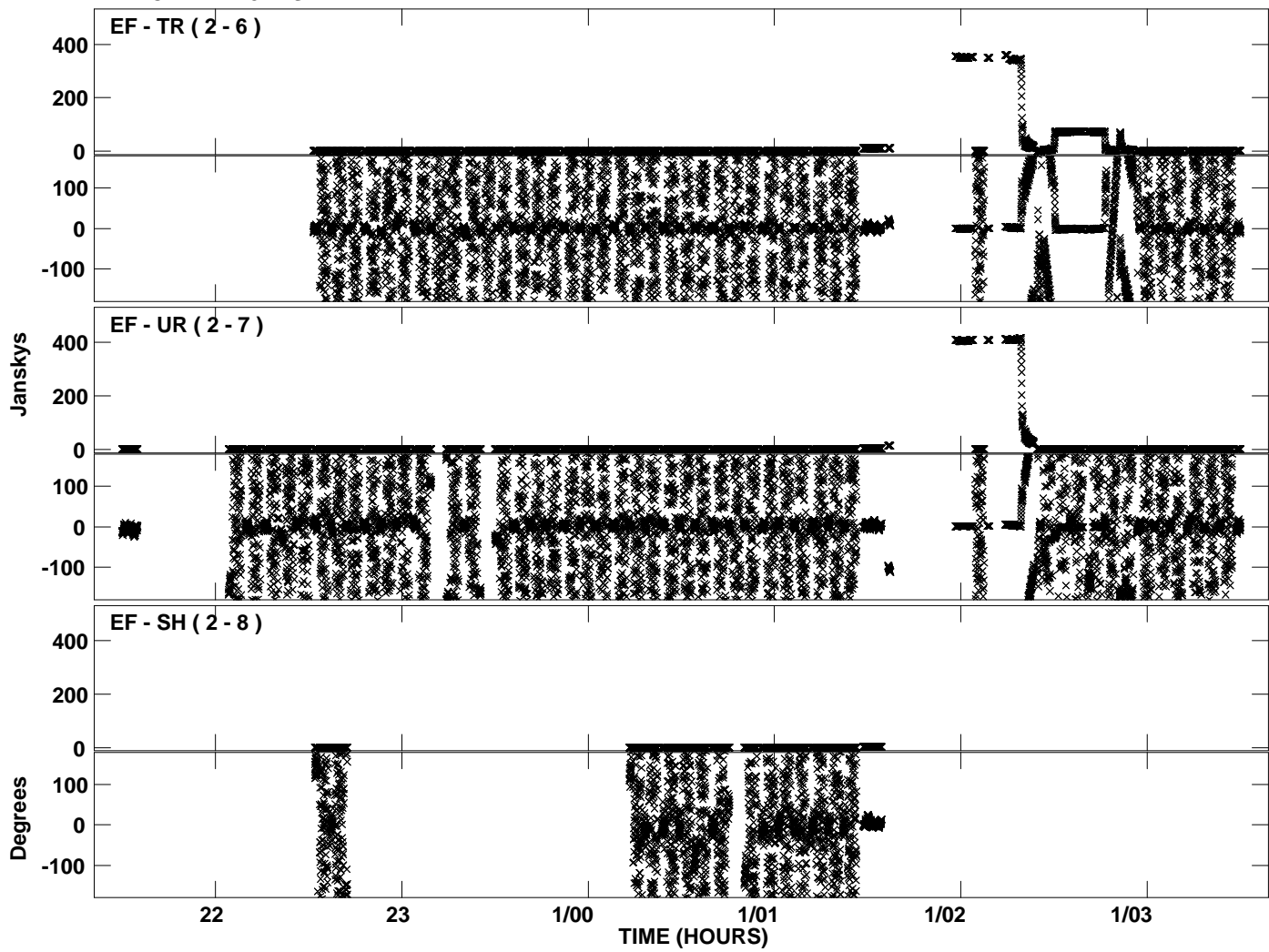
PLot file version 16 created 13-OCT-2010 18:51:14
Amplitude andPhase vs Time for EP064N.UVDATA.1 Vect aver. CL # 3
IF 8 CHAN 1 - 32 STK LL



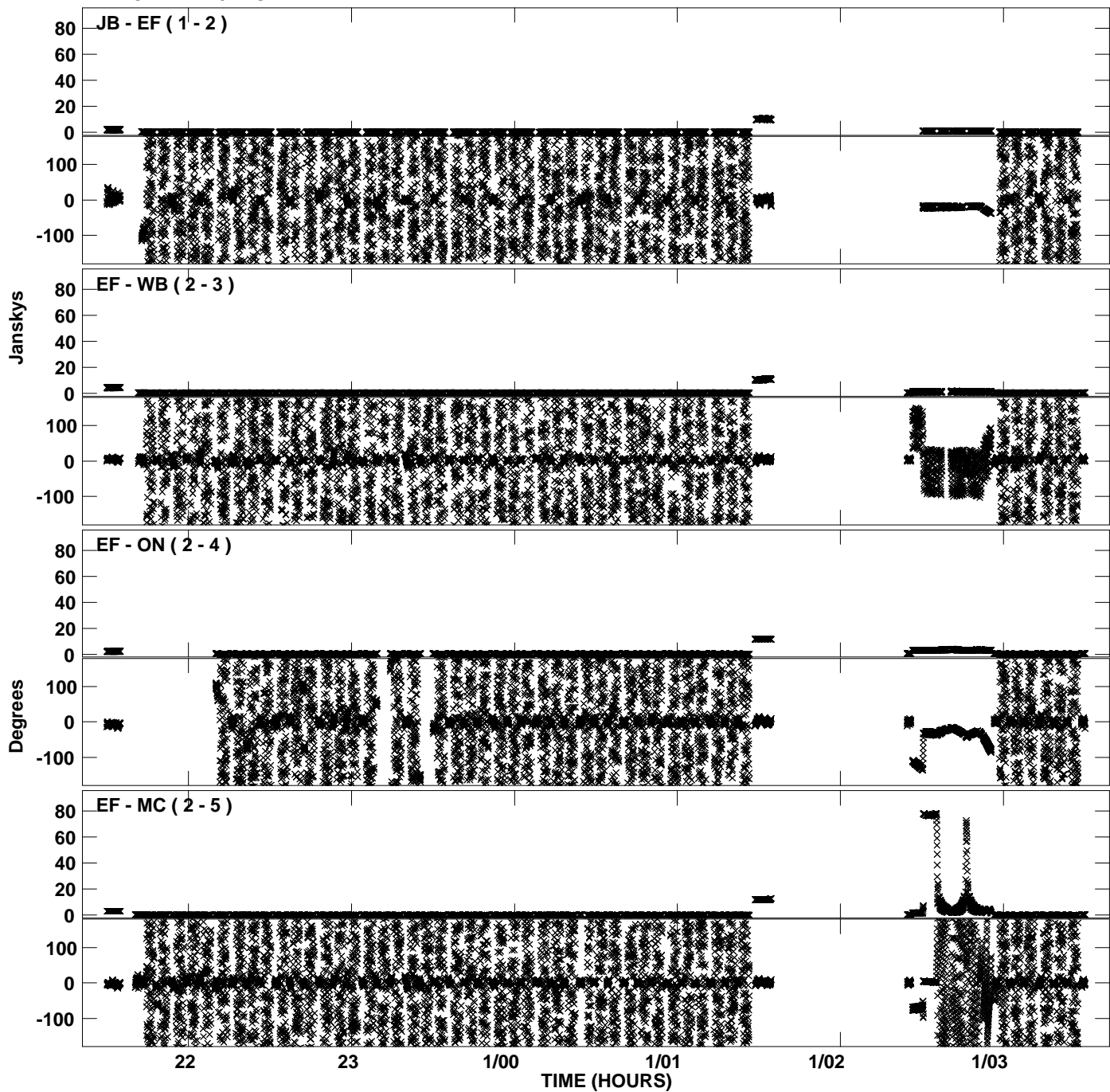
PLot file version 17 created 13-OCT-2010 18:51:26
Amplitude andPhase vs Time for EP064N.UVDATA.1 Vect aver. CL # 3
IF 1 CHAN 1 - 32 STK RR



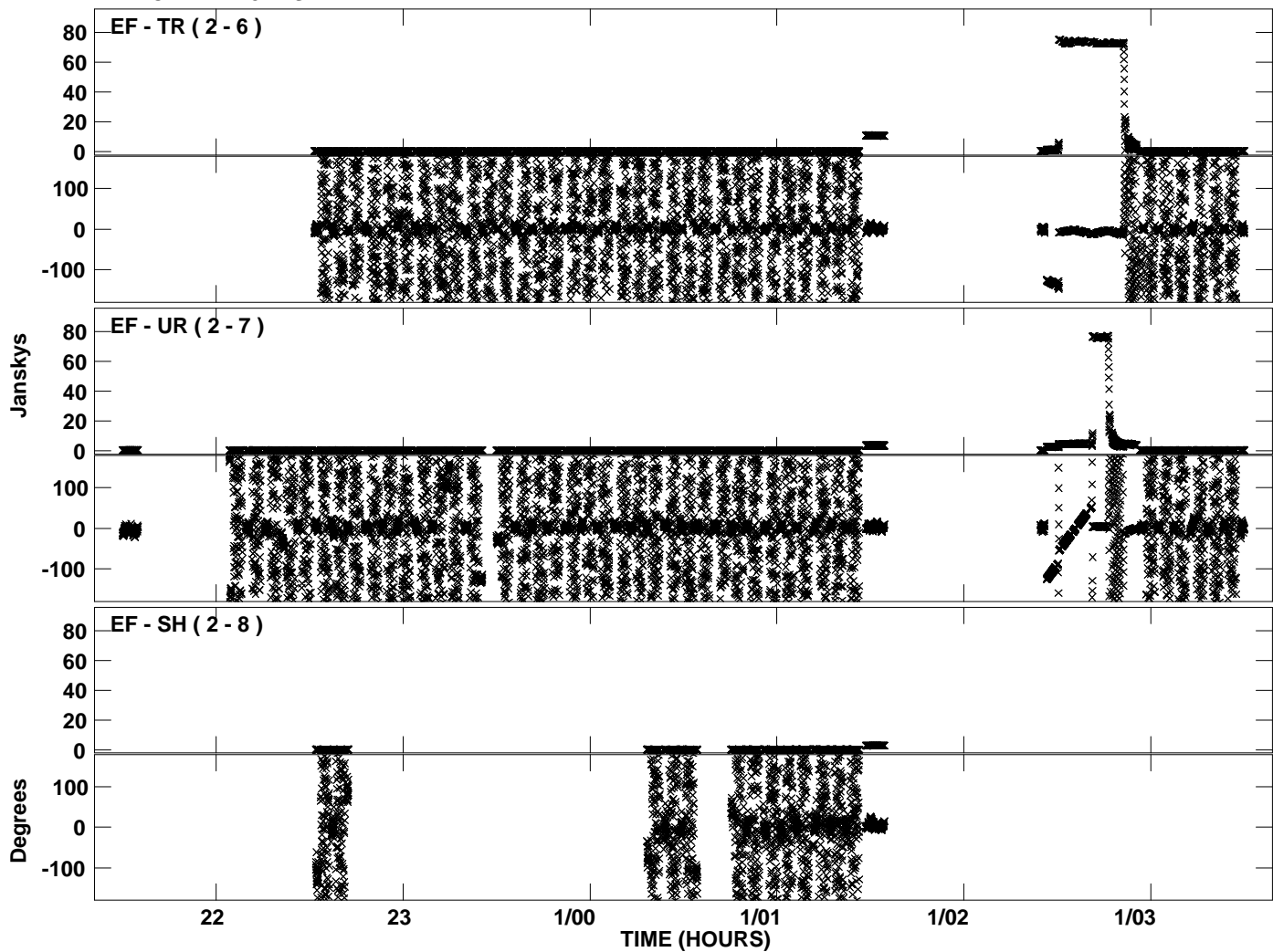
PLot file version 18 created 13-OCT-2010 18:51:26
Amplitude andPhase vs Time for EP064N.UVDATA.1 Vect aver. CL # 3
IF 1 CHAN 1 - 32 STK RR



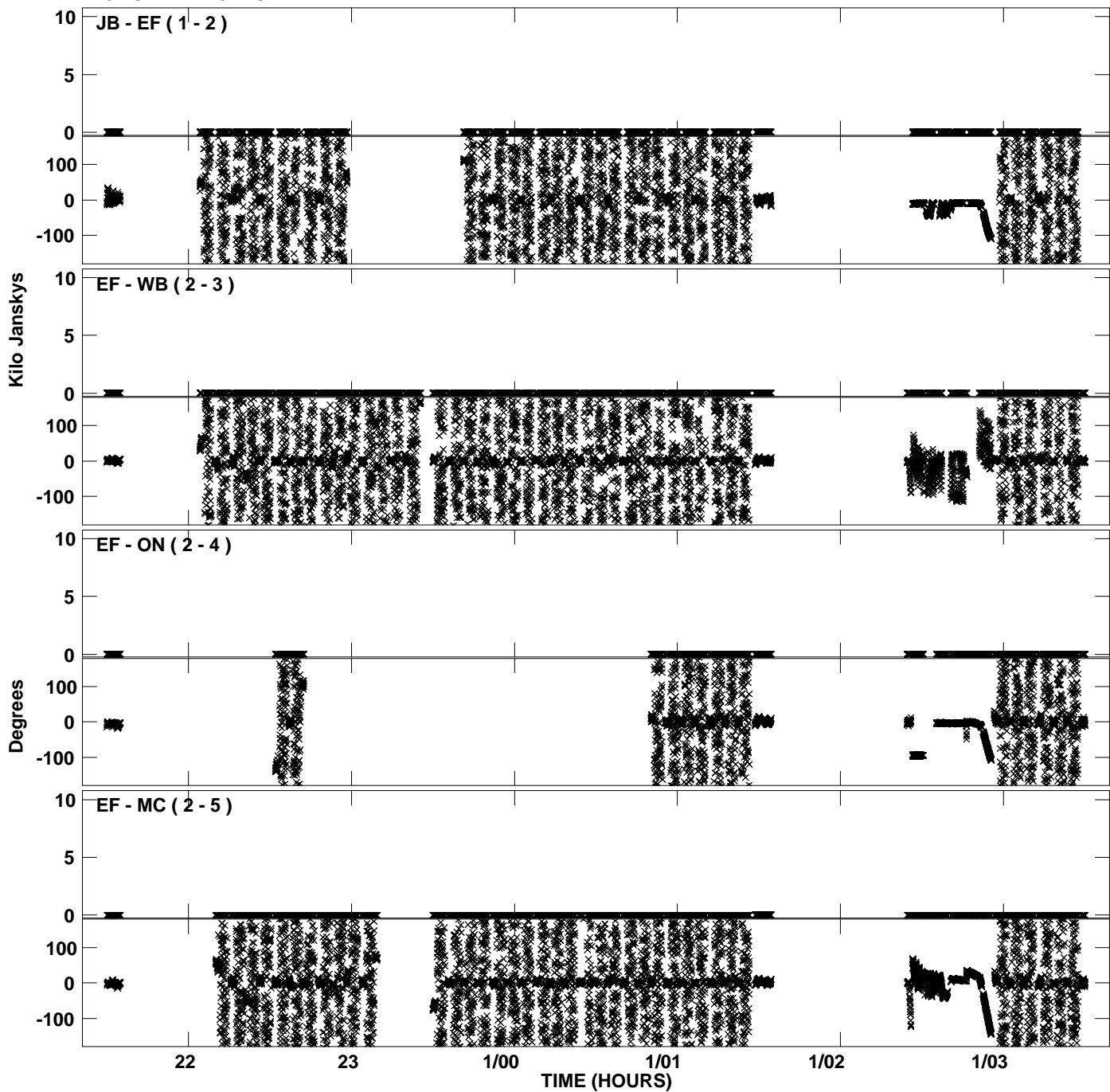
Plot file version 19 created 13-OCT-2010 18:51:38
Amplitude andPhase vs Time for EP064N.UVDATA.1 Vect aver. CL # 3
IF 2 CHAN 1 - 32 STK RR



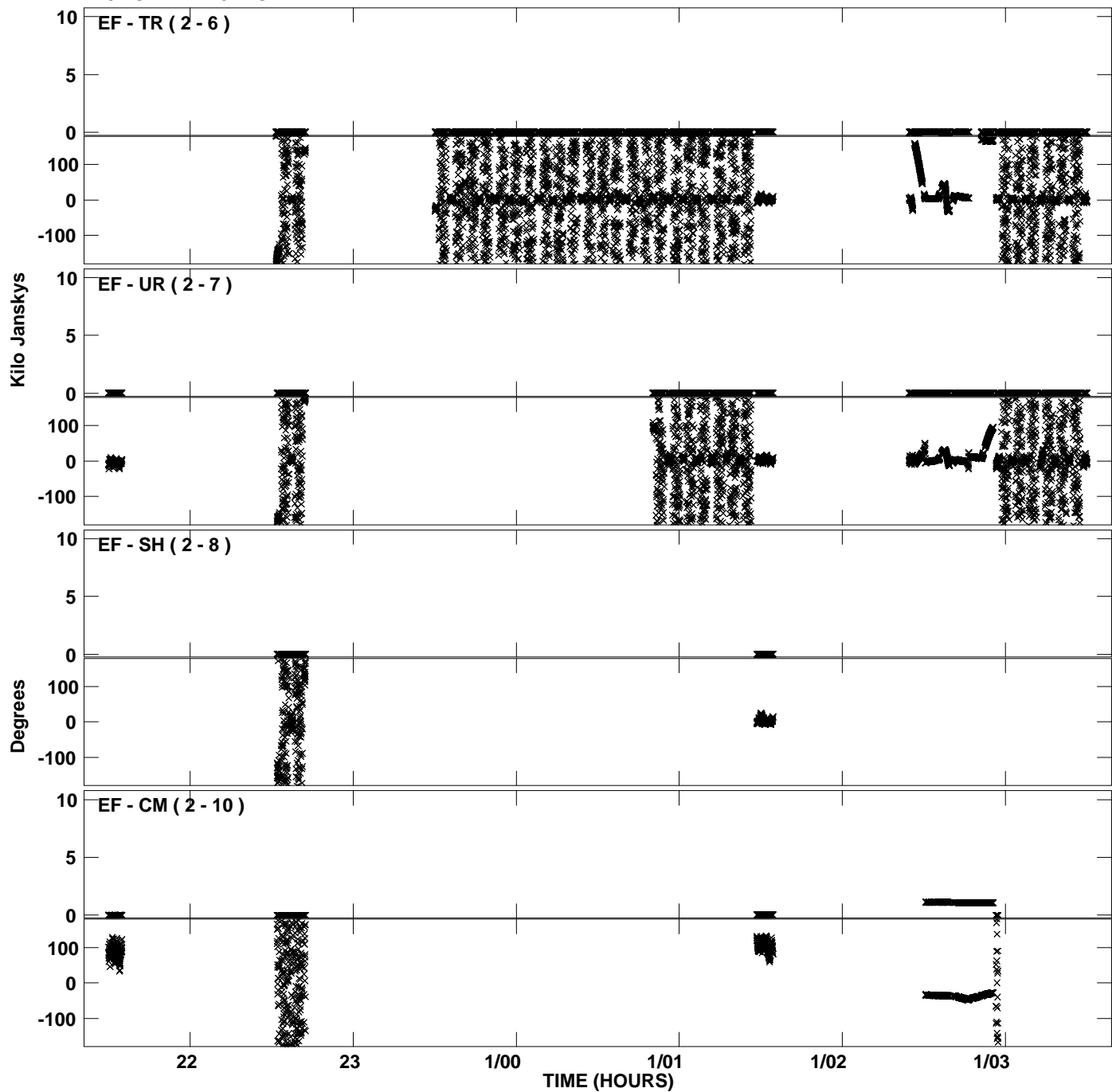
PLot file version 20 created 13-OCT-2010 18:51:38
Amplitude andPhase vs Time for EP064N.UVDATA.1 Vect aver. CL # 3
IF 2 CHAN 1 - 32 STK RR



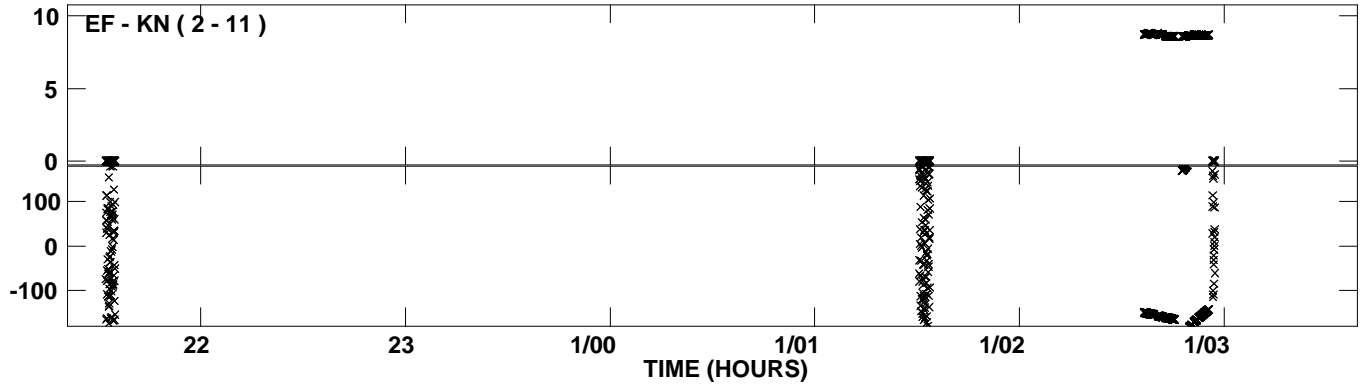
PLot file version 21 created 13-OCT-2010 18:51:49
Amplitude andPhase vs Time for EP064N.UVDATA.1 Vect aver. CL # 3
IF 3 CHAN 1 - 32 STK RR



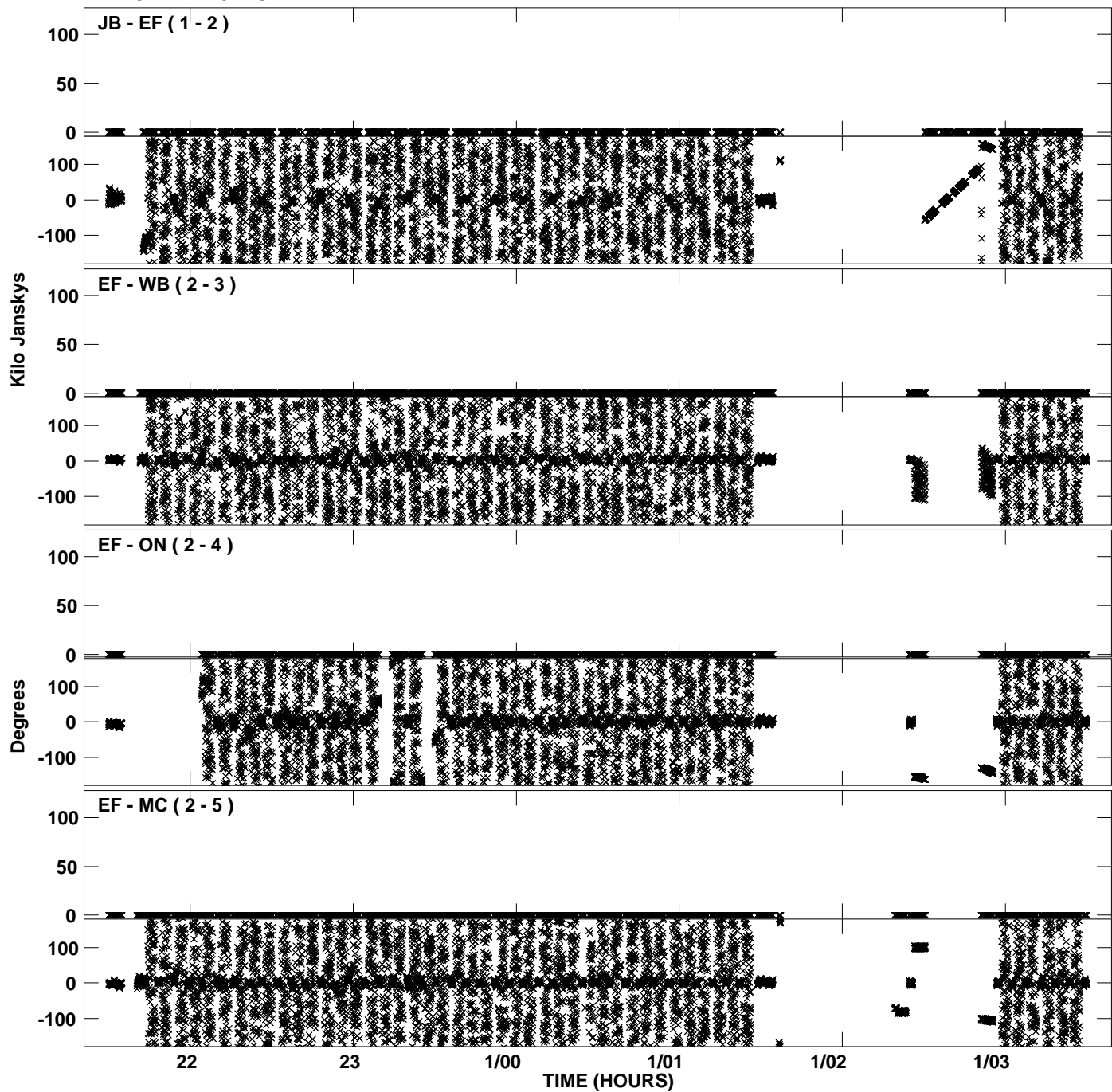
Plot file version 22 created 13-OCT-2010 18:51:49
Amplitude andPhase vs Time for EP064N.UVDATA.1 Vect aver. CL # 3
IF 3 CHAN 1 - 32 STK RR



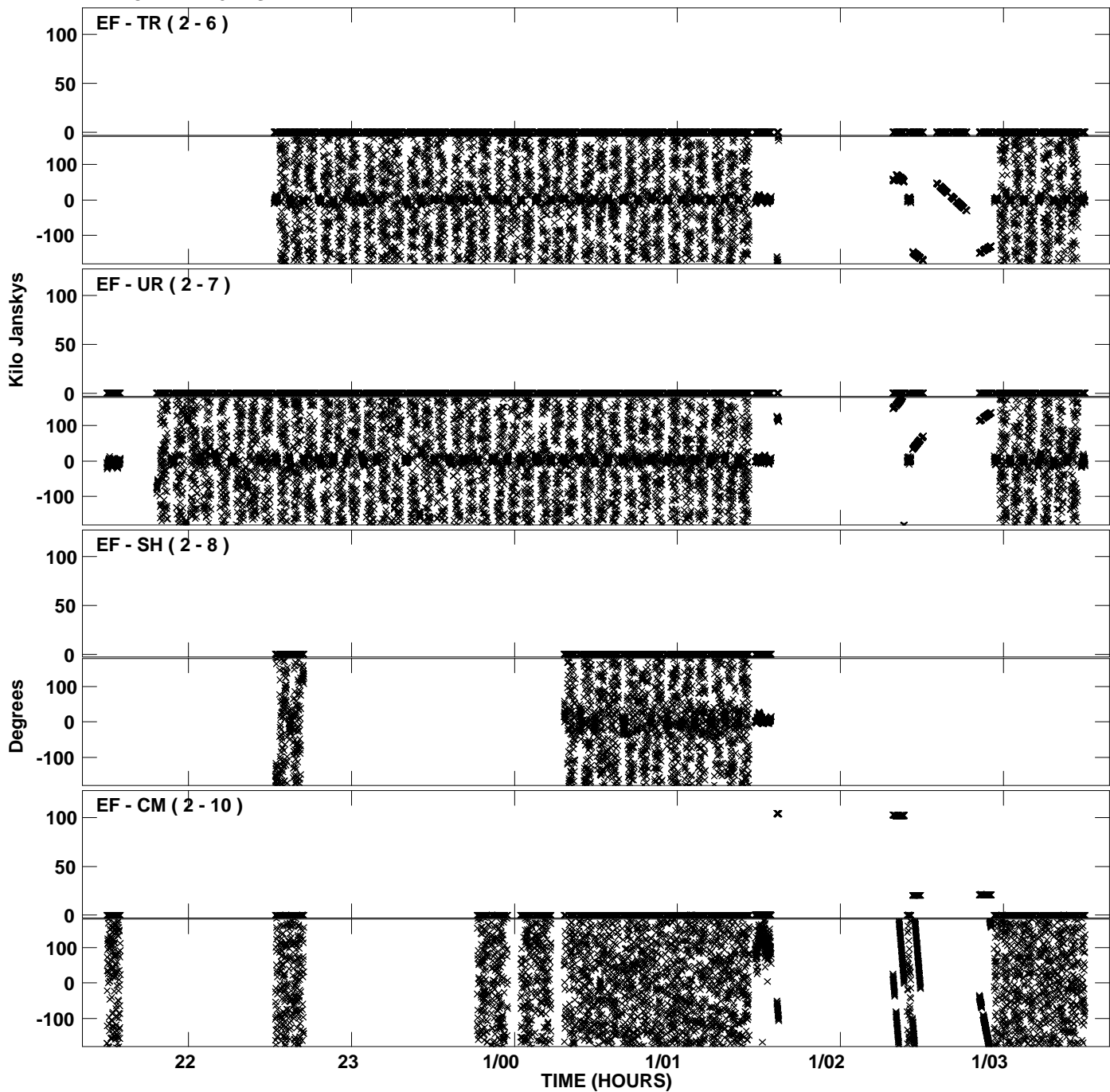
PLot file version 23 created 13-OCT-2010 18:51:49
Amplitude andPhase vs Time for EP064N.UVDATA.1 Vect aver. CL # 3
IF 3 CHAN 1 - 32 STK RR



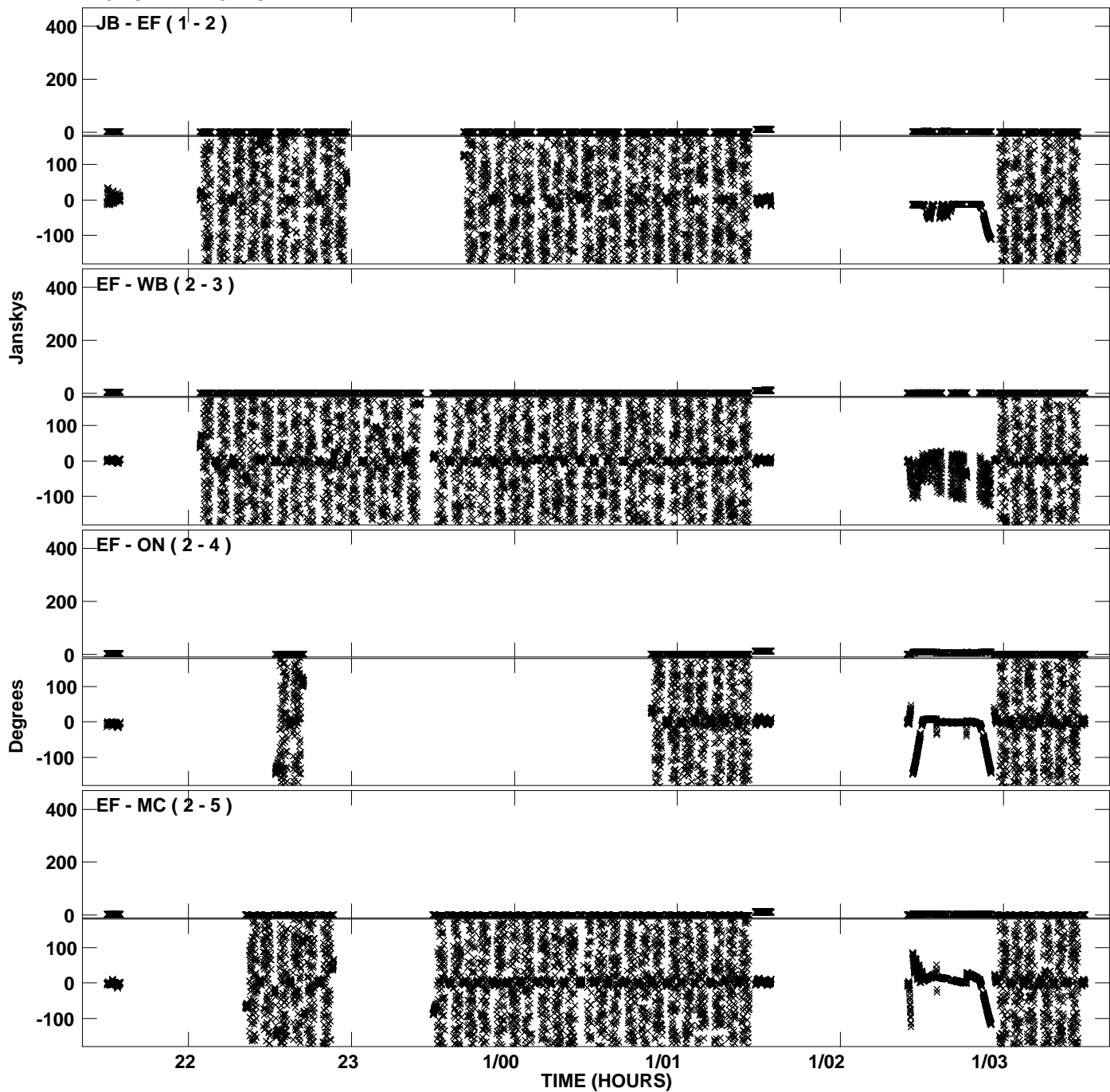
PLot file version 24 created 13-OCT-2010 18:52:01
Amplitude andPhase vs Time for EP064N.UVDATA.1 Vect aver. CL # 3
IF 4 CHAN 1 - 32 STK RR



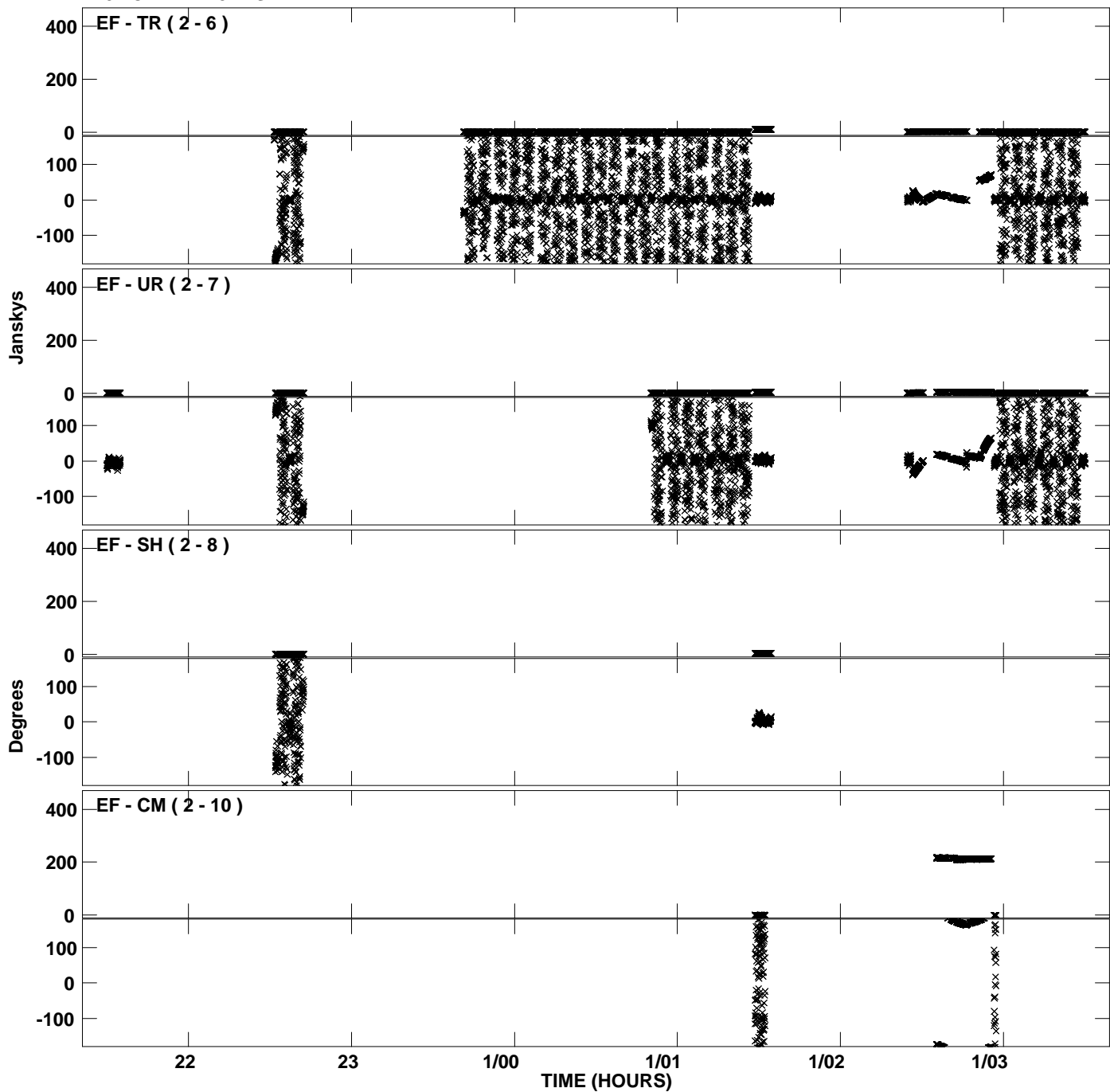
PLot file version 25 created 13-OCT-2010 18:52:01
Amplitude andPhase vs Time for EP064N.UVDATA.1 Vect aver. CL # 3
IF 4 CHAN 1 - 32 STK RR



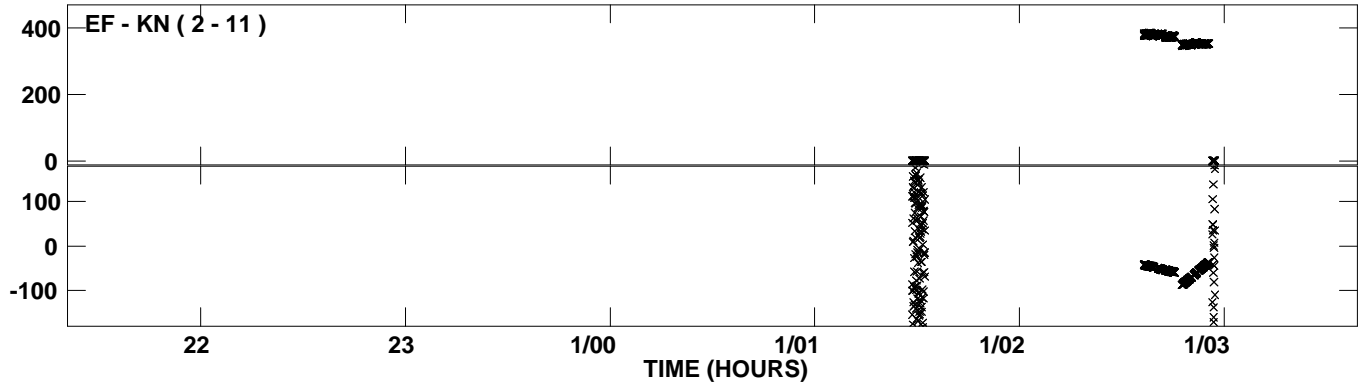
Plot file version 26 created 13-OCT-2010 18:52:13
Amplitude and Phase vs Time for EP064N.UVDATA.1 Vect aver. CL # 3
IF 5 CHAN 1 - 32 STK RR



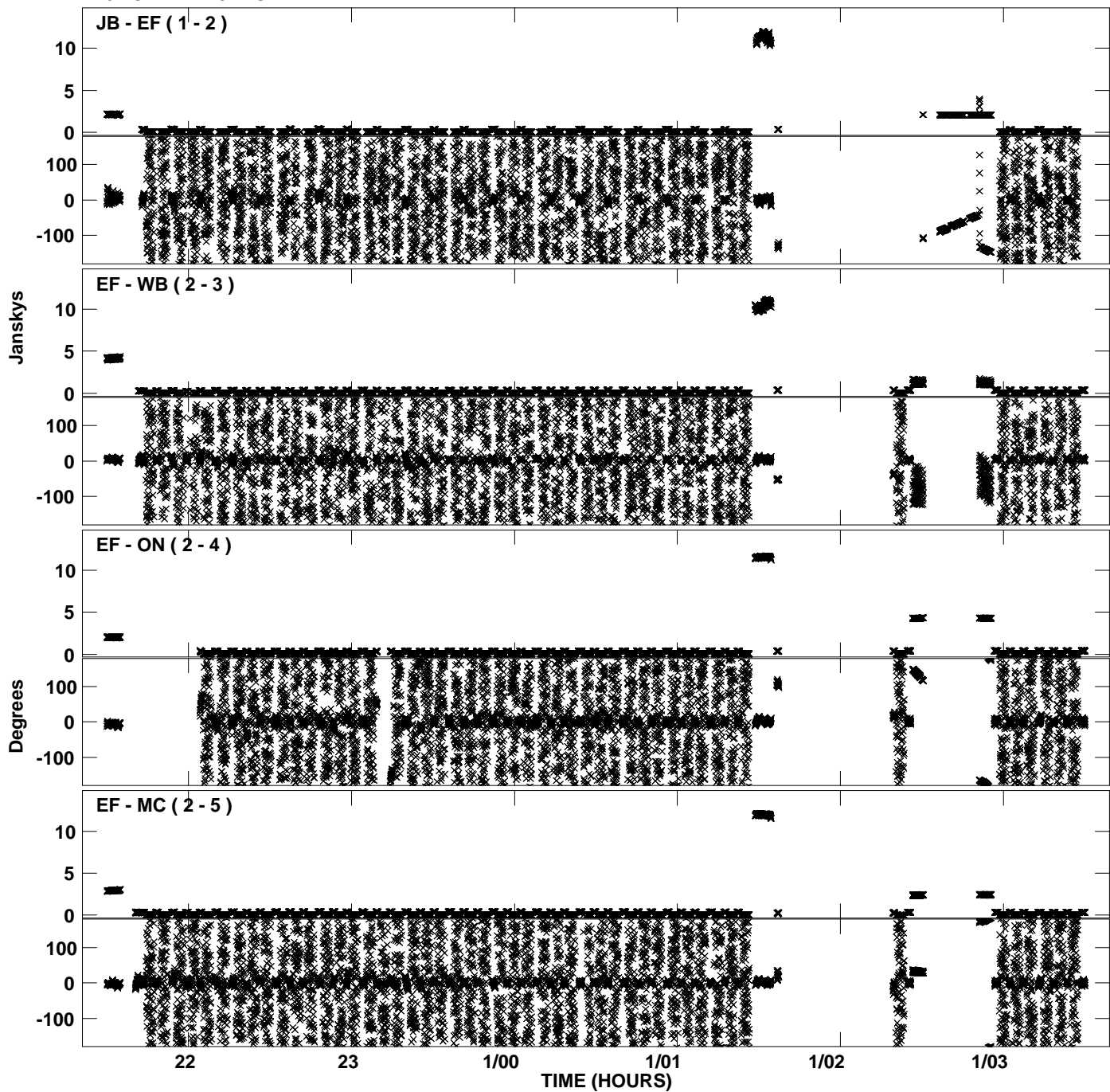
Plot file version 27 created 13-OCT-2010 18:52:13
Amplitude and Phase vs Time for EP064N.UVDATA.1 Vect aver. CL # 3
IF 5 CHAN 1 - 32 STK RR



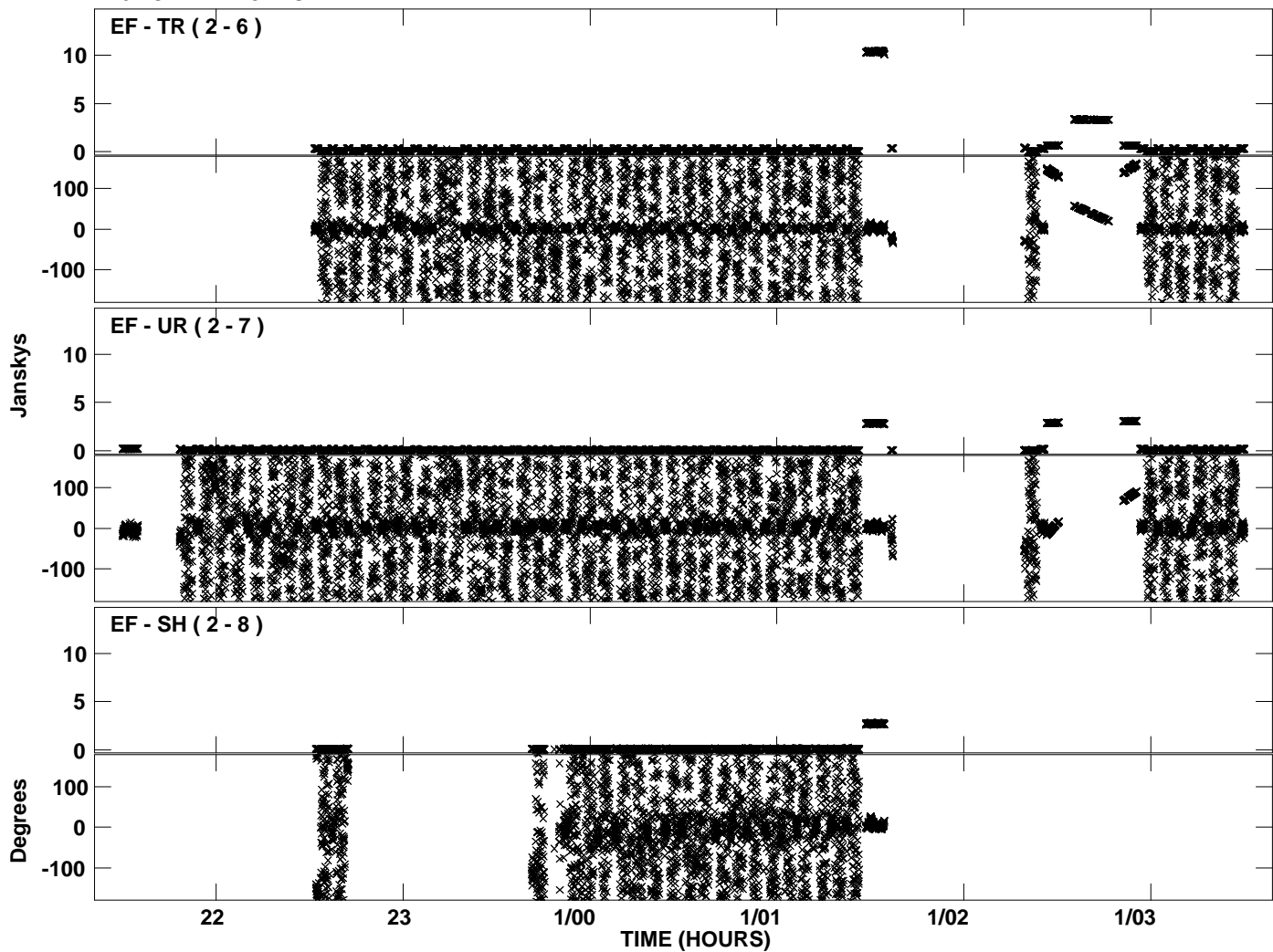
PLot file version 28 created 13-OCT-2010 18:52:13
Amplitude andPhase vs Time for EP064N.UVDATA.1 Vect aver. CL # 3
IF 5 CHAN 1 - 32 STK RR



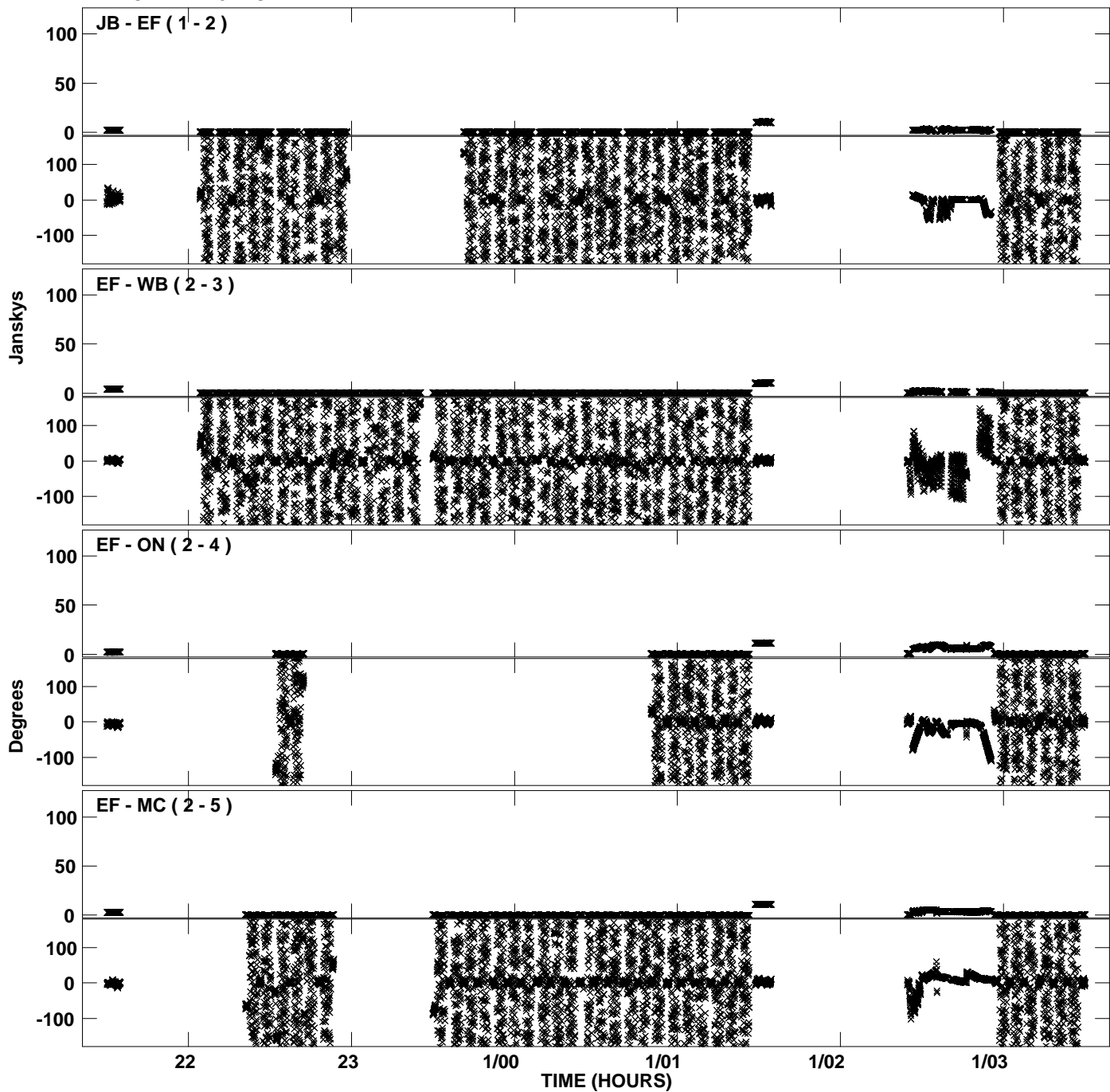
PLot file version 29 created 13-OCT-2010 18:52:24
Amplitude andPhase vs Time for EP064N.UVDATA.1 Vect aver. CL # 3
IF 6 CHAN 1 - 32 STK RR



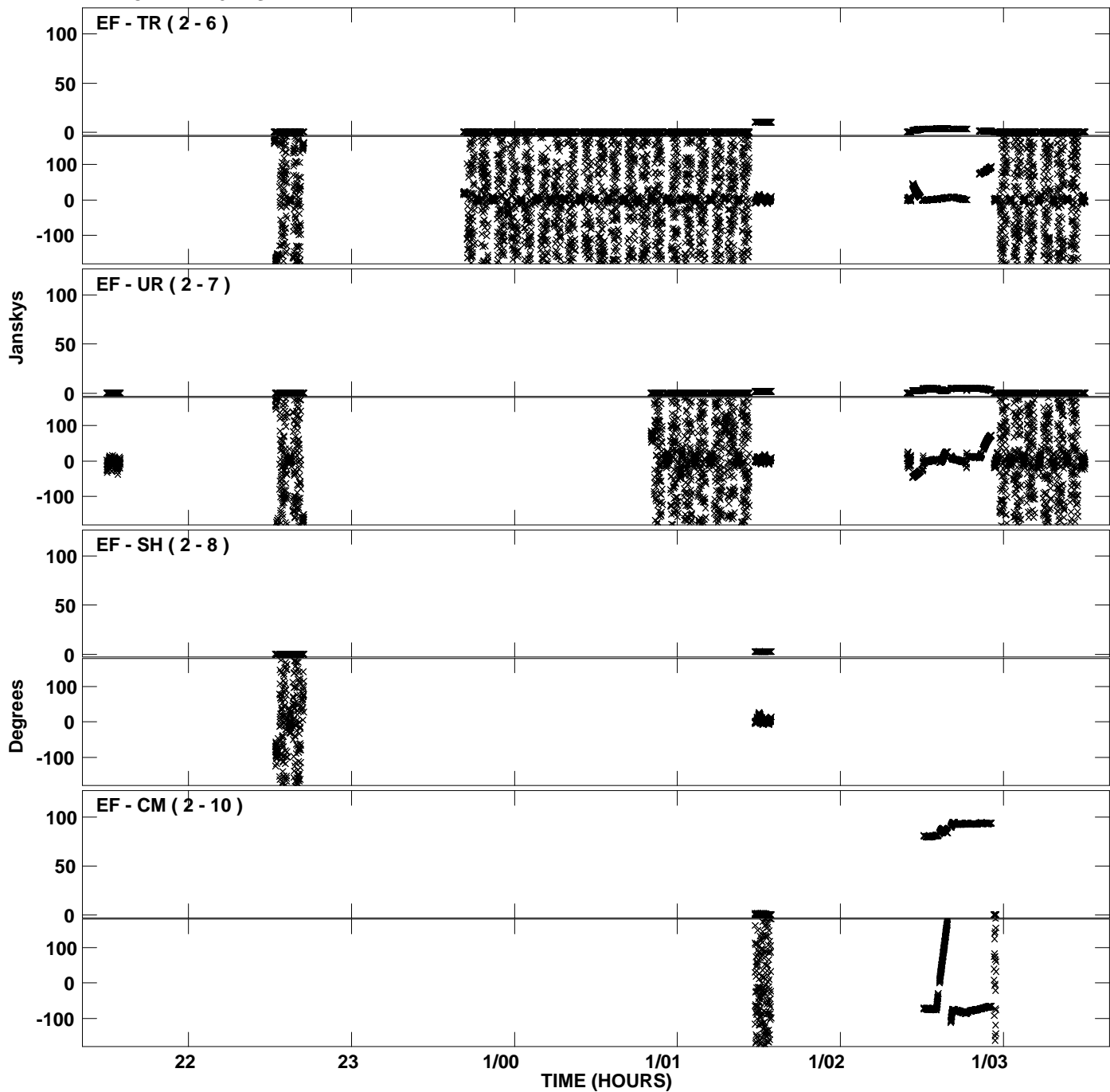
PLot file version 30 created 13-OCT-2010 18:52:24
Amplitude andPhase vs Time for EP064N.UVDATA.1 Vect aver. CL # 3
IF 6 CHAN 1 - 32 STK RR



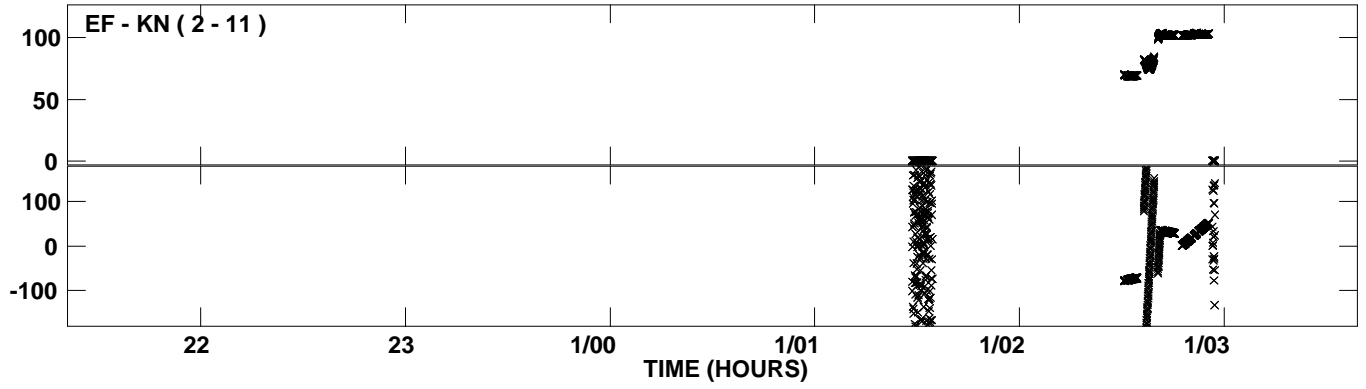
Plot file version 31 created 13-OCT-2010 18:52:35
Amplitude andPhase vs Time for EP064N.UVDATA.1 Vect aver. CL # 3
IF 7 CHAN 1 - 32 STK RR



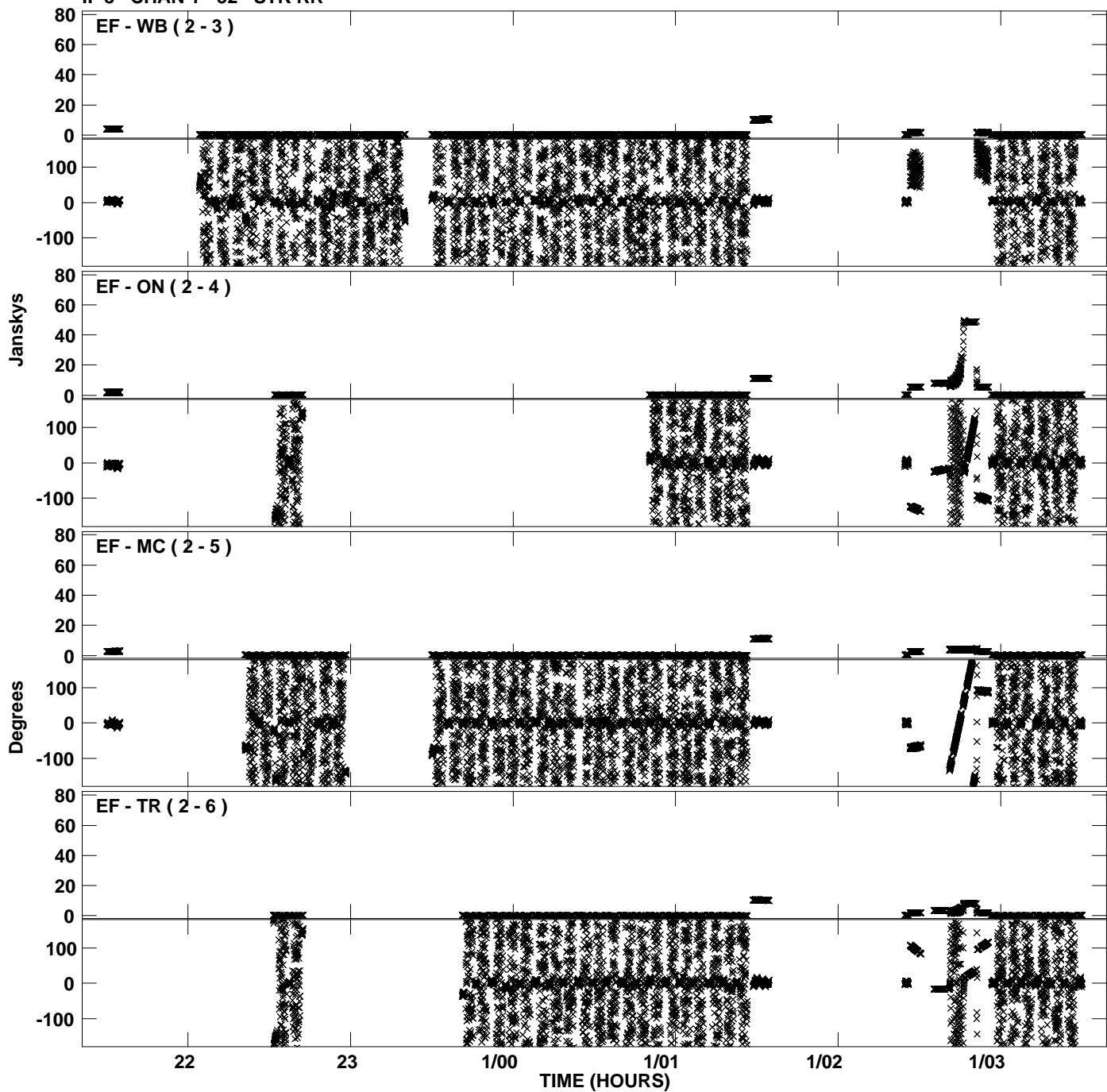
Plot file version 32 created 13-OCT-2010 18:52:35
Amplitude andPhase vs Time for EP064N.UVDATA.1 Vect aver. CL # 3
IF 7 CHAN 1 - 32 STK RR



PLot file version 33 created 13-OCT-2010 18:52:35
Amplitude andPhase vs Time for EP064N.UVDATA.1 Vect aver. CL # 3
IF 7 CHAN 1 - 32 STK RR



Plot file version 34 created 13-OCT-2010 18:52:46
Amplitude andPhase vs Time for EP064N.UVDATA.1 Vect aver. CL # 3
IF 8 CHAN 1 - 32 STK RR



PLot file version 35 created 13-OCT-2010 18:52:46
Amplitude andPhase vs Time for EP064N.UVDATA.1 Vect aver. CL # 3
IF 8 CHAN 1 - 32 STK RR

