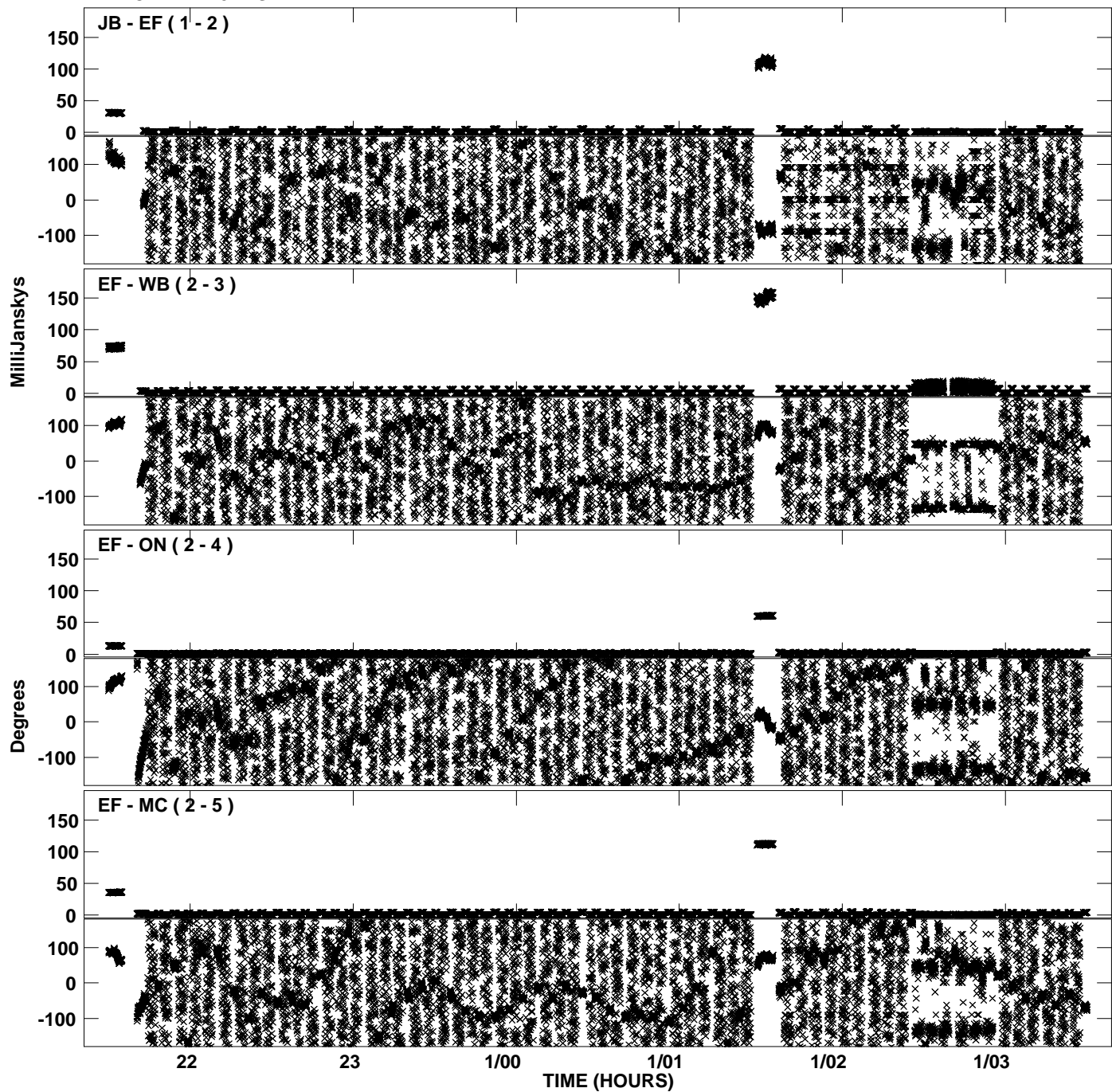
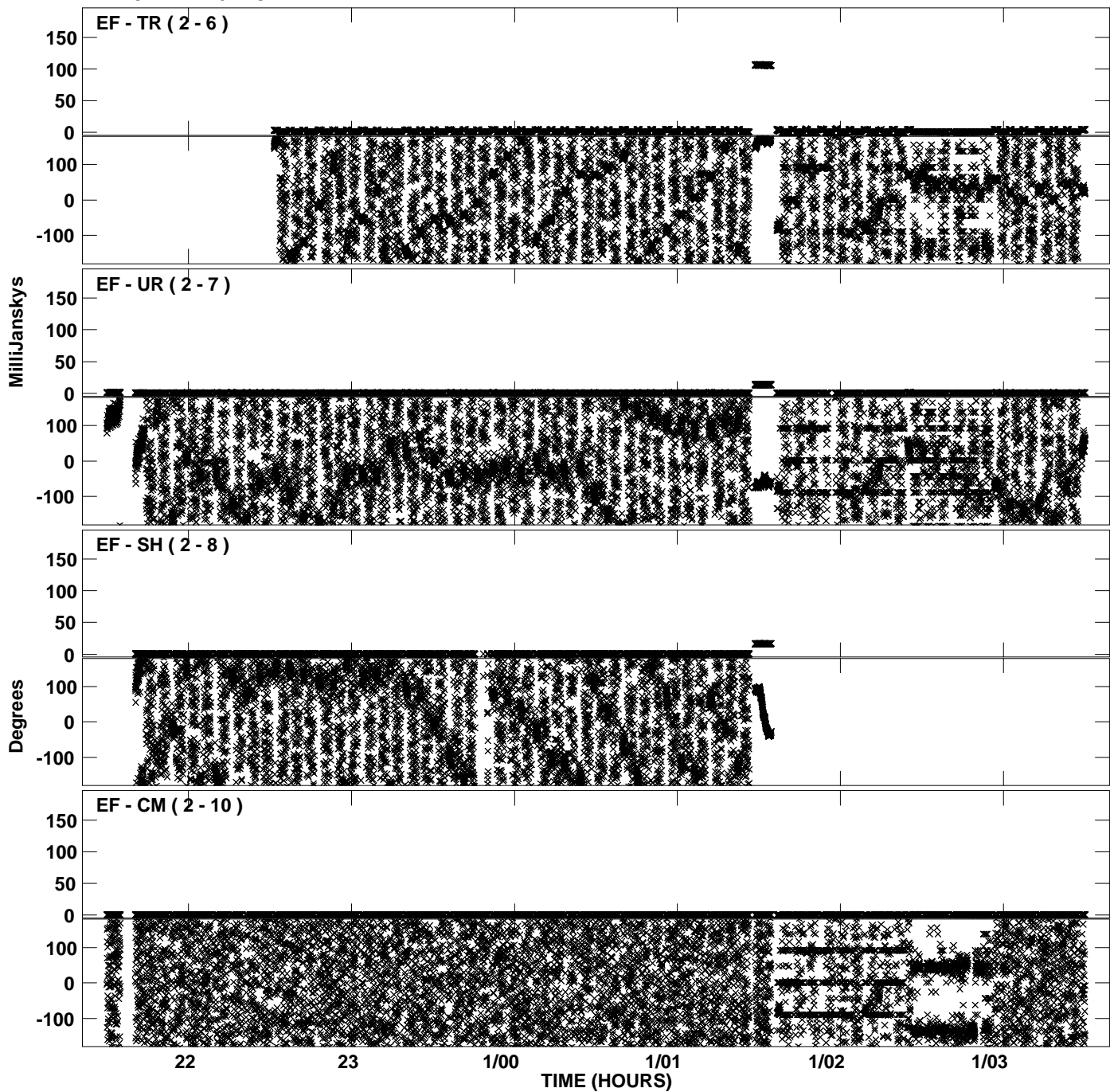


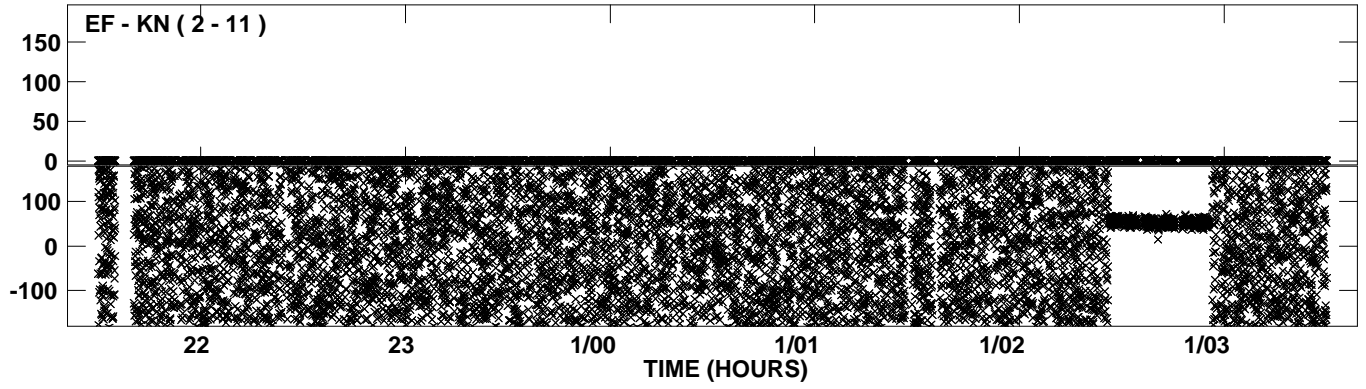
PLot file version 1 created 13-OCT-2010 18:11:59  
Amplitude andPhase vs Time for EP064N.UVDATA.1 Vect aver.  
IF 1 CHAN 1 - 32 STK LL



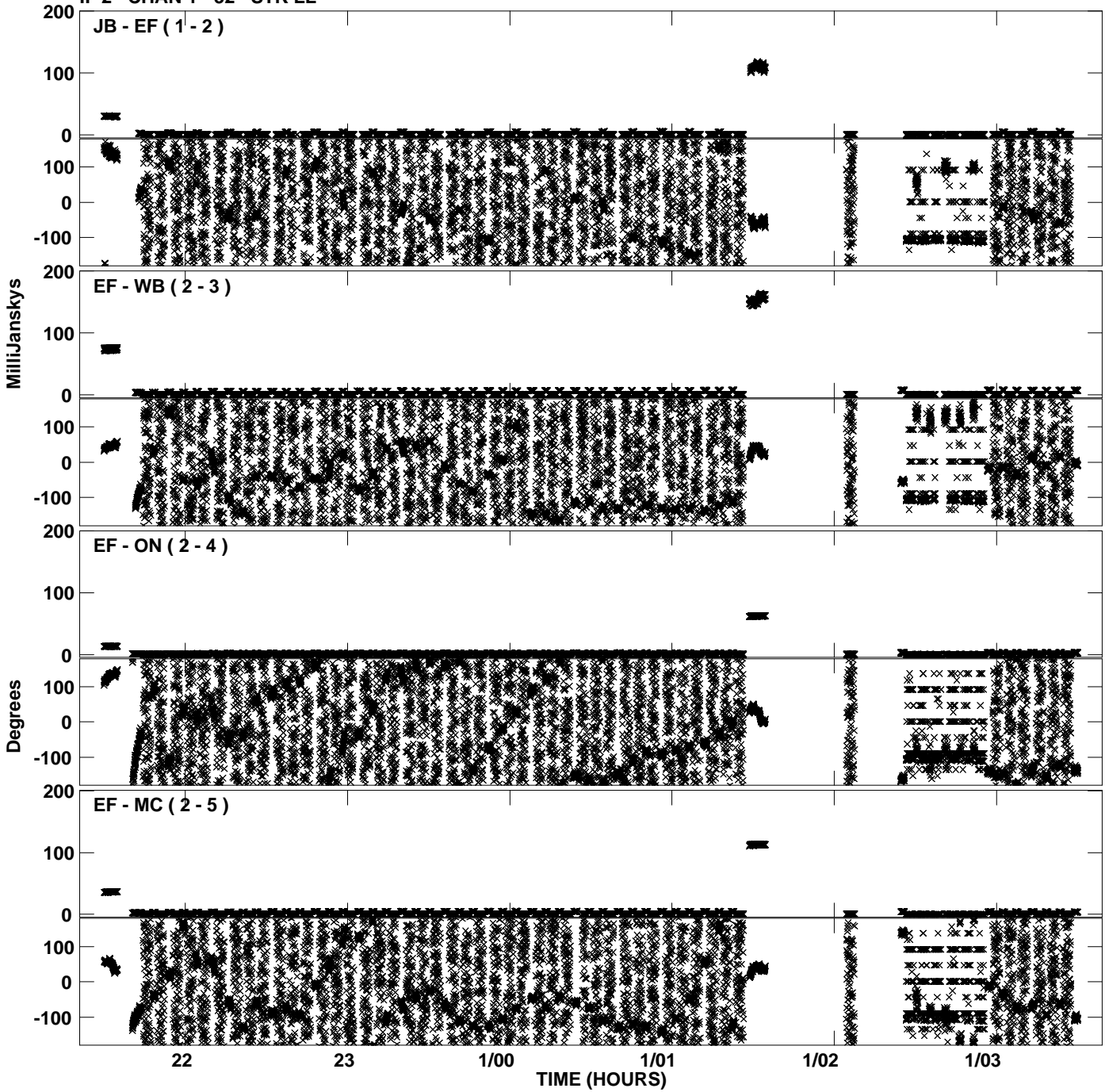
PLot file version 2 created 13-OCT-2010 18:11:59  
Amplitude andPhase vs Time for EP064N.UVDATA.1 Vect aver.  
IF 1 CHAN 1 - 32 STK LL



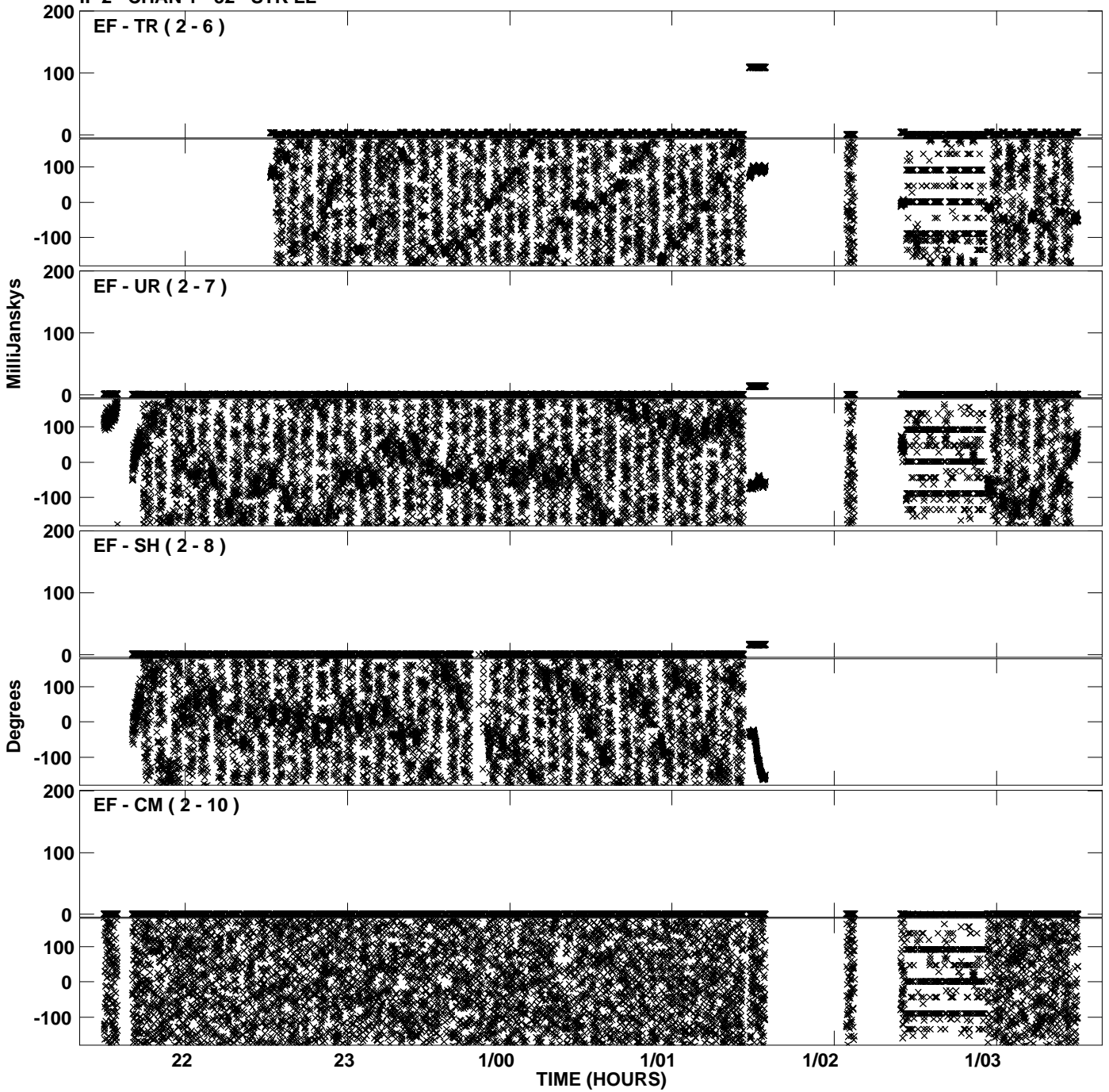
Plot file version 3 created 13-OCT-2010 18:11:59  
Amplitude and Phase vs Time for EP064N.UVDATA.1 Vect aver.  
IF 1 CHAN 1 - 32 STK LL



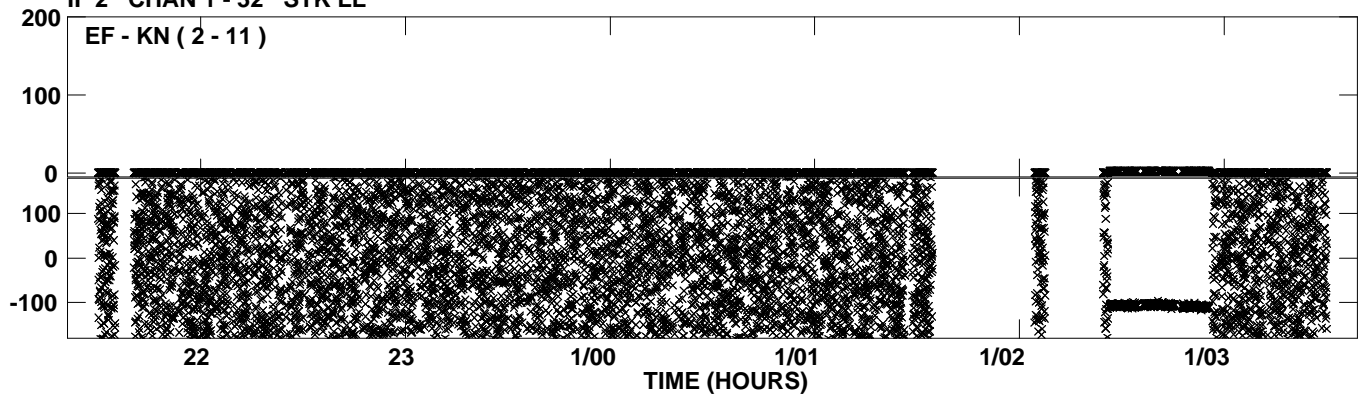
PLot file version 4 created 13-OCT-2010 18:12:06  
Amplitude andPhase vs Time for EP064N.UVDATA.1 Vect aver.  
IF 2 CHAN 1 - 32 STK LL



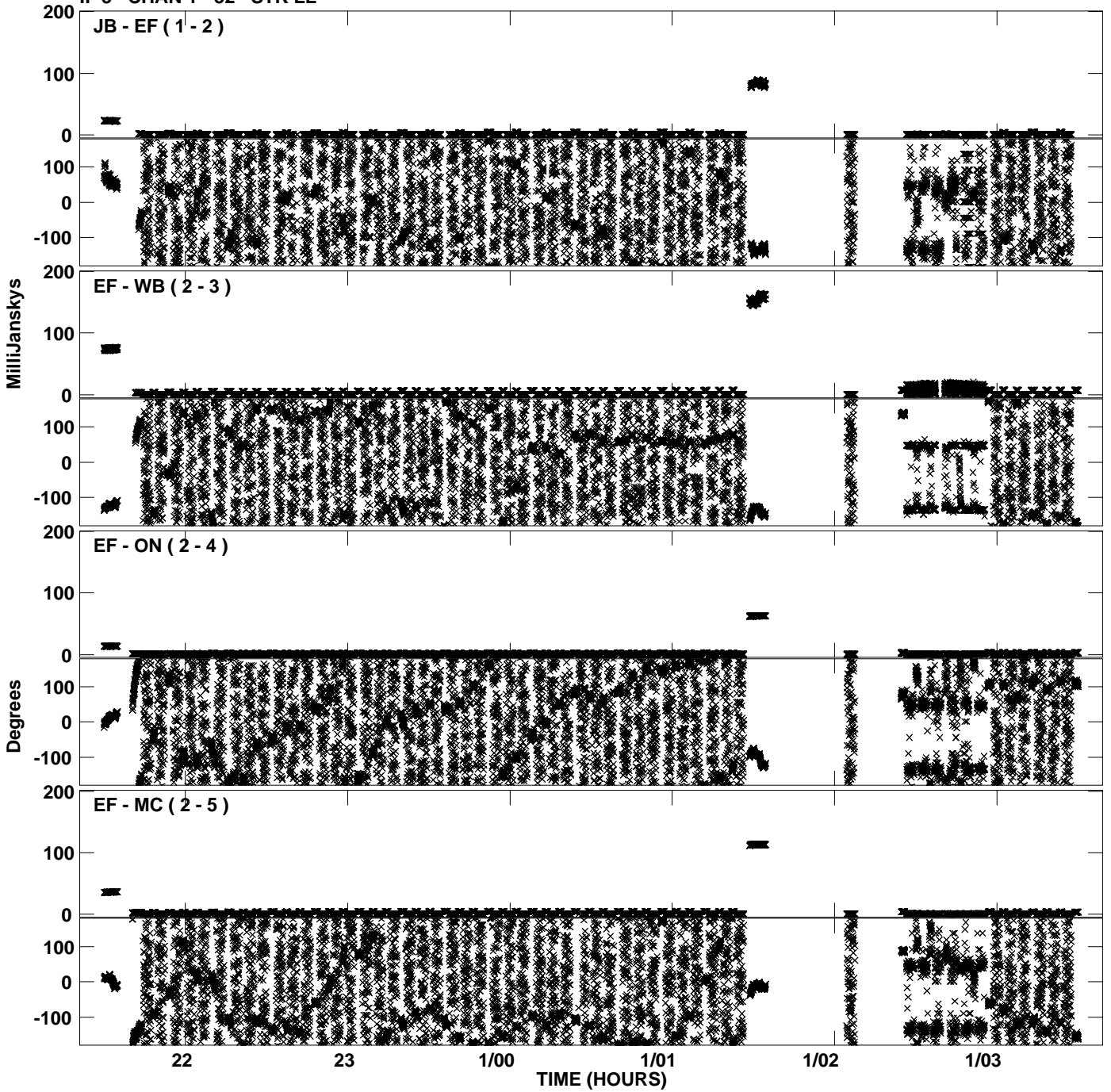
Plot file version 5 created 13-OCT-2010 18:12:06  
Amplitude andPhase vs Time for EP064N.UVDATA.1 Vect aver.  
IF 2 CHAN 1 - 32 STK LL



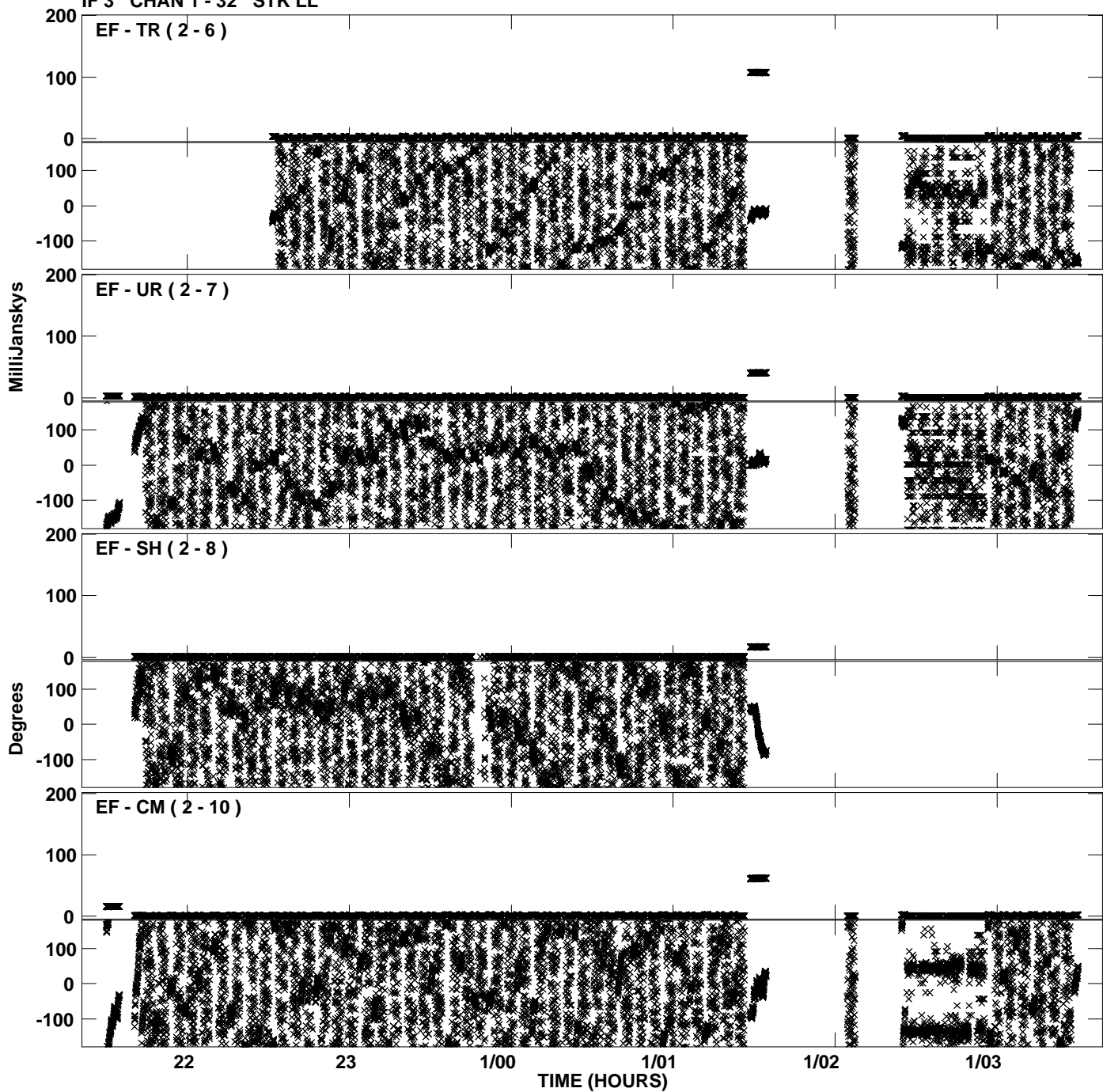
PLot file version 6 created 13-OCT-2010 18:12:06  
Amplitude andPhase vs Time for EP064N.UVDATA.1 Vect aver.  
IF 2 CHAN 1 - 32 STK LL



Plot file version 7 created 13-OCT-2010 18:12:13  
Amplitude andPhase vs Time for EP064N.UVDATA.1 Vect aver.  
IF 3 CHAN 1 - 32 STK LL

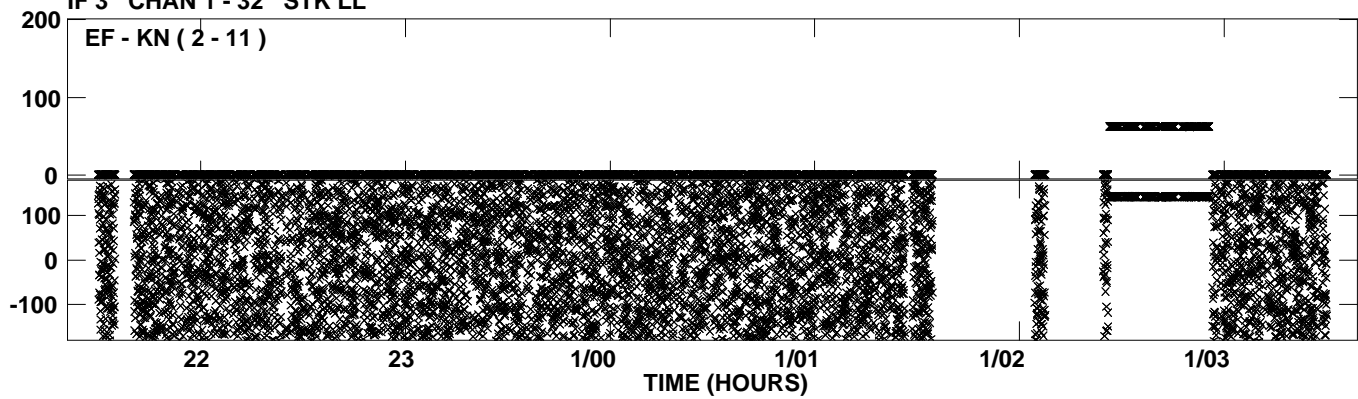


Plot file version 8 created 13-OCT-2010 18:12:13  
Amplitude andPhase vs Time for EP064N.UVDATA.1 Vect aver.  
IF 3 CHAN 1 - 32 STK LL

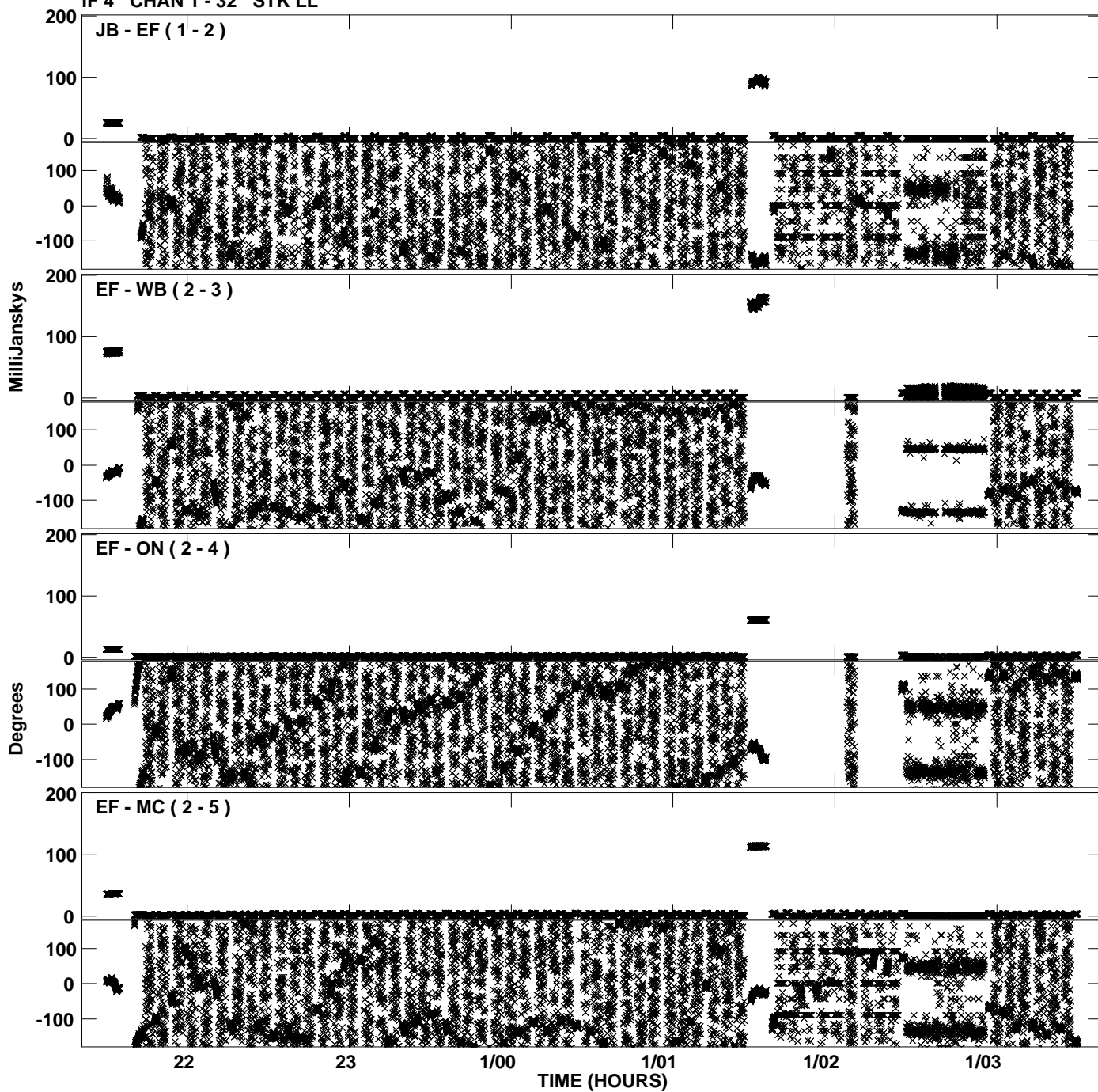




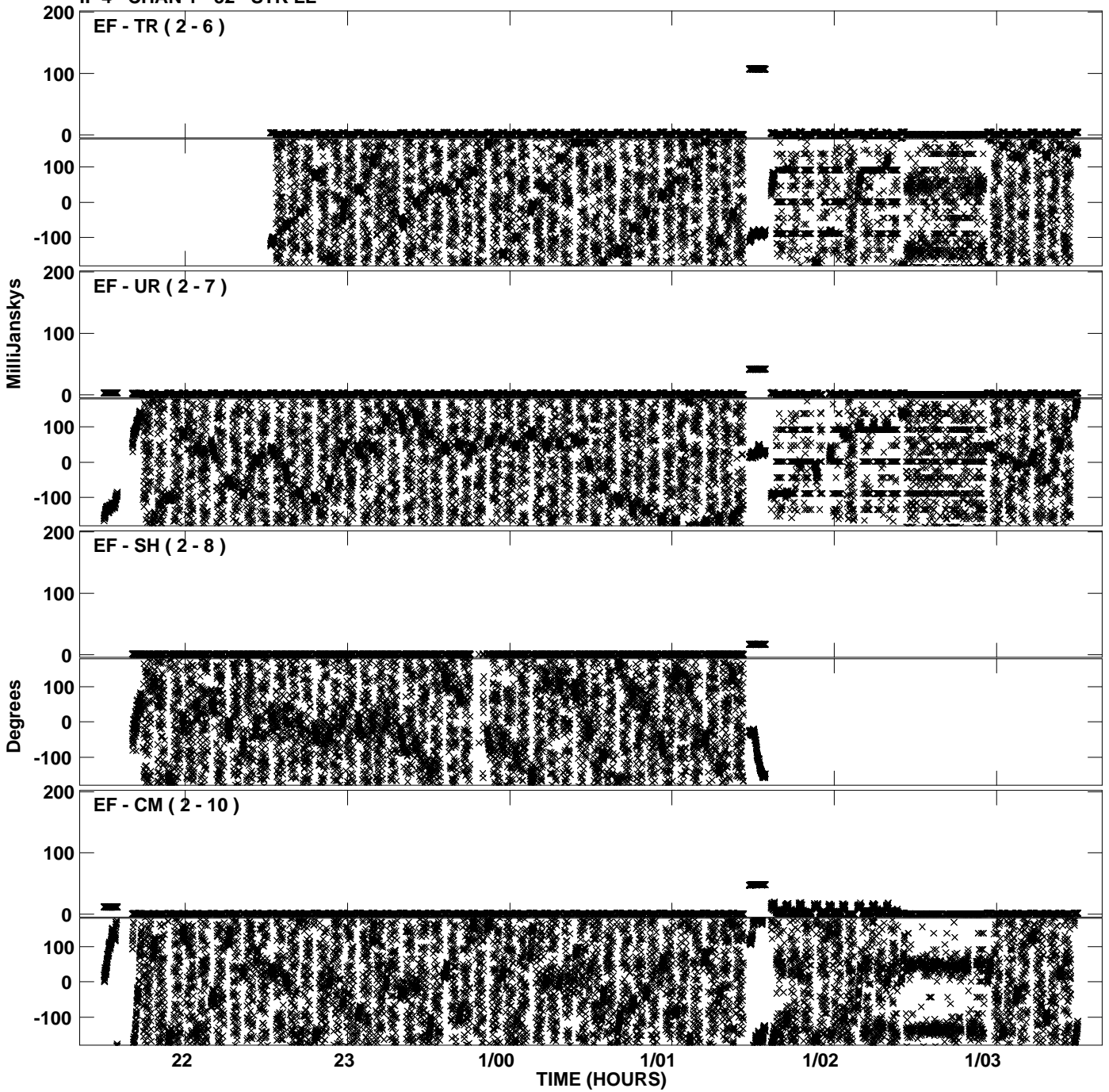
PLot file version 9 created 13-OCT-2010 18:12:13  
Amplitude andPhase vs Time for EP064N.UVDATA.1 Vect aver.  
IF 3 CHAN 1 - 32 STK LL



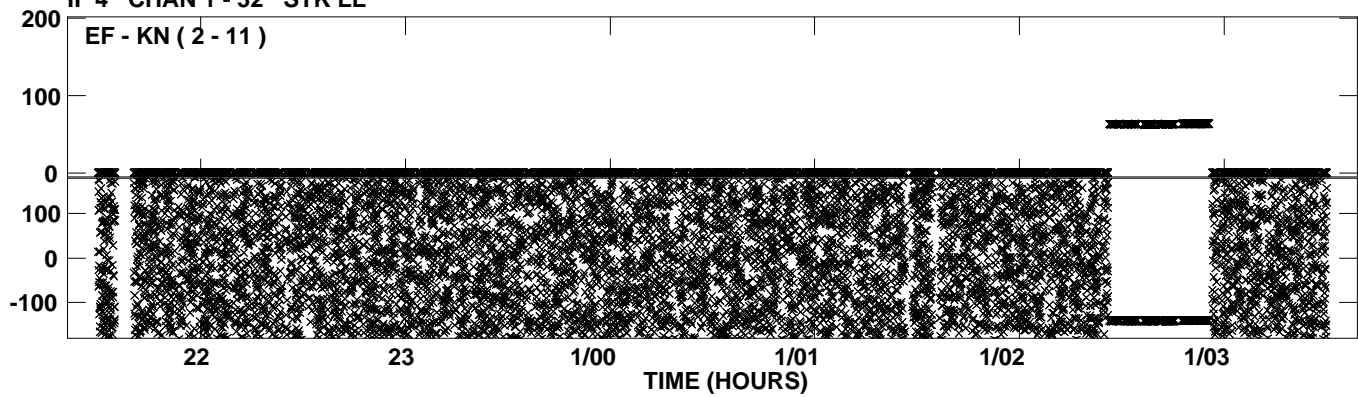
Plot file version 10 created 13-OCT-2010 18:12:20  
Amplitude andPhase vs Time for EP064N.UVDATA.1 Vect aver.  
IF 4 CHAN 1 - 32 STK LL



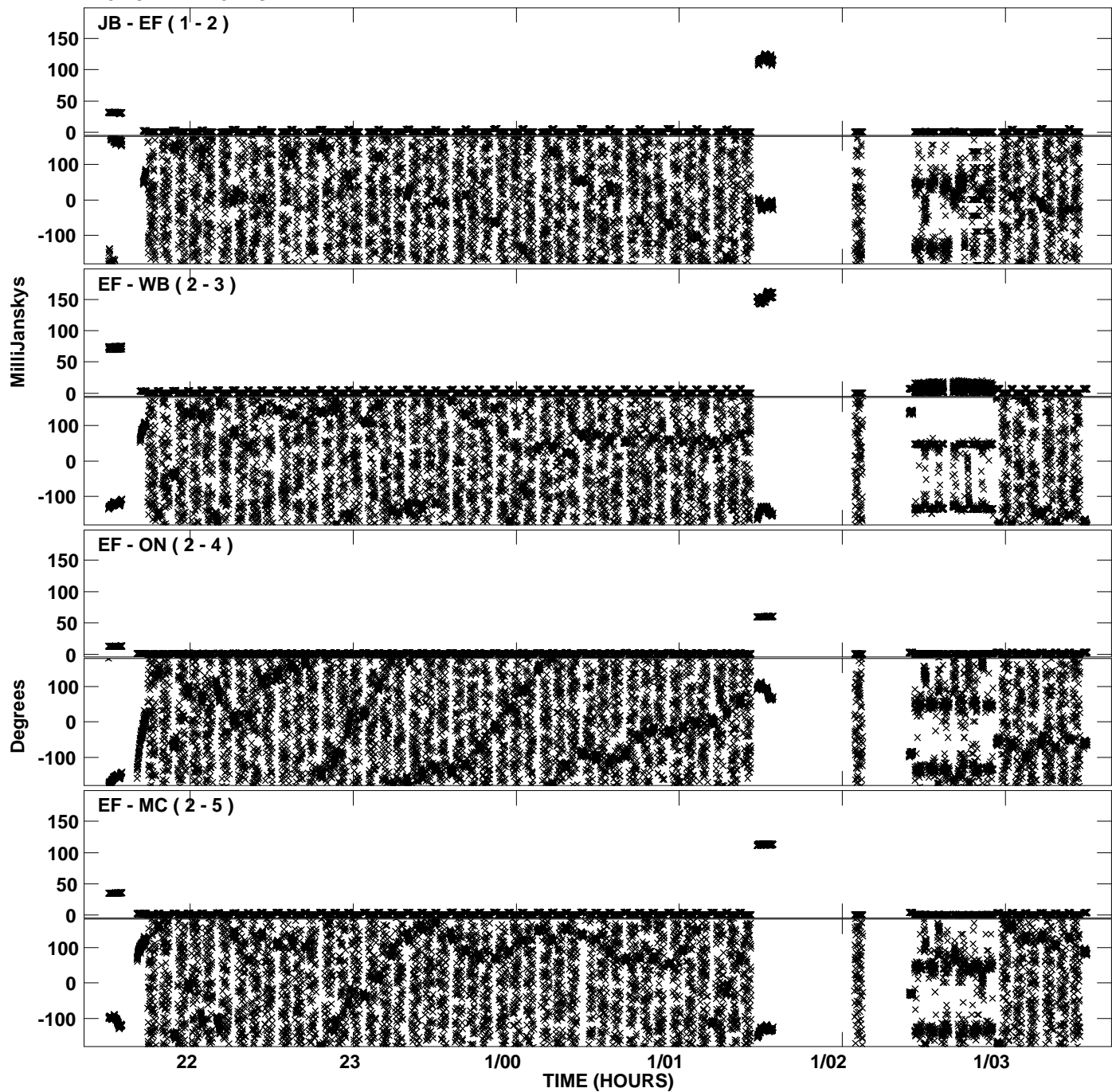
PLot file version 11 created 13-OCT-2010 18:12:20  
Amplitude andPhase vs Time for EP064N.UVDATA.1 Vect aver.  
IF 4 CHAN 1 - 32 STK LL



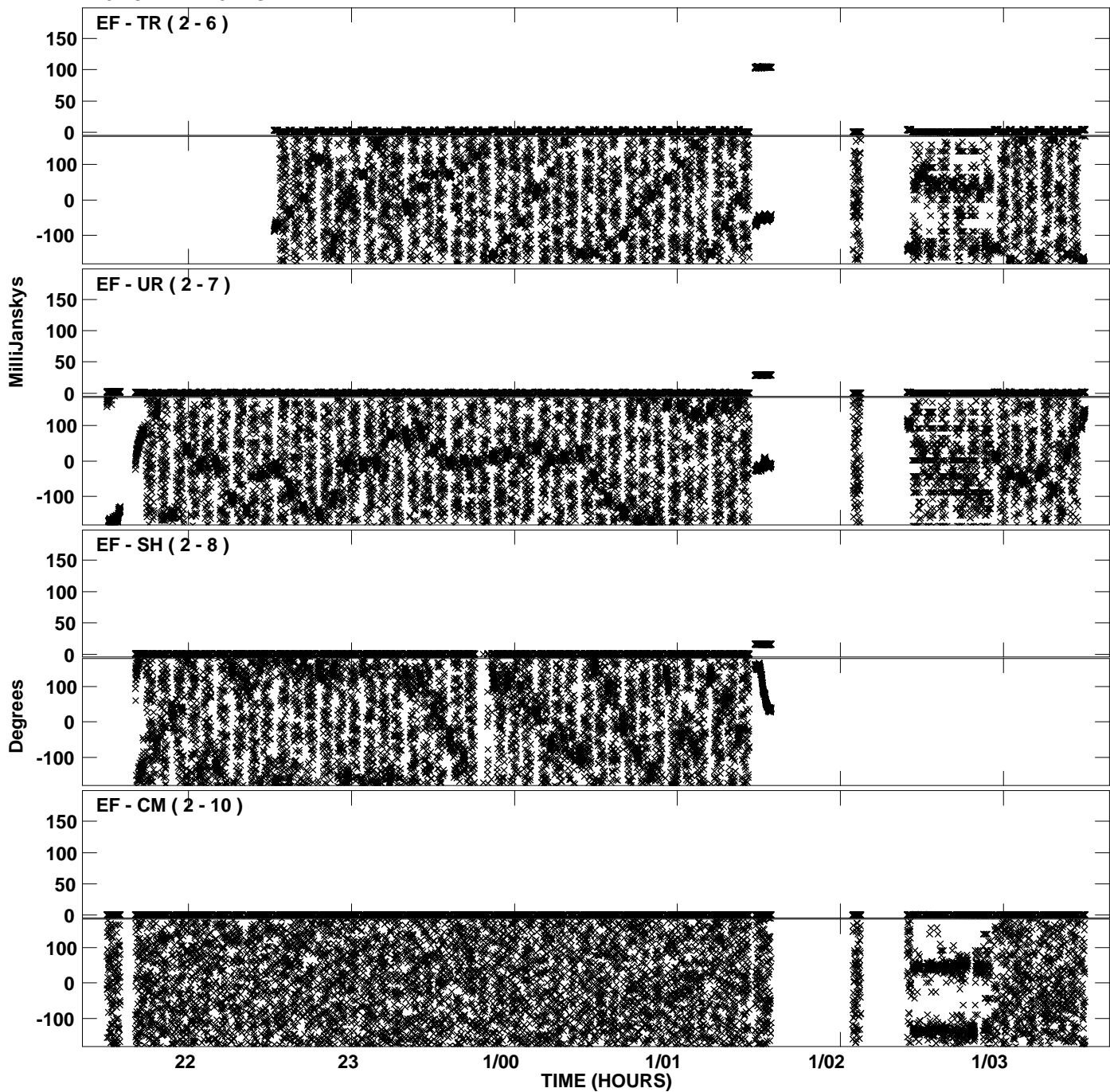
PLot file version 12 created 13-OCT-2010 18:12:20  
Amplitude andPhase vs Time for EP064N.UVDATA.1 Vect aver.  
IF 4 CHAN 1 - 32 STK LL



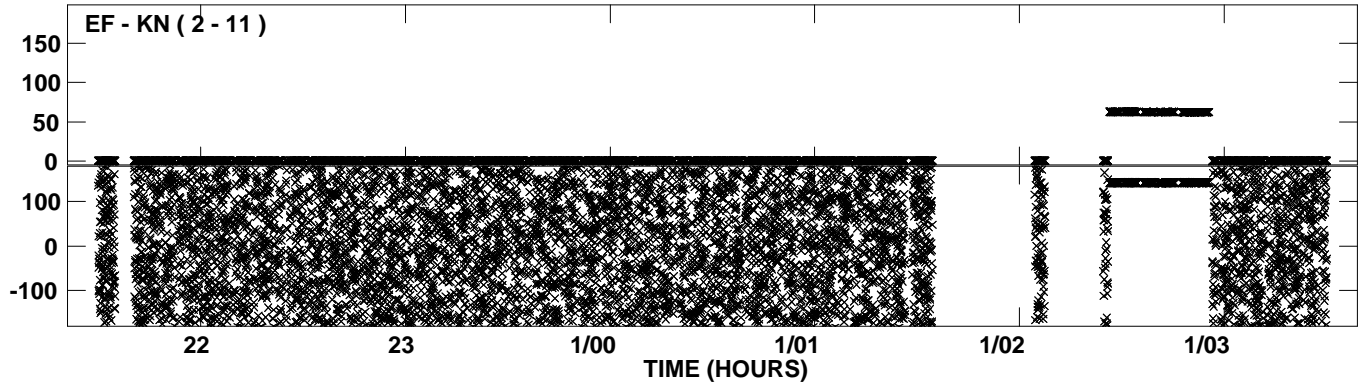
PLot file version 13 created 13-OCT-2010 18:12:27  
Amplitude andPhase vs Time for EP064N.UVDATA.1 Vect aver.  
IF 5 CHAN 1 - 32 STK LL



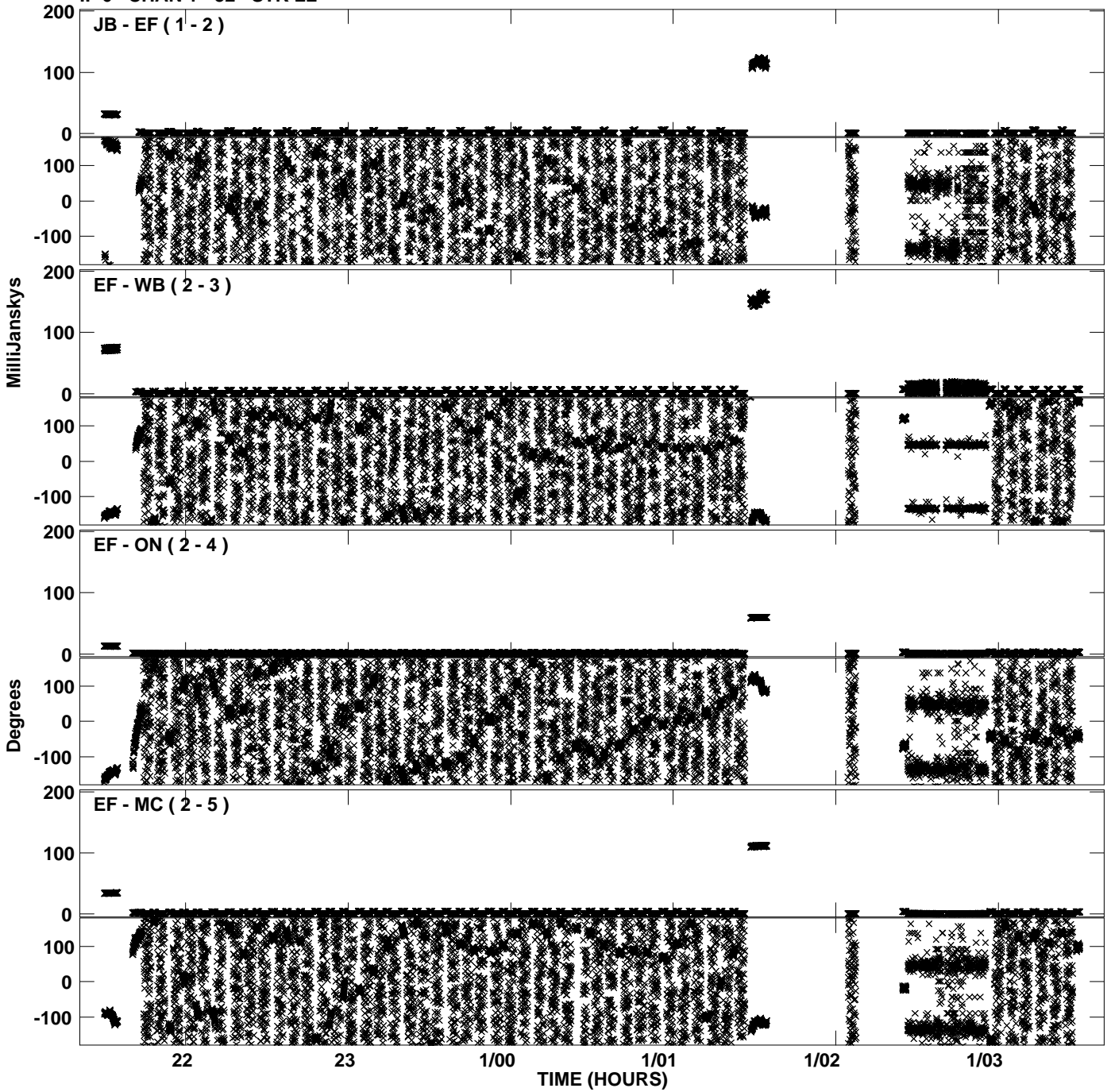
Plot file version 14 created 13-OCT-2010 18:12:27  
Amplitude andPhase vs Time for EP064N.UVDATA.1 Vect aver.  
IF 5 CHAN 1 - 32 STK LL



PLot file version 15 created 13-OCT-2010 18:12:27  
Amplitude andPhase vs Time for EP064N.UVDATA.1 Vect aver.  
IF 5 CHAN 1 - 32 STK LL

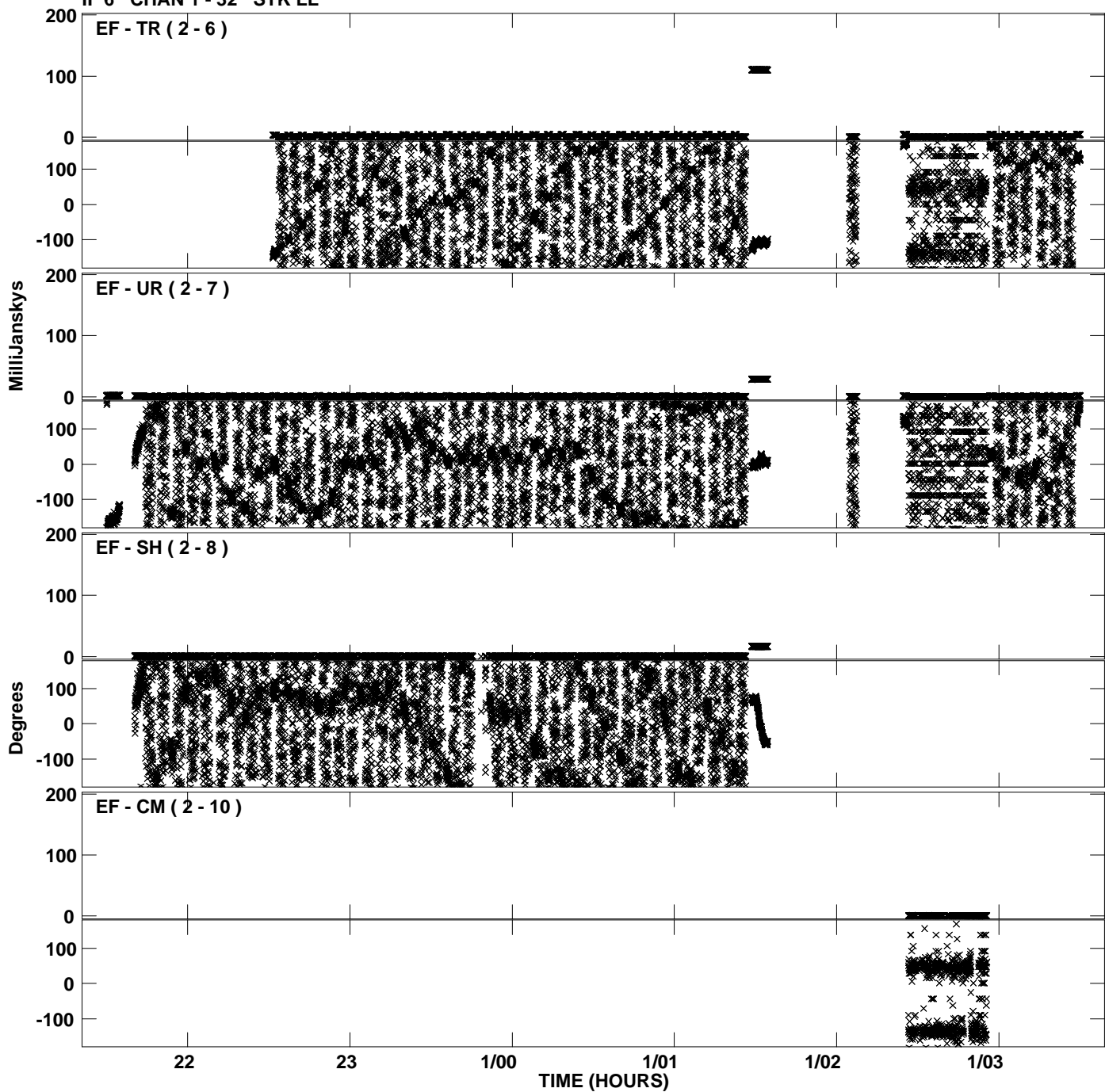


PLot file version 16 created 13-OCT-2010 18:12:33  
Amplitude andPhase vs Time for EP064N.UVDATA.1 Vect aver.  
IF 6 CHAN 1 - 32 STK LL

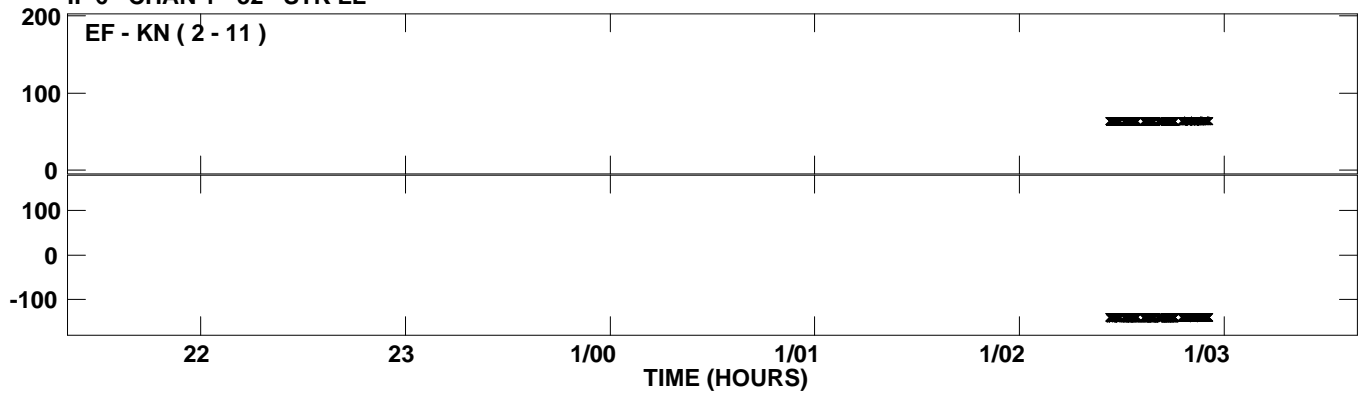




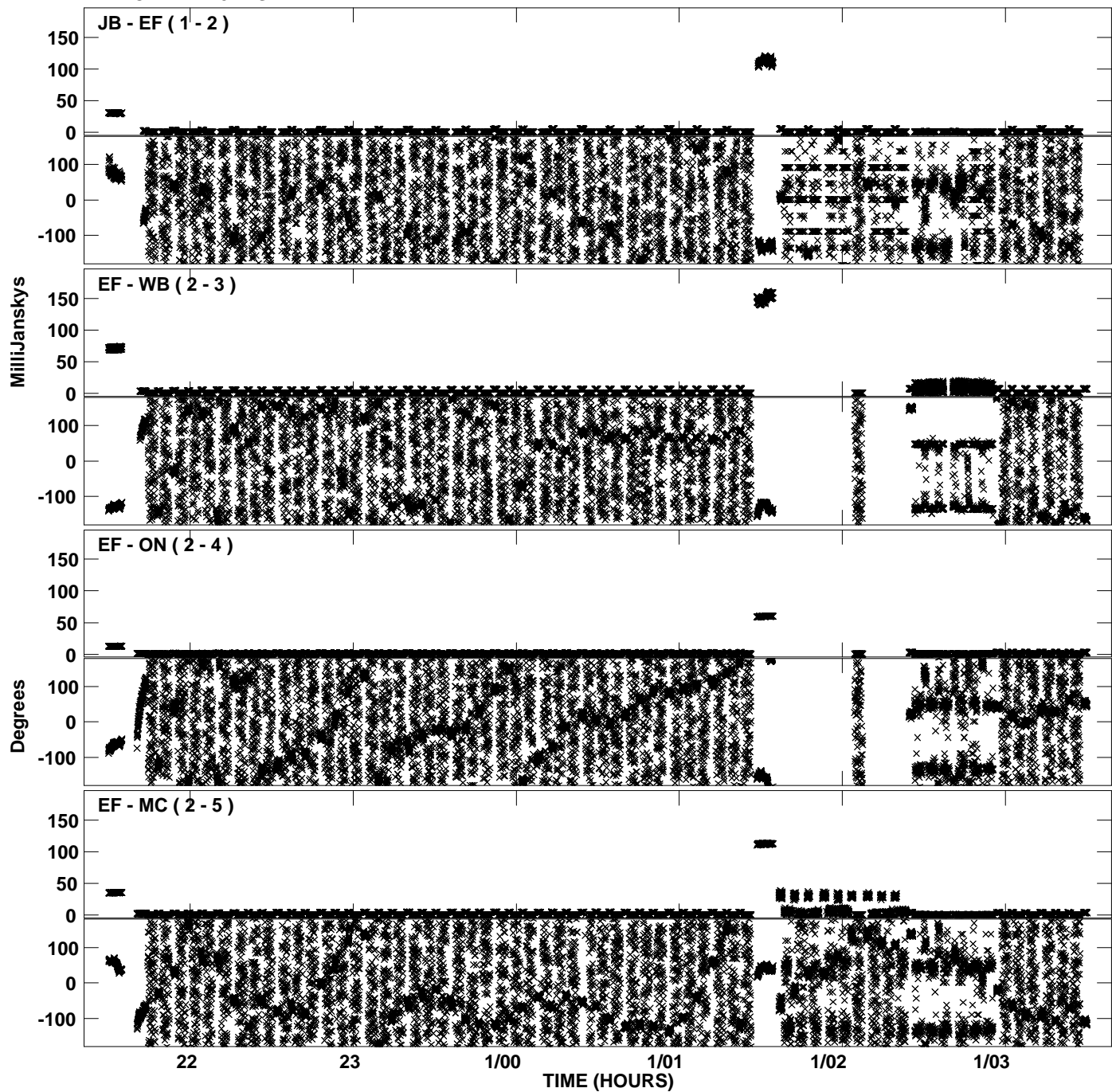
PLot file version 17 created 13-OCT-2010 18:12:34  
Amplitude andPhase vs Time for EP064N.UVDATA.1 Vect aver.  
IF 6 CHAN 1 - 32 STK LL



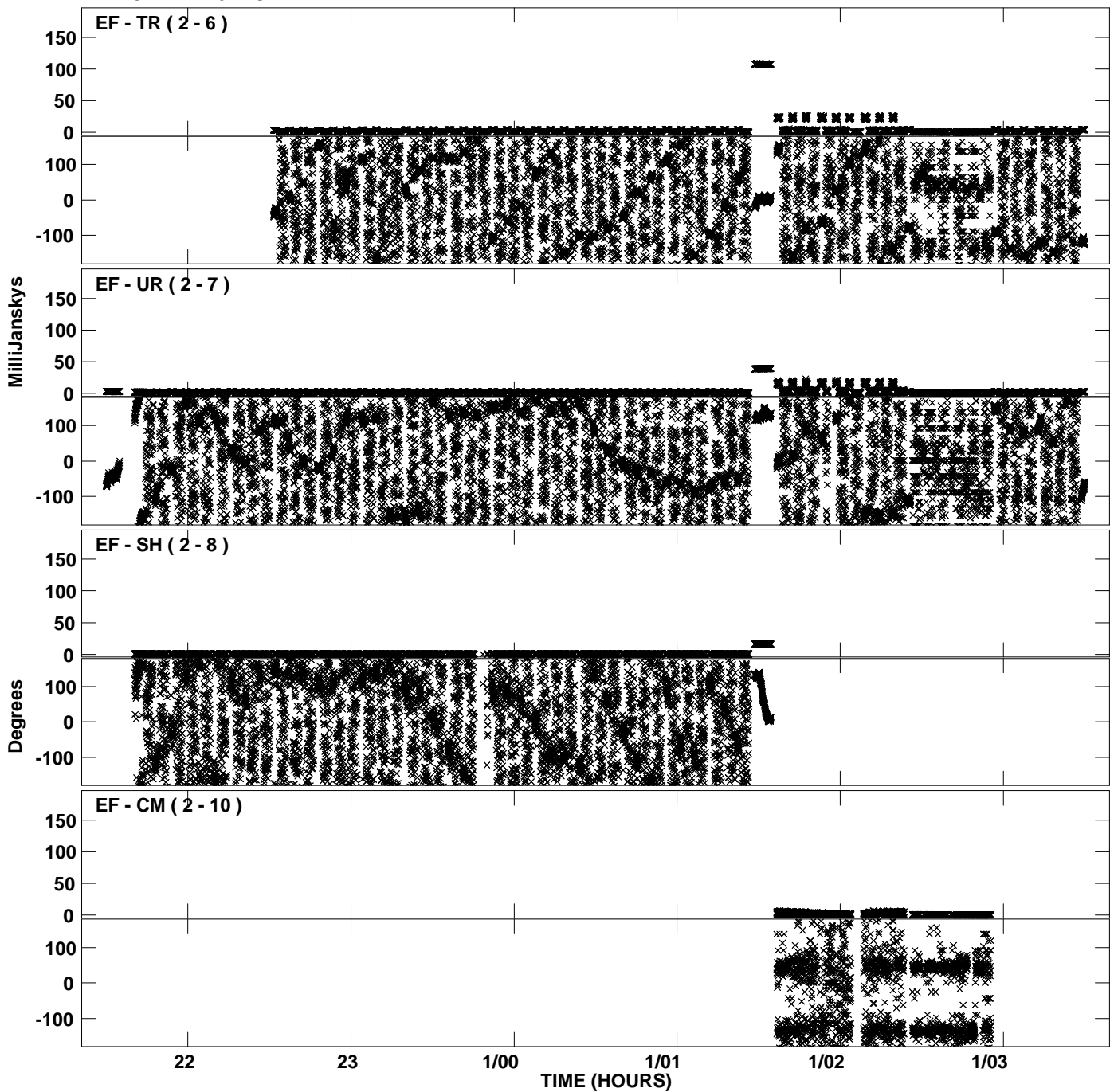
PLot file version 18 created 13-OCT-2010 18:12:34  
Amplitude andPhase vs Time for EP064N.UVDATA.1 Vect aver.  
IF 6 CHAN 1 - 32 STK LL



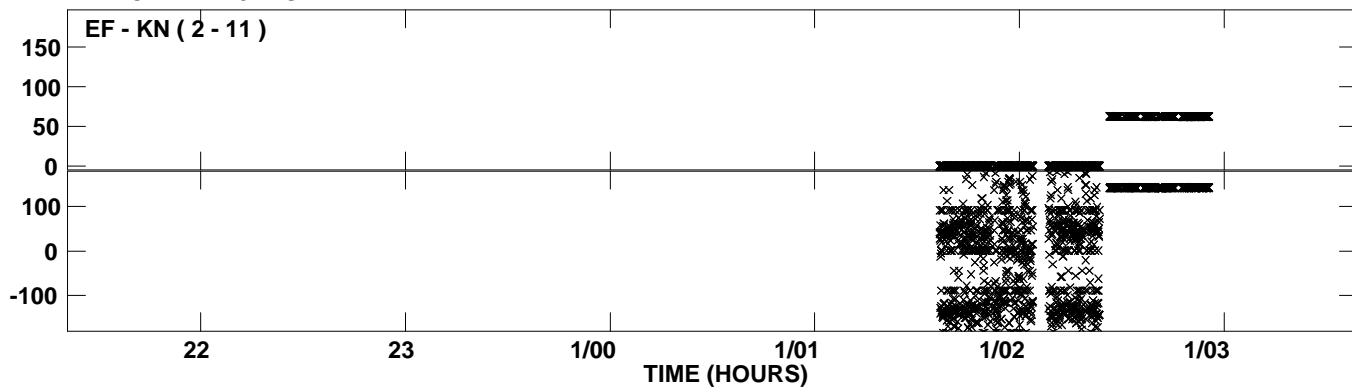
PLot file version 19 created 13-OCT-2010 18:12:40  
Amplitude andPhase vs Time for EP064N.UVDATA.1 Vect aver.  
IF 7 CHAN 1 - 32 STK LL



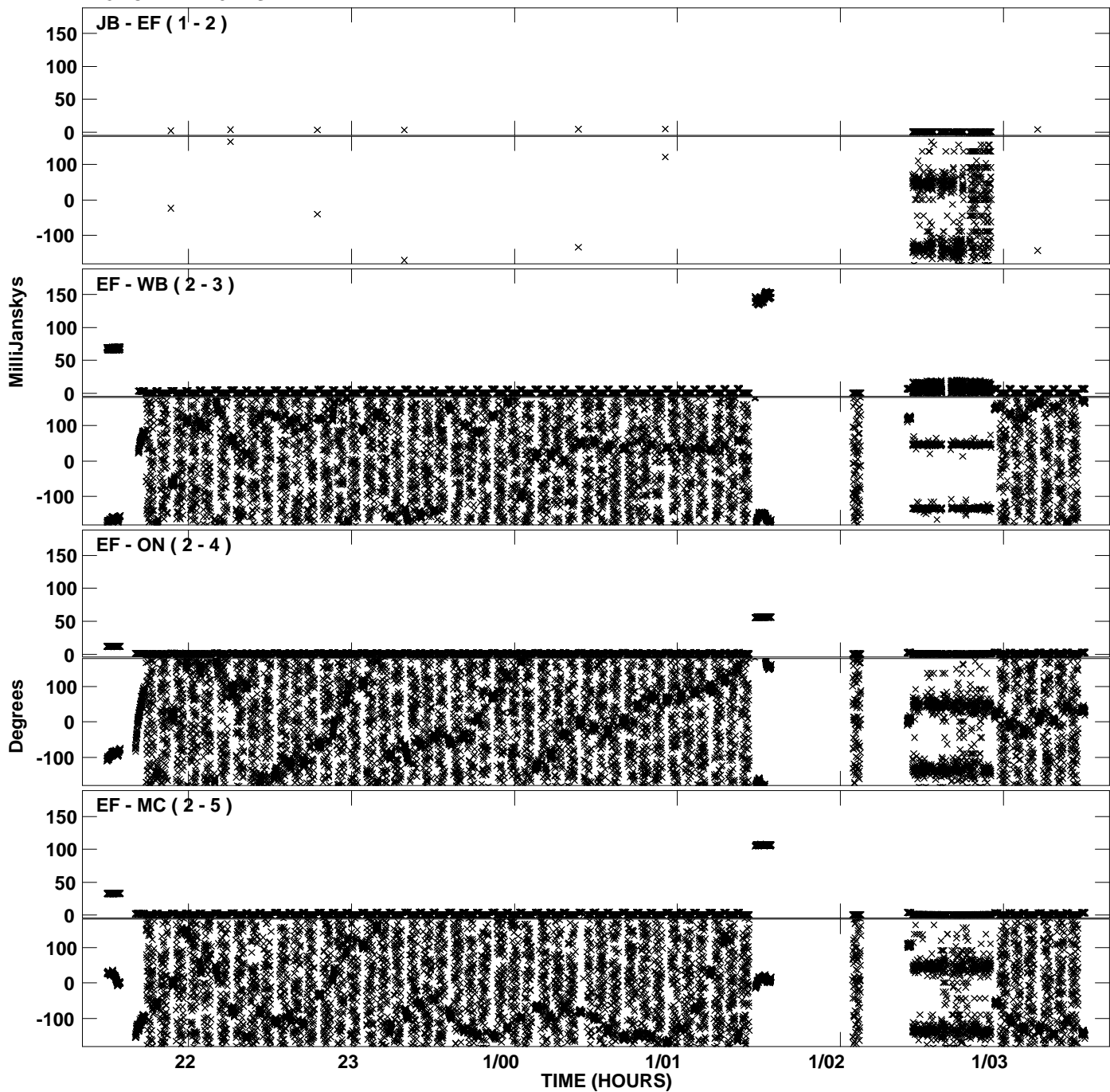
PLot file version 20 created 13-OCT-2010 18:12:41  
Amplitude andPhase vs Time for EP064N.UVDATA.1 Vect aver.  
IF 7 CHAN 1 - 32 STK LL



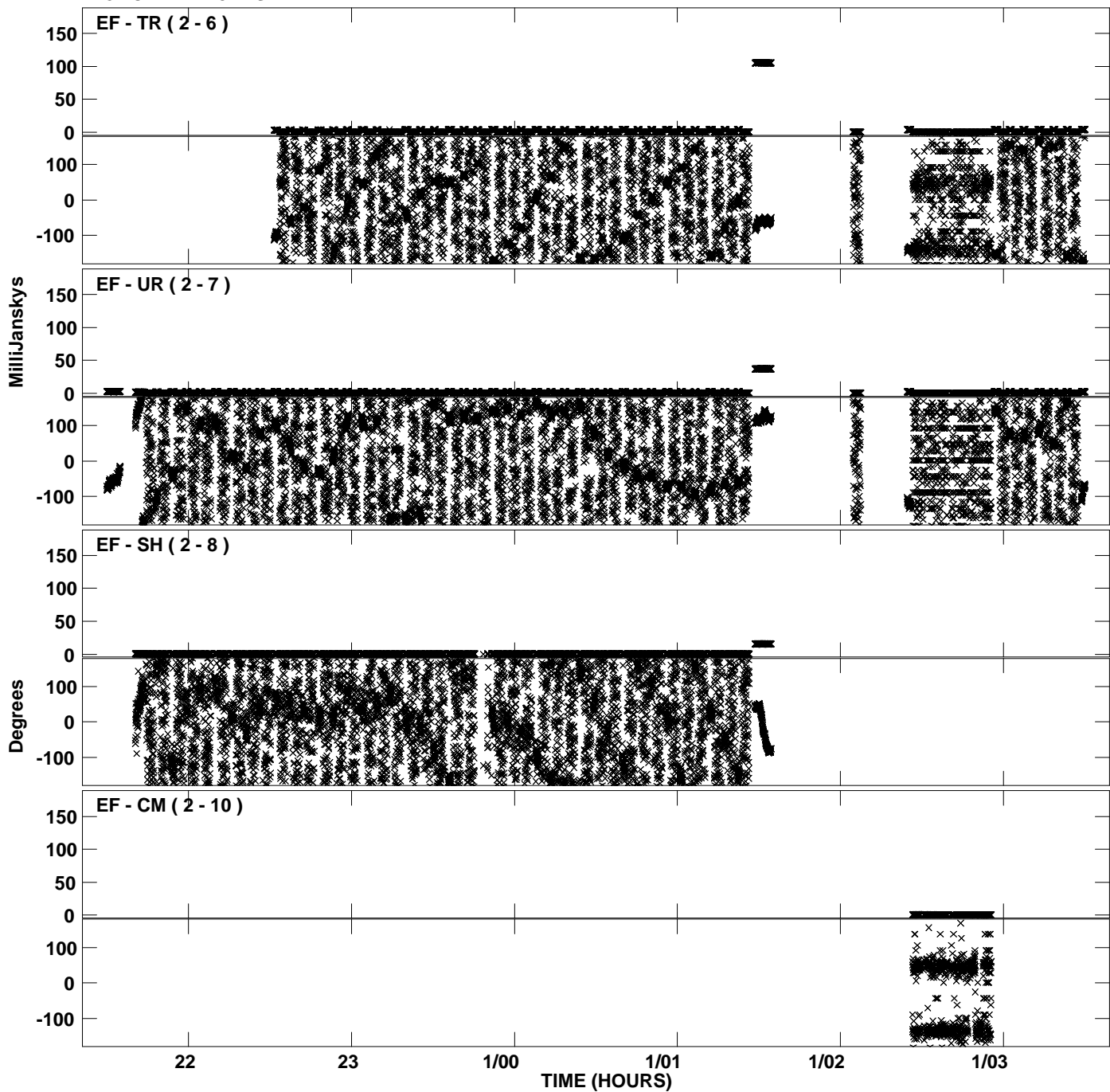
PLot file version 21 created 13-OCT-2010 18:12:41  
Amplitude andPhase vs Time for EP064N.UVDATA.1 Vect aver.  
IF 7 CHAN 1 - 32 STK LL



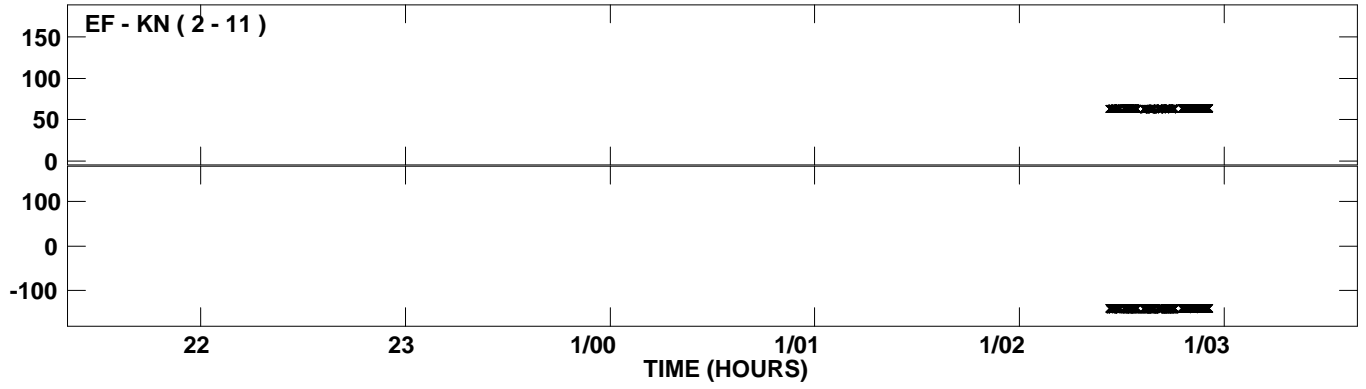
PLot file version 22 created 13-OCT-2010 18:12:47  
Amplitude andPhase vs Time for EP064N.UVDATA.1 Vect aver.  
IF 8 CHAN 1 - 32 STK LL



PLot file version 23 created 13-OCT-2010 18:12:47  
Amplitude andPhase vs Time for EP064N.UVDATA.1 Vect aver.  
IF 8 CHAN 1 - 32 STK LL

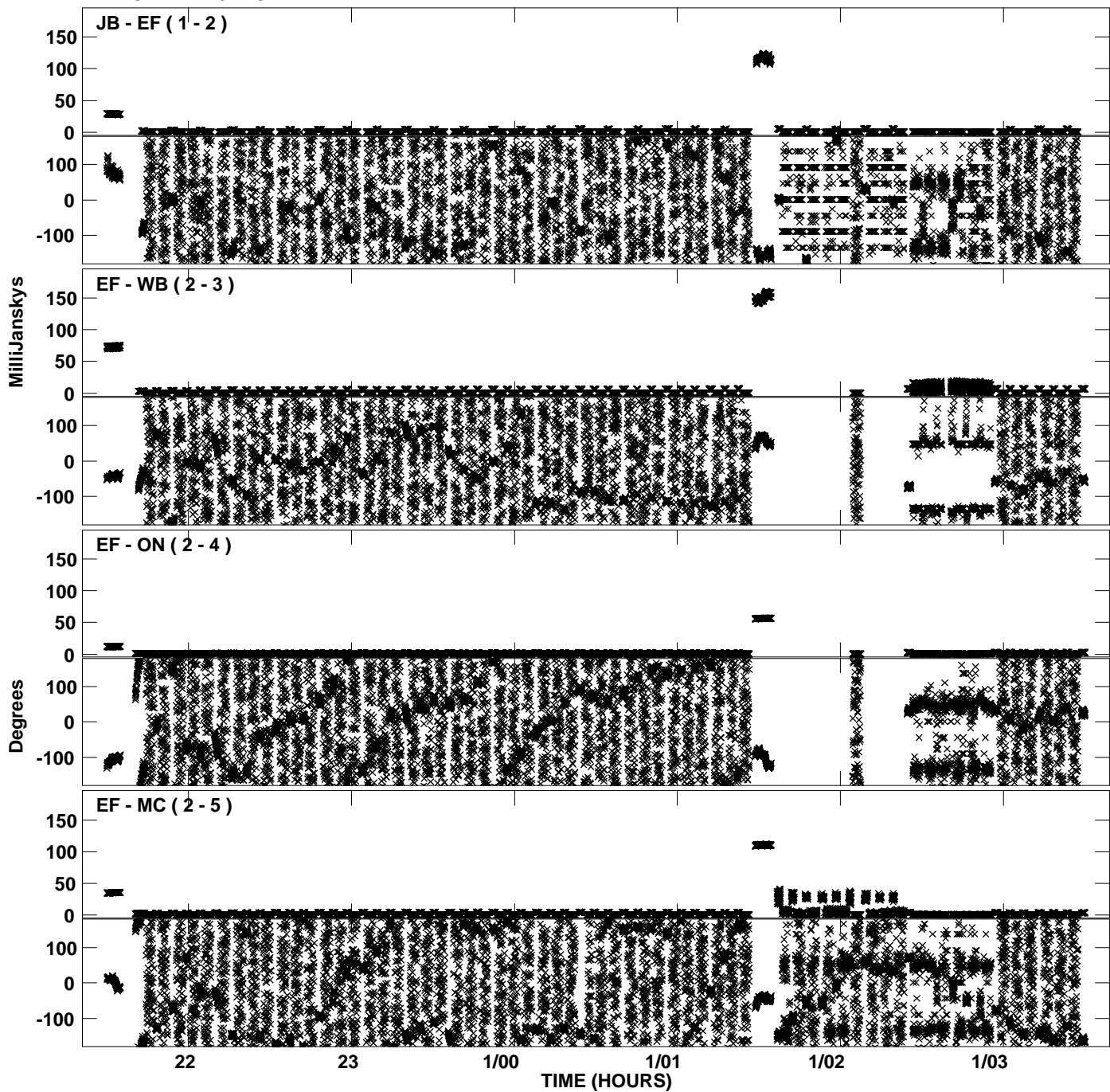


PLot file version 24 created 13-OCT-2010 18:12:48  
Amplitude andPhase vs Time for EP064N.UVDATA.1 Vect aver.  
IF 8 CHAN 1 - 32 STK LL

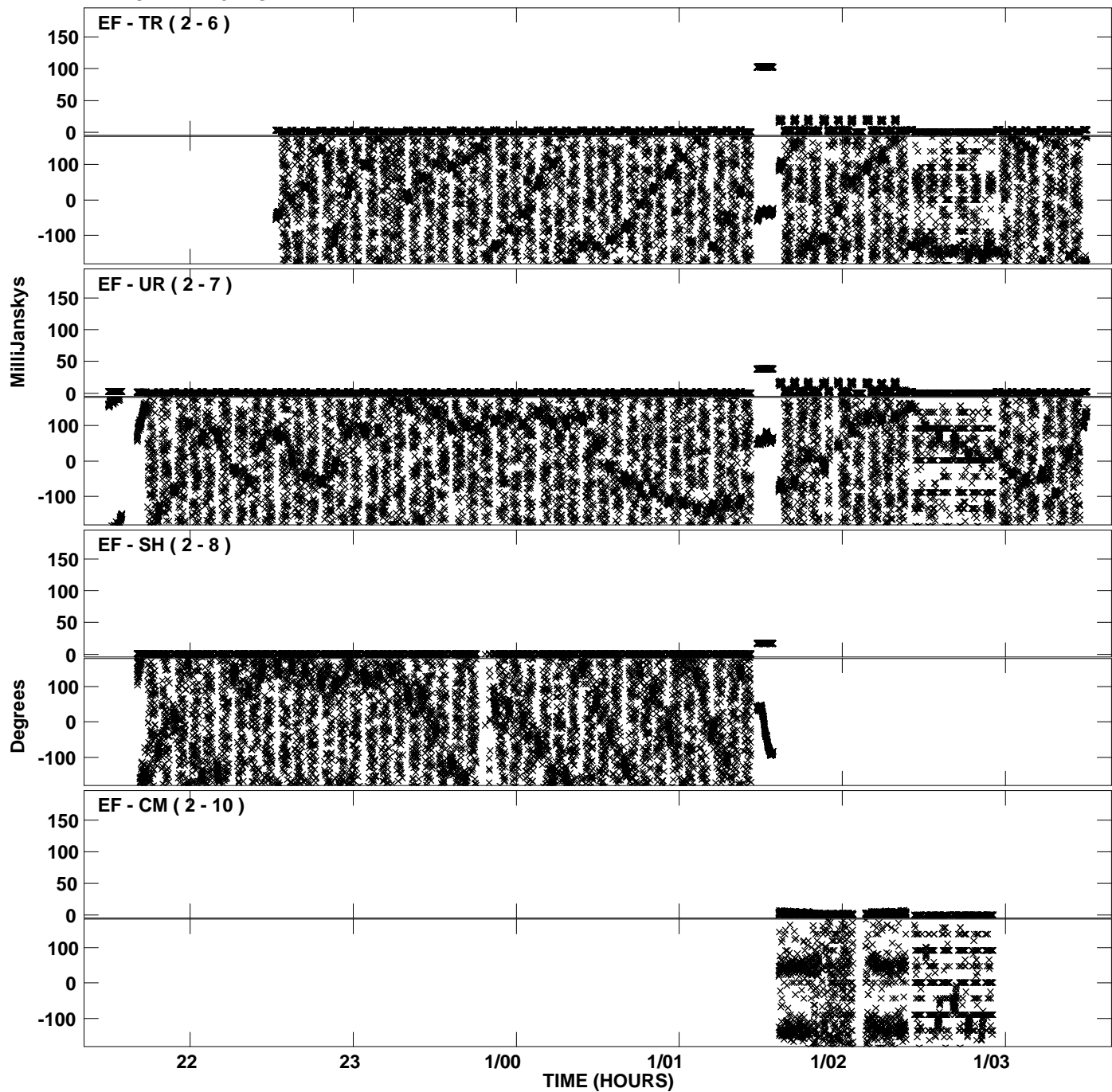




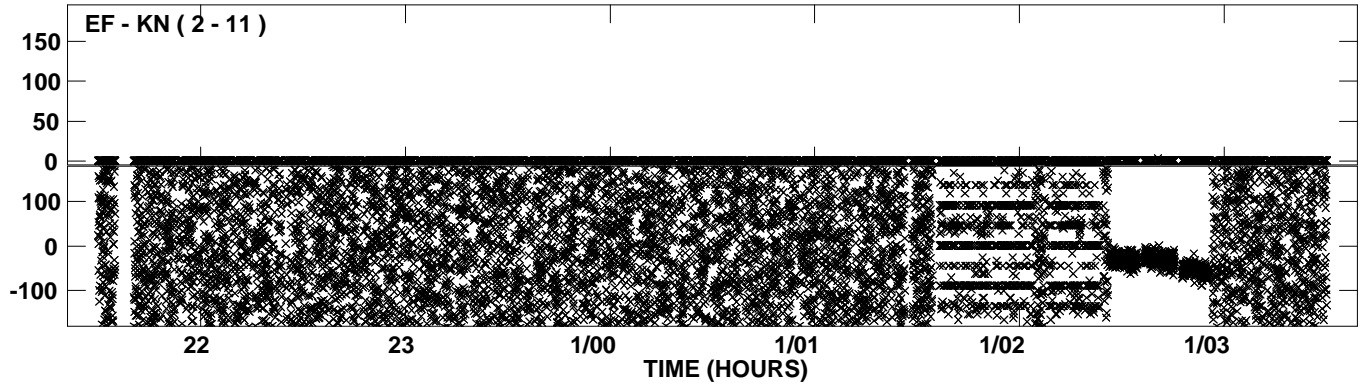
PLot file version 25 created 13-OCT-2010 18:12:55  
Amplitude andPhase vs Time for EP064N.UVDATA.1 Vect aver.  
IF 1 CHAN 1 - 32 STK RR



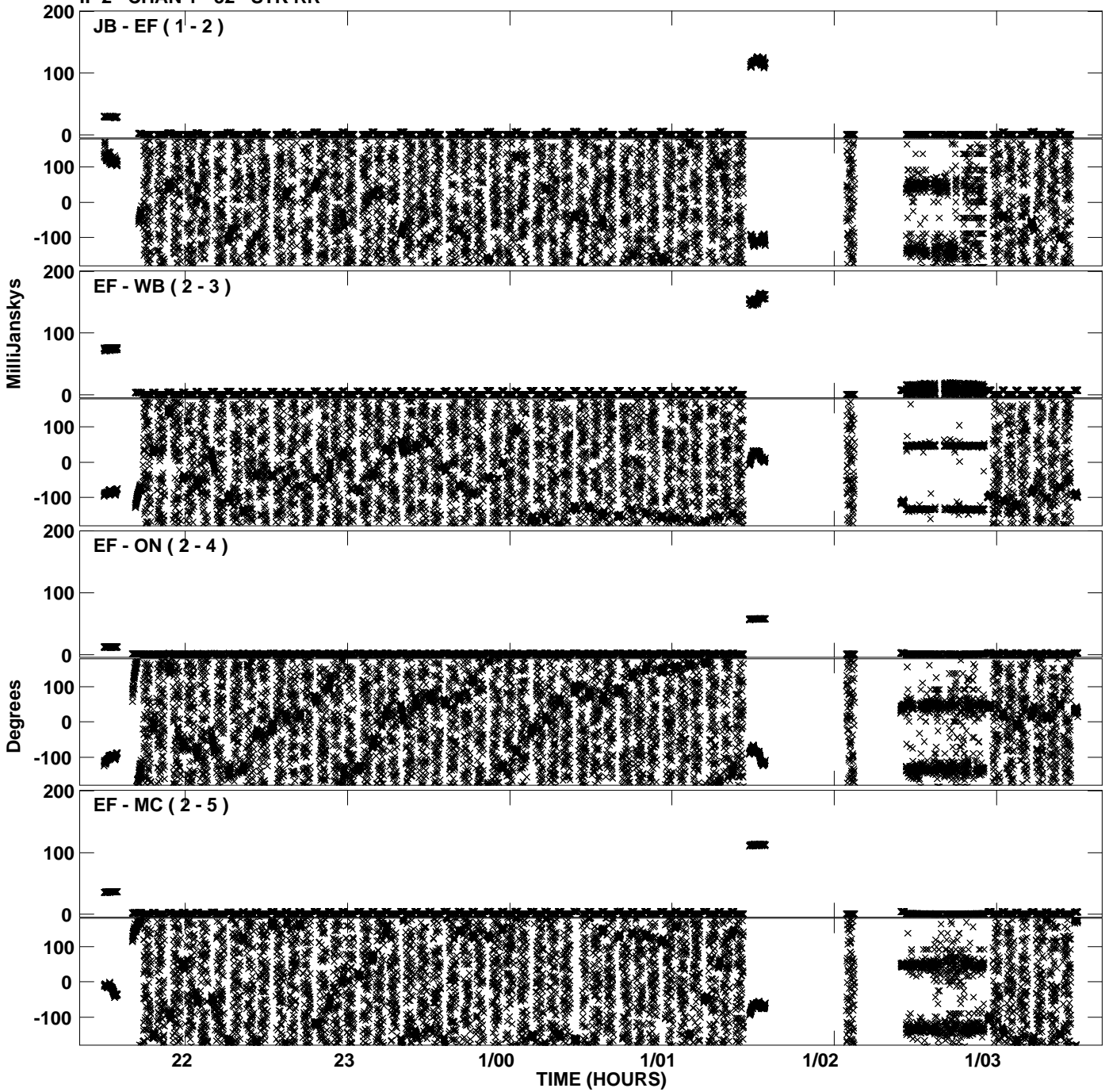
PLot file version 26 created 13-OCT-2010 18:12:55  
Amplitude andPhase vs Time for EP064N.UVDATA.1 Vect aver.  
IF 1 CHAN 1 - 32 STK RR



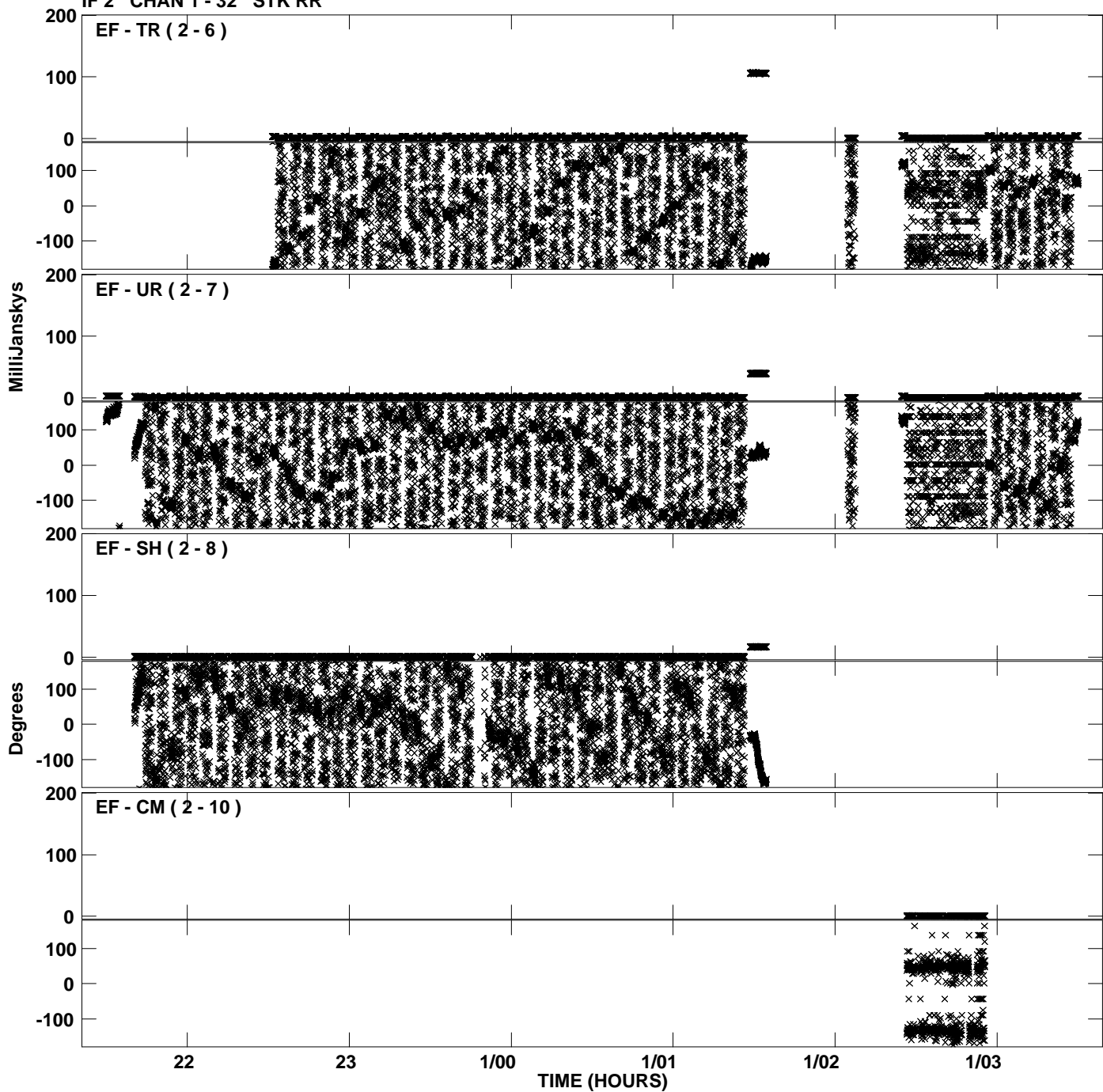
Plot file version 27 created 13-OCT-2010 18:12:55  
Amplitude and Phase vs Time for EP064N.UVDATA.1 Vect aver.  
IF 1 CHAN 1 - 32 STK RR



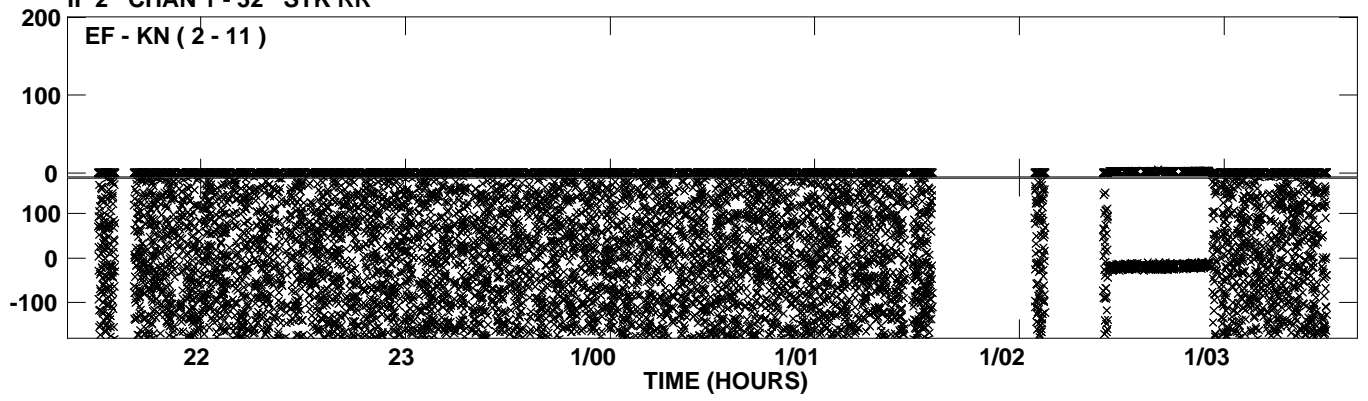
PLot file version 28 created 13-OCT-2010 18:13:01  
Amplitude andPhase vs Time for EP064N.UVDATA.1 Vect aver.  
IF 2 CHAN 1 - 32 STK RR



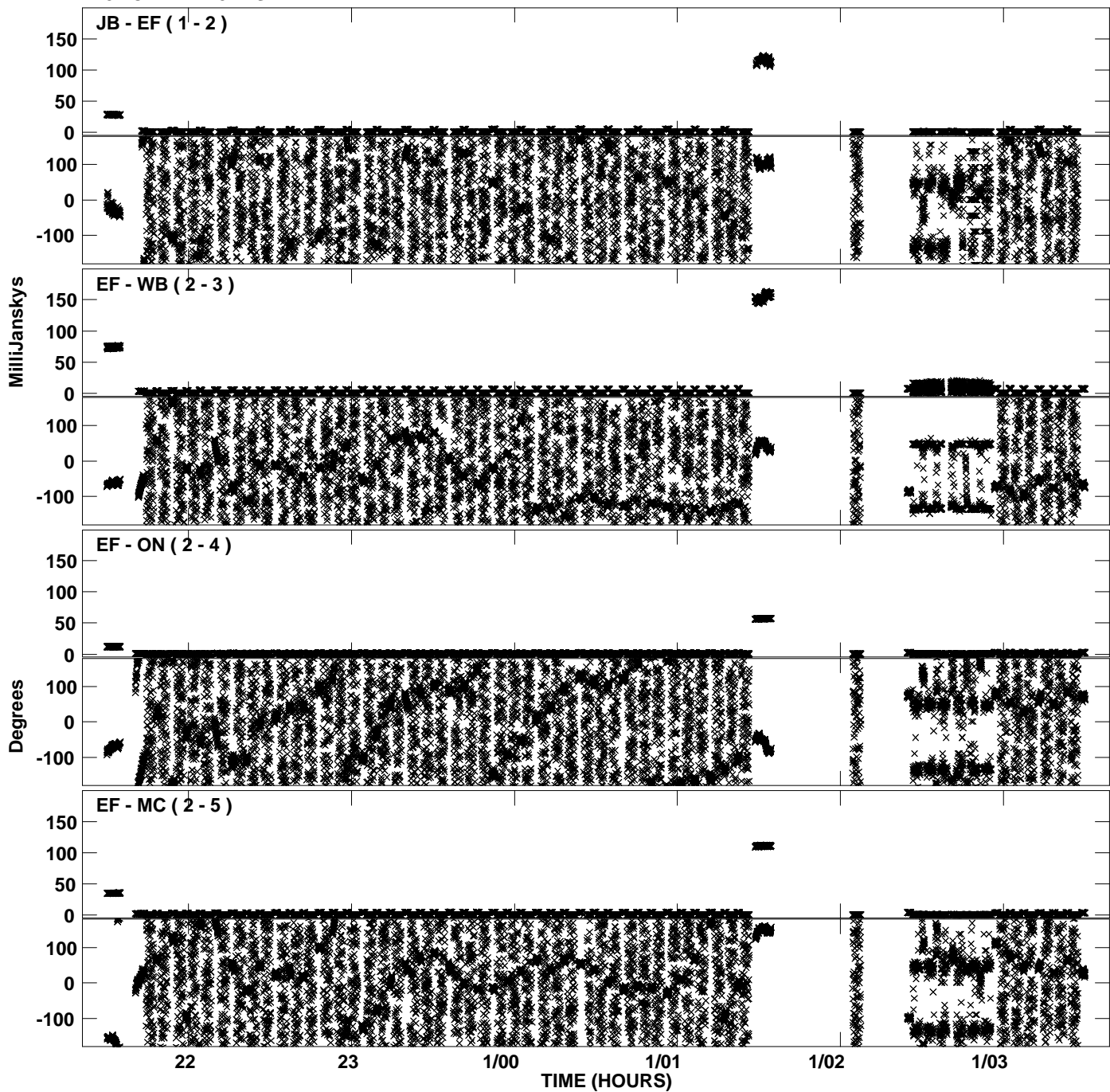
PLot file version 29 created 13-OCT-2010 18:13:01  
Amplitude andPhase vs Time for EP064N.UVDATA.1 Vect aver.  
IF 2 CHAN 1 - 32 STK RR



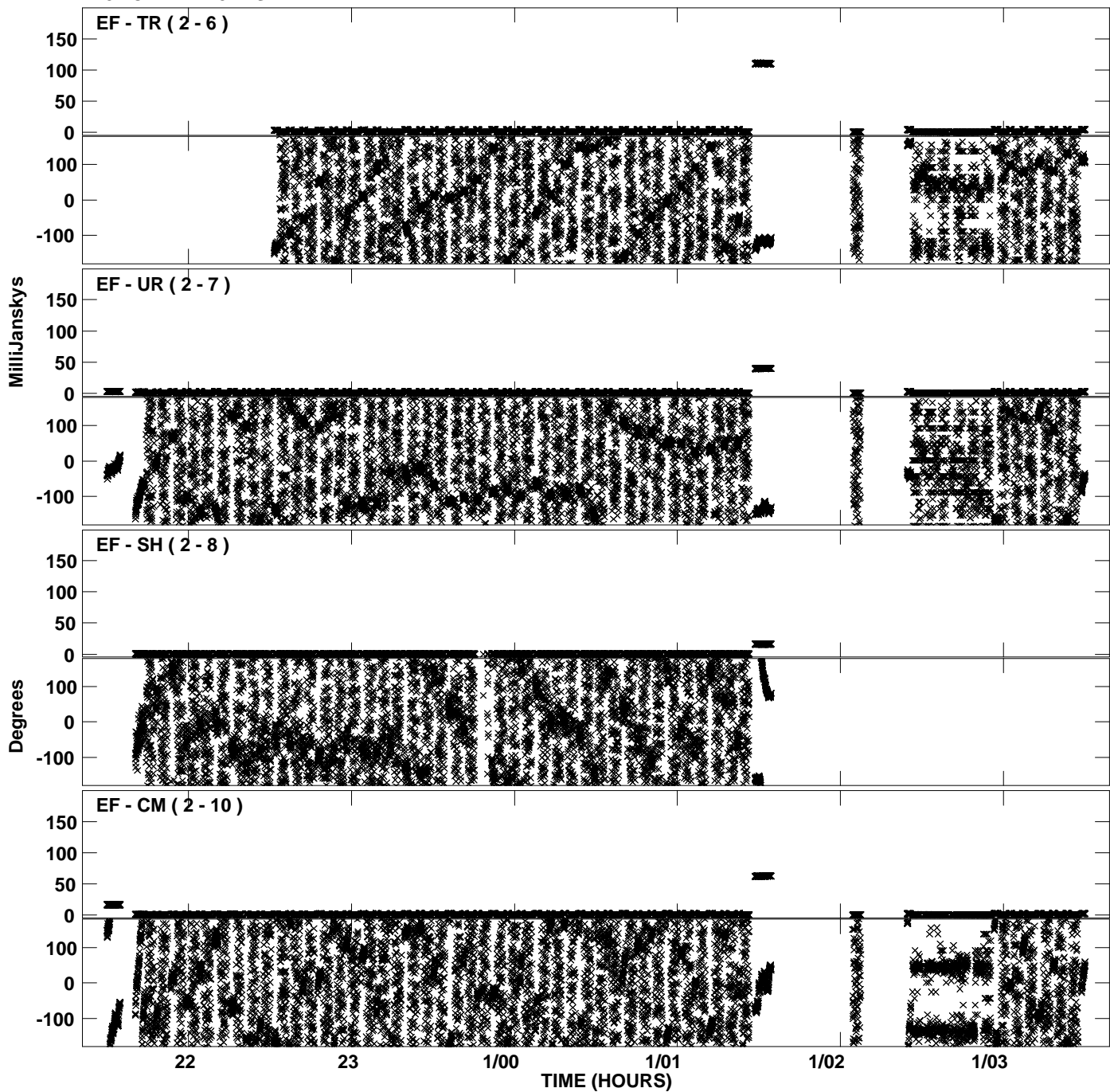
PLot file version 30 created 13-OCT-2010 18:13:02  
Amplitude andPhase vs Time for EP064N.UVDATA.1 Vect aver.  
IF 2 CHAN 1 - 32 STK RR



PLot file version 31 created 13-OCT-2010 18:13:08  
Amplitude andPhase vs Time for EP064N.UVDATA.1 Vect aver.  
IF 3 CHAN 1 - 32 STK RR

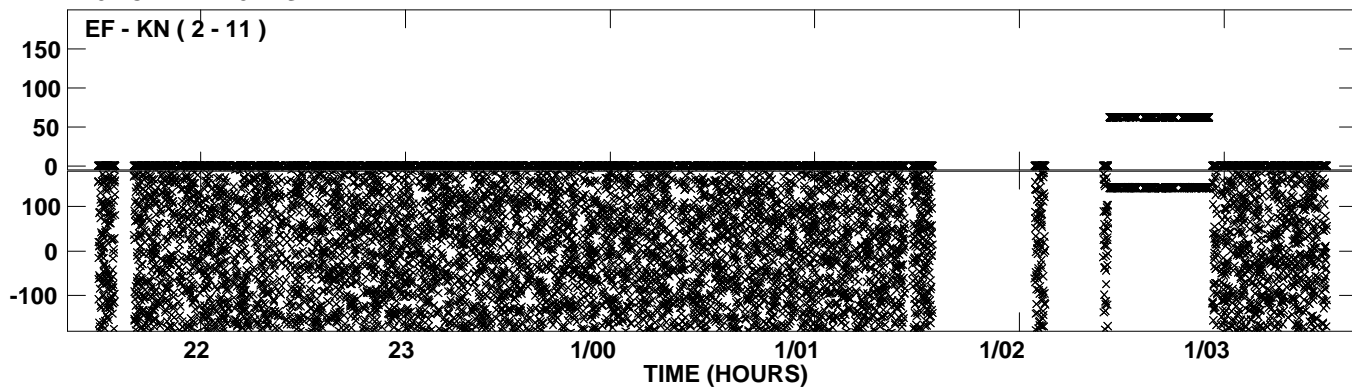


PLot file version 32 created 13-OCT-2010 18:13:08  
Amplitude andPhase vs Time for EP064N.UVDATA.1 Vect aver.  
IF 3 CHAN 1 - 32 STK RR

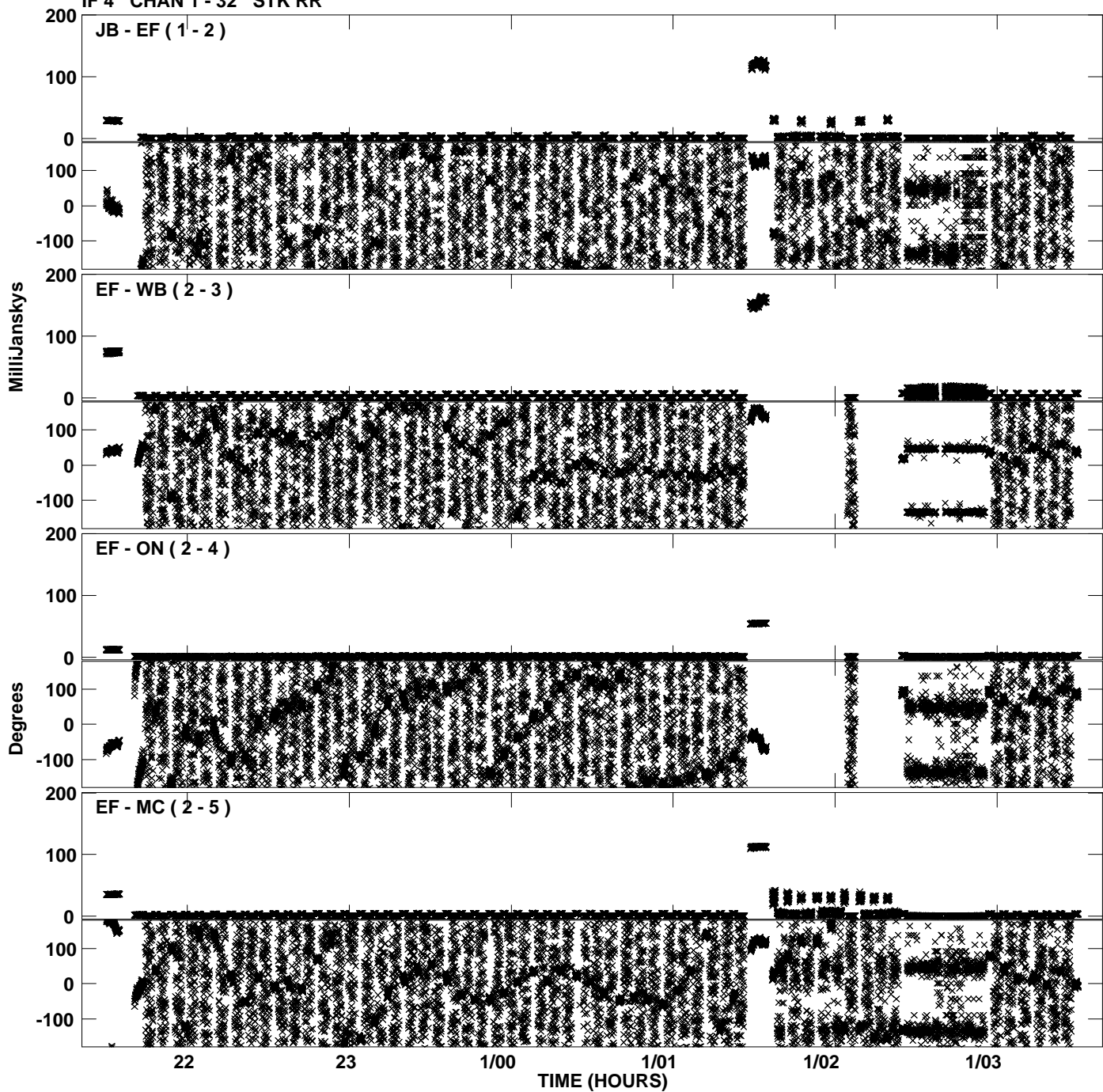




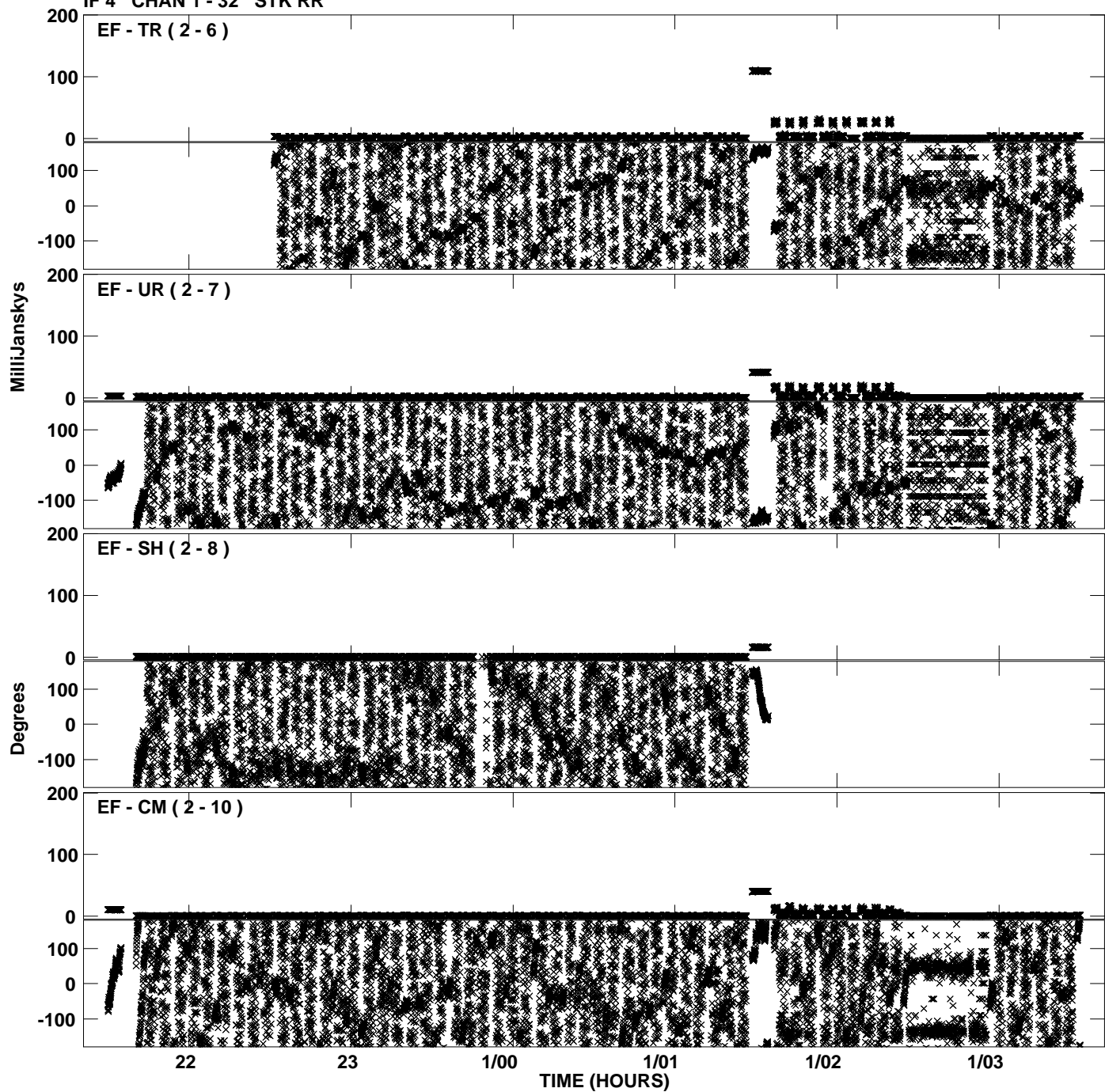
Plot file version 33 created 13-OCT-2010 18:13:08  
Amplitude andPhase vs Time for EP064N.UVDATA.1 Vect aver.  
IF 3 CHAN 1 - 32 STK RR



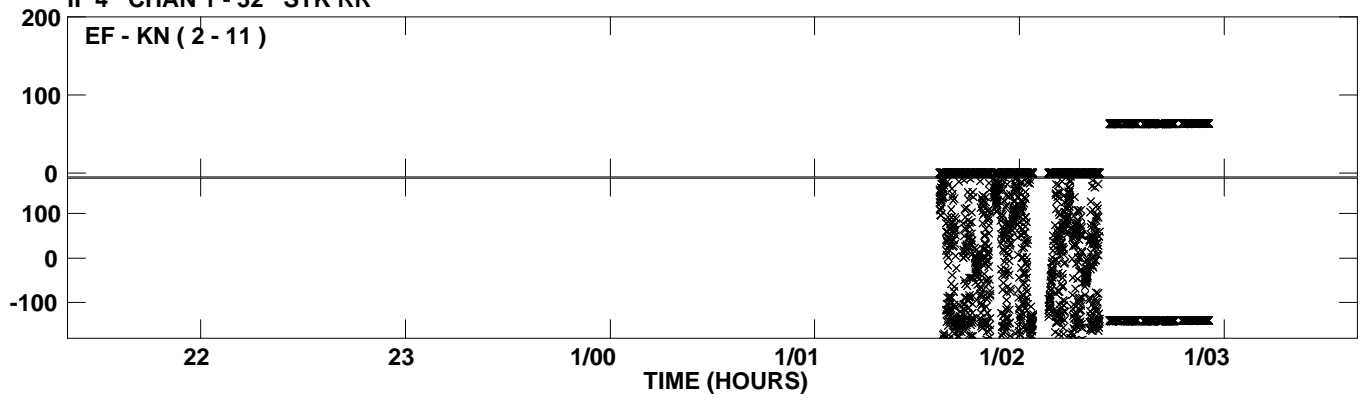
PLot file version 34 created 13-OCT-2010 18:13:15  
Amplitude andPhase vs Time for EP064N.UVDATA.1 Vect aver.  
IF 4 CHAN 1 - 32 STK RR



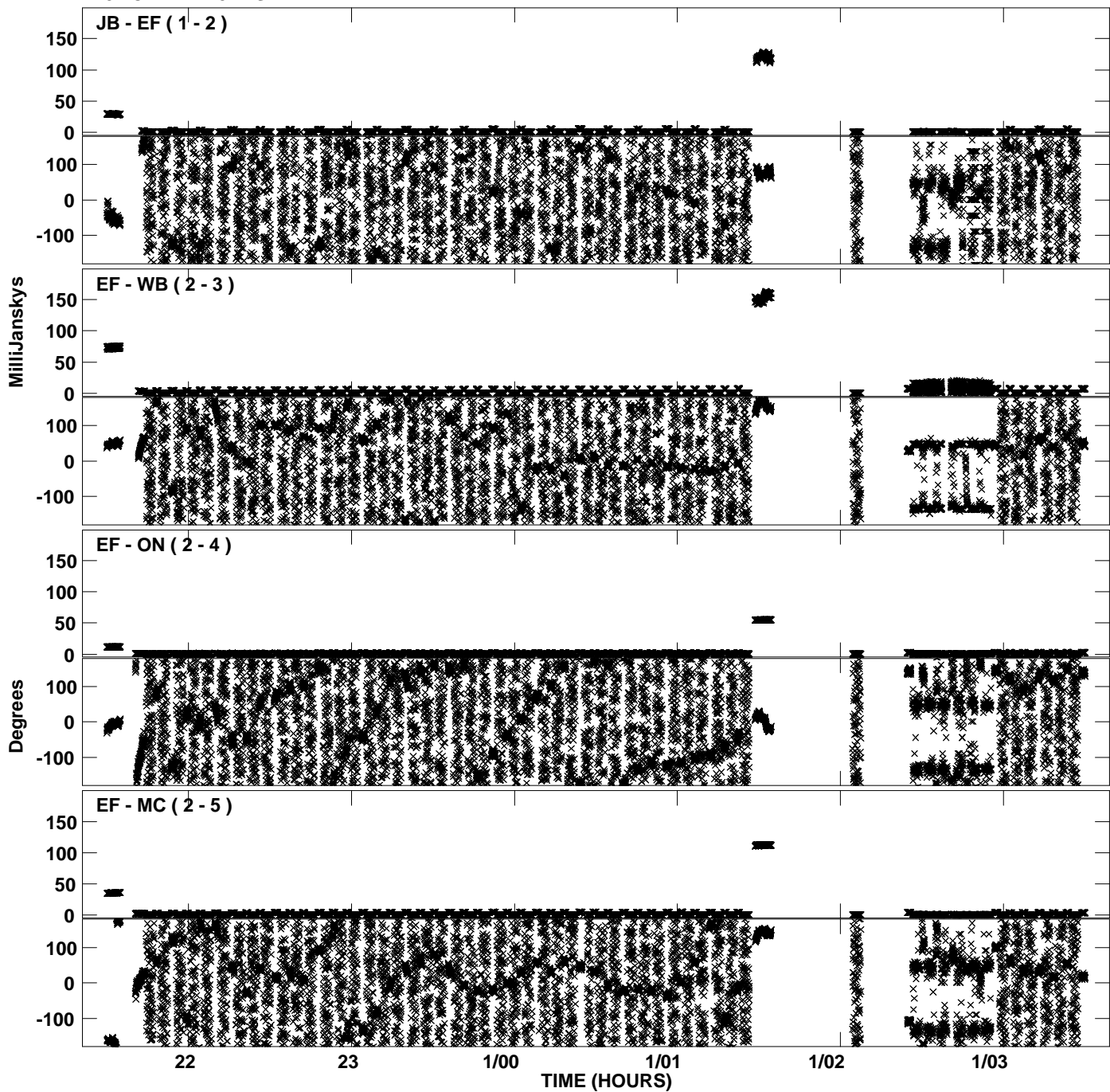
PLot file version 35 created 13-OCT-2010 18:13:15  
Amplitude andPhase vs Time for EP064N.UVDATA.1 Vect aver.  
IF 4 CHAN 1 - 32 STK RR



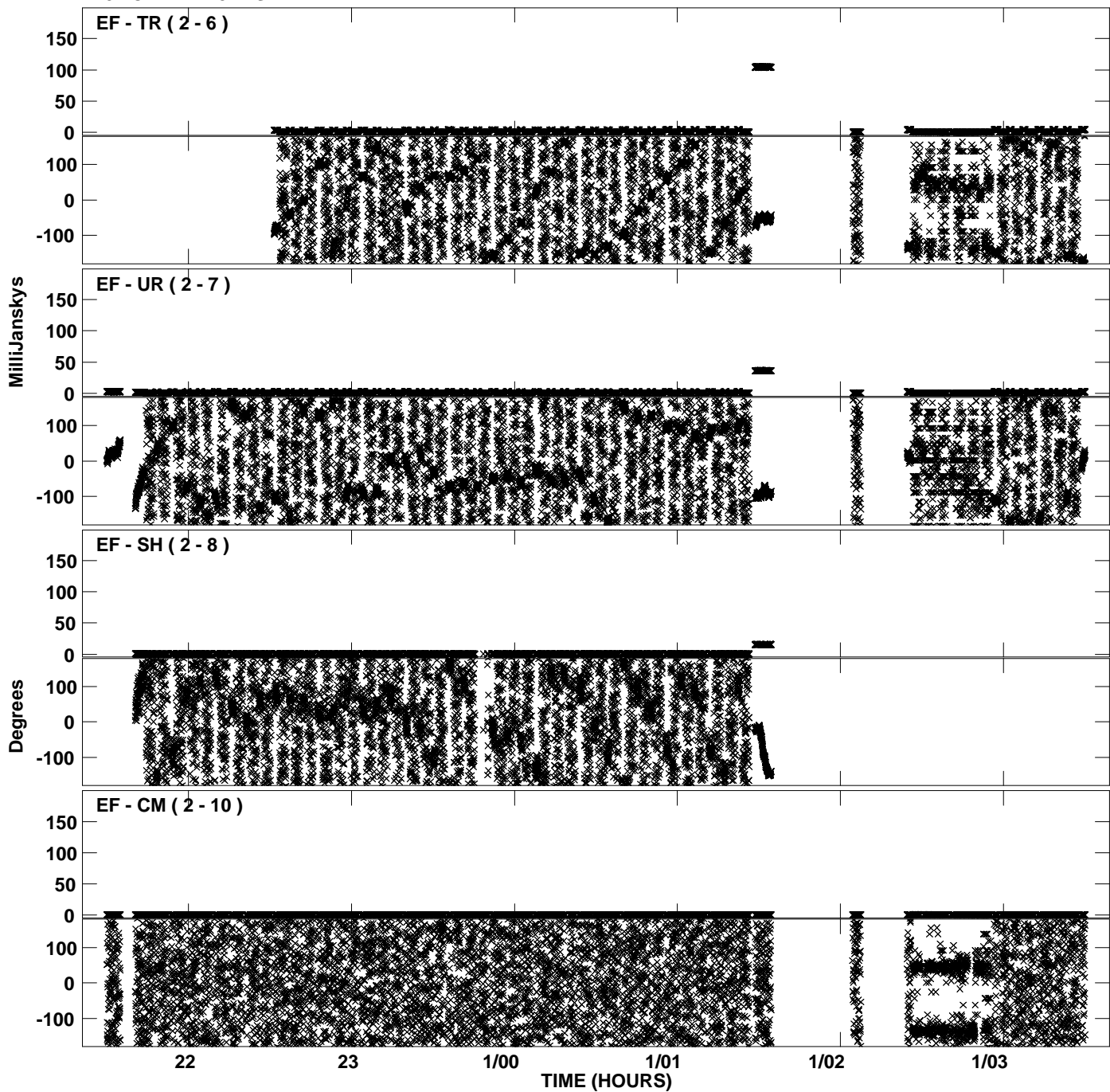
PLot file version 36 created 13-OCT-2010 18:13:15  
Amplitude andPhase vs Time for EP064N.UVDATA.1 Vect aver.  
IF 4 CHAN 1 - 32 STK RR



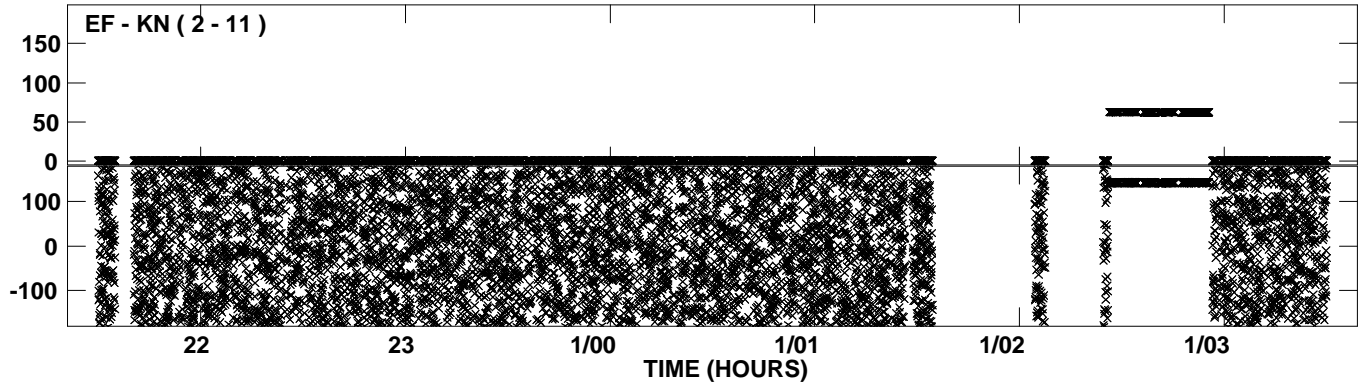
PLot file version 37 created 13-OCT-2010 18:13:21  
Amplitude andPhase vs Time for EP064N.UVDATA.1 Vect aver.  
IF 5 CHAN 1 - 32 STK RR



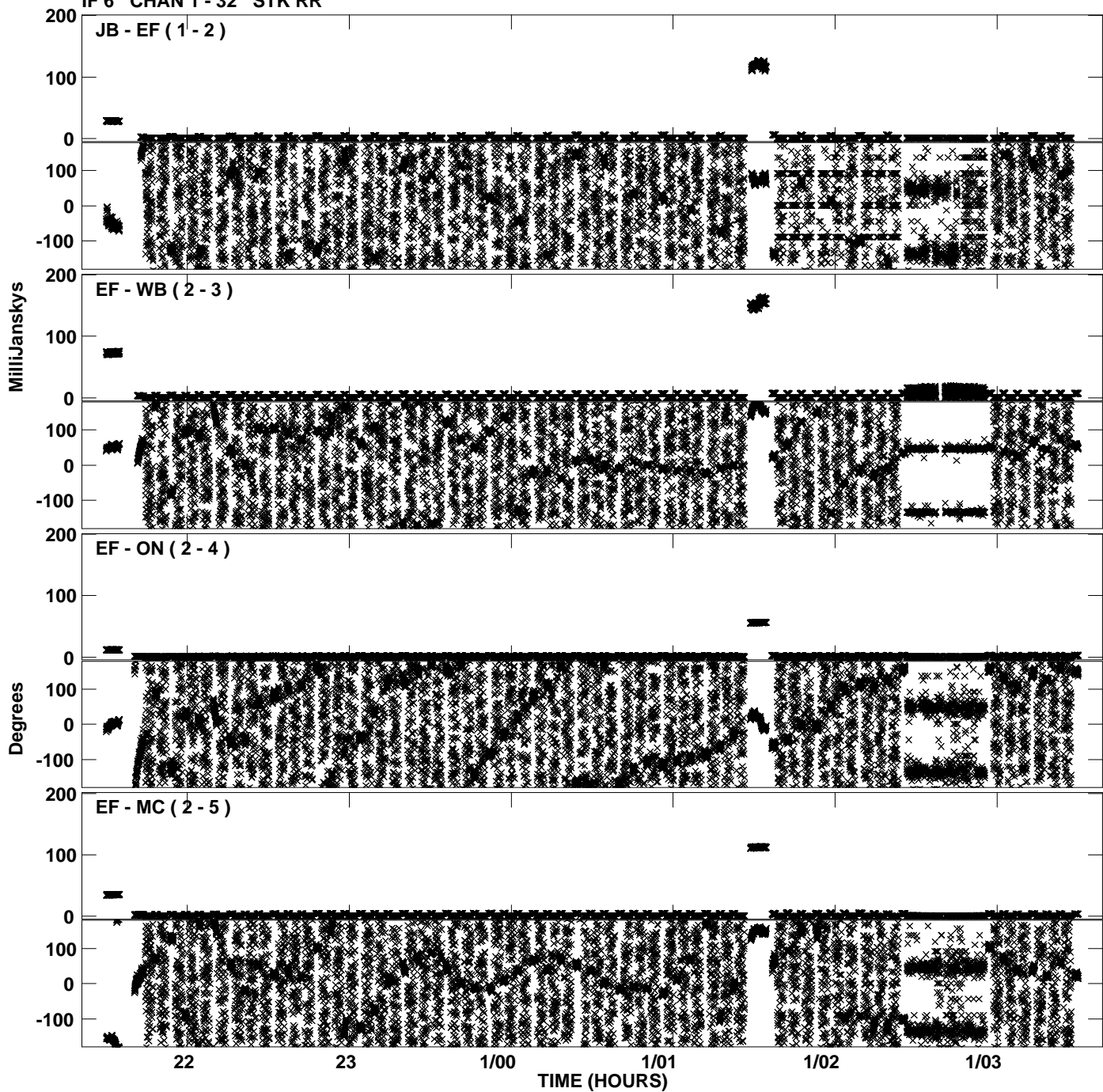
PLot file version 38 created 13-OCT-2010 18:13:21  
Amplitude andPhase vs Time for EP064N.UVDATA.1 Vect aver.  
IF 5 CHAN 1 - 32 STK RR



PLot file version 39 created 13-OCT-2010 18:13:21  
Amplitude andPhase vs Time for EP064N.UVDATA.1 Vect aver.  
IF 5 CHAN 1 - 32 STK RR

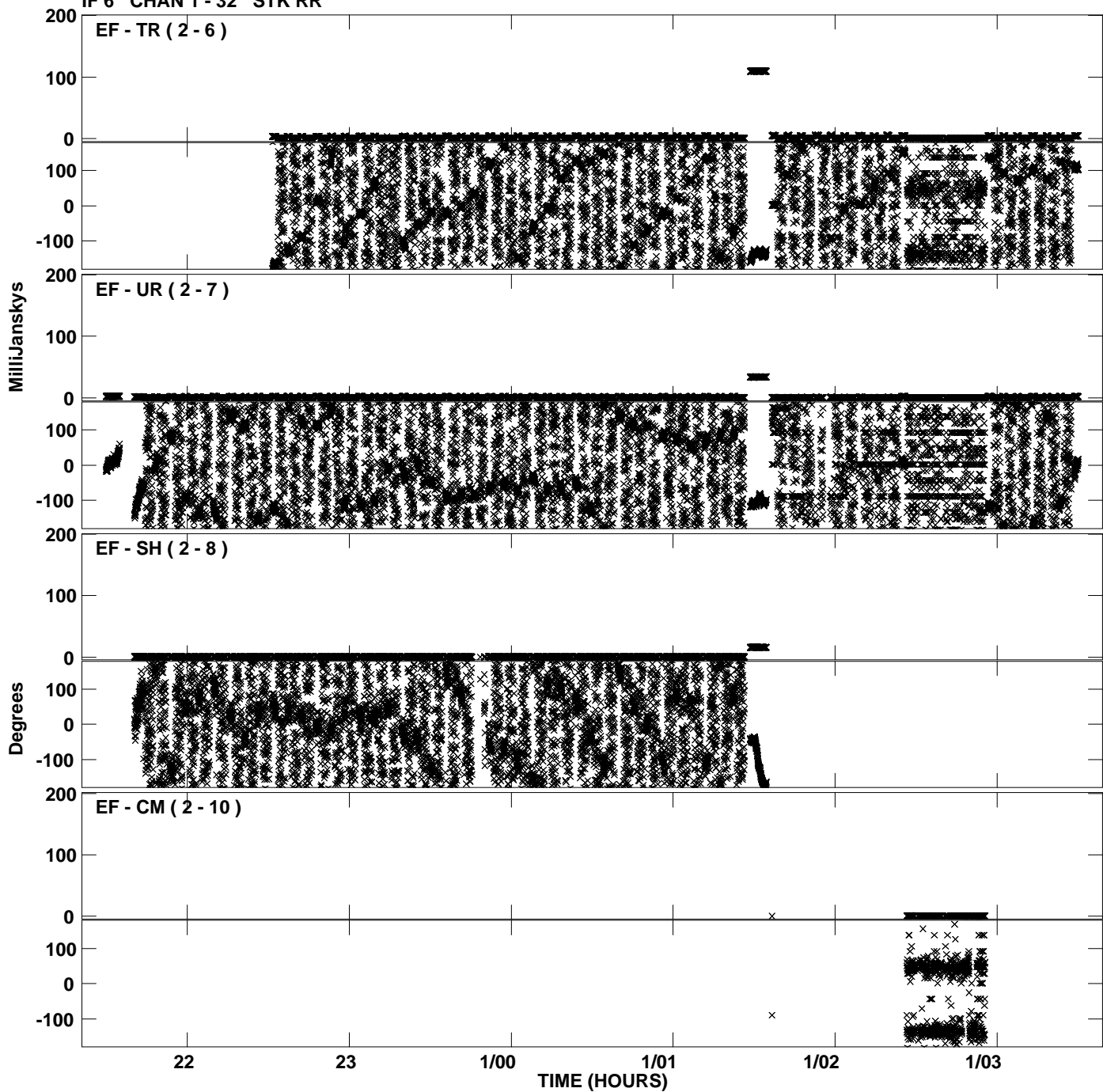


PLot file version 40 created 13-OCT-2010 18:13:27  
Amplitude andPhase vs Time for EP064N.UVDATA.1 Vect aver.  
IF 6 CHAN 1 - 32 STK RR

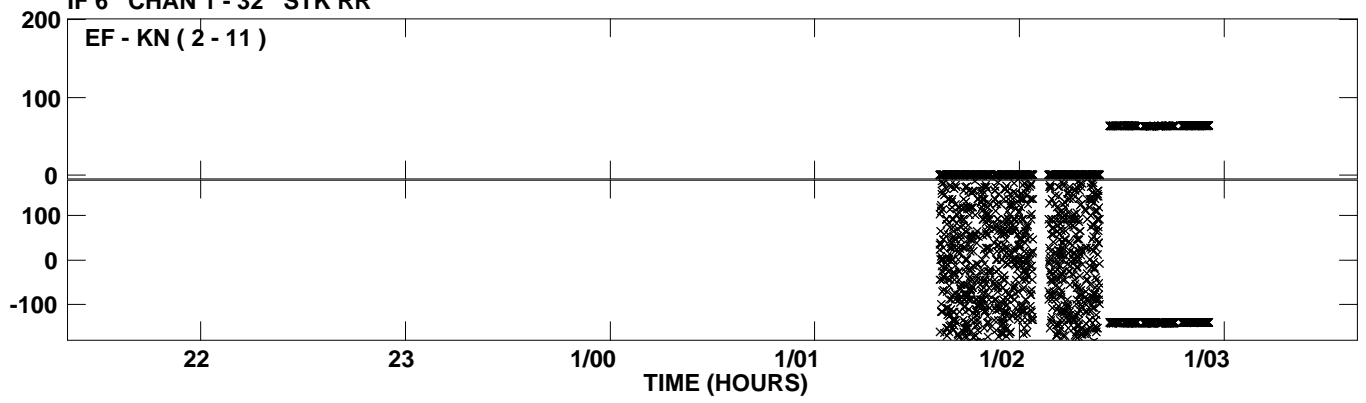




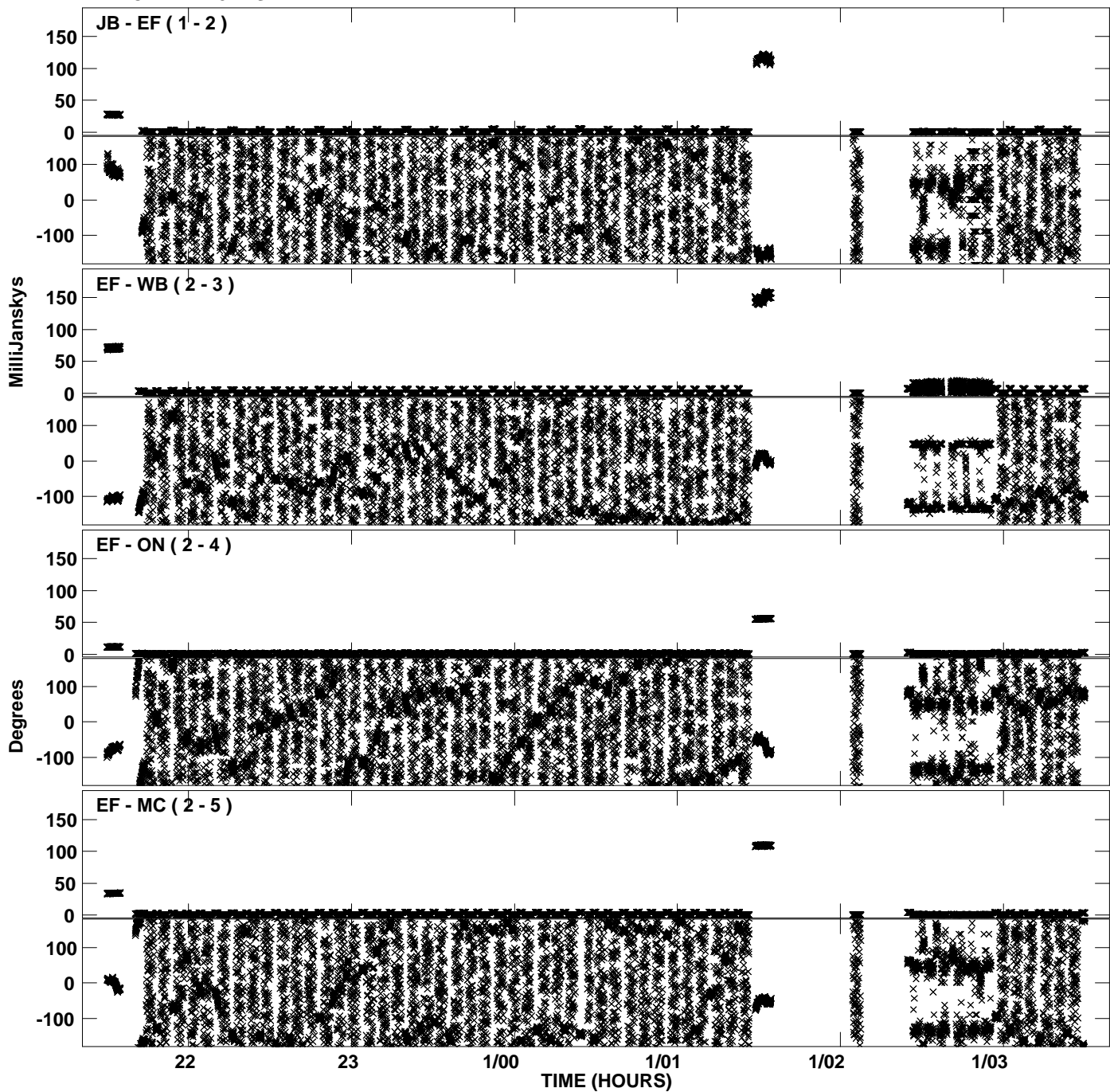
Plot file version 41 created 13-OCT-2010 18:13:28  
Amplitude andPhase vs Time for EP064N.UVDATA.1 Vect aver.  
IF 6 CHAN 1 - 32 STK RR



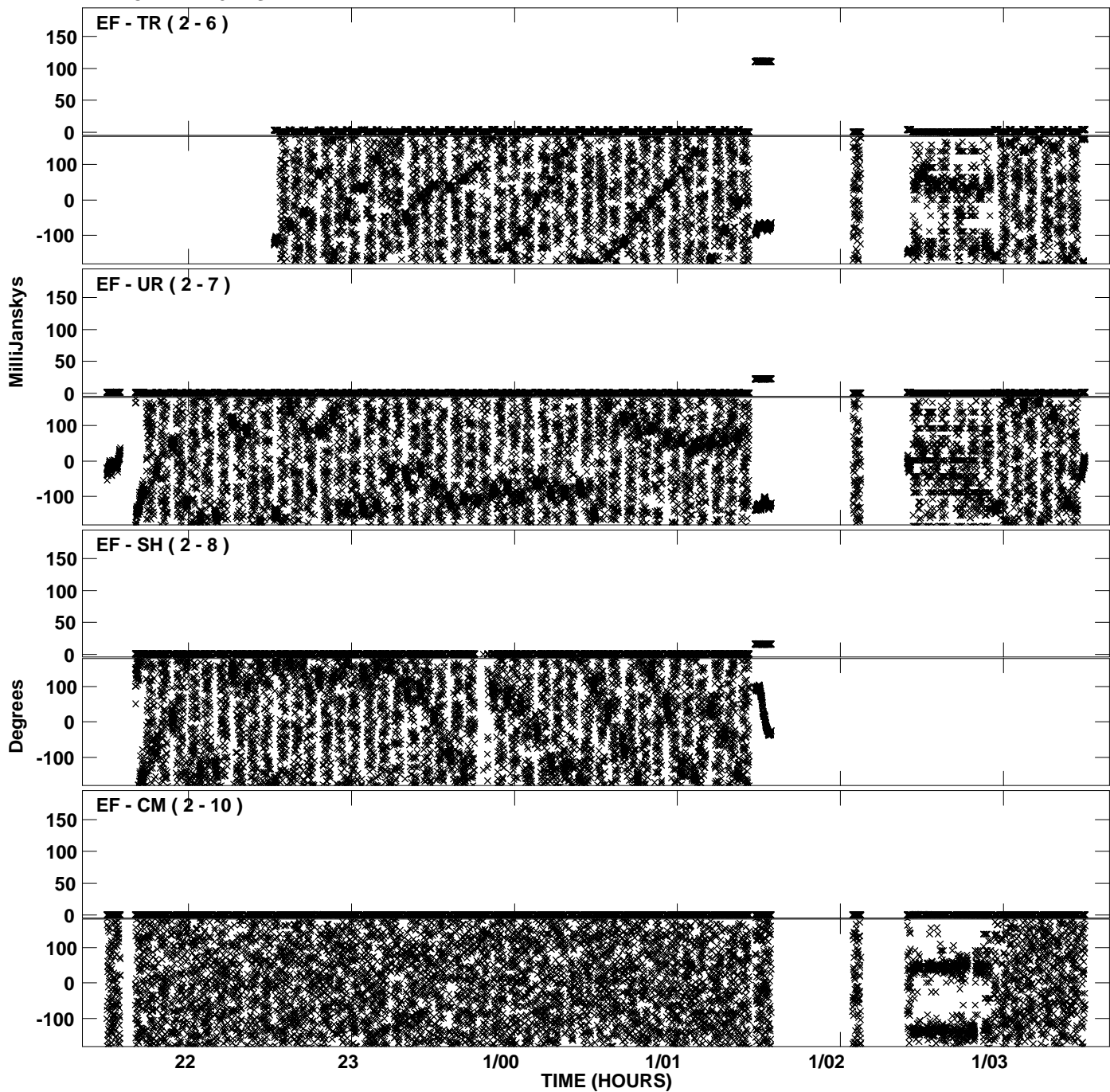
PLot file version 42 created 13-OCT-2010 18:13:28  
Amplitude andPhase vs Time for EP064N.UVDATA.1 Vect aver.  
IF 6 CHAN 1 - 32 STK RR



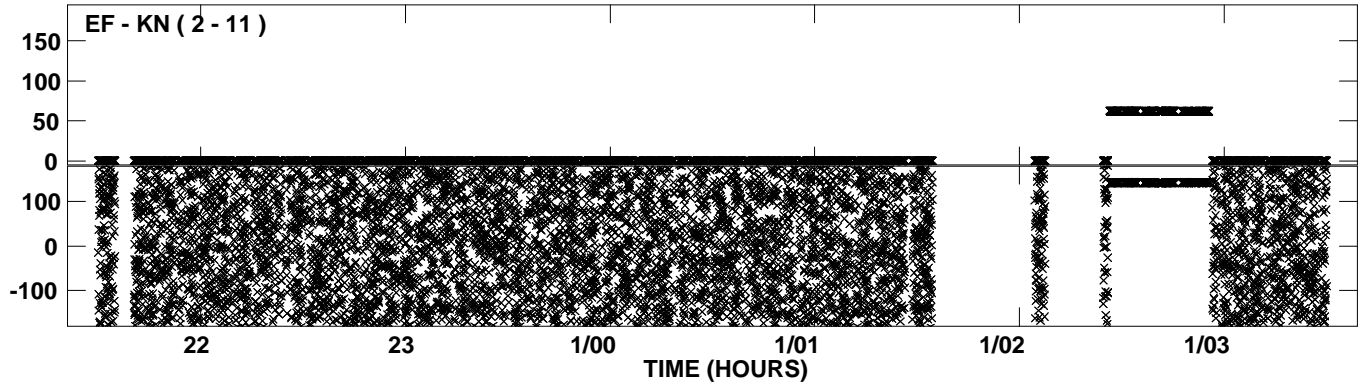
PLot file version 43 created 13-OCT-2010 18:13:34  
Amplitude andPhase vs Time for EP064N.UVDATA.1 Vect aver.  
IF 7 CHAN 1 - 32 STK RR



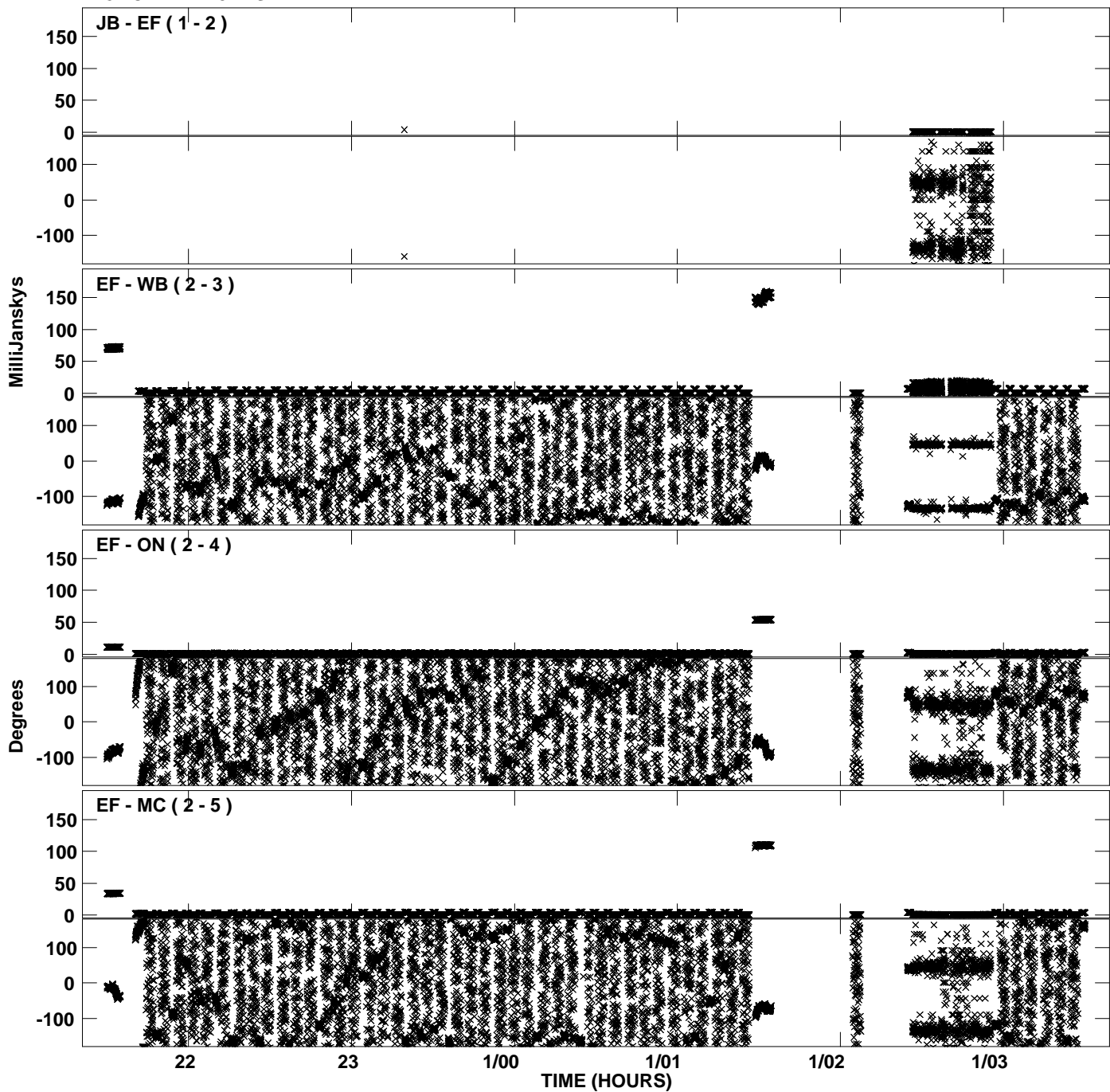
Plot file version 44 created 13-OCT-2010 18:13:34  
Amplitude andPhase vs Time for EP064N.UVDATA.1 Vect aver.  
IF 7 CHAN 1 - 32 STK RR



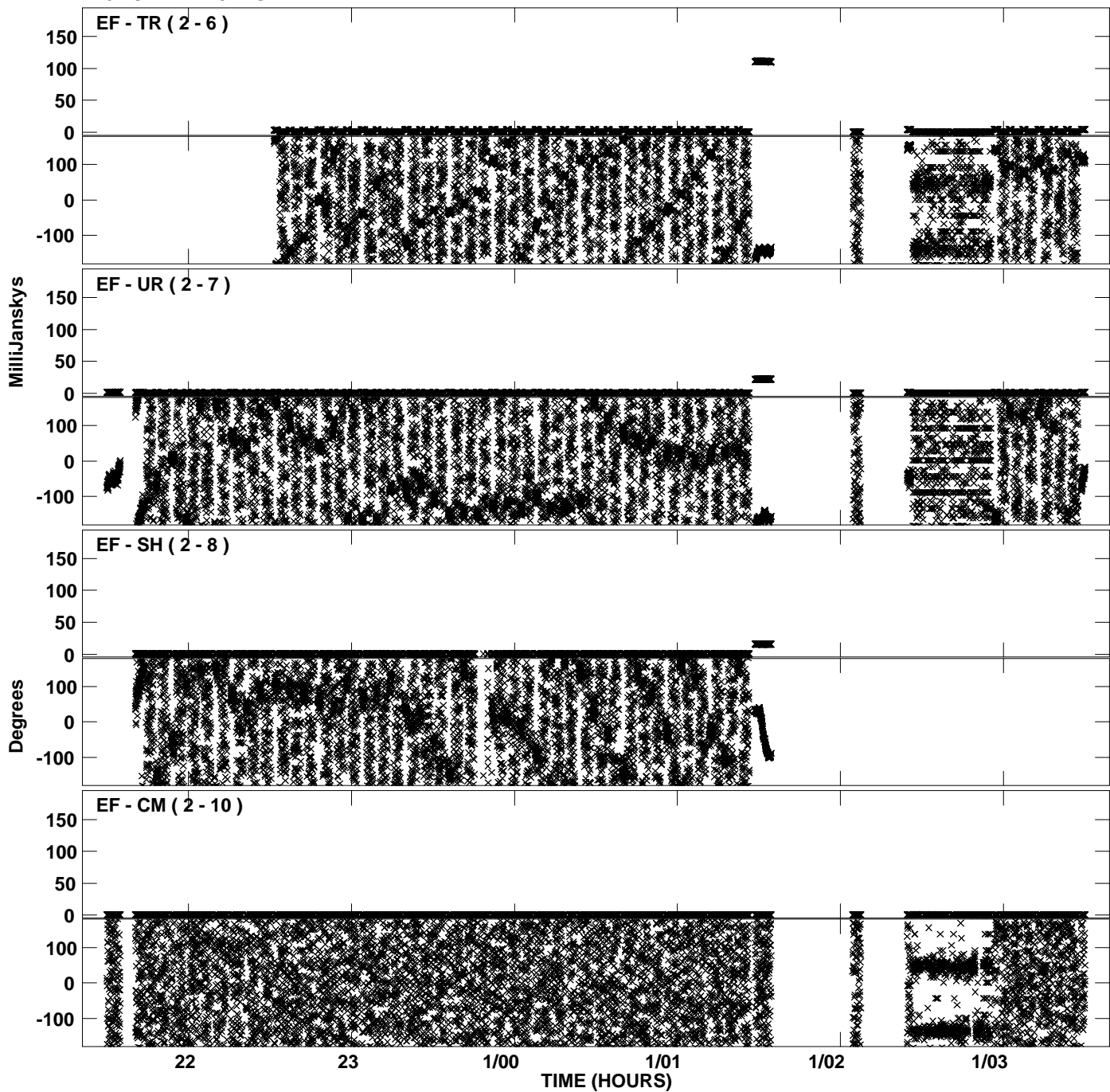
Plot file version 45 created 13-OCT-2010 18:13:34  
Amplitude andPhase vs Time for EP064N.UVDATA.1 Vect aver.  
IF 7 CHAN 1 - 32 STK RR



PLot file version 46 created 13-OCT-2010 18:13:41  
Amplitude andPhase vs Time for EP064N.UVDATA.1 Vect aver.  
IF 8 CHAN 1 - 32 STK RR



PLot file version 47 created 13-OCT-2010 18:13:41  
Amplitude andPhase vs Time for EP064N.UVDATA.1 Vect aver.  
IF 8 CHAN 1 - 32 STK RR



Plot file version 48 created 13-OCT-2010 18:13:41  
Amplitude andPhase vs Time for EP064N.UVDATA.1 Vect aver.  
IF 8 CHAN 1 - 32 STK RR

