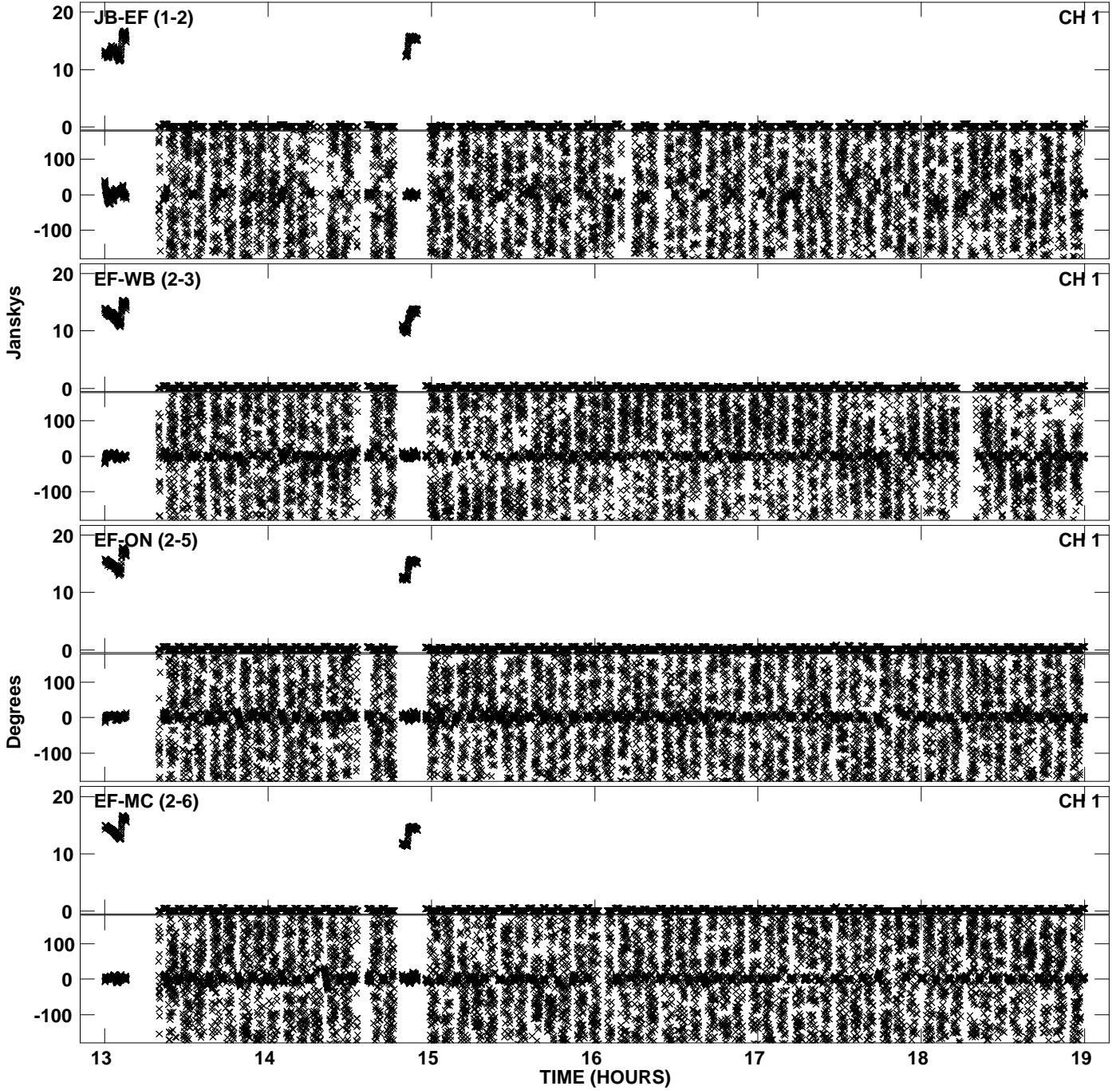
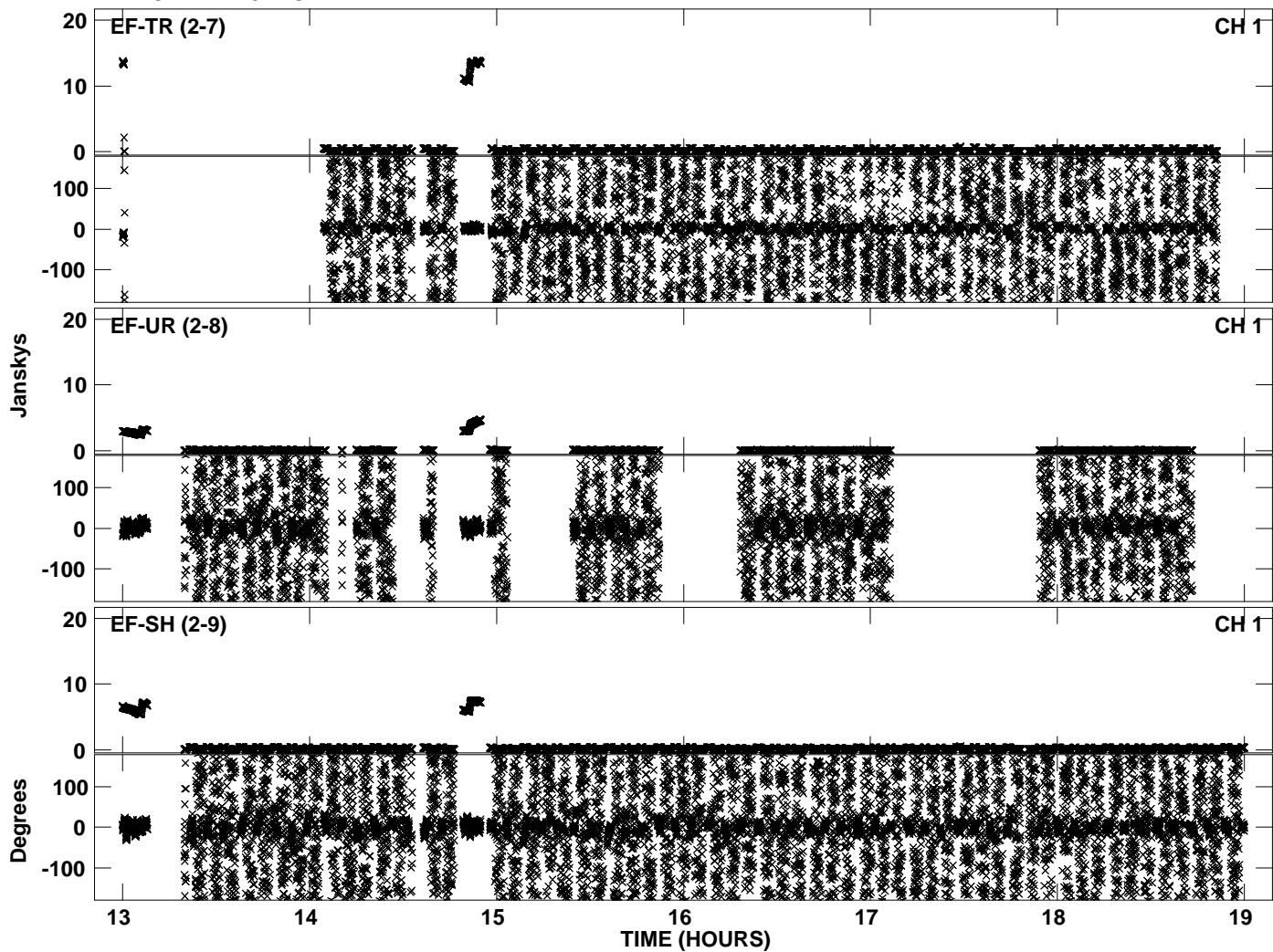


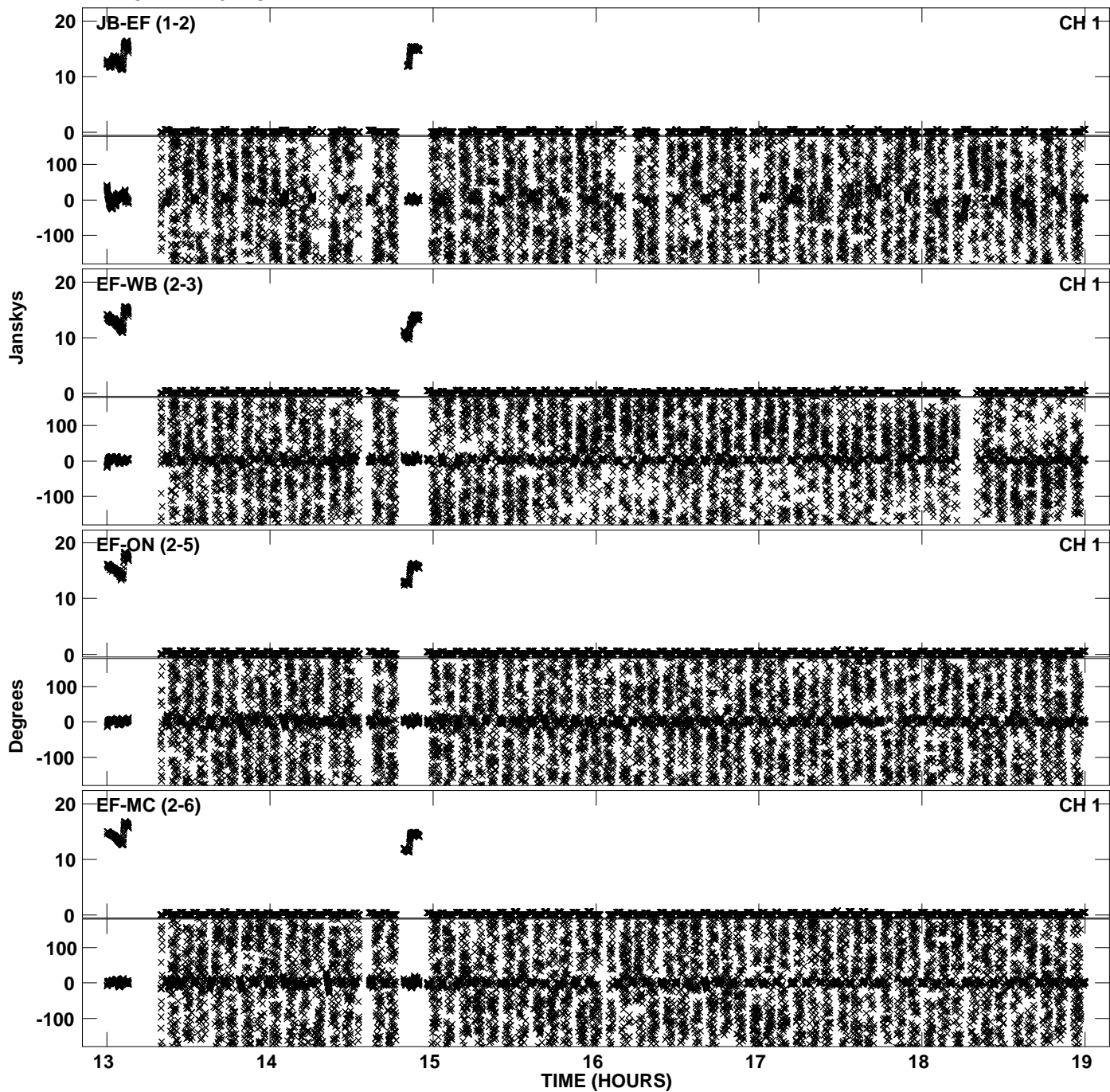
PLot file version 1 created 16-NOV-2010 20:11:29  
Amplitude andPhase vs Time for EP068A 1.UVDATA.1 Vect aver. CL # 3  
IF 1 CHAN 1 - 32 STK LL



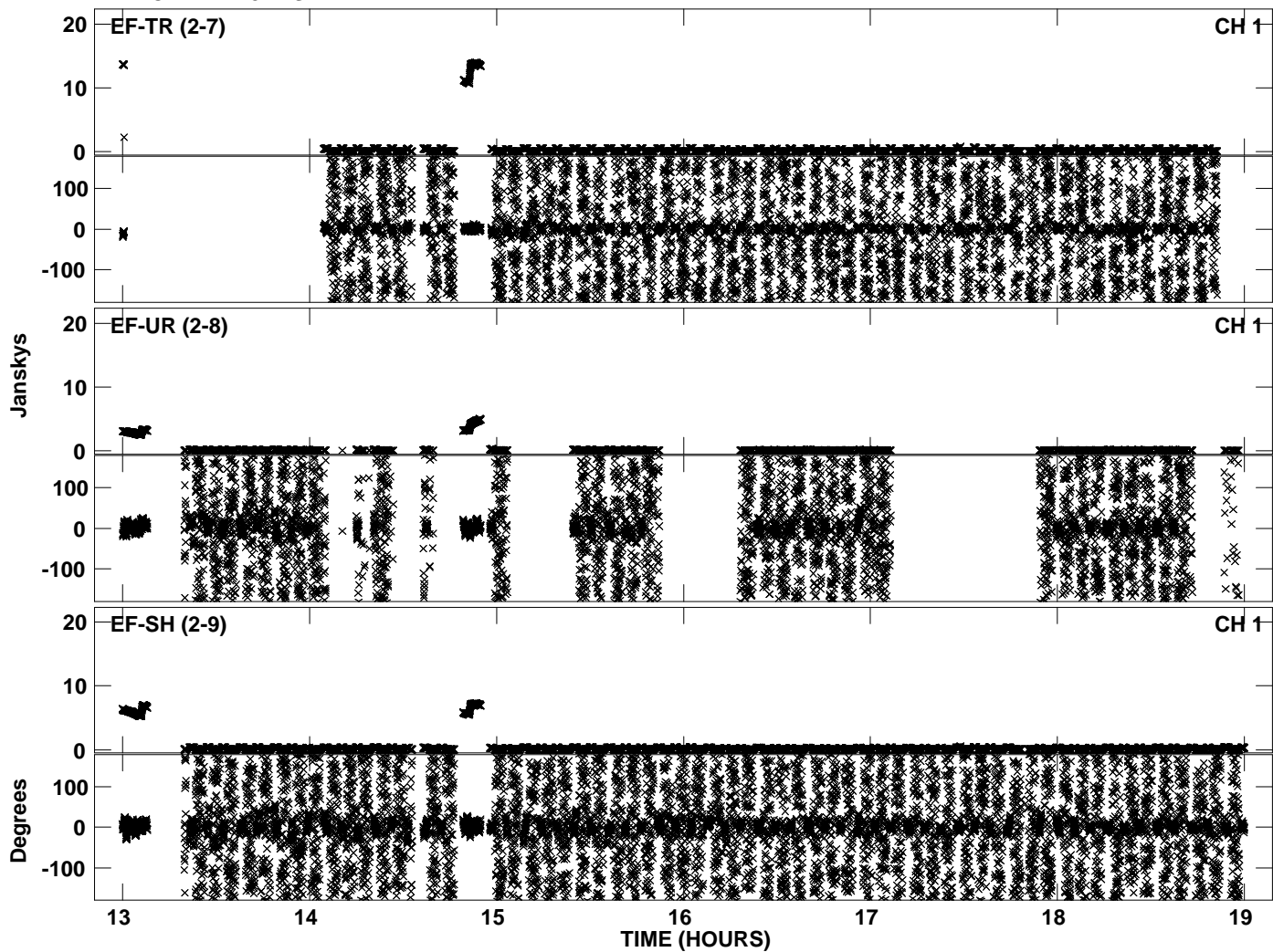
PLot file version 2 created 16-NOV-2010 20:11:29  
Amplitude andPhase vs Time for EP068A 1.UVDATA.1 Vect aver. CL # 3  
IF 1 CHAN 1 - 32 STK LL



PLot file version 3 created 16-NOV-2010 20:11:36  
Amplitude andPhase vs Time for EP068A 1.UVDATA.1 Vect aver. CL # 3  
IF 2 CHAN 1 - 32 STK LL

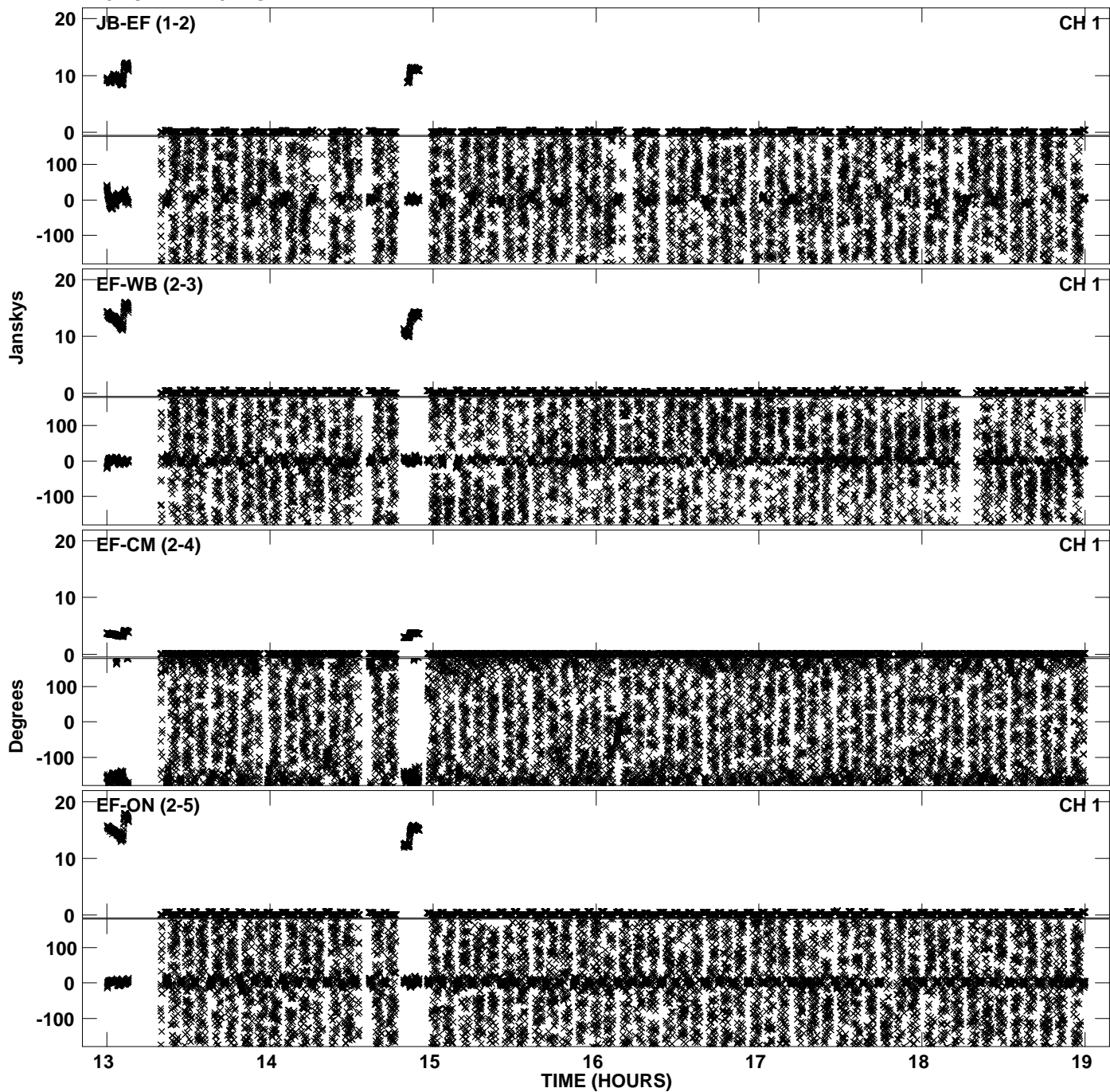


Plot file version 4 created 16-NOV-2010 20:11:36  
Amplitude andPhase vs Time for EP068A 1.UVDATA.1 Vect aver. CL # 3  
IF 2 CHAN 1 - 32 STK LL

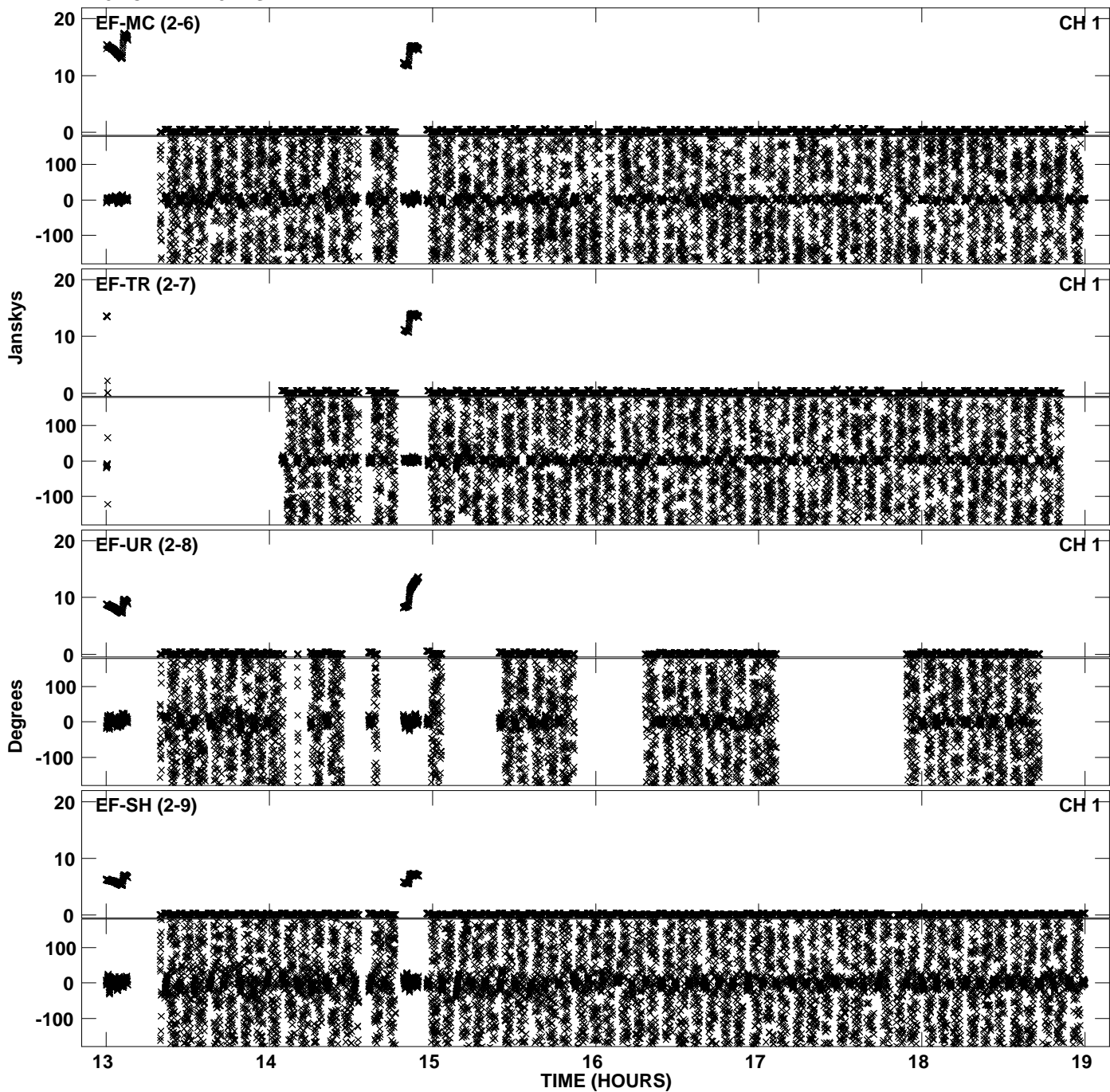




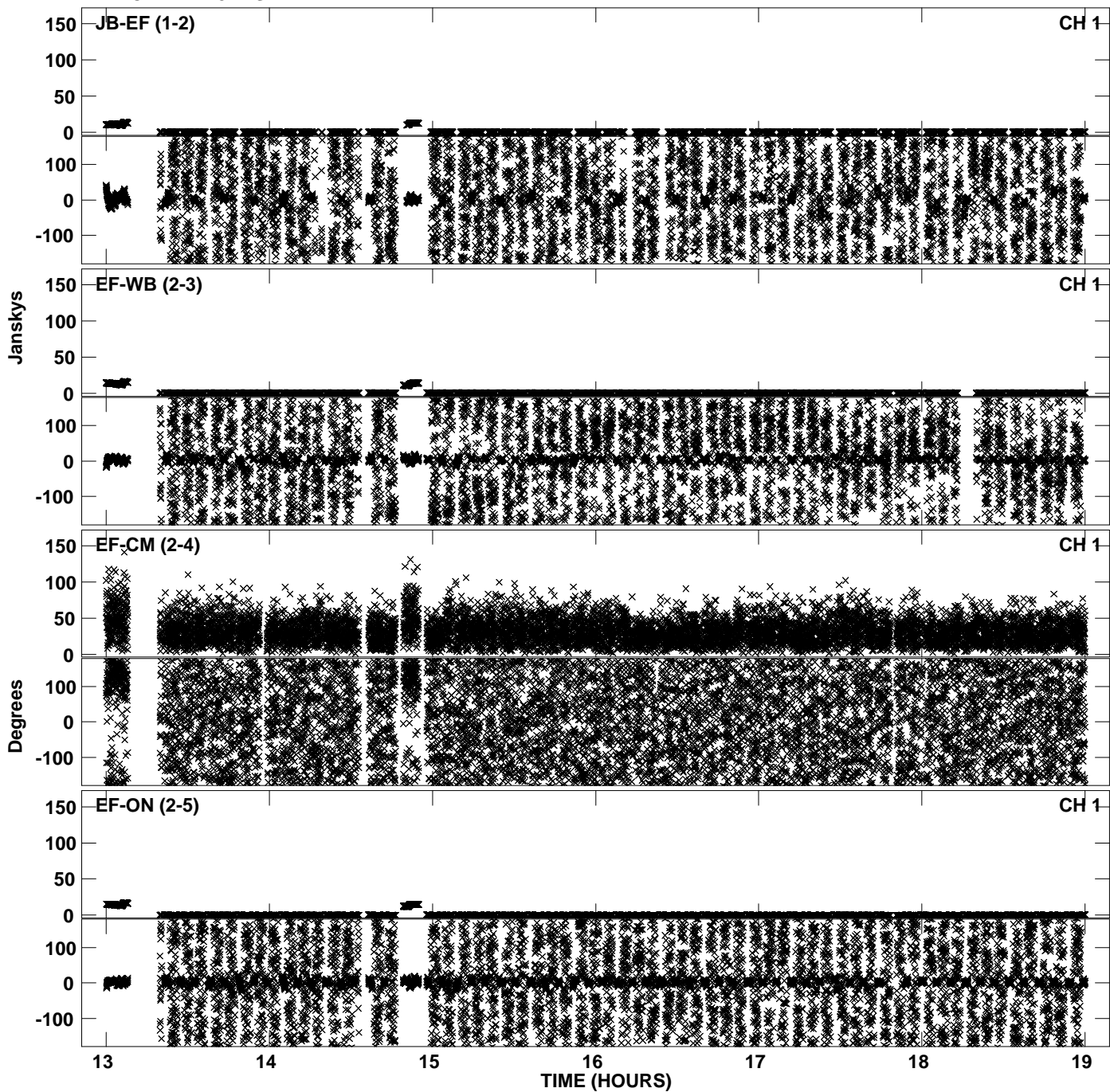
Plot file version 5 created 16-NOV-2010 20:11:44  
Amplitude andPhase vs Time for EP068A 1.UVDATA.1 Vect aver. CL # 3  
IF 3 CHAN 1 - 32 STK LL



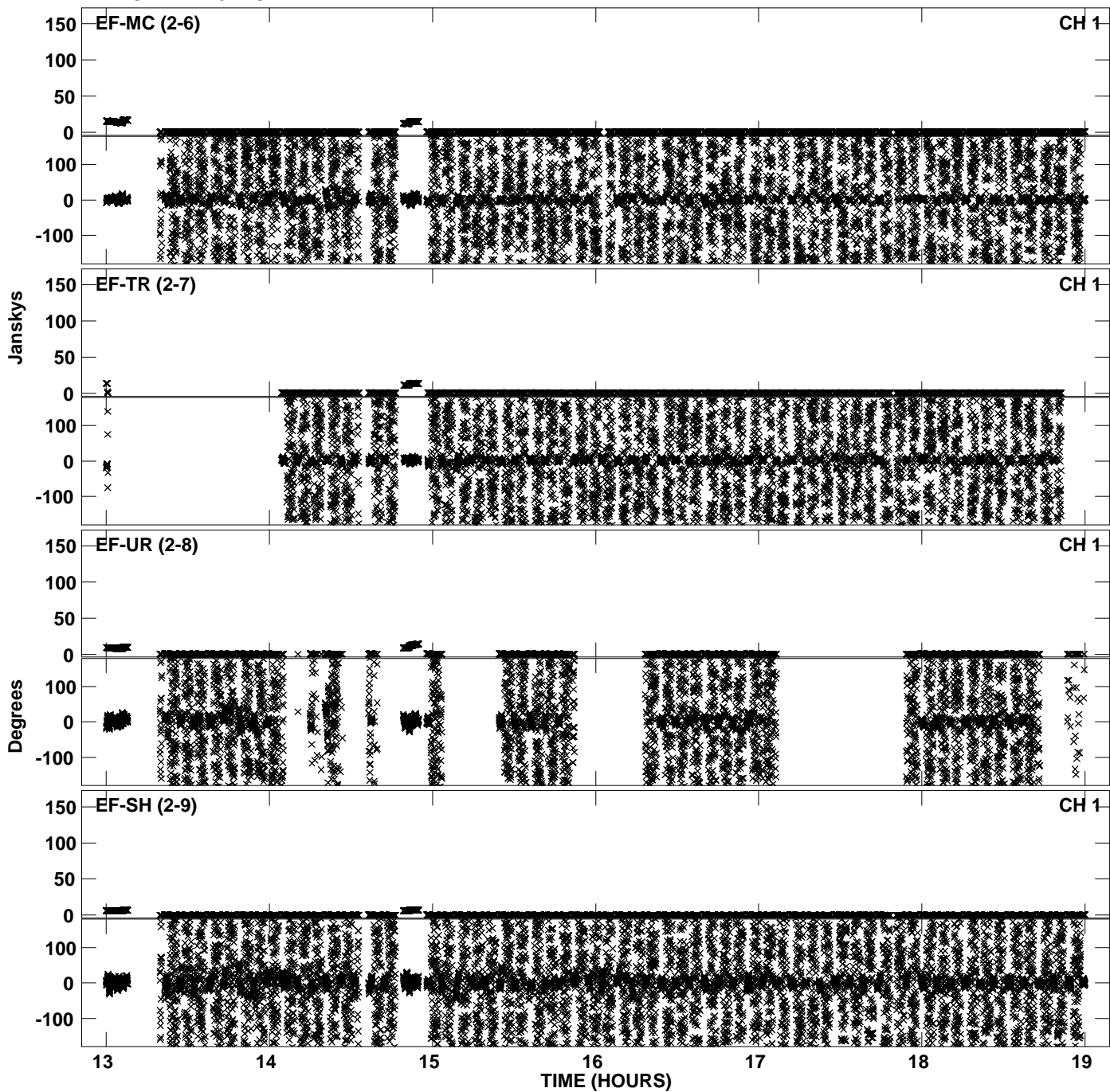
Plot file version 6 created 16-NOV-2010 20:11:44  
Amplitude andPhase vs Time for EP068A 1.UVDATA.1 Vect aver. CL # 3  
IF 3 CHAN 1 - 32 STK LL



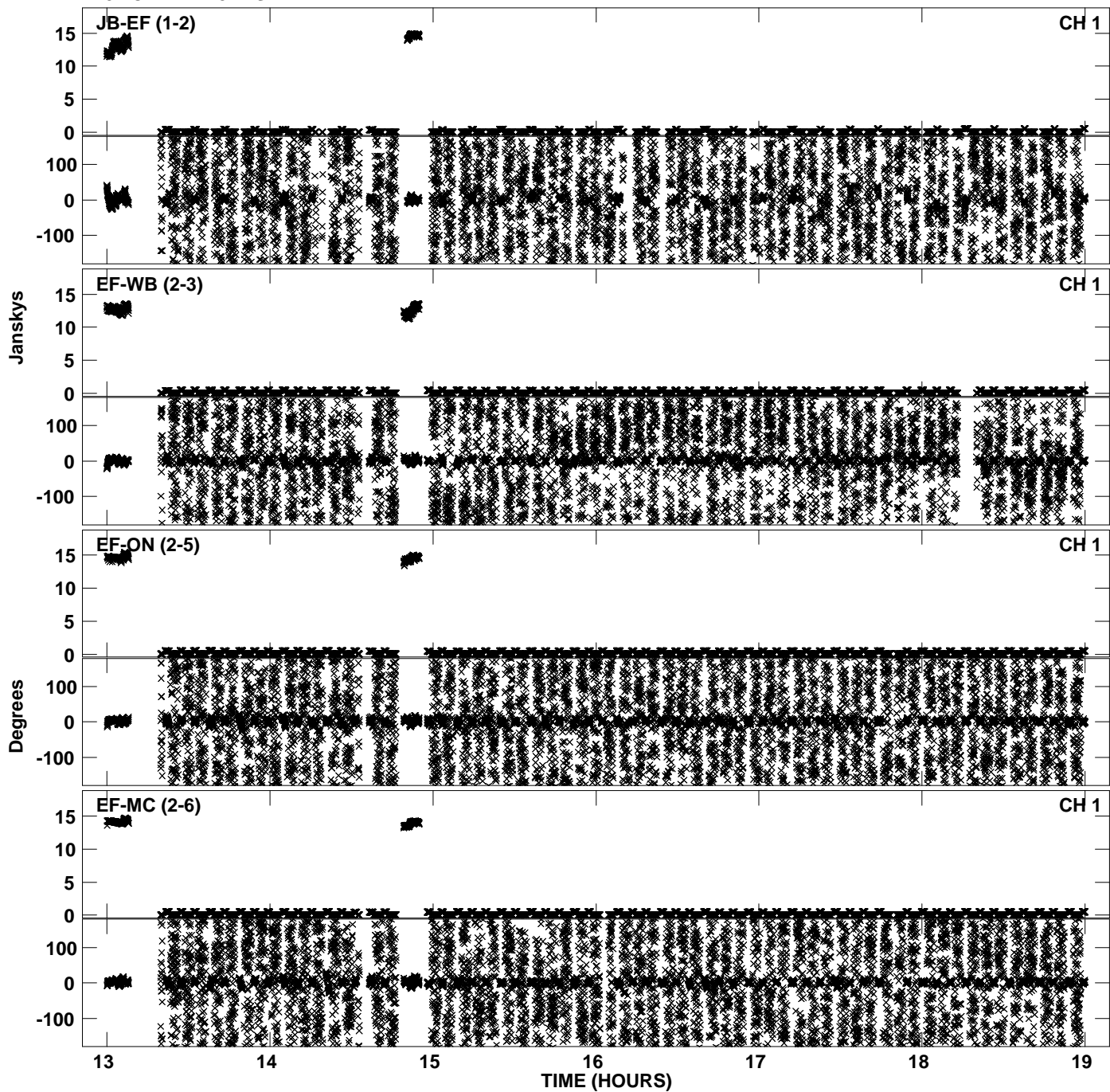
Plot file version 7 created 16-NOV-2010 20:11:52  
Amplitude andPhase vs Time for EP068A 1.UVDATA.1 Vect aver. CL # 3  
IF 4 CHAN 1 - 32 STK LL



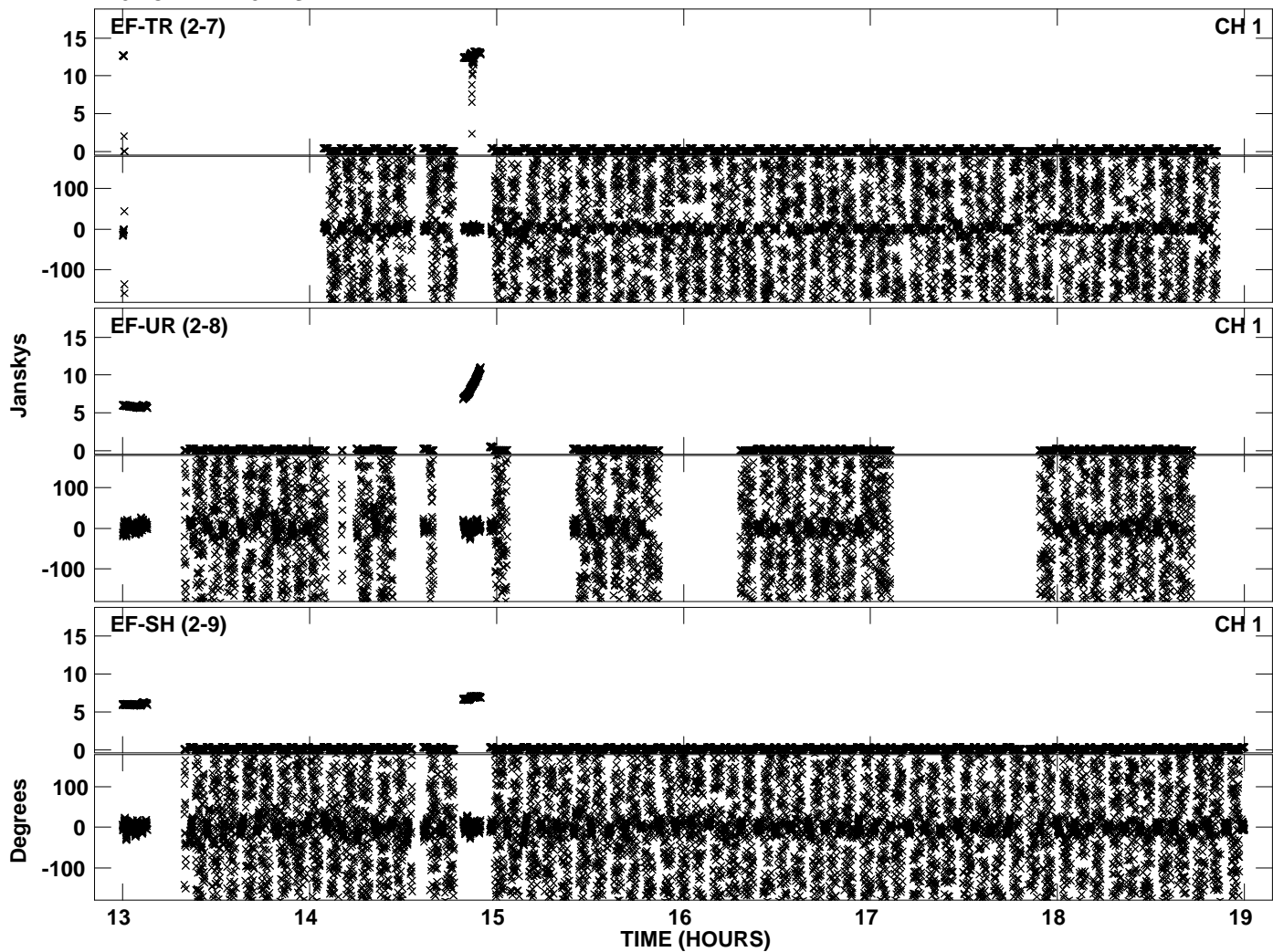
Plot file version 8 created 16-NOV-2010 20:11:52  
Amplitude andPhase vs Time for EP068A 1.UVDATA.1 Vect aver. CL # 3  
IF 4 CHAN 1 - 32 STK LL



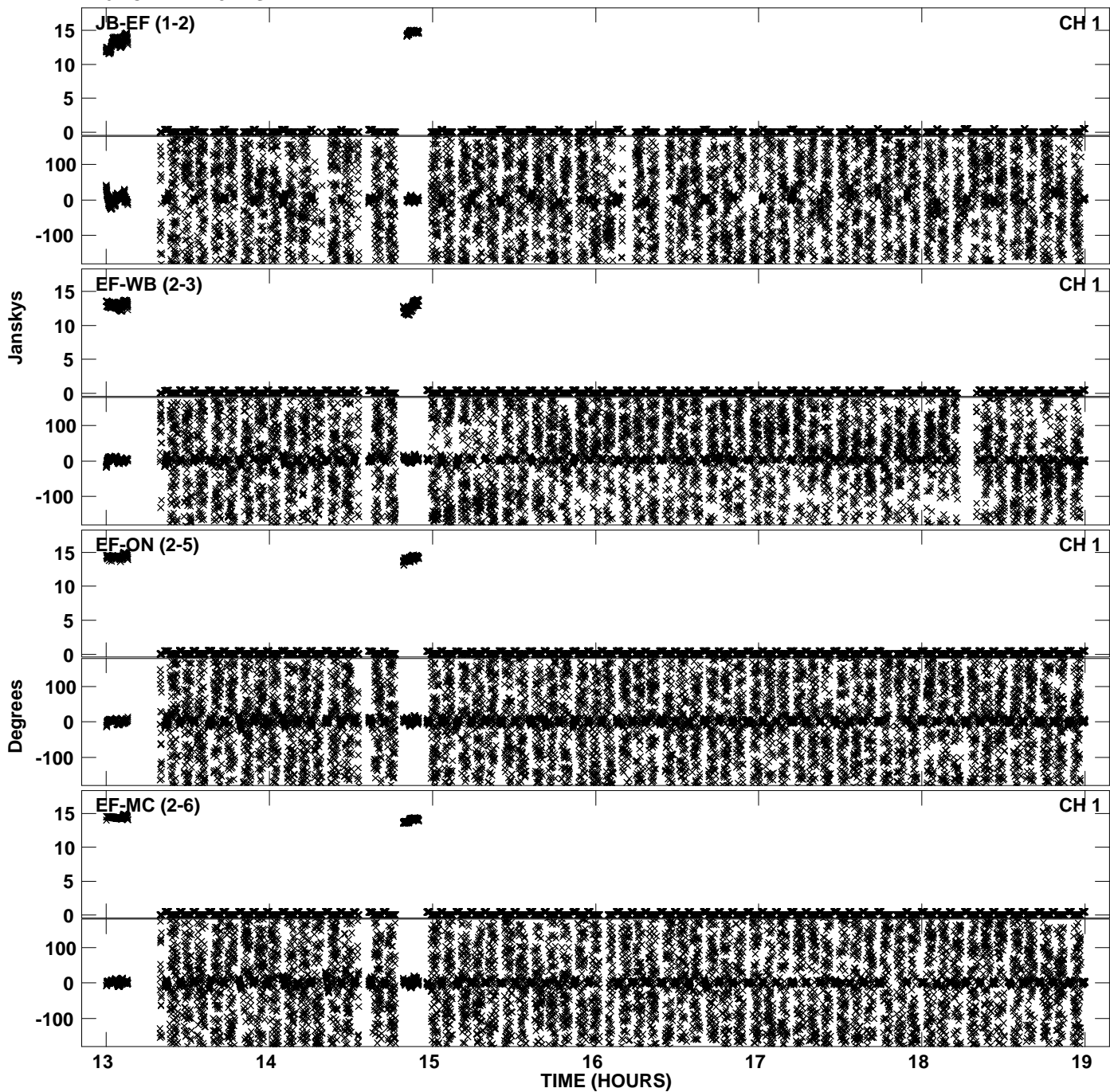
PLot file version 9 created 16-NOV-2010 20:12:00  
Amplitude andPhase vs Time for EP068A 1.UVDATA.1 Vect aver. CL # 3  
IF 5 CHAN 1 - 32 STK LL



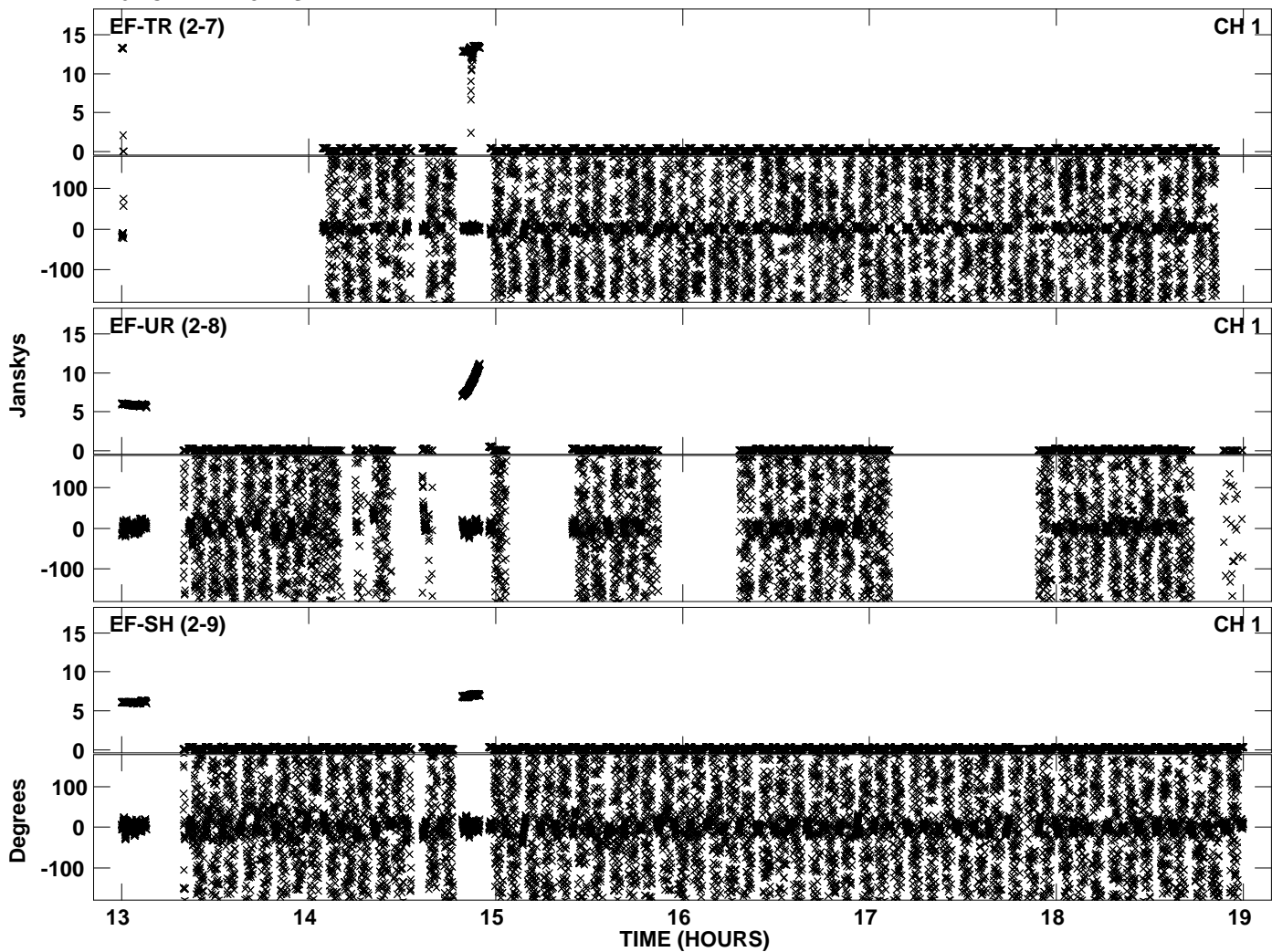
Plot file version 10 created 16-NOV-2010 20:12:00  
Amplitude andPhase vs Time for EP068A 1.UVDATA.1 Vect aver. CL # 3  
IF 5 CHAN 1 - 32 STK LL



PLot file version 11 created 16-NOV-2010 20:12:08  
Amplitude andPhase vs Time for EP068A 1.UVDATA.1 Vect aver. CL # 3  
IF 6 CHAN 1 - 32 STK LL

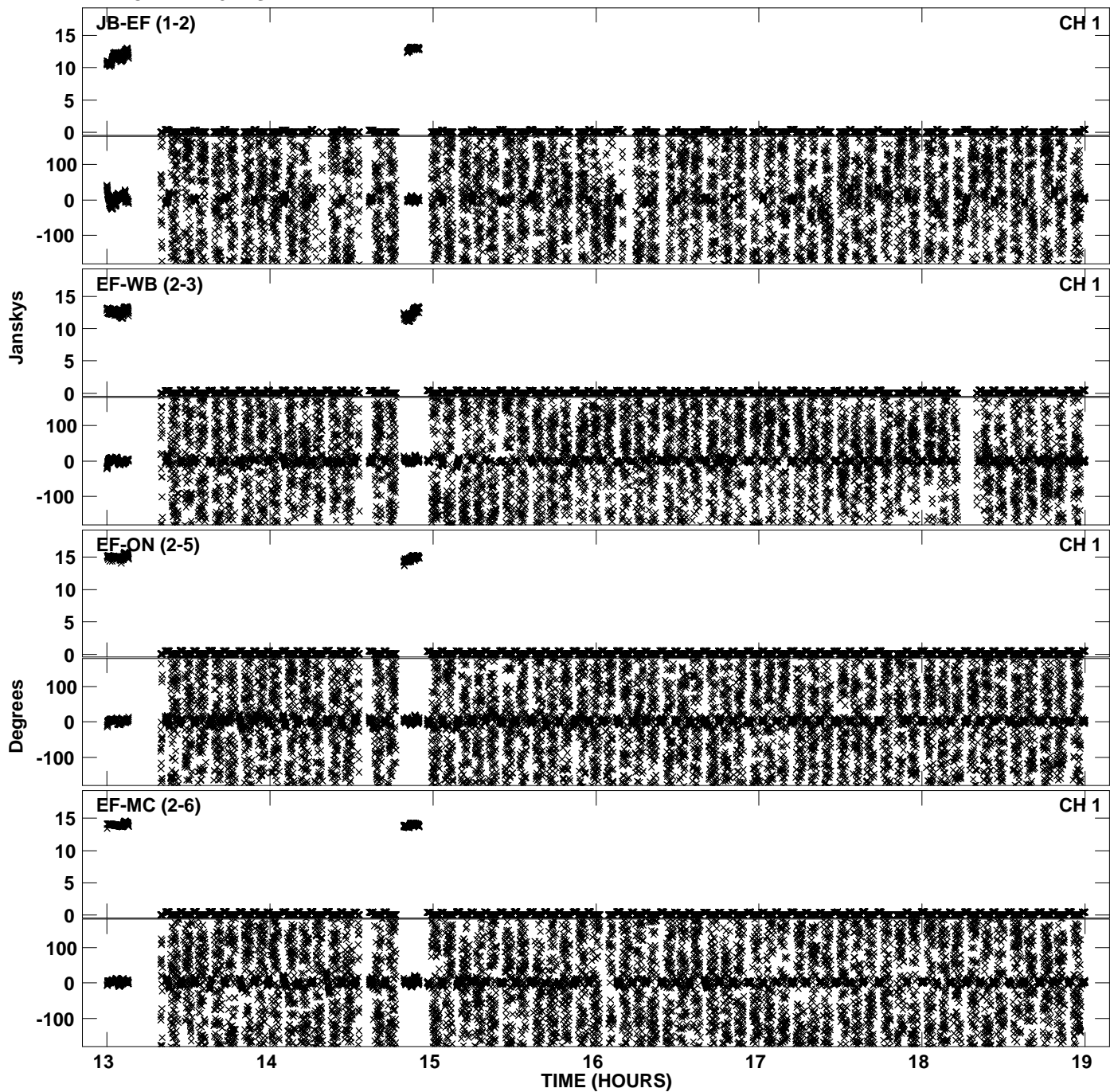


Plot file version 12 created 16-NOV-2010 20:12:08  
Amplitude andPhase vs Time for EP068A 1.UVDATA.1 Vect aver. CL # 3  
IF 6 CHAN 1 - 32 STK LL

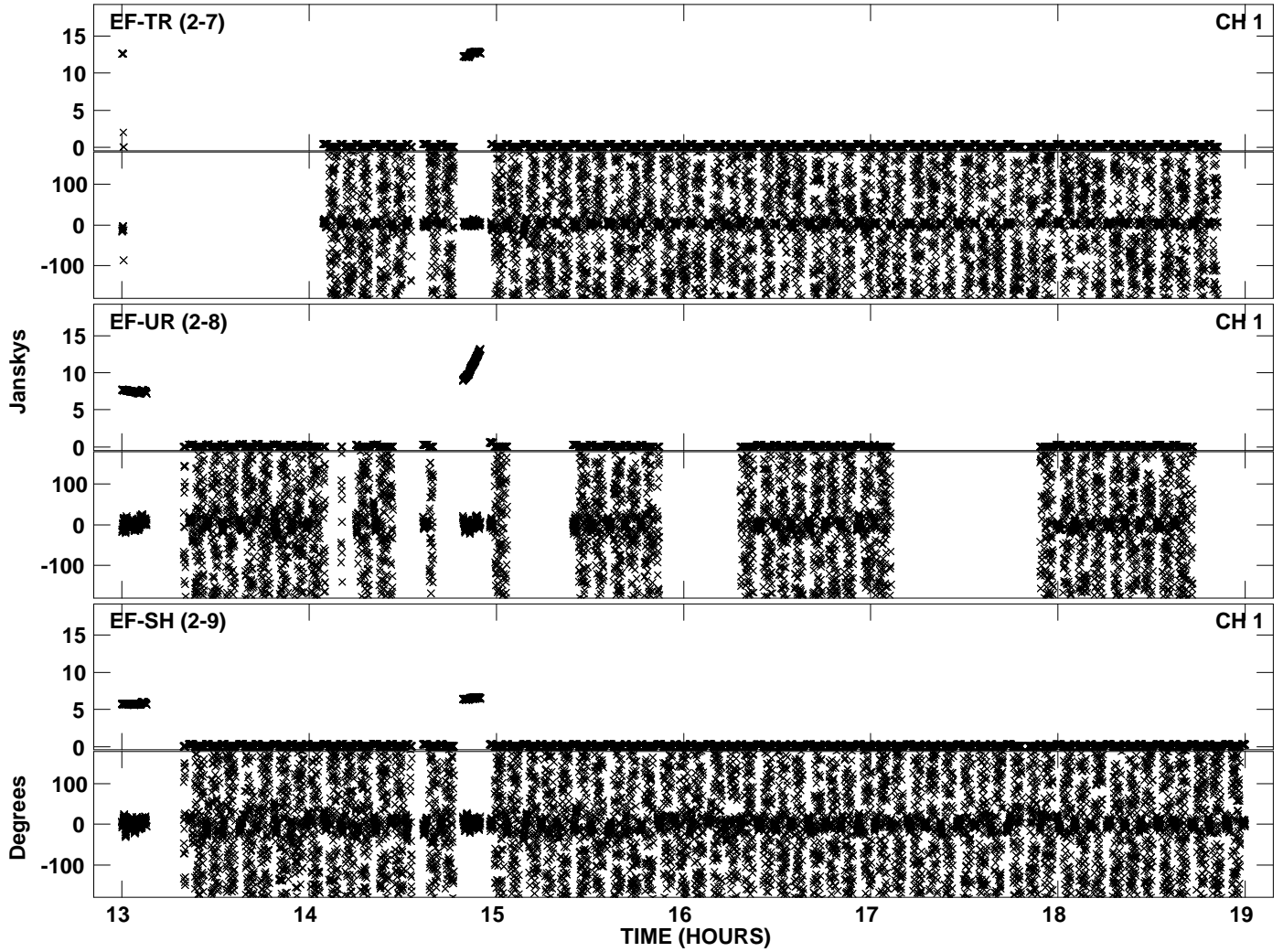




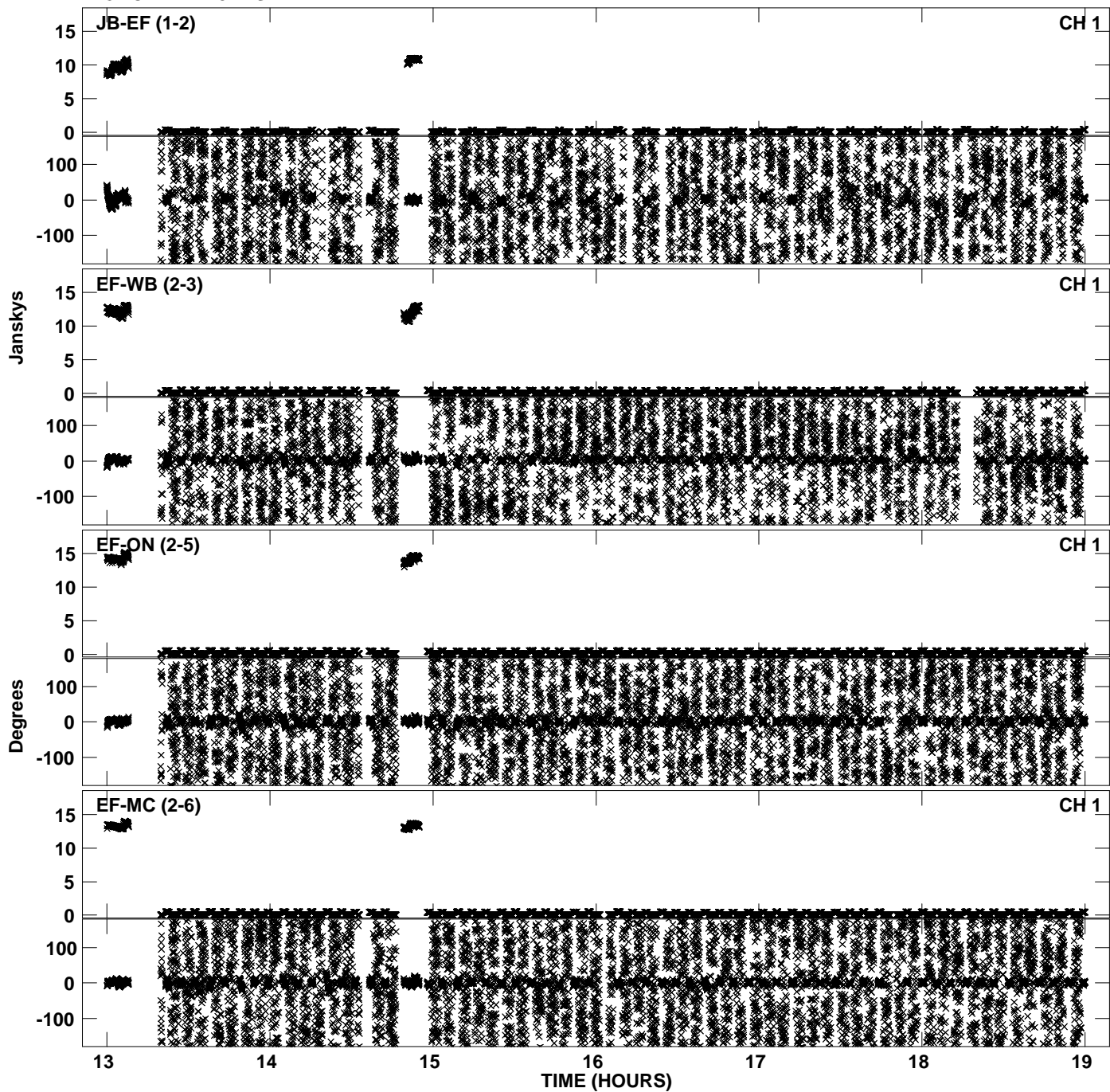
Plot file version 13 created 16-NOV-2010 20:12:15  
Amplitude andPhase vs Time for EP068A 1.UVDATA.1 Vect aver. CL # 3  
IF 7 CHAN 1 - 32 STK LL



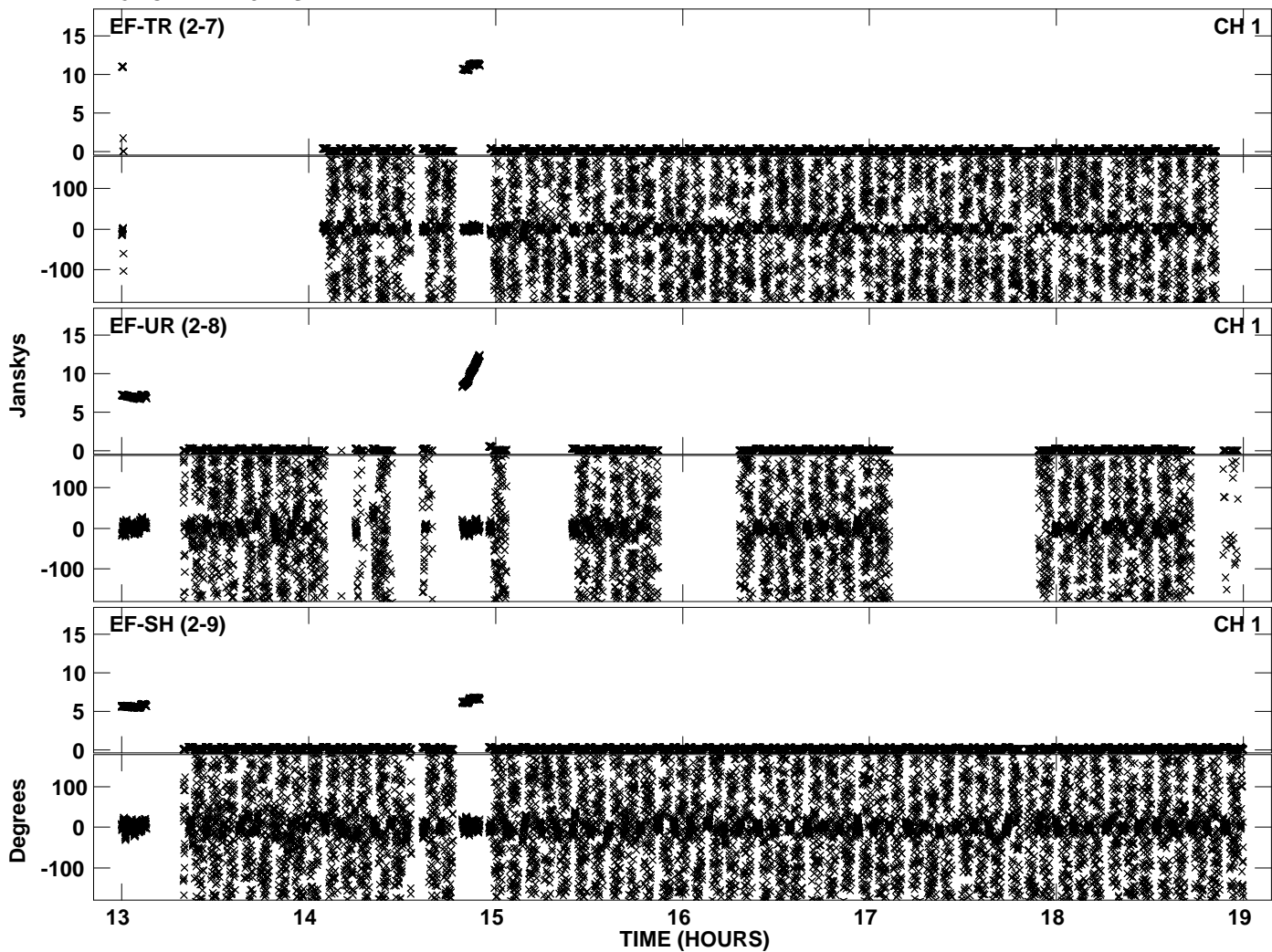
Plot file version 14 created 16-NOV-2010 20:12:15  
Amplitude and Phase vs Time for EP068A 1.UVDATA.1 Vect aver. CL # 3  
IF 7 CHAN 1 - 32 STK LL



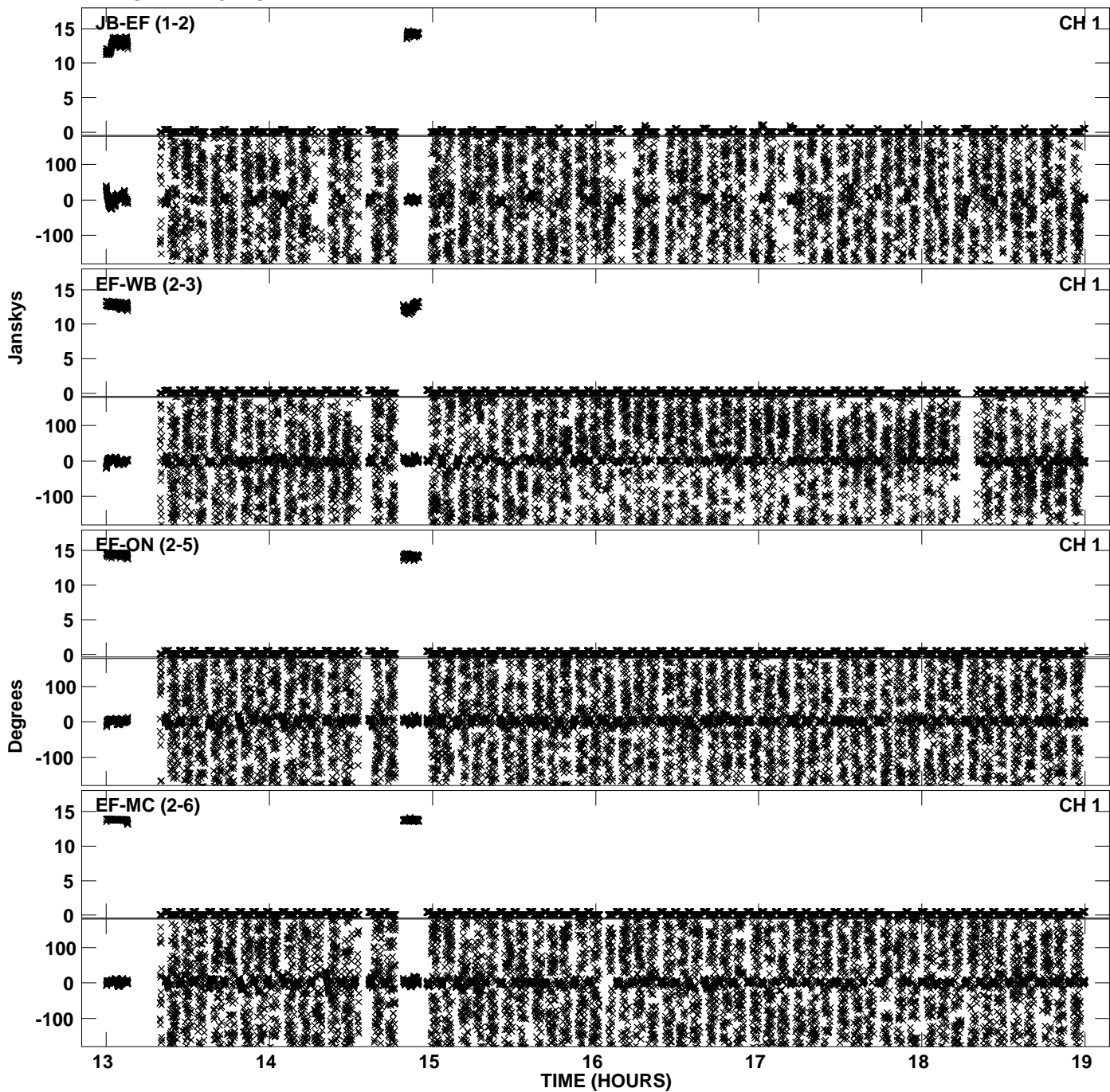
PLot file version 15 created 16-NOV-2010 20:12:23  
Amplitude andPhase vs Time for EP068A 1.UVDATA.1 Vect aver. CL # 3  
IF 8 CHAN 1 - 32 STK LL



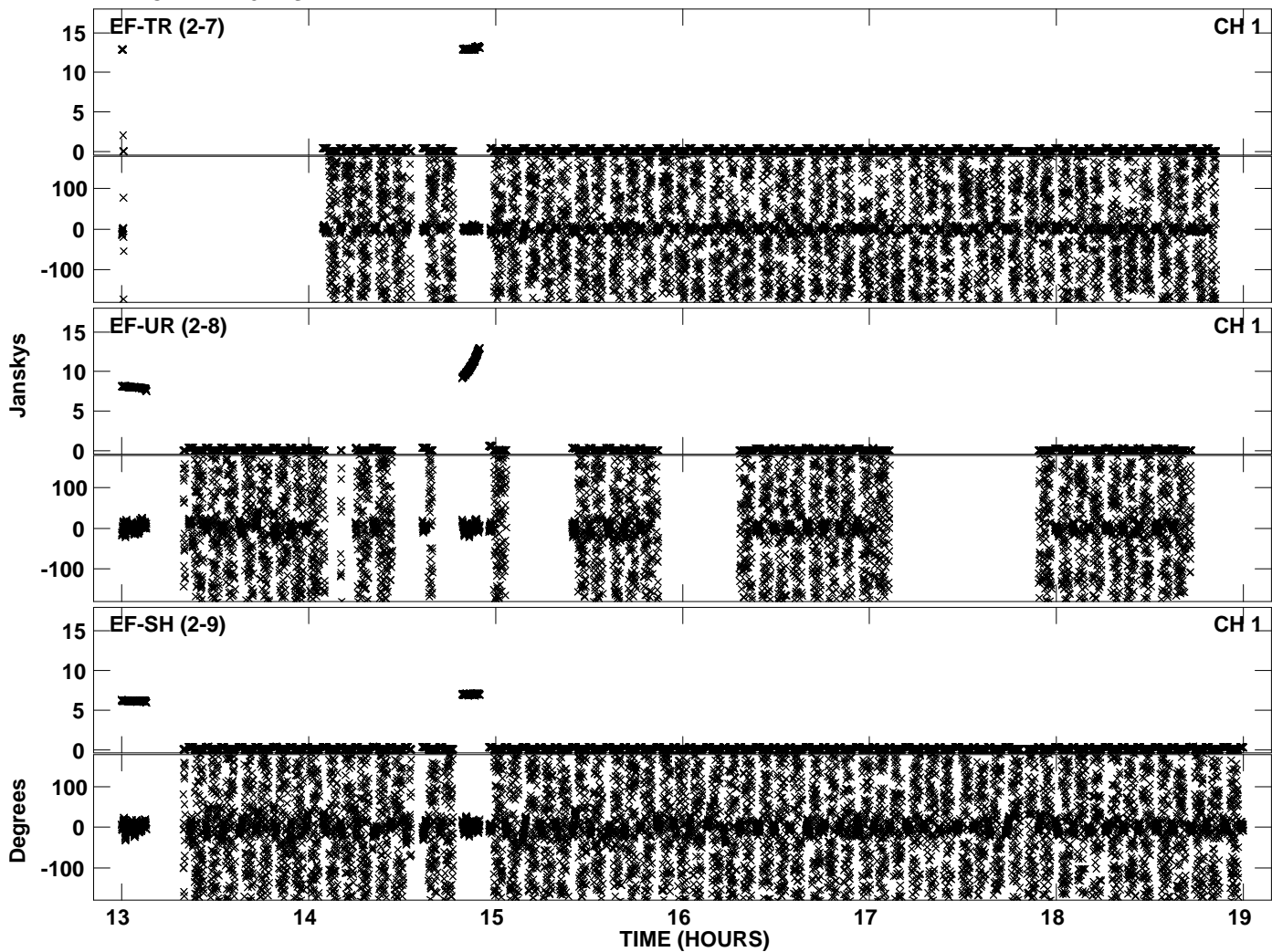
Plot file version 16 created 16-NOV-2010 20:12:23  
Amplitude andPhase vs Time for EP068A 1.UVDATA.1 Vect aver. CL # 3  
IF 8 CHAN 1 - 32 STK LL



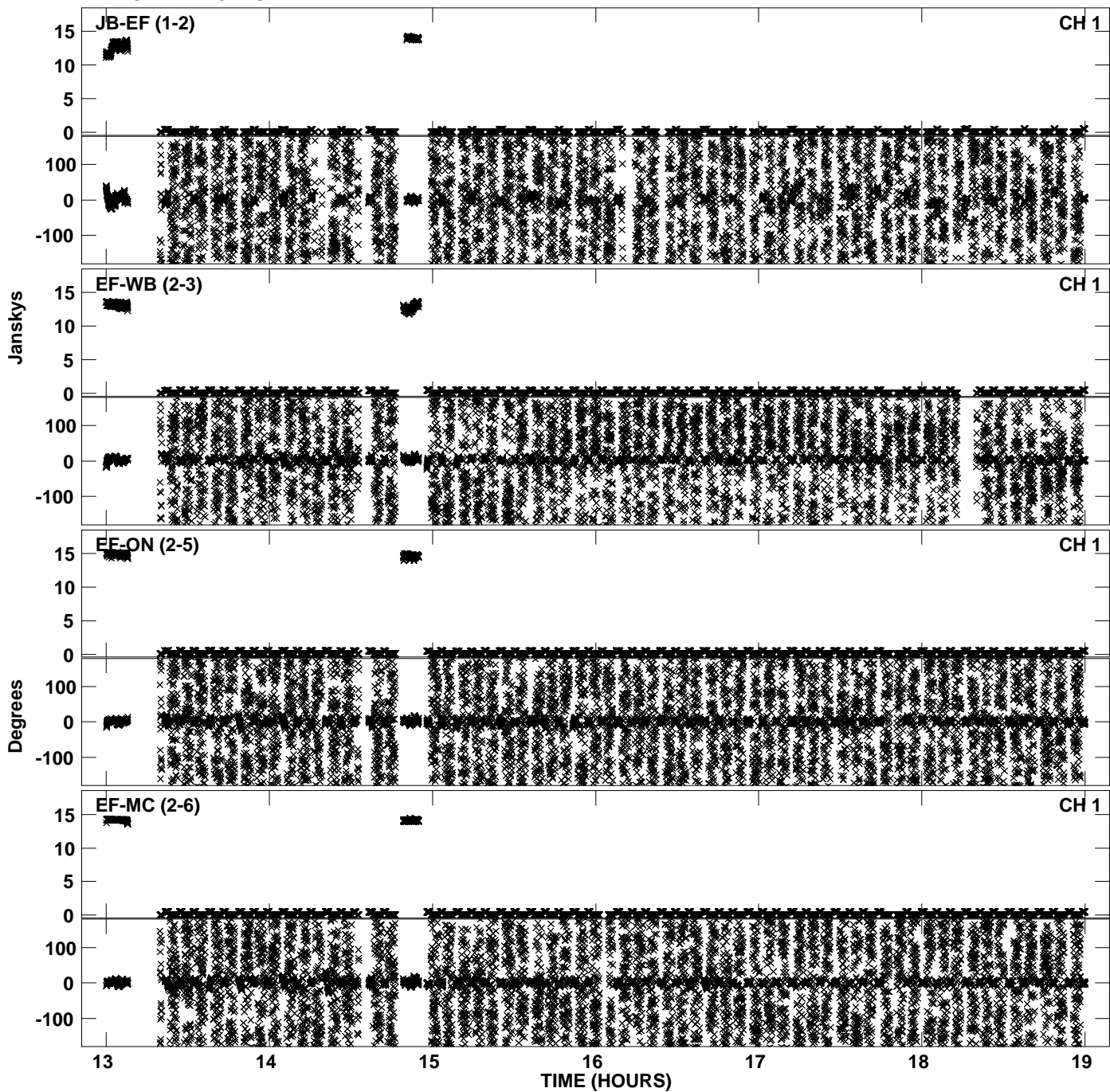
Plot file version 17 created 16-NOV-2010 20:12:29  
Amplitude andPhase vs Time for EP068A 1.UVDATA.1 Vect aver. CL # 3  
IF 1 CHAN 1 - 32 STK RR



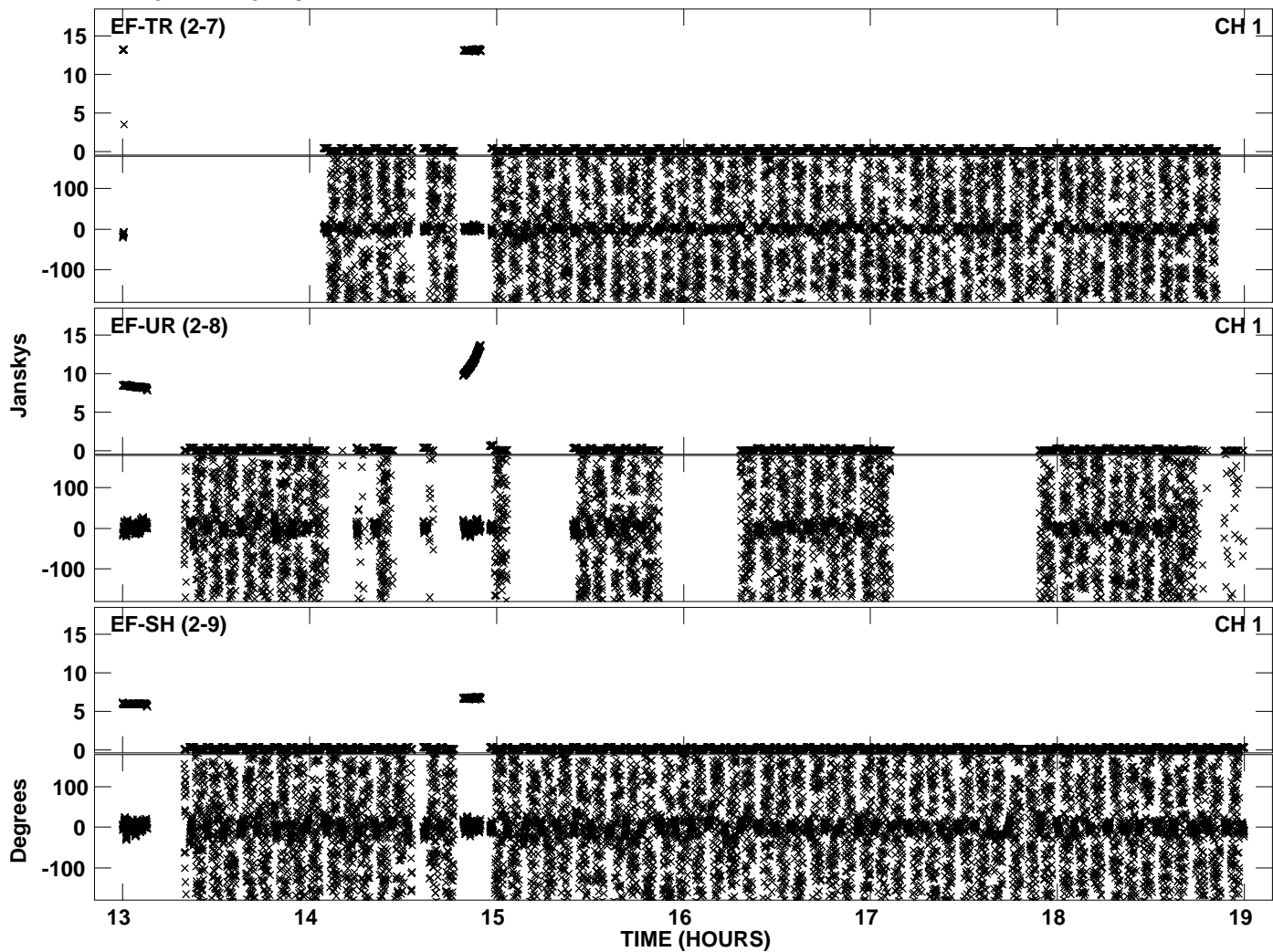
Plot file version 18 created 16-NOV-2010 20:12:30  
Amplitude andPhase vs Time for EP068A 1.UVDATA.1 Vect aver. CL # 3  
IF 1 CHAN 1 - 32 STK RR



PLot file version 19 created 16-NOV-2010 20:12:36  
Amplitude andPhase vs Time for EP068A 1.UVDATA.1 Vect aver. CL # 3  
IF 2 CHAN 1 - 32 STK RR

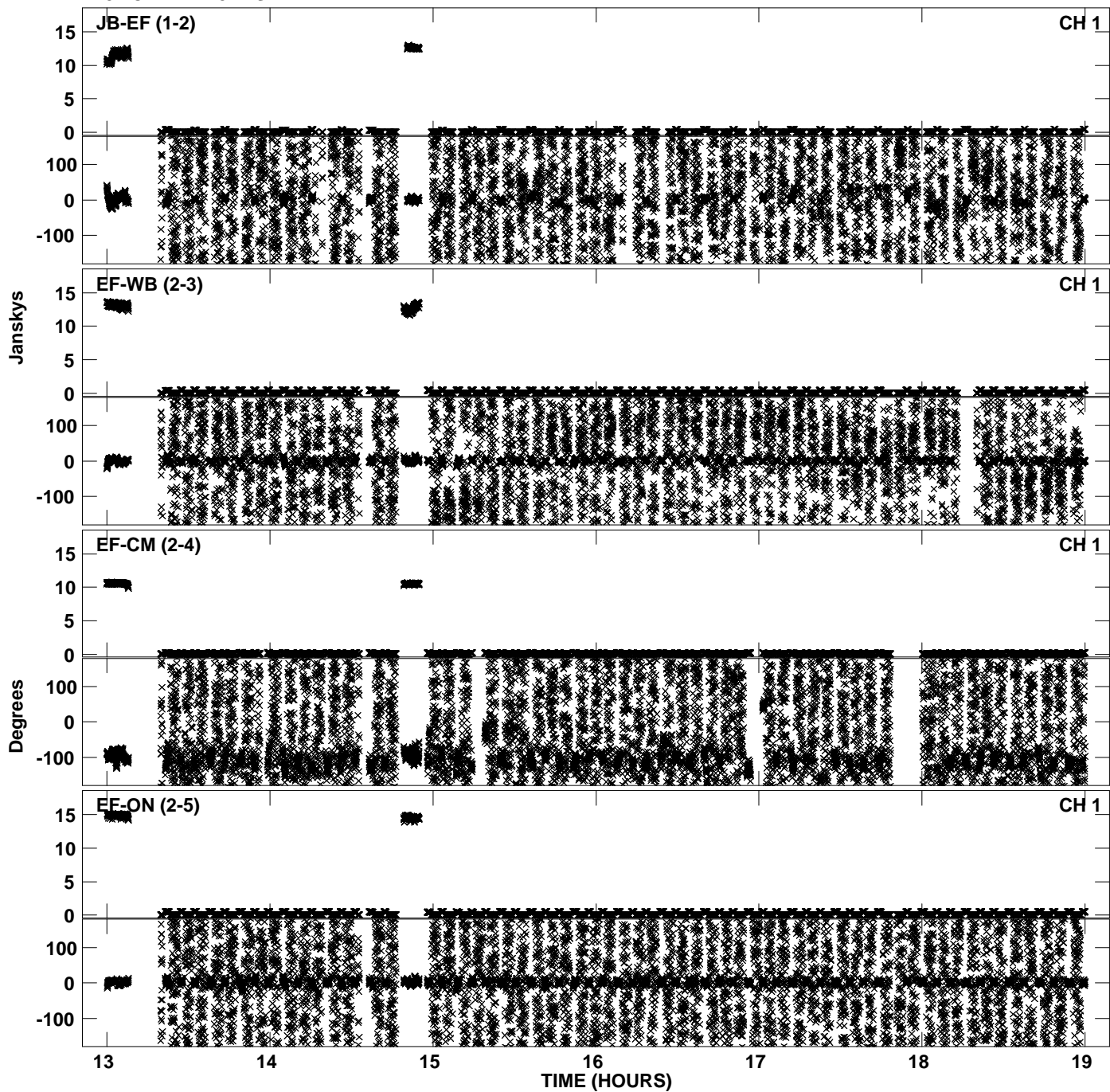


PLot file version 20 created 16-NOV-2010 20:12:37  
Amplitude andPhase vs Time for EP068A 1.UVDATA.1 Vect aver. CL # 3  
IF 2 CHAN 1 - 32 STK RR

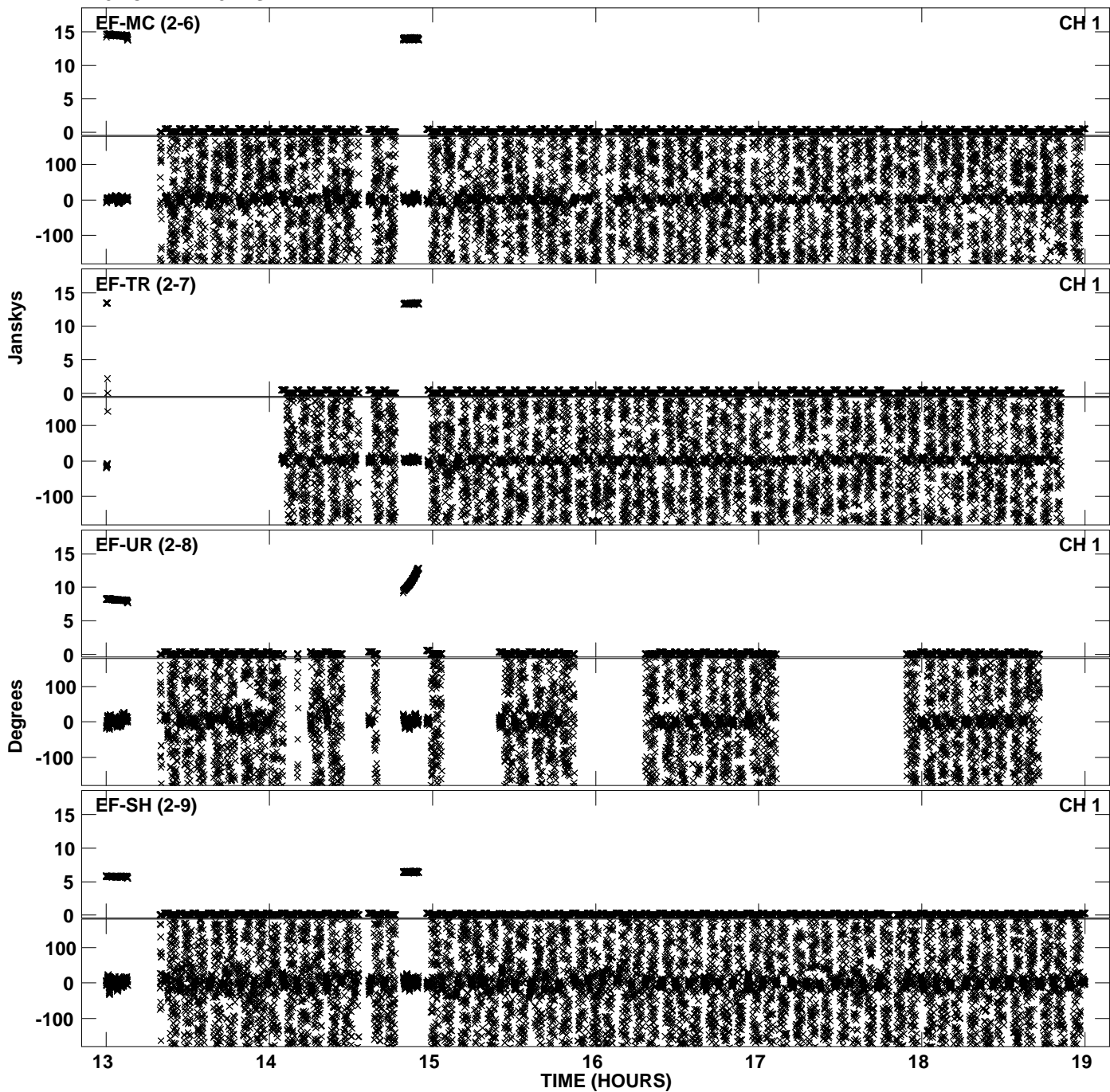




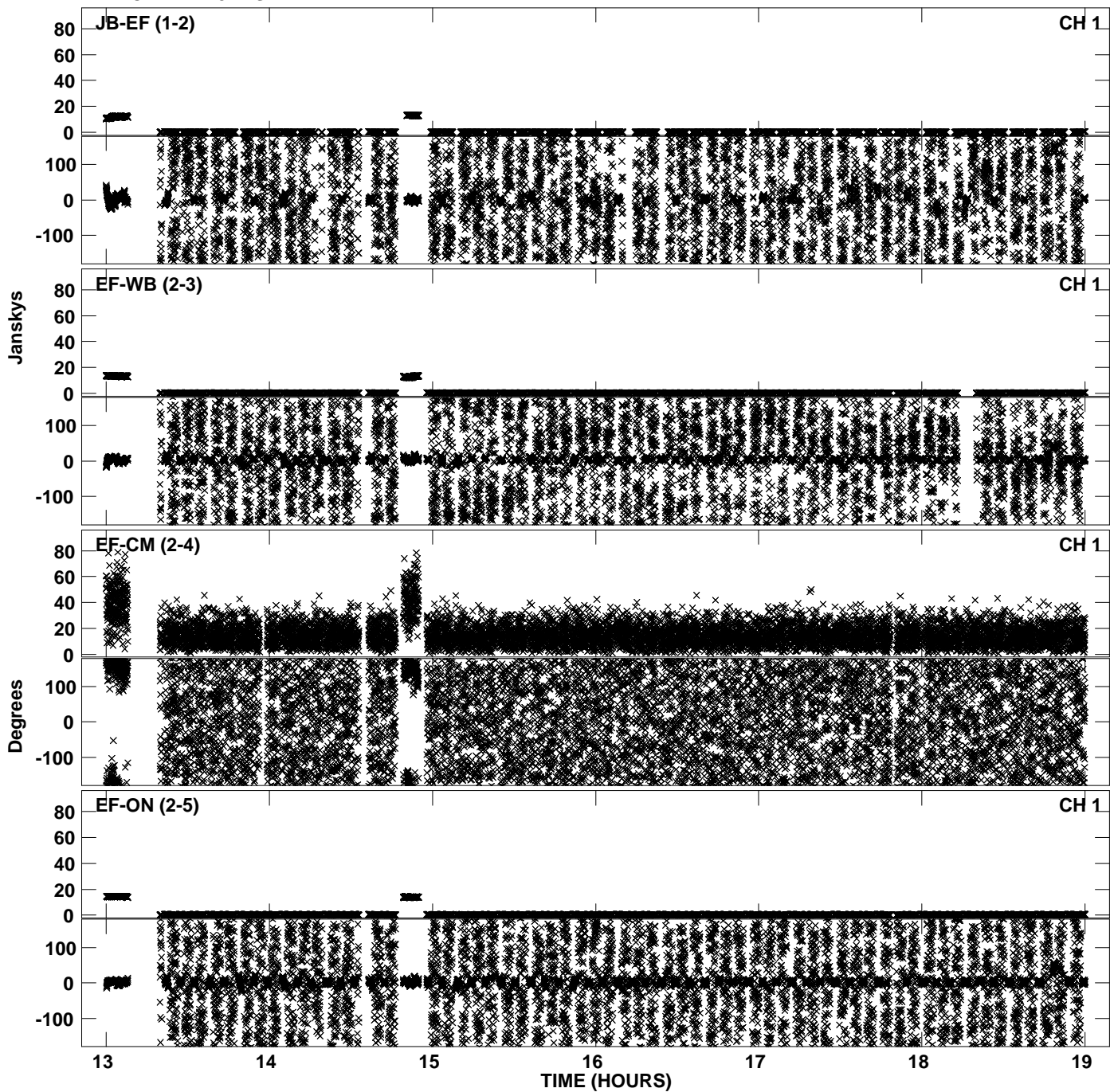
PLot file version 21 created 16-NOV-2010 20:12:44  
Amplitude andPhase vs Time for EP068A 1.UVDATA.1 Vect aver. CL # 3  
IF 3 CHAN 1 - 32 STK RR



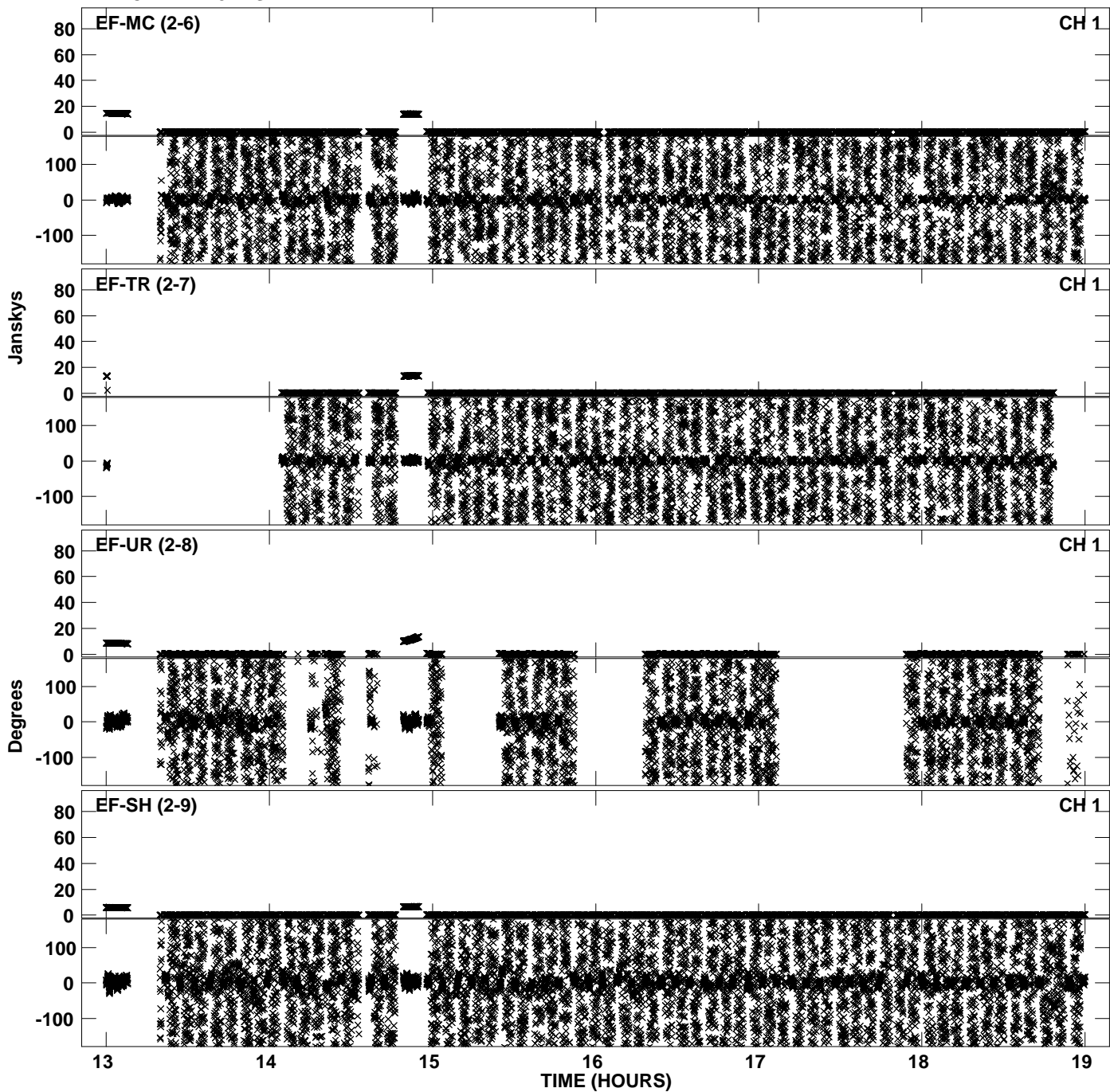
Plot file version 22 created 16-NOV-2010 20:12:44  
Amplitude andPhase vs Time for EP068A 1.UVDATA.1 Vect aver. CL # 3  
IF 3 CHAN 1 - 32 STK RR



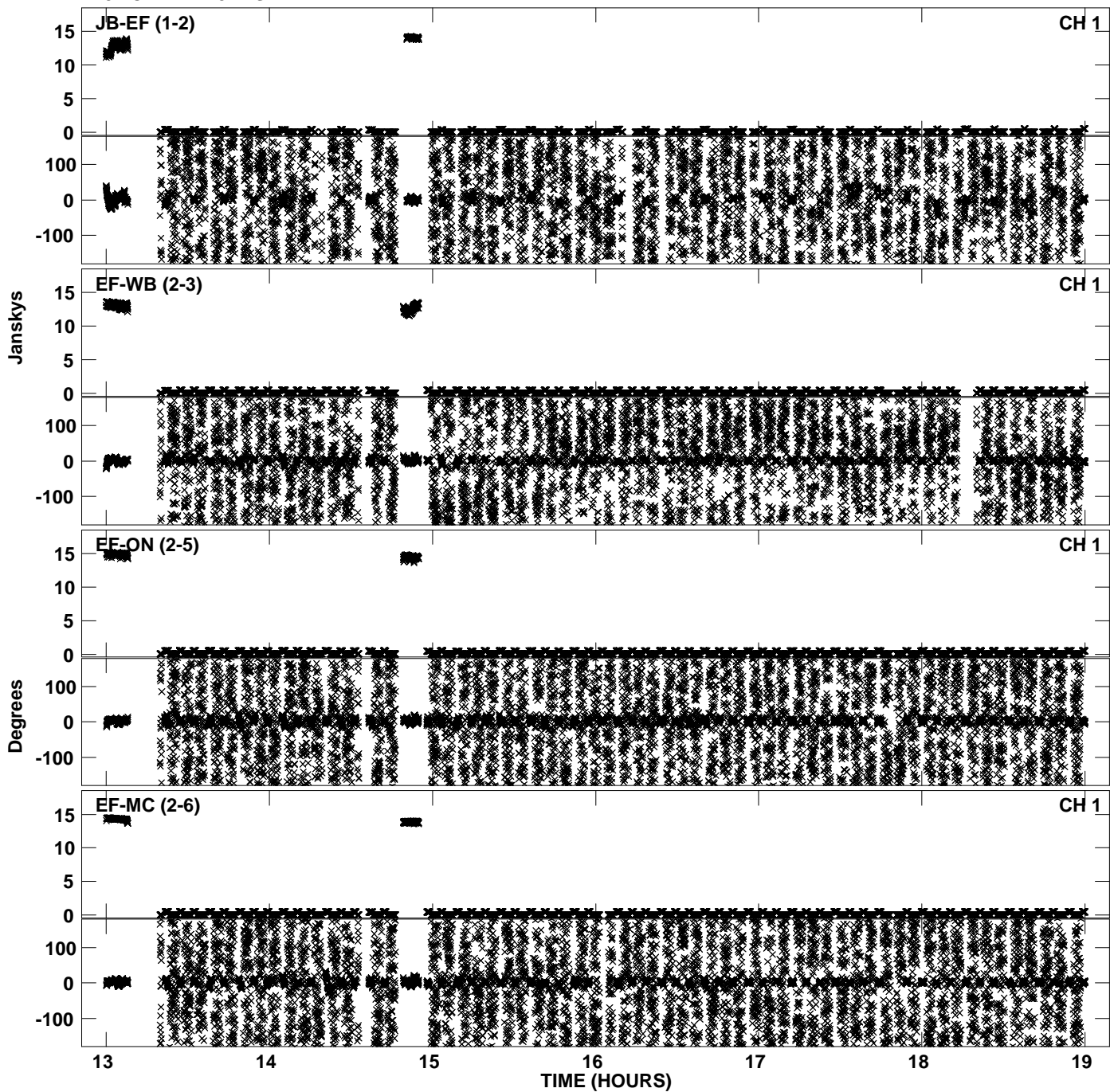
Plot file version 23 created 16-NOV-2010 20:12:52  
Amplitude andPhase vs Time for EP068A 1.UVDATA.1 Vect aver. CL # 3  
IF 4 CHAN 1 - 32 STK RR



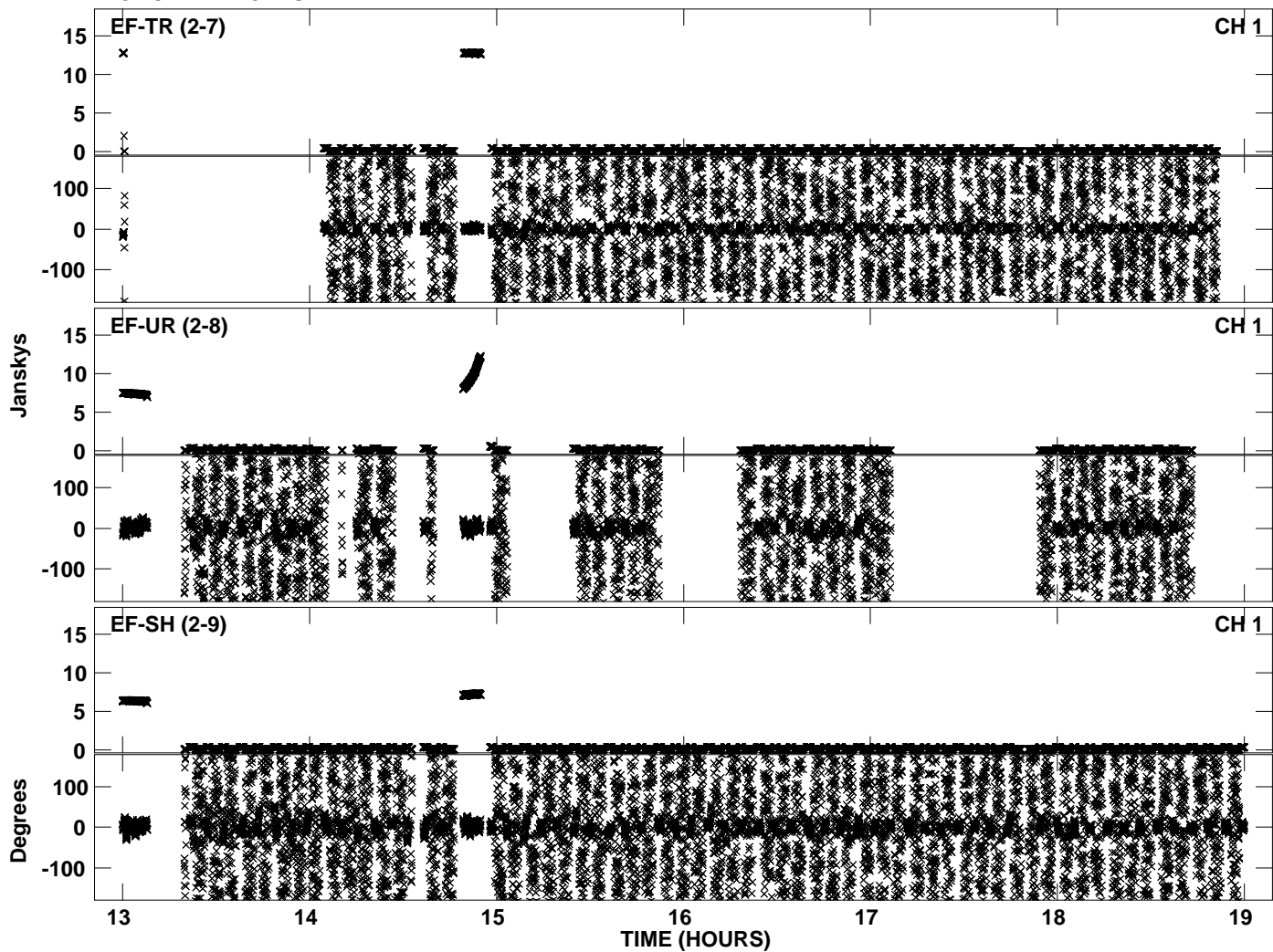
Plot file version 24 created 16-NOV-2010 20:12:52  
Amplitude andPhase vs Time for EP068A 1.UVDATA.1 Vect aver. CL # 3  
IF 4 CHAN 1 - 32 STK RR



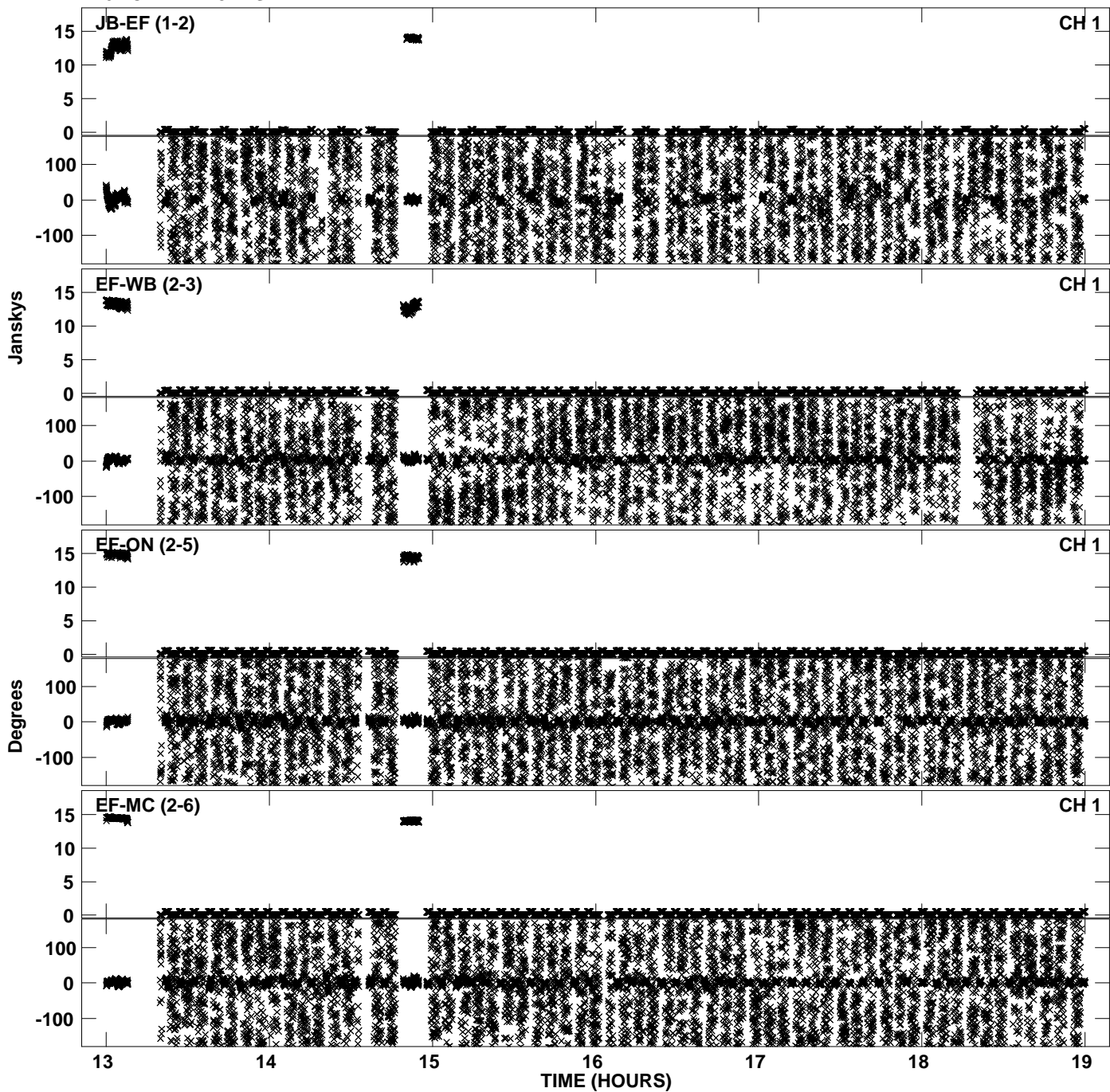
PLot file version 25 created 16-NOV-2010 20:12:59  
Amplitude andPhase vs Time for EP068A 1.UVDATA.1 Vect aver. CL # 3  
IF 5 CHAN 1 - 32 STK RR



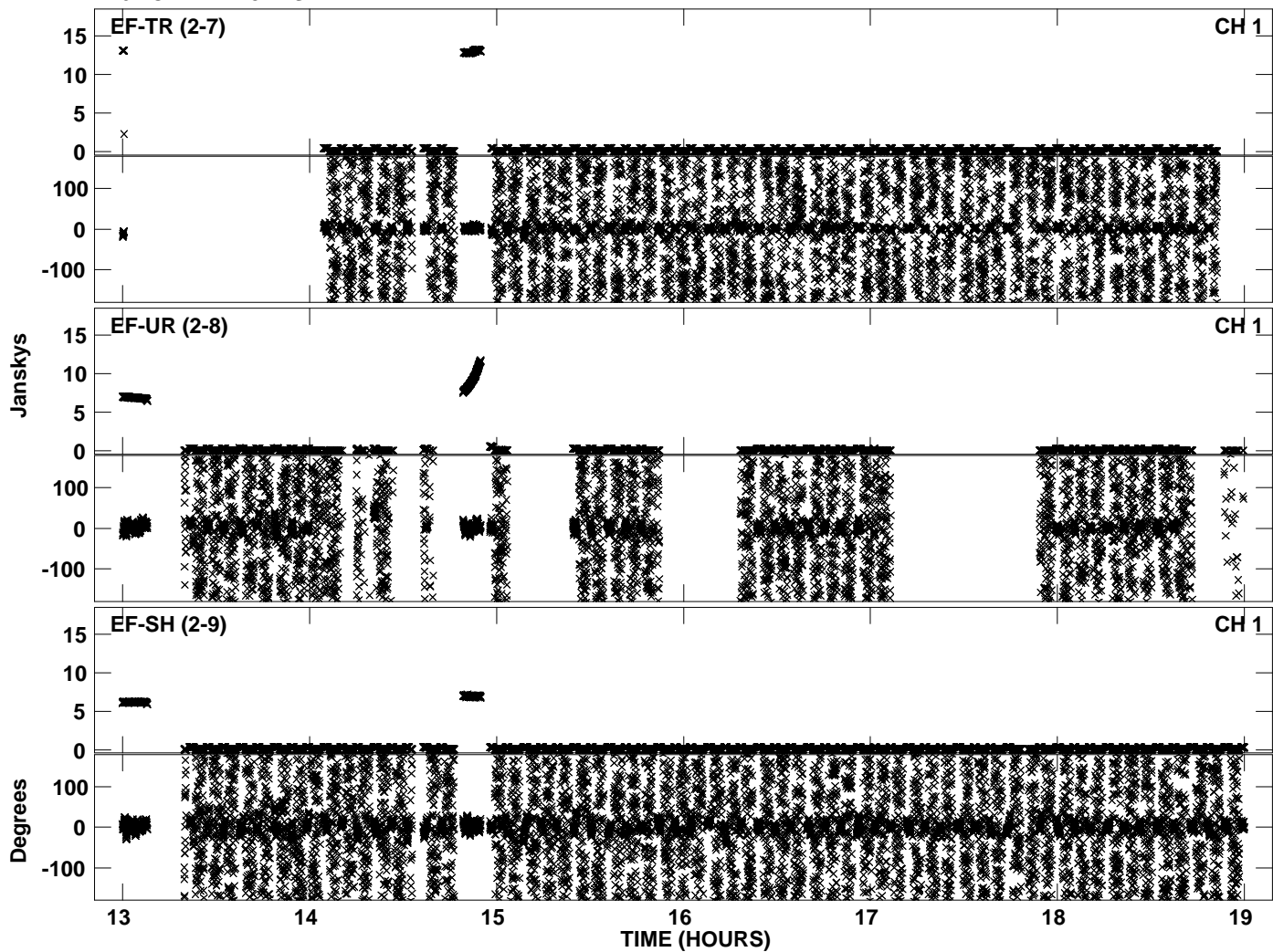
Plot file version 26 created 16-NOV-2010 20:12:59  
Amplitude andPhase vs Time for EP068A 1.UVDATA.1 Vect aver. CL # 3  
IF 5 CHAN 1 - 32 STK RR



PLot file version 27 created 16-NOV-2010 20:13:05  
Amplitude andPhase vs Time for EP068A 1.UVDATA.1 Vect aver. CL # 3  
IF 6 CHAN 1 - 32 STK RR

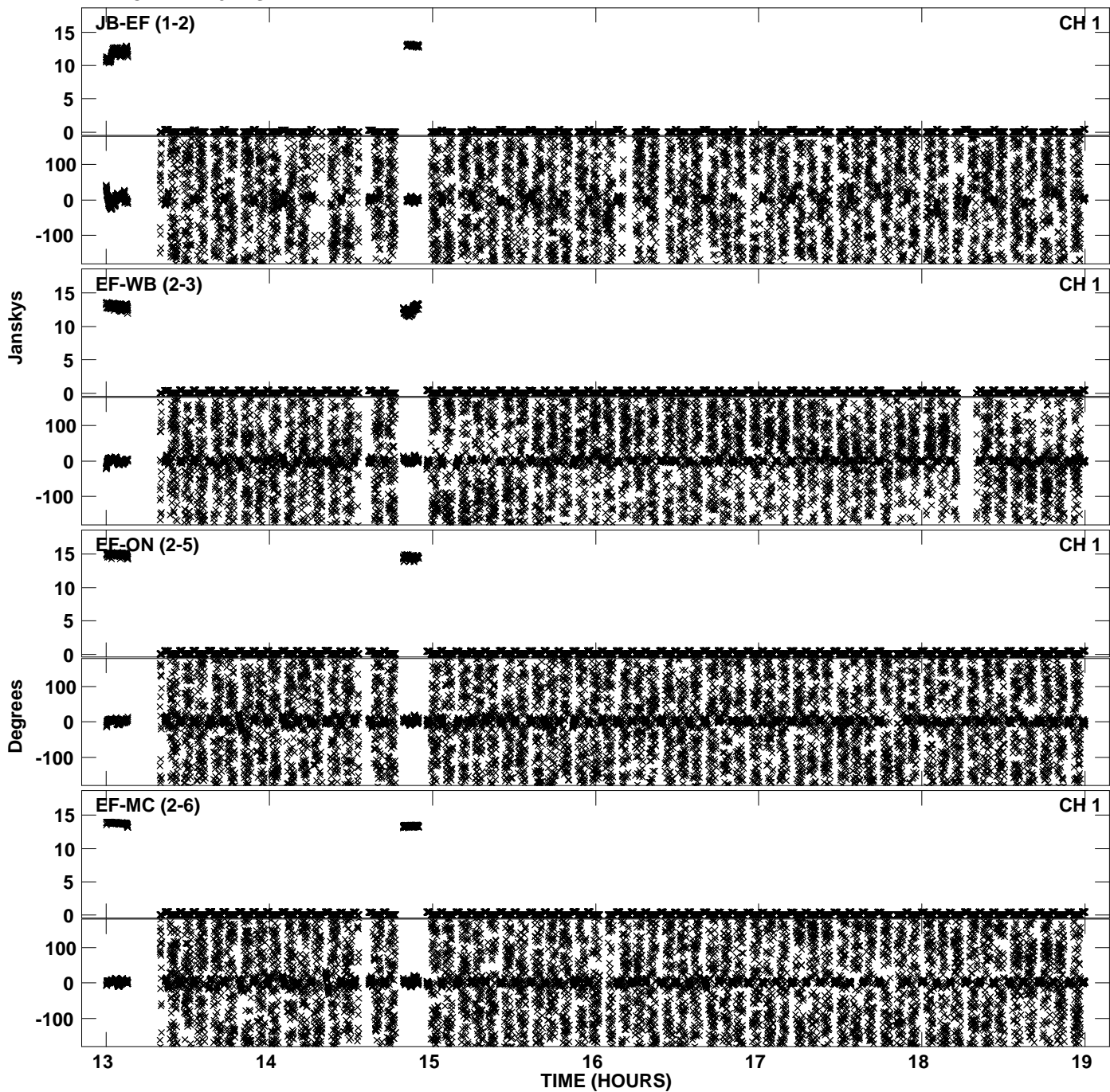


Plot file version 28 created 16-NOV-2010 20:13:06  
Amplitude andPhase vs Time for EP068A 1.UVDATA.1 Vect aver. CL # 3  
IF 6 CHAN 1 - 32 STK RR

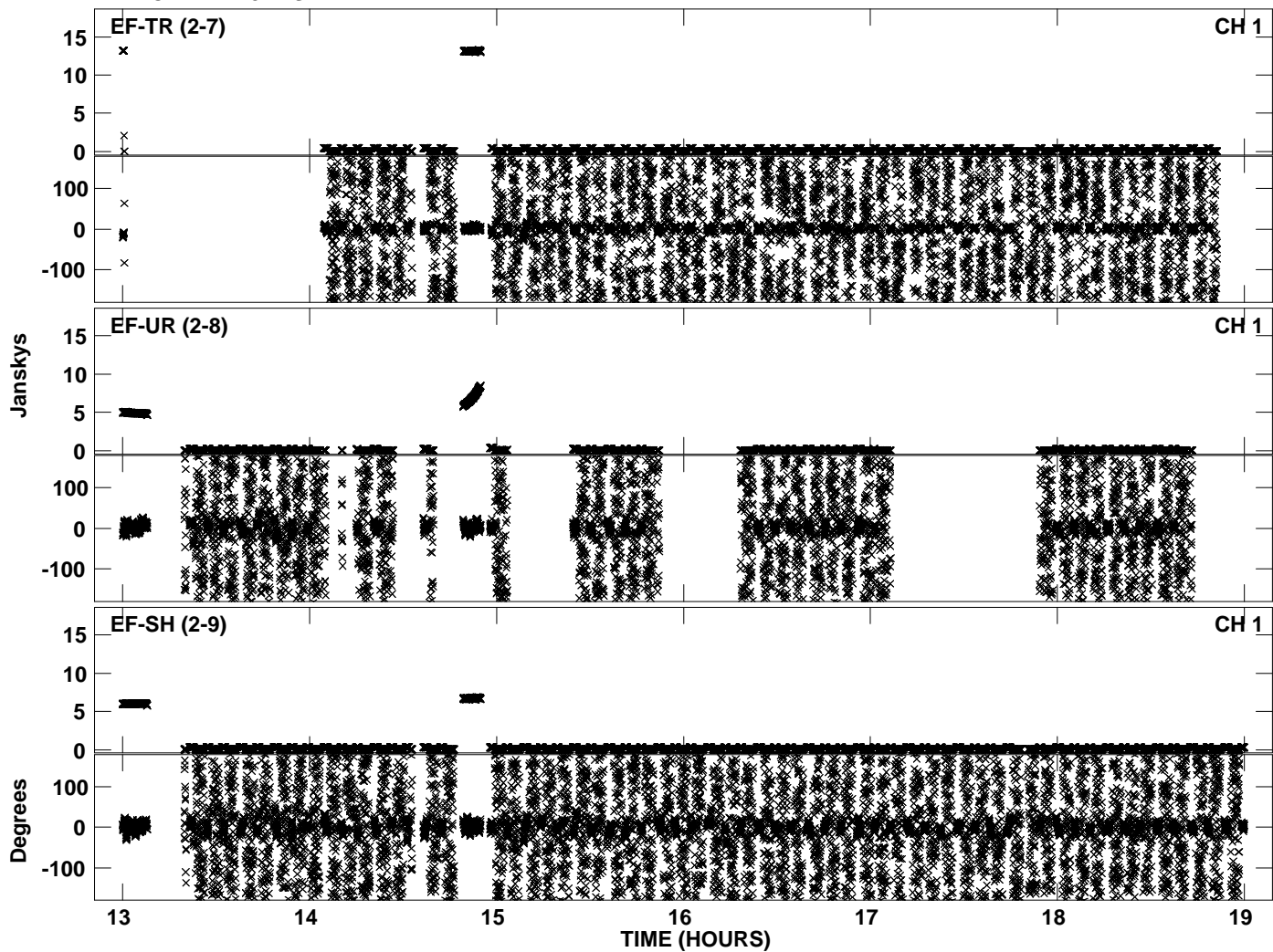




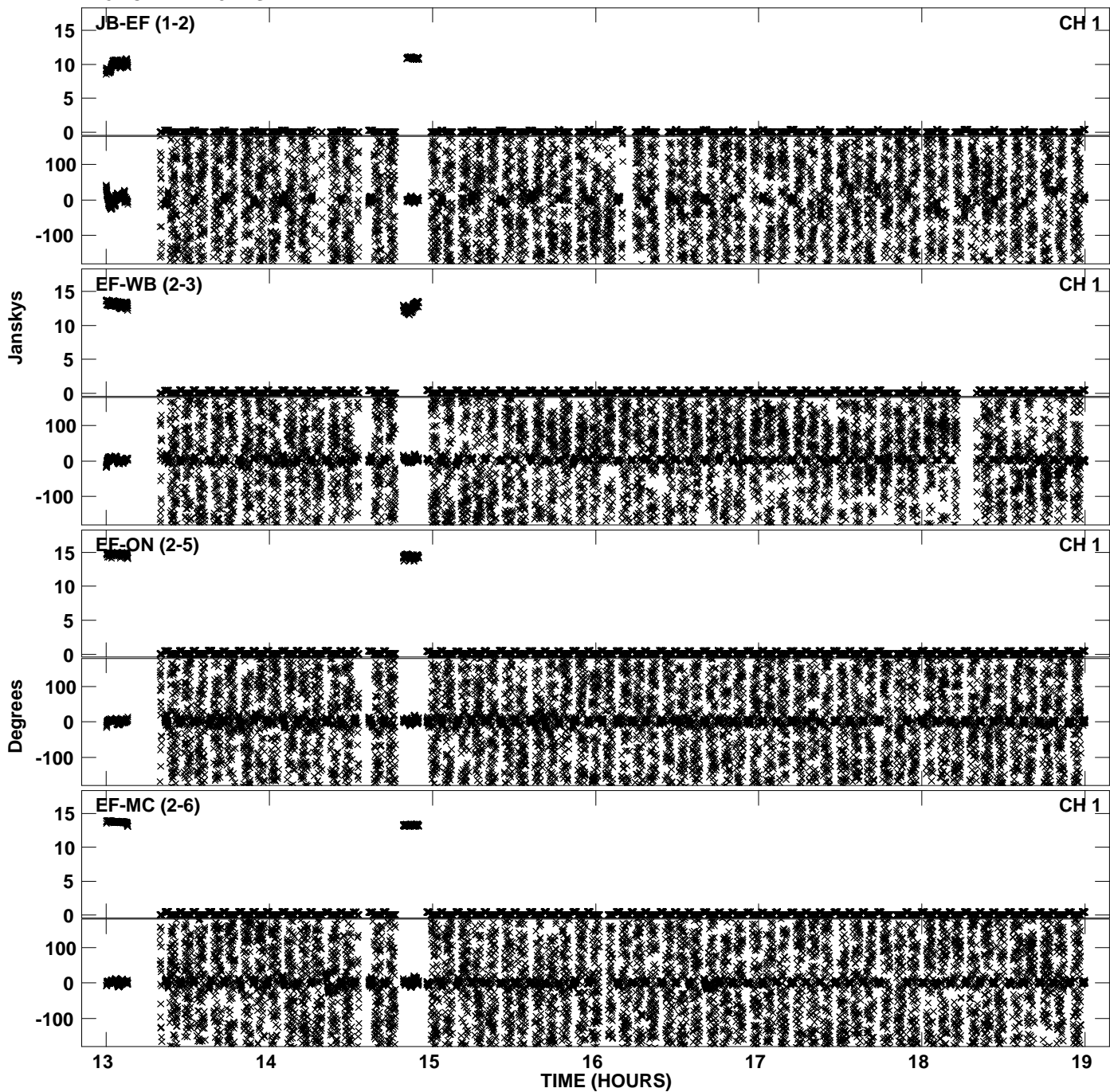
PLot file version 29 created 16-NOV-2010 20:13:12  
Amplitude andPhase vs Time for EP068A 1.UVDATA.1 Vect aver. CL # 3  
IF 7 CHAN 1 - 32 STK RR



PLot file version 30 created 16-NOV-2010 20:13:12  
Amplitude andPhase vs Time for EP068A 1.UVDATA.1 Vect aver. CL # 3  
IF 7 CHAN 1 - 32 STK RR



PLot file version 31 created 16-NOV-2010 20:13:19  
Amplitude andPhase vs Time for EP068A 1.UVDATA.1 Vect aver. CL # 3  
IF 8 CHAN 1 - 32 STK RR



PLot file version 32 created 16-NOV-2010 20:13:19  
Amplitude andPhase vs Time for EP068A 1.UVDATA.1 Vect aver. CL # 3  
IF 8 CHAN 1 - 32 STK RR

