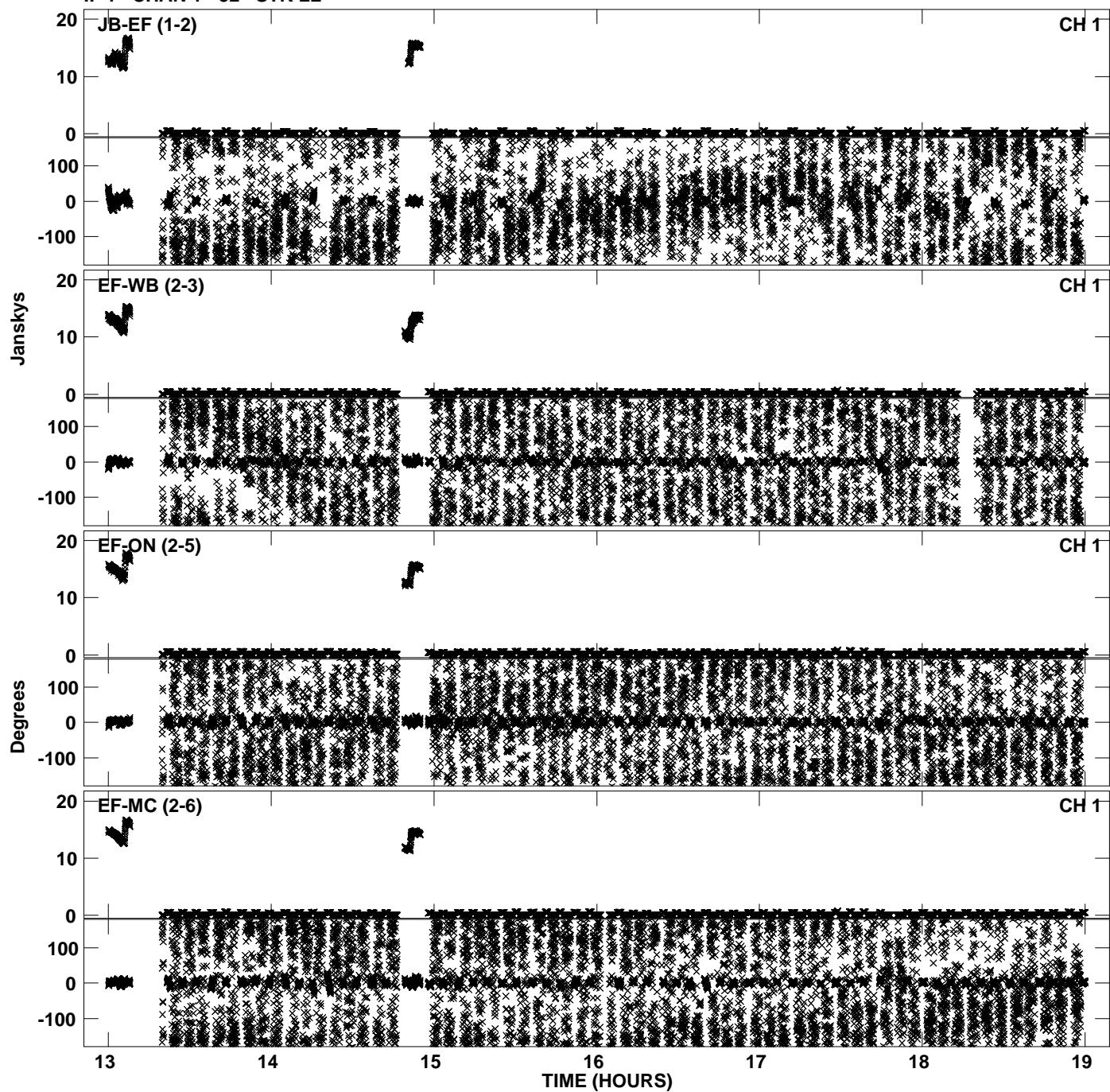
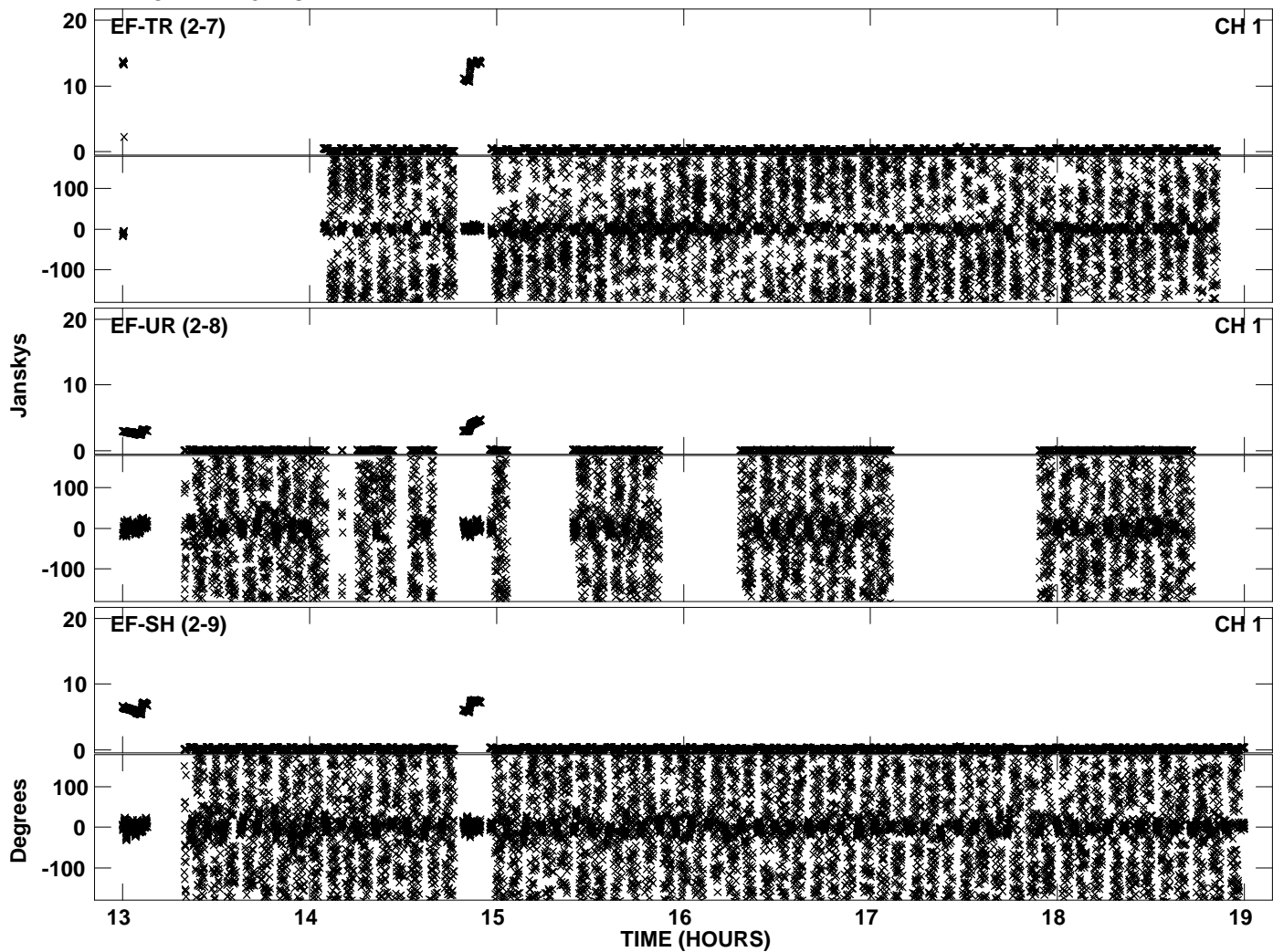


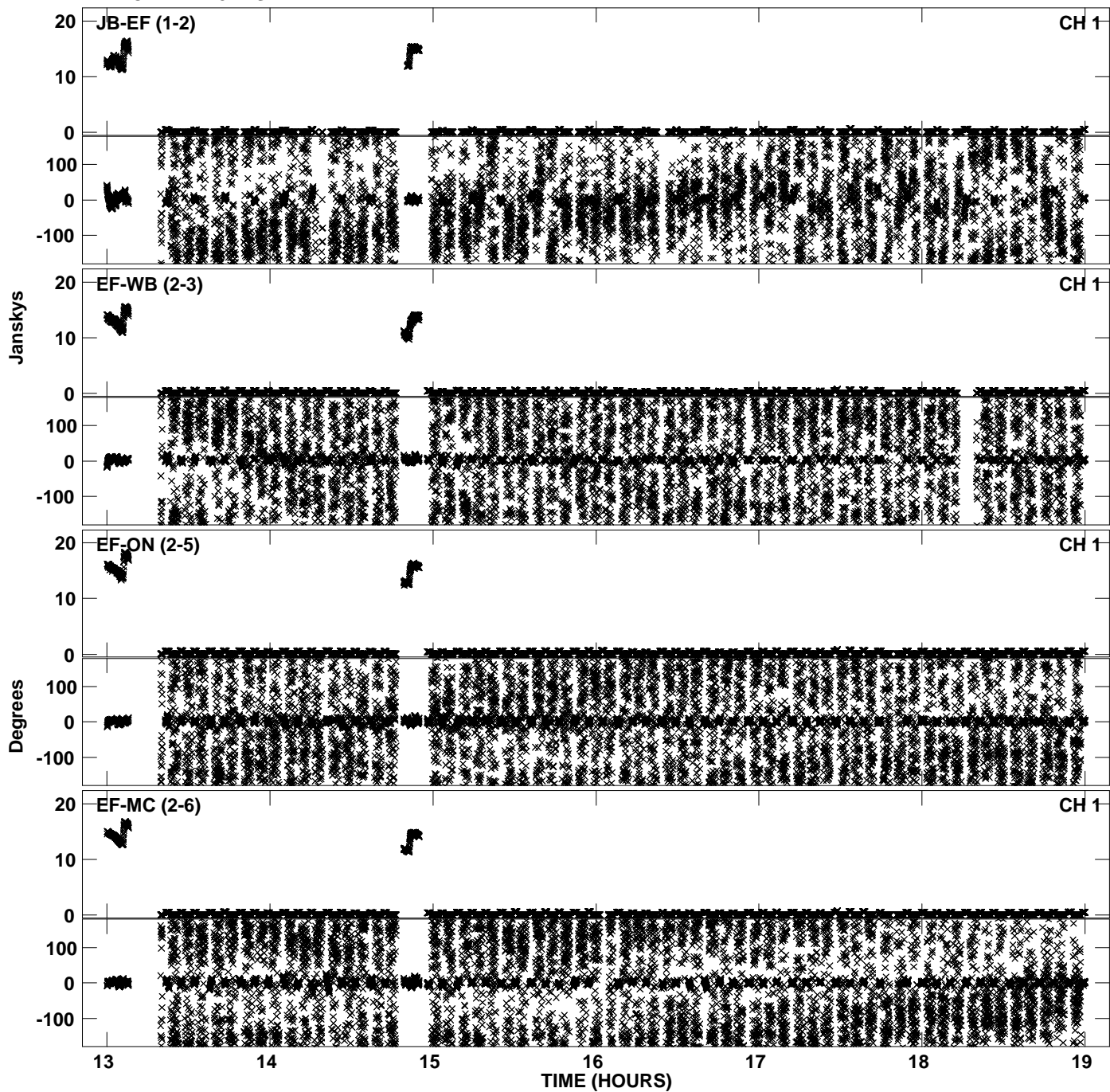
PLot file version 1 created 17-NOV-2010 12:54:55
Amplitude andPhase vs Time for EP068A 2.UVDATA.1 Vect aver. CL # 3
IF 1 CHAN 1 - 32 STK LL



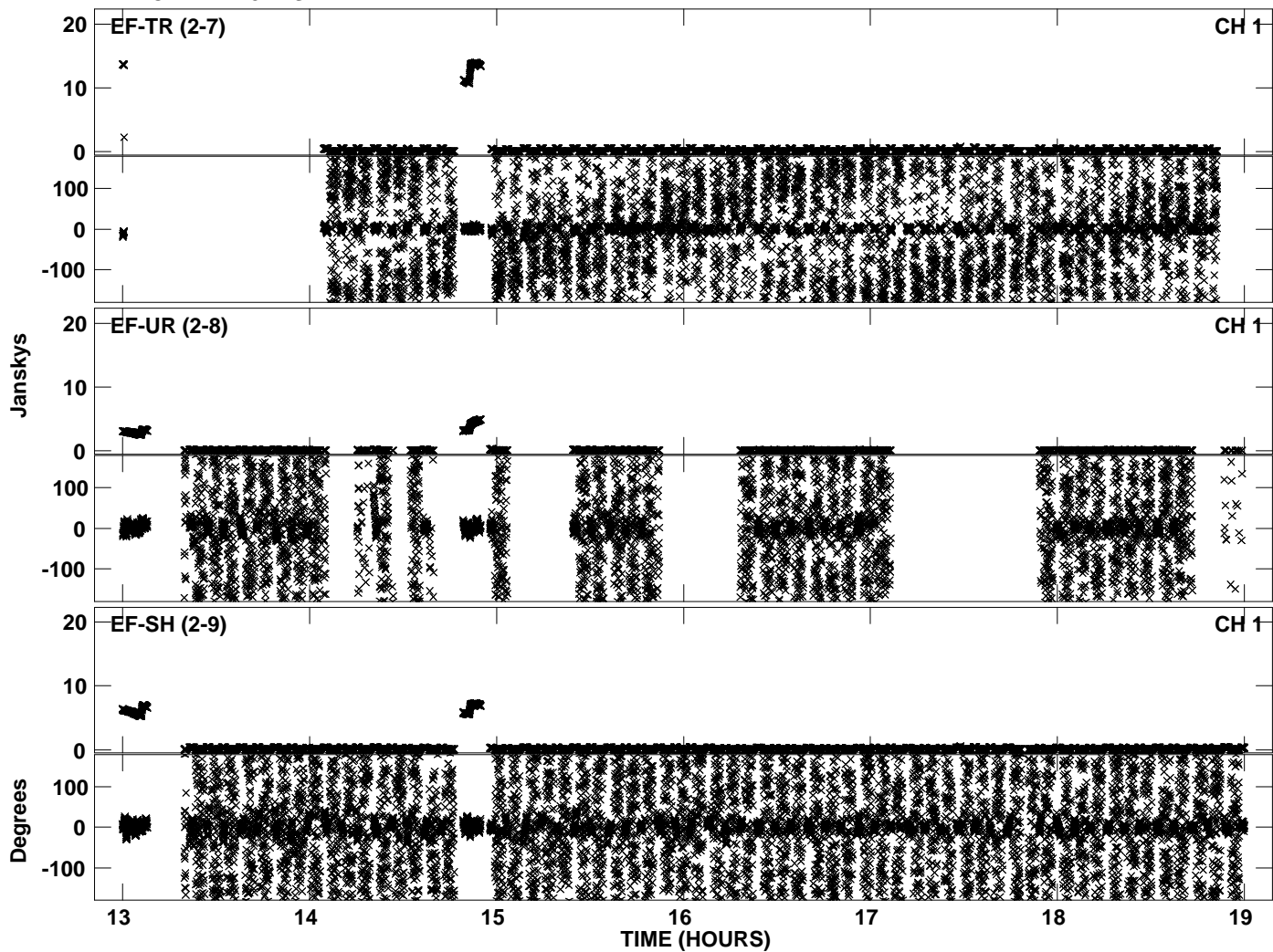
Plot file version 2 created 17-NOV-2010 12:54:55
Amplitude and Phase vs Time for EP068A 2.UVDATA.1 Vect aver. CL # 3
IF 1 CHAN 1 - 32 STK LL



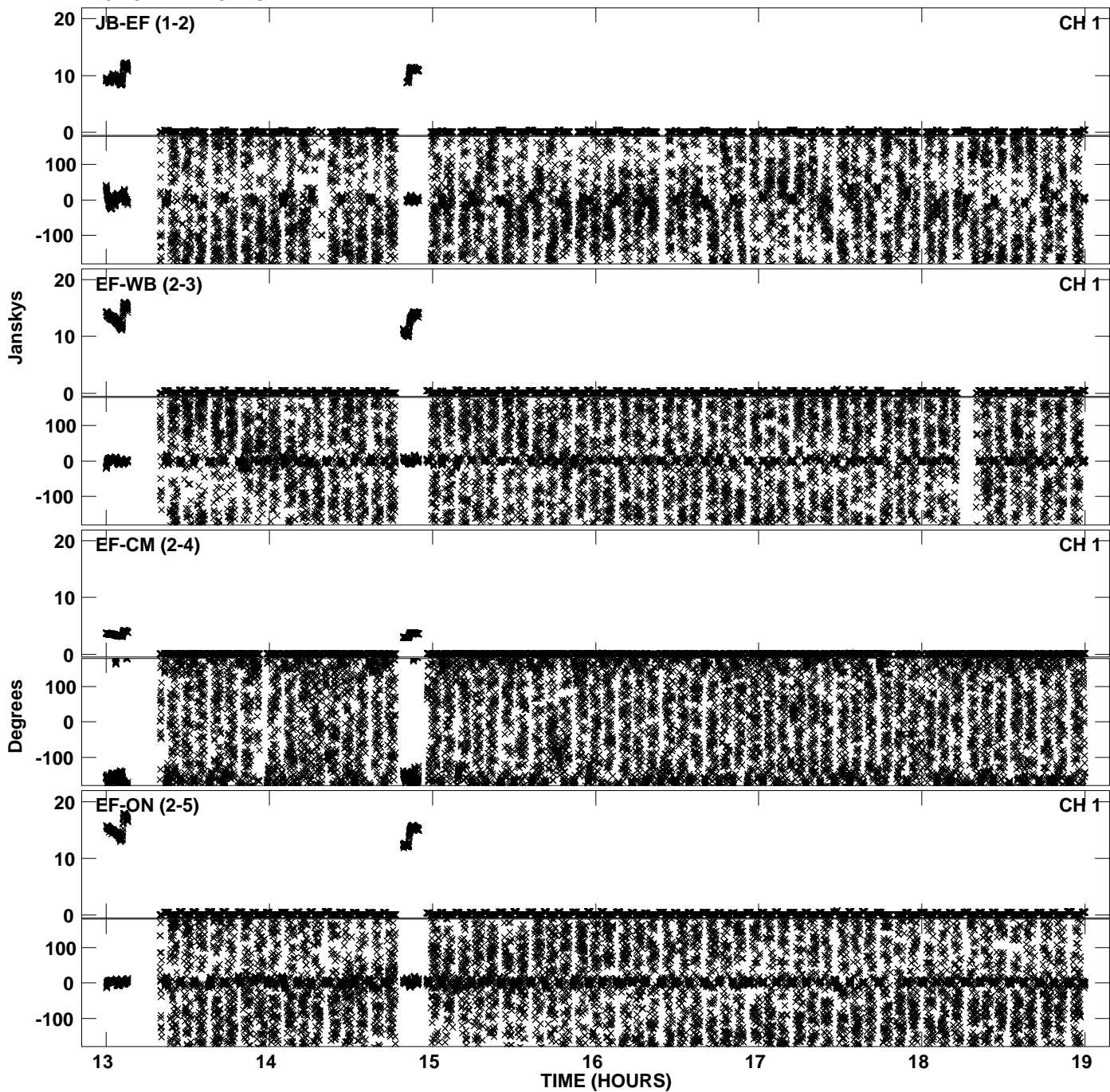
PLot file version 3 created 17-NOV-2010 12:55:03
Amplitude andPhase vs Time for EP068A 2.UVDATA.1 Vect aver. CL # 3
IF 2 CHAN 1 - 32 STK LL



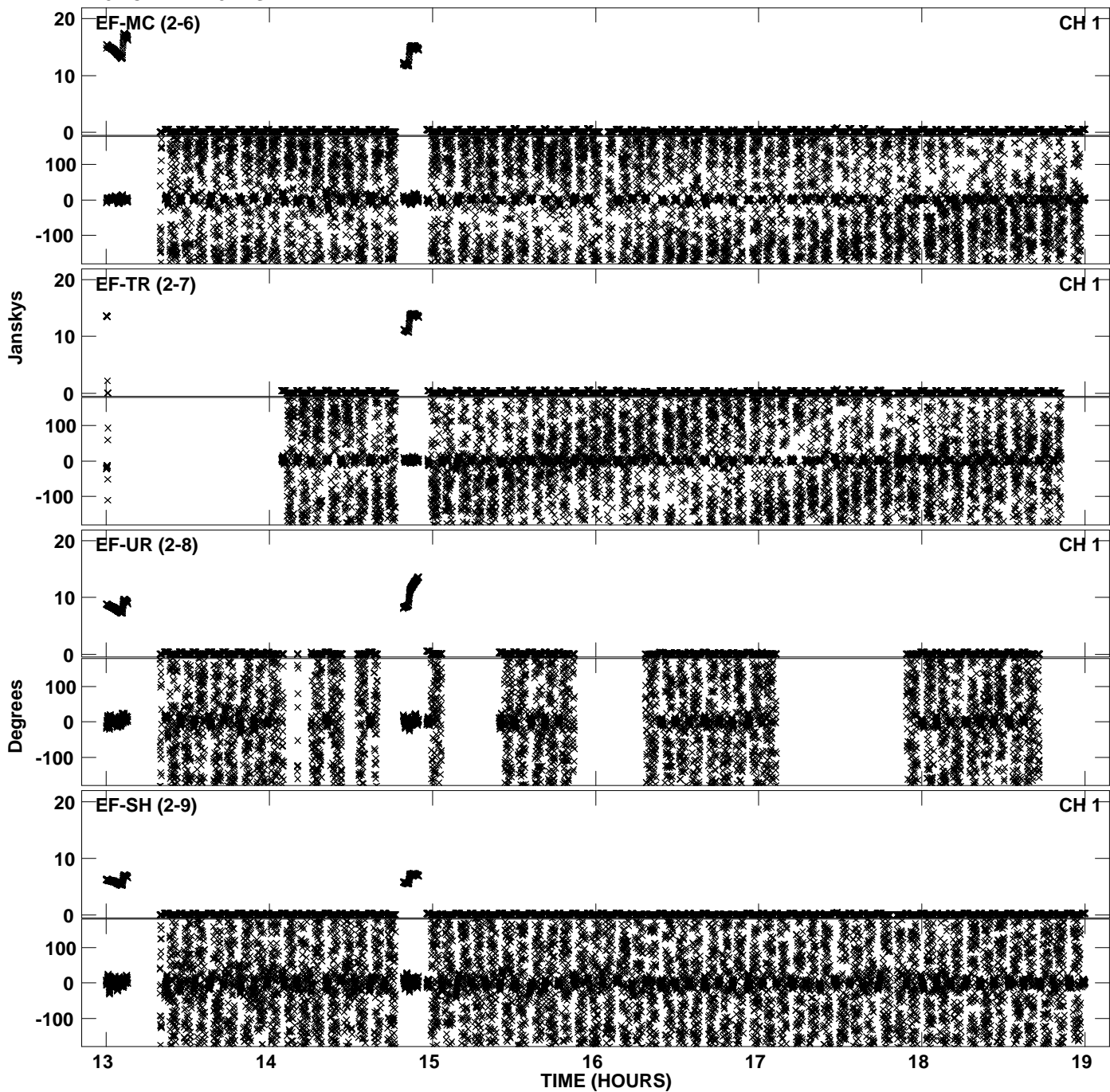
Plot file version 4 created 17-NOV-2010 12:55:03
Amplitude andPhase vs Time for EP068A 2.UVDATA.1 Vect aver. CL # 3
IF 2 CHAN 1 - 32 STK LL



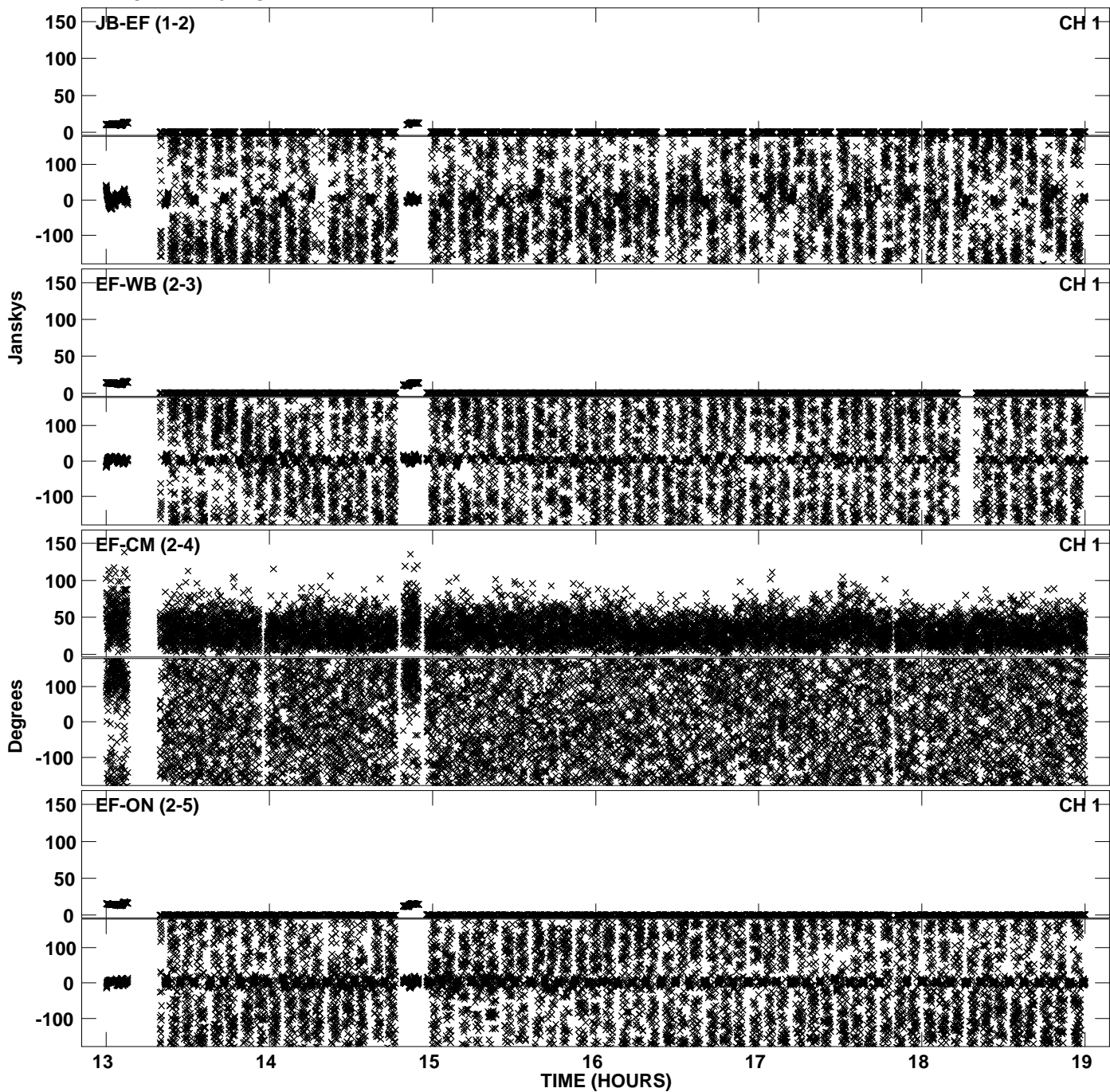
Plot file version 5 created 17-NOV-2010 12:55:11
Amplitude andPhase vs Time for EP068A 2.UVDATA.1 Vect aver. CL # 3
IF 3 CHAN 1 - 32 STK LL



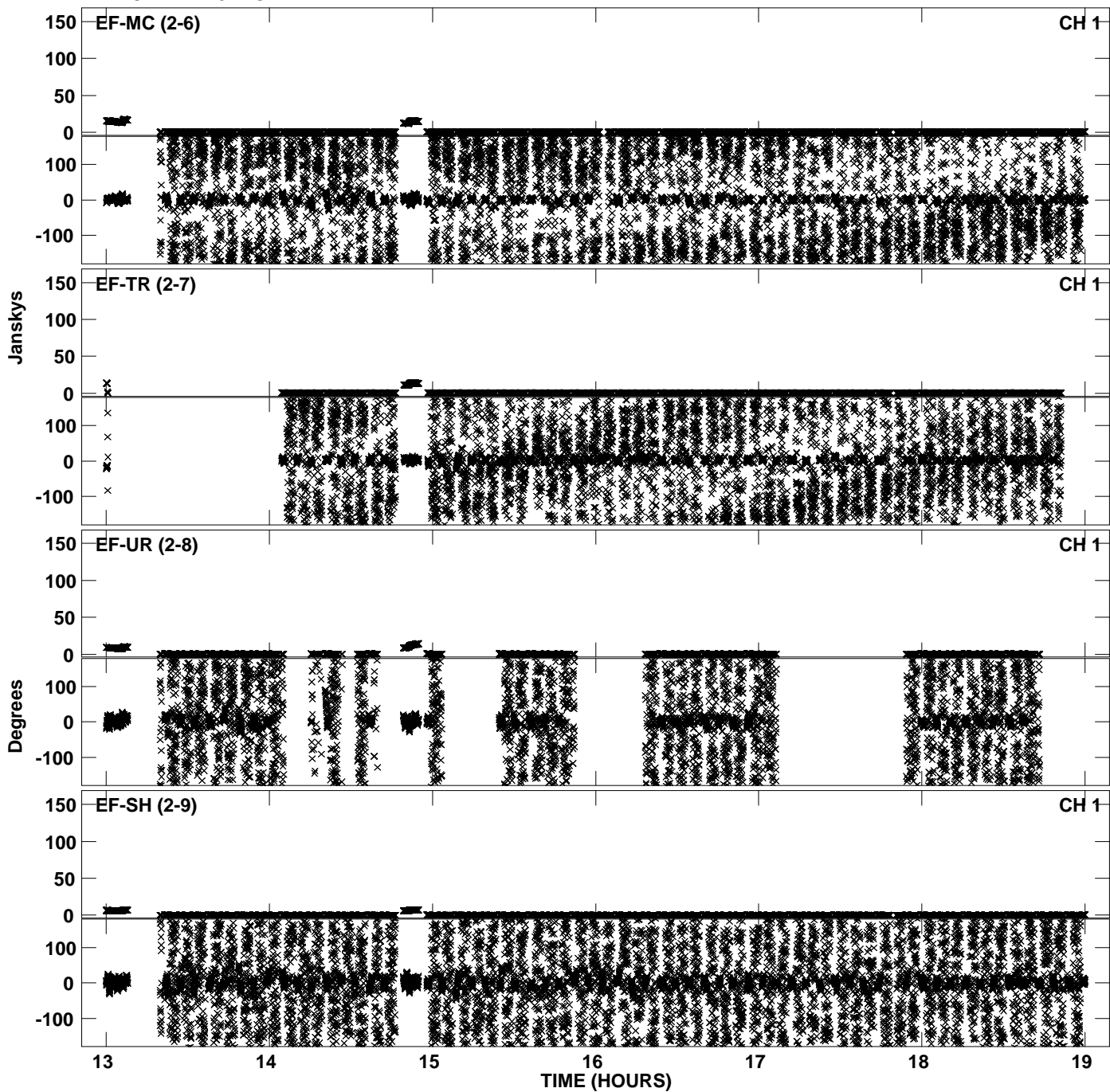
Plot file version 6 created 17-NOV-2010 12:55:11
Amplitude andPhase vs Time for EP068A 2.UVDATA.1 Vect aver. CL # 3
IF 3 CHAN 1 - 32 STK LL



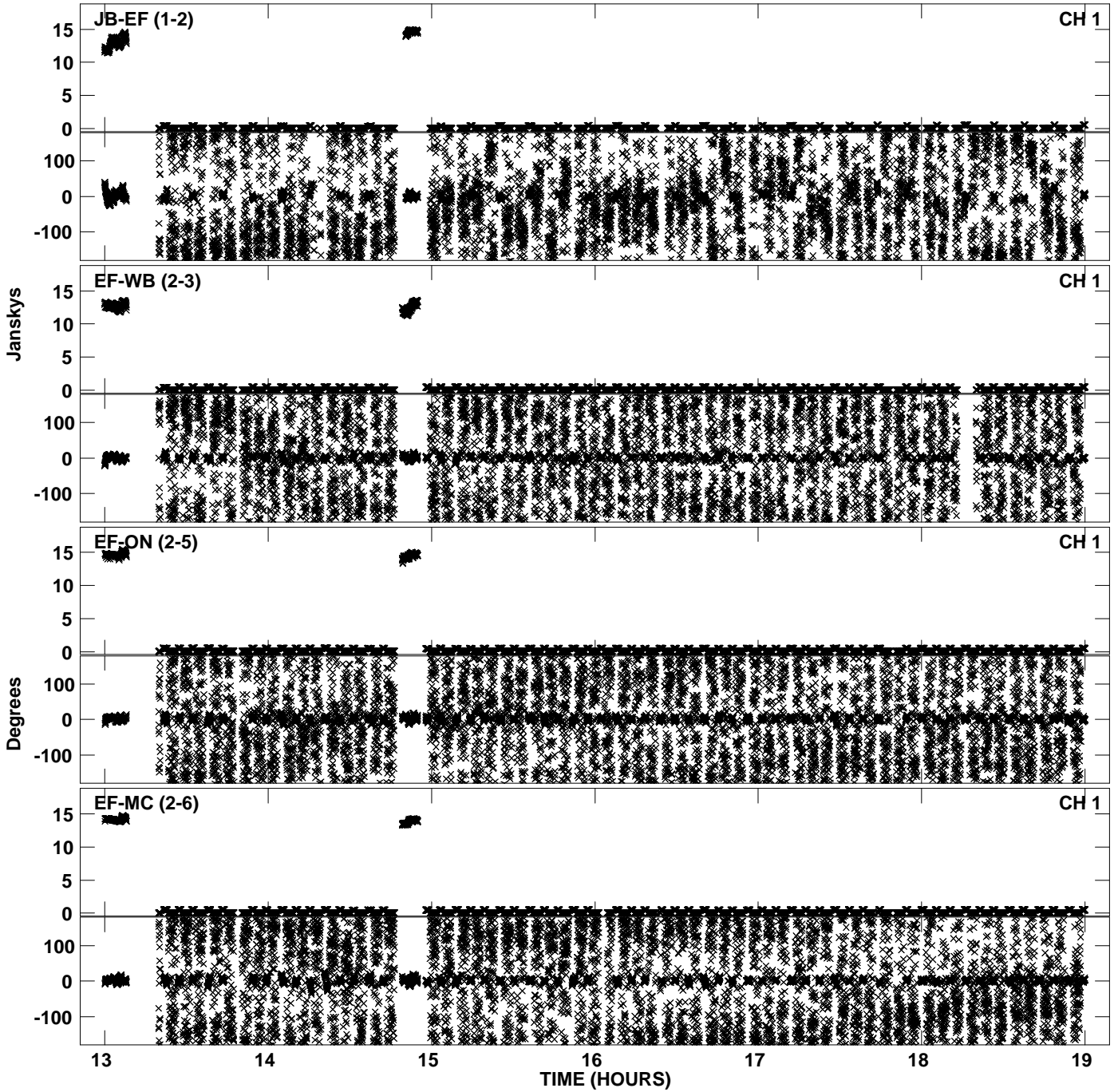
Plot file version 7 created 17-NOV-2010 12:55:19
Amplitude andPhase vs Time for EP068A 2.UVDATA.1 Vect aver. CL # 3
IF 4 CHAN 1 - 32 STK LL



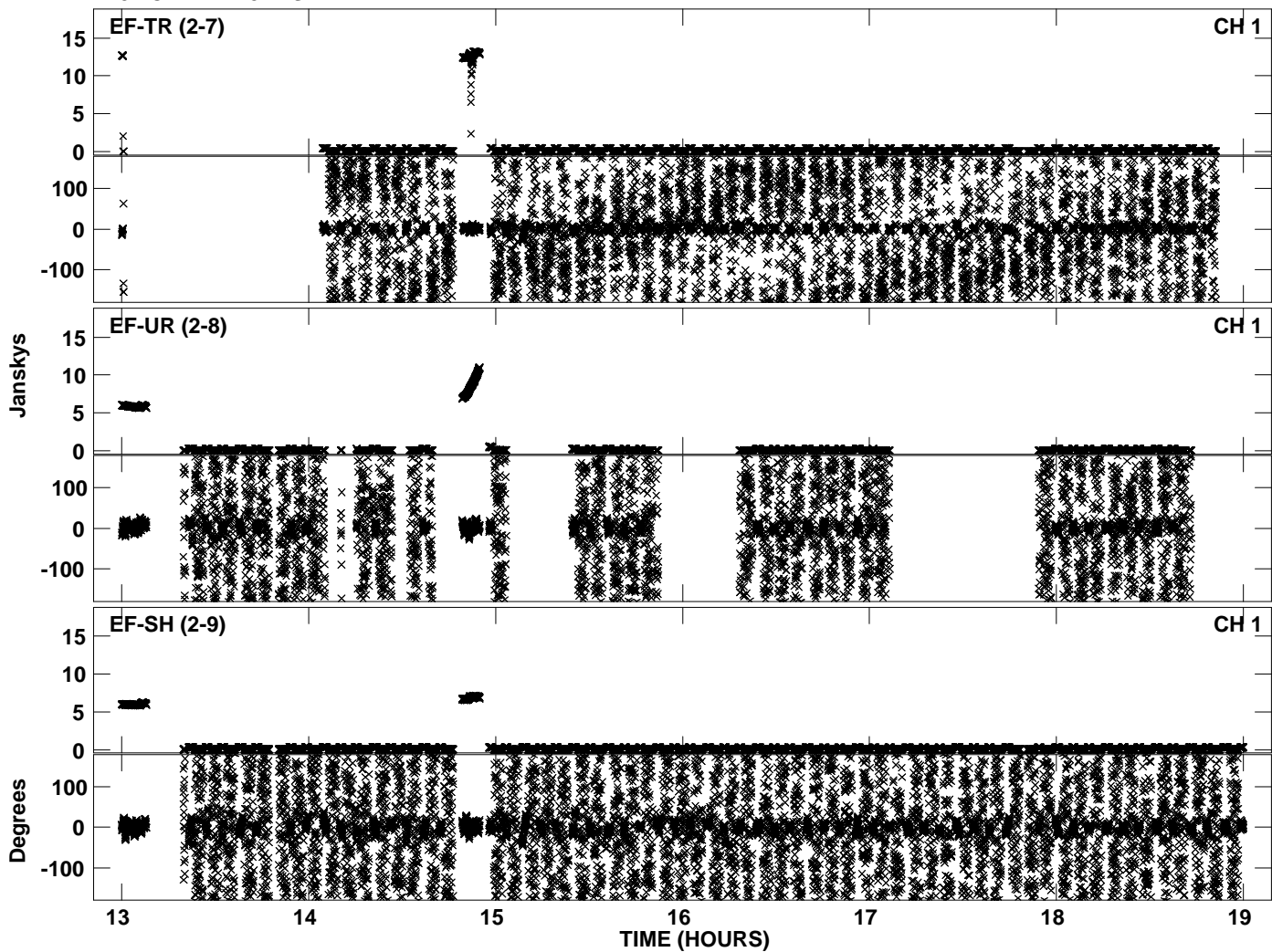
Plot file version 8 created 17-NOV-2010 12:55:19
Amplitude andPhase vs Time for EP068A 2.UVDATA.1 Vect aver. CL # 3
IF 4 CHAN 1 - 32 STK LL



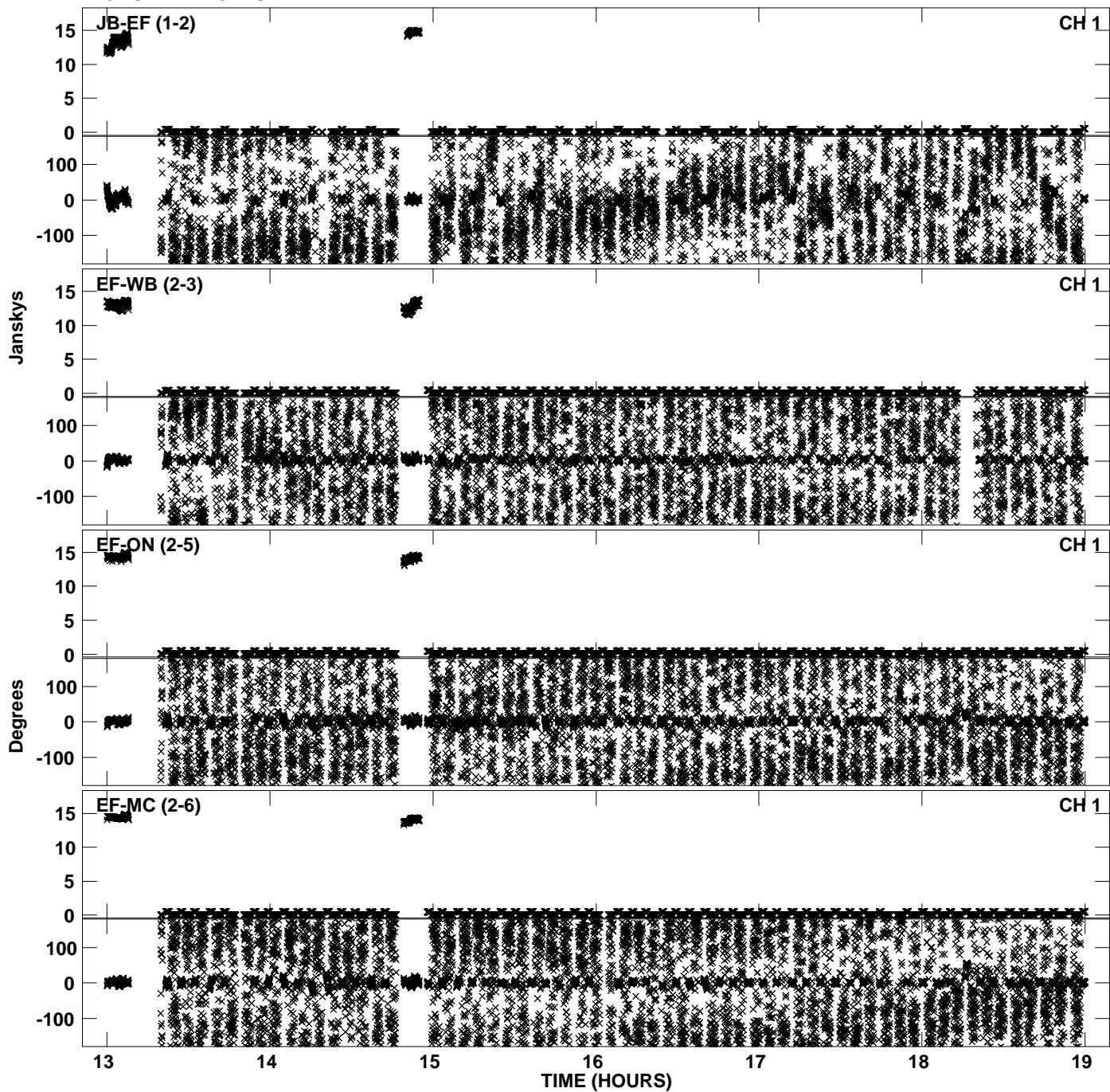
Plot file version 9 created 17-NOV-2010 12:55:27
Amplitude andPhase vs Time for EP068A 2.UVDATA.1 Vect aver. CL # 3
IF 5 CHAN 1 - 32 STK LL



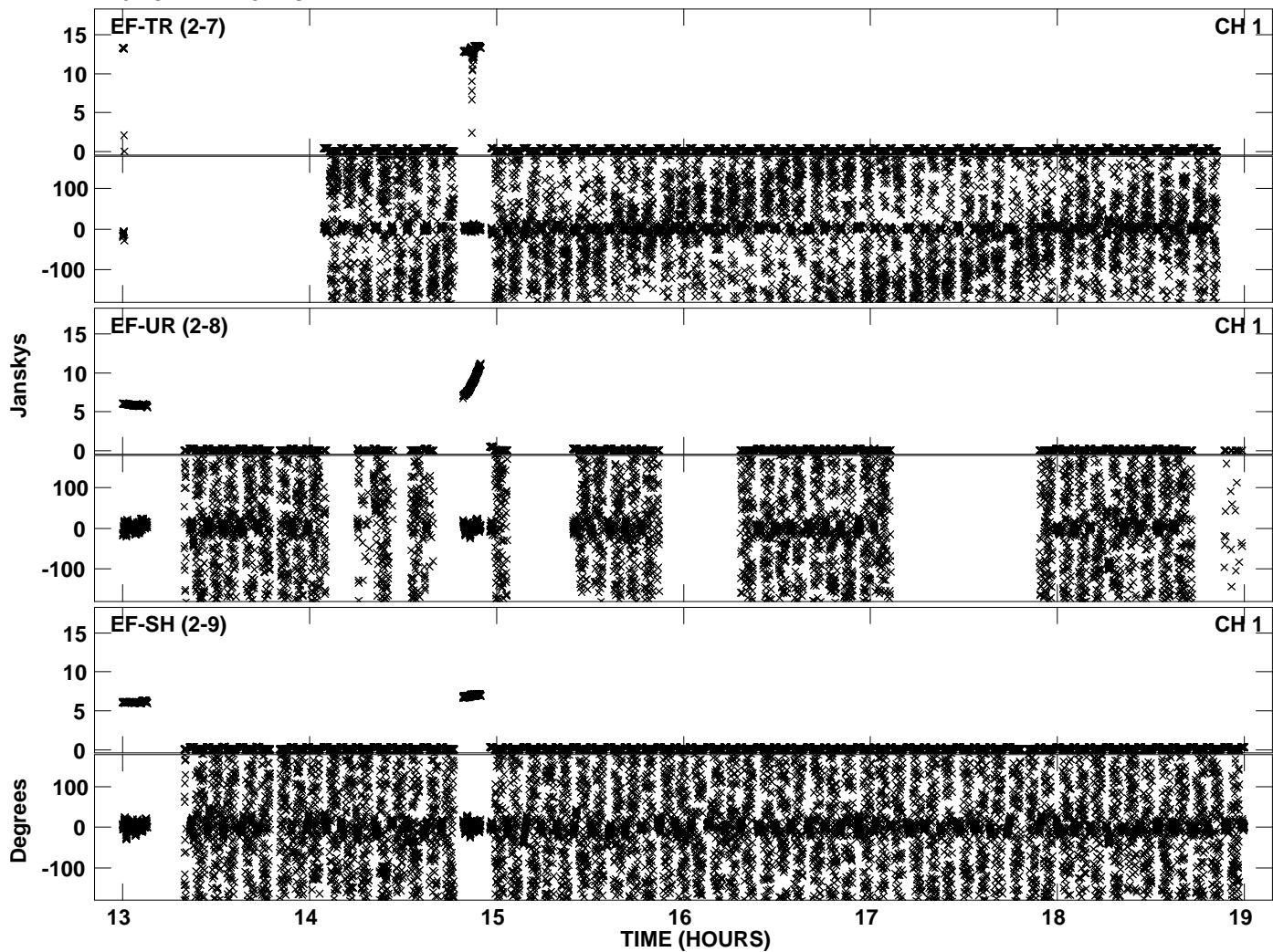
Plot file version 10 created 17-NOV-2010 12:55:27
Amplitude andPhase vs Time for EP068A 2.UVDATA.1 Vect aver. CL # 3
IF 5 CHAN 1 - 32 STK LL



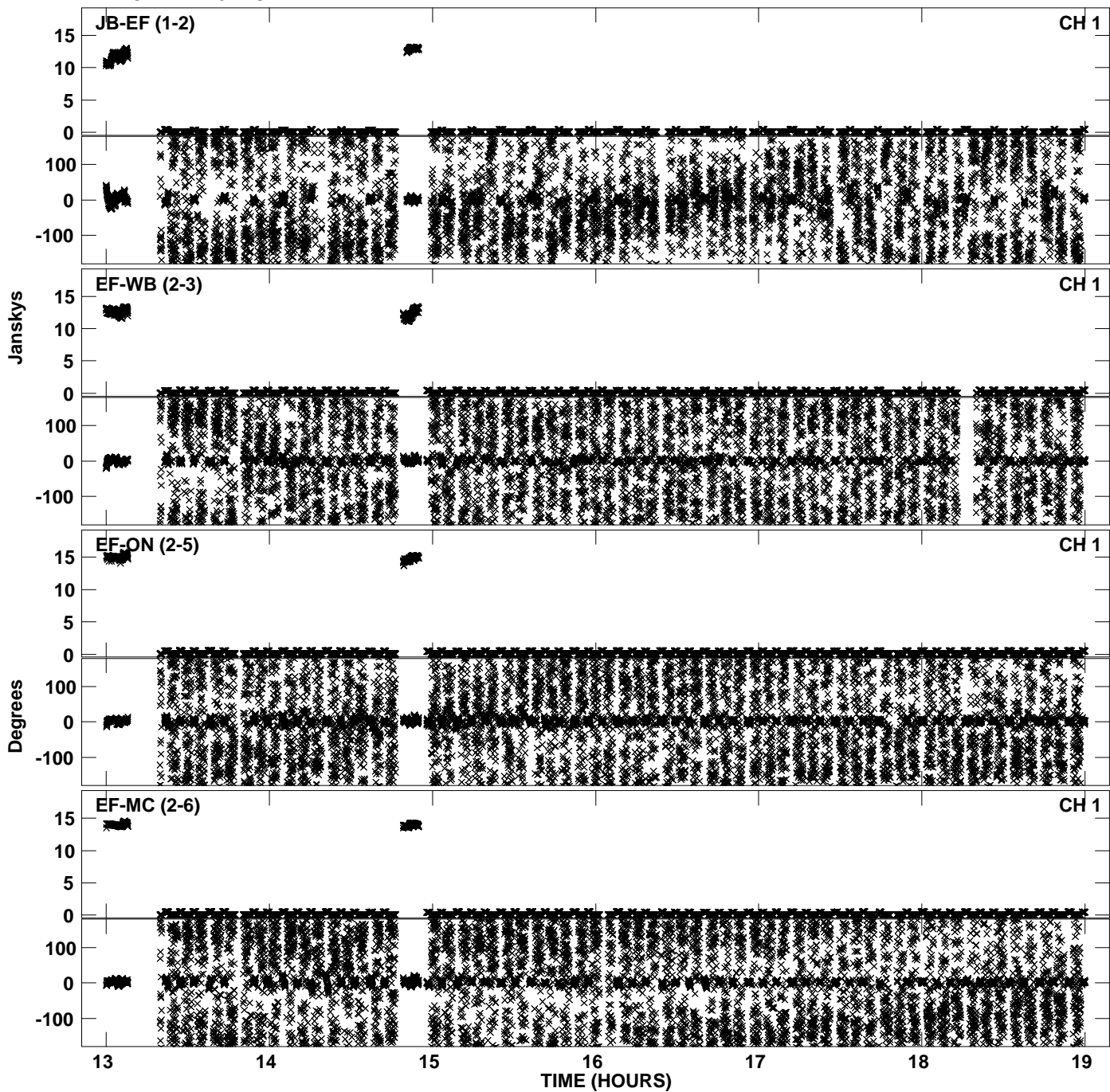
PLot file version 11 created 17-NOV-2010 12:55:34
Amplitude andPhase vs Time for EP068A 2.UVDATA.1 Vect aver. CL # 3
IF 6 CHAN 1 - 32 STK LL



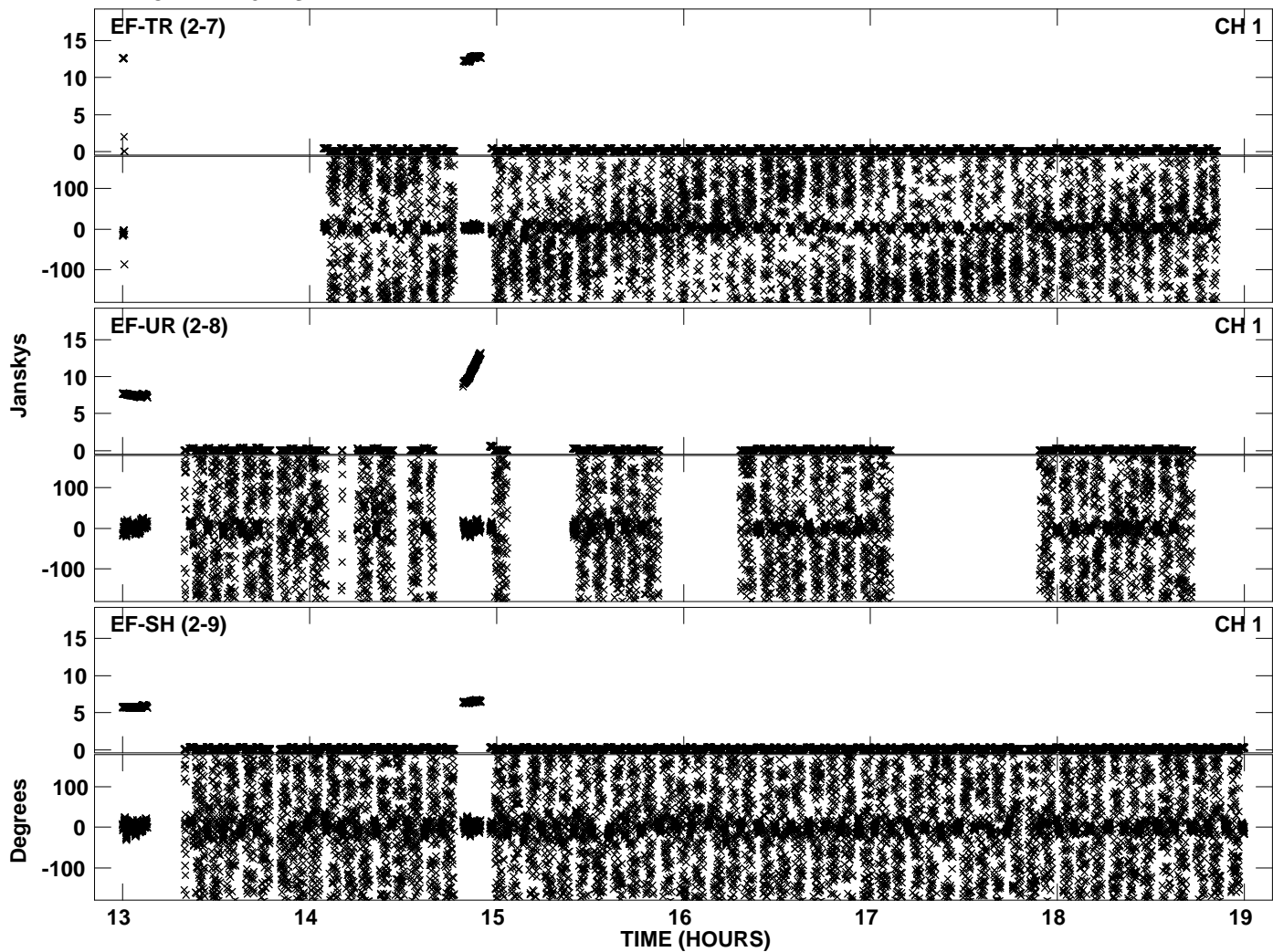
Plot file version 12 created 17-NOV-2010 12:55:34
Amplitude andPhase vs Time for EP068A 2.UVDATA.1 Vect aver. CL # 3
IF 6 CHAN 1 - 32 STK LL



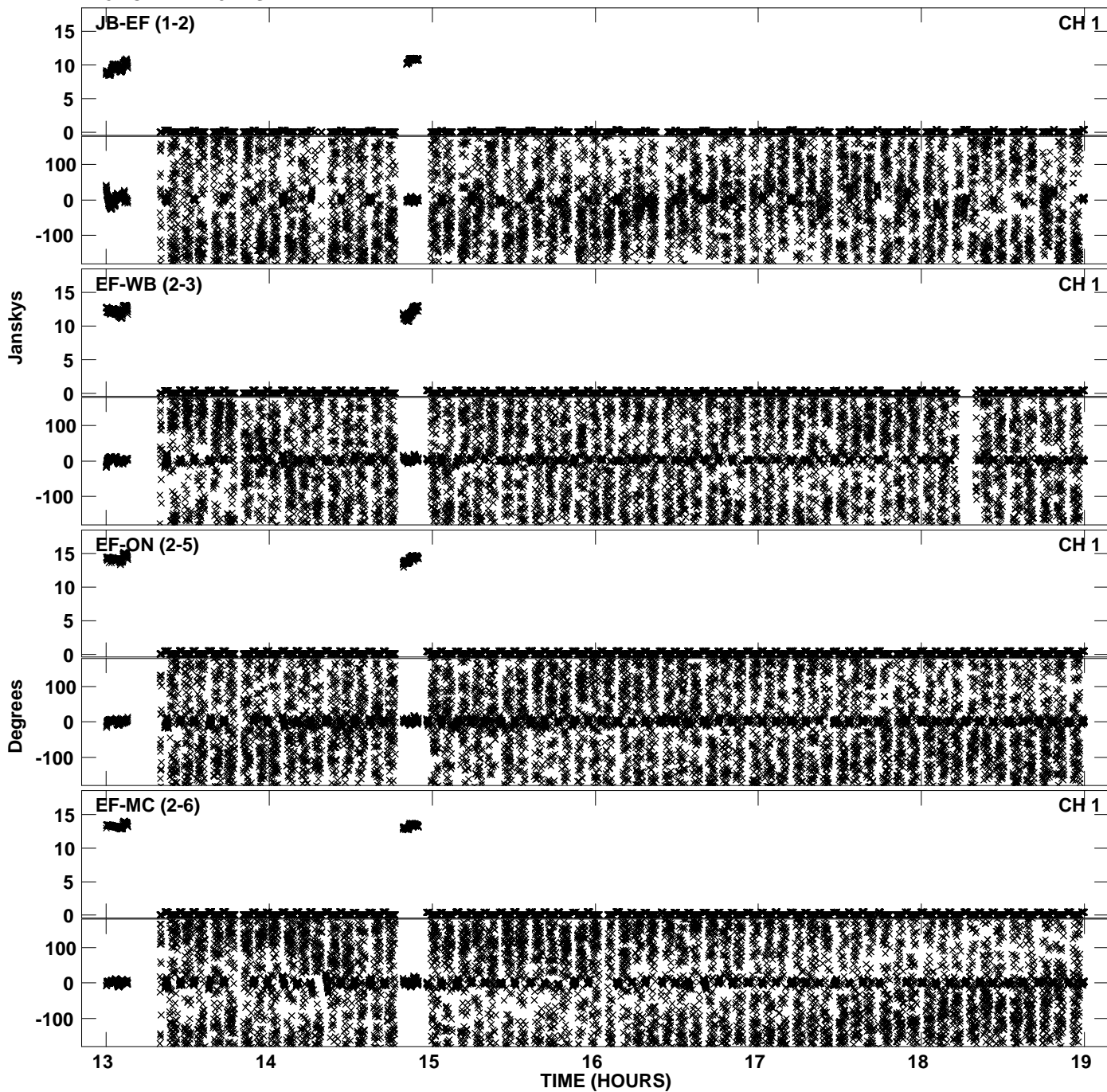
Plot file version 13 created 17-NOV-2010 12:55:42
Amplitude andPhase vs Time for EP068A 2.UVDATA.1 Vect aver. CL # 3
IF 7 CHAN 1 - 32 STK LL



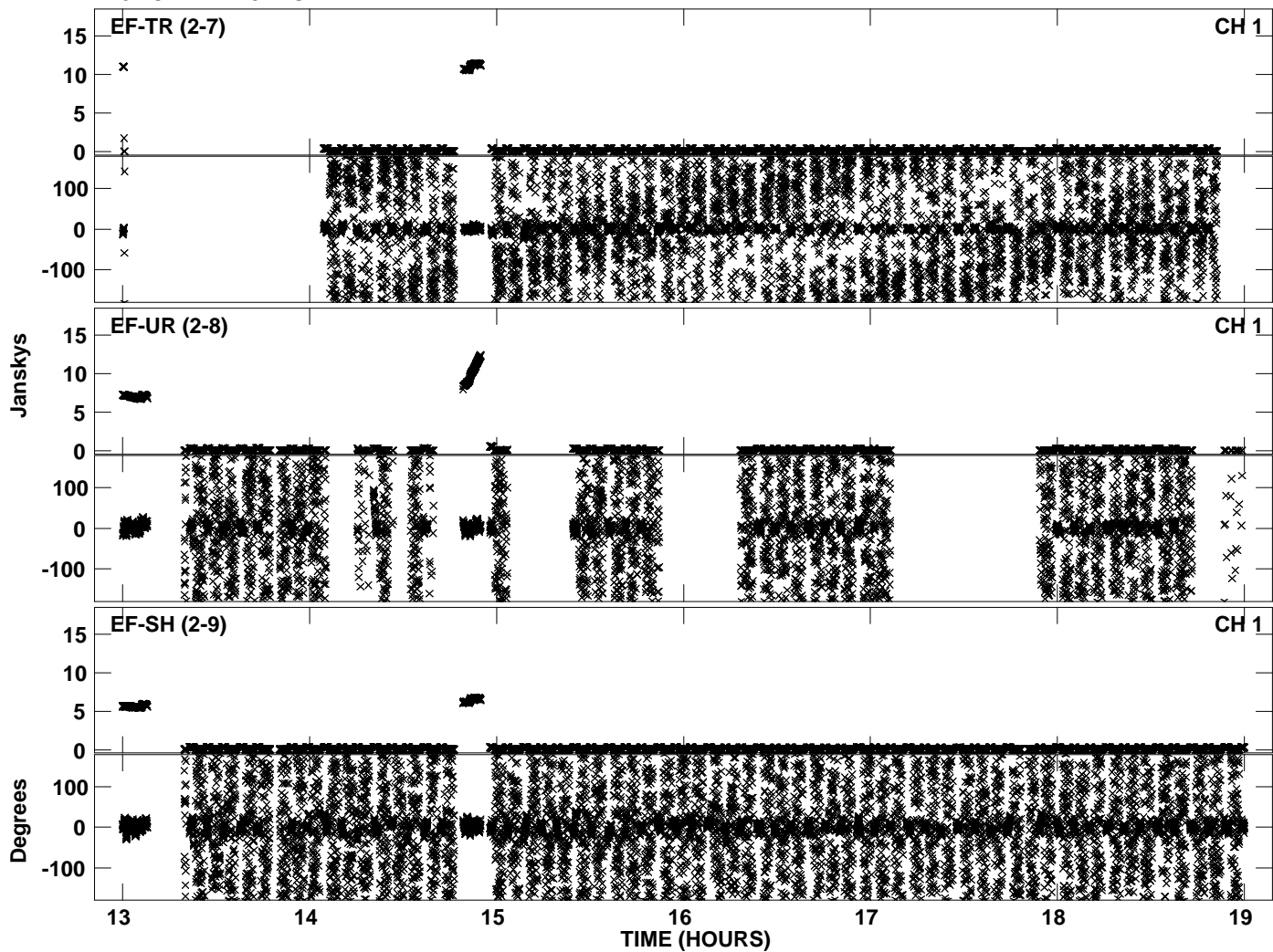
Plot file version 14 created 17-NOV-2010 12:55:42
Amplitude andPhase vs Time for EP068A 2.UVDATA.1 Vect aver. CL # 3
IF 7 CHAN 1 - 32 STK LL



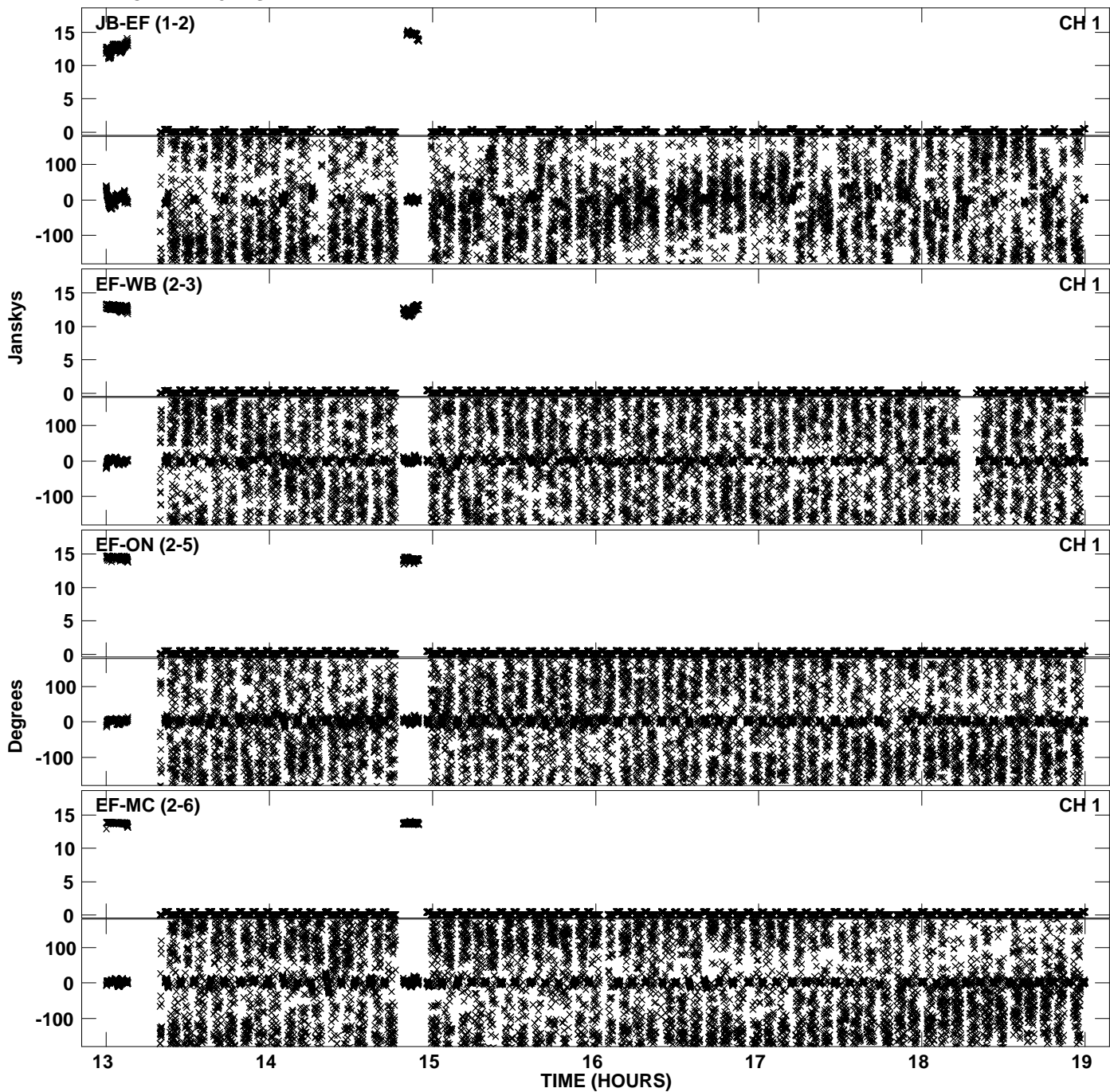
Plot file version 15 created 17-NOV-2010 12:55:49
Amplitude andPhase vs Time for EP068A 2.UVDATA.1 Vect aver. CL # 3
IF 8 CHAN 1 - 32 STK LL



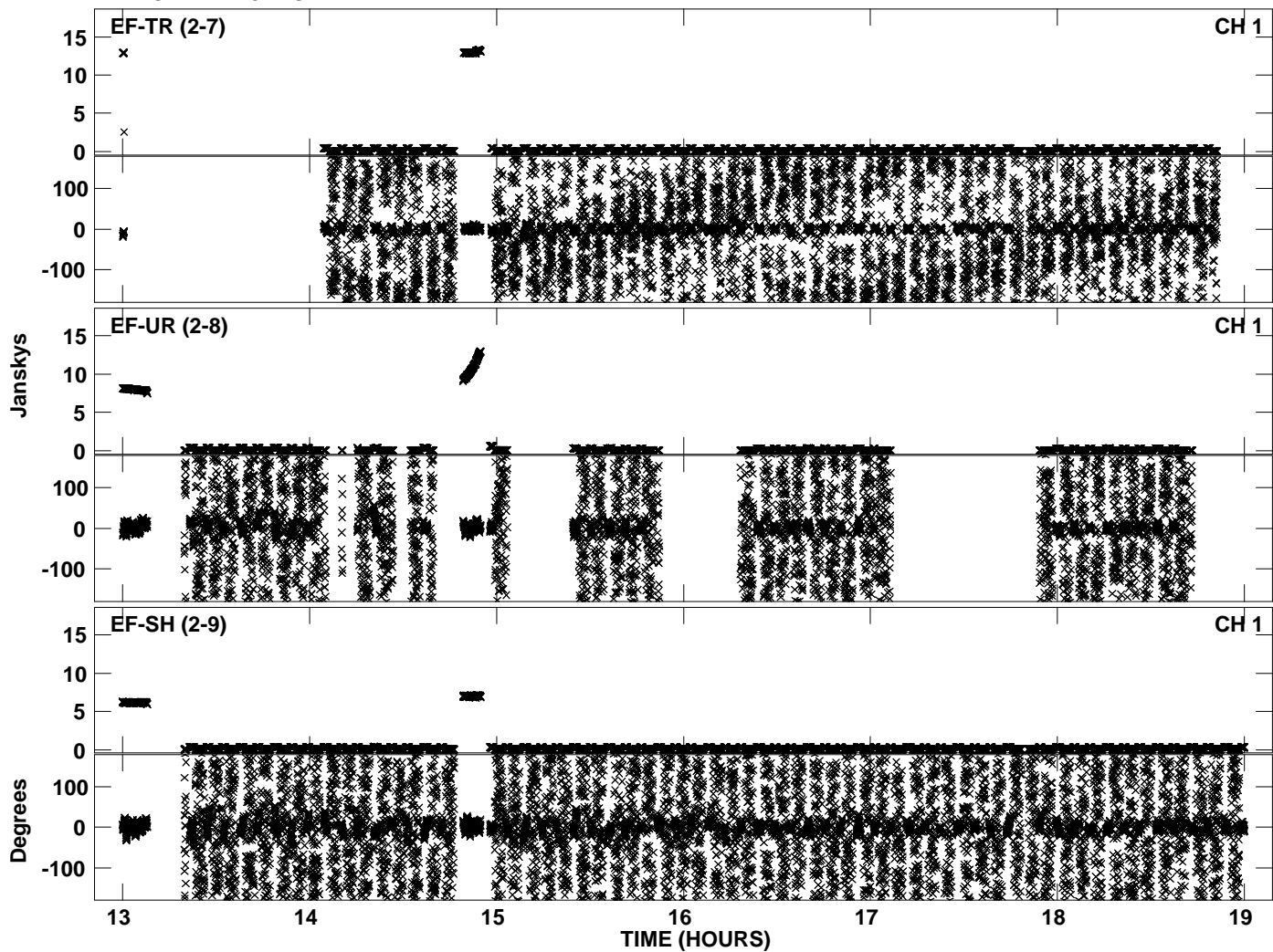
Plot file version 16 created 17-NOV-2010 12:55:49
Amplitude andPhase vs Time for EP068A 2.UVDATA.1 Vect aver. CL # 3
IF 8 CHAN 1 - 32 STK LL



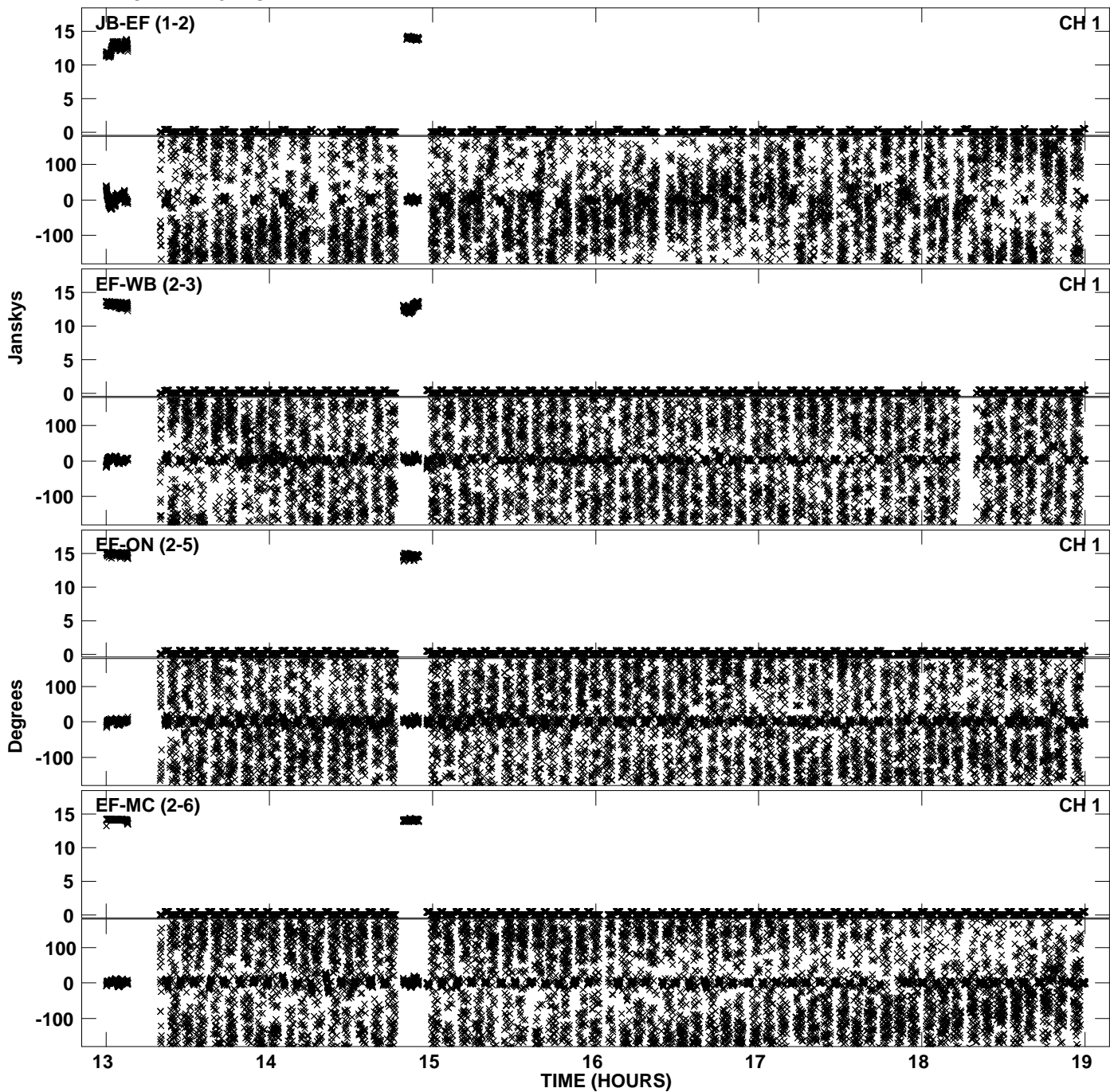
PLot file version 17 created 17-NOV-2010 12:55:56
Amplitude andPhase vs Time for EP068A 2.UVDATA.1 Vect aver. CL # 3
IF 1 CHAN 1 - 32 STK RR



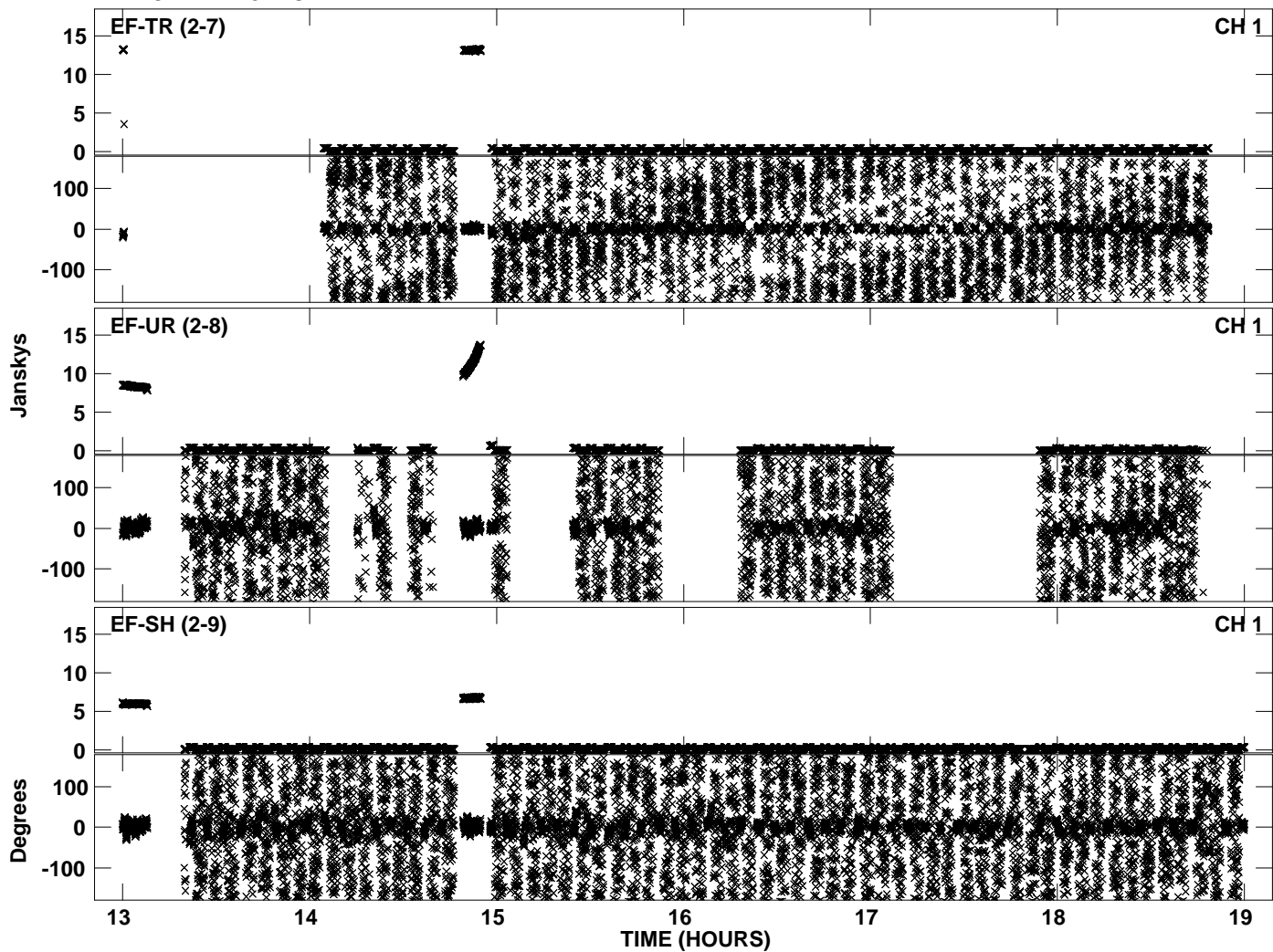
Plot file version 18 created 17-NOV-2010 12:55:56
Amplitude andPhase vs Time for EP068A 2.UVDATA.1 Vect aver. CL # 3
IF 1 CHAN 1 - 32 STK RR



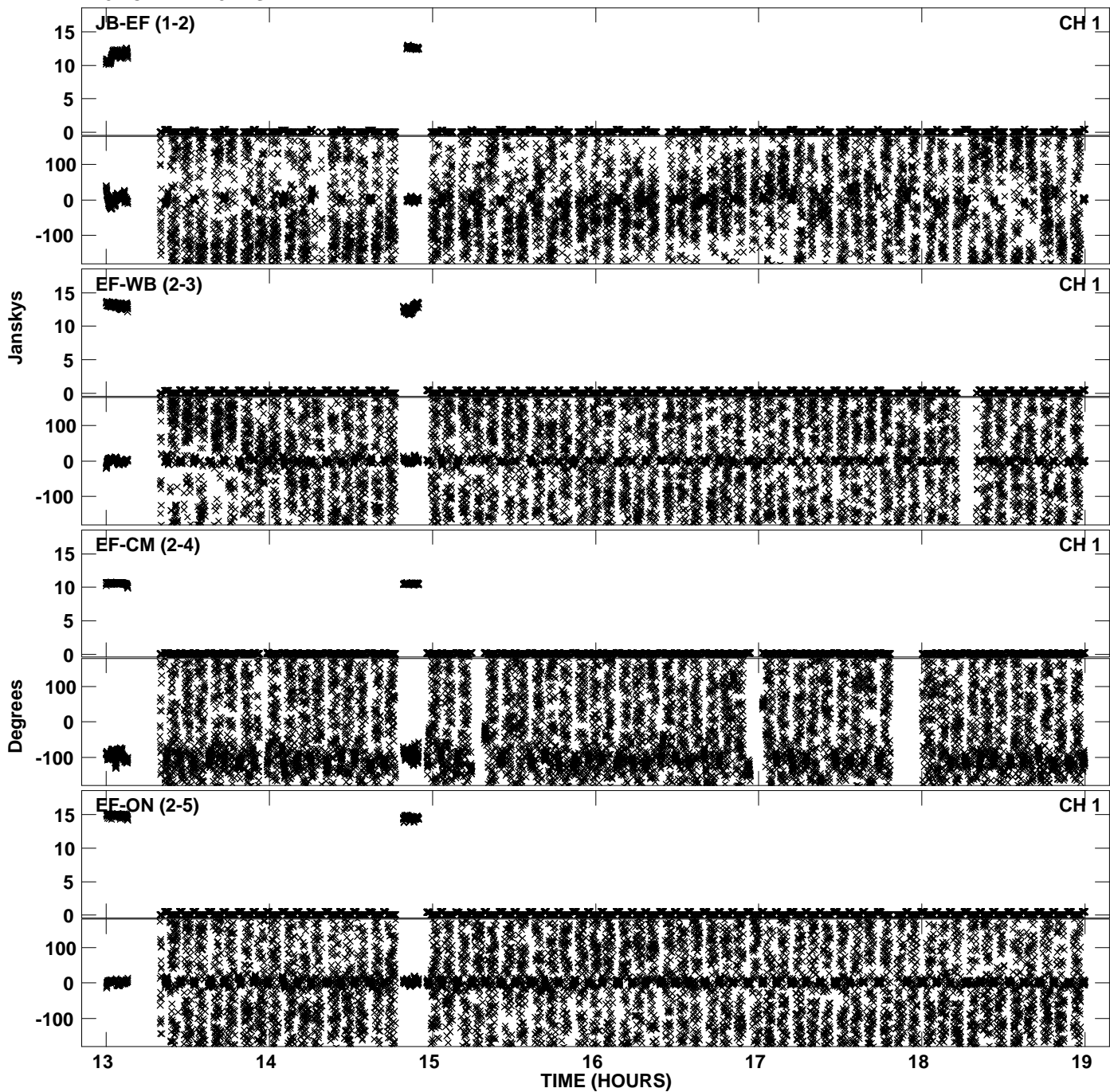
PLot file version 19 created 17-NOV-2010 12:56:03
Amplitude andPhase vs Time for EP068A 2.UVDATA.1 Vect aver. CL # 3
IF 2 CHAN 1 - 32 STK RR



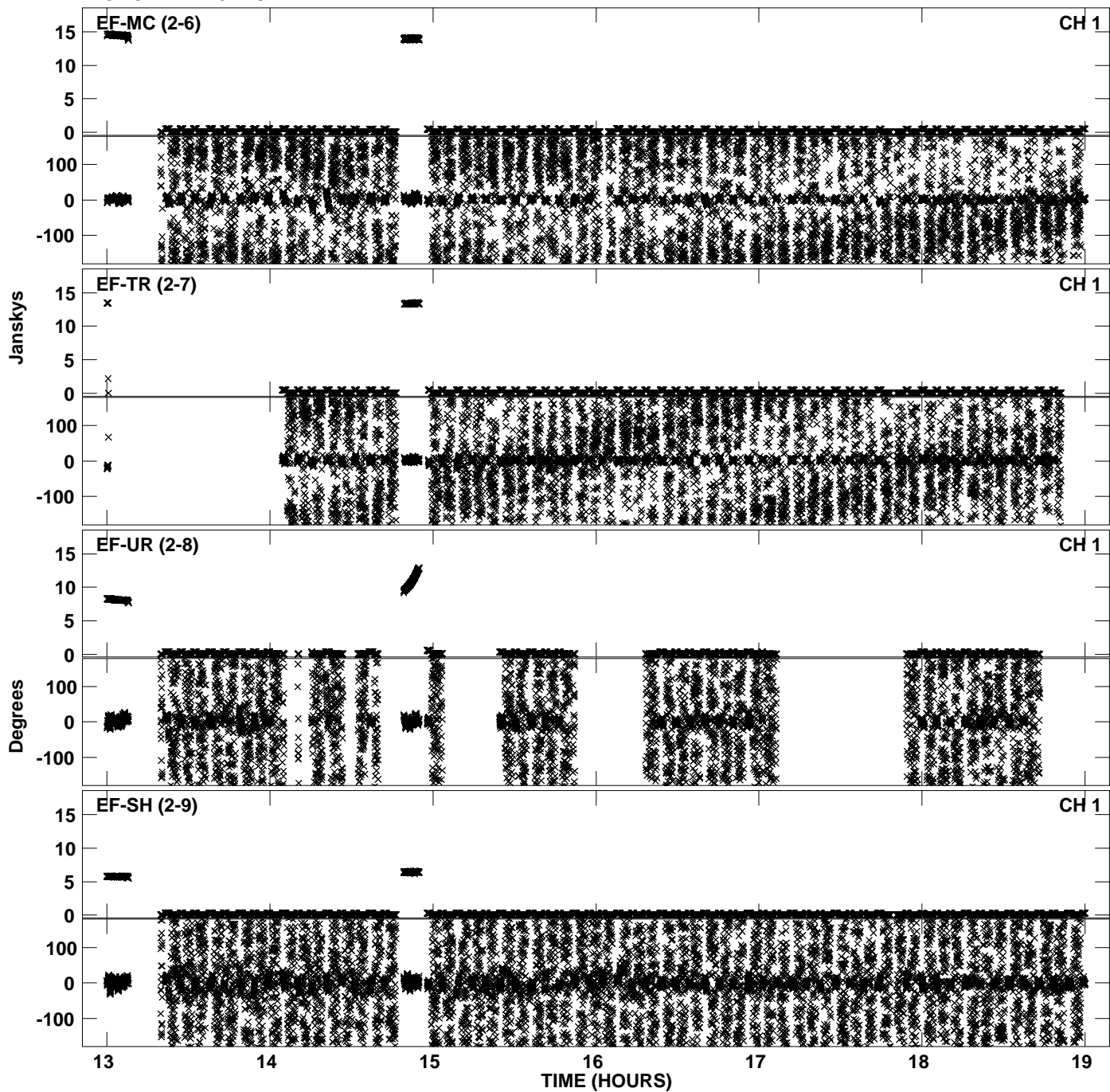
Plot file version 20 created 17-NOV-2010 12:56:03
Amplitude andPhase vs Time for EP068A 2.UVDATA.1 Vect aver. CL # 3
IF 2 CHAN 1 - 32 STK RR



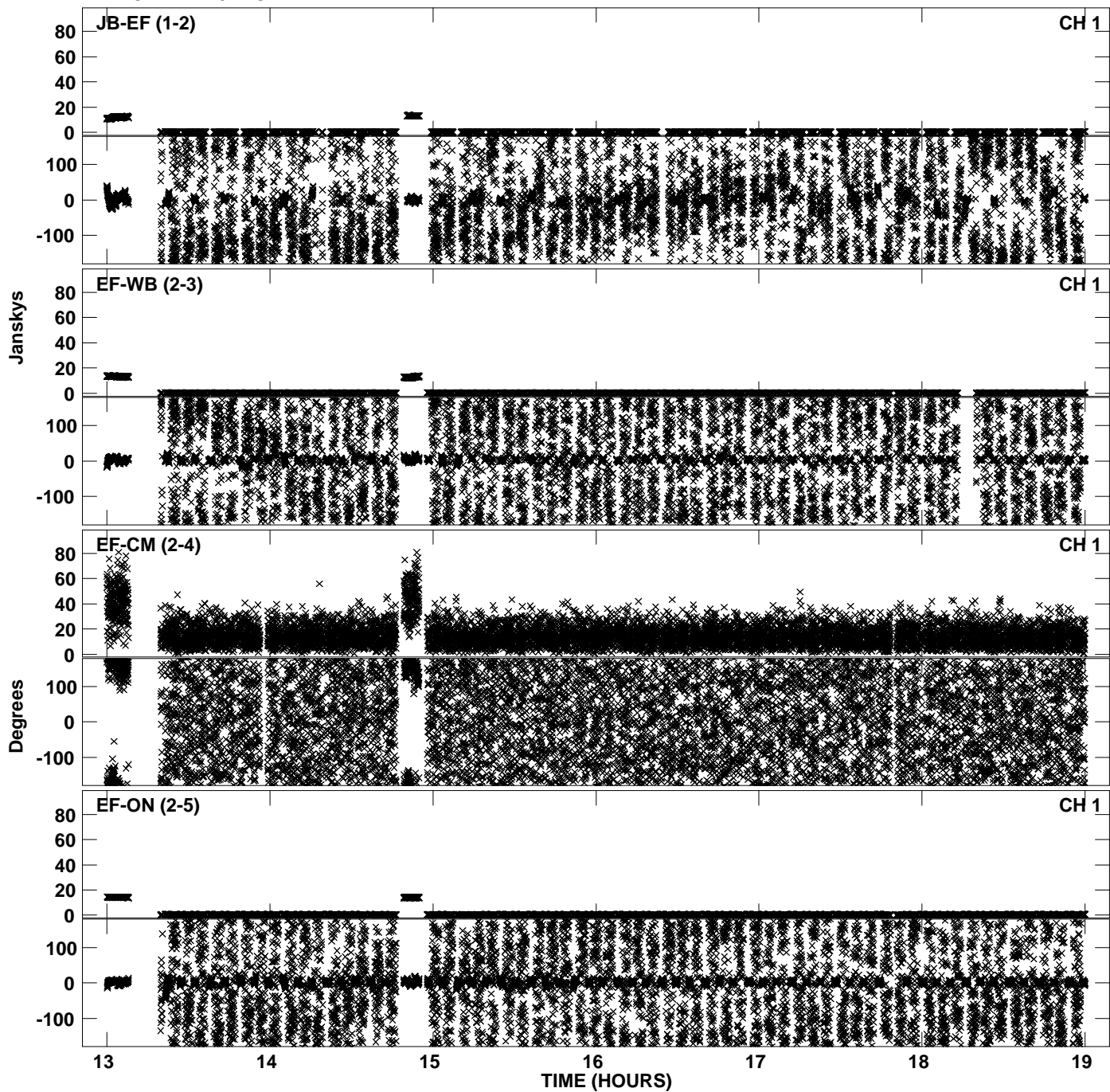
PLot file version 21 created 17-NOV-2010 12:56:11
Amplitude andPhase vs Time for EP068A 2.UVDATA.1 Vect aver. CL # 3
IF 3 CHAN 1 - 32 STK RR



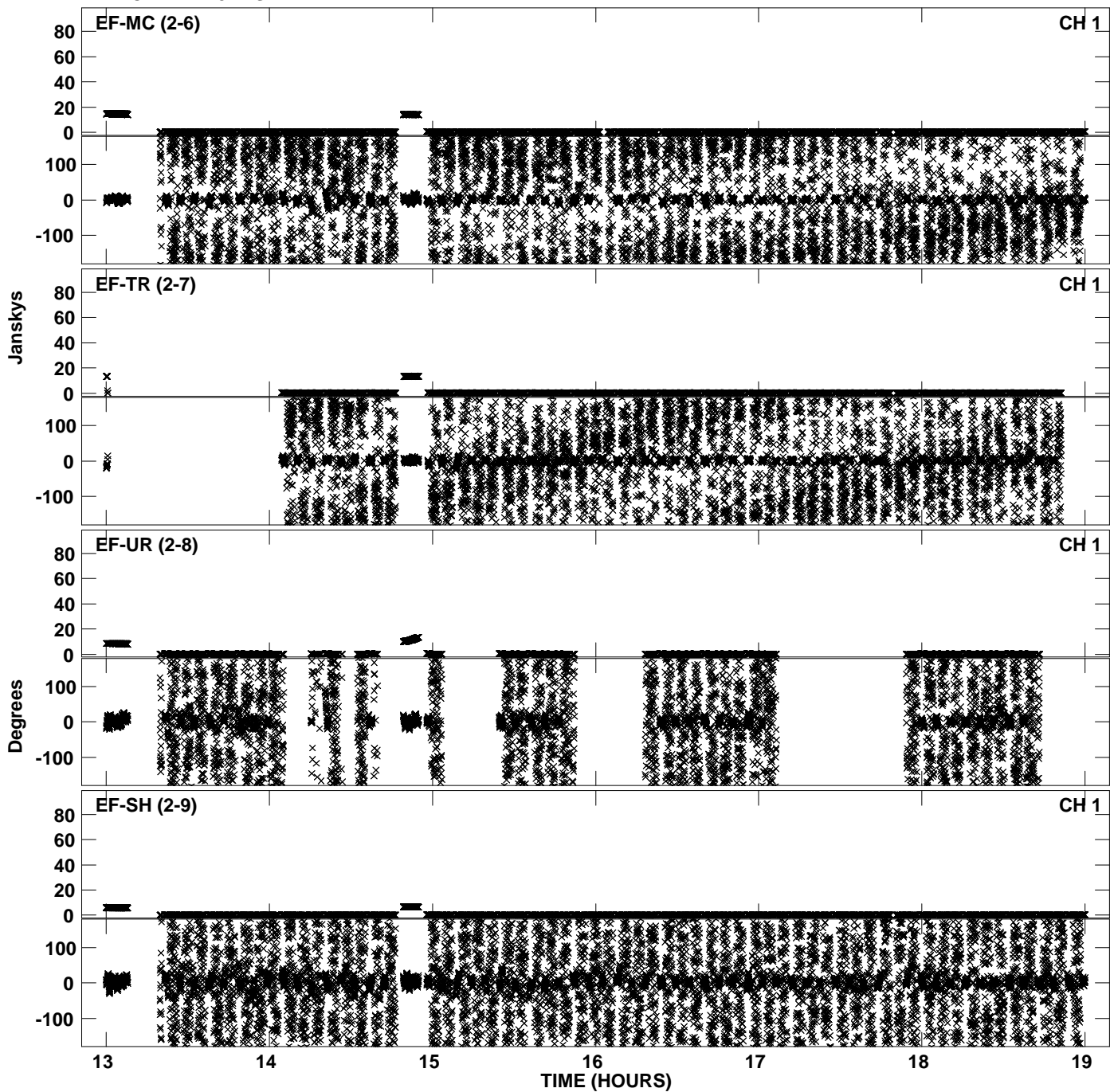
Plot file version 22 created 17-NOV-2010 12:56:11
Amplitude andPhase vs Time for EP068A 2.UVDATA.1 Vect aver. CL # 3
IF 3 CHAN 1 - 32 STK RR



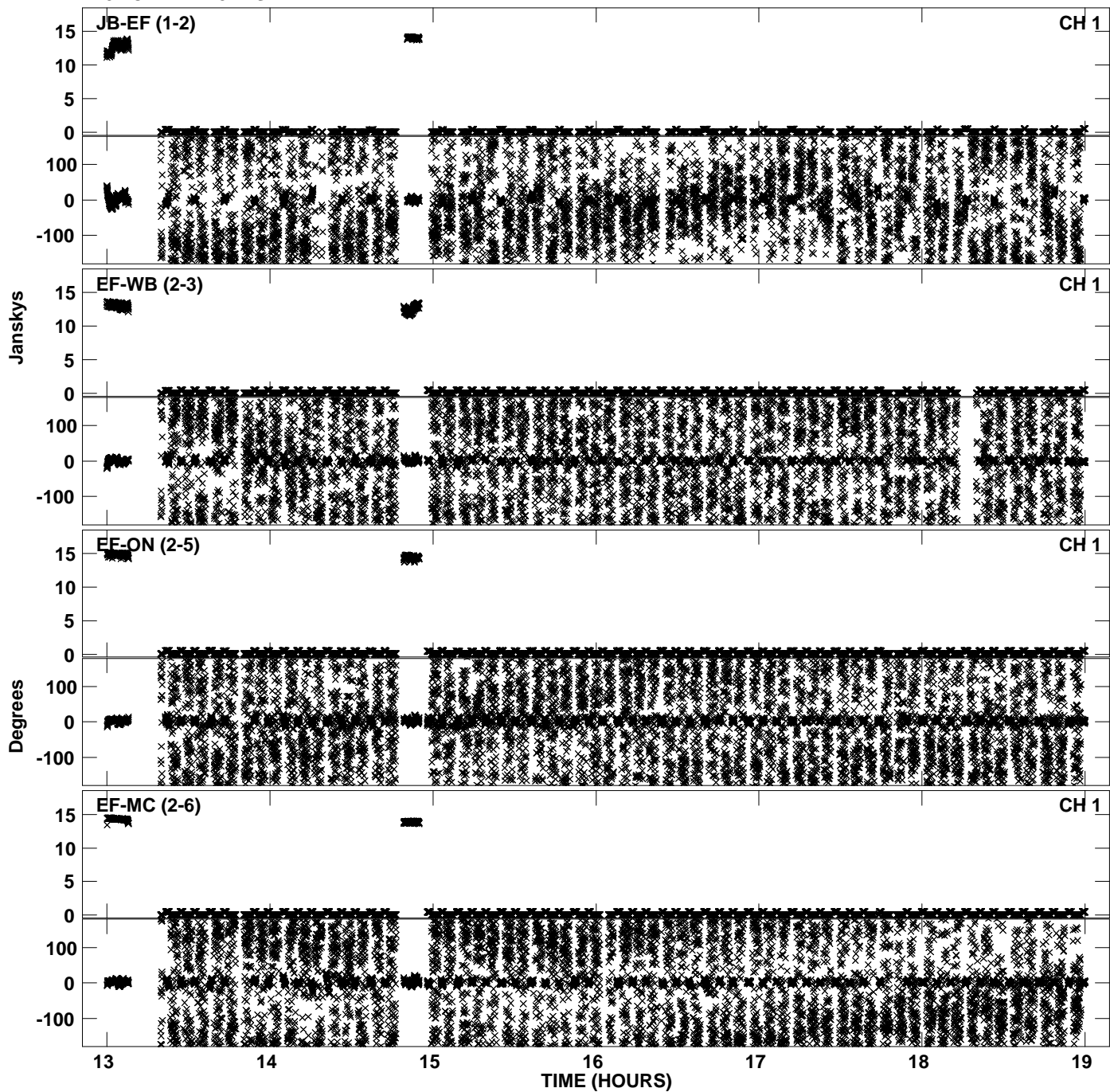
Plot file version 23 created 17-NOV-2010 12:56:18
Amplitude andPhase vs Time for EP068A 2.UVDATA.1 Vect aver. CL # 3
IF 4 CHAN 1 - 32 STK RR



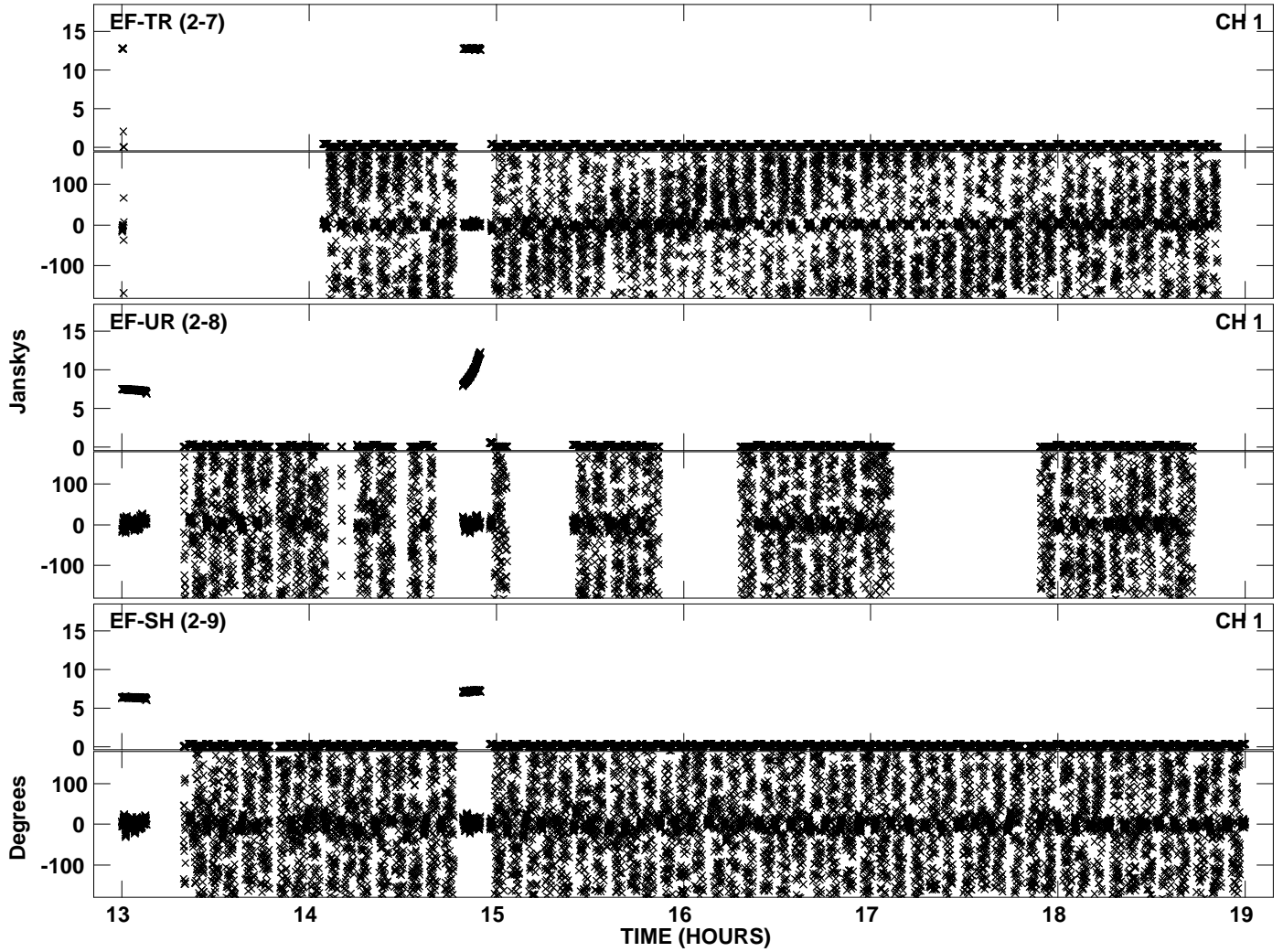
Plot file version 24 created 17-NOV-2010 12:56:19
Amplitude andPhase vs Time for EP068A 2.UVDATA.1 Vect aver. CL # 3
IF 4 CHAN 1 - 32 STK RR



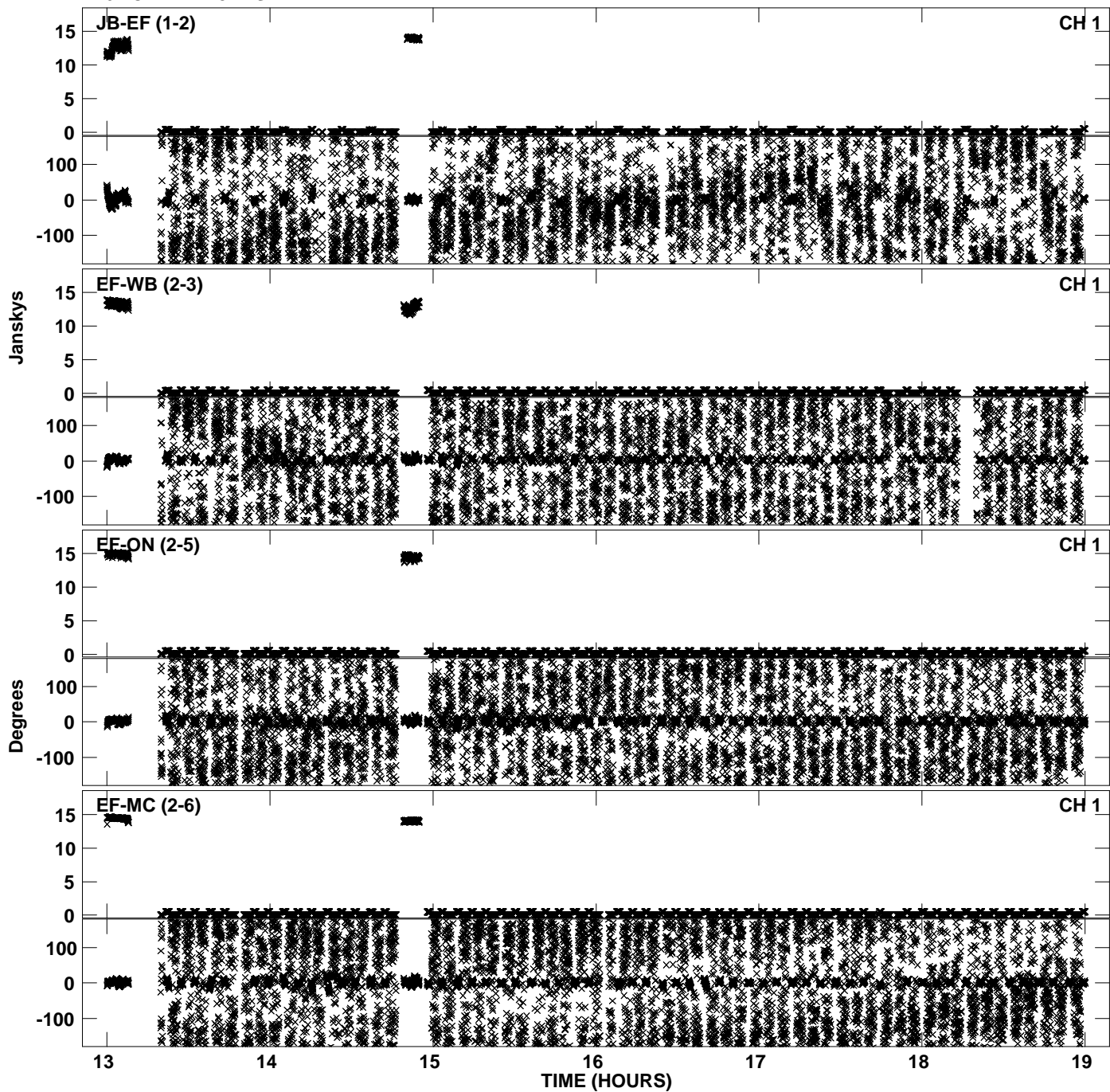
PLot file version 25 created 17-NOV-2010 12:56:26
Amplitude andPhase vs Time for EP068A 2.UVDATA.1 Vect aver. CL # 3
IF 5 CHAN 1 - 32 STK RR



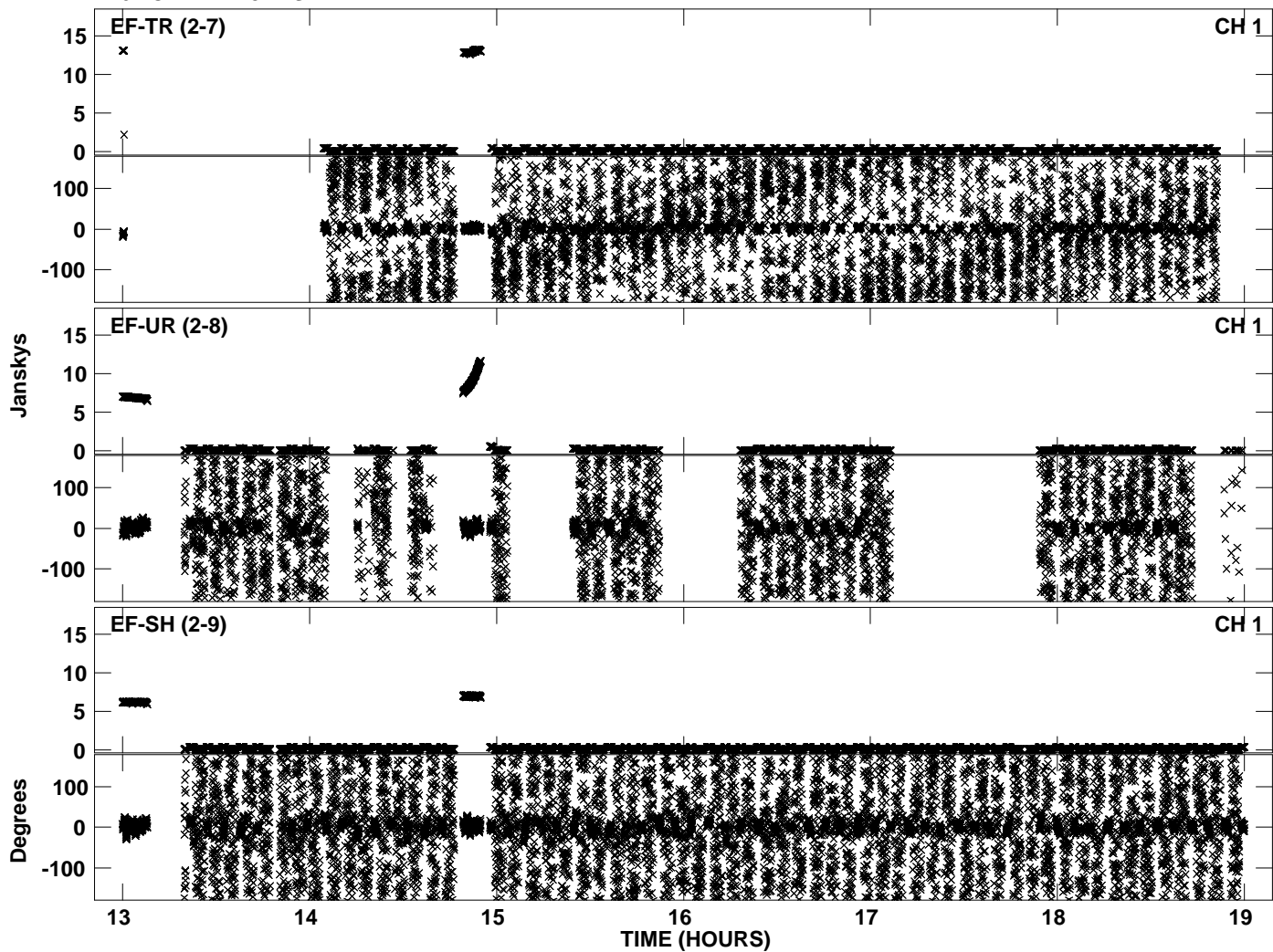
Plot file version 26 created 17-NOV-2010 12:56:26
Amplitude andPhase vs Time for EP068A 2.UVDATA.1 Vect aver. CL # 3
IF 5 CHAN 1 - 32 STK RR



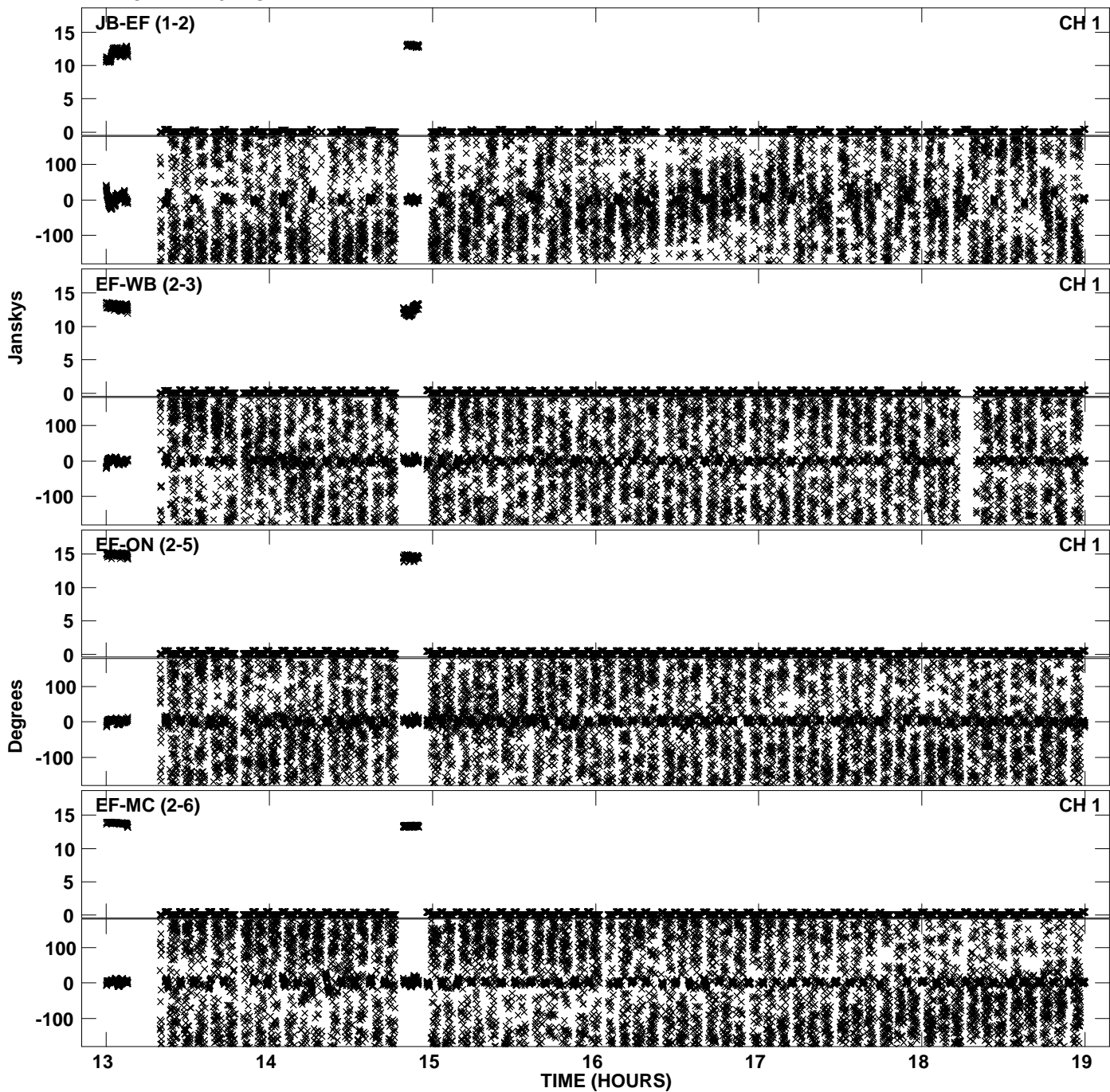
PLot file version 27 created 17-NOV-2010 12:56:32
Amplitude andPhase vs Time for EP068A 2.UVDATA.1 Vect aver. CL # 3
IF 6 CHAN 1 - 32 STK RR



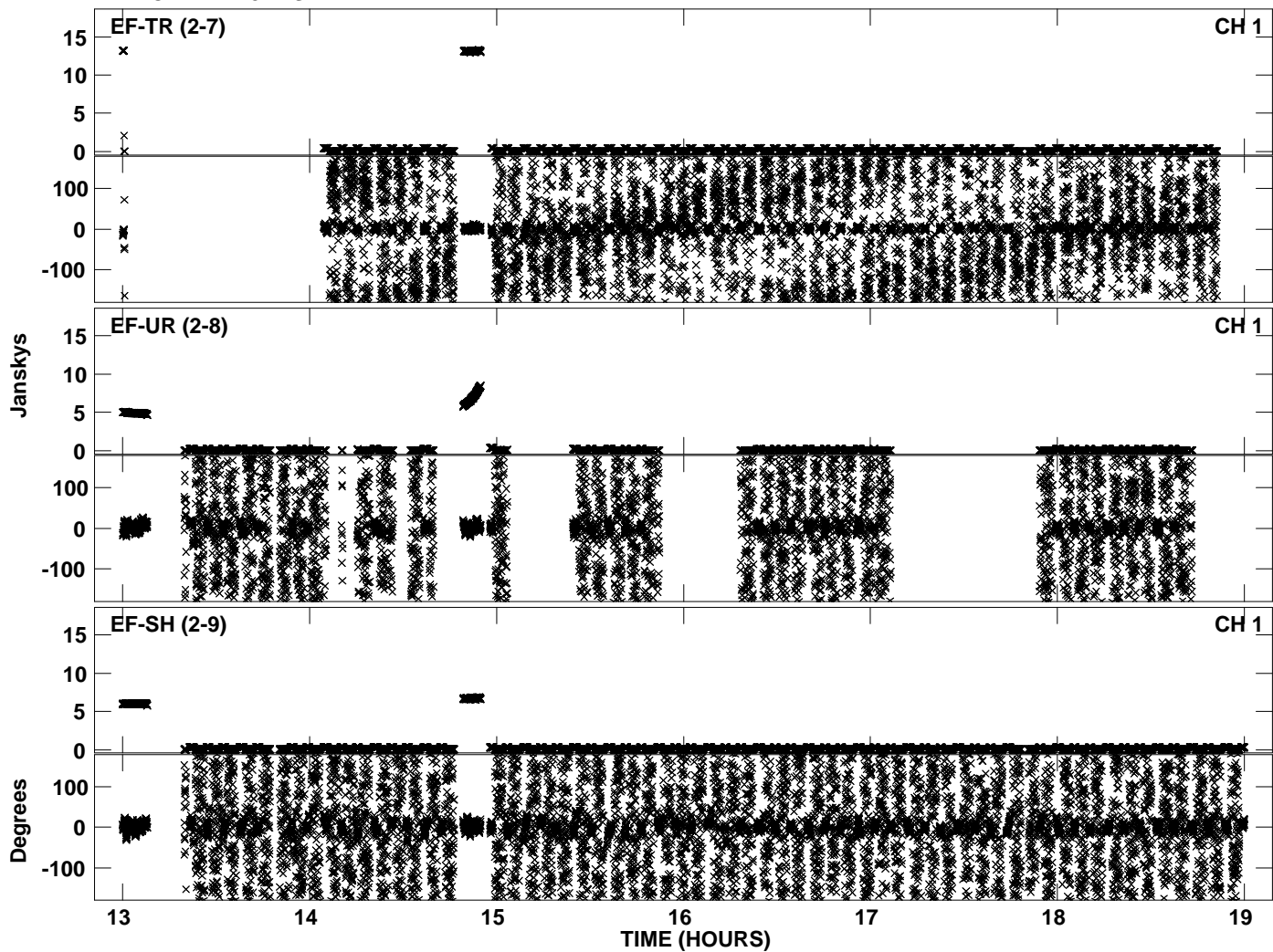
Plot file version 28 created 17-NOV-2010 12:56:33
Amplitude andPhase vs Time for EP068A 2.UVDATA.1 Vect aver. CL # 3
IF 6 CHAN 1 - 32 STK RR



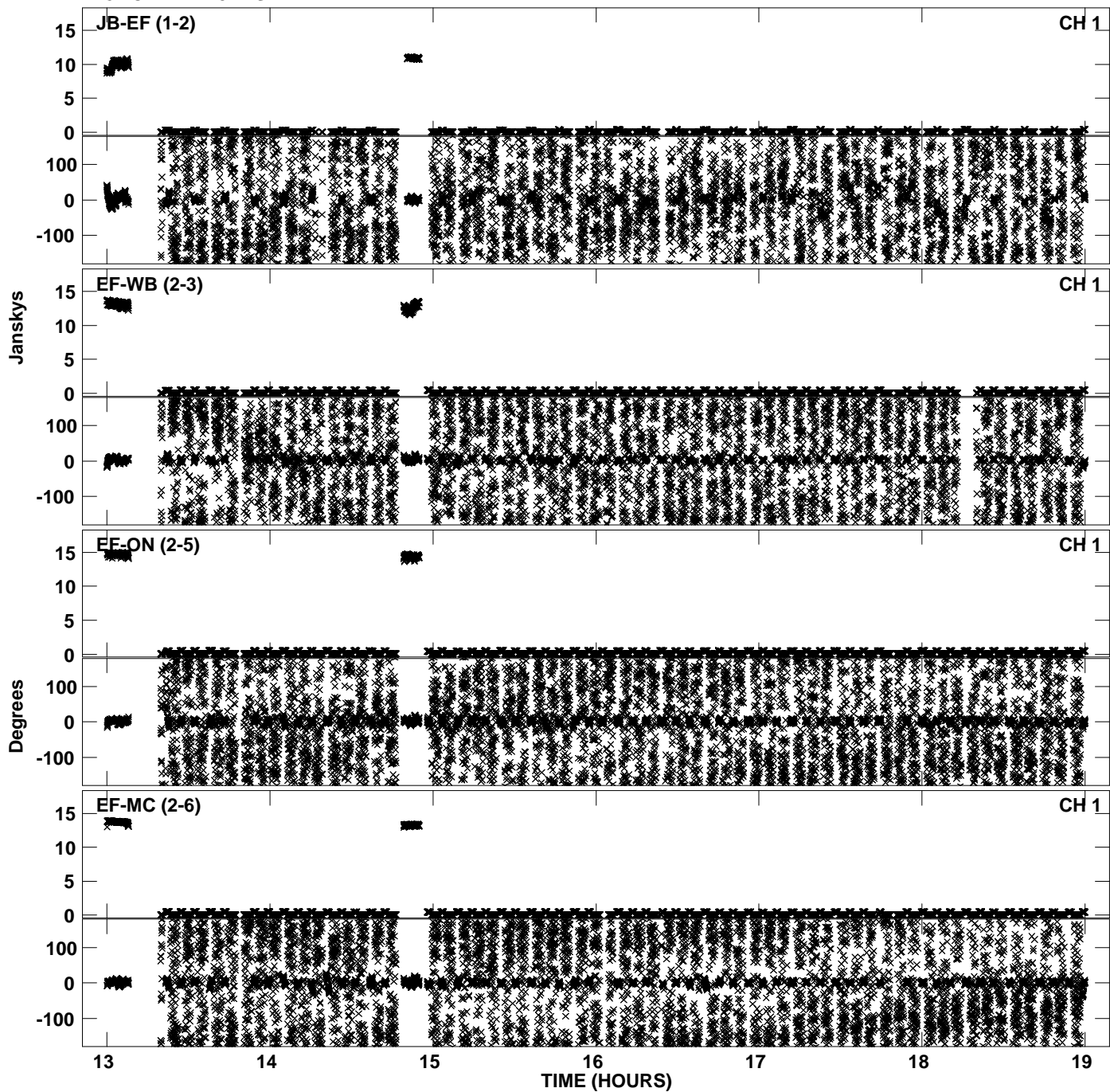
PLot file version 29 created 17-NOV-2010 12:56:39
Amplitude andPhase vs Time for EP068A 2.UVDATA.1 Vect aver. CL # 3
IF 7 CHAN 1 - 32 STK RR



PLot file version 30 created 17-NOV-2010 12:56:40
Amplitude andPhase vs Time for EP068A 2.UVDATA.1 Vect aver. CL # 3
IF 7 CHAN 1 - 32 STK RR



PLot file version 31 created 17-NOV-2010 12:56:46
Amplitude andPhase vs Time for EP068A 2.UVDATA.1 Vect aver. CL # 3
IF 8 CHAN 1 - 32 STK RR



Plot file version 32 created 17-NOV-2010 12:56:47
Amplitude andPhase vs Time for EP068A 2.UVDATA.1 Vect aver. CL # 3
IF 8 CHAN 1 - 32 STK RR

