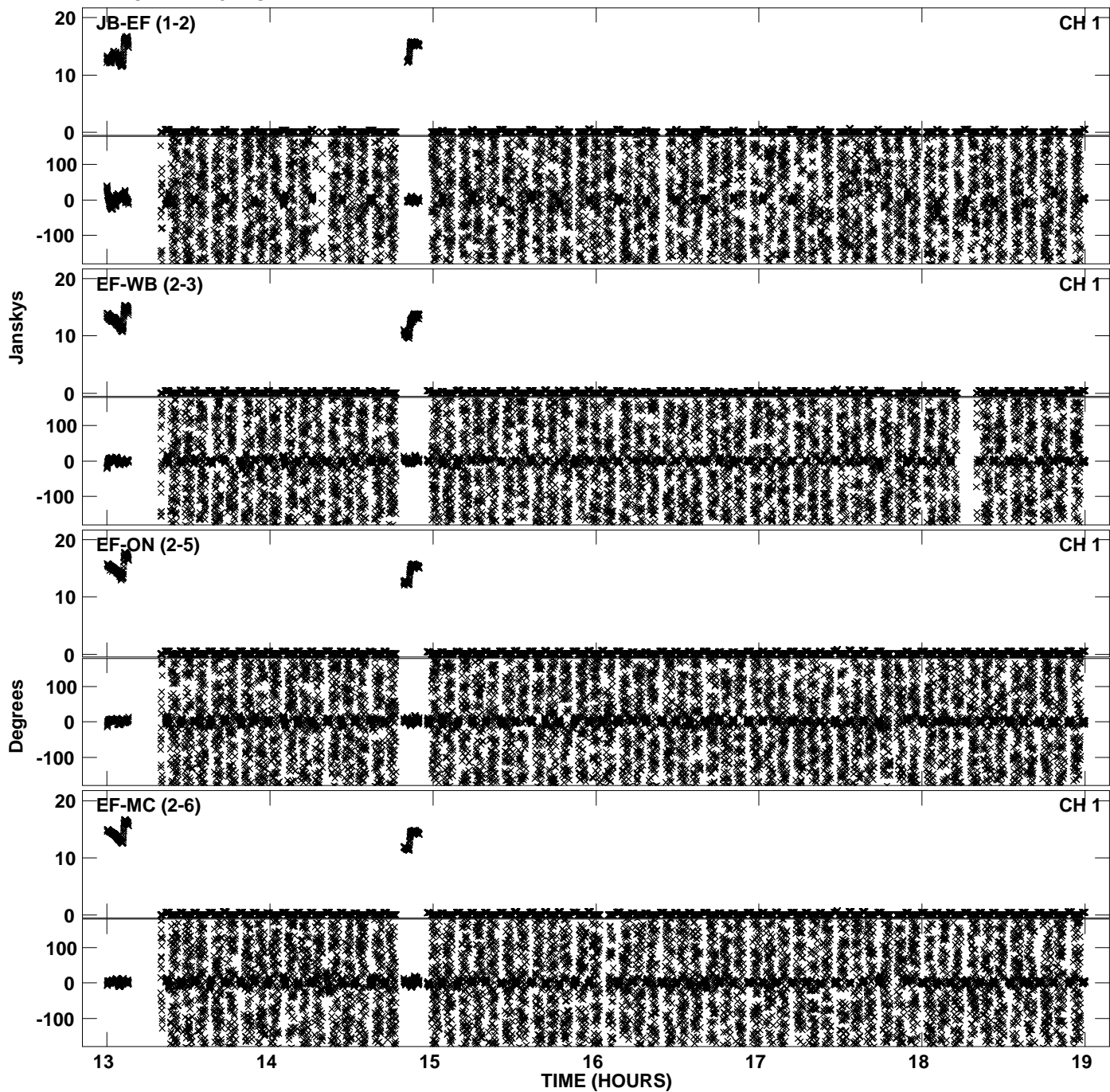
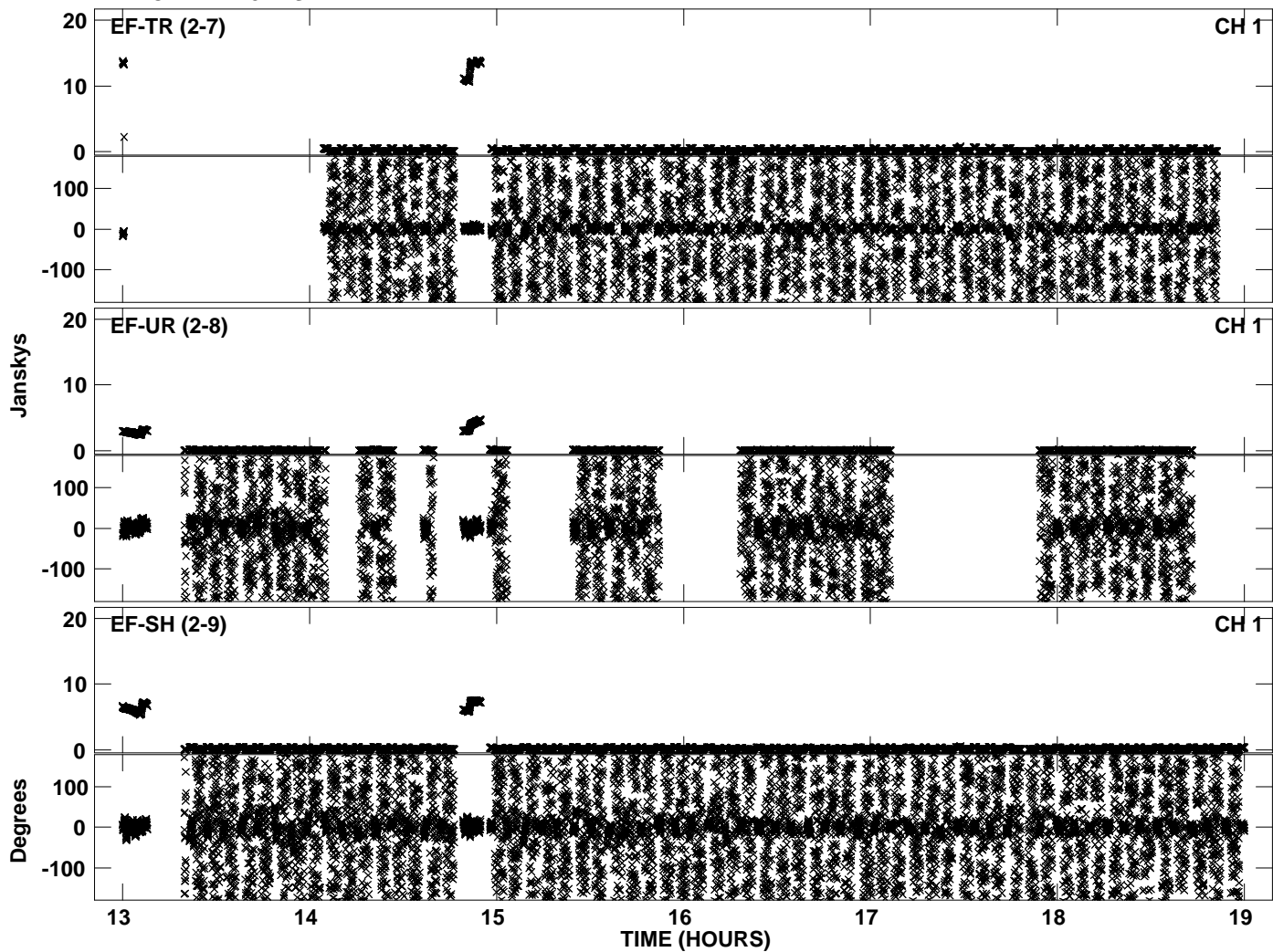


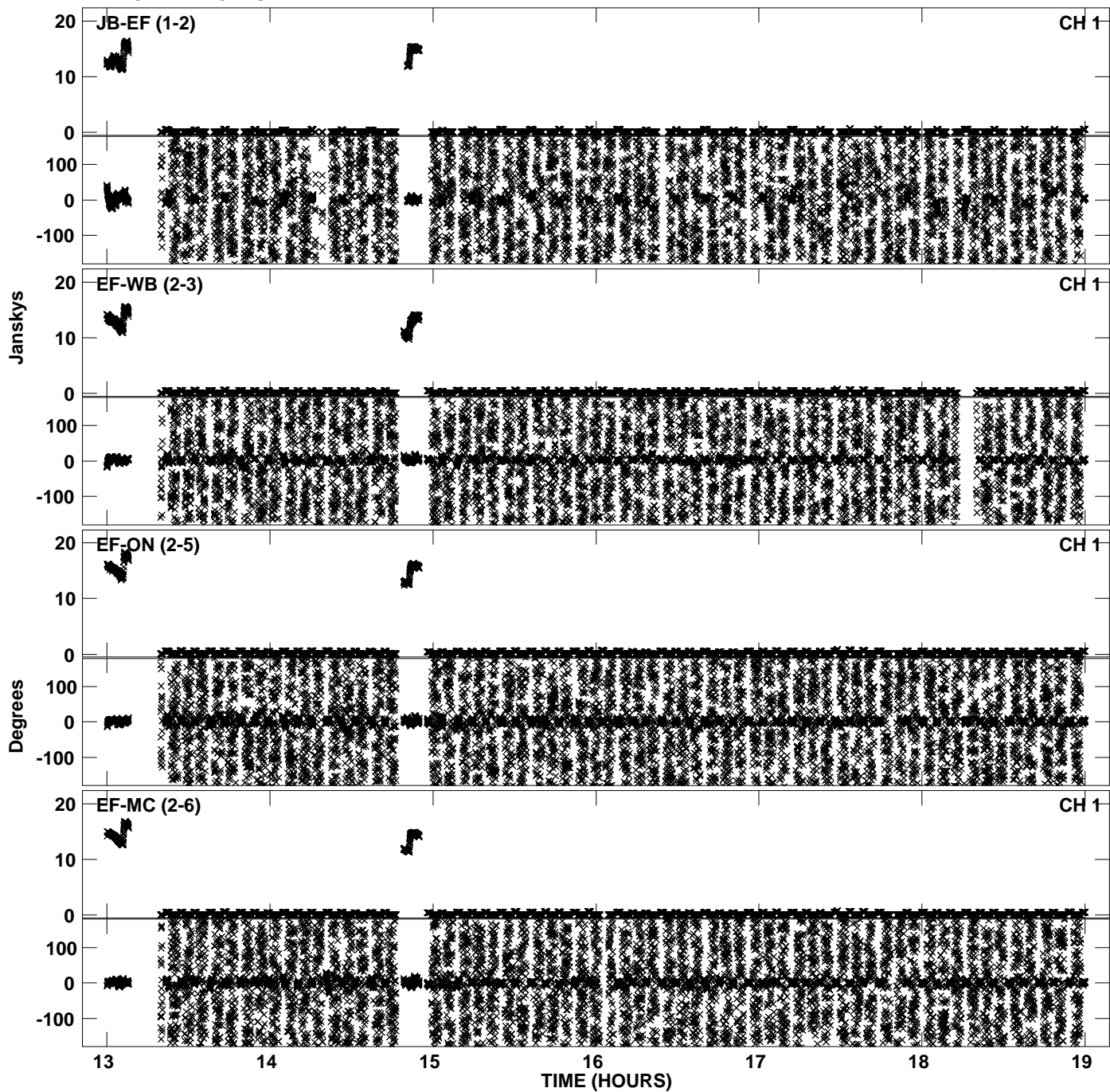
Plot file version 1 created 17-NOV-2010 13:58:34
Amplitude andPhase vs Time for EP068A 3.UVDATA.1 Vect aver. CL # 3
IF 1 CHAN 1 - 32 STK LL



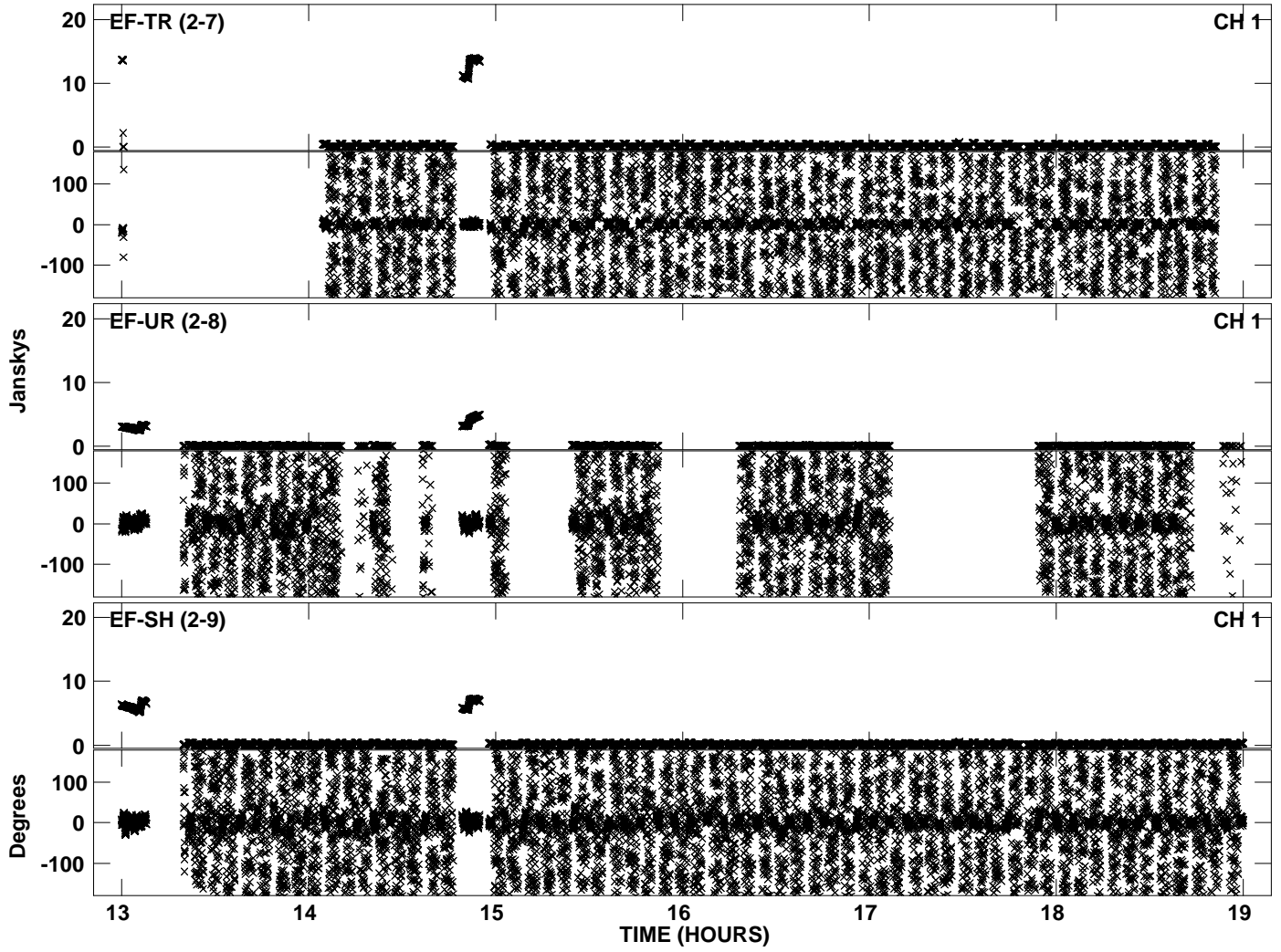
Plot file version 2 created 17-NOV-2010 13:58:34
Amplitude andPhase vs Time for EP068A 3.UVDATA.1 Vect aver. CL # 3
IF 1 CHAN 1 - 32 STK LL



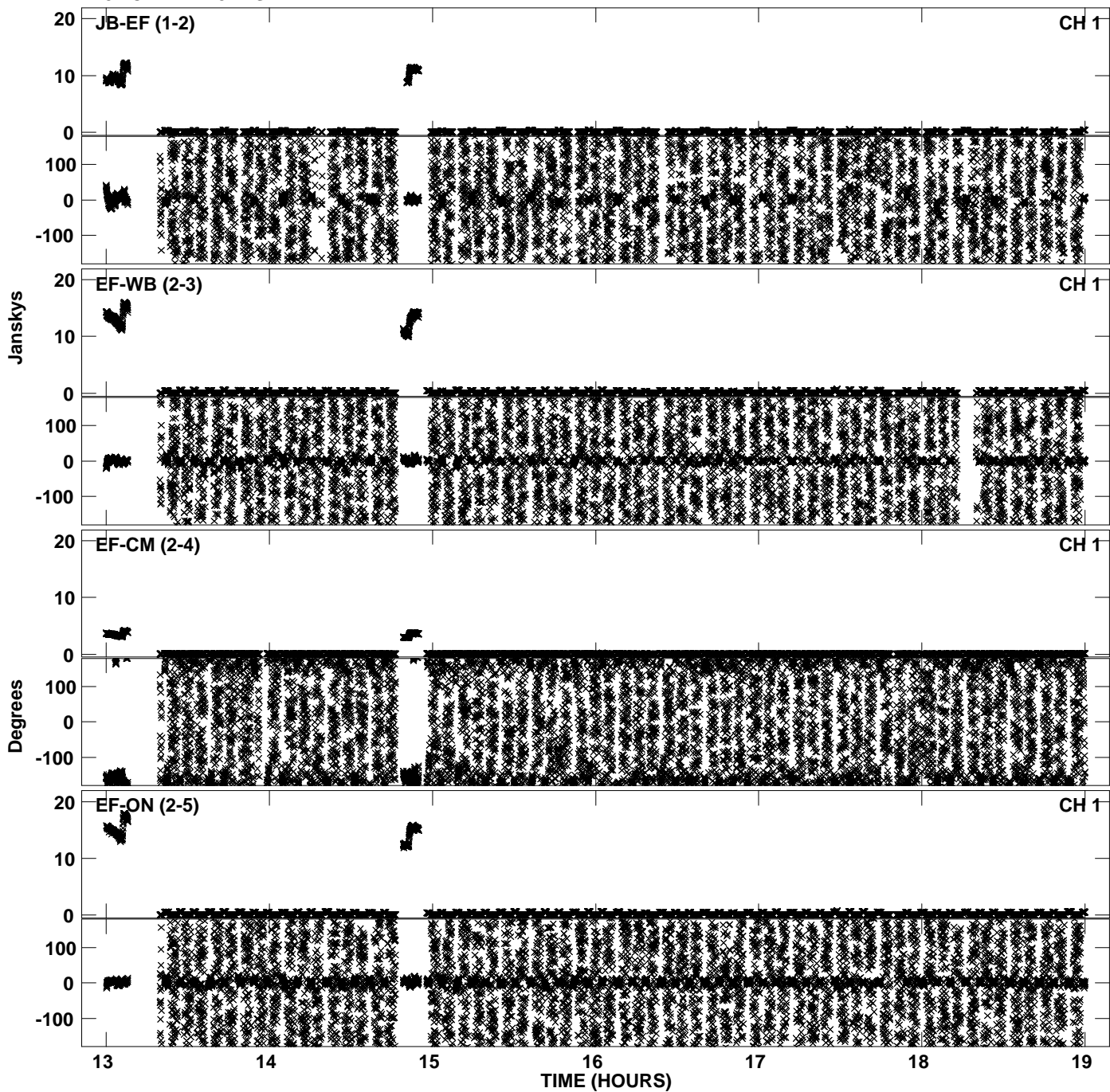
Plot file version 3 created 17-NOV-2010 13:58:41
Amplitude andPhase vs Time for EP068A 3.UVDATA.1 Vect aver. CL # 3
IF 2 CHAN 1 - 32 STK LL



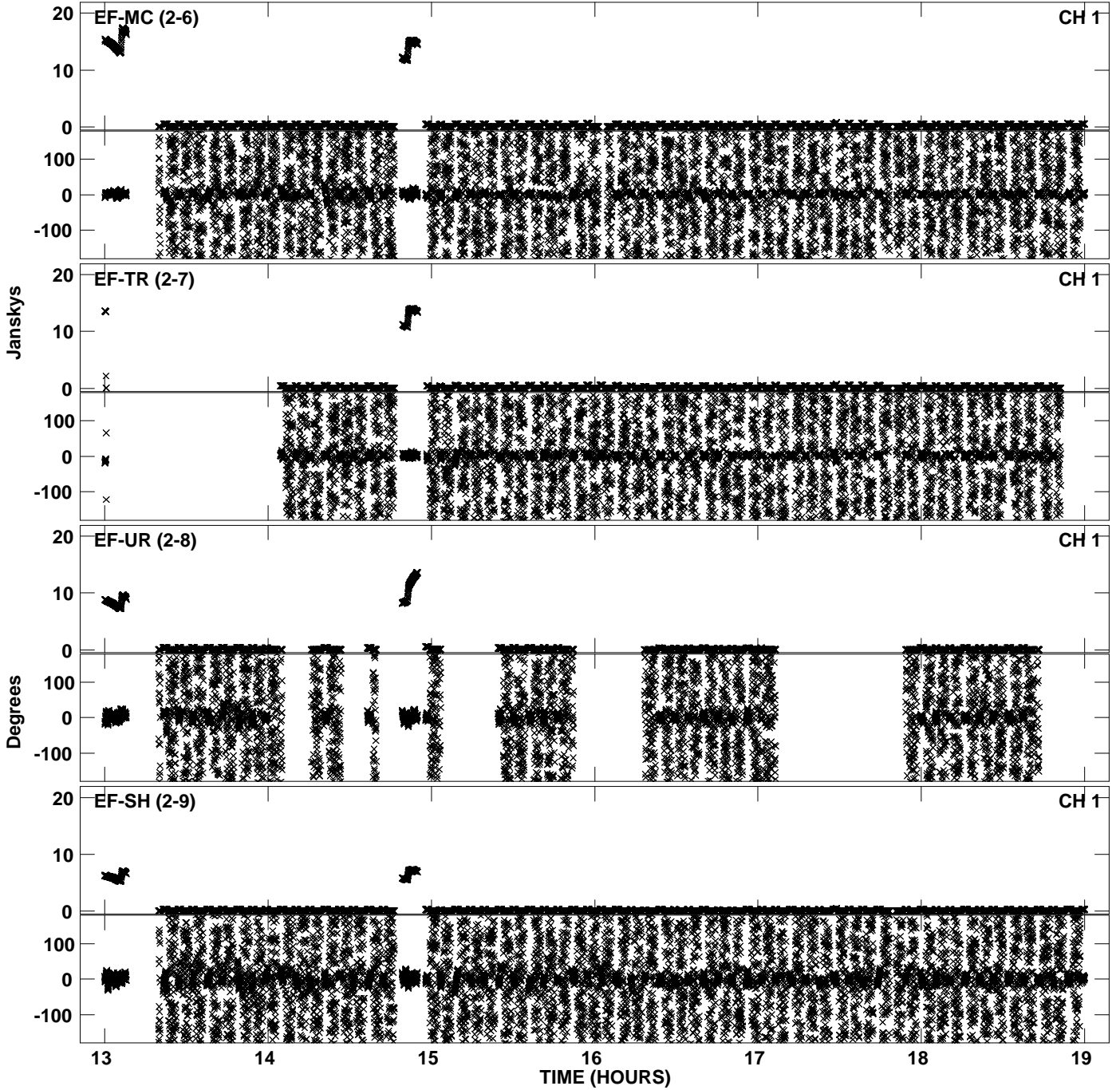
Plot file version 4 created 17-NOV-2010 13:58:41
Amplitude andPhase vs Time for EP068A 3.UVDATA.1 Vect aver. CL # 3
IF 2 CHAN 1 - 32 STK LL



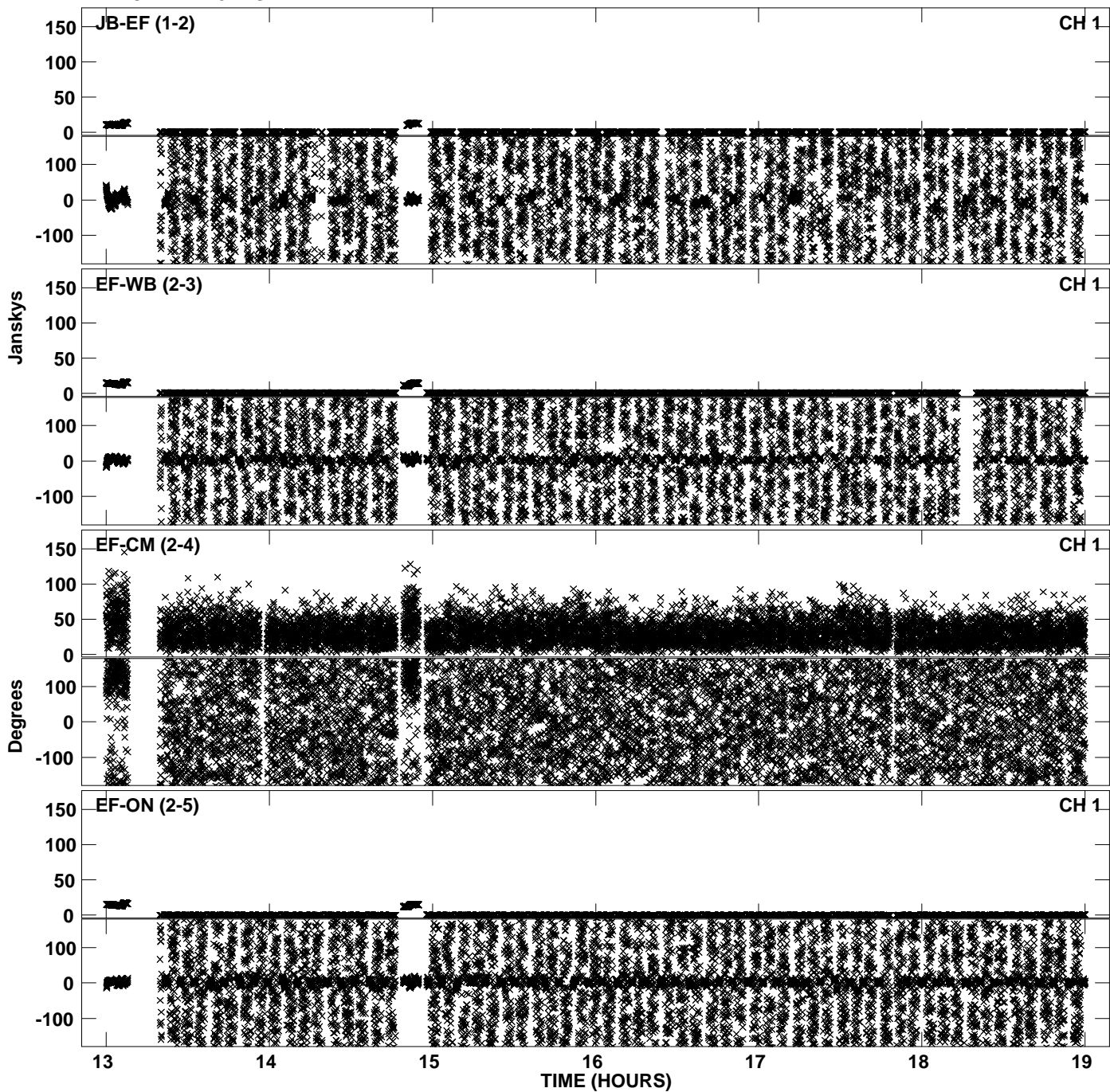
Plot file version 5 created 17-NOV-2010 13:58:49
Amplitude andPhase vs Time for EP068A 3.UVDATA.1 Vect aver. CL # 3
IF 3 CHAN 1 - 32 STK LL



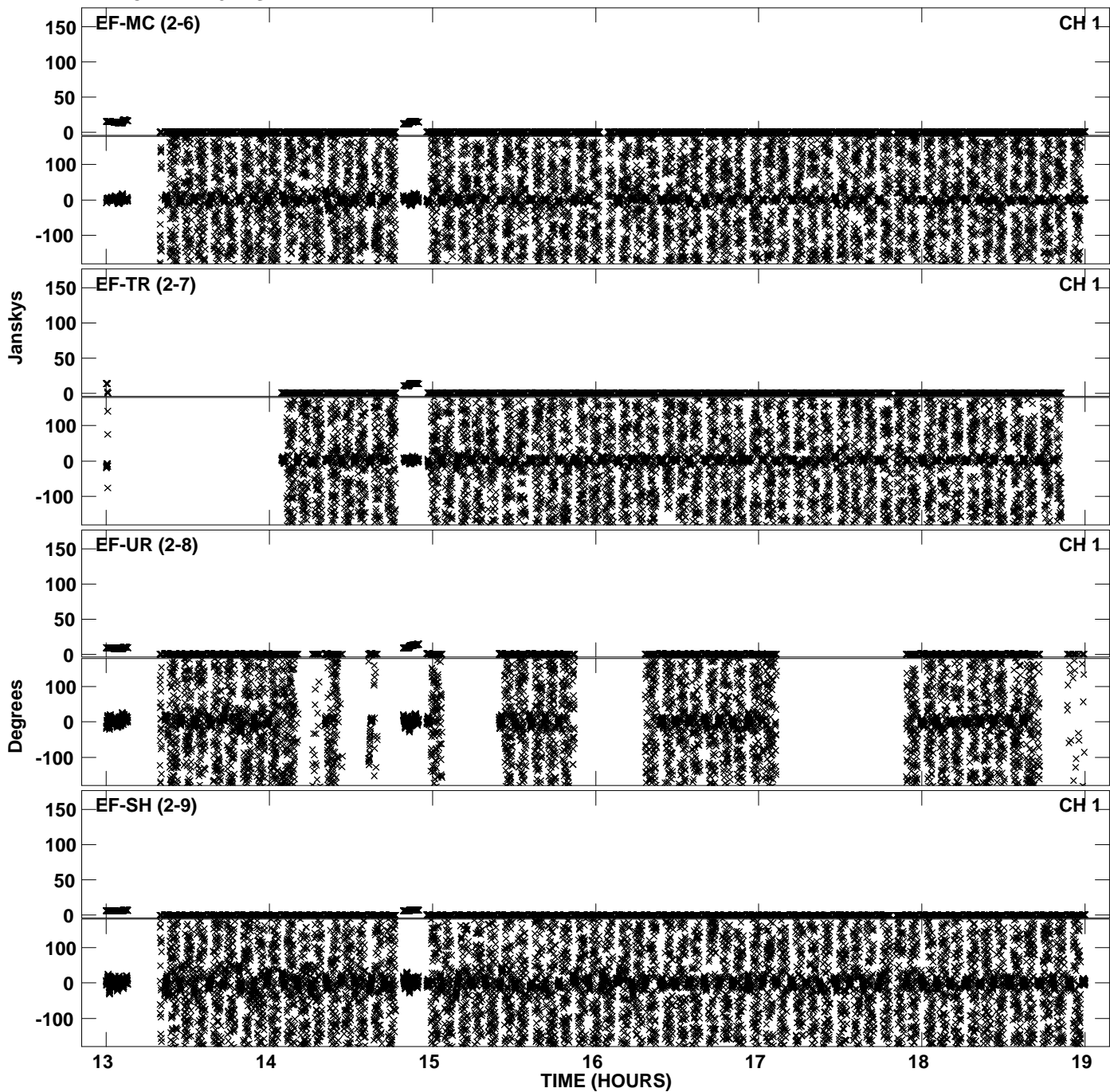
Plot file version 6 created 17-NOV-2010 13:58:49
Amplitude andPhase vs Time for EP068A 3.UVDATA.1 Vect aver. CL # 3
IF 3 CHAN 1 - 32 STK LL



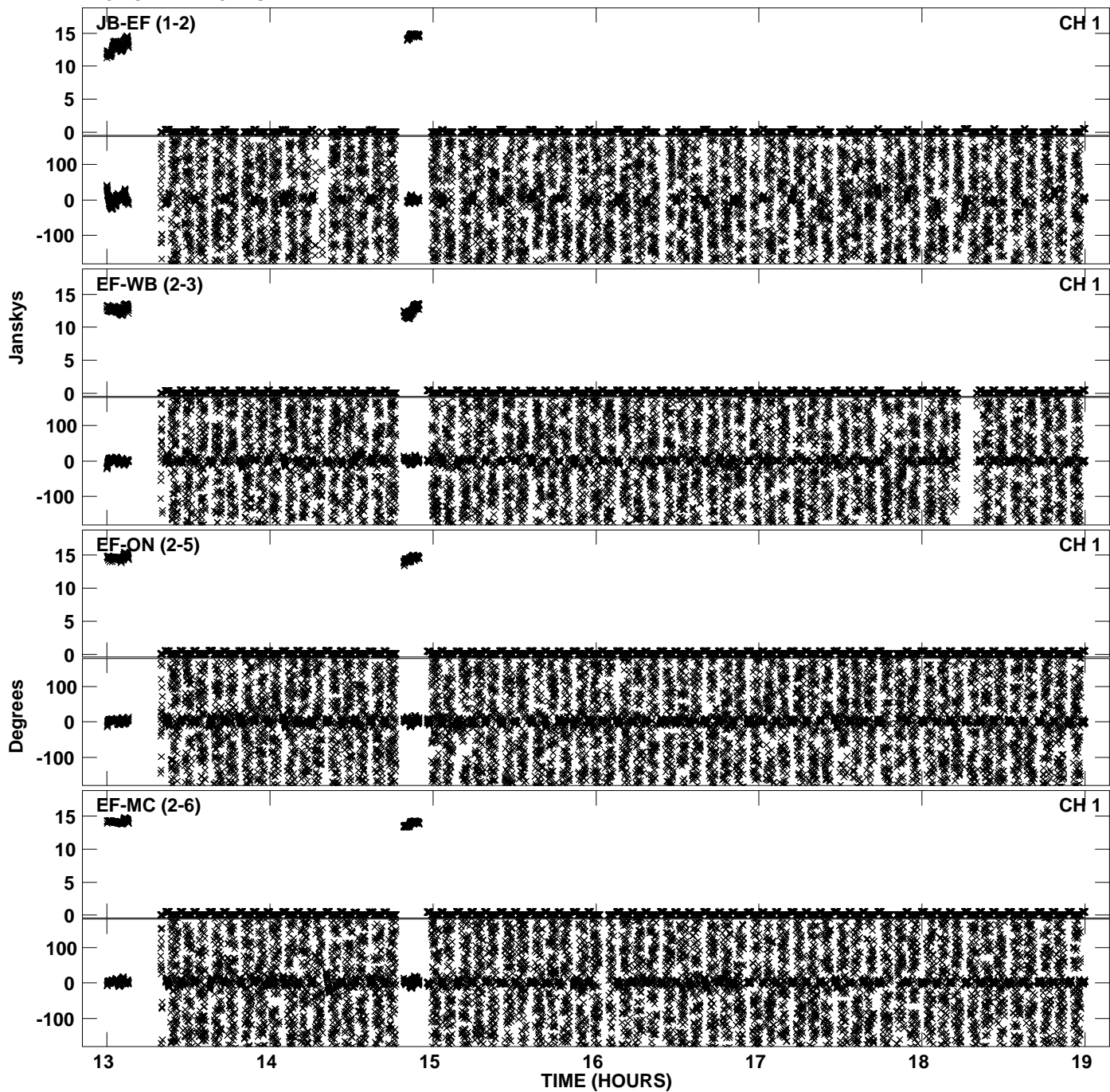
Plot file version 7 created 17-NOV-2010 13:58:57
Amplitude andPhase vs Time for EP068A 3.UVDATA.1 Vect aver. CL # 3
IF 4 CHAN 1 - 32 STK LL



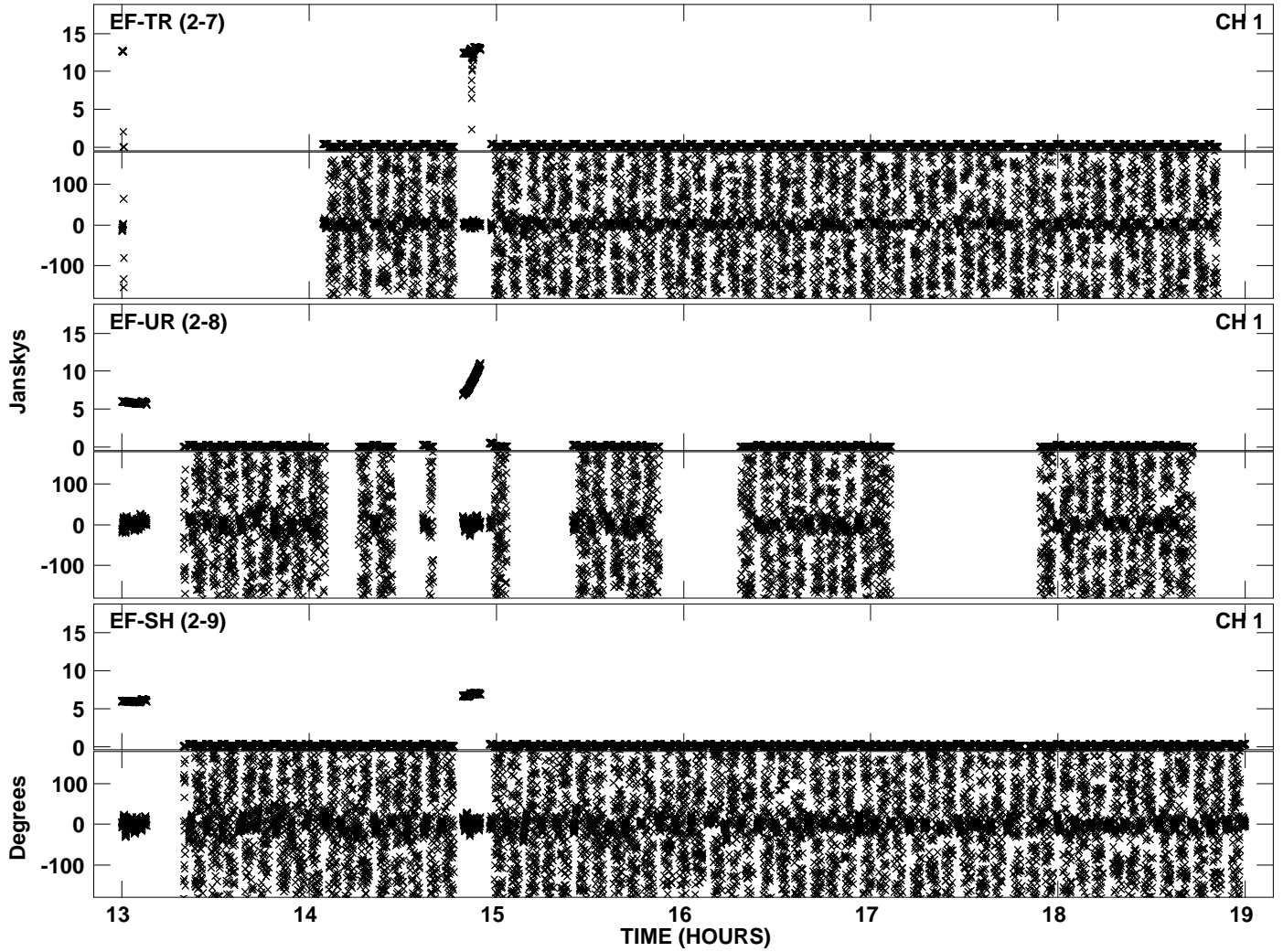
Plot file version 8 created 17-NOV-2010 13:58:58
Amplitude andPhase vs Time for EP068A 3.UVDATA.1 Vect aver. CL # 3
IF 4 CHAN 1 - 32 STK LL



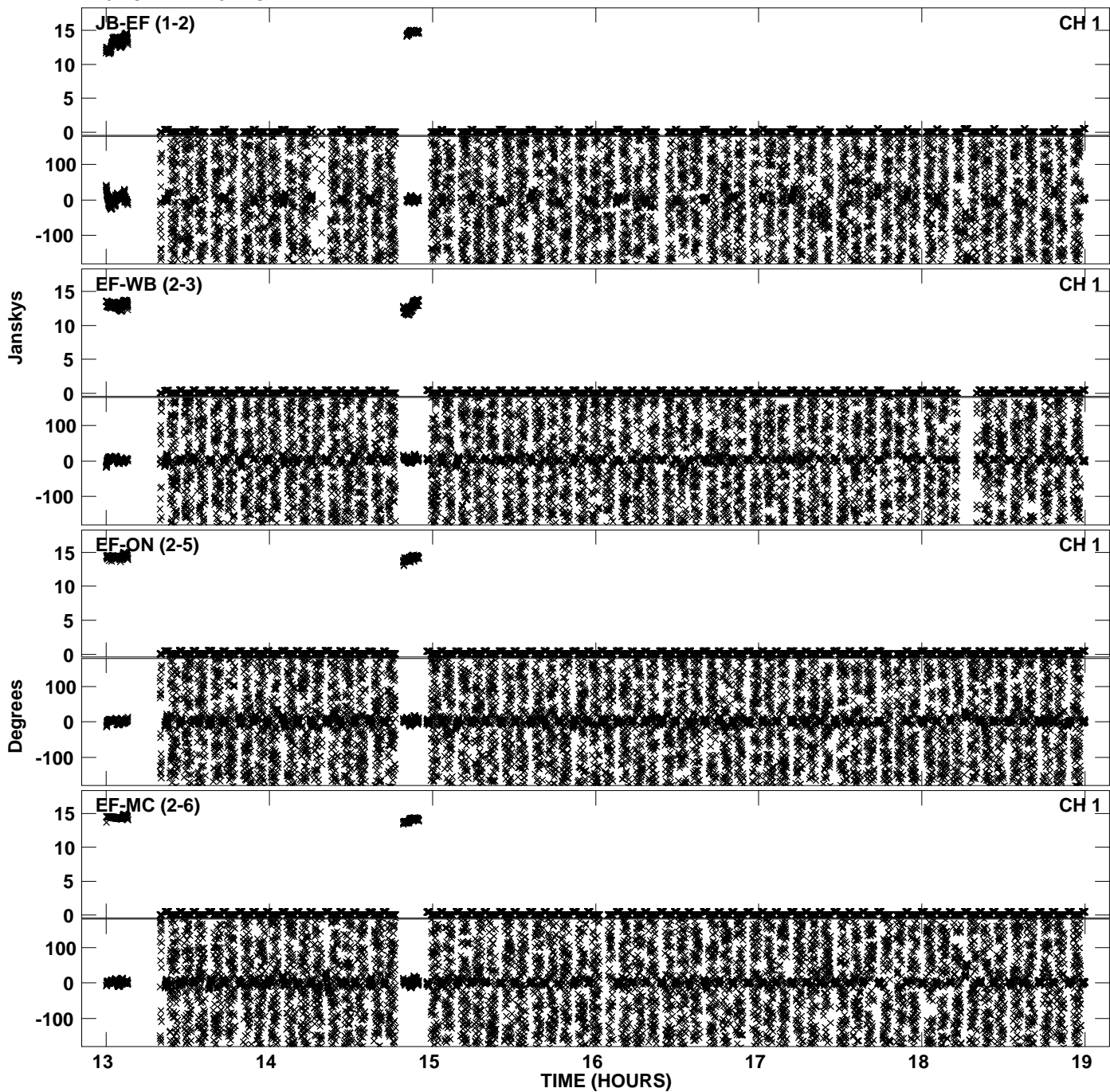
Plot file version 9 created 17-NOV-2010 13:59:05
Amplitude andPhase vs Time for EP068A 3.UVDATA.1 Vect aver. CL # 3
IF 5 CHAN 1 - 32 STK LL



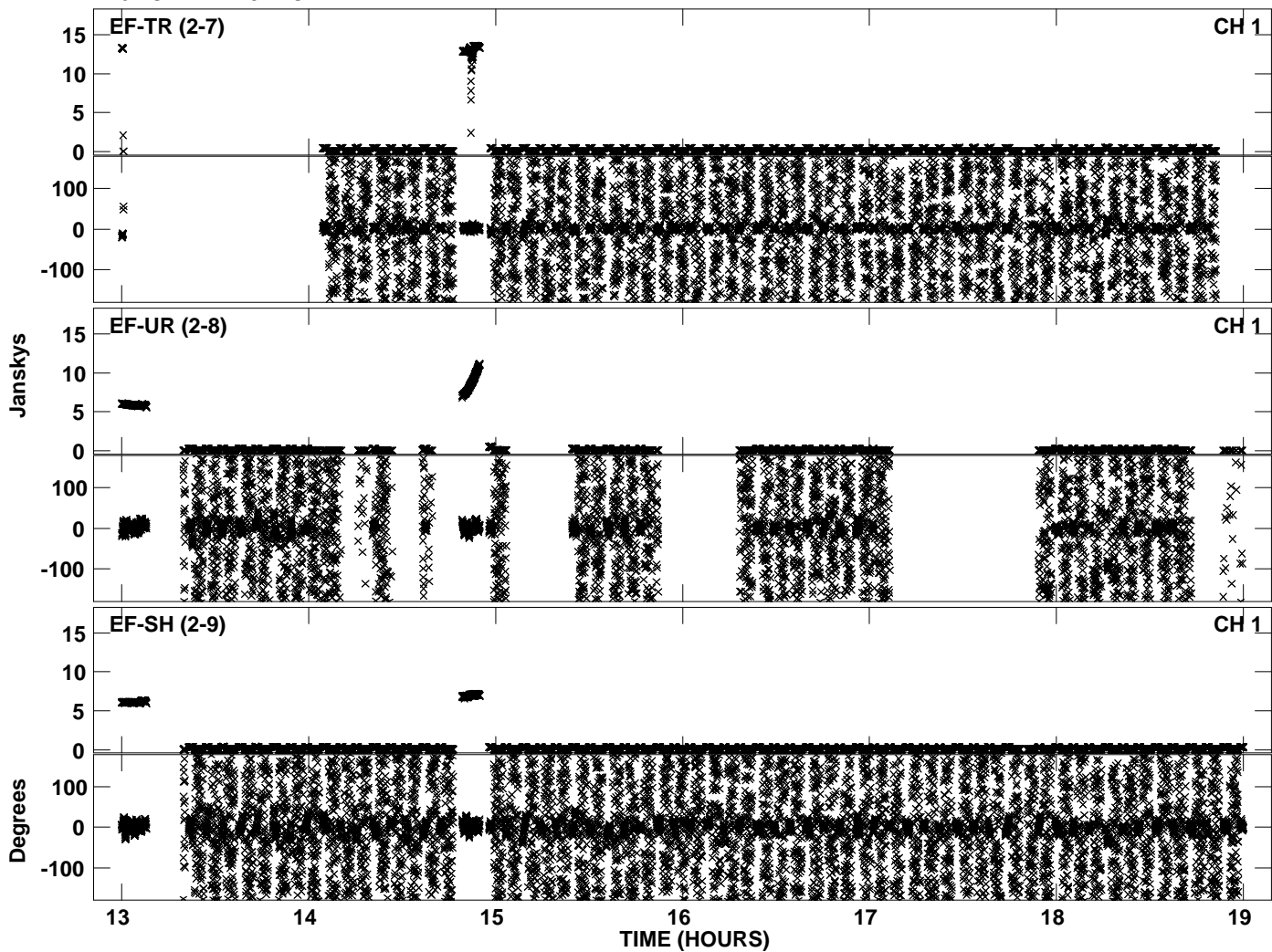
Plot file version 10 created 17-NOV-2010 13:59:06
Amplitude andPhase vs Time for EP068A 3.UVDATA.1 Vect aver. CL # 3
IF 5 CHAN 1 - 32 STK LL



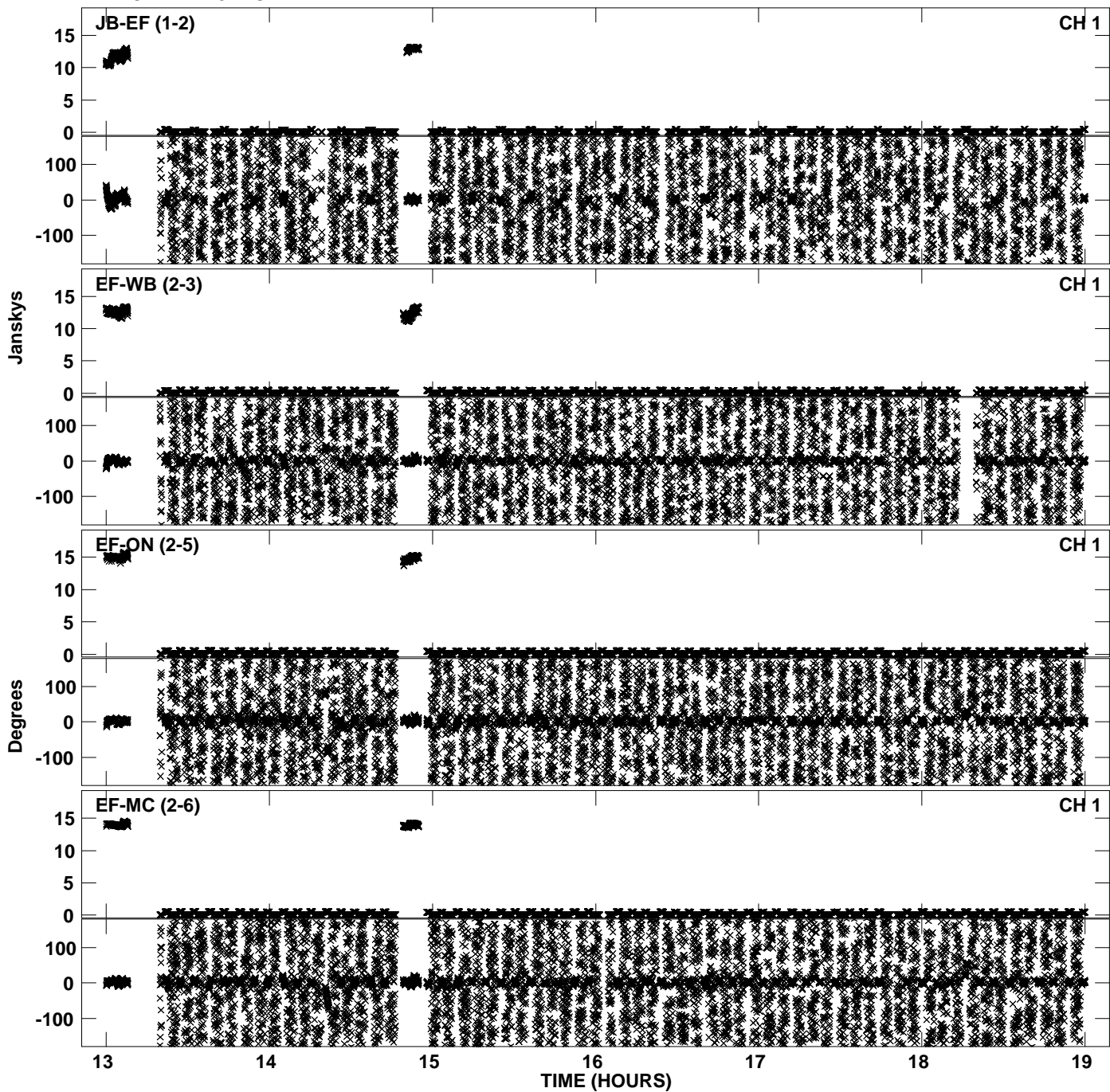
PLot file version 11 created 17-NOV-2010 13:59:13
Amplitude andPhase vs Time for EP068A 3.UVDATA.1 Vect aver. CL # 3
IF 6 CHAN 1 - 32 STK LL



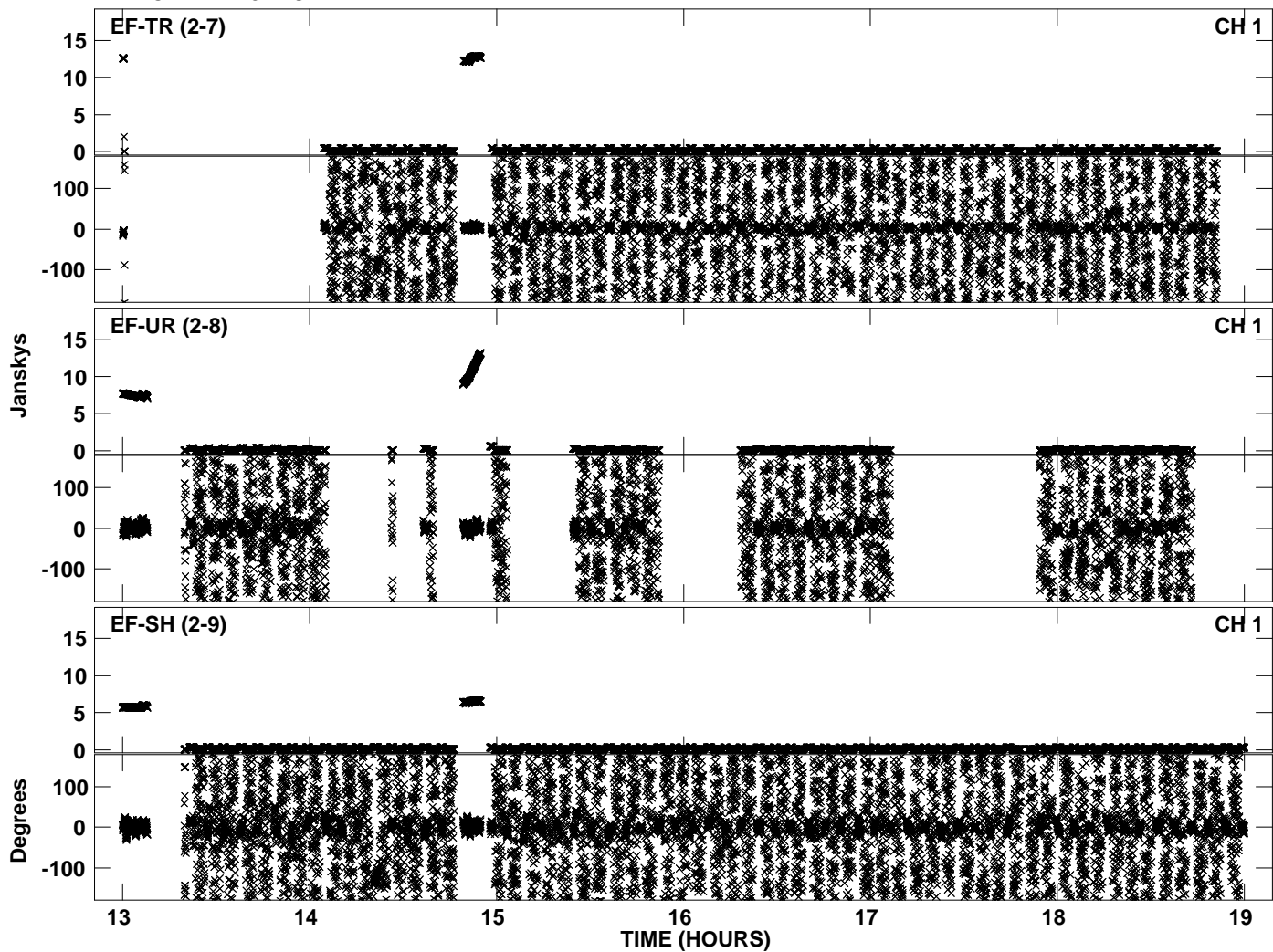
Plot file version 12 created 17-NOV-2010 13:59:13
Amplitude andPhase vs Time for EP068A 3.UVDATA.1 Vect aver. CL # 3
IF 6 CHAN 1 - 32 STK LL



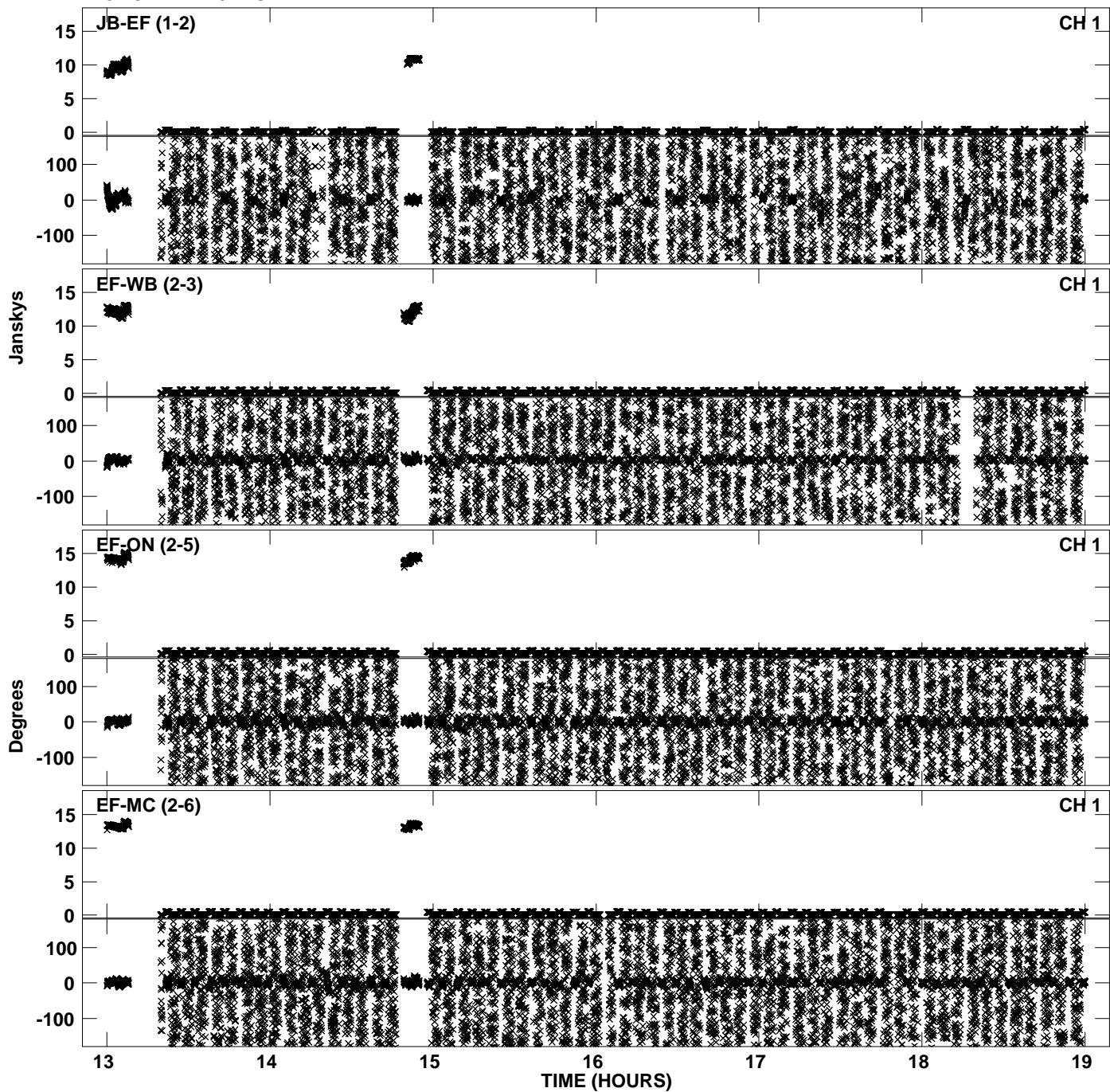
Plot file version 13 created 17-NOV-2010 13:59:20
Amplitude andPhase vs Time for EP068A 3.UVDATA.1 Vect aver. CL # 3
IF 7 CHAN 1 - 32 STK LL



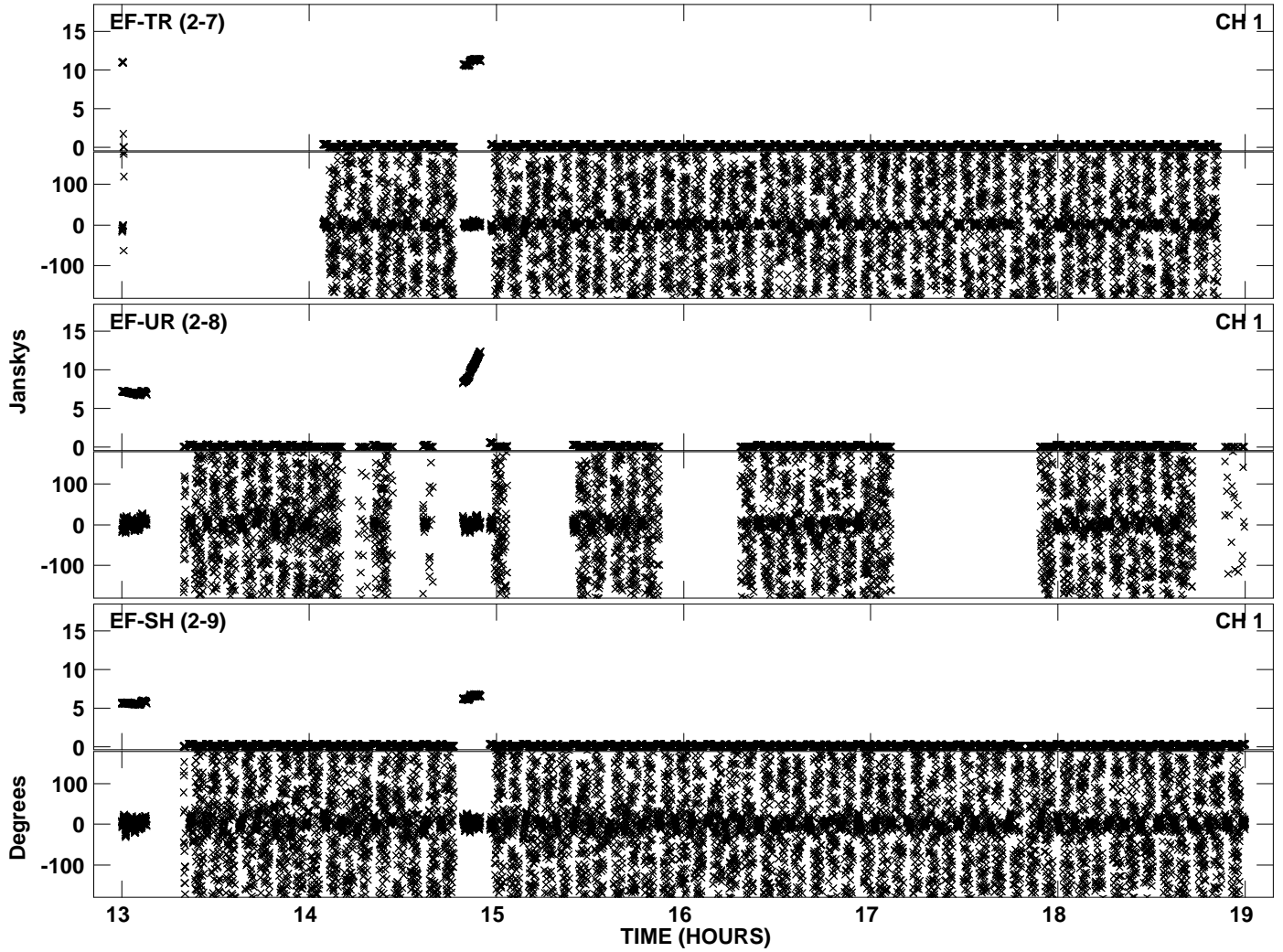
Plot file version 14 created 17-NOV-2010 13:59:20
Amplitude andPhase vs Time for EP068A 3.UVDATA.1 Vect aver. CL # 3
IF 7 CHAN 1 - 32 STK LL



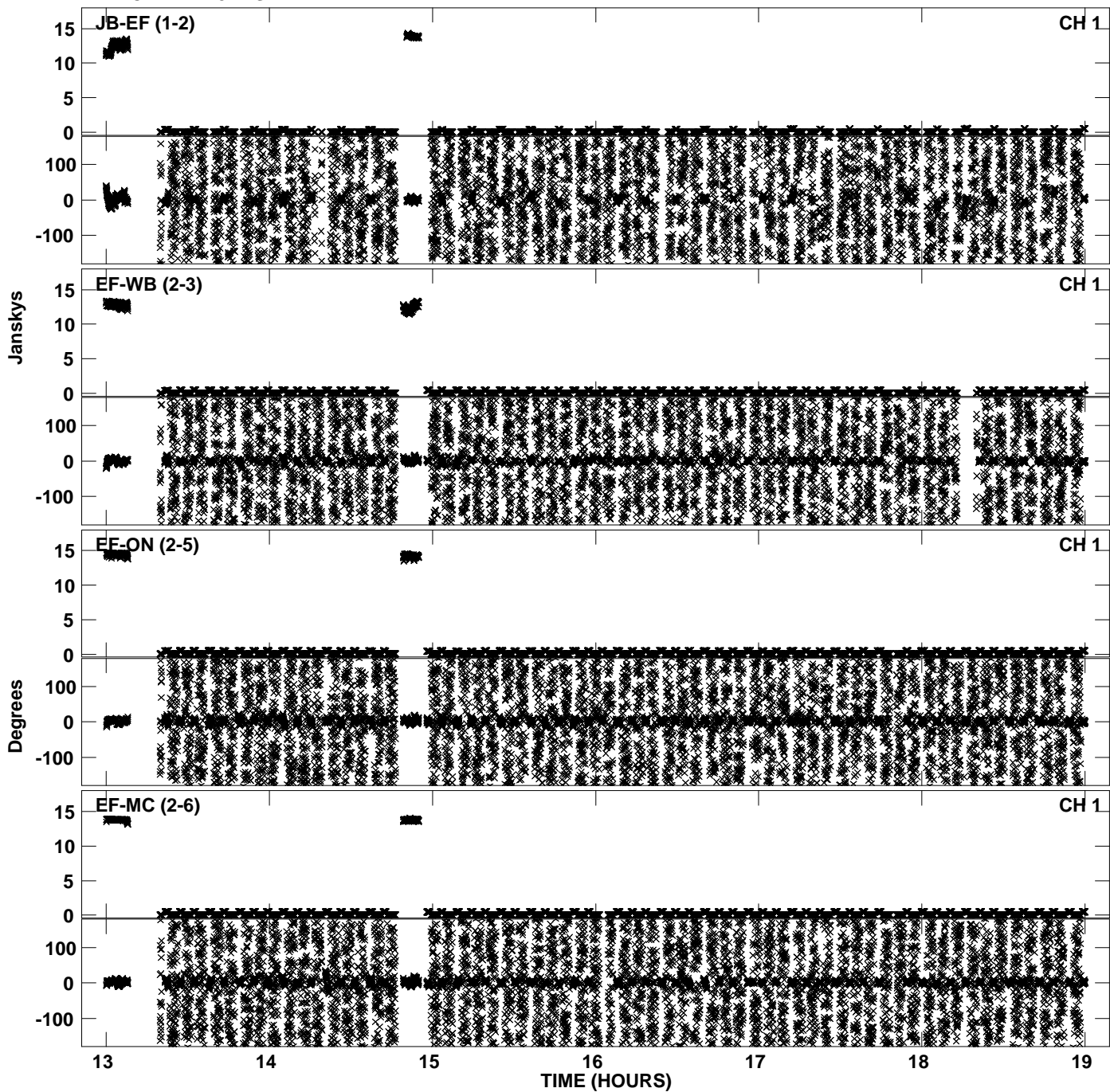
PLot file version 15 created 17-NOV-2010 13:59:27
Amplitude andPhase vs Time for EP068A 3.UVDATA.1 Vect aver. CL # 3
IF 8 CHAN 1 - 32 STK LL



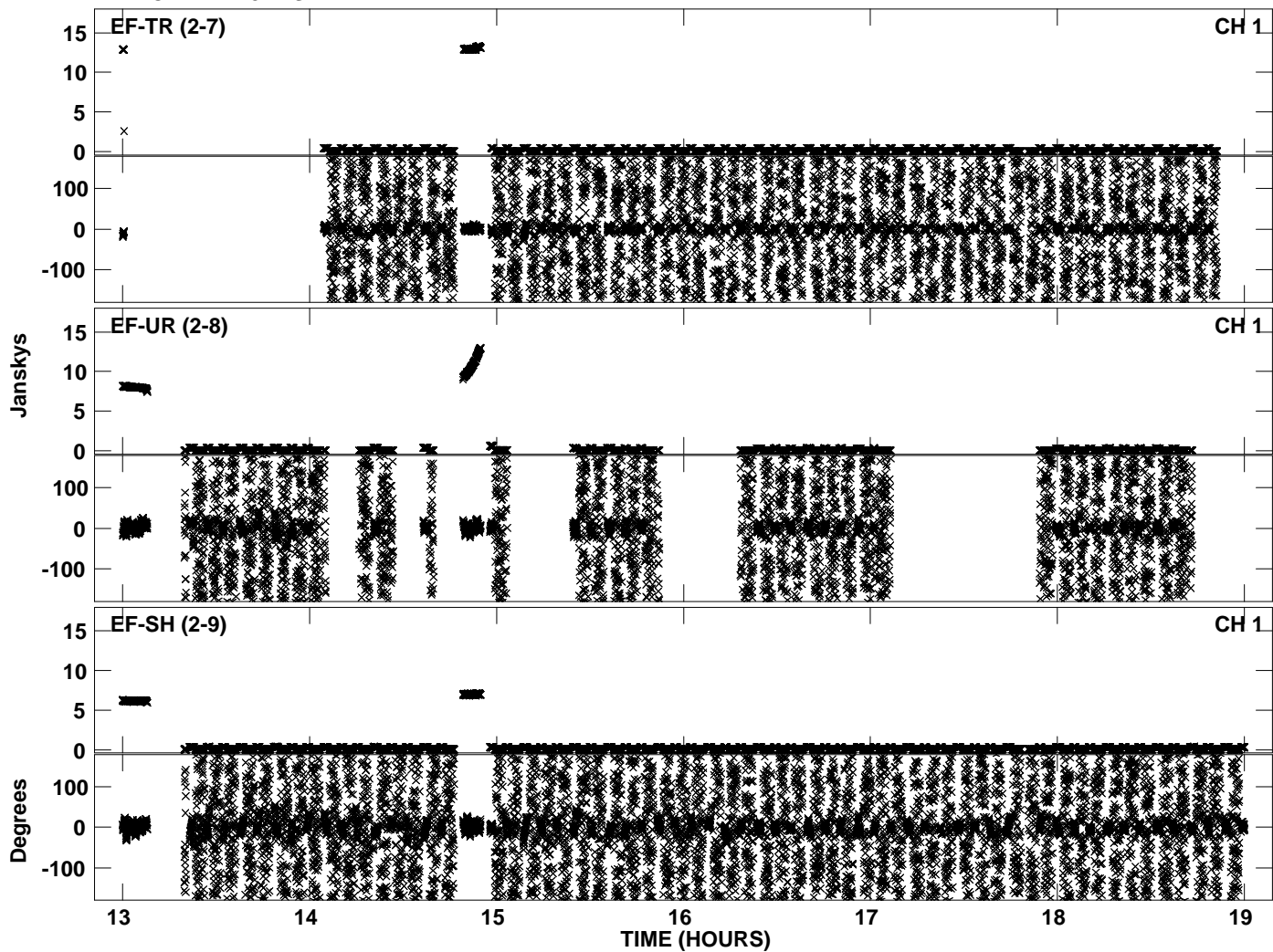
Plot file version 16 created 17-NOV-2010 13:59:28
Amplitude andPhase vs Time for EP068A 3.UVDATA.1 Vect aver. CL # 3
IF 8 CHAN 1 - 32 STK LL



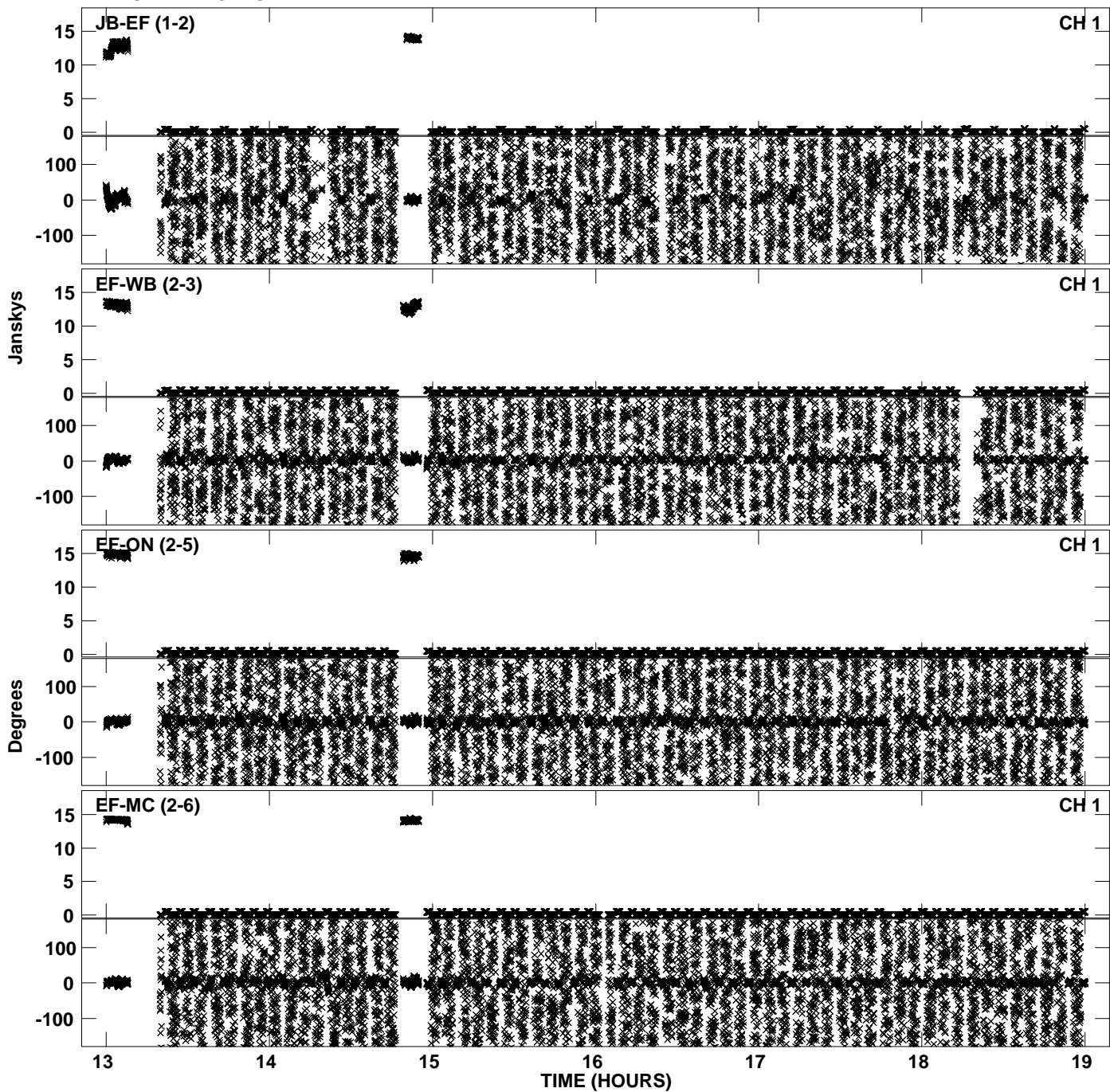
PLot file version 17 created 17-NOV-2010 13:59:34
Amplitude andPhase vs Time for EP068A 3.UVDATA.1 Vect aver. CL # 3
IF 1 CHAN 1 - 32 STK RR



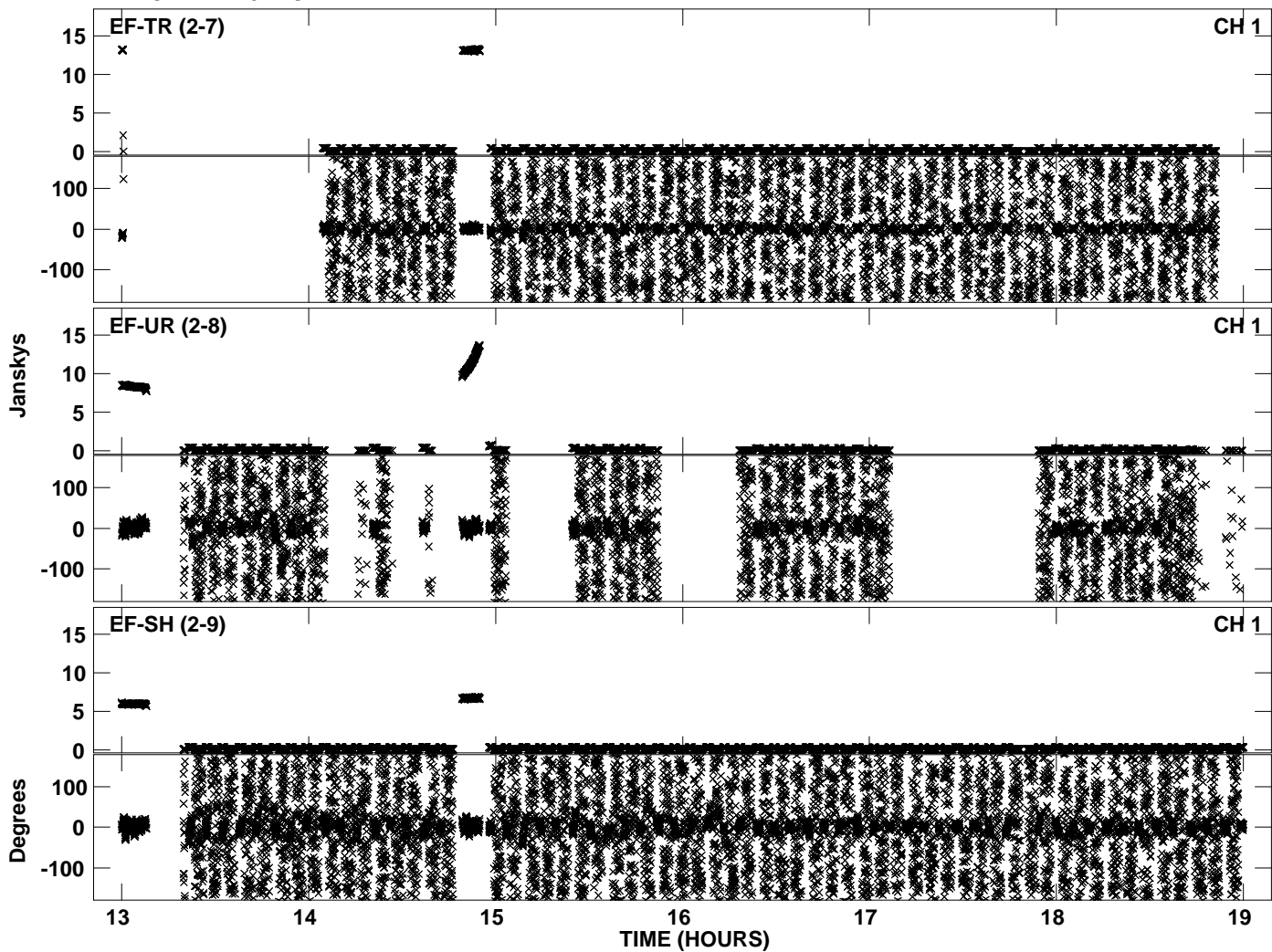
Plot file version 18 created 17-NOV-2010 13:59:35
Amplitude andPhase vs Time for EP068A 3.UVDATA.1 Vect aver. CL # 3
IF 1 CHAN 1 - 32 STK RR



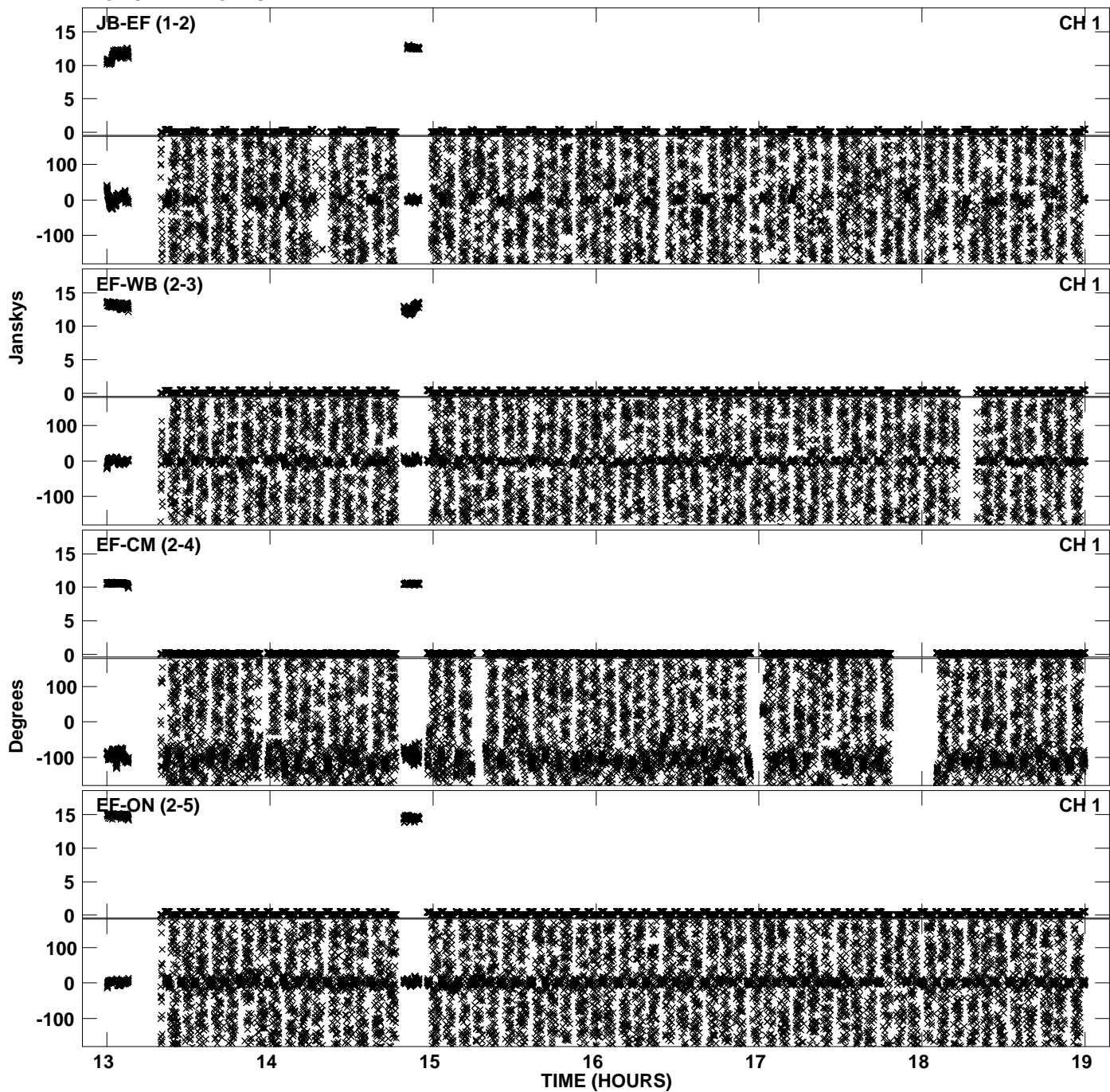
PLot file version 19 created 17-NOV-2010 13:59:42
Amplitude andPhase vs Time for EP068A 3.UVDATA.1 Vect aver. CL # 3
IF 2 CHAN 1 - 32 STK RR



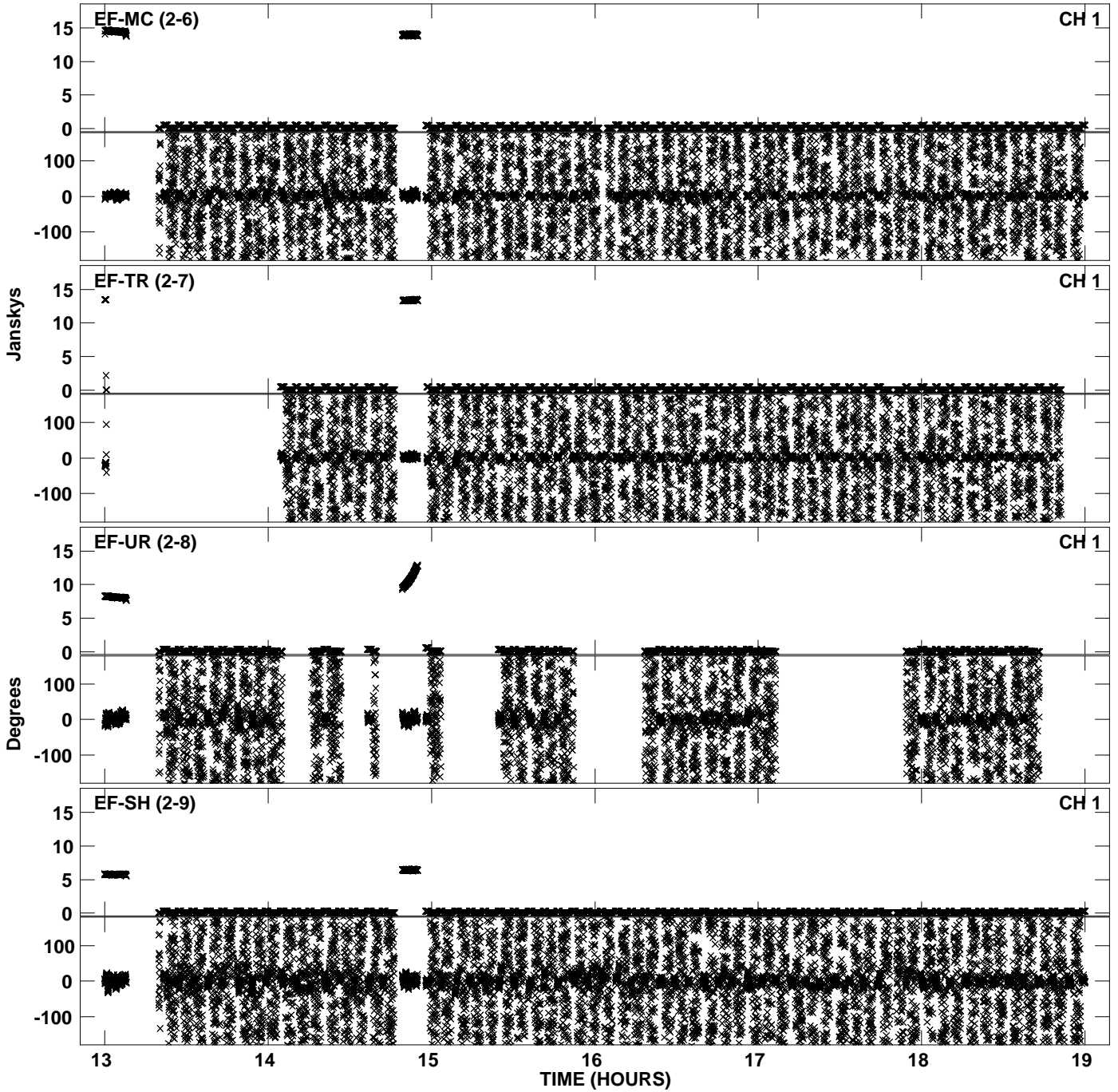
Plot file version 20 created 17-NOV-2010 13:59:42
Amplitude andPhase vs Time for EP068A 3.UVDATA.1 Vect aver. CL # 3
IF 2 CHAN 1 - 32 STK RR



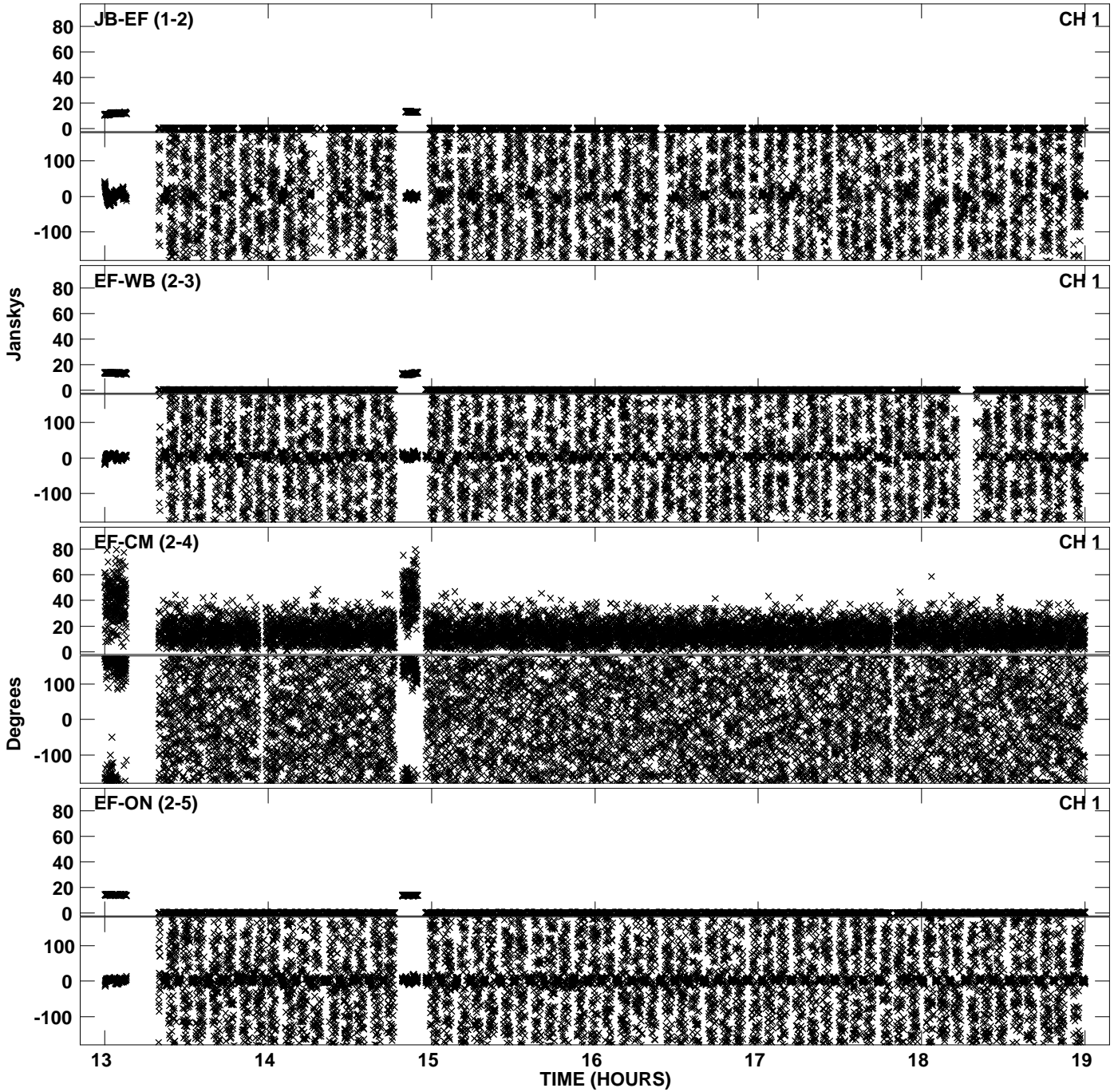
PLot file version 21 created 17-NOV-2010 13:59:49
Amplitude andPhase vs Time for EP068A 3.UVDATA.1 Vect aver. CL # 3
IF 3 CHAN 1 - 32 STK RR



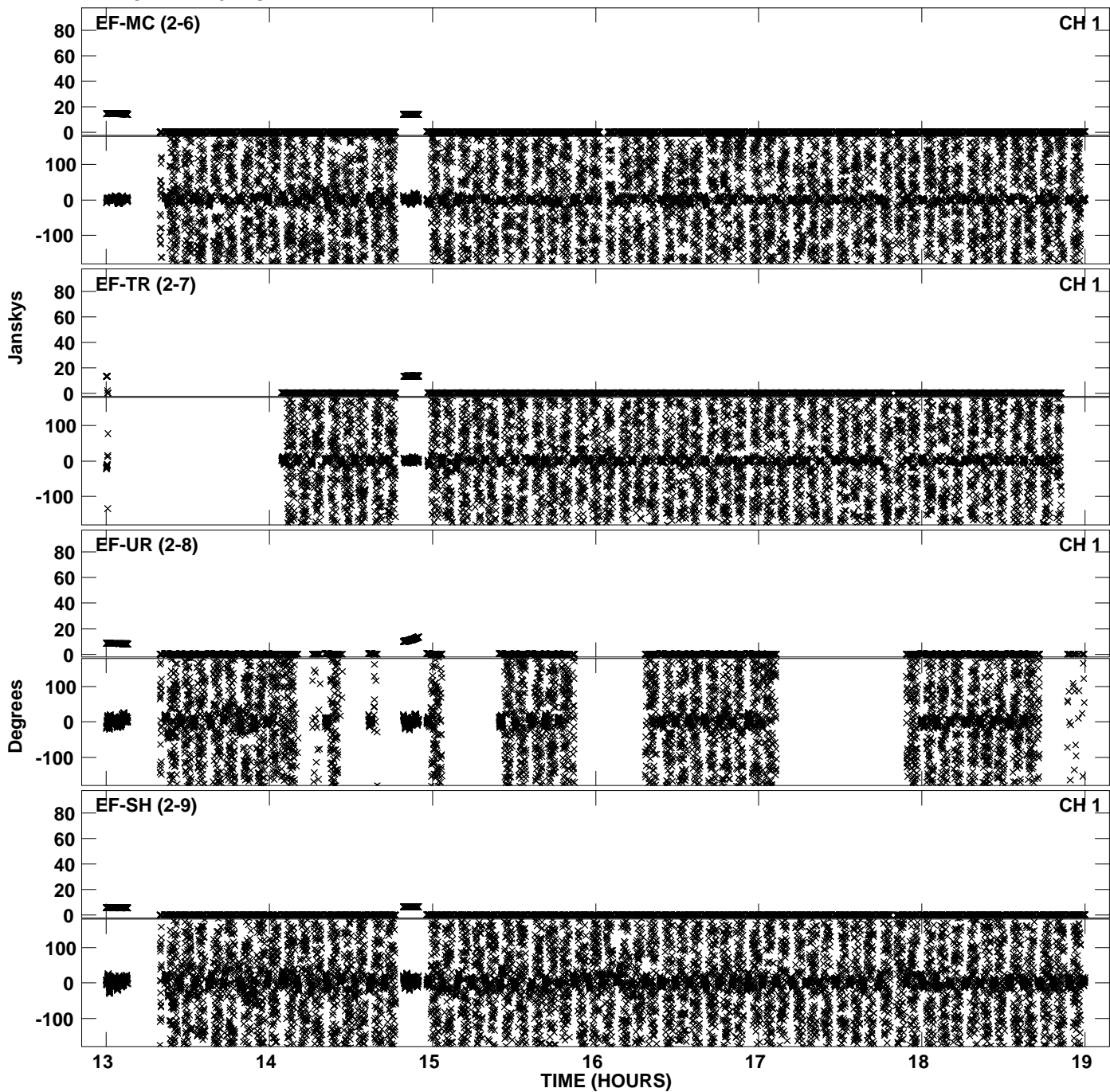
Plot file version 22 created 17-NOV-2010 13:59:49
Amplitude andPhase vs Time for EP068A 3.UVDATA.1 Vect aver. CL # 3
IF 3 CHAN 1 - 32 STK RR



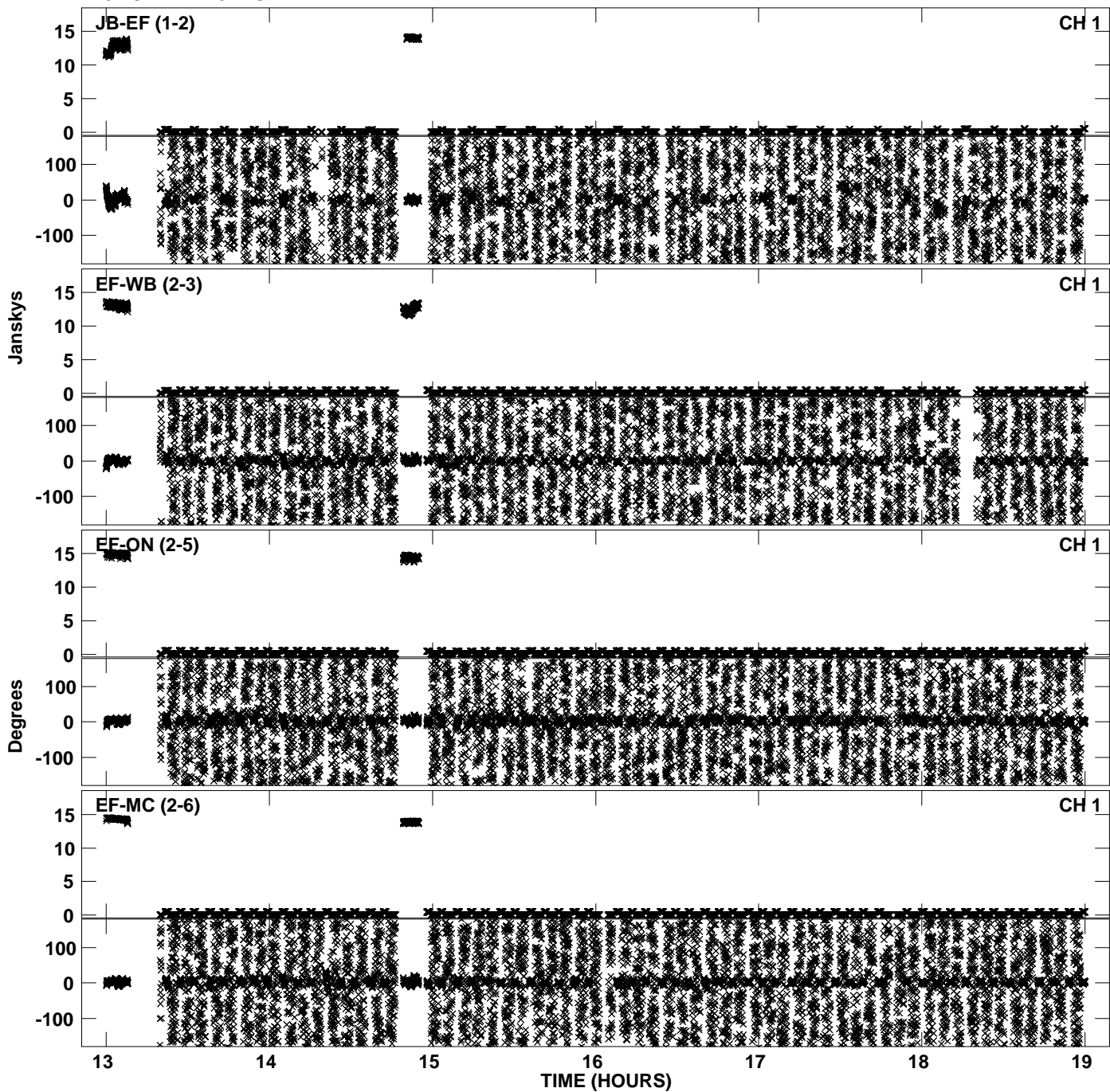
Plot file version 23 created 17-NOV-2010 13:59:57
Amplitude andPhase vs Time for EP068A 3.UVDATA.1 Vect aver. CL # 3
IF 4 CHAN 1 - 32 STK RR



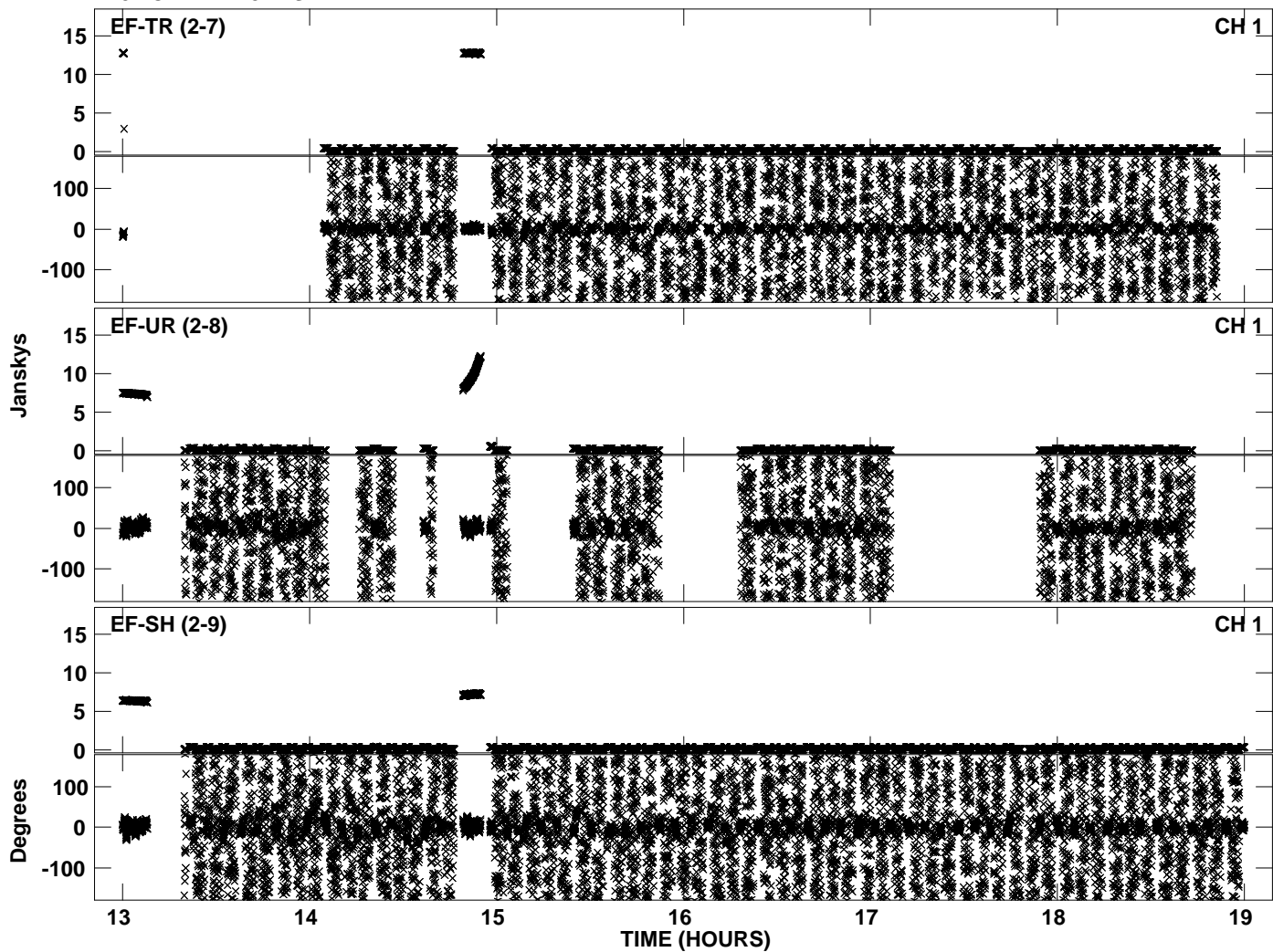
Plot file version 24 created 17-NOV-2010 13:59:57
Amplitude andPhase vs Time for EP068A 3.UVDATA.1 Vect aver. CL # 3
IF 4 CHAN 1 - 32 STK RR



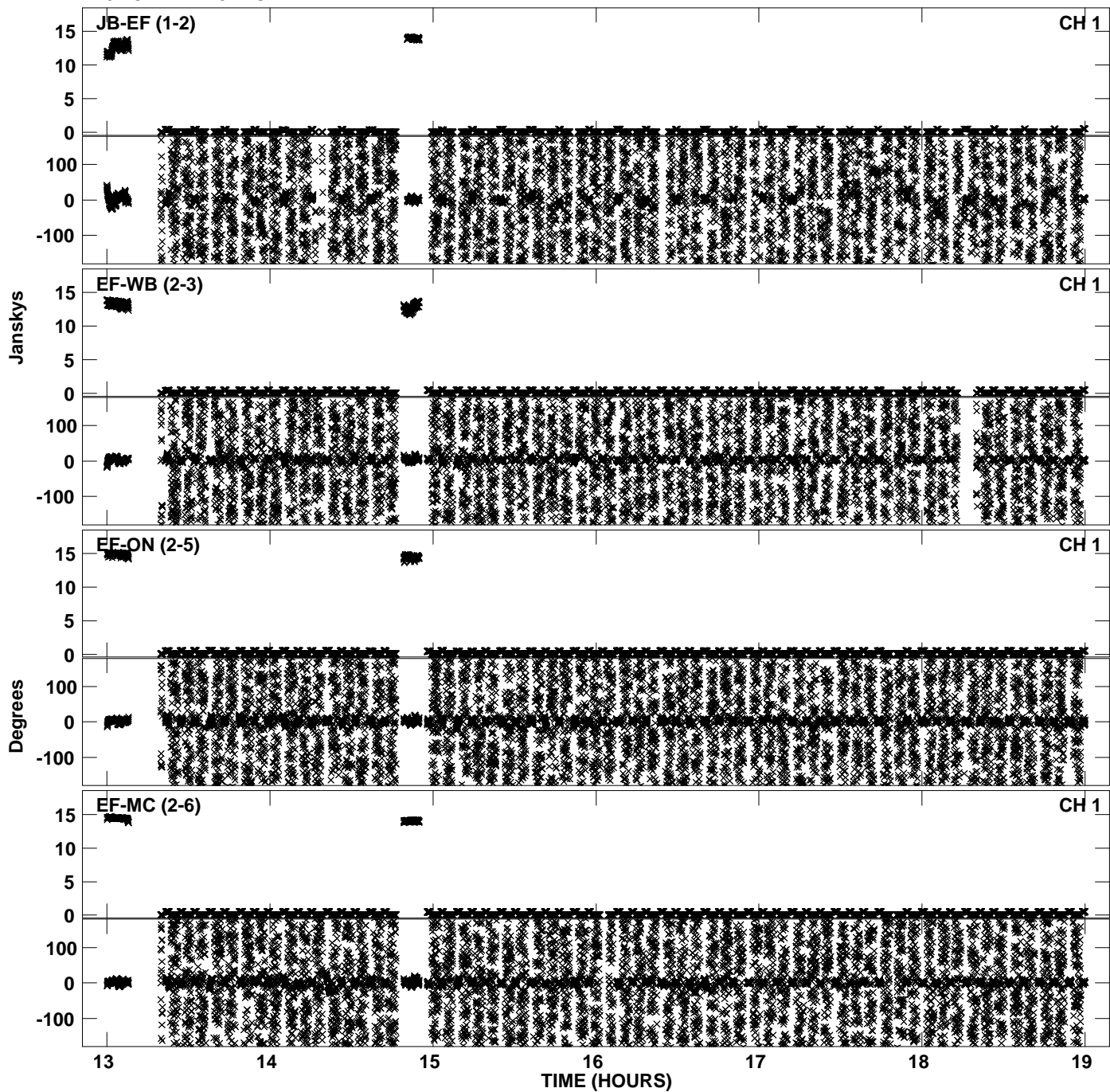
PLot file version 25 created 17-NOV-2010 14:00:04
Amplitude andPhase vs Time for EP068A 3.UVDATA.1 Vect aver. CL # 3
IF 5 CHAN 1 - 32 STK RR



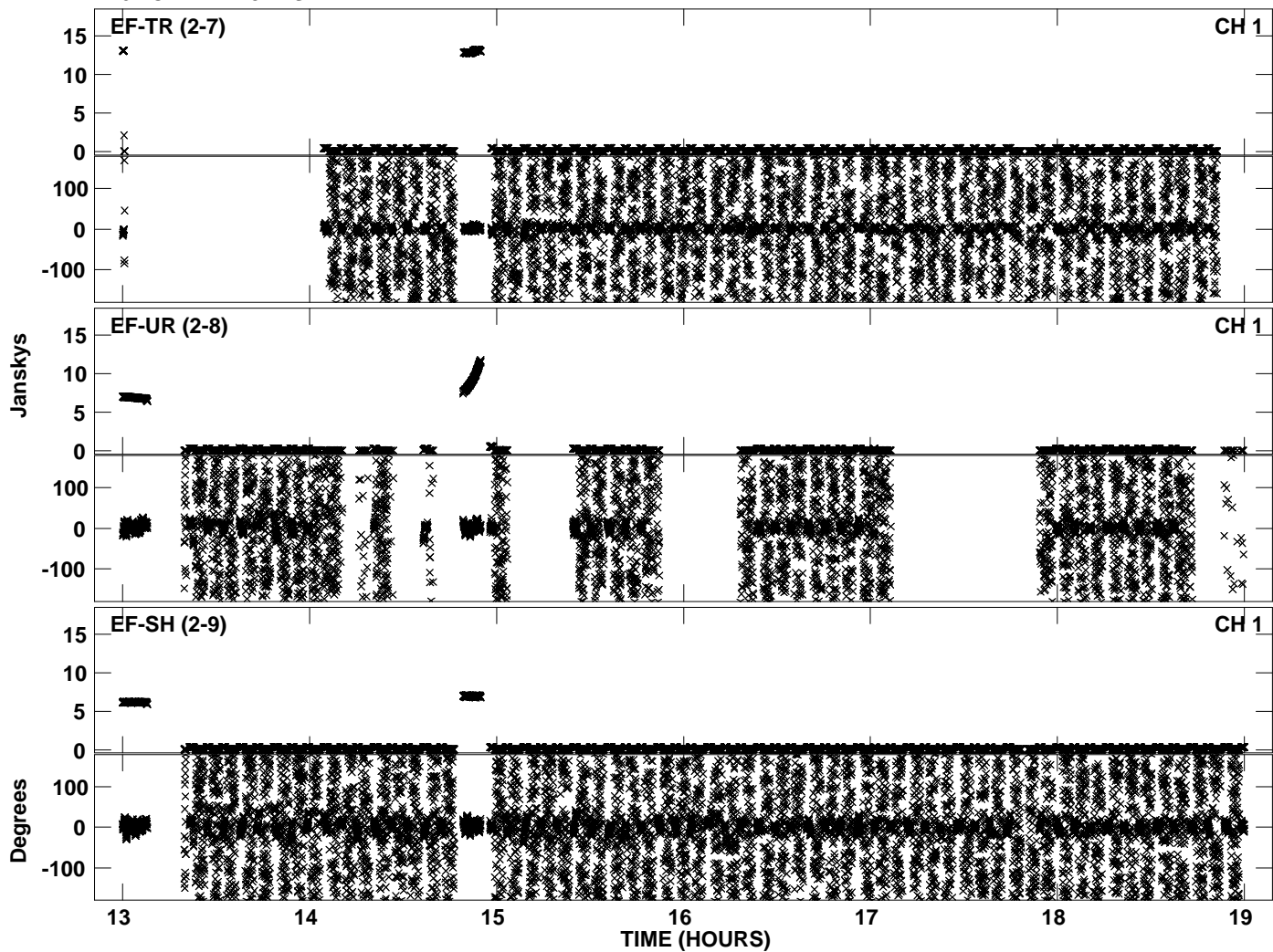
Plot file version 26 created 17-NOV-2010 14:00:04
Amplitude andPhase vs Time for EP068A 3.UVDATA.1 Vect aver. CL # 3
IF 5 CHAN 1 - 32 STK RR



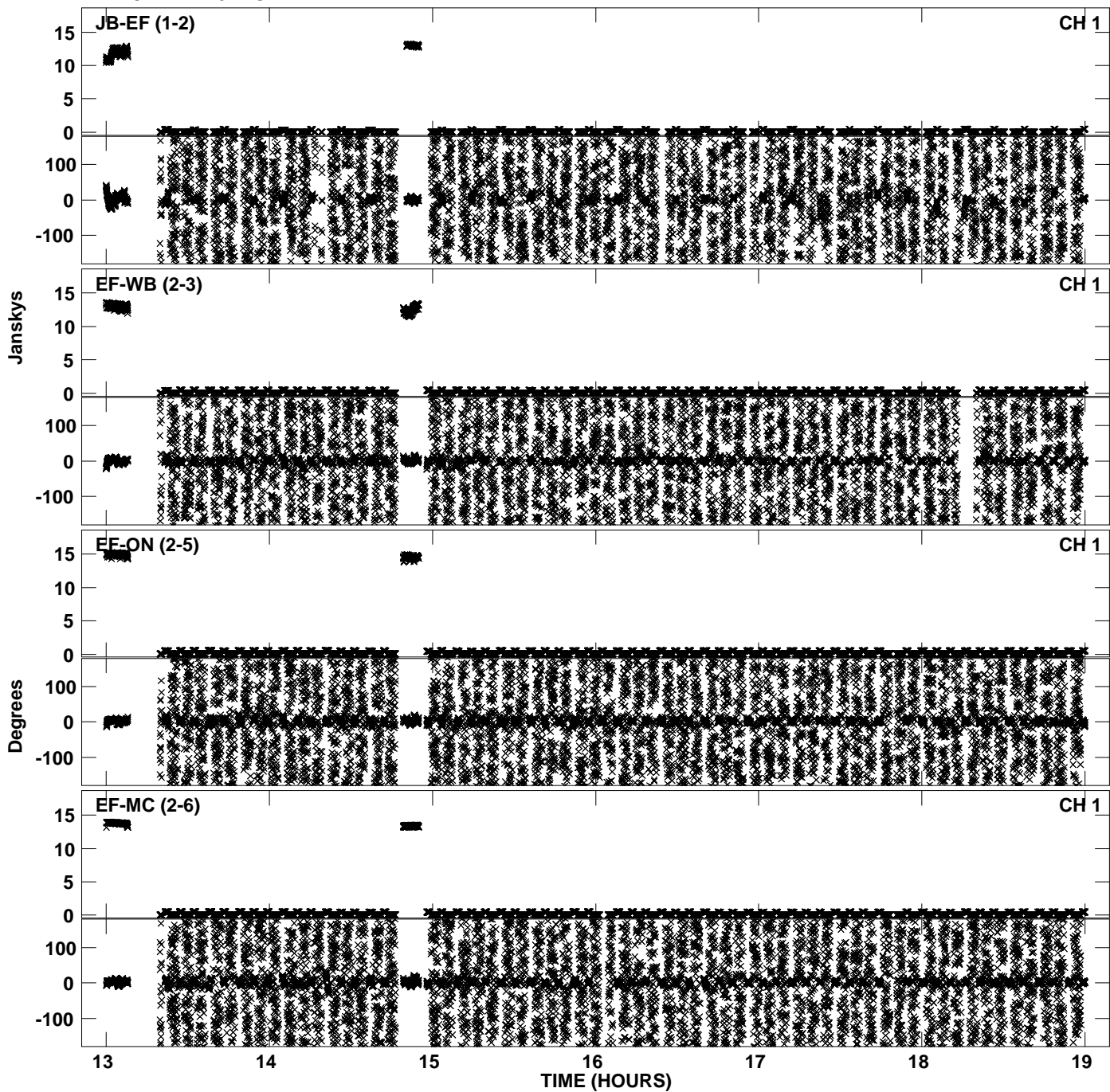
PLot file version 27 created 17-NOV-2010 14:00:11
Amplitude andPhase vs Time for EP068A 3.UVDATA.1 Vect aver. CL # 3
IF 6 CHAN 1 - 32 STK RR



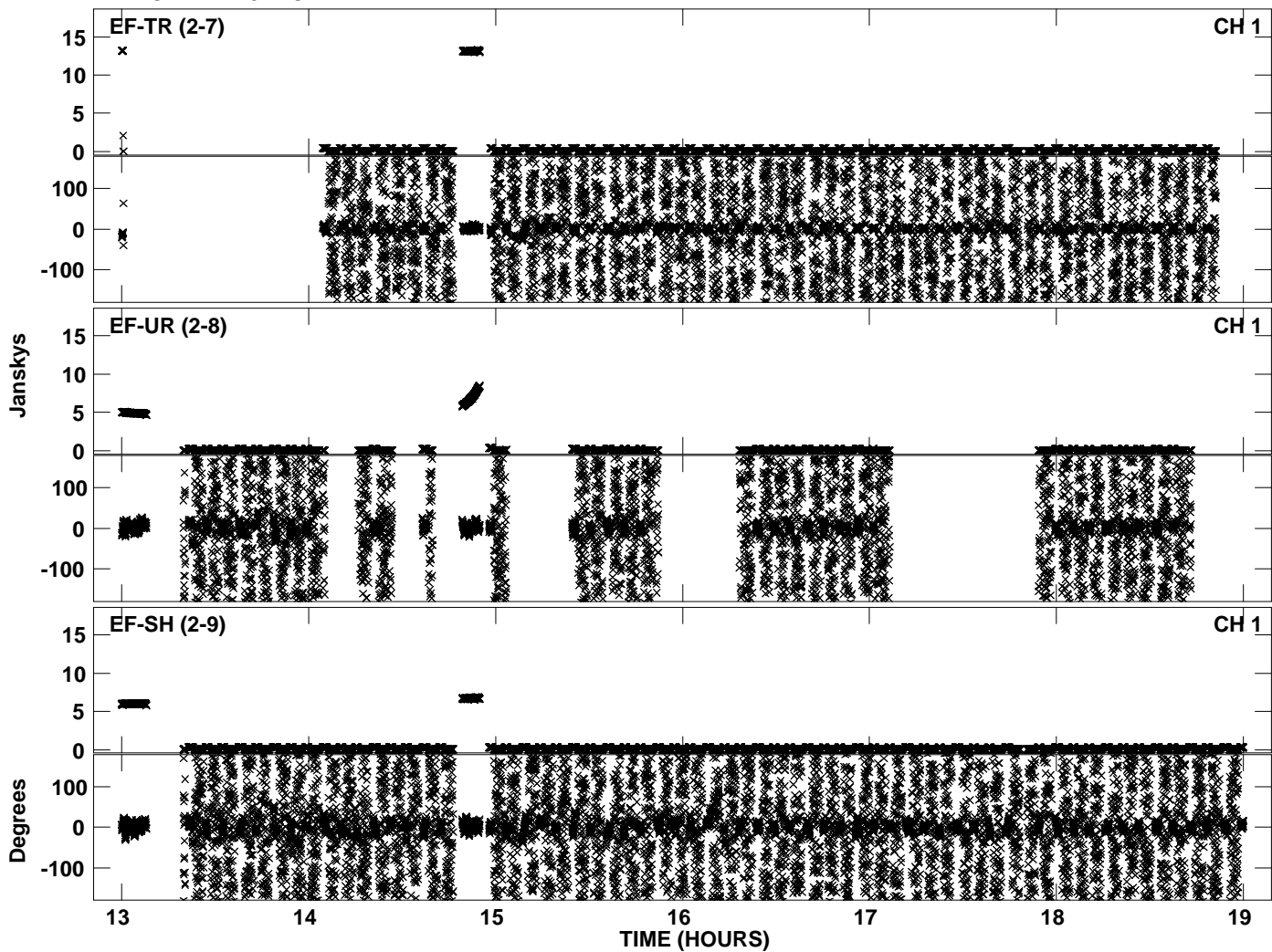
Plot file version 28 created 17-NOV-2010 14:00:11
Amplitude andPhase vs Time for EP068A 3.UVDATA.1 Vect aver. CL # 3
IF 6 CHAN 1 - 32 STK RR



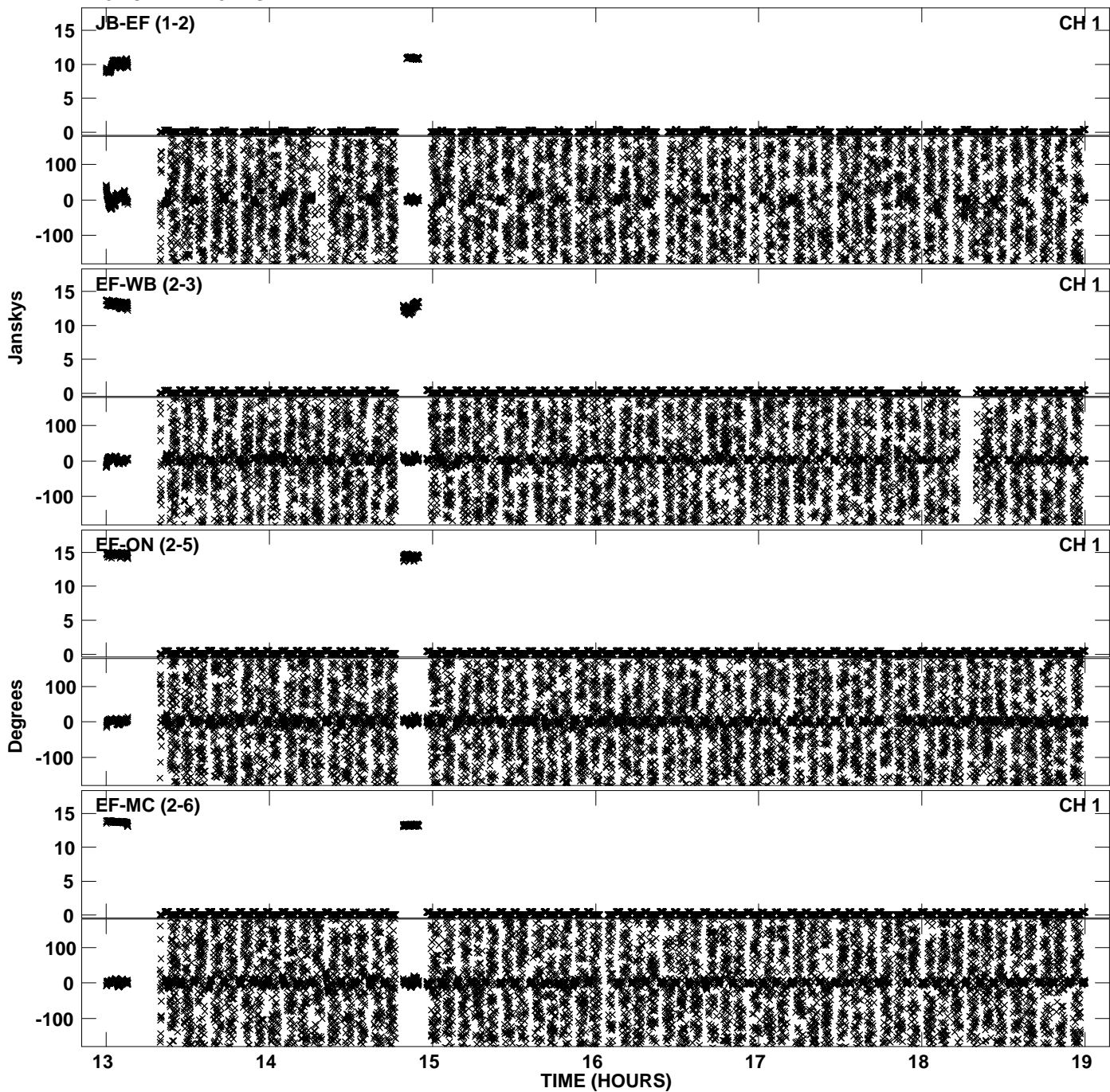
Plot file version 29 created 17-NOV-2010 14:00:18
Amplitude andPhase vs Time for EP068A 3.UVDATA.1 Vect aver. CL # 3
IF 7 CHAN 1 - 32 STK RR



Plot file version 30 created 17-NOV-2010 14:00:18
Amplitude andPhase vs Time for EP068A 3.UVDATA.1 Vect aver. CL # 3
IF 7 CHAN 1 - 32 STK RR



PLot file version 31 created 17-NOV-2010 14:00:25
Amplitude andPhase vs Time for EP068A 3.UVDATA.1 Vect aver. CL # 3
IF 8 CHAN 1 - 32 STK RR



Plot file version 32 created 17-NOV-2010 14:00:25
Amplitude andPhase vs Time for EP068A 3.UVDATA.1 Vect aver. CL # 3
IF 8 CHAN 1 - 32 STK RR

