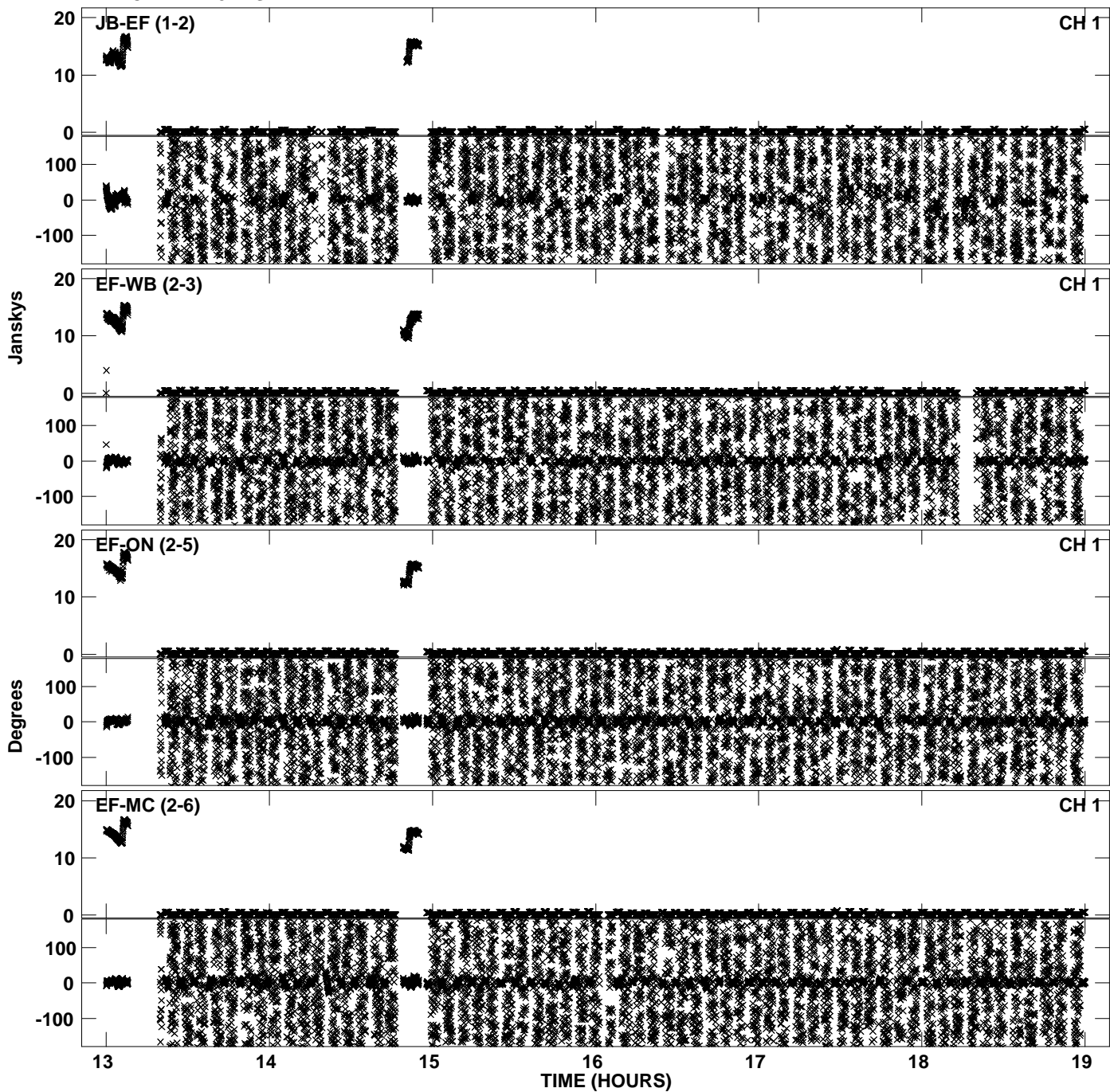
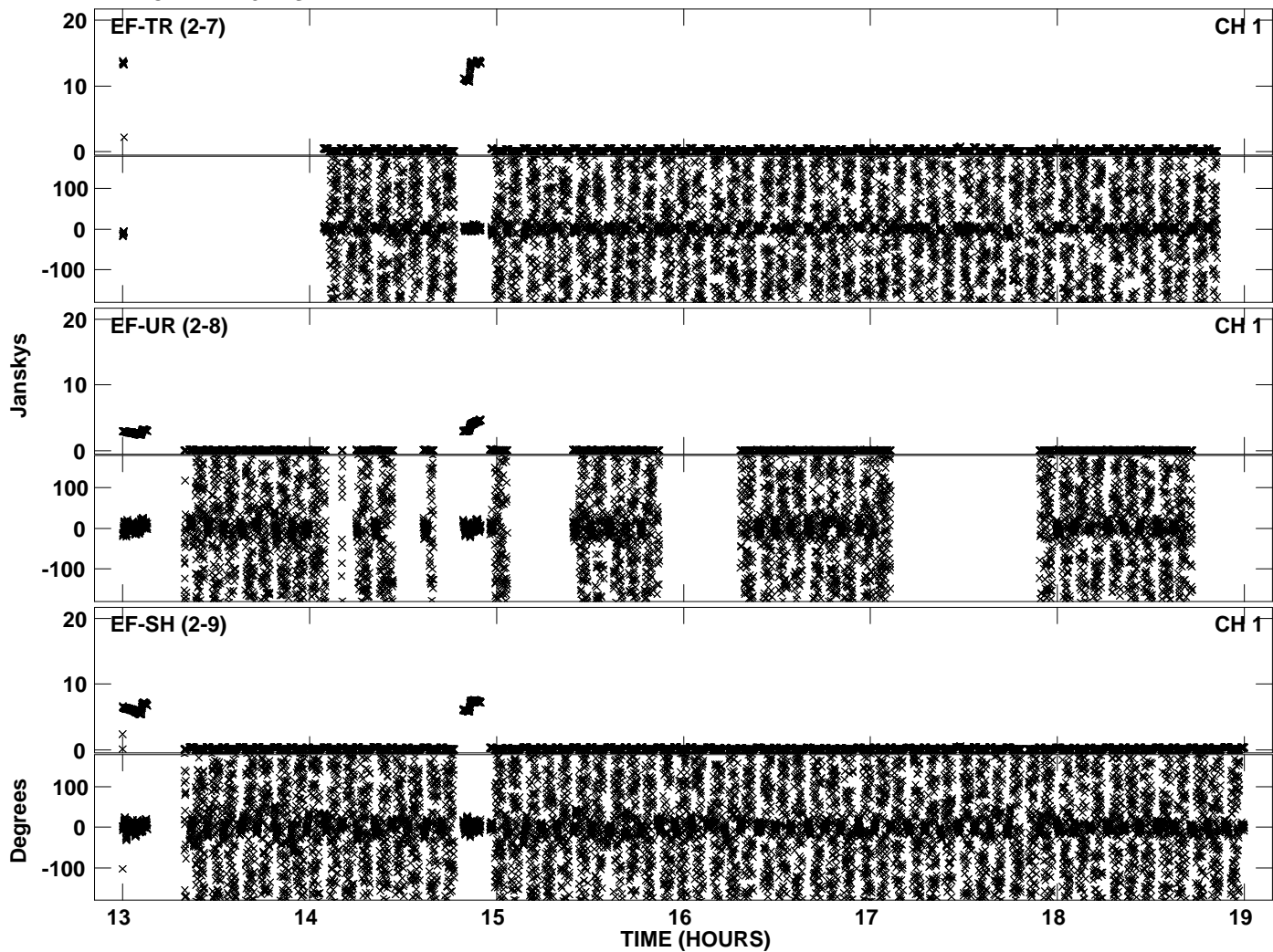


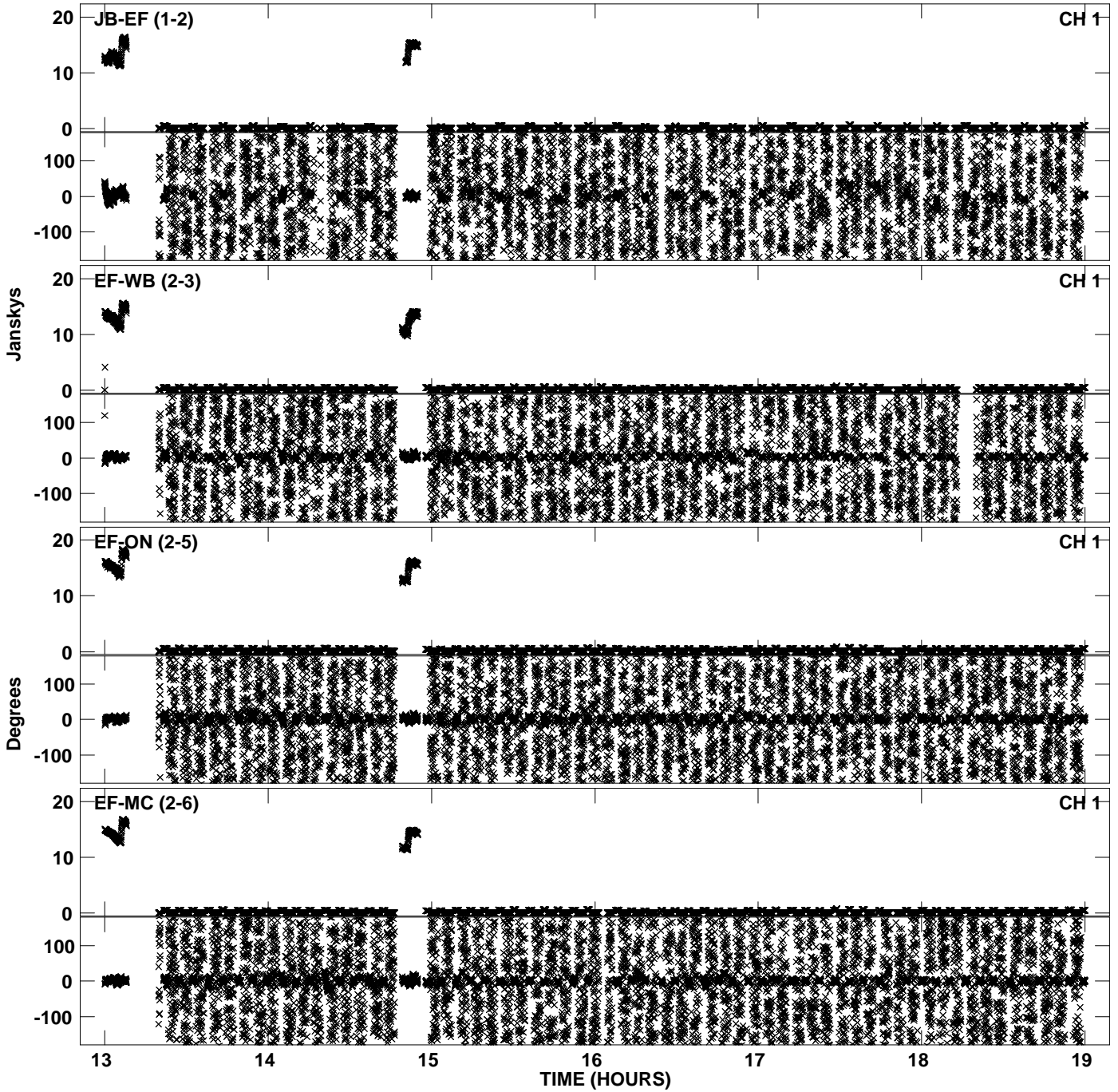
Plot file version 1 created 17-NOV-2010 15:36:33  
Amplitude andPhase vs Time for EP068A 4.UVDATA.1 Vect aver. CL # 3  
IF 1 CHAN 1 - 32 STK LL



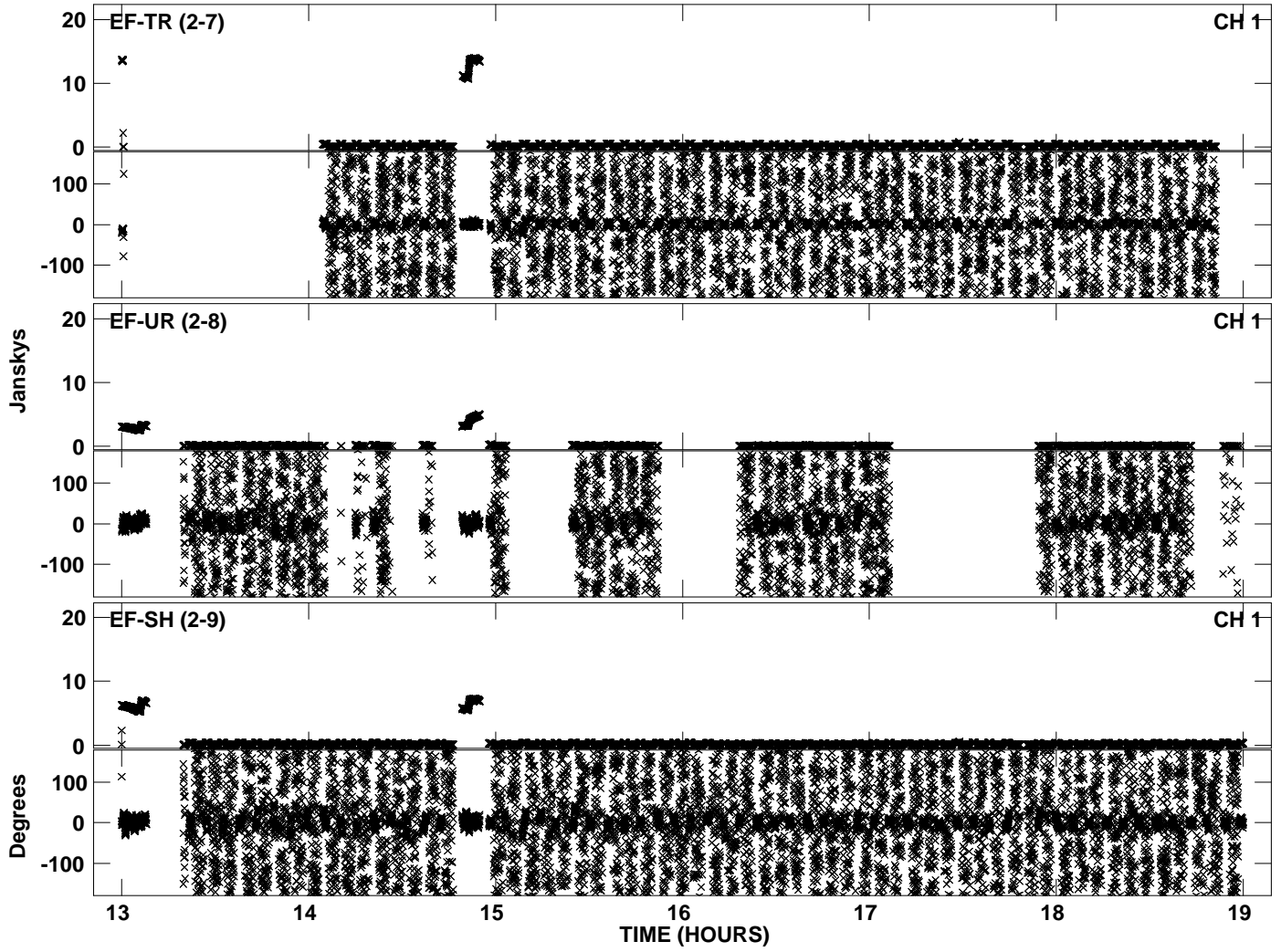
Plot file version 2 created 17-NOV-2010 15:36:33  
Amplitude andPhase vs Time for EP068A 4.UVDATA.1 Vect aver. CL # 3  
IF 1 CHAN 1 - 32 STK LL



PLot file version 3 created 17-NOV-2010 15:36:40  
Amplitude andPhase vs Time for EP068A 4.UVDATA.1 Vect aver. CL # 3  
IF 2 CHAN 1 - 32 STK LL

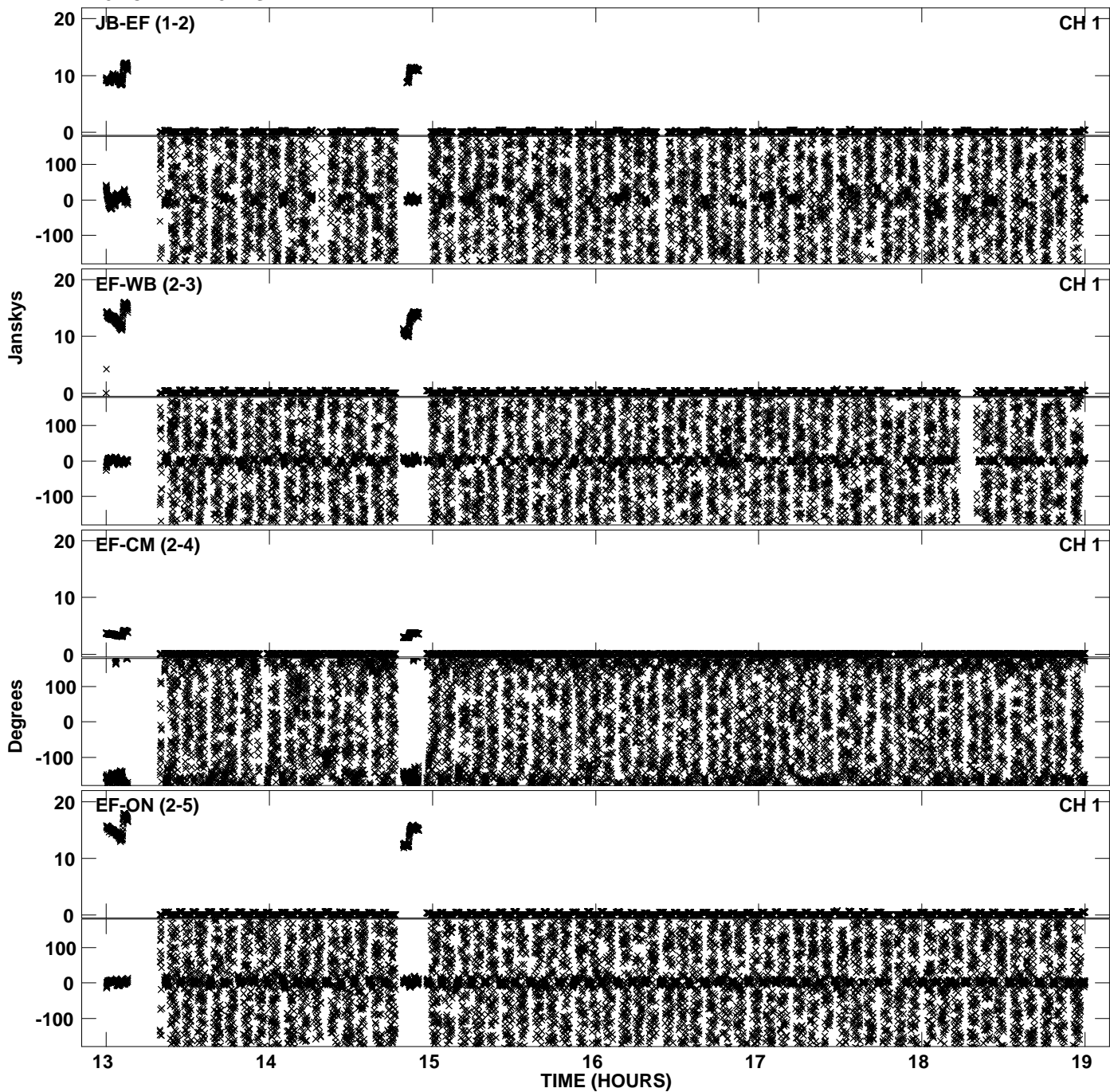


Plot file version 4 created 17-NOV-2010 15:36:41  
Amplitude andPhase vs Time for EP068A 4.UVDATA.1 Vect aver. CL # 3  
IF 2 CHAN 1 - 32 STK LL

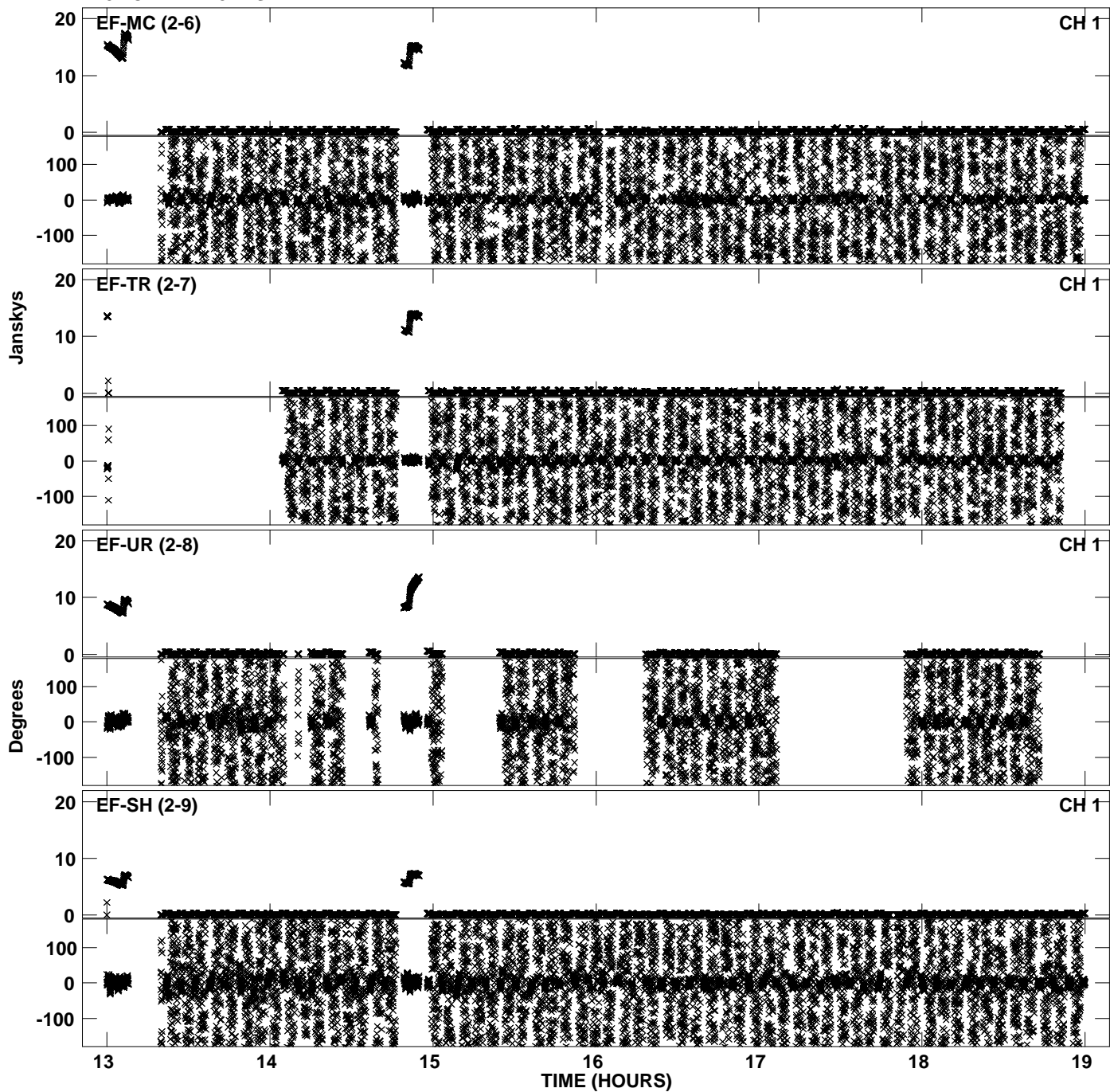




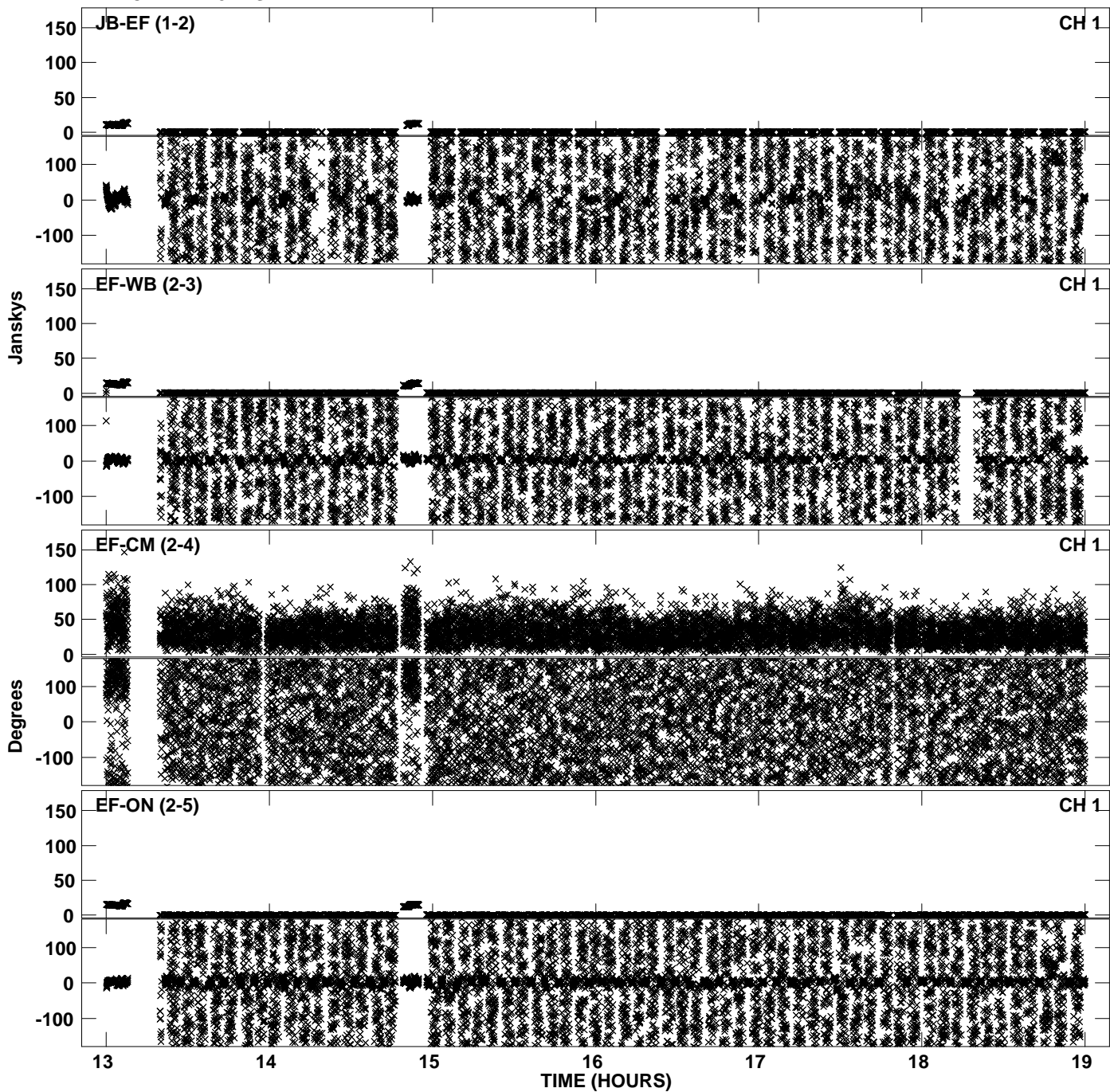
Plot file version 5 created 17-NOV-2010 15:36:48  
Amplitude andPhase vs Time for EP068A 4.UVDATA.1 Vect aver. CL # 3  
IF 3 CHAN 1 - 32 STK LL



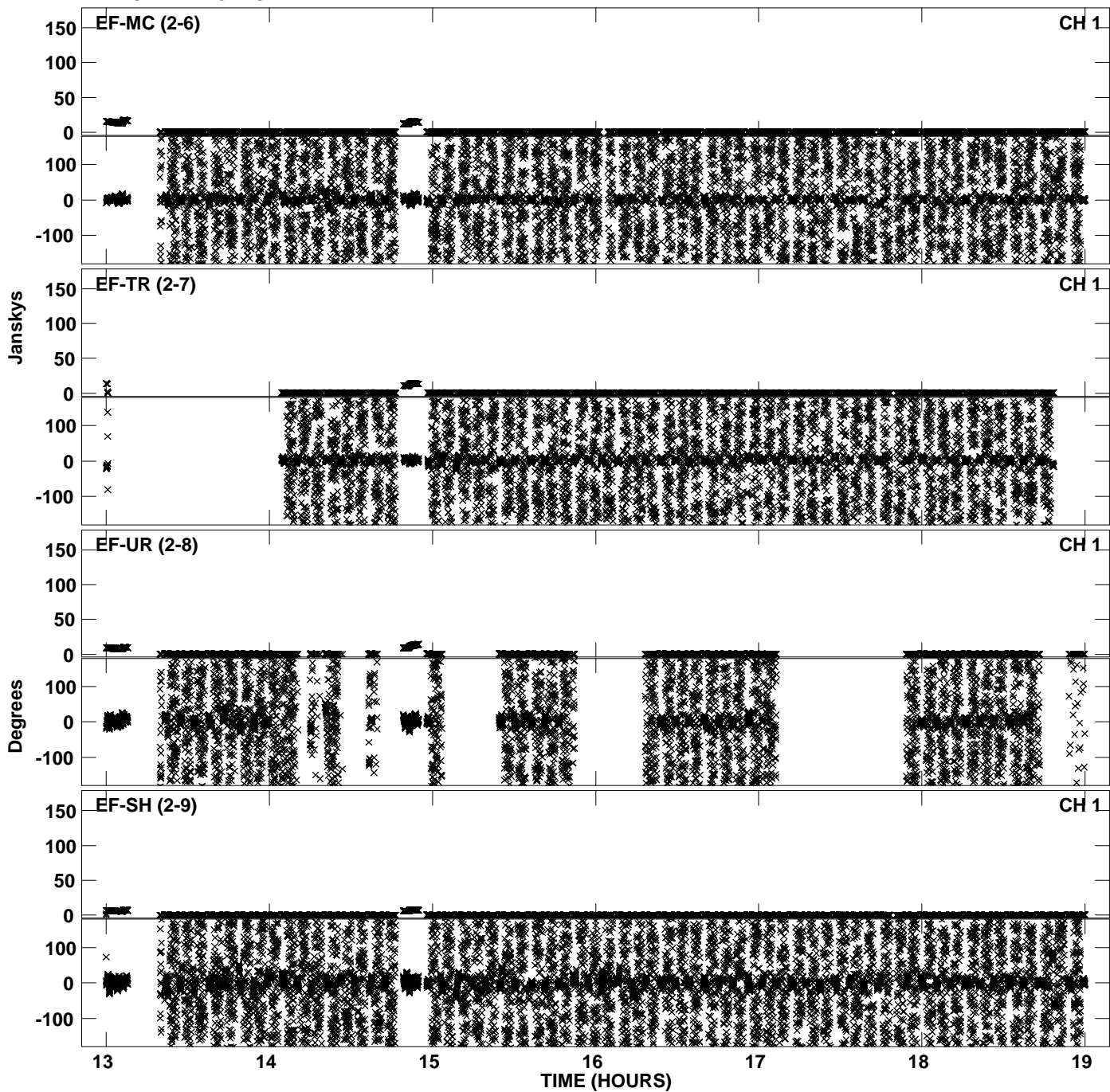
Plot file version 6 created 17-NOV-2010 15:36:49  
Amplitude andPhase vs Time for EP068A 4.UVDATA.1 Vect aver. CL # 3  
IF 3 CHAN 1 - 32 STK LL



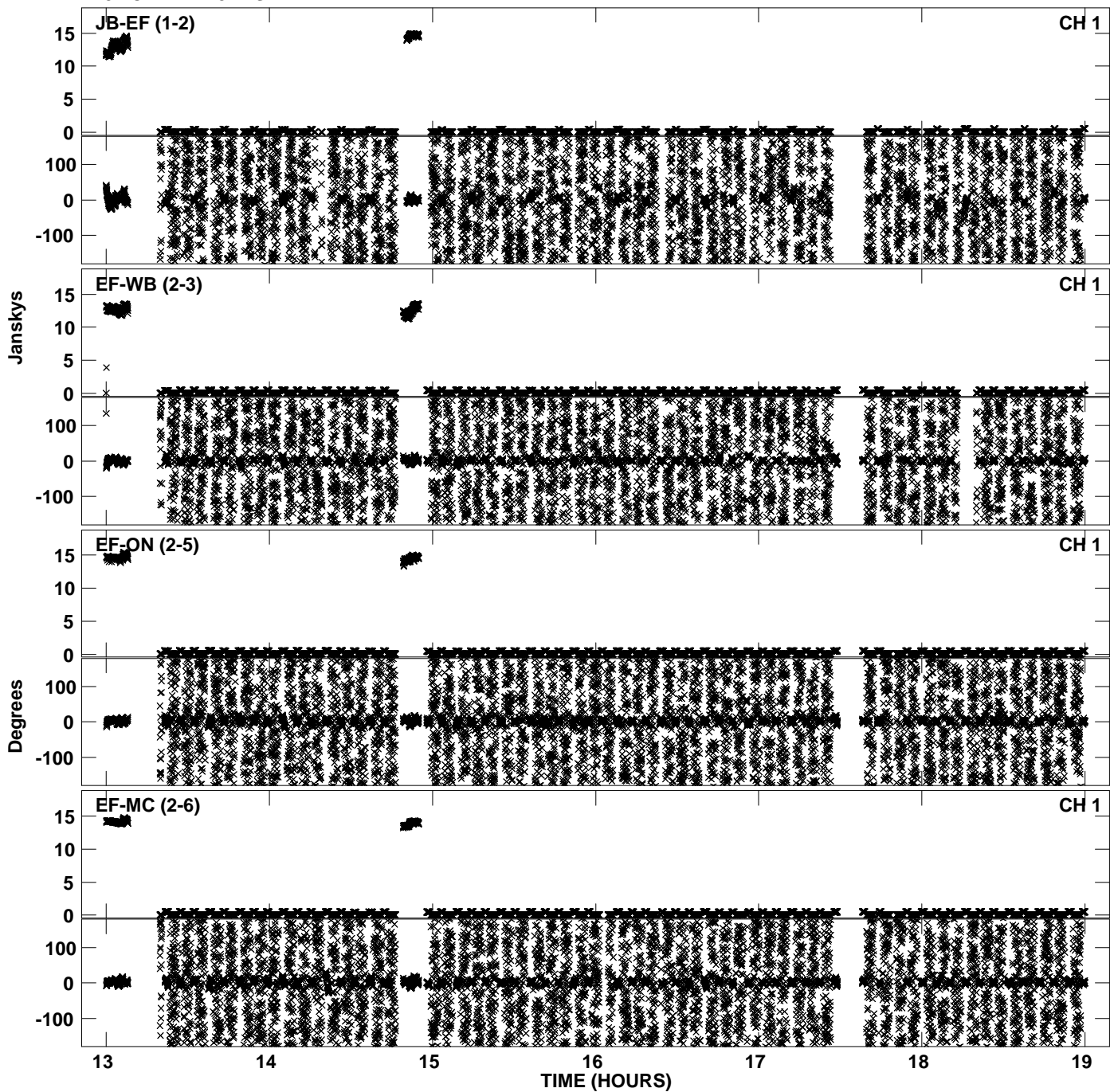
Plot file version 7 created 17-NOV-2010 15:36:57  
Amplitude andPhase vs Time for EP068A 4.UVDATA.1 Vect aver. CL # 3  
IF 4 CHAN 1 - 32 STK LL



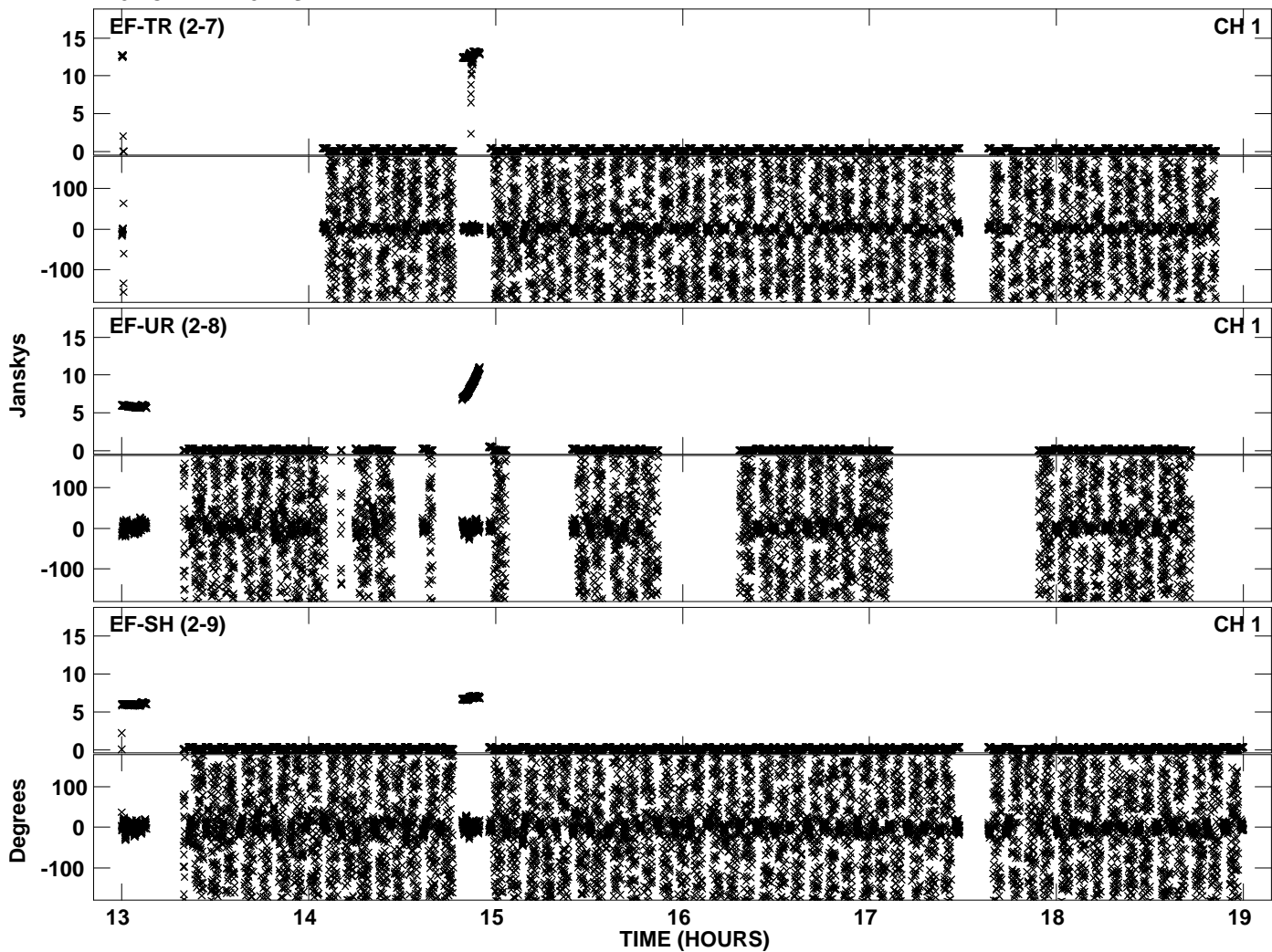
Plot file version 8 created 17-NOV-2010 15:36:57  
Amplitude andPhase vs Time for EP068A 4.UVDATA.1 Vect aver. CL # 3  
IF 4 CHAN 1 - 32 STK LL



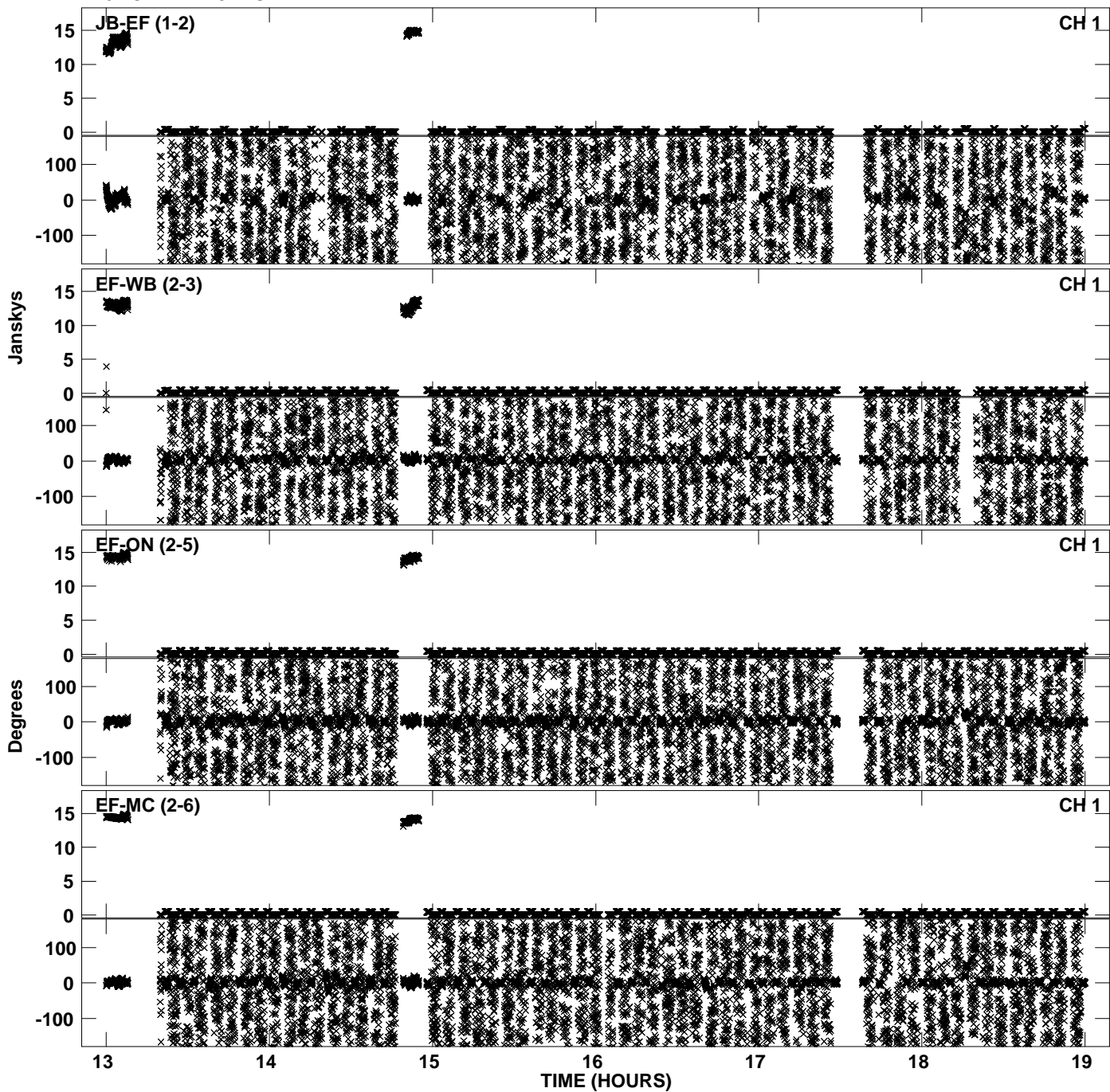
Plot file version 9 created 17-NOV-2010 15:37:04  
Amplitude andPhase vs Time for EP068A 4.UVDATA.1 Vect aver. CL # 3  
IF 5 CHAN 1 - 32 STK LL



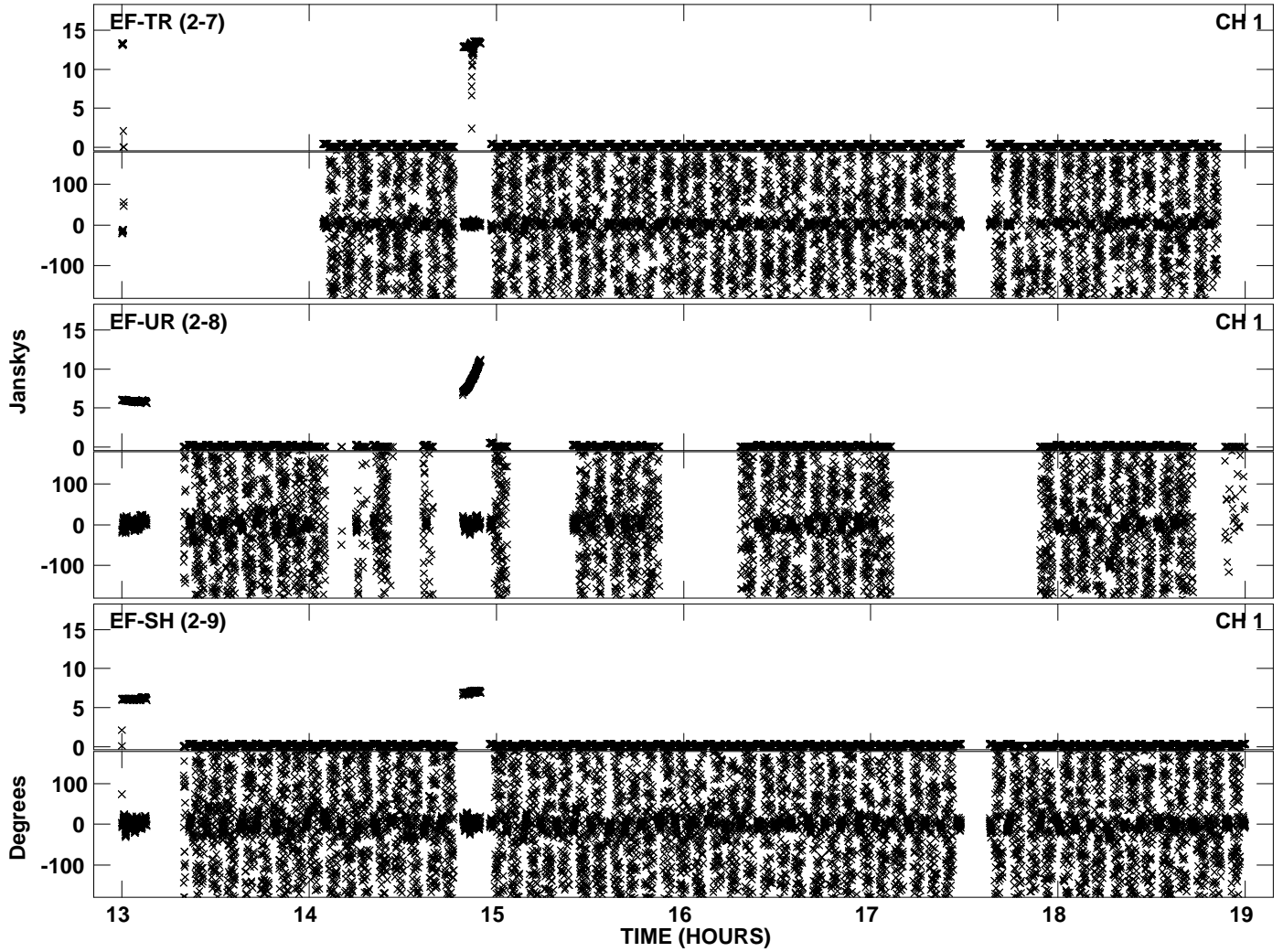
Plot file version 10 created 17-NOV-2010 15:37:04  
Amplitude andPhase vs Time for EP068A 4.UVDATA.1 Vect aver. CL # 3  
IF 5 CHAN 1 - 32 STK LL



PLot file version 11 created 17-NOV-2010 15:37:11  
Amplitude andPhase vs Time for EP068A 4.UVDATA.1 Vect aver. CL # 3  
IF 6 CHAN 1 - 32 STK LL

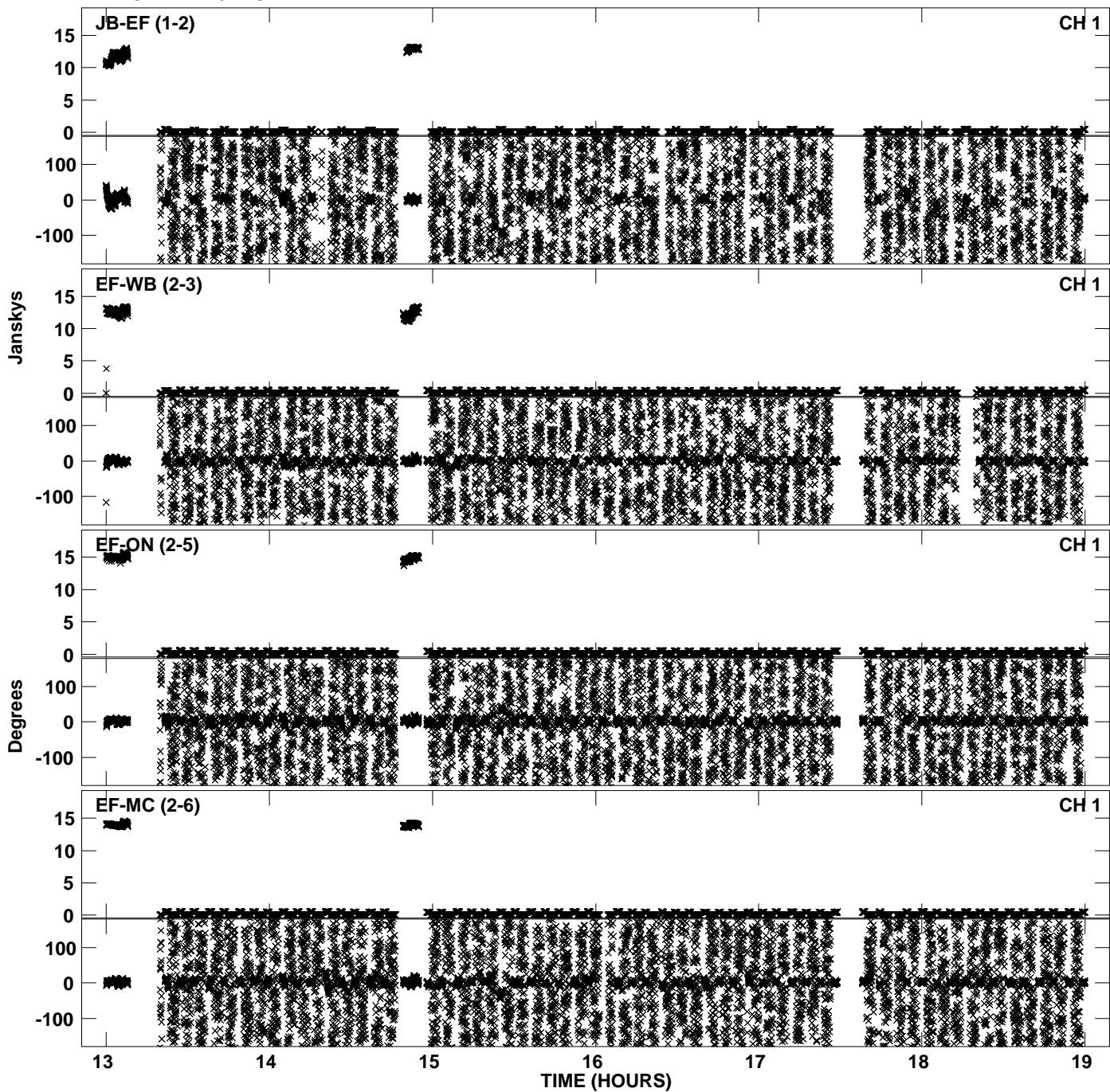


Plot file version 12 created 17-NOV-2010 15:37:12  
Amplitude andPhase vs Time for EP068A 4.UVDATA.1 Vect aver. CL # 3  
IF 6 CHAN 1 - 32 STK LL

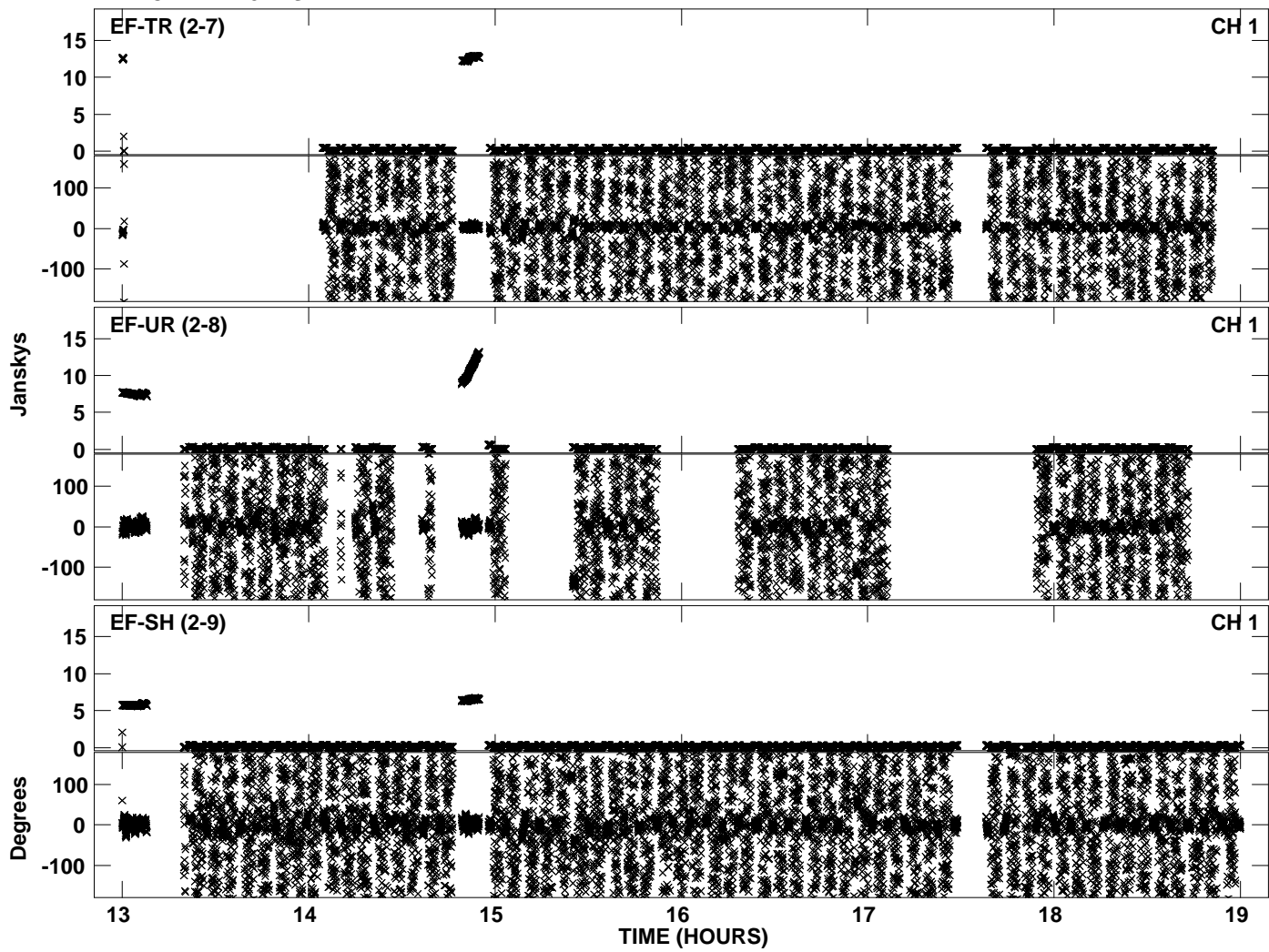




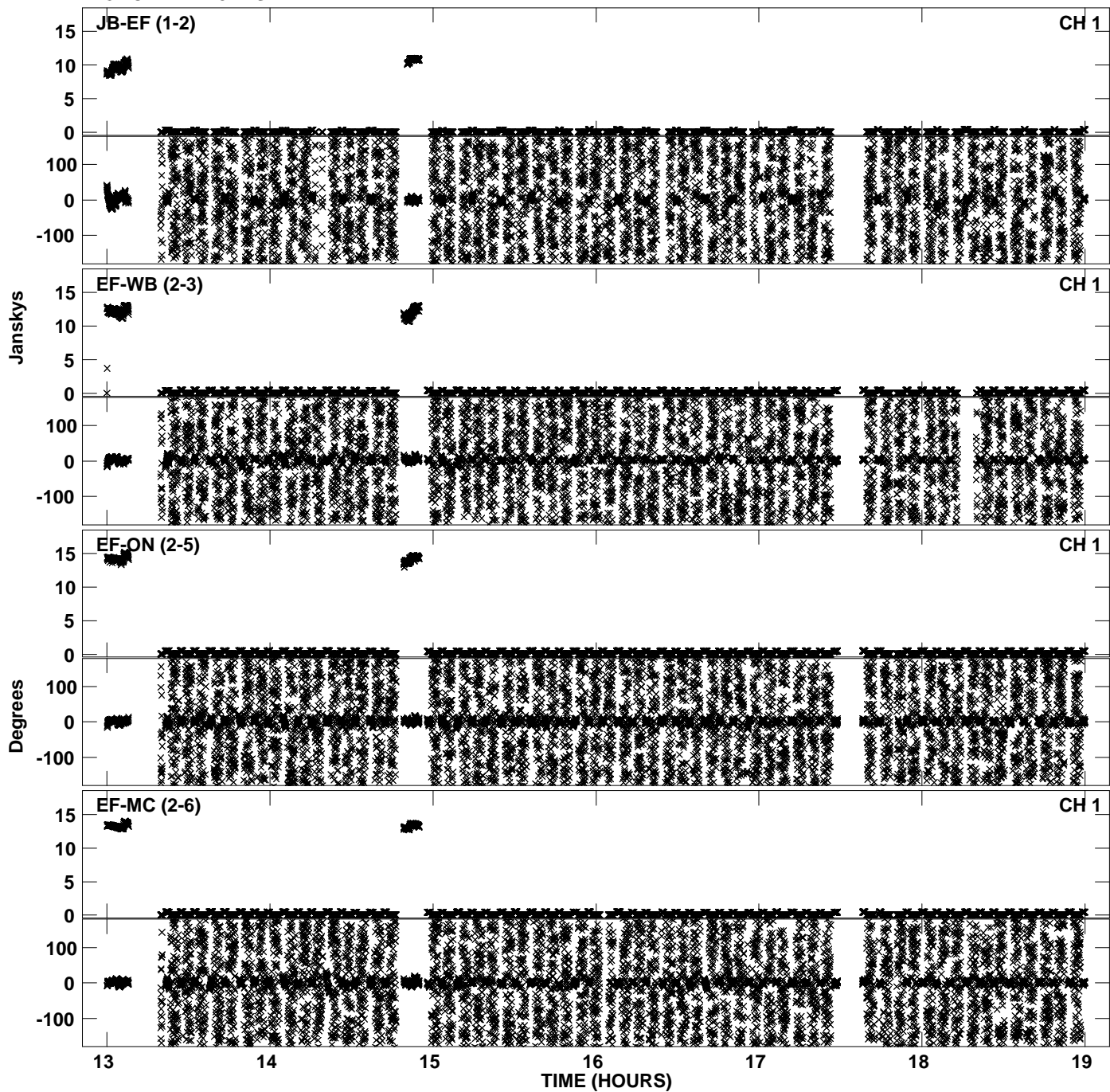
PLot file version 13 created 17-NOV-2010 15:37:19  
Amplitude andPhase vs Time for EP068A 4.UVDATA.1 Vect aver. CL # 3  
IF 7 CHAN 1 - 32 STK LL



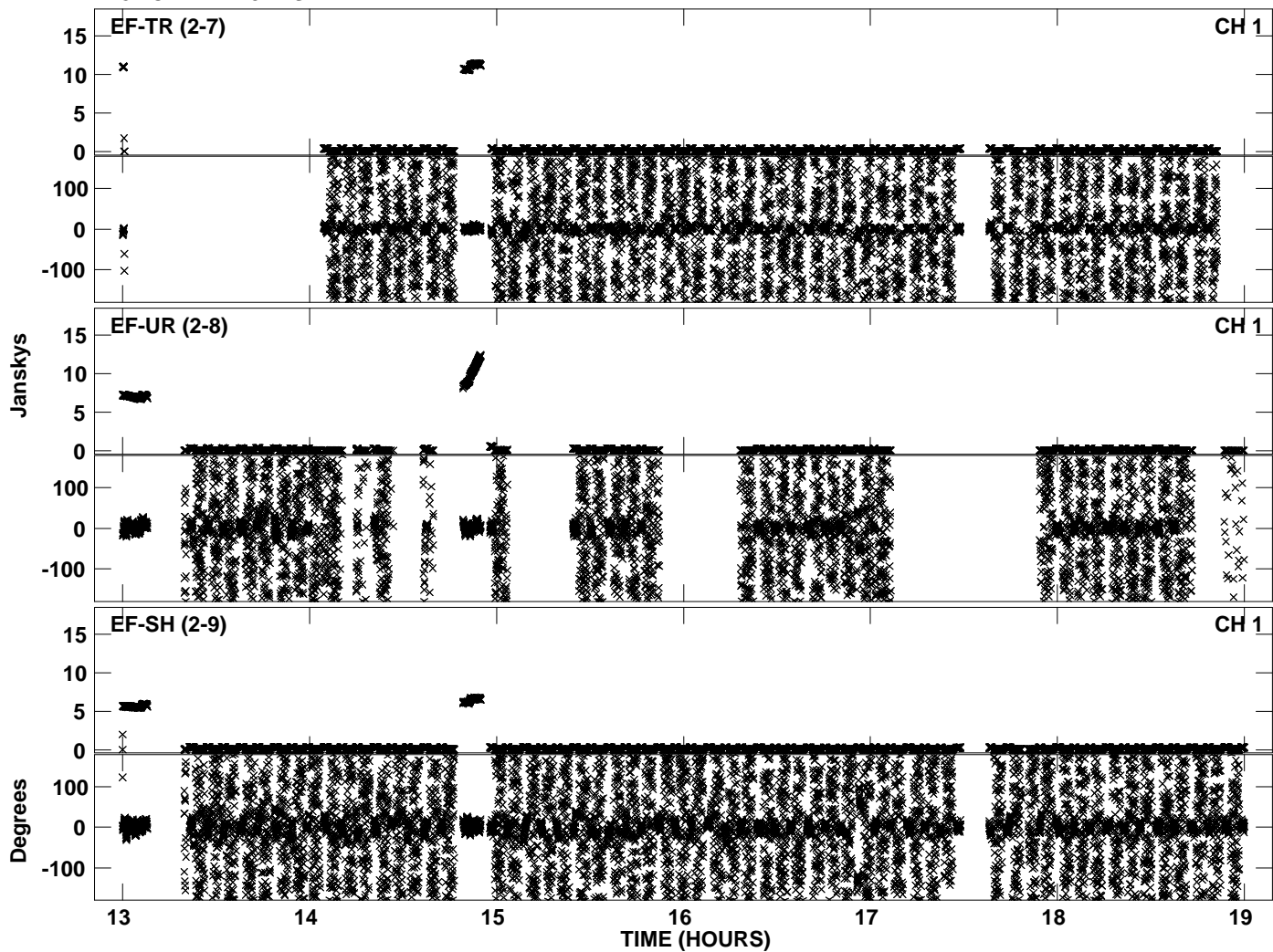
Plot file version 14 created 17-NOV-2010 15:37:19  
Amplitude andPhase vs Time for EP068A 4.UVDATA.1 Vect aver. CL # 3  
IF 7 CHAN 1 - 32 STK LL



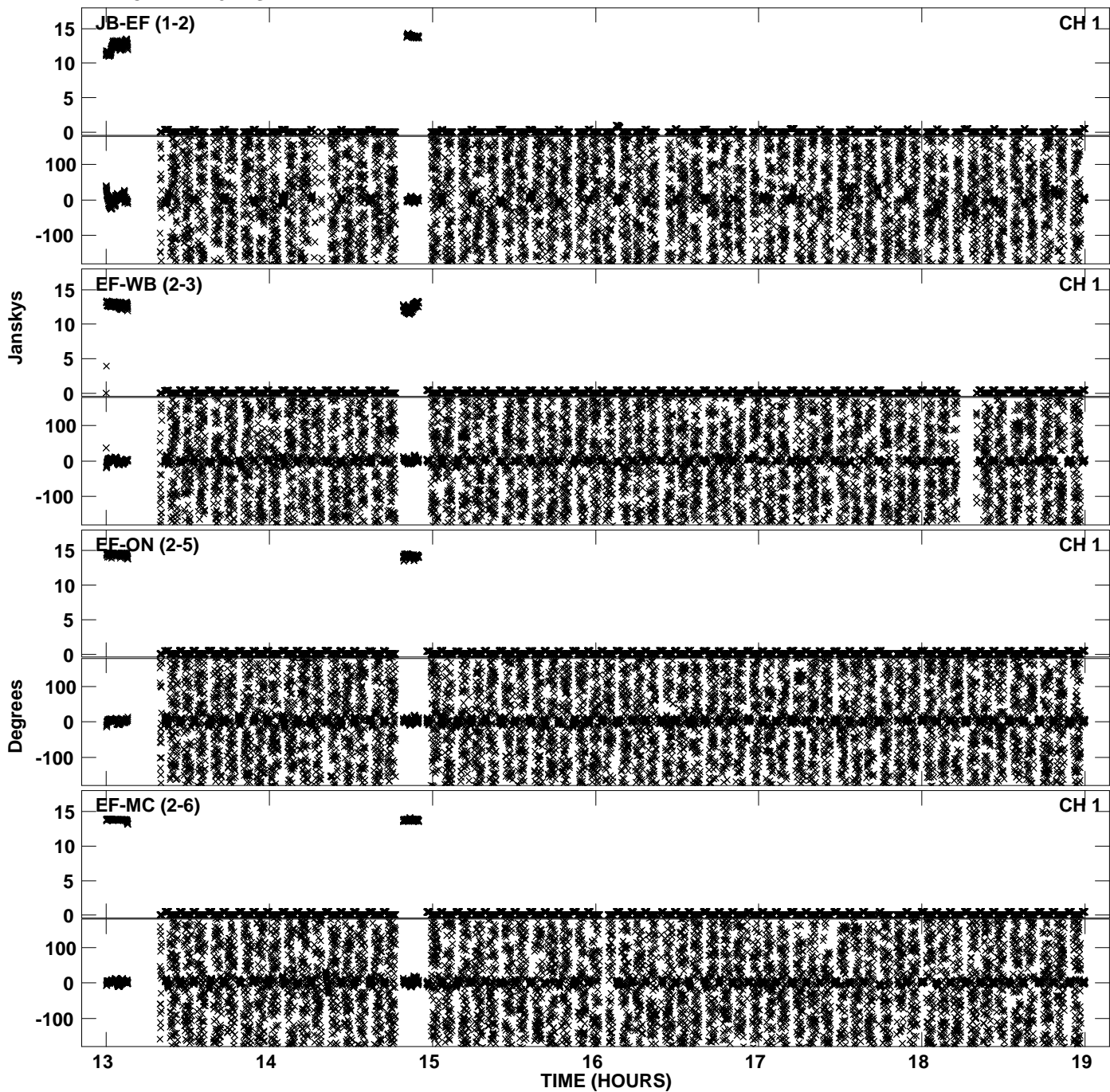
PLot file version 15 created 17-NOV-2010 15:37:26  
Amplitude andPhase vs Time for EP068A 4.UVDATA.1 Vect aver. CL # 3  
IF 8 CHAN 1 - 32 STK LL



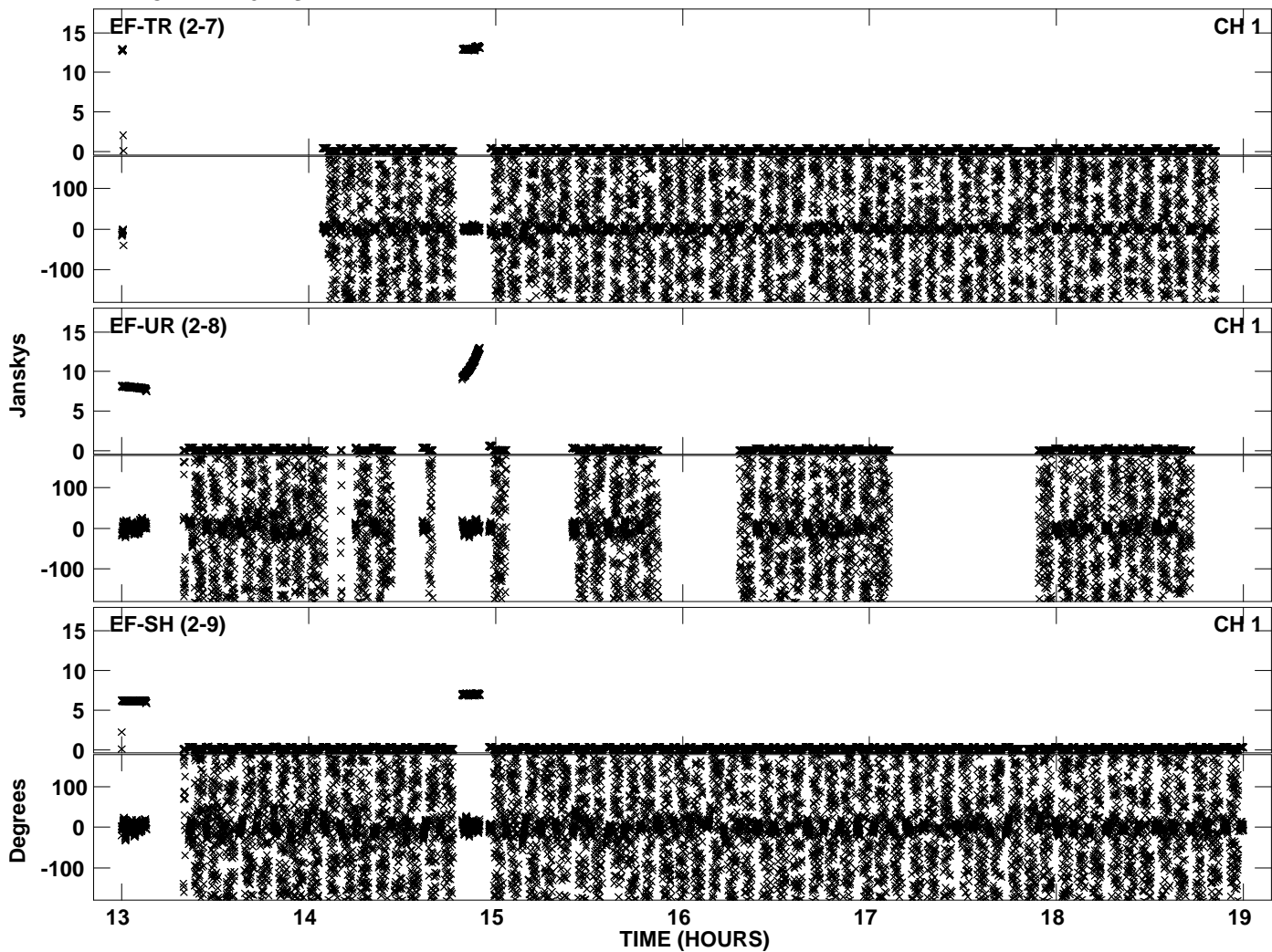
Plot file version 16 created 17-NOV-2010 15:37:26  
Amplitude andPhase vs Time for EP068A 4.UVDATA.1 Vect aver. CL # 3  
IF 8 CHAN 1 - 32 STK LL



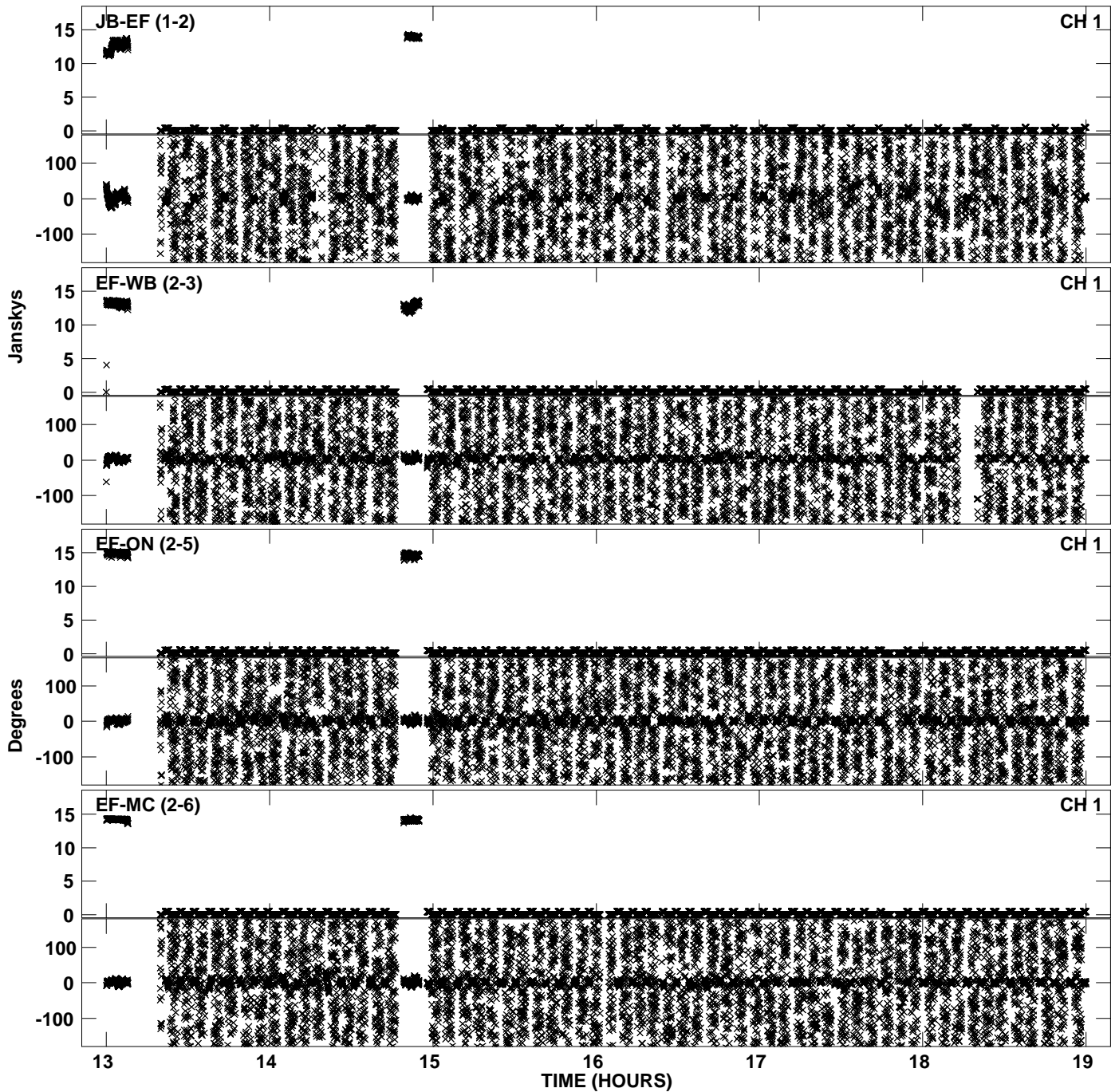
PLot file version 17 created 17-NOV-2010 15:37:33  
Amplitude andPhase vs Time for EP068A 4.UVDATA.1 Vect aver. CL # 3  
IF 1 CHAN 1 - 32 STK RR



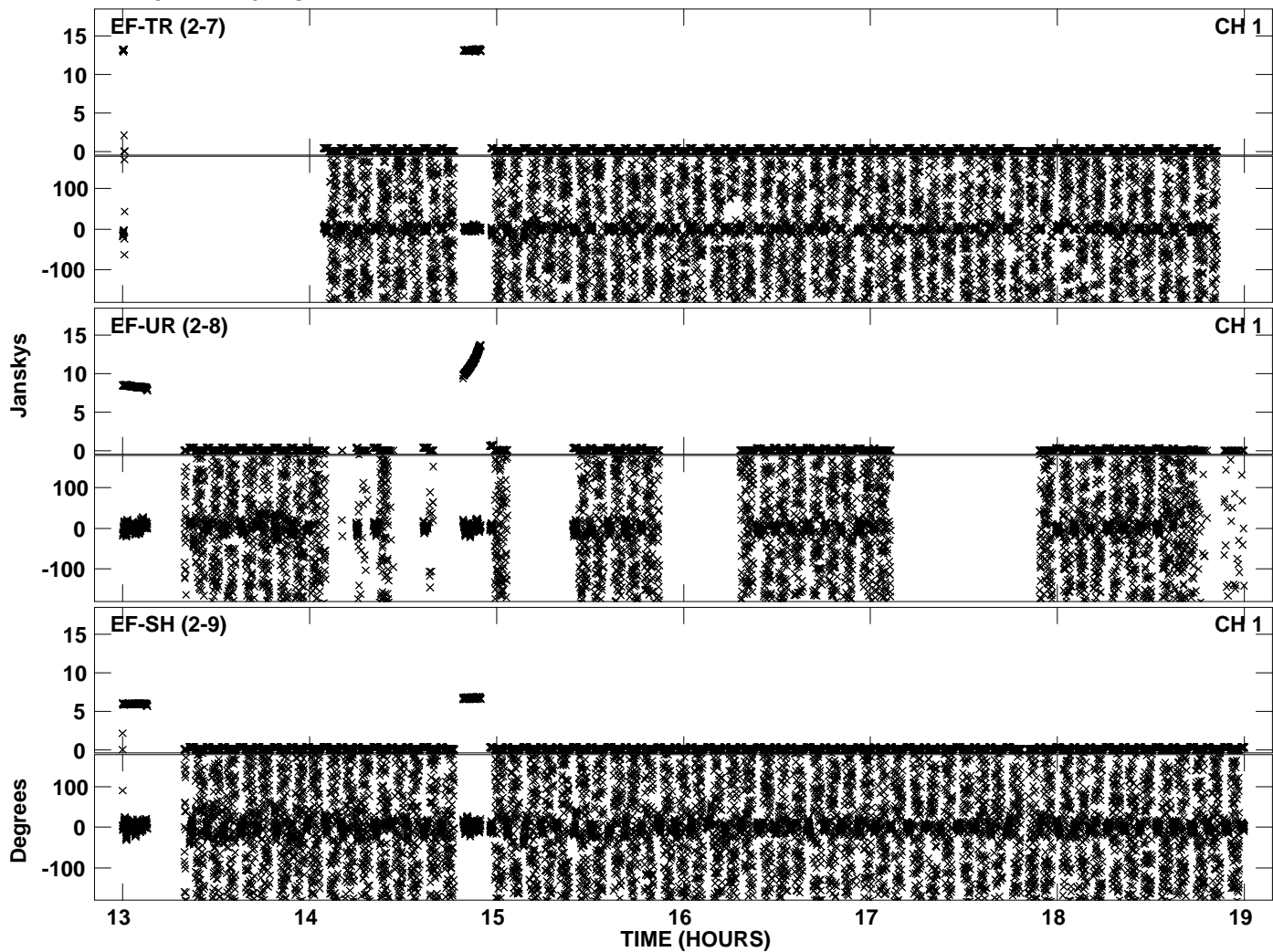
Plot file version 18 created 17-NOV-2010 15:37:33  
Amplitude andPhase vs Time for EP068A 4.UVDATA.1 Vect aver. CL # 3  
IF 1 CHAN 1 - 32 STK RR



PLot file version 19 created 17-NOV-2010 15:37:40  
Amplitude andPhase vs Time for EP068A 4.UVDATA.1 Vect aver. CL # 3  
IF 2 CHAN 1 - 32 STK RR

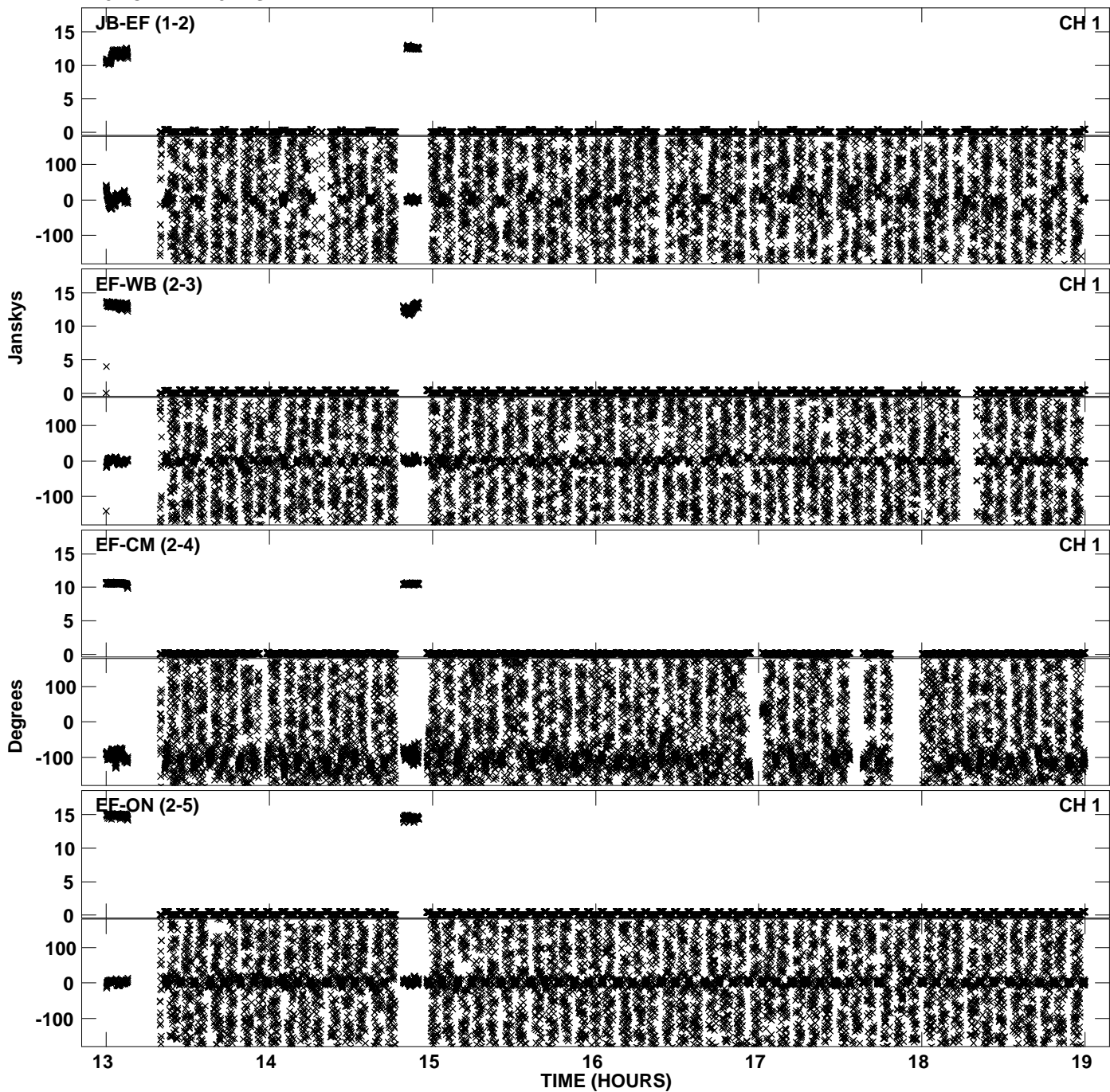


Plot file version 20 created 17-NOV-2010 15:37:40  
Amplitude andPhase vs Time for EP068A 4.UVDATA.1 Vect aver. CL # 3  
IF 2 CHAN 1 - 32 STK RR

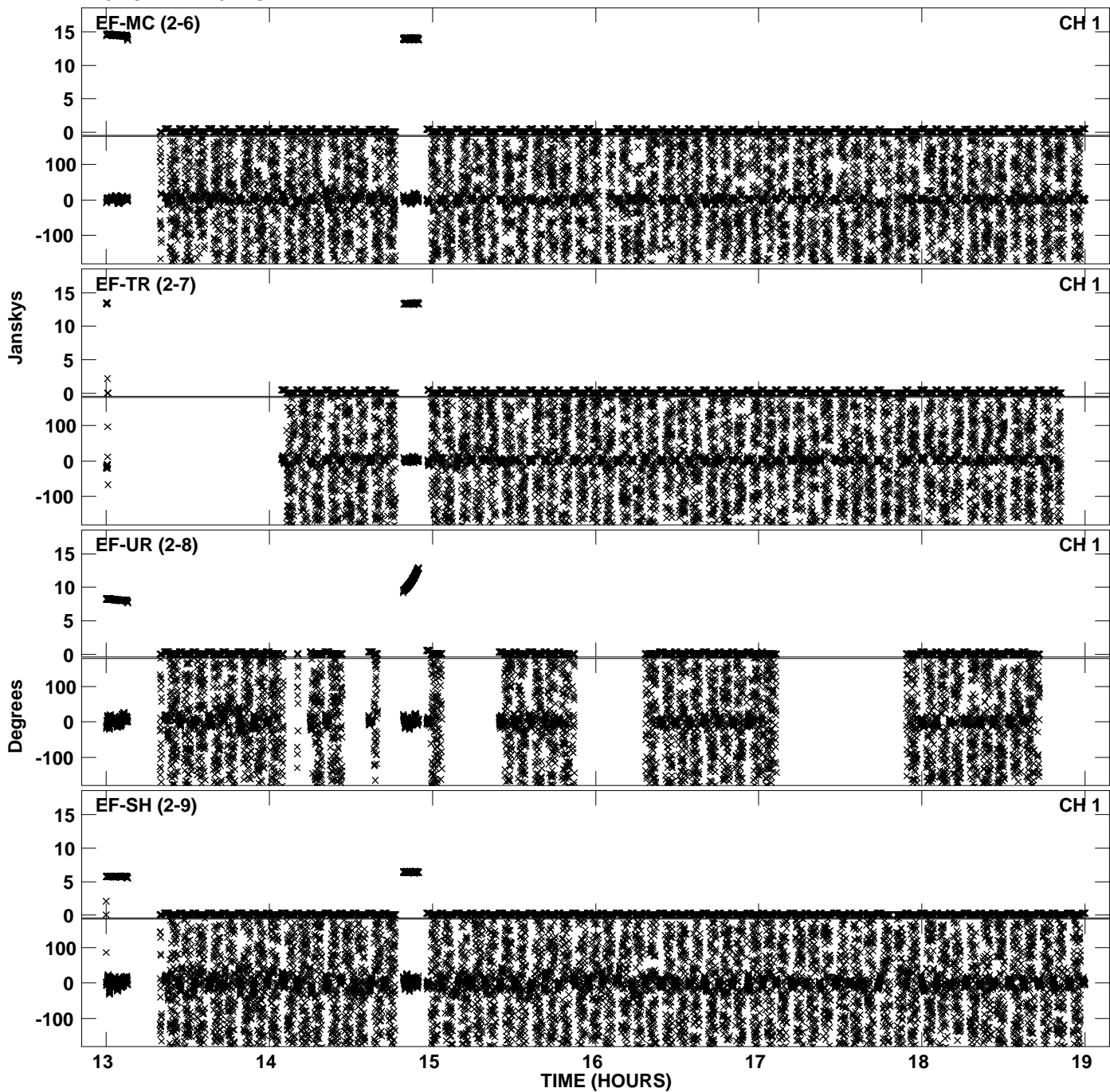




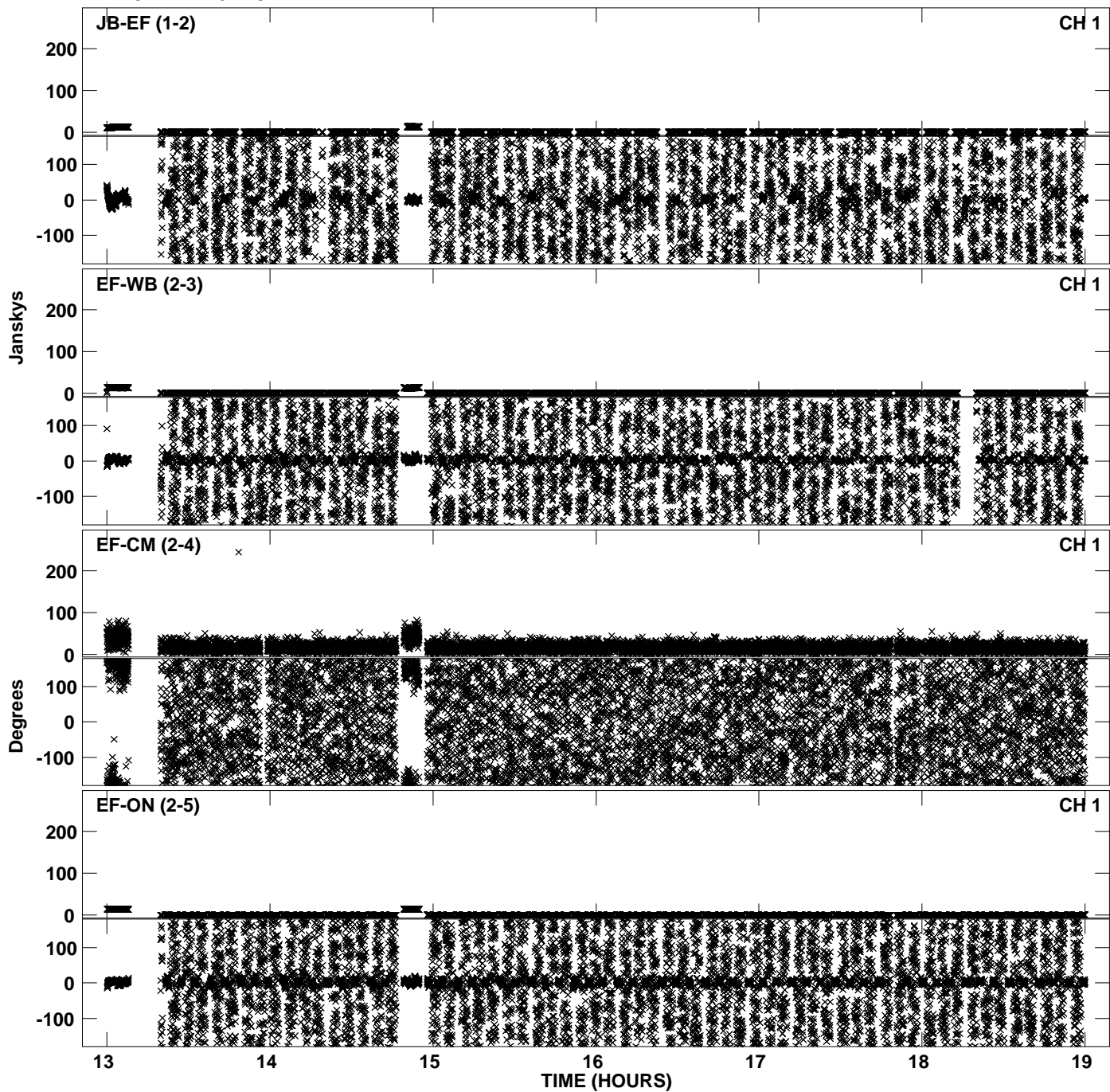
PLot file version 21 created 17-NOV-2010 15:37:48  
Amplitude andPhase vs Time for EP068A 4.UVDATA.1 Vect aver. CL # 3  
IF 3 CHAN 1 - 32 STK RR



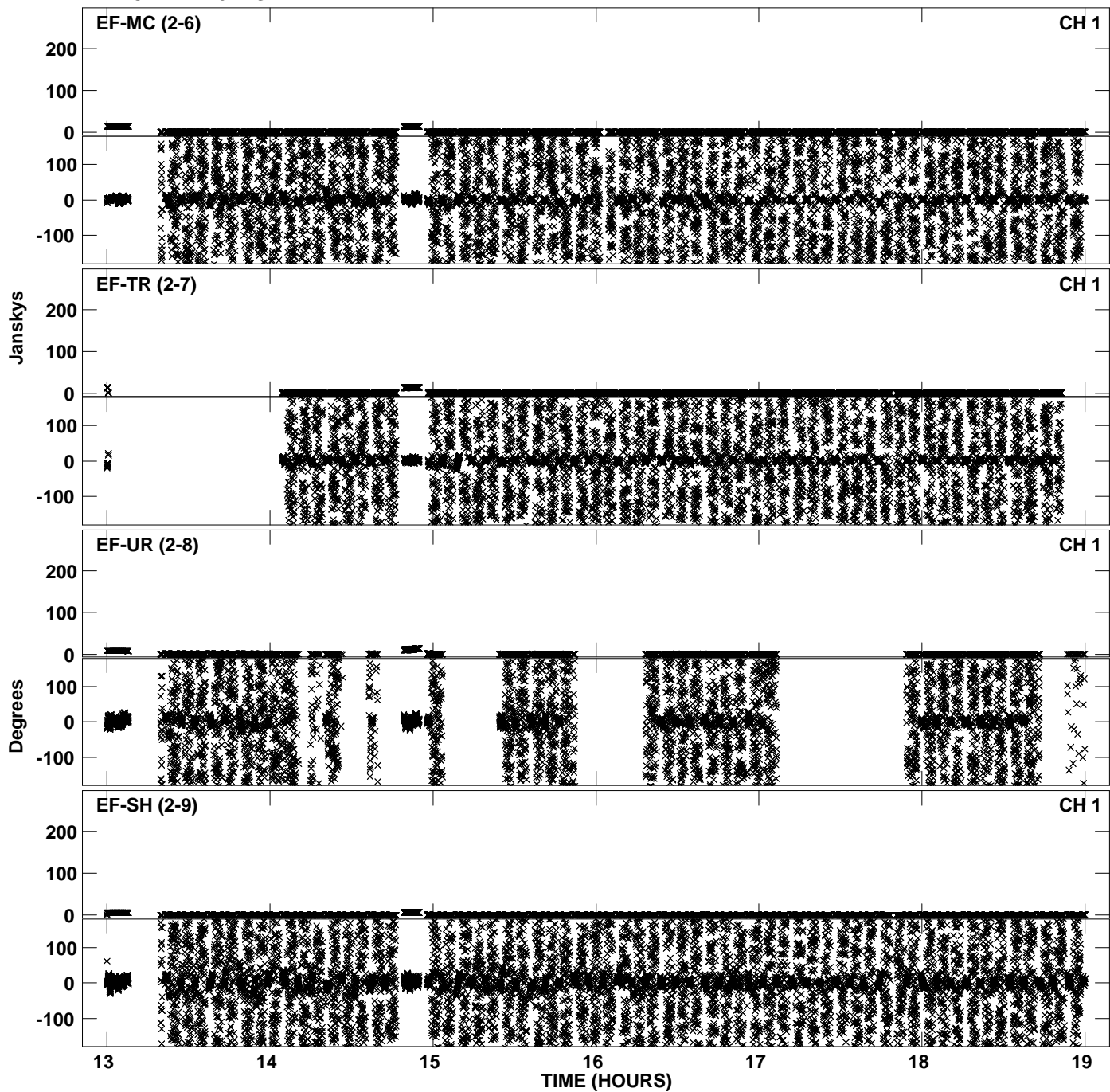
Plot file version 22 created 17-NOV-2010 15:37:48  
Amplitude andPhase vs Time for EP068A 4.UVDATA.1 Vect aver. CL # 3  
IF 3 CHAN 1 - 32 STK RR



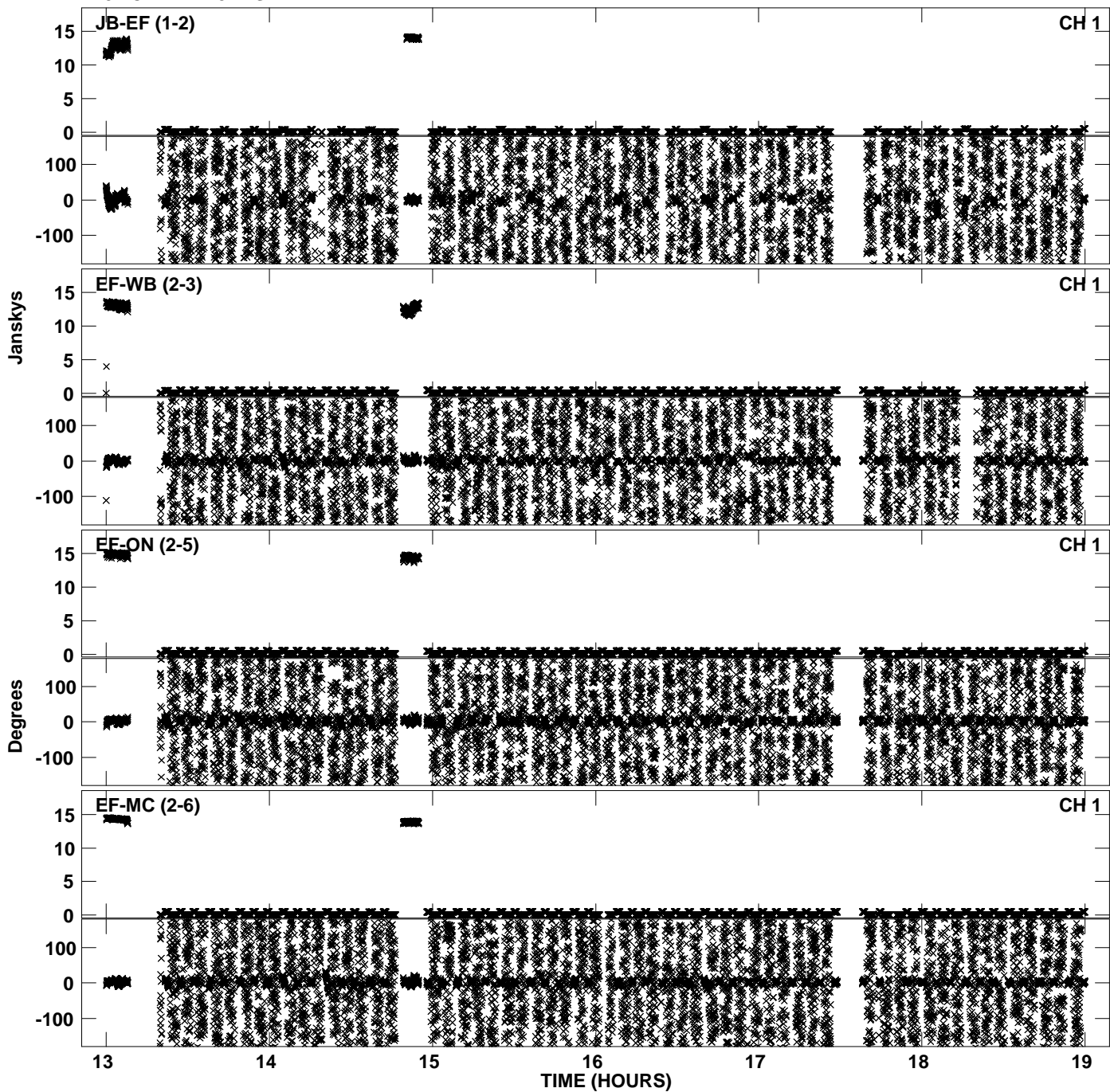
Plot file version 23 created 17-NOV-2010 15:37:55  
Amplitude andPhase vs Time for EP068A 4.UVDATA.1 Vect aver. CL # 3  
IF 4 CHAN 1 - 32 STK RR



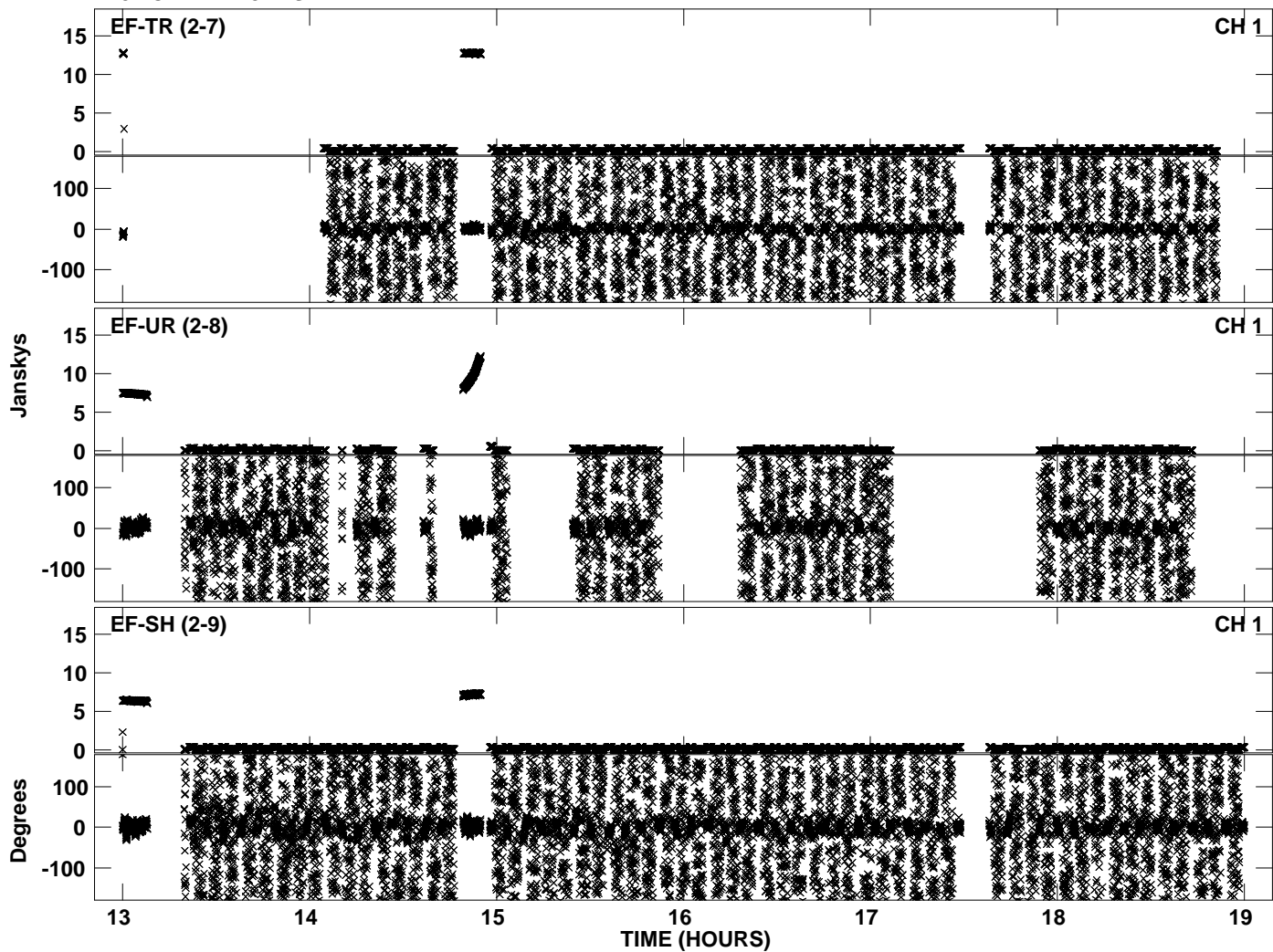
Plot file version 24 created 17-NOV-2010 15:37:55  
Amplitude andPhase vs Time for EP068A 4.UVDATA.1 Vect aver. CL # 3  
IF 4 CHAN 1 - 32 STK RR



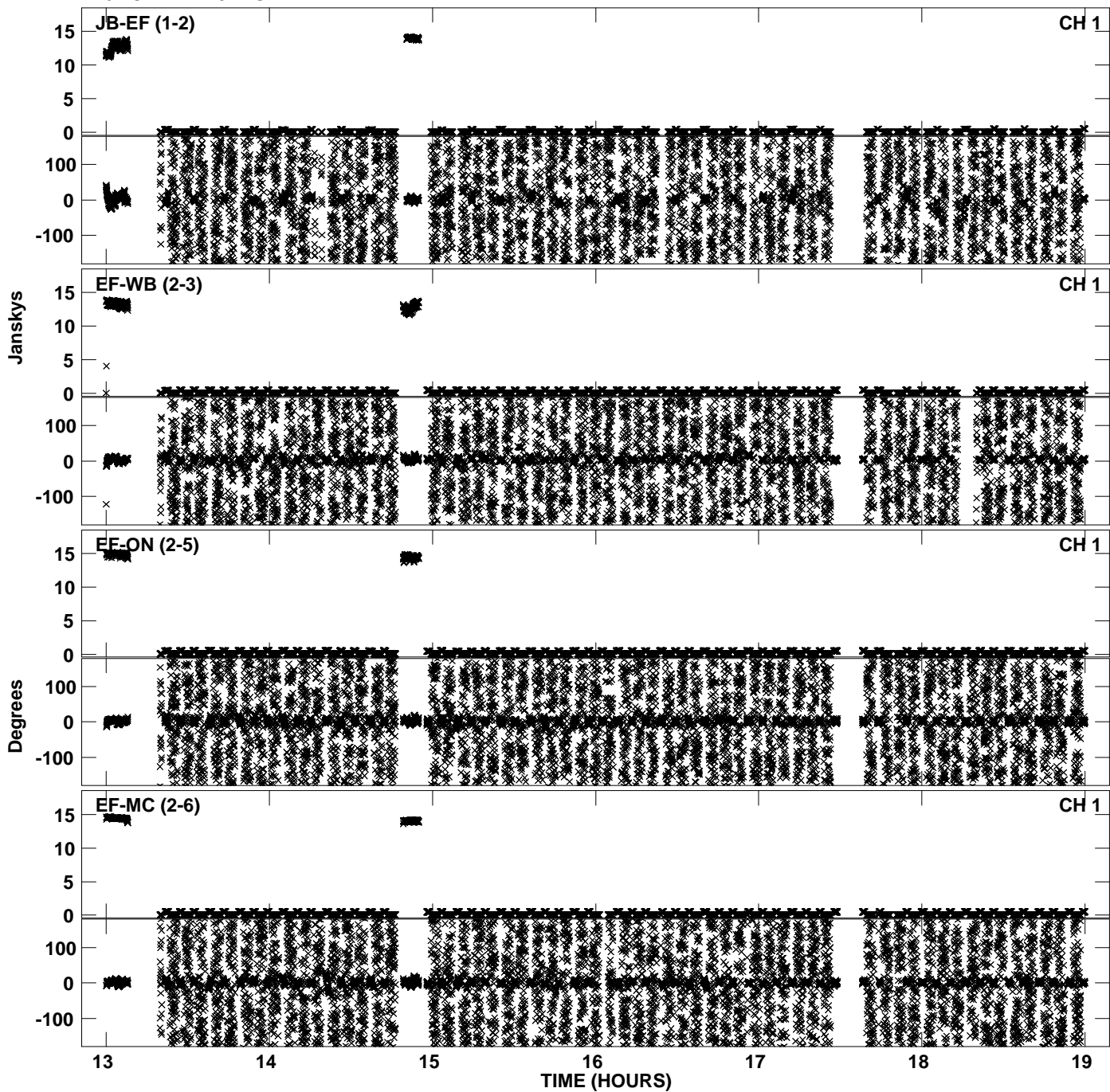
PLot file version 25 created 17-NOV-2010 15:38:02  
Amplitude andPhase vs Time for EP068A 4.UVDATA.1 Vect aver. CL # 3  
IF 5 CHAN 1 - 32 STK RR



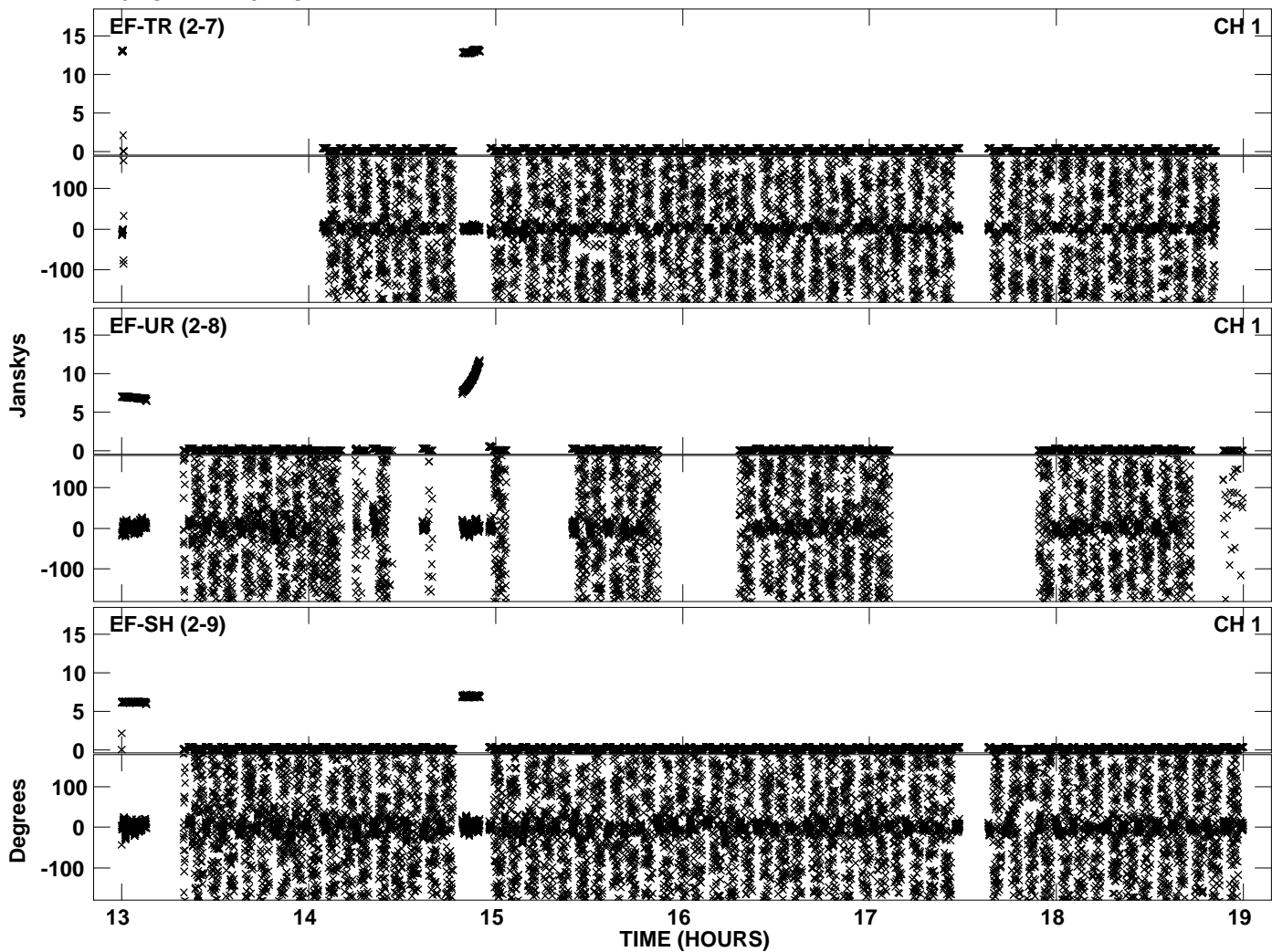
Plot file version 26 created 17-NOV-2010 15:38:03  
Amplitude andPhase vs Time for EP068A 4.UVDATA.1 Vect aver. CL # 3  
IF 5 CHAN 1 - 32 STK RR



PLot file version 27 created 17-NOV-2010 15:38:09  
Amplitude andPhase vs Time for EP068A 4.UVDATA.1 Vect aver. CL # 3  
IF 6 CHAN 1 - 32 STK RR

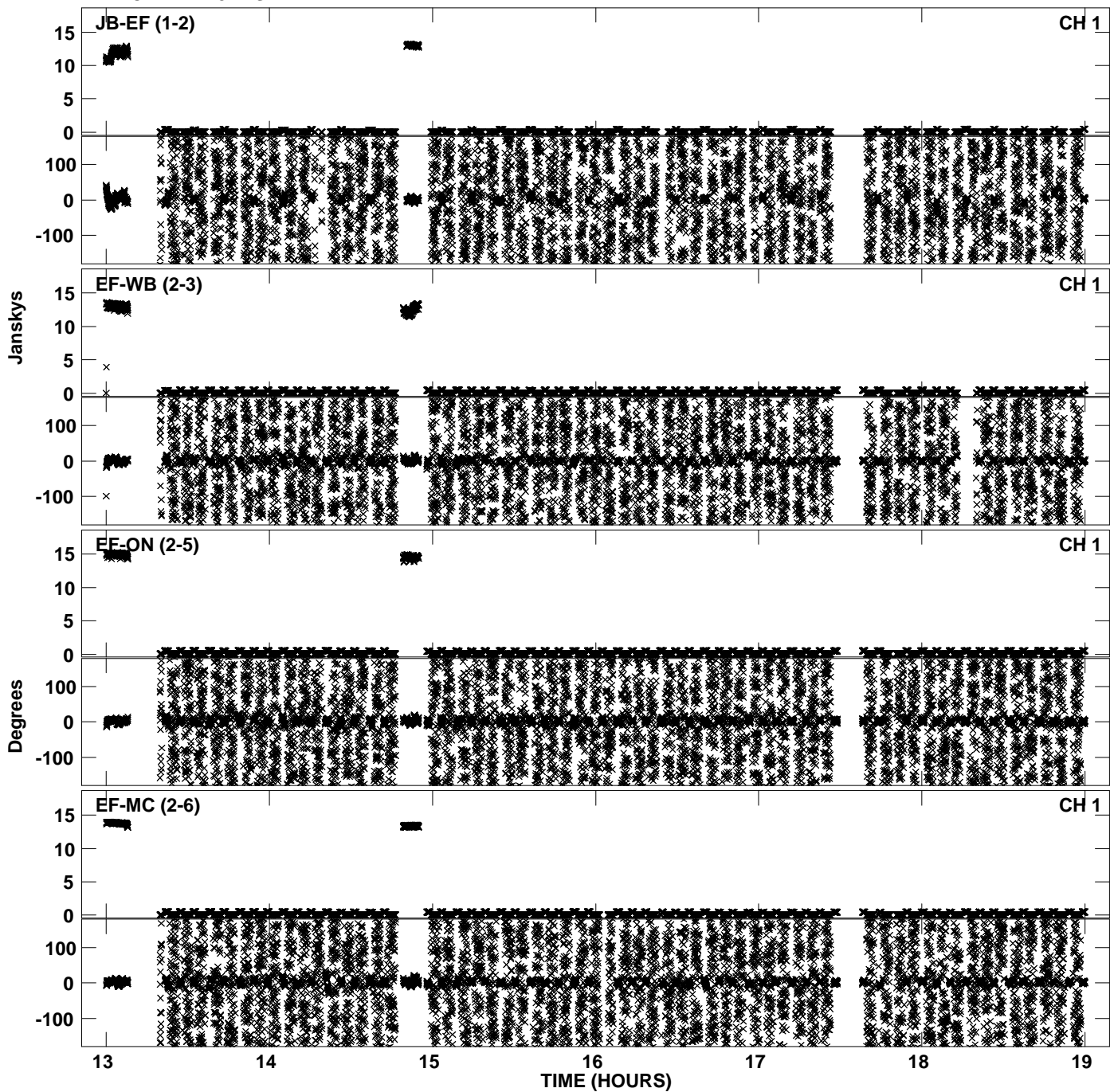


Plot file version 28 created 17-NOV-2010 15:38:09  
Amplitude andPhase vs Time for EP068A 4.UVDATA.1 Vect aver. CL # 3  
IF 6 CHAN 1 - 32 STK RR

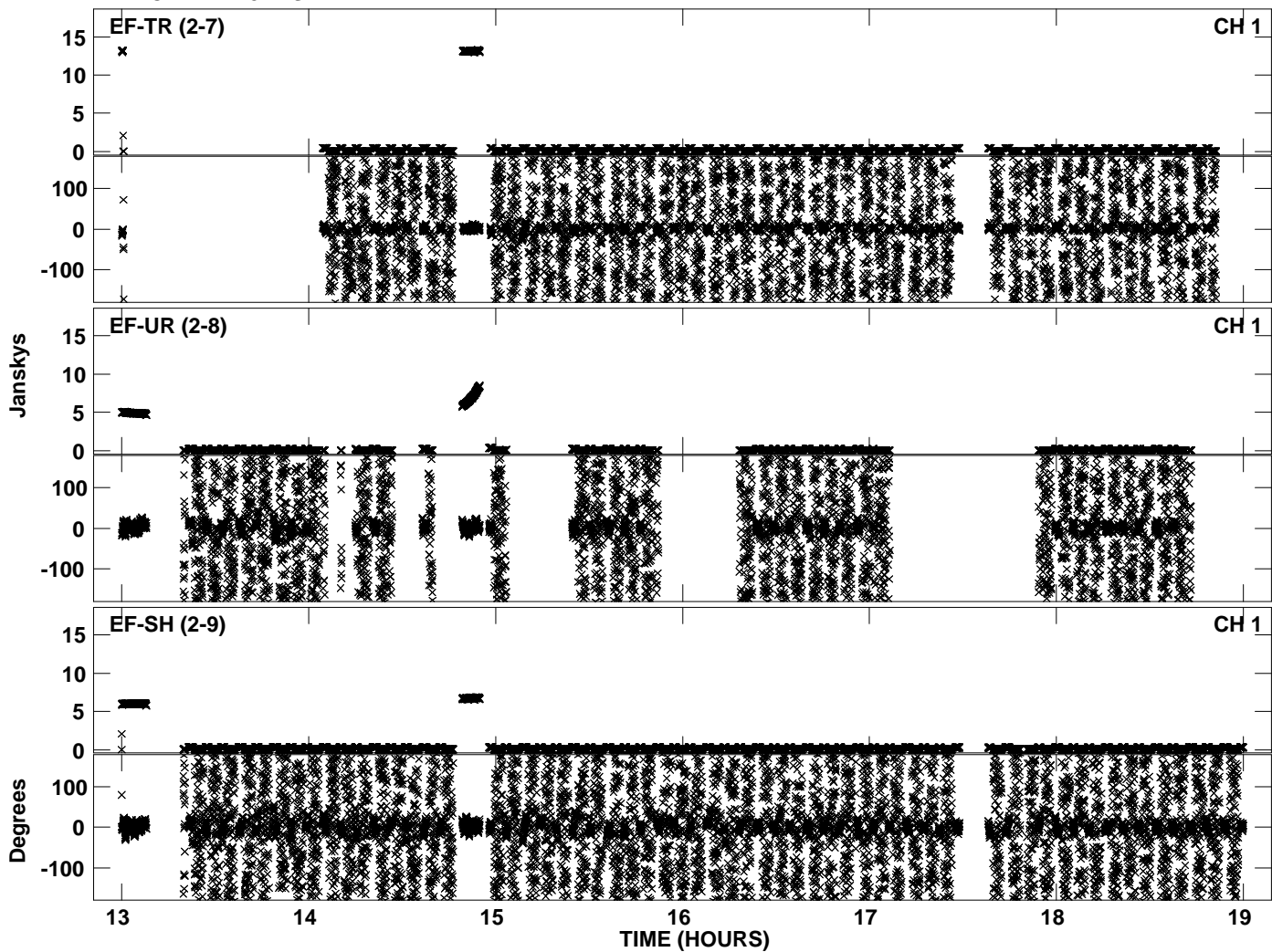




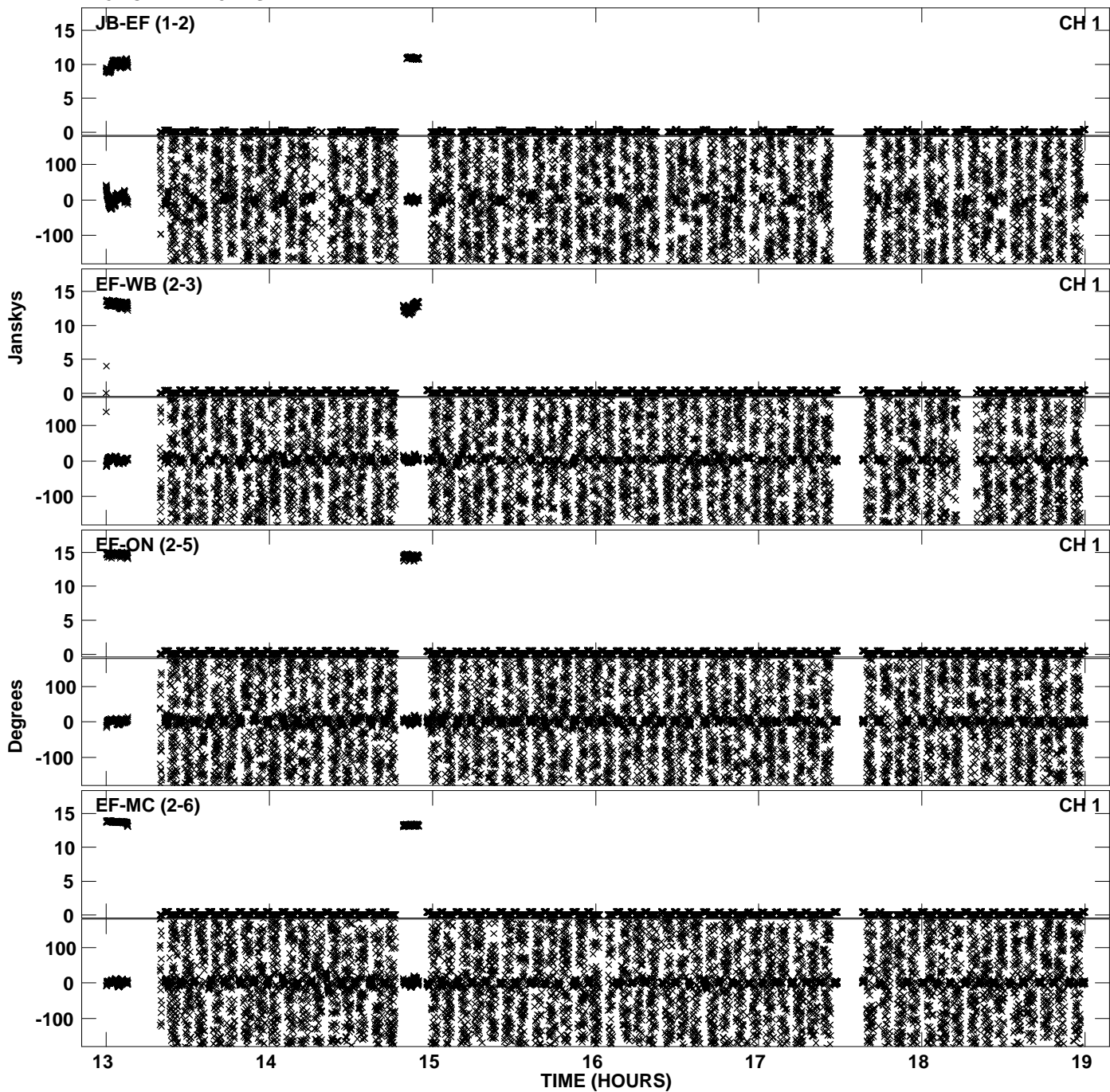
PLot file version 29 created 17-NOV-2010 15:38:16  
Amplitude andPhase vs Time for EP068A 4.UVDATA.1 Vect aver. CL # 3  
IF 7 CHAN 1 - 32 STK RR



Plot file version 30 created 17-NOV-2010 15:38:16  
Amplitude andPhase vs Time for EP068A 4.UVDATA.1 Vect aver. CL # 3  
IF 7 CHAN 1 - 32 STK RR



PLot file version 31 created 17-NOV-2010 15:38:23  
Amplitude andPhase vs Time for EP068A 4.UVDATA.1 Vect aver. CL # 3  
IF 8 CHAN 1 - 32 STK RR



PLot file version 32 created 17-NOV-2010 15:38:23  
Amplitude andPhase vs Time for EP068A 4.UVDATA.1 Vect aver. CL # 3  
IF 8 CHAN 1 - 32 STK RR

