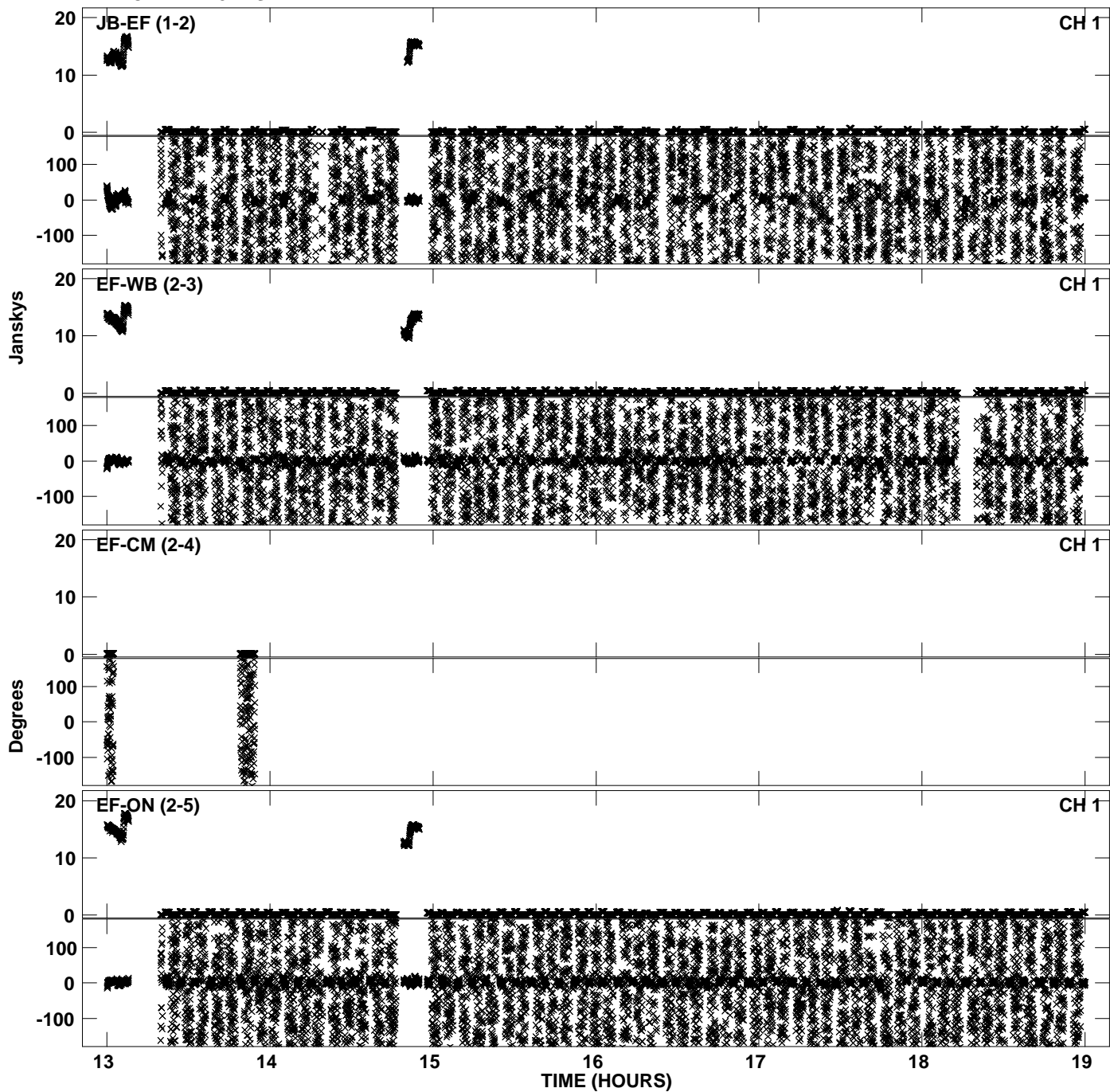
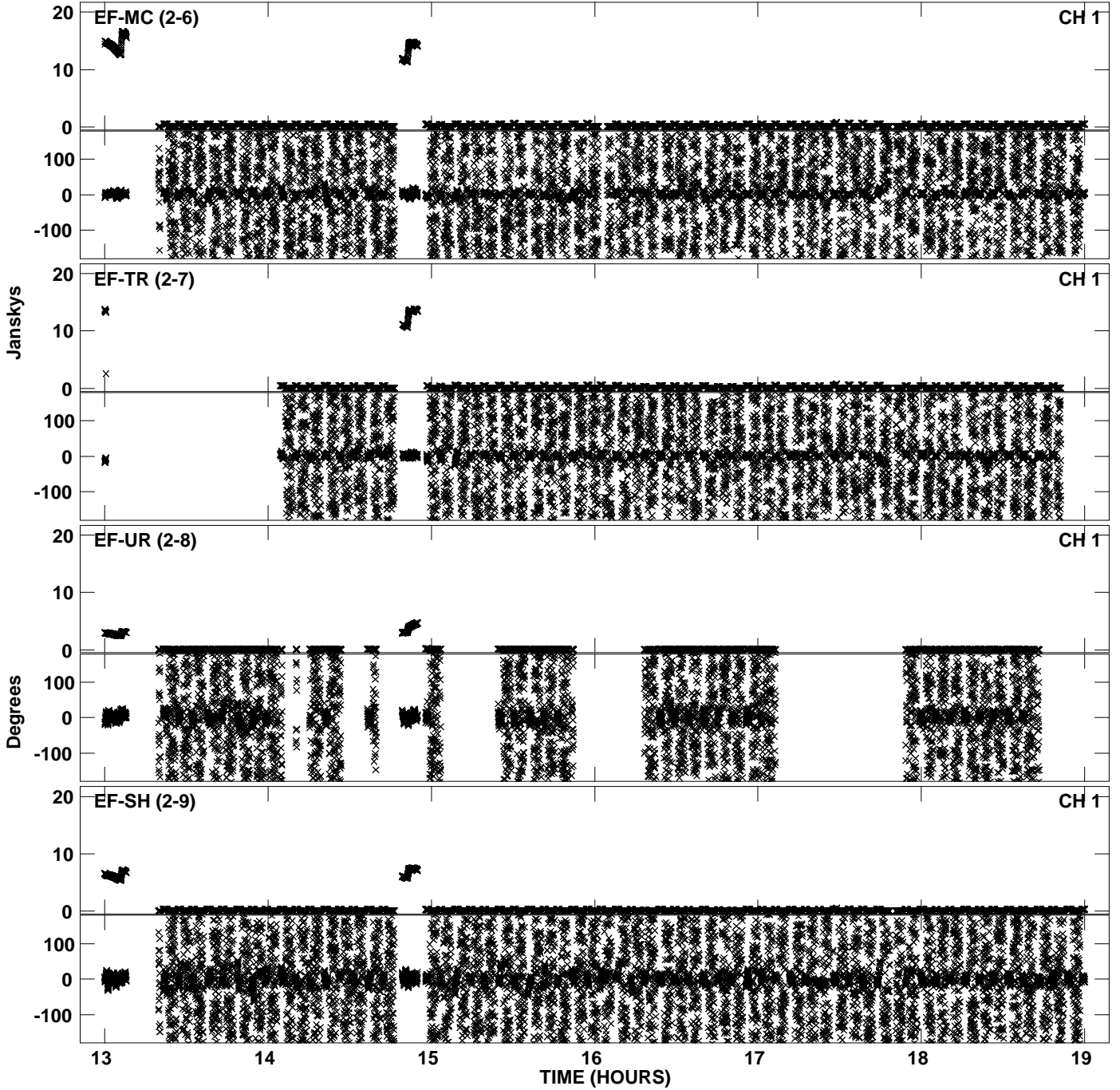


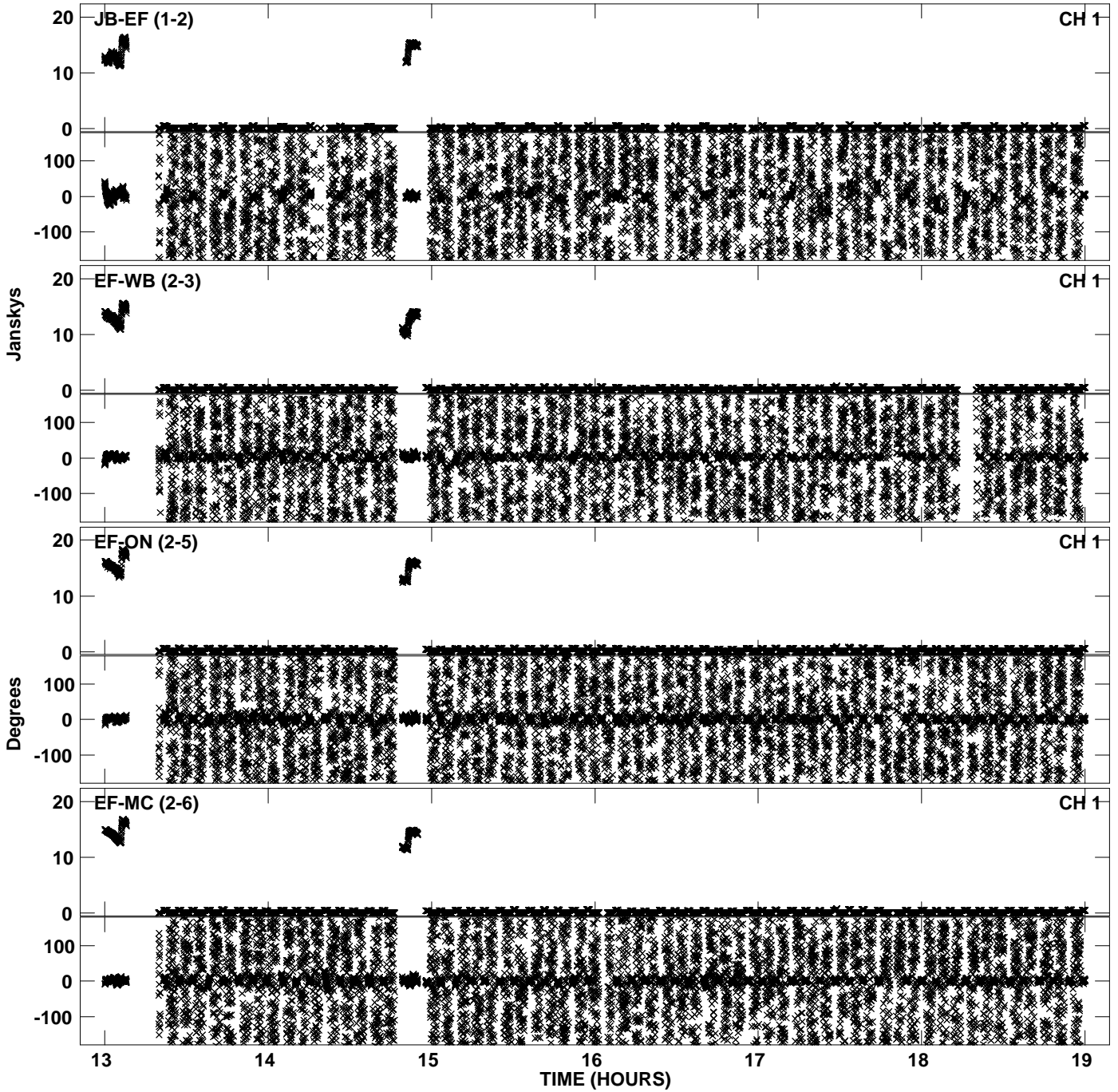
Plot file version 1 created 17-NOV-2010 16:25:05
Amplitude andPhase vs Time for EP068A 5.UVDATA.1 Vect aver. CL # 3
IF 1 CHAN 1 - 32 STK LL



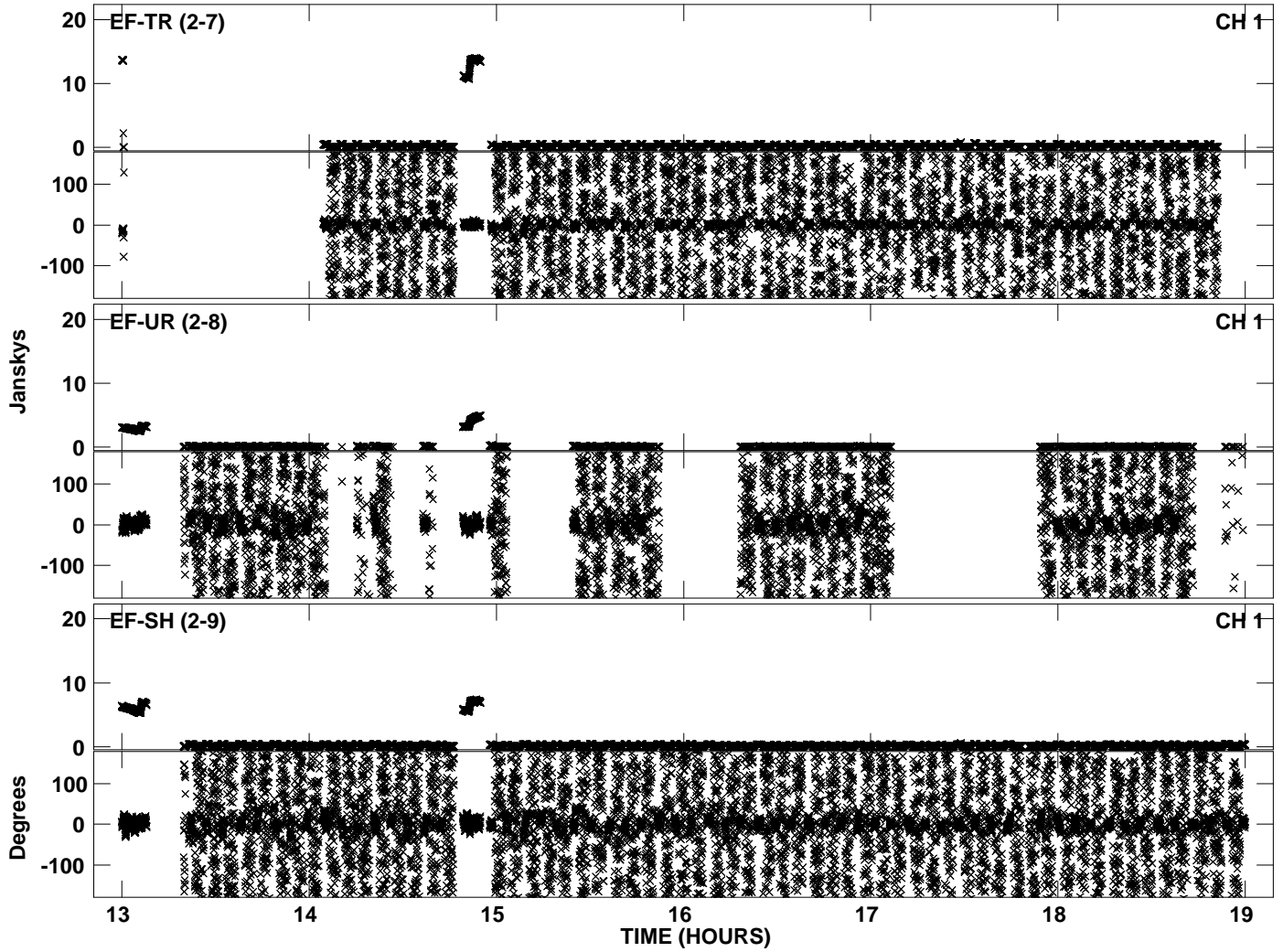
Plot file version 2 created 17-NOV-2010 16:25:05
Amplitude andPhase vs Time for EP068A 5.UVDATA.1 Vect aver. CL # 3
IF 1 CHAN 1 - 32 STK LL



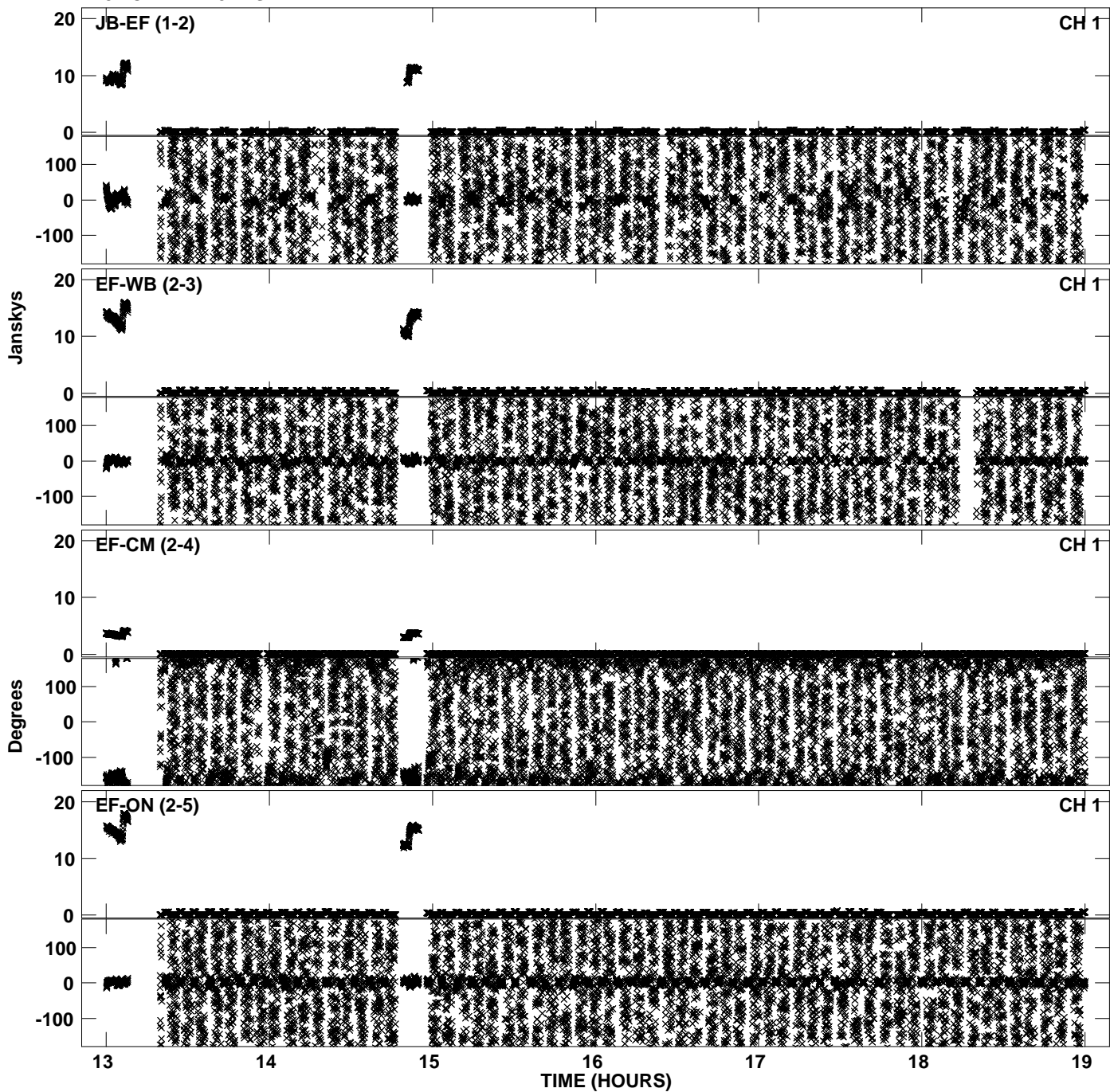
Plot file version 3 created 17-NOV-2010 16:25:13
Amplitude andPhase vs Time for EP068A 5.UVDATA.1 Vect aver. CL # 3
IF 2 CHAN 1 - 32 STK LL



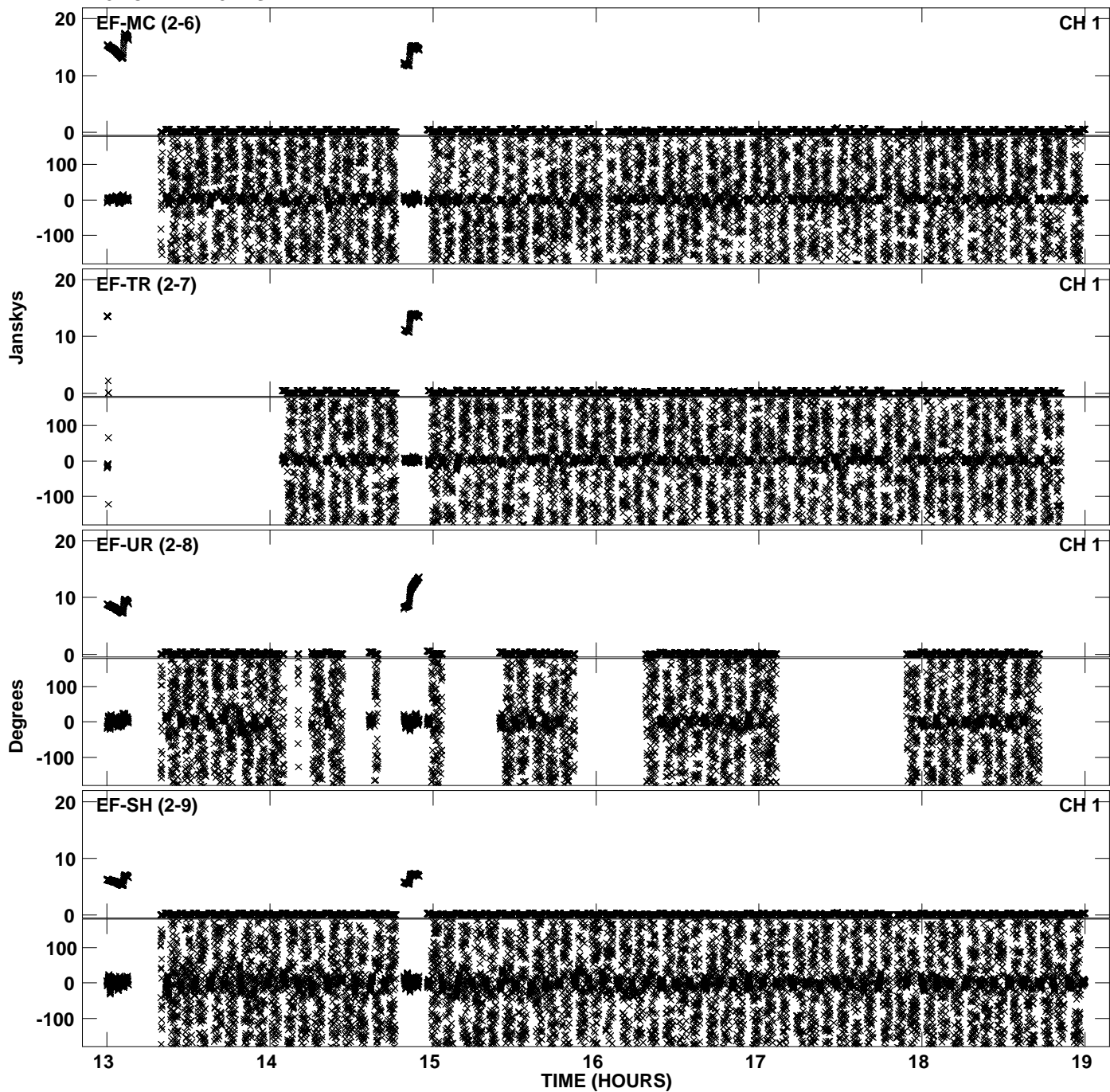
Plot file version 4 created 17-NOV-2010 16:25:13
Amplitude andPhase vs Time for EP068A 5.UVDATA.1 Vect aver. CL # 3
IF 2 CHAN 1 - 32 STK LL



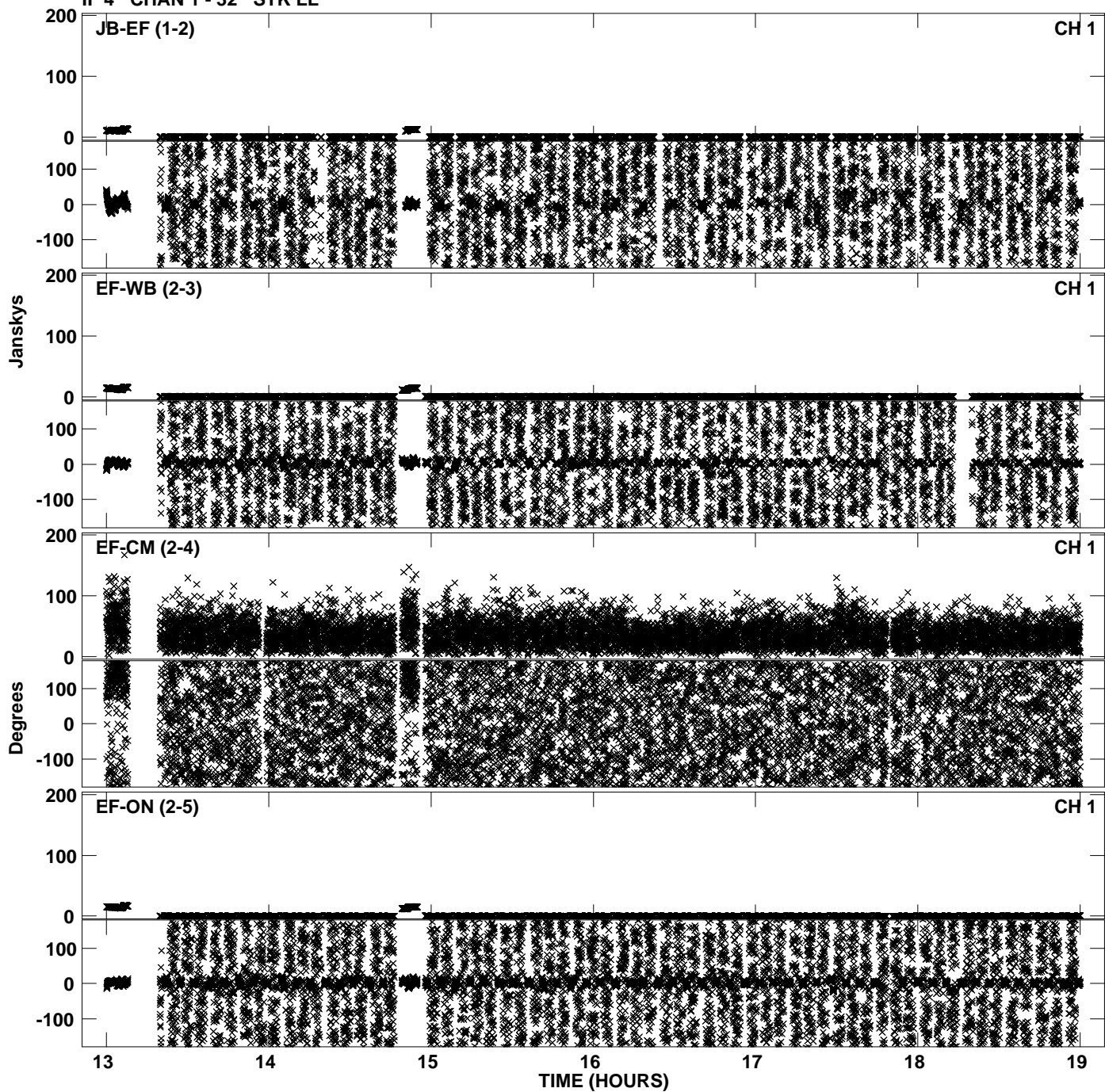
Plot file version 5 created 17-NOV-2010 16:25:21
Amplitude andPhase vs Time for EP068A 5.UVDATA.1 Vect aver. CL # 3
IF 3 CHAN 1 - 32 STK LL



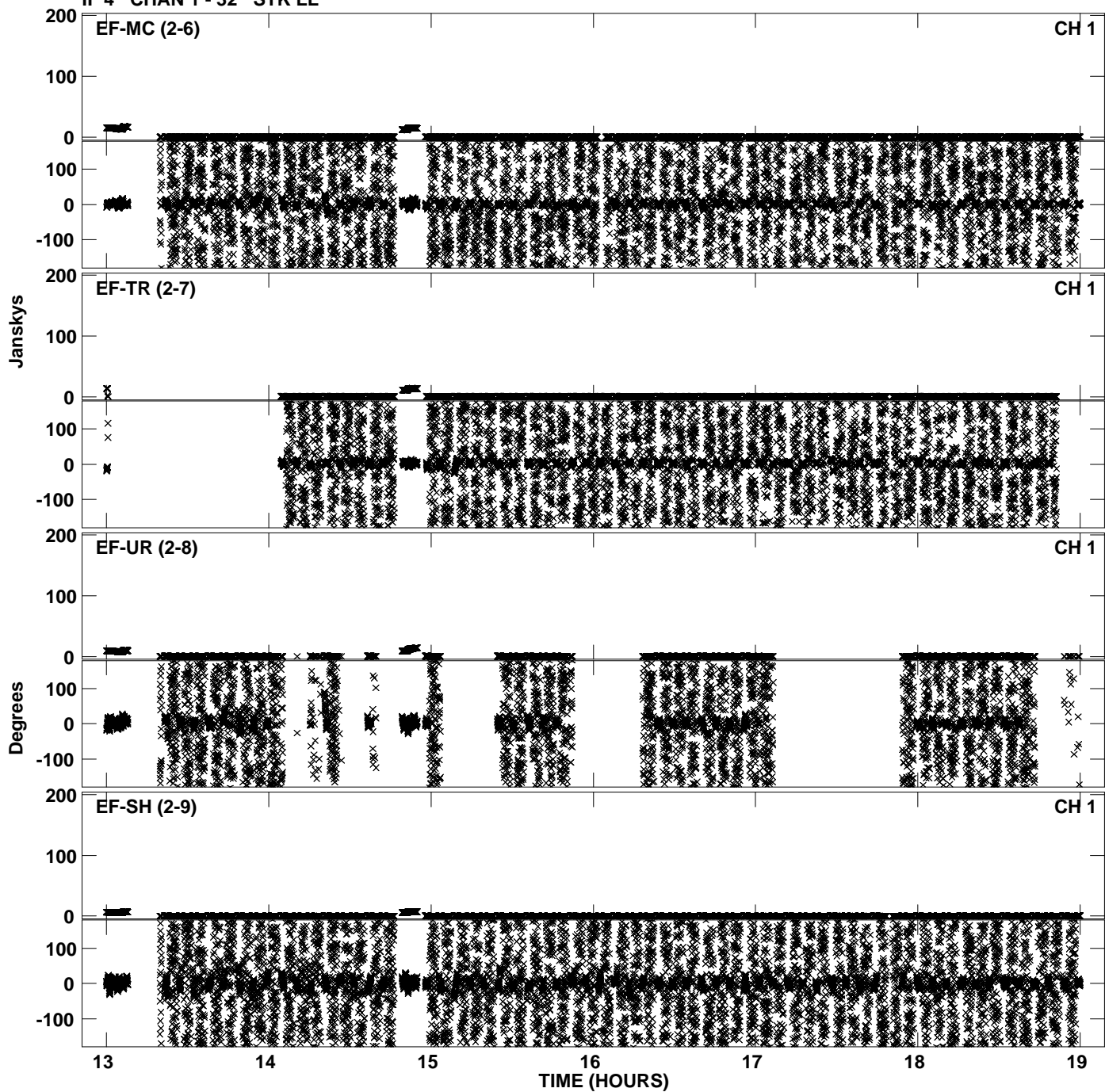
Plot file version 6 created 17-NOV-2010 16:25:21
Amplitude andPhase vs Time for EP068A 5.UVDATA.1 Vect aver. CL # 3
IF 3 CHAN 1 - 32 STK LL



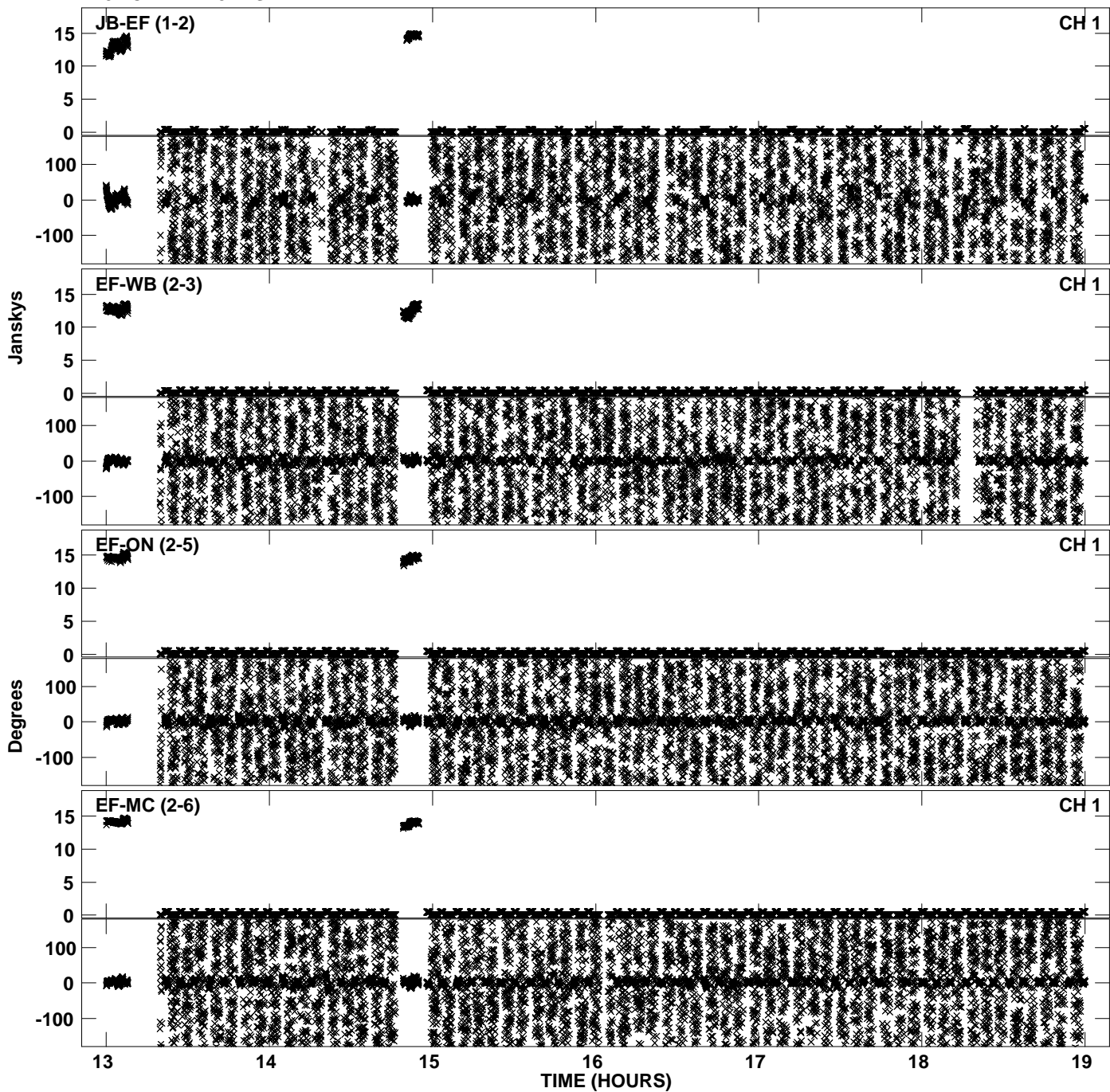
Plot file version 7 created 17-NOV-2010 16:25:29
Amplitude andPhase vs Time for EP068A 5.UVDATA.1 Vect aver. CL # 3
IF 4 CHAN 1 - 32 STK LL



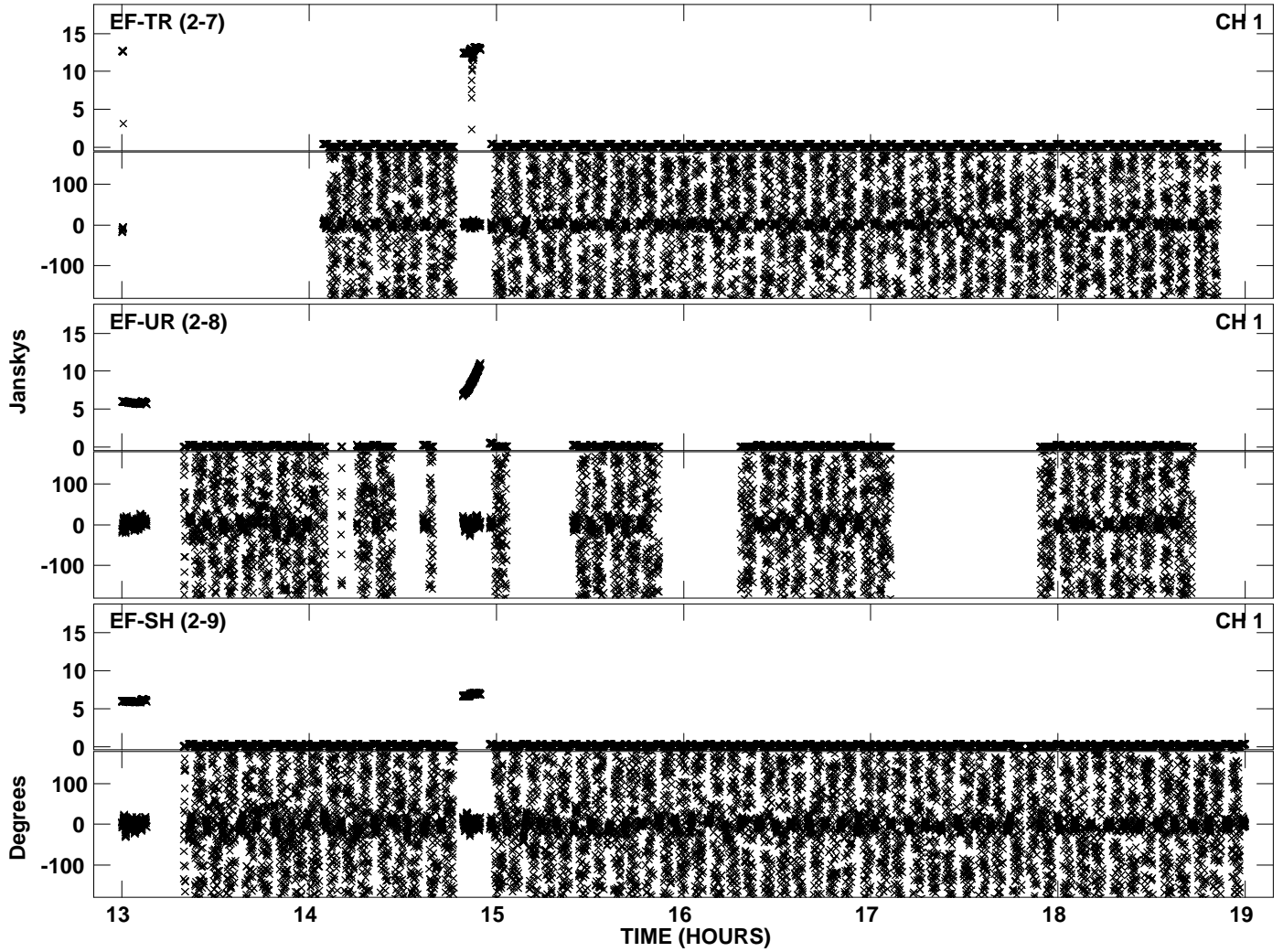
Plot file version 8 created 17-NOV-2010 16:25:29
Amplitude andPhase vs Time for EP068A 5.UVDATA.1 Vect aver. CL # 3
IF 4 CHAN 1 - 32 STK LL



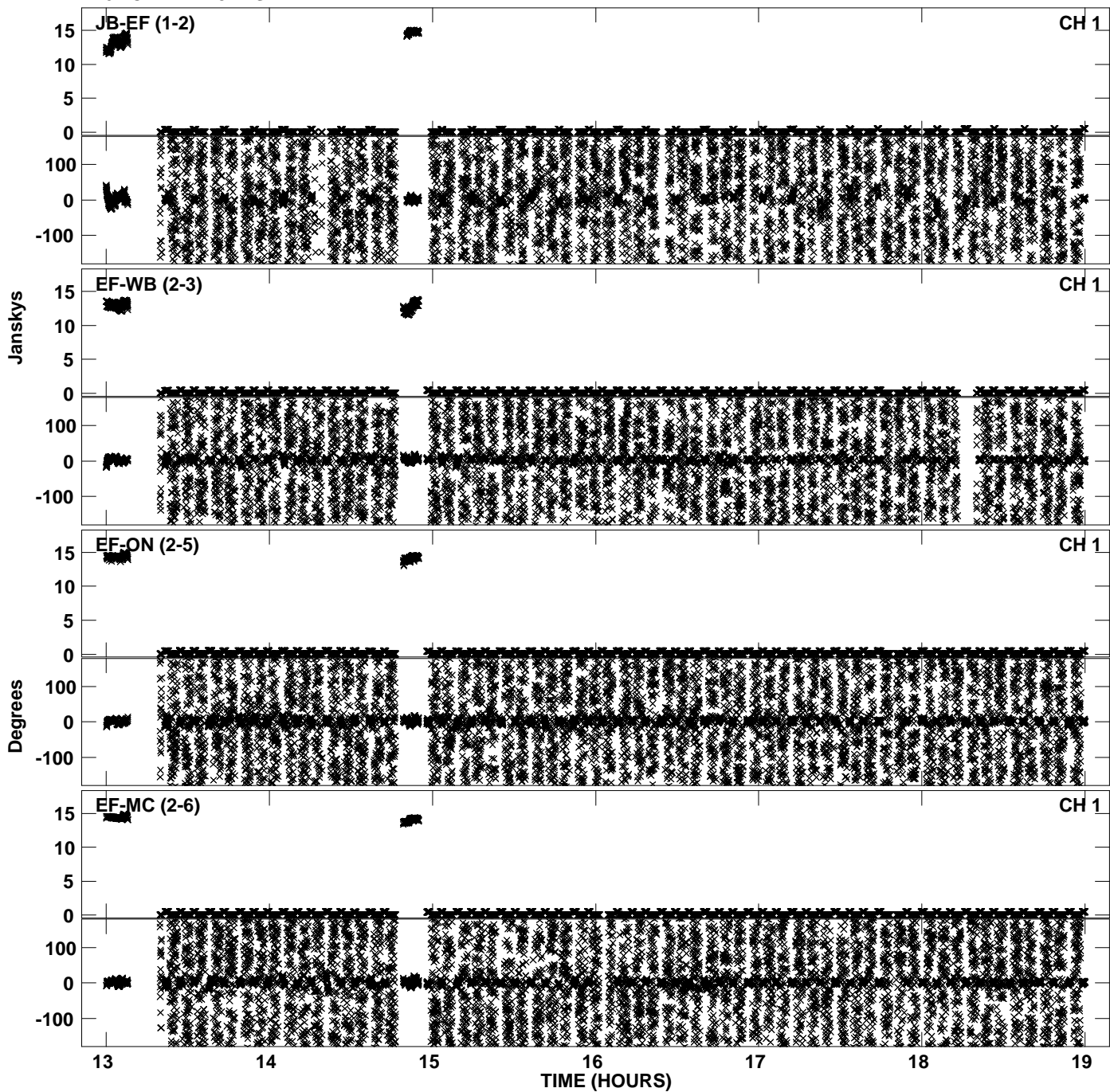
PLot file version 9 created 17-NOV-2010 16:25:37
Amplitude andPhase vs Time for EP068A 5.UVDATA.1 Vect aver. CL # 3
IF 5 CHAN 1 - 32 STK LL



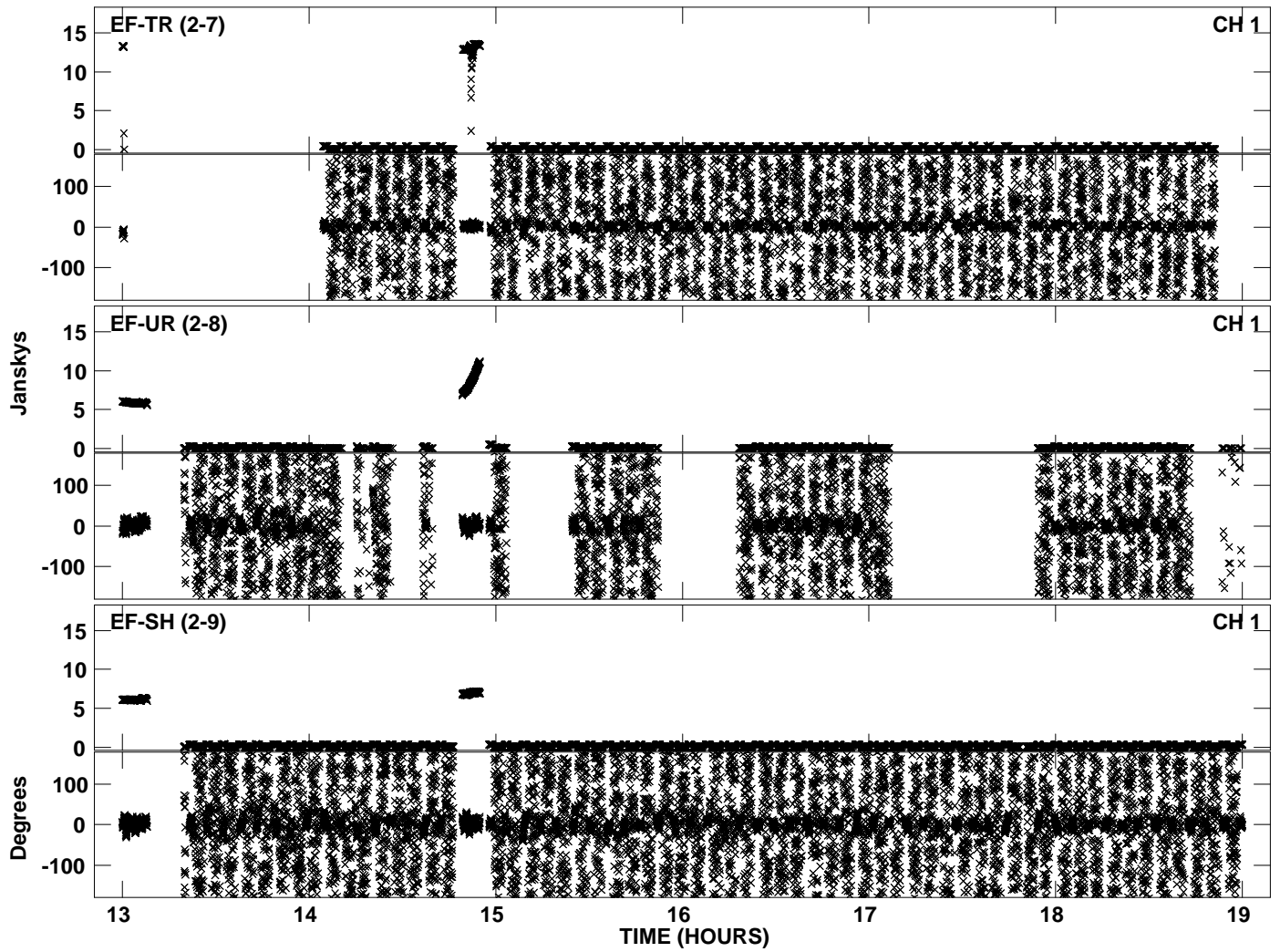
Plot file version 10 created 17-NOV-2010 16:25:37
Amplitude andPhase vs Time for EP068A 5.UVDATA.1 Vect aver. CL # 3
IF 5 CHAN 1 - 32 STK LL



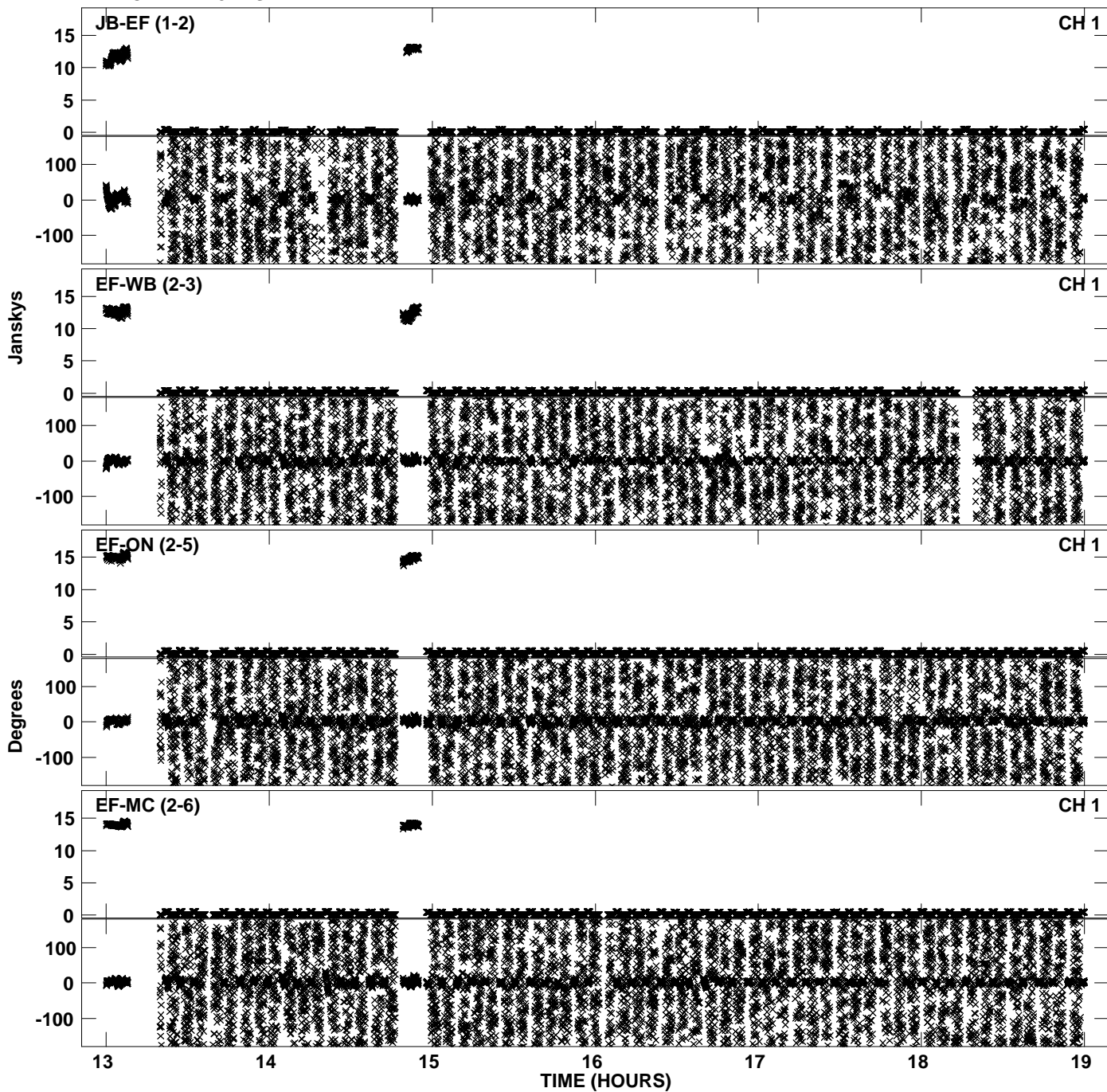
PLot file version 11 created 17-NOV-2010 16:25:44
Amplitude andPhase vs Time for EP068A 5.UVDATA.1 Vect aver. CL # 3
IF 6 CHAN 1 - 32 STK LL



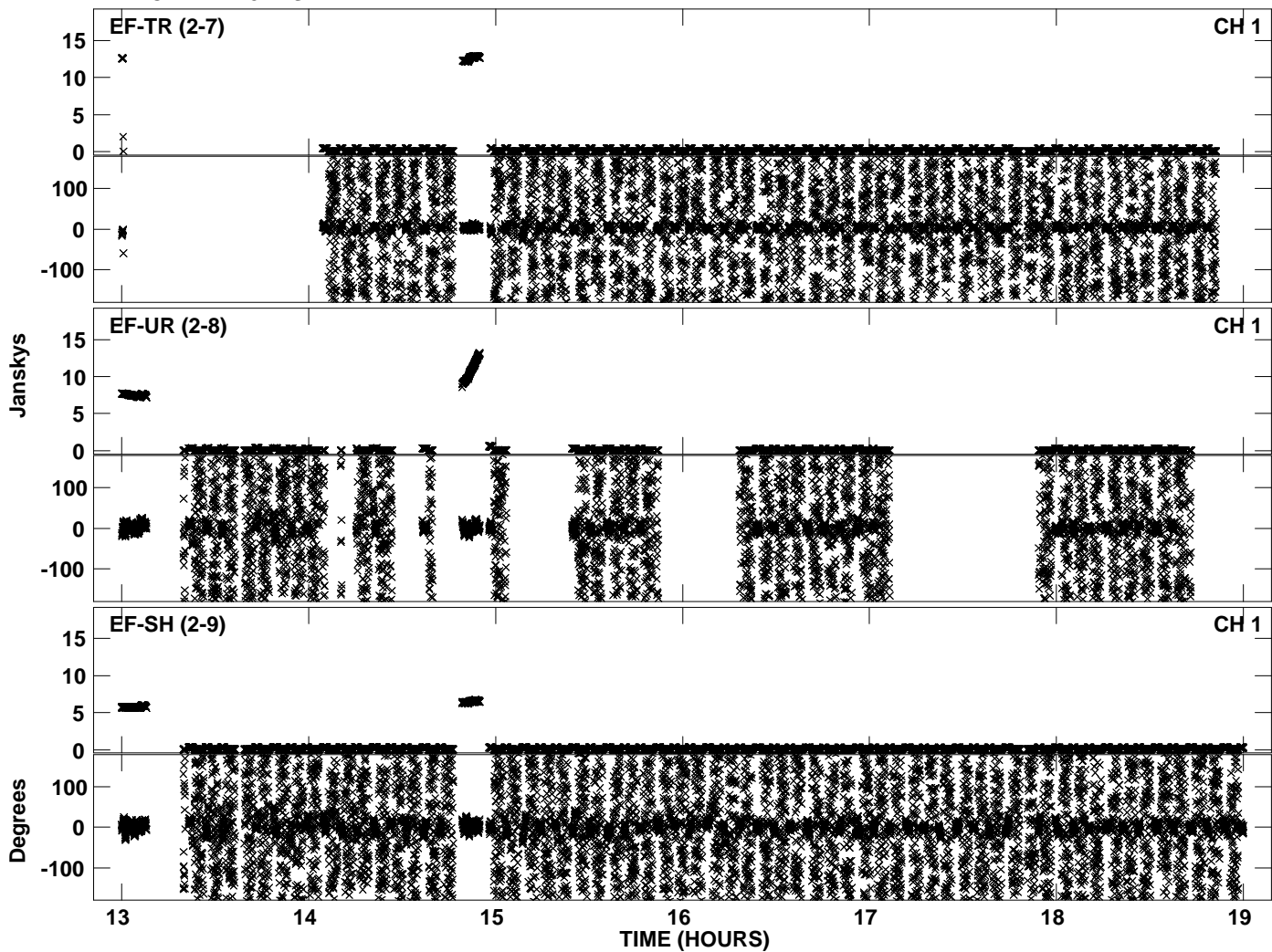
Plot file version 12 created 17-NOV-2010 16:25:44
Amplitude andPhase vs Time for EP068A 5.UVDATA.1 Vect aver. CL # 3
IF 6 CHAN 1 - 32 STK LL



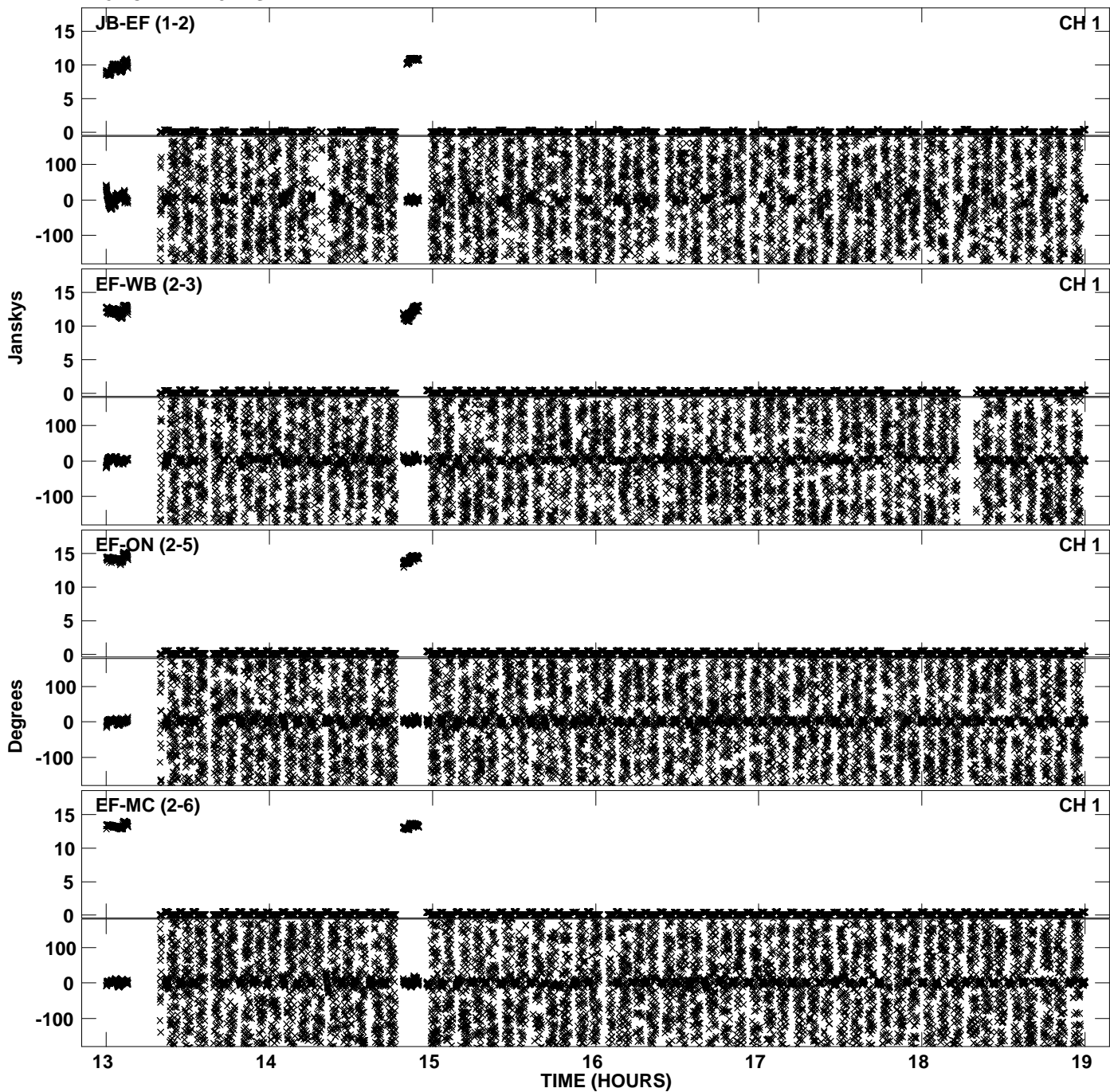
Plot file version 13 created 17-NOV-2010 16:25:51
Amplitude andPhase vs Time for EP068A 5.UVDATA.1 Vect aver. CL # 3
IF 7 CHAN 1 - 32 STK LL



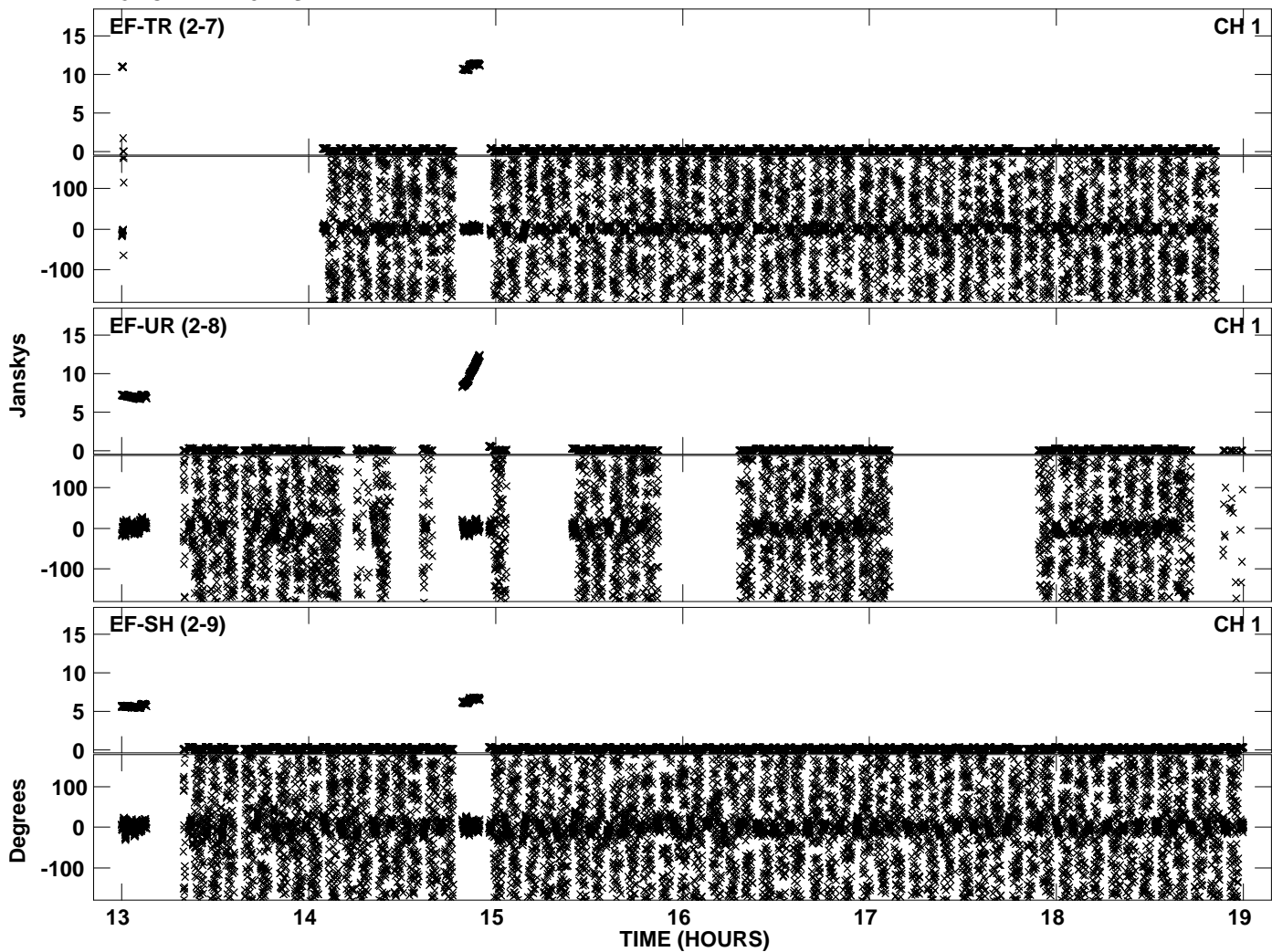
Plot file version 14 created 17-NOV-2010 16:25:52
Amplitude andPhase vs Time for EP068A 5.UVDATA.1 Vect aver. CL # 3
IF 7 CHAN 1 - 32 STK LL



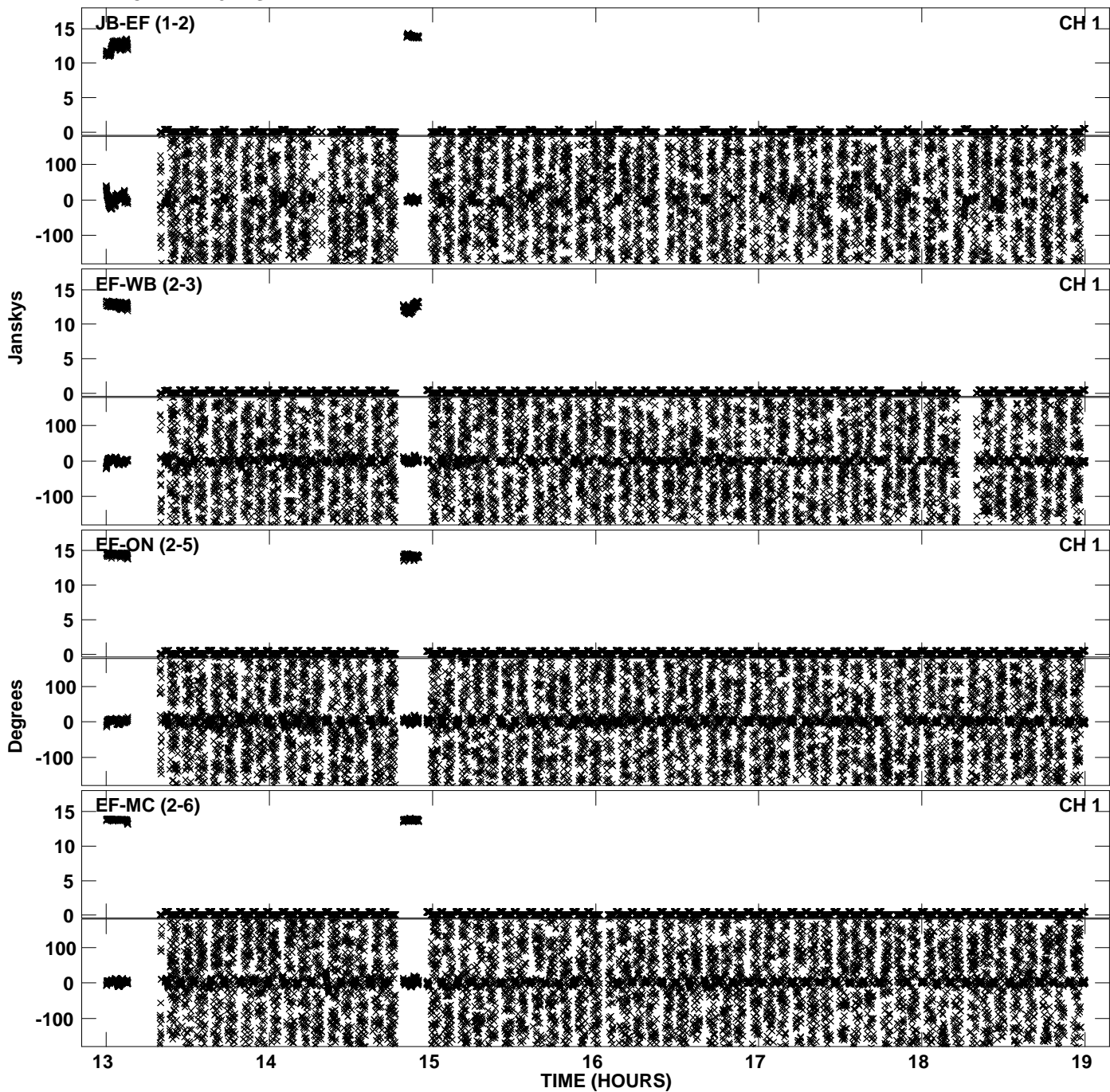
PLot file version 15 created 17-NOV-2010 16:25:59
Amplitude andPhase vs Time for EP068A 5.UVDATA.1 Vect aver. CL # 3
IF 8 CHAN 1 - 32 STK LL



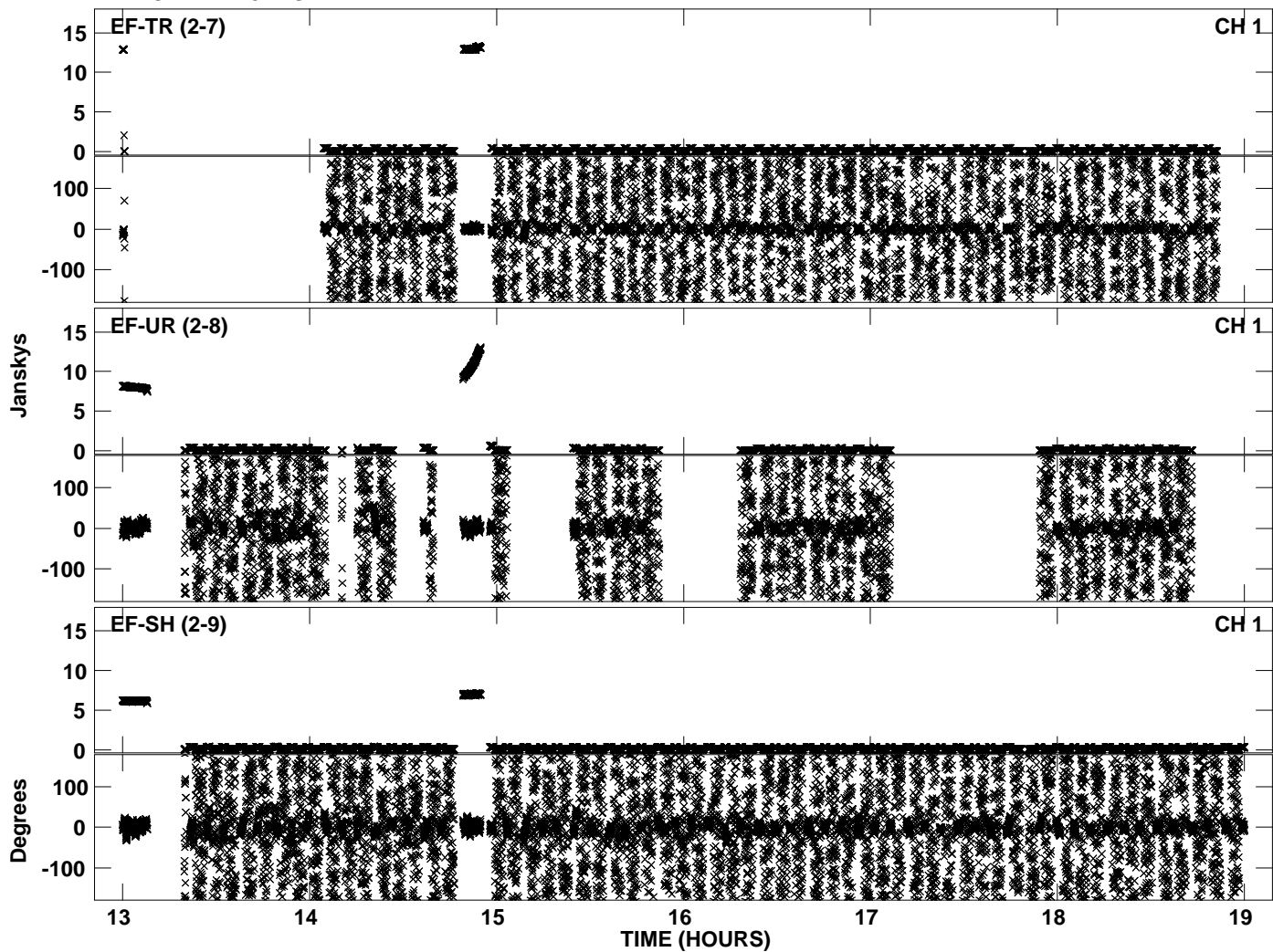
Plot file version 16 created 17-NOV-2010 16:25:59
Amplitude andPhase vs Time for EP068A 5.UVDATA.1 Vect aver. CL # 3
IF 8 CHAN 1 - 32 STK LL



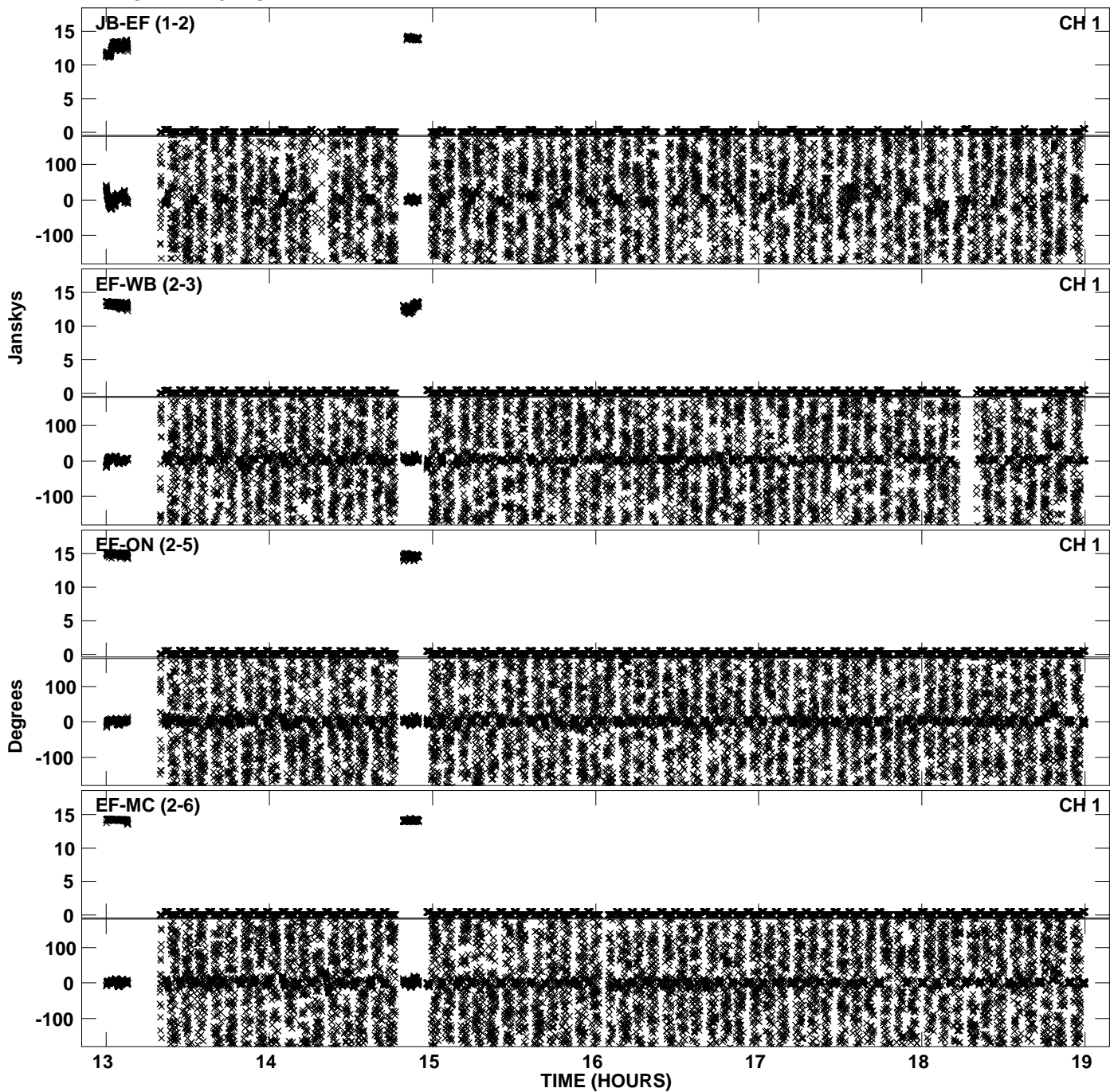
PLot file version 17 created 17-NOV-2010 16:26:06
Amplitude andPhase vs Time for EP068A 5.UVDATA.1 Vect aver. CL # 3
IF 1 CHAN 1 - 32 STK RR



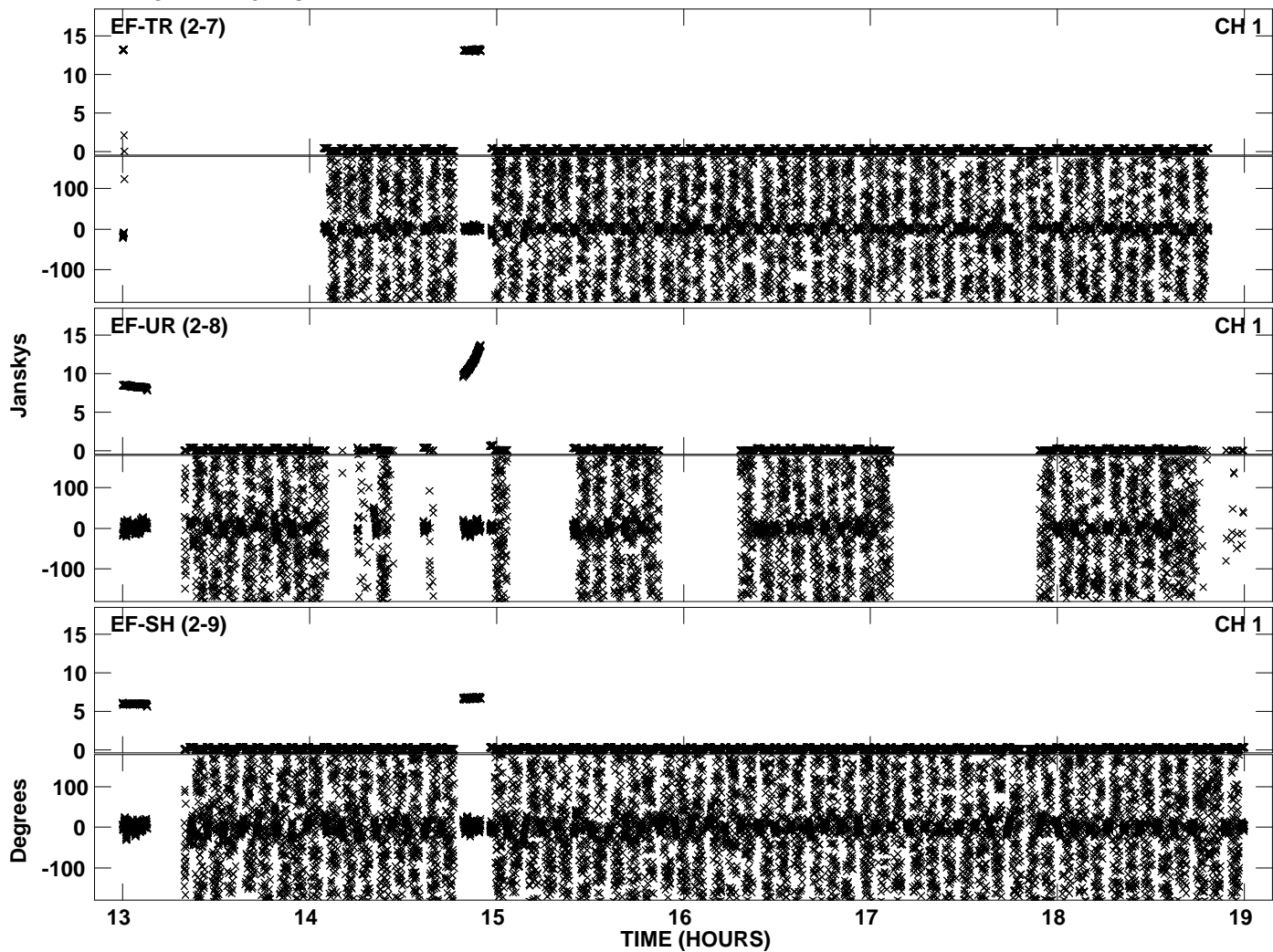
Plot file version 18 created 17-NOV-2010 16:26:06
Amplitude andPhase vs Time for EP068A 5.UVDATA.1 Vect aver. CL # 3
IF 1 CHAN 1 - 32 STK RR



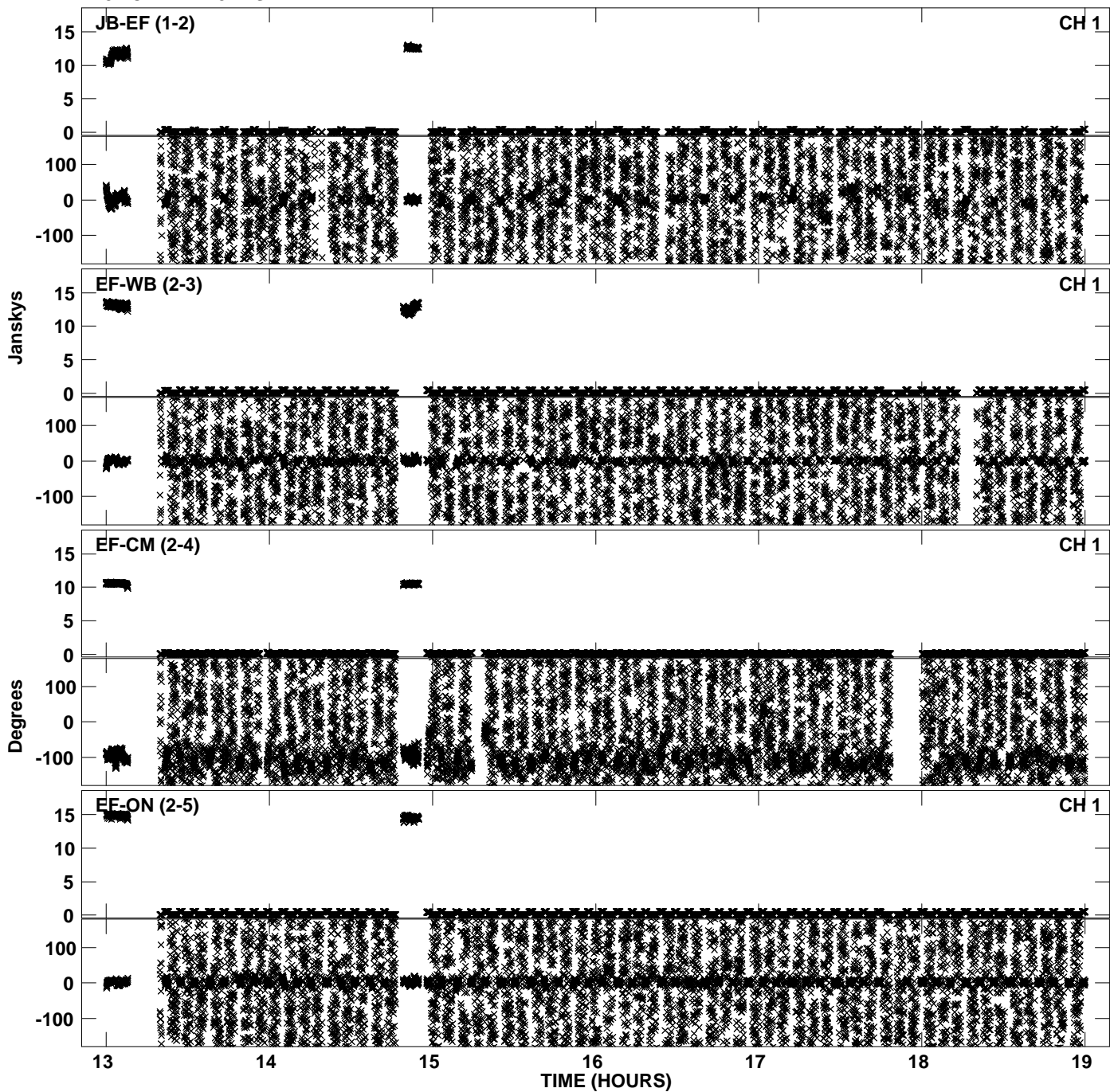
PLot file version 19 created 17-NOV-2010 16:26:13
Amplitude andPhase vs Time for EP068A 5.UVDATA.1 Vect aver. CL # 3
IF 2 CHAN 1 - 32 STK RR



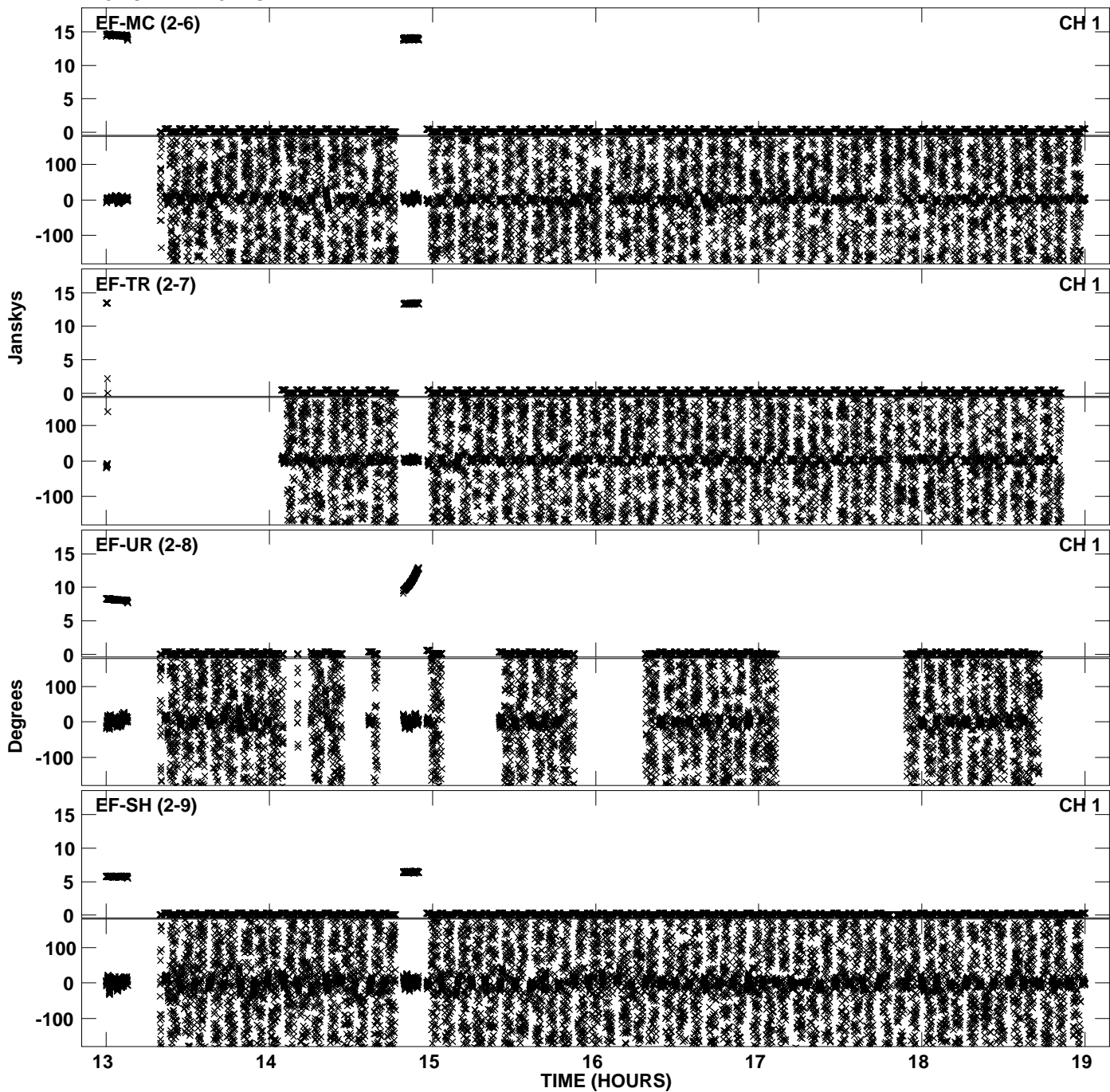
Plot file version 20 created 17-NOV-2010 16:26:13
Amplitude andPhase vs Time for EP068A 5.UVDATA.1 Vect aver. CL # 3
IF 2 CHAN 1 - 32 STK RR



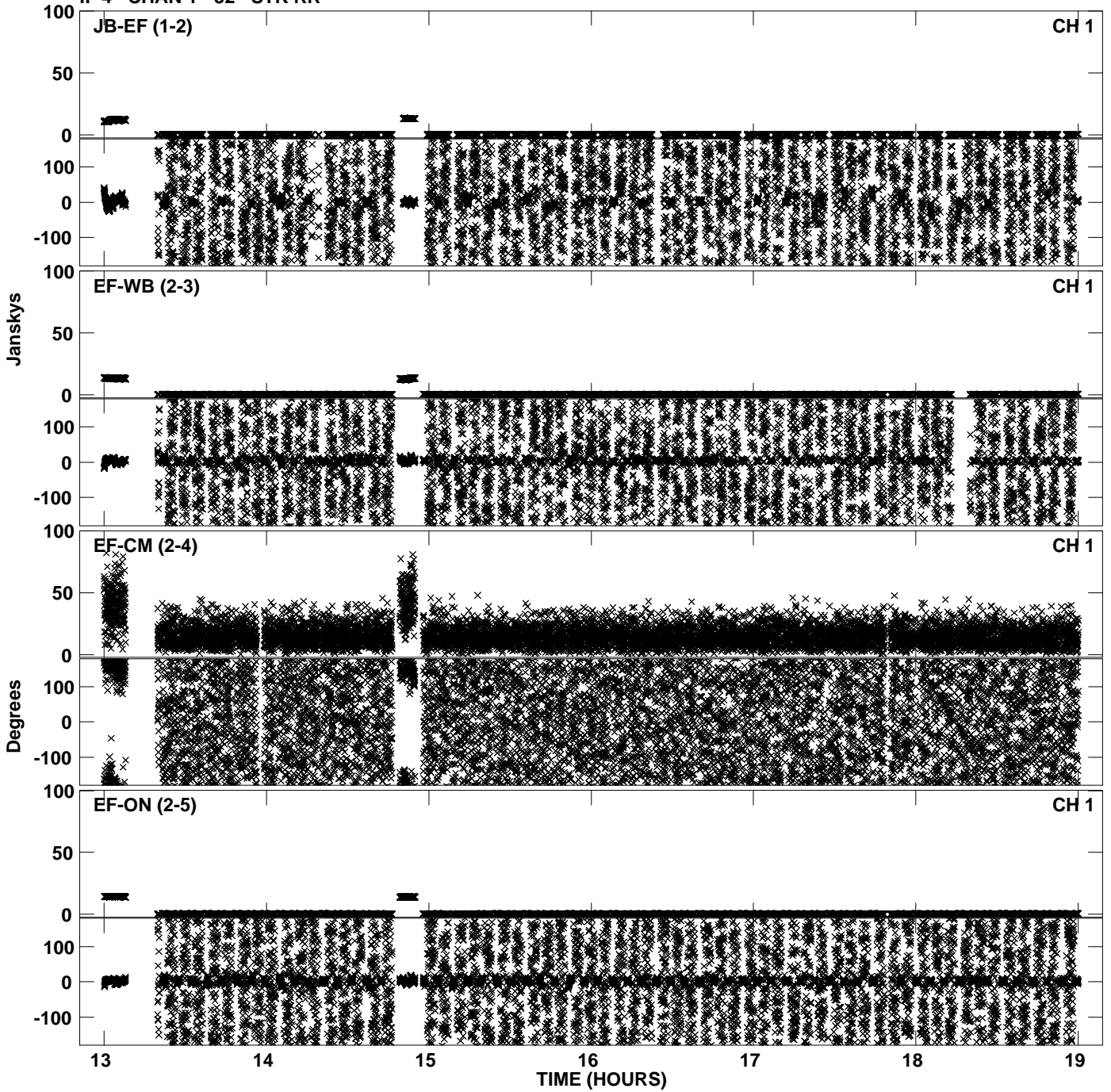
PLot file version 21 created 17-NOV-2010 16:26:21
Amplitude andPhase vs Time for EP068A 5.UVDATA.1 Vect aver. CL # 3
IF 3 CHAN 1 - 32 STK RR



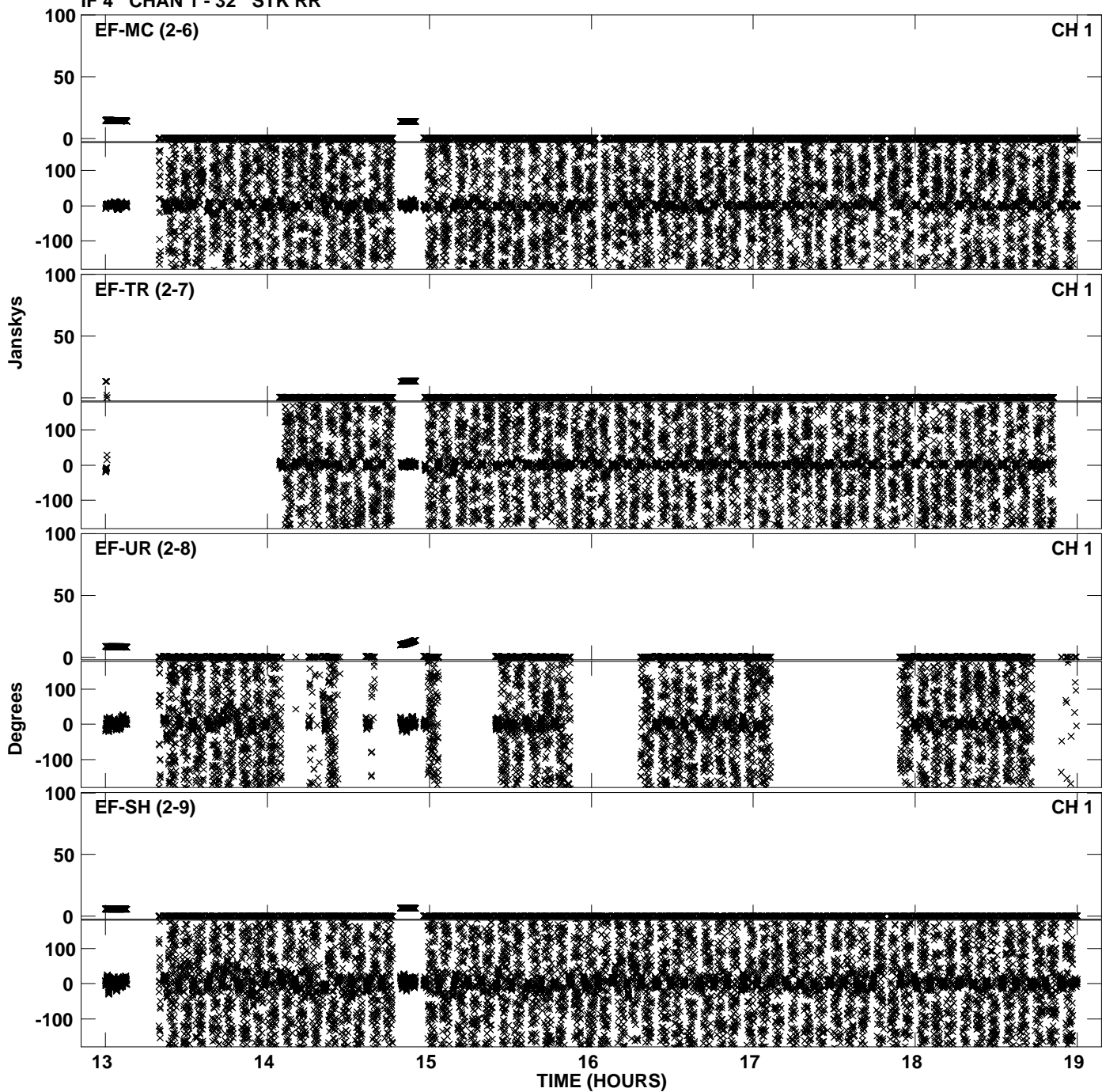
Plot file version 22 created 17-NOV-2010 16:26:21
Amplitude andPhase vs Time for EP068A 5.UVDATA.1 Vect aver. CL # 3
IF 3 CHAN 1 - 32 STK RR



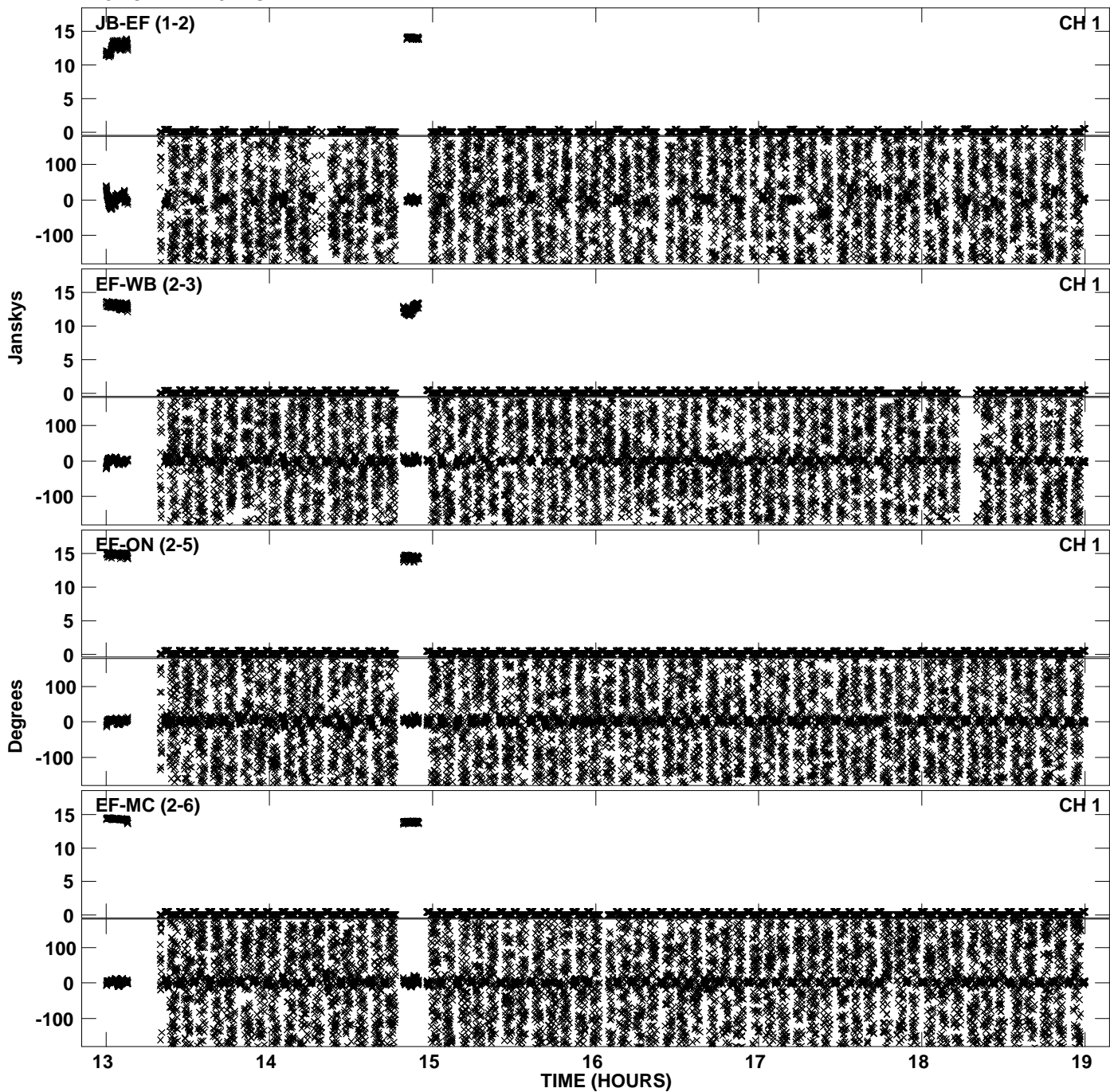
Plot file version 23 created 17-NOV-2010 16:26:28
Amplitude andPhase vs Time for EP068A 5.UVDATA.1 Vect aver. CL # 3
IF 4 CHAN 1 - 32 STK RR



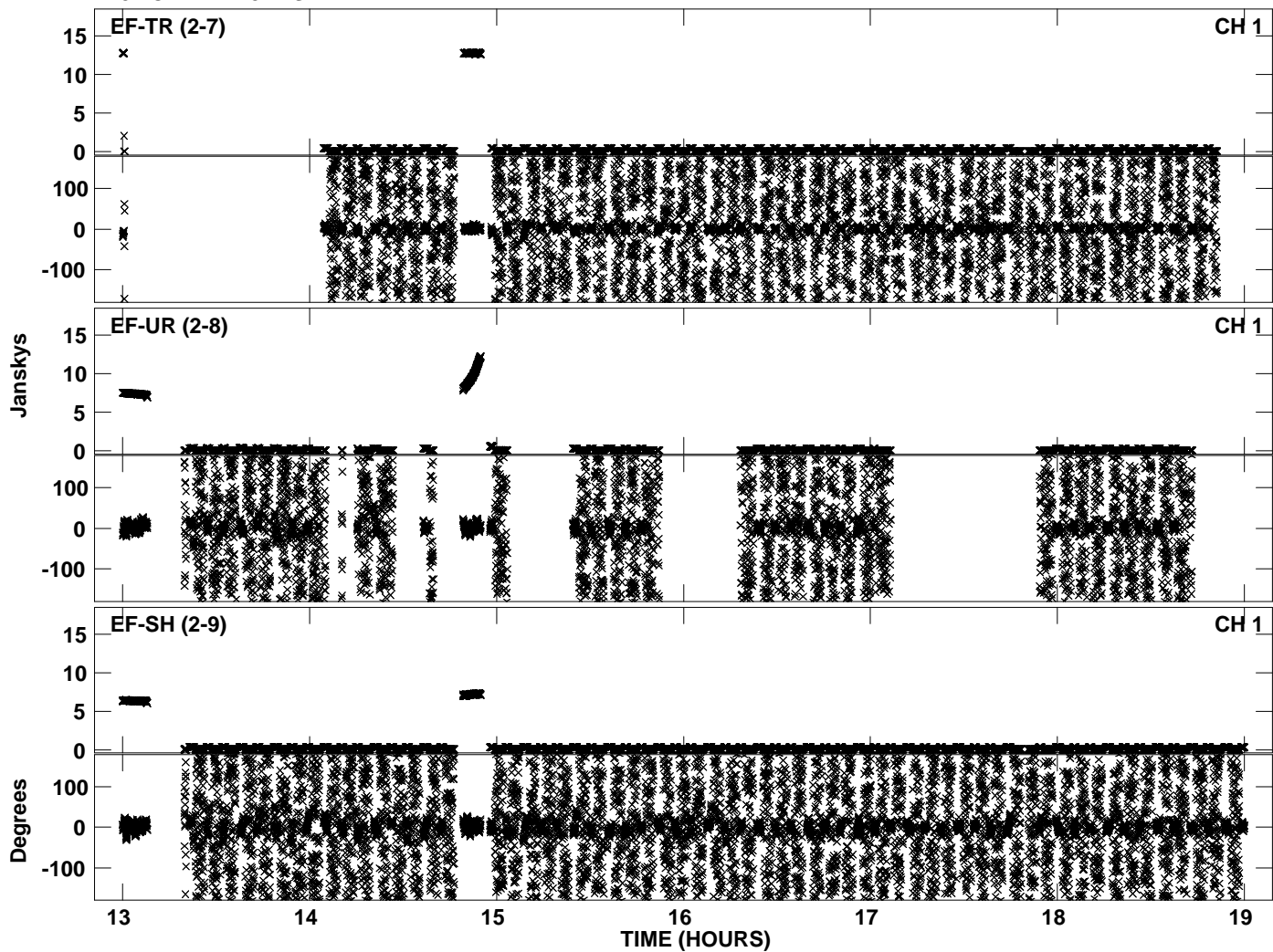
Plot file version 24 created 17-NOV-2010 16:26:28
Amplitude andPhase vs Time for EP068A 5.UVDATA.1 Vect aver. CL # 3
IF 4 CHAN 1 - 32 STK RR



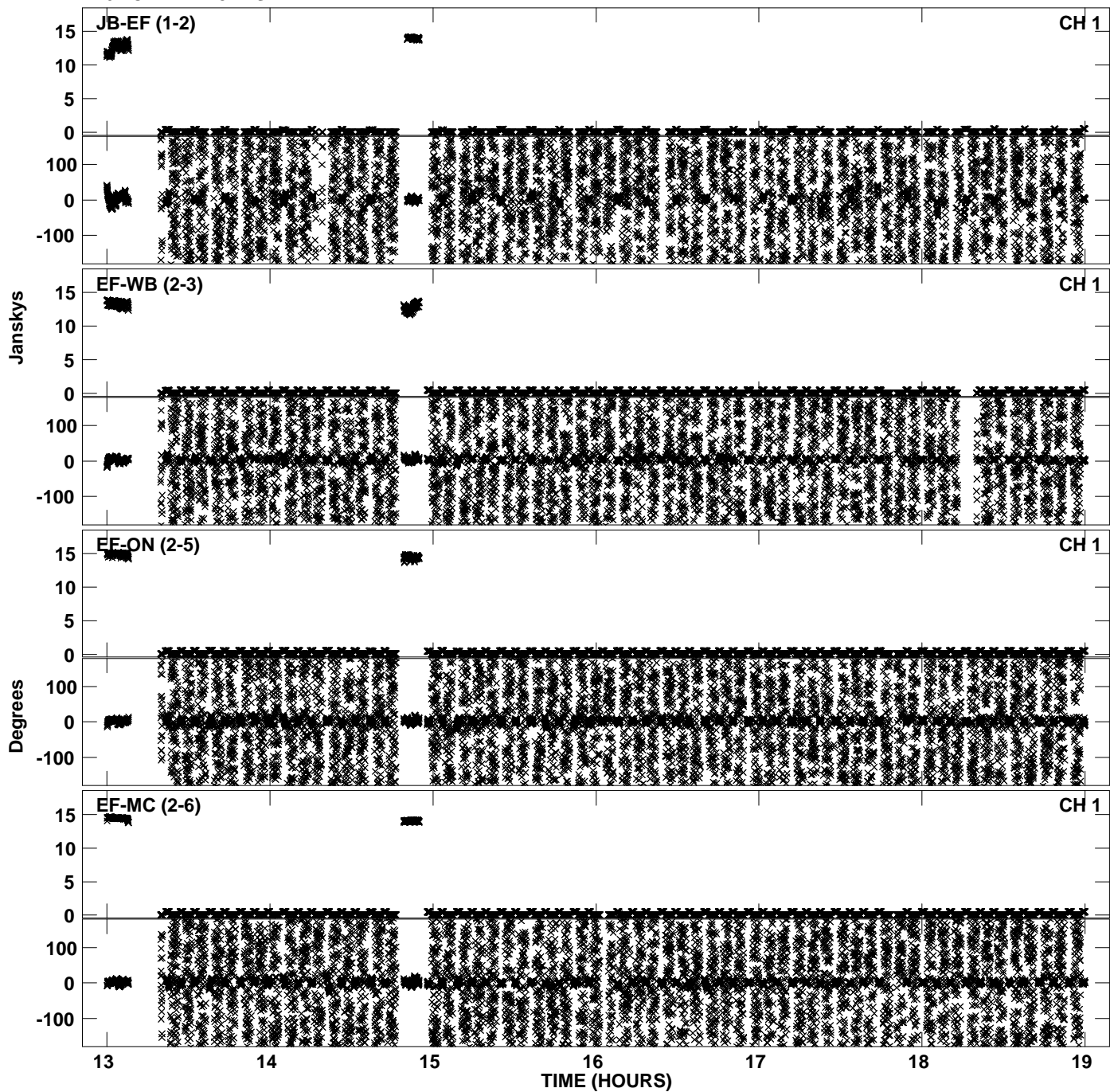
PLot file version 25 created 17-NOV-2010 16:26:35
Amplitude andPhase vs Time for EP068A 5.UVDATA.1 Vect aver. CL # 3
IF 5 CHAN 1 - 32 STK RR



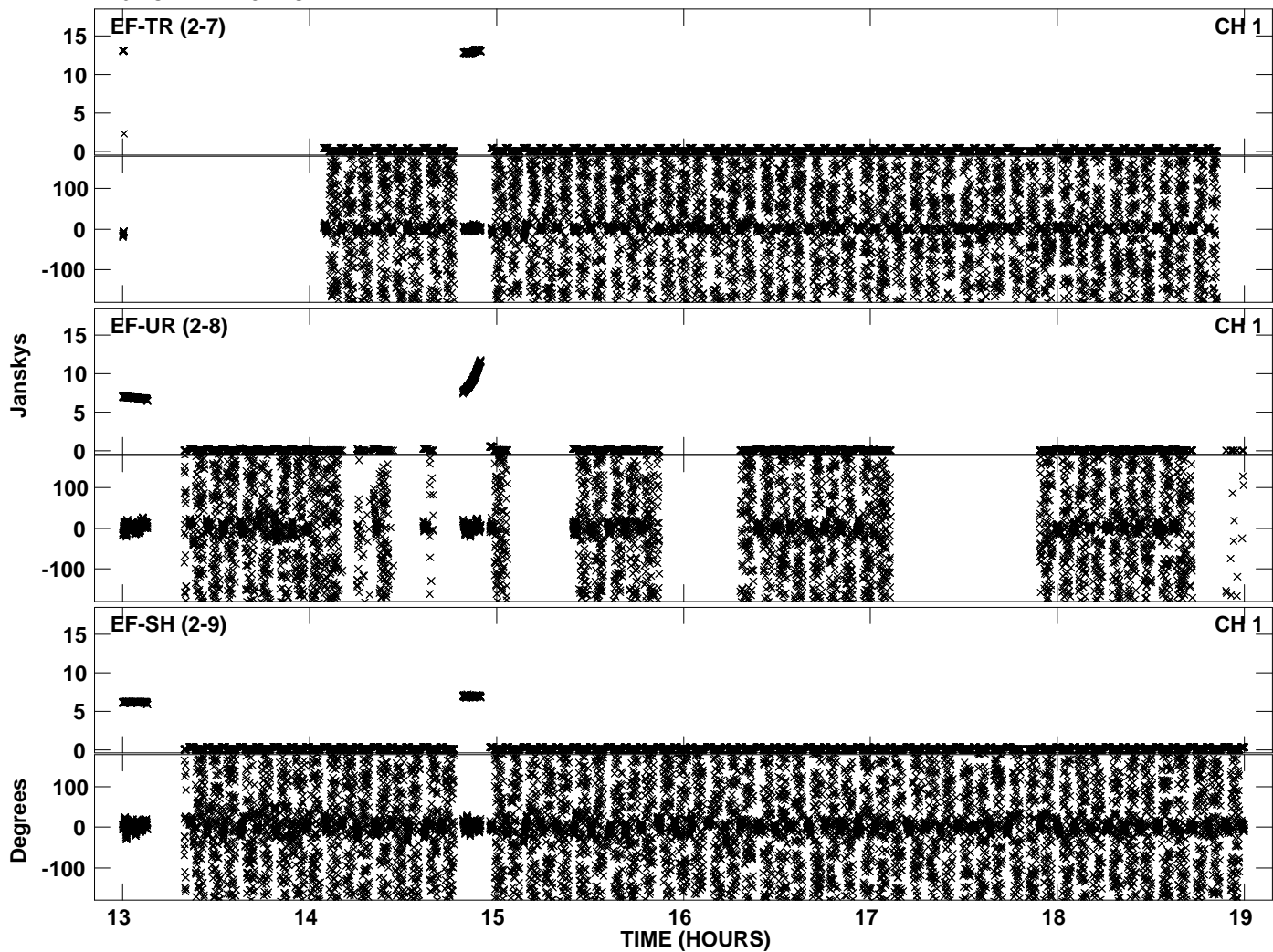
Plot file version 26 created 17-NOV-2010 16:26:35
Amplitude andPhase vs Time for EP068A 5.UVDATA.1 Vect aver. CL # 3
IF 5 CHAN 1 - 32 STK RR



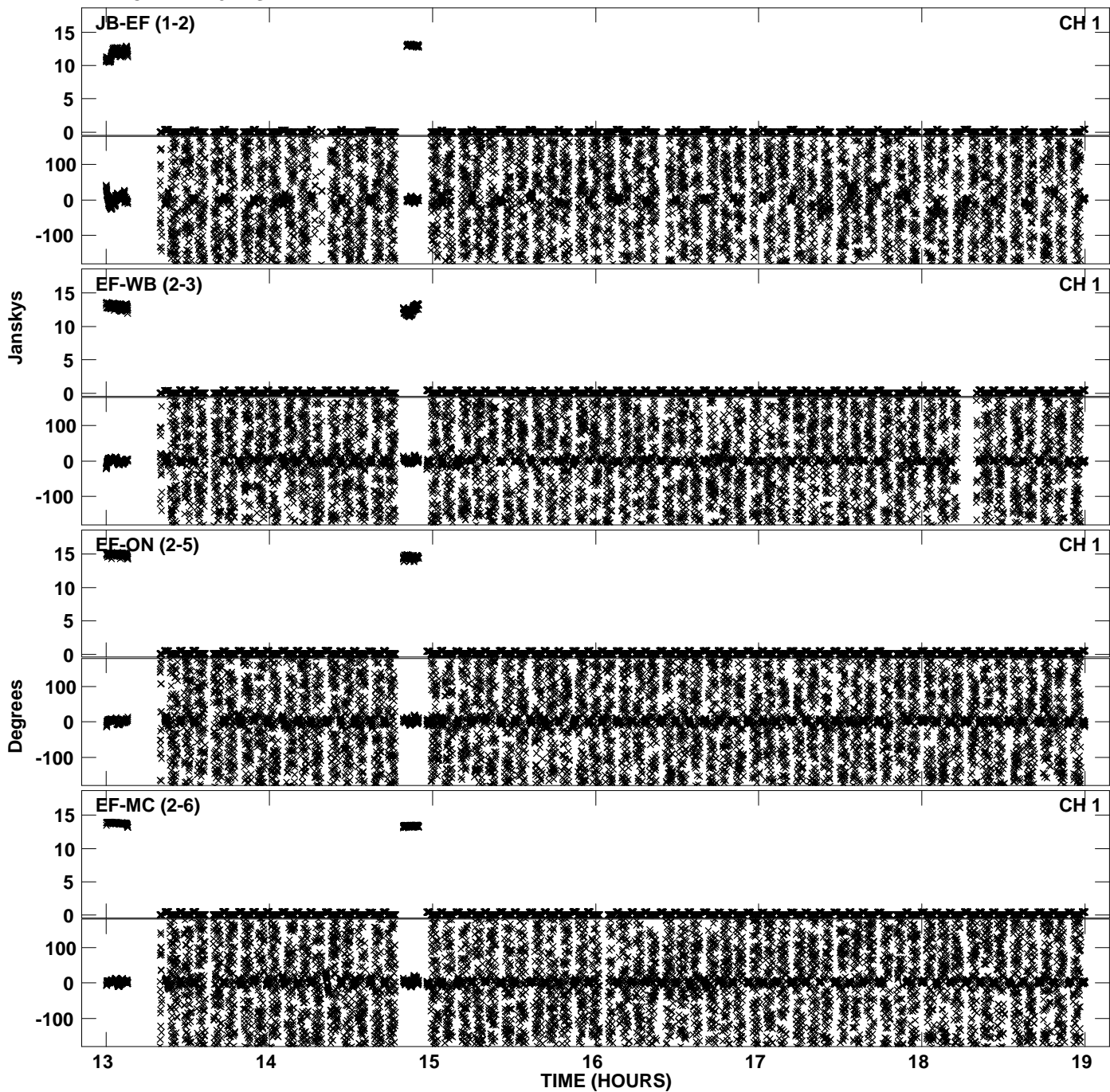
PLot file version 27 created 17-NOV-2010 16:26:42
Amplitude andPhase vs Time for EP068A 5.UVDATA.1 Vect aver. CL # 3
IF 6 CHAN 1 - 32 STK RR



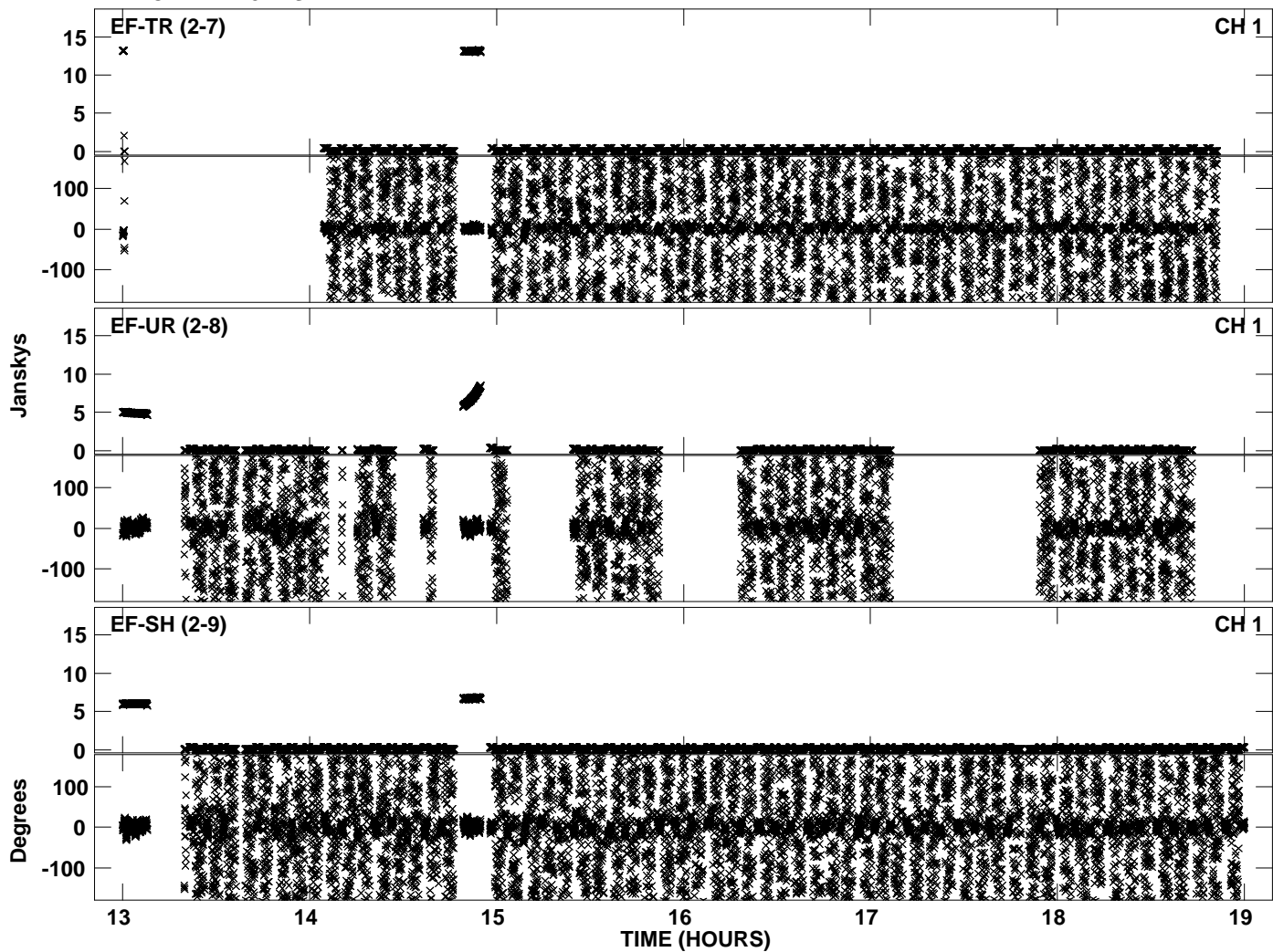
Plot file version 28 created 17-NOV-2010 16:26:42
Amplitude andPhase vs Time for EP068A 5.UVDATA.1 Vect aver. CL # 3
IF 6 CHAN 1 - 32 STK RR



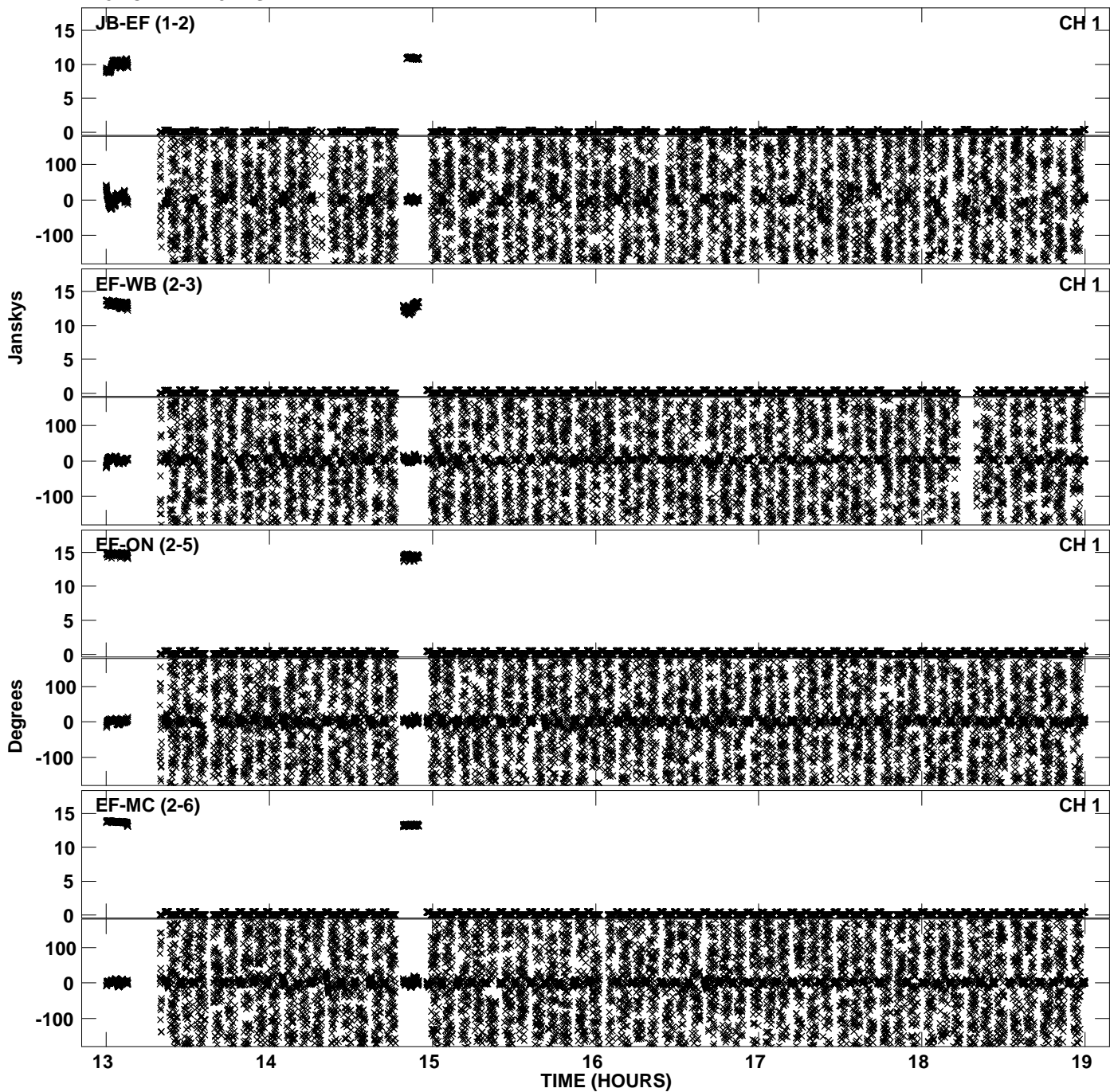
PLot file version 29 created 17-NOV-2010 16:26:49
Amplitude andPhase vs Time for EP068A 5.UVDATA.1 Vect aver. CL # 3
IF 7 CHAN 1 - 32 STK RR



Plot file version 30 created 17-NOV-2010 16:26:49
Amplitude andPhase vs Time for EP068A 5.UVDATA.1 Vect aver. CL # 3
IF 7 CHAN 1 - 32 STK RR



Plot file version 31 created 17-NOV-2010 16:26:56
Amplitude andPhase vs Time for EP068A 5.UVDATA.1 Vect aver. CL # 3
IF 8 CHAN 1 - 32 STK RR



Plot file version 32 created 17-NOV-2010 16:26:56
Amplitude andPhase vs Time for EP068A 5.UVDATA.1 Vect aver. CL # 3
IF 8 CHAN 1 - 32 STK RR

