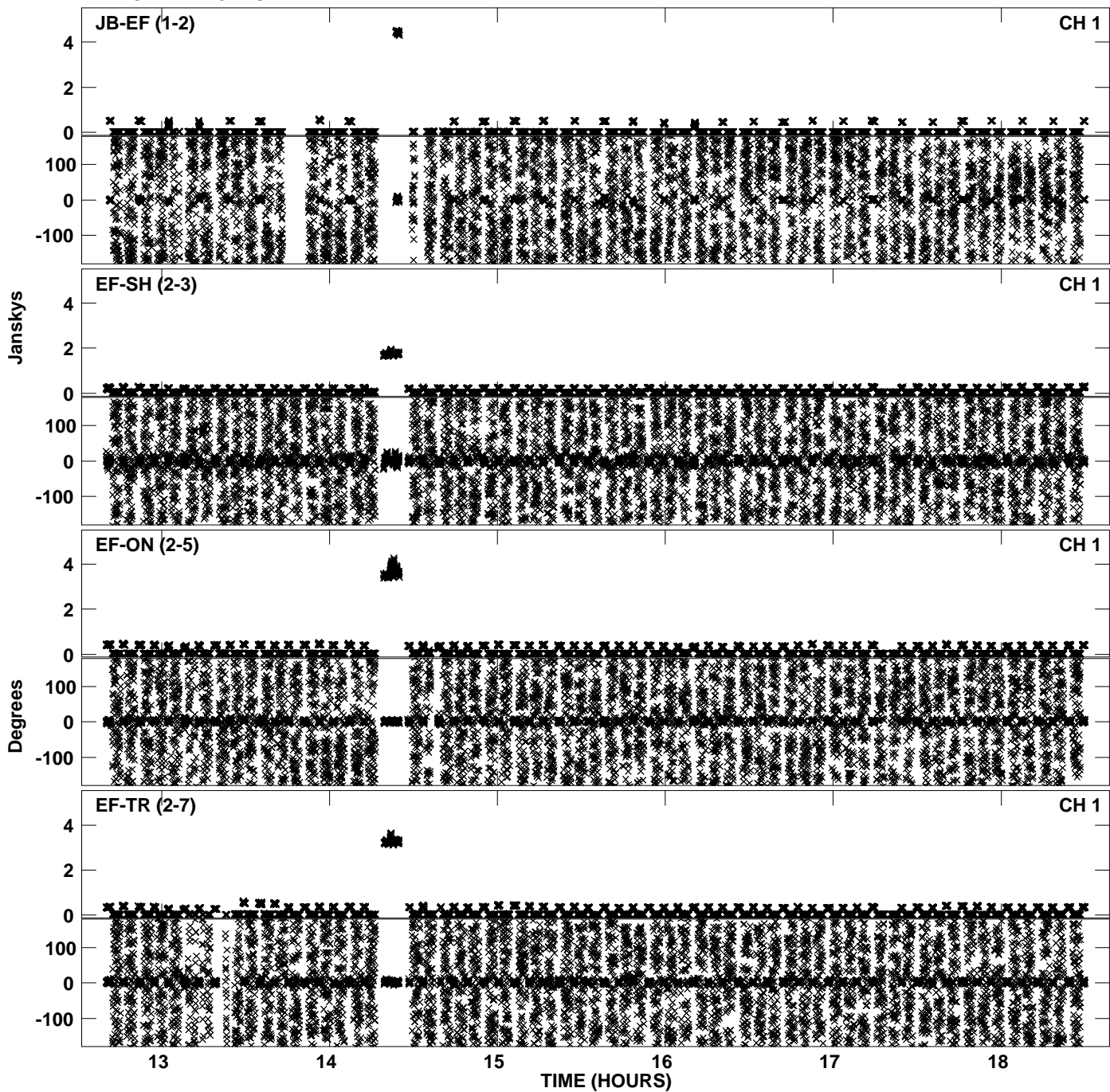
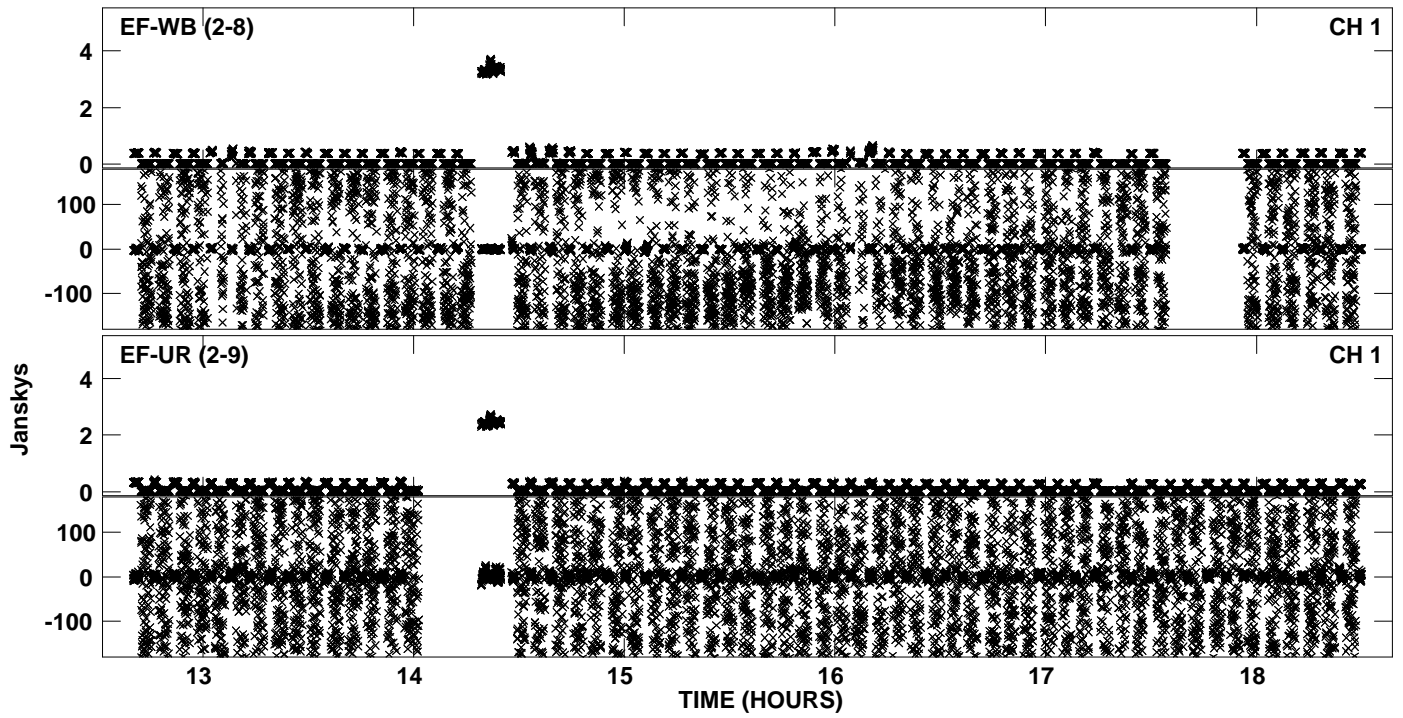


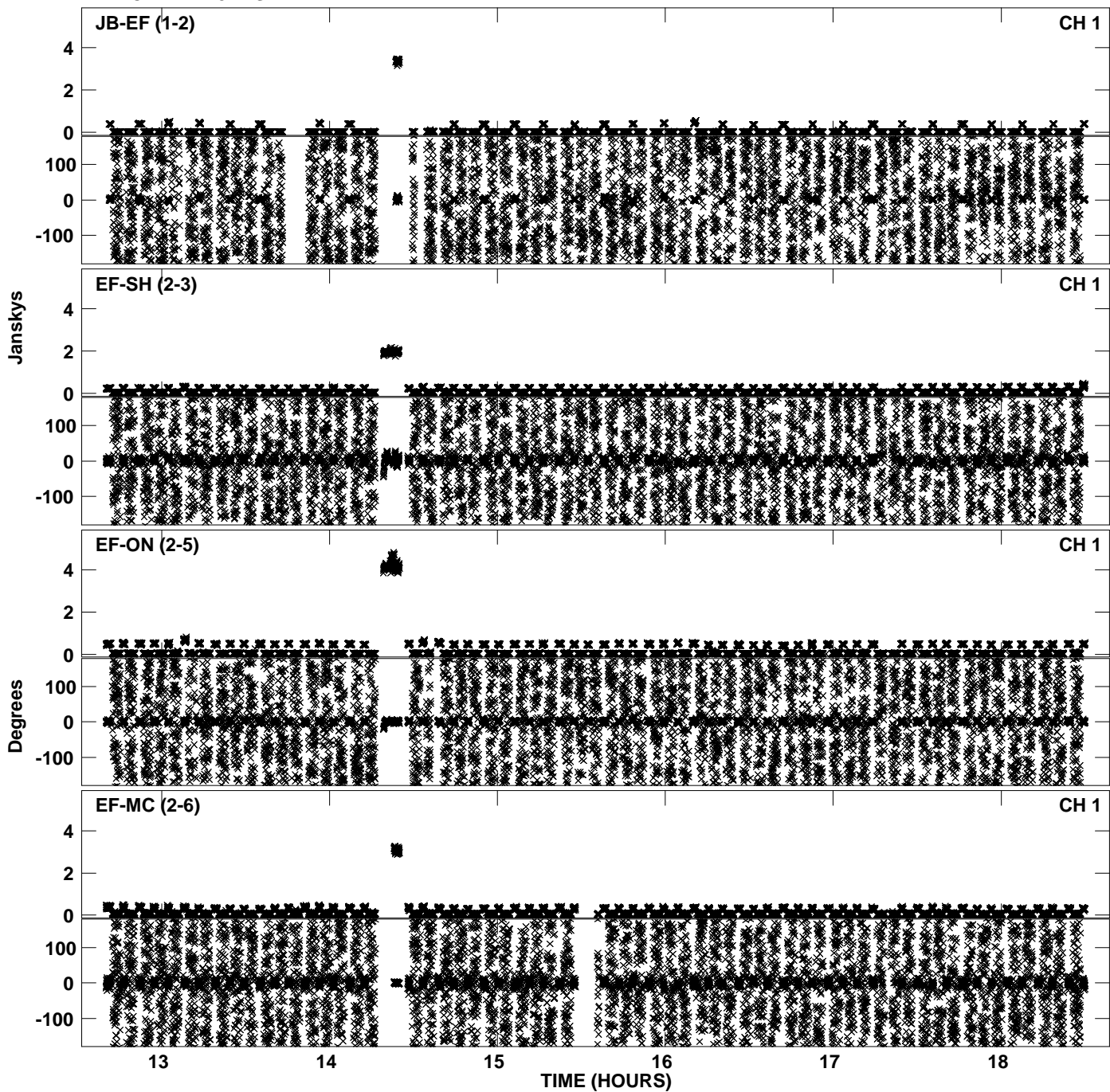
Plot file version 1 created 30-NOV-2010 12:08:45
Amplitude andPhase vs Time for EP068B 1.UVDATA.1 Vect aver. CL # 3
IF 1 CHAN 1 - 32 STK LL



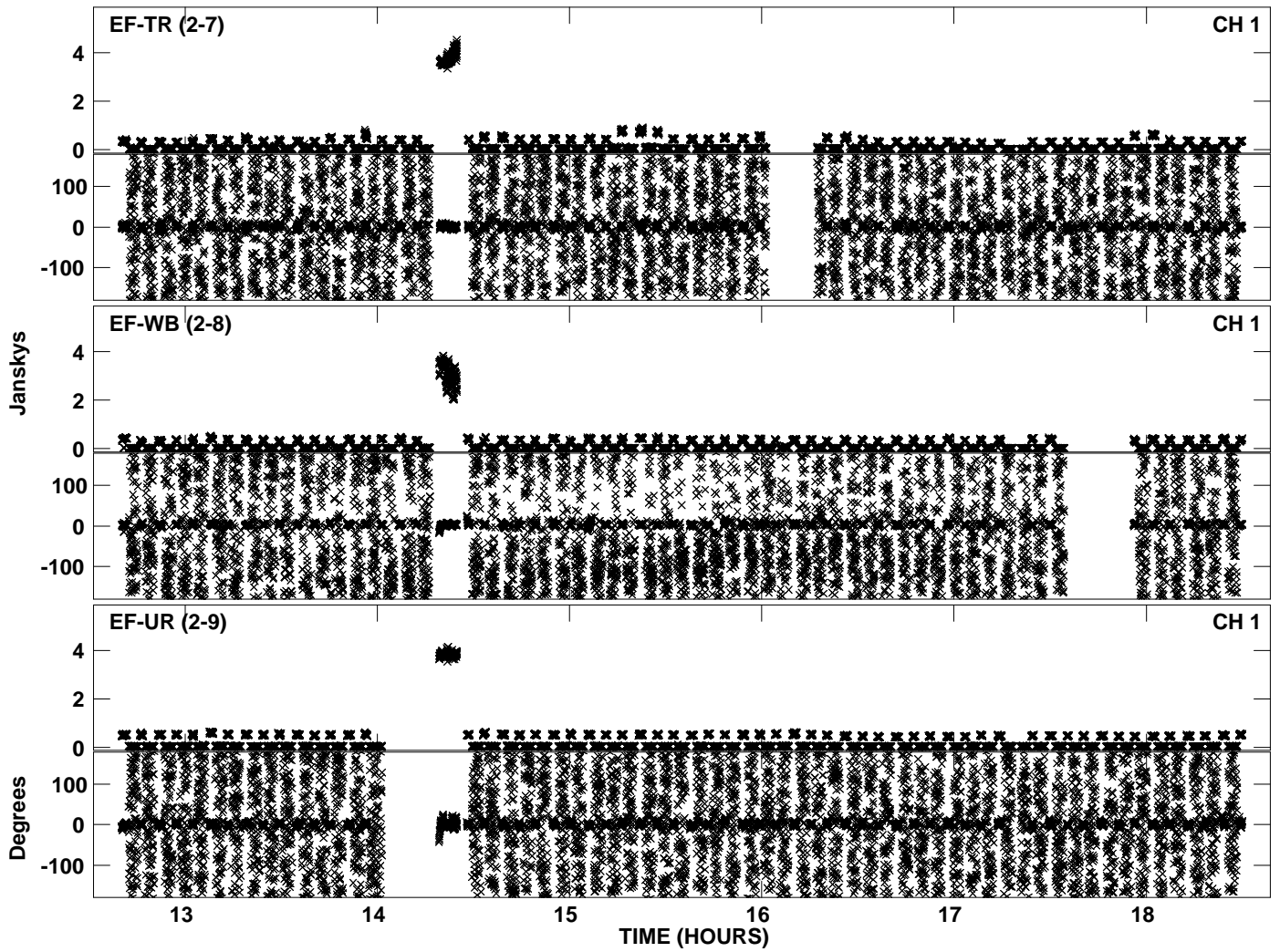
PLot file version 2 created 30-NOV-2010 12:08:46
Amplitude andPhase vs Time for EP068B 1.UVDATA.1 Vect aver. CL # 3
IF 1 CHAN 1 - 32 STK LL



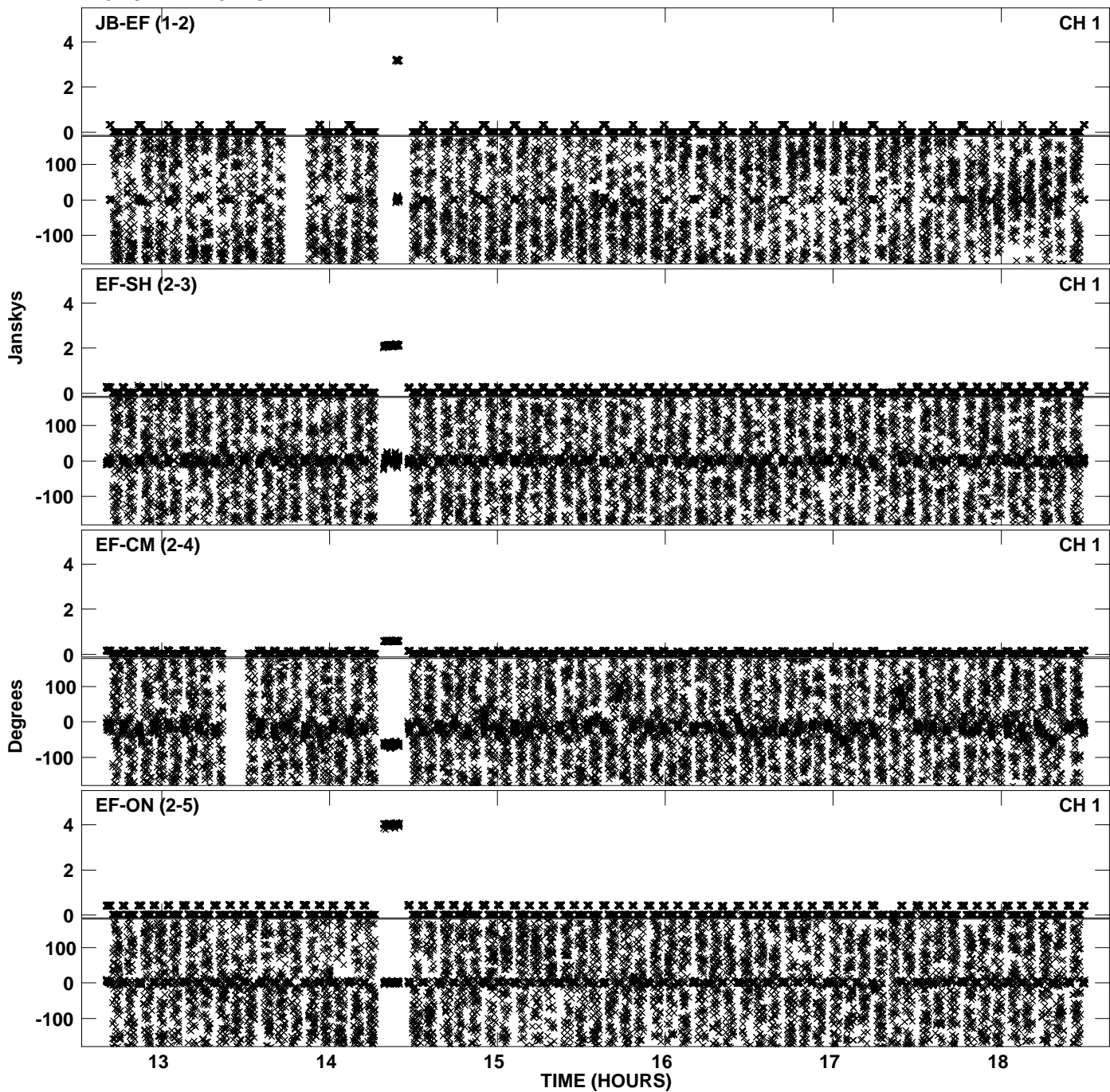
PLot file version 3 created 30-NOV-2010 12:08:54
Amplitude andPhase vs Time for EP068B 1.UVDATA.1 Vect aver. CL # 3
IF 2 CHAN 1 - 32 STK LL



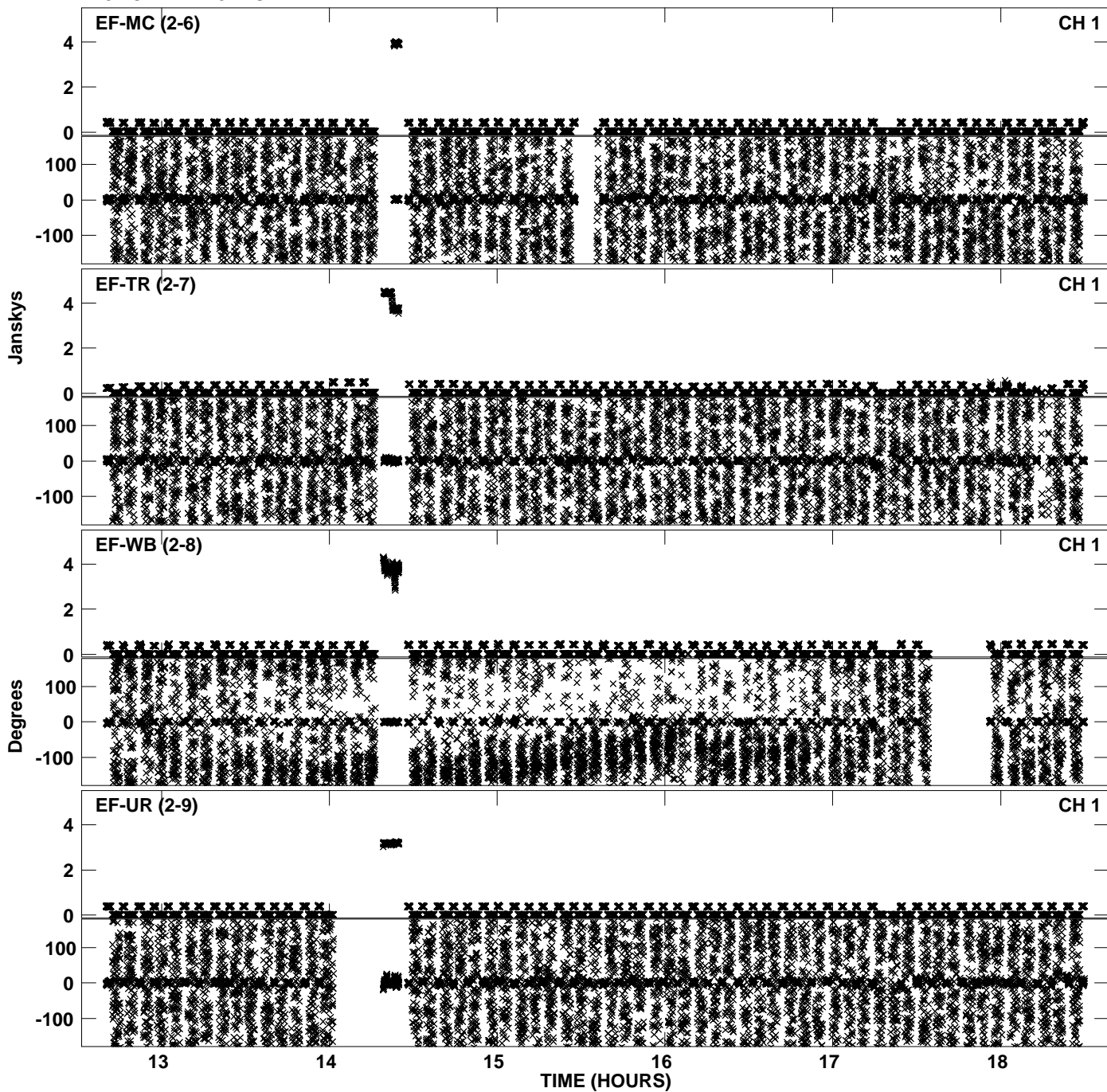
PLot file version 4 created 30-NOV-2010 12:08:54
Amplitude andPhase vs Time for EP068B 1.UVDATA.1 Vect aver. CL # 3
IF 2 CHAN 1 - 32 STK LL



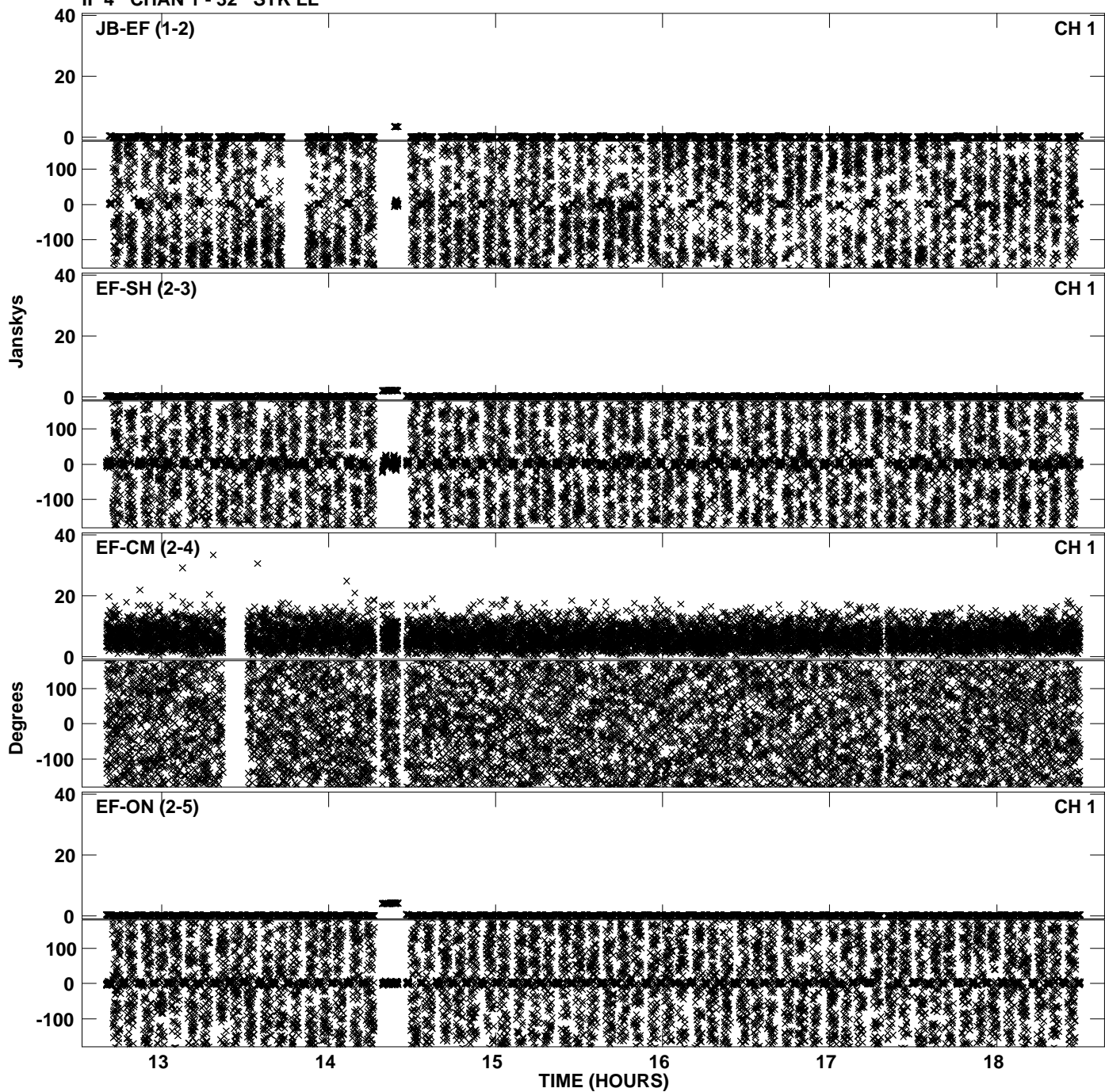
Plot file version 5 created 30-NOV-2010 12:09:03
Amplitude andPhase vs Time for EP068B 1.UVDATA.1 Vect aver. CL # 3
IF 3 CHAN 1 - 32 STK LL



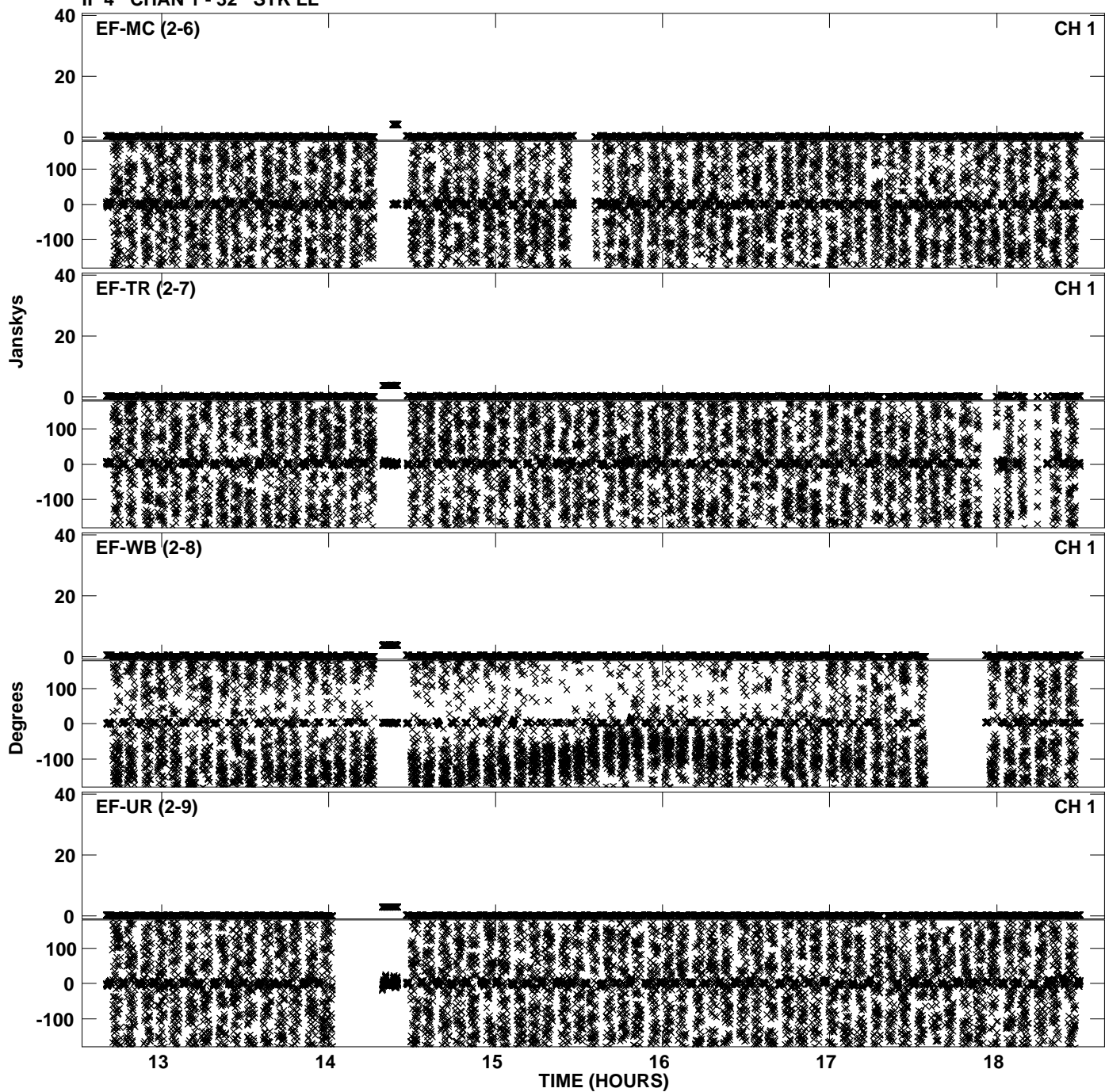
Plot file version 6 created 30-NOV-2010 12:09:03
Amplitude and Phase vs Time for EP068B 1.UVDATA.1 Vect aver. CL # 3
IF 3 CHAN 1 - 32 STK LL



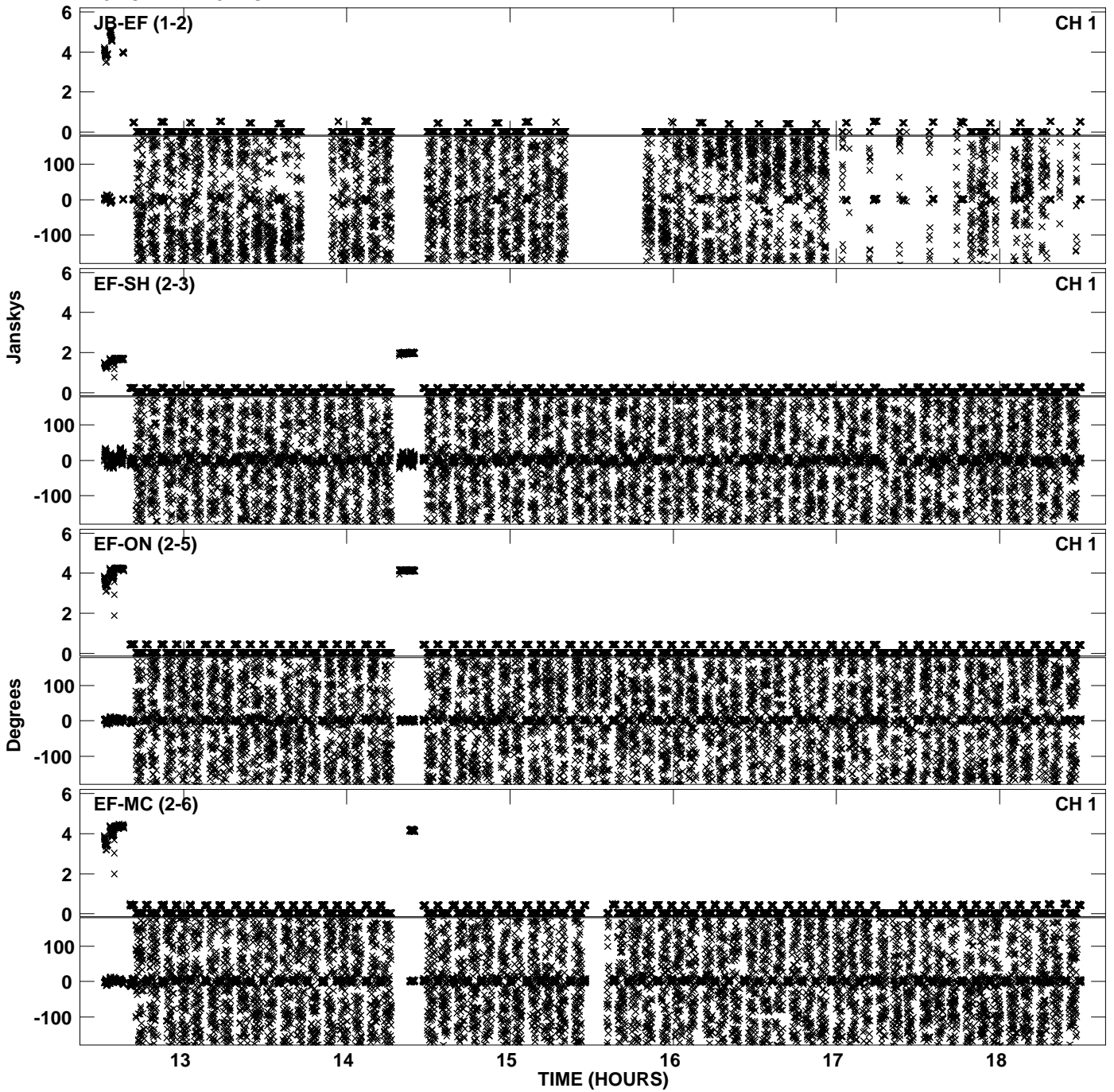
Plot file version 7 created 30-NOV-2010 12:09:12
Amplitude andPhase vs Time for EP068B 1.UVDATA.1 Vect aver. CL # 3
IF 4 CHAN 1 - 32 STK LL



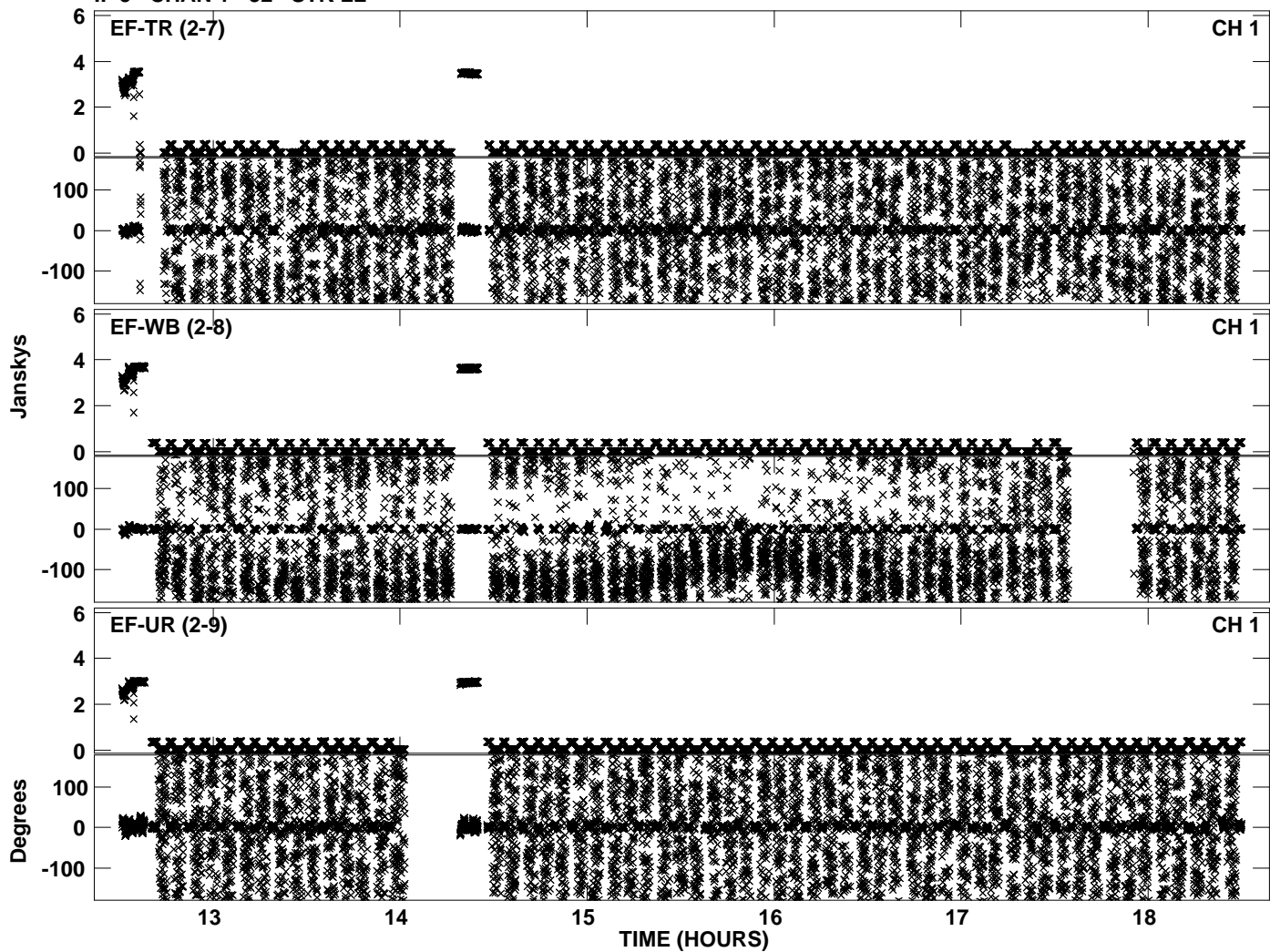
PLot file version 8 created 30-NOV-2010 12:09:12
Amplitude andPhase vs Time for EP068B 1.UVDATA.1 Vect aver. CL # 3
IF 4 CHAN 1 - 32 STK LL



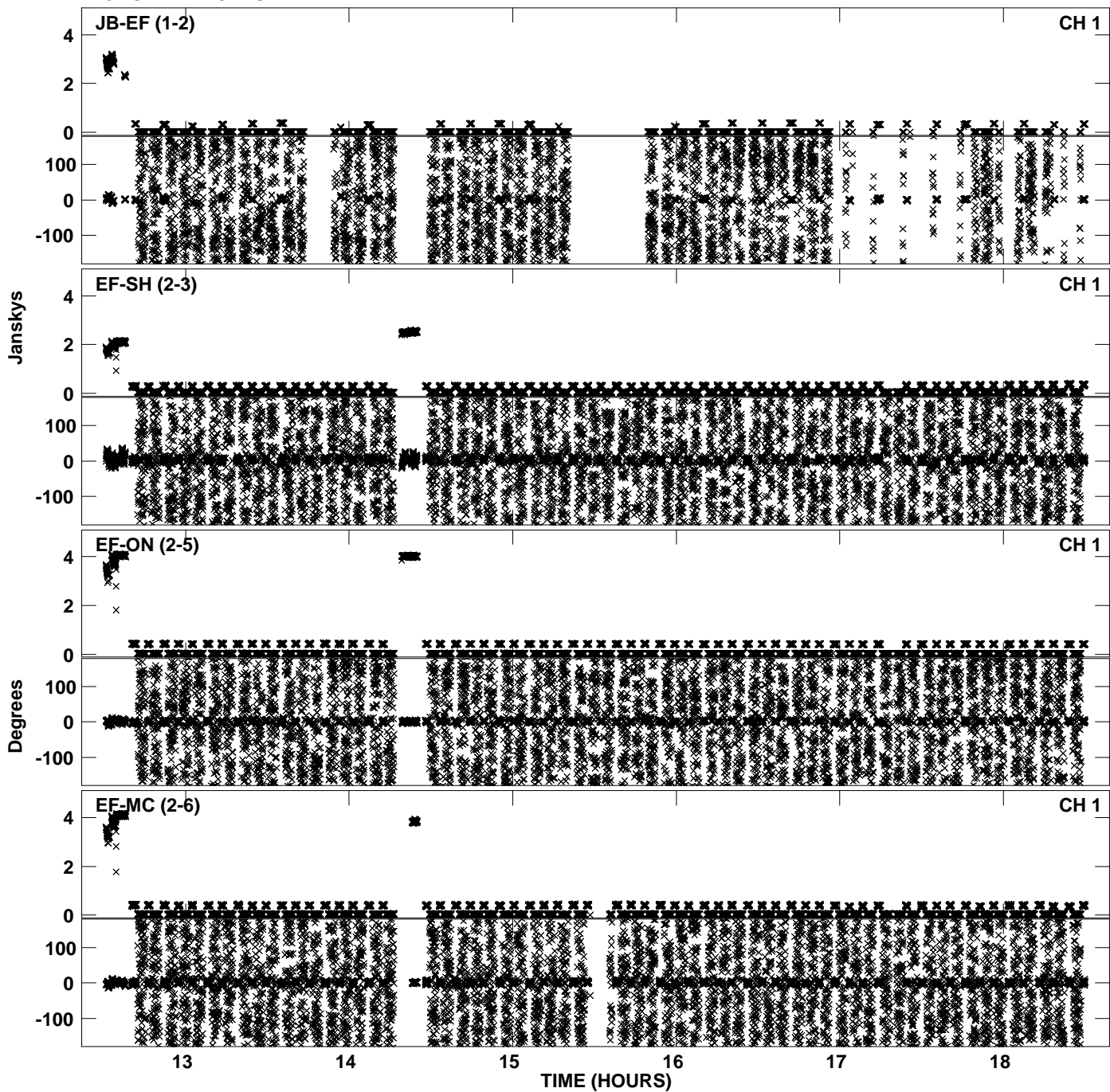
Plot file version 9 created 30-NOV-2010 12:09:20
Amplitude andPhase vs Time for EP068B 1.UVDATA.1 Vect aver. CL # 3
IF 5 CHAN 1 - 32 STK LL



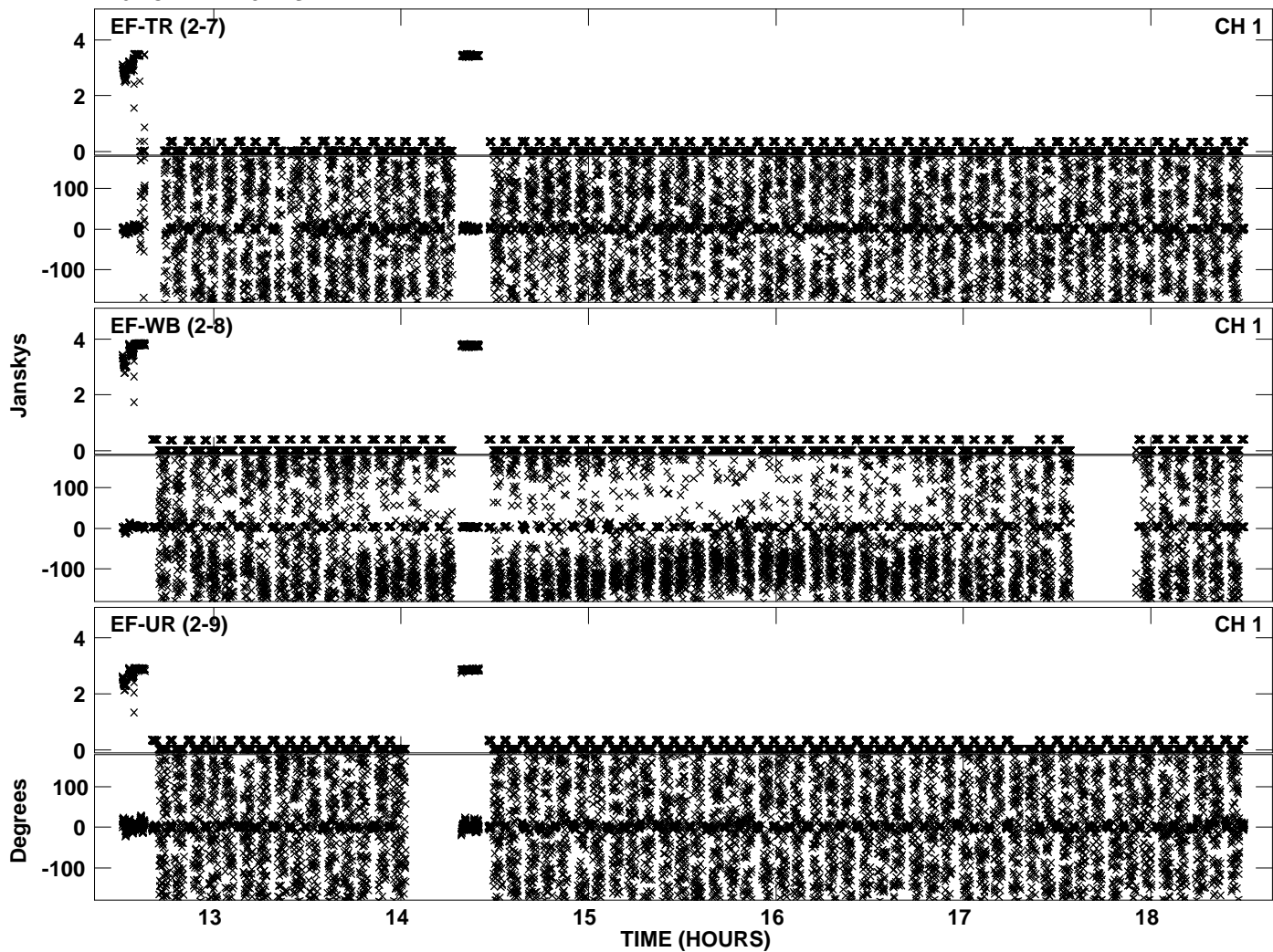
Plot file version 10 created 30-NOV-2010 12:09:20
Amplitude andPhase vs Time for EP068B 1.UVDATA.1 Vect aver. CL # 3
IF 5 CHAN 1 - 32 STK LL



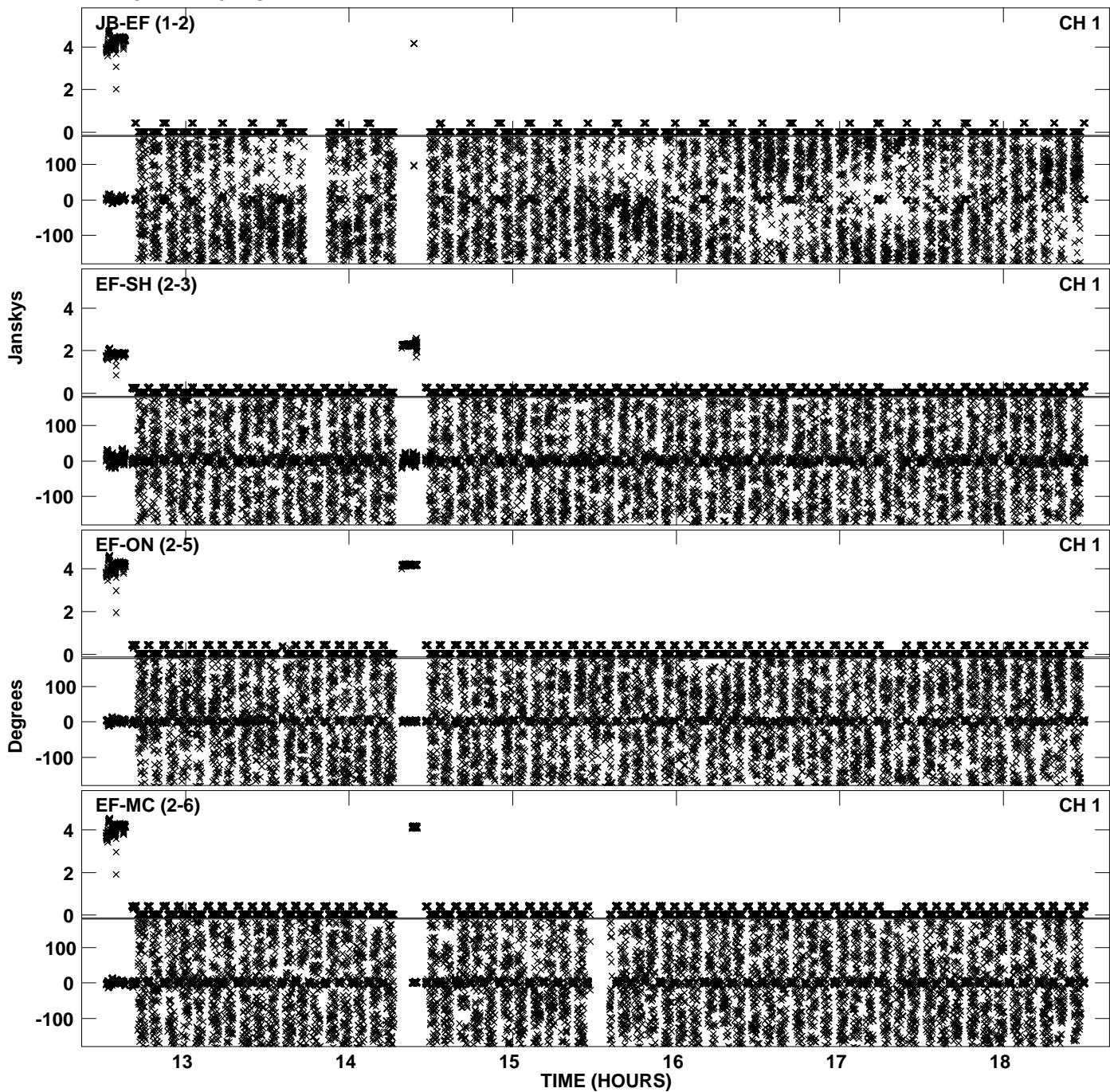
Plot file version 11 created 30-NOV-2010 12:09:28
Amplitude andPhase vs Time for EP068B 1.UVDATA.1 Vect aver. CL # 3
IF 6 CHAN 1 - 32 STK LL



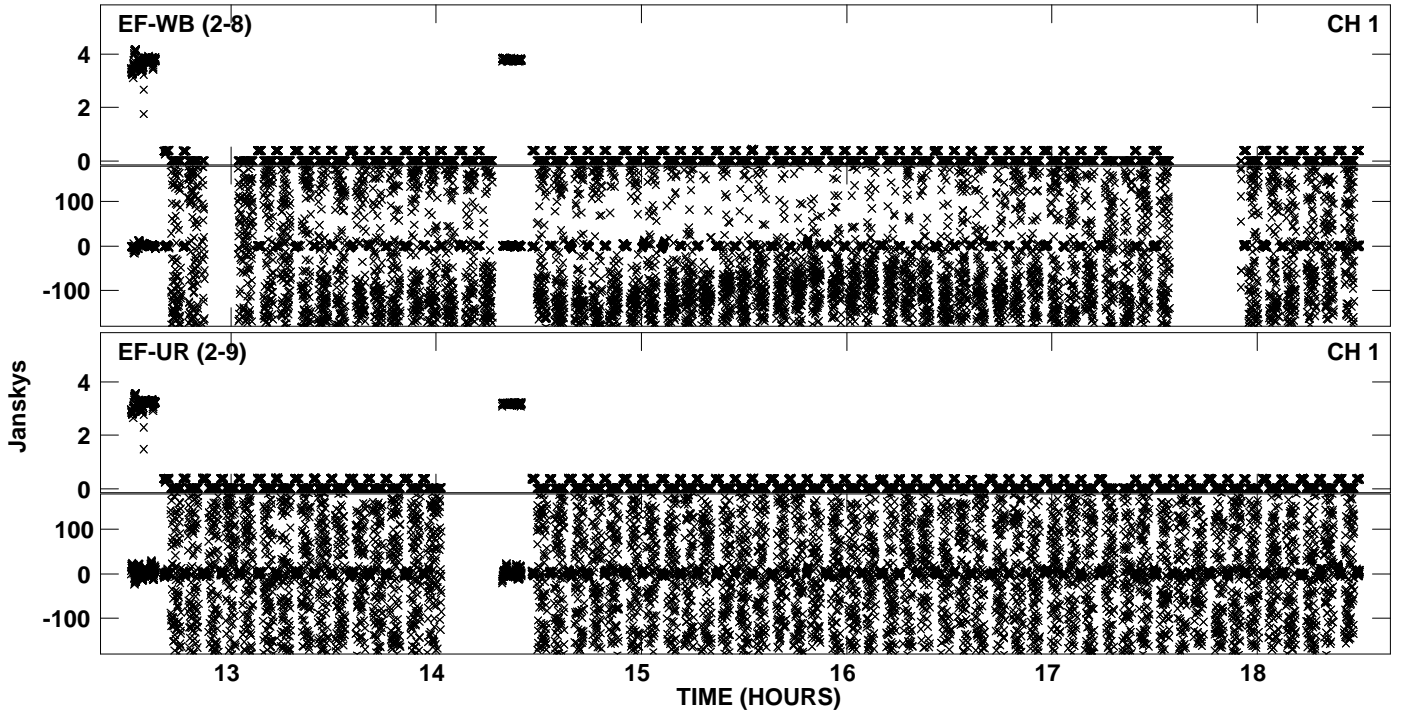
Plot file version 12 created 30-NOV-2010 12:09:29
Amplitude andPhase vs Time for EP068B 1.UVDATA.1 Vect aver. CL # 3
IF 6 CHAN 1 - 32 STK LL



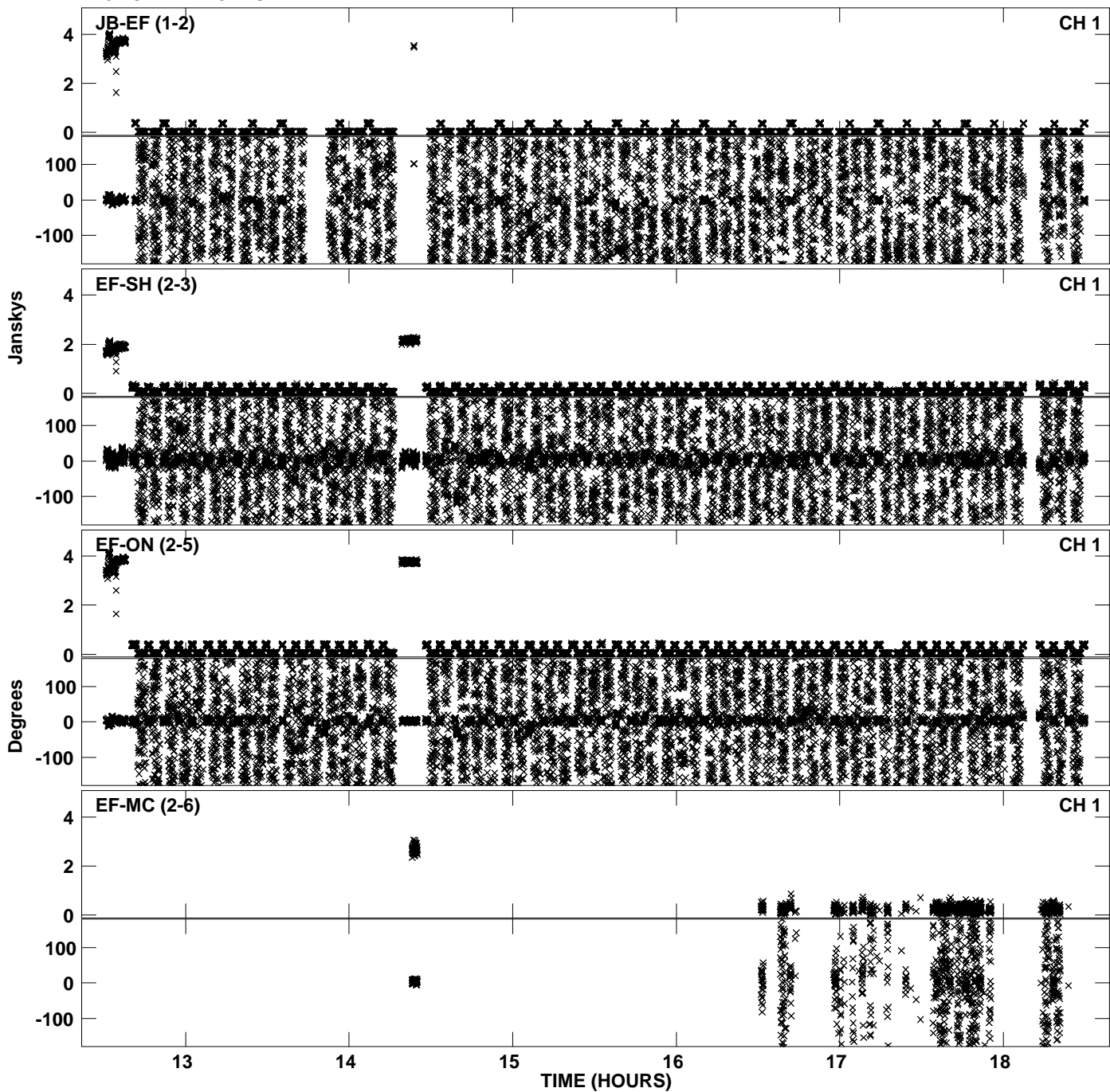
PLot file version 13 created 30-NOV-2010 12:09:36
Amplitude andPhase vs Time for EP068B 1.UVDATA.1 Vect aver. CL # 3
IF 7 CHAN 1 - 32 STK LL



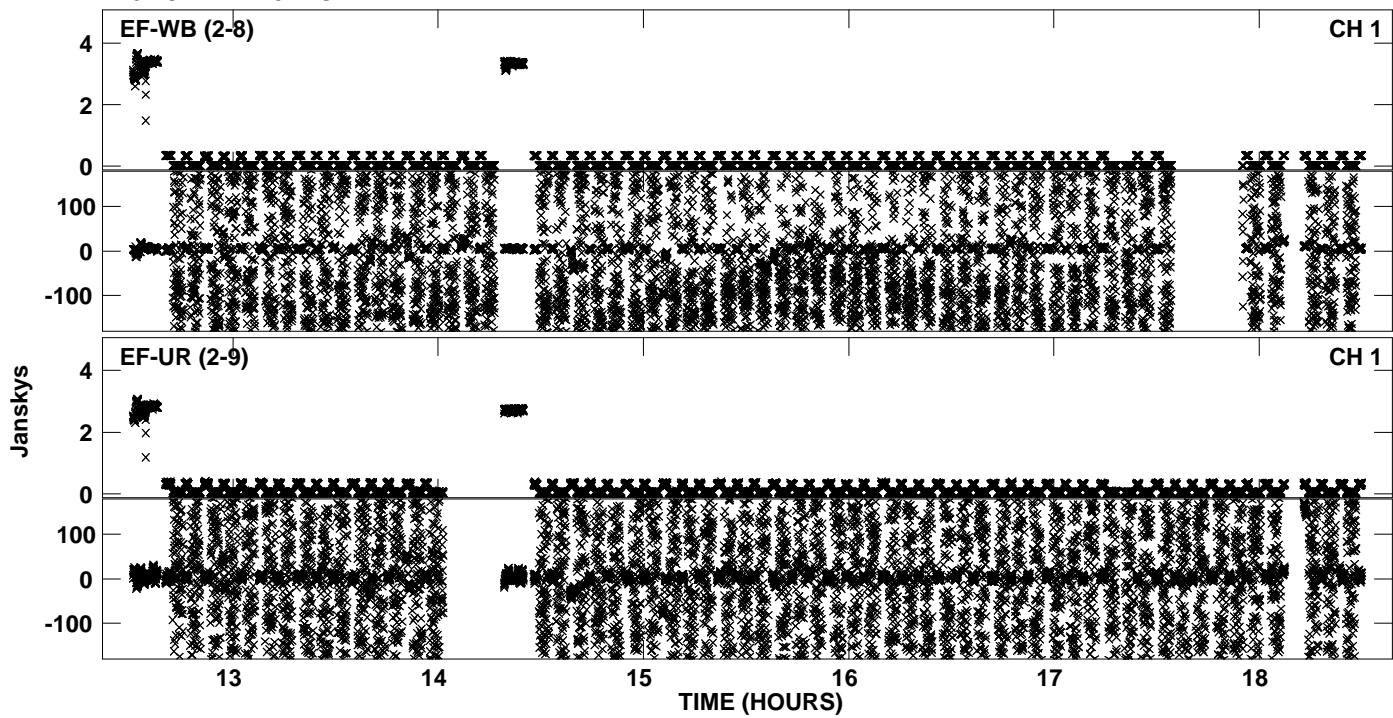
Plot file version 14 created 30-NOV-2010 12:09:37
Amplitude andPhase vs Time for EP068B 1.UVDATA.1 Vect aver. CL # 3
IF 7 CHAN 1 - 32 STK LL



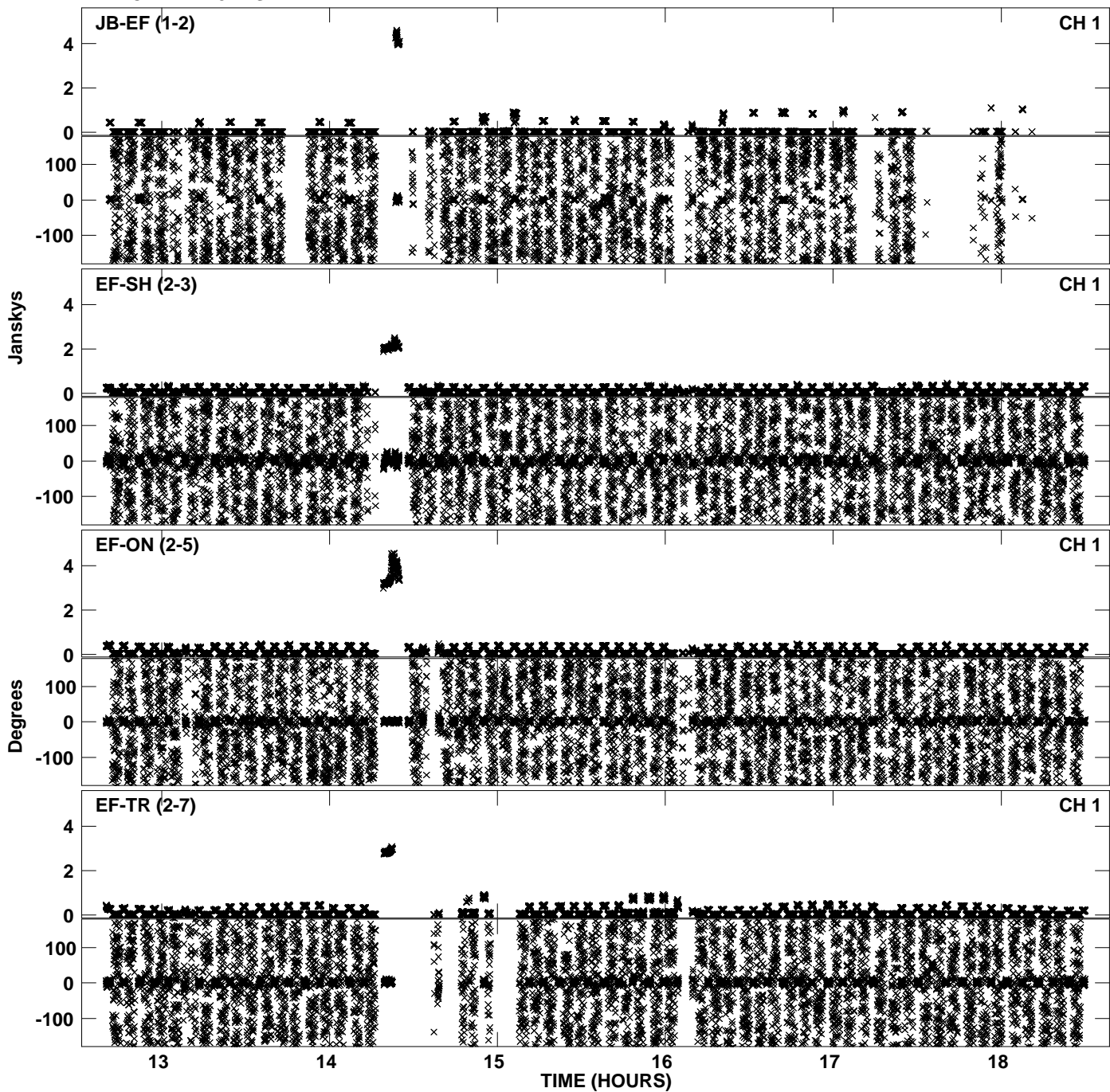
Plot file version 15 created 30-NOV-2010 12:09:44
Amplitude andPhase vs Time for EP068B 1.UVDATA.1 Vect aver. CL # 3
IF 8 CHAN 1 - 32 STK LL



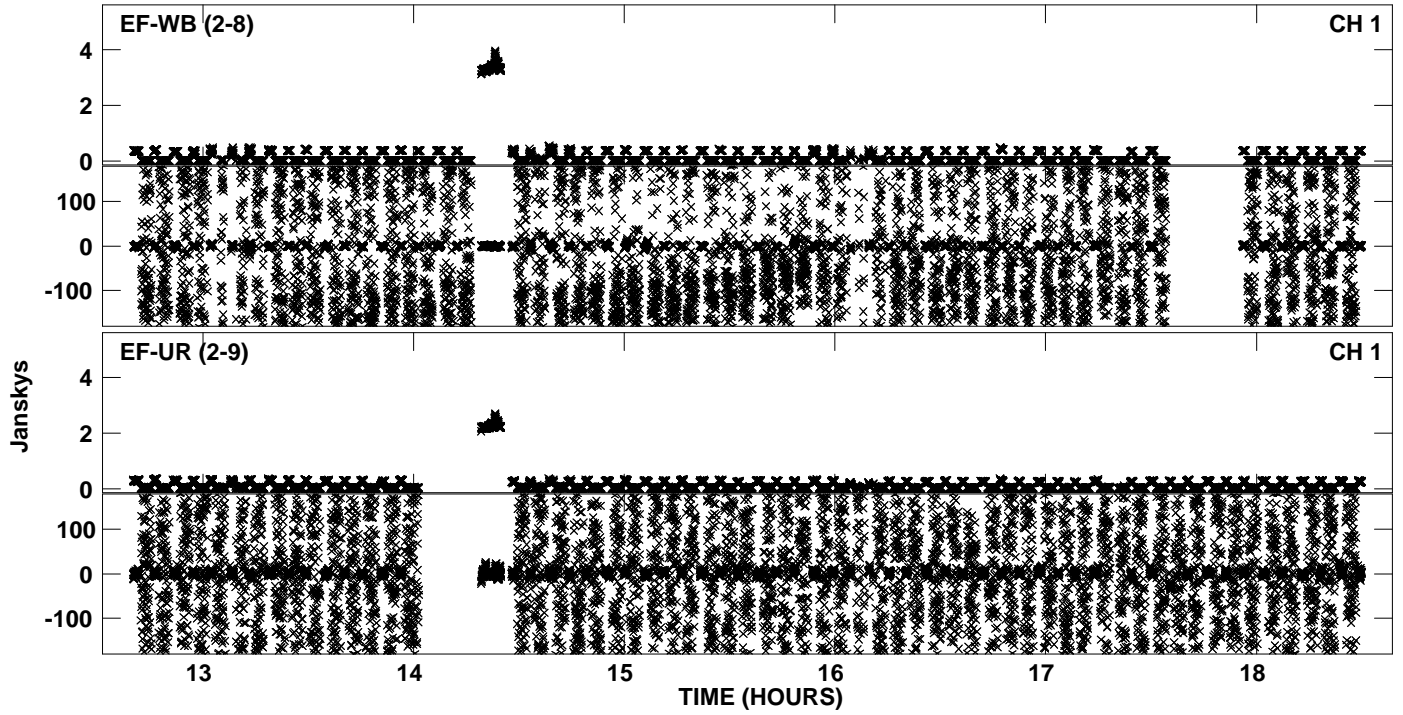
PLot file version 16 created 30-NOV-2010 12:09:44
Amplitude andPhase vs Time for EP068B 1.UVDATA.1 Vect aver. CL # 3
IF 8 CHAN 1 - 32 STK LL



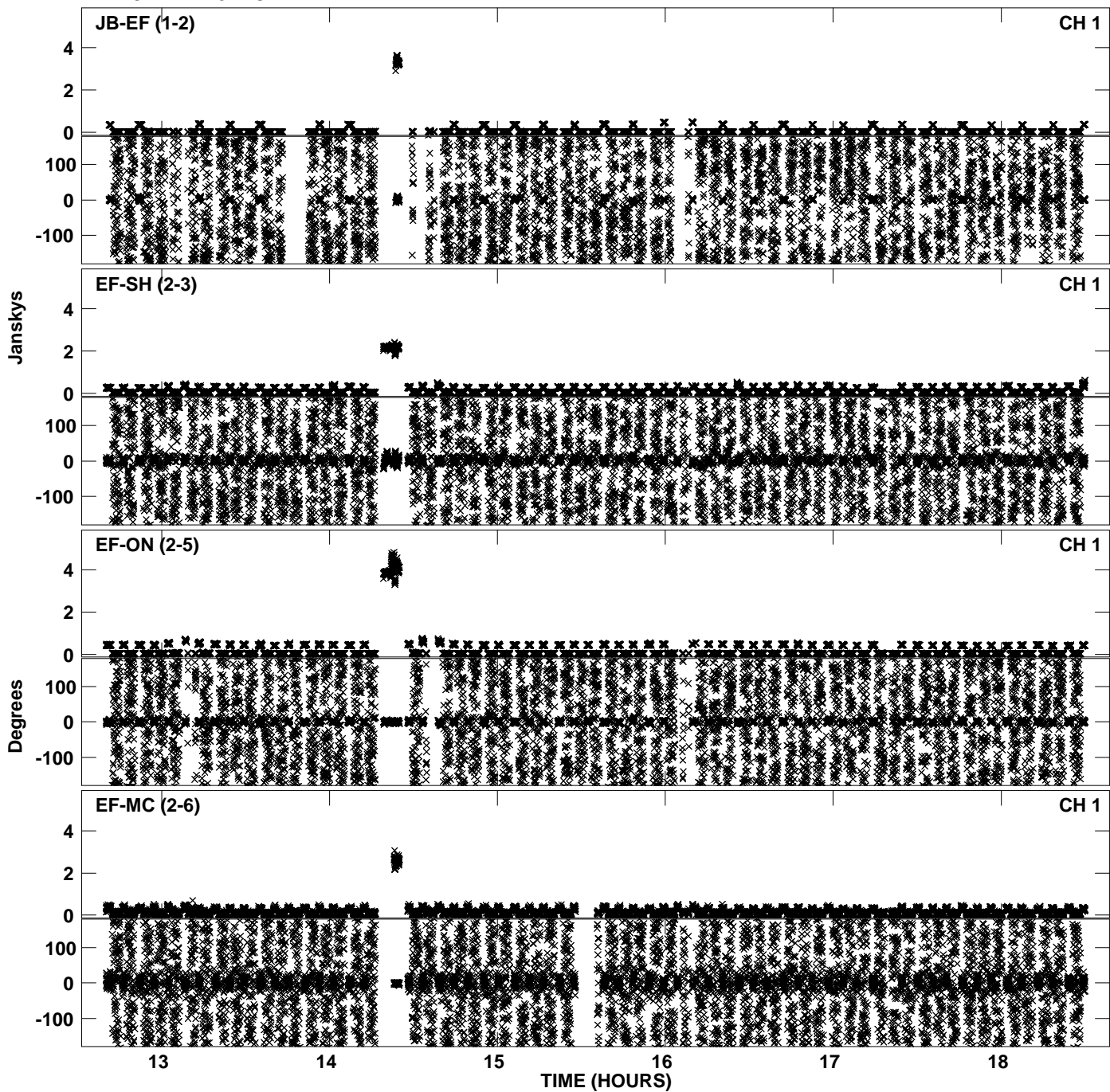
Plot file version 17 created 30-NOV-2010 12:09:50
Amplitude andPhase vs Time for EP068B 1.UVDATA.1 Vect aver. CL # 3
IF 1 CHAN 1 - 32 STK RR



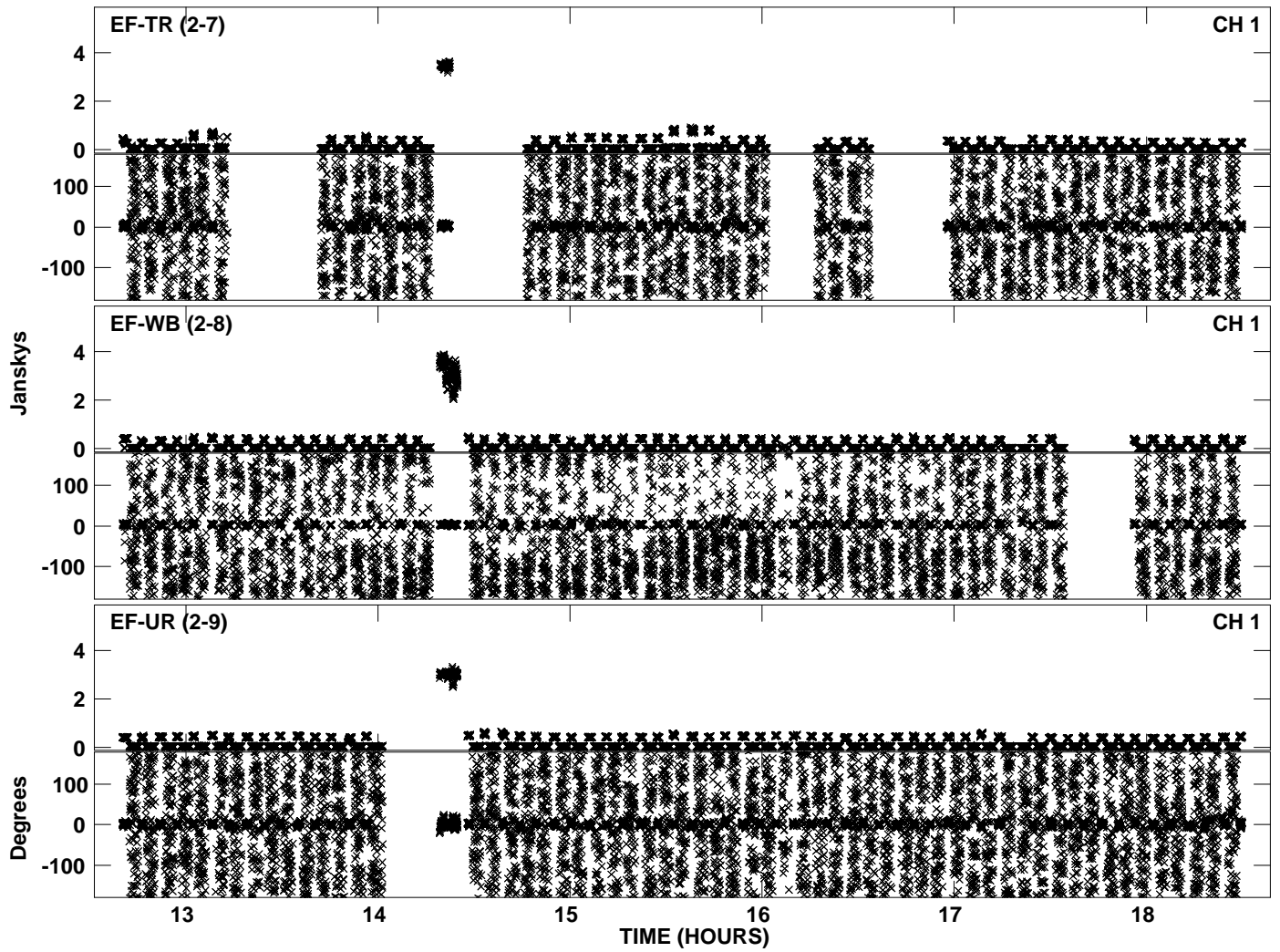
PLot file version 18 created 30-NOV-2010 12:09:51
Amplitude andPhase vs Time for EP068B 1.UVDATA.1 Vect aver. CL # 3
IF 1 CHAN 1 - 32 STK RR



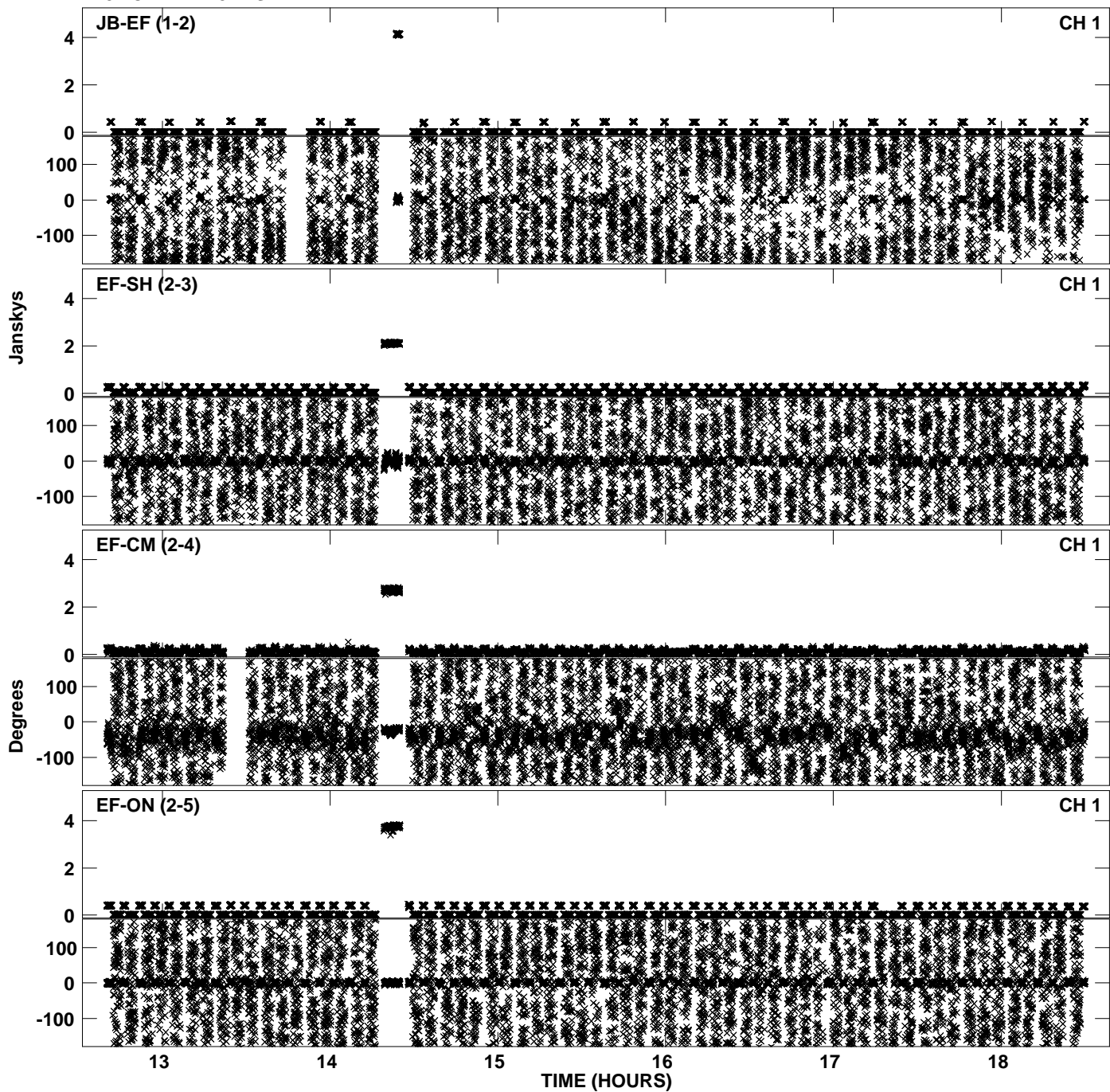
PLot file version 19 created 30-NOV-2010 12:09:58
Amplitude andPhase vs Time for EP068B 1.UVDATA.1 Vect aver. CL # 3
IF 2 CHAN 1 - 32 STK RR



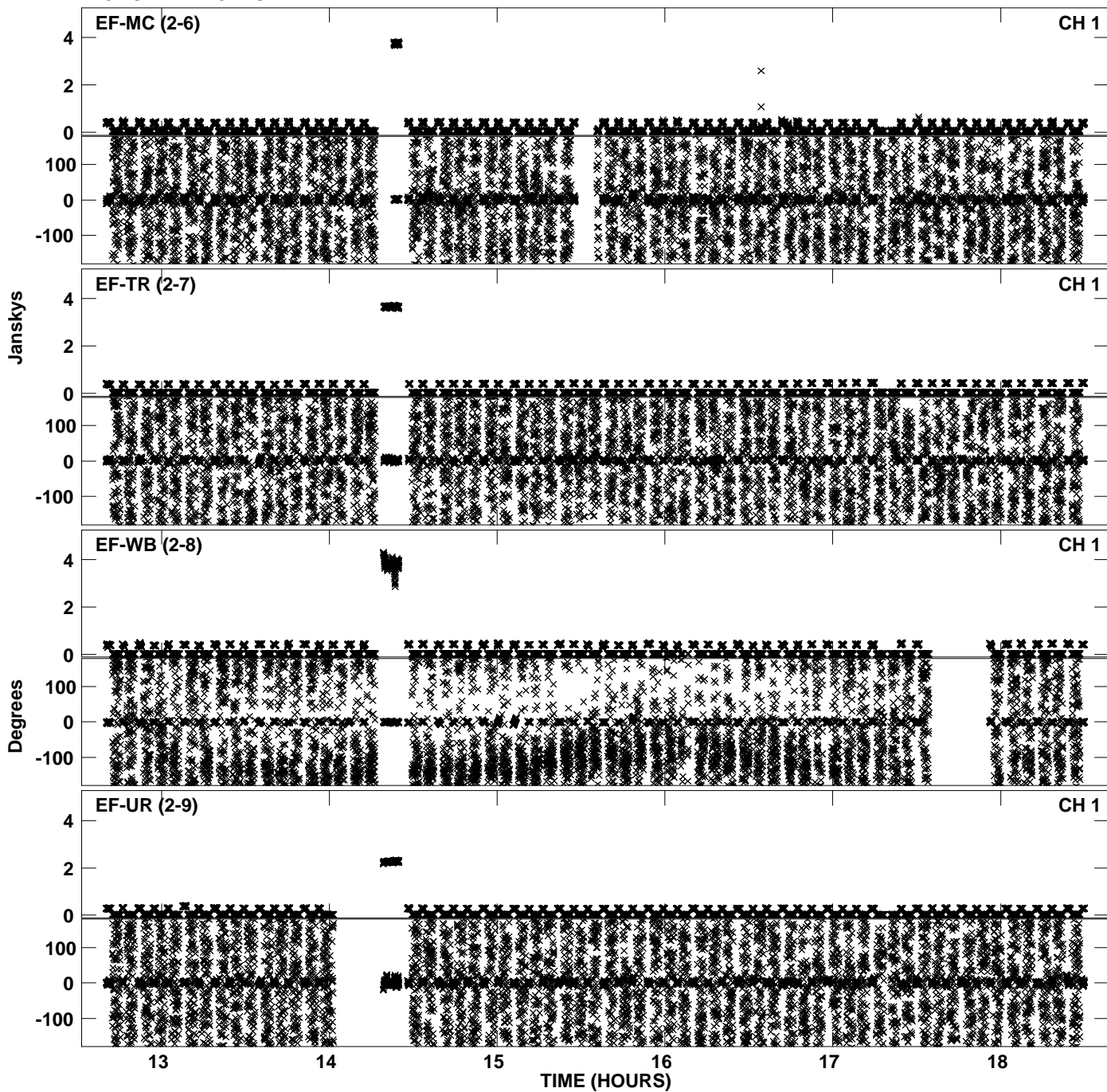
PLot file version 20 created 30-NOV-2010 12:09:58
Amplitude andPhase vs Time for EP068B 1.UVDATA.1 Vect aver. CL # 3
IF 2 CHAN 1 - 32 STK RR



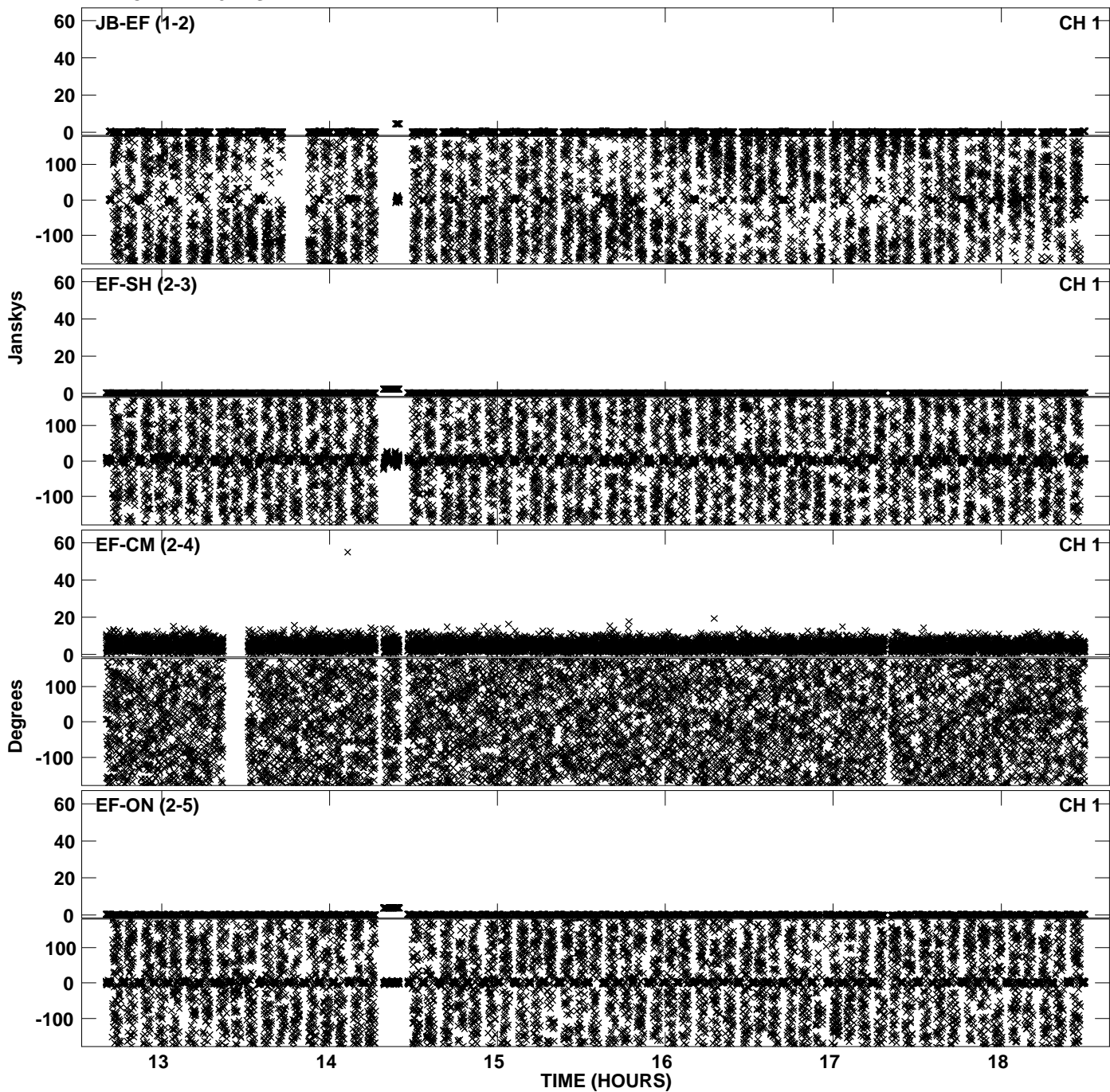
Plot file version 21 created 30-NOV-2010 12:10:06
Amplitude andPhase vs Time for EP068B 1.UVDATA.1 Vect aver. CL # 3
IF 3 CHAN 1 - 32 STK RR



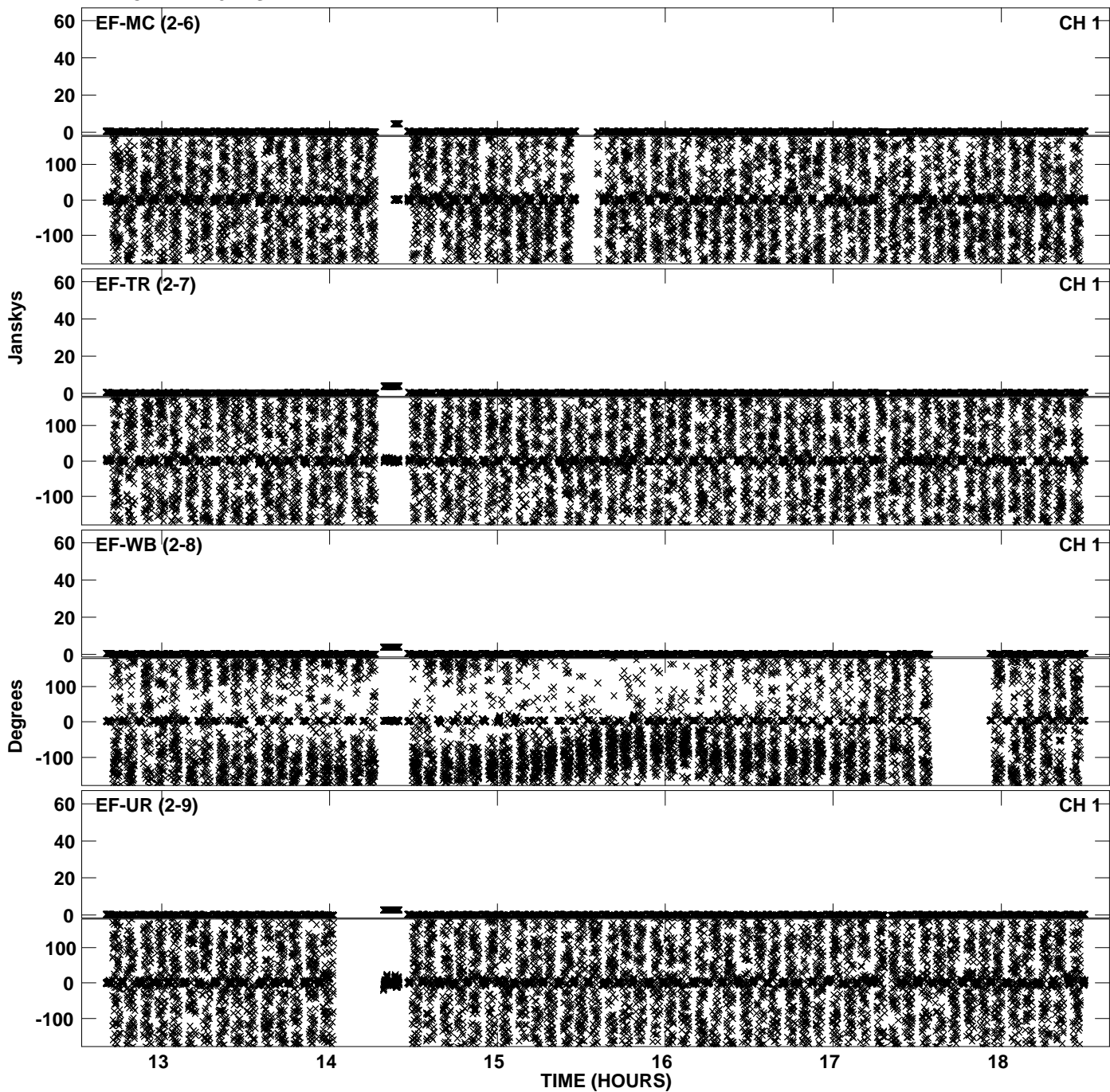
Plot file version 22 created 30-NOV-2010 12:10:06
Amplitude andPhase vs Time for EP068B 1.UVDATA.1 Vect aver. CL # 3
IF 3 CHAN 1 - 32 STK RR



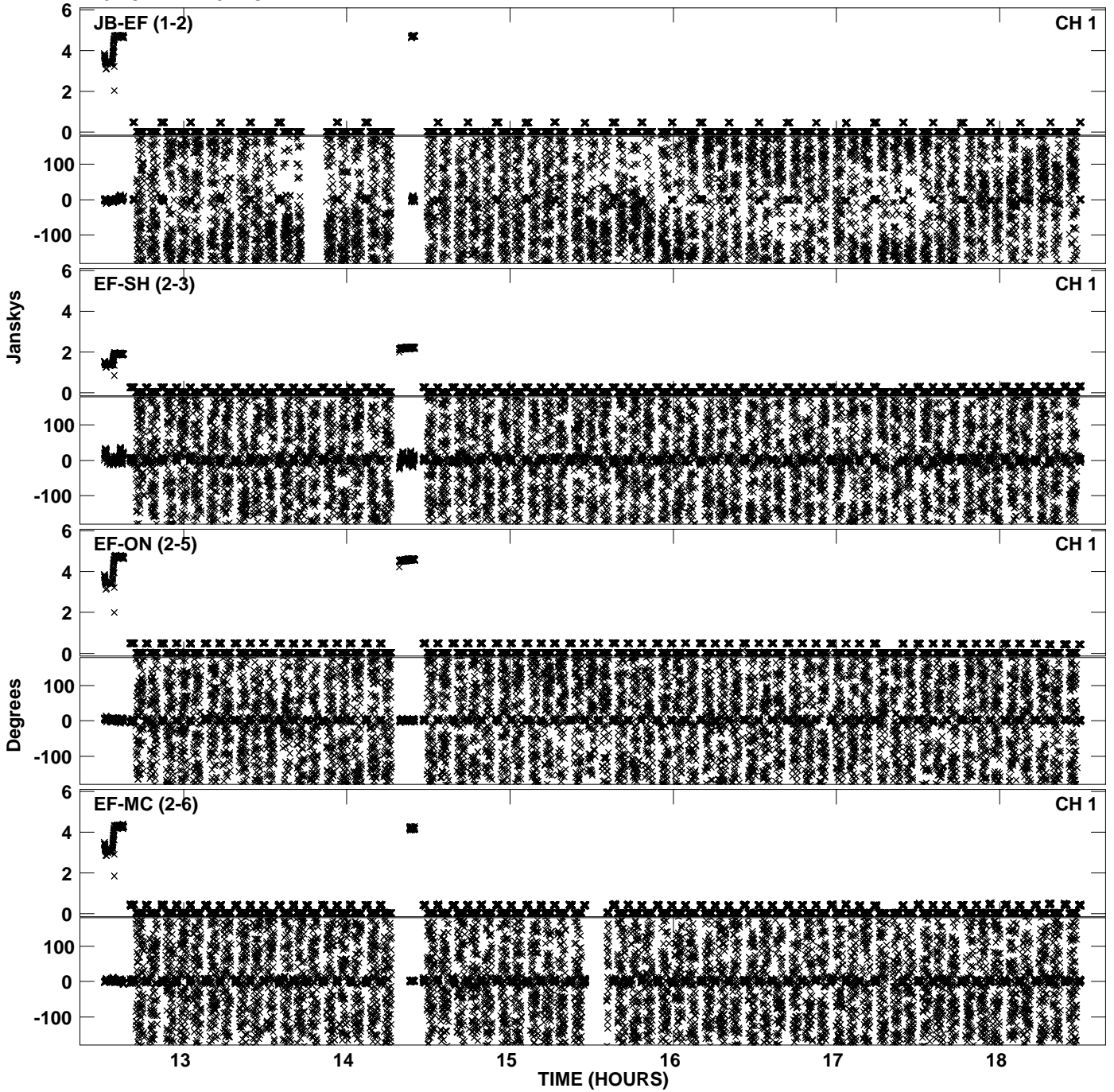
PLot file version 23 created 30-NOV-2010 12:10:15
Amplitude andPhase vs Time for EP068B 1.UVDATA.1 Vect aver. CL # 3
IF 4 CHAN 1 - 32 STK RR



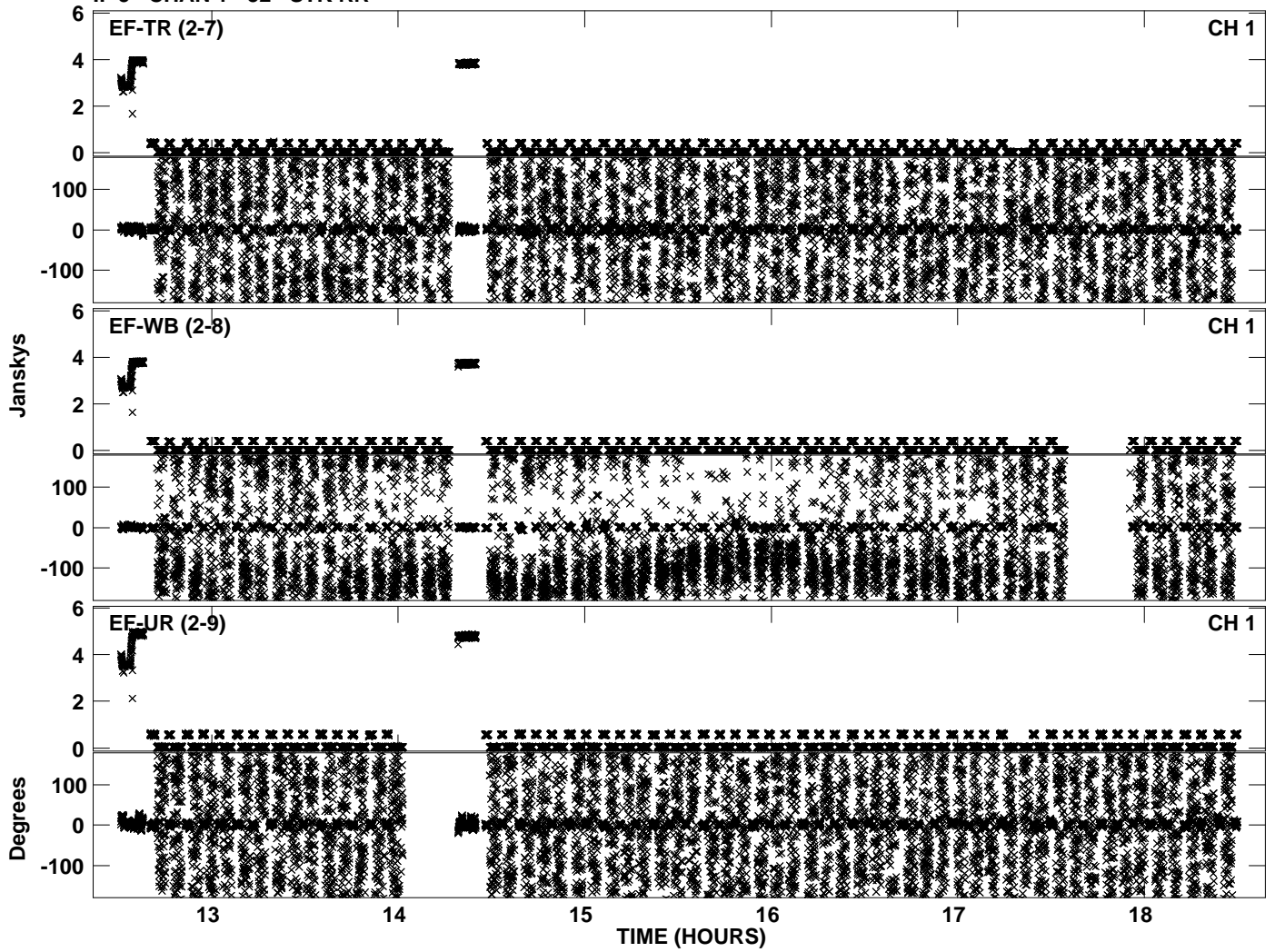
PLot file version 24 created 30-NOV-2010 12:10:15
Amplitude andPhase vs Time for EP068B 1.UVDATA.1 Vect aver. CL # 3
IF 4 CHAN 1 - 32 STK RR



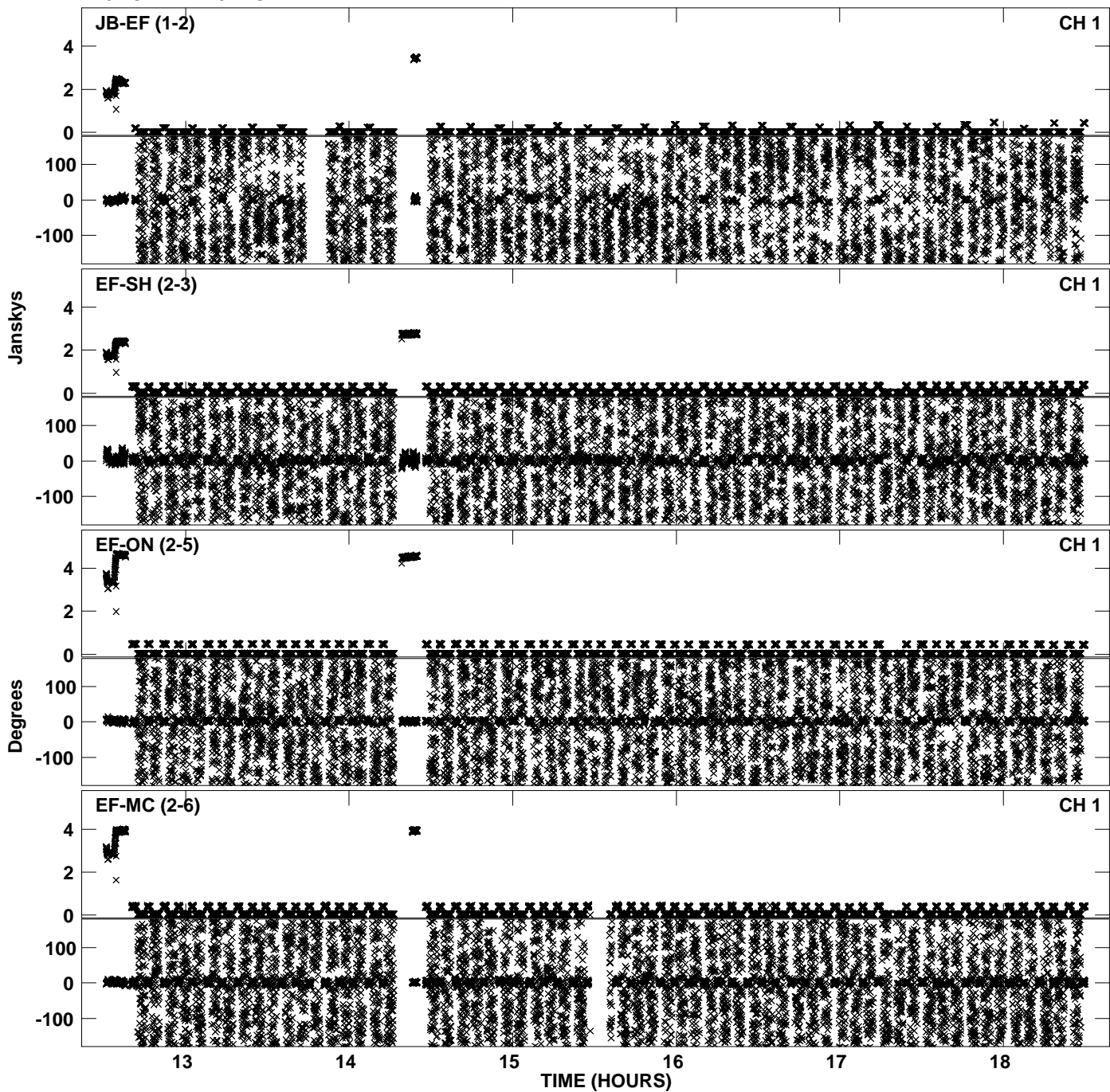
PLot file version 25 created 30-NOV-2010 12:10:22
Amplitude andPhase vs Time for EP068B 1.UVDATA.1 Vect aver. CL # 3
IF 5 CHAN 1 - 32 STK RR



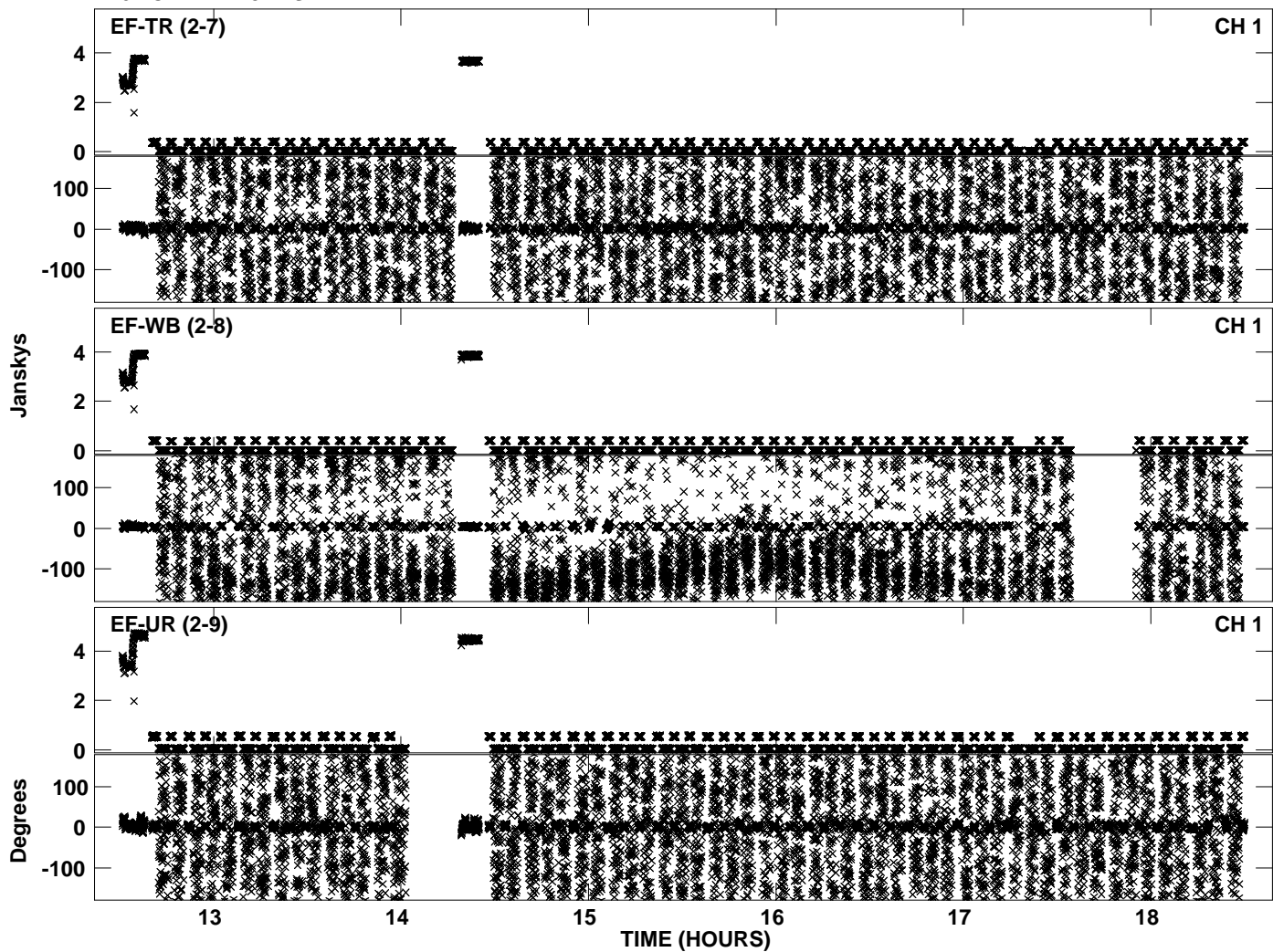
PLot file version 26 created 30-NOV-2010 12:10:23
Amplitude andPhase vs Time for EP068B 1.UVDATA.1 Vect aver. CL # 3
IF 5 CHAN 1 - 32 STK RR



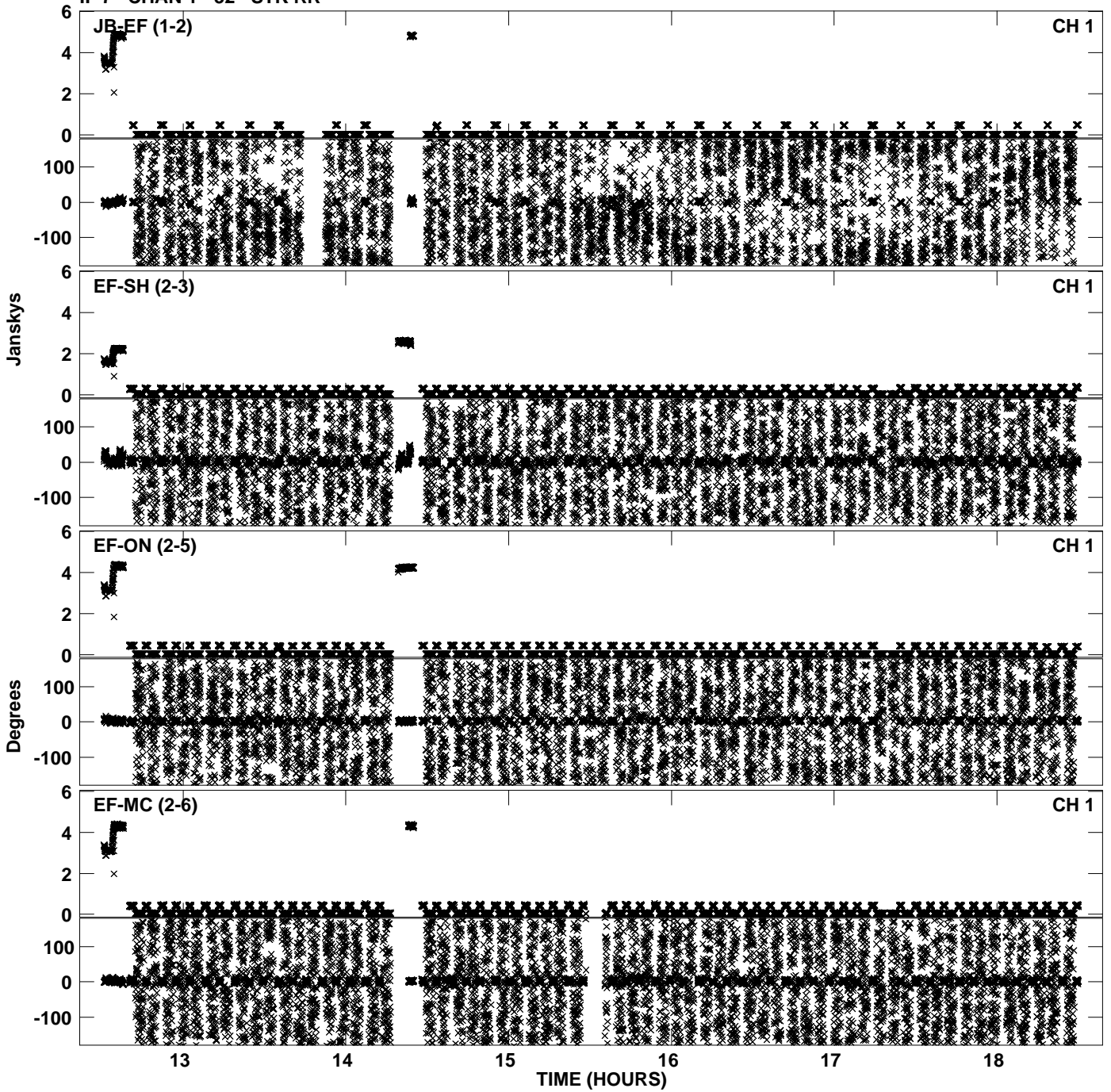
PLot file version 27 created 30-NOV-2010 12:10:30
Amplitude andPhase vs Time for EP068B 1.UVDATA.1 Vect aver. CL # 3
IF 6 CHAN 1 - 32 STK RR



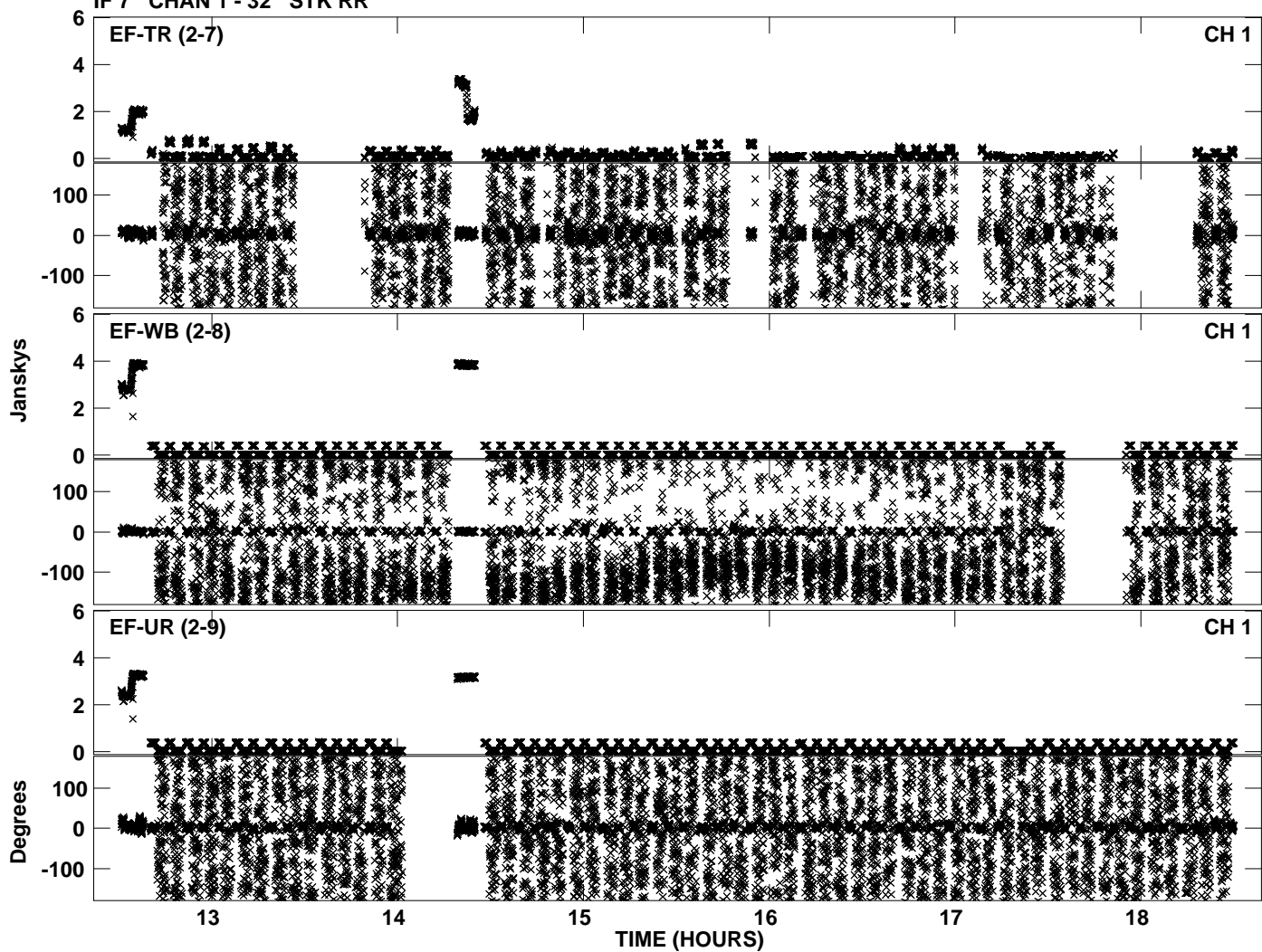
PLot file version 28 created 30-NOV-2010 12:10:30
Amplitude andPhase vs Time for EP068B 1.UVDATA.1 Vect aver. CL # 3
IF 6 CHAN 1 - 32 STK RR



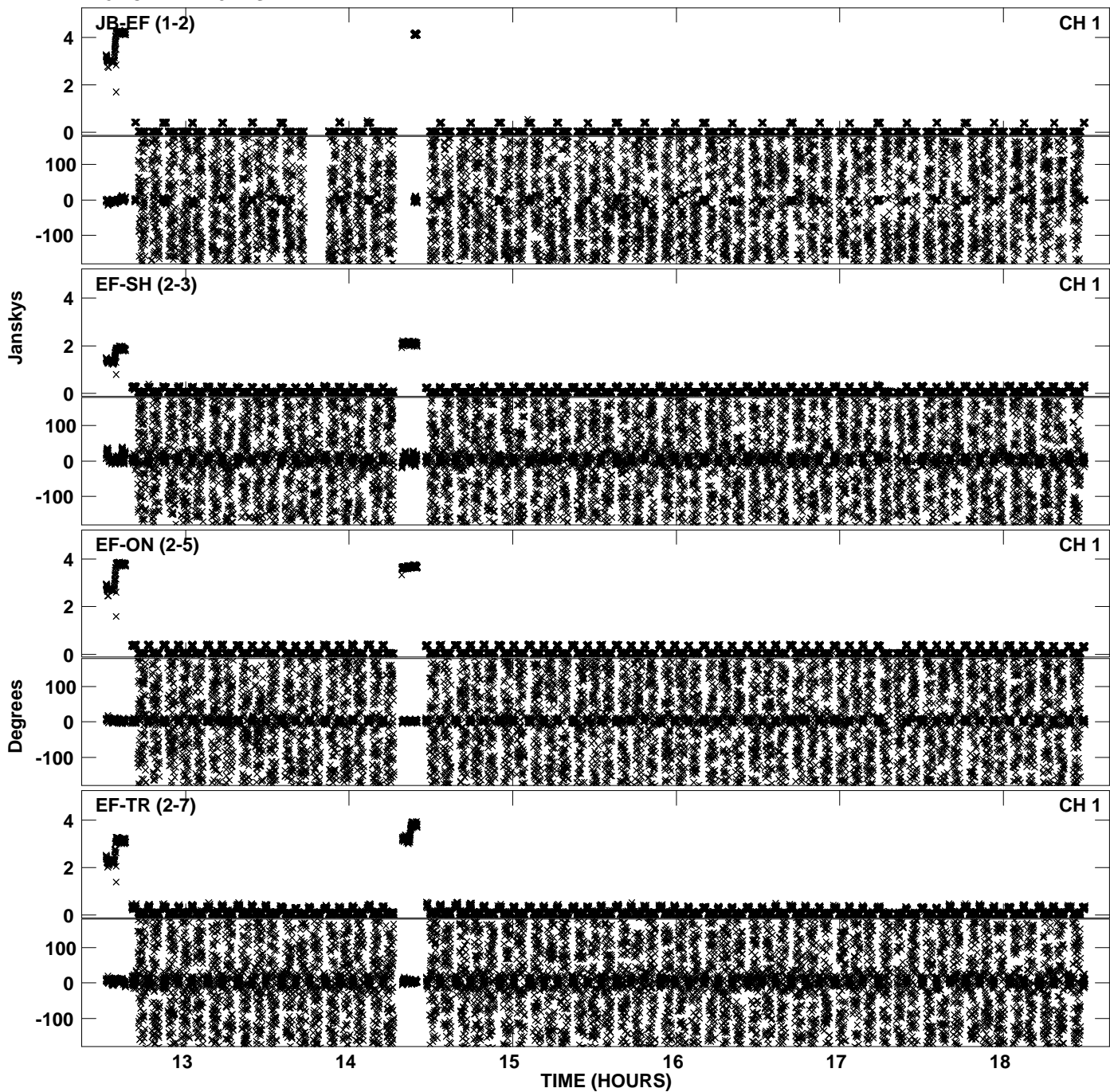
Plot file version 29 created 30-NOV-2010 12:10:38
Amplitude andPhase vs Time for EP068B 1.UVDATA.1 Vect aver. CL # 3
IF 7 CHAN 1 - 32 STK RR



Plot file version 30 created 30-NOV-2010 12:10:38
Amplitude andPhase vs Time for EP068B 1.UVDATA.1 Vect aver. CL # 3
IF 7 CHAN 1 - 32 STK RR



PLot file version 31 created 30-NOV-2010 12:10:45
Amplitude andPhase vs Time for EP068B 1.UVDATA.1 Vect aver. CL # 3
IF 8 CHAN 1 - 32 STK RR



PLot file version 32 created 30-NOV-2010 12:10:45
Amplitude andPhase vs Time for EP068B 1.UVDATA.1 Vect aver. CL # 3
IF 8 CHAN 1 - 32 STK RR

