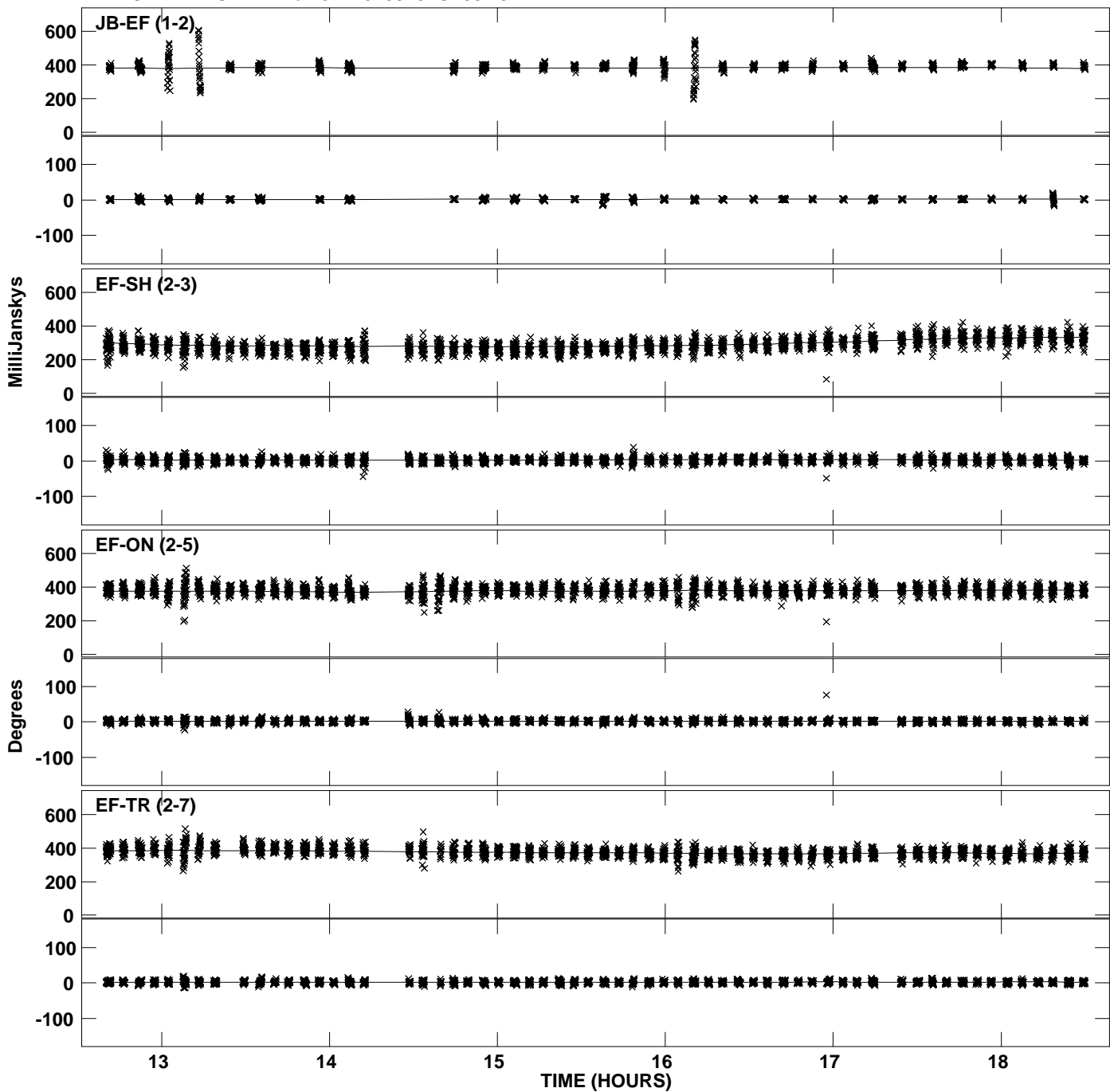
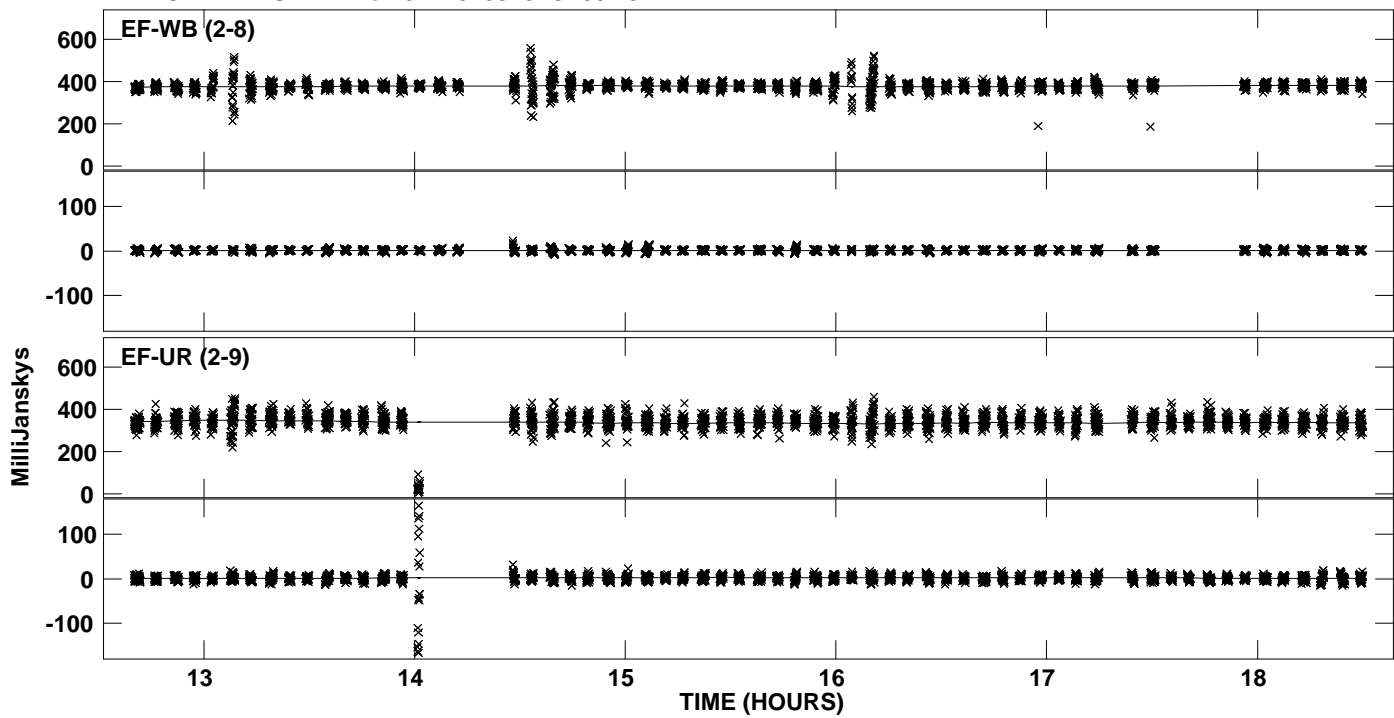


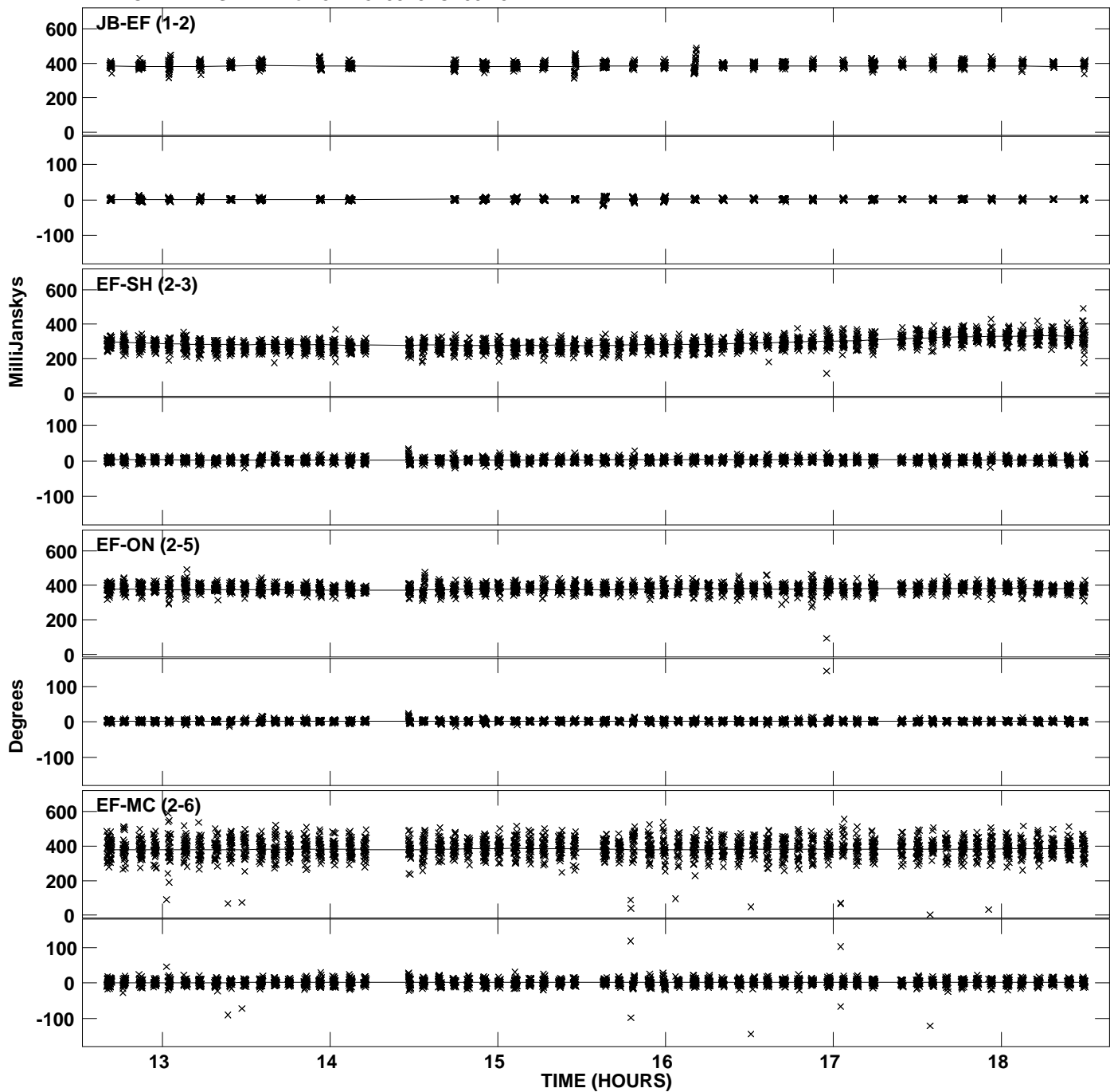
Plot file version 1 created 30-NOV-2010 13:06:02  
Amplitude andPhase vs Time for J1128+5925.MULTI.1 CL # 3  
IF 1 CHAN 1 STK LL of J1128+5925.ICL001.3



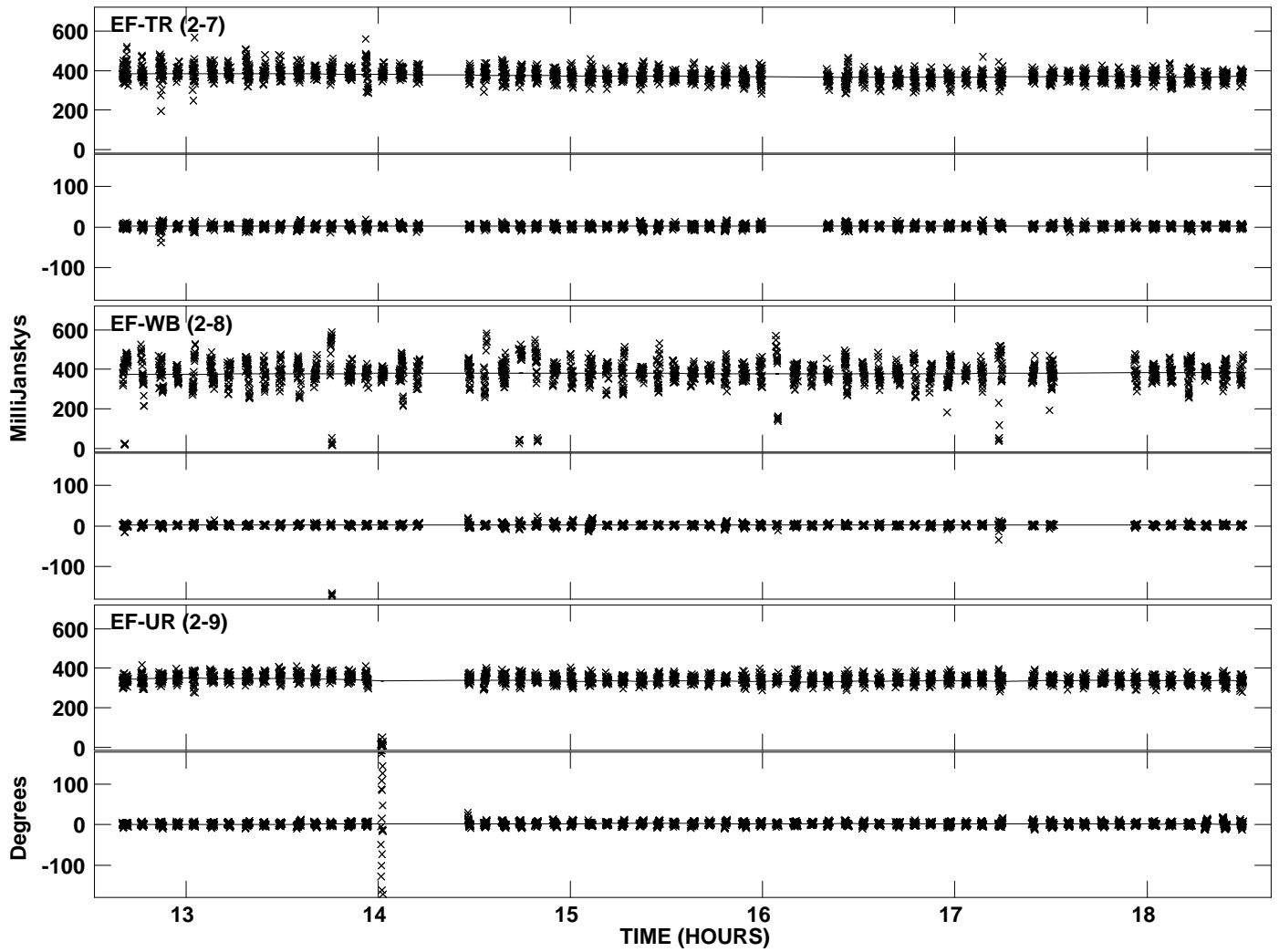
PLot file version 2 created 30-NOV-2010 13:06:04  
Amplitude andPhase vs Time for J1128+5925.MULTI.1 CL # 3  
IF 1 CHAN 1 STK LL of J1128+5925.ICL001.3



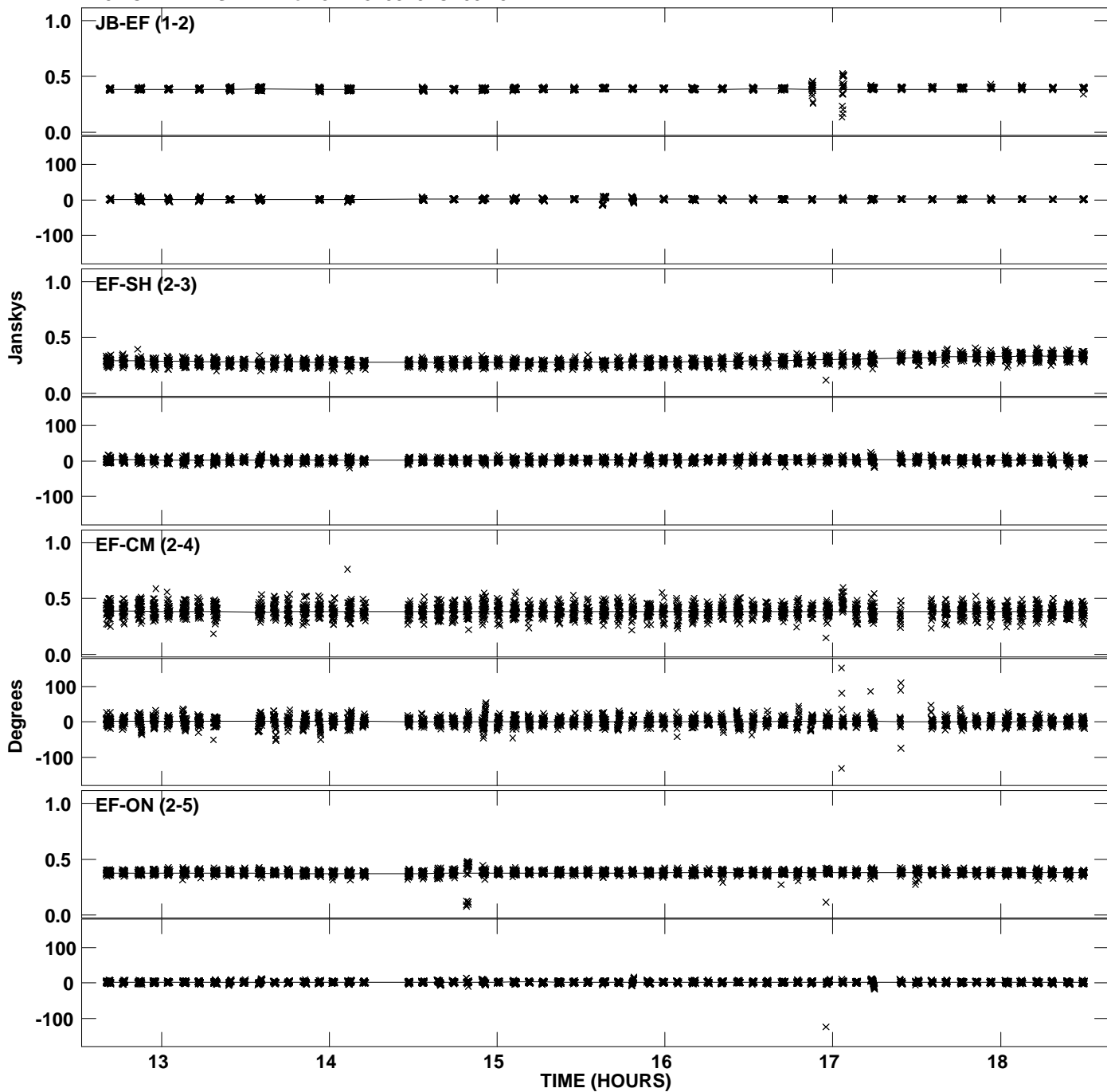
PLot file version 3 created 30-NOV-2010 13:06:14  
Amplitude andPhase vs Time for J1128+5925.MULTI.1 CL # 3  
IF 2 CHAN 1 STK LL of J1128+5925.ICL001.3



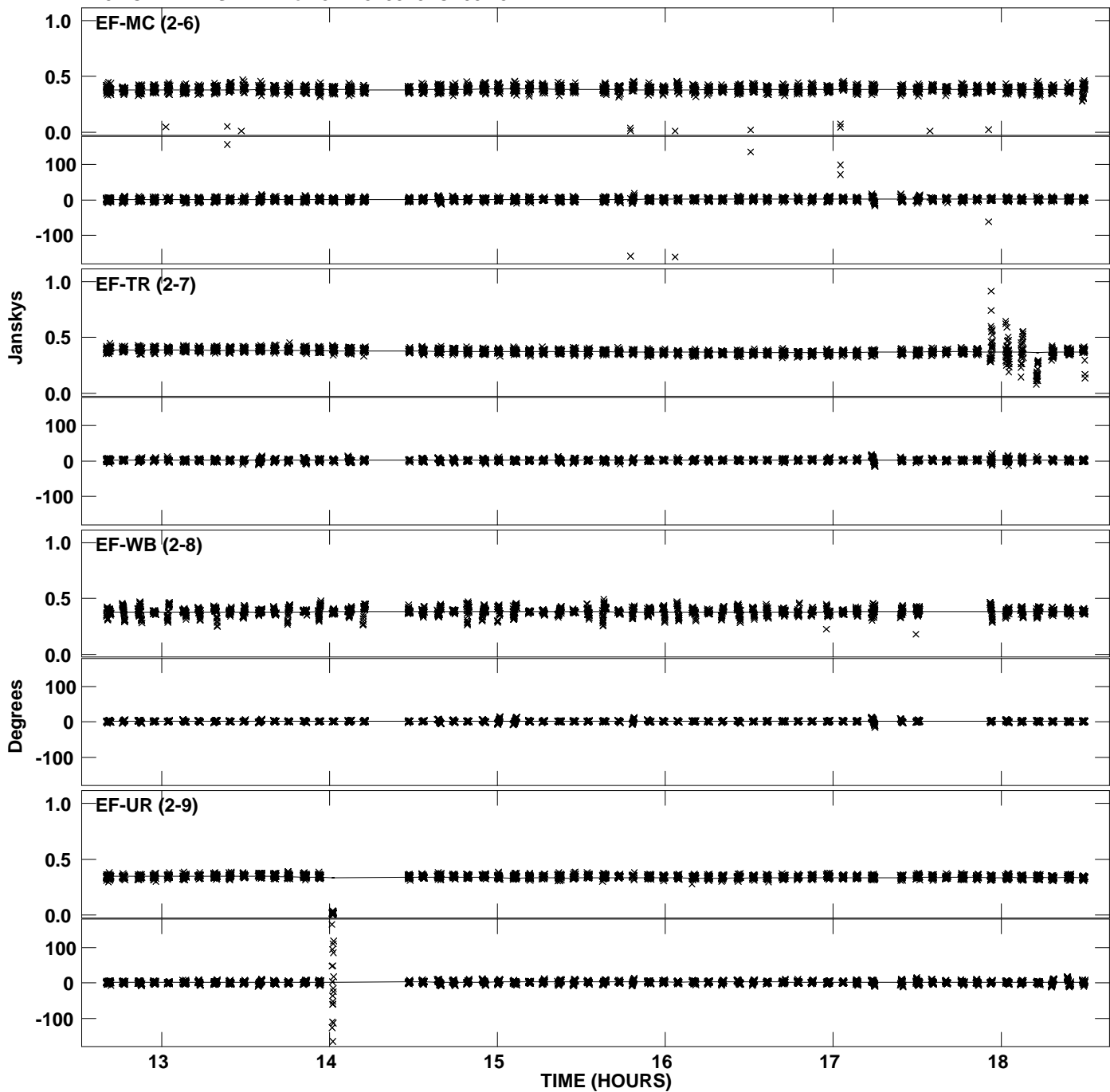
Plot file version 4 created 30-NOV-2010 13:06:16  
Amplitude andPhase vs Time for J1128+5925.MULTI.1 CL # 3  
IF 2 CHAN 1 STK LL of J1128+5925.ICL001.3



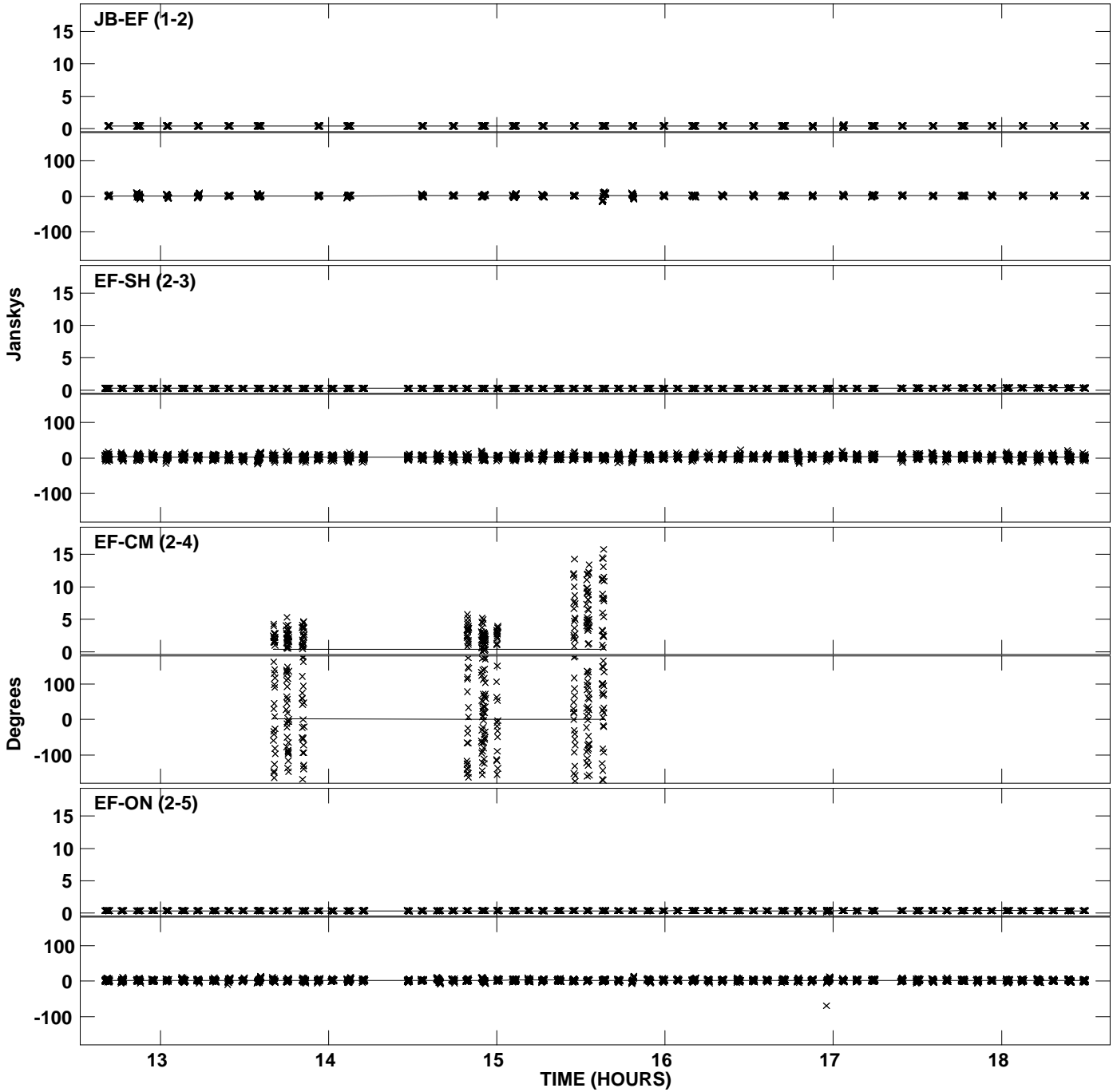
Plot file version 5 created 30-NOV-2010 13:06:22  
Amplitude and Phase vs Time for J1128+5925.MULTI.1 CL # 3  
IF 3 CHAN 1 STK LL of J1128+5925.ICL001.3



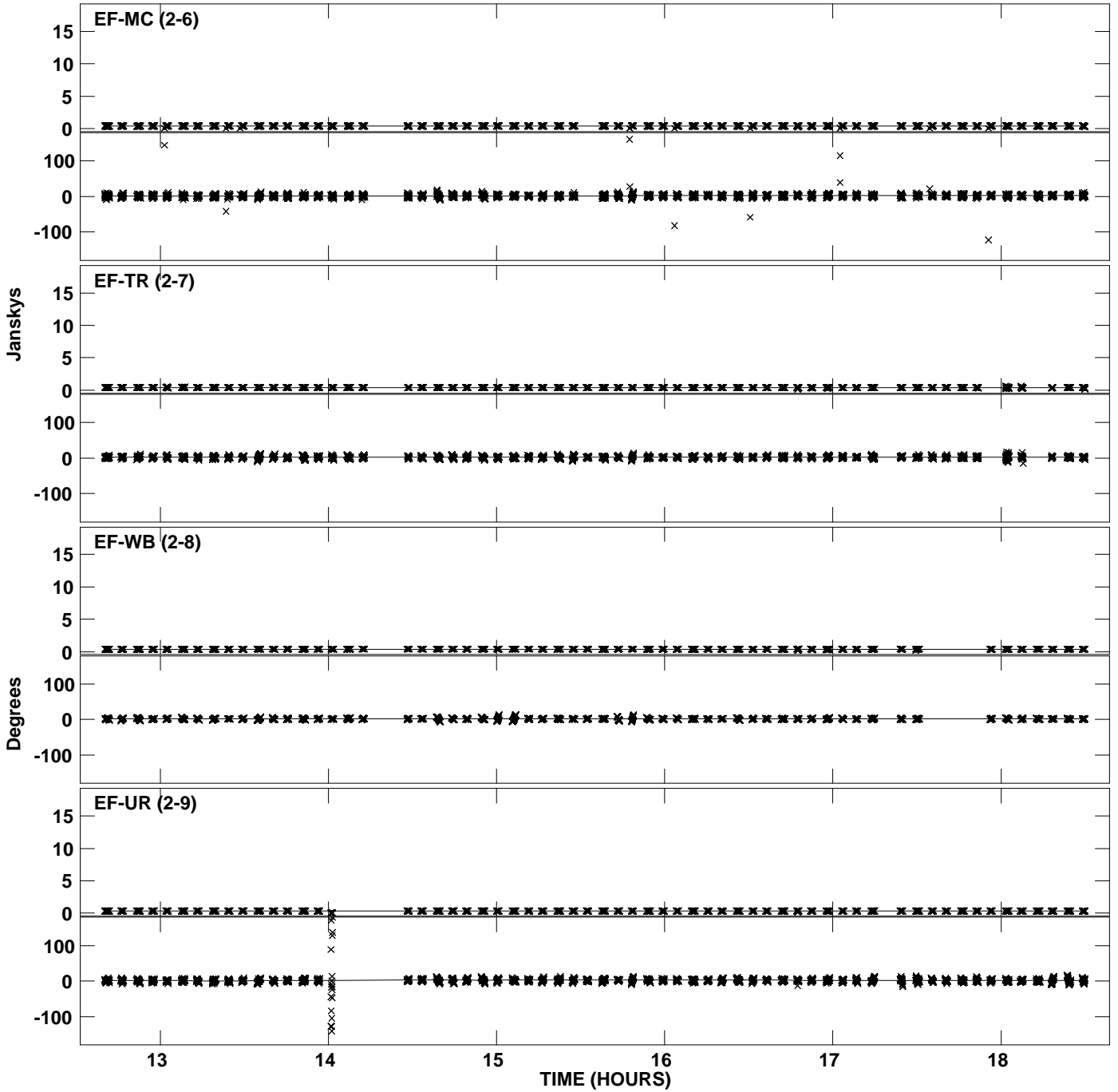
Plot file version 6 created 30-NOV-2010 13:06:23  
Amplitude and Phase vs Time for J1128+5925.MULTI.1 CL # 3  
IF 3 CHAN 1 STK LL of J1128+5925.ICL001.3



Plot file version 7 created 30-NOV-2010 13:06:35  
Amplitude andPhase vs Time for J1128+5925.MULTI.1 CL # 3  
IF 4 CHAN 1 STK LL of J1128+5925.ICL001.3

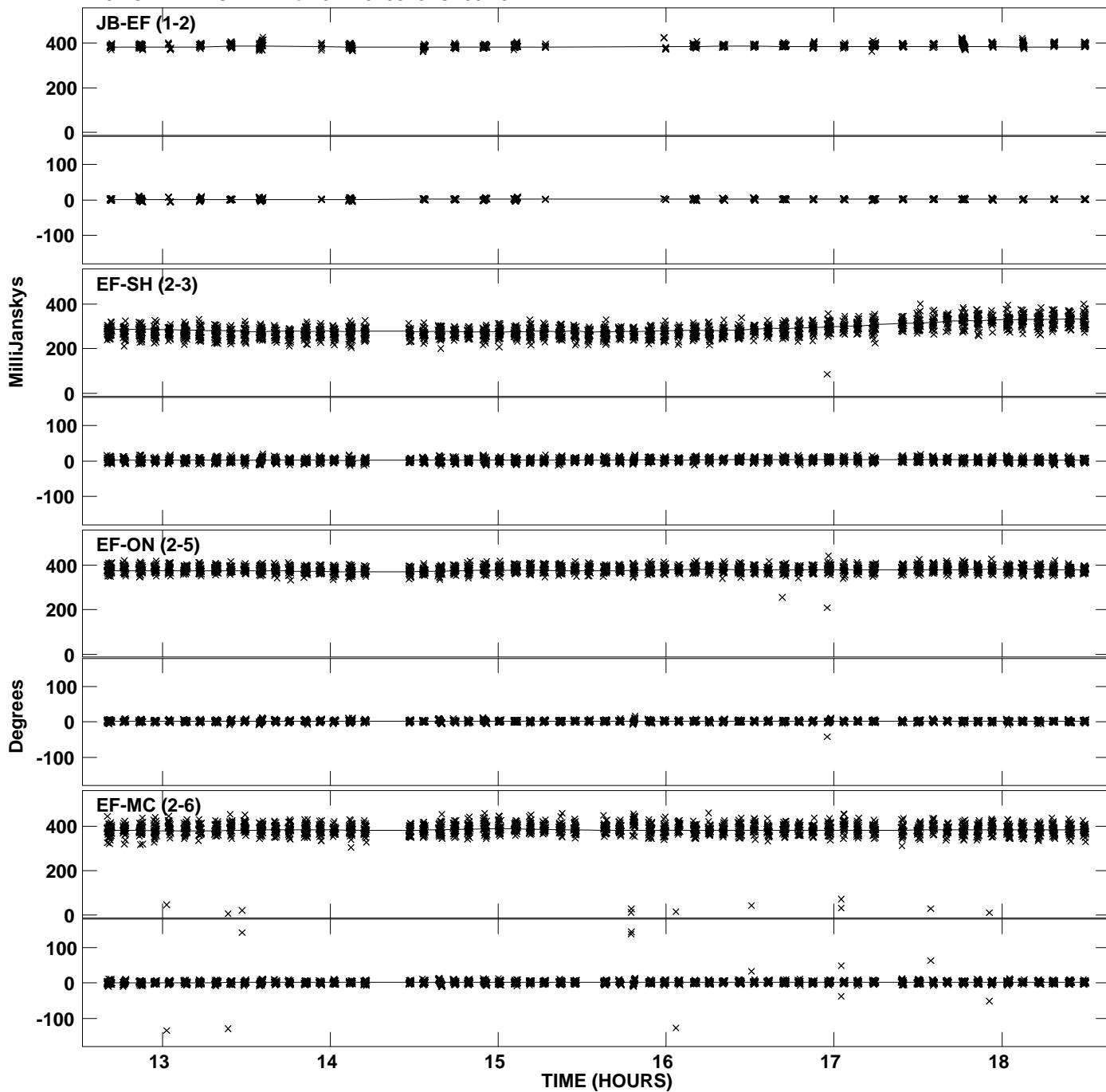


Plot file version 8 created 30-NOV-2010 13:06:37  
Amplitude andPhase vs Time for J1128+5925.MULTI.1 CL # 3  
IF 4 CHAN 1 STK LL of J1128+5925.ICL001.3

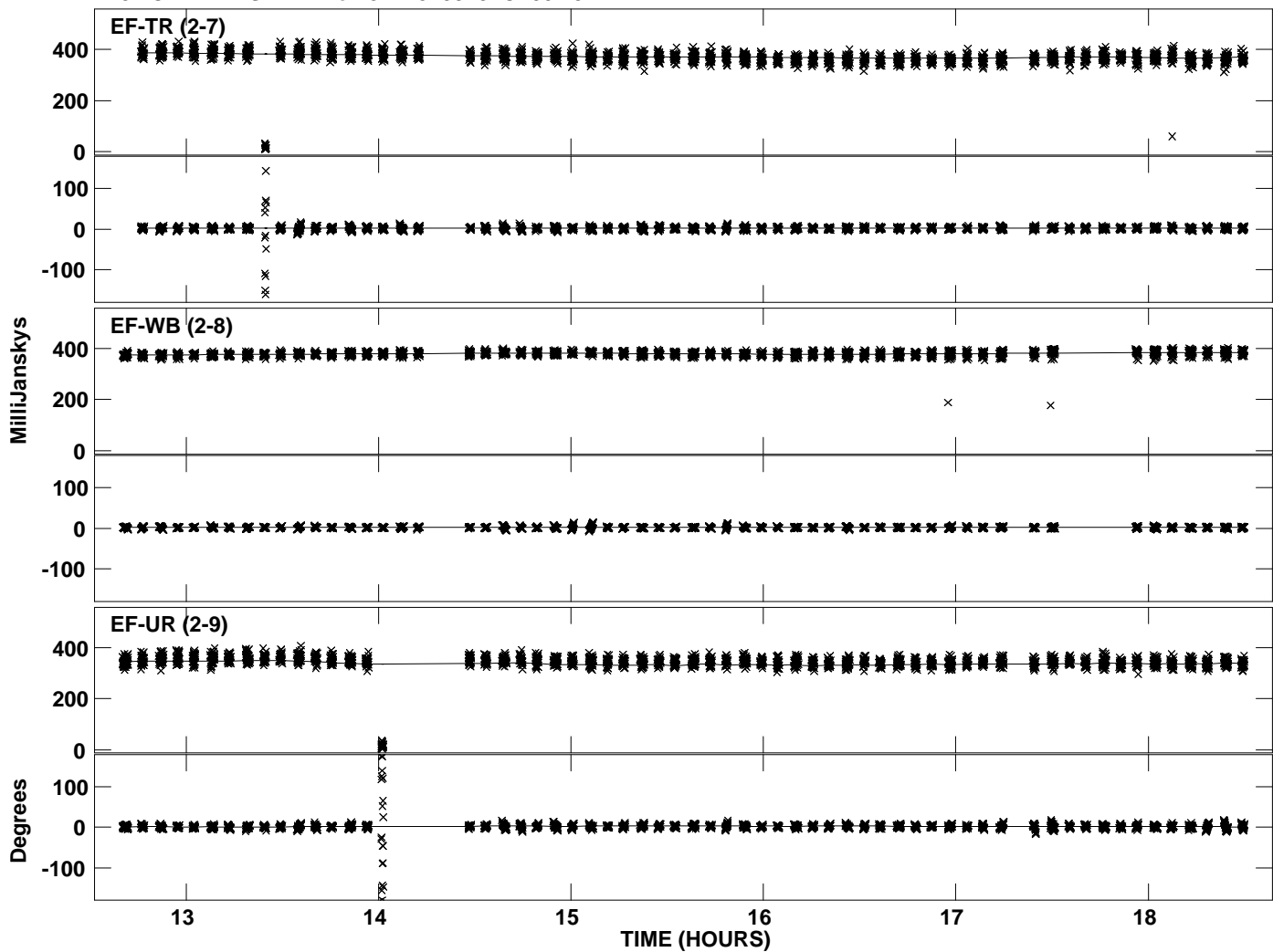




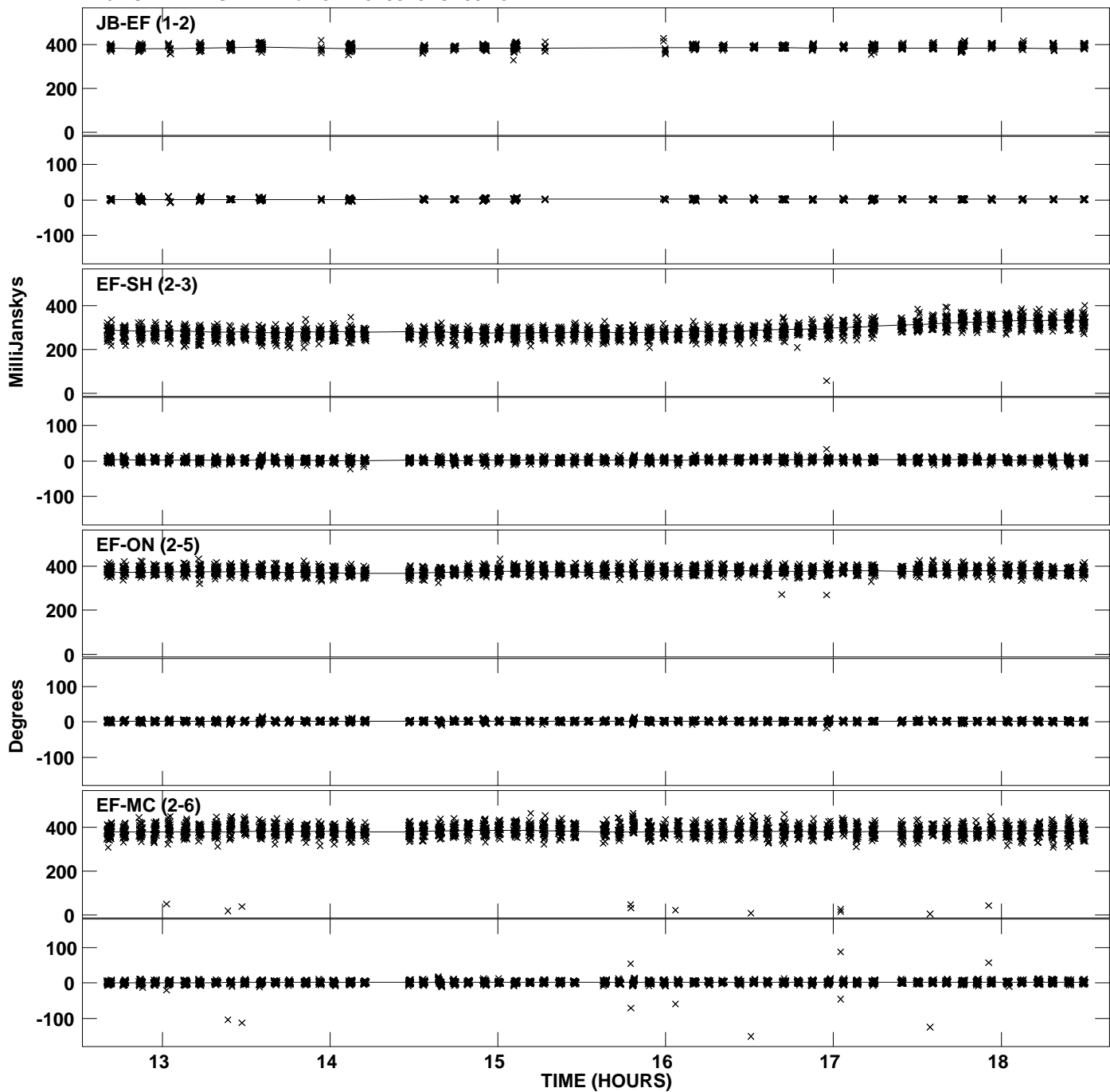
Plot file version 9 created 30-NOV-2010 13:06:48  
Amplitude andPhase vs Time for J1128+5925.MULTI.1 CL # 3  
IF 5 CHAN 1 STK LL of J1128+5925.ICL001.3



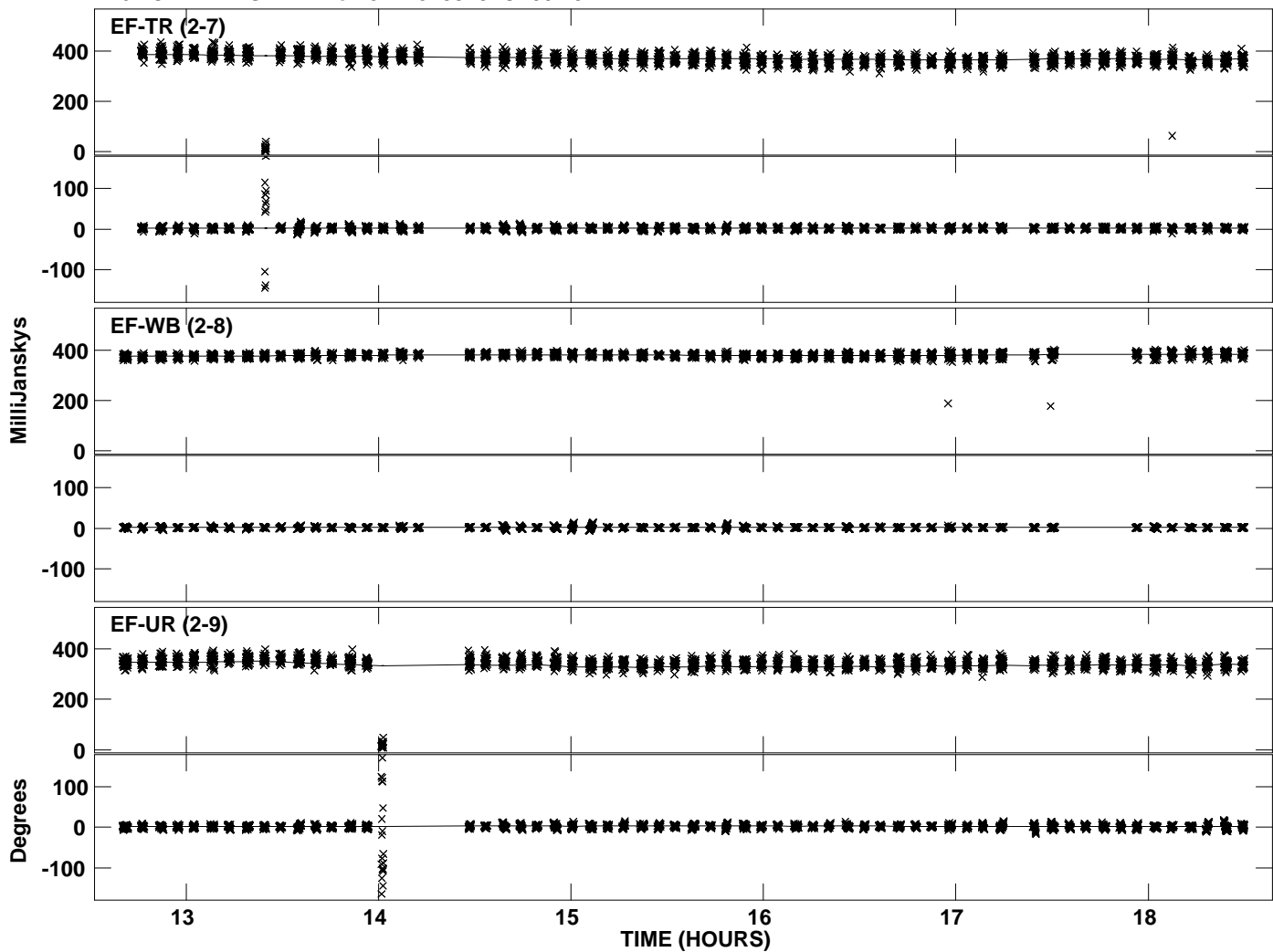
PLot file version 10 created 30-NOV-2010 13:06:49  
Amplitude andPhase vs Time for J1128+5925.MULTI.1 CL # 3  
IF 5 CHAN 1 STK LL of J1128+5925.ICL001.3



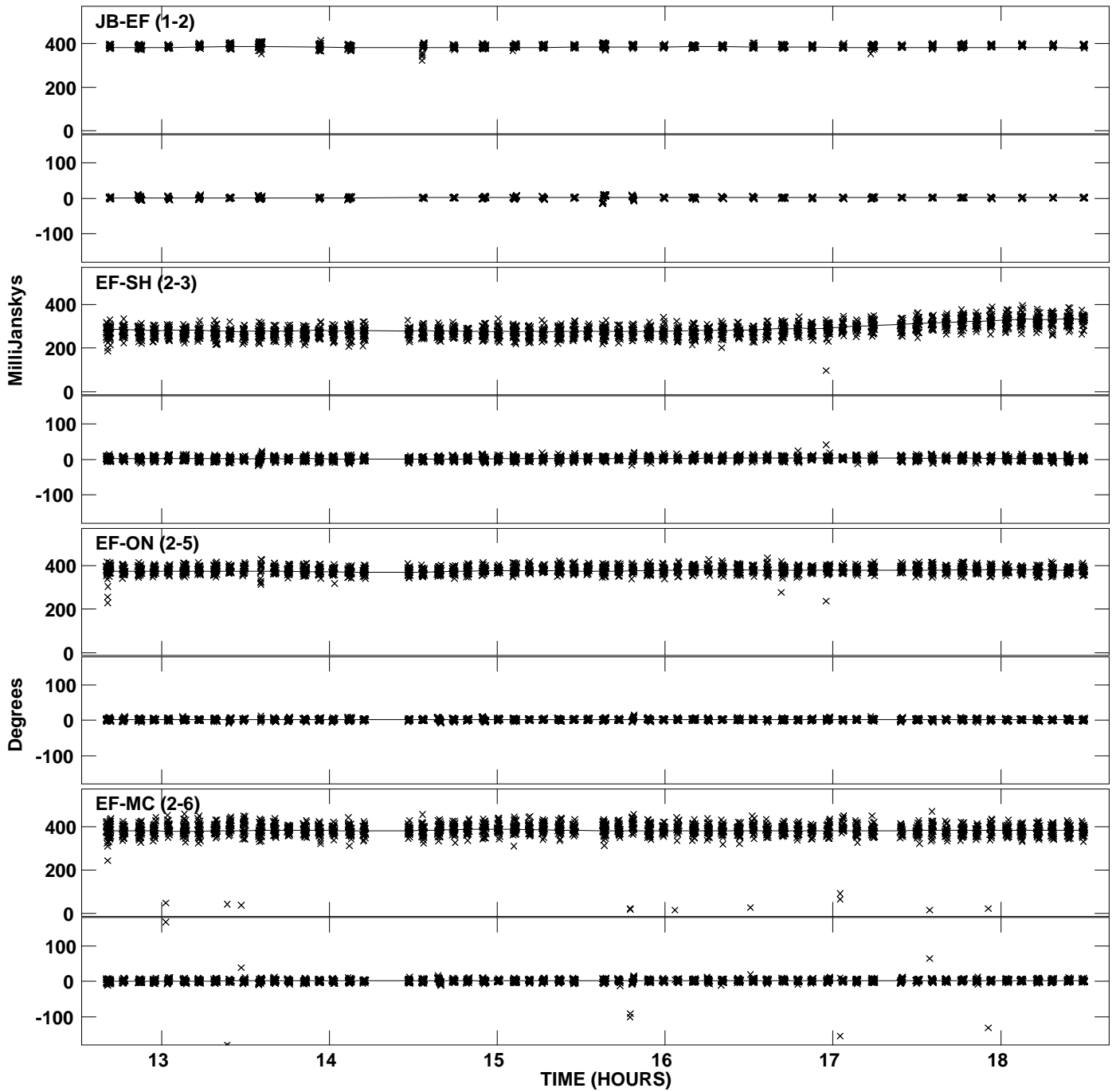
Plot file version 11 created 30-NOV-2010 13:06:49  
Amplitude and Phase vs Time for J1128+5925.MULTI.1 CL # 3  
IF 6 CHAN 1 STK LL of J1128+5925.ICL001.3



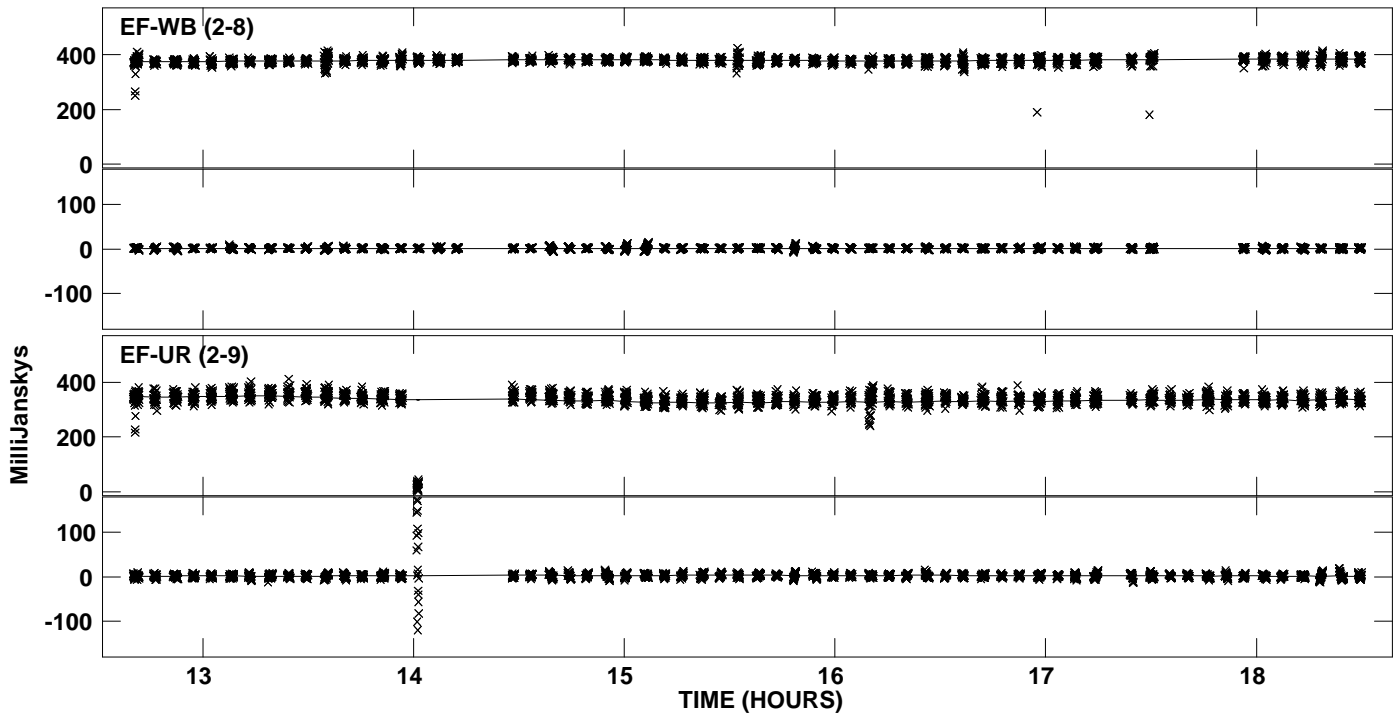
Plot file version 12 created 30-NOV-2010 13:06:49  
Amplitude andPhase vs Time for J1128+5925.MULTI.1 CL # 3  
IF 6 CHAN 1 STK LL of J1128+5925.ICL001.3



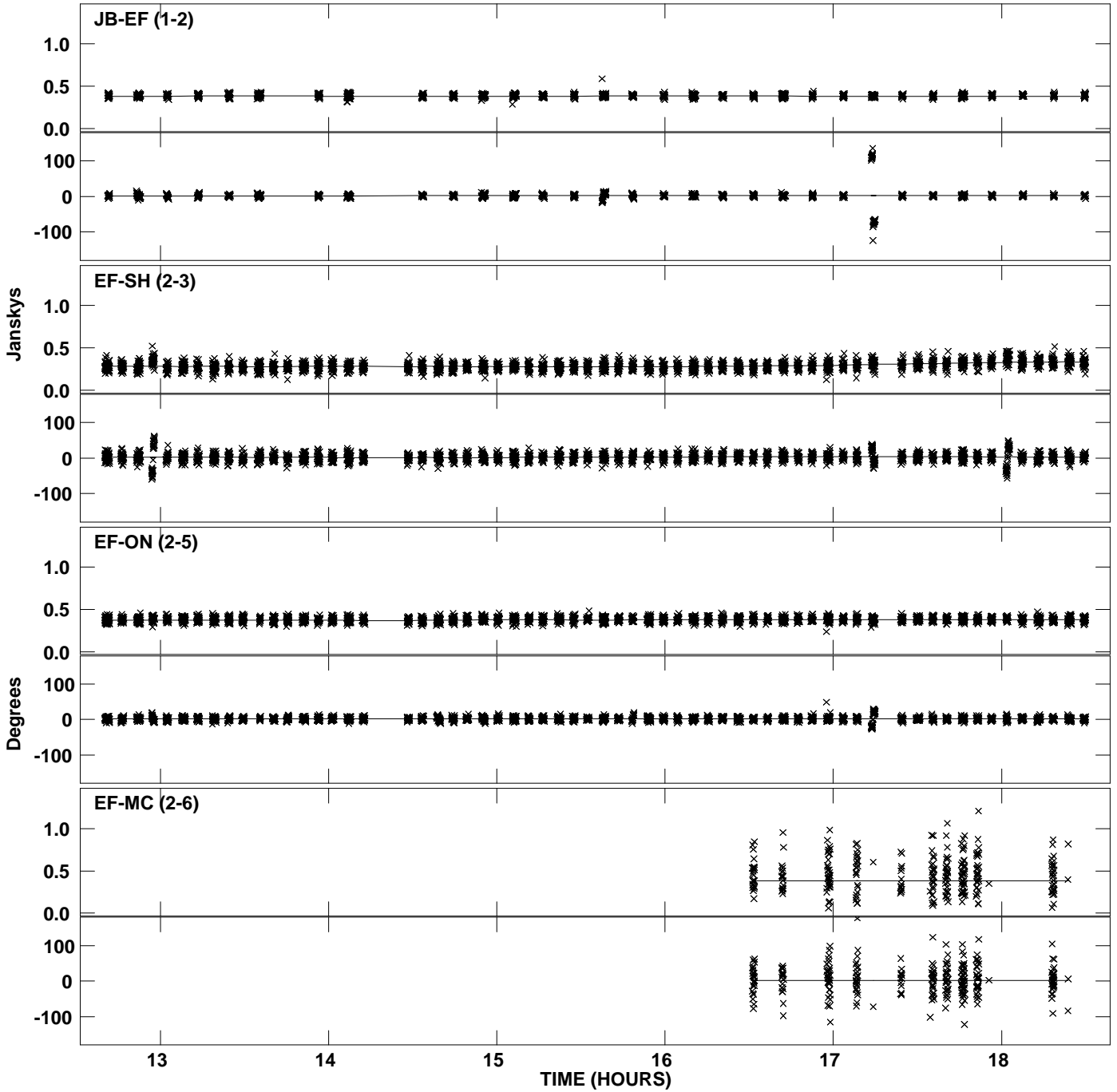
PLot file version 13 created 30-NOV-2010 13:06:50  
Amplitude andPhase vs Time for J1128+5925.MULTI.1 CL # 3  
IF 7 CHAN 1 STK LL of J1128+5925.ICL001.3



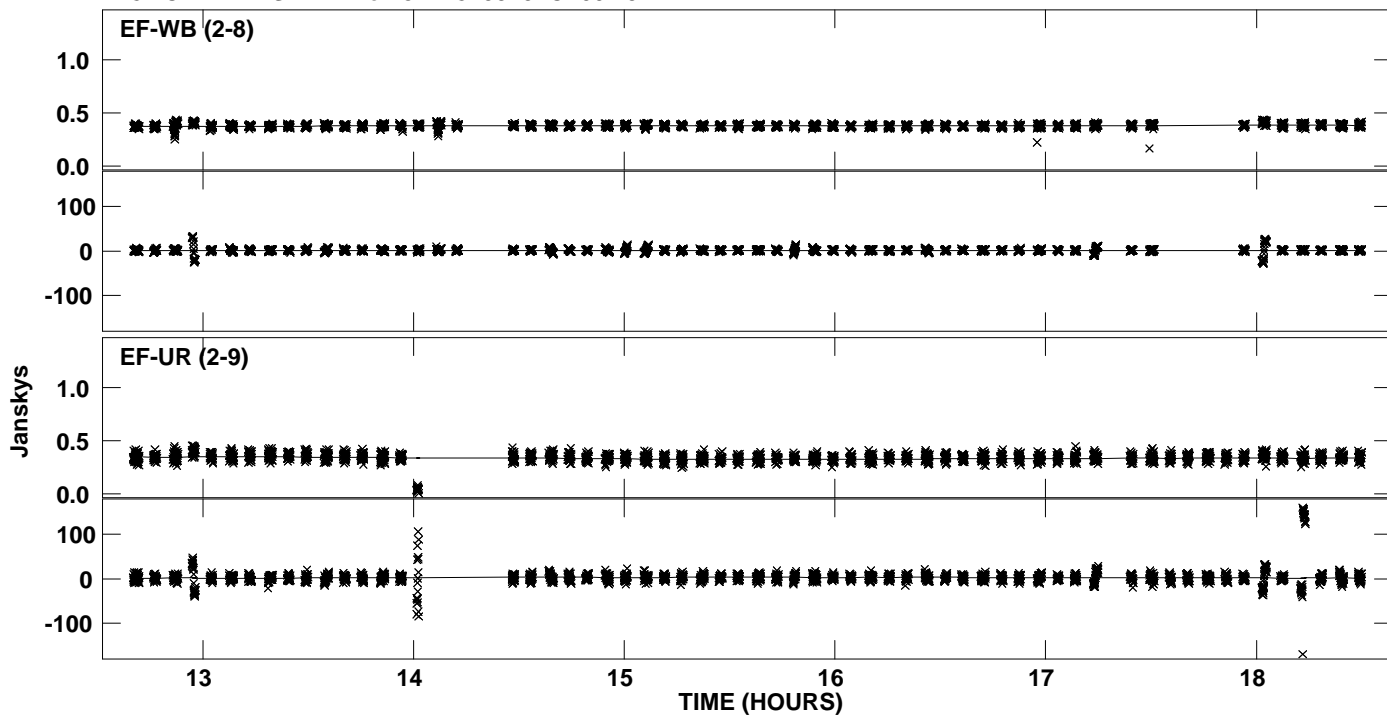
PLot file version 14 created 30-NOV-2010 13:06:50  
Amplitude andPhase vs Time for J1128+5925.MULTI.1 CL # 3  
IF 7 CHAN 1 STK LL of J1128+5925.ICL001.3



Plot file version 15 created 30-NOV-2010 13:06:50  
Amplitude and Phase vs Time for J1128+5925.MULTI.1 CL # 3  
IF 8 CHAN 1 STK LL of J1128+5925.ICL001.3

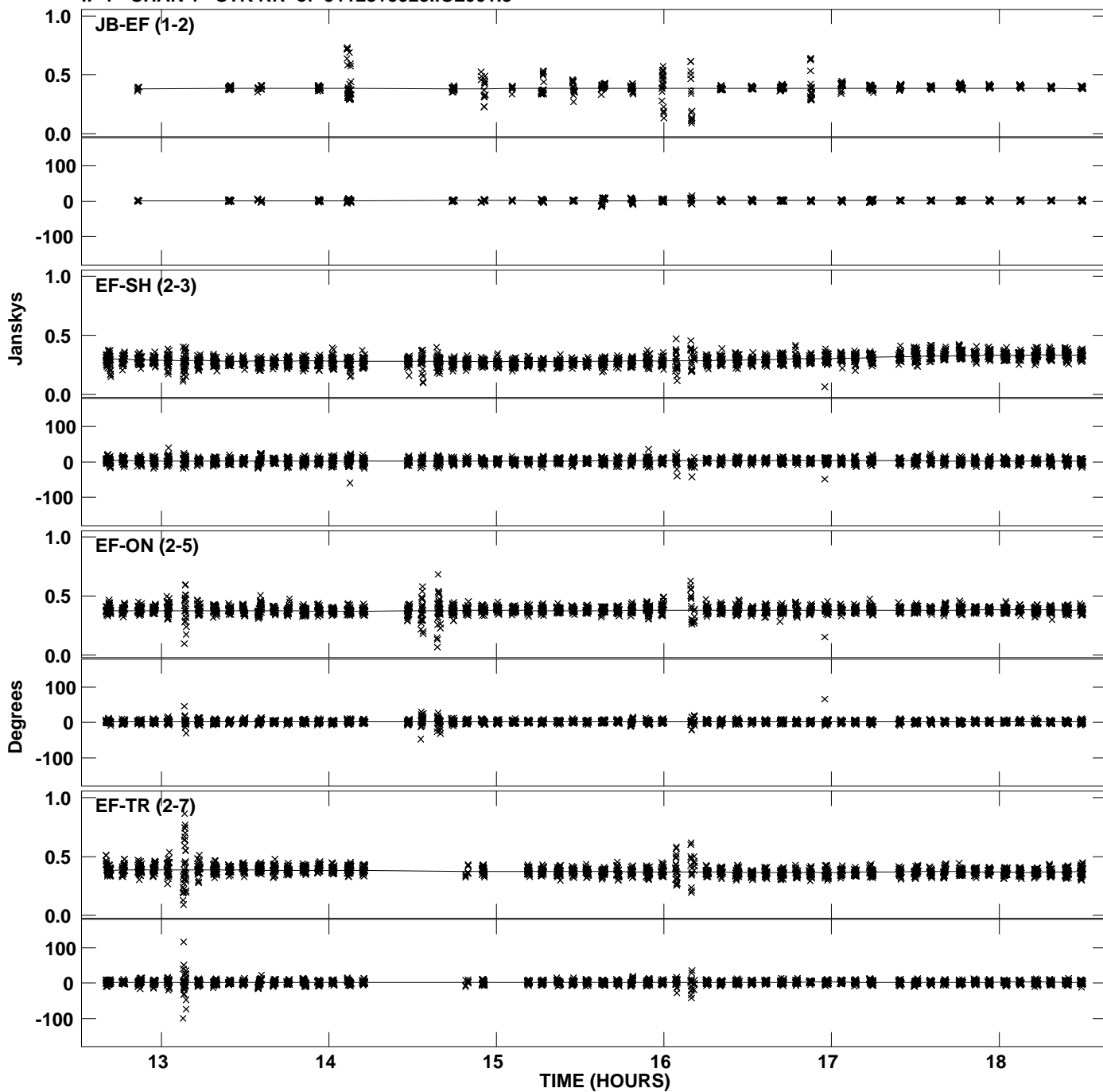


PLot file version 16 created 30-NOV-2010 13:06:50  
Amplitude andPhase vs Time for J1128+5925.MULTI.1 CL # 3  
IF 8 CHAN 1 STK LL of J1128+5925.ICL001.3

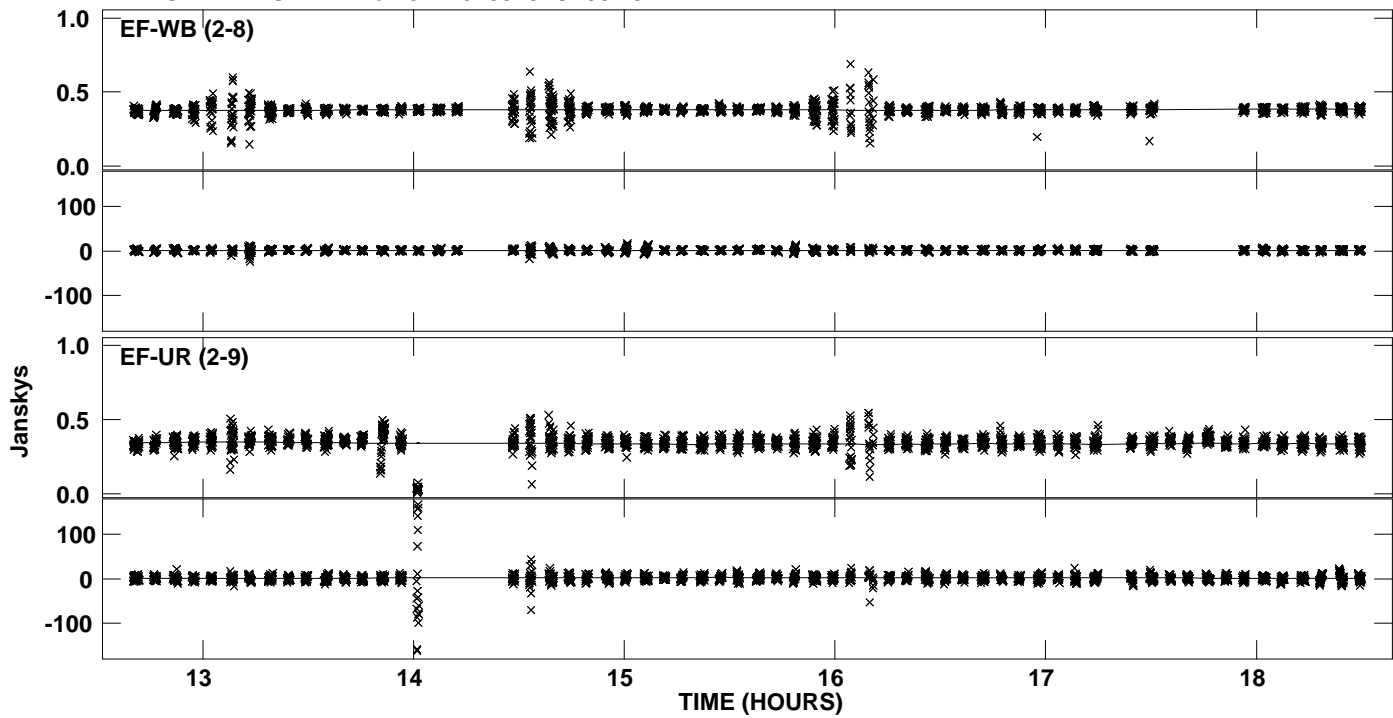




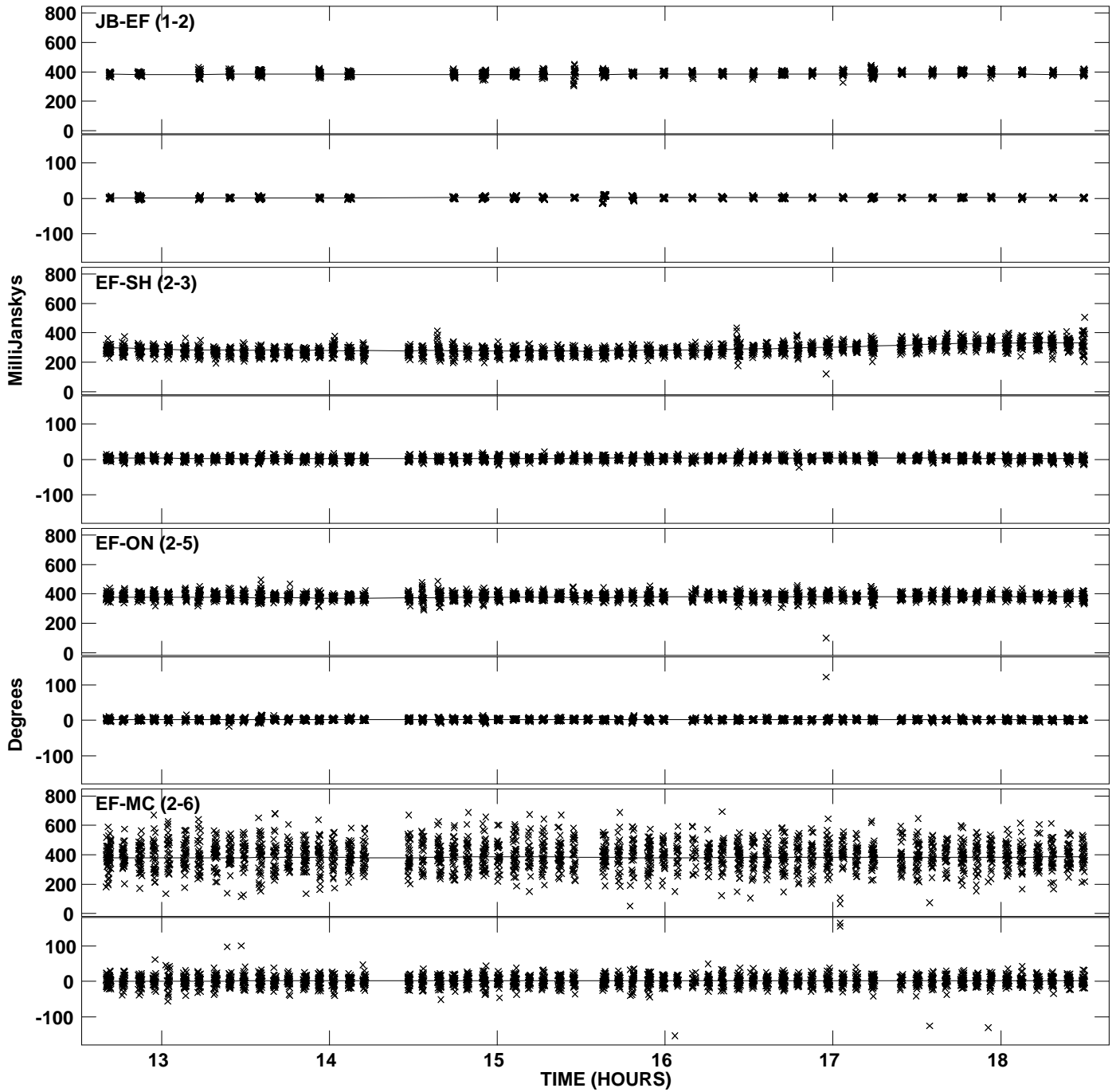
PLot file version 17 created 30-NOV-2010 13:06:51  
Amplitude andPhase vs Time for J1128+5925.MULTI.1 CL # 3  
IF 1 CHAN 1 STK RR of J1128+5925.ICL001.3



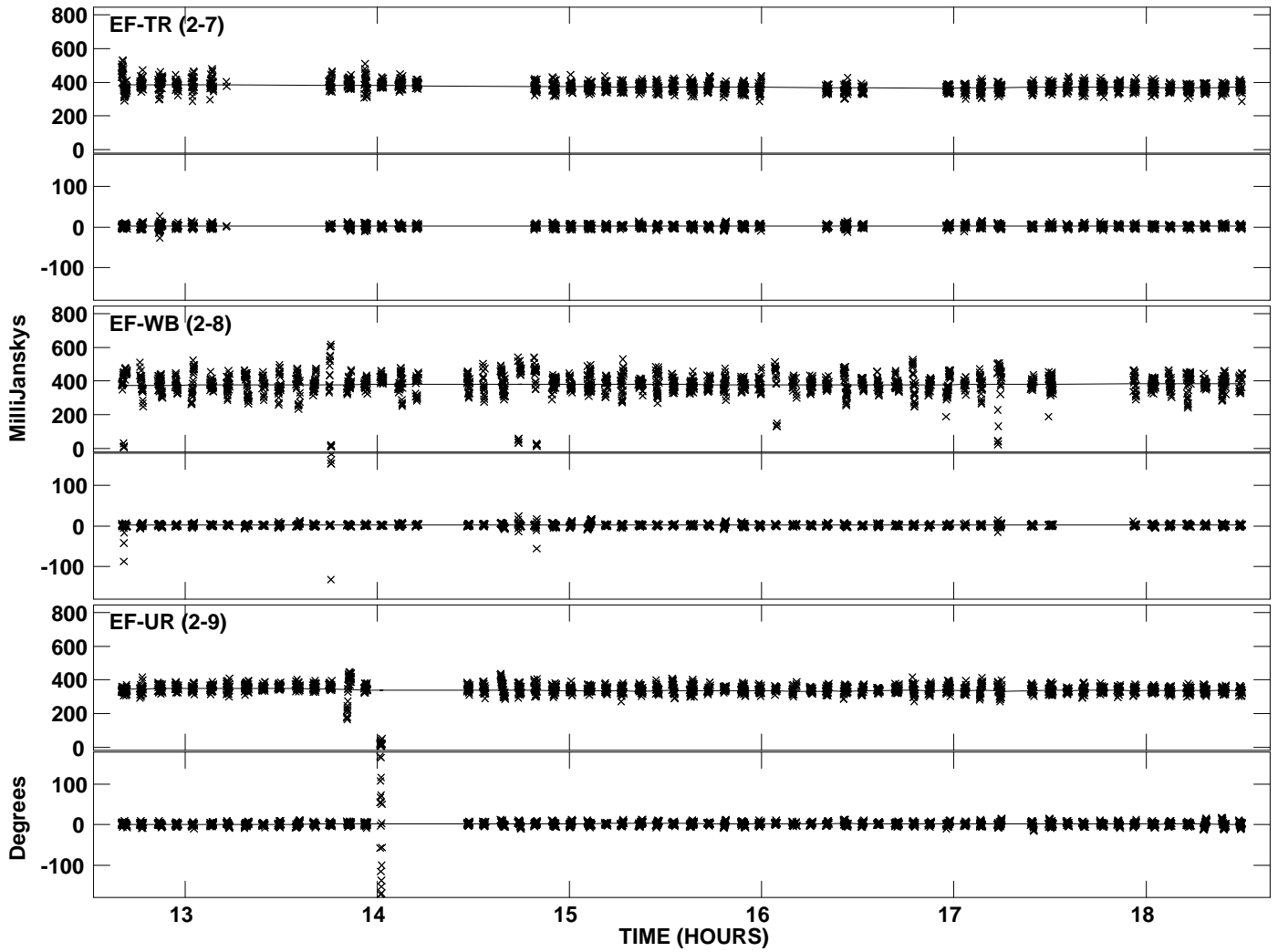
PLot file version 18 created 30-NOV-2010 13:06:51  
Amplitude andPhase vs Time for J1128+5925.MULTI.1 CL # 3  
IF 1 CHAN 1 STK RR of J1128+5925.ICL001.3



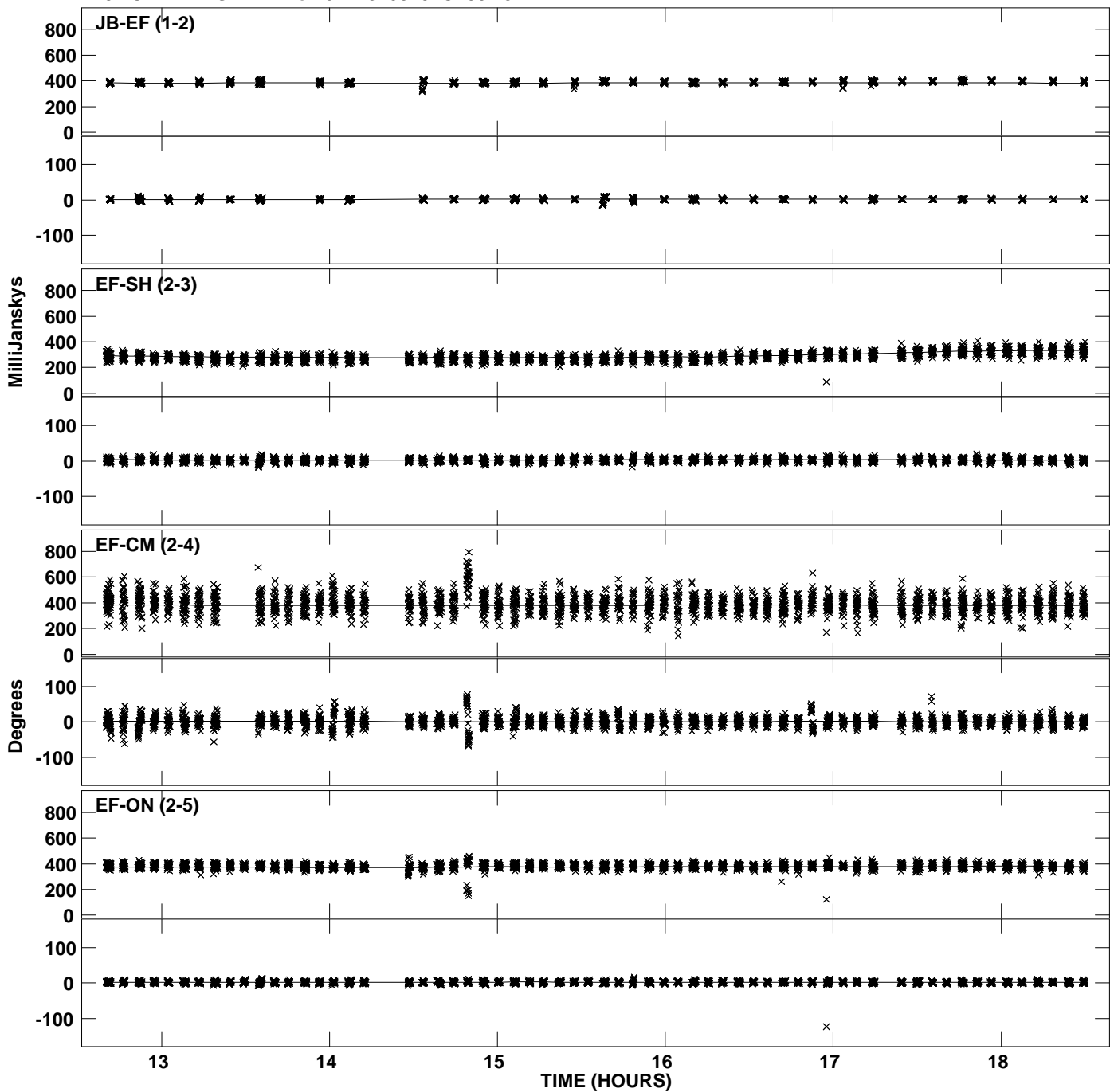
PLot file version 19 created 30-NOV-2010 13:06:51  
Amplitude andPhase vs Time for J1128+5925.MULTI.1 CL # 3  
IF 2 CHAN 1 STK RR of J1128+5925.ICL001.3



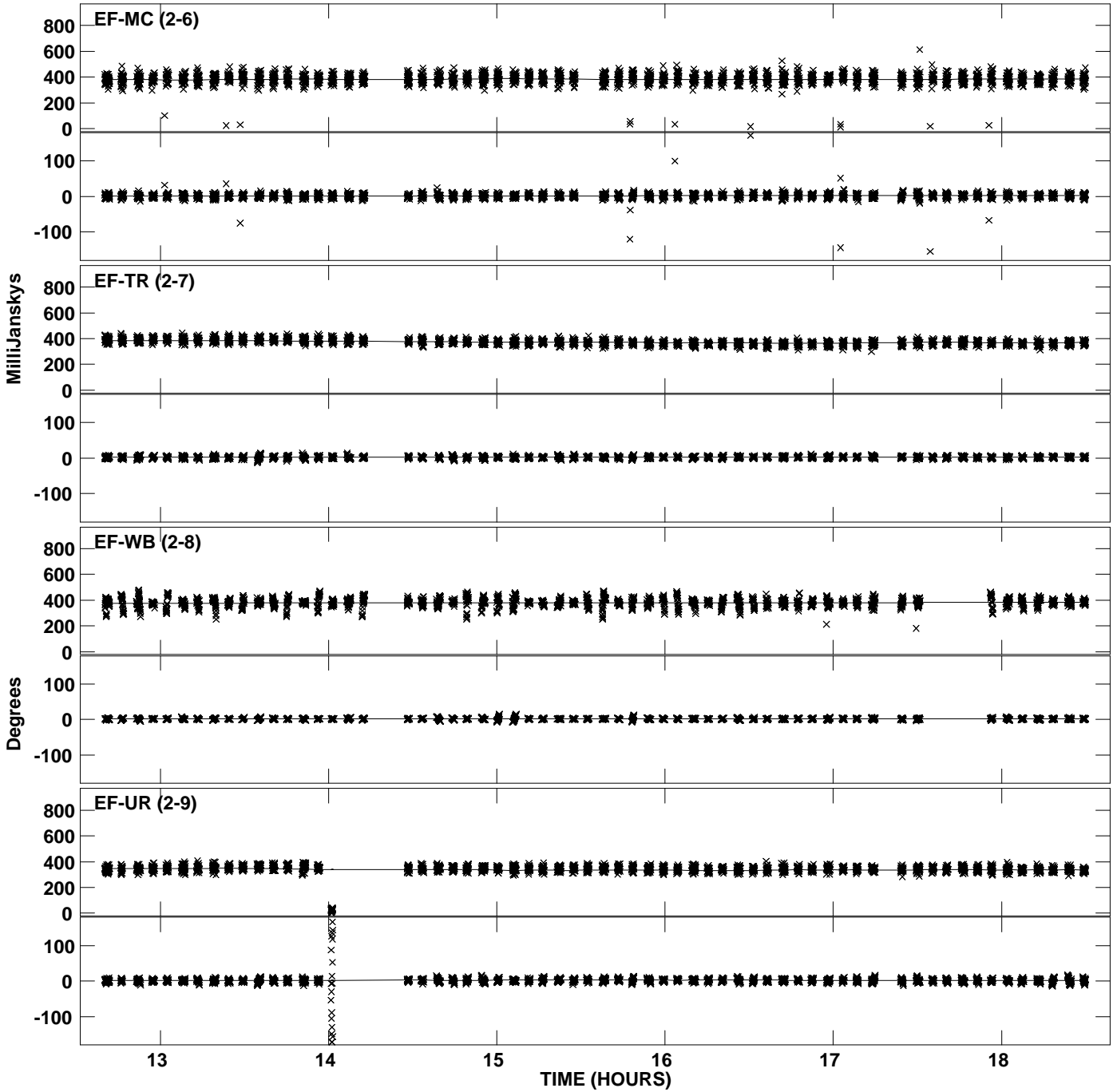
Plot file version 20 created 30-NOV-2010 13:06:51  
Amplitude andPhase vs Time for J1128+5925.MULTI.1 CL # 3  
IF 2 CHAN 1 STK RR of J1128+5925.ICL001.3



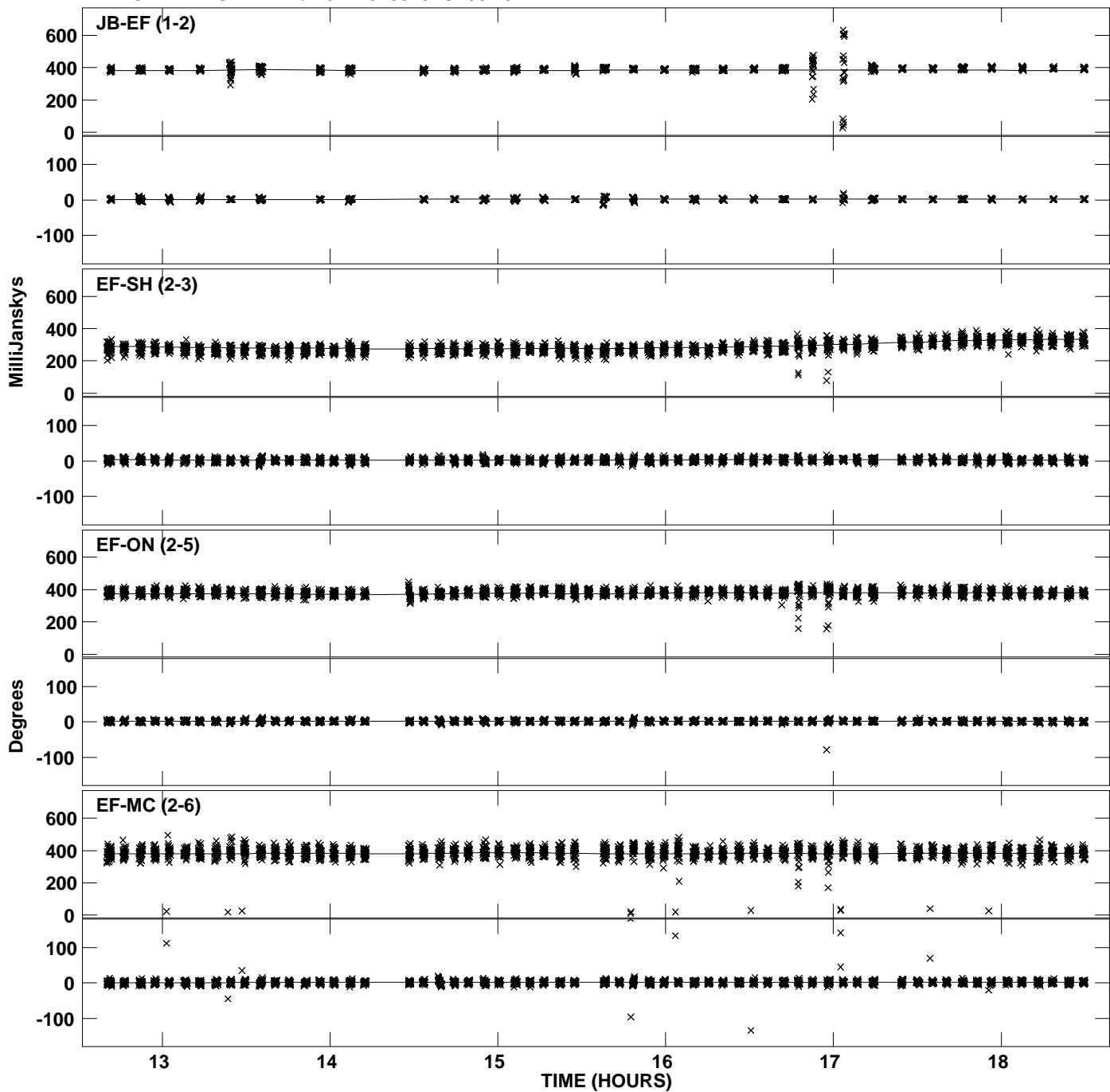
Plot file version 21 created 30-NOV-2010 13:06:52  
Amplitude andPhase vs Time for J1128+5925.MULTI.1 CL # 3  
IF 3 CHAN 1 STK RR of J1128+5925.ICL001.3



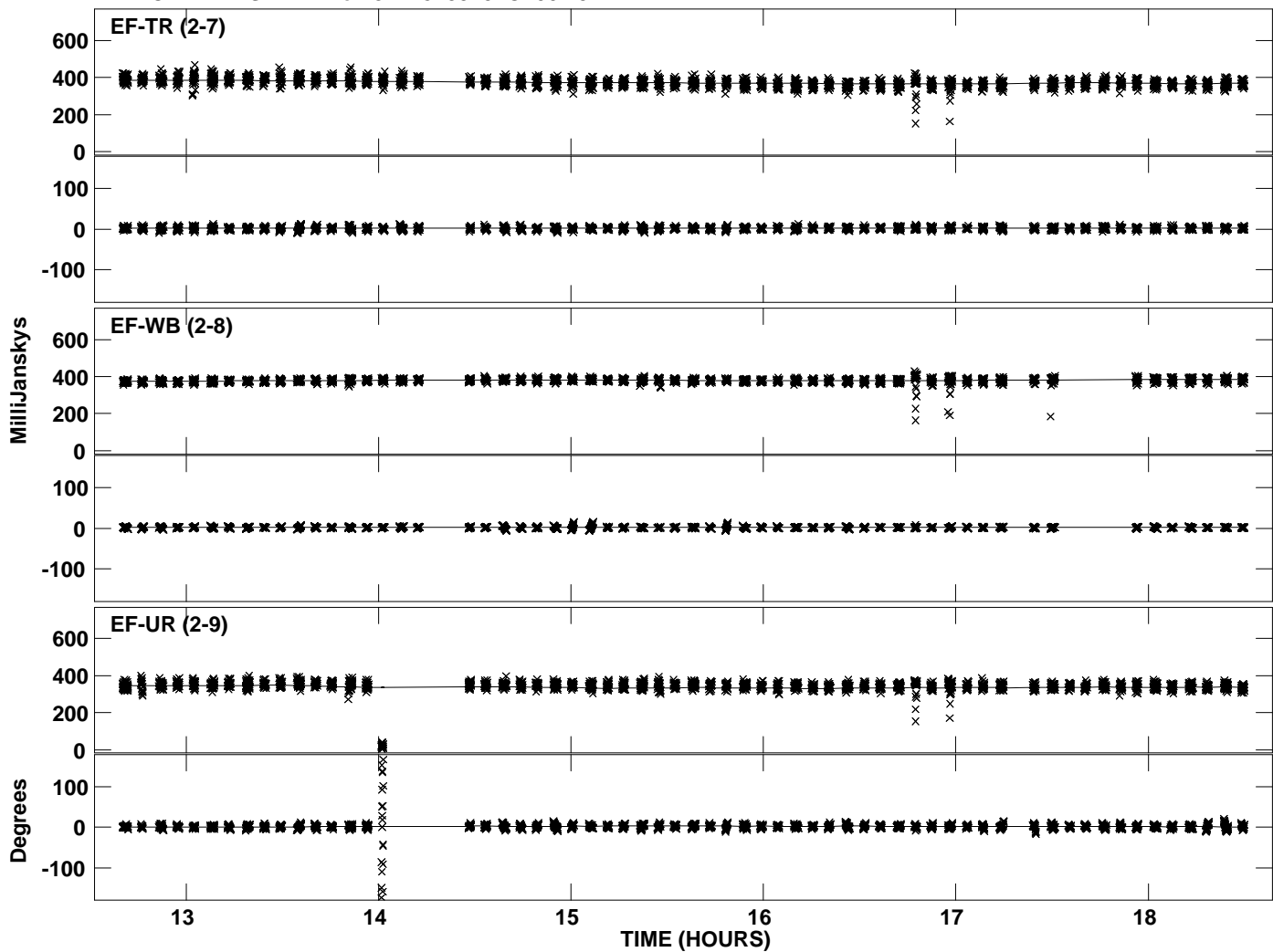
Plot file version 22 created 30-NOV-2010 13:06:52  
Amplitude andPhase vs Time for J1128+5925.MULTI.1 CL # 3  
IF 3 CHAN 1 STK RR of J1128+5925.ICL001.3



PLot file version 23 created 30-NOV-2010 13:06:52  
Amplitude andPhase vs Time for J1128+5925.MULTI.1 CL # 3  
IF 4 CHAN 1 STK RR of J1128+5925.ICL001.3

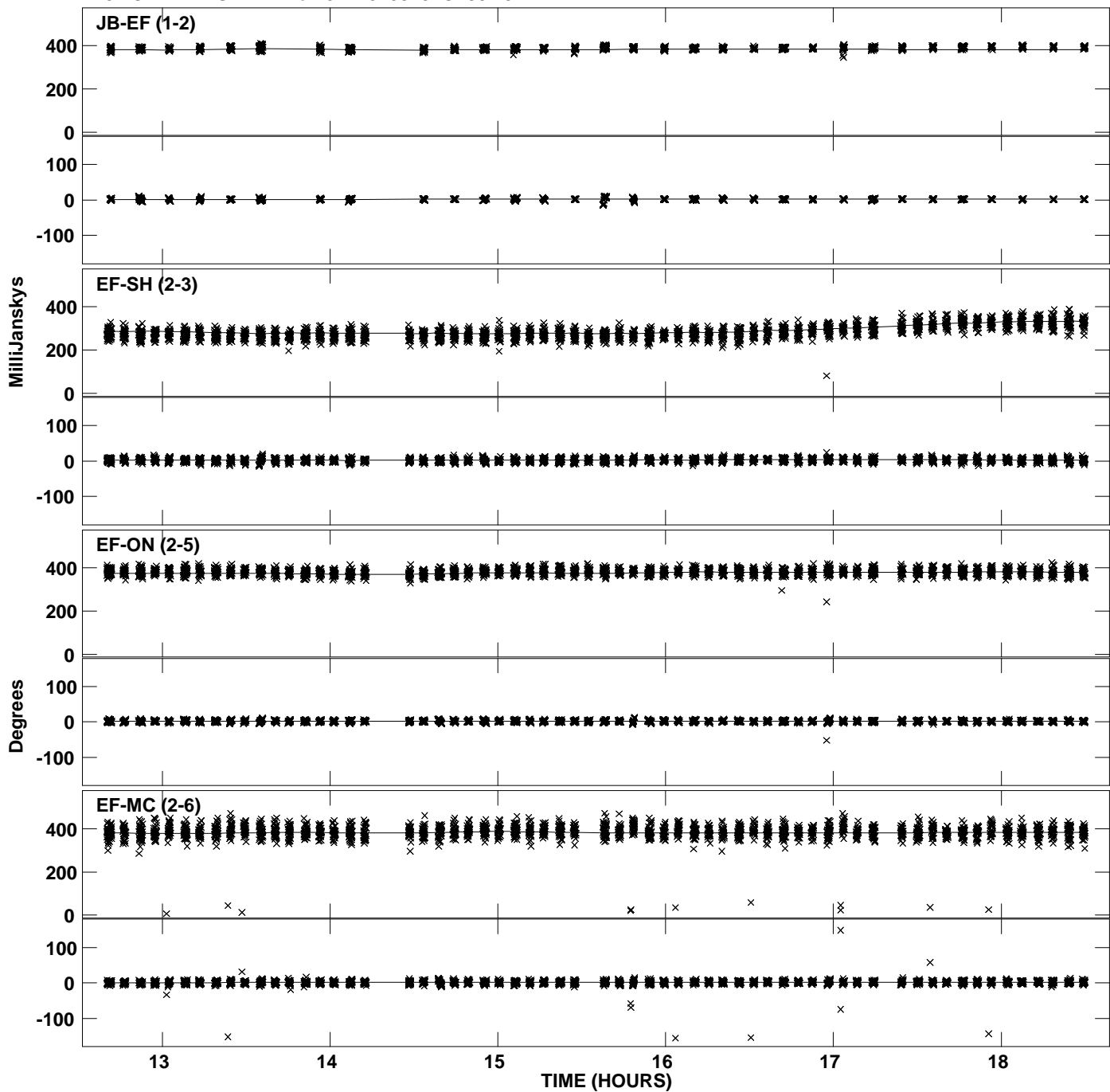


PLot file version 24 created 30-NOV-2010 13:06:52  
Amplitude andPhase vs Time for J1128+5925.MULTI.1 CL # 3  
IF 4 CHAN 1 STK RR of J1128+5925.ICL001.3

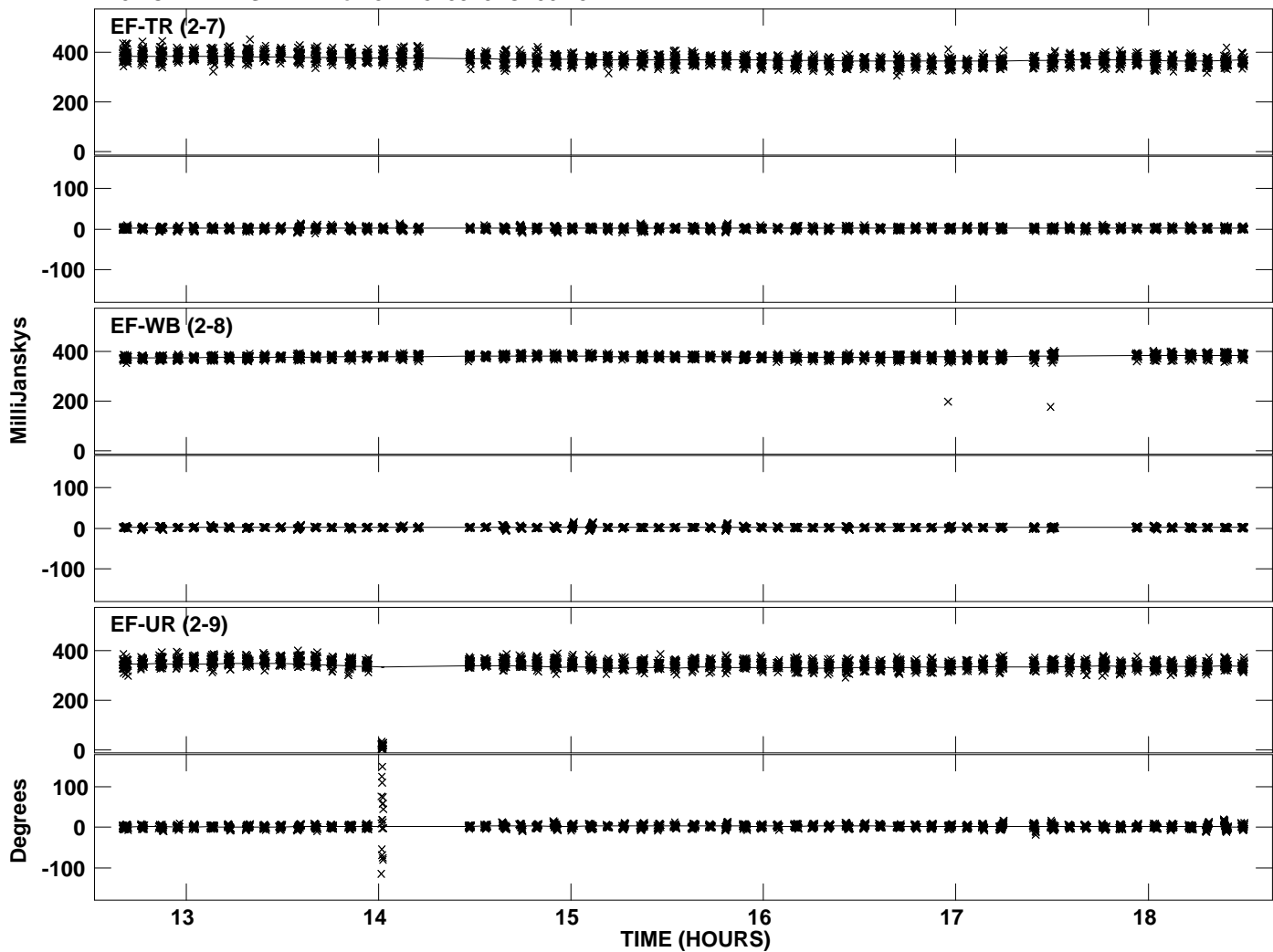




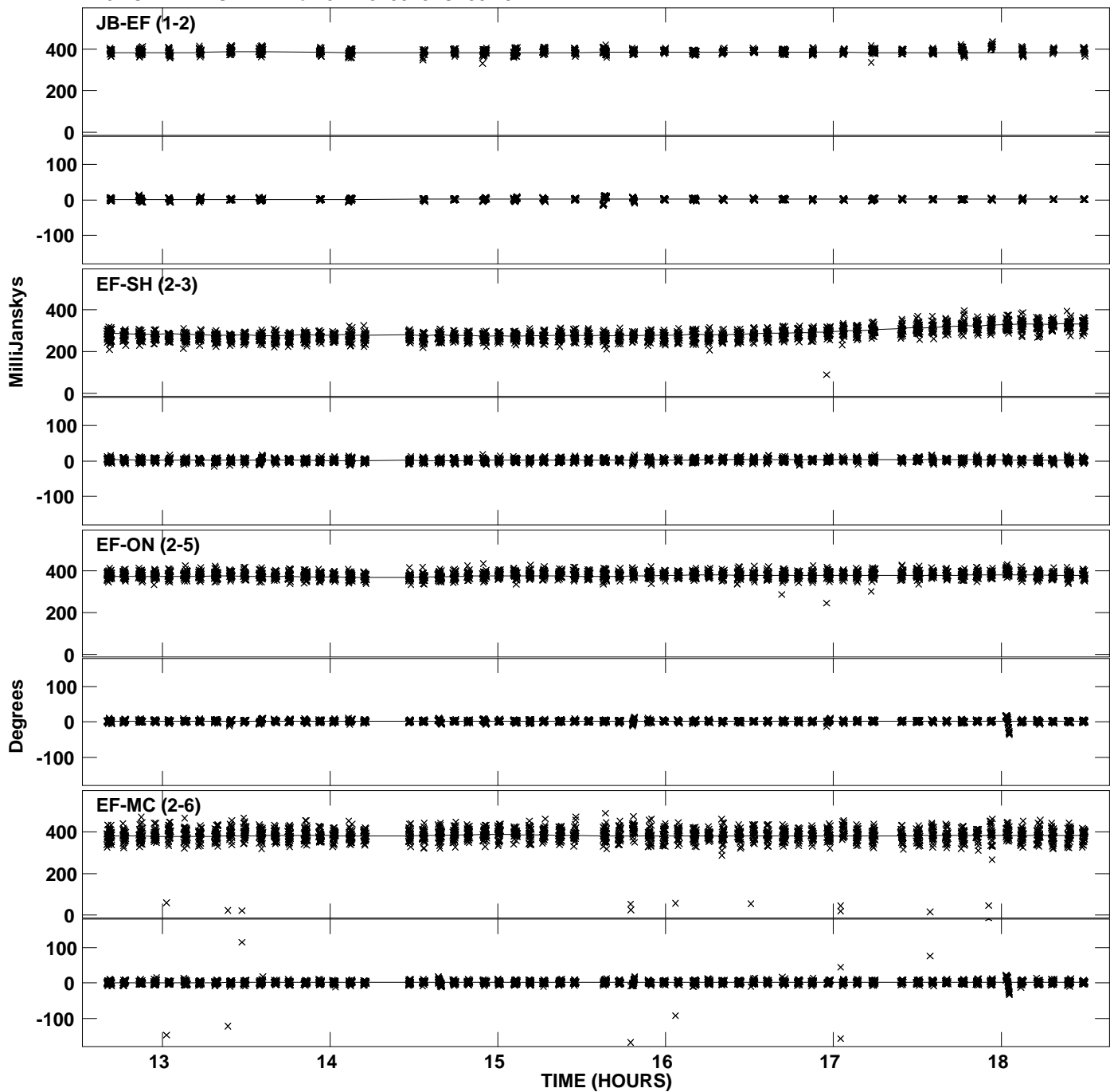
Plot file version 25 created 30-NOV-2010 13:06:53  
Amplitude andPhase vs Time for J1128+5925.MULTI.1 CL # 3  
IF 5 CHAN 1 STK RR of J1128+5925.ICL001.3



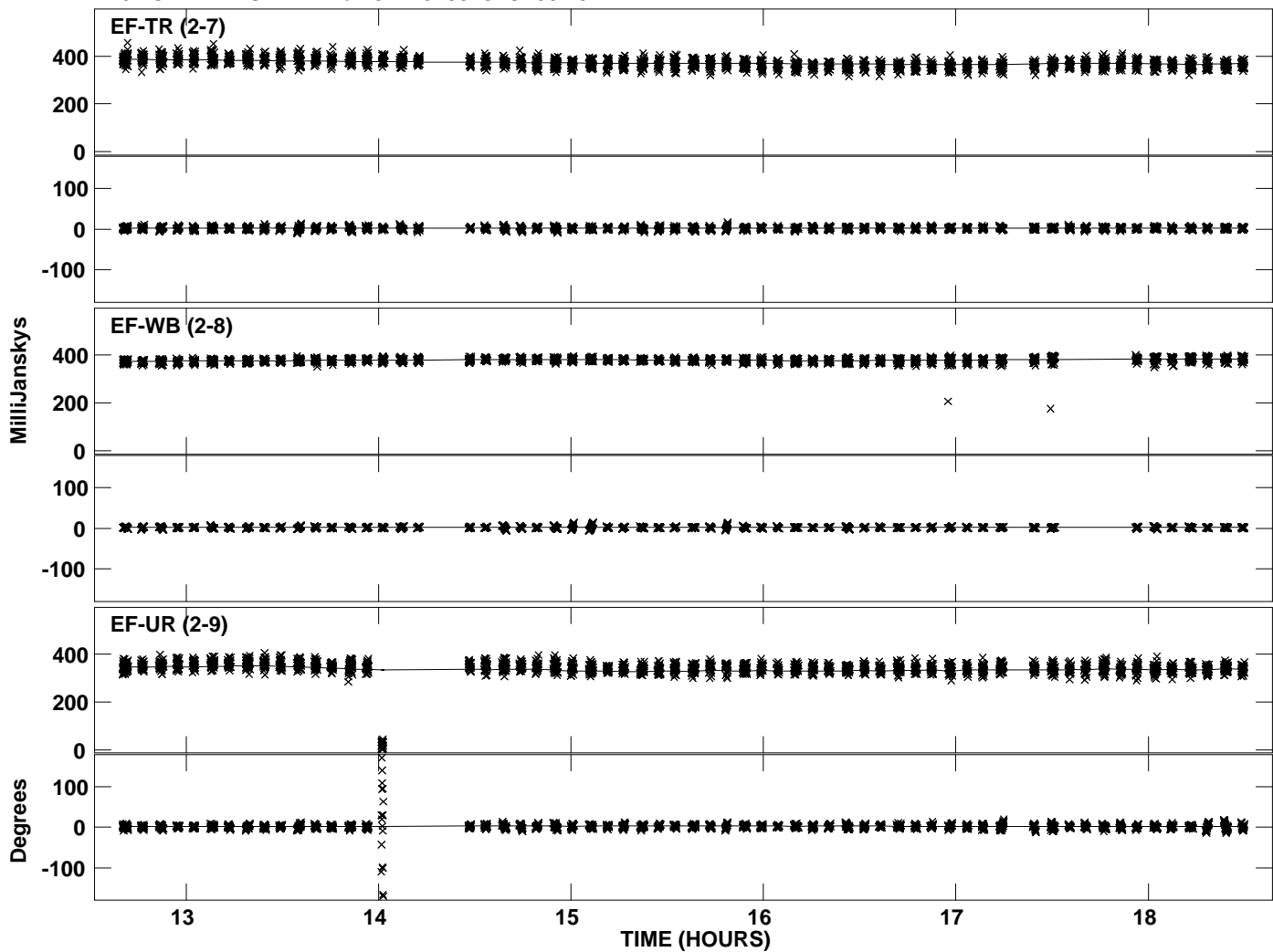
PLot file version 26 created 30-NOV-2010 13:06:53  
Amplitude andPhase vs Time for J1128+5925.MULTI.1 CL # 3  
IF 5 CHAN 1 STK RR of J1128+5925.ICL001.3



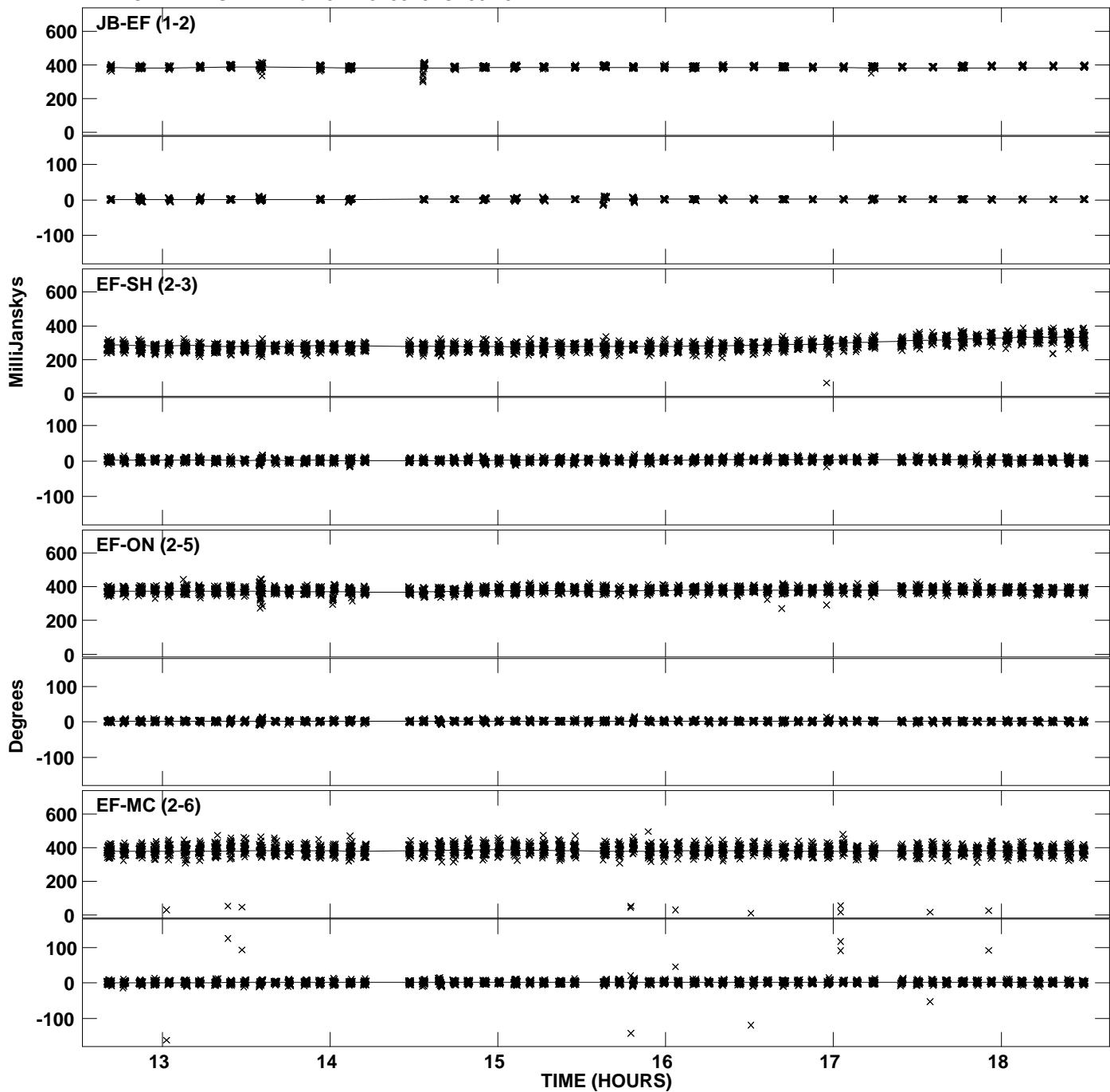
Plot file version 27 created 30-NOV-2010 13:06:53  
Amplitude andPhase vs Time for J1128+5925.MULTI.1 CL # 3  
IF 6 CHAN 1 STK RR of J1128+5925.ICL001.3



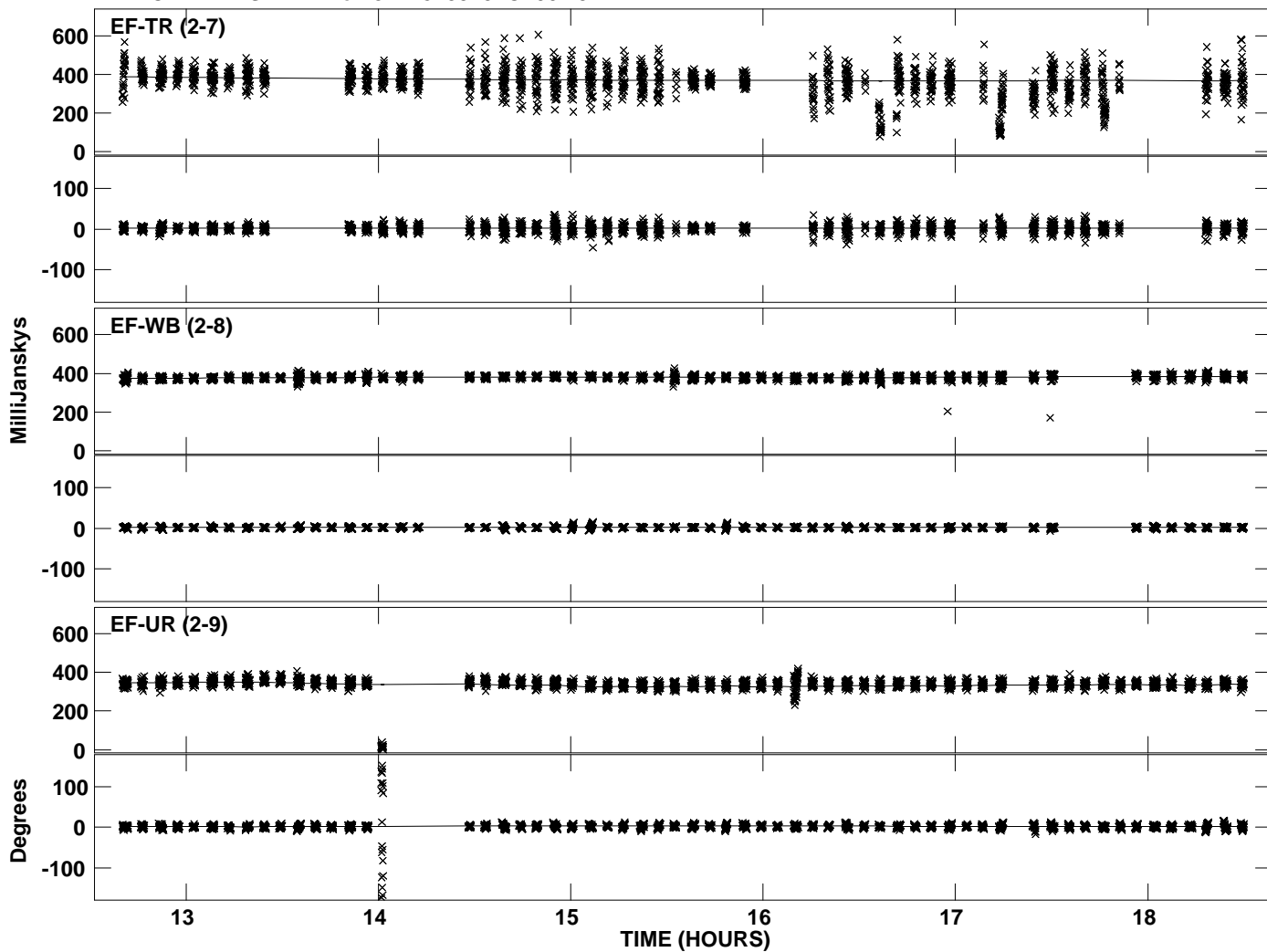
PLot file version 28 created 30-NOV-2010 13:06:53  
Amplitude andPhase vs Time for J1128+5925.MULTI.1 CL # 3  
IF 6 CHAN 1 STK RR of J1128+5925.ICL001.3



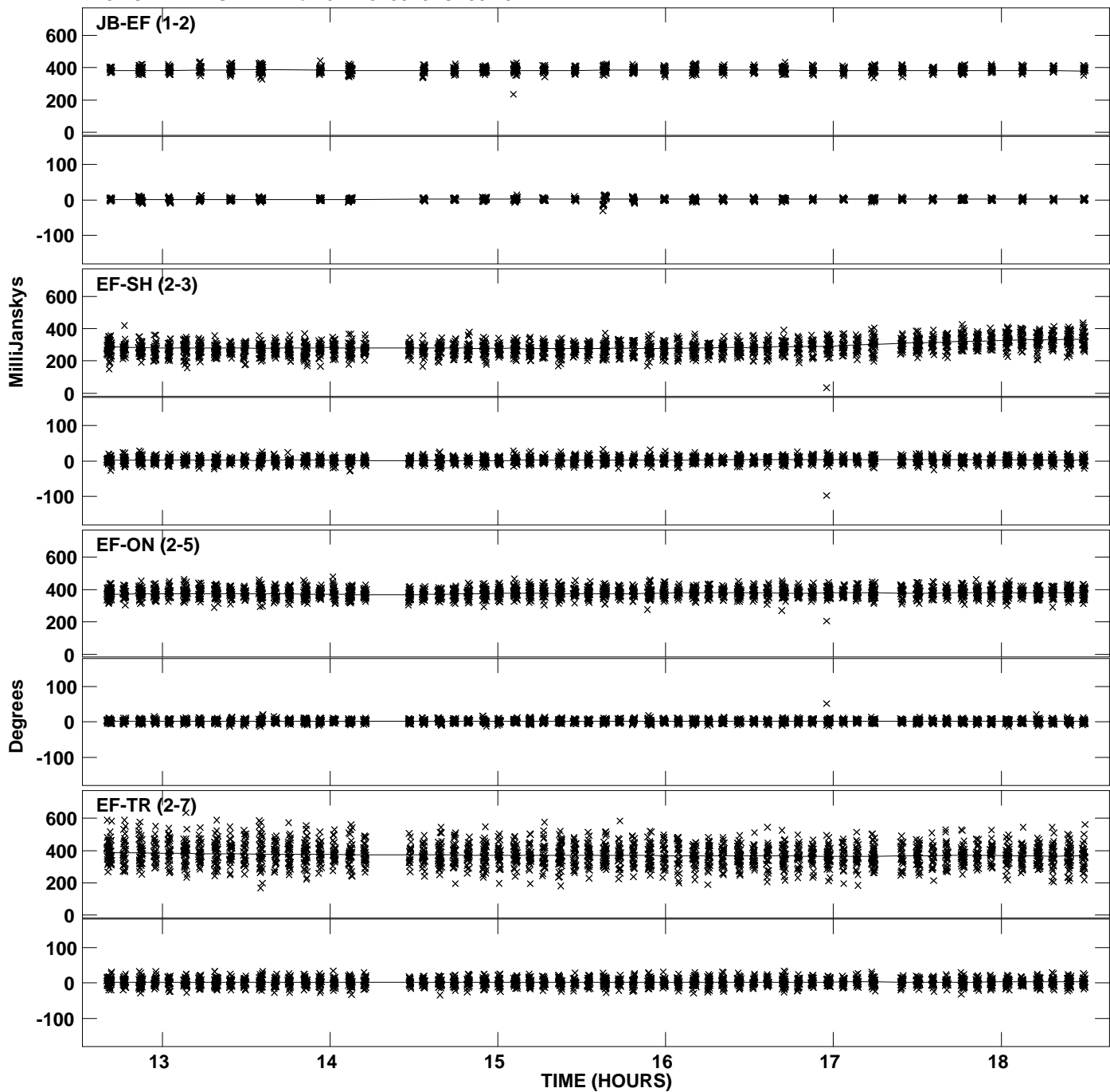
PLot file version 29 created 30-NOV-2010 13:06:54  
Amplitude andPhase vs Time for J1128+5925.MULTI.1 CL # 3  
IF 7 CHAN 1 STK RR of J1128+5925.ICL001.3



Plot file version 30 created 30-NOV-2010 13:06:54  
Amplitude andPhase vs Time for J1128+5925.MULTI.1 CL # 3  
IF 7 CHAN 1 STK RR of J1128+5925.ICL001.3



PLot file version 31 created 30-NOV-2010 13:06:54  
Amplitude andPhase vs Time for J1128+5925.MULTI.1 CL # 3  
IF 8 CHAN 1 STK RR of J1128+5925.ICL001.3



PLot file version 32 created 30-NOV-2010 13:06:54  
Amplitude andPhase vs Time for J1128+5925.MULTI.1 CL # 3  
IF 8 CHAN 1 STK RR of J1128+5925.ICL001.3

