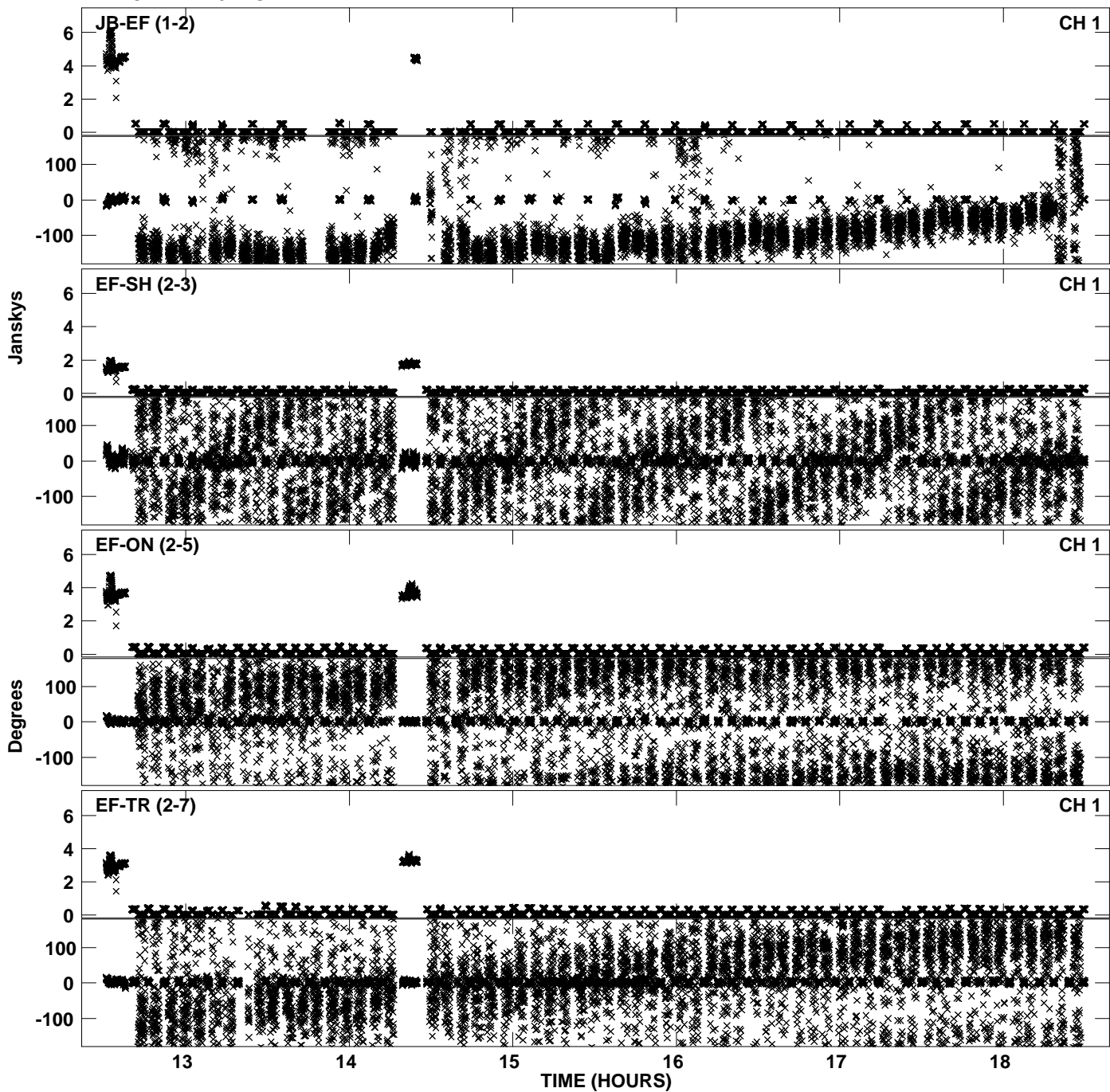
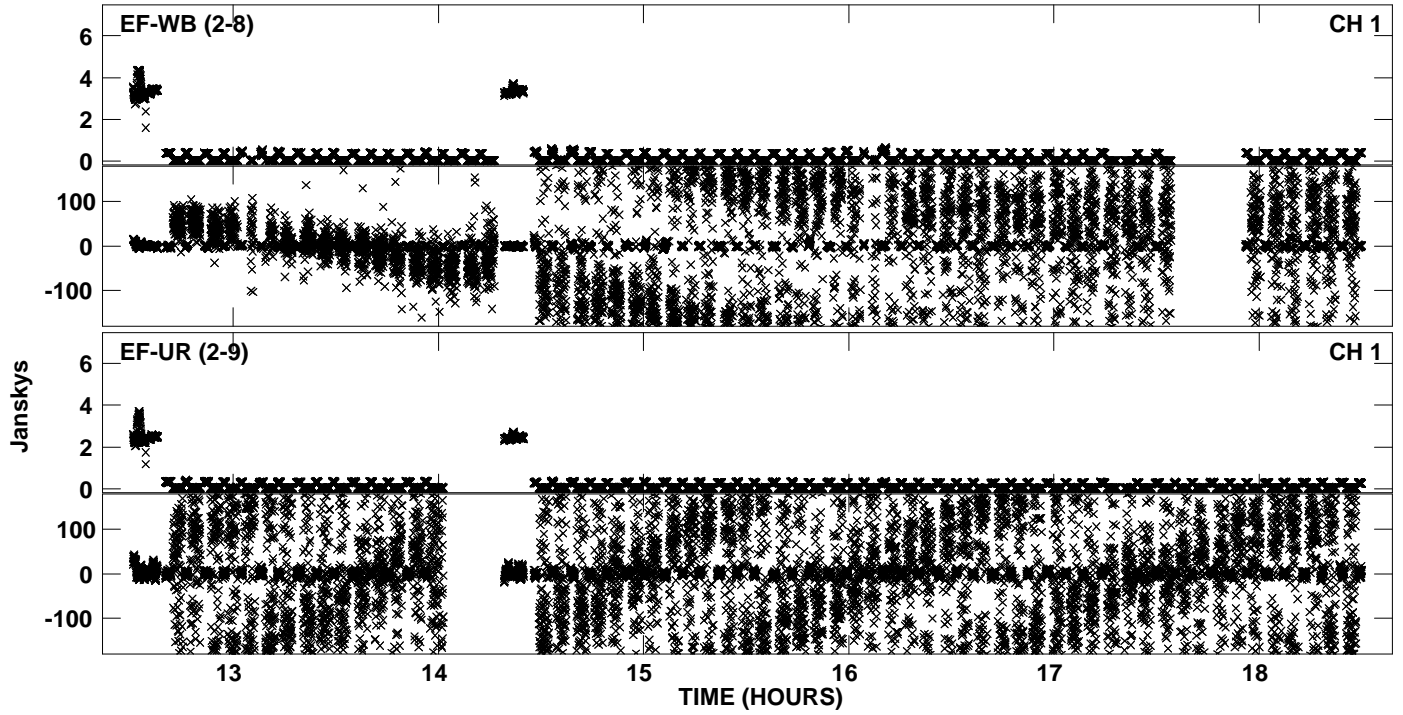


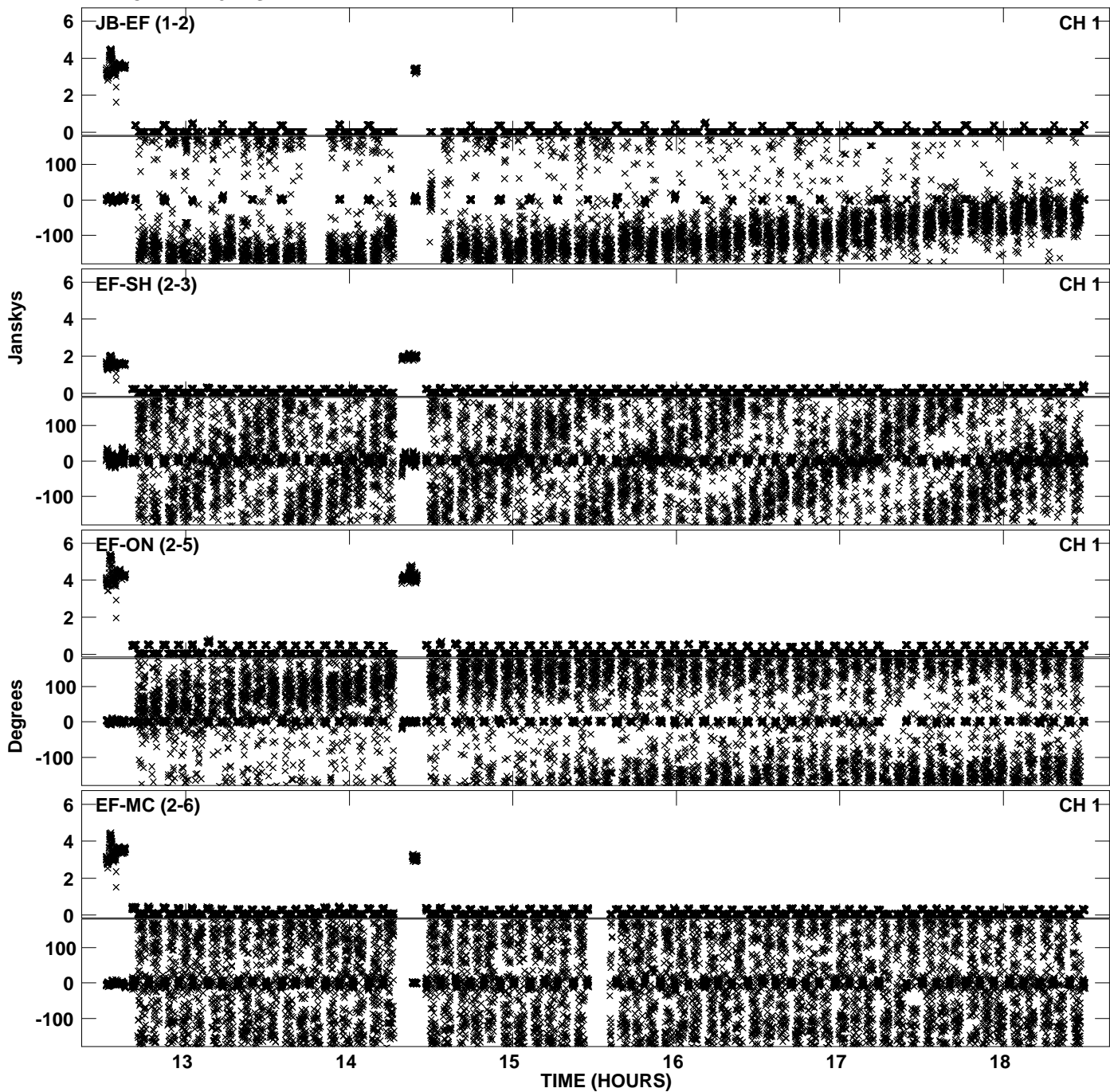
Plot file version 1 created 30-NOV-2010 12:58:38  
Amplitude andPhase vs Time for EP068B 2.UVDATA.1 Vect aver. CL # 3  
IF 1 CHAN 1 - 32 STK LL



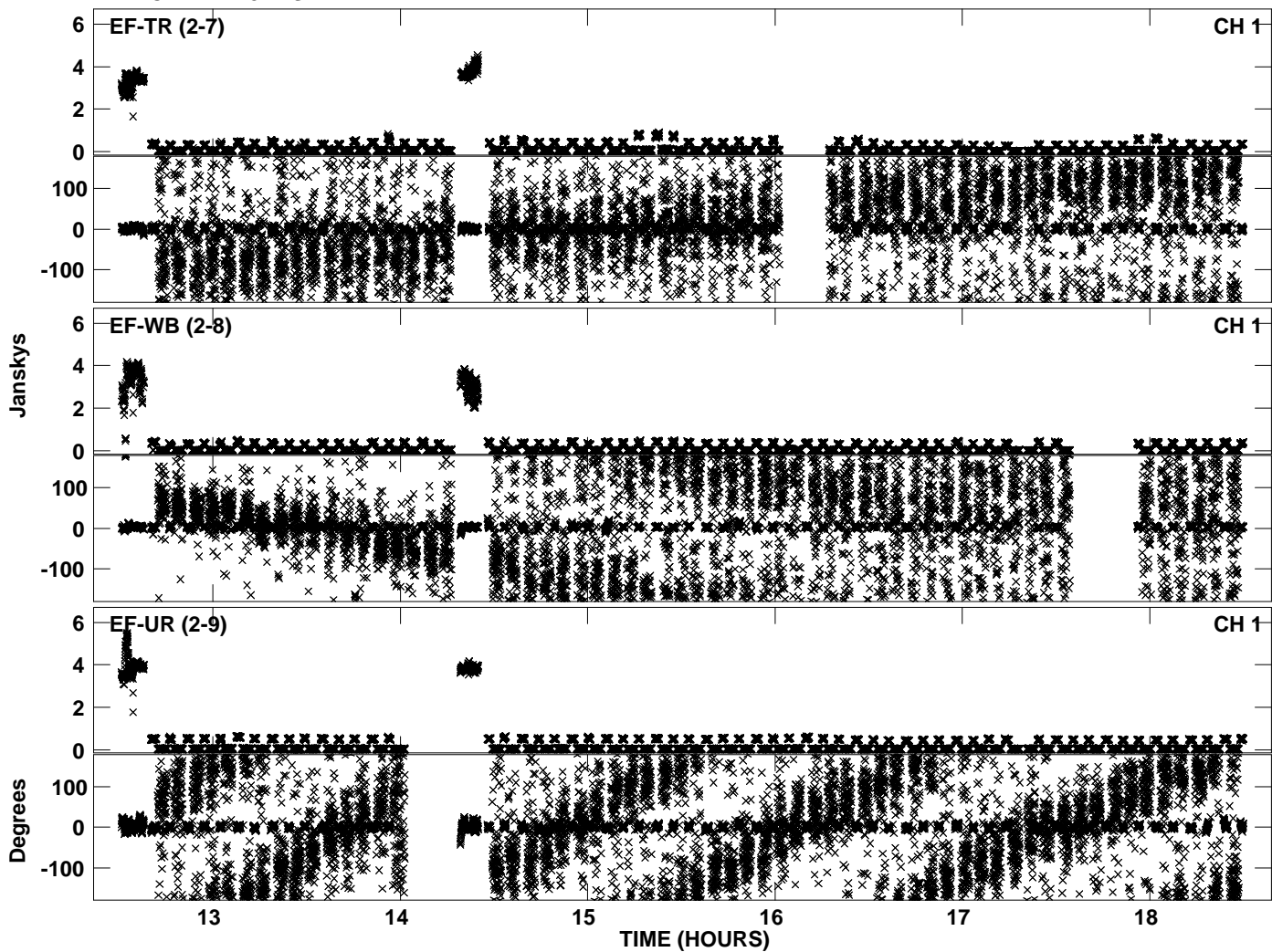
Plot file version 2 created 30-NOV-2010 12:58:39  
Amplitude andPhase vs Time for EP068B 2.UVDATA.1 Vect aver. CL # 3  
IF 1 CHAN 1 - 32 STK LL



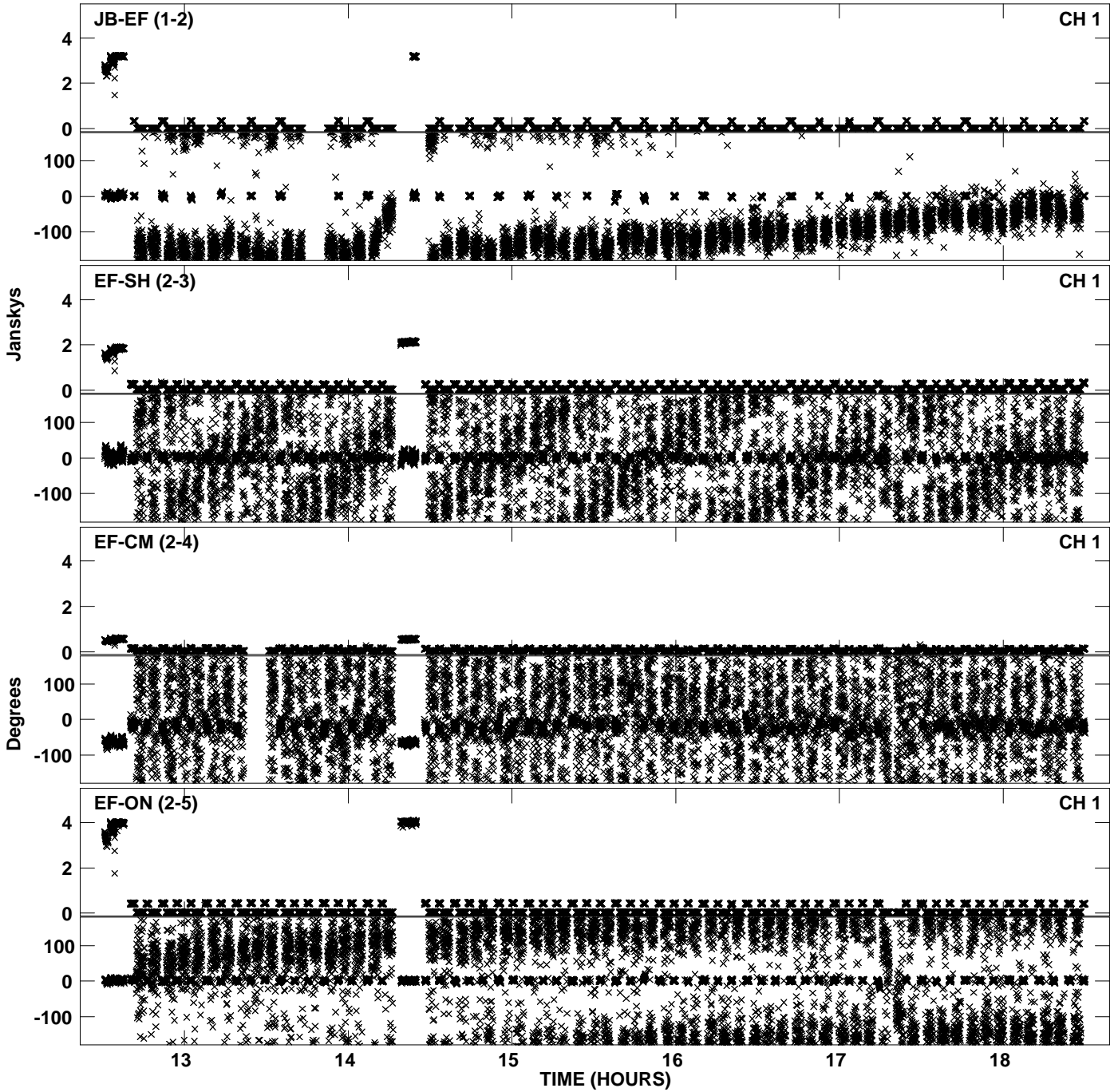
Plot file version 3 created 30-NOV-2010 12:58:46  
Amplitude andPhase vs Time for EP068B 2.UVDATA.1 Vect aver. CL # 3  
IF 2 CHAN 1 - 32 STK LL



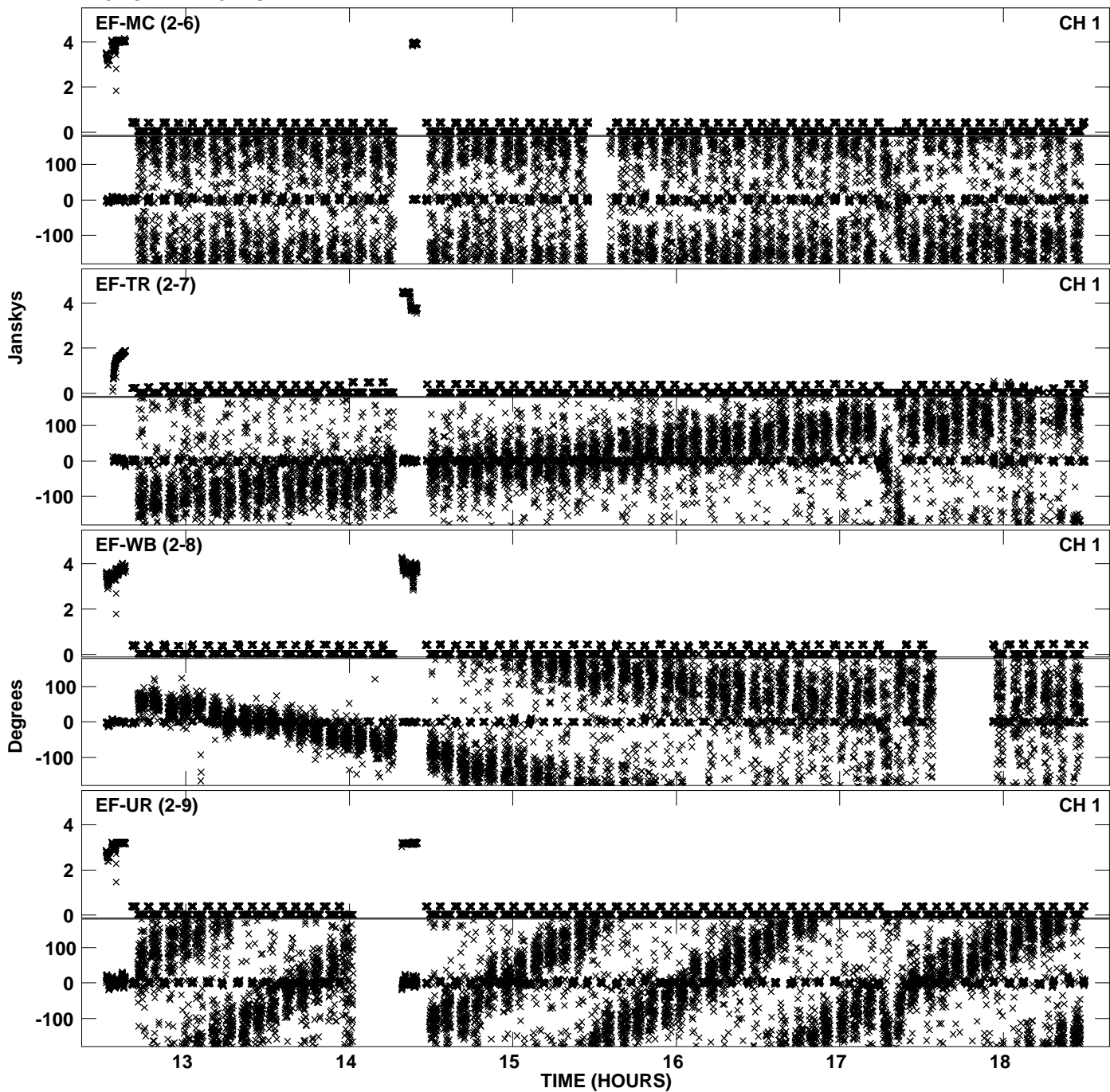
Plot file version 4 created 30-NOV-2010 12:58:47  
Amplitude andPhase vs Time for EP068B 2.UVDATA.1 Vect aver. CL # 3  
IF 2 CHAN 1 - 32 STK LL



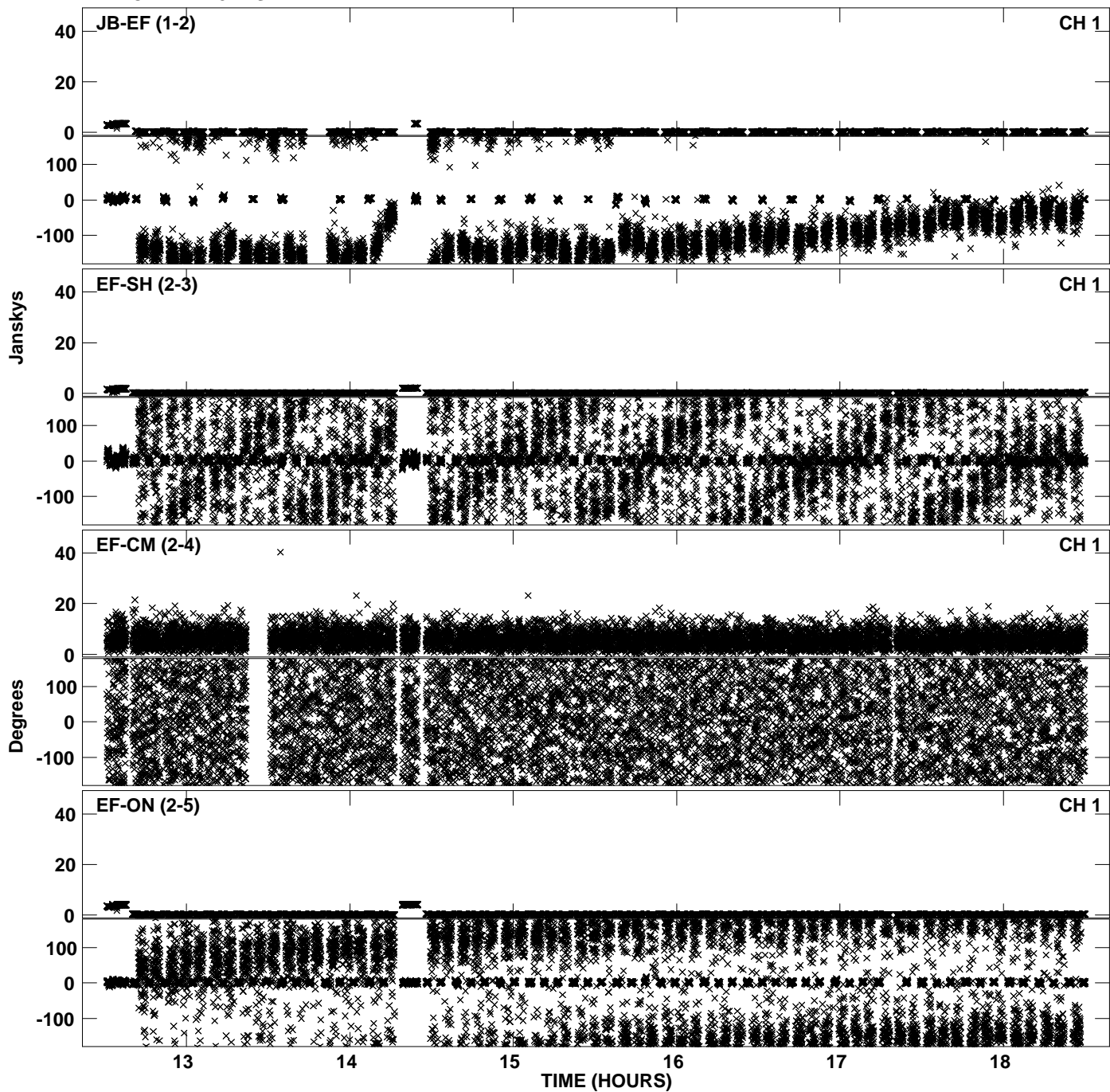
PLot file version 5 created 30-NOV-2010 12:58:55  
Amplitude andPhase vs Time for EP068B 2.UVDATA.1 Vect aver. CL # 3  
IF 3 CHAN 1 - 32 STK LL



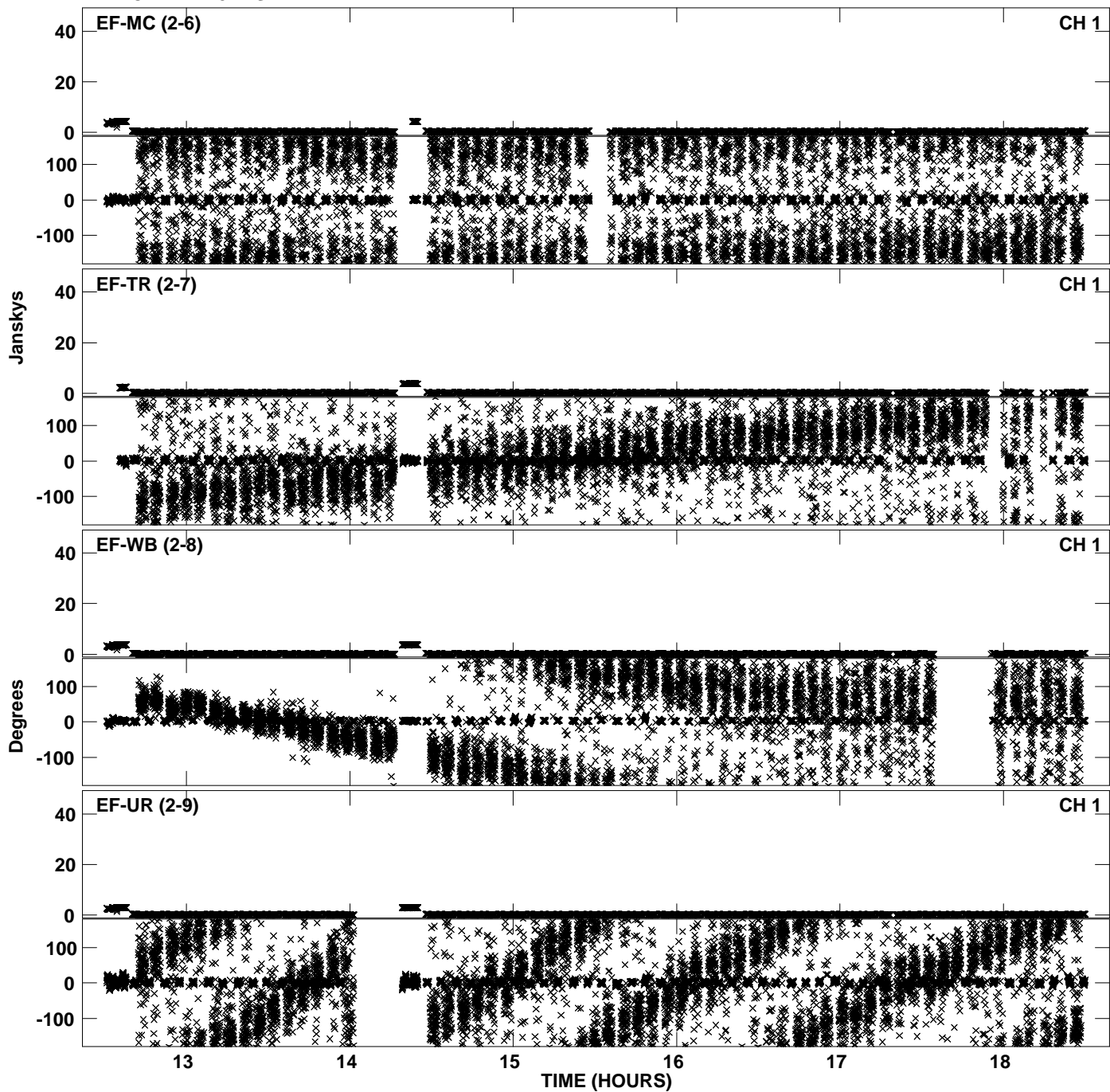
PLot file version 6 created 30-NOV-2010 12:58:55  
Amplitude andPhase vs Time for EP068B 2.UVDATA.1 Vect aver. CL # 3  
IF 3 CHAN 1 - 32 STK LL



Plot file version 7 created 30-NOV-2010 12:59:04  
Amplitude andPhase vs Time for EP068B 2.UVDATA.1 Vect aver. CL # 3  
IF 4 CHAN 1 - 32 STK LL

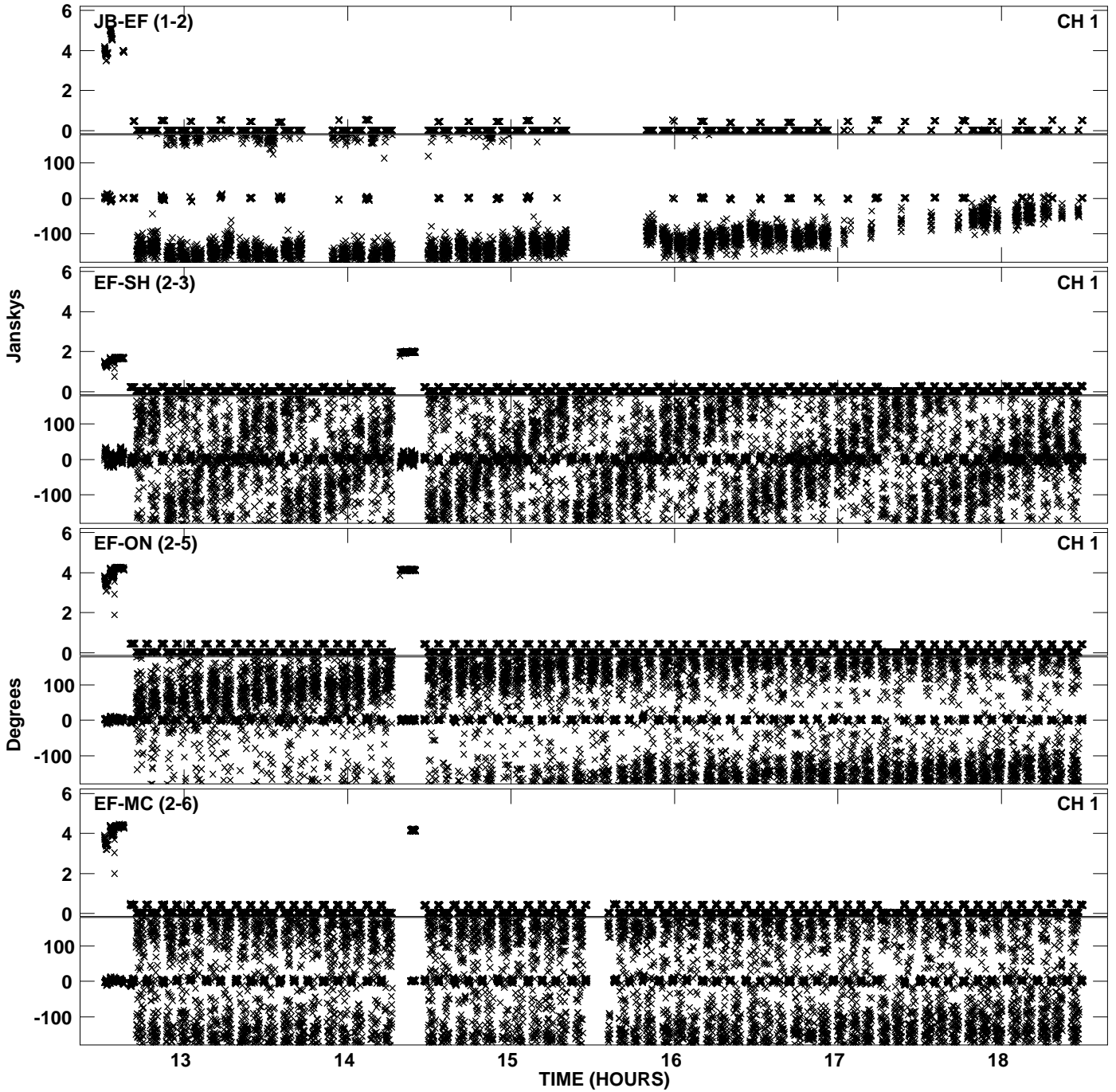


Plot file version 8 created 30-NOV-2010 12:59:04  
Amplitude andPhase vs Time for EP068B 2.UVDATA.1 Vect aver. CL # 3  
IF 4 CHAN 1 - 32 STK LL

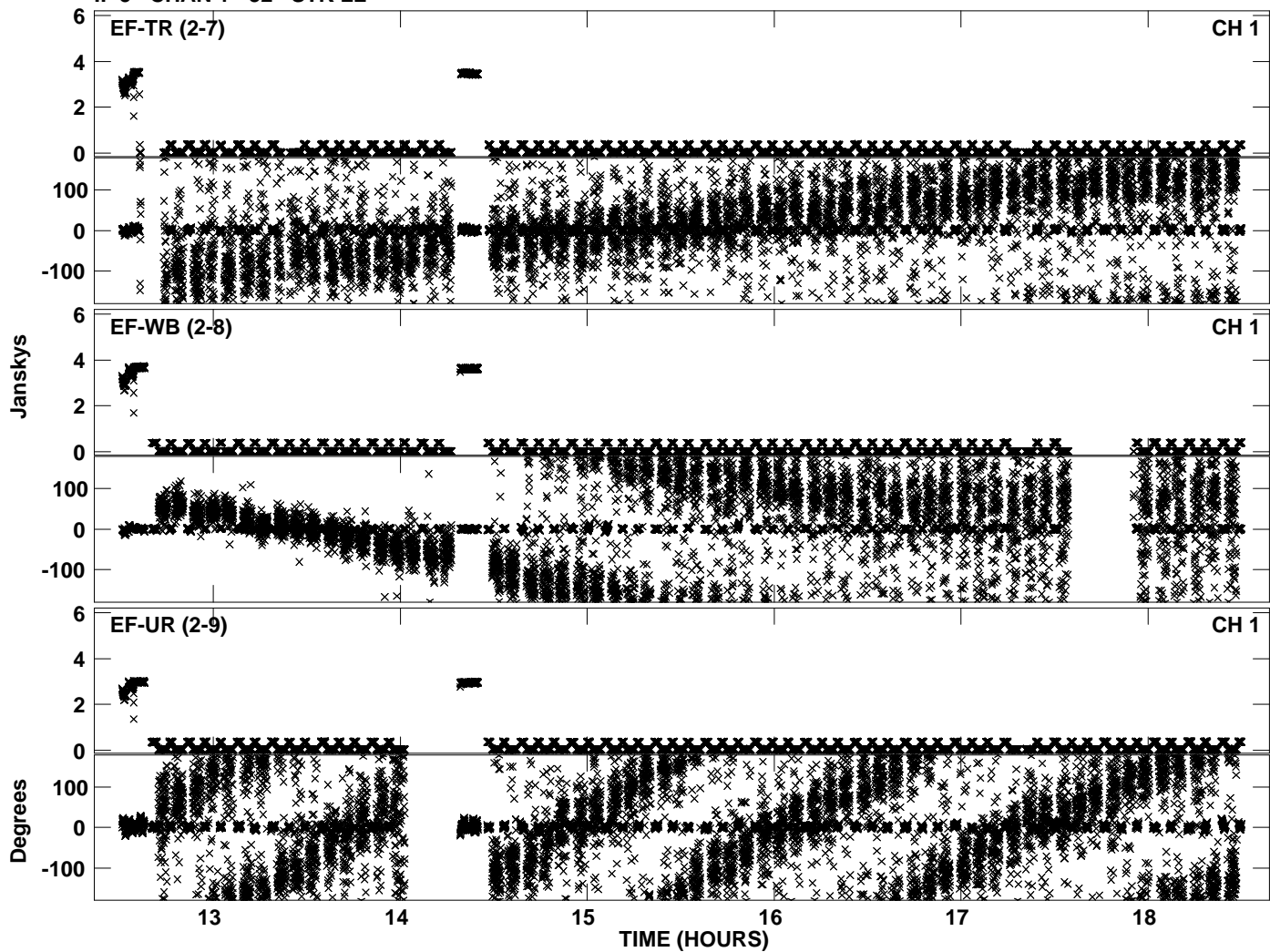




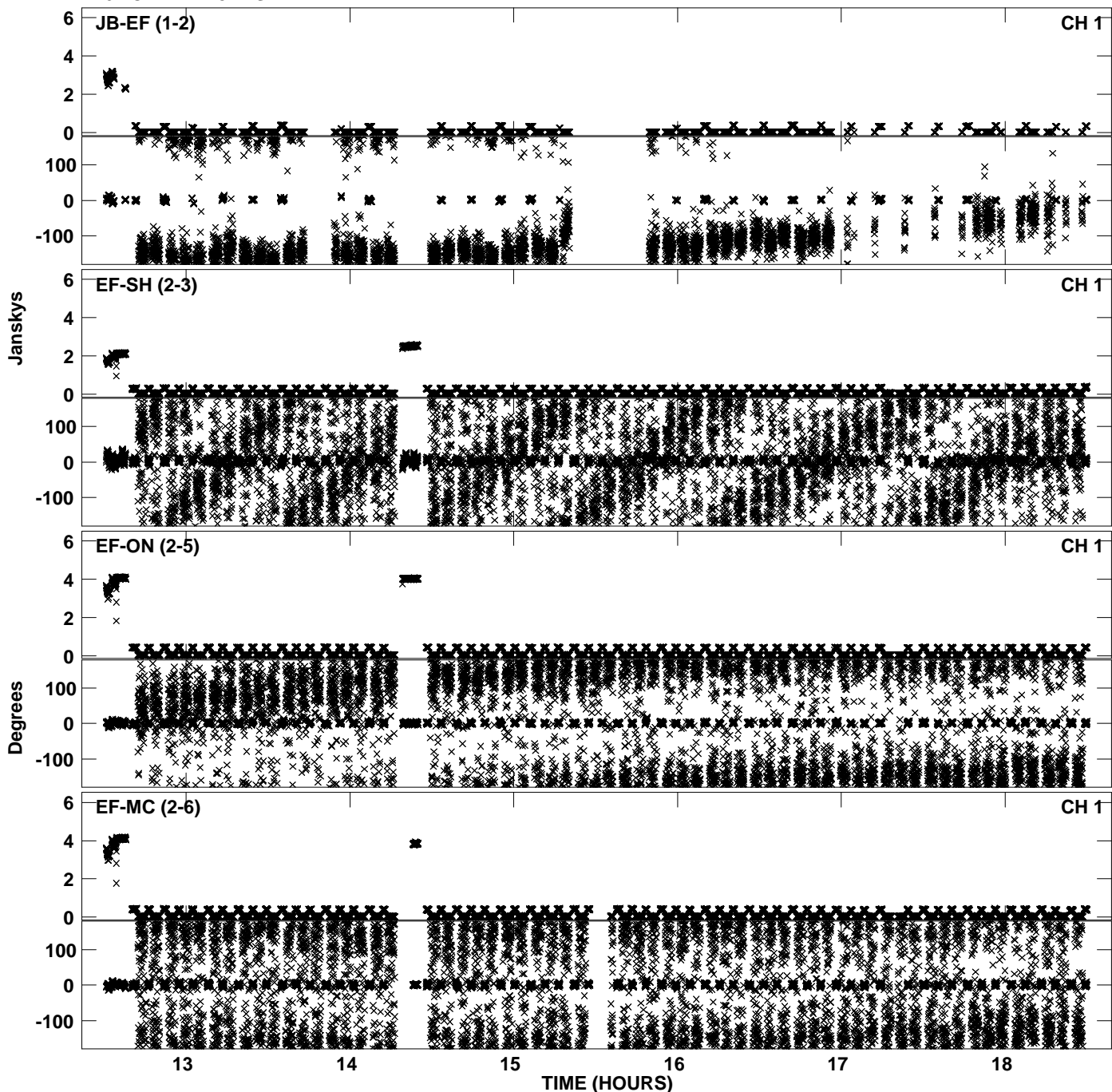
Plot file version 9 created 30-NOV-2010 12:59:12  
Amplitude andPhase vs Time for EP068B 2.UVDATA.1 Vect aver. CL # 3  
IF 5 CHAN 1 - 32 STK LL



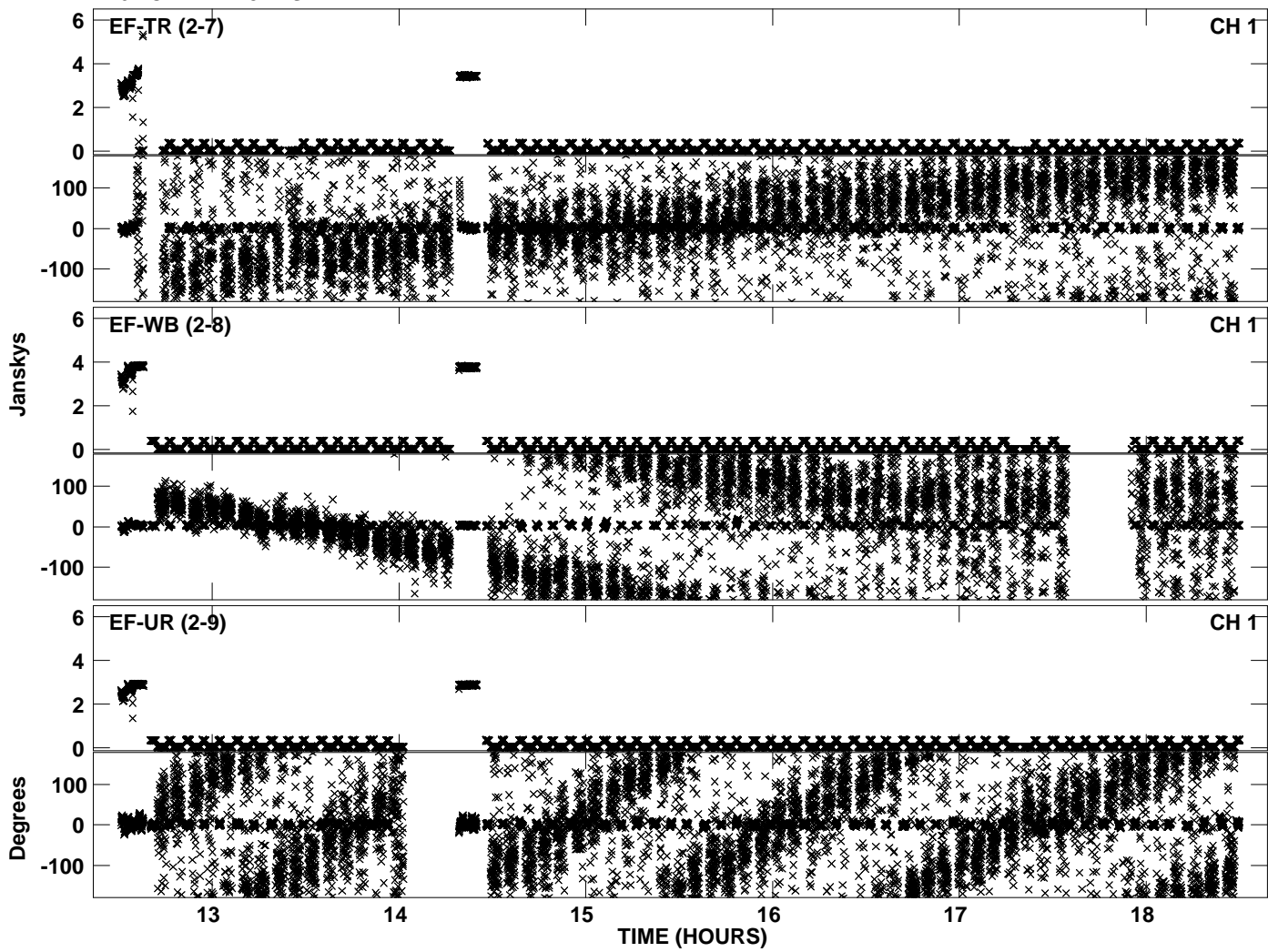
Plot file version 10 created 30-NOV-2010 12:59:13  
Amplitude andPhase vs Time for EP068B 2.UVDATA.1 Vect aver. CL # 3  
IF 5 CHAN 1 - 32 STK LL



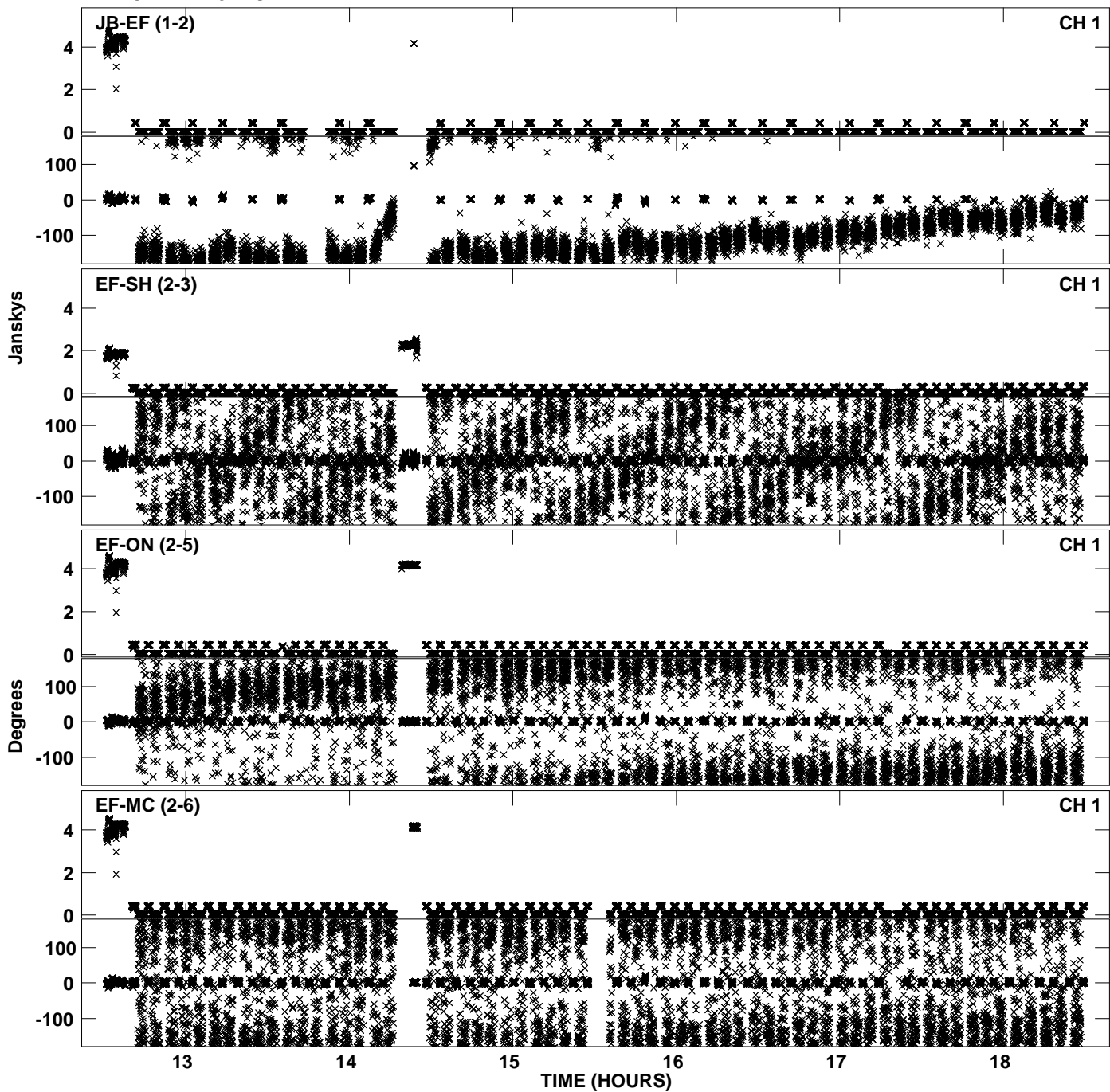
PLot file version 11 created 30-NOV-2010 12:59:21  
Amplitude andPhase vs Time for EP068B 2.UVDATA.1 Vect aver. CL # 3  
IF 6 CHAN 1 - 32 STK LL



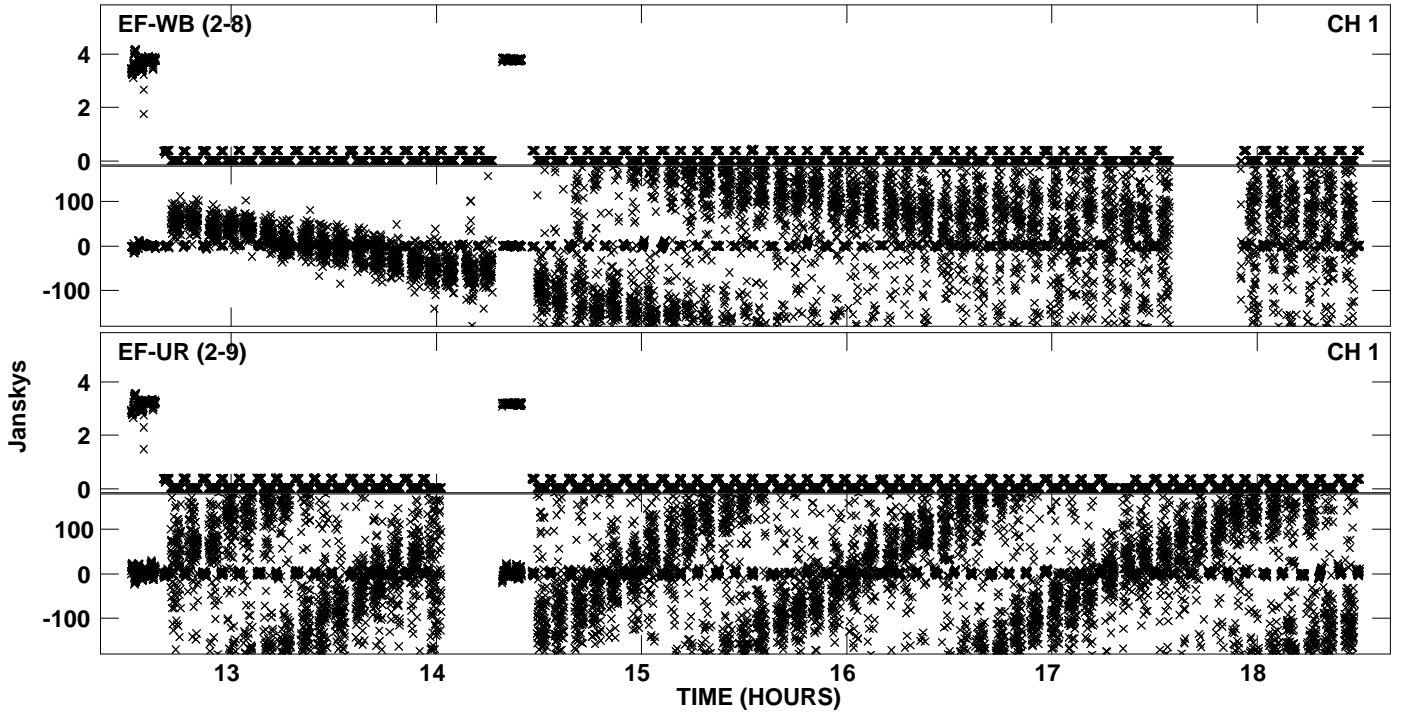
PLot file version 12 created 30-NOV-2010 12:59:21  
Amplitude andPhase vs Time for EP068B 2.UVDATA.1 Vect aver. CL # 3  
IF 6 CHAN 1 - 32 STK LL



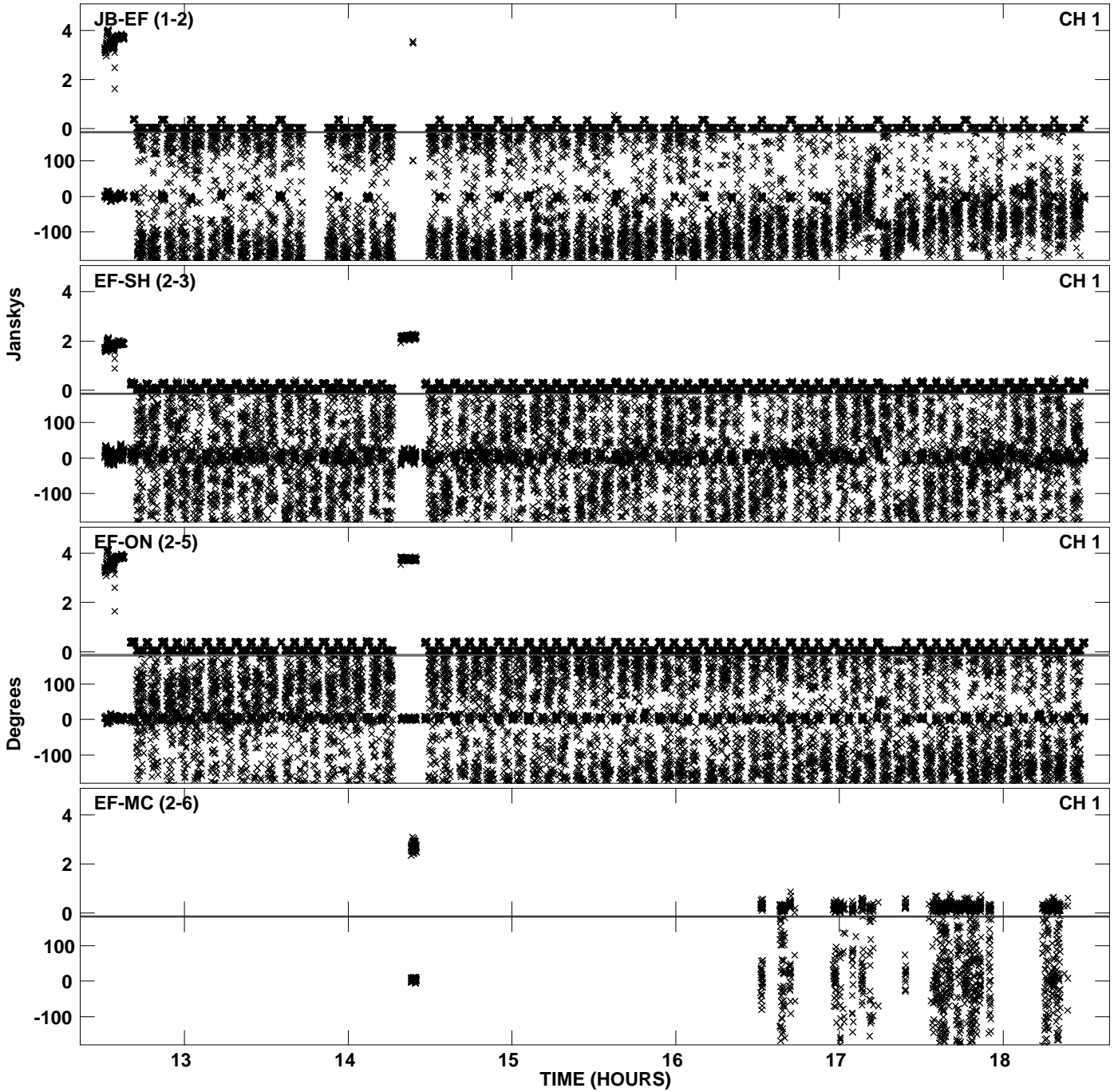
PLot file version 13 created 30-NOV-2010 12:59:28  
Amplitude andPhase vs Time for EP068B 2.UVDATA.1 Vect aver. CL # 3  
IF 7 CHAN 1 - 32 STK LL



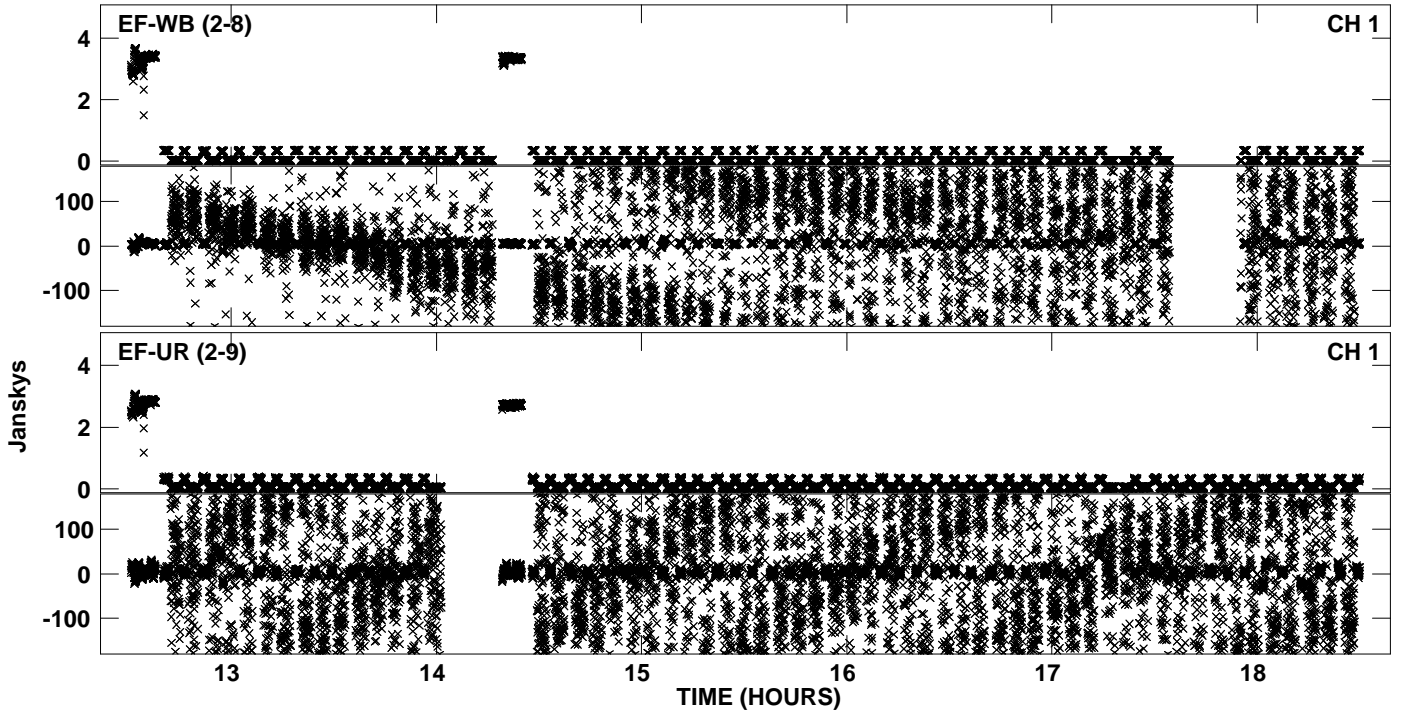
PLot file version 14 created 30-NOV-2010 12:59:29  
Amplitude andPhase vs Time for EP068B 2.UVDATA.1 Vect aver. CL # 3  
IF 7 CHAN 1 - 32 STK LL



Plot file version 15 created 30-NOV-2010 12:59:36  
Amplitude andPhase vs Time for EP068B 2.UVDATA.1 Vect aver. CL # 3  
IF 8 CHAN 1 - 32 STK LL

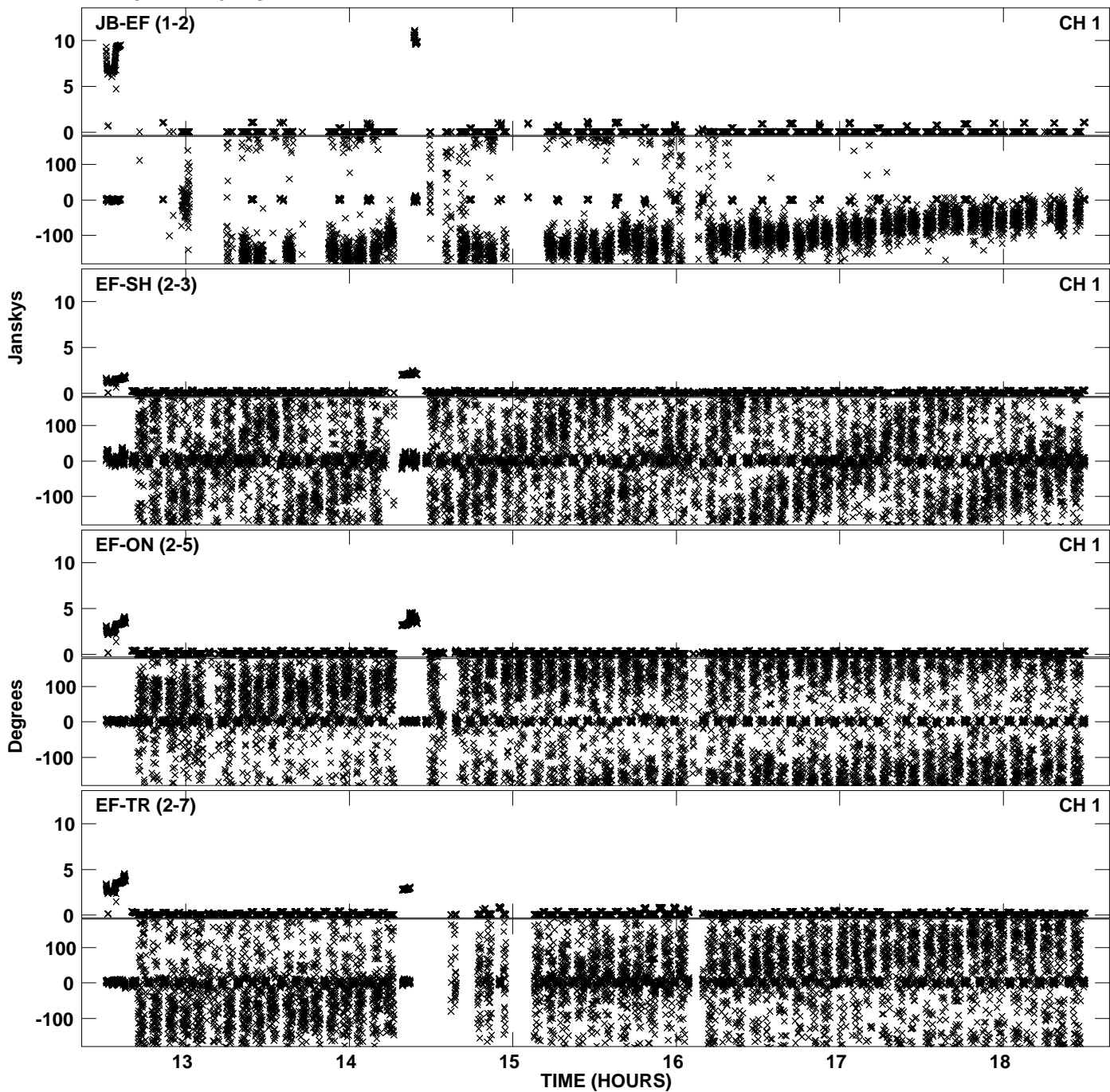


PLot file version 16 created 30-NOV-2010 12:59:36  
Amplitude andPhase vs Time for EP068B 2.UVDATA.1 Vect aver. CL # 3  
IF 8 CHAN 1 - 32 STK LL

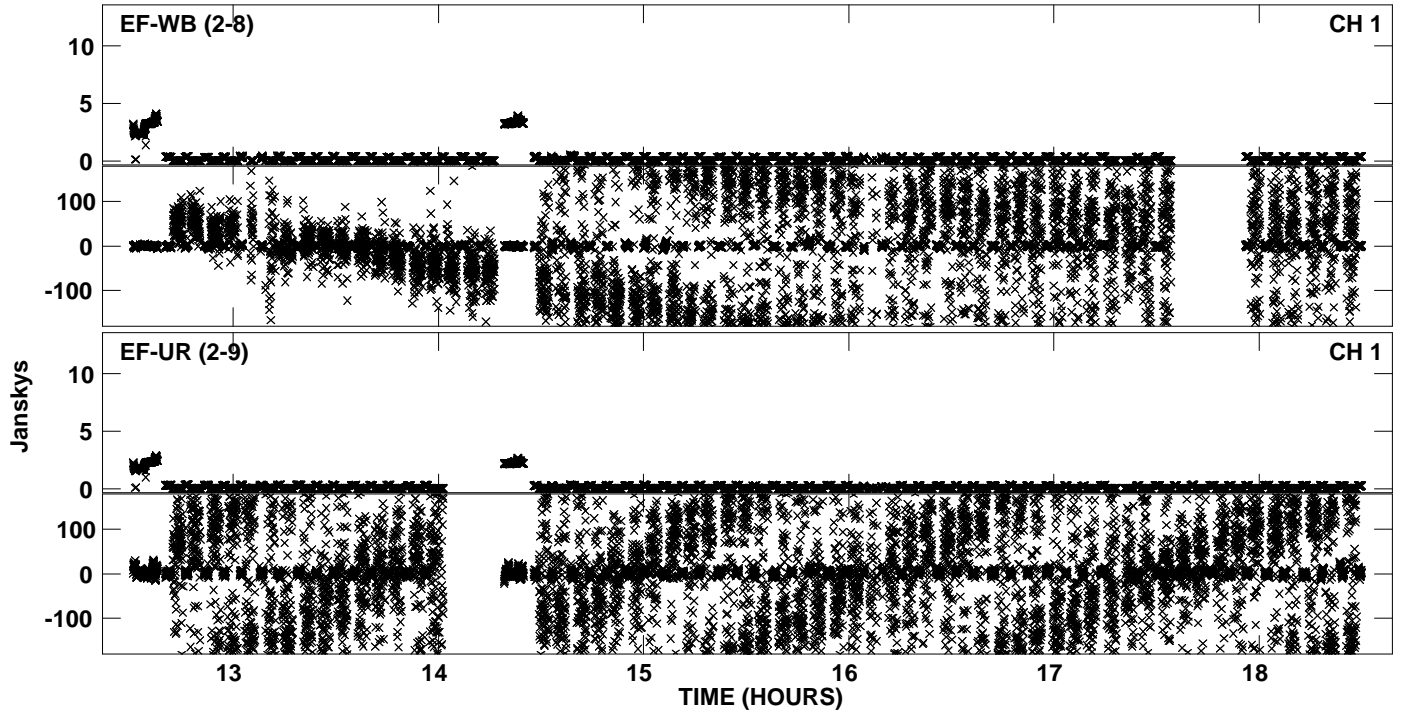




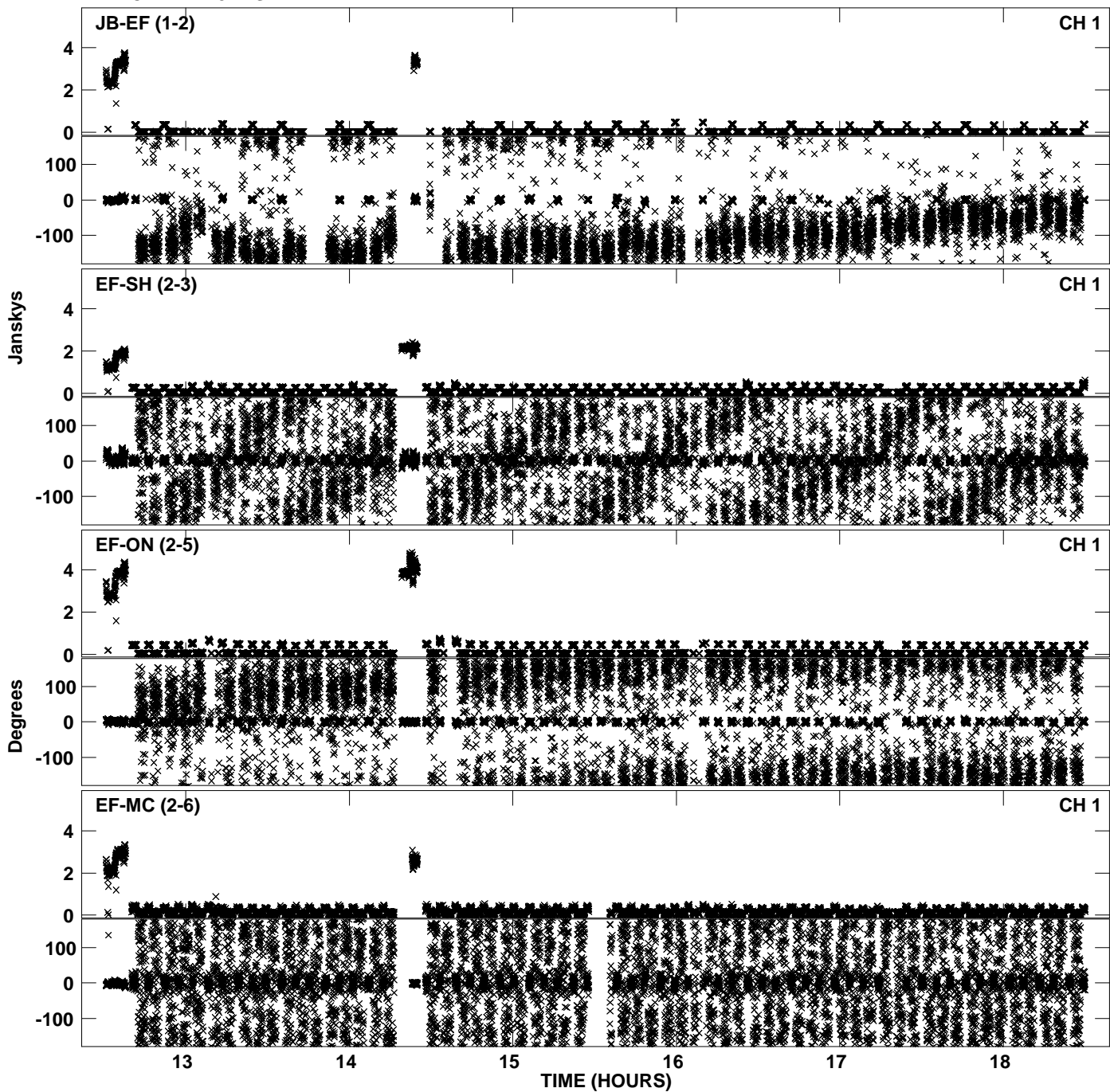
Plot file version 17 created 30-NOV-2010 12:59:43  
Amplitude andPhase vs Time for EP068B 2.UVDATA.1 Vect aver. CL # 3  
IF 1 CHAN 1 - 32 STK RR



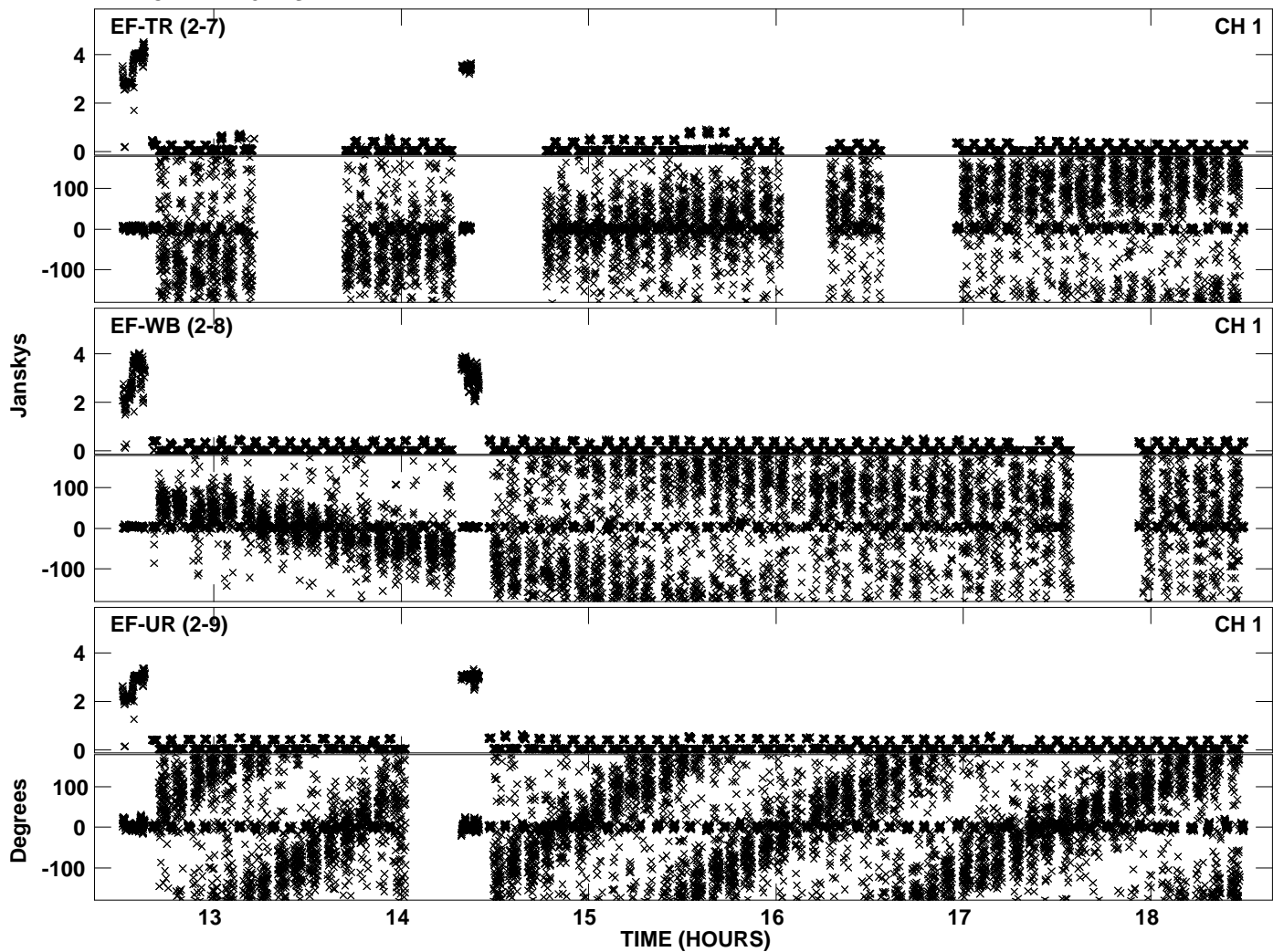
PLot file version 18 created 30-NOV-2010 12:59:43  
Amplitude andPhase vs Time for EP068B 2.UVDATA.1 Vect aver. CL # 3  
IF 1 CHAN 1 - 32 STK RR



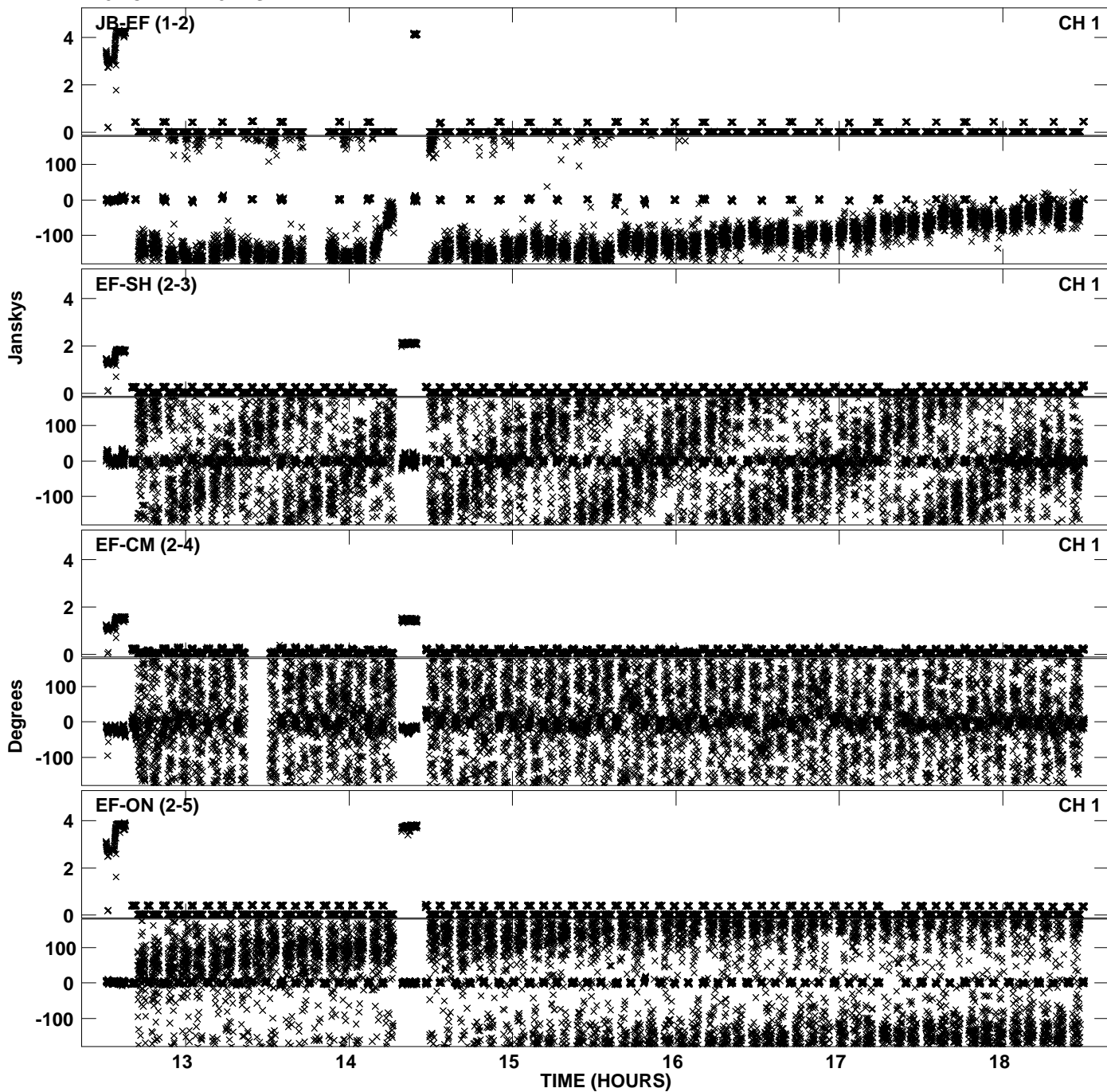
Plot file version 19 created 30-NOV-2010 12:59:50  
Amplitude andPhase vs Time for EP068B 2.UVDATA.1 Vect aver. CL # 3  
IF 2 CHAN 1 - 32 STK RR



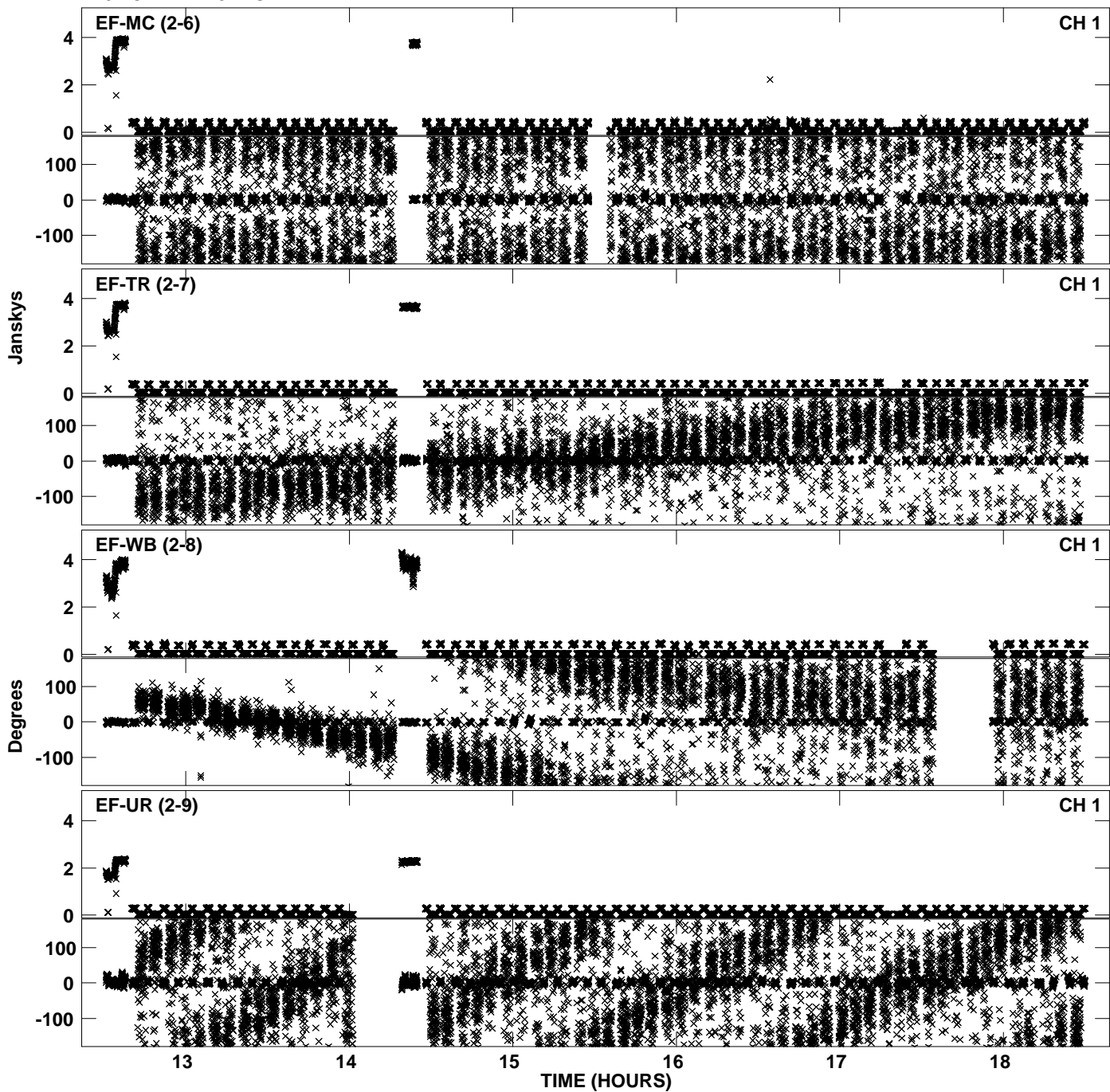
PLot file version 20 created 30-NOV-2010 12:59:50  
Amplitude andPhase vs Time for EP068B 2.UVDATA.1 Vect aver. CL # 3  
IF 2 CHAN 1 - 32 STK RR



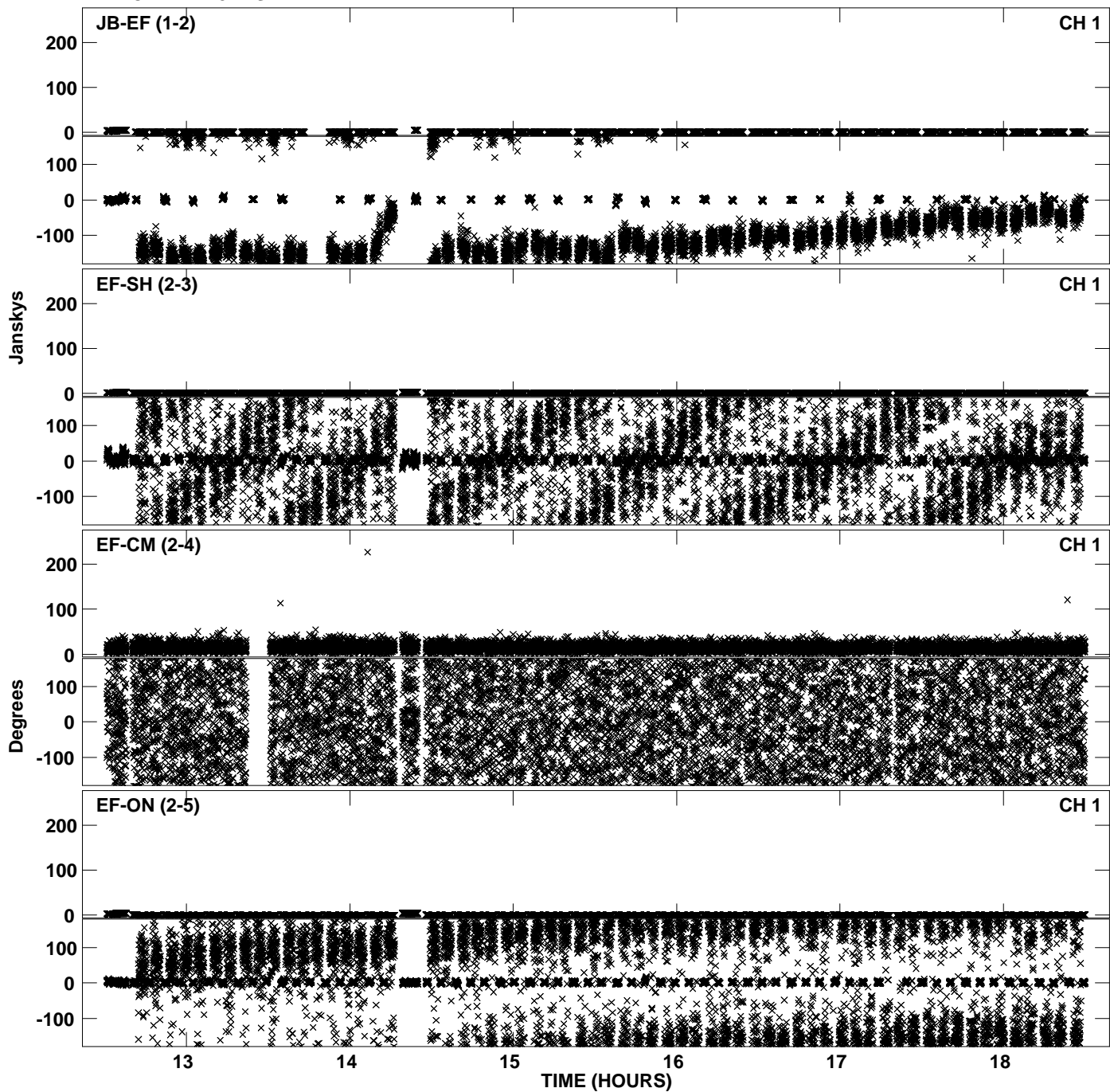
Plot file version 21 created 30-NOV-2010 12:59:58  
Amplitude andPhase vs Time for EP068B 2.UVDATA.1 Vect aver. CL # 3  
IF 3 CHAN 1 - 32 STK RR



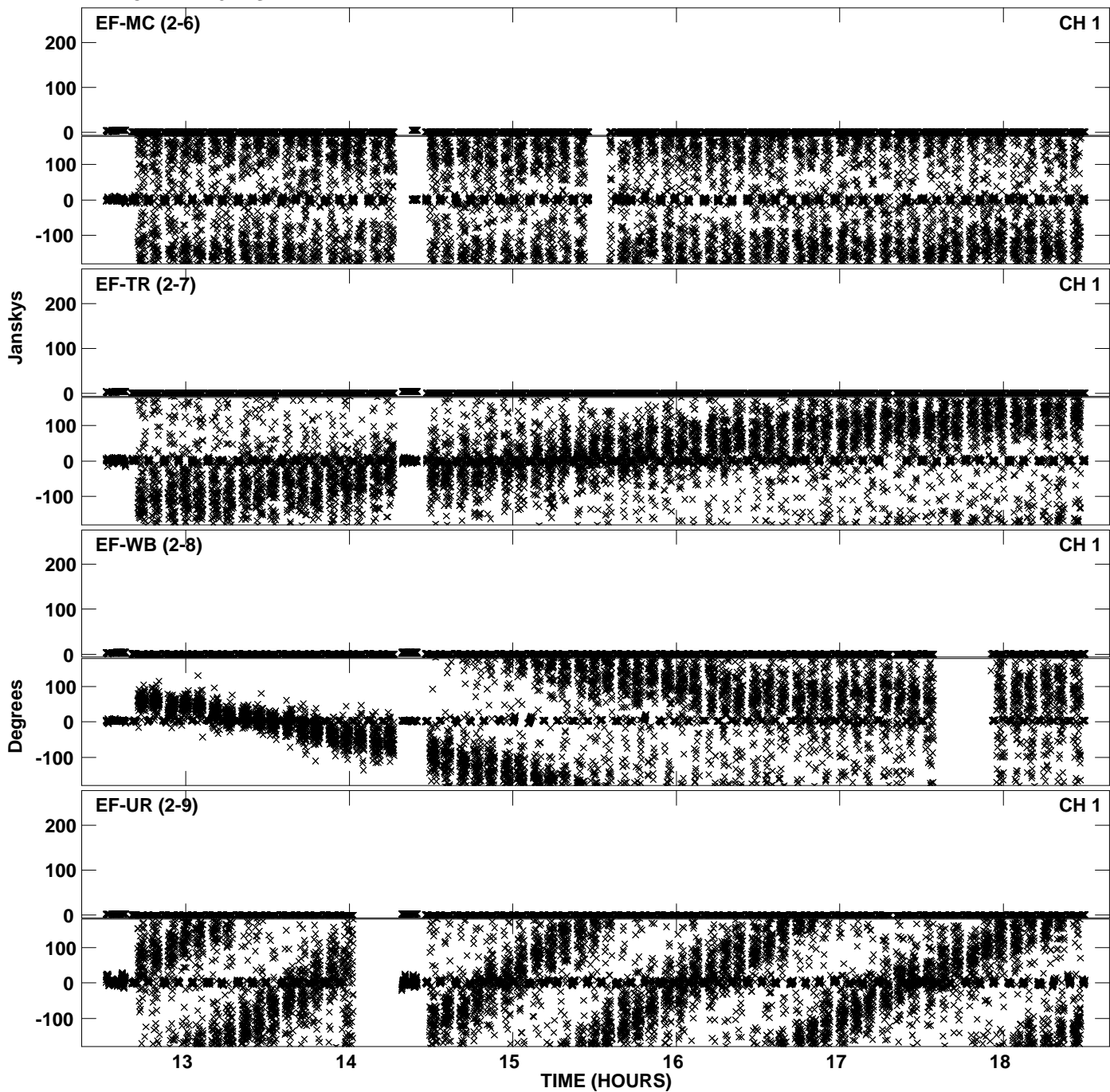
Plot file version 22 created 30-NOV-2010 12:59:58  
Amplitude andPhase vs Time for EP068B 2.UVDATA.1 Vect aver. CL # 3  
IF 3 CHAN 1 - 32 STK RR



Plot file version 23 created 30-NOV-2010 13:00:07  
Amplitude andPhase vs Time for EP068B 2.UVDATA.1 Vect aver. CL # 3  
IF 4 CHAN 1 - 32 STK RR

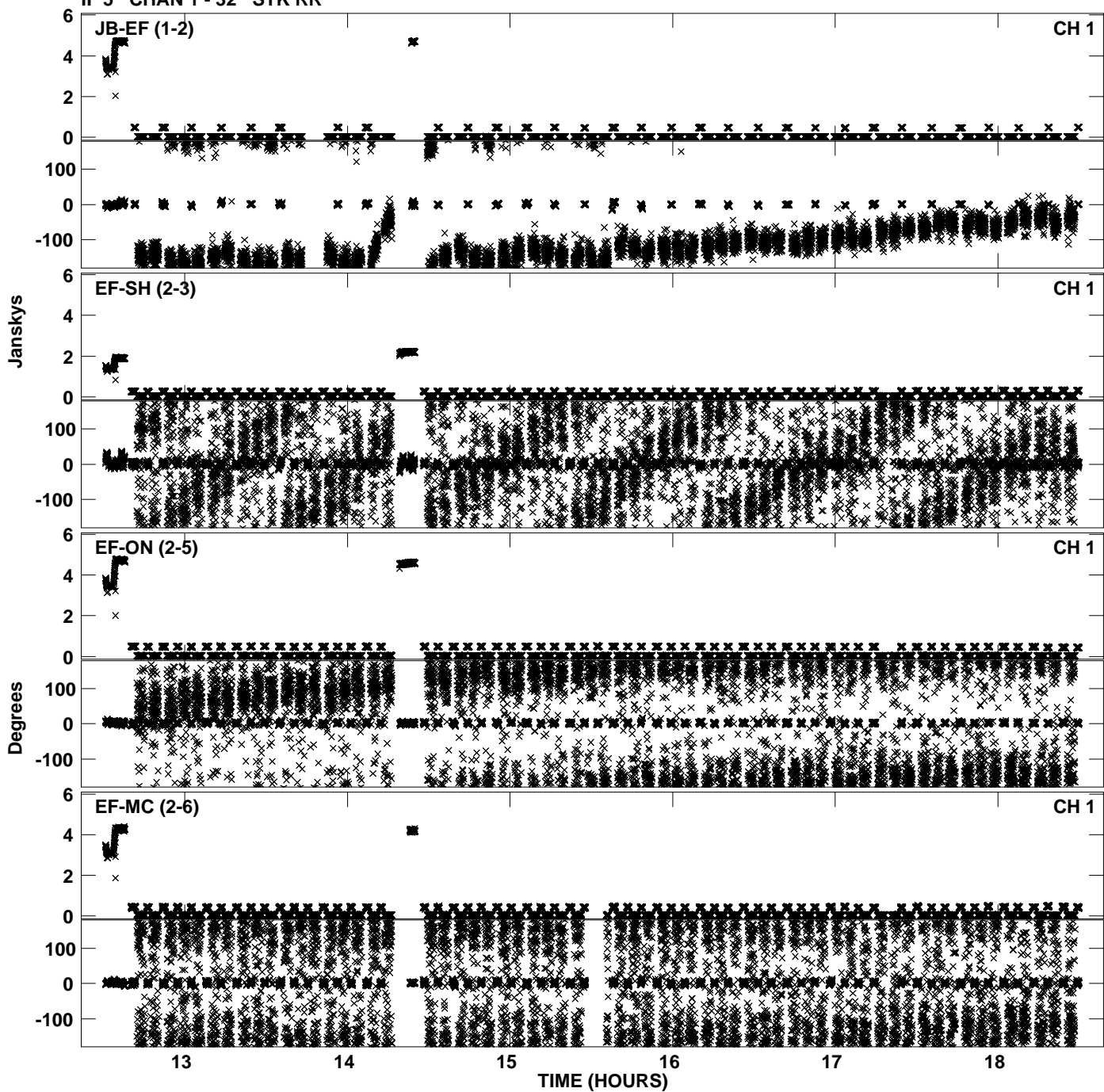


PLot file version 24 created 30-NOV-2010 13:00:07  
Amplitude andPhase vs Time for EP068B 2.UVDATA.1 Vect aver. CL # 3  
IF 4 CHAN 1 - 32 STK RR

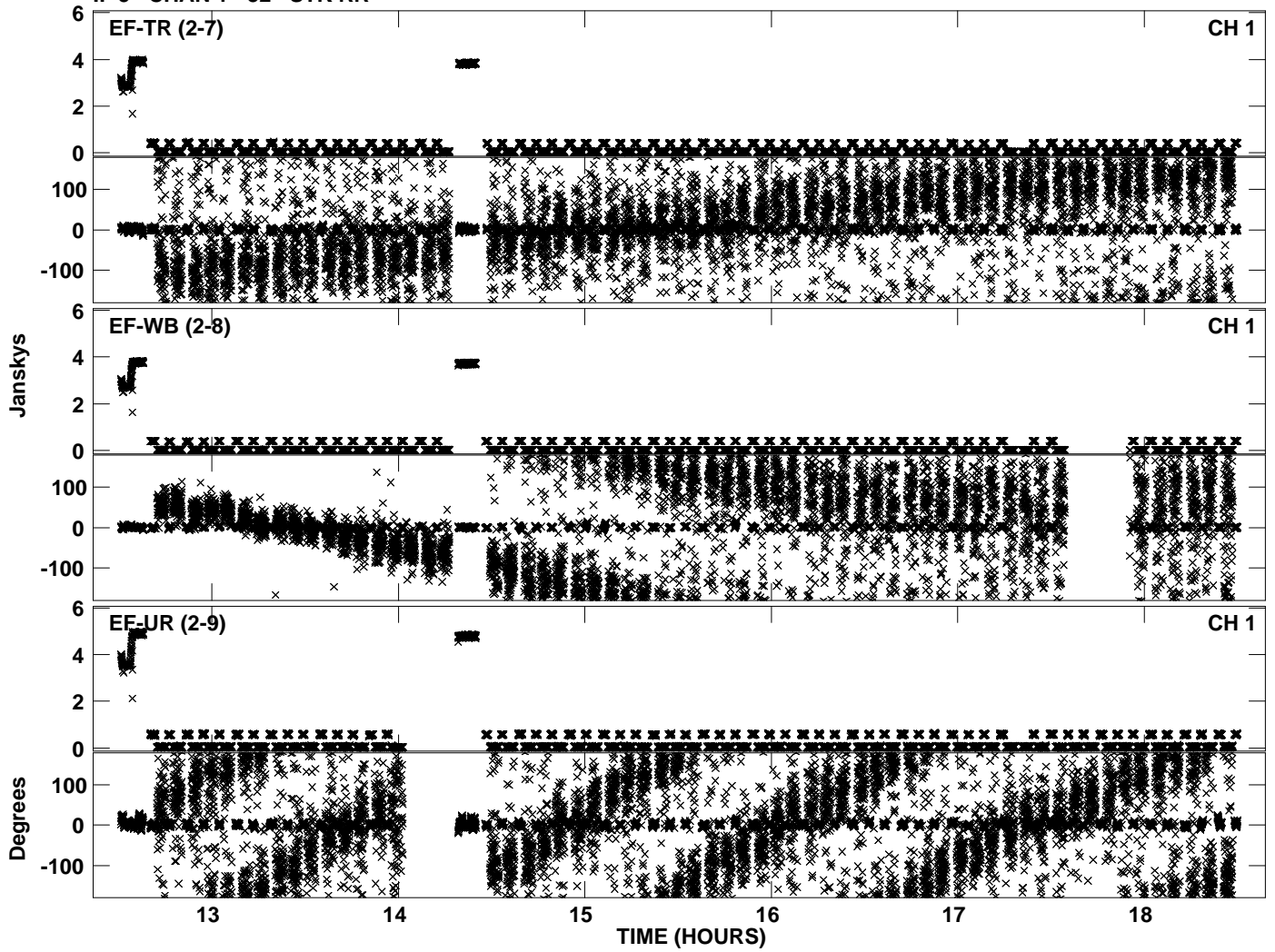




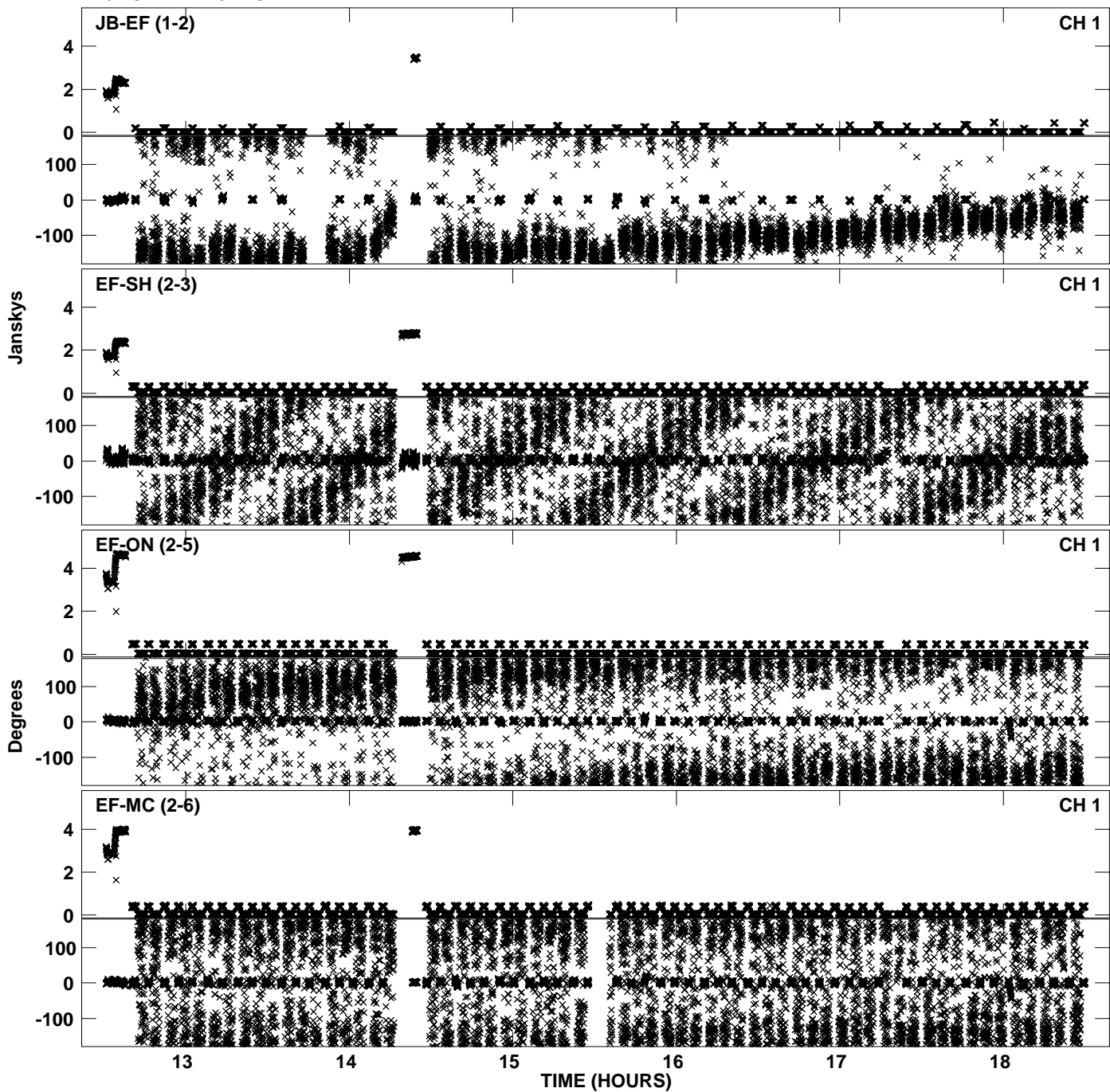
Plot file version 25 created 30-NOV-2010 13:00:14  
Amplitude and Phase vs Time for EP068B 2.UVDATA.1 Vect aver. CL # 3  
IF 5 CHAN 1 - 32 STK RR



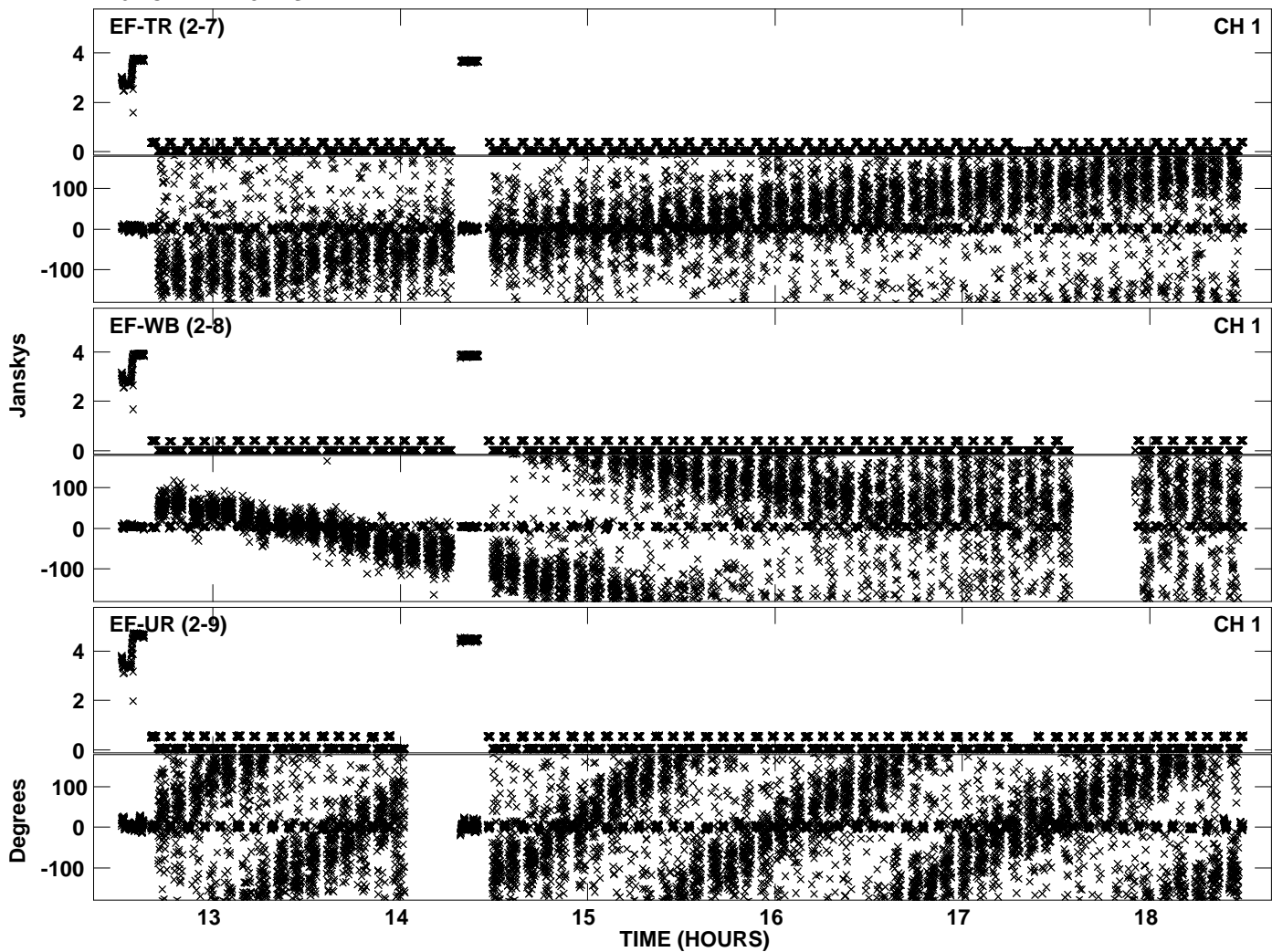
PLot file version 26 created 30-NOV-2010 13:00:15  
Amplitude andPhase vs Time for EP068B 2.UVDATA.1 Vect aver. CL # 3  
IF 5 CHAN 1 - 32 STK RR



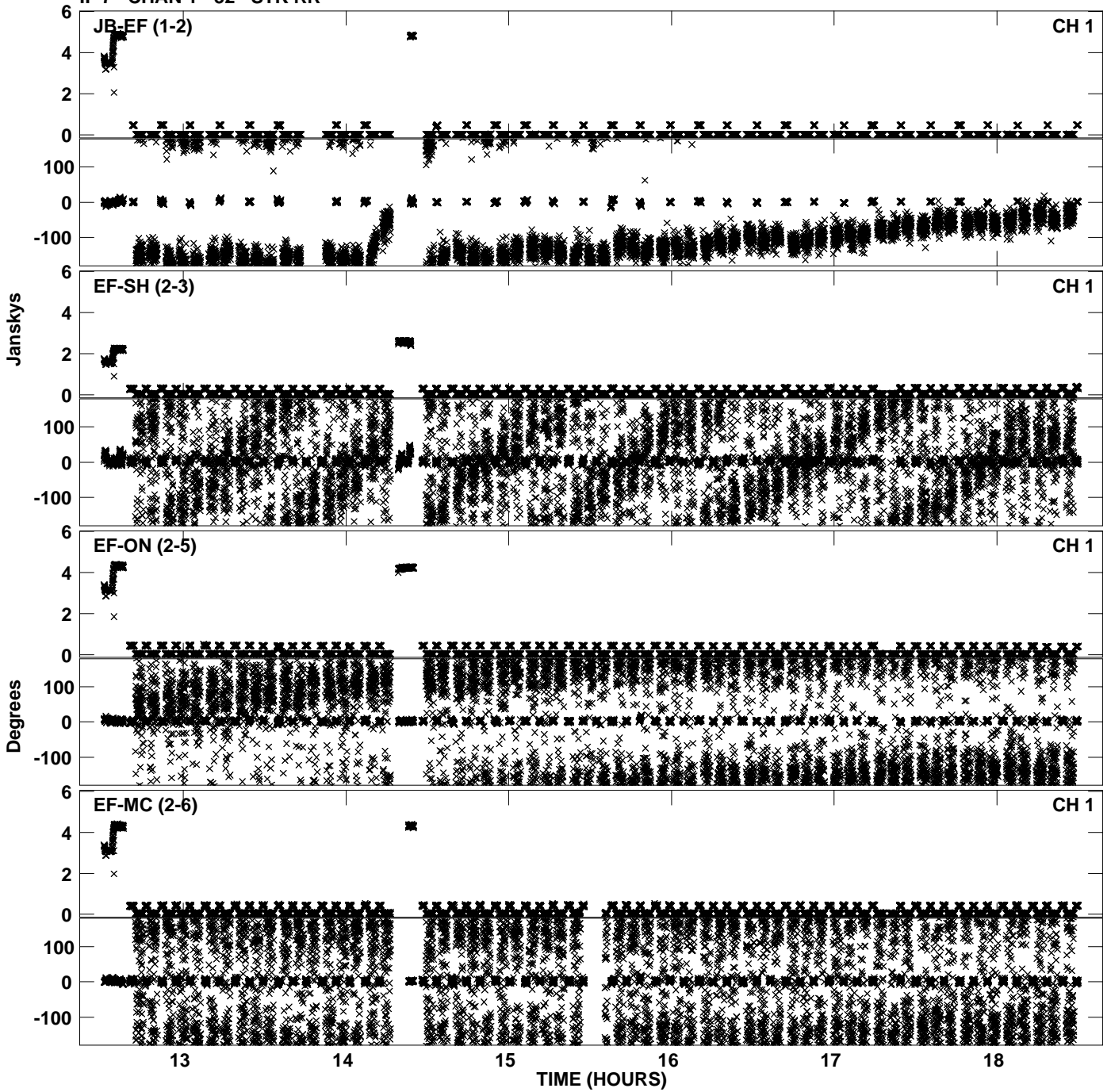
PLot file version 27 created 30-NOV-2010 13:00:22  
Amplitude andPhase vs Time for EP068B 2.UVDATA.1 Vect aver. CL # 3  
IF 6 CHAN 1 - 32 STK RR



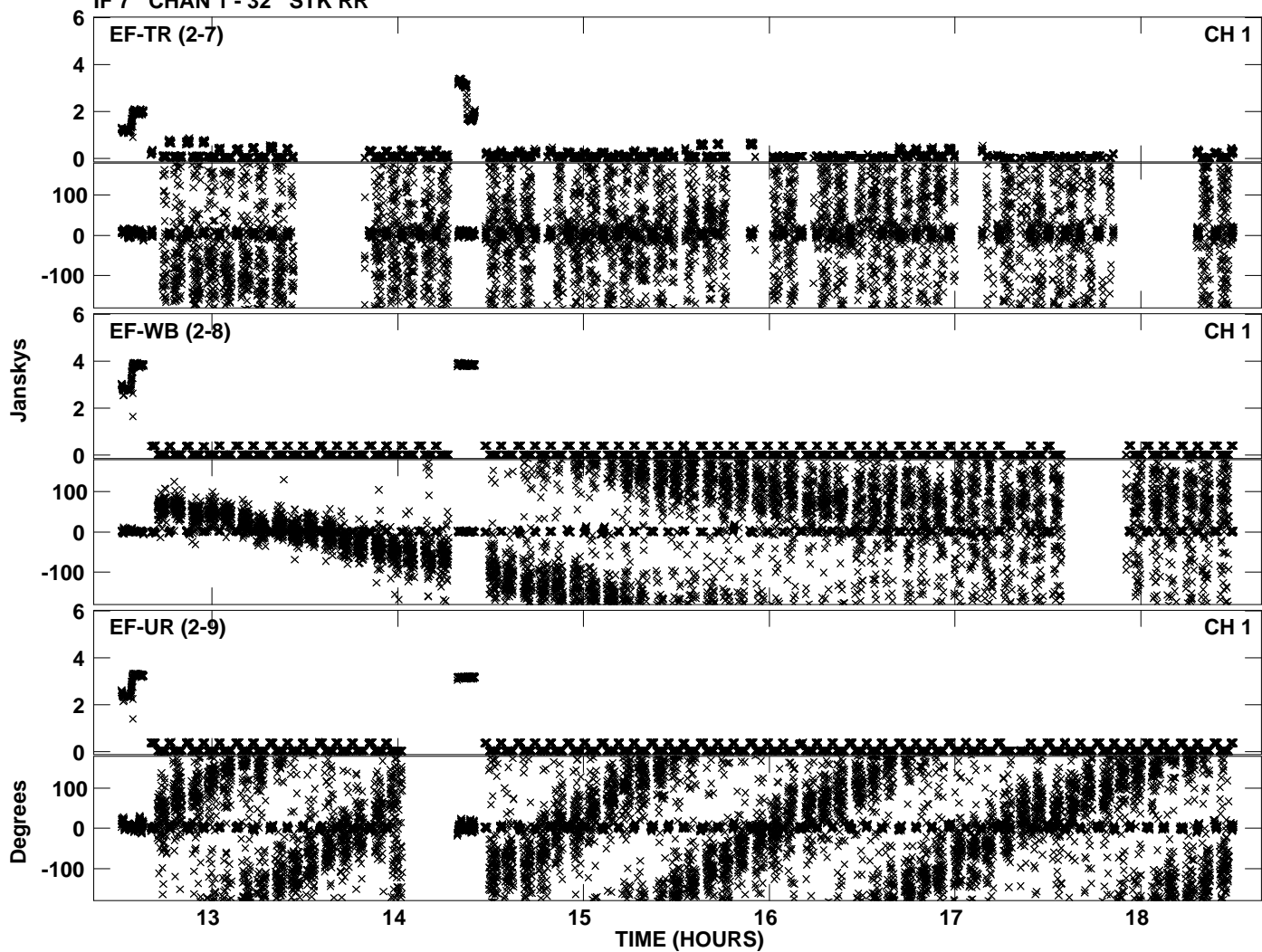
PLot file version 28 created 30-NOV-2010 13:00:22  
Amplitude andPhase vs Time for EP068B 2.UVDATA.1 Vect aver. CL # 3  
IF 6 CHAN 1 - 32 STK RR



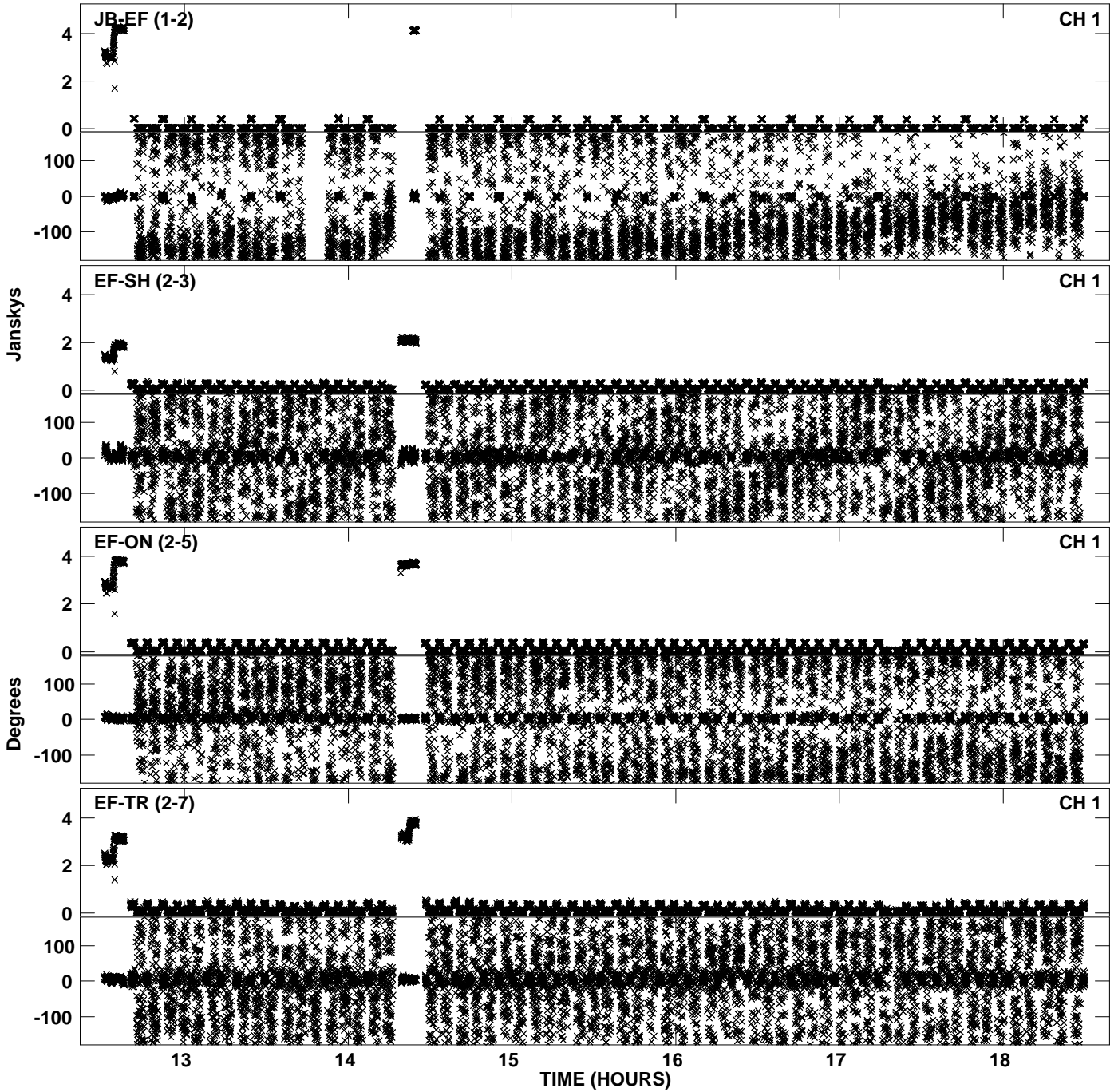
Plot file version 29 created 30-NOV-2010 13:00:30  
Amplitude andPhase vs Time for EP068B 2.UVDATA.1 Vect aver. CL # 3  
IF 7 CHAN 1 - 32 STK RR



PLot file version 30 created 30-NOV-2010 13:00:30  
Amplitude andPhase vs Time for EP068B 2.UVDATA.1 Vect aver. CL # 3  
IF 7 CHAN 1 - 32 STK RR



PLot file version 31 created 30-NOV-2010 13:00:37  
Amplitude andPhase vs Time for EP068B 2.UVDATA.1 Vect aver. CL # 3  
IF 8 CHAN 1 - 32 STK RR



PLot file version 32 created 30-NOV-2010 13:00:37  
Amplitude andPhase vs Time for EP068B 2.UVDATA.1 Vect aver. CL # 3  
IF 8 CHAN 1 - 32 STK RR

