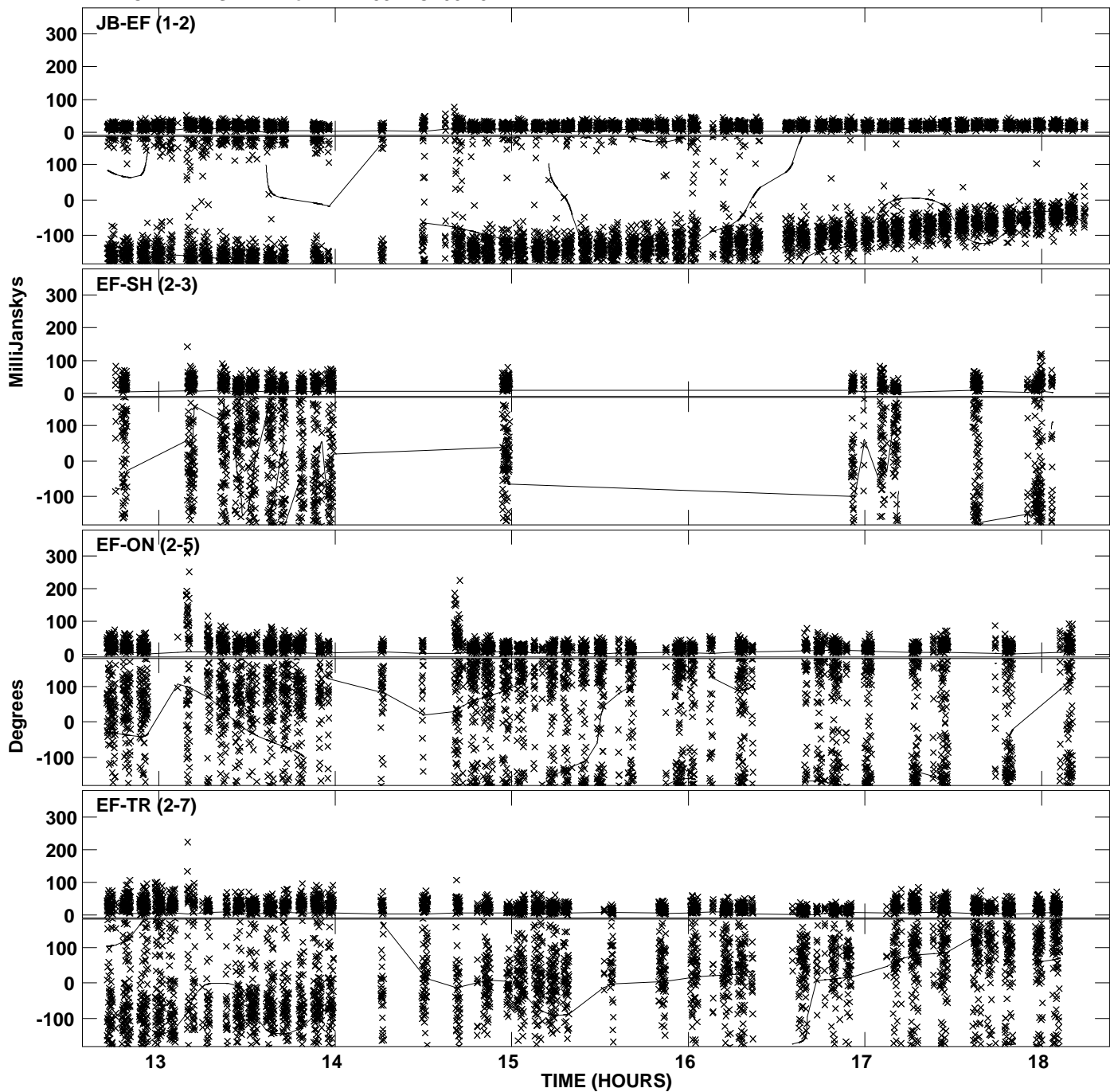
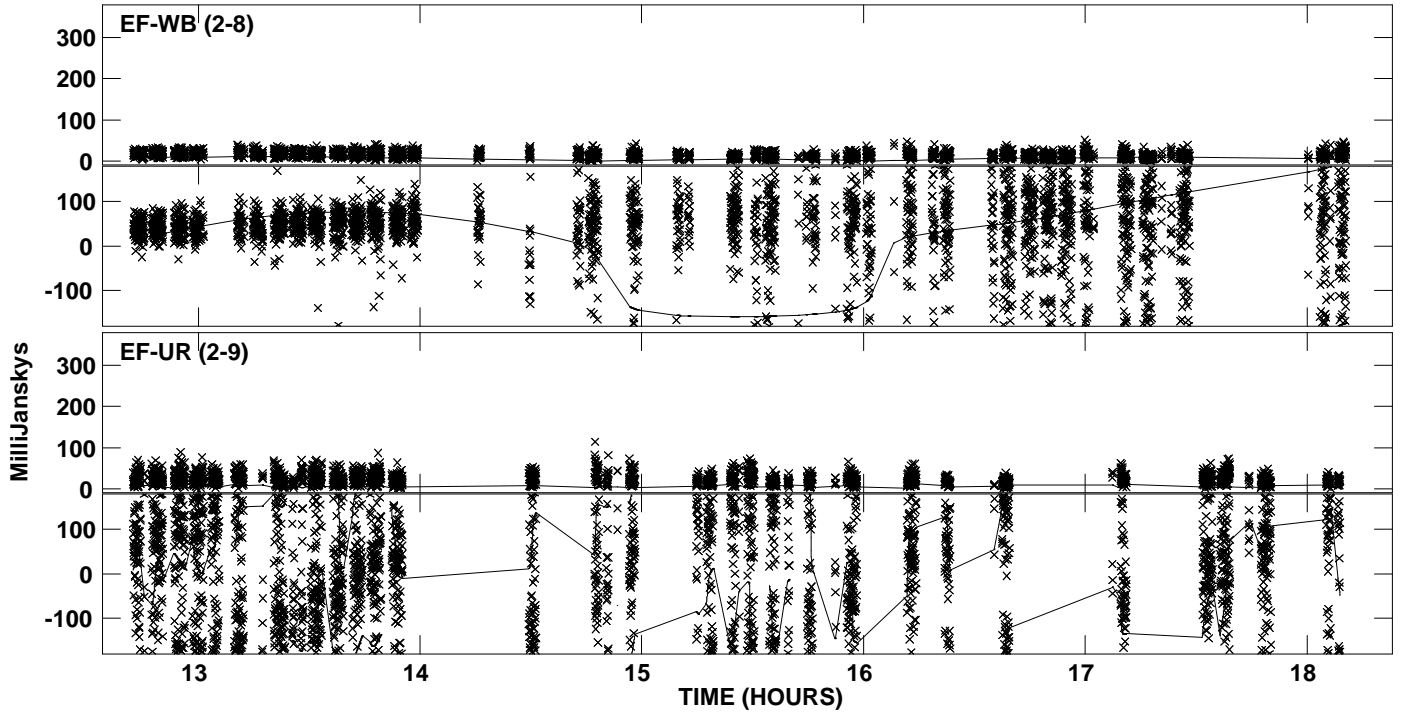


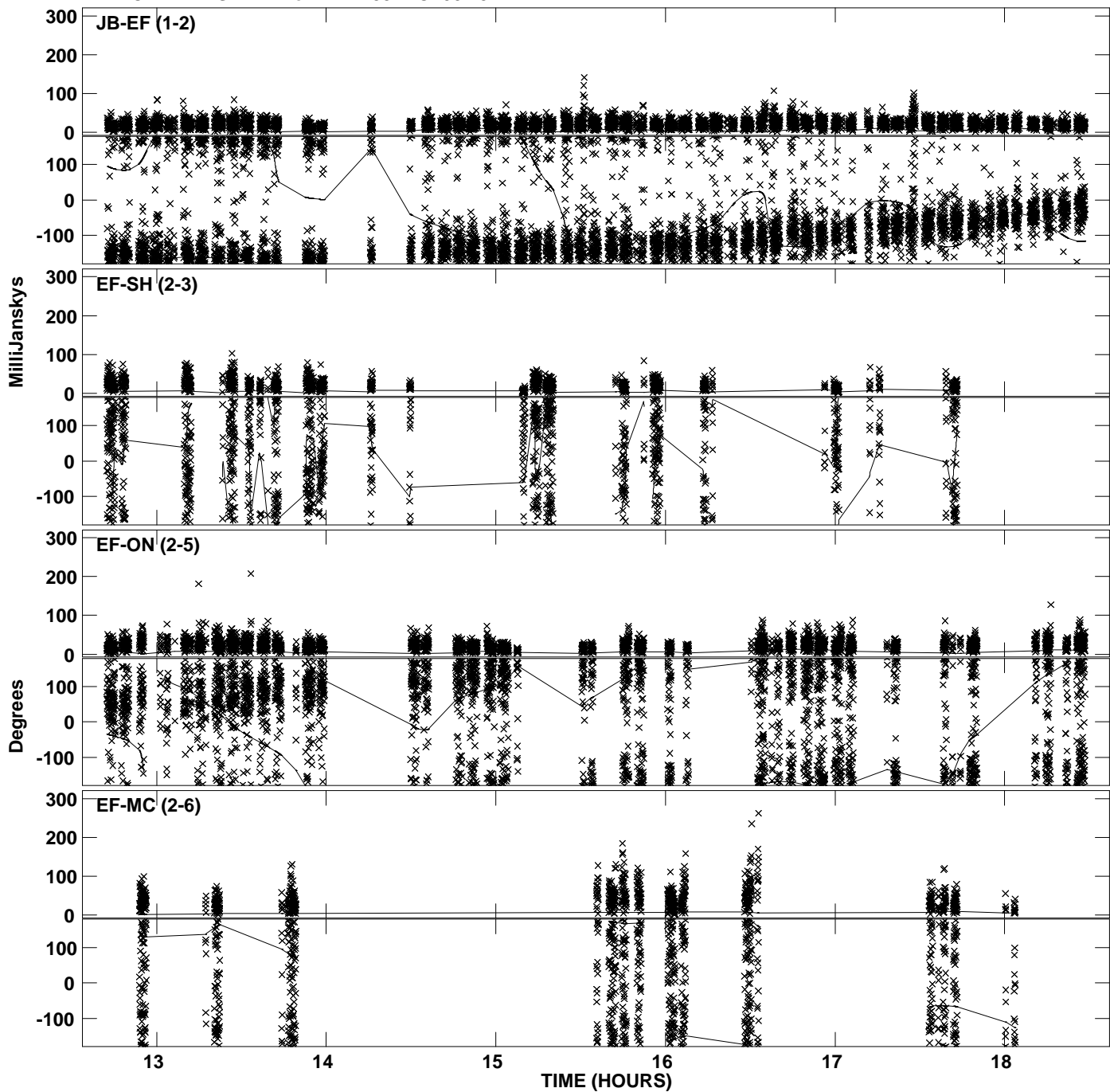
Plot file version 1 created 27-OCT-2010 14:15:57
Amplitude andPhase vs Time for ARP299B.MULTI.1 CL # 3
IF 1 CHAN 1 STK LL of ARP299B.ICL001.3



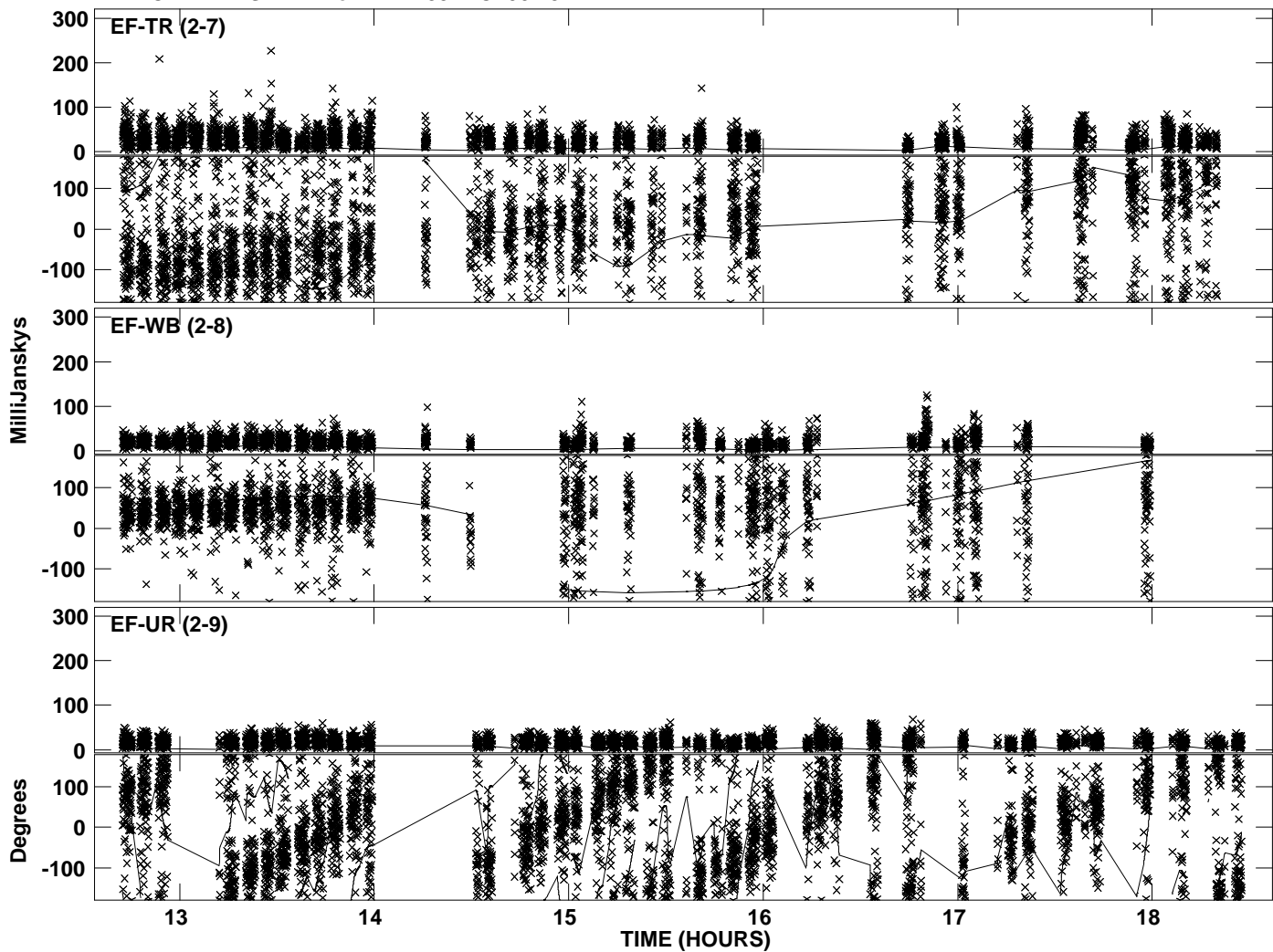
Plot file version 2 created 27-OCT-2010 14:15:57
Amplitude andPhase vs Time for ARP299B.MULTI.1 CL # 3
IF 1 CHAN 1 STK LL of ARP299B.ICL001.3



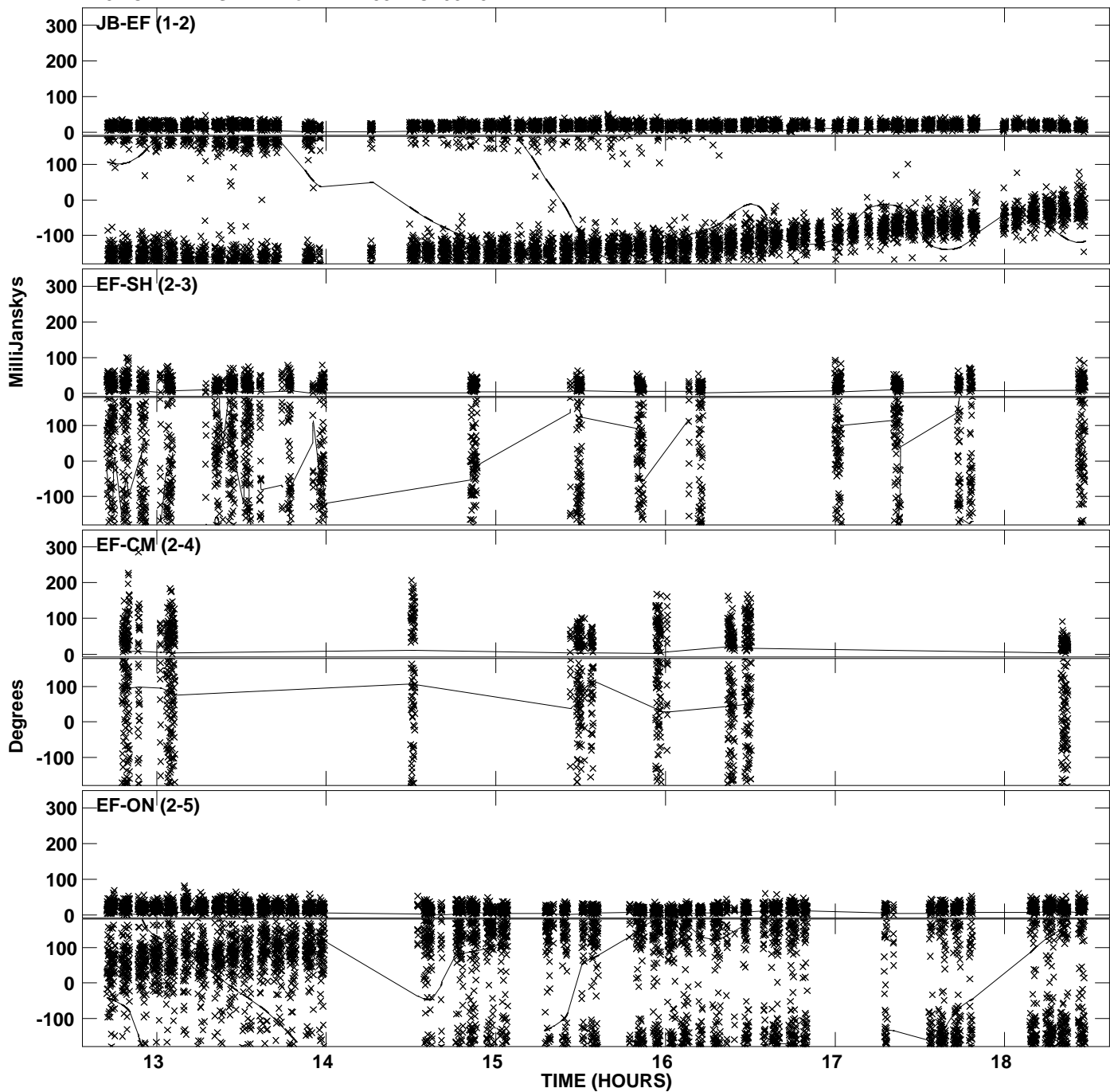
Plot file version 3 created 27-OCT-2010 14:15:58
Amplitude and Phase vs Time for ARP299B.MULTI.1 CL # 3
IF 2 CHAN 1 STK LL of ARP299B.ICL001.3



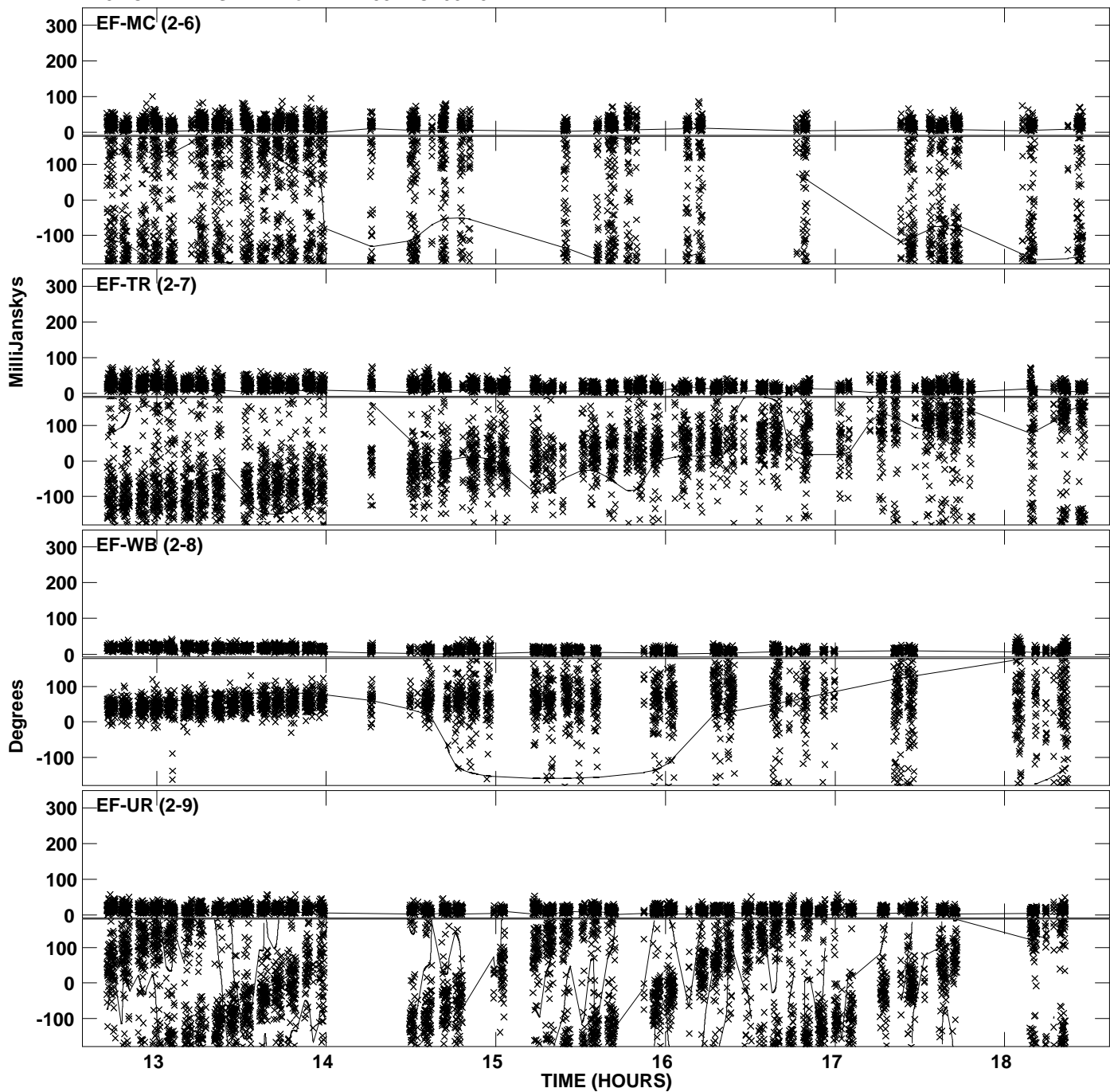
PLot file version 4 created 27-OCT-2010 14:15:58
Amplitude andPhase vs Time for ARP299B.MULTI.1 CL # 3
IF 2 CHAN 1 STK LL of ARP299B.ICL001.3



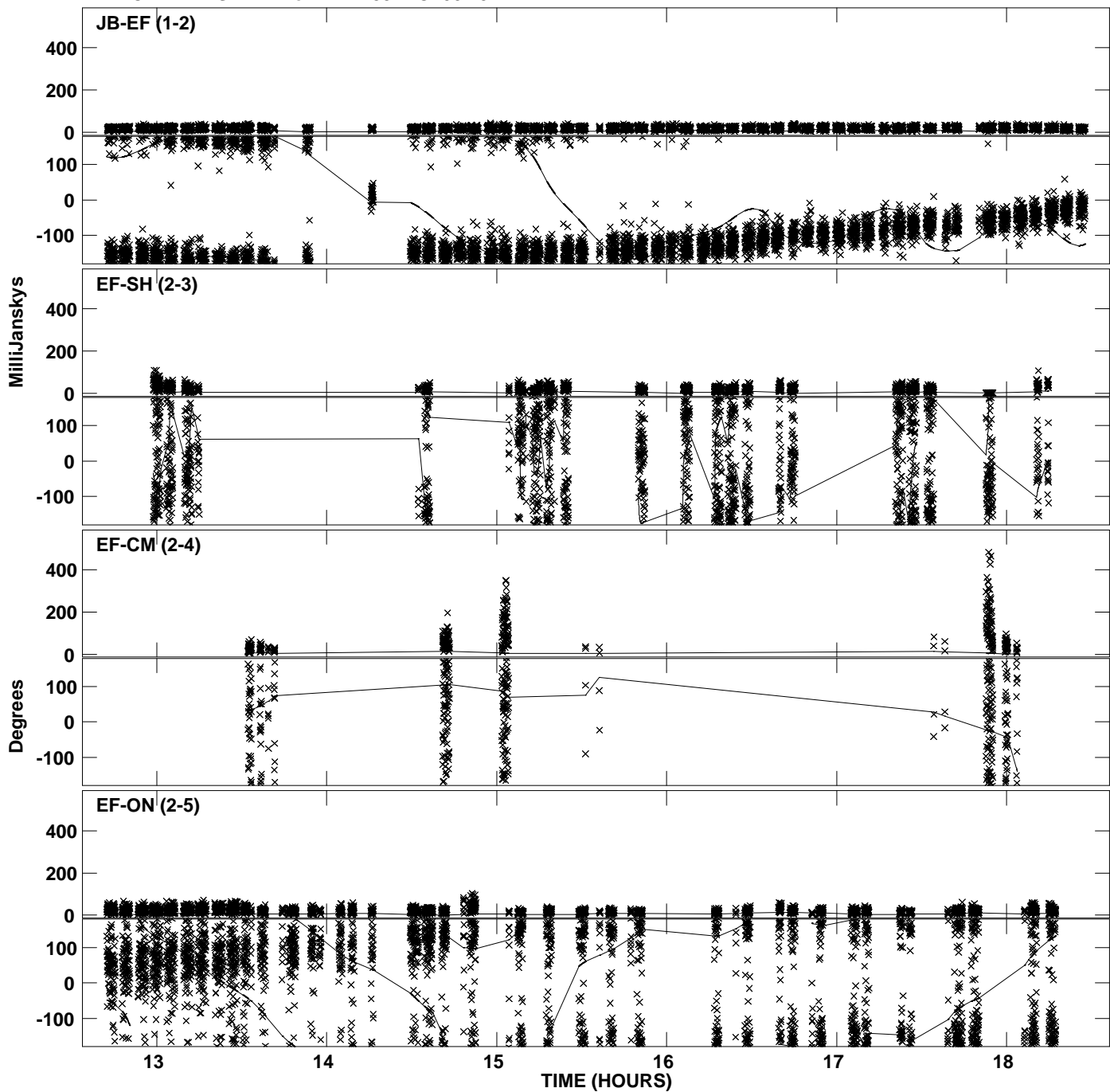
Plot file version 5 created 27-OCT-2010 14:15:59
Amplitude andPhase vs Time for ARP299B.MULTI.1 CL # 3
IF 3 CHAN 1 STK LL of ARP299B.ICL001.3



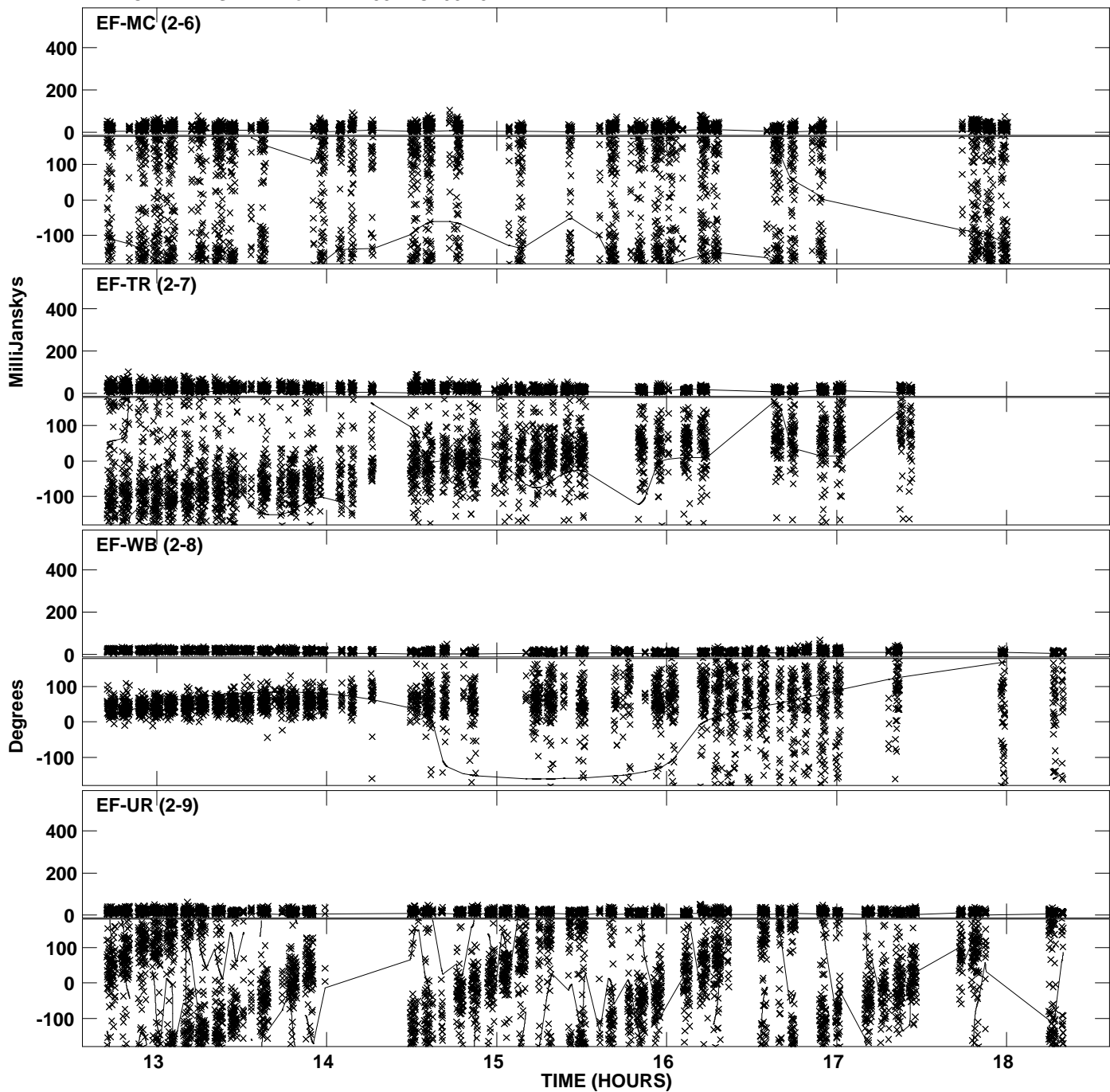
Plot file version 6 created 27-OCT-2010 14:15:59
Amplitude andPhase vs Time for ARP299B.MULTI.1 CL # 3
IF 3 CHAN 1 STK LL of ARP299B.ICL001.3



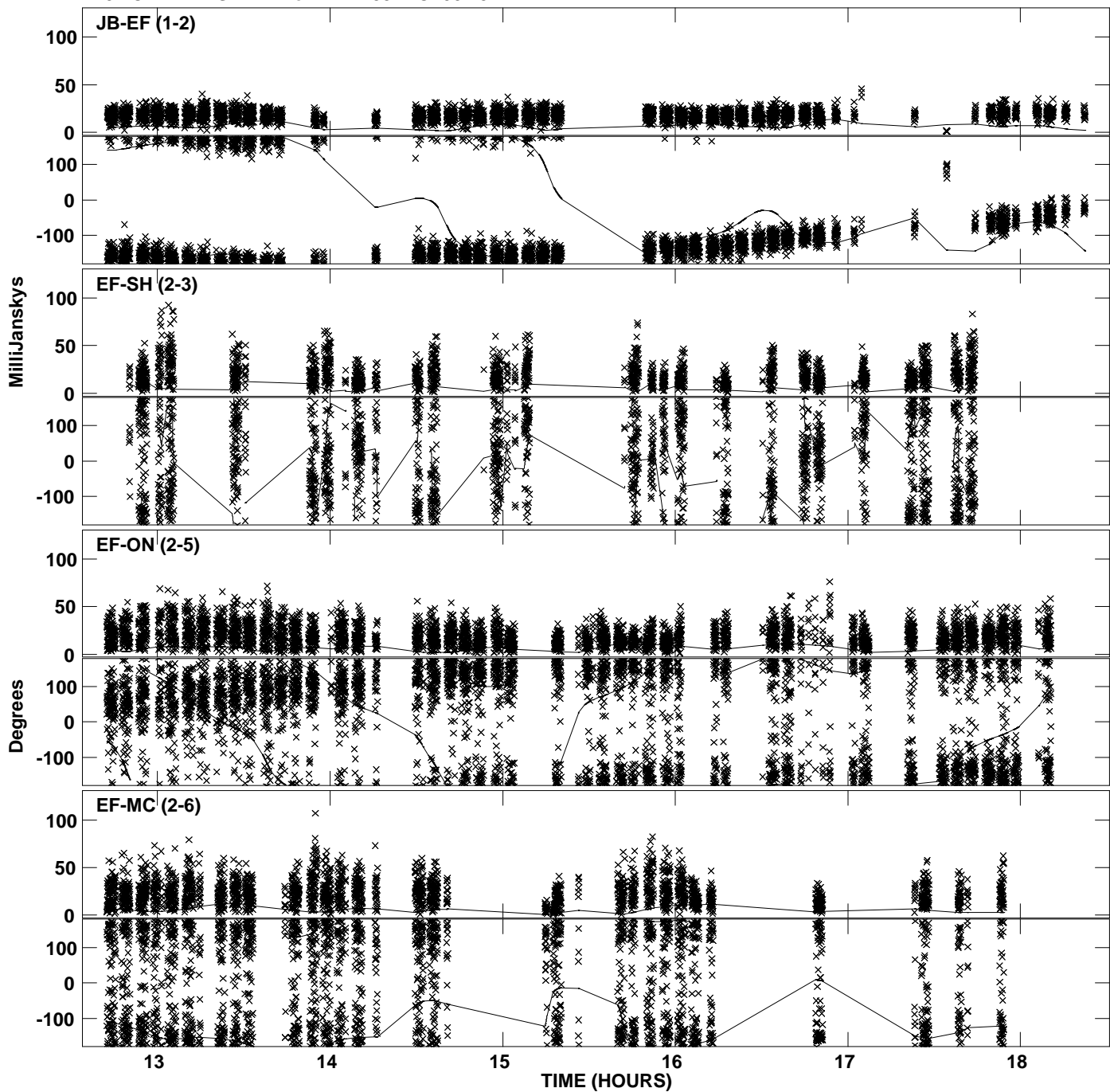
PLot file version 7 created 27-OCT-2010 14:16:00
Amplitude andPhase vs Time for ARP299B.MULTI.1 CL # 3
IF 4 CHAN 1 STK LL of ARP299B.ICL001.3



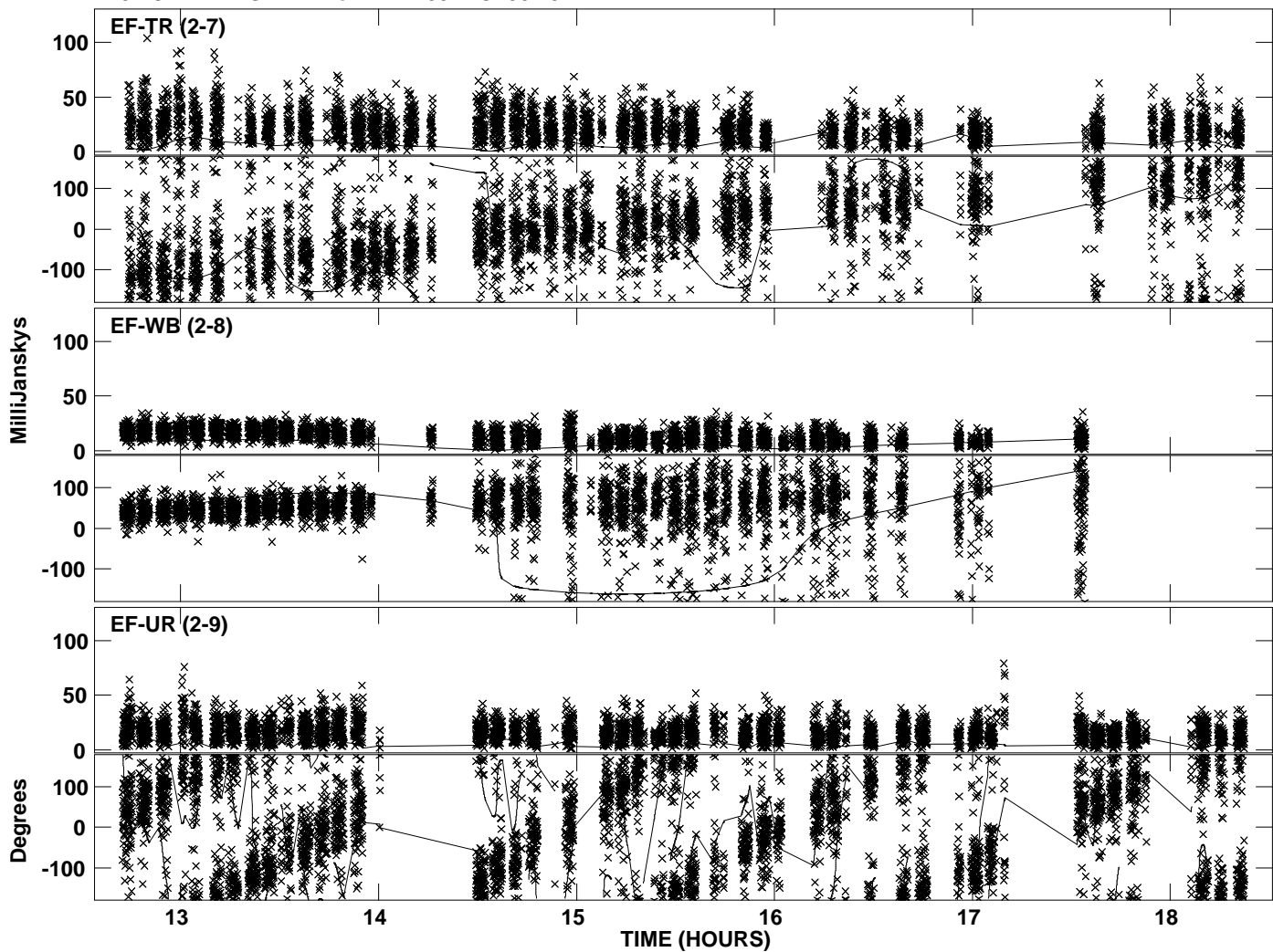
PLot file version 8 created 27-OCT-2010 14:16:00
Amplitude andPhase vs Time for ARP299B.MULTI.1 CL # 3
IF 4 CHAN 1 STK LL of ARP299B.ICL001.3



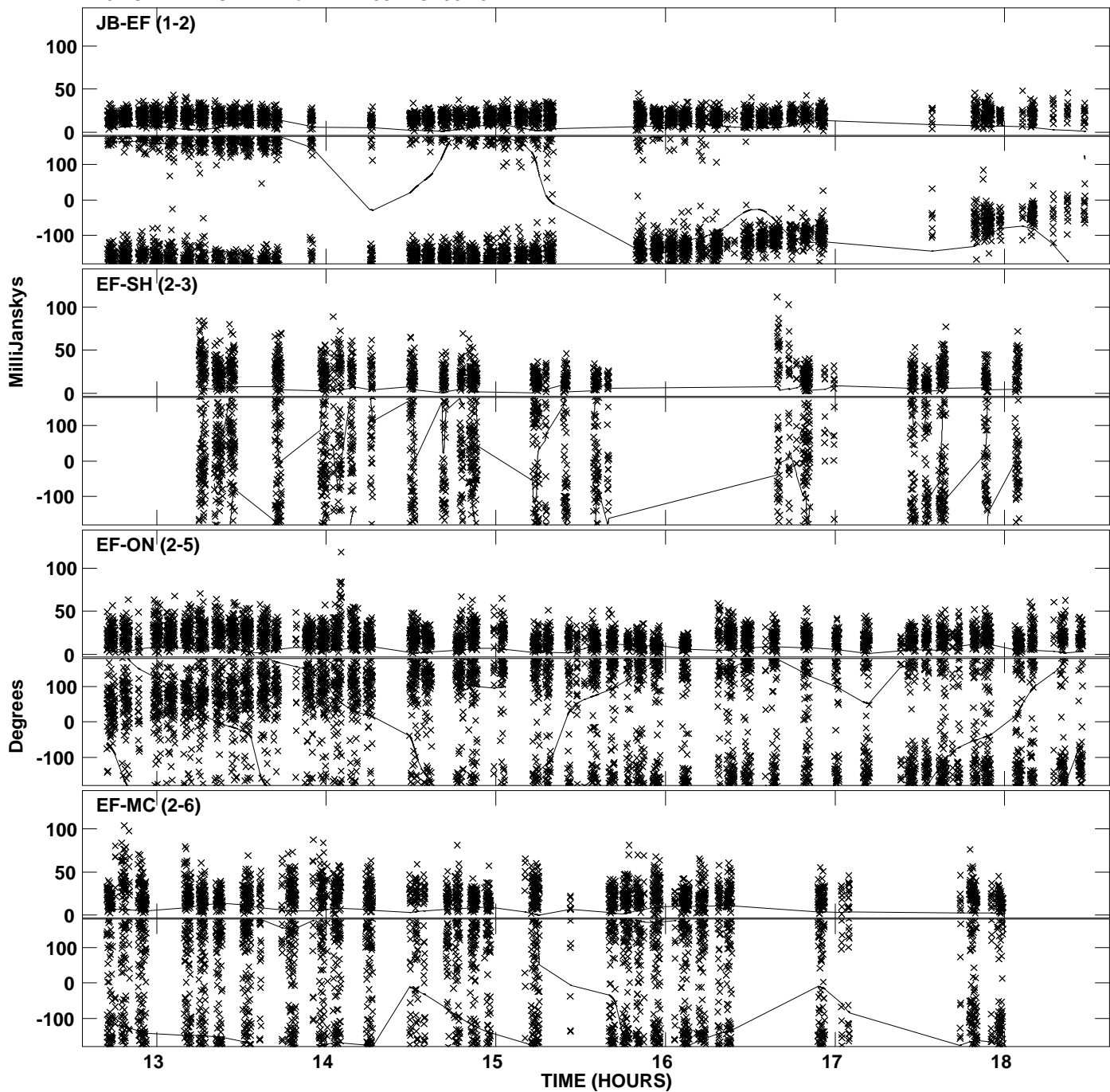
Plot file version 9 created 27-OCT-2010 14:16:01
Amplitude and Phase vs Time for ARP299B.MULTI.1 CL # 3
IF 5 CHAN 1 STK LL of ARP299B.ICL001.3



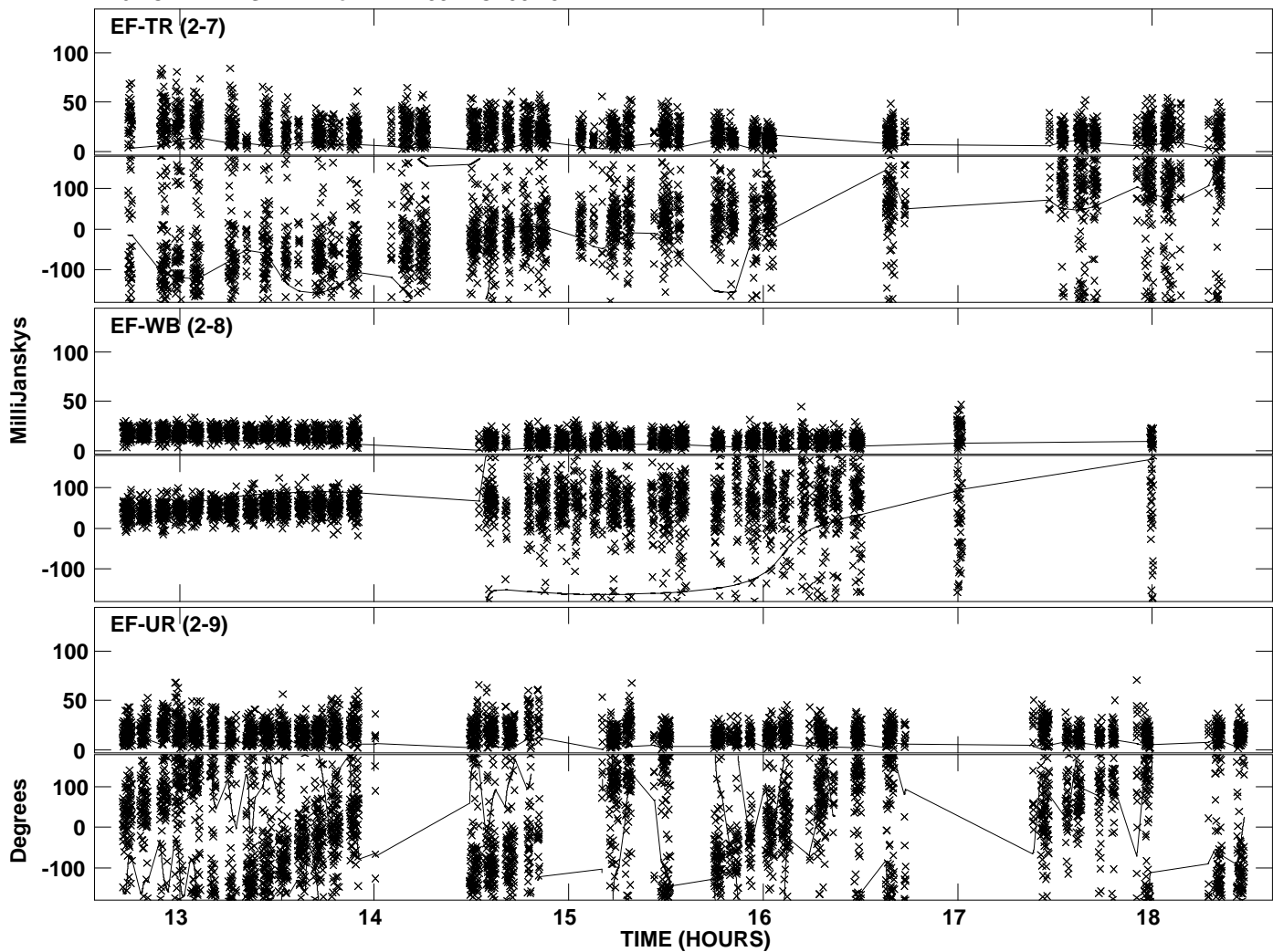
Plot file version 10 created 27-OCT-2010 14:16:01
Amplitude and Phase vs Time for ARP299B.MULTI.1 CL # 3
IF 5 CHAN 1 STK LL of ARP299B.ICL001.3



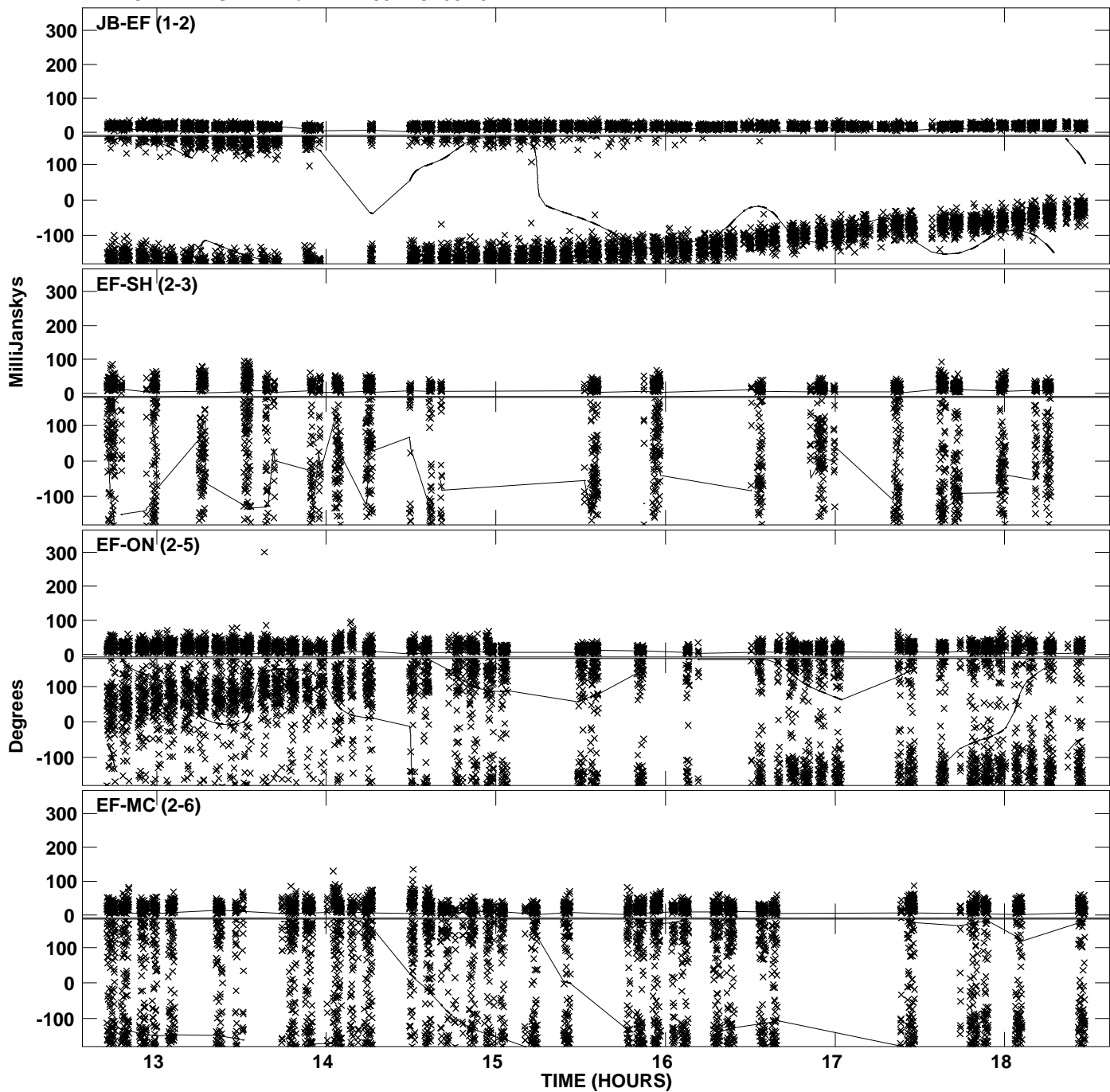
PLot file version 11 created 27-OCT-2010 14:16:01
Amplitude andPhase vs Time for ARP299B.MULTI.1 CL # 3
IF 6 CHAN 1 STK LL of ARP299B.ICL001.3



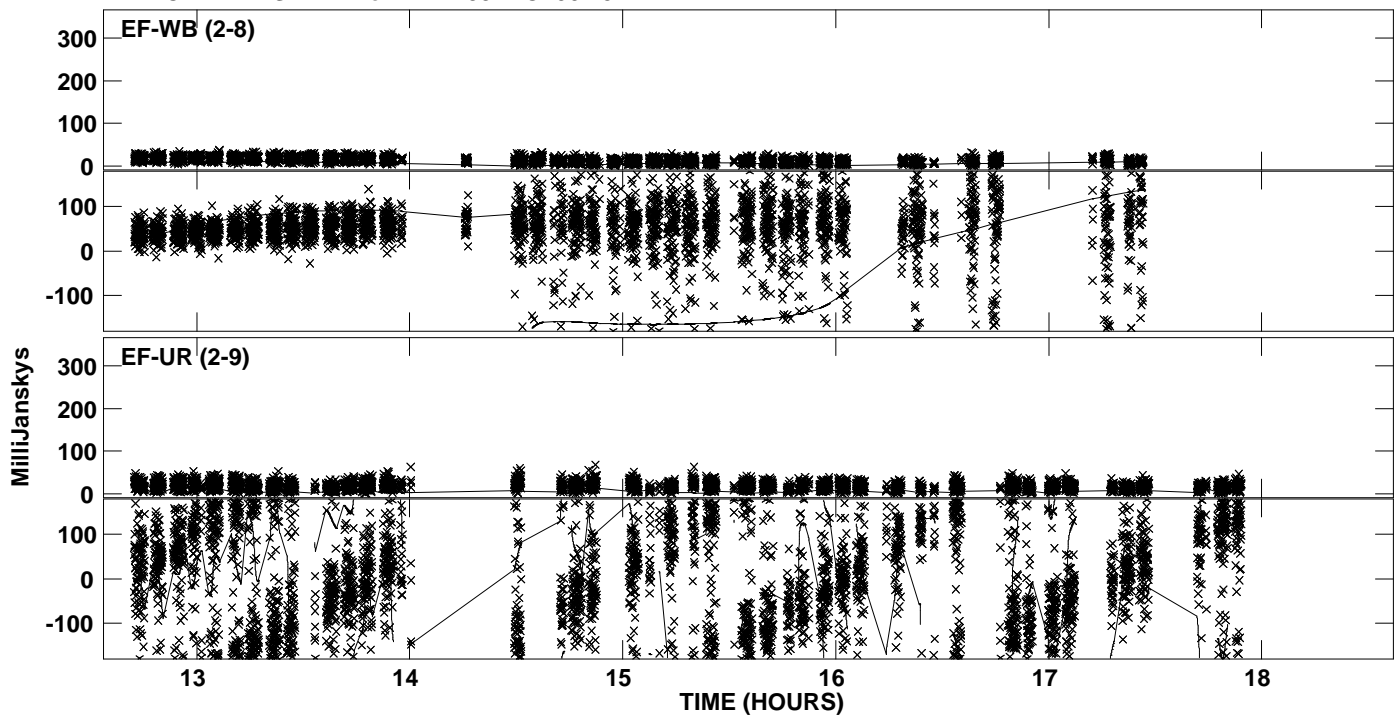
Plot file version 12 created 27-OCT-2010 14:16:02
Amplitude and Phase vs Time for ARP299B.MULTI.1 CL # 3
IF 6 CHAN 1 STK LL of ARP299B.ICL001.3



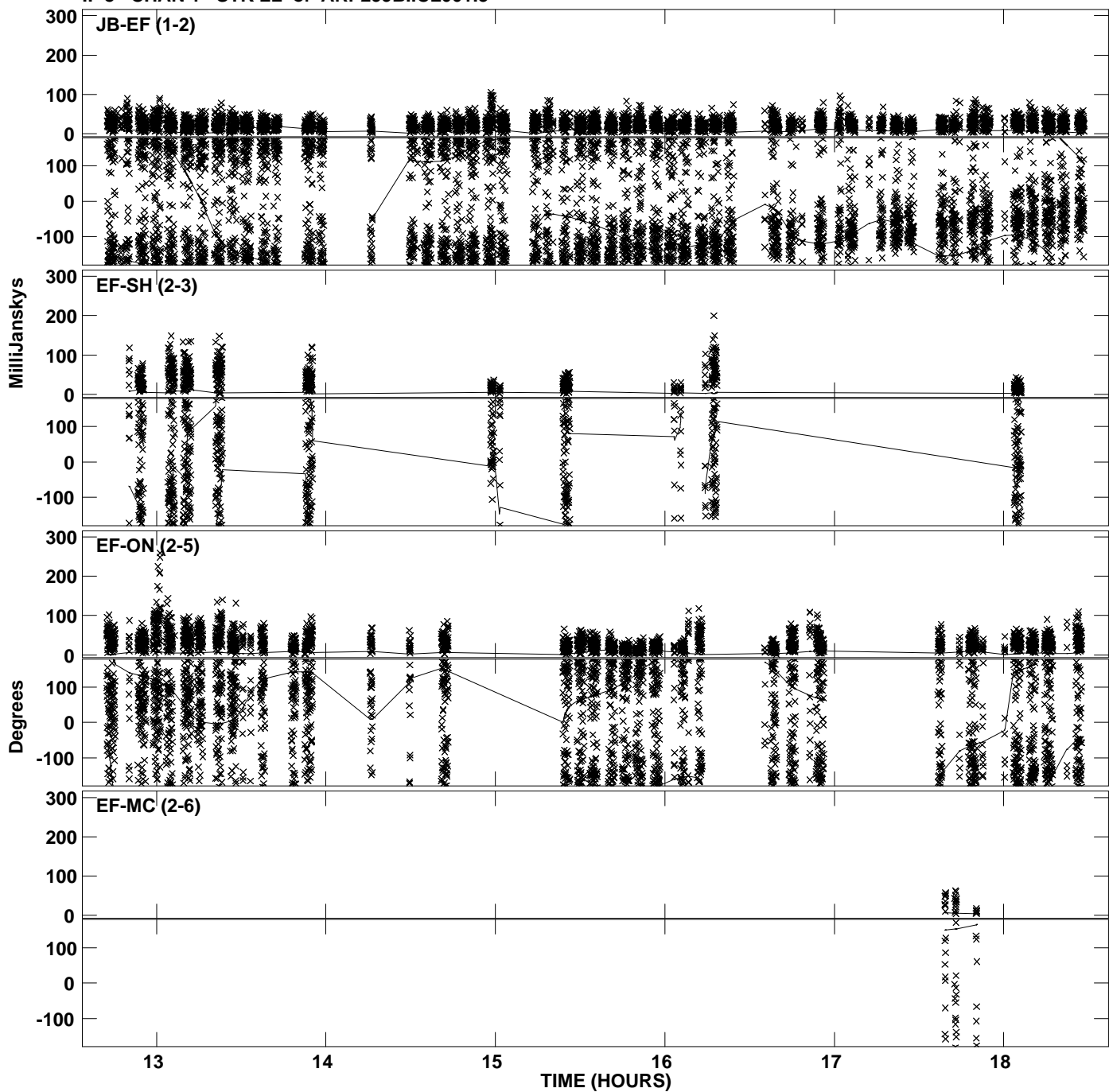
Plot file version 13 created 27-OCT-2010 14:16:02
Amplitude and Phase vs Time for ARP299B.MULTI.1 CL # 3
IF 7 CHAN 1 STK LL of ARP299B.ICL001.3



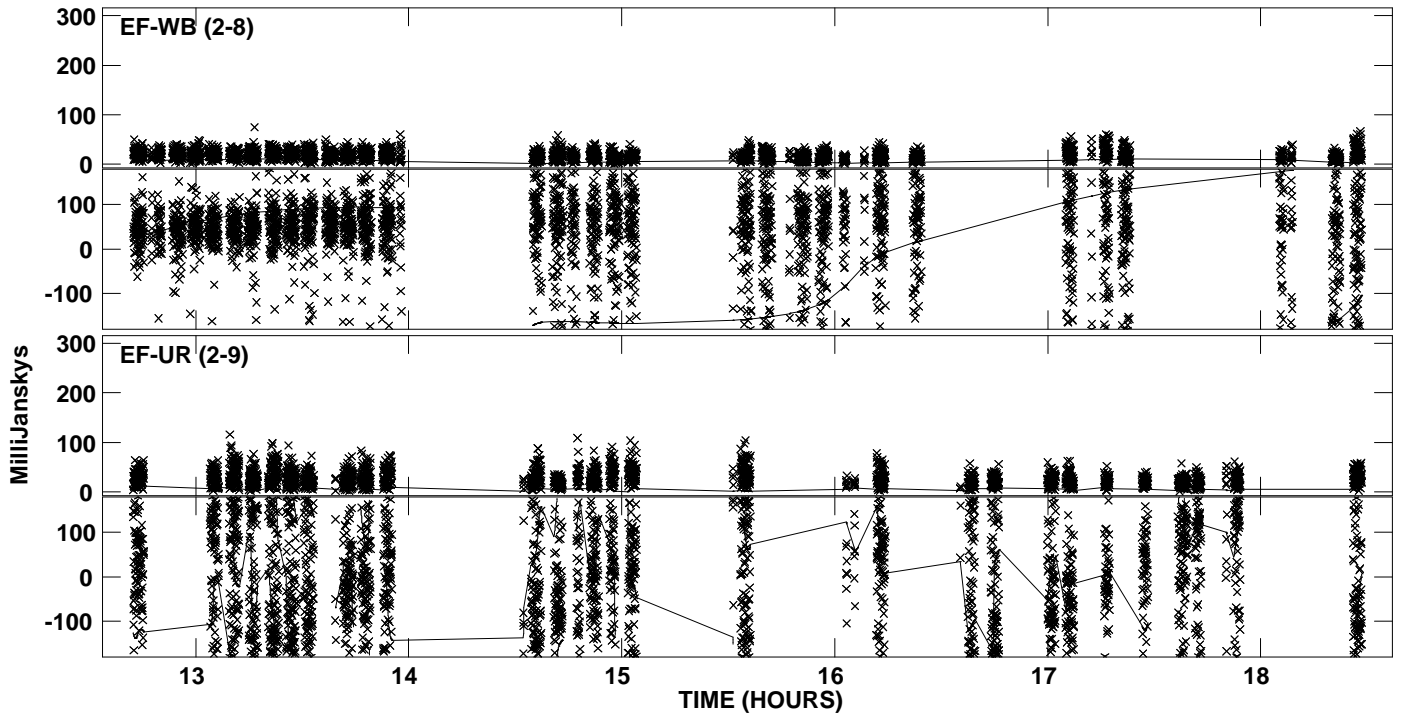
Plot file version 14 created 27-OCT-2010 14:16:02
Amplitude andPhase vs Time for ARP299B.MULTI.1 CL # 3
IF 7 CHAN 1 STK LL of ARP299B.ICL001.3



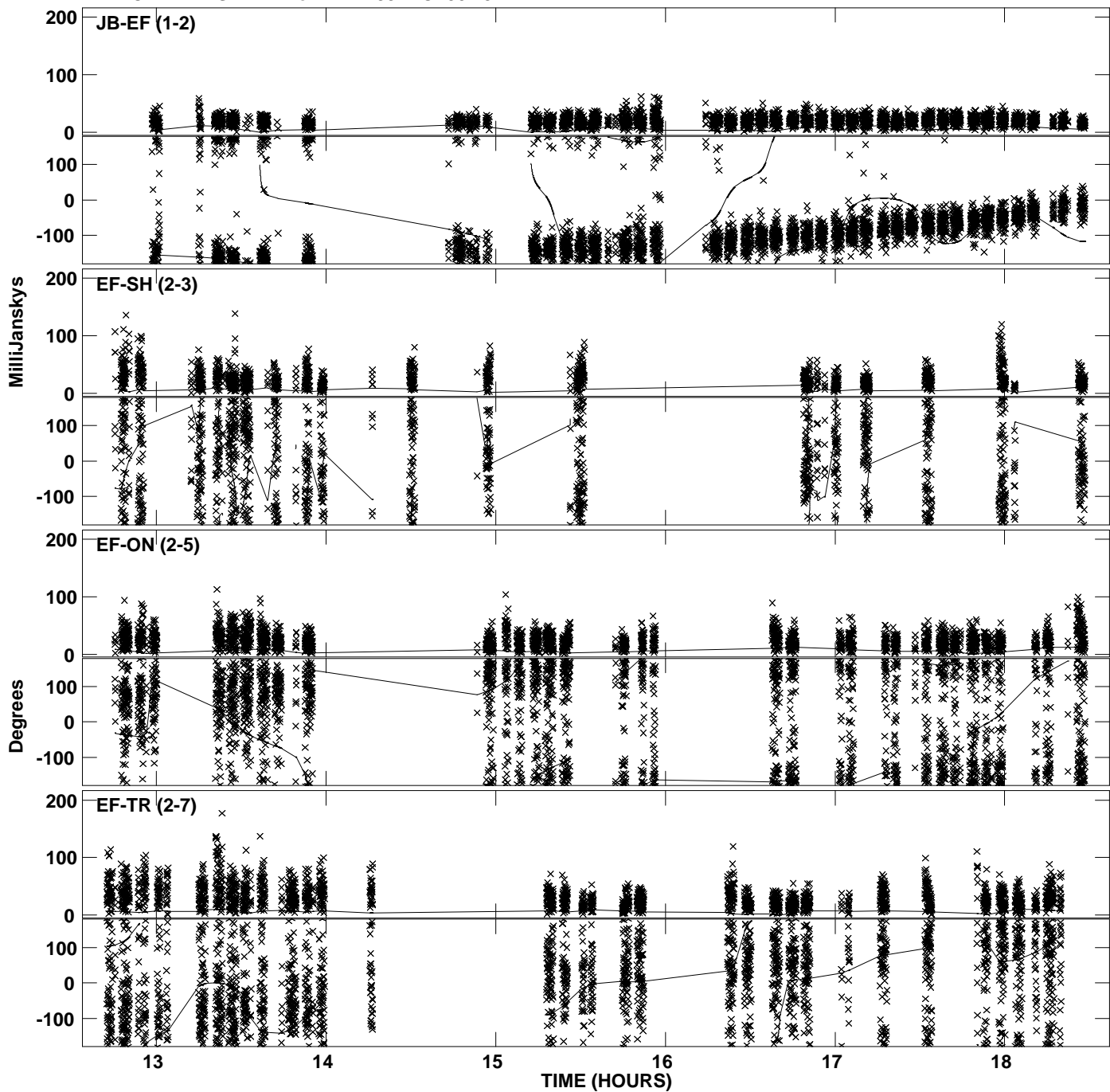
PLot file version 15 created 27-OCT-2010 14:16:03
Amplitude andPhase vs Time for ARP299B.MULTI.1 CL # 3
IF 8 CHAN 1 STK LL of ARP299B.ICL001.3



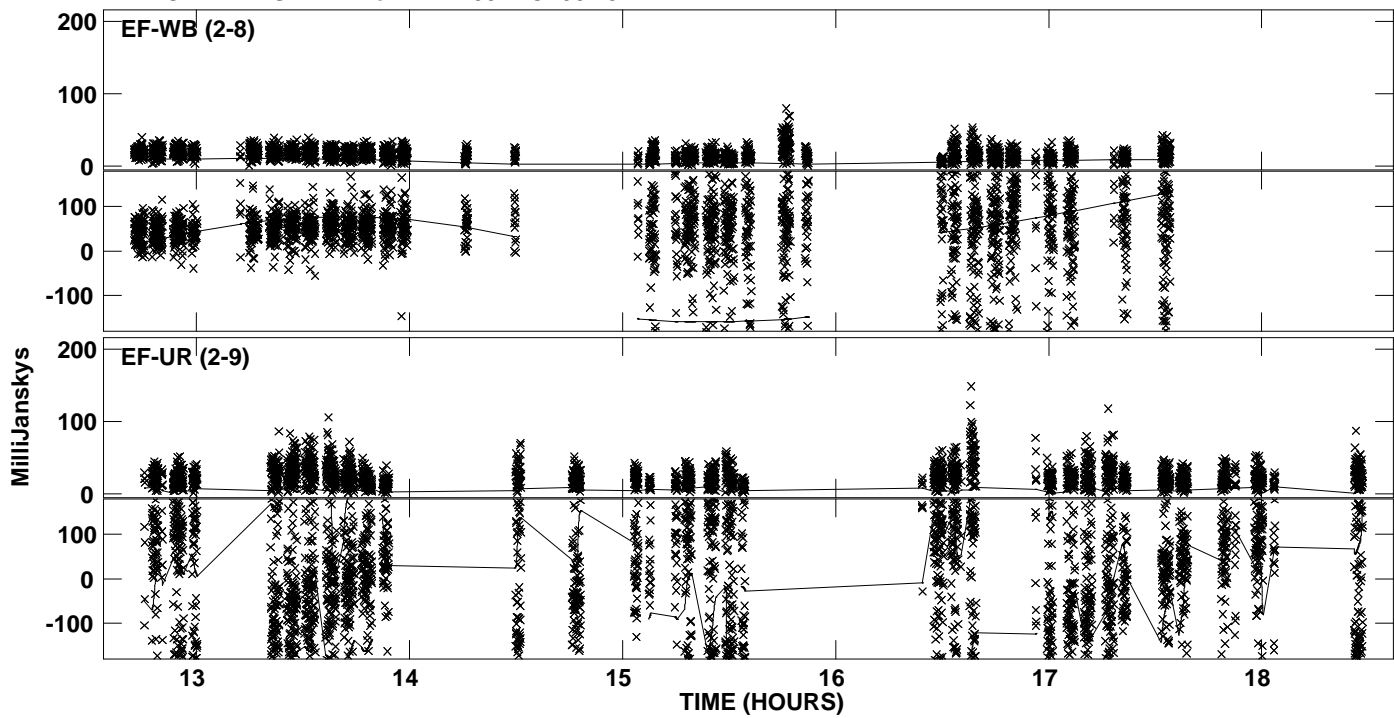
PLot file version 16 created 27-OCT-2010 14:16:03
Amplitude andPhase vs Time for ARP299B.MULTI.1 CL # 3
IF 8 CHAN 1 STK LL of ARP299B.ICL001.3



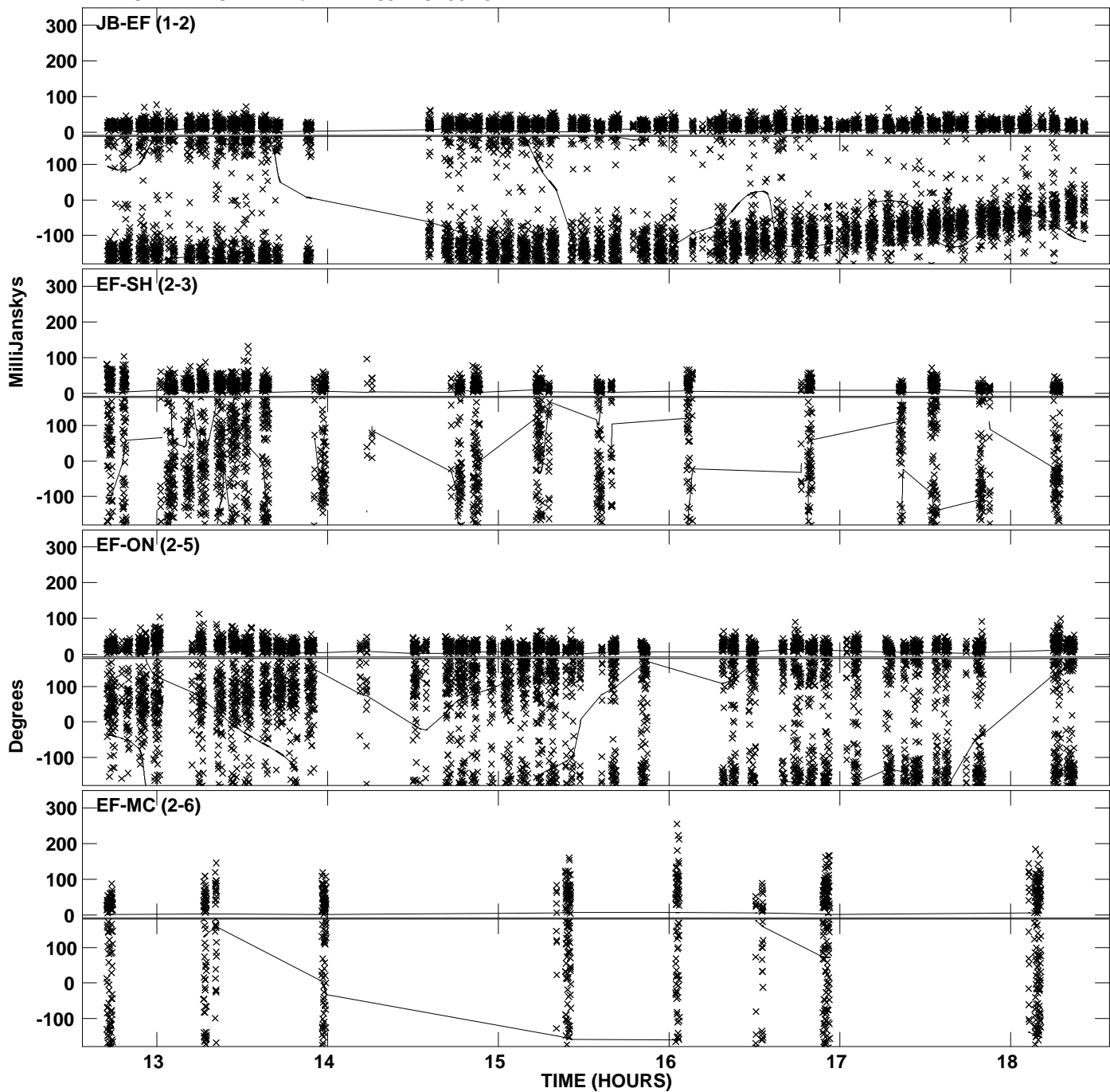
Plot file version 17 created 27-OCT-2010 14:16:04
Amplitude andPhase vs Time for ARP299B.MULTI.1 CL # 3
IF 1 CHAN 1 STK RR of ARP299B.ICL001.3



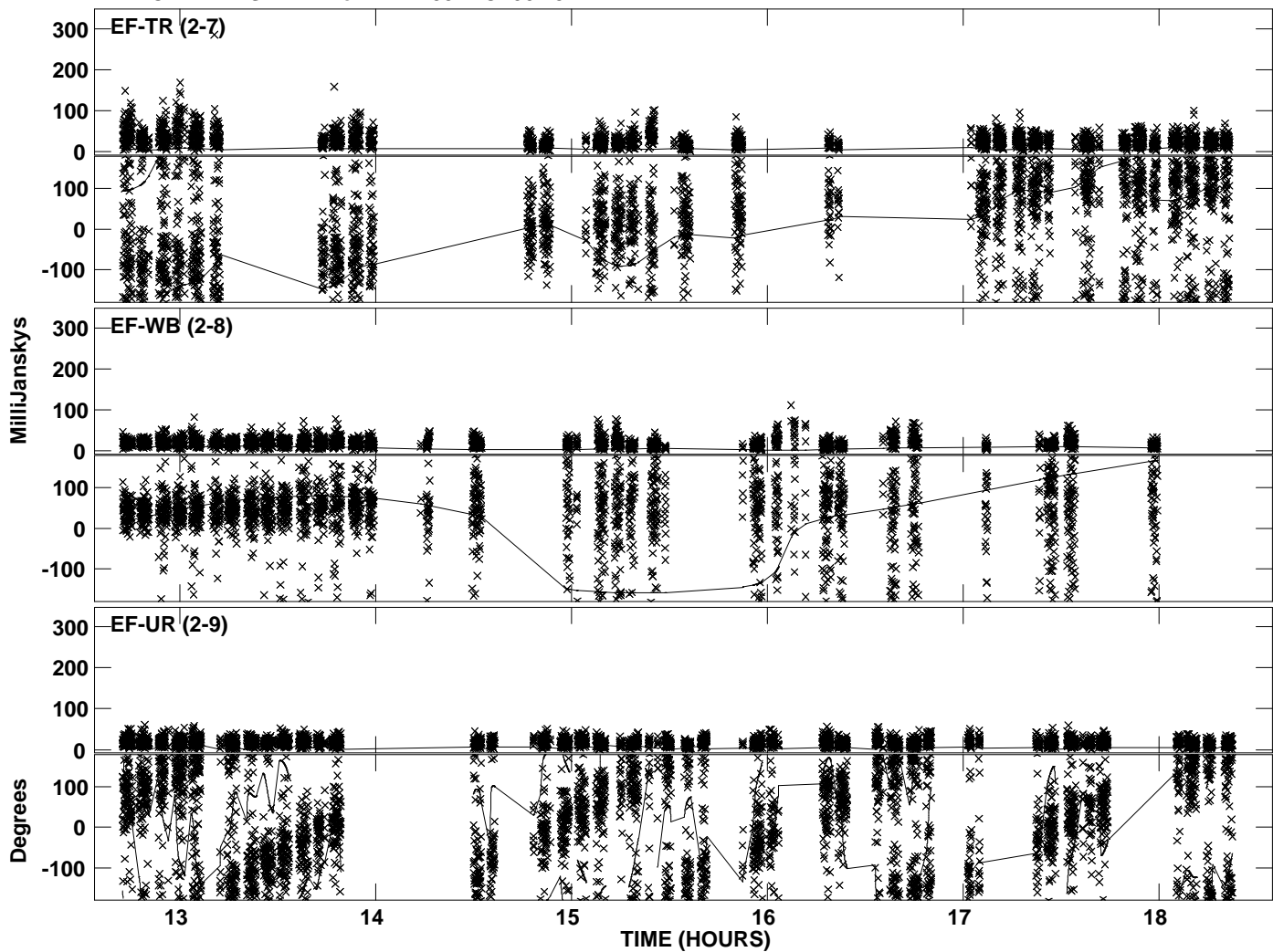
PLot file version 18 created 27-OCT-2010 14:16:04
Amplitude andPhase vs Time for ARP299B.MULTI.1 CL # 3
IF 1 CHAN 1 STK RR of ARP299B.ICL001.3



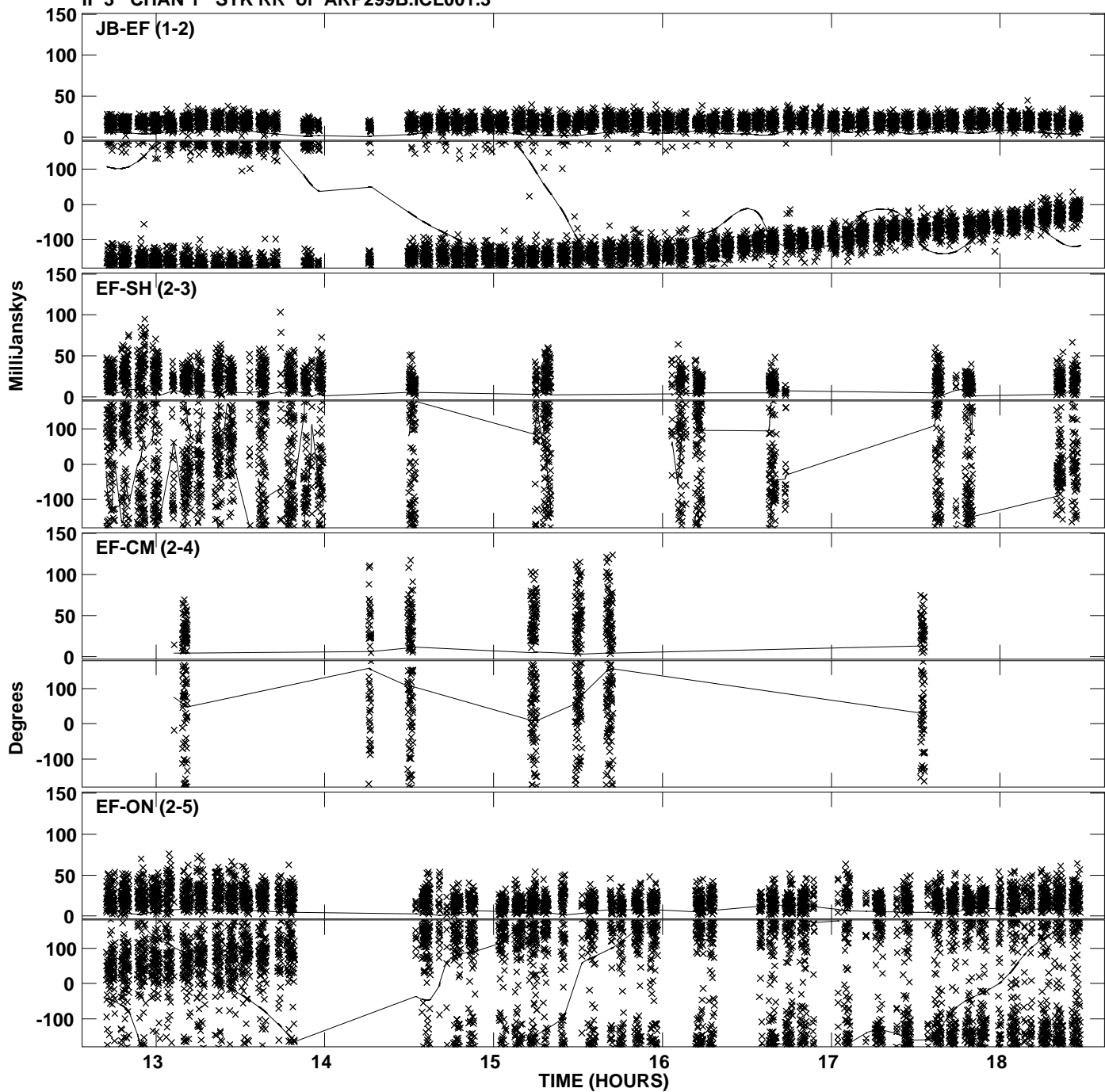
Plot file version 19 created 27-OCT-2010 14:16:05
Amplitude andPhase vs Time for ARP299B.MULTI.1 CL # 3
IF 2 CHAN 1 STK RR of ARP299B.ICL001.3



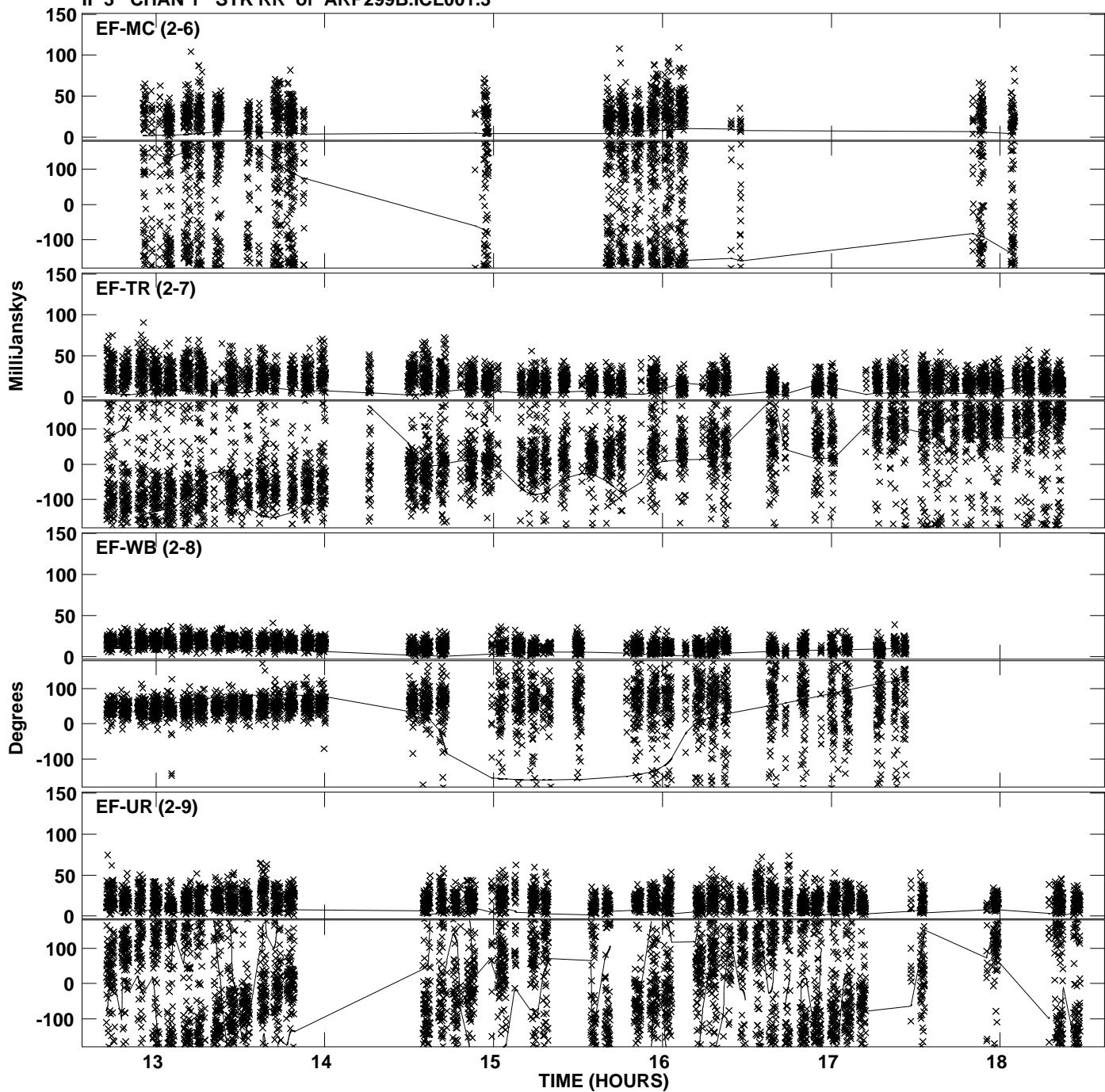
Plot file version 20 created 27-OCT-2010 14:16:05
Amplitude andPhase vs Time for ARP299B.MULTI.1 CL # 3
IF 2 CHAN 1 STK RR of ARP299B.ICL001.3



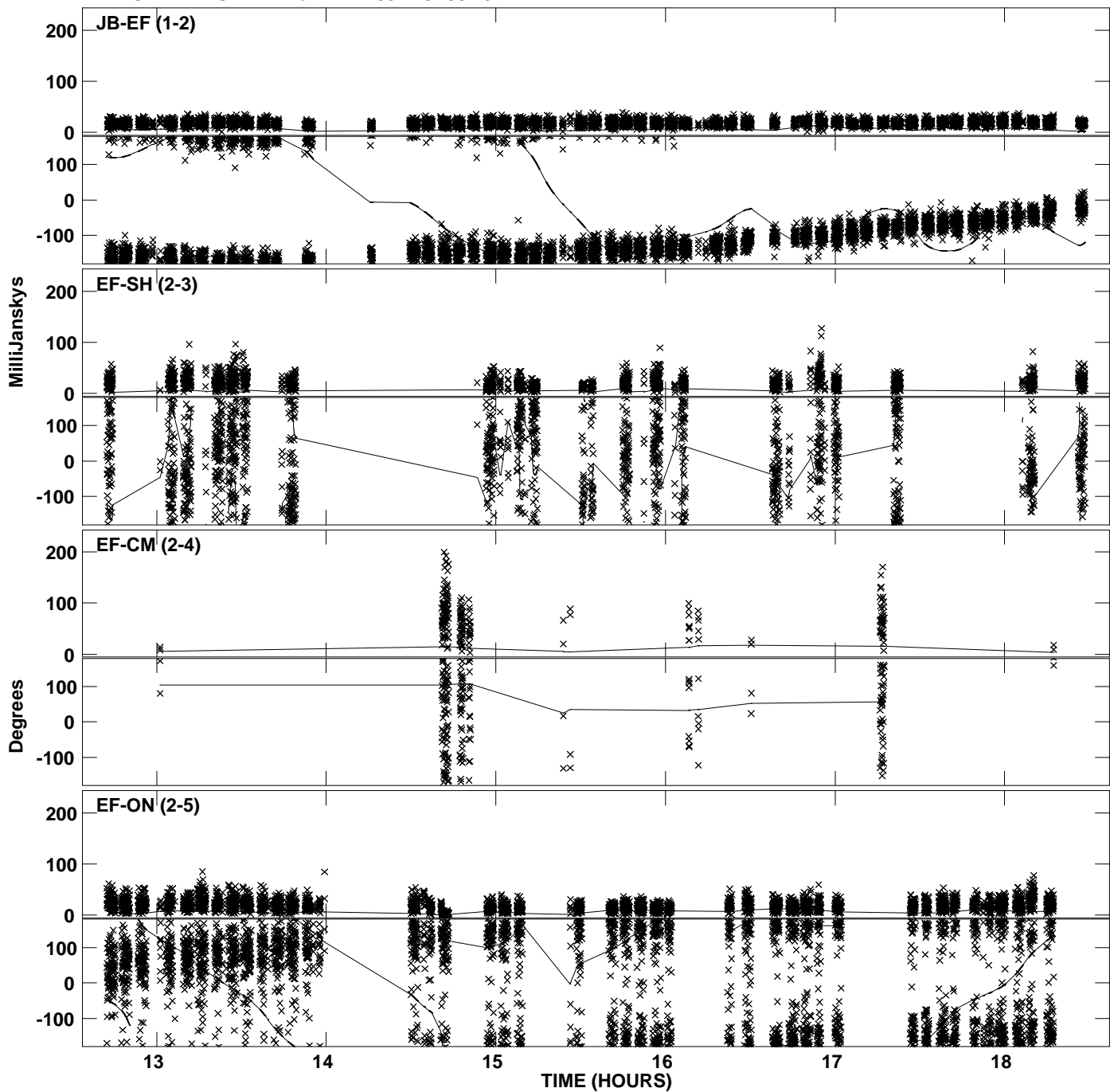
Plot file version 21 created 27-OCT-2010 14:16:05
Amplitude andPhase vs Time for ARP299B.MULTI.1 CL # 3
IF 3 CHAN 1 STK RR of ARP299B.ICL001.3



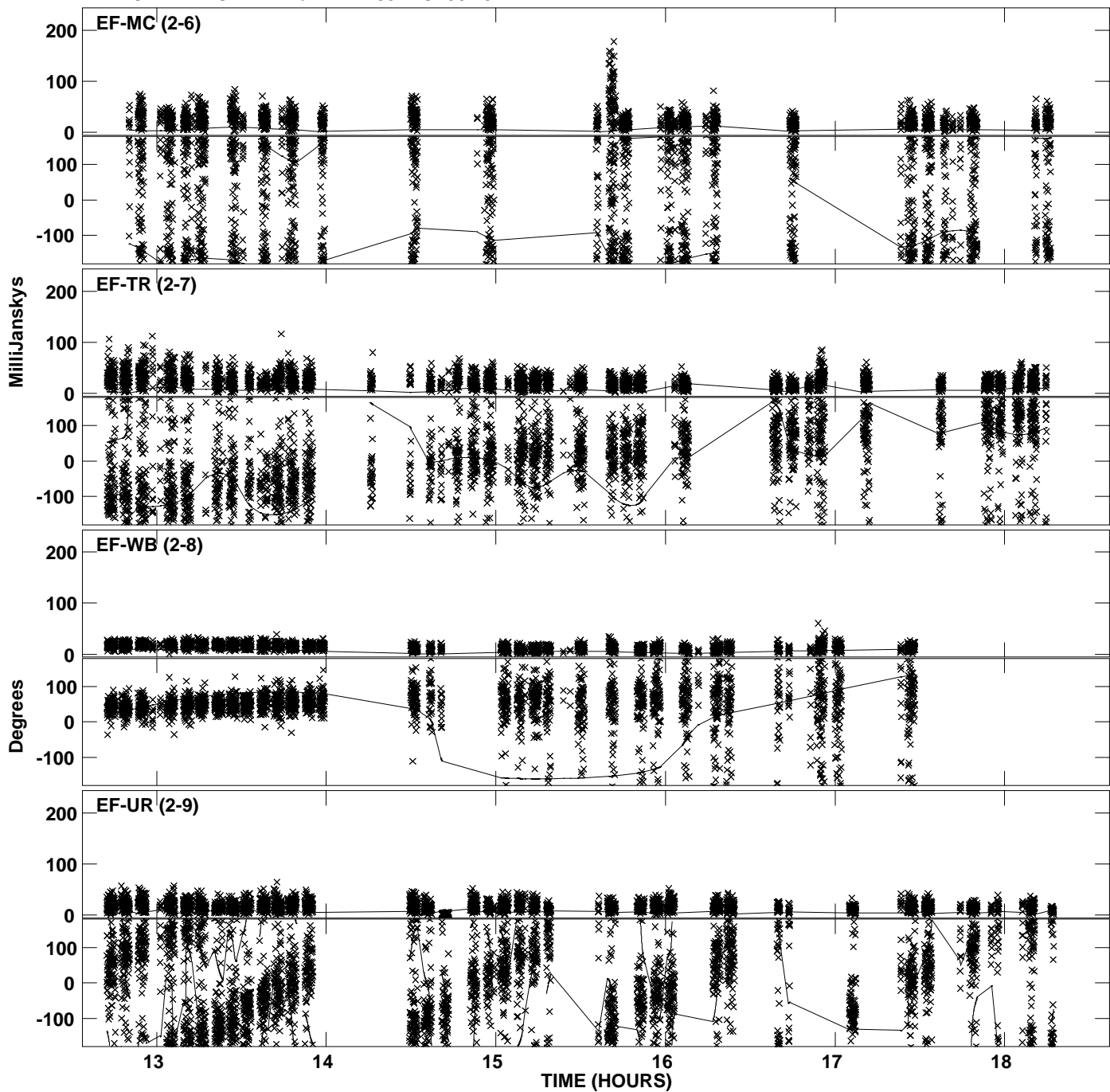
PLot file version 22 created 27-OCT-2010 14:16:05
Amplitude andPhase vs Time for ARP299B.MULTI.1 CL # 3
IF 3 CHAN 1 STK RR of ARP299B.ICL001.3



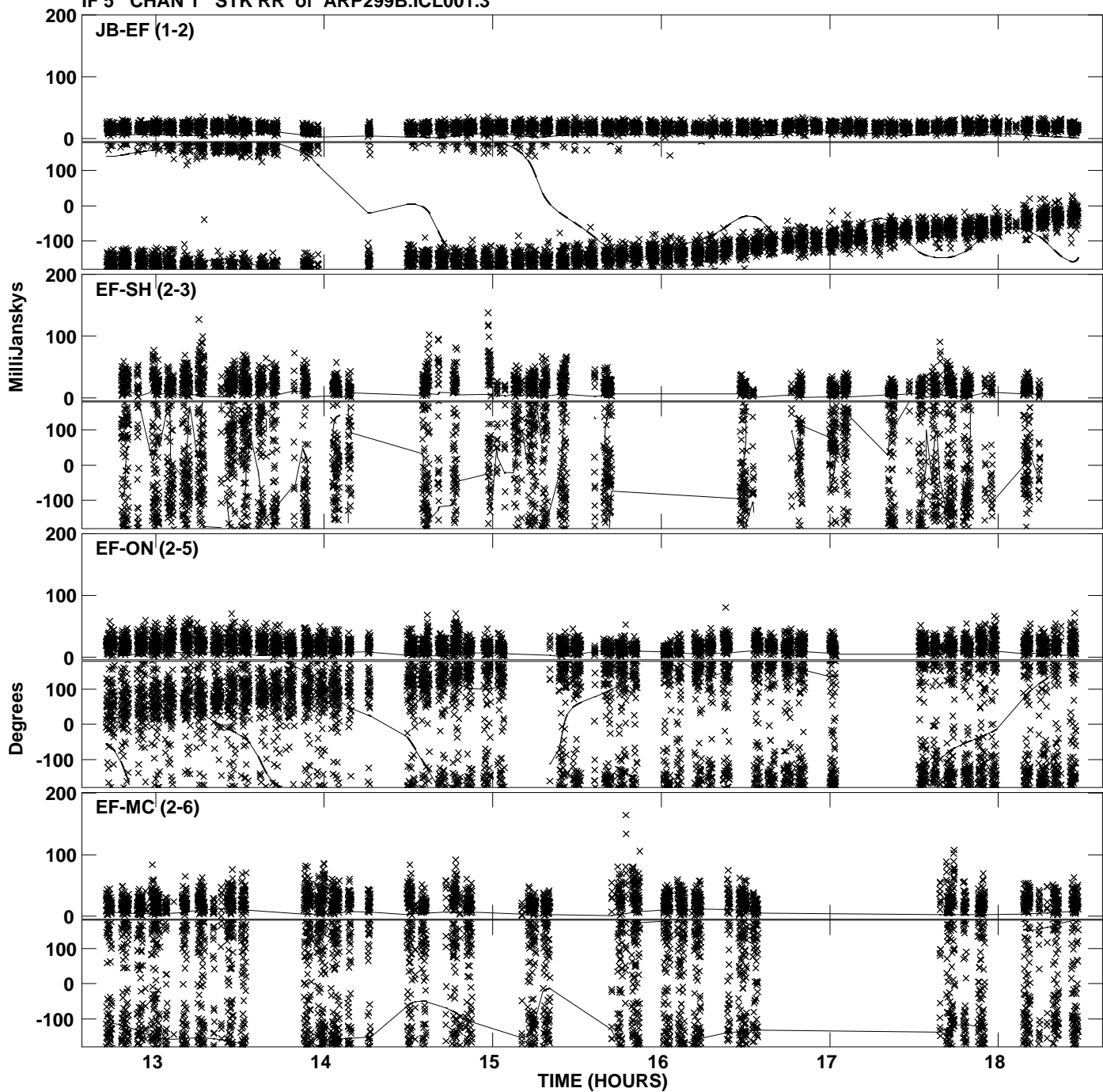
Plot file version 23 created 27-OCT-2010 14:16:06
Amplitude and Phase vs Time for ARP299B.MULTI.1 CL # 3
IF 4 CHAN 1 STK RR of ARP299B.ICL001.3



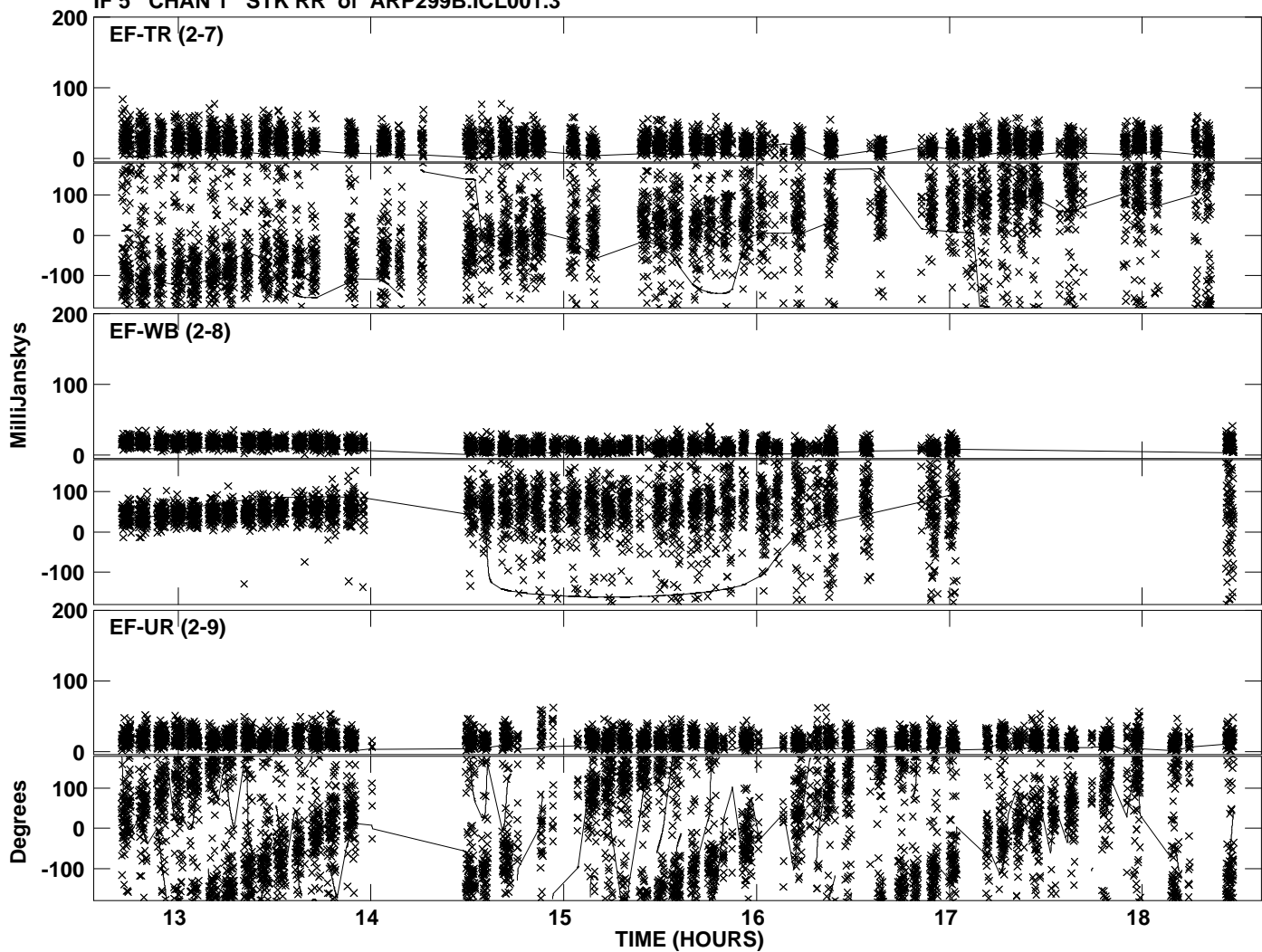
PLot file version 24 created 27-OCT-2010 14:16:06
Amplitude andPhase vs Time for ARP299B.MULTI.1 CL # 3
IF 4 CHAN 1 STK RR of ARP299B.ICL001.3



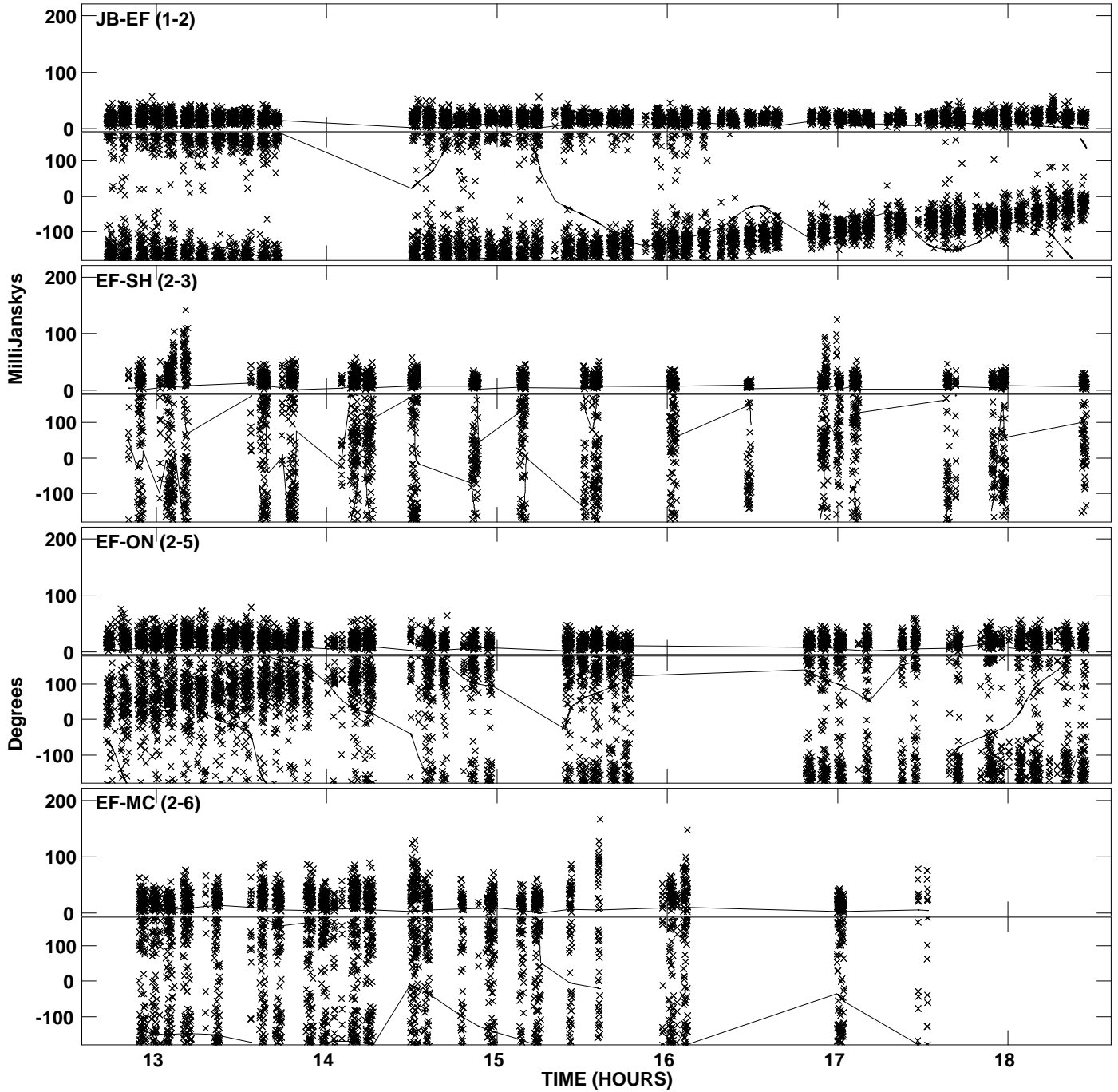
PLot file version 25 created 27-OCT-2010 14:16:07
Amplitude andPhase vs Time for ARP299B.MULTI.1 CL # 3
IF 5 CHAN 1 STK RR of ARP299B.ICL001.3



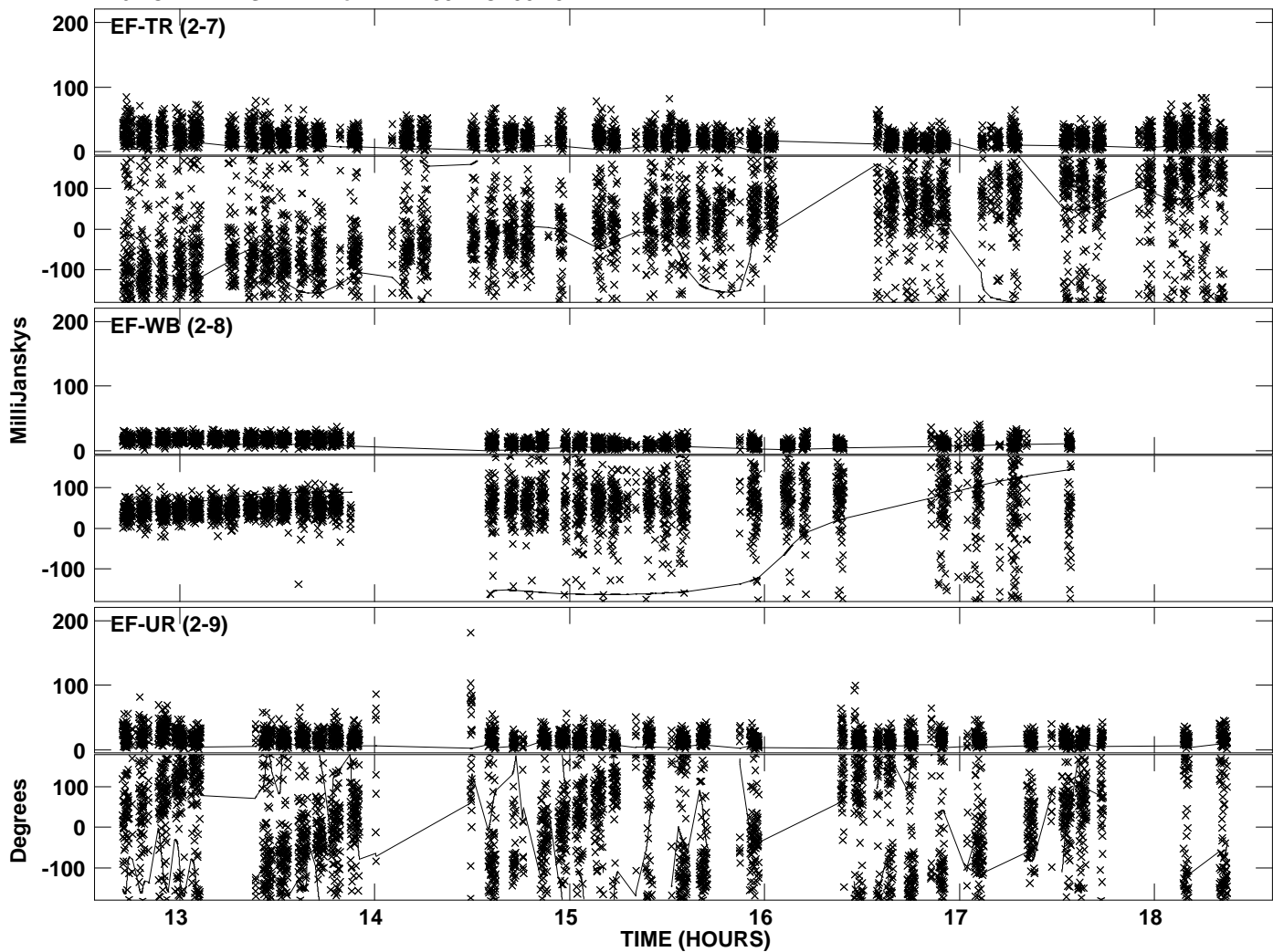
PLot file version 26 created 27-OCT-2010 14:16:07
Amplitude andPhase vs Time for ARP299B.MULTI.1 CL # 3
IF 5 CHAN 1 STK RR of ARP299B.ICL001.3



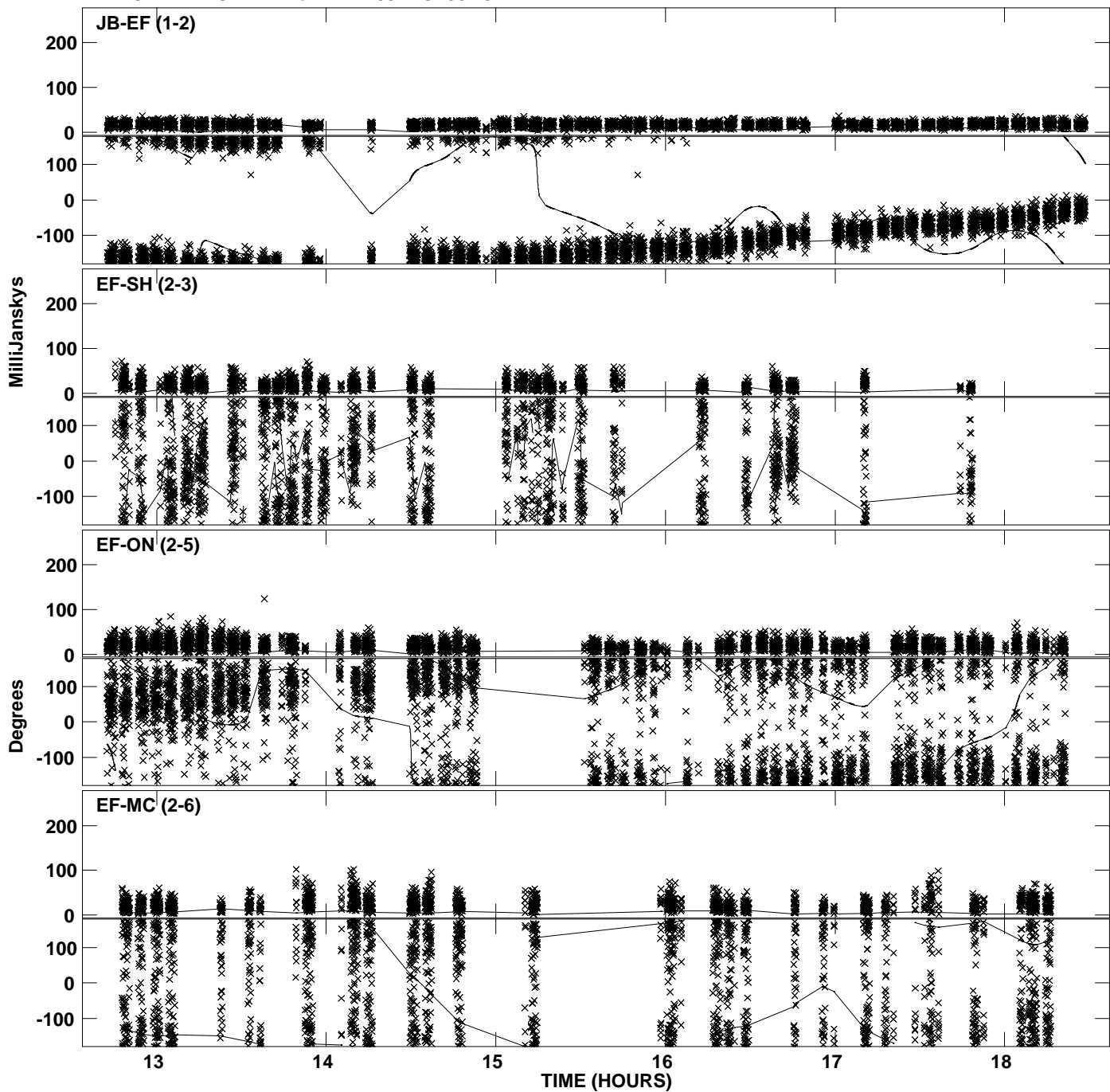
PLot file version 27 created 27-OCT-2010 14:16:08
Amplitude andPhase vs Time for ARP299B.MULTI.1 CL # 3
IF 6 CHAN 1 STK RR of ARP299B.ICL001.3



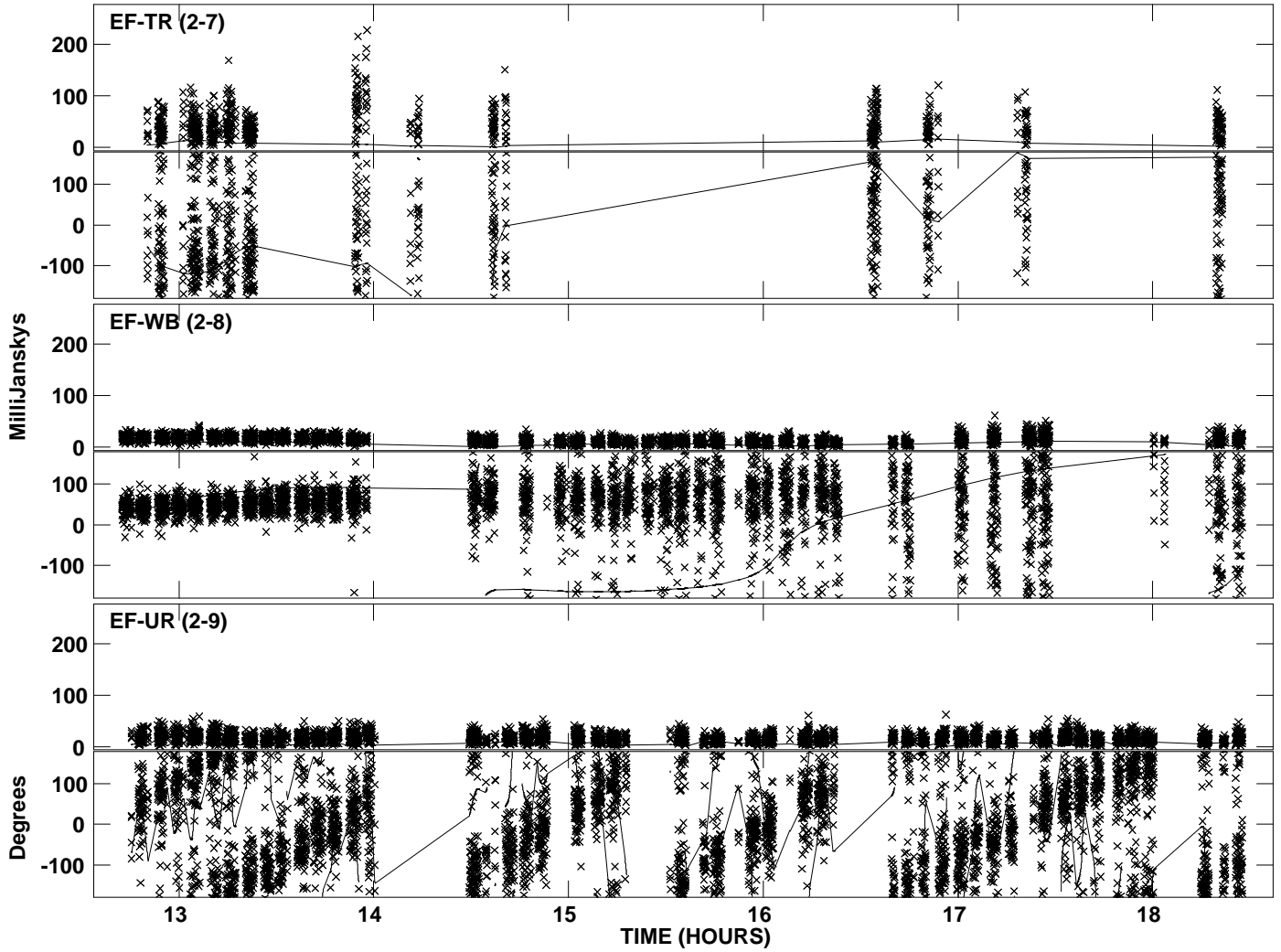
PLot file version 28 created 27-OCT-2010 14:16:08
Amplitude andPhase vs Time for ARP299B.MULTI.1 CL # 3
IF 6 CHAN 1 STK RR of ARP299B.ICL001.3



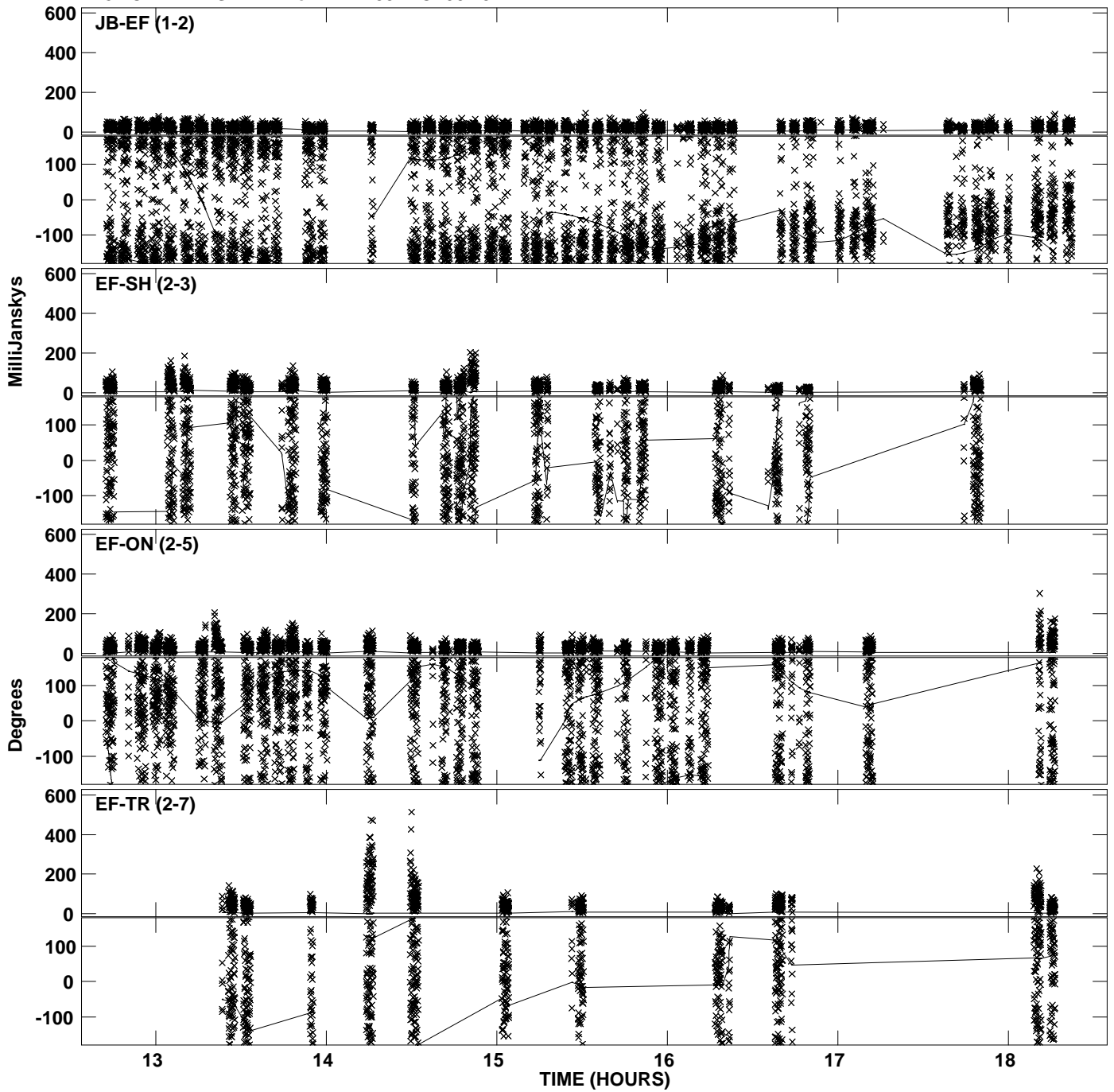
Plot file version 29 created 27-OCT-2010 14:16:09
Amplitude andPhase vs Time for ARP299B.MULTI.1 CL # 3
IF 7 CHAN 1 STK RR of ARP299B.ICL001.3



Plot file version 30 created 27-OCT-2010 14:16:09
Amplitude and Phase vs Time for ARP299B.MULTI.1 CL # 3
IF 7 CHAN 1 STK RR of ARP299B.ICL001.3



PLot file version 31 created 27-OCT-2010 14:16:10
Amplitude andPhase vs Time for ARP299B.MULTI.1 CL # 3
IF 8 CHAN 1 STK RR of ARP299B.ICL001.3



PLot file version 32 created 27-OCT-2010 14:16:10
Amplitude andPhase vs Time for ARP299B.MULTI.1 CL # 3
IF 8 CHAN 1 STK RR of ARP299B.ICL001.3

