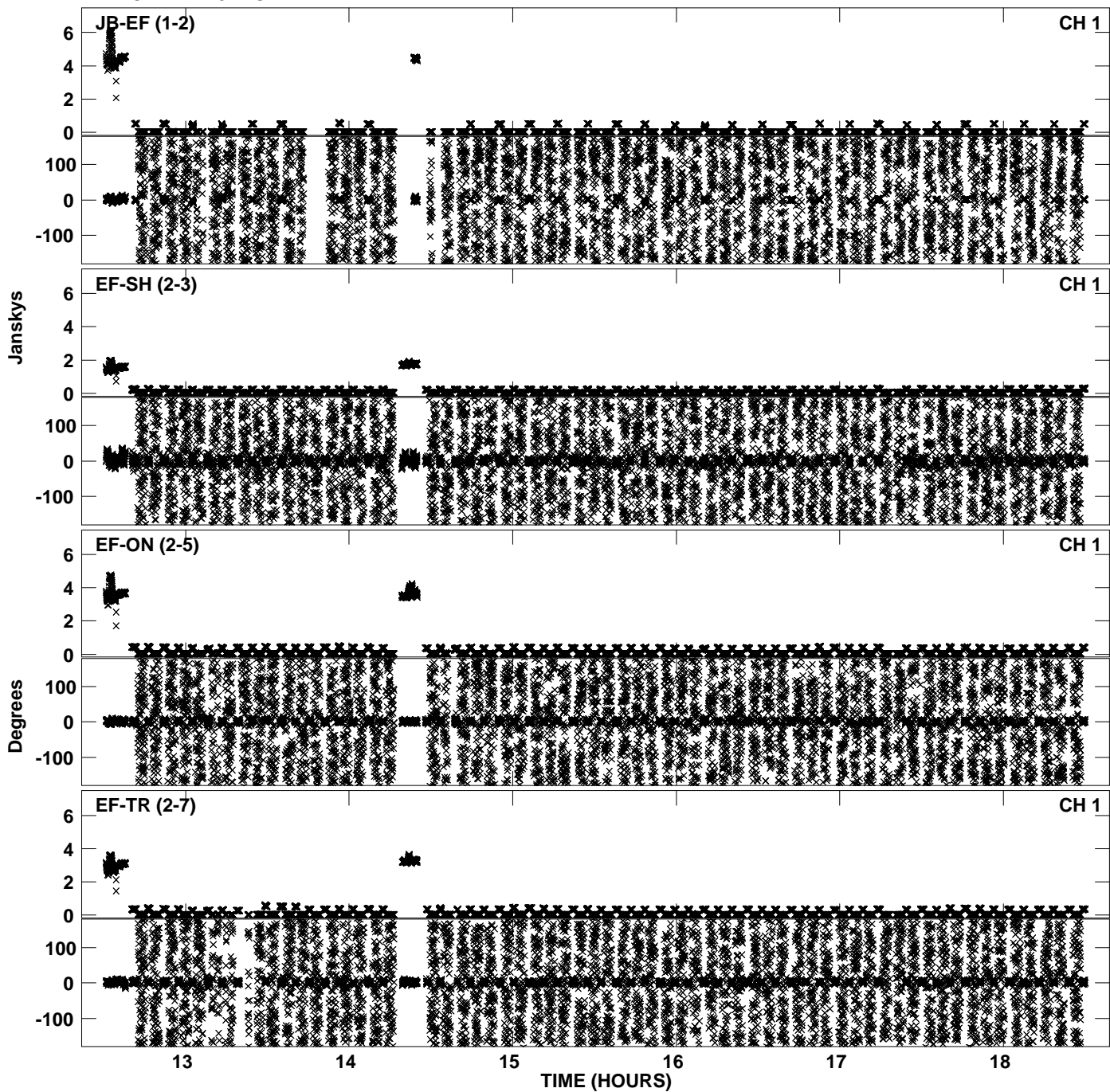
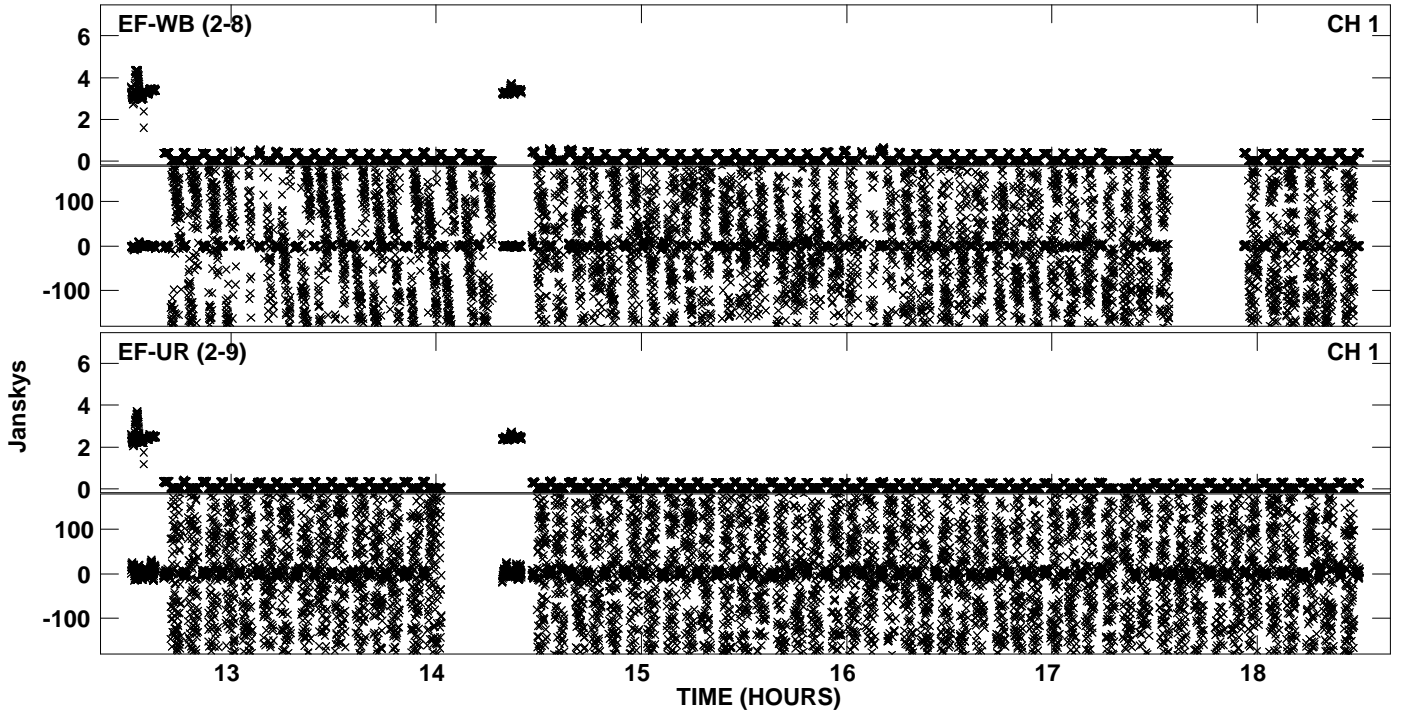


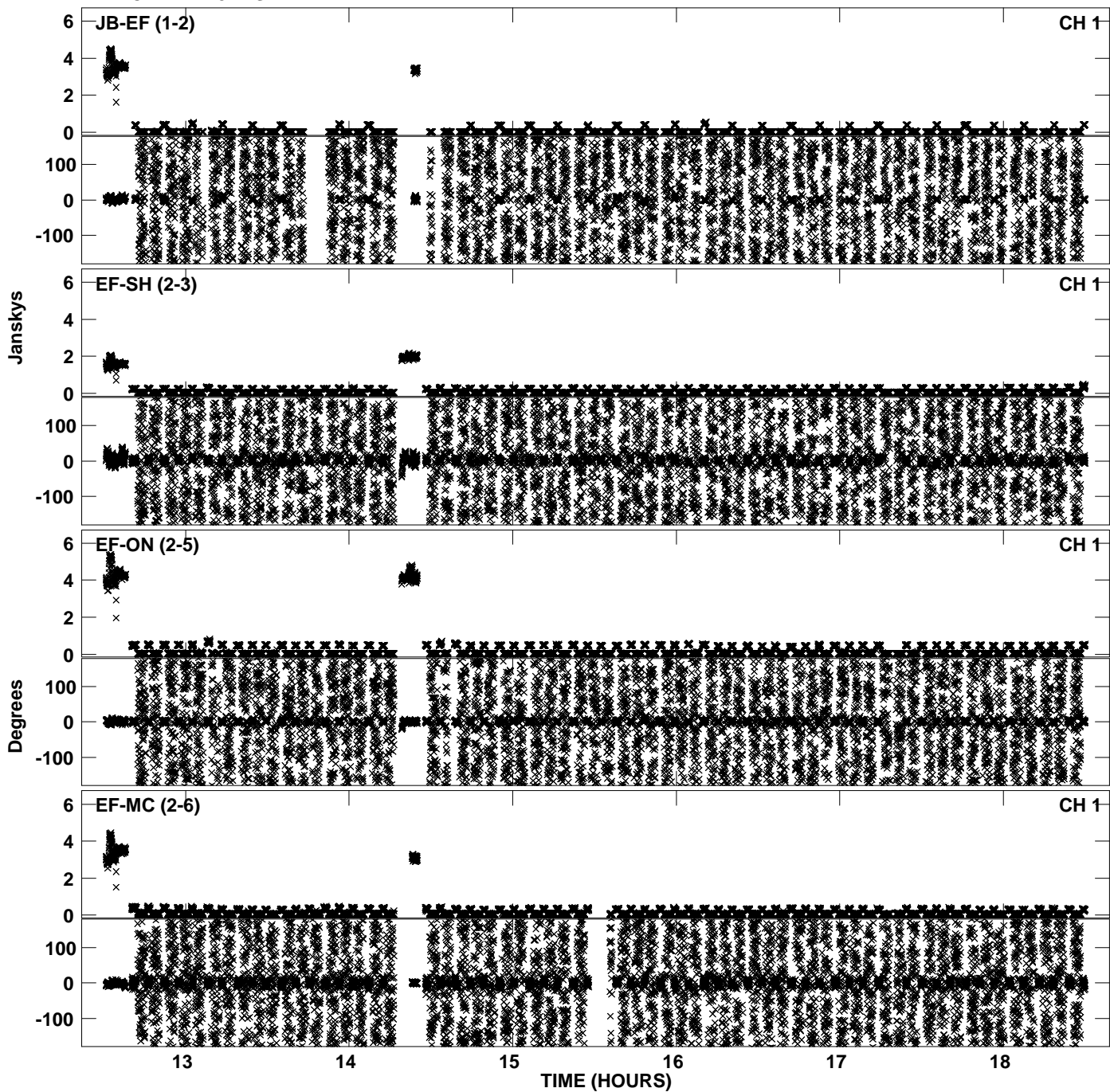
Plot file version 1 created 30-NOV-2010 17:26:57
Amplitude andPhase vs Time for EP068B 5.UVDATA.1 Vect aver. CL # 3
IF 1 CHAN 1 - 32 STK LL



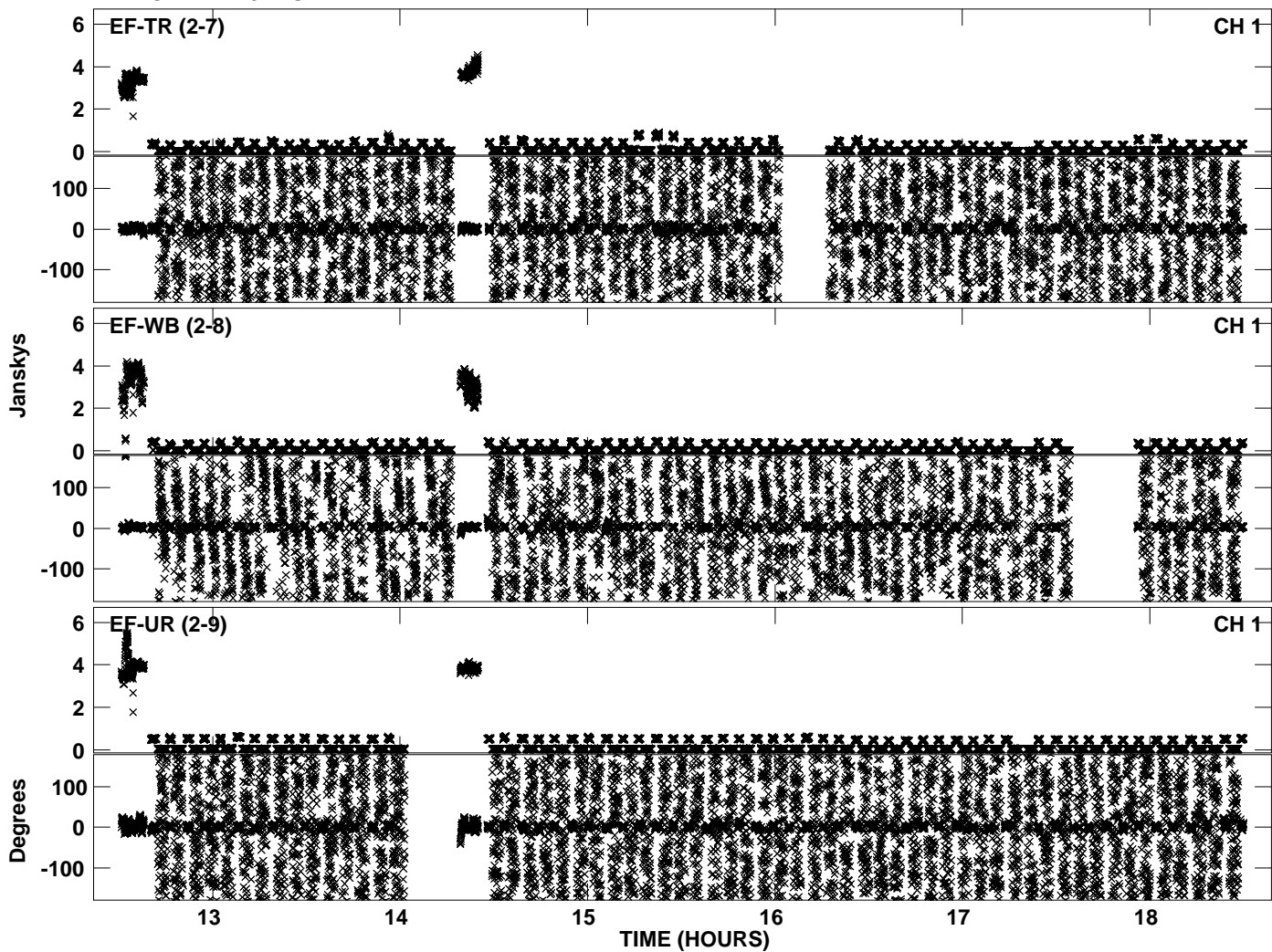
Plot file version 2 created 30-NOV-2010 17:26:57
Amplitude andPhase vs Time for EP068B 5.UVDATA.1 Vect aver. CL # 3
IF 1 CHAN 1 - 32 STK LL



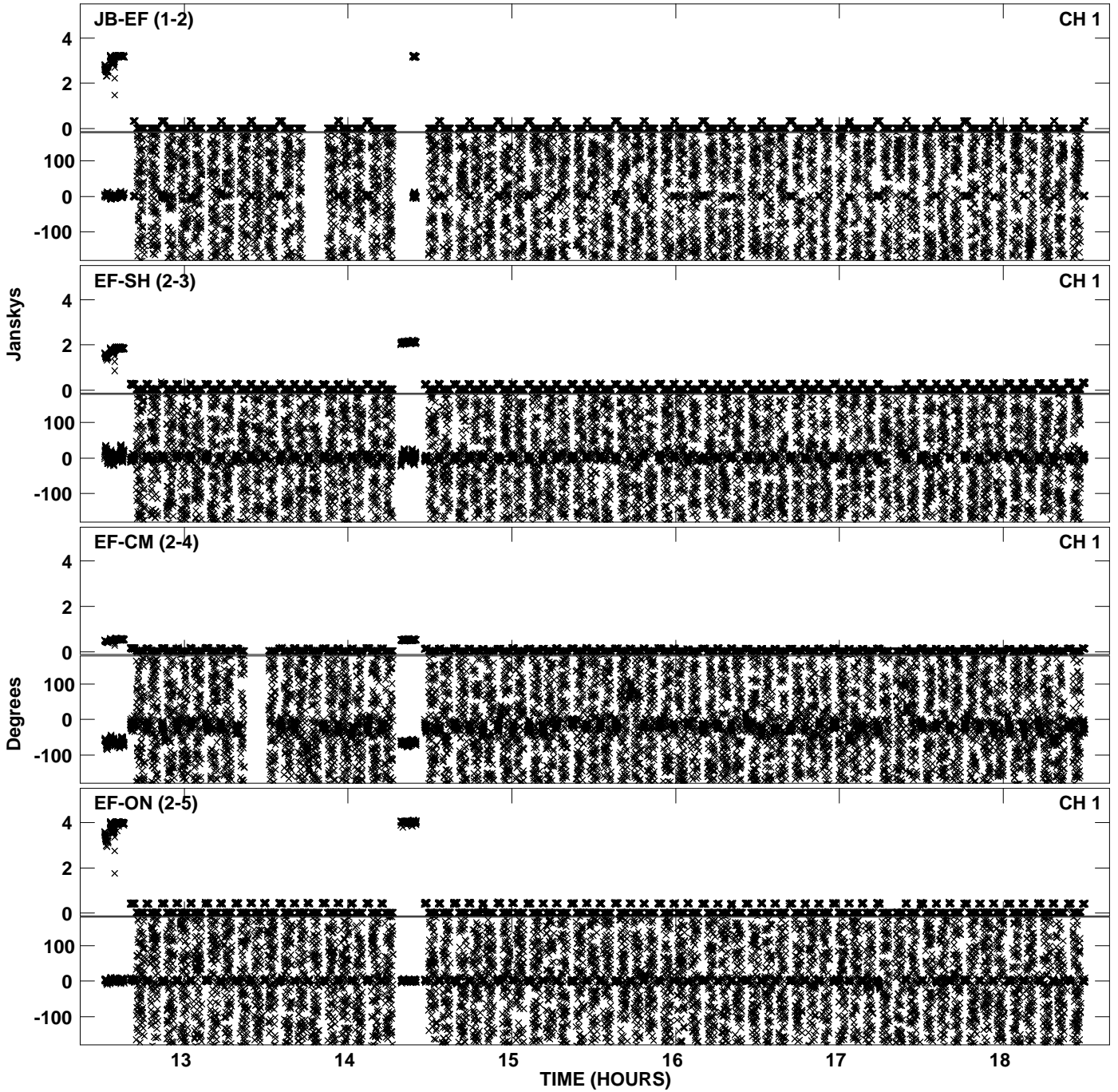
Plot file version 3 created 30-NOV-2010 17:27:05
Amplitude andPhase vs Time for EP068B 5.UVDATA.1 Vect aver. CL # 3
IF 2 CHAN 1 - 32 STK LL



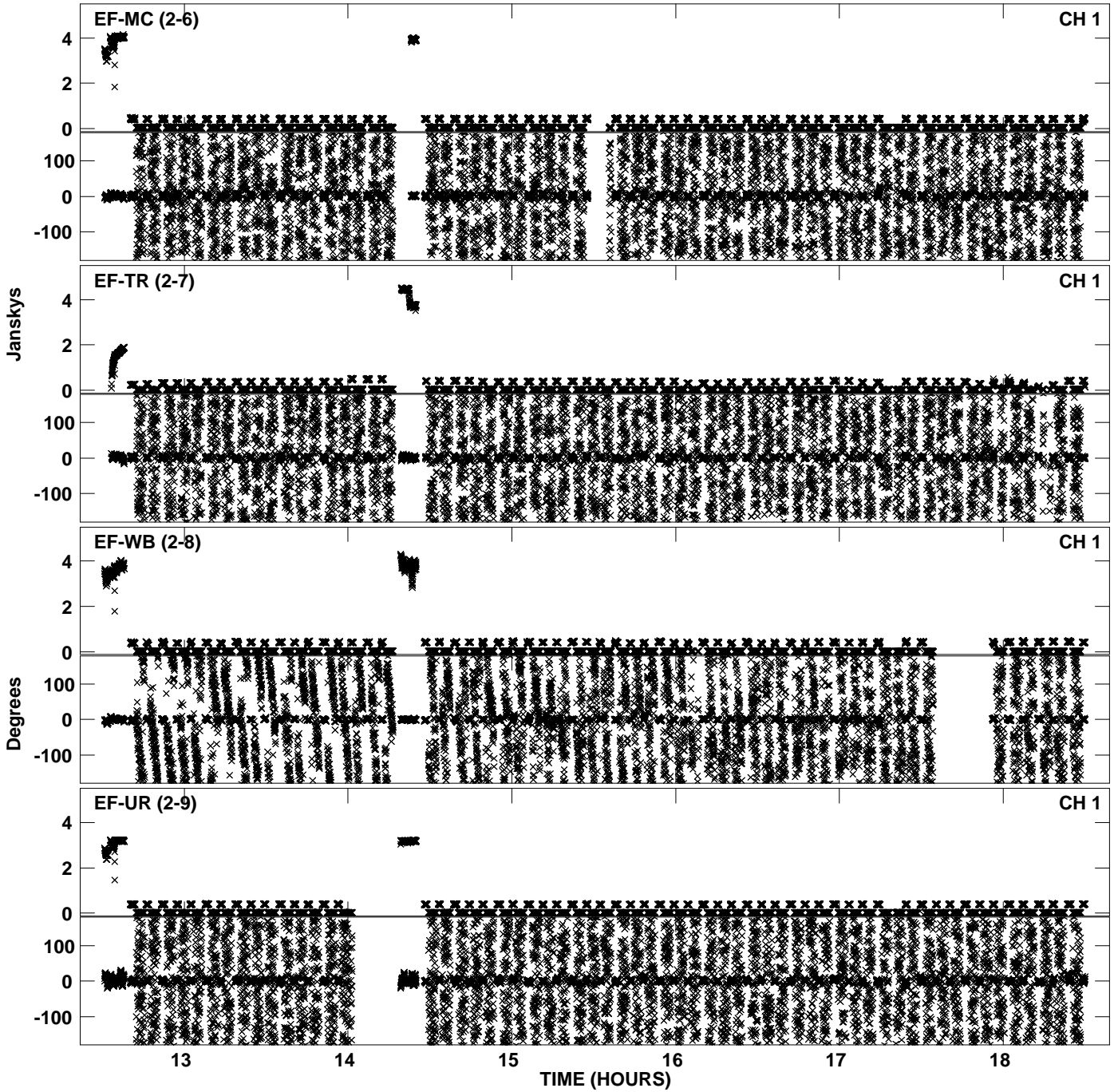
Plot file version 4 created 30-NOV-2010 17:27:05
Amplitude andPhase vs Time for EP068B 5.UVDATA.1 Vect aver. CL # 3
IF 2 CHAN 1 - 32 STK LL



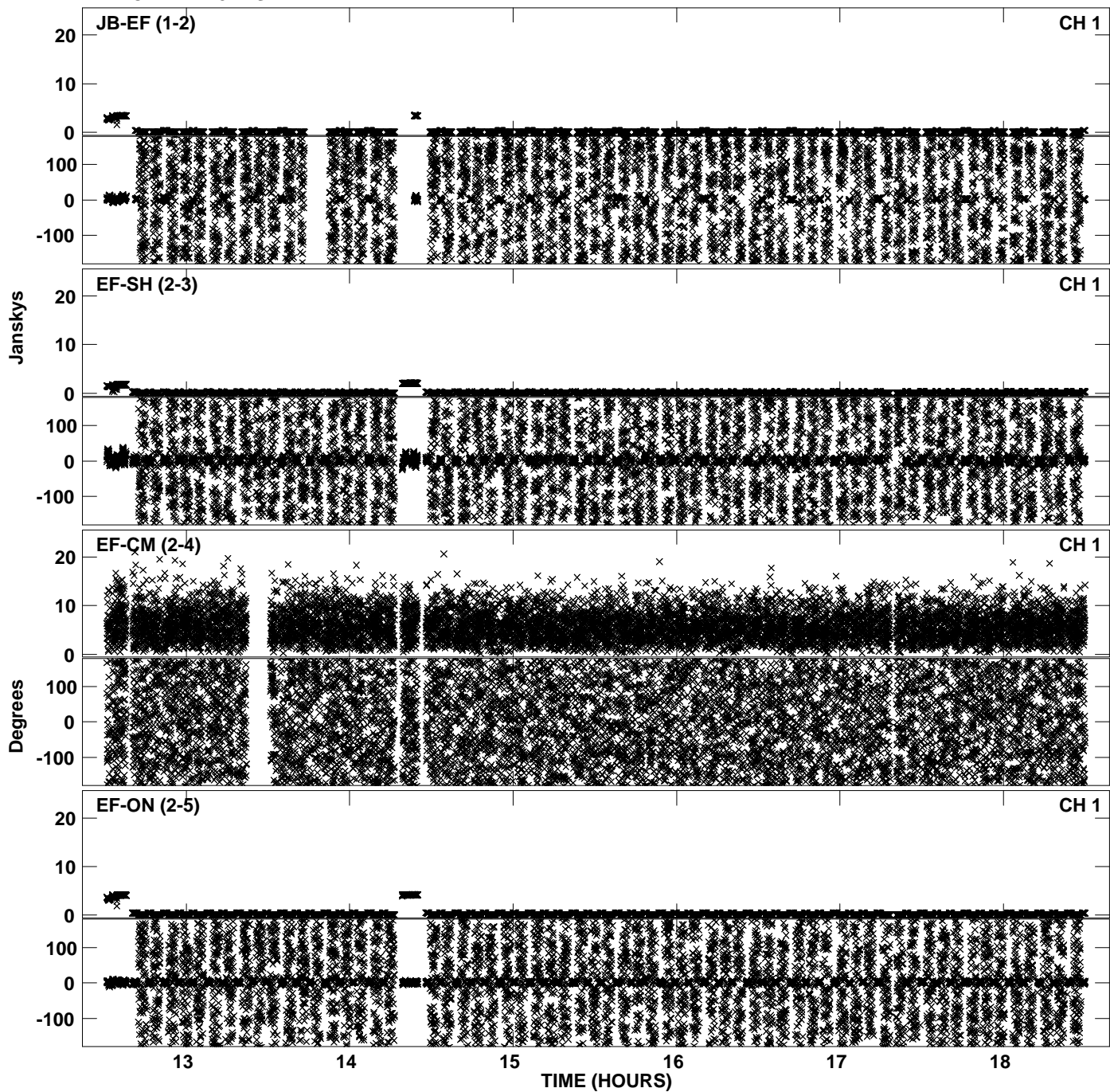
Plot file version 5 created 30-NOV-2010 17:27:14
Amplitude andPhase vs Time for EP068B 5.UVDATA.1 Vect aver. CL # 3
IF 3 CHAN 1 - 32 STK LL



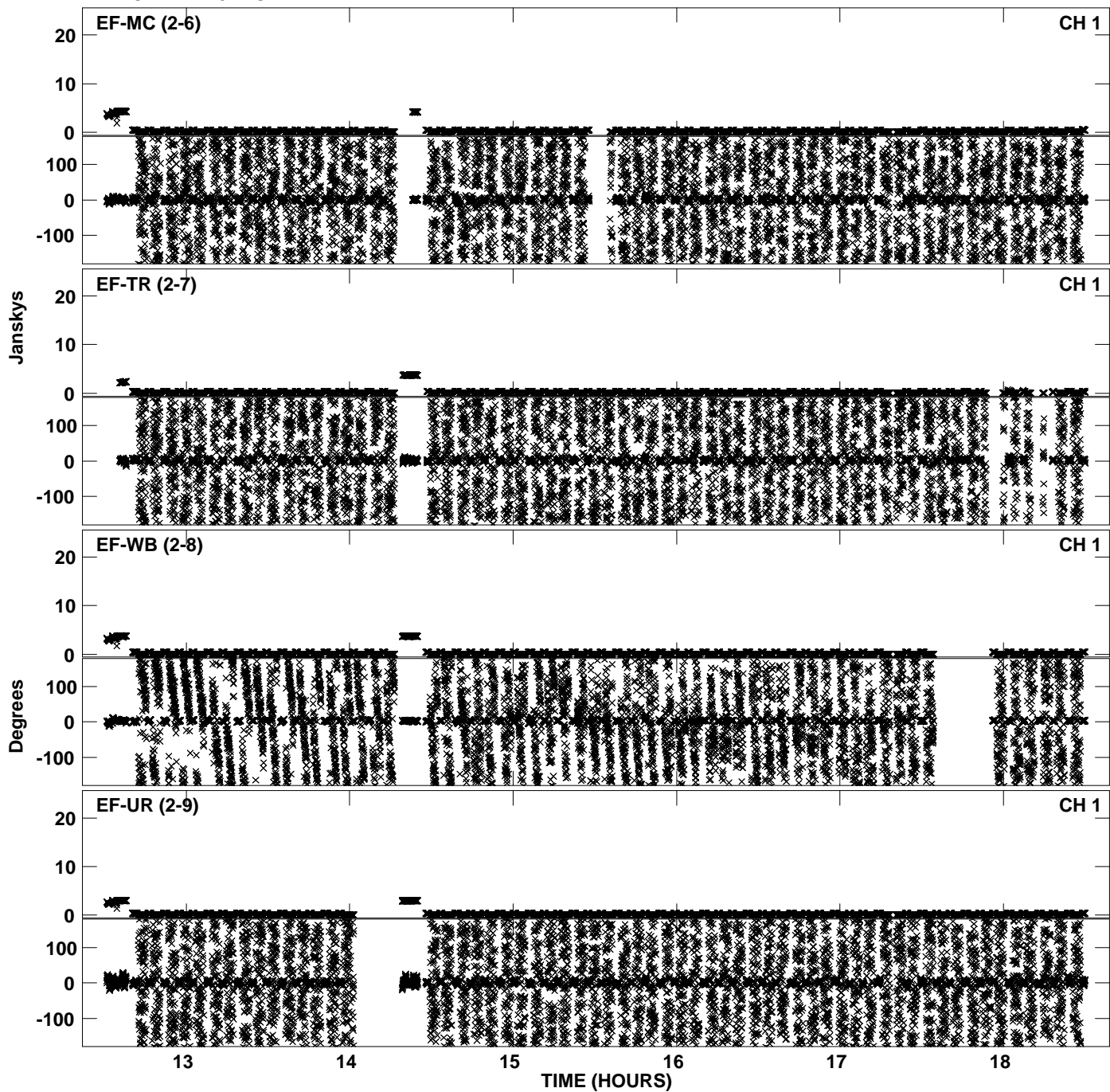
PLot file version 6 created 30-NOV-2010 17:27:14
Amplitude andPhase vs Time for EP068B 5.UVDATA.1 Vect aver. CL # 3
IF 3 CHAN 1 - 32 STK LL



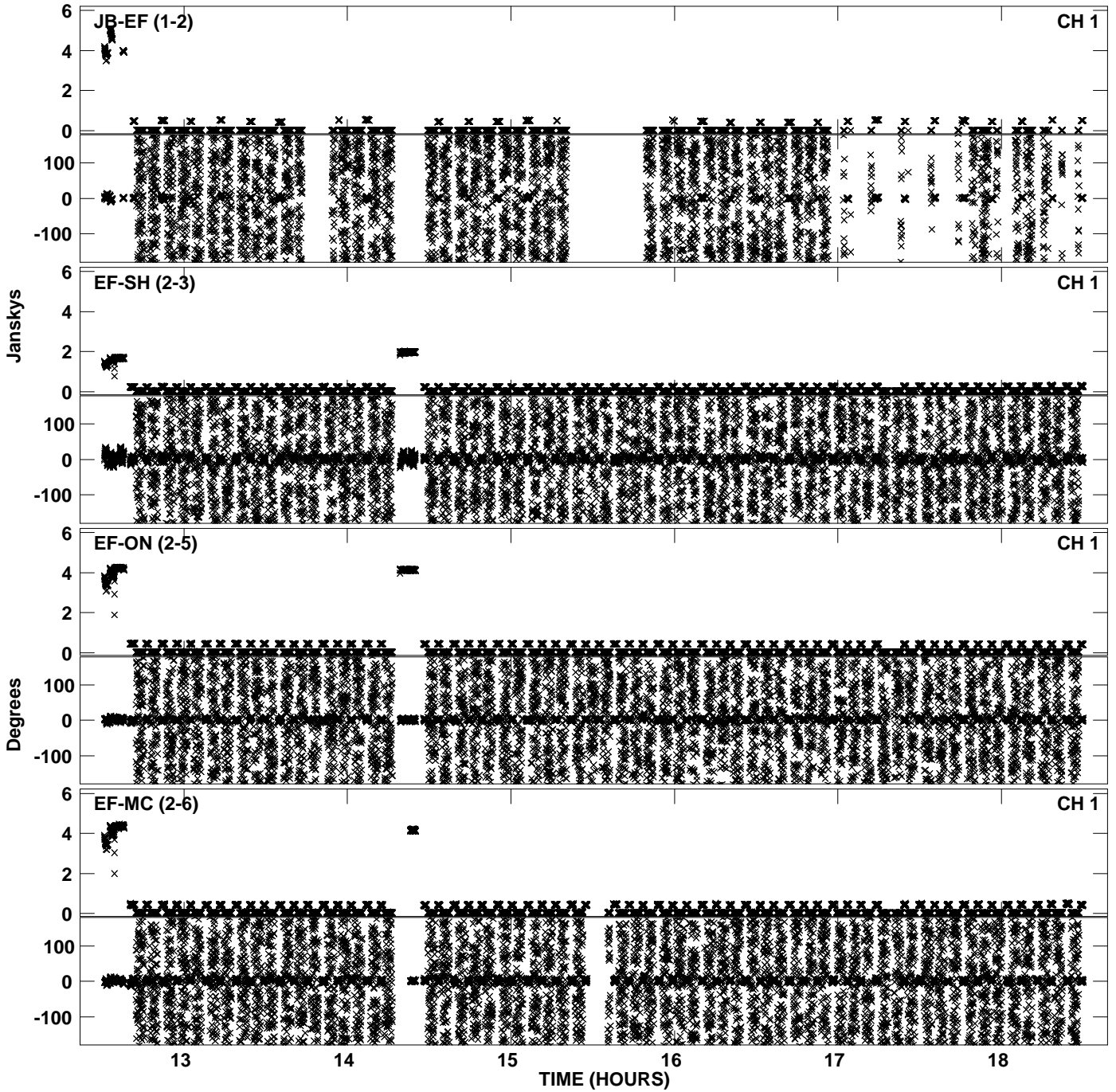
Plot file version 7 created 30-NOV-2010 17:27:23
Amplitude andPhase vs Time for EP068B 5.UVDATA.1 Vect aver. CL # 3
IF 4 CHAN 1 - 32 STK LL



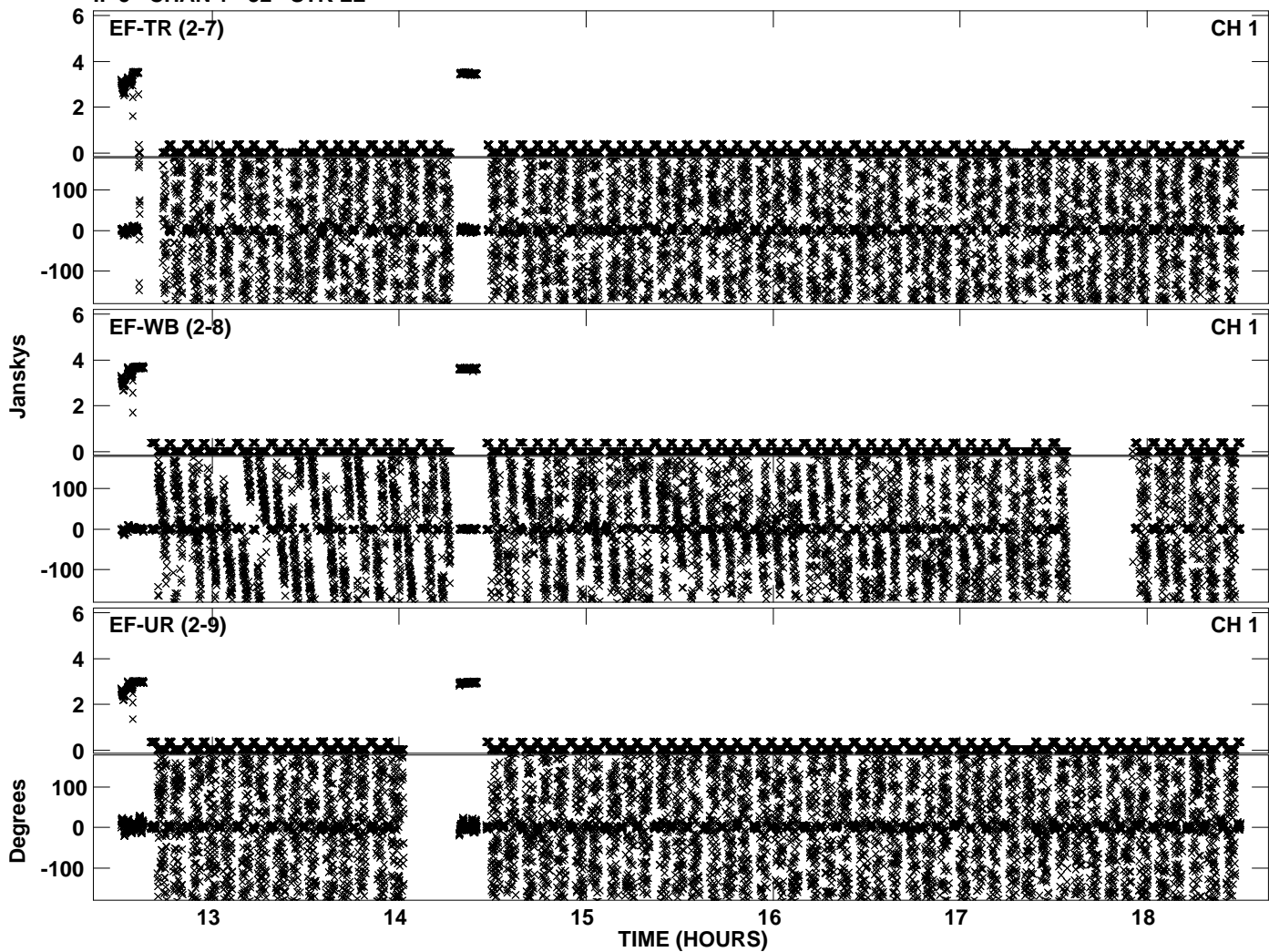
PLot file version 8 created 30-NOV-2010 17:27:23
Amplitude andPhase vs Time for EP068B 5.UVDATA.1 Vect aver. CL # 3
IF 4 CHAN 1 - 32 STK LL



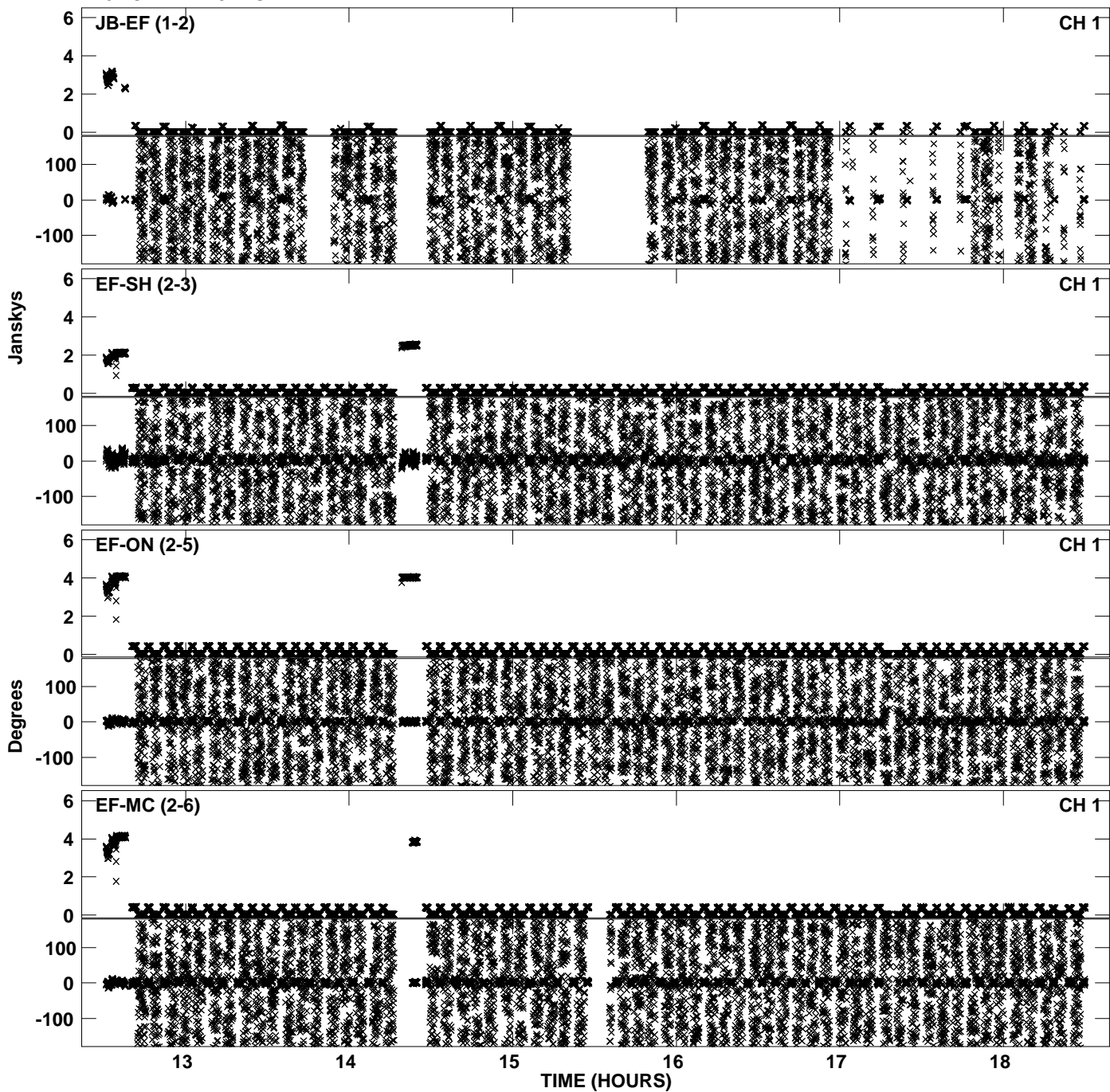
Plot file version 9 created 30-NOV-2010 17:27:31
Amplitude andPhase vs Time for EP068B 5.UVDATA.1 Vect aver. CL # 3
IF 5 CHAN 1 - 32 STK LL



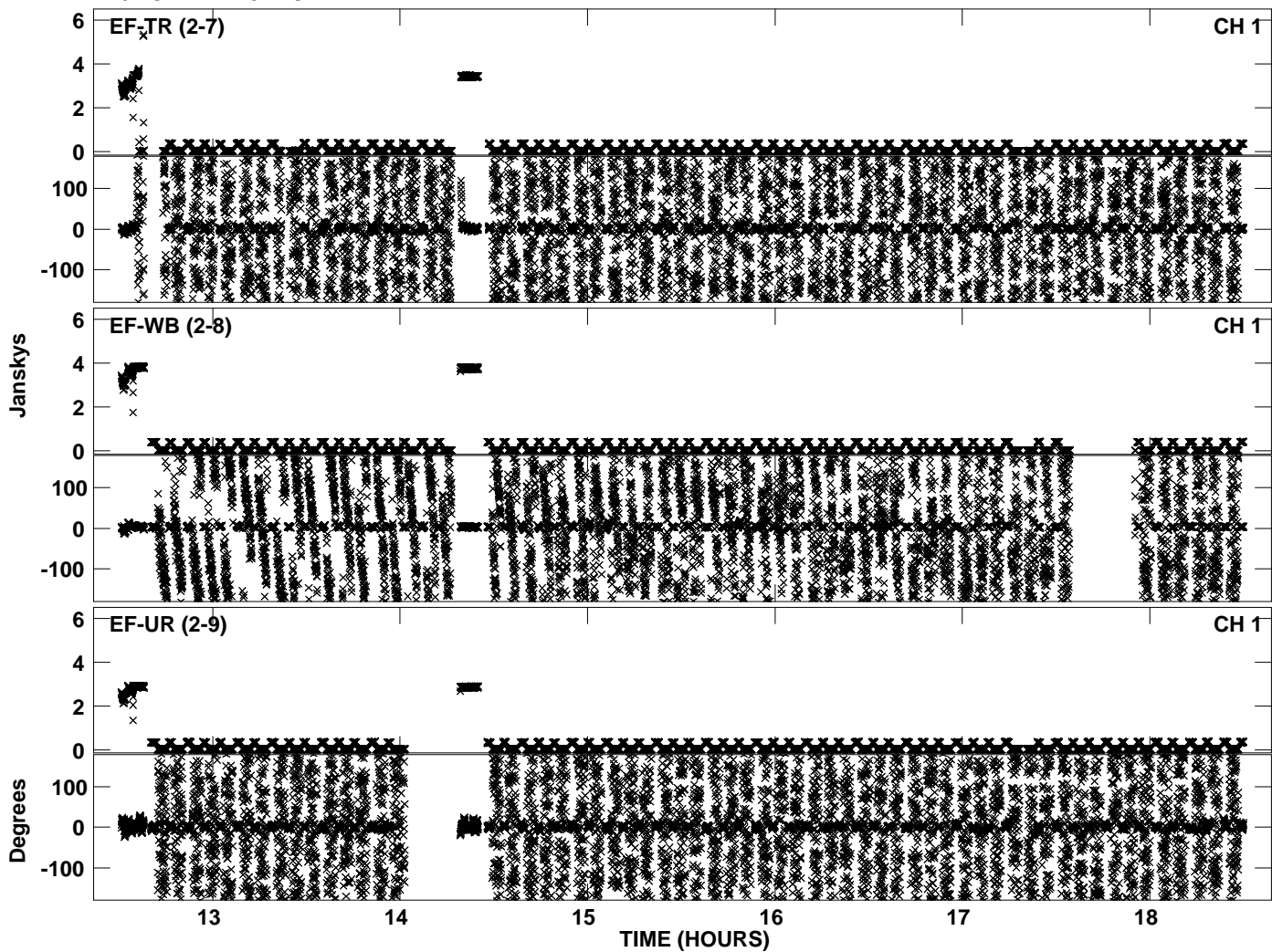
PLot file version 10 created 30-NOV-2010 17:27:31
Amplitude andPhase vs Time for EP068B 5.UVDATA.1 Vect aver. CL # 3
IF 5 CHAN 1 - 32 STK LL



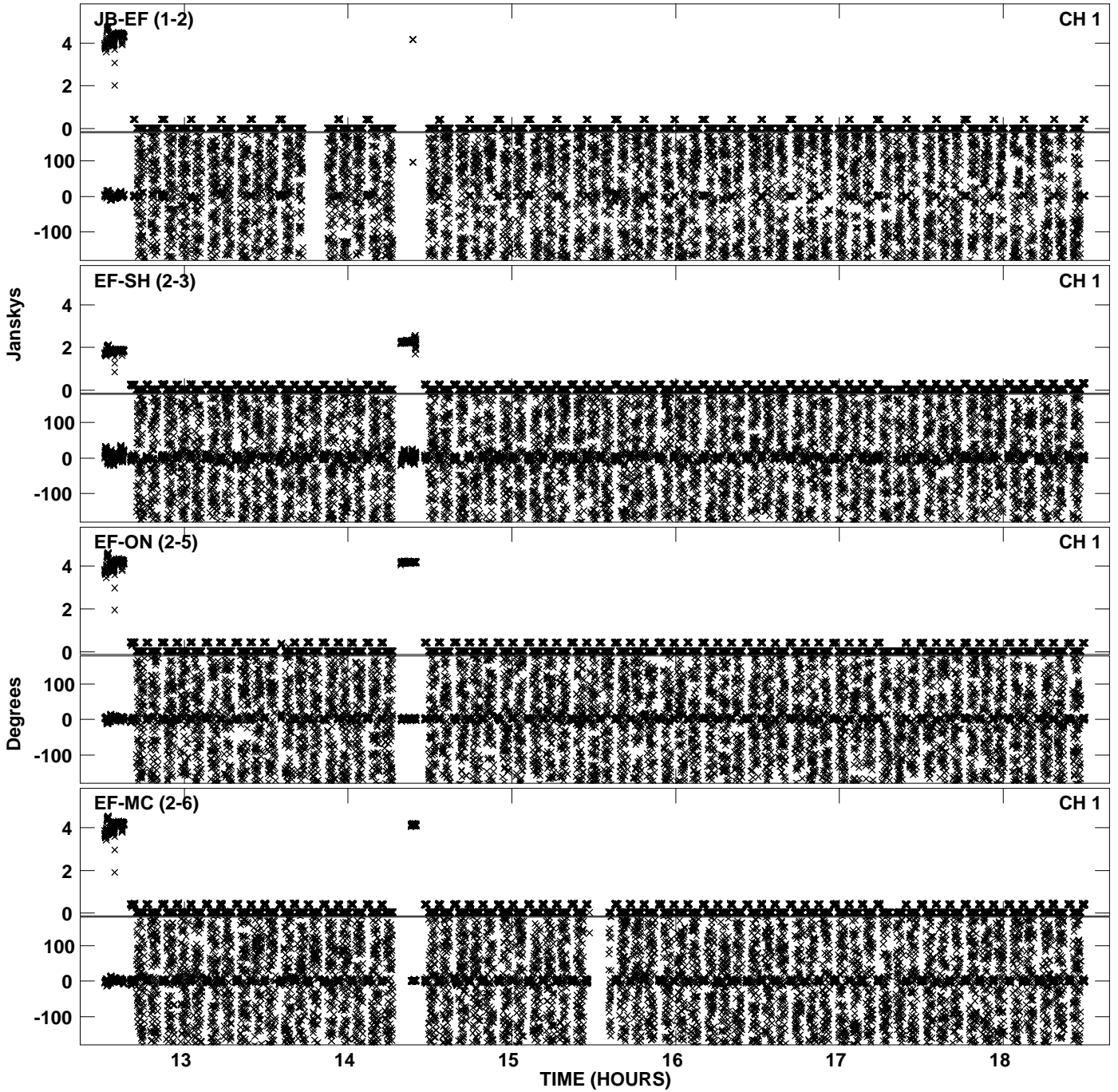
Plot file version 11 created 30-NOV-2010 17:27:39
Amplitude andPhase vs Time for EP068B 5.UVDATA.1 Vect aver. CL # 3
IF 6 CHAN 1 - 32 STK LL



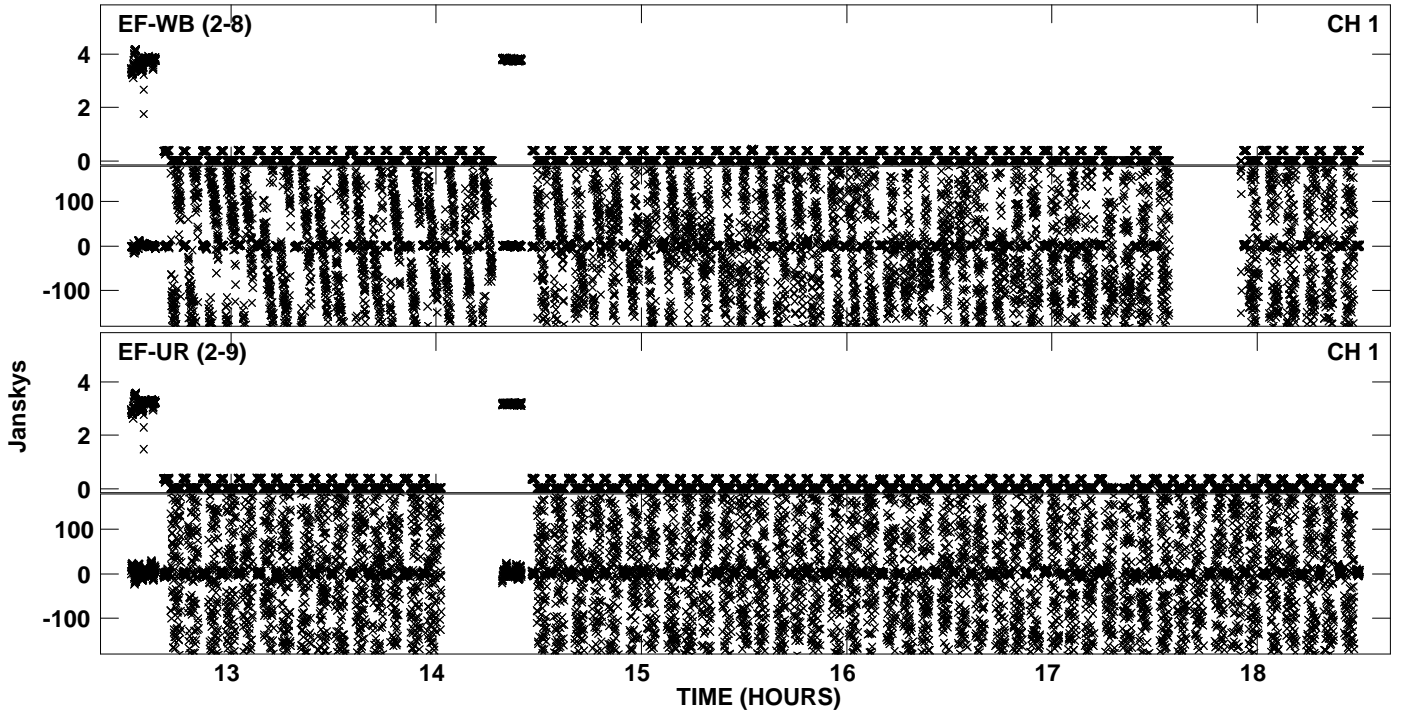
Plot file version 12 created 30-NOV-2010 17:27:39
Amplitude andPhase vs Time for EP068B 5.UVDATA.1 Vect aver. CL # 3
IF 6 CHAN 1 - 32 STK LL



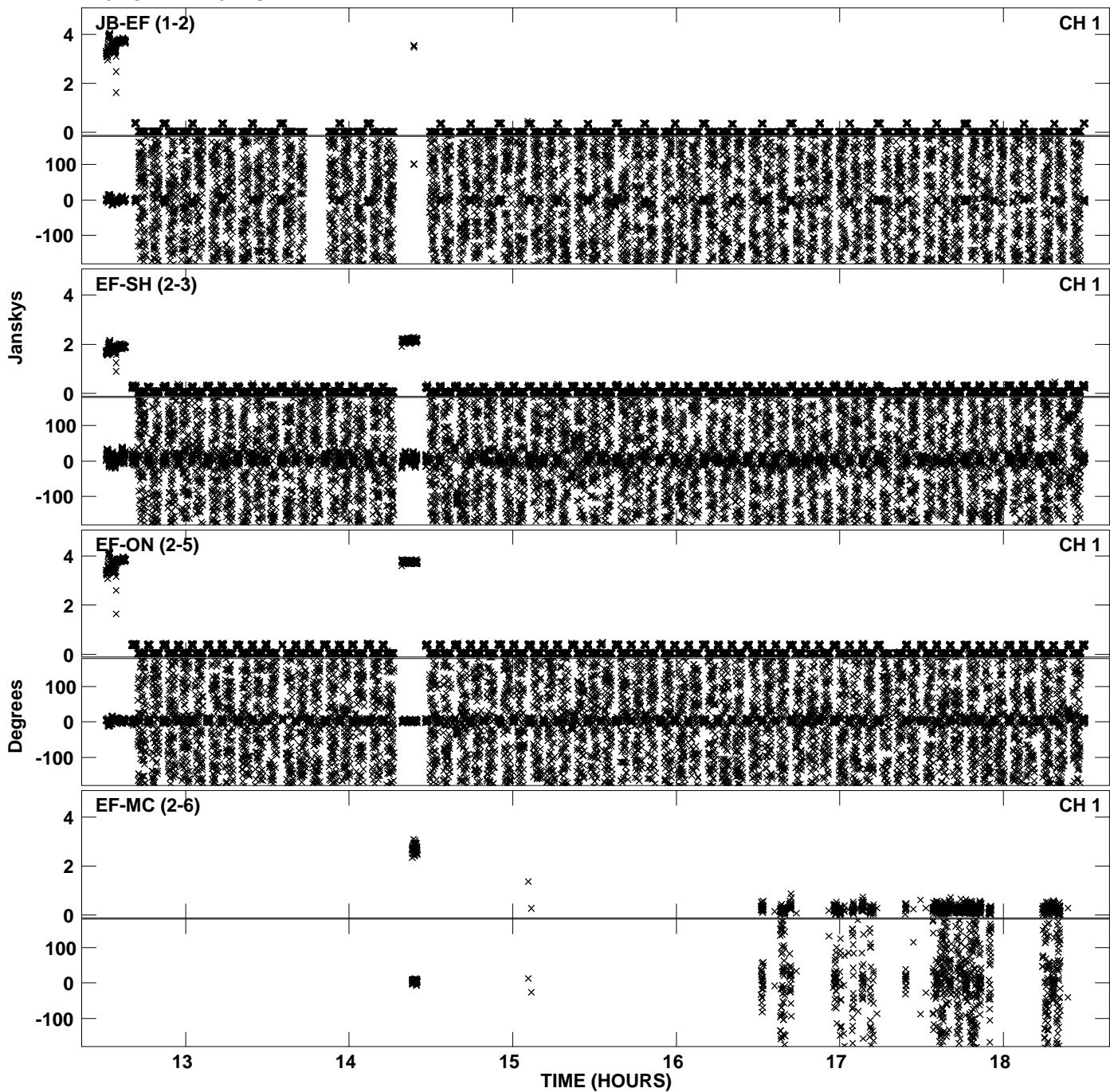
PLot file version 13 created 30-NOV-2010 17:27:47
Amplitude andPhase vs Time for EP068B 5.UVDATA.1 Vect aver. CL # 3
IF 7 CHAN 1 - 32 STK LL



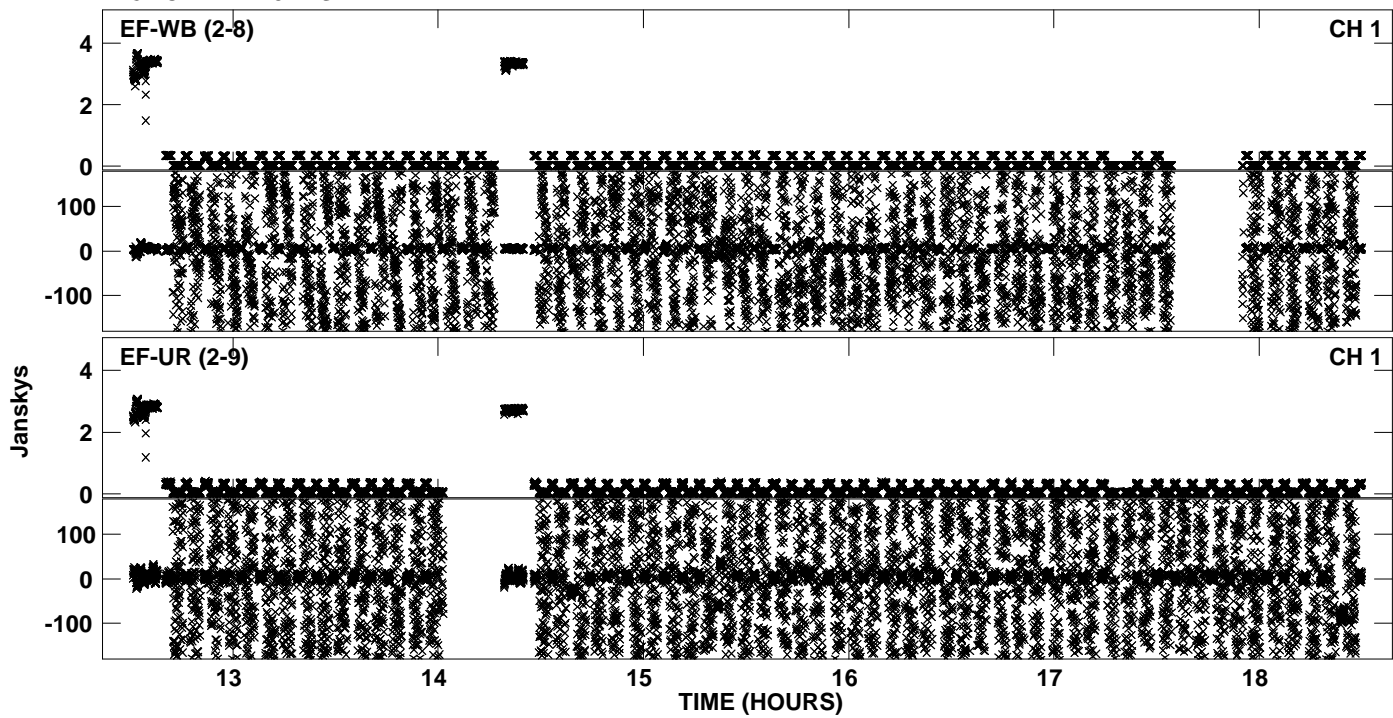
PLot file version 14 created 30-NOV-2010 17:27:47
Amplitude andPhase vs Time for EP068B 5.UVDATA.1 Vect aver. CL # 3
IF 7 CHAN 1 - 32 STK LL



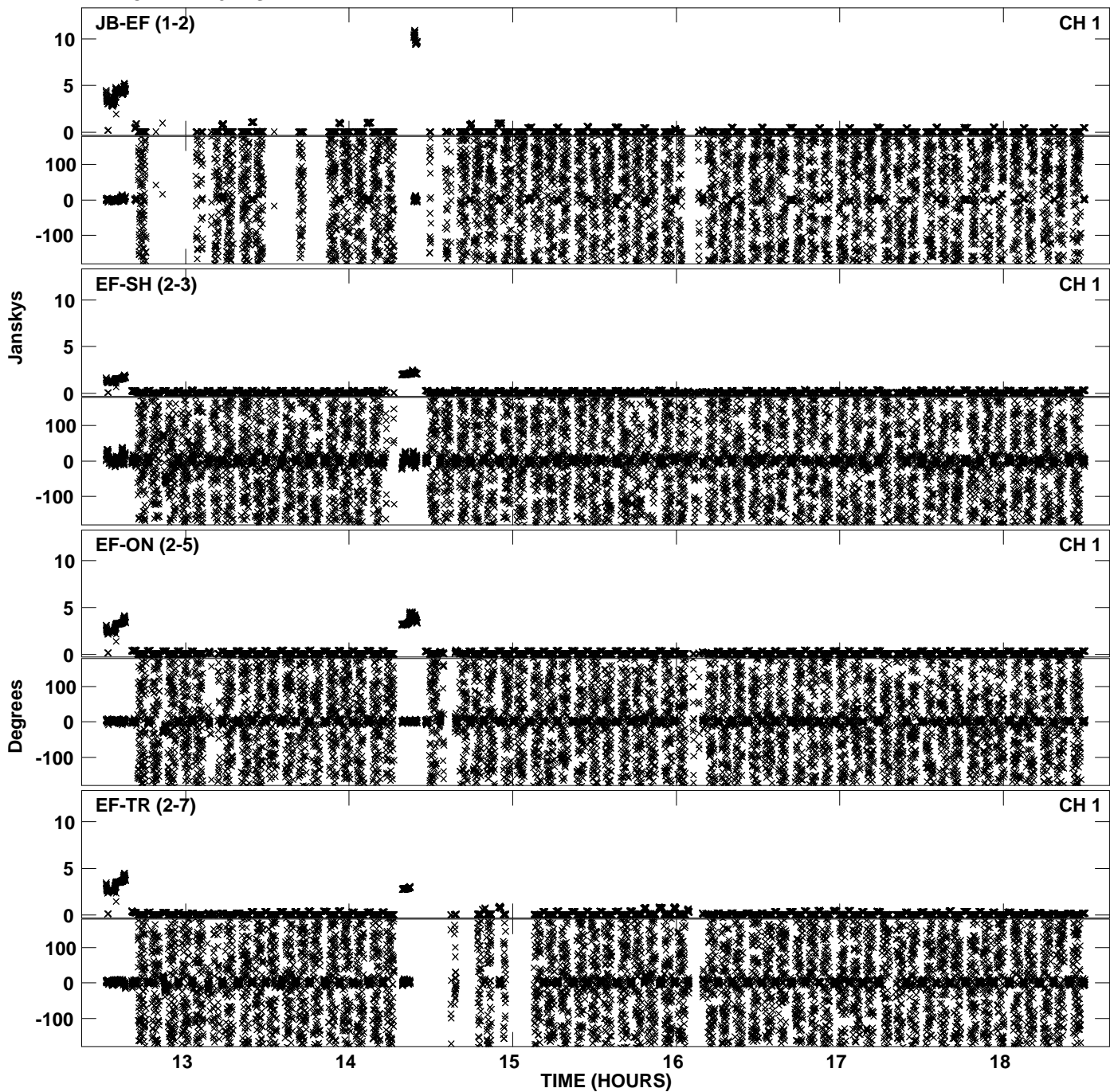
Plot file version 15 created 30-NOV-2010 17:27:54
Amplitude andPhase vs Time for EP068B 5.UVDATA.1 Vect aver. CL # 3
IF 8 CHAN 1 - 32 STK LL



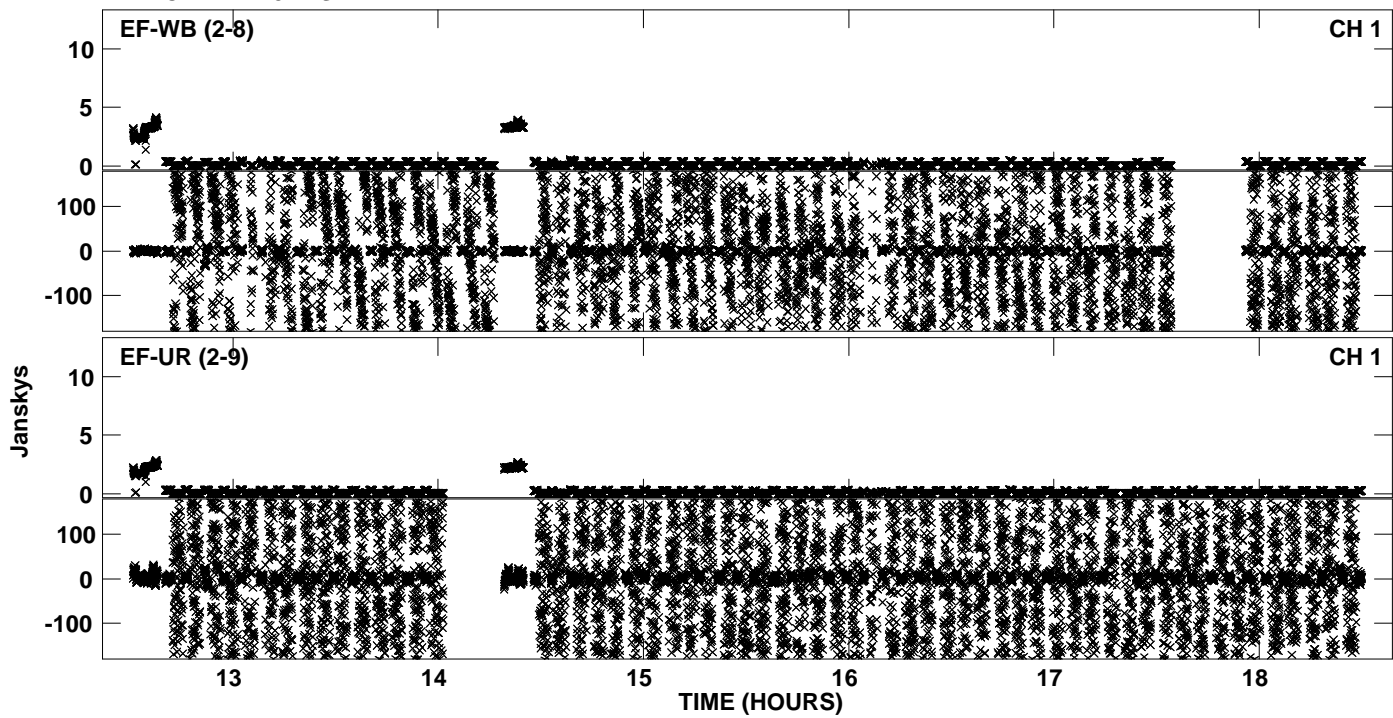
PLot file version 16 created 30-NOV-2010 17:27:55
Amplitude andPhase vs Time for EP068B 5.UVDATA.1 Vect aver. CL # 3
IF 8 CHAN 1 - 32 STK LL



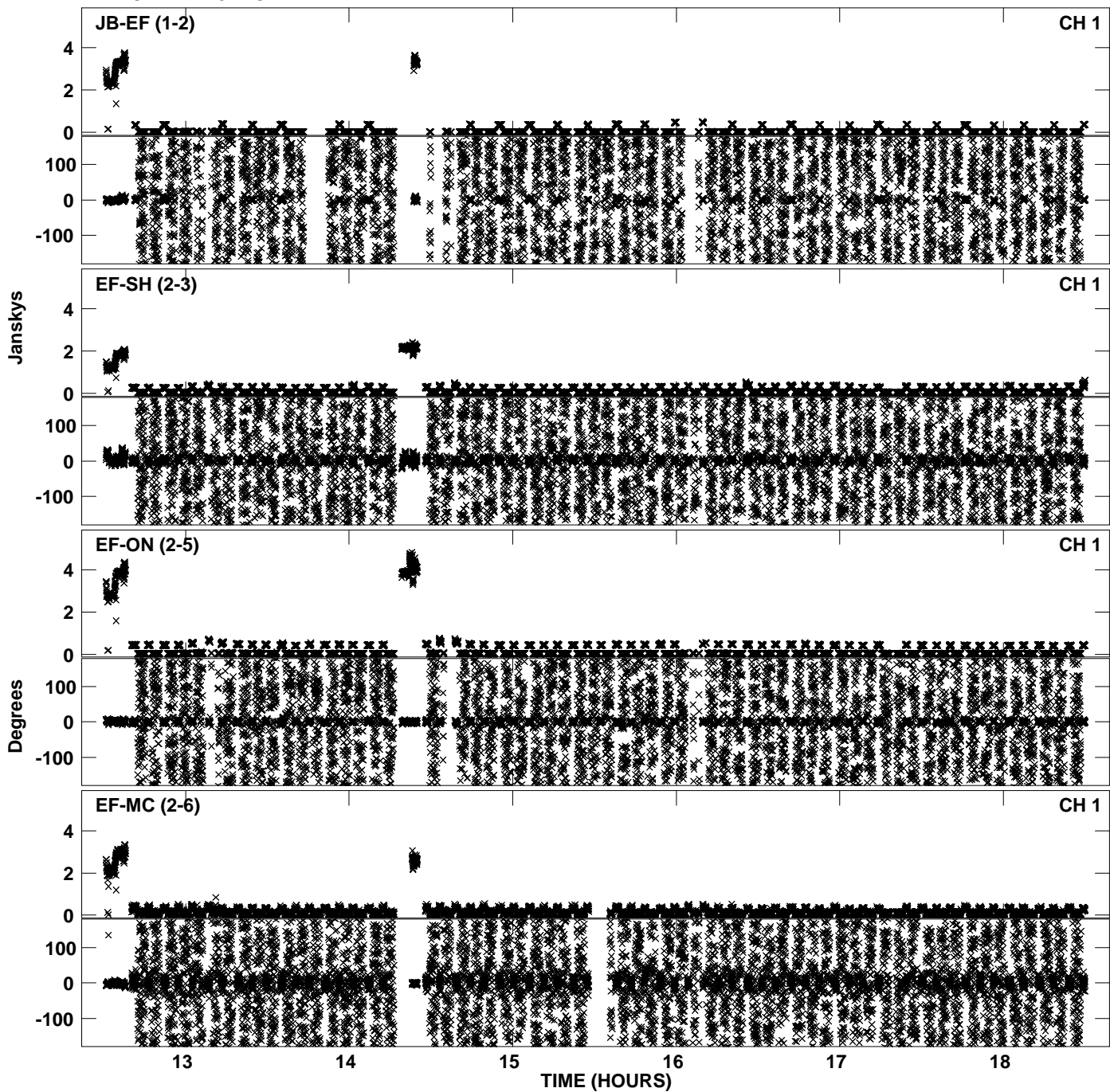
Plot file version 17 created 30-NOV-2010 17:28:01
Amplitude andPhase vs Time for EP068B 5.UVDATA.1 Vect aver. CL # 3
IF 1 CHAN 1 - 32 STK RR



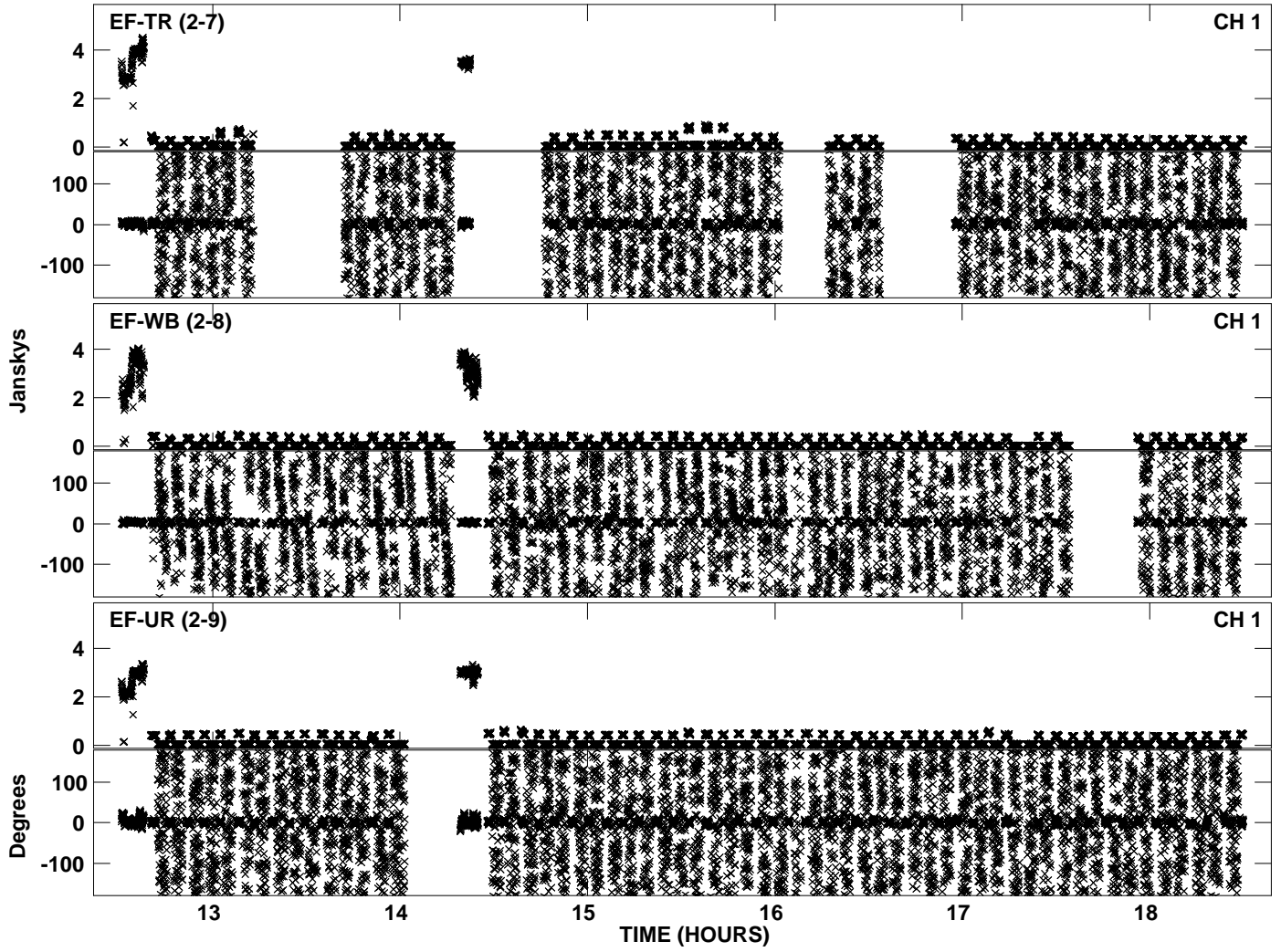
PLot file version 18 created 30-NOV-2010 17:28:01
Amplitude andPhase vs Time for EP068B 5.UVDATA.1 Vect aver. CL # 3
IF 1 CHAN 1 - 32 STK RR



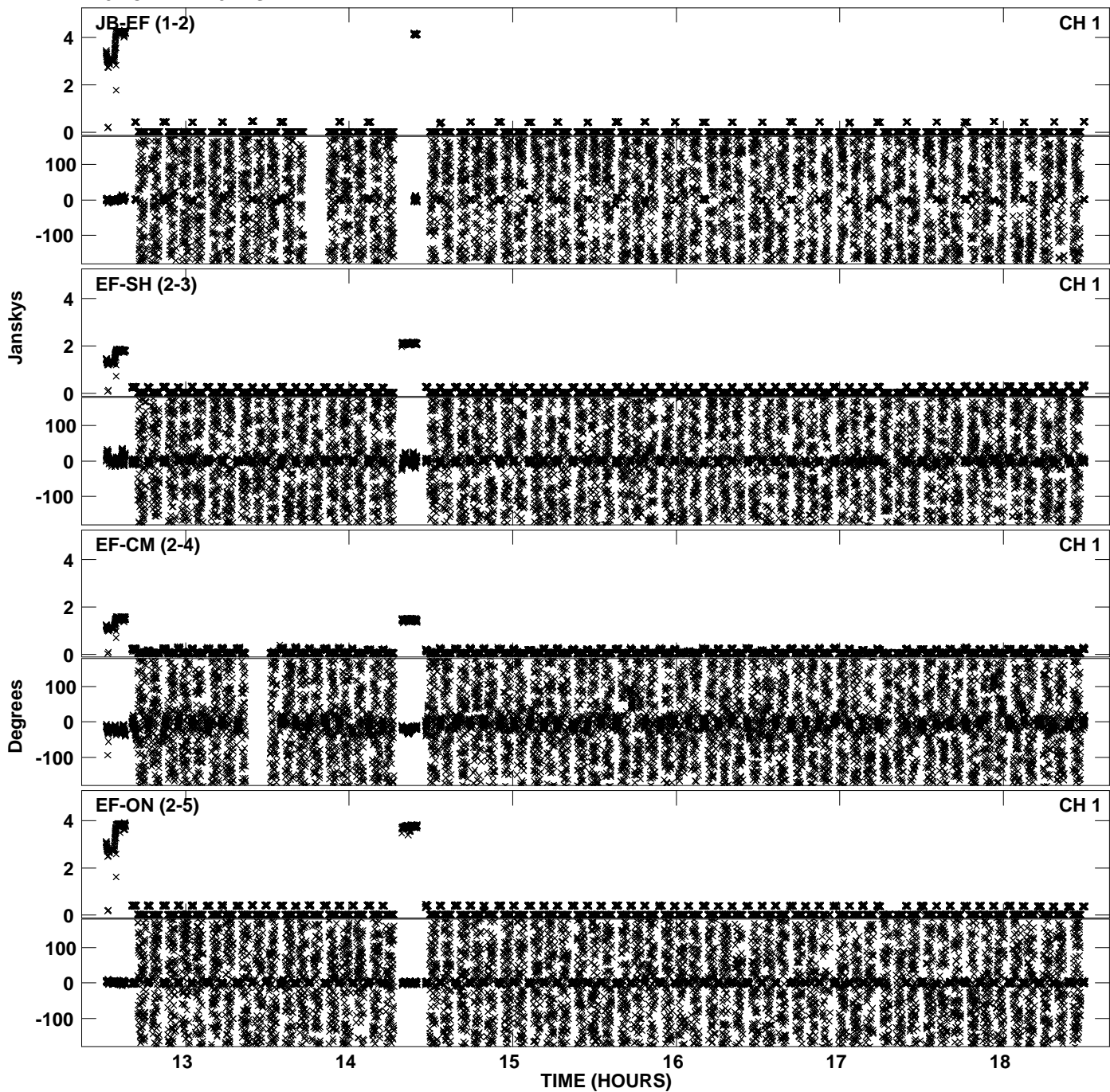
PLot file version 19 created 30-NOV-2010 17:28:09
Amplitude andPhase vs Time for EP068B 5.UVDATA.1 Vect aver. CL # 3
IF 2 CHAN 1 - 32 STK RR



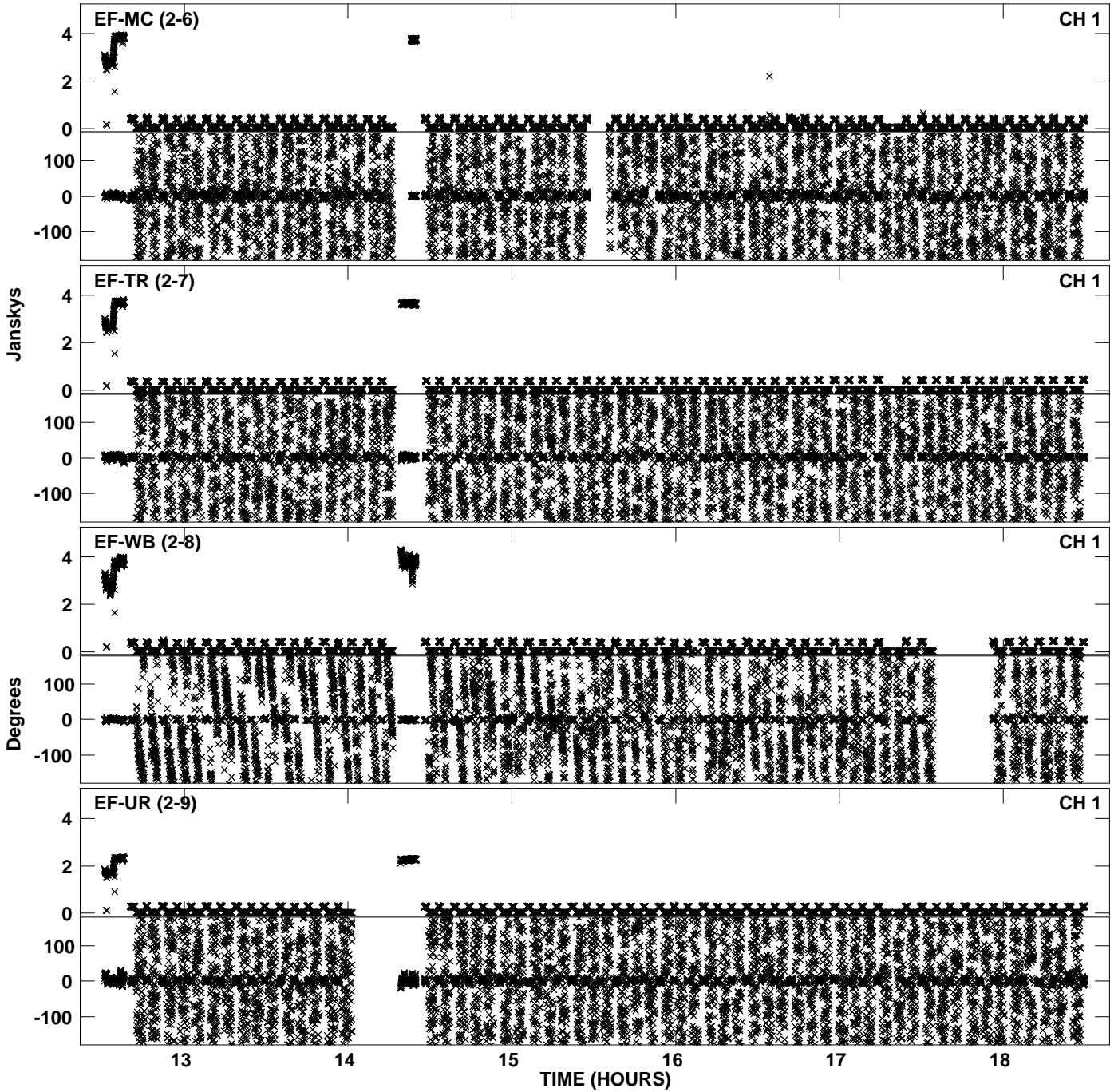
PLot file version 20 created 30-NOV-2010 17:28:09
Amplitude andPhase vs Time for EP068B 5.UVDATA.1 Vect aver. CL # 3
IF 2 CHAN 1 - 32 STK RR



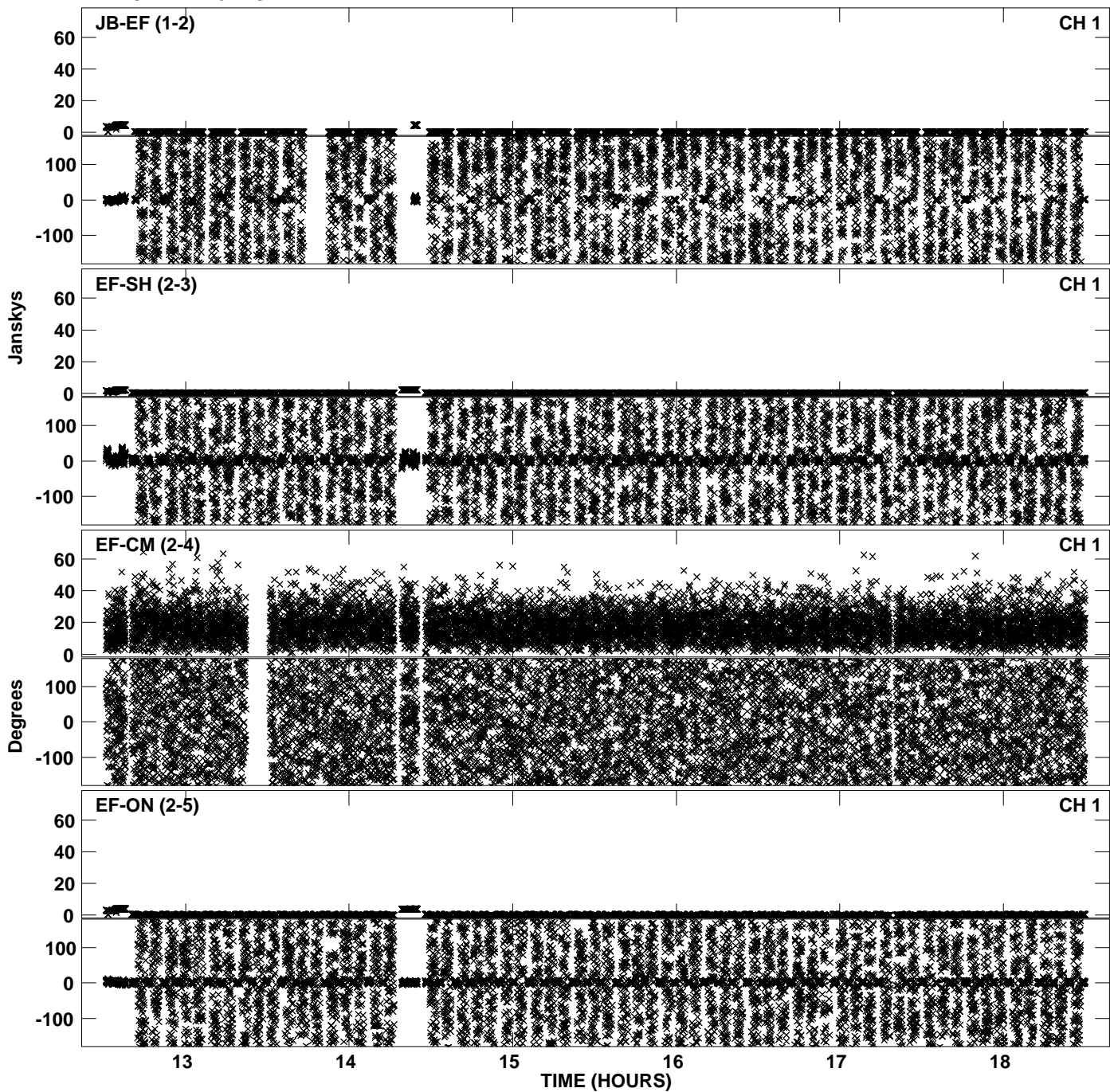
PLot file version 21 created 30-NOV-2010 17:28:17
Amplitude andPhase vs Time for EP068B 5.UVDATA.1 Vect aver. CL # 3
IF 3 CHAN 1 - 32 STK RR



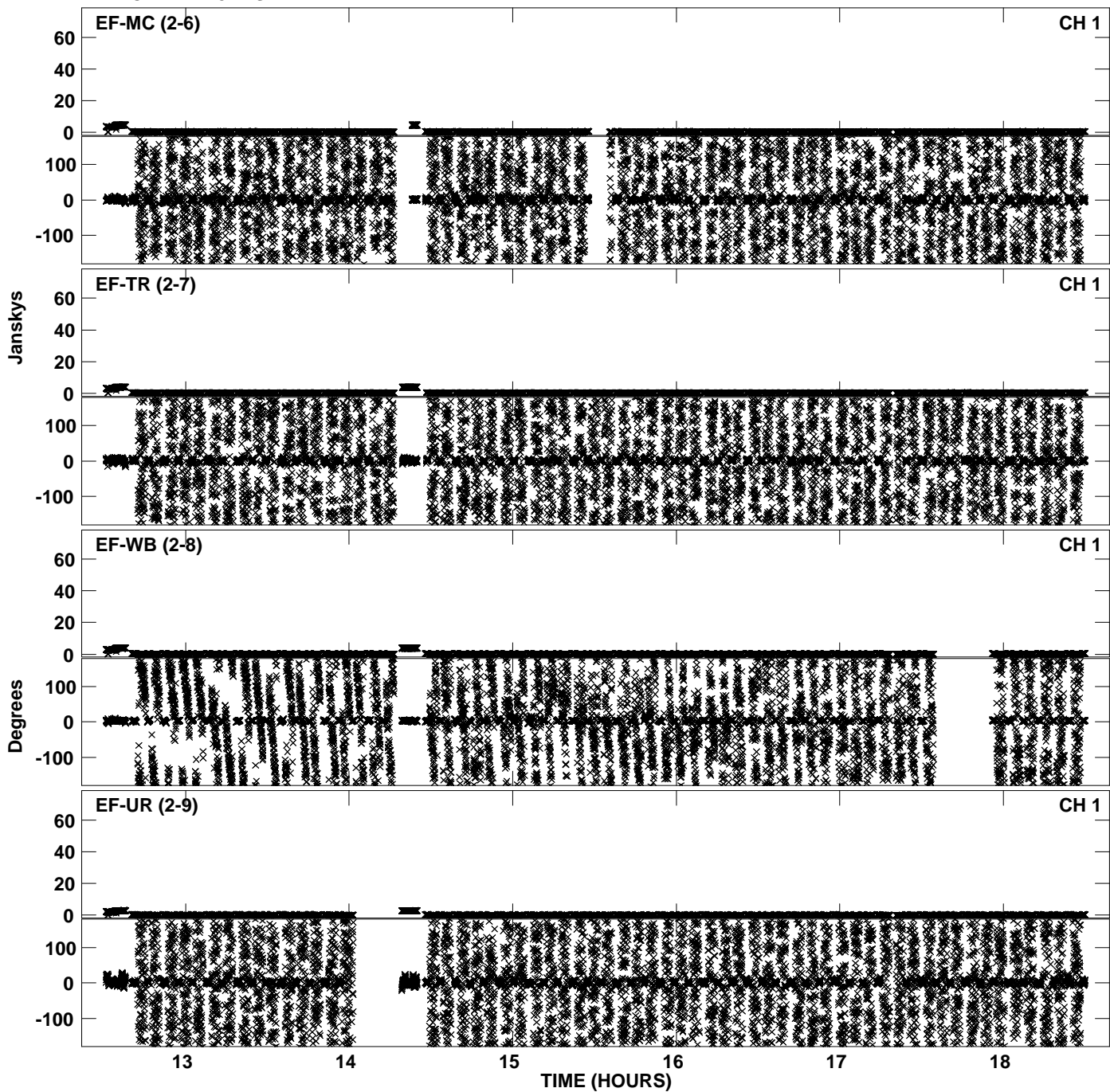
Plot file version 22 created 30-NOV-2010 17:28:17
Amplitude and Phase vs Time for EP068B 5.UVDATA.1 Vect aver. CL # 3
IF 3 CHAN 1 - 32 STK RR



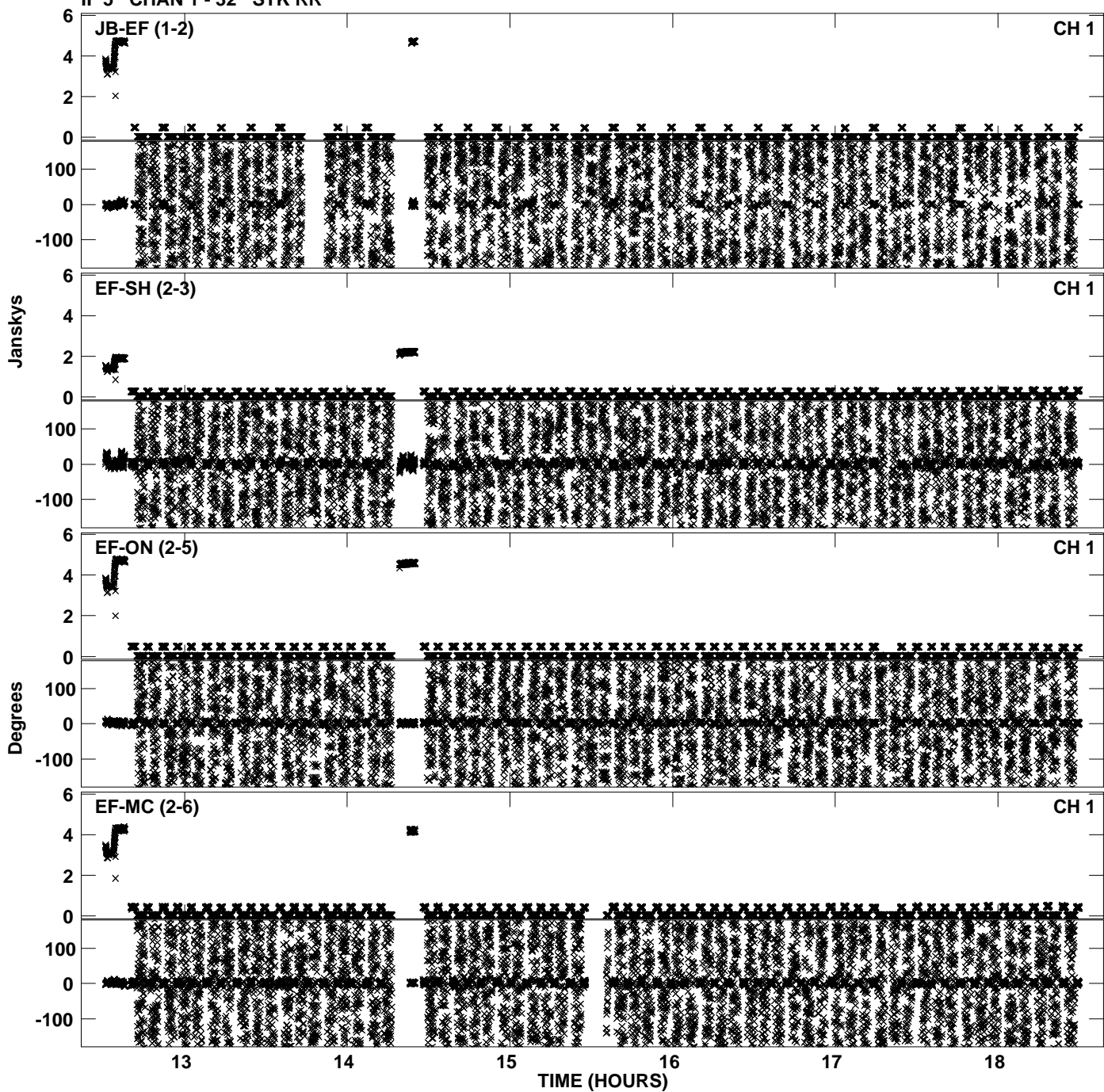
Plot file version 23 created 30-NOV-2010 17:28:25
Amplitude andPhase vs Time for EP068B 5.UVDATA.1 Vect aver. CL # 3
IF 4 CHAN 1 - 32 STK RR



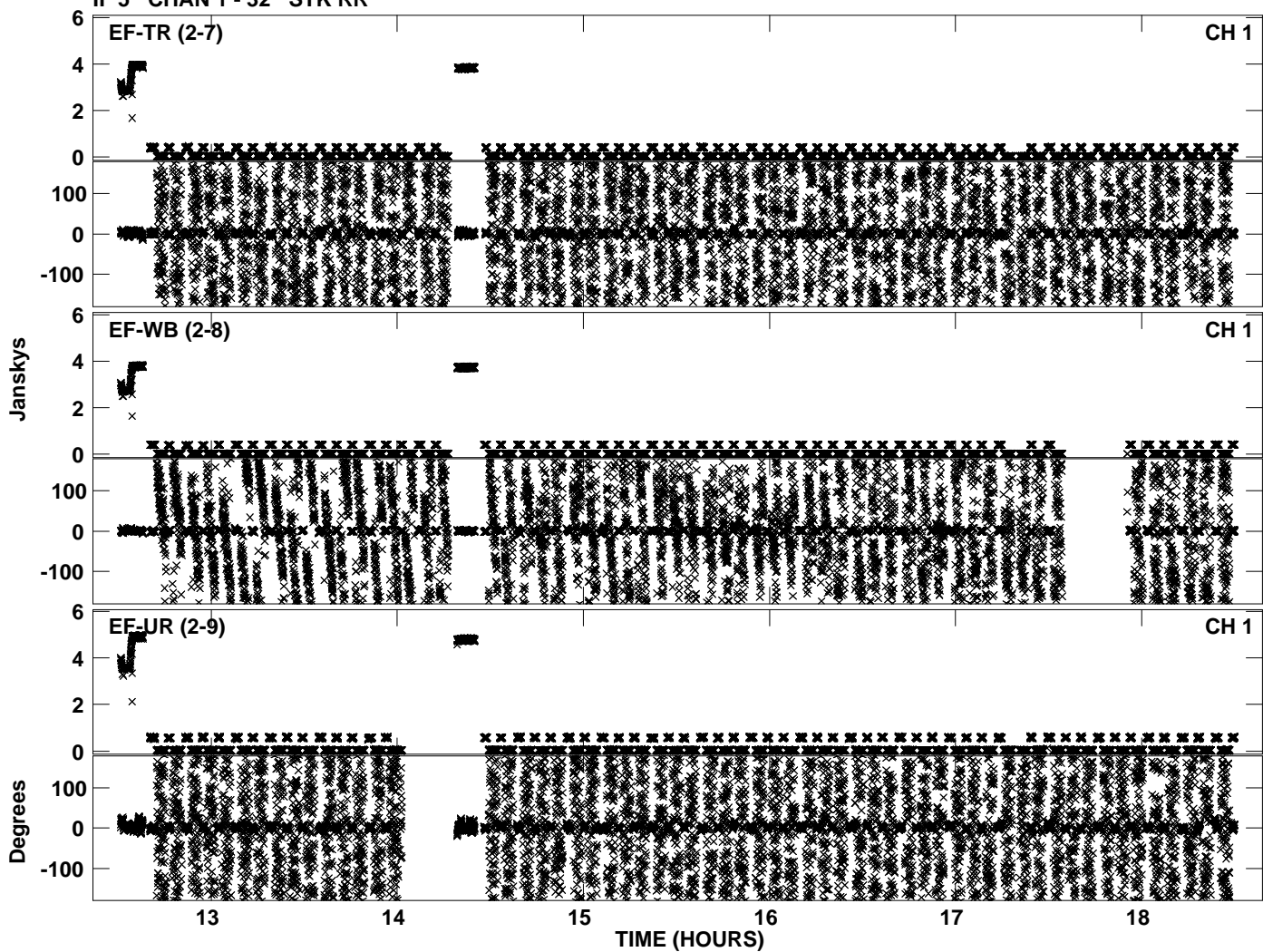
Plot file version 24 created 30-NOV-2010 17:28:25
Amplitude andPhase vs Time for EP068B 5.UVDATA.1 Vect aver. CL # 3
IF 4 CHAN 1 - 32 STK RR



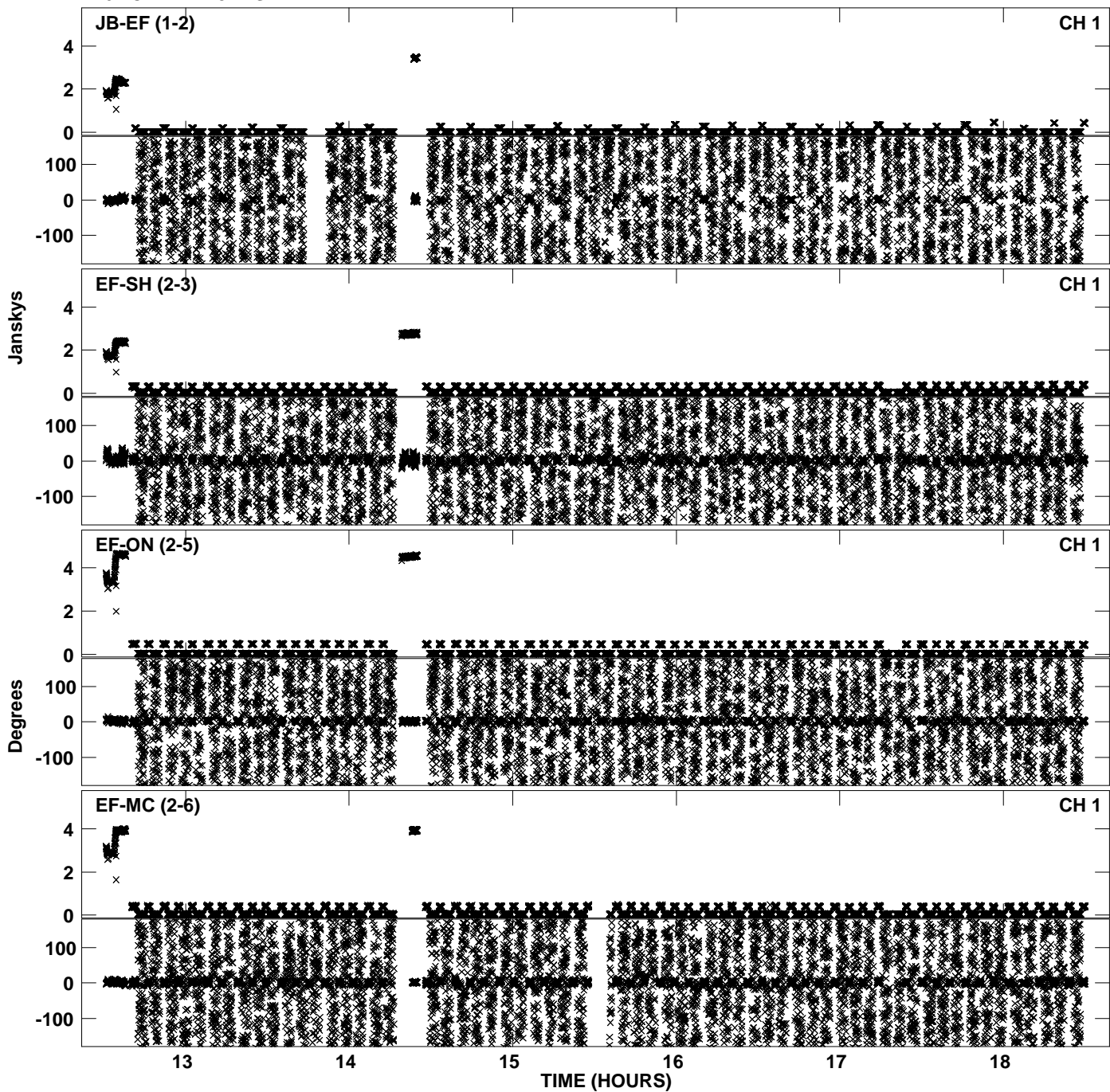
Plot file version 25 created 30-NOV-2010 17:28:33
Amplitude andPhase vs Time for EP068B 5.UVDATA.1 Vect aver. CL # 3
IF 5 CHAN 1 - 32 STK RR



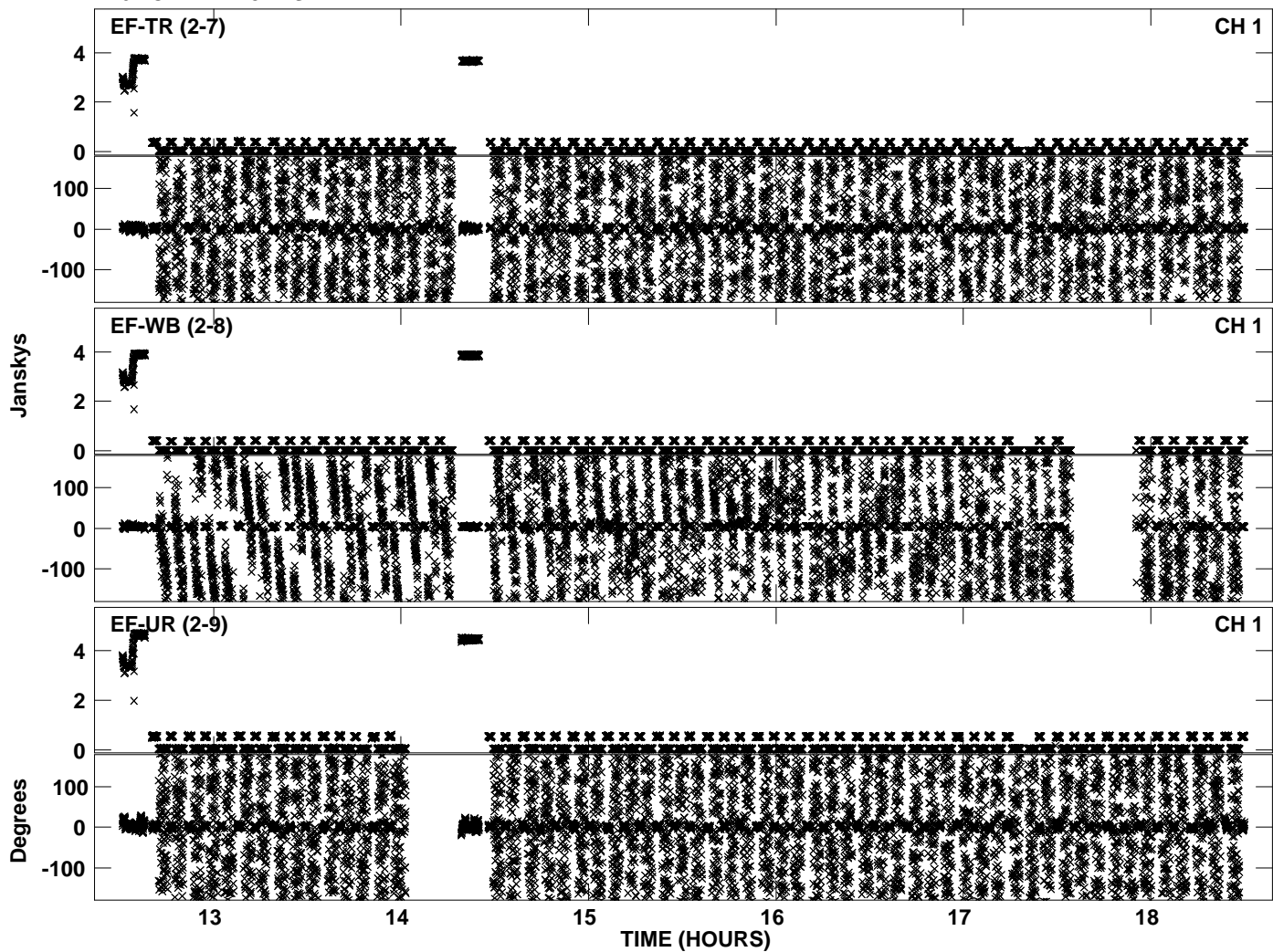
PLot file version 26 created 30-NOV-2010 17:28:33
Amplitude andPhase vs Time for EP068B 5.UVDATA.1 Vect aver. CL # 3
IF 5 CHAN 1 - 32 STK RR



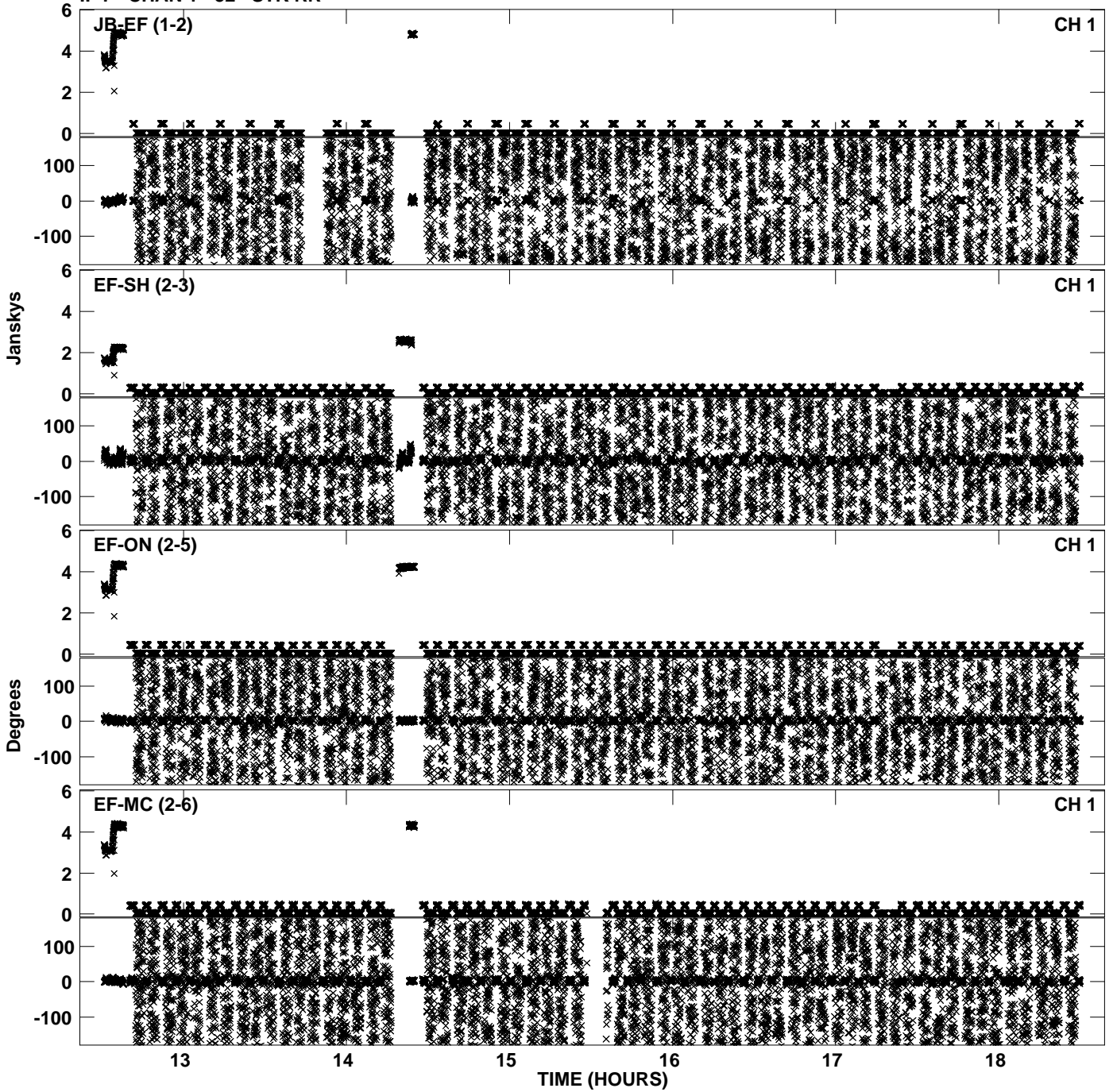
PLot file version 27 created 30-NOV-2010 17:28:41
Amplitude andPhase vs Time for EP068B 5.UVDATA.1 Vect aver. CL # 3
IF 6 CHAN 1 - 32 STK RR



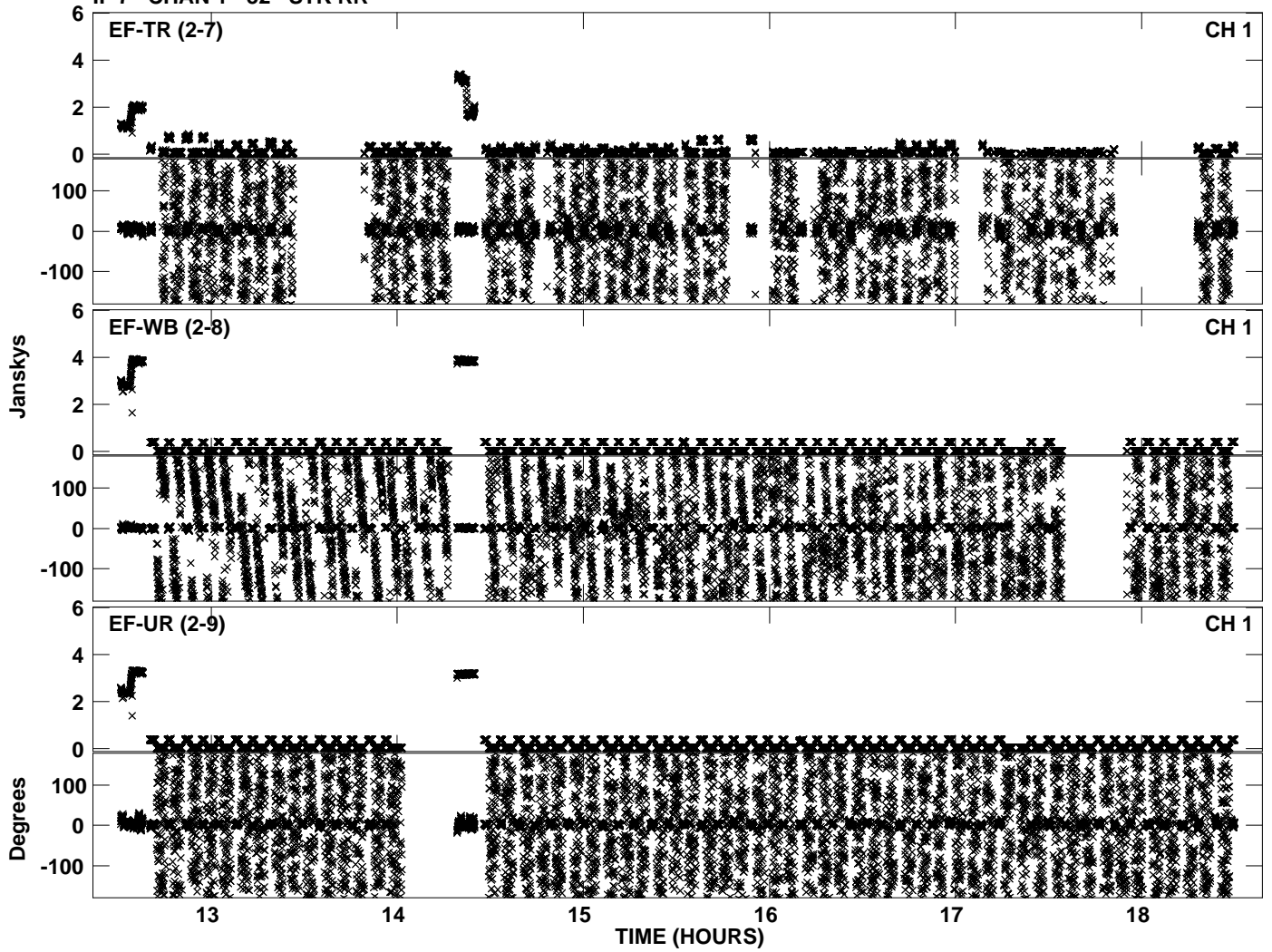
PLot file version 28 created 30-NOV-2010 17:28:41
Amplitude andPhase vs Time for EP068B 5.UVDATA.1 Vect aver. CL # 3
IF 6 CHAN 1 - 32 STK RR



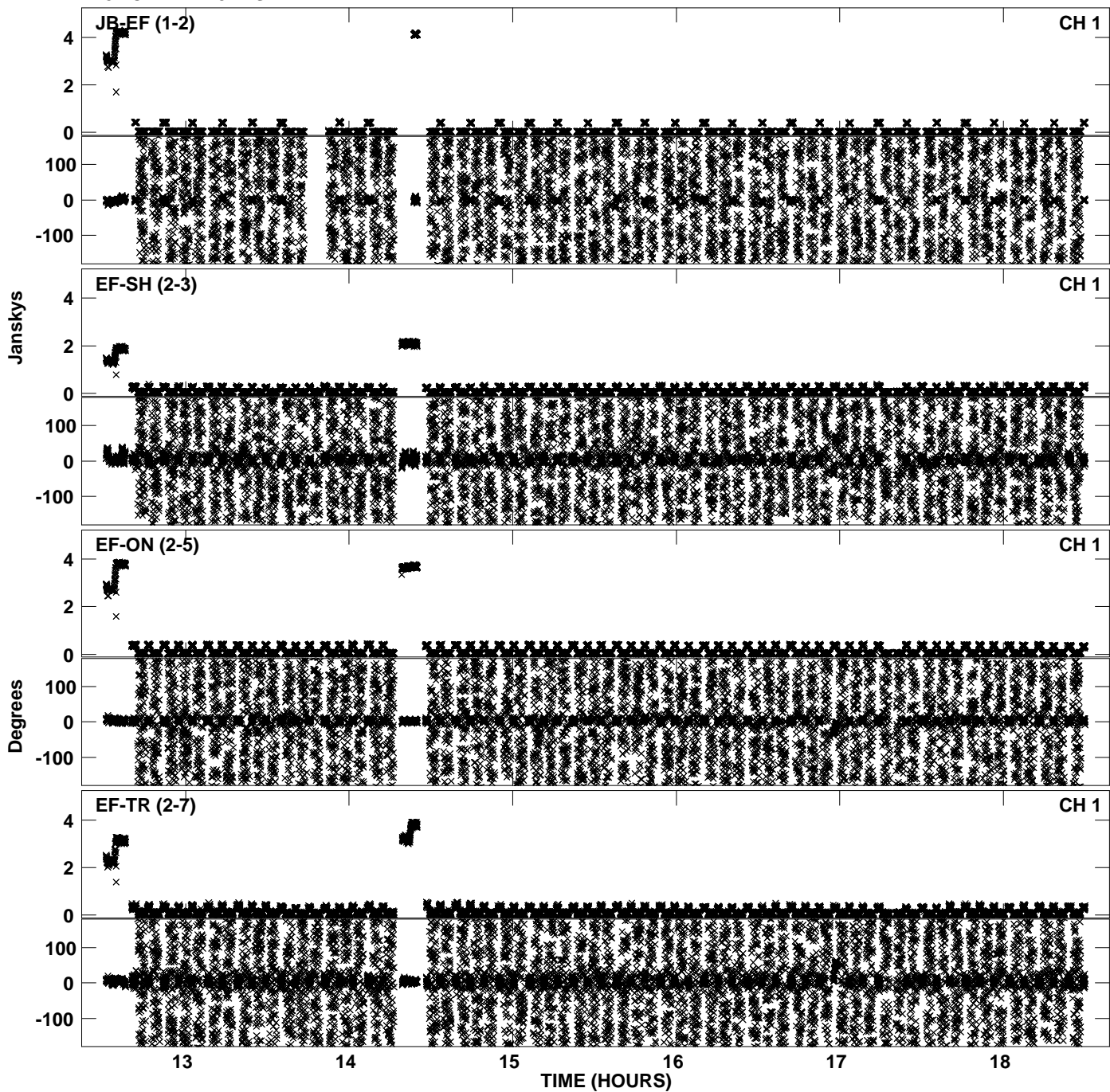
Plot file version 29 created 30-NOV-2010 17:28:48
Amplitude andPhase vs Time for EP068B 5.UVDATA.1 Vect aver. CL # 3
IF 7 CHAN 1 - 32 STK RR



Plot file version 30 created 30-NOV-2010 17:28:48
Amplitude andPhase vs Time for EP068B 5.UVDATA.1 Vect aver. CL # 3
IF 7 CHAN 1 - 32 STK RR



PLot file version 31 created 30-NOV-2010 17:28:55
Amplitude andPhase vs Time for EP068B 5.UVDATA.1 Vect aver. CL # 3
IF 8 CHAN 1 - 32 STK RR



PLot file version 32 created 30-NOV-2010 17:28:55
Amplitude andPhase vs Time for EP068B 5.UVDATA.1 Vect aver. CL # 3
IF 8 CHAN 1 - 32 STK RR

