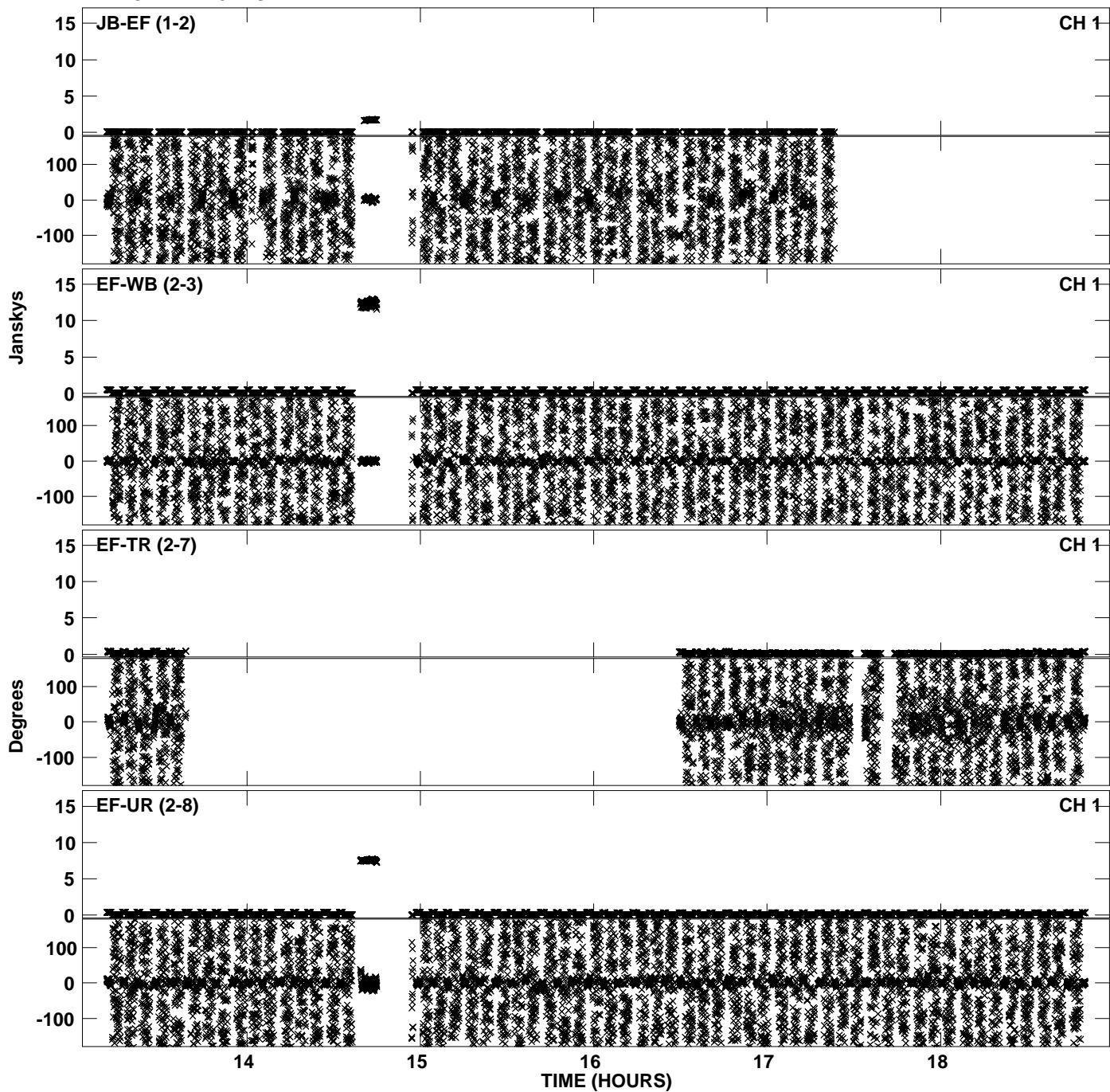
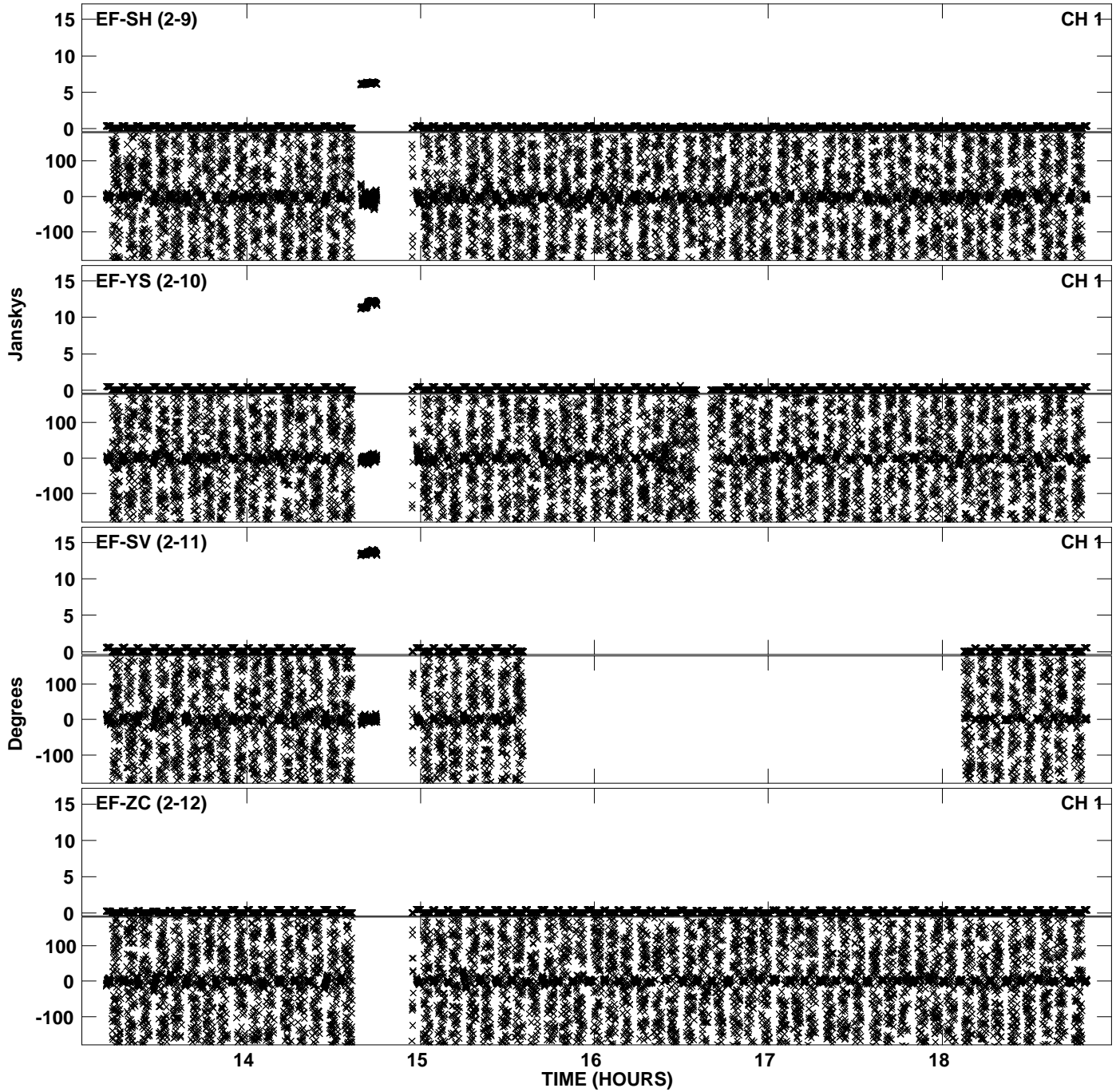


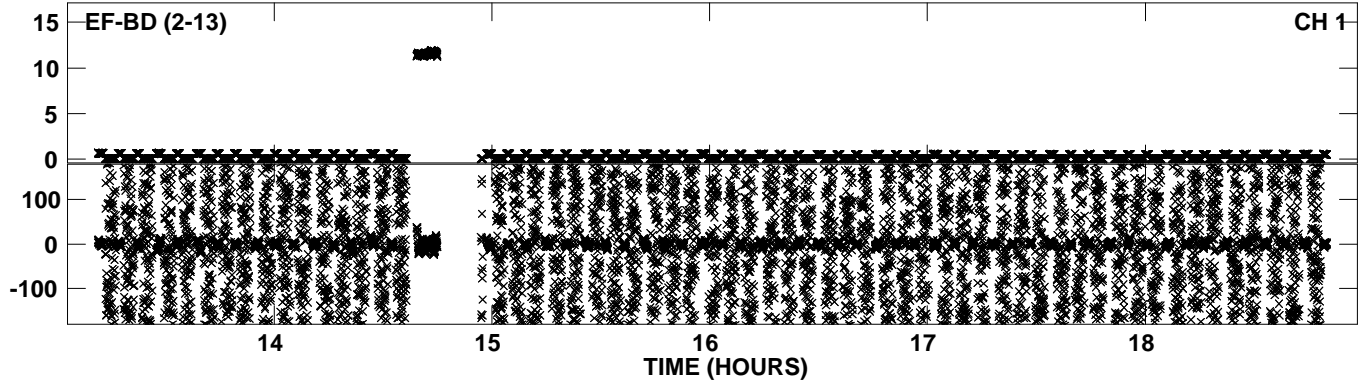
Plot file version 1 created 20-DEC-2011 15:09:00  
Amplitude andPhase vs Time for EP068C 4.UVDATA.1 Vect aver. CL # 3  
IF 1 CHAN 1 - 32 STK LL



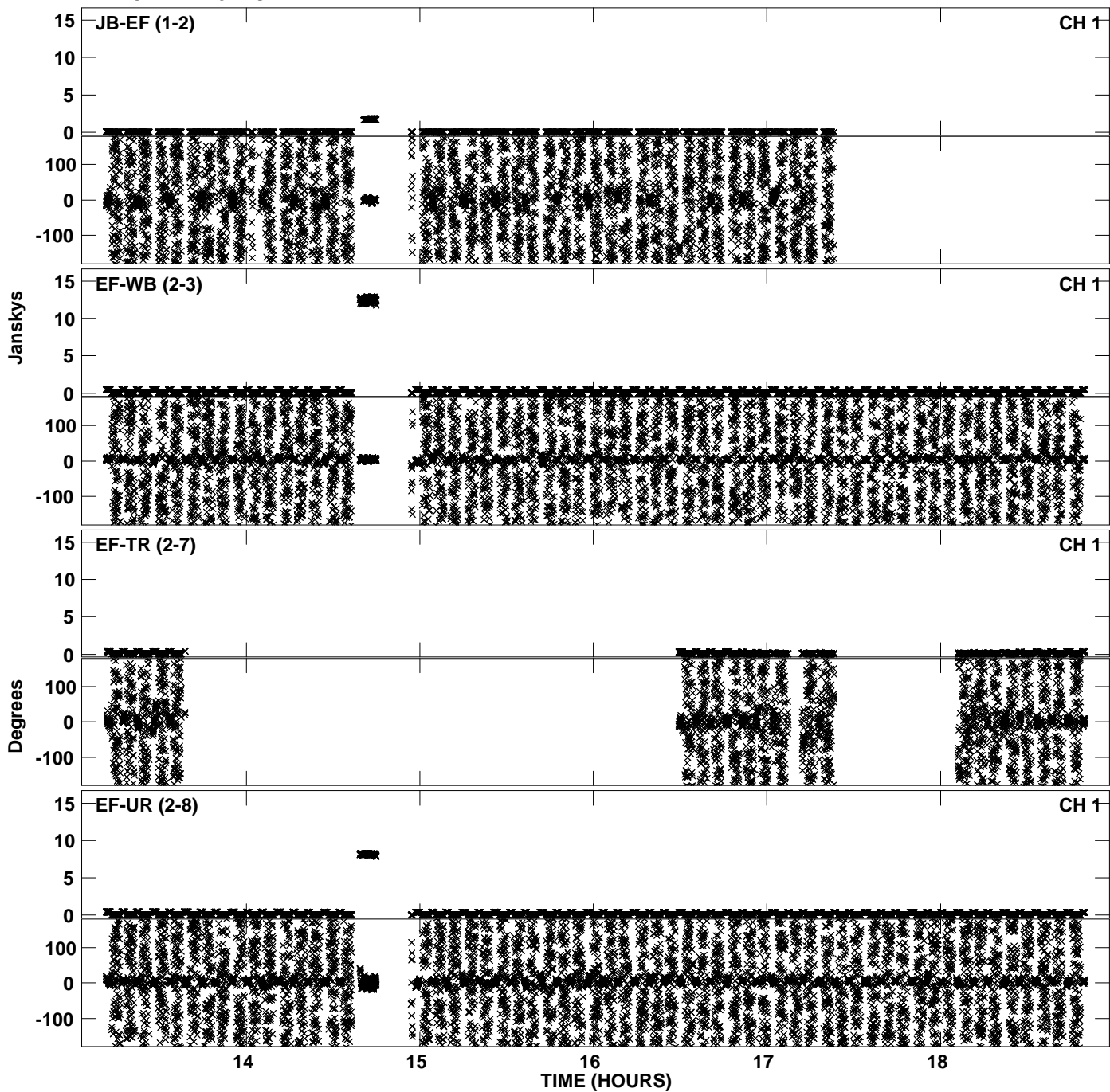
PLot file version 2 created 20-DEC-2011 15:09:01  
Amplitude andPhase vs Time for EP068C 4.UVDATA.1 Vect aver. CL # 3  
IF 1 CHAN 1 - 32 STK LL



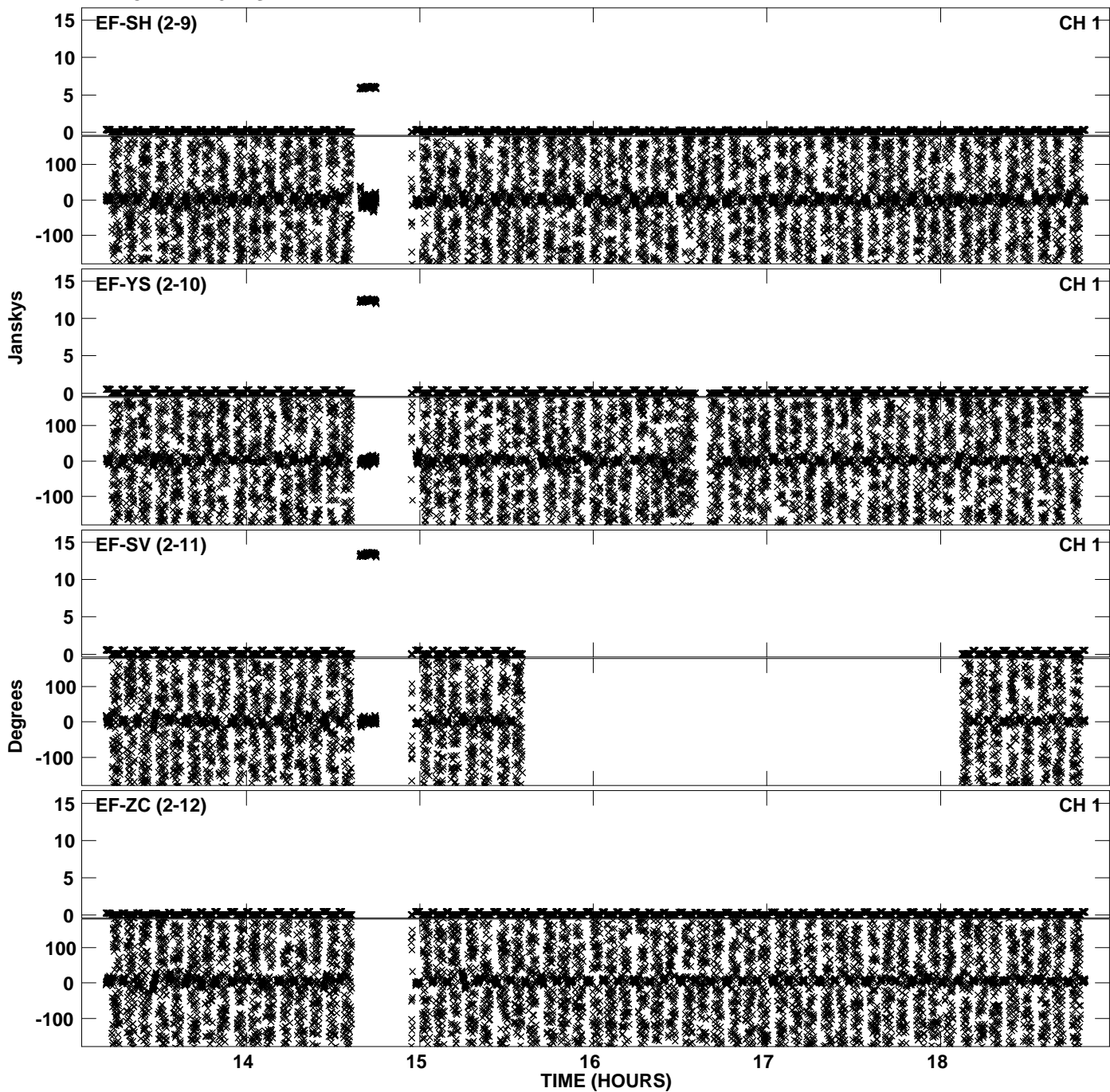
PLot file version 3 created 20-DEC-2011 15:09:02  
Amplitude andPhase vs Time for EP068C 4.UVDATA.1 Vect aver. CL # 3  
IF 1 CHAN 1 - 32 STK LL



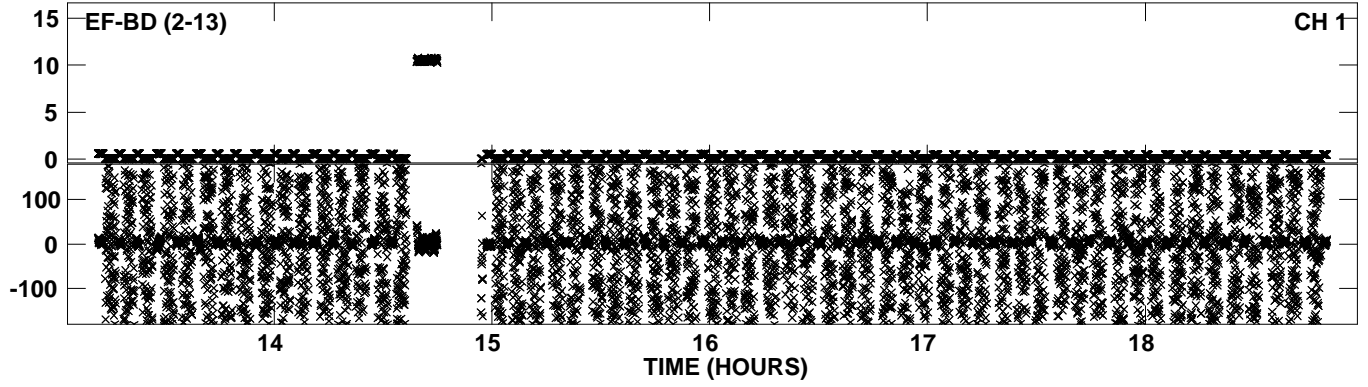
PLot file version 4 created 20-DEC-2011 15:10:40  
Amplitude andPhase vs Time for EP068C 4.UVDATA.1 Vect aver. CL # 3  
IF 2 CHAN 1 - 32 STK LL



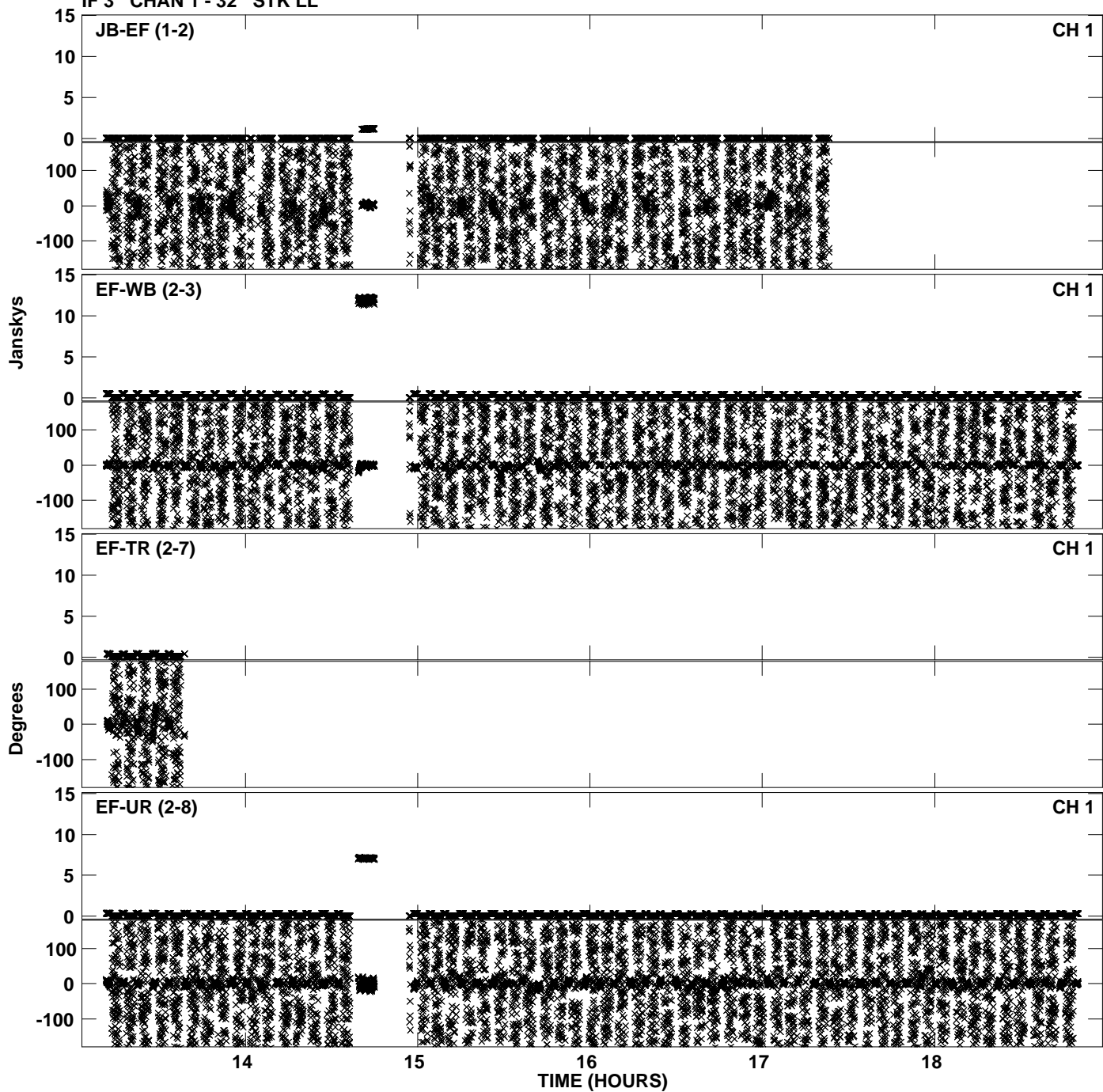
PLot file version 5 created 20-DEC-2011 15:10:41  
Amplitude andPhase vs Time for EP068C 4.UVDATA.1 Vect aver. CL # 3  
IF 2 CHAN 1 - 32 STK LL



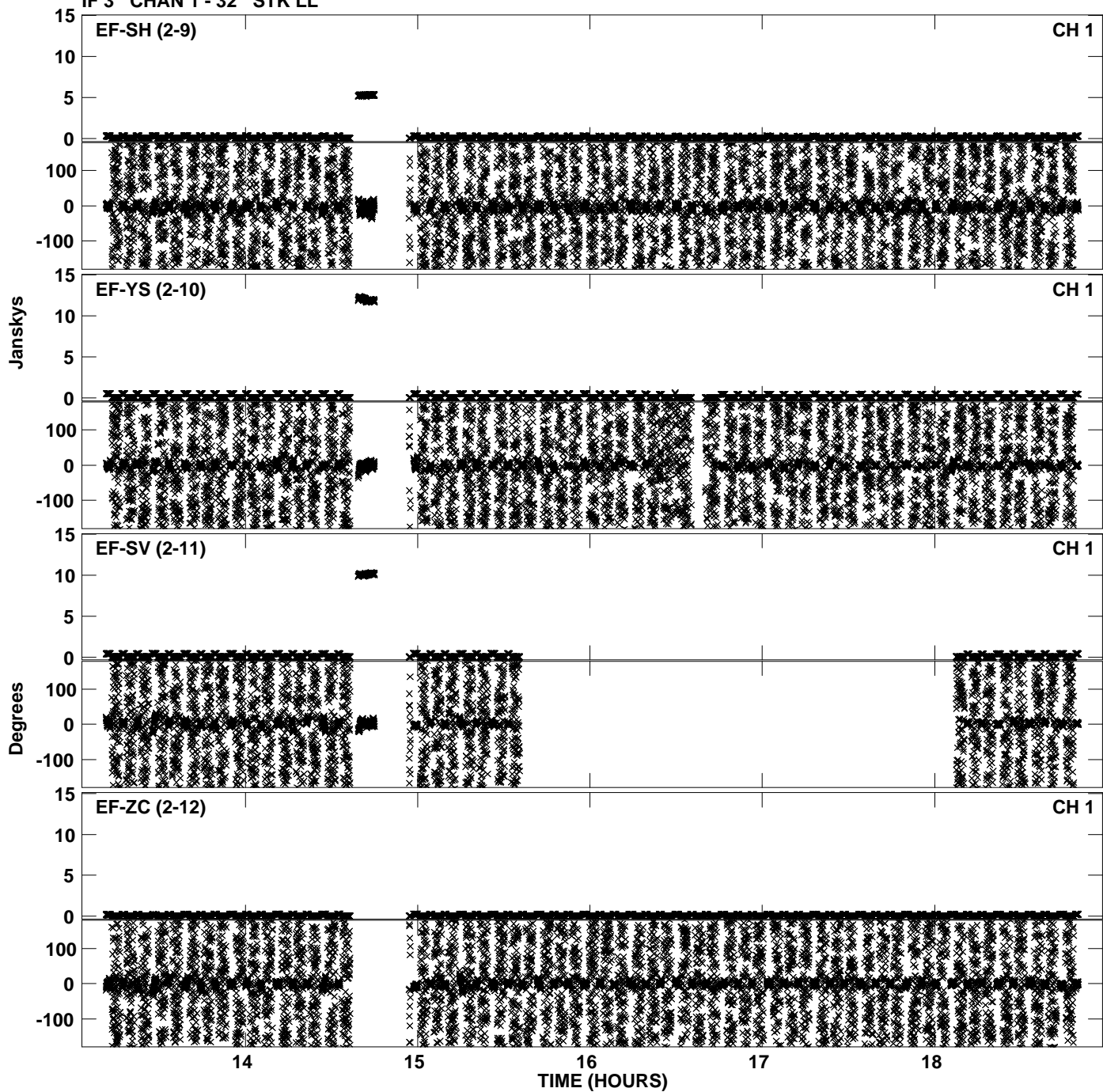
PLot file version 6 created 20-DEC-2011 15:10:41  
Amplitude andPhase vs Time for EP068C 4.UVDATA.1 Vect aver. CL # 3  
IF 2 CHAN 1 - 32 STK LL



PLot file version 7 created 20-DEC-2011 15:12:21  
Amplitude andPhase vs Time for EP068C 4.UVDATA.1 Vect aver. CL # 3  
IF 3 CHAN 1 - 32 STK LL

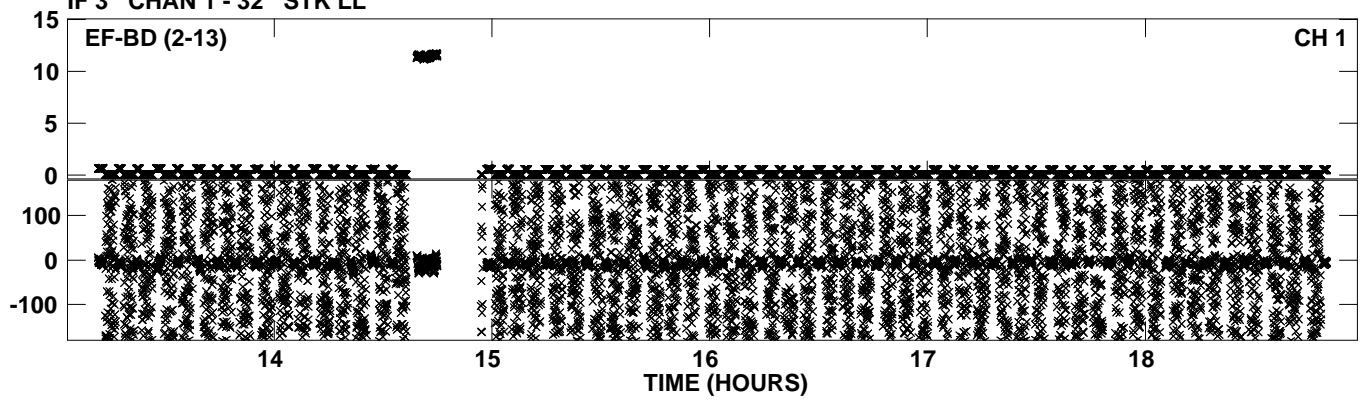


Plot file version 8 created 20-DEC-2011 15:12:21  
Amplitude andPhase vs Time for EP068C 4.UVDATA.1 Vect aver. CL # 3  
IF 3 CHAN 1 - 32 STK LL

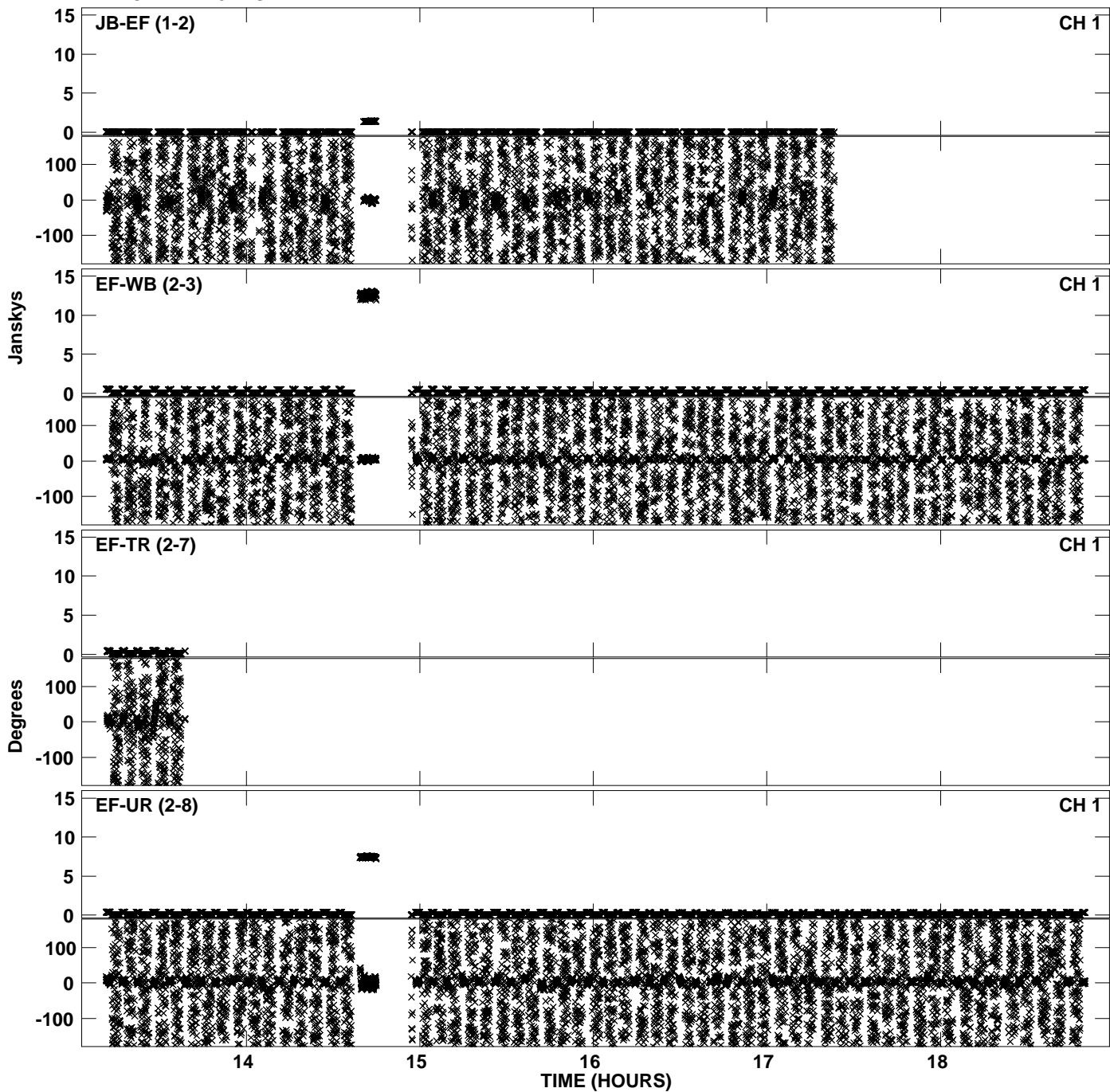




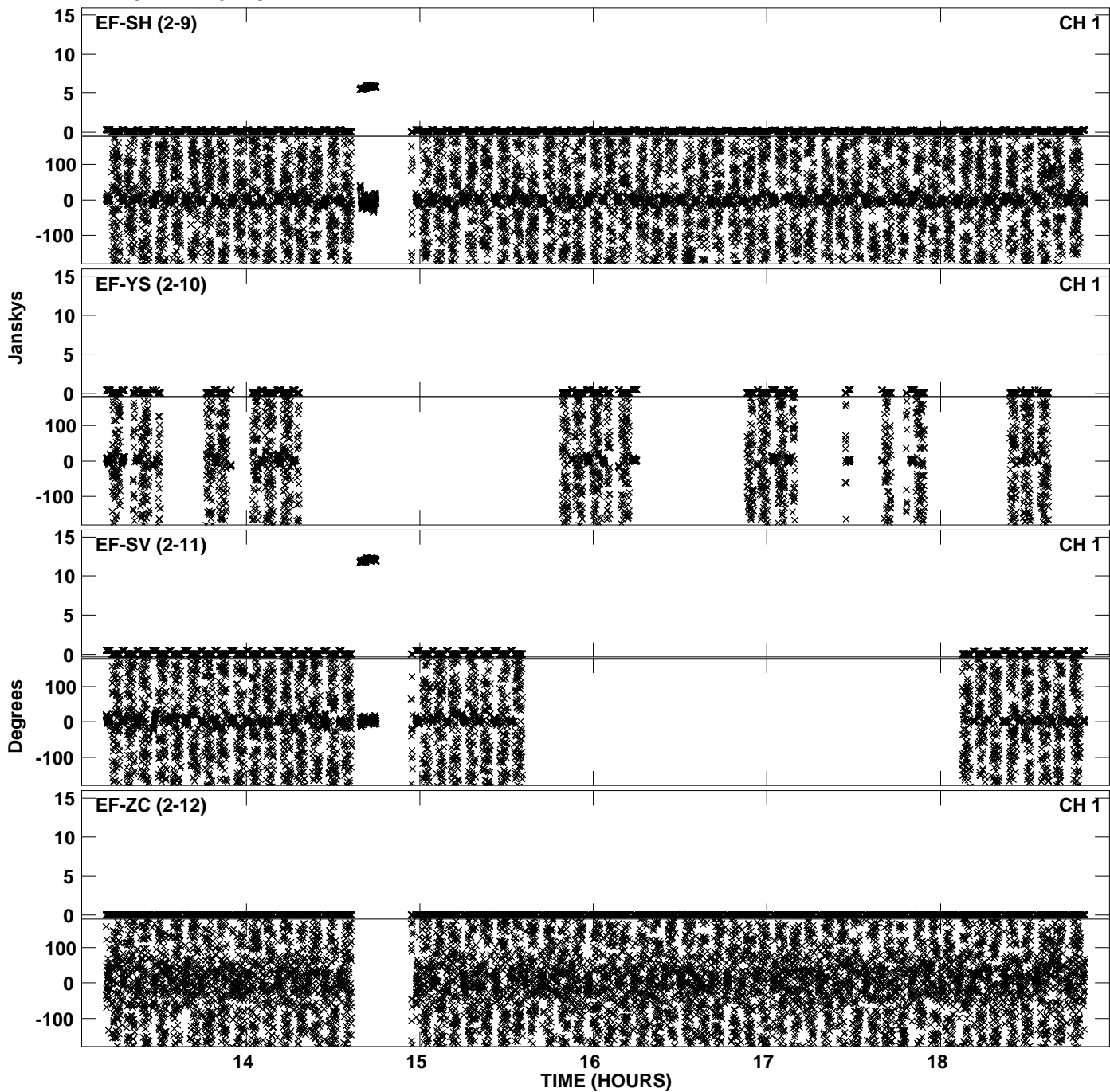
PLot file version 9 created 20-DEC-2011 15:12:21  
Amplitude andPhase vs Time for EP068C 4.UVDATA.1 Vect aver. CL # 3  
IF 3 CHAN 1 - 32 STK LL



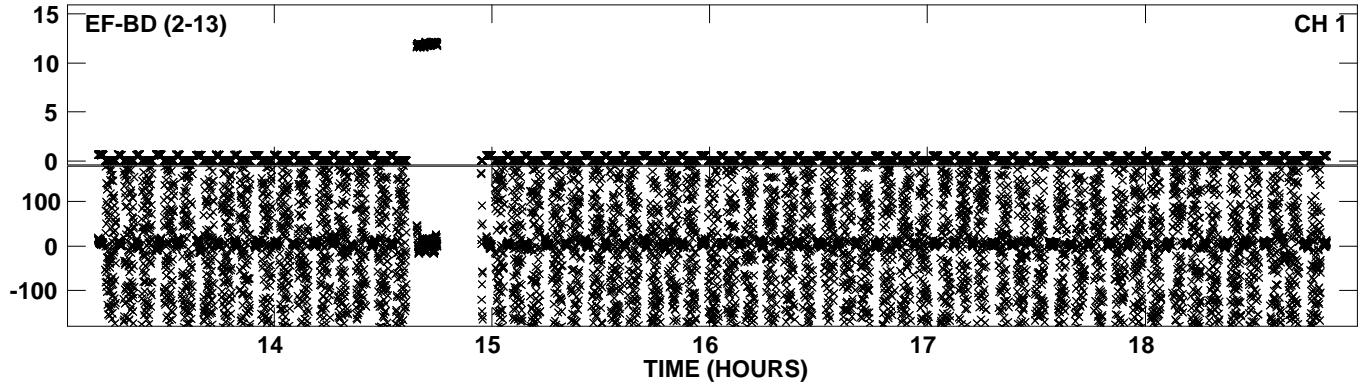
Plot file version 10 created 20-DEC-2011 15:13:30  
Amplitude andPhase vs Time for EP068C 4.UVDATA.1 Vect aver. CL # 3  
IF 4 CHAN 1 - 32 STK LL



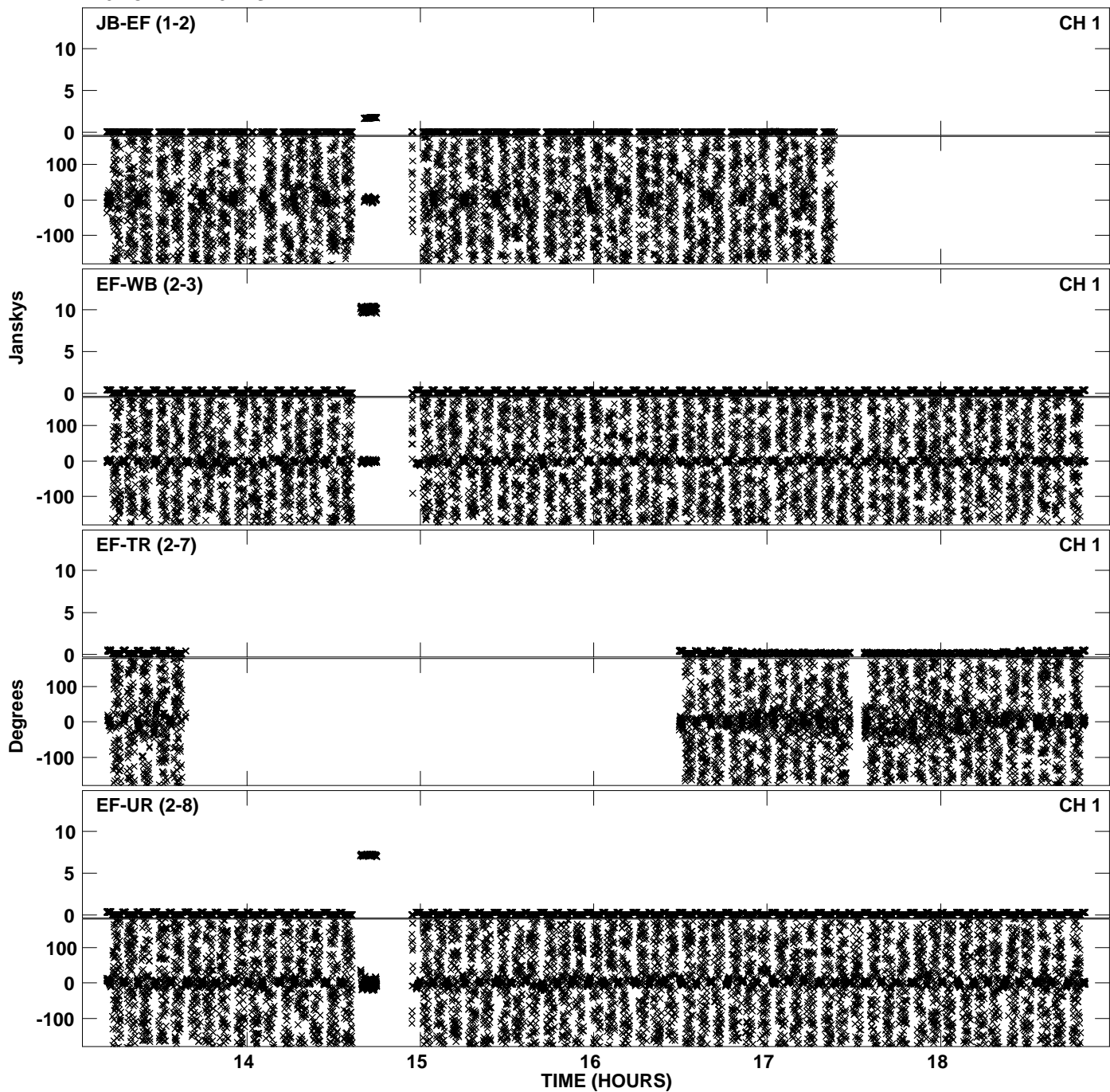
PLot file version 11 created 20-DEC-2011 15:13:31  
Amplitude andPhase vs Time for EP068C 4.UVDATA.1 Vect aver. CL # 3  
IF 4 CHAN 1 - 32 STK LL



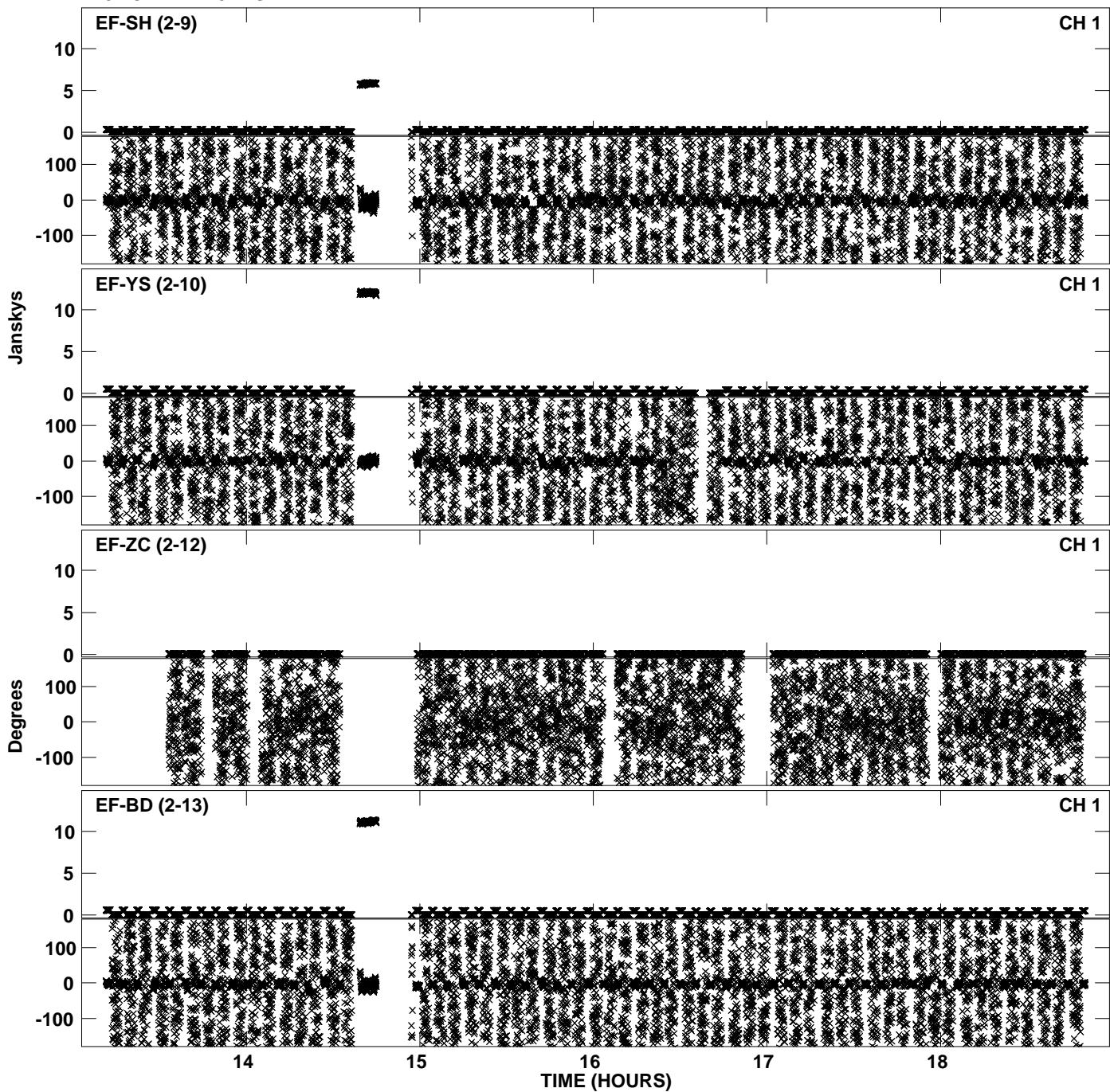
PLot file version 12 created 20-DEC-2011 15:13:31  
Amplitude andPhase vs Time for EP068C 4.UVDATA.1 Vect aver. CL # 3  
IF 4 CHAN 1 - 32 STK LL



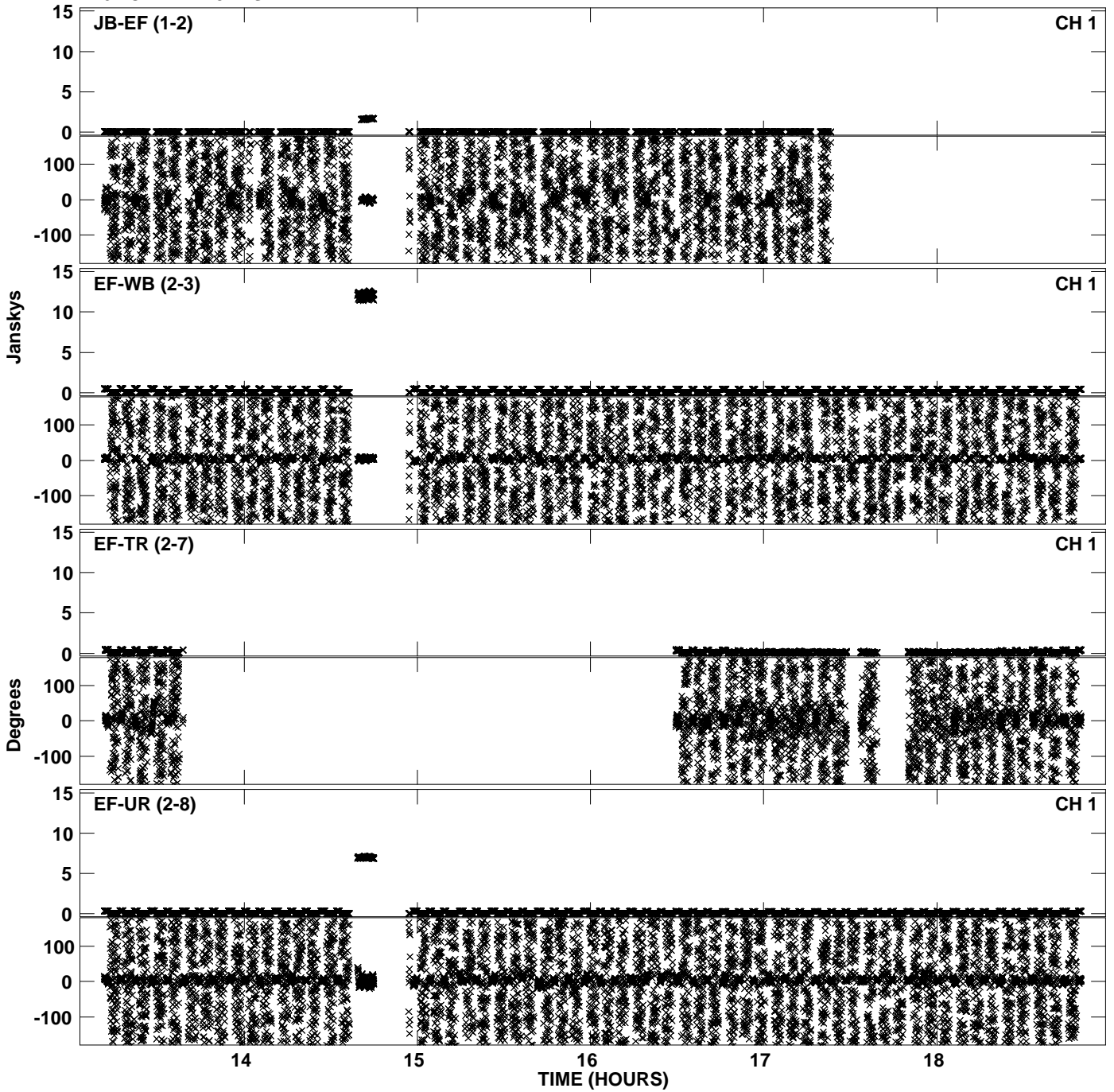
Plot file version 13 created 20-DEC-2011 15:13:50  
Amplitude andPhase vs Time for EP068C 4.UVDATA.1 Vect aver. CL # 3  
IF 5 CHAN 1 - 32 STK LL



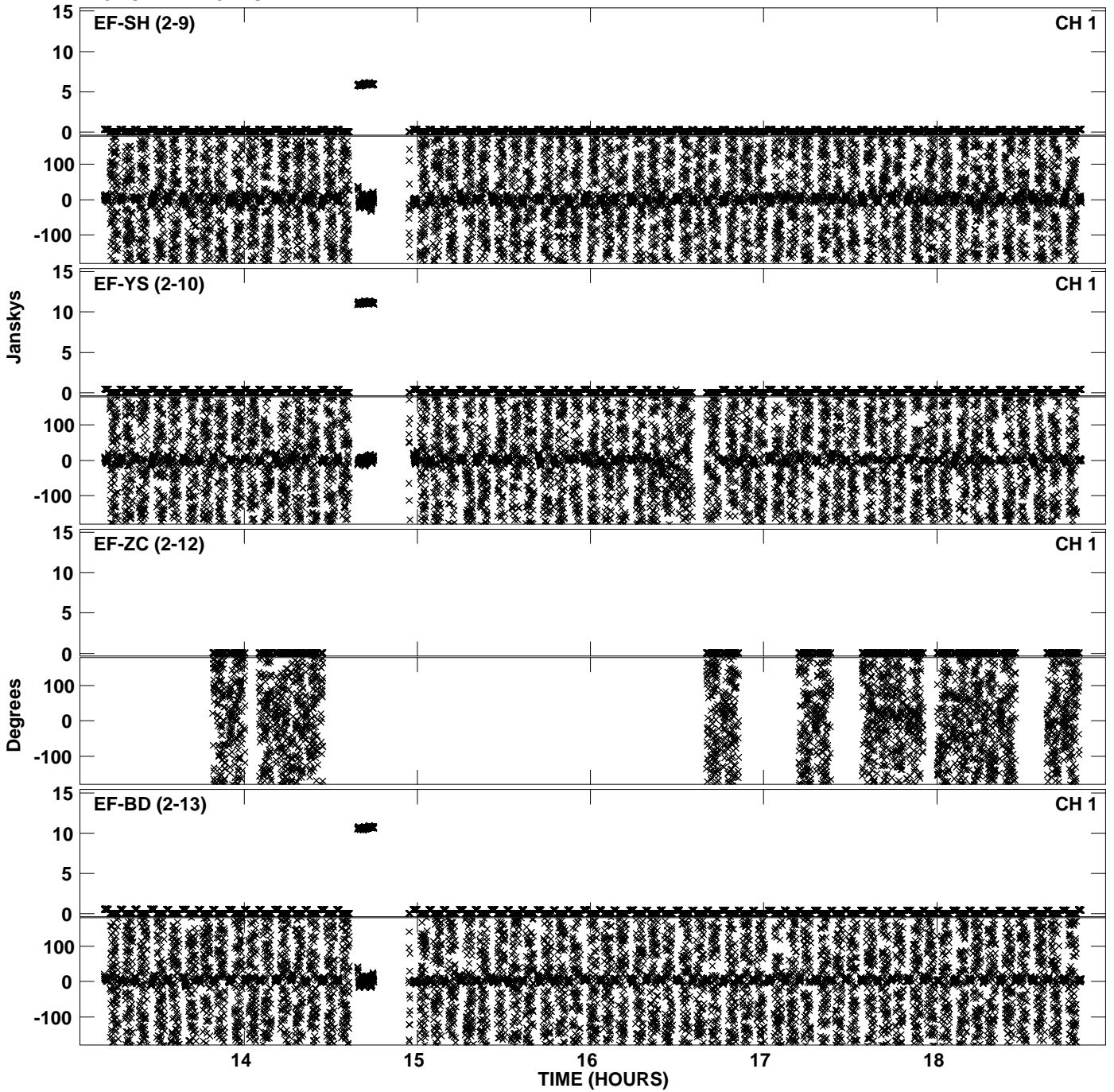
PLot file version 14 created 20-DEC-2011 15:13:50  
Amplitude andPhase vs Time for EP068C 4.UVDATA.1 Vect aver. CL # 3  
IF 5 CHAN 1 - 32 STK LL



Plot file version 15 created 20-DEC-2011 15:14:02  
Amplitude andPhase vs Time for EP068C 4.UVDATA.1 Vect aver. CL # 3  
IF 6 CHAN 1 - 32 STK LL

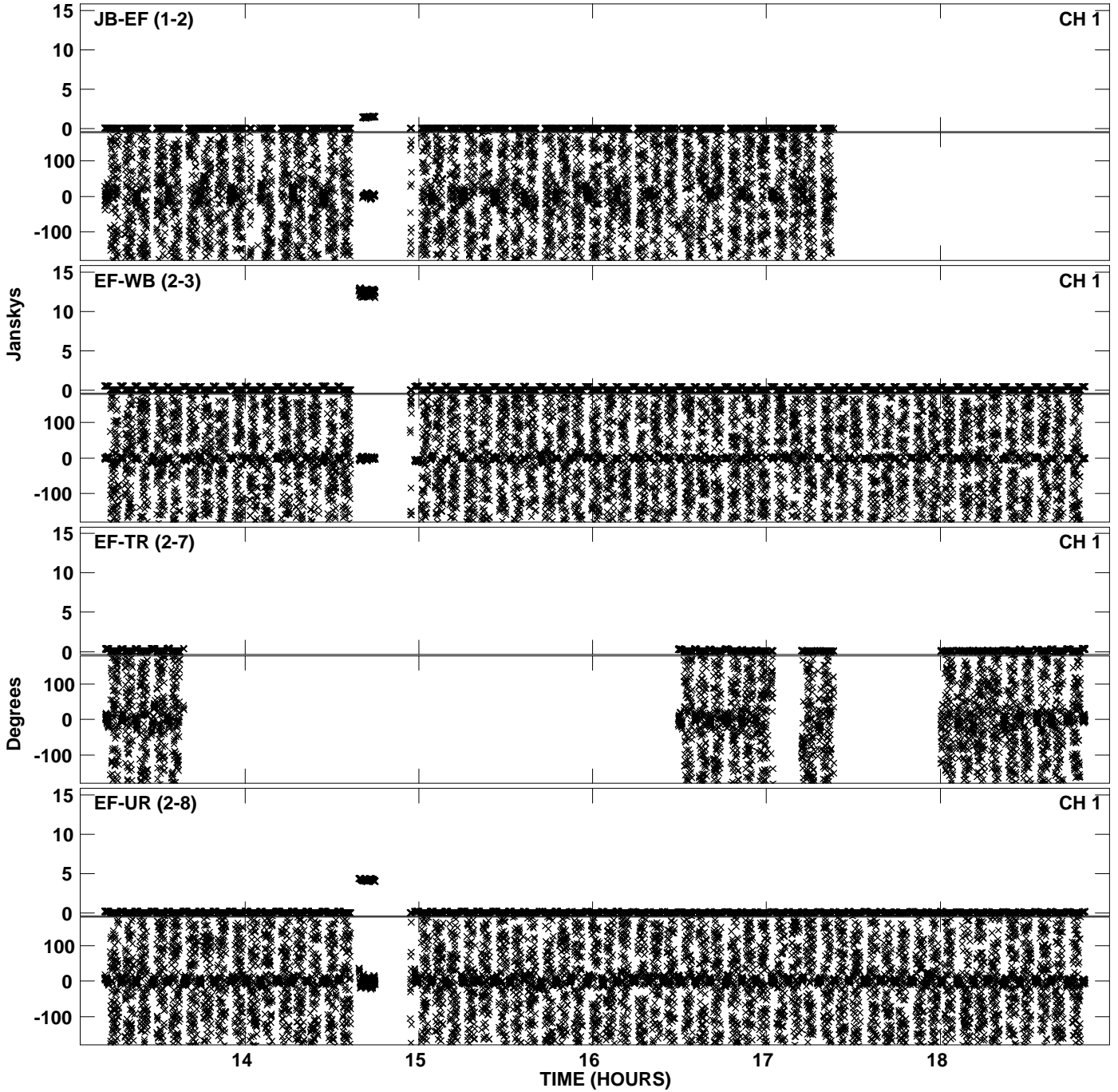


PLot file version 16 created 20-DEC-2011 15:14:02  
Amplitude andPhase vs Time for EP068C 4.UVDATA.1 Vect aver. CL # 3  
IF 6 CHAN 1 - 32 STK LL

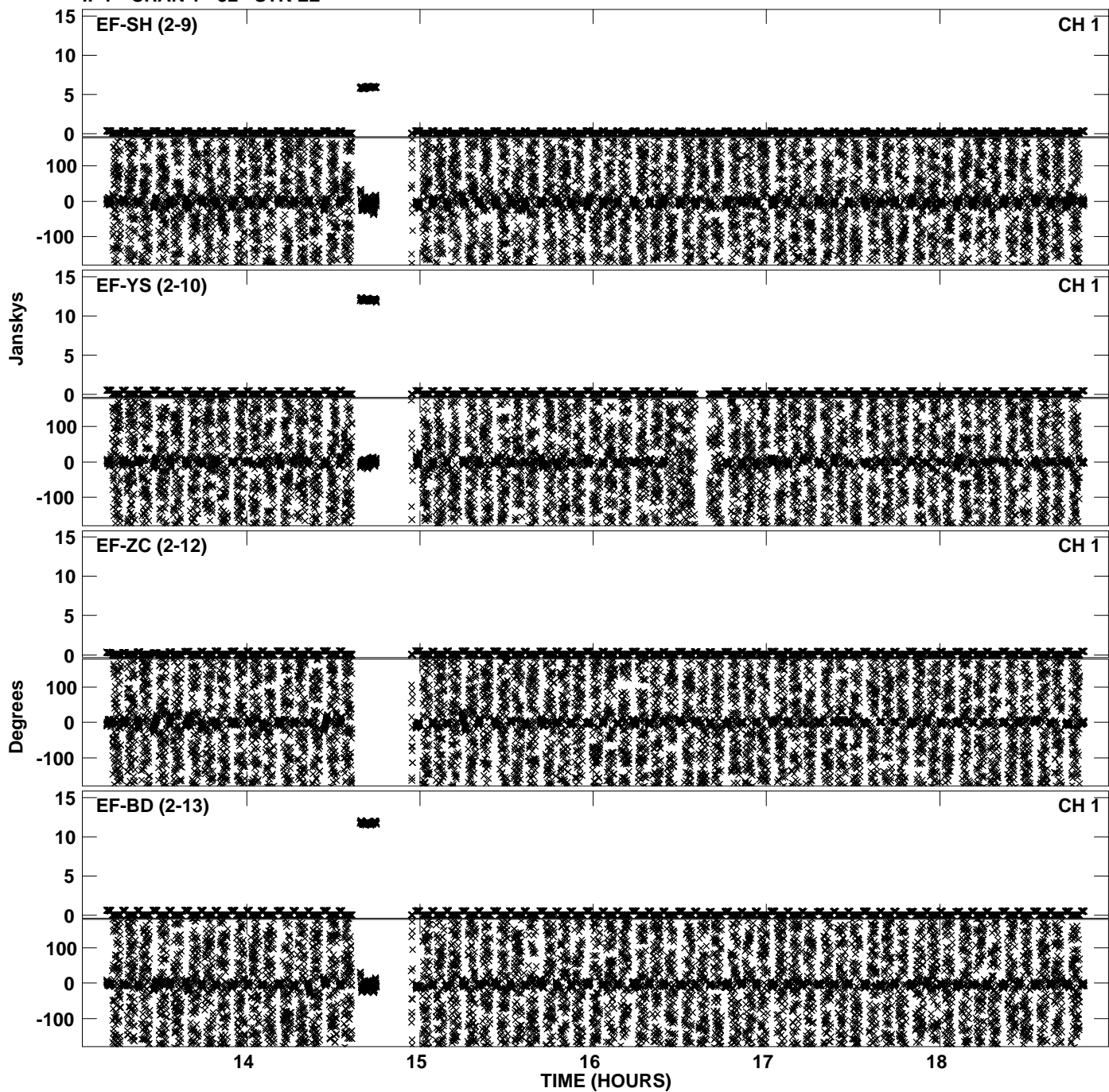




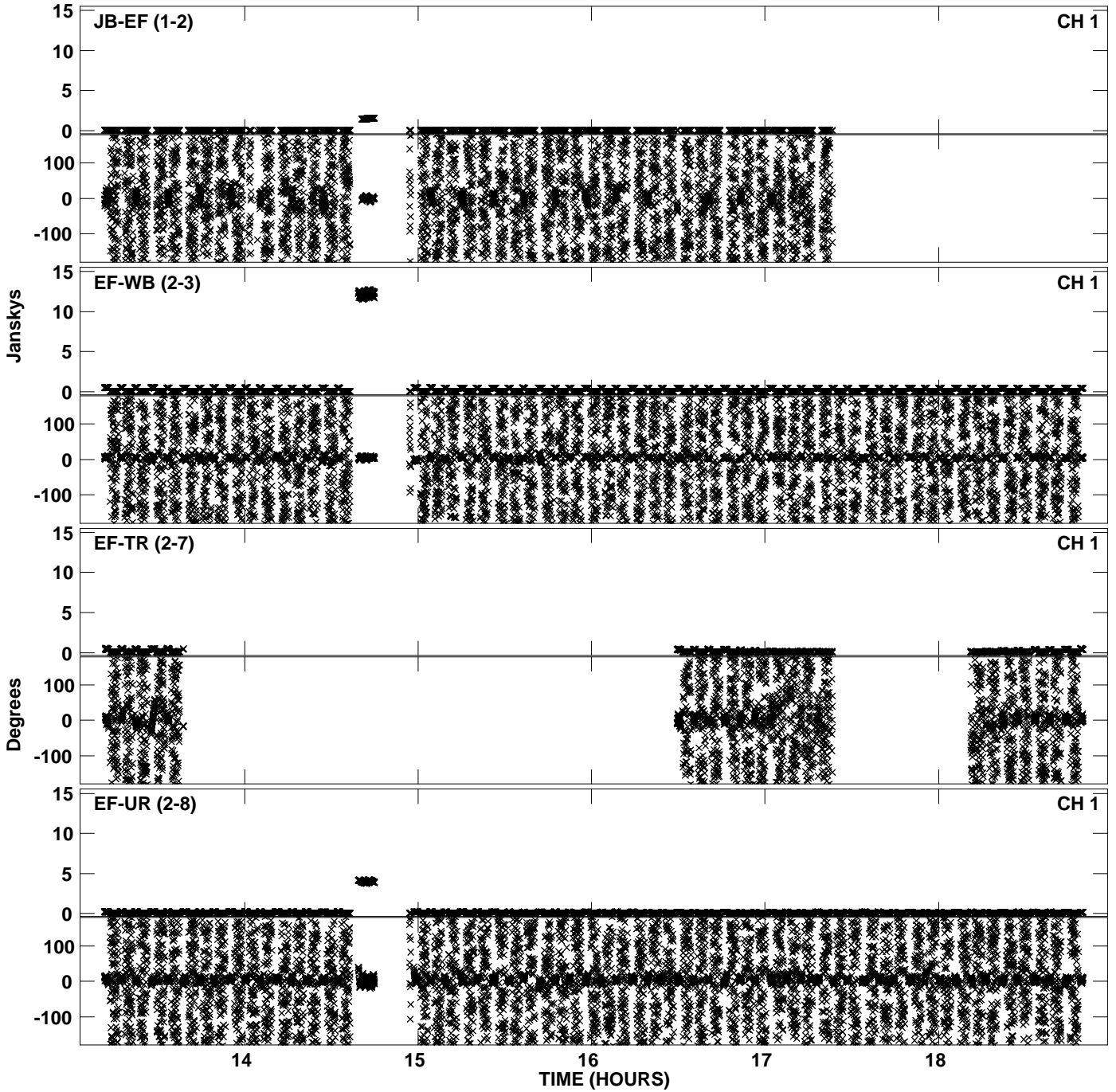
PLot file version 17 created 20-DEC-2011 15:14:15  
Amplitude andPhase vs Time for EP068C 4.UVDATA.1 Vect aver. CL # 3  
IF 7 CHAN 1 - 32 STK LL



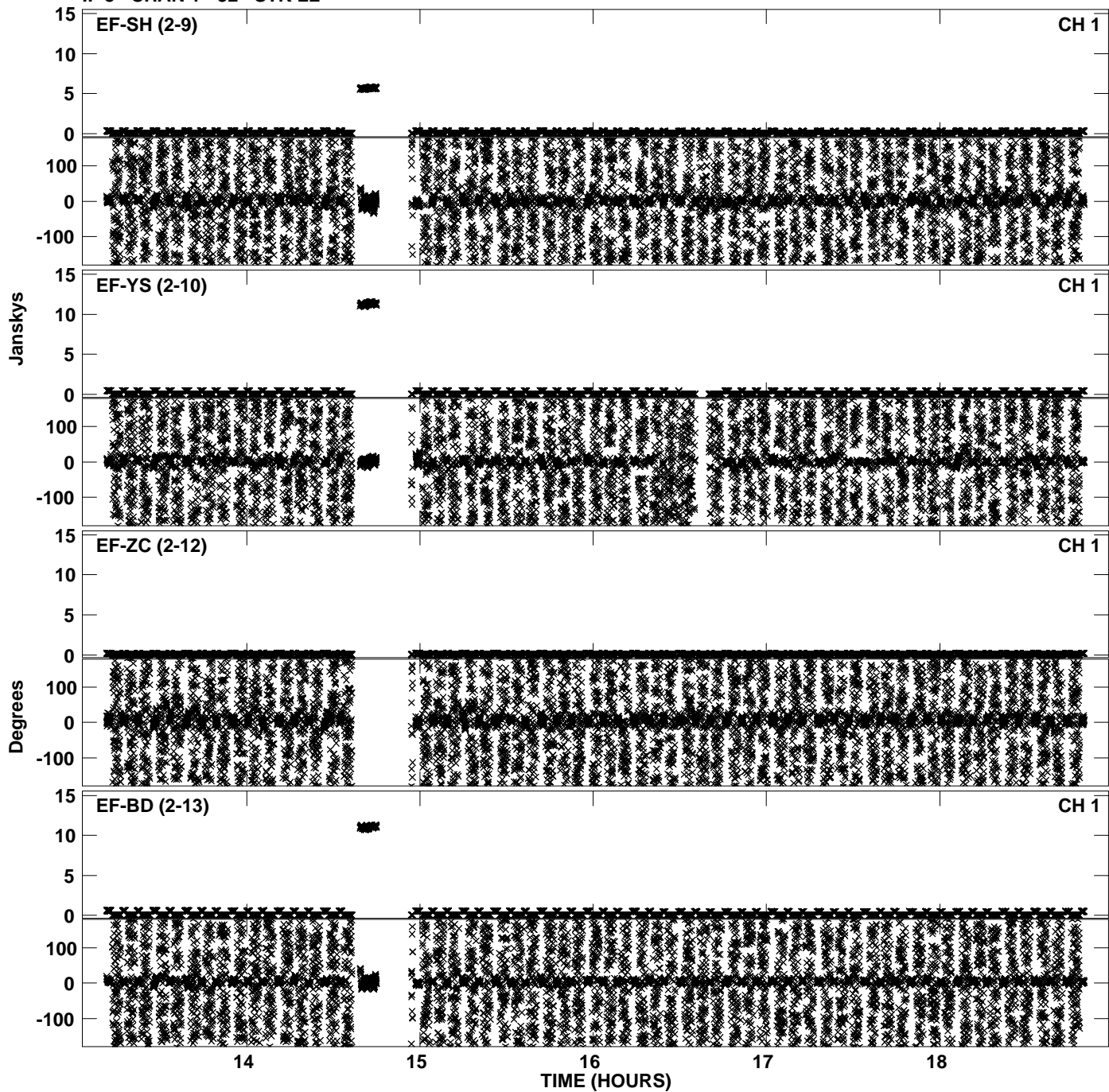
Plot file version 18 created 20-DEC-2011 15:14:16  
Amplitude andPhase vs Time for EP068C 4.UVDATA.1 Vect aver. CL # 3  
IF 7 CHAN 1 - 32 STK LL



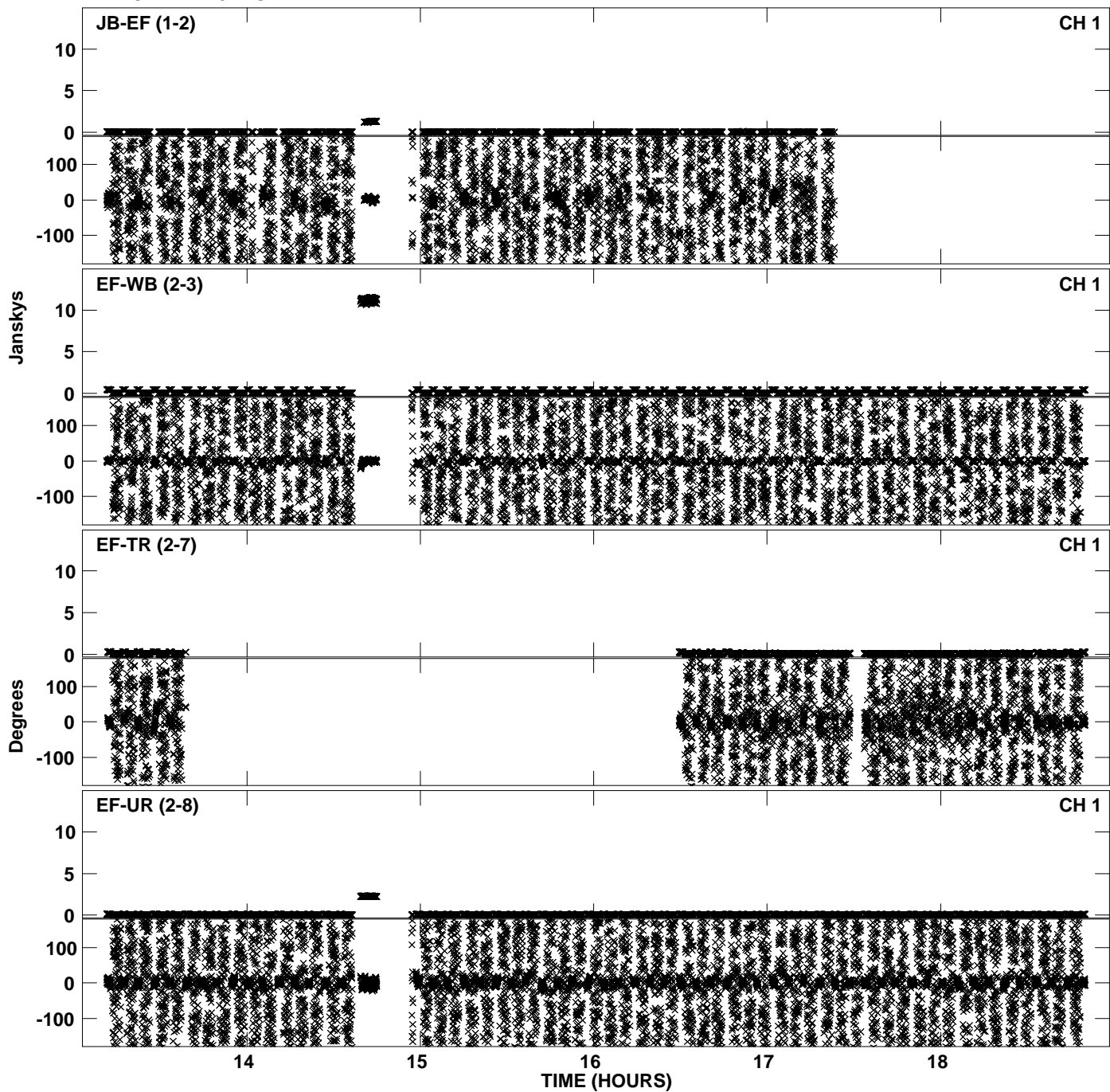
PLot file version 19 created 20-DEC-2011 15:14:31  
Amplitude andPhase vs Time for EP068C 4.UVDATA.1 Vect aver. CL # 3  
IF 8 CHAN 1 - 32 STK LL



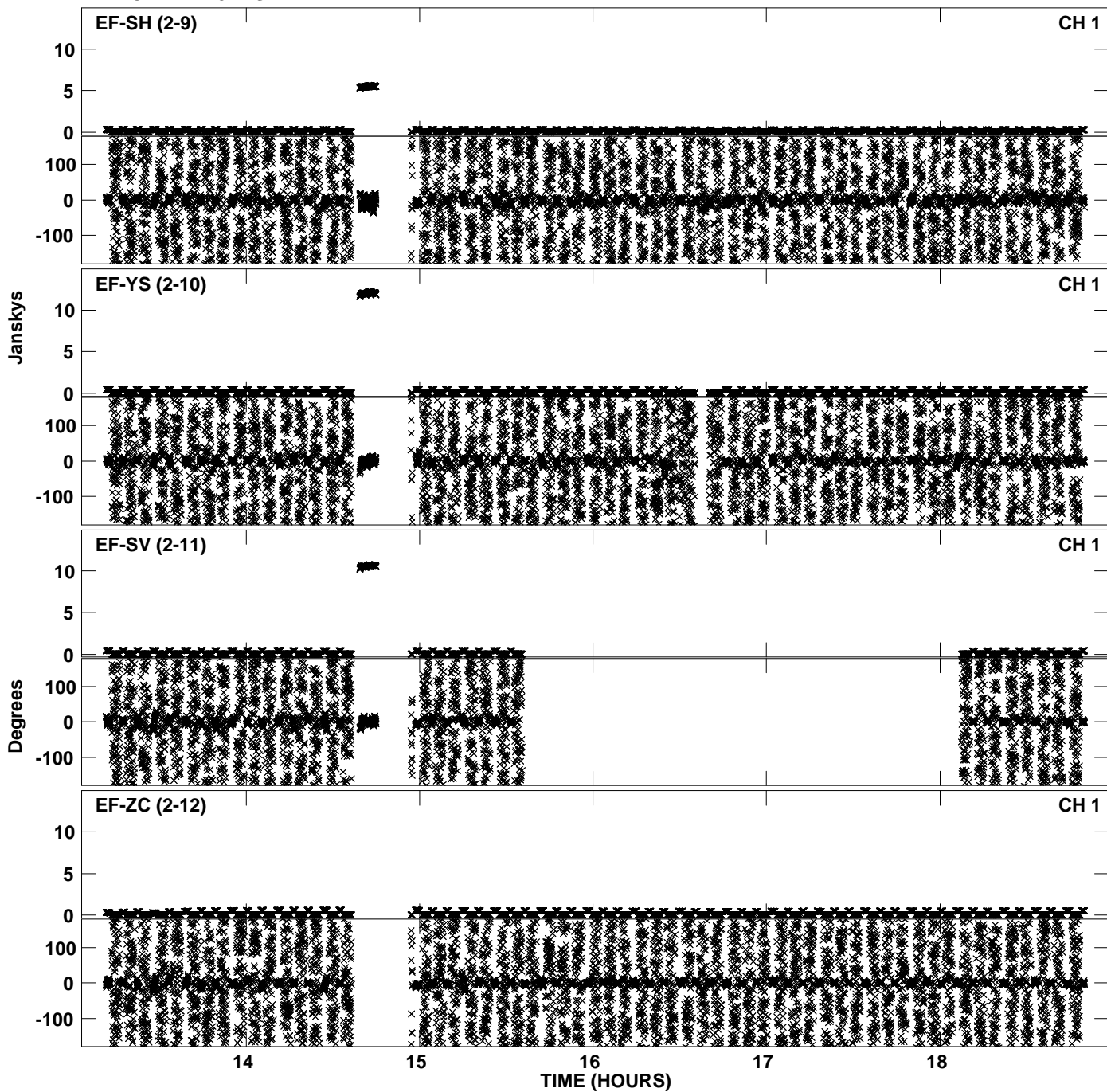
PLot file version 20 created 20-DEC-2011 15:14:31  
Amplitude andPhase vs Time for EP068C 4.UVDATA.1 Vect aver. CL # 3  
IF 8 CHAN 1 - 32 STK LL



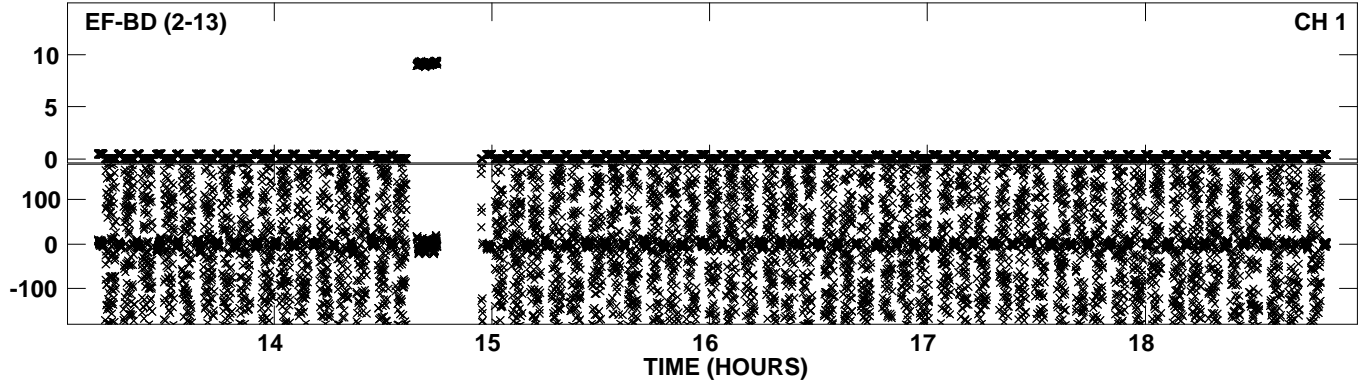
PLot file version 21 created 20-DEC-2011 15:14:56  
Amplitude andPhase vs Time for EP068C 4.UVDATA.1 Vect aver. CL # 3  
IF 1 CHAN 1 - 32 STK RR



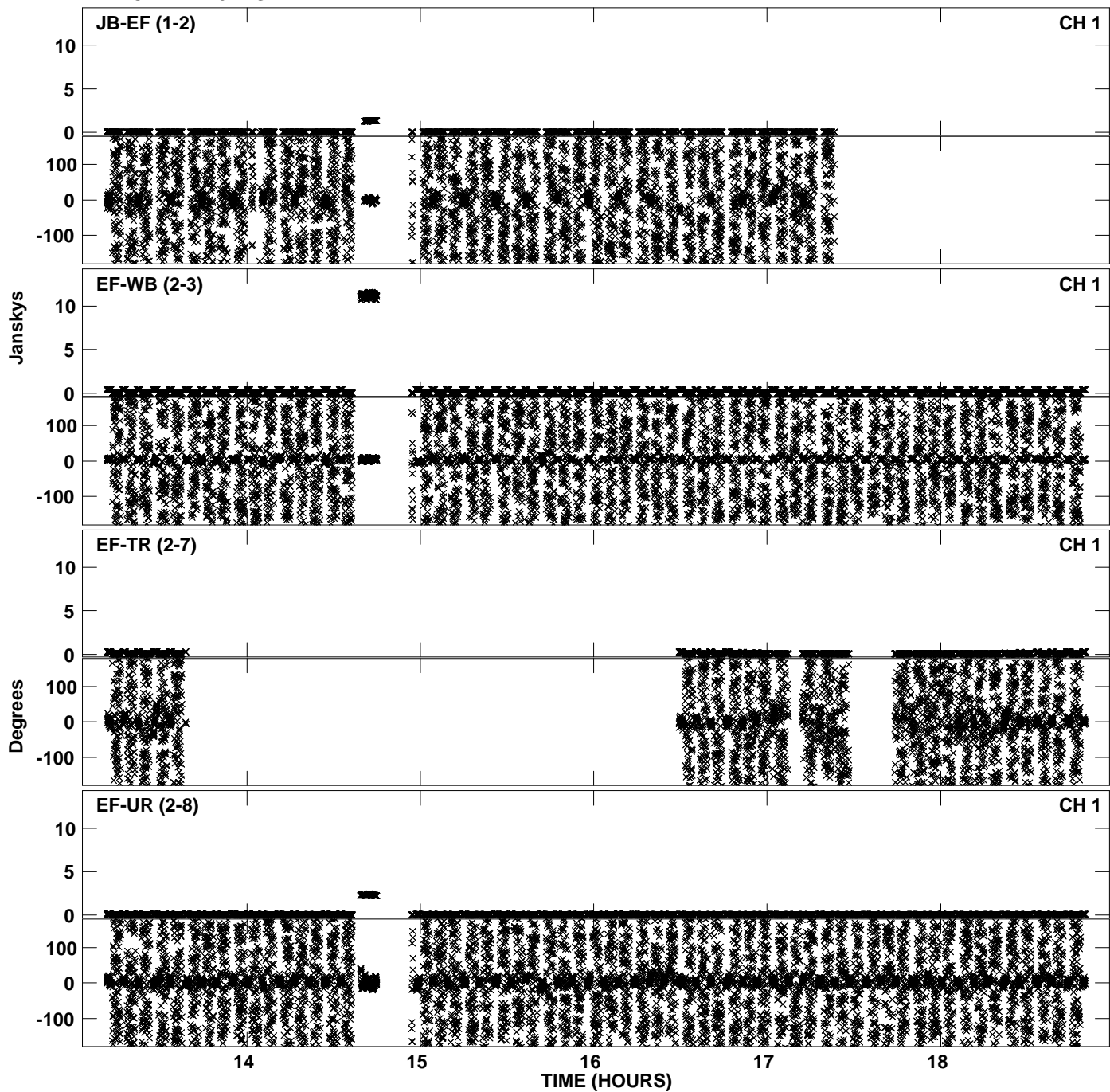
PLot file version 22 created 20-DEC-2011 15:14:56  
Amplitude andPhase vs Time for EP068C 4.UVDATA.1 Vect aver. CL # 3  
IF 1 CHAN 1 - 32 STK RR



PLot file version 23 created 20-DEC-2011 15:14:56  
Amplitude andPhase vs Time for EP068C 4.UVDATA.1 Vect aver. CL # 3  
IF 1 CHAN 1 - 32 STK RR

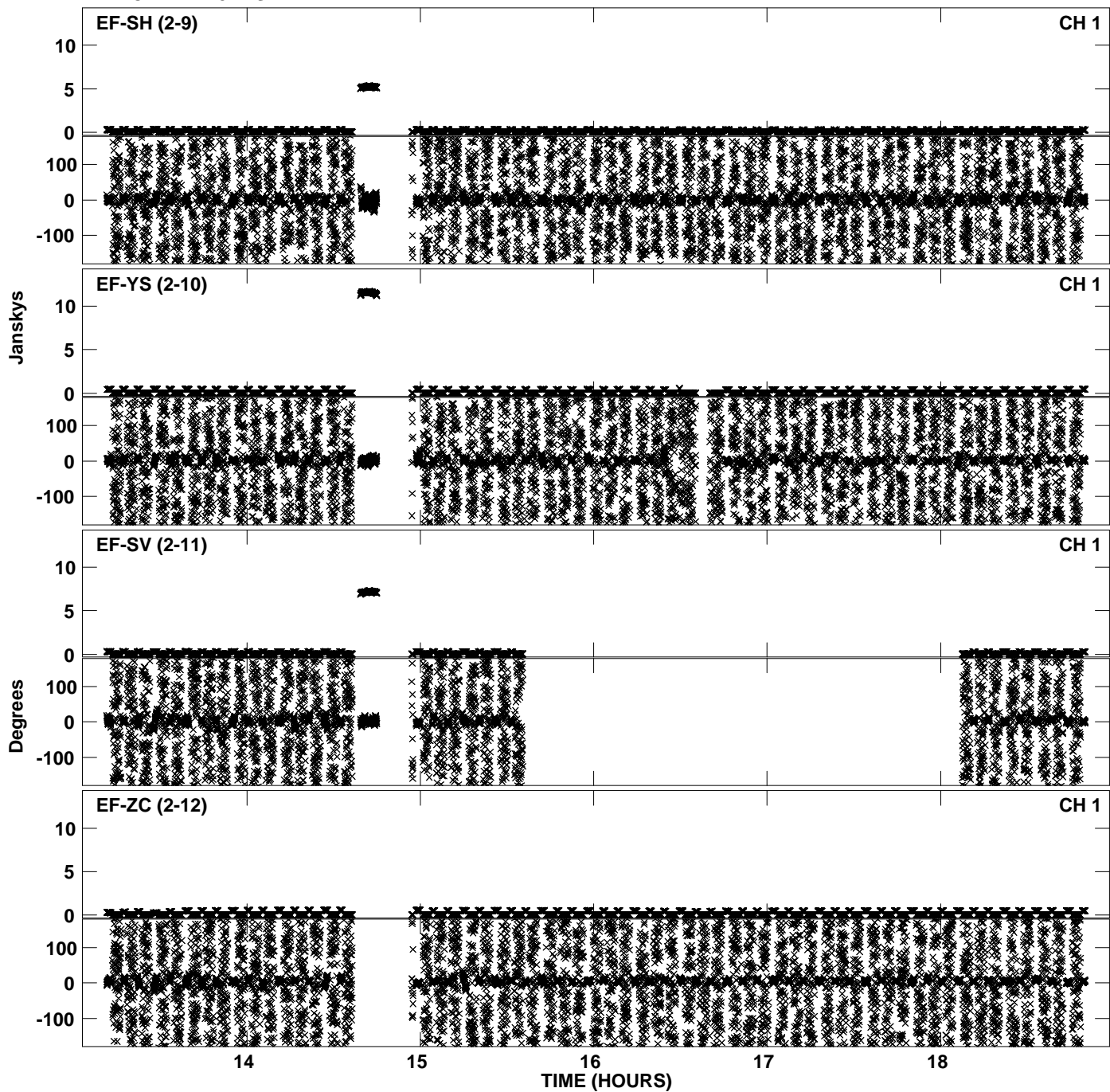


PLot file version 24 created 20-DEC-2011 15:15:12  
Amplitude andPhase vs Time for EP068C 4.UVDATA.1 Vect aver. CL # 3  
IF 2 CHAN 1 - 32 STK RR

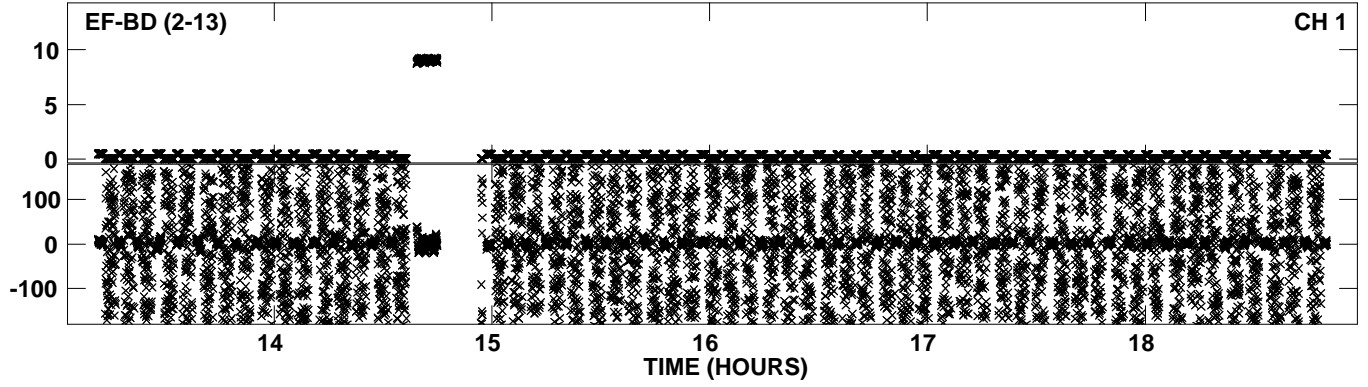




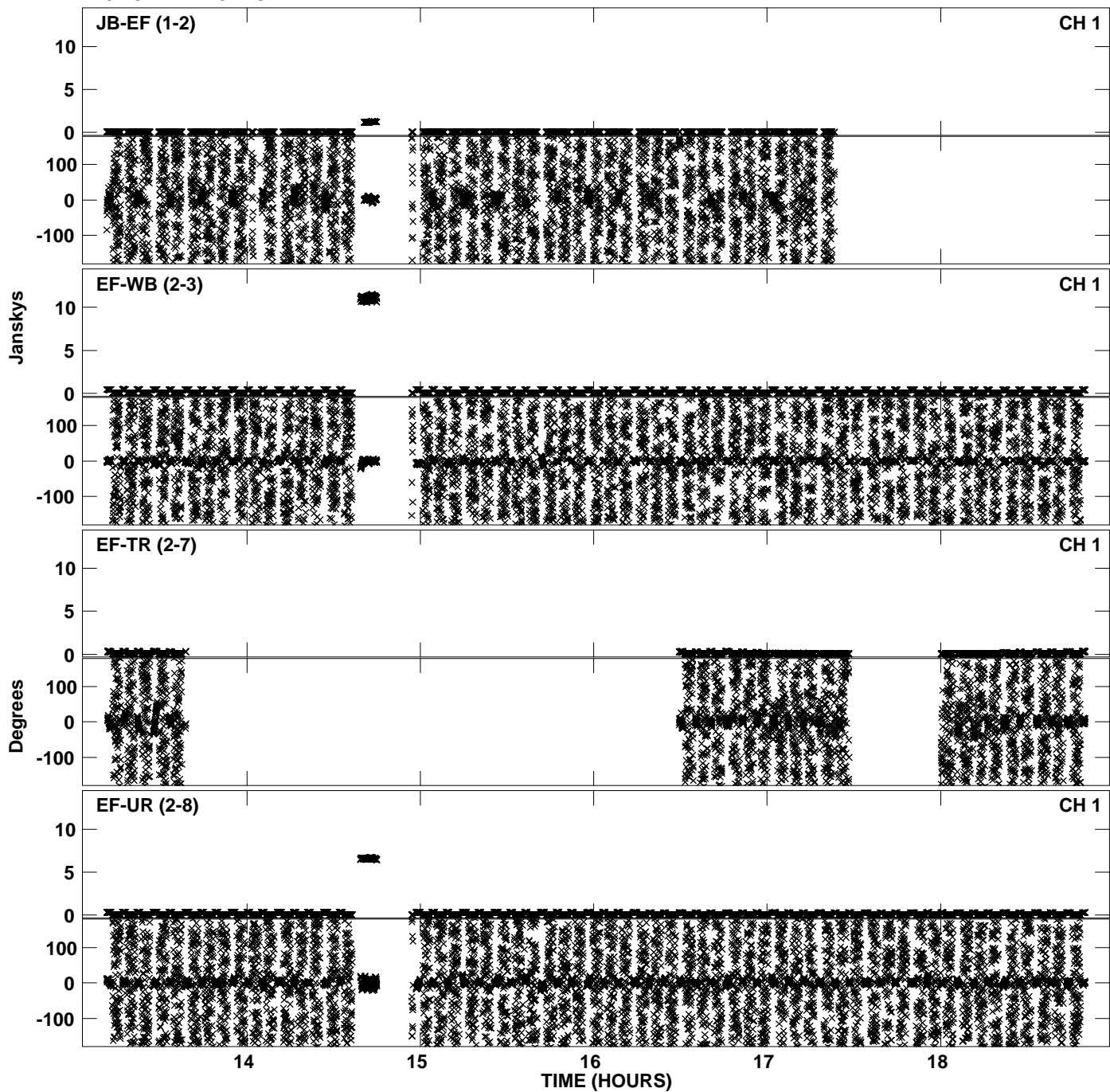
PLot file version 25 created 20-DEC-2011 15:15:12  
Amplitude andPhase vs Time for EP068C 4.UVDATA.1 Vect aver. CL # 3  
IF 2 CHAN 1 - 32 STK RR



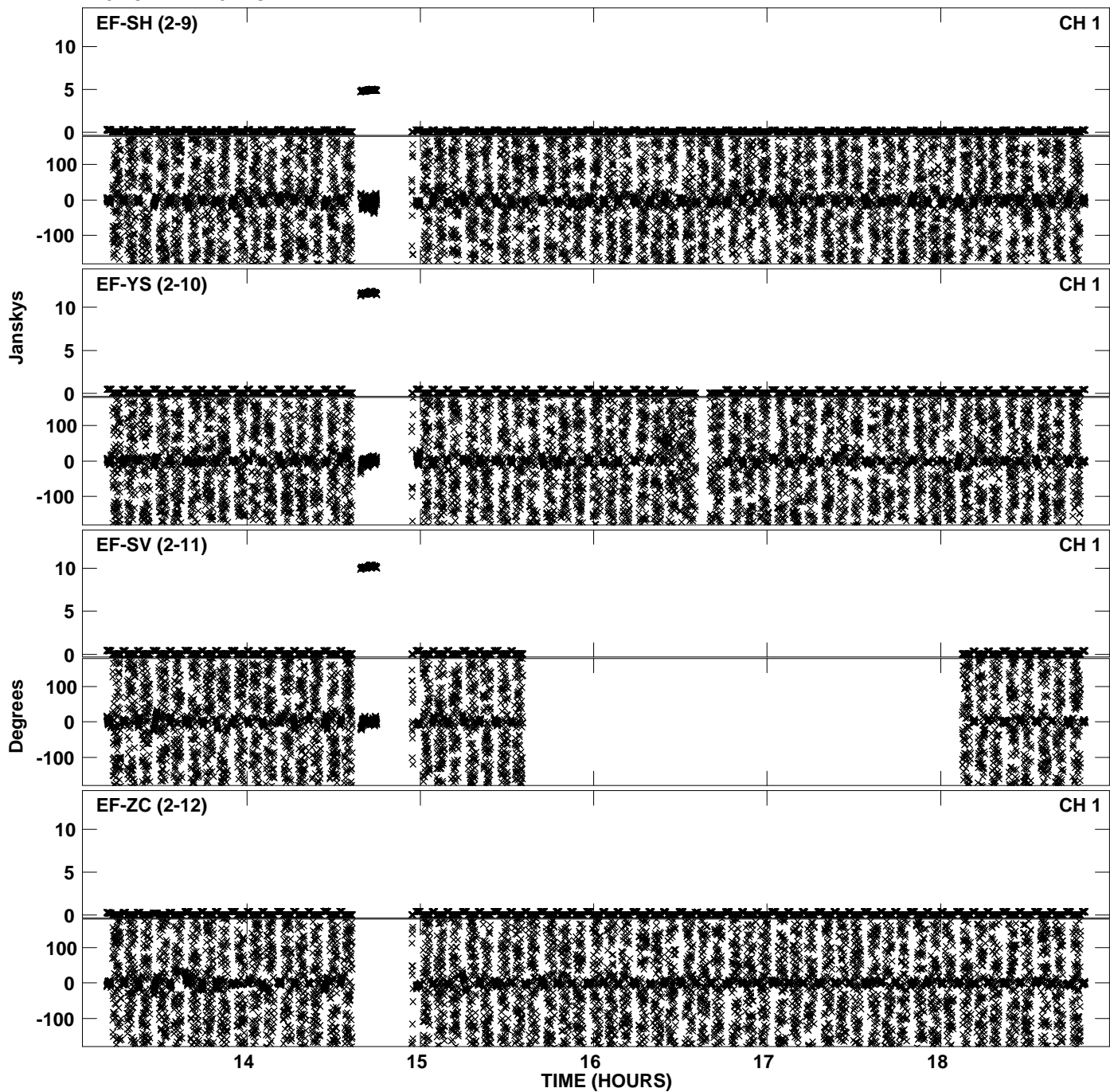
PLot file version 26 created 20-DEC-2011 15:15:12  
Amplitude andPhase vs Time for EP068C 4.UVDATA.1 Vect aver. CL # 3  
IF 2 CHAN 1 - 32 STK RR



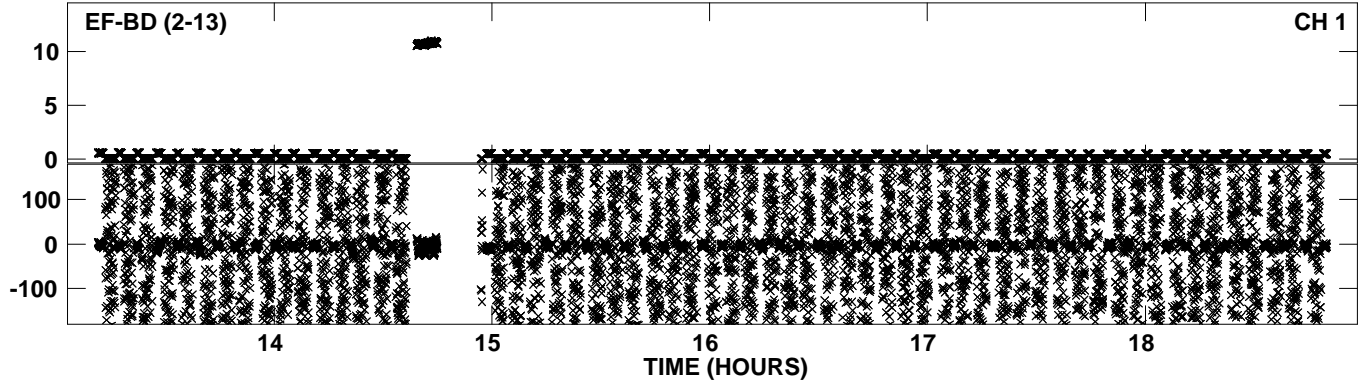
PLot file version 27 created 20-DEC-2011 15:15:25  
Amplitude andPhase vs Time for EP068C 4.UVDATA.1 Vect aver. CL # 3  
IF 3 CHAN 1 - 32 STK RR



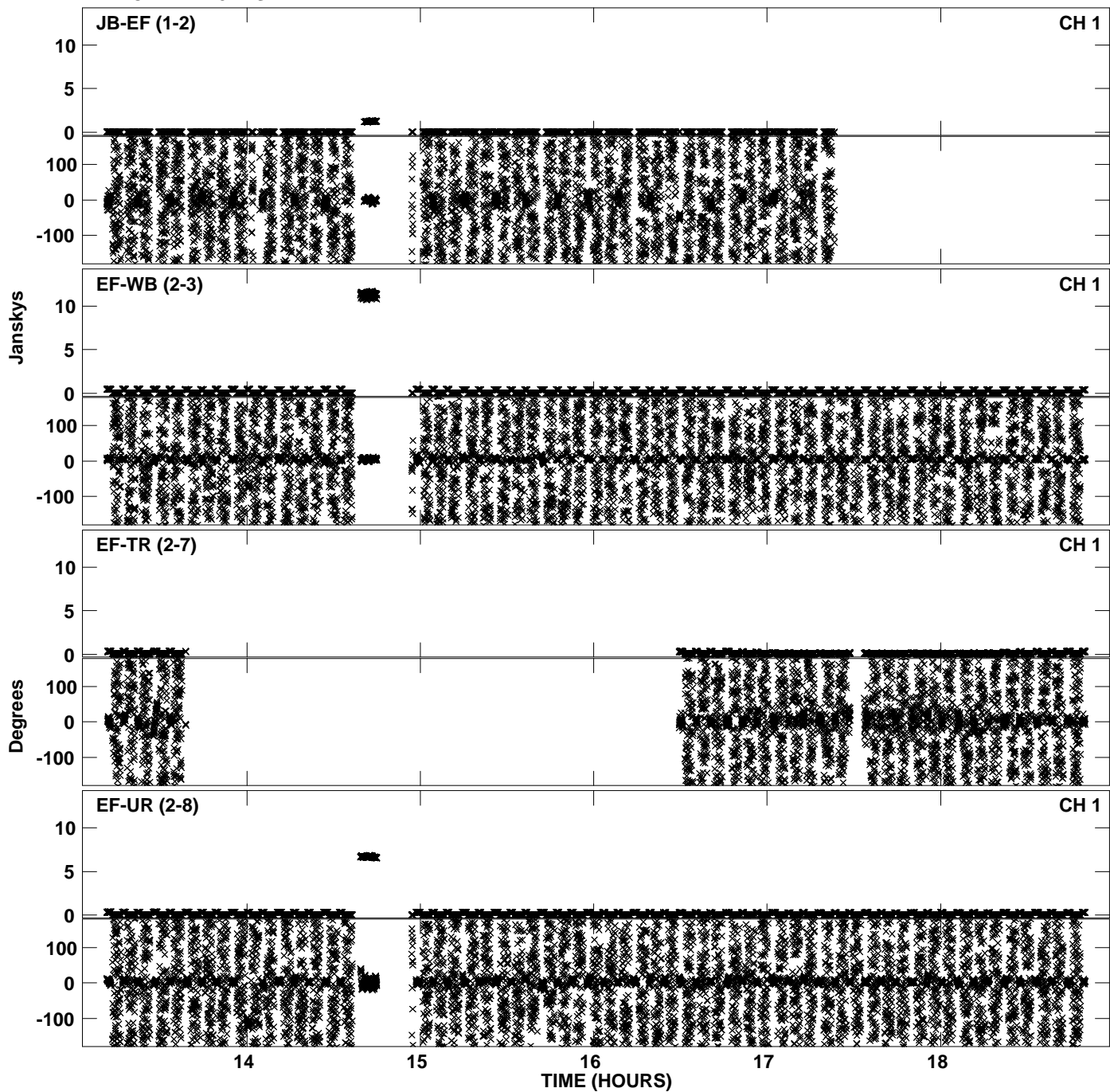
PLot file version 28 created 20-DEC-2011 15:15:26  
Amplitude andPhase vs Time for EP068C 4.UVDATA.1 Vect aver. CL # 3  
IF 3 CHAN 1 - 32 STK RR



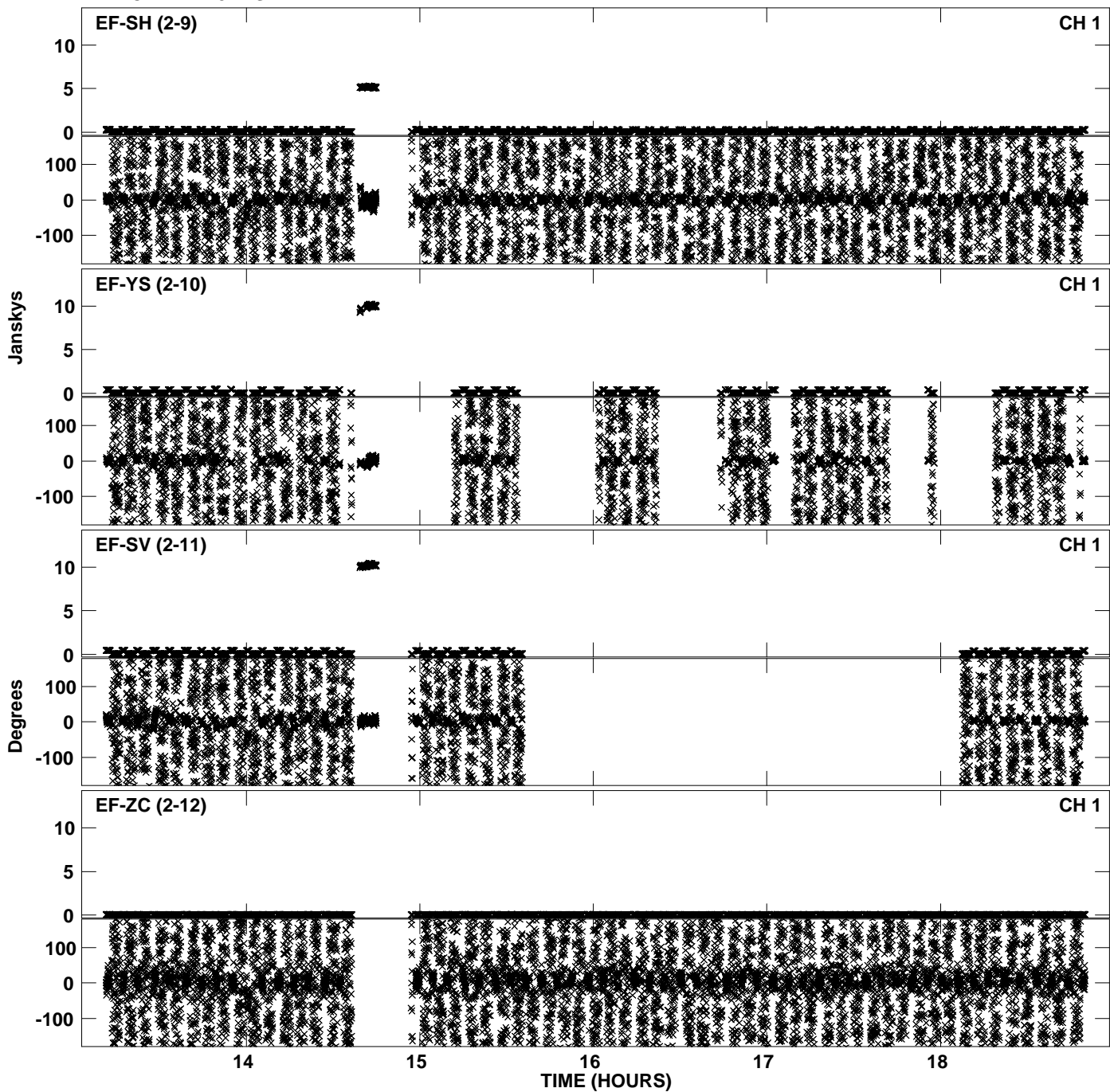
PLot file version 29 created 20-DEC-2011 15:15:26  
Amplitude andPhase vs Time for EP068C 4.UVDATA.1 Vect aver. CL # 3  
IF 3 CHAN 1 - 32 STK RR



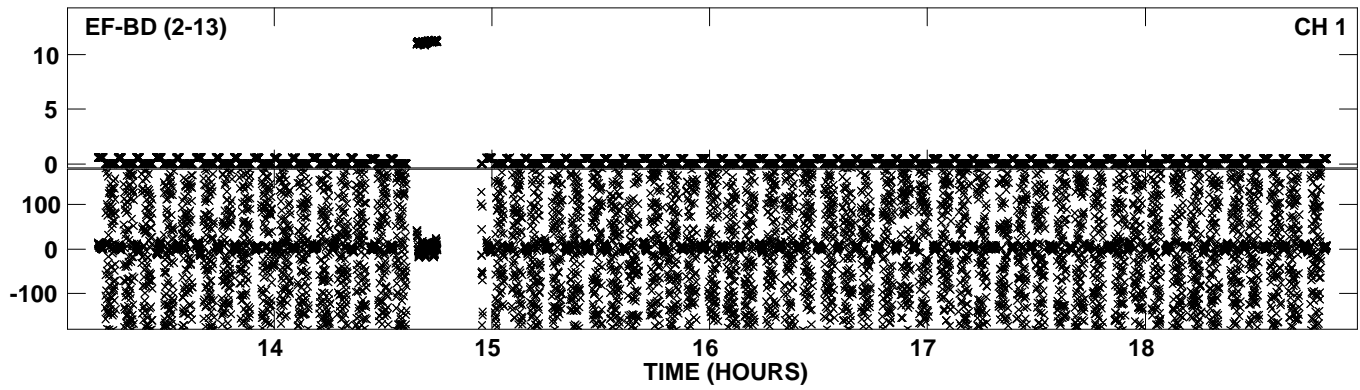
PLot file version 30 created 20-DEC-2011 15:15:35  
Amplitude andPhase vs Time for EP068C 4.UVDATA.1 Vect aver. CL # 3  
IF 4 CHAN 1 - 32 STK RR



PLot file version 31 created 20-DEC-2011 15:15:35  
Amplitude andPhase vs Time for EP068C 4.UVDATA.1 Vect aver. CL # 3  
IF 4 CHAN 1 - 32 STK RR

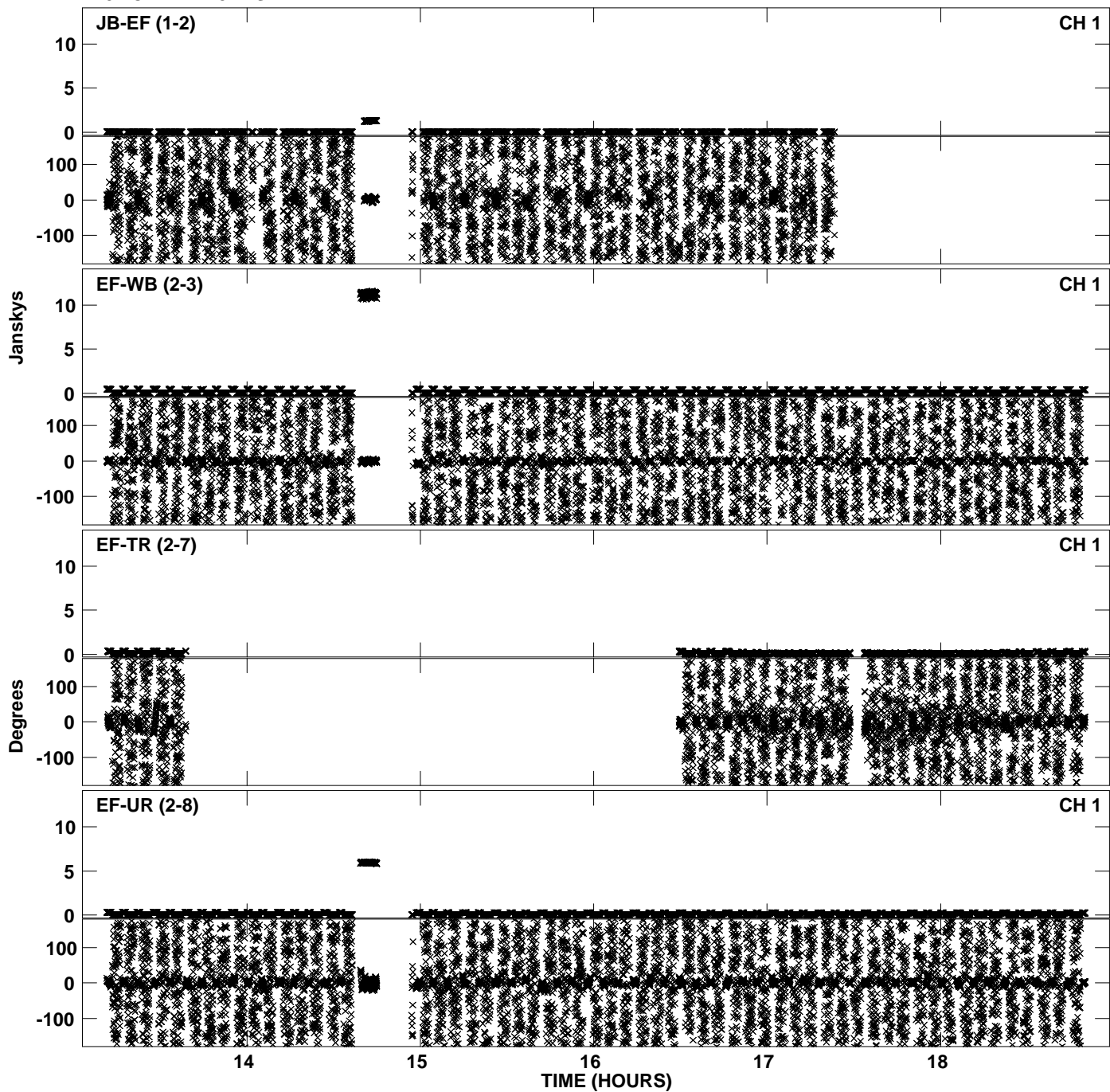


PLot file version 32 created 20-DEC-2011 15:15:35  
Amplitude andPhase vs Time for EP068C 4.UVDATA.1 Vect aver. CL # 3  
IF 4 CHAN 1 - 32 STK RR

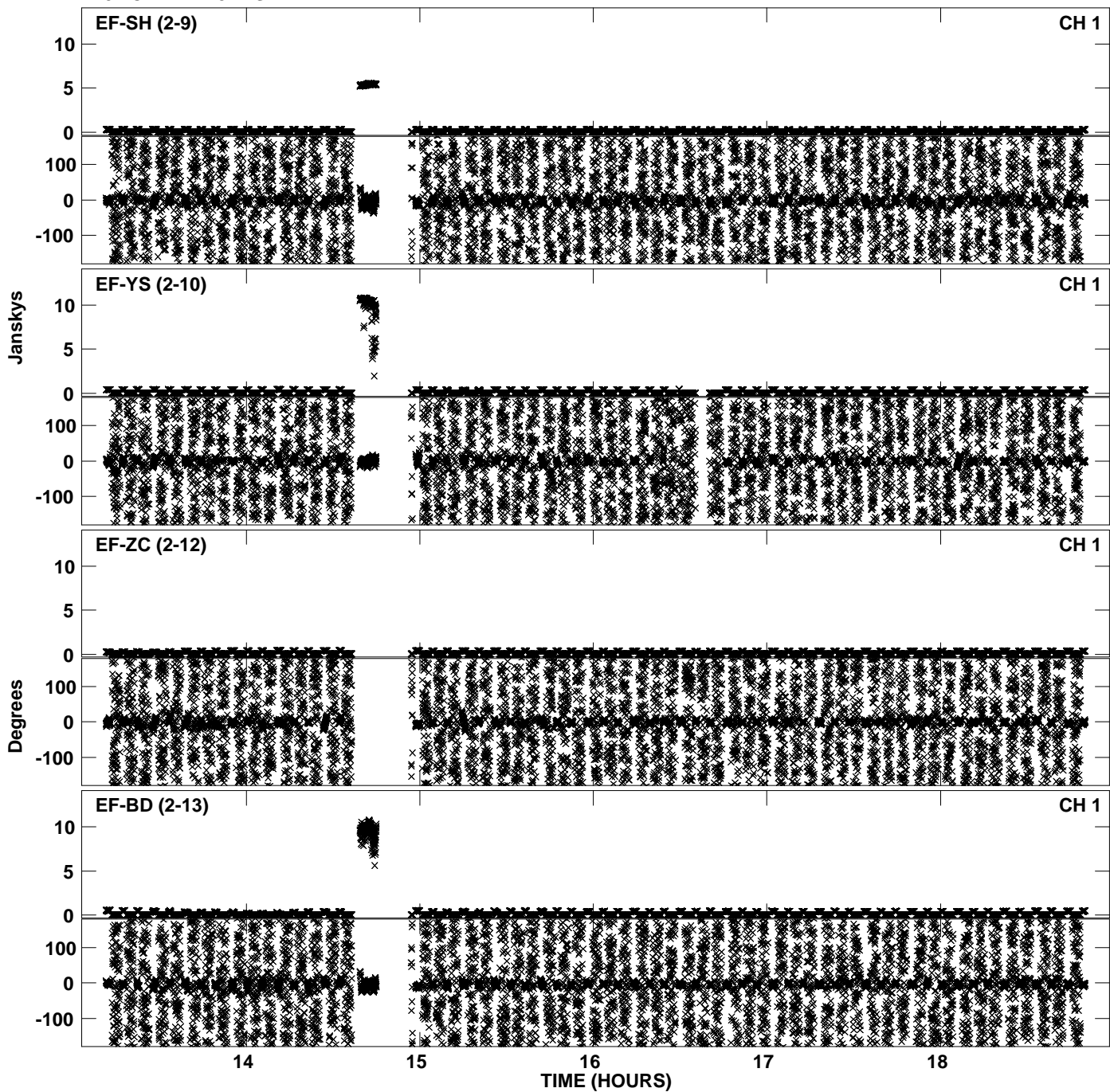




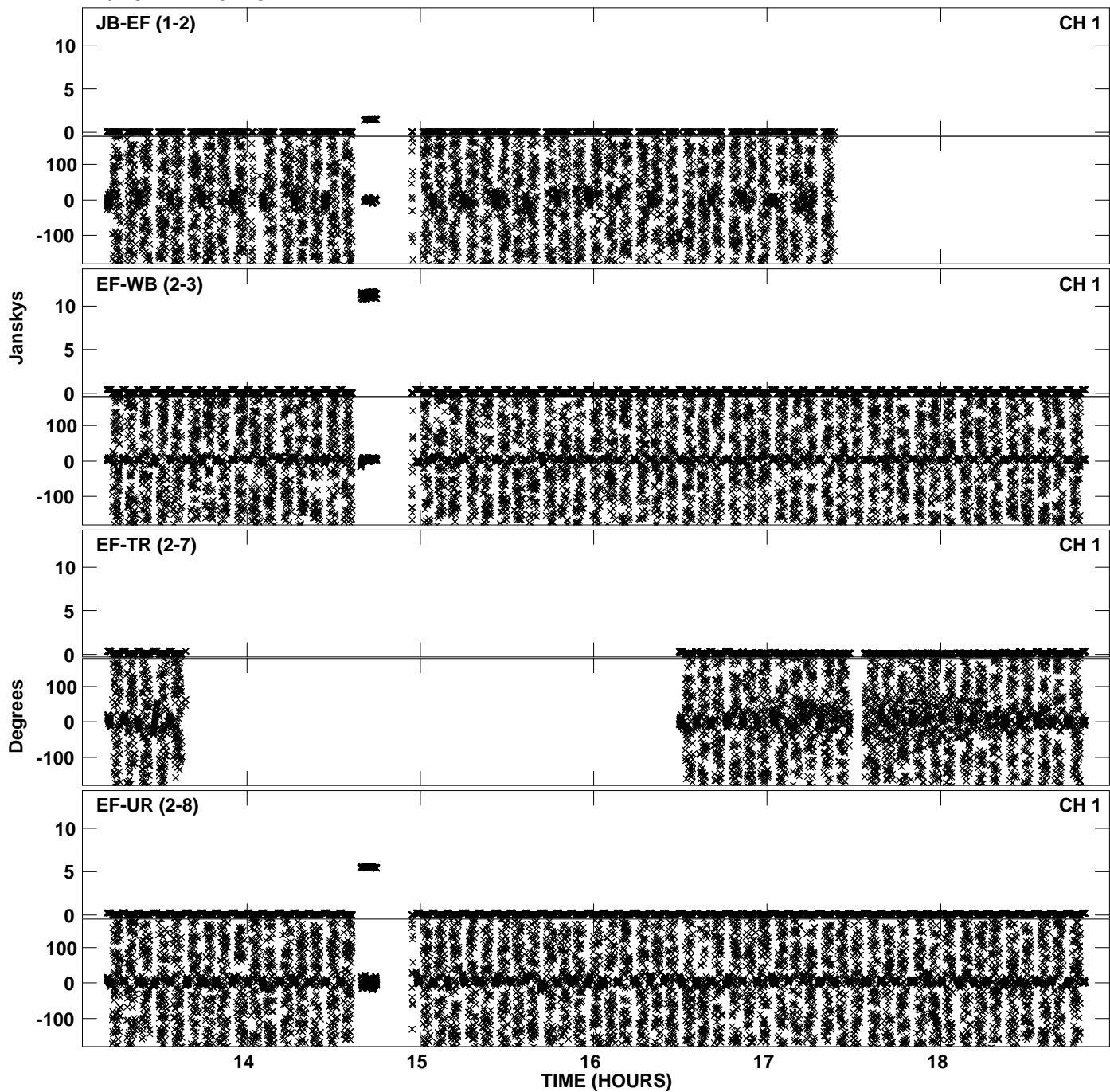
Plot file version 33 created 20-DEC-2011 15:15:44  
Amplitude andPhase vs Time for EP068C 4.UVDATA.1 Vect aver. CL # 3  
IF 5 CHAN 1 - 32 STK RR



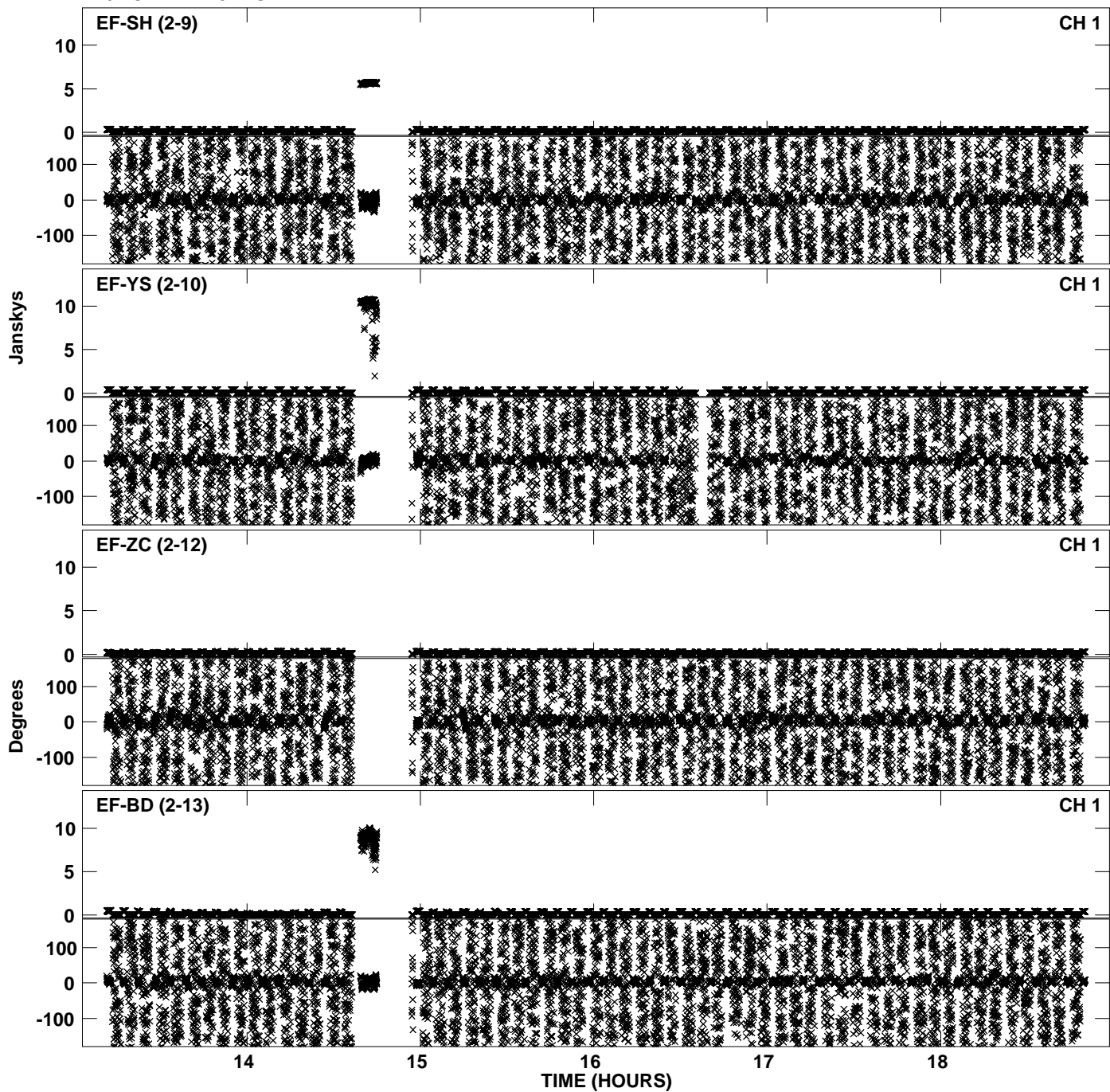
Plot file version 34 created 20-DEC-2011 15:15:44  
Amplitude andPhase vs Time for EP068C 4.UVDATA.1 Vect aver. CL # 3  
IF 5 CHAN 1 - 32 STK RR



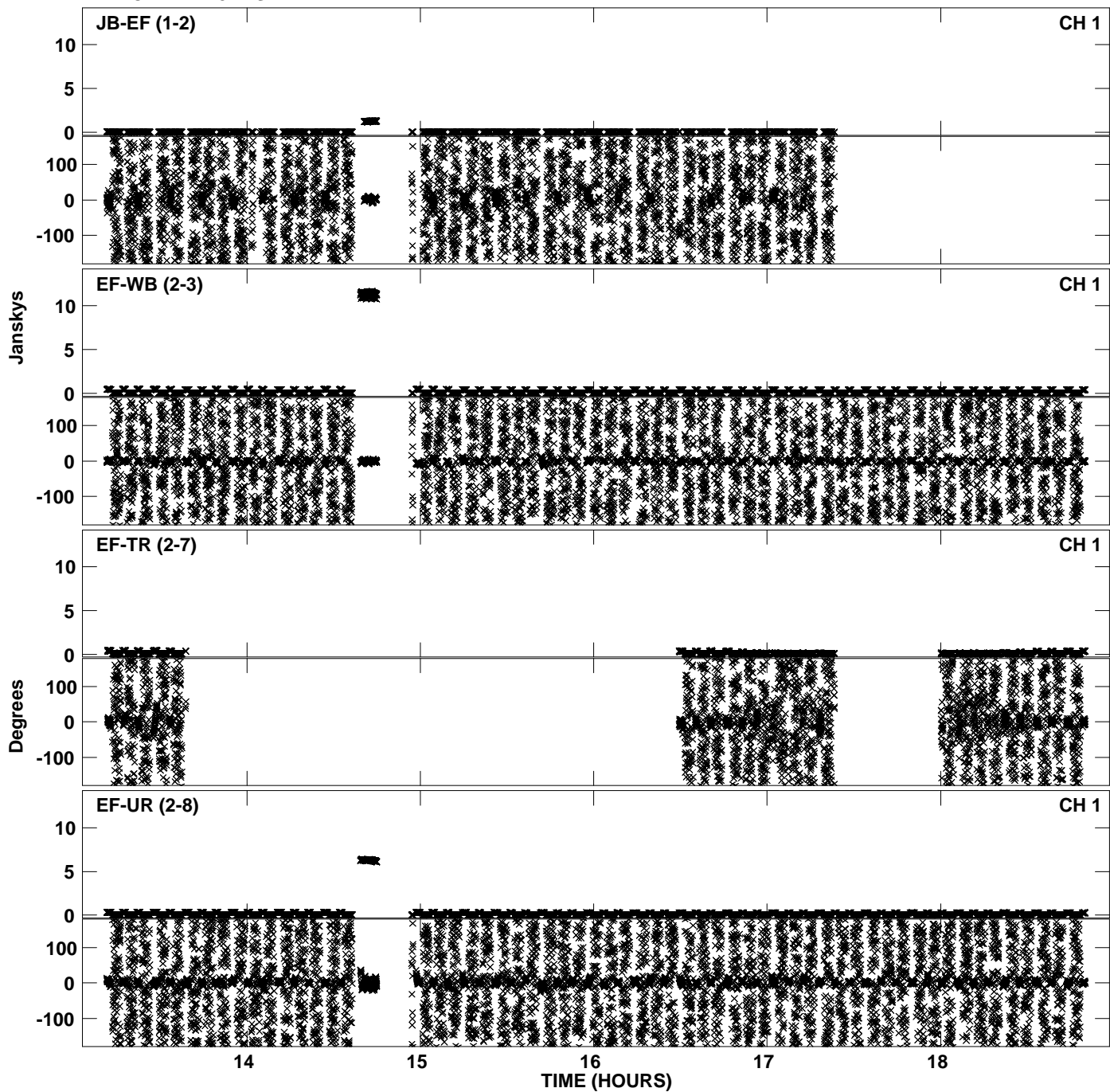
PLot file version 35 created 20-DEC-2011 15:15:53  
Amplitude andPhase vs Time for EP068C 4.UVDATA.1 Vect aver. CL # 3  
IF 6 CHAN 1 - 32 STK RR



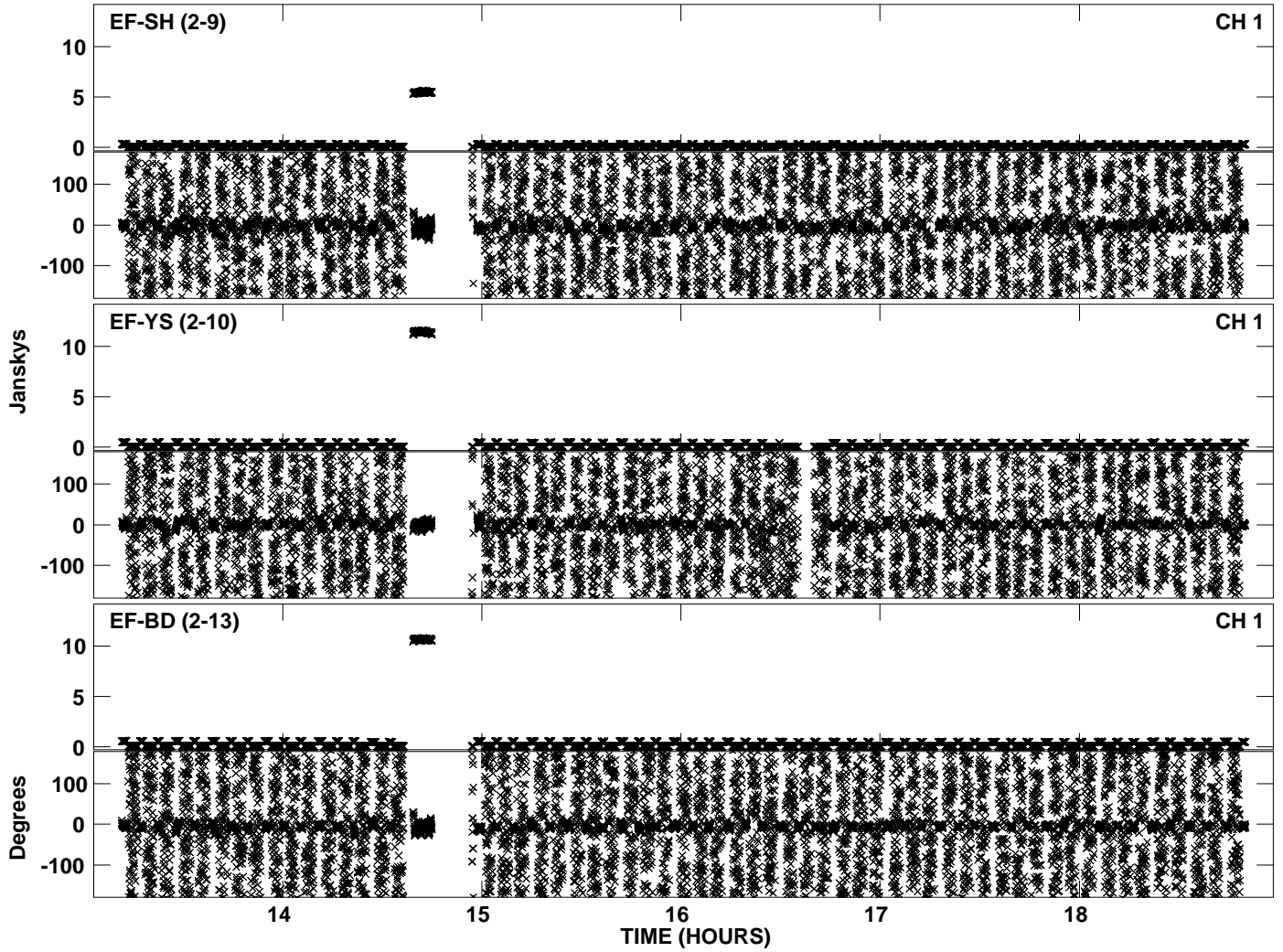
Plot file version 36 created 20-DEC-2011 15:15:53  
Amplitude andPhase vs Time for EP068C 4.UVDATA.1 Vect aver. CL # 3  
IF 6 CHAN 1 - 32 STK RR



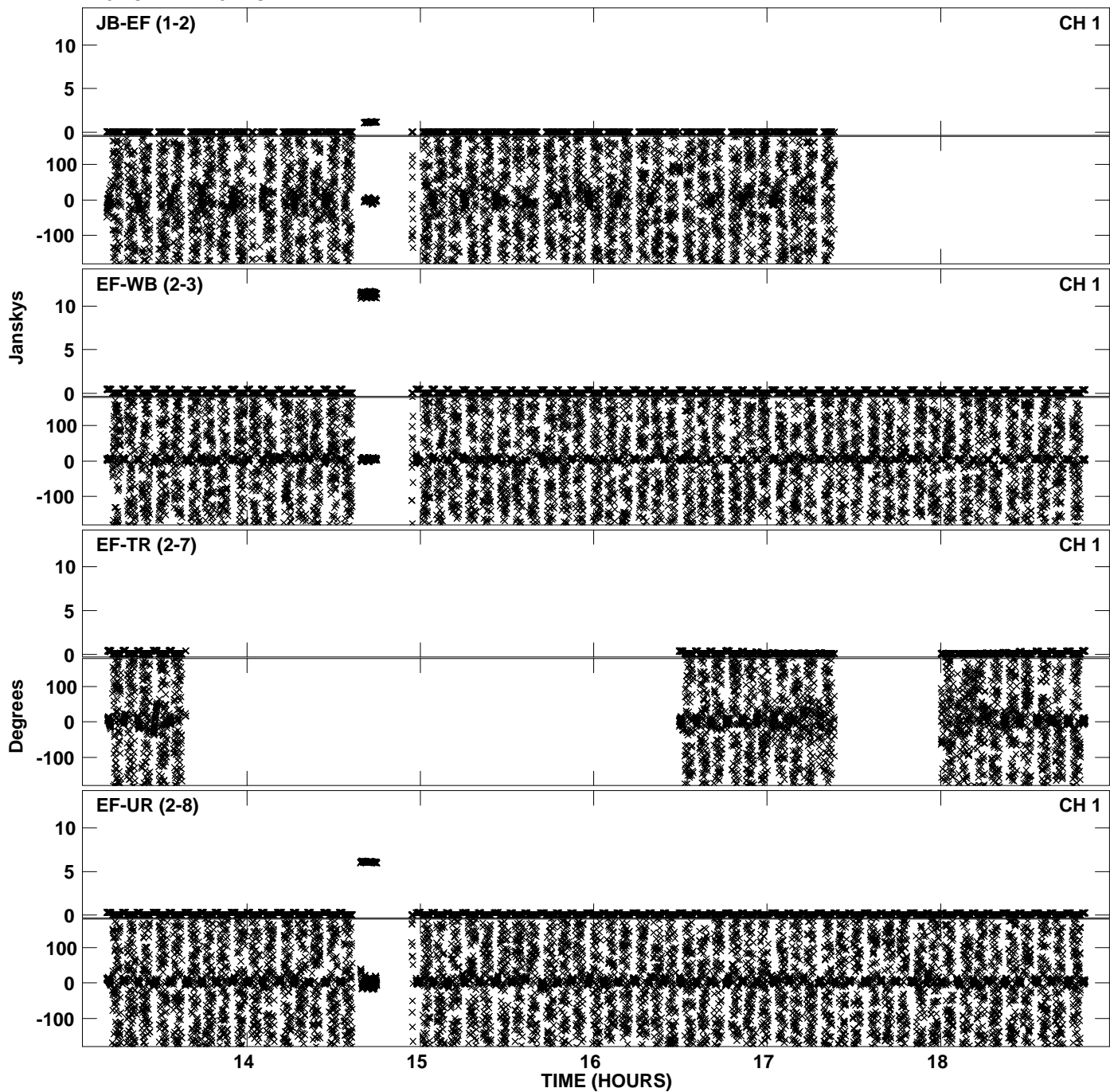
PLot file version 37 created 20-DEC-2011 15:16:03  
Amplitude andPhase vs Time for EP068C 4.UVDATA.1 Vect aver. CL # 3  
IF 7 CHAN 1 - 32 STK RR



PLot file version 38 created 20-DEC-2011 15:16:03  
Amplitude andPhase vs Time for EP068C 4.UVDATA.1 Vect aver. CL # 3  
IF 7 CHAN 1 - 32 STK RR



Plot file version 39 created 20-DEC-2011 15:16:12  
Amplitude andPhase vs Time for EP068C 4.UVDATA.1 Vect aver. CL # 3  
IF 8 CHAN 1 - 32 STK RR



PLot file version 40 created 20-DEC-2011 15:16:12  
Amplitude andPhase vs Time for EP068C 4.UVDATA.1 Vect aver. CL # 3  
IF 8 CHAN 1 - 32 STK RR

