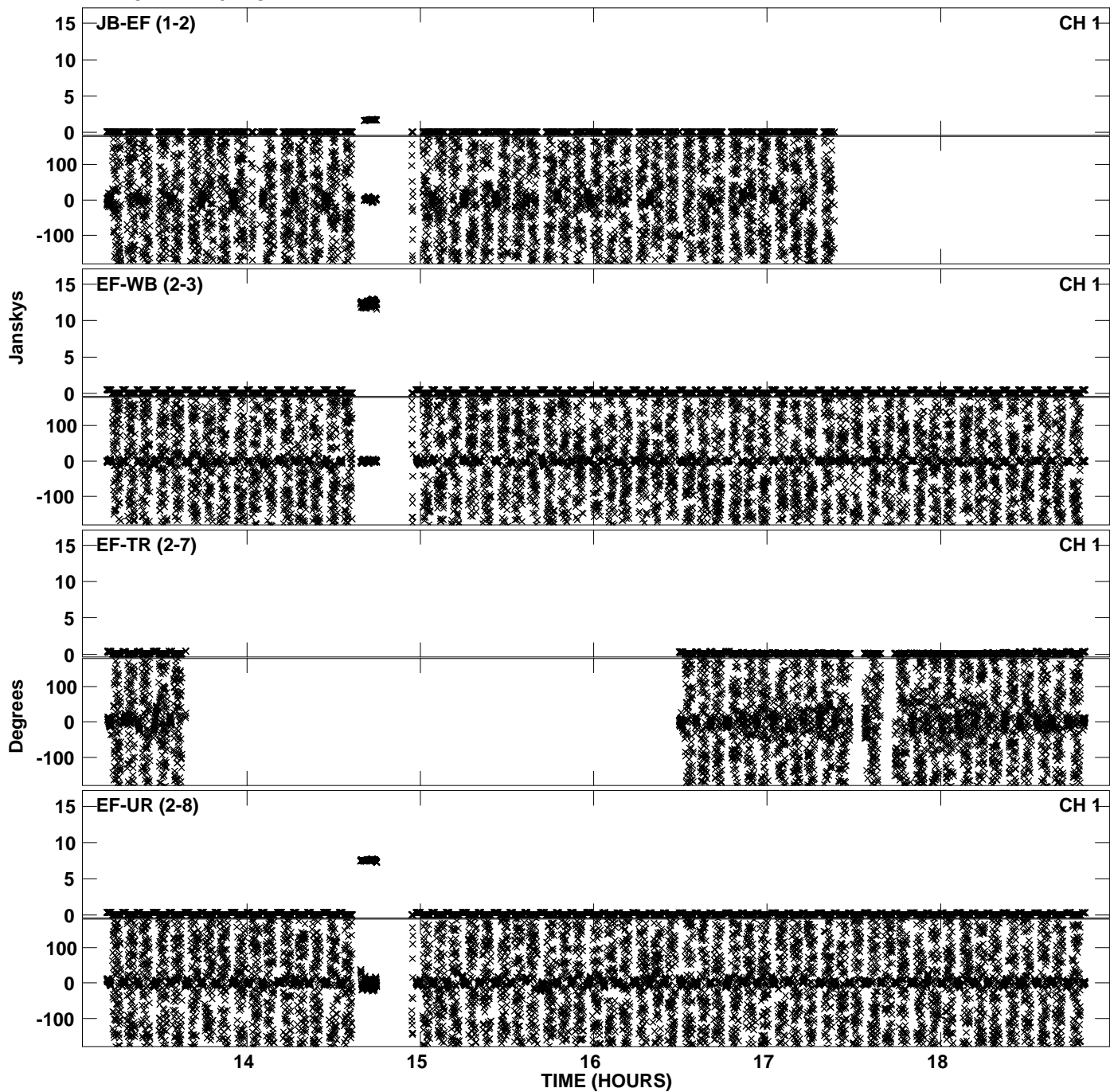
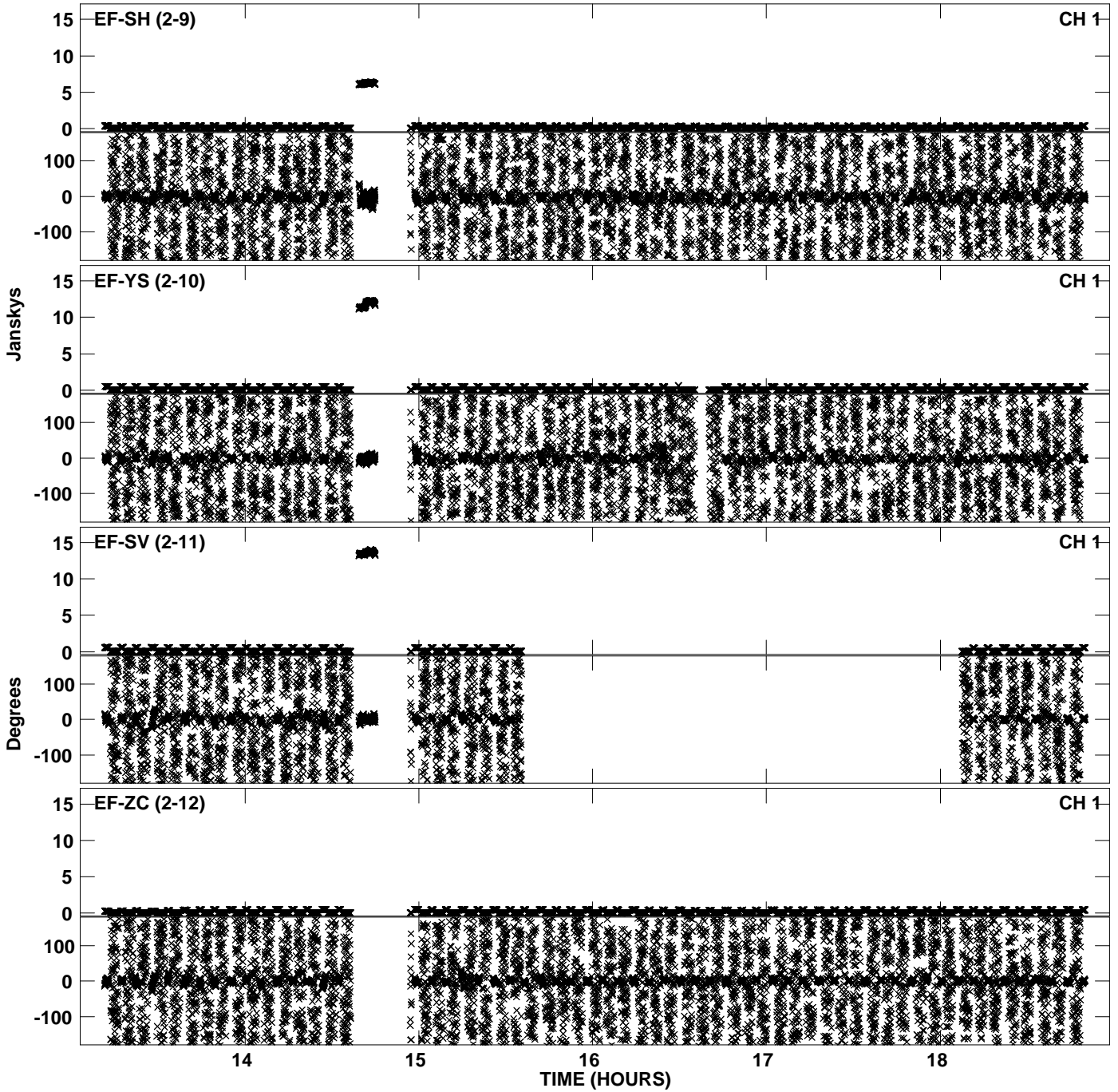


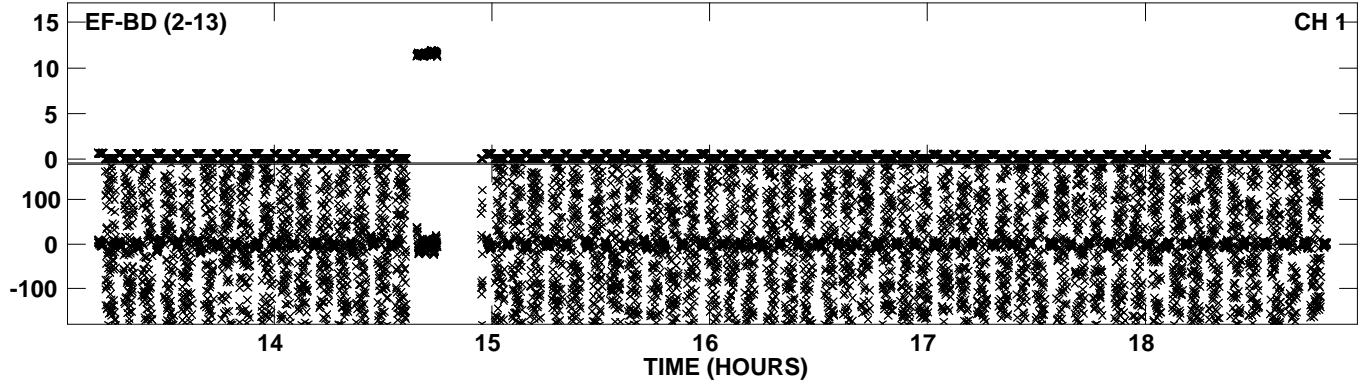
Plot file version 1 created 20-DEC-2011 15:14:25
Amplitude andPhase vs Time for EP068C 5.UVDATA.1 Vect aver. CL # 3
IF 1 CHAN 1 - 32 STK LL



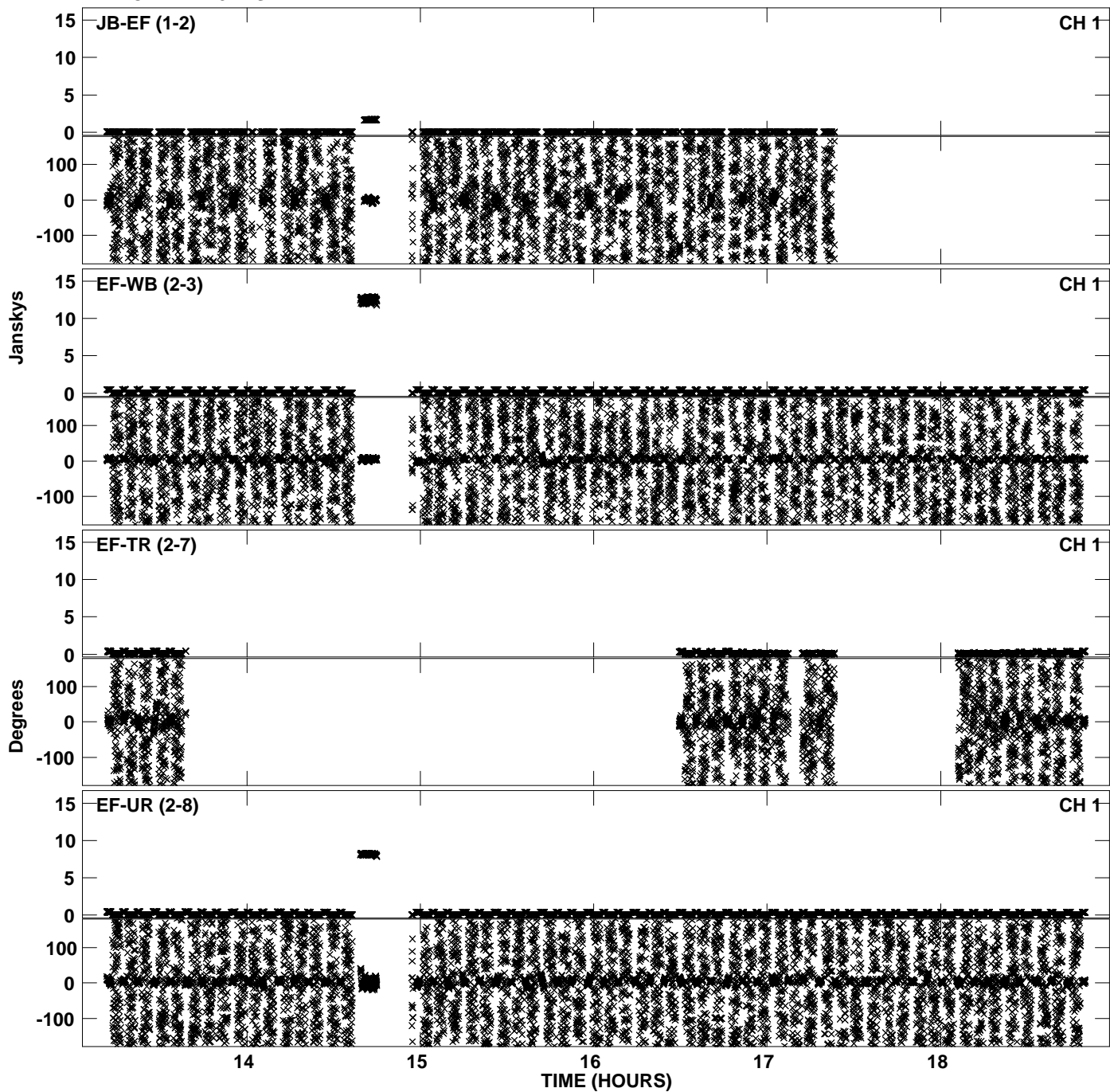
PLot file version 2 created 20-DEC-2011 15:14:28
Amplitude andPhase vs Time for EP068C 5.UVDATA.1 Vect aver. CL # 3
IF 1 CHAN 1 - 32 STK LL



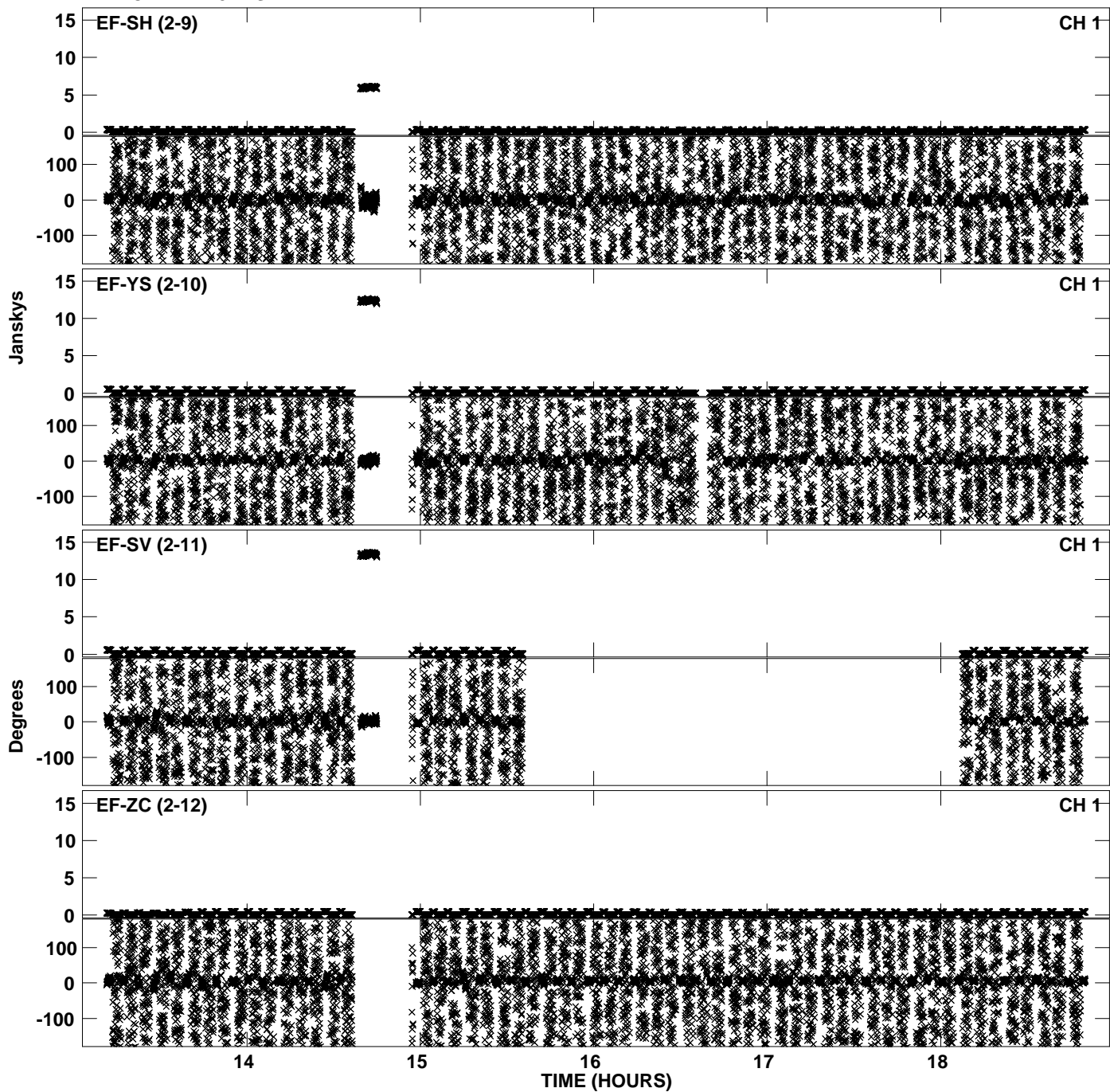
PLot file version 3 created 20-DEC-2011 15:14:28
Amplitude andPhase vs Time for EP068C 5.UVDATA.1 Vect aver. CL # 3
IF 1 CHAN 1 - 32 STK LL



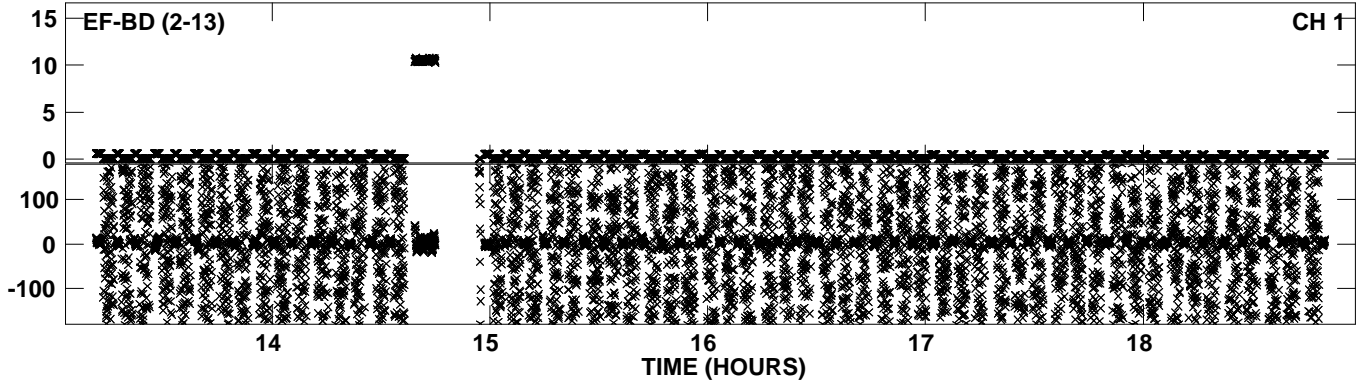
PLot file version 4 created 20-DEC-2011 15:16:44
Amplitude andPhase vs Time for EP068C 5.UVDATA.1 Vect aver. CL # 3
IF 2 CHAN 1 - 32 STK LL



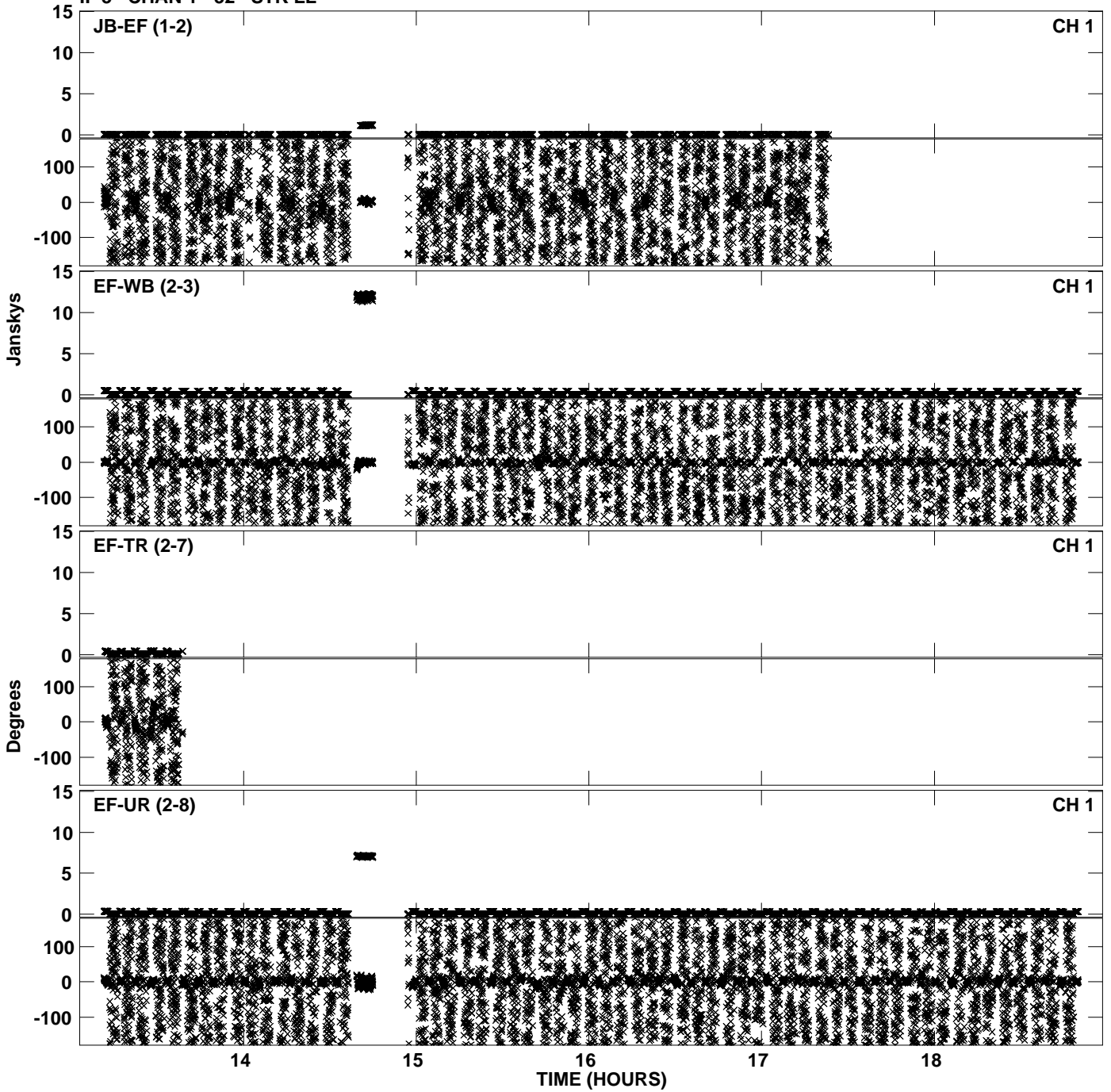
PLot file version 5 created 20-DEC-2011 15:16:45
Amplitude andPhase vs Time for EP068C 5.UVDATA.1 Vect aver. CL # 3
IF 2 CHAN 1 - 32 STK LL



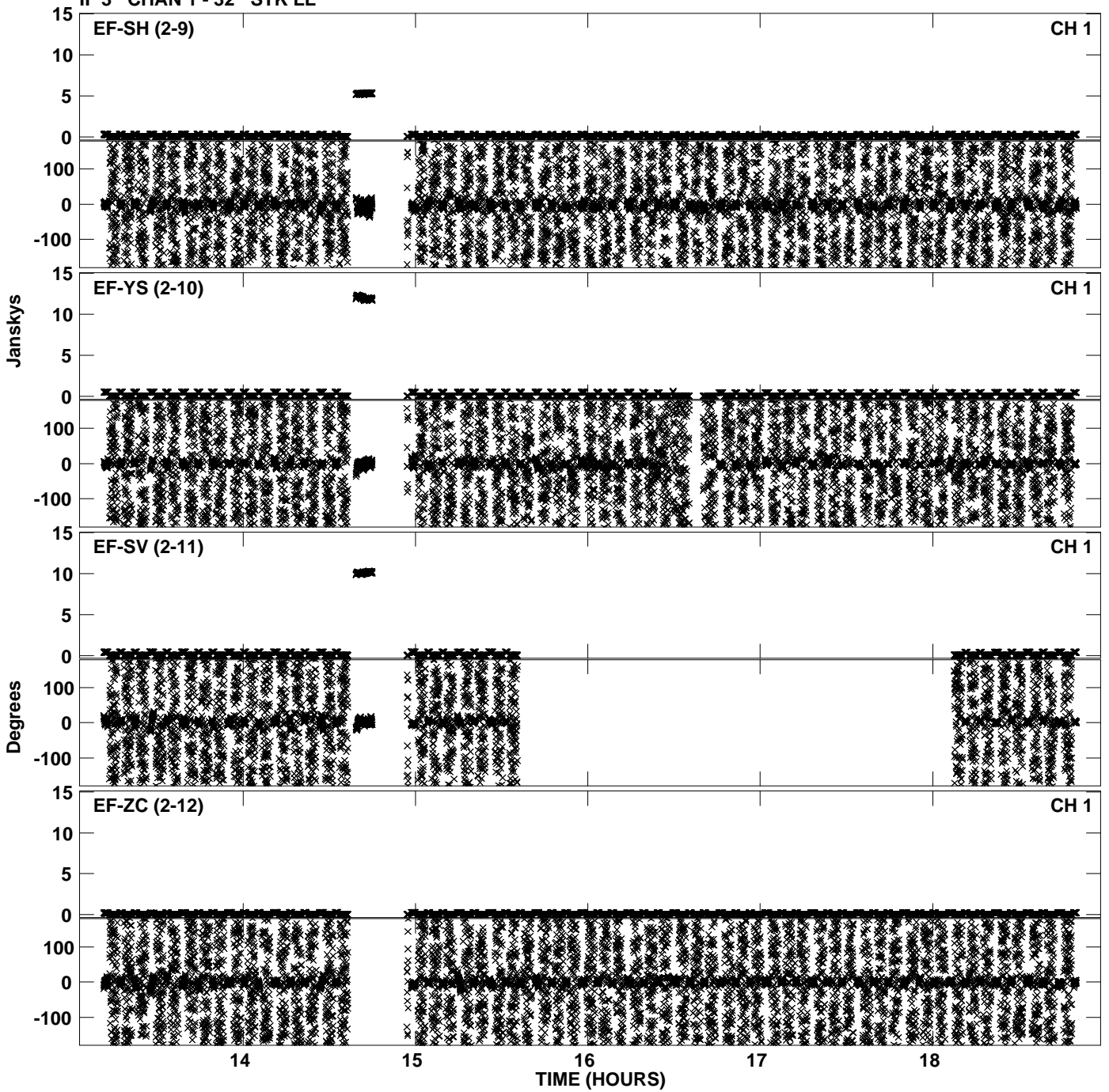
PLot file version 6 created 20-DEC-2011 15:16:45
Amplitude andPhase vs Time for EP068C 5.UVDATA.1 Vect aver. CL # 3
IF 2 CHAN 1 - 32 STK LL



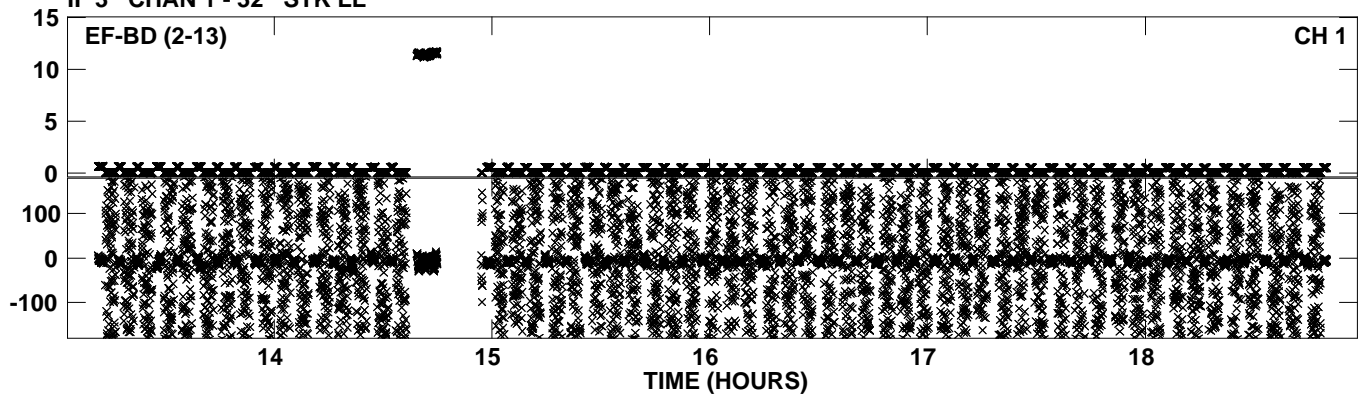
Plot file version 7 created 20-DEC-2011 15:19:04
Amplitude andPhase vs Time for EP068C 5.UVDATA.1 Vect aver. CL # 3
IF 3 CHAN 1 - 32 STK LL



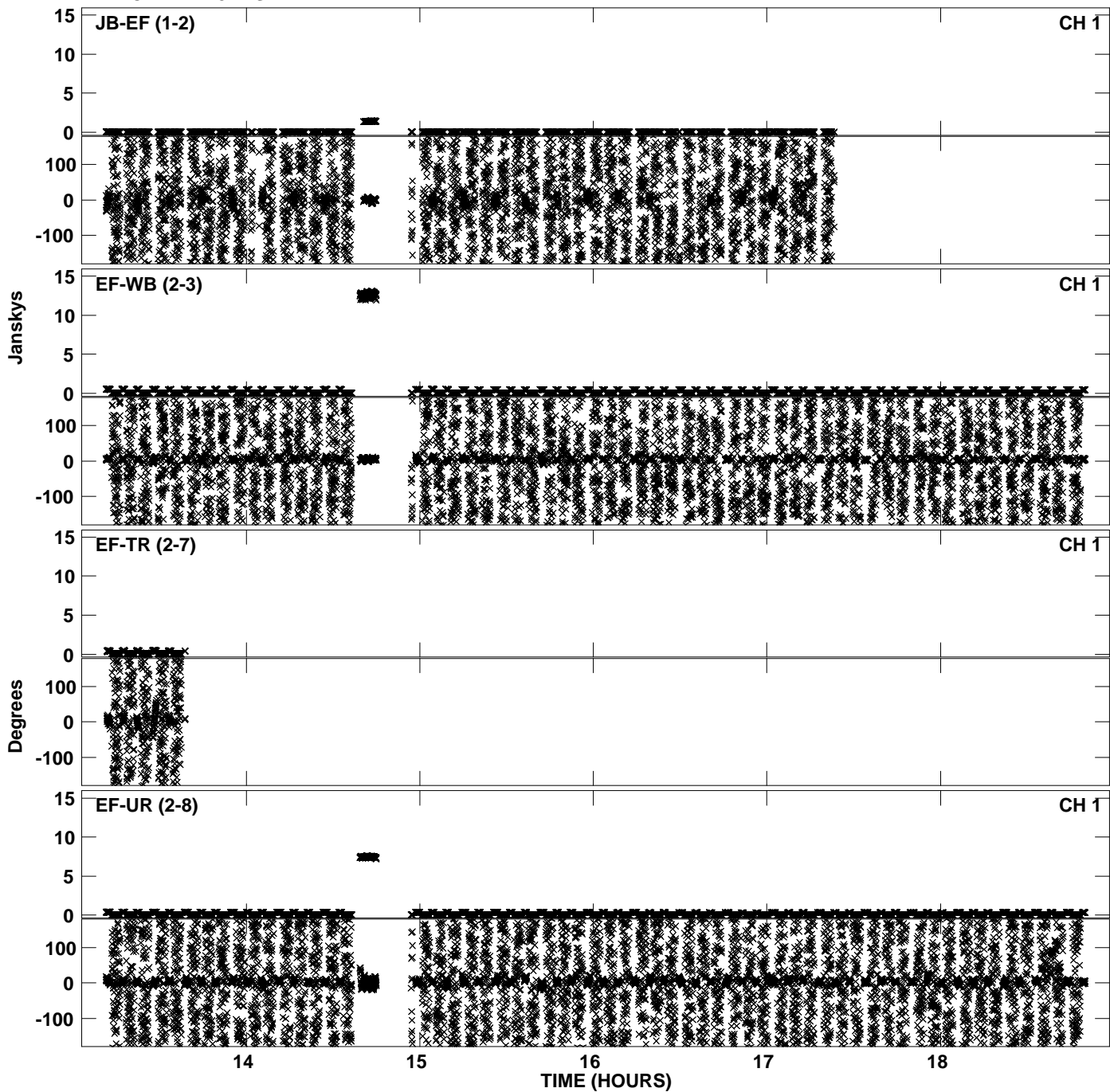
Plot file version 8 created 20-DEC-2011 15:19:05
Amplitude andPhase vs Time for EP068C 5.UVDATA.1 Vect aver. CL # 3
IF 3 CHAN 1 - 32 STK LL



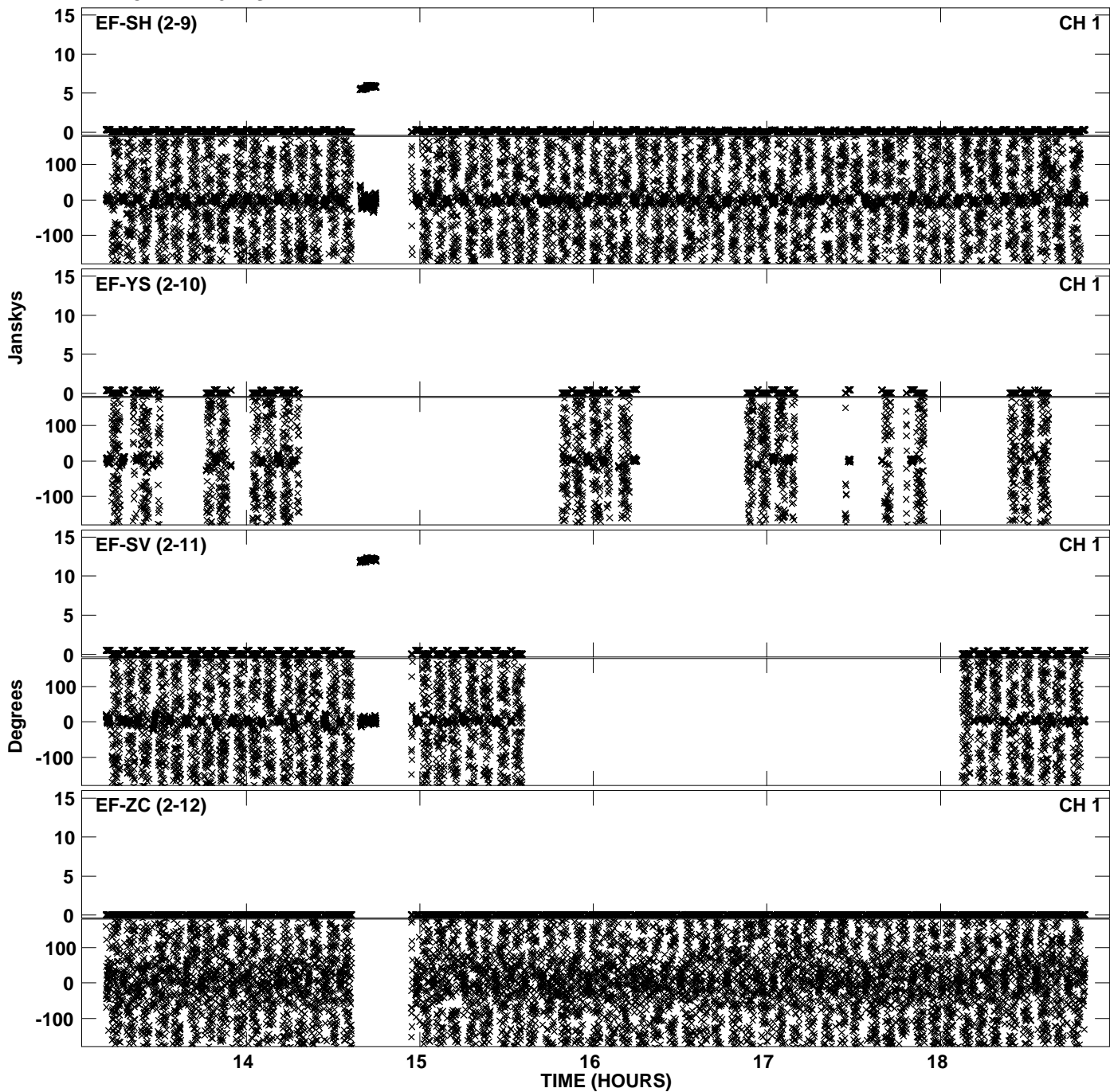
PLot file version 9 created 20-DEC-2011 15:19:05
Amplitude andPhase vs Time for EP068C 5.UVDATA.1 Vect aver. CL # 3
IF 3 CHAN 1 - 32 STK LL



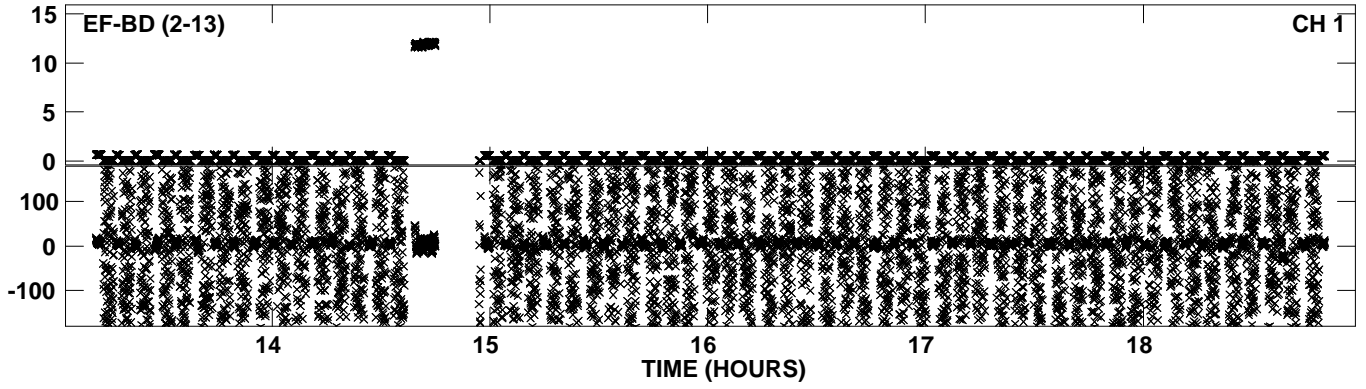
Plot file version 10 created 20-DEC-2011 15:21:10
Amplitude andPhase vs Time for EP068C 5.UVDATA.1 Vect aver. CL # 3
IF 4 CHAN 1 - 32 STK LL



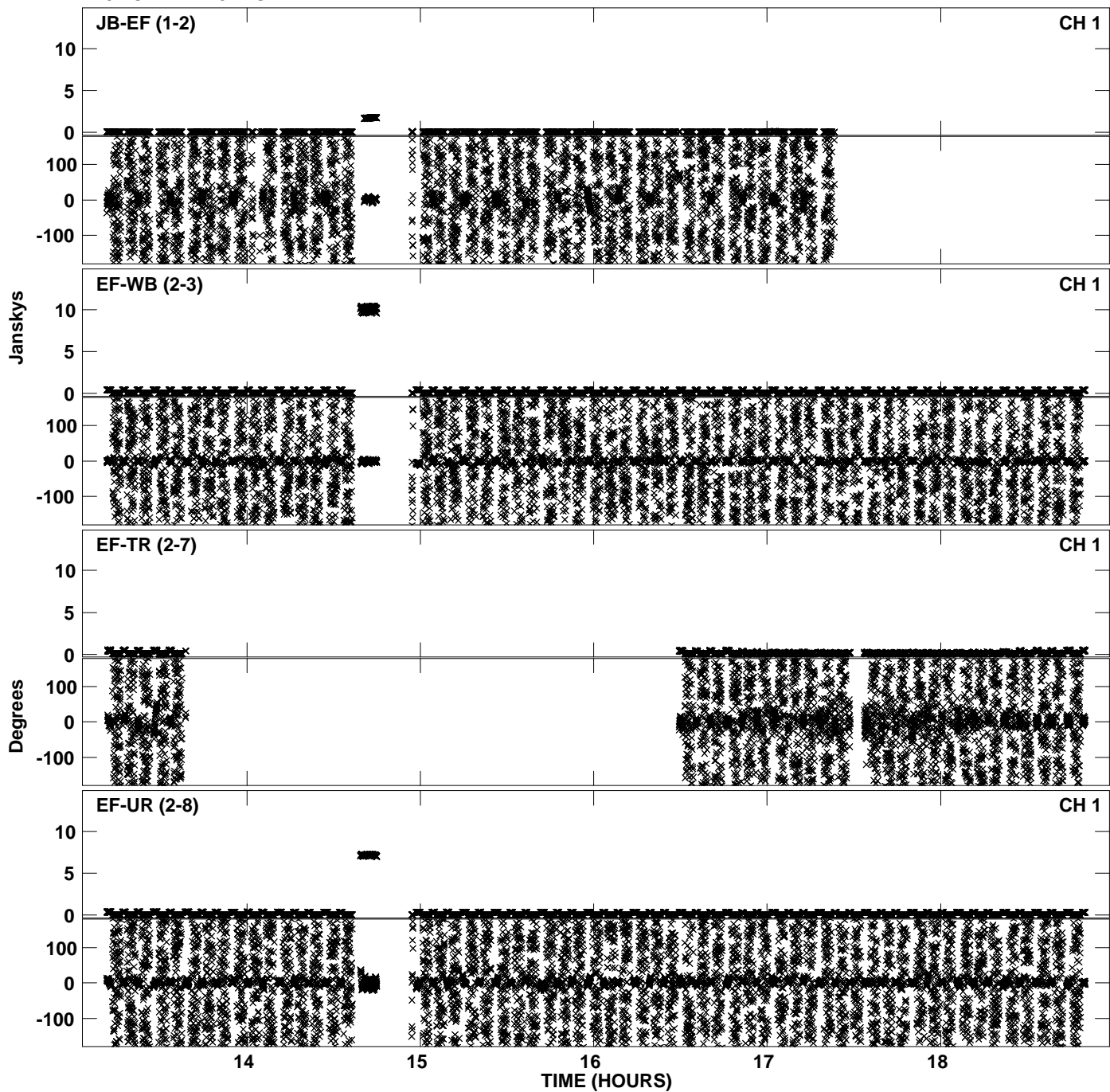
PLot file version 11 created 20-DEC-2011 15:21:10
Amplitude andPhase vs Time for EP068C 5.UVDATA.1 Vect aver. CL # 3
IF 4 CHAN 1 - 32 STK LL



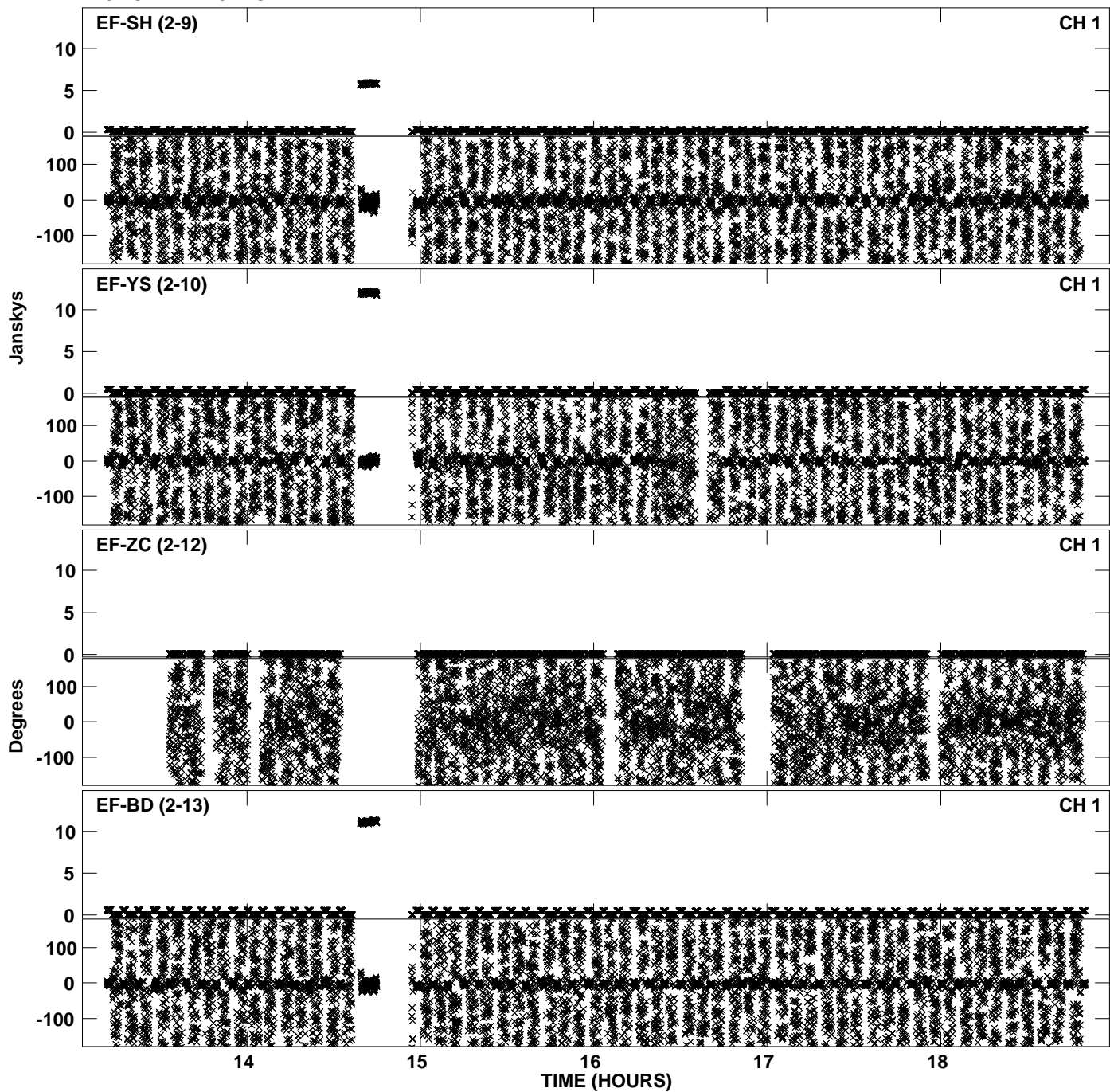
PLot file version 12 created 20-DEC-2011 15:21:10
Amplitude andPhase vs Time for EP068C 5.UVDATA.1 Vect aver. CL # 3
IF 4 CHAN 1 - 32 STK LL



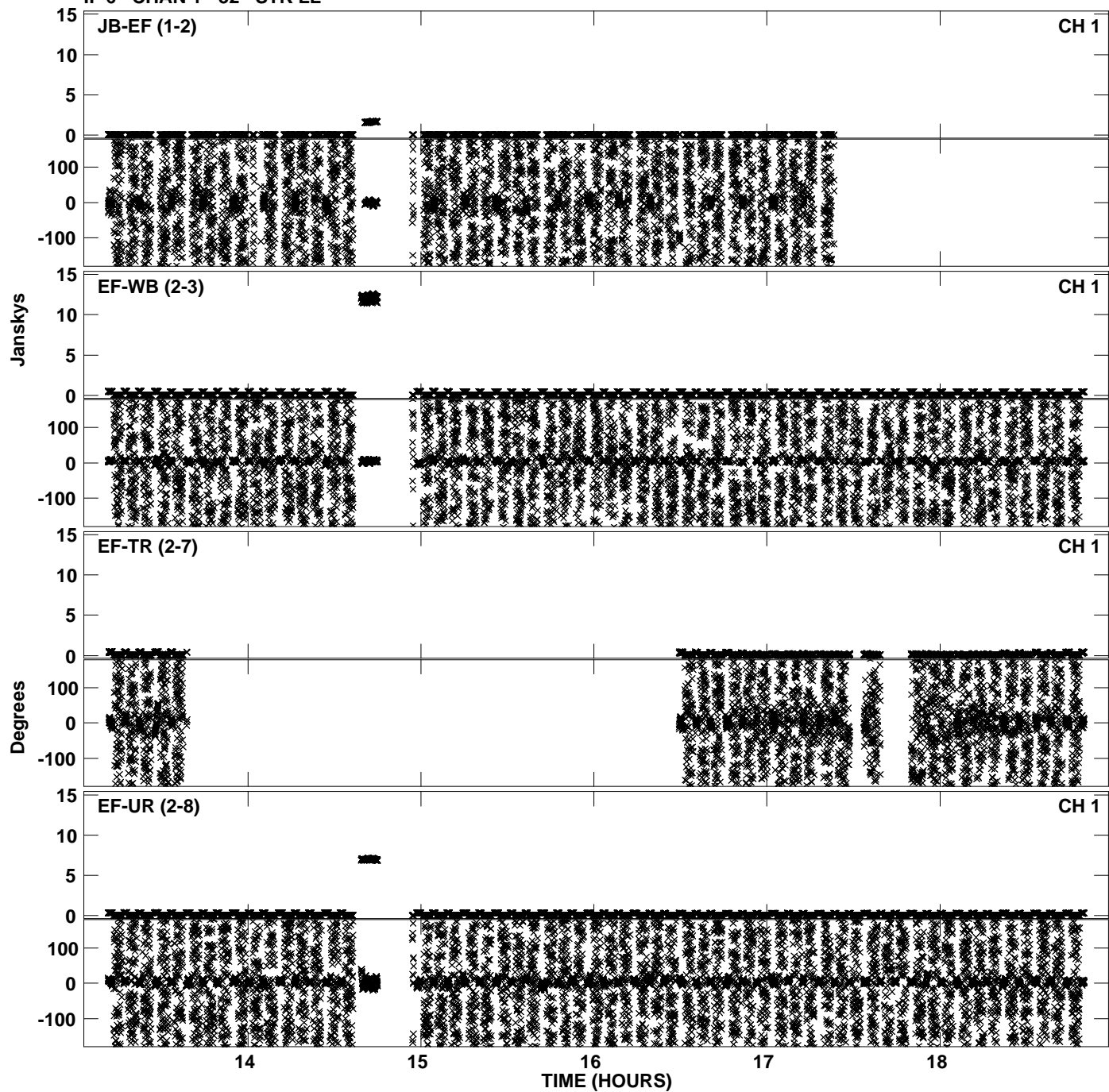
Plot file version 13 created 20-DEC-2011 15:23:09
Amplitude andPhase vs Time for EP068C 5.UVDATA.1 Vect aver. CL # 3
IF 5 CHAN 1 - 32 STK LL



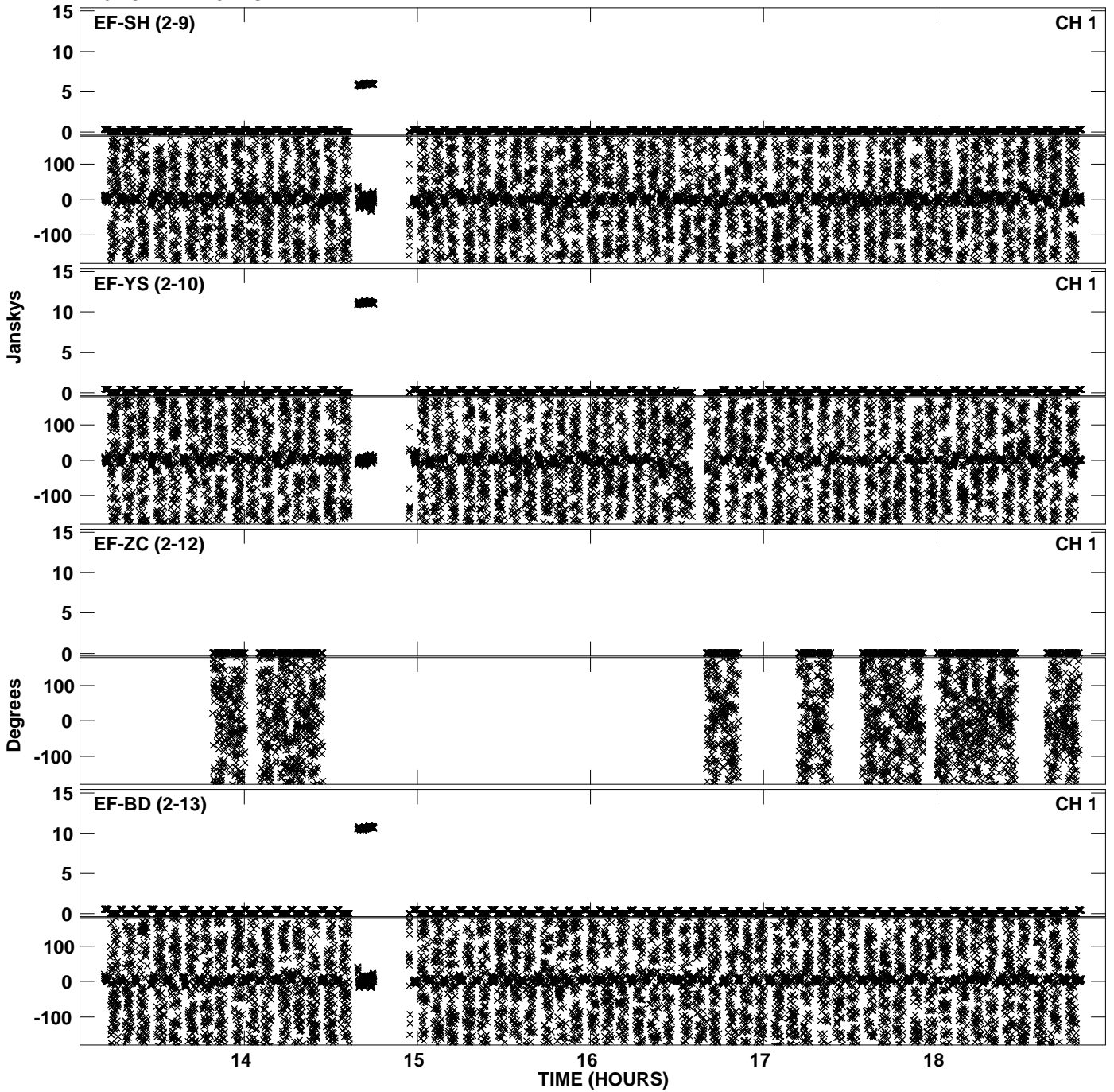
Plot file version 14 created 20-DEC-2011 15:23:09
Amplitude and Phase vs Time for EP068C 5.UVDATA.1 Vect aver. CL # 3
IF 5 CHAN 1 - 32 STK LL



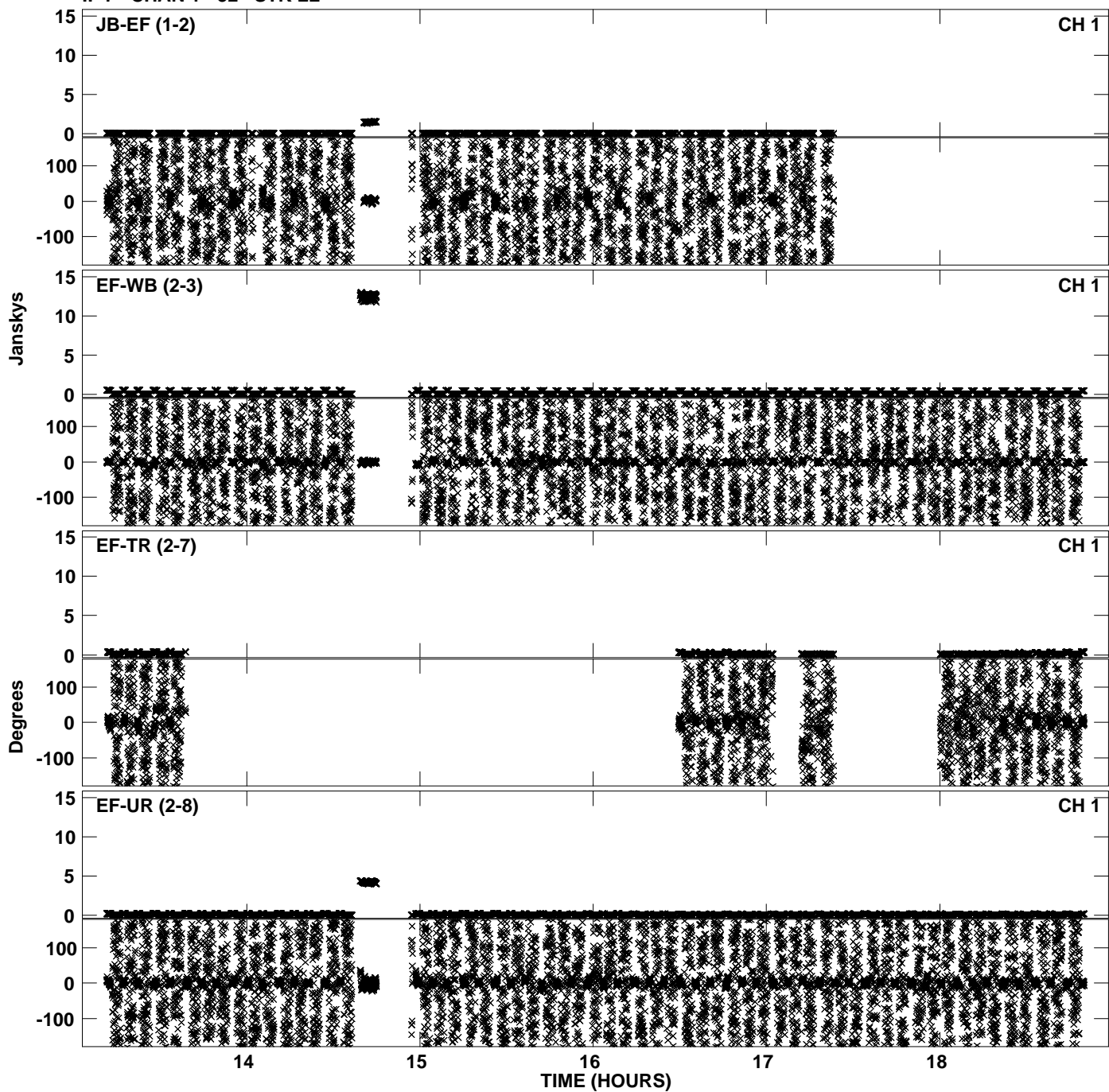
Plot file version 15 created 20-DEC-2011 15:25:10
Amplitude andPhase vs Time for EP068C 5.UVDATA.1 Vect aver. CL # 3
IF 6 CHAN 1 - 32 STK LL



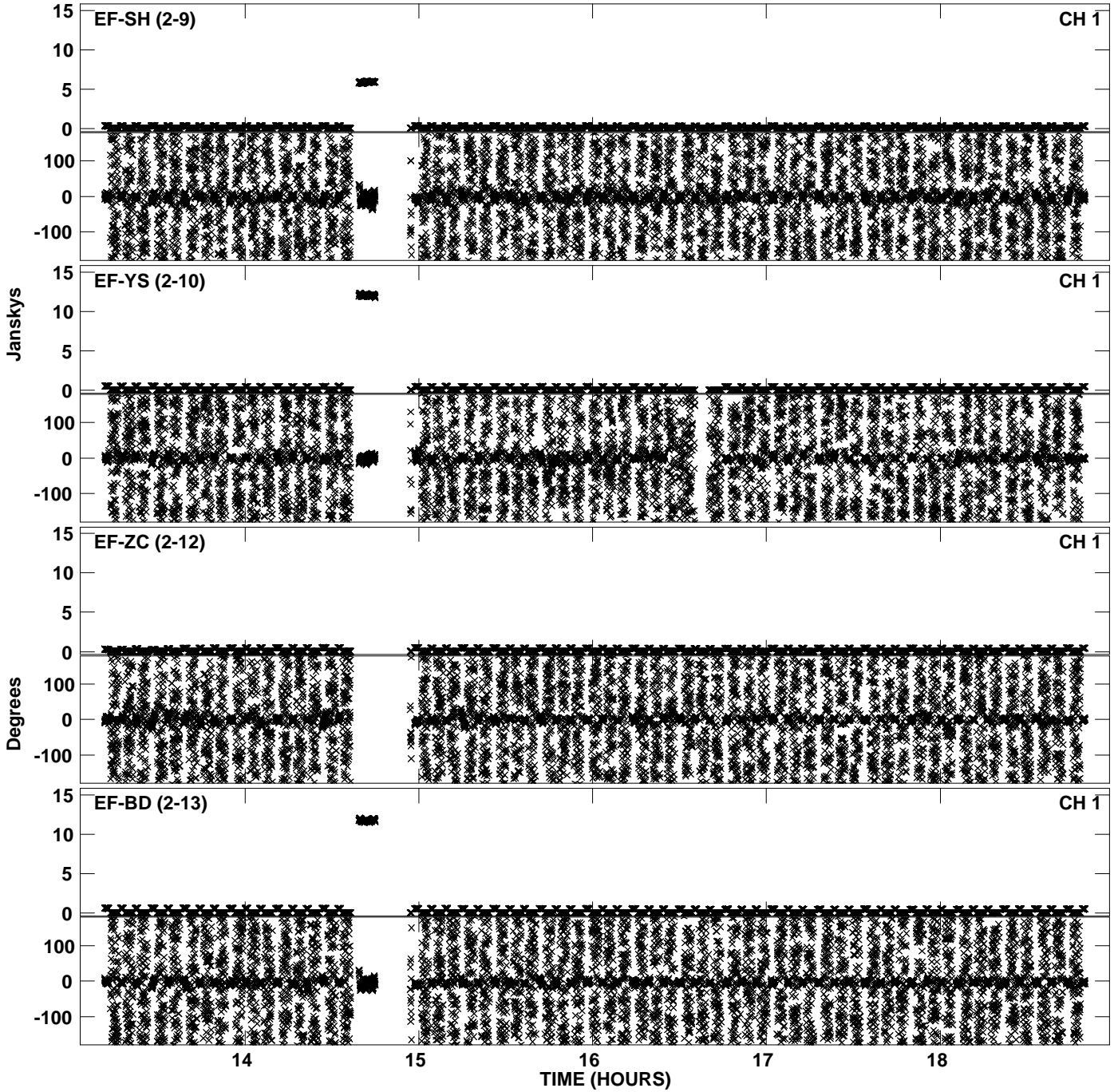
PLot file version 16 created 20-DEC-2011 15:25:11
Amplitude andPhase vs Time for EP068C 5.UVDATA.1 Vect aver. CL # 3
IF 6 CHAN 1 - 32 STK LL



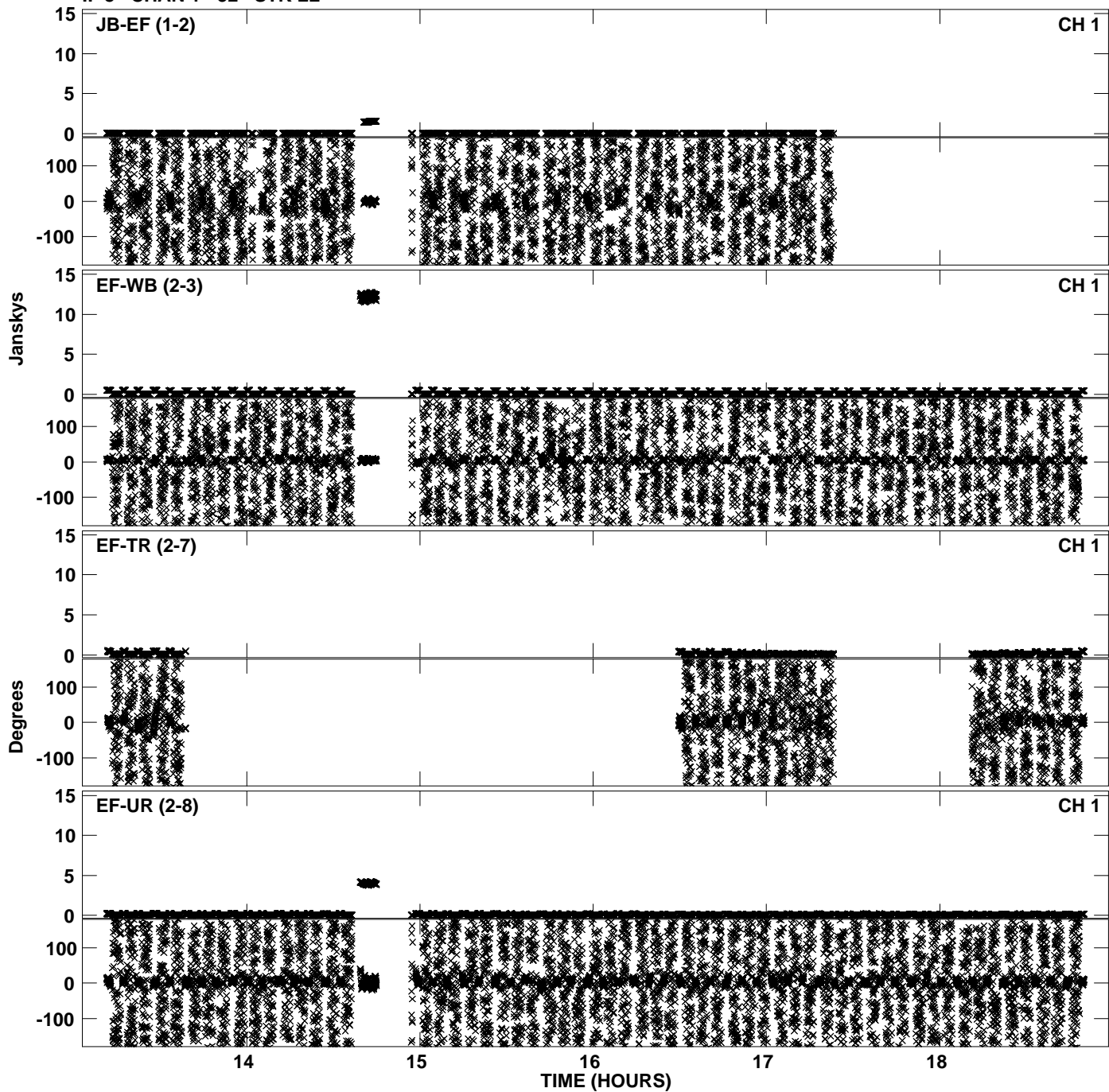
PLot file version 17 created 20-DEC-2011 15:27:12
Amplitude andPhase vs Time for EP068C 5.UVDATA.1 Vect aver. CL # 3
IF 7 CHAN 1 - 32 STK LL



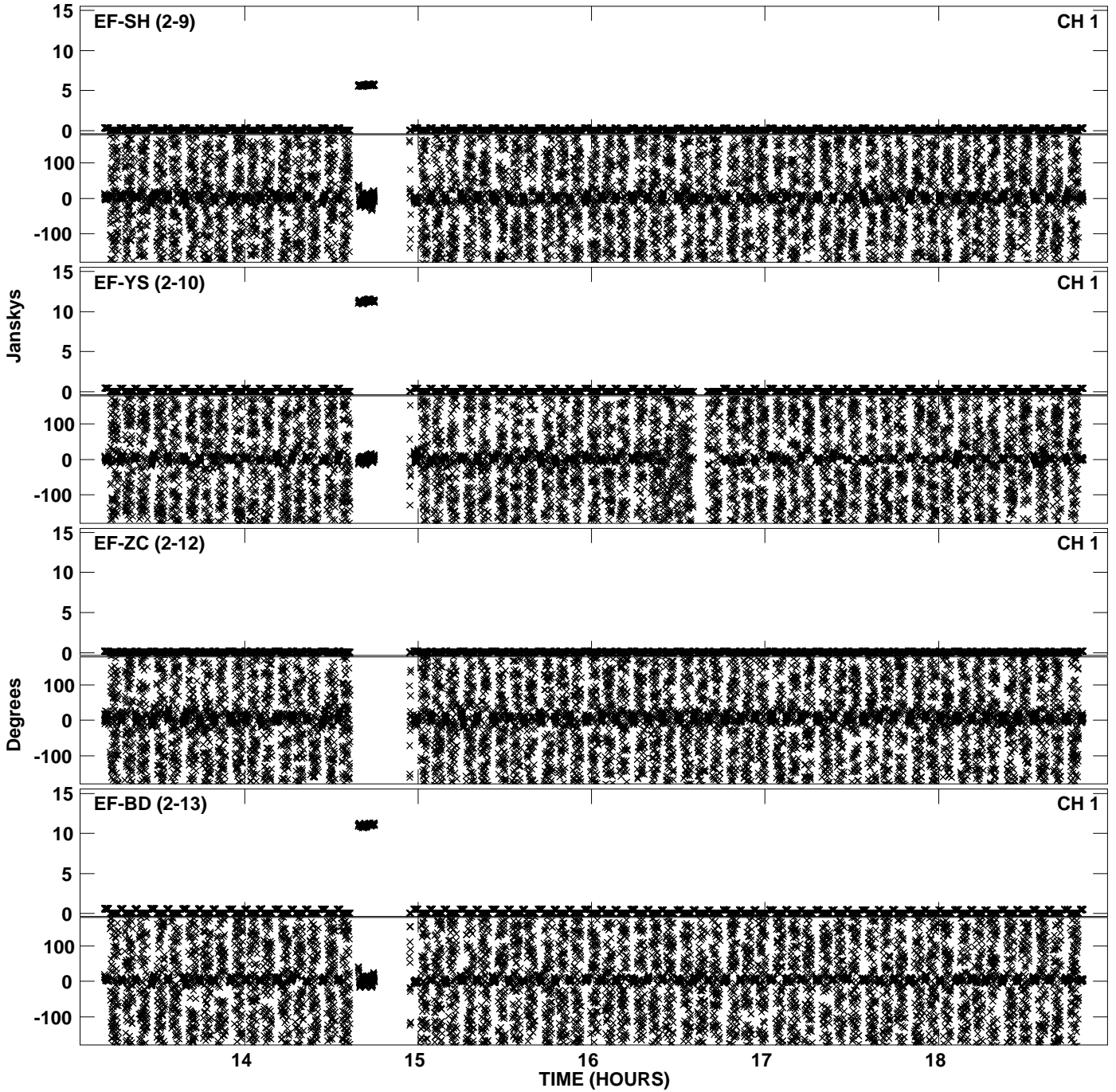
Plot file version 18 created 20-DEC-2011 15:27:12
Amplitude and Phase vs Time for EP068C 5.UVDATA.1 Vect aver. CL # 3
IF 7 CHAN 1 - 32 STK LL



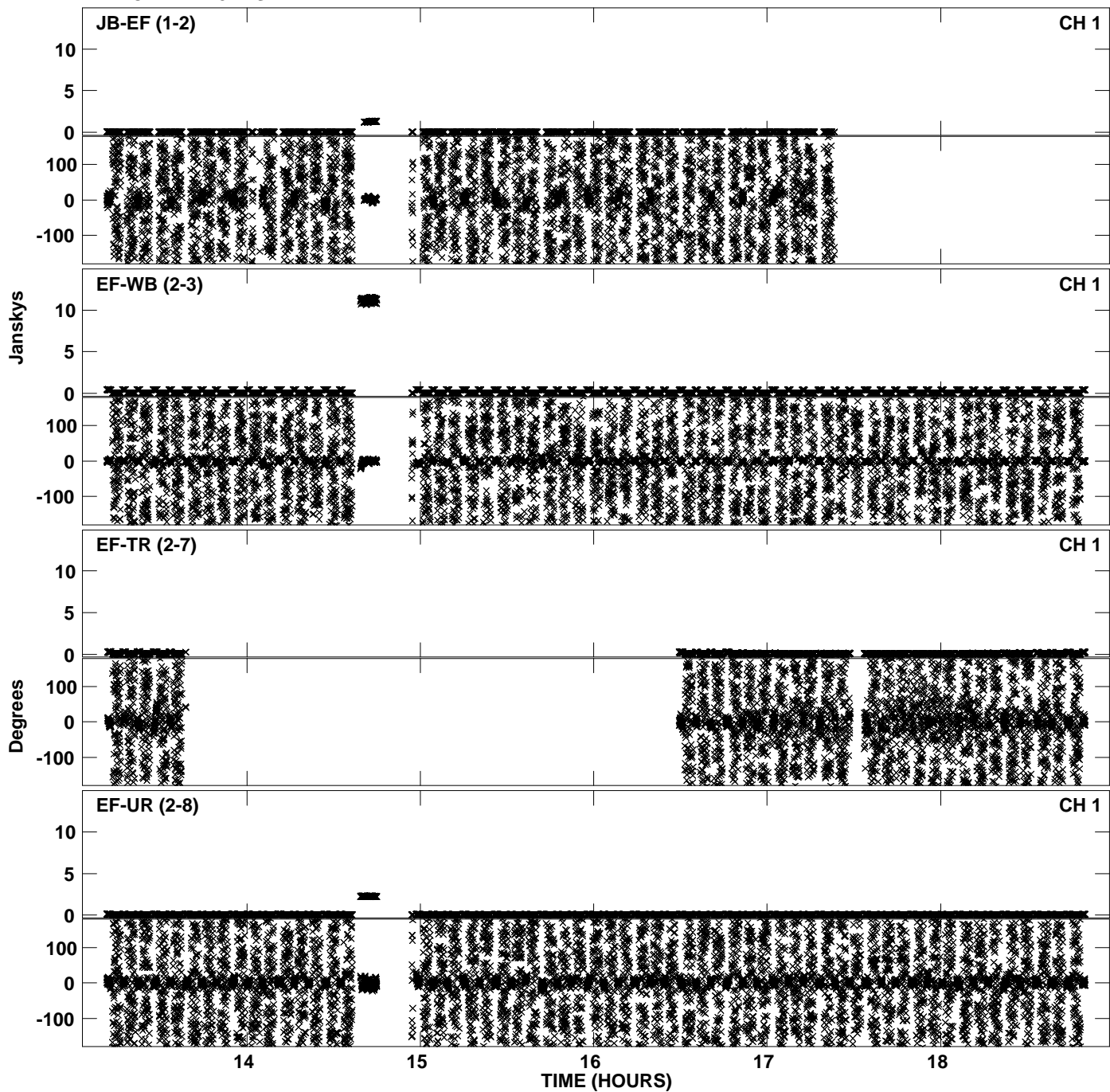
PLot file version 19 created 20-DEC-2011 15:29:27
Amplitude andPhase vs Time for EP068C 5.UVDATA.1 Vect aver. CL # 3
IF 8 CHAN 1 - 32 STK LL



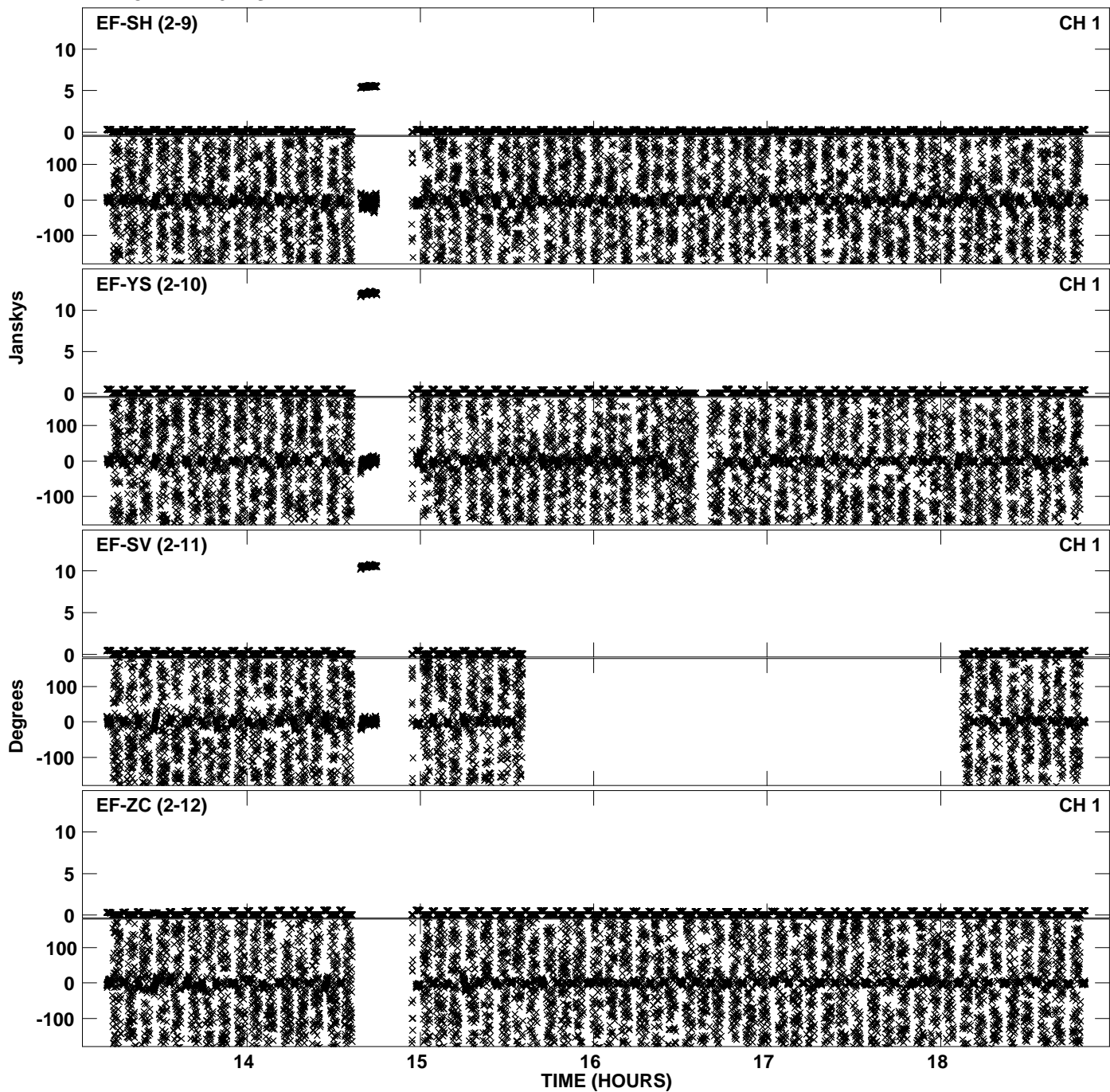
PLot file version 20 created 20-DEC-2011 15:29:28
Amplitude andPhase vs Time for EP068C 5.UVDATA.1 Vect aver. CL # 3
IF 8 CHAN 1 - 32 STK LL



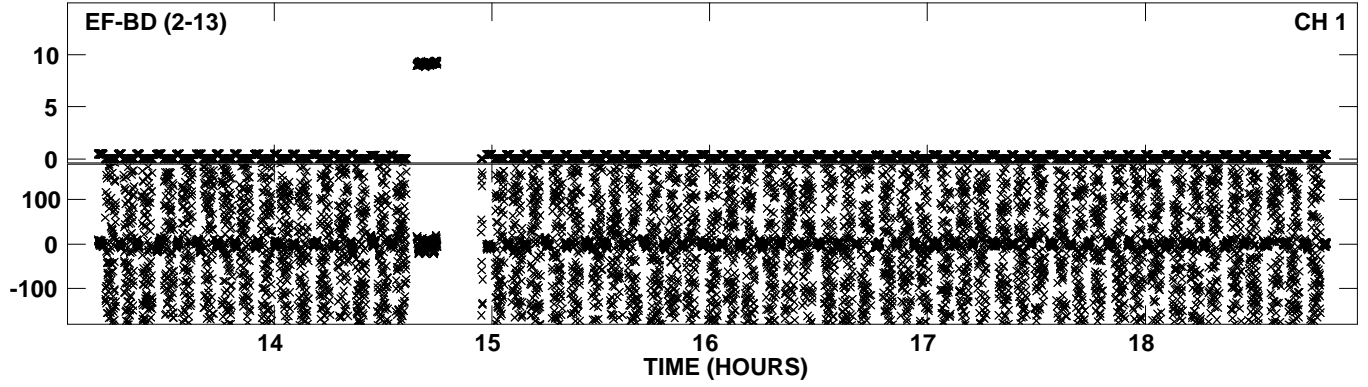
PLot file version 21 created 20-DEC-2011 15:31:18
Amplitude andPhase vs Time for EP068C 5.UVDATA.1 Vect aver. CL # 3
IF 1 CHAN 1 - 32 STK RR



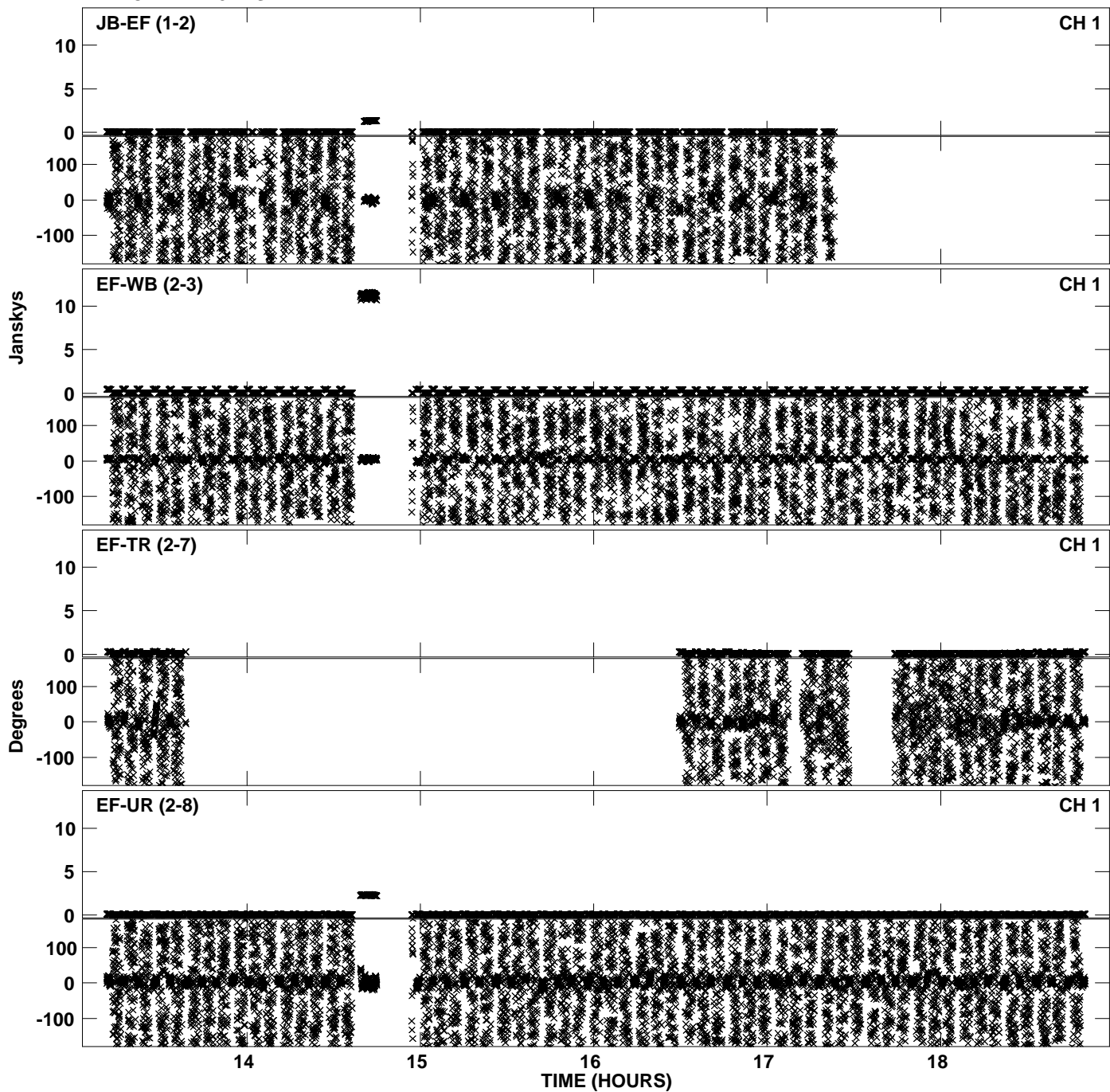
PLot file version 22 created 20-DEC-2011 15:31:18
Amplitude andPhase vs Time for EP068C 5.UVDATA.1 Vect aver. CL # 3
IF 1 CHAN 1 - 32 STK RR



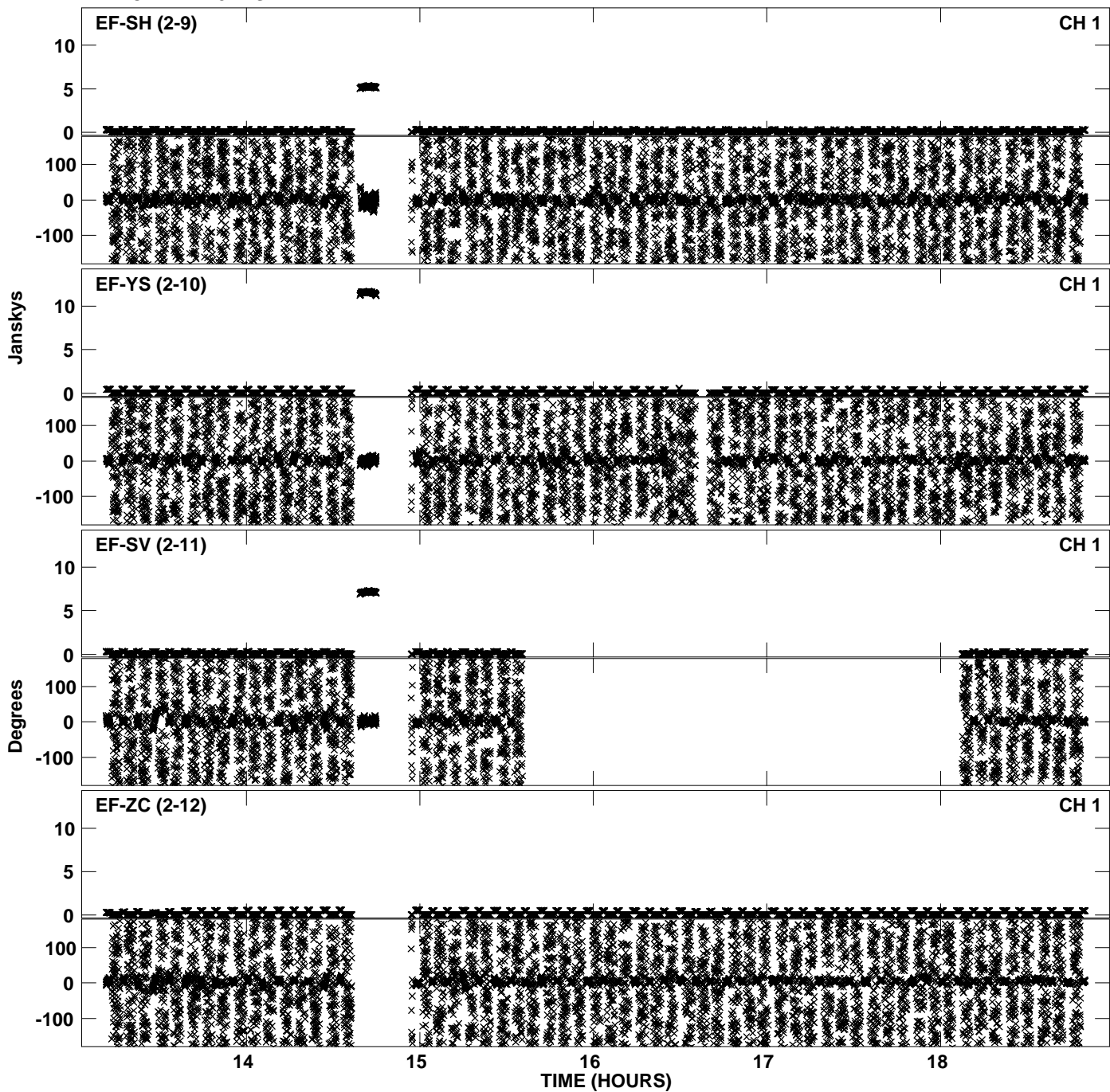
PLot file version 23 created 20-DEC-2011 15:31:18
Amplitude andPhase vs Time for EP068C 5.UVDATA.1 Vect aver. CL # 3
IF 1 CHAN 1 - 32 STK RR



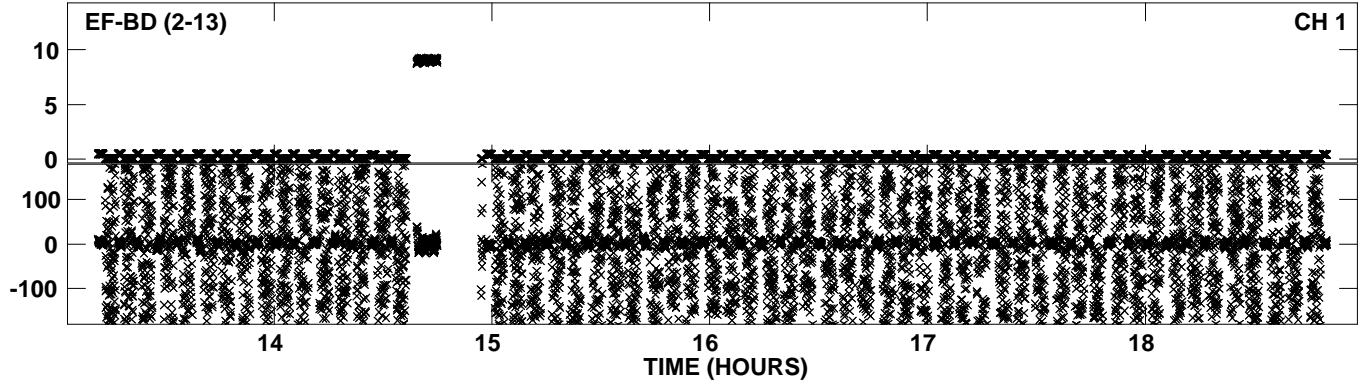
PLot file version 24 created 20-DEC-2011 15:33:44
Amplitude andPhase vs Time for EP068C 5.UVDATA.1 Vect aver. CL # 3
IF 2 CHAN 1 - 32 STK RR



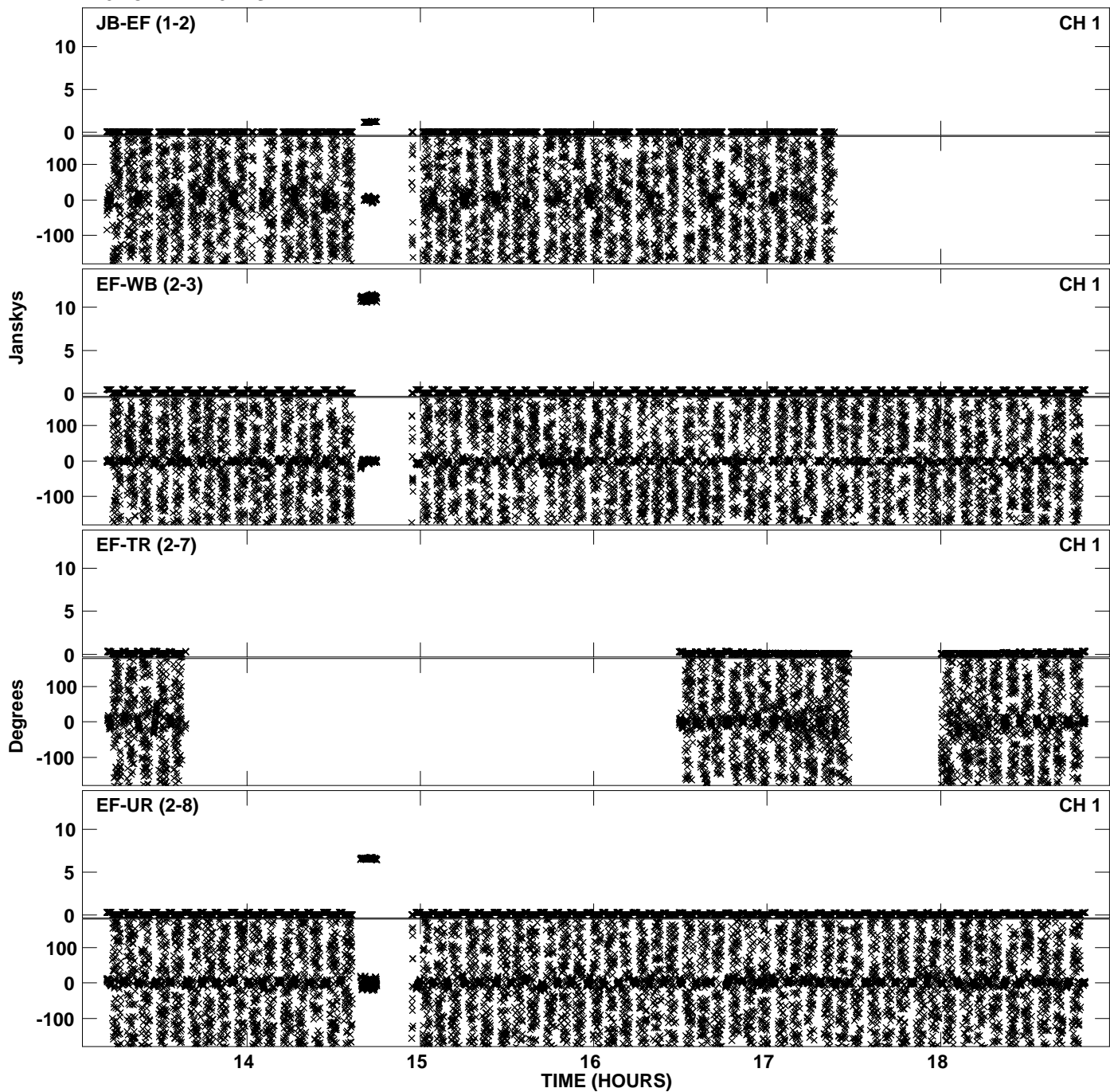
PLot file version 25 created 20-DEC-2011 15:33:44
Amplitude andPhase vs Time for EP068C 5.UVDATA.1 Vect aver. CL # 3
IF 2 CHAN 1 - 32 STK RR



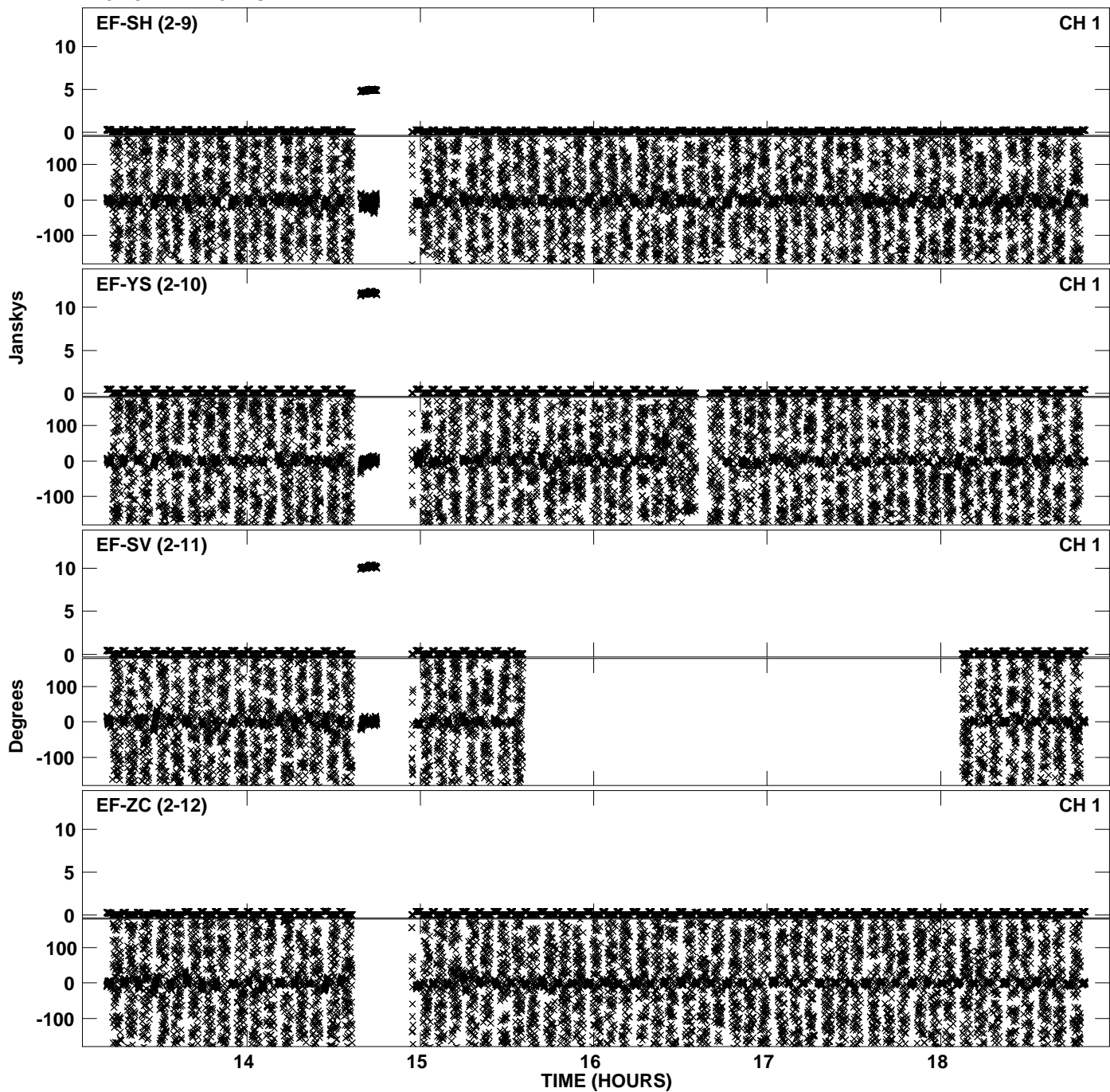
PLot file version 26 created 20-DEC-2011 15:33:44
Amplitude andPhase vs Time for EP068C 5.UVDATA.1 Vect aver. CL # 3
IF 2 CHAN 1 - 32 STK RR



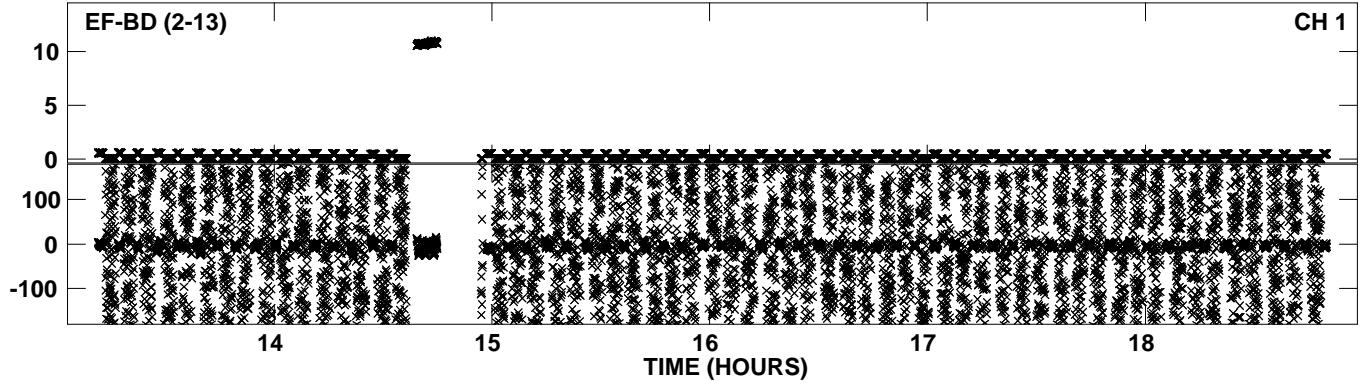
PLot file version 27 created 20-DEC-2011 15:35:40
Amplitude andPhase vs Time for EP068C 5.UVDATA.1 Vect aver. CL # 3
IF 3 CHAN 1 - 32 STK RR



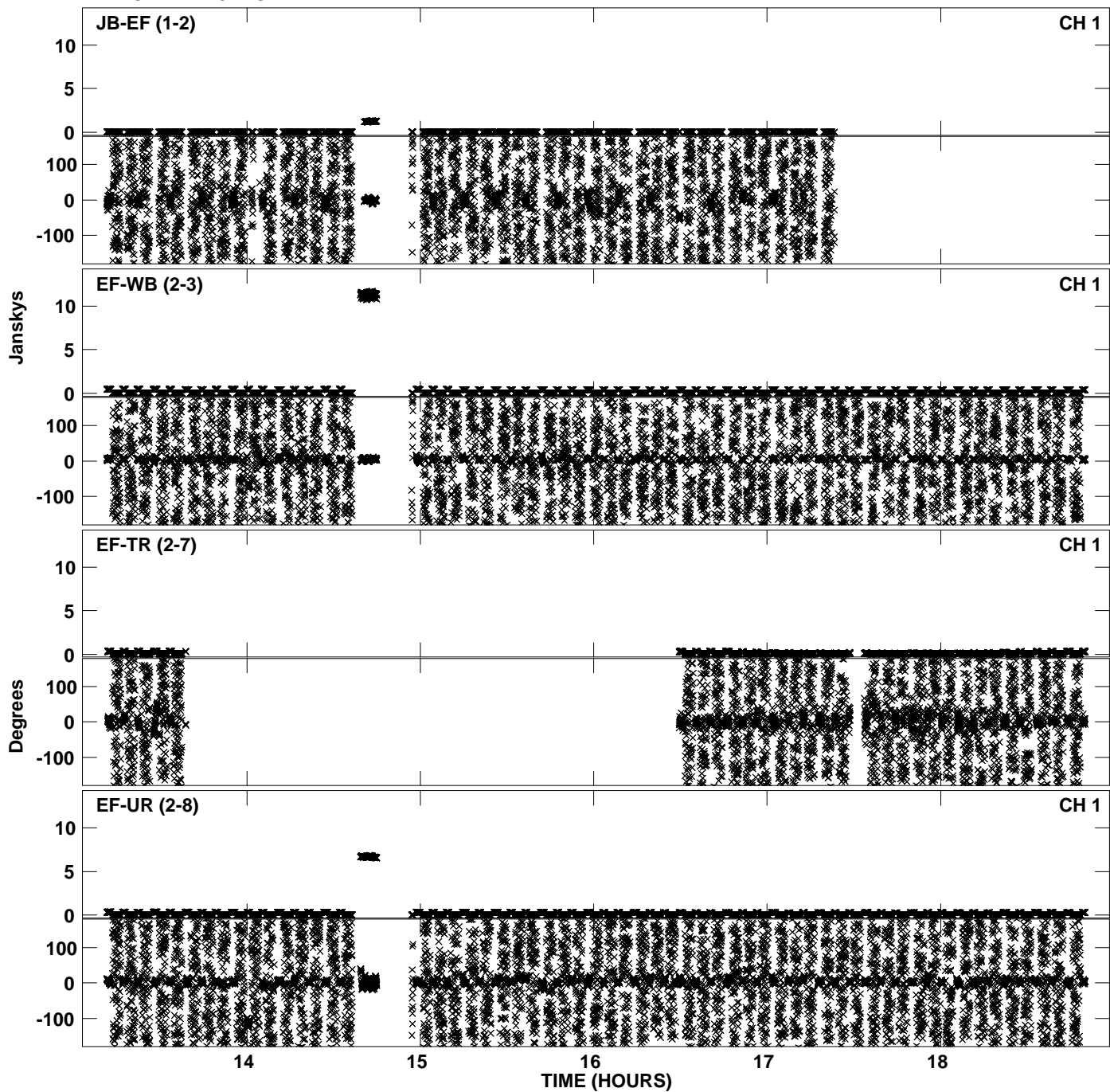
PLot file version 28 created 20-DEC-2011 15:35:40
Amplitude andPhase vs Time for EP068C 5.UVDATA.1 Vect aver. CL # 3
IF 3 CHAN 1 - 32 STK RR



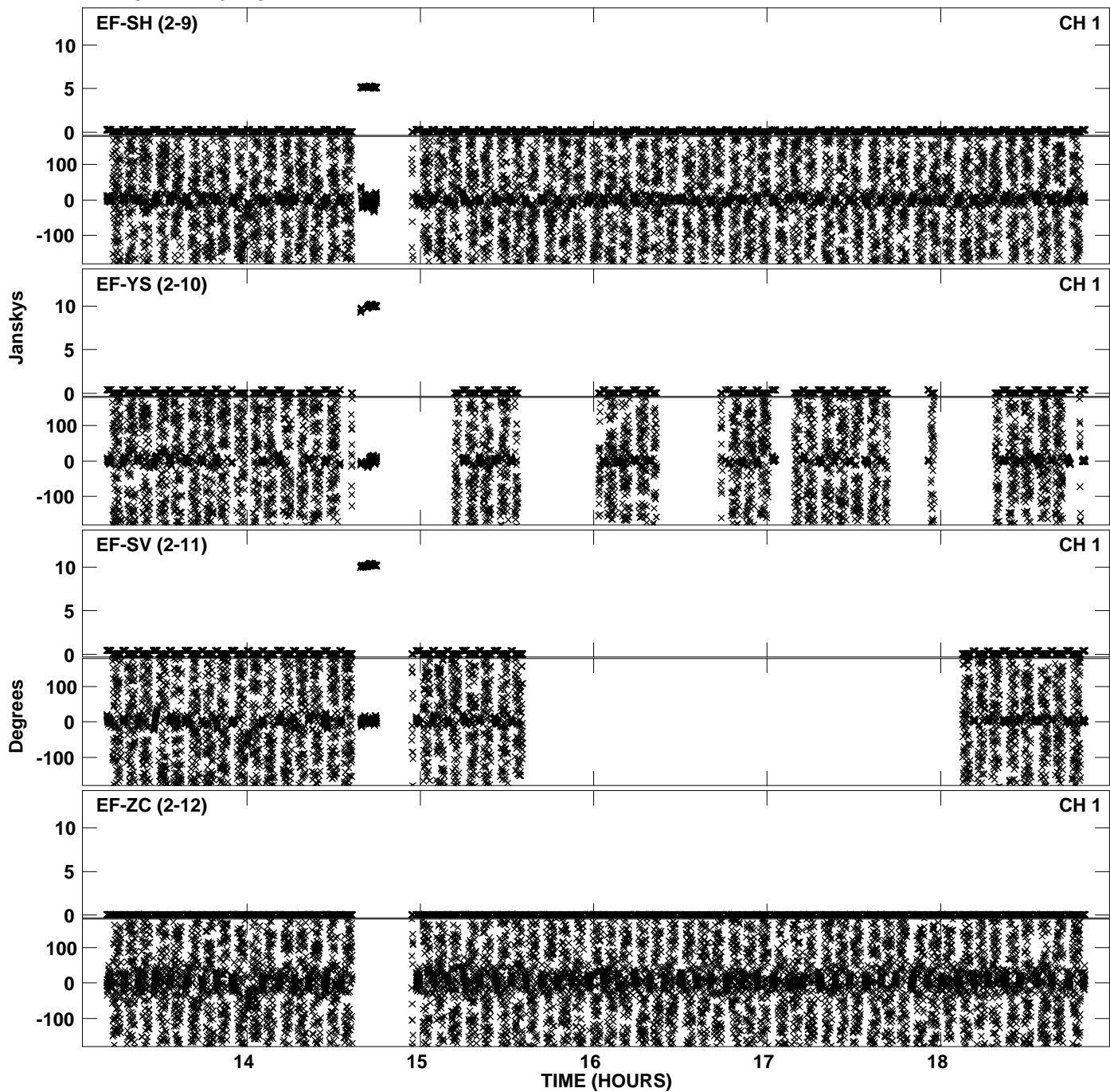
PLot file version 29 created 20-DEC-2011 15:35:40
Amplitude andPhase vs Time for EP068C 5.UVDATA.1 Vect aver. CL # 3
IF 3 CHAN 1 - 32 STK RR



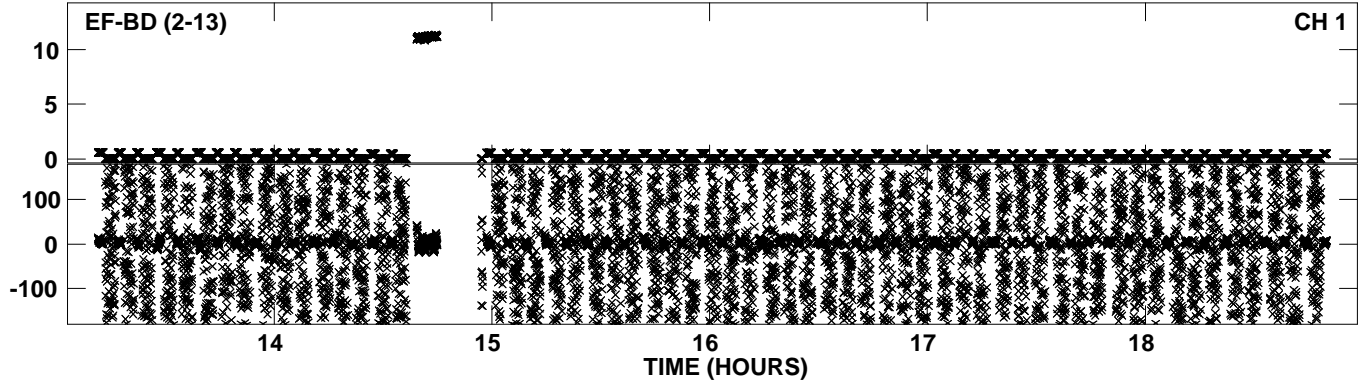
PLot file version 30 created 20-DEC-2011 15:37:16
Amplitude andPhase vs Time for EP068C 5.UVDATA.1 Vect aver. CL # 3
IF 4 CHAN 1 - 32 STK RR



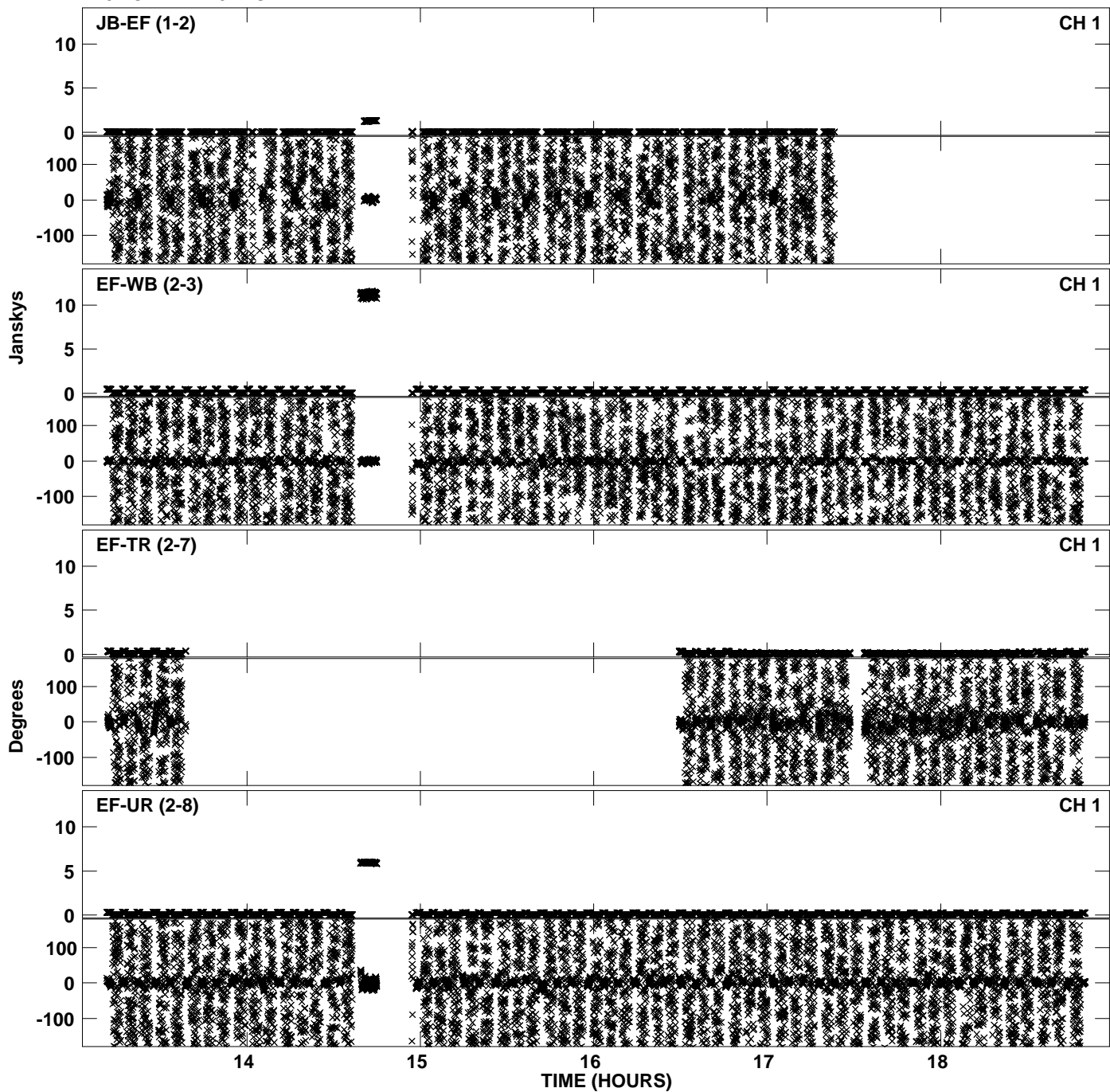
PLot file version 31 created 20-DEC-2011 15:37:16
Amplitude andPhase vs Time for EP068C 5.UVDATA.1 Vect aver. CL # 3
IF 4 CHAN 1 - 32 STK RR



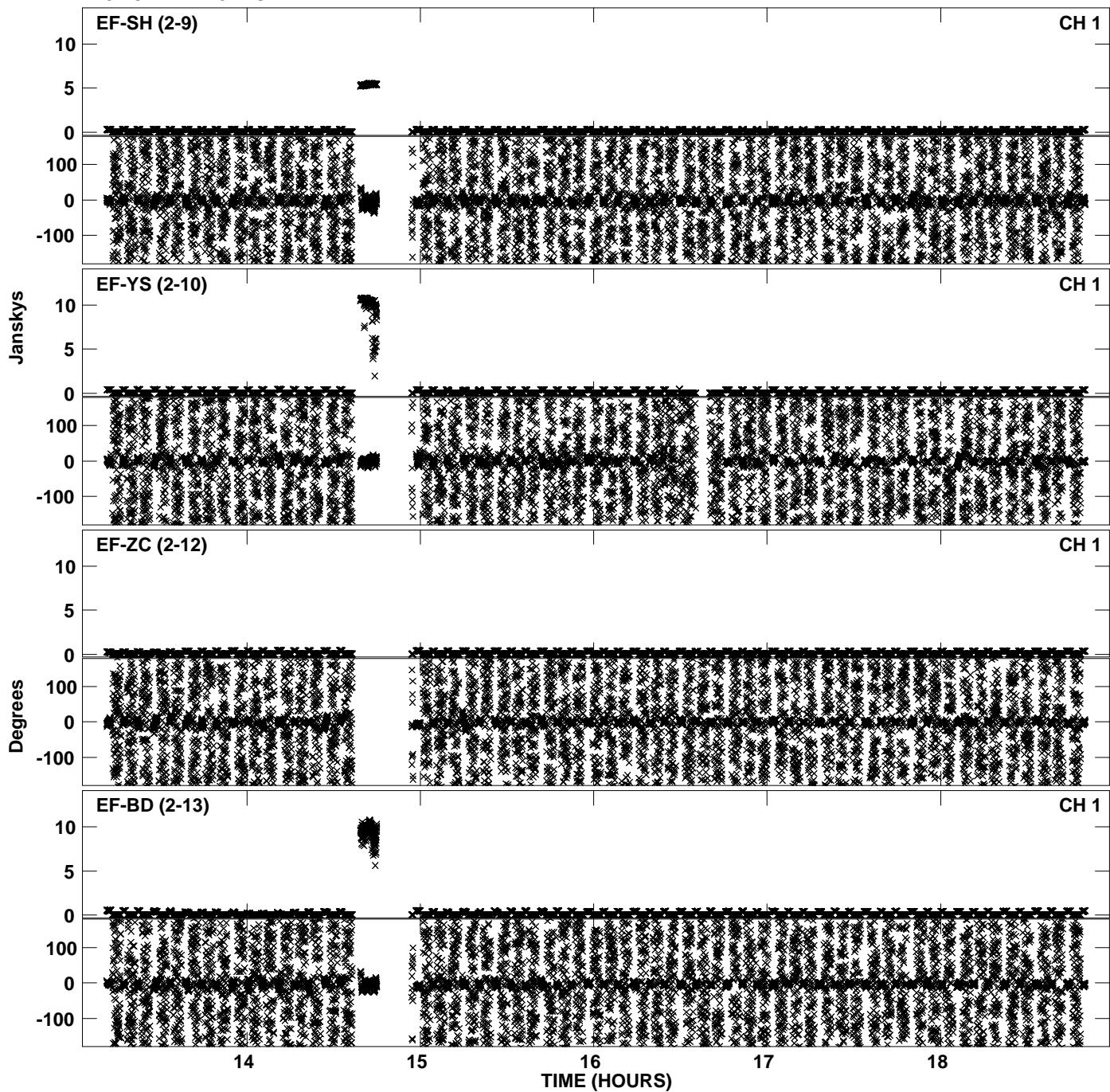
PLot file version 32 created 20-DEC-2011 15:37:16
Amplitude andPhase vs Time for EP068C 5.UVDATA.1 Vect aver. CL # 3
IF 4 CHAN 1 - 32 STK RR



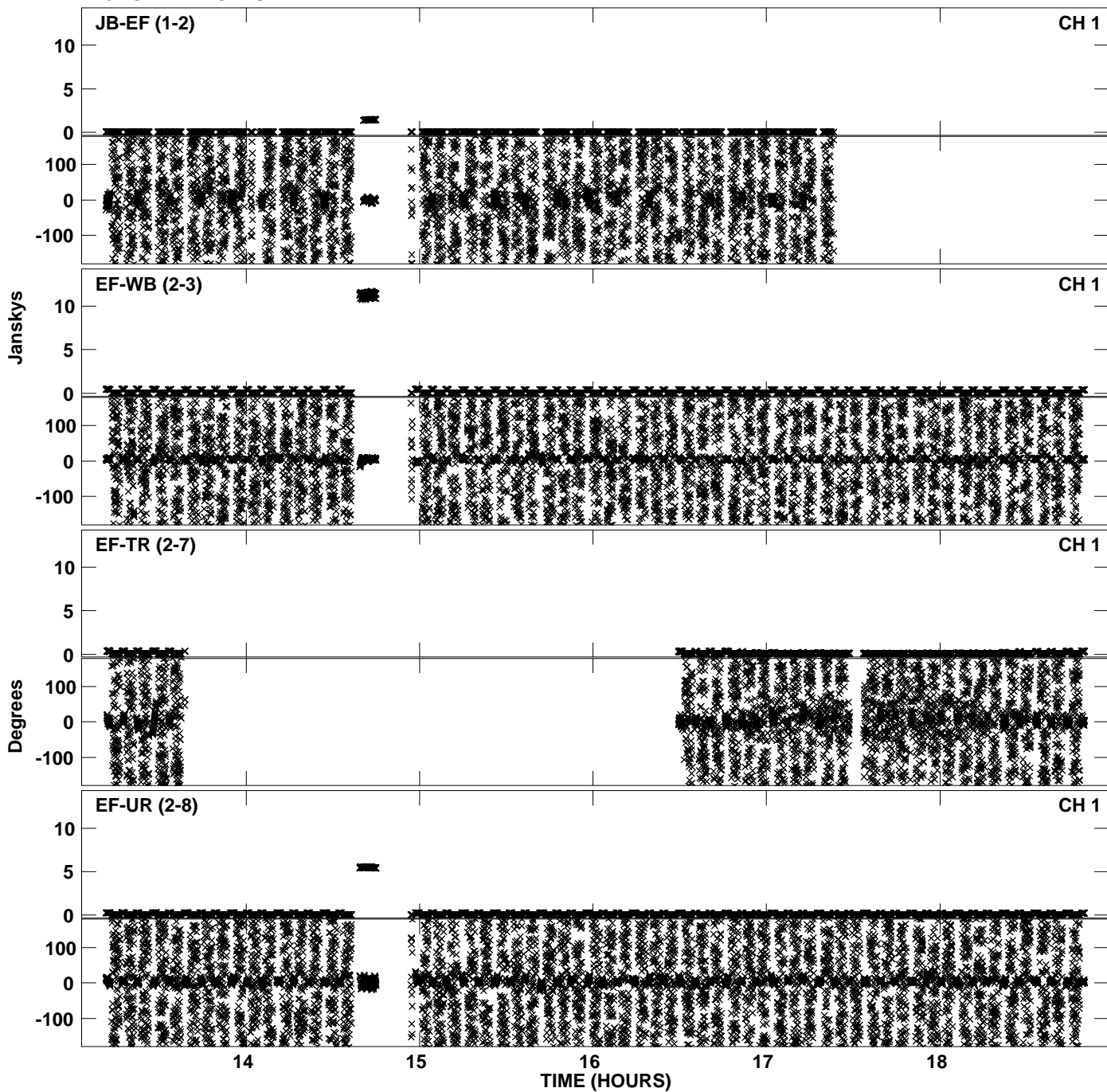
Plot file version 33 created 20-DEC-2011 15:38:07
Amplitude andPhase vs Time for EP068C 5.UVDATA.1 Vect aver. CL # 3
IF 5 CHAN 1 - 32 STK RR



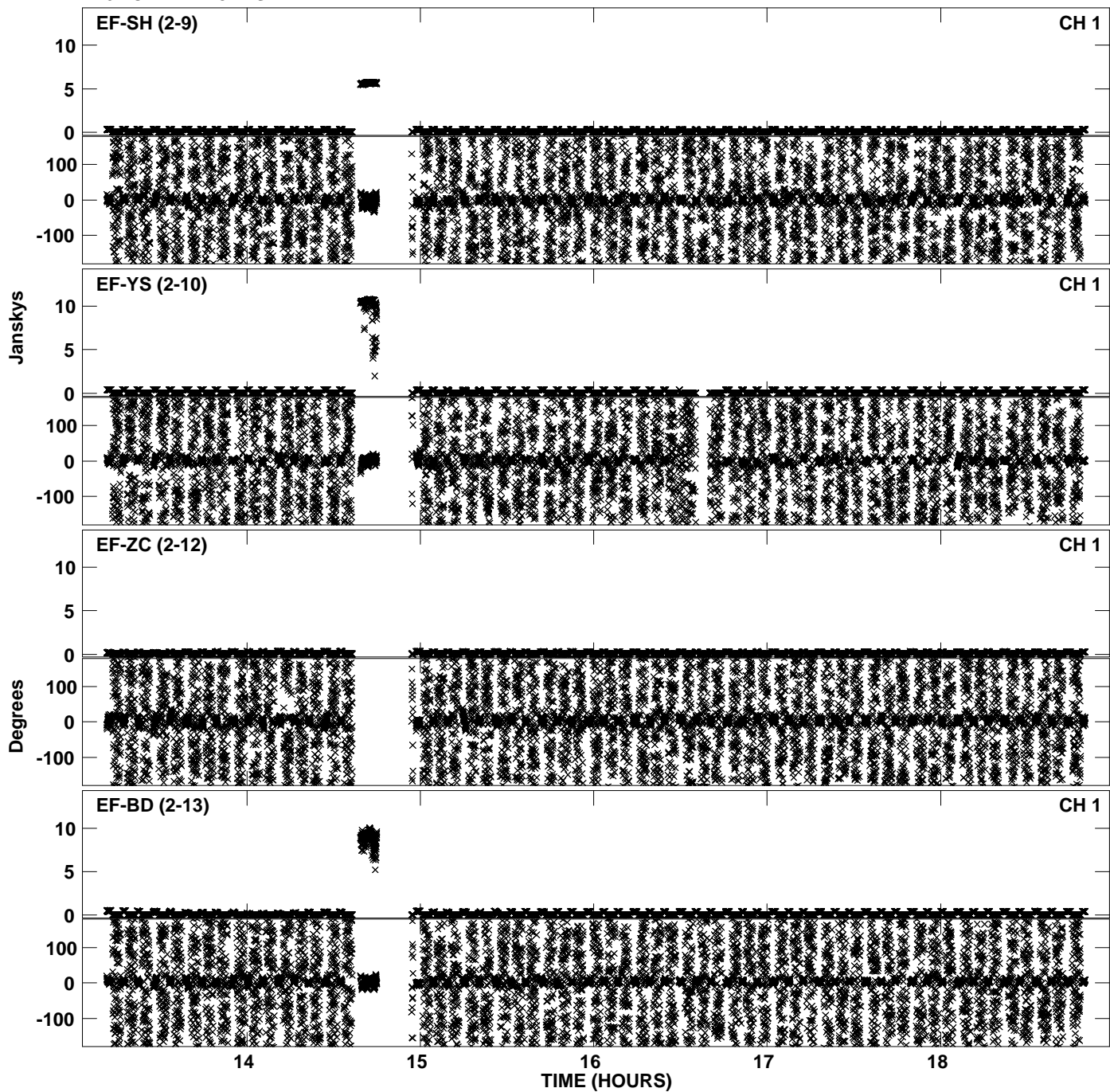
PLot file version 34 created 20-DEC-2011 15:38:07
Amplitude andPhase vs Time for EP068C 5.UVDATA.1 Vect aver. CL # 3
IF 5 CHAN 1 - 32 STK RR



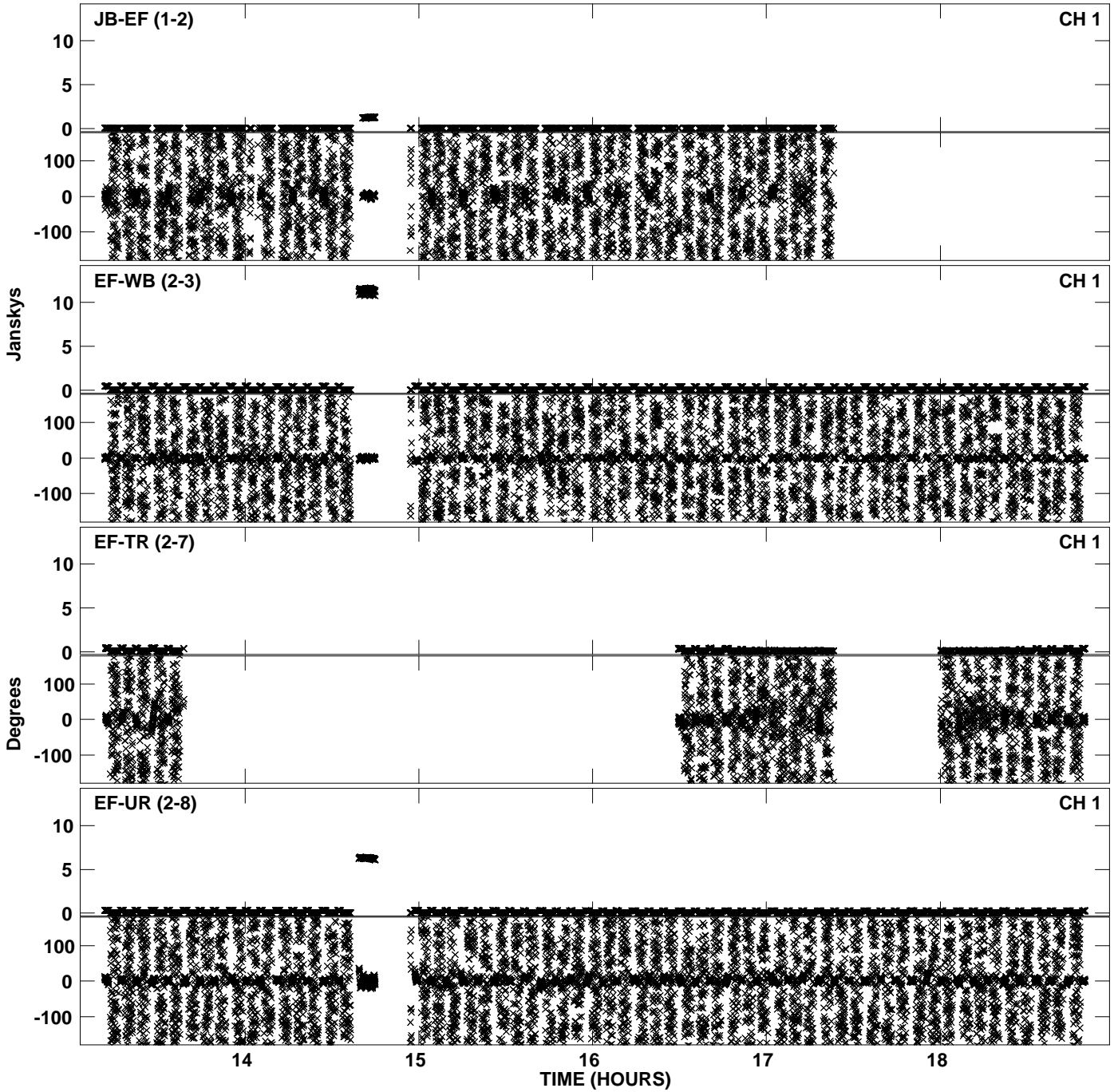
PLot file version 35 created 20-DEC-2011 15:39:29
Amplitude andPhase vs Time for EP068C 5.UVDATA.1 Vect aver. CL # 3
IF 6 CHAN 1 - 32 STK RR



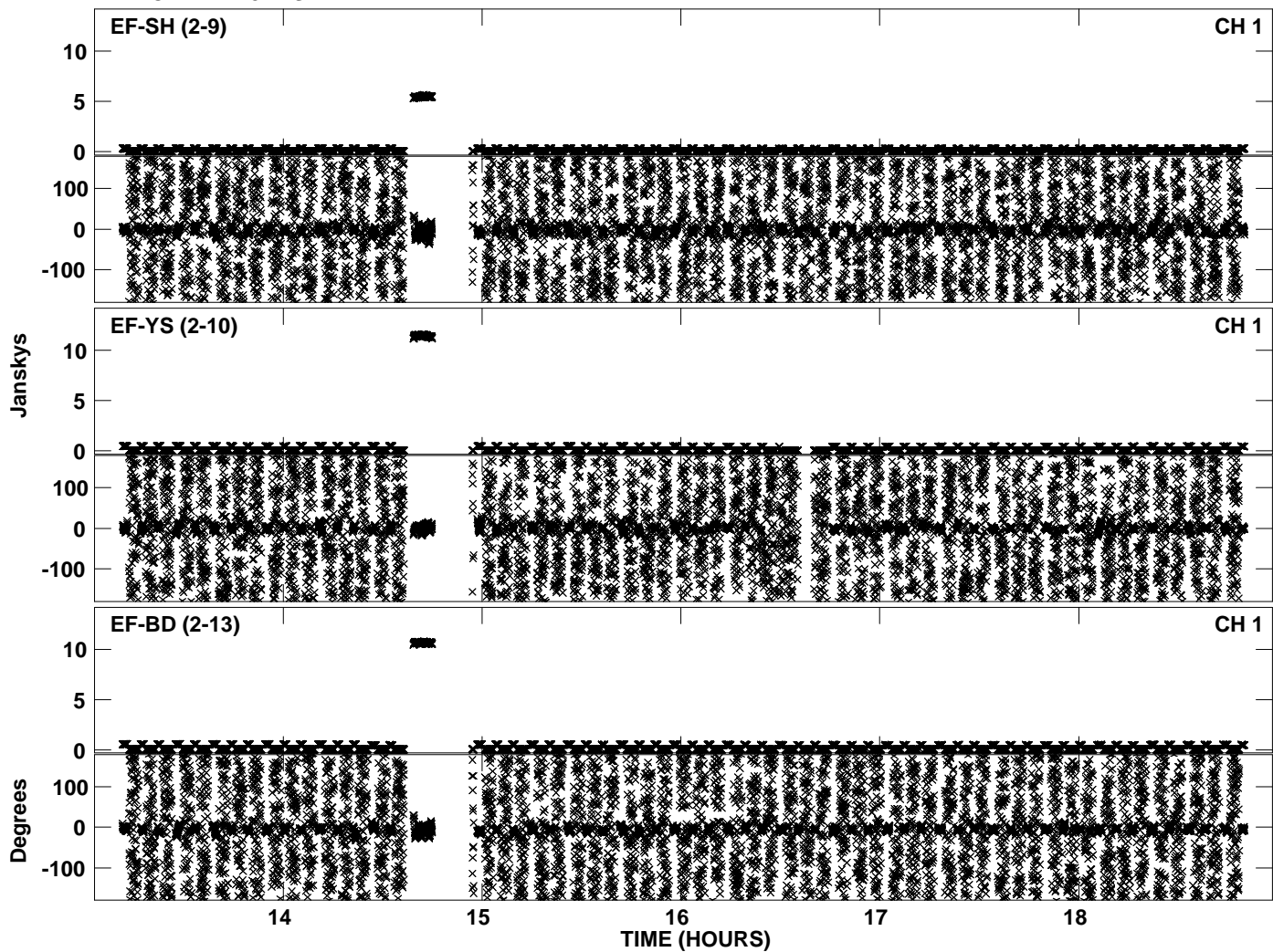
Plot file version 36 created 20-DEC-2011 15:39:34
Amplitude andPhase vs Time for EP068C 5.UVDATA.1 Vect aver. CL # 3
IF 6 CHAN 1 - 32 STK RR



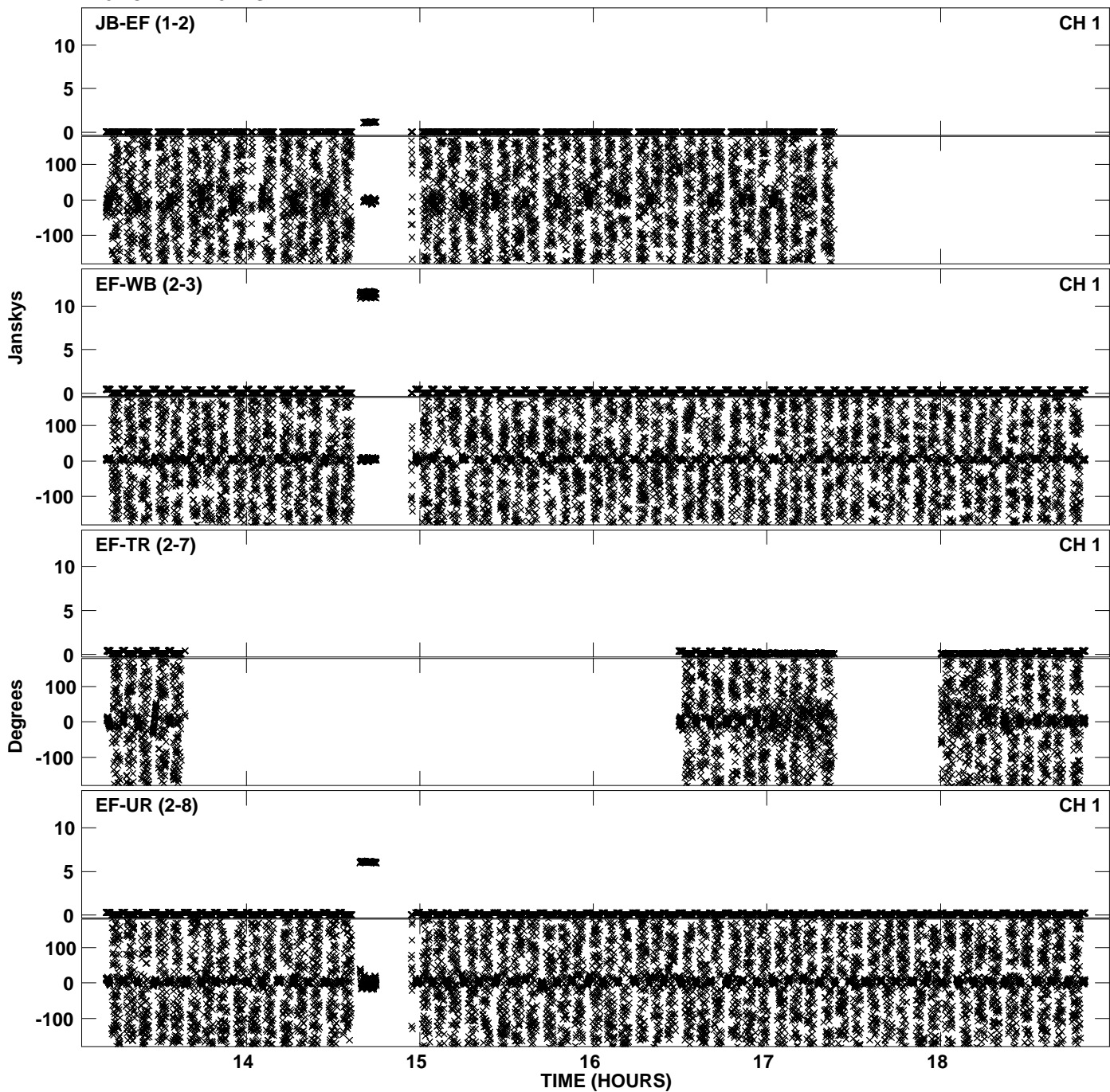
PLot file version 37 created 20-DEC-2011 15:40:55
Amplitude andPhase vs Time for EP068C 5.UVDATA.1 Vect aver. CL # 3
IF 7 CHAN 1 - 32 STK RR



PLot file version 38 created 20-DEC-2011 15:40:56
Amplitude andPhase vs Time for EP068C 5.UVDATA.1 Vect aver. CL # 3
IF 7 CHAN 1 - 32 STK RR



PLot file version 39 created 20-DEC-2011 15:41:05
Amplitude andPhase vs Time for EP068C 5.UVDATA.1 Vect aver. CL # 3
IF 8 CHAN 1 - 32 STK RR



PLot file version 40 created 20-DEC-2011 15:41:05
Amplitude andPhase vs Time for EP068C 5.UVDATA.1 Vect aver. CL # 3
IF 8 CHAN 1 - 32 STK RR

