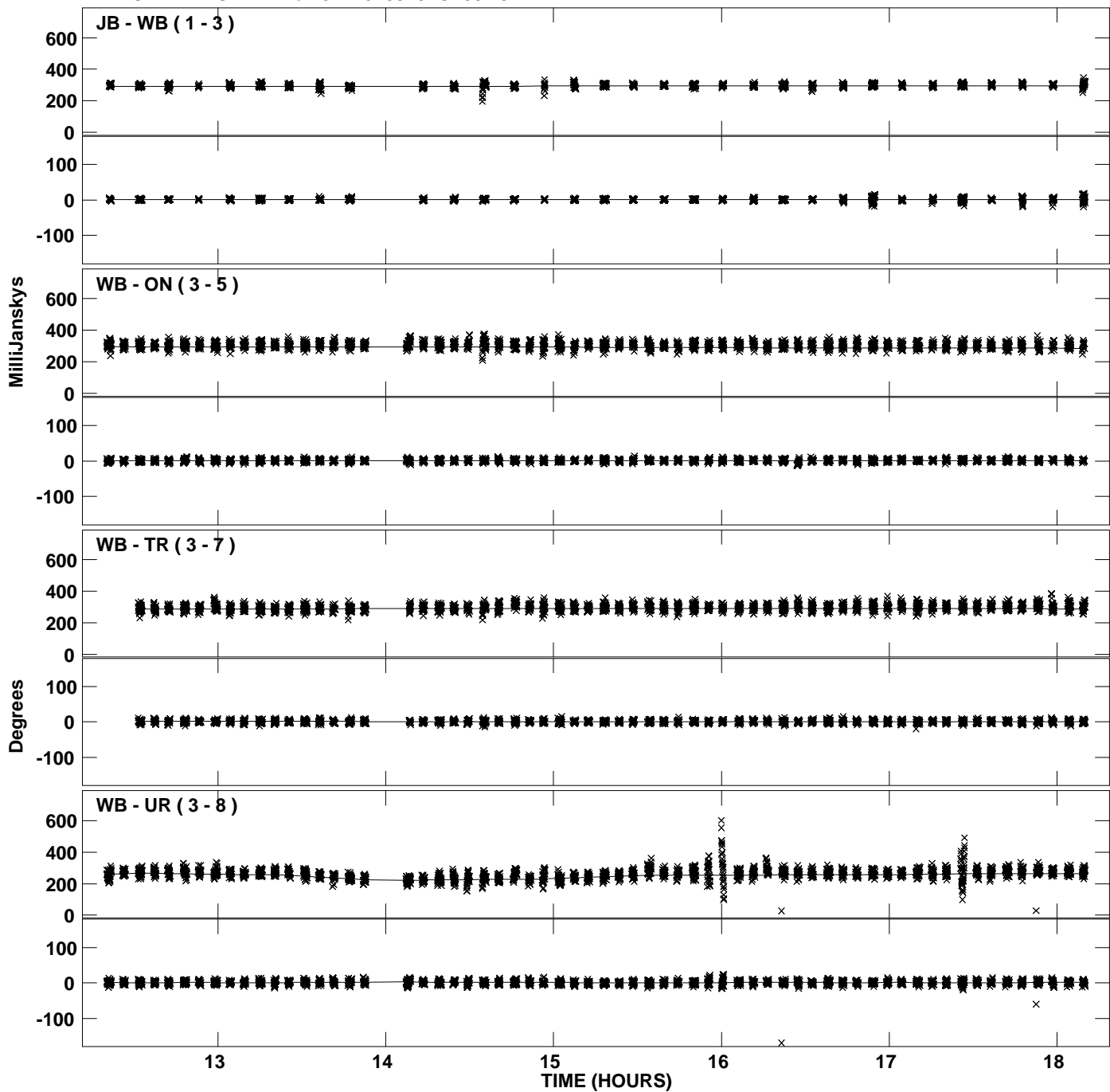
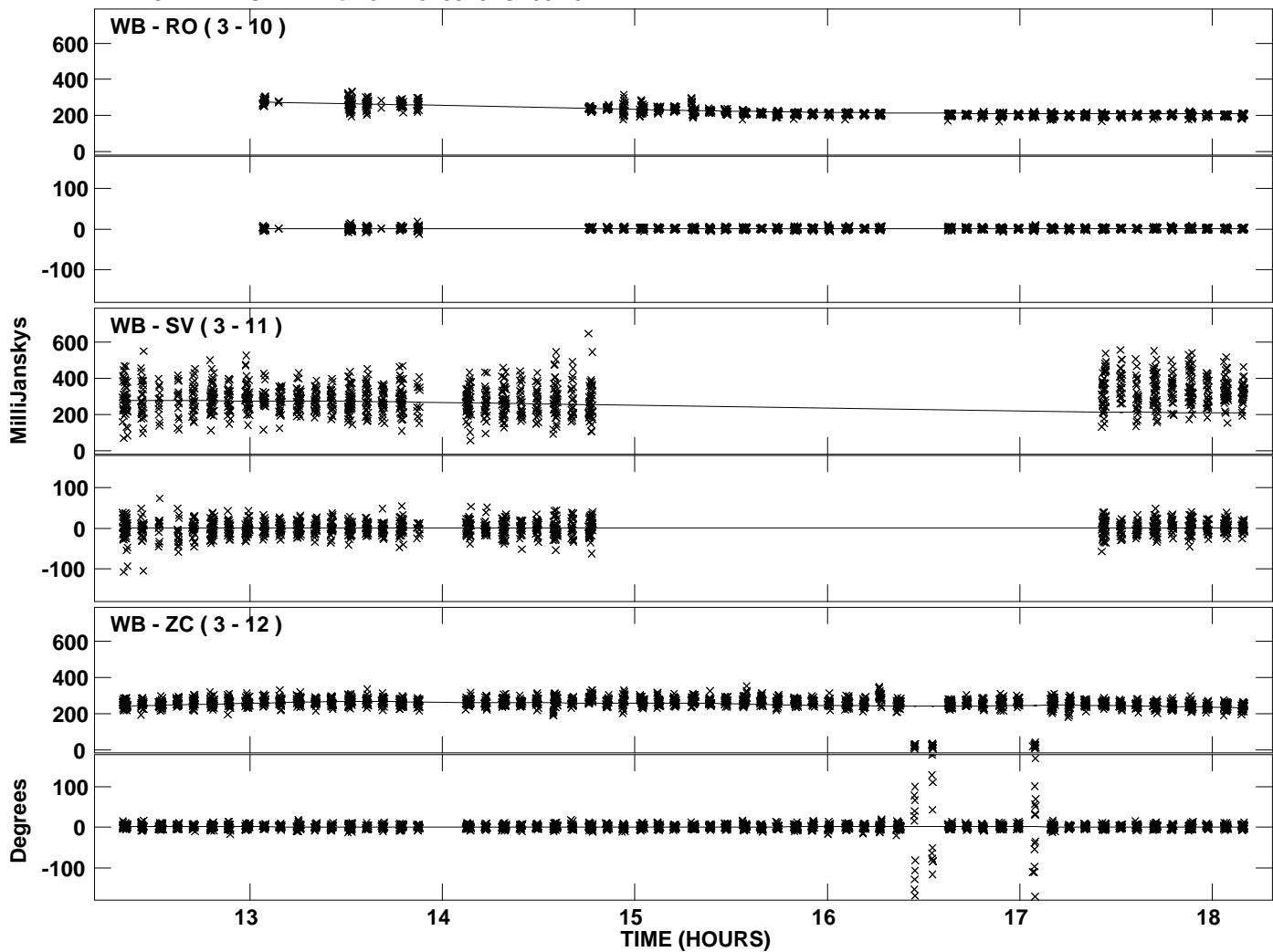


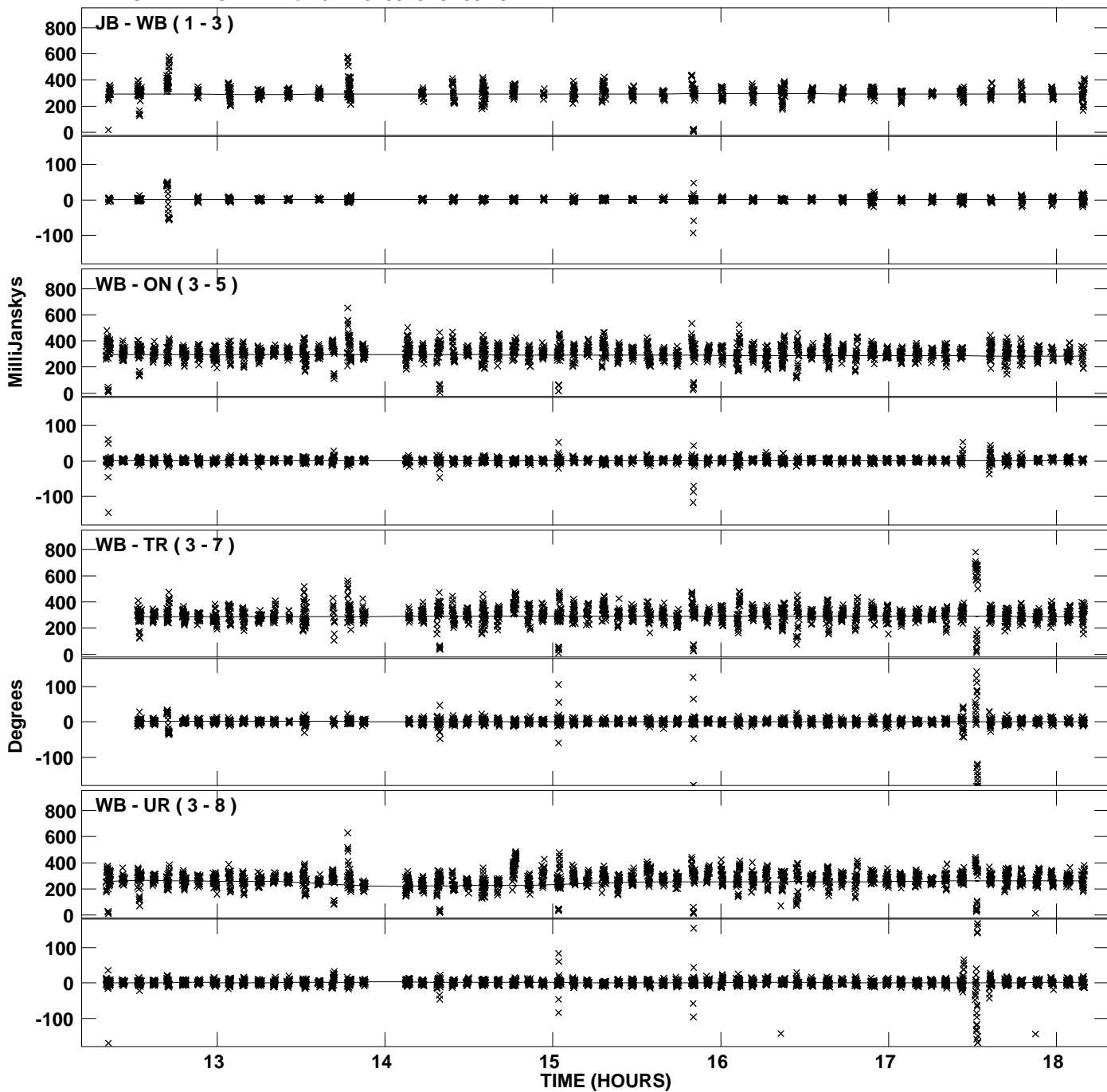
PLot file version 1 created 05-JAN-2012 18:20:03
Amplitude andPhase vs Time for J1128+5925.MULTI.1 CL # 3
IF 1 CHAN 1 STK LL of J1128+5925.ICL001.3



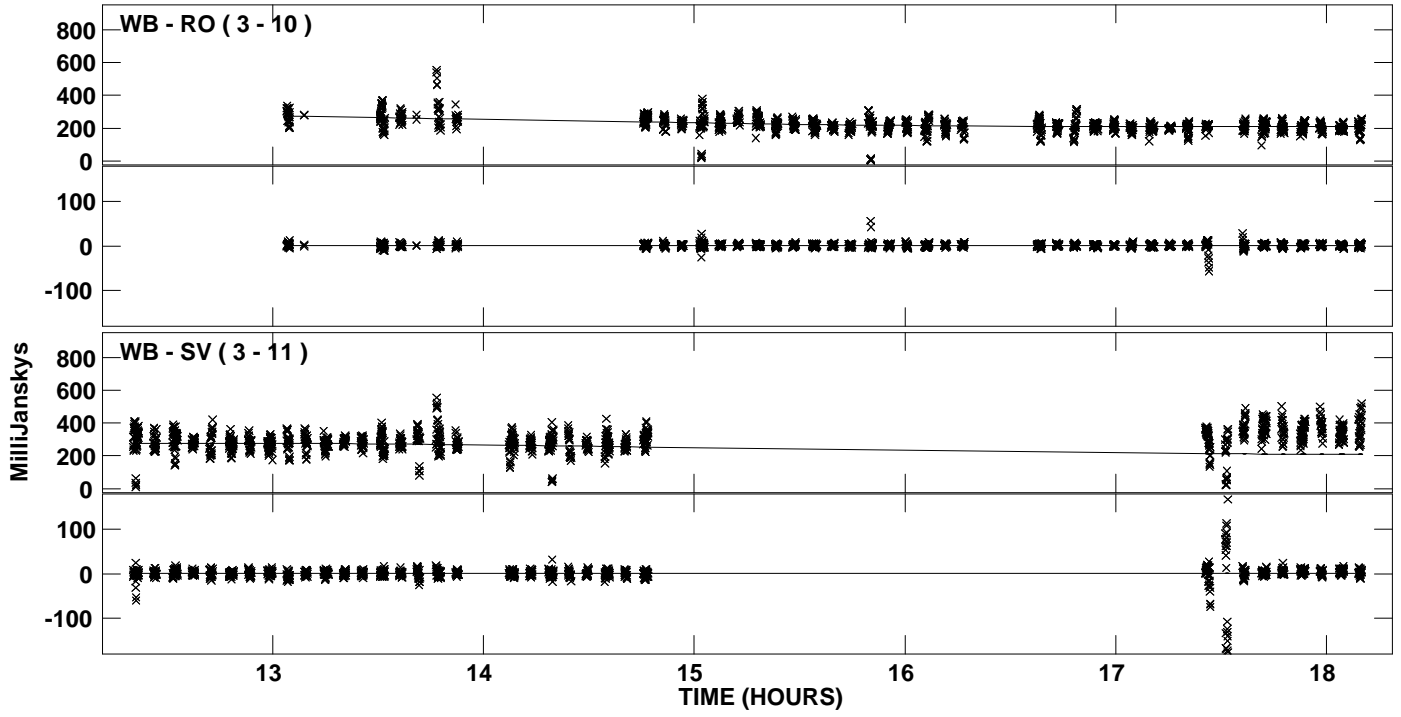
Plot file version 2 created 05-JAN-2012 18:20:05
Amplitude and Phase vs Time for J1128+5925.MULTI.1 CL # 3
IF 1 CHAN 1 STK LL of J1128+5925.ICL001.3



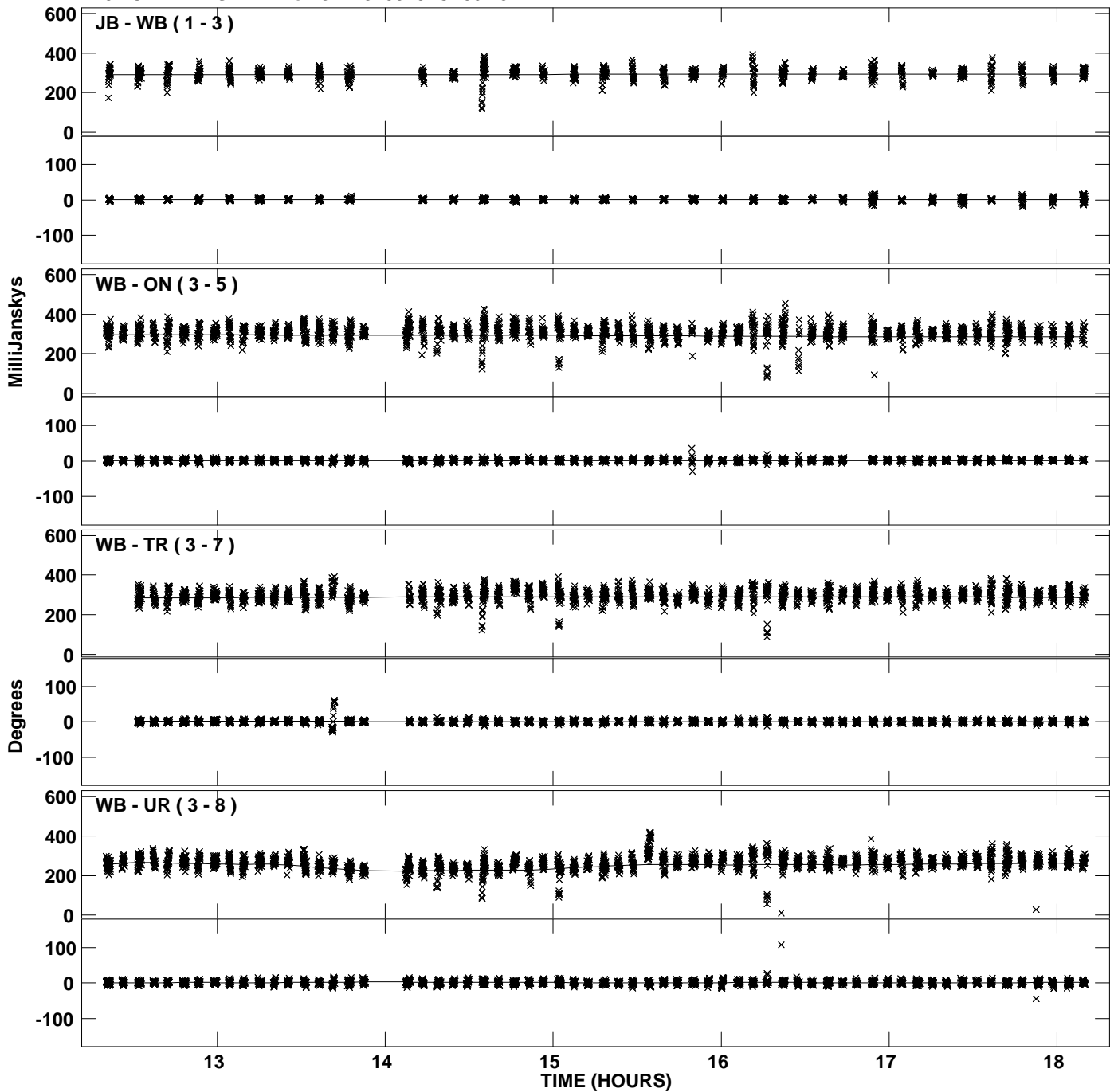
Plot file version 3 created 05-JAN-2012 18:20:09
Amplitude and Phase vs Time for J1128+5925.MULTI.1 CL # 3
IF 2 CHAN 1 STK LL of J1128+5925.ICL001.3



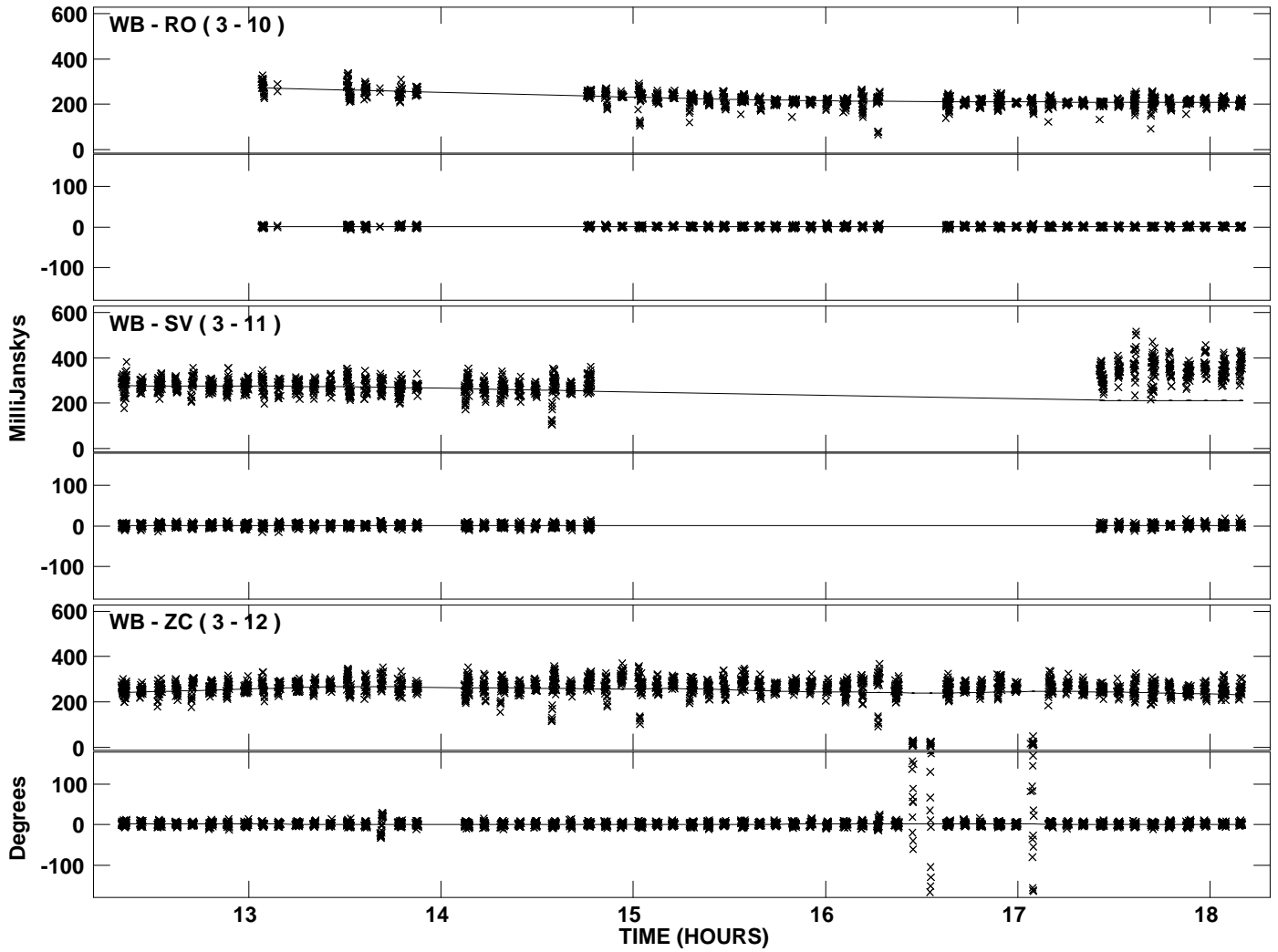
PLot file version 4 created 05-JAN-2012 18:20:10
Amplitude andPhase vs Time for J1128+5925.MULTI.1 CL # 3
IF 2 CHAN 1 STK LL of J1128+5925.ICL001.3



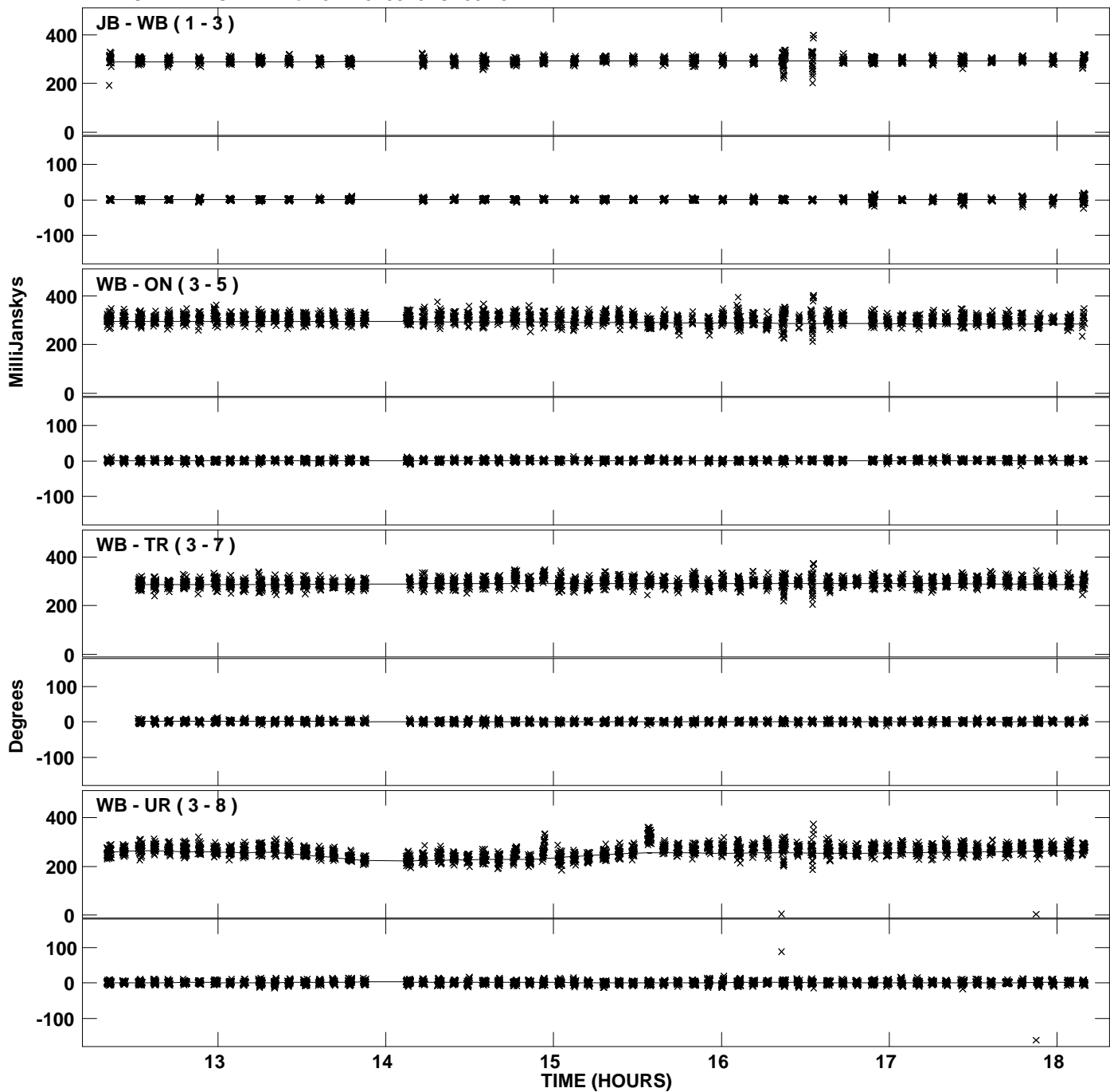
Plot file version 5 created 05-JAN-2012 18:20:18
Amplitude and Phase vs Time for J1128+5925.MULTI.1 CL # 3
IF 3 CHAN 1 STK LL of J1128+5925.ICL001.3



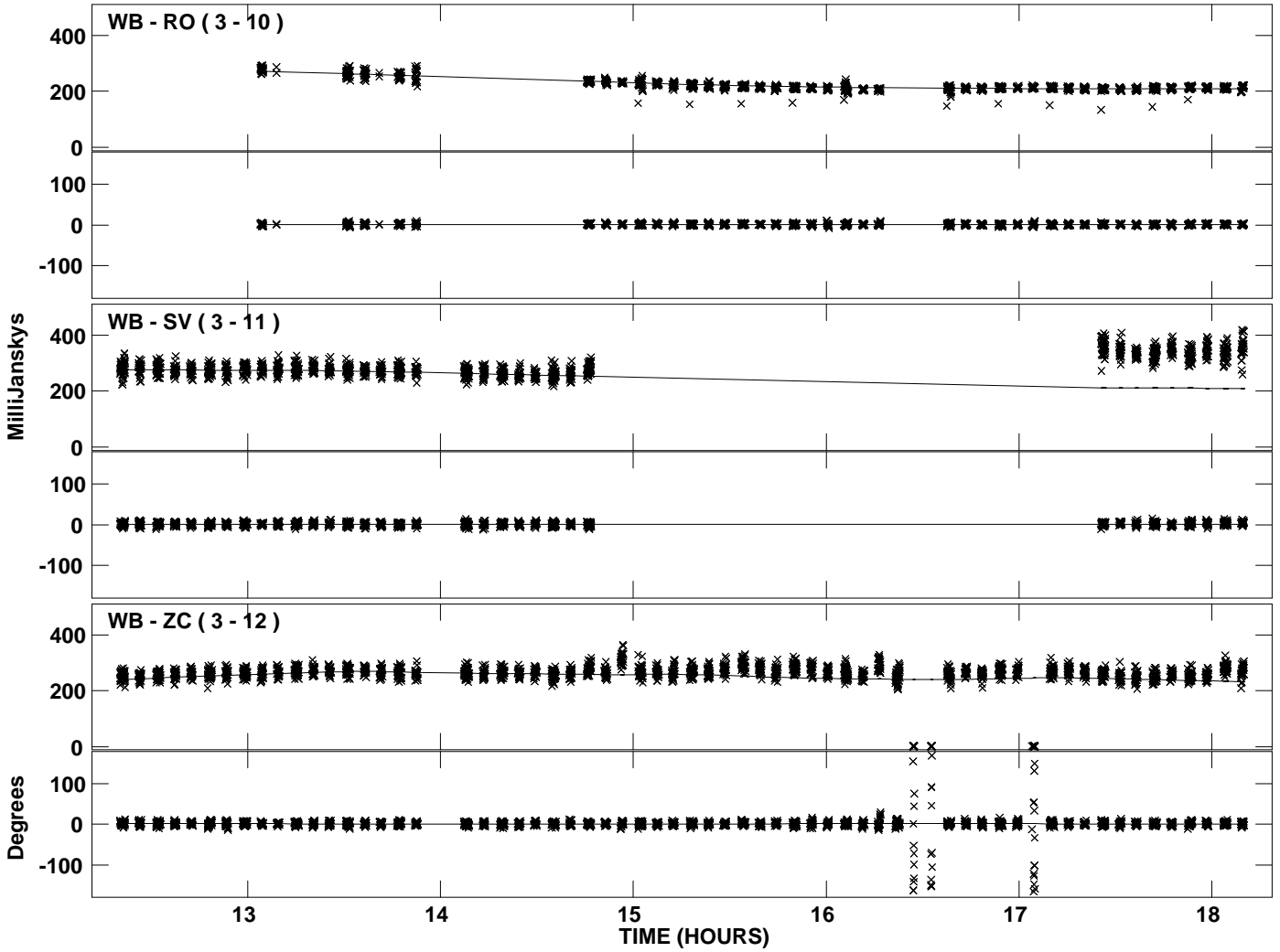
Plot file version 6 created 05-JAN-2012 18:20:20
Amplitude andPhase vs Time for J1128+5925.MULTI.1 CL # 3
IF 3 CHAN 1 STK LL of J1128+5925.ICL001.3



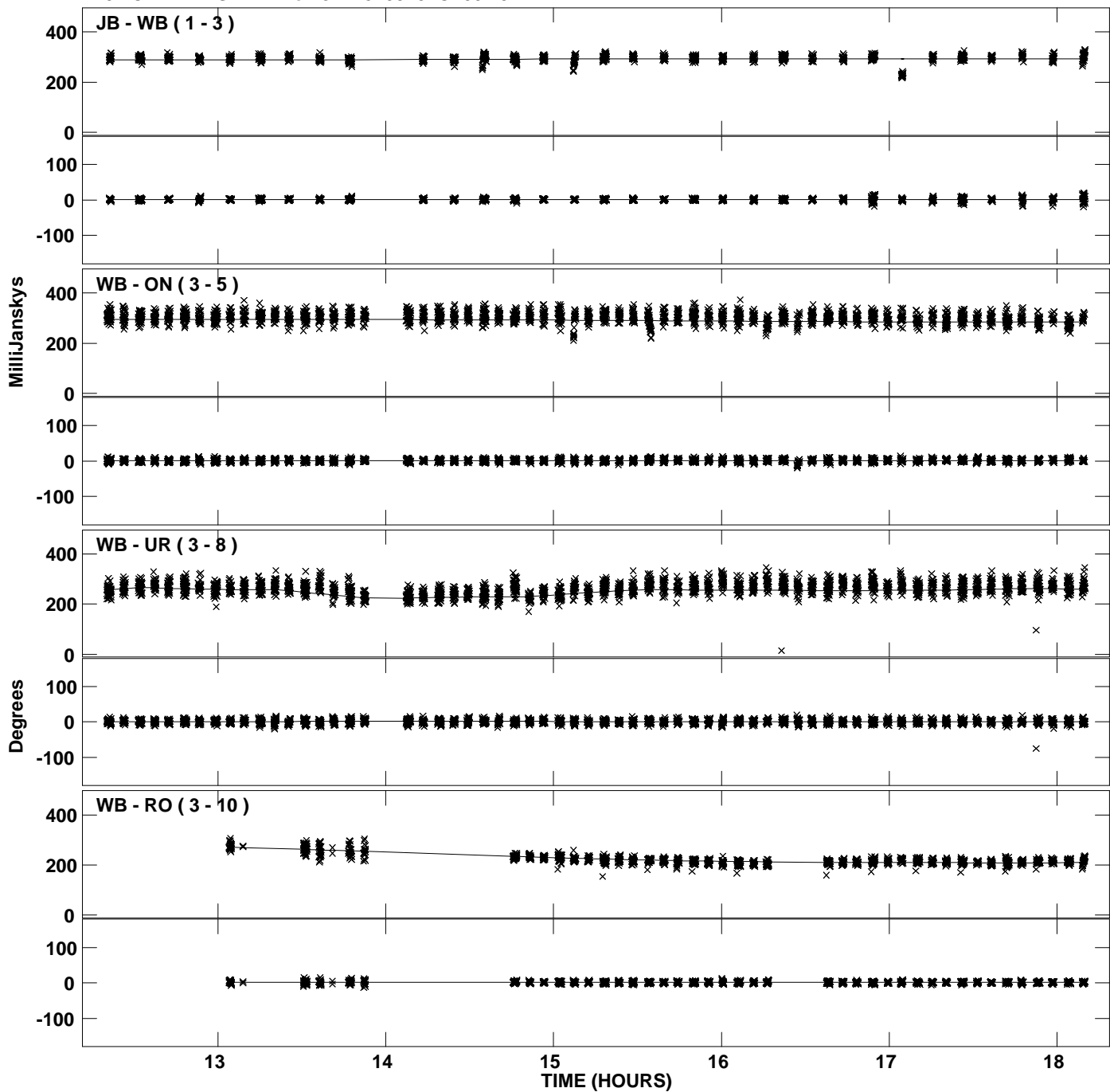
Plot file version 7 created 05-JAN-2012 18:20:28
Amplitude and Phase vs Time for J1128+5925.MULTI.1 CL # 3
IF 4 CHAN 1 STK LL of J1128+5925.ICL001.3



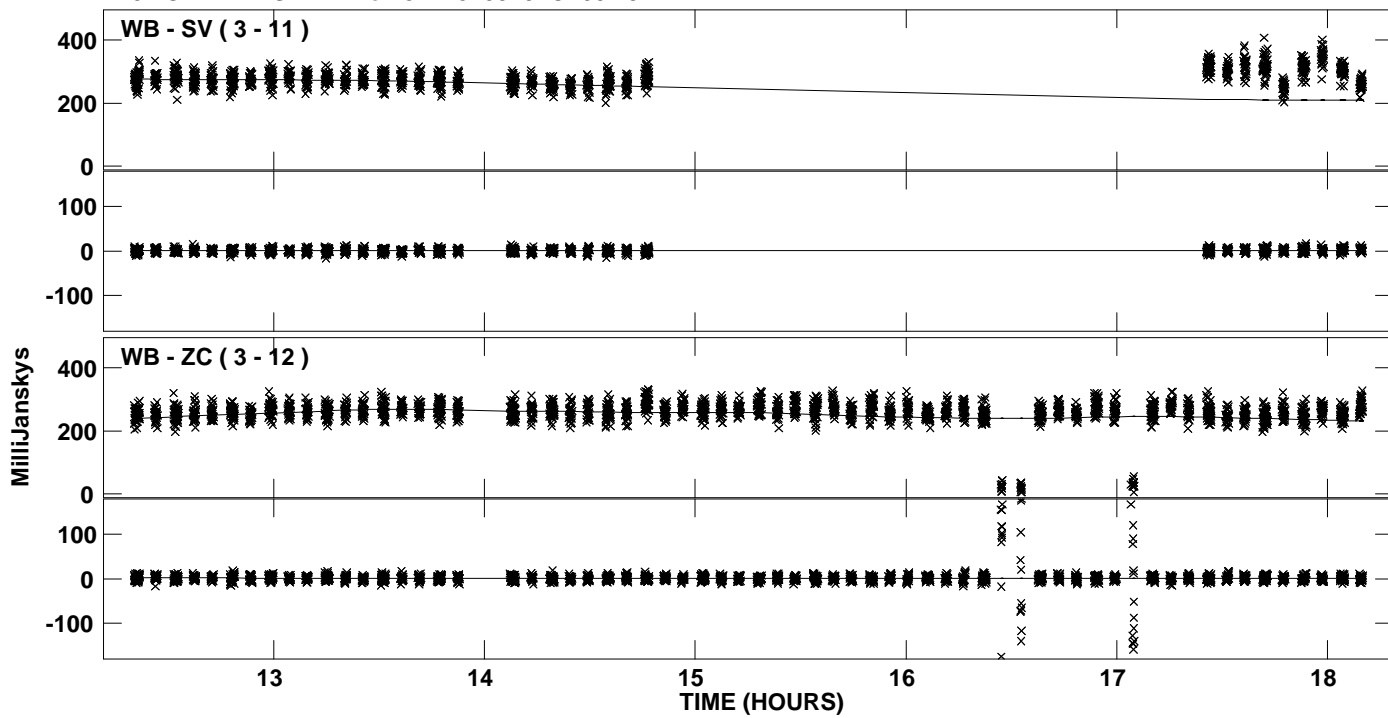
PLot file version 8 created 05-JAN-2012 18:20:30
Amplitude andPhase vs Time for J1128+5925.MULTI.1 CL # 3
IF 4 CHAN 1 STK LL of J1128+5925.ICL001.3



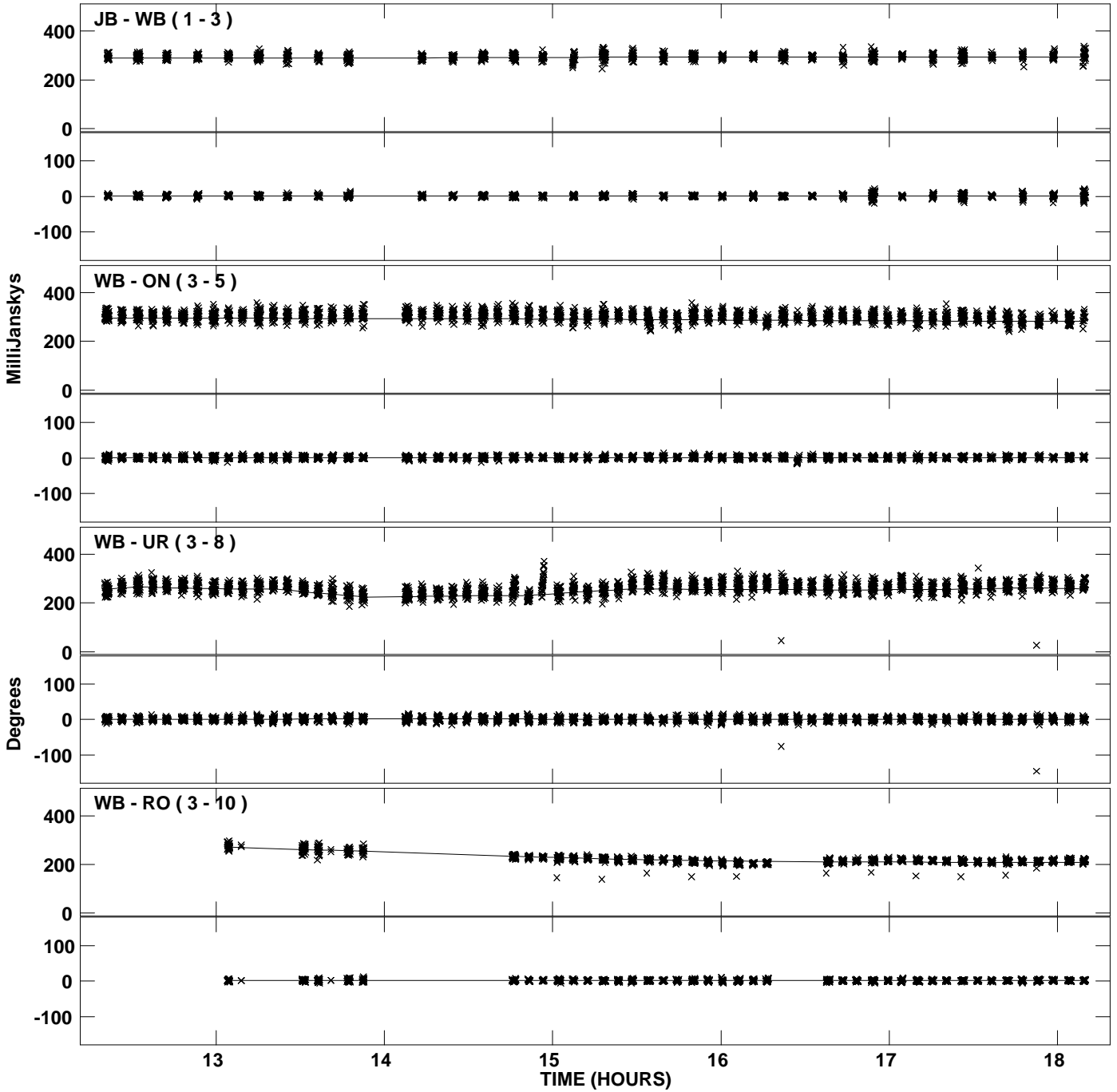
Plot file version 9 created 05-JAN-2012 18:20:37
Amplitude and Phase vs Time for J1128+5925.MULTI.1 CL # 3
IF 5 CHAN 1 STK LL of J1128+5925.ICL001.3



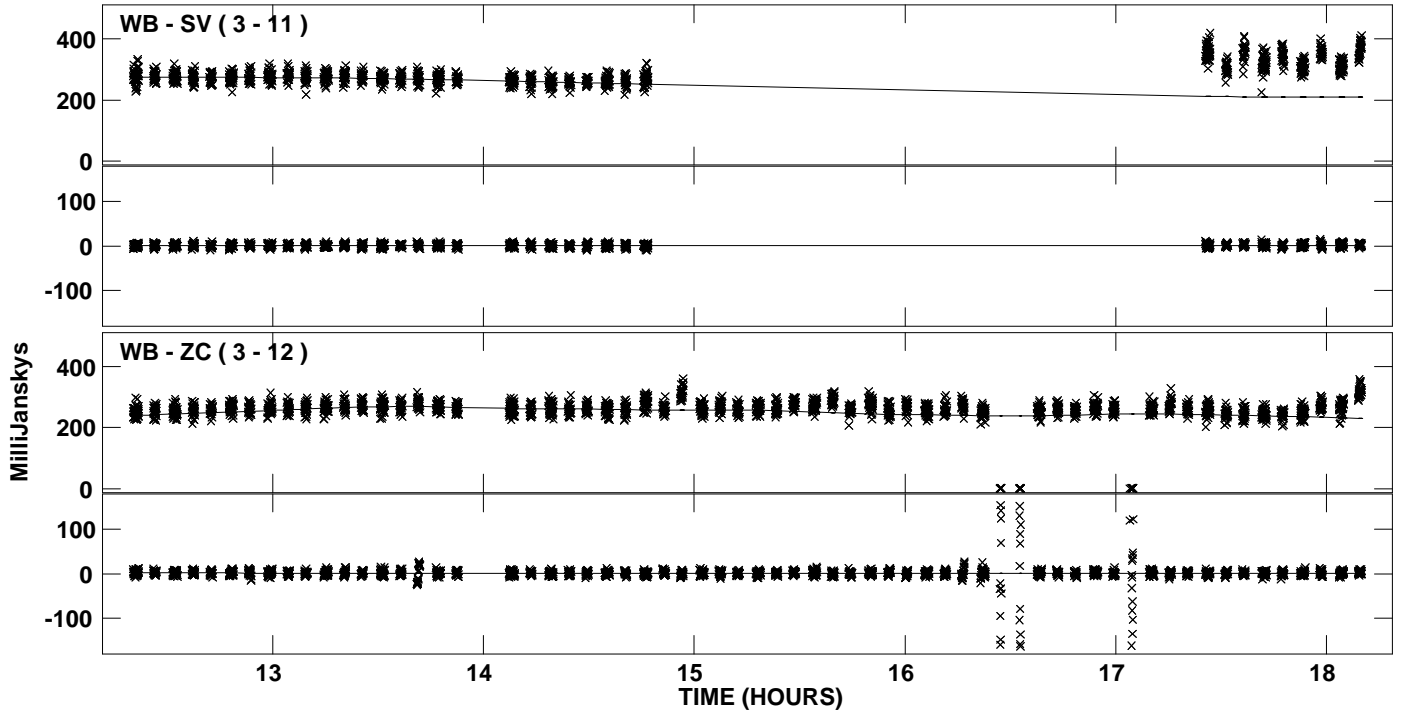
PLot file version 10 created 05-JAN-2012 18:20:37
Amplitude andPhase vs Time for J1128+5925.MULTI.1 CL # 3
IF 5 CHAN 1 STK LL of J1128+5925.ICL001.3



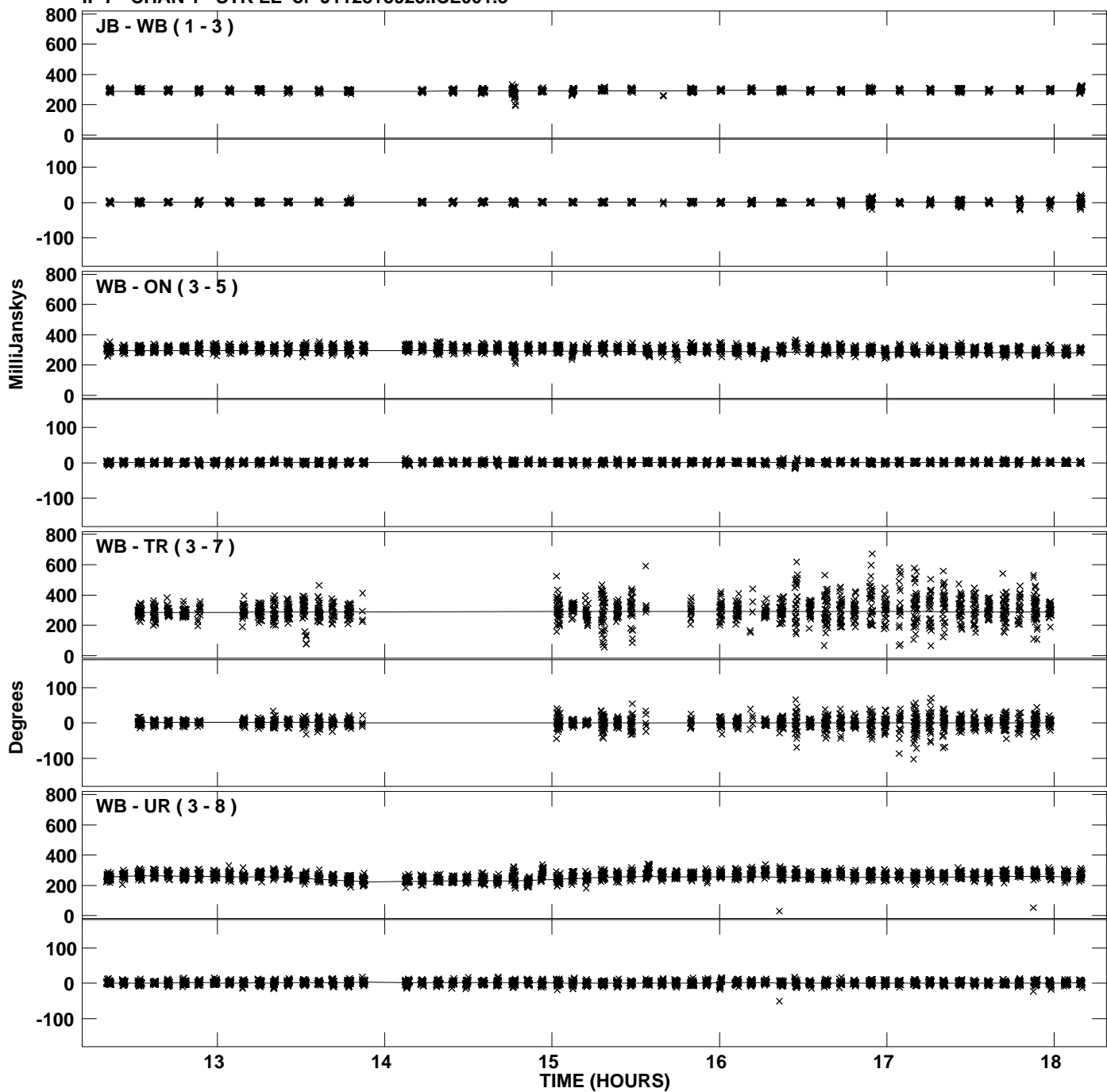
PLot file version 11 created 05-JAN-2012 18:20:37
Amplitude and Phase vs Time for J1128+5925.MULTI.1 CL # 3
IF 6 CHAN 1 STK LL of J1128+5925.ICL001.3



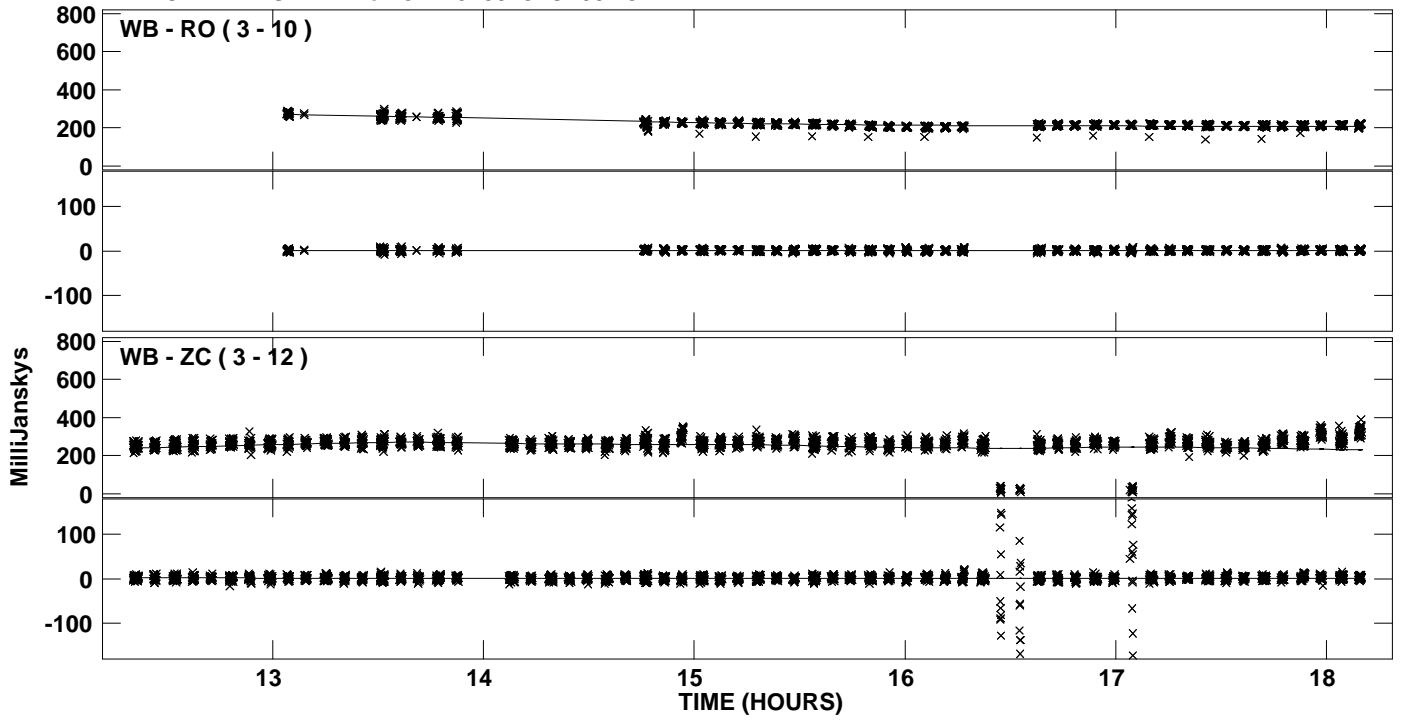
PLot file version 12 created 05-JAN-2012 18:20:37
Amplitude andPhase vs Time for J1128+5925.MULTI.1 CL # 3
IF 6 CHAN 1 STK LL of J1128+5925.ICL001.3



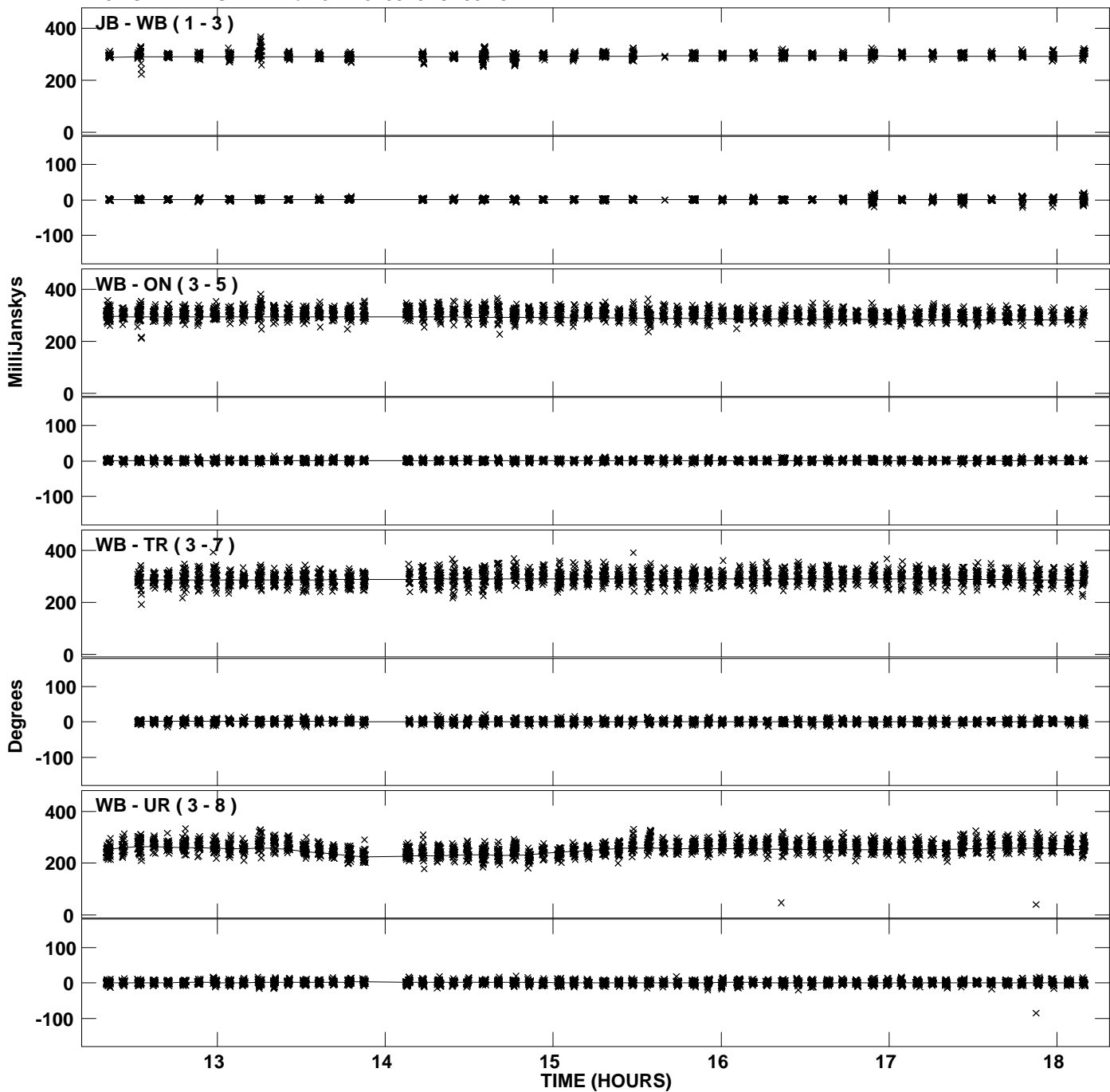
PLot file version 13 created 05-JAN-2012 18:20:37
Amplitude andPhase vs Time for J1128+5925.MULTI.1 CL # 3
IF 7 CHAN 1 STK LL of J1128+5925.ICL001.3



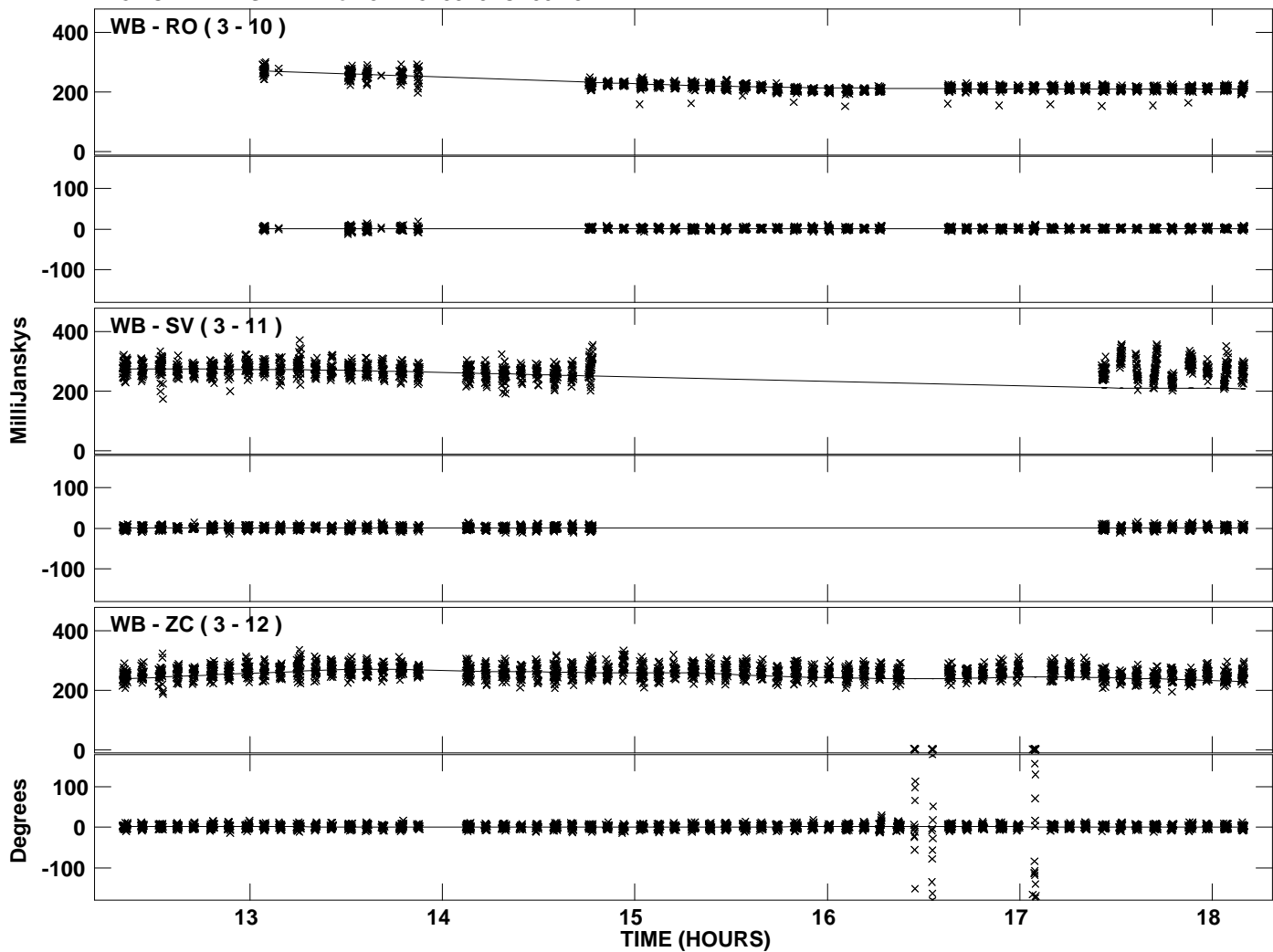
PLot file version 14 created 05-JAN-2012 18:20:37
Amplitude andPhase vs Time for J1128+5925.MULTI.1 CL # 3
IF 7 CHAN 1 STK LL of J1128+5925.ICL001.3



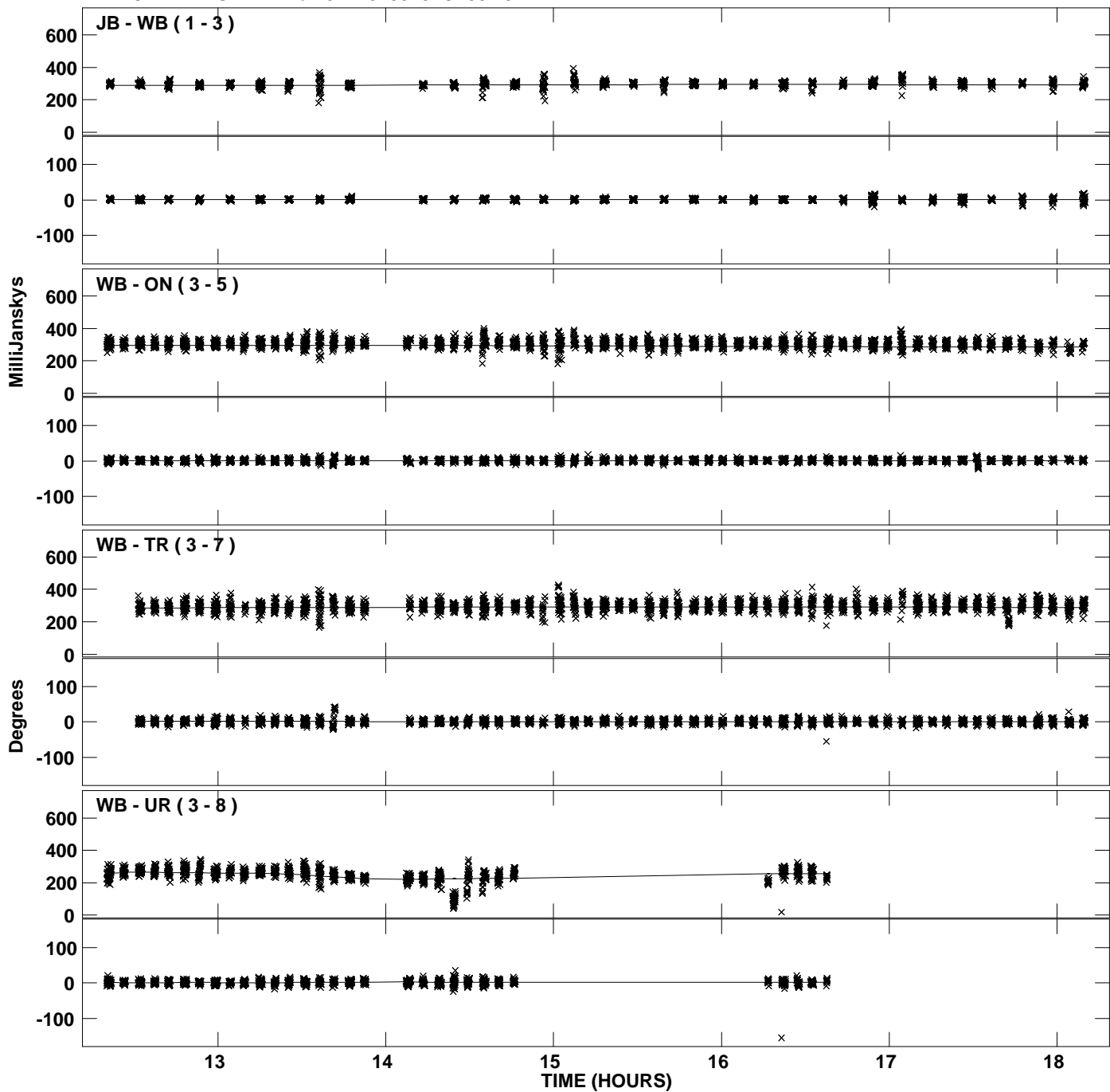
PLot file version 15 created 05-JAN-2012 18:20:38
Amplitude andPhase vs Time for J1128+5925.MULTI.1 CL # 3
IF 8 CHAN 1 STK LL of J1128+5925.ICL001.3



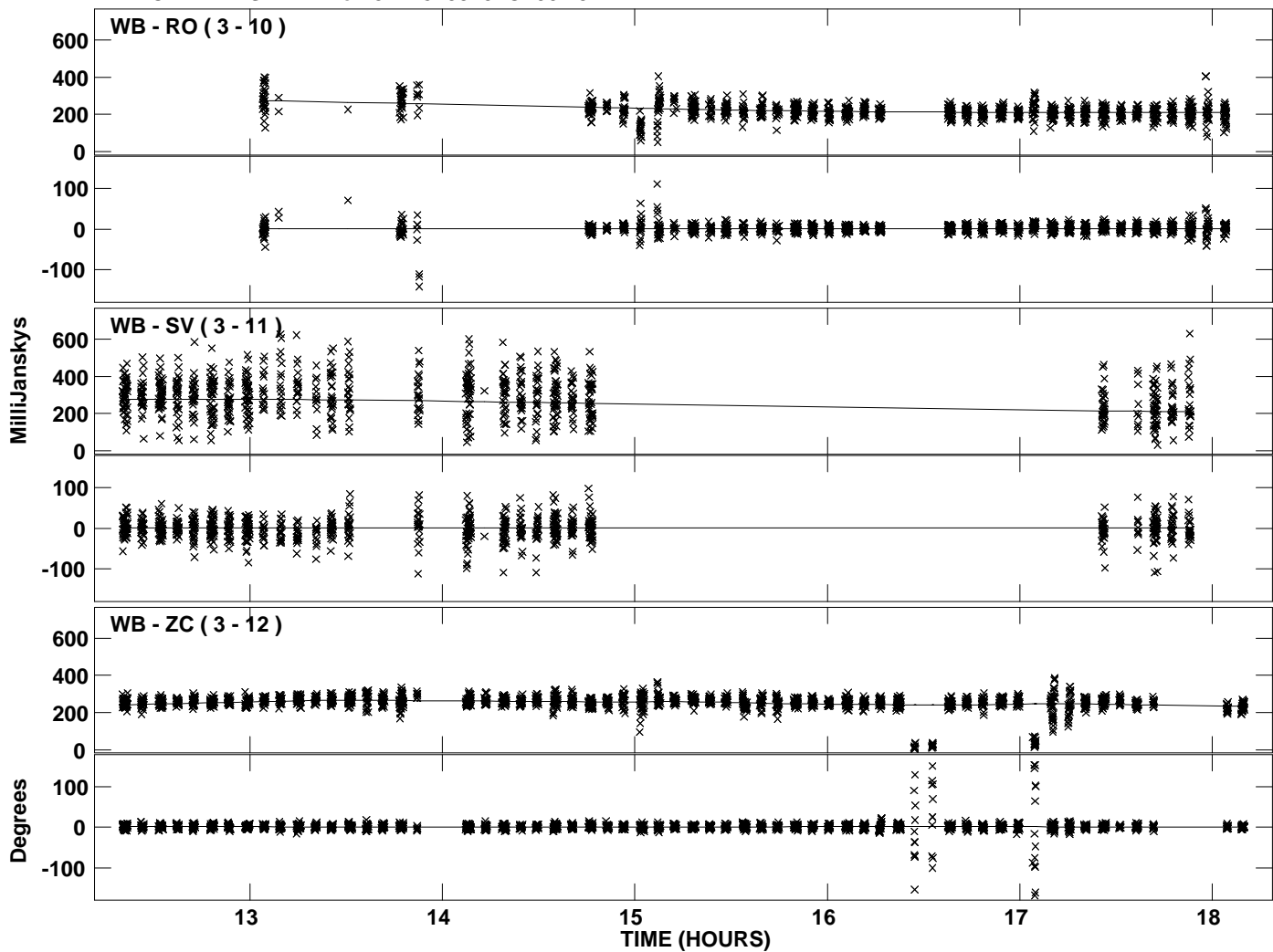
PLot file version 16 created 05-JAN-2012 18:20:38
Amplitude andPhase vs Time for J1128+5925.MULTI.1 CL # 3
IF 8 CHAN 1 STK LL of J1128+5925.ICL001.3



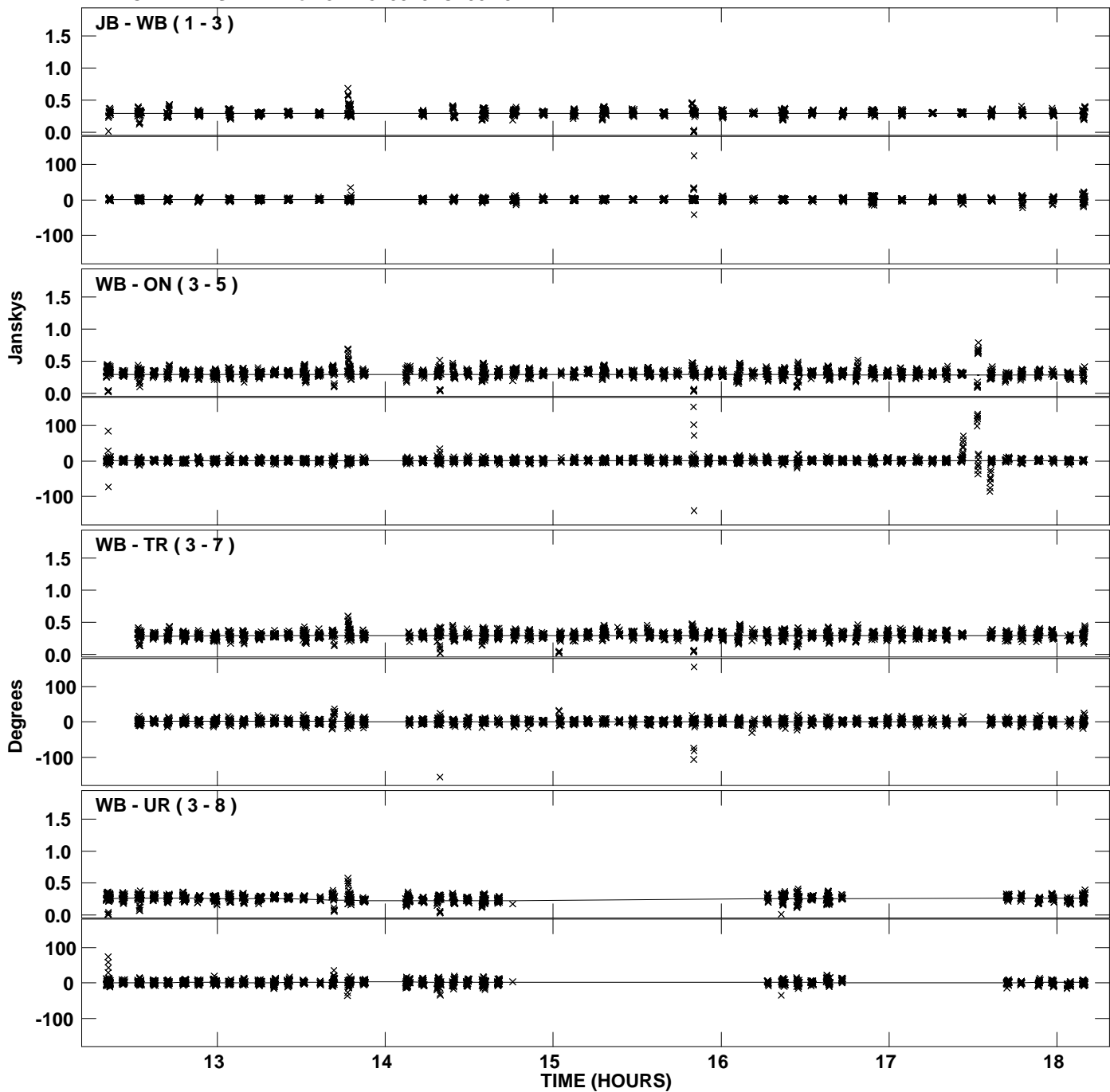
PLot file version 17 created 05-JAN-2012 18:20:38
Amplitude andPhase vs Time for J1128+5925.MULTI.1 CL # 3
IF 1 CHAN 1 STK RR of J1128+5925.ICL001.3



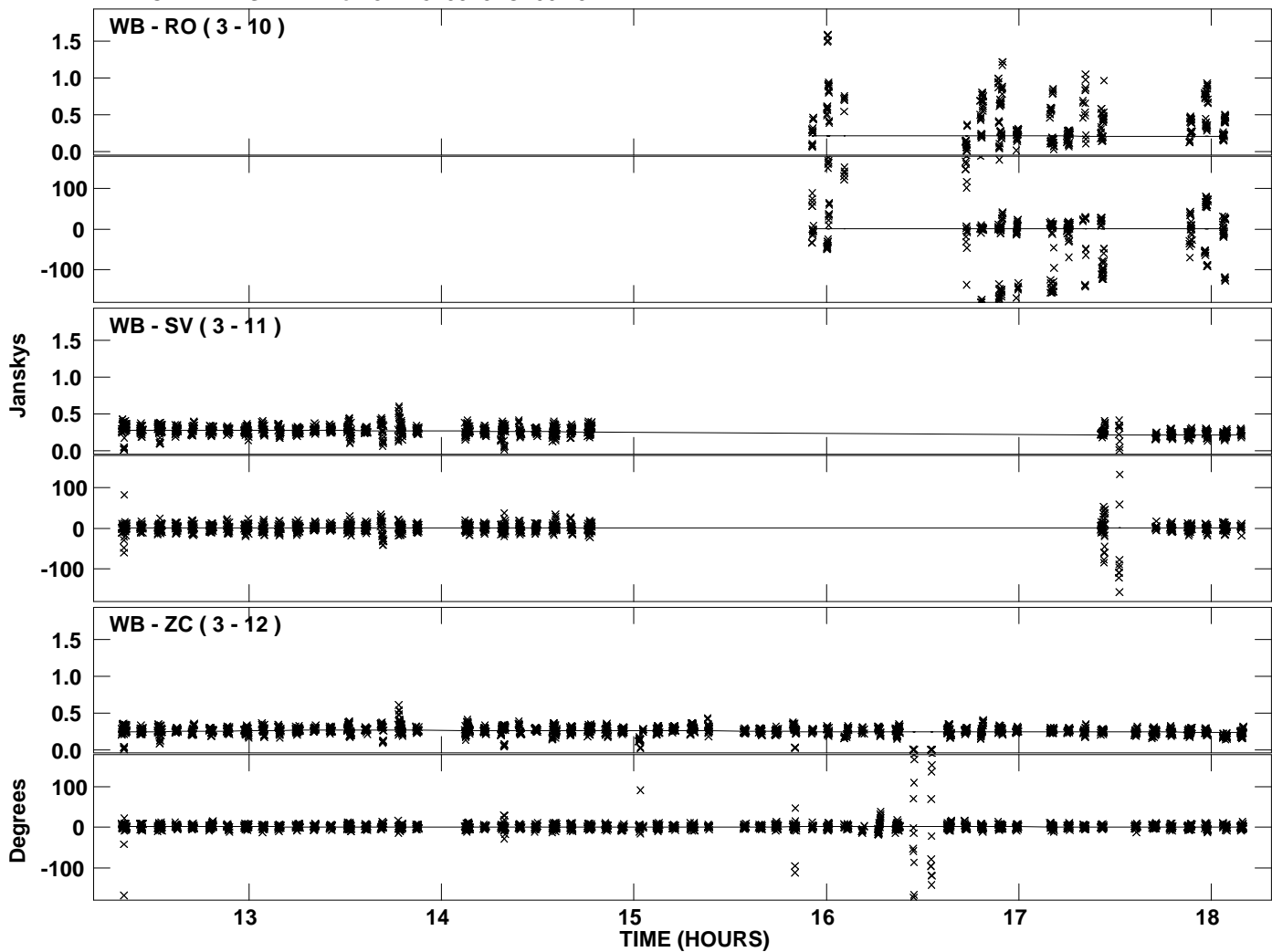
Plot file version 18 created 05-JAN-2012 18:20:38
Amplitude andPhase vs Time for J1128+5925.MULTI.1 CL # 3
IF 1 CHAN 1 STK RR of J1128+5925.ICL001.3



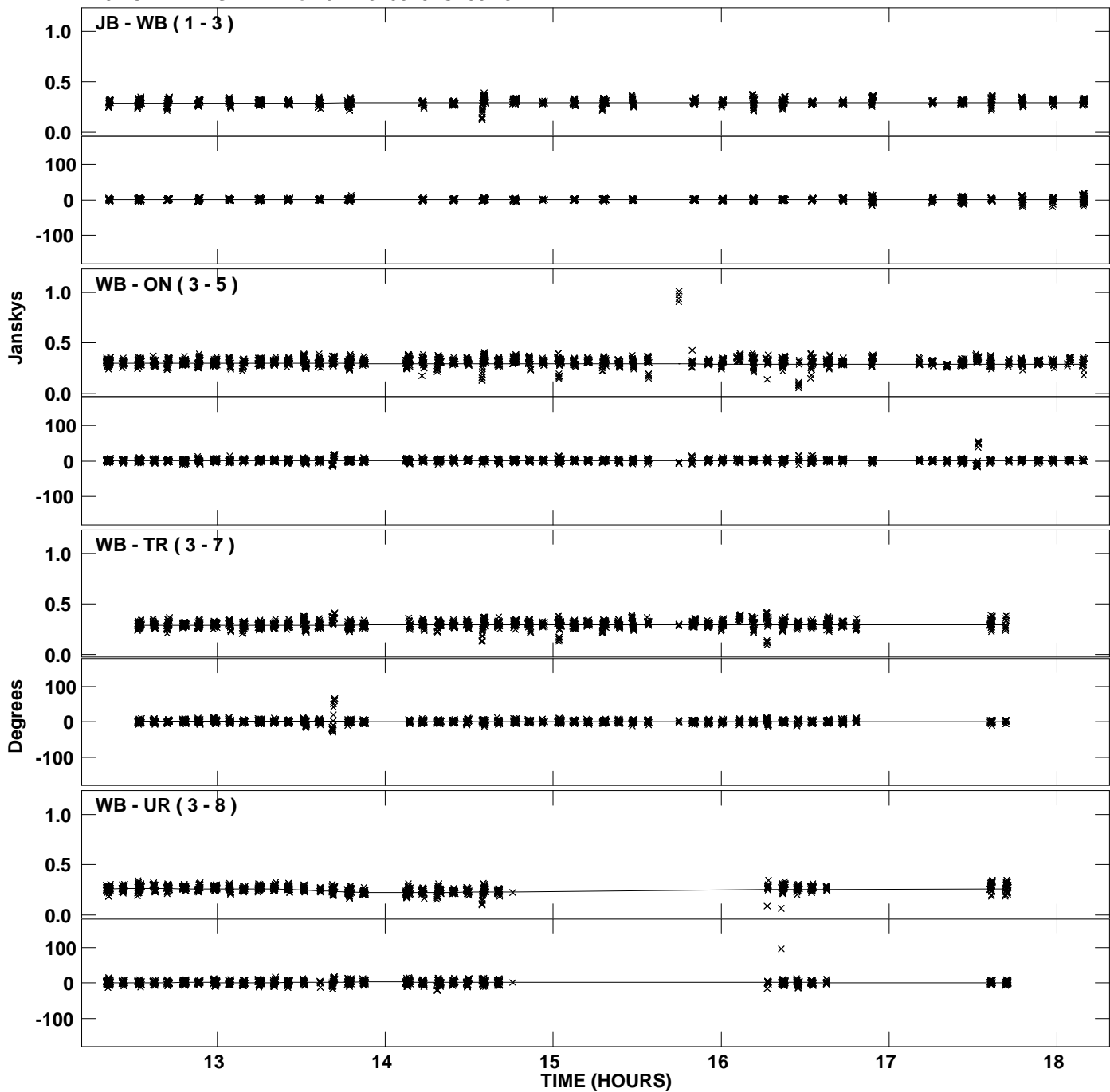
Plot file version 19 created 05-JAN-2012 18:20:39
Amplitude andPhase vs Time for J1128+5925.MULTI.1 CL # 3
IF 2 CHAN 1 STK RR of J1128+5925.ICL001.3



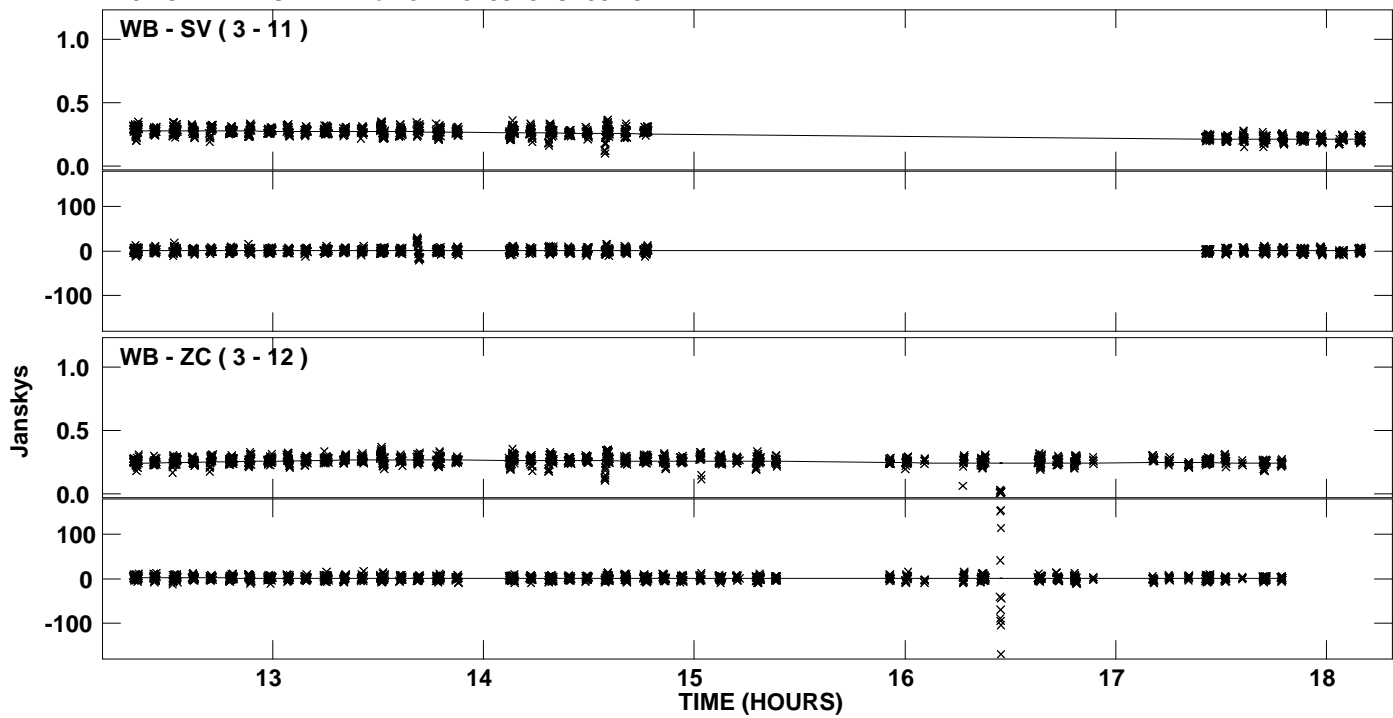
PLot file version 20 created 05-JAN-2012 18:20:39
Amplitude andPhase vs Time for J1128+5925.MULTI.1 CL # 3
IF 2 CHAN 1 STK RR of J1128+5925.ICL001.3



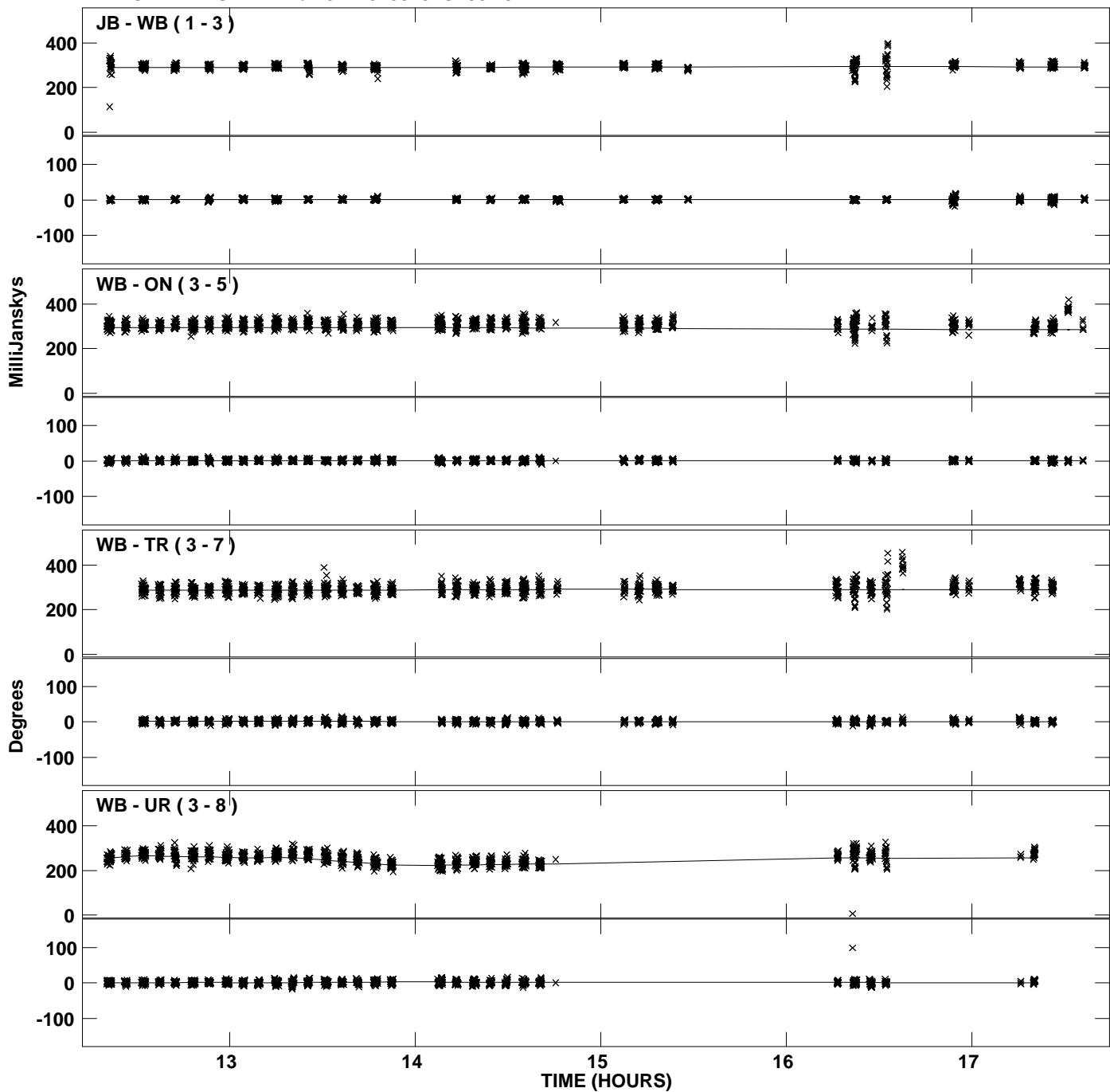
PLot file version 21 created 05-JAN-2012 18:20:39
Amplitude and Phase vs Time for J1128+5925.MULTI.1 CL # 3
IF 3 CHAN 1 STK RR of J1128+5925.ICL001.3



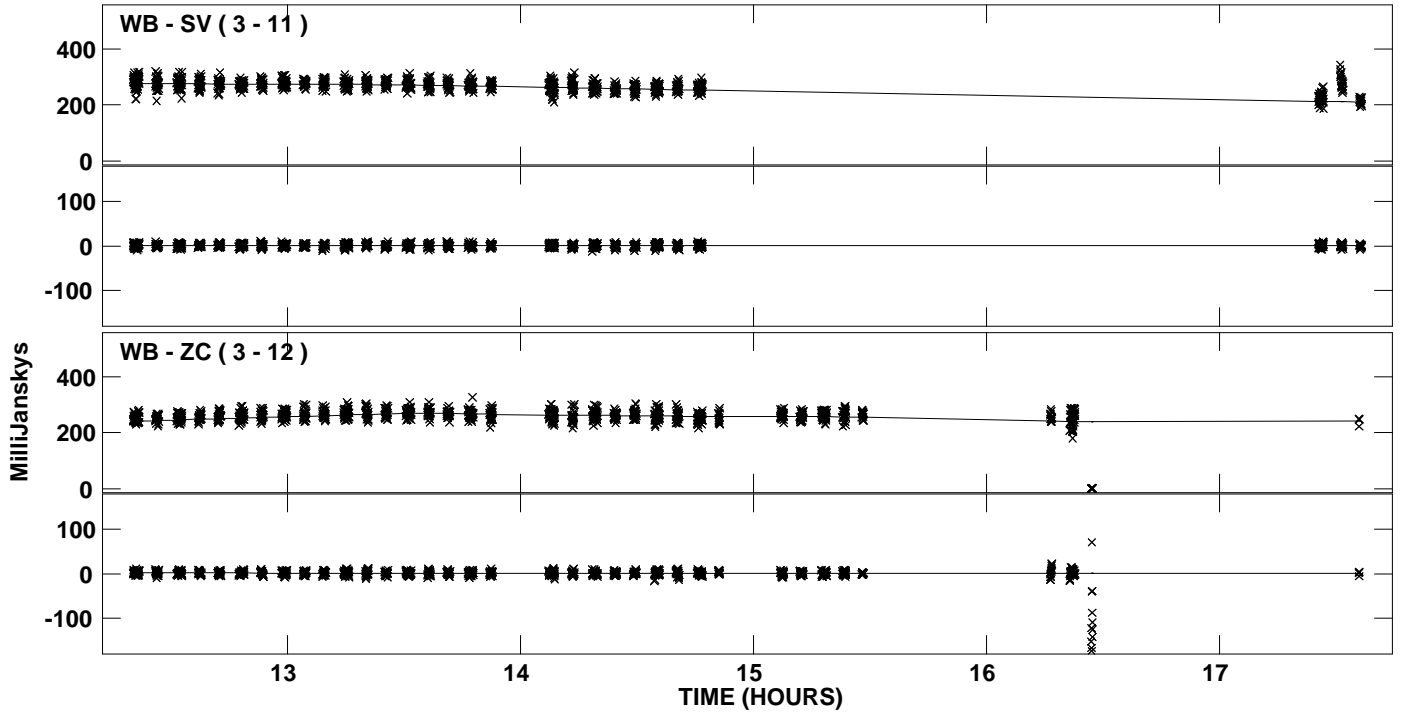
PLot file version 22 created 05-JAN-2012 18:20:39
Amplitude and Phase vs Time for J1128+5925.MULTI.1 CL # 3
IF 3 CHAN 1 STK RR of J1128+5925.ICL001.3



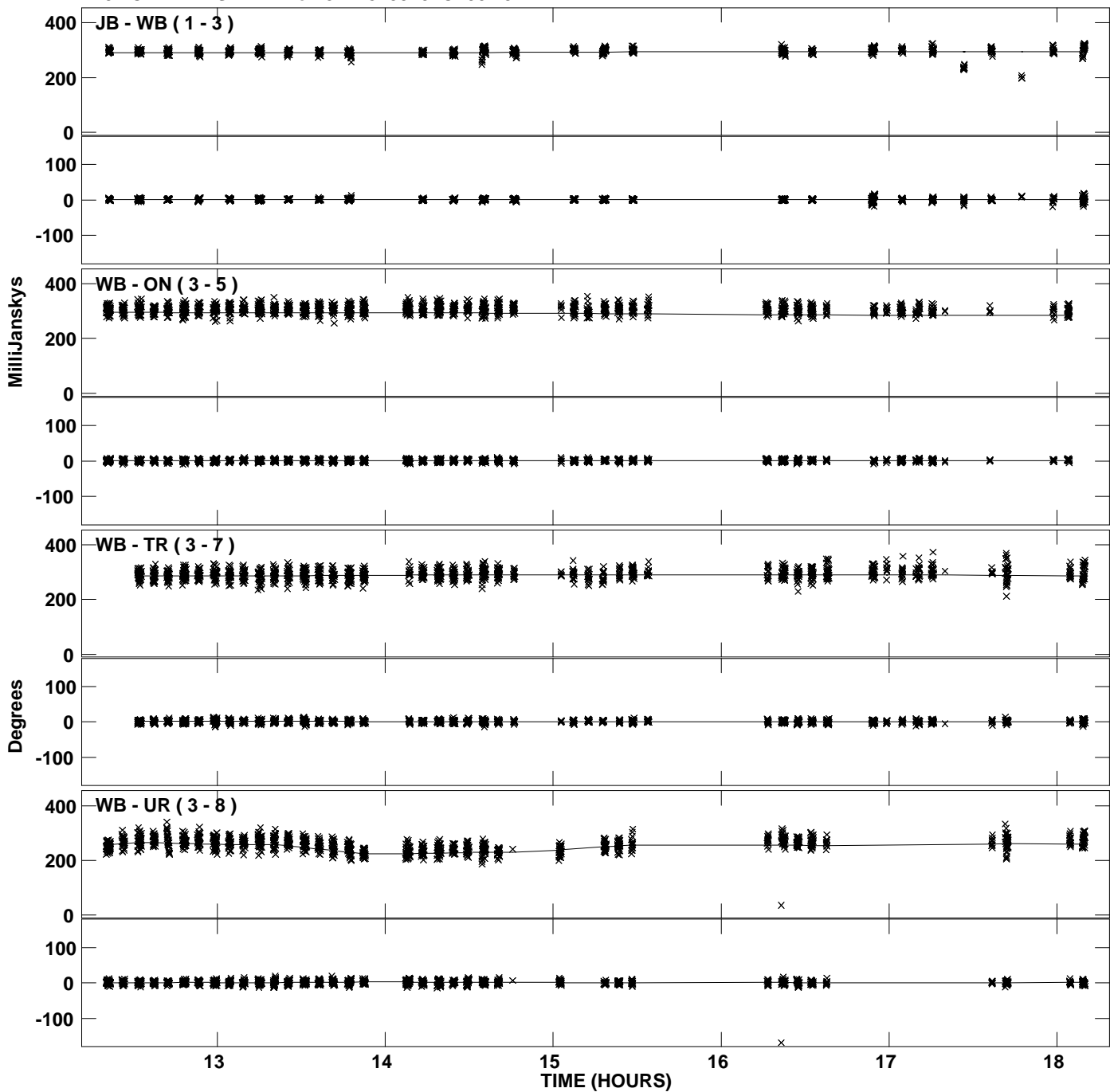
PLot file version 23 created 05-JAN-2012 18:20:39
Amplitude and Phase vs Time for J1128+5925.MULTI.1 CL # 3
IF 4 CHAN 1 STK RR of J1128+5925.ICL001.3



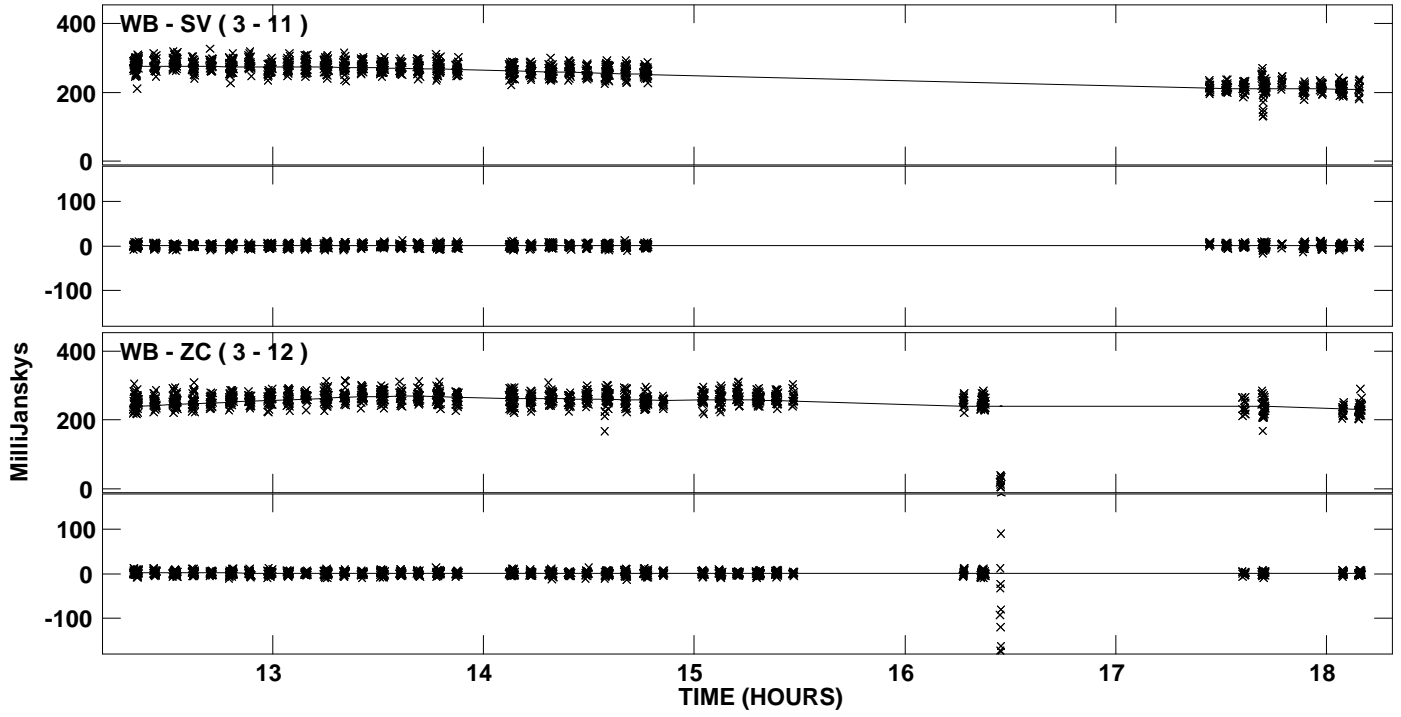
Plot file version 24 created 05-JAN-2012 18:20:39
Amplitude and Phase vs Time for J1128+5925.MULTI.1 CL # 3
IF 4 CHAN 1 STK RR of J1128+5925.ICL001.3



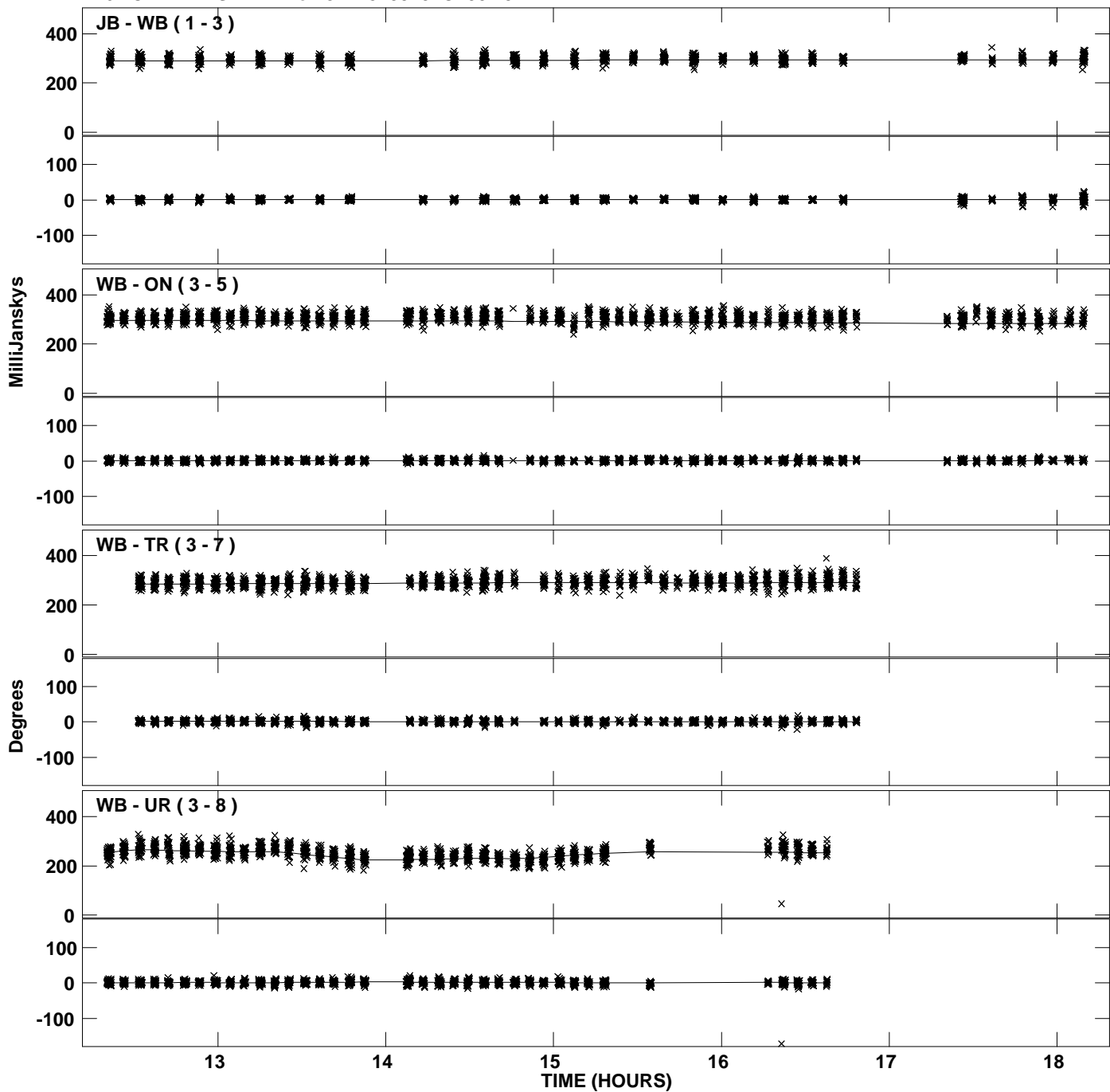
PLot file version 25 created 05-JAN-2012 18:20:40
Amplitude andPhase vs Time for J1128+5925.MULTI.1 CL # 3
IF 5 CHAN 1 STK RR of J1128+5925.ICL001.3



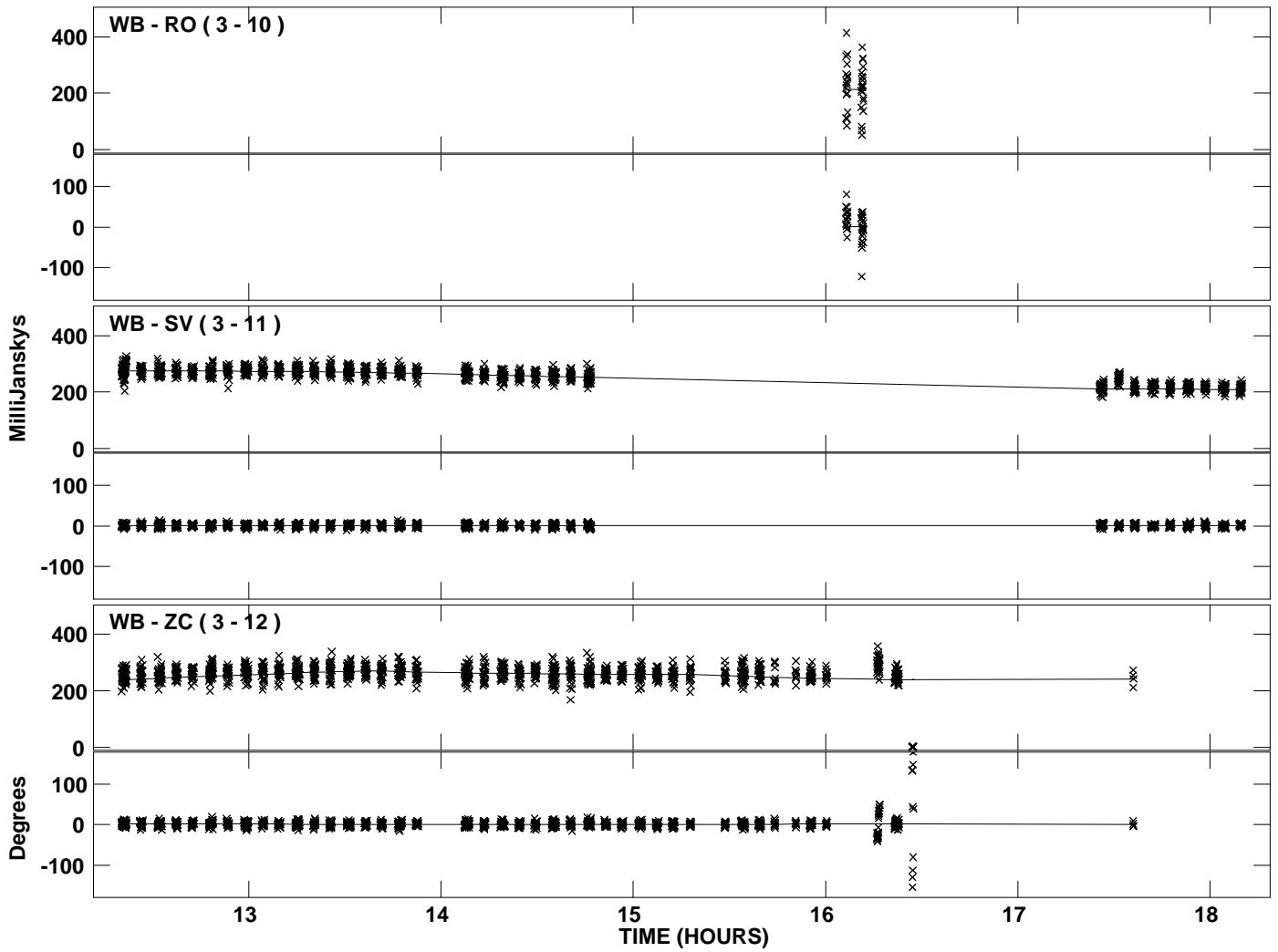
Plot file version 26 created 05-JAN-2012 18:20:40
Amplitude and Phase vs Time for J1128+5925.MULTI.1 CL # 3
IF 5 CHAN 1 STK RR of J1128+5925.ICL001.3



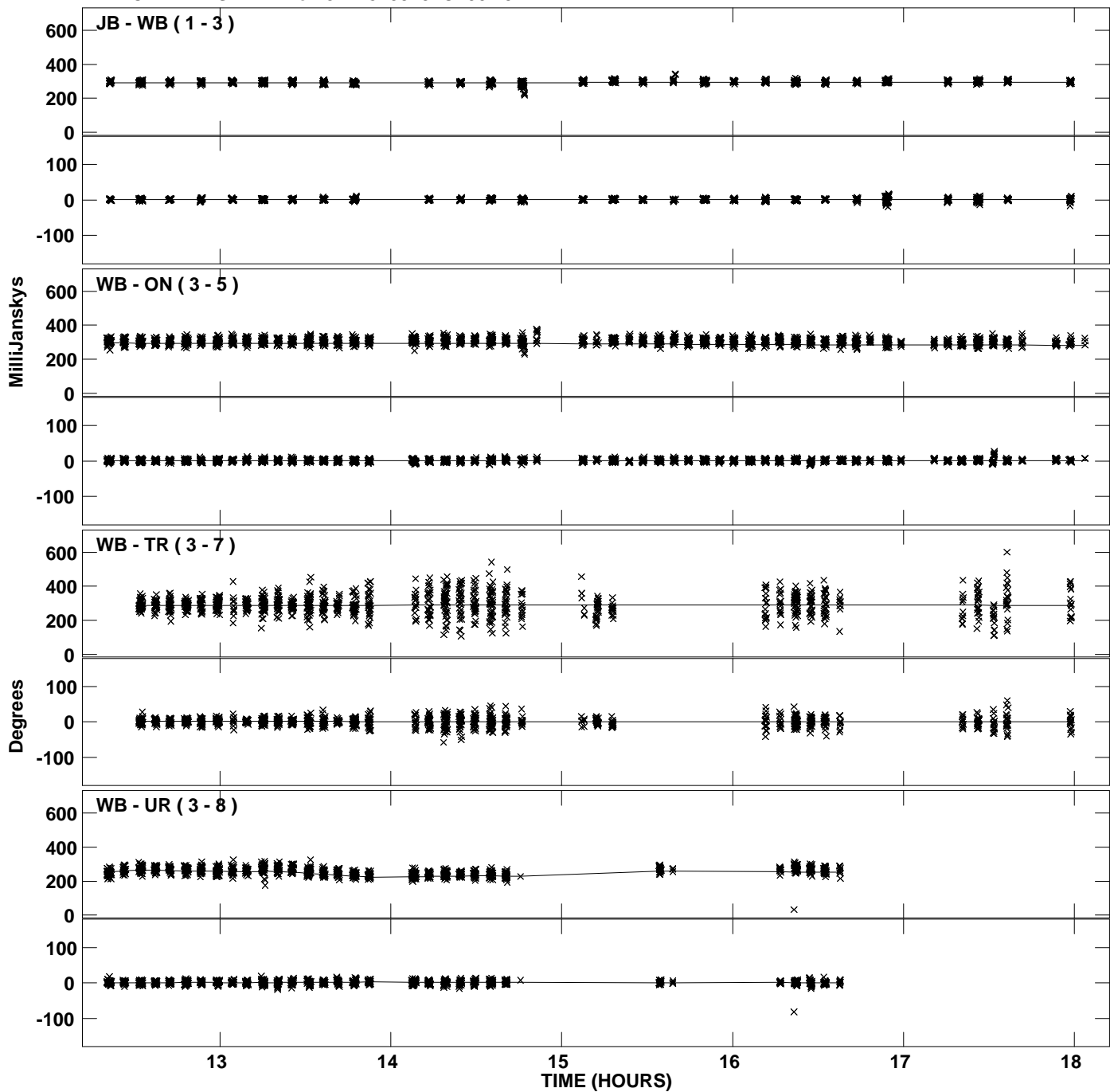
PLot file version 27 created 05-JAN-2012 18:20:40
Amplitude andPhase vs Time for J1128+5925.MULTI.1 CL # 3
IF 6 CHAN 1 STK RR of J1128+5925.ICL001.3



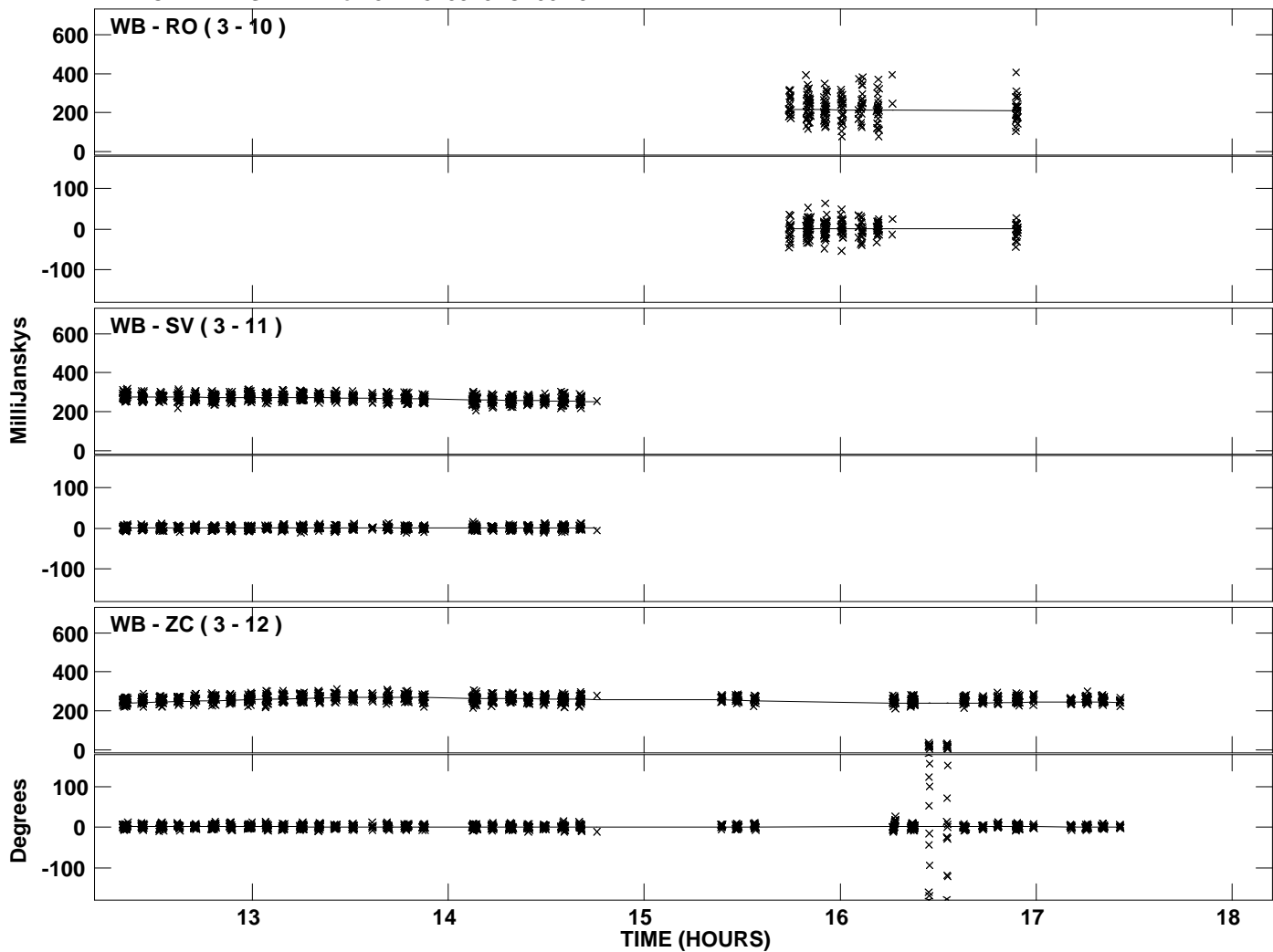
PLot file version 28 created 05-JAN-2012 18:20:40
Amplitude andPhase vs Time for J1128+5925.MULTI.1 CL # 3
IF 6 CHAN 1 STK RR of J1128+5925.ICL001.3



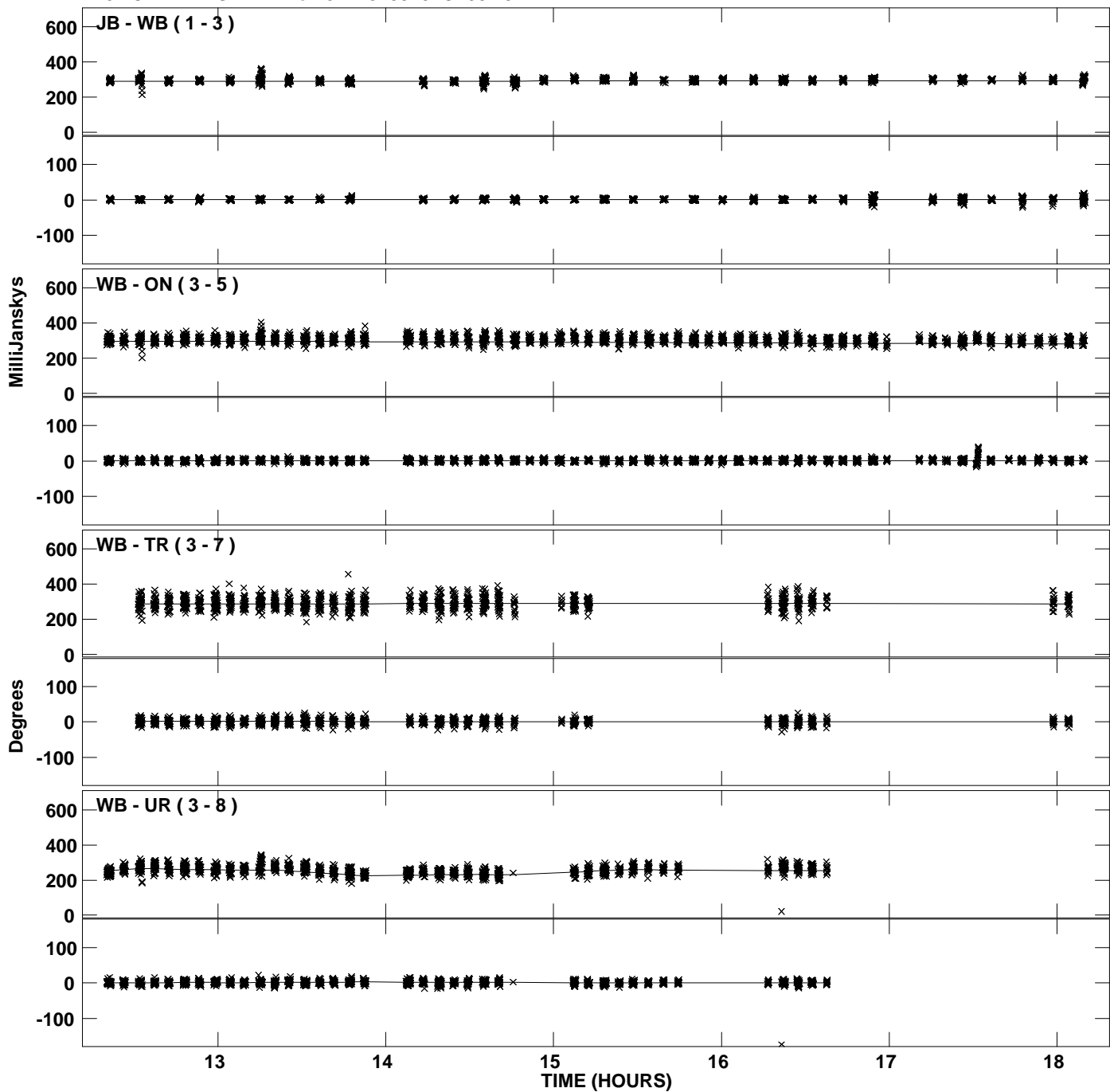
PLot file version 29 created 05-JAN-2012 18:20:40
Amplitude andPhase vs Time for J1128+5925.MULTI.1 CL # 3
IF 7 CHAN 1 STK RR of J1128+5925.ICL001.3



PLot file version 30 created 05-JAN-2012 18:20:40
Amplitude andPhase vs Time for J1128+5925.MULTI.1 CL # 3
IF 7 CHAN 1 STK RR of J1128+5925.ICL001.3



Plot file version 31 created 05-JAN-2012 18:20:41
Amplitude and Phase vs Time for J1128+5925.MULTI.1 CL # 3
IF 8 CHAN 1 STK RR of J1128+5925.ICL001.3



PLot file version 32 created 05-JAN-2012 18:20:41
Amplitude andPhase vs Time for J1128+5925.MULTI.1 CL # 3
IF 8 CHAN 1 STK RR of J1128+5925.ICL001.3

