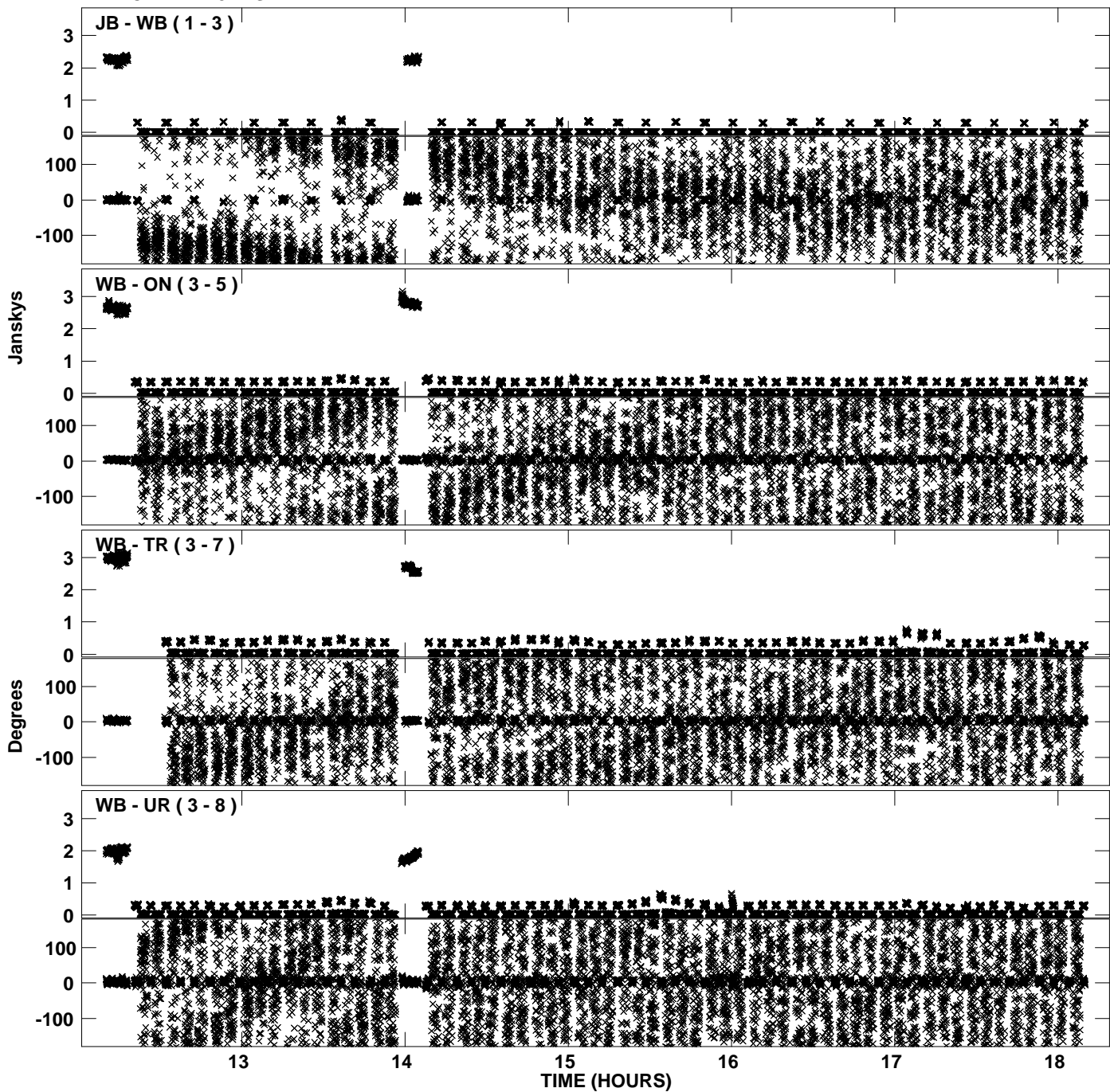
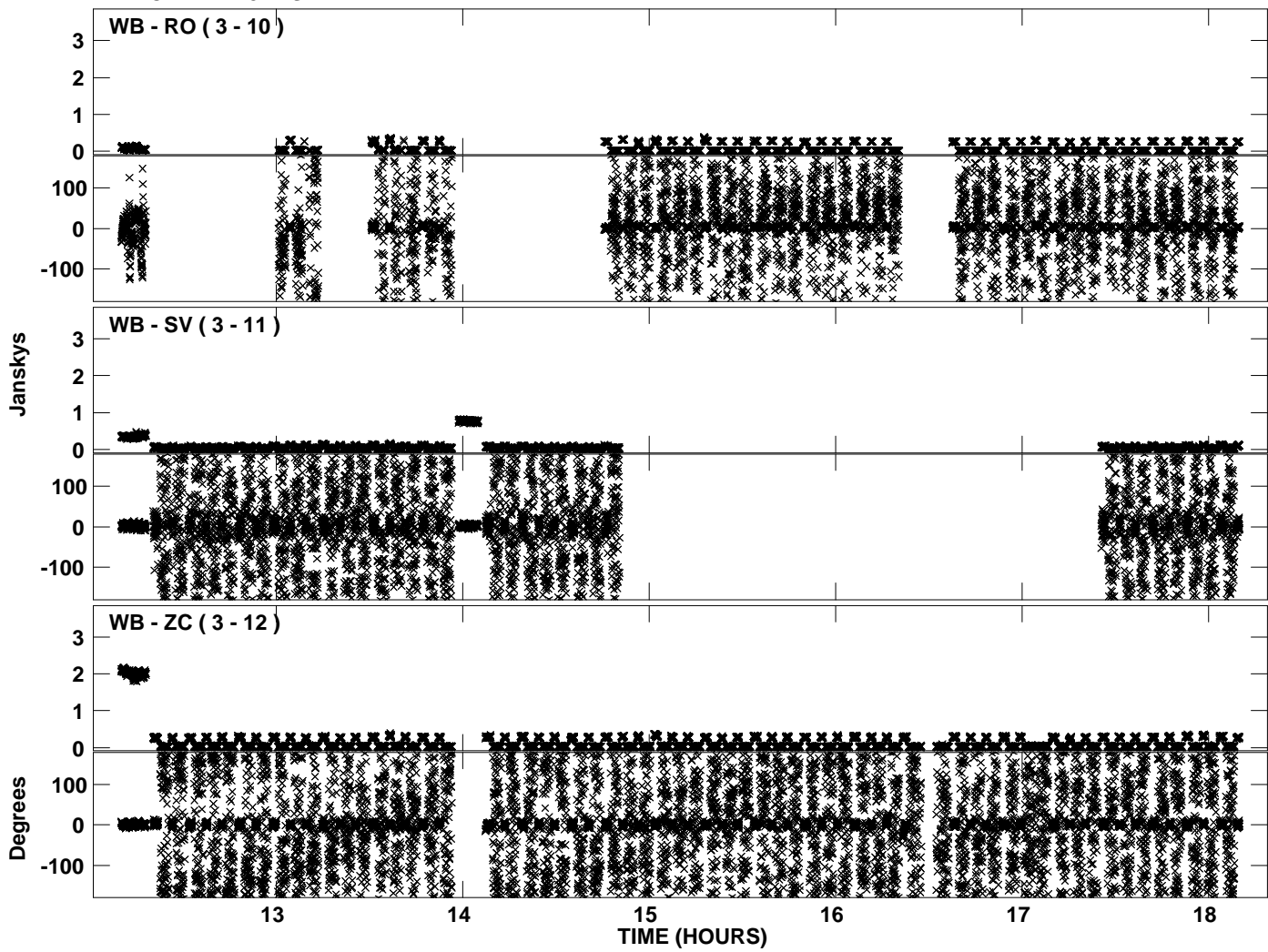


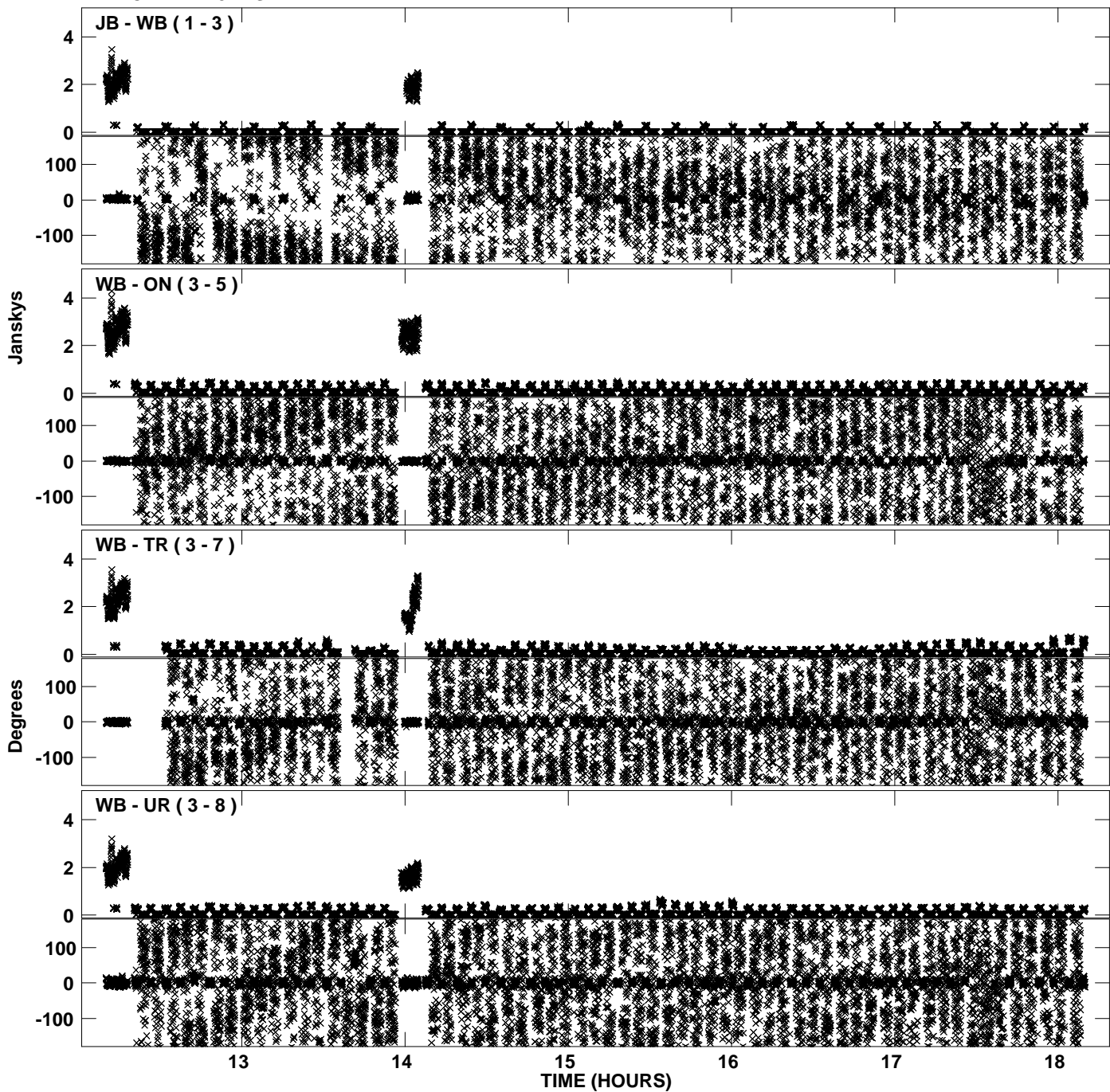
Plot file version 1 created 05-JAN-2012 18:11:49
Amplitude andPhase vs Time for EP068D 2.UVDATA.1 Vect aver. CL # 3
IF 1 CHAN 1 - 32 STK LL



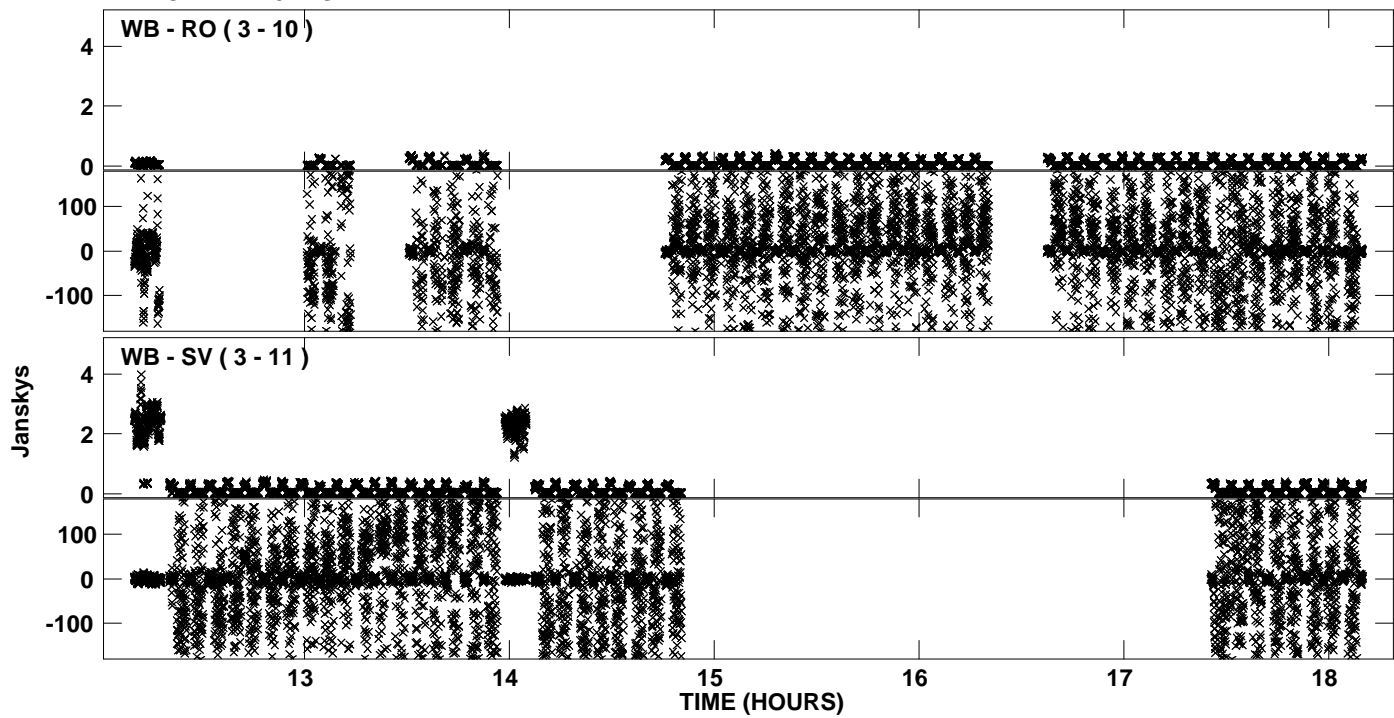
Plot file version 2 created 05-JAN-2012 18:11:49
Amplitude andPhase vs Time for EP068D 2.UVDATA.1 Vect aver. CL # 3
IF 1 CHAN 1 - 32 STK LL



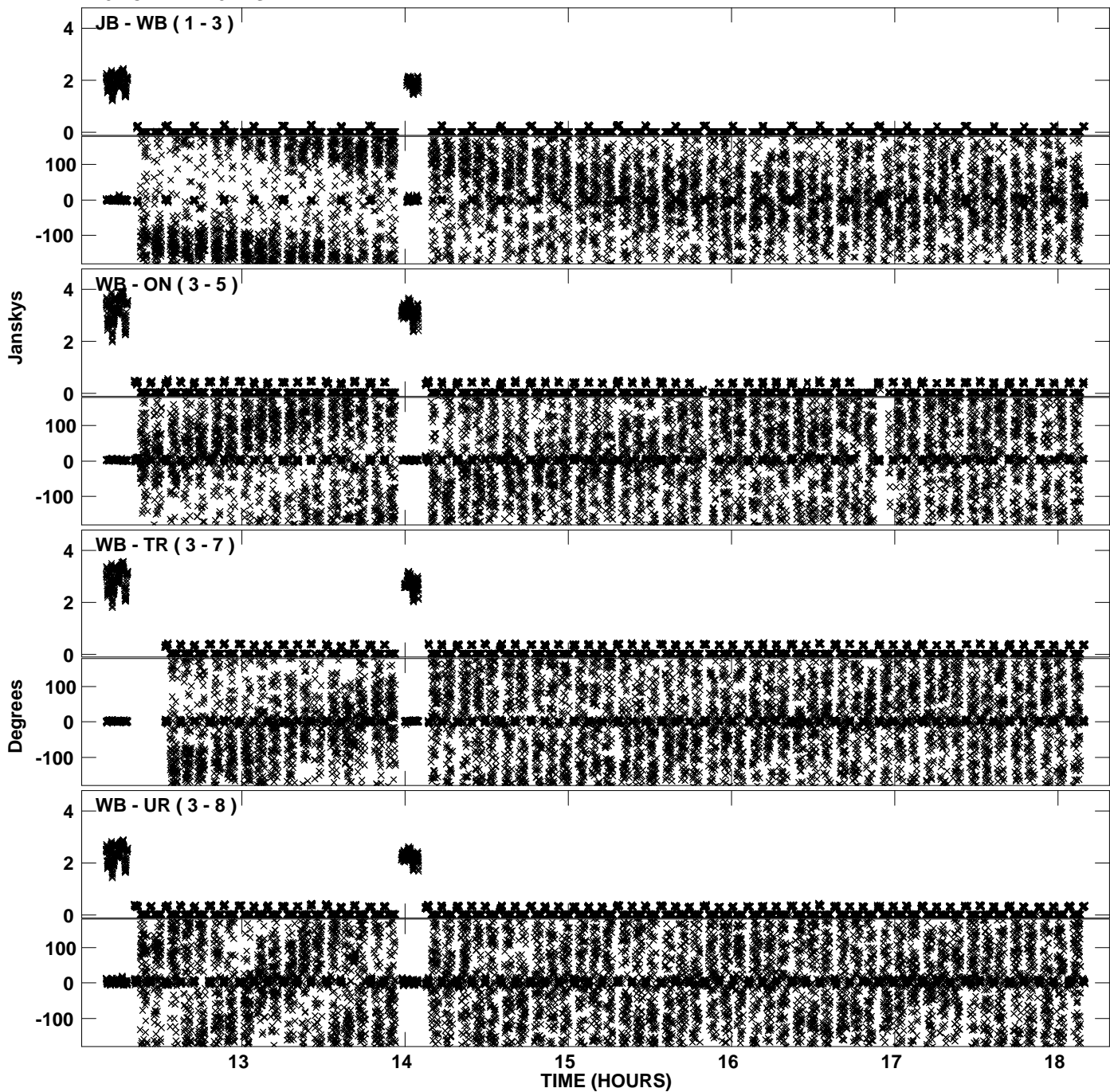
Plot file version 3 created 05-JAN-2012 18:11:56
Amplitude andPhase vs Time for EP068D 2.UVDATA.1 Vect aver. CL # 3
IF 2 CHAN 1 - 32 STK LL



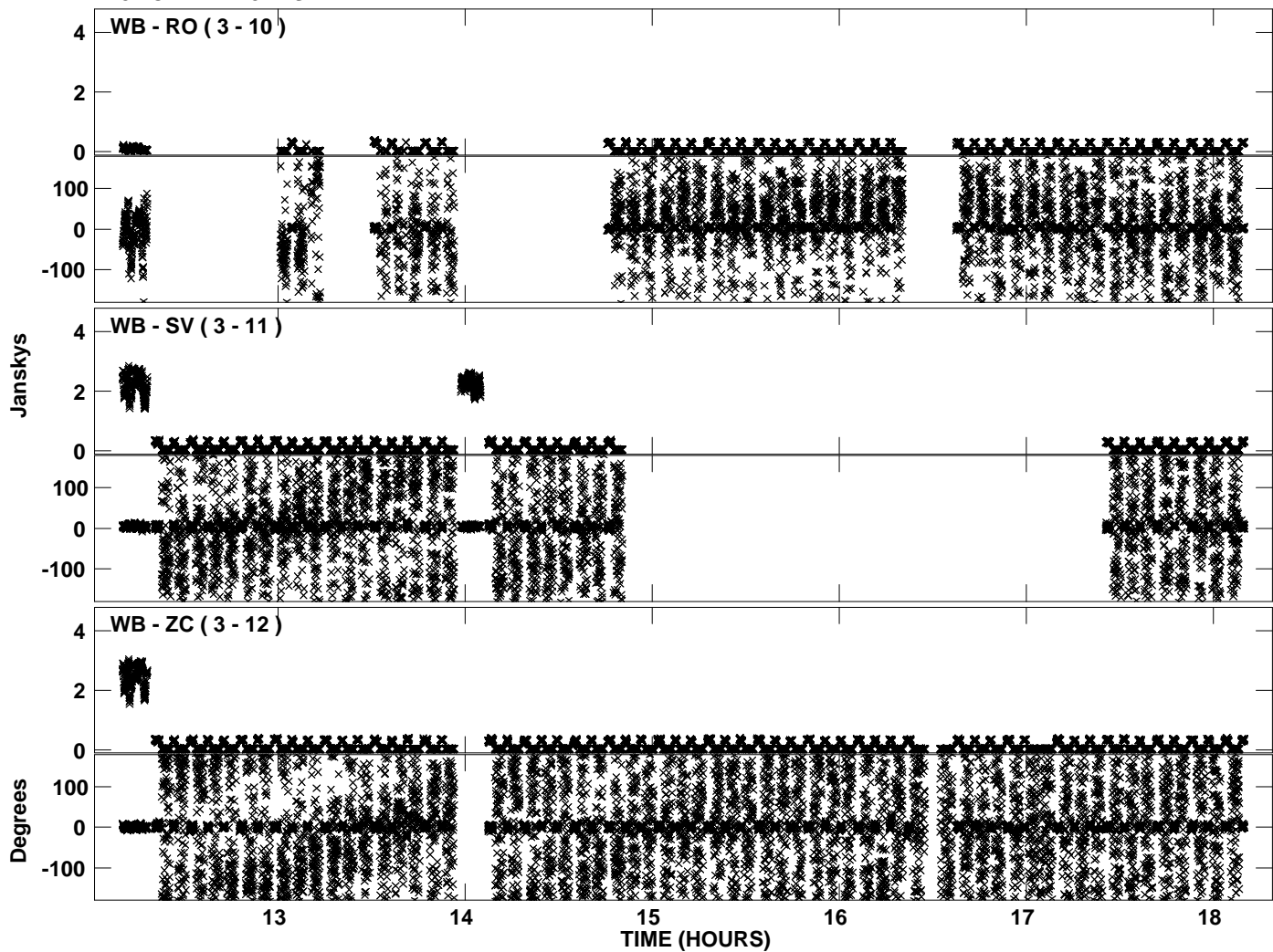
PLot file version 4 created 05-JAN-2012 18:11:56
Amplitude andPhase vs Time for EP068D 2.UVDATA.1 Vect aver. CL # 3
IF 2 CHAN 1 - 32 STK LL



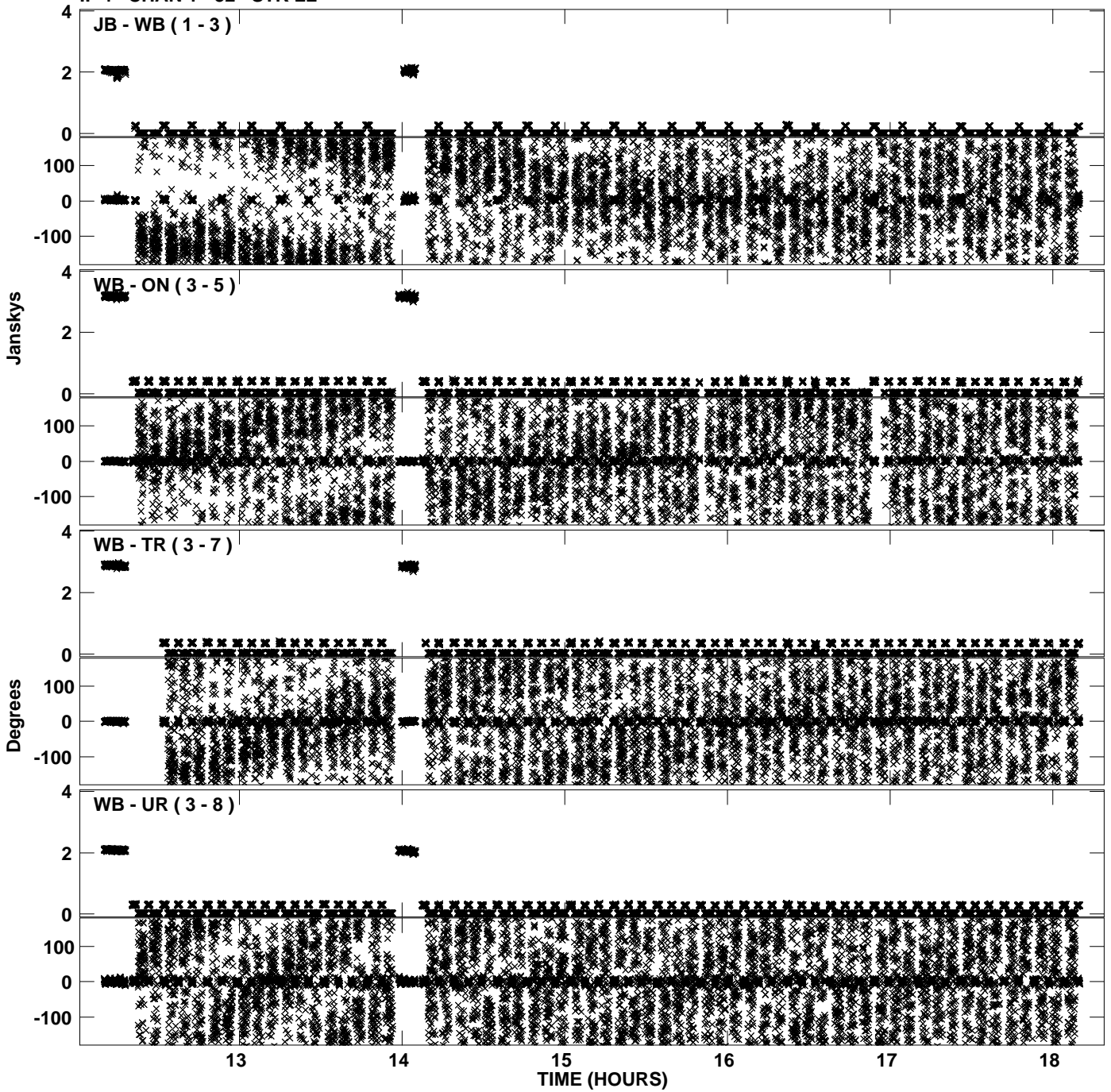
Plot file version 5 created 05-JAN-2012 18:12:04
Amplitude andPhase vs Time for EP068D 2.UVDATA.1 Vect aver. CL # 3
IF 3 CHAN 1 - 32 STK LL



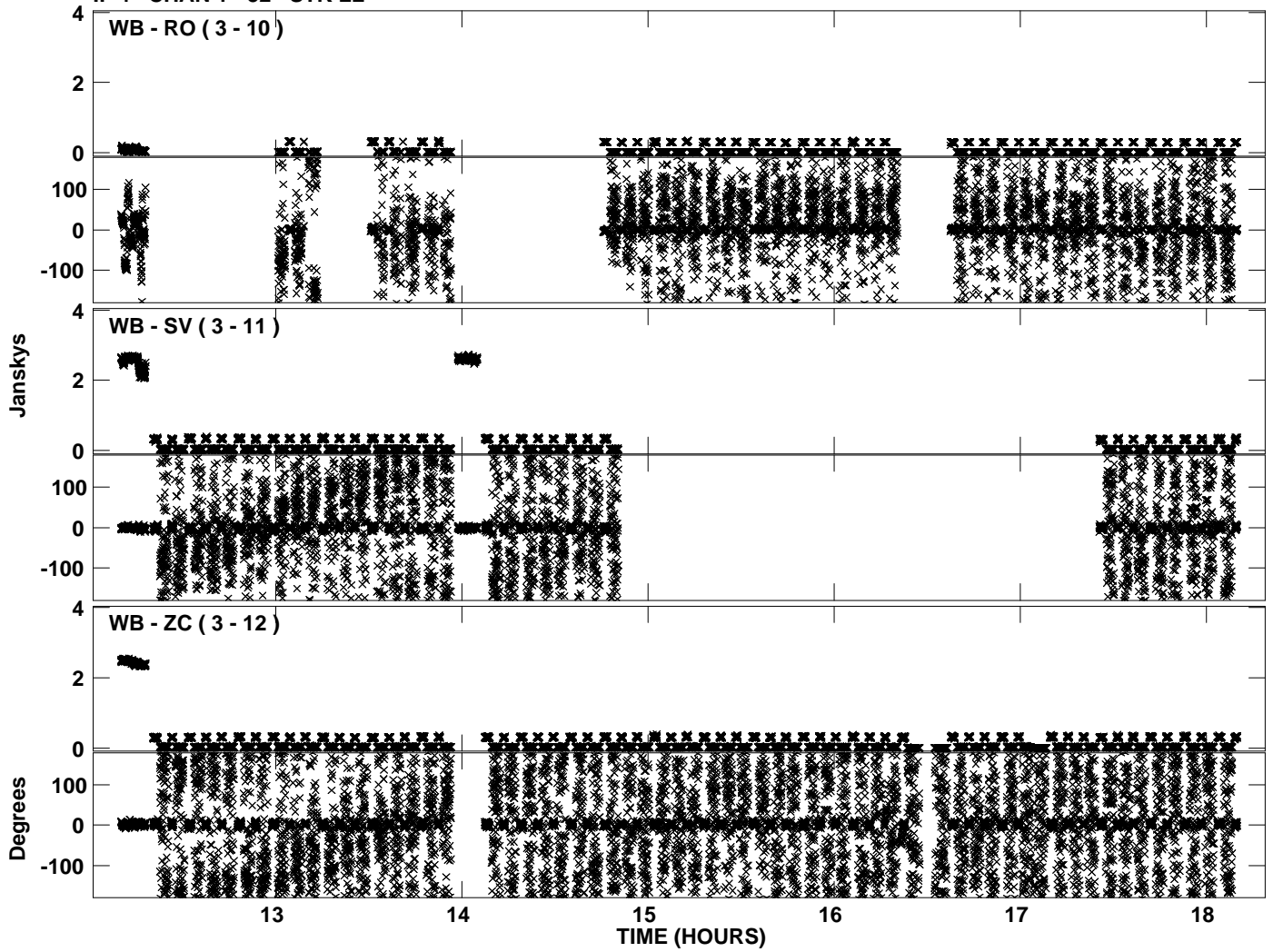
Plot file version 6 created 05-JAN-2012 18:12:04
Amplitude andPhase vs Time for EP068D 2.UVDATA.1 Vect aver. CL # 3
IF 3 CHAN 1 - 32 STK LL



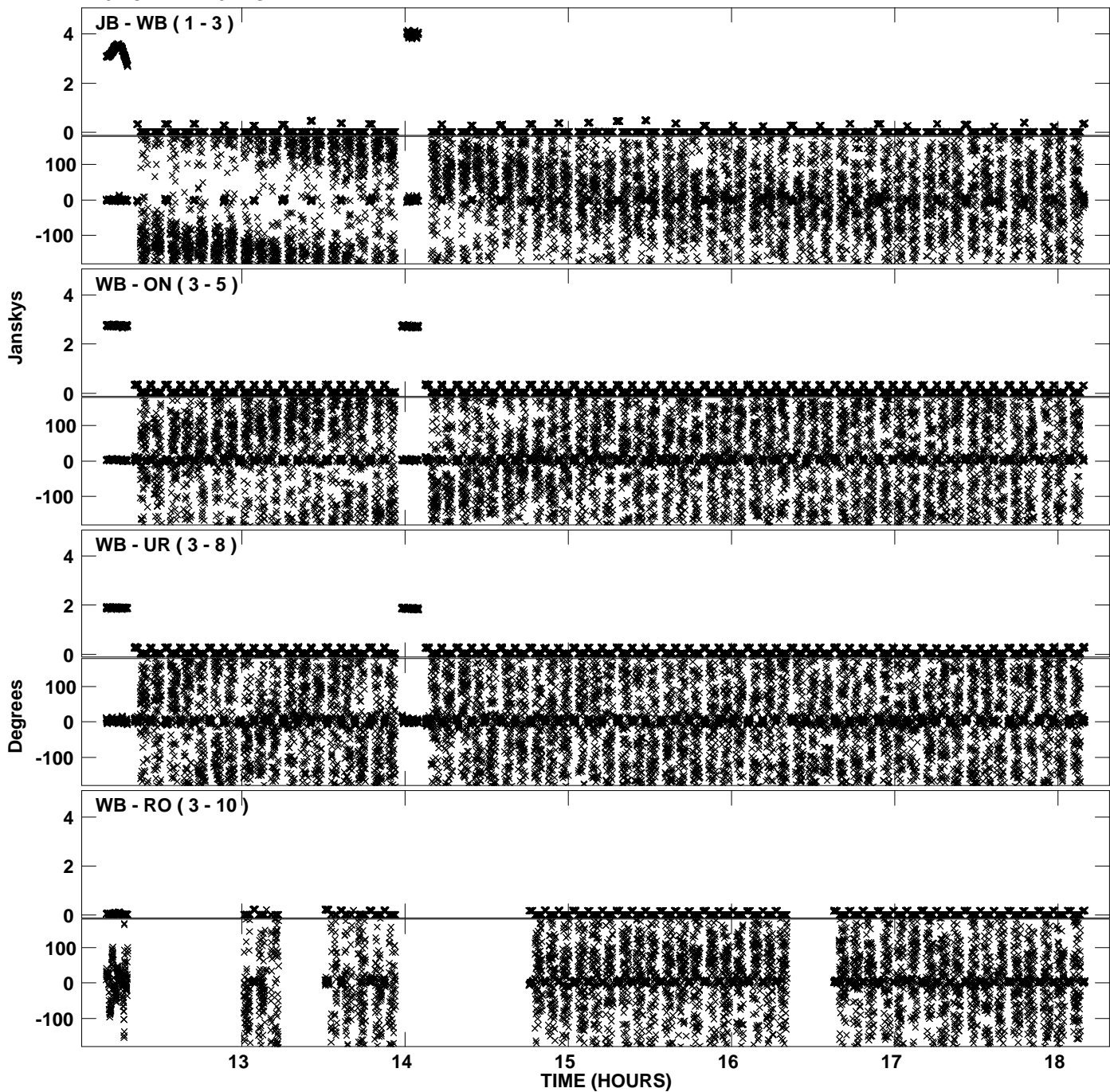
Plot file version 7 created 05-JAN-2012 18:12:12
Amplitude andPhase vs Time for EP068D 2.UVDATA.1 Vect aver. CL # 3
IF 4 CHAN 1 - 32 STK LL



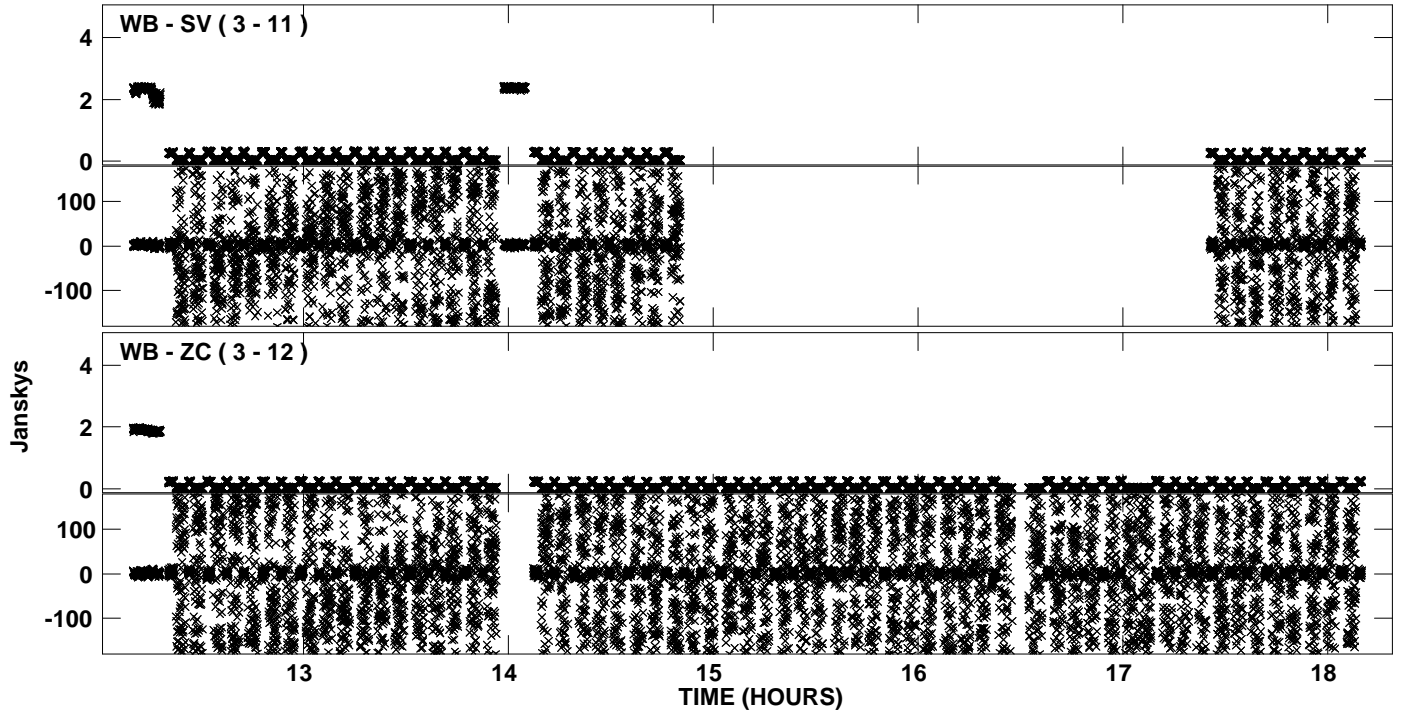
Plot file version 8 created 05-JAN-2012 18:12:12
Amplitude andPhase vs Time for EP068D 2.UVDATA.1 Vect aver. CL # 3
IF 4 CHAN 1 - 32 STK LL



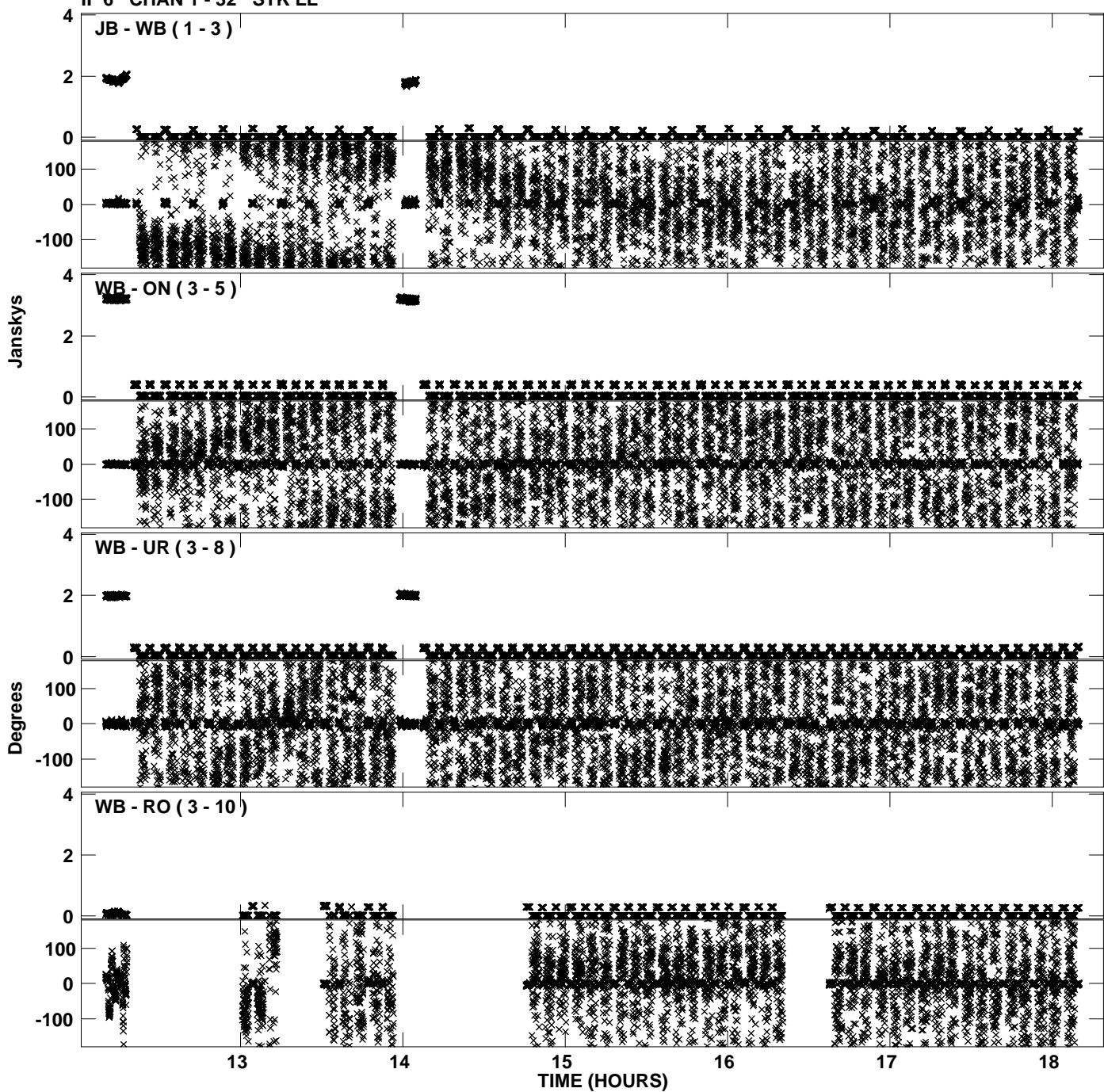
Plot file version 9 created 05-JAN-2012 18:12:20
Amplitude and Phase vs Time for EP068D 2.UVDATA.1 Vect aver. CL # 3
IF 5 CHAN 1 - 32 STK LL



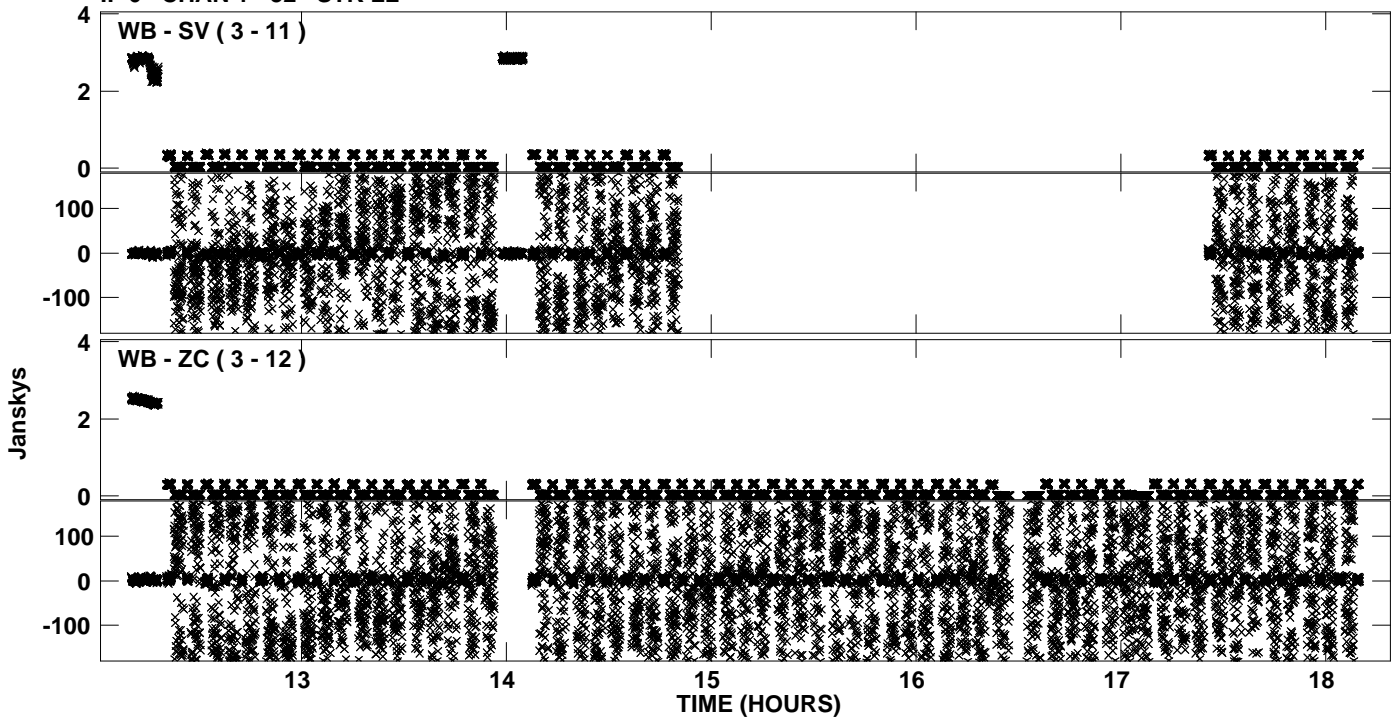
PLot file version 10 created 05-JAN-2012 18:12:20
Amplitude andPhase vs Time for EP068D 2.UVDATA.1 Vect aver. CL # 3
IF 5 CHAN 1 - 32 STK LL



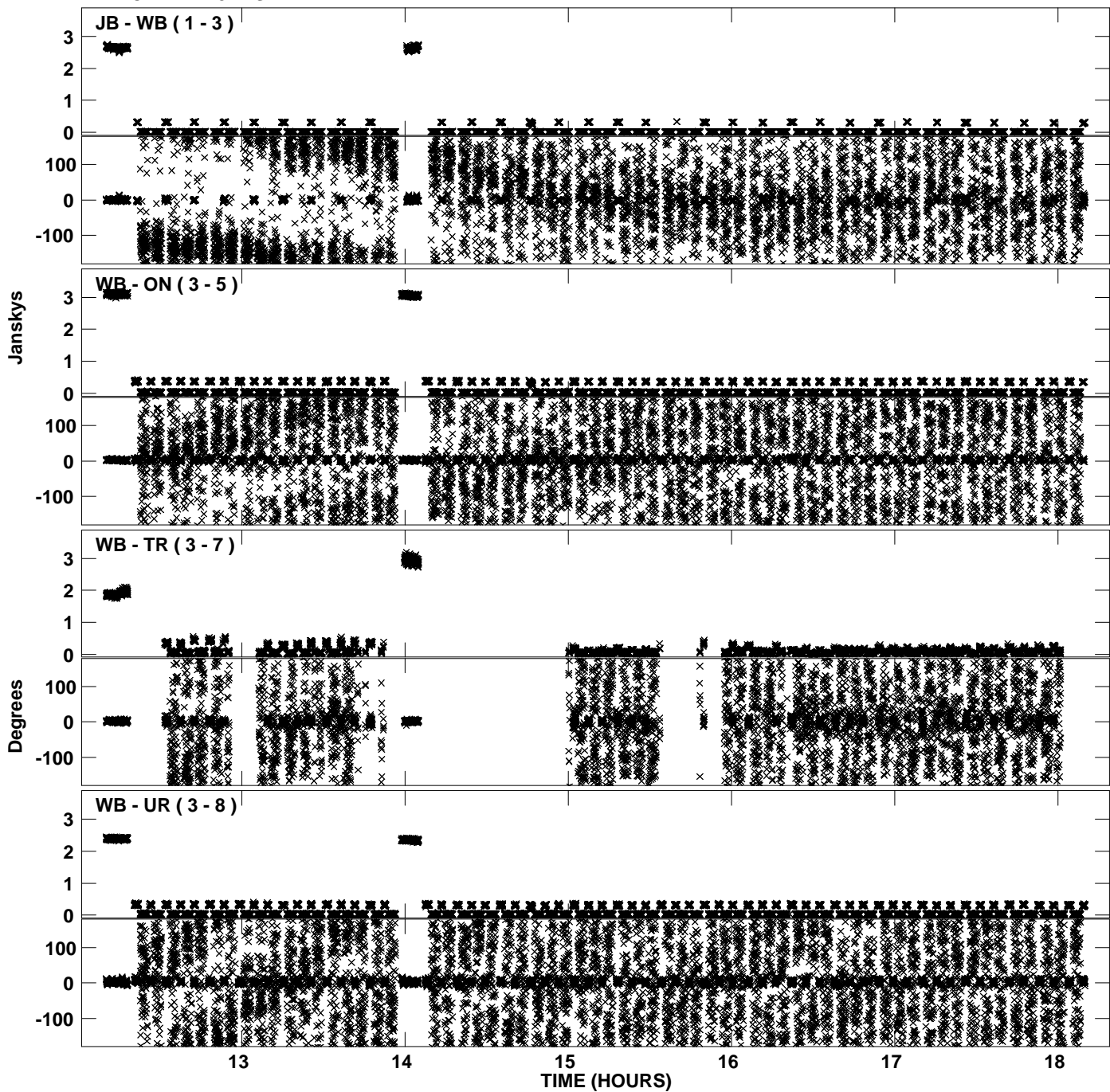
Plot file version 11 created 05-JAN-2012 18:12:27
Amplitude and Phase vs Time for EP068D 2.UVDATA.1 Vect aver. CL # 3
IF 6 CHAN 1 - 32 STK LL



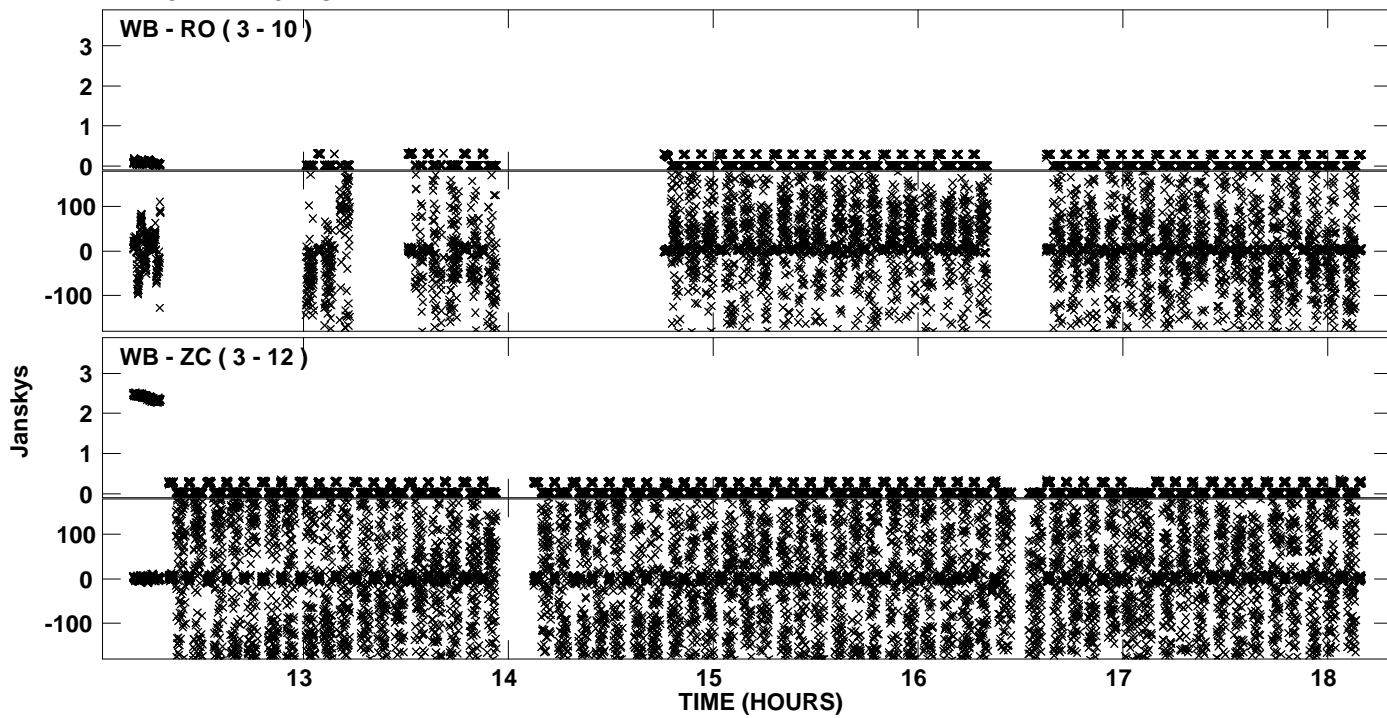
Plot file version 12 created 05-JAN-2012 18:12:27
Amplitude andPhase vs Time for EP068D 2.UVDATA.1 Vect aver. CL # 3
IF 6 CHAN 1 - 32 STK LL



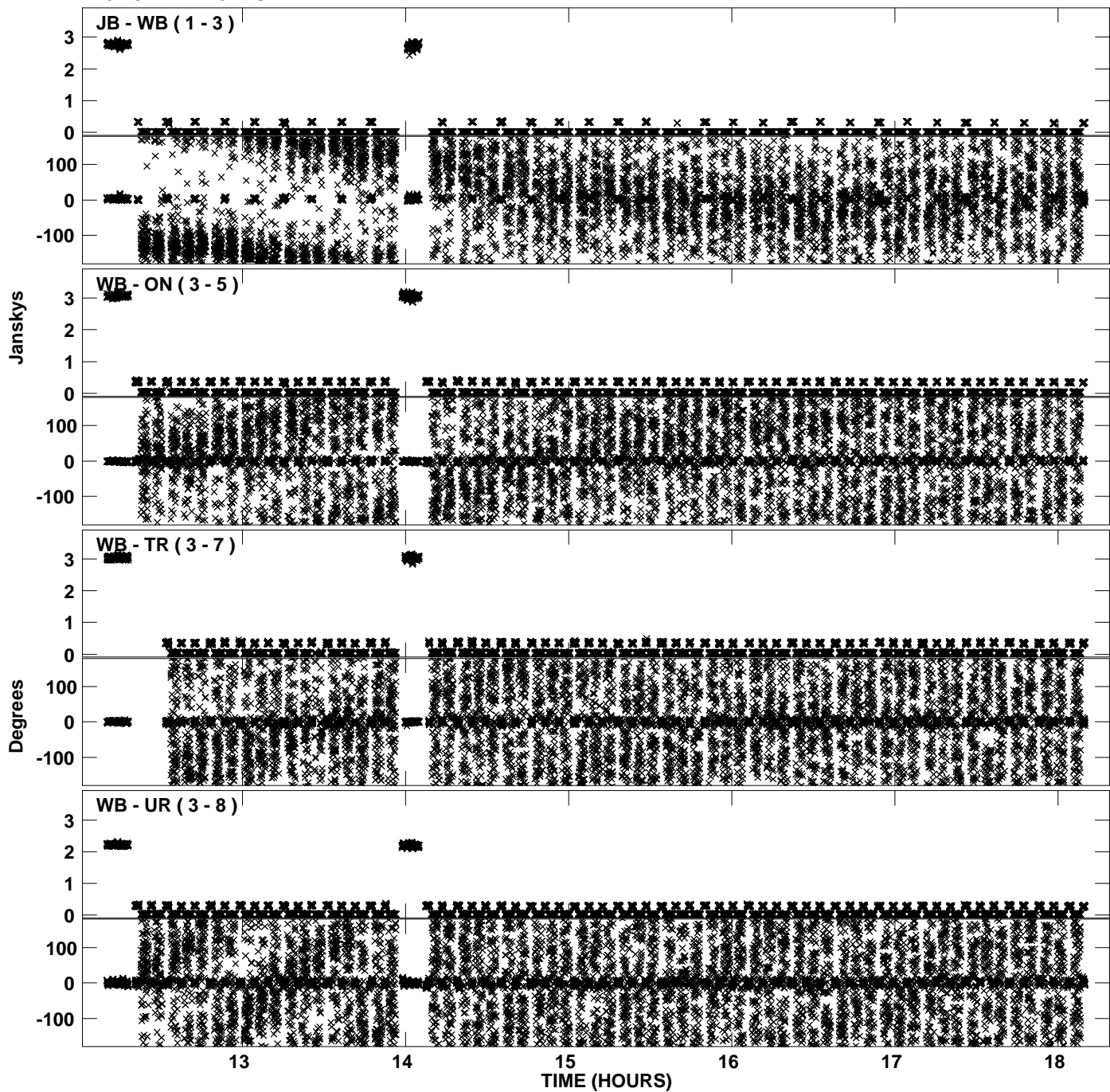
PLot file version 13 created 05-JAN-2012 18:12:34
Amplitude andPhase vs Time for EP068D 2.UVDATA.1 Vect aver. CL # 3
IF 7 CHAN 1 - 32 STK LL



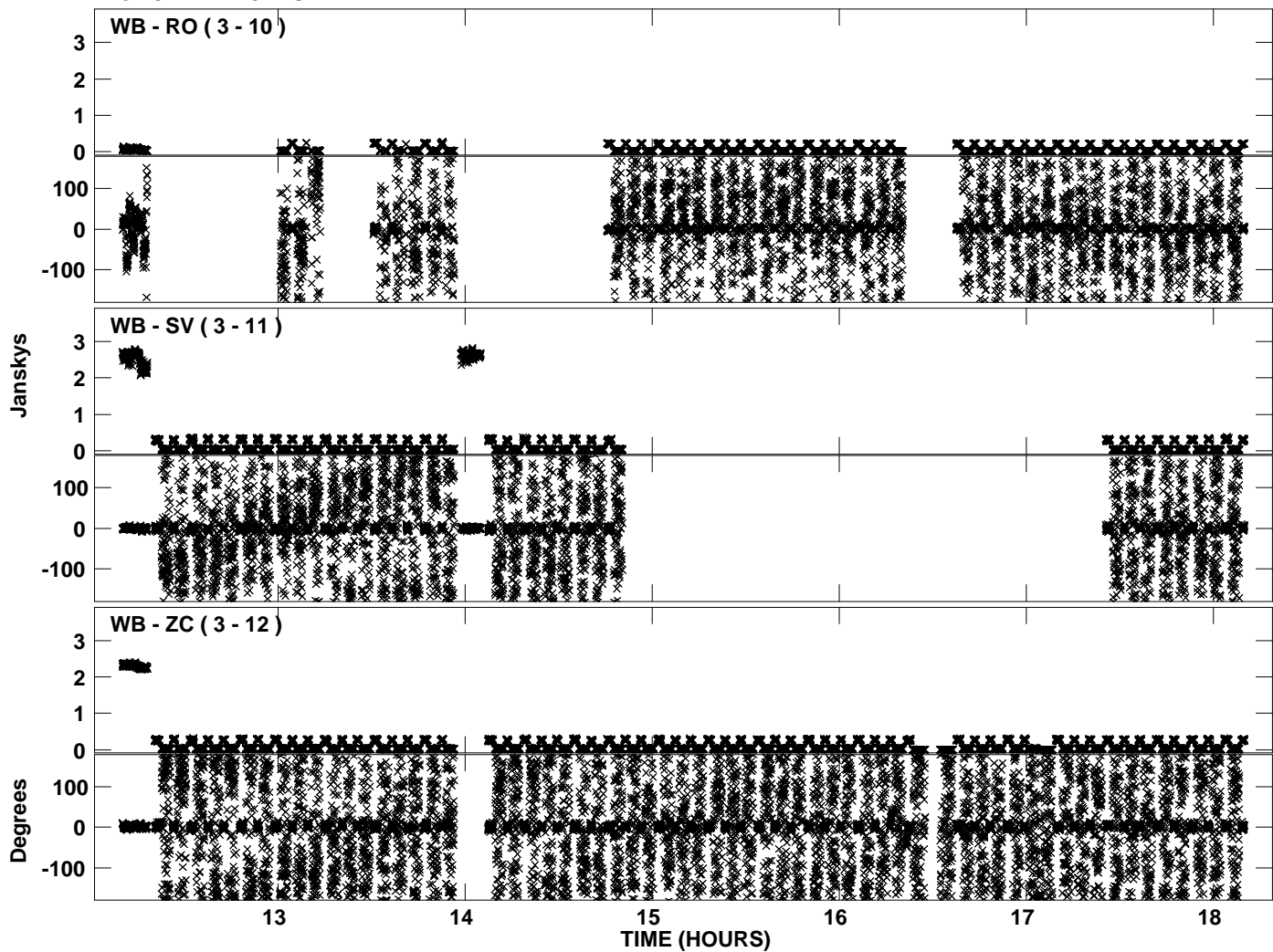
Plot file version 14 created 05-JAN-2012 18:12:34
Amplitude andPhase vs Time for EP068D 2.UVDATA.1 Vect aver. CL # 3
IF 7 CHAN 1 - 32 STK LL



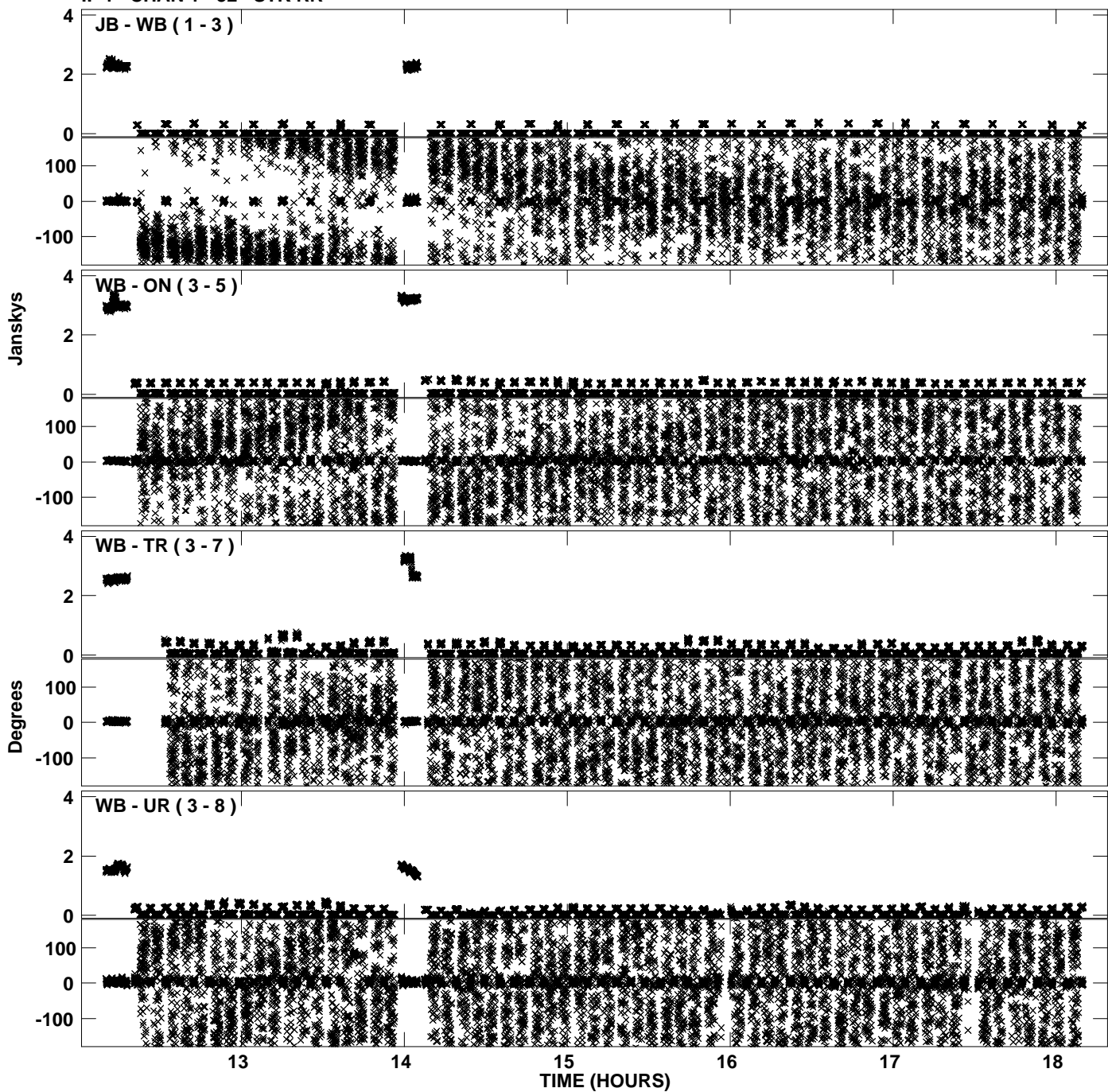
PLot file version 15 created 05-JAN-2012 18:12:42
Amplitude andPhase vs Time for EP068D 2.UVDATA.1 Vect aver. CL # 3
IF 8 CHAN 1 - 32 STK LL



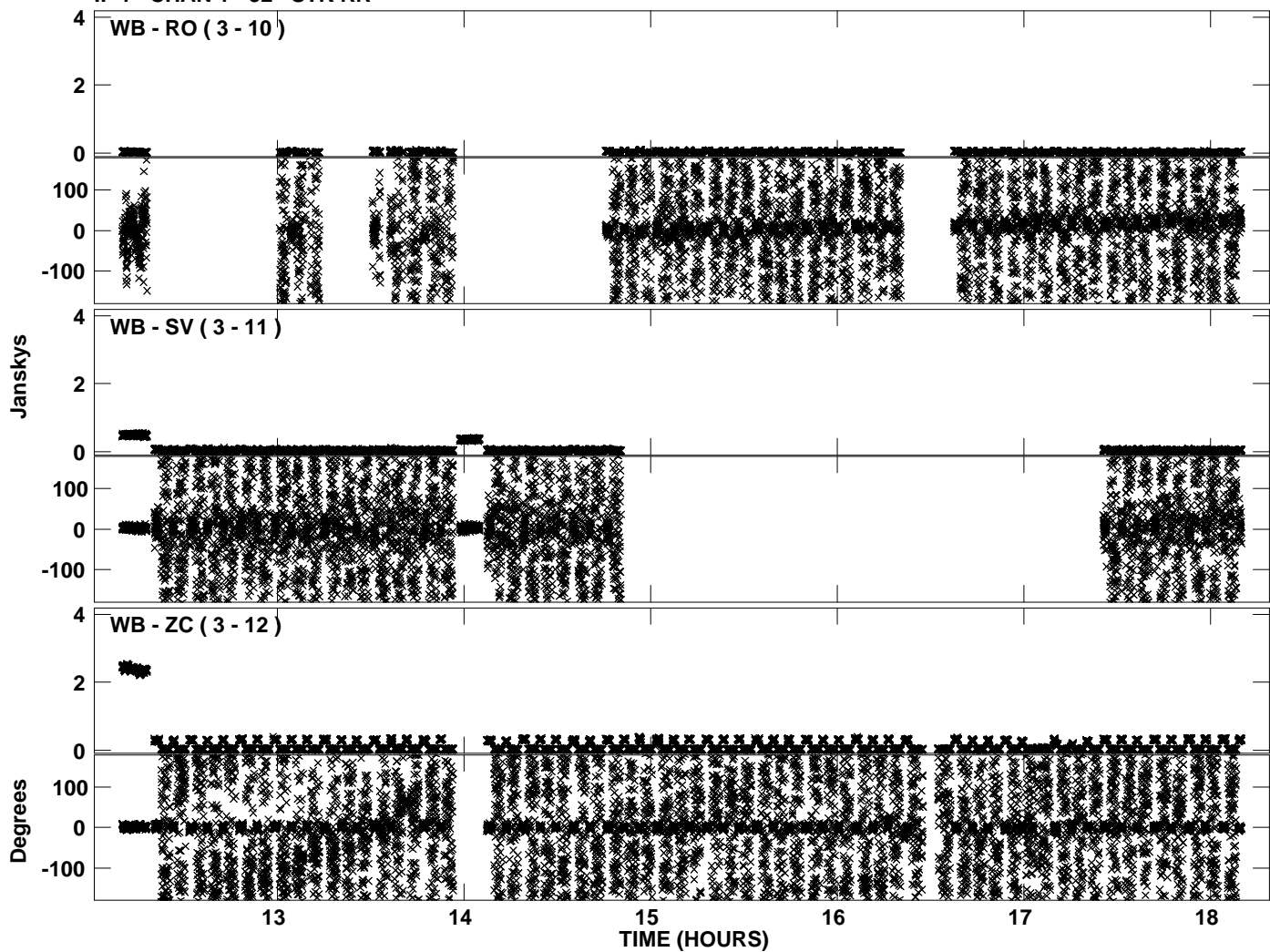
Plot file version 16 created 05-JAN-2012 18:12:42
Amplitude andPhase vs Time for EP068D 2.UVDATA.1 Vect aver. CL # 3
IF 8 CHAN 1 - 32 STK LL



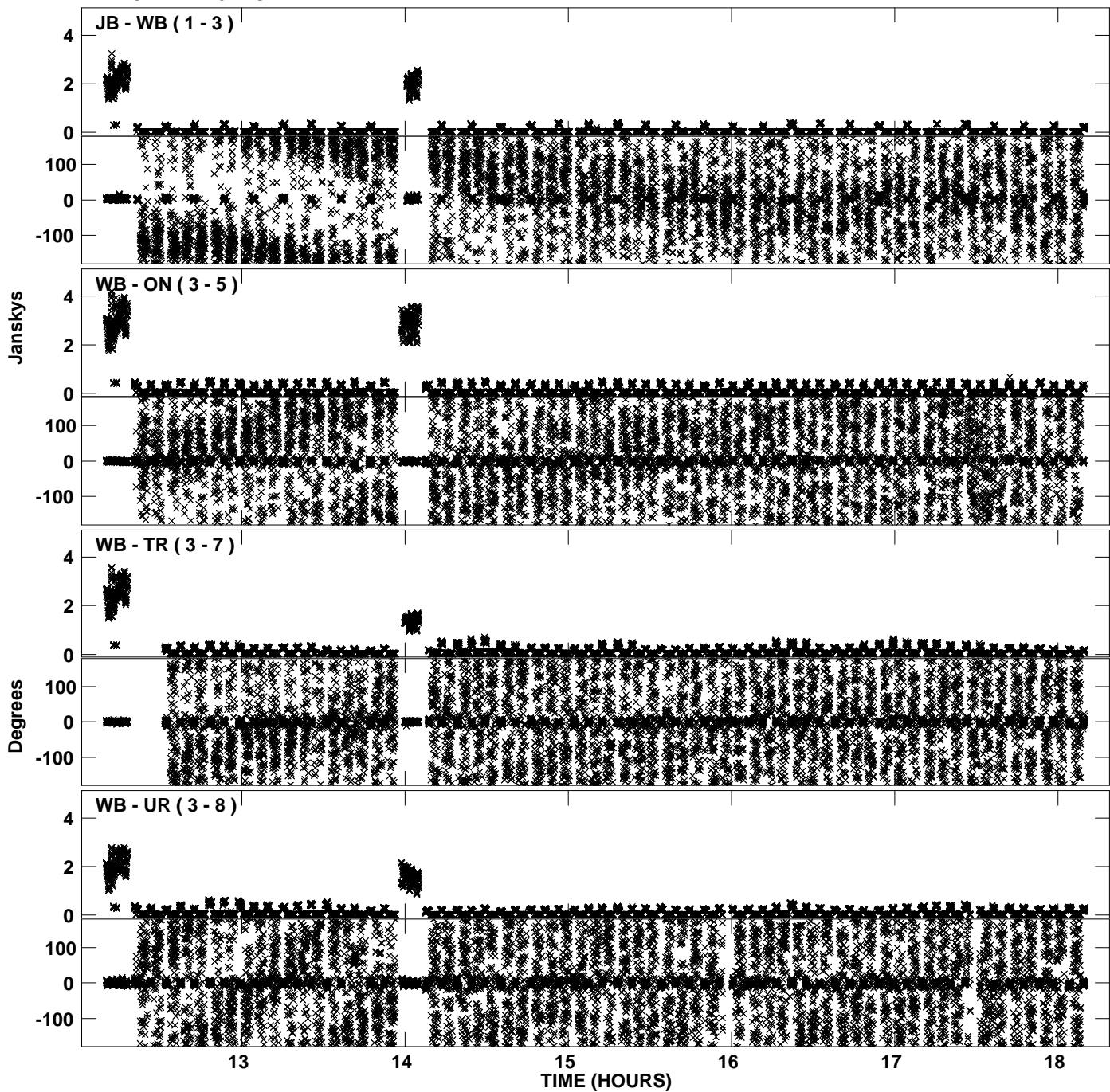
PLot file version 17 created 05-JAN-2012 18:12:49
Amplitude andPhase vs Time for EP068D 2.UVDATA.1 Vect aver. CL # 3
IF 1 CHAN 1 - 32 STK RR



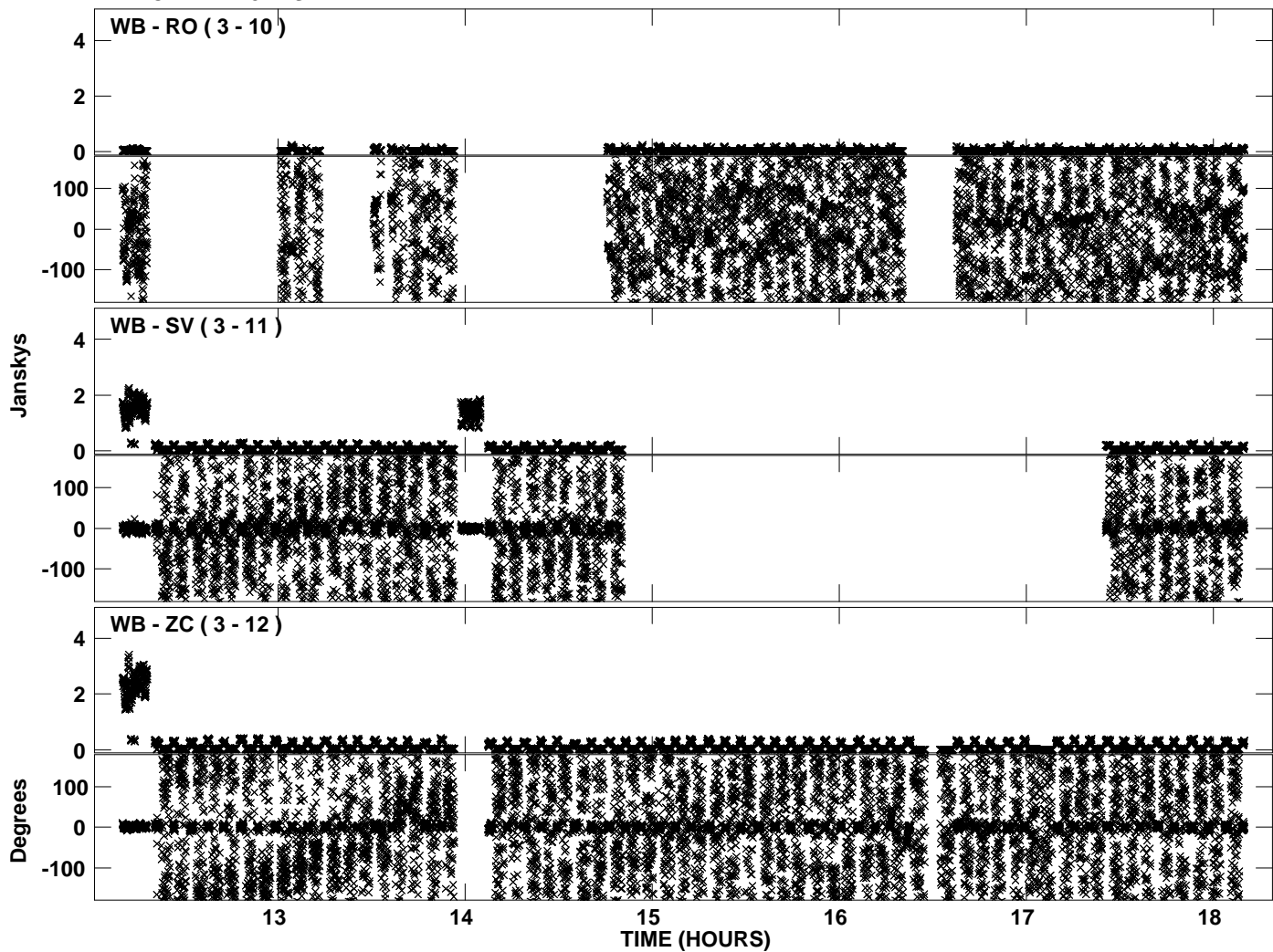
PLot file version 18 created 05-JAN-2012 18:12:49
Amplitude andPhase vs Time for EP068D 2.UVDATA.1 Vect aver. CL # 3
IF 1 CHAN 1 - 32 STK RR



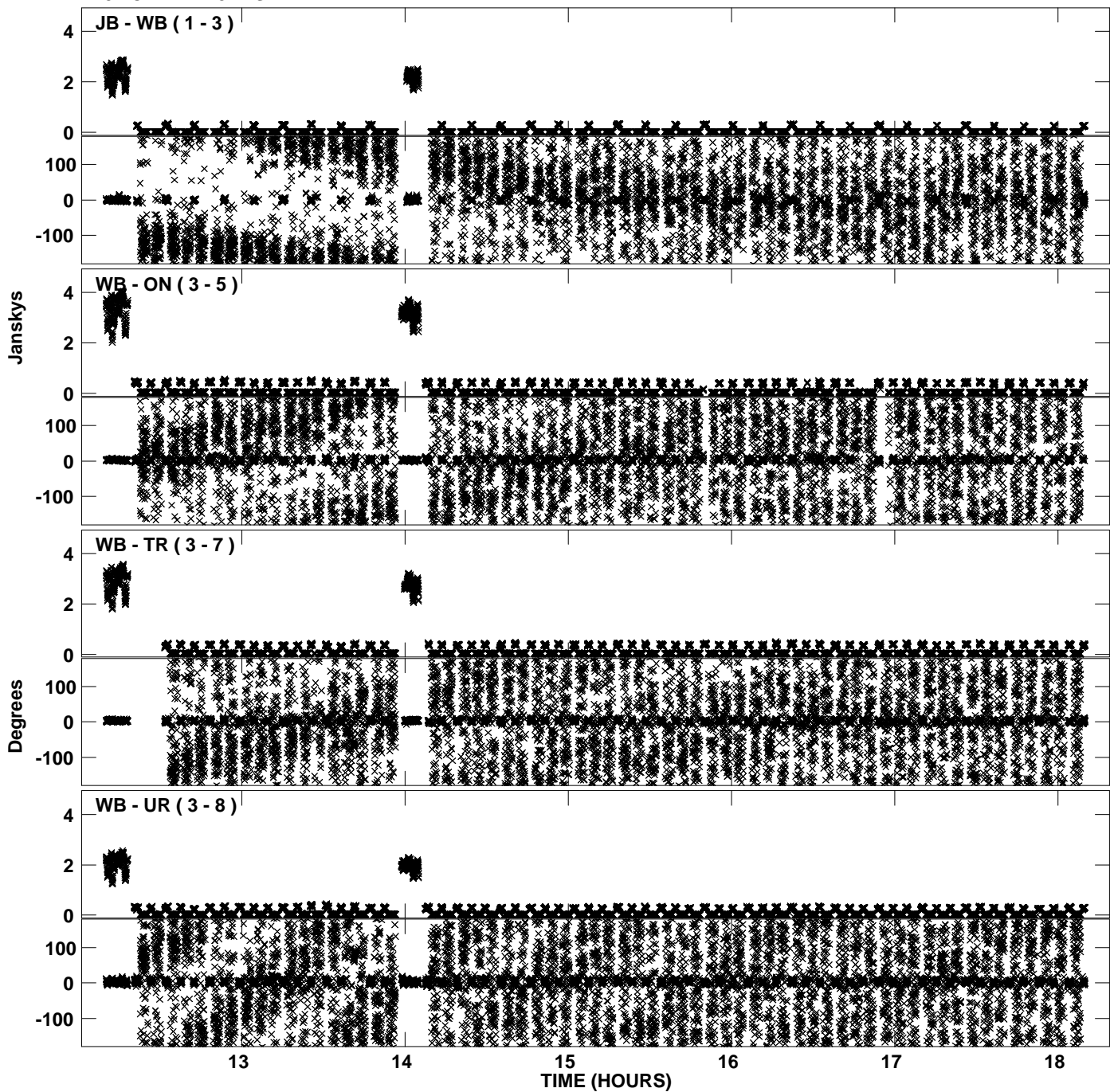
PLot file version 19 created 05-JAN-2012 18:12:56
Amplitude andPhase vs Time for EP068D 2.UVDATA.1 Vect aver. CL # 3
IF 2 CHAN 1 - 32 STK RR



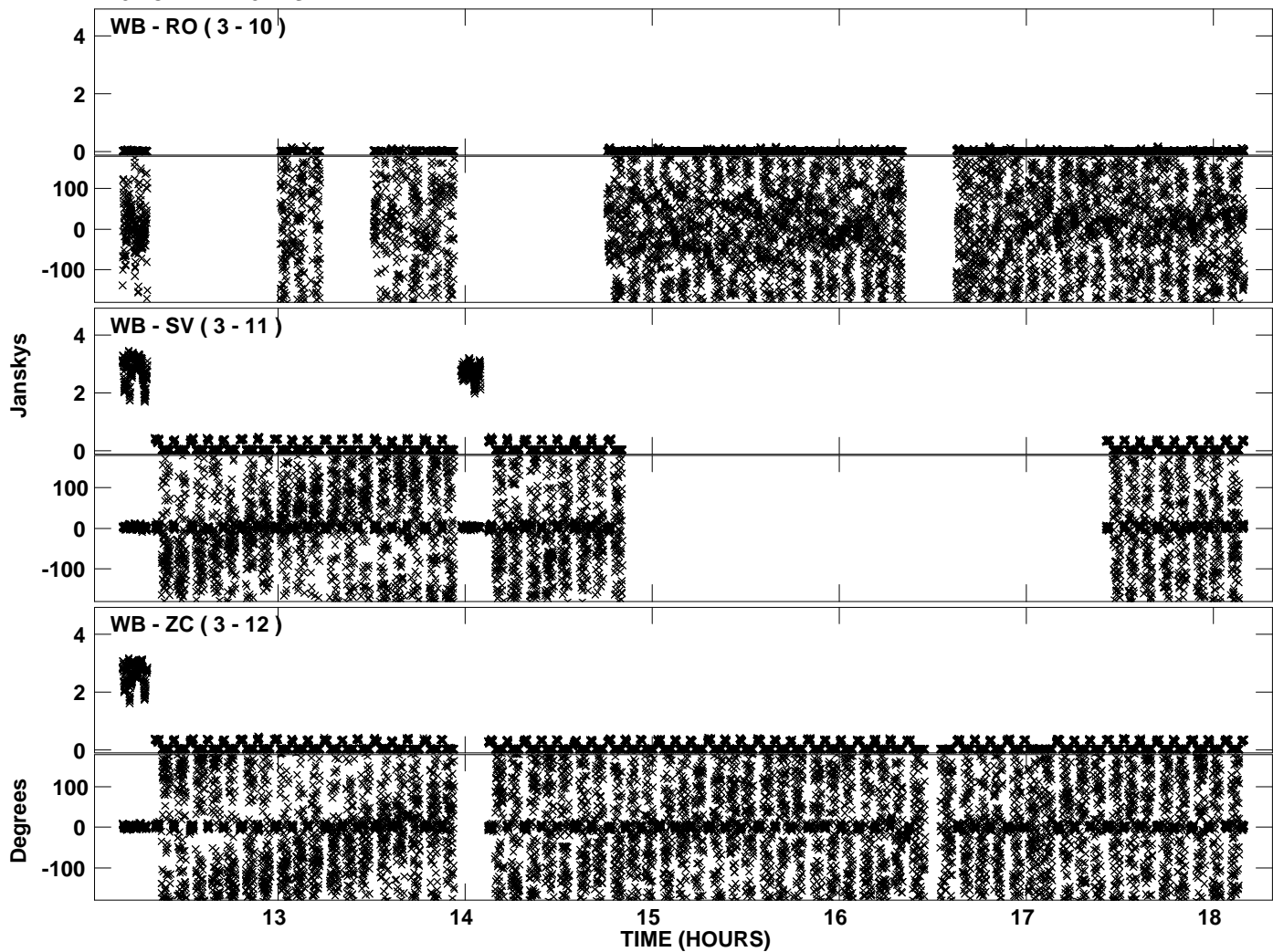
PLot file version 20 created 05-JAN-2012 18:12:56
Amplitude andPhase vs Time for EP068D 2.UVDATA.1 Vect aver. CL # 3
IF 2 CHAN 1 - 32 STK RR



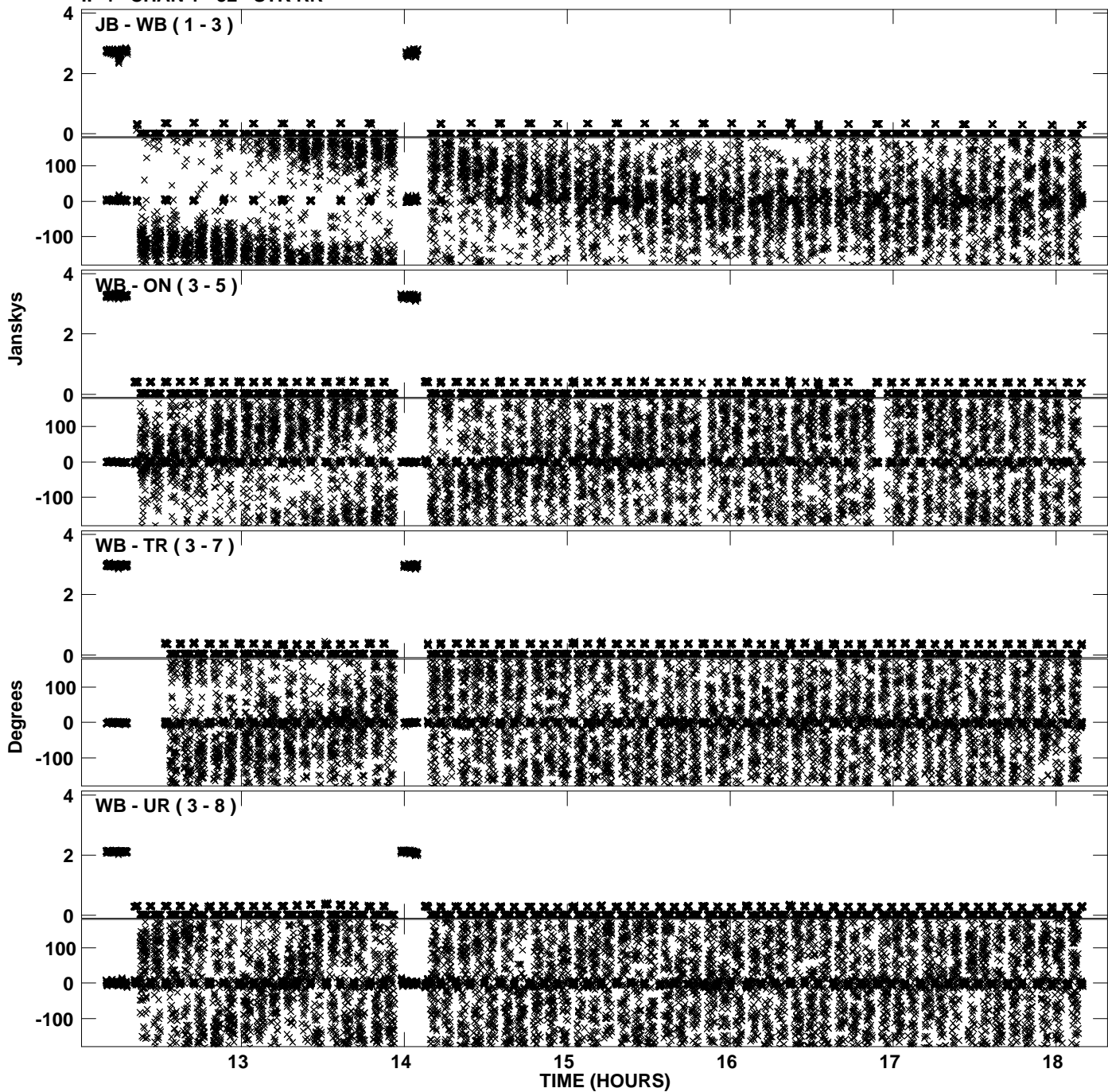
PLot file version 21 created 05-JAN-2012 18:13:03
Amplitude andPhase vs Time for EP068D 2.UVDATA.1 Vect aver. CL # 3
IF 3 CHAN 1 - 32 STK RR



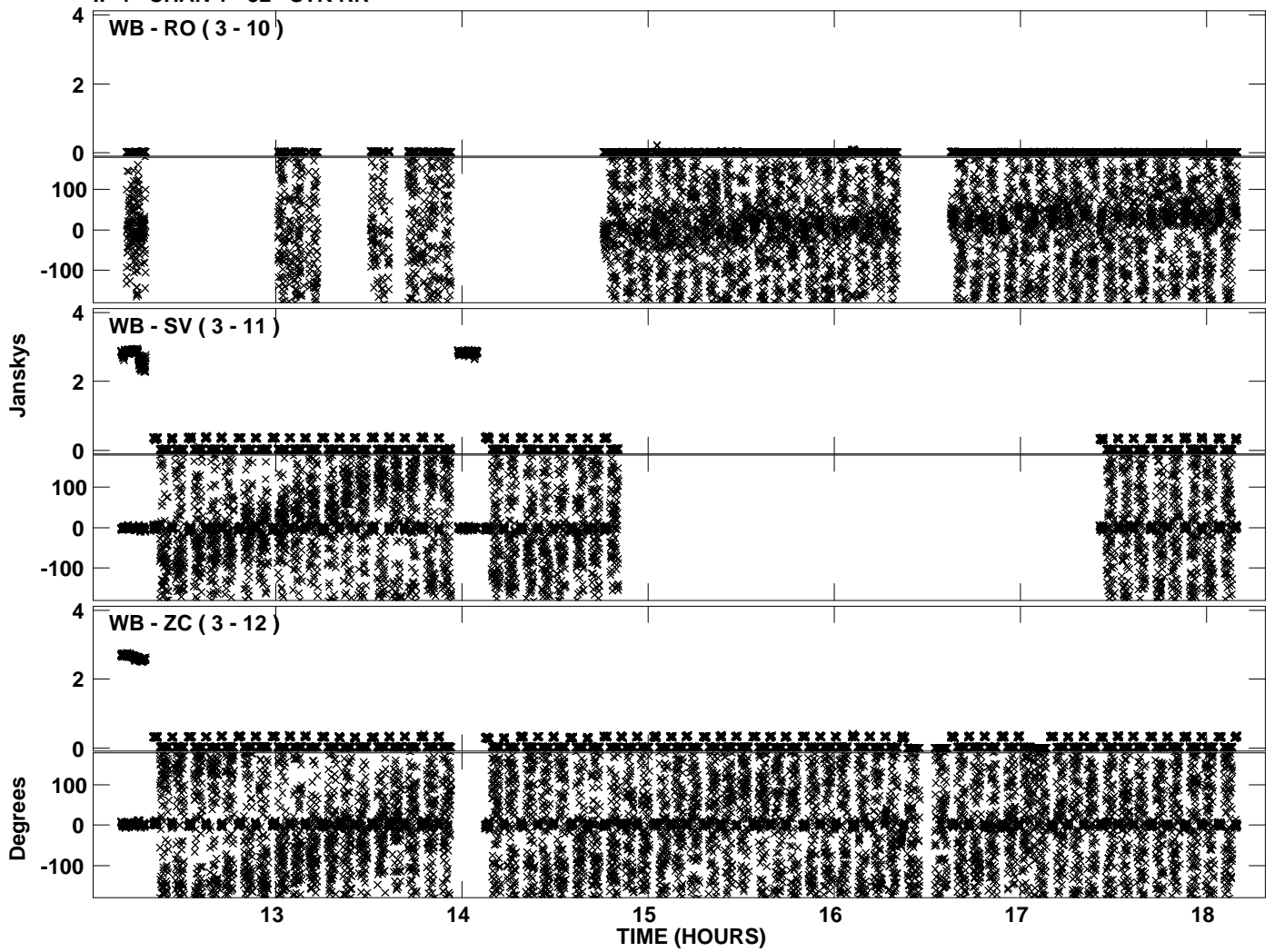
PLot file version 22 created 05-JAN-2012 18:13:03
Amplitude andPhase vs Time for EP068D 2.UVDATA.1 Vect aver. CL # 3
IF 3 CHAN 1 - 32 STK RR



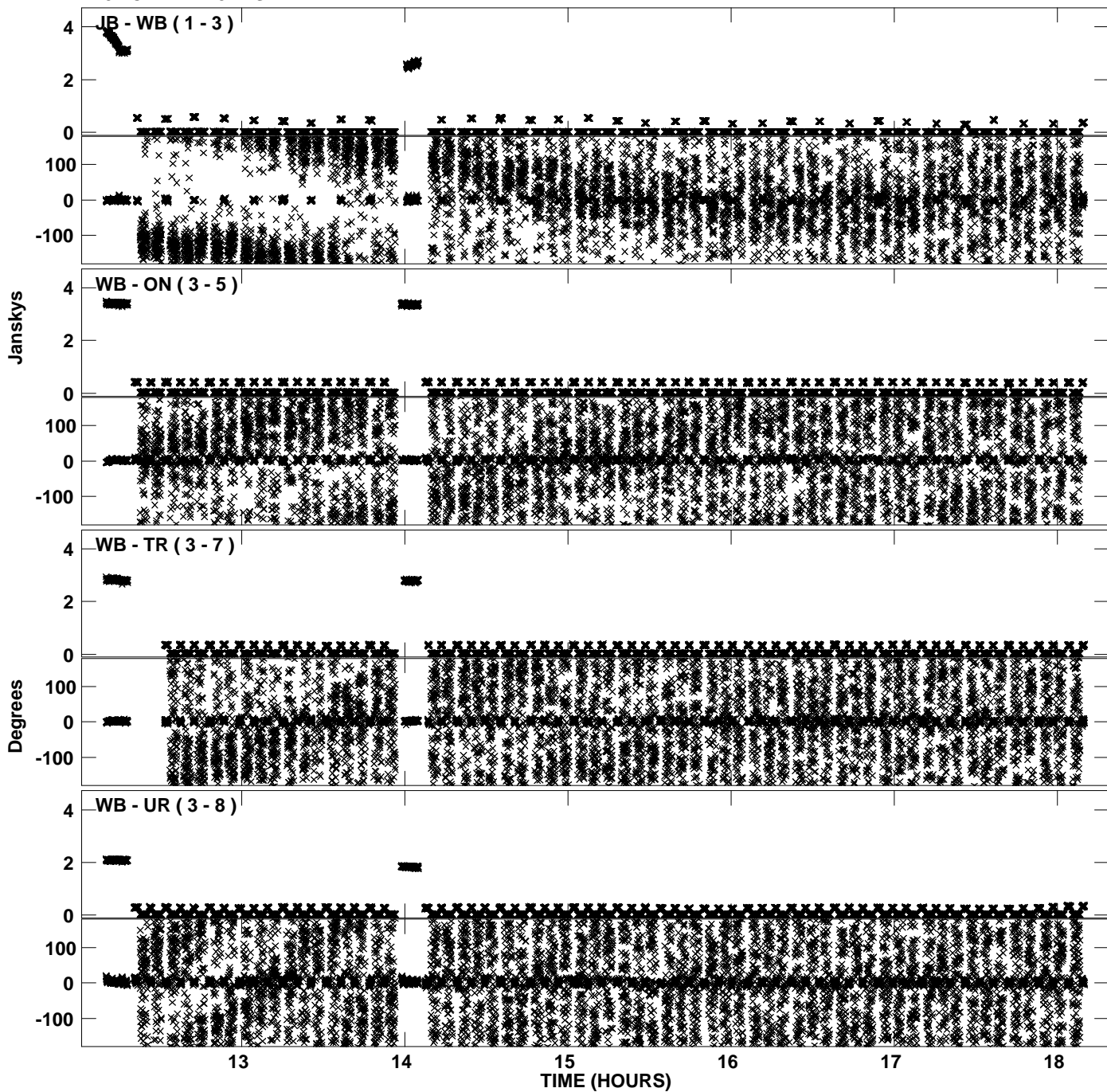
PLot file version 23 created 05-JAN-2012 18:13:10
Amplitude andPhase vs Time for EP068D 2.UVDATA.1 Vect aver. CL # 3
IF 4 CHAN 1 - 32 STK RR



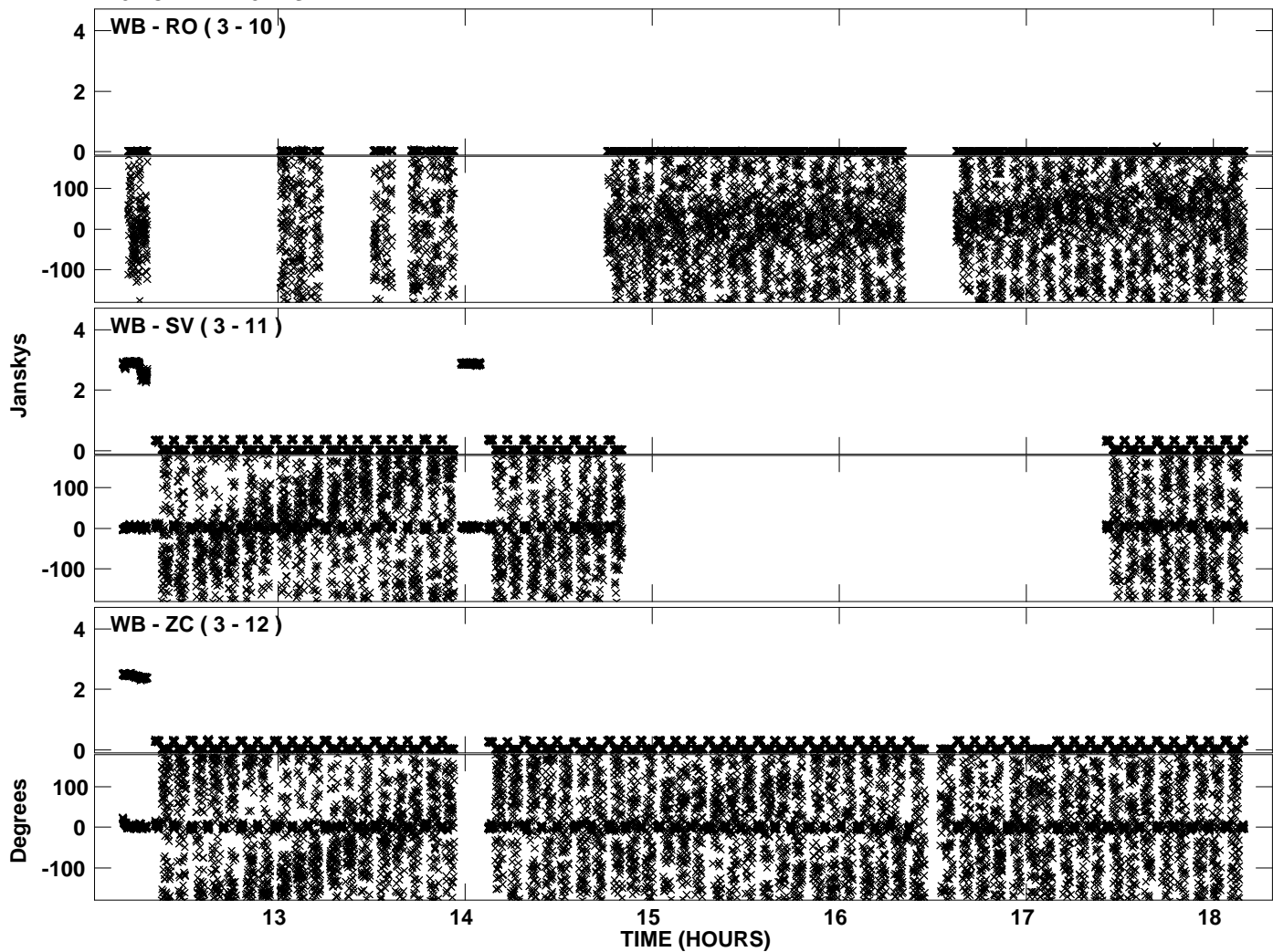
PLot file version 24 created 05-JAN-2012 18:13:10
Amplitude andPhase vs Time for EP068D 2.UVDATA.1 Vect aver. CL # 3
IF 4 CHAN 1 - 32 STK RR



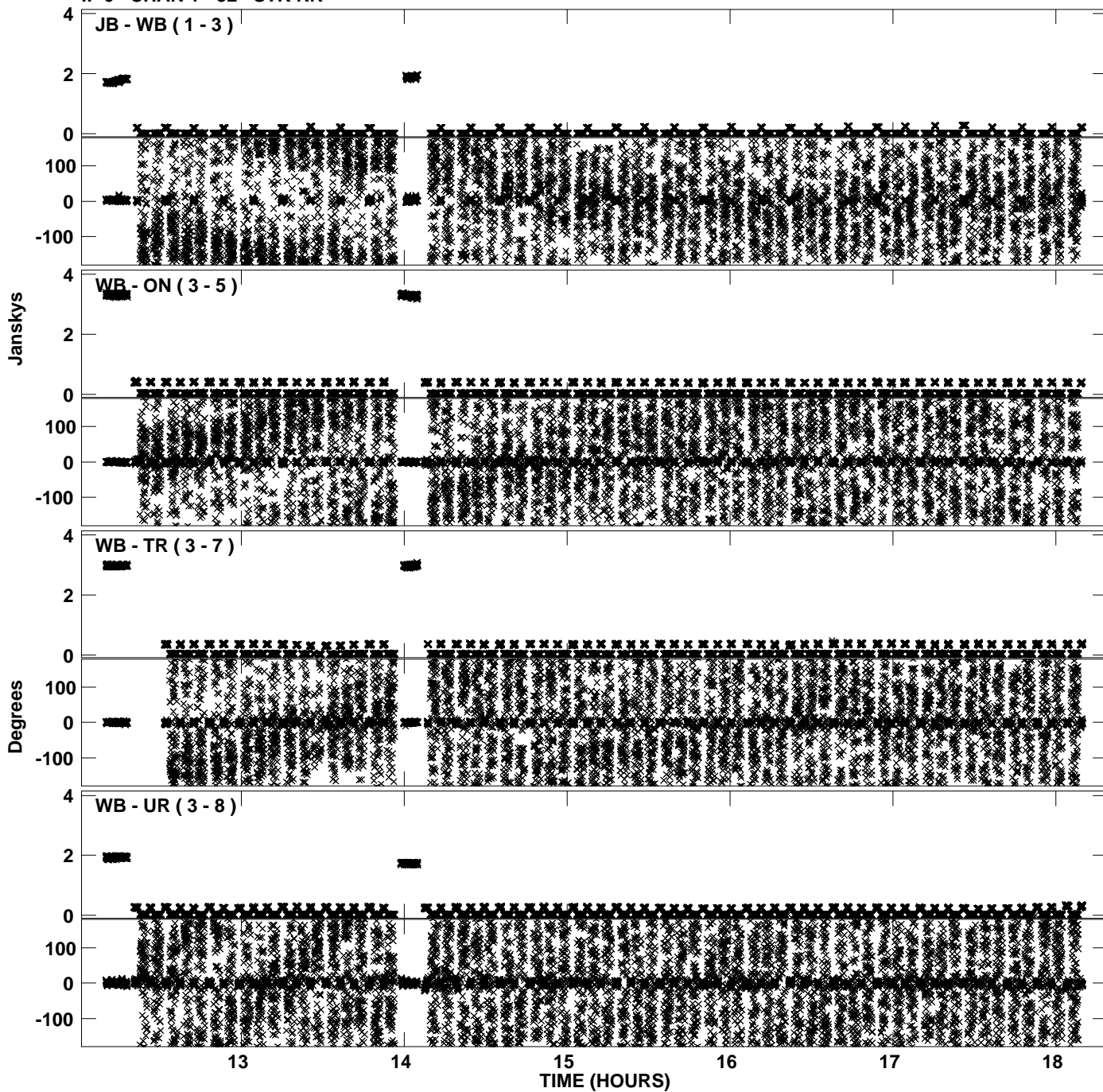
PLot file version 25 created 05-JAN-2012 18:13:17
Amplitude andPhase vs Time for EP068D 2.UVDATA.1 Vect aver. CL # 3
IF 5 CHAN 1 - 32 STK RR



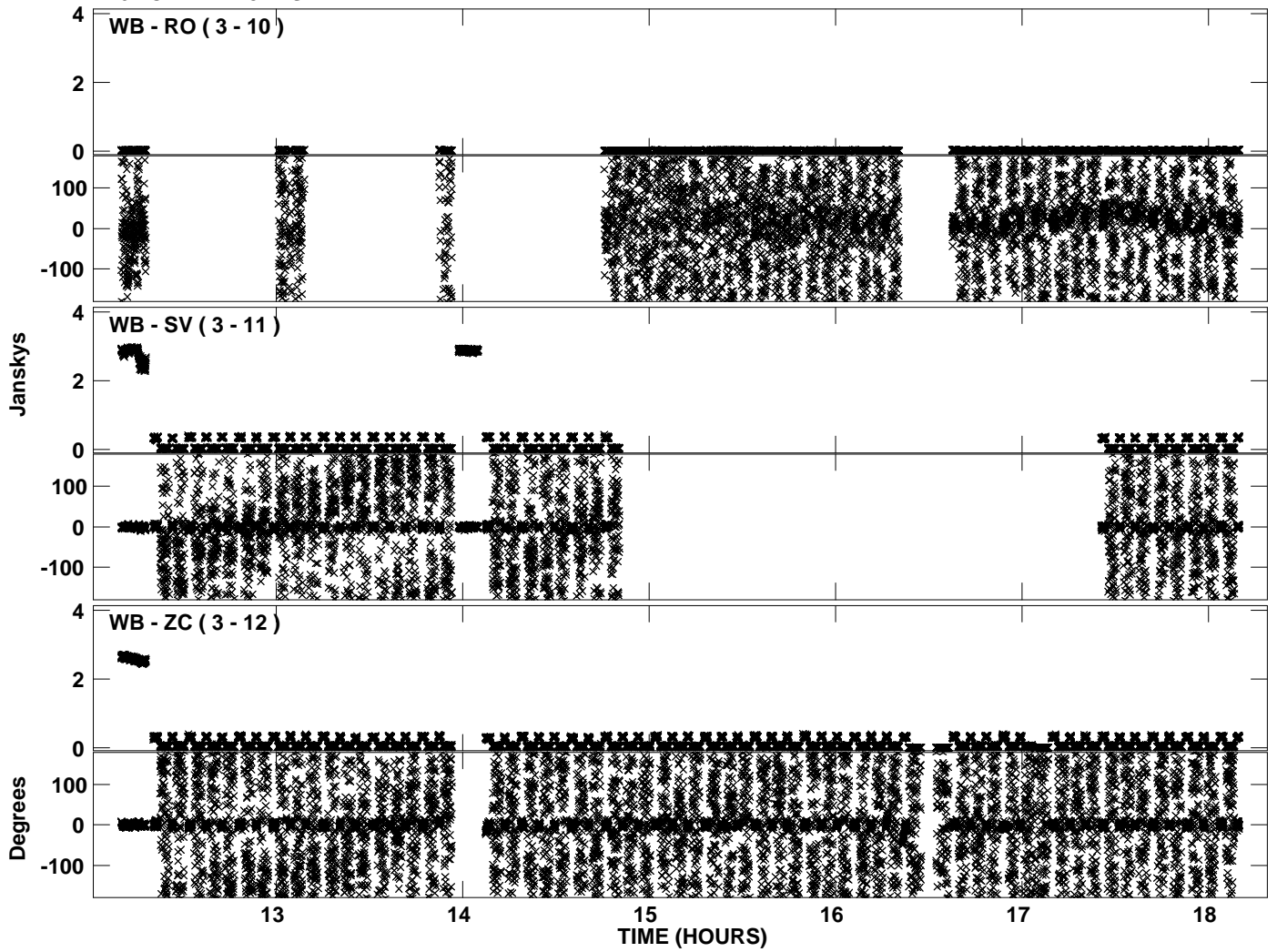
PLot file version 26 created 05-JAN-2012 18:13:17
Amplitude andPhase vs Time for EP068D 2.UVDATA.1 Vect aver. CL # 3
IF 5 CHAN 1 - 32 STK RR



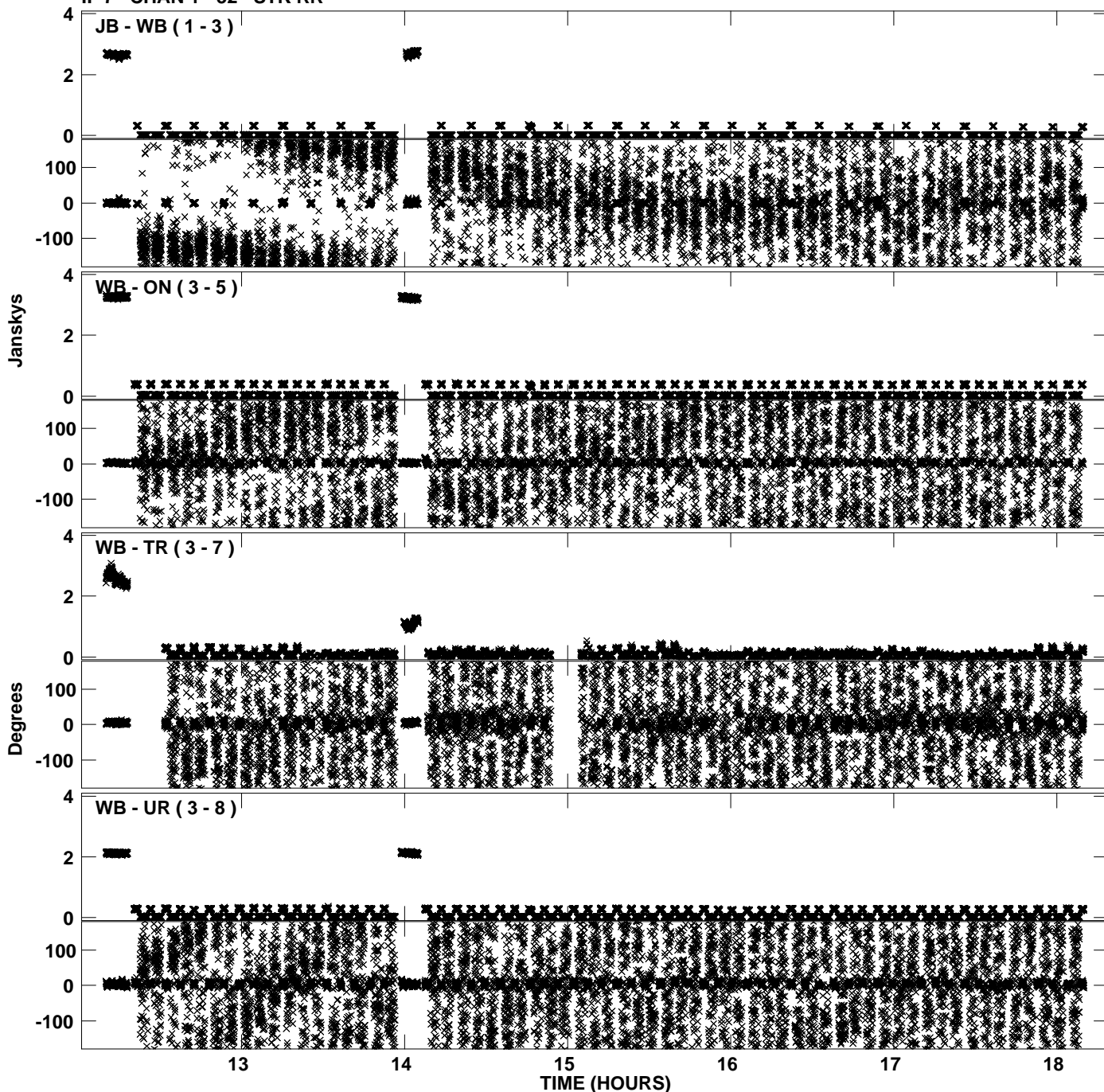
PLot file version 27 created 05-JAN-2012 18:13:24
Amplitude andPhase vs Time for EP068D 2.UVDATA.1 Vect aver. CL # 3
IF 6 CHAN 1 - 32 STK RR



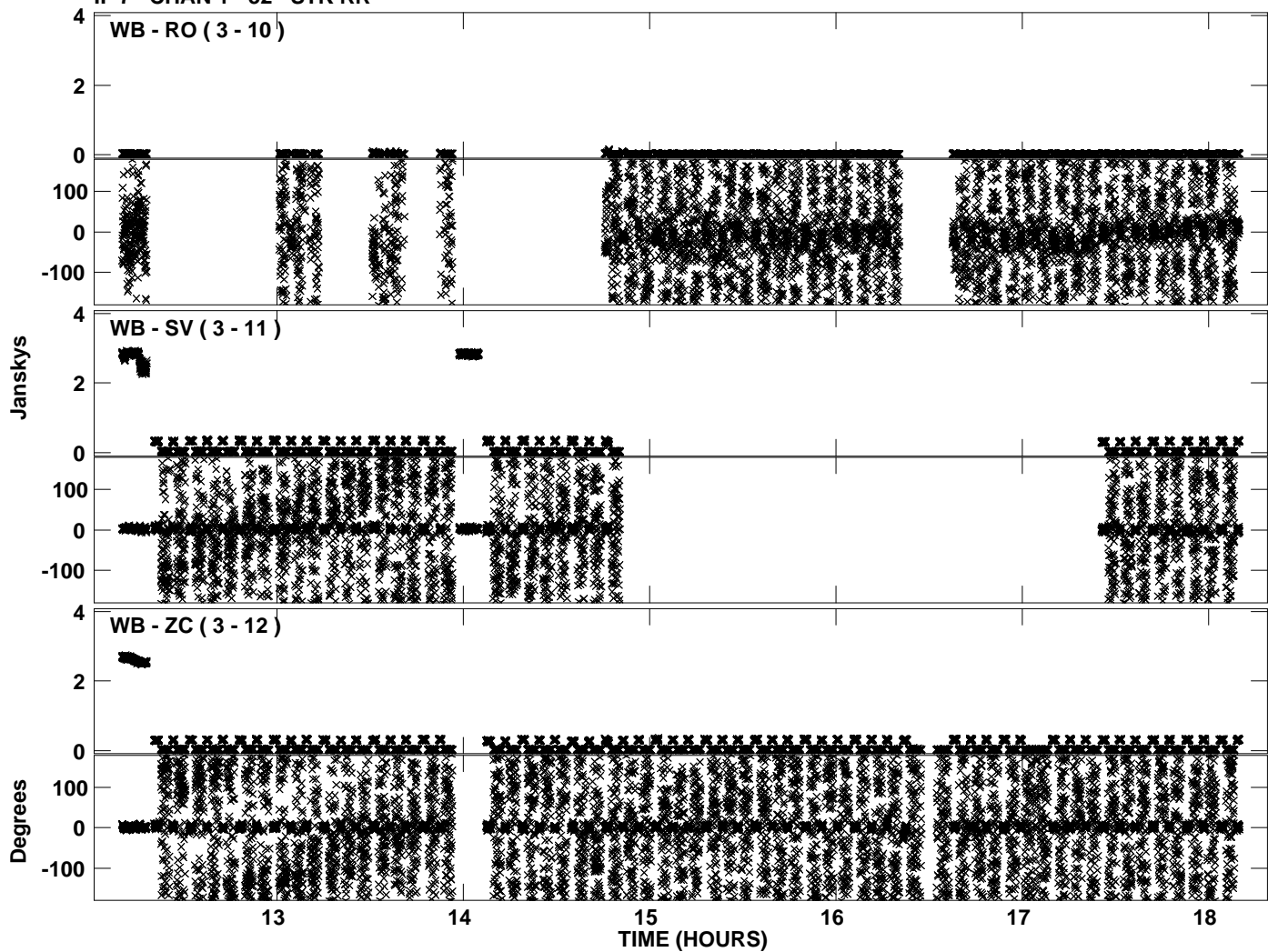
PLot file version 28 created 05-JAN-2012 18:13:25
Amplitude andPhase vs Time for EP068D 2.UVDATA.1 Vect aver. CL # 3
IF 6 CHAN 1 - 32 STK RR



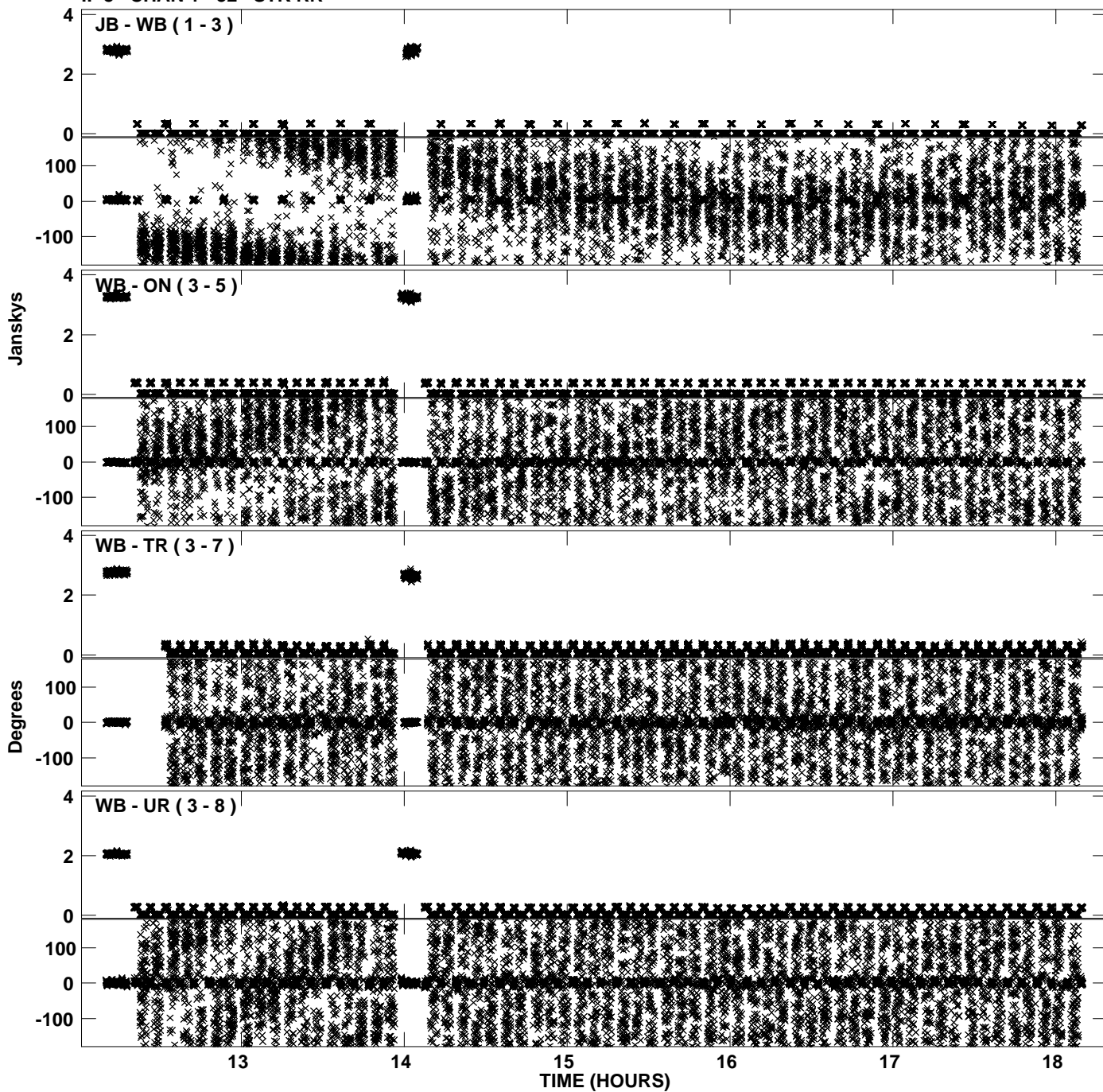
Plot file version 29 created 05-JAN-2012 18:13:31
Amplitude andPhase vs Time for EP068D 2.UVDATA.1 Vect aver. CL # 3
IF 7 CHAN 1 - 32 STK RR



PLot file version 30 created 05-JAN-2012 18:13:32
Amplitude andPhase vs Time for EP068D 2.UVDATA.1 Vect aver. CL # 3
IF 7 CHAN 1 - 32 STK RR



Plot file version 31 created 05-JAN-2012 18:13:39
Amplitude andPhase vs Time for EP068D 2.UVDATA.1 Vect aver. CL # 3
IF 8 CHAN 1 - 32 STK RR



PLot file version 32 created 05-JAN-2012 18:13:39
Amplitude andPhase vs Time for EP068D 2.UVDATA.1 Vect aver. CL # 3
IF 8 CHAN 1 - 32 STK RR

