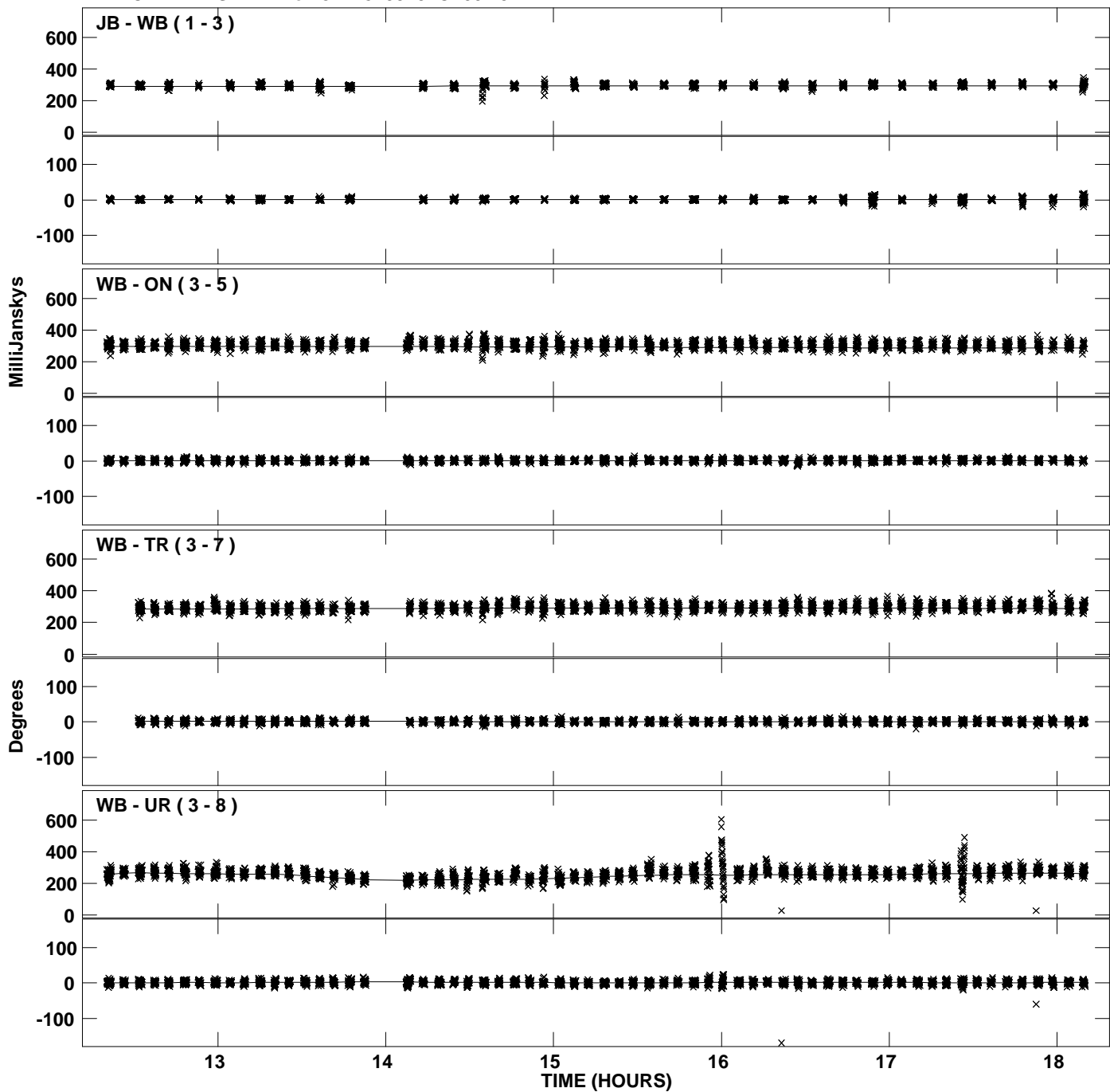
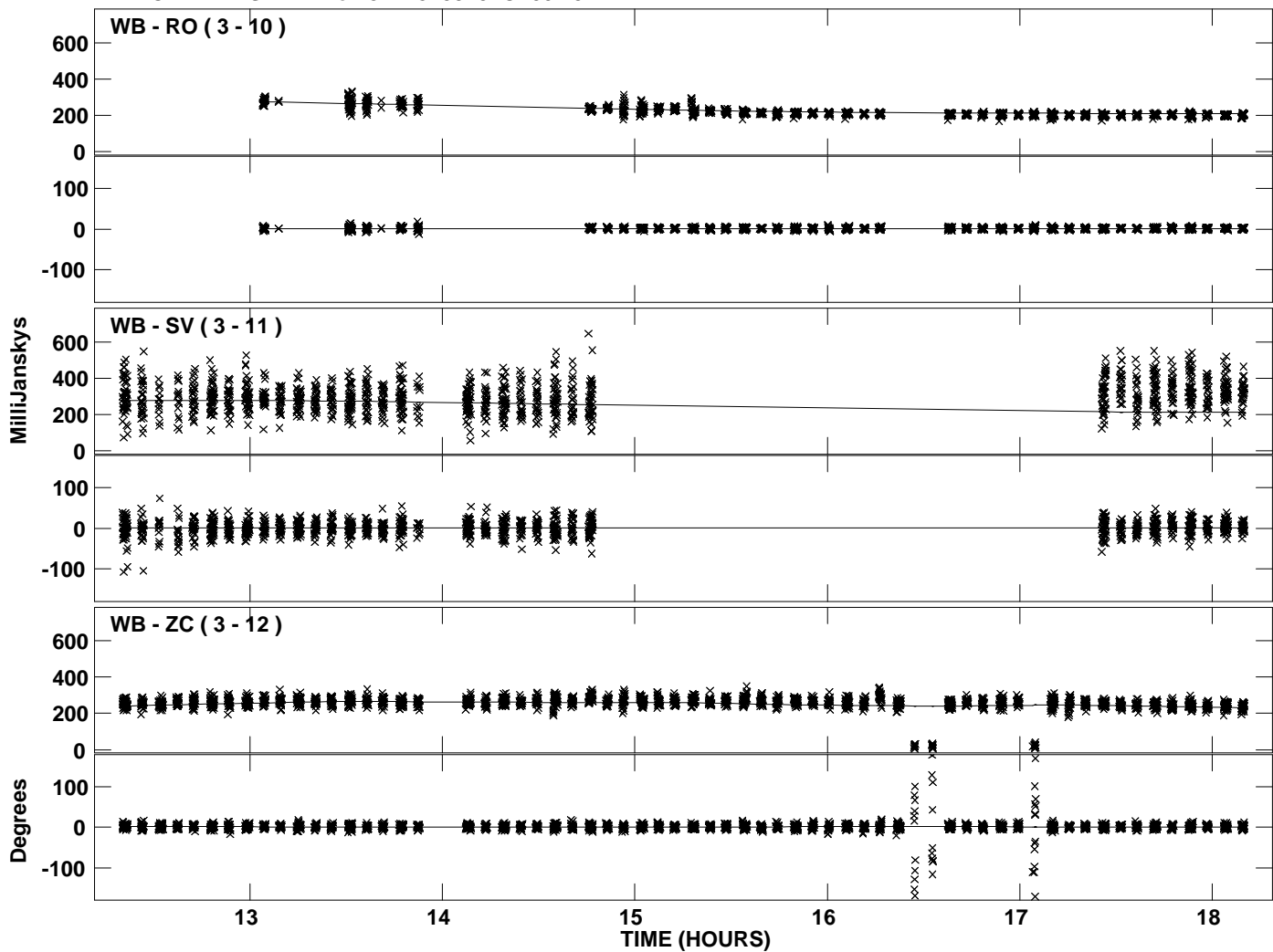


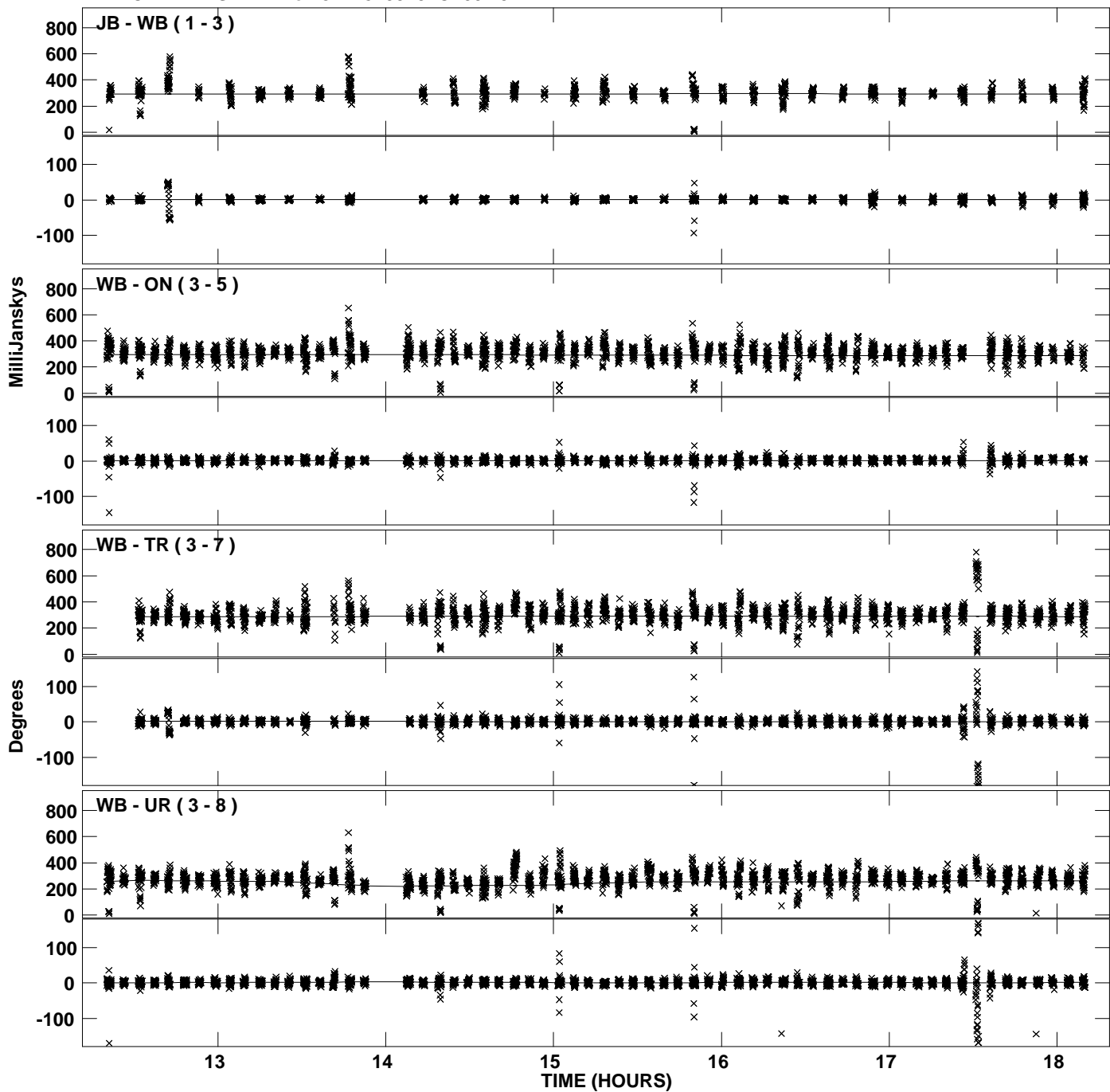
PLot file version 1 created 05-JAN-2012 19:20:36
Amplitude andPhase vs Time for J1128+5925.MULTI.1 CL # 3
IF 1 CHAN 1 STK LL of J1128+5925.ICL001.3



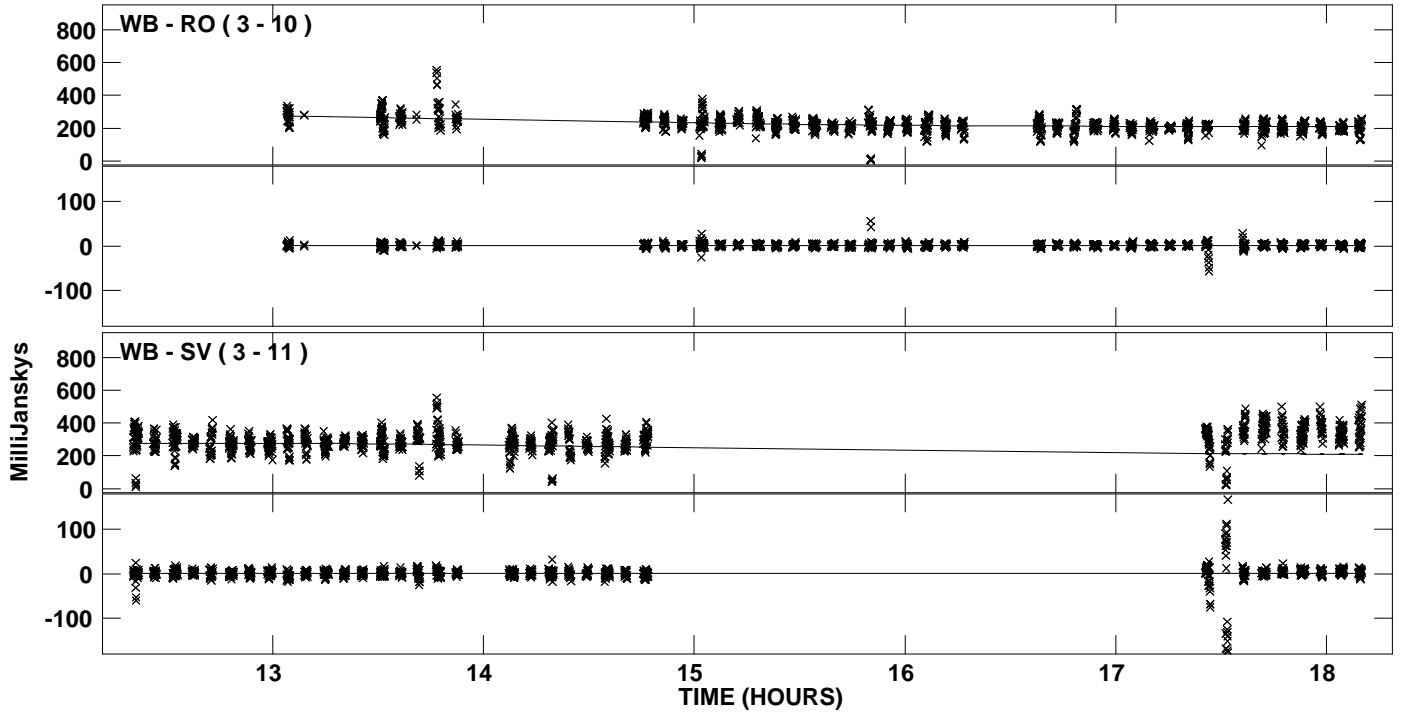
Plot file version 2 created 05-JAN-2012 19:20:37
Amplitude and Phase vs Time for J1128+5925.MULTI.1 CL # 3
IF 1 CHAN 1 STK LL of J1128+5925.ICL001.3



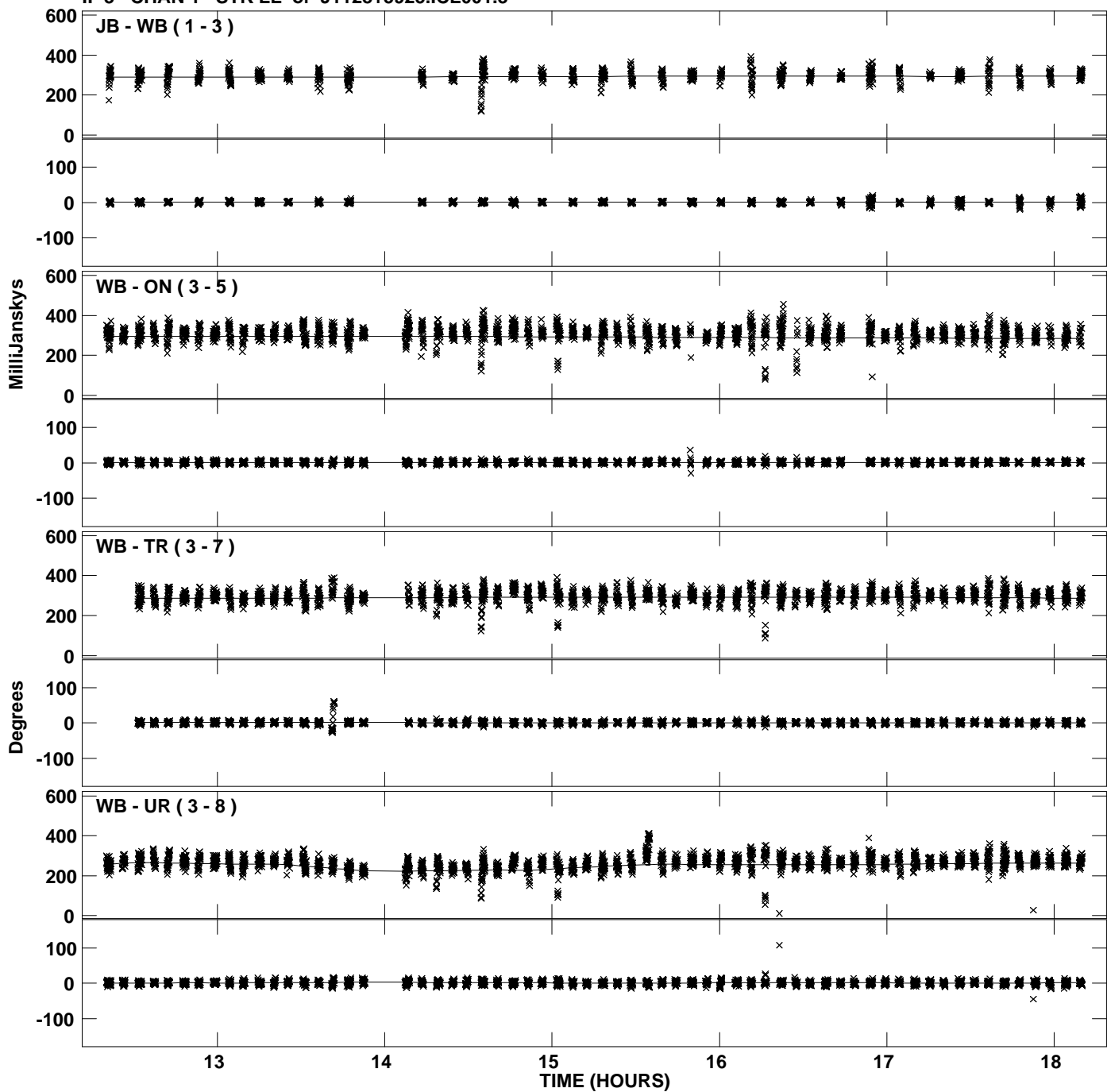
Plot file version 3 created 05-JAN-2012 19:20:45
Amplitude and Phase vs Time for J1128+5925.MULTI.1 CL # 3
IF 2 CHAN 1 STK LL of J1128+5925.ICL001.3



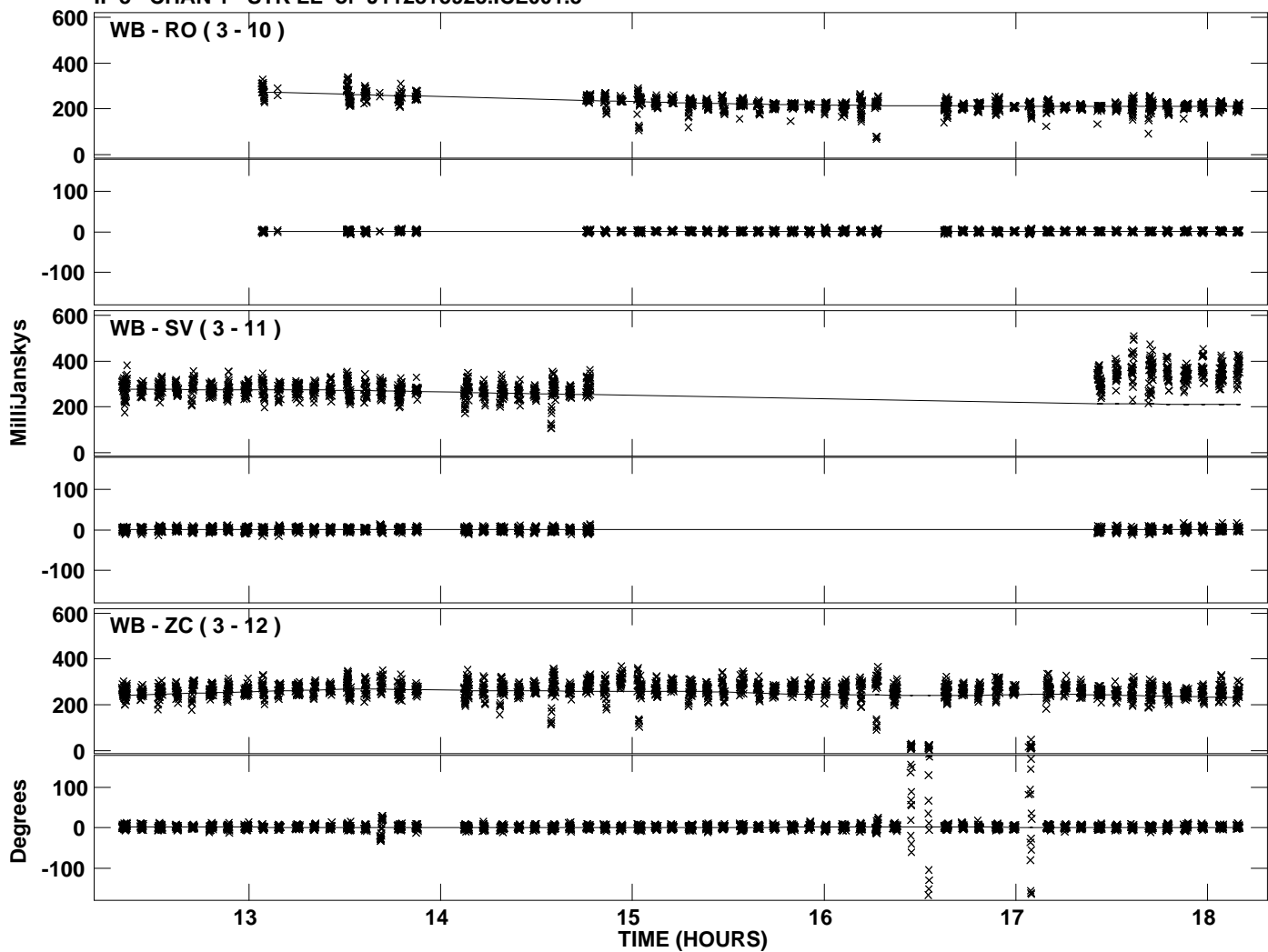
Plot file version 4 created 05-JAN-2012 19:20:46
Amplitude and Phase vs Time for J1128+5925.MULTI.1 CL # 3
IF 2 CHAN 1 STK LL of J1128+5925.ICL001.3



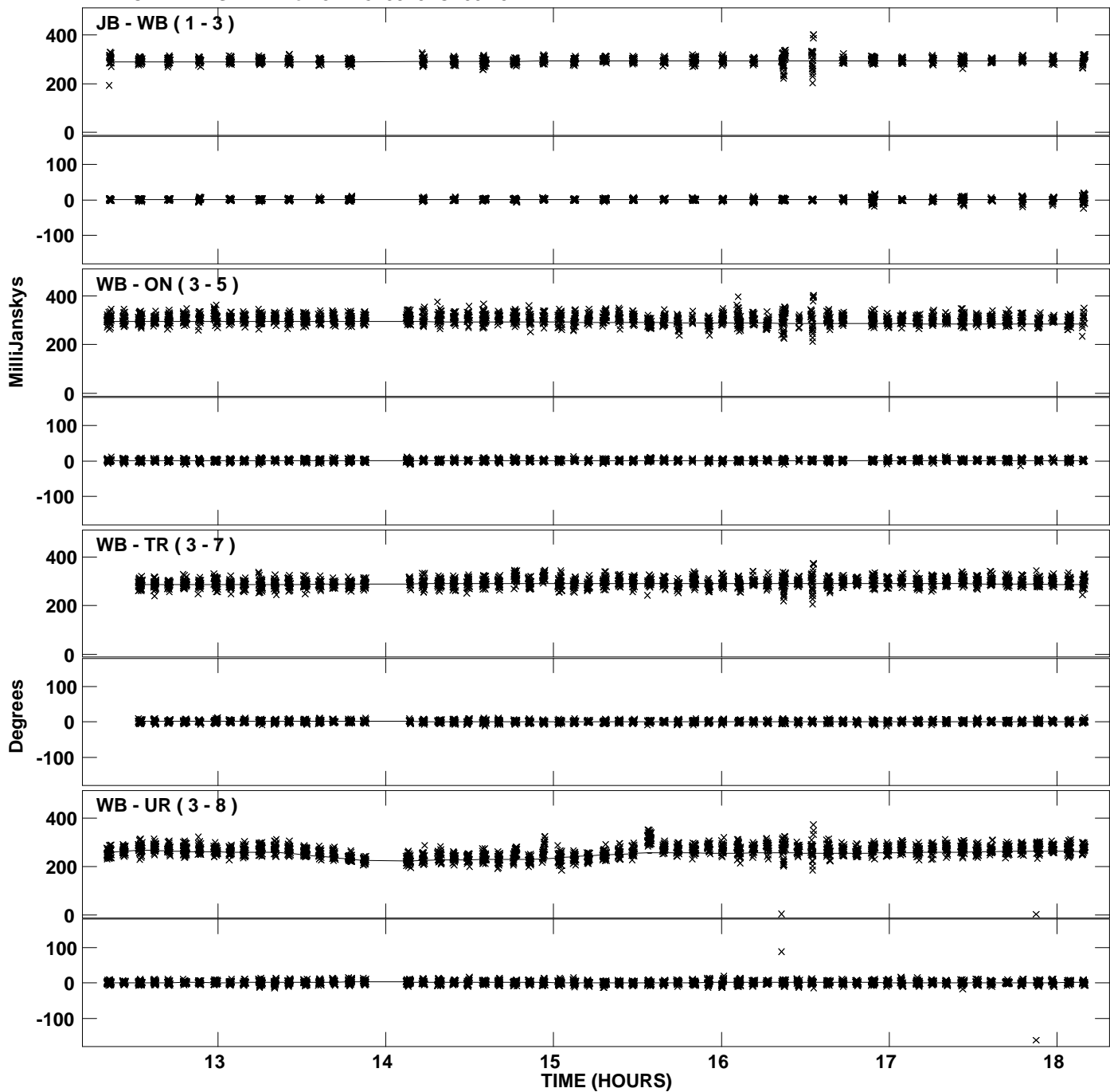
Plot file version 5 created 05-JAN-2012 19:20:54
Amplitude and Phase vs Time for J1128+5925.MULTI.1 CL # 3
IF 3 CHAN 1 STK LL of J1128+5925.ICL001.3



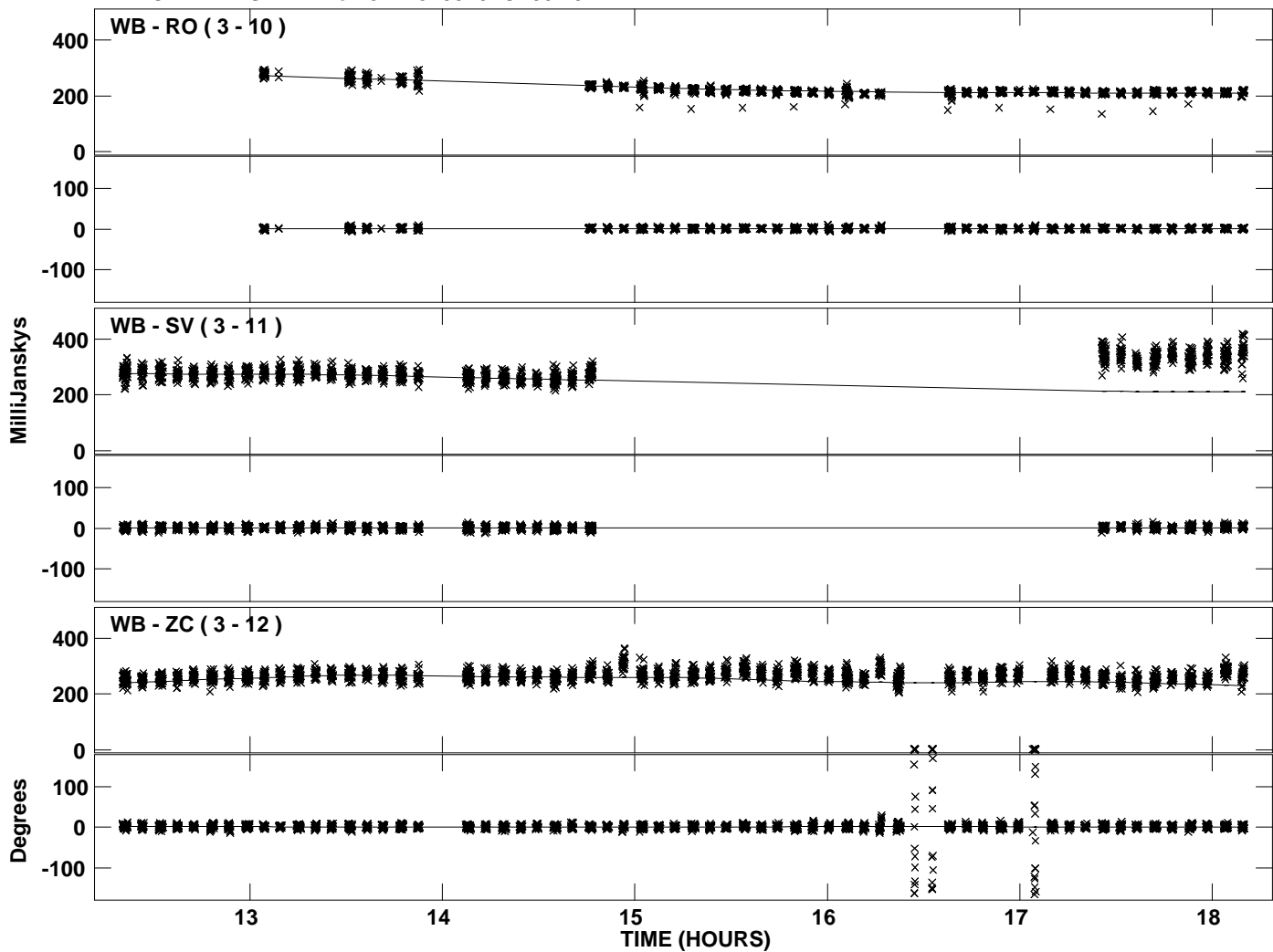
PLot file version 6 created 05-JAN-2012 19:20:55
Amplitude andPhase vs Time for J1128+5925.MULTI.1 CL # 3
IF 3 CHAN 1 STK LL of J1128+5925.ICL001.3



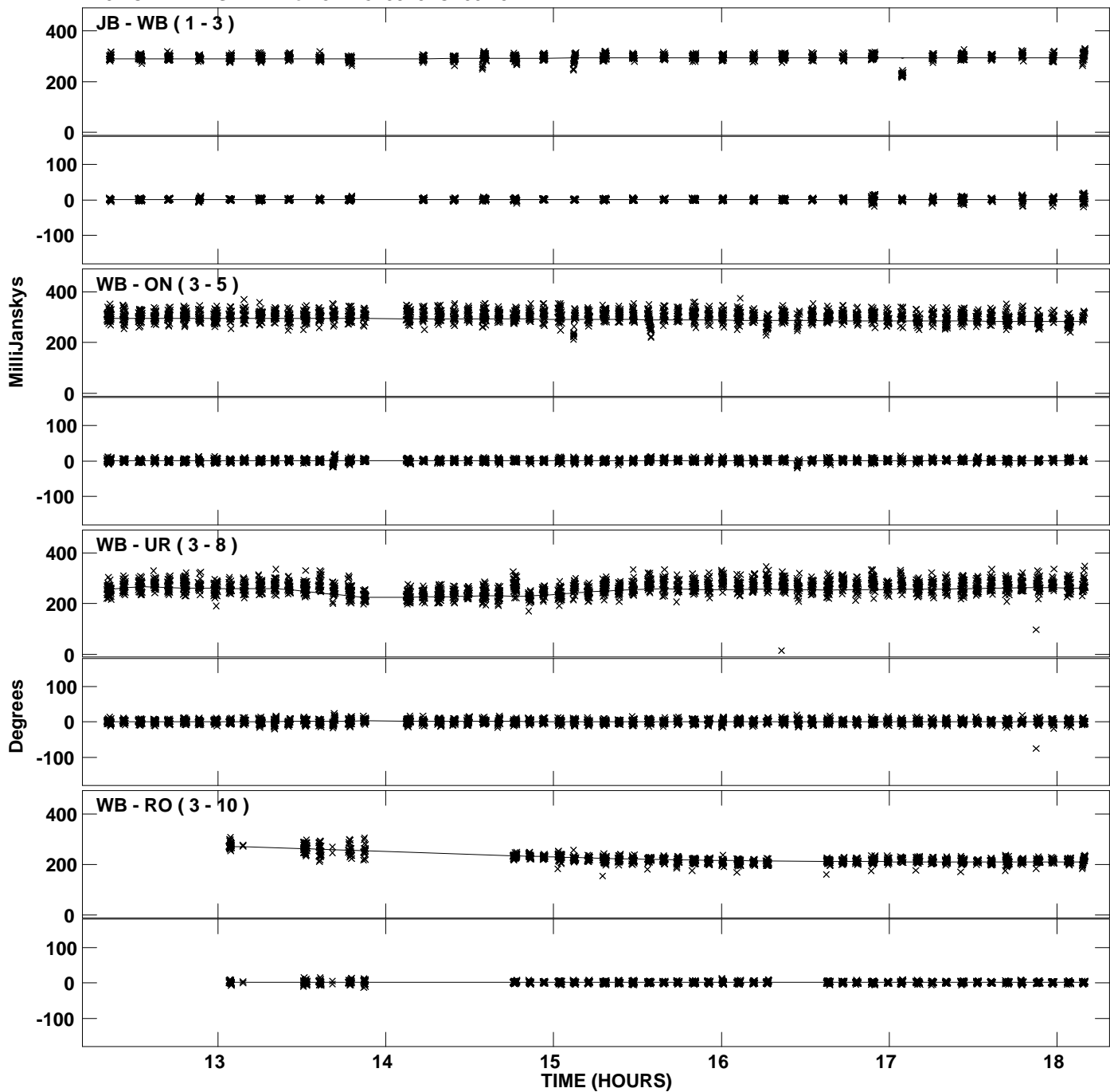
Plot file version 7 created 05-JAN-2012 19:21:03
Amplitude and Phase vs Time for J1128+5925.MULTI.1 CL # 3
IF 4 CHAN 1 STK LL of J1128+5925.ICL001.3



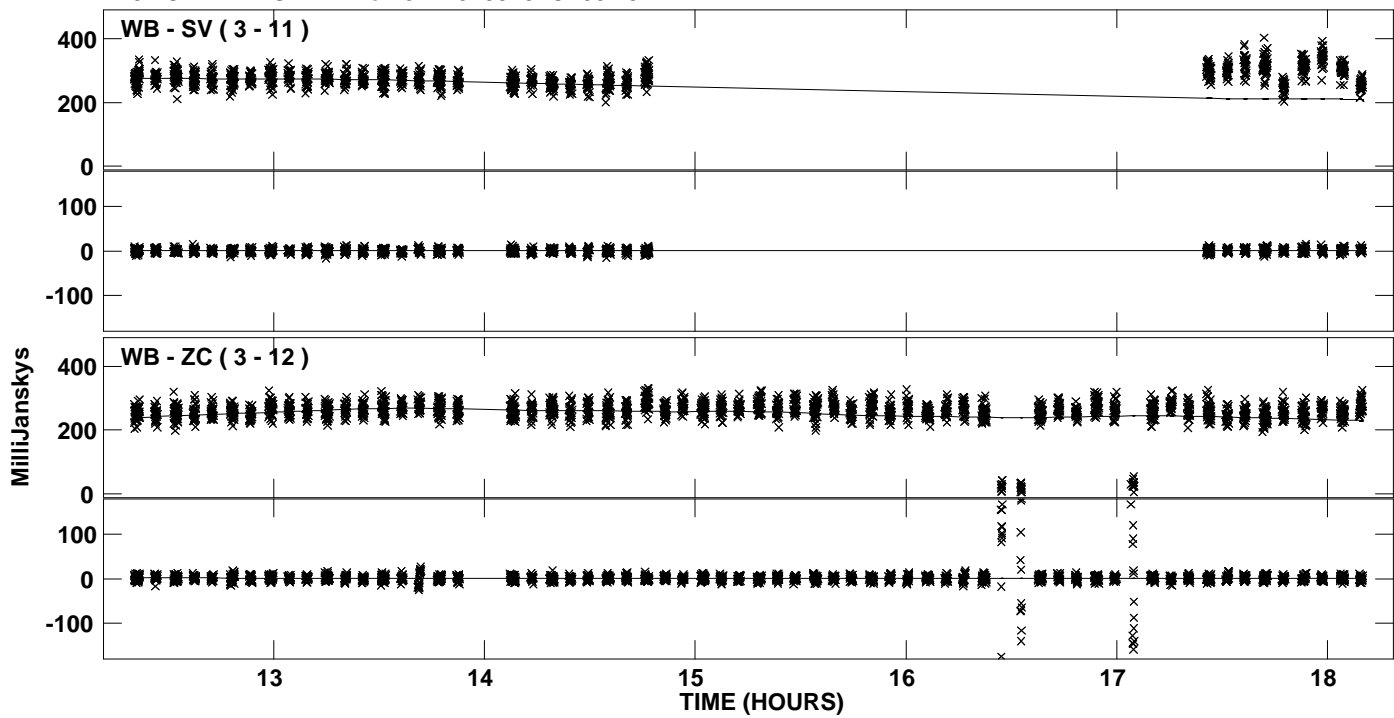
PLot file version 8 created 05-JAN-2012 19:21:04
Amplitude andPhase vs Time for J1128+5925.MULTI.1 CL # 3
IF 4 CHAN 1 STK LL of J1128+5925.ICL001.3



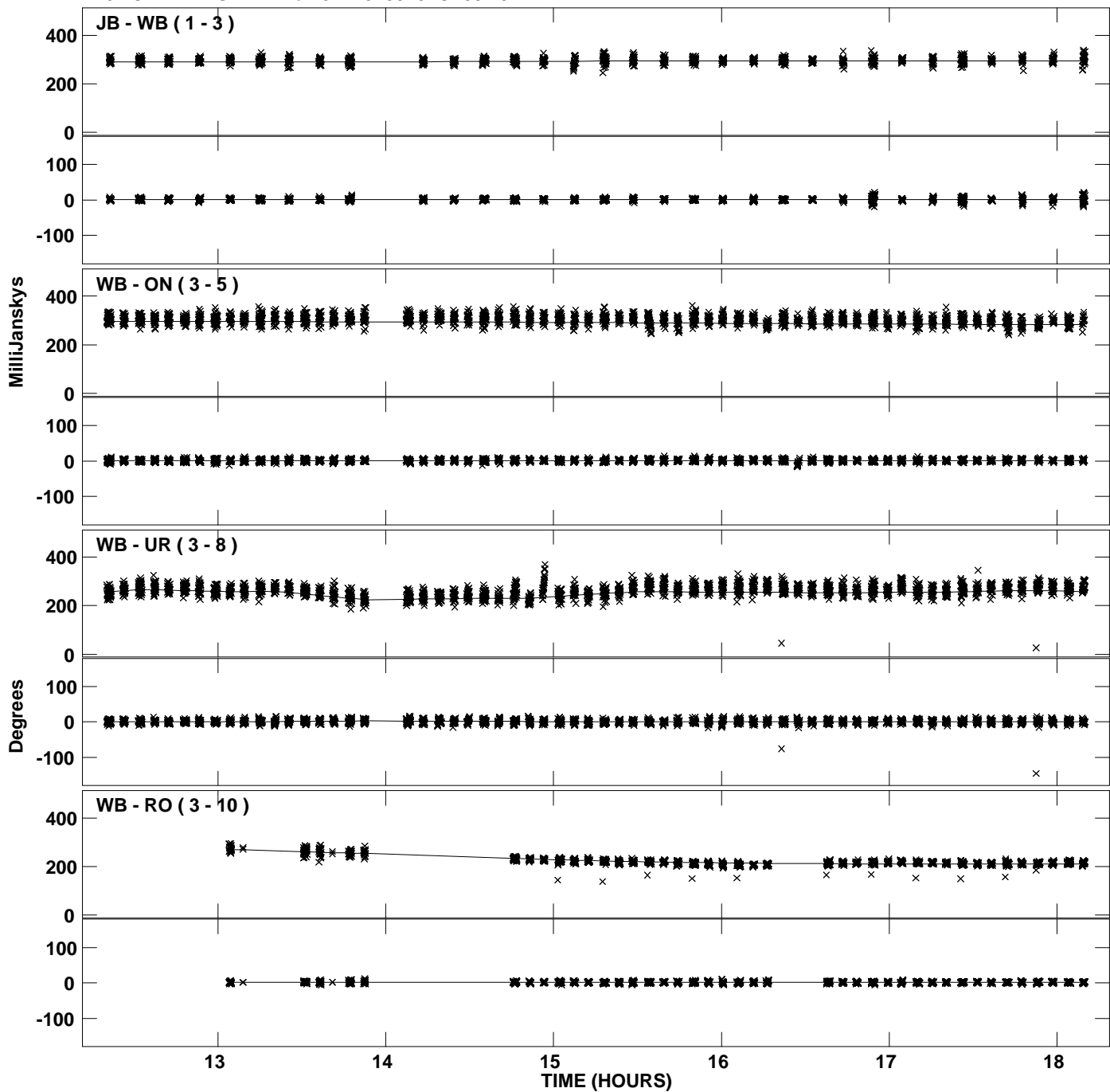
Plot file version 9 created 05-JAN-2012 19:21:10
Amplitude and Phase vs Time for J1128+5925.MULTI.1 CL # 3
IF 5 CHAN 1 STK LL of J1128+5925.ICL001.3



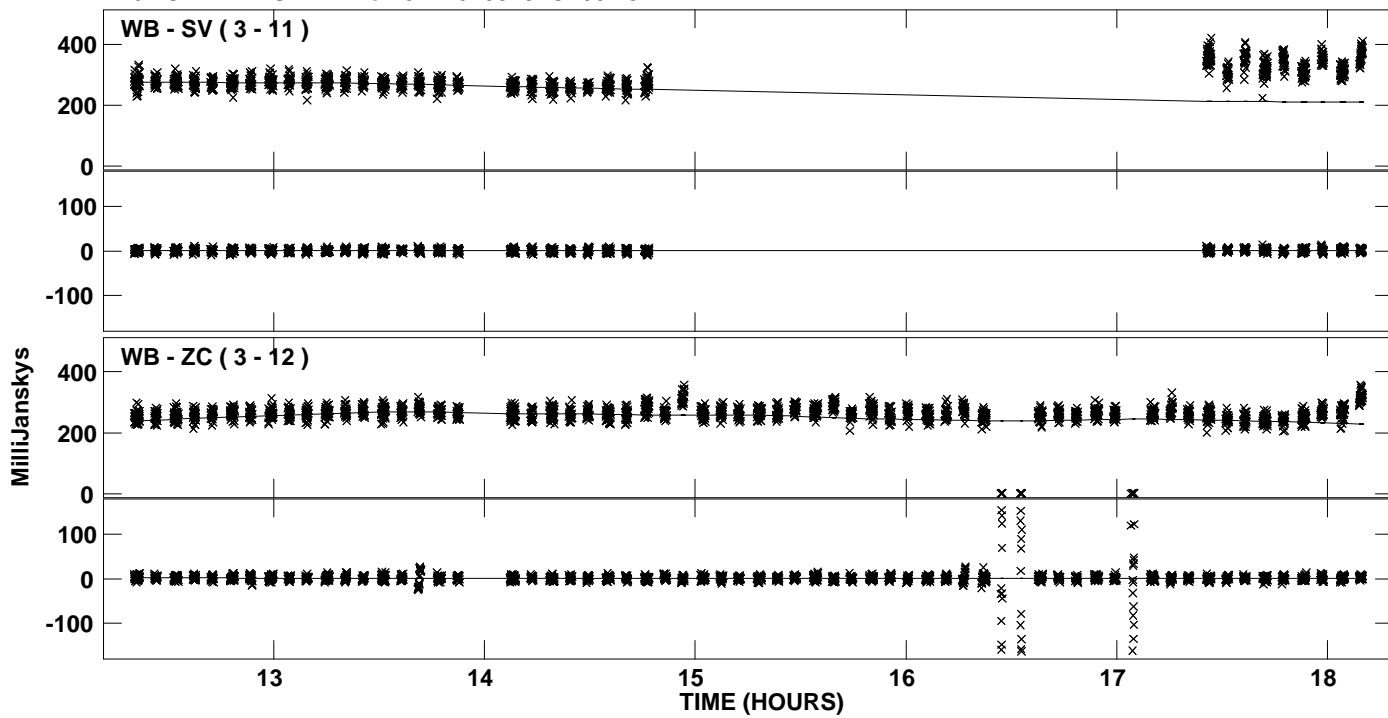
PLot file version 10 created 05-JAN-2012 19:21:10
Amplitude andPhase vs Time for J1128+5925.MULTI.1 CL # 3
IF 5 CHAN 1 STK LL of J1128+5925.ICL001.3



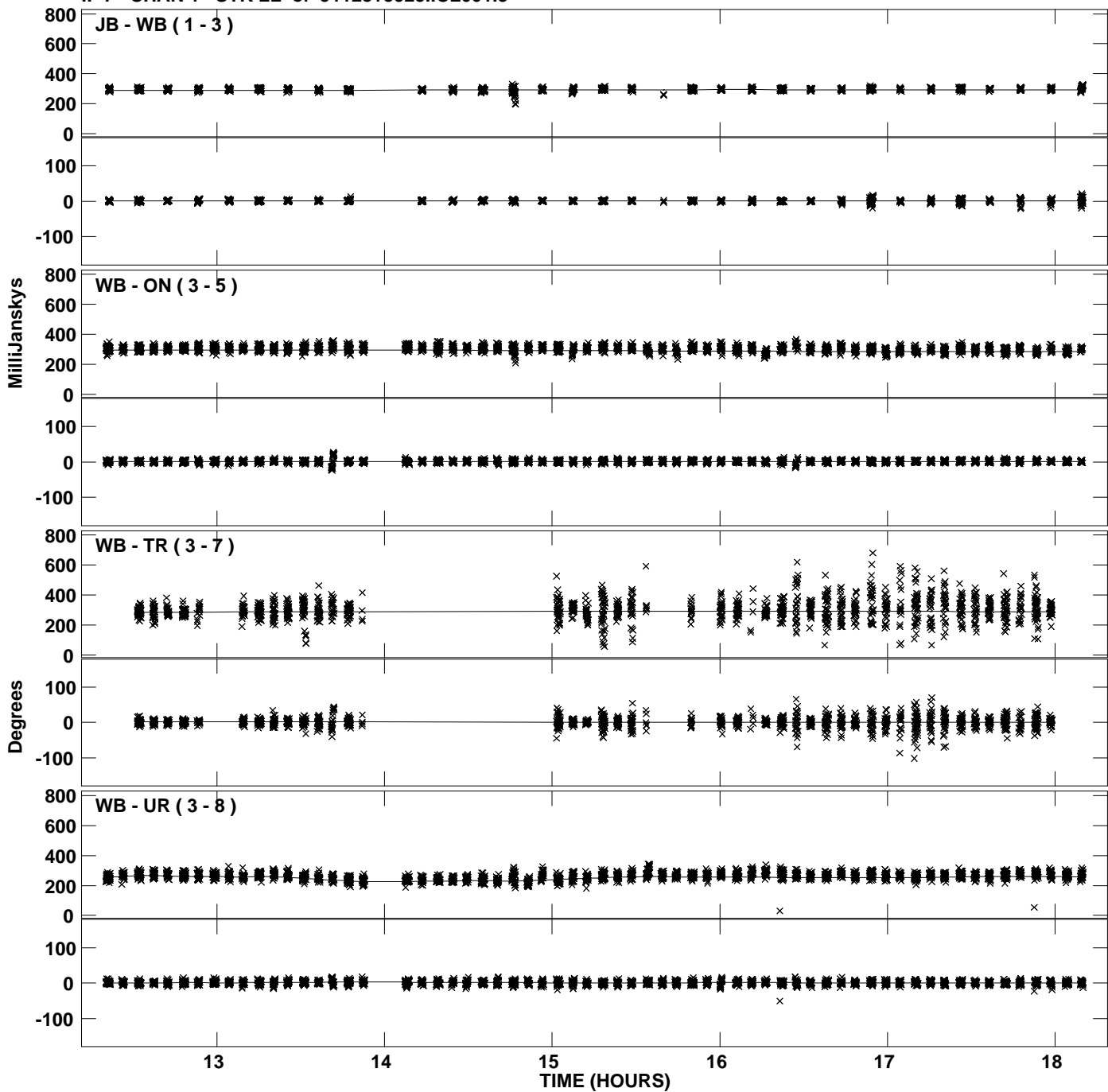
PLot file version 11 created 05-JAN-2012 19:21:10
Amplitude and Phase vs Time for J1128+5925.MULTI.1 CL # 3
IF 6 CHAN 1 STK LL of J1128+5925.ICL001.3



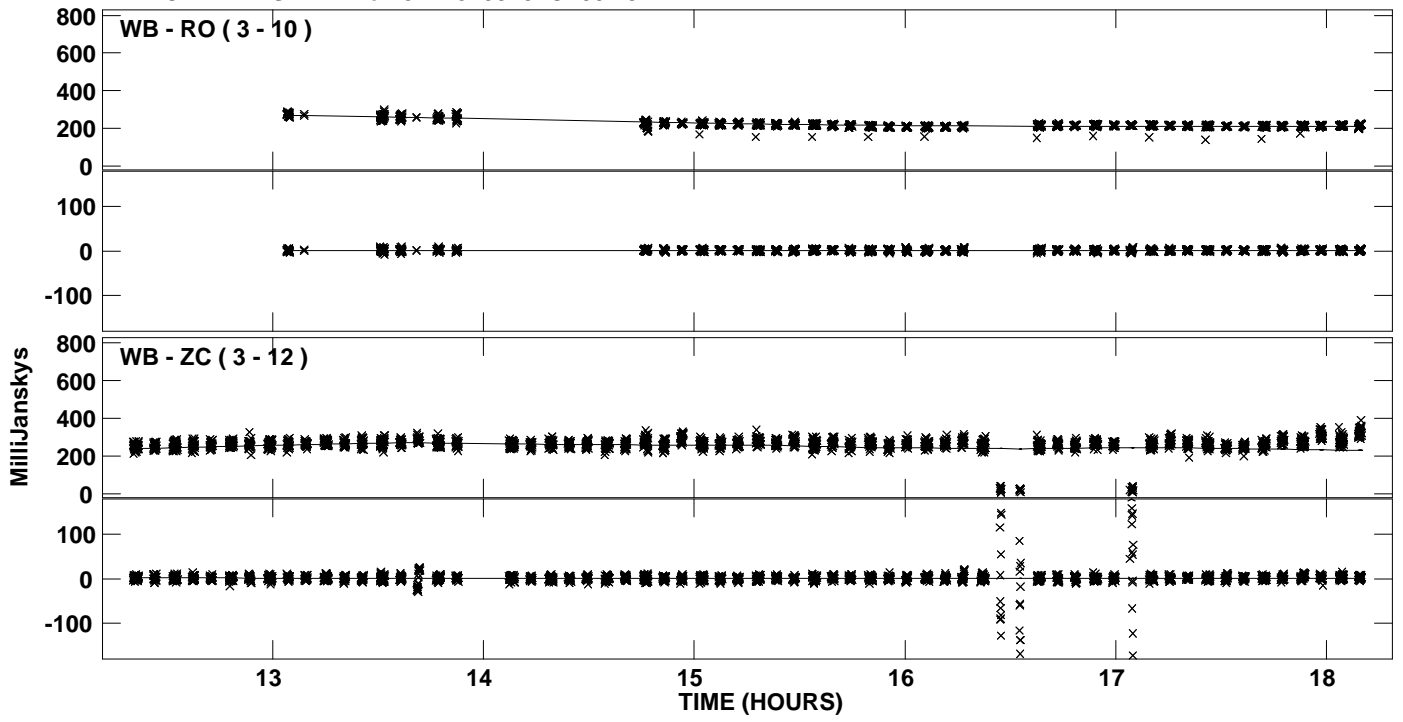
PLot file version 12 created 05-JAN-2012 19:21:10
Amplitude andPhase vs Time for J1128+5925.MULTI.1 CL # 3
IF 6 CHAN 1 STK LL of J1128+5925.ICL001.3



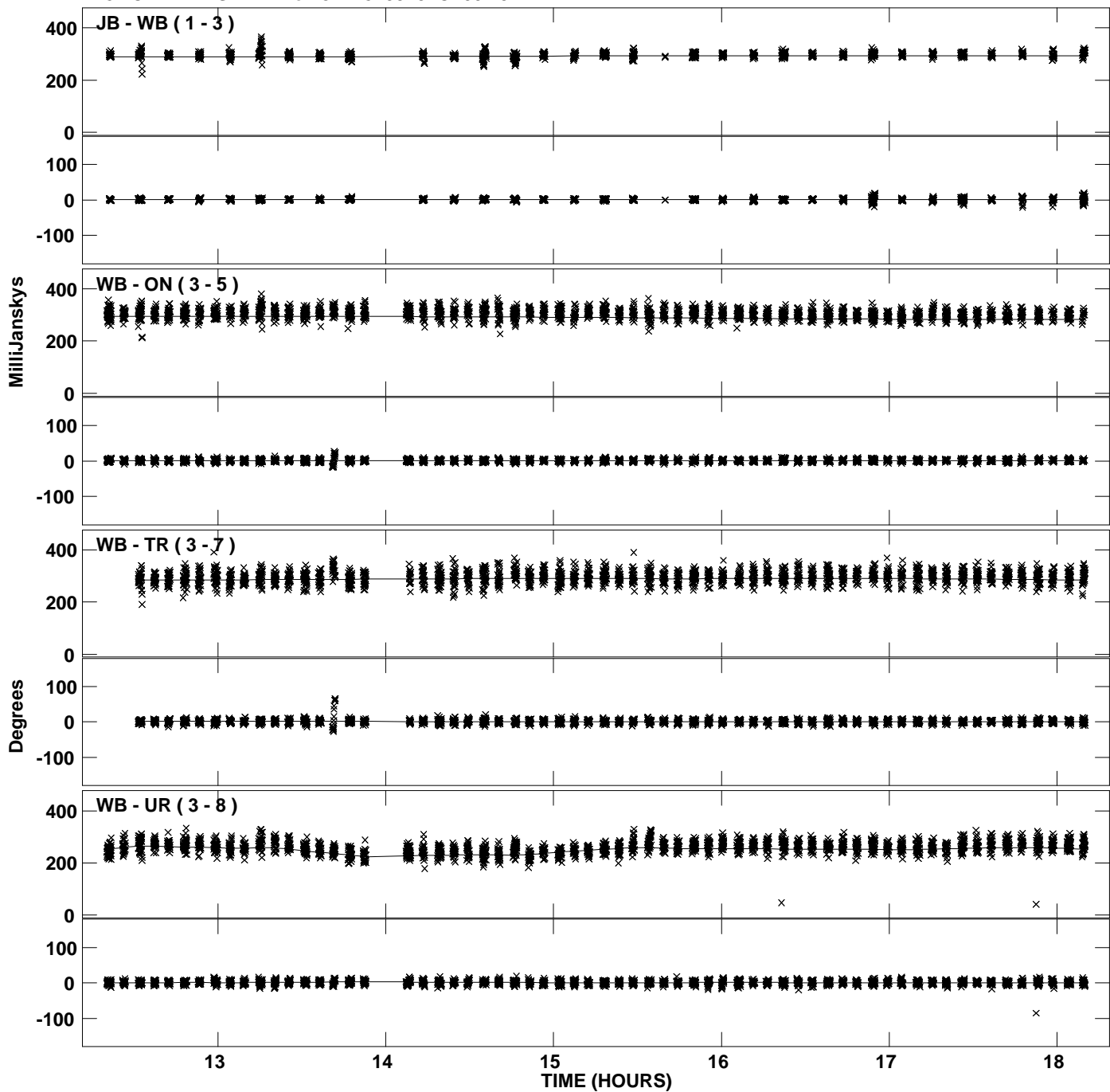
PLot file version 13 created 05-JAN-2012 19:21:10
Amplitude andPhase vs Time for J1128+5925.MULTI.1 CL # 3
IF 7 CHAN 1 STK LL of J1128+5925.ICL001.3



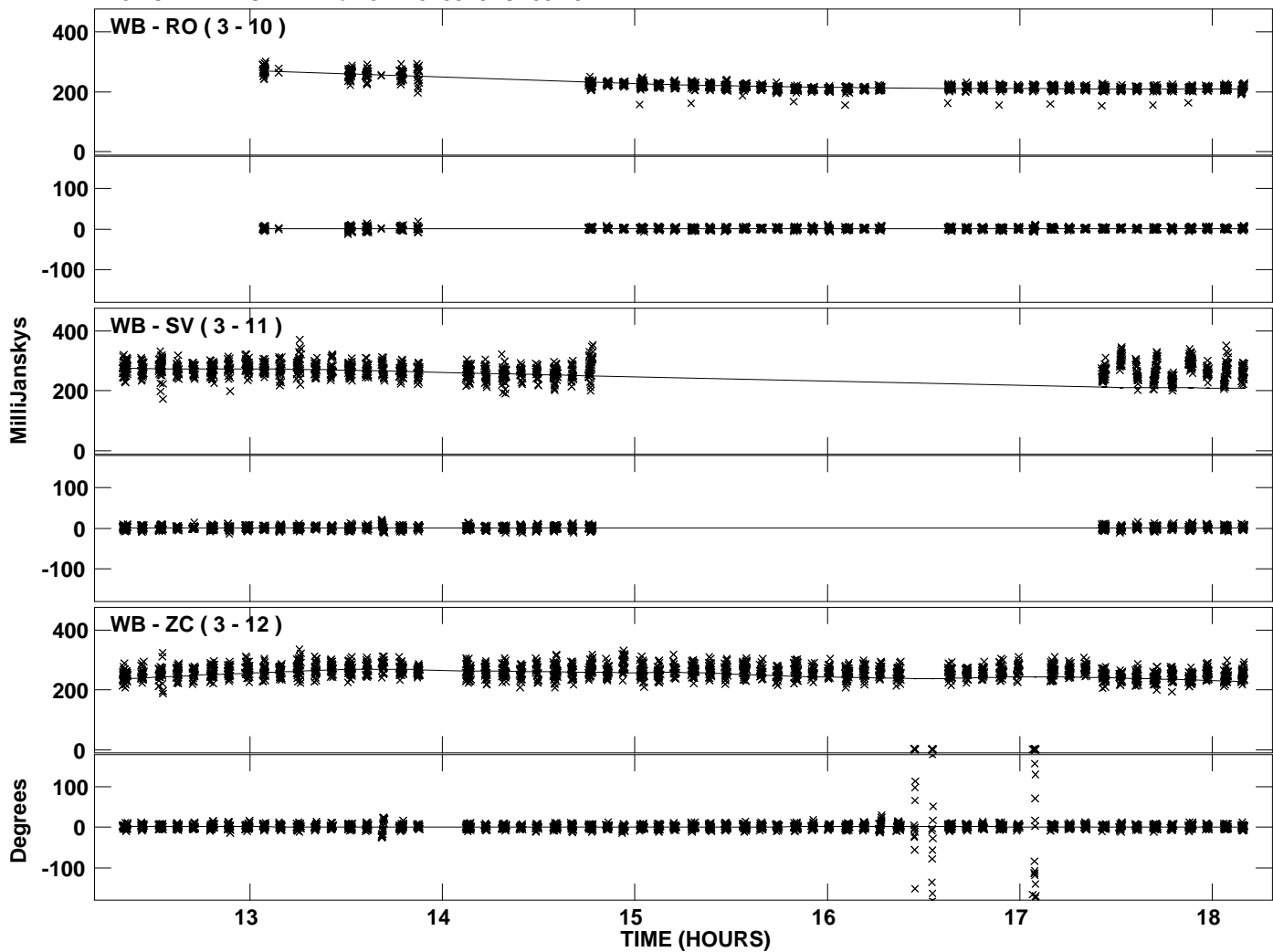
PLot file version 14 created 05-JAN-2012 19:21:10
Amplitude andPhase vs Time for J1128+5925.MULTI.1 CL # 3
IF 7 CHAN 1 STK LL of J1128+5925.ICL001.3



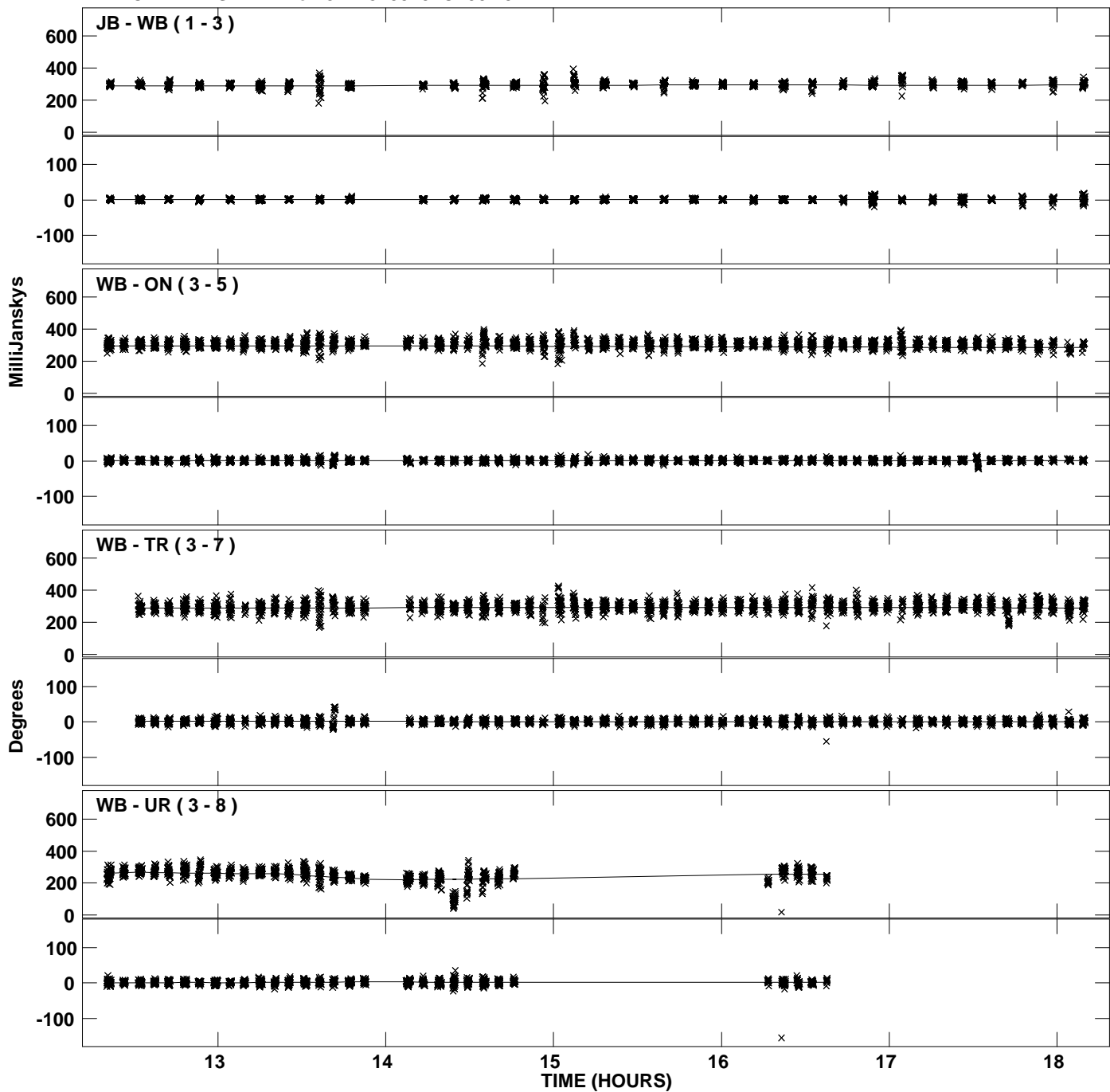
PLot file version 15 created 05-JAN-2012 19:21:11
Amplitude andPhase vs Time for J1128+5925.MULTI.1 CL # 3
IF 8 CHAN 1 STK LL of J1128+5925.ICL001.3



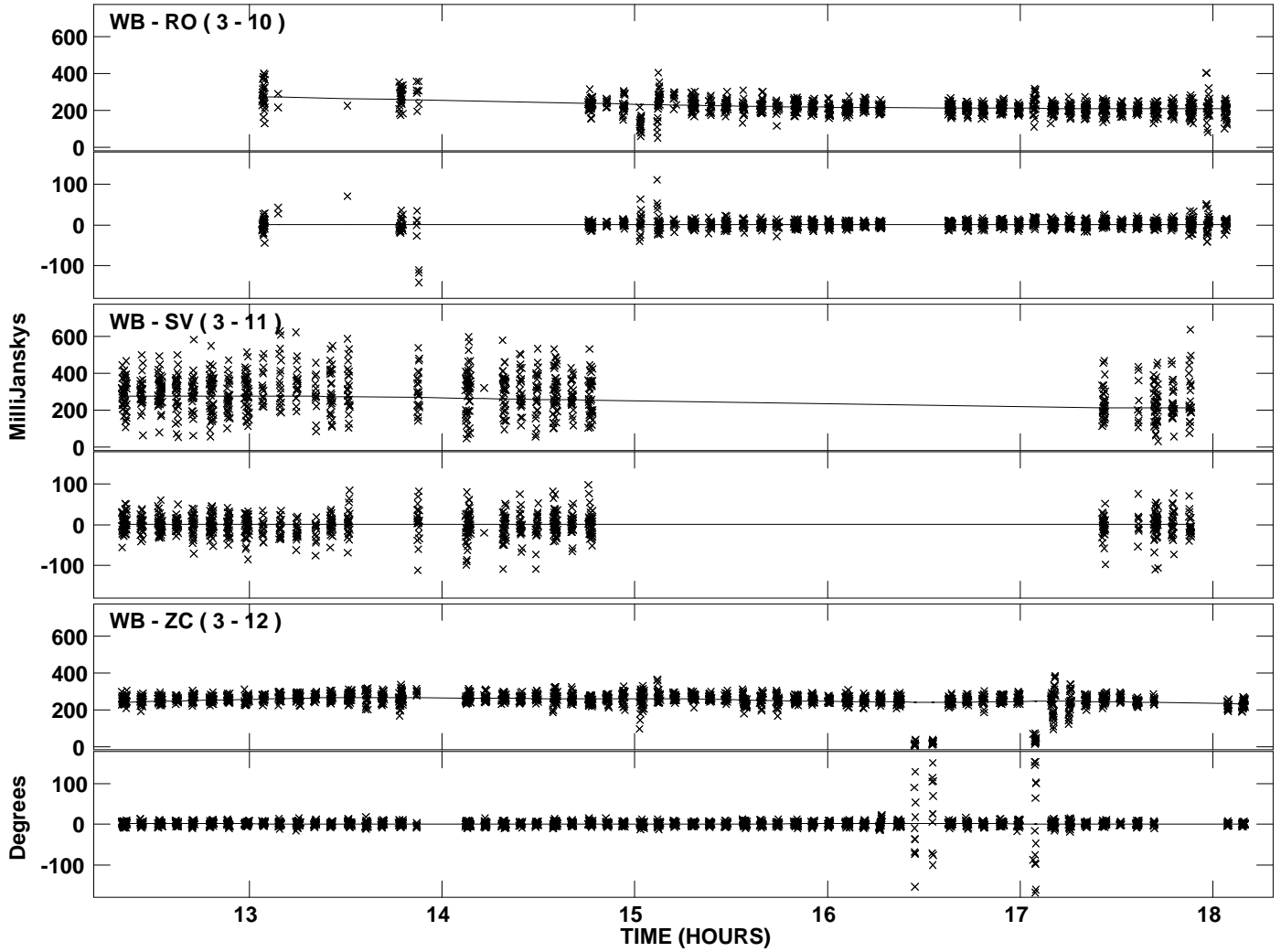
PLot file version 16 created 05-JAN-2012 19:21:11
Amplitude andPhase vs Time for J1128+5925.MULTI.1 CL # 3
IF 8 CHAN 1 STK LL of J1128+5925.ICL001.3



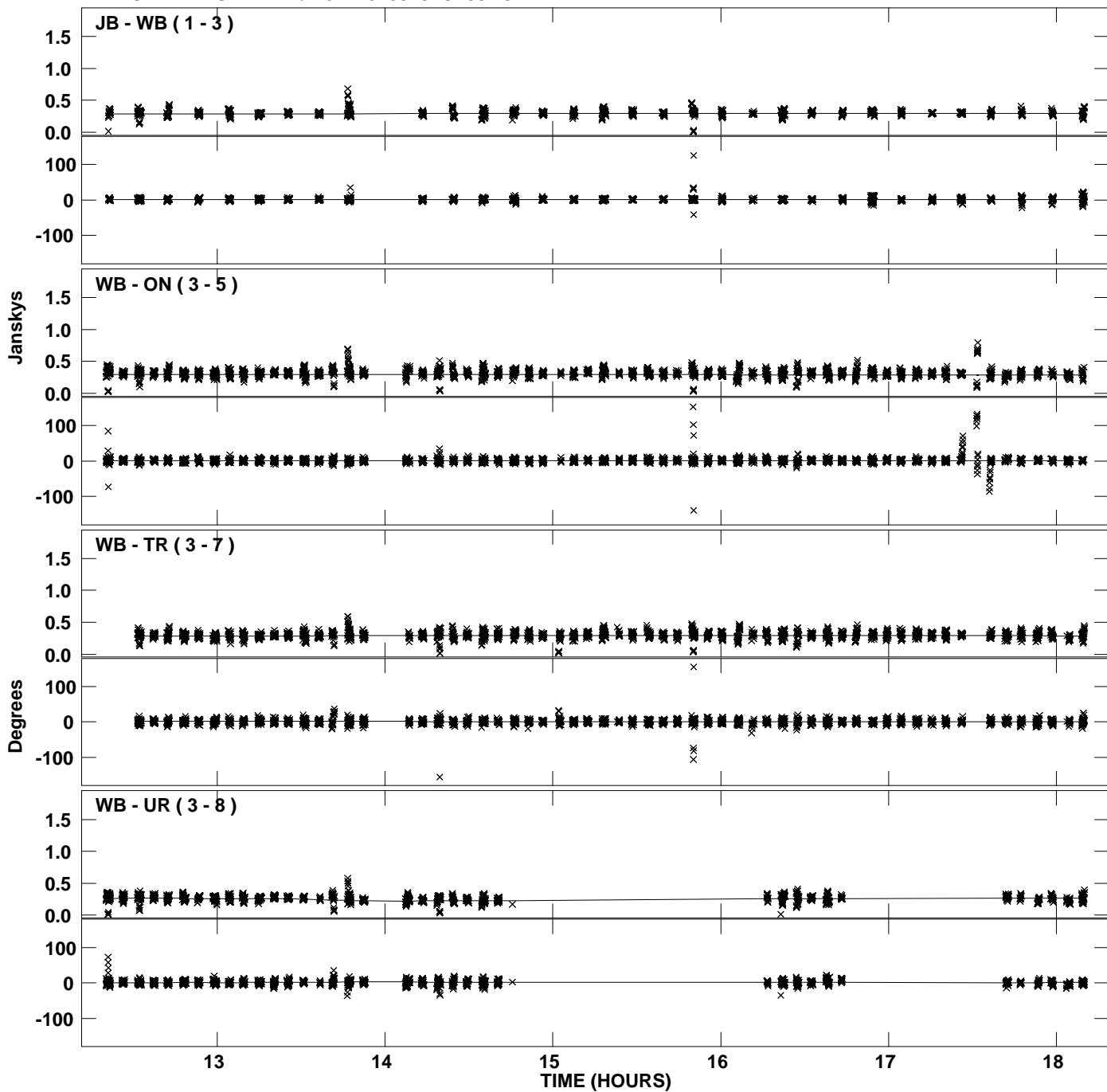
PLot file version 17 created 05-JAN-2012 19:21:11
Amplitude andPhase vs Time for J1128+5925.MULTI.1 CL # 3
IF 1 CHAN 1 STK RR of J1128+5925.ICL001.3



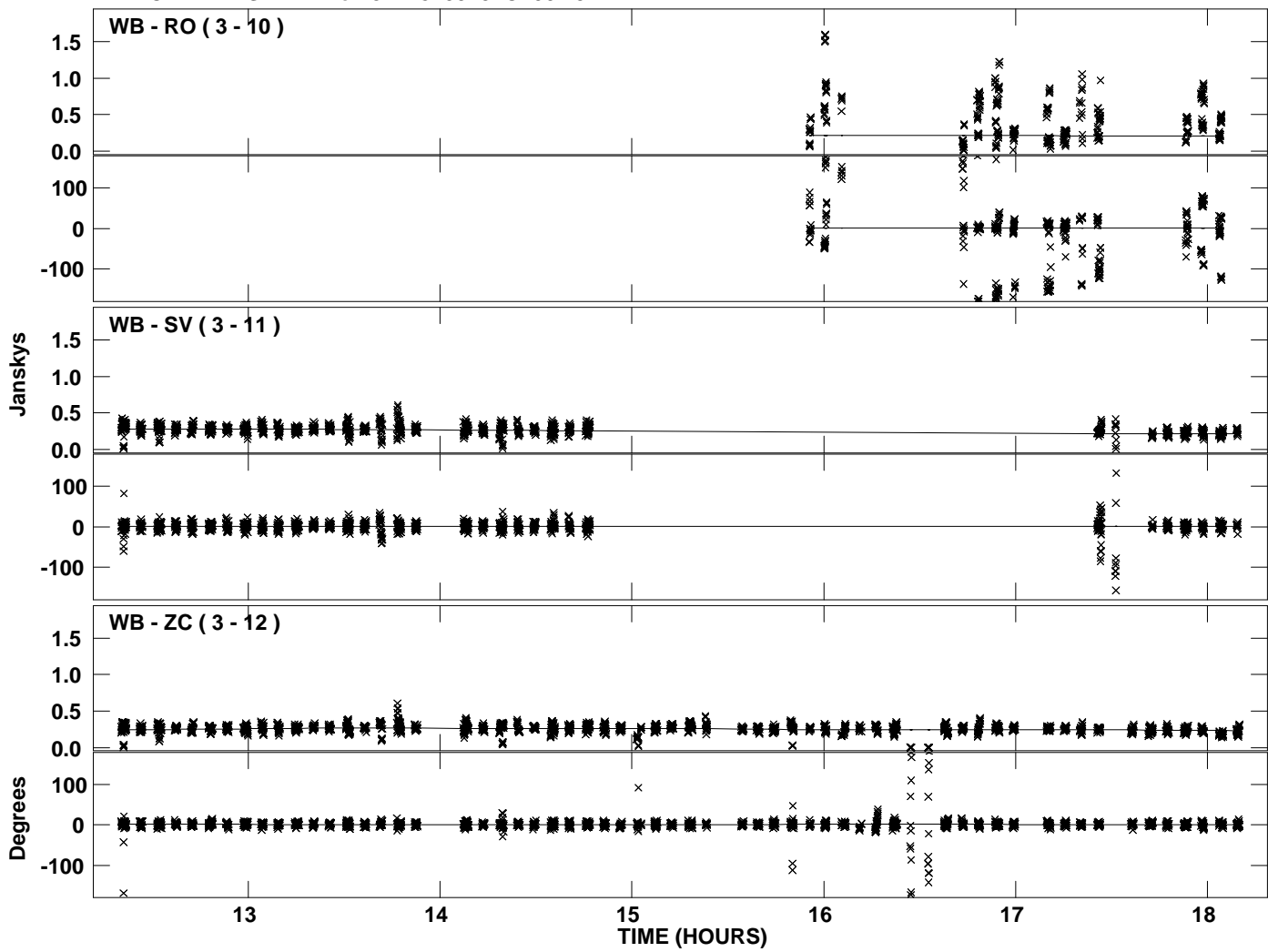
Plot file version 18 created 05-JAN-2012 19:21:11
Amplitude andPhase vs Time for J1128+5925.MULTI.1 CL # 3
IF 1 CHAN 1 STK RR of J1128+5925.ICL001.3



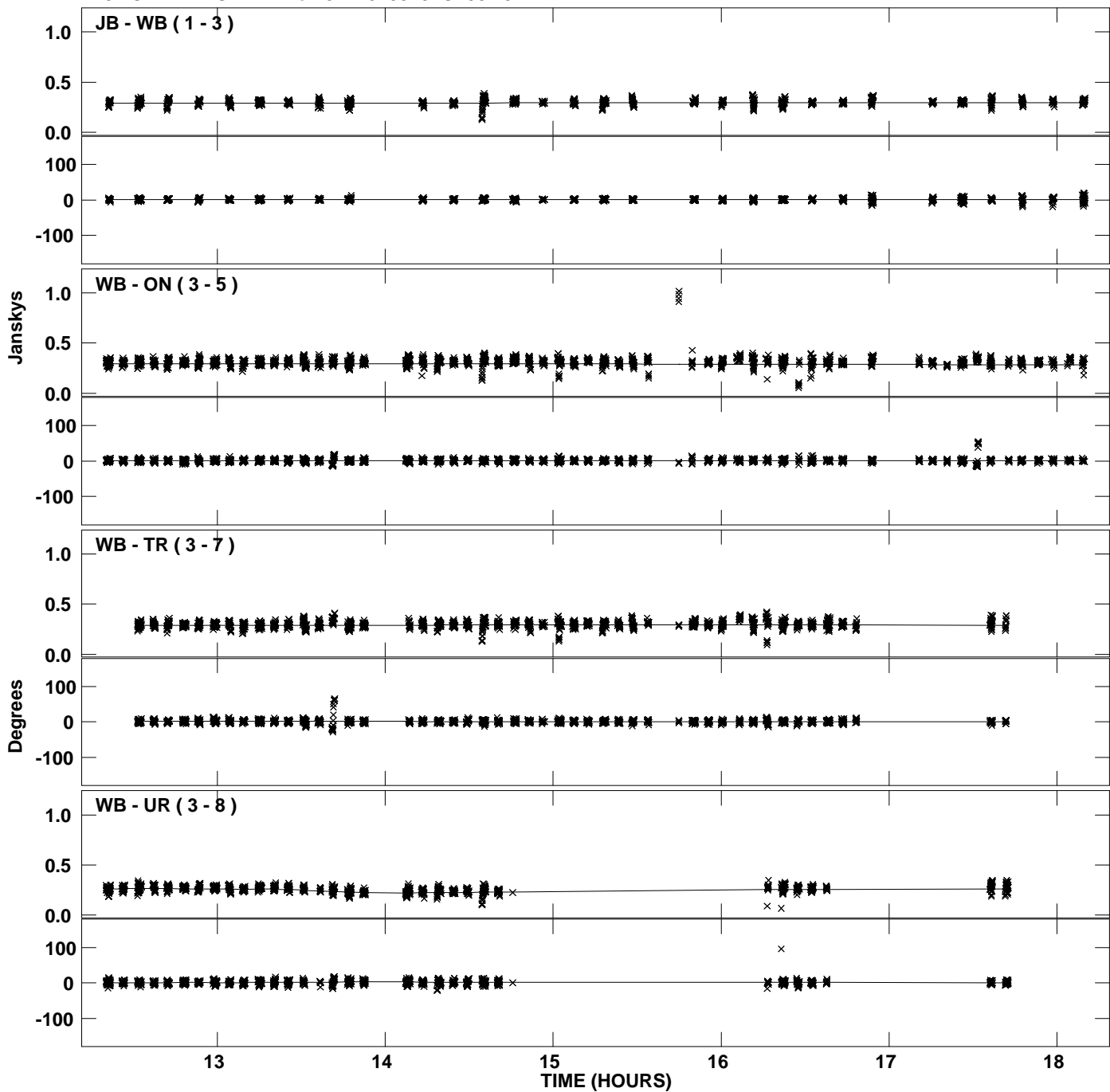
Plot file version 19 created 05-JAN-2012 19:21:12
Amplitude andPhase vs Time for J1128+5925.MULTI.1 CL # 3
IF 2 CHAN 1 STK RR of J1128+5925.ICL001.3



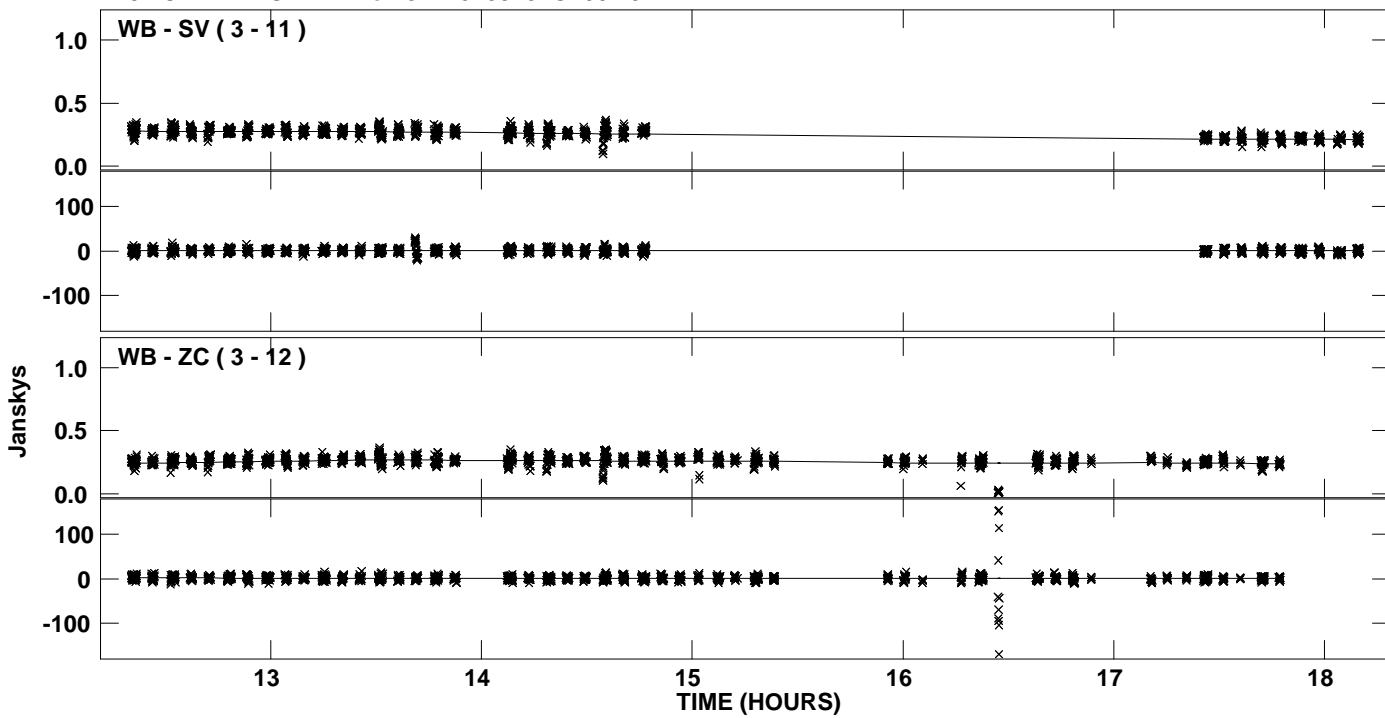
PLot file version 20 created 05-JAN-2012 19:21:12
Amplitude andPhase vs Time for J1128+5925.MULTI.1 CL # 3
IF 2 CHAN 1 STK RR of J1128+5925.ICL001.3



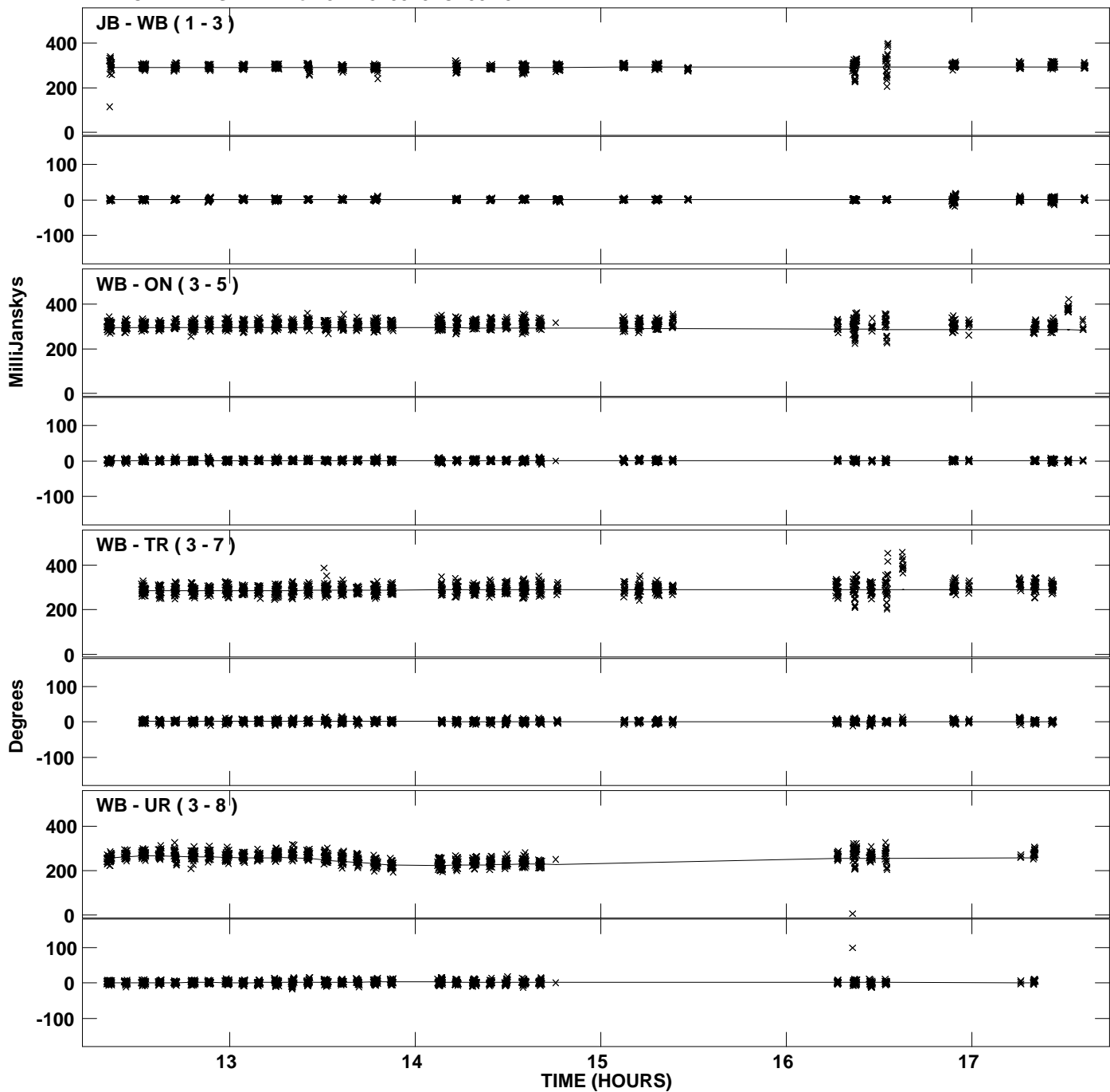
PLot file version 21 created 05-JAN-2012 19:21:12
Amplitude and Phase vs Time for J1128+5925.MULTI.1 CL # 3
IF 3 CHAN 1 STK RR of J1128+5925.ICL001.3



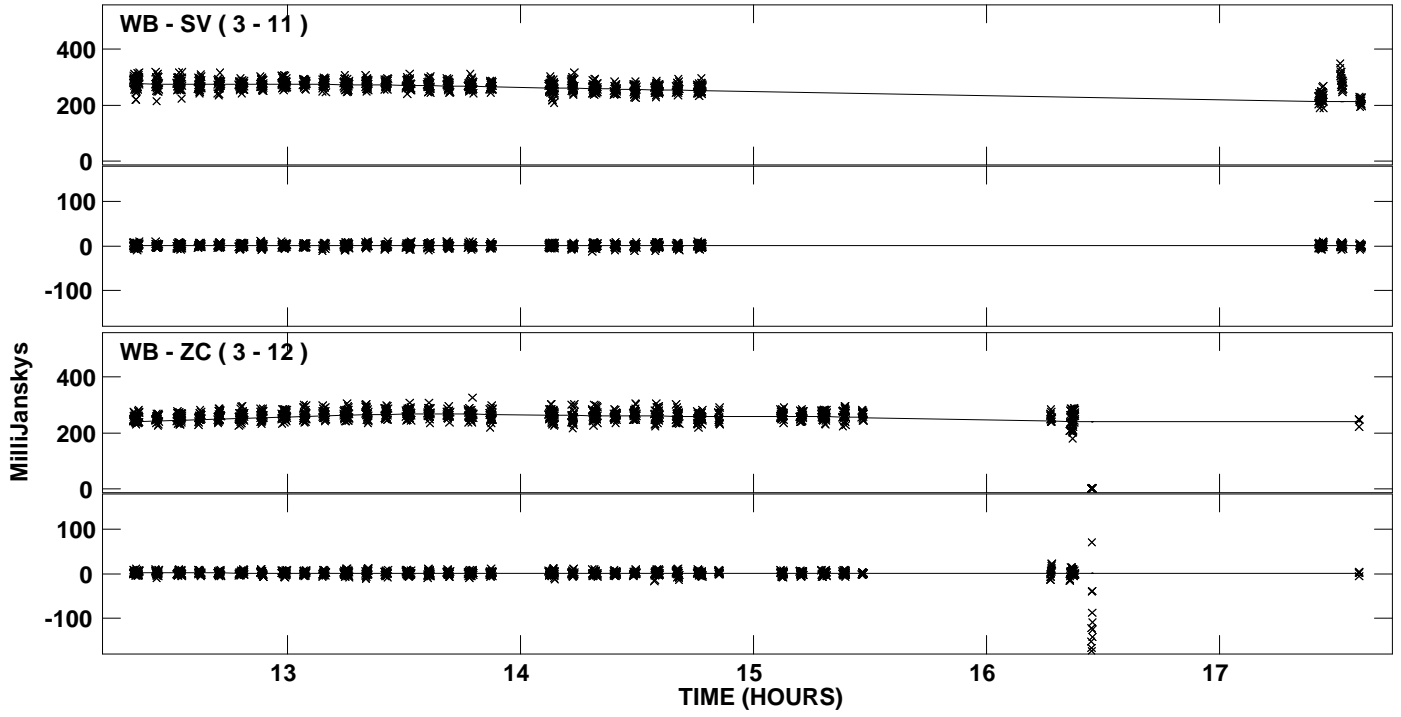
PLot file version 22 created 05-JAN-2012 19:21:12
Amplitude and Phase vs Time for J1128+5925.MULTI.1 CL # 3
IF 3 CHAN 1 STK RR of J1128+5925.ICL001.3



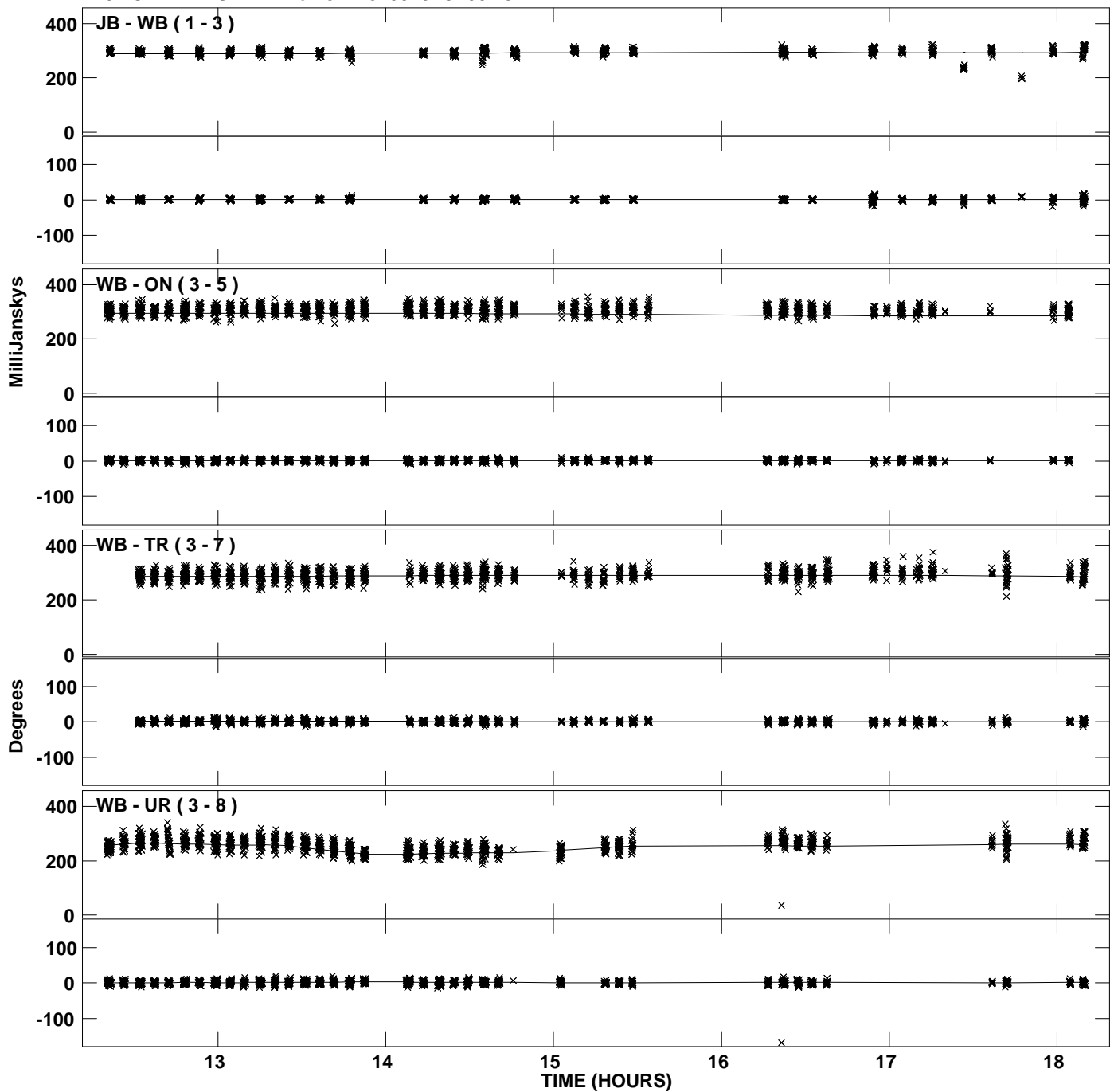
PLot file version 23 created 05-JAN-2012 19:21:12
Amplitude and Phase vs Time for J1128+5925.MULTI.1 CL # 3
IF 4 CHAN 1 STK RR of J1128+5925.ICL001.3



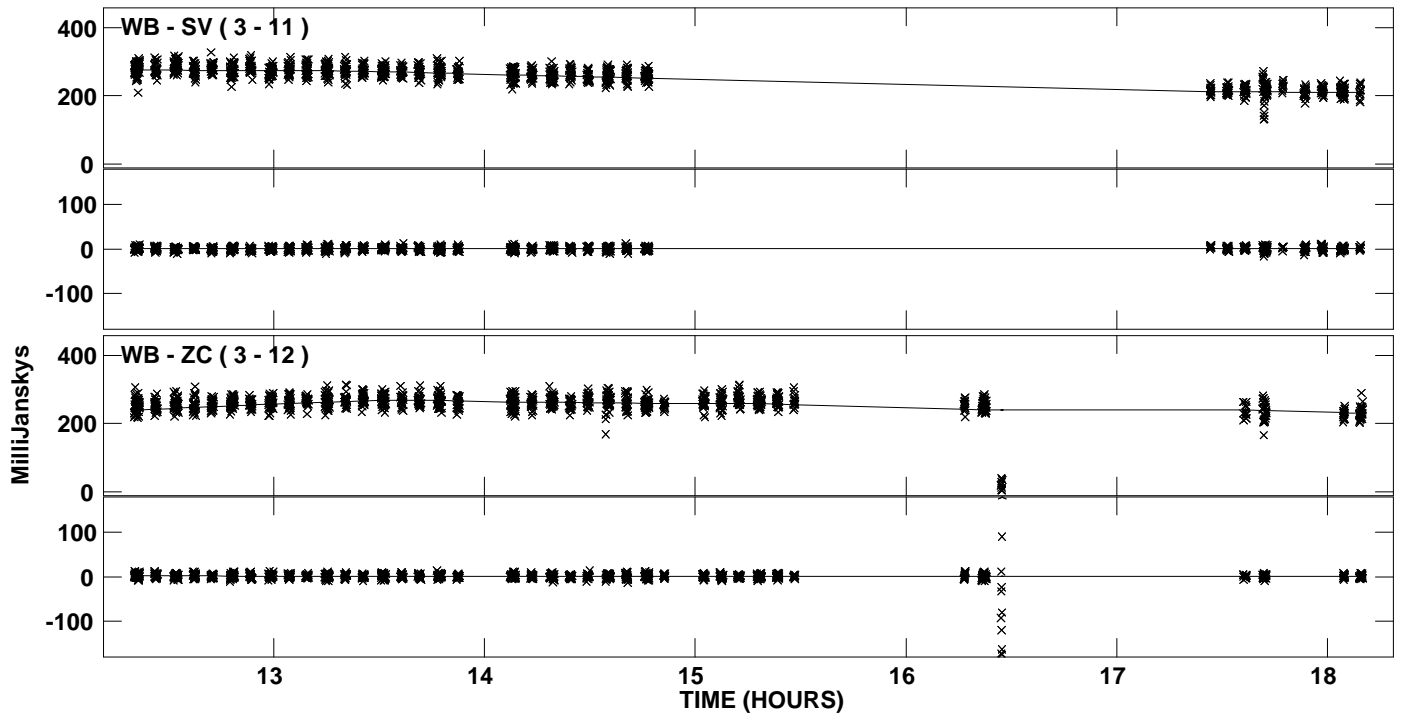
Plot file version 24 created 05-JAN-2012 19:21:12
Amplitude and Phase vs Time for J1128+5925.MULTI.1 CL # 3
IF 4 CHAN 1 STK RR of J1128+5925.ICL001.3



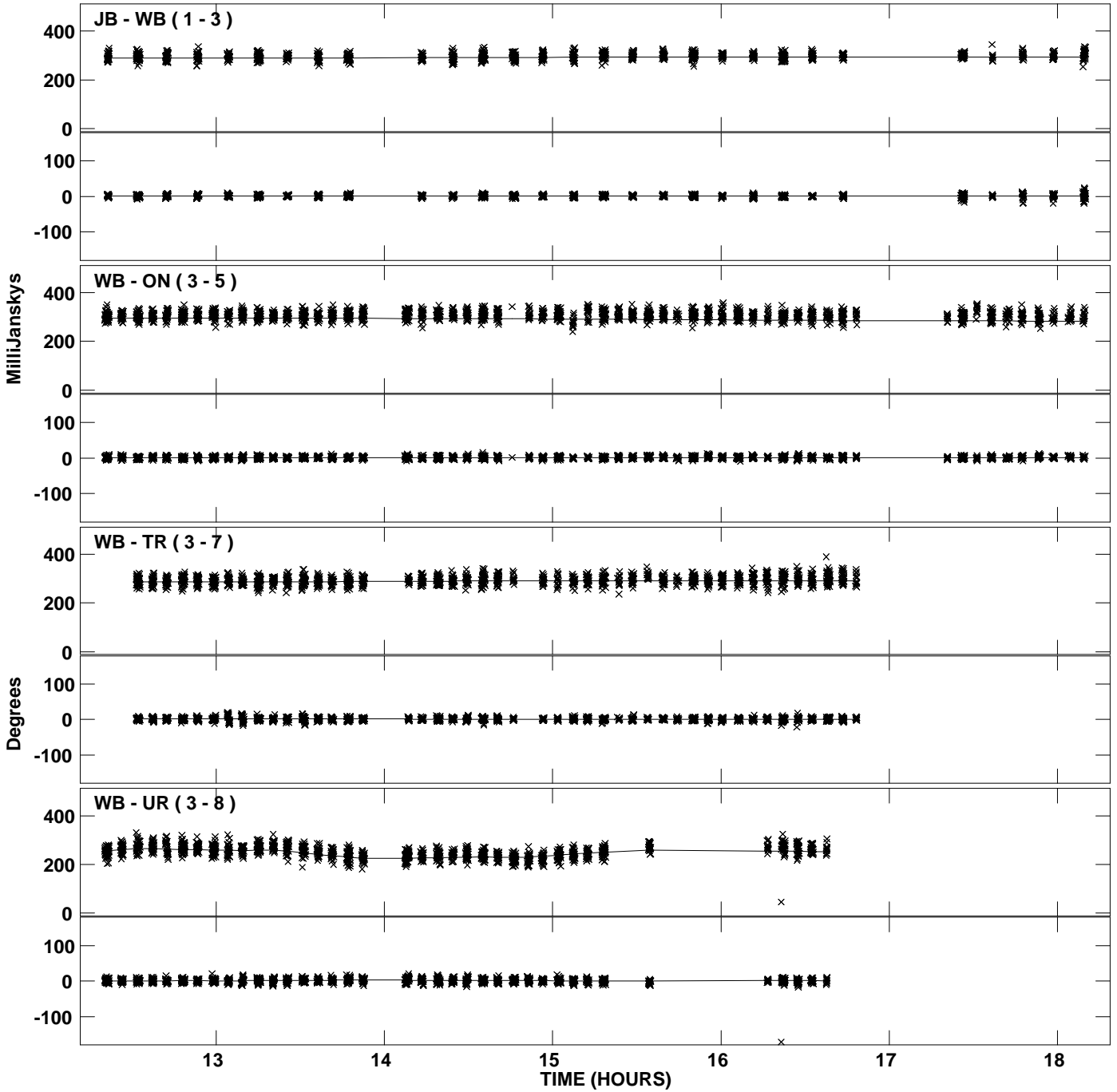
PLot file version 25 created 05-JAN-2012 19:21:13
Amplitude andPhase vs Time for J1128+5925.MULTI.1 CL # 3
IF 5 CHAN 1 STK RR of J1128+5925.ICL001.3



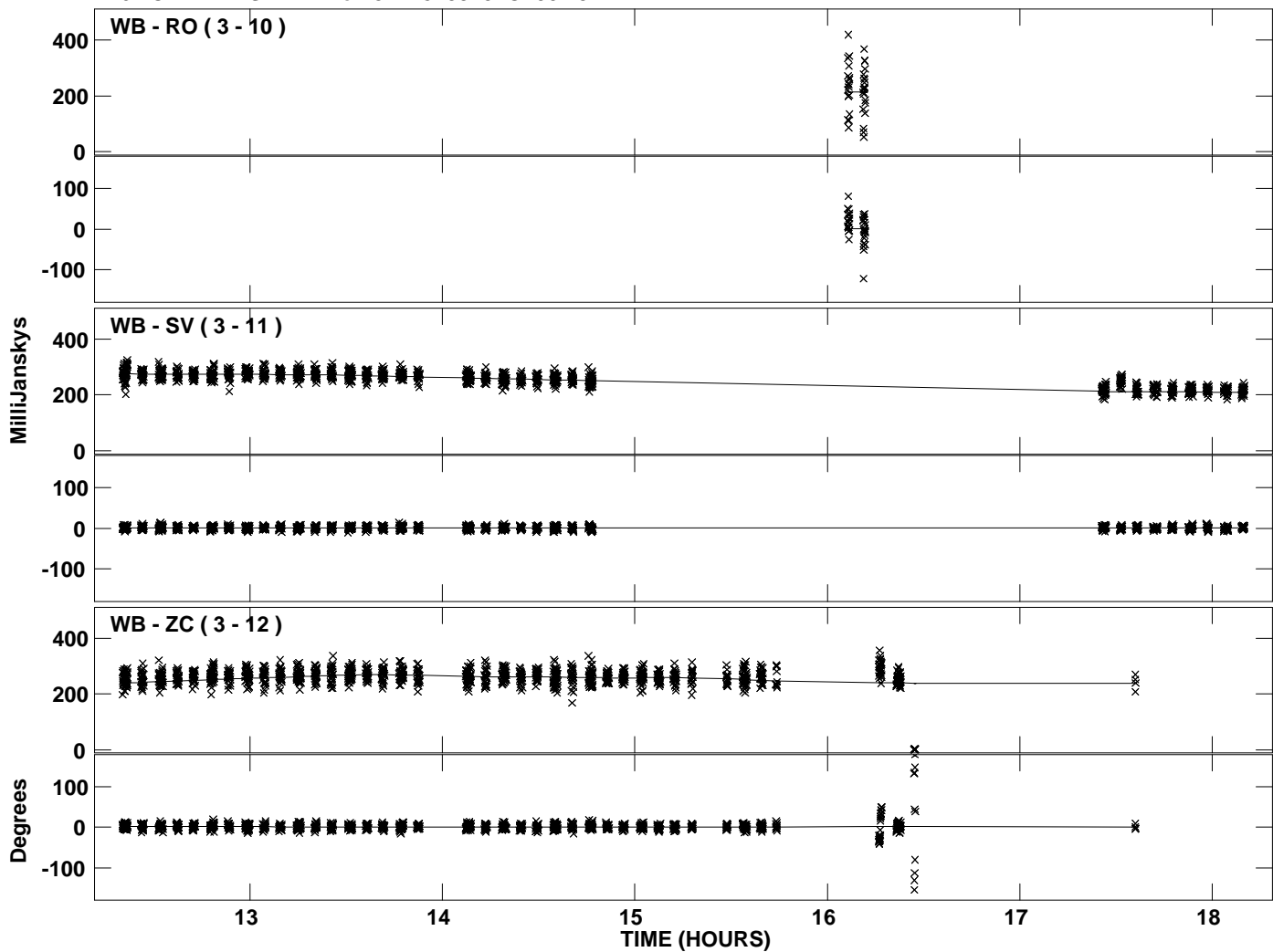
Plot file version 26 created 05-JAN-2012 19:21:13
Amplitude and Phase vs Time for J1128+5925.MULTI.1 CL # 3
IF 5 CHAN 1 STK RR of J1128+5925.ICL001.3



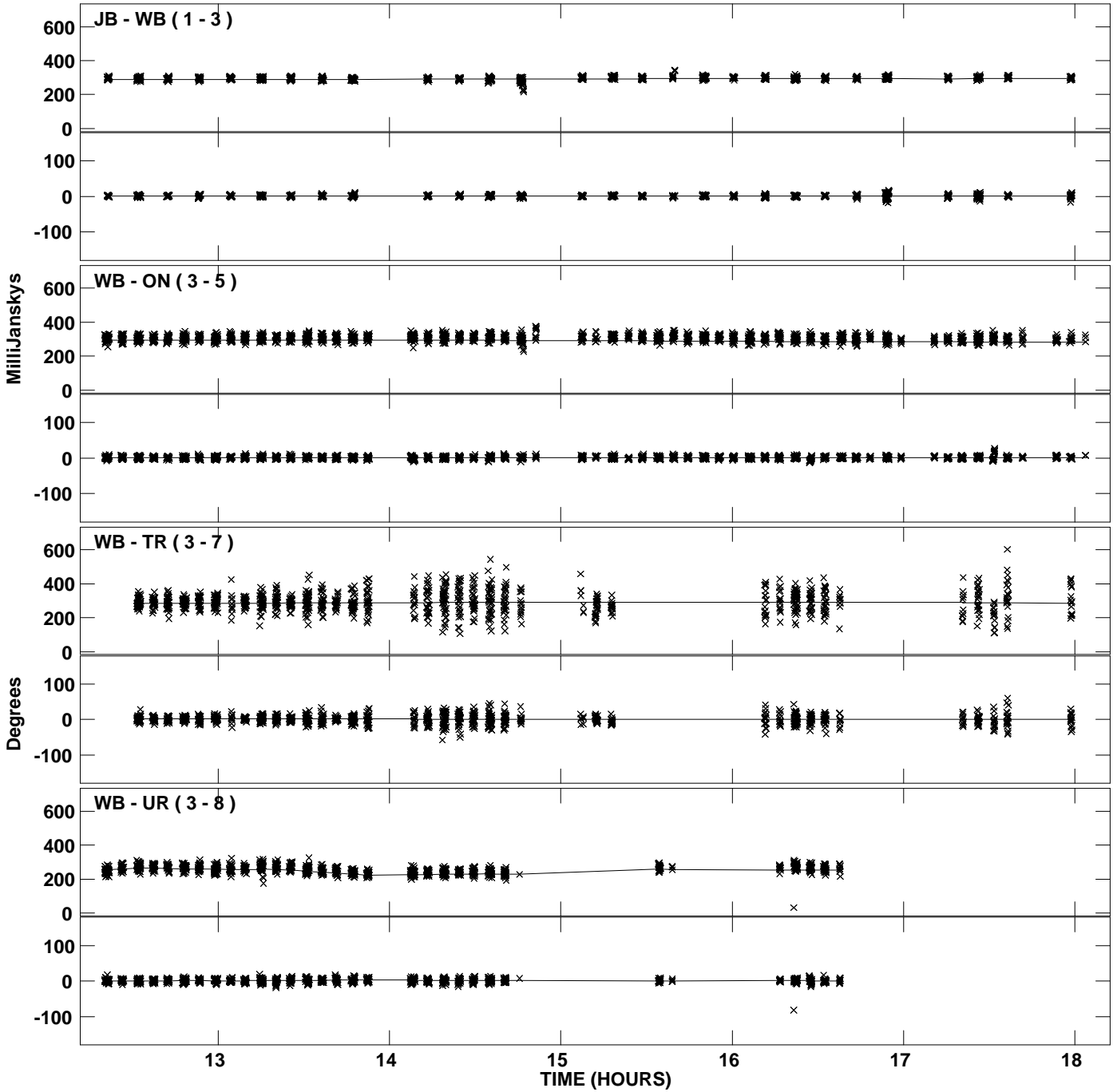
PLot file version 27 created 05-JAN-2012 19:21:13
Amplitude andPhase vs Time for J1128+5925.MULTI.1 CL # 3
IF 6 CHAN 1 STK RR of J1128+5925.ICL001.3



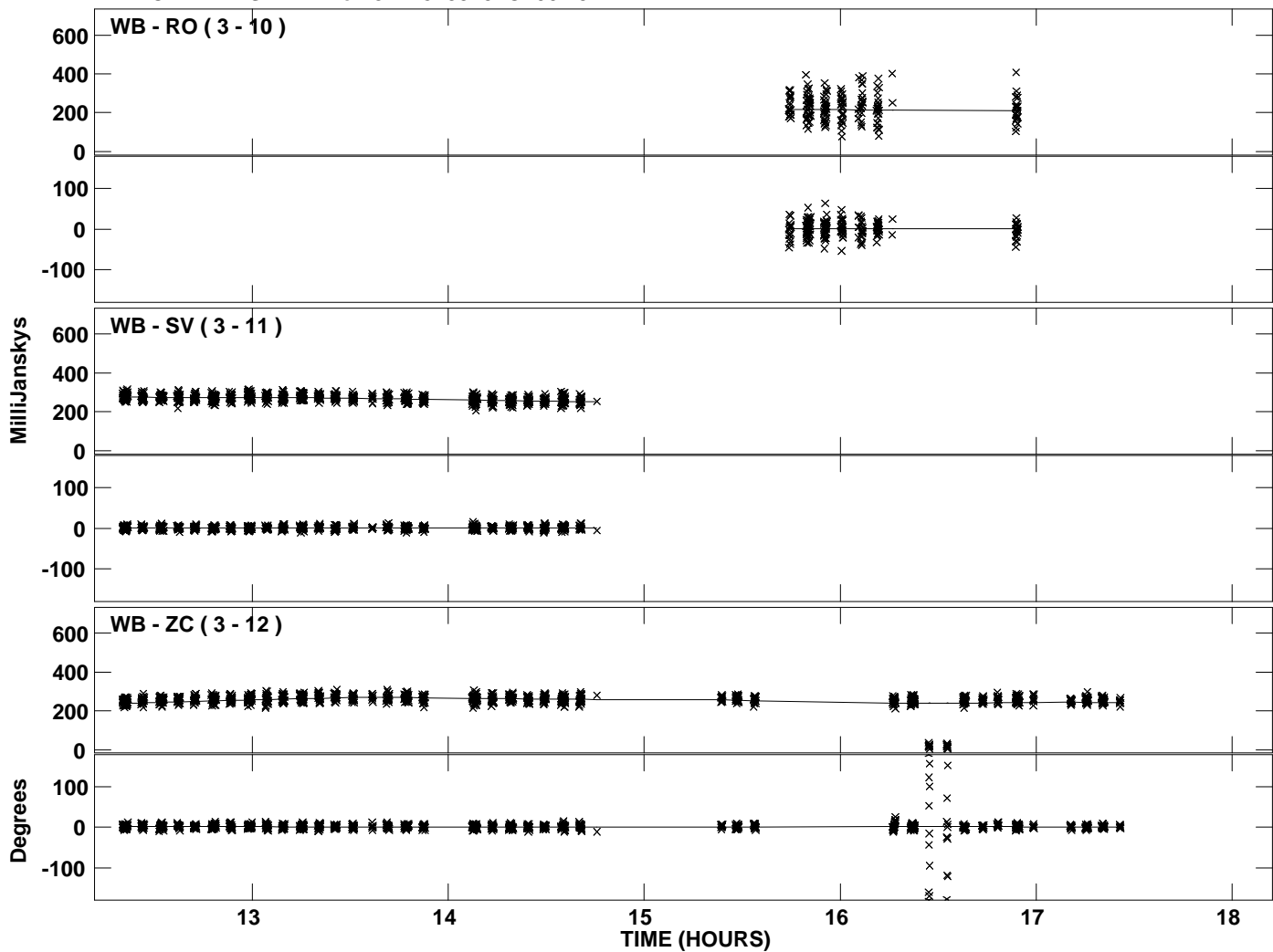
PLot file version 28 created 05-JAN-2012 19:21:13
Amplitude andPhase vs Time for J1128+5925.MULTI.1 CL # 3
IF 6 CHAN 1 STK RR of J1128+5925.ICL001.3



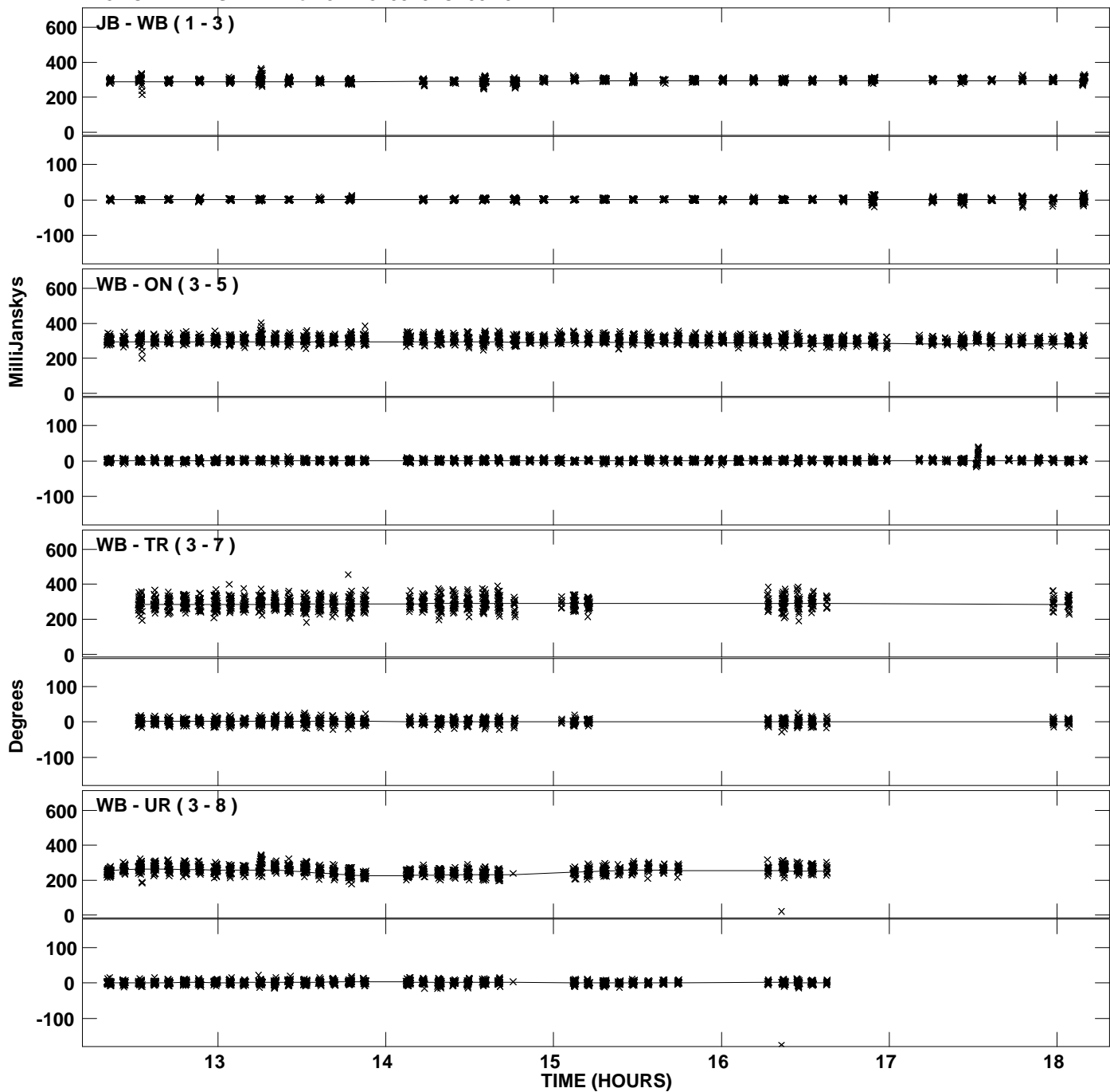
PLot file version 29 created 05-JAN-2012 19:21:13
Amplitude andPhase vs Time for J1128+5925.MULTI.1 CL # 3
IF 7 CHAN 1 STK RR of J1128+5925.ICL001.3



PLot file version 30 created 05-JAN-2012 19:21:13
Amplitude andPhase vs Time for J1128+5925.MULTI.1 CL # 3
IF 7 CHAN 1 STK RR of J1128+5925.ICL001.3



Plot file version 31 created 05-JAN-2012 19:21:14
Amplitude and Phase vs Time for J1128+5925.MULTI.1 CL # 3
IF 8 CHAN 1 STK RR of J1128+5925.ICL001.3



PLot file version 32 created 05-JAN-2012 19:21:14
Amplitude andPhase vs Time for J1128+5925.MULTI.1 CL # 3
IF 8 CHAN 1 STK RR of J1128+5925.ICL001.3

