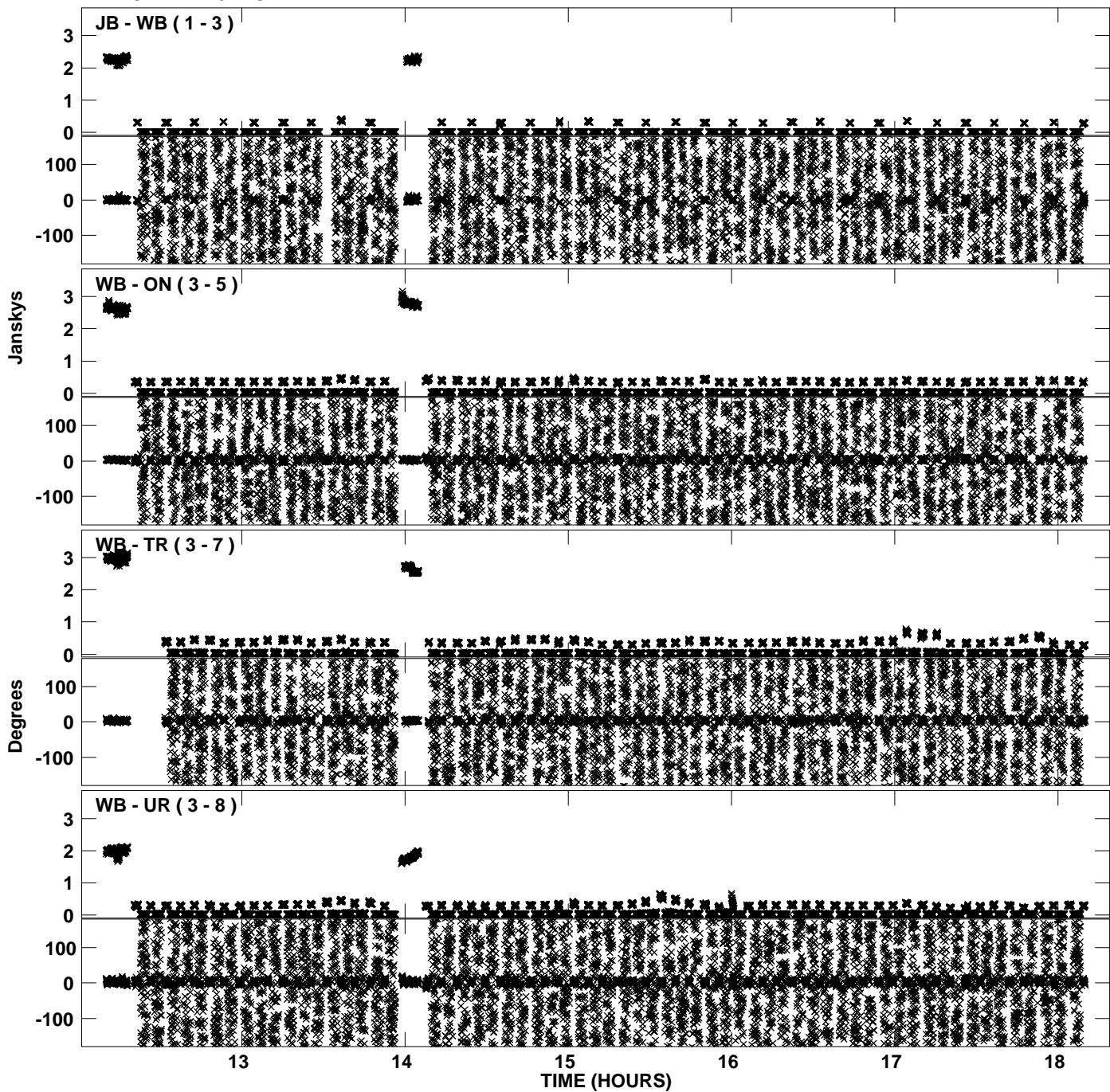
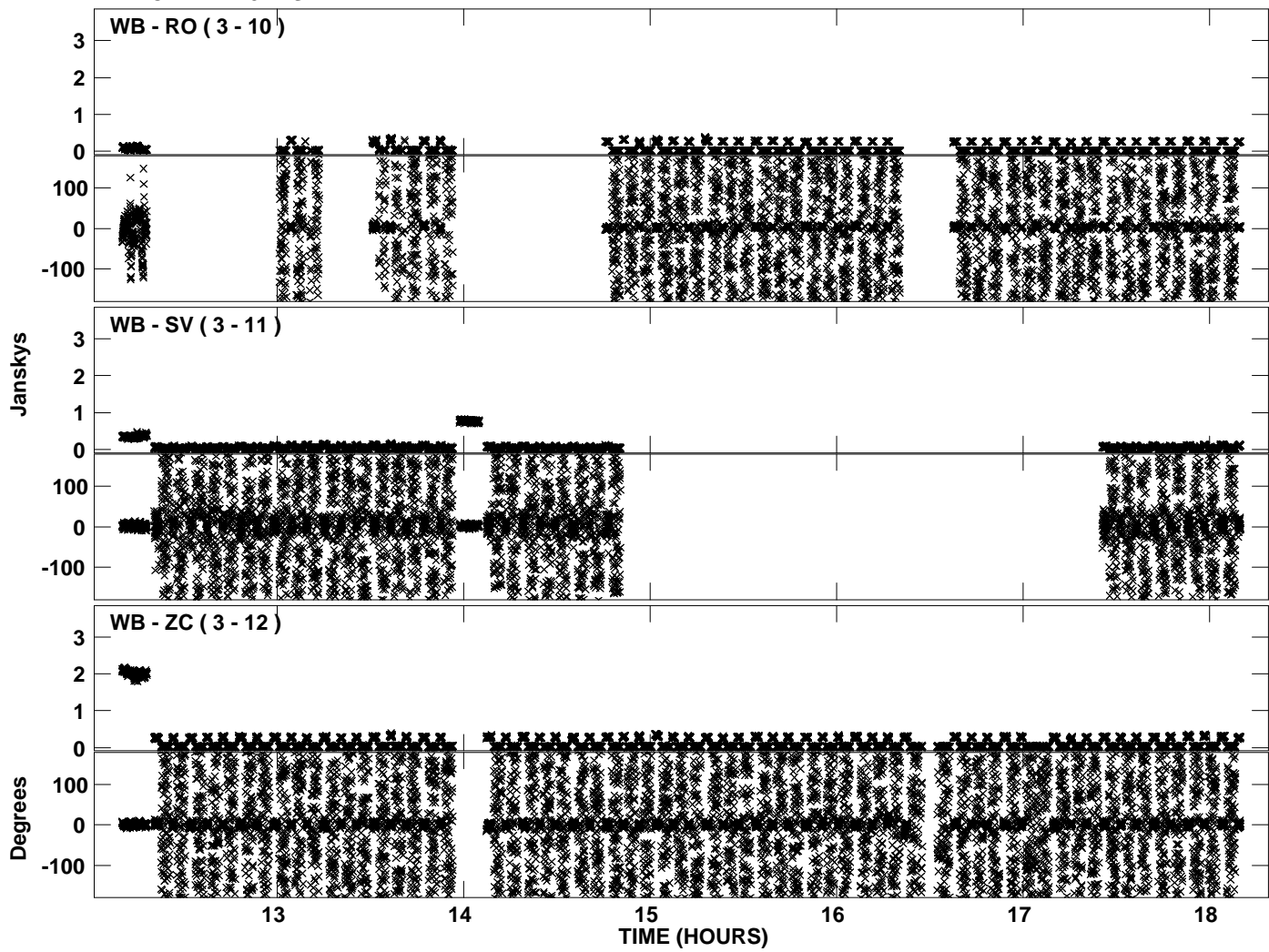


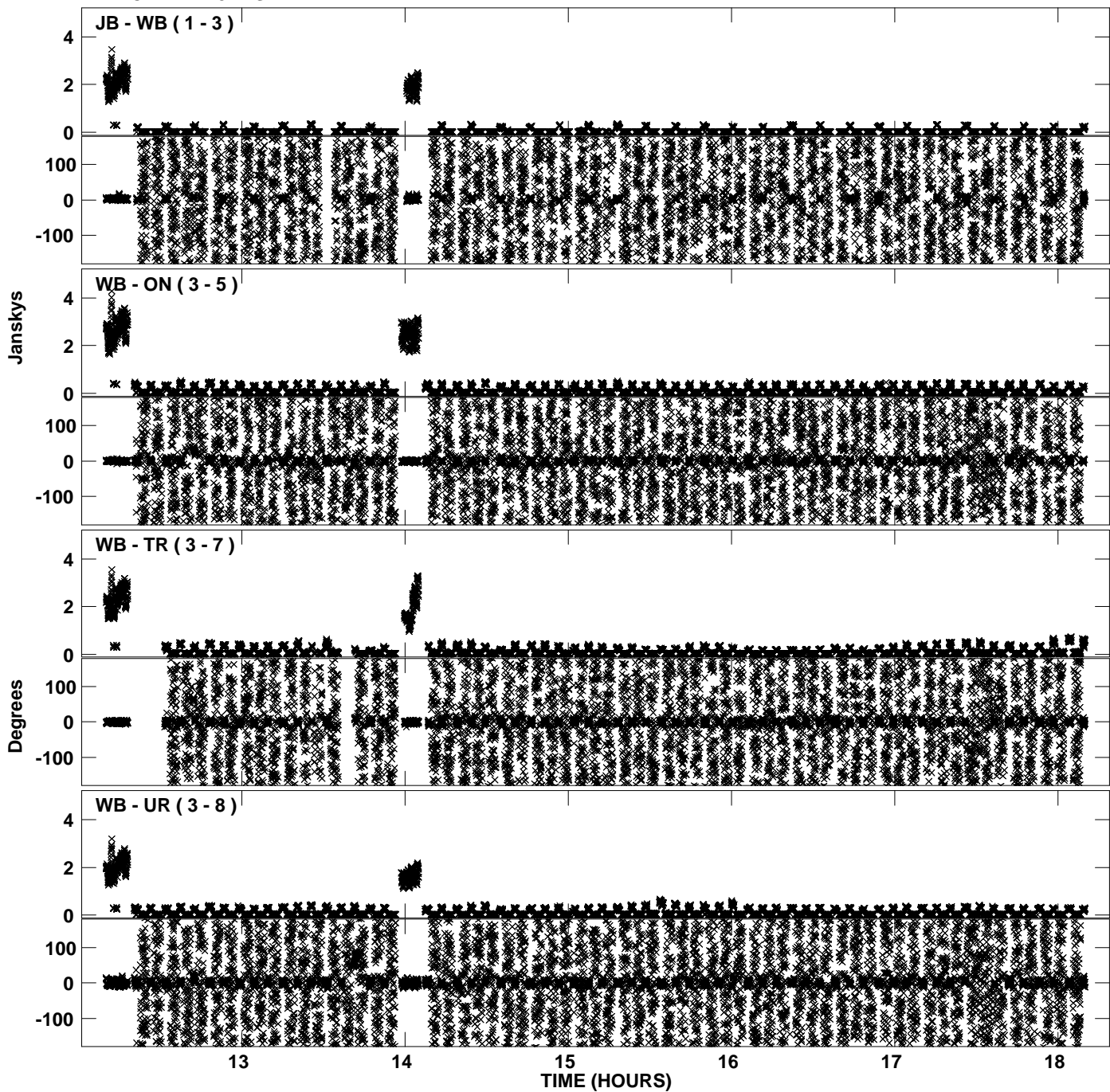
Plot file version 1 created 05-JAN-2012 19:10:49  
Amplitude andPhase vs Time for EP068D 3.UVDATA.1 Vect aver. CL # 3  
IF 1 CHAN 1 - 32 STK LL



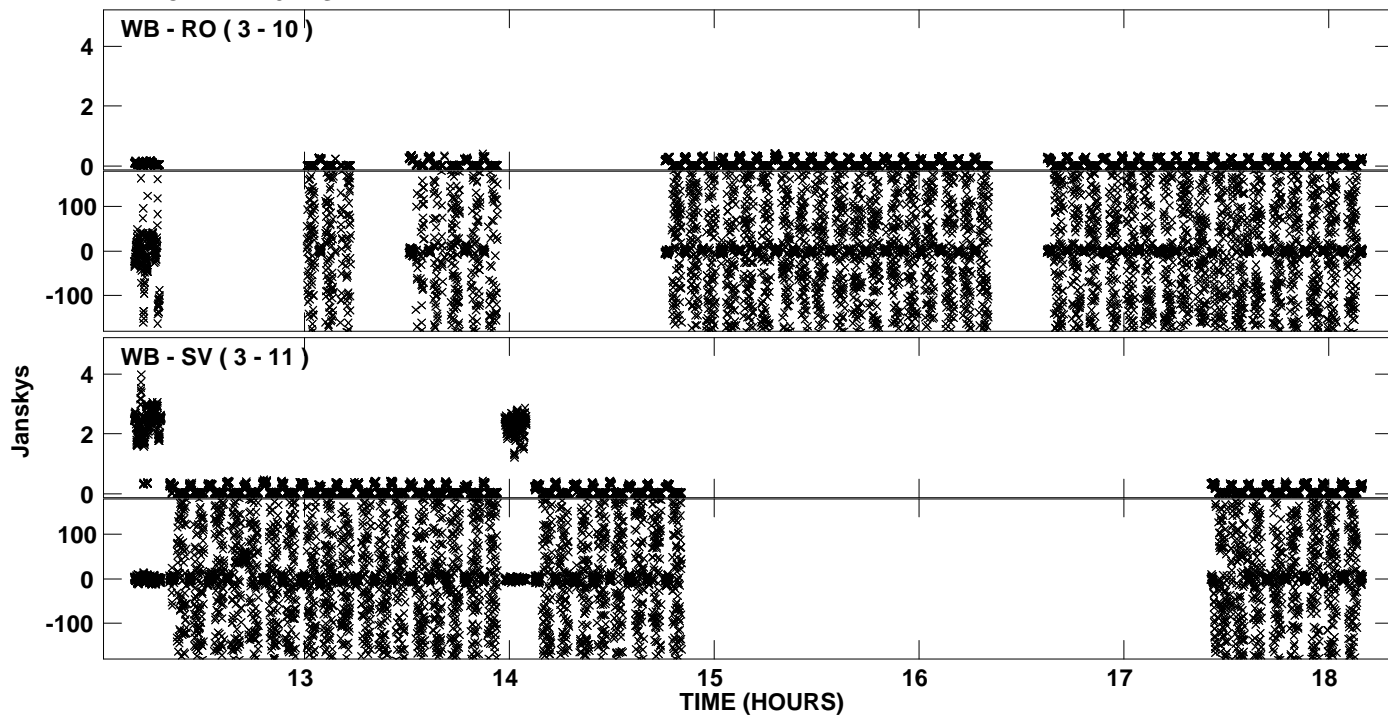
Plot file version 2 created 05-JAN-2012 19:10:49  
Amplitude andPhase vs Time for EP068D 3.UVDATA.1 Vect aver. CL # 3  
IF 1 CHAN 1 - 32 STK LL



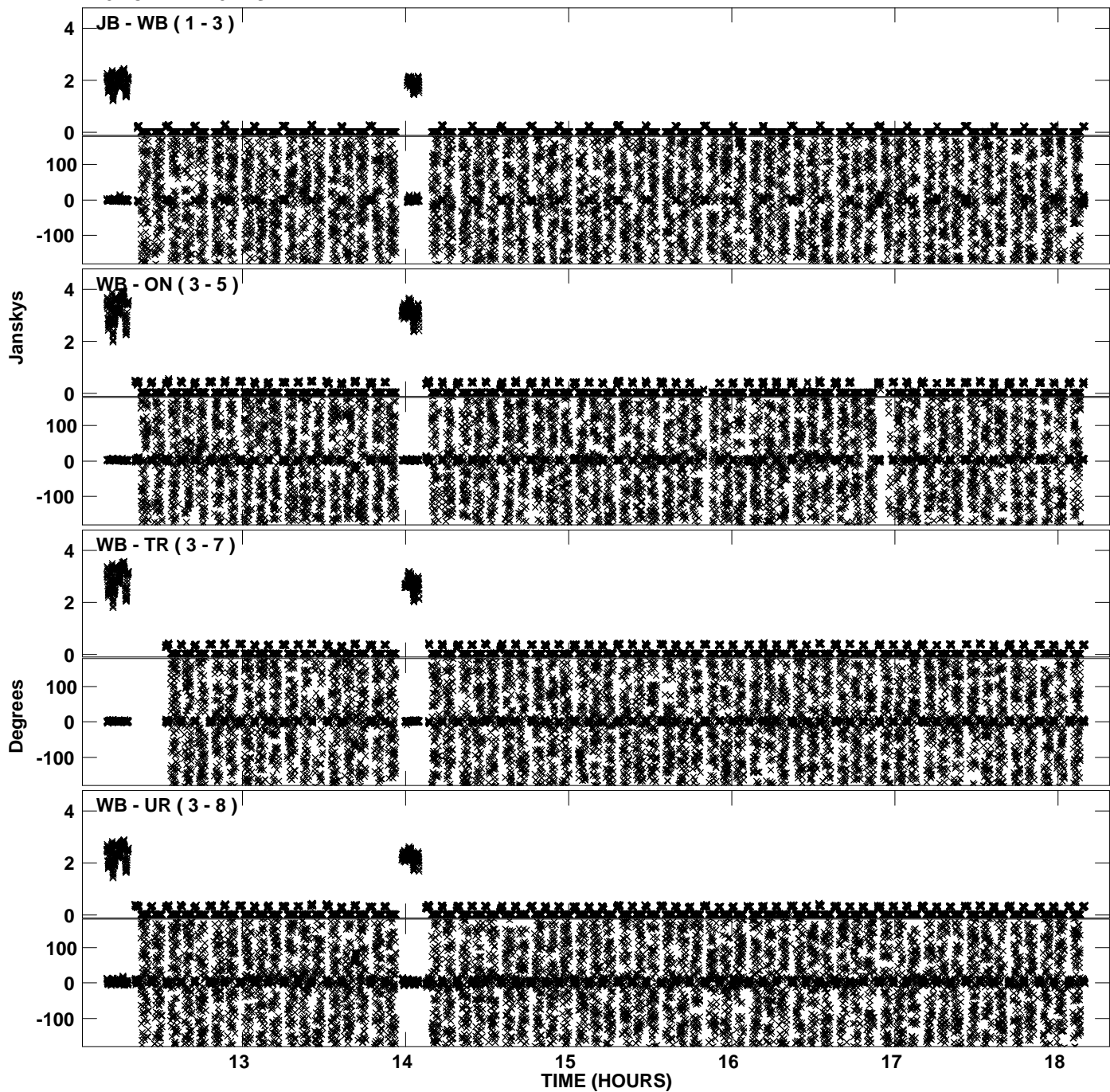
Plot file version 3 created 05-JAN-2012 19:10:57  
Amplitude andPhase vs Time for EP068D 3.UVDATA.1 Vect aver. CL # 3  
IF 2 CHAN 1 - 32 STK LL



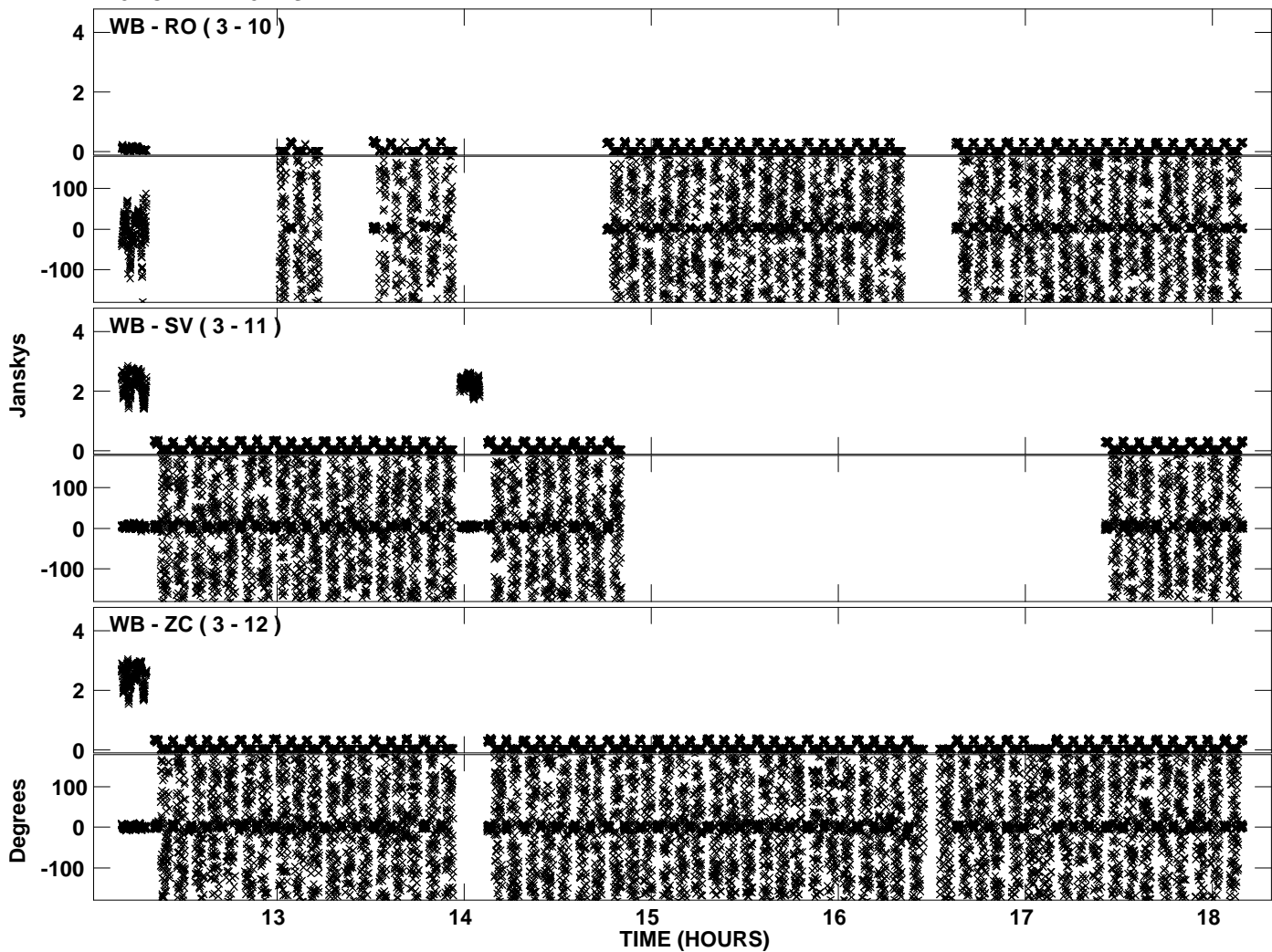
PLot file version 4 created 05-JAN-2012 19:10:57  
Amplitude andPhase vs Time for EP068D 3.UVDATA.1 Vect aver. CL # 3  
IF 2 CHAN 1 - 32 STK LL



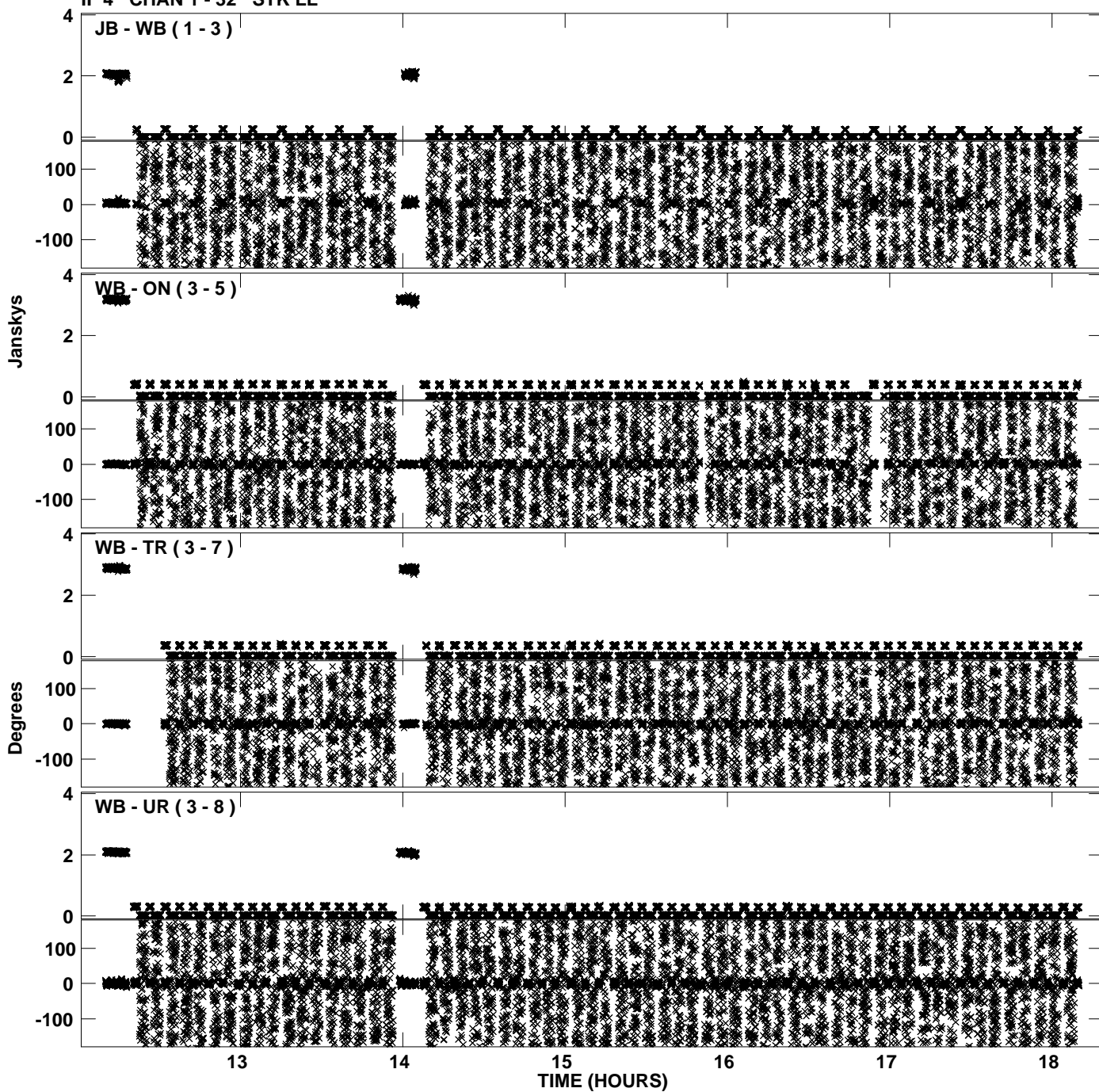
Plot file version 5 created 05-JAN-2012 19:11:05  
Amplitude andPhase vs Time for EP068D 3.UVDATA.1 Vect aver. CL # 3  
IF 3 CHAN 1 - 32 STK LL



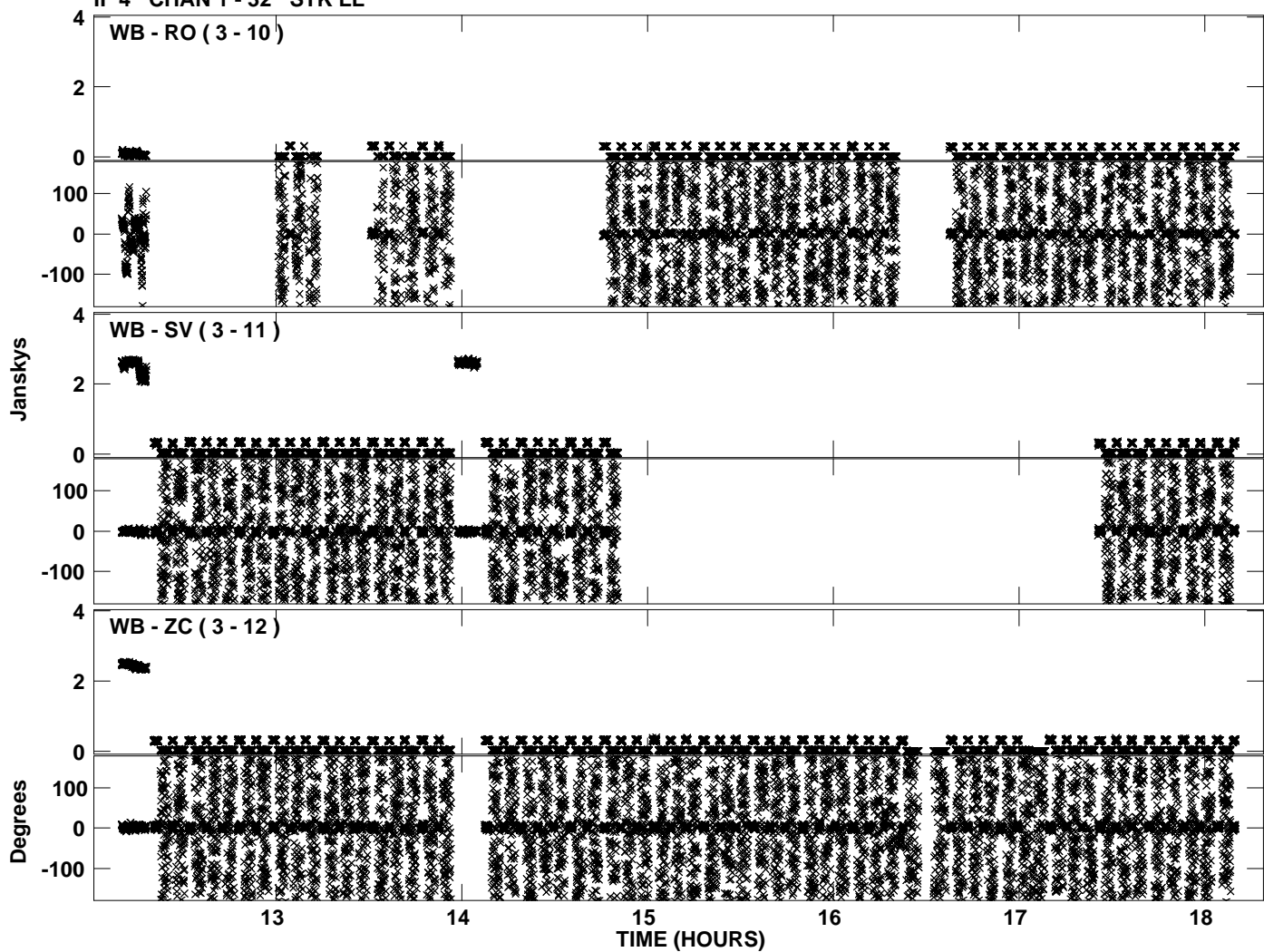
PLot file version 6 created 05-JAN-2012 19:11:05  
Amplitude andPhase vs Time for EP068D 3.UVDATA.1 Vect aver. CL # 3  
IF 3 CHAN 1 - 32 STK LL



Plot file version 7 created 05-JAN-2012 19:11:12  
Amplitude andPhase vs Time for EP068D 3.UVDATA.1 Vect aver. CL # 3  
IF 4 CHAN 1 - 32 STK LL

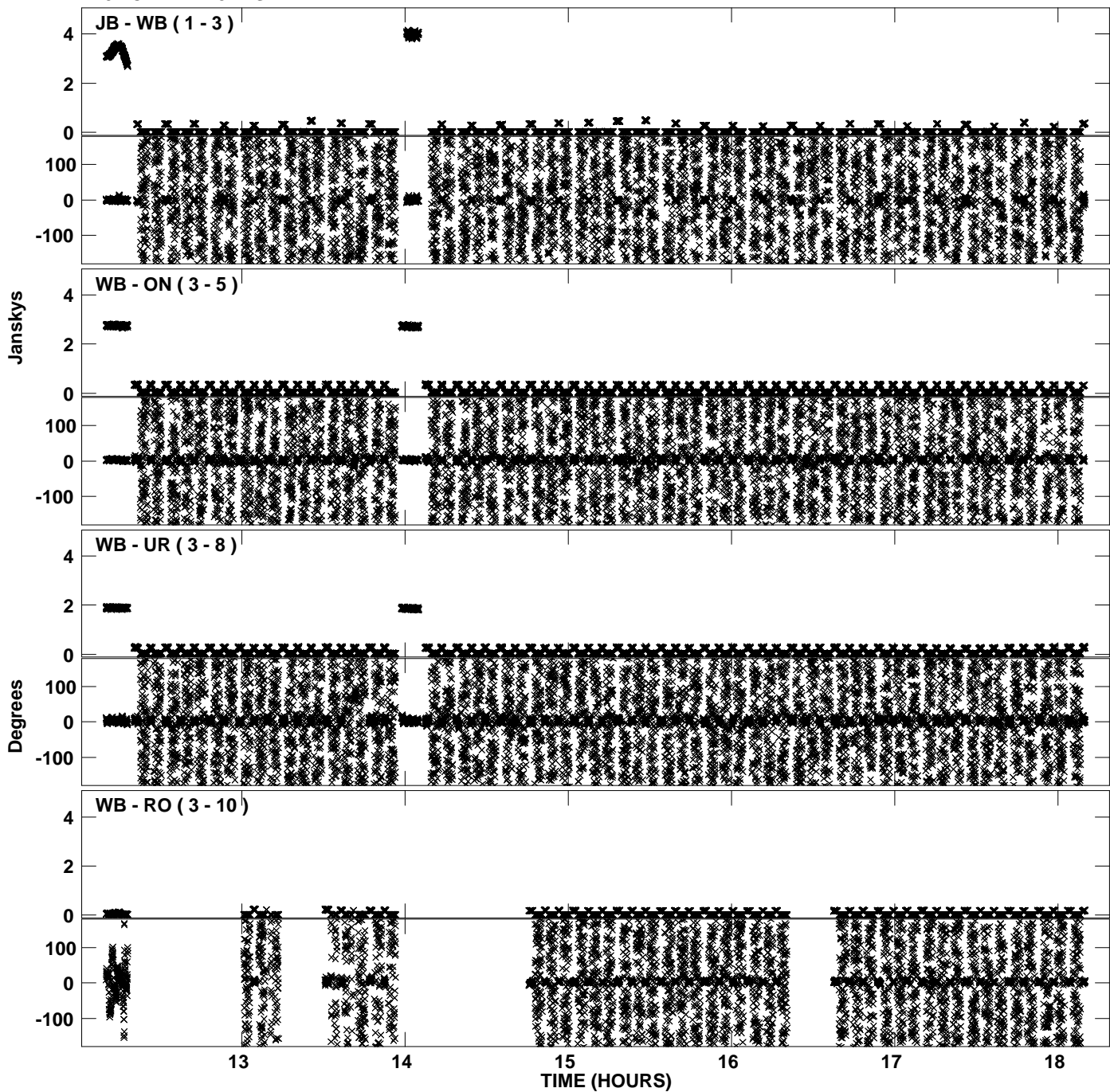


Plot file version 8 created 05-JAN-2012 19:11:12  
Amplitude andPhase vs Time for EP068D 3.UVDATA.1 Vect aver. CL # 3  
IF 4 CHAN 1 - 32 STK LL

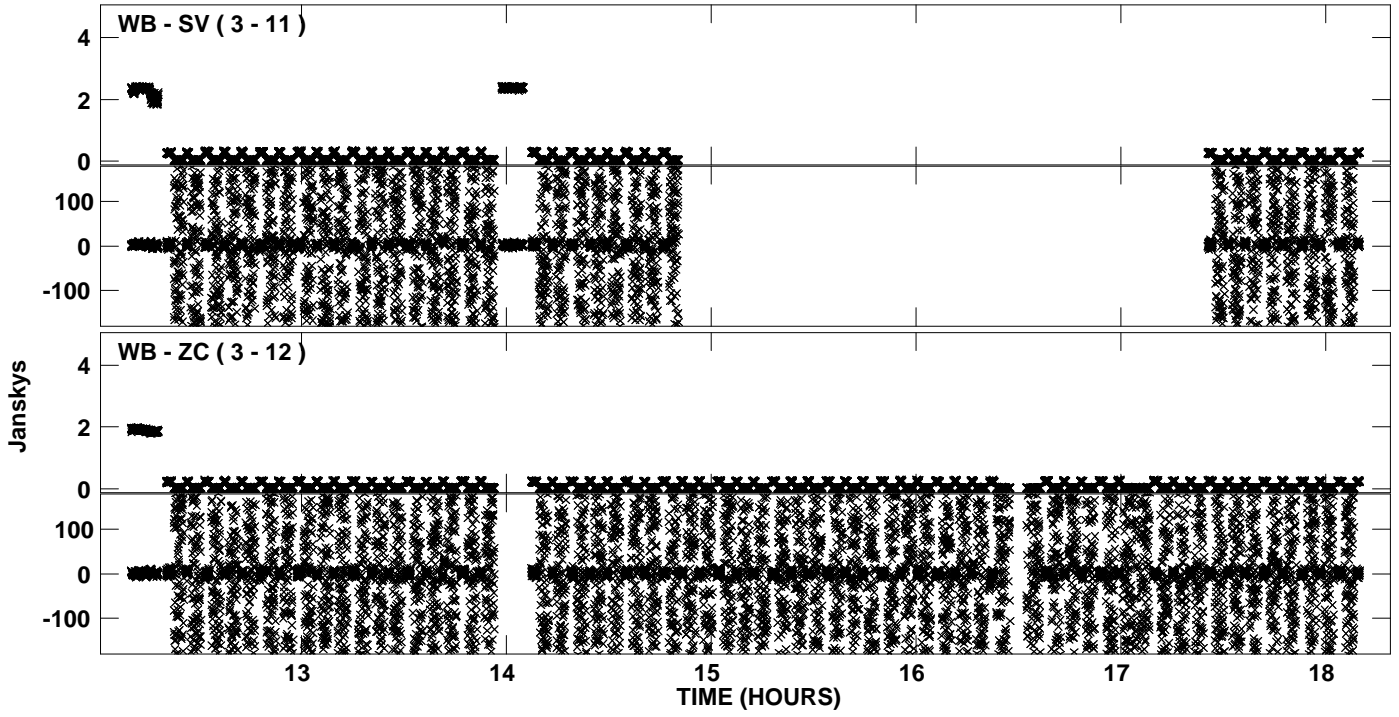




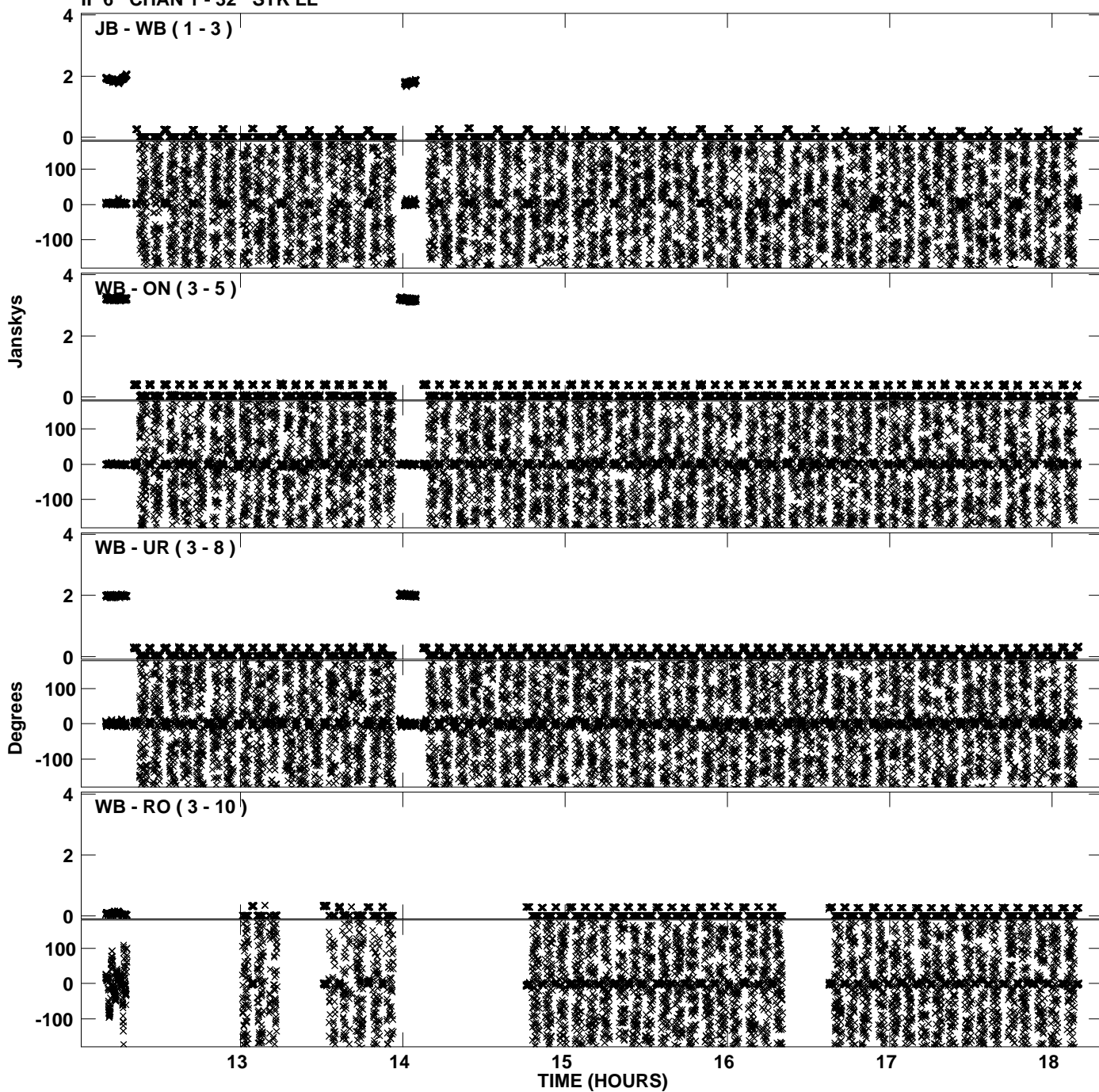
Plot file version 9 created 05-JAN-2012 19:11:20  
Amplitude andPhase vs Time for EP068D 3.UVDATA.1 Vect aver. CL # 3  
IF 5 CHAN 1 - 32 STK LL



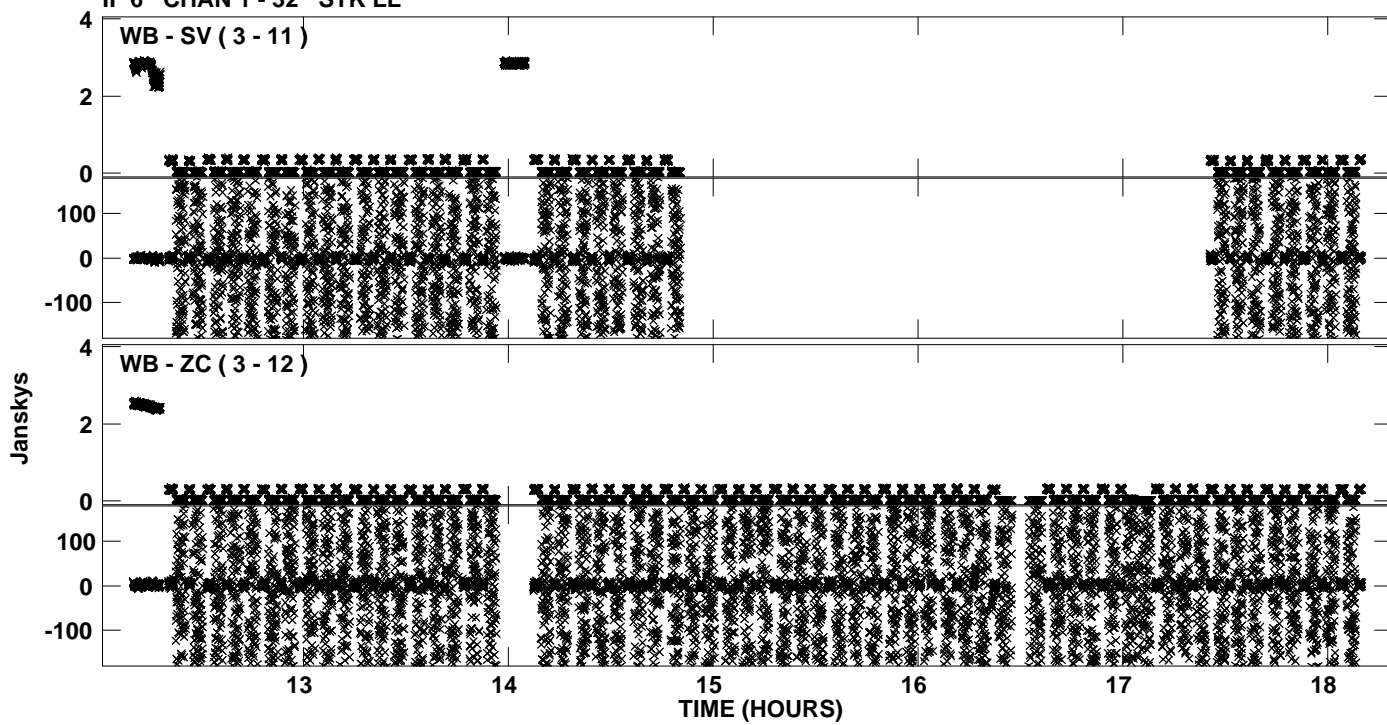
Plot file version 10 created 05-JAN-2012 19:11:20  
Amplitude andPhase vs Time for EP068D 3.UVDATA.1 Vect aver. CL # 3  
IF 5 CHAN 1 - 32 STK LL



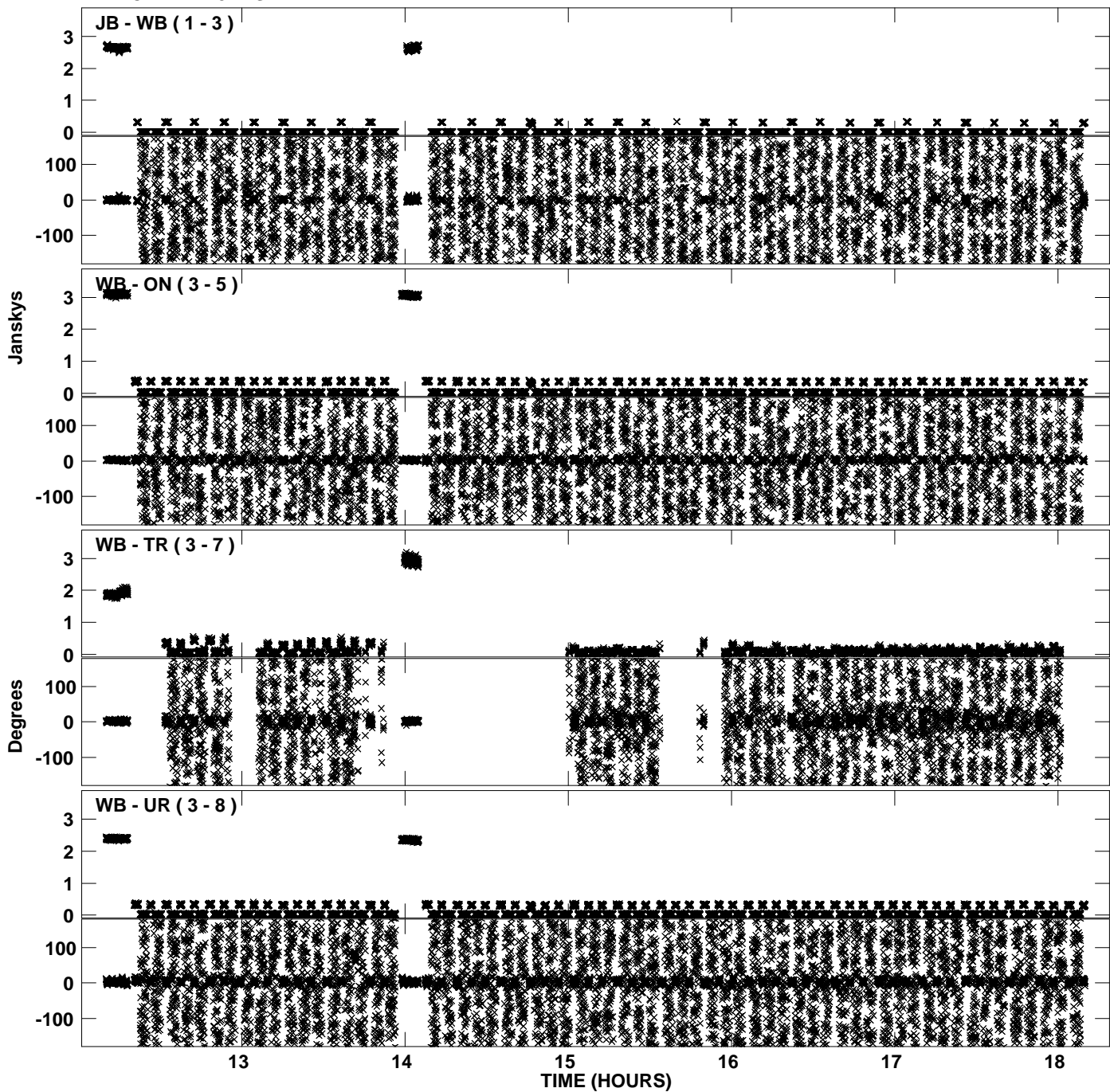
Plot file version 11 created 05-JAN-2012 19:11:27  
Amplitude andPhase vs Time for EP068D 3.UVDATA.1 Vect aver. CL # 3  
IF 6 CHAN 1 - 32 STK LL



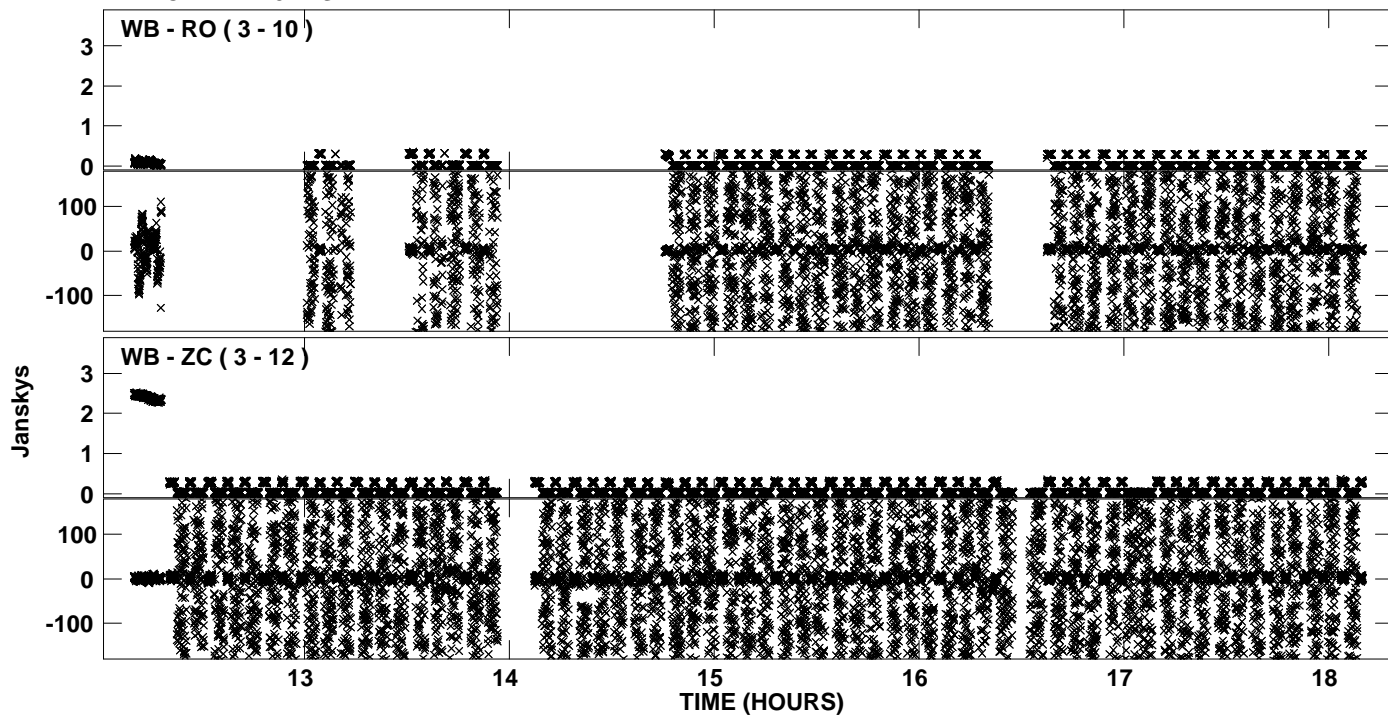
Plot file version 12 created 05-JAN-2012 19:11:27  
Amplitude andPhase vs Time for EP068D 3.UVDATA.1 Vect aver. CL # 3  
IF 6 CHAN 1 - 32 STK LL



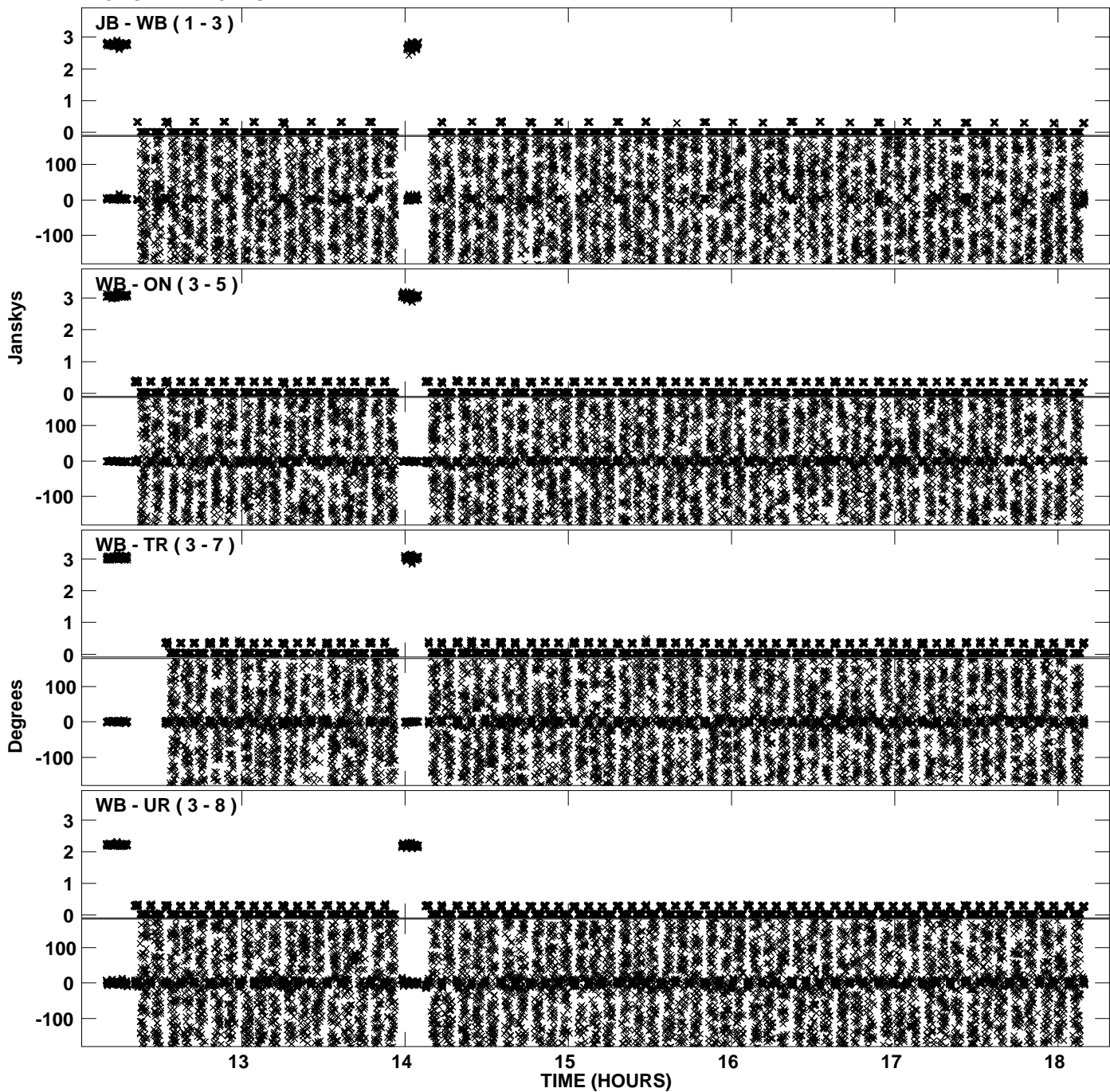
PLot file version 13 created 05-JAN-2012 19:11:34  
Amplitude andPhase vs Time for EP068D 3.UVDATA.1 Vect aver. CL # 3  
IF 7 CHAN 1 - 32 STK LL



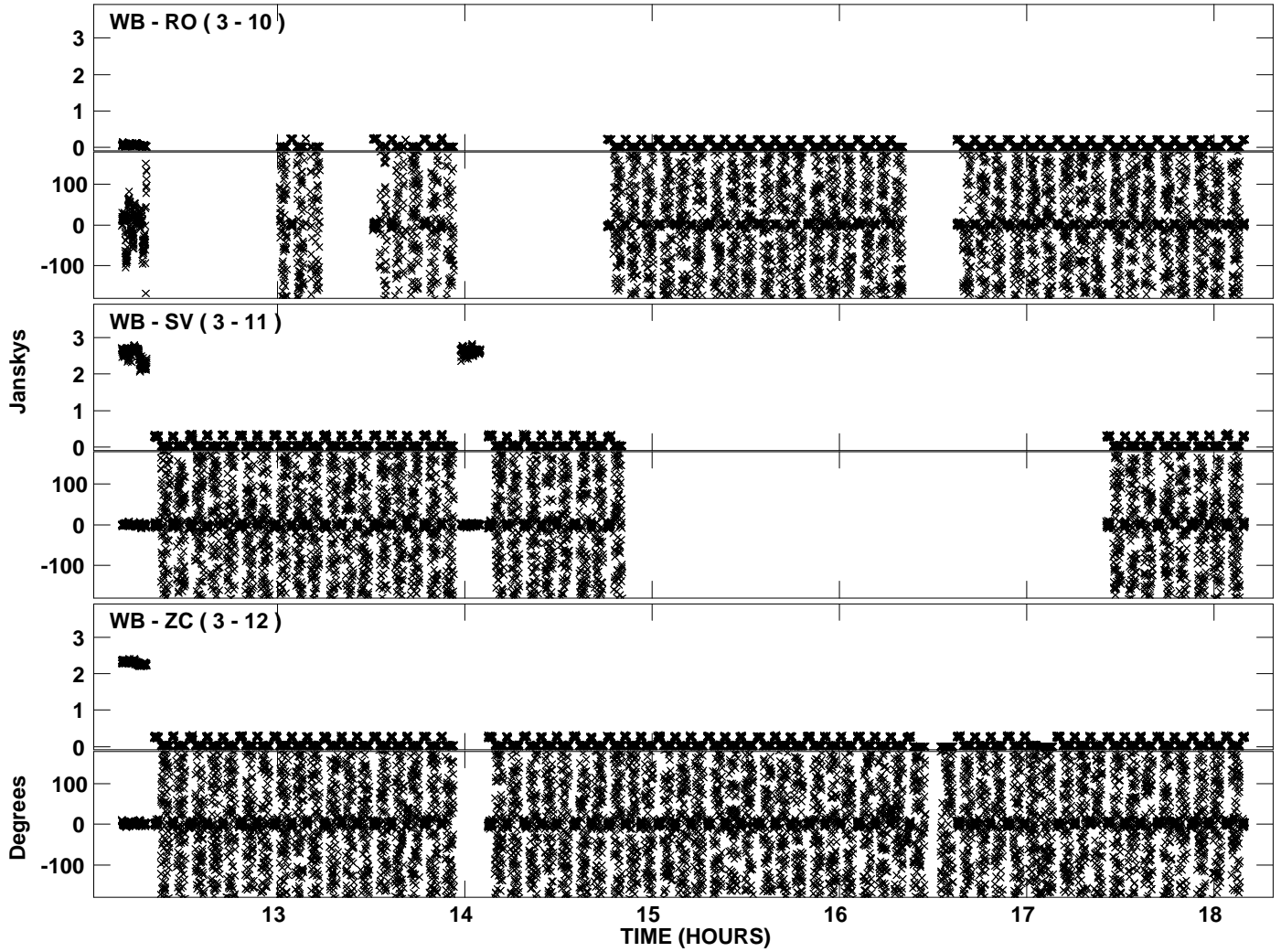
Plot file version 14 created 05-JAN-2012 19:11:34  
Amplitude and Phase vs Time for EP068D 3.UVDATA.1 Vect aver. CL # 3  
IF 7 CHAN 1 - 32 STK LL



PLot file version 15 created 05-JAN-2012 19:11:42  
Amplitude andPhase vs Time for EP068D 3.UVDATA.1 Vect aver. CL # 3  
IF 8 CHAN 1 - 32 STK LL

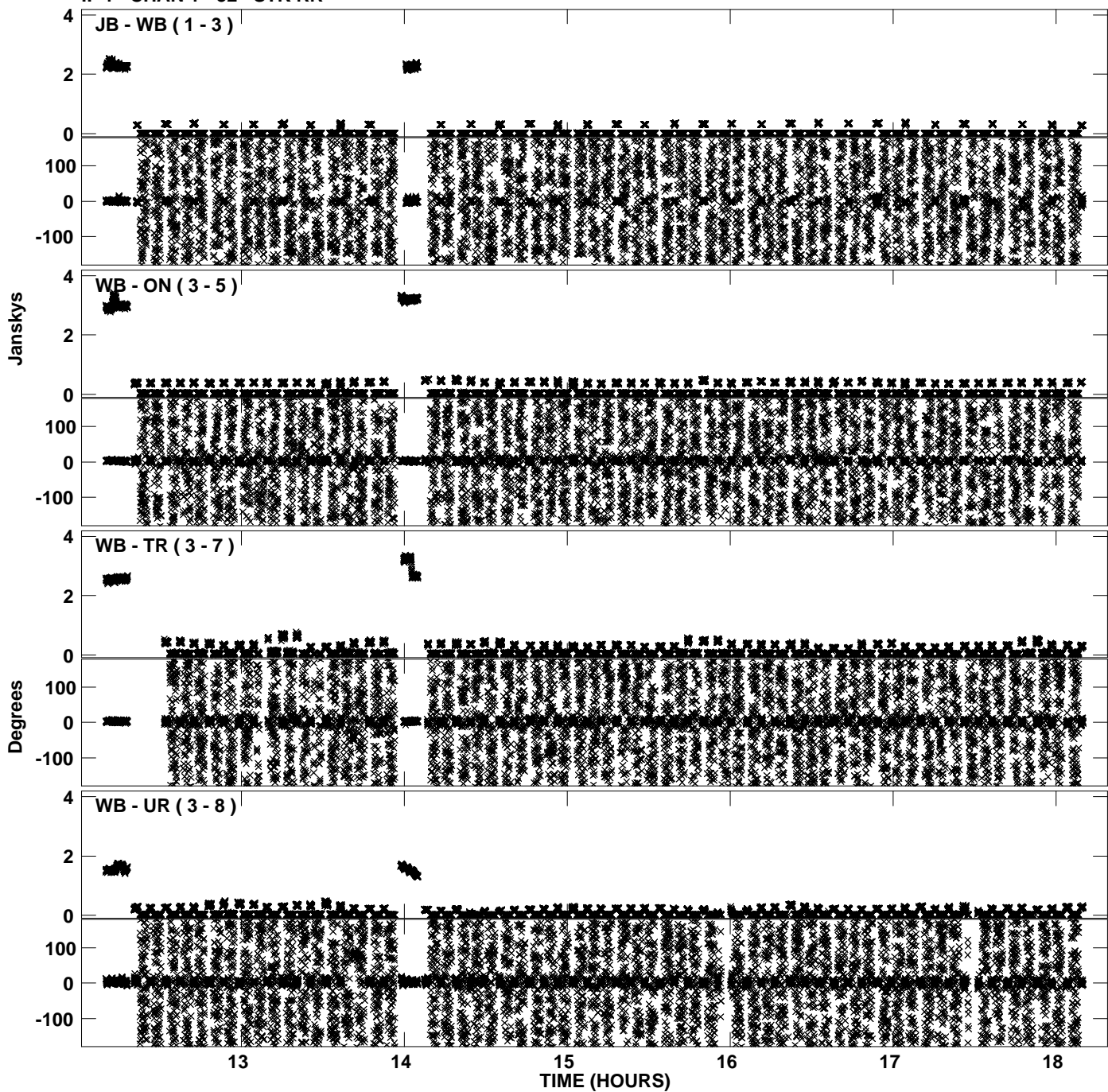


Plot file version 16 created 05-JAN-2012 19:11:42  
Amplitude andPhase vs Time for EP068D 3.UVDATA.1 Vect aver. CL # 3  
IF 8 CHAN 1 - 32 STK LL

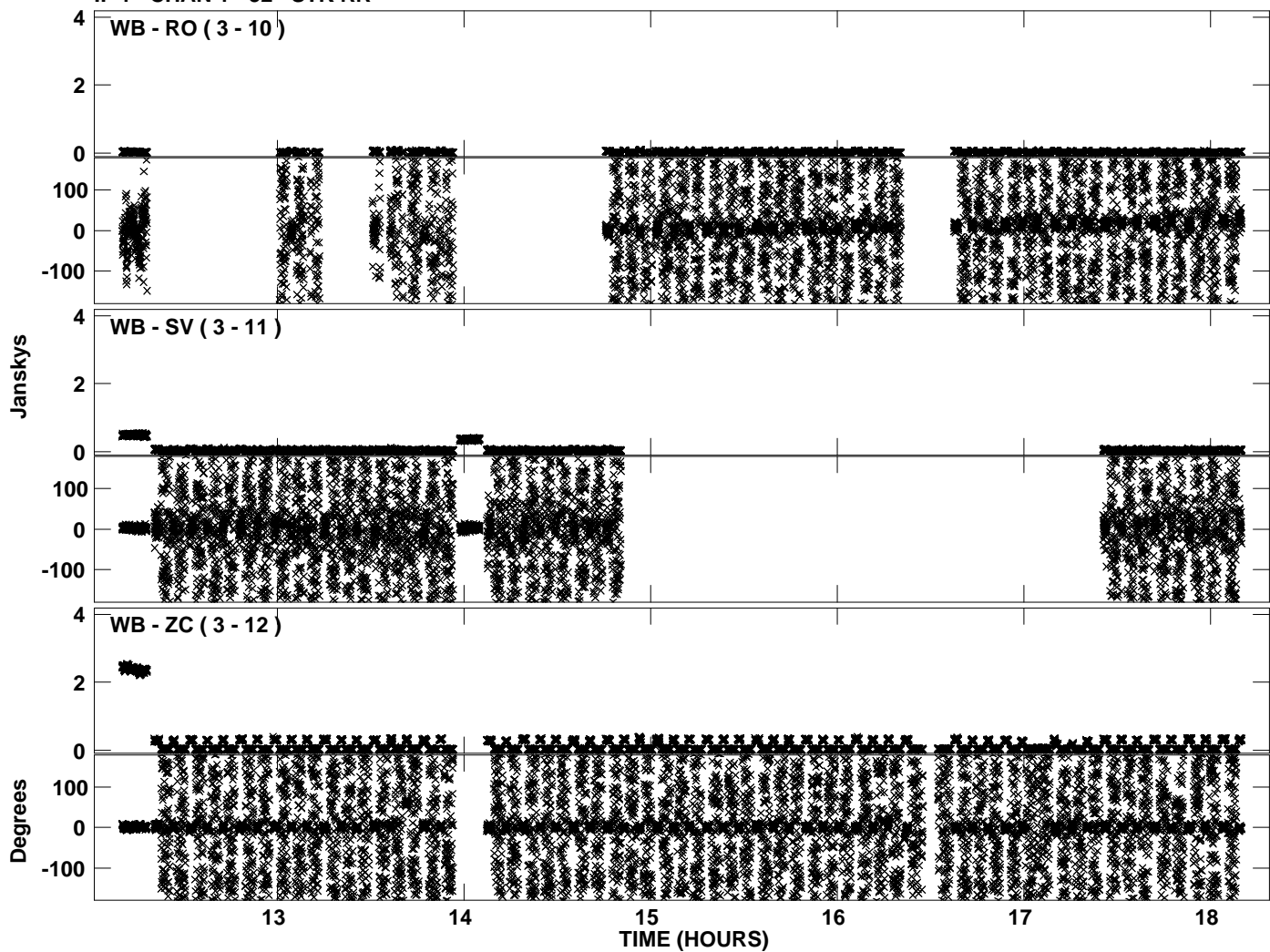




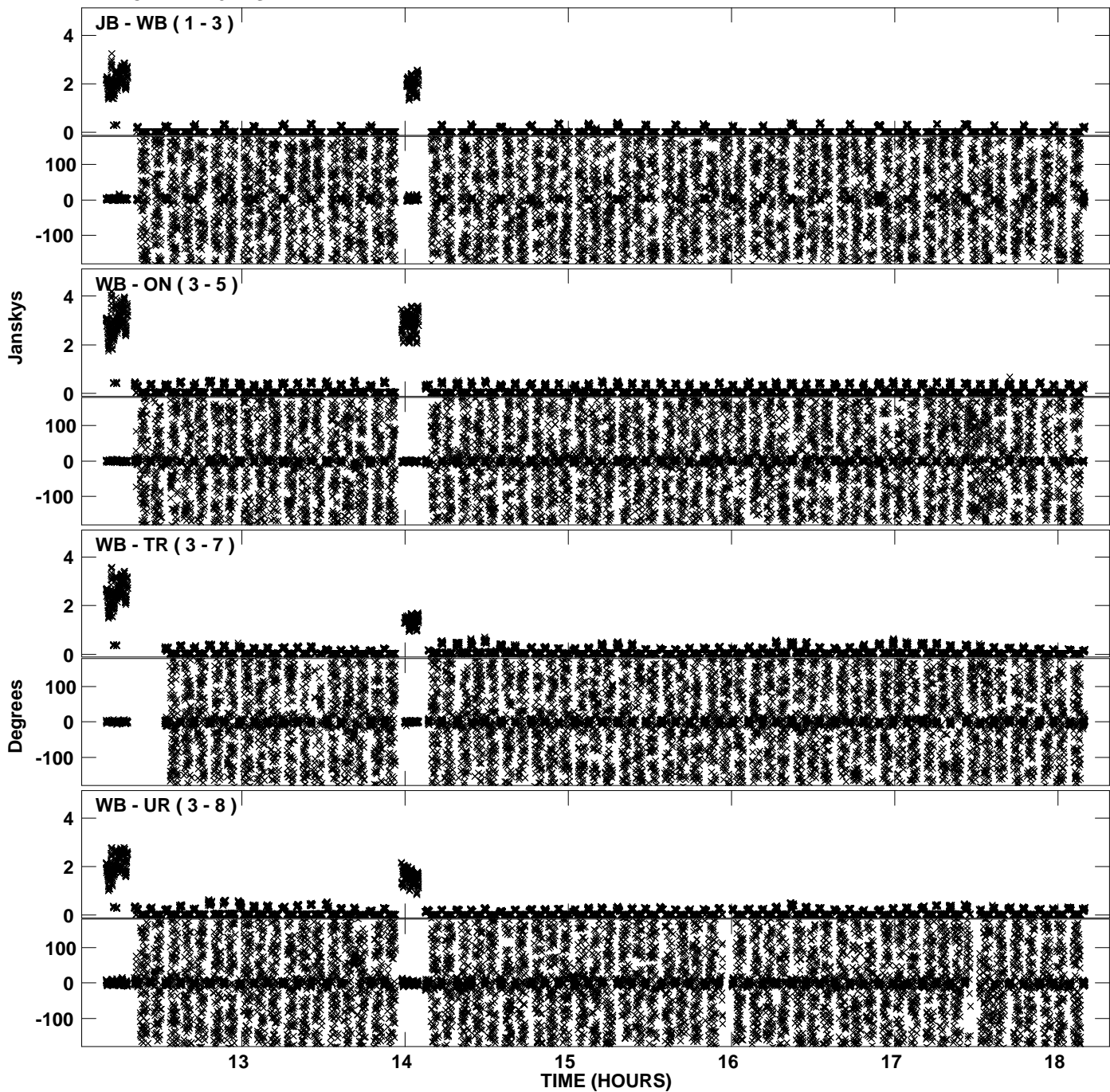
PLot file version 17 created 05-JAN-2012 19:11:49  
Amplitude andPhase vs Time for EP068D 3.UVDATA.1 Vect aver. CL # 3  
IF 1 CHAN 1 - 32 STK RR



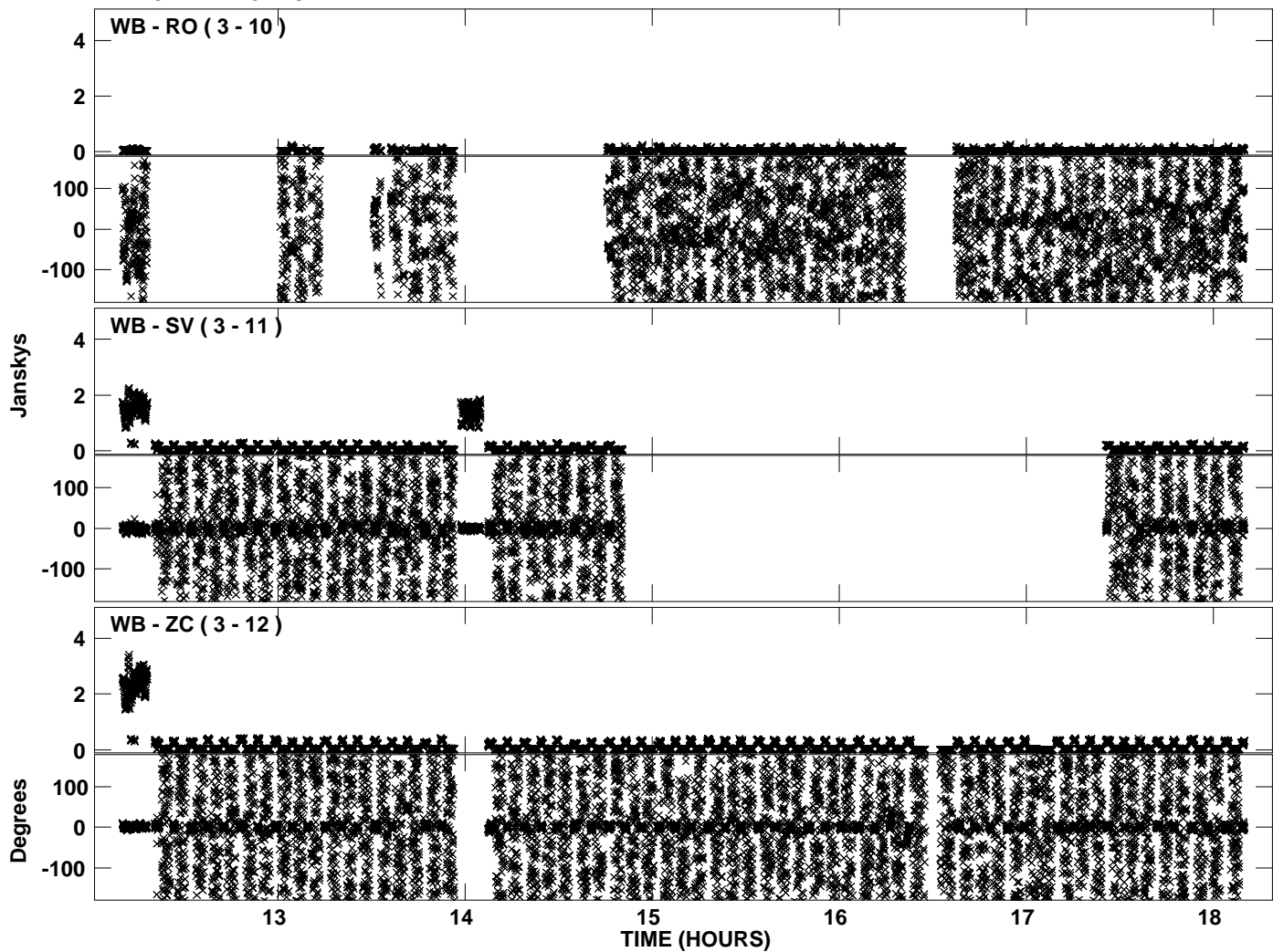
PLot file version 18 created 05-JAN-2012 19:11:49  
Amplitude andPhase vs Time for EP068D 3.UVDATA.1 Vect aver. CL # 3  
IF 1 CHAN 1 - 32 STK RR



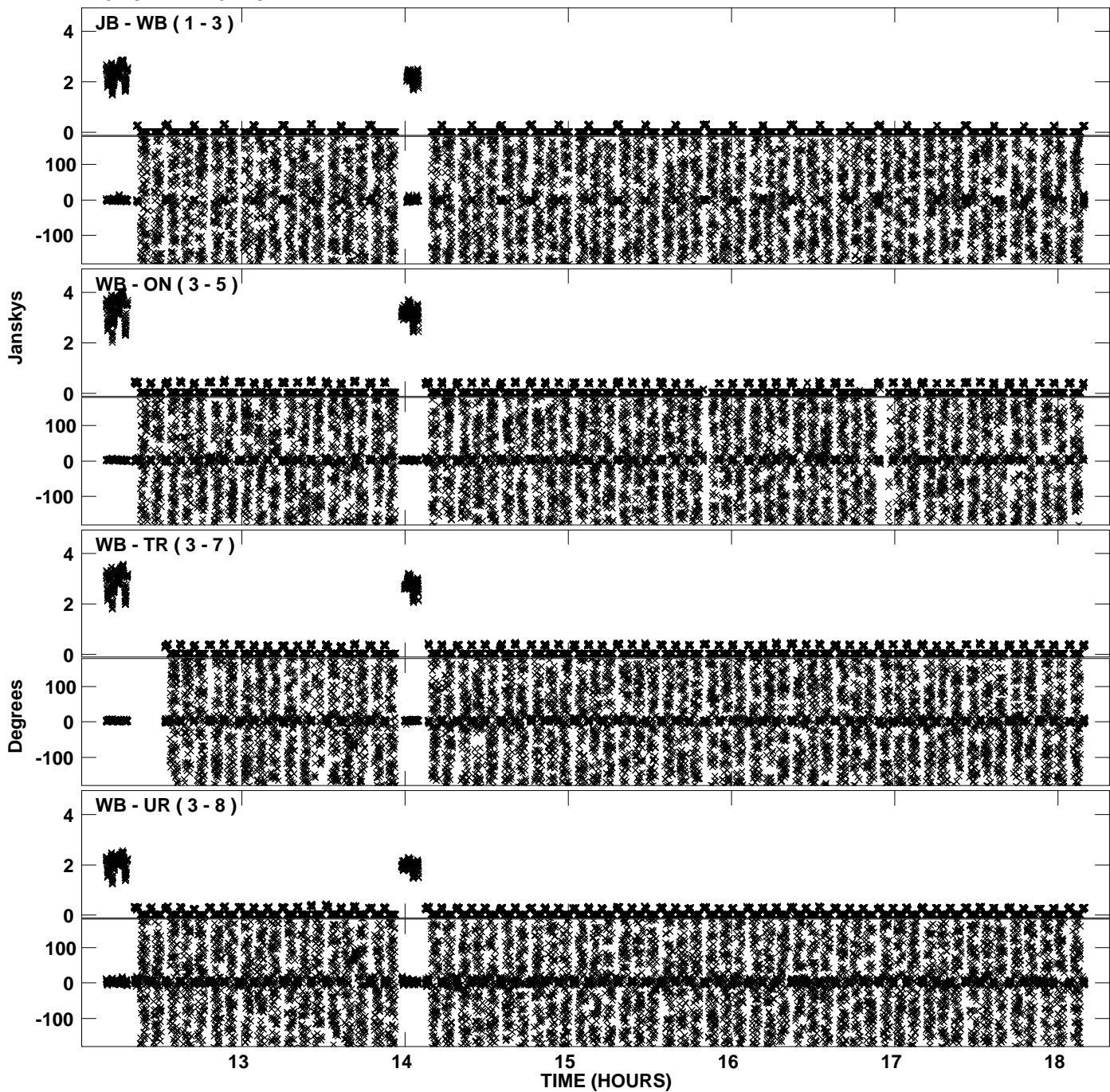
PLot file version 19 created 05-JAN-2012 19:11:56  
Amplitude andPhase vs Time for EP068D 3.UVDATA.1 Vect aver. CL # 3  
IF 2 CHAN 1 - 32 STK RR



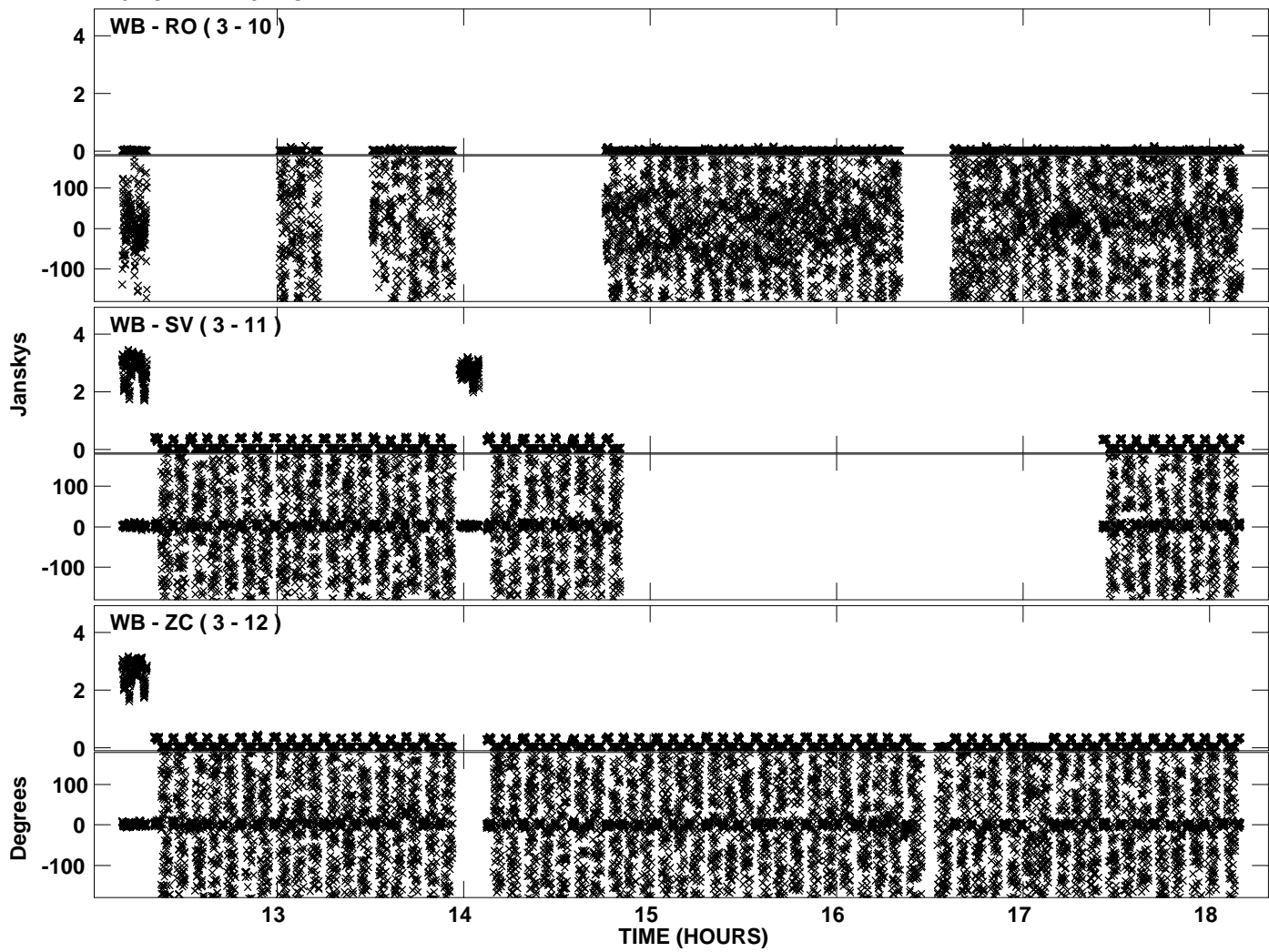
PLot file version 20 created 05-JAN-2012 19:11:56  
Amplitude andPhase vs Time for EP068D 3.UVDATA.1 Vect aver. CL # 3  
IF 2 CHAN 1 - 32 STK RR



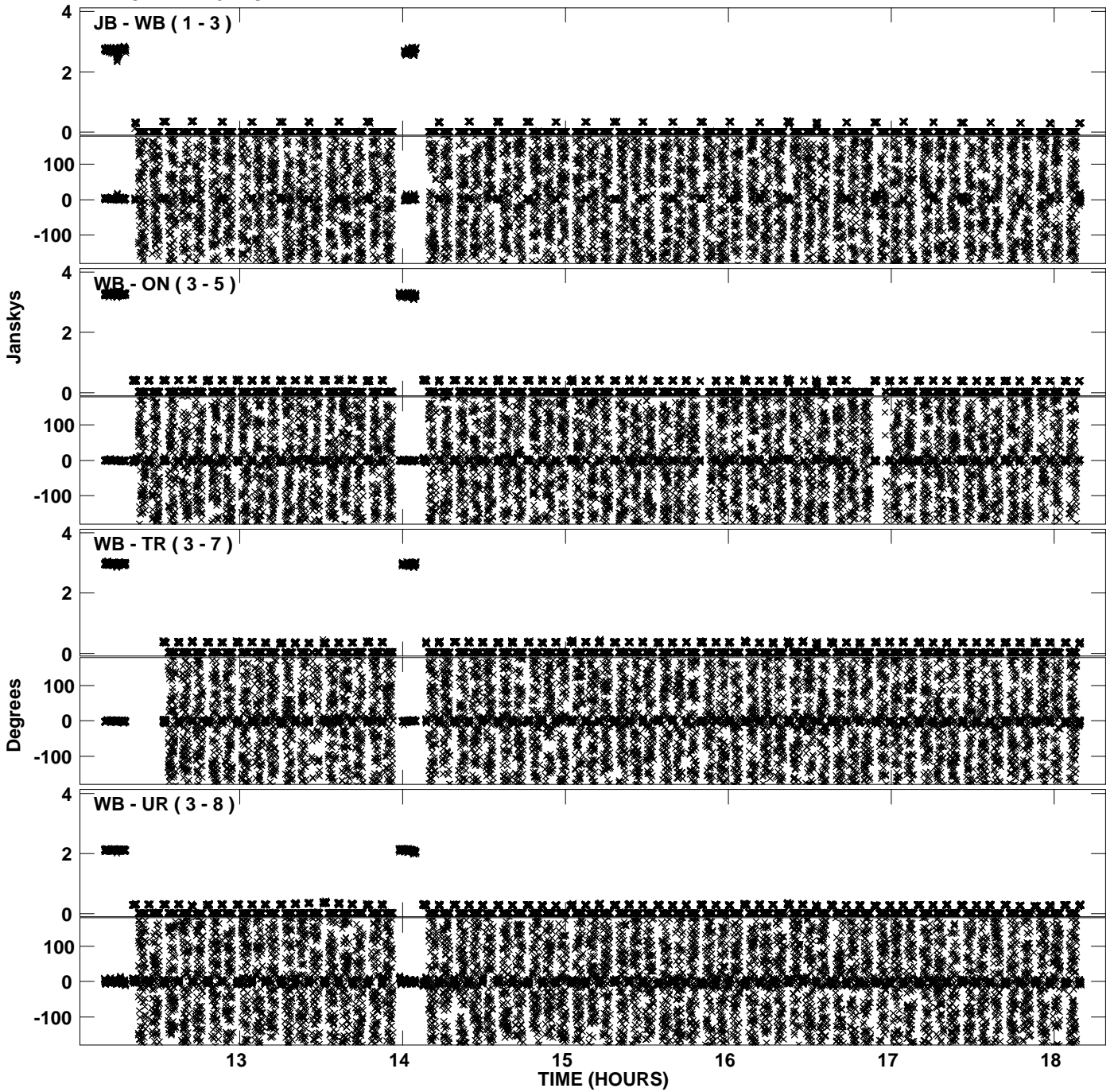
PLot file version 21 created 05-JAN-2012 19:12:03  
Amplitude andPhase vs Time for EP068D 3.UVDATA.1 Vect aver. CL # 3  
IF 3 CHAN 1 - 32 STK RR



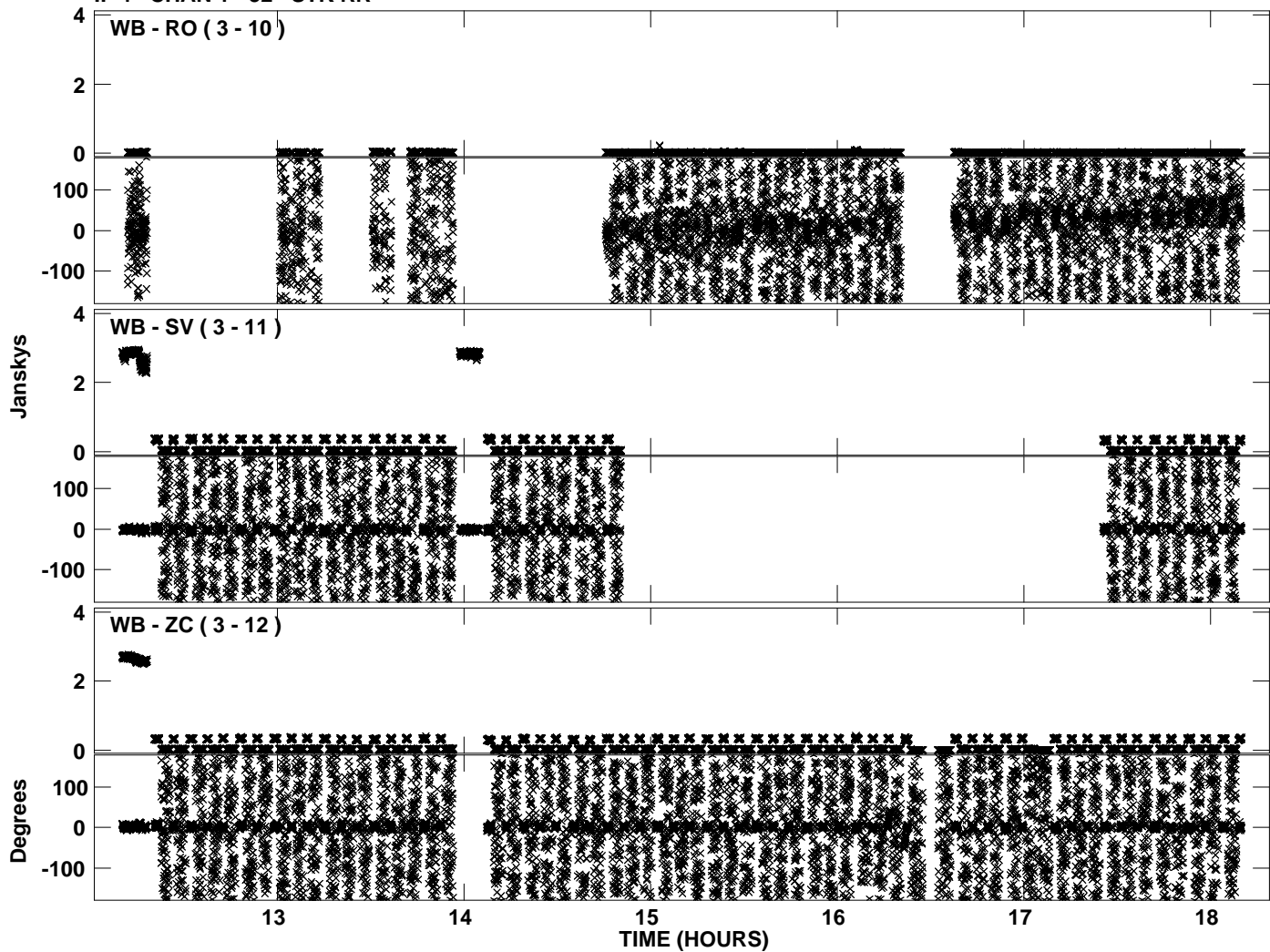
Plot file version 22 created 05-JAN-2012 19:12:03  
Amplitude andPhase vs Time for EP068D 3.UVDATA.1 Vect aver. CL # 3  
IF 3 CHAN 1 - 32 STK RR



PLot file version 23 created 05-JAN-2012 19:12:10  
Amplitude andPhase vs Time for EP068D 3.UVDATA.1 Vect aver. CL # 3  
IF 4 CHAN 1 - 32 STK RR

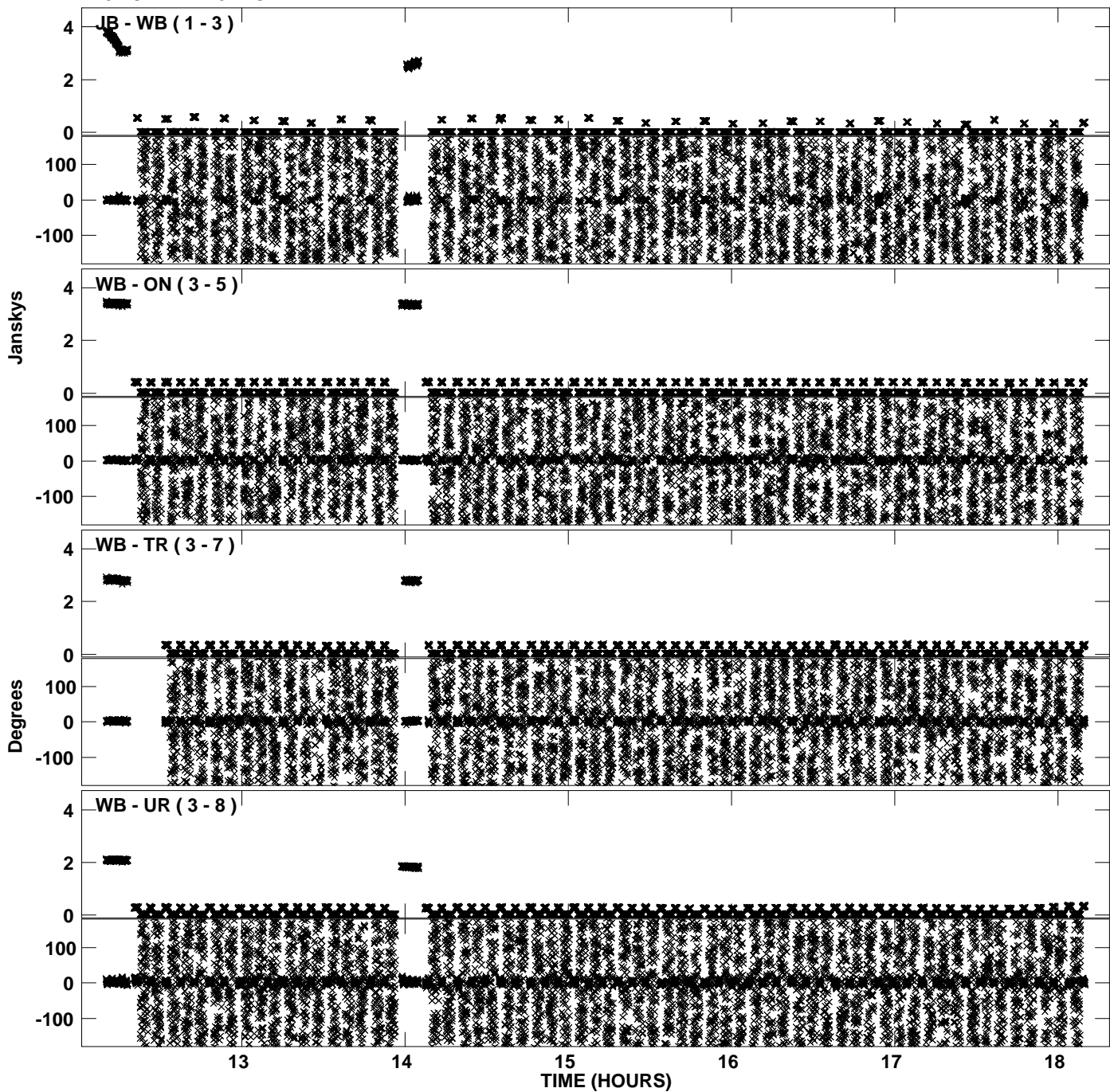


PLot file version 24 created 05-JAN-2012 19:12:10  
Amplitude andPhase vs Time for EP068D 3.UVDATA.1 Vect aver. CL # 3  
IF 4 CHAN 1 - 32 STK RR

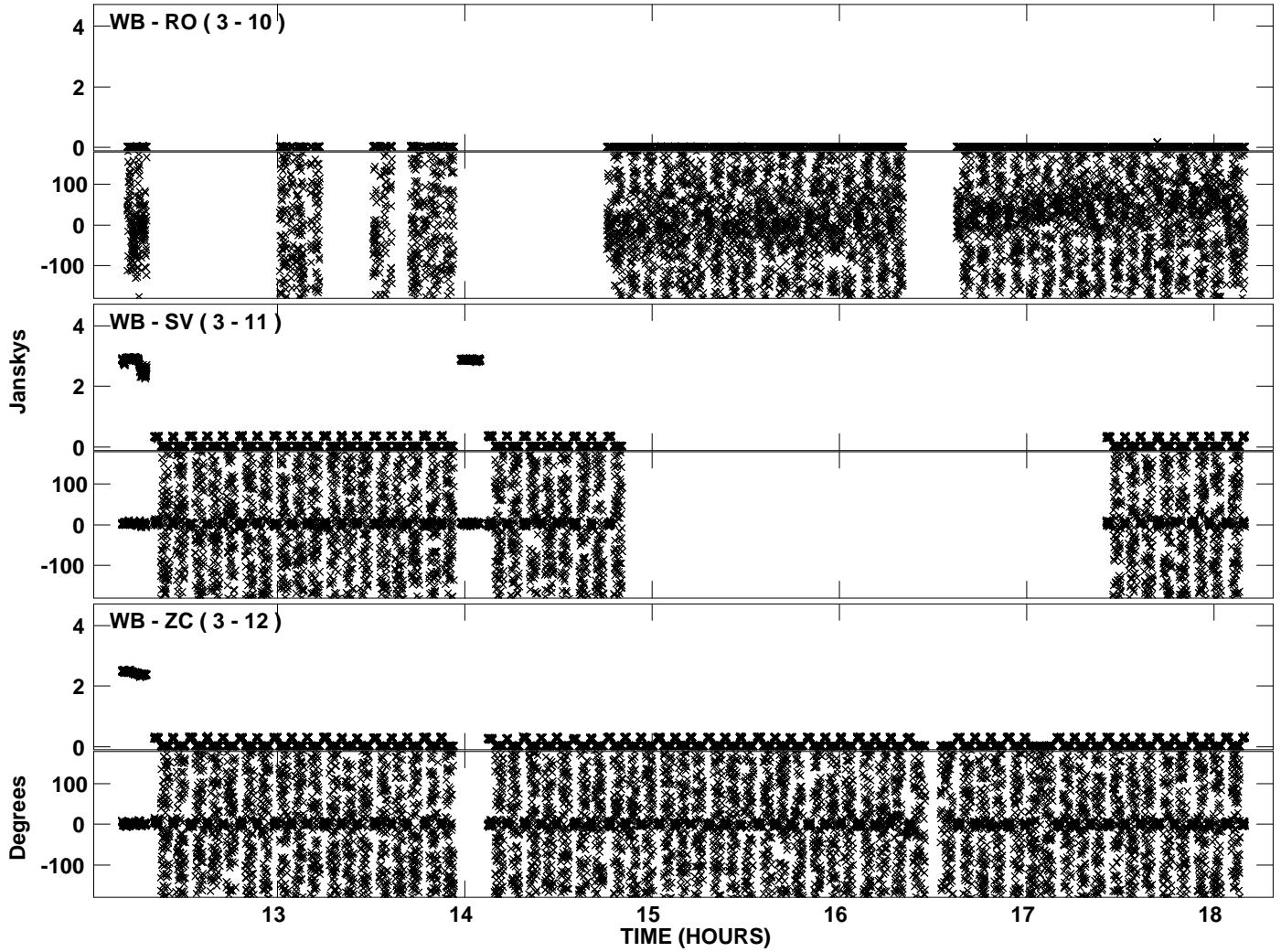




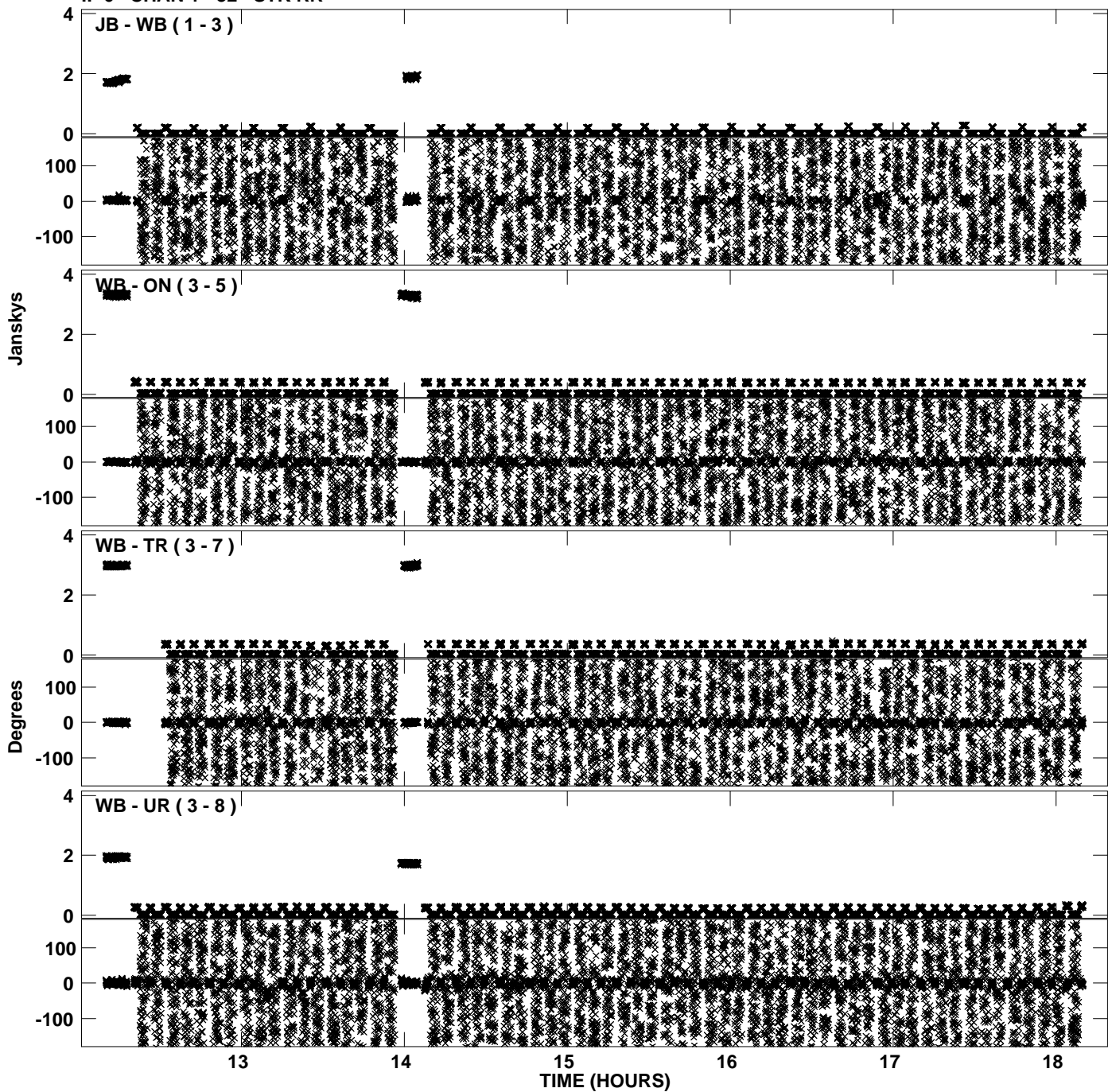
PLot file version 25 created 05-JAN-2012 19:12:17  
Amplitude andPhase vs Time for EP068D 3.UVDATA.1 Vect aver. CL # 3  
IF 5 CHAN 1 - 32 STK RR



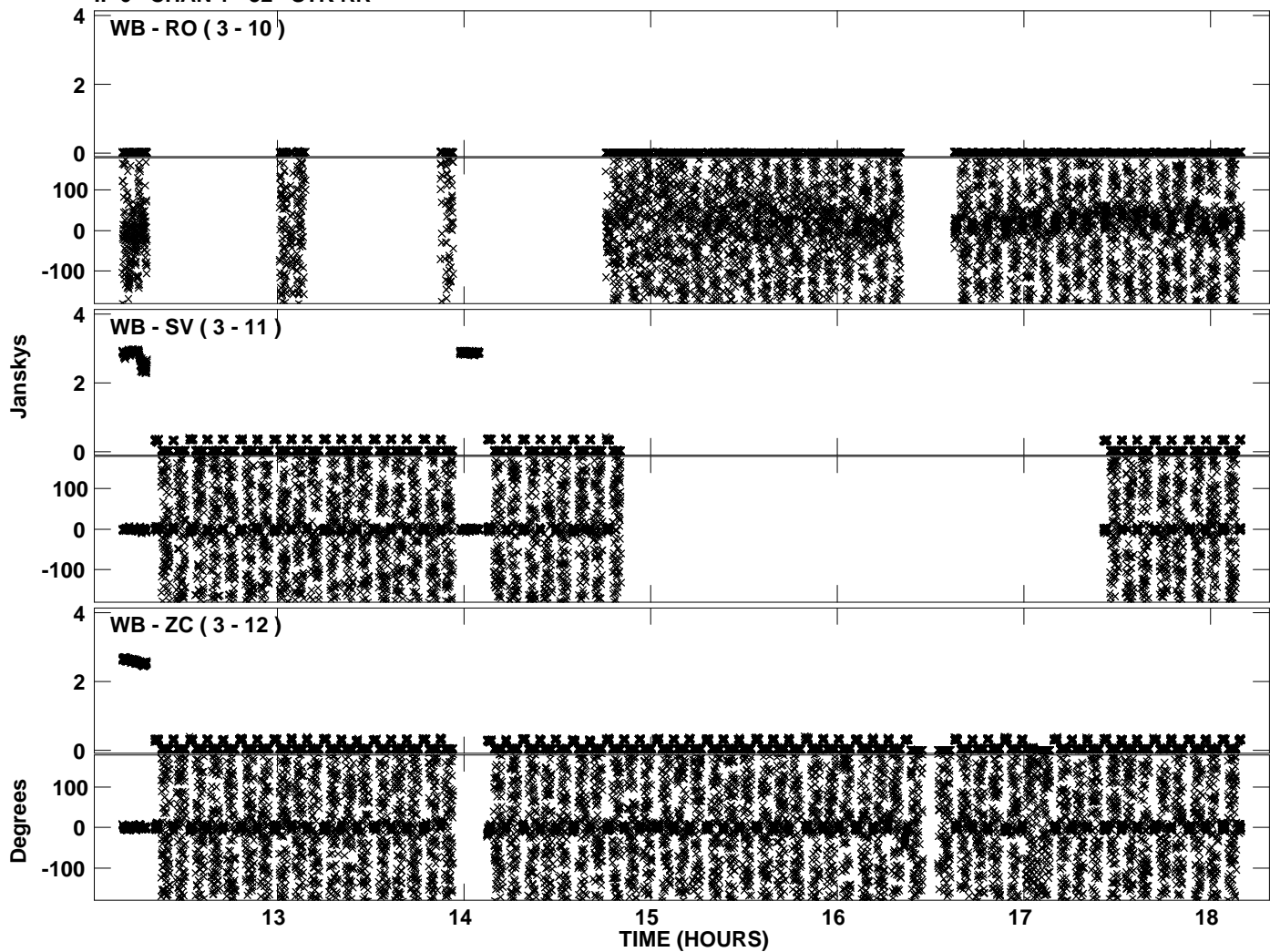
PLot file version 26 created 05-JAN-2012 19:12:17  
Amplitude andPhase vs Time for EP068D 3.UVDATA.1 Vect aver. CL # 3  
IF 5 CHAN 1 - 32 STK RR



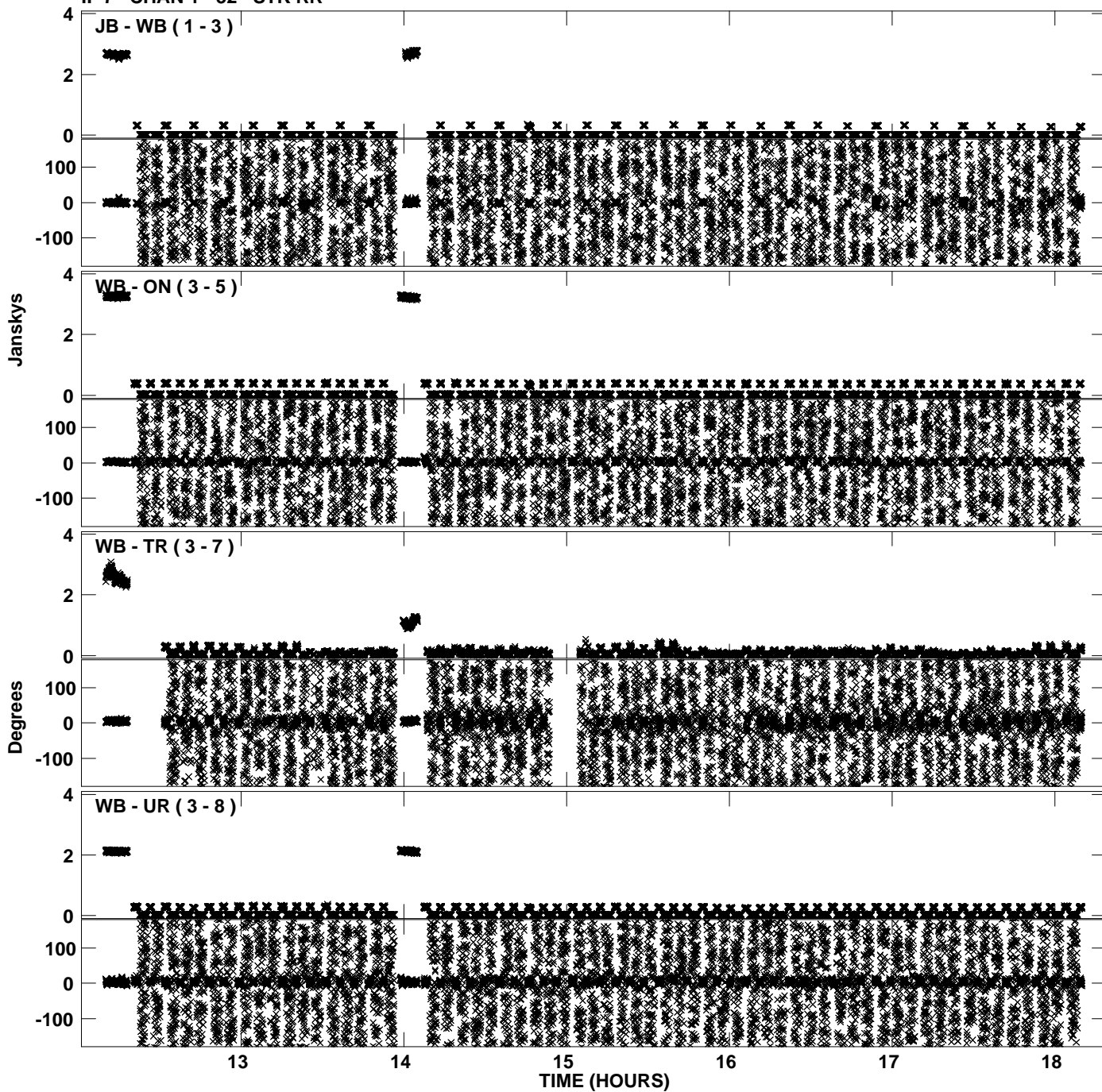
PLot file version 27 created 05-JAN-2012 19:12:24  
Amplitude andPhase vs Time for EP068D 3.UVDATA.1 Vect aver. CL # 3  
IF 6 CHAN 1 - 32 STK RR



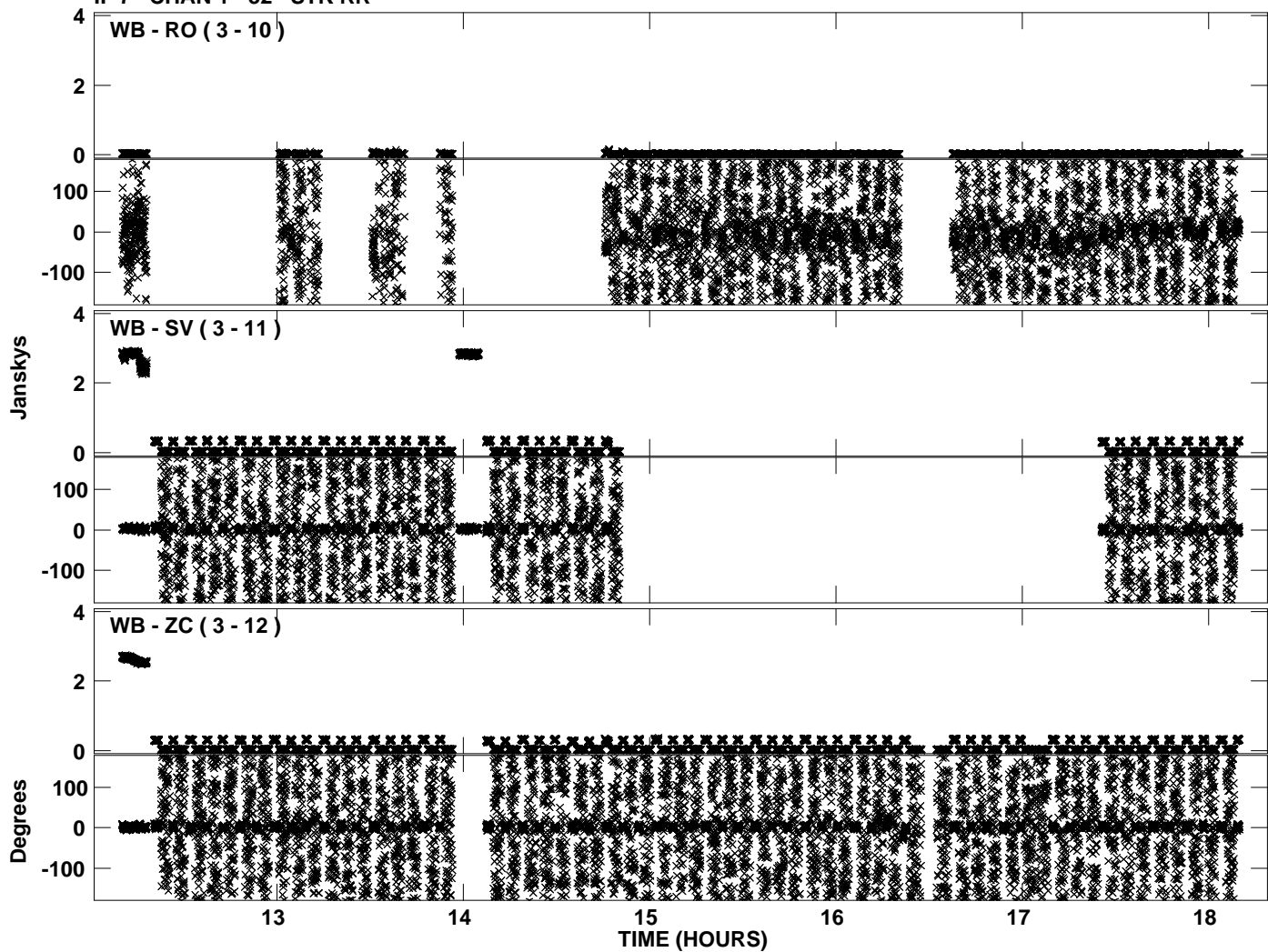
PLot file version 28 created 05-JAN-2012 19:12:24  
Amplitude andPhase vs Time for EP068D 3.UVDATA.1 Vect aver. CL # 3  
IF 6 CHAN 1 - 32 STK RR



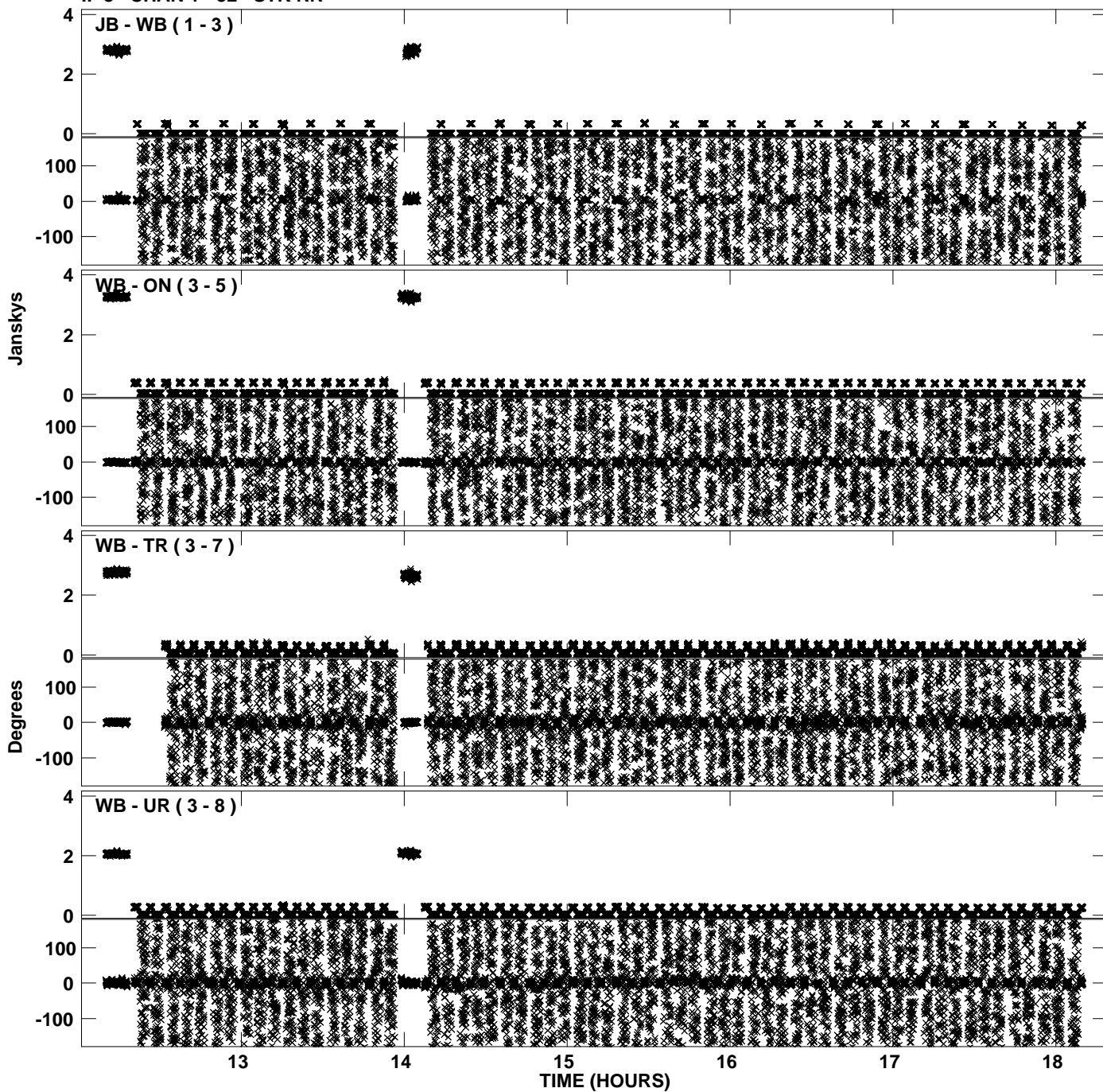
PLot file version 29 created 05-JAN-2012 19:12:31  
Amplitude andPhase vs Time for EP068D 3.UVDATA.1 Vect aver. CL # 3  
IF 7 CHAN 1 - 32 STK RR



PLot file version 30 created 05-JAN-2012 19:12:31  
Amplitude andPhase vs Time for EP068D 3.UVDATA.1 Vect aver. CL # 3  
IF 7 CHAN 1 - 32 STK RR



Plot file version 31 created 05-JAN-2012 19:12:38  
Amplitude andPhase vs Time for EP068D 3.UVDATA.1 Vect aver. CL # 3  
IF 8 CHAN 1 - 32 STK RR



PLot file version 32 created 05-JAN-2012 19:12:38  
Amplitude andPhase vs Time for EP068D 3.UVDATA.1 Vect aver. CL # 3  
IF 8 CHAN 1 - 32 STK RR

