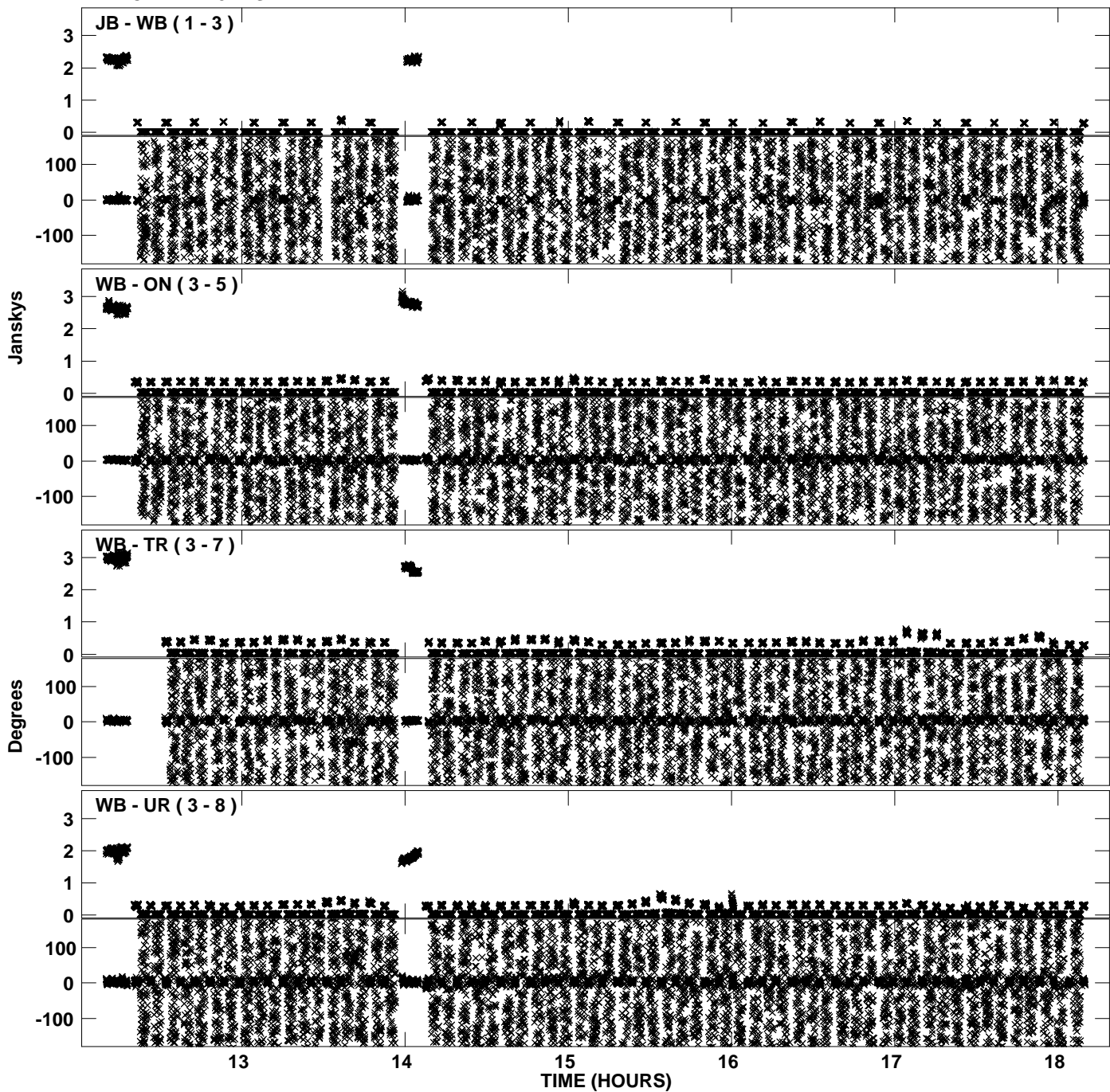
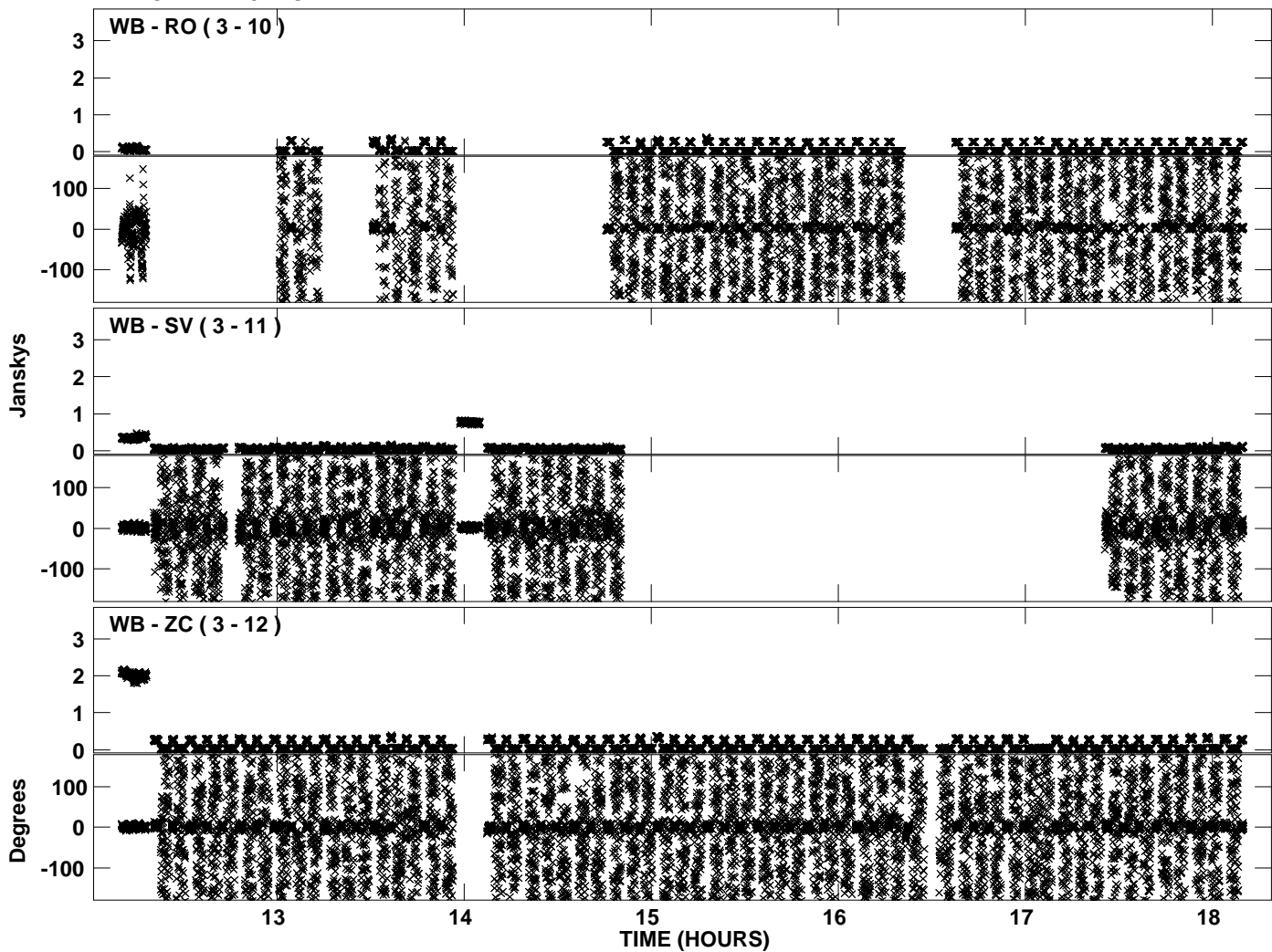


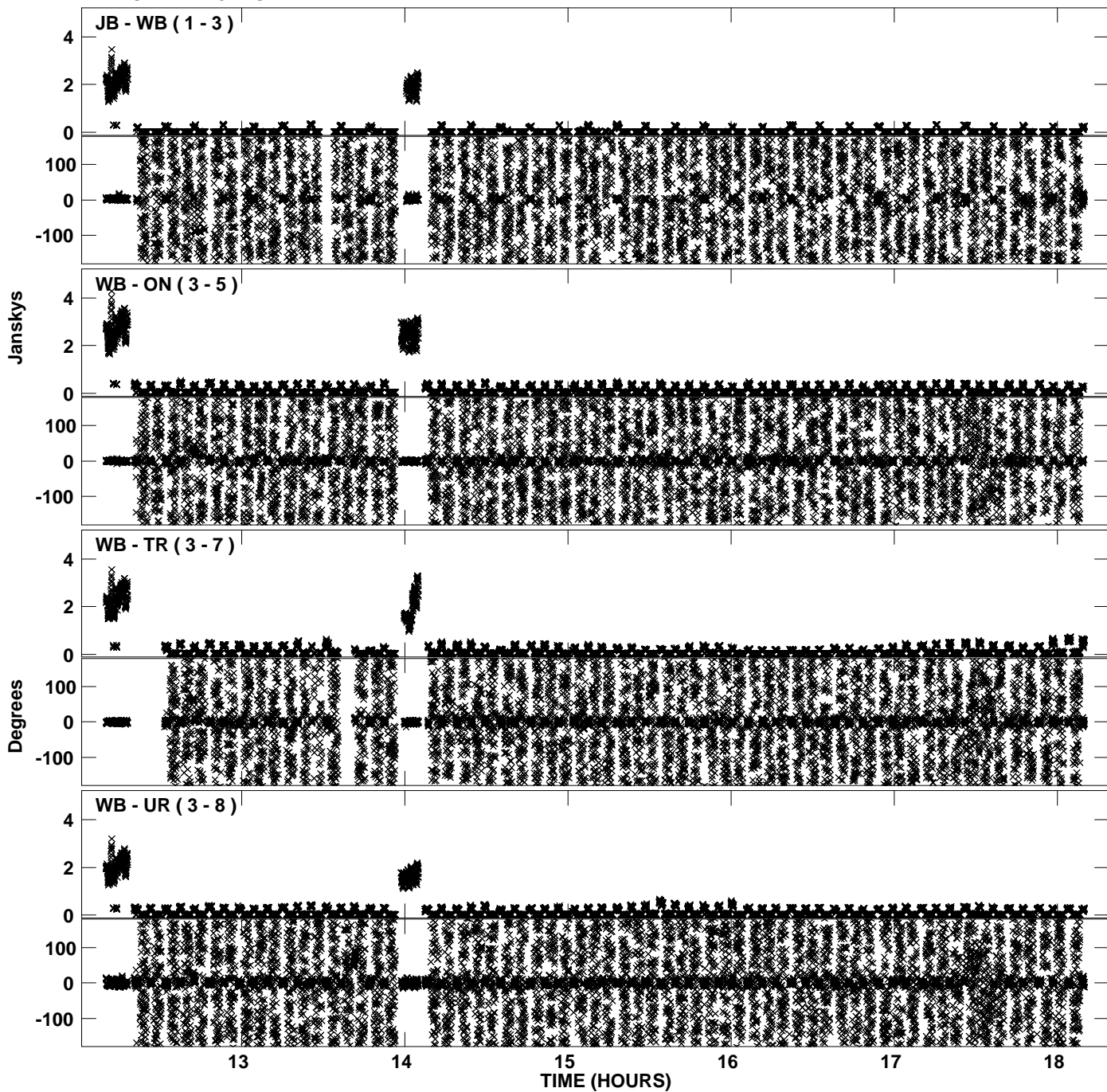
Plot file version 1 created 06-JAN-2012 11:24:38  
Amplitude andPhase vs Time for EP068D 4.UVDATA.1 Vect aver. CL # 3  
IF 1 CHAN 1 - 32 STK LL



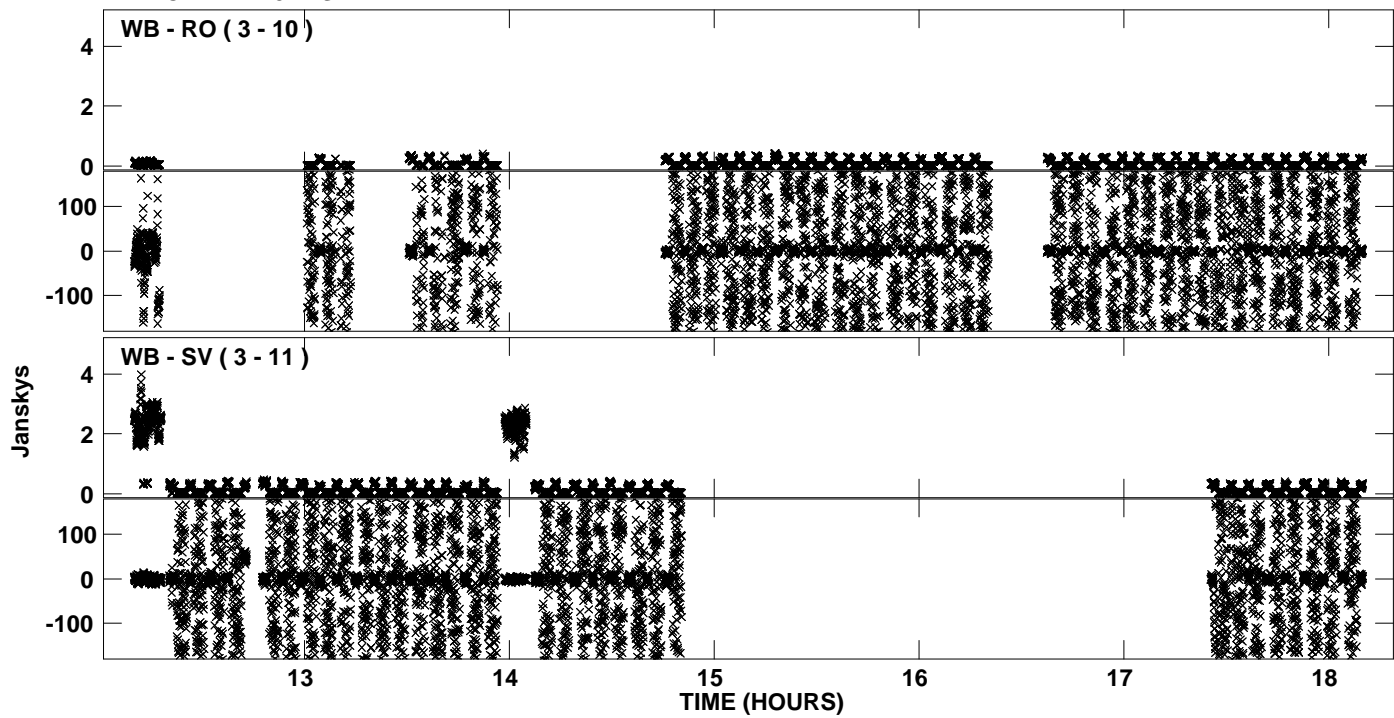
Plot file version 2 created 06-JAN-2012 11:24:39  
Amplitude and Phase vs Time for EP068D 4.UVDATA.1 Vect aver. CL # 3  
IF 1 CHAN 1 - 32 STK LL



Plot file version 3 created 06-JAN-2012 11:24:46  
Amplitude andPhase vs Time for EP068D 4.UVDATA.1 Vect aver. CL # 3  
IF 2 CHAN 1 - 32 STK LL

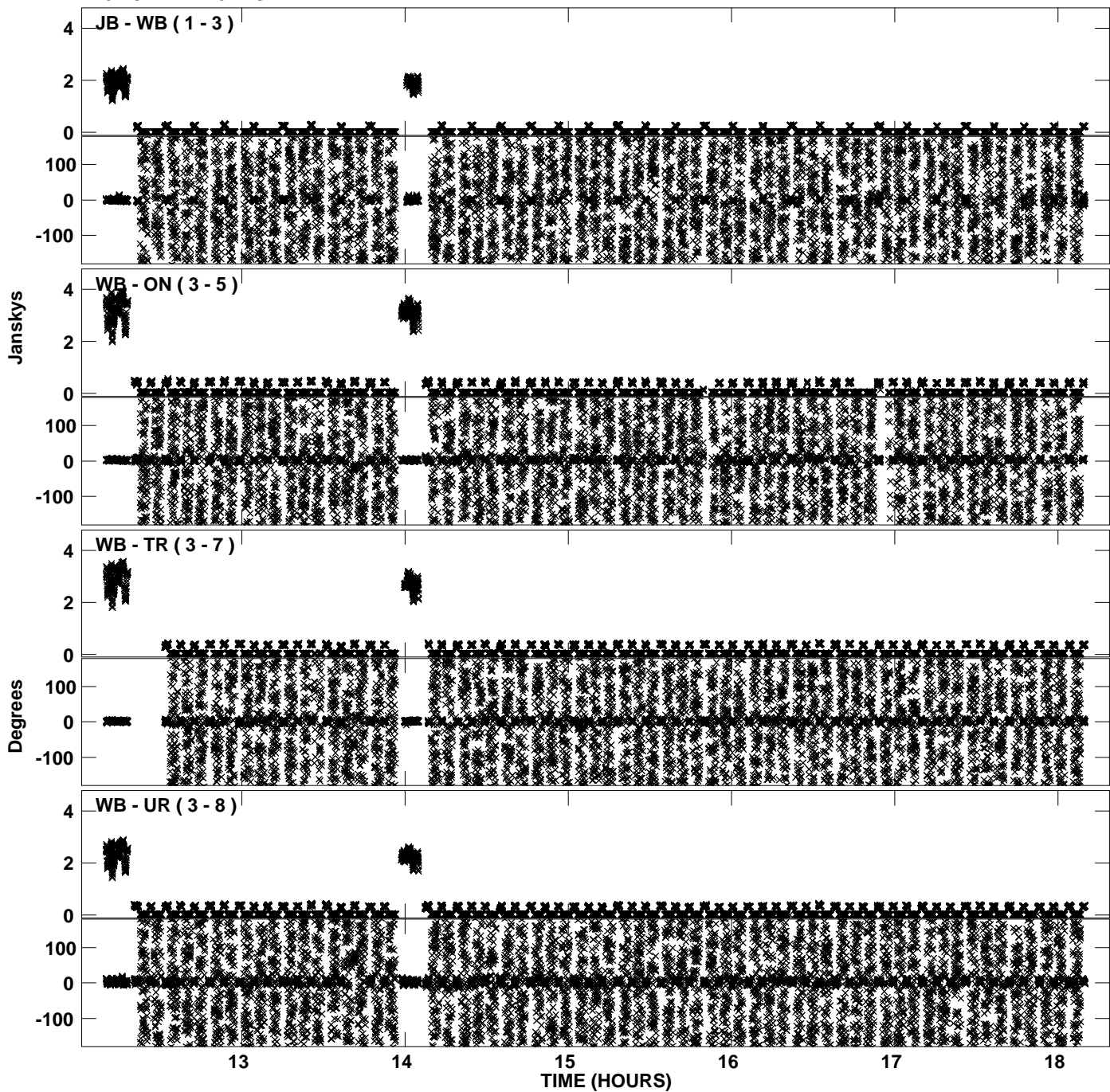


PLot file version 4 created 06-JAN-2012 11:24:46  
Amplitude andPhase vs Time for EP068D 4.UVDATA.1 Vect aver. CL # 3  
IF 2 CHAN 1 - 32 STK LL

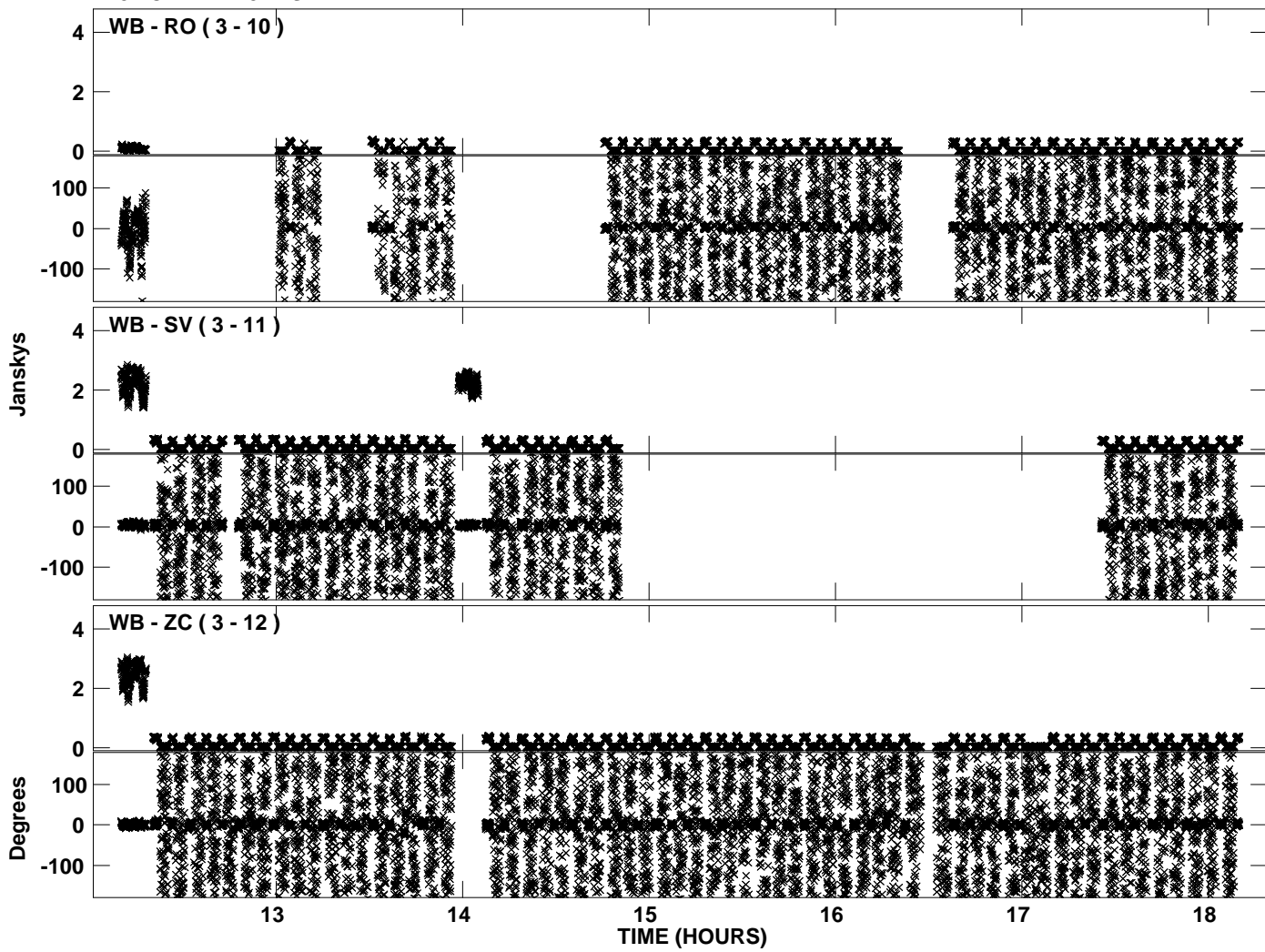




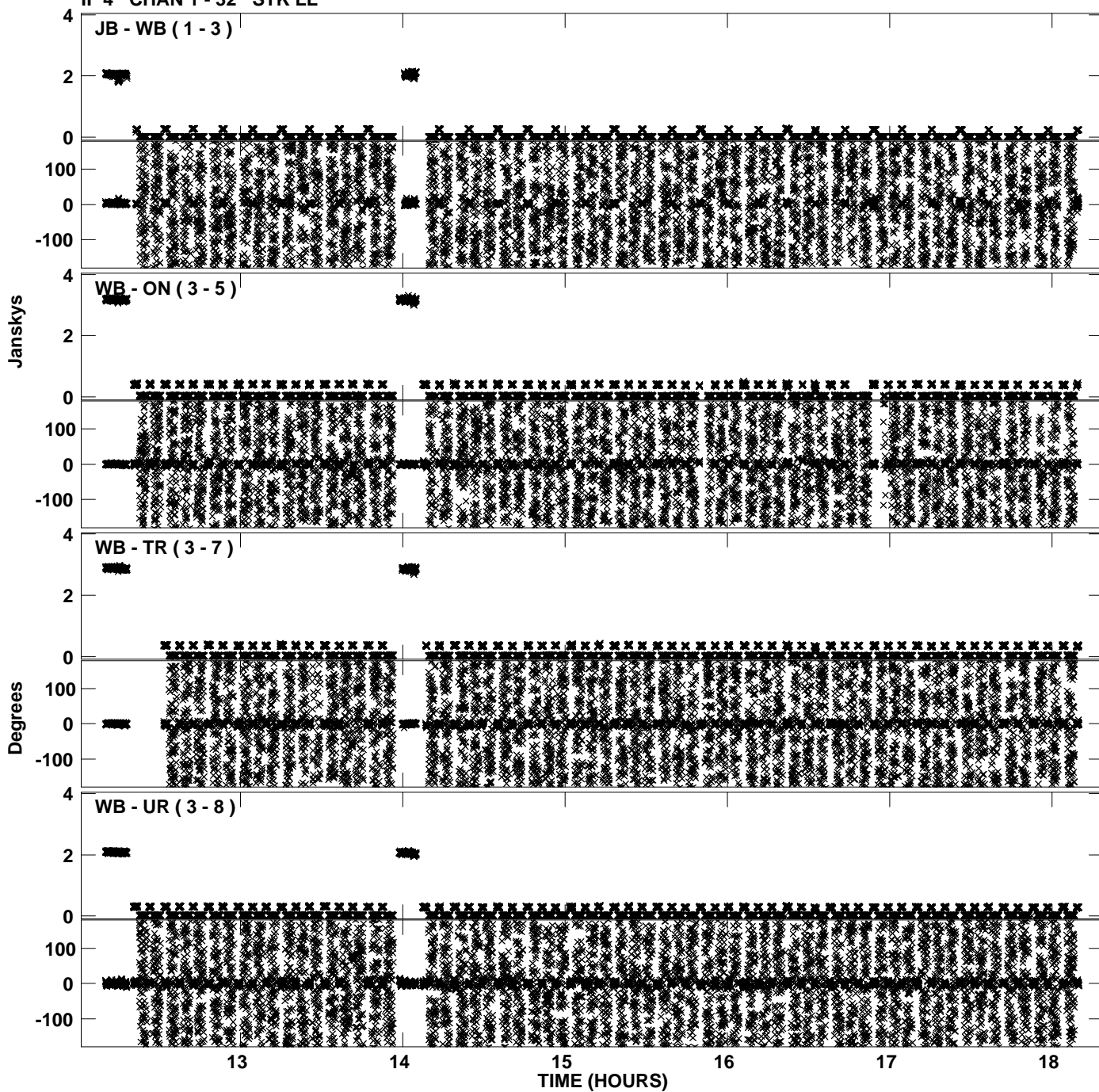
Plot file version 5 created 06-JAN-2012 11:24:53  
Amplitude andPhase vs Time for EP068D 4.UVDATA.1 Vect aver. CL # 3  
IF 3 CHAN 1 - 32 STK LL



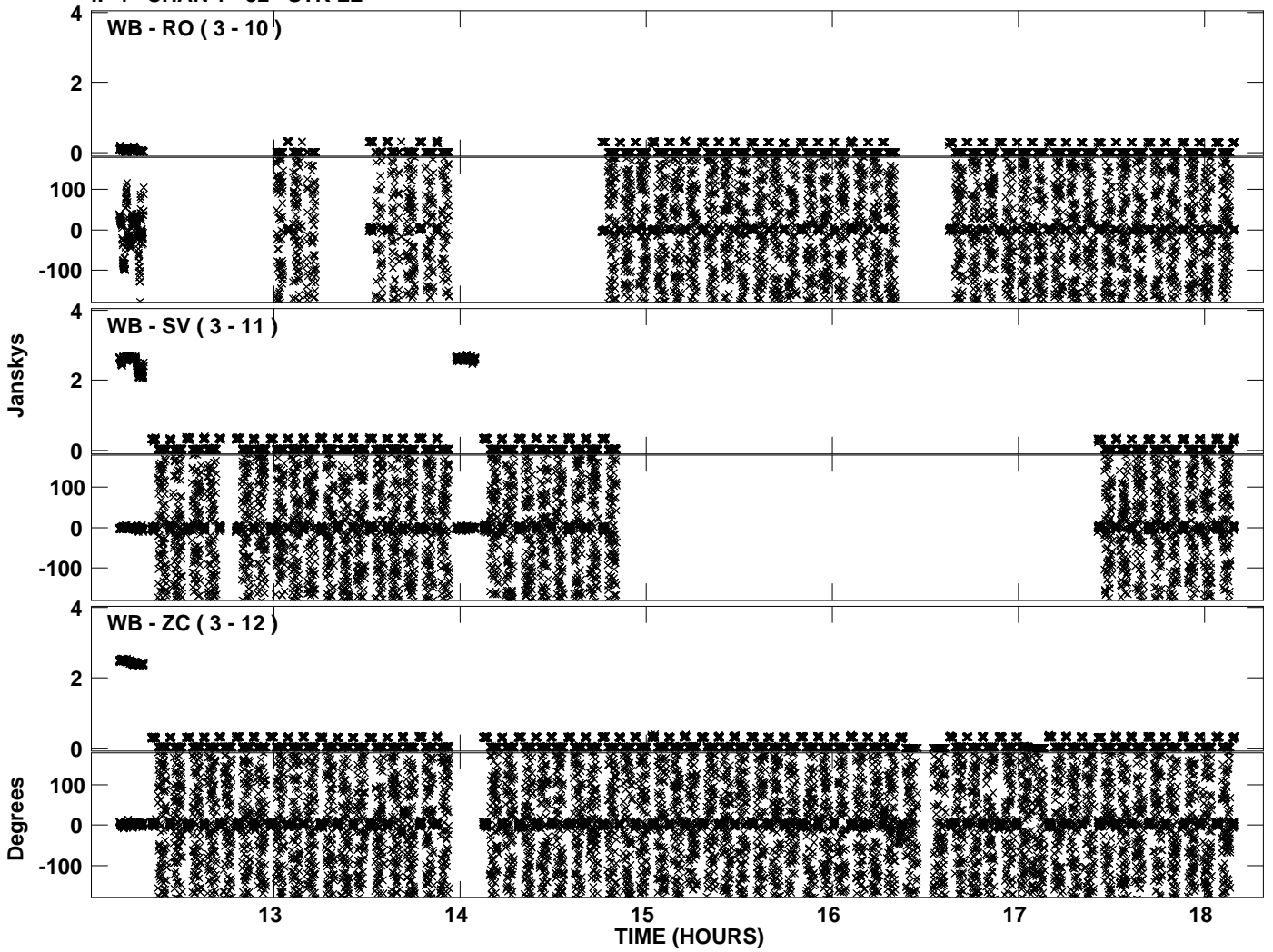
Plot file version 6 created 06-JAN-2012 11:24:54  
Amplitude andPhase vs Time for EP068D 4.UVDATA.1 Vect aver. CL # 3  
IF 3 CHAN 1 - 32 STK LL



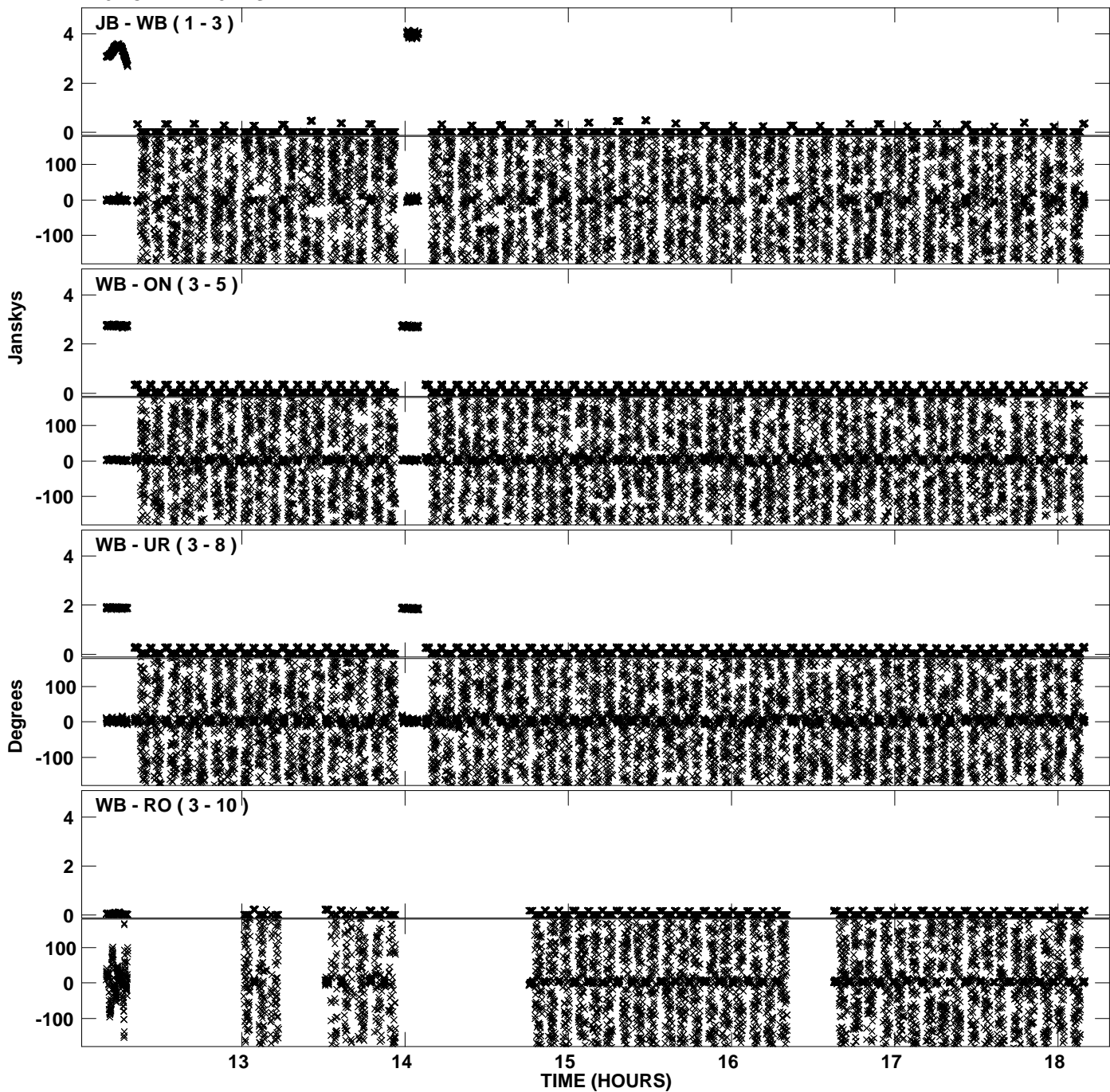
Plot file version 7 created 06-JAN-2012 11:25:01  
Amplitude andPhase vs Time for EP068D 4.UVDATA.1 Vect aver. CL # 3  
IF 4 CHAN 1 - 32 STK LL



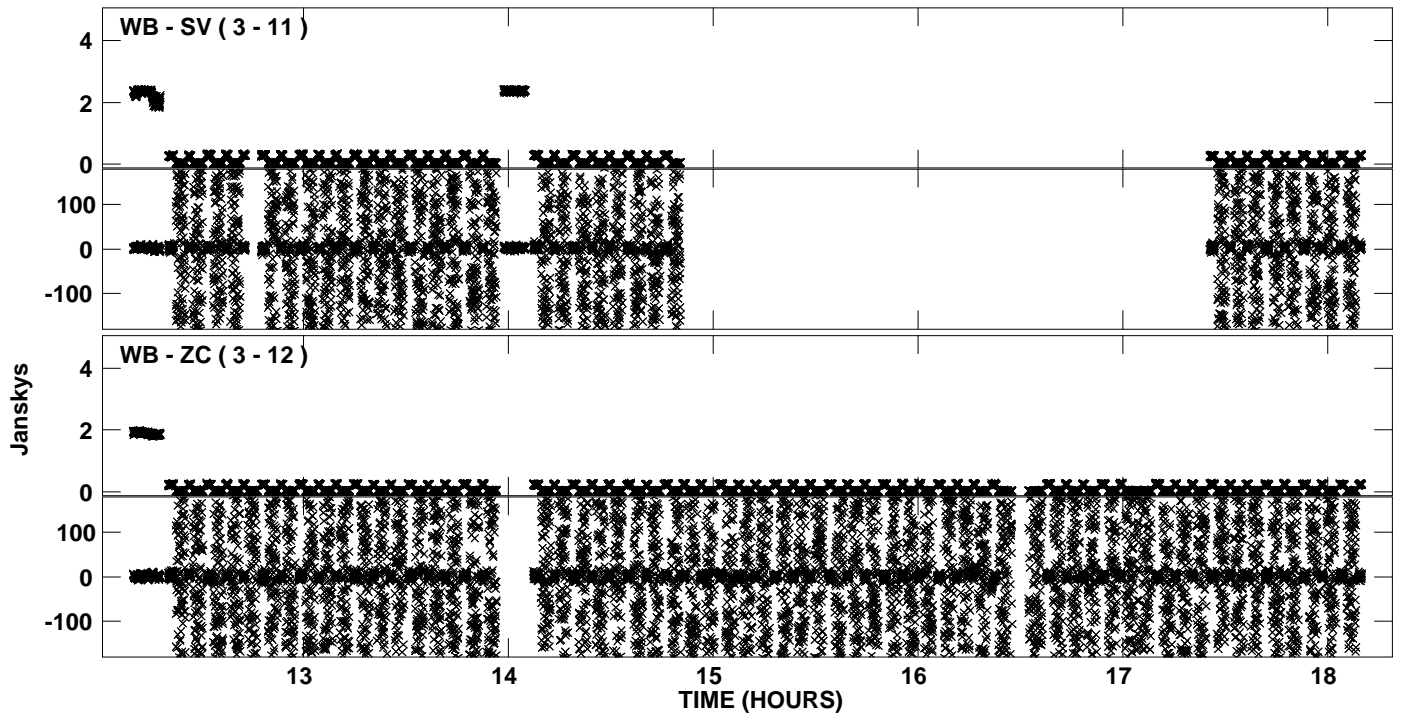
PLot file version 8 created 06-JAN-2012 11:25:01  
Amplitude andPhase vs Time for EP068D 4.UVDATA.1 Vect aver. CL # 3  
IF 4 CHAN 1 - 32 STK LL



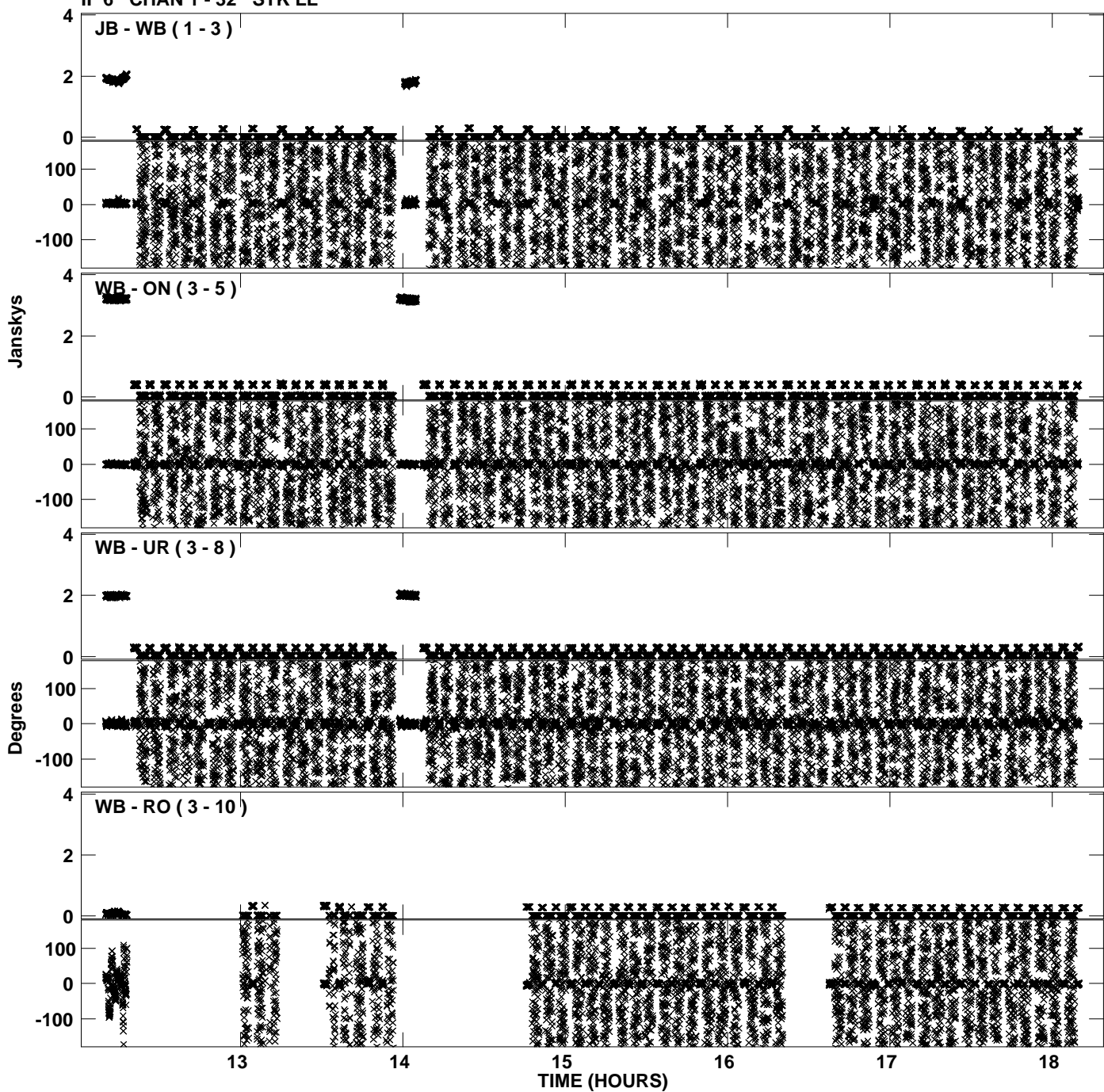
Plot file version 9 created 06-JAN-2012 11:25:08  
Amplitude andPhase vs Time for EP068D 4.UVDATA.1 Vect aver. CL # 3  
IF 5 CHAN 1 - 32 STK LL



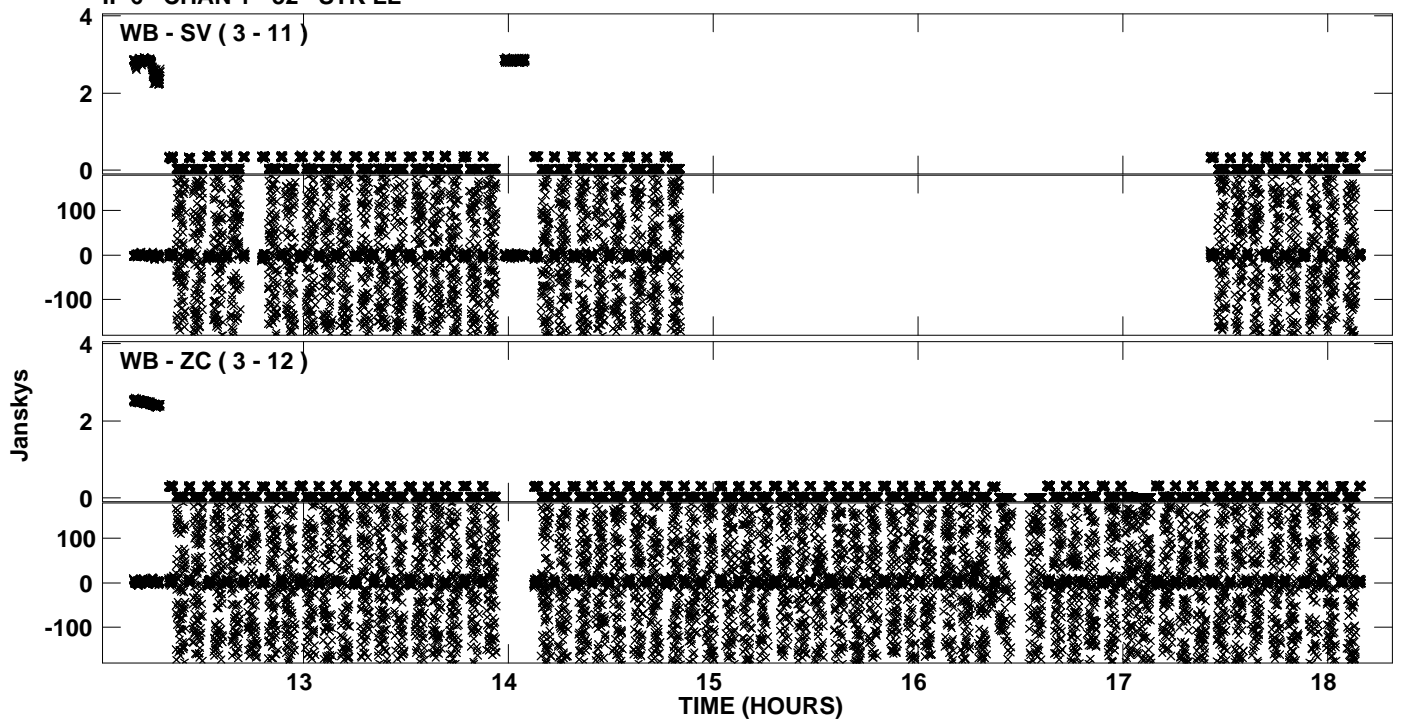
Plot file version 10 created 06-JAN-2012 11:25:08  
Amplitude andPhase vs Time for EP068D 4.UVDATA.1 Vect aver. CL # 3  
IF 5 CHAN 1 - 32 STK LL



Plot file version 11 created 06-JAN-2012 11:25:16  
Amplitude andPhase vs Time for EP068D 4.UVDATA.1 Vect aver. CL # 3  
IF 6 CHAN 1 - 32 STK LL

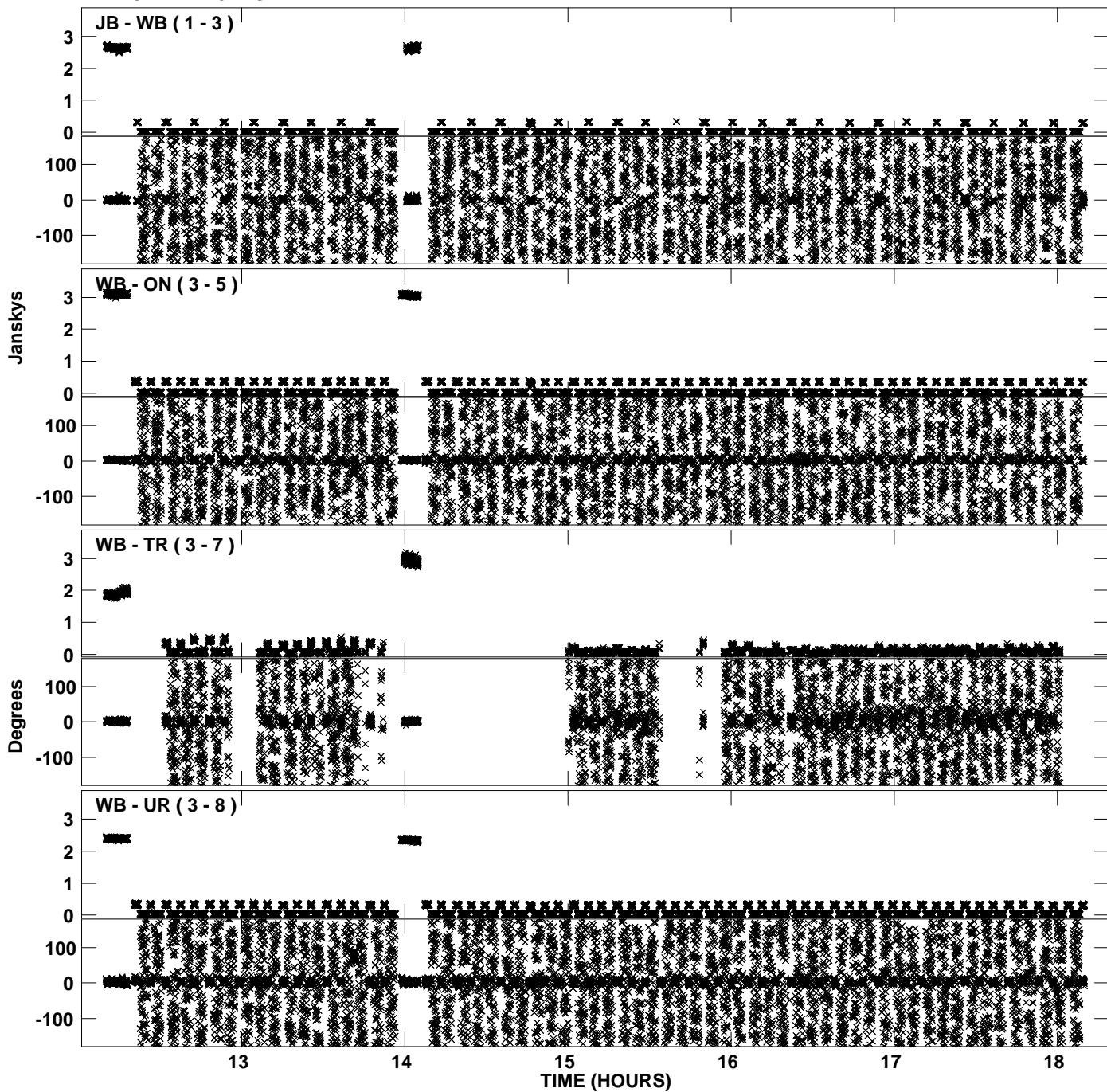


Plot file version 12 created 06-JAN-2012 11:25:16  
Amplitude andPhase vs Time for EP068D 4.UVDATA.1 Vect aver. CL # 3  
IF 6 CHAN 1 - 32 STK LL

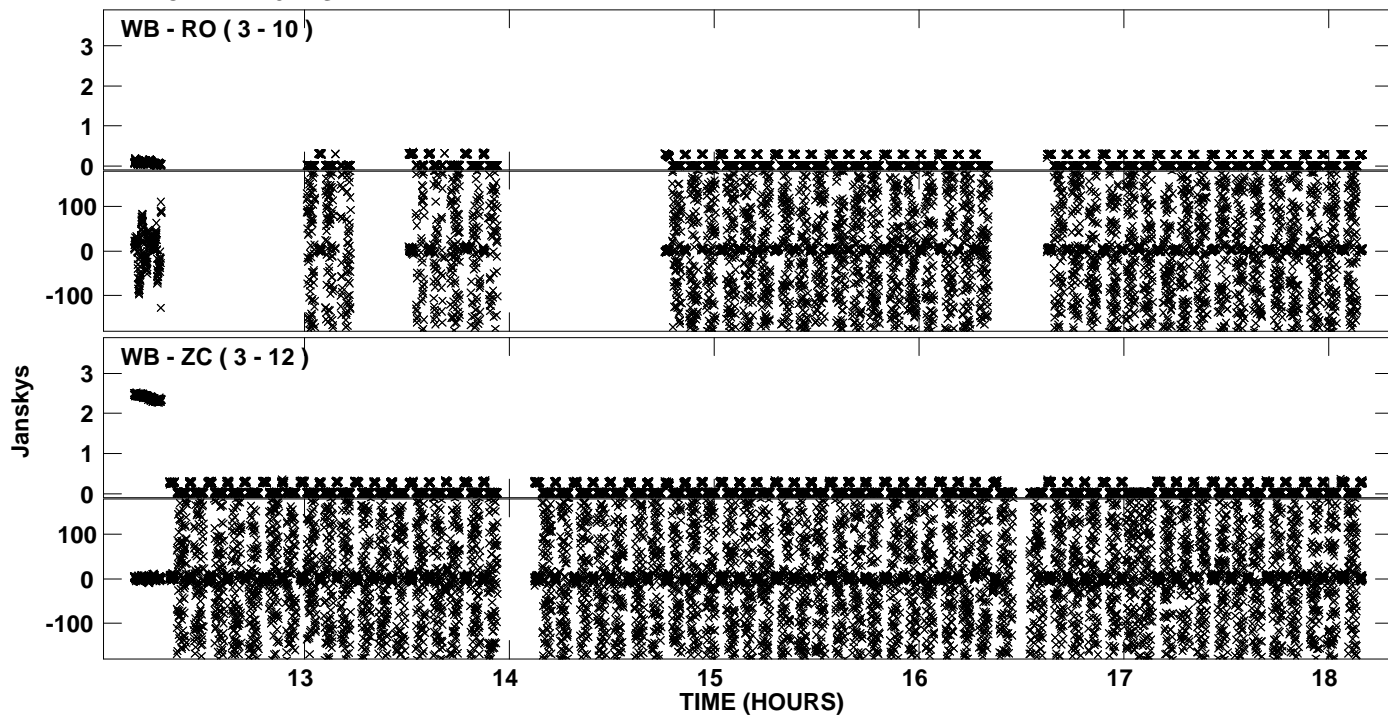




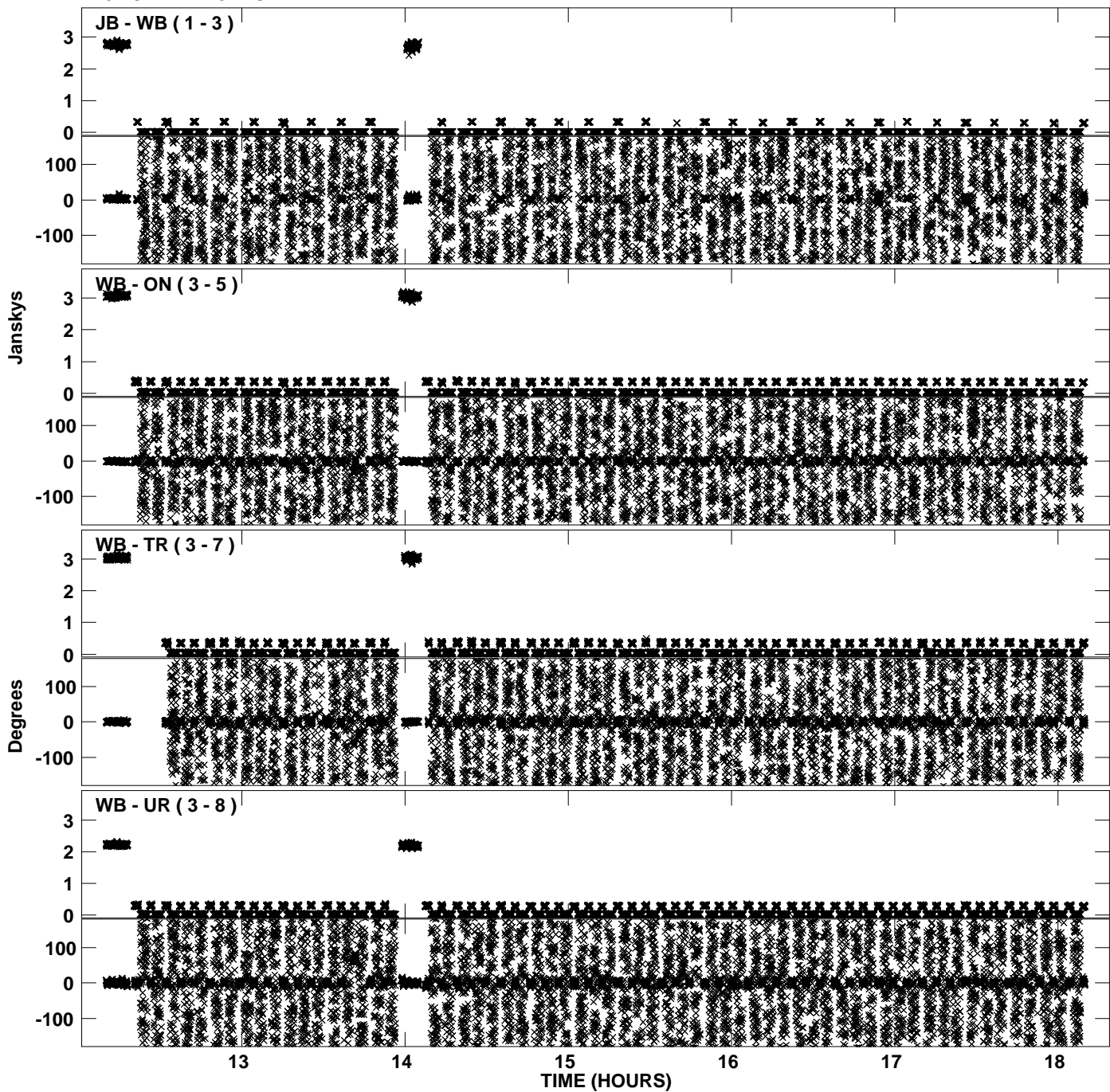
Plot file version 13 created 06-JAN-2012 11:25:23  
Amplitude andPhase vs Time for EP068D 4.UVDATA.1 Vect aver. CL # 3  
IF 7 CHAN 1 - 32 STK LL



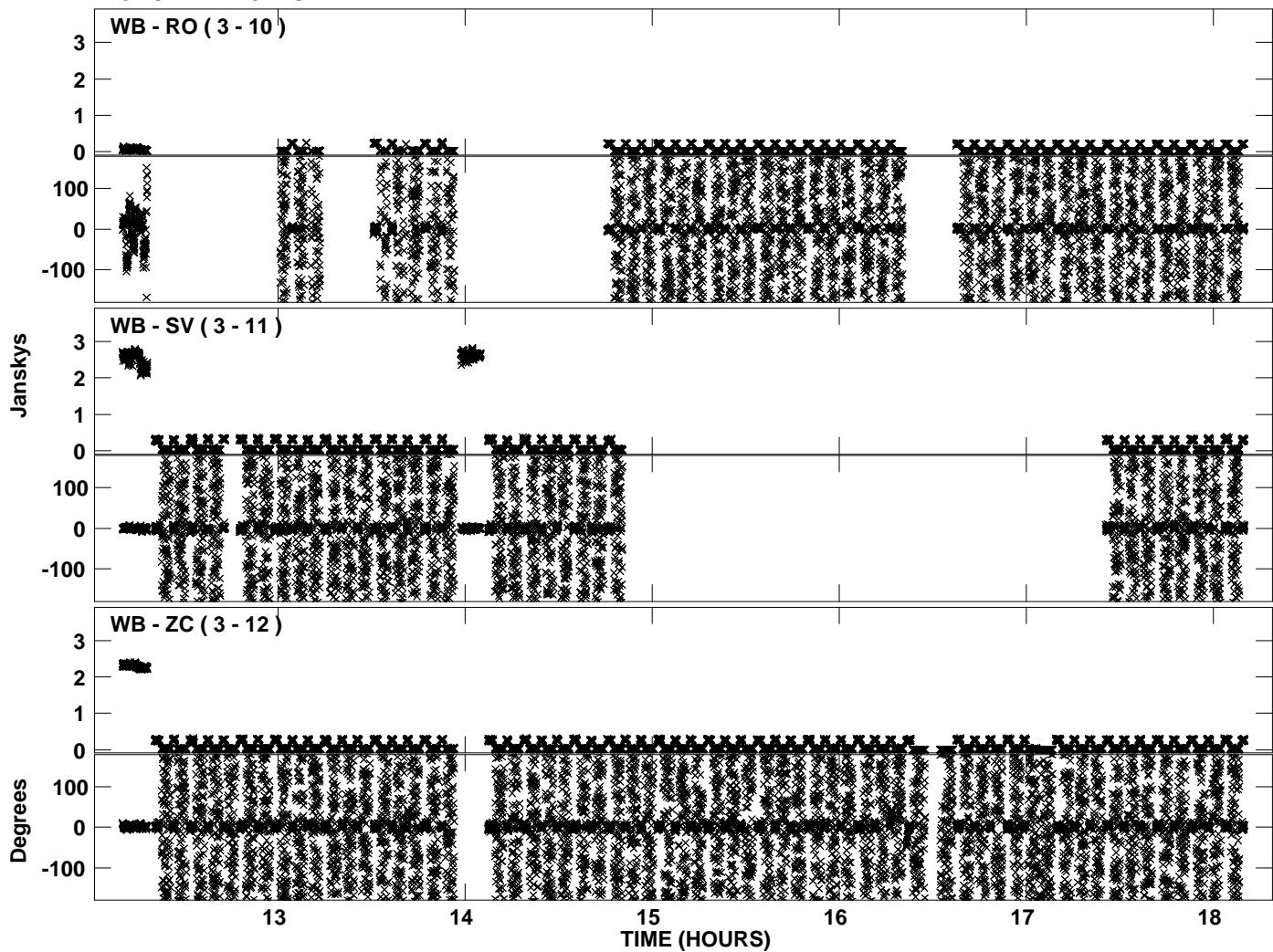
Plot file version 14 created 06-JAN-2012 11:25:23  
Amplitude and Phase vs Time for EP068D 4.UVDATA.1 Vect aver. CL # 3  
IF 7 CHAN 1 - 32 STK LL



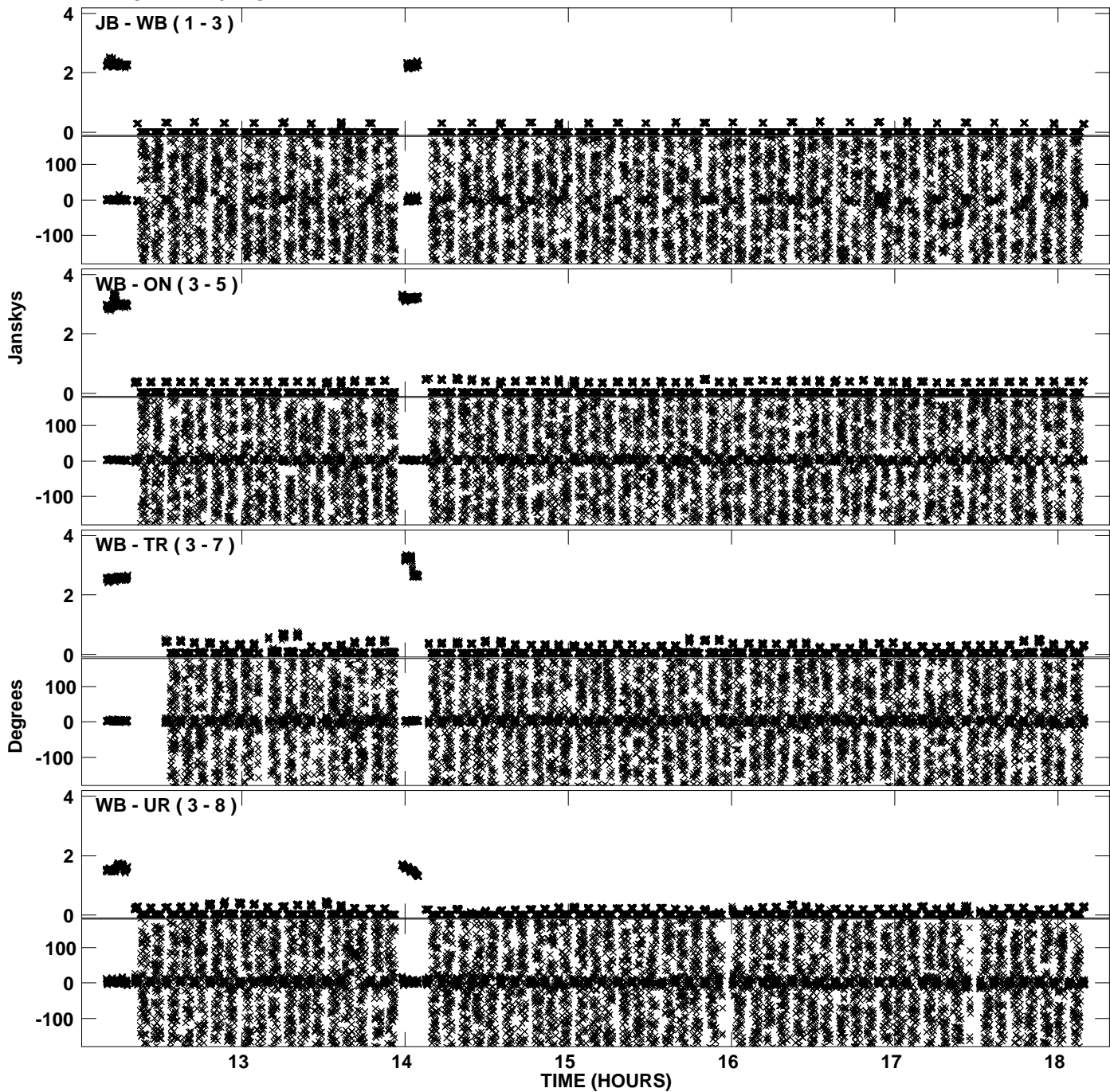
PLot file version 15 created 06-JAN-2012 11:25:31  
Amplitude andPhase vs Time for EP068D 4.UVDATA.1 Vect aver. CL # 3  
IF 8 CHAN 1 - 32 STK LL



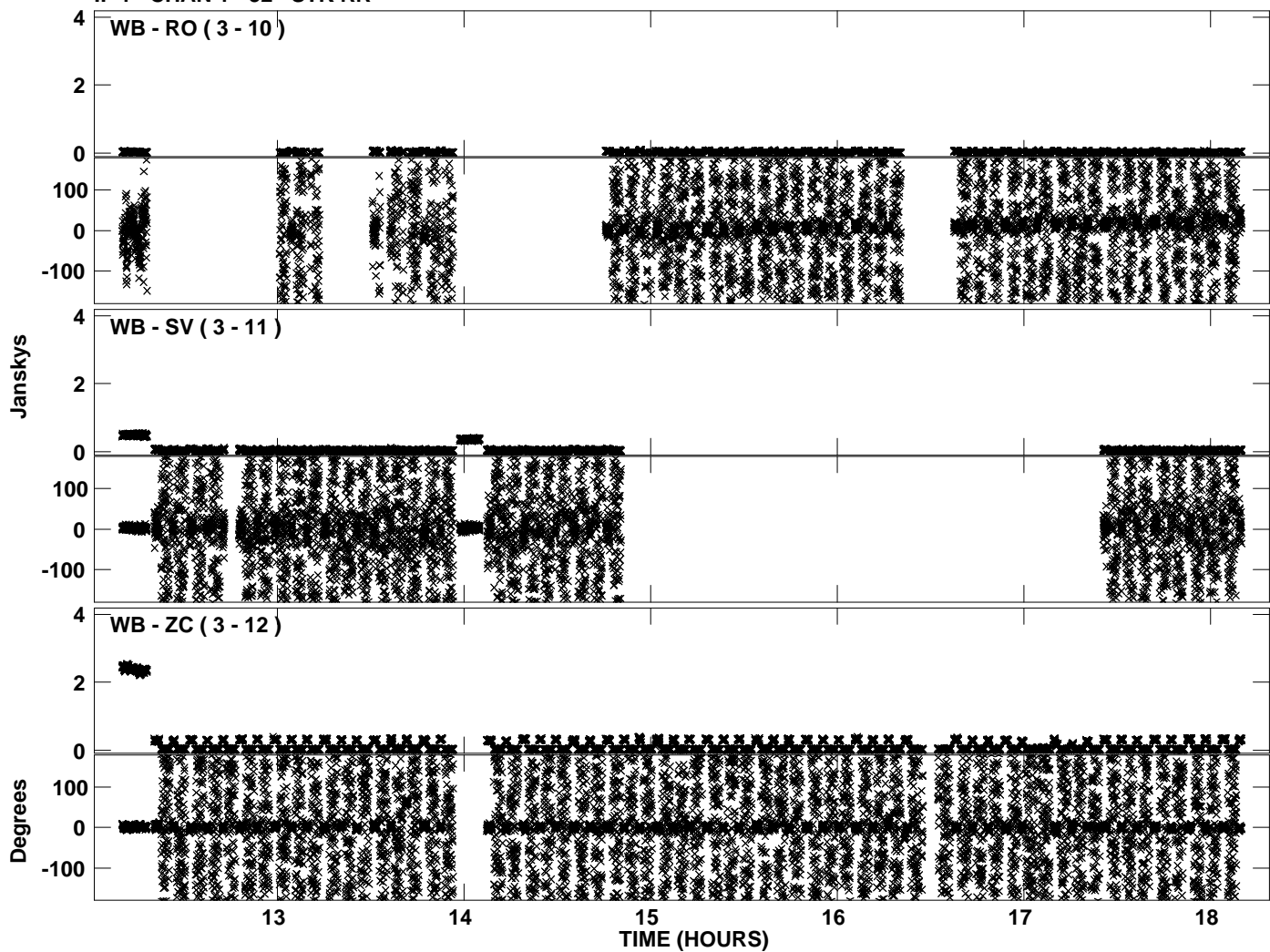
Plot file version 16 created 06-JAN-2012 11:25:31  
Amplitude andPhase vs Time for EP068D 4.UVDATA.1 Vect aver. CL # 3  
IF 8 CHAN 1 - 32 STK LL



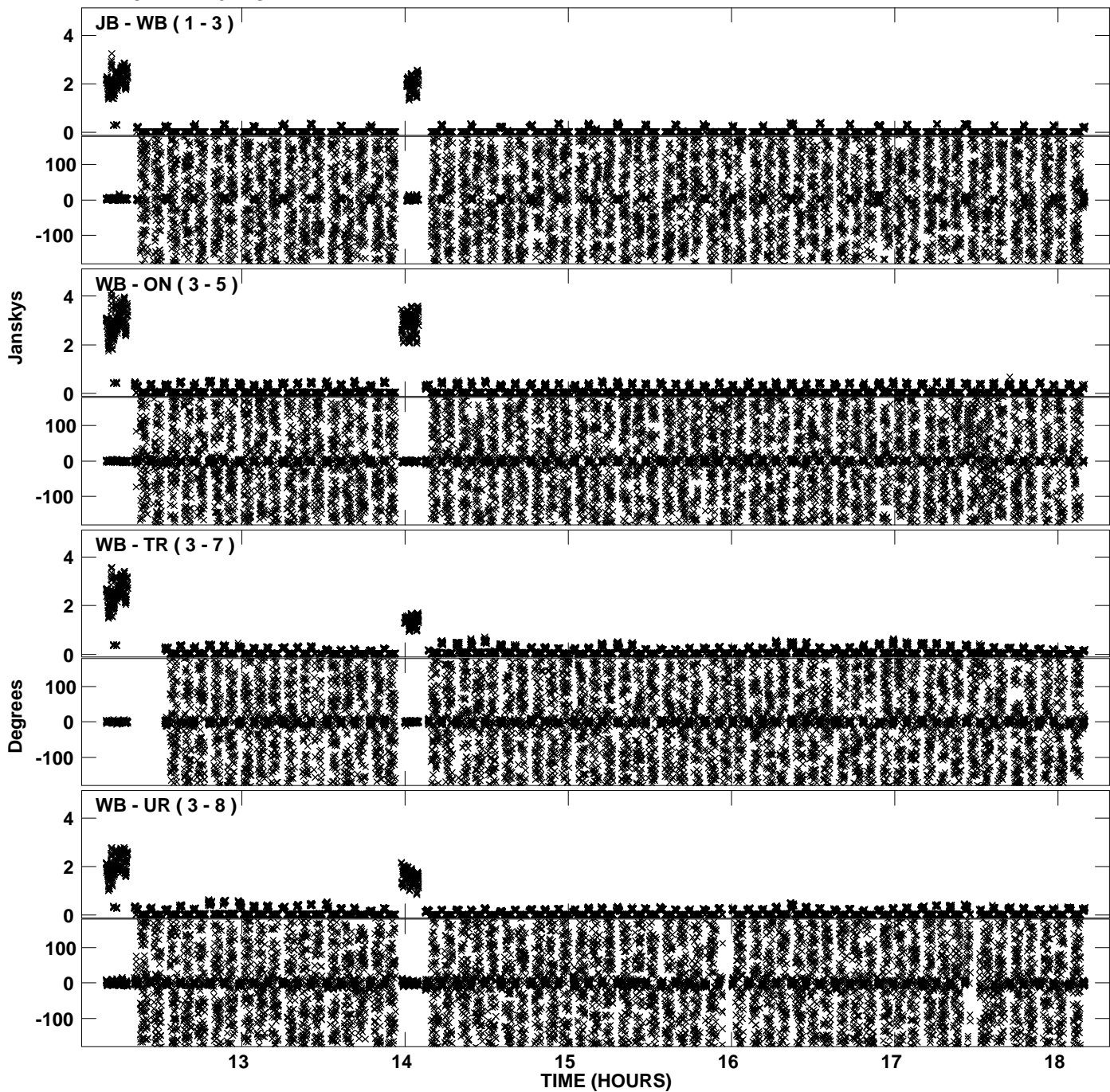
PLot file version 17 created 06-JAN-2012 11:25:38  
Amplitude andPhase vs Time for EP068D 4.UVDATA.1 Vect aver. CL # 3  
IF 1 CHAN 1 - 32 STK RR



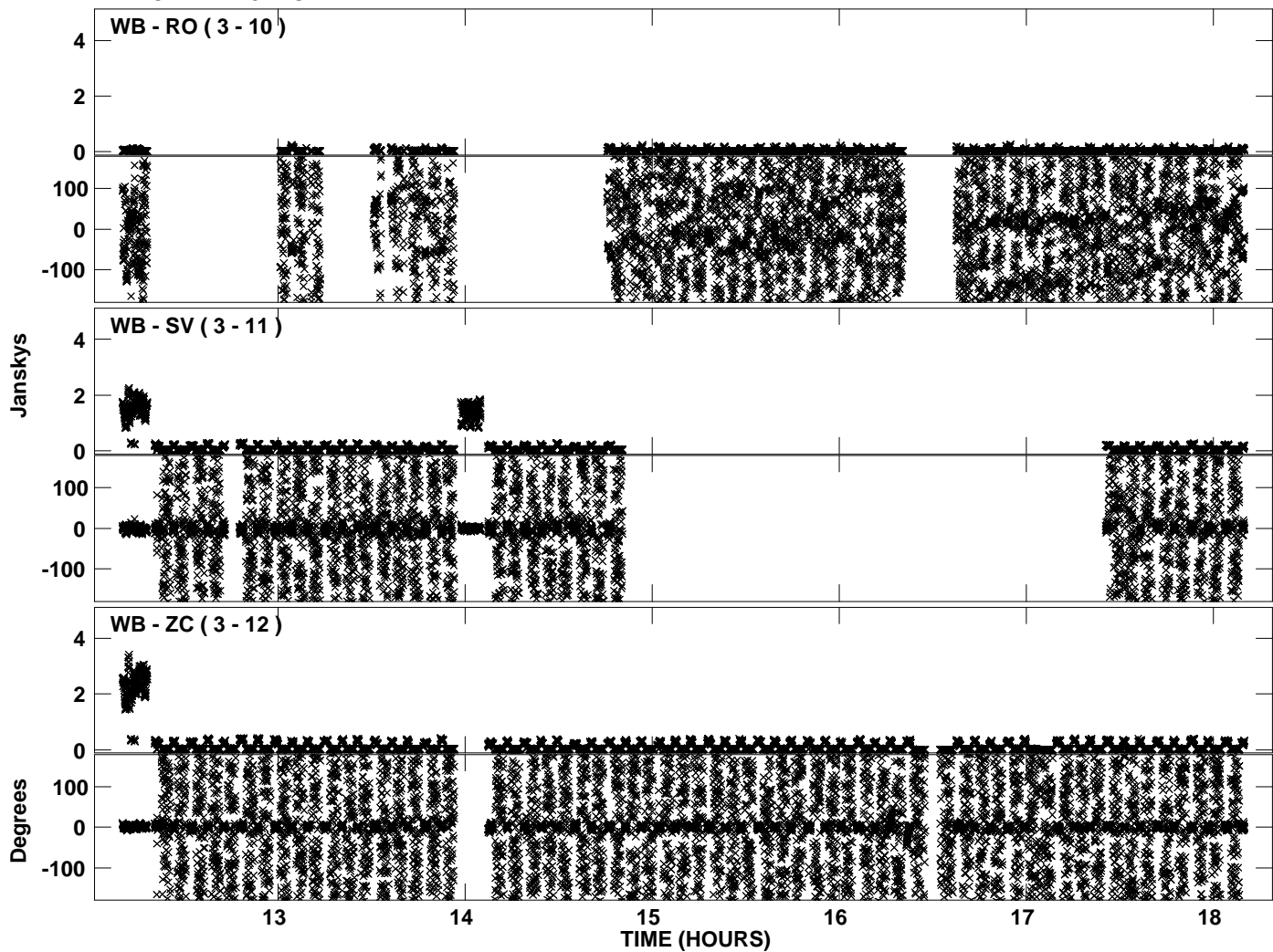
PLot file version 18 created 06-JAN-2012 11:25:38  
Amplitude andPhase vs Time for EP068D 4.UVDATA.1 Vect aver. CL # 3  
IF 1 CHAN 1 - 32 STK RR



PLot file version 19 created 06-JAN-2012 11:25:45  
Amplitude andPhase vs Time for EP068D 4.UVDATA.1 Vect aver. CL # 3  
IF 2 CHAN 1 - 32 STK RR

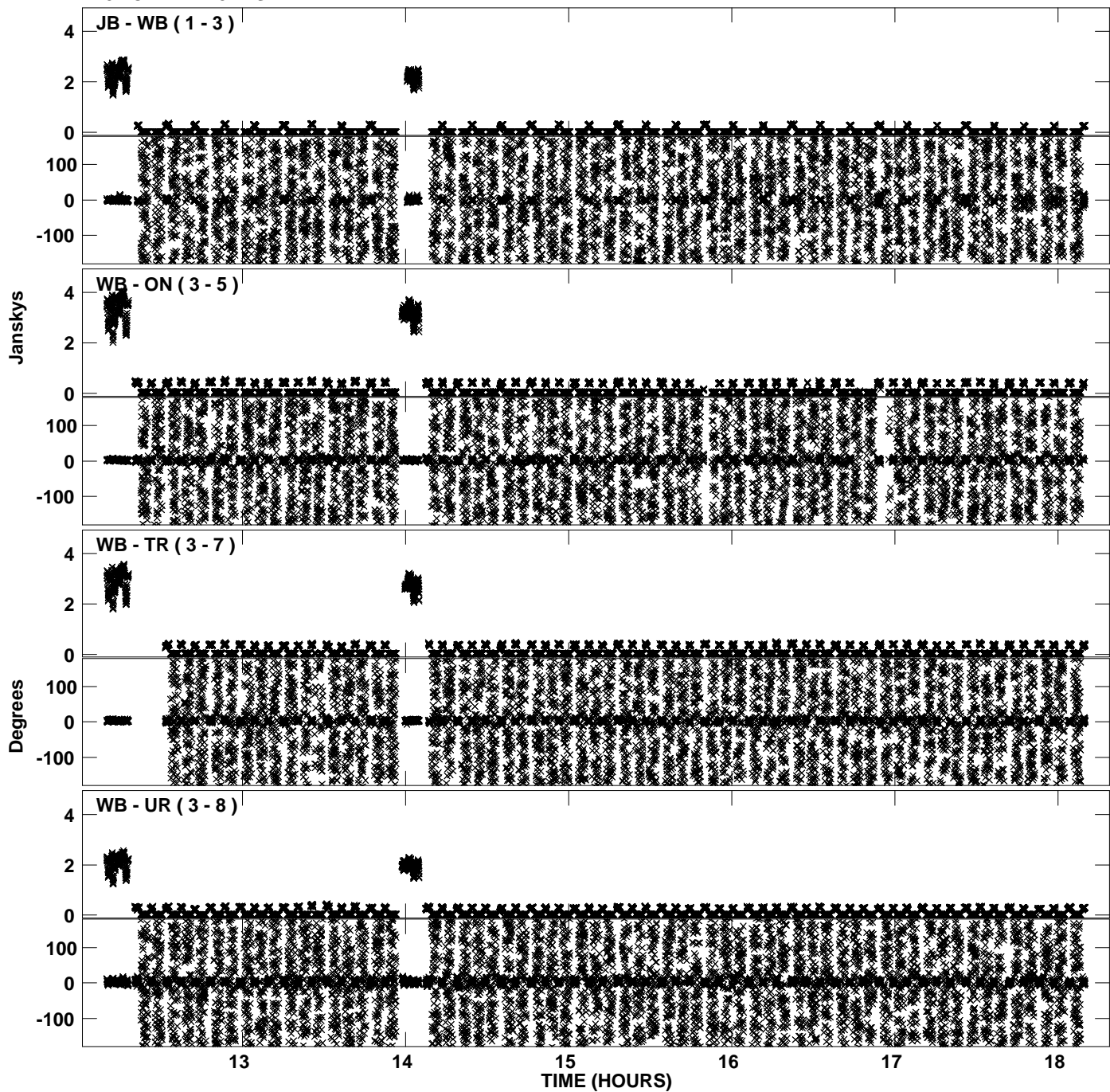


PLot file version 20 created 06-JAN-2012 11:25:45  
Amplitude andPhase vs Time for EP068D 4.UVDATA.1 Vect aver. CL # 3  
IF 2 CHAN 1 - 32 STK RR

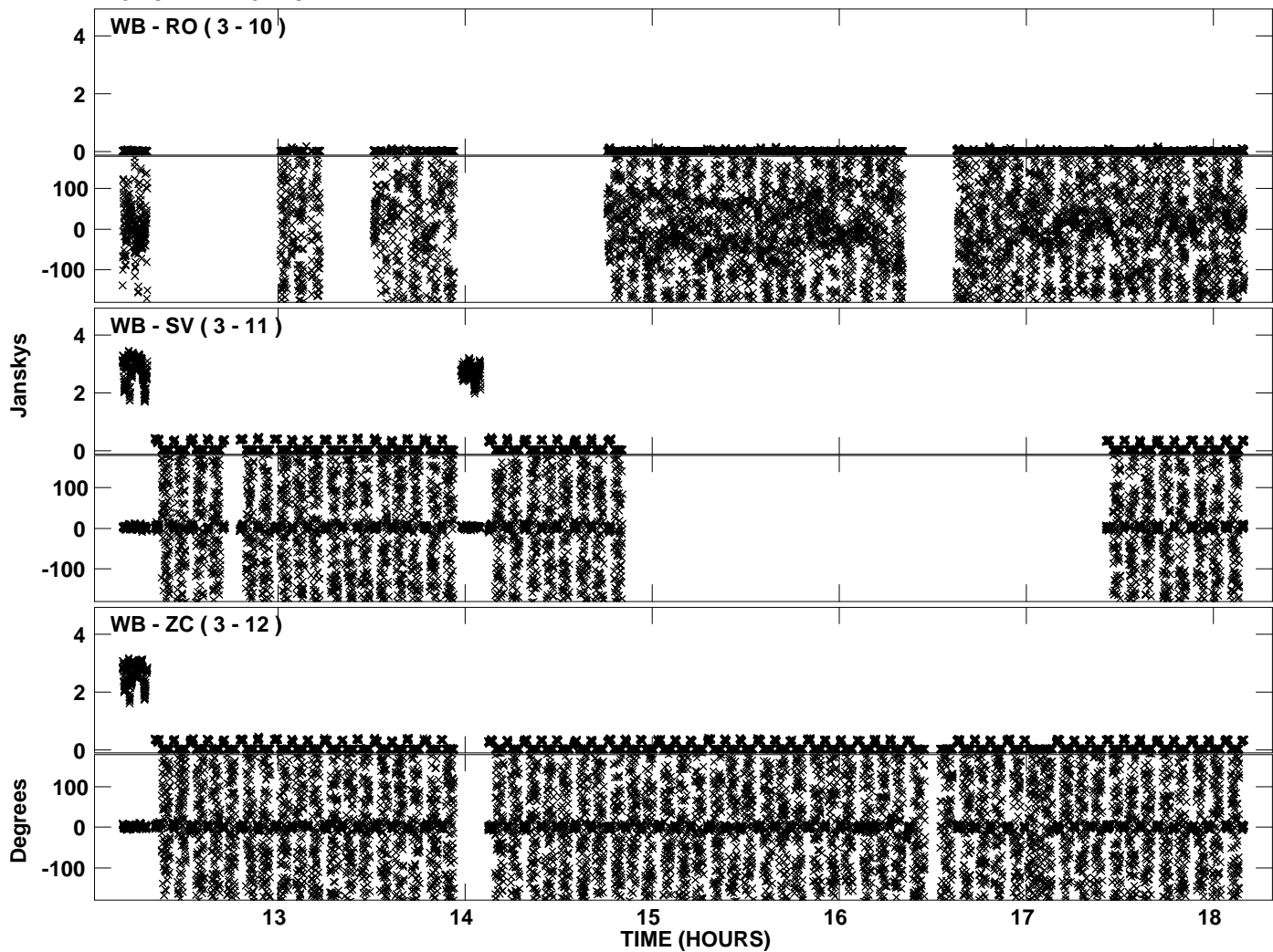




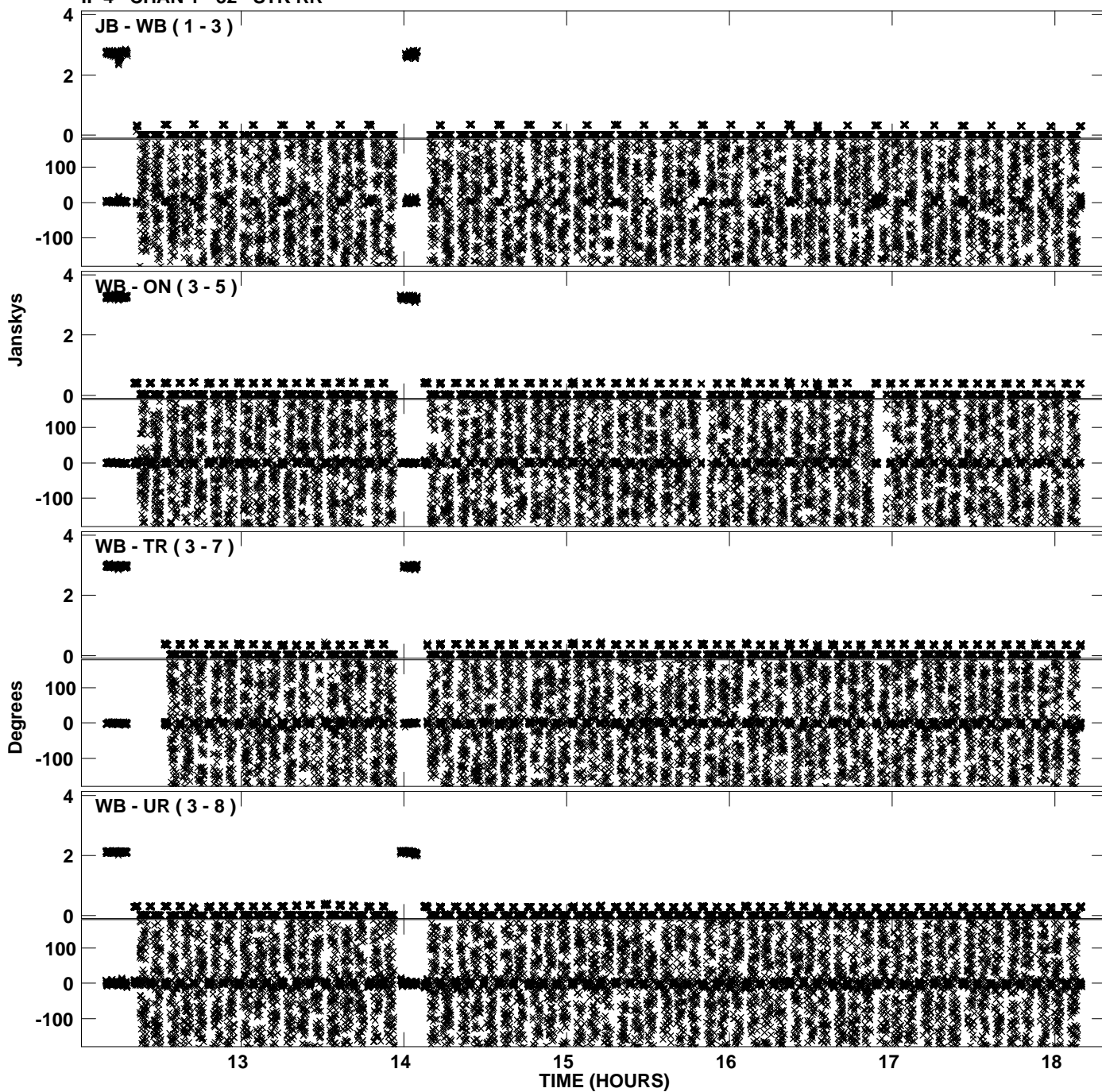
Plot file version 21 created 06-JAN-2012 11:25:52  
Amplitude andPhase vs Time for EP068D 4.UVDATA.1 Vect aver. CL # 3  
IF 3 CHAN 1 - 32 STK RR



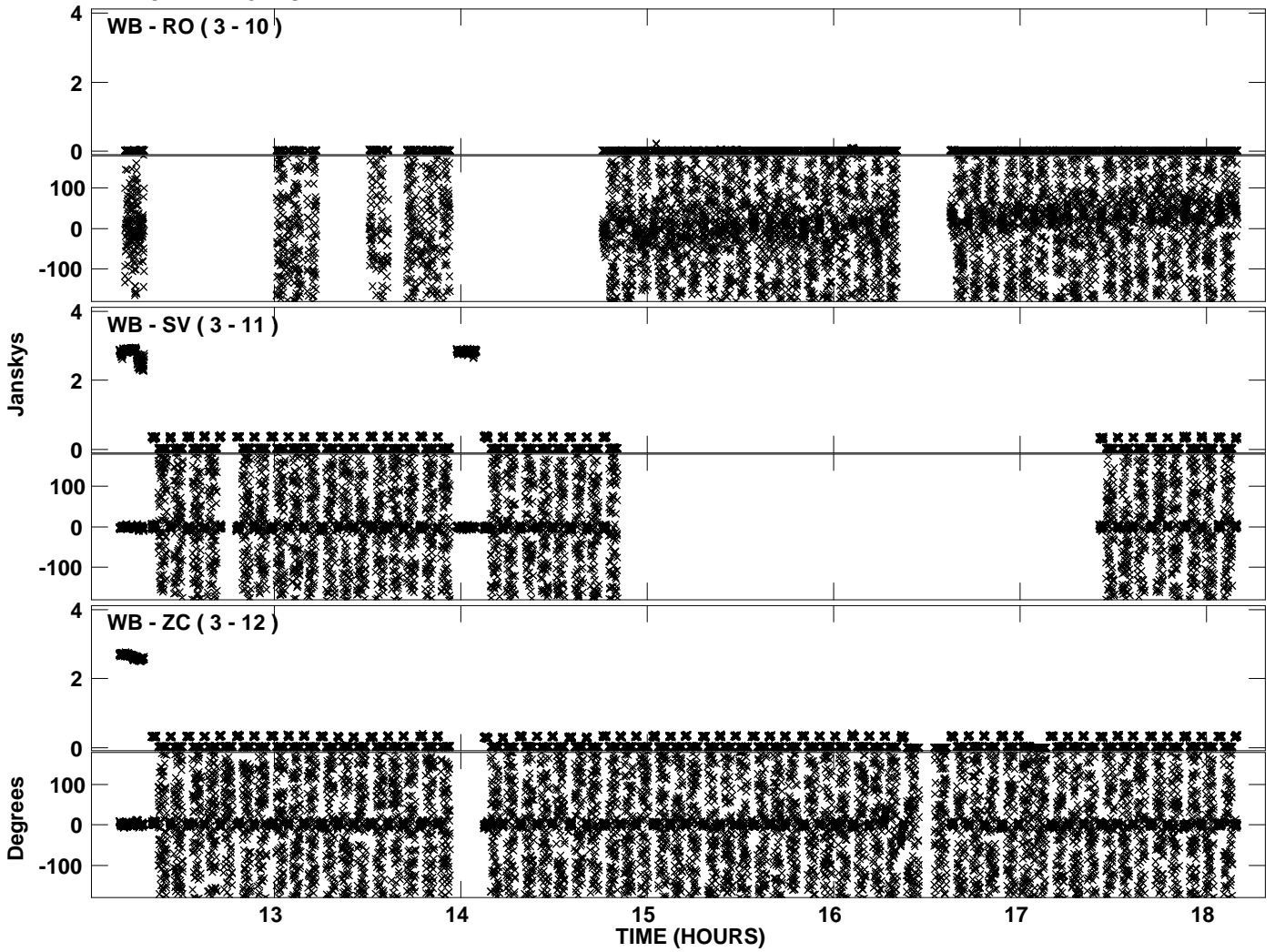
PLot file version 22 created 06-JAN-2012 11:25:52  
Amplitude andPhase vs Time for EP068D 4.UVDATA.1 Vect aver. CL # 3  
IF 3 CHAN 1 - 32 STK RR



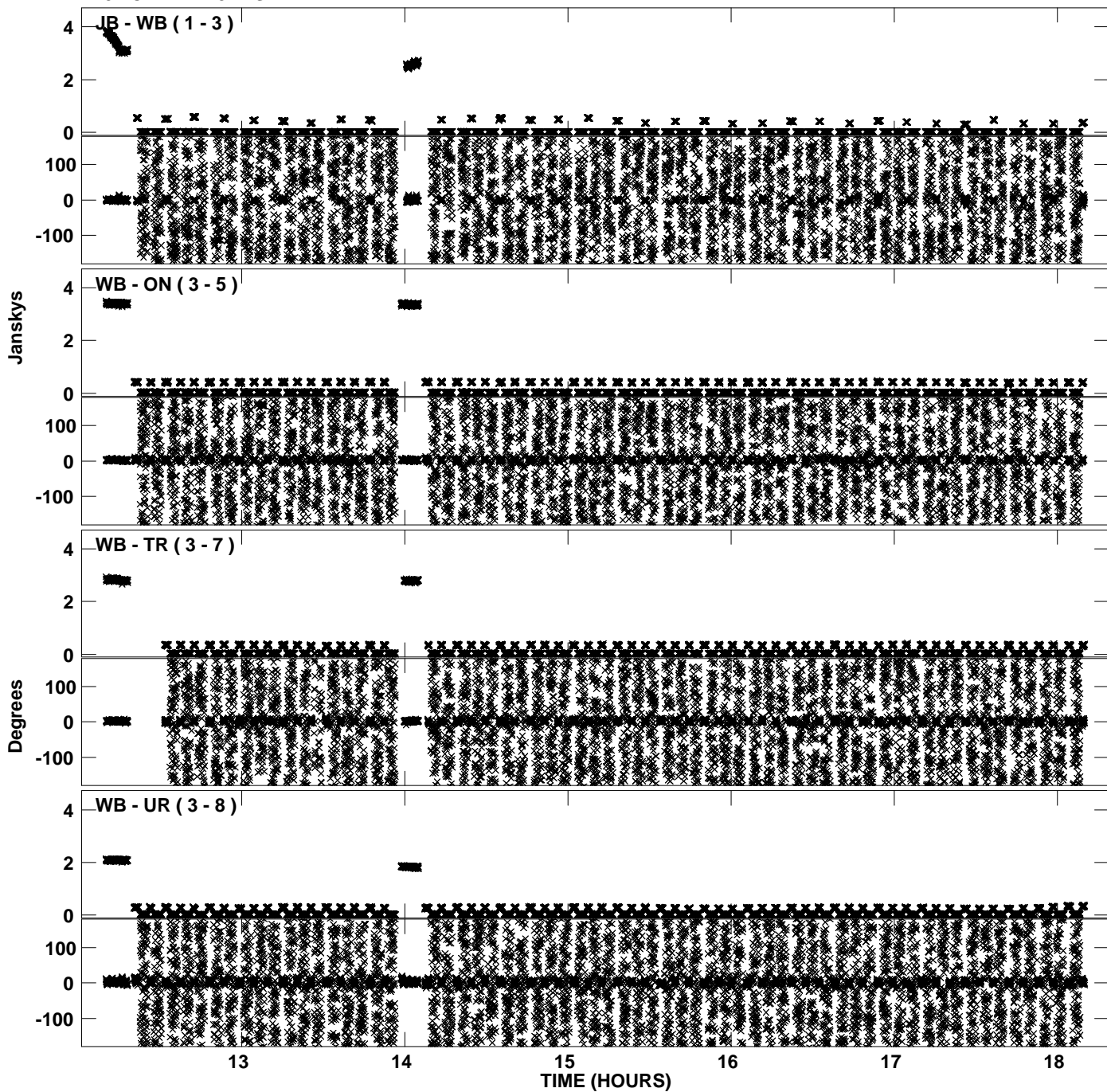
PLot file version 23 created 06-JAN-2012 11:25:59  
Amplitude andPhase vs Time for EP068D 4.UVDATA.1 Vect aver. CL # 3  
IF 4 CHAN 1 - 32 STK RR



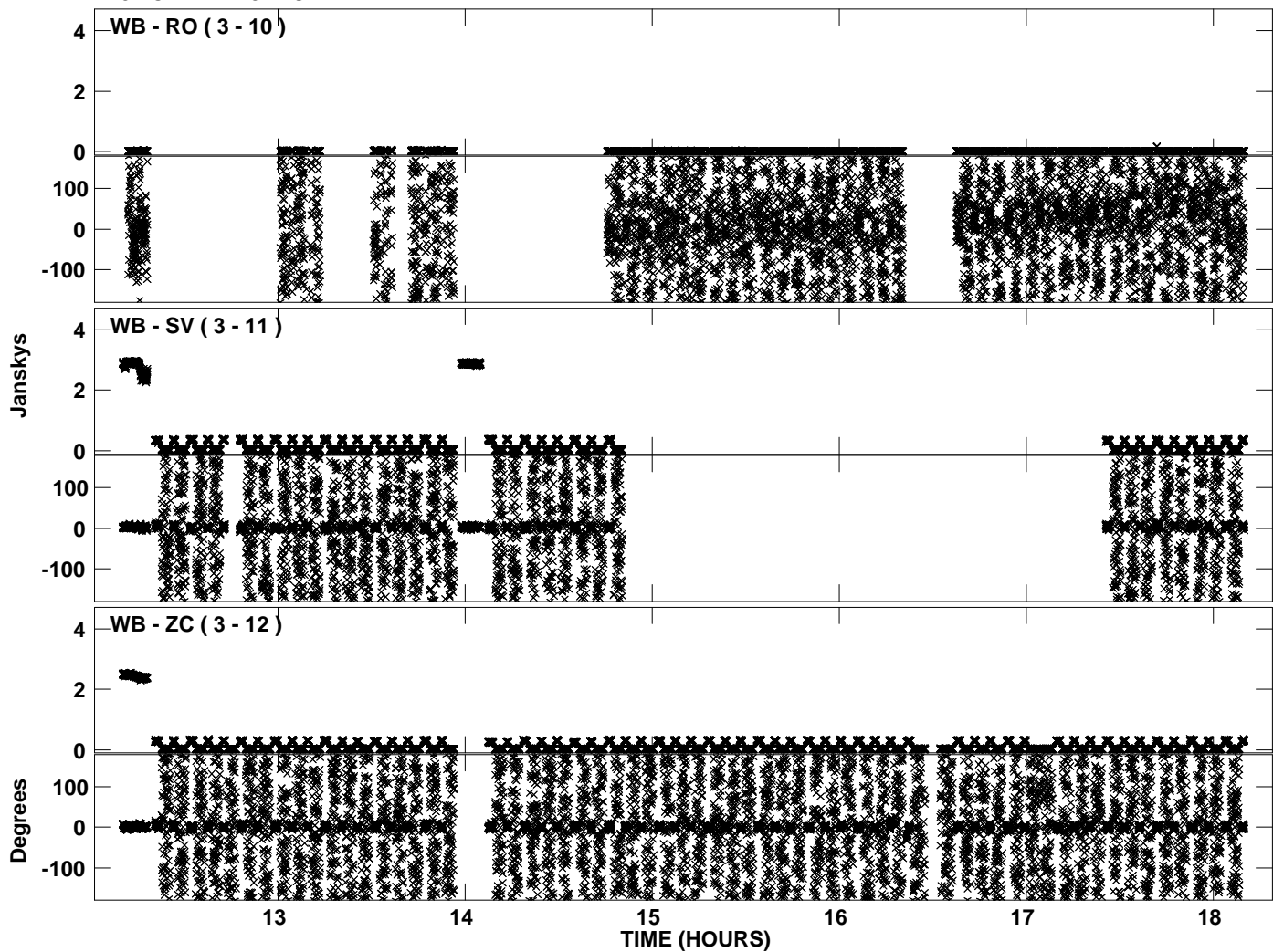
PLot file version 24 created 06-JAN-2012 11:25:59  
Amplitude andPhase vs Time for EP068D 4.UVDATA.1 Vect aver. CL # 3  
IF 4 CHAN 1 - 32 STK RR



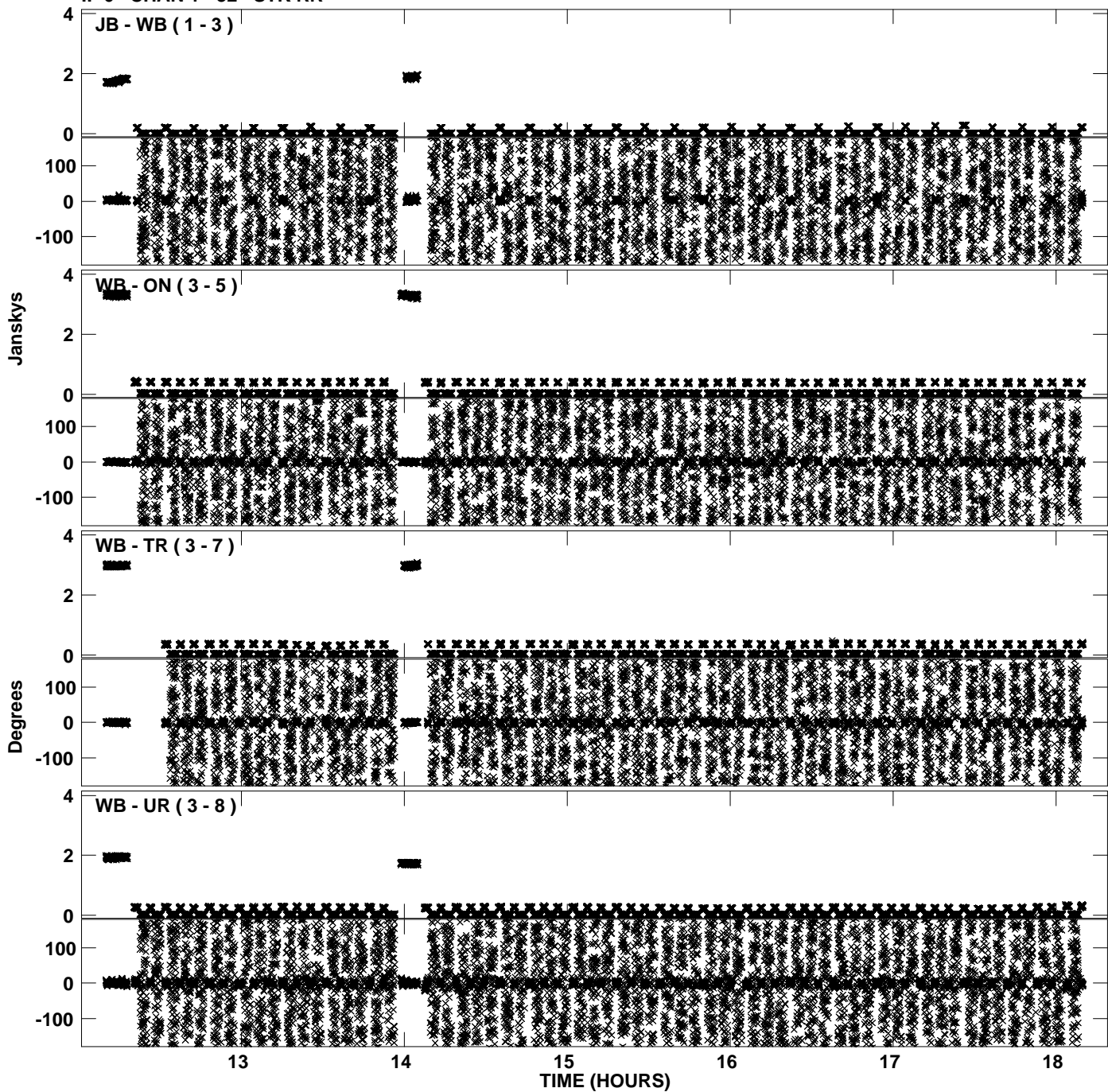
PLot file version 25 created 06-JAN-2012 11:26:06  
Amplitude andPhase vs Time for EP068D 4.UVDATA.1 Vect aver. CL # 3  
IF 5 CHAN 1 - 32 STK RR



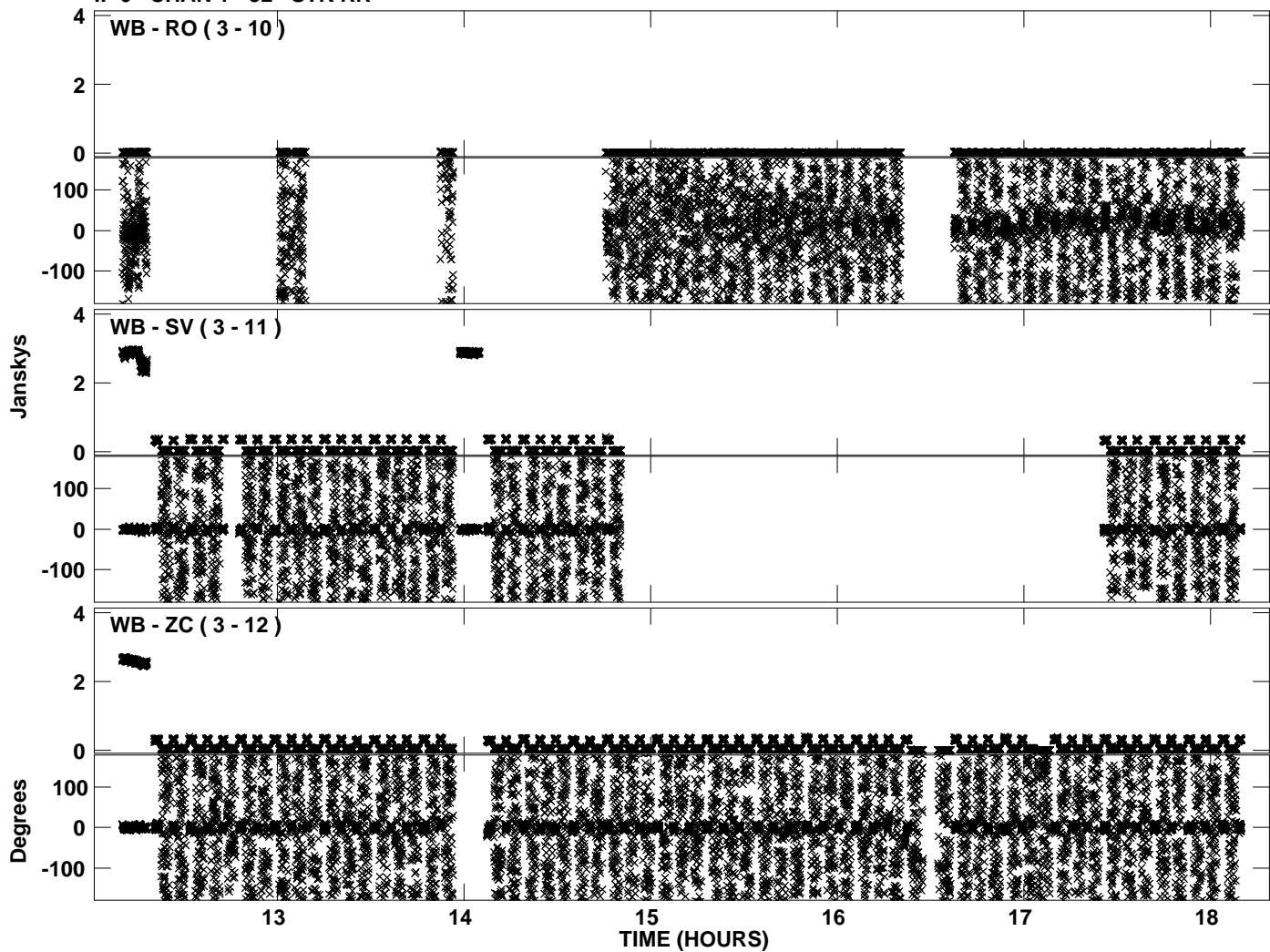
PLot file version 26 created 06-JAN-2012 11:26:06  
Amplitude andPhase vs Time for EP068D 4.UVDATA.1 Vect aver. CL # 3  
IF 5 CHAN 1 - 32 STK RR



Plot file version 27 created 06-JAN-2012 11:26:13  
Amplitude andPhase vs Time for EP068D 4.UVDATA.1 Vect aver. CL # 3  
IF 6 CHAN 1 - 32 STK RR

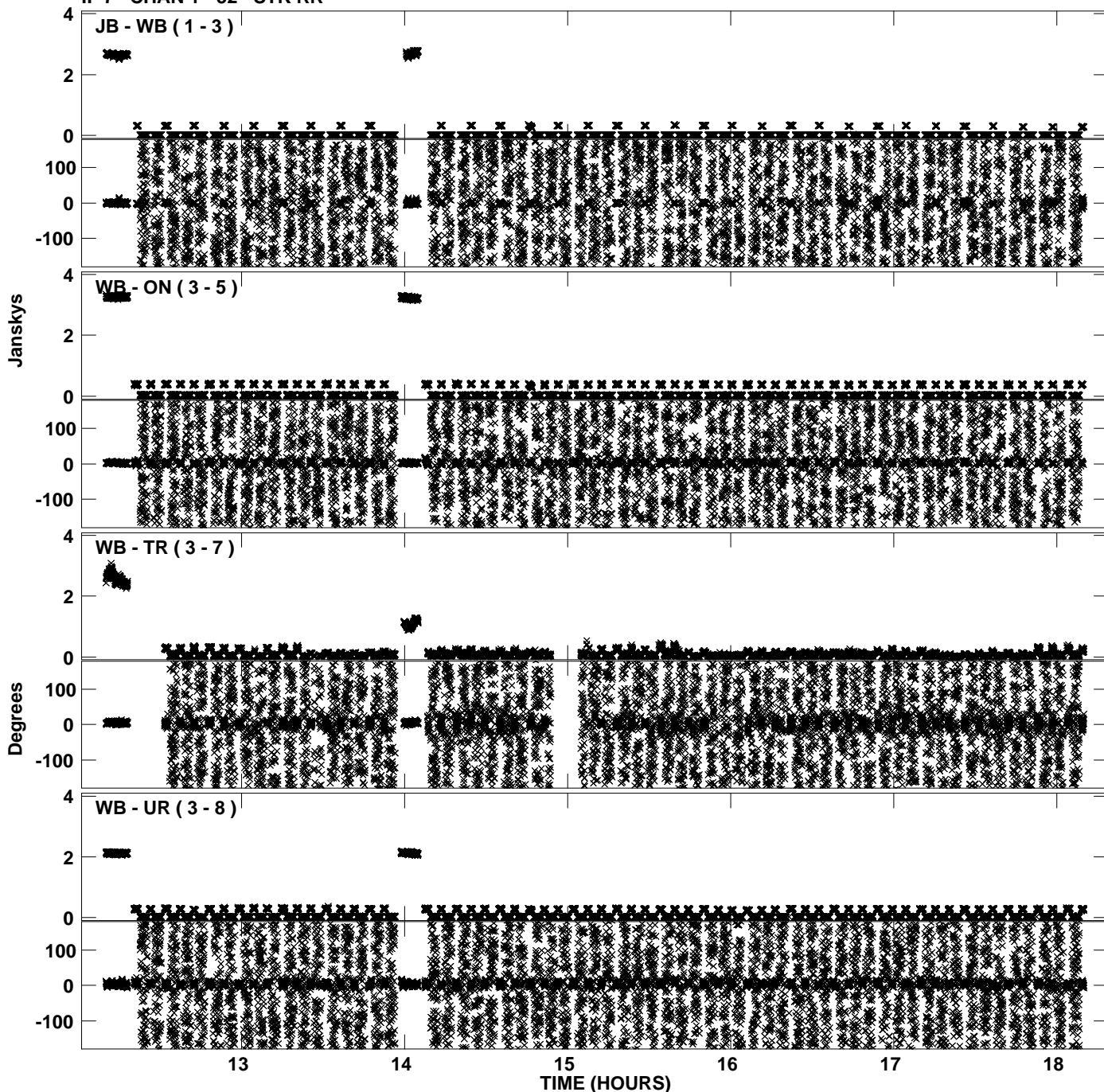


PLot file version 28 created 06-JAN-2012 11:26:13  
Amplitude andPhase vs Time for EP068D 4.UVDATA.1 Vect aver. CL # 3  
IF 6 CHAN 1 - 32 STK RR

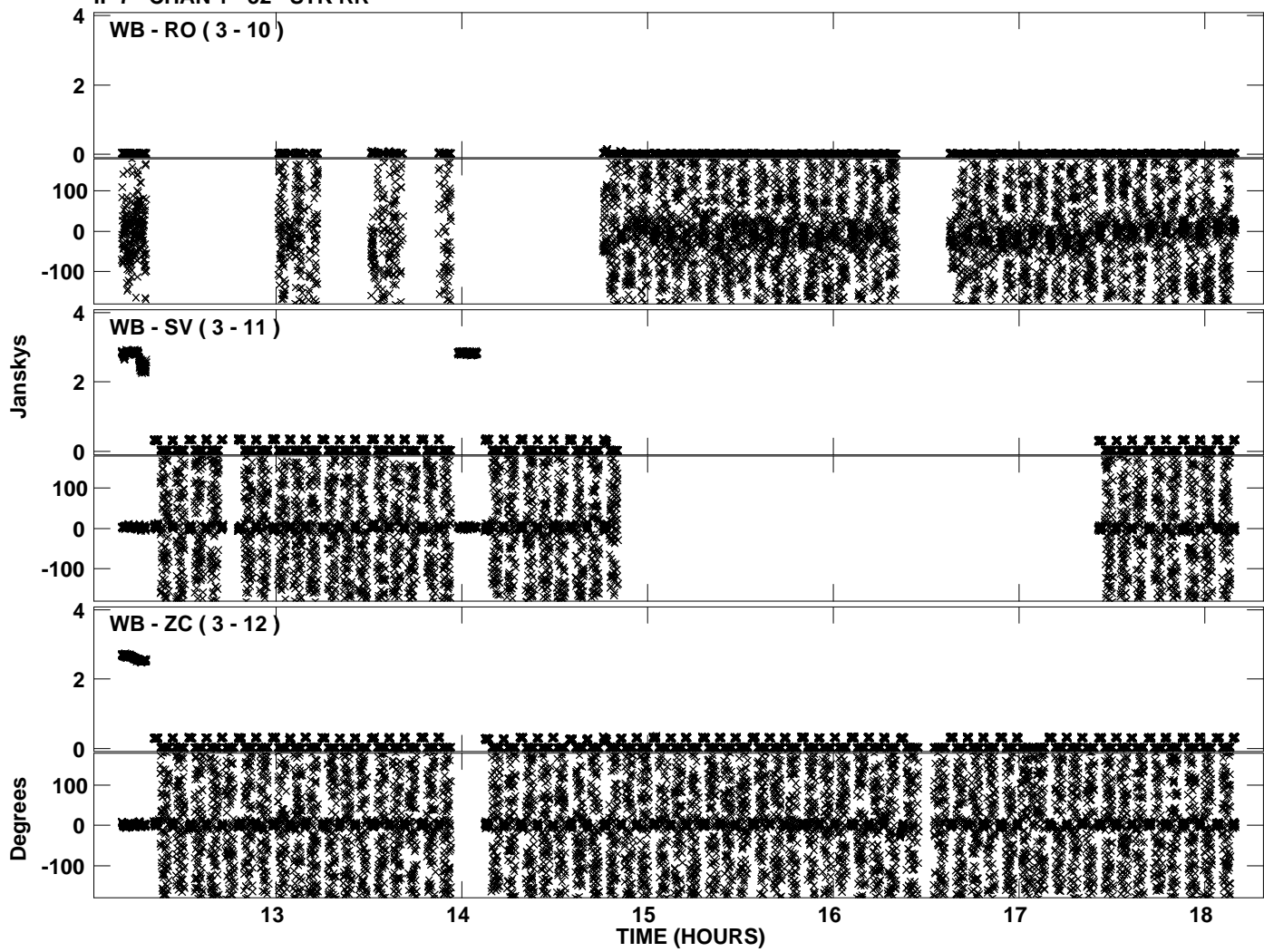




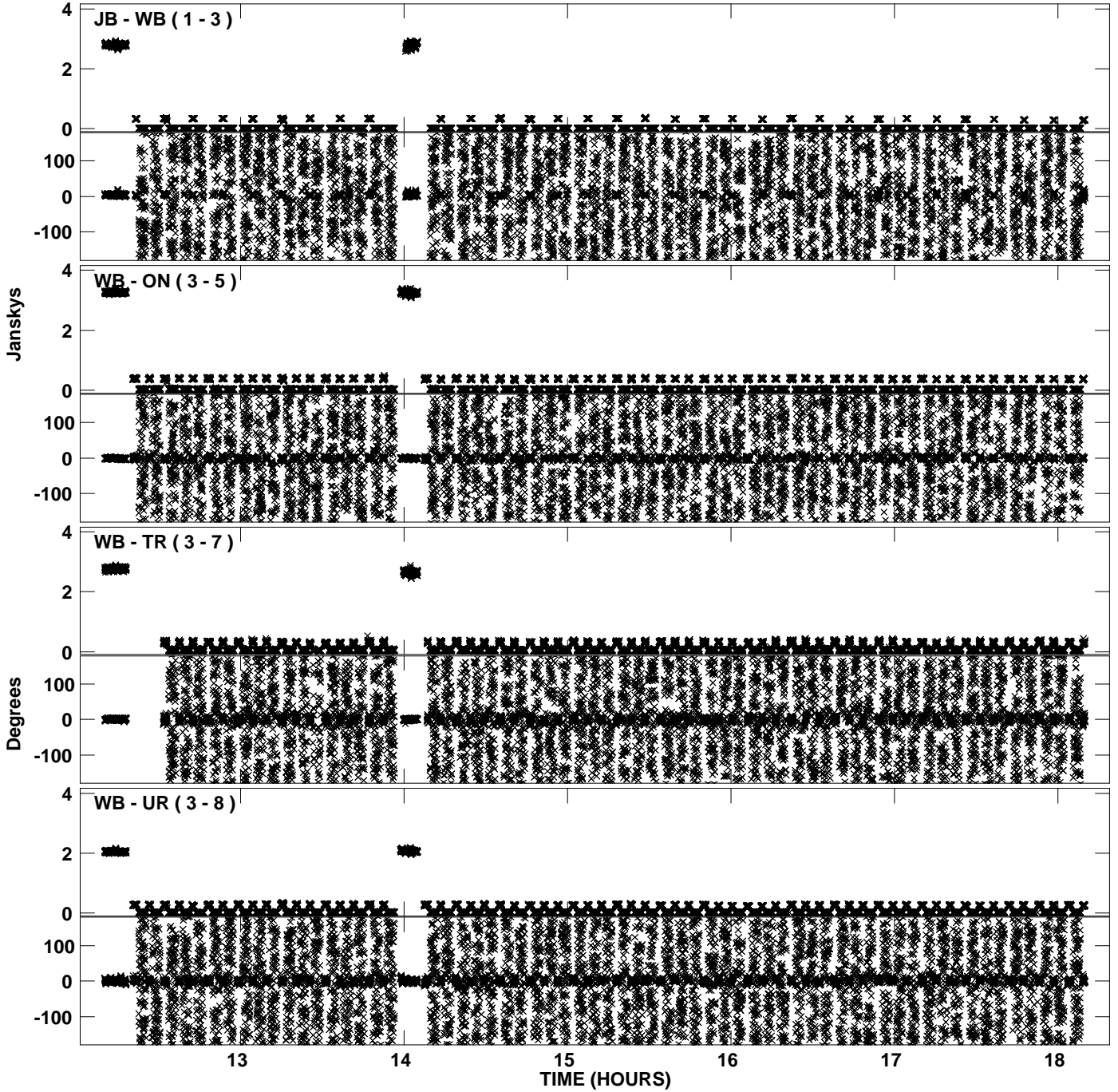
Plot file version 29 created 06-JAN-2012 11:26:20  
Amplitude andPhase vs Time for EP068D 4.UVDATA.1 Vect aver. CL # 3  
IF 7 CHAN 1 - 32 STK RR



Plot file version 30 created 06-JAN-2012 11:26:20  
Amplitude andPhase vs Time for EP068D 4.UVDATA.1 Vect aver. CL # 3  
IF 7 CHAN 1 - 32 STK RR



Plot file version 31 created 06-JAN-2012 11:26:27  
Amplitude andPhase vs Time for EP068D 4.UVDATA.1 Vect aver. CL # 3  
IF 8 CHAN 1 - 32 STK RR



Plot file version 32 created 06-JAN-2012 11:26:27  
Amplitude and Phase vs Time for EP068D 4.UVDATA.1 Vect aver. CL # 3  
IF 8 CHAN 1 - 32 STK RR

