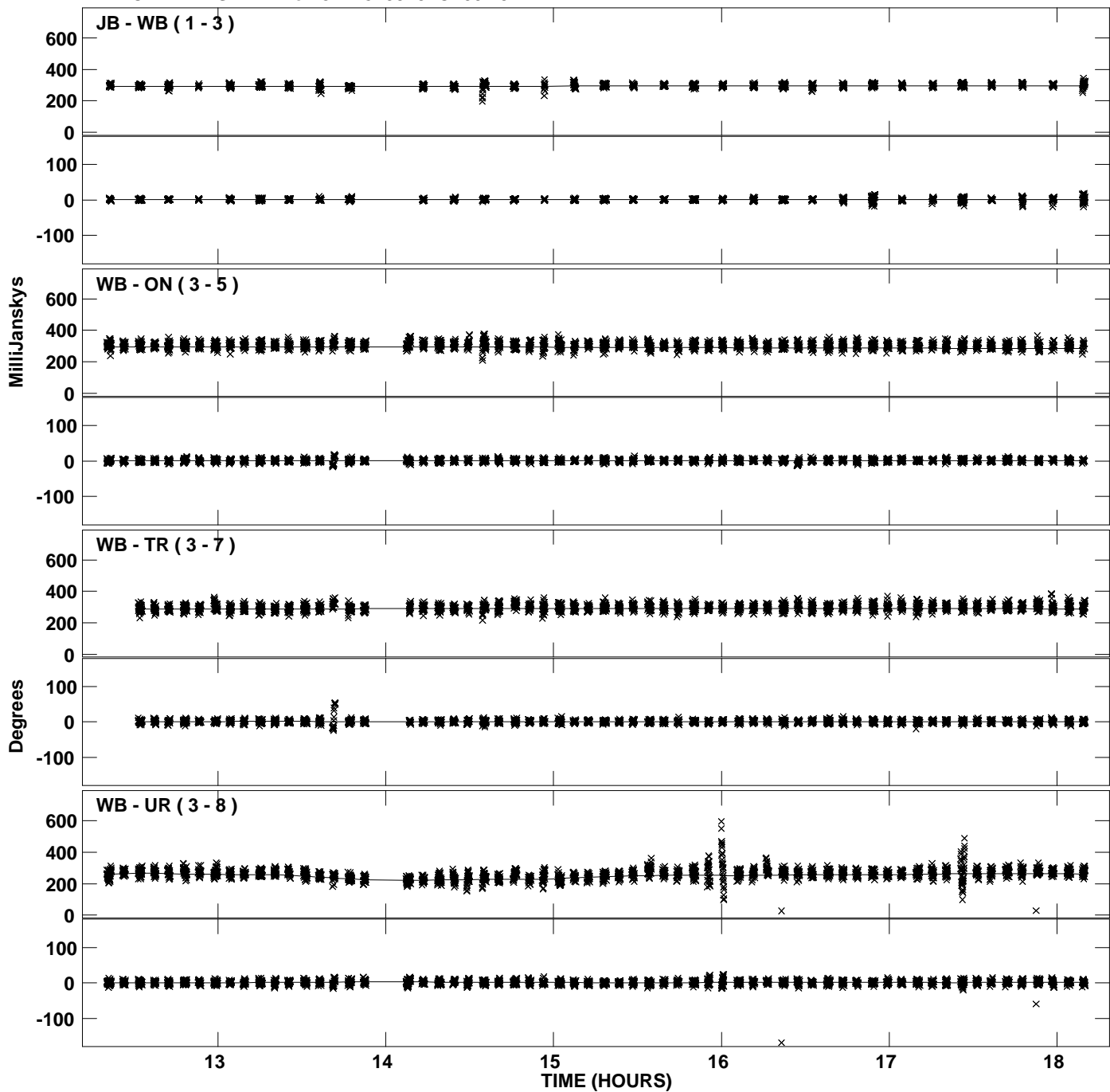
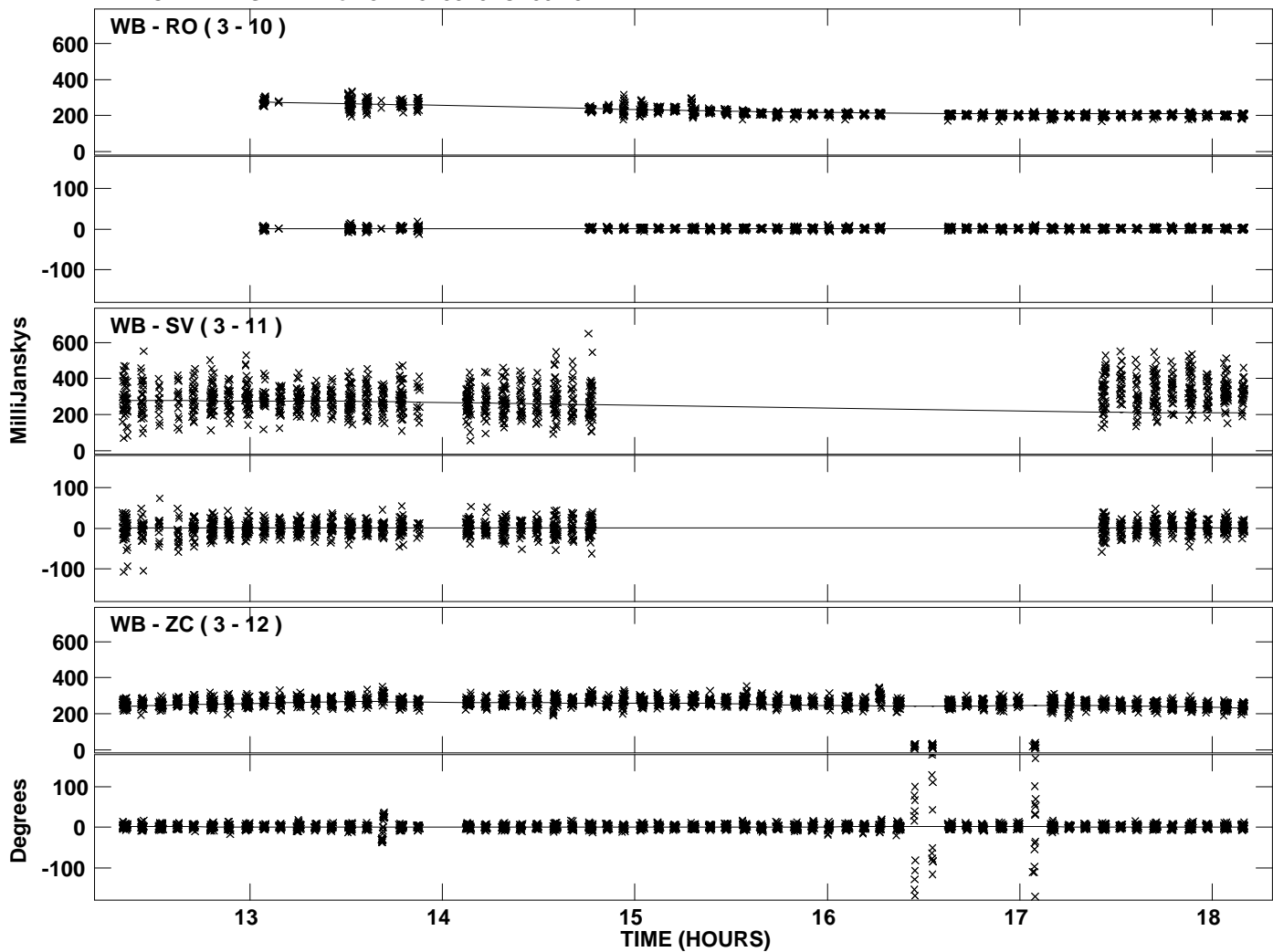


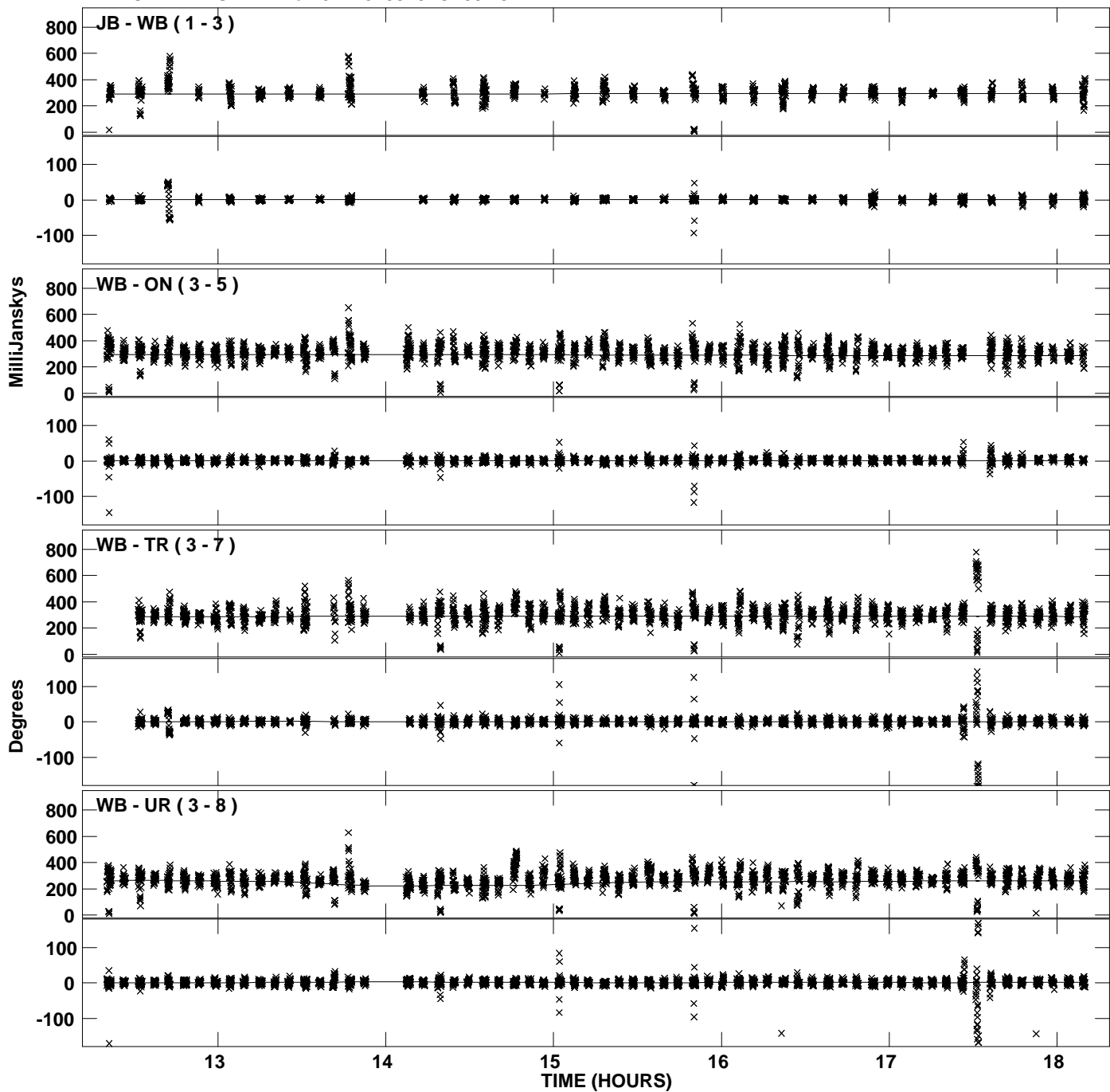
PLot file version 1 created 06-JAN-2012 12:40:03  
Amplitude andPhase vs Time for J1128+5925.MULTI.1 CL # 3  
IF 1 CHAN 1 STK LL of J1128+5925.ICL001.3



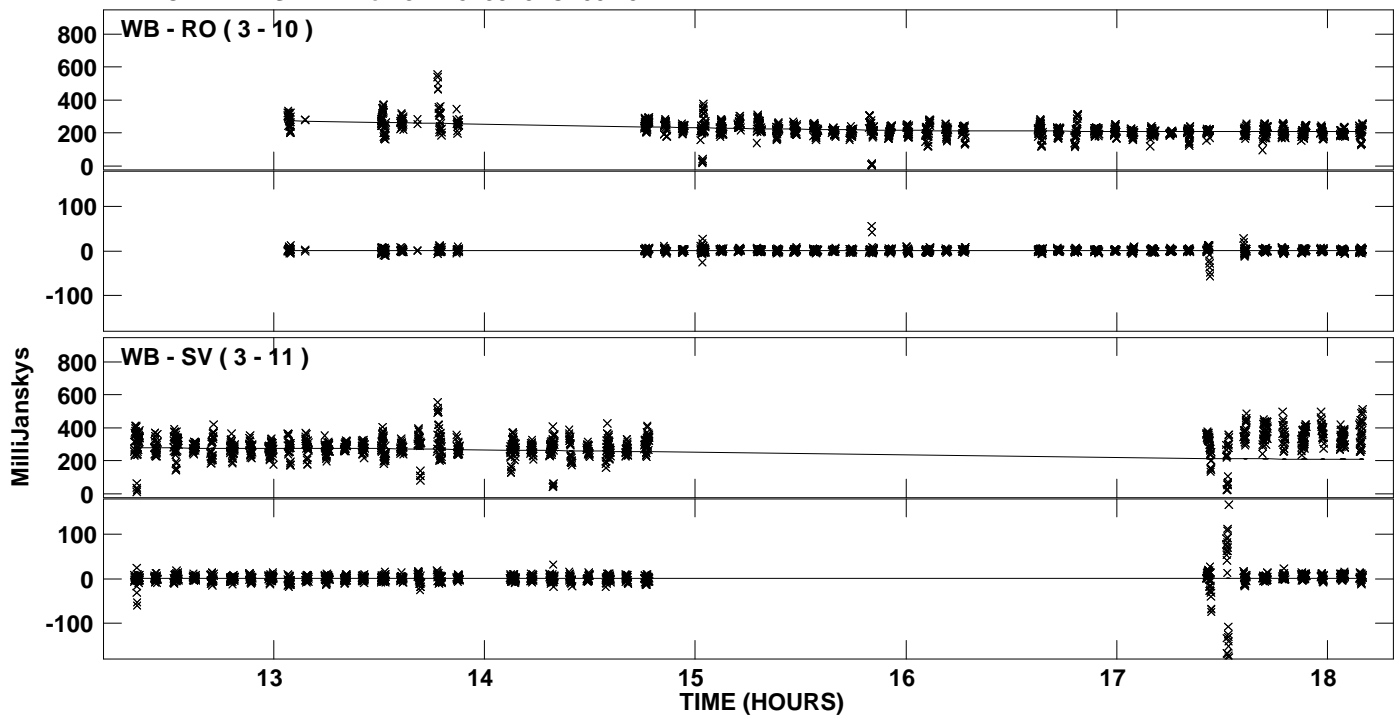
Plot file version 2 created 06-JAN-2012 12:40:03  
Amplitude and Phase vs Time for J1128+5925.MULTI.1 CL # 3  
IF 1 CHAN 1 STK LL of J1128+5925.ICL001.3



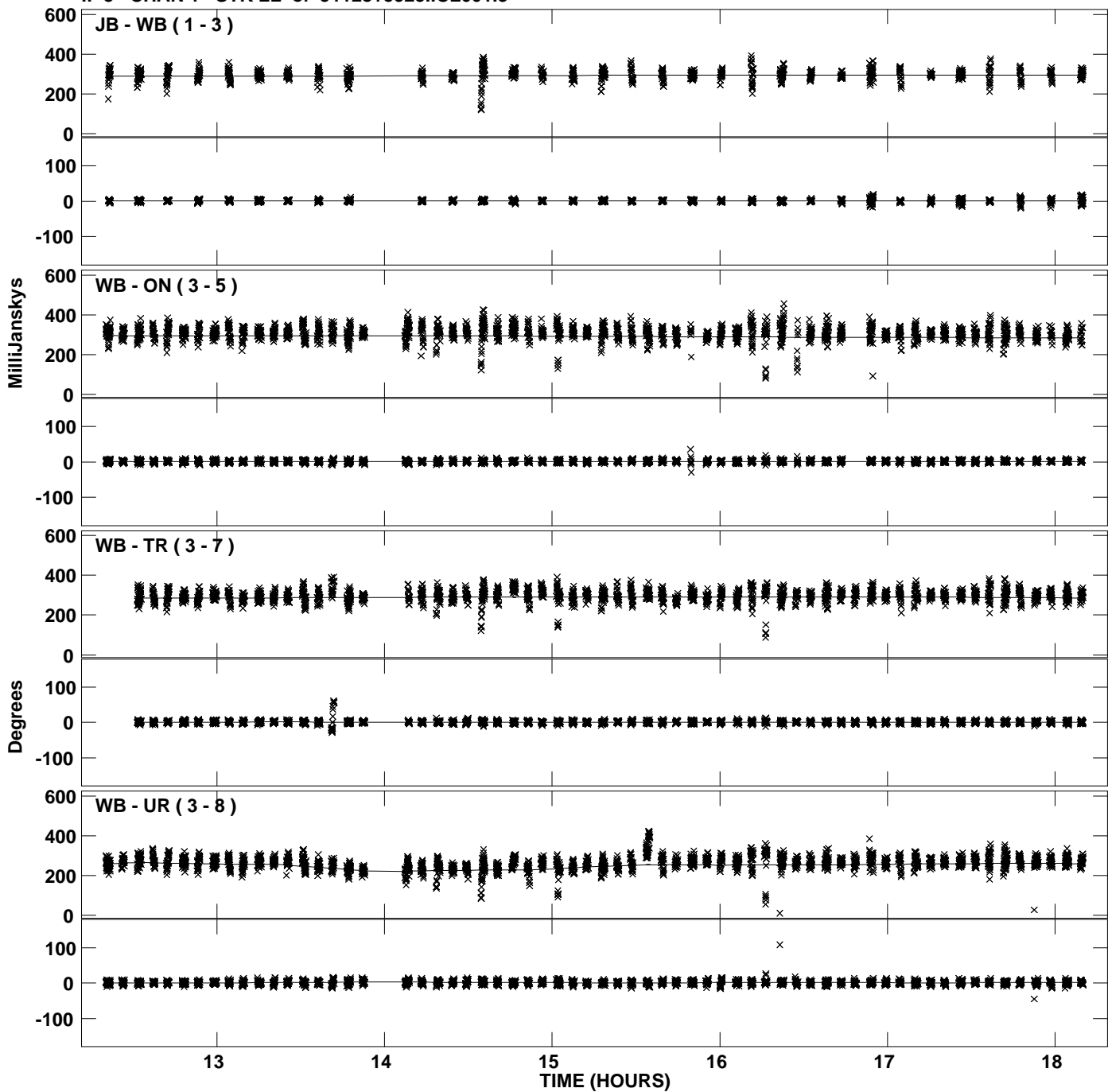
Plot file version 3 created 06-JAN-2012 12:40:04  
Amplitude and Phase vs Time for J1128+5925.MULTI.1 CL # 3  
IF 2 CHAN 1 STK LL of J1128+5925.ICL001.3



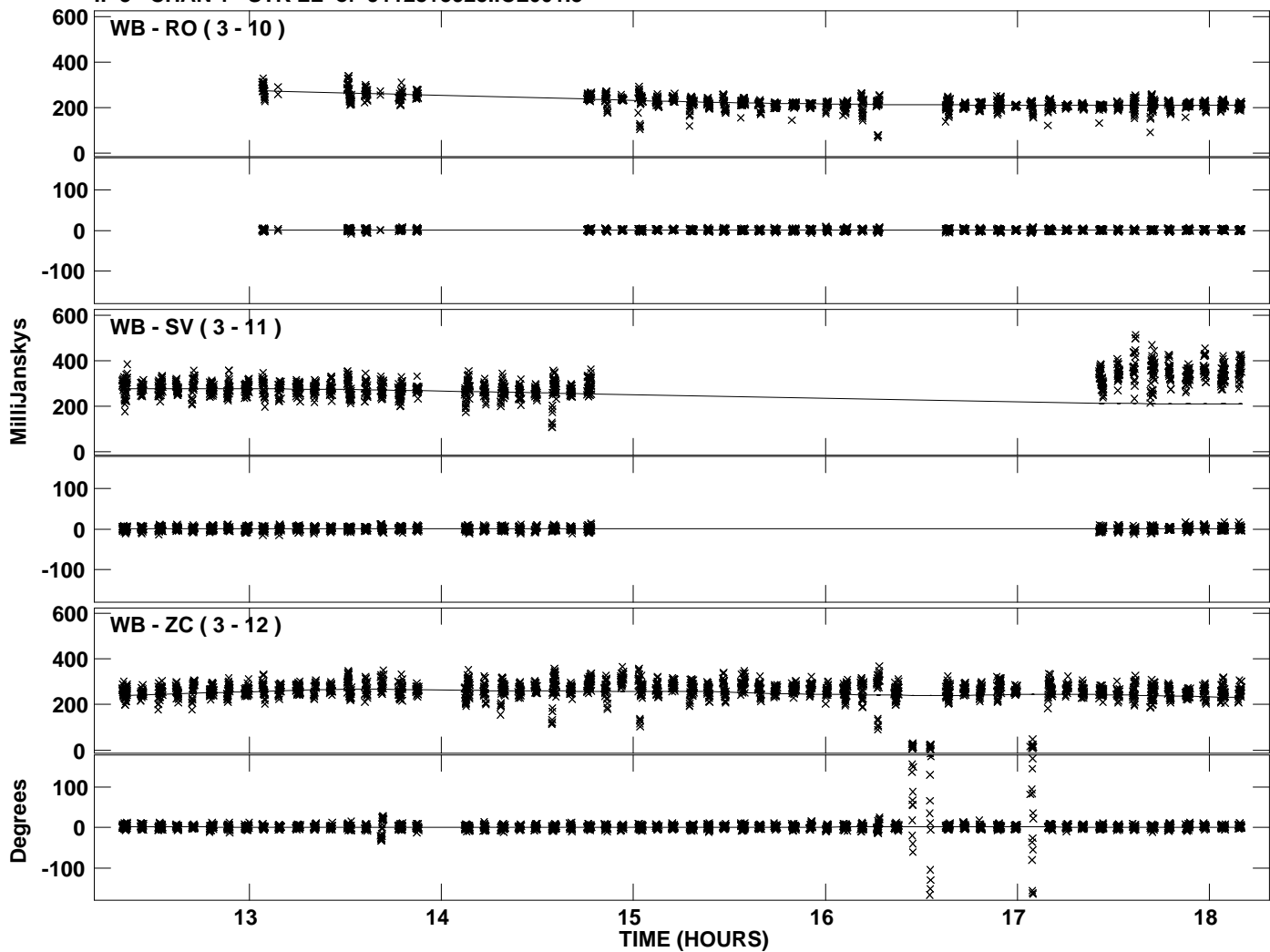
Plot file version 4 created 06-JAN-2012 12:40:04  
Amplitude andPhase vs Time for J1128+5925.MULTI.1 CL # 3  
IF 2 CHAN 1 STK LL of J1128+5925.ICL001.3



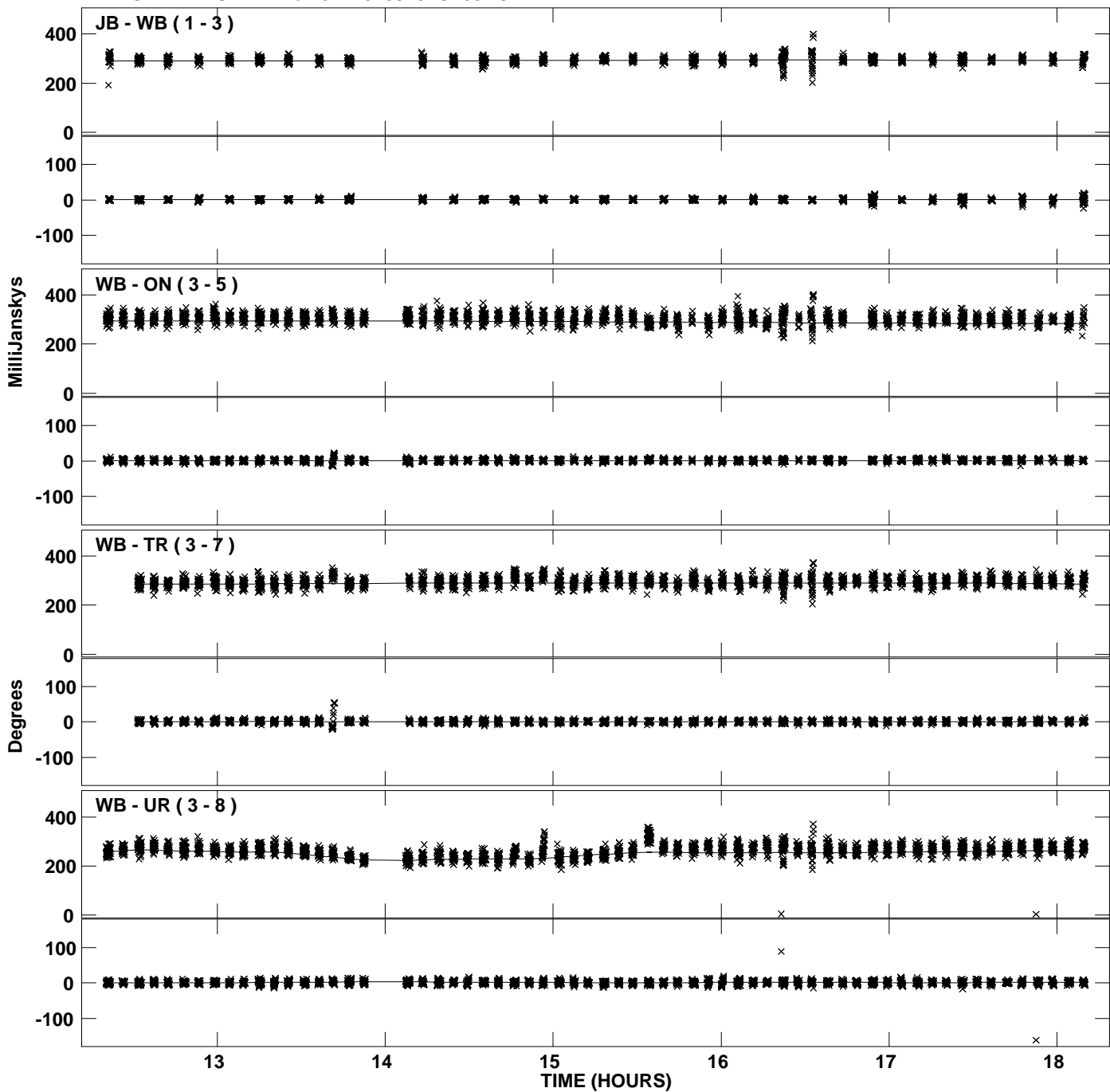
Plot file version 5 created 06-JAN-2012 12:40:04  
Amplitude and Phase vs Time for J1128+5925.MULTI.1 CL # 3  
IF 3 CHAN 1 STK LL of J1128+5925.ICL001.3



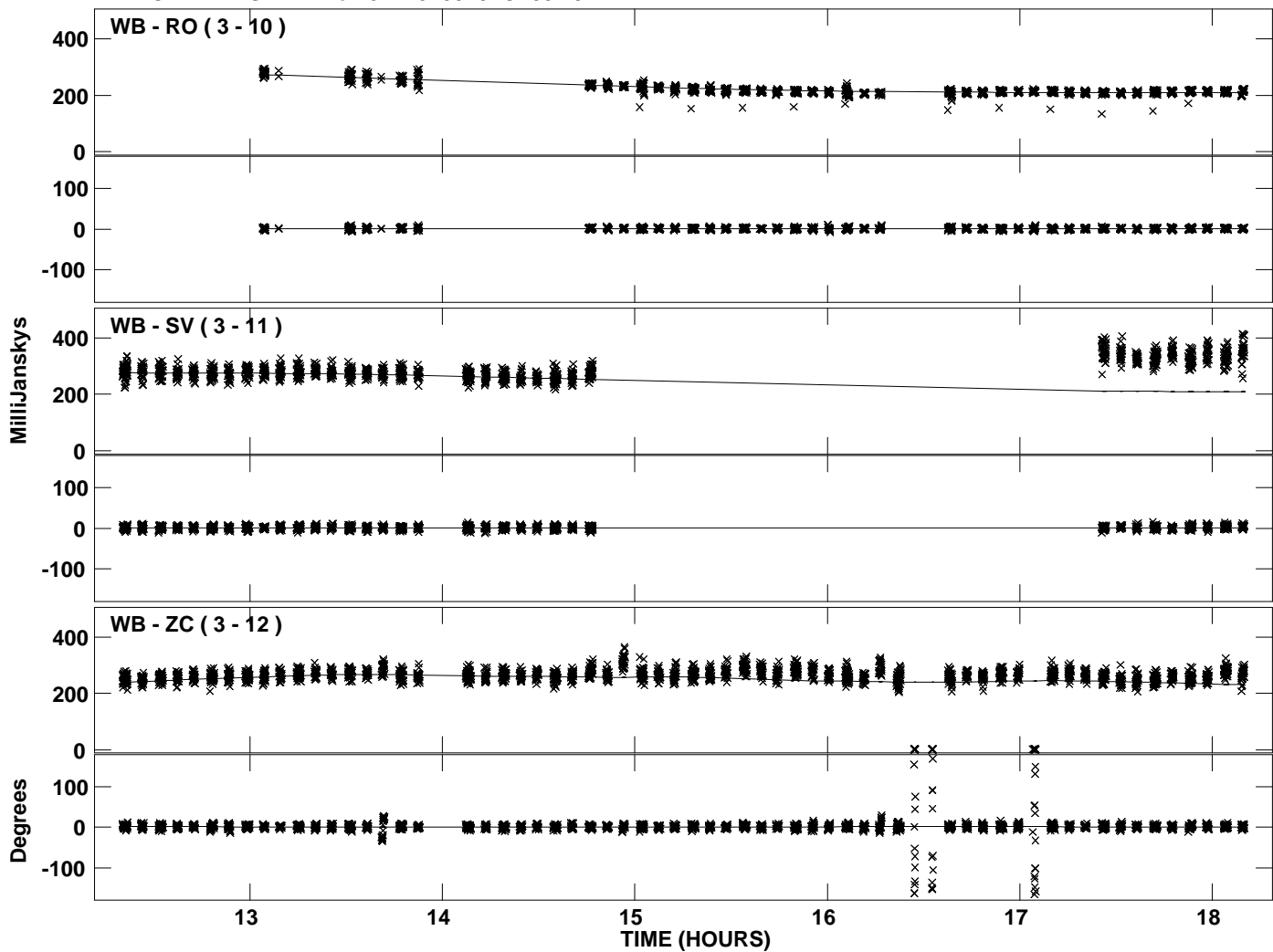
PLot file version 6 created 06-JAN-2012 12:40:04  
Amplitude andPhase vs Time for J1128+5925.MULTI.1 CL # 3  
IF 3 CHAN 1 STK LL of J1128+5925.ICL001.3



PLot file version 7 created 06-JAN-2012 12:40:04  
Amplitude andPhase vs Time for J1128+5925.MULTI.1 CL # 3  
IF 4 CHAN 1 STK LL of J1128+5925.ICL001.3

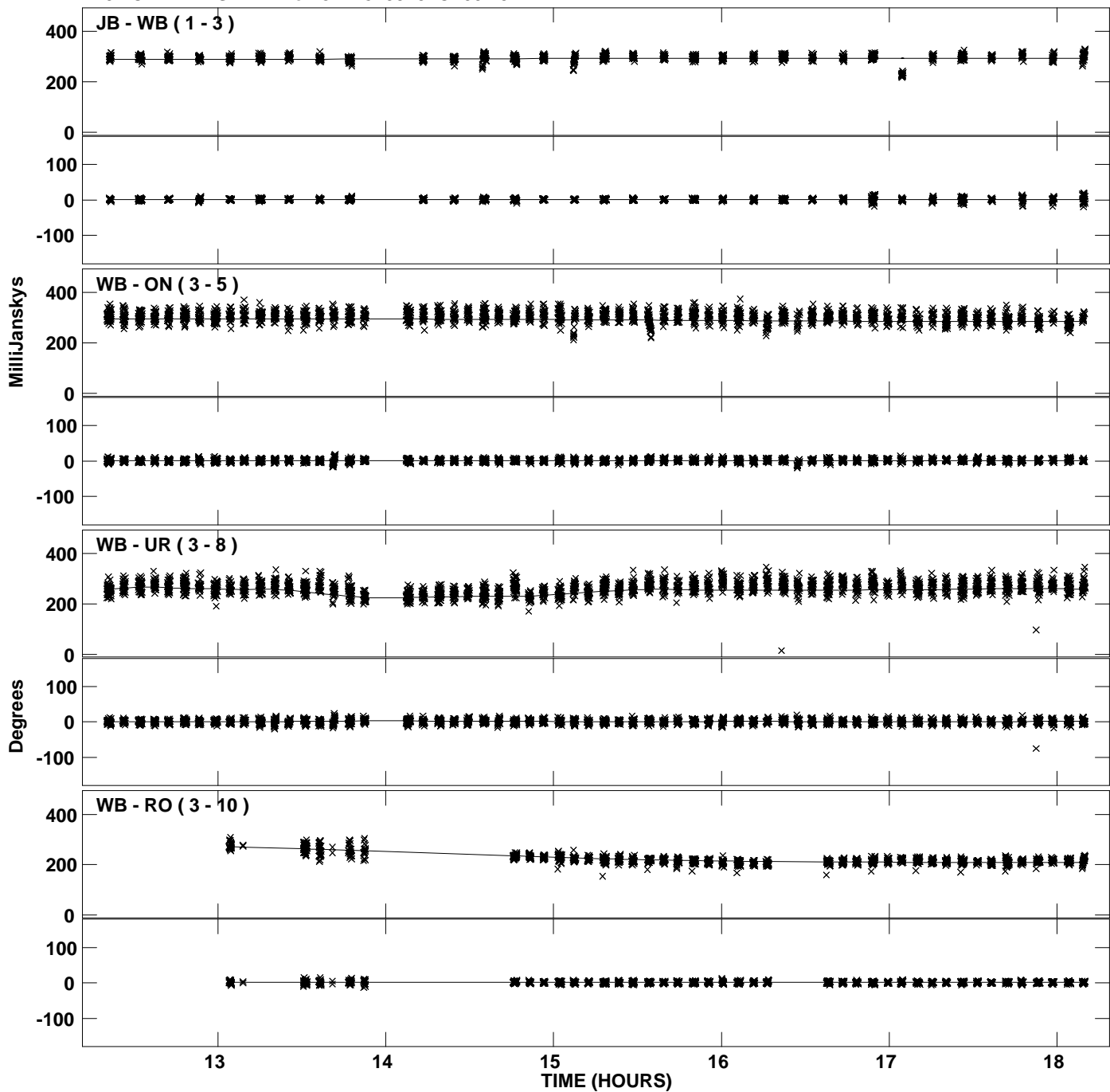


PLot file version 8 created 06-JAN-2012 12:40:04  
Amplitude andPhase vs Time for J1128+5925.MULTI.1 CL # 3  
IF 4 CHAN 1 STK LL of J1128+5925.ICL001.3

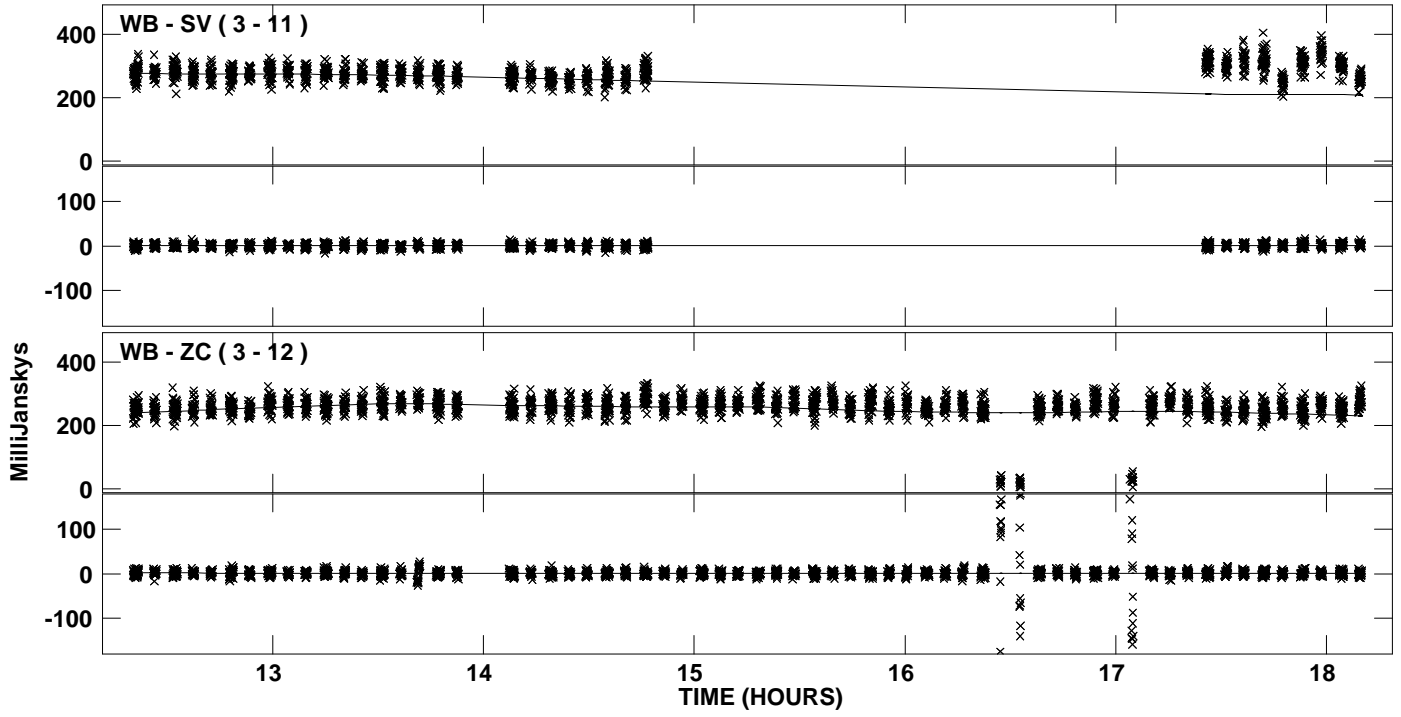




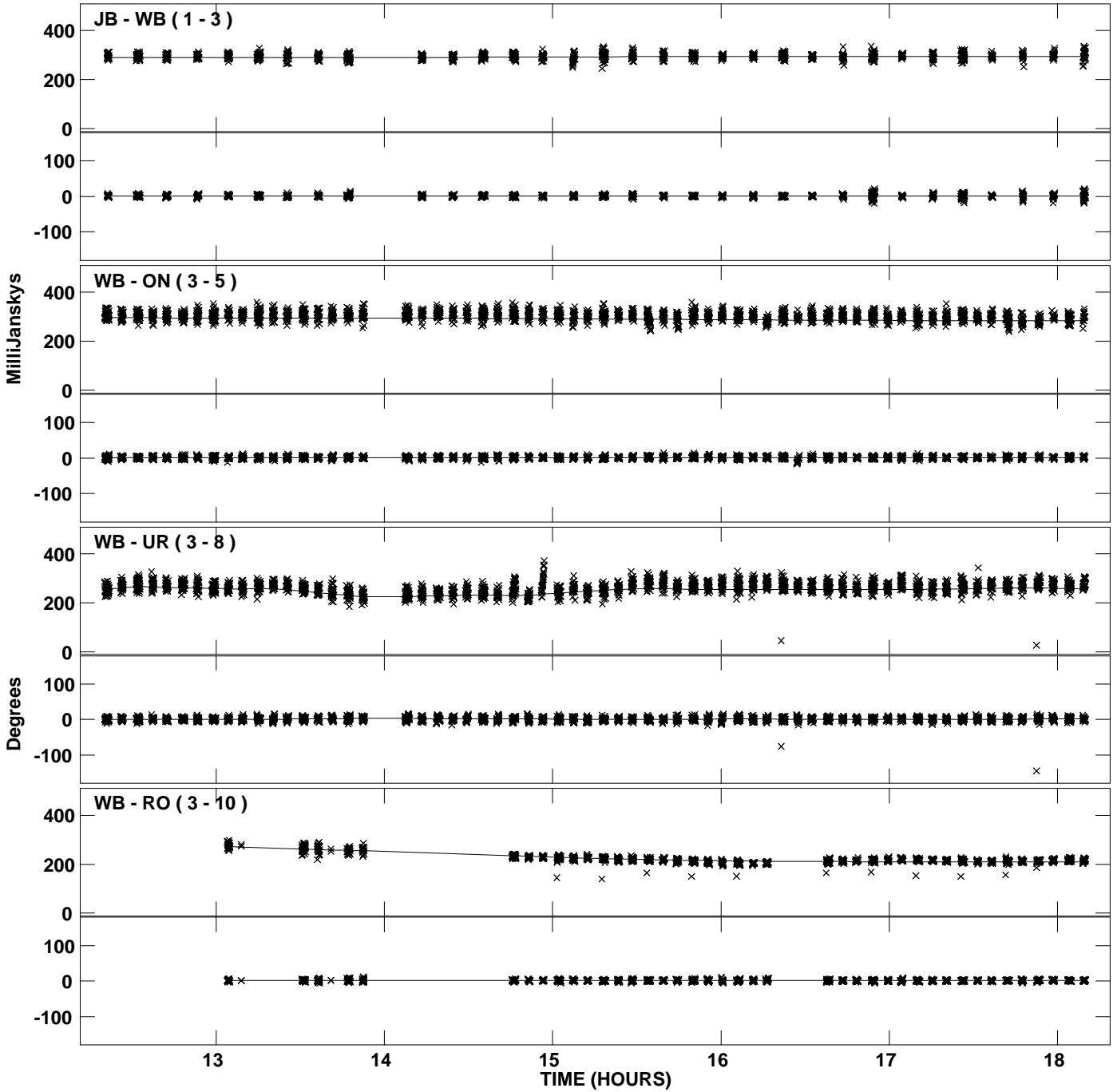
Plot file version 9 created 06-JAN-2012 12:40:05  
Amplitude and Phase vs Time for J1128+5925.MULTI.1 CL # 3  
IF 5 CHAN 1 STK LL of J1128+5925.ICL001.3



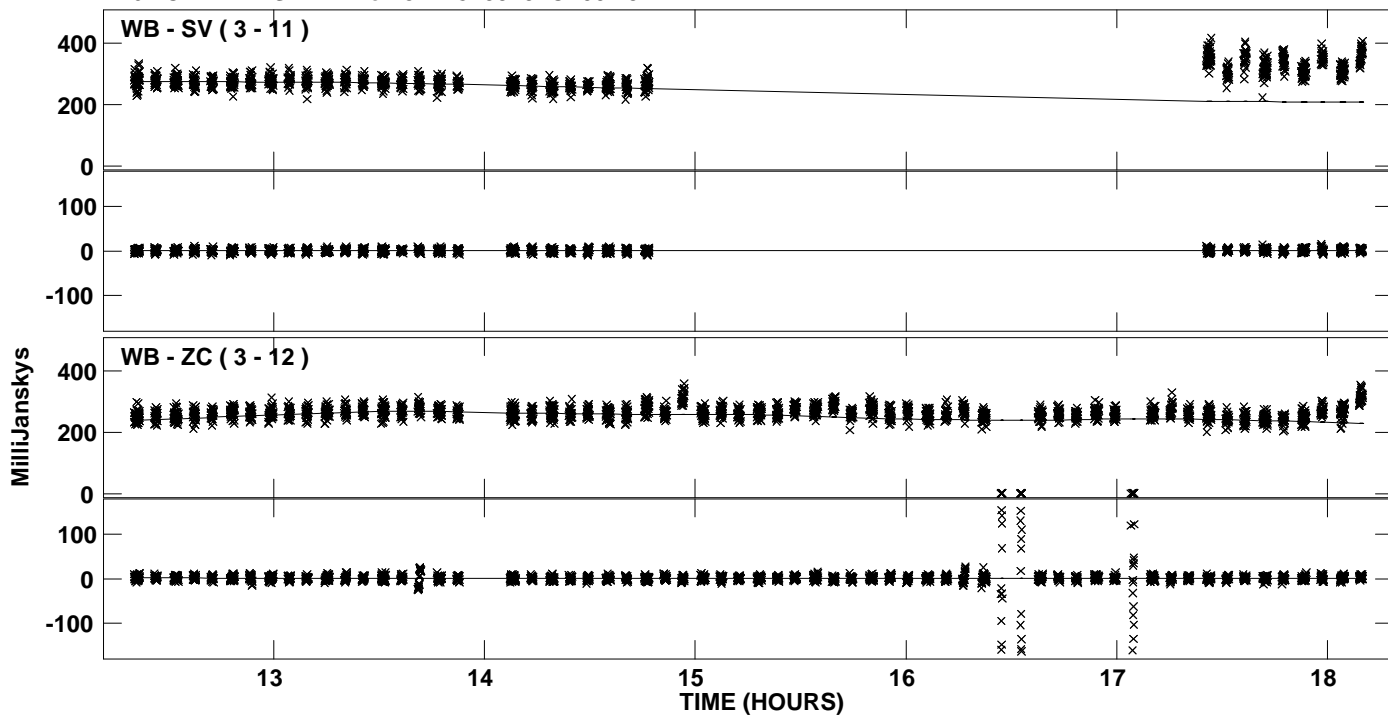
PLot file version 10 created 06-JAN-2012 12:40:05  
Amplitude andPhase vs Time for J1128+5925.MULTI.1 CL # 3  
IF 5 CHAN 1 STK LL of J1128+5925.ICL001.3



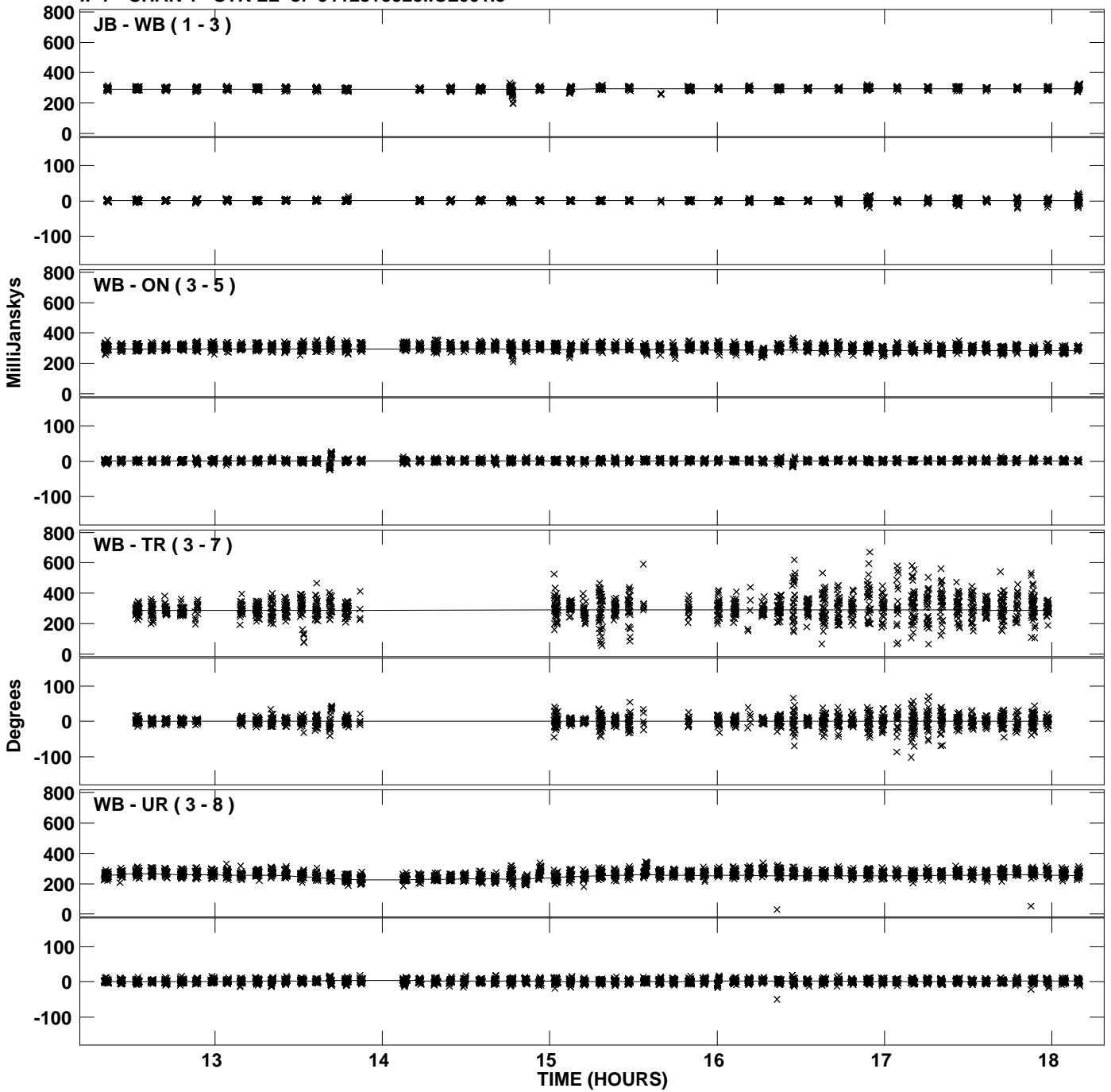
PLot file version 11 created 06-JAN-2012 12:40:05  
Amplitude and Phase vs Time for J1128+5925.MULTI.1 CL # 3  
IF 6 CHAN 1 STK LL of J1128+5925.ICL001.3



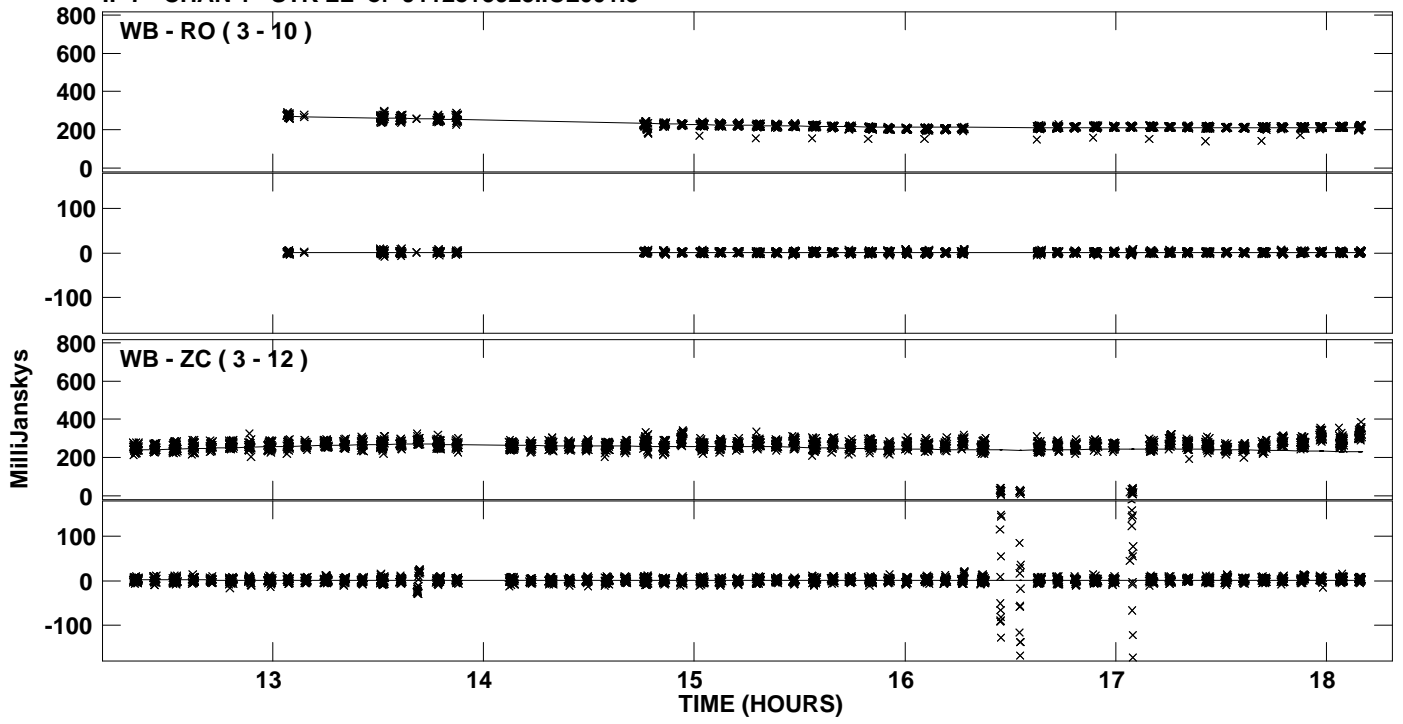
PLot file version 12 created 06-JAN-2012 12:40:05  
Amplitude andPhase vs Time for J1128+5925.MULTI.1 CL # 3  
IF 6 CHAN 1 STK LL of J1128+5925.ICL001.3



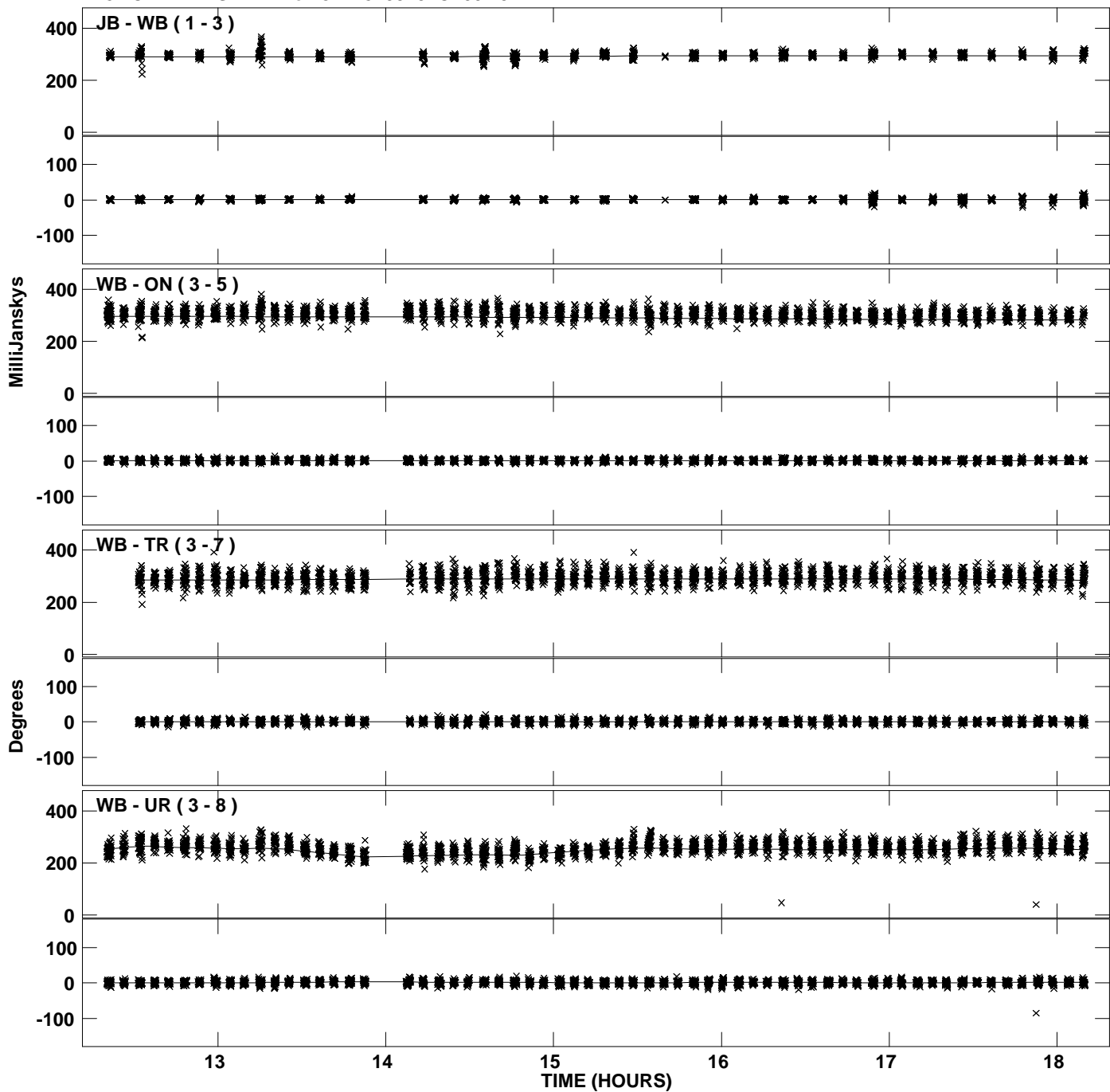
PLot file version 13 created 06-JAN-2012 12:40:06  
Amplitude andPhase vs Time for J1128+5925.MULTI.1 CL # 3  
IF 7 CHAN 1 STK LL of J1128+5925.ICL001.3



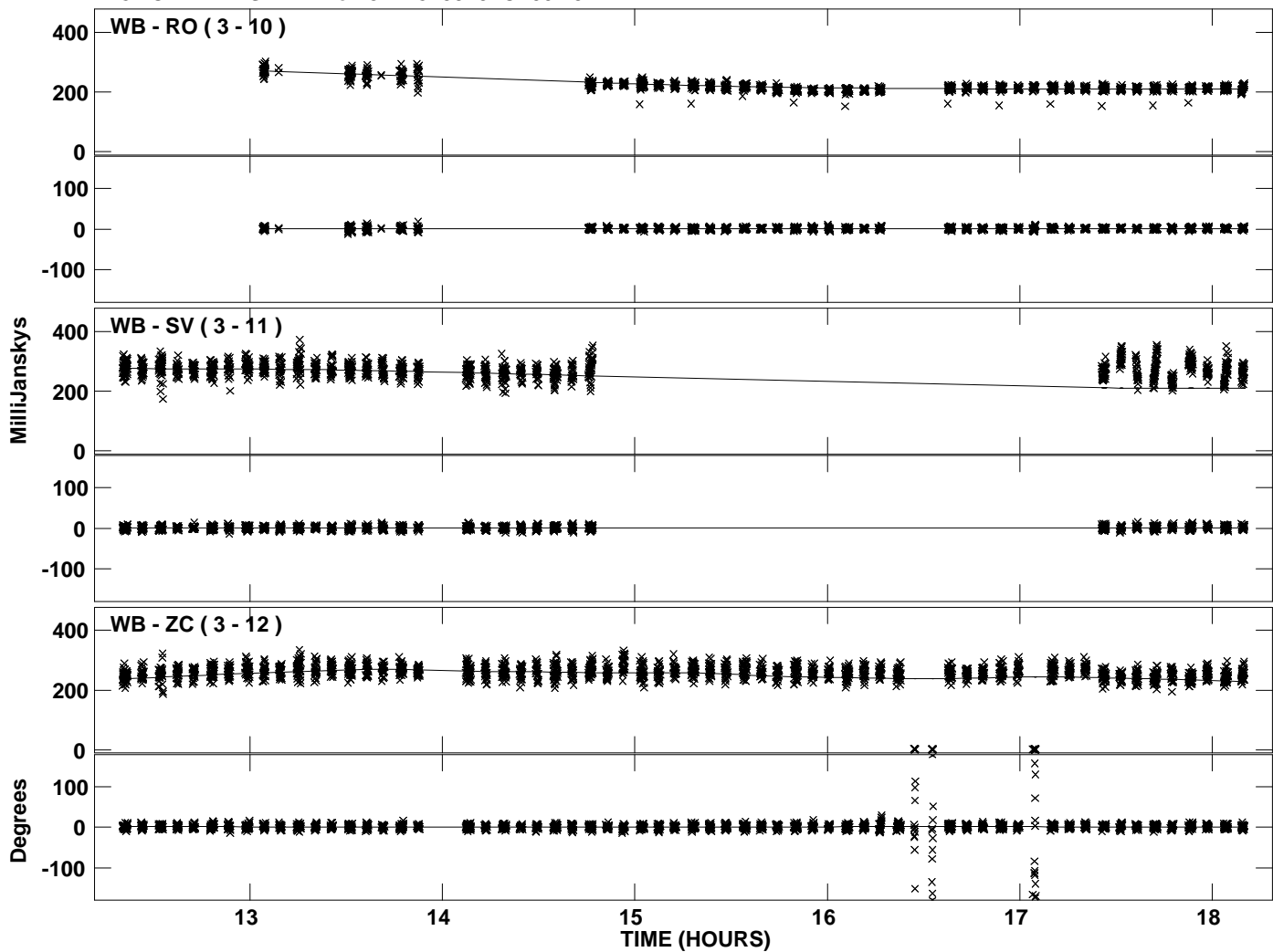
PLot file version 14 created 06-JAN-2012 12:40:06  
Amplitude andPhase vs Time for J1128+5925.MULTI.1 CL # 3  
IF 7 CHAN 1 STK LL of J1128+5925.ICL001.3



PLot file version 15 created 06-JAN-2012 12:40:06  
Amplitude andPhase vs Time for J1128+5925.MULTI.1 CL # 3  
IF 8 CHAN 1 STK LL of J1128+5925.ICL001.3

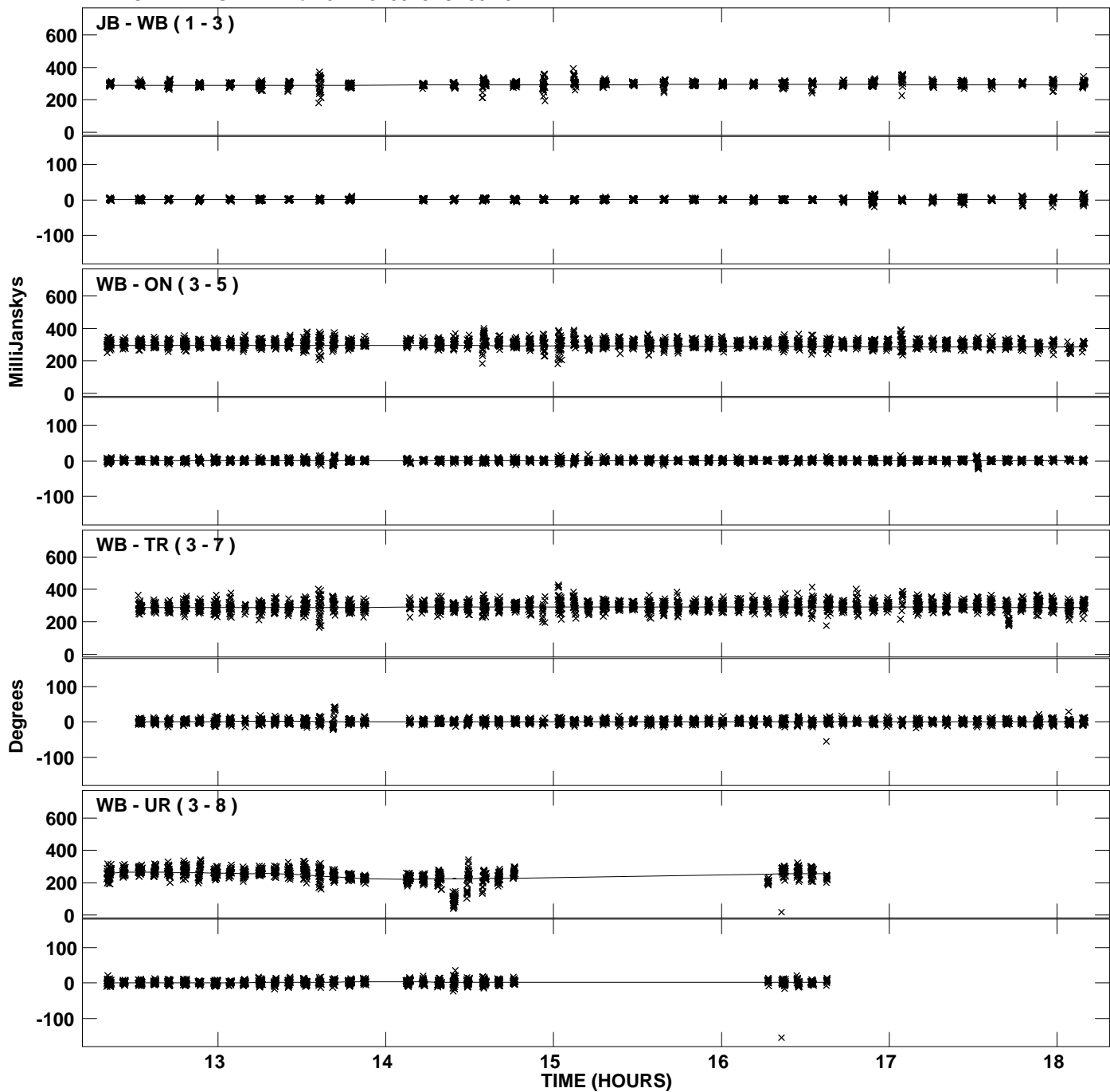


PLot file version 16 created 06-JAN-2012 12:40:06  
Amplitude andPhase vs Time for J1128+5925.MULTI.1 CL # 3  
IF 8 CHAN 1 STK LL of J1128+5925.ICL001.3

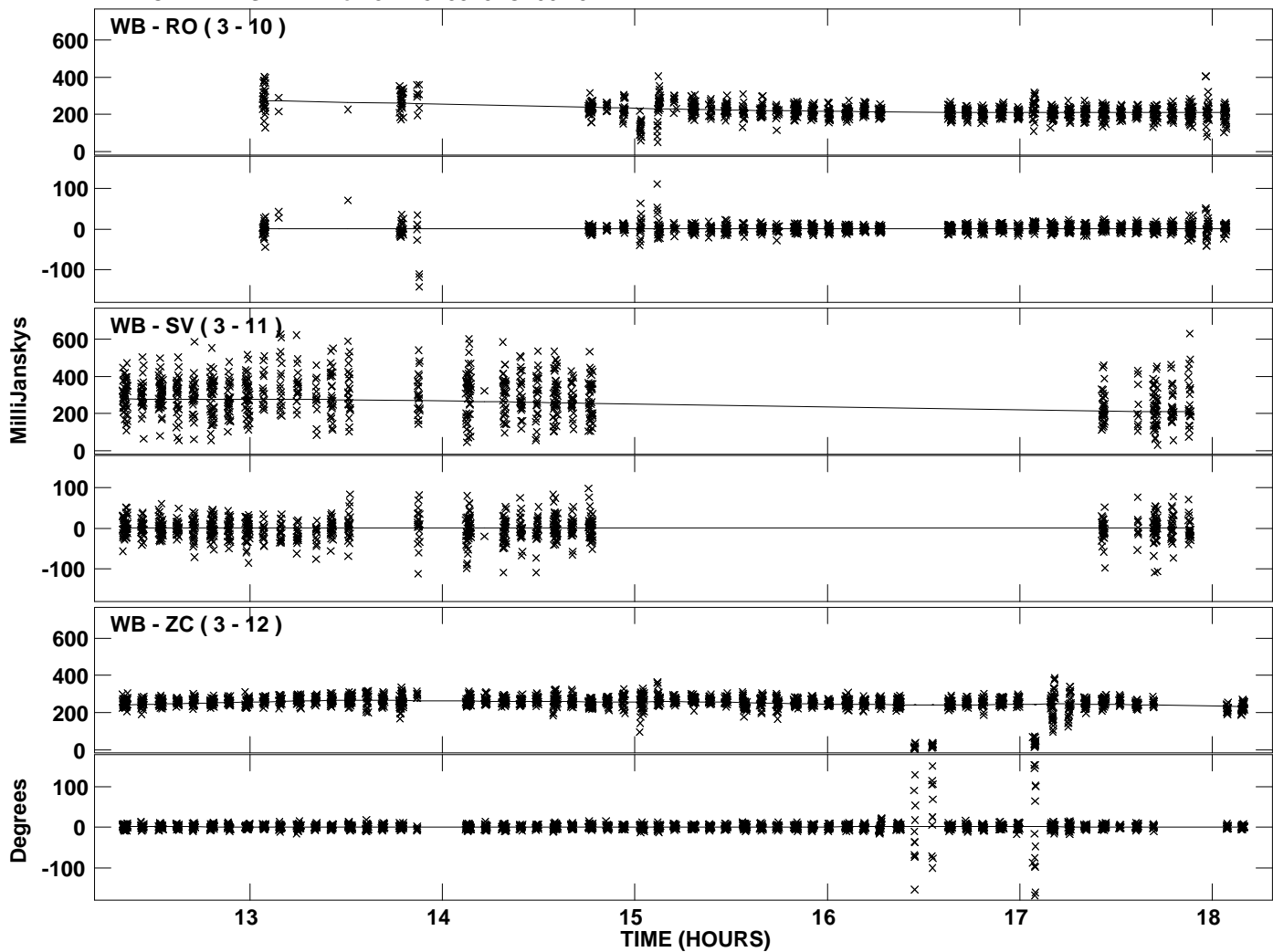




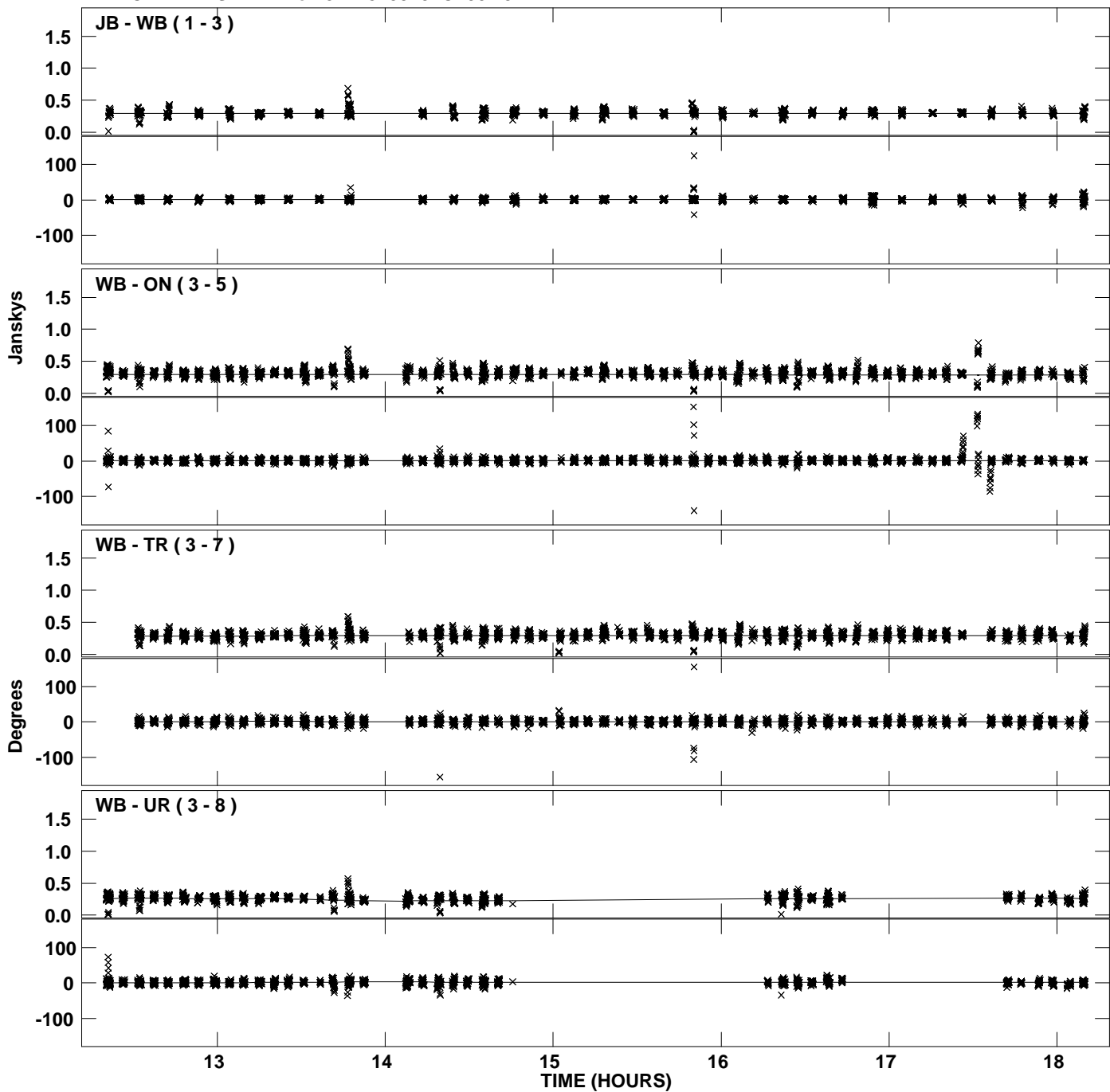
PLot file version 17 created 06-JAN-2012 12:40:06  
Amplitude andPhase vs Time for J1128+5925.MULTI.1 CL # 3  
IF 1 CHAN 1 STK RR of J1128+5925.ICL001.3



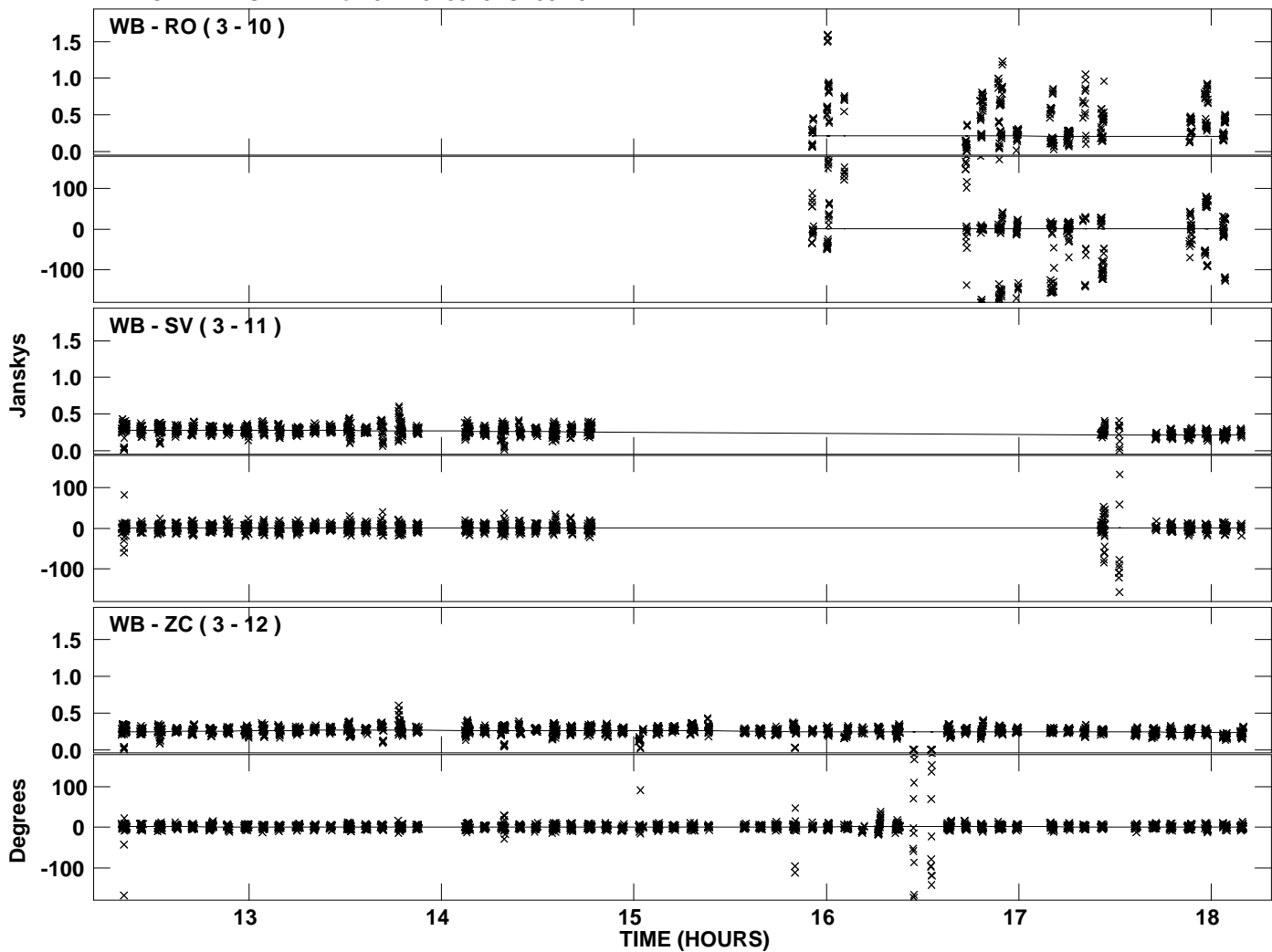
Plot file version 18 created 06-JAN-2012 12:40:07  
Amplitude andPhase vs Time for J1128+5925.MULTI.1 CL # 3  
IF 1 CHAN 1 STK RR of J1128+5925.ICL001.3



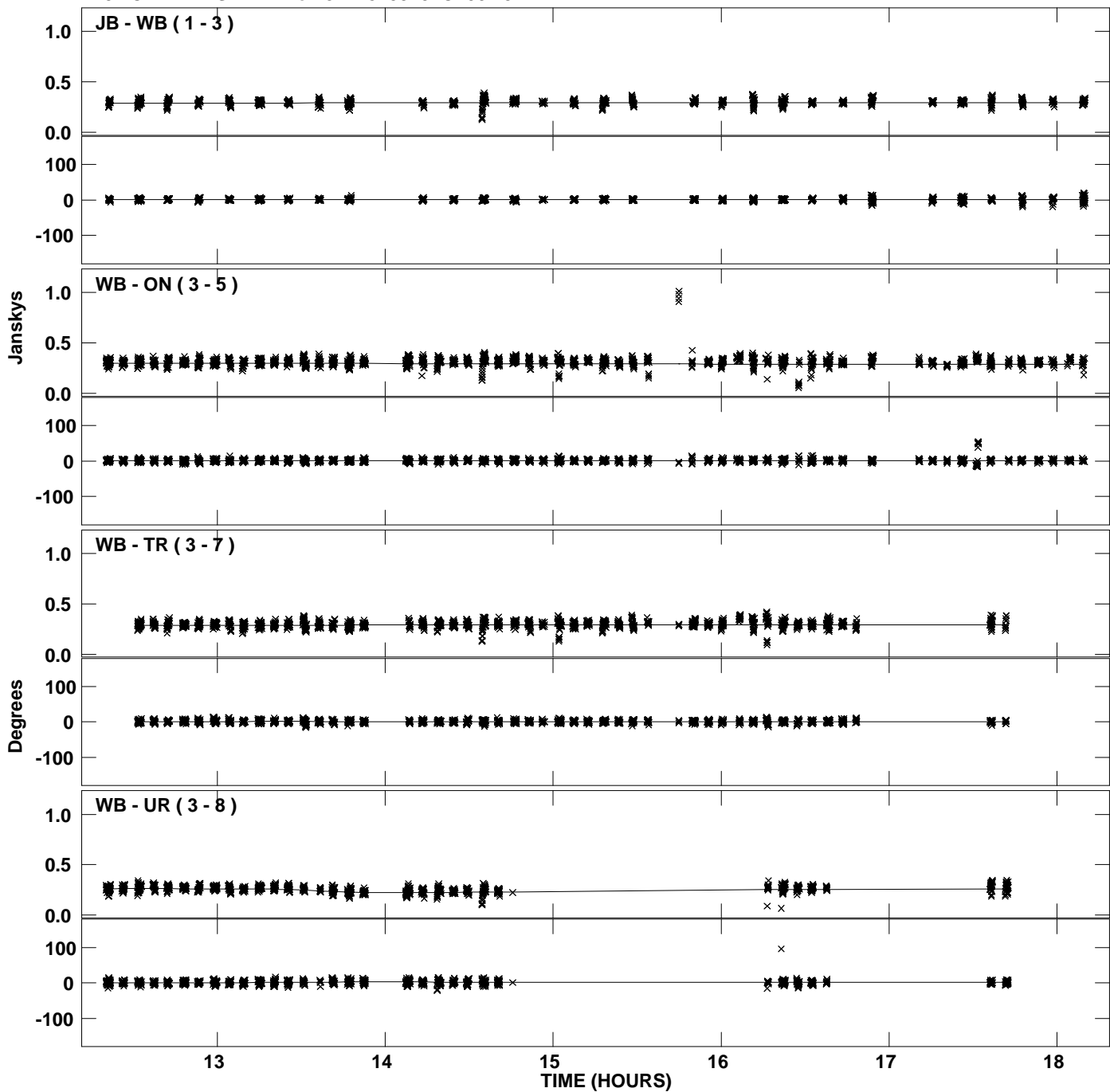
Plot file version 19 created 06-JAN-2012 12:40:07  
Amplitude andPhase vs Time for J1128+5925.MULTI.1 CL # 3  
IF 2 CHAN 1 STK RR of J1128+5925.ICL001.3



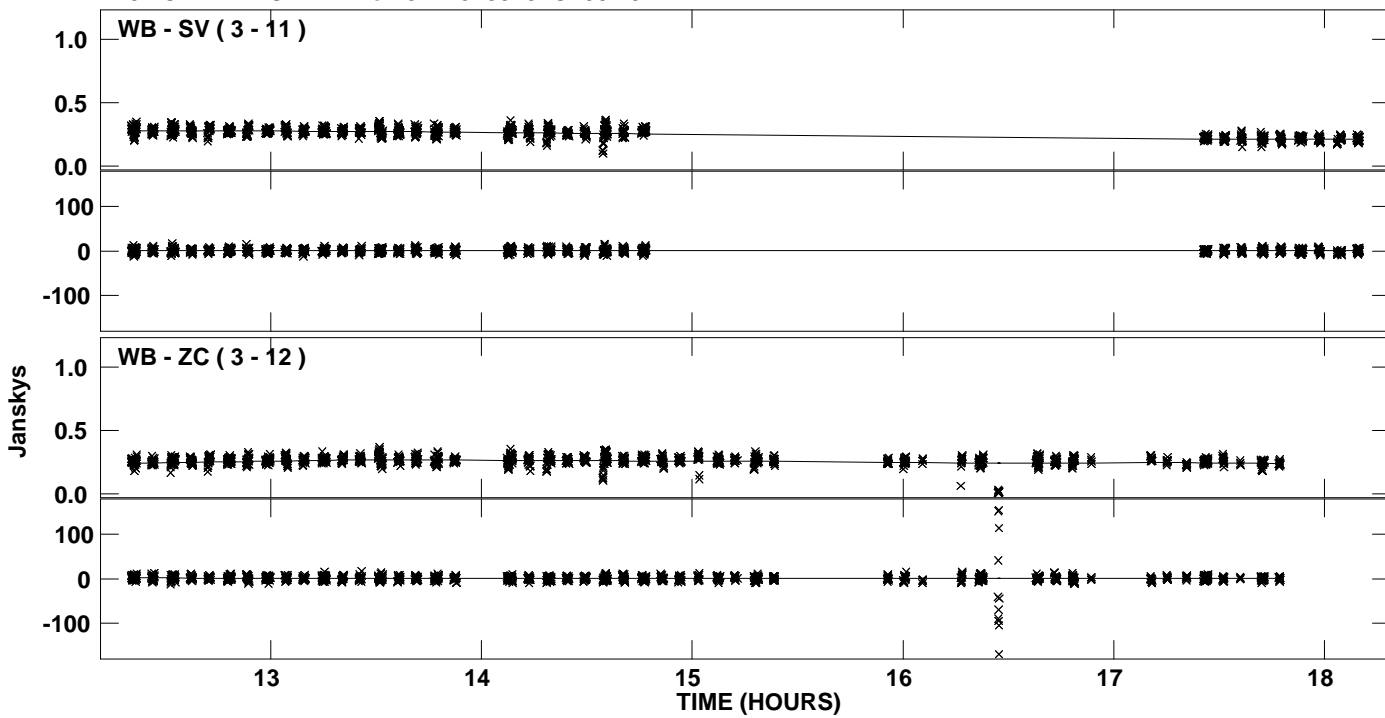
PLot file version 20 created 06-JAN-2012 12:40:07  
Amplitude andPhase vs Time for J1128+5925.MULTI.1 CL # 3  
IF 2 CHAN 1 STK RR of J1128+5925.ICL001.3



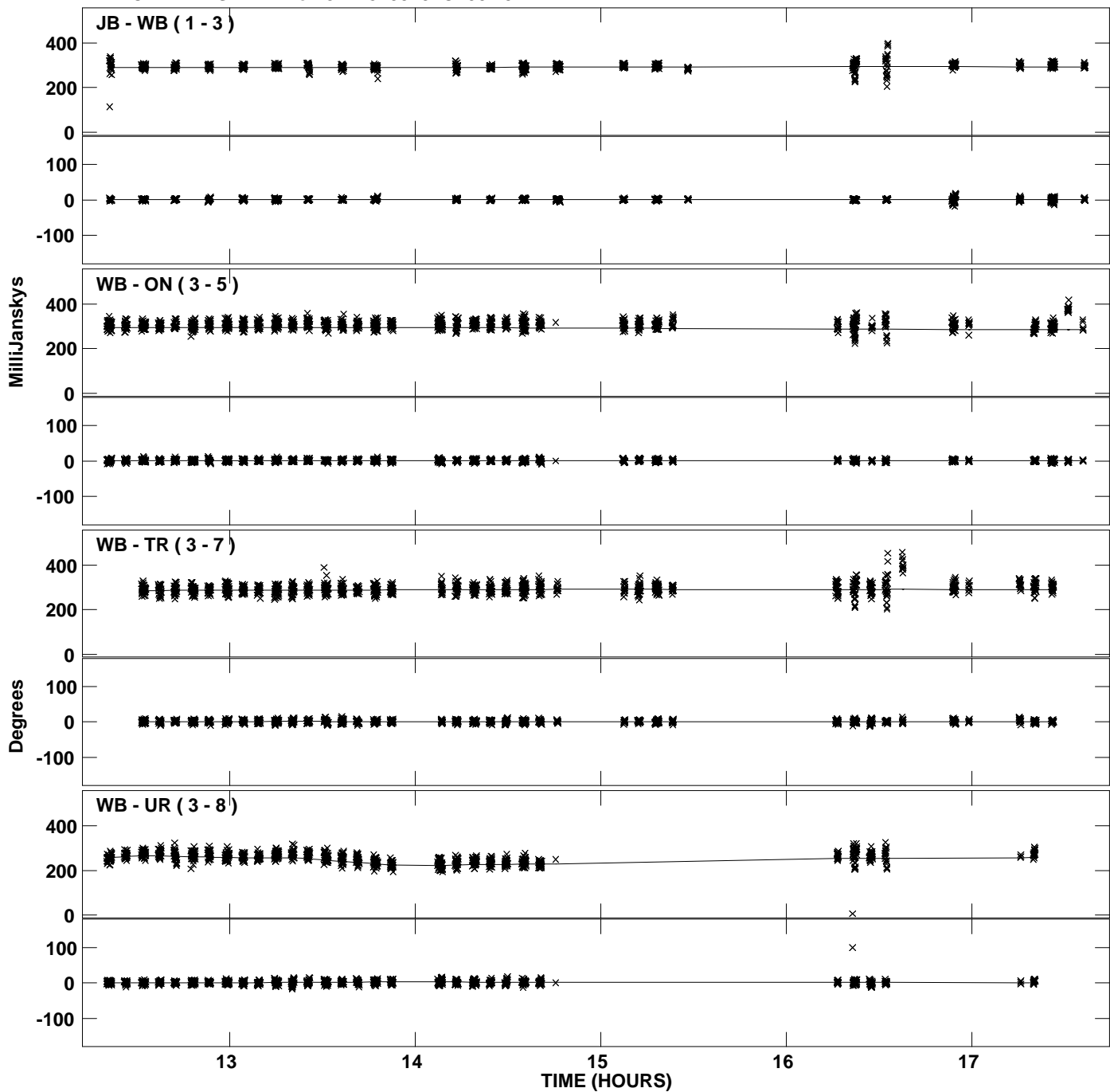
Plot file version 21 created 06-JAN-2012 12:40:07  
Amplitude and Phase vs Time for J1128+5925.MULTI.1 CL # 3  
IF 3 CHAN 1 STK RR of J1128+5925.ICL001.3



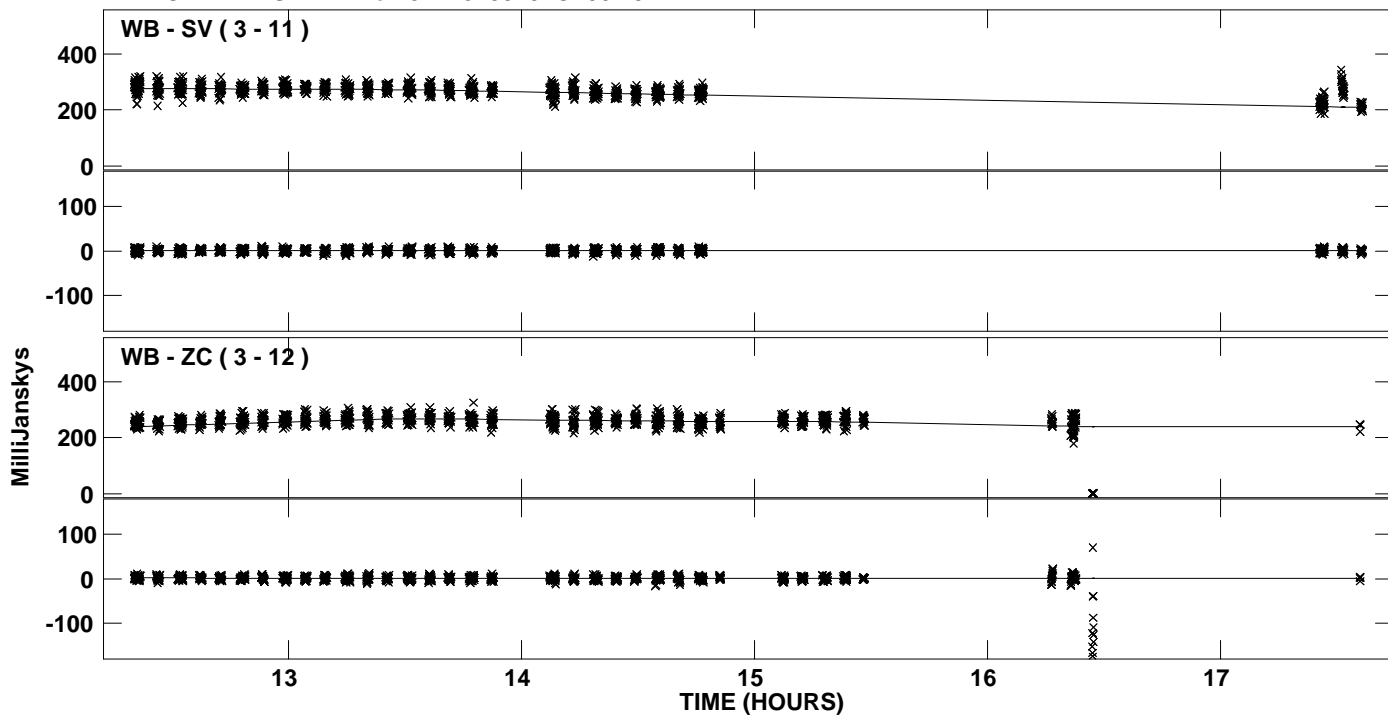
PLot file version 22 created 06-JAN-2012 12:40:07  
Amplitude and Phase vs Time for J1128+5925.MULTI.1 CL # 3  
IF 3 CHAN 1 STK RR of J1128+5925.ICL001.3



PLot file version 23 created 06-JAN-2012 12:40:08  
Amplitude andPhase vs Time for J1128+5925.MULTI.1 CL # 3  
IF 4 CHAN 1 STK RR of J1128+5925.ICL001.3

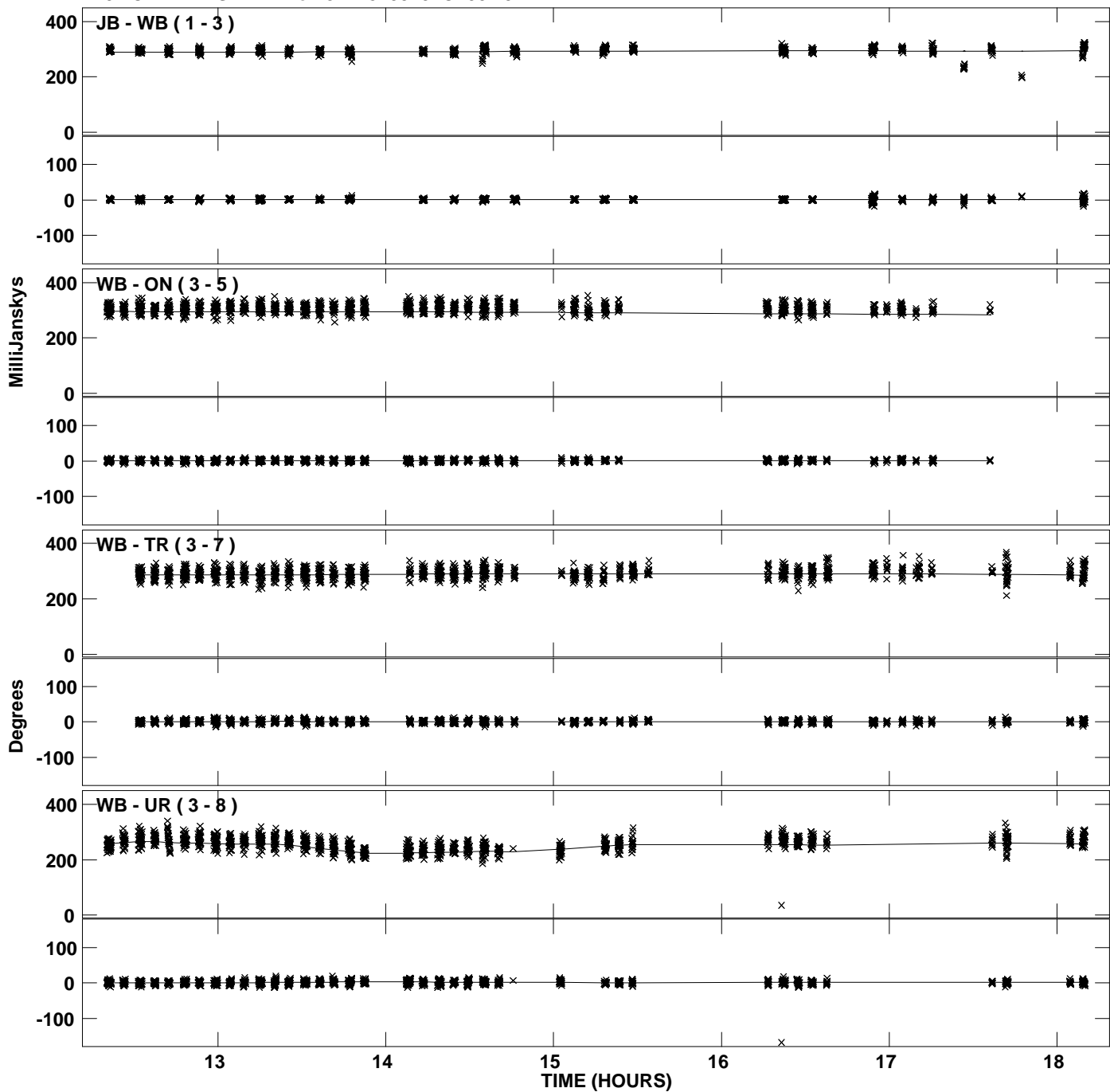


Plot file version 24 created 06-JAN-2012 12:40:08  
Amplitude and Phase vs Time for J1128+5925.MULTI.1 CL # 3  
IF 4 CHAN 1 STK RR of J1128+5925.ICL001.3

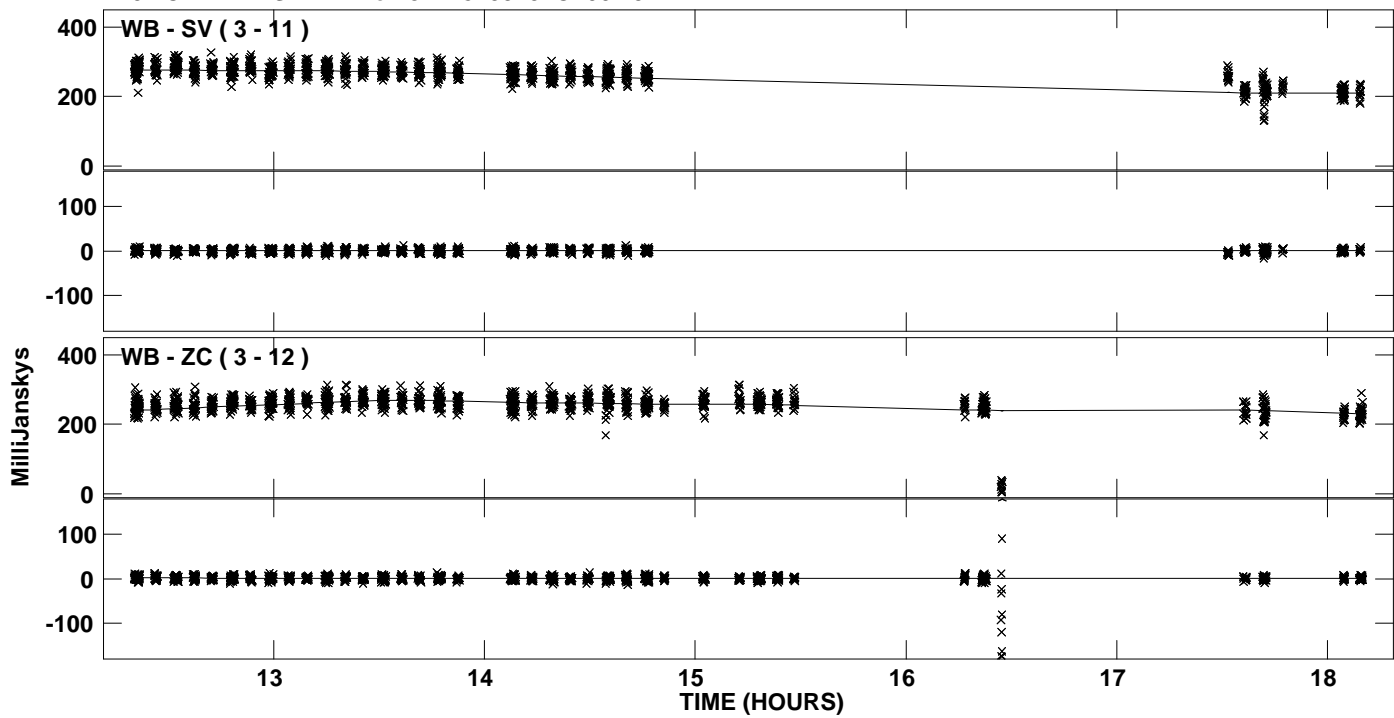




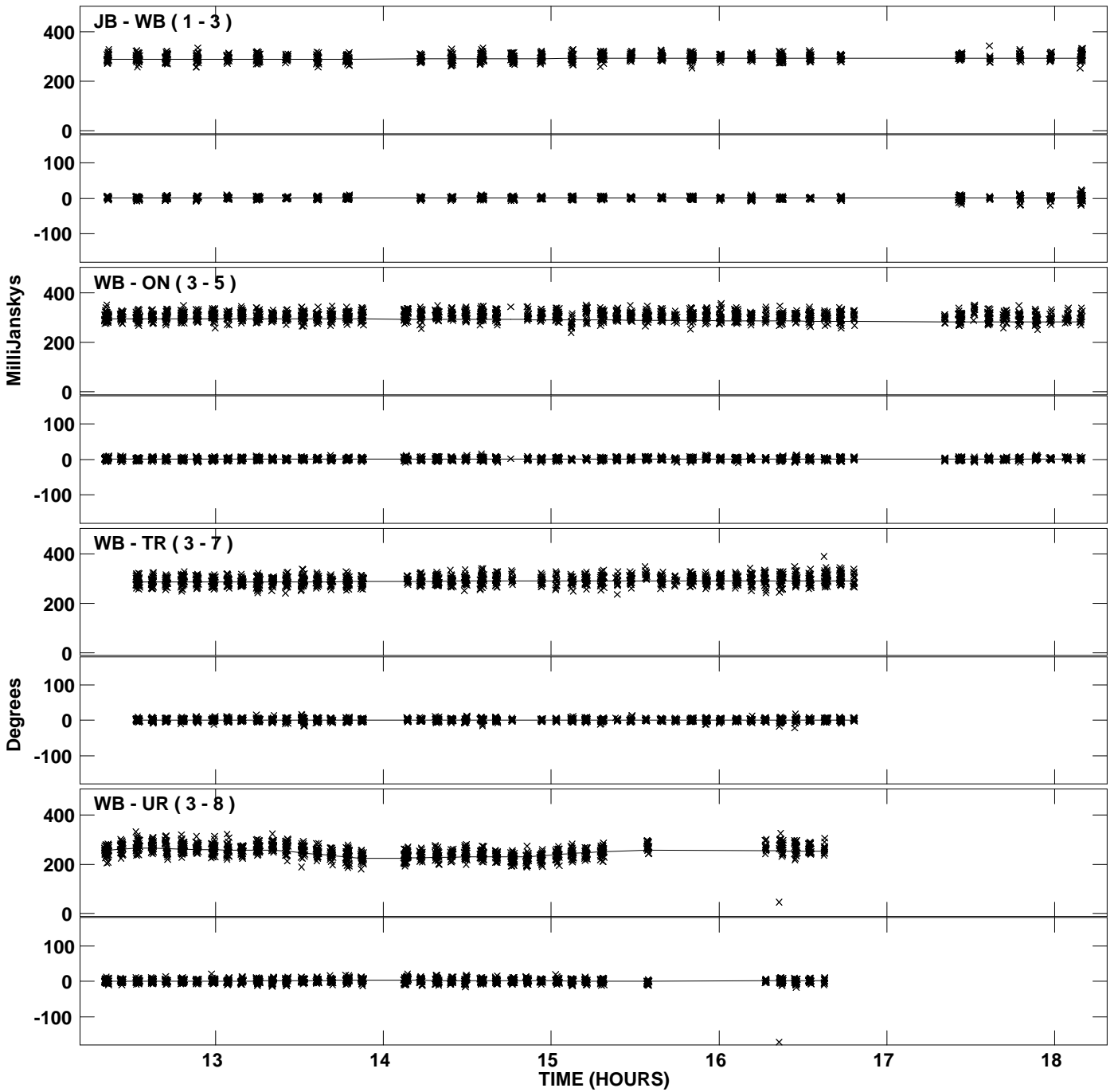
PLot file version 25 created 06-JAN-2012 12:40:08  
Amplitude andPhase vs Time for J1128+5925.MULTI.1 CL # 3  
IF 5 CHAN 1 STK RR of J1128+5925.ICL001.3



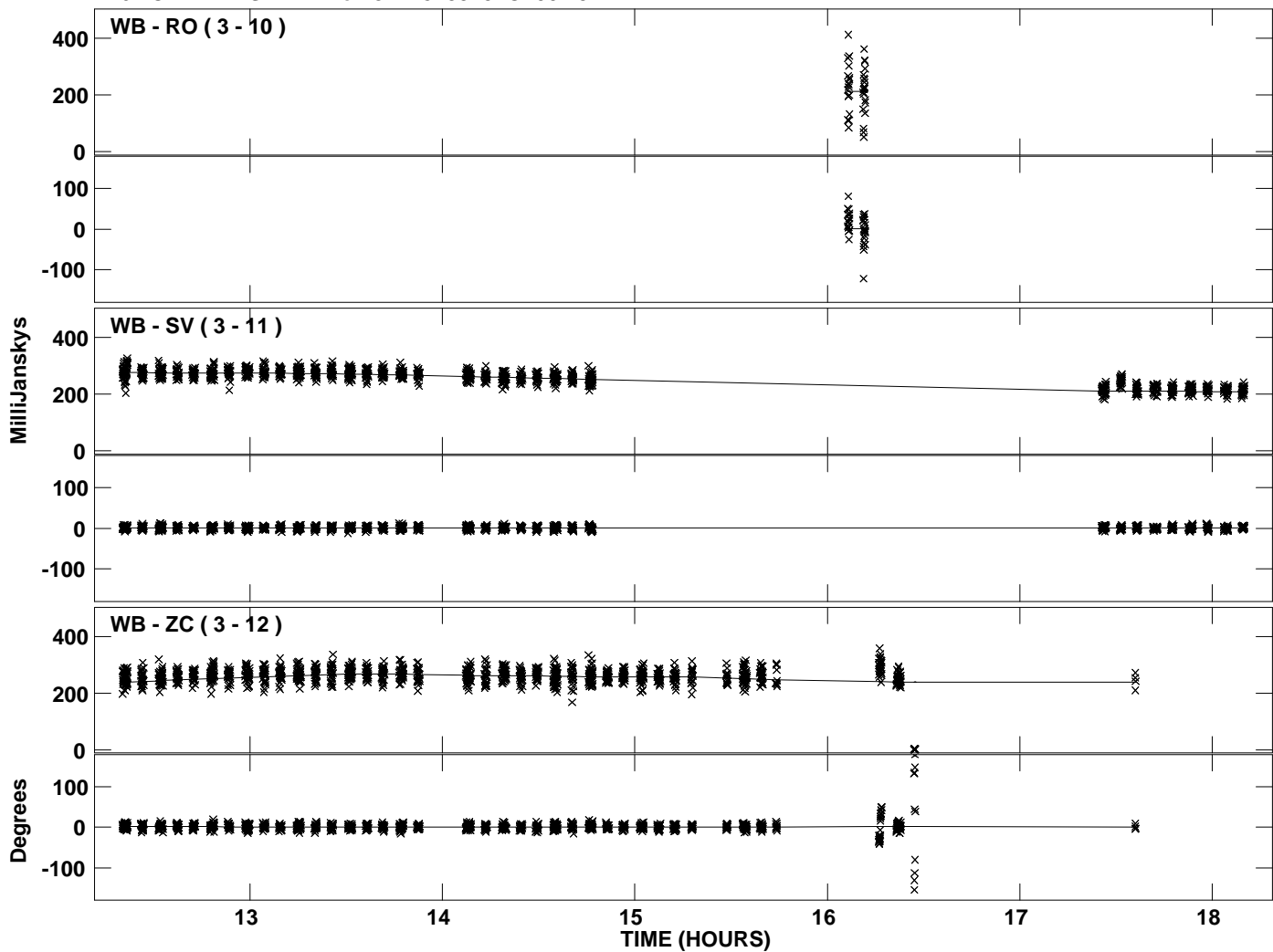
Plot file version 26 created 06-JAN-2012 12:40:08  
Amplitude andPhase vs Time for J1128+5925.MULTI.1 CL # 3  
IF 5 CHAN 1 STK RR of J1128+5925.ICL001.3



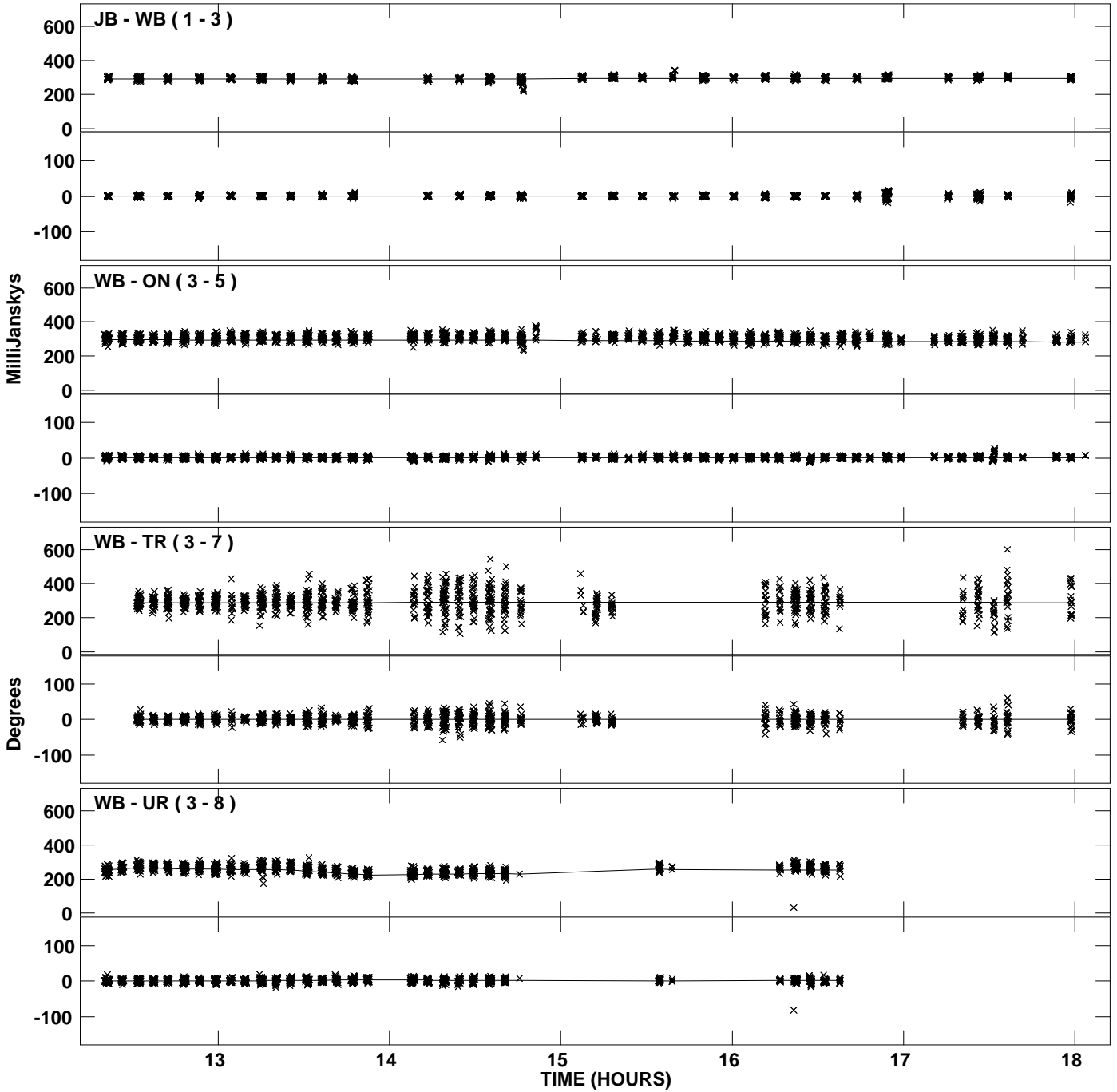
PLot file version 27 created 06-JAN-2012 12:40:08  
Amplitude andPhase vs Time for J1128+5925.MULTI.1 CL # 3  
IF 6 CHAN 1 STK RR of J1128+5925.ICL001.3



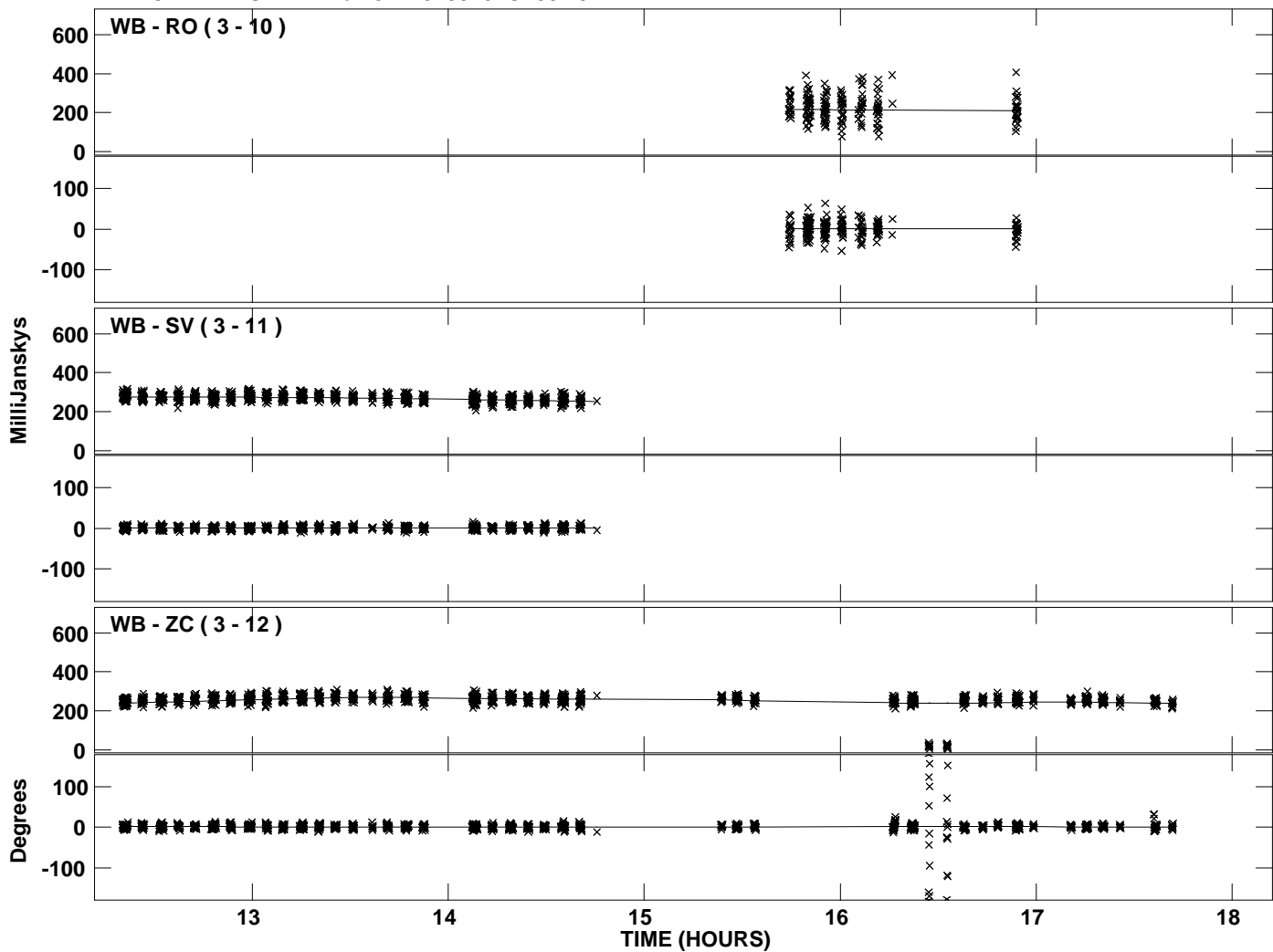
PLot file version 28 created 06-JAN-2012 12:40:08  
Amplitude andPhase vs Time for J1128+5925.MULTI.1 CL # 3  
IF 6 CHAN 1 STK RR of J1128+5925.ICL001.3



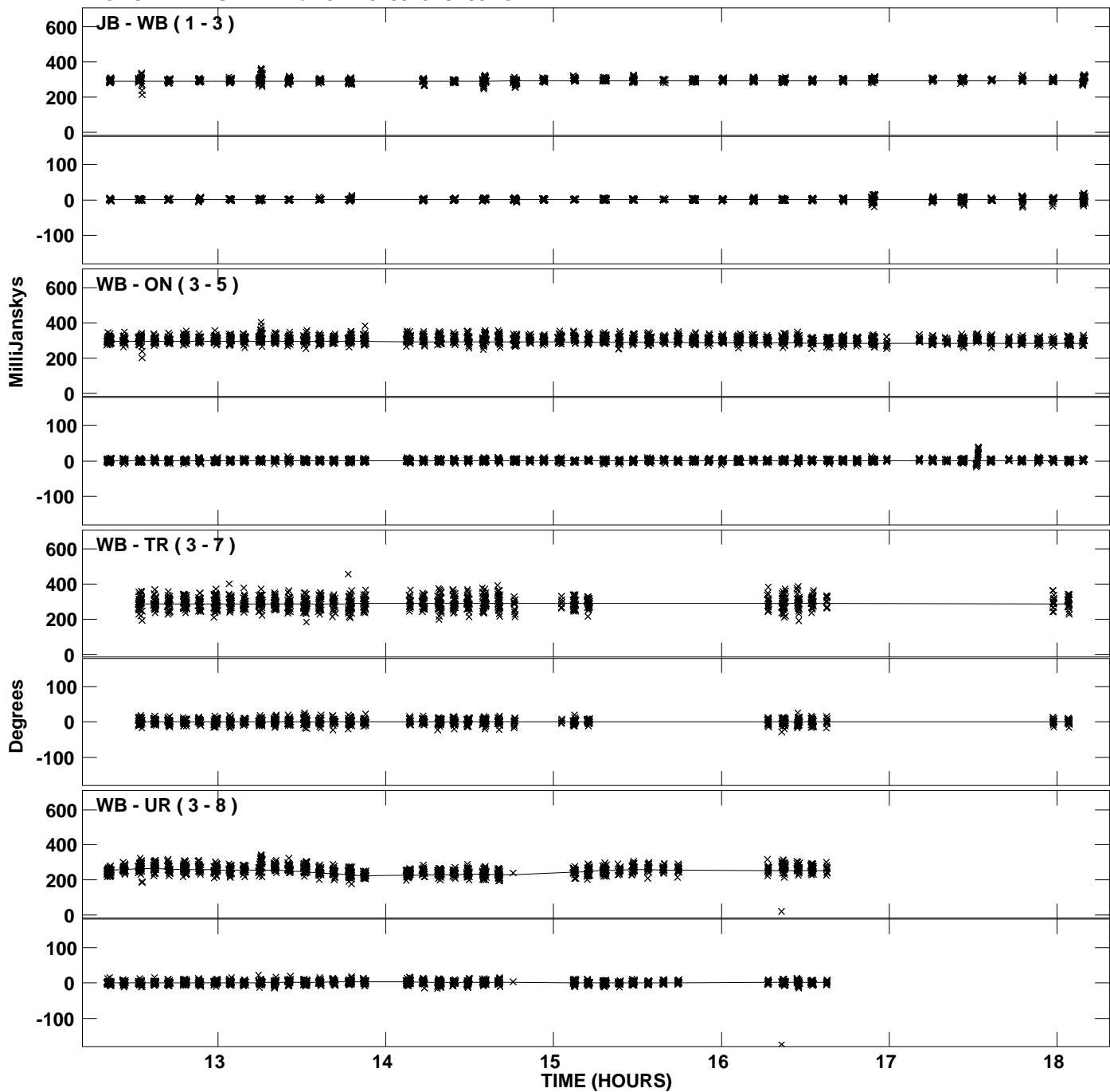
PLot file version 29 created 06-JAN-2012 12:40:09  
Amplitude andPhase vs Time for J1128+5925.MULTI.1 CL # 3  
IF 7 CHAN 1 STK RR of J1128+5925.ICL001.3



PLot file version 30 created 06-JAN-2012 12:40:09  
Amplitude andPhase vs Time for J1128+5925.MULTI.1 CL # 3  
IF 7 CHAN 1 STK RR of J1128+5925.ICL001.3



Plot file version 31 created 06-JAN-2012 12:40:09  
Amplitude and Phase vs Time for J1128+5925.MULTI.1 CL # 3  
IF 8 CHAN 1 STK RR of J1128+5925.ICL001.3



PLot file version 32 created 06-JAN-2012 12:40:09  
Amplitude andPhase vs Time for J1128+5925.MULTI.1 CL # 3  
IF 8 CHAN 1 STK RR of J1128+5925.ICL001.3

