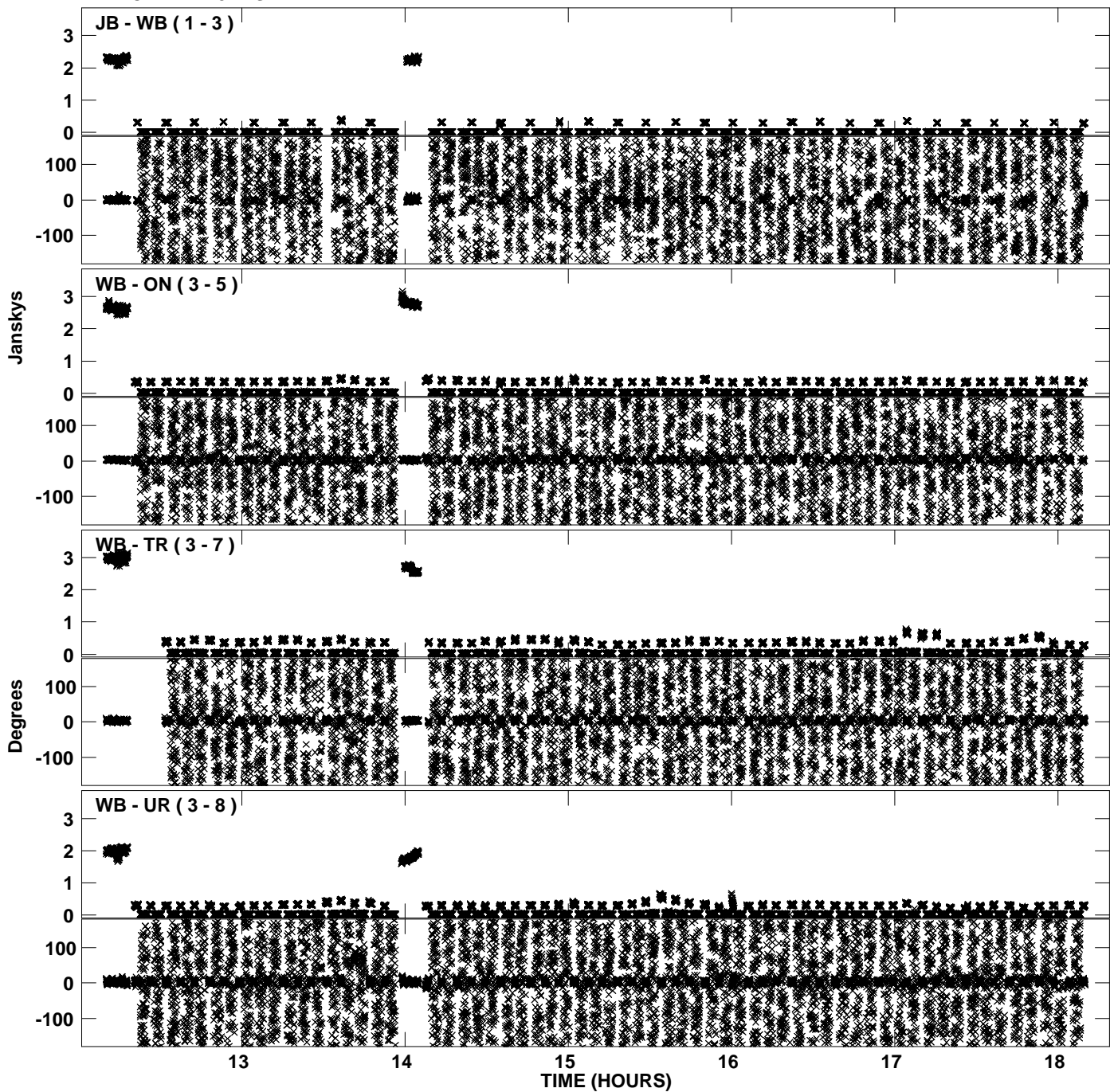
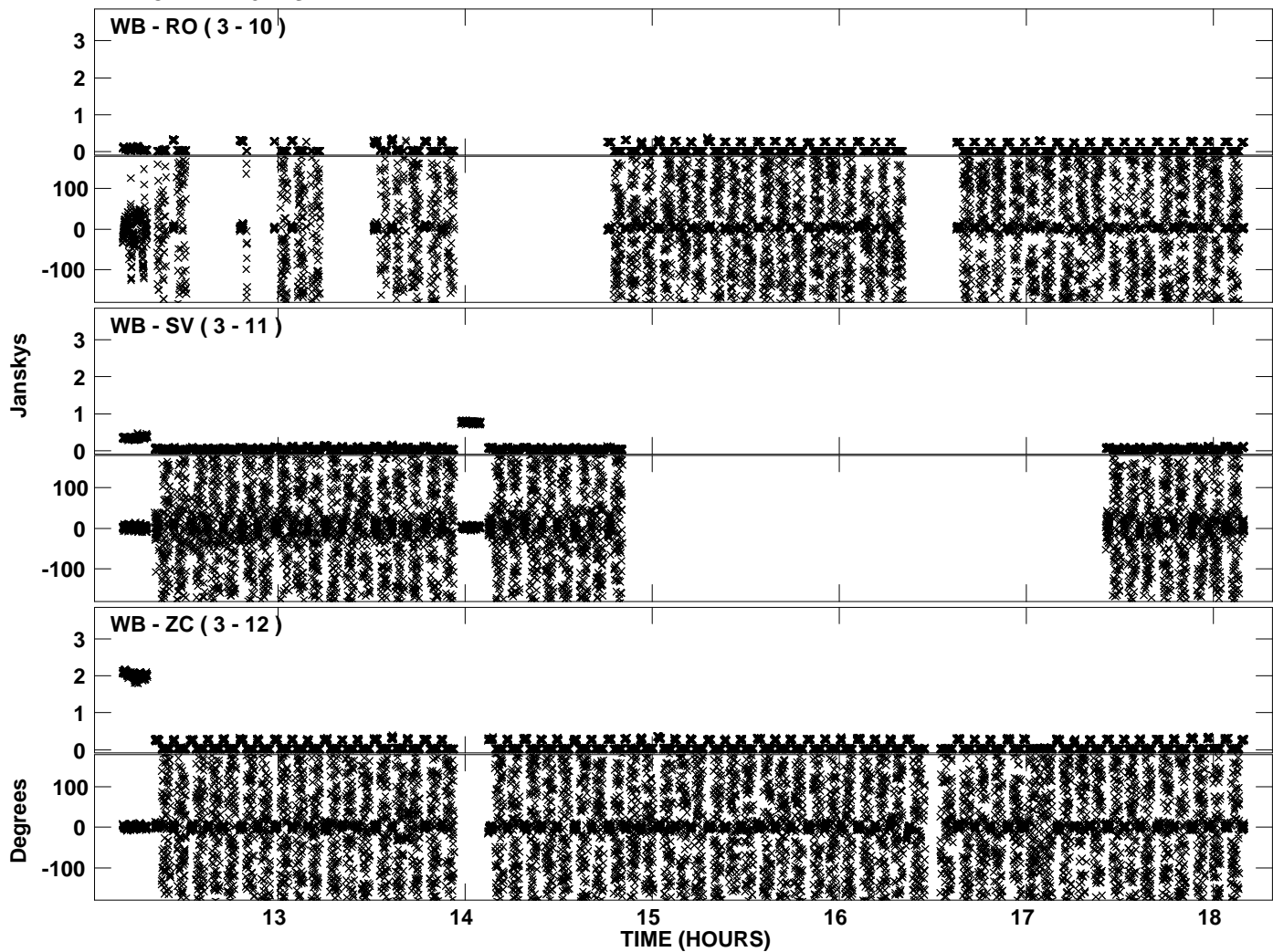


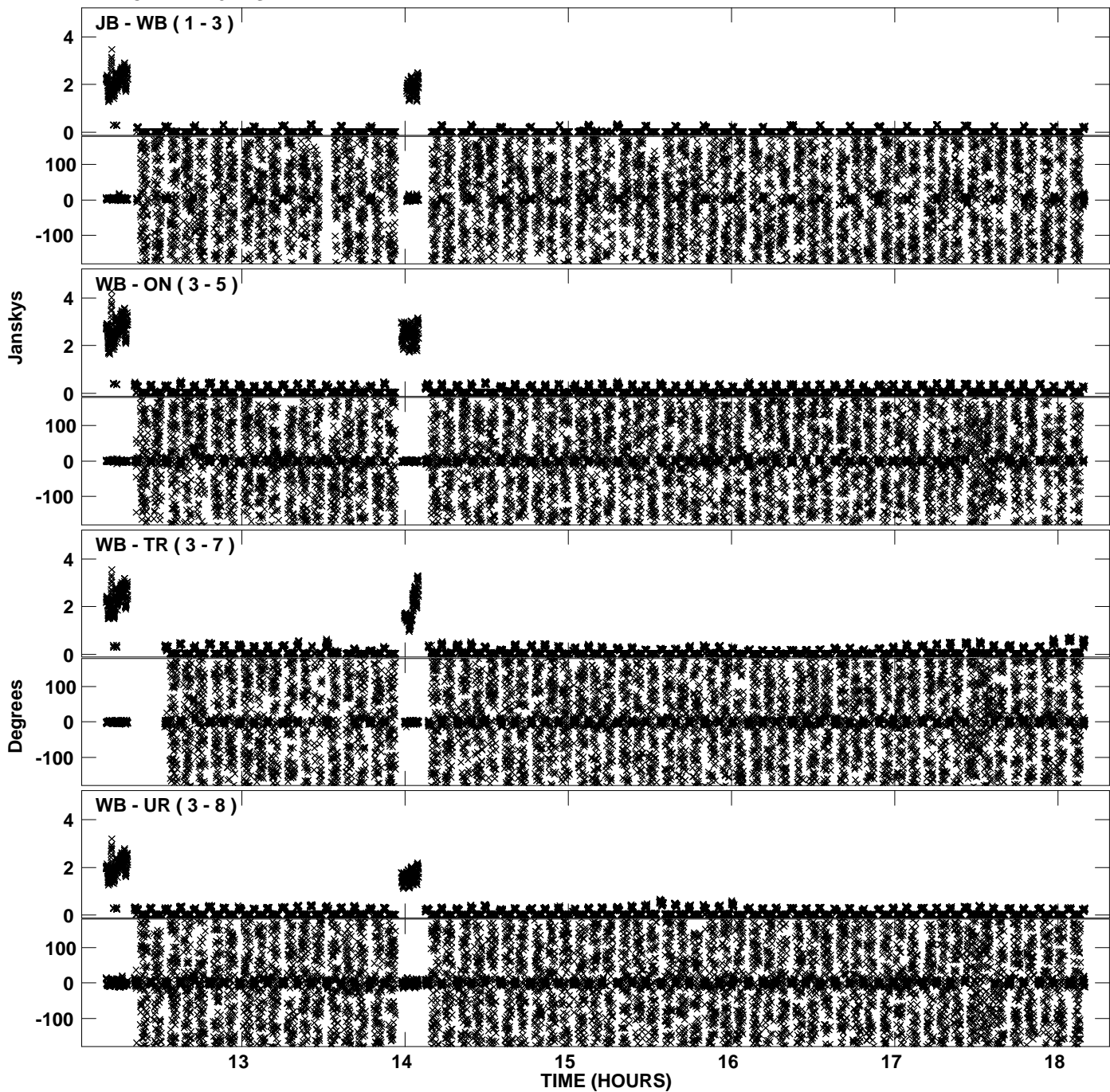
Plot file version 1 created 02-JAN-2012 17:58:20
Amplitude andPhase vs Time for EP068D 1.UVDATA.1 Vect aver. CL # 3
IF 1 CHAN 1 - 32 STK LL



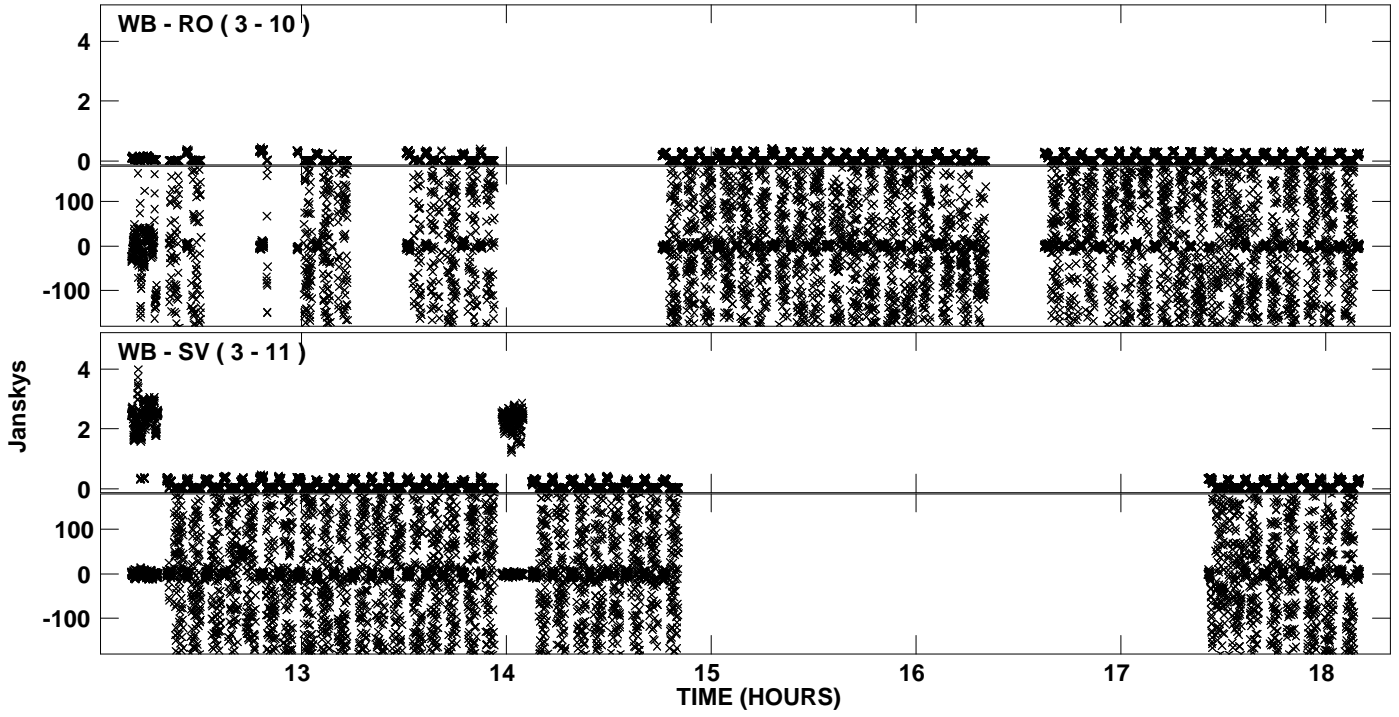
Plot file version 2 created 02-JAN-2012 17:58:20
Amplitude andPhase vs Time for EP068D 1.UVDATA.1 Vect aver. CL # 3
IF 1 CHAN 1 - 32 STK LL



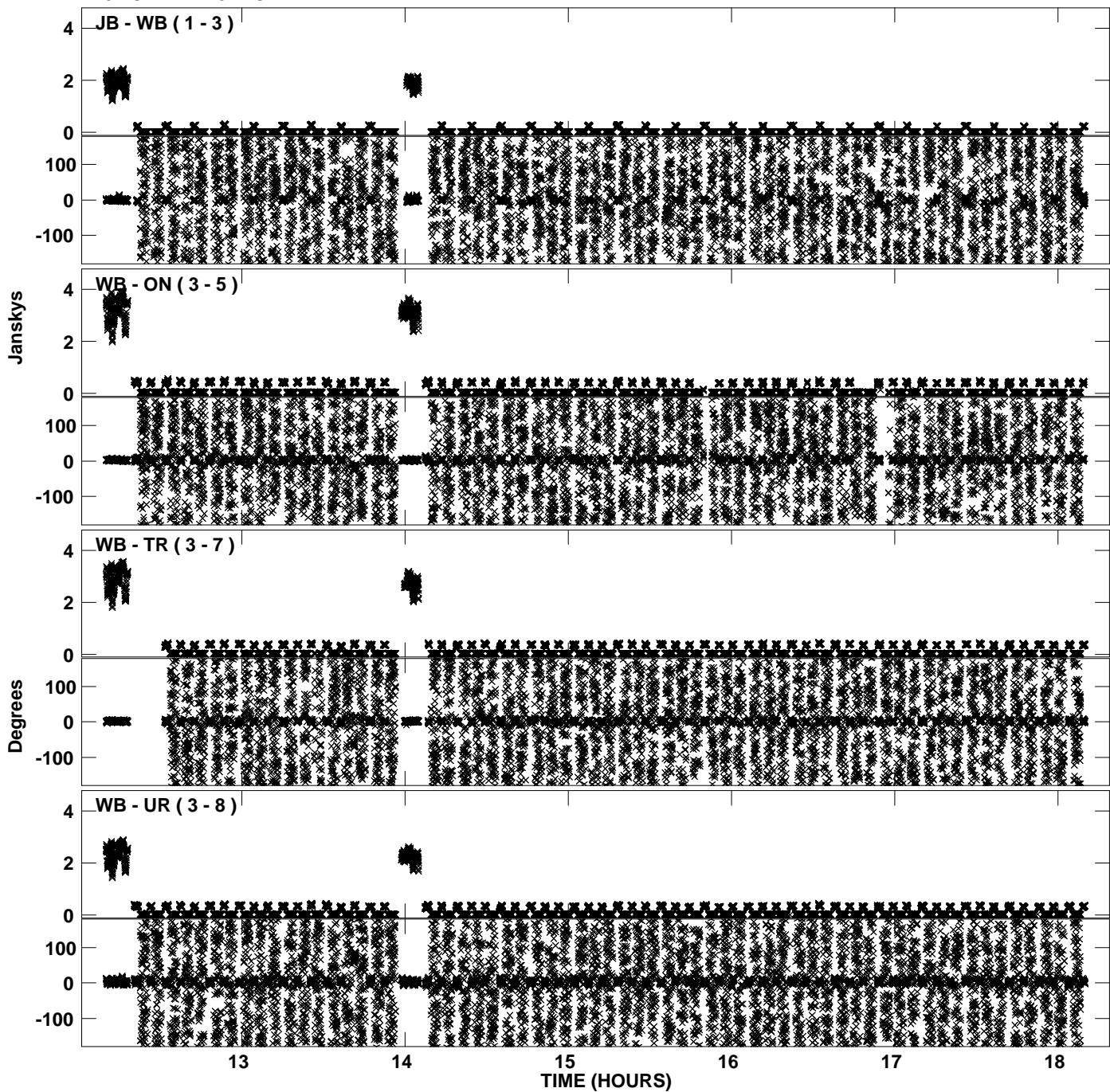
Plot file version 3 created 02-JAN-2012 17:58:28
Amplitude andPhase vs Time for EP068D 1.UVDATA.1 Vect aver. CL # 3
IF 2 CHAN 1 - 32 STK LL



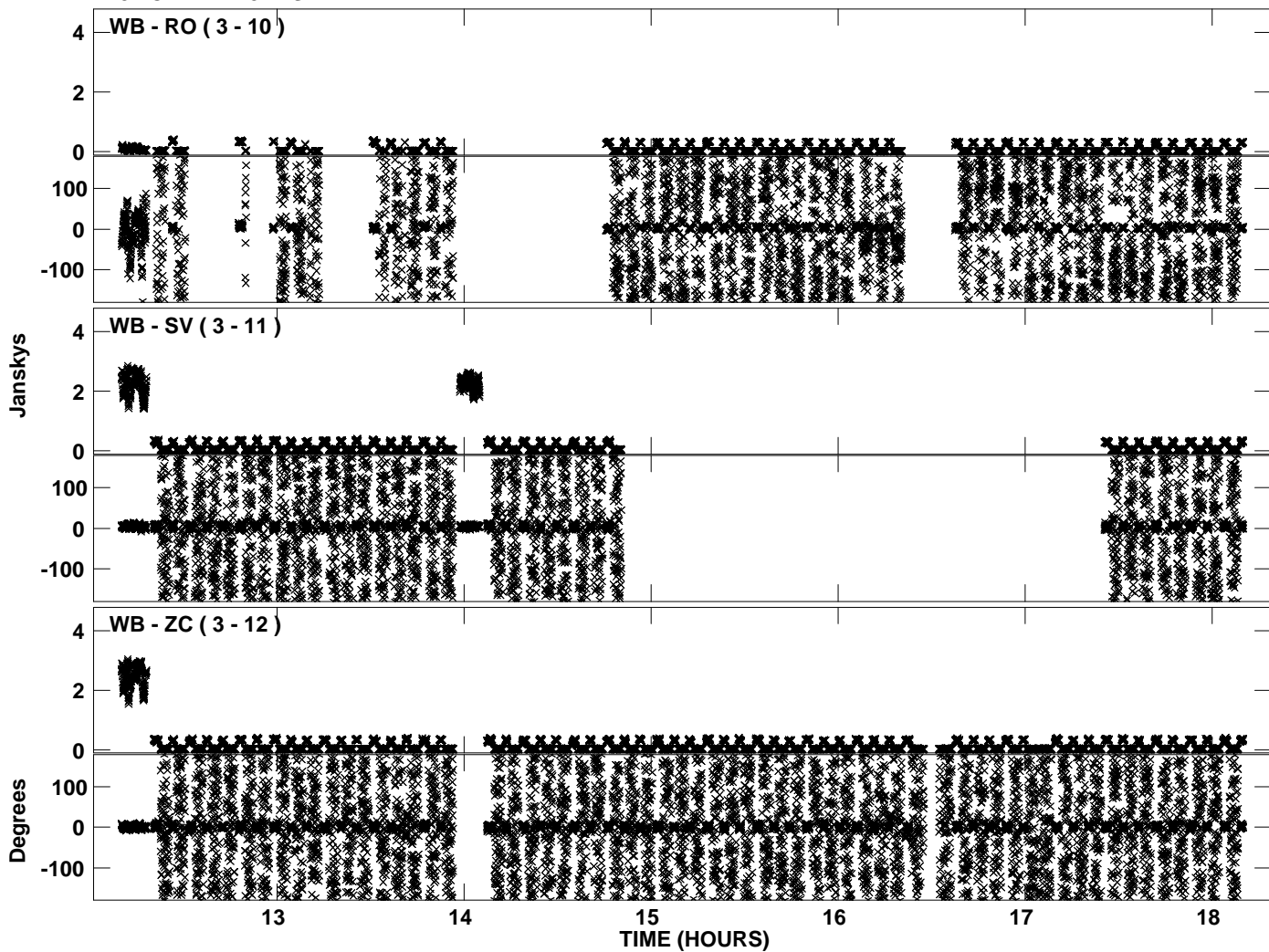
Plot file version 4 created 02-JAN-2012 17:58:28
Amplitude and Phase vs Time for EP068D 1.UVDATA.1 Vect aver. CL # 3
IF 2 CHAN 1 - 32 STK LL



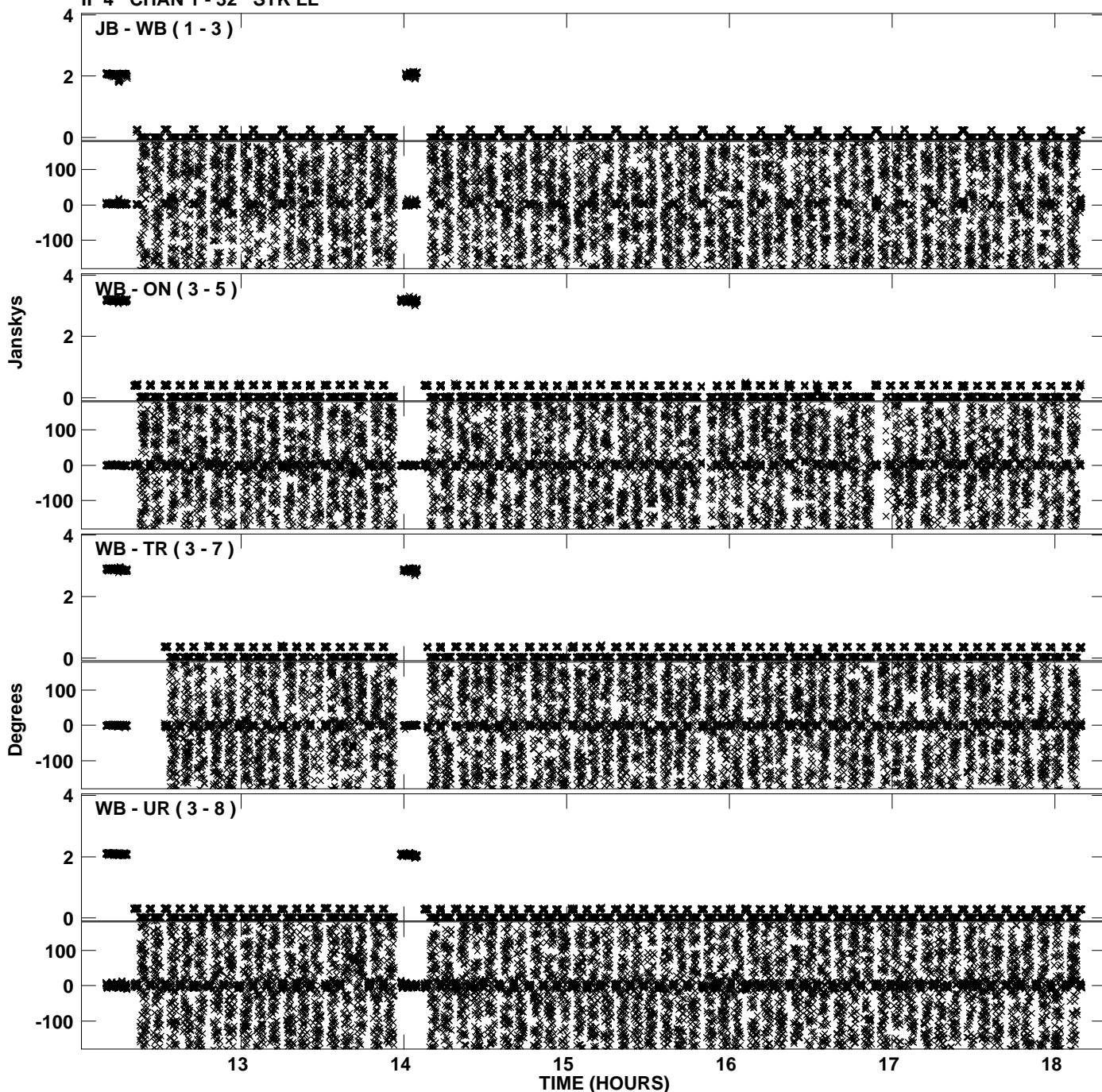
Plot file version 5 created 02-JAN-2012 17:58:35
Amplitude andPhase vs Time for EP068D 1.UVDATA.1 Vect aver. CL # 3
IF 3 CHAN 1 - 32 STK LL



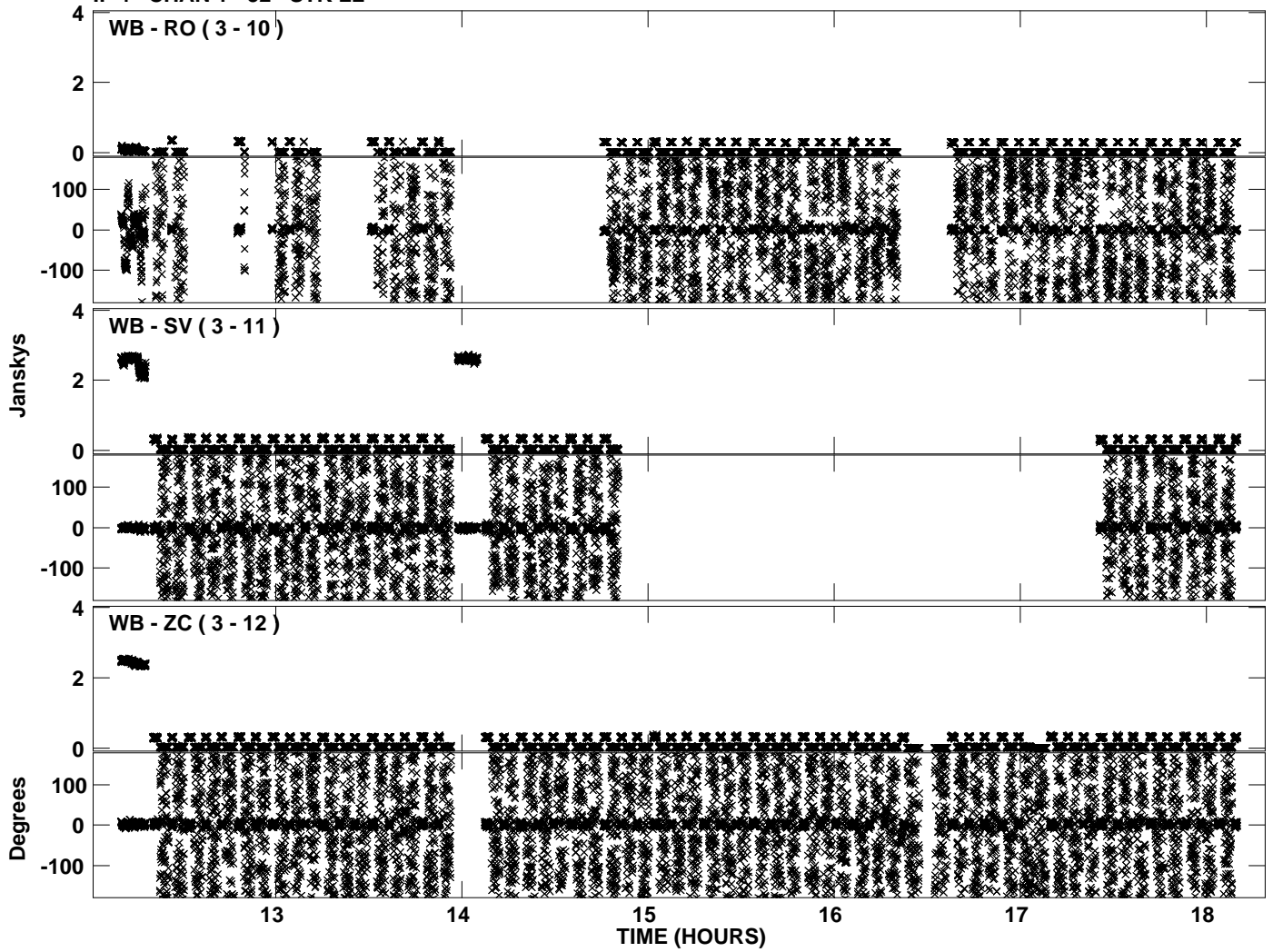
Plot file version 6 created 02-JAN-2012 17:58:35
Amplitude and Phase vs Time for EP068D 1.UVDATA.1 Vect aver. CL # 3
IF 3 CHAN 1 - 32 STK LL



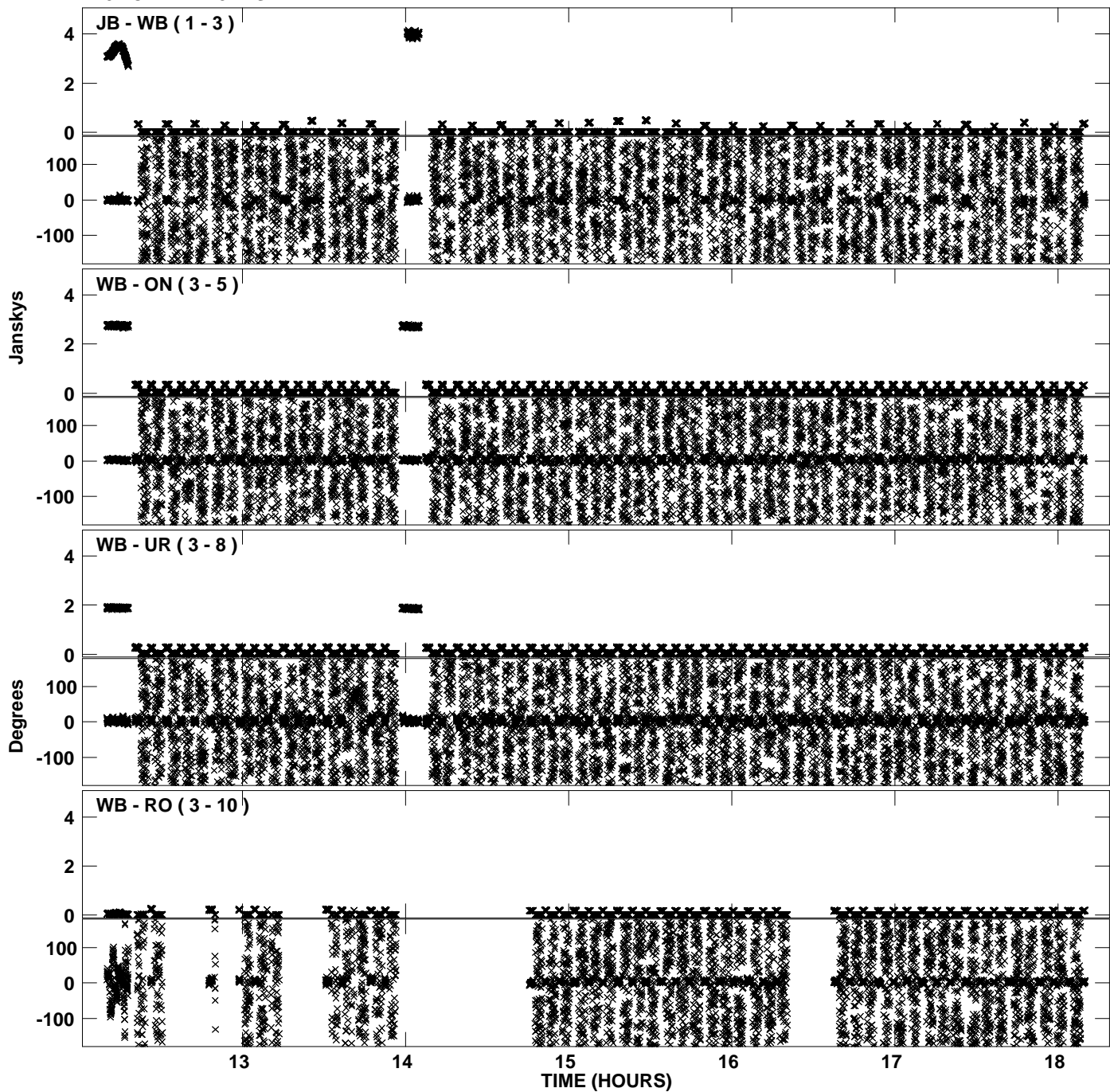
Plot file version 7 created 02-JAN-2012 17:58:43
Amplitude andPhase vs Time for EP068D 1.UVDATA.1 Vect aver. CL # 3
IF 4 CHAN 1 - 32 STK LL



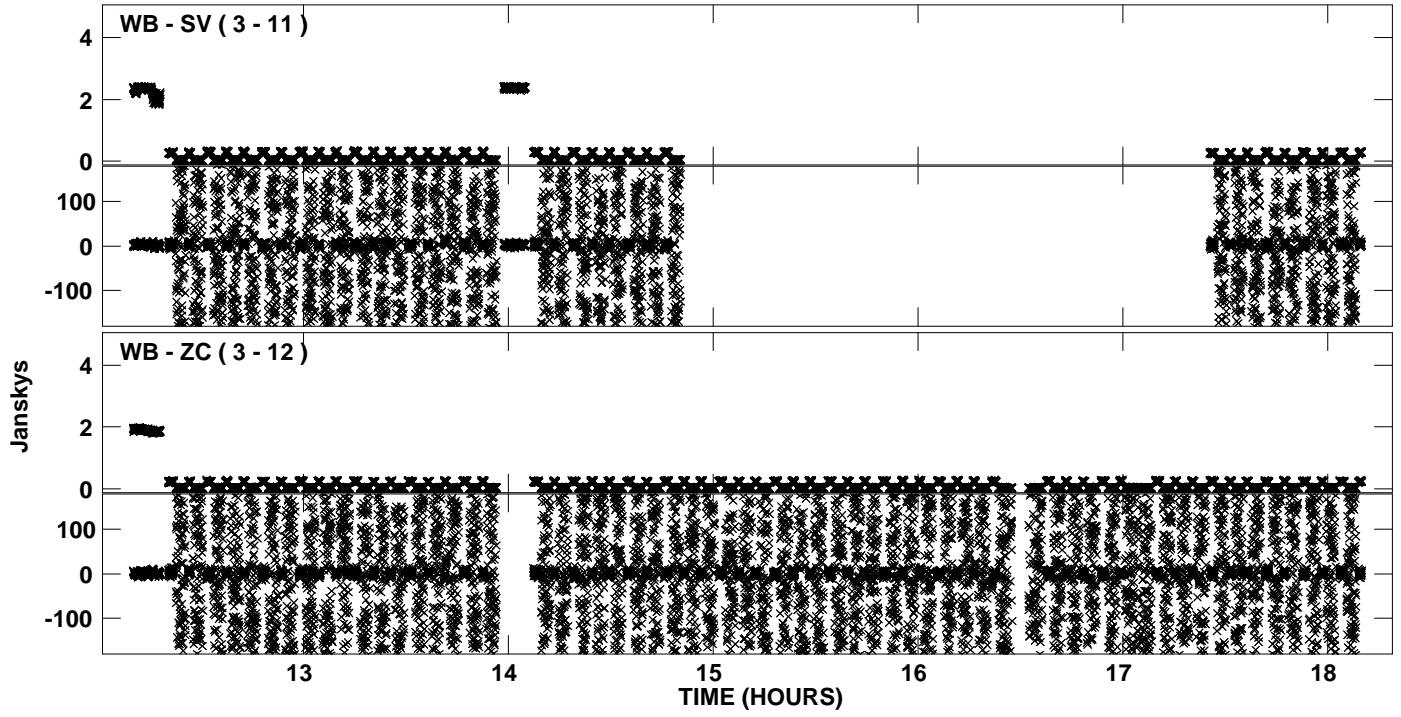
Plot file version 8 created 02-JAN-2012 17:58:43
Amplitude andPhase vs Time for EP068D 1.UVDATA.1 Vect aver. CL # 3
IF 4 CHAN 1 - 32 STK LL



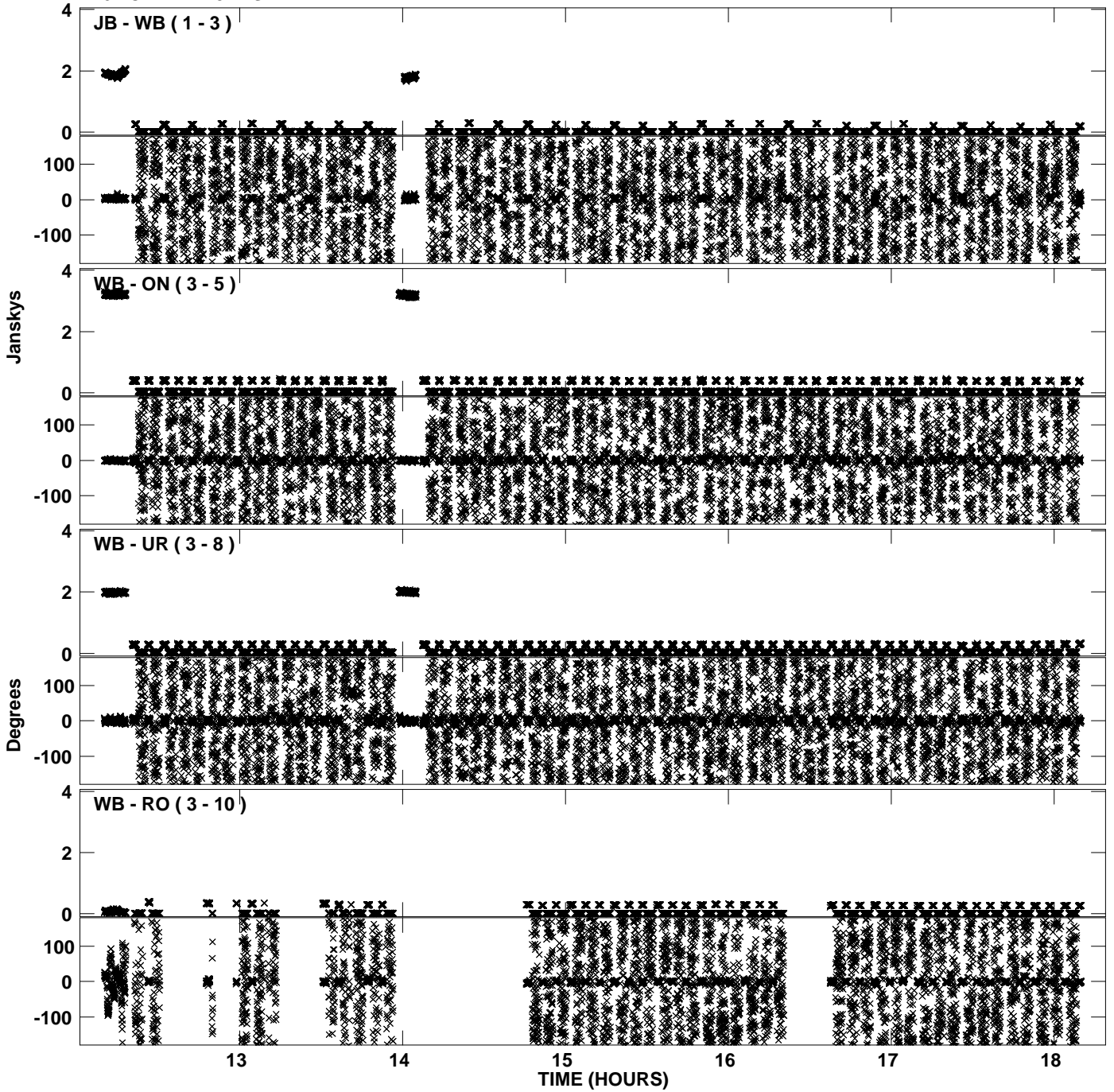
Plot file version 9 created 02-JAN-2012 17:58:50
Amplitude and Phase vs Time for EP068D 1.UVDATA.1 Vect aver. CL # 3
IF 5 CHAN 1 - 32 STK LL



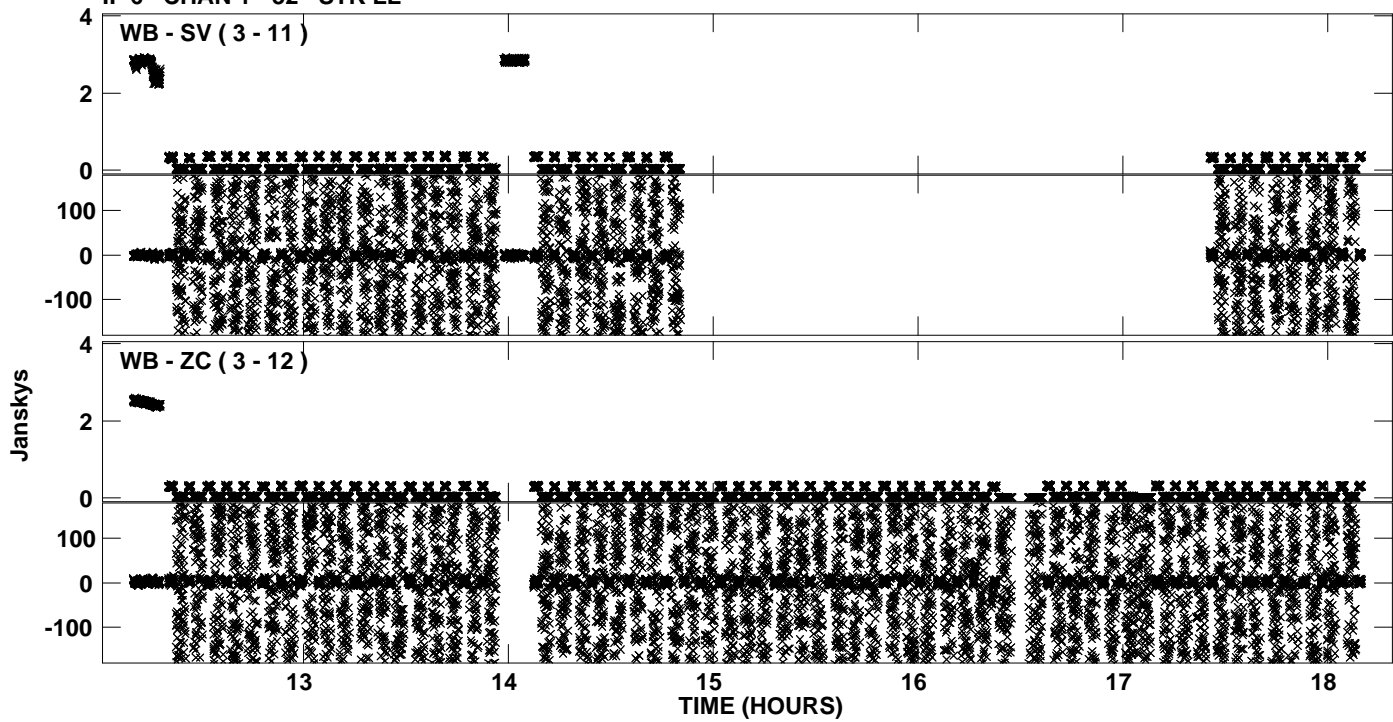
Plot file version 10 created 02-JAN-2012 17:58:50
Amplitude andPhase vs Time for EP068D 1.UVDATA.1 Vect aver. CL # 3
IF 5 CHAN 1 - 32 STK LL



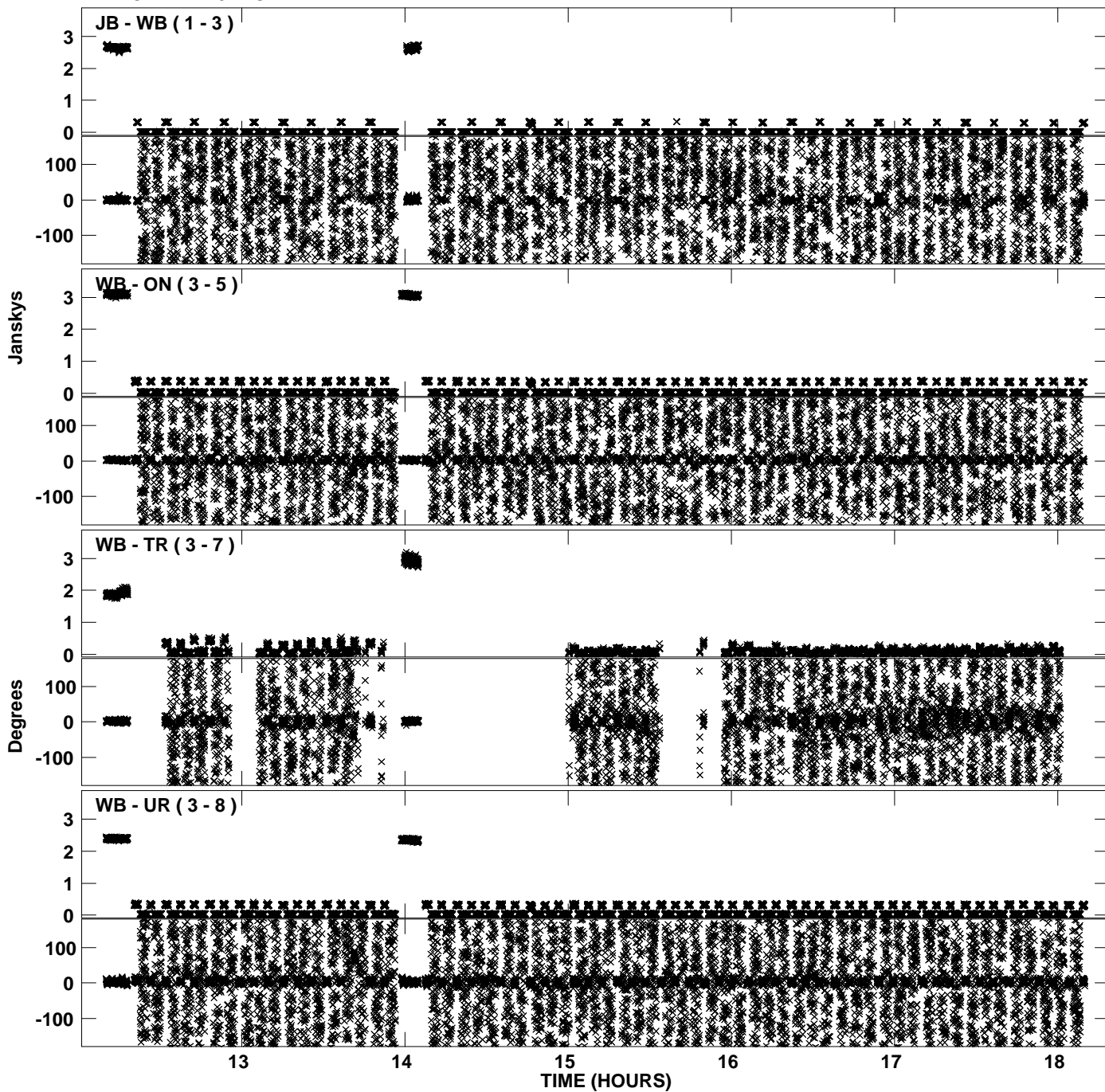
Plot file version 11 created 02-JAN-2012 17:58:58
Amplitude andPhase vs Time for EP068D 1.UVDATA.1 Vect aver. CL # 3
IF 6 CHAN 1 - 32 STK LL



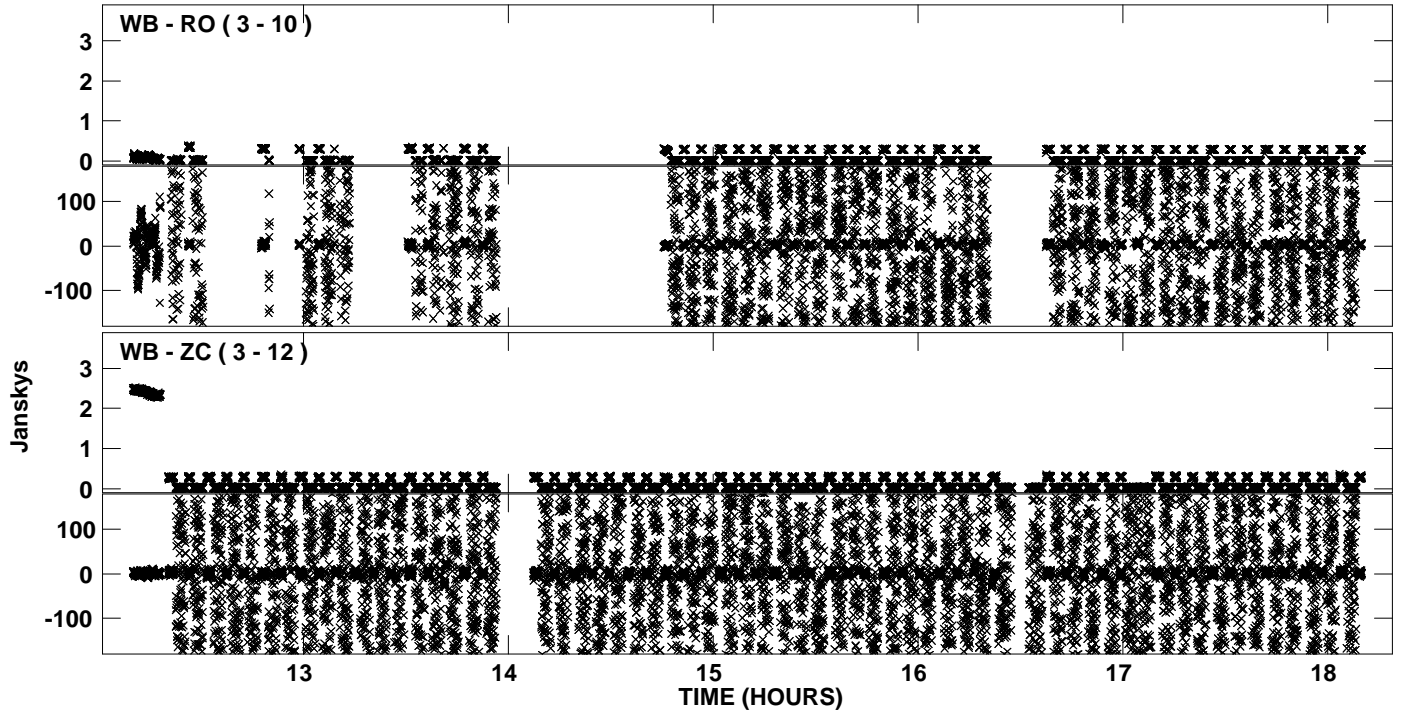
Plot file version 12 created 02-JAN-2012 17:58:58
Amplitude andPhase vs Time for EP068D 1.UVDATA.1 Vect aver. CL # 3
IF 6 CHAN 1 - 32 STK LL



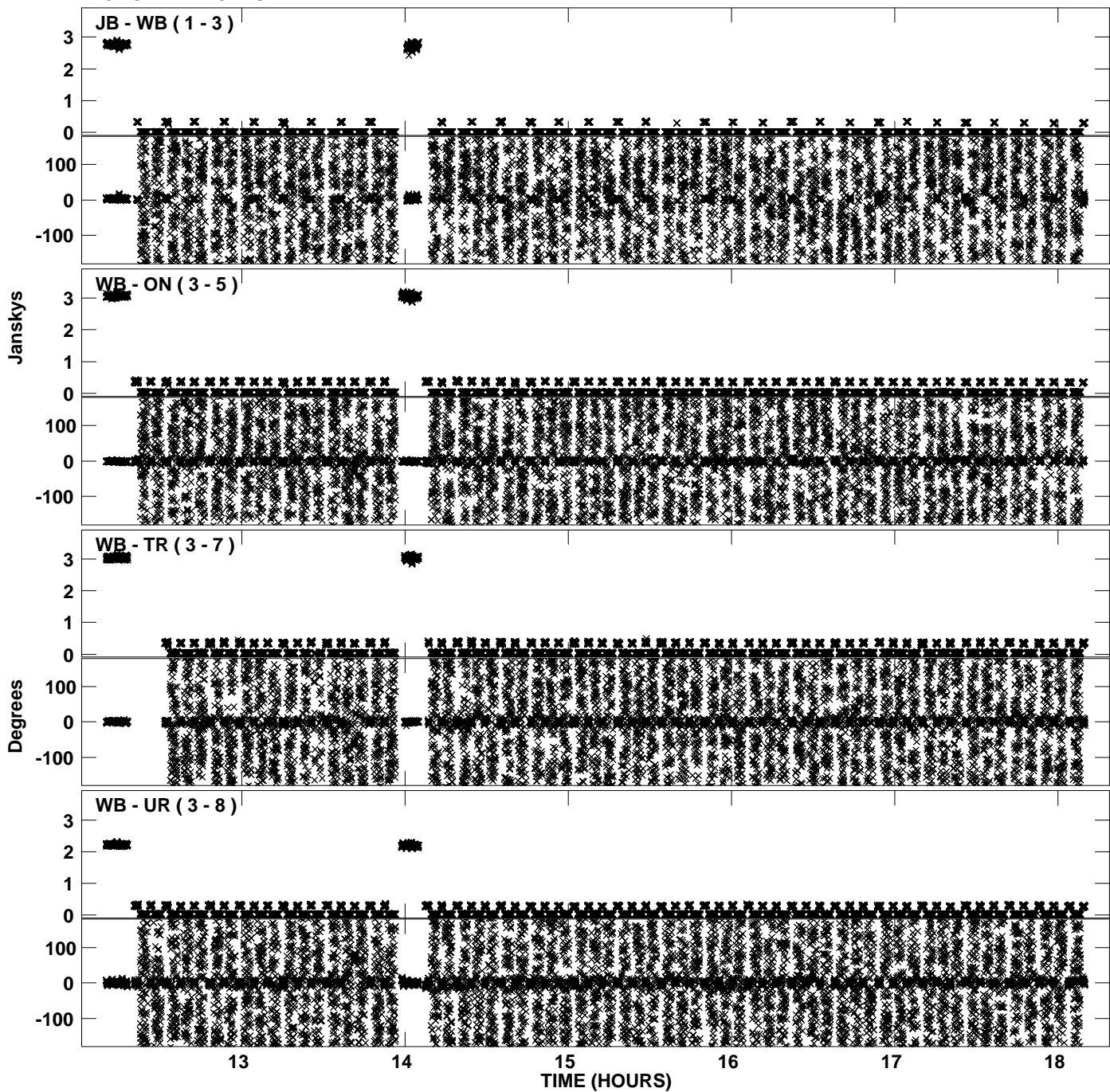
PLot file version 13 created 02-JAN-2012 17:59:05
Amplitude andPhase vs Time for EP068D 1.UVDATA.1 Vect aver. CL # 3
IF 7 CHAN 1 - 32 STK LL



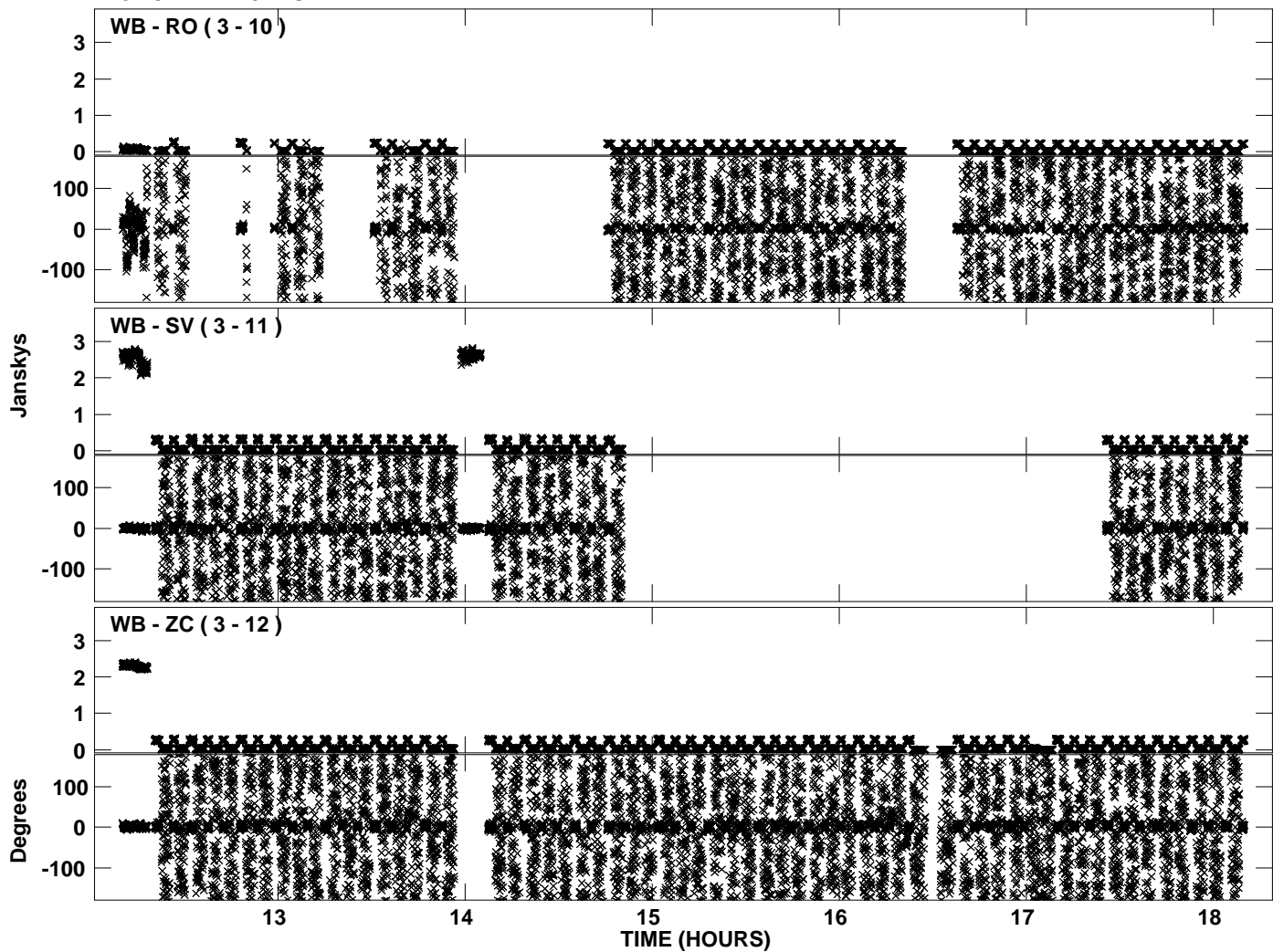
Plot file version 14 created 02-JAN-2012 17:59:05
Amplitude andPhase vs Time for EP068D 1.UVDATA.1 Vect aver. CL # 3
IF 7 CHAN 1 - 32 STK LL



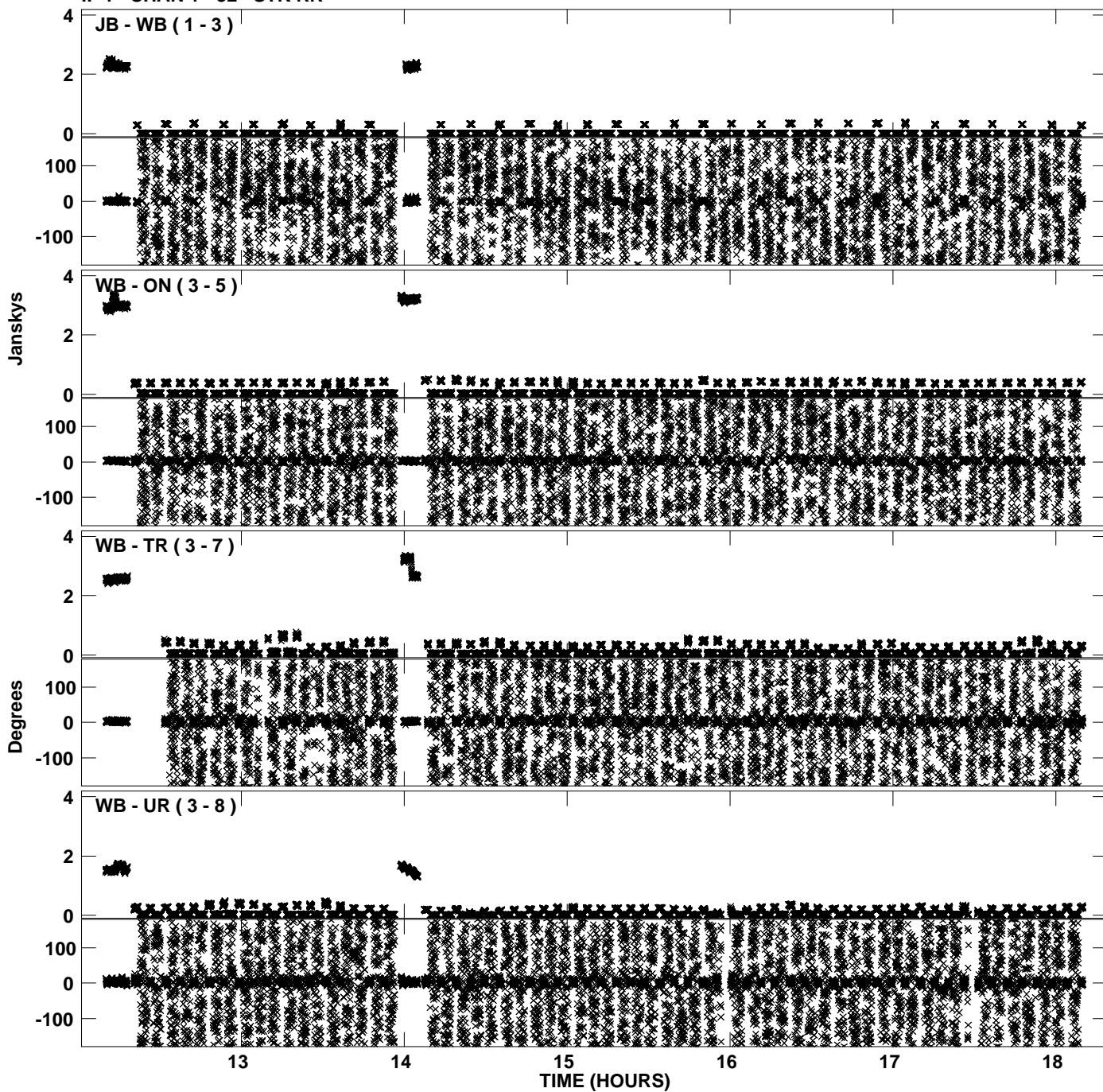
Plot file version 15 created 02-JAN-2012 17:59:13
Amplitude andPhase vs Time for EP068D 1.UVDATA.1 Vect aver. CL # 3
IF 8 CHAN 1 - 32 STK LL



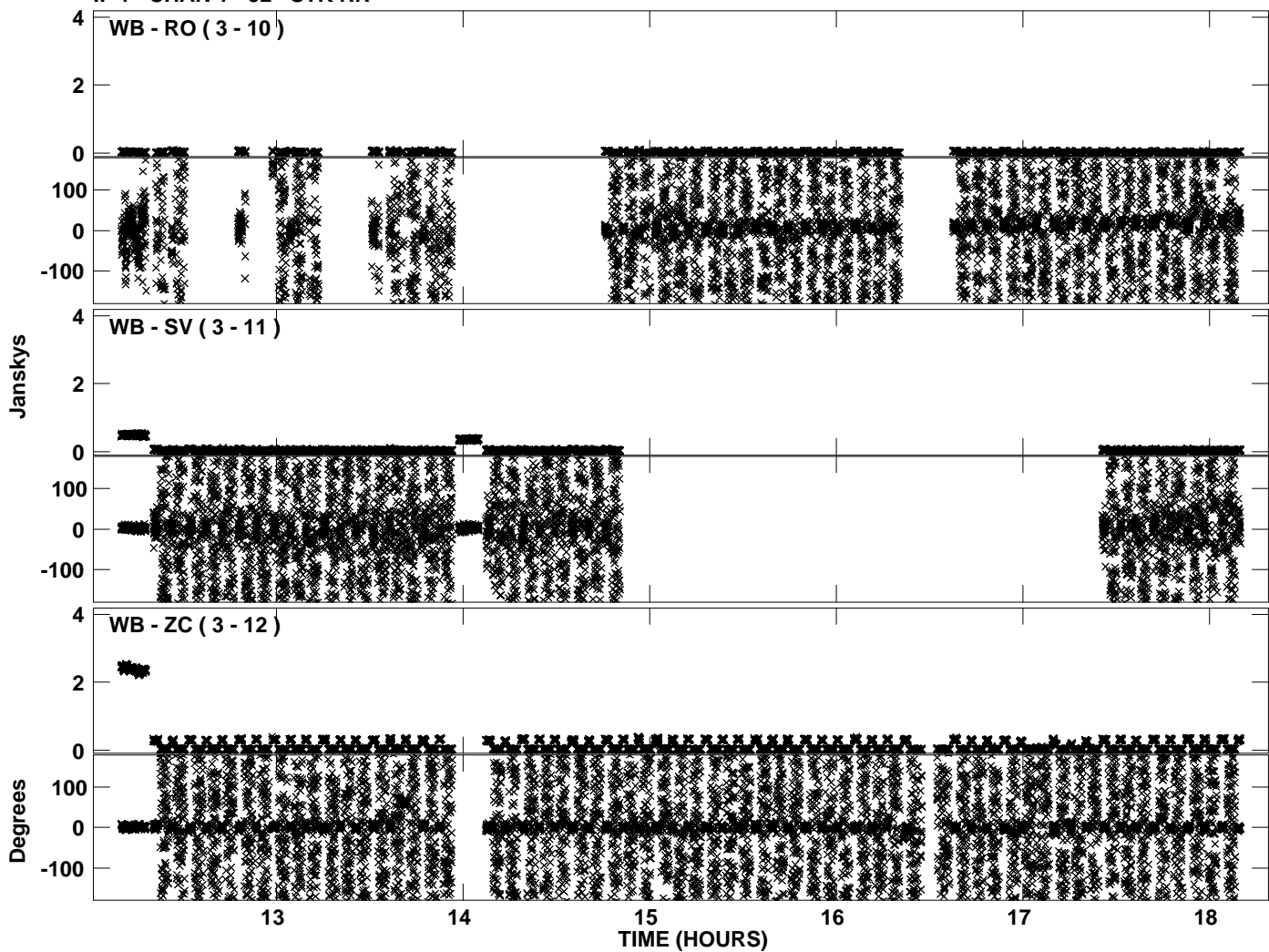
Plot file version 16 created 02-JAN-2012 17:59:13
Amplitude and Phase vs Time for EP068D 1.UVDATA.1 Vect aver. CL # 3
IF 8 CHAN 1 - 32 STK LL



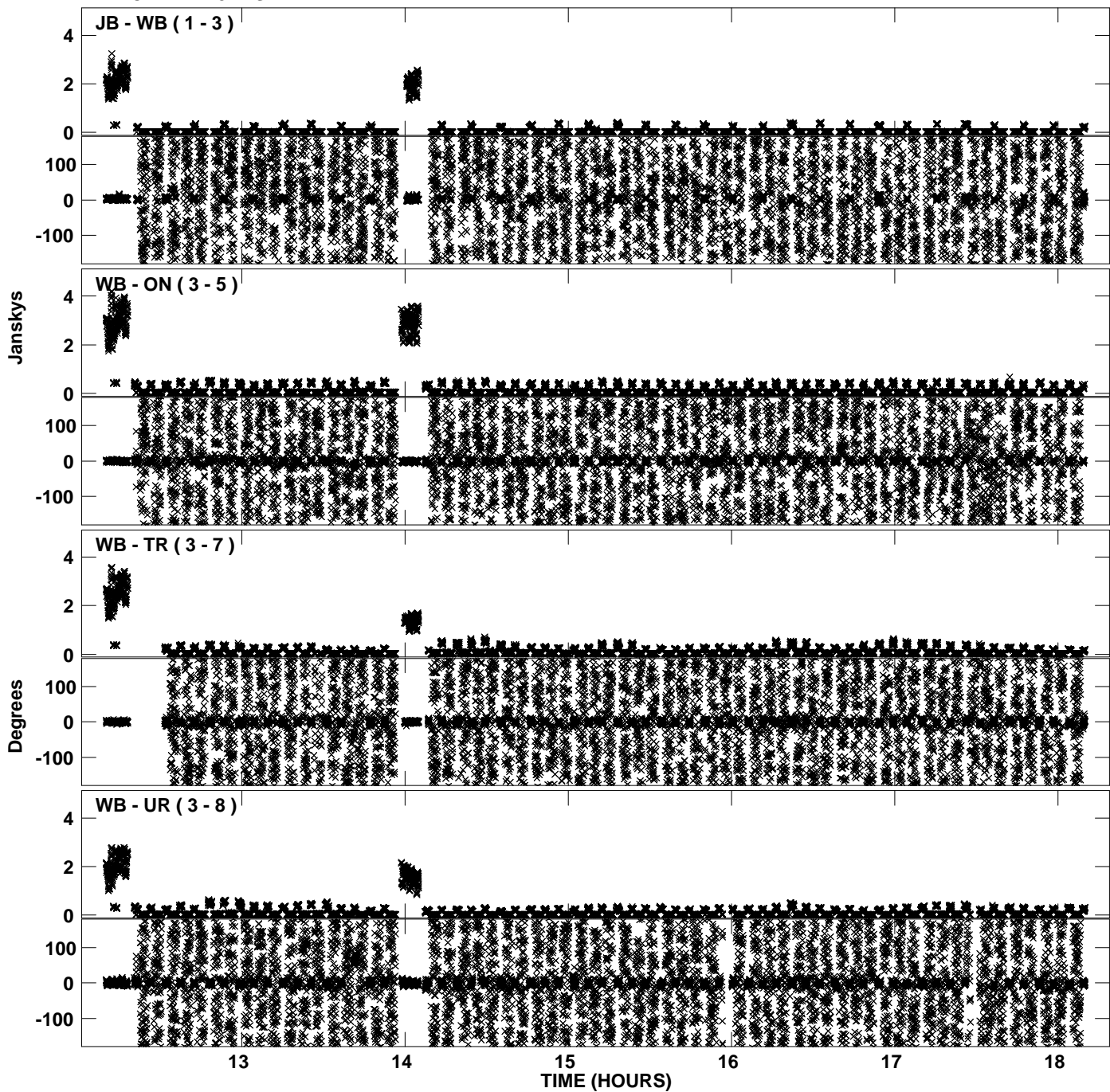
Plot file version 17 created 02-JAN-2012 17:59:20
Amplitude and Phase vs Time for EP068D 1.UVDATA.1 Vect aver. CL # 3
IF 1 CHAN 1 - 32 STK RR



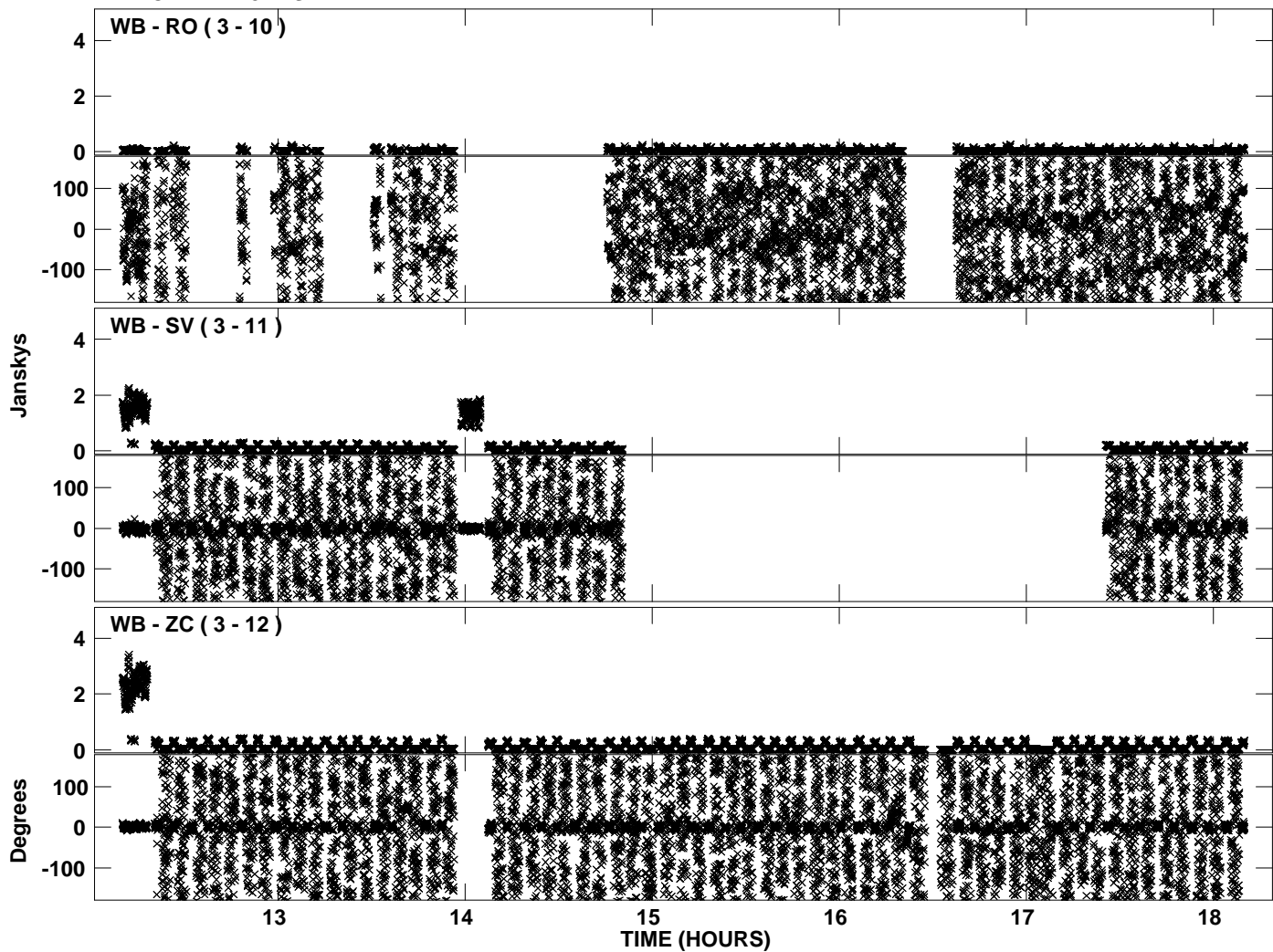
Plot file version 18 created 02-JAN-2012 17:59:20
Amplitude andPhase vs Time for EP068D 1.UVDATA.1 Vect aver. CL # 3
IF 1 CHAN 1 - 32 STK RR



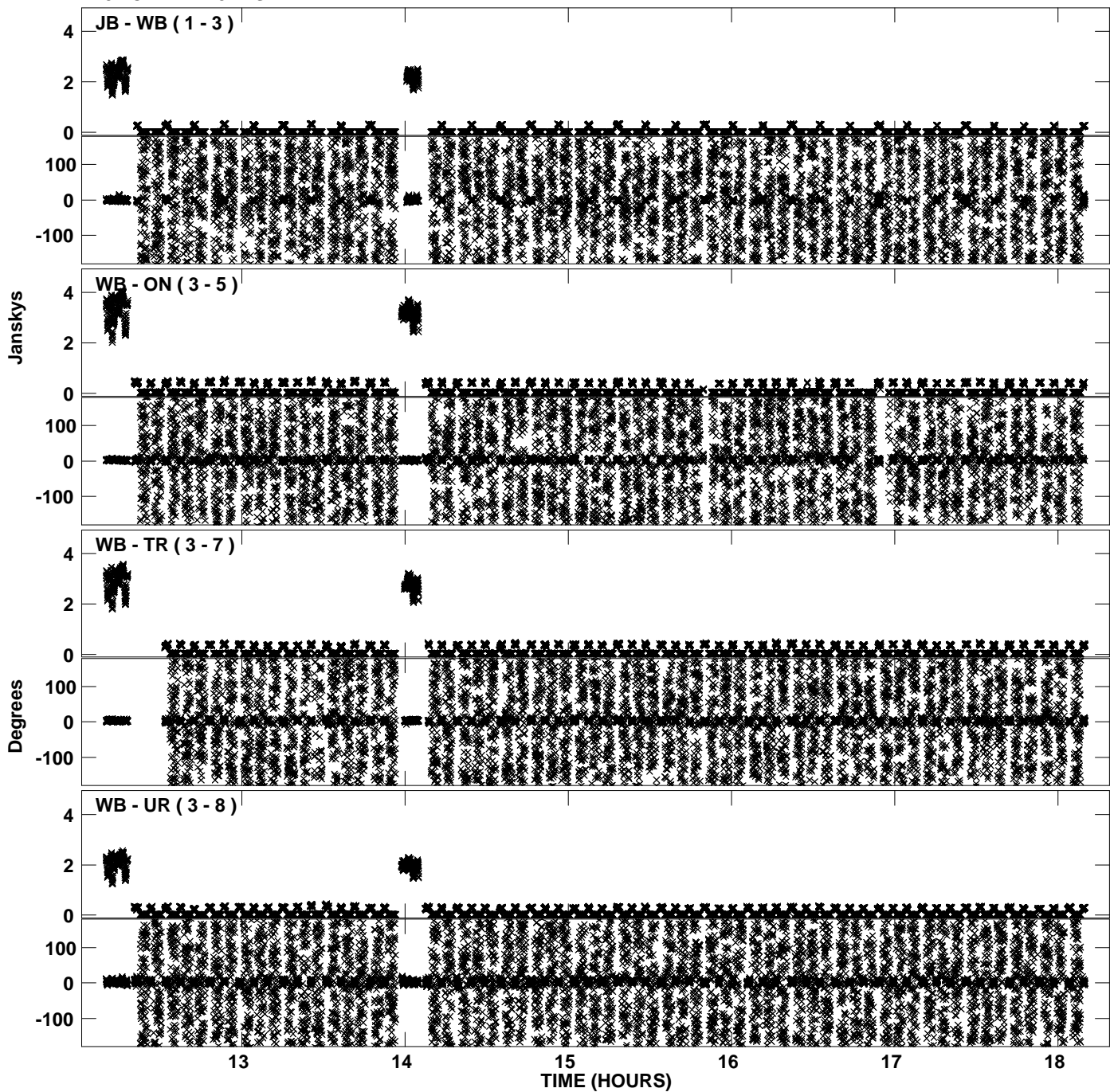
PLot file version 19 created 02-JAN-2012 17:59:27
Amplitude andPhase vs Time for EP068D 1.UVDATA.1 Vect aver. CL # 3
IF 2 CHAN 1 - 32 STK RR



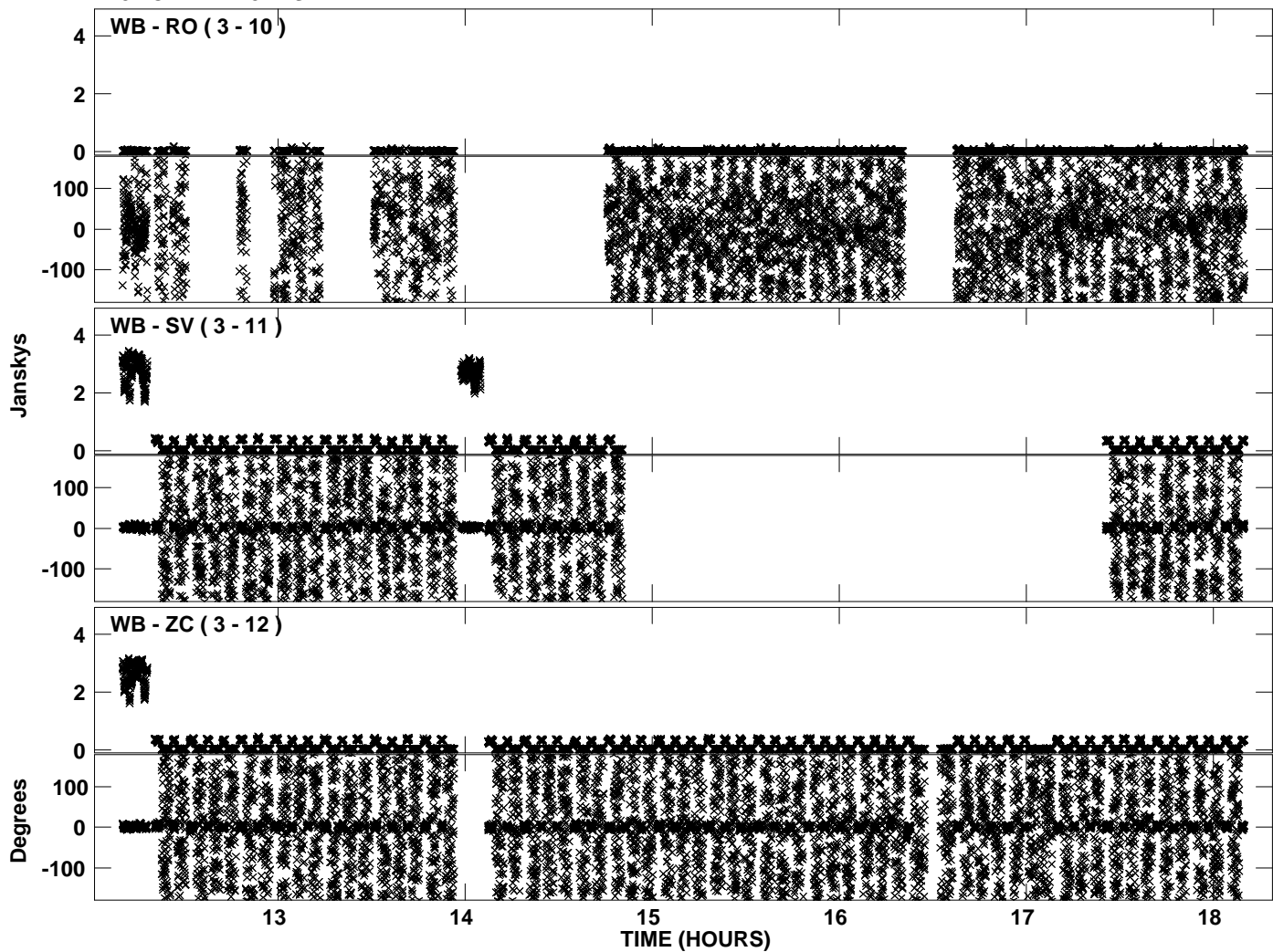
PLot file version 20 created 02-JAN-2012 17:59:27
Amplitude andPhase vs Time for EP068D 1.UVDATA.1 Vect aver. CL # 3
IF 2 CHAN 1 - 32 STK RR



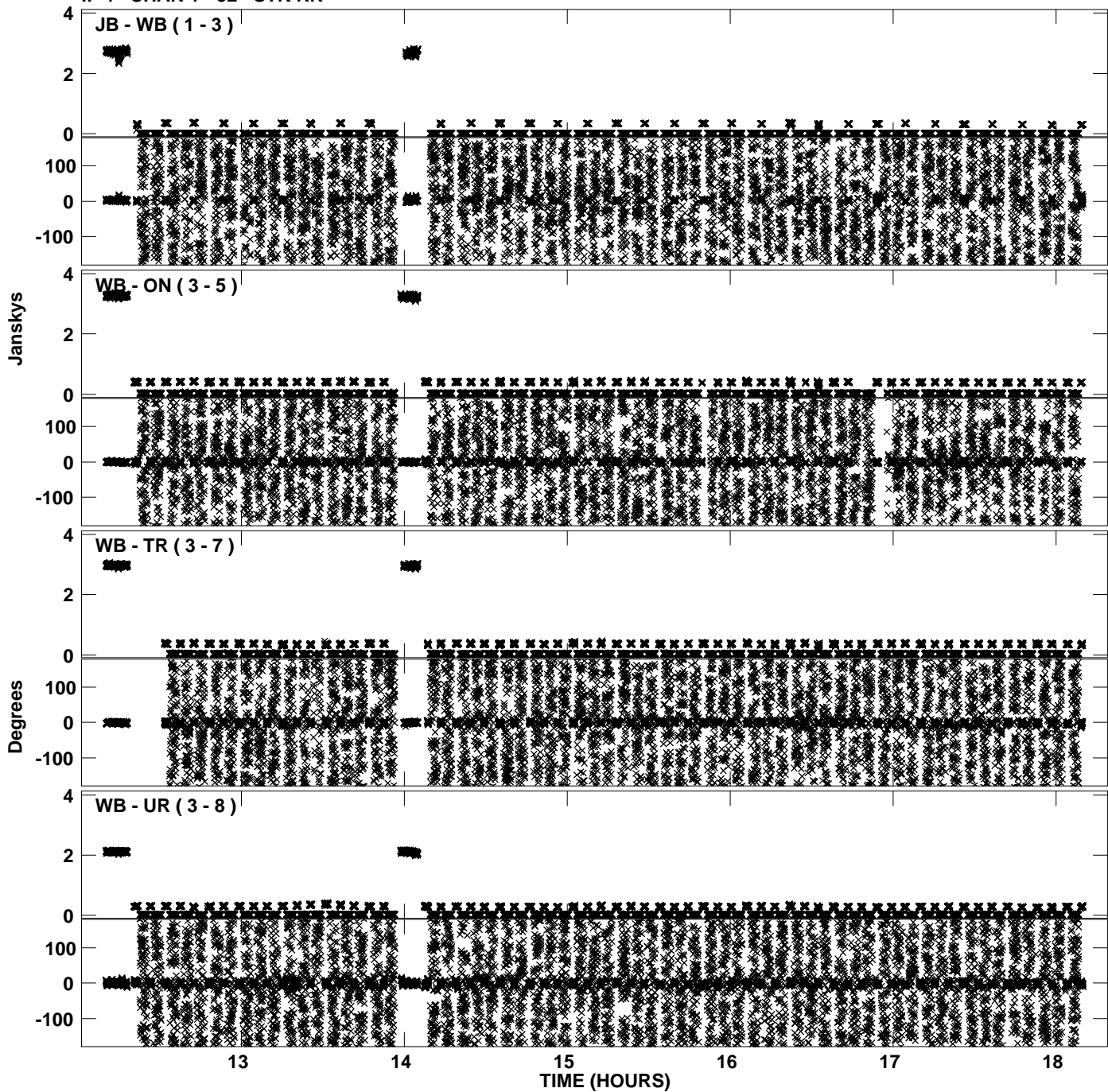
Plot file version 21 created 02-JAN-2012 17:59:34
Amplitude andPhase vs Time for EP068D 1.UVDATA.1 Vect aver. CL # 3
IF 3 CHAN 1 - 32 STK RR



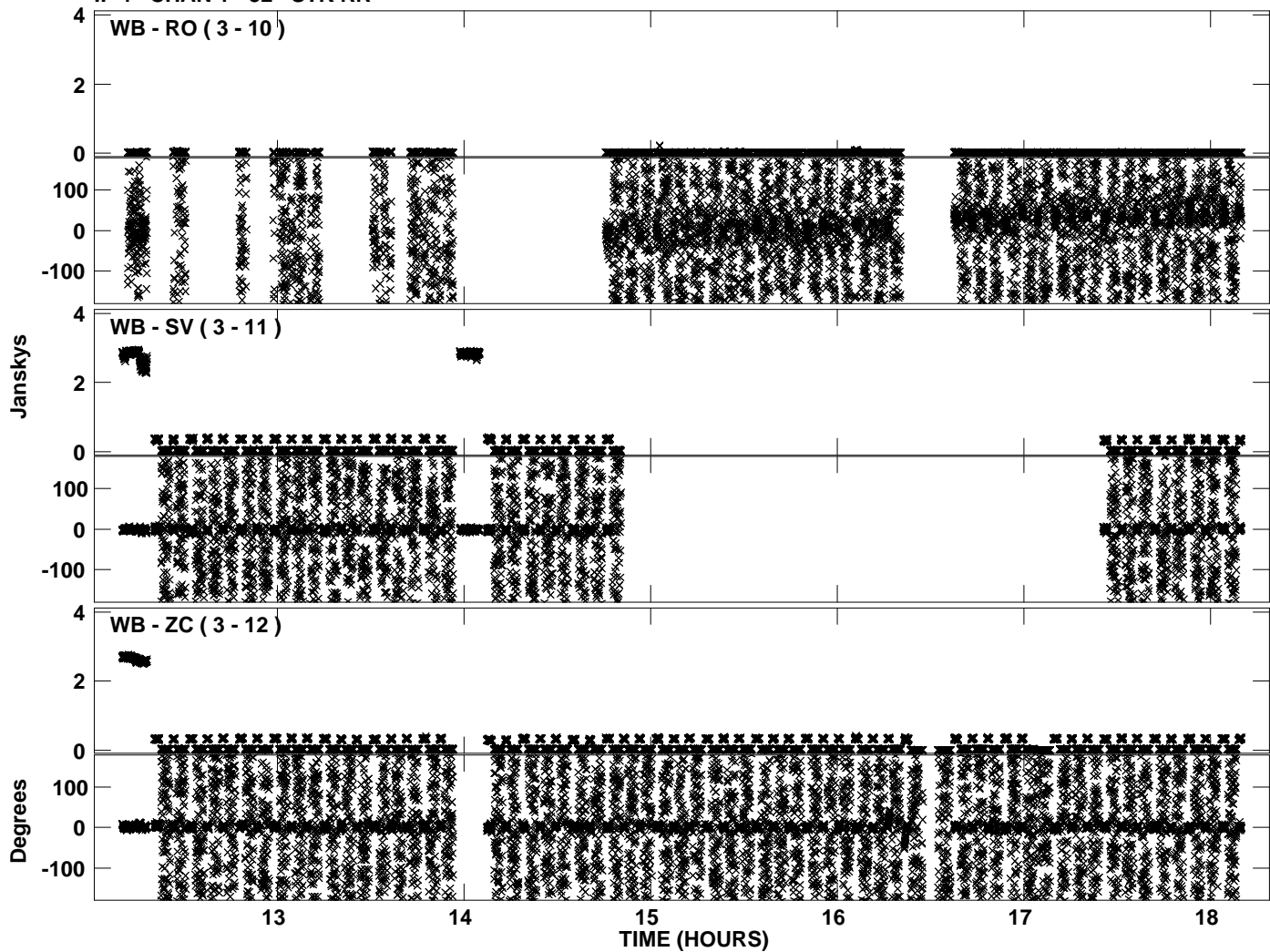
Plot file version 22 created 02-JAN-2012 17:59:34
Amplitude andPhase vs Time for EP068D 1.UVDATA.1 Vect aver. CL # 3
IF 3 CHAN 1 - 32 STK RR



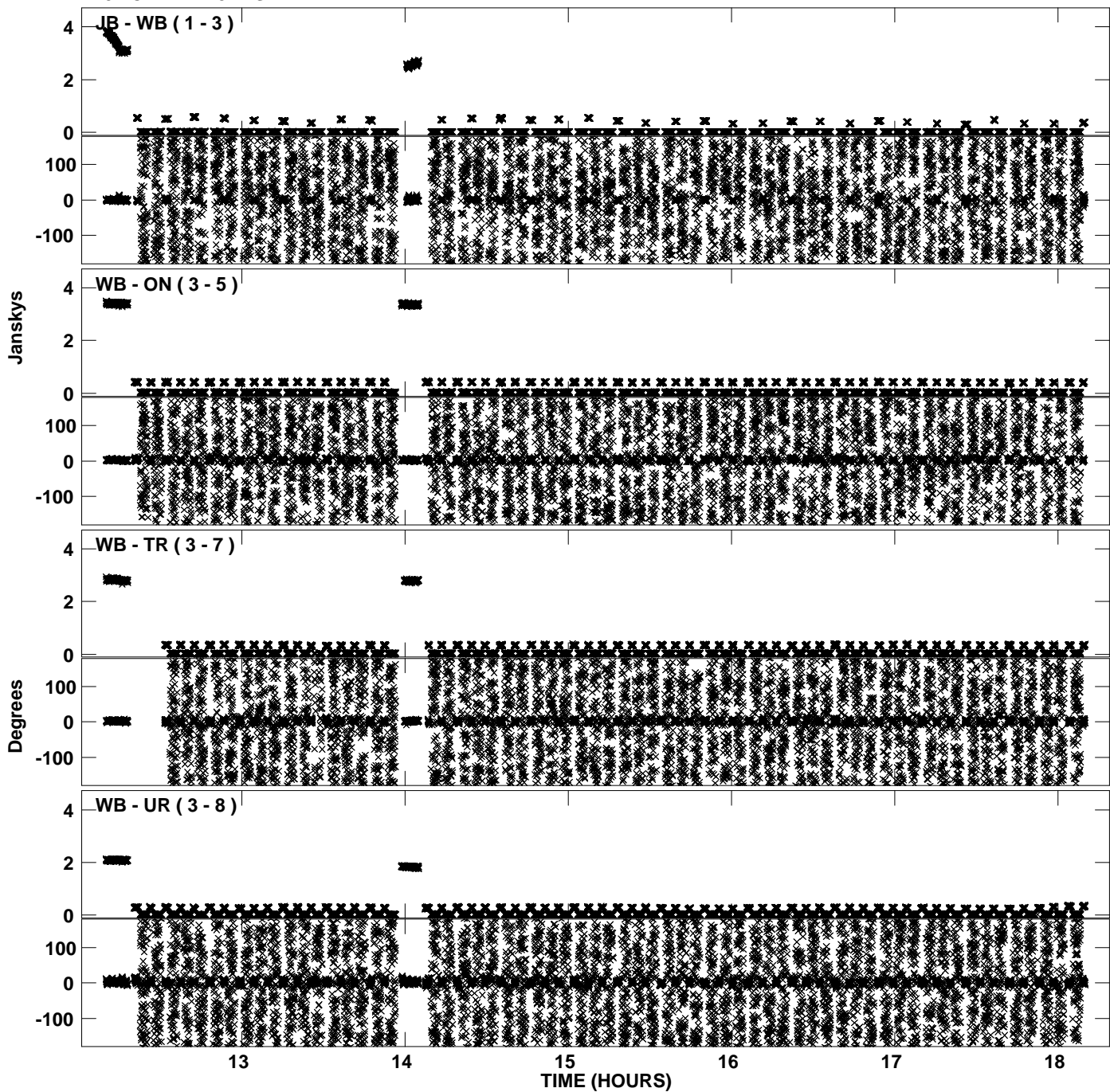
Plot file version 23 created 02-JAN-2012 17:59:41
Amplitude andPhase vs Time for EP068D 1.UVDATA.1 Vect aver. CL # 3
IF 4 CHAN 1 - 32 STK RR



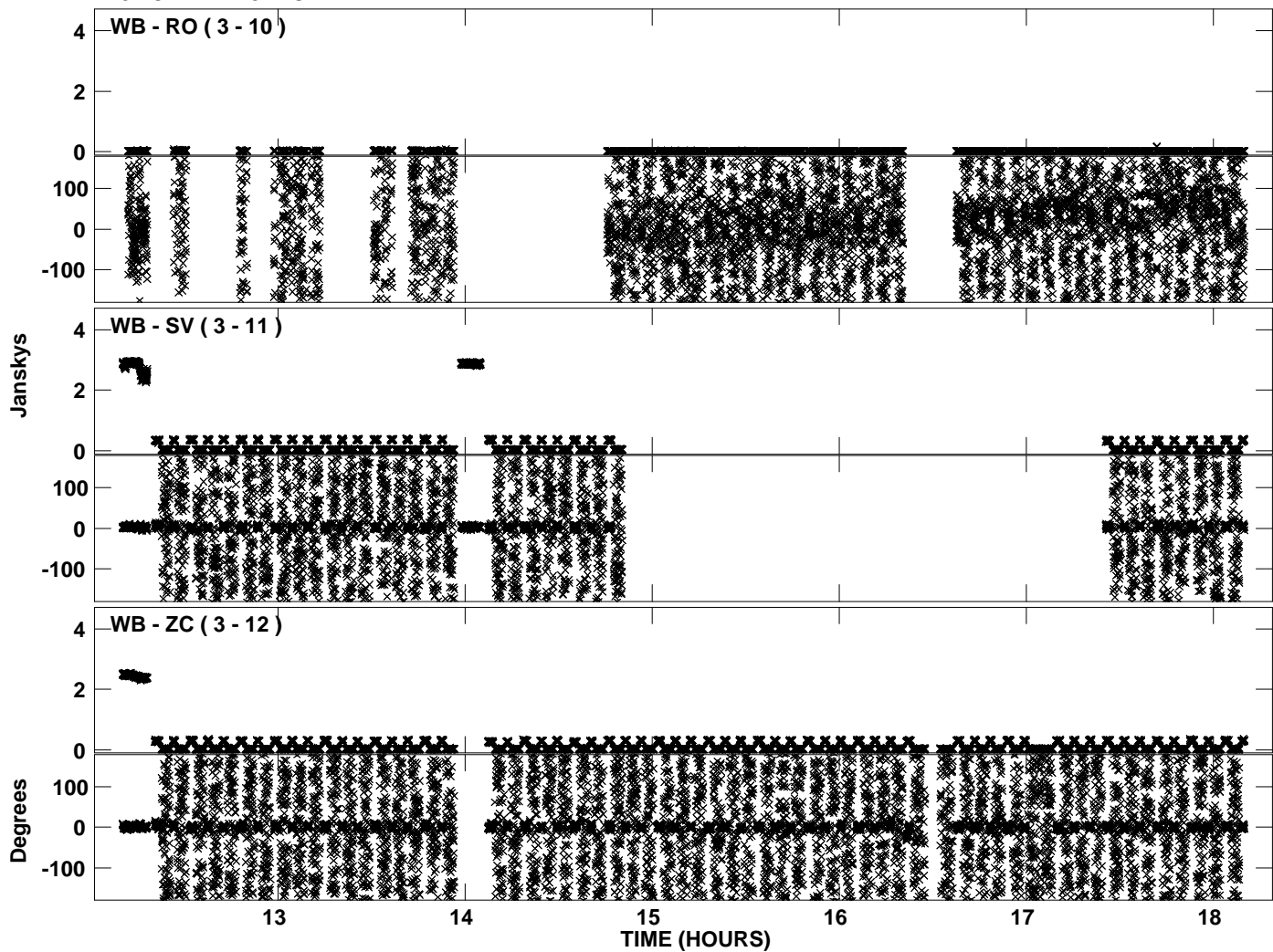
PLot file version 24 created 02-JAN-2012 17:59:41
Amplitude andPhase vs Time for EP068D 1.UVDATA.1 Vect aver. CL # 3
IF 4 CHAN 1 - 32 STK RR



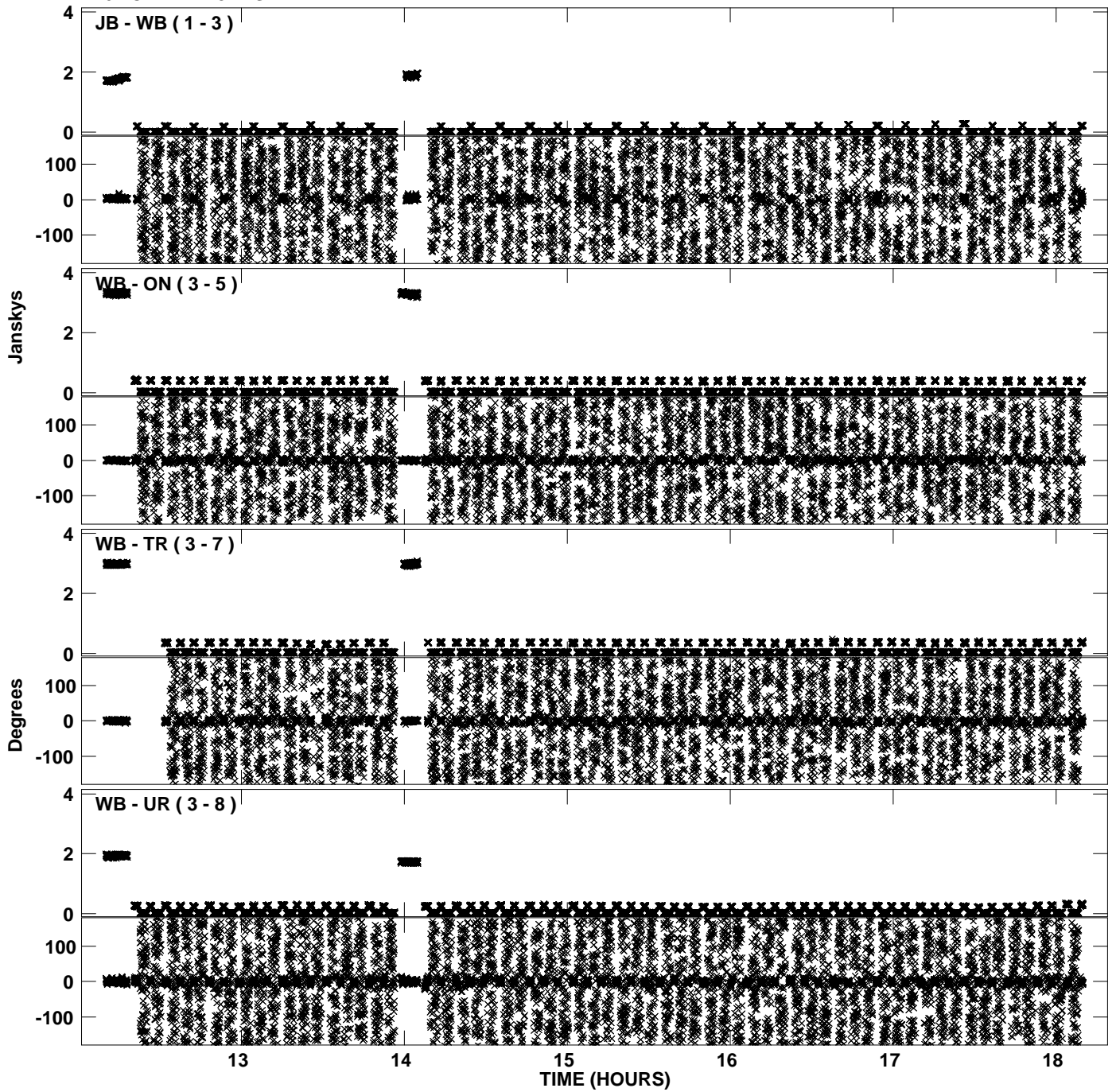
Plot file version 25 created 02-JAN-2012 17:59:48
Amplitude andPhase vs Time for EP068D 1.UVDATA.1 Vect aver. CL # 3
IF 5 CHAN 1 - 32 STK RR



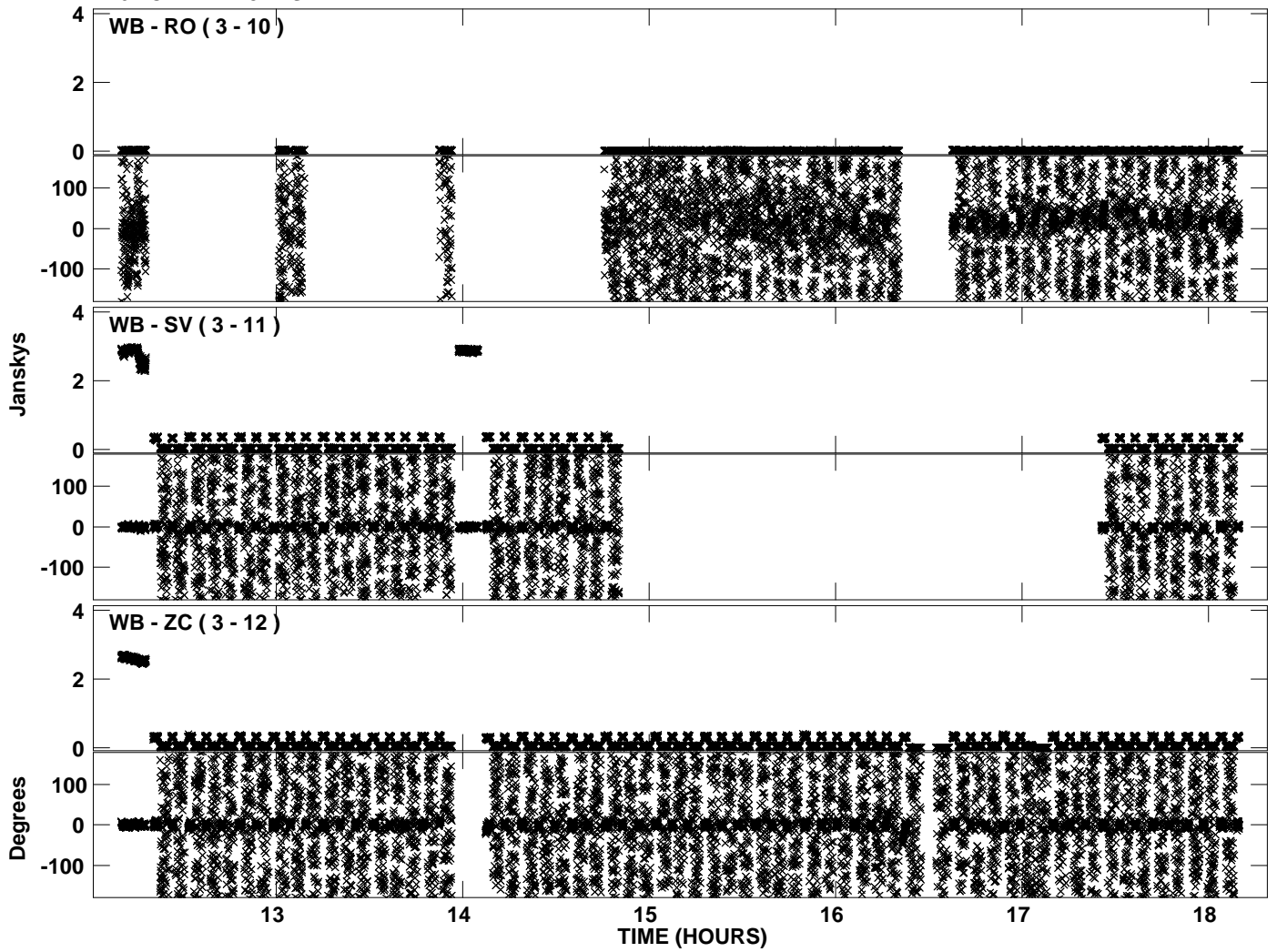
Plot file version 26 created 02-JAN-2012 17:59:48
Amplitude andPhase vs Time for EP068D 1.UVDATA.1 Vect aver. CL # 3
IF 5 CHAN 1 - 32 STK RR



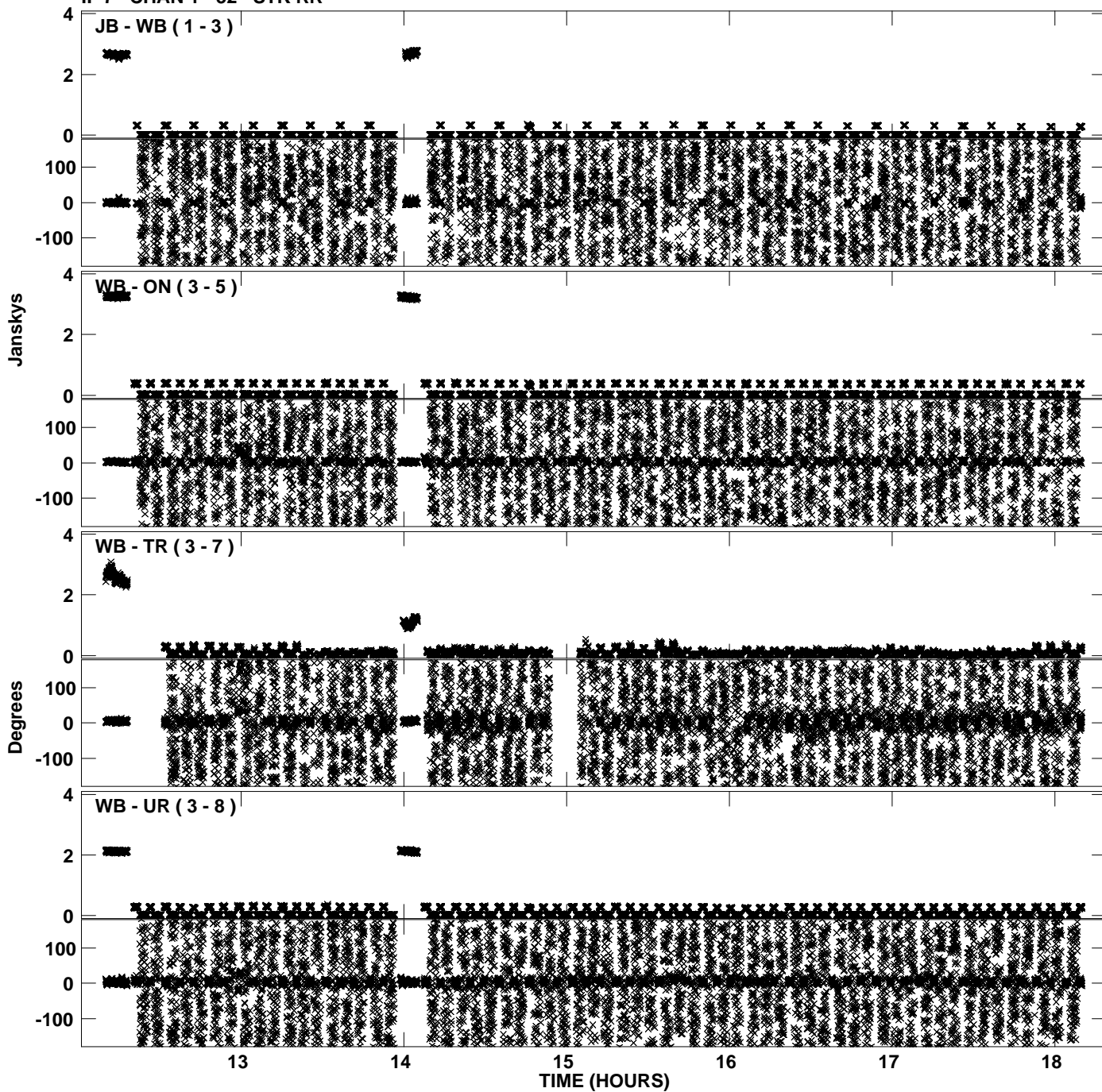
Plot file version 27 created 02-JAN-2012 17:59:55
Amplitude andPhase vs Time for EP068D 1.UVDATA.1 Vect aver. CL # 3
IF 6 CHAN 1 - 32 STK RR



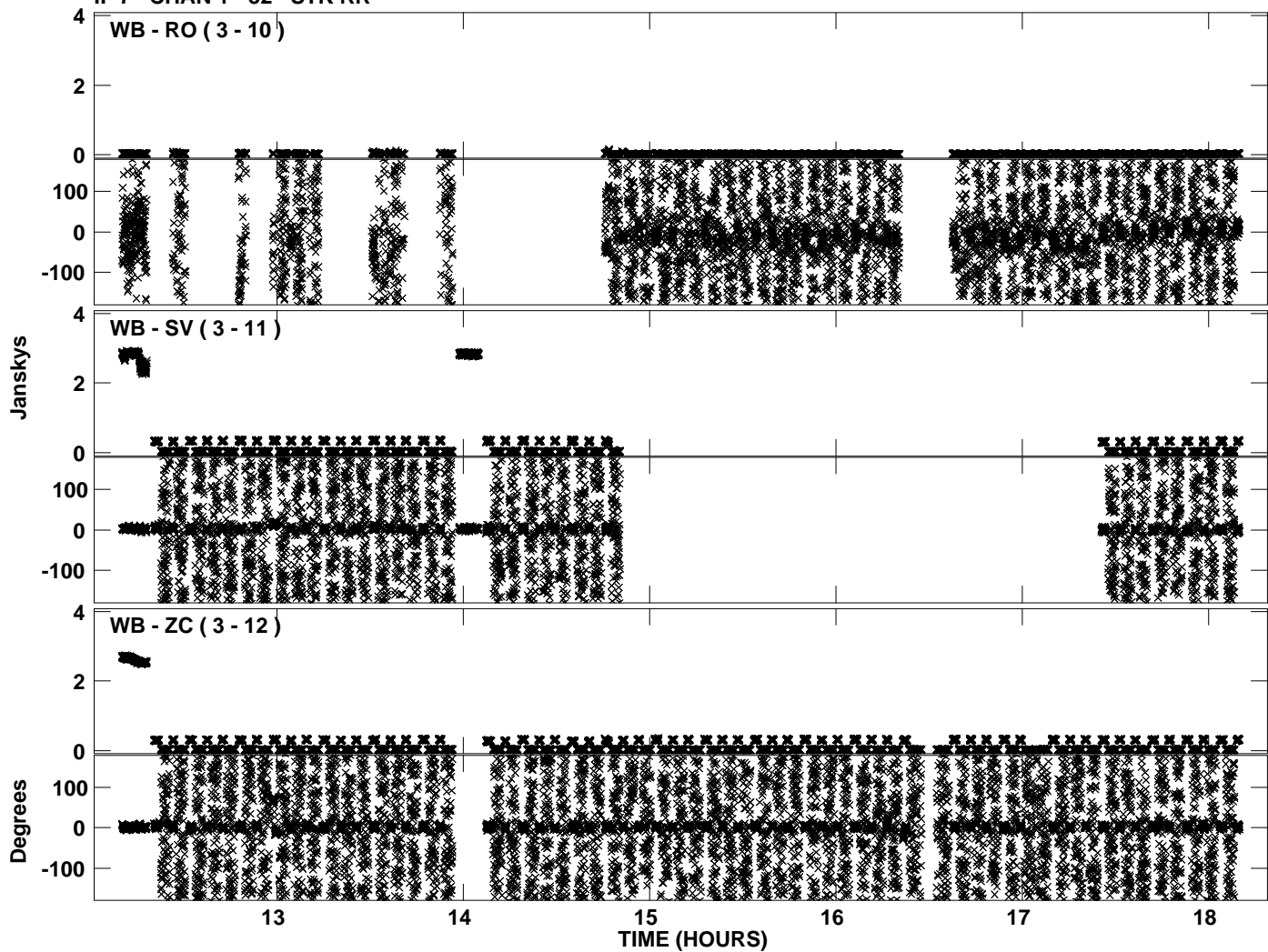
PLot file version 28 created 02-JAN-2012 17:59:55
Amplitude andPhase vs Time for EP068D 1.UVDATA.1 Vect aver. CL # 3
IF 6 CHAN 1 - 32 STK RR



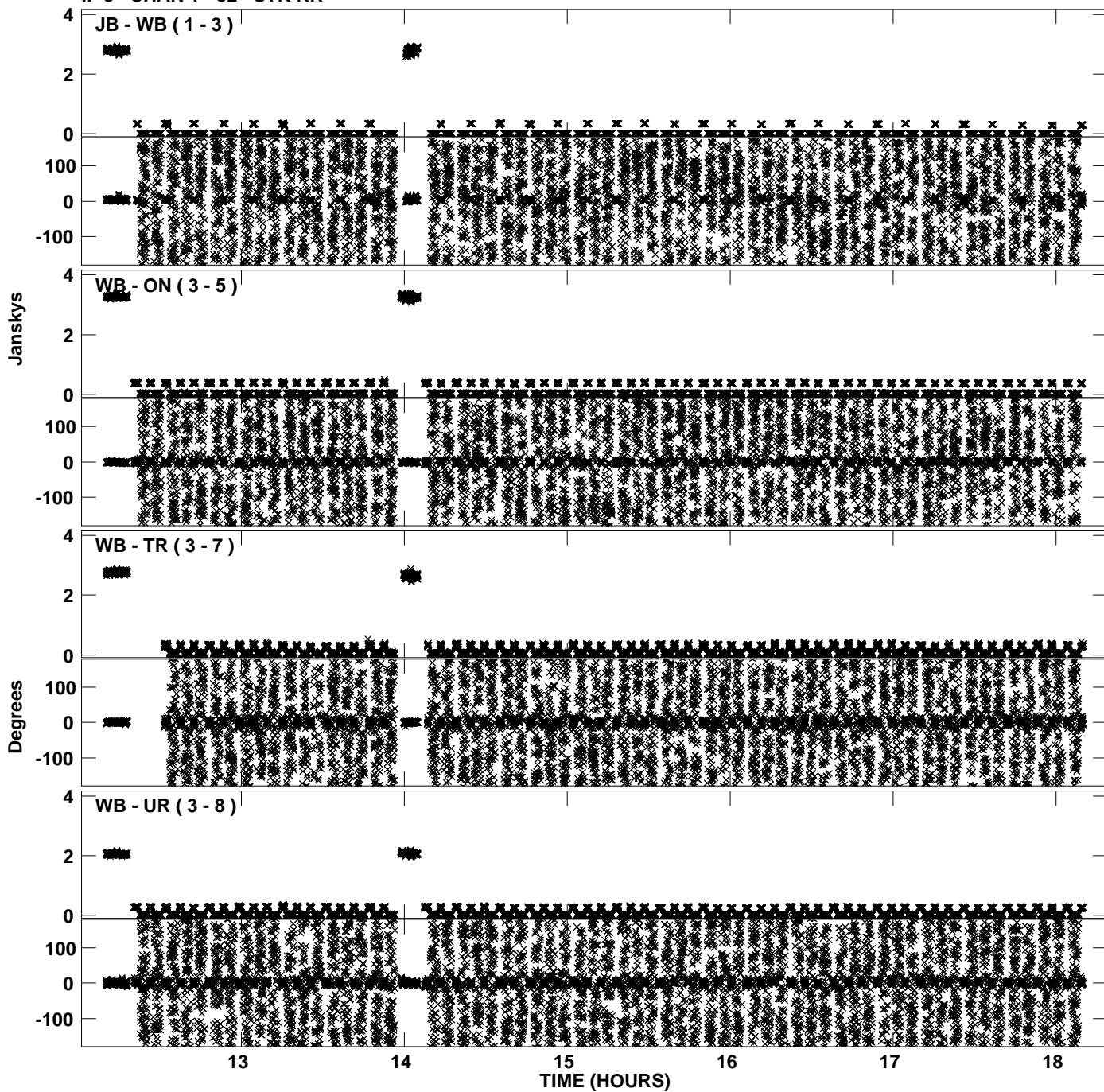
Plot file version 29 created 02-JAN-2012 18:00:02
Amplitude andPhase vs Time for EP068D 1.UVDATA.1 Vect aver. CL # 3
IF 7 CHAN 1 - 32 STK RR



Plot file version 30 created 02-JAN-2012 18:00:02
Amplitude and Phase vs Time for EP068D 1.UVDATA.1 Vect aver. CL # 3
IF 7 CHAN 1 - 32 STK RR



Plot file version 31 created 02-JAN-2012 18:00:10
Amplitude andPhase vs Time for EP068D 1.UVDATA.1 Vect aver. CL # 3
IF 8 CHAN 1 - 32 STK RR



Plot file version 32 created 02-JAN-2012 18:00:10
Amplitude andPhase vs Time for EP068D 1.UVDATA.1 Vect aver. CL # 3
IF 8 CHAN 1 - 32 STK RR

