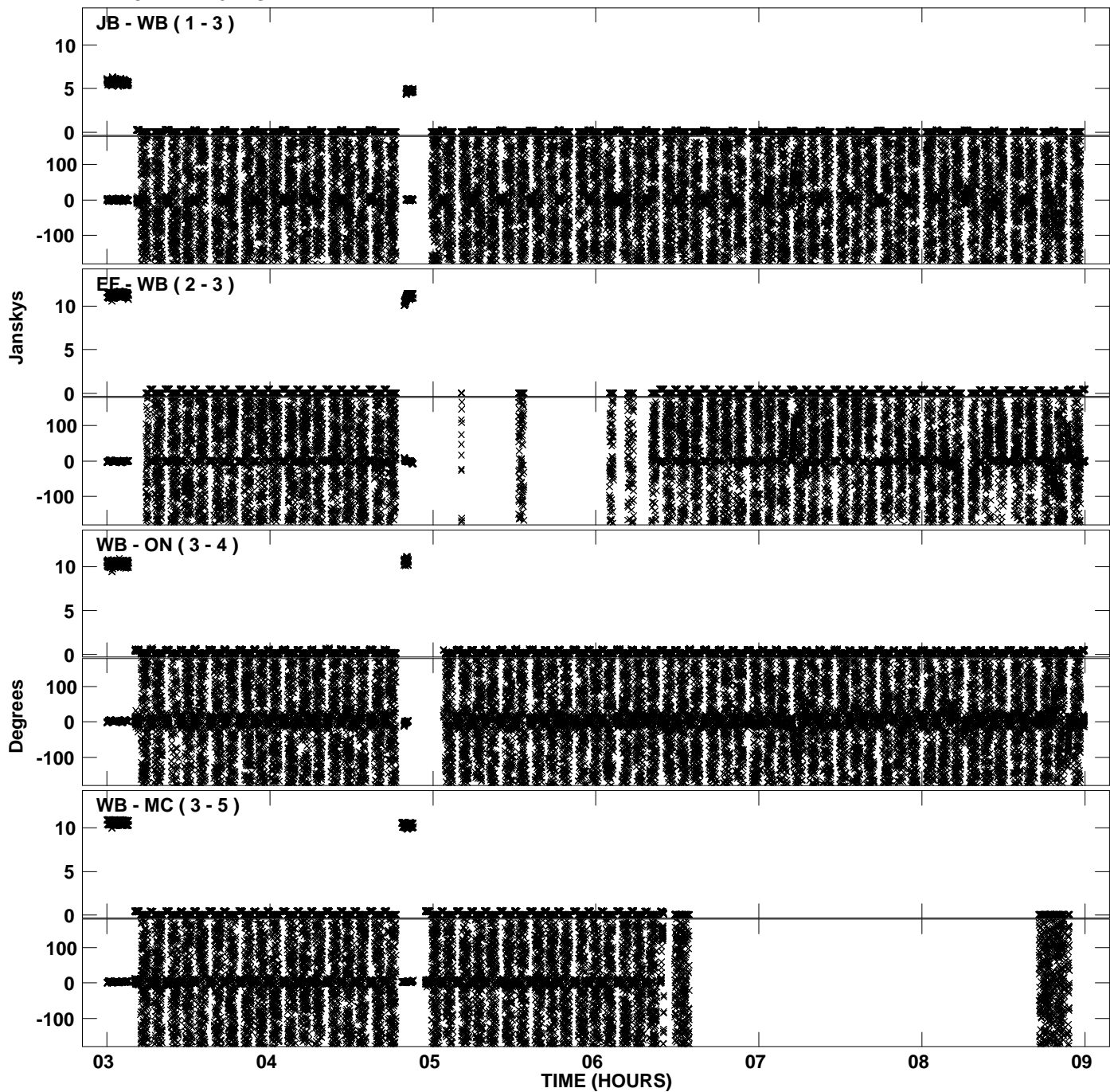
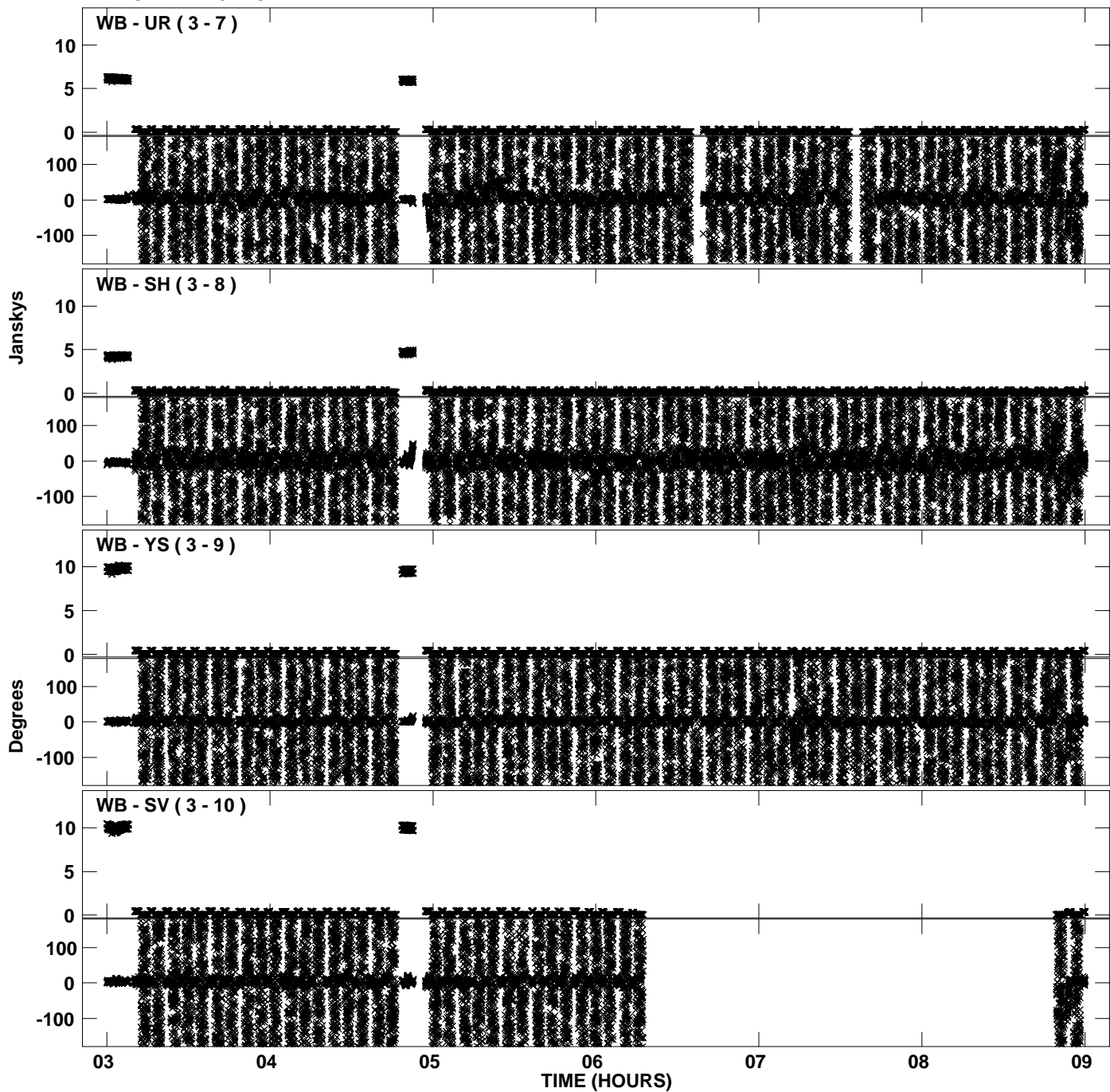


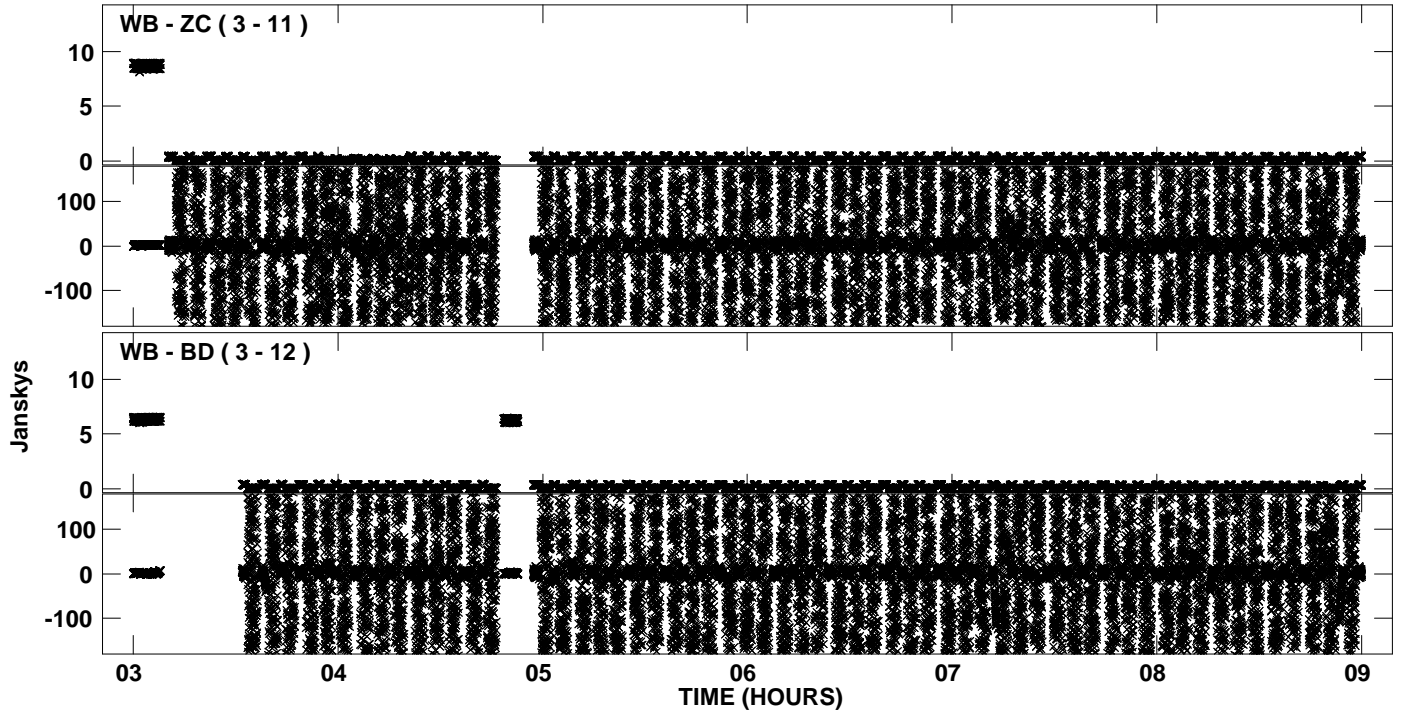
Plot file version 1 created 18-FEB-2013 15:40:55
Amplitude and Phase vs Time for EP075A 1.UVDATA.1 Vect aver. CL # 3
IF 1 CHAN 1 - 32 STK LL



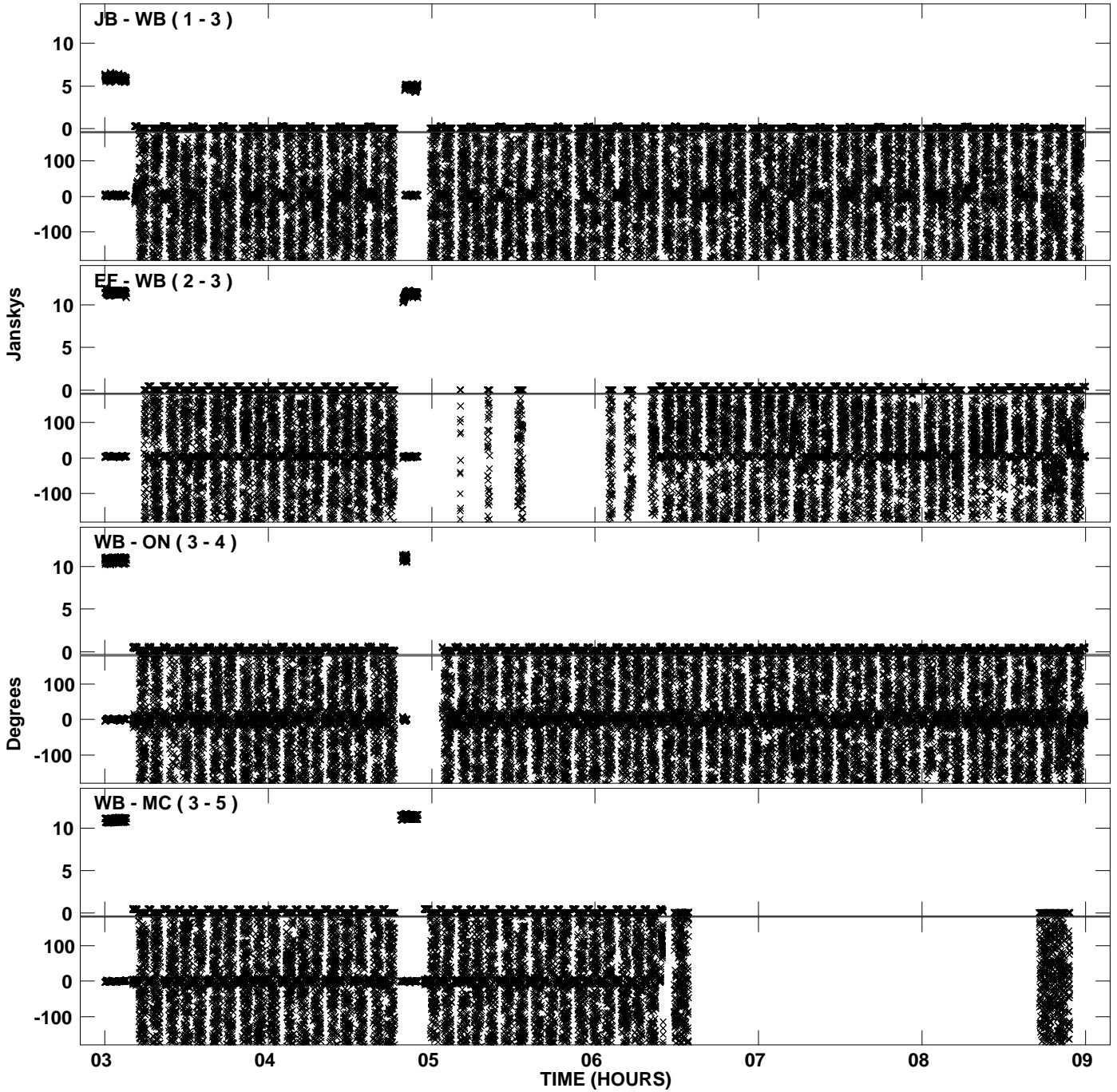
Plot file version 2 created 18-FEB-2013 15:40:55
Amplitude andPhase vs Time for EP075A 1.UVDATA.1 Vect aver. CL # 3
IF 1 CHAN 1 - 32 STK LL



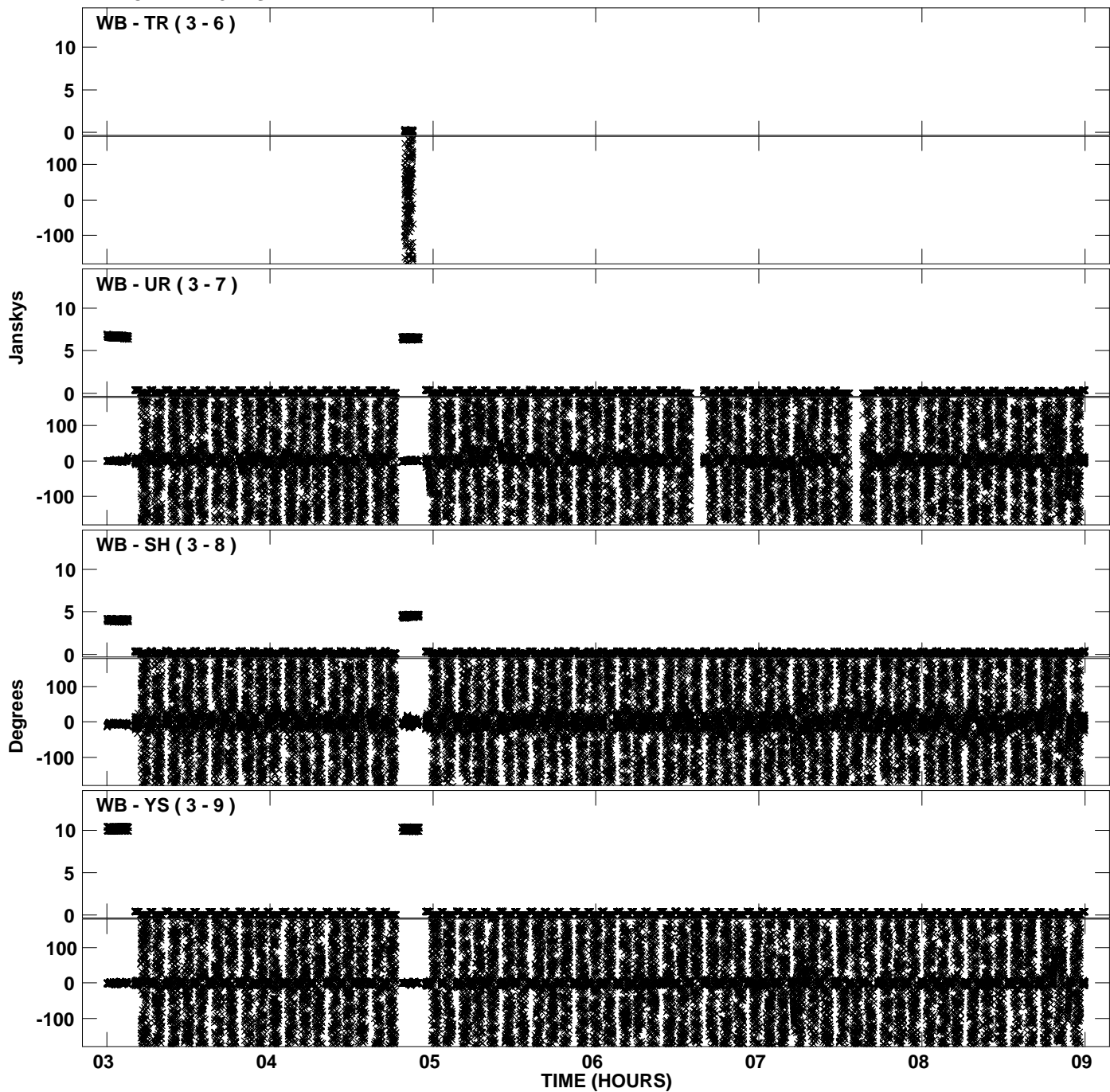
Plot file version 3 created 18-FEB-2013 15:40:55
Amplitude andPhase vs Time for EP075A 1.UVDATA.1 Vect aver. CL # 3
IF 1 CHAN 1 - 32 STK LL



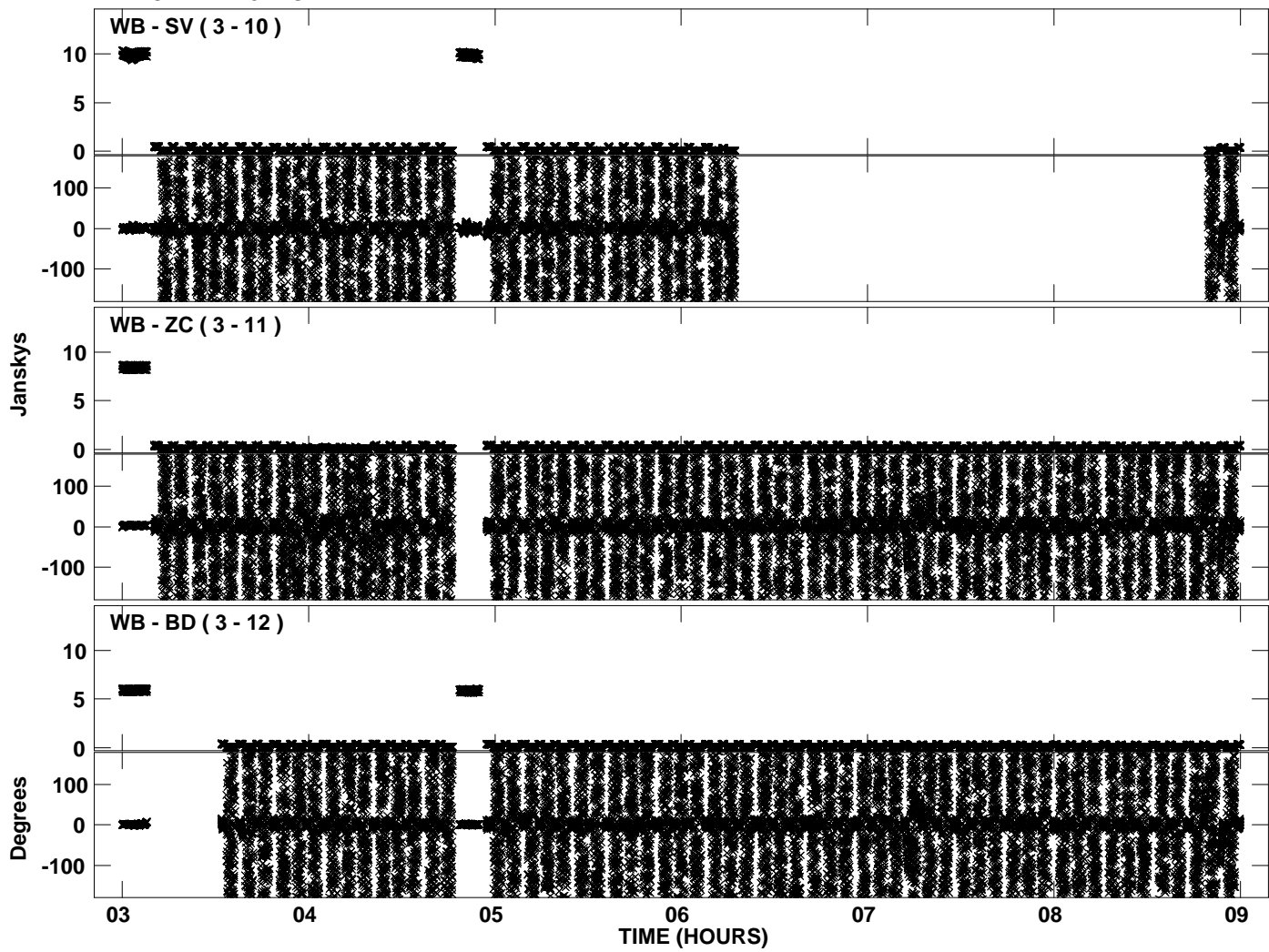
PLot file version 4 created 18-FEB-2013 15:41:05
Amplitude andPhase vs Time for EP075A 1.UVDATA.1 Vect aver. CL # 3
IF 2 CHAN 1 - 32 STK LL



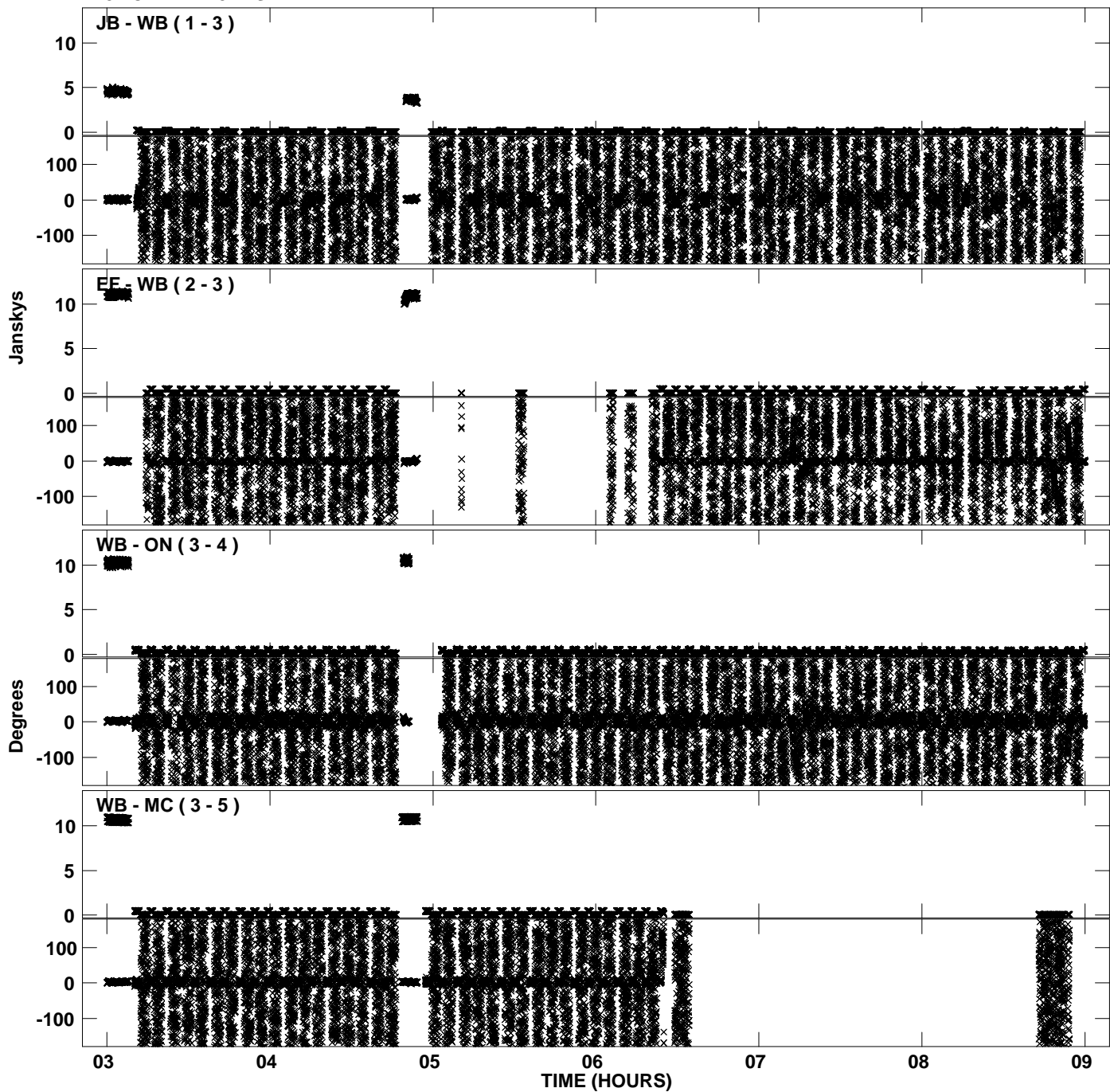
Plot file version 5 created 18-FEB-2013 15:41:05
Amplitude andPhase vs Time for EP075A 1.UVDATA.1 Vect aver. CL # 3
IF 2 CHAN 1 - 32 STK LL



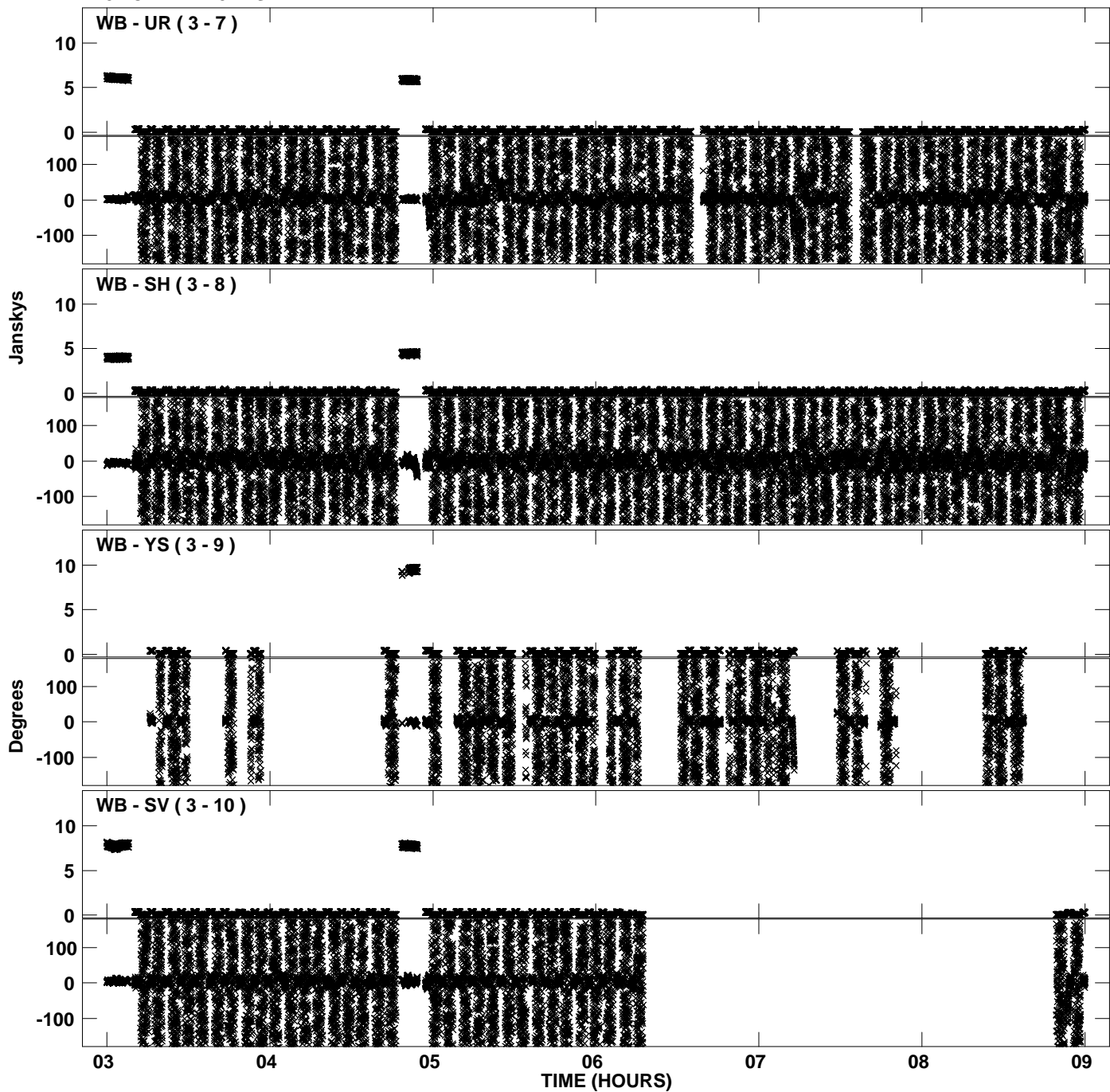
PLot file version 6 created 18-FEB-2013 15:41:05
Amplitude andPhase vs Time for EP075A 1.UVDATA.1 Vect aver. CL # 3
IF 2 CHAN 1 - 32 STK LL



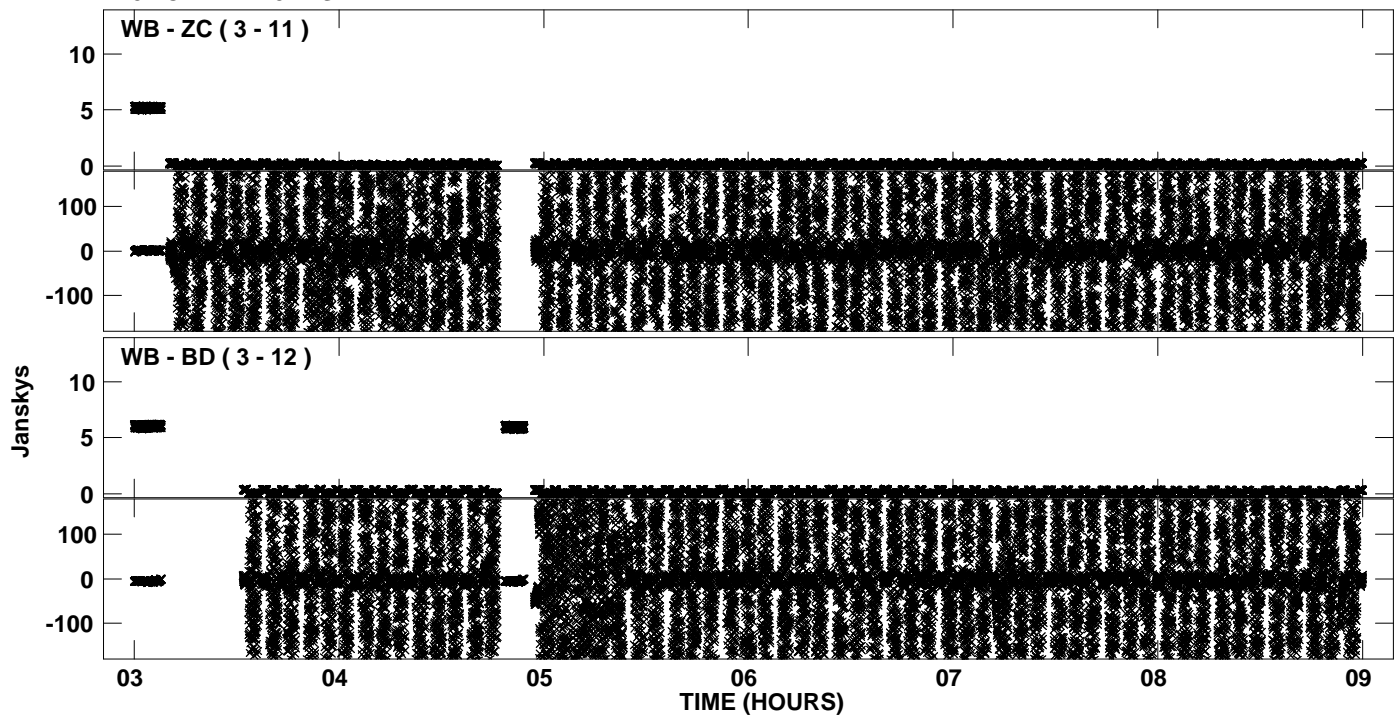
Plot file version 7 created 18-FEB-2013 15:41:15
Amplitude andPhase vs Time for EP075A 1.UVDATA.1 Vect aver. CL # 3
IF 3 CHAN 1 - 32 STK LL



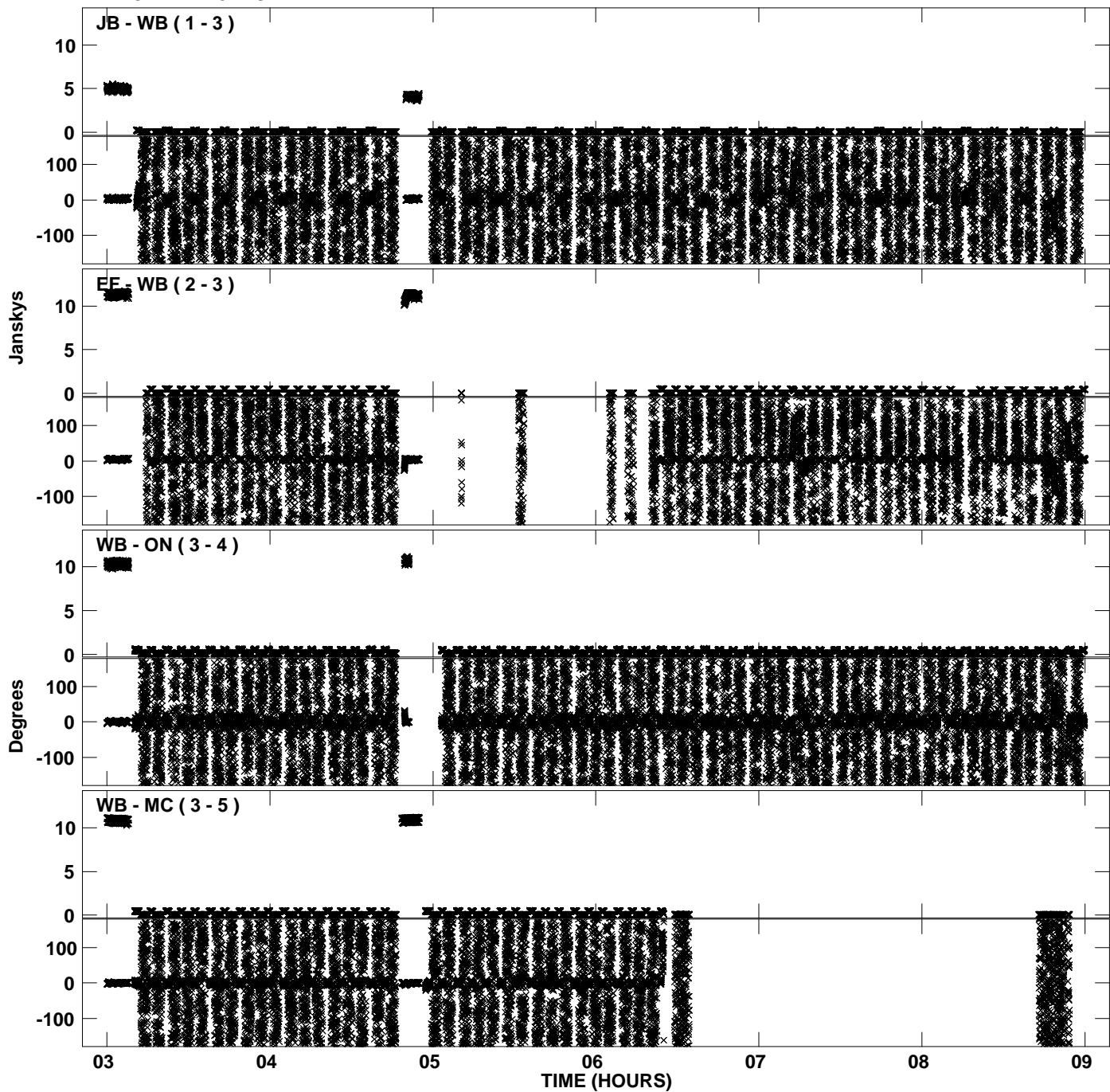
Plot file version 8 created 18-FEB-2013 15:41:16
Amplitude andPhase vs Time for EP075A 1.UVDATA.1 Vect aver. CL # 3
IF 3 CHAN 1 - 32 STK LL



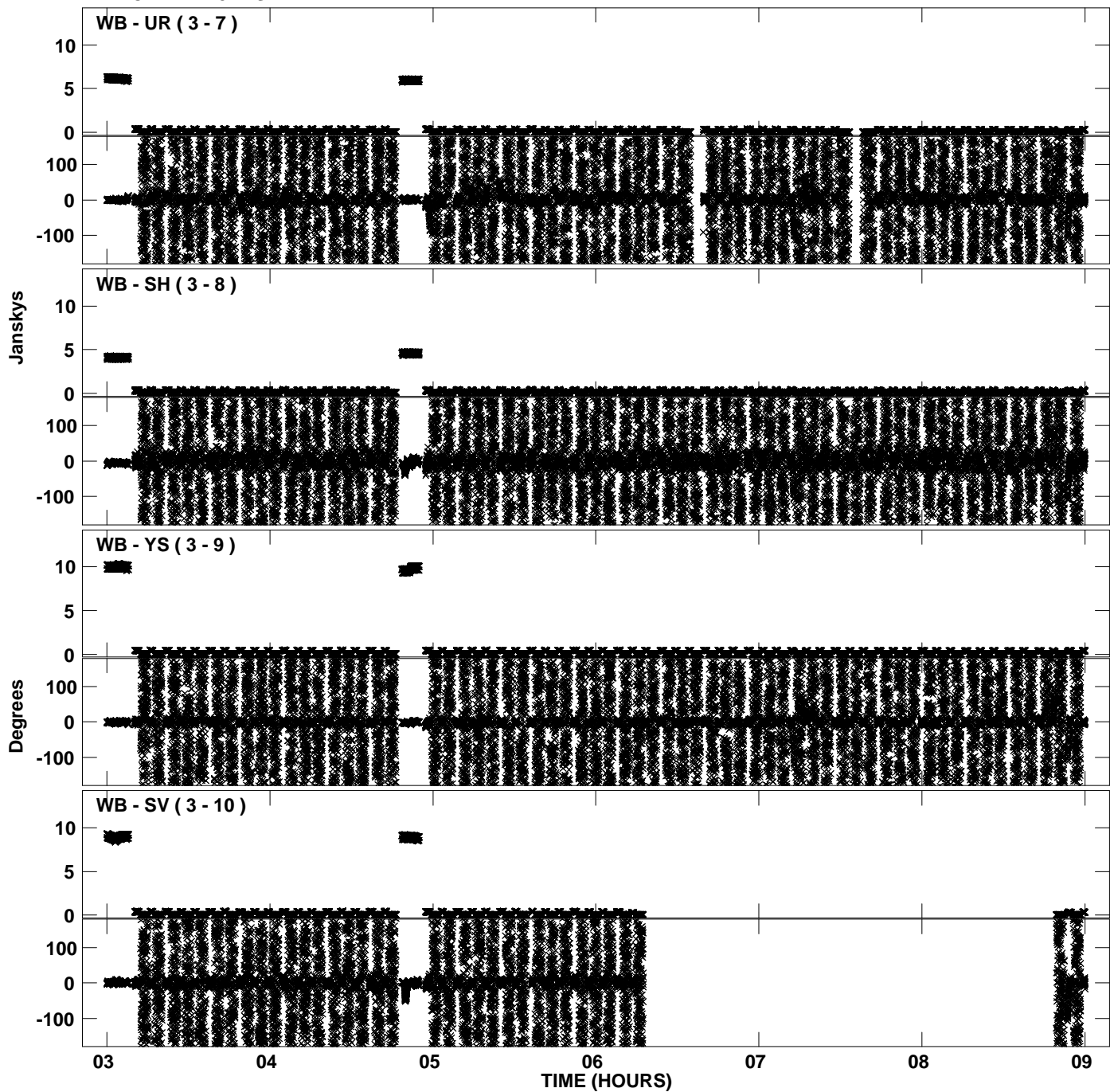
PLot file version 9 created 18-FEB-2013 15:41:16
Amplitude andPhase vs Time for EP075A 1.UVDATA.1 Vect aver. CL # 3
IF 3 CHAN 1 - 32 STK LL



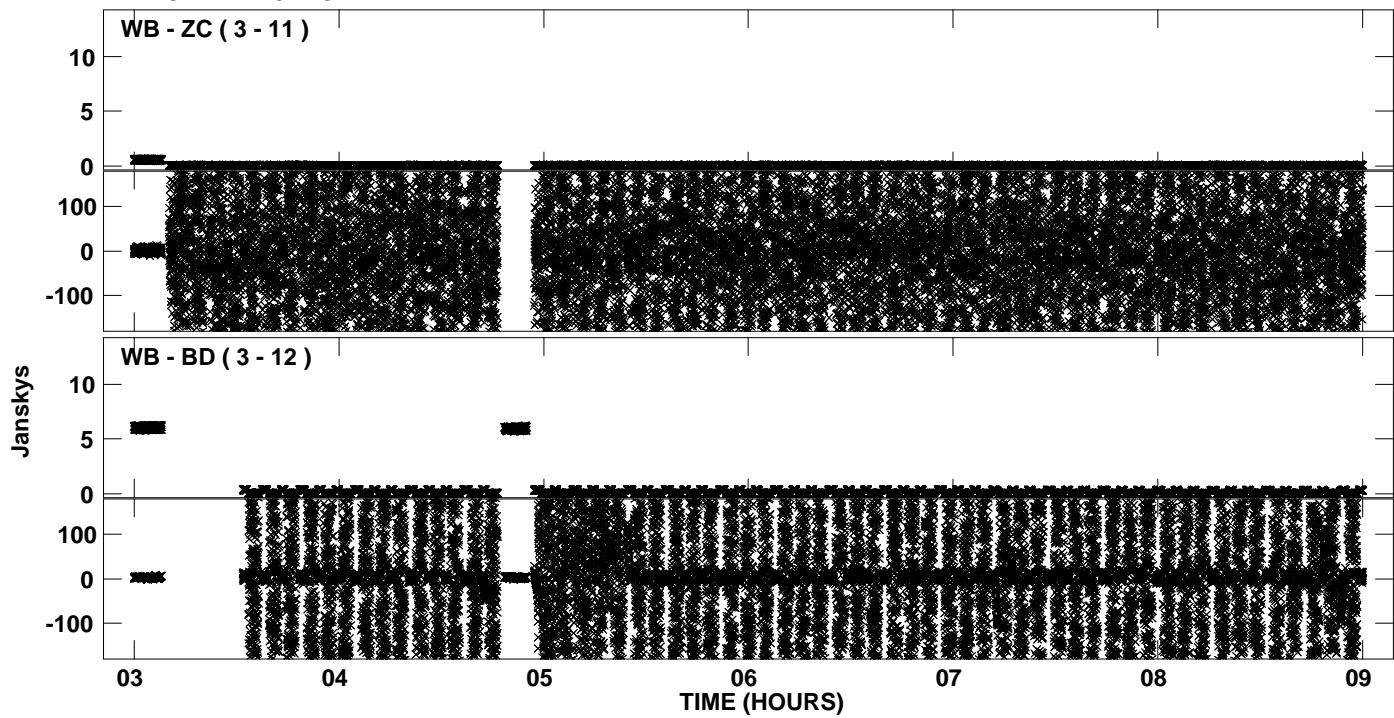
Plot file version 10 created 18-FEB-2013 15:41:26
Amplitude andPhase vs Time for EP075A 1.UVDATA.1 Vect aver. CL # 3
IF 4 CHAN 1 - 32 STK LL



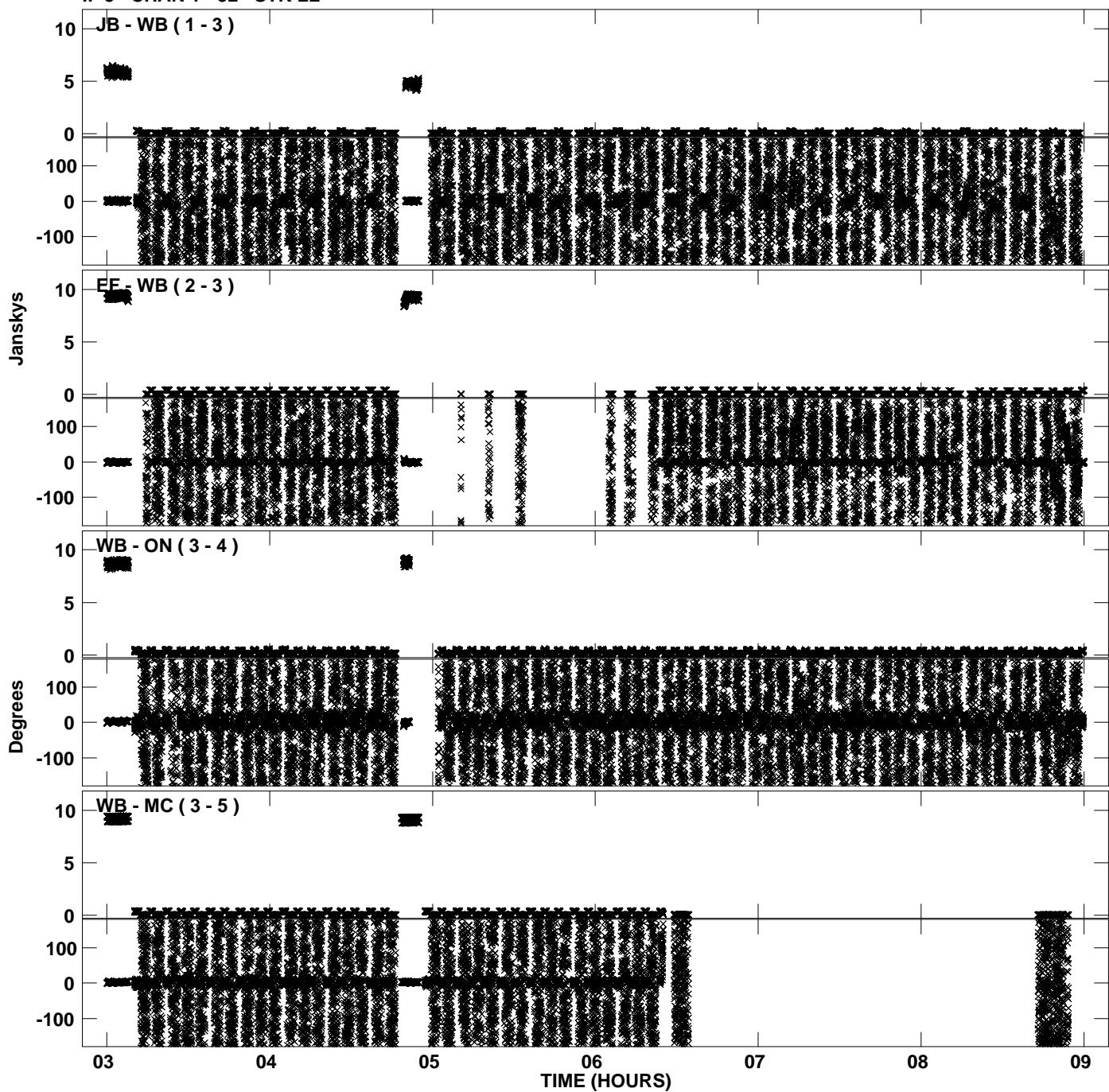
PLot file version 11 created 18-FEB-2013 15:41:26
Amplitude andPhase vs Time for EP075A 1.UVDATA.1 Vect aver. CL # 3
IF 4 CHAN 1 - 32 STK LL



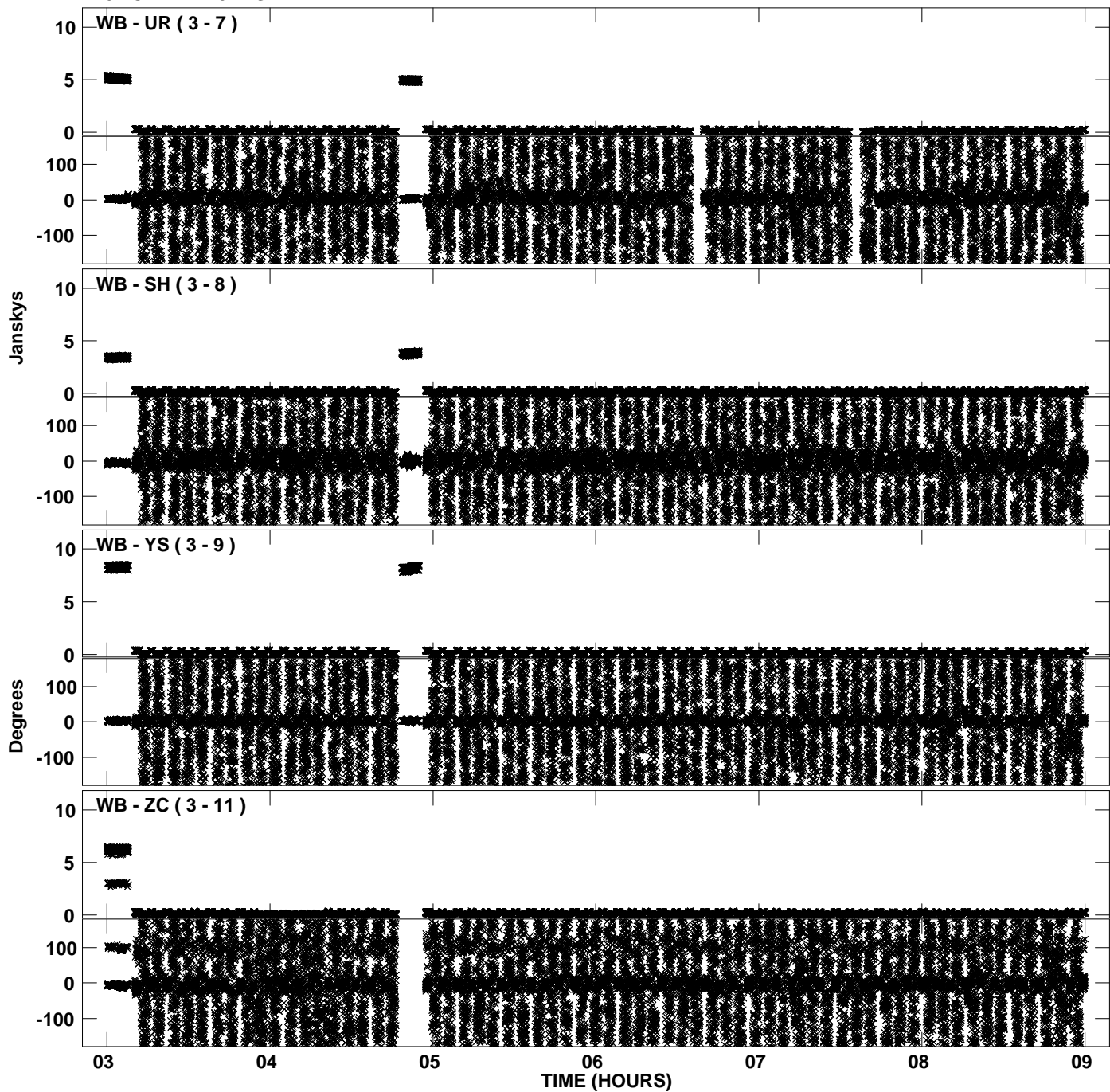
PLot file version 12 created 18-FEB-2013 15:41:26
Amplitude andPhase vs Time for EP075A 1.UVDATA.1 Vect aver. CL # 3
IF 4 CHAN 1 - 32 STK LL



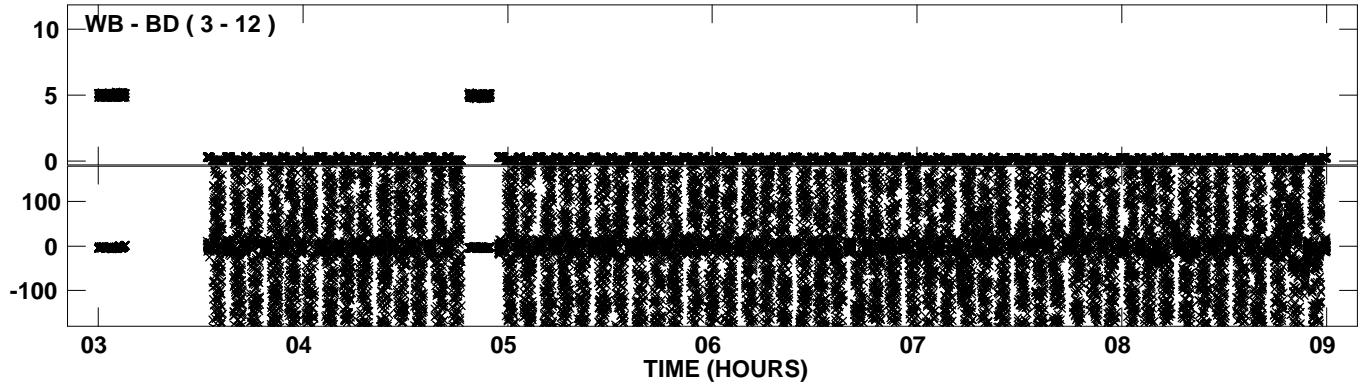
Plot file version 13 created 18-FEB-2013 15:41:36
Amplitude andPhase vs Time for EP075A 1.UVDATA.1 Vect aver. CL # 3
IF 5 CHAN 1 - 32 STK LL



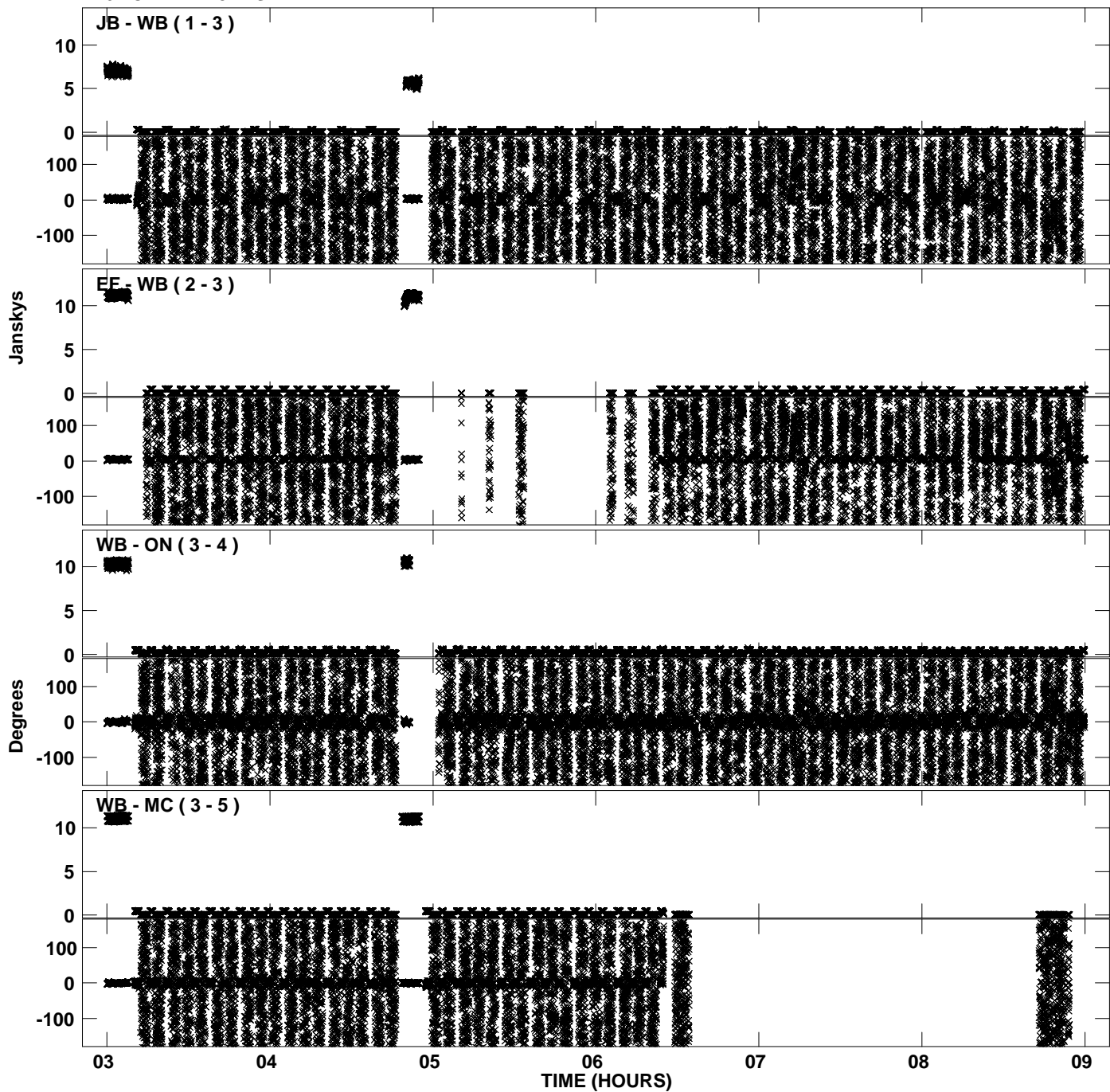
PLot file version 14 created 18-FEB-2013 15:41:37
Amplitude andPhase vs Time for EP075A 1.UVDATA.1 Vect aver. CL # 3
IF 5 CHAN 1 - 32 STK LL



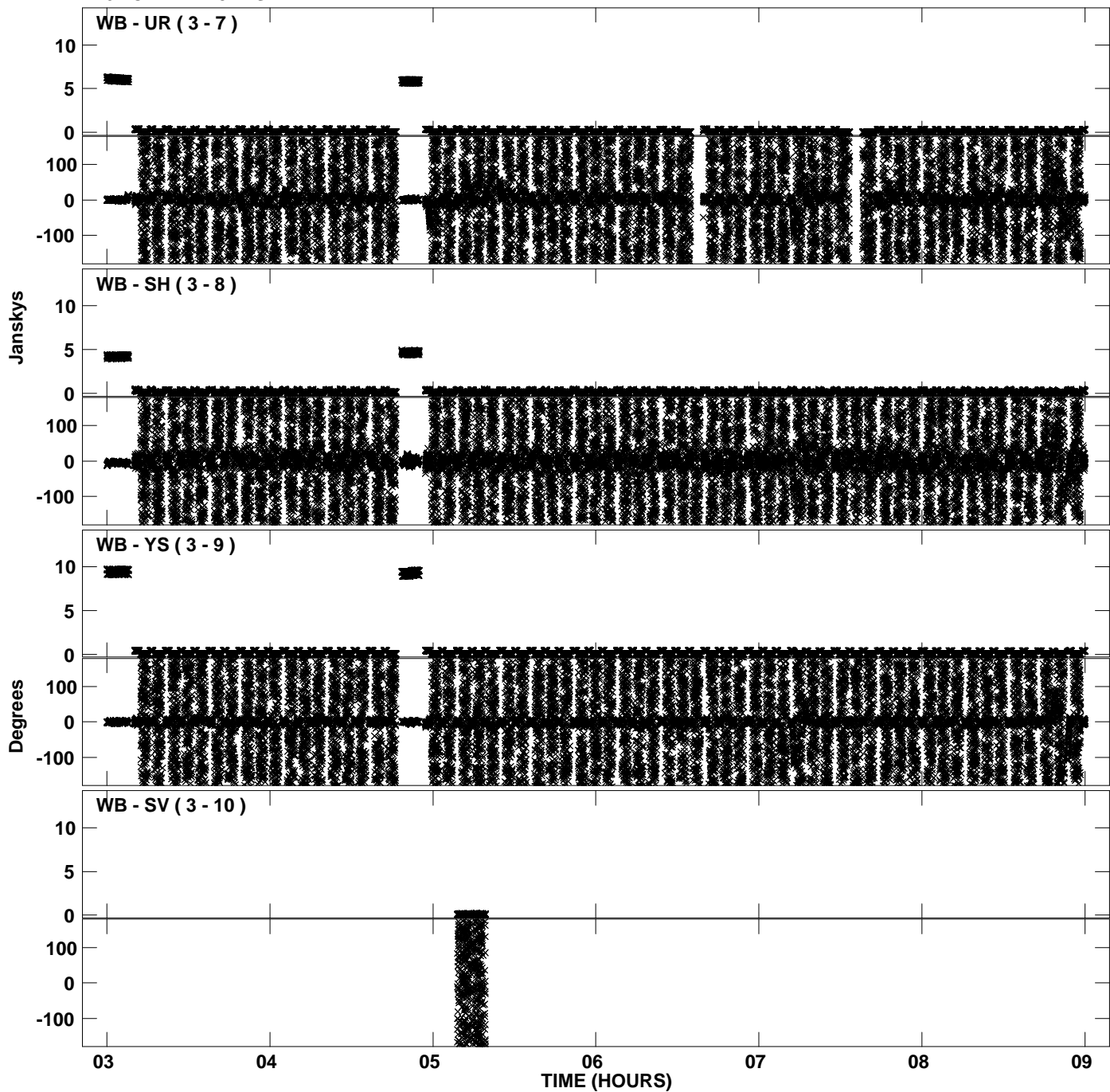
PLot file version 15 created 18-FEB-2013 15:41:37
Amplitude andPhase vs Time for EP075A 1.UVDATA.1 Vect aver. CL # 3
IF 5 CHAN 1 - 32 STK LL



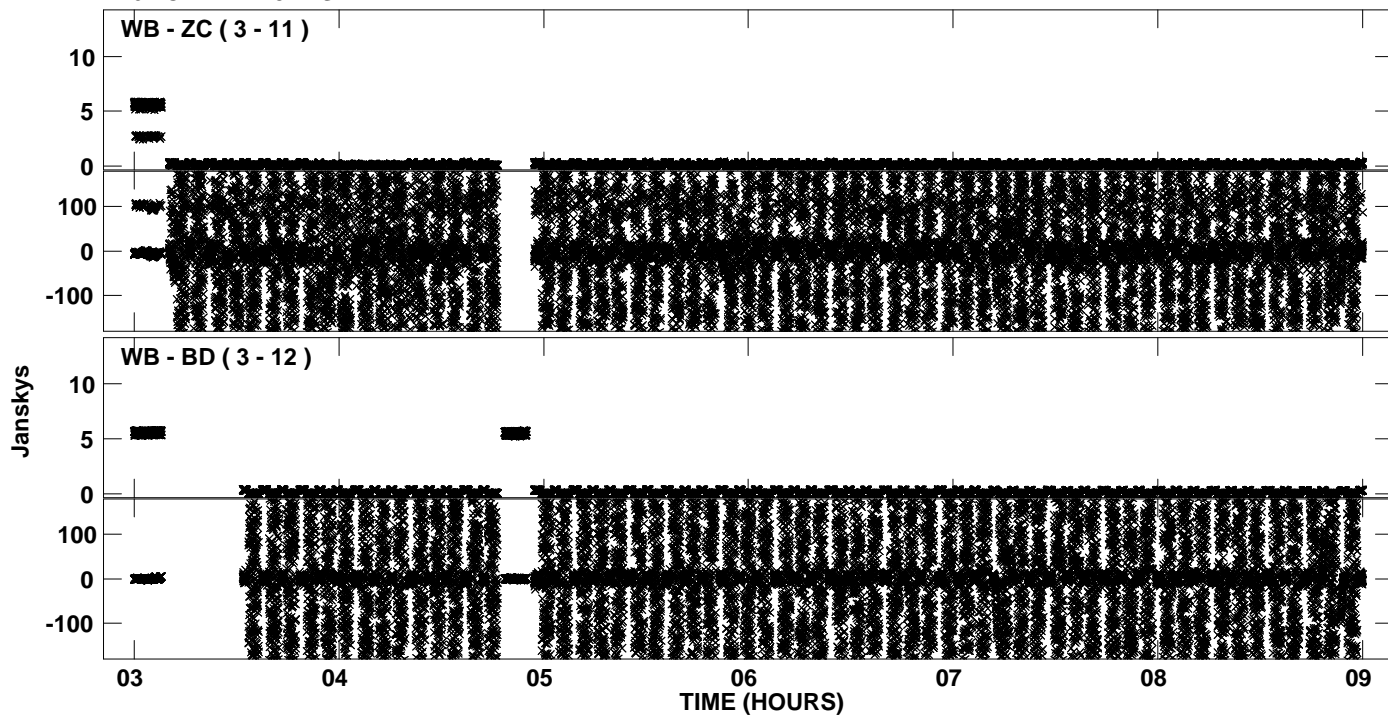
PLot file version 16 created 18-FEB-2013 15:41:47
Amplitude andPhase vs Time for EP075A 1.UVDATA.1 Vect aver. CL # 3
IF 6 CHAN 1 - 32 STK LL



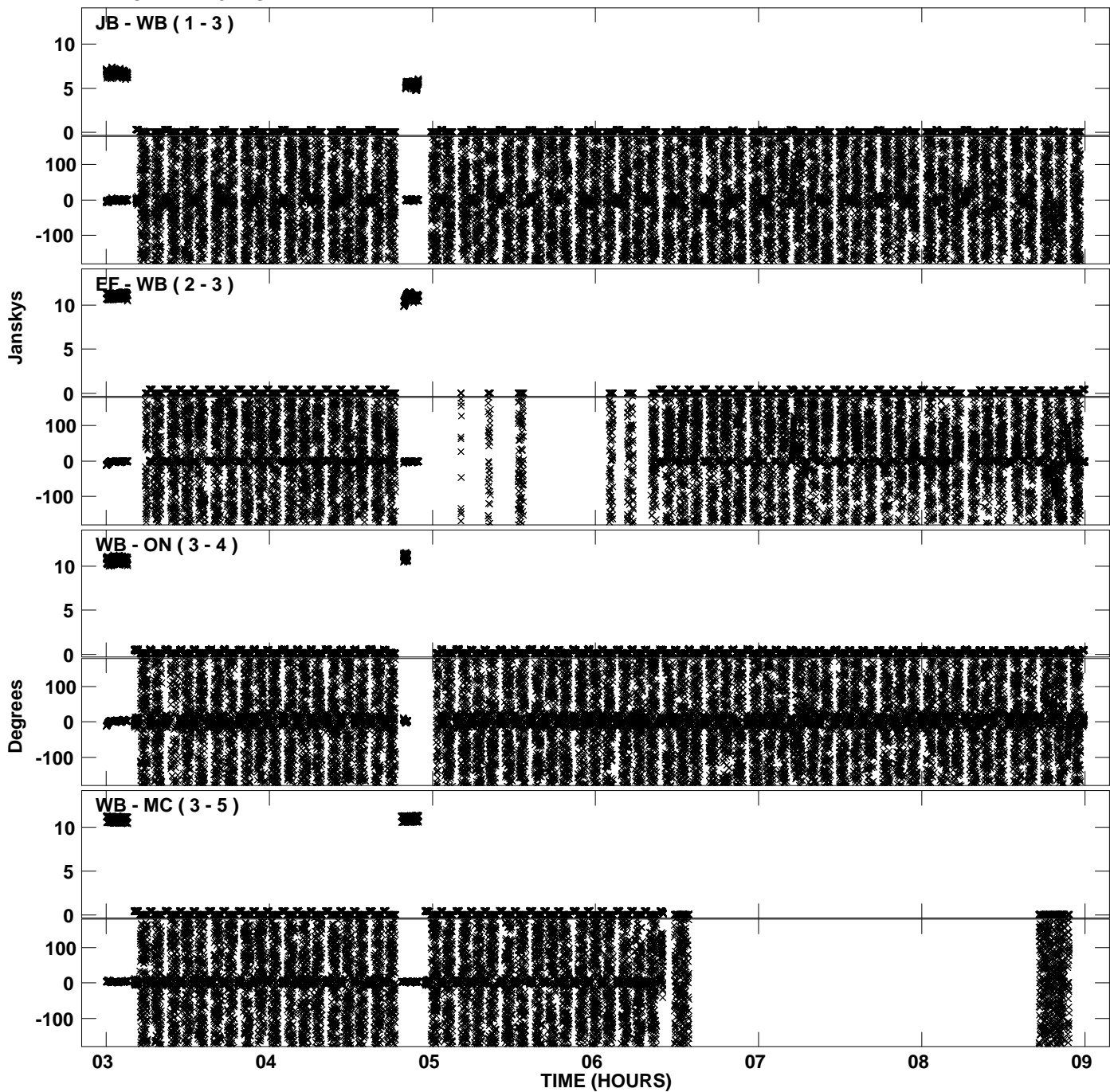
PLot file version 17 created 18-FEB-2013 15:41:47
Amplitude andPhase vs Time for EP075A 1.UVDATA.1 Vect aver. CL # 3
IF 6 CHAN 1 - 32 STK LL



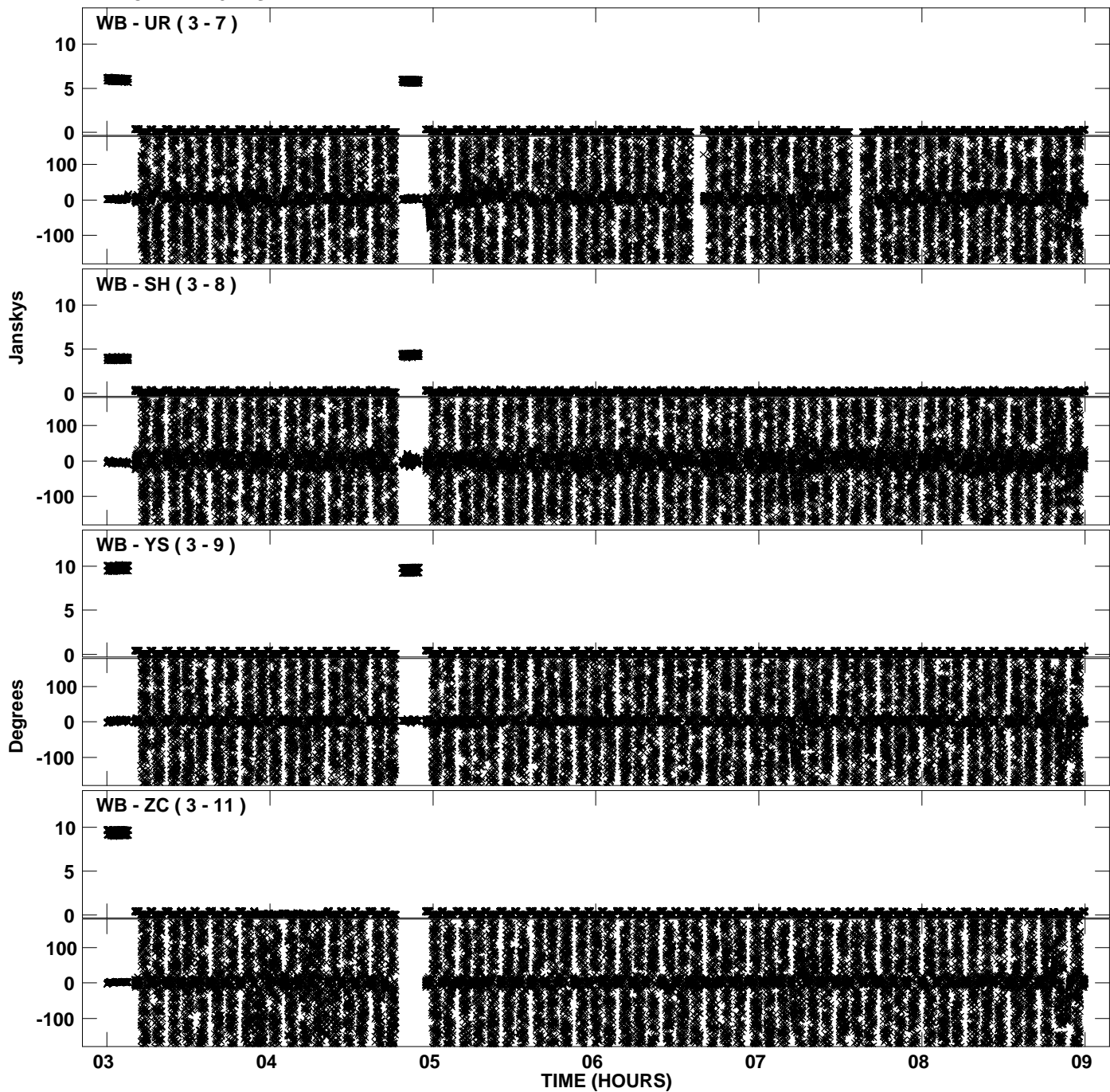
Plot file version 18 created 18-FEB-2013 15:41:47
Amplitude andPhase vs Time for EP075A 1.UVDATA.1 Vect aver. CL # 3
IF 6 CHAN 1 - 32 STK LL



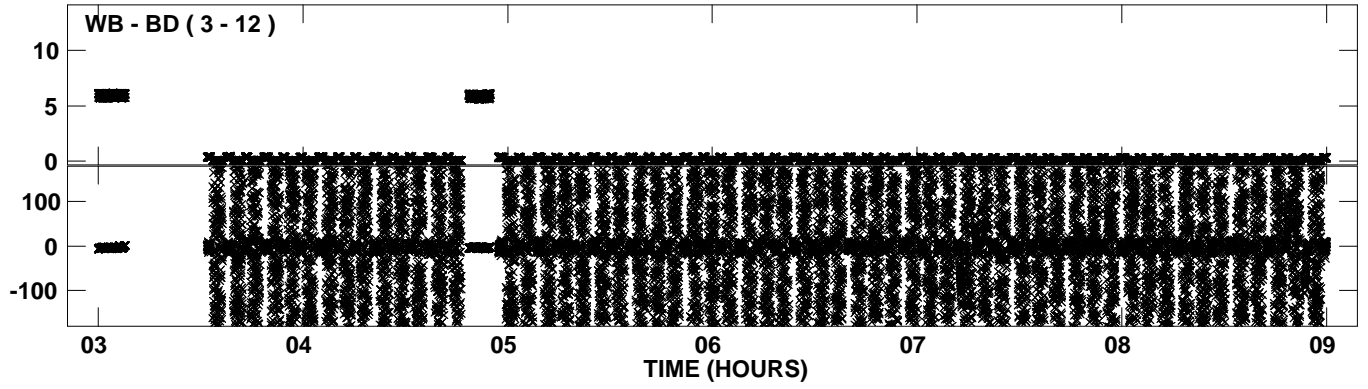
Plot file version 19 created 18-FEB-2013 15:41:57
Amplitude andPhase vs Time for EP075A 1.UVDATA.1 Vect aver. CL # 3
IF 7 CHAN 1 - 32 STK LL



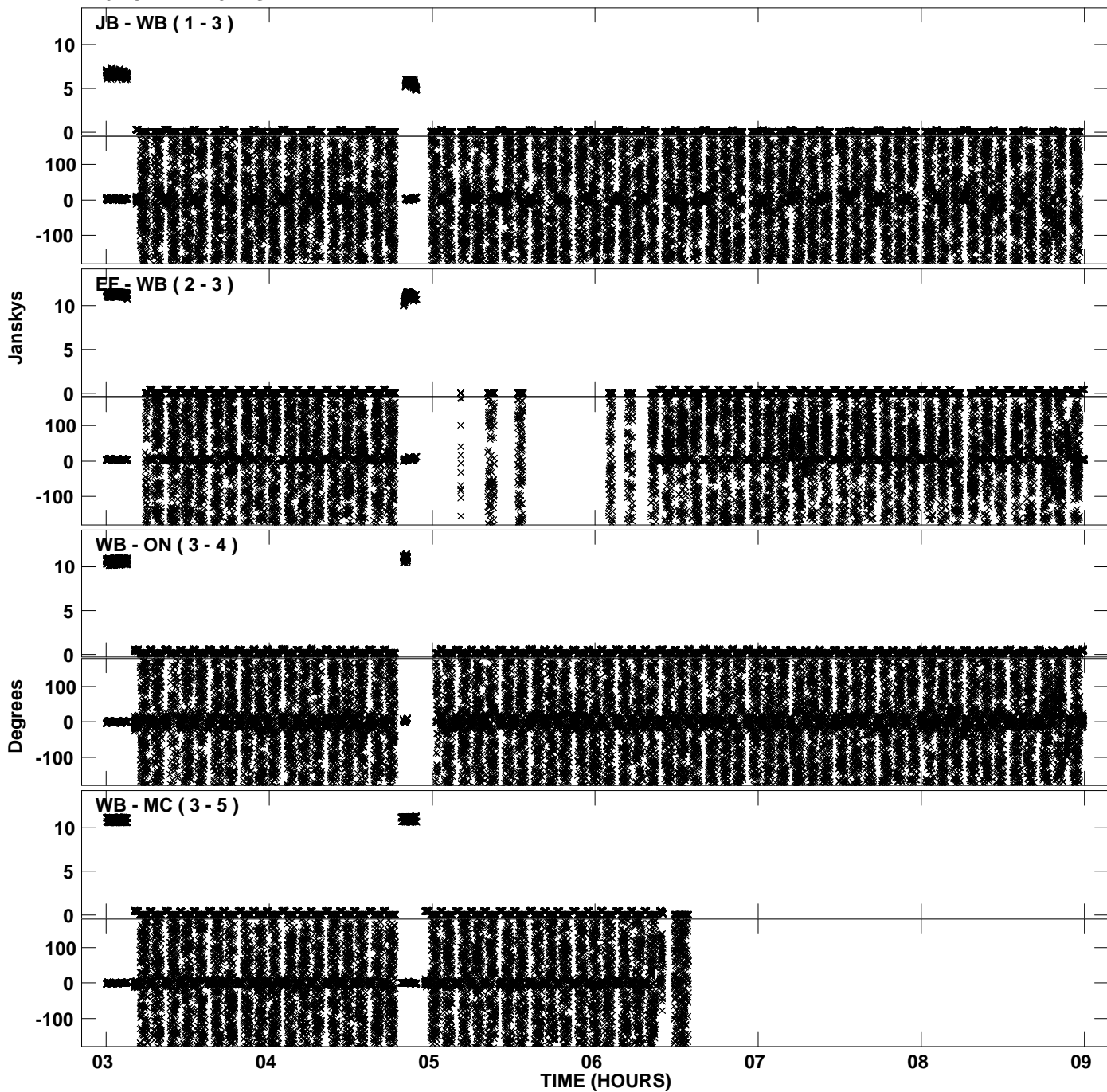
PLot file version 20 created 18-FEB-2013 15:41:57
Amplitude andPhase vs Time for EP075A 1.UVDATA.1 Vect aver. CL # 3
IF 7 CHAN 1 - 32 STK LL



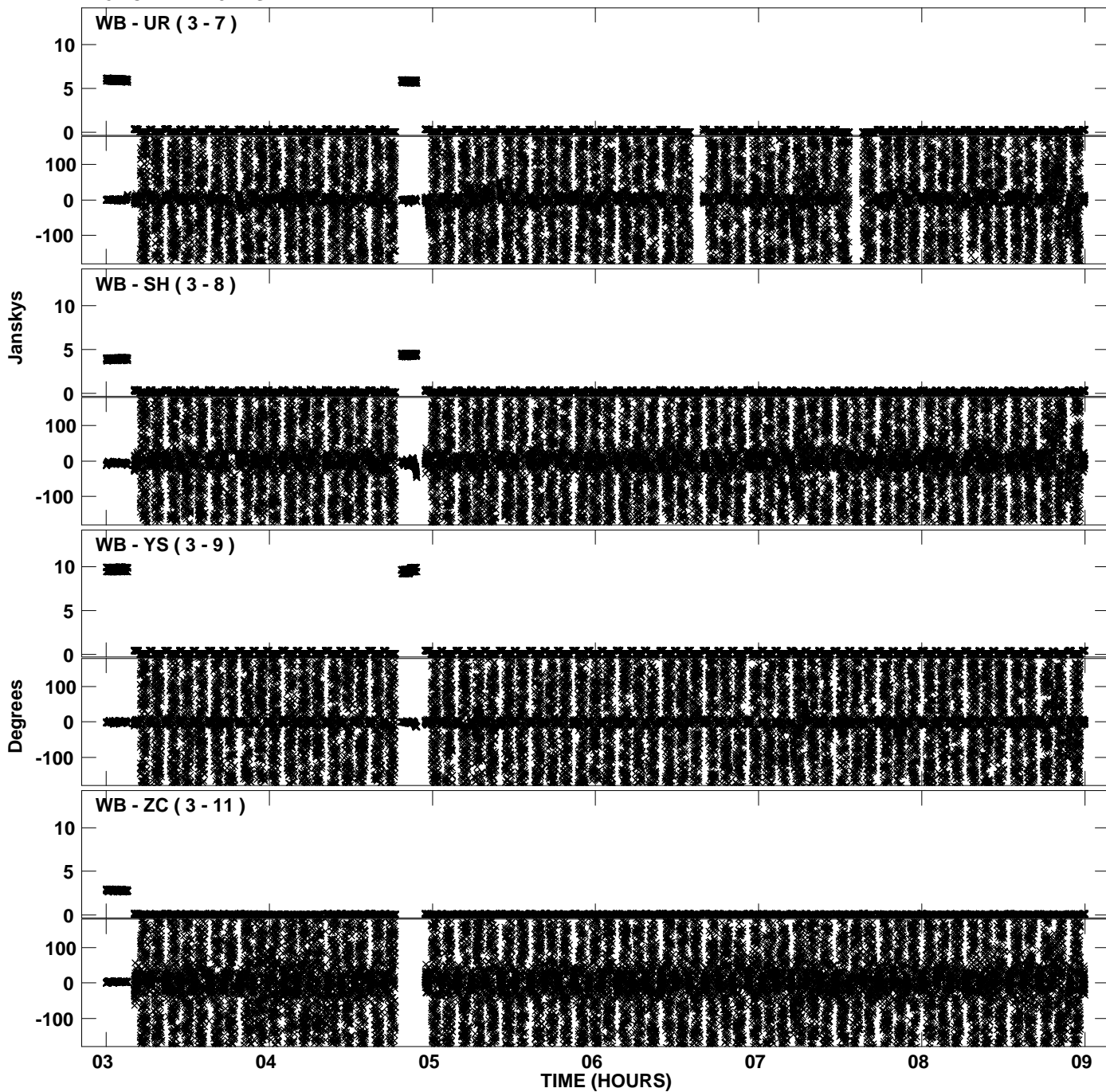
Plot file version 21 created 18-FEB-2013 15:41:58
Amplitude andPhase vs Time for EP075A 1.UVDATA.1 Vect aver. CL # 3
IF 7 CHAN 1 - 32 STK LL



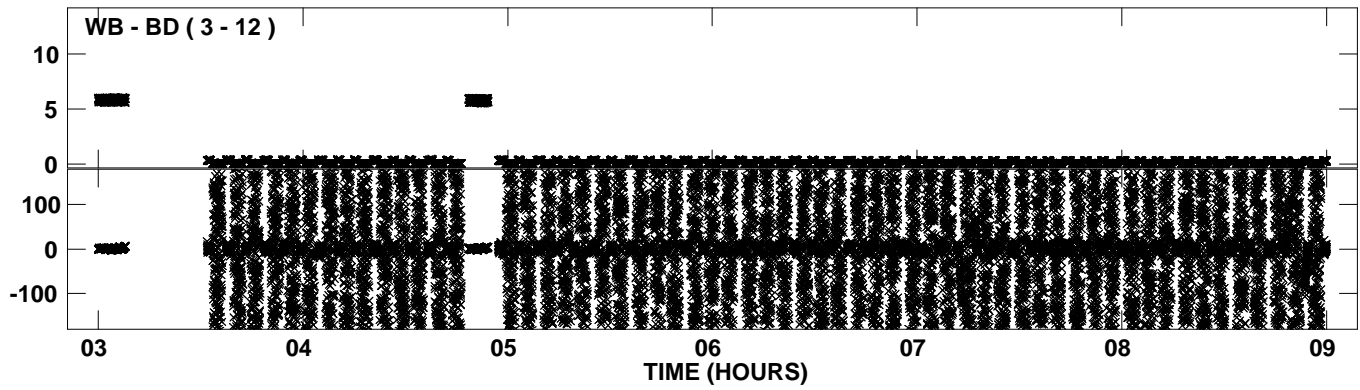
Plot file version 22 created 18-FEB-2013 15:42:08
Amplitude andPhase vs Time for EP075A 1.UVDATA.1 Vect aver. CL # 3
IF 8 CHAN 1 - 32 STK LL



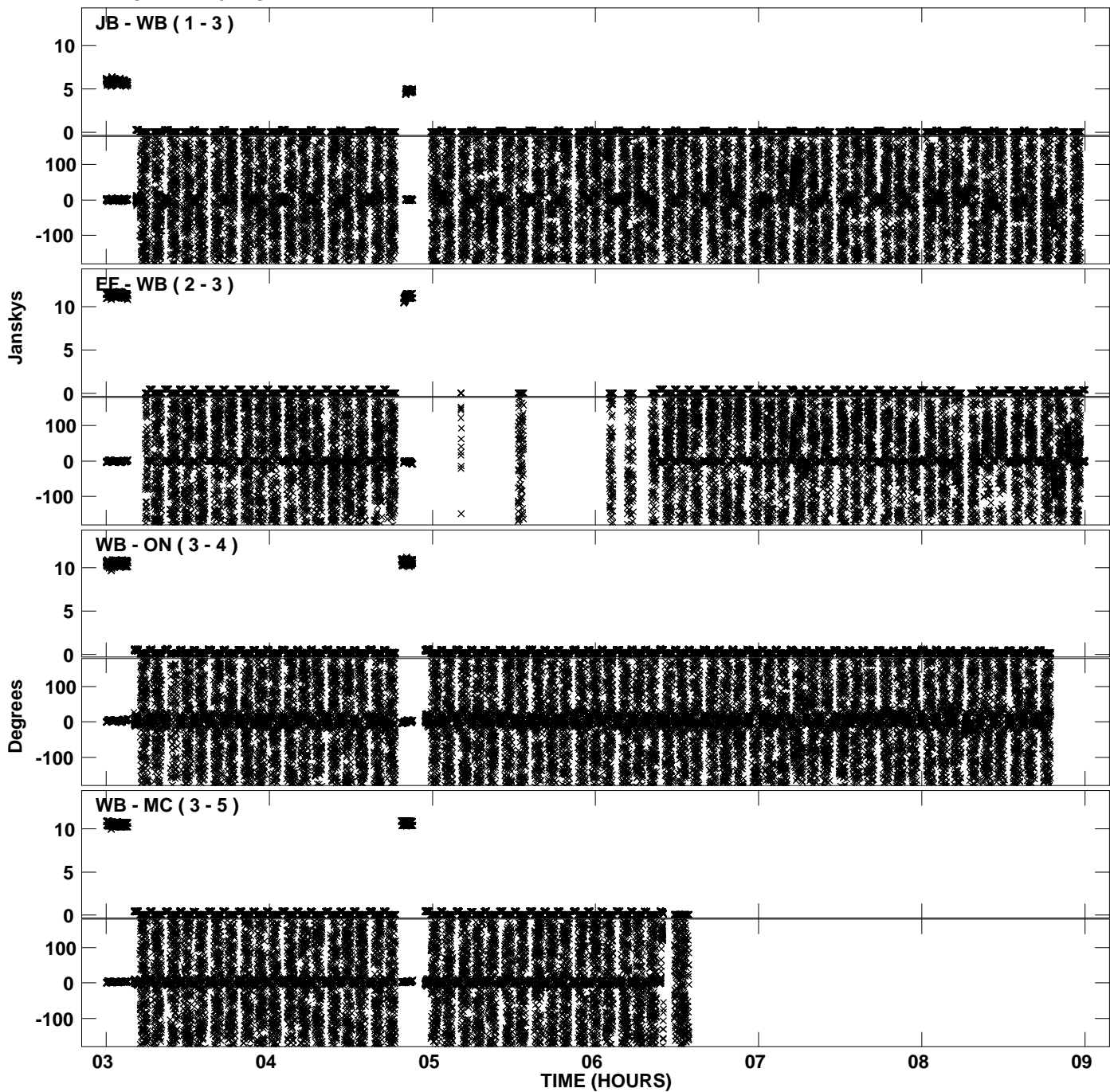
PLot file version 23 created 18-FEB-2013 15:42:08
Amplitude andPhase vs Time for EP075A 1.UVDATA.1 Vect aver. CL # 3
IF 8 CHAN 1 - 32 STK LL



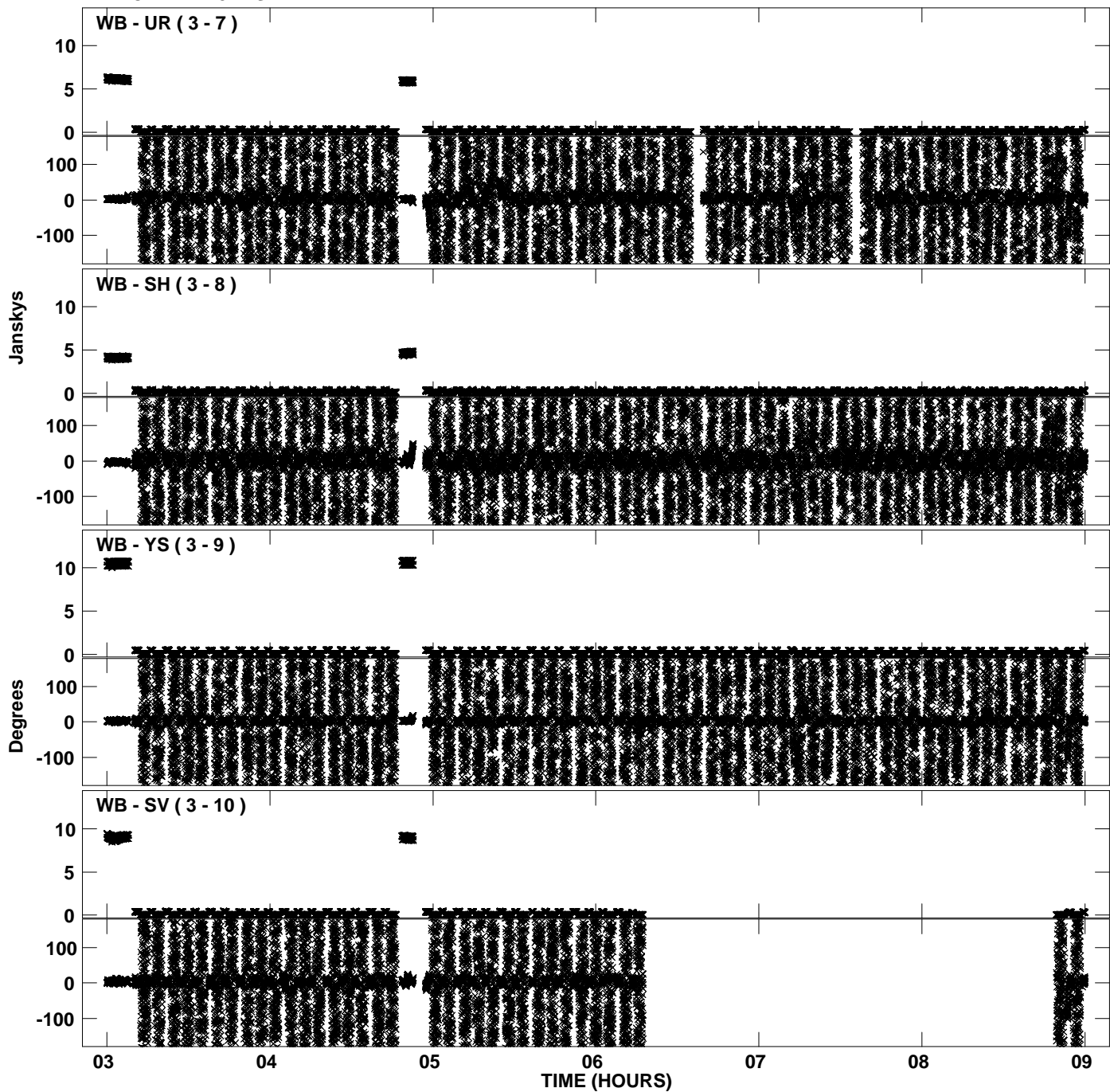
Plot file version 24 created 18-FEB-2013 15:42:08
Amplitude andPhase vs Time for EP075A 1.UVDATA.1 Vect aver. CL # 3
IF 8 CHAN 1 - 32 STK LL



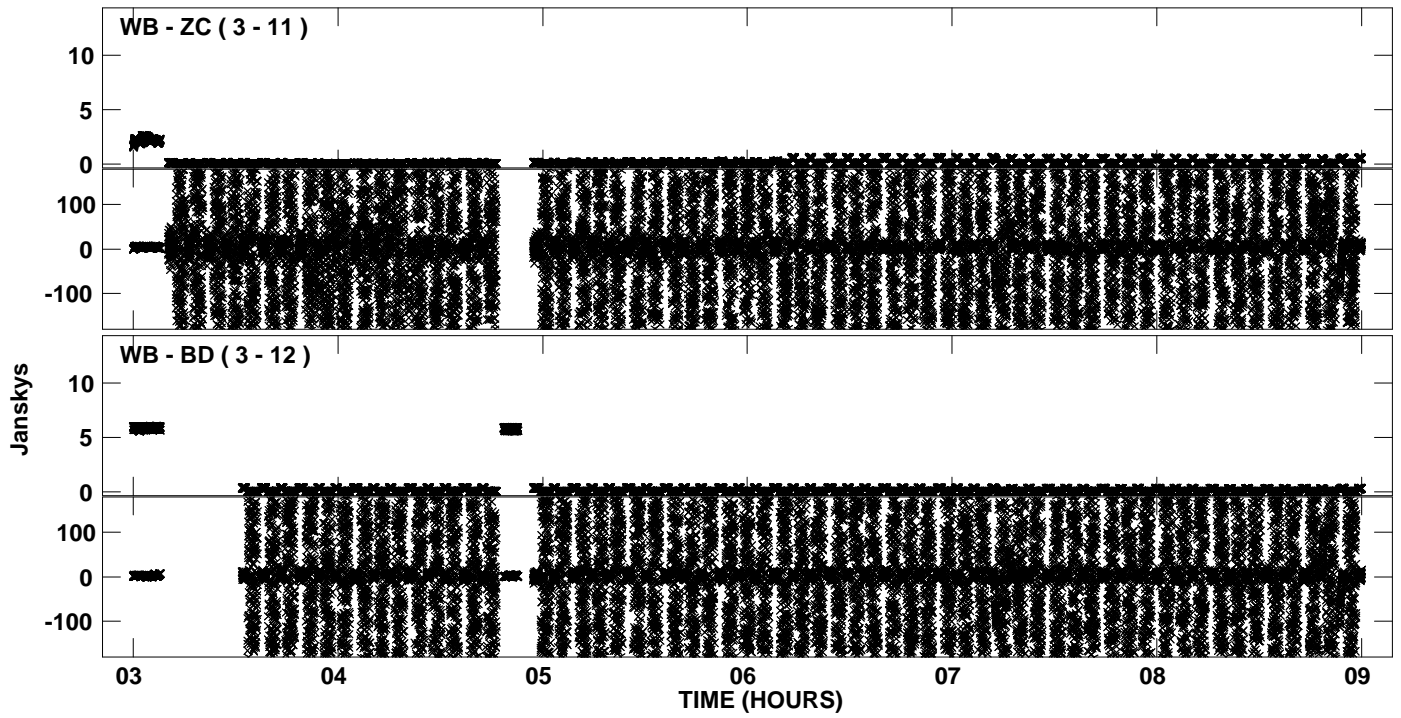
Plot file version 25 created 18-FEB-2013 15:42:18
Amplitude andPhase vs Time for EP075A 1.UVDATA.1 Vect aver. CL # 3
IF 1 CHAN 1 - 32 STK RR



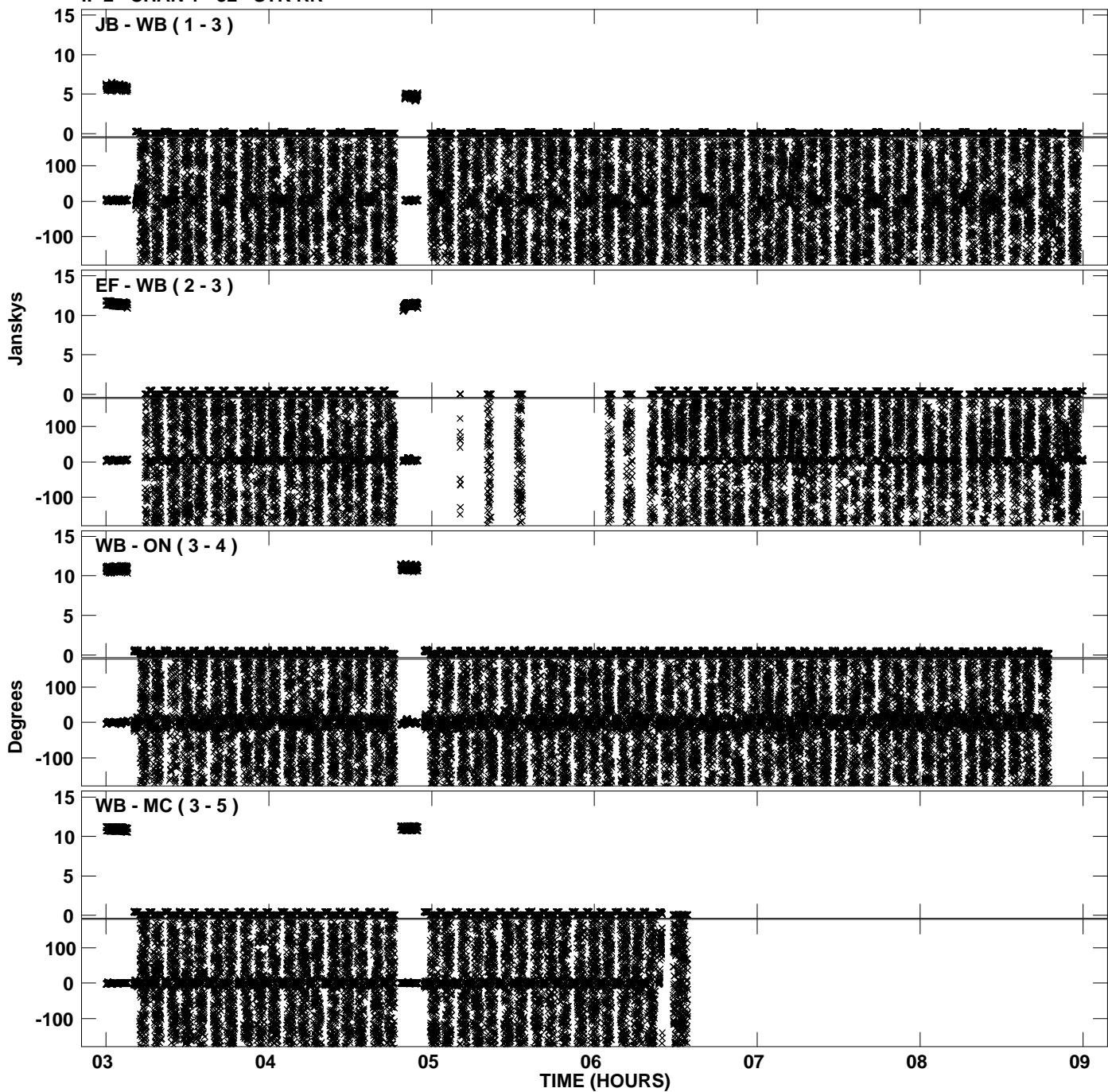
PLot file version 26 created 18-FEB-2013 15:42:18
Amplitude andPhase vs Time for EP075A 1.UVDATA.1 Vect aver. CL # 3
IF 1 CHAN 1 - 32 STK RR



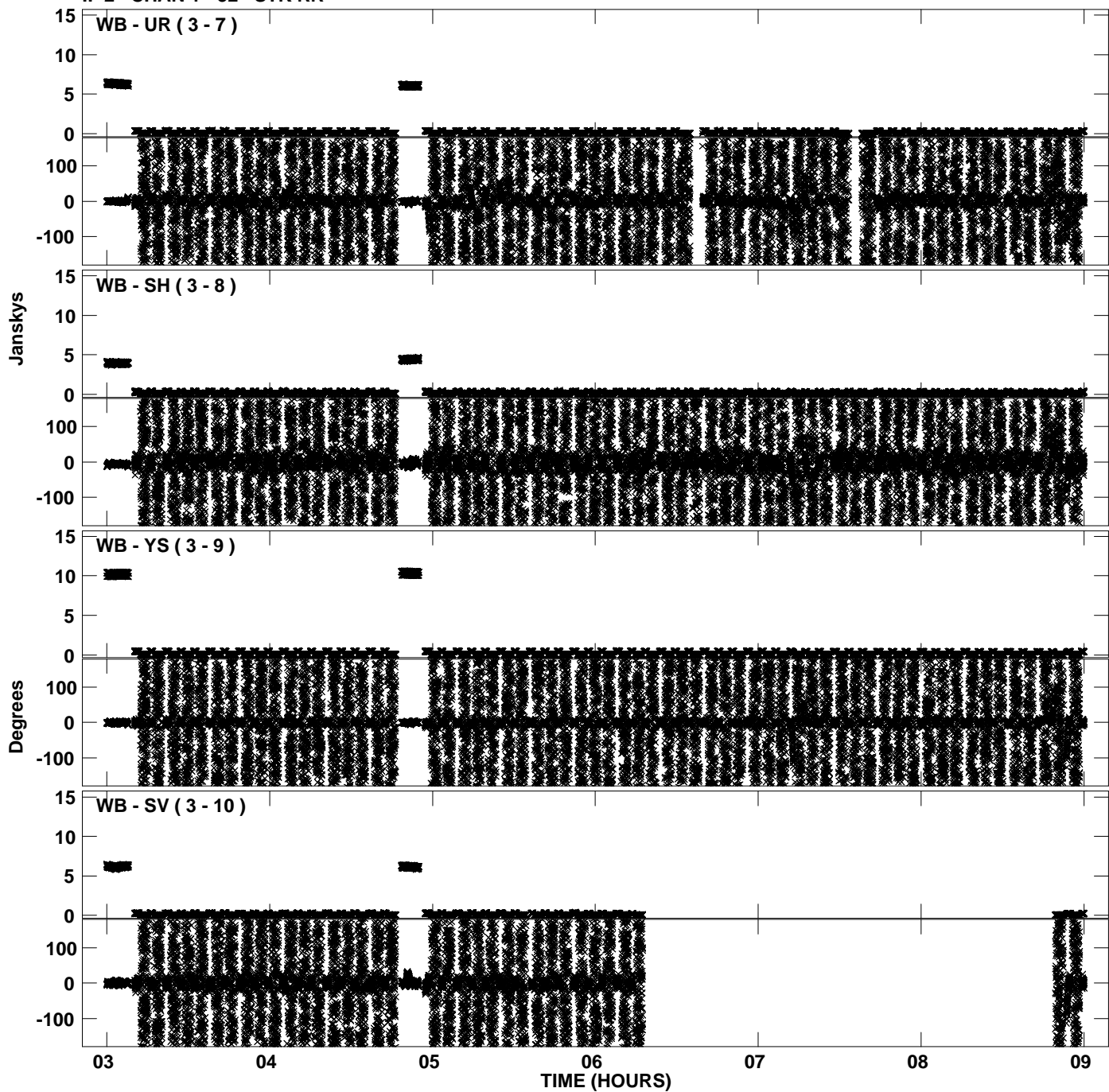
Plot file version 27 created 18-FEB-2013 15:42:18
Amplitude andPhase vs Time for EP075A 1.UVDATA.1 Vect aver. CL # 3
IF 1 CHAN 1 - 32 STK RR



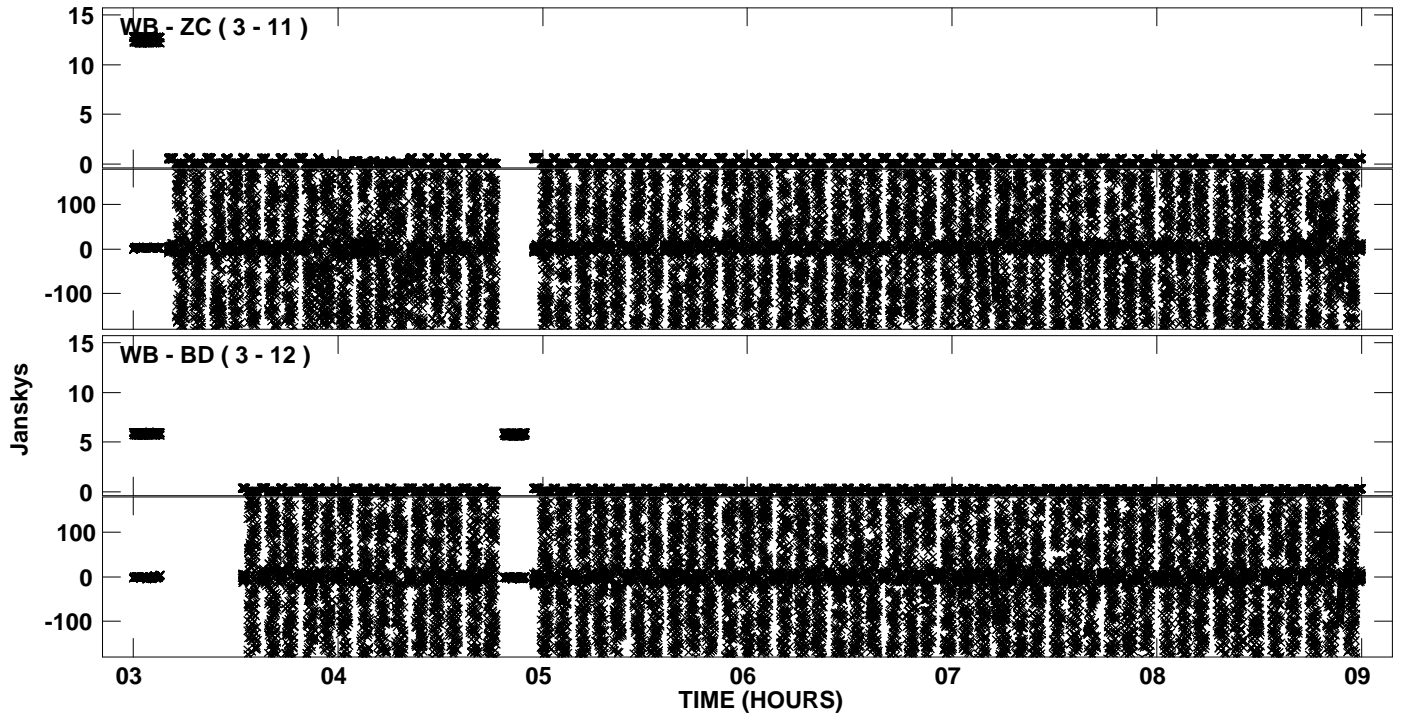
PLot file version 28 created 18-FEB-2013 15:42:28
Amplitude andPhase vs Time for EP075A 1.UVDATA.1 Vect aver. CL # 3
IF 2 CHAN 1 - 32 STK RR



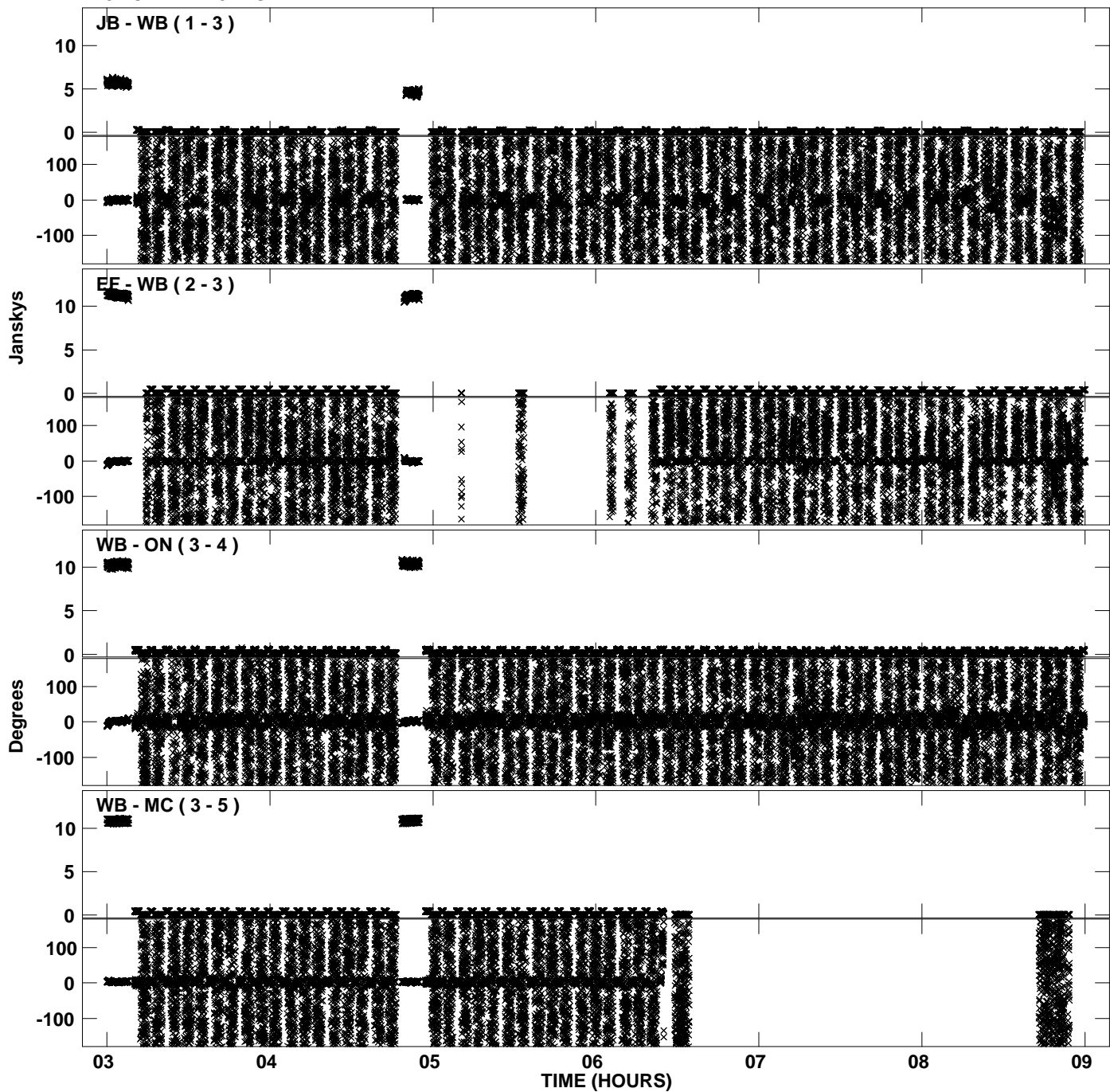
Plot file version 29 created 18-FEB-2013 15:42:28
Amplitude andPhase vs Time for EP075A 1.UVDATA.1 Vect aver. CL # 3
IF 2 CHAN 1 - 32 STK RR



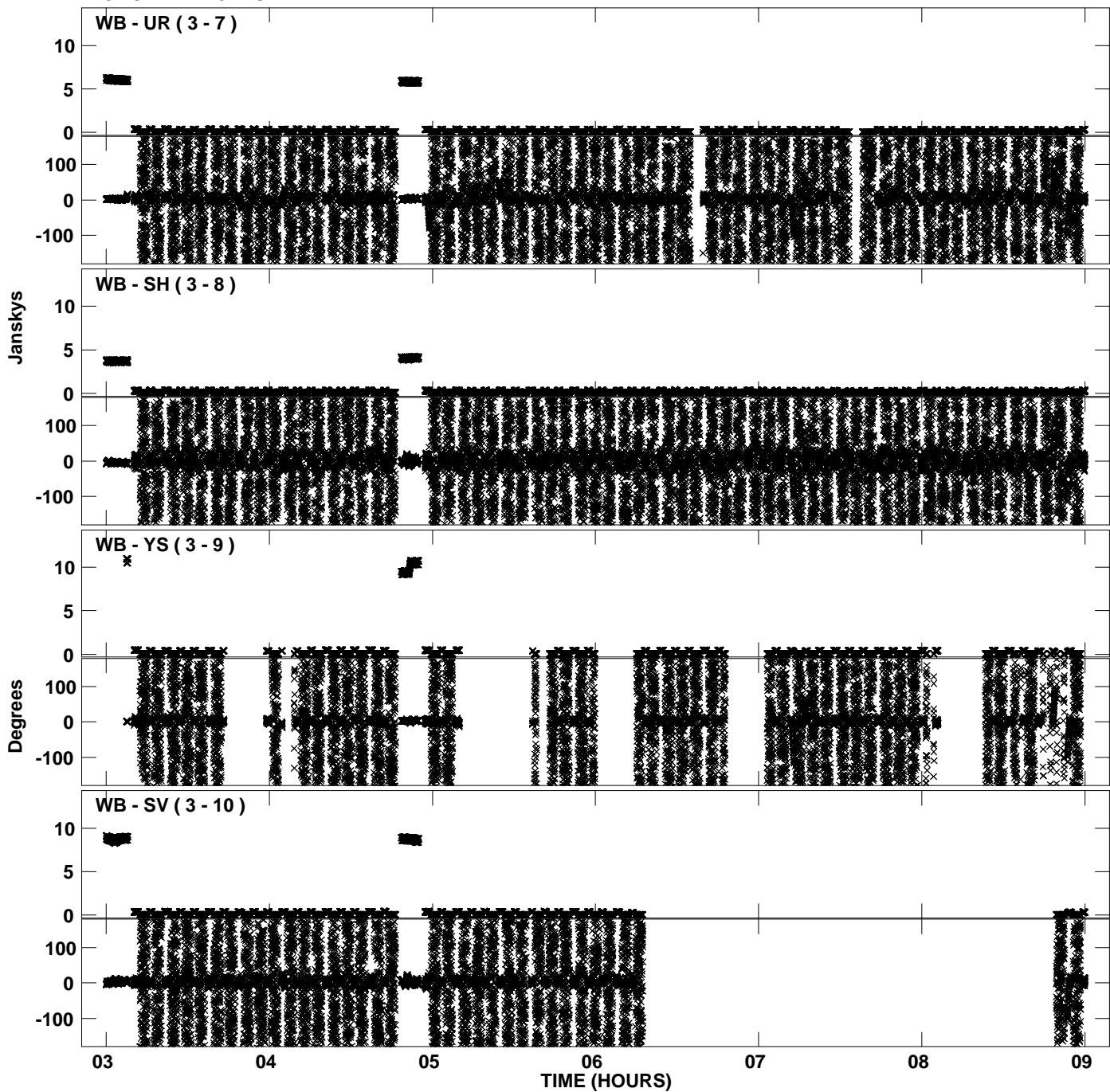
PLot file version 30 created 18-FEB-2013 15:42:28
Amplitude andPhase vs Time for EP075A 1.UVDATA.1 Vect aver. CL # 3
IF 2 CHAN 1 - 32 STK RR



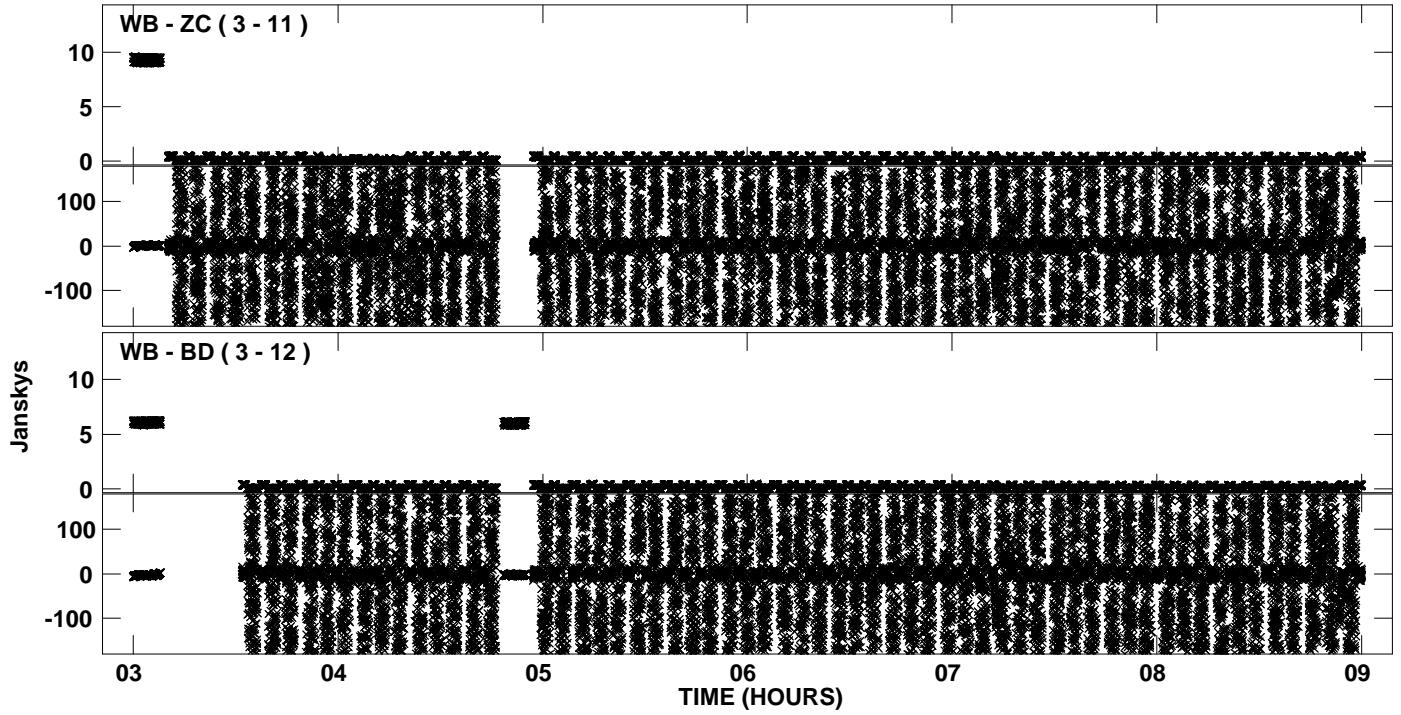
PLot file version 31 created 18-FEB-2013 15:42:37
Amplitude andPhase vs Time for EP075A 1.UVDATA.1 Vect aver. CL # 3
IF 3 CHAN 1 - 32 STK RR



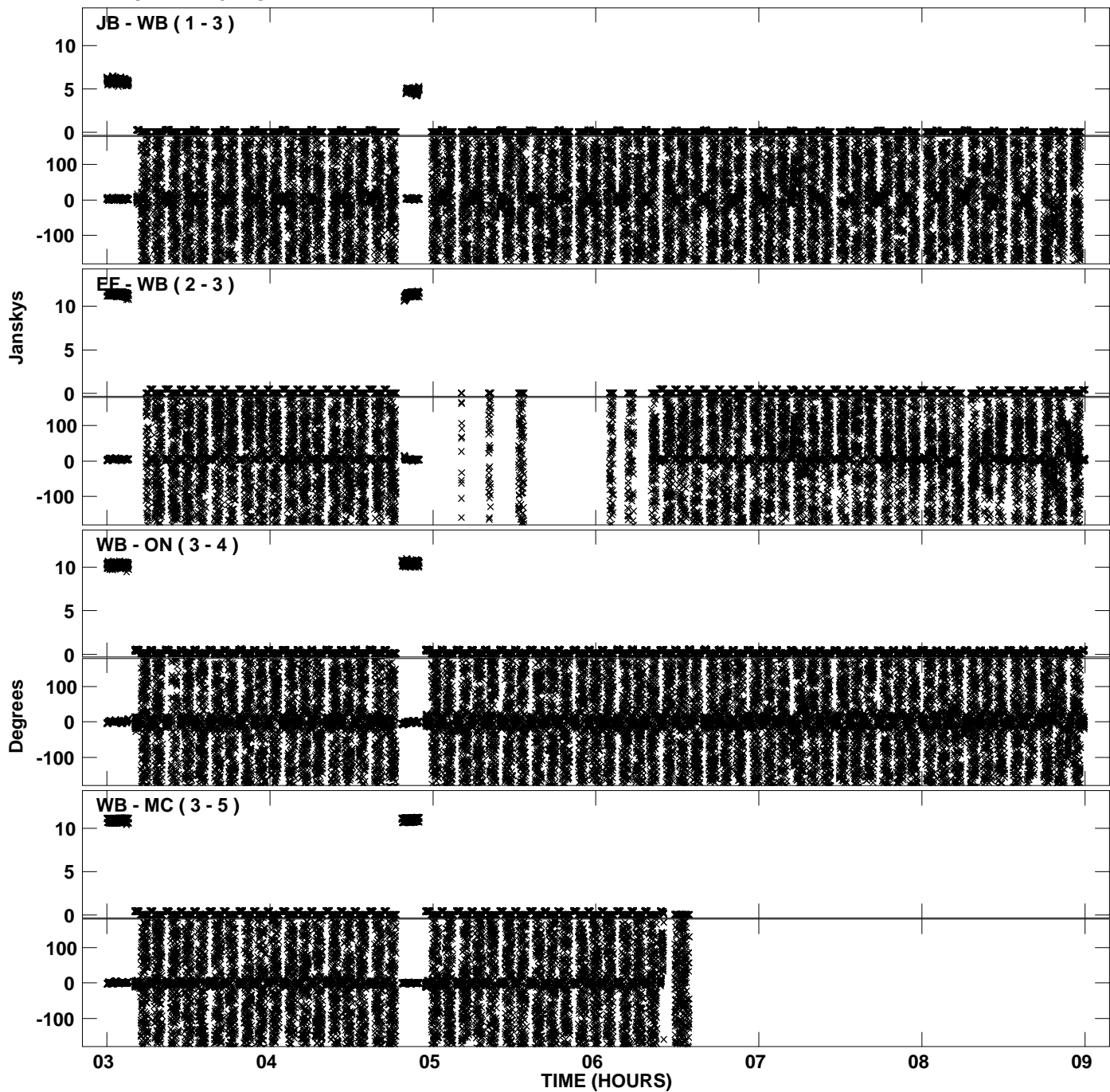
PLot file version 32 created 18-FEB-2013 15:42:38
Amplitude andPhase vs Time for EP075A 1.UVDATA.1 Vect aver. CL # 3
IF 3 CHAN 1 - 32 STK RR



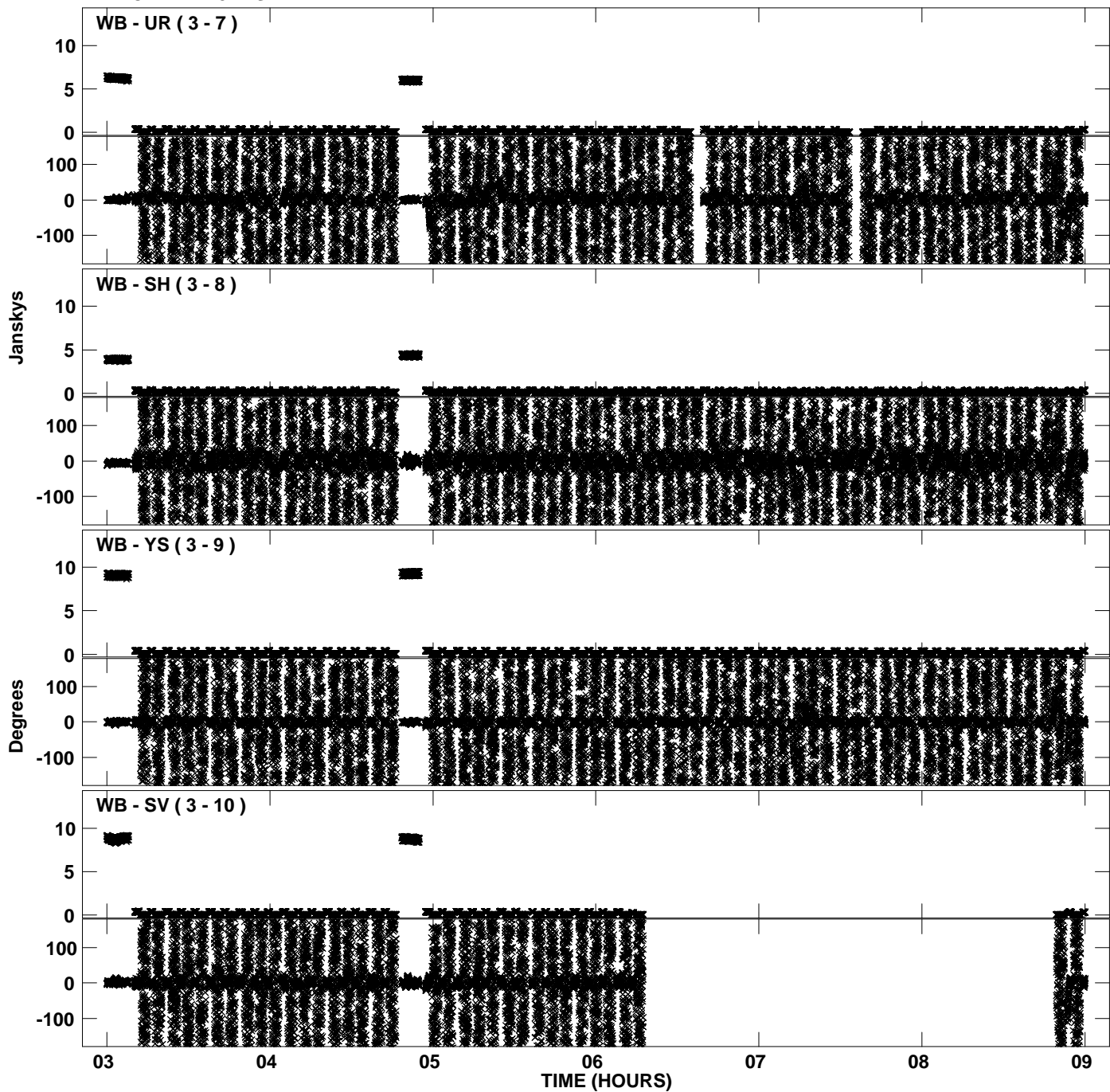
PLot file version 33 created 18-FEB-2013 15:42:38
Amplitude andPhase vs Time for EP075A 1.UVDATA.1 Vect aver. CL # 3
IF 3 CHAN 1 - 32 STK RR



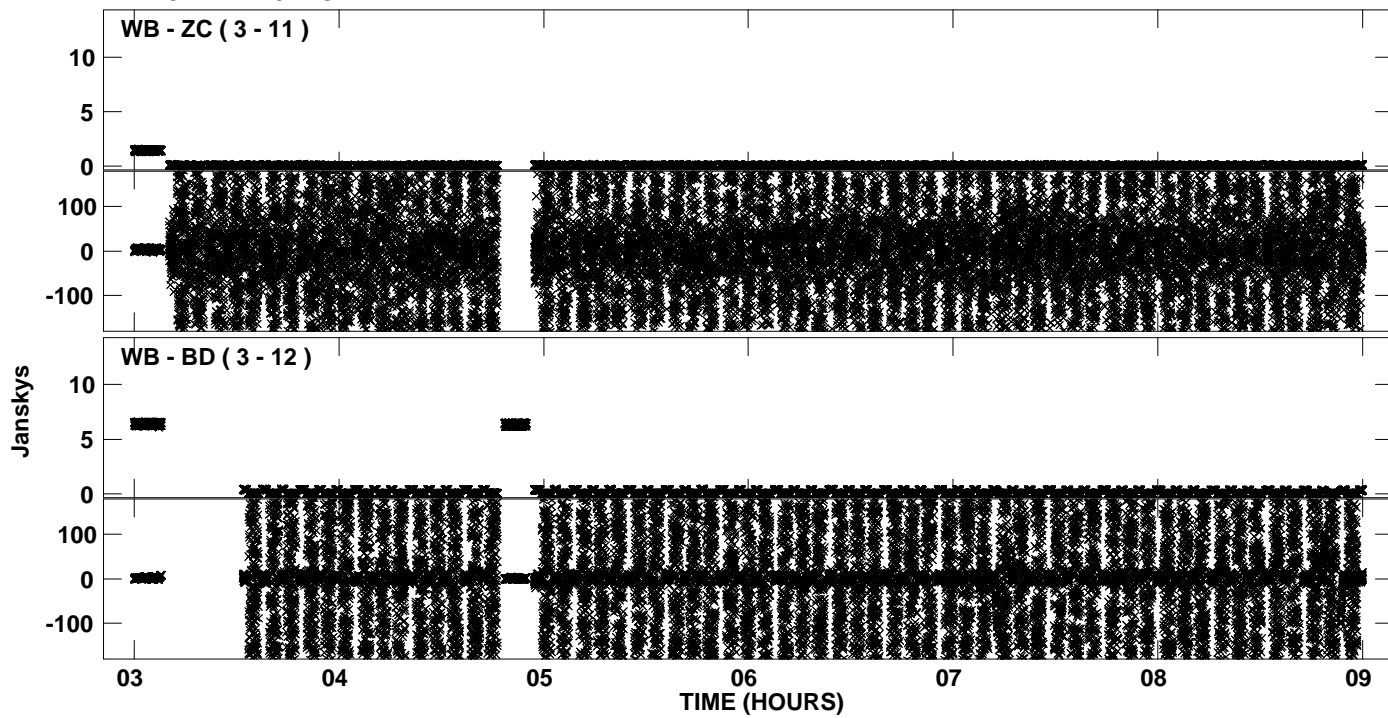
PLot file version 34 created 18-FEB-2013 15:42:47
Amplitude andPhase vs Time for EP075A 1.UVDATA.1 Vect aver. CL # 3
IF 4 CHAN 1 - 32 STK RR



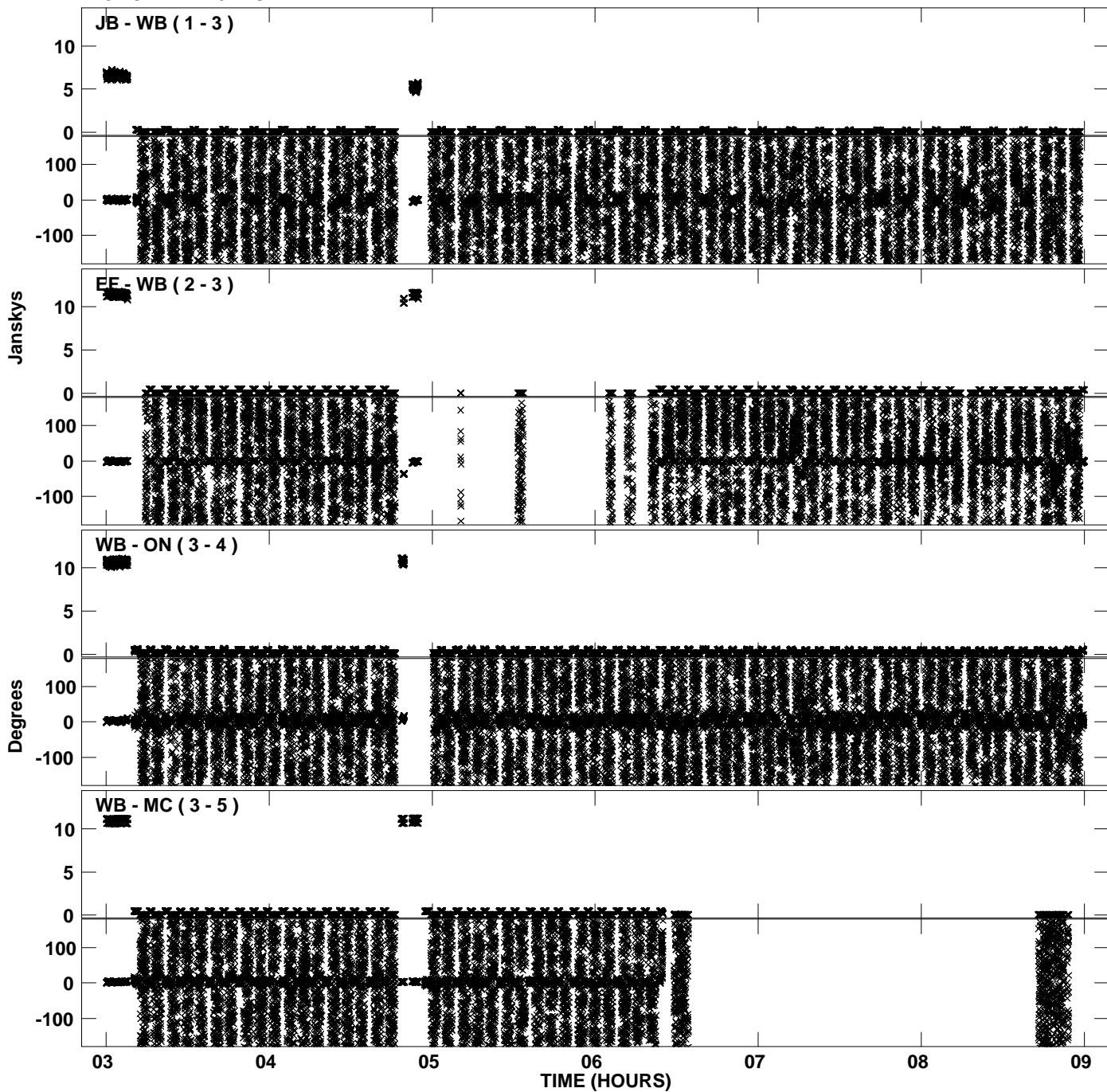
PLot file version 35 created 18-FEB-2013 15:42:48
Amplitude andPhase vs Time for EP075A 1.UVDATA.1 Vect aver. CL # 3
IF 4 CHAN 1 - 32 STK RR



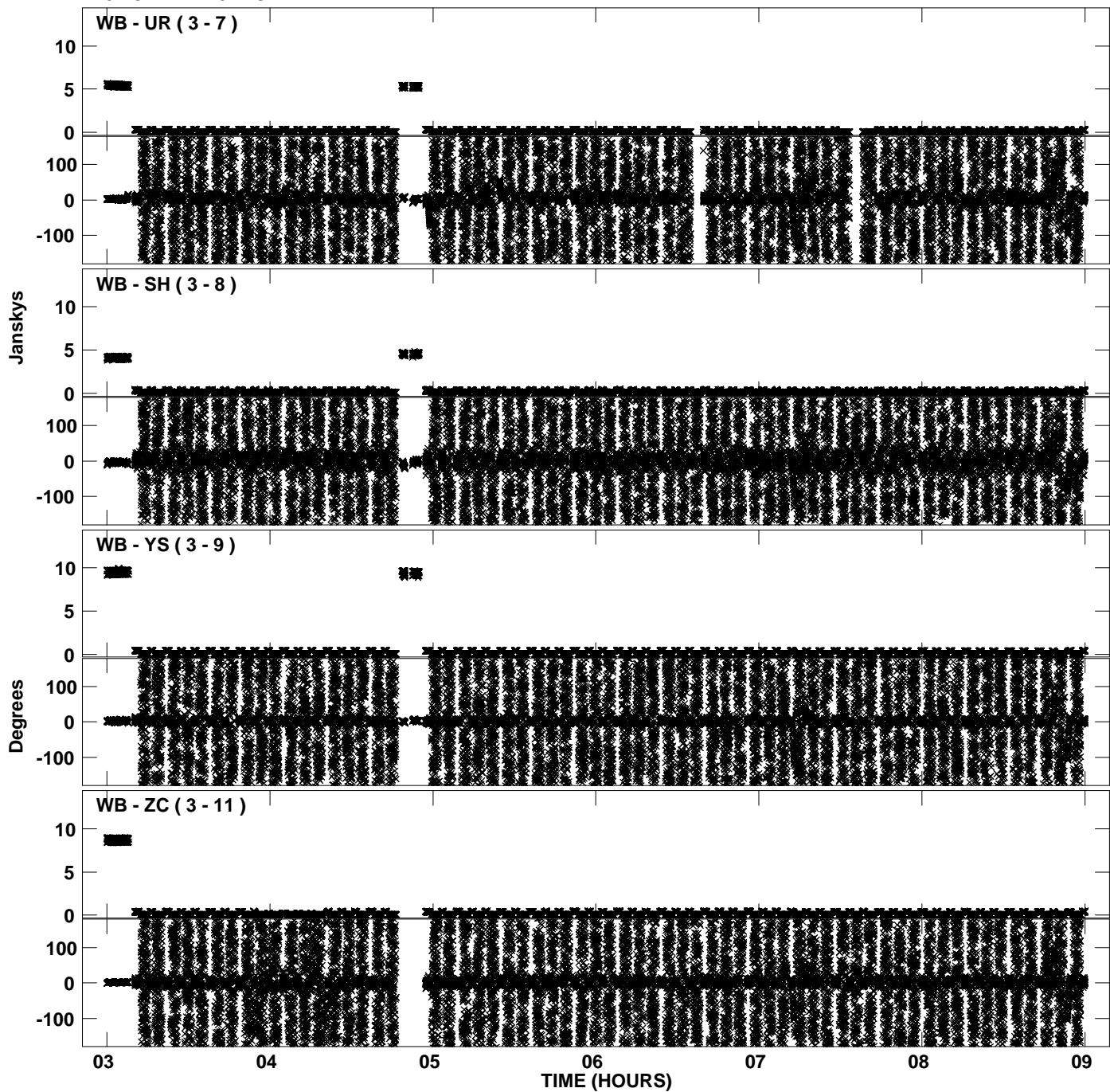
Plot file version 36 created 18-FEB-2013 15:42:48
Amplitude and Phase vs Time for EP075A 1.UVDATA.1 Vect aver. CL # 3
IF 4 CHAN 1 - 32 STK RR



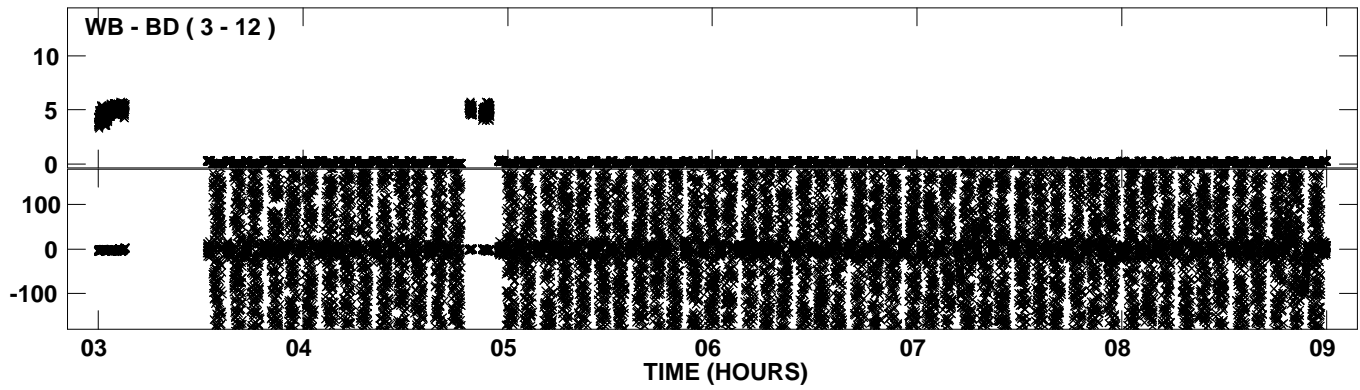
Plot file version 37 created 18-FEB-2013 15:42:57
Amplitude andPhase vs Time for EP075A 1.UVDATA.1 Vect aver. CL # 3
IF 5 CHAN 1 - 32 STK RR



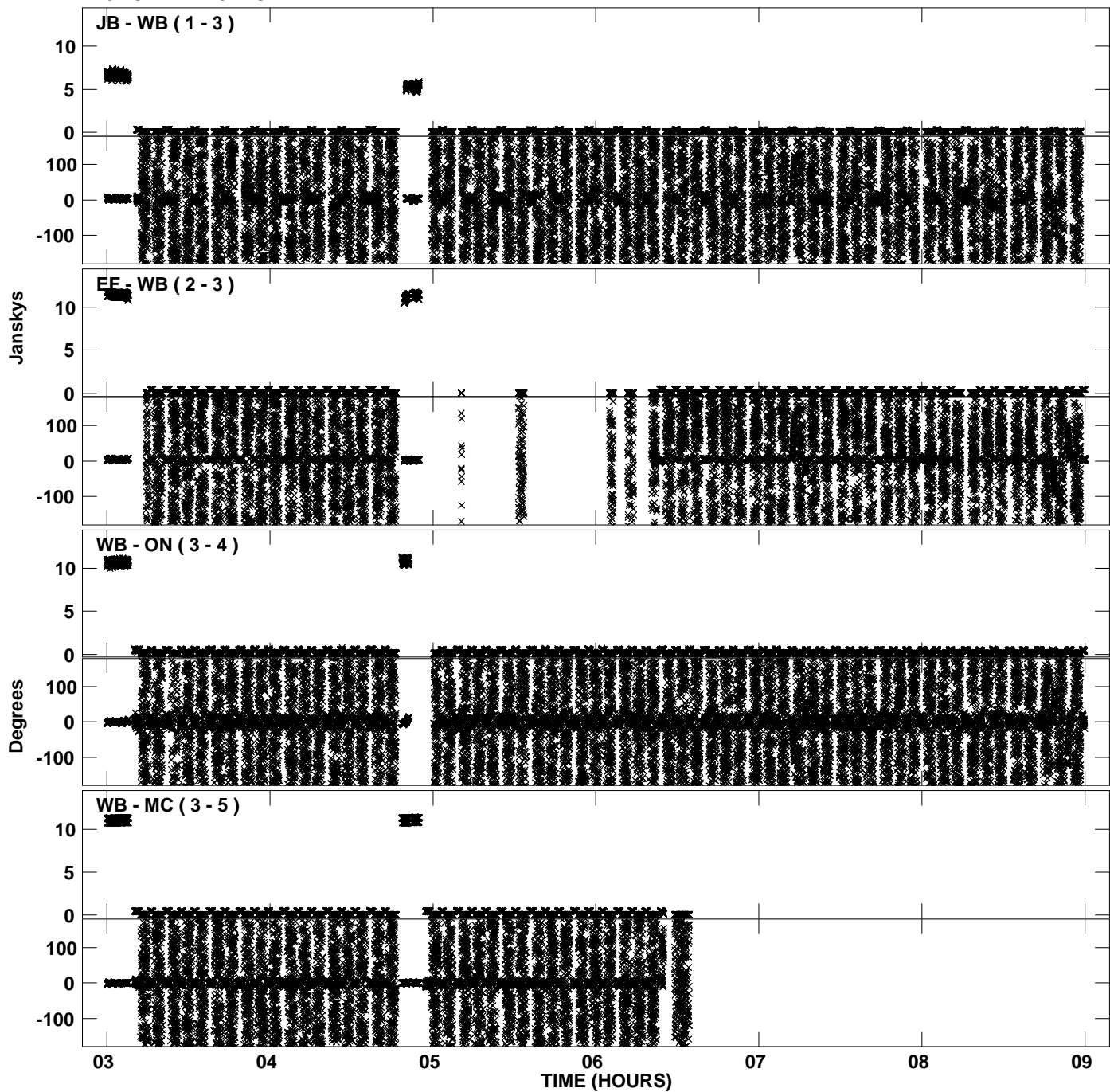
PLot file version 38 created 18-FEB-2013 15:42:57
Amplitude andPhase vs Time for EP075A 1.UVDATA.1 Vect aver. CL # 3
IF 5 CHAN 1 - 32 STK RR



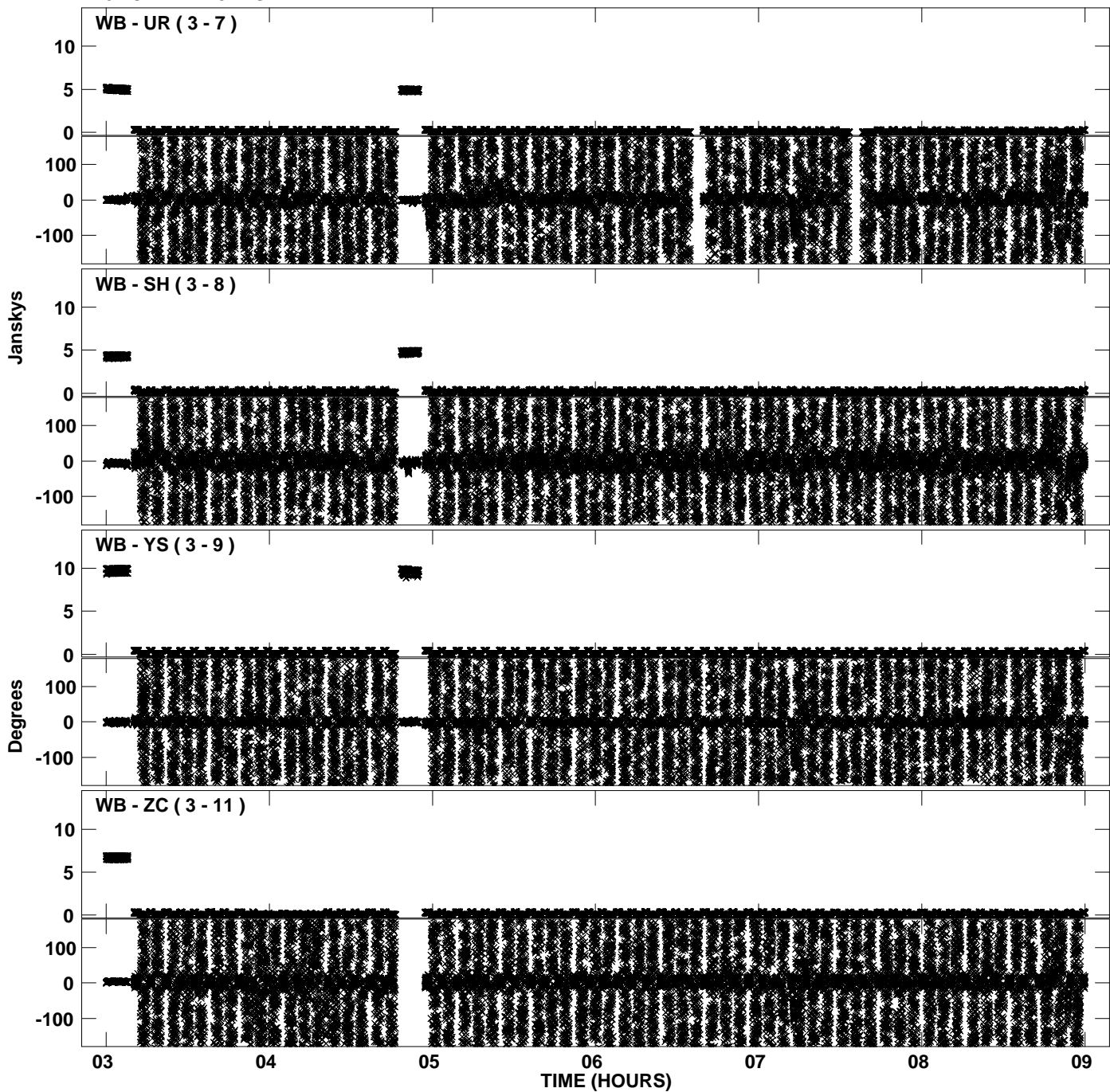
Plot file version 39 created 18-FEB-2013 15:42:57
Amplitude and Phase vs Time for EP075A 1.UVDATA.1 Vect aver. CL # 3
IF 5 CHAN 1 - 32 STK RR



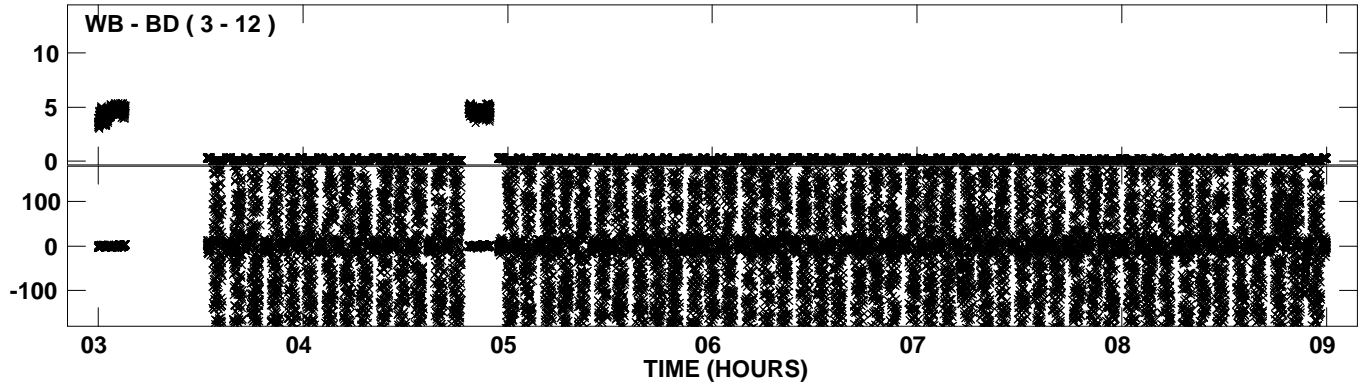
Plot file version 40 created 18-FEB-2013 15:43:06
Amplitude andPhase vs Time for EP075A 1.UVDATA.1 Vect aver. CL # 3
IF 6 CHAN 1 - 32 STK RR



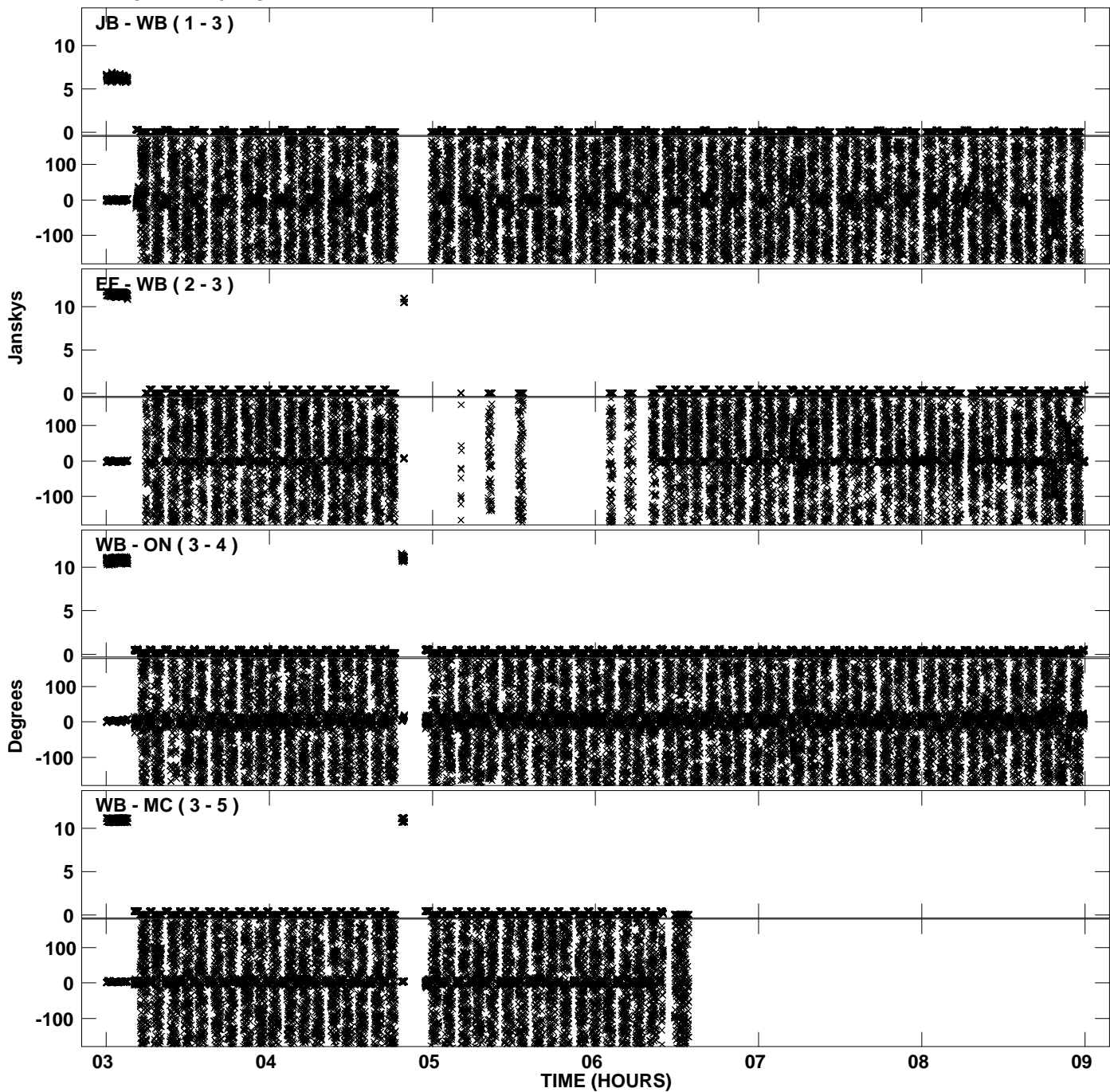
PLot file version 41 created 18-FEB-2013 15:43:07
Amplitude andPhase vs Time for EP075A 1.UVDATA.1 Vect aver. CL # 3
IF 6 CHAN 1 - 32 STK RR



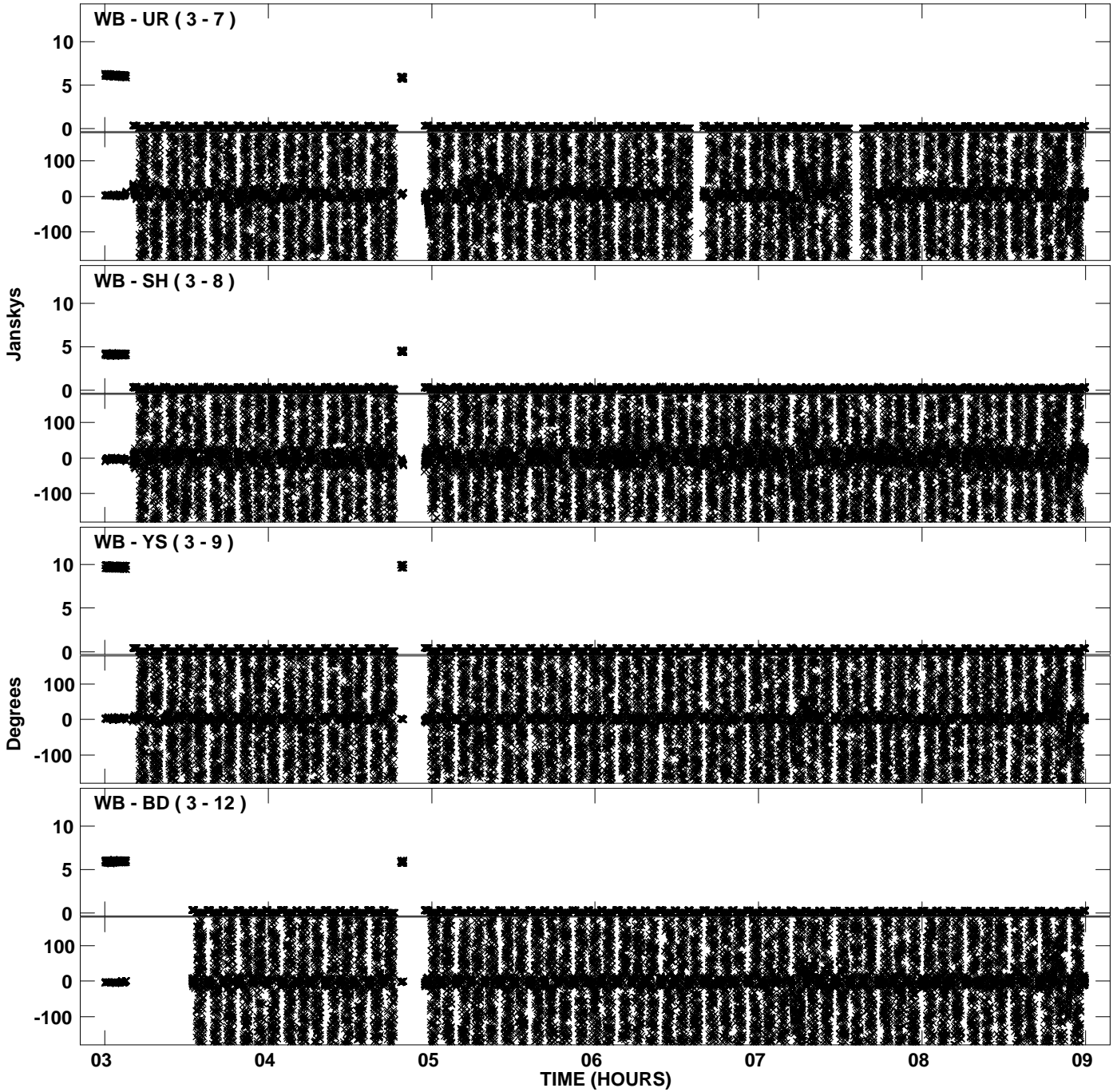
Plot file version 42 created 18-FEB-2013 15:43:07
Amplitude andPhase vs Time for EP075A 1.UVDATA.1 Vect aver. CL # 3
IF 6 CHAN 1 - 32 STK RR



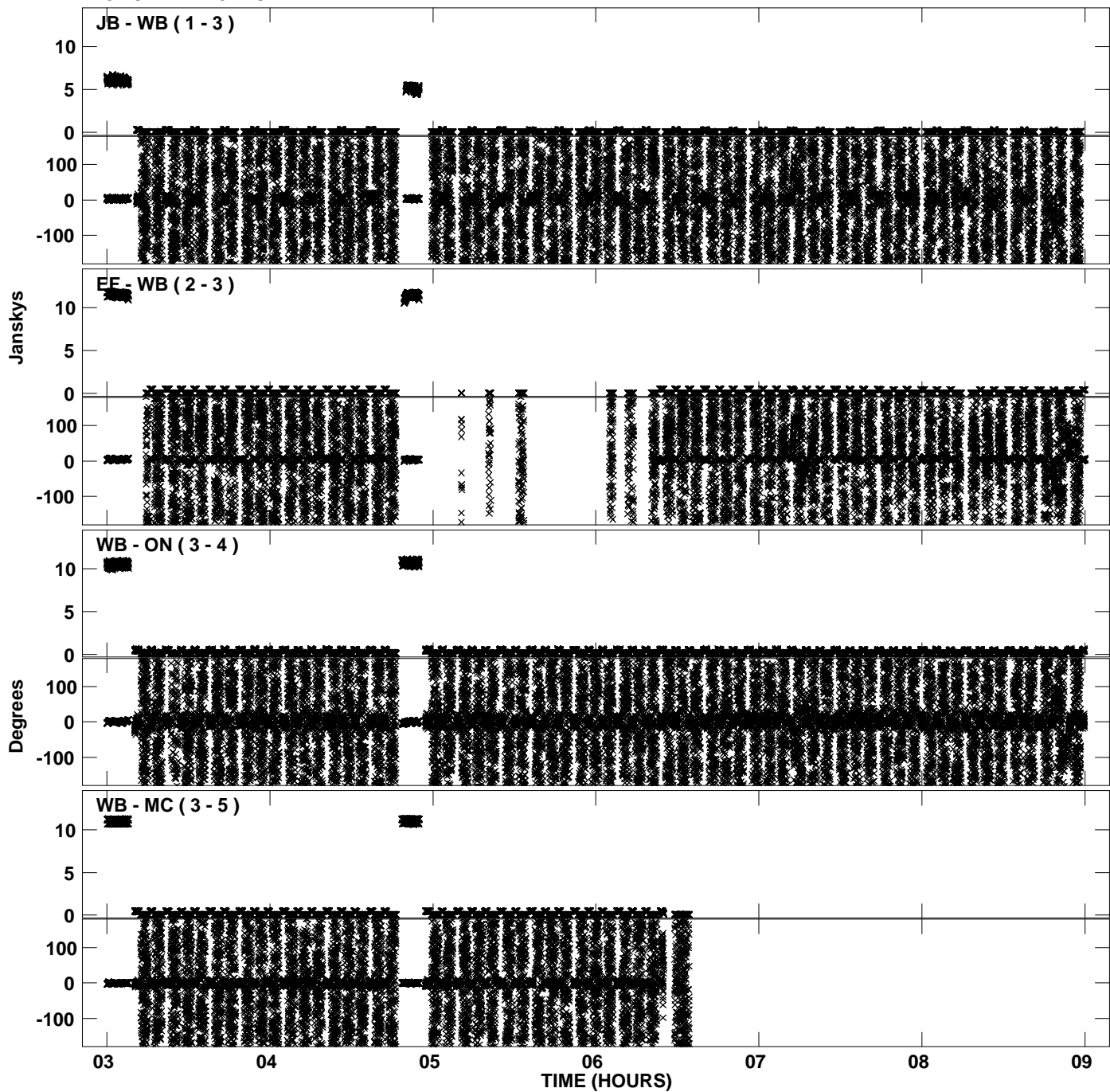
Plot file version 43 created 18-FEB-2013 15:43:16
Amplitude andPhase vs Time for EP075A 1.UVDATA.1 Vect aver. CL # 3
IF 7 CHAN 1 - 32 STK RR



PLot file version 44 created 18-FEB-2013 15:43:16
Amplitude andPhase vs Time for EP075A 1.UVDATA.1 Vect aver. CL # 3
IF 7 CHAN 1 - 32 STK RR



Plot file version 45 created 18-FEB-2013 15:43:25
Amplitude andPhase vs Time for EP075A 1.UVDATA.1 Vect aver. CL # 3
IF 8 CHAN 1 - 32 STK RR



PLot file version 46 created 18-FEB-2013 15:43:25
Amplitude andPhase vs Time for EP075A 1.UVDATA.1 Vect aver. CL # 3
IF 8 CHAN 1 - 32 STK RR

