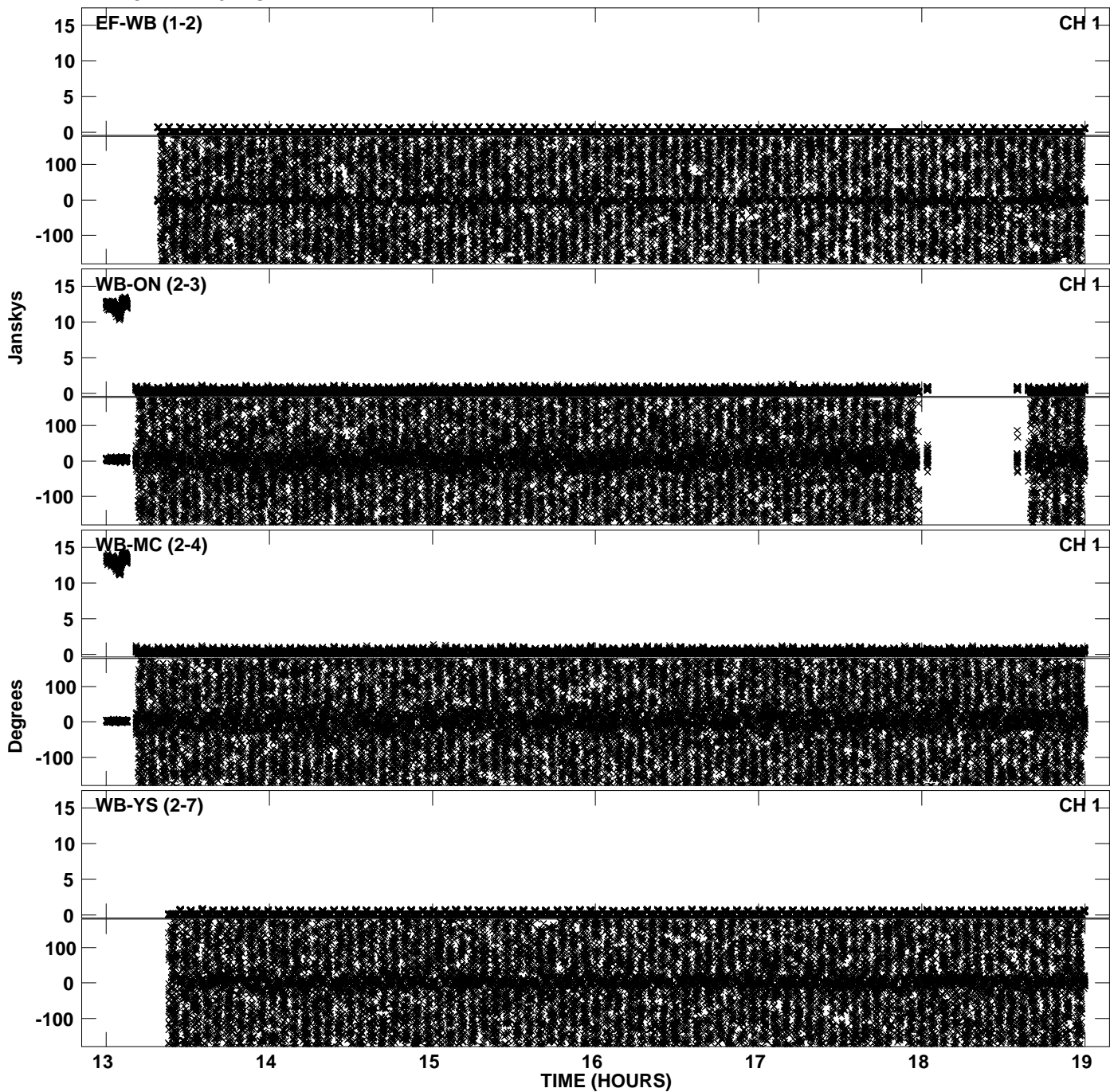
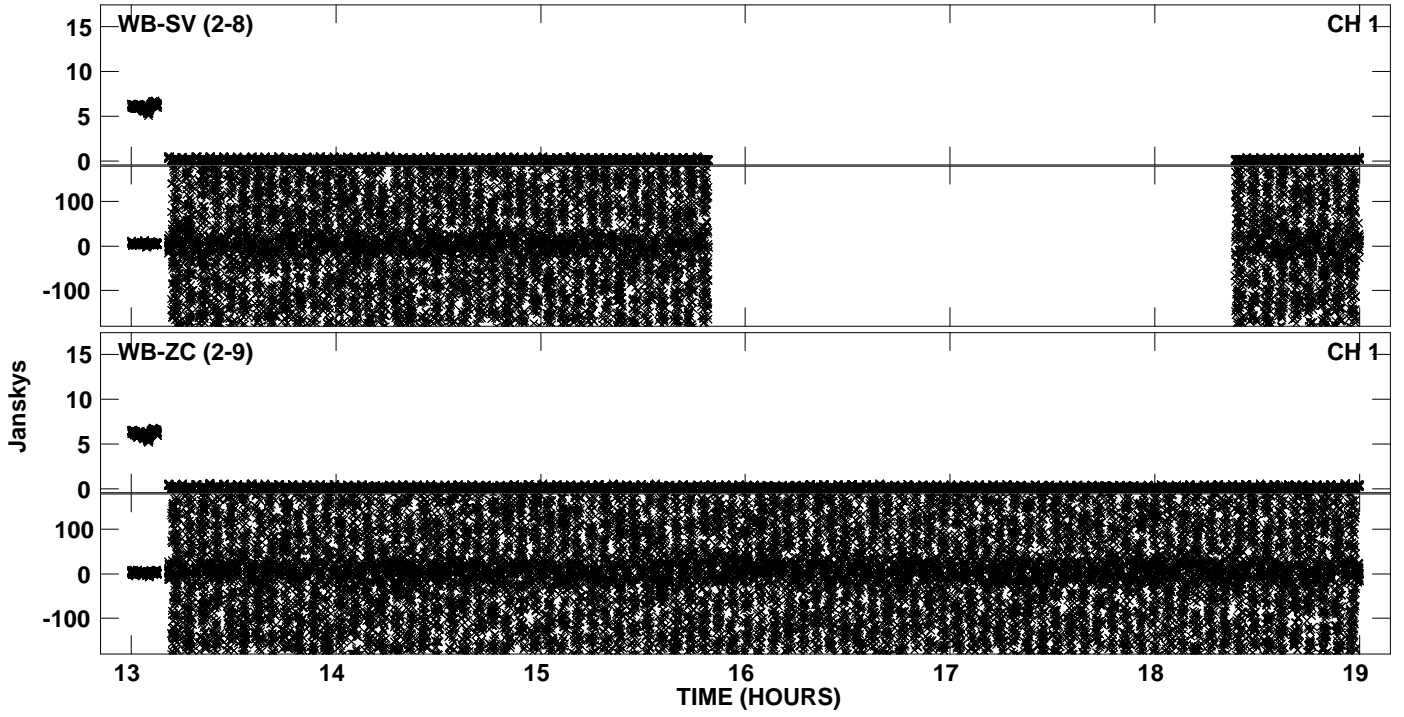


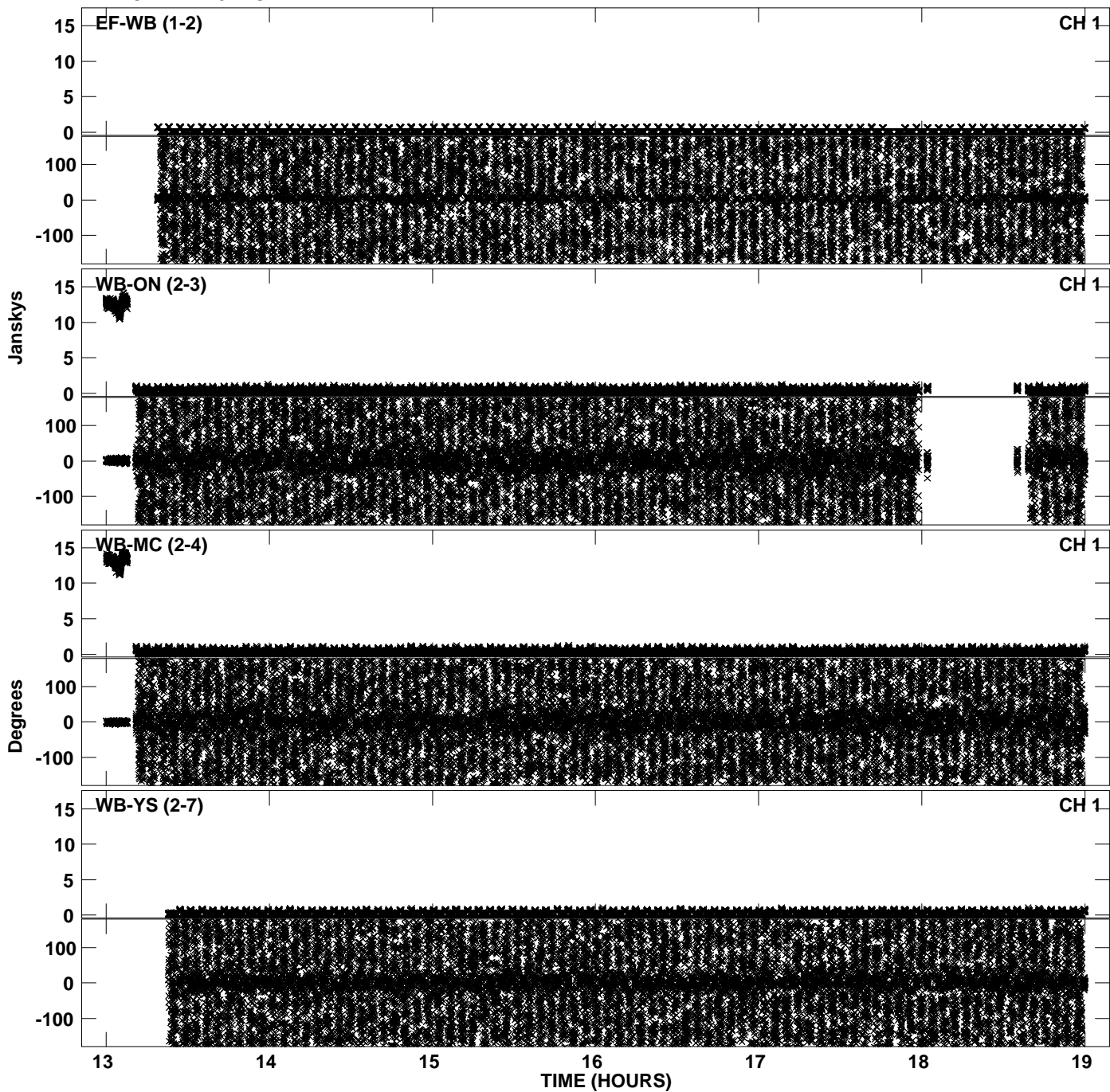
Plot file version 1 created 15-FEB-2013 15:44:08
Amplitude andPhase vs Time for EP075B 2.UVDATA.1 Vect aver. CL # 3
IF 1 CHAN 1 - 32 STK LL



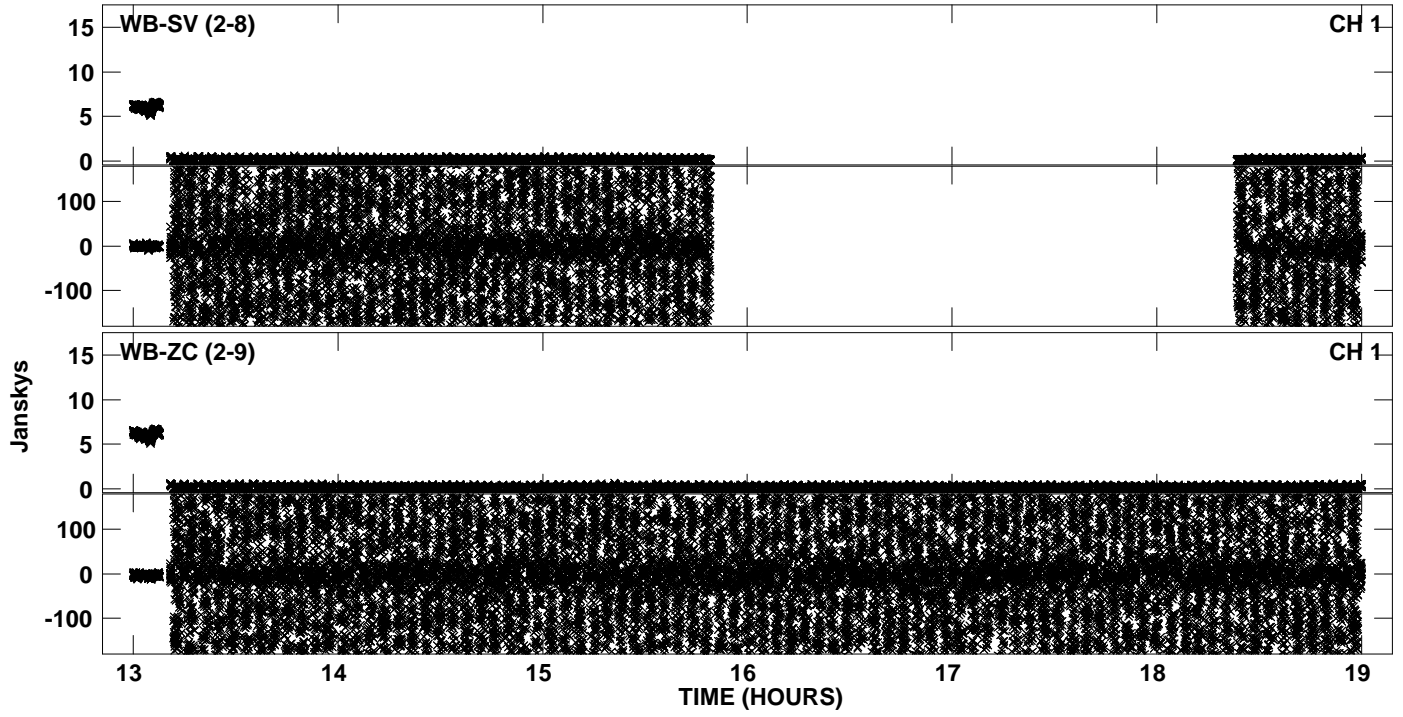
Plot file version 2 created 15-FEB-2013 15:44:09
Amplitude andPhase vs Time for EP075B 2.UVDATA.1 Vect aver. CL # 3
IF 1 CHAN 1 - 32 STK LL



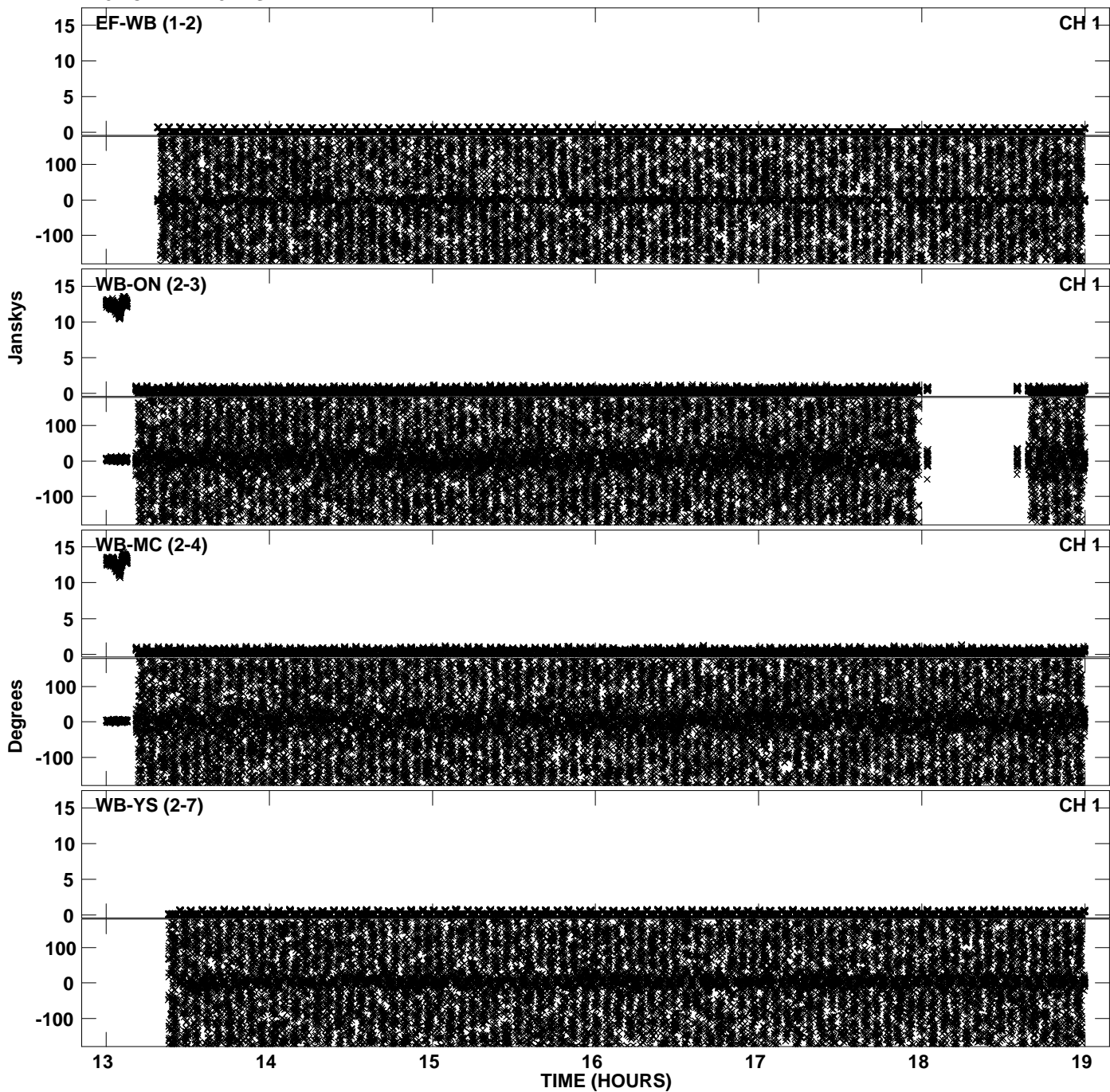
Plot file version 3 created 15-FEB-2013 15:44:18
Amplitude andPhase vs Time for EP075B 2.UVDATA.1 Vect aver. CL # 3
IF 2 CHAN 1 - 32 STK LL



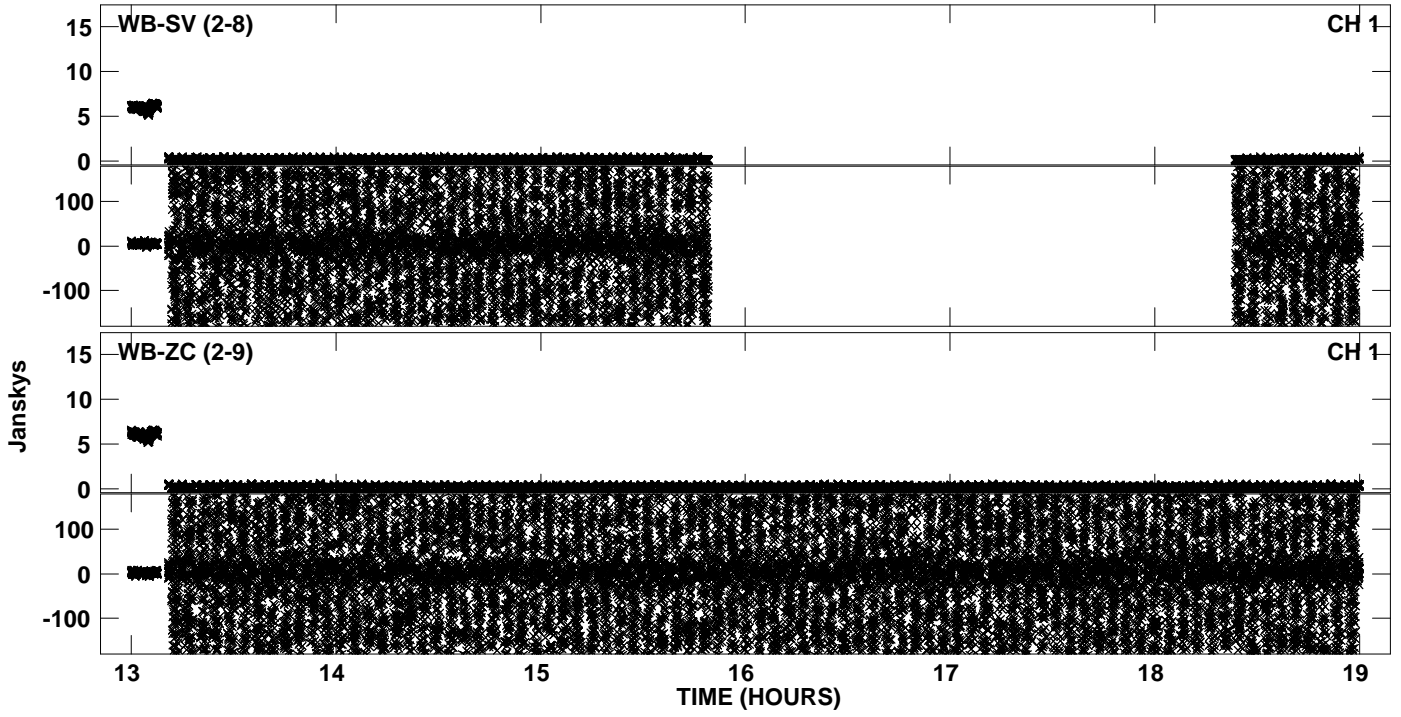
Plot file version 4 created 15-FEB-2013 15:44:18
Amplitude andPhase vs Time for EP075B 2.UVDATA.1 Vect aver. CL # 3
IF 2 CHAN 1 - 32 STK LL



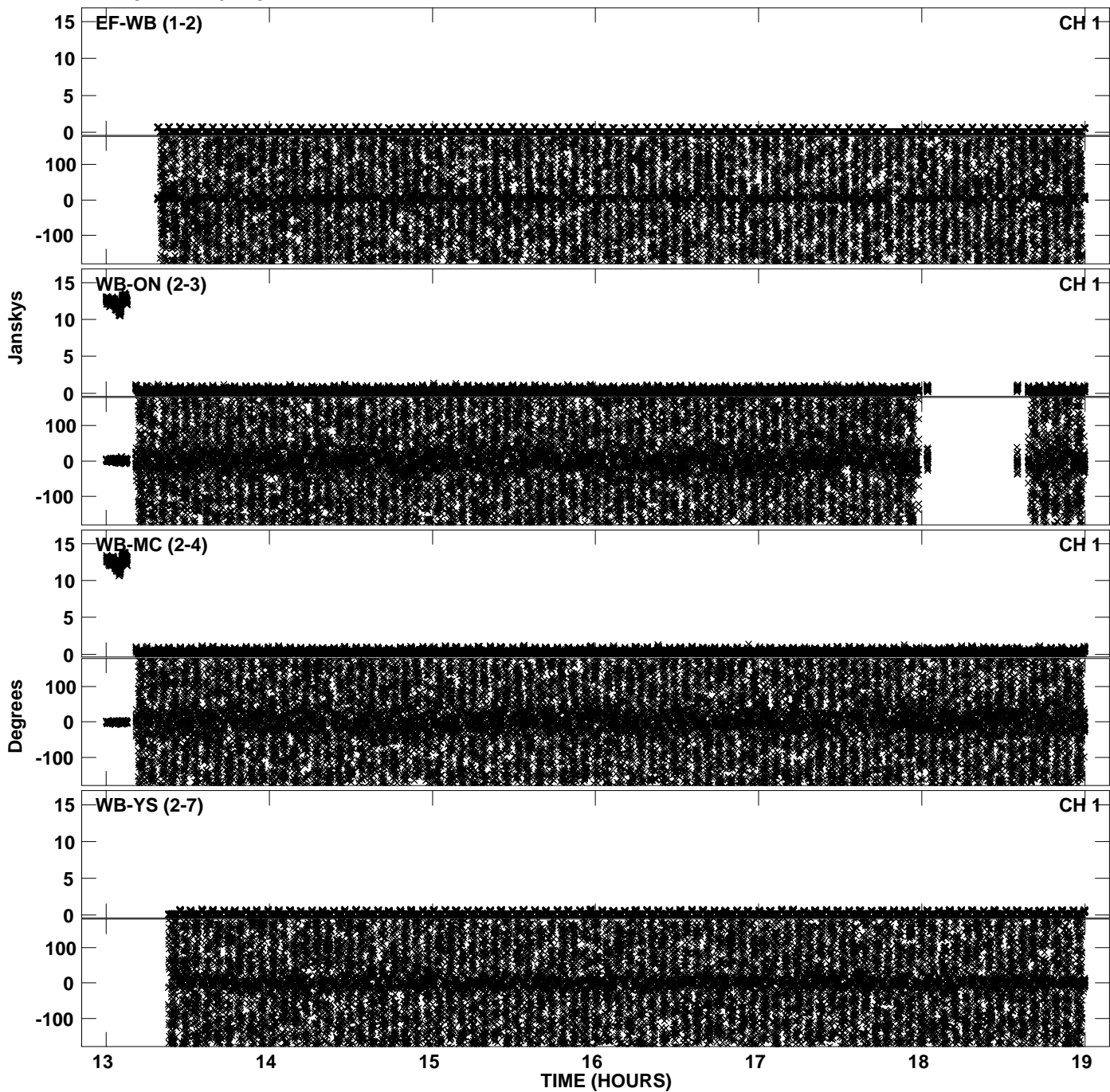
Plot file version 5 created 15-FEB-2013 15:44:28
Amplitude andPhase vs Time for EP075B 2.UVDATA.1 Vect aver. CL # 3
IF 3 CHAN 1 - 32 STK LL



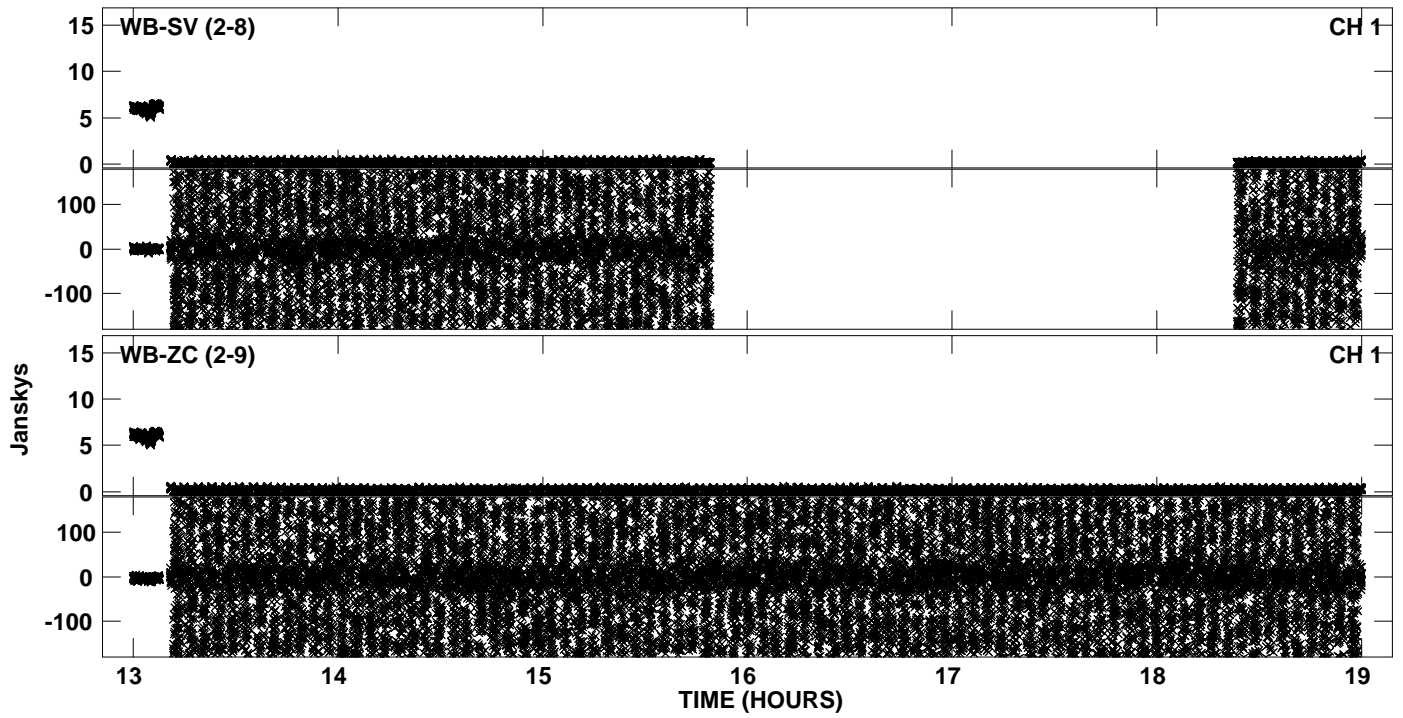
Plot file version 6 created 15-FEB-2013 15:44:28
Amplitude andPhase vs Time for EP075B 2.UVDATA.1 Vect aver. CL # 3
IF 3 CHAN 1 - 32 STK LL



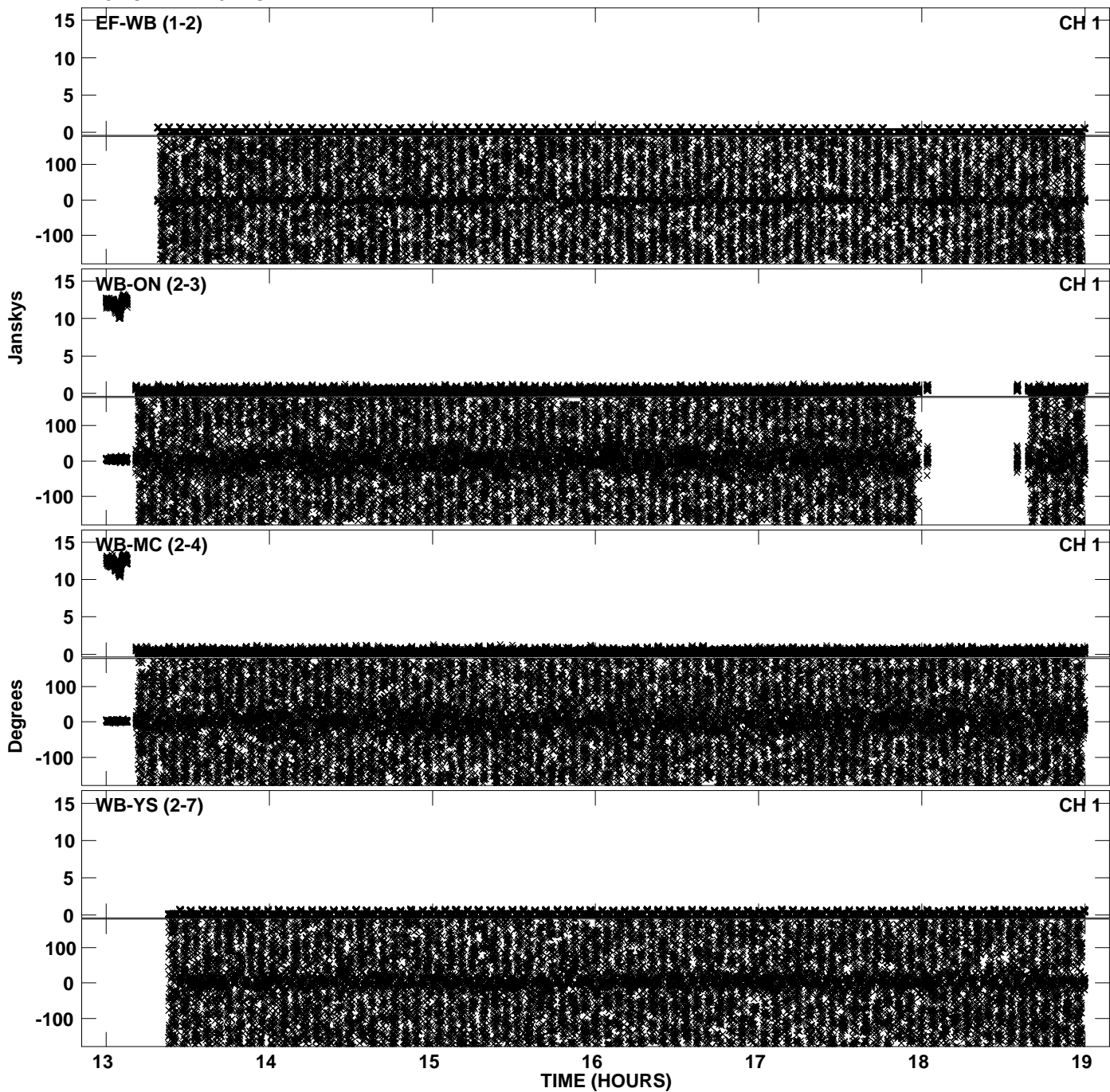
Plot file version 7 created 15-FEB-2013 15:44:37
Amplitude andPhase vs Time for EP075B 2.UVDATA.1 Vect aver. CL # 3
IF 4 CHAN 1 - 32 STK LL



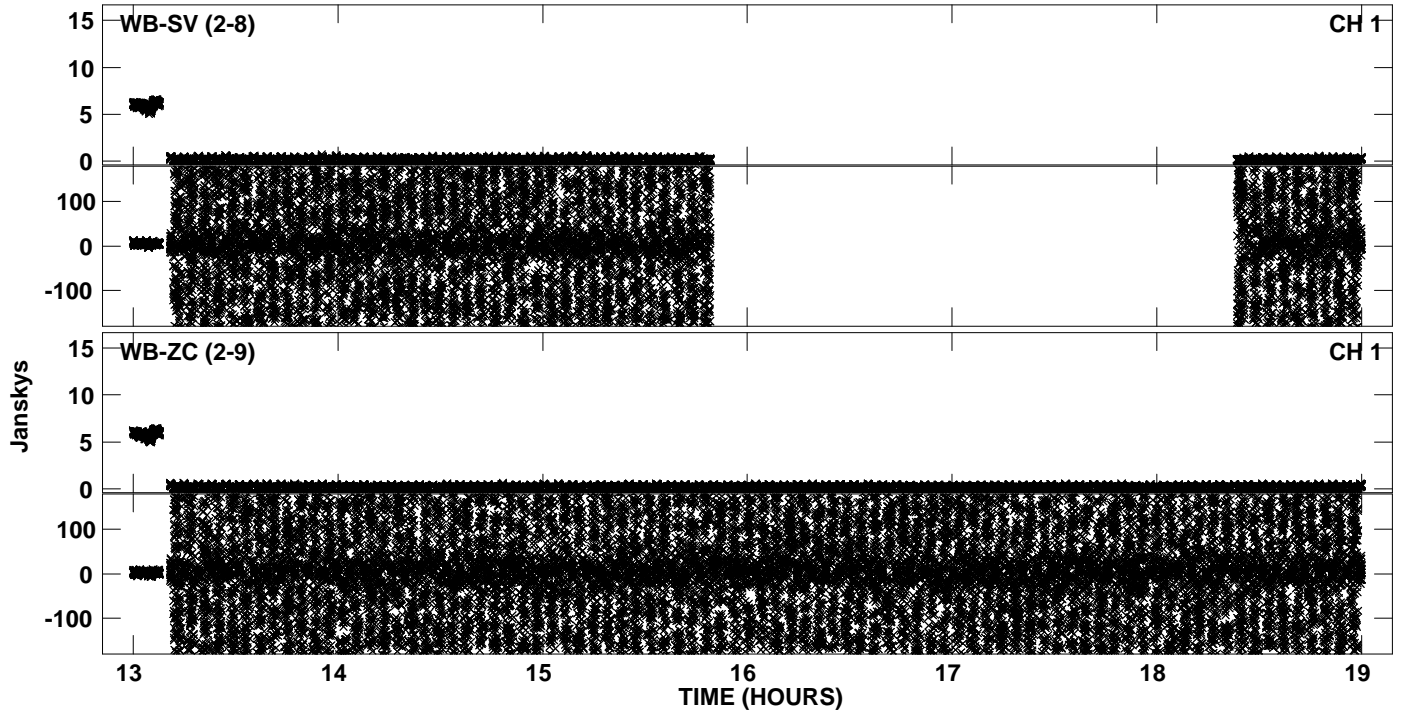
Plot file version 8 created 15-FEB-2013 15:44:38
Amplitude andPhase vs Time for EP075B 2.UVDATA.1 Vect aver. CL # 3
IF 4 CHAN 1 - 32 STK LL



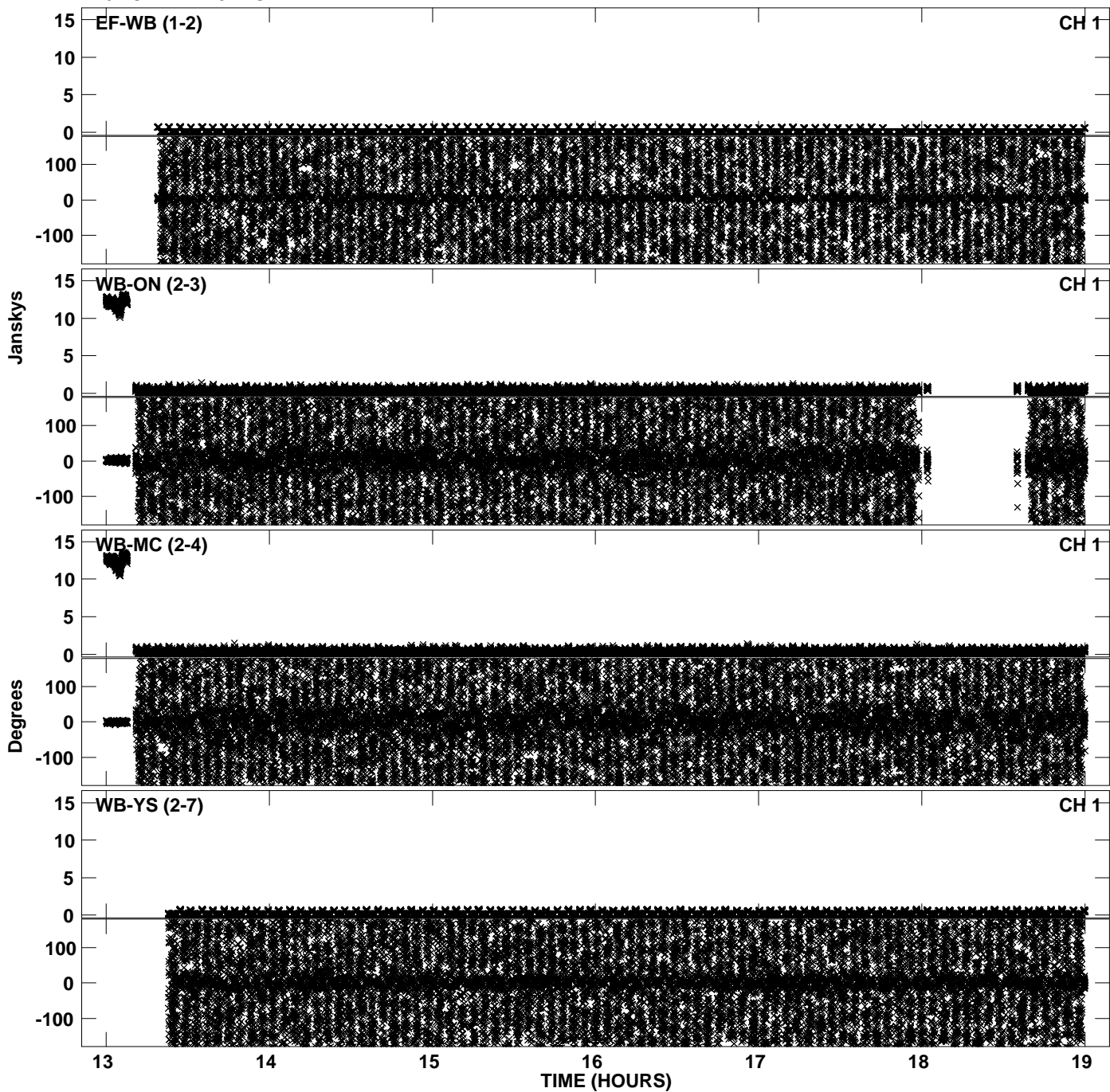
Plot file version 9 created 15-FEB-2013 15:44:47
Amplitude andPhase vs Time for EP075B 2.UVDATA.1 Vect aver. CL # 3
IF 5 CHAN 1 - 32 STK LL



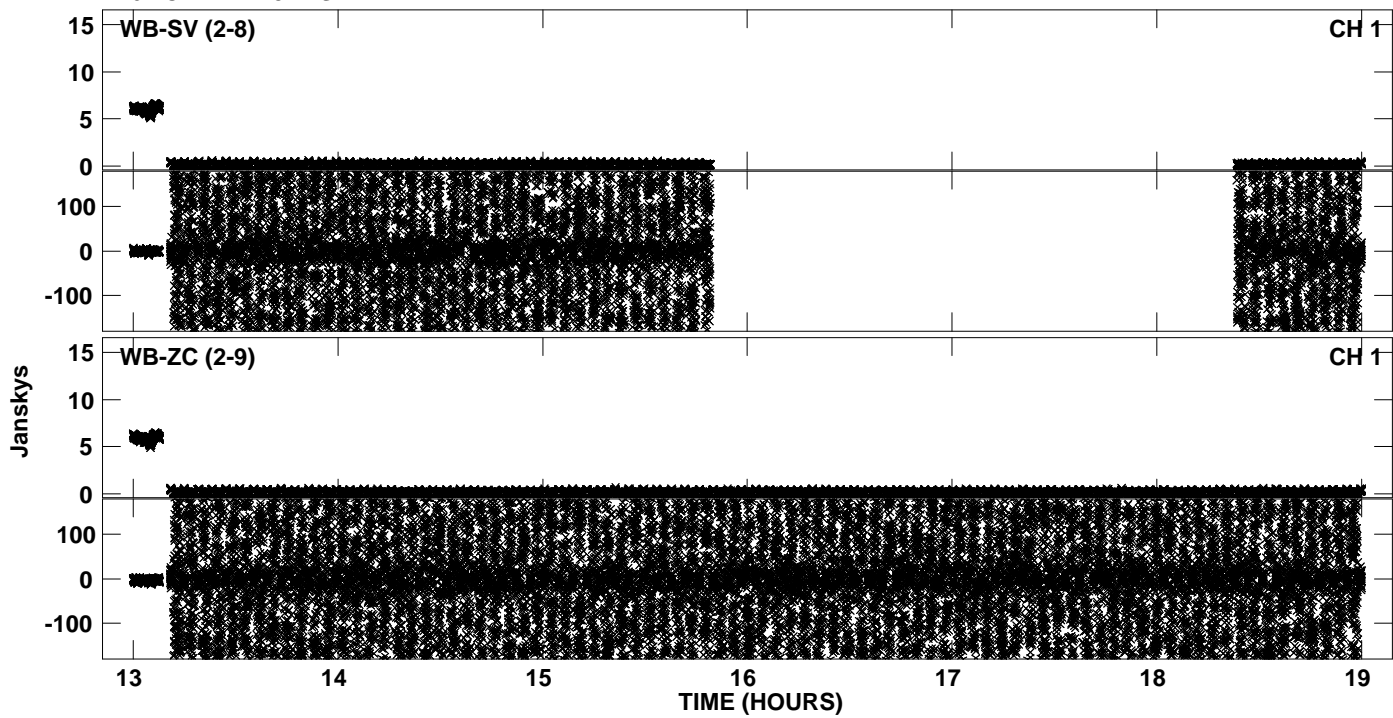
Plot file version 10 created 15-FEB-2013 15:44:47
Amplitude andPhase vs Time for EP075B 2.UVDATA.1 Vect aver. CL # 3
IF 5 CHAN 1 - 32 STK LL



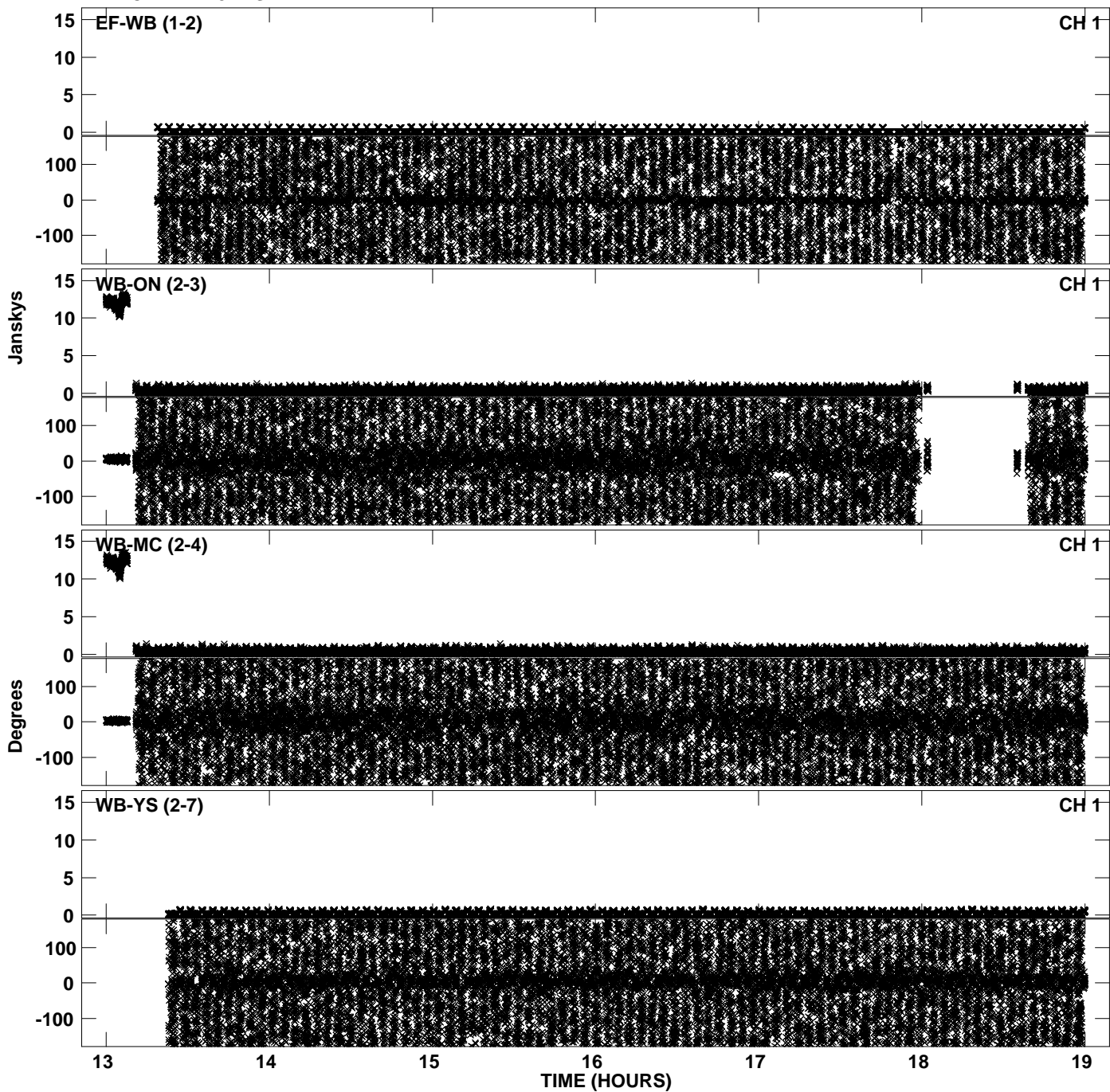
Plot file version 11 created 15-FEB-2013 15:44:57
Amplitude andPhase vs Time for EP075B 2.UVDATA.1 Vect aver. CL # 3
IF 6 CHAN 1 - 32 STK LL



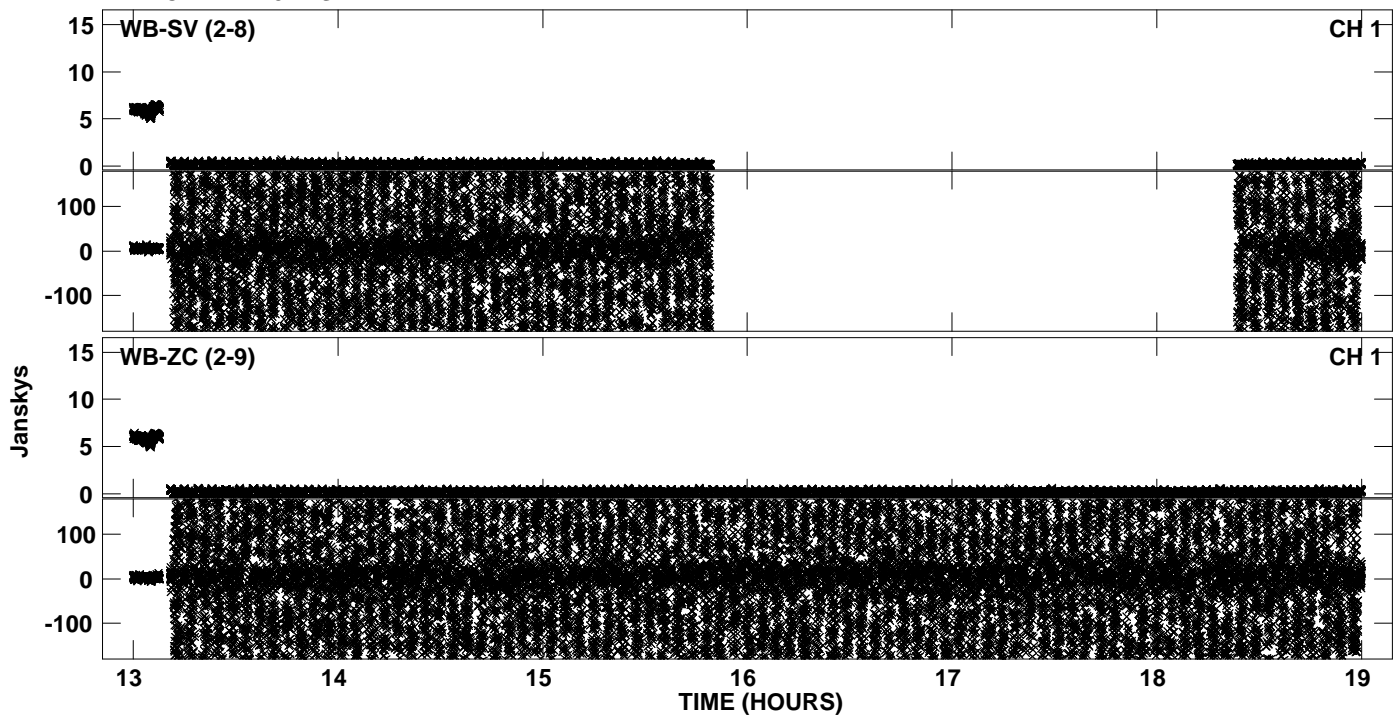
Plot file version 12 created 15-FEB-2013 15:44:57
Amplitude andPhase vs Time for EP075B 2.UVDATA.1 Vect aver. CL # 3
IF 6 CHAN 1 - 32 STK LL



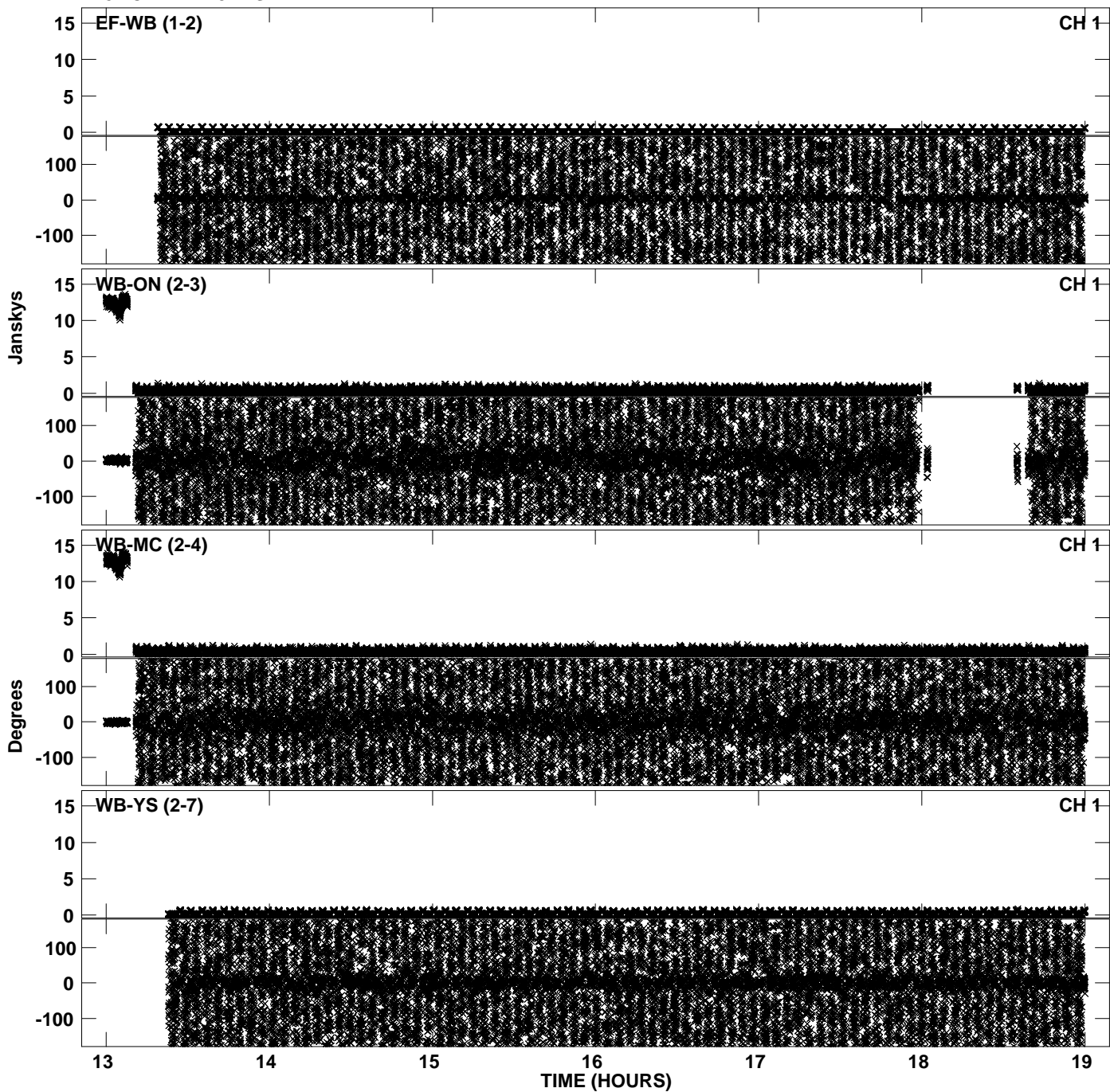
Plot file version 13 created 15-FEB-2013 15:45:06
Amplitude andPhase vs Time for EP075B 2.UVDATA.1 Vect aver. CL # 3
IF 7 CHAN 1 - 32 STK LL



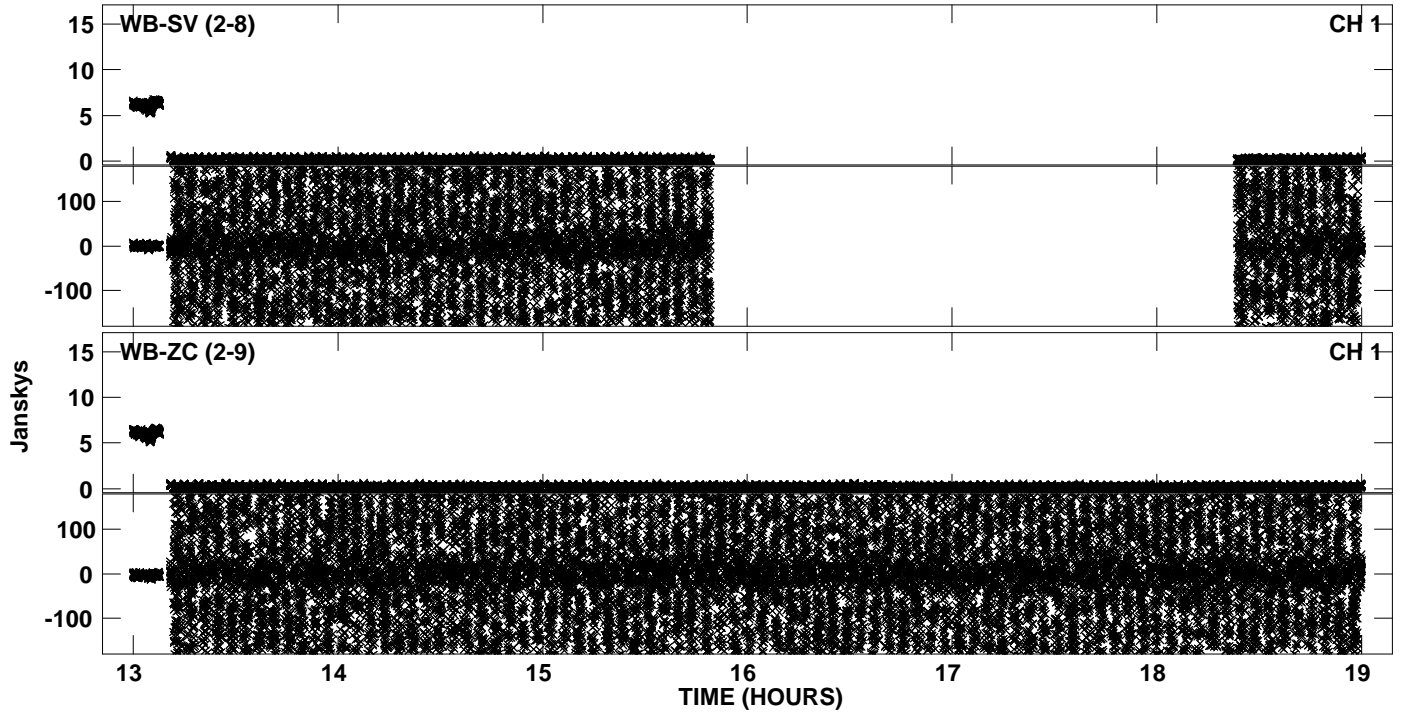
Plot file version 14 created 15-FEB-2013 15:45:06
Amplitude andPhase vs Time for EP075B 2.UVDATA.1 Vect aver. CL # 3
IF 7 CHAN 1 - 32 STK LL



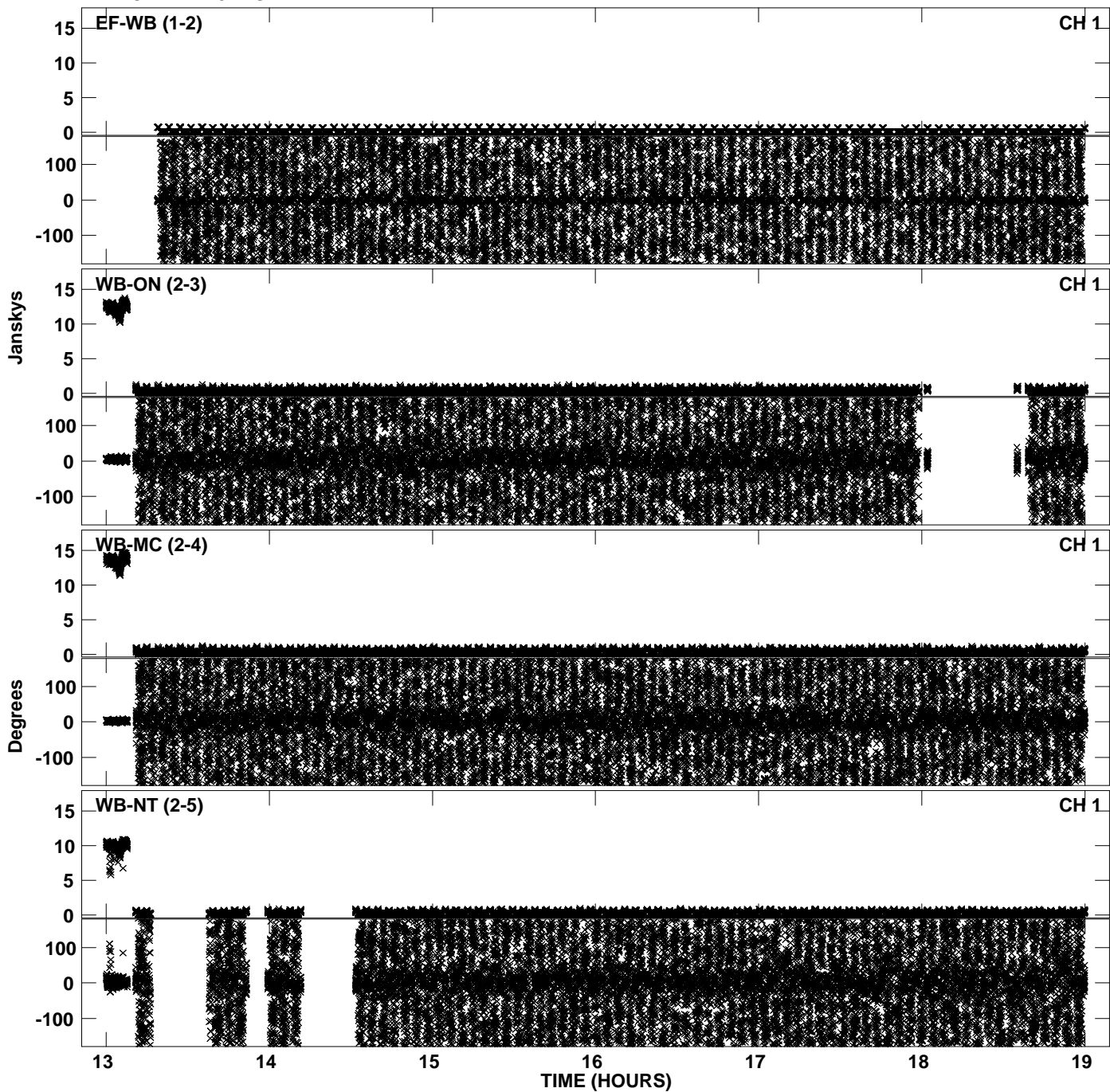
Plot file version 15 created 15-FEB-2013 15:45:16
Amplitude andPhase vs Time for EP075B 2.UVDATA.1 Vect aver. CL # 3
IF 8 CHAN 1 - 32 STK LL



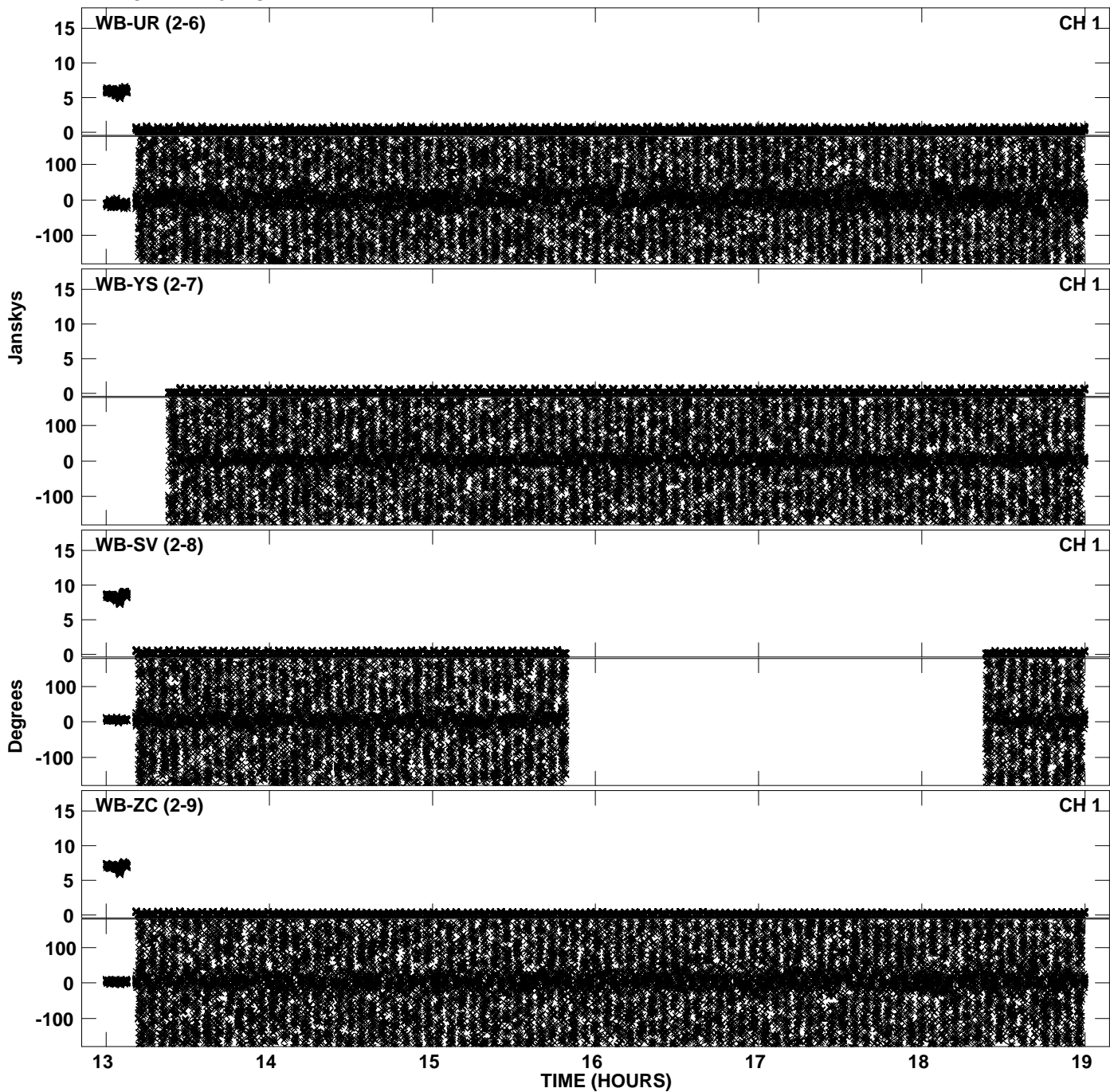
Plot file version 16 created 15-FEB-2013 15:45:16
Amplitude andPhase vs Time for EP075B 2.UVDATA.1 Vect aver. CL # 3
IF 8 CHAN 1 - 32 STK LL



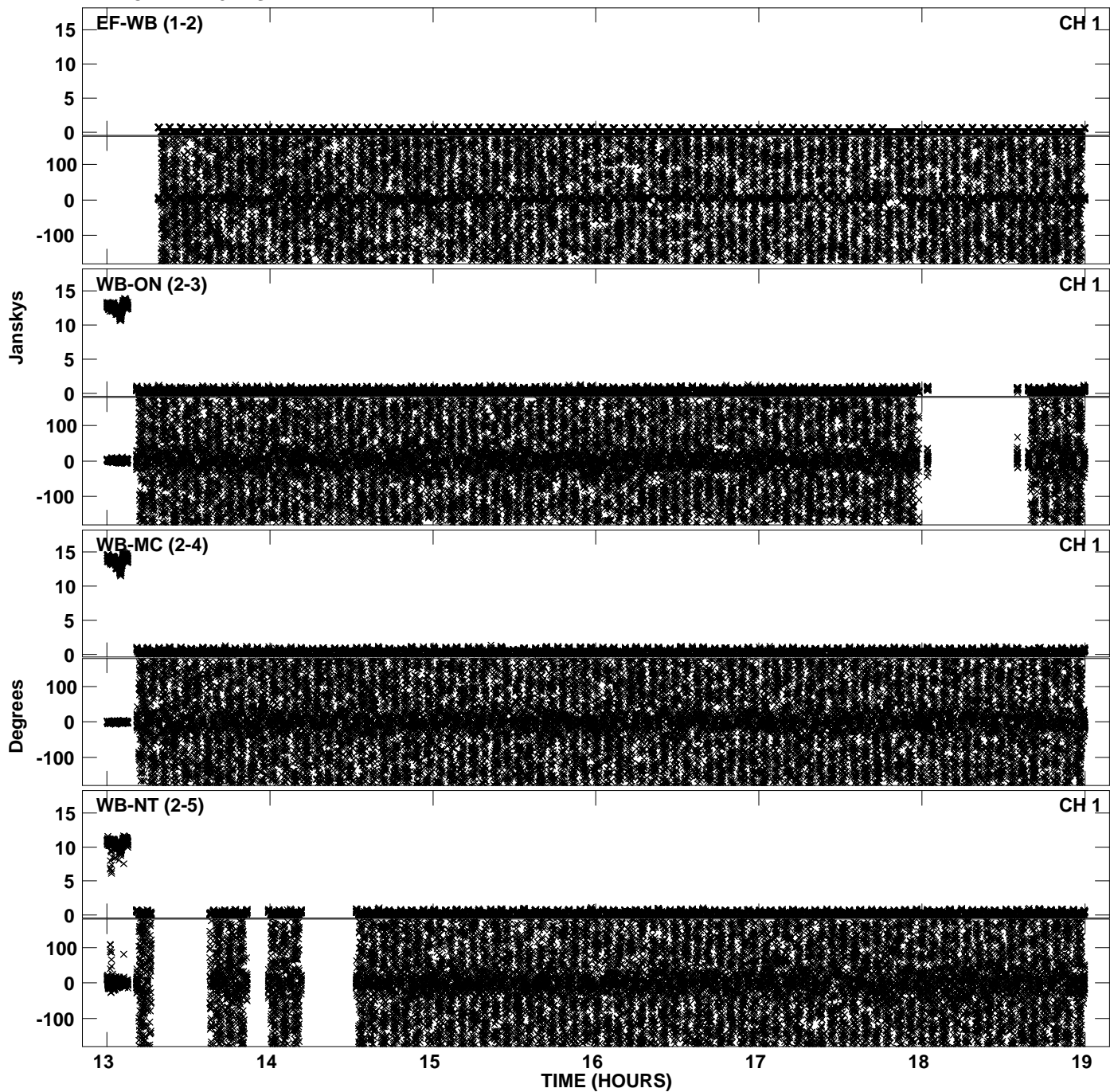
Plot file version 17 created 15-FEB-2013 15:45:24
Amplitude andPhase vs Time for EP075B 2.UVDATA.1 Vect aver. CL # 3
IF 1 CHAN 1 - 32 STK RR



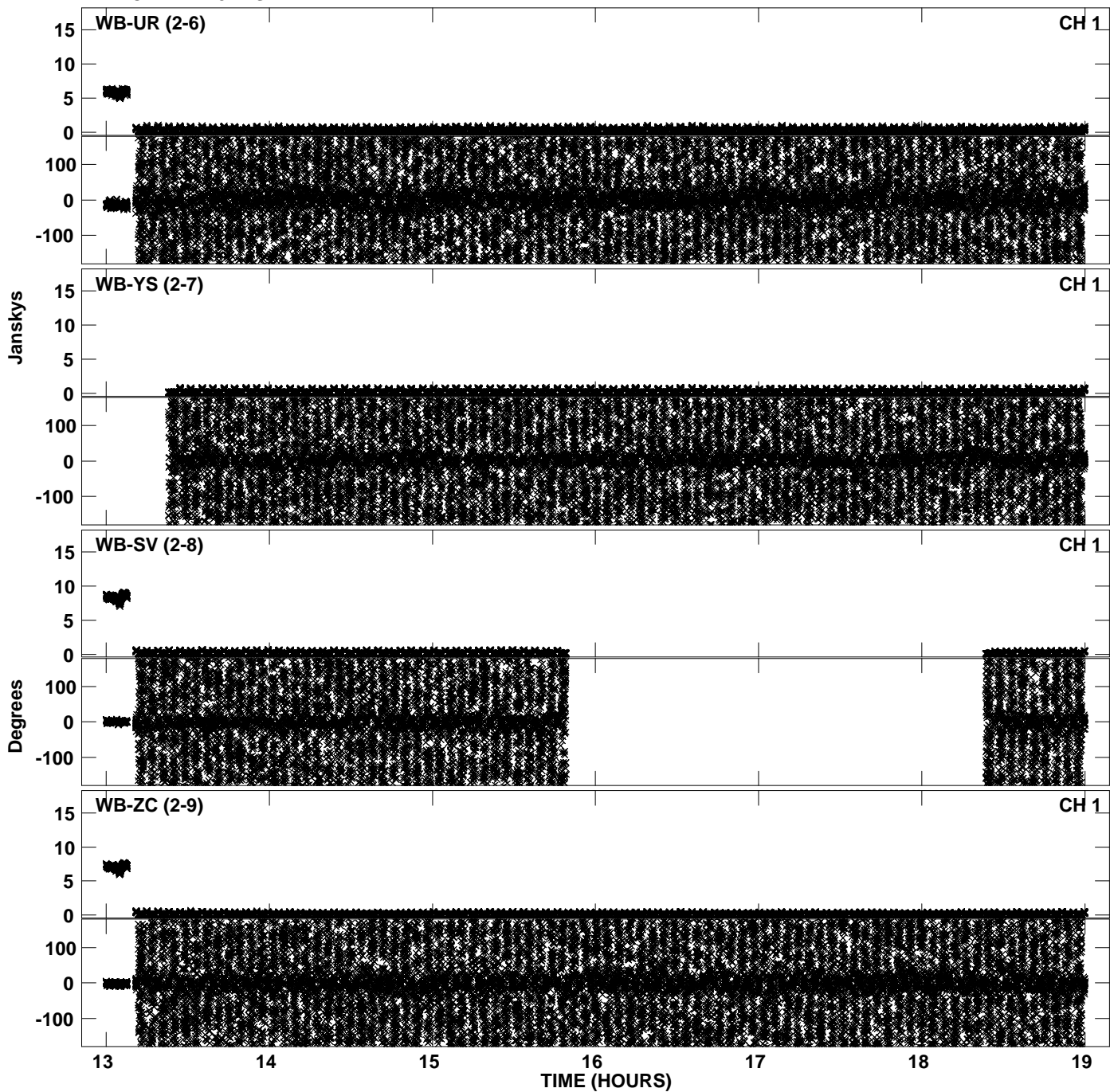
Plot file version 18 created 15-FEB-2013 15:45:24
Amplitude andPhase vs Time for EP075B 2.UVDATA.1 Vect aver. CL # 3
IF 1 CHAN 1 - 32 STK RR



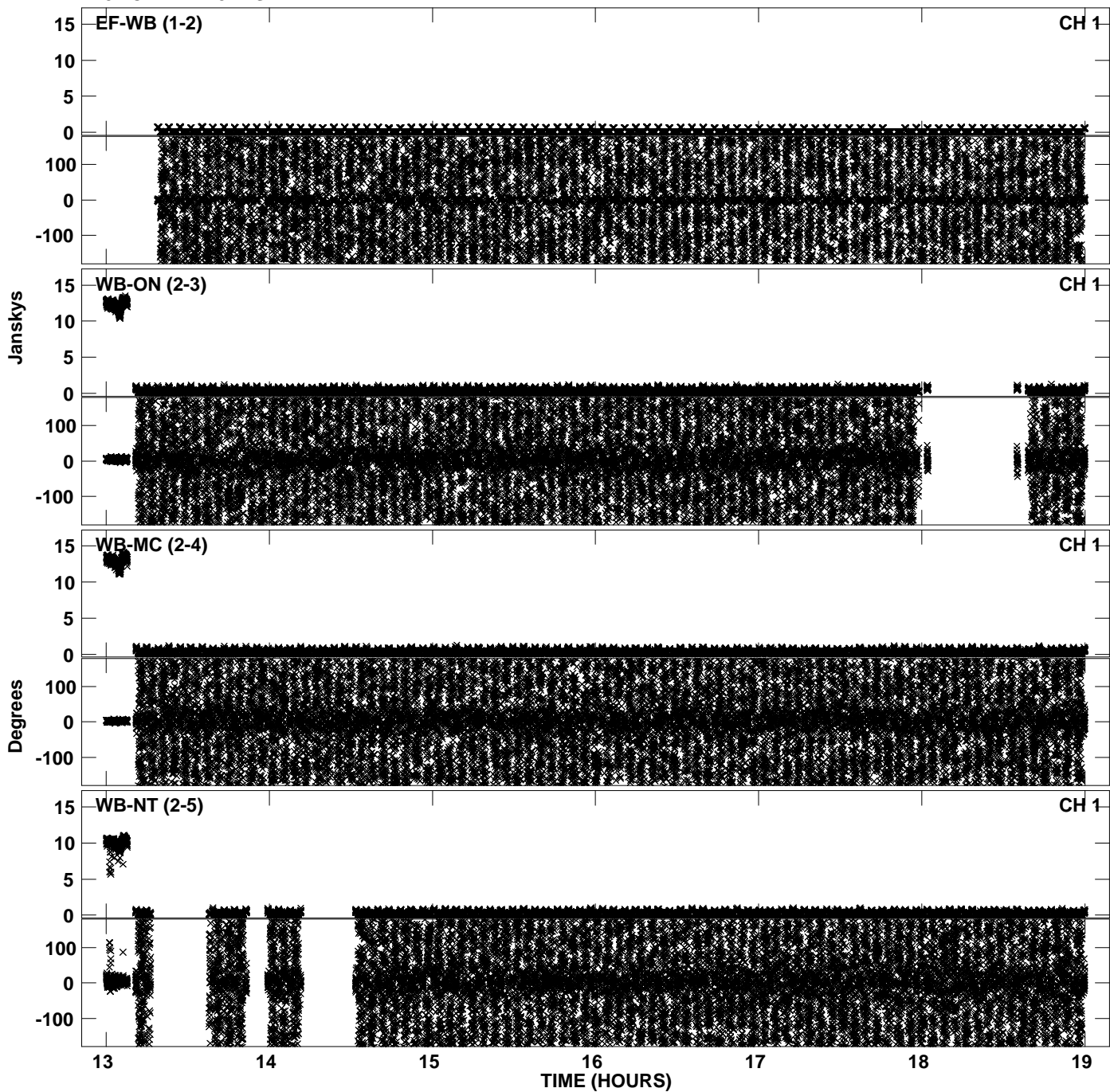
Plot file version 19 created 15-FEB-2013 15:45:32
Amplitude andPhase vs Time for EP075B 2.UVDATA.1 Vect aver. CL # 3
IF 2 CHAN 1 - 32 STK RR



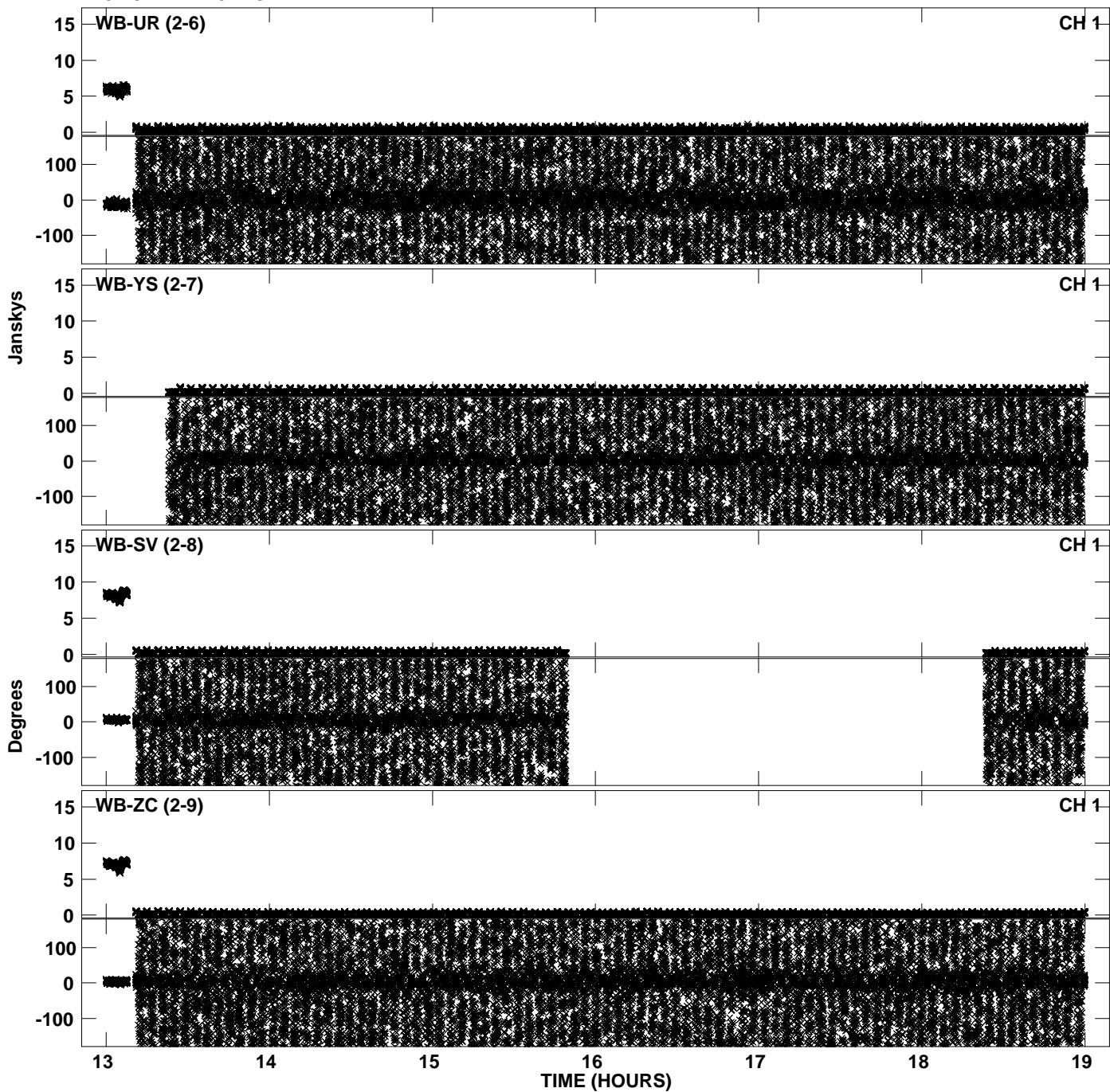
Plot file version 20 created 15-FEB-2013 15:45:32
Amplitude andPhase vs Time for EP075B 2.UVDATA.1 Vect aver. CL # 3
IF 2 CHAN 1 - 32 STK RR



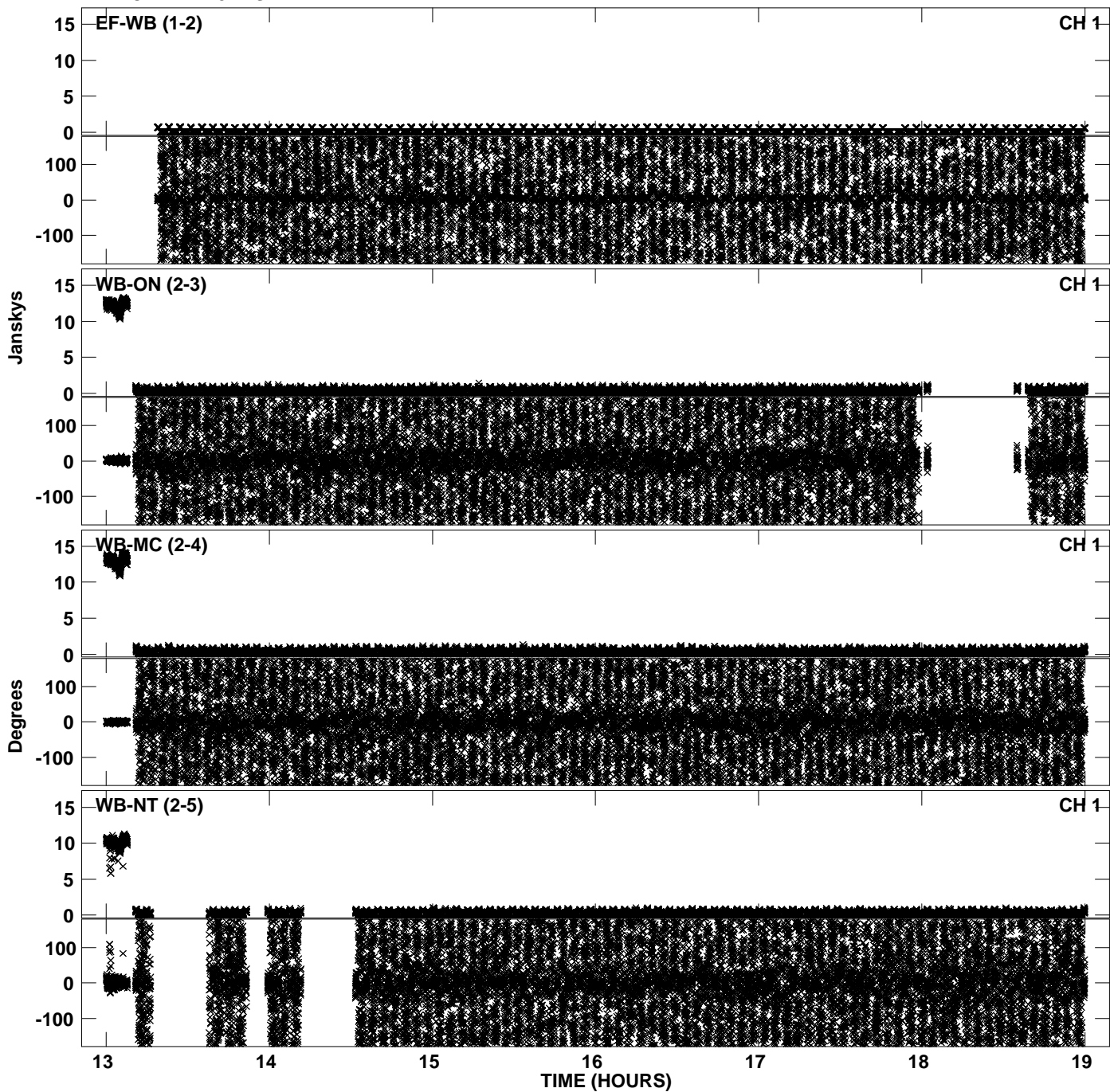
Plot file version 21 created 15-FEB-2013 15:45:41
Amplitude andPhase vs Time for EP075B 2.UVDATA.1 Vect aver. CL # 3
IF 3 CHAN 1 - 32 STK RR



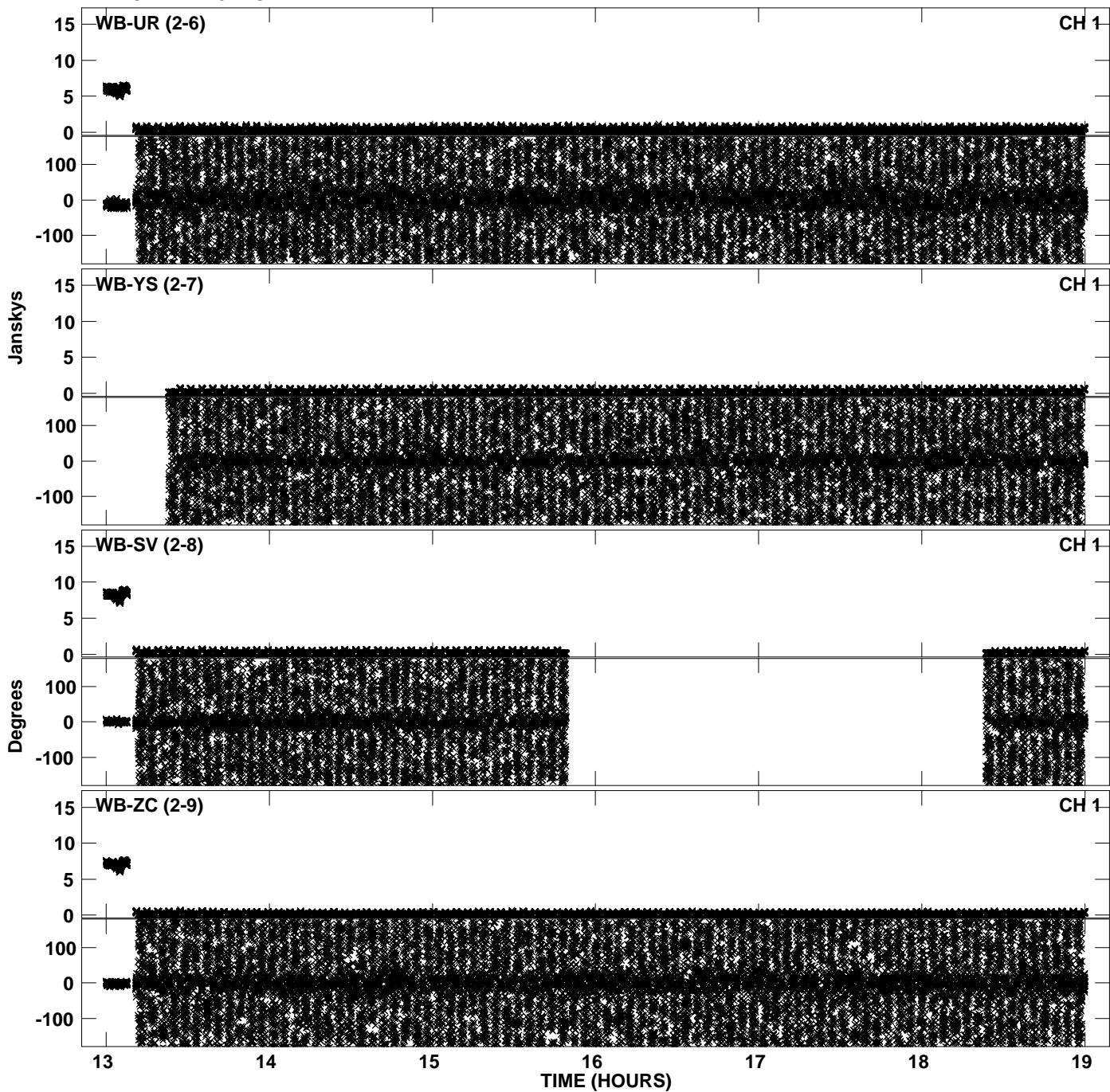
Plot file version 22 created 15-FEB-2013 15:45:41
Amplitude andPhase vs Time for EP075B 2.UVDATA.1 Vect aver. CL # 3
IF 3 CHAN 1 - 32 STK RR



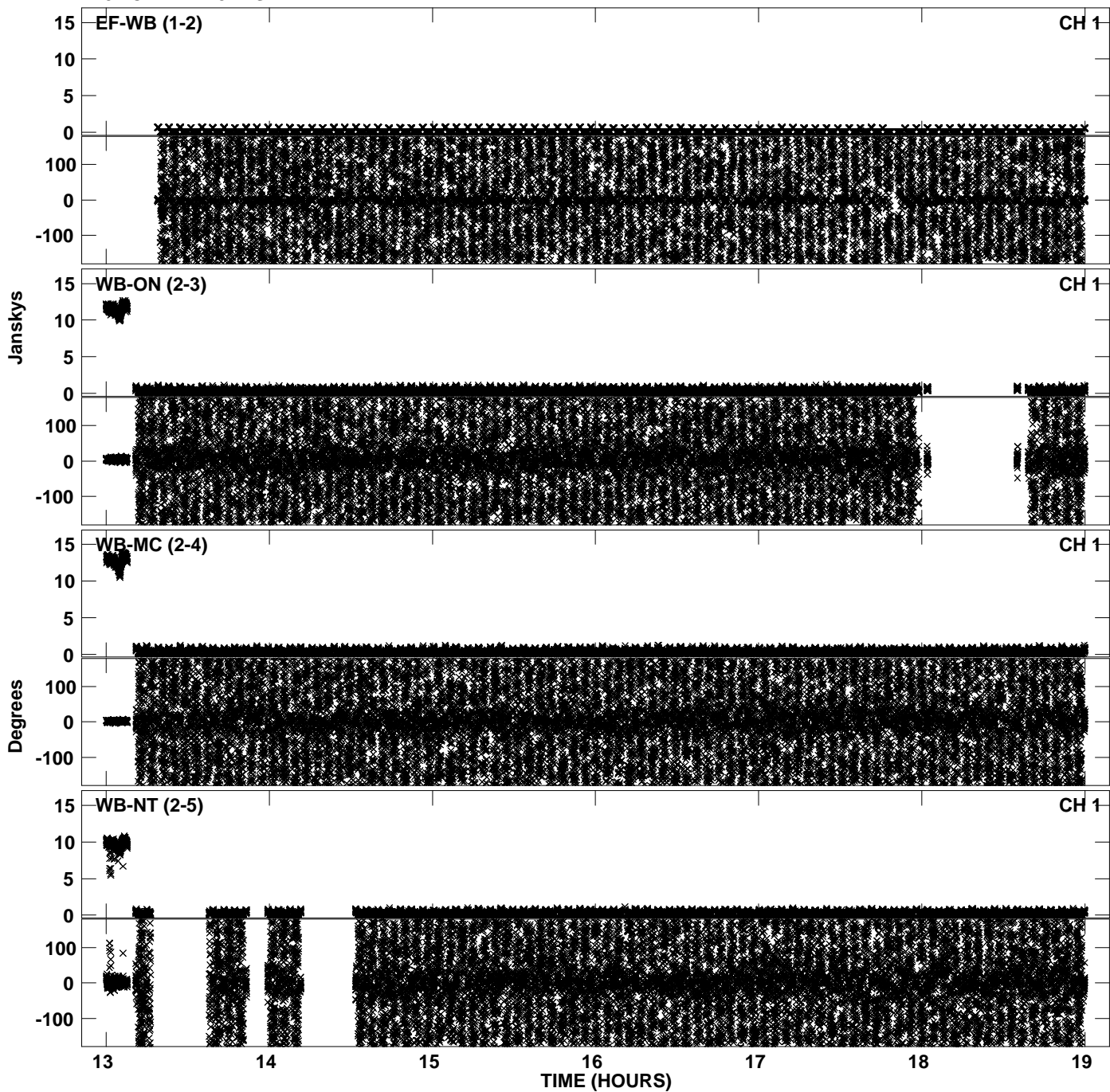
Plot file version 23 created 15-FEB-2013 15:45:49
Amplitude andPhase vs Time for EP075B 2.UVDATA.1 Vect aver. CL # 3
IF 4 CHAN 1 - 32 STK RR



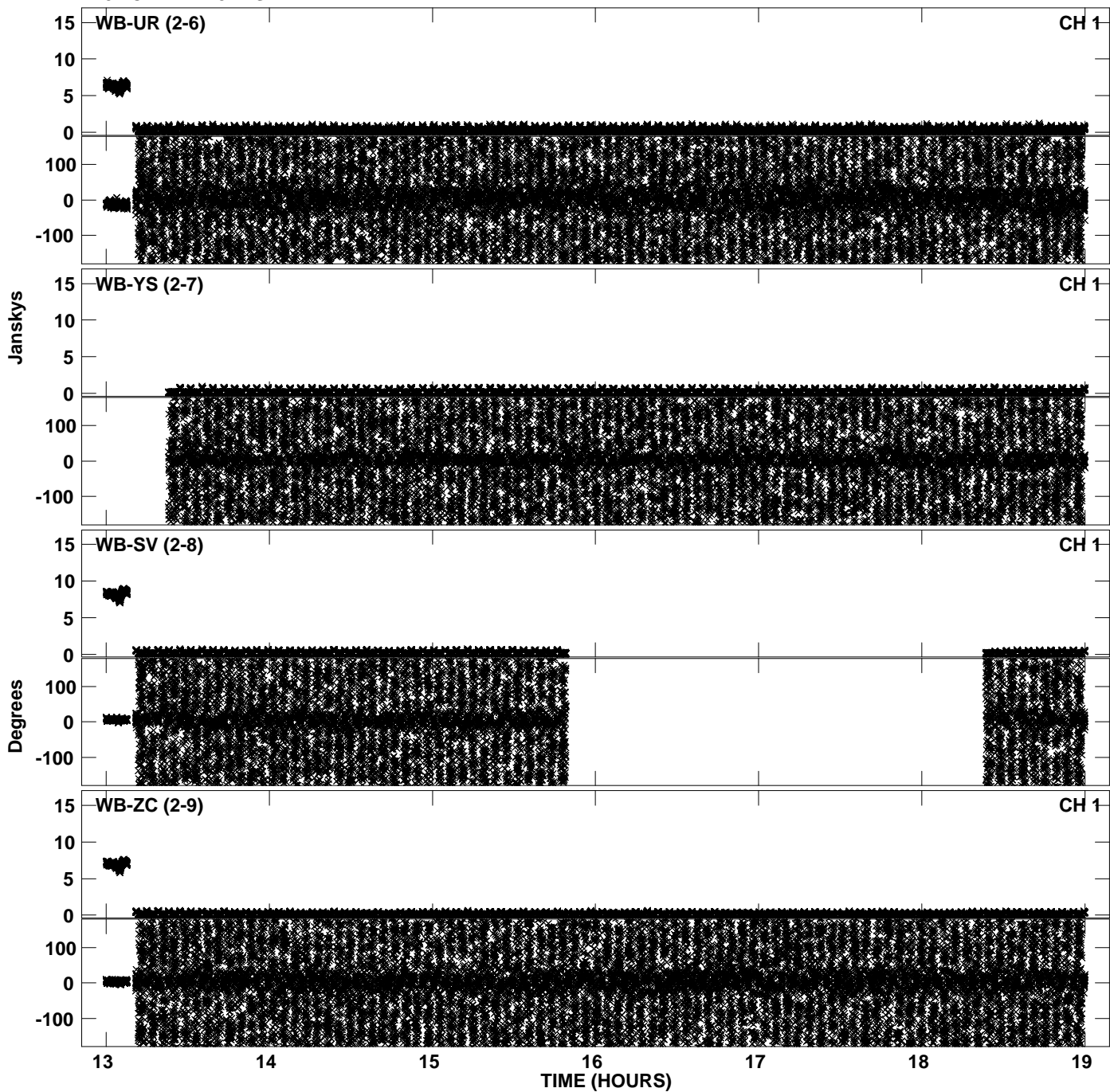
Plot file version 24 created 15-FEB-2013 15:45:49
Amplitude and Phase vs Time for EP075B 2.UVDATA.1 Vect aver. CL # 3
IF 4 CHAN 1 - 32 STK RR



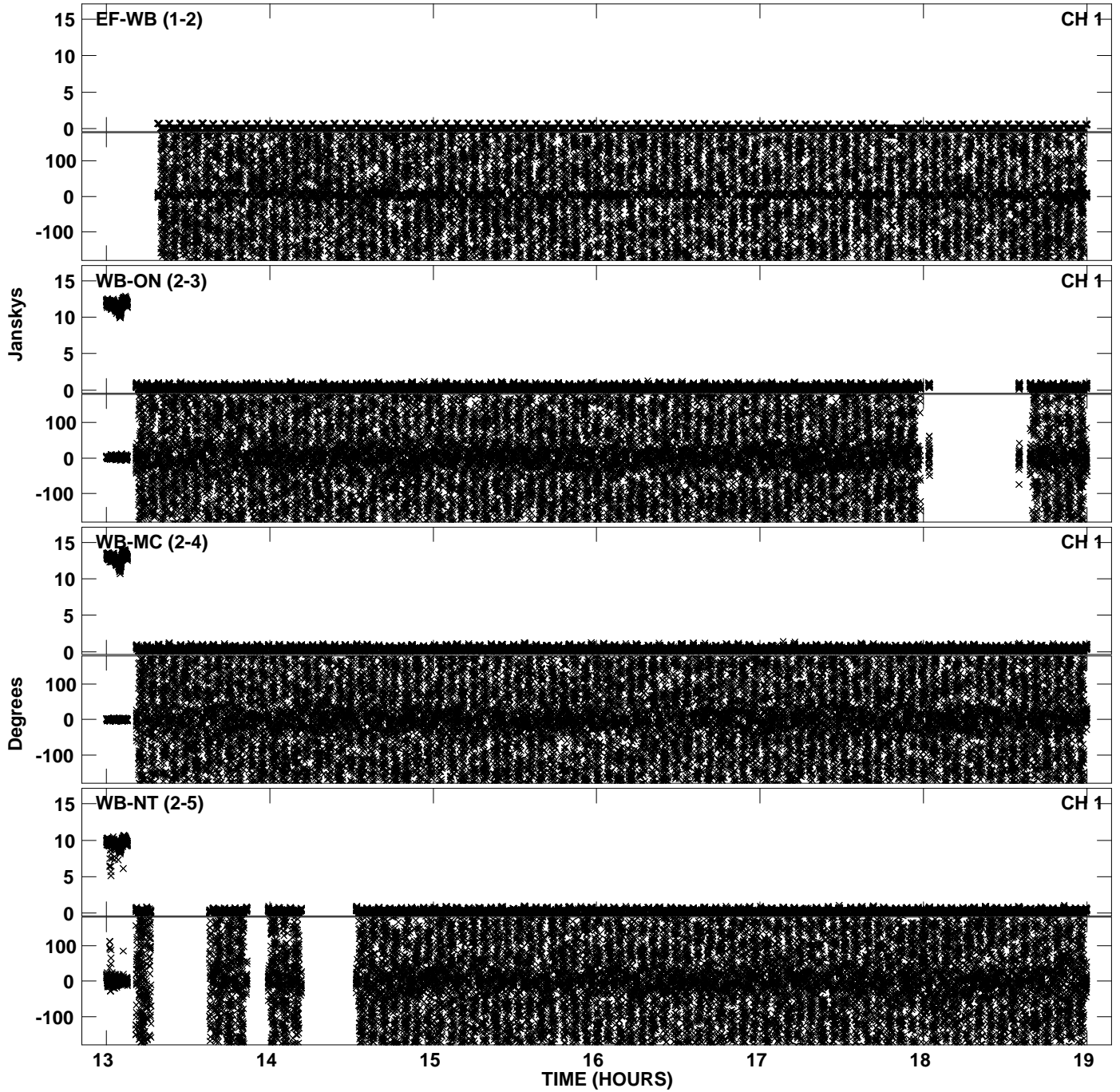
Plot file version 25 created 15-FEB-2013 15:45:59
Amplitude andPhase vs Time for EP075B 2.UVDATA.1 Vect aver. CL # 3
IF 5 CHAN 1 - 32 STK RR



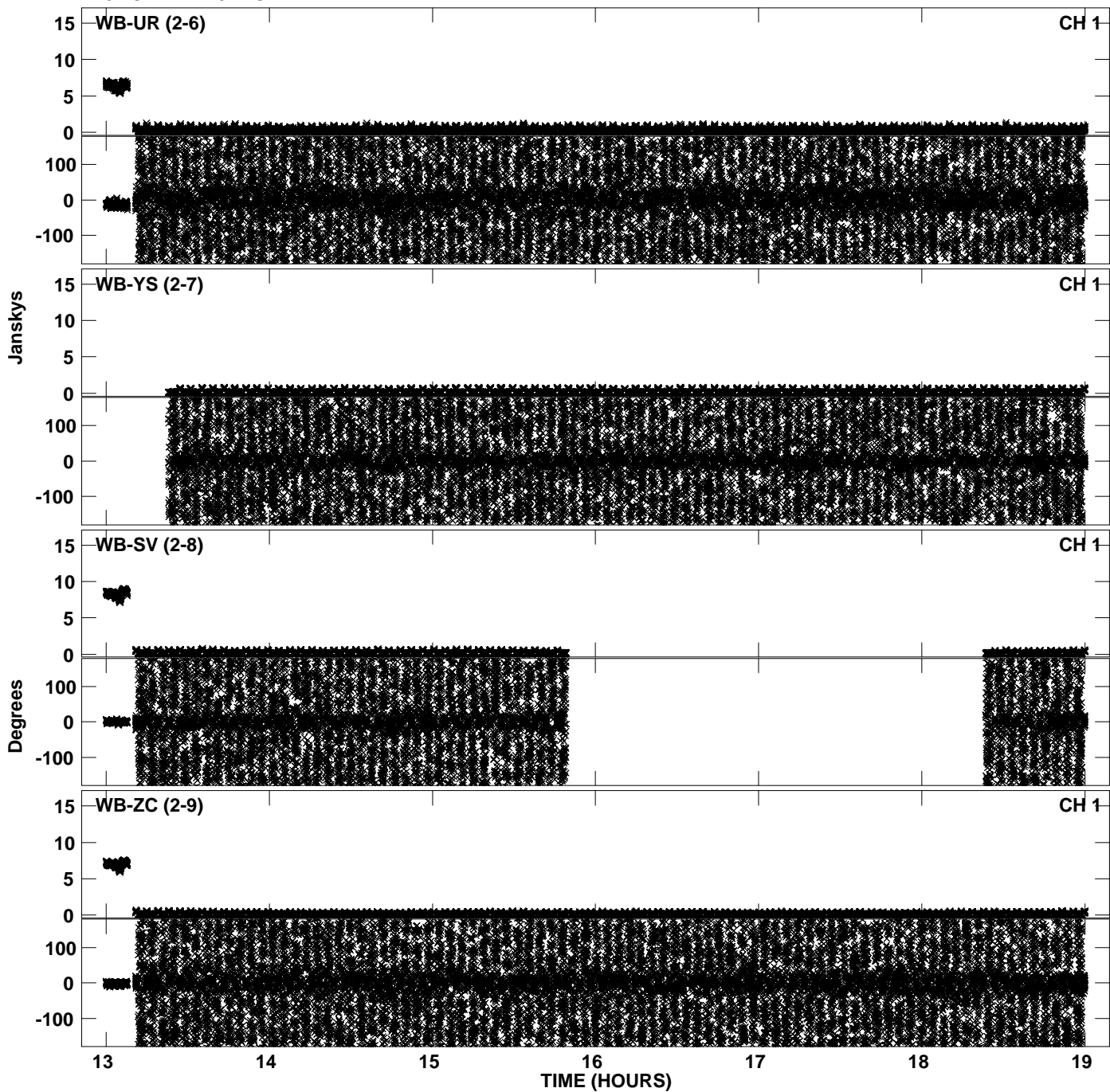
Plot file version 26 created 15-FEB-2013 15:45:59
Amplitude andPhase vs Time for EP075B 2.UVDATA.1 Vect aver. CL # 3
IF 5 CHAN 1 - 32 STK RR



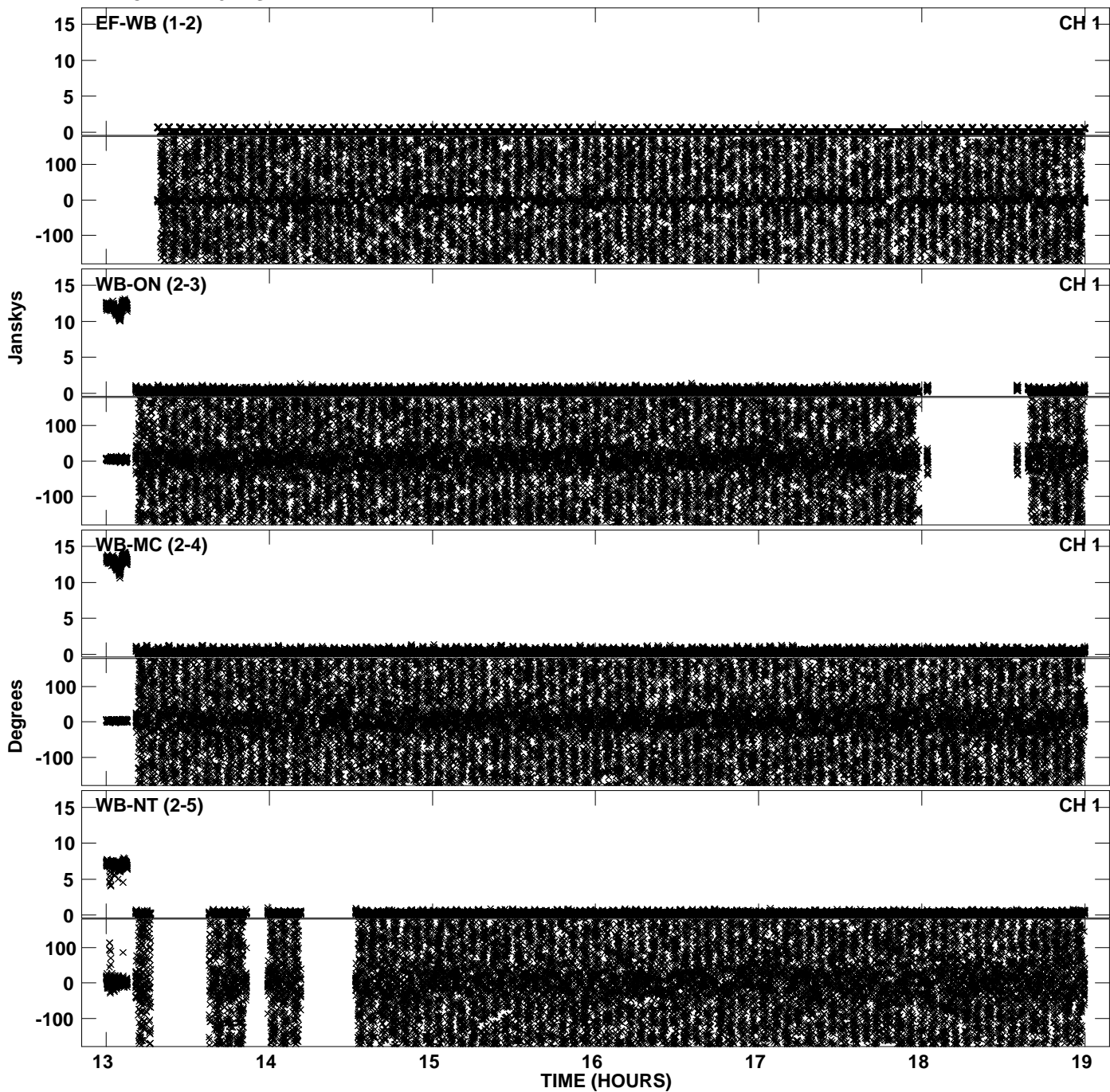
Plot file version 27 created 15-FEB-2013 15:46:07
Amplitude andPhase vs Time for EP075B 2.UVDATA.1 Vect aver. CL # 3
IF 6 CHAN 1 - 32 STK RR



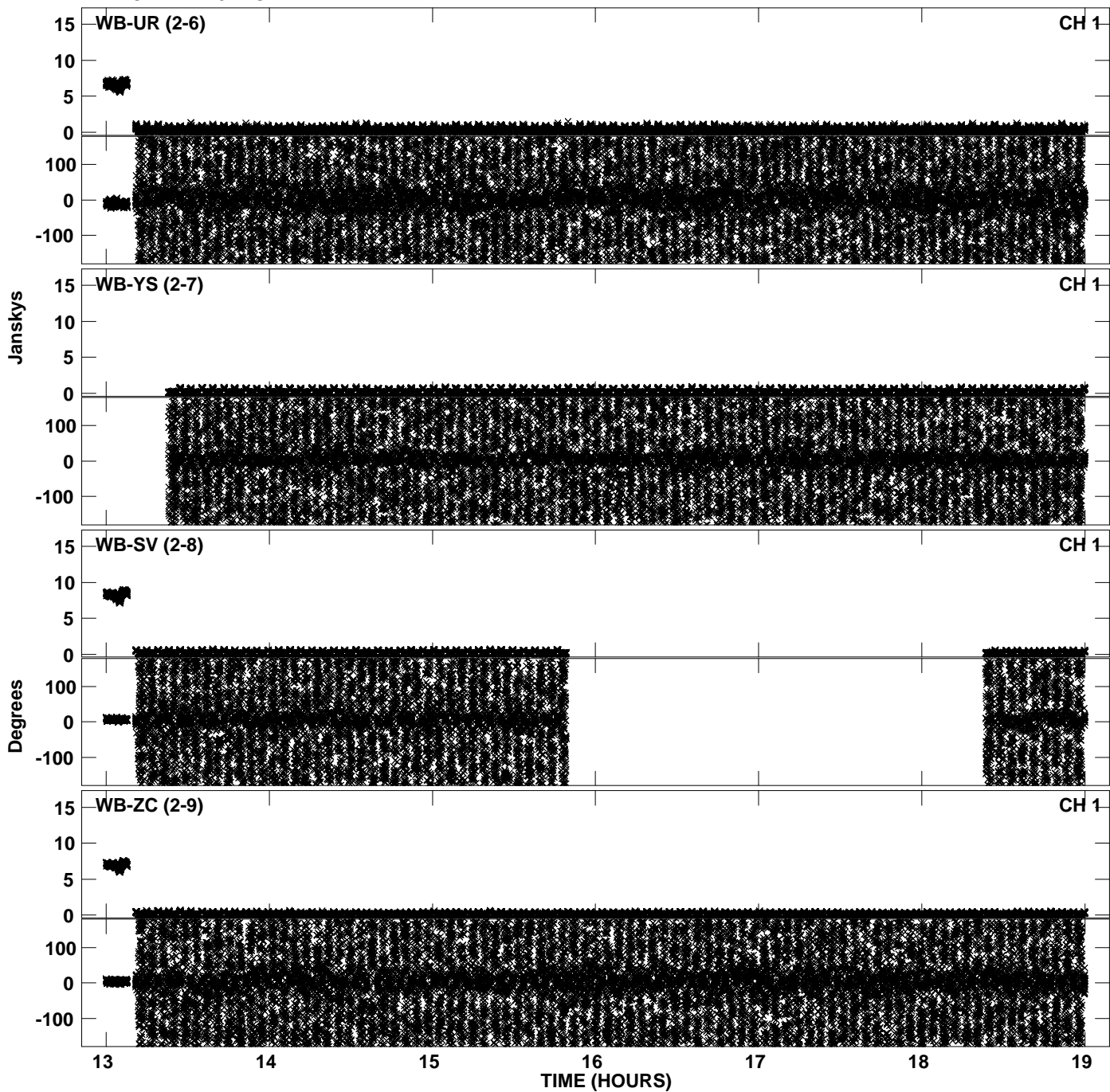
Plot file version 28 created 15-FEB-2013 15:46:07
Amplitude andPhase vs Time for EP075B 2.UVDATA.1 Vect aver. CL # 3
IF 6 CHAN 1 - 32 STK RR



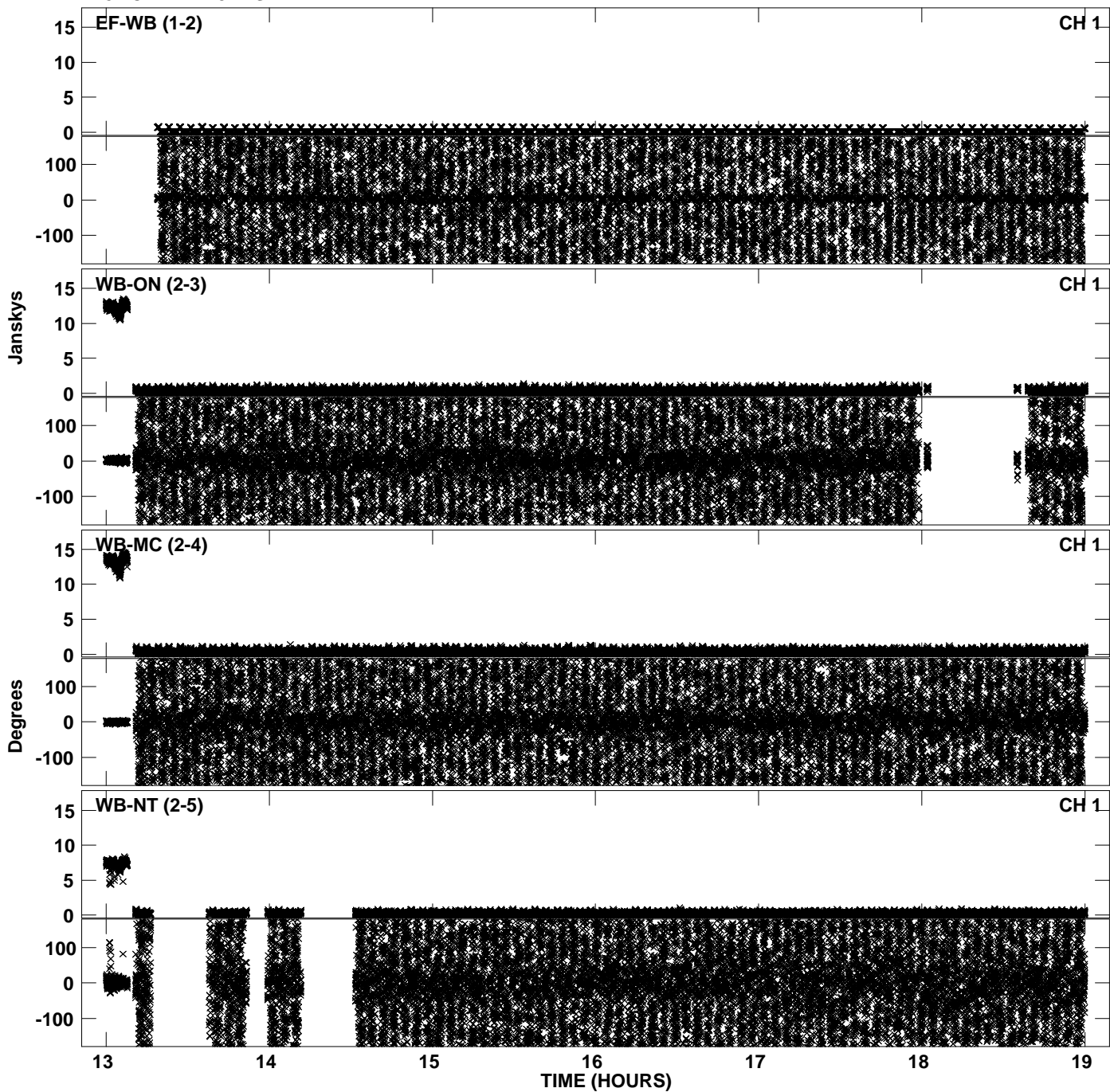
Plot file version 29 created 15-FEB-2013 15:46:15
Amplitude andPhase vs Time for EP075B 2.UVDATA.1 Vect aver. CL # 3
IF 7 CHAN 1 - 32 STK RR



Plot file version 30 created 15-FEB-2013 15:46:15
Amplitude andPhase vs Time for EP075B 2.UVDATA.1 Vect aver. CL # 3
IF 7 CHAN 1 - 32 STK RR



Plot file version 31 created 15-FEB-2013 15:46:23
Amplitude andPhase vs Time for EP075B 2.UVDATA.1 Vect aver. CL # 3
IF 8 CHAN 1 - 32 STK RR



Plot file version 32 created 15-FEB-2013 15:46:23
Amplitude andPhase vs Time for EP075B 2.UVDATA.1 Vect aver. CL # 3
IF 8 CHAN 1 - 32 STK RR

