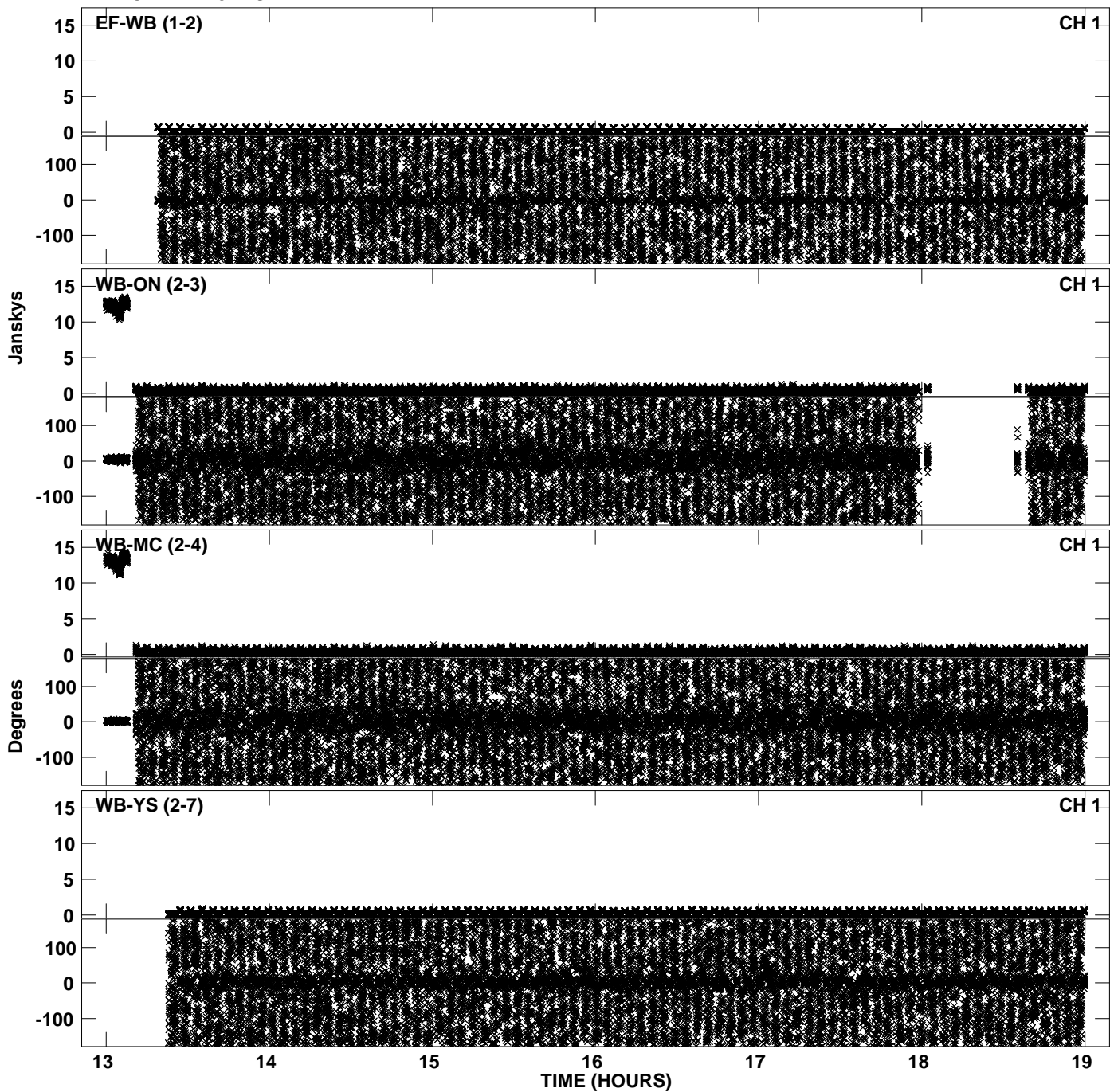
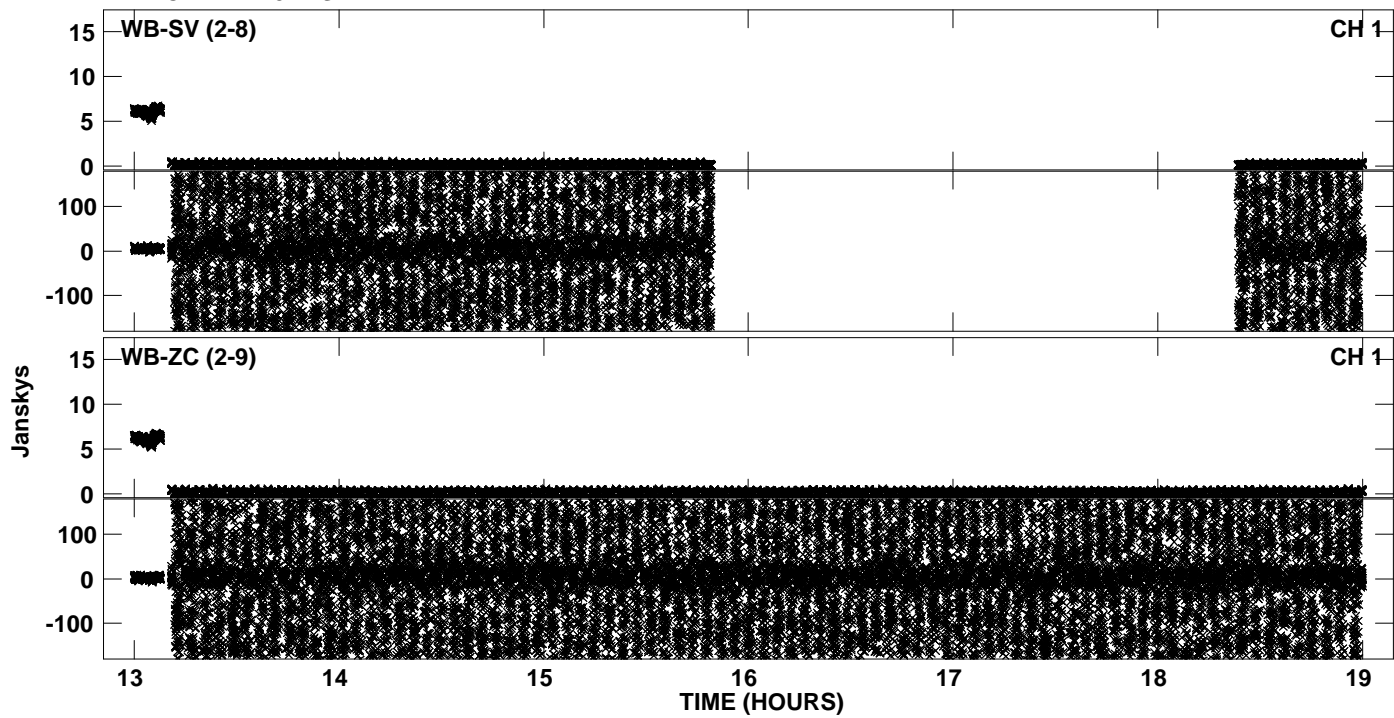


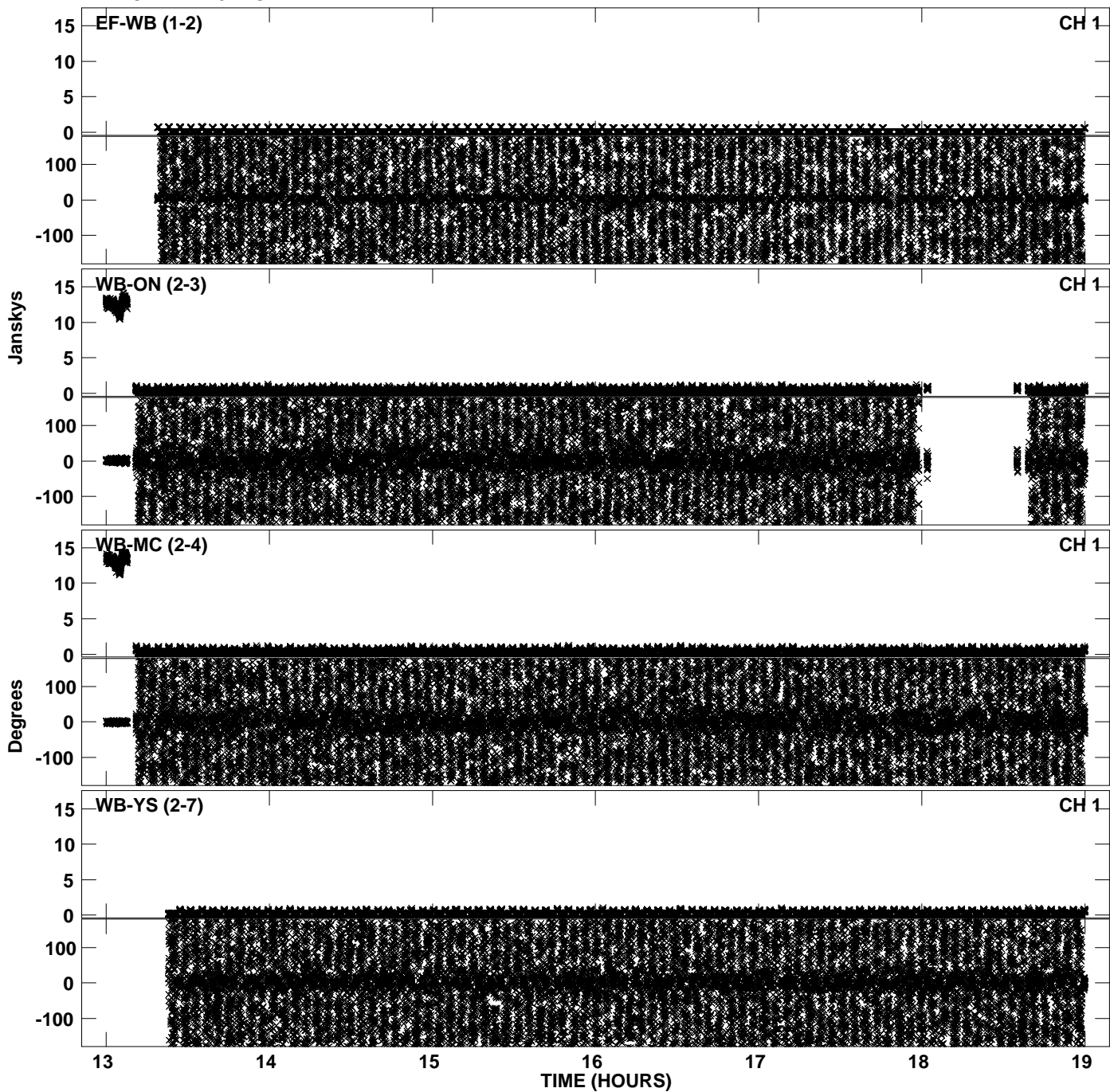
Plot file version 1 created 21-SEP-2012 21:16:30
Amplitude andPhase vs Time for EP075B 3.UVDATA.1 Vect aver. CL # 3
IF 1 CHAN 1 - 32 STK LL



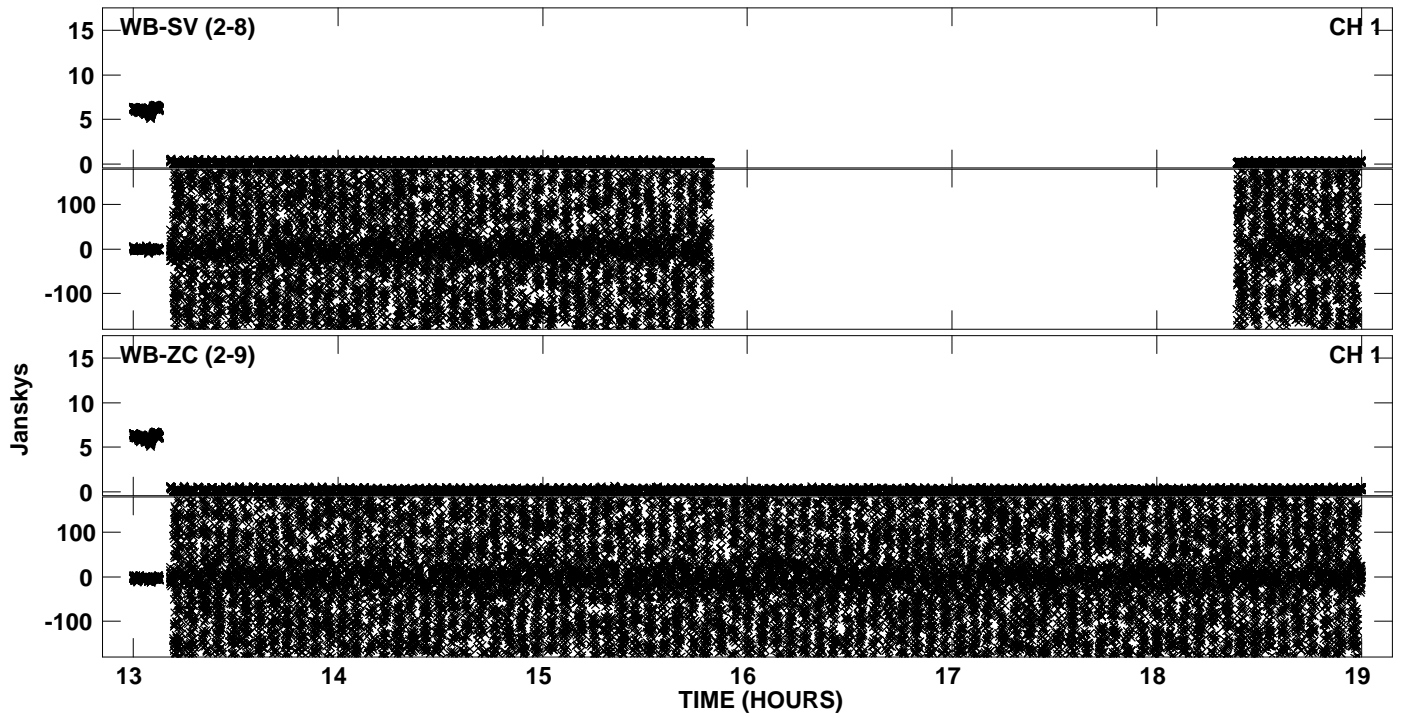
Plot file version 2 created 21-SEP-2012 21:16:30
Amplitude andPhase vs Time for EP075B 3.UVDATA.1 Vect aver. CL # 3
IF 1 CHAN 1 - 32 STK LL



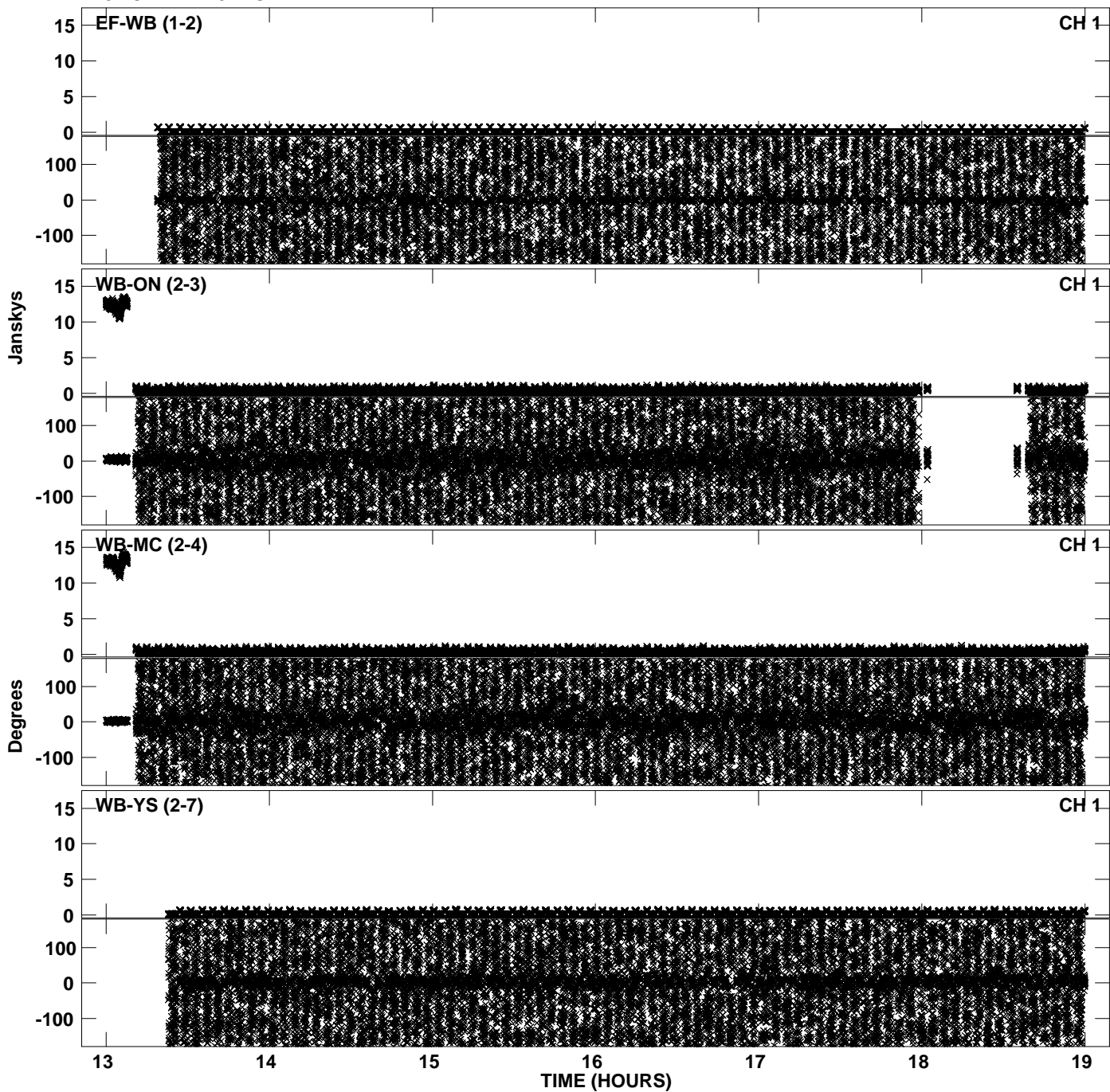
Plot file version 3 created 21-SEP-2012 21:16:44
Amplitude andPhase vs Time for EP075B 3.UVDATA.1 Vect aver. CL # 3
IF 2 CHAN 1 - 32 STK LL



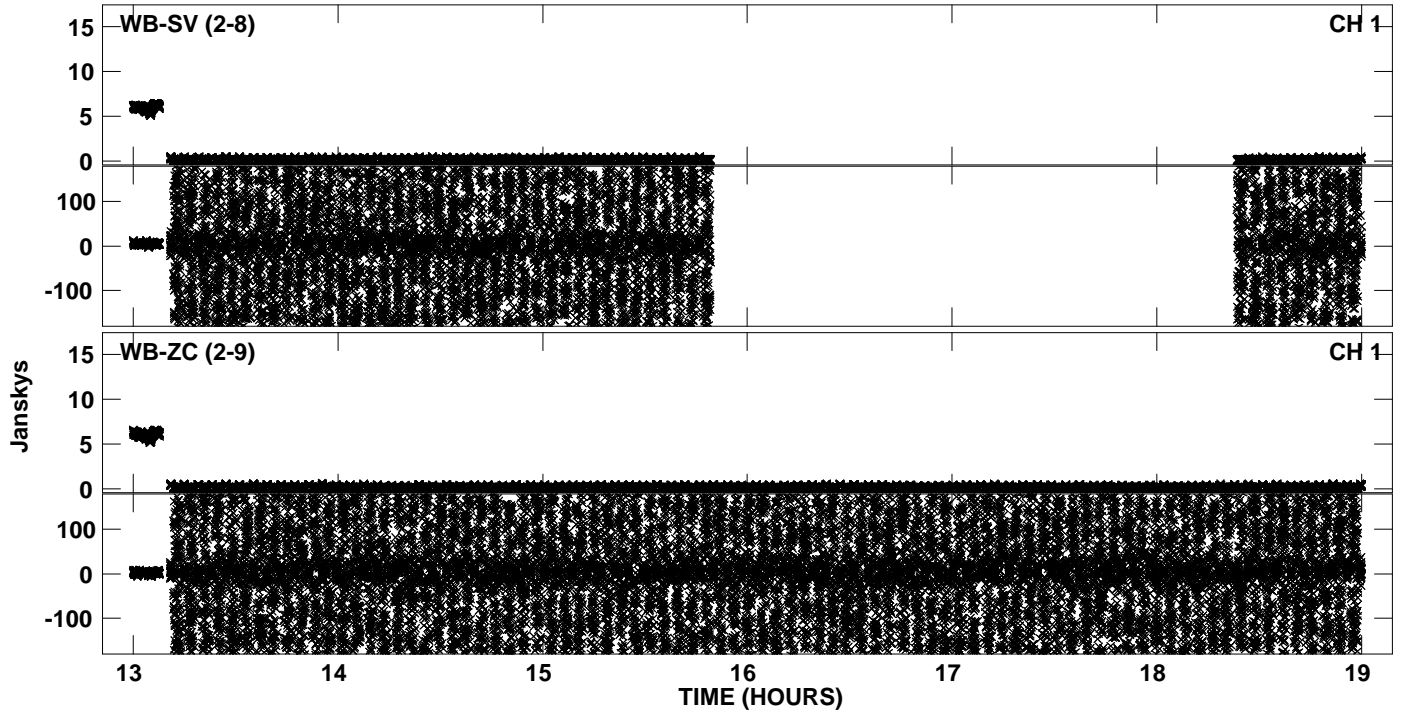
Plot file version 4 created 21-SEP-2012 21:16:44
Amplitude andPhase vs Time for EP075B 3.UVDATA.1 Vect aver. CL # 3
IF 2 CHAN 1 - 32 STK LL



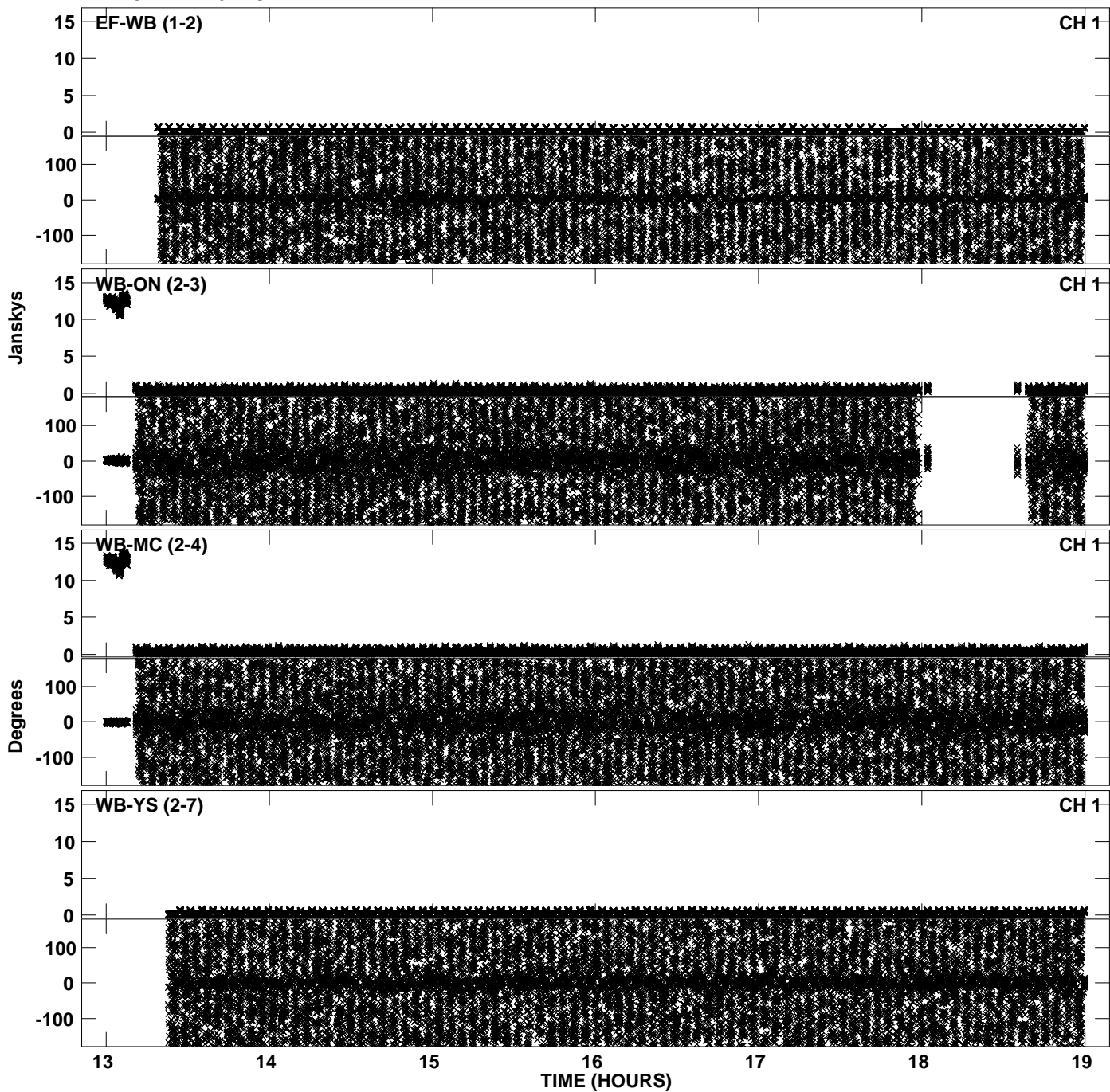
Plot file version 5 created 21-SEP-2012 21:16:57
Amplitude andPhase vs Time for EP075B 3.UVDATA.1 Vect aver. CL # 3
IF 3 CHAN 1 - 32 STK LL



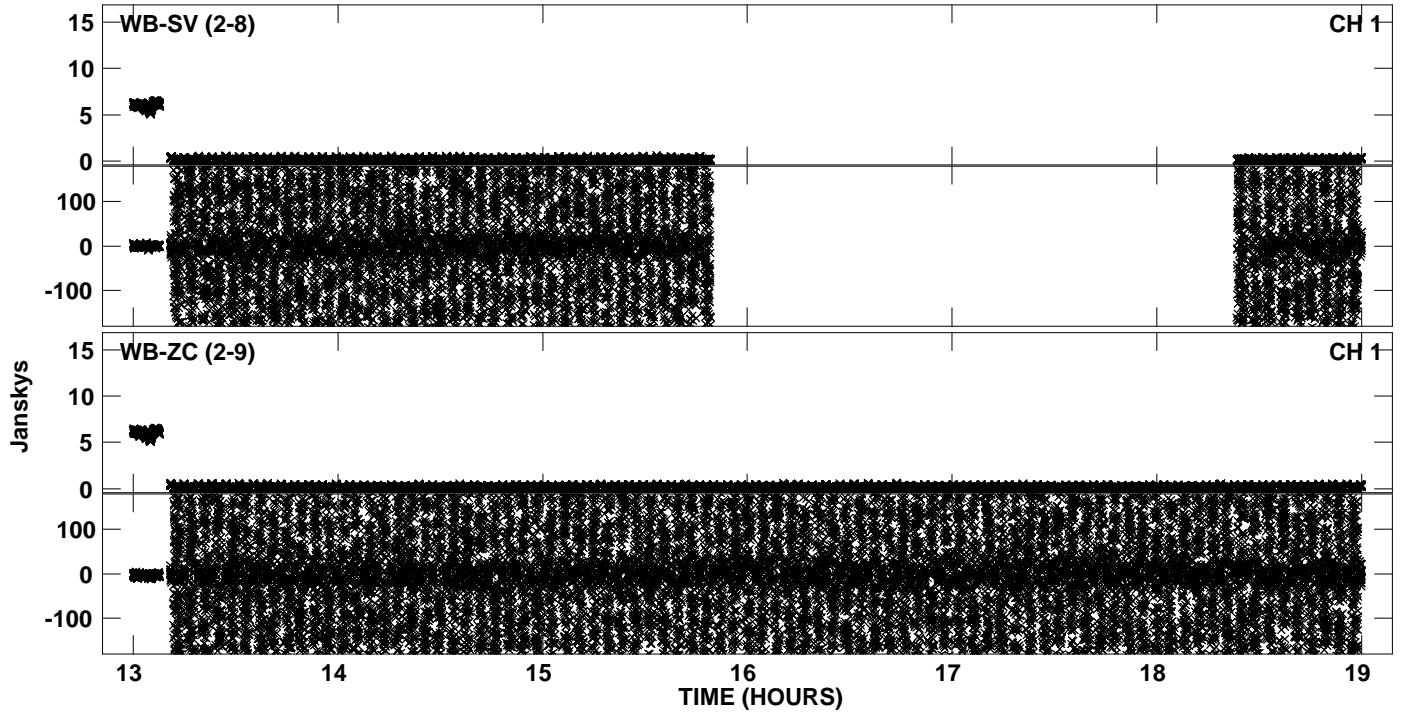
Plot file version 6 created 21-SEP-2012 21:16:57
Amplitude andPhase vs Time for EP075B 3.UVDATA.1 Vect aver. CL # 3
IF 3 CHAN 1 - 32 STK LL



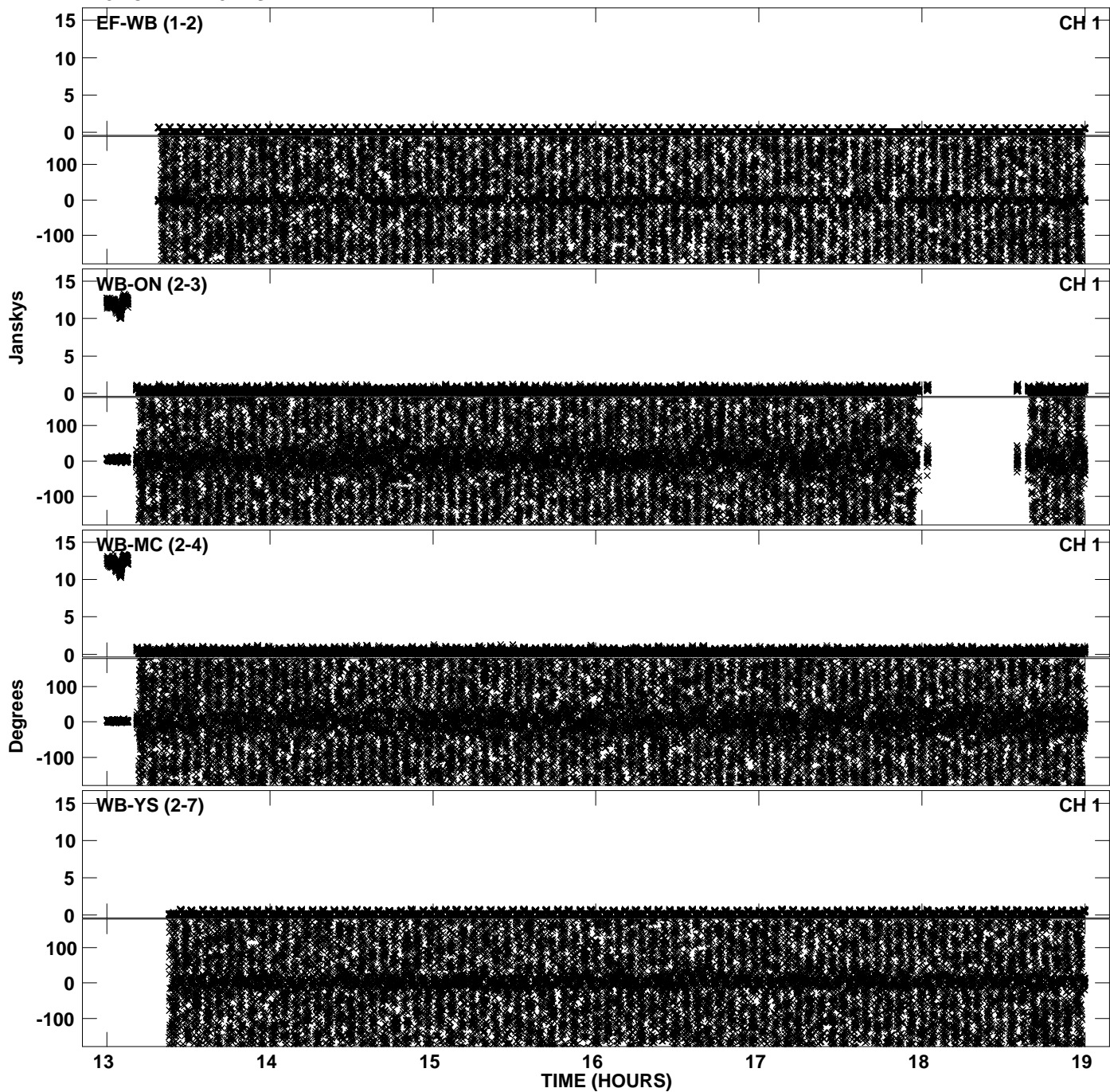
Plot file version 7 created 21-SEP-2012 21:17:11
Amplitude andPhase vs Time for EP075B 3.UVDATA.1 Vect aver. CL # 3
IF 4 CHAN 1 - 32 STK LL



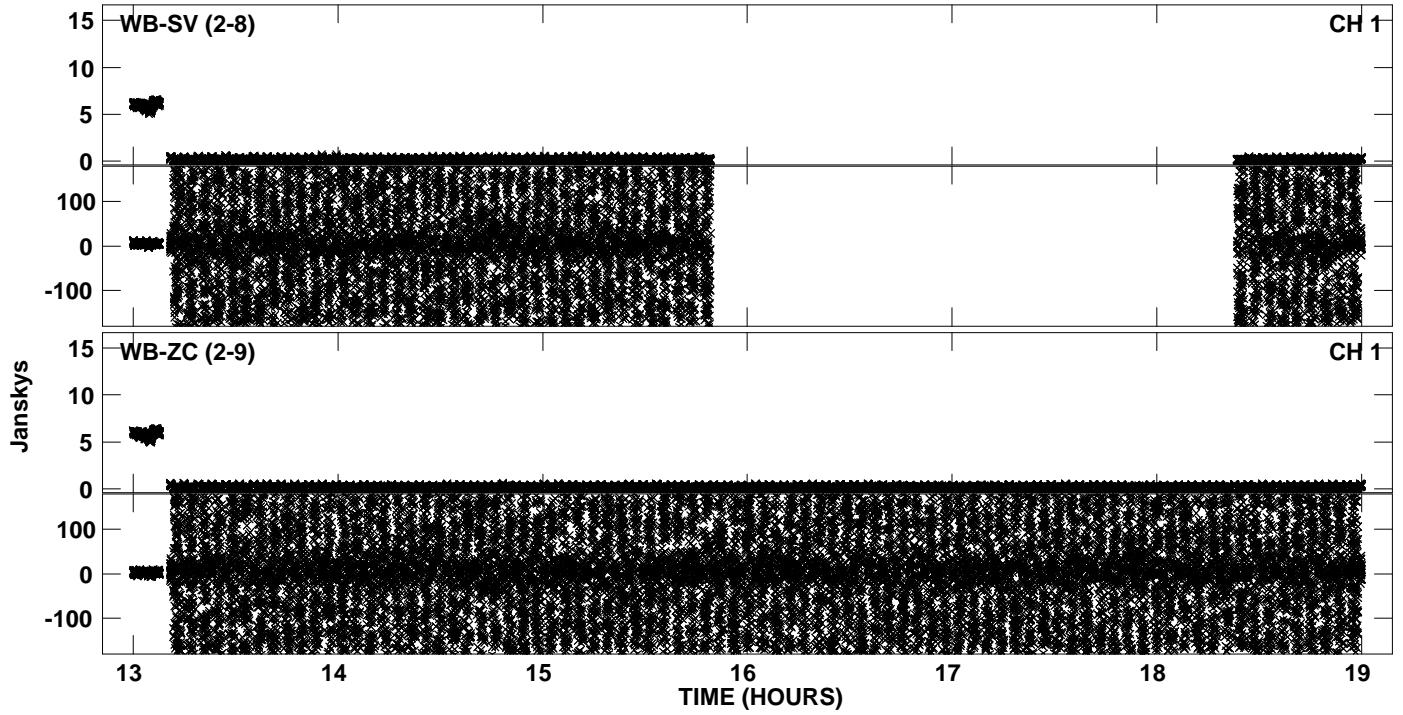
Plot file version 8 created 21-SEP-2012 21:17:11
Amplitude andPhase vs Time for EP075B 3.UVDATA.1 Vect aver. CL # 3
IF 4 CHAN 1 - 32 STK LL



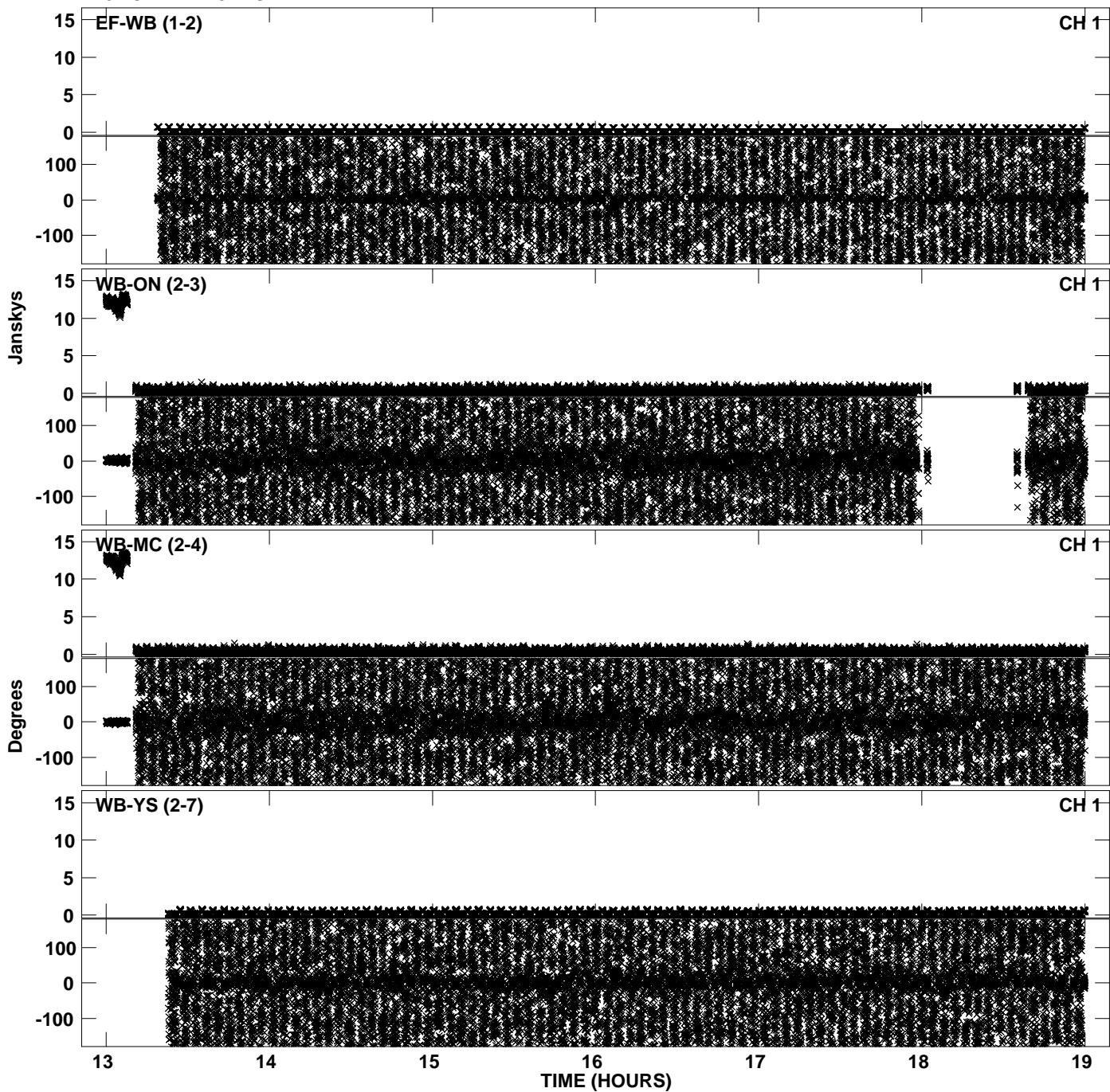
Plot file version 9 created 21-SEP-2012 21:17:24
Amplitude andPhase vs Time for EP075B 3.UVDATA.1 Vect aver. CL # 3
IF 5 CHAN 1 - 32 STK LL



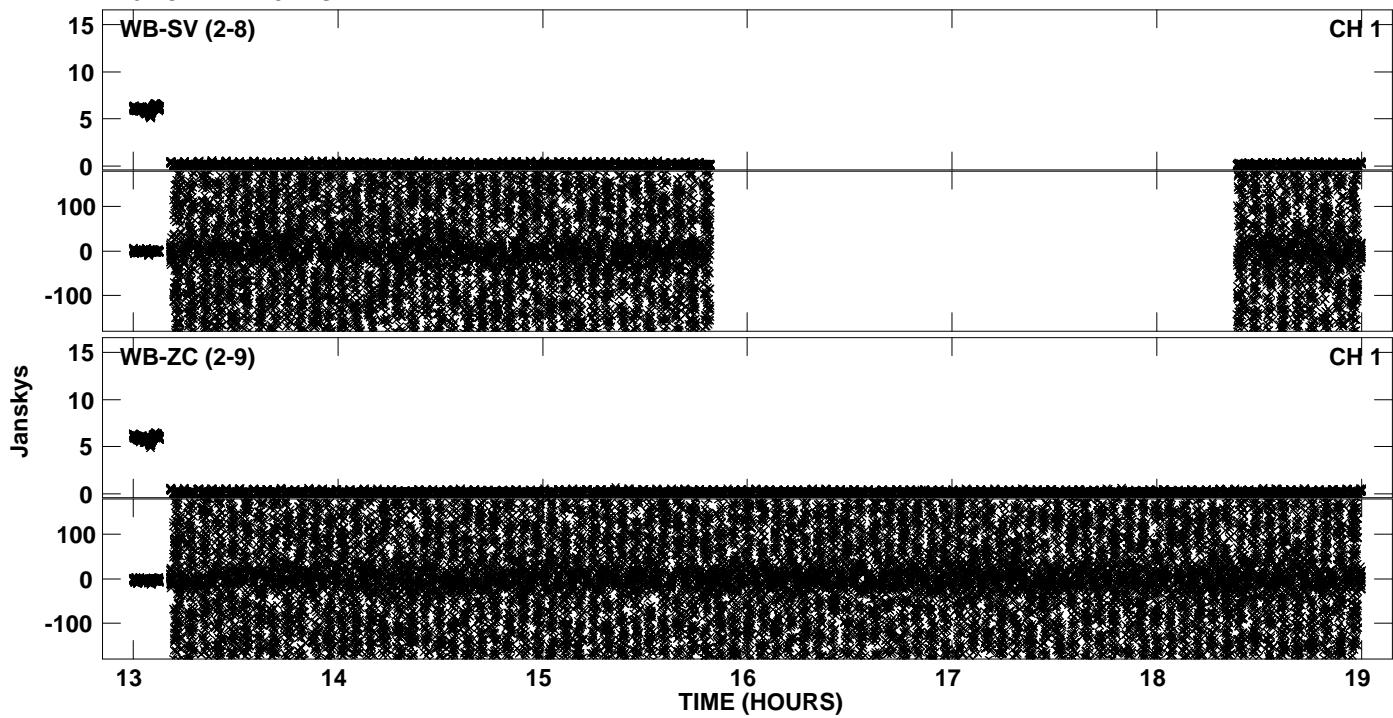
Plot file version 10 created 21-SEP-2012 21:17:24
Amplitude andPhase vs Time for EP075B 3.UVDATA.1 Vect aver. CL # 3
IF 5 CHAN 1 - 32 STK LL



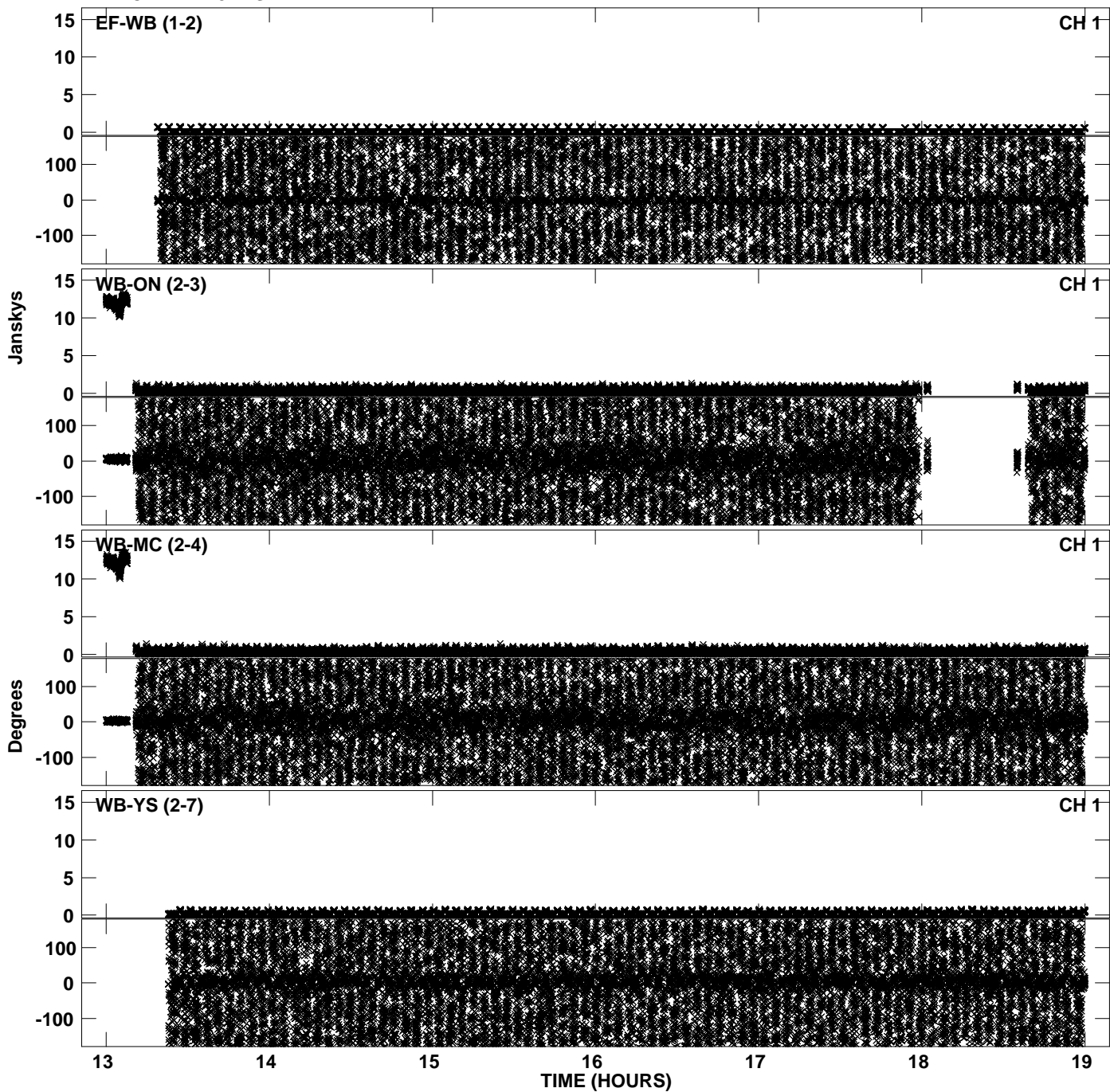
Plot file version 11 created 21-SEP-2012 21:17:38
Amplitude andPhase vs Time for EP075B 3.UVDATA.1 Vect aver. CL # 3
IF 6 CHAN 1 - 32 STK LL



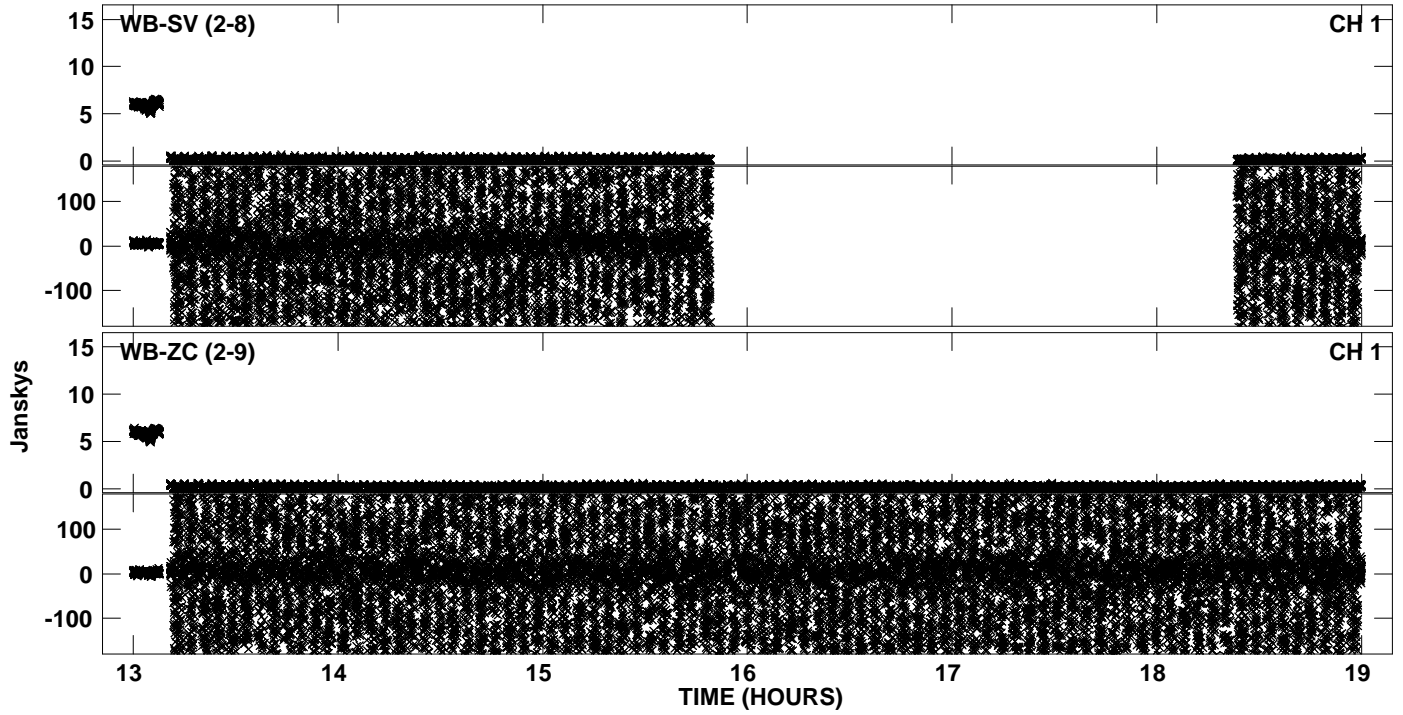
Plot file version 12 created 21-SEP-2012 21:17:38
Amplitude andPhase vs Time for EP075B 3.UVDATA.1 Vect aver. CL # 3
IF 6 CHAN 1 - 32 STK LL



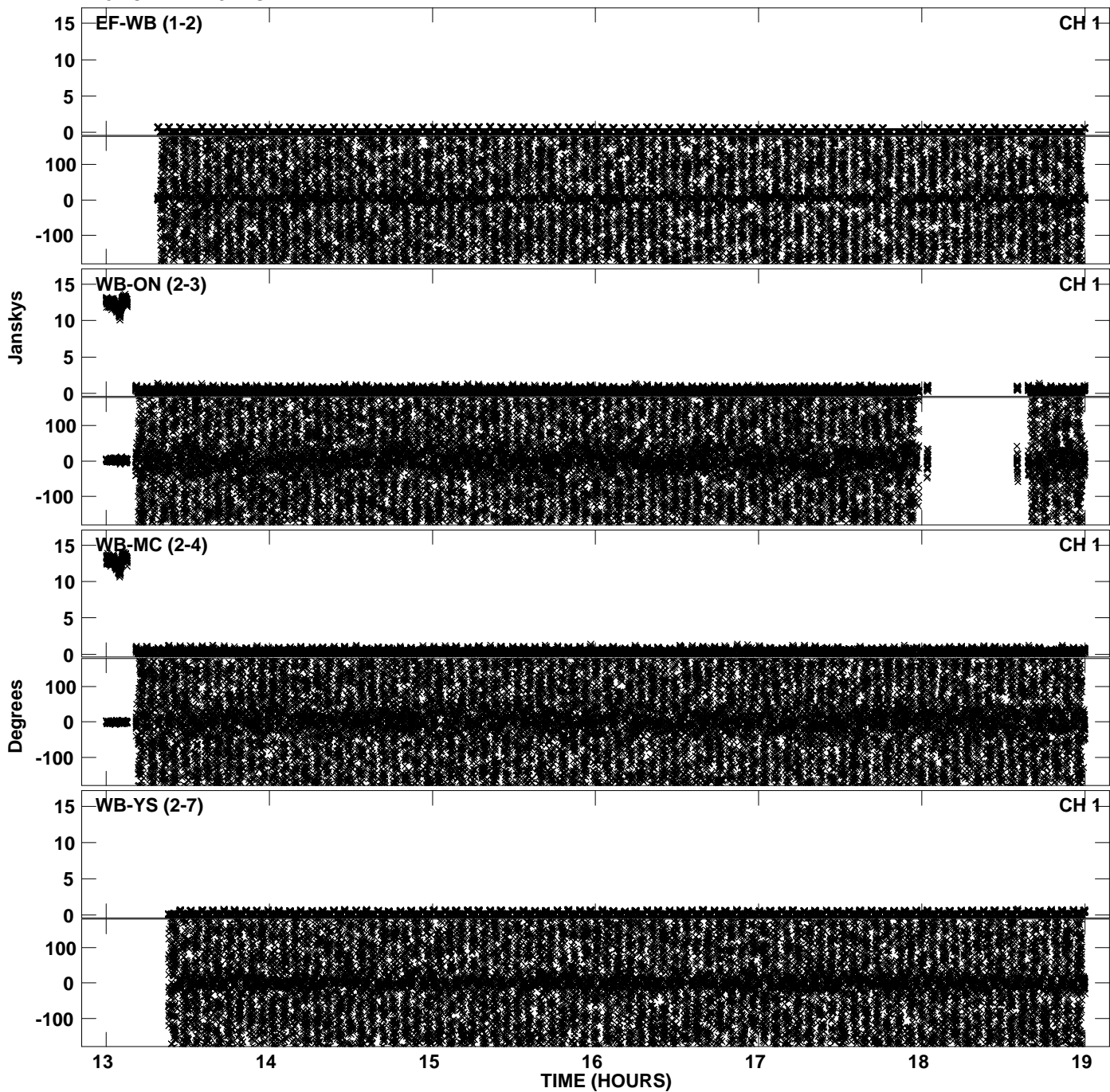
Plot file version 13 created 21-SEP-2012 21:17:51
Amplitude andPhase vs Time for EP075B 3.UVDATA.1 Vect aver. CL # 3
IF 7 CHAN 1 - 32 STK LL



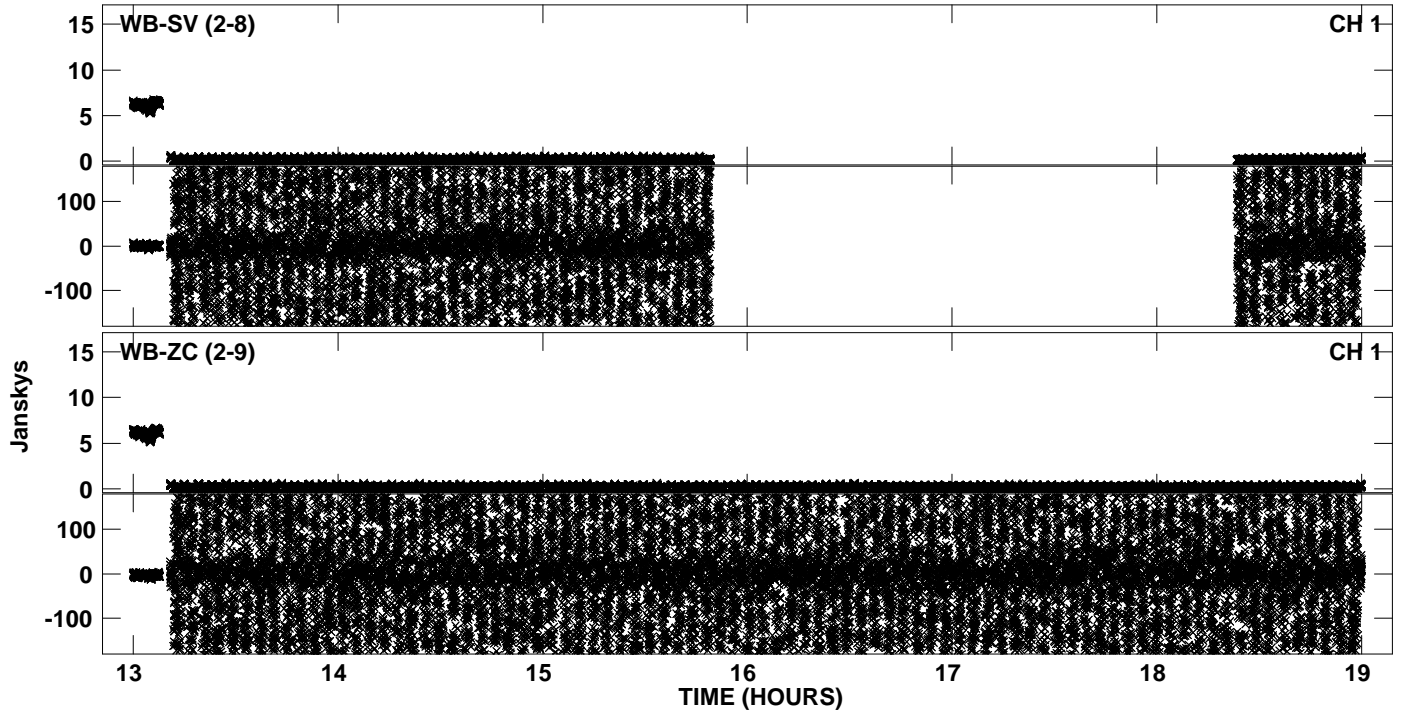
Plot file version 14 created 21-SEP-2012 21:17:52
Amplitude andPhase vs Time for EP075B 3.UVDATA.1 Vect aver. CL # 3
IF 7 CHAN 1 - 32 STK LL



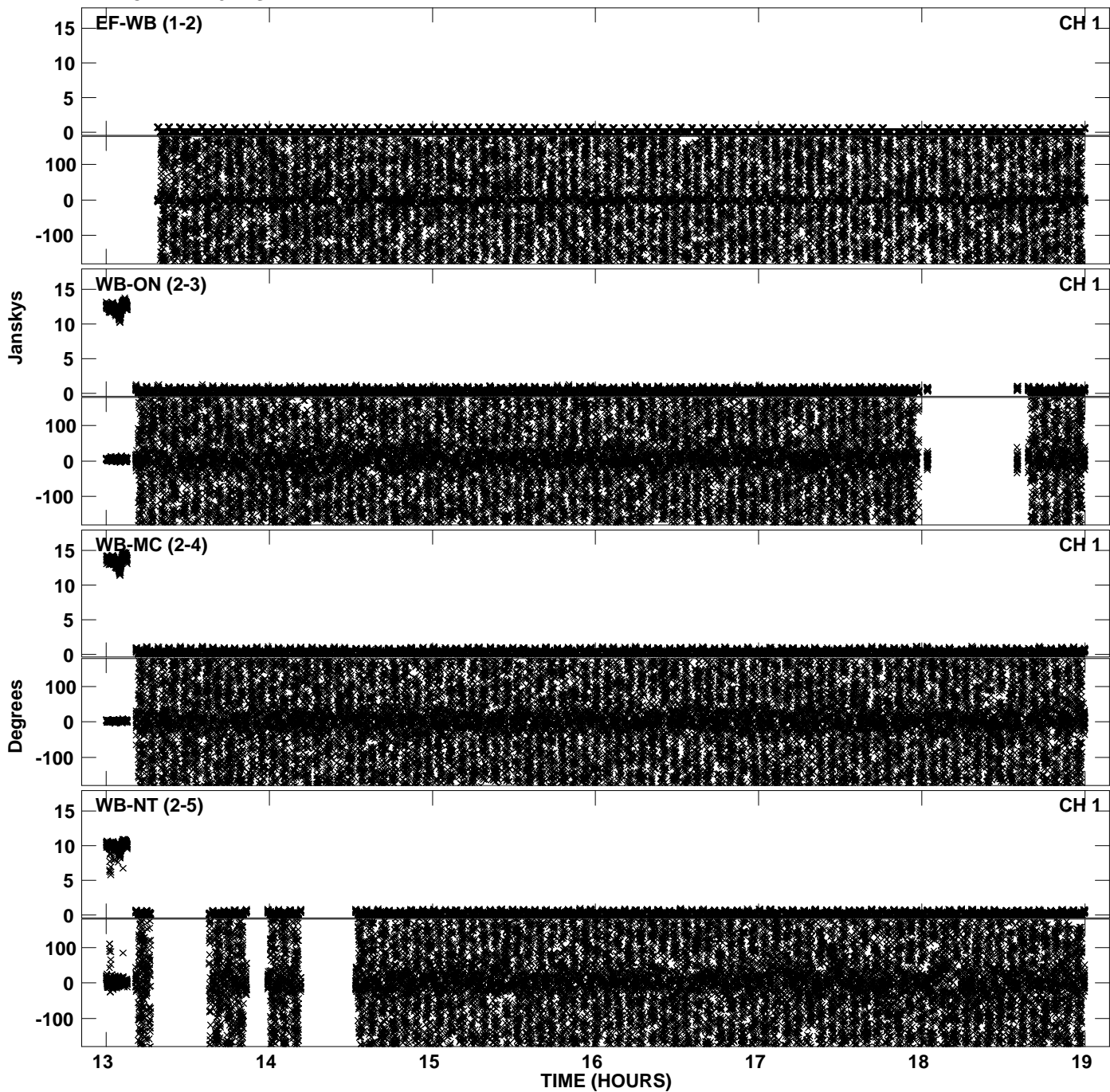
Plot file version 15 created 21-SEP-2012 21:18:05
Amplitude andPhase vs Time for EP075B 3.UVDATA.1 Vect aver. CL # 3
IF 8 CHAN 1 - 32 STK LL



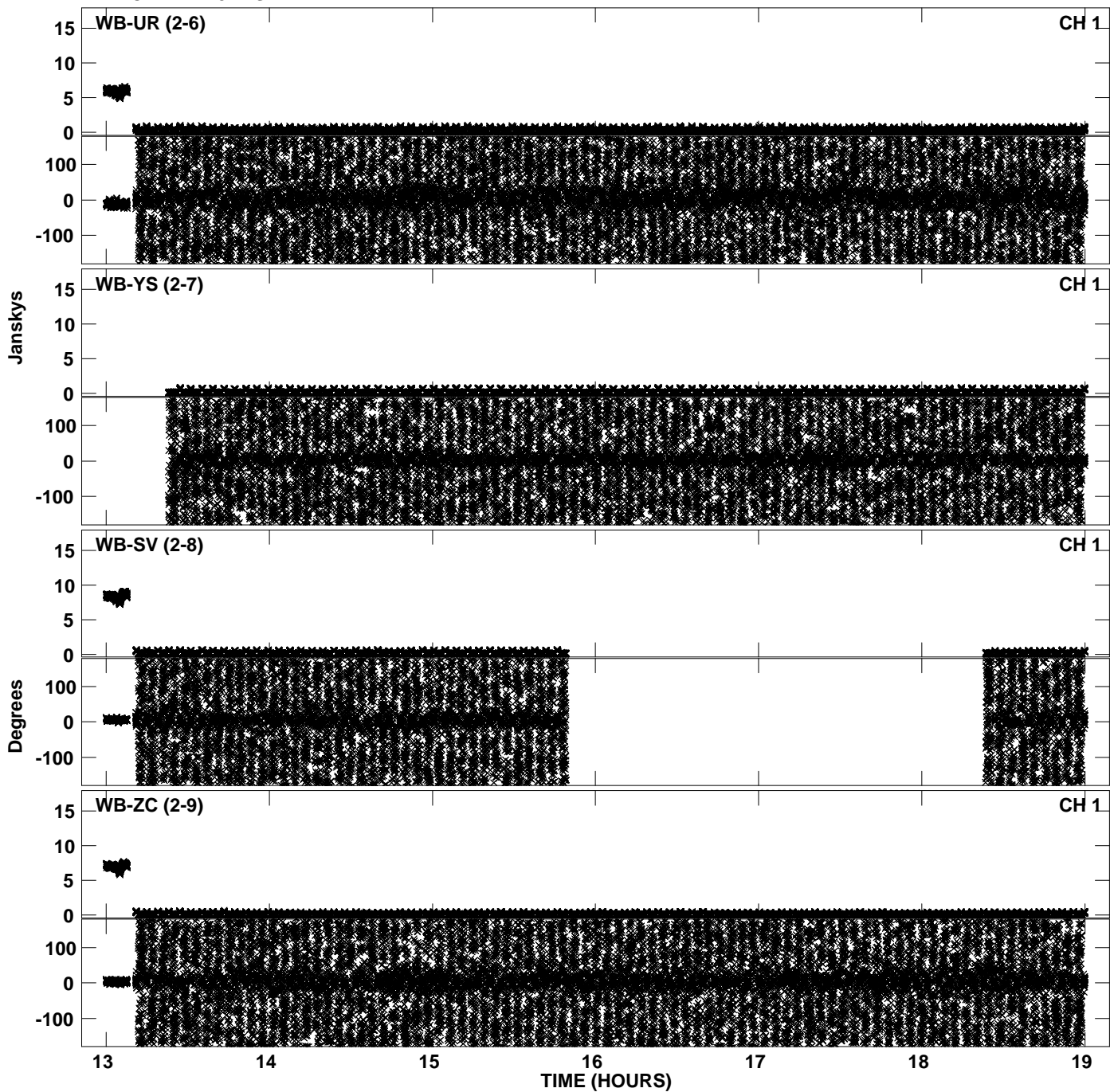
Plot file version 16 created 21-SEP-2012 21:18:05
Amplitude andPhase vs Time for EP075B 3.UVDATA.1 Vect aver. CL # 3
IF 8 CHAN 1 - 32 STK LL



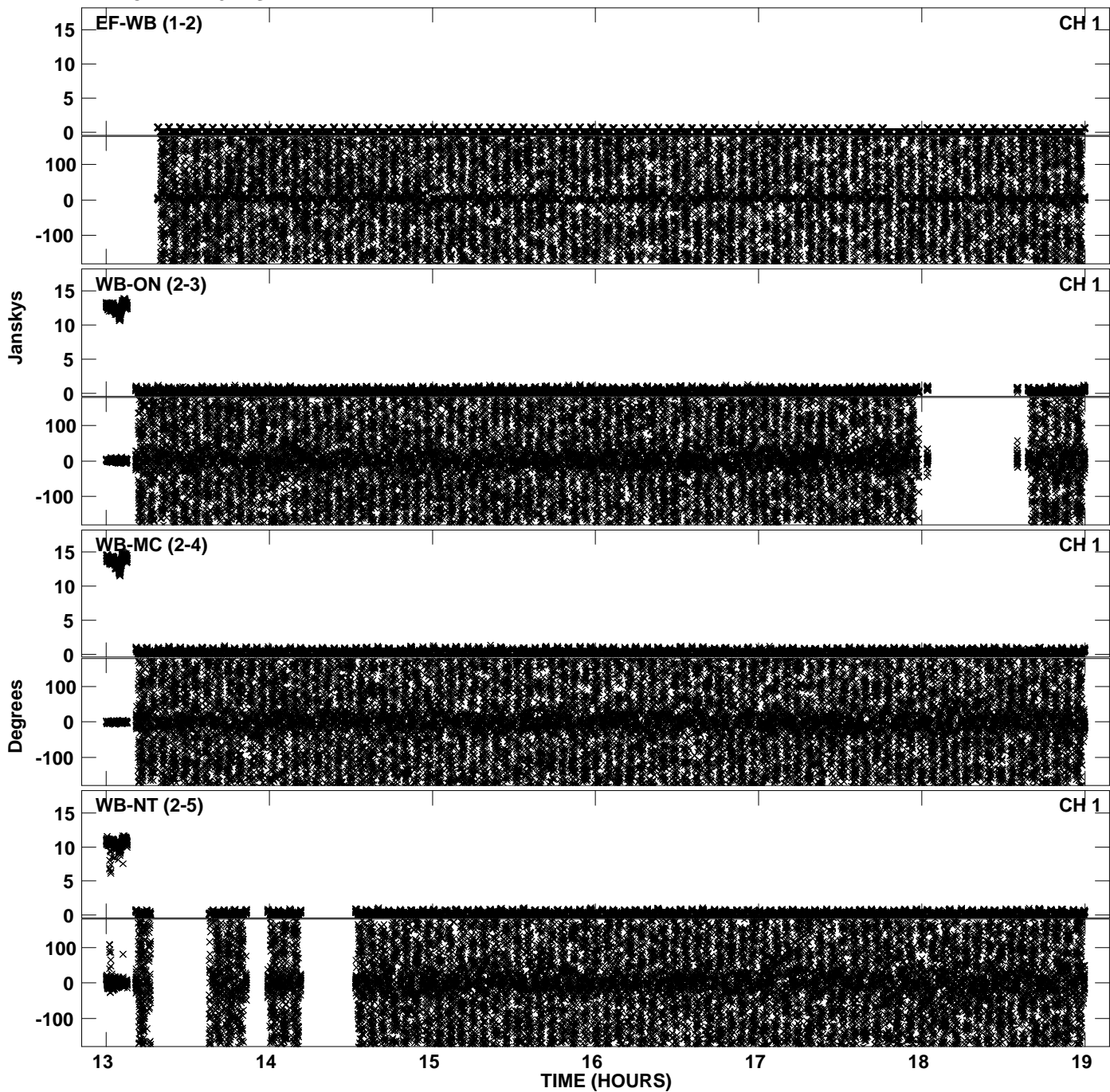
Plot file version 17 created 21-SEP-2012 21:18:17
Amplitude andPhase vs Time for EP075B 3.UVDATA.1 Vect aver. CL # 3
IF 1 CHAN 1 - 32 STK RR



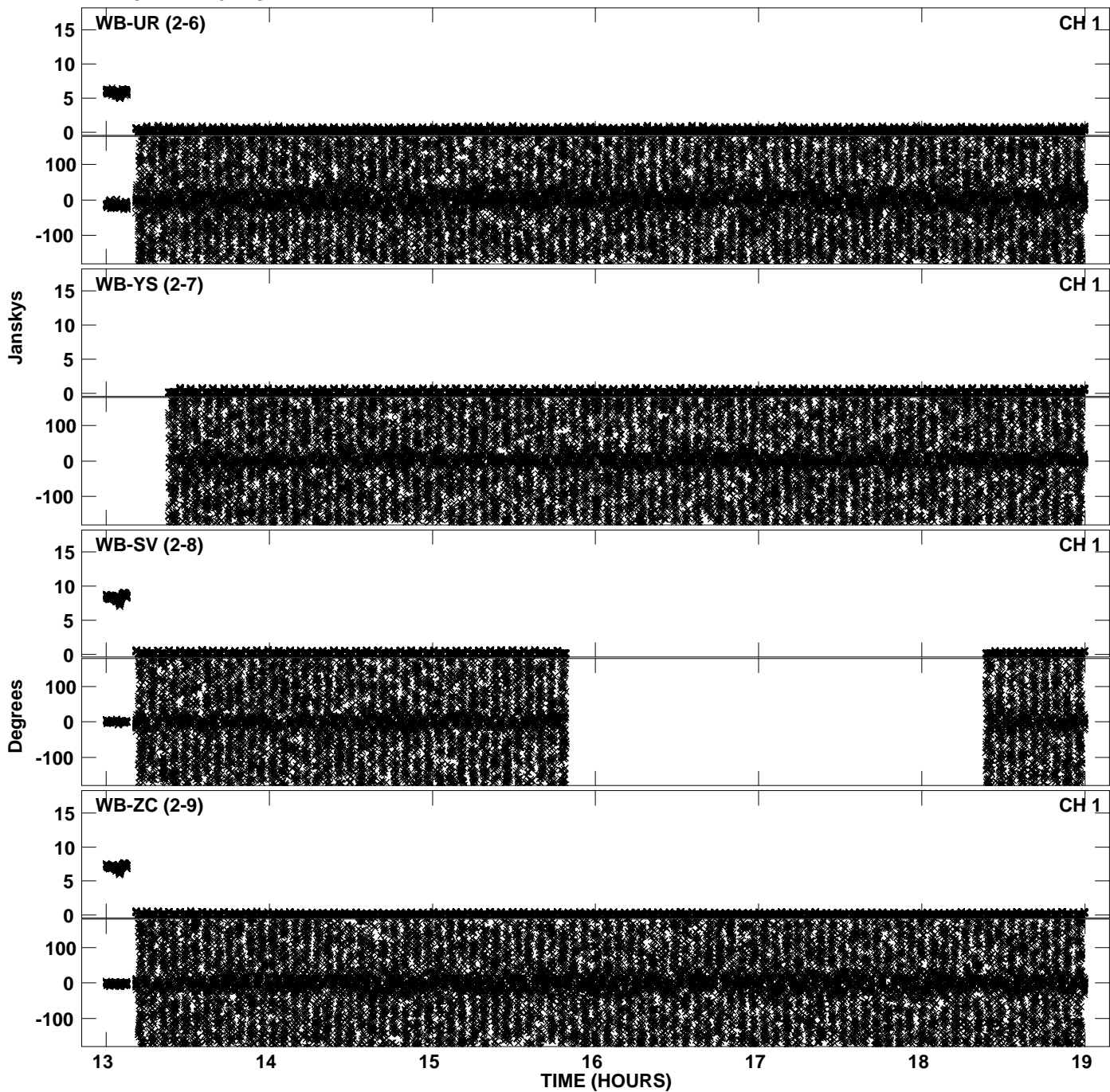
Plot file version 18 created 21-SEP-2012 21:18:17
Amplitude andPhase vs Time for EP075B 3.UVDATA.1 Vect aver. CL # 3
IF 1 CHAN 1 - 32 STK RR



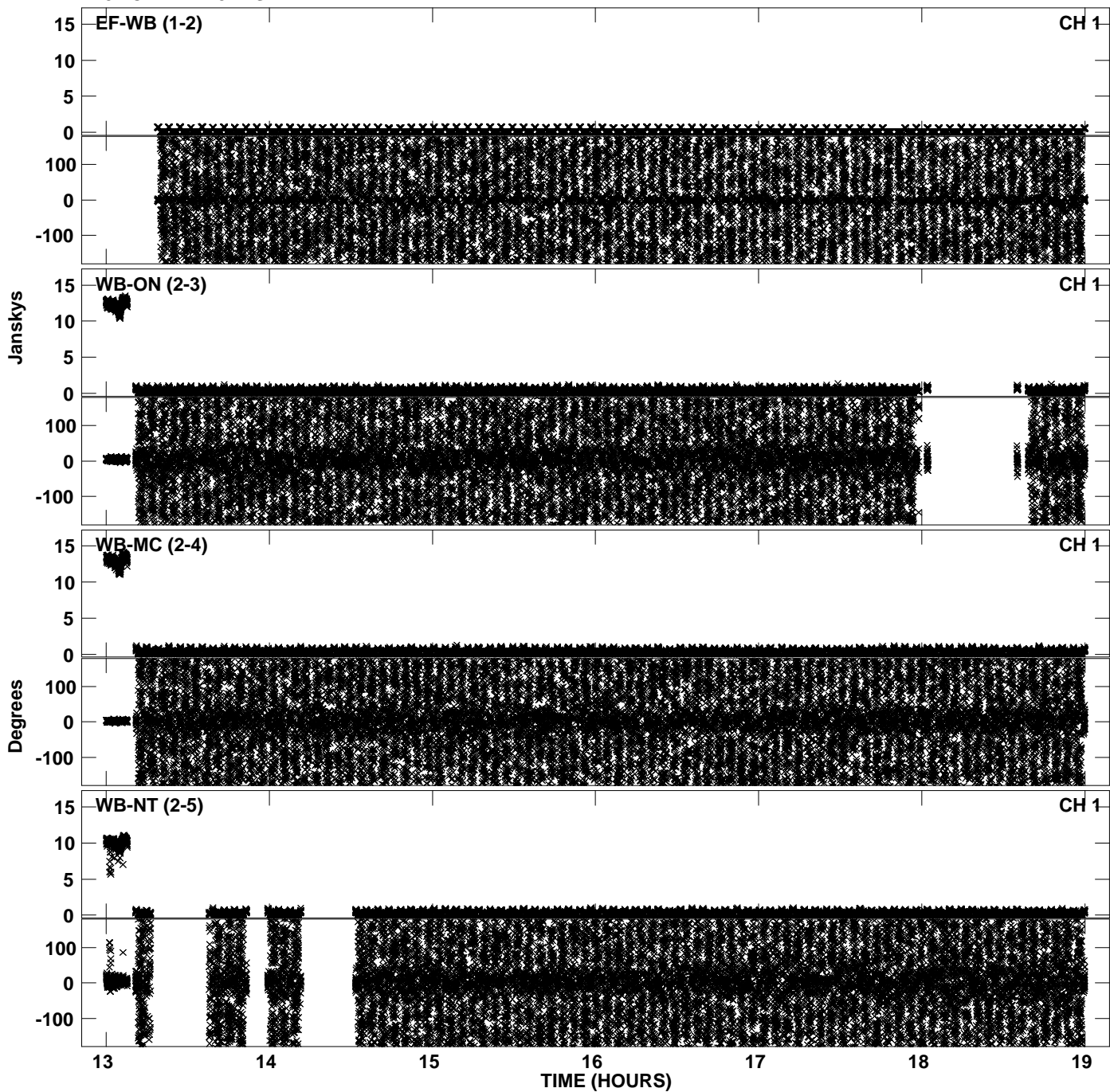
Plot file version 19 created 21-SEP-2012 21:18:29
Amplitude andPhase vs Time for EP075B 3.UVDATA.1 Vect aver. CL # 3
IF 2 CHAN 1 - 32 STK RR



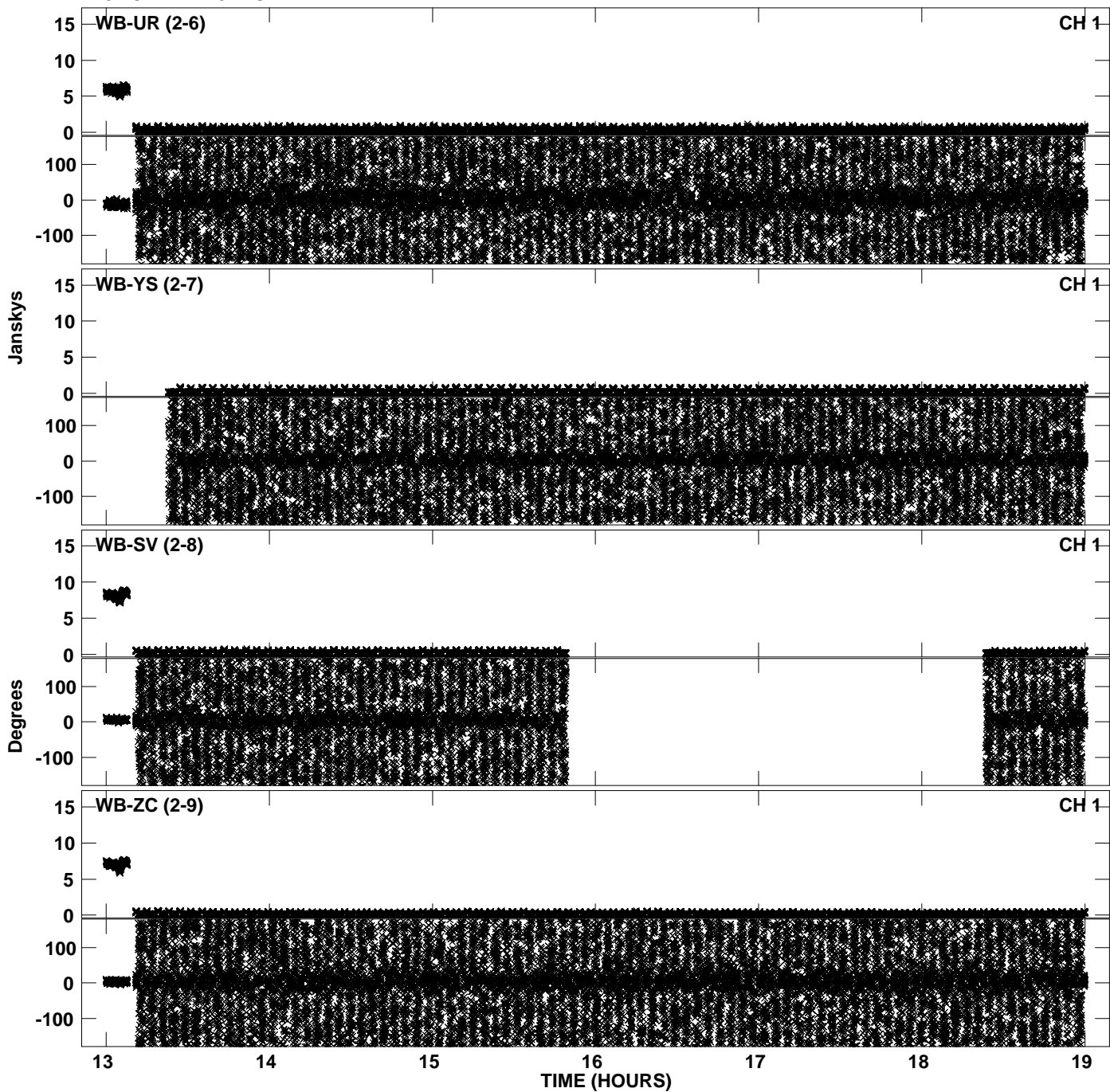
Plot file version 20 created 21-SEP-2012 21:18:29
Amplitude andPhase vs Time for EP075B 3.UVDATA.1 Vect aver. CL # 3
IF 2 CHAN 1 - 32 STK RR



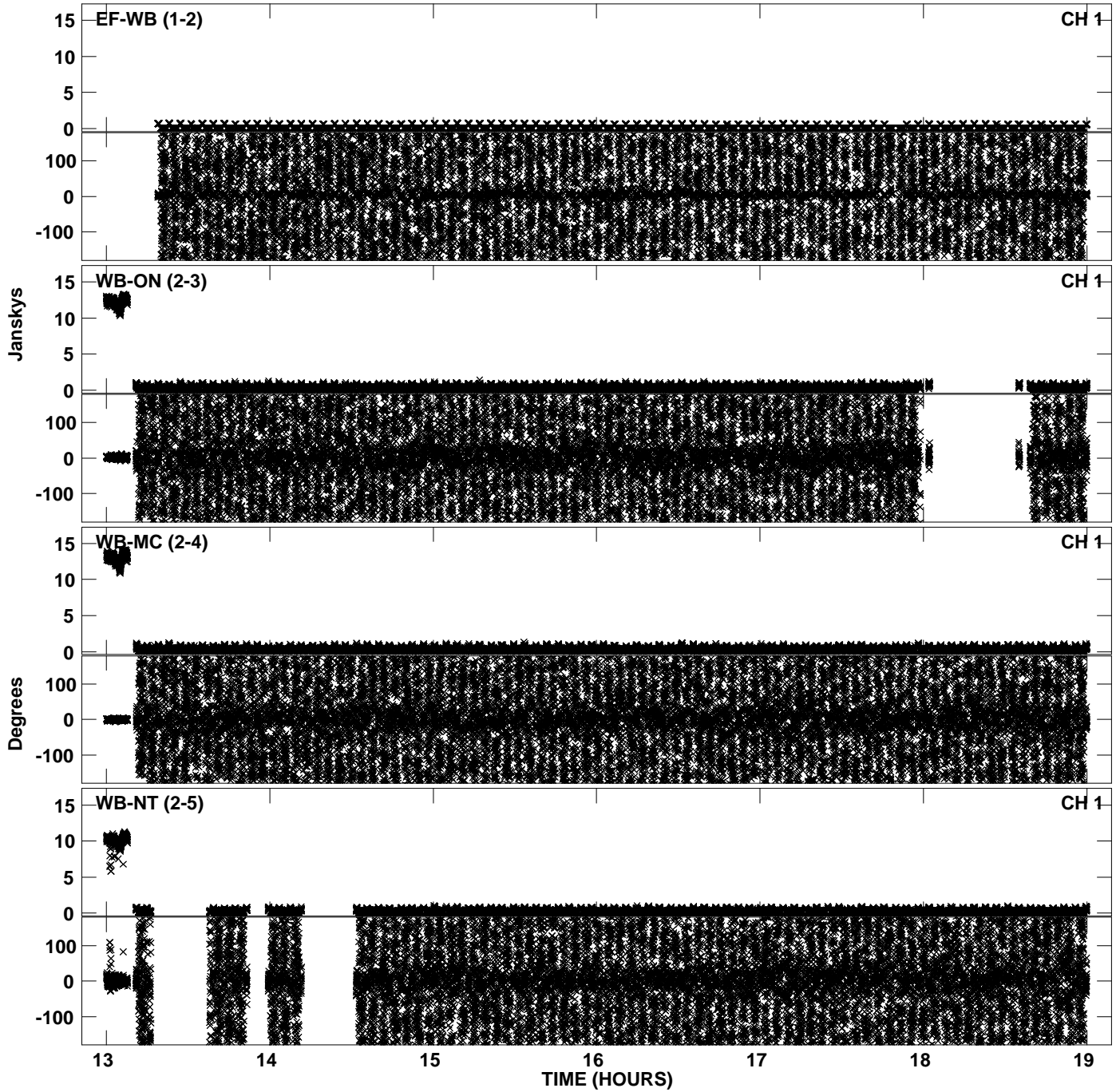
Plot file version 21 created 21-SEP-2012 21:18:41
Amplitude andPhase vs Time for EP075B 3.UVDATA.1 Vect aver. CL # 3
IF 3 CHAN 1 - 32 STK RR



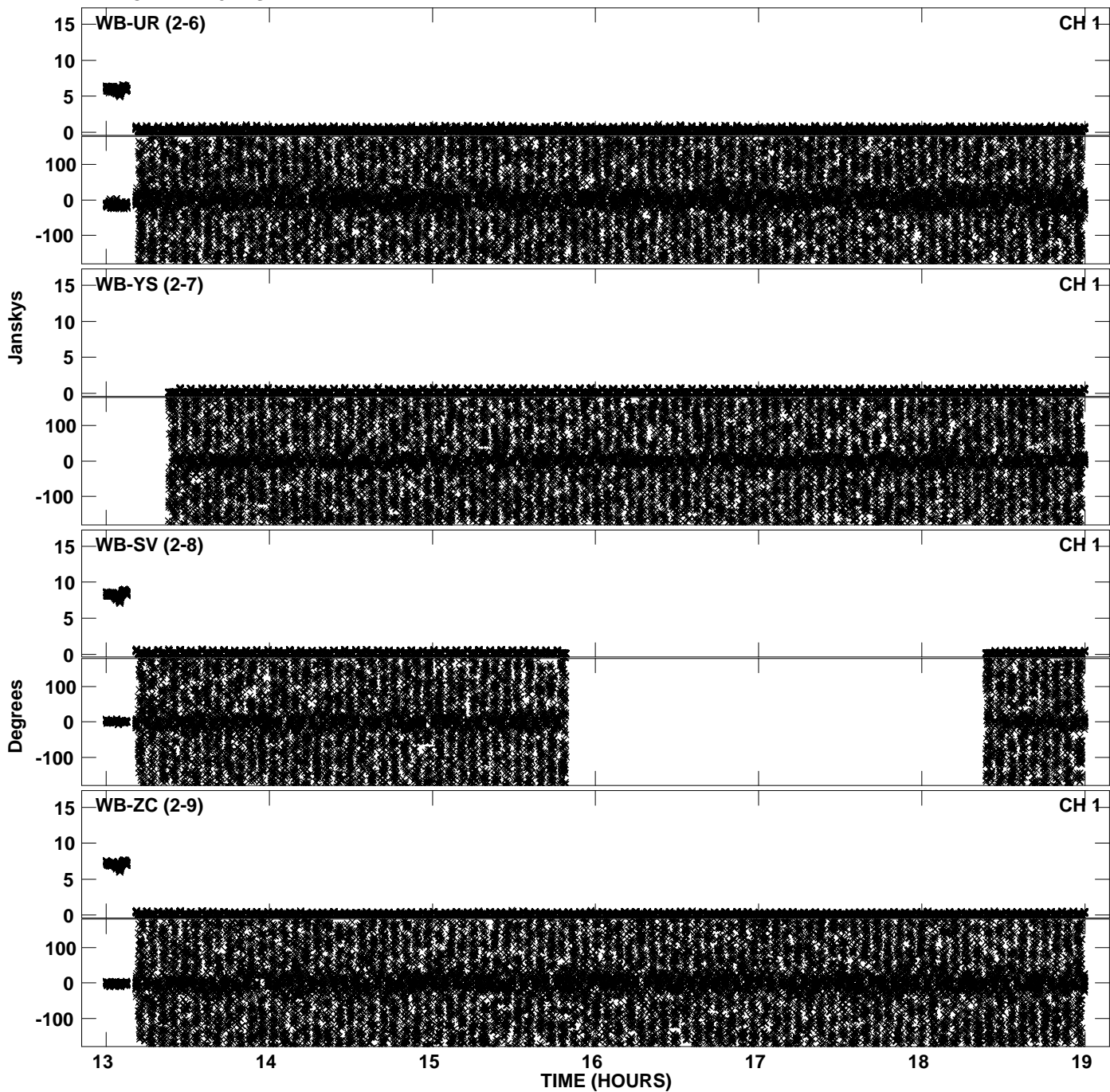
Plot file version 22 created 21-SEP-2012 21:18:42
Amplitude and Phase vs Time for EP075B 3.UVDATA.1 Vect aver. CL # 3
IF 3 CHAN 1 - 32 STK RR



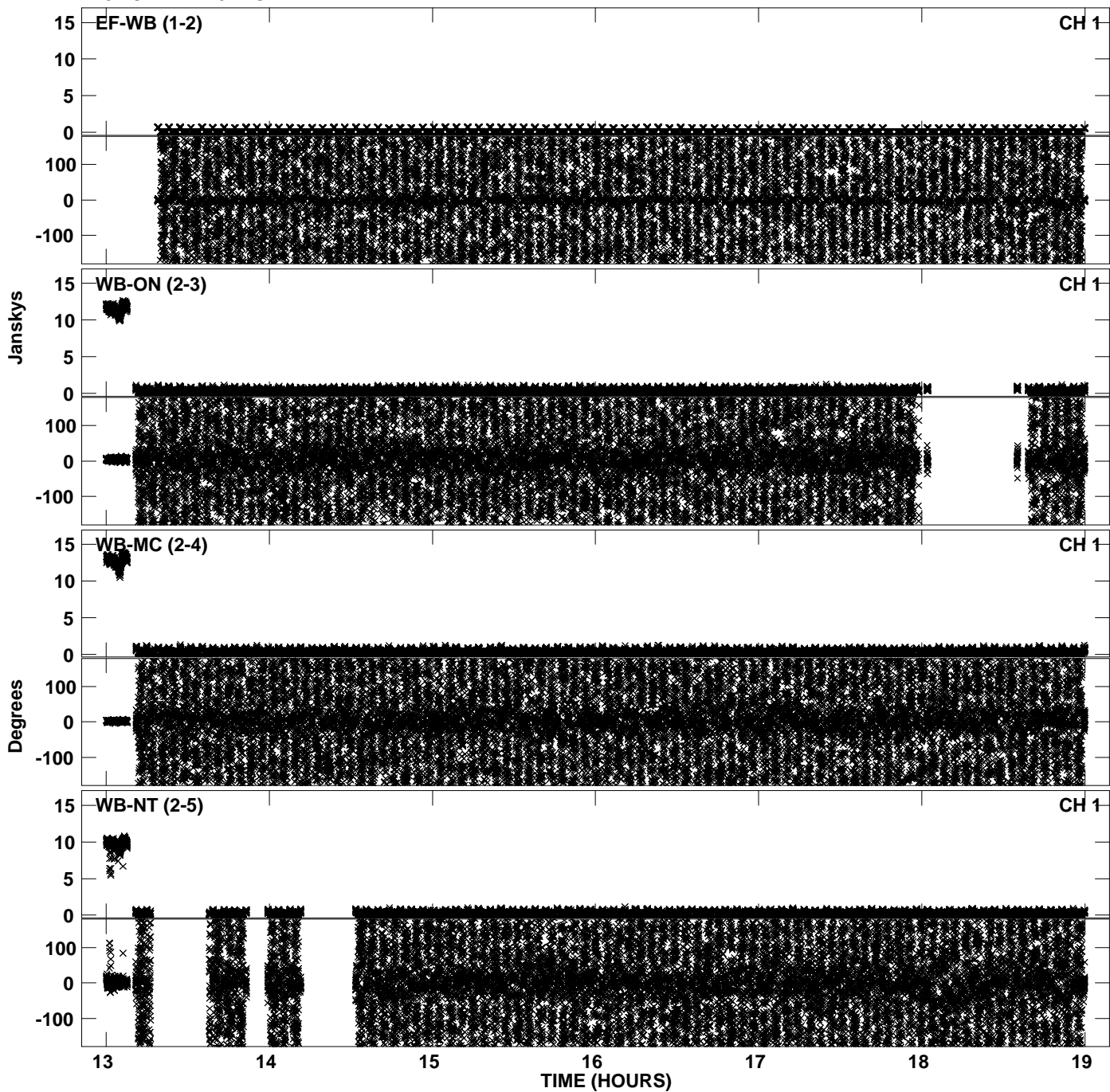
Plot file version 23 created 21-SEP-2012 21:18:54
Amplitude andPhase vs Time for EP075B 3.UVDATA.1 Vect aver. CL # 3
IF 4 CHAN 1 - 32 STK RR



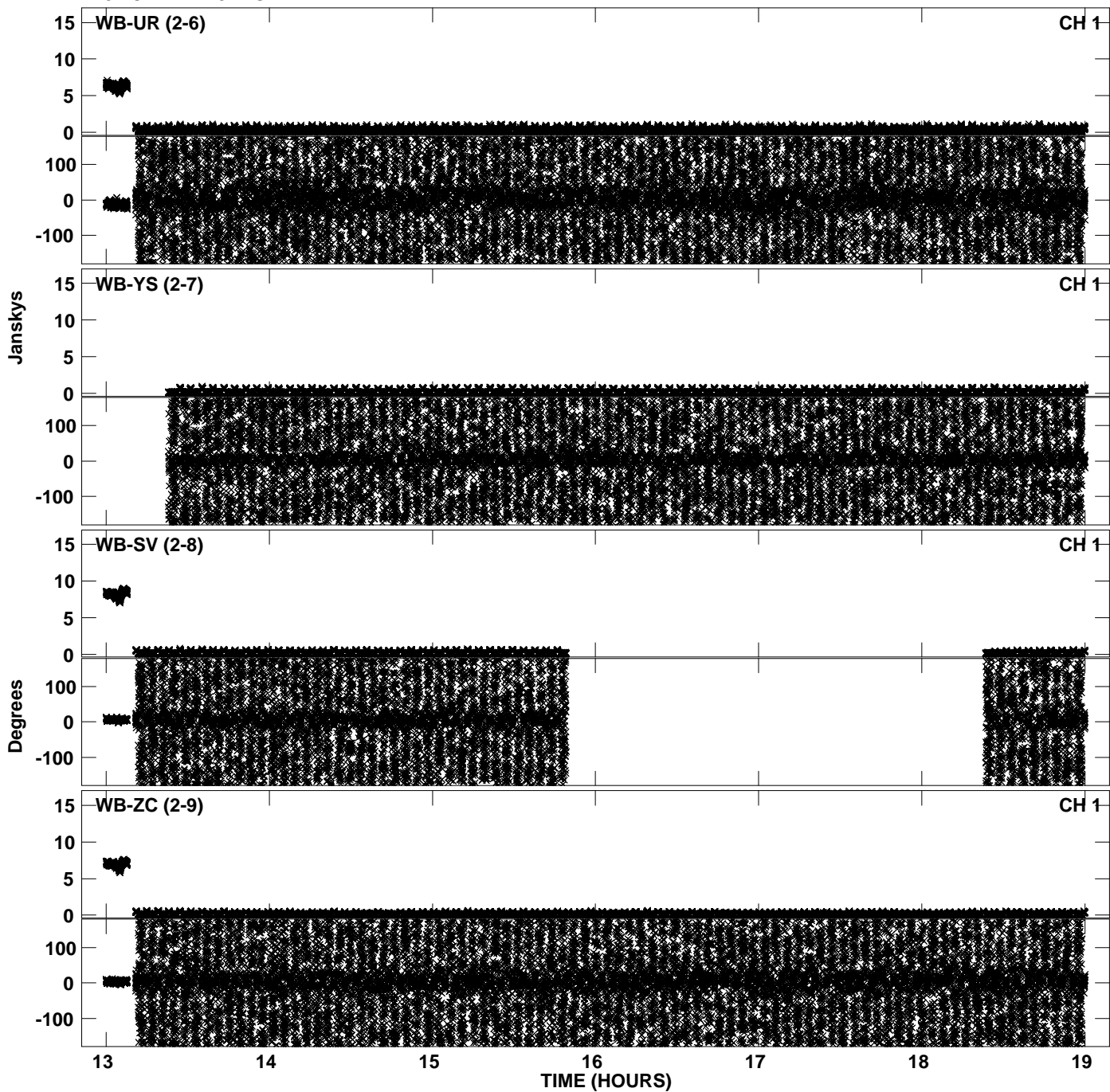
Plot file version 24 created 21-SEP-2012 21:18:54
Amplitude andPhase vs Time for EP075B 3.UVDATA.1 Vect aver. CL # 3
IF 4 CHAN 1 - 32 STK RR



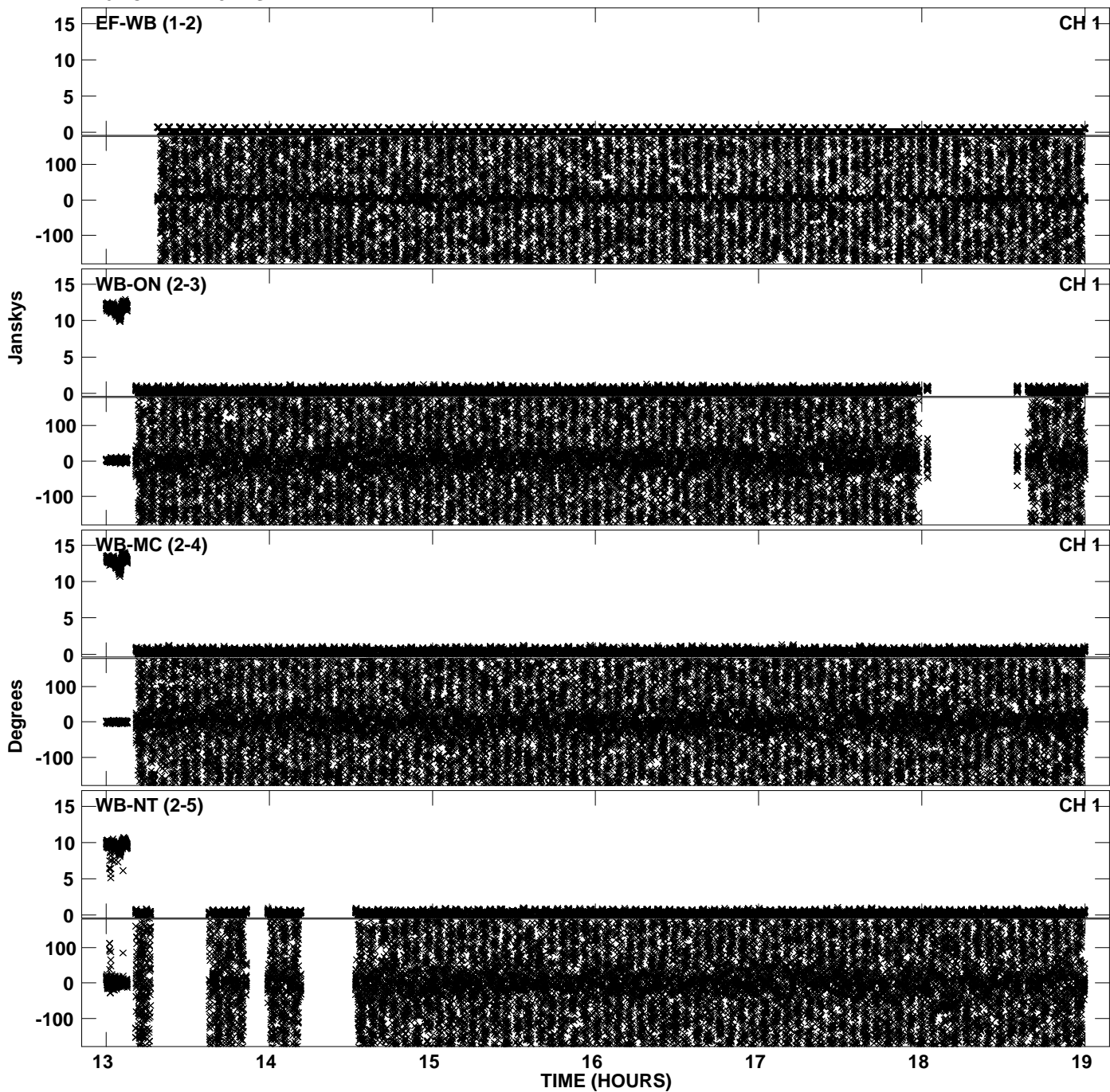
Plot file version 25 created 21-SEP-2012 21:19:06
Amplitude andPhase vs Time for EP075B 3.UVDATA.1 Vect aver. CL # 3
IF 5 CHAN 1 - 32 STK RR



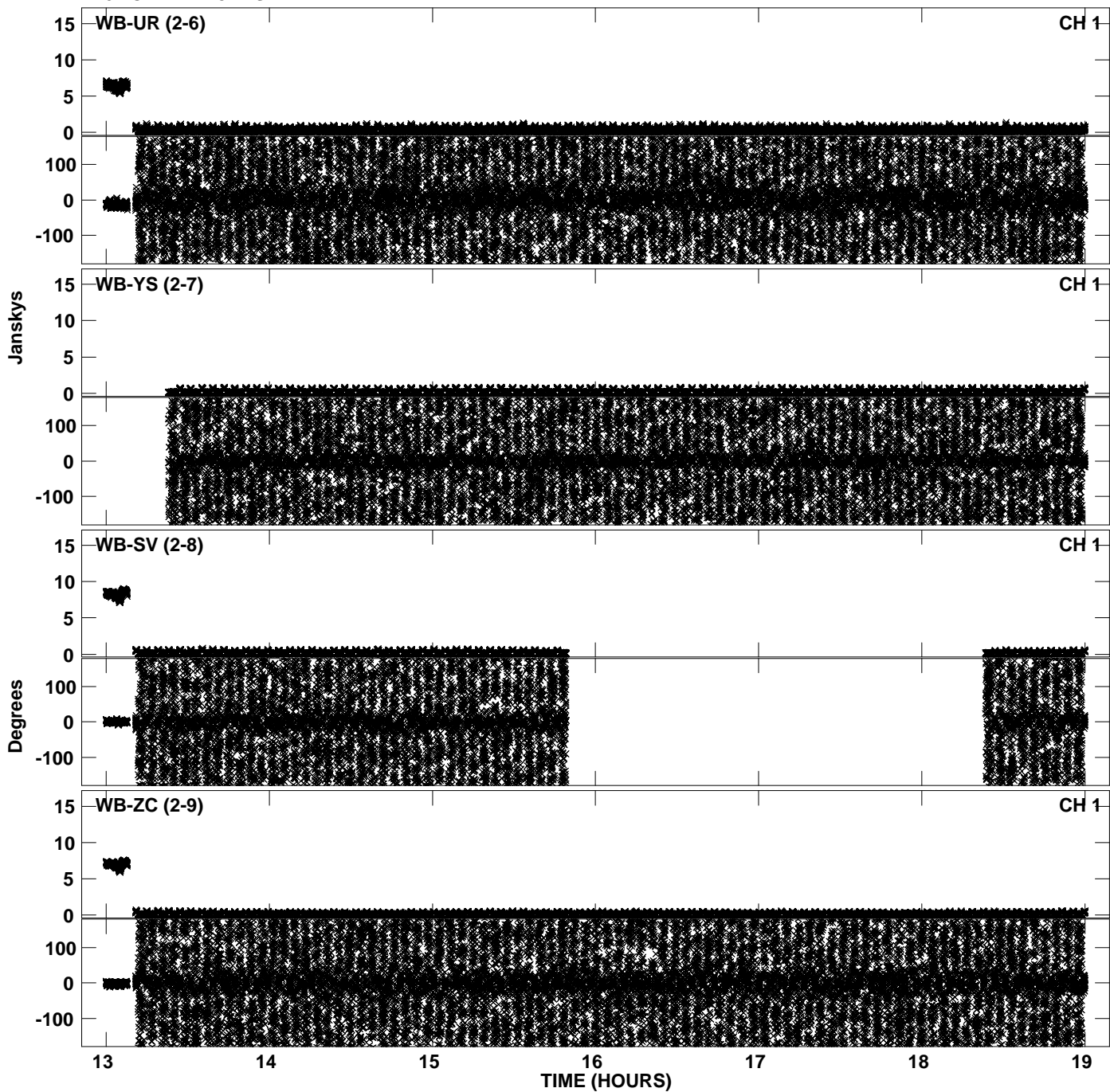
Plot file version 26 created 21-SEP-2012 21:19:06
Amplitude andPhase vs Time for EP075B 3.UVDATA.1 Vect aver. CL # 3
IF 5 CHAN 1 - 32 STK RR



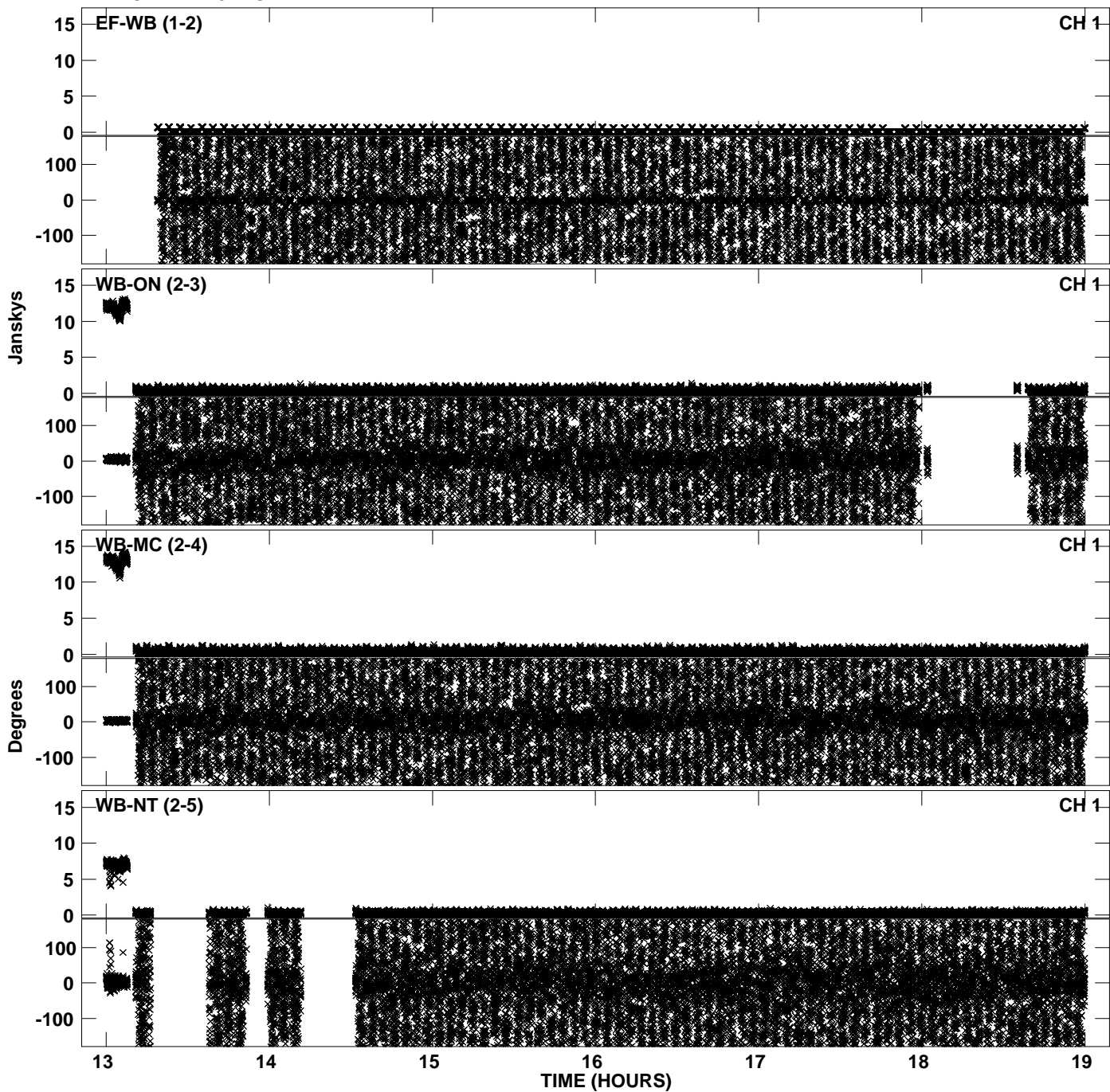
Plot file version 27 created 21-SEP-2012 21:19:18
Amplitude andPhase vs Time for EP075B 3.UVDATA.1 Vect aver. CL # 3
IF 6 CHAN 1 - 32 STK RR



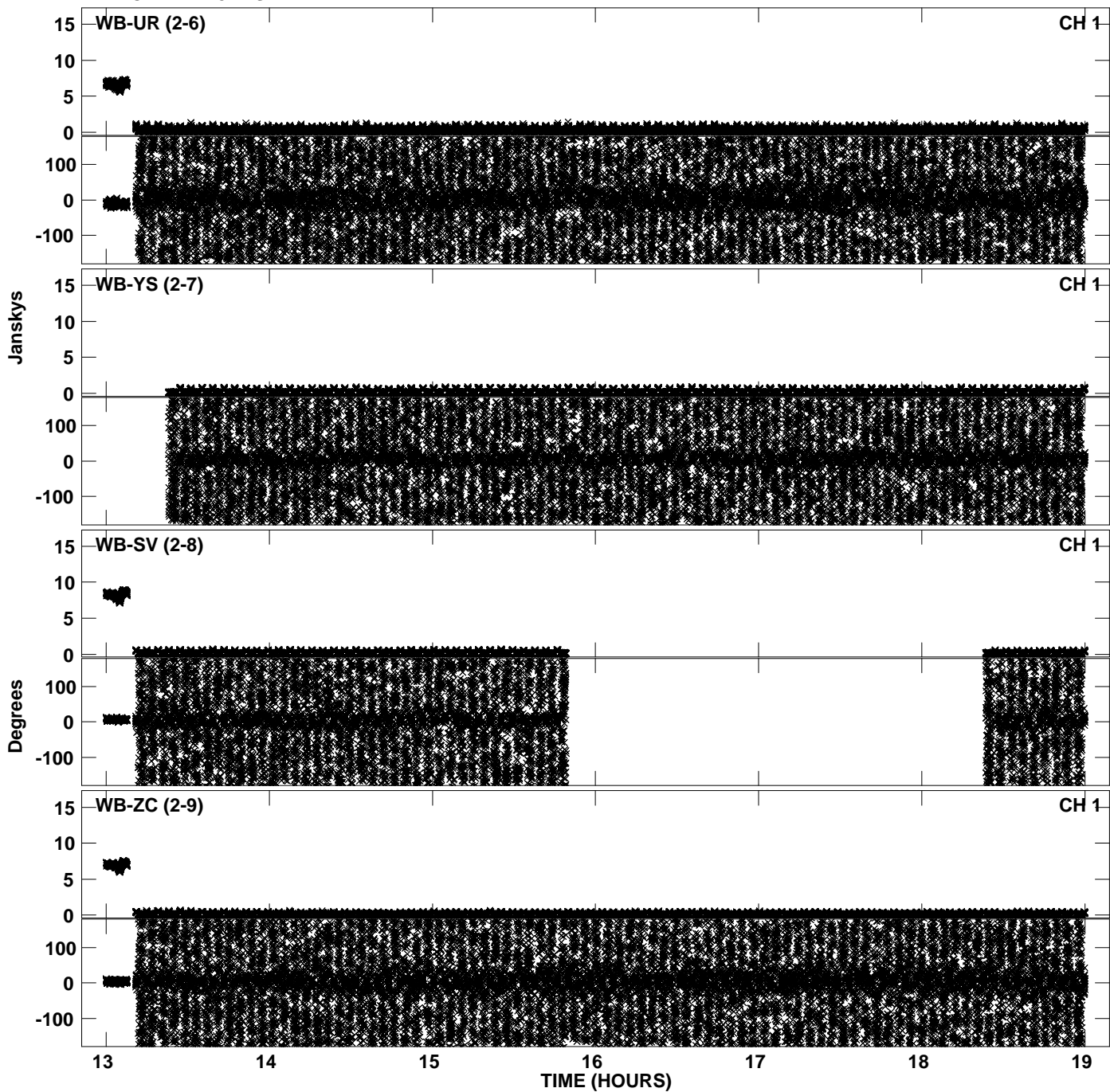
Plot file version 28 created 21-SEP-2012 21:19:18
Amplitude andPhase vs Time for EP075B 3.UVDATA.1 Vect aver. CL # 3
IF 6 CHAN 1 - 32 STK RR



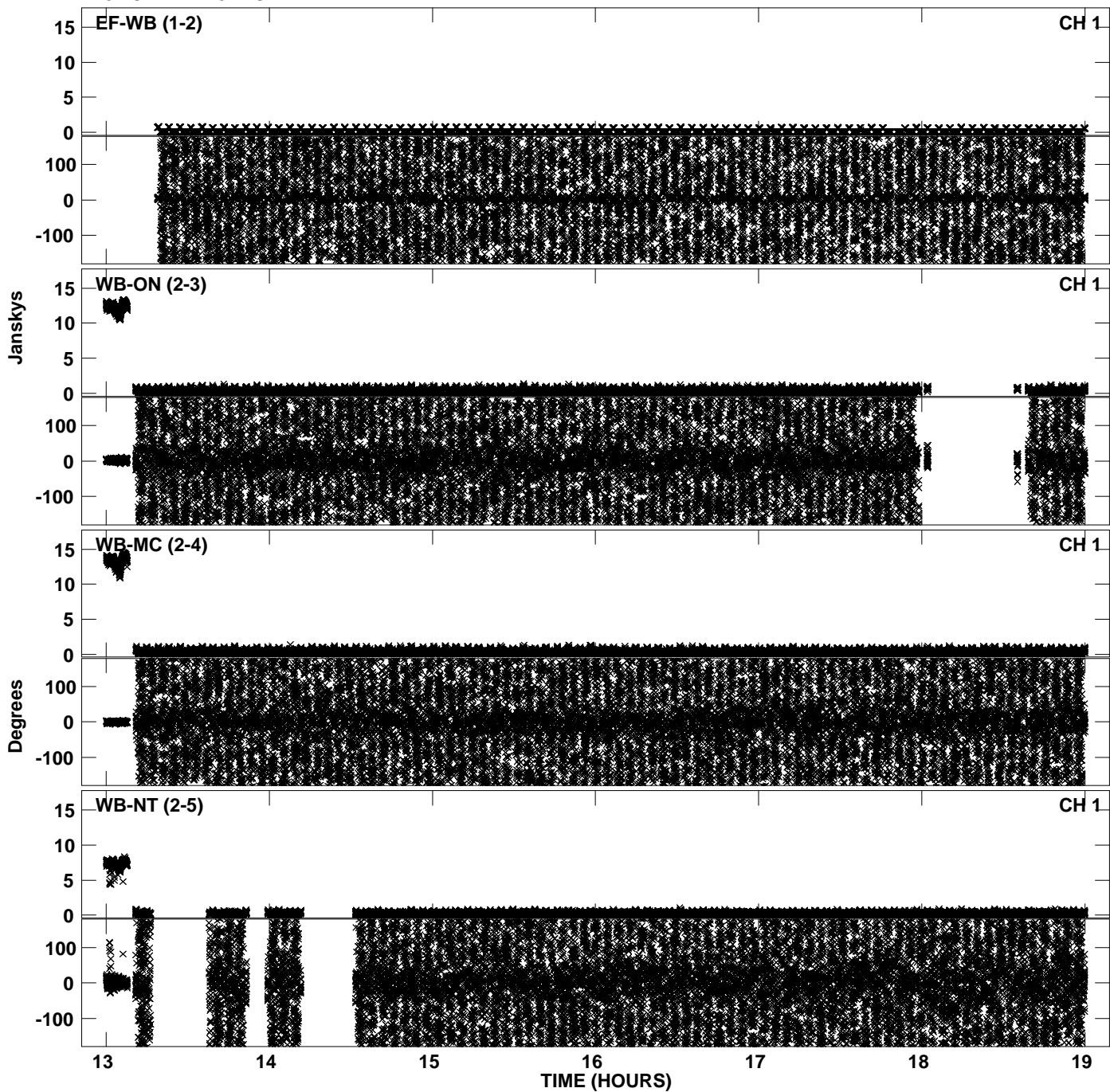
Plot file version 29 created 21-SEP-2012 21:19:30
Amplitude andPhase vs Time for EP075B 3.UVDATA.1 Vect aver. CL # 3
IF 7 CHAN 1 - 32 STK RR



Plot file version 30 created 21-SEP-2012 21:19:30
Amplitude andPhase vs Time for EP075B 3.UVDATA.1 Vect aver. CL # 3
IF 7 CHAN 1 - 32 STK RR



Plot file version 31 created 21-SEP-2012 21:19:43
Amplitude andPhase vs Time for EP075B 3.UVDATA.1 Vect aver. CL # 3
IF 8 CHAN 1 - 32 STK RR



Plot file version 32 created 21-SEP-2012 21:19:43
Amplitude andPhase vs Time for EP075B 3.UVDATA.1 Vect aver. CL # 3
IF 8 CHAN 1 - 32 STK RR

