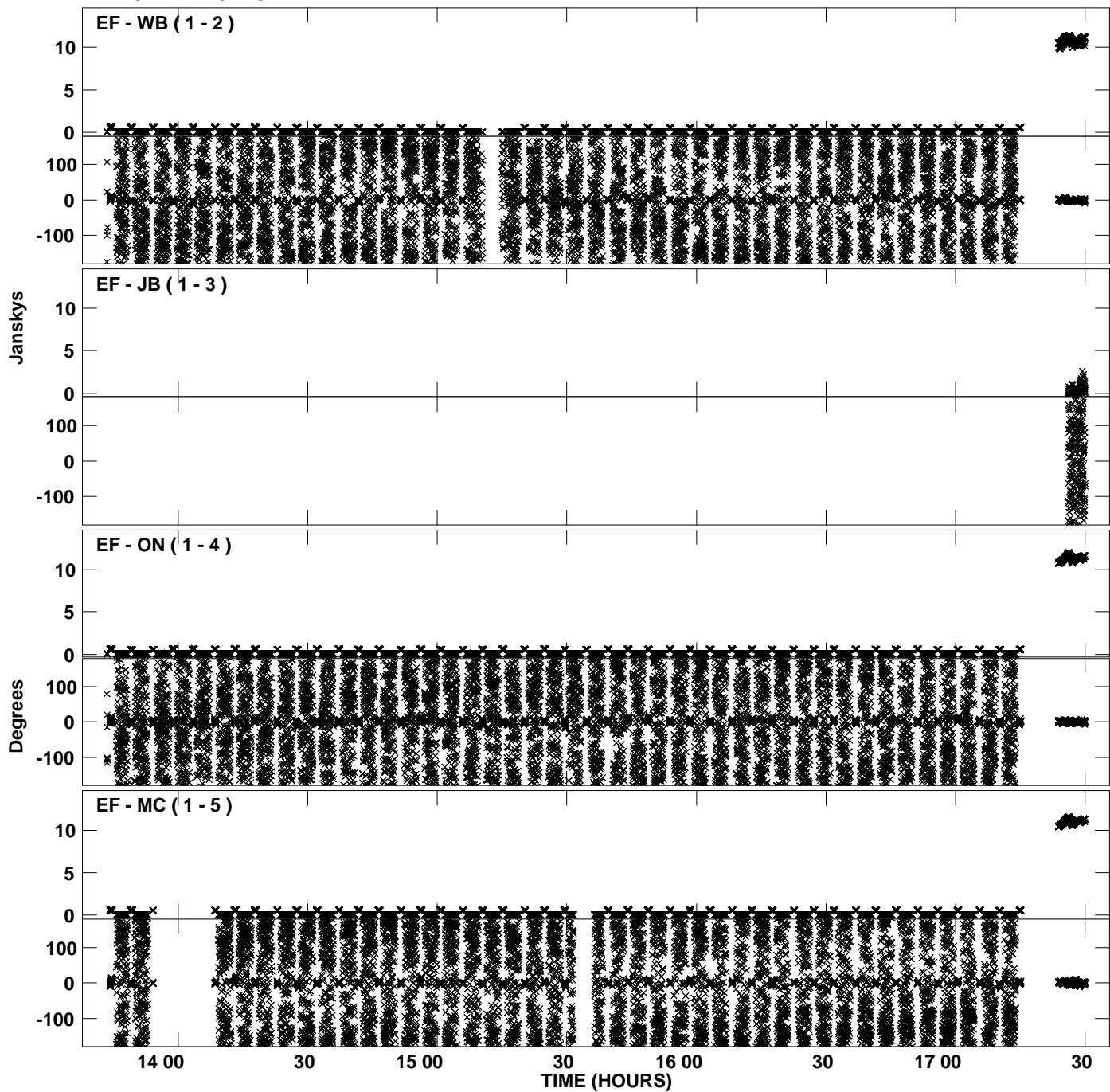
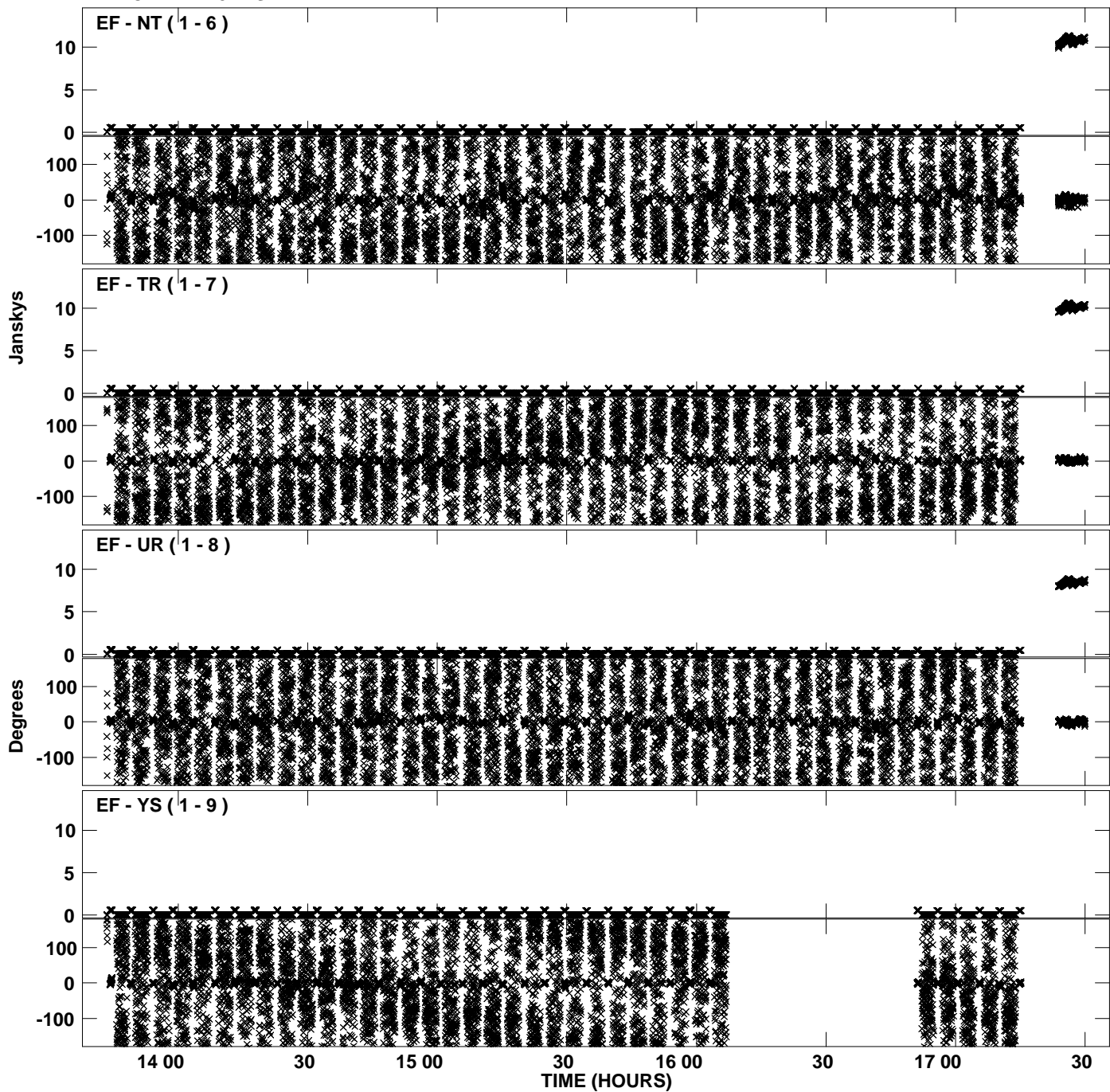


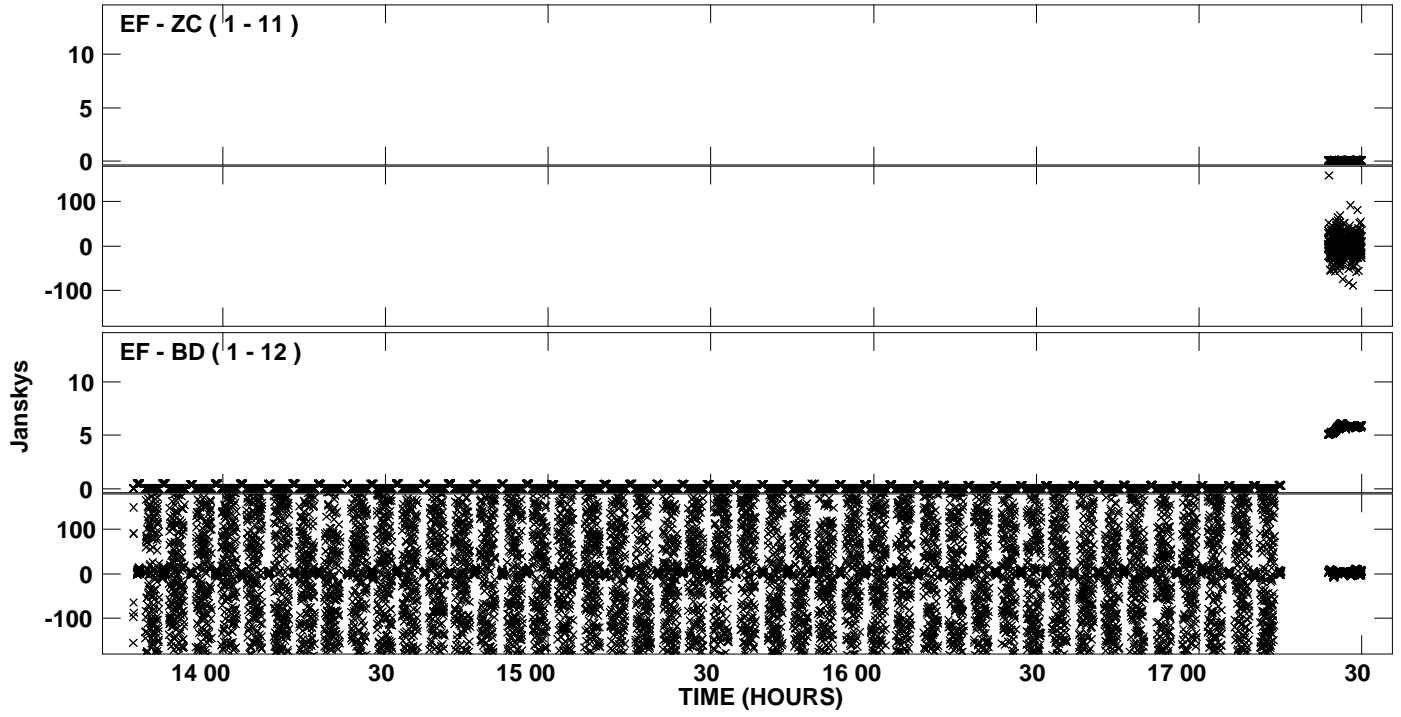
Plot file version 1 created 03-AUG-2012 17:46:55
Amplitude and Phase vs Time for EP075C.UVDATA.1 Vect aver. CL # 3
IF 1 CHAN 1 - 32 STK LL



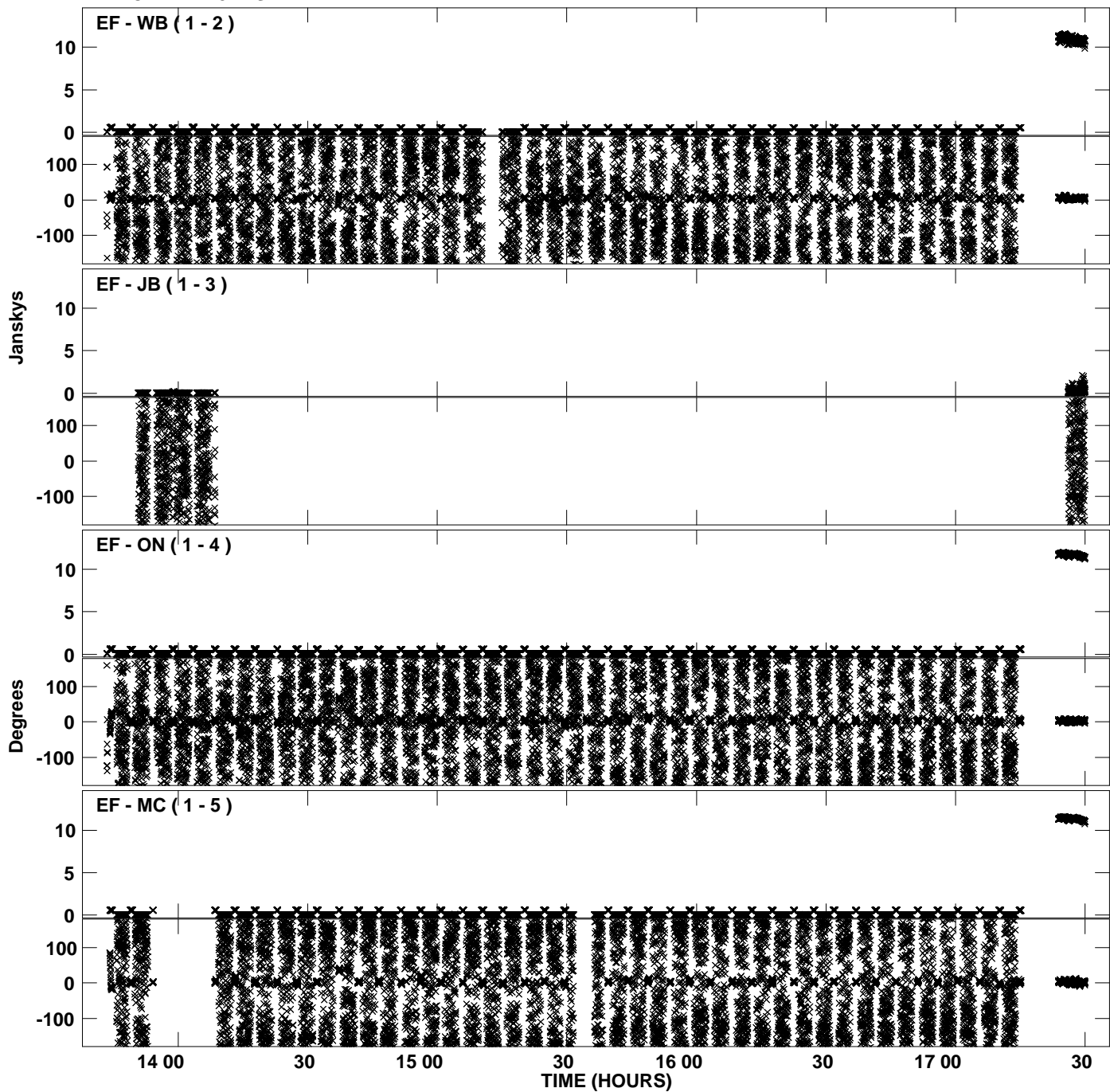
PLot file version 2 created 03-AUG-2012 17:46:55
Amplitude andPhase vs Time for EP075C.UVDATA.1 Vect aver. CL # 3
IF 1 CHAN 1 - 32 STK LL



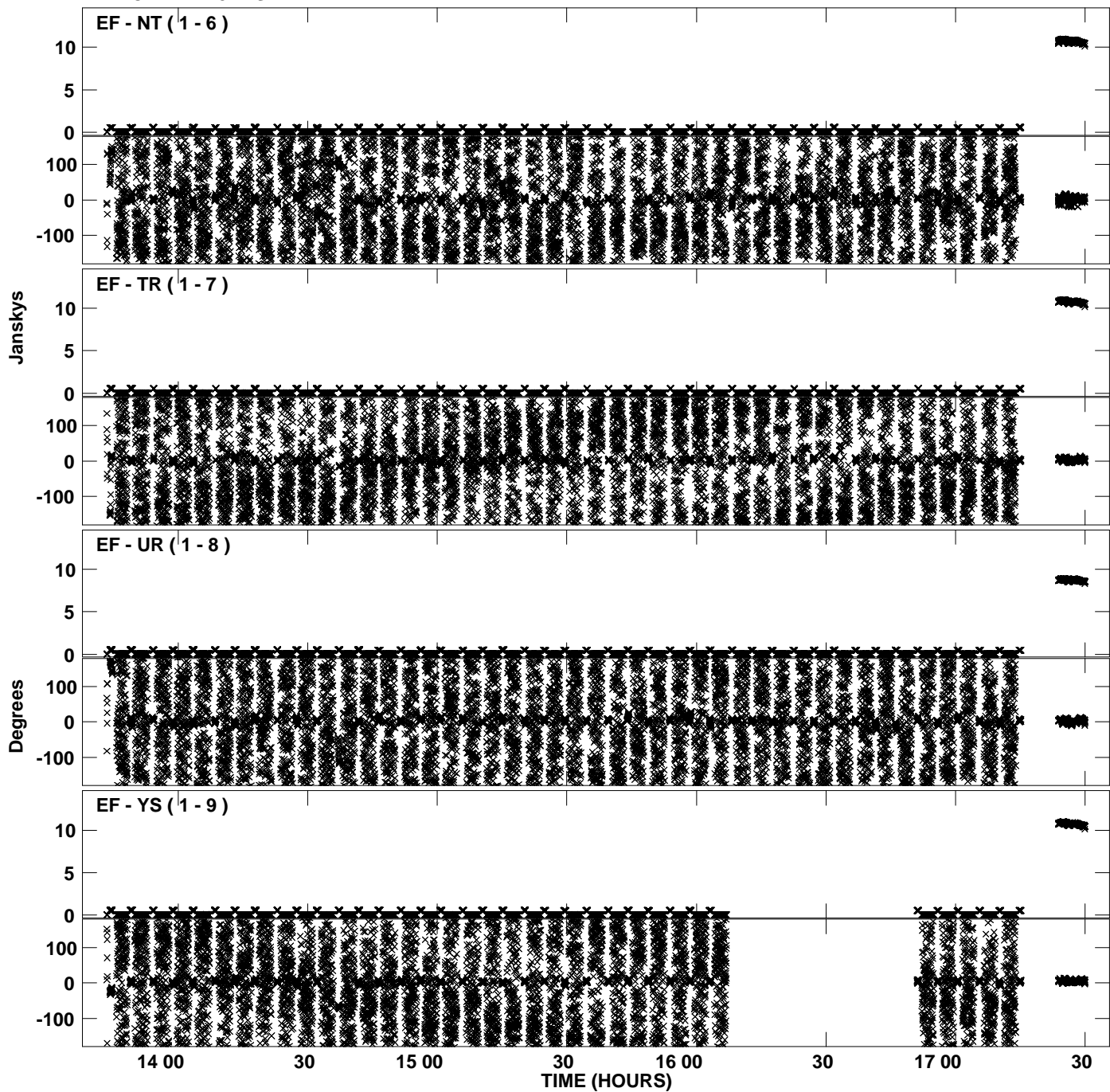
PLot file version 3 created 03-AUG-2012 17:46:55
Amplitude andPhase vs Time for EP075C.UVDATA.1 Vect aver. CL # 3
IF 1 CHAN 1 - 32 STK LL



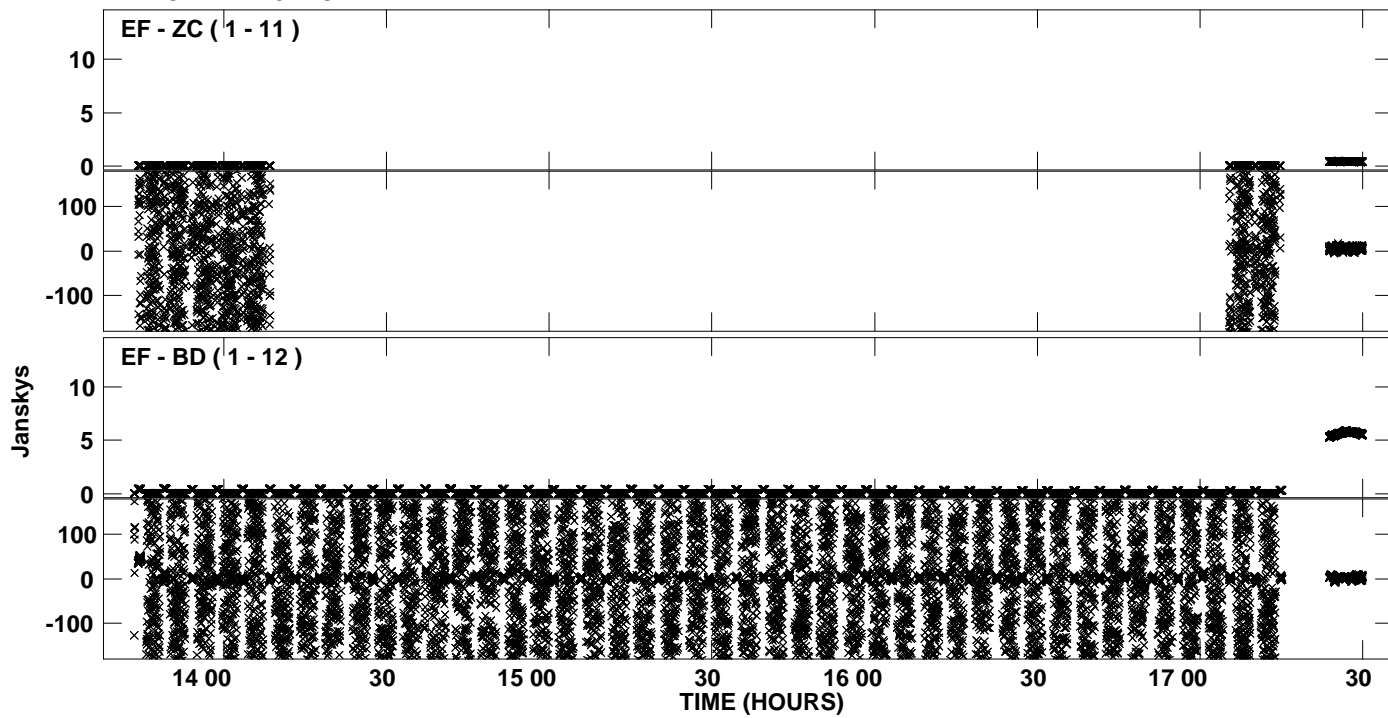
Plot file version 4 created 03-AUG-2012 17:47:08
Amplitude andPhase vs Time for EP075C.UVDATA.1 Vect aver. CL # 3
IF 2 CHAN 1 - 32 STK LL



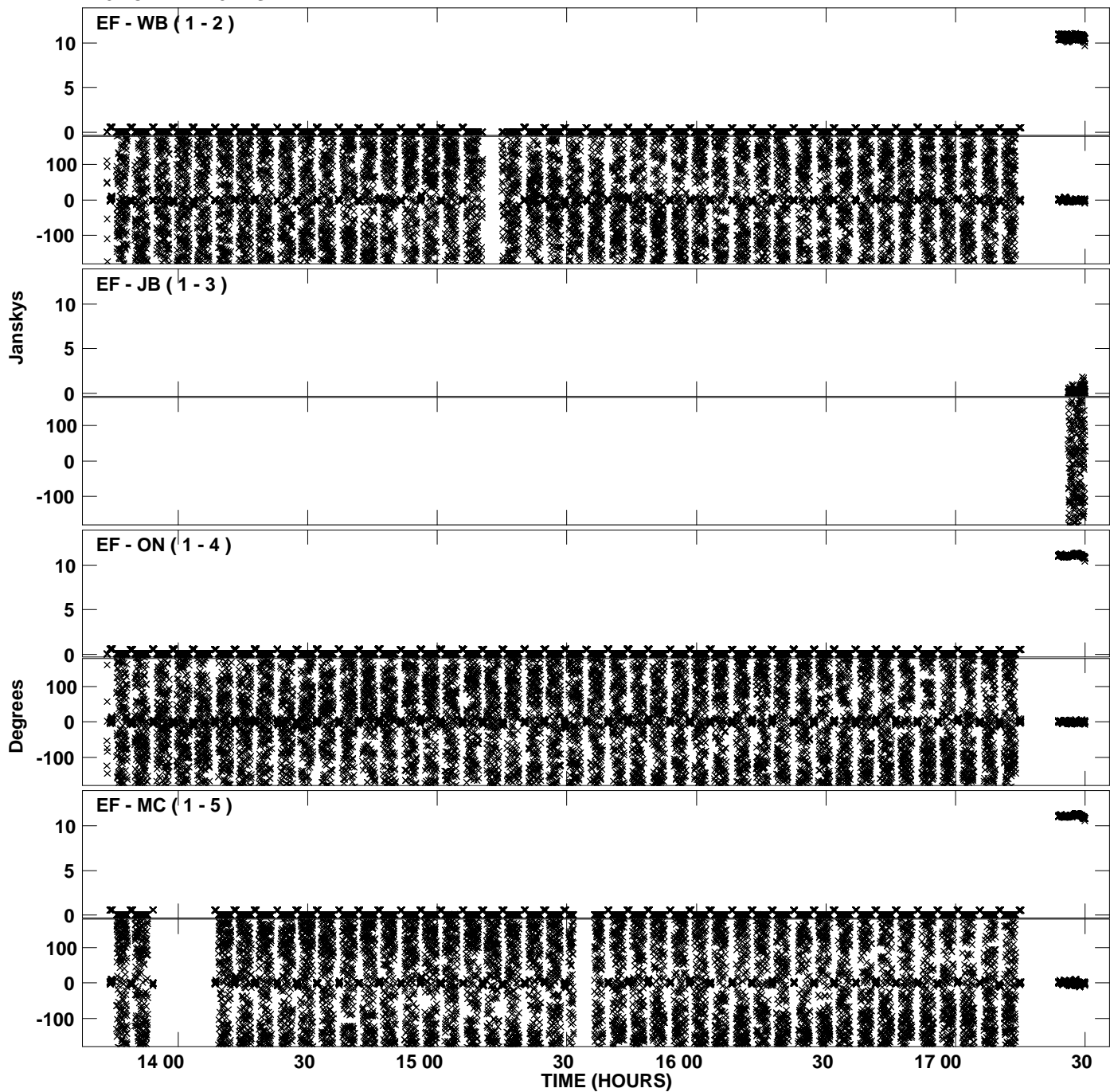
Plot file version 5 created 03-AUG-2012 17:47:08
Amplitude and Phase vs Time for EP075C.UVDATA.1 Vect aver. CL # 3
IF 2 CHAN 1 - 32 STK LL



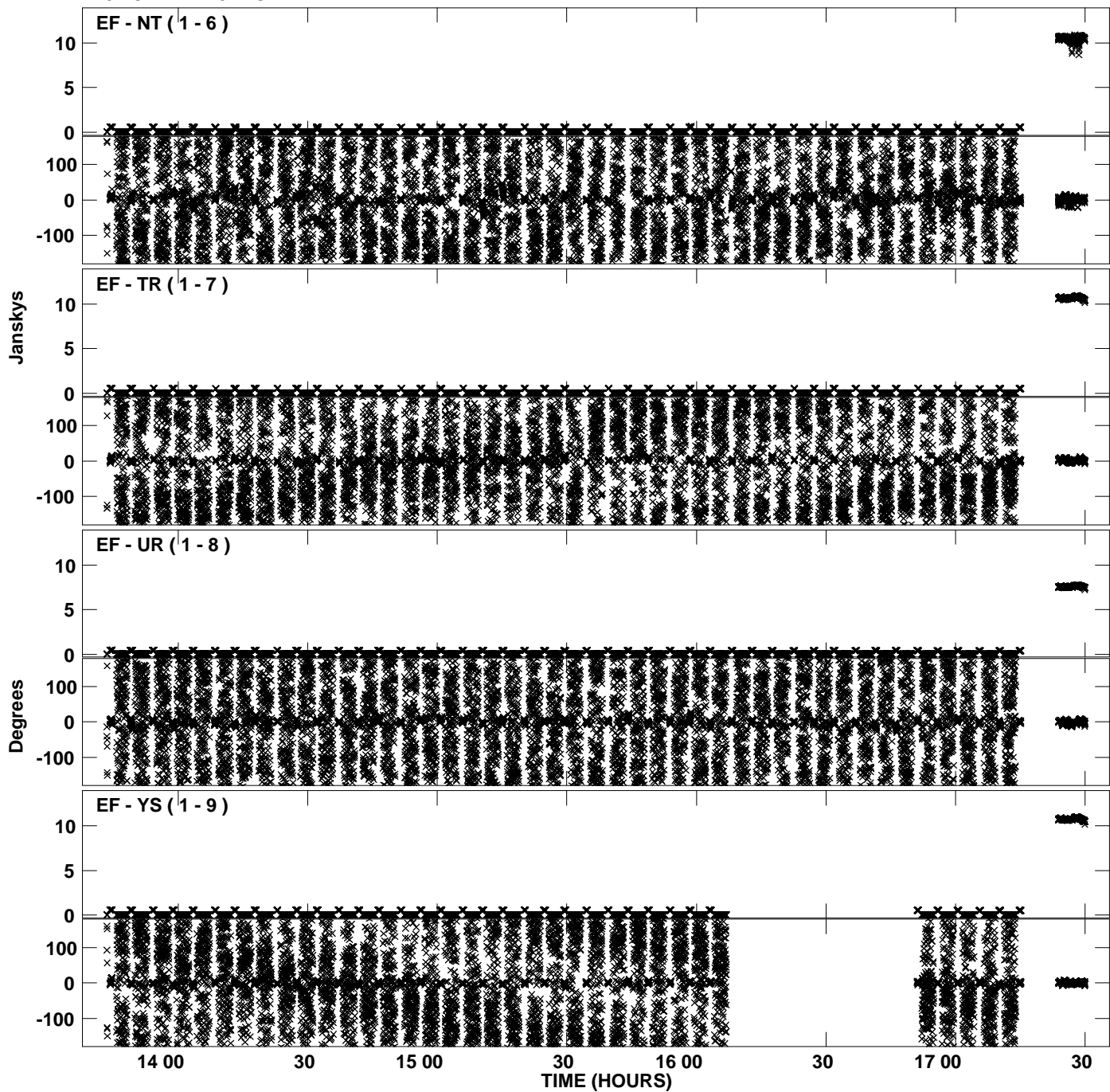
PLot file version 6 created 03-AUG-2012 17:47:08
Amplitude andPhase vs Time for EP075C.UVDATA.1 Vect aver. CL # 3
IF 2 CHAN 1 - 32 STK LL



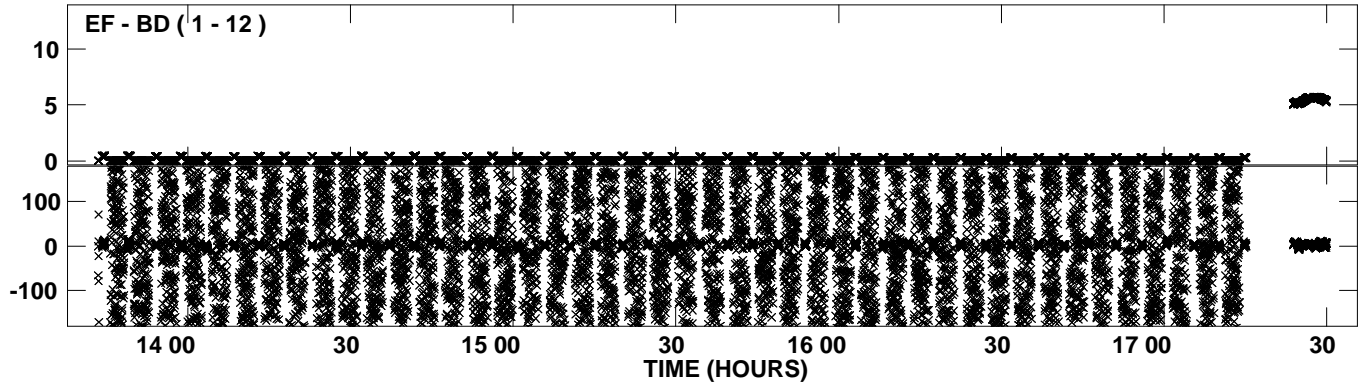
Plot file version 7 created 03-AUG-2012 17:47:19
Amplitude andPhase vs Time for EP075C.UVDATA.1 Vect aver. CL # 3
IF 3 CHAN 1 - 32 STK LL



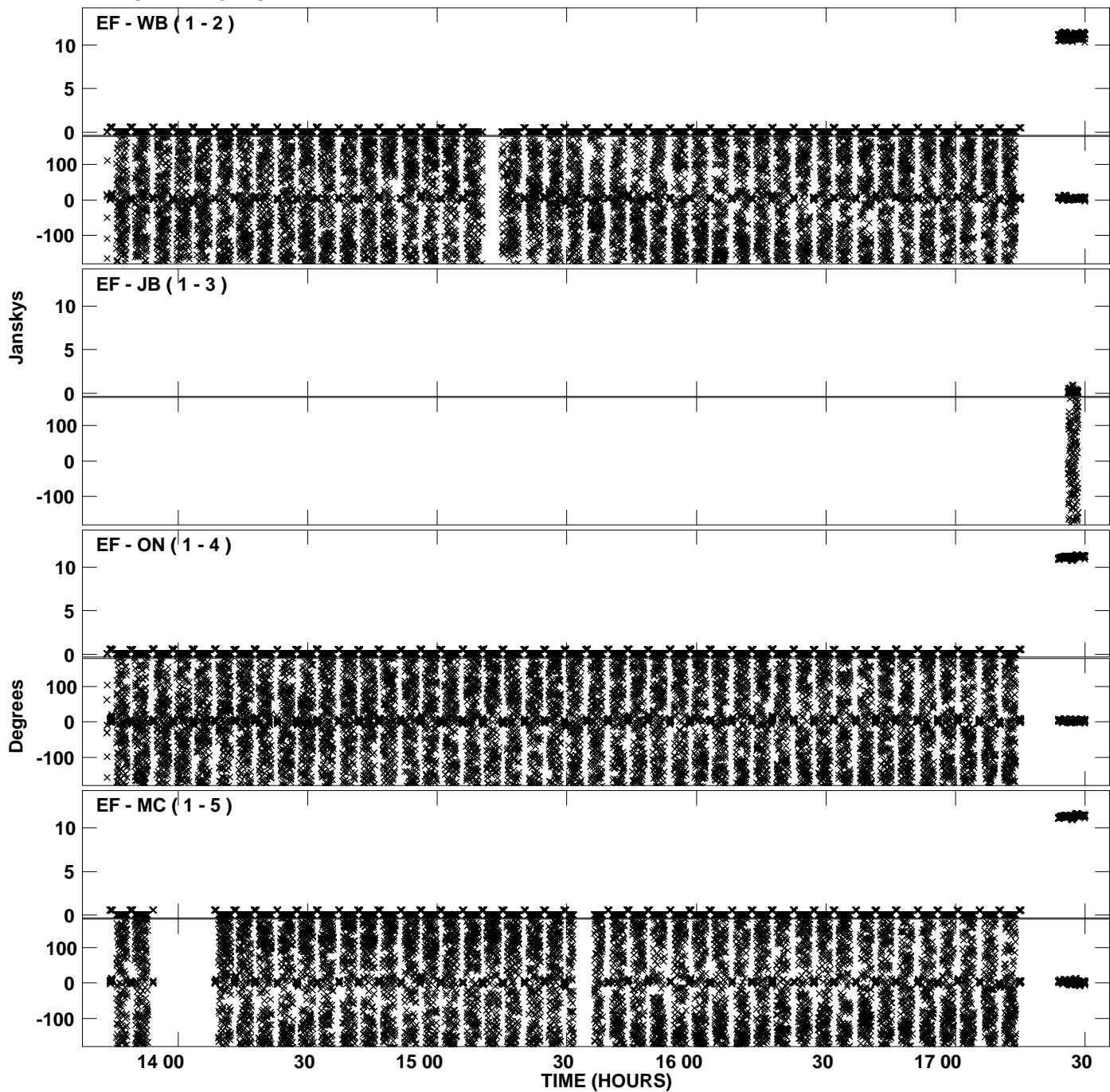
Plot file version 8 created 03-AUG-2012 17:47:19
Amplitude and Phase vs Time for EP075C.UVDATA.1 Vect aver. CL # 3
IF 3 CHAN 1 - 32 STK LL



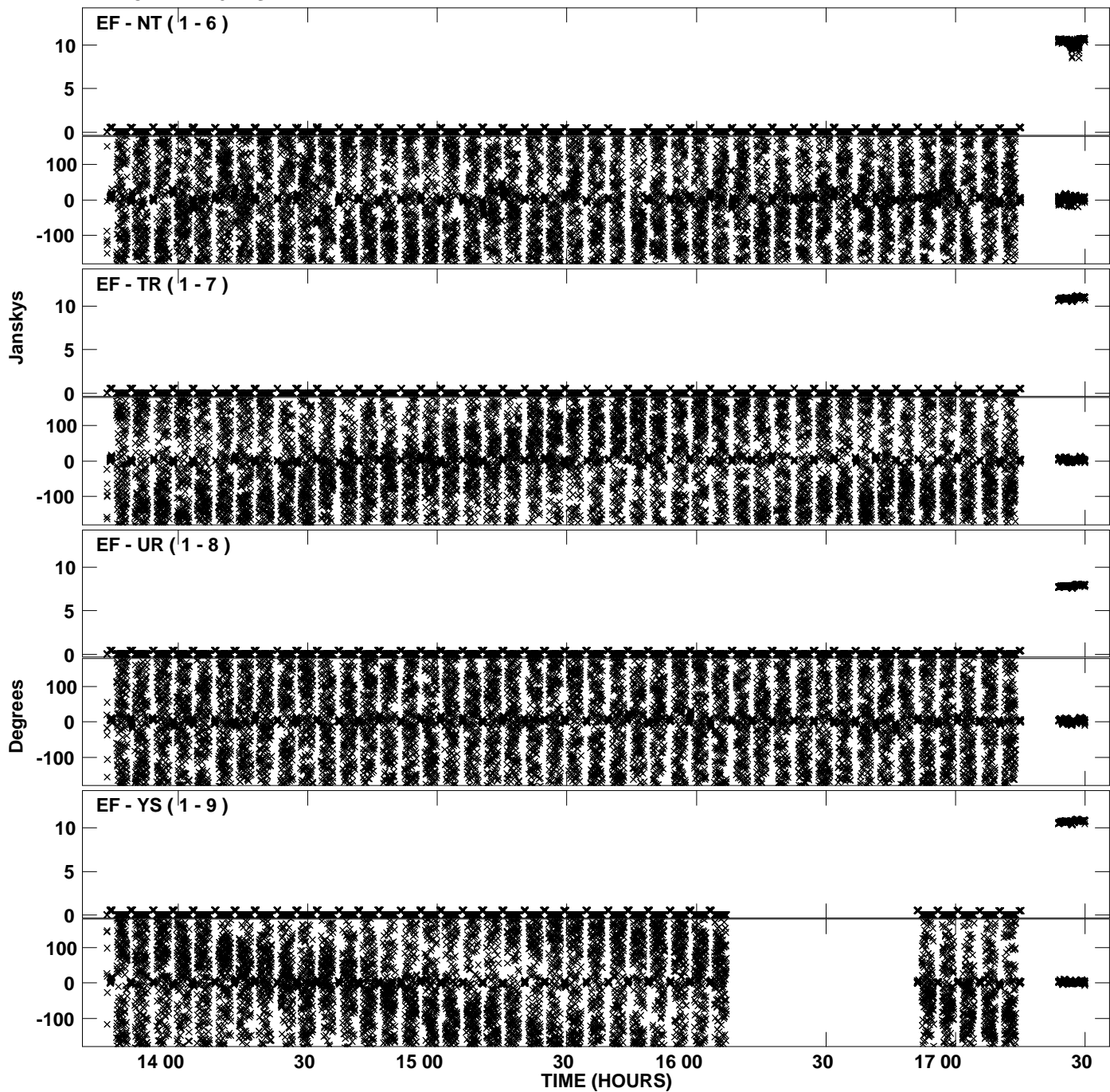
PLot file version 9 created 03-AUG-2012 17:47:19
Amplitude andPhase vs Time for EP075C.UVDATA.1 Vect aver. CL # 3
IF 3 CHAN 1 - 32 STK LL



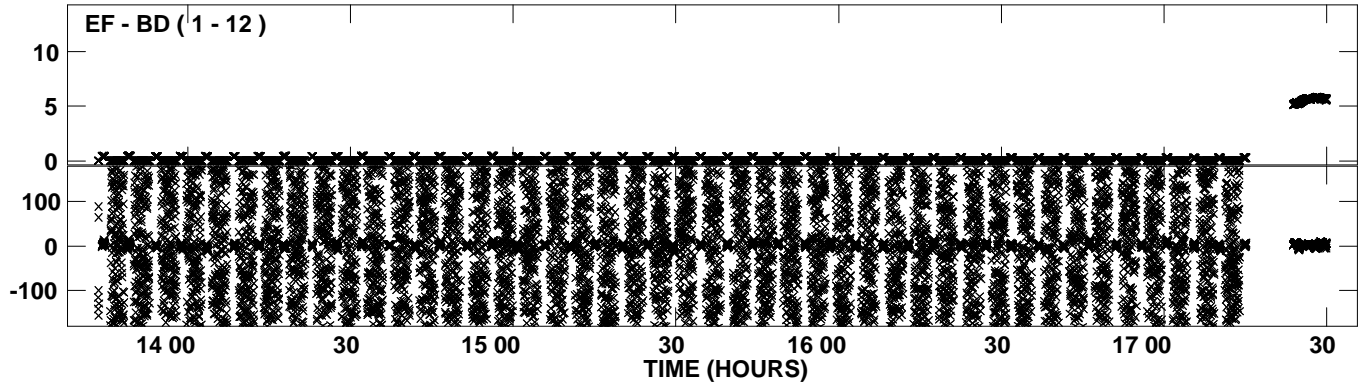
Plot file version 10 created 03-AUG-2012 17:47:31
Amplitude andPhase vs Time for EP075C.UVDATA.1 Vect aver. CL # 3
IF 4 CHAN 1 - 32 STK LL



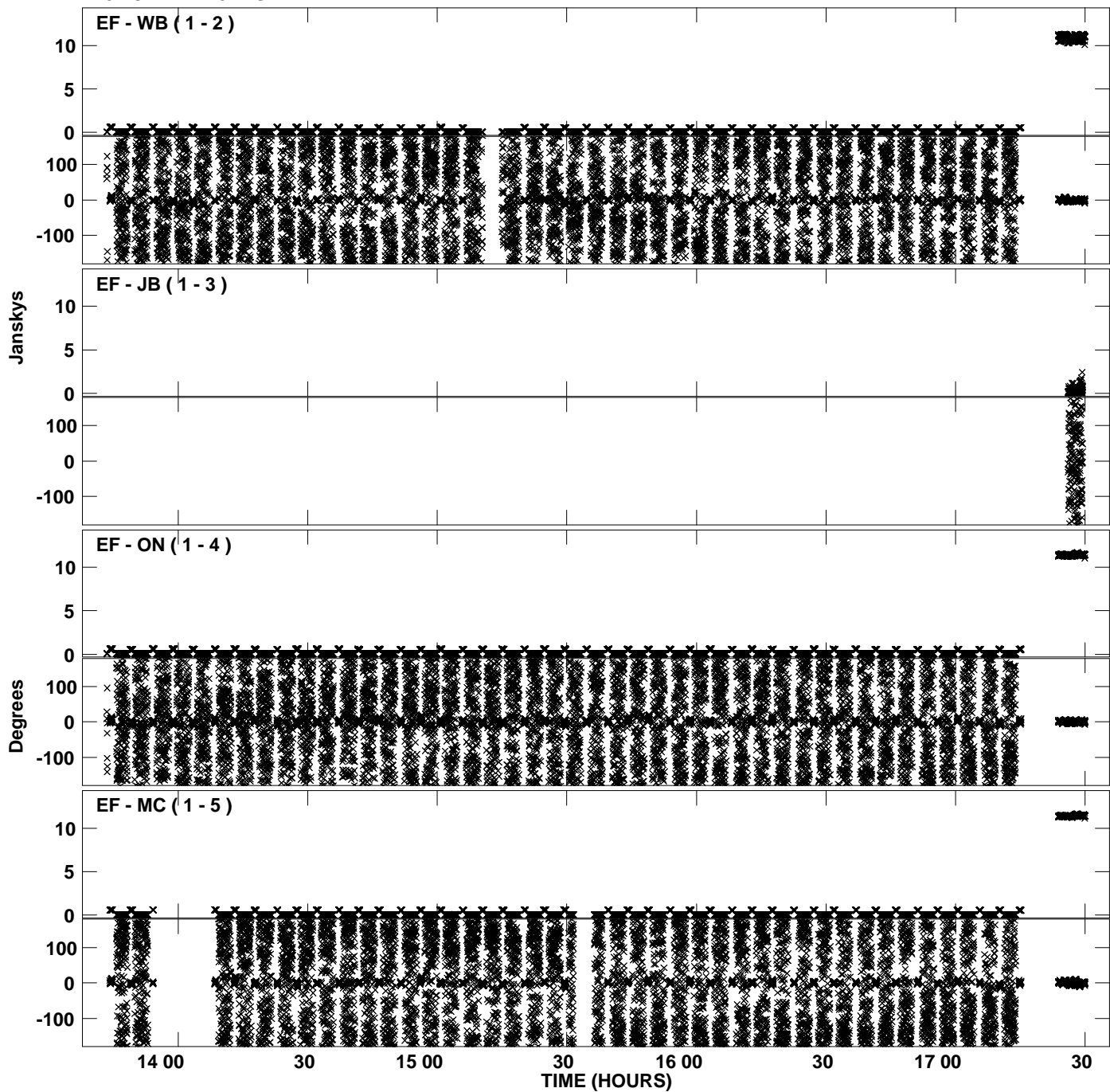
PLot file version 11 created 03-AUG-2012 17:47:31
Amplitude andPhase vs Time for EP075C.UVDATA.1 Vect aver. CL # 3
IF 4 CHAN 1 - 32 STK LL



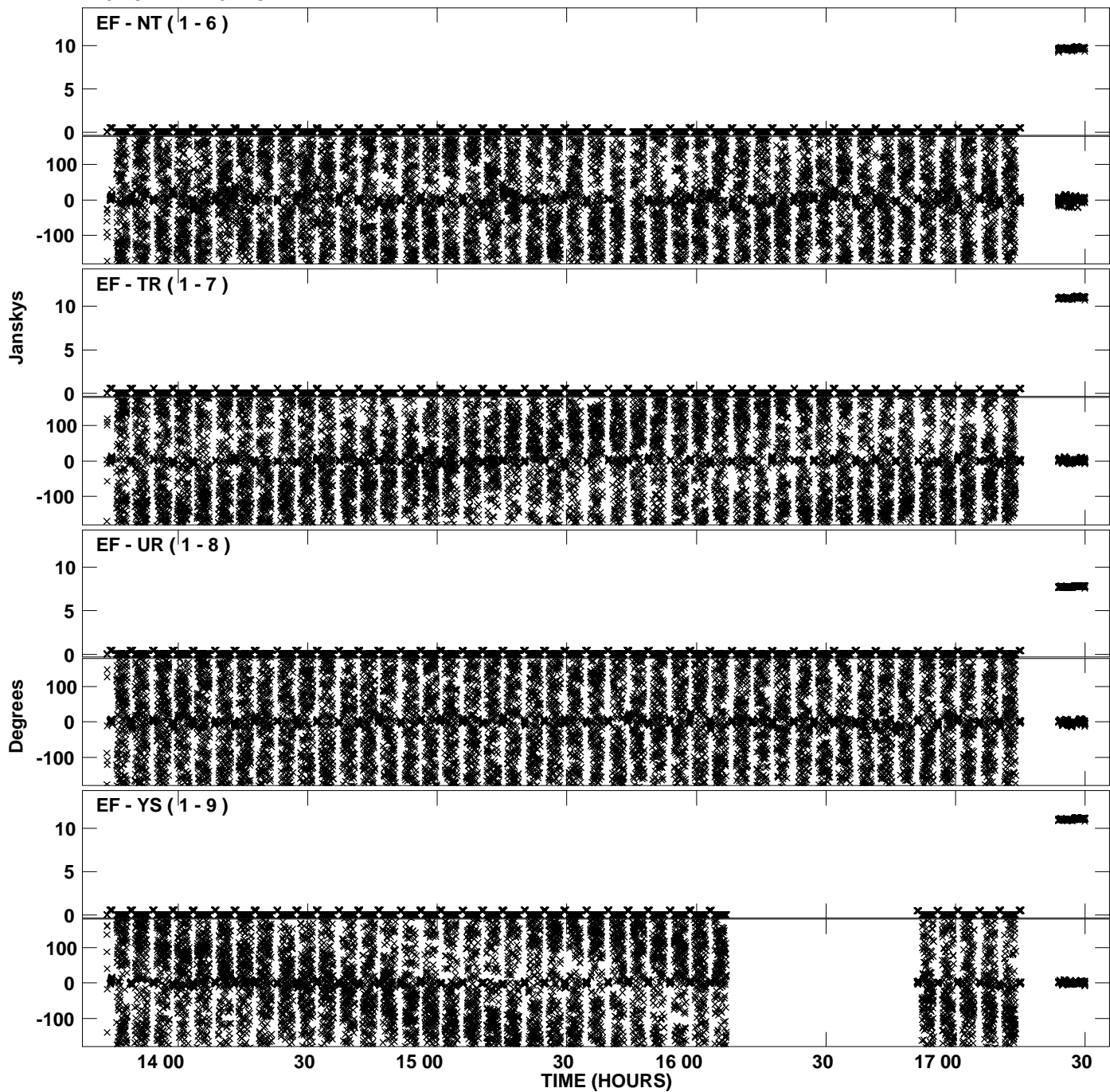
PLot file version 12 created 03-AUG-2012 17:47:31
Amplitude andPhase vs Time for EP075C.UVDATA.1 Vect aver. CL # 3
IF 4 CHAN 1 - 32 STK LL



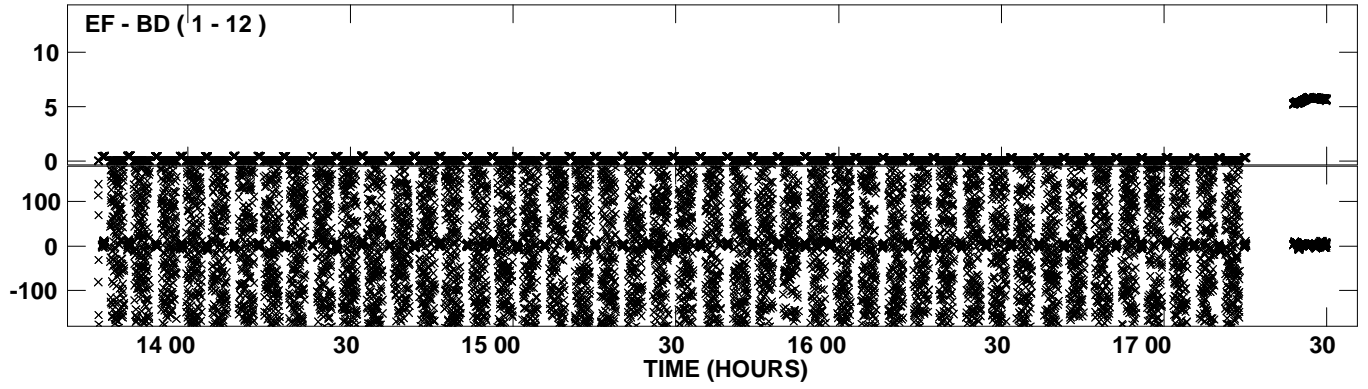
Plot file version 13 created 03-AUG-2012 17:47:43
Amplitude andPhase vs Time for EP075C.UVDATA.1 Vect aver. CL # 3
IF 5 CHAN 1 - 32 STK LL



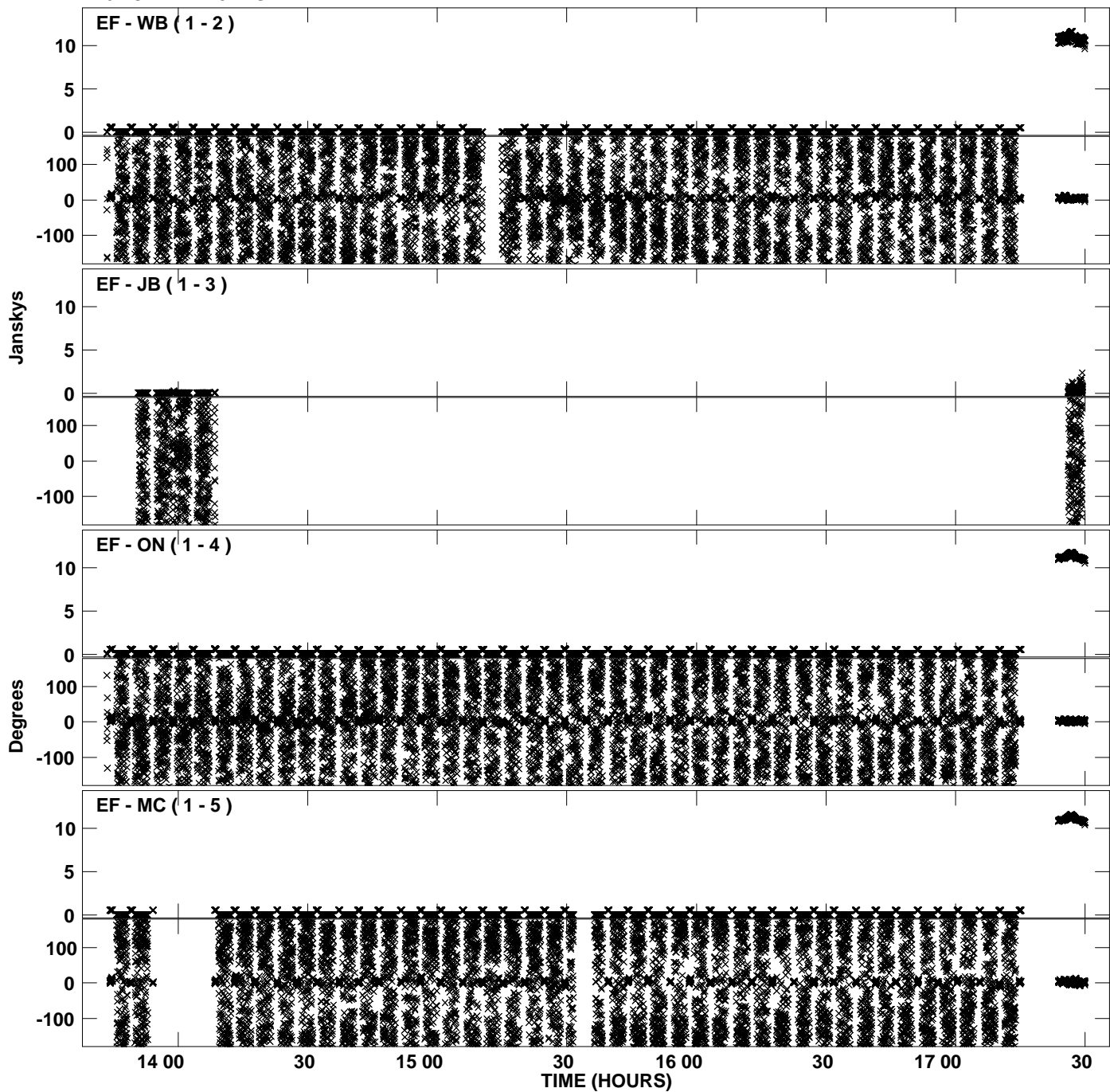
Plot file version 14 created 03-AUG-2012 17:47:43
Amplitude andPhase vs Time for EP075C.UVDATA.1 Vect aver. CL # 3
IF 5 CHAN 1 - 32 STK LL



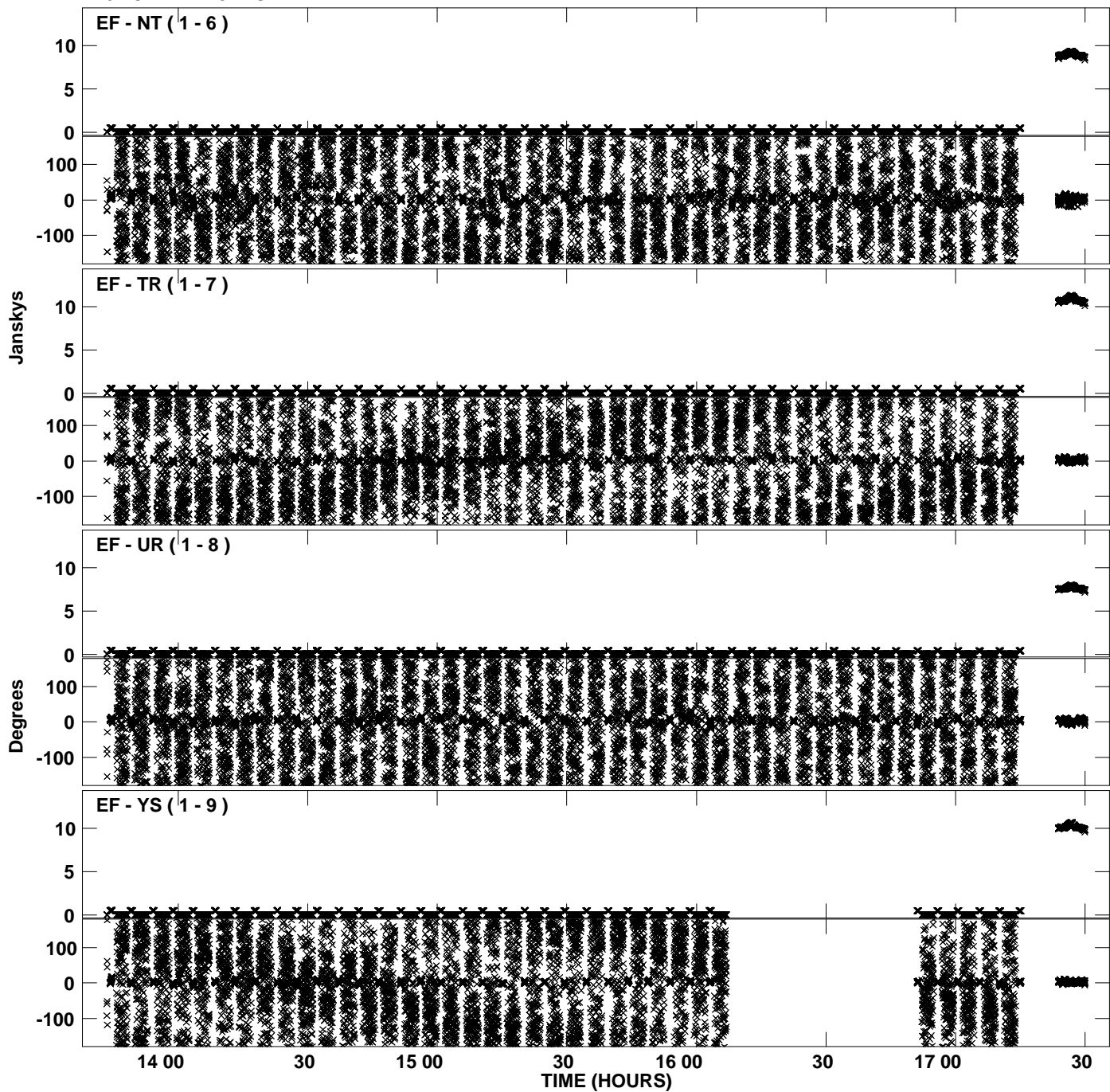
Plot file version 15 created 03-AUG-2012 17:47:43
Amplitude andPhase vs Time for EP075C.UVDATA.1 Vect aver. CL # 3
IF 5 CHAN 1 - 32 STK LL



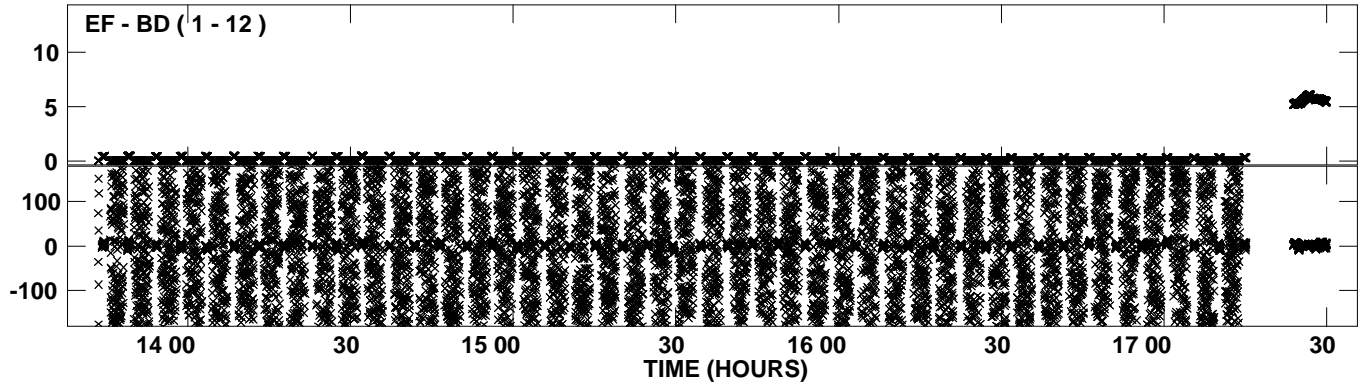
Plot file version 16 created 03-AUG-2012 17:47:55
Amplitude andPhase vs Time for EP075C.UVDATA.1 Vect aver. CL # 3
IF 6 CHAN 1 - 32 STK LL



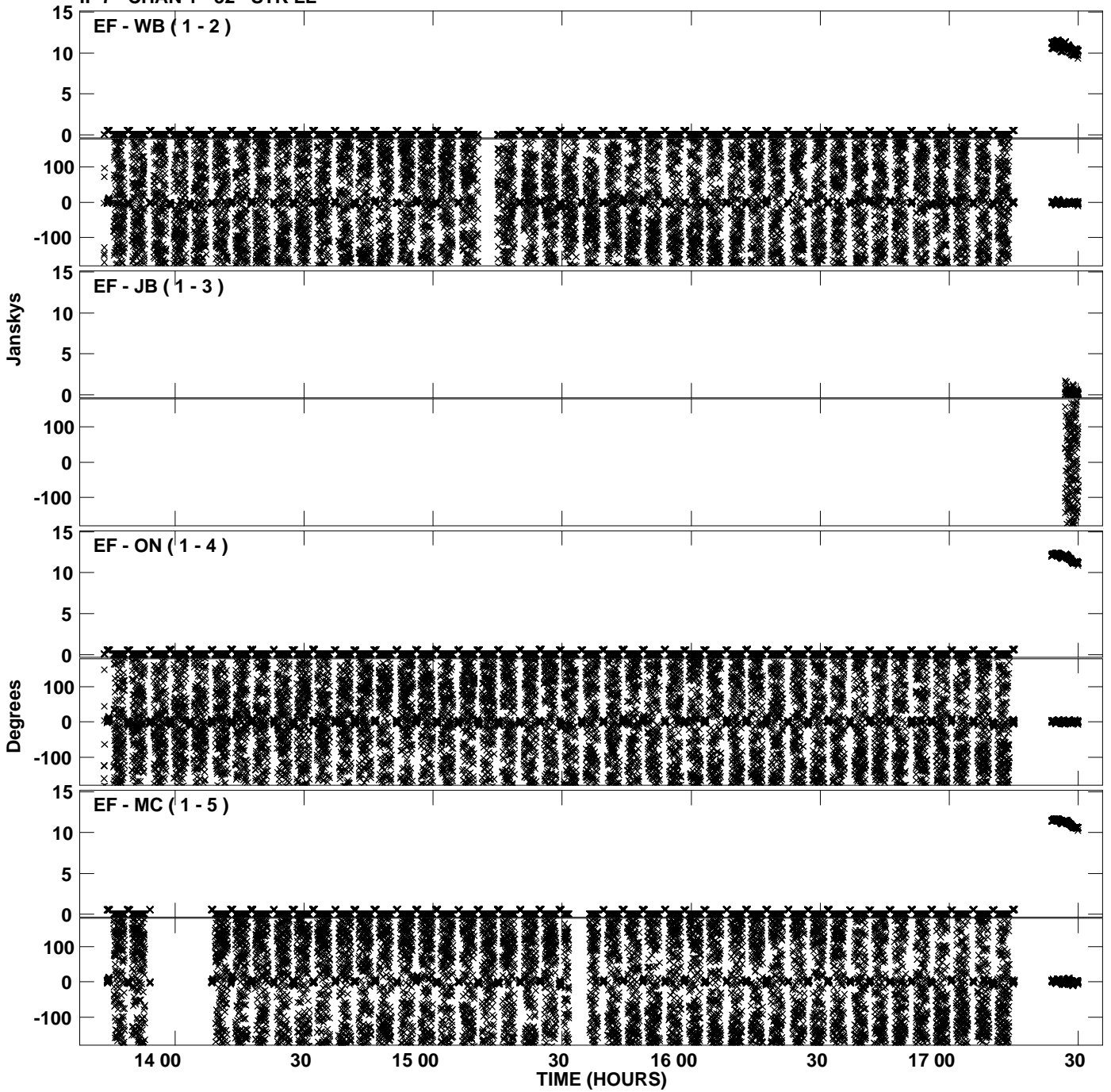
Plot file version 17 created 03-AUG-2012 17:47:55
Amplitude and Phase vs Time for EP075C.UVDATA.1 Vect aver. CL # 3
IF 6 CHAN 1 - 32 STK LL



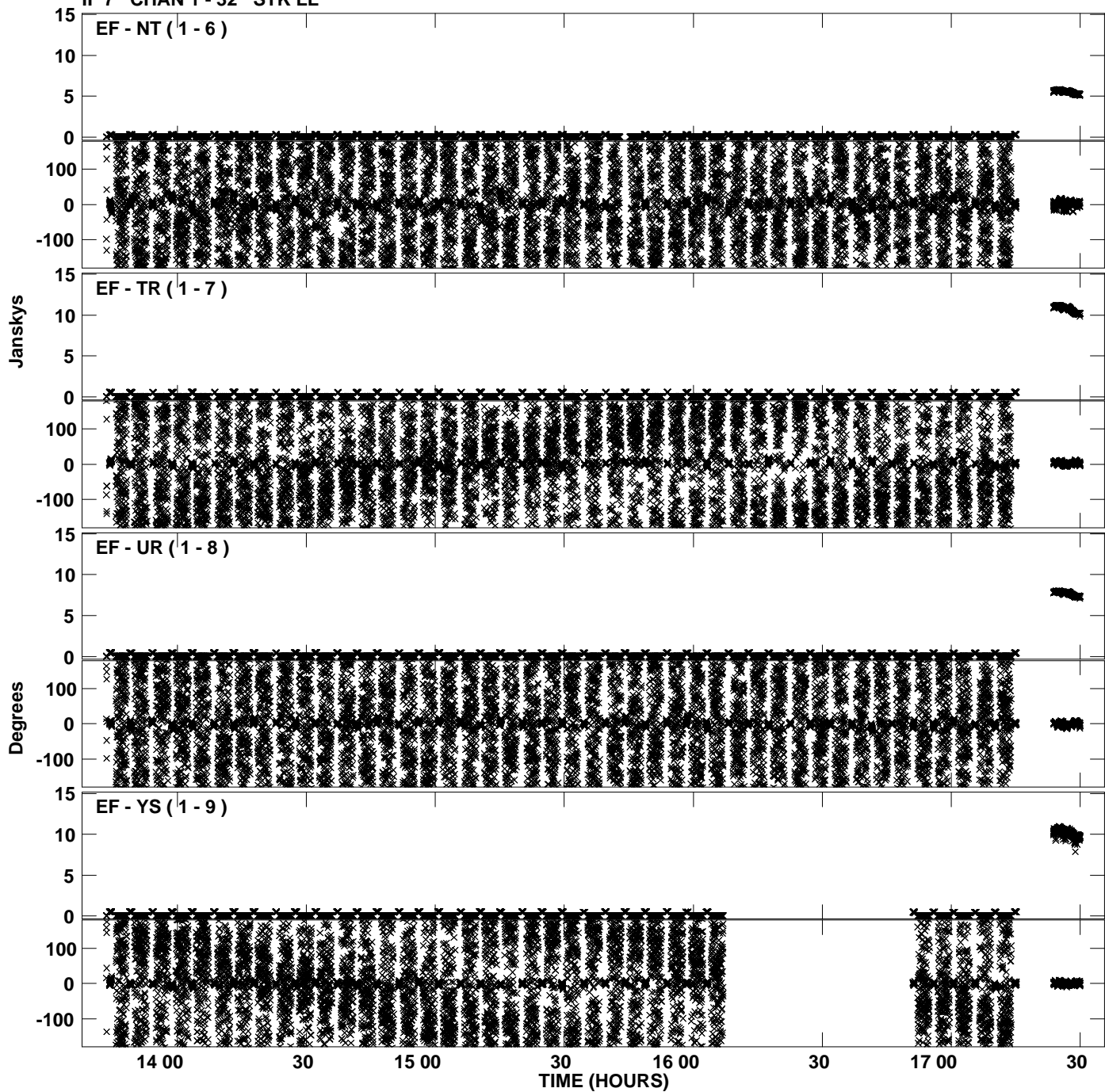
Plot file version 18 created 03-AUG-2012 17:47:55
Amplitude andPhase vs Time for EP075C.UVDATA.1 Vect aver. CL # 3
IF 6 CHAN 1 - 32 STK LL



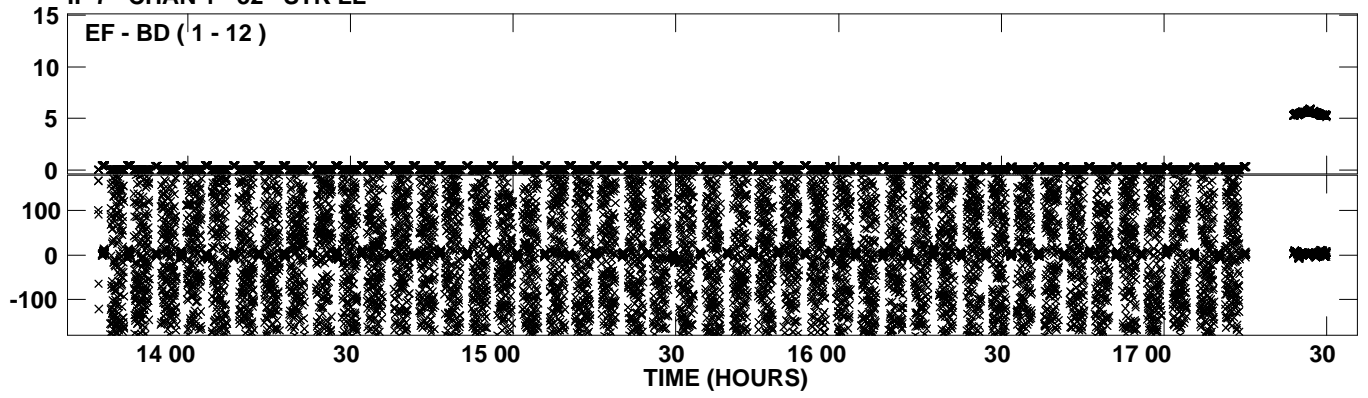
Plot file version 19 created 03-AUG-2012 17:48:06
Amplitude andPhase vs Time for EP075C.UVDATA.1 Vect aver. CL # 3
IF 7 CHAN 1 - 32 STK LL



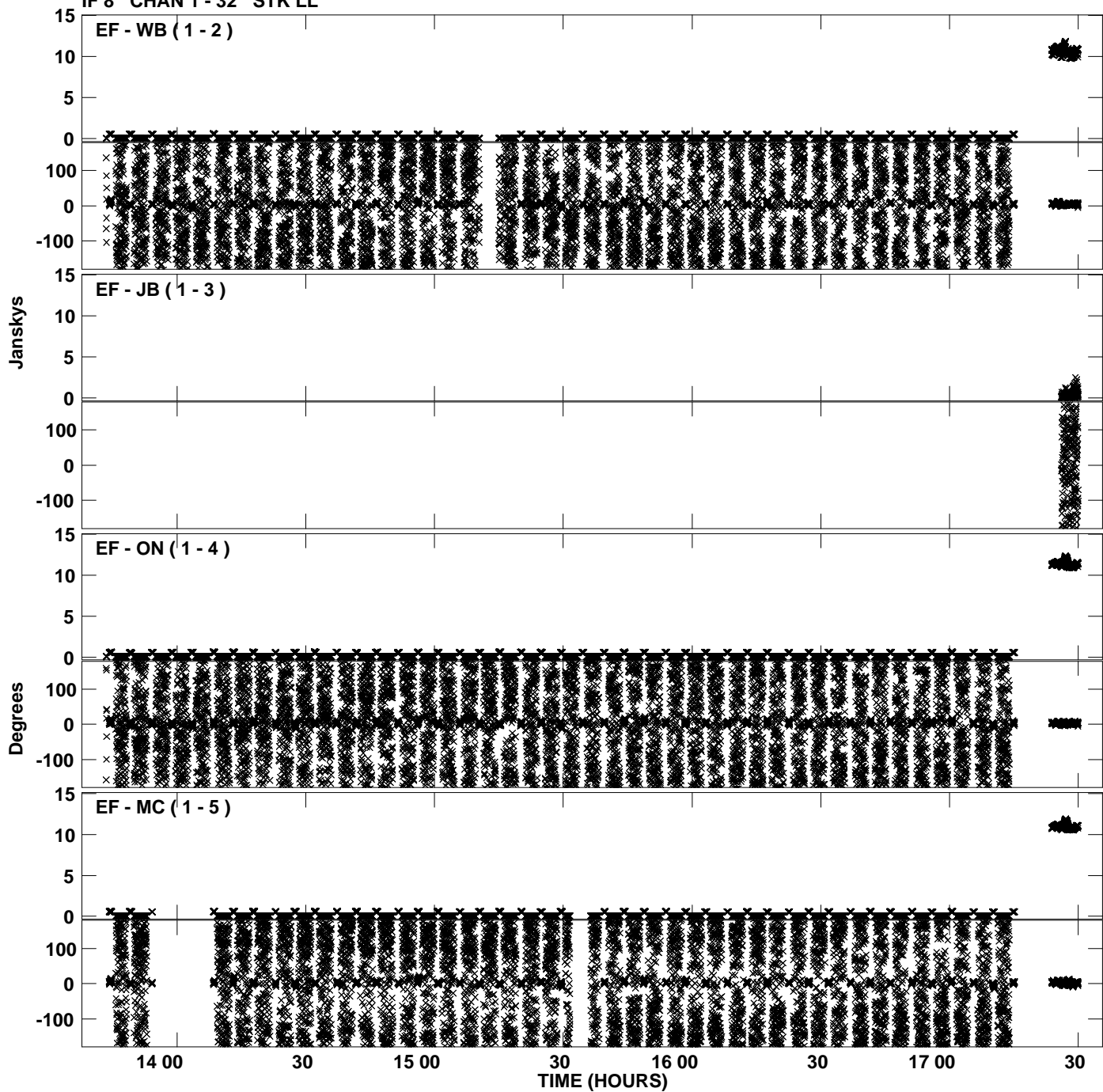
Plot file version 20 created 03-AUG-2012 17:48:06
Amplitude and Phase vs Time for EP075C.UVDATA.1 Vect aver. CL # 3
IF 7 CHAN 1 - 32 STK LL



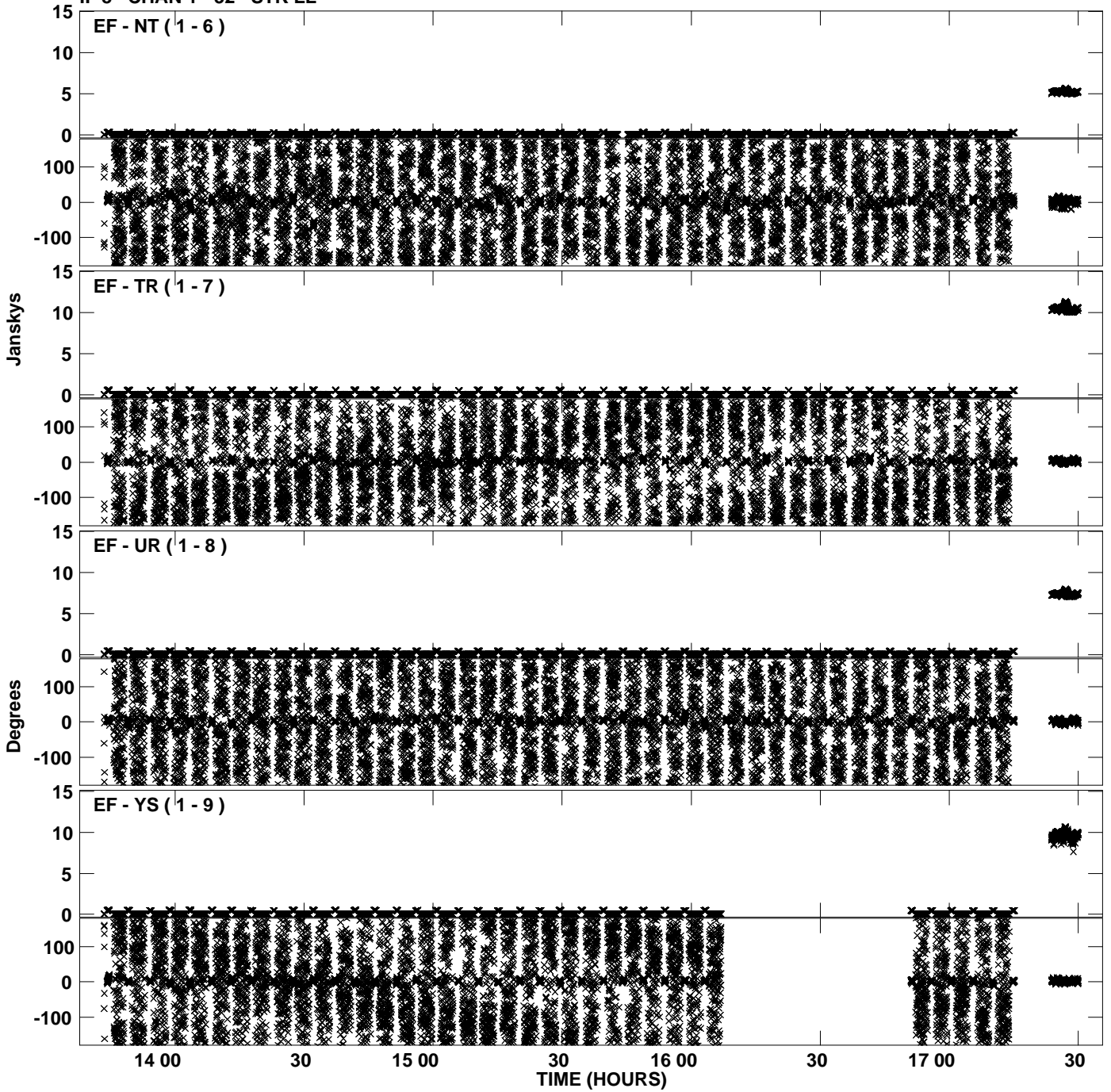
PLot file version 21 created 03-AUG-2012 17:48:06
Amplitude andPhase vs Time for EP075C.UVDATA.1 Vect aver. CL # 3
IF 7 CHAN 1 - 32 STK LL



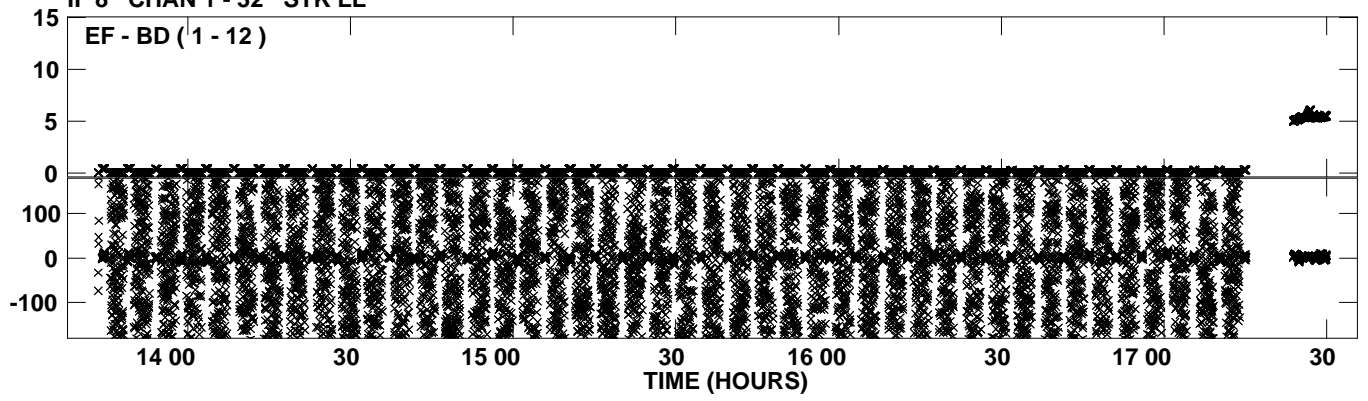
Plot file version 22 created 03-AUG-2012 17:48:18
Amplitude and Phase vs Time for EP075C.UVDATA.1 Vect aver. CL # 3
IF 8 CHAN 1 - 32 STK LL



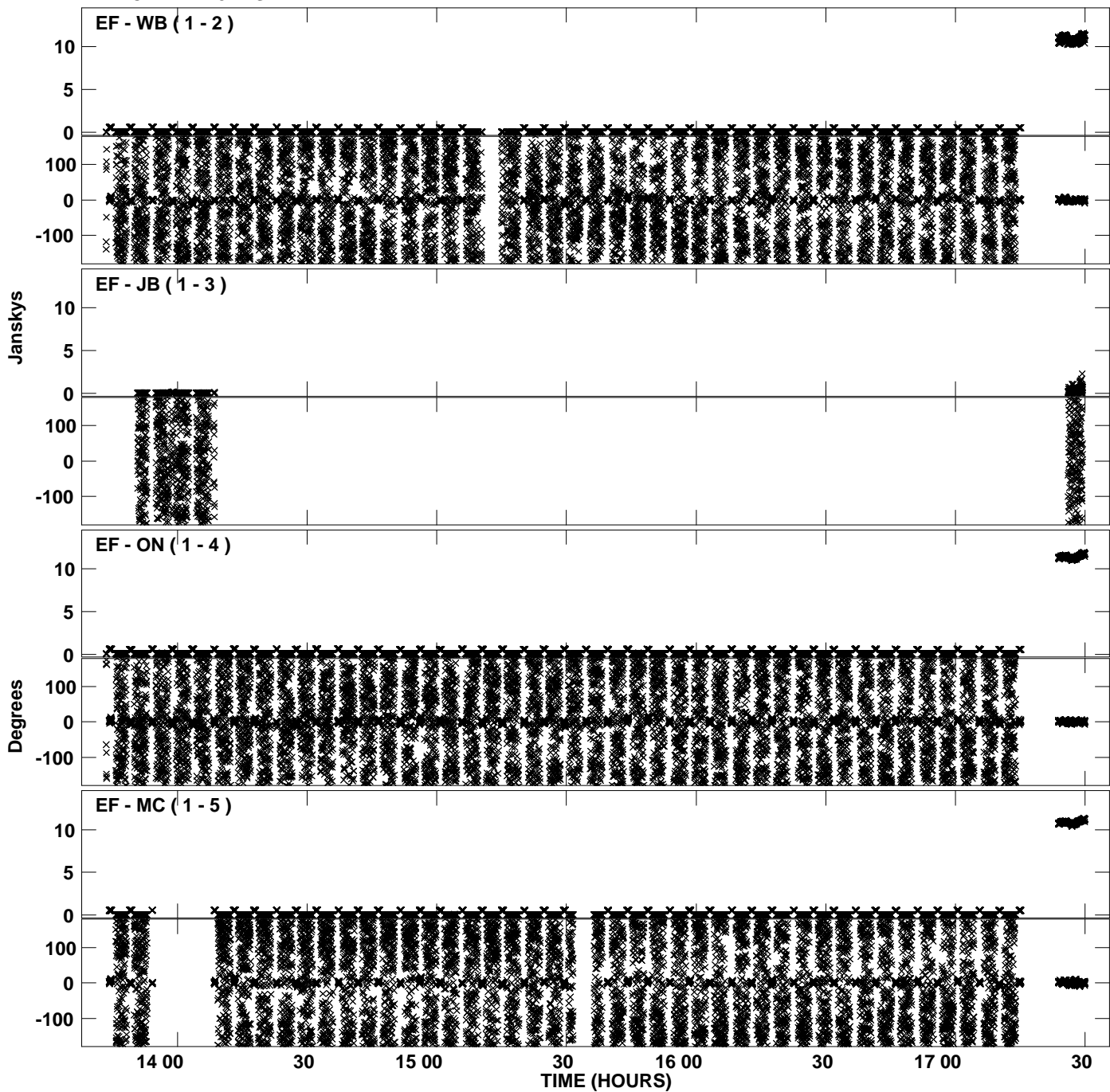
Plot file version 23 created 03-AUG-2012 17:48:18
Amplitude and Phase vs Time for EP075C.UVDATA.1 Vect aver. CL # 3
IF 8 CHAN 1 - 32 STK LL



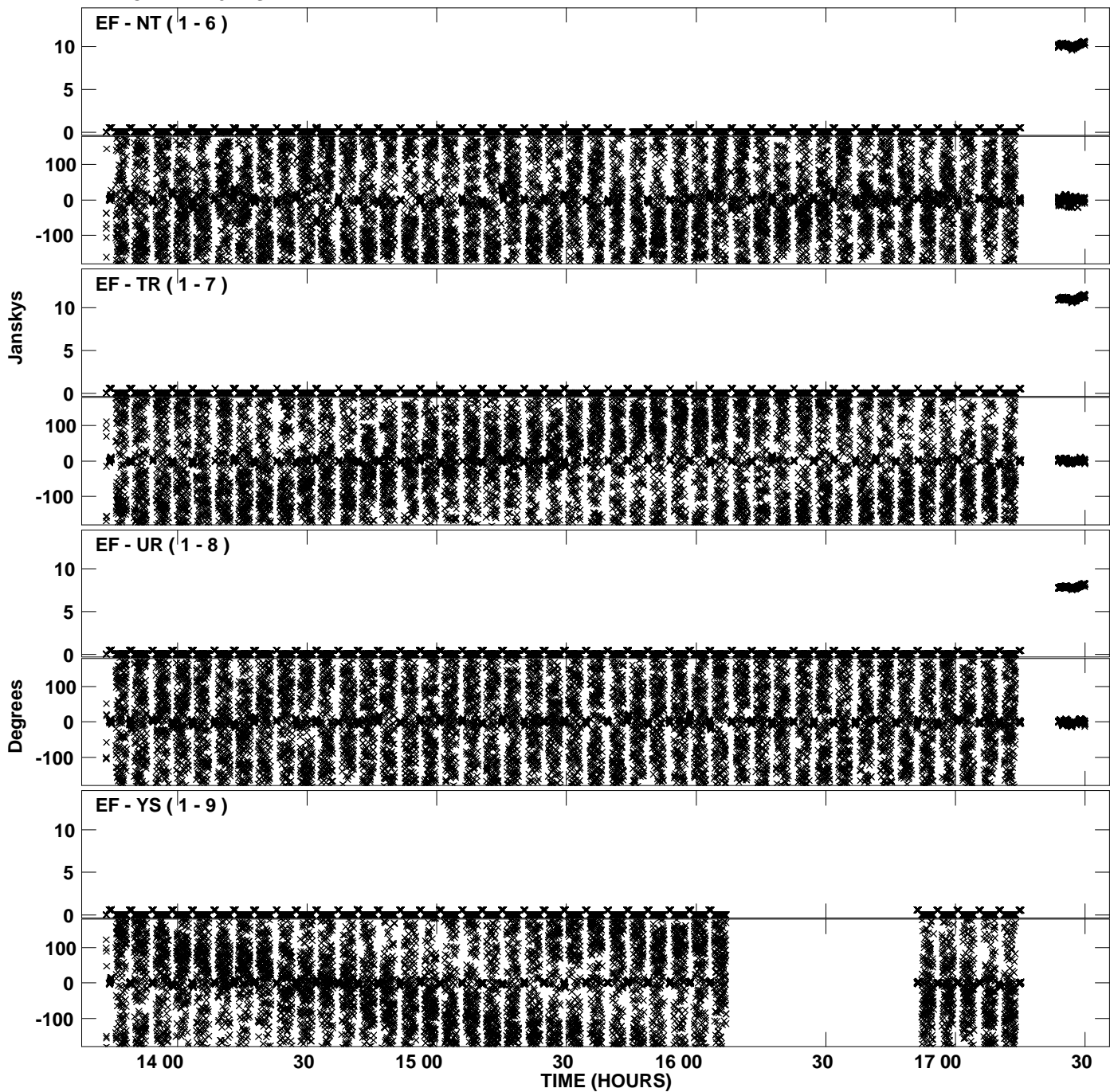
PLot file version 24 created 03-AUG-2012 17:48:18
Amplitude andPhase vs Time for EP075C.UVDATA.1 Vect aver. CL # 3
IF 8 CHAN 1 - 32 STK LL



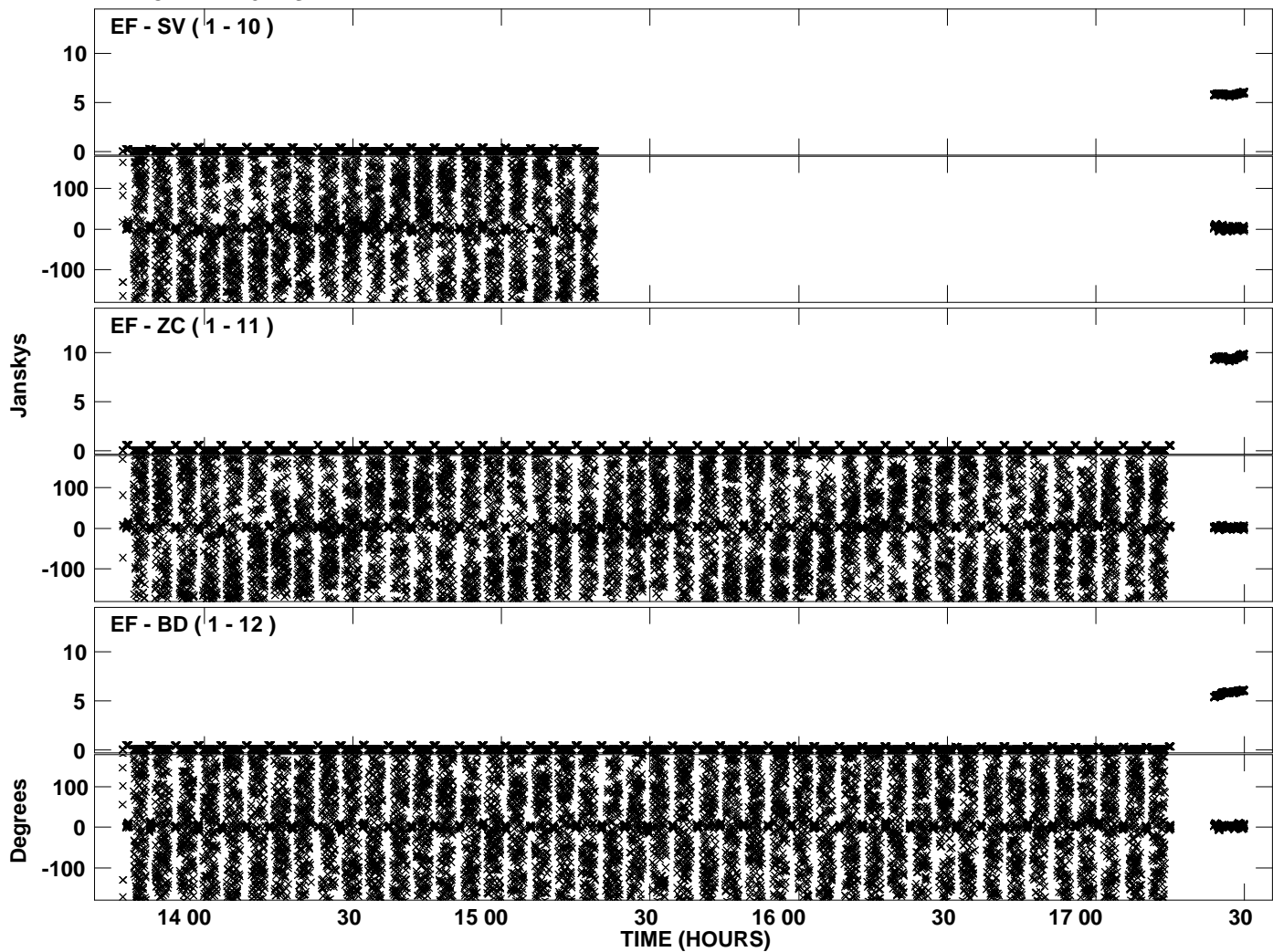
Plot file version 25 created 03-AUG-2012 17:48:28
Amplitude andPhase vs Time for EP075C.UVDATA.1 Vect aver. CL # 3
IF 1 CHAN 1 - 32 STK RR



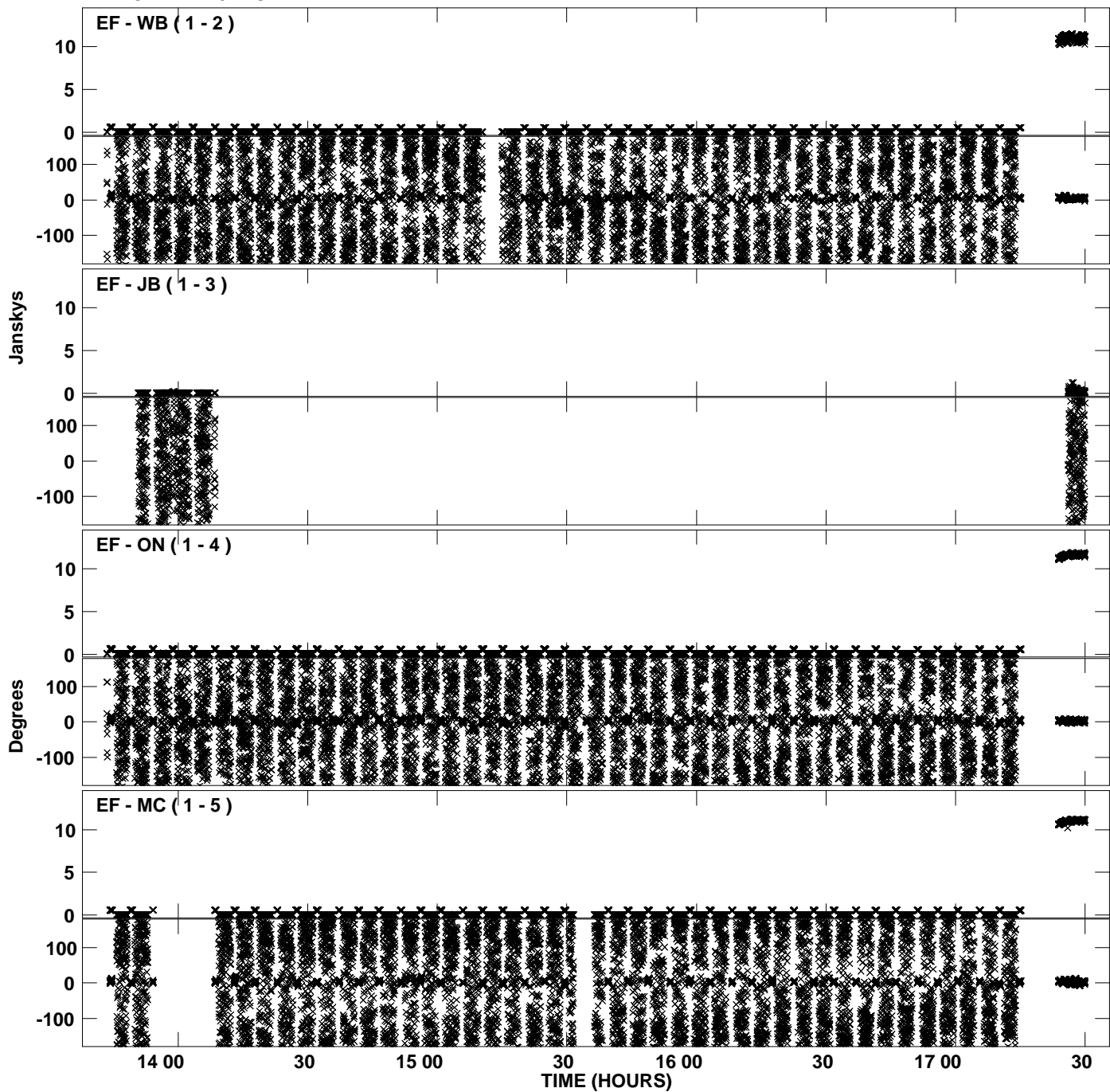
Plot file version 26 created 03-AUG-2012 17:48:28
Amplitude andPhase vs Time for EP075C.UVDATA.1 Vect aver. CL # 3
IF 1 CHAN 1 - 32 STK RR



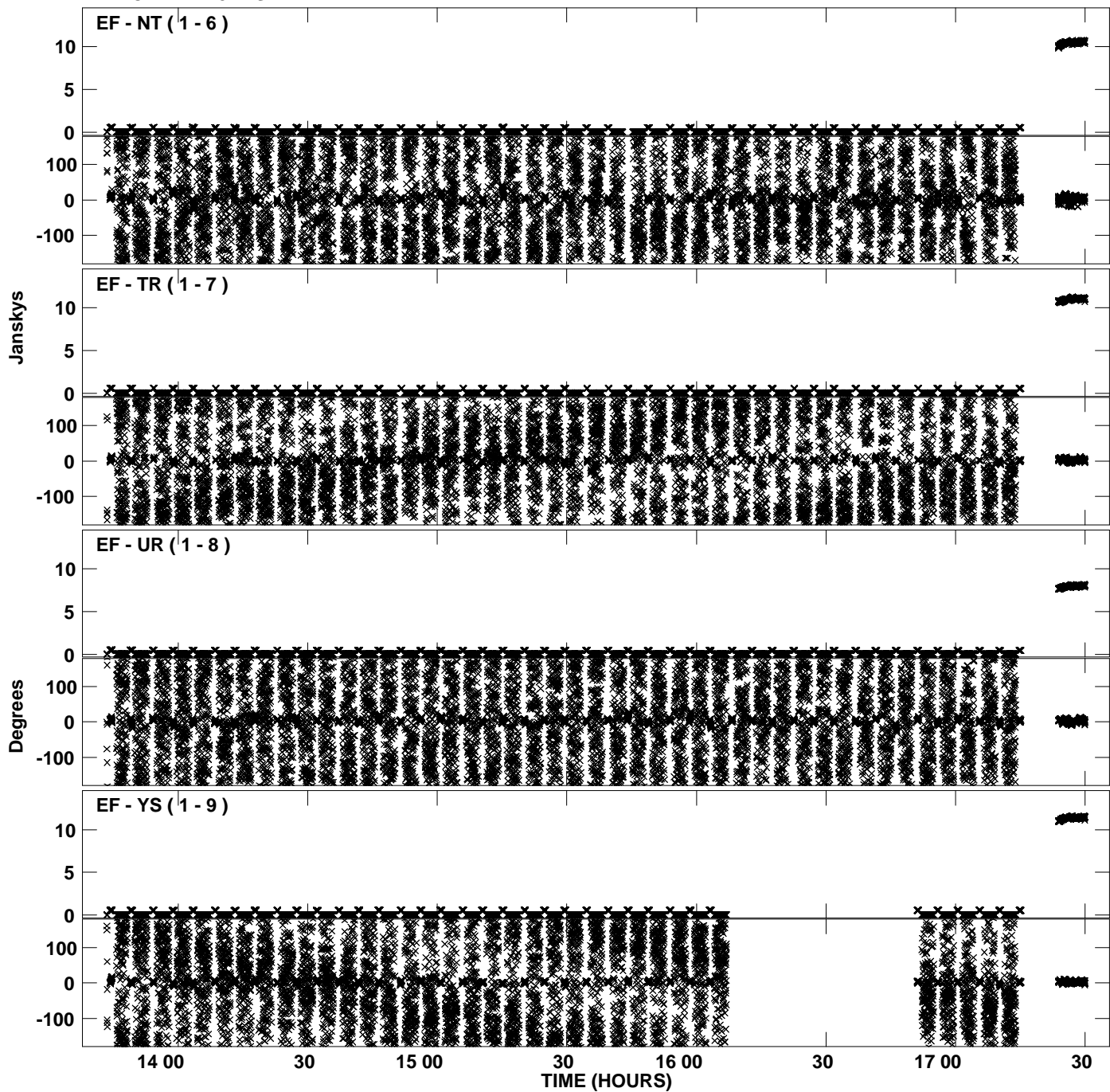
PLot file version 27 created 03-AUG-2012 17:48:28
Amplitude andPhase vs Time for EP075C.UVDATA.1 Vect aver. CL # 3
IF 1 CHAN 1 - 32 STK RR



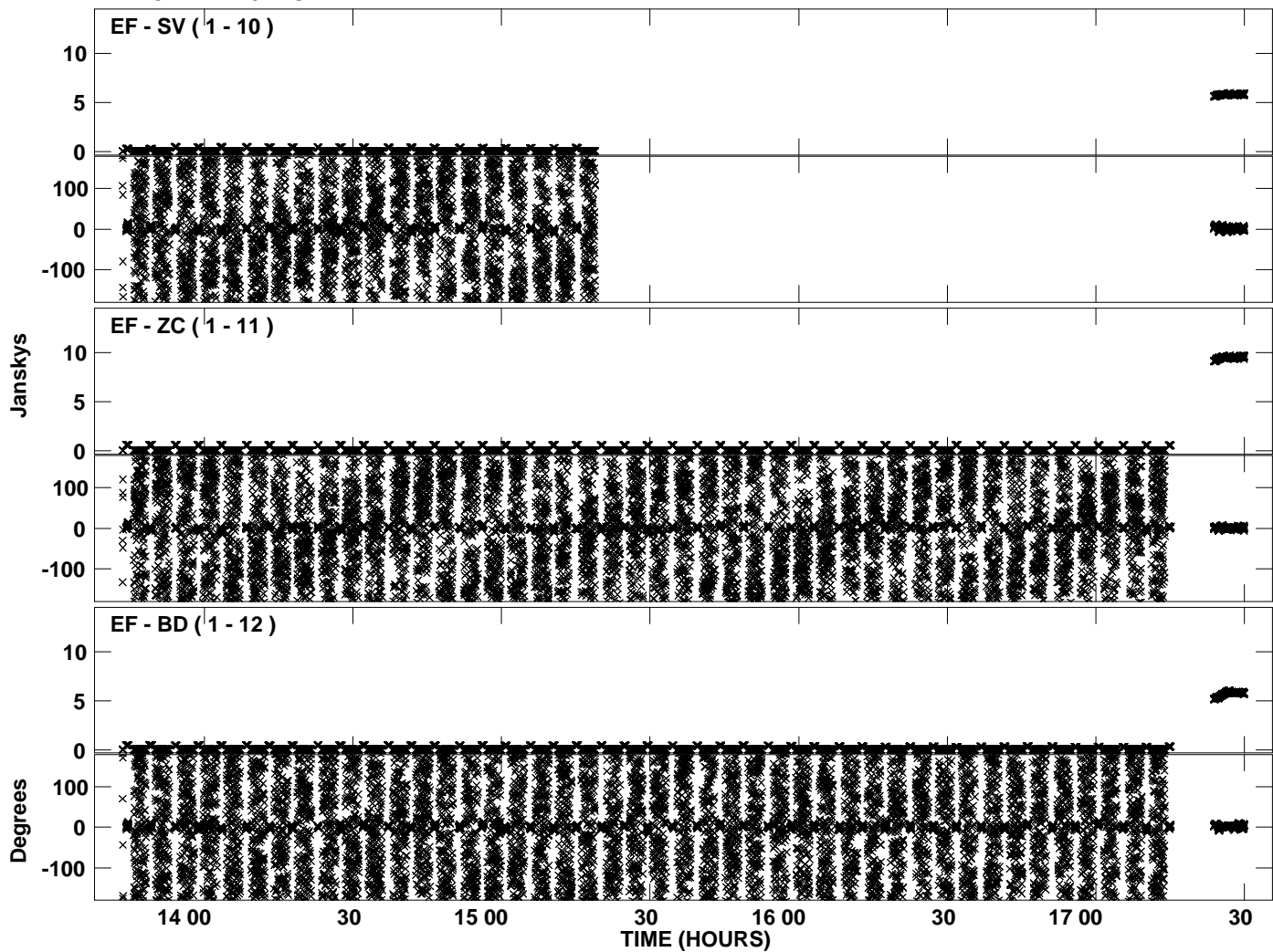
Plot file version 28 created 03-AUG-2012 17:48:39
Amplitude andPhase vs Time for EP075C.UVDATA.1 Vect aver. CL # 3
IF 2 CHAN 1 - 32 STK RR



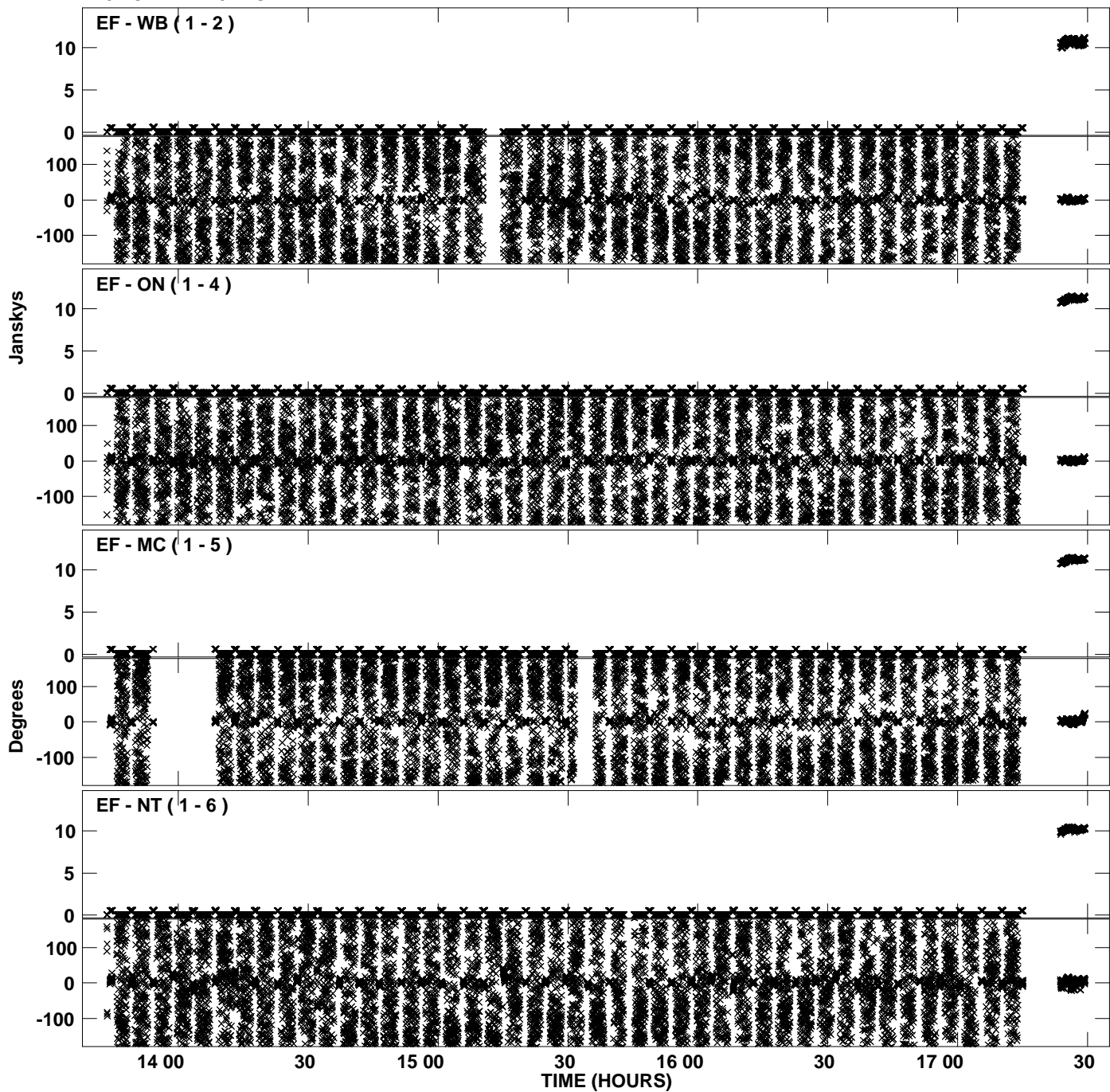
Plot file version 29 created 03-AUG-2012 17:48:39
Amplitude andPhase vs Time for EP075C.UVDATA.1 Vect aver. CL # 3
IF 2 CHAN 1 - 32 STK RR



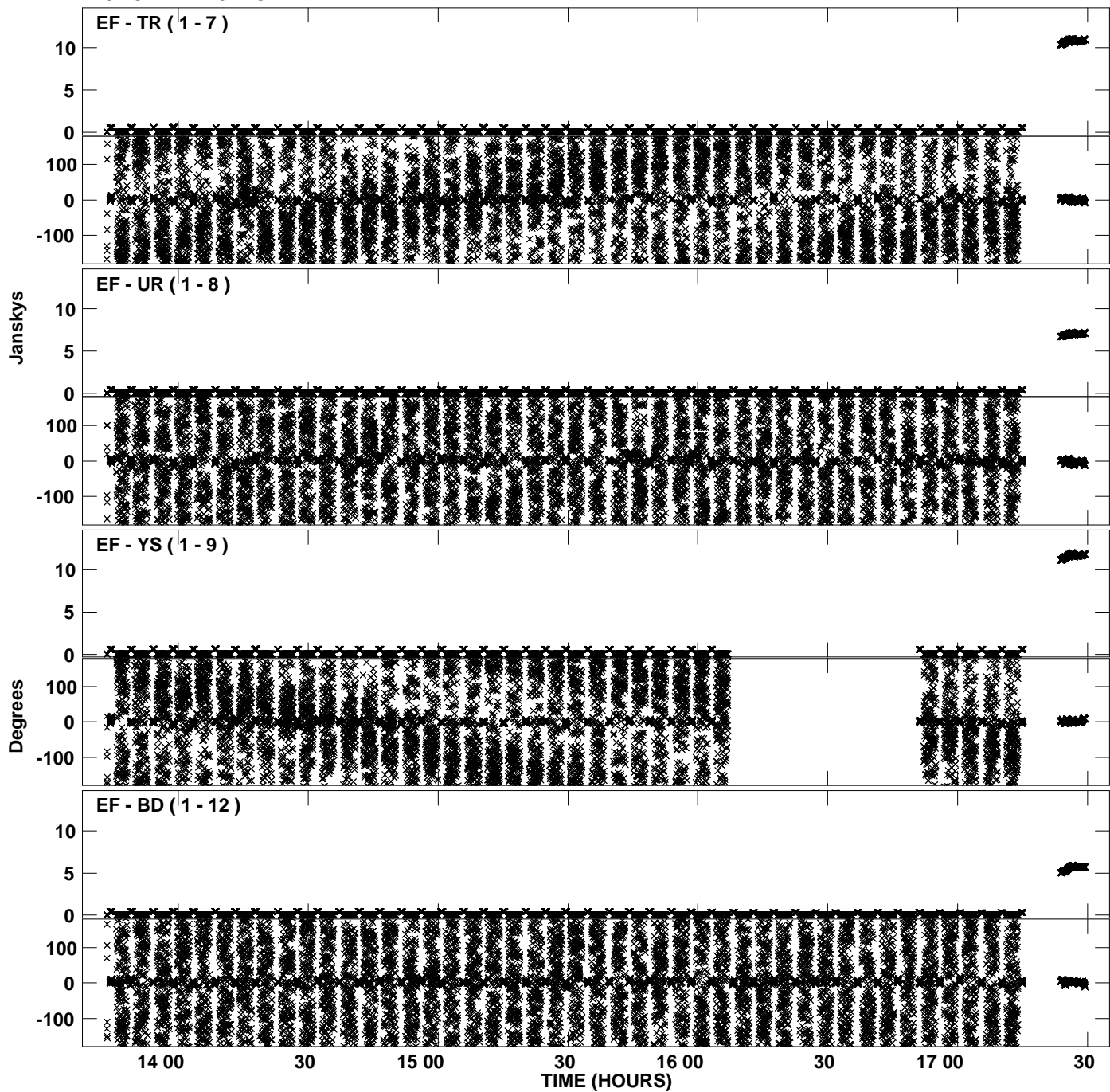
PLot file version 30 created 03-AUG-2012 17:48:39
Amplitude andPhase vs Time for EP075C.UVDATA.1 Vect aver. CL # 3
IF 2 CHAN 1 - 32 STK RR



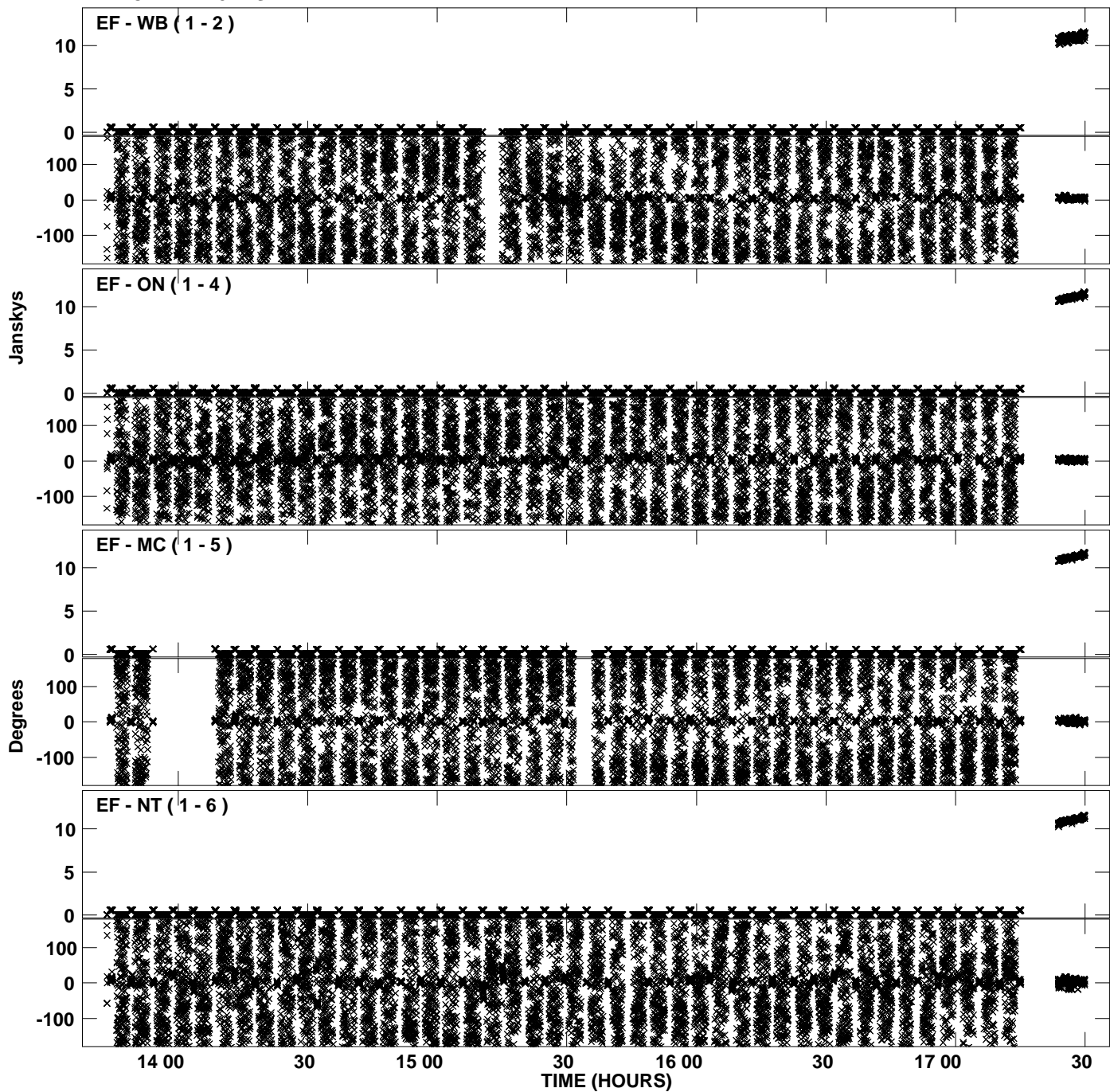
PLot file version 31 created 03-AUG-2012 17:48:48
Amplitude andPhase vs Time for EP075C.UVDATA.1 Vect aver. CL # 3
IF 3 CHAN 1 - 32 STK RR



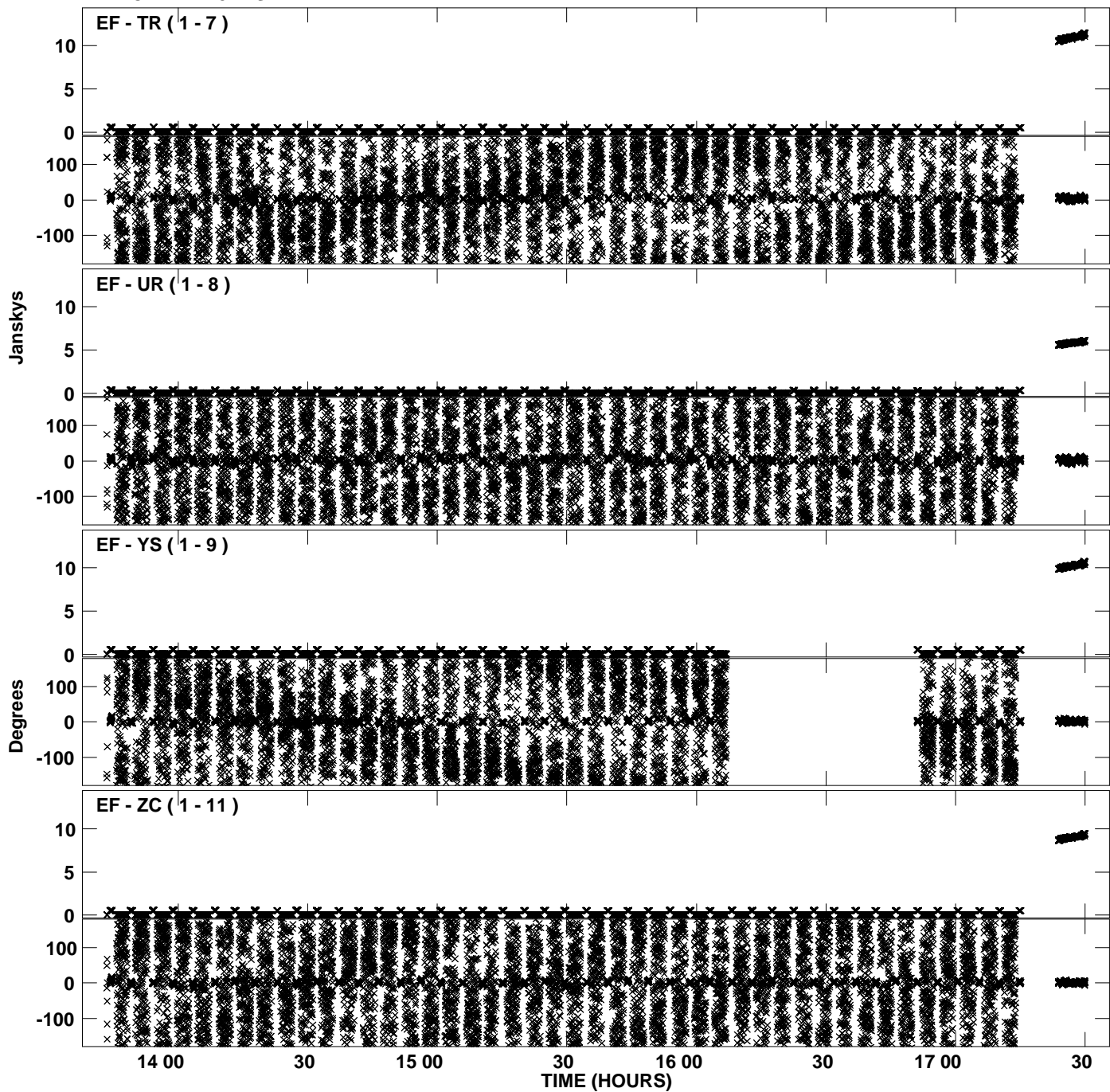
Plot file version 32 created 03-AUG-2012 17:48:48
Amplitude andPhase vs Time for EP075C.UVDATA.1 Vect aver. CL # 3
IF 3 CHAN 1 - 32 STK RR



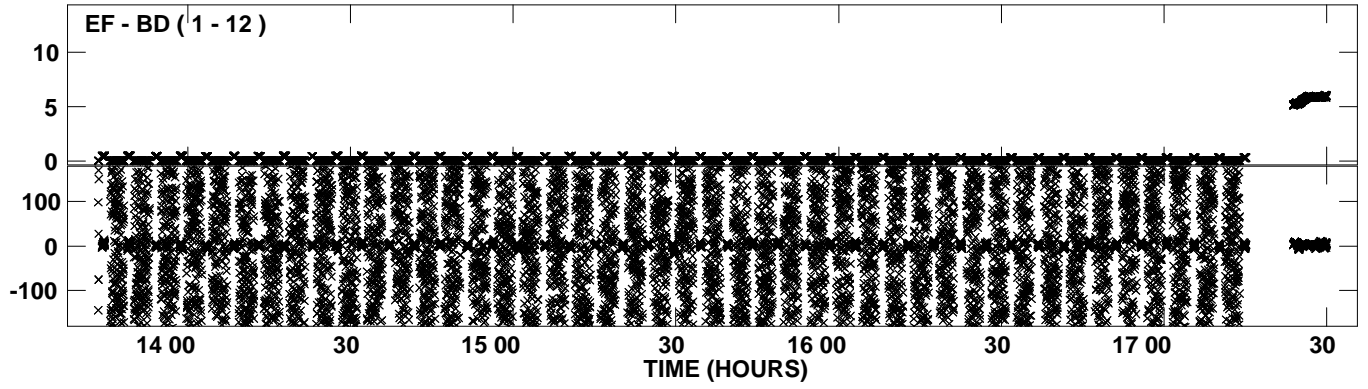
Plot file version 33 created 03-AUG-2012 17:48:59
Amplitude andPhase vs Time for EP075C.UVDATA.1 Vect aver. CL # 3
IF 4 CHAN 1 - 32 STK RR



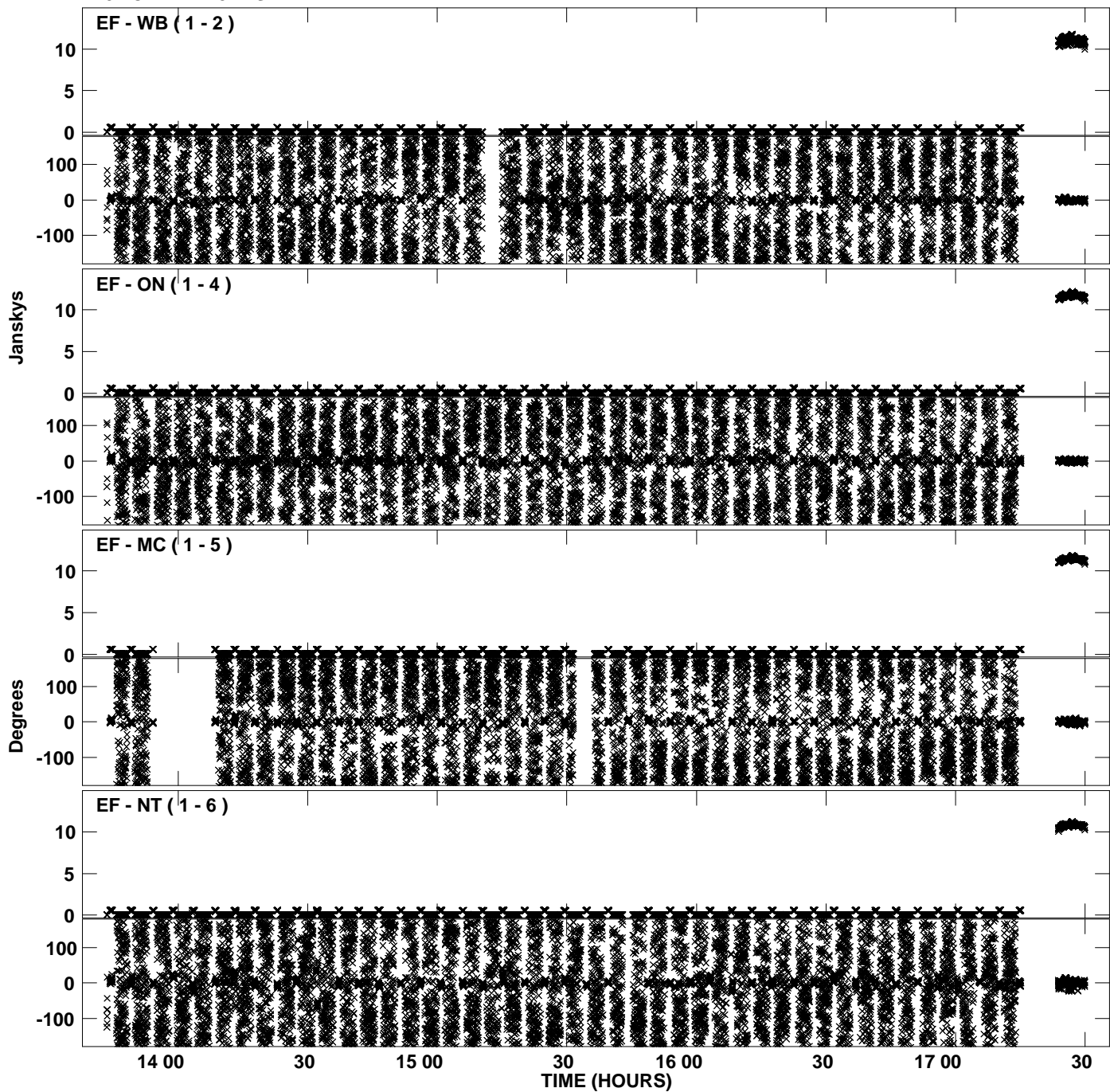
Plot file version 34 created 03-AUG-2012 17:48:59
Amplitude andPhase vs Time for EP075C.UVDATA.1 Vect aver. CL # 3
IF 4 CHAN 1 - 32 STK RR



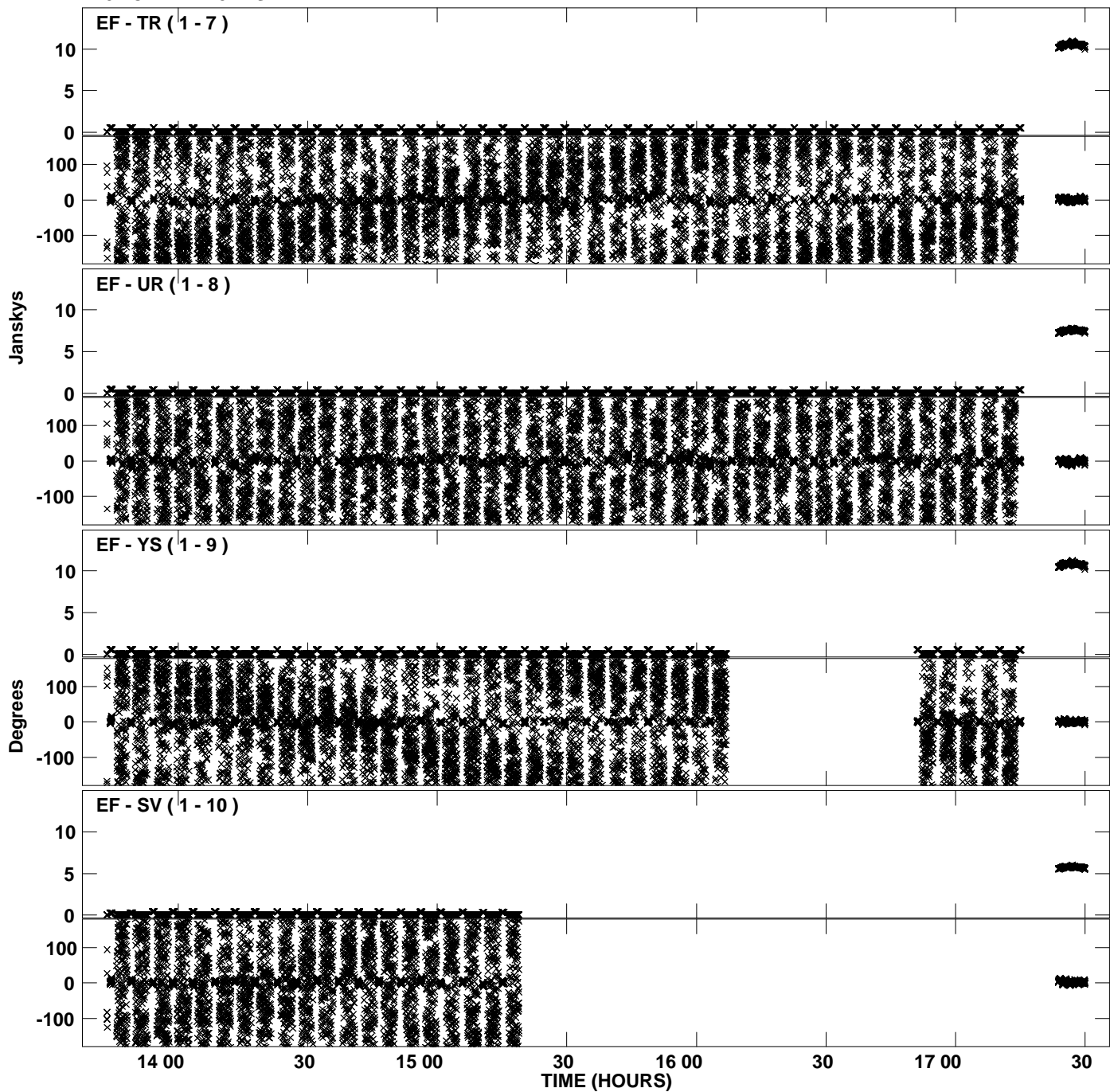
PLot file version 35 created 03-AUG-2012 17:48:59
Amplitude andPhase vs Time for EP075C.UVDATA.1 Vect aver. CL # 3
IF 4 CHAN 1 - 32 STK RR



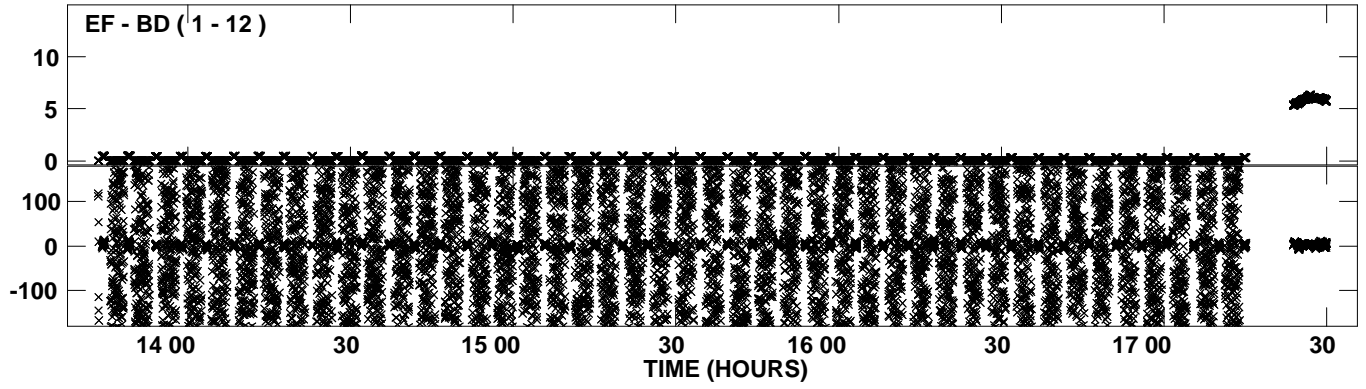
Plot file version 36 created 03-AUG-2012 17:49:09
Amplitude andPhase vs Time for EP075C.UVDATA.1 Vect aver. CL # 3
IF 5 CHAN 1 - 32 STK RR



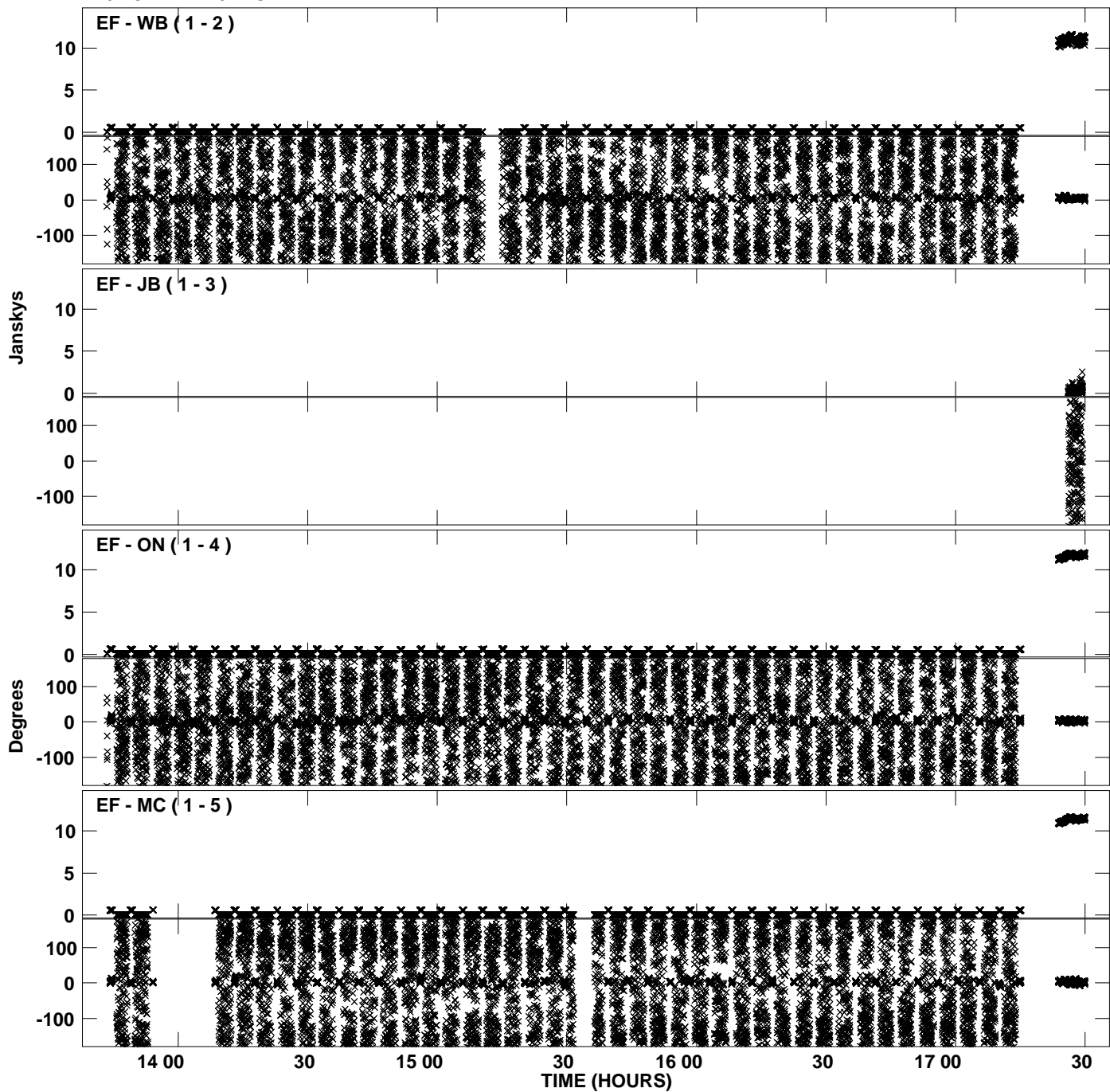
Plot file version 37 created 03-AUG-2012 17:49:09
Amplitude andPhase vs Time for EP075C.UVDATA.1 Vect aver. CL # 3
IF 5 CHAN 1 - 32 STK RR



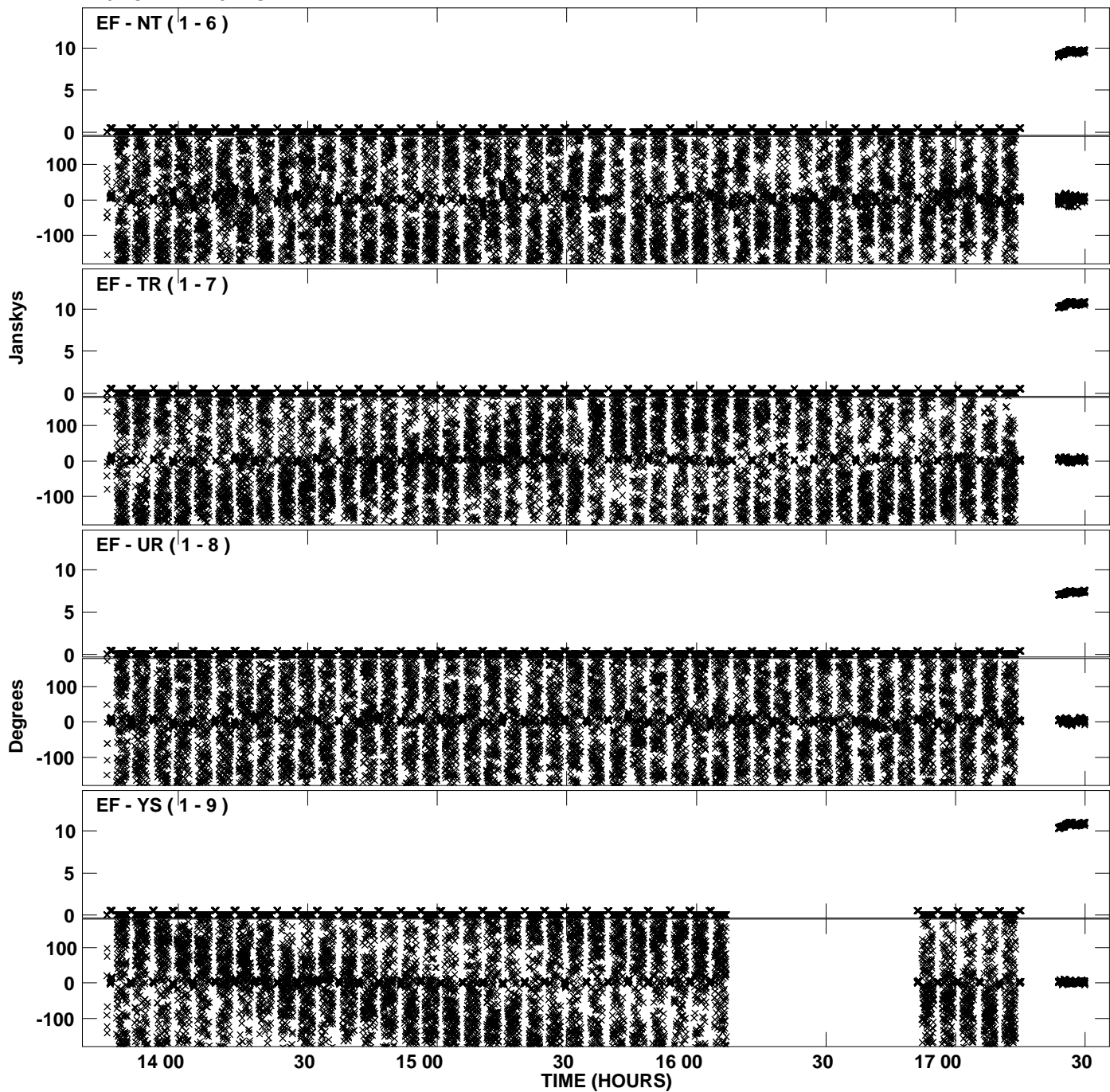
PLot file version 38 created 03-AUG-2012 17:49:09
Amplitude andPhase vs Time for EP075C.UVDATA.1 Vect aver. CL # 3
IF 5 CHAN 1 - 32 STK RR



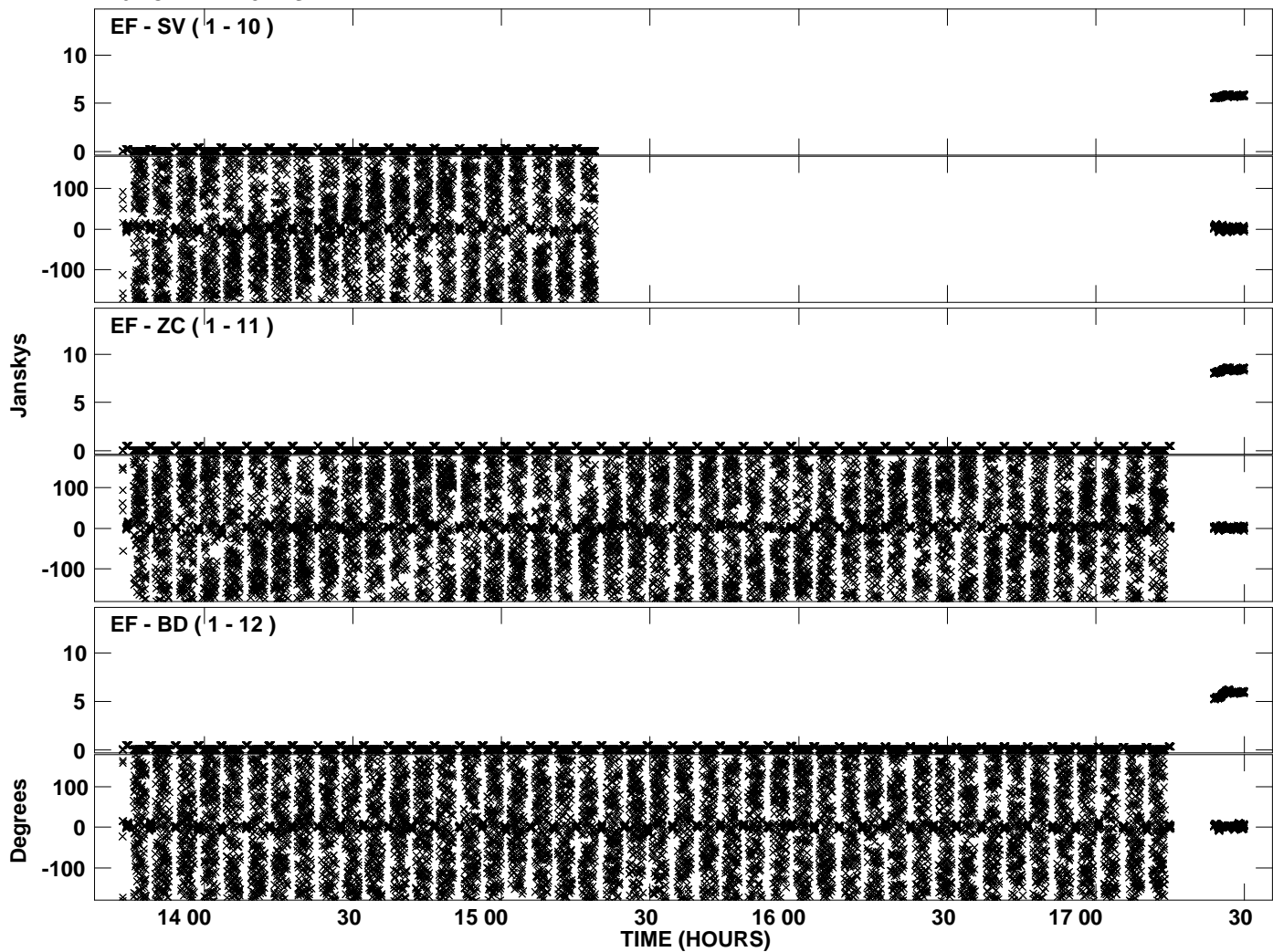
Plot file version 39 created 03-AUG-2012 17:49:19
Amplitude andPhase vs Time for EP075C.UVDATA.1 Vect aver. CL # 3
IF 6 CHAN 1 - 32 STK RR



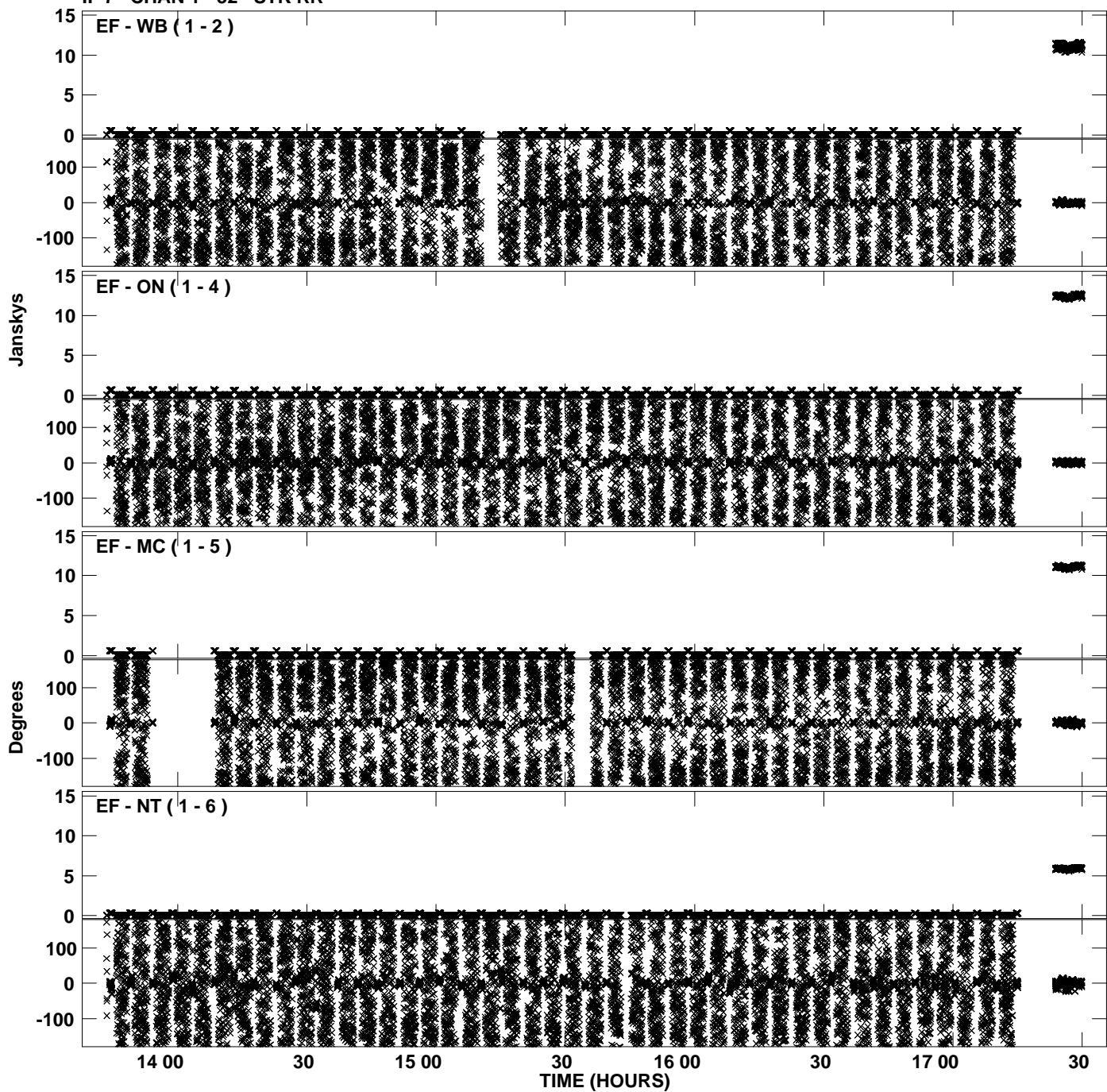
Plot file version 40 created 03-AUG-2012 17:49:19
Amplitude andPhase vs Time for EP075C.UVDATA.1 Vect aver. CL # 3
IF 6 CHAN 1 - 32 STK RR



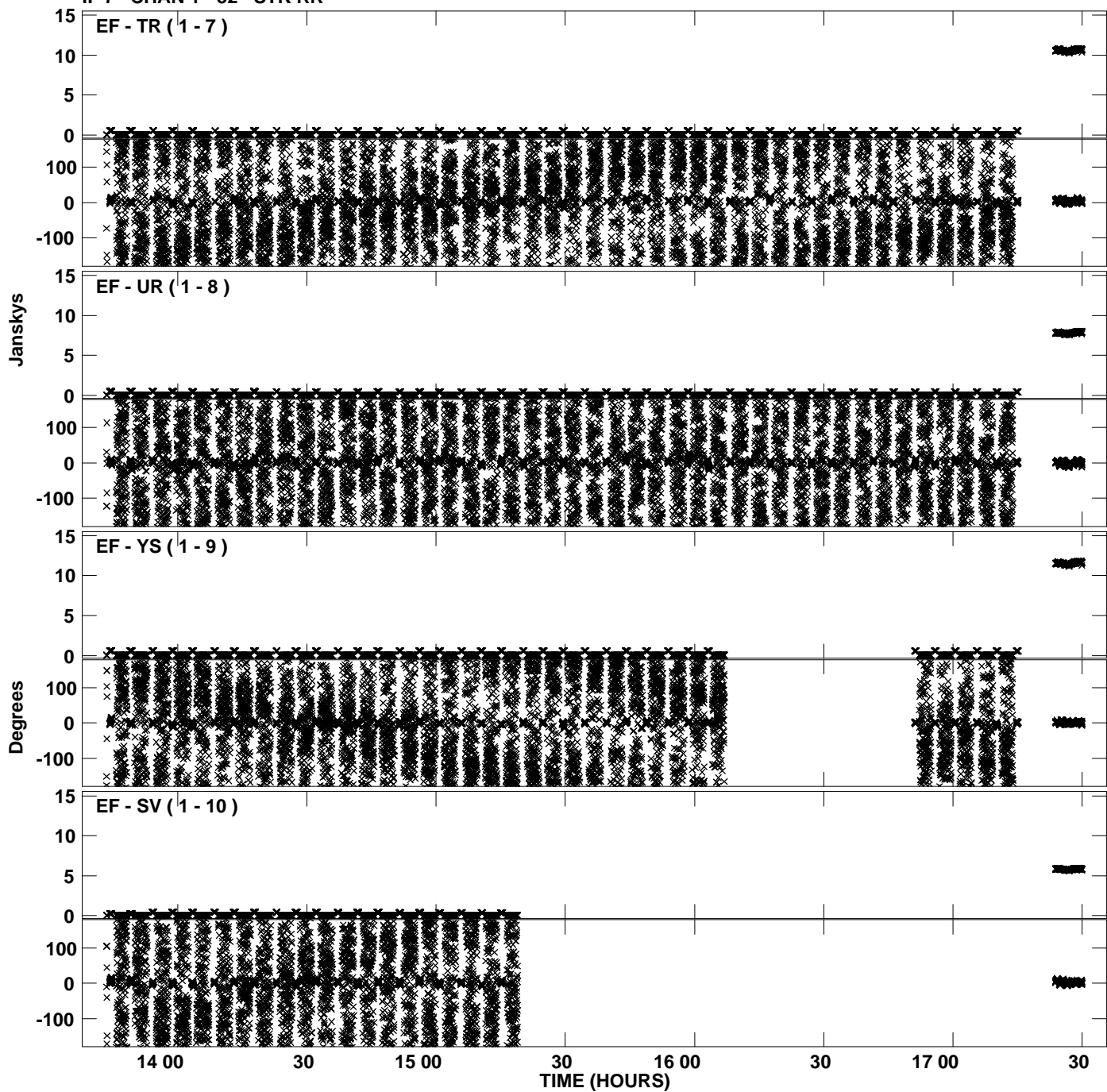
Plot file version 41 created 03-AUG-2012 17:49:19
Amplitude andPhase vs Time for EP075C.UVDATA.1 Vect aver. CL # 3
IF 6 CHAN 1 - 32 STK RR



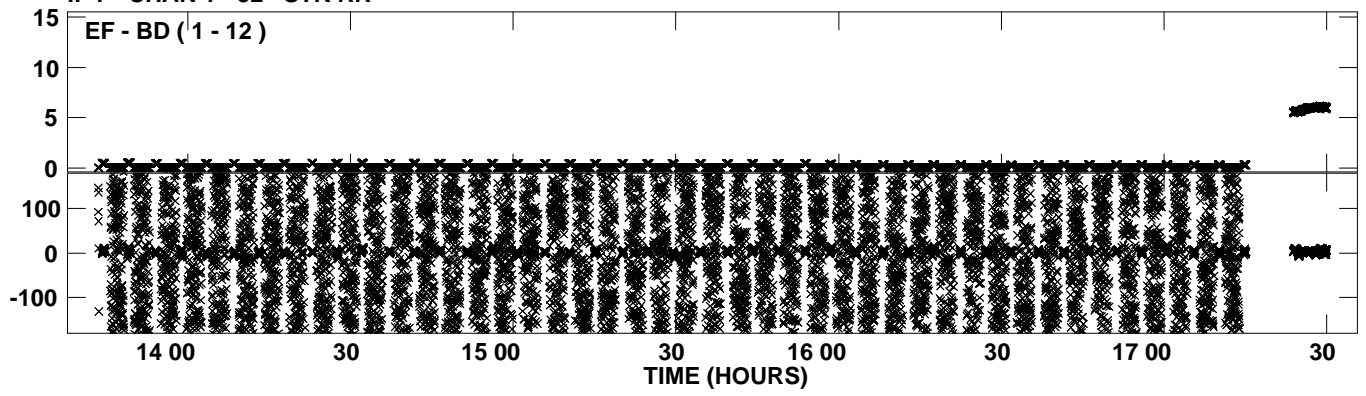
PLot file version 42 created 03-AUG-2012 17:49:29
Amplitude andPhase vs Time for EP075C.UVDATA.1 Vect aver. CL # 3
IF 7 CHAN 1 - 32 STK RR



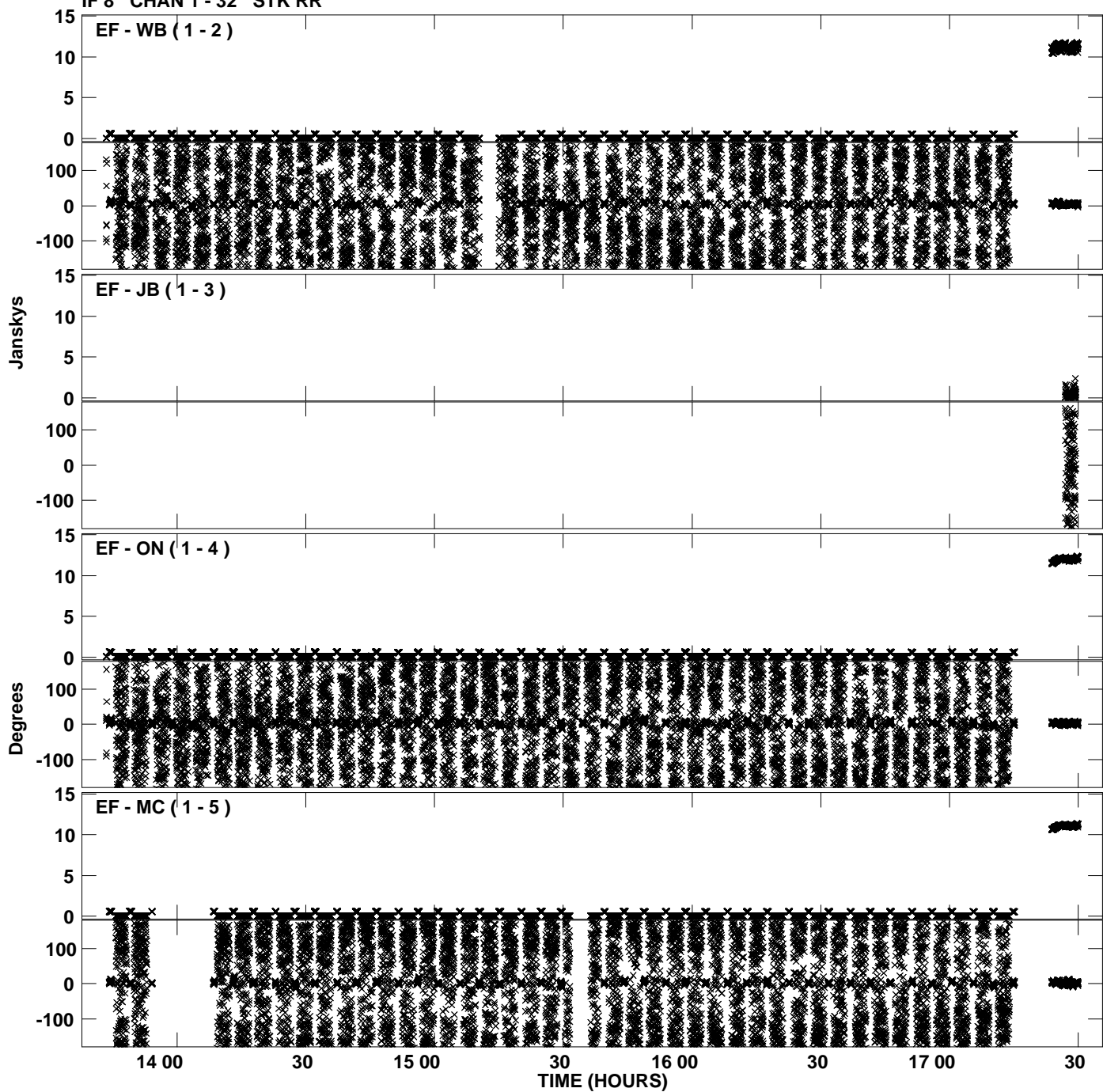
Plot file version 43 created 03-AUG-2012 17:49:29
Amplitude and Phase vs Time for EP075C.UVDATA.1 Vect aver. CL # 3
IF 7 CHAN 1 - 32 STK RR



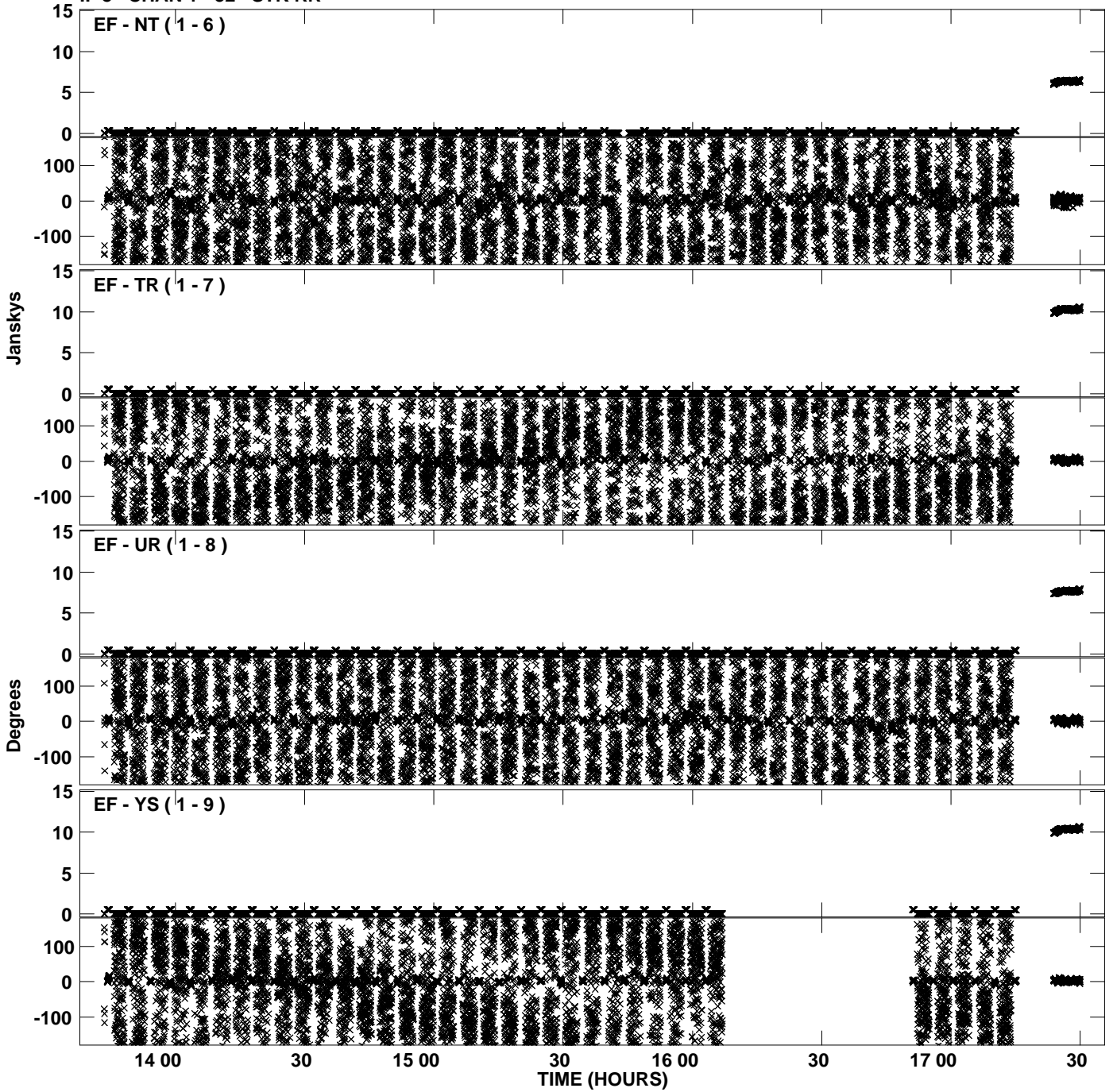
Plot file version 44 created 03-AUG-2012 17:49:29
Amplitude andPhase vs Time for EP075C.UVDATA.1 Vect aver. CL # 3
IF 7 CHAN 1 - 32 STK RR



Plot file version 45 created 03-AUG-2012 17:49:40
Amplitude andPhase vs Time for EP075C.UVDATA.1 Vect aver. CL # 3
IF 8 CHAN 1 - 32 STK RR



Plot file version 46 created 03-AUG-2012 17:49:40
Amplitude andPhase vs Time for EP075C.UVDATA.1 Vect aver. CL # 3
IF 8 CHAN 1 - 32 STK RR



PLot file version 47 created 03-AUG-2012 17:49:40
Amplitude andPhase vs Time for EP075C.UVDATA.1 Vect aver. CL # 3
IF 8 CHAN 1 - 32 STK RR

