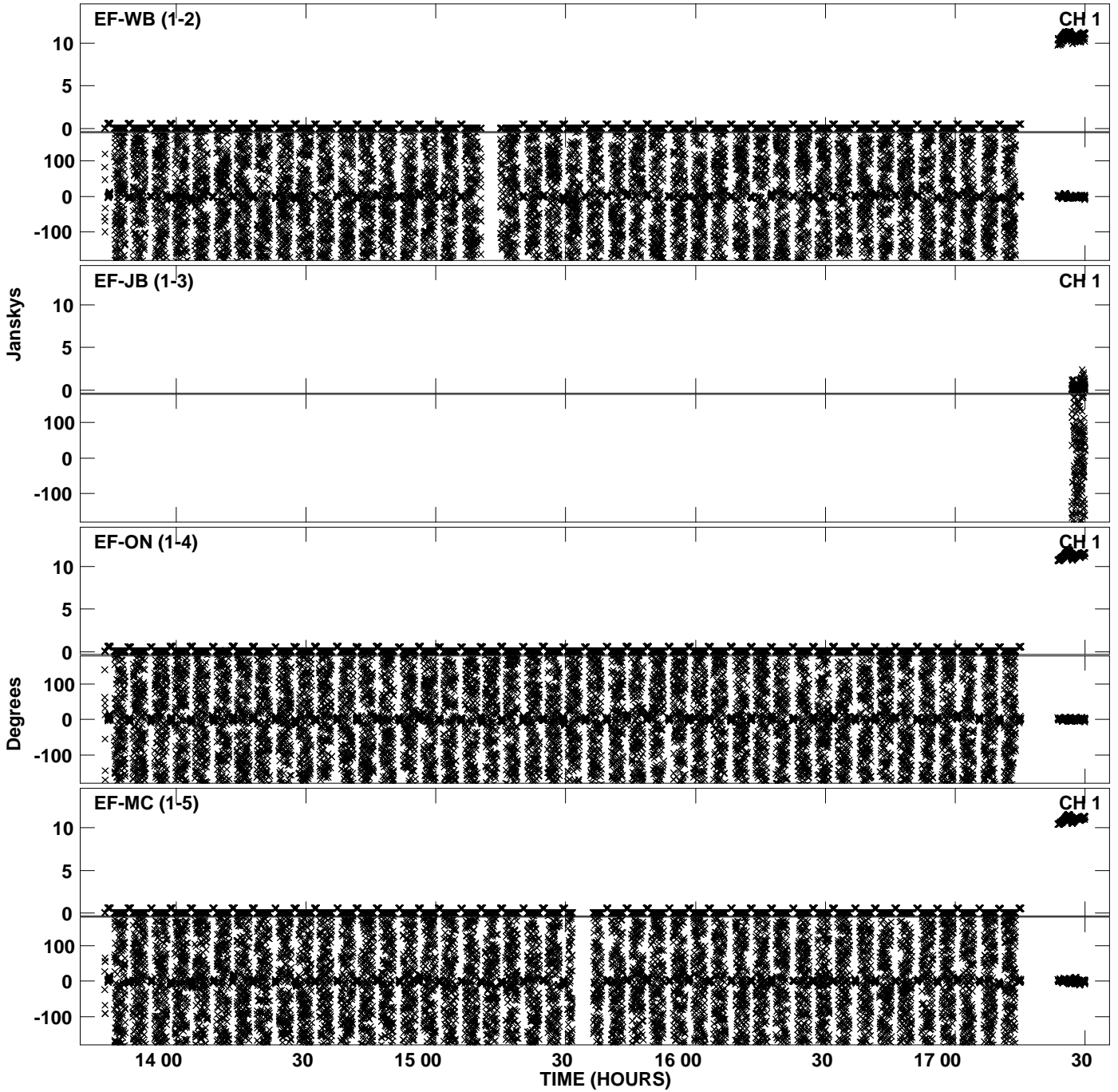
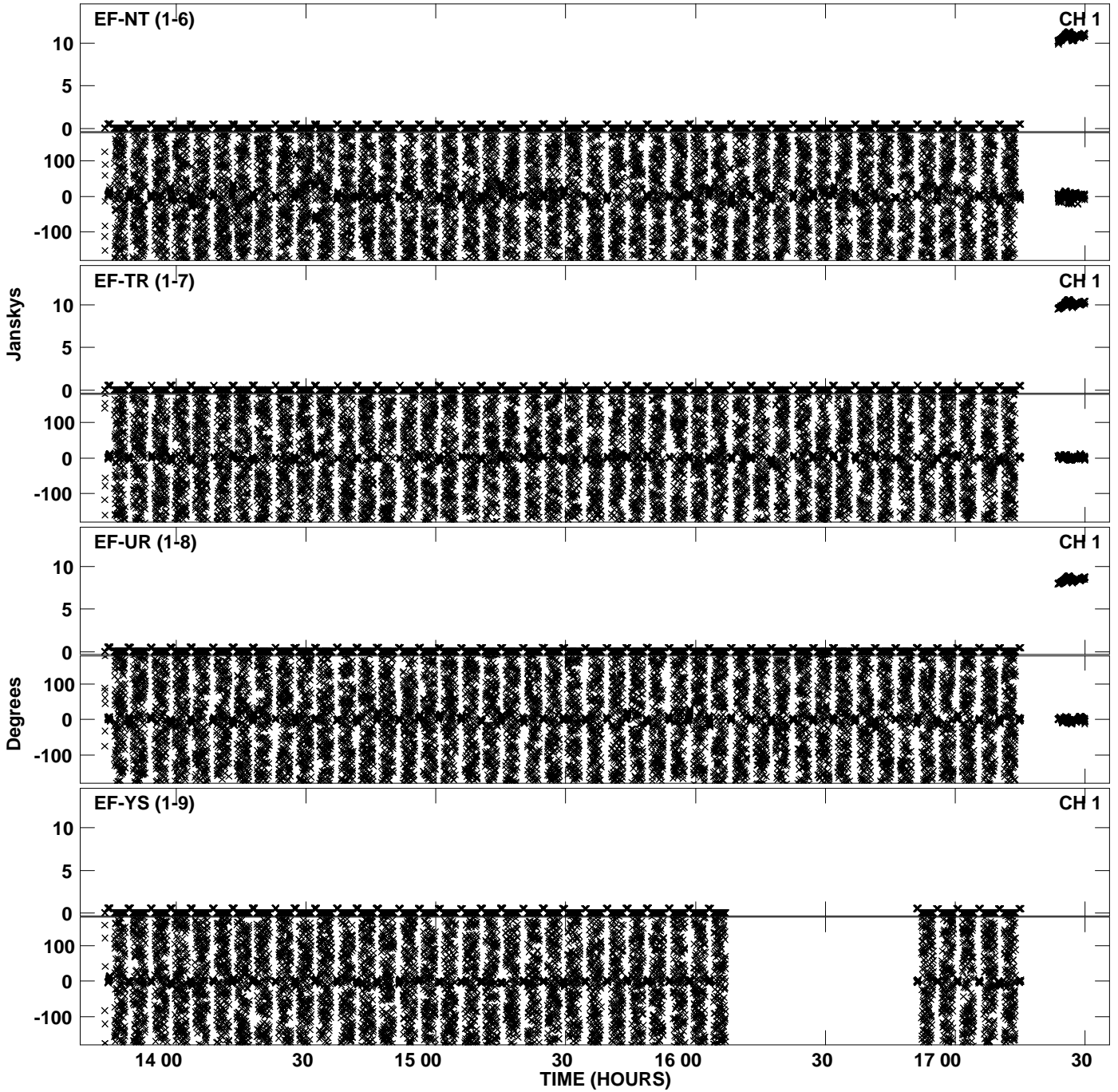


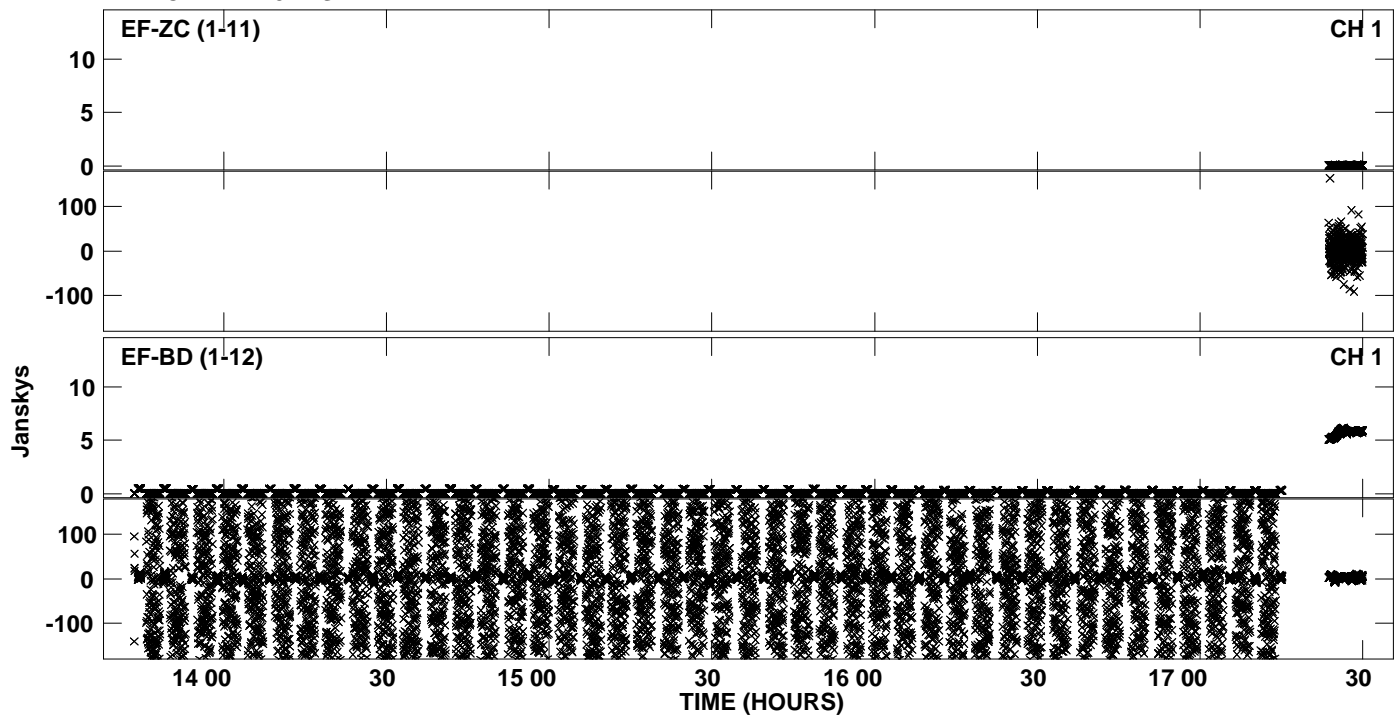
Plot file version 1 created 24-SEP-2012 15:48:43  
Amplitude andPhase vs Time for EP075C 3.UVDATA.1 Vect aver. CL # 3  
IF 1 CHAN 1 - 32 STK LL



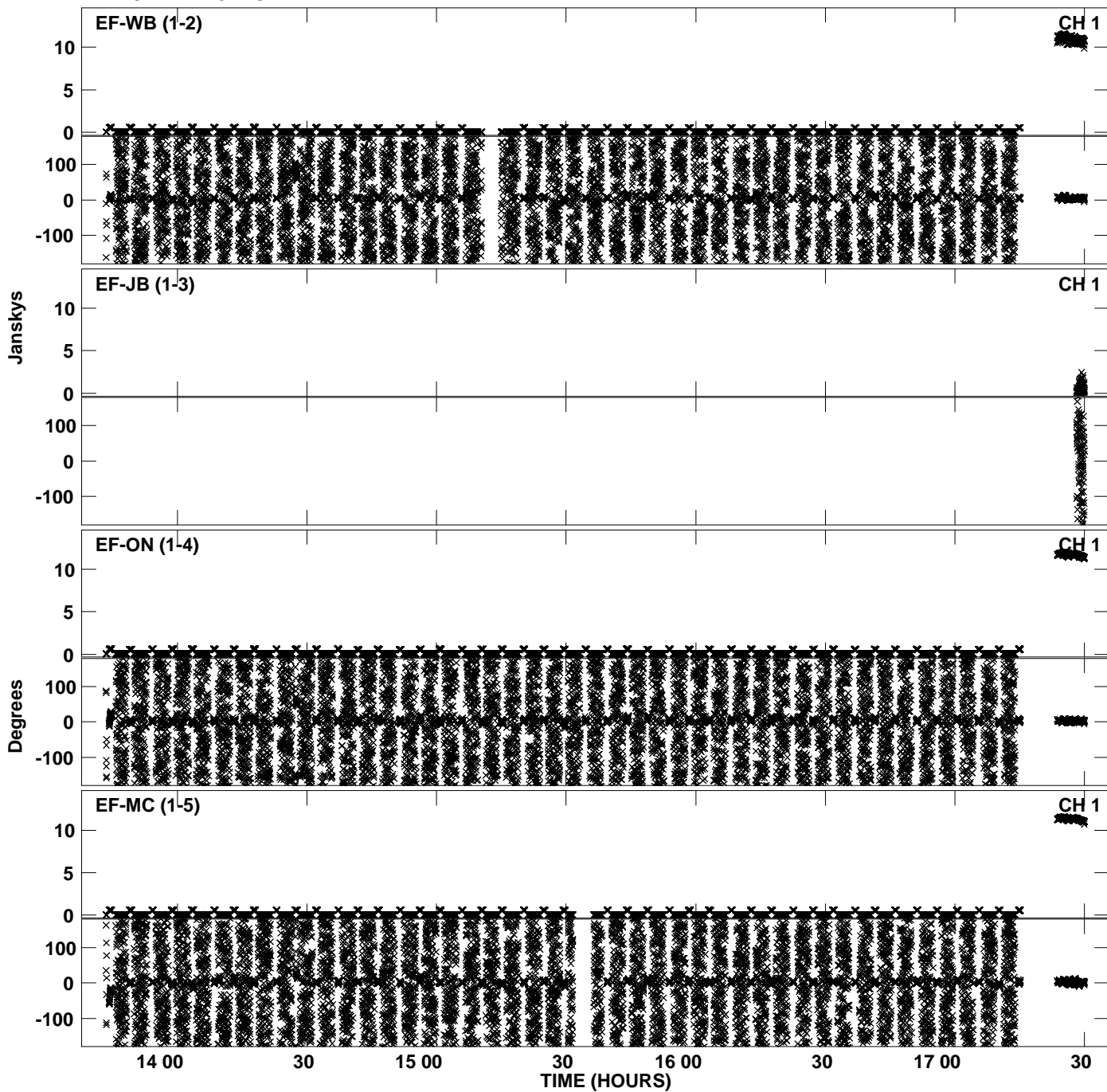
Plot file version 2 created 24-SEP-2012 15:48:43  
Amplitude andPhase vs Time for EP075C 3.UVDATA.1 Vect aver. CL # 3  
IF 1 CHAN 1 - 32 STK LL



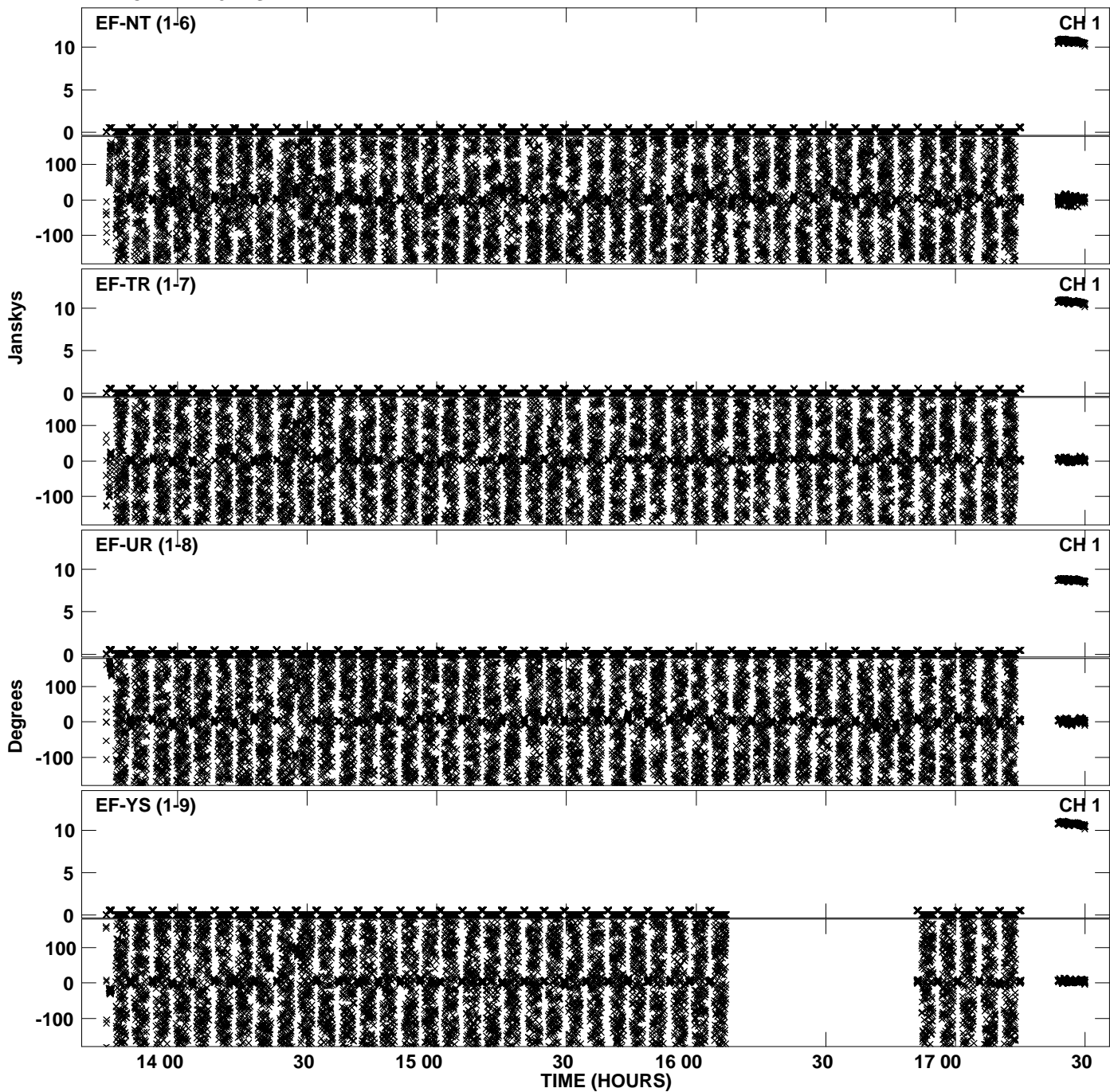
PLot file version 3 created 24-SEP-2012 15:48:43  
Amplitude andPhase vs Time for EP075C 3.UVDATA.1 Vect aver. CL # 3  
IF 1 CHAN 1 - 32 STK LL



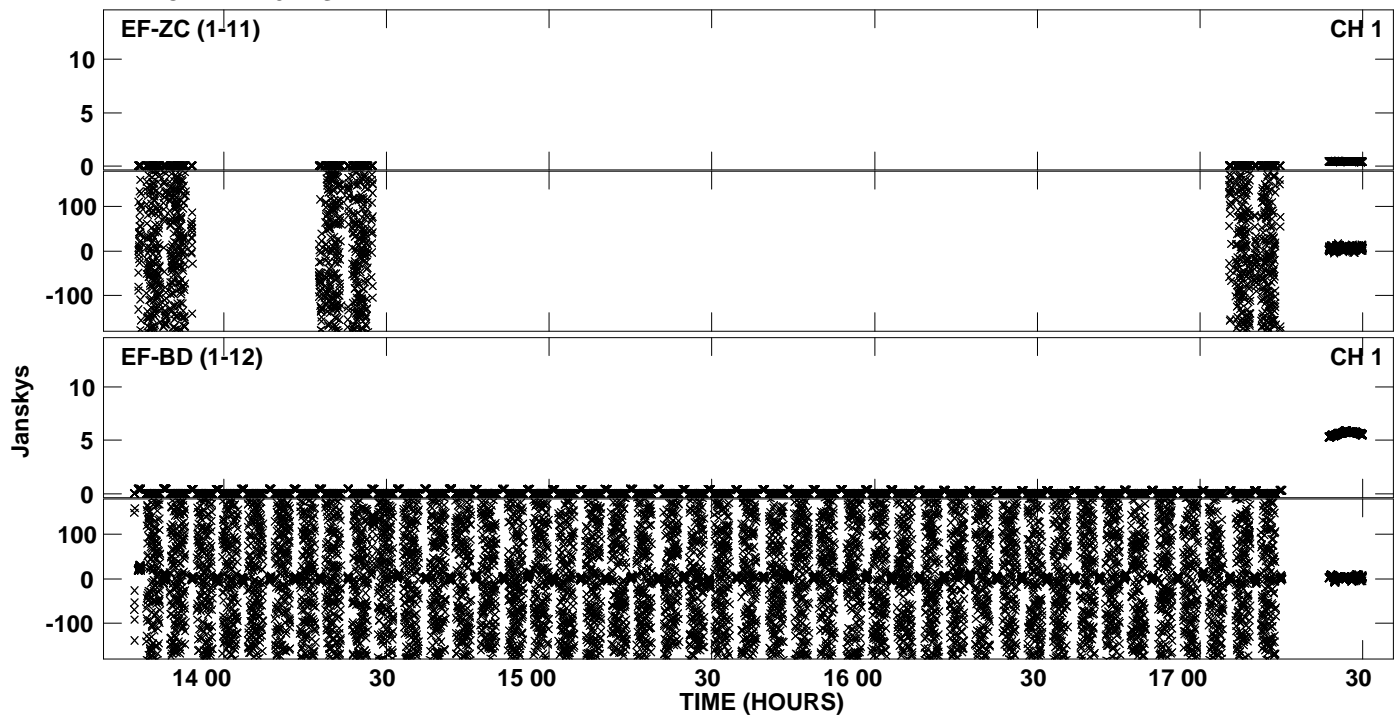
Plot file version 4 created 24-SEP-2012 15:49:00  
Amplitude andPhase vs Time for EP075C 3.UVDATA.1 Vect aver. CL # 3  
IF 2 CHAN 1 - 32 STK LL



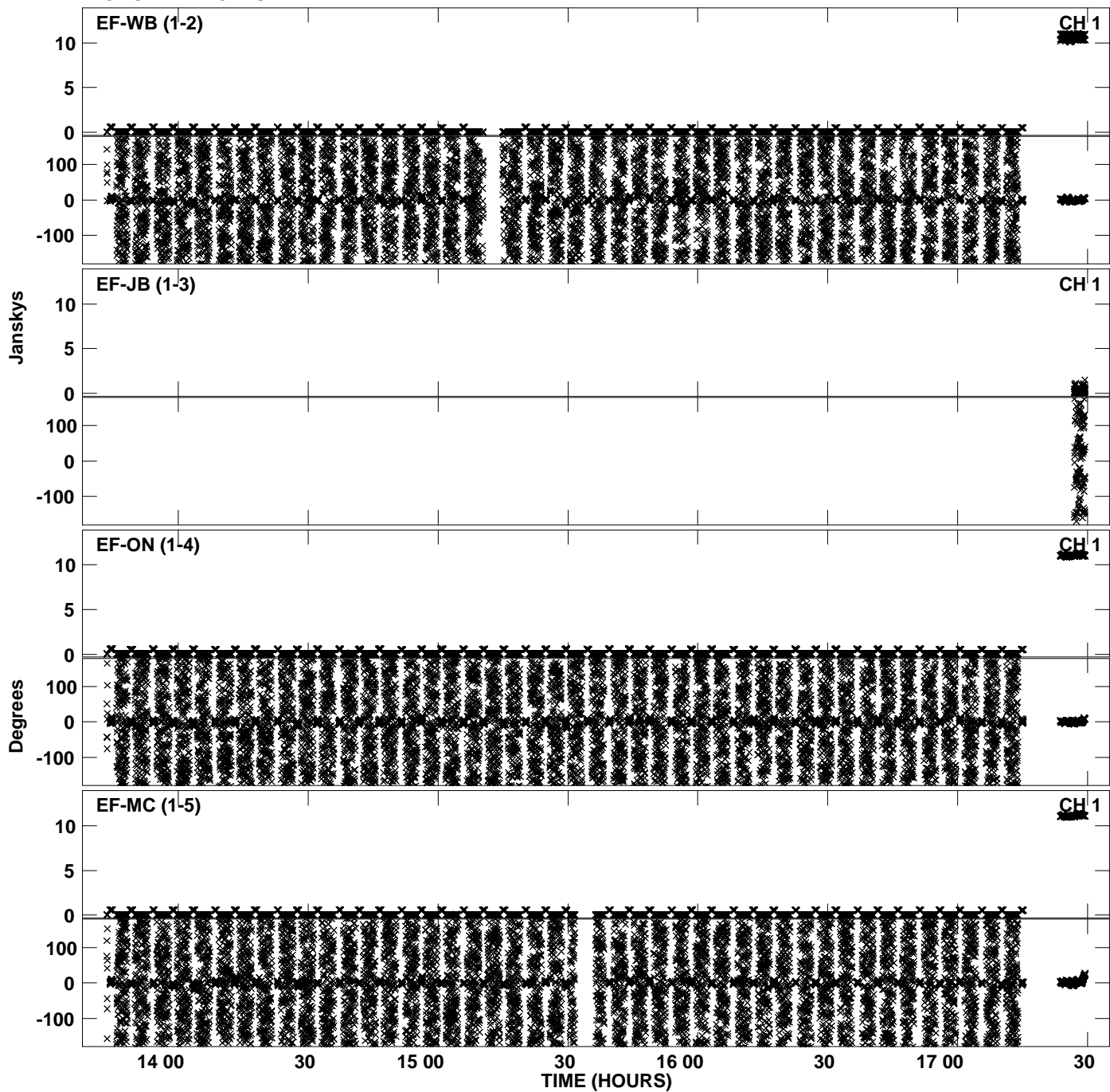
Plot file version 5 created 24-SEP-2012 15:49:00  
Amplitude andPhase vs Time for EP075C 3.UVDATA.1 Vect aver. CL # 3  
IF 2 CHAN 1 - 32 STK LL



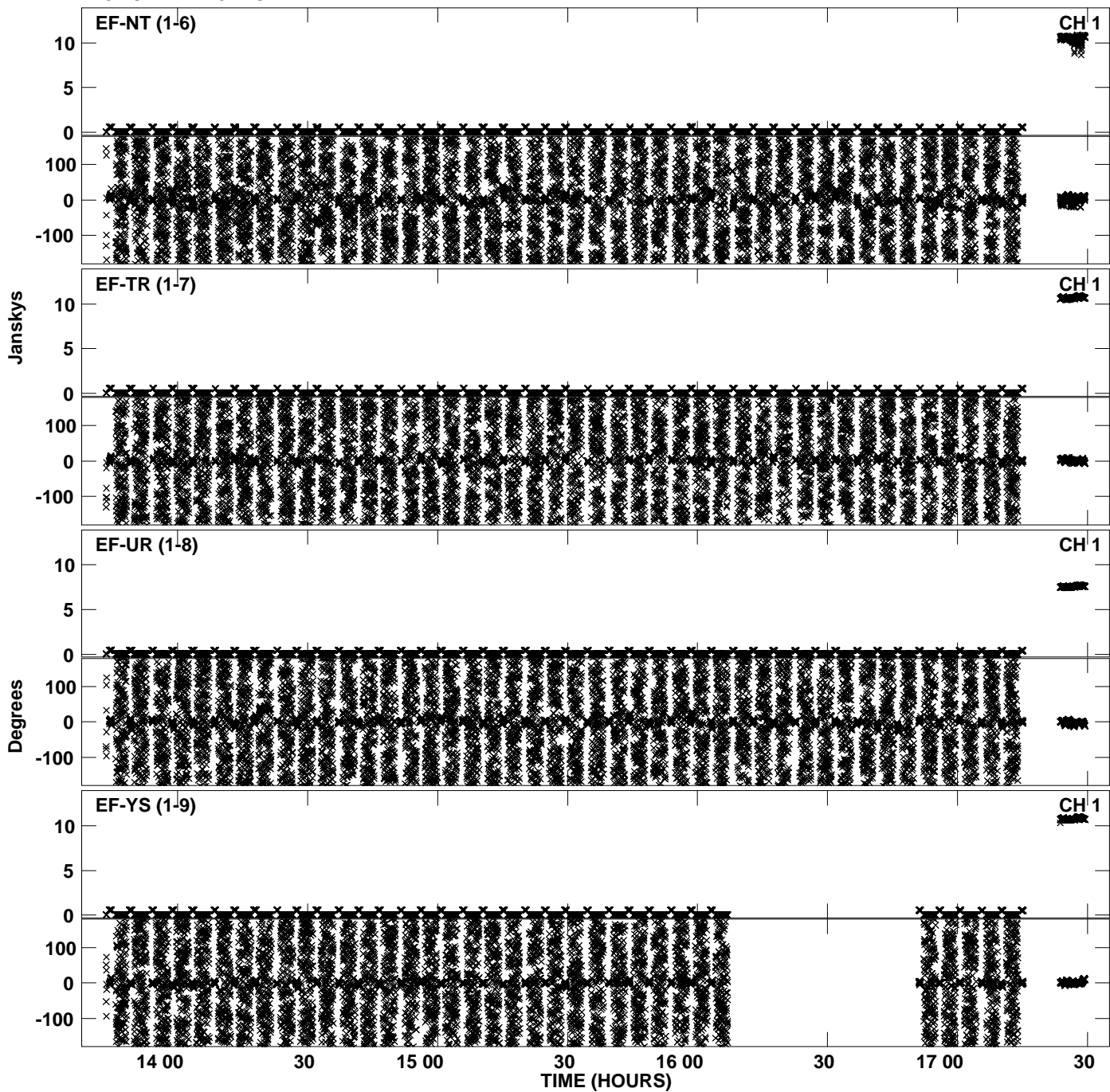
PLot file version 6 created 24-SEP-2012 15:49:00  
Amplitude andPhase vs Time for EP075C 3.UVDATA.1 Vect aver. CL # 3  
IF 2 CHAN 1 - 32 STK LL



Plot file version 7 created 24-SEP-2012 15:49:15  
Amplitude and Phase vs Time for EP075C 3.UVDATA.1 Vect aver. CL # 3  
IF 3 CHAN 1 - 32 STK LL

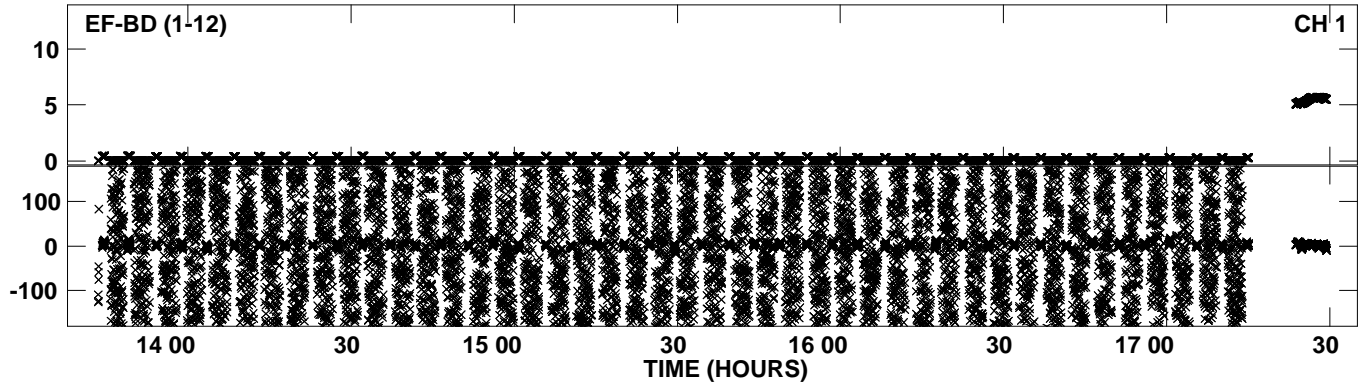


PLot file version 8 created 24-SEP-2012 15:49:15  
Amplitude andPhase vs Time for EP075C 3.UVDATA.1 Vect aver. CL # 3  
IF 3 CHAN 1 - 32 STK LL

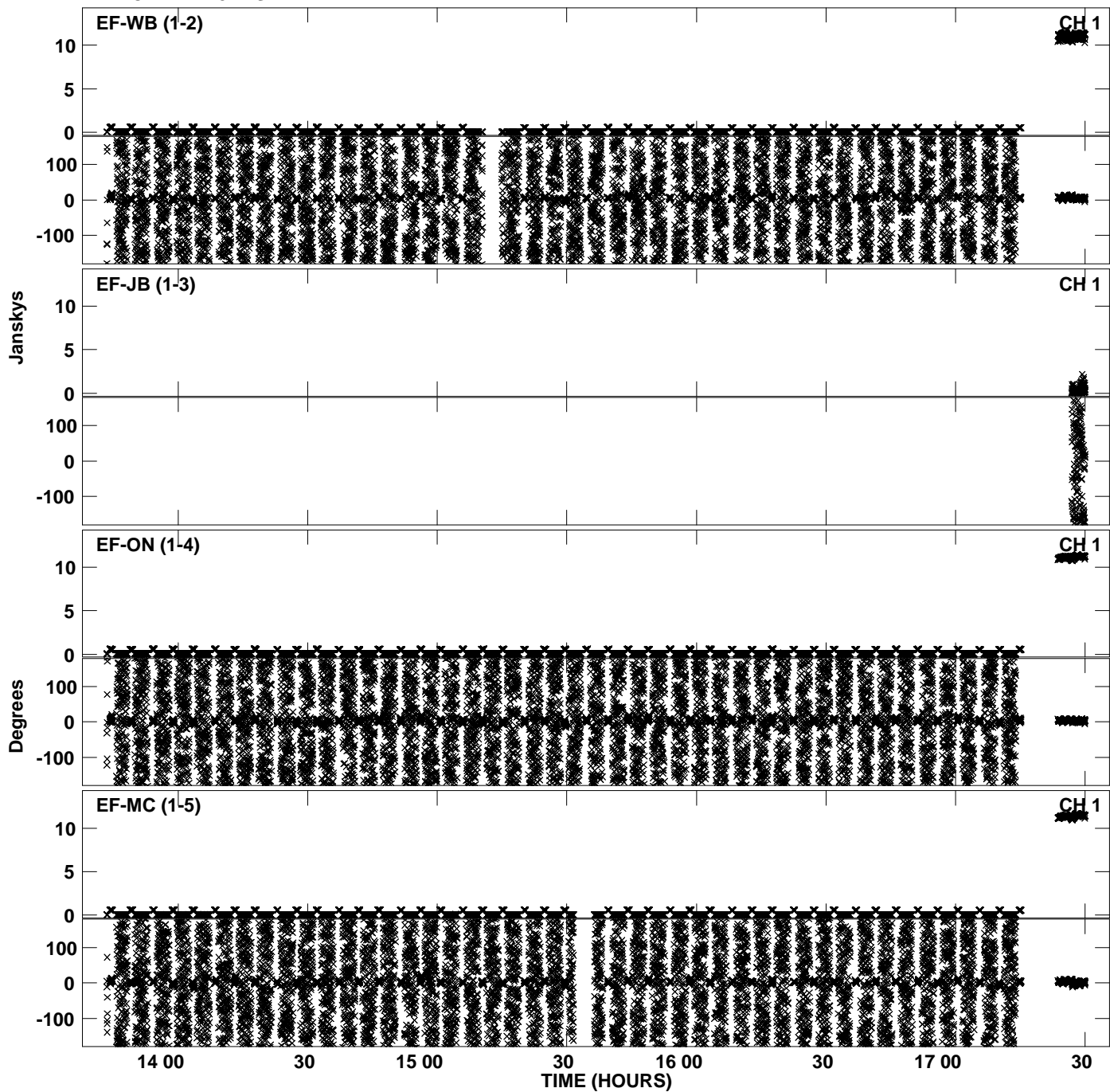




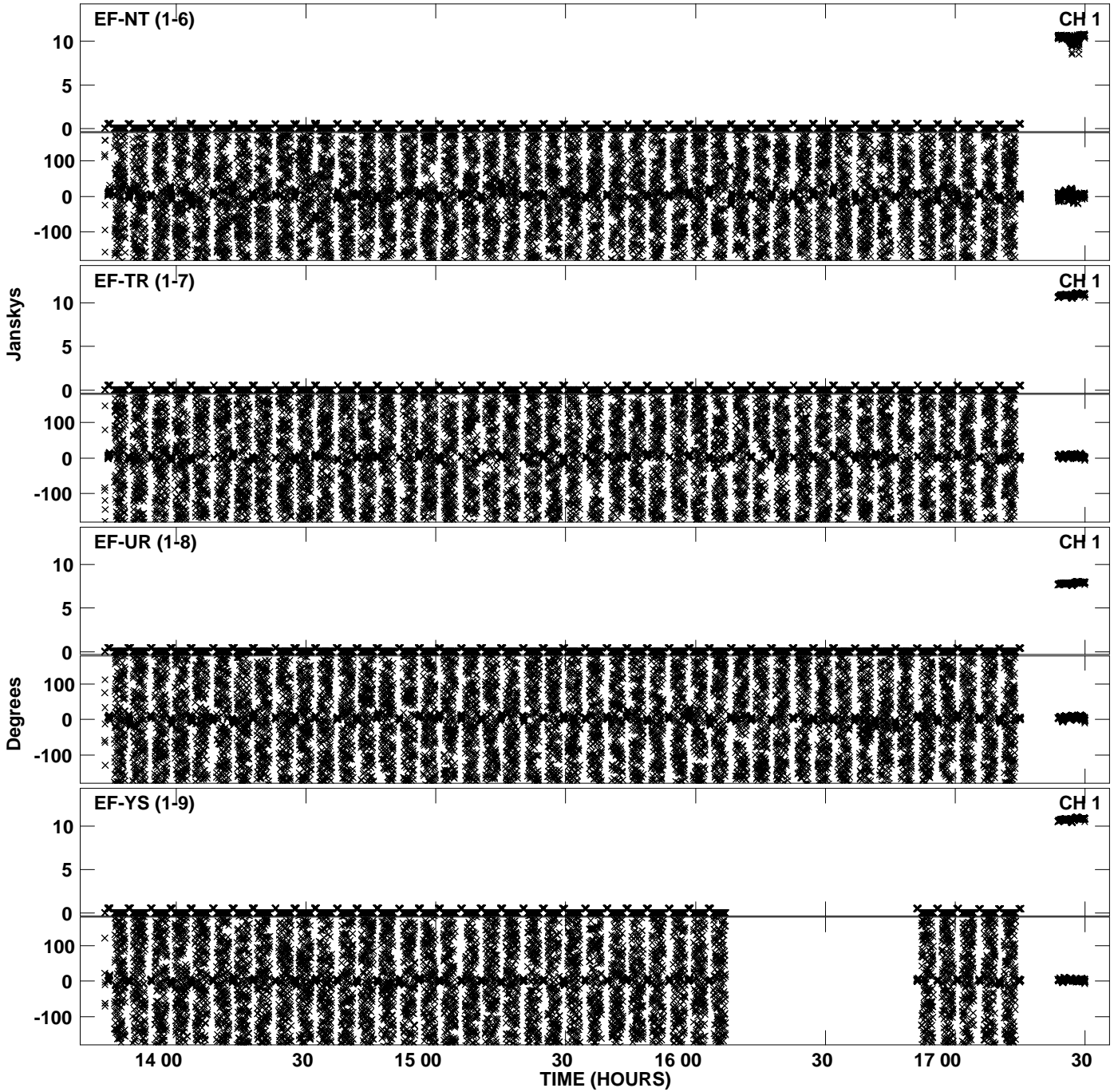
PLot file version 9 created 24-SEP-2012 15:49:15  
Amplitude andPhase vs Time for EP075C 3.UVDATA.1 Vect aver. CL # 3  
IF 3 CHAN 1 - 32 STK LL



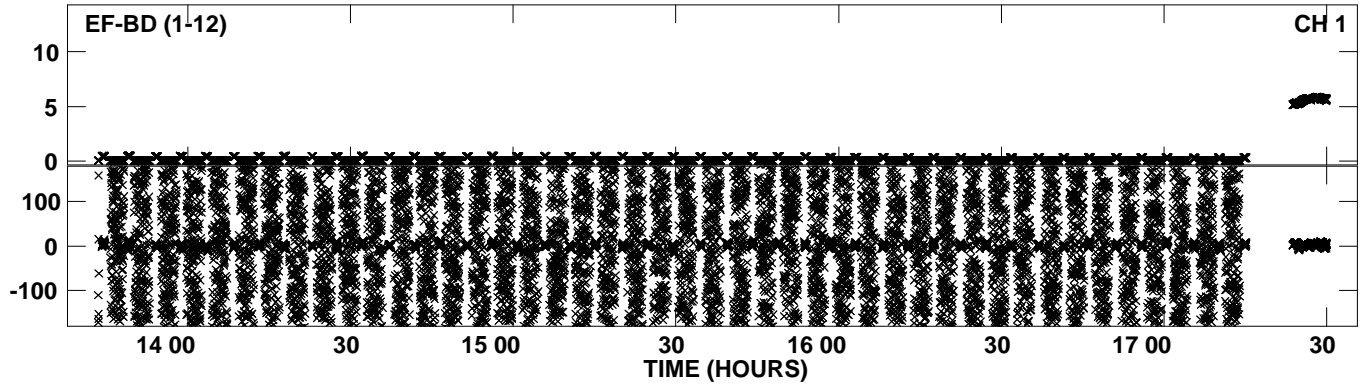
PLot file version 10 created 24-SEP-2012 15:49:31  
Amplitude andPhase vs Time for EP075C 3.UVDATA.1 Vect aver. CL # 3  
IF 4 CHAN 1 - 32 STK LL



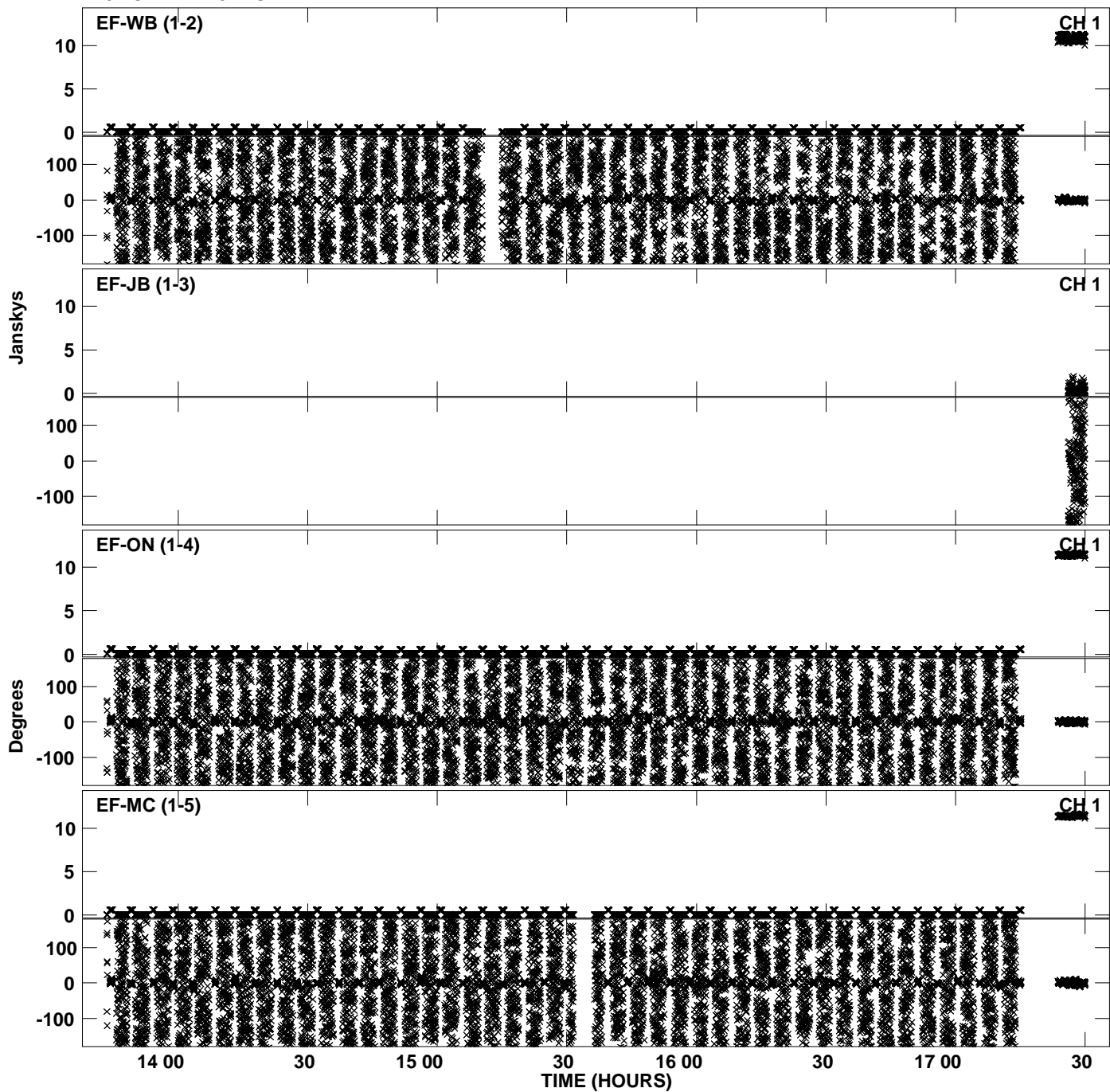
Plot file version 11 created 24-SEP-2012 15:49:31  
Amplitude andPhase vs Time for EP075C 3.UVDATA.1 Vect aver. CL # 3  
IF 4 CHAN 1 - 32 STK LL



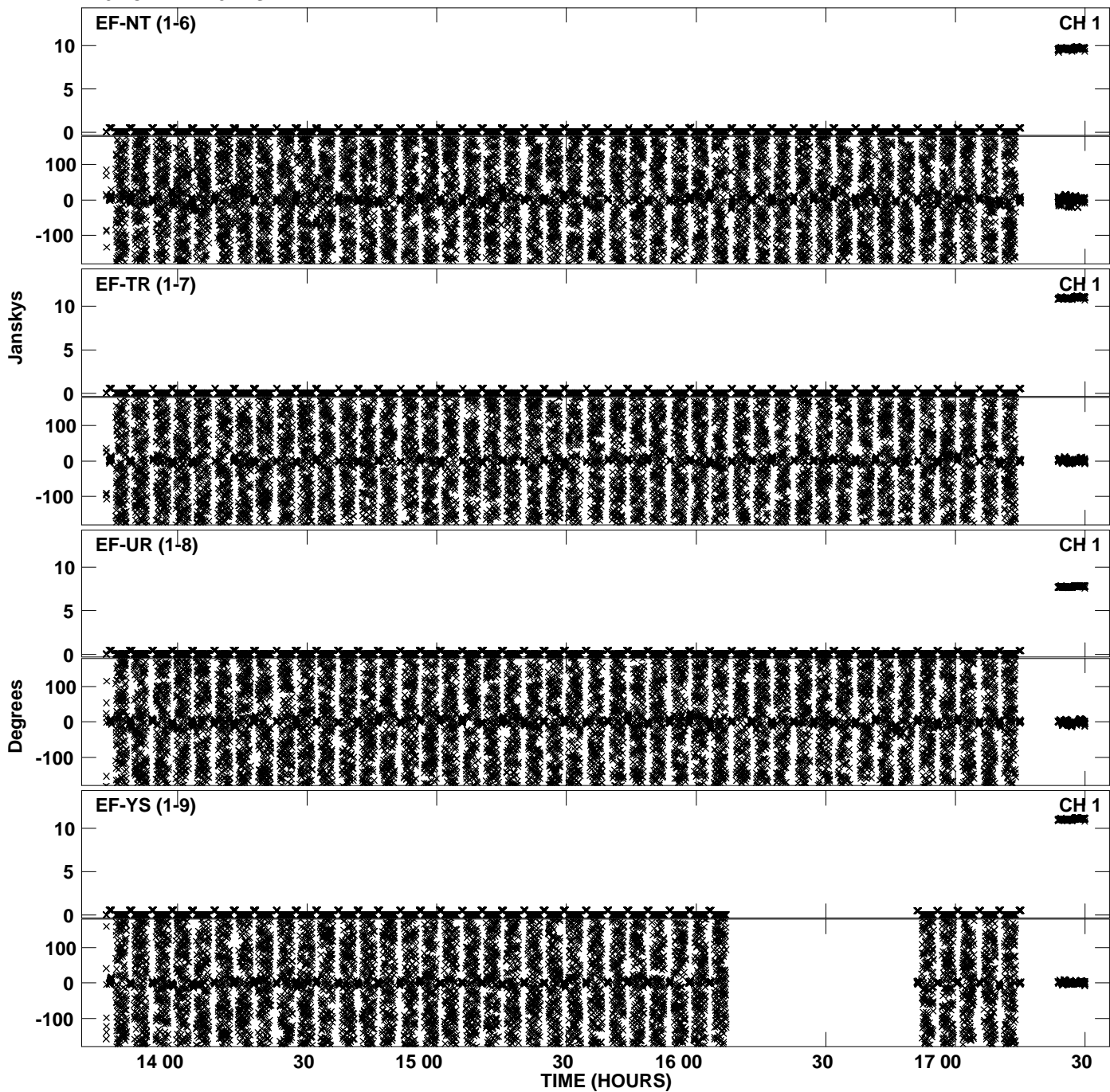
PLot file version 12 created 24-SEP-2012 15:49:31  
Amplitude andPhase vs Time for EP075C 3.UVDATA.1 Vect aver. CL # 3  
IF 4 CHAN 1 - 32 STK LL



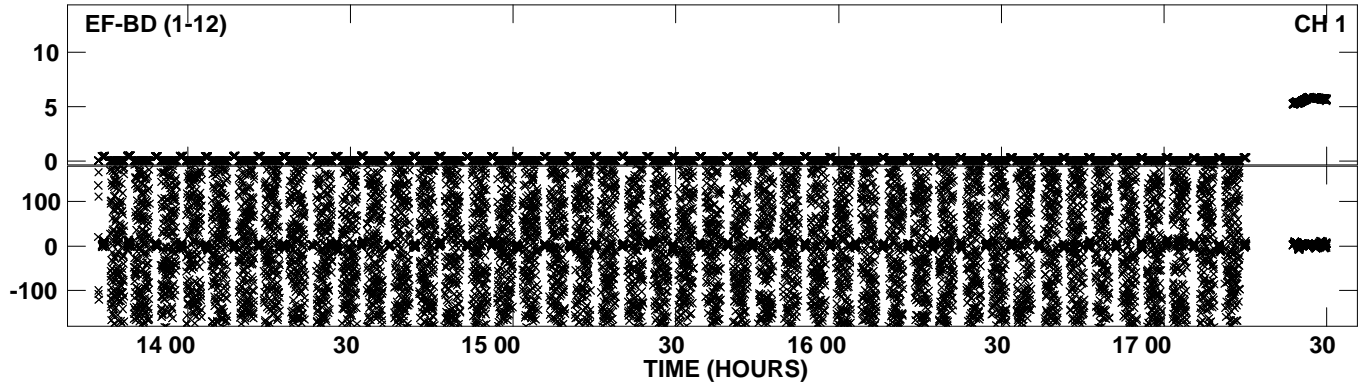
Plot file version 13 created 24-SEP-2012 15:49:47  
Amplitude andPhase vs Time for EP075C 3.UVDATA.1 Vect aver. CL # 3  
IF 5 CHAN 1 - 32 STK LL



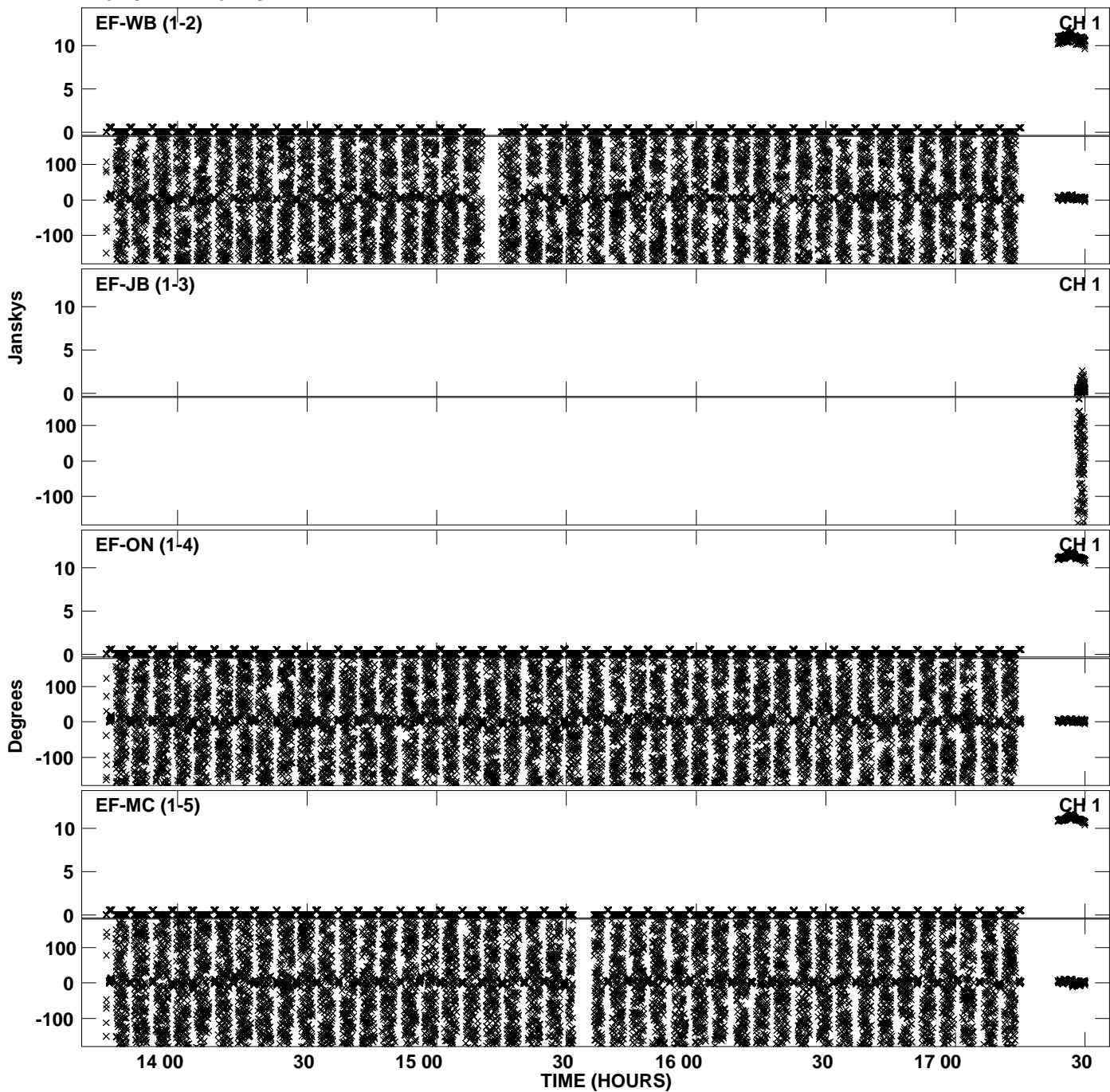
Plot file version 14 created 24-SEP-2012 15:49:47  
Amplitude andPhase vs Time for EP075C 3.UVDATA.1 Vect aver. CL # 3  
IF 5 CHAN 1 - 32 STK LL



PLot file version 15 created 24-SEP-2012 15:49:47  
Amplitude andPhase vs Time for EP075C 3.UVDATA.1 Vect aver. CL # 3  
IF 5 CHAN 1 - 32 STK LL

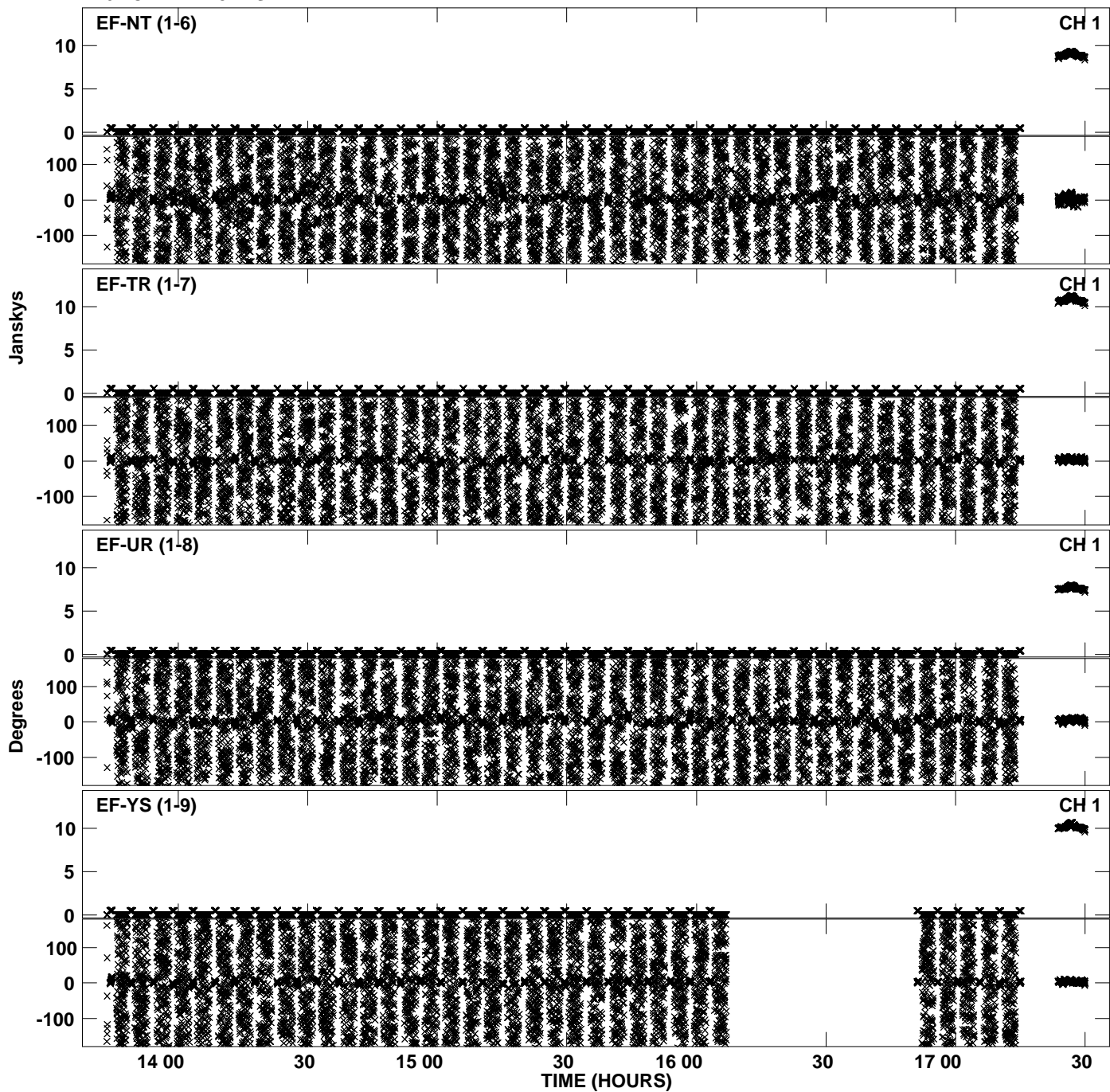


Plot file version 16 created 24-SEP-2012 15:50:03  
Amplitude andPhase vs Time for EP075C 3.UVDATA.1 Vect aver. CL # 3  
IF 6 CHAN 1 - 32 STK LL

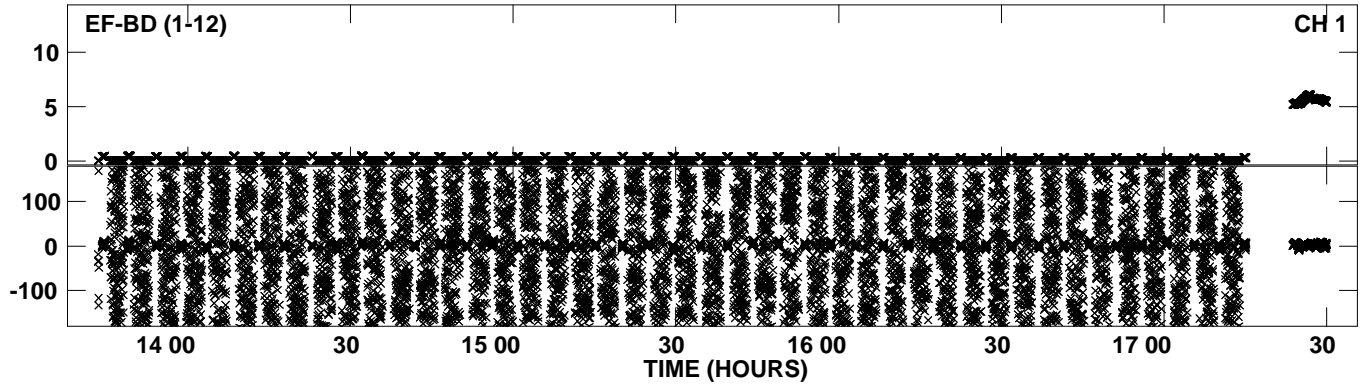




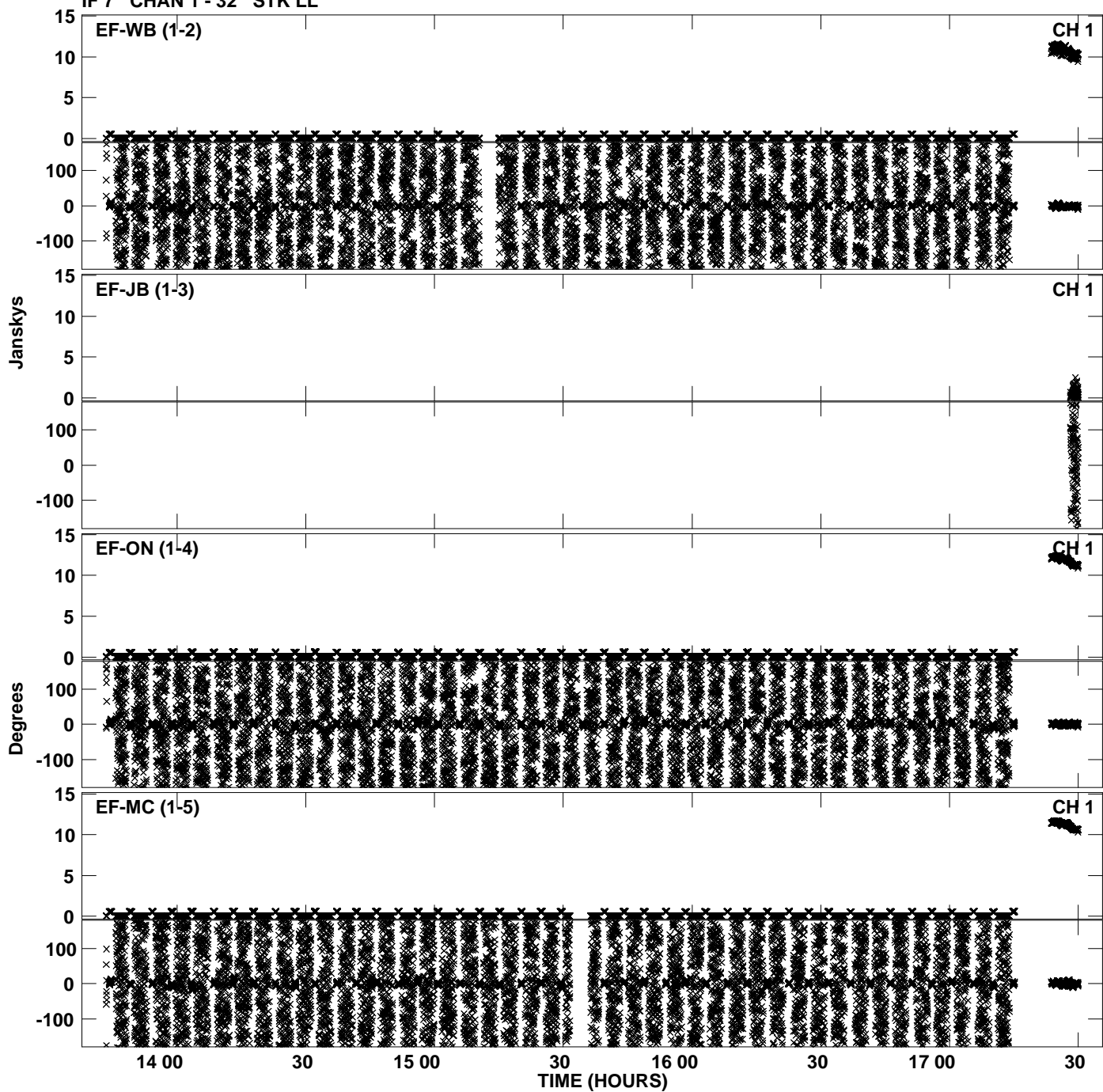
Plot file version 17 created 24-SEP-2012 15:50:03  
Amplitude andPhase vs Time for EP075C 3.UVDATA.1 Vect aver. CL # 3  
IF 6 CHAN 1 - 32 STK LL



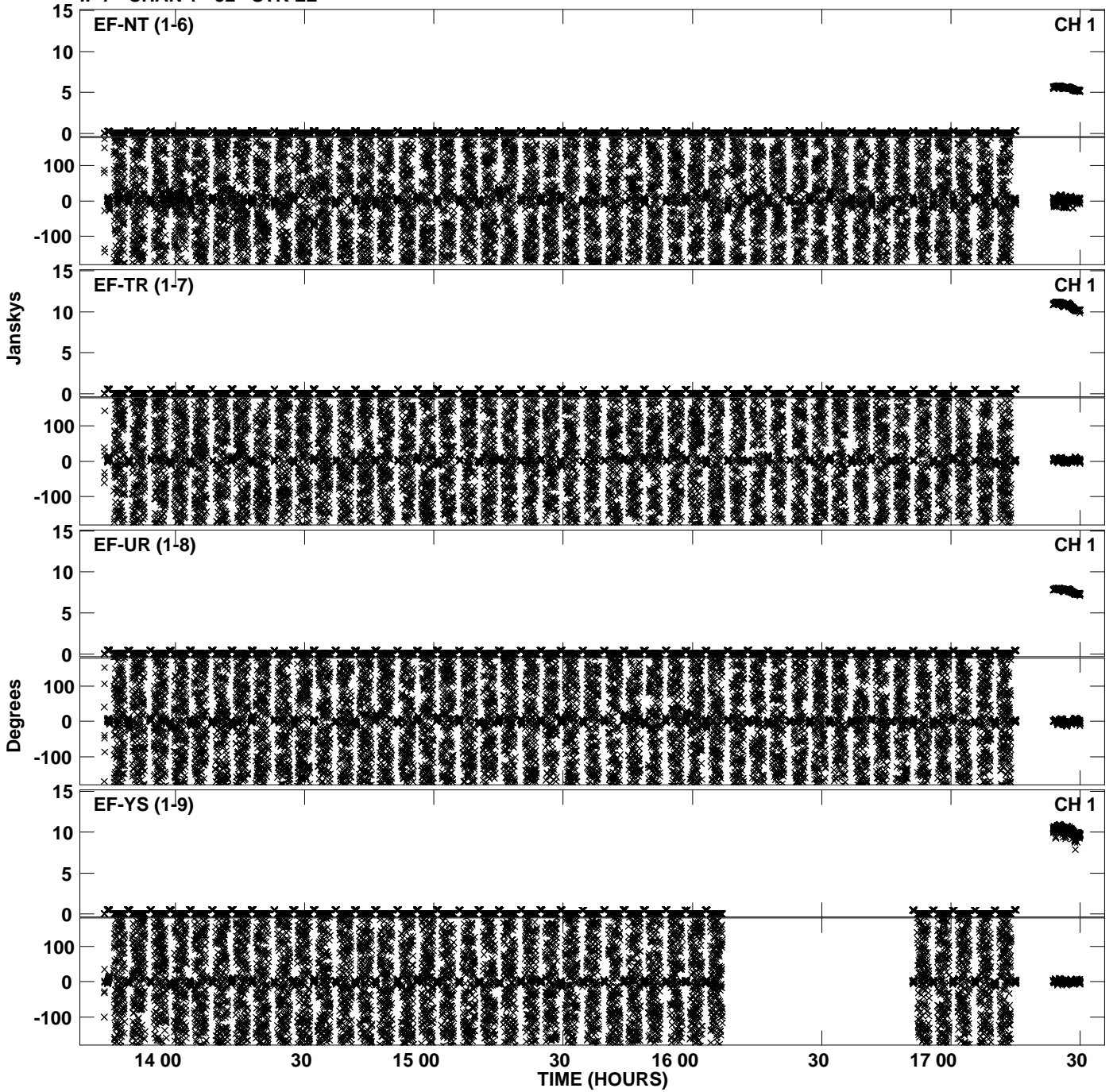
PLot file version 18 created 24-SEP-2012 15:50:03  
Amplitude andPhase vs Time for EP075C 3.UVDATA.1 Vect aver. CL # 3  
IF 6 CHAN 1 - 32 STK LL



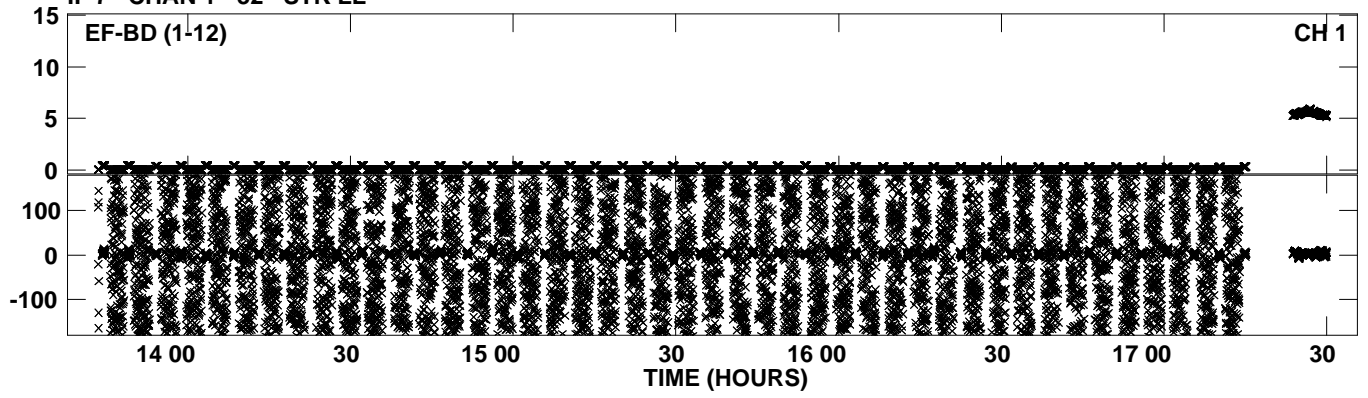
Plot file version 19 created 24-SEP-2012 15:50:19  
Amplitude andPhase vs Time for EP075C 3.UVDATA.1 Vect aver. CL # 3  
IF 7 CHAN 1 - 32 STK LL



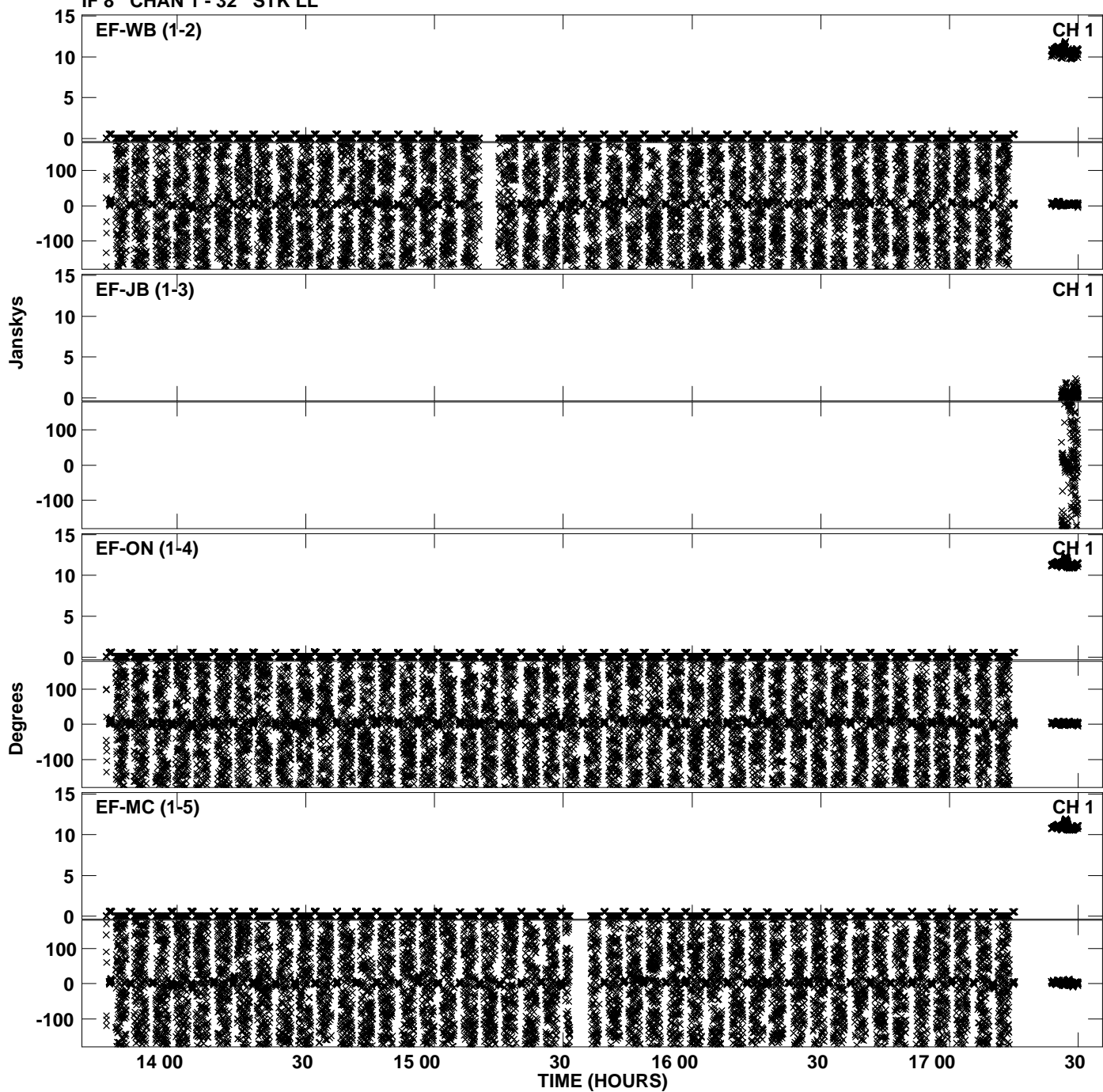
PLot file version 20 created 24-SEP-2012 15:50:19  
Amplitude andPhase vs Time for EP075C 3.UVDATA.1 Vect aver. CL # 3  
IF 7 CHAN 1 - 32 STK LL



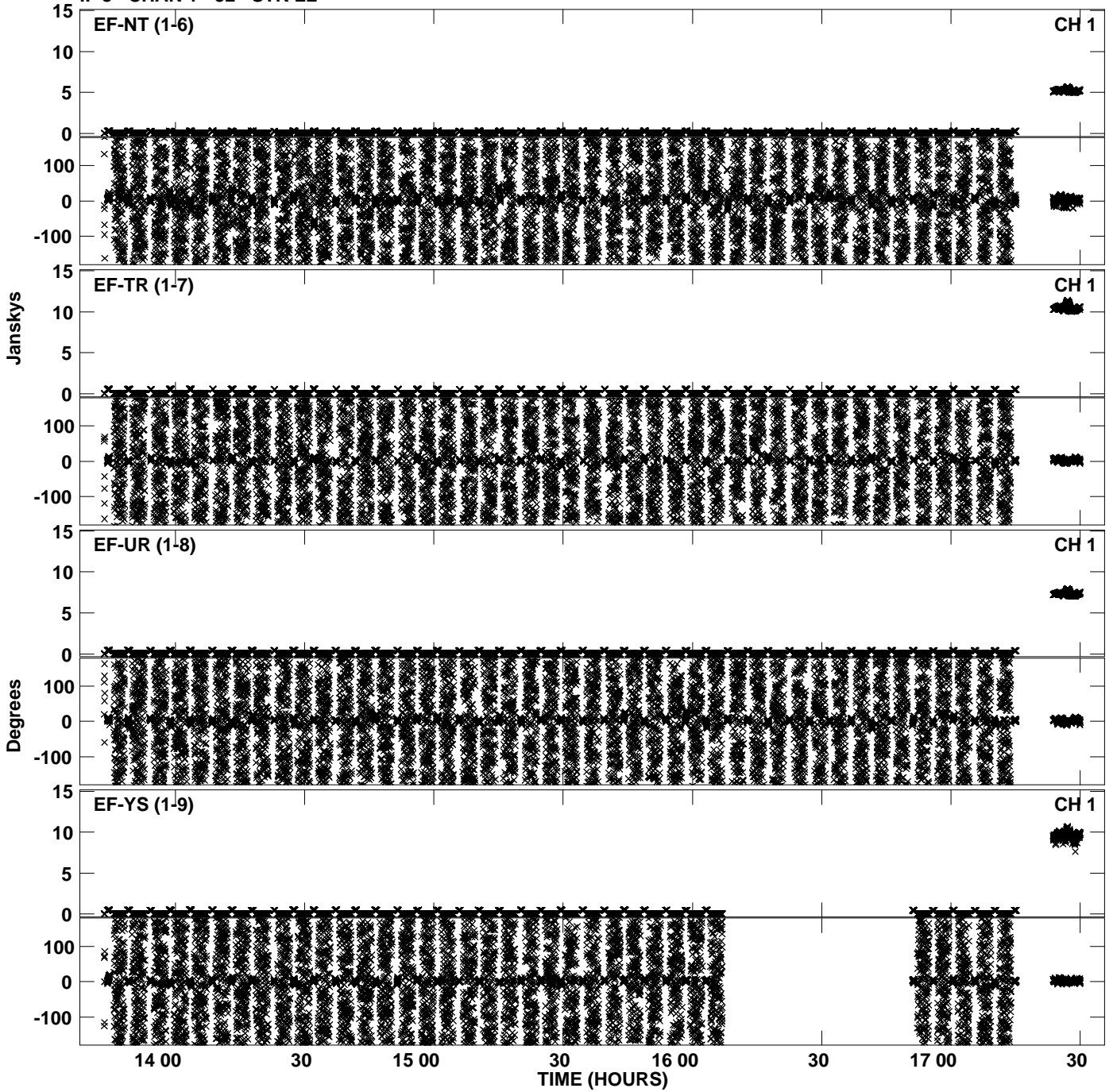
PLot file version 21 created 24-SEP-2012 15:50:19  
Amplitude andPhase vs Time for EP075C 3.UVDATA.1 Vect aver. CL # 3  
IF 7 CHAN 1 - 32 STK LL



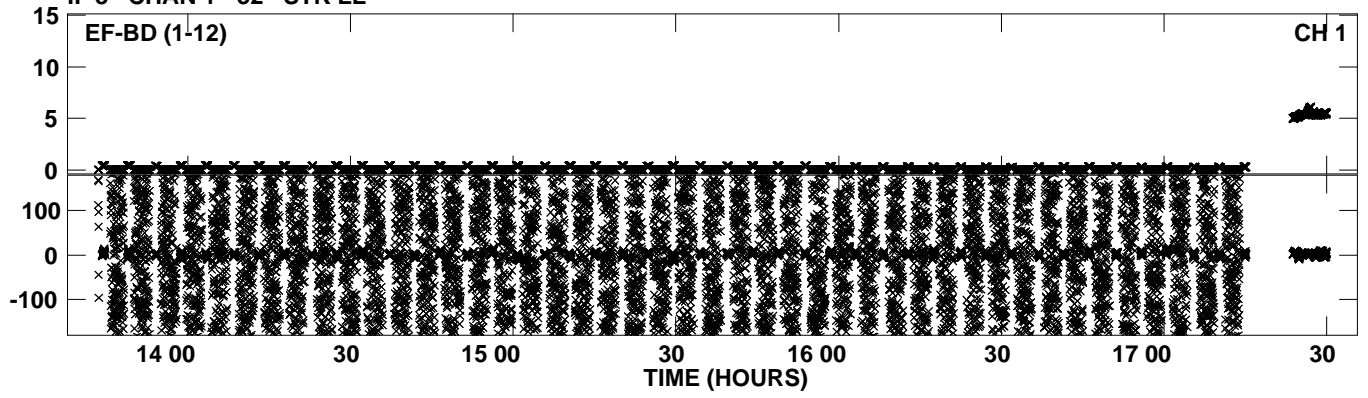
Plot file version 22 created 24-SEP-2012 15:50:35  
Amplitude andPhase vs Time for EP075C 3.UVDATA.1 Vect aver. CL # 3  
IF 8 CHAN 1 - 32 STK LL



Plot file version 23 created 24-SEP-2012 15:50:35  
Amplitude and Phase vs Time for EP075C 3.UVDATA.1 Vect aver. CL # 3  
IF 8 CHAN 1 - 32 STK LL

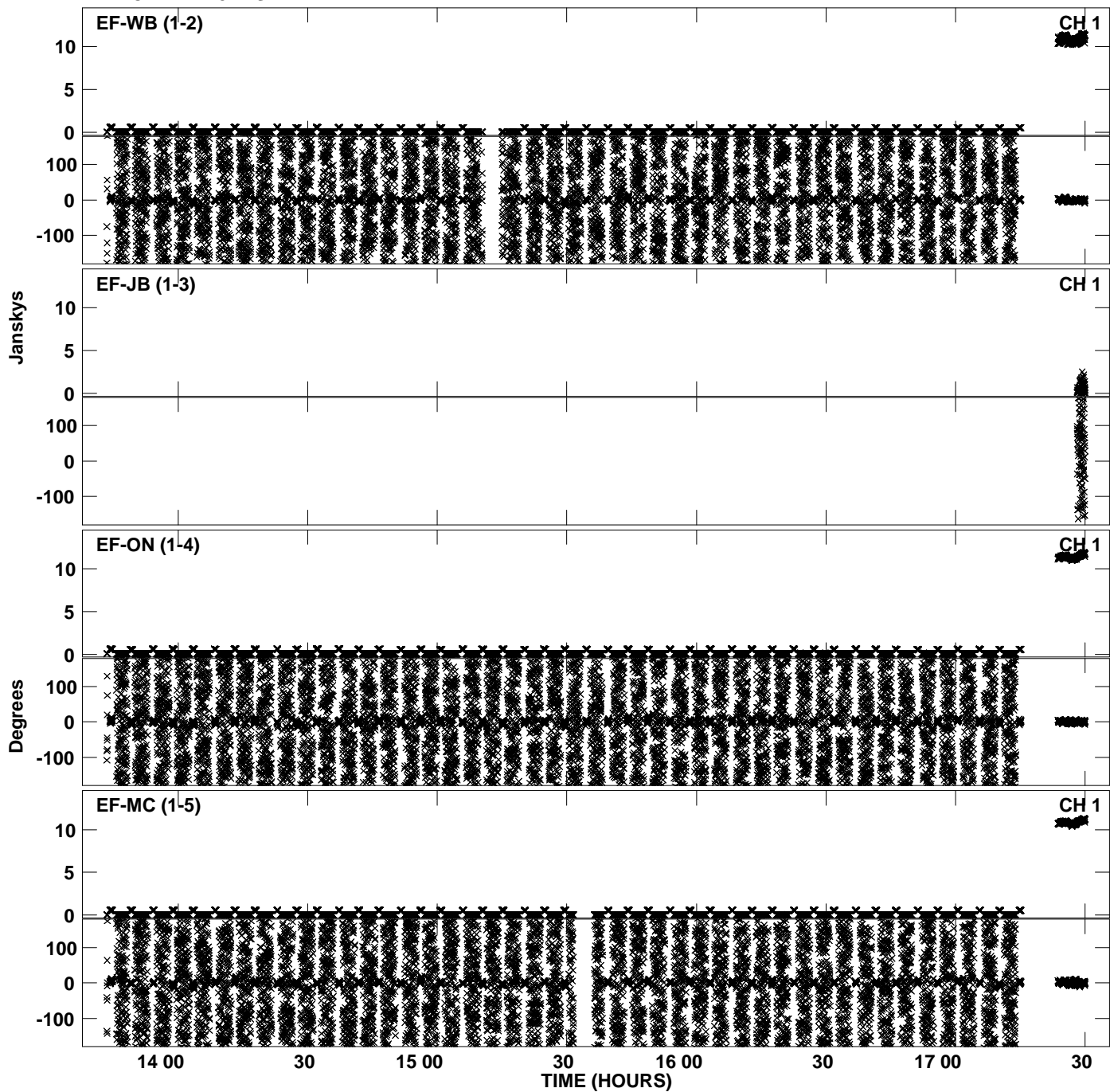


PLot file version 24 created 24-SEP-2012 15:50:35  
Amplitude andPhase vs Time for EP075C 3.UVDATA.1 Vect aver. CL # 3  
IF 8 CHAN 1 - 32 STK LL

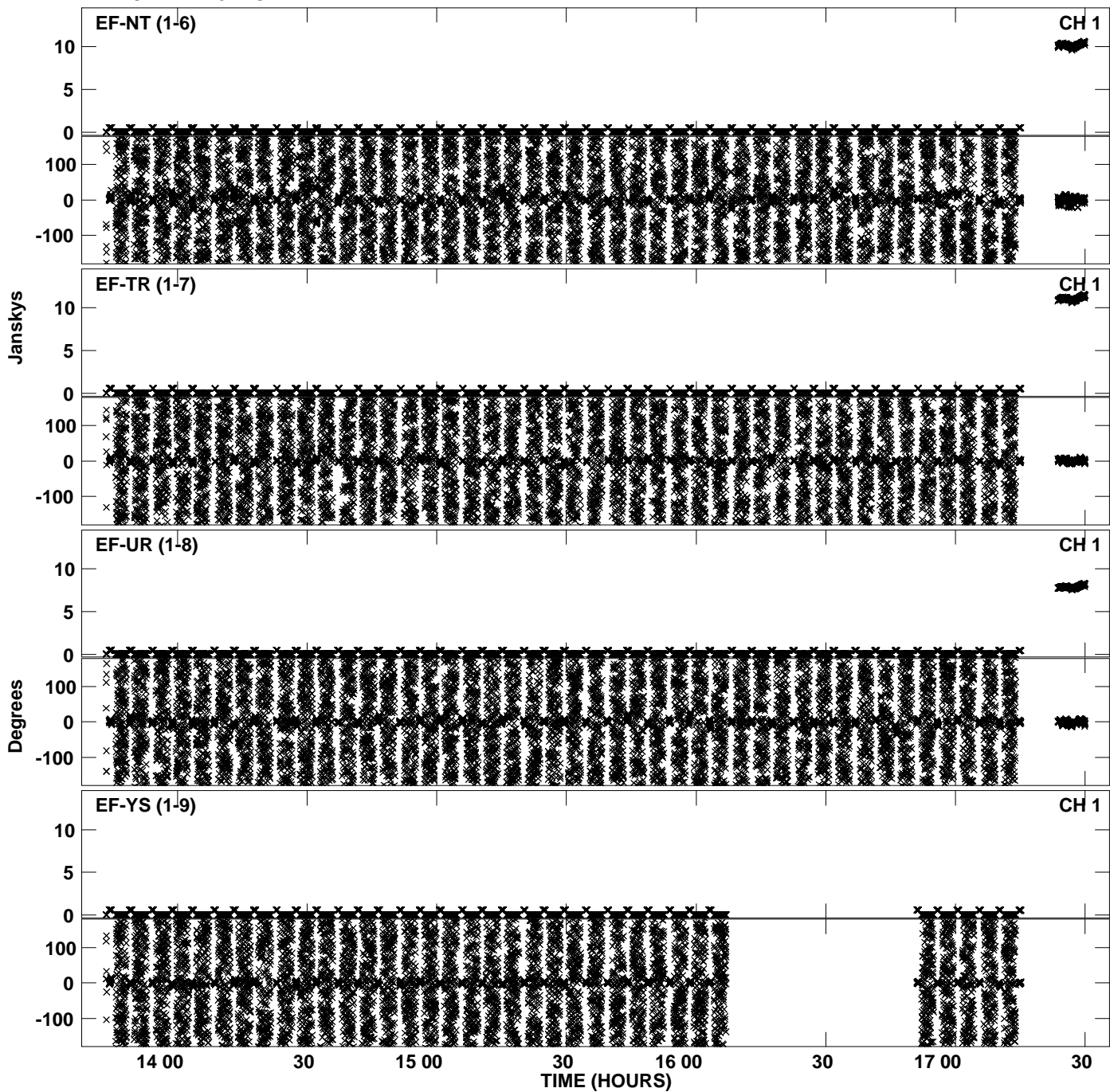




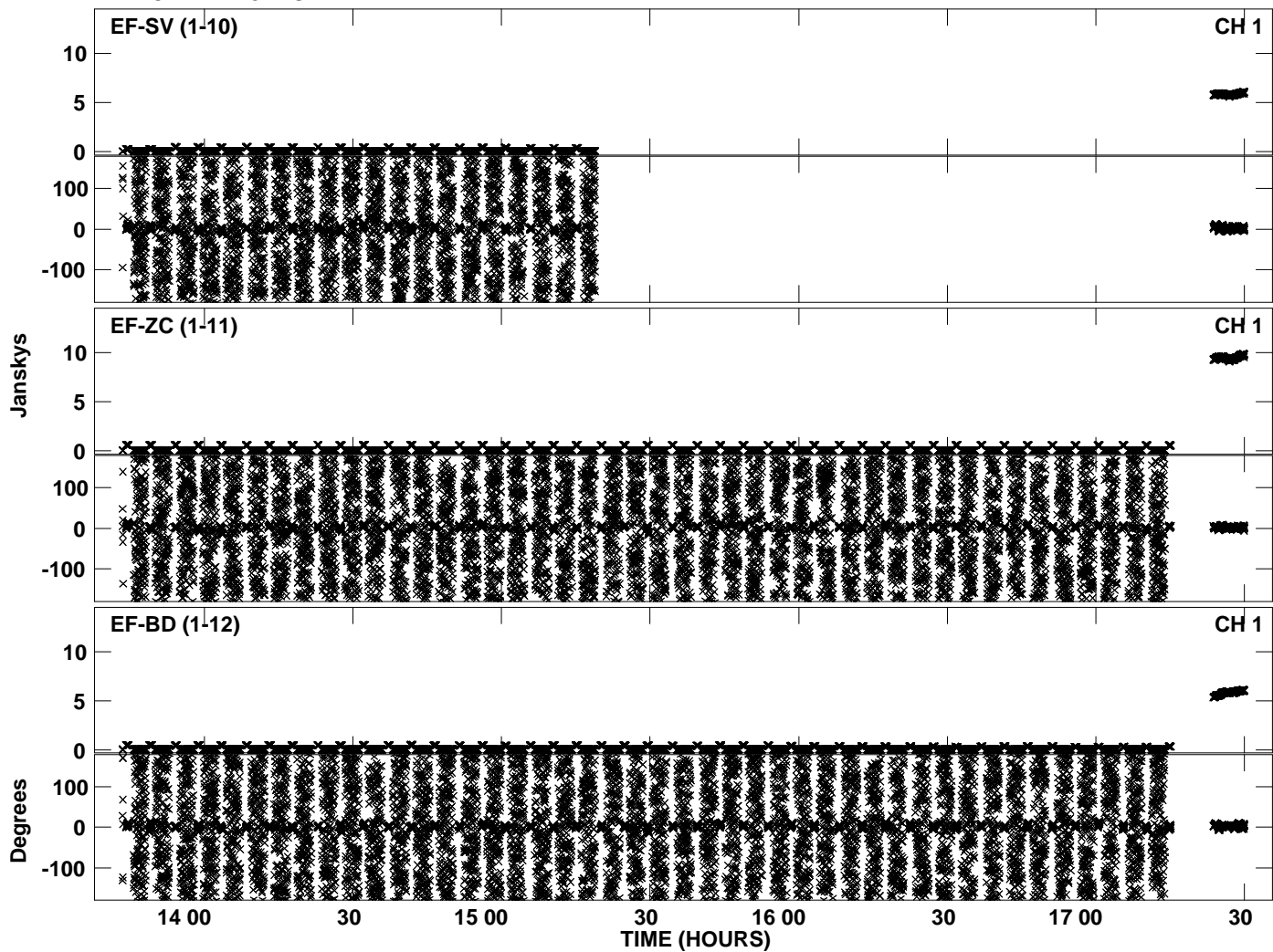
Plot file version 25 created 24-SEP-2012 15:50:50  
Amplitude andPhase vs Time for EP075C 3.UVDATA.1 Vect aver. CL # 3  
IF 1 CHAN 1 - 32 STK RR



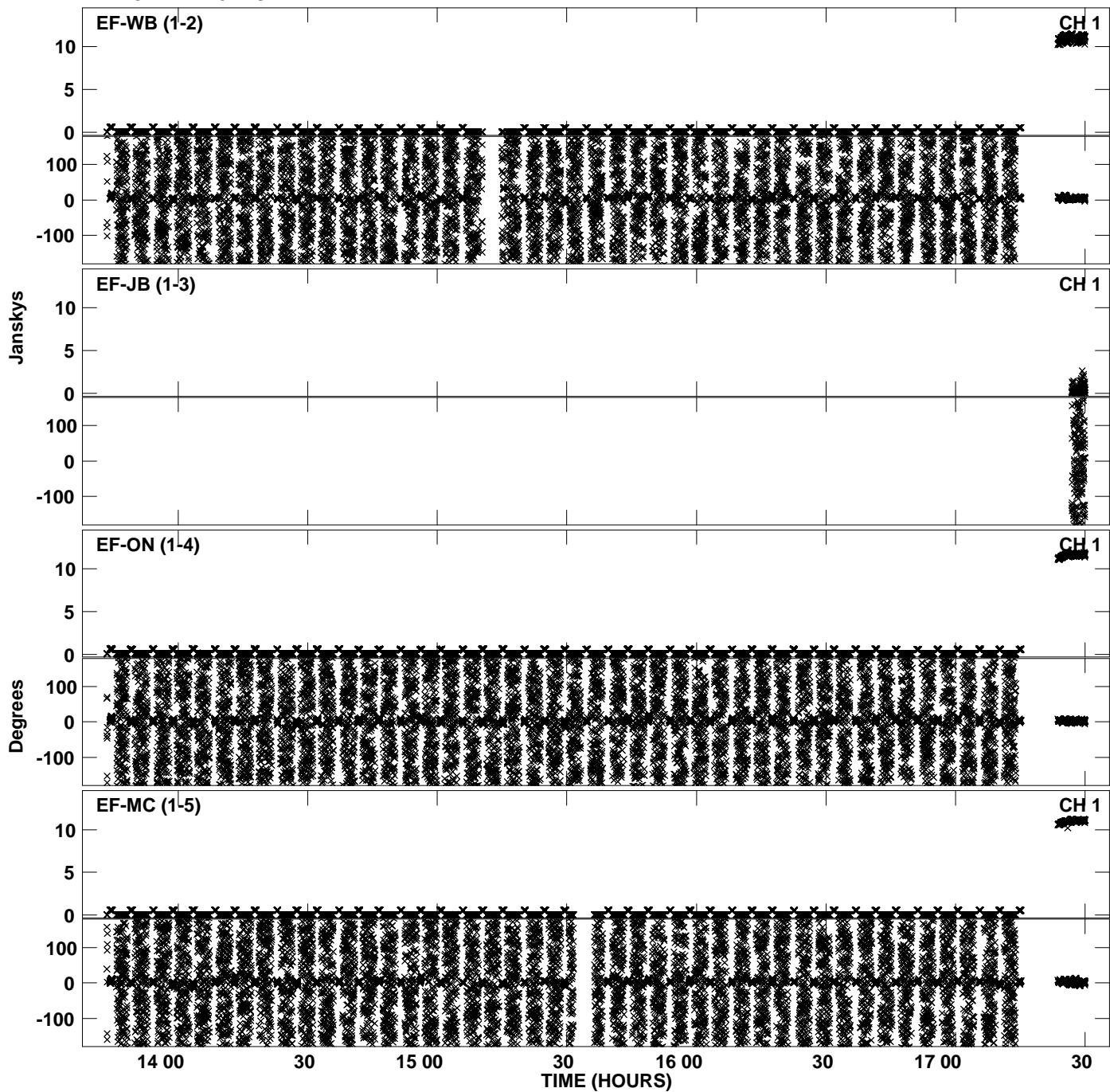
PLot file version 26 created 24-SEP-2012 15:50:50  
Amplitude andPhase vs Time for EP075C 3.UVDATA.1 Vect aver. CL # 3  
IF 1 CHAN 1 - 32 STK RR



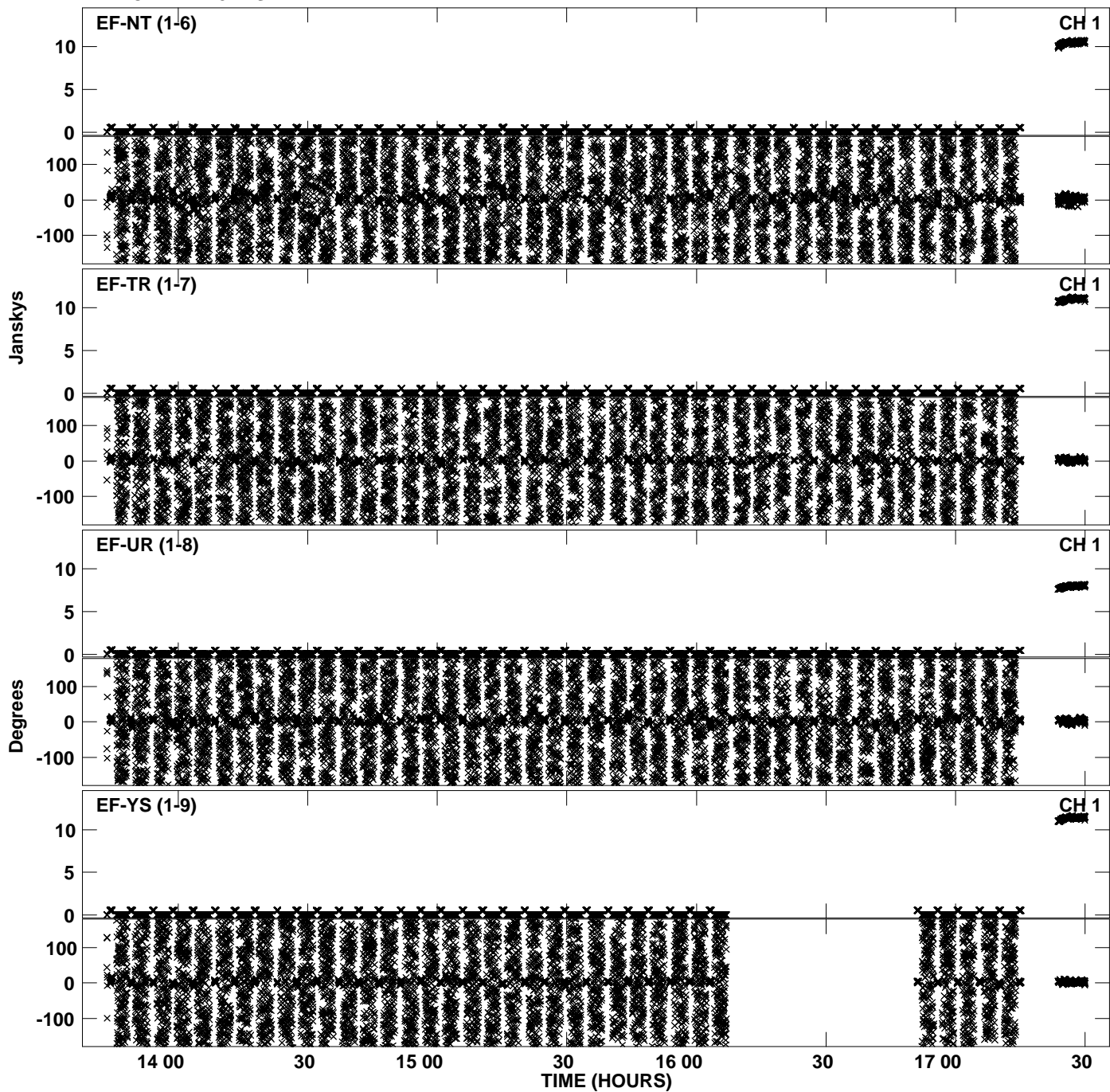
PLot file version 27 created 24-SEP-2012 15:50:50  
Amplitude andPhase vs Time for EP075C 3.UVDATA.1 Vect aver. CL # 3  
IF 1 CHAN 1 - 32 STK RR



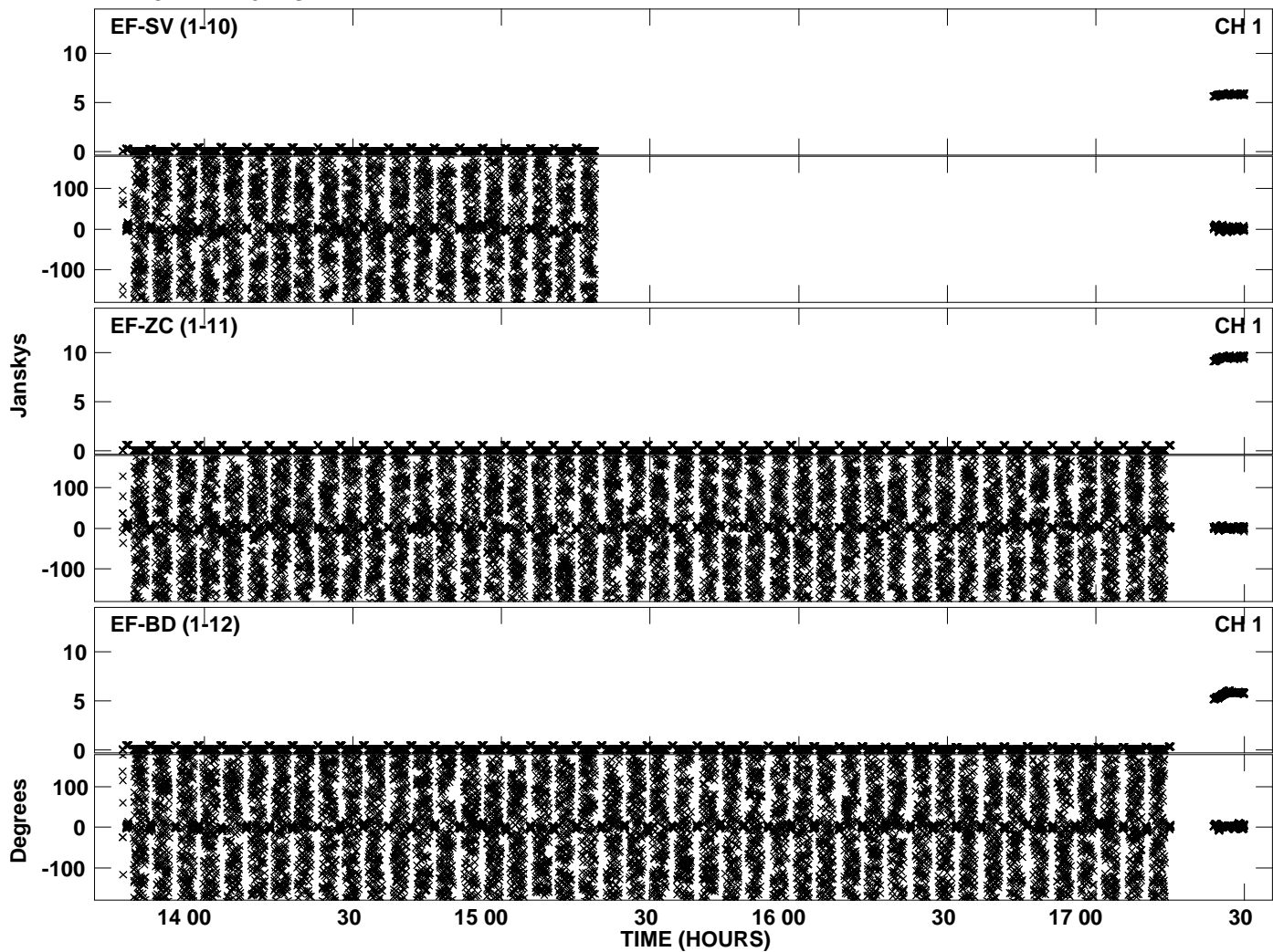
Plot file version 28 created 24-SEP-2012 15:51:04  
Amplitude andPhase vs Time for EP075C 3.UVDATA.1 Vect aver. CL # 3  
IF 2 CHAN 1 - 32 STK RR



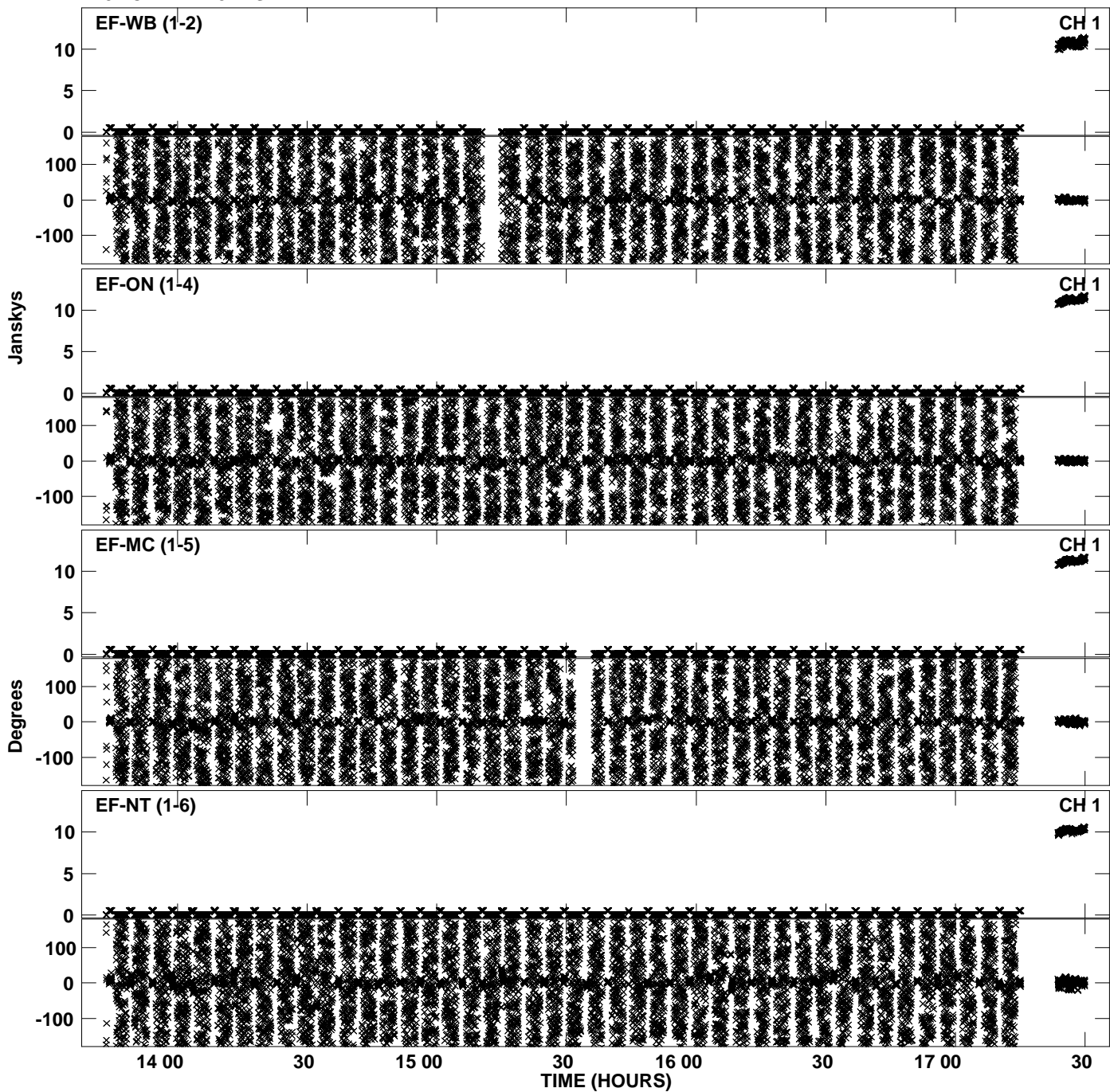
Plot file version 29 created 24-SEP-2012 15:51:04  
Amplitude andPhase vs Time for EP075C 3.UVDATA.1 Vect aver. CL # 3  
IF 2 CHAN 1 - 32 STK RR



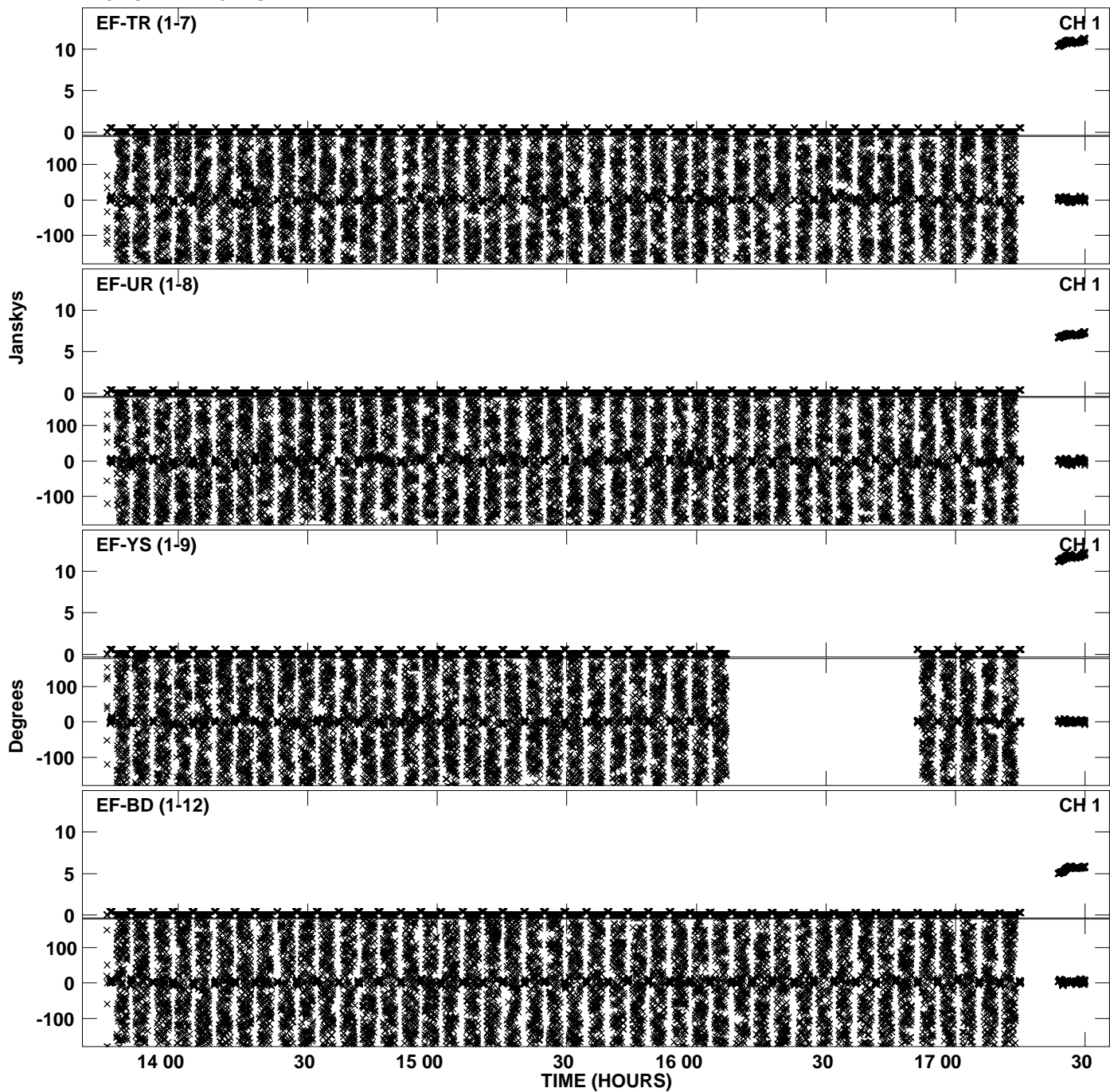
PLot file version 30 created 24-SEP-2012 15:51:04  
Amplitude andPhase vs Time for EP075C 3.UVDATA.1 Vect aver. CL # 3  
IF 2 CHAN 1 - 32 STK RR



Plot file version 31 created 24-SEP-2012 15:51:18  
Amplitude andPhase vs Time for EP075C 3.UVDATA.1 Vect aver. CL # 3  
IF 3 CHAN 1 - 32 STK RR

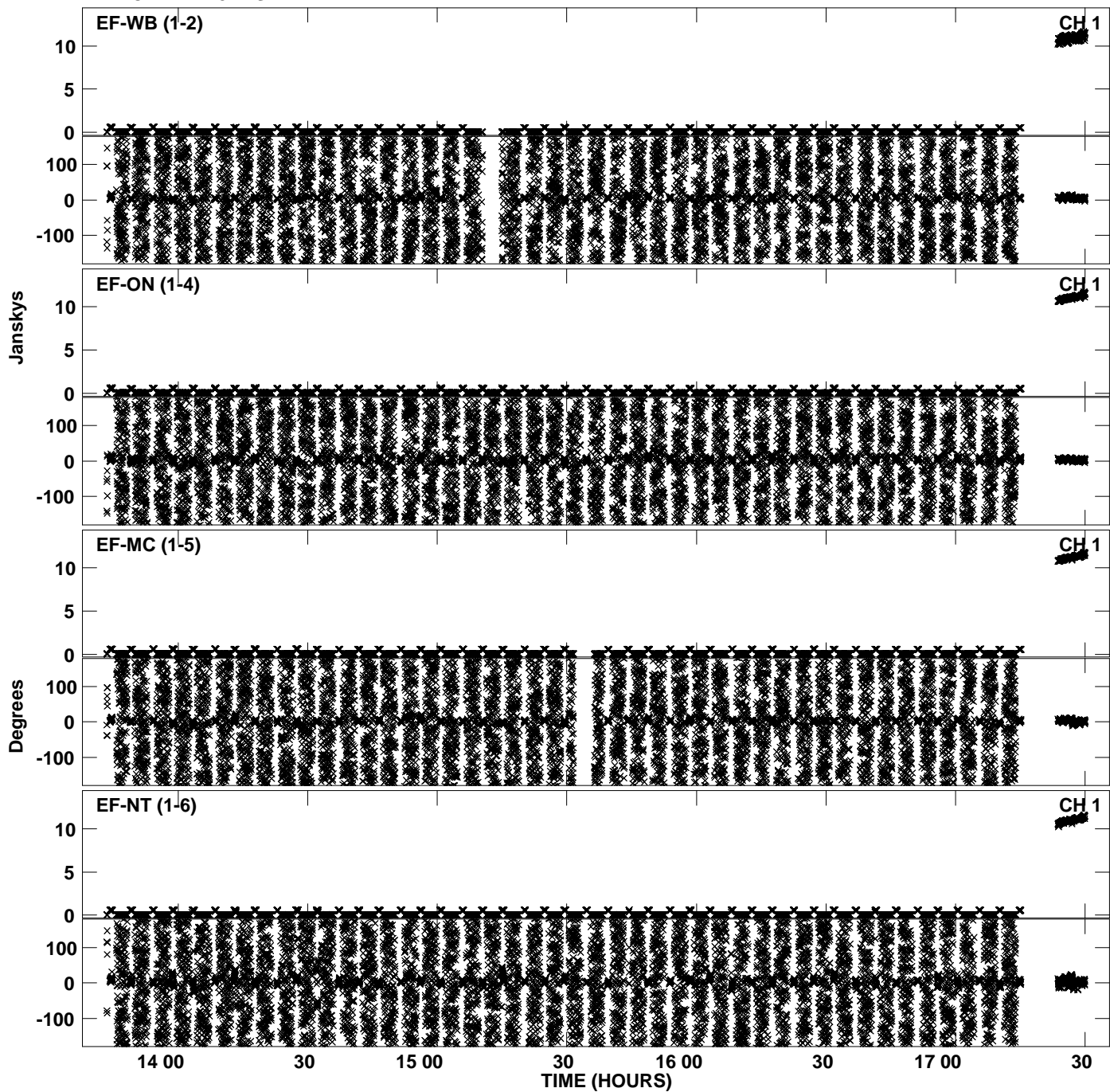


Plot file version 32 created 24-SEP-2012 15:51:18  
Amplitude andPhase vs Time for EP075C 3.UVDATA.1 Vect aver. CL # 3  
IF 3 CHAN 1 - 32 STK RR

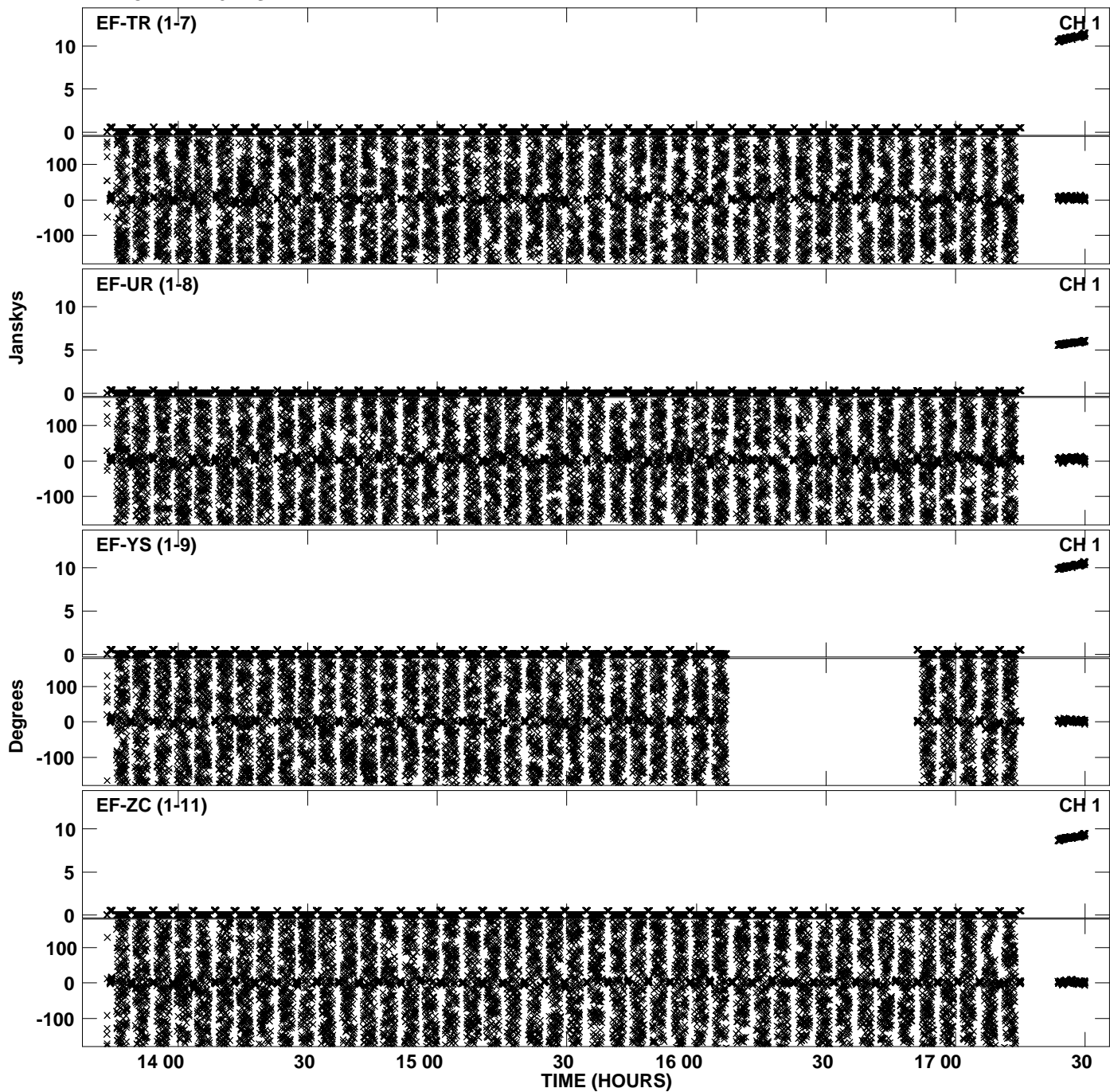




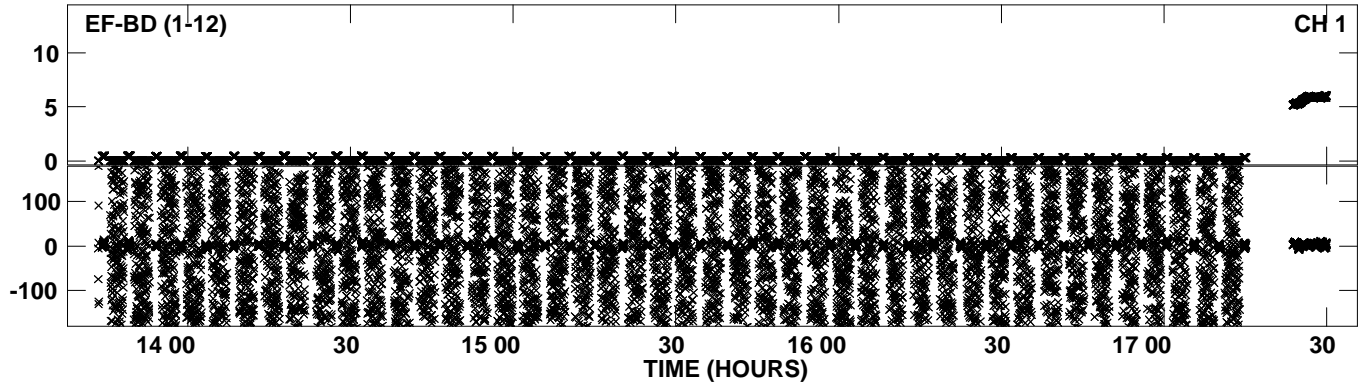
PLot file version 33 created 24-SEP-2012 15:51:32  
Amplitude andPhase vs Time for EP075C 3.UVDATA.1 Vect aver. CL # 3  
IF 4 CHAN 1 - 32 STK RR



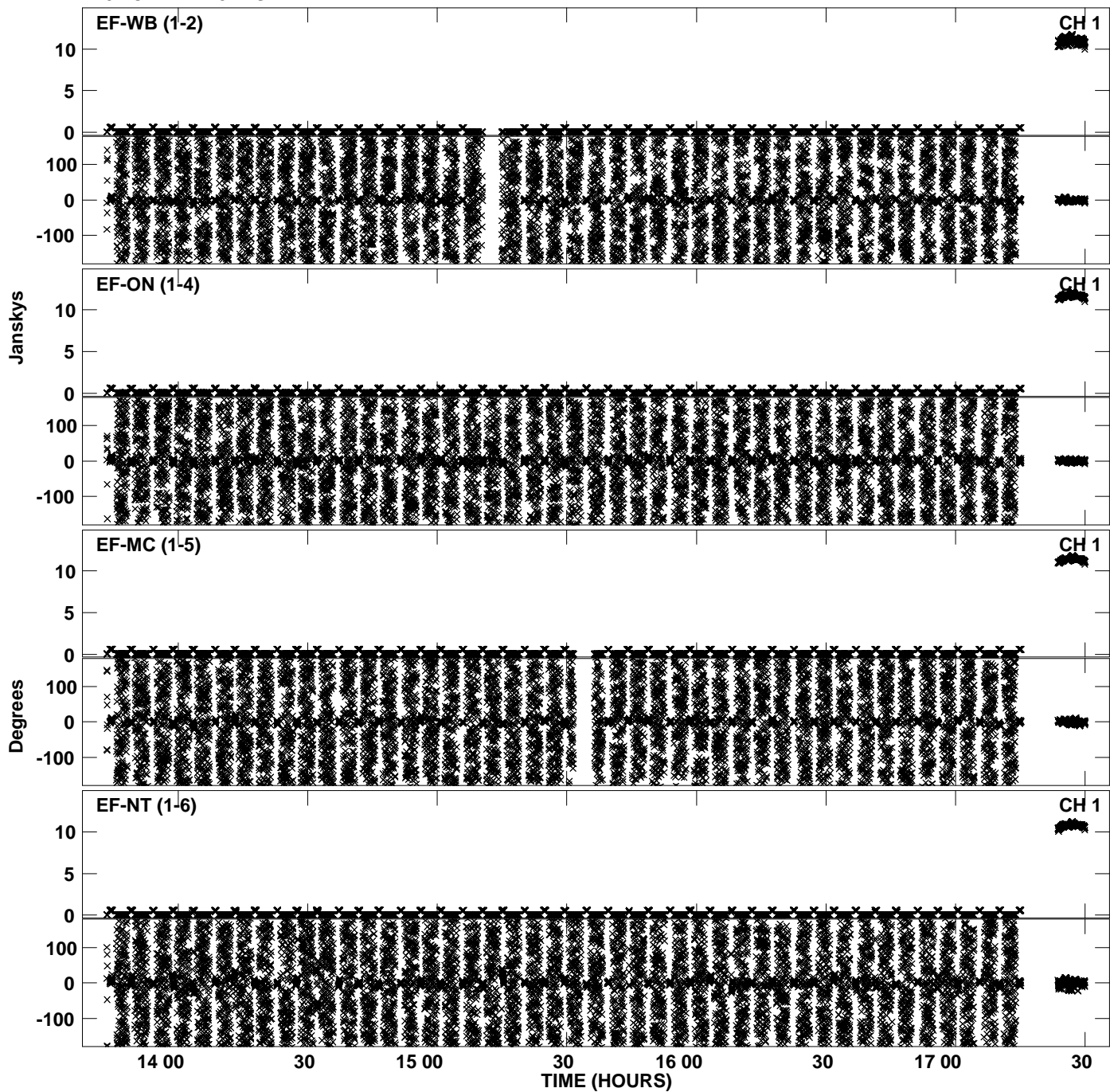
Plot file version 34 created 24-SEP-2012 15:51:32  
Amplitude andPhase vs Time for EP075C 3.UVDATA.1 Vect aver. CL # 3  
IF 4 CHAN 1 - 32 STK RR



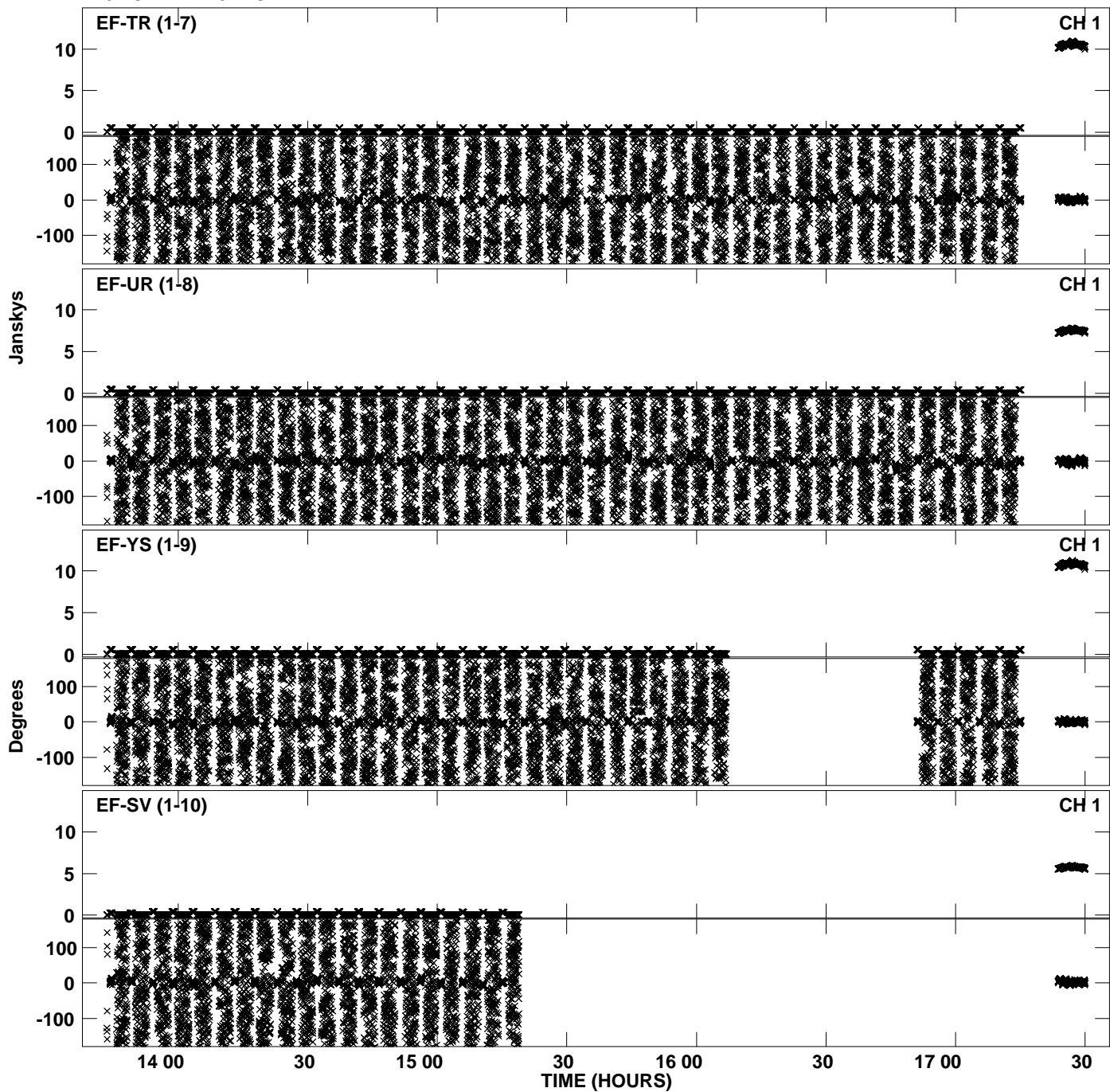
PLot file version 35 created 24-SEP-2012 15:51:32  
Amplitude andPhase vs Time for EP075C 3.UVDATA.1 Vect aver. CL # 3  
IF 4 CHAN 1 - 32 STK RR



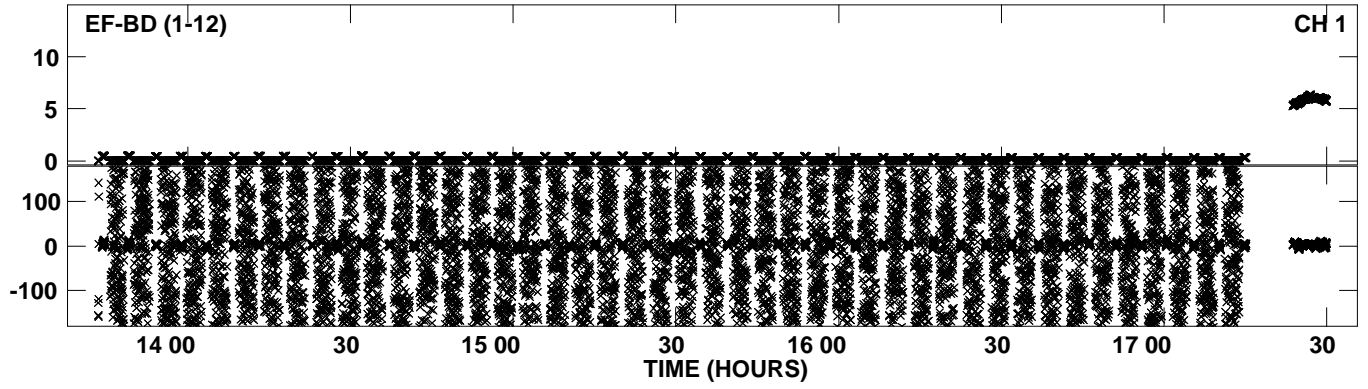
Plot file version 36 created 24-SEP-2012 15:51:45  
Amplitude andPhase vs Time for EP075C 3.UVDATA.1 Vect aver. CL # 3  
IF 5 CHAN 1 - 32 STK RR



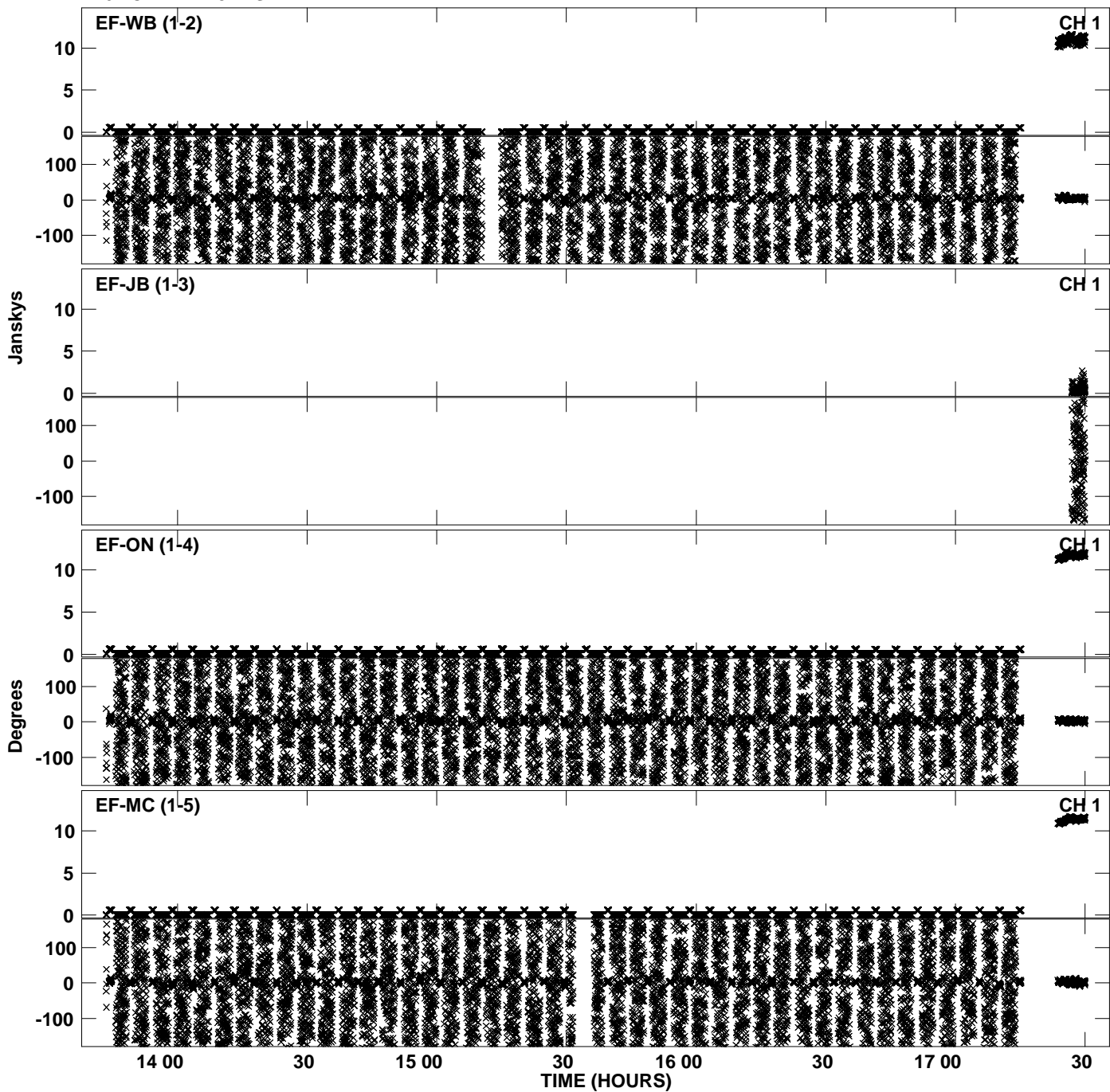
Plot file version 37 created 24-SEP-2012 15:51:46  
Amplitude andPhase vs Time for EP075C 3.UVDATA.1 Vect aver. CL # 3  
IF 5 CHAN 1 - 32 STK RR



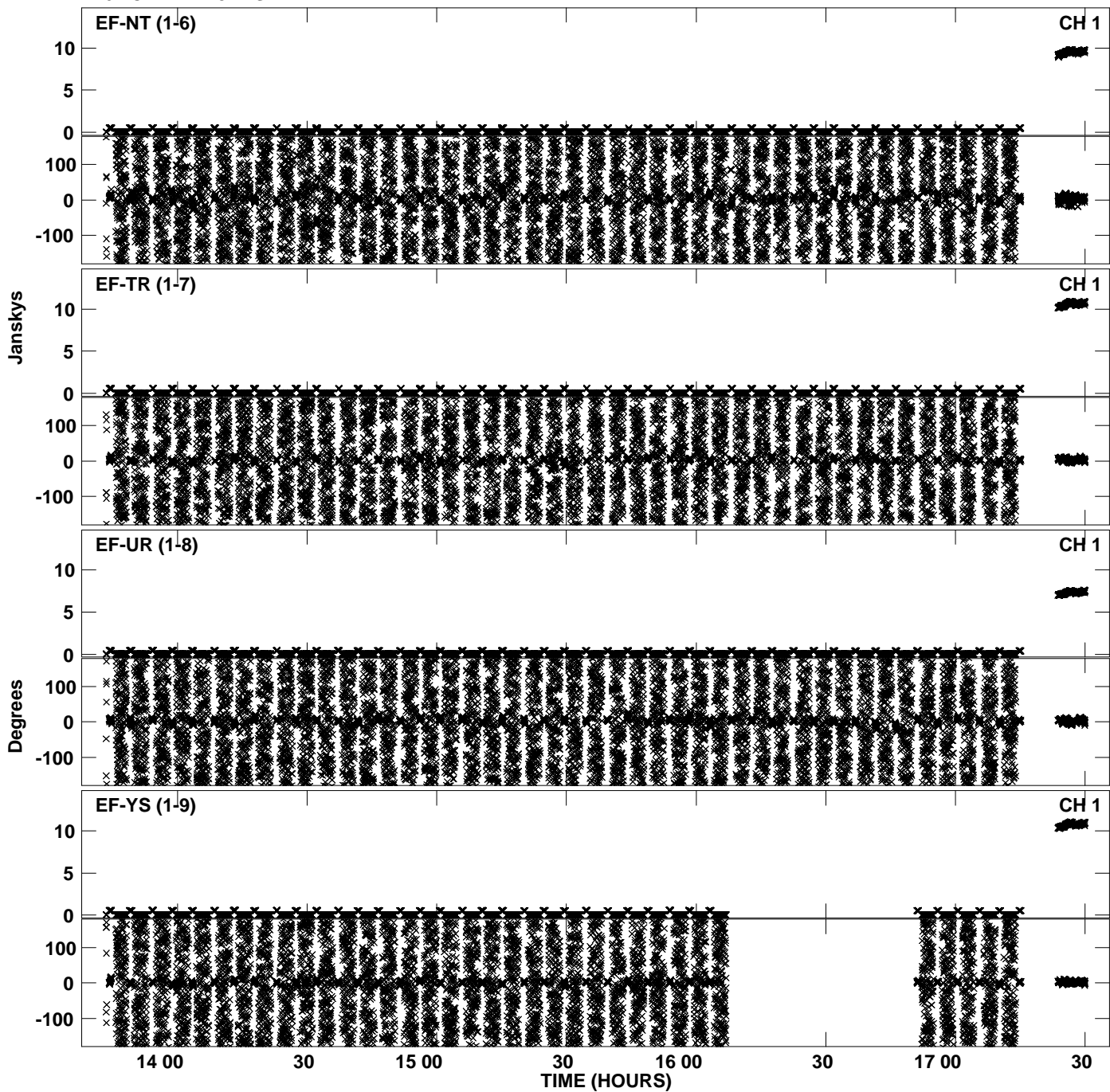
Plot file version 38 created 24-SEP-2012 15:51:46  
Amplitude andPhase vs Time for EP075C 3.UVDATA.1 Vect aver. CL # 3  
IF 5 CHAN 1 - 32 STK RR



Plot file version 39 created 24-SEP-2012 15:52:00  
Amplitude andPhase vs Time for EP075C 3.UVDATA.1 Vect aver. CL # 3  
IF 6 CHAN 1 - 32 STK RR

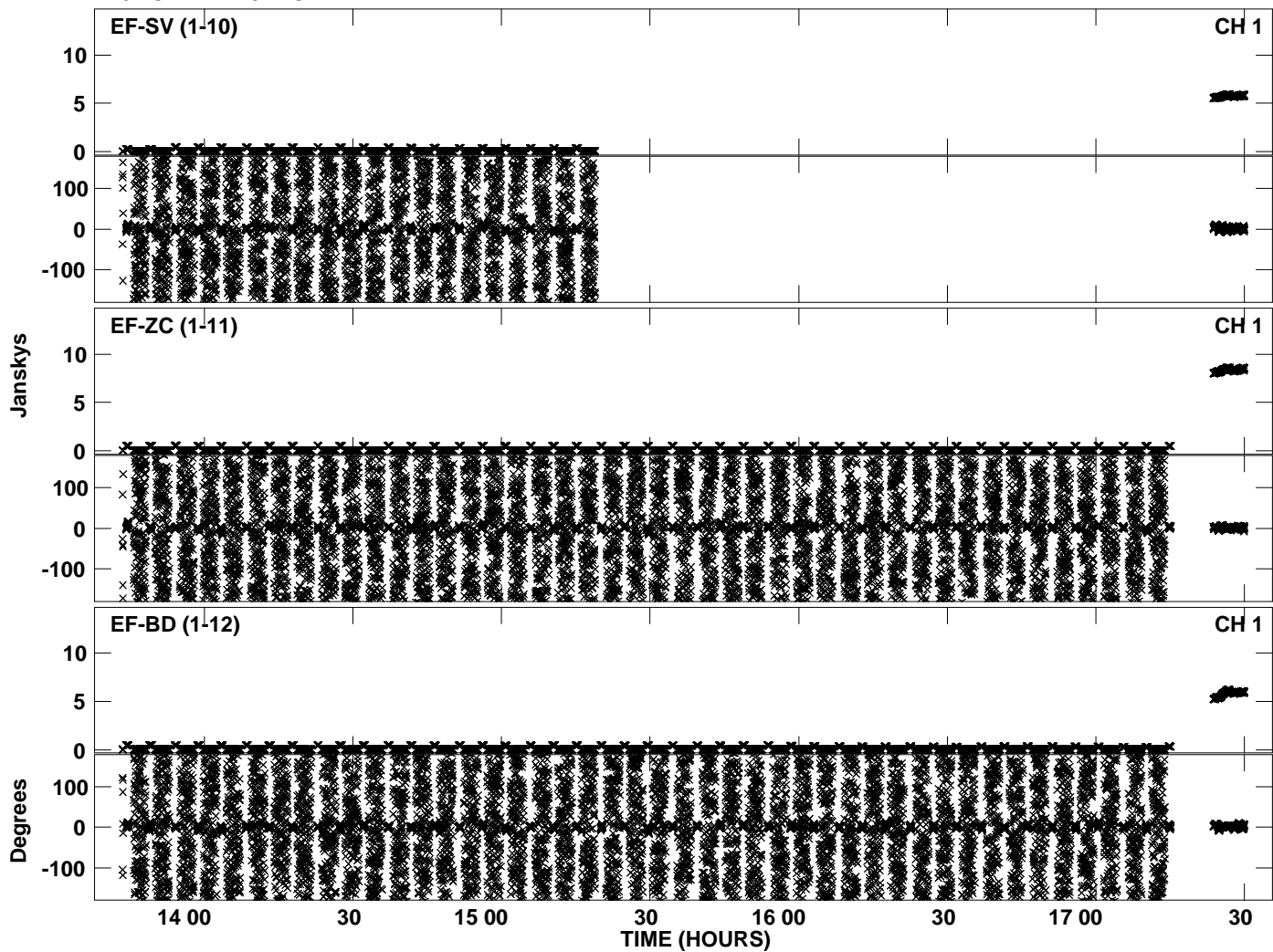


Plot file version 40 created 24-SEP-2012 15:52:00  
Amplitude andPhase vs Time for EP075C 3.UVDATA.1 Vect aver. CL # 3  
IF 6 CHAN 1 - 32 STK RR

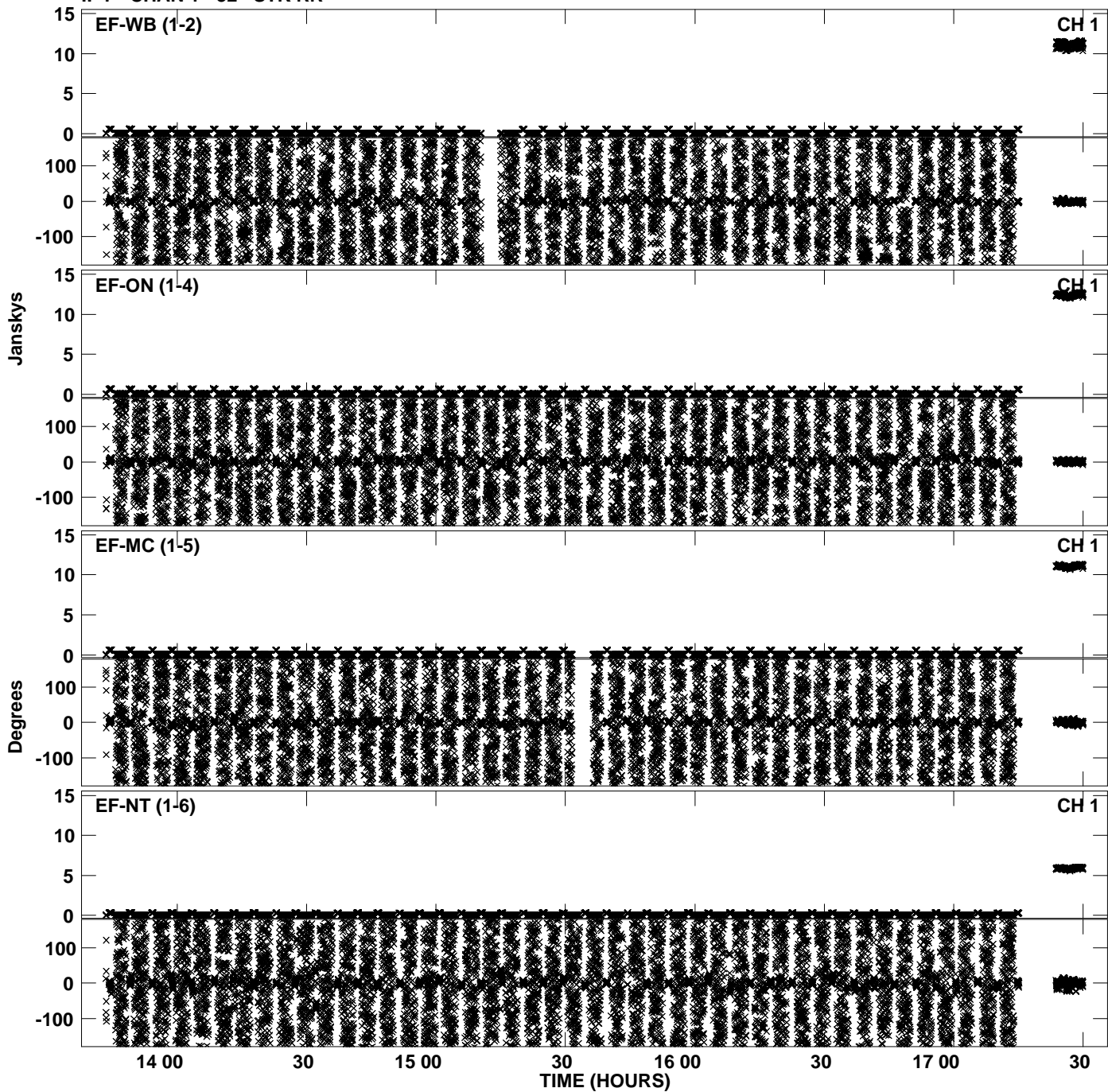




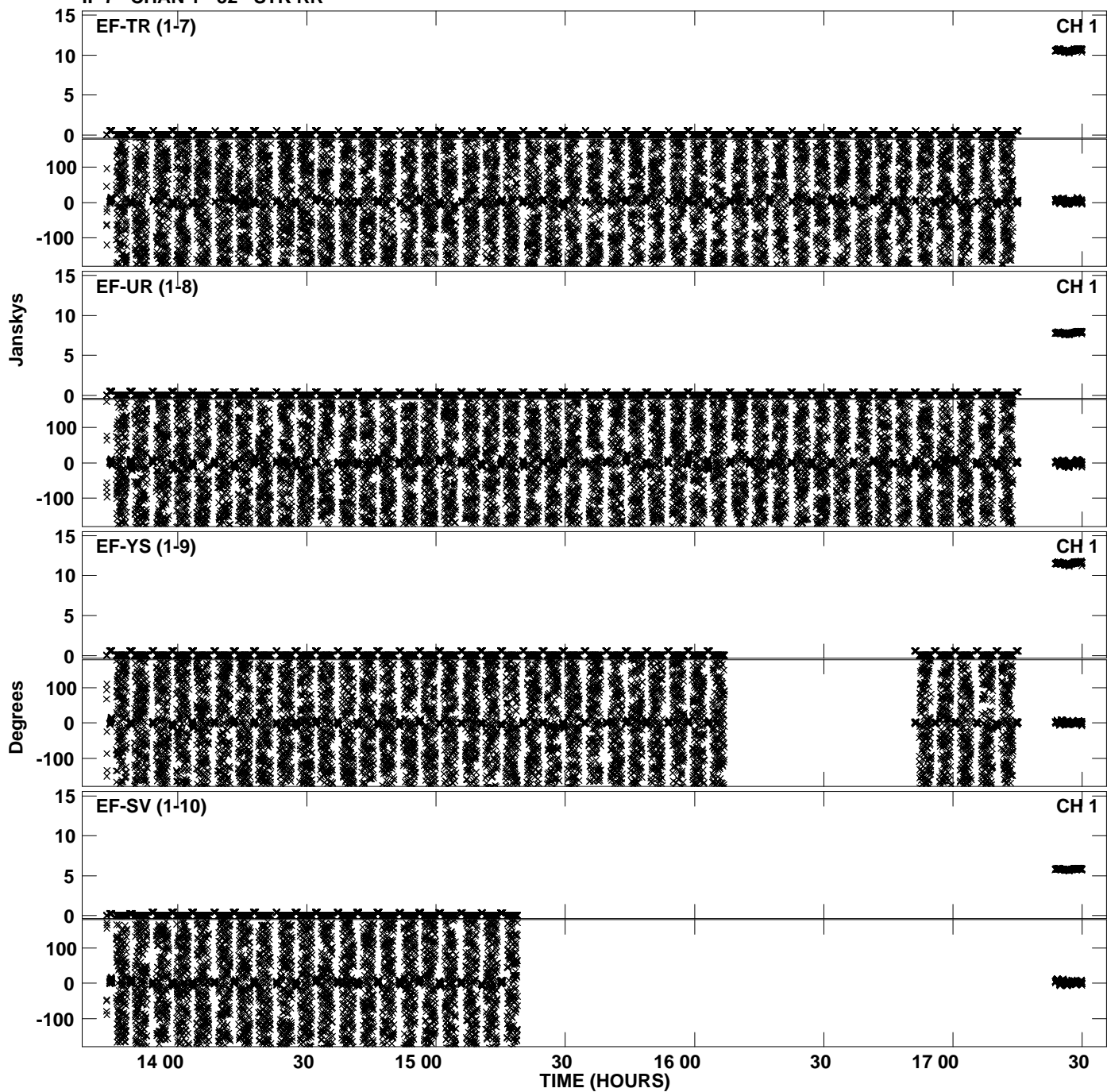
Plot file version 41 created 24-SEP-2012 15:52:00  
Amplitude andPhase vs Time for EP075C 3.UVDATA.1 Vect aver. CL # 3  
IF 6 CHAN 1 - 32 STK RR



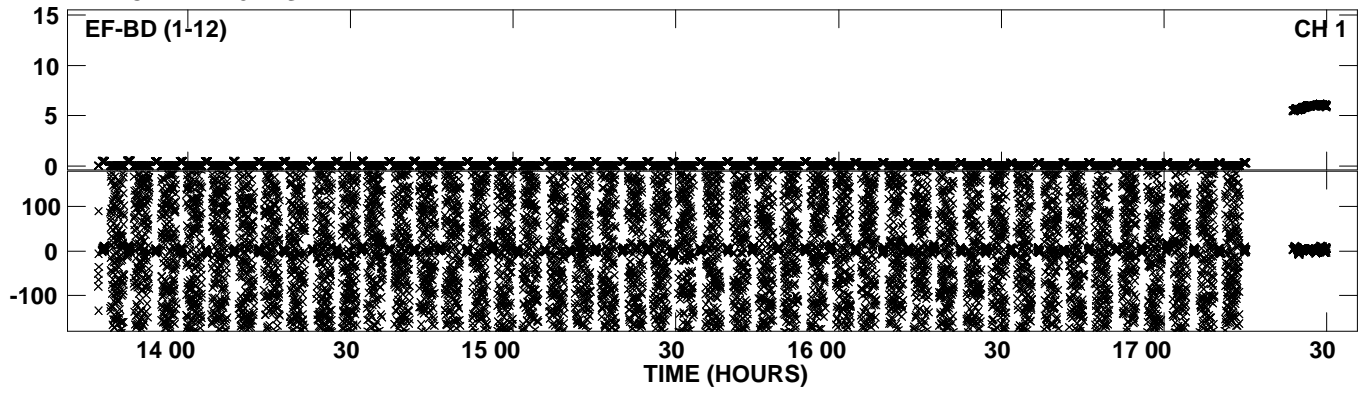
Plot file version 42 created 24-SEP-2012 15:52:14  
Amplitude andPhase vs Time for EP075C 3.UVDATA.1 Vect aver. CL # 3  
IF 7 CHAN 1 - 32 STK RR



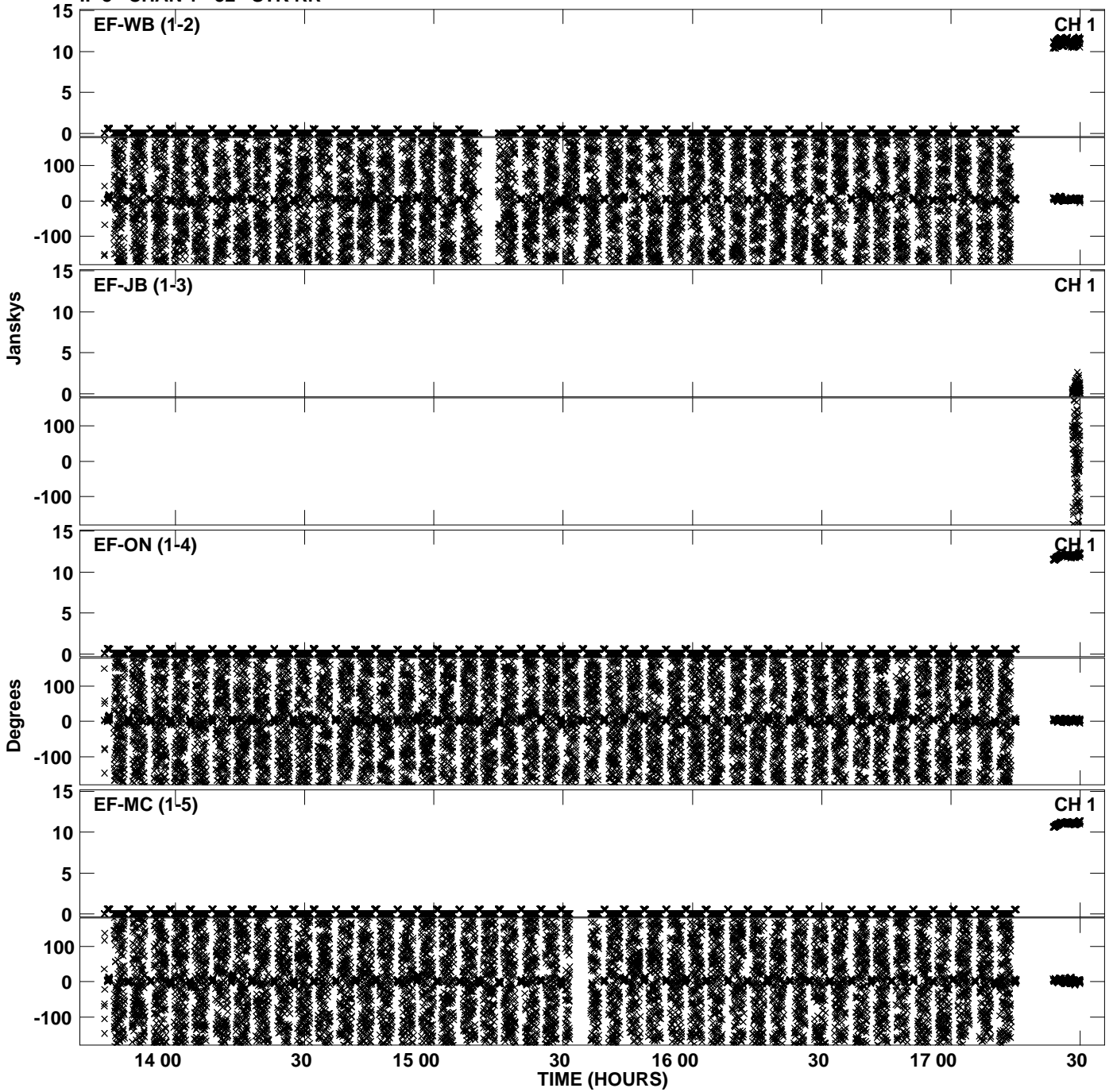
Plot file version 43 created 24-SEP-2012 15:52:14  
Amplitude andPhase vs Time for EP075C 3.UVDATA.1 Vect aver. CL # 3  
IF 7 CHAN 1 - 32 STK RR



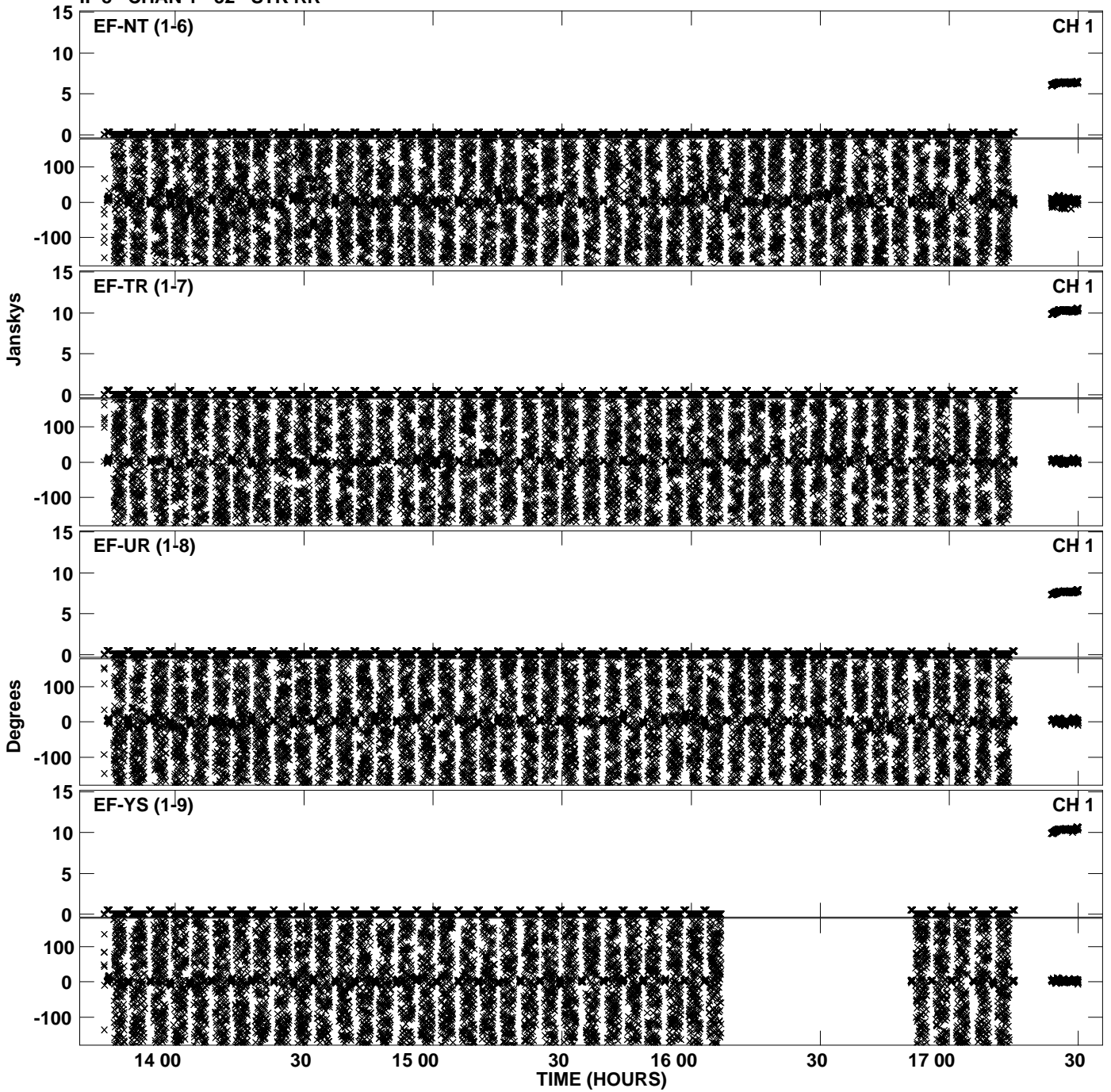
PLot file version 44 created 24-SEP-2012 15:52:14  
Amplitude andPhase vs Time for EP075C 3.UVDATA.1 Vect aver. CL # 3  
IF 7 CHAN 1 - 32 STK RR



Plot file version 45 created 24-SEP-2012 15:52:28  
Amplitude andPhase vs Time for EP075C 3.UVDATA.1 Vect aver. CL # 3  
IF 8 CHAN 1 - 32 STK RR



Plot file version 46 created 24-SEP-2012 15:52:28  
Amplitude andPhase vs Time for EP075C 3.UVDATA.1 Vect aver. CL # 3  
IF 8 CHAN 1 - 32 STK RR



PLot file version 47 created 24-SEP-2012 15:52:28  
Amplitude andPhase vs Time for EP075C 3.UVDATA.1 Vect aver. CL # 3  
IF 8 CHAN 1 - 32 STK RR

