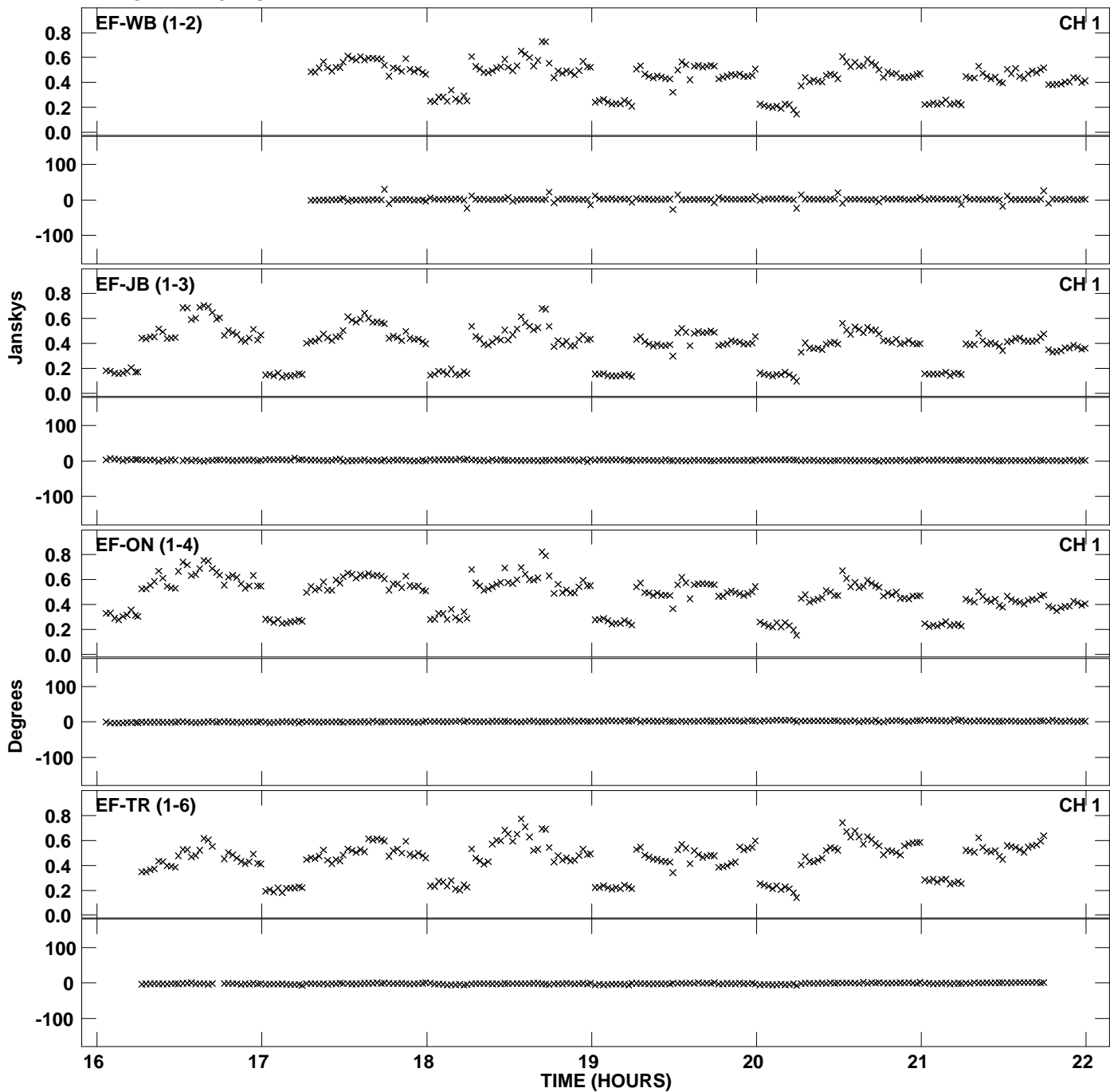
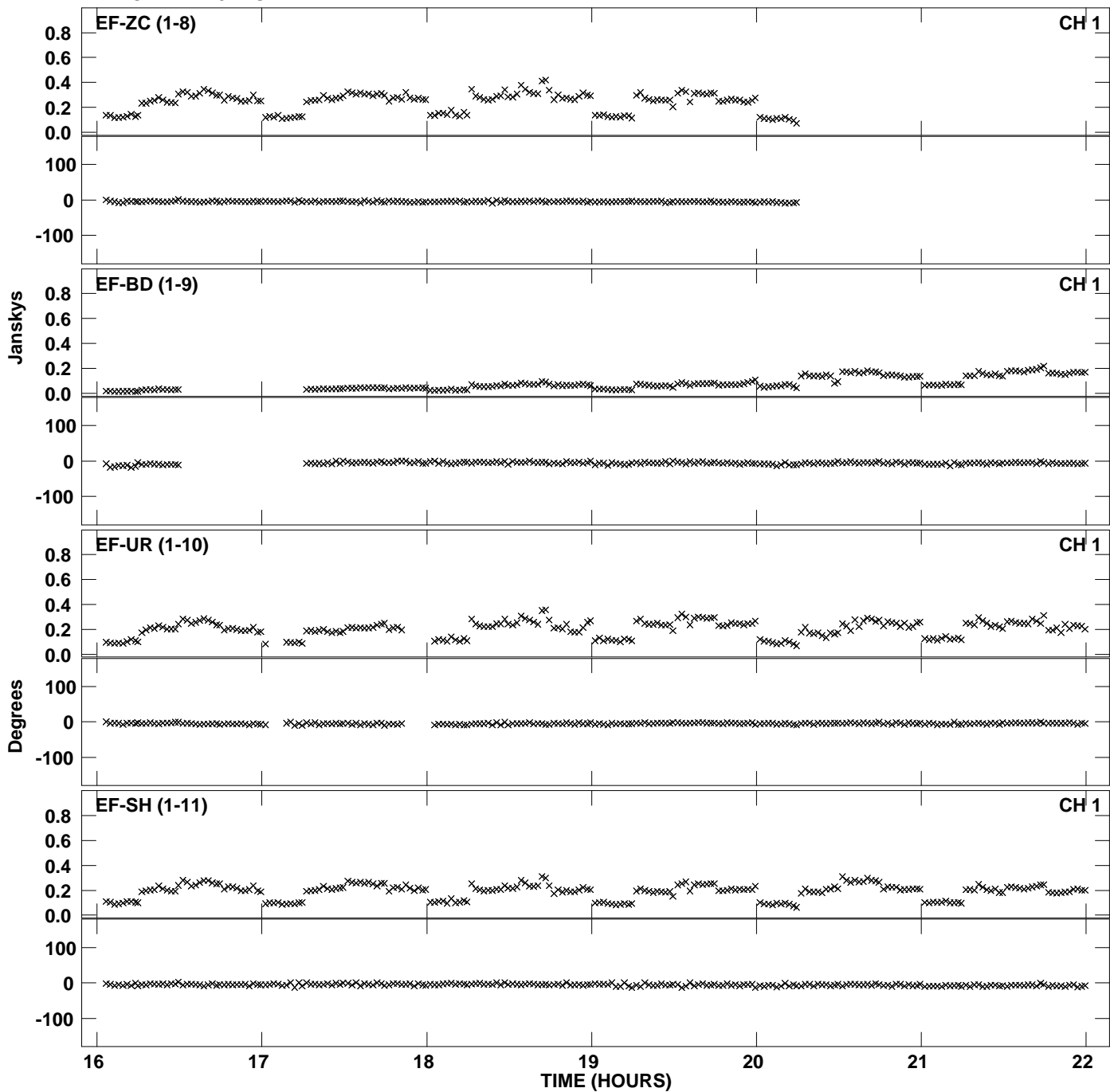


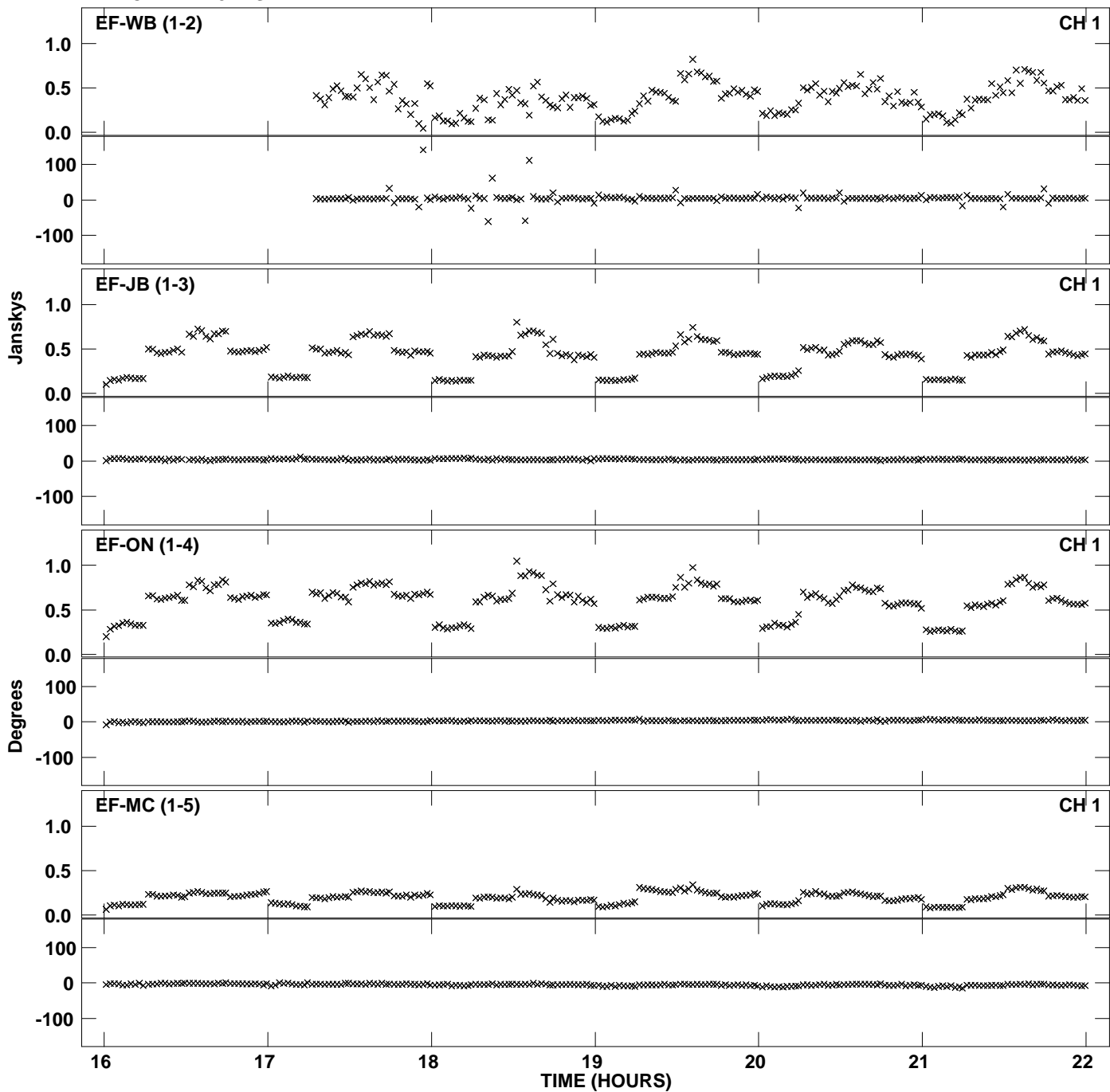
Plot file version 1 created 26-NOV-2012 11:33:32
Amplitude and Phase vs Time for EP077 2.UVDATA.1 Vect aver. CL # 3
IF 1 CHAN 1 - 32 STK LL



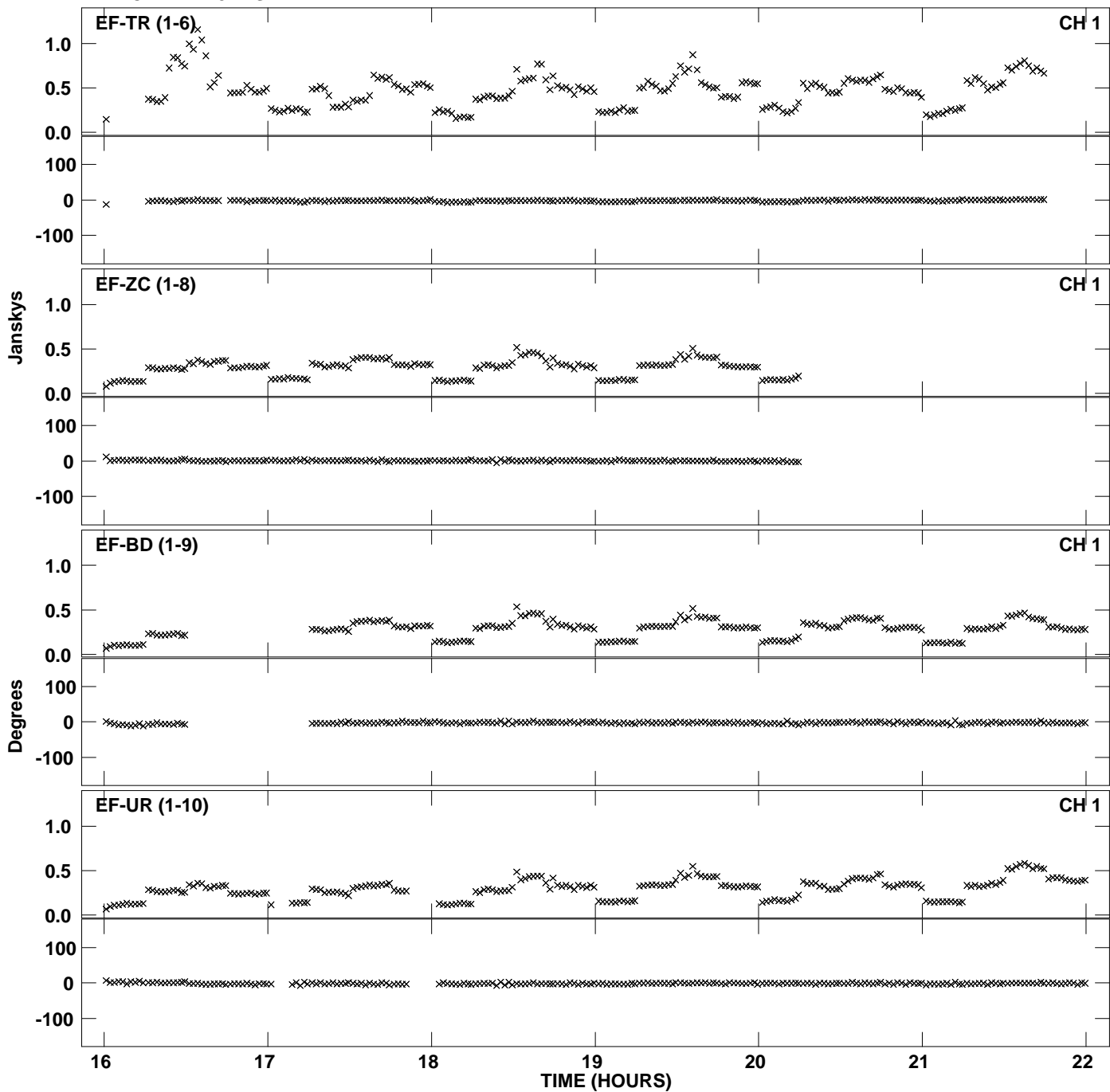
Plot file version 2 created 26-NOV-2012 11:33:32
Amplitude andPhase vs Time for EP077 2.UVDATA.1 Vect aver. CL # 3
IF 1 CHAN 1 - 32 STK LL



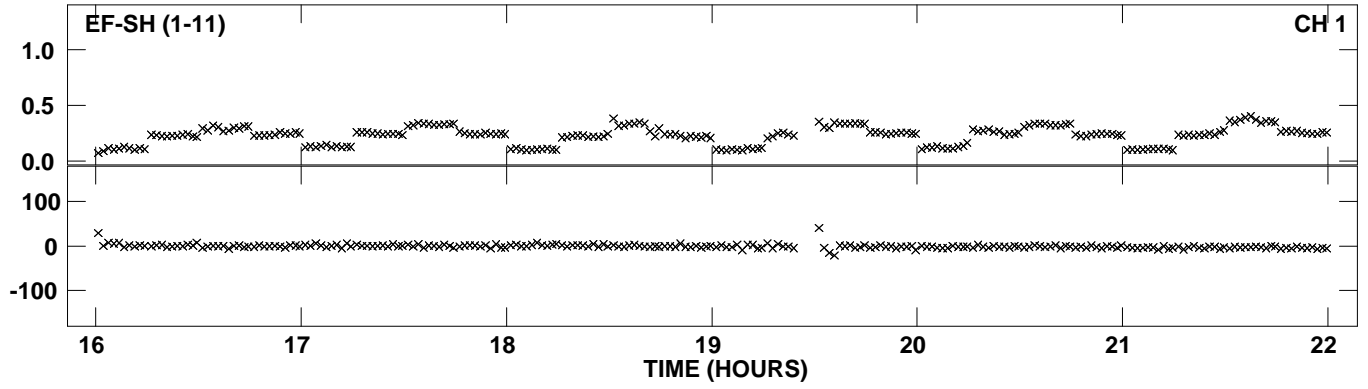
PLot file version 3 created 26-NOV-2012 11:33:38
Amplitude andPhase vs Time for EP077 2.UVDATA.1 Vect aver. CL # 3
IF 2 CHAN 1 - 32 STK LL



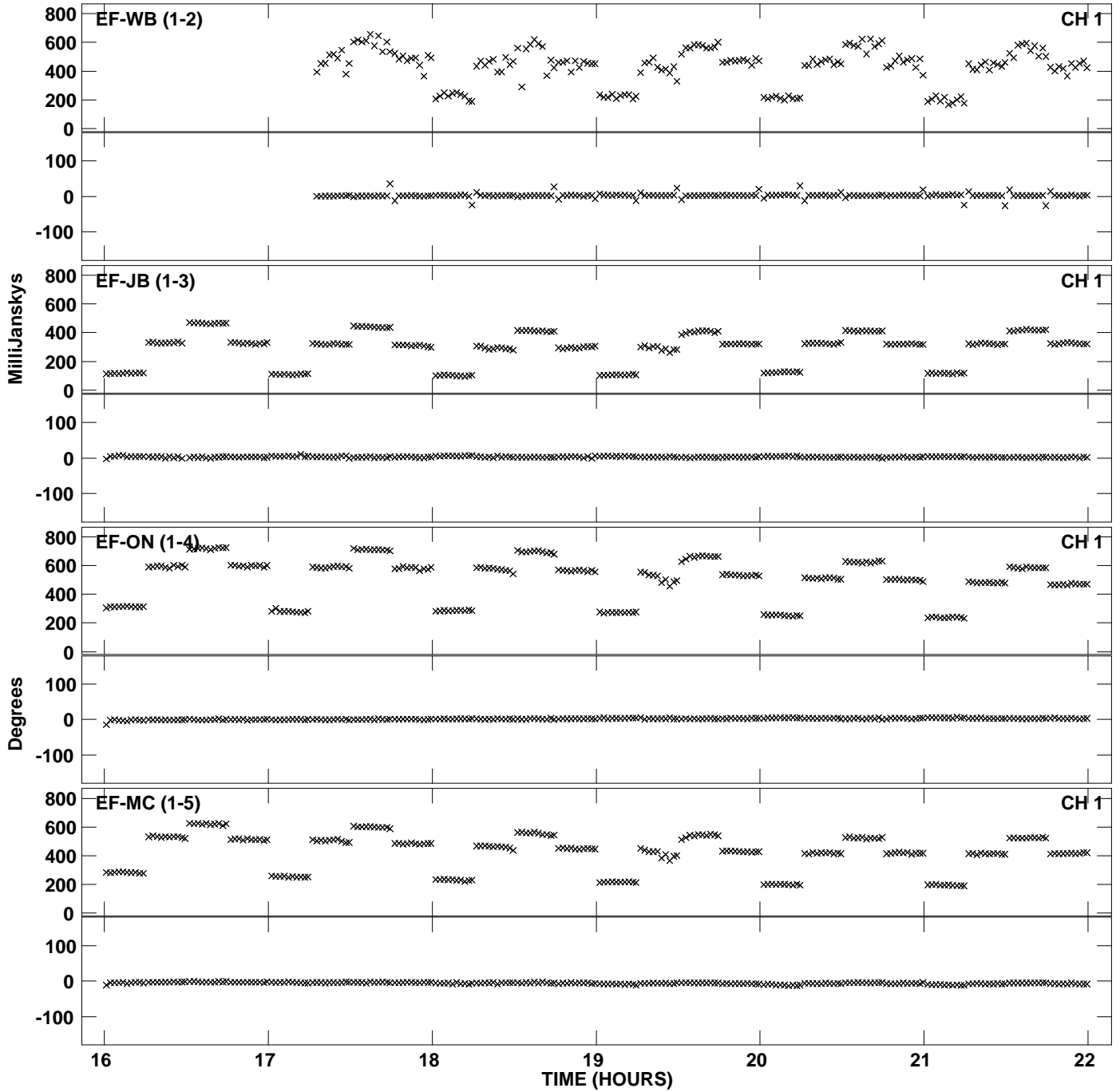
Plot file version 4 created 26-NOV-2012 11:33:38
Amplitude and Phase vs Time for EP077 2.UVDATA.1 Vect aver. CL # 3
IF 2 CHAN 1 - 32 STK LL



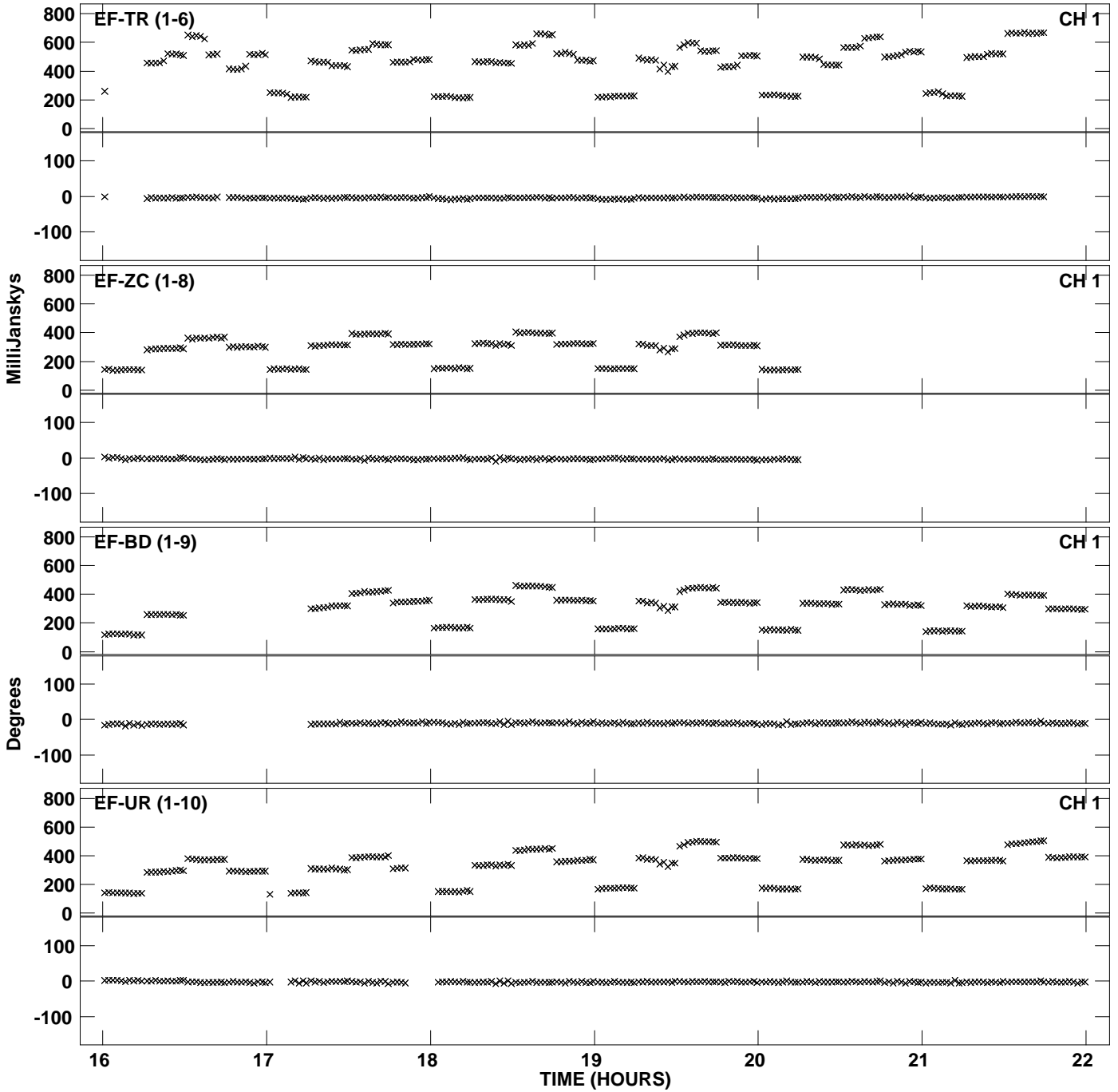
PLot file version 5 created 26-NOV-2012 11:33:38
Amplitude andPhase vs Time for EP077 2.UVDATA.1 Vect aver. CL # 3
IF 2 CHAN 1 - 32 STK LL



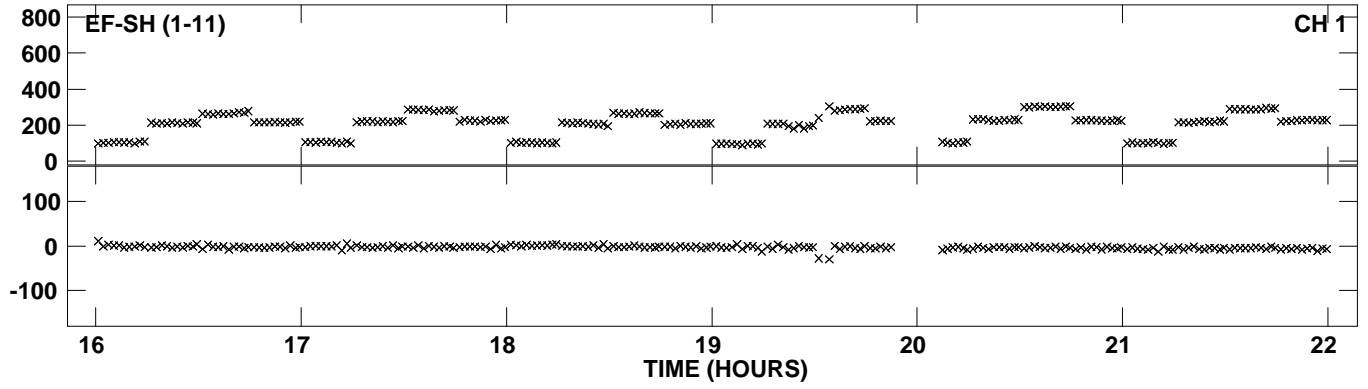
Plot file version 6 created 26-NOV-2012 11:33:45
Amplitude andPhase vs Time for EP077 2.UVDATA.1 Vect aver. CL # 3
IF 3 CHAN 1 - 32 STK LL



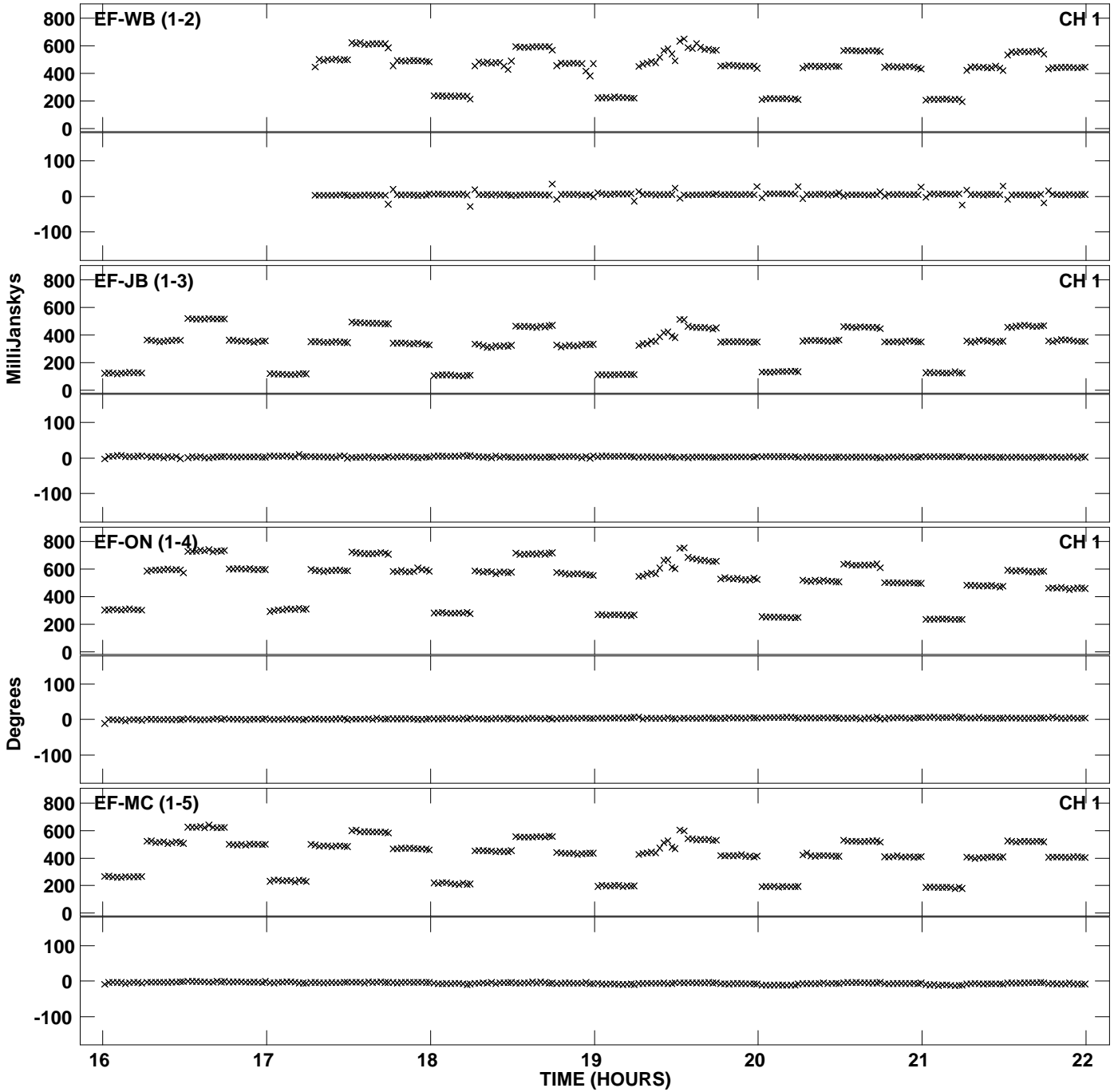
PLot file version 7 created 26-NOV-2012 11:33:45
Amplitude andPhase vs Time for EP077 2.UVDATA.1 Vect aver. CL # 3
IF 3 CHAN 1 - 32 STK LL



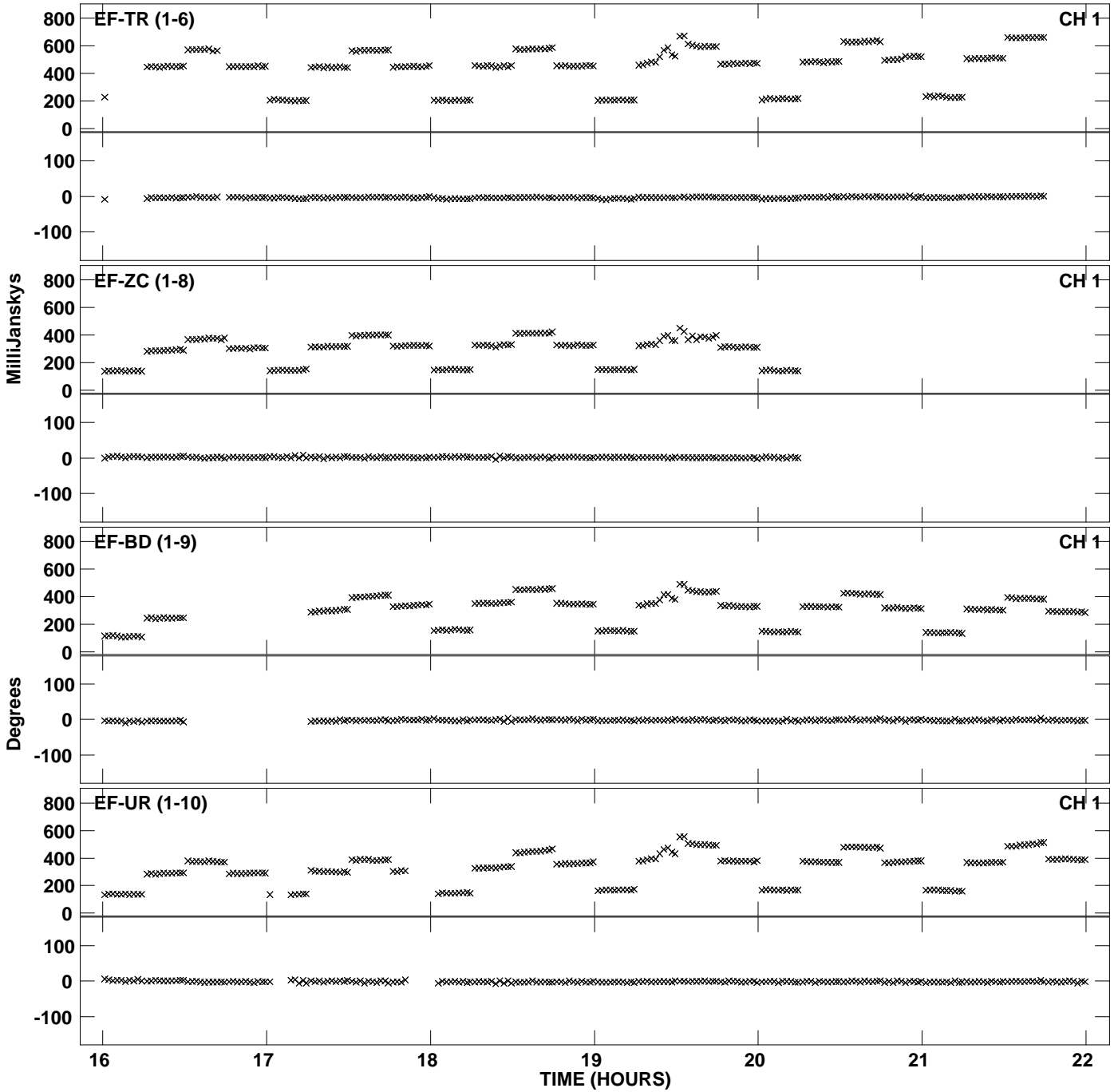
PLot file version 8 created 26-NOV-2012 11:33:45
Amplitude andPhase vs Time for EP077 2.UVDATA.1 Vect aver. CL # 3
IF 3 CHAN 1 - 32 STK LL



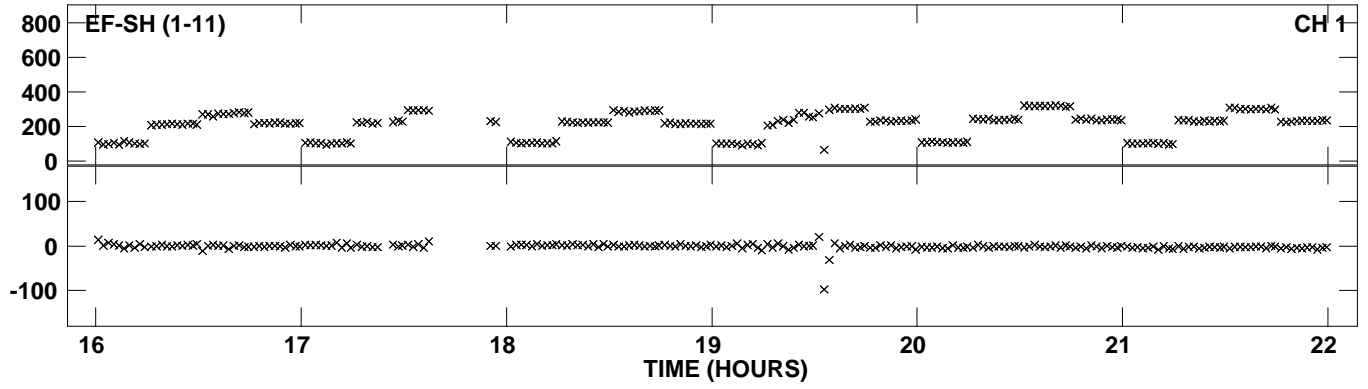
Plot file version 9 created 26-NOV-2012 11:33:51
Amplitude and Phase vs Time for EP077 2.UVDATA.1 Vect aver. CL # 3
IF 4 CHAN 1 - 32 STK LL



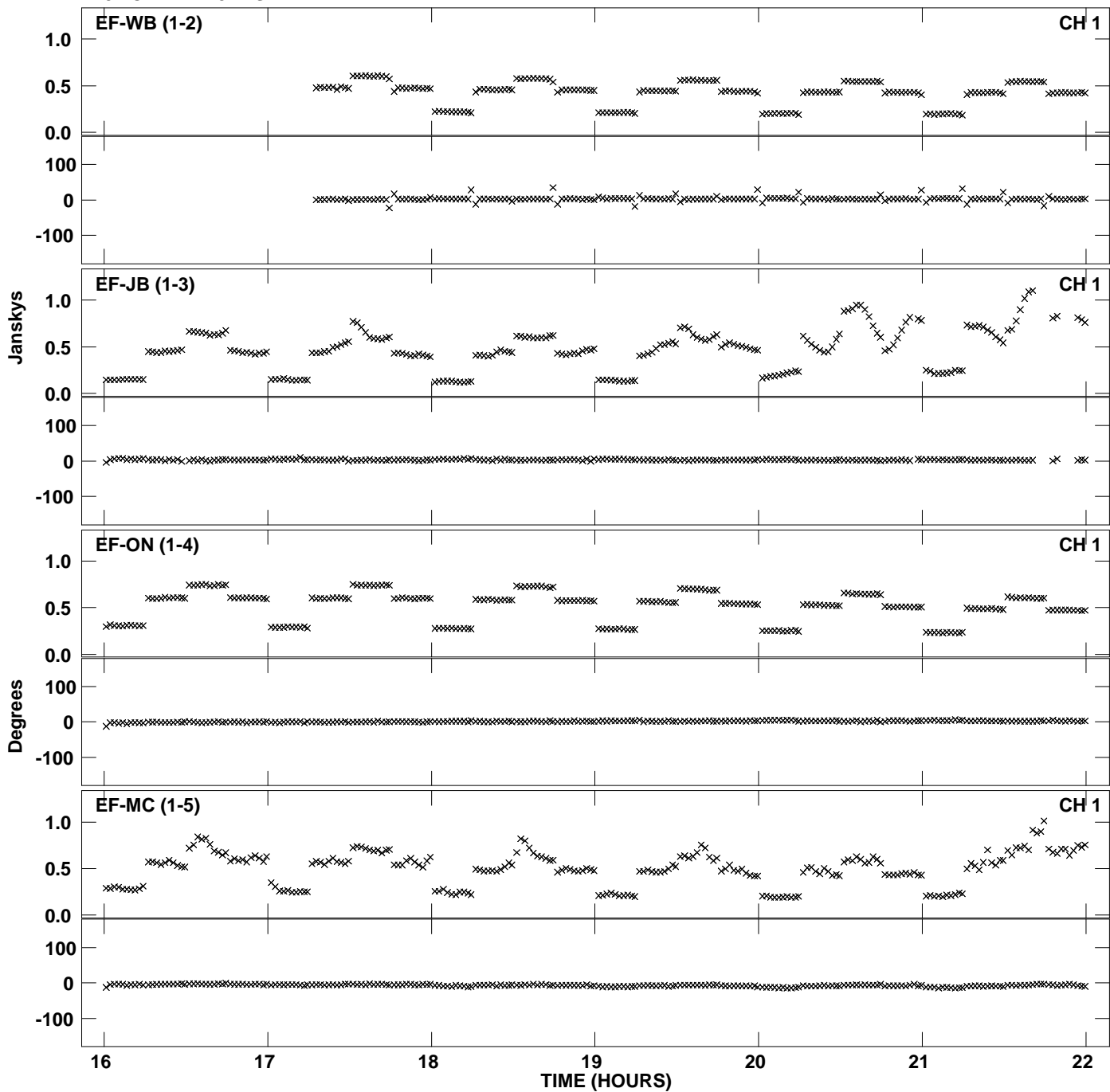
PLot file version 10 created 26-NOV-2012 11:33:51
Amplitude andPhase vs Time for EP077 2.UVDATA.1 Vect aver. CL # 3
IF 4 CHAN 1 - 32 STK LL



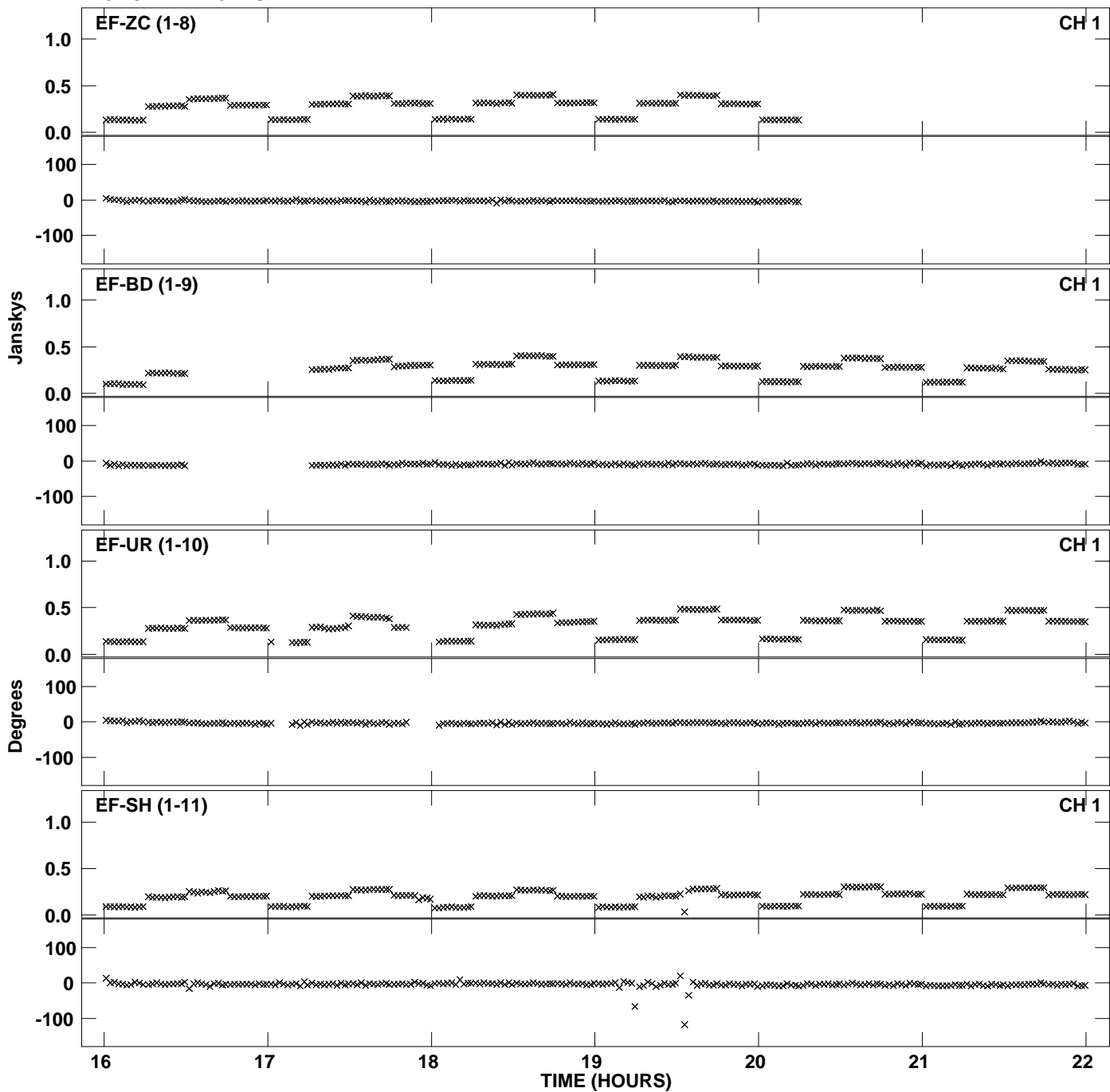
PLot file version 11 created 26-NOV-2012 11:33:51
Amplitude andPhase vs Time for EP077 2.UVDATA.1 Vect aver. CL # 3
IF 4 CHAN 1 - 32 STK LL



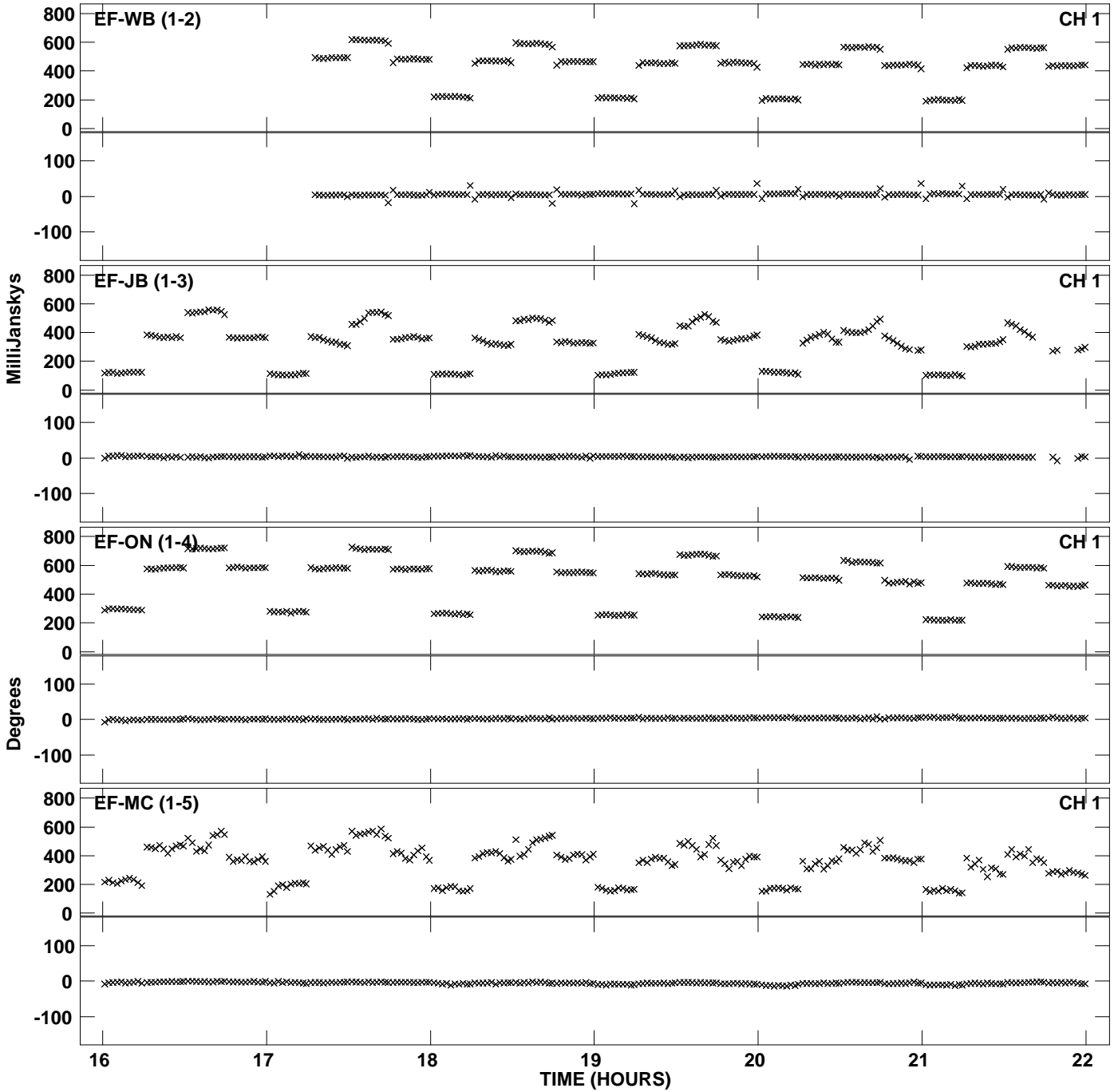
Plot file version 12 created 26-NOV-2012 11:33:58
Amplitude andPhase vs Time for EP077 2.UVDATA.1 Vect aver. CL # 3
IF 5 CHAN 1 - 32 STK LL



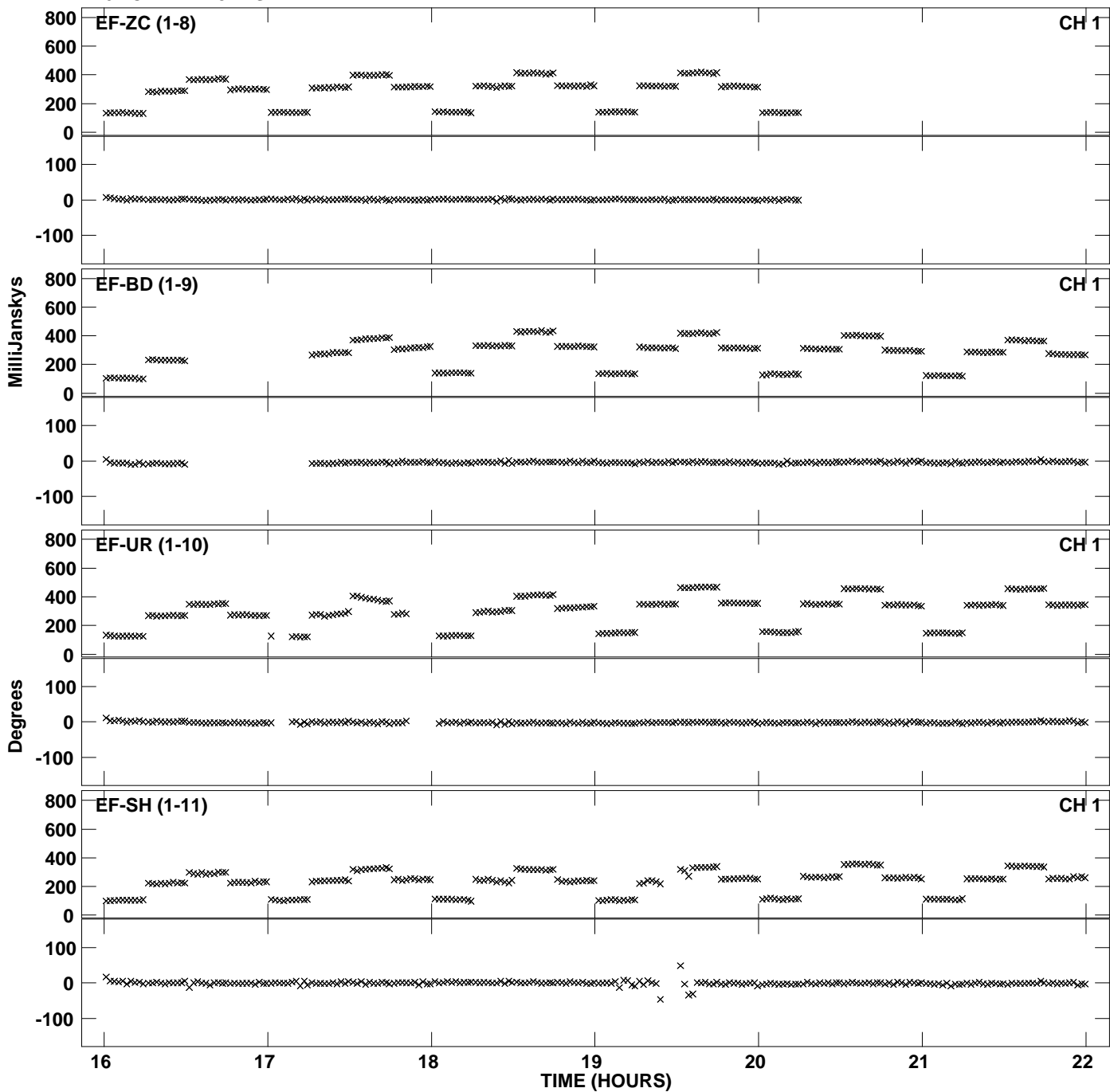
PLot file version 13 created 26-NOV-2012 11:33:58
Amplitude andPhase vs Time for EP077 2.UVDATA.1 Vect aver. CL # 3
IF 5 CHAN 1 - 32 STK LL



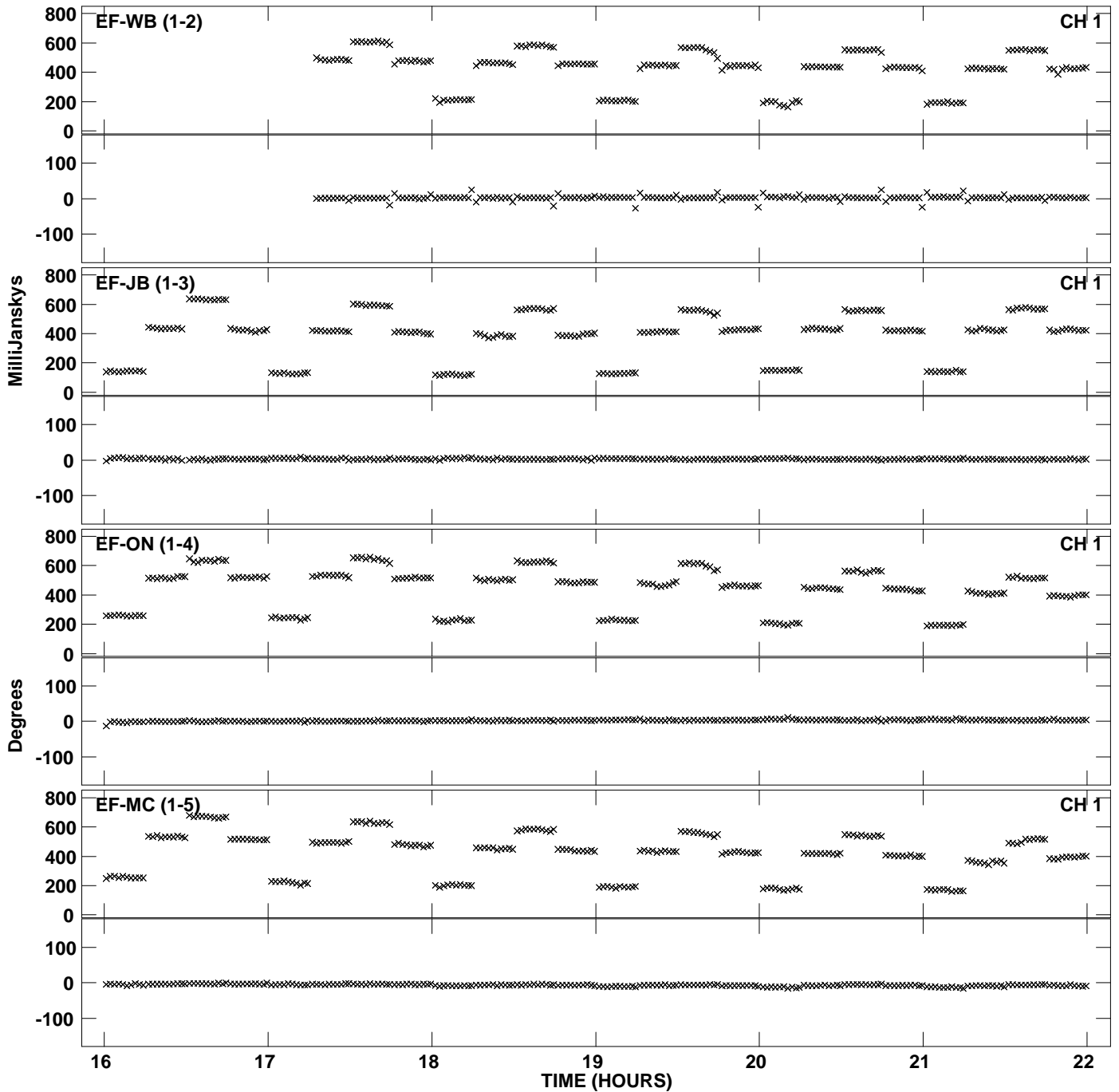
Plot file version 14 created 26-NOV-2012 11:34:04
Amplitude and Phase vs Time for EP077 2.UVDATA.1 Vect aver. CL # 3
IF 6 CHAN 1 - 32 STK LL



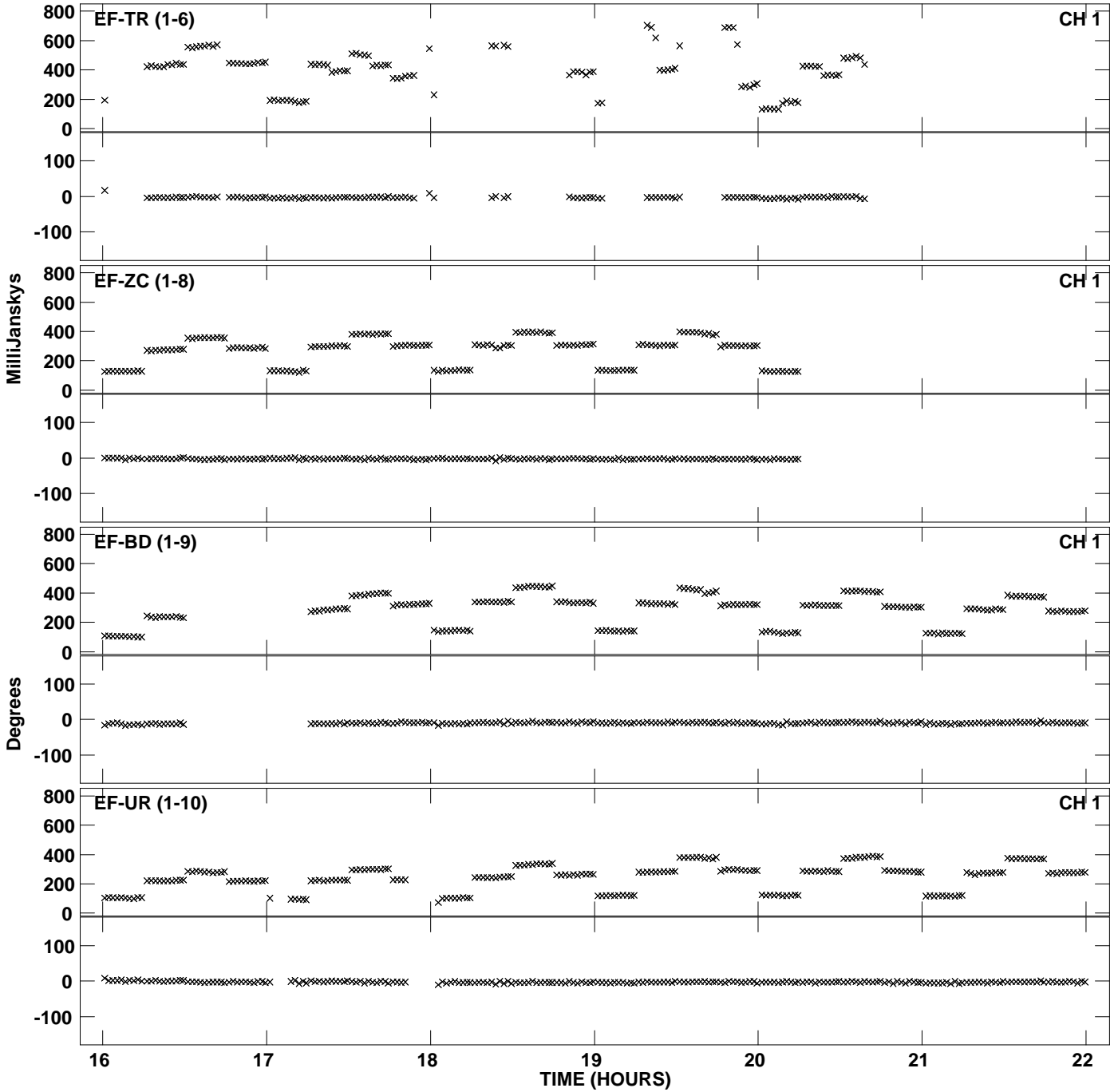
Plot file version 15 created 26-NOV-2012 11:34:04
Amplitude andPhase vs Time for EP077 2.UVDATA.1 Vect aver. CL # 3
IF 6 CHAN 1 - 32 STK LL



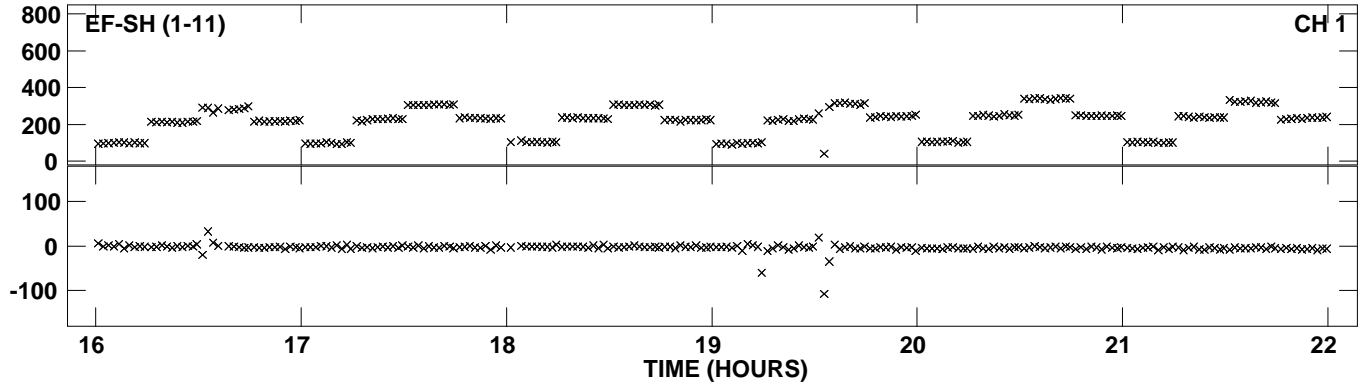
PLot file version 16 created 26-NOV-2012 11:34:11
Amplitude andPhase vs Time for EP077 2.UVDATA.1 Vect aver. CL # 3
IF 7 CHAN 1 - 32 STK LL



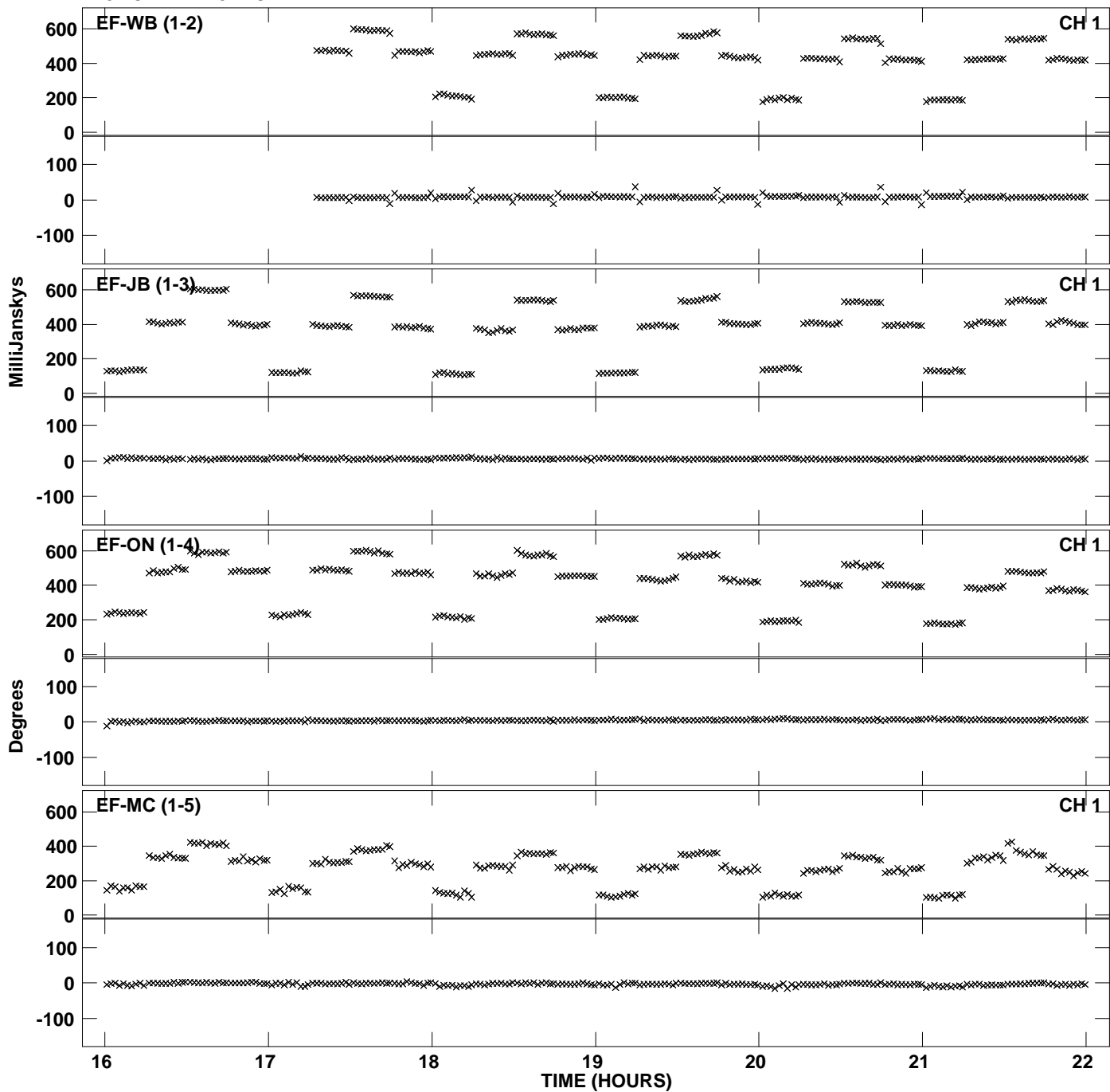
PLot file version 17 created 26-NOV-2012 11:34:11
Amplitude andPhase vs Time for EP077 2.UVDATA.1 Vect aver. CL # 3
IF 7 CHAN 1 - 32 STK LL



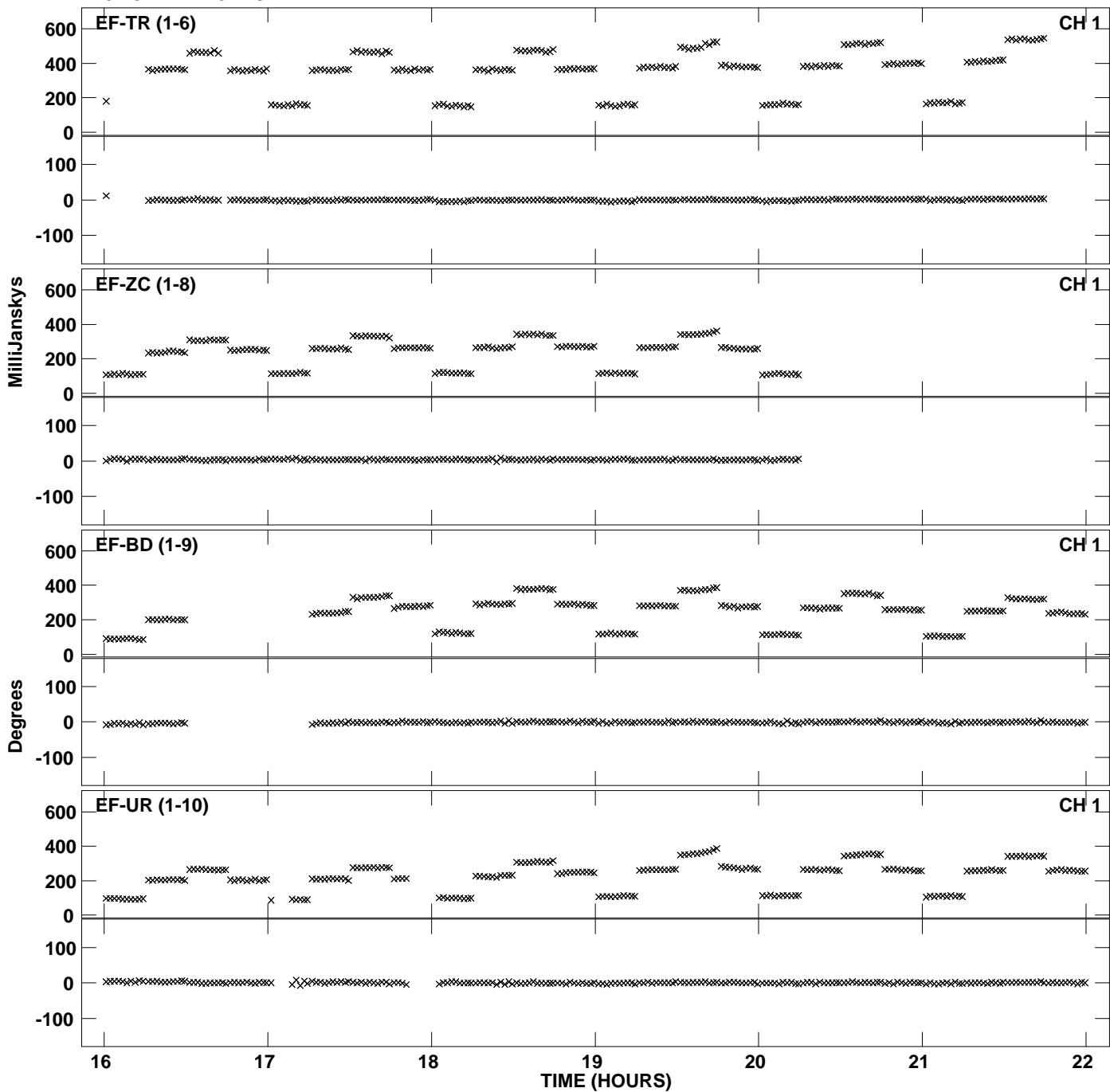
PLot file version 18 created 26-NOV-2012 11:34:11
Amplitude andPhase vs Time for EP077 2.UVDATA.1 Vect aver. CL # 3
IF 7 CHAN 1 - 32 STK LL



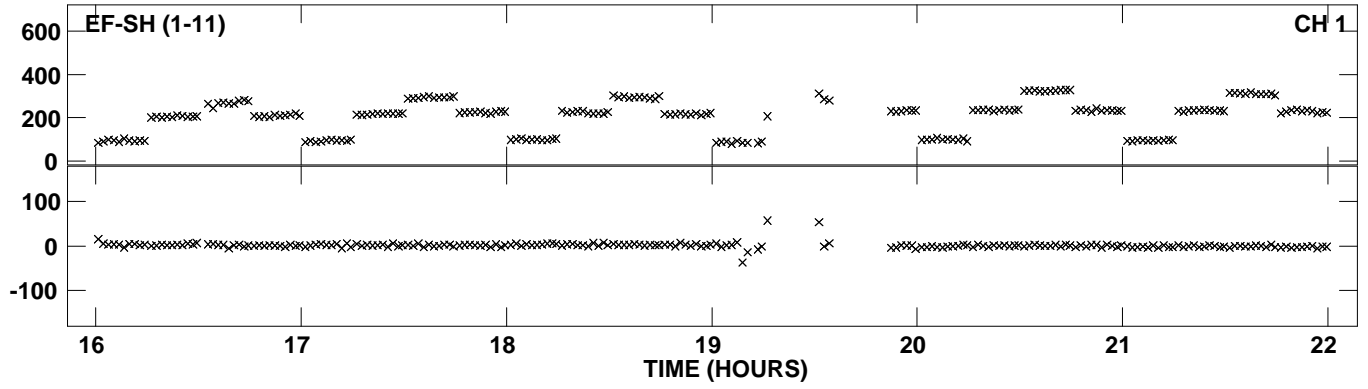
Plot file version 19 created 26-NOV-2012 11:34:18
Amplitude andPhase vs Time for EP077 2.UVDATA.1 Vect aver. CL # 3
IF 8 CHAN 1 - 32 STK LL



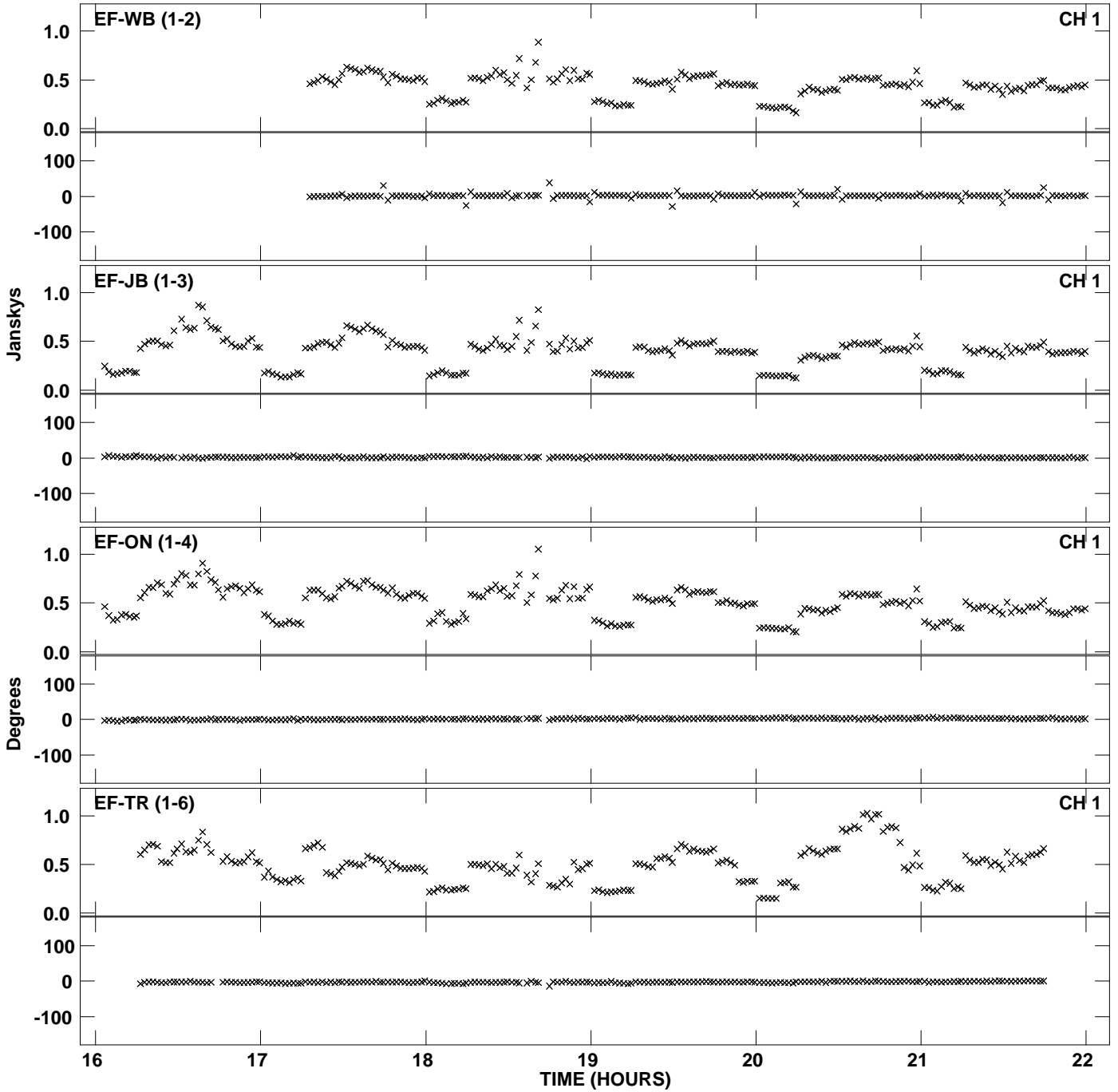
Plot file version 20 created 26-NOV-2012 11:34:18
Amplitude andPhase vs Time for EP077 2.UVDATA.1 Vect aver. CL # 3
IF 8 CHAN 1 - 32 STK LL



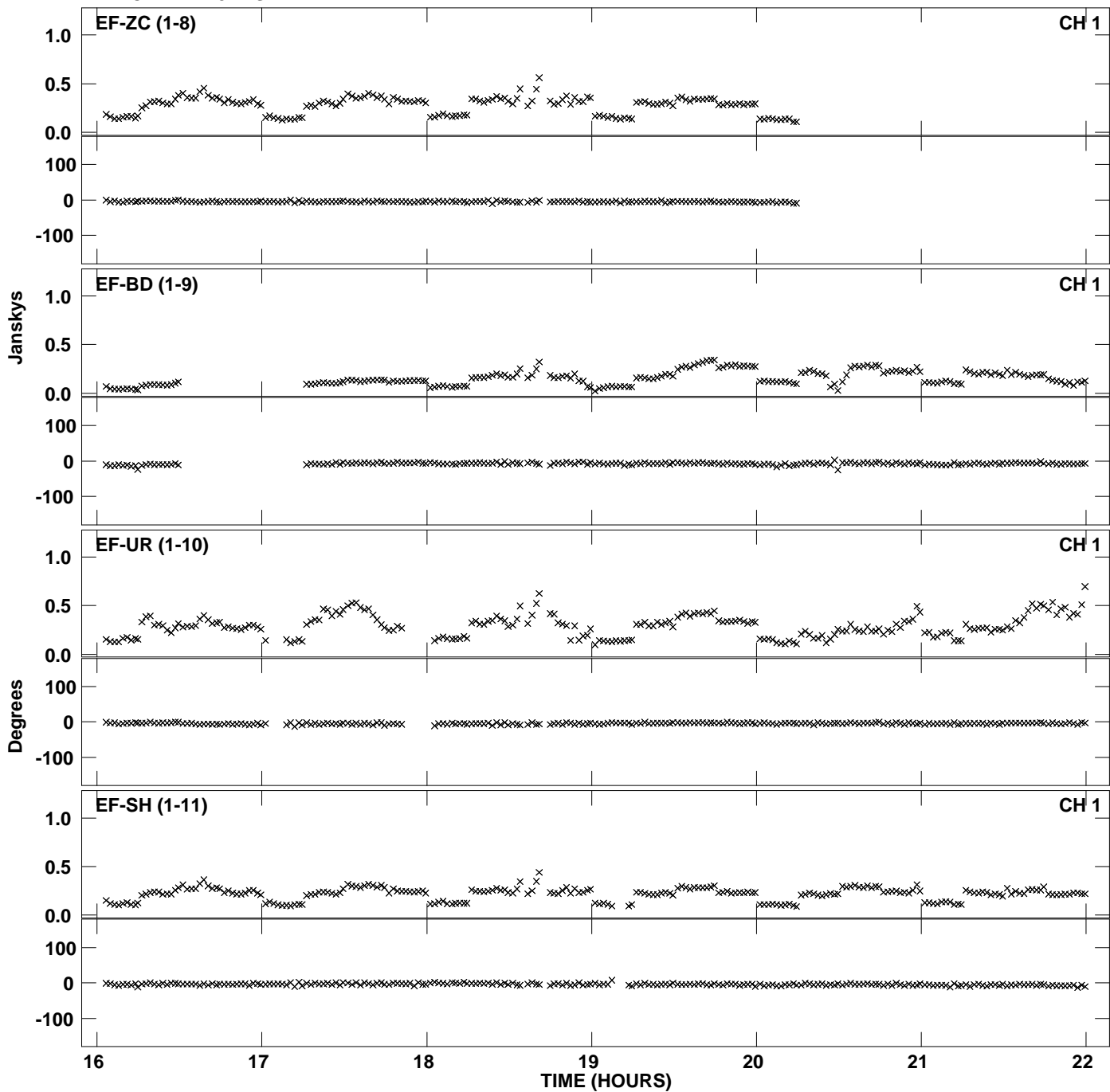
PLot file version 21 created 26-NOV-2012 11:34:18
Amplitude andPhase vs Time for EP077 2.UVDATA.1 Vect aver. CL # 3
IF 8 CHAN 1 - 32 STK LL



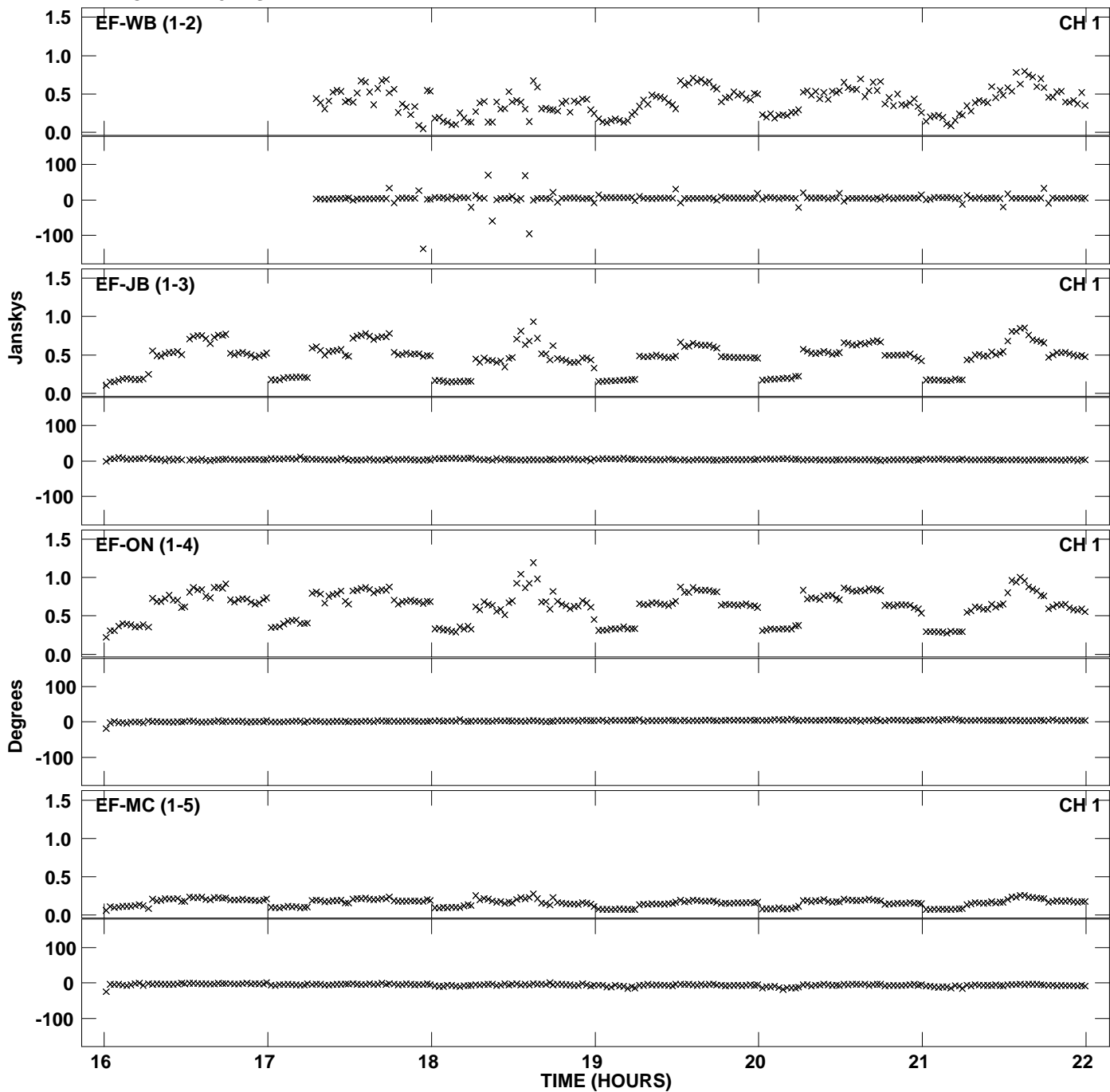
Plot file version 22 created 26-NOV-2012 11:34:23
Amplitude and Phase vs Time for EP077 2.UVDATA.1 Vect aver. CL # 3
IF 1 CHAN 1 - 32 STK RR



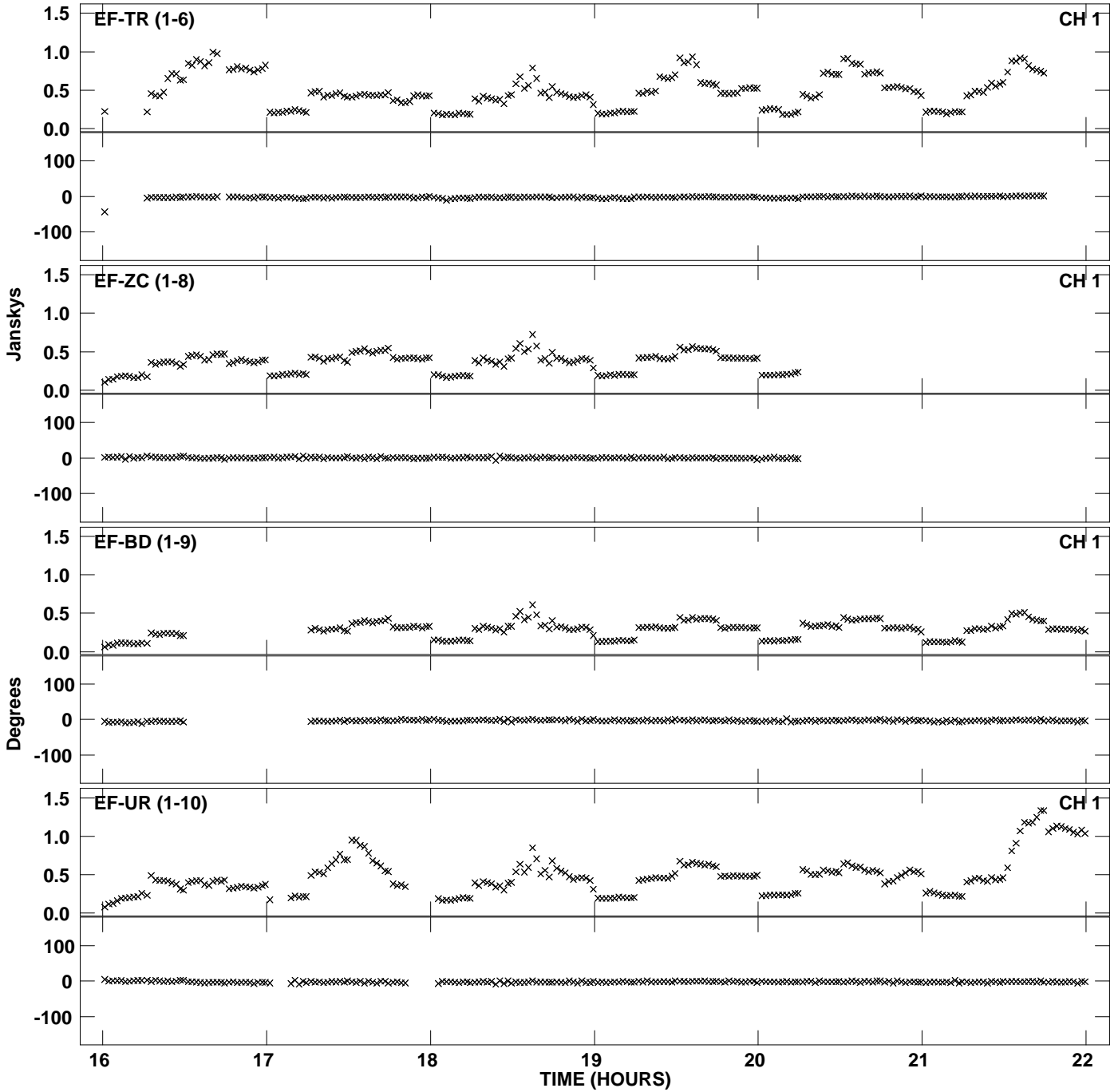
Plot file version 23 created 26-NOV-2012 11:34:23
Amplitude and Phase vs Time for EP077 2.UVDATA.1 Vect aver. CL # 3
IF 1 CHAN 1 - 32 STK RR



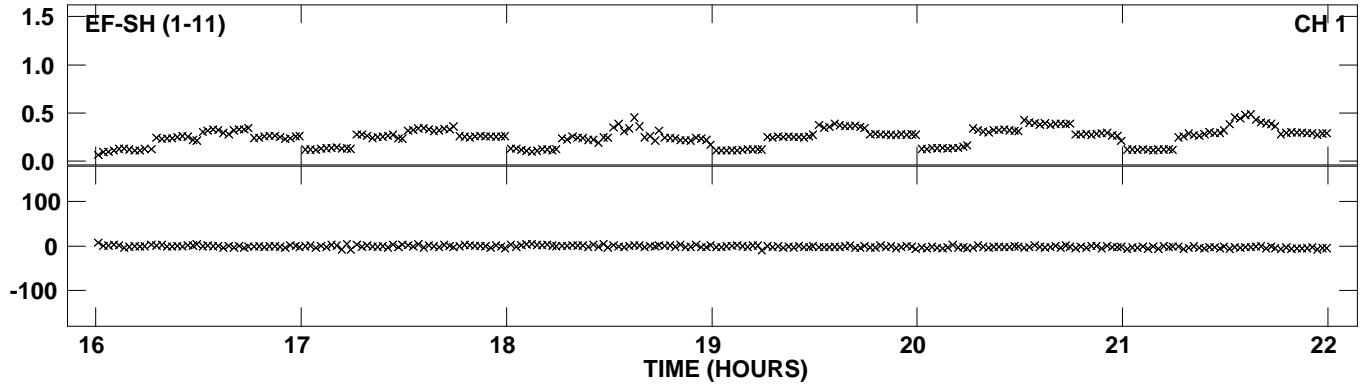
Plot file version 24 created 26-NOV-2012 11:34:29
Amplitude andPhase vs Time for EP077 2.UVDATA.1 Vect aver. CL # 3
IF 2 CHAN 1 - 32 STK RR



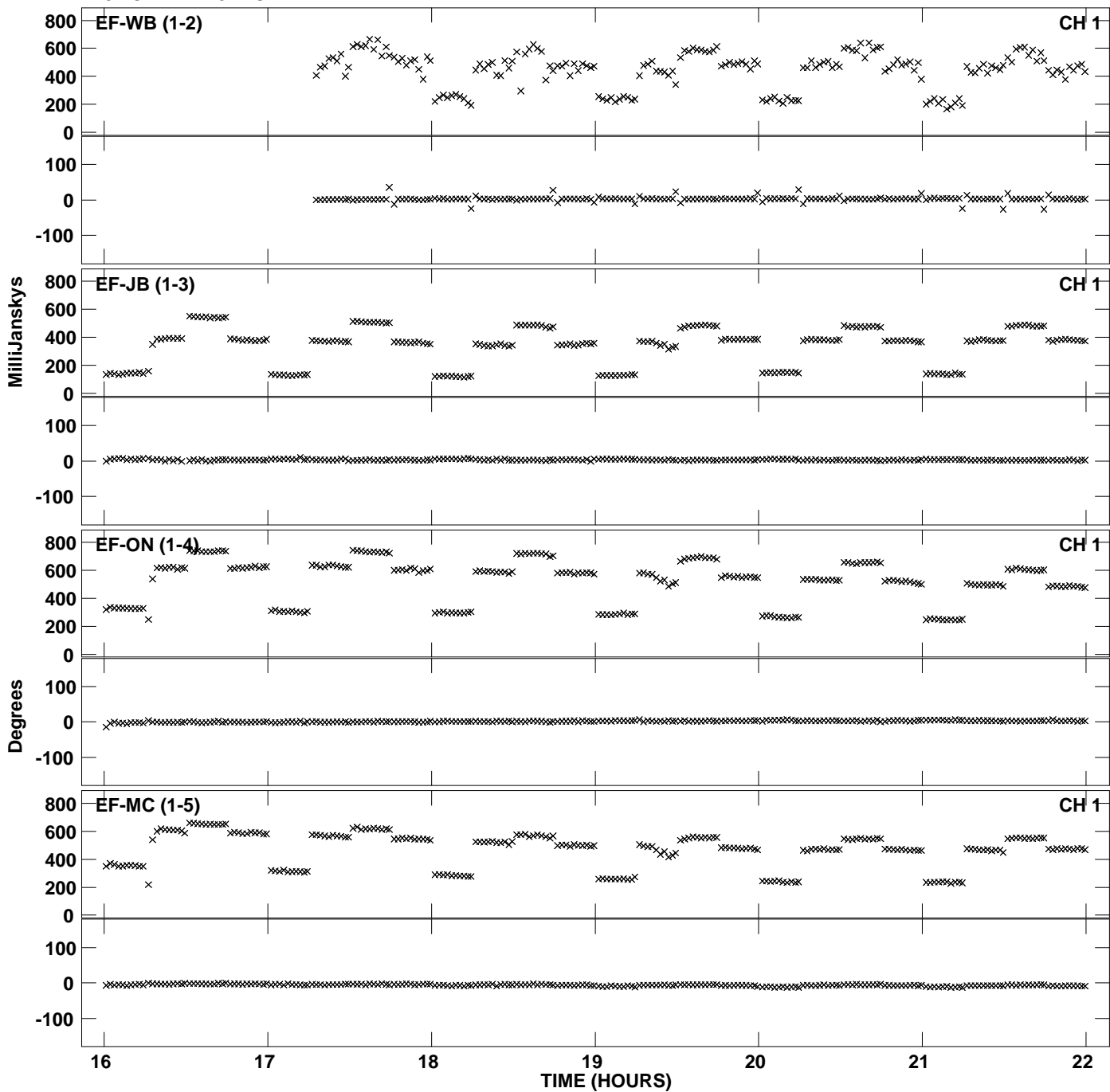
Plot file version 25 created 26-NOV-2012 11:34:29
Amplitude andPhase vs Time for EP077 2.UVDATA.1 Vect aver. CL # 3
IF 2 CHAN 1 - 32 STK RR



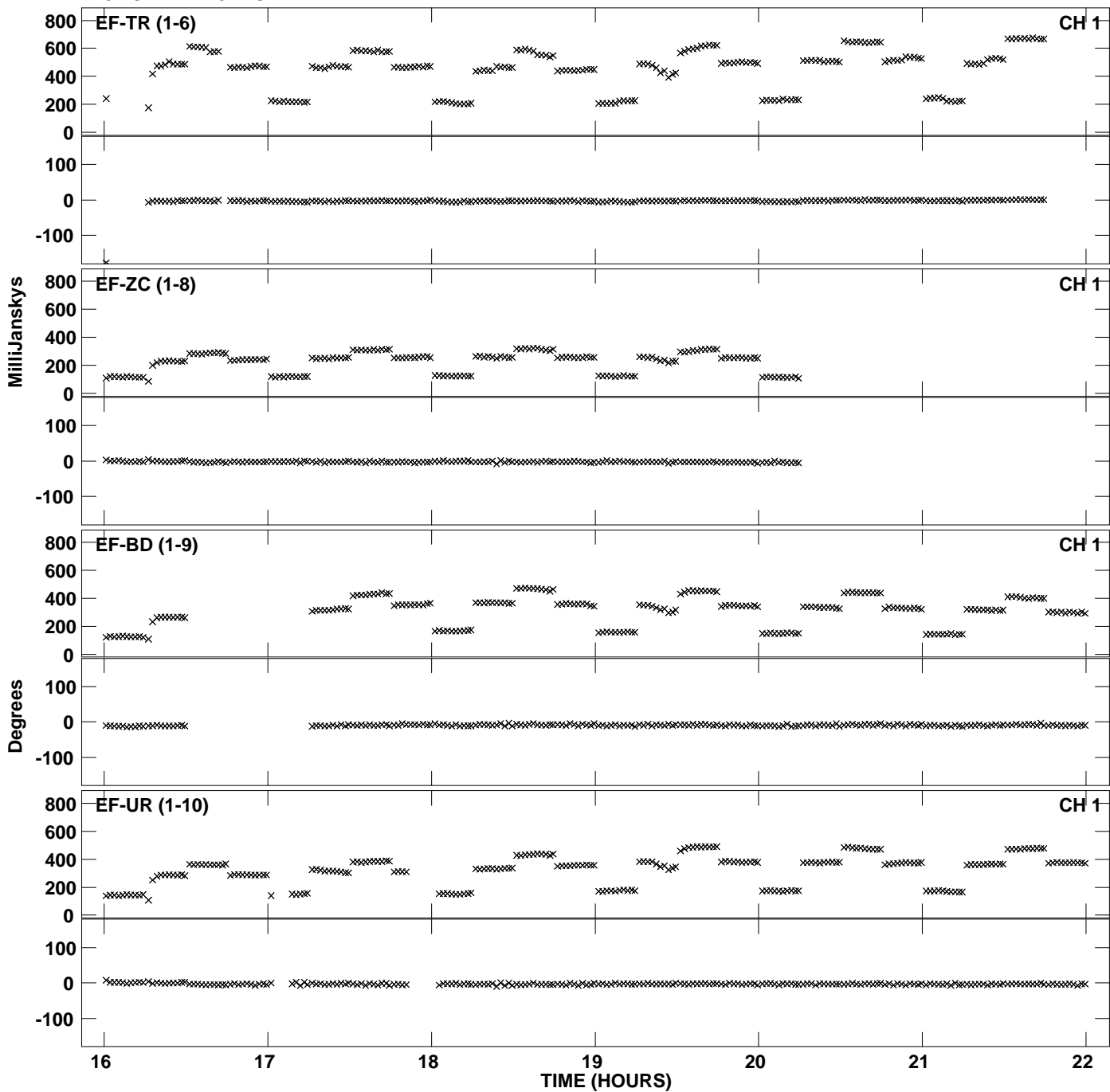
PLot file version 26 created 26-NOV-2012 11:34:29
Amplitude andPhase vs Time for EP077 2.UVDATA.1 Vect aver. CL # 3
IF 2 CHAN 1 - 32 STK RR



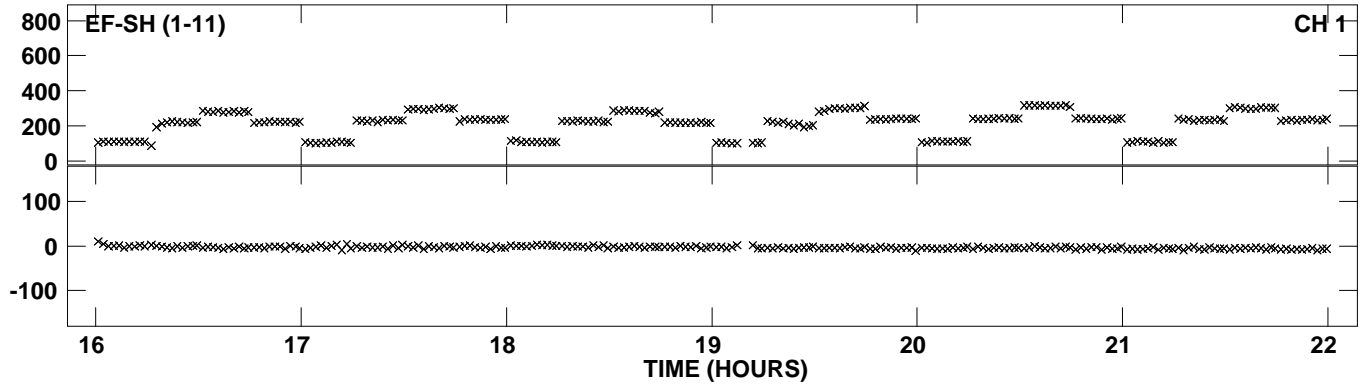
Plot file version 27 created 26-NOV-2012 11:34:35
Amplitude and Phase vs Time for EP077 2.UVDATA.1 Vect aver. CL # 3
IF 3 CHAN 1 - 32 STK RR



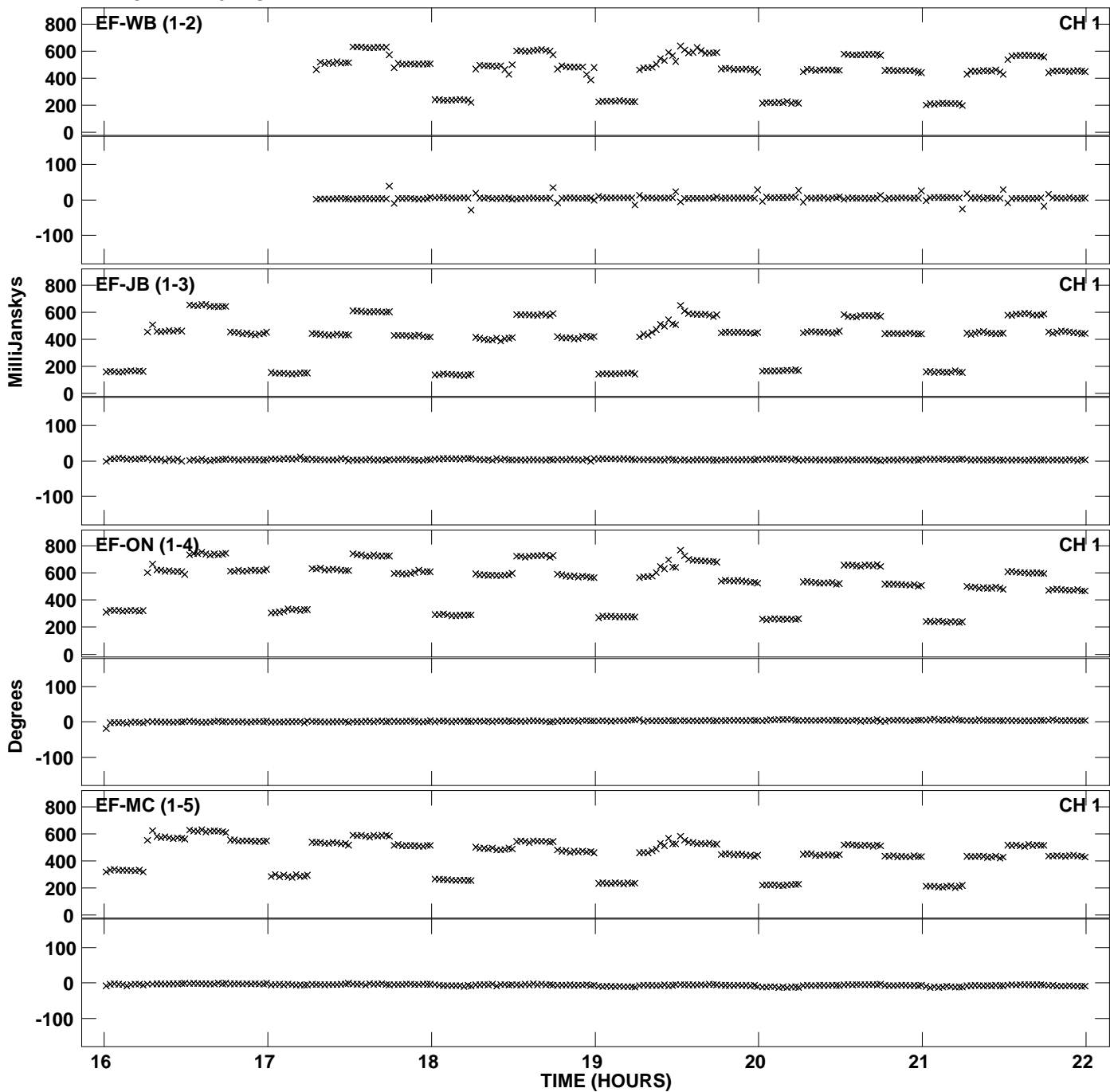
PLot file version 28 created 26-NOV-2012 11:34:35
Amplitude andPhase vs Time for EP077 2.UVDATA.1 Vect aver. CL # 3
IF 3 CHAN 1 - 32 STK RR



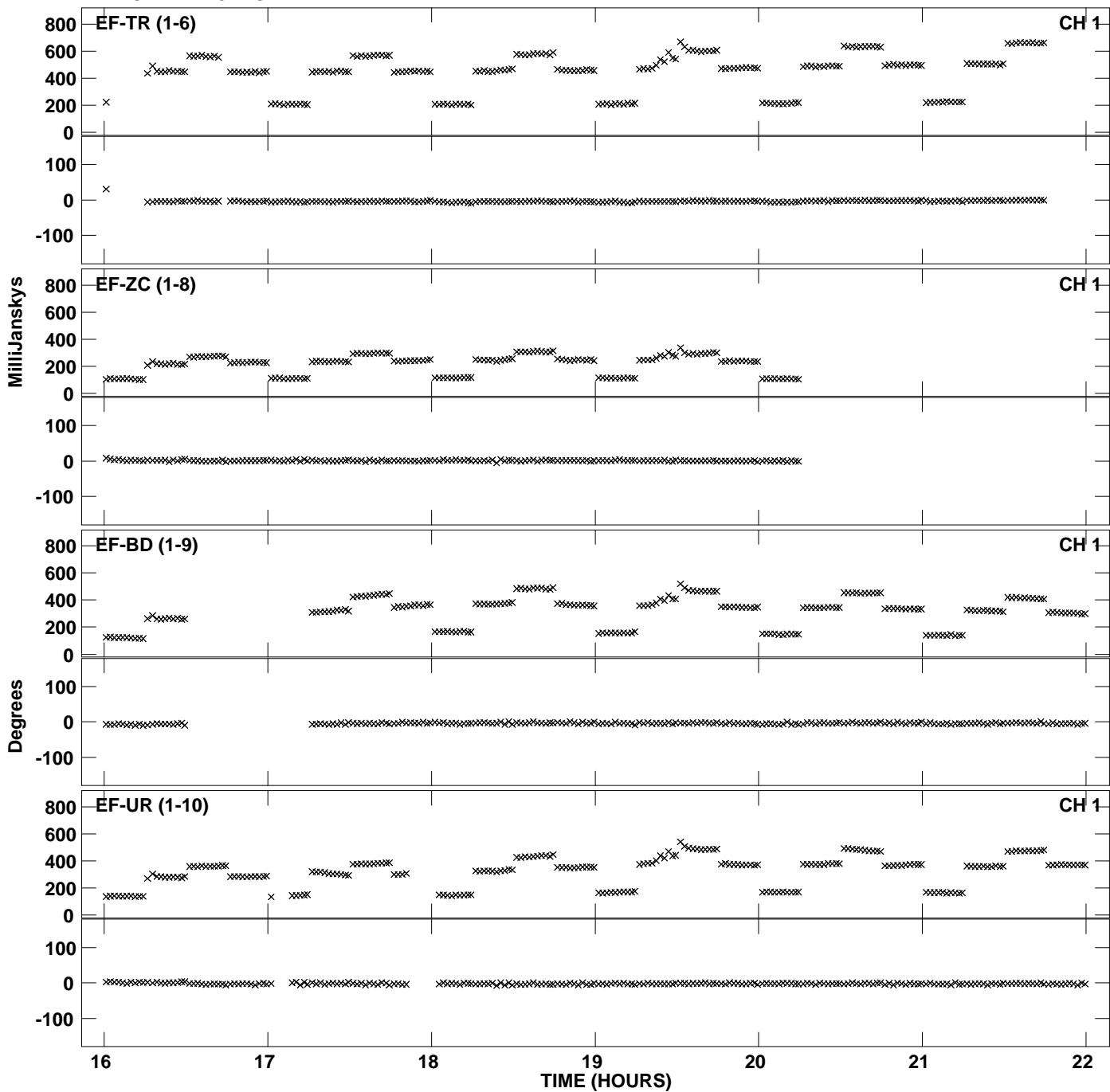
PLot file version 29 created 26-NOV-2012 11:34:35
Amplitude andPhase vs Time for EP077 2.UVDATA.1 Vect aver. CL # 3
IF 3 CHAN 1 - 32 STK RR



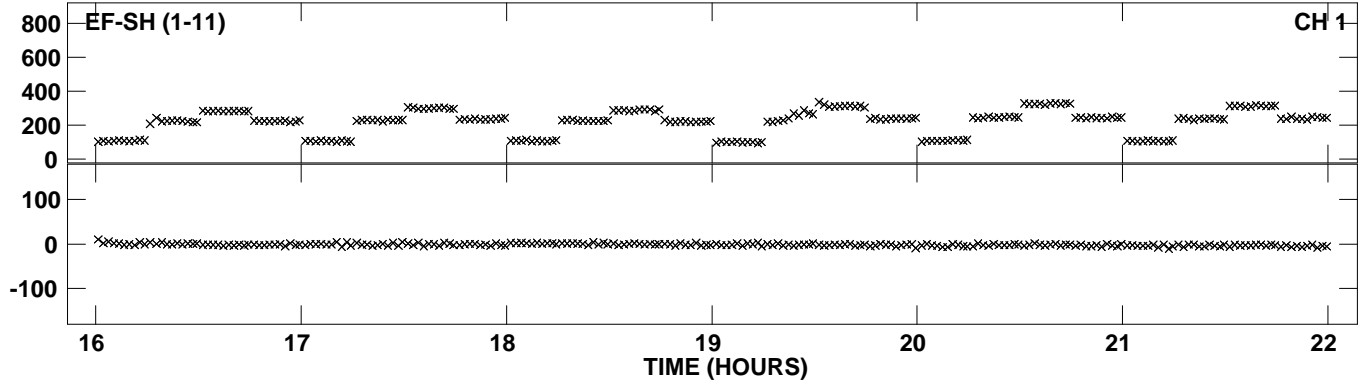
Plot file version 30 created 26-NOV-2012 11:34:41
Amplitude andPhase vs Time for EP077 2.UVDATA.1 Vect aver. CL # 3
IF 4 CHAN 1 - 32 STK RR



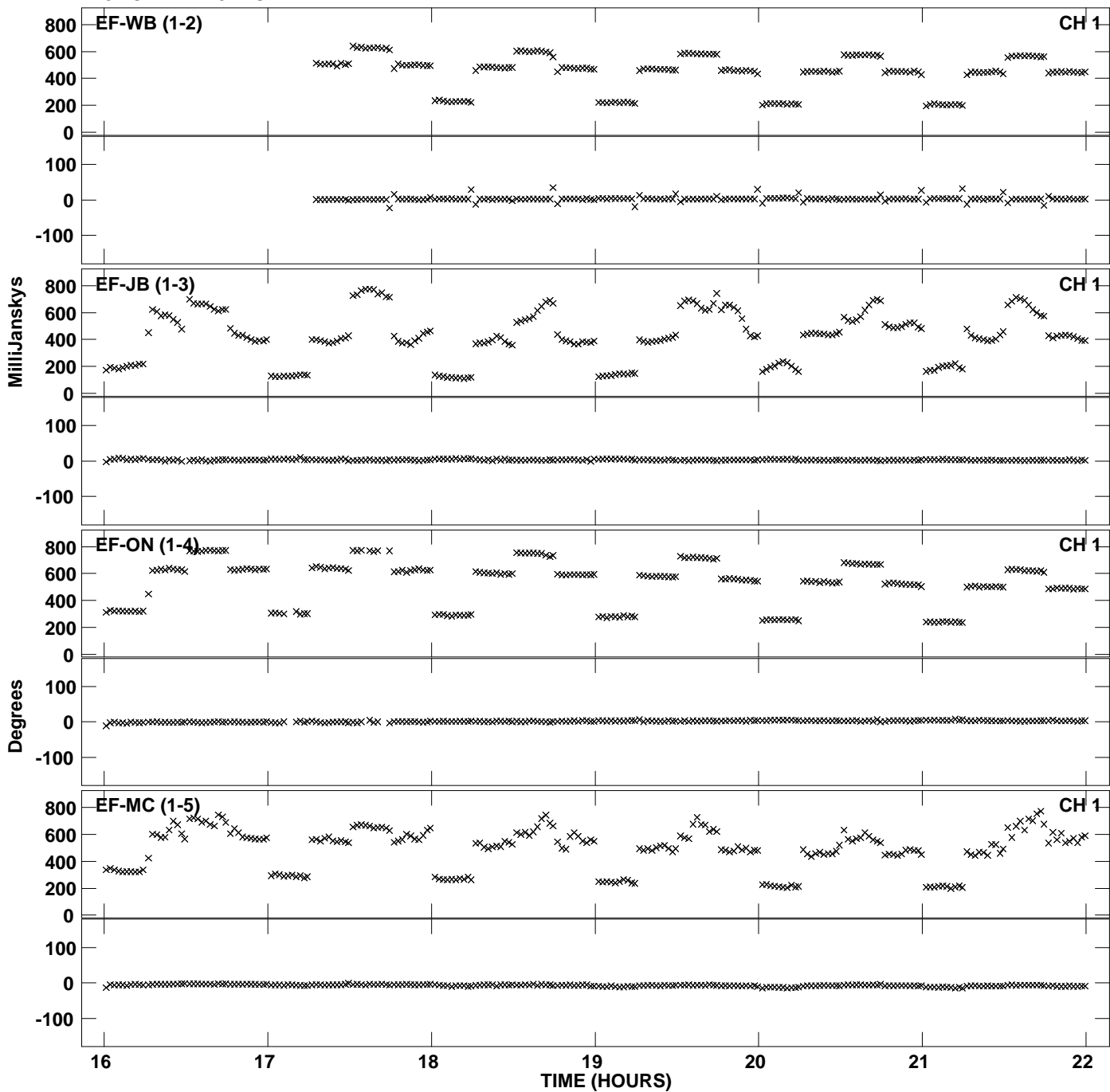
PLot file version 31 created 26-NOV-2012 11:34:41
Amplitude andPhase vs Time for EP077 2.UVDATA.1 Vect aver. CL # 3
IF 4 CHAN 1 - 32 STK RR



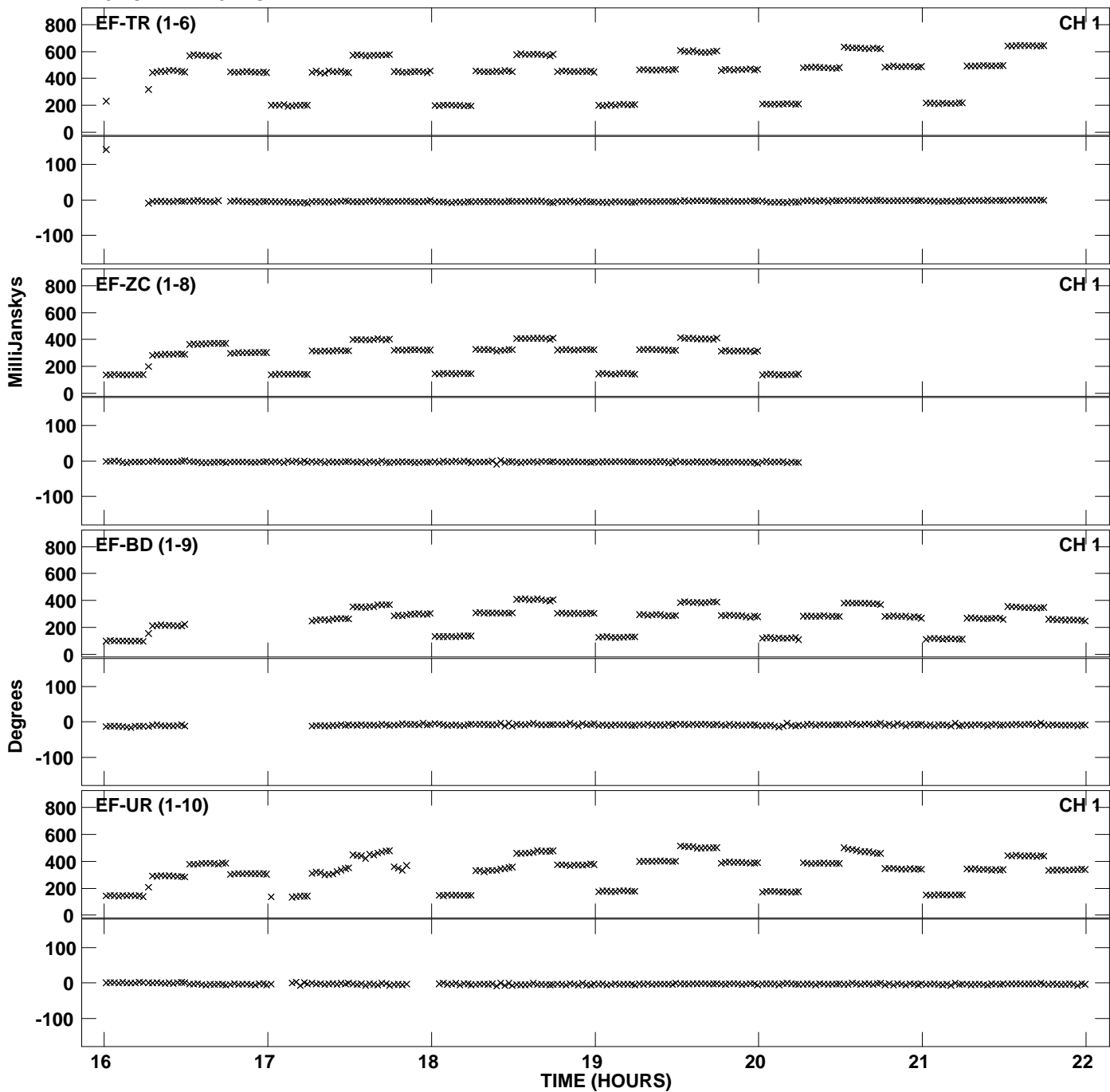
PLot file version 32 created 26-NOV-2012 11:34:41
Amplitude andPhase vs Time for EP077 2.UVDATA.1 Vect aver. CL # 3
IF 4 CHAN 1 - 32 STK RR



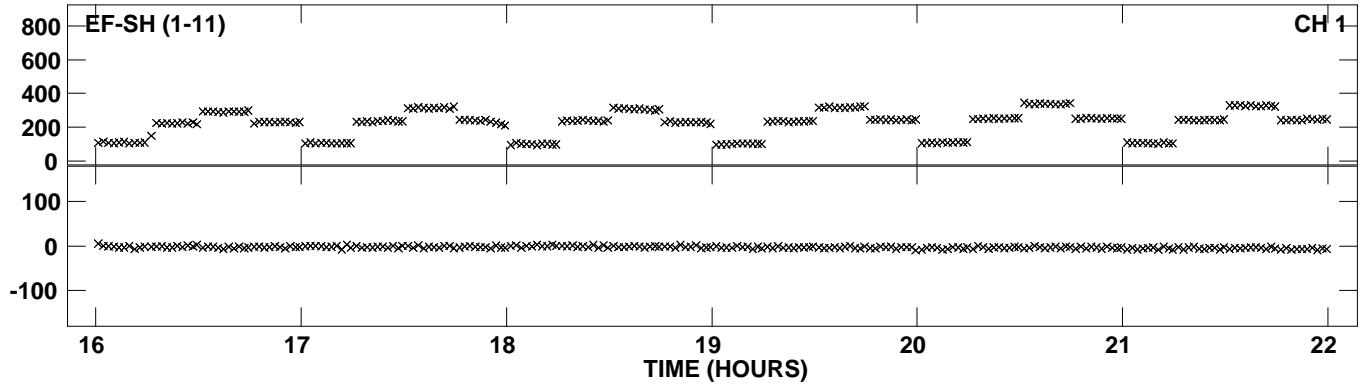
Plot file version 33 created 26-NOV-2012 11:34:47
Amplitude and Phase vs Time for EP077 2.UVDATA.1 Vect aver. CL # 3
IF 5 CHAN 1 - 32 STK RR



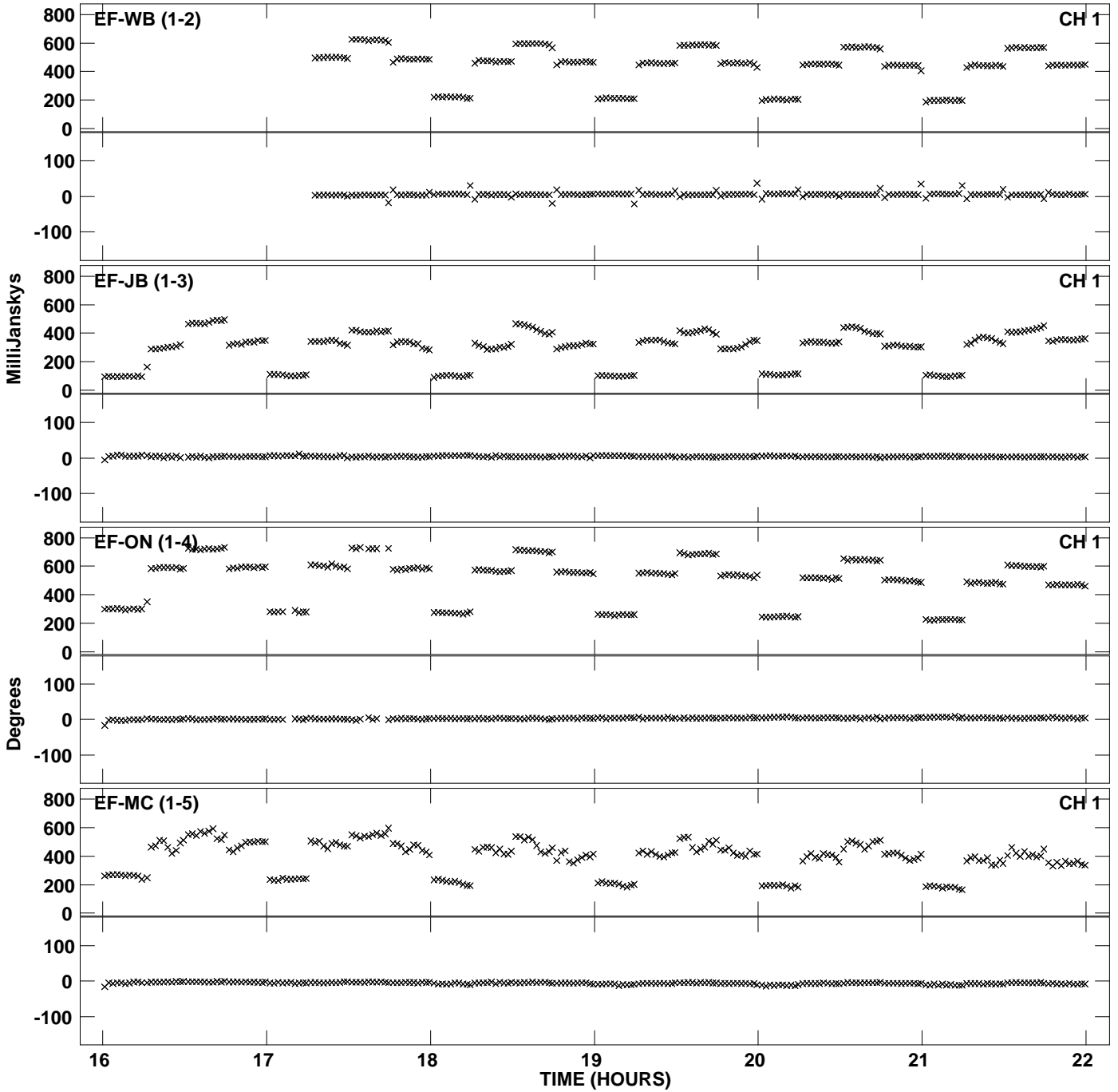
Plot file version 34 created 26-NOV-2012 11:34:47
Amplitude andPhase vs Time for EP077 2.UVDATA.1 Vect aver. CL # 3
IF 5 CHAN 1 - 32 STK RR



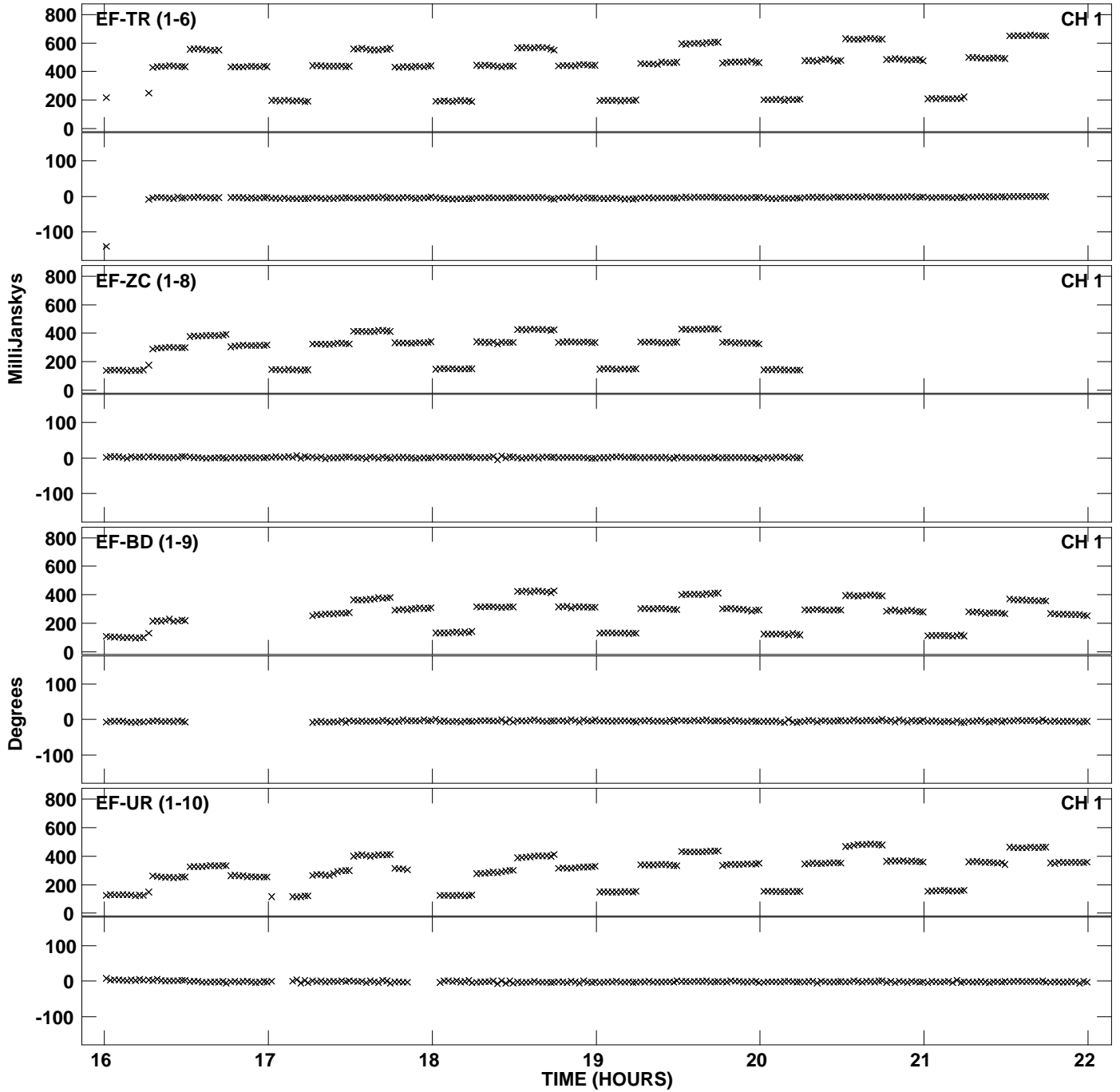
Plot file version 35 created 26-NOV-2012 11:34:47
Amplitude andPhase vs Time for EP077 2.UVDATA.1 Vect aver. CL # 3
IF 5 CHAN 1 - 32 STK RR



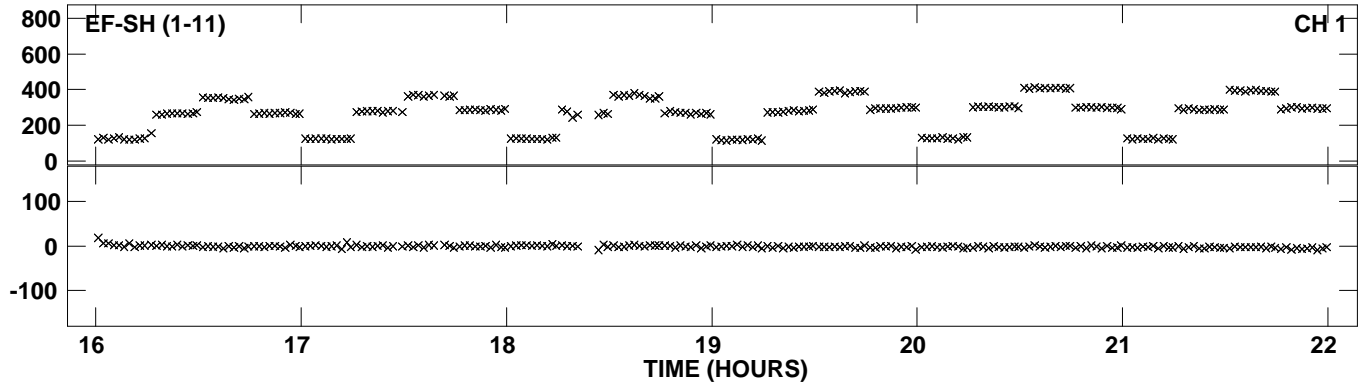
Plot file version 36 created 26-NOV-2012 11:34:53
Amplitude andPhase vs Time for EP077 2.UVDATA.1 Vect aver. CL # 3
IF 6 CHAN 1 - 32 STK RR



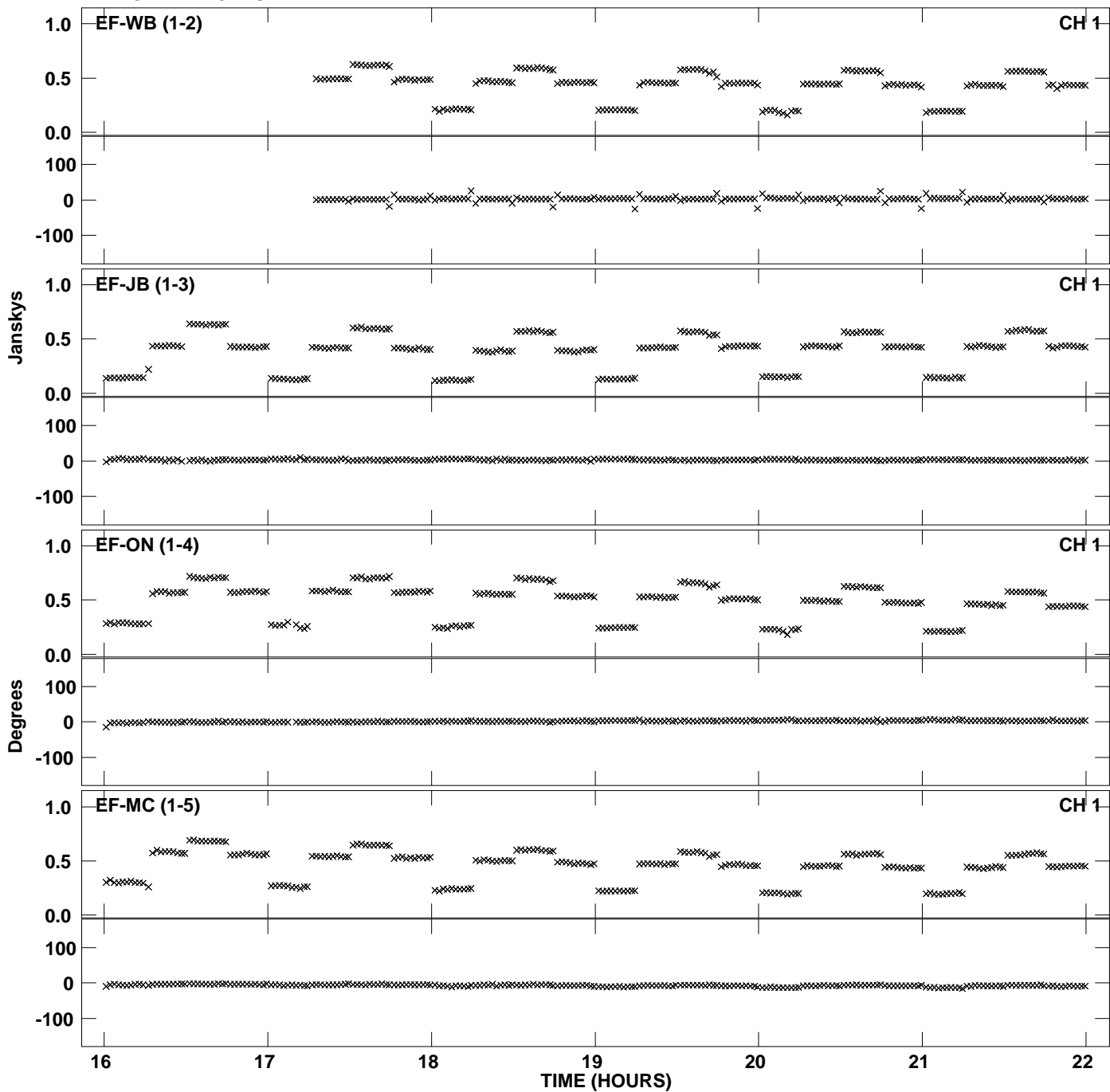
Plot file version 37 created 26-NOV-2012 11:34:53
Amplitude andPhase vs Time for EP077 2.UVDATA.1 Vect aver. CL # 3
IF 6 CHAN 1 - 32 STK RR



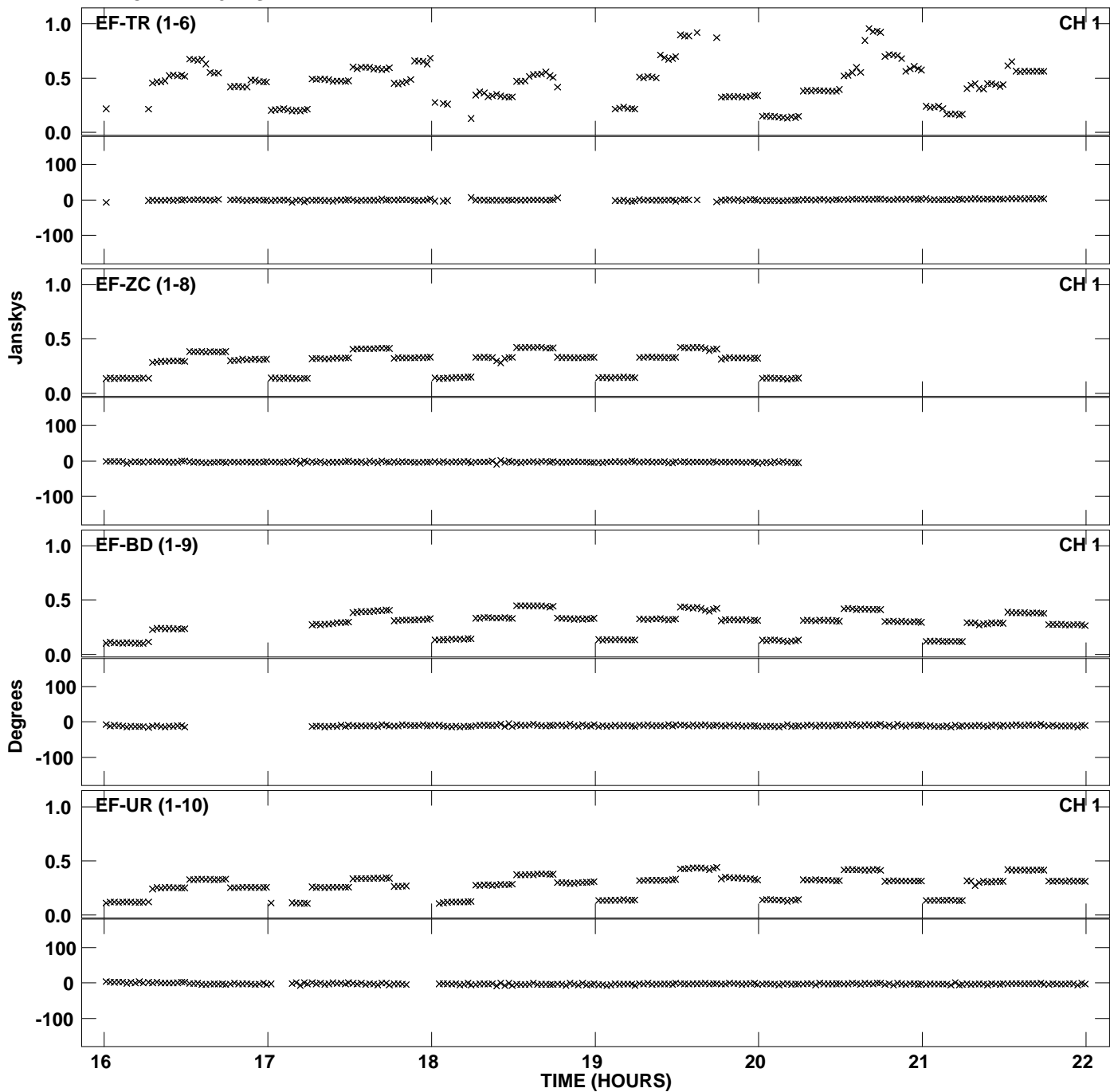
PLot file version 38 created 26-NOV-2012 11:34:53
Amplitude andPhase vs Time for EP077 2.UVDATA.1 Vect aver. CL # 3
IF 6 CHAN 1 - 32 STK RR



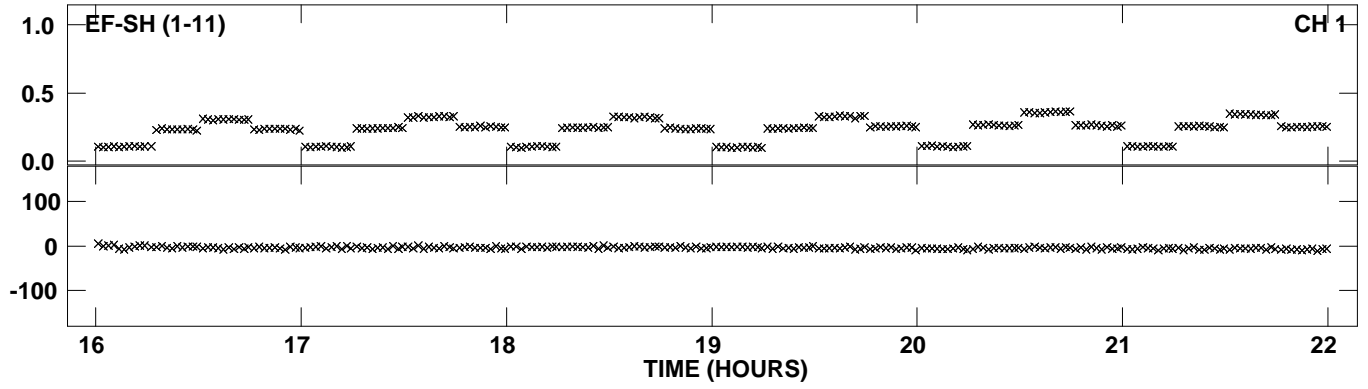
Plot file version 39 created 26-NOV-2012 11:34:59
Amplitude andPhase vs Time for EP077 2.UVDATA.1 Vect aver. CL # 3
IF 7 CHAN 1 - 32 STK RR



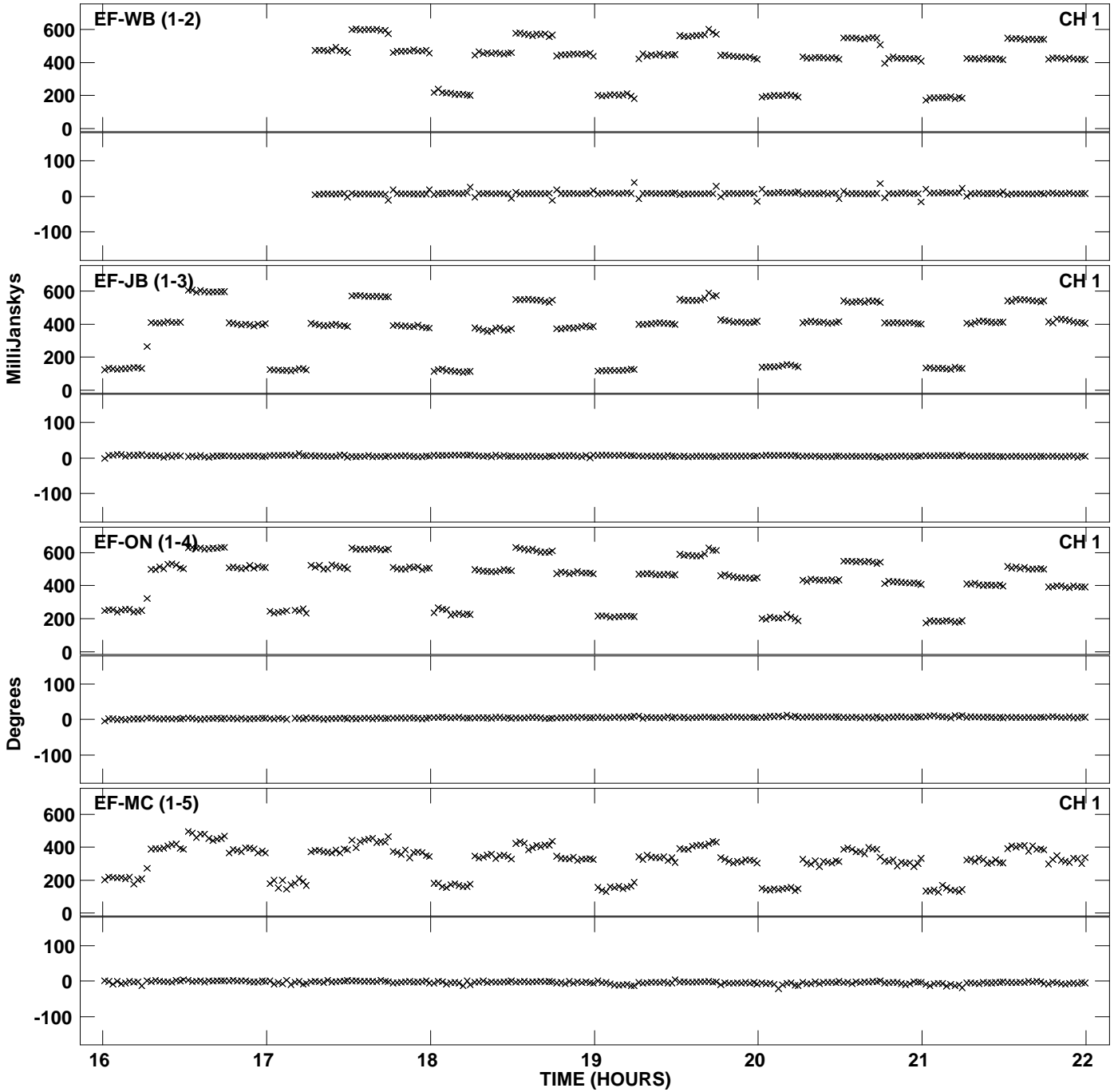
PLot file version 40 created 26-NOV-2012 11:34:59
Amplitude andPhase vs Time for EP077 2.UVDATA.1 Vect aver. CL # 3
IF 7 CHAN 1 - 32 STK RR



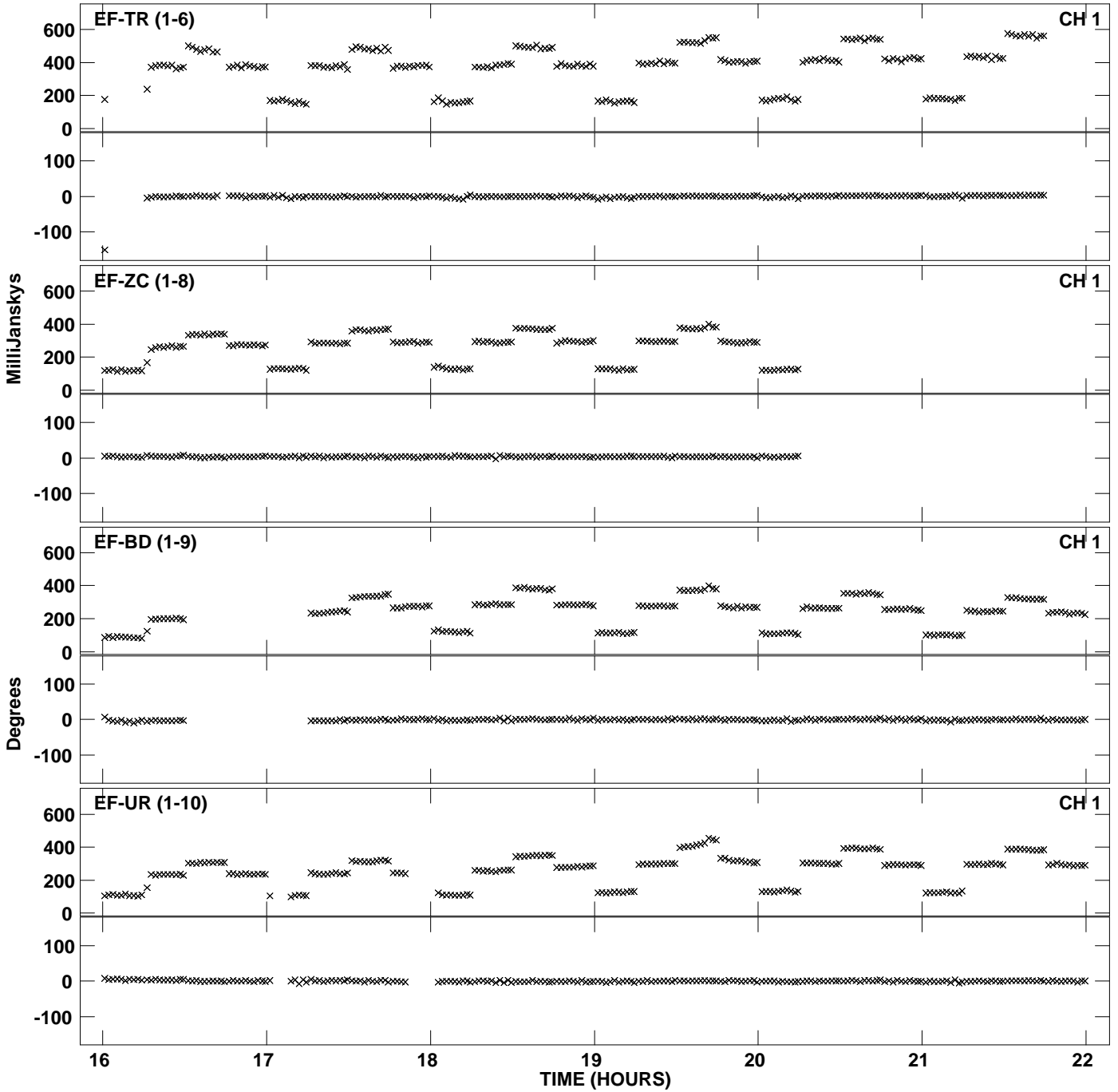
PLot file version 41 created 26-NOV-2012 11:34:59
Amplitude andPhase vs Time for EP077 2.UVDATA.1 Vect aver. CL # 3
IF 7 CHAN 1 - 32 STK RR



PLot file version 42 created 26-NOV-2012 11:35:05
Amplitude andPhase vs Time for EP077 2.UVDATA.1 Vect aver. CL # 3
IF 8 CHAN 1 - 32 STK RR



Plot file version 43 created 26-NOV-2012 11:35:05
Amplitude andPhase vs Time for EP077 2.UVDATA.1 Vect aver. CL # 3
IF 8 CHAN 1 - 32 STK RR



PLot file version 44 created 26-NOV-2012 11:35:05
Amplitude andPhase vs Time for EP077 2.UVDATA.1 Vect aver. CL # 3
IF 8 CHAN 1 - 32 STK RR

