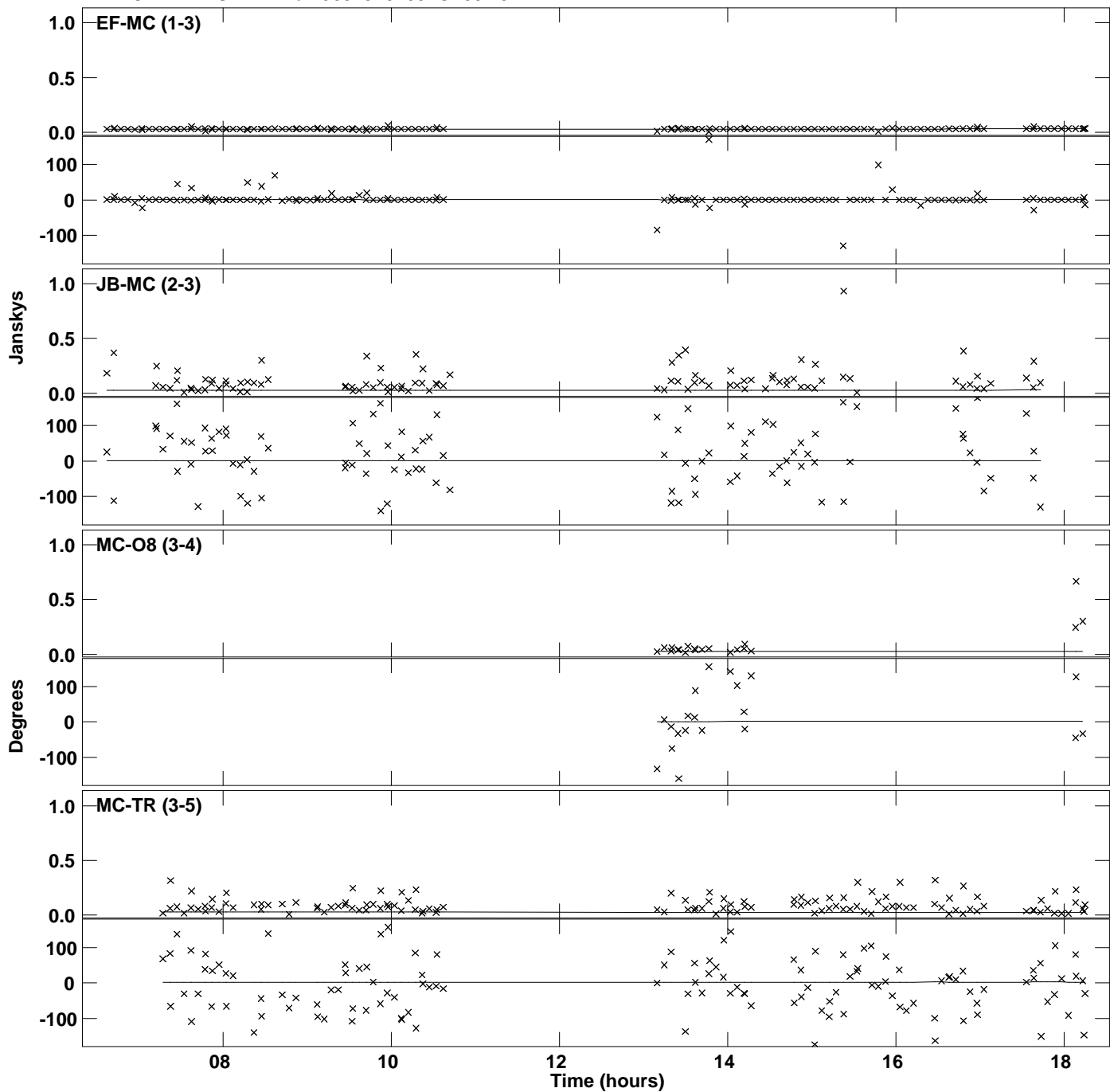
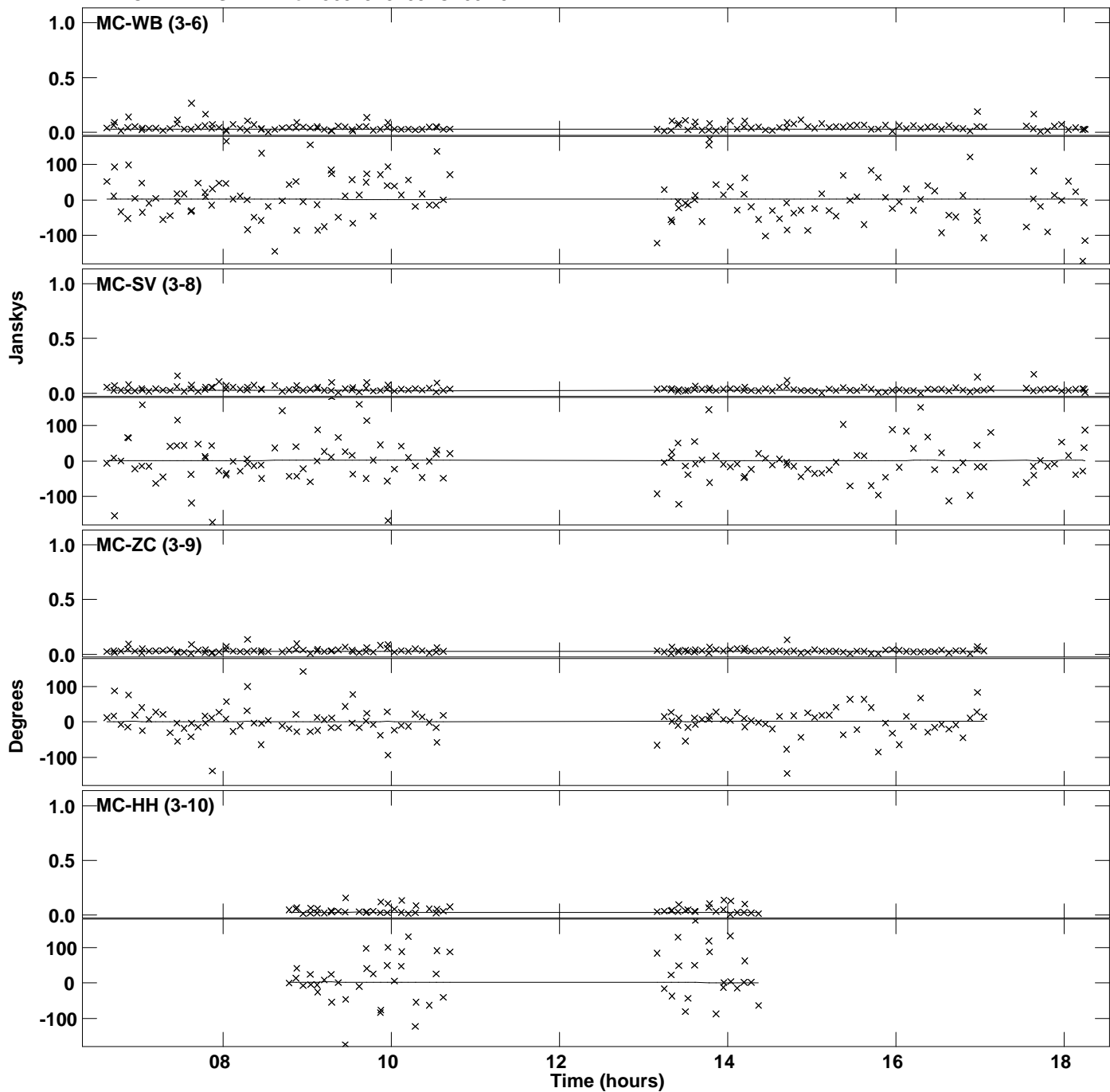


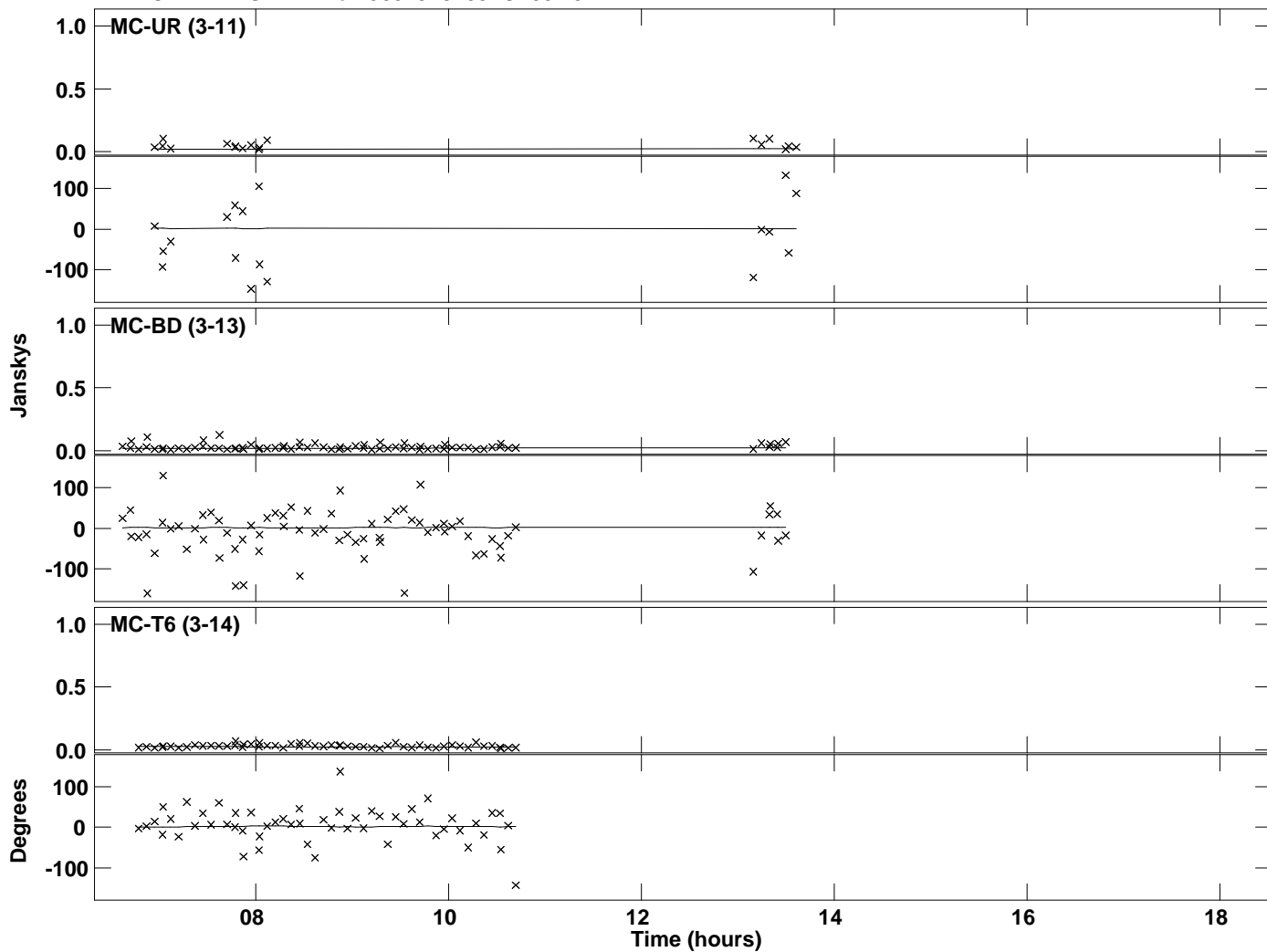
Plot file version 14 created 12-JAN-2018 16:13:21
Amplitude and Phase vs Time for J0529+3209.MULTI.1 Vect aver. CL # 3
IF 7 CHAN 1 STK LL of J0529+3209.ICL001.3



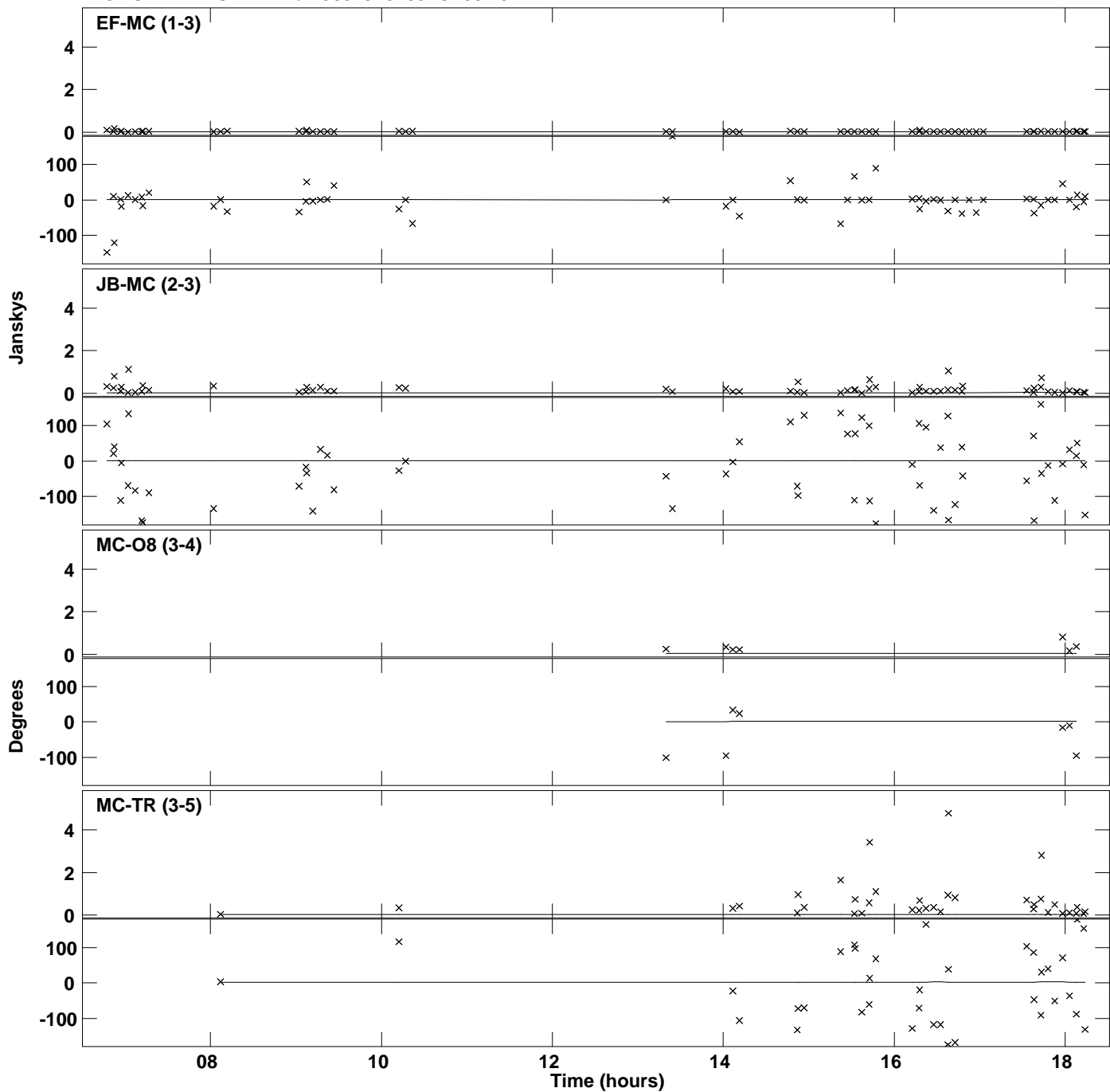
Plot file version 15 created 12-JAN-2018 16:13:21
Amplitude and Phase vs Time for J0529+3209.MULTI.1 Vect aver. CL # 3
IF 7 CHAN 1 STK LL of J0529+3209.ICL001.3



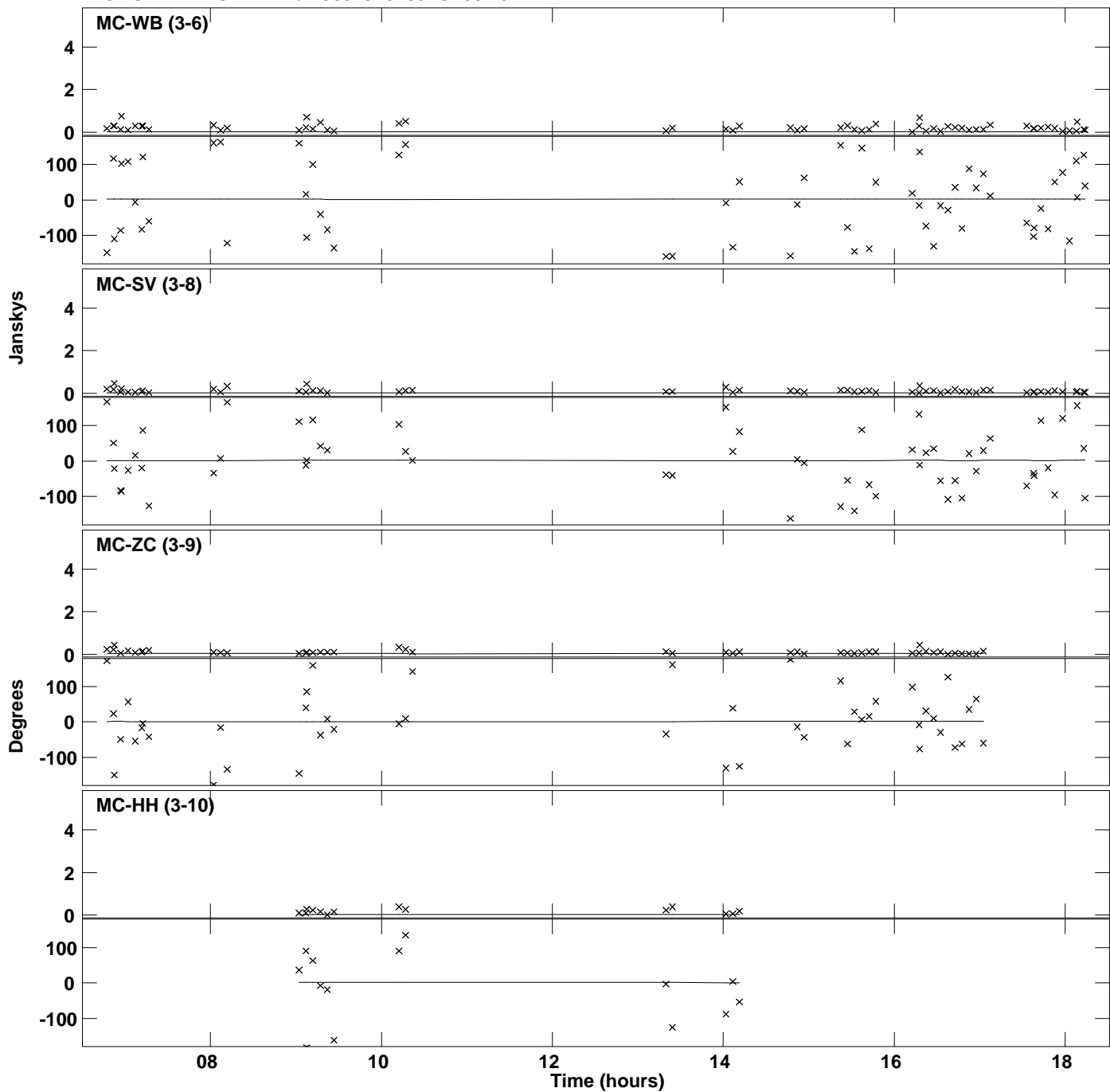
Plot file version 16 created 12-JAN-2018 16:13:21
Amplitude and Phase vs Time for J0529+3209.MULTI.1 Vect aver. CL # 3
IF 7 CHAN 1 STK LL of J0529+3209.ICL001.3



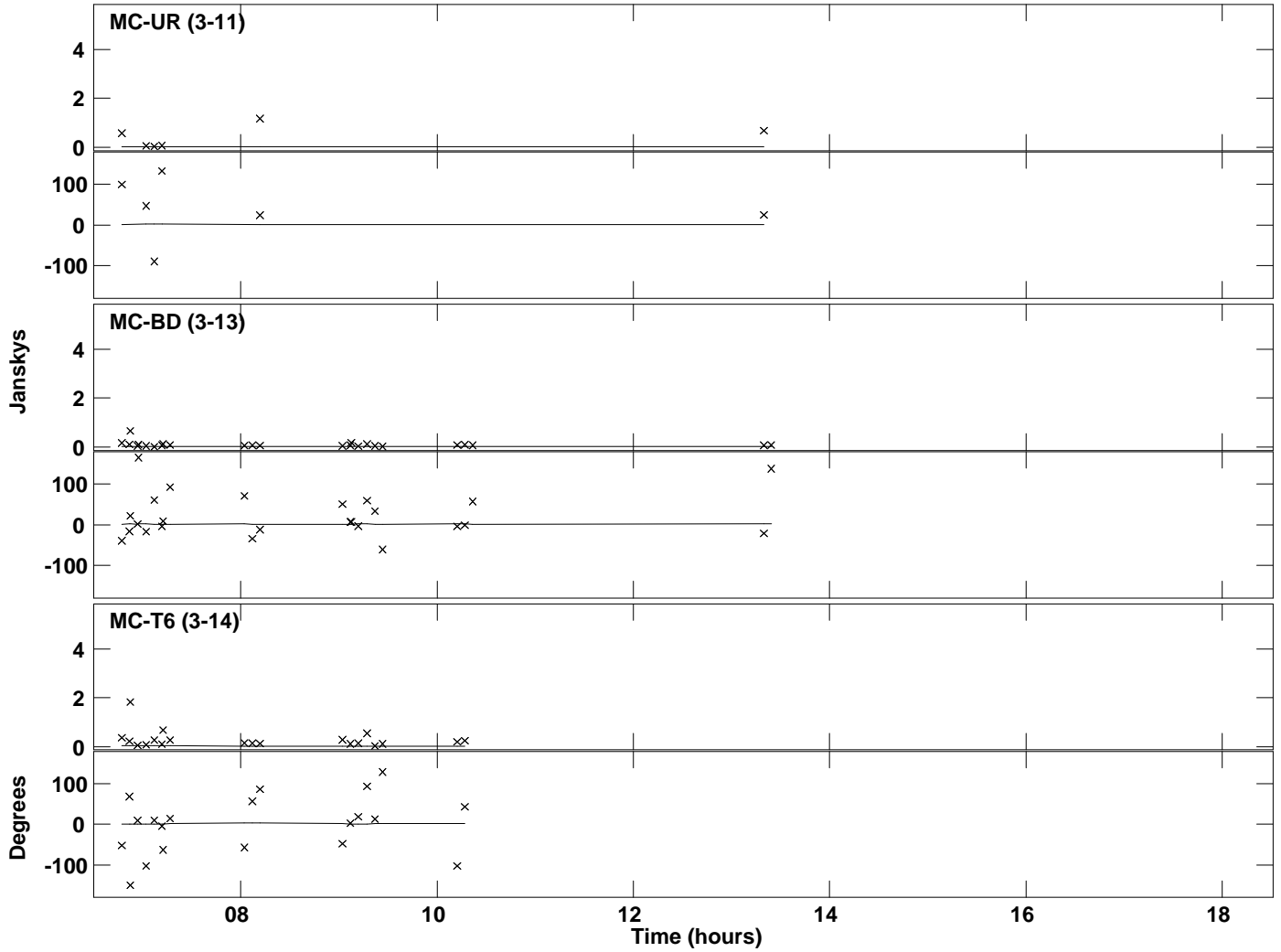
Plot file version 17 created 12-JAN-2018 16:13:21
Amplitude andPhase vs Time for J0529+3209.MULTI.1 Vect aver. CL # 3
IF 8 CHAN 1 STK LL of J0529+3209.ICL001.3



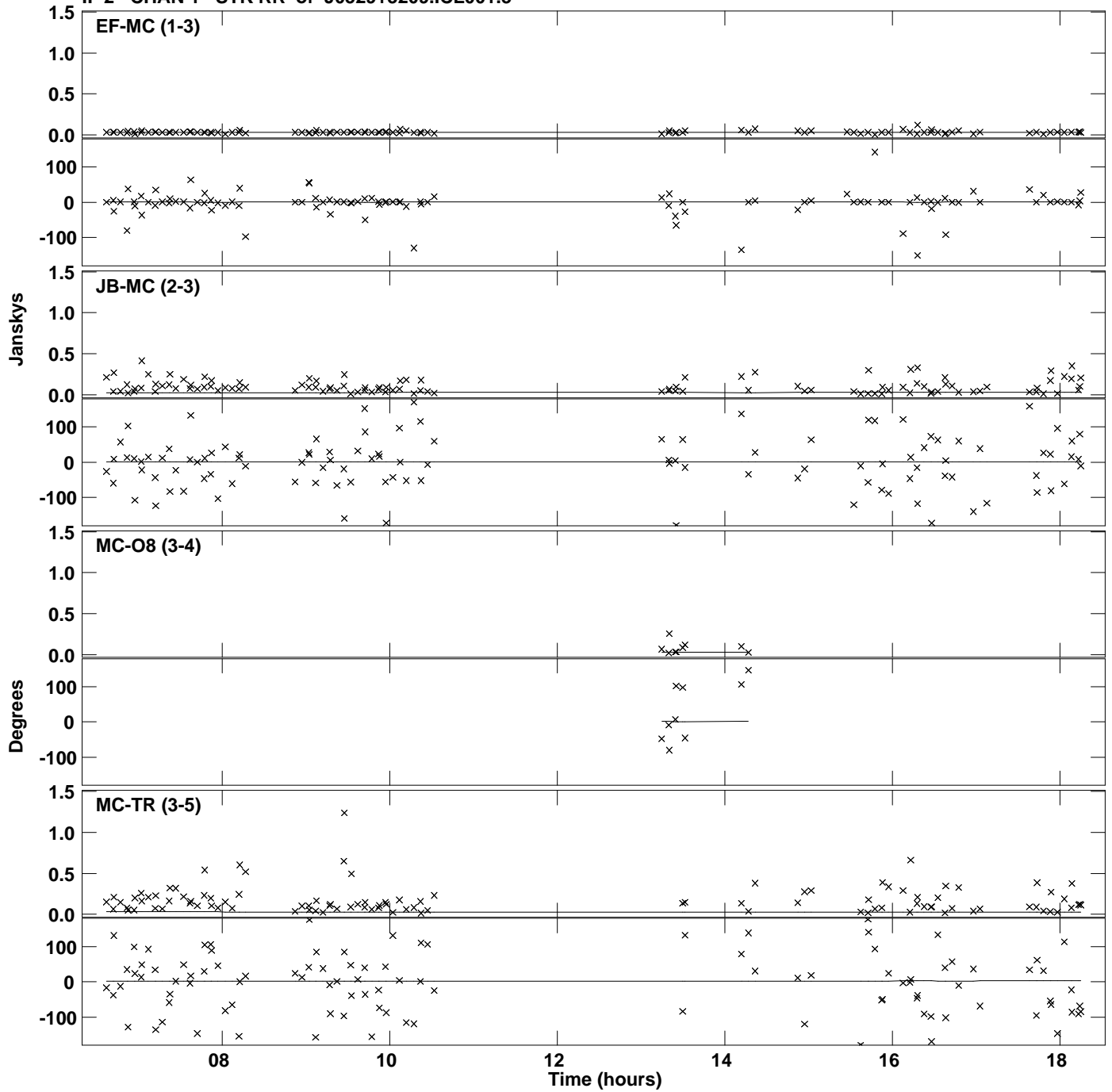
Plot file version 18 created 12-JAN-2018 16:13:21
Amplitude and Phase vs Time for J0529+3209.MULTI.1 Vect aver. CL # 3
IF 8 CHAN 1 STK LL of J0529+3209.ICL001.3



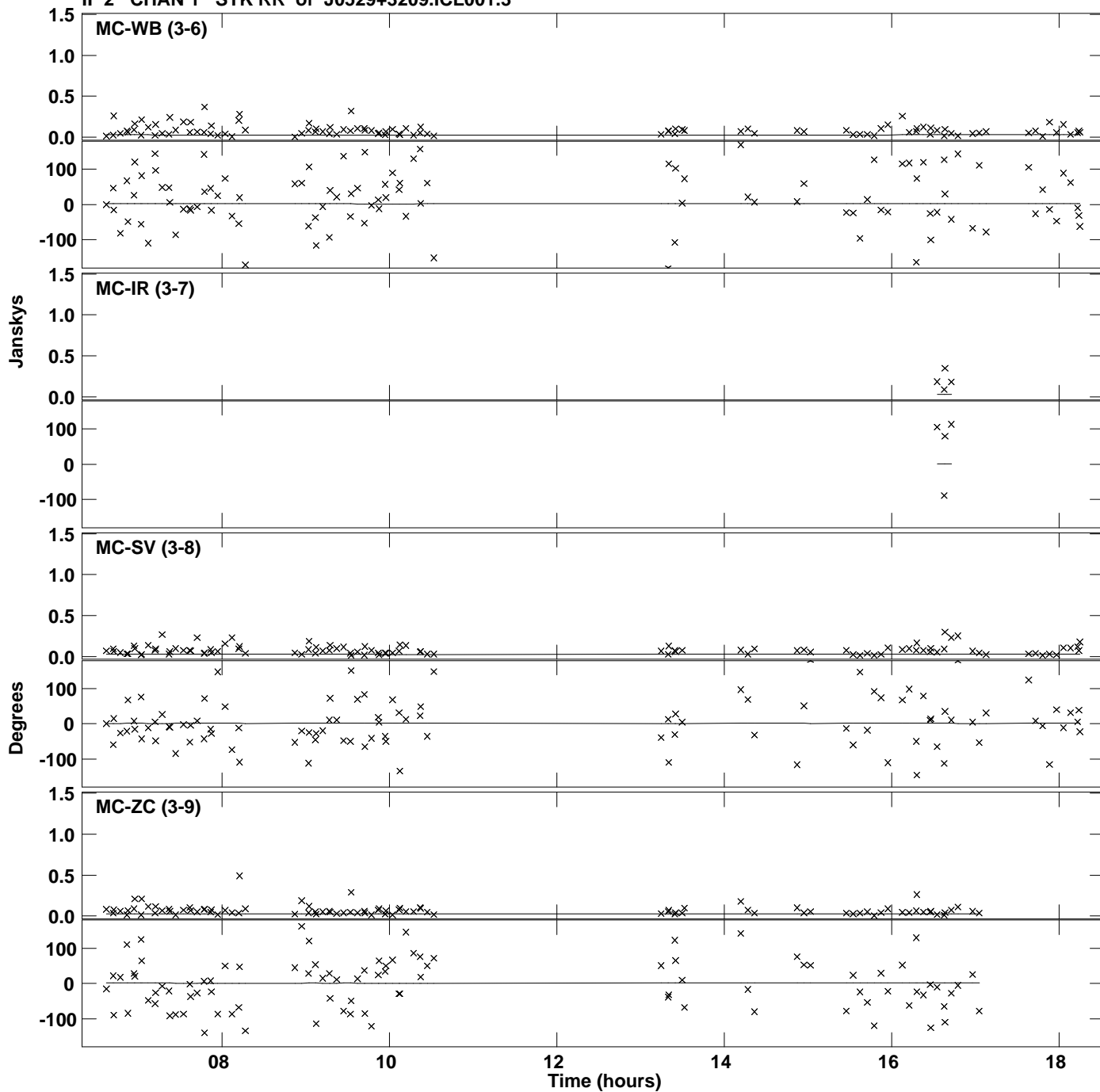
PLot file version 19 created 12-JAN-2018 16:13:21
Amplitude and Phase vs Time for J0529+3209.MULTI.1 Vect aver. CL # 3
IF 8 CHAN 1 STK LL of J0529+3209.ICL001.3



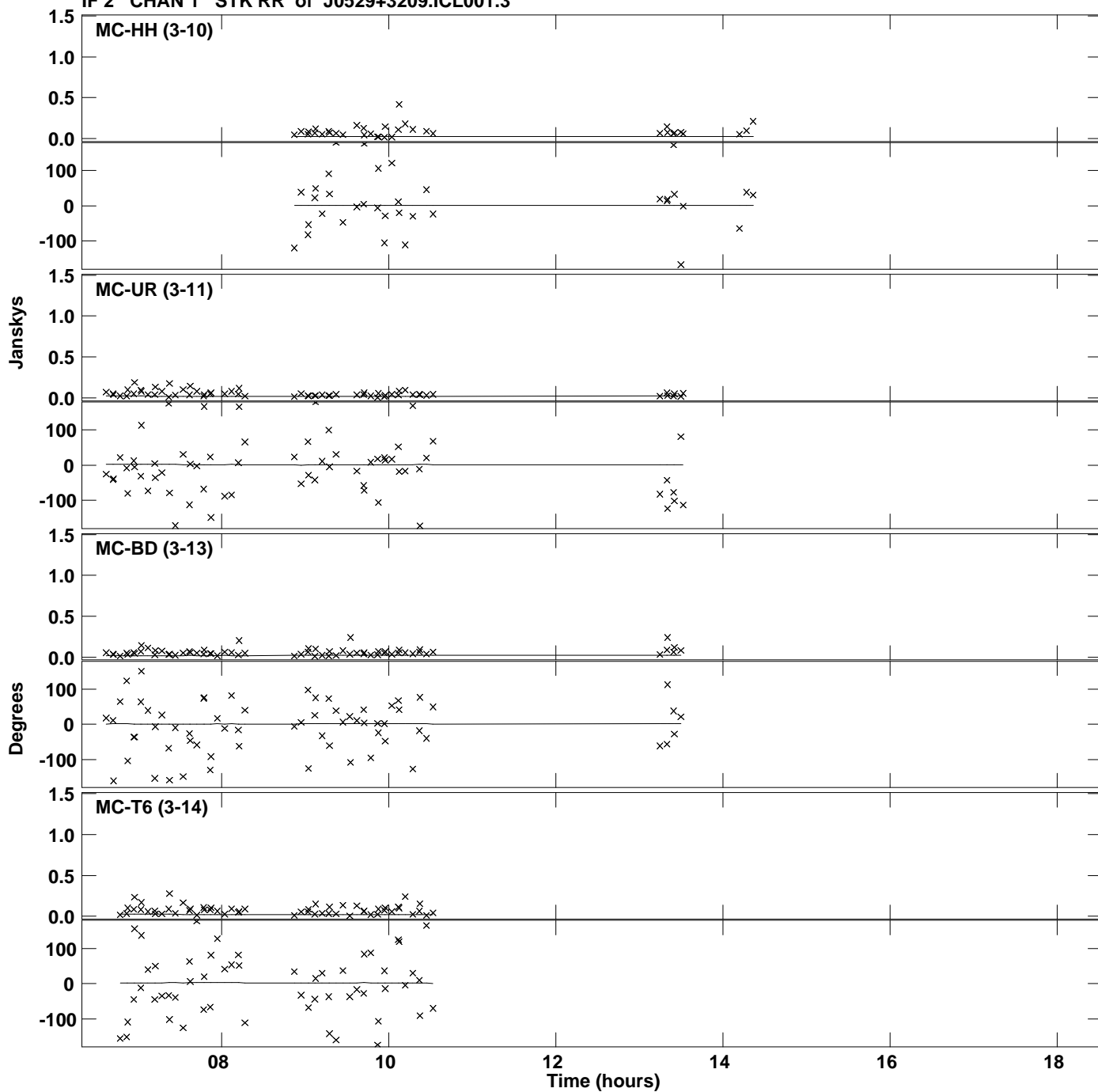
Plot file version 20 created 12-JAN-2018 16:13:22
Amplitude and Phase vs Time for J0529+3209.MULTI.1 Vect aver. CL # 3
IF 2 CHAN 1 STK RR of J0529+3209.ICL001.3



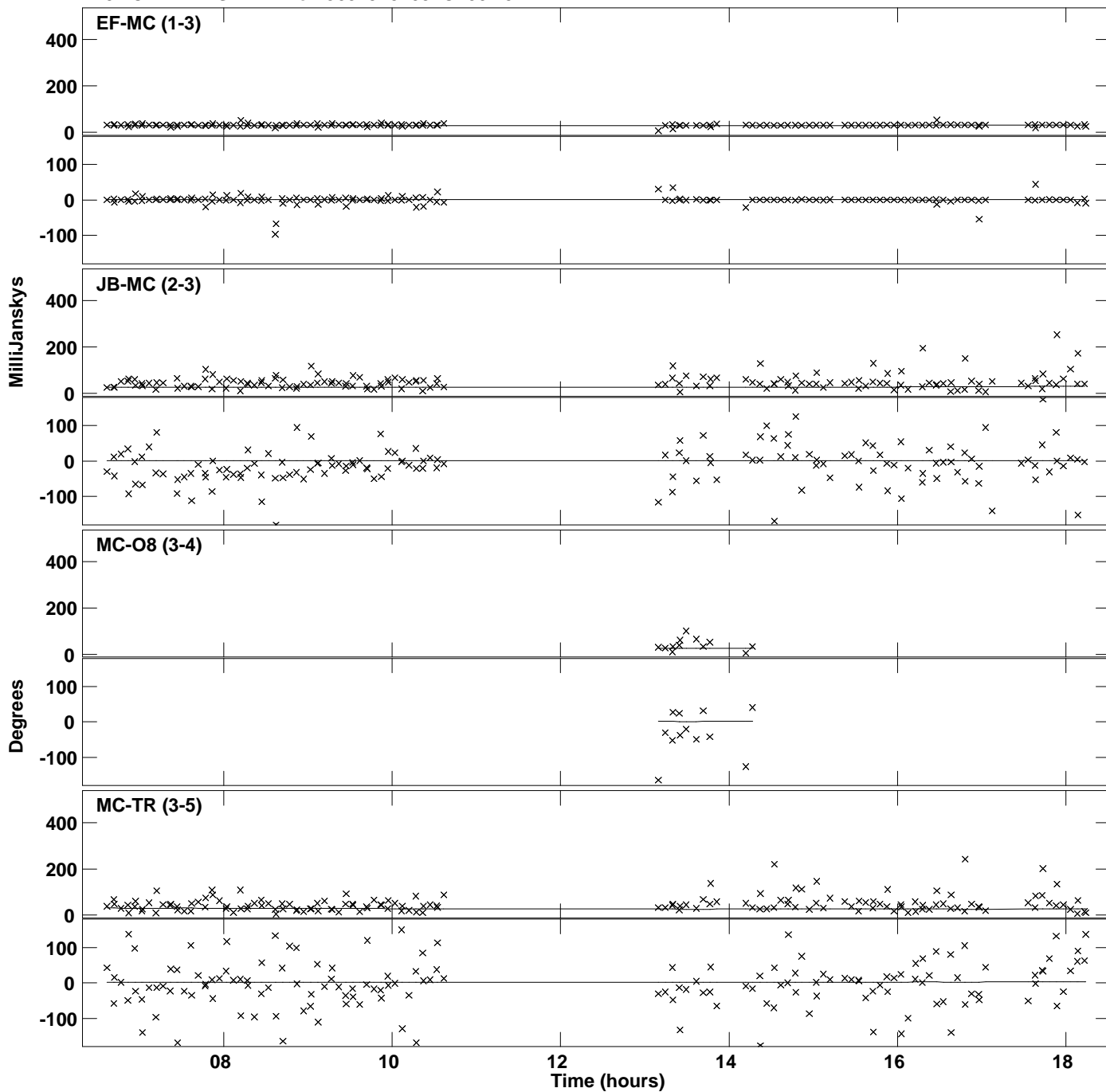
Plot file version 21 created 12-JAN-2018 16:13:22
Amplitude and Phase vs Time for J0529+3209.MULTI.1 Vect aver. CL # 3
IF 2 CHAN 1 STK RR of J0529+3209.ICL001.3



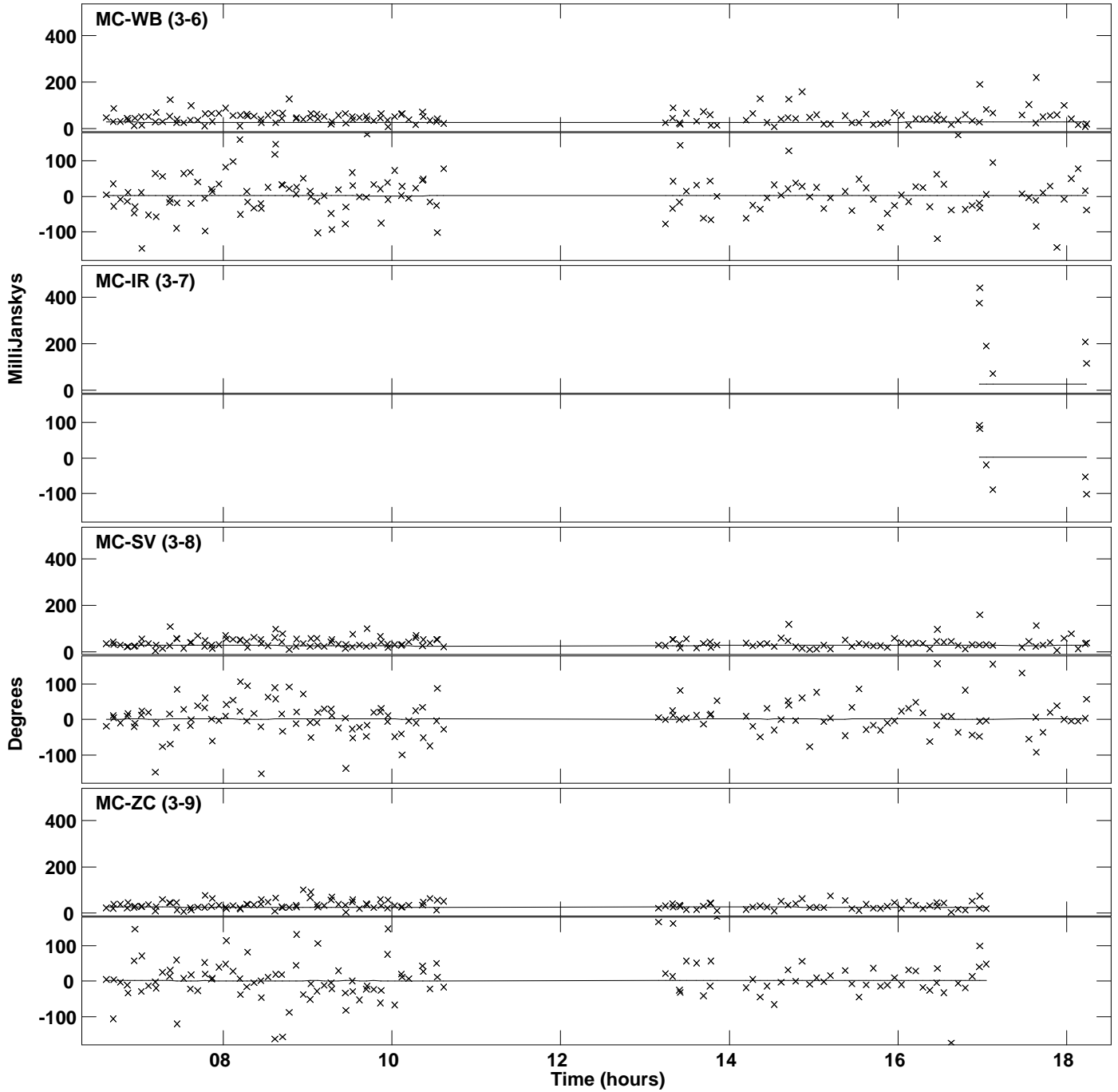
Plot file version 22 created 12-JAN-2018 16:13:22
Amplitude and Phase vs Time for J0529+3209.MULTI.1 Vect aver. CL # 3
IF 2 CHAN 1 STK RR of J0529+3209.ICL001.3



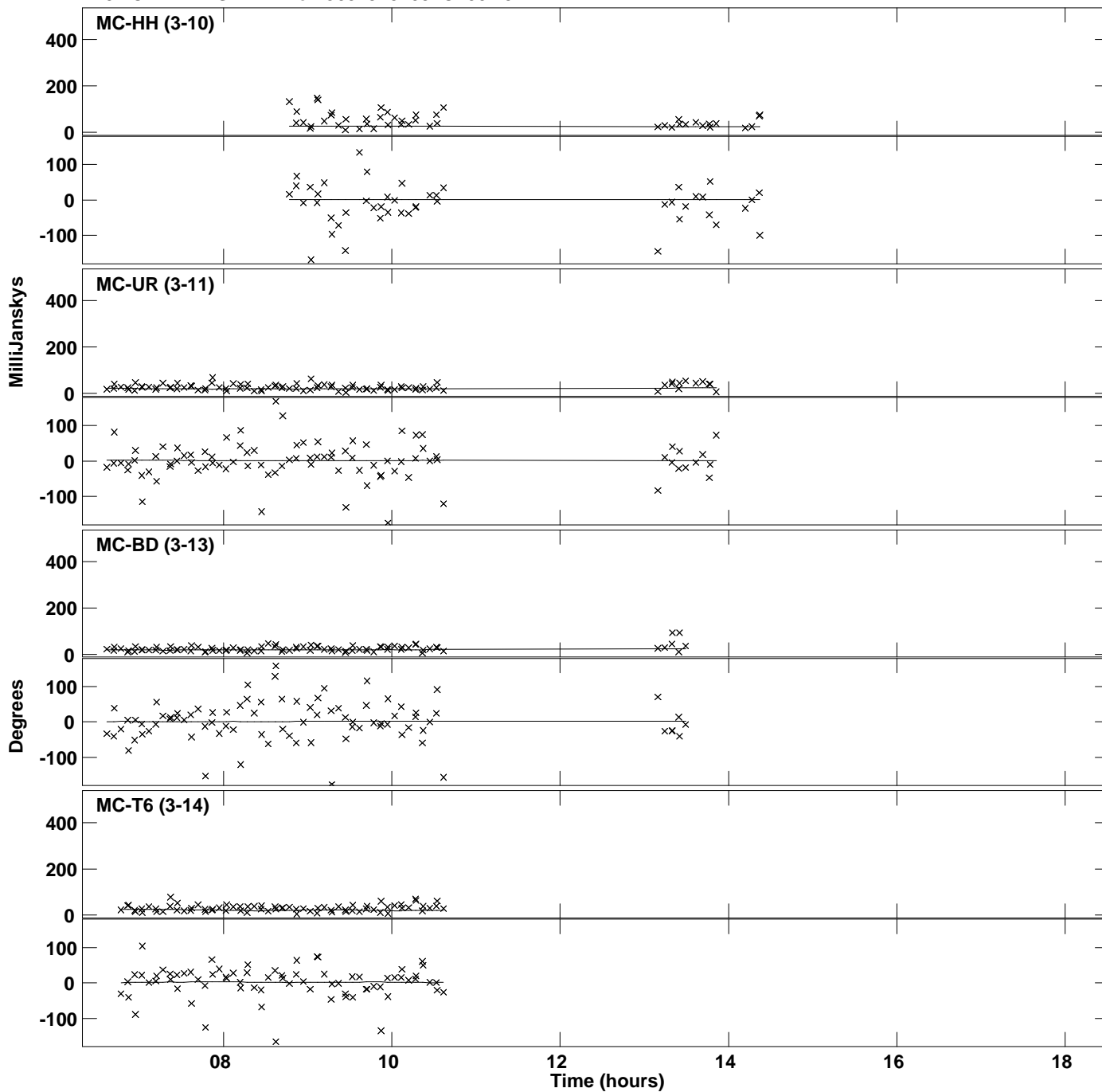
Plot file version 23 created 12-JAN-2018 16:13:23
Amplitude andPhase vs Time for J0529+3209.MULTI.1 Vect aver. CL # 3
IF 3 CHAN 1 STK RR of J0529+3209.ICL001.3



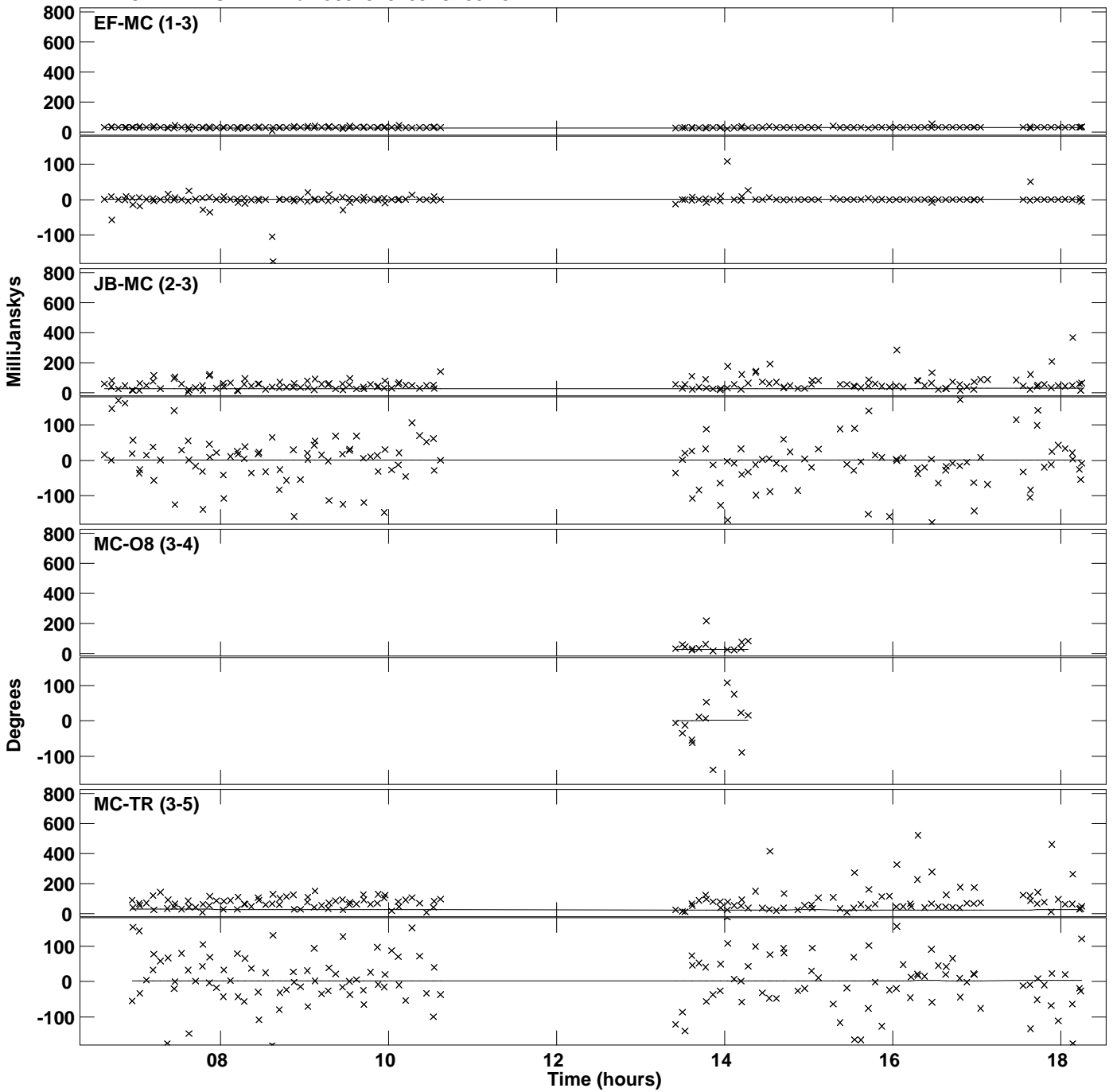
Plot file version 24 created 12-JAN-2018 16:13:23
Amplitude andPhase vs Time for J0529+3209.MULTI.1 Vect aver. CL # 3
IF 3 CHAN 1 STK RR of J0529+3209.ICL001.3



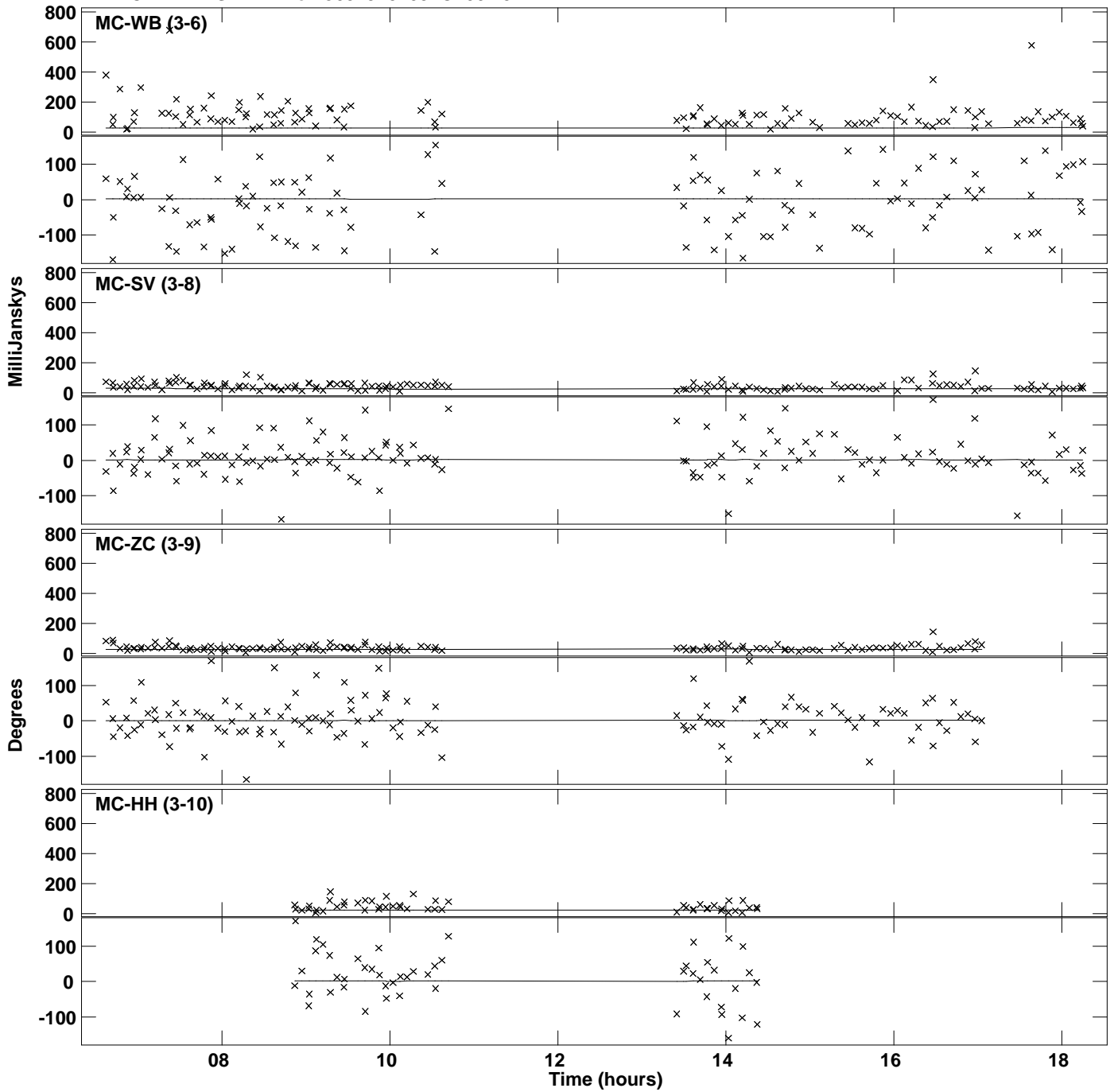
Plot file version 25 created 12-JAN-2018 16:13:23
Amplitude and Phase vs Time for J0529+3209.MULTI.1 Vect aver. CL # 3
IF 3 CHAN 1 STK RR of J0529+3209.ICL001.3



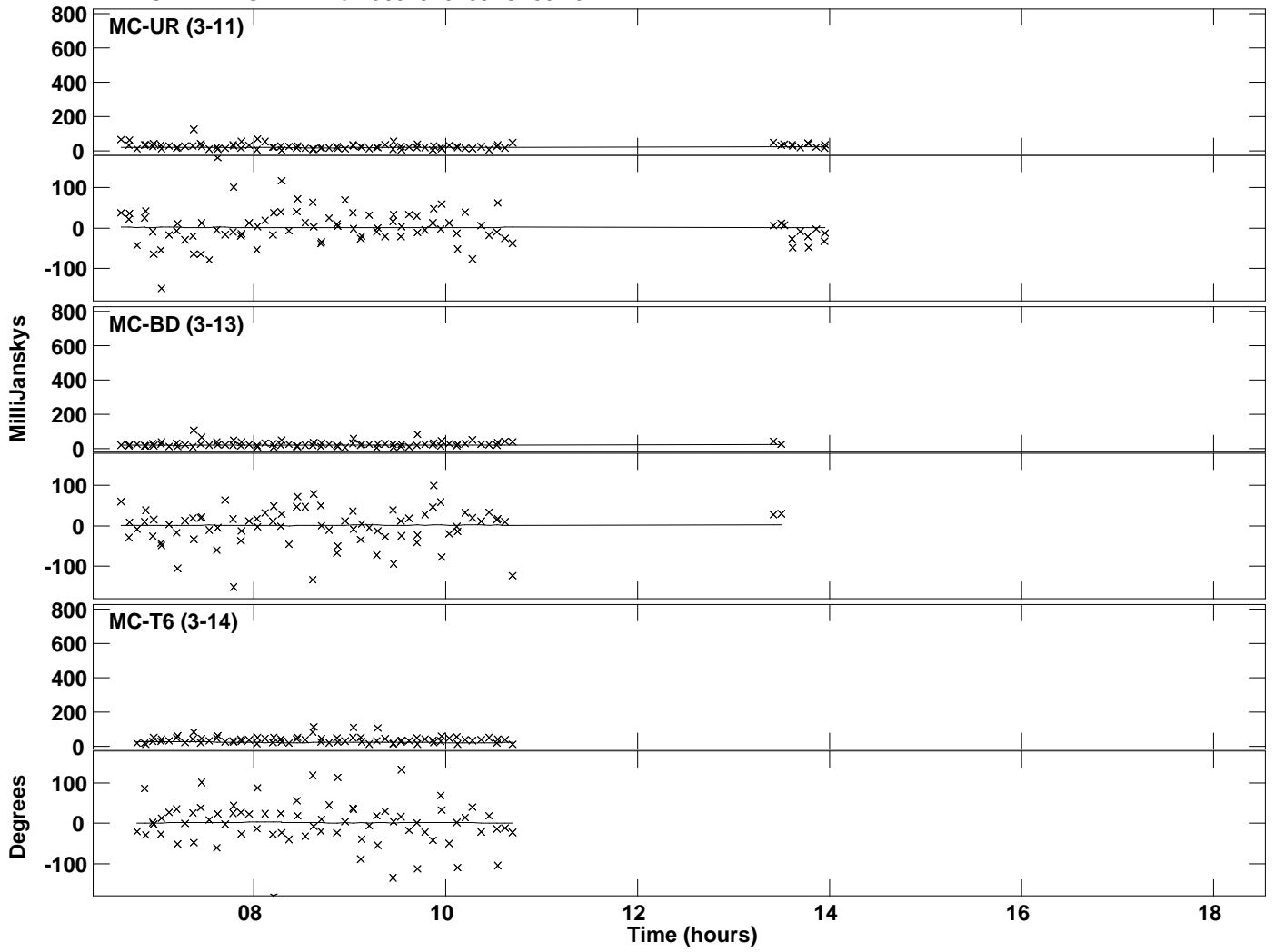
Plot file version 26 created 12-JAN-2018 16:13:23
Amplitude and Phase vs Time for J0529+3209.MULTI.1 Vect aver. CL # 3
IF 4 CHAN 1 STK RR of J0529+3209.ICL001.3



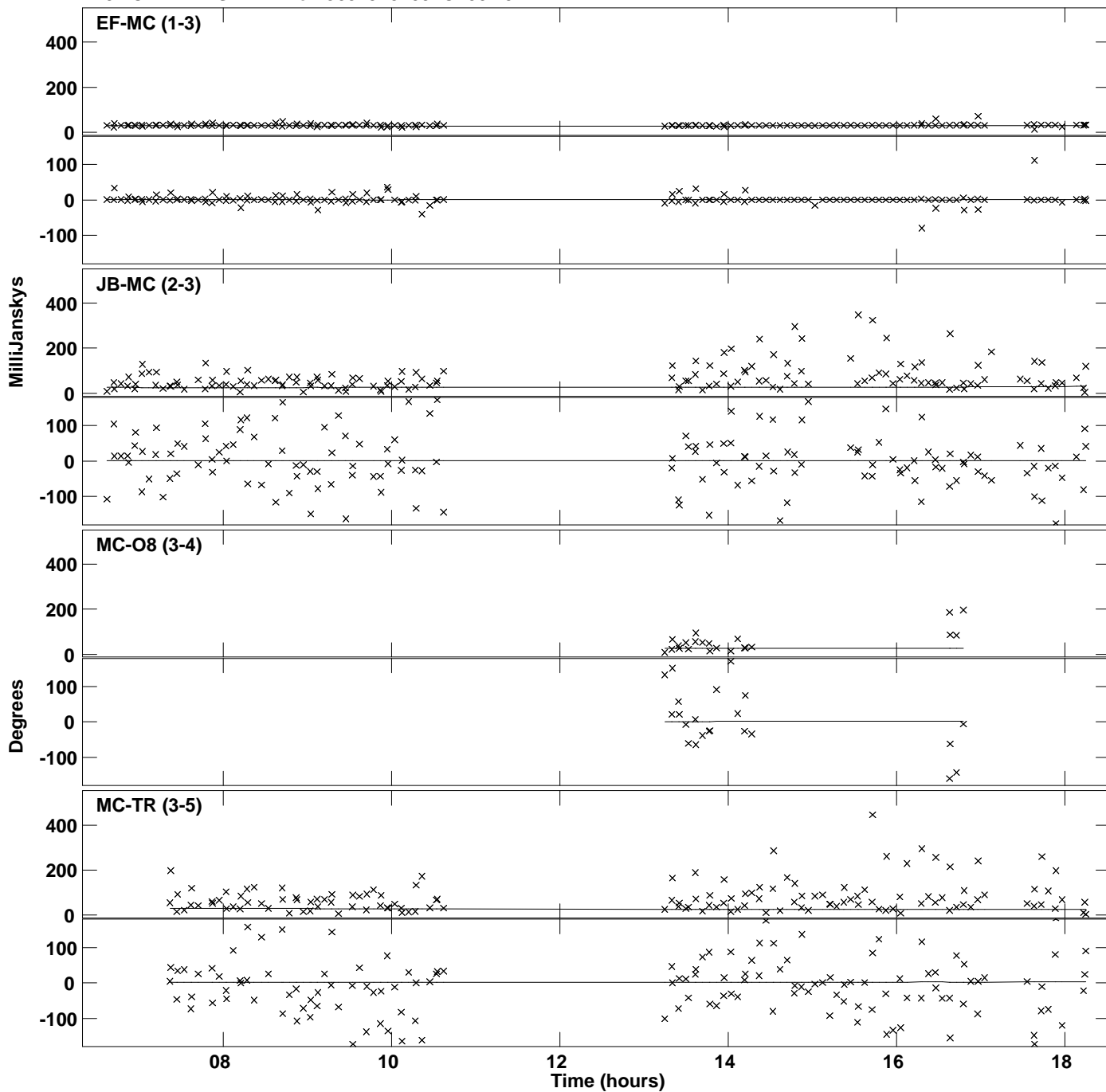
PLot file version 27 created 12-JAN-2018 16:13:23
Amplitude and Phase vs Time for J0529+3209.MULTI.1 Vect aver. CL # 3
IF 4 CHAN 1 STK RR of J0529+3209.ICL001.3



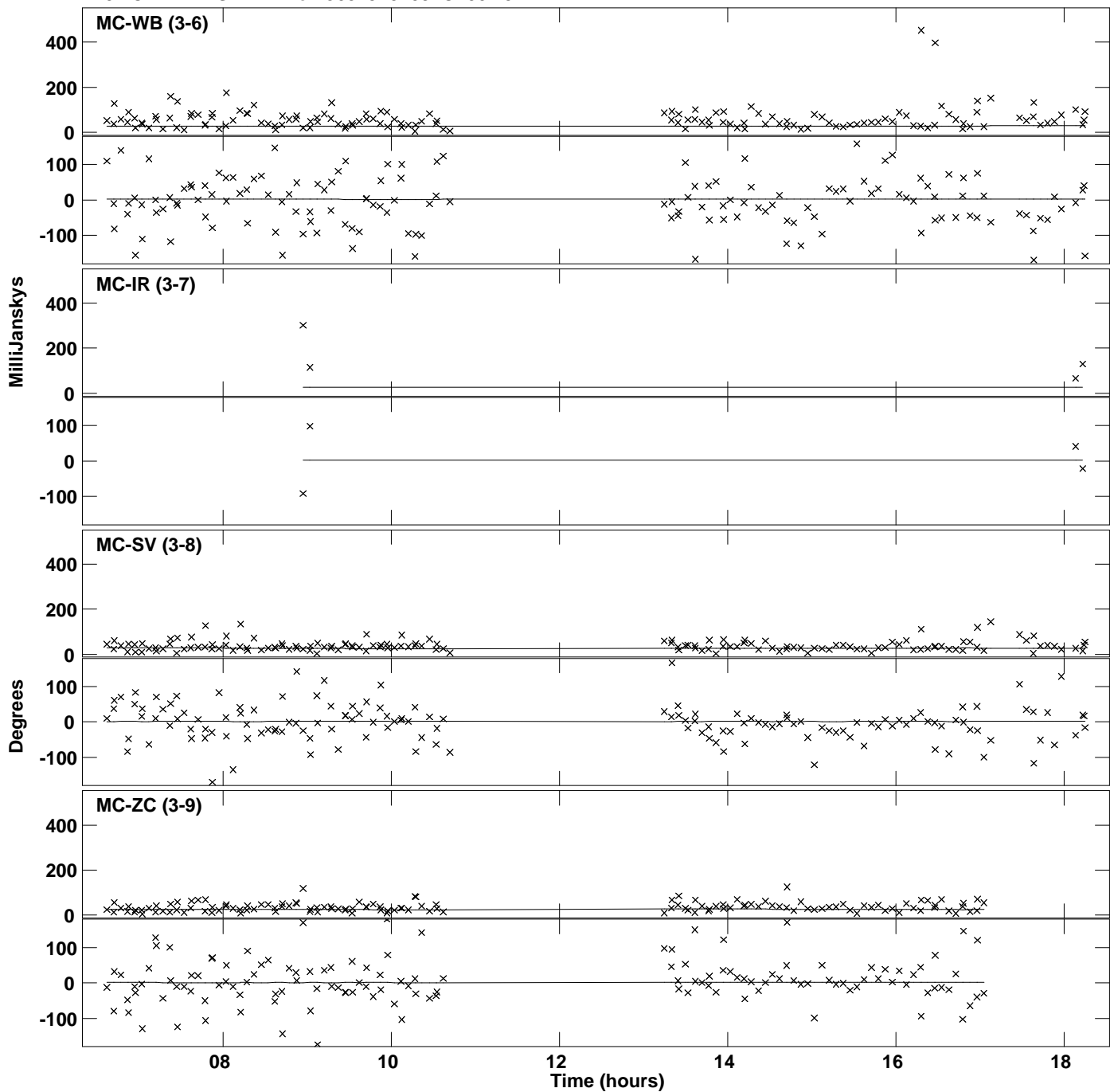
Plot file version 28 created 12-JAN-2018 16:13:23
Amplitude and Phase vs Time for J0529+3209.MULTI.1 Vect aver. CL # 3
IF 4 CHAN 1 STK RR of J0529+3209.ICL001.3



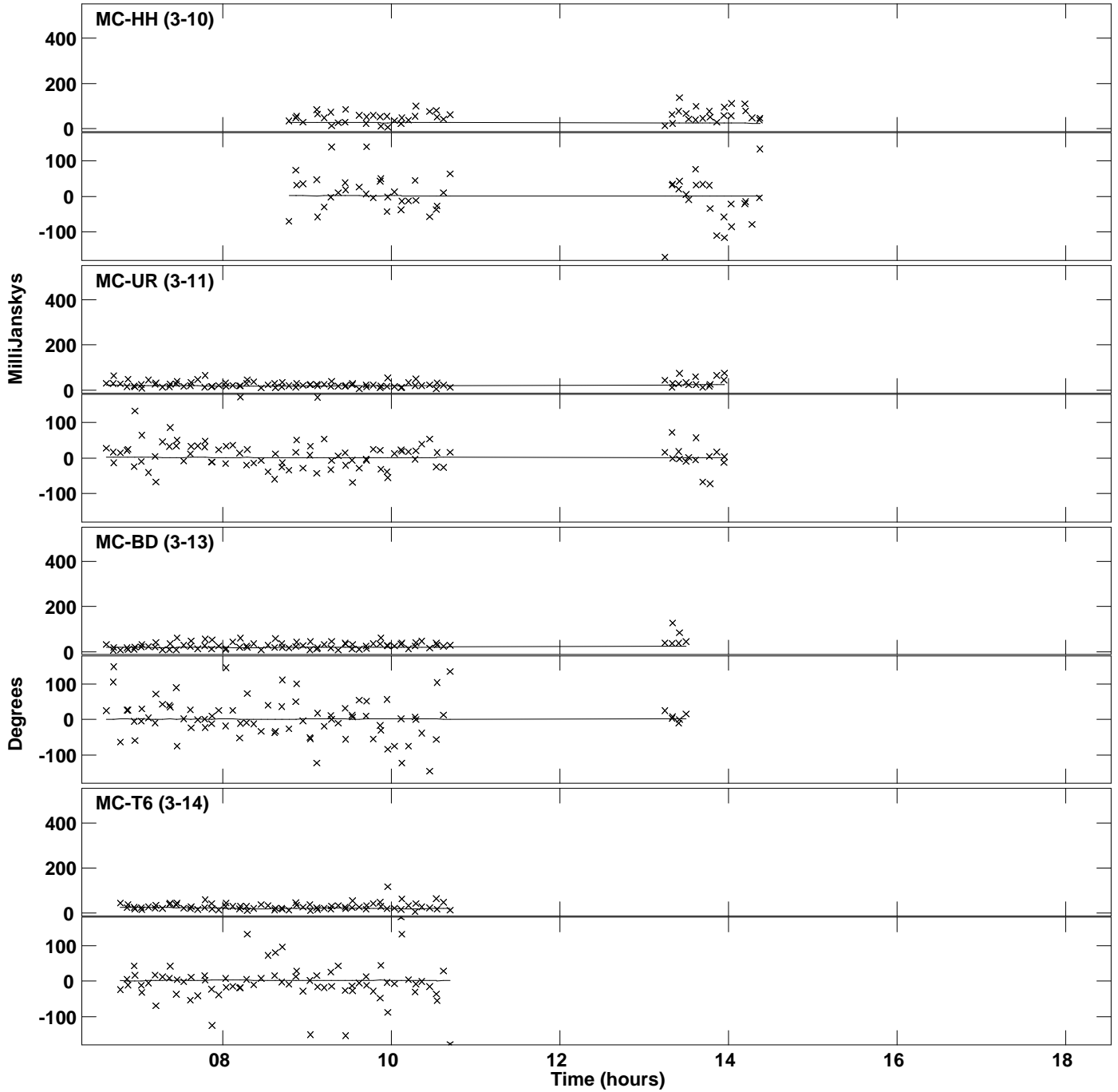
Plot file version 29 created 12-JAN-2018 16:13:24
Amplitude andPhase vs Time for J0529+3209.MULTI.1 Vect aver. CL # 3
IF 5 CHAN 1 STK RR of J0529+3209.ICL001.3



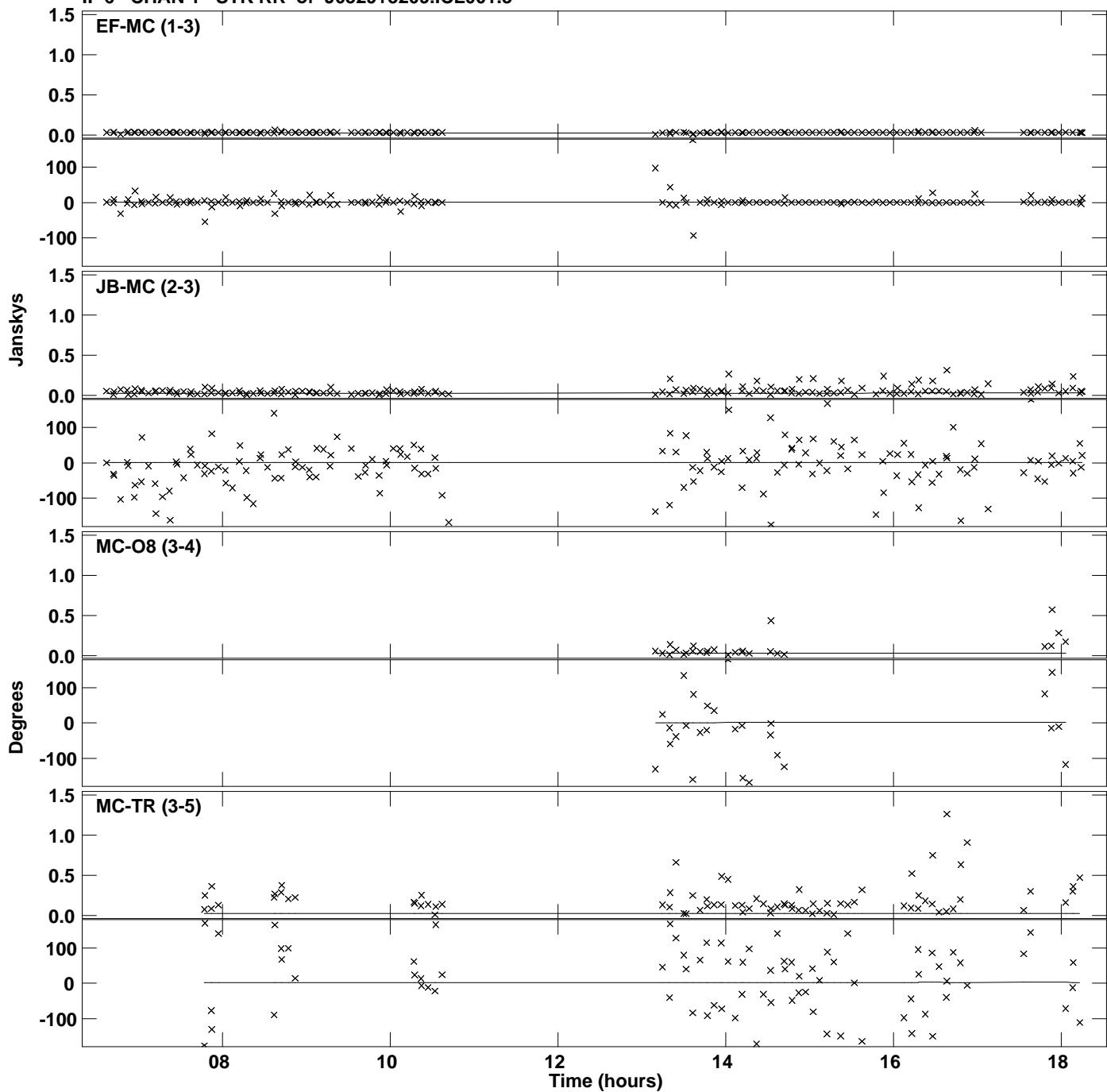
Plot file version 30 created 12-JAN-2018 16:13:24
Amplitude andPhase vs Time for J0529+3209.MULTI.1 Vect aver. CL # 3
IF 5 CHAN 1 STK RR of J0529+3209.ICL001.3



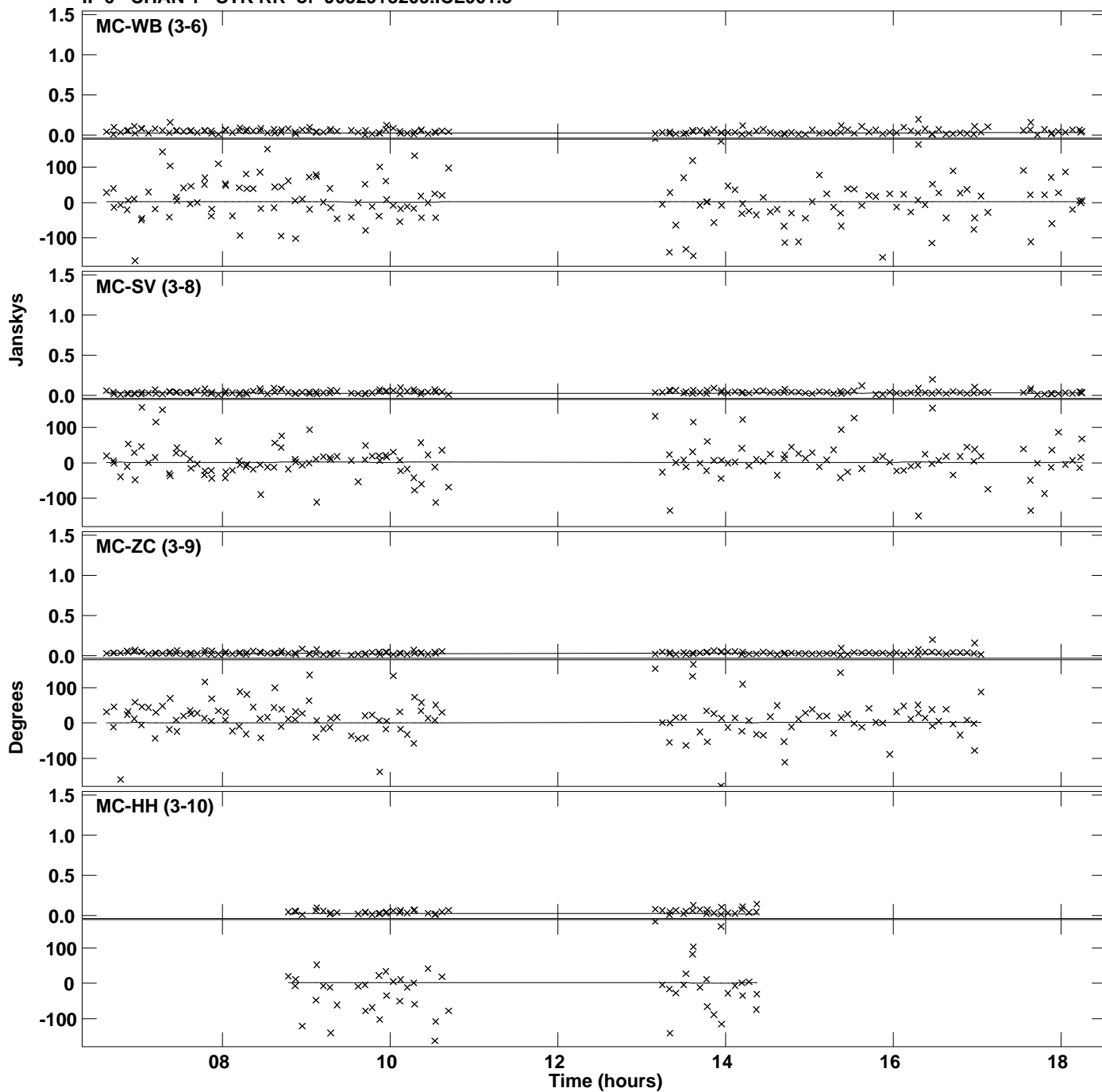
Plot file version 31 created 12-JAN-2018 16:13:24
Amplitude and Phase vs Time for J0529+3209.MULTI.1 Vect aver. CL # 3
IF 5 CHAN 1 STK RR of J0529+3209.ICL001.3



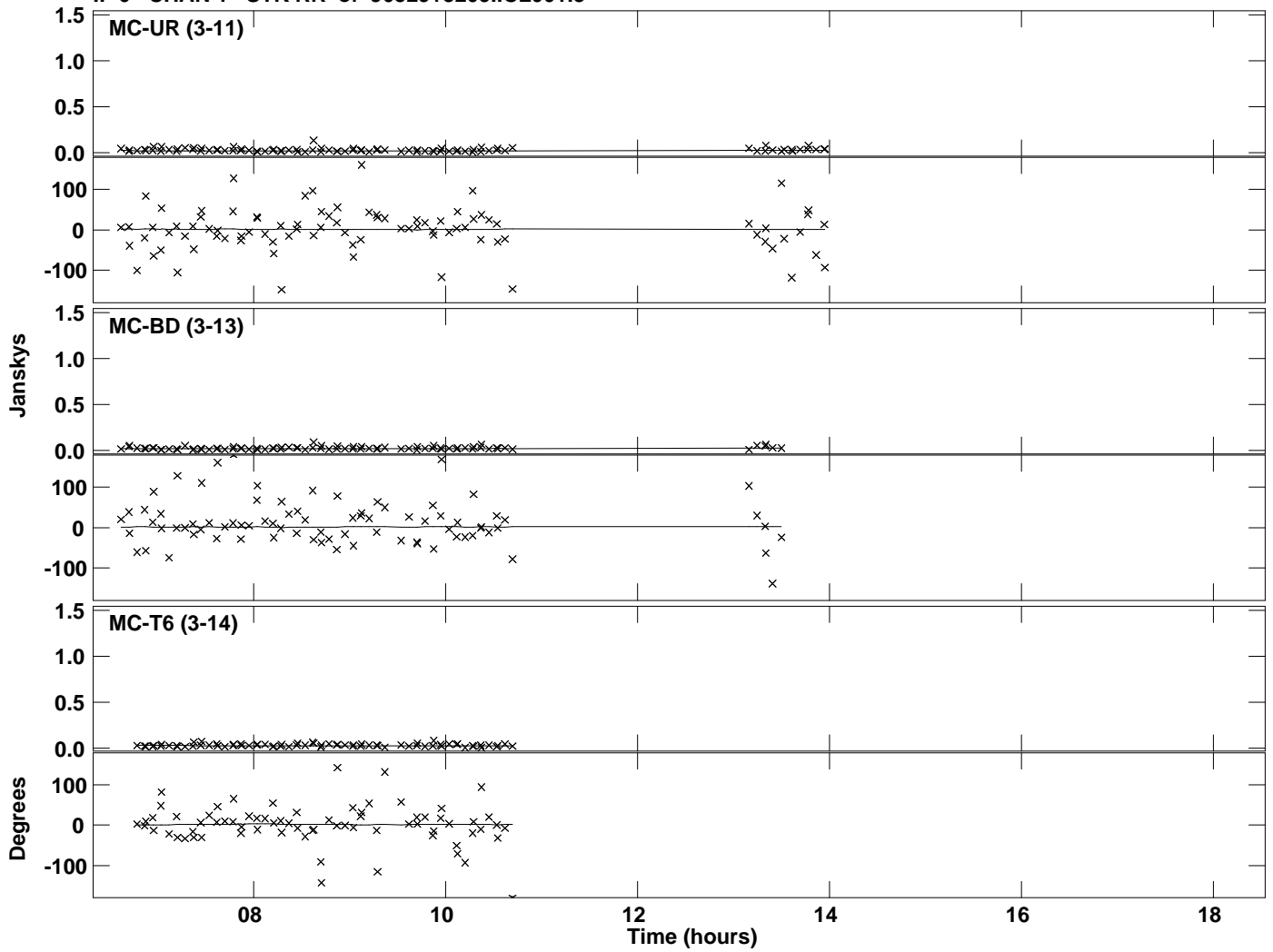
Plot file version 32 created 12-JAN-2018 16:13:24
Amplitude andPhase vs Time for J0529+3209.MULTI.1 Vect aver. CL # 3
IF 6 CHAN 1 STK RR of J0529+3209.ICL001.3



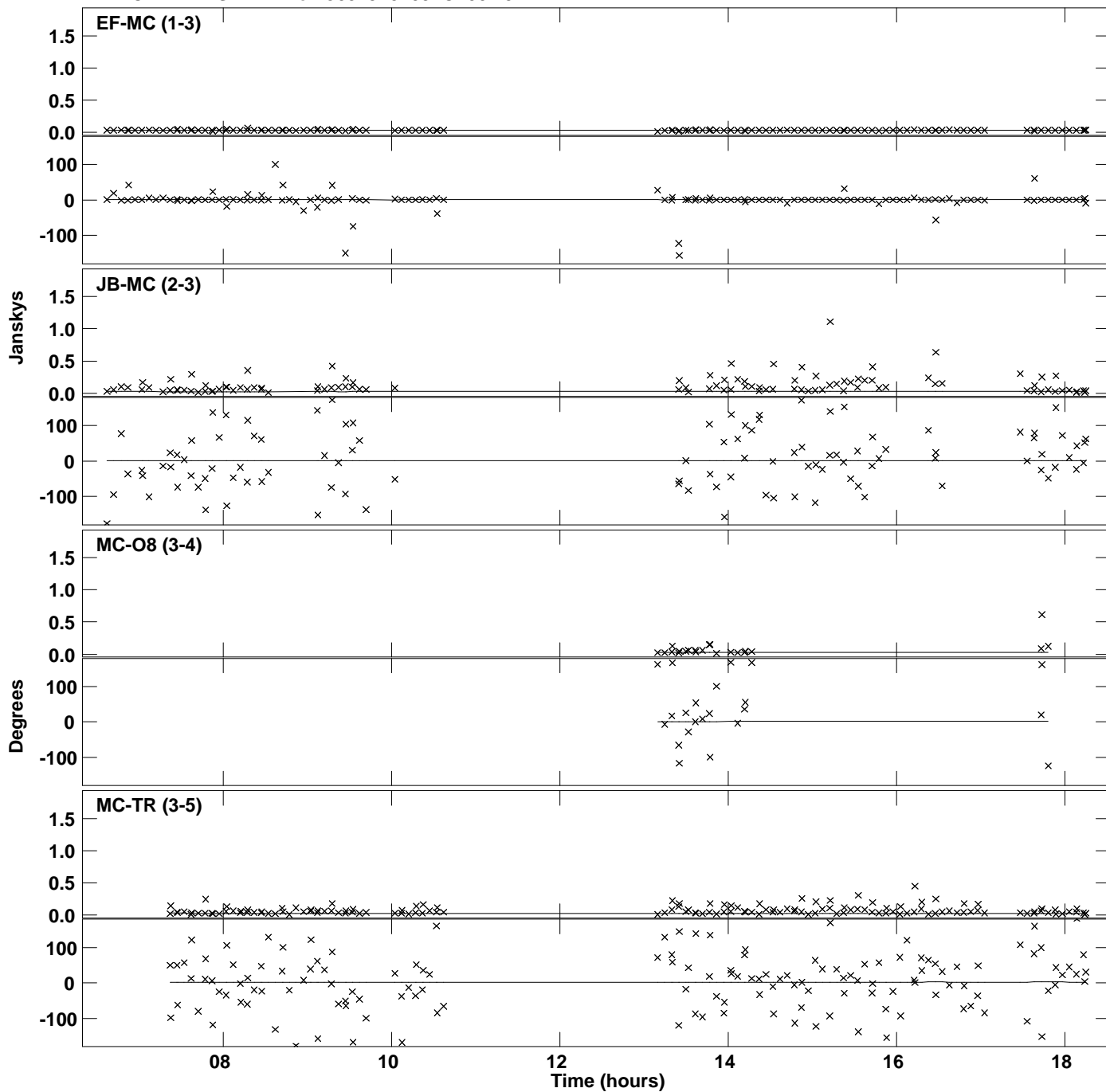
Plot file version 33 created 12-JAN-2018 16:13:24
Amplitude and Phase vs Time for J0529+3209.MULTI.1 Vect aver. CL # 3
IF 6 CHAN 1 STK RR of J0529+3209.ICL001.3



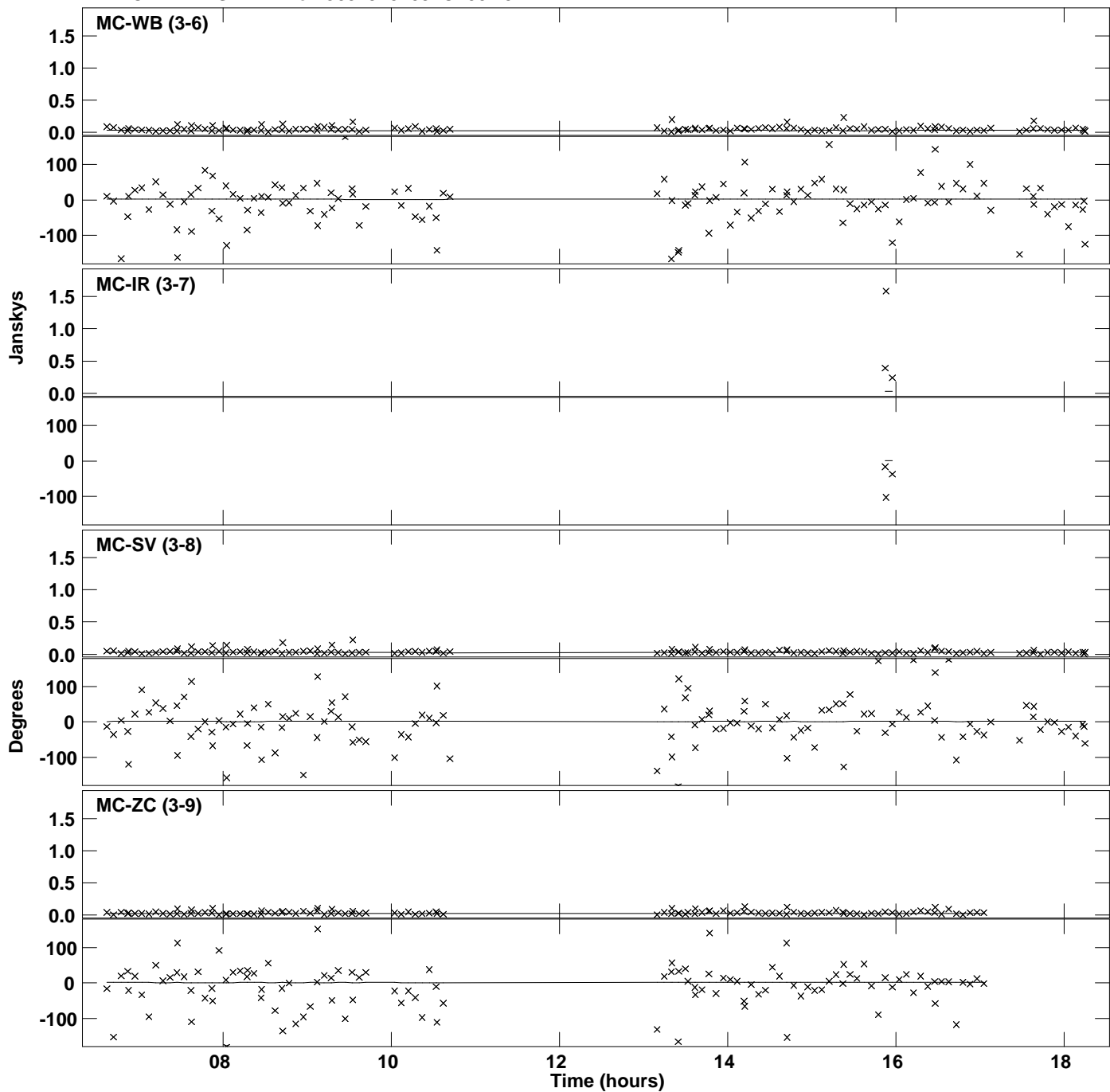
Plot file version 34 created 12-JAN-2018 16:13:24
Amplitude and Phase vs Time for J0529+3209.MULTI.1 Vect aver. CL # 3
IF 6 CHAN 1 STK RR of J0529+3209.ICL001.3



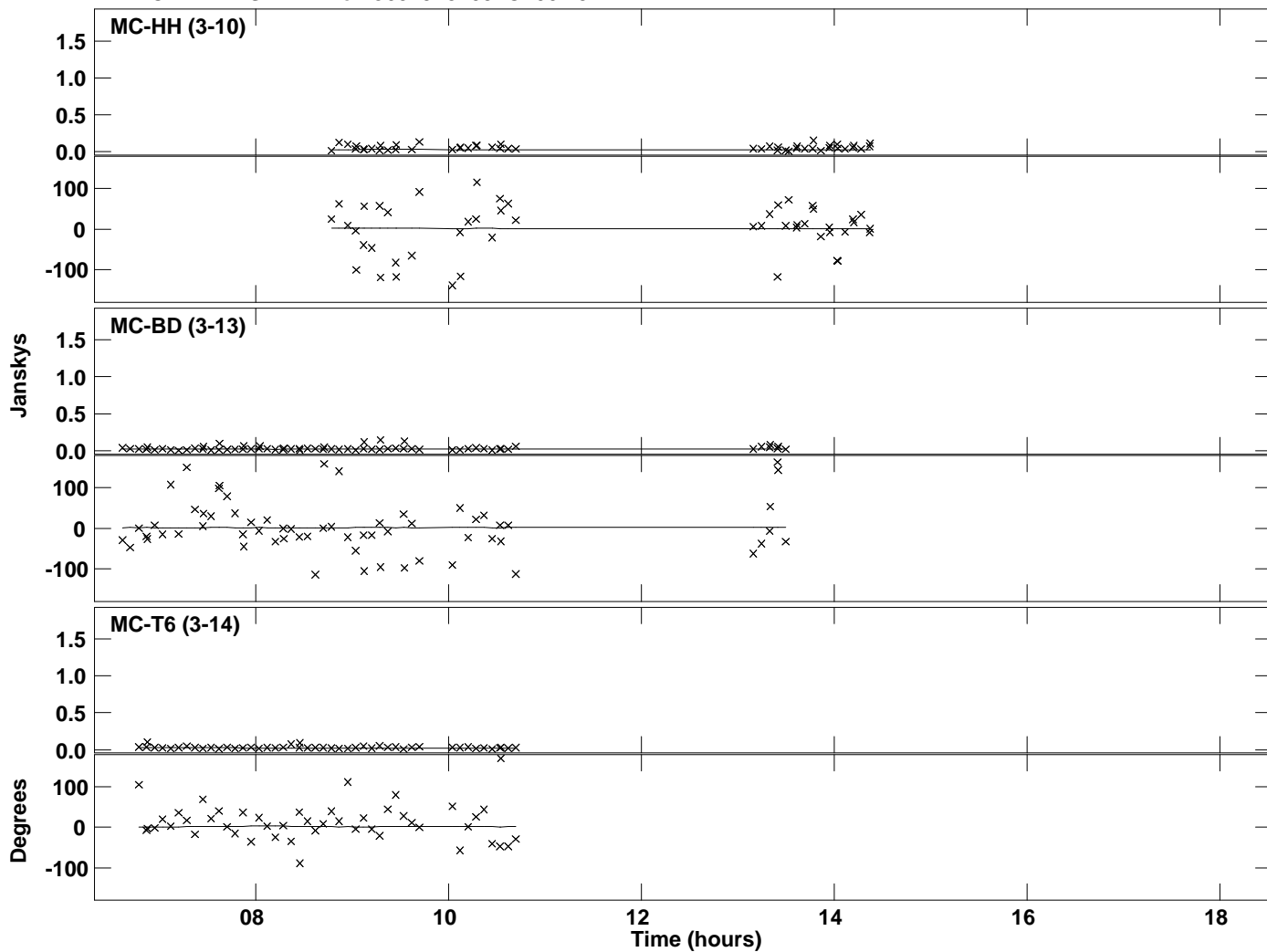
Plot file version 35 created 12-JAN-2018 16:13:24
Amplitude andPhase vs Time for J0529+3209.MULTI.1 Vect aver. CL # 3
IF 7 CHAN 1 STK RR of J0529+3209.ICL001.3



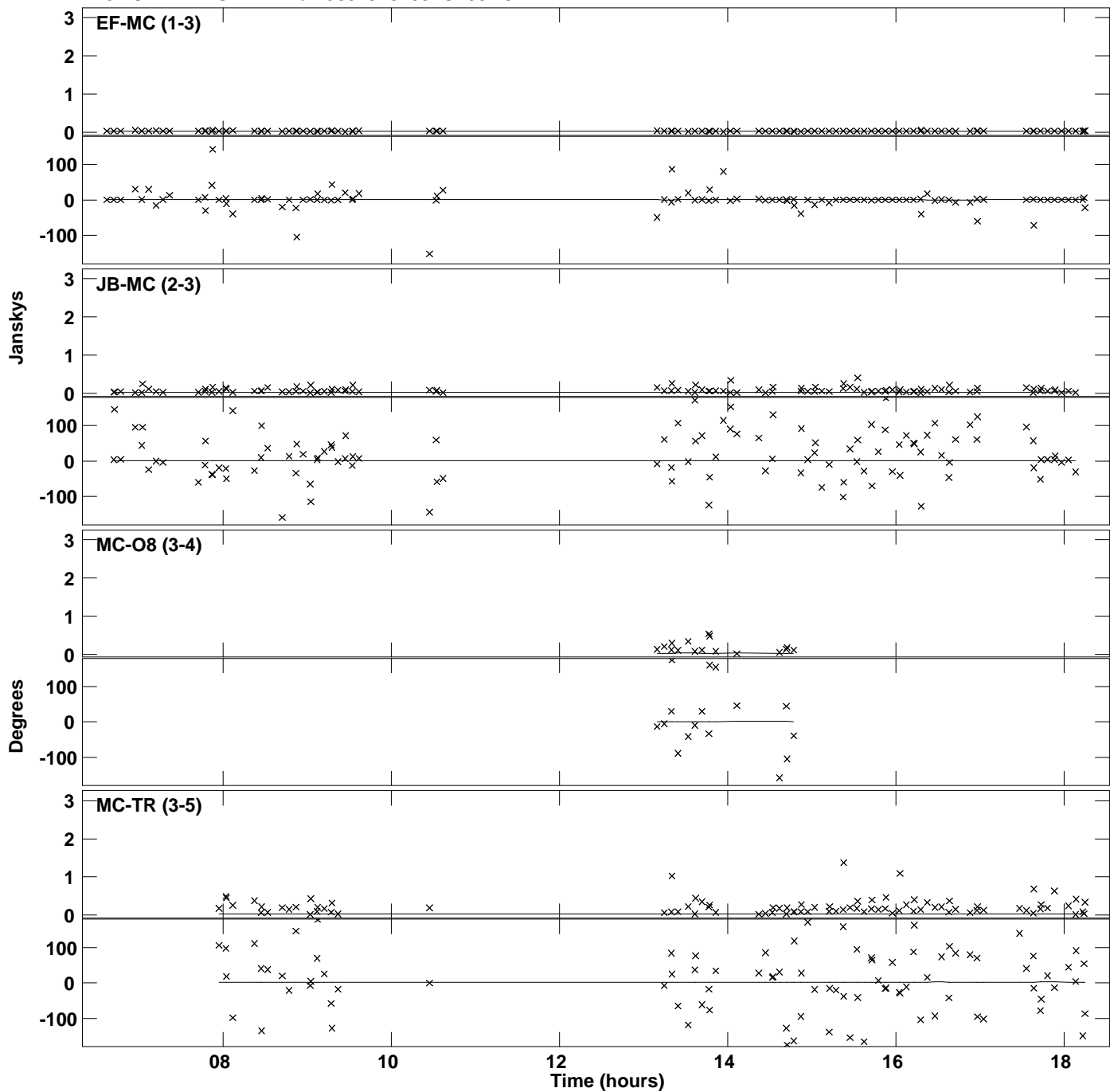
Plot file version 36 created 12-JAN-2018 16:13:24
Amplitude and Phase vs Time for J0529+3209.MULTI.1 Vect aver. CL # 3
IF 7 CHAN 1 STK RR of J0529+3209.ICL001.3



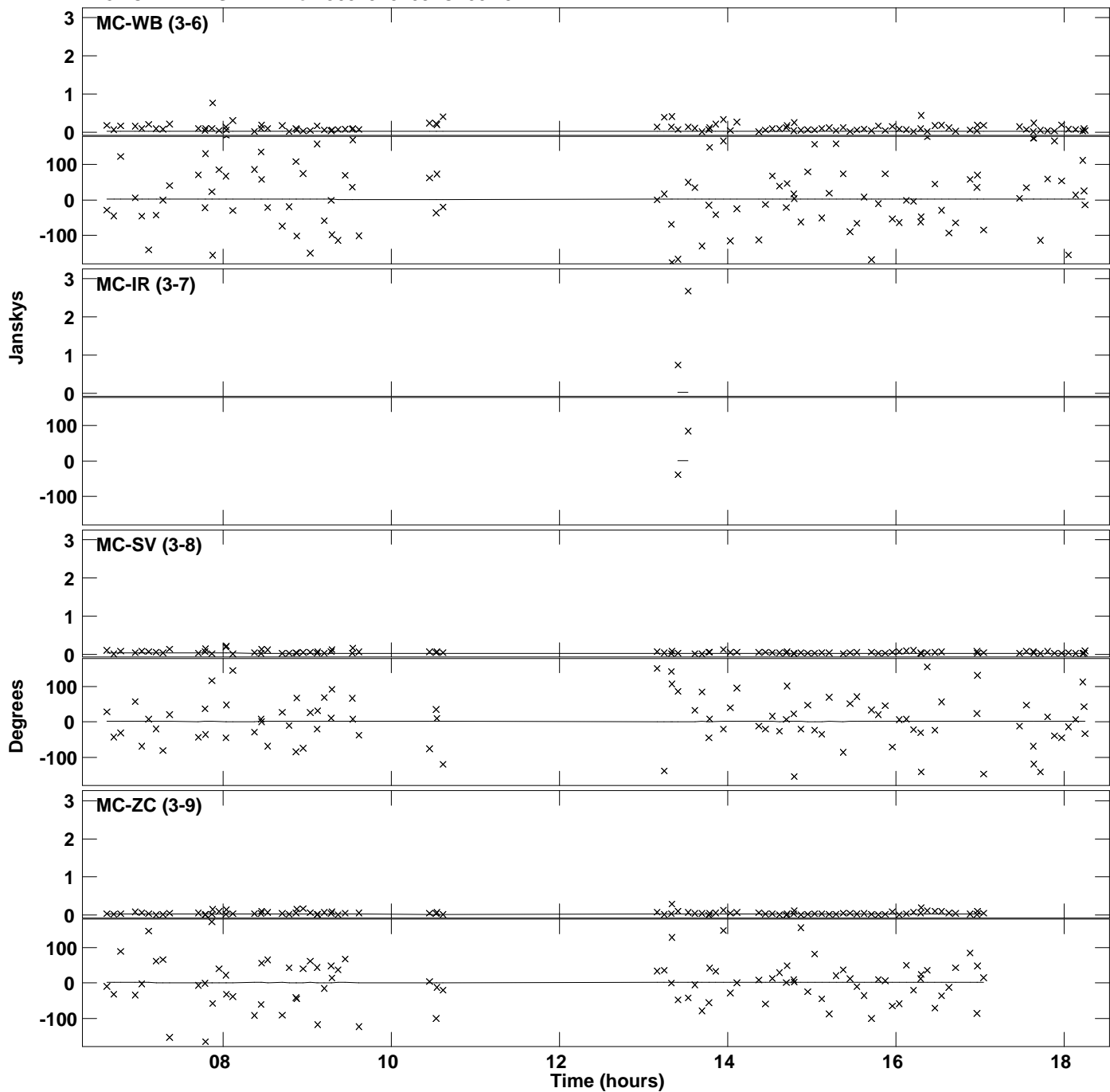
PLot file version 37 created 12-JAN-2018 16:13:24
Amplitude and Phase vs Time for J0529+3209.MULTI.1 Vect aver. CL # 3
IF 7 CHAN 1 STK RR of J0529+3209.ICL001.3



Plot file version 38 created 12-JAN-2018 16:13:25
Amplitude andPhase vs Time for J0529+3209.MULTI.1 Vect aver. CL # 3
IF 8 CHAN 1 STK RR of J0529+3209.ICL001.3



Plot file version 39 created 12-JAN-2018 16:13:25
Amplitude andPhase vs Time for J0529+3209.MULTI.1 Vect aver. CL # 3
IF 8 CHAN 1 STK RR of J0529+3209.ICL001.3



Plot file version 40 created 12-JAN-2018 16:13:25
Amplitude and Phase vs Time for J0529+3209.MULTI.1 Vect aver. CL # 3
IF 8 CHAN 1 STK RR of J0529+3209.ICL001.3

