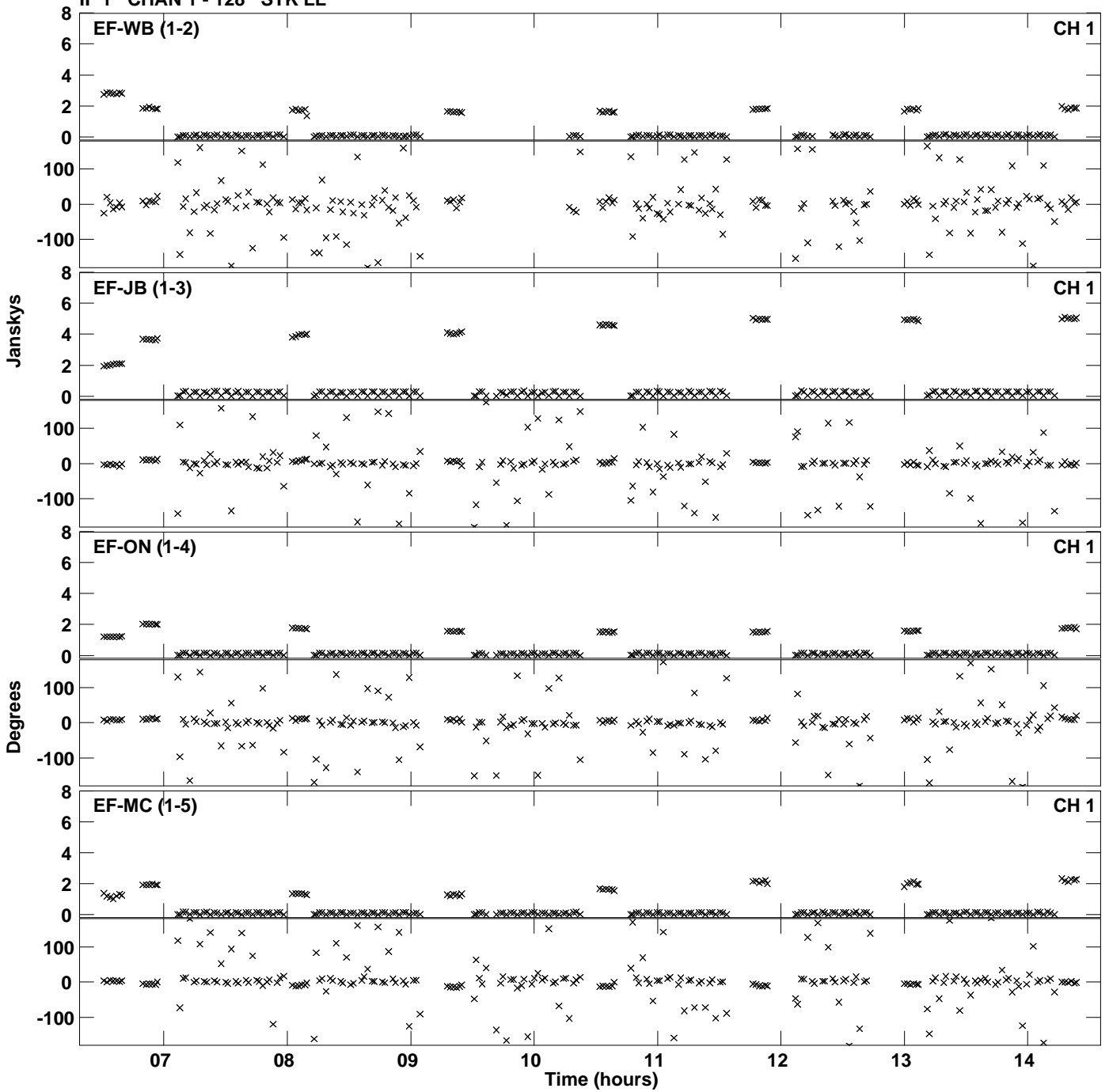
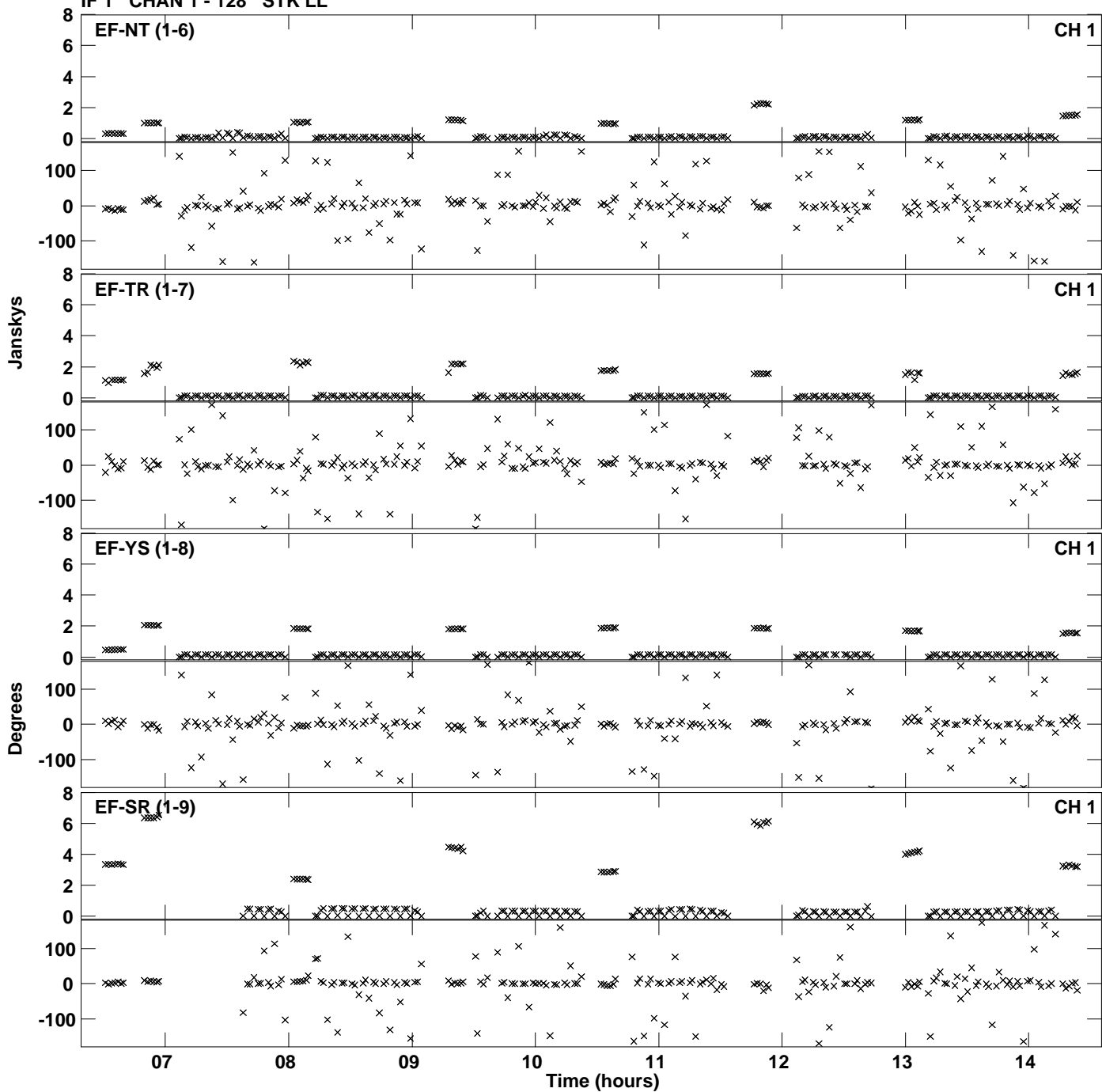


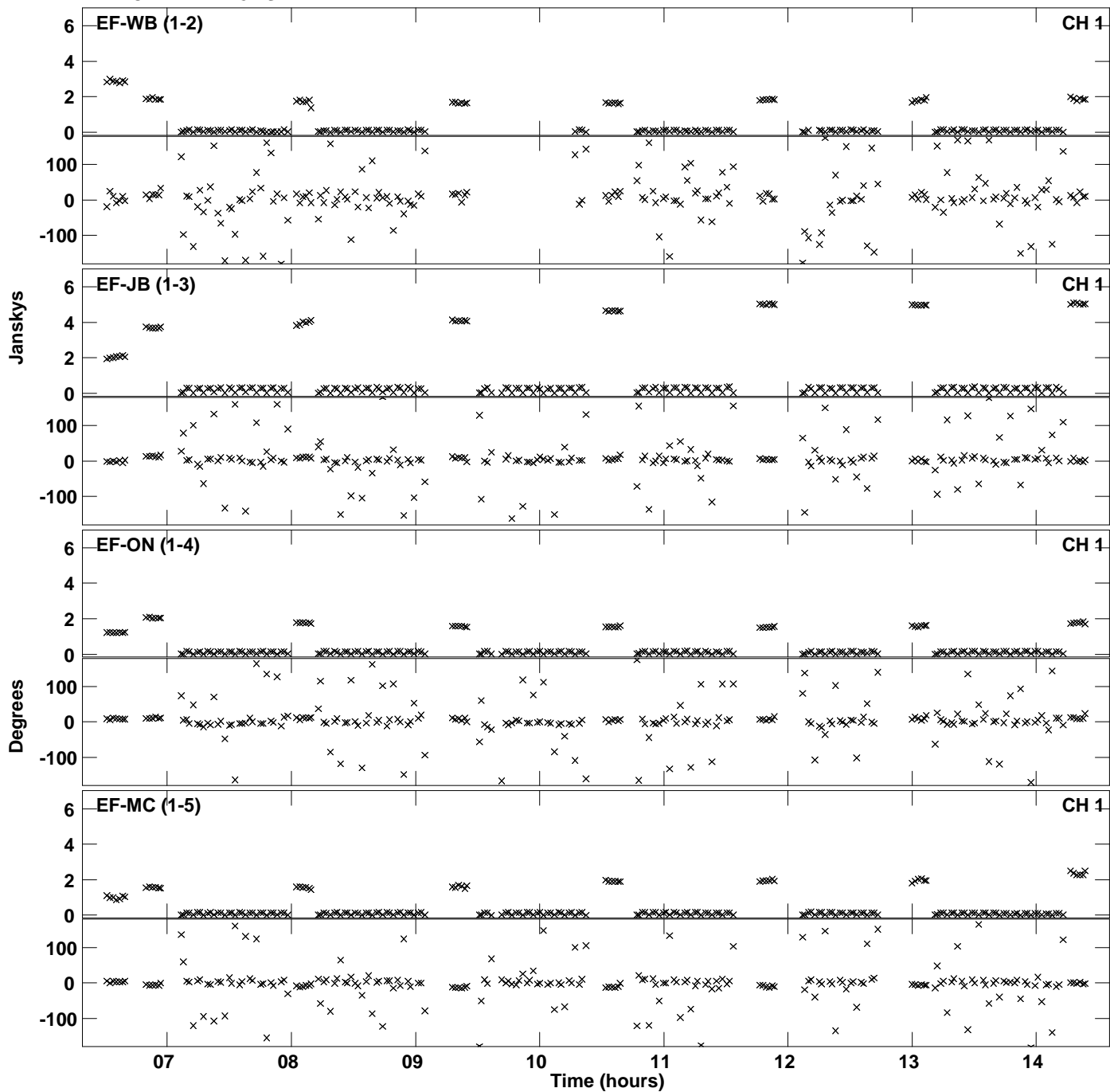
Plot file version 1 created 15-JAN-2016 16:43:00
Amplitude andPhase vs Time for ES071C 1.UVDATA.1 Vect aver. CL # 3
IF 1 CHAN 1 - 128 STK LL



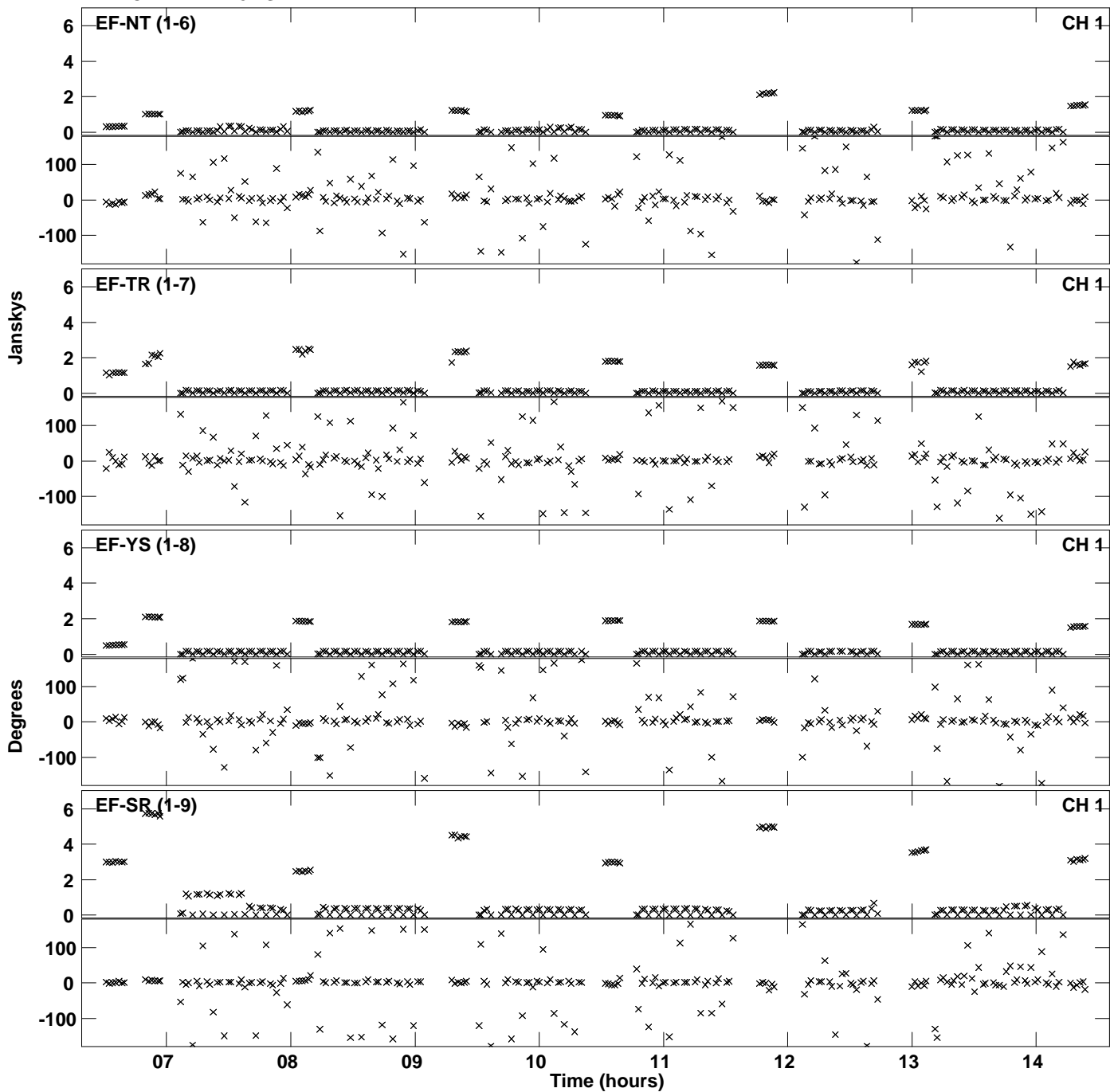
Plot file version 2 created 15-JAN-2016 16:43:00
Amplitude andPhase vs Time for ES071C 1.UVDATA.1 Vect aver. CL # 3
IF 1 CHAN 1 - 128 STK LL



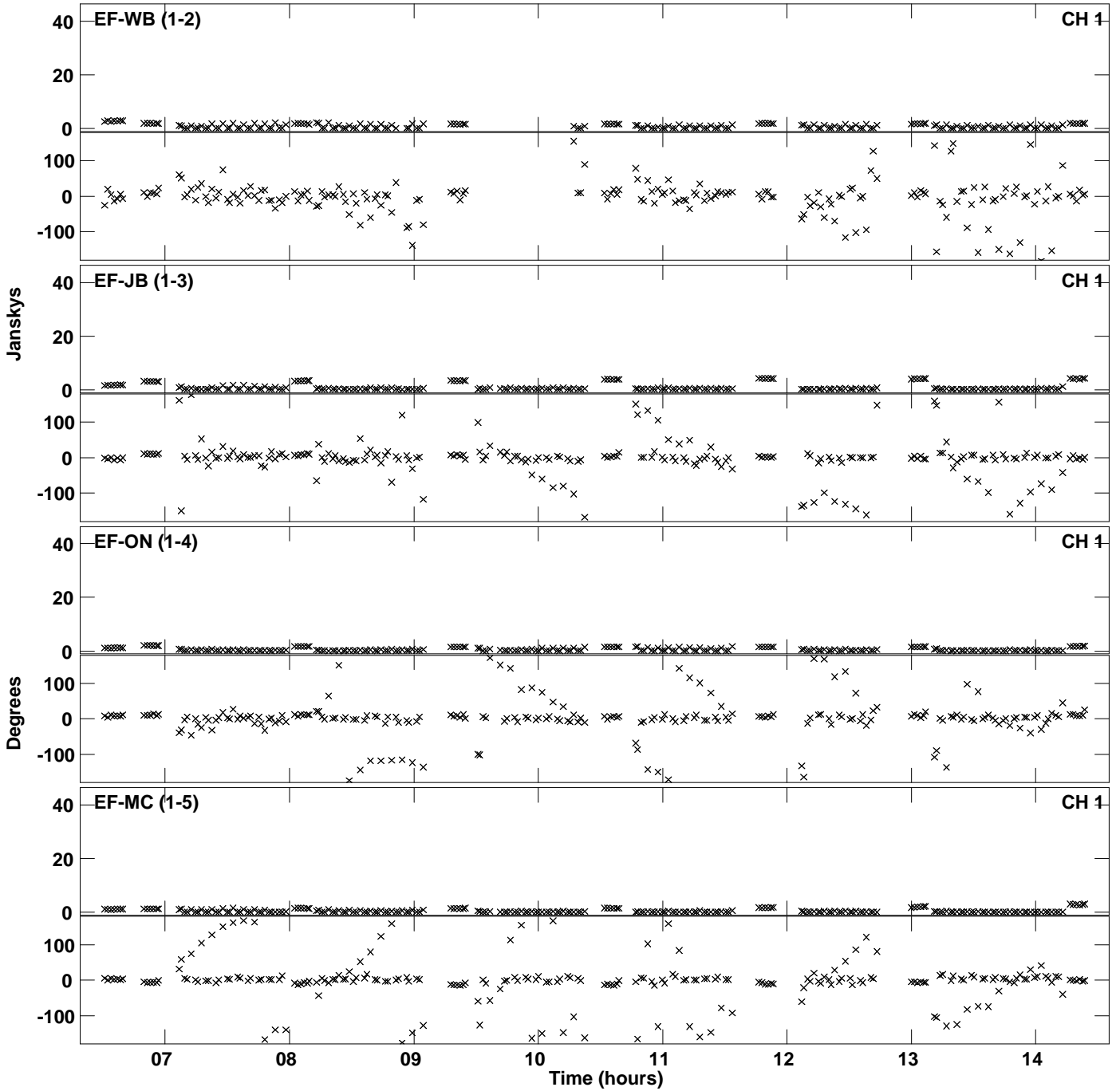
Plot file version 3 created 15-JAN-2016 16:43:23
Amplitude and Phase vs Time for ES071C 1.UVDATA.1 Vect aver. CL # 3
IF 2 CHAN 1 - 128 STK LL



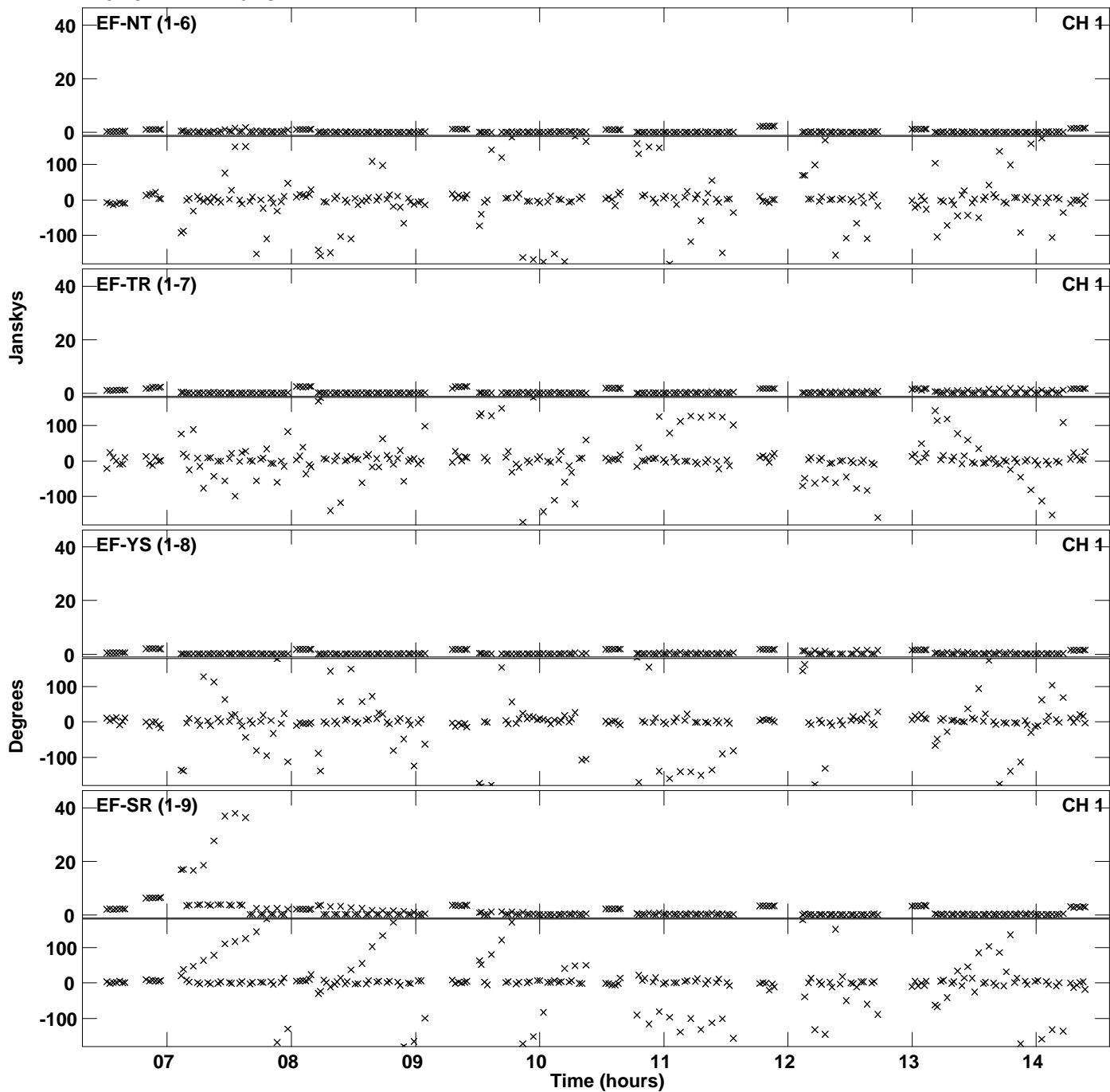
Plot file version 4 created 15-JAN-2016 16:43:23
Amplitude and Phase vs Time for ES071C 1.UVDATA.1 Vect aver. CL # 3
IF 2 CHAN 1 - 128 STK LL



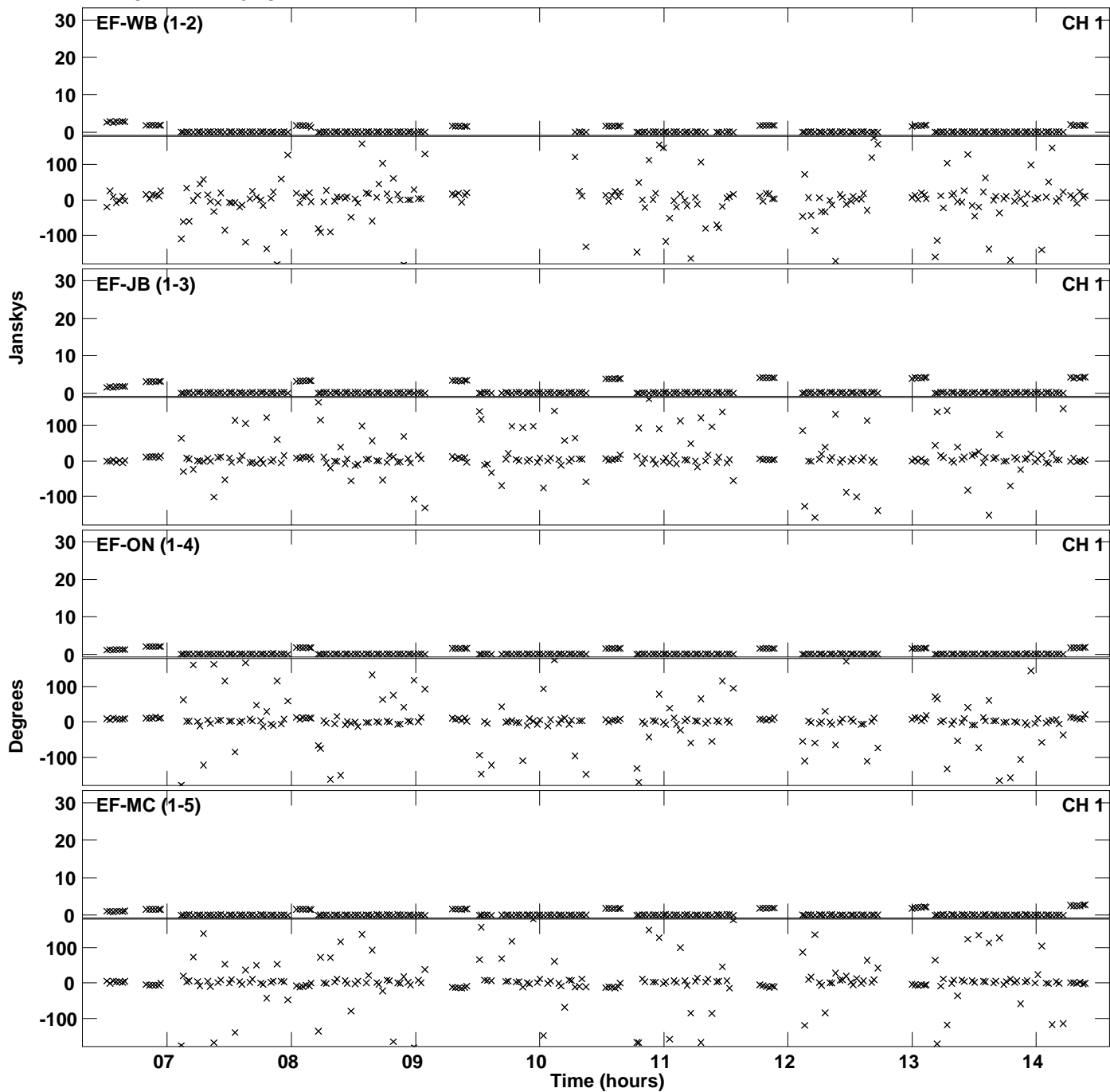
Plot file version 5 created 15-JAN-2016 16:43:45
Amplitude andPhase vs Time for ES071C 1.UVDATA.1 Vect aver. CL # 3
IF 3 CHAN 1 - 128 STK LL



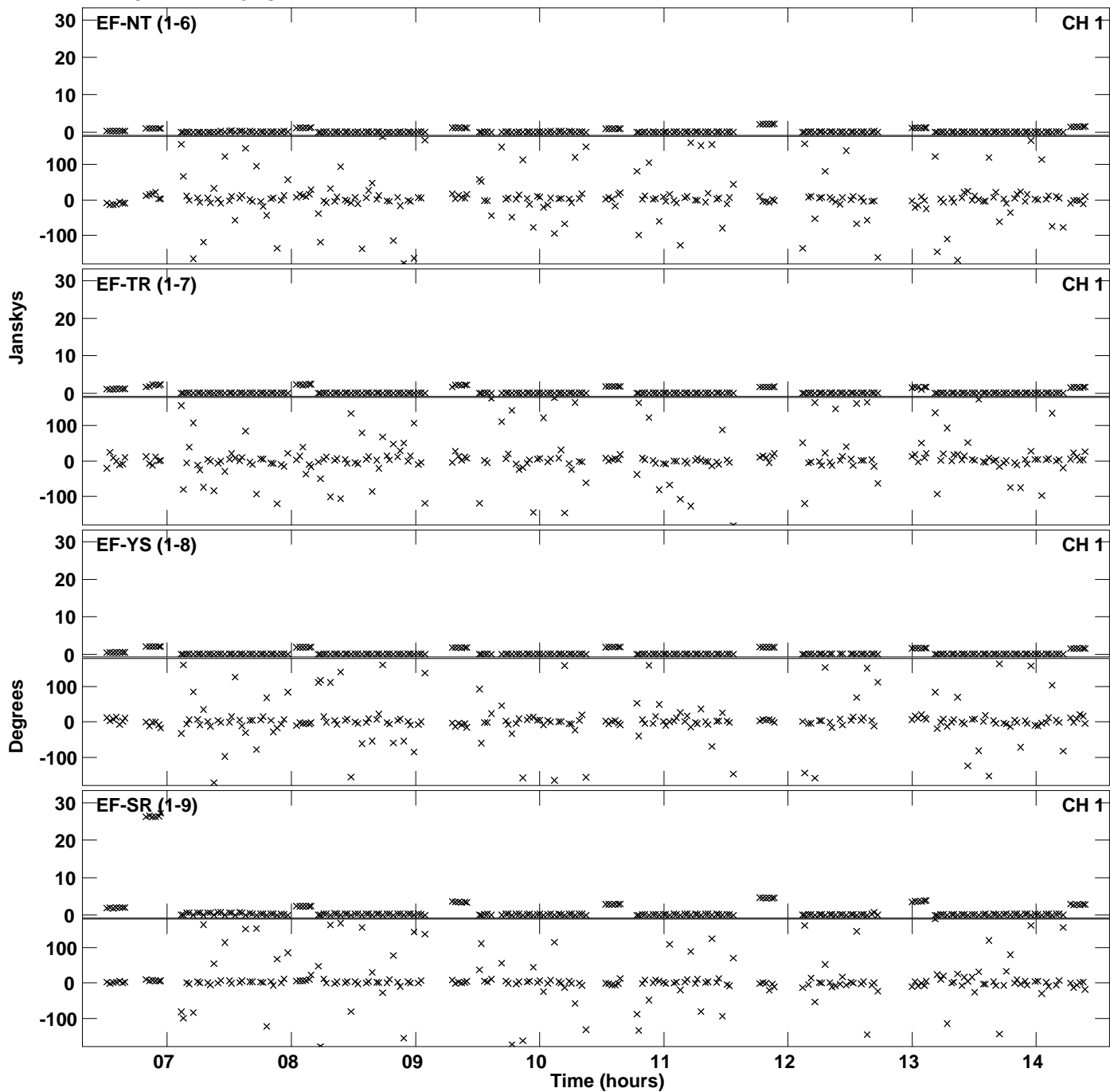
Plot file version 6 created 15-JAN-2016 16:43:45
Amplitude andPhase vs Time for ES071C 1.UVDATA.1 Vect aver. CL # 3
IF 3 CHAN 1 - 128 STK LL



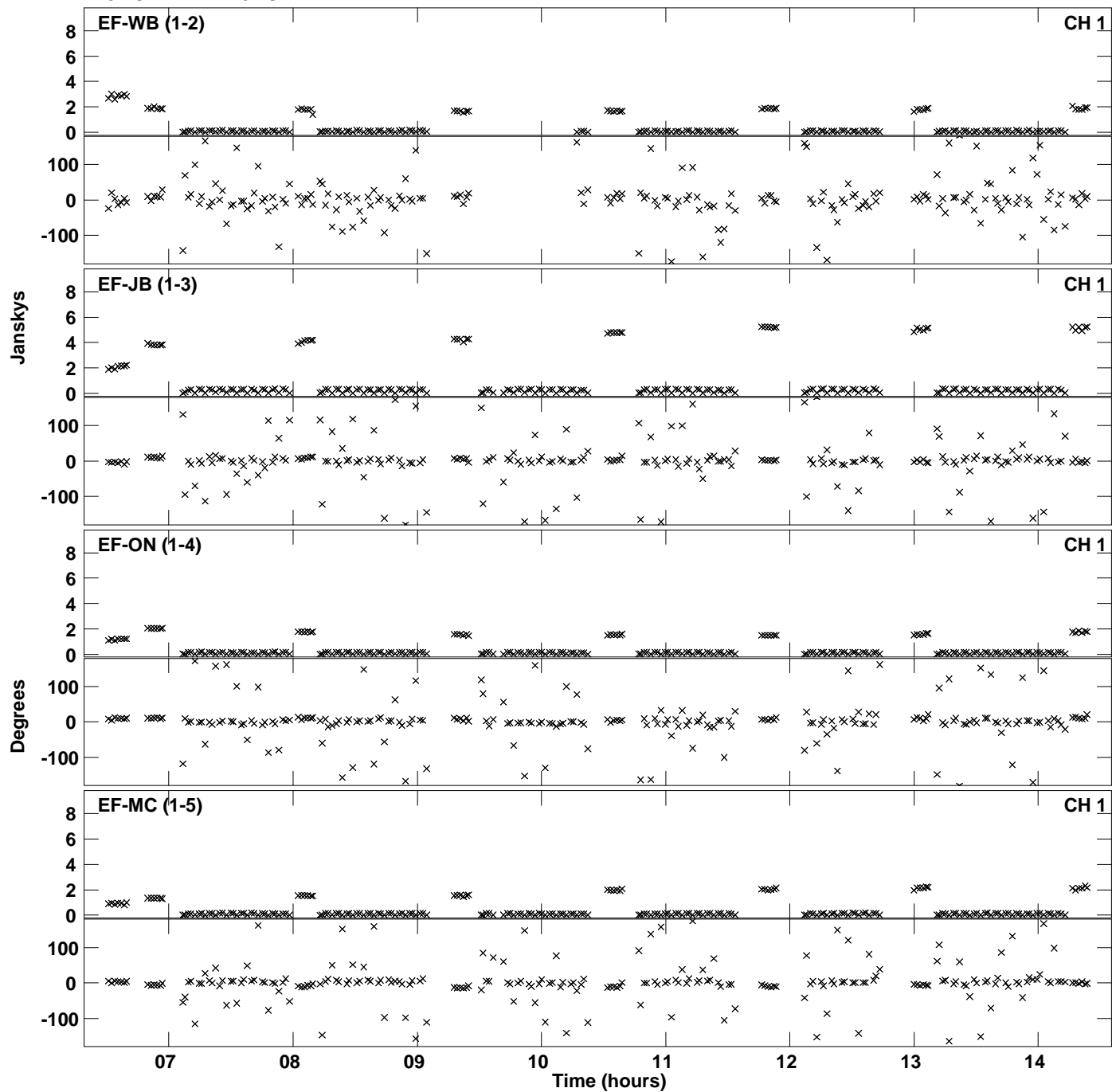
Plot file version 7 created 15-JAN-2016 16:44:07
Amplitude andPhase vs Time for ES071C 1.UVDATA.1 Vect aver. CL # 3
IF 4 CHAN 1 - 128 STK LL



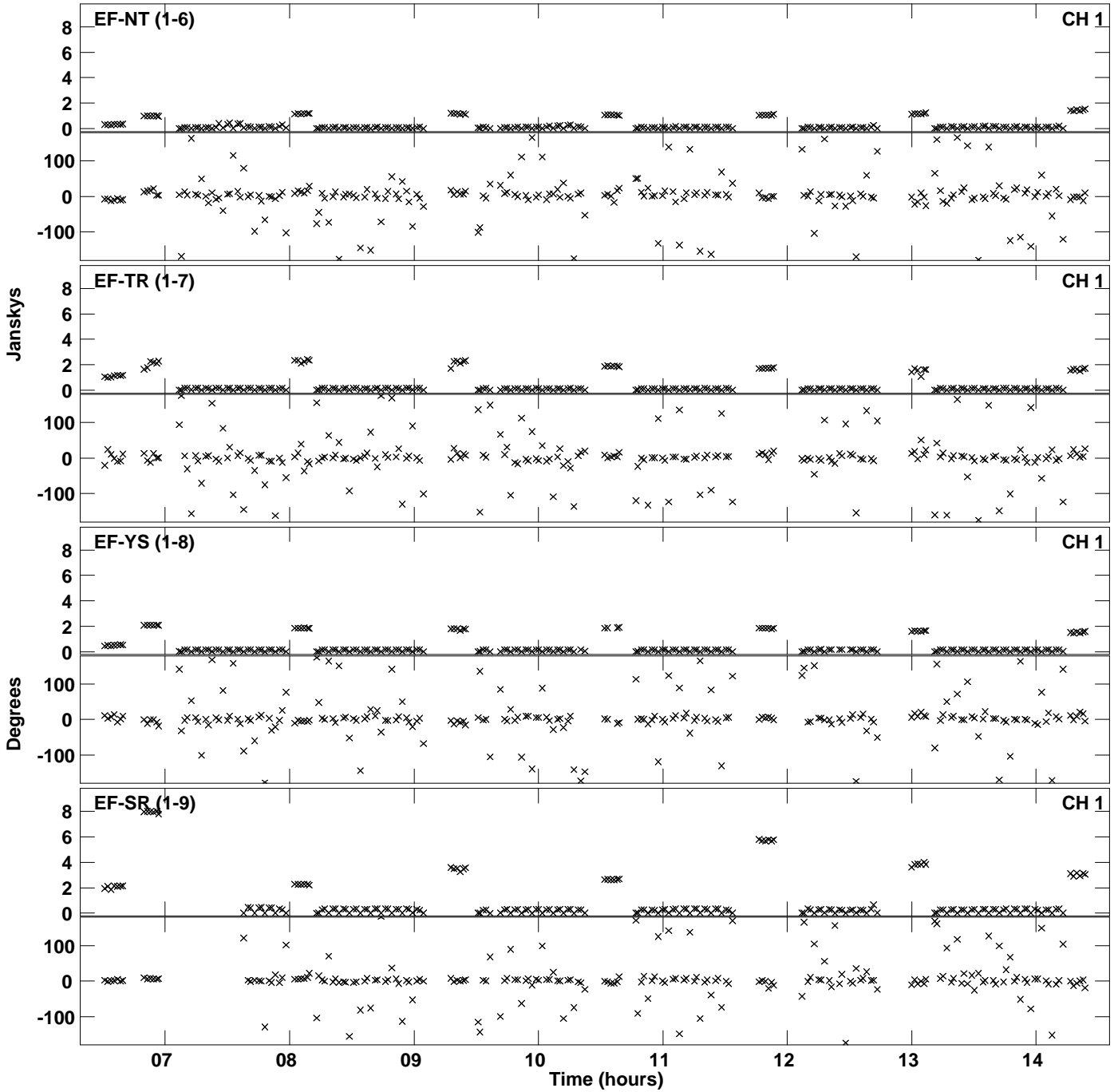
Plot file version 8 created 15-JAN-2016 16:44:07
Amplitude and Phase vs Time for ES071C 1.UVDATA.1 Vect aver. CL # 3
IF 4 CHAN 1 - 128 STK LL



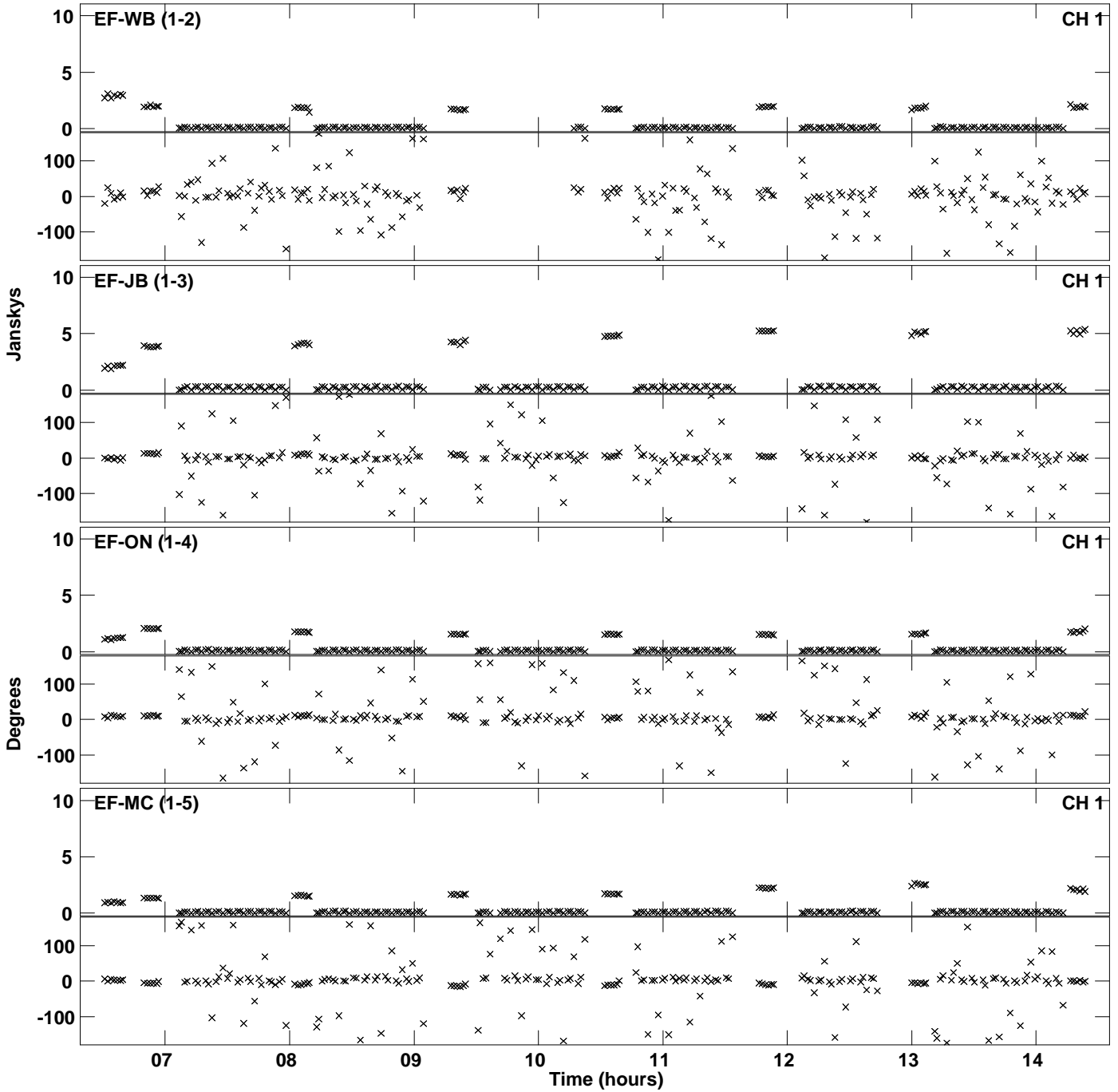
Plot file version 9 created 15-JAN-2016 16:44:30
Amplitude and Phase vs Time for ES071C 1.UVDATA.1 Vect aver. CL # 3
IF 5 CHAN 1 - 128 STK LL



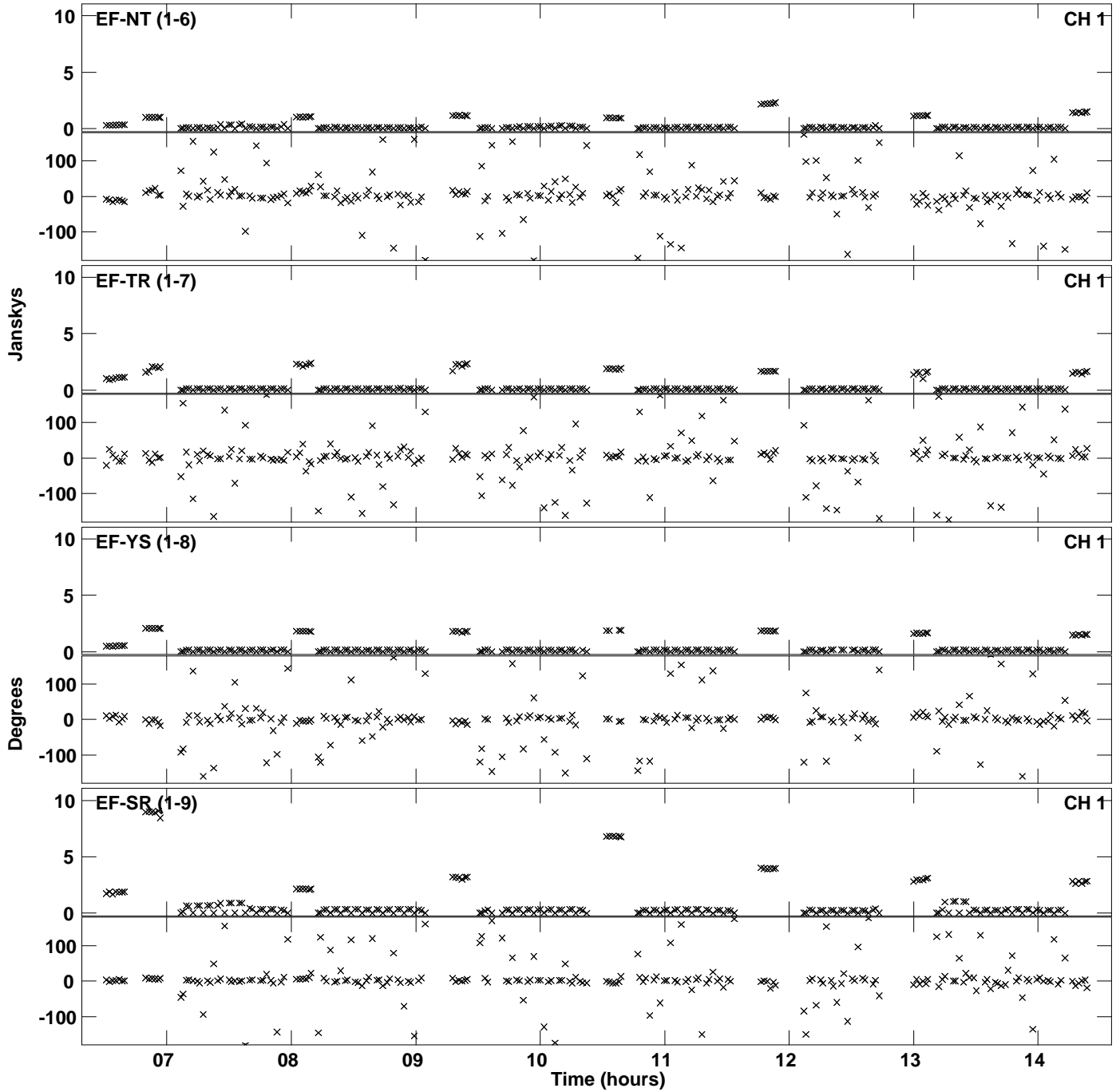
Plot file version 10 created 15-JAN-2016 16:44:30
Amplitude and Phase vs Time for ES071C 1.UVDATA.1 Vect aver. CL # 3
IF 5 CHAN 1 - 128 STK LL



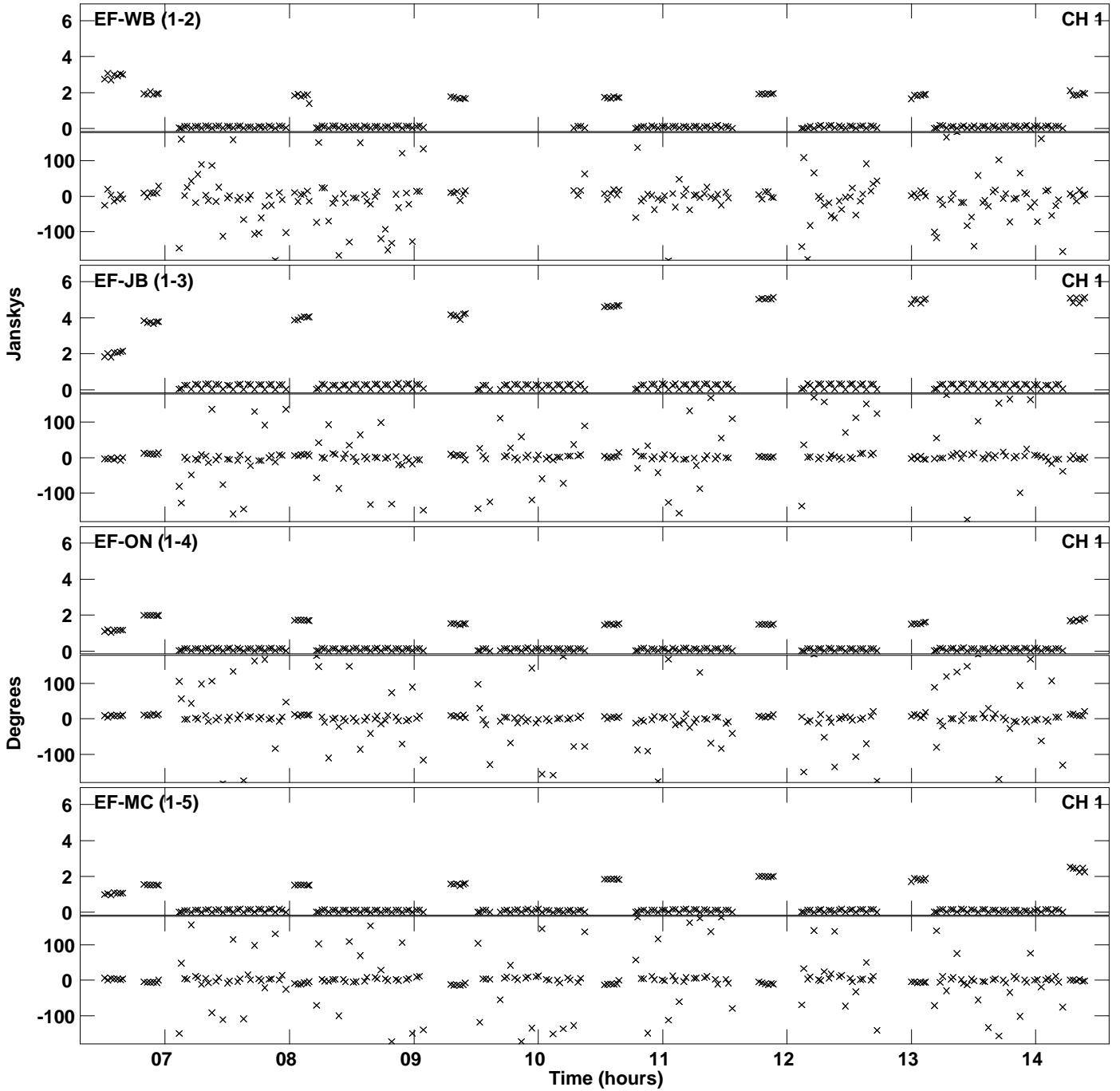
Plot file version 11 created 15-JAN-2016 16:44:52
Amplitude and Phase vs Time for ES071C 1.UVDATA.1 Vect aver. CL # 3
IF 6 CHAN 1 - 128 STK LL



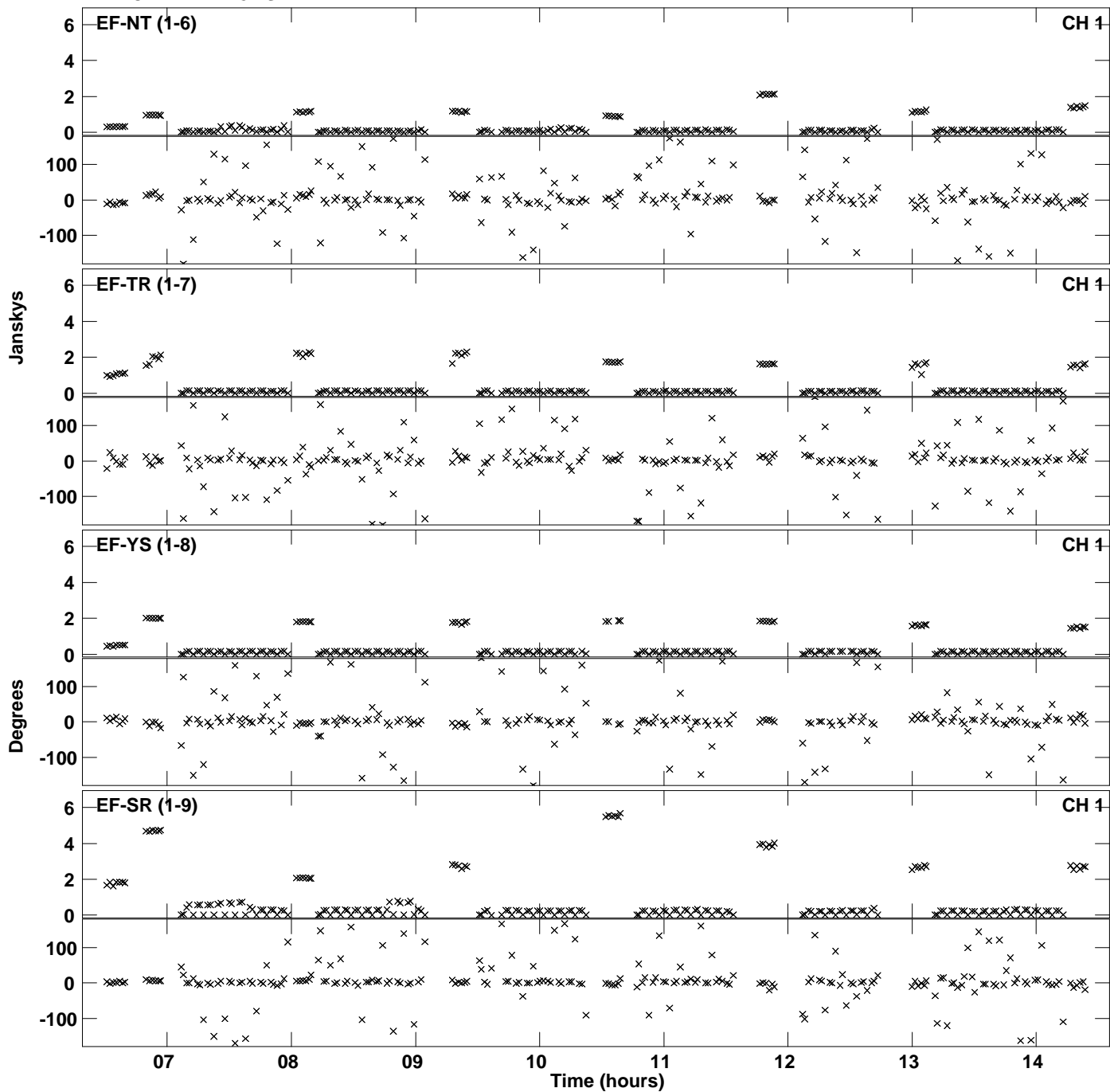
Plot file version 12 created 15-JAN-2016 16:44:52
Amplitude and Phase vs Time for ES071C 1.UVDATA.1 Vect aver. CL # 3
IF 6 CHAN 1 - 128 STK LL



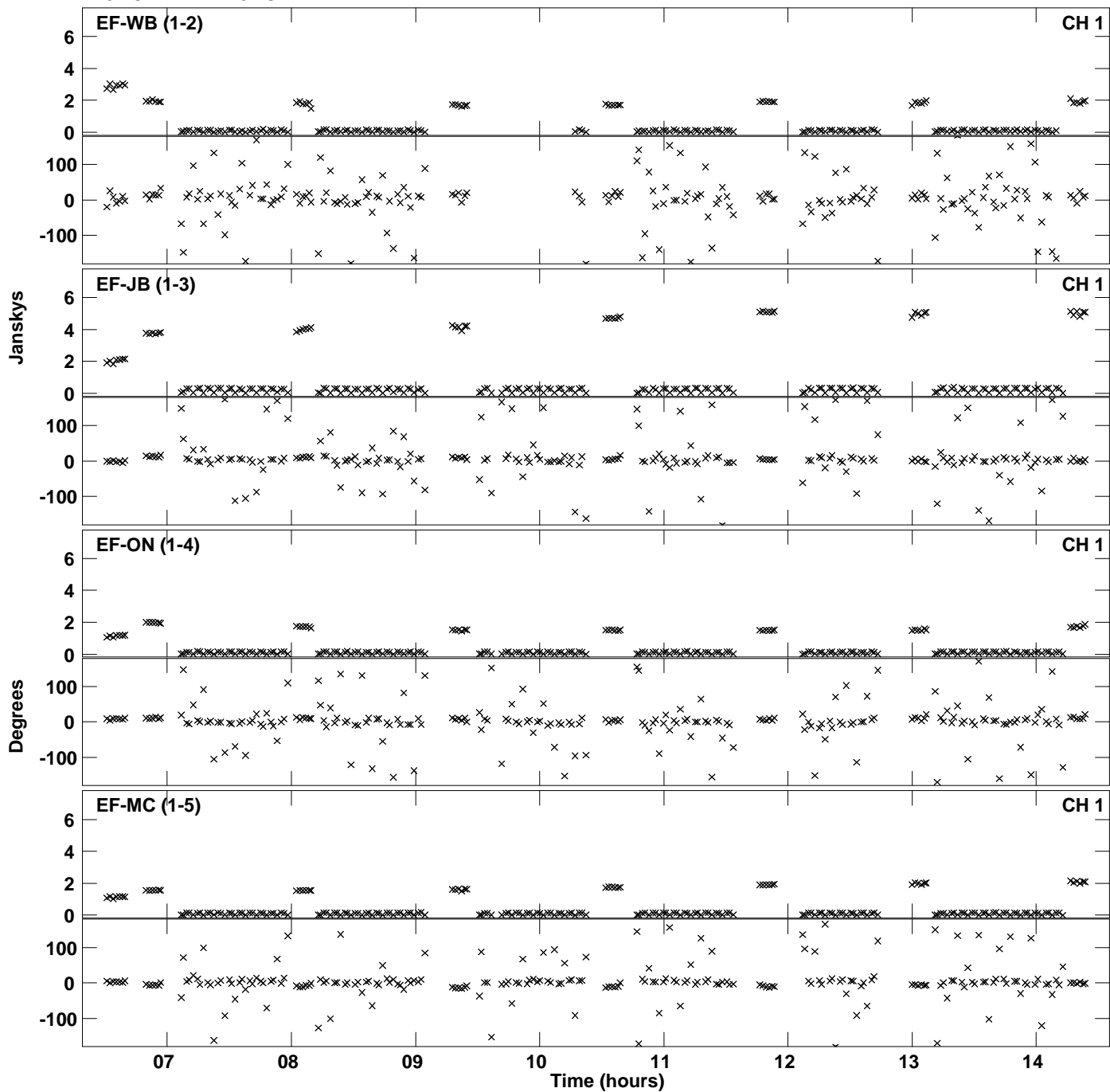
Plot file version 13 created 15-JAN-2016 16:45:15
Amplitude andPhase vs Time for ES071C 1.UVDATA.1 Vect aver. CL # 3
IF 7 CHAN 1 - 128 STK LL



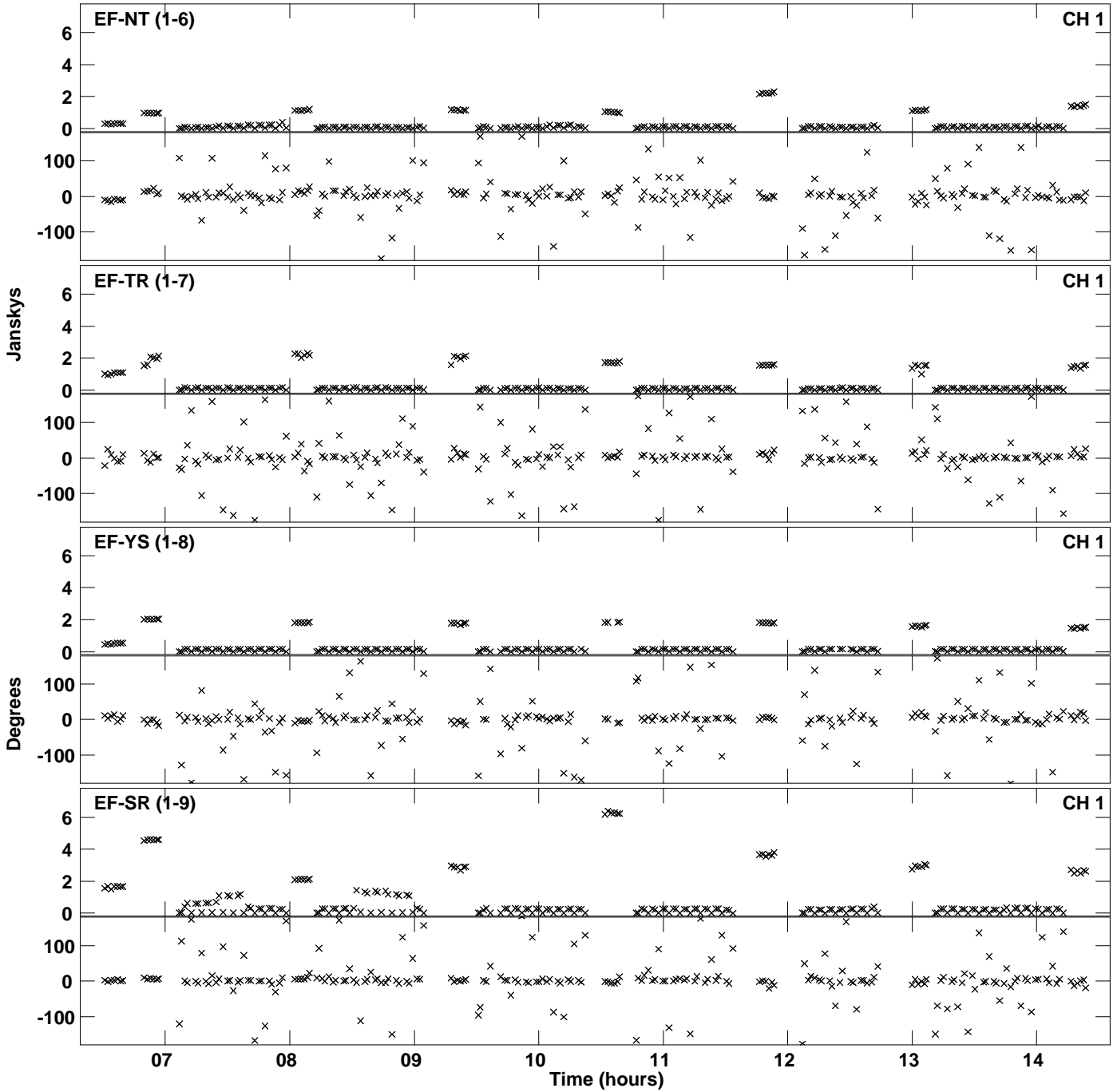
Plot file version 14 created 15-JAN-2016 16:45:15
Amplitude and Phase vs Time for ES071C 1.UVDATA.1 Vect aver. CL # 3
IF 7 CHAN 1 - 128 STK LL



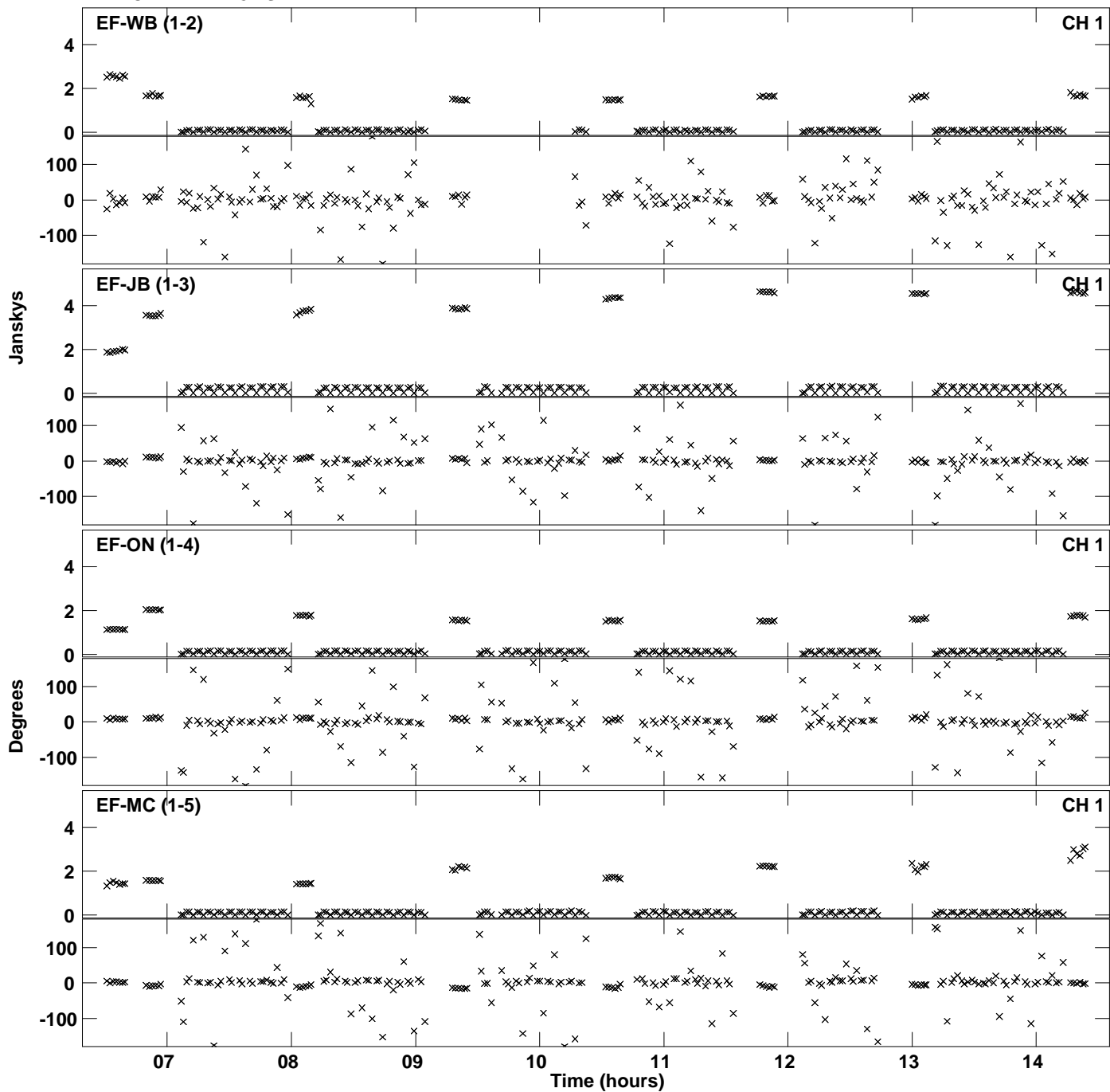
Plot file version 15 created 15-JAN-2016 16:45:37
Amplitude and Phase vs Time for ES071C 1.UVDATA.1 Vect aver. CL # 3
IF 8 CHAN 1 - 128 STK LL



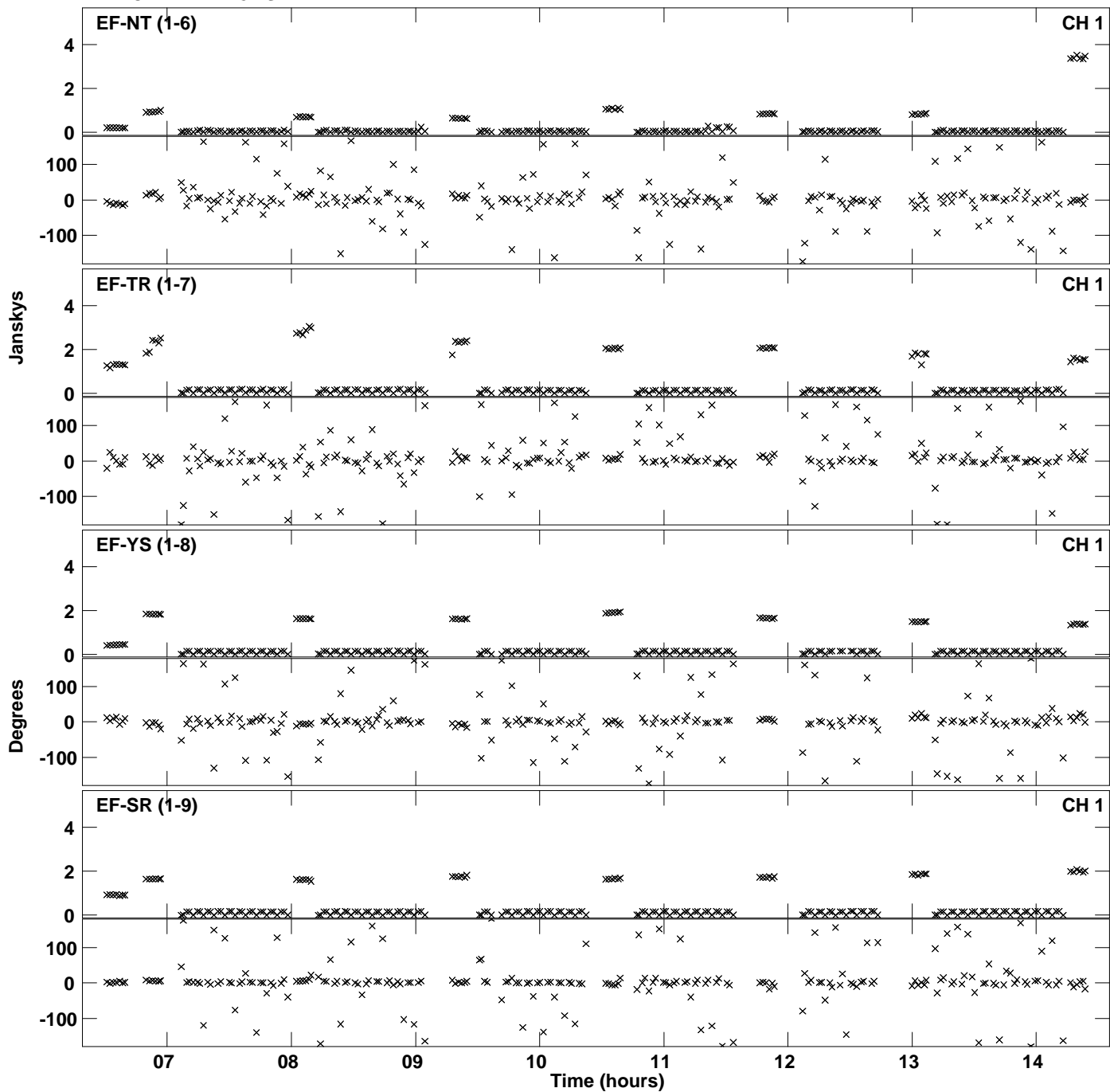
Plot file version 16 created 15-JAN-2016 16:45:37
Amplitude and Phase vs Time for ES071C 1.UVDATA.1 Vect aver. CL # 3
IF 8 CHAN 1 - 128 STK LL



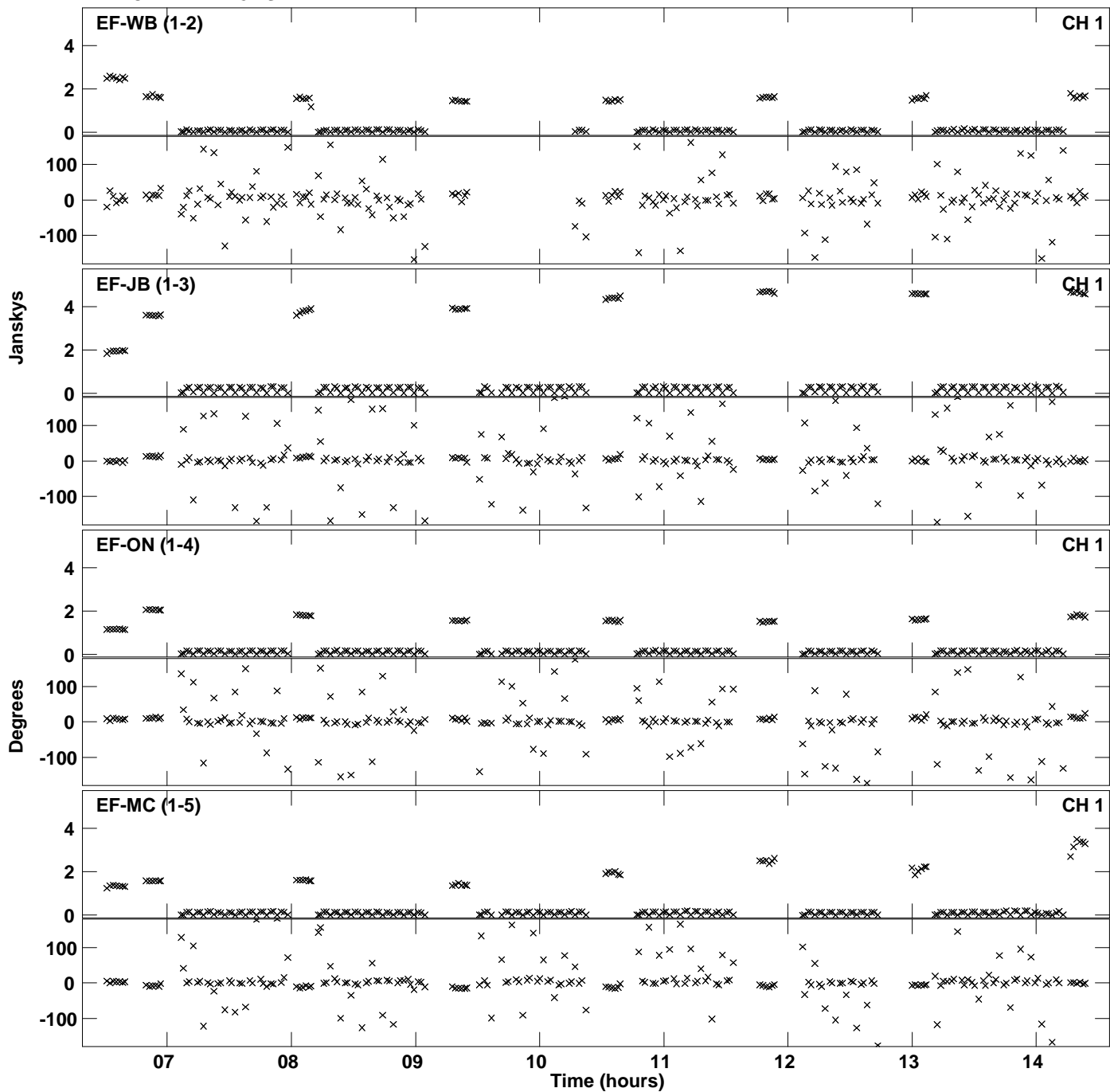
PLot file version 17 created 15-JAN-2016 16:45:57
Amplitude andPhase vs Time for ES071C 1.UVDATA.1 Vect aver. CL # 3
IF 1 CHAN 1 - 128 STK RR



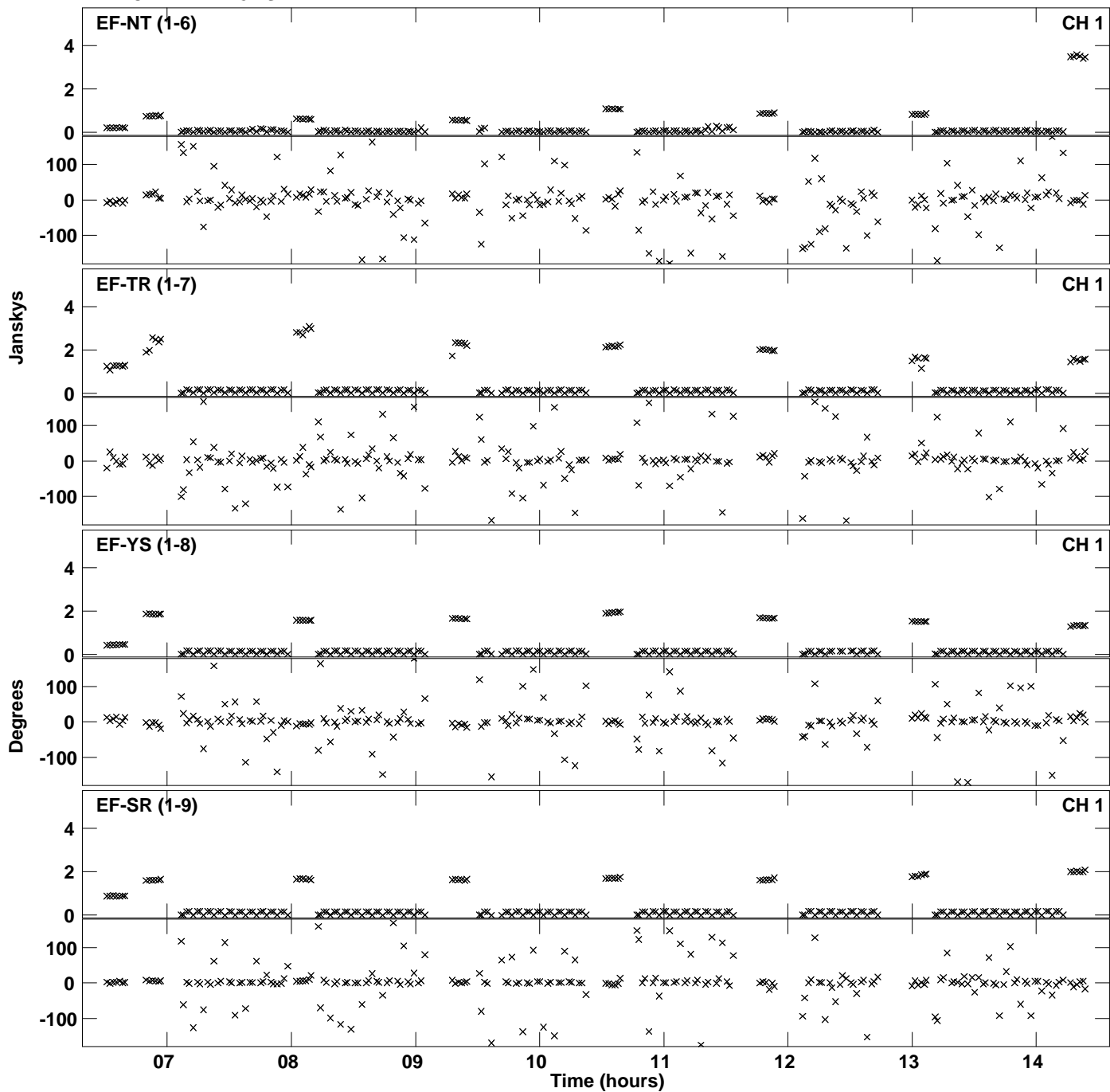
Plot file version 18 created 15-JAN-2016 16:45:57
Amplitude and Phase vs Time for ES071C 1.UVDATA.1 Vect aver. CL # 3
IF 1 CHAN 1 - 128 STK RR



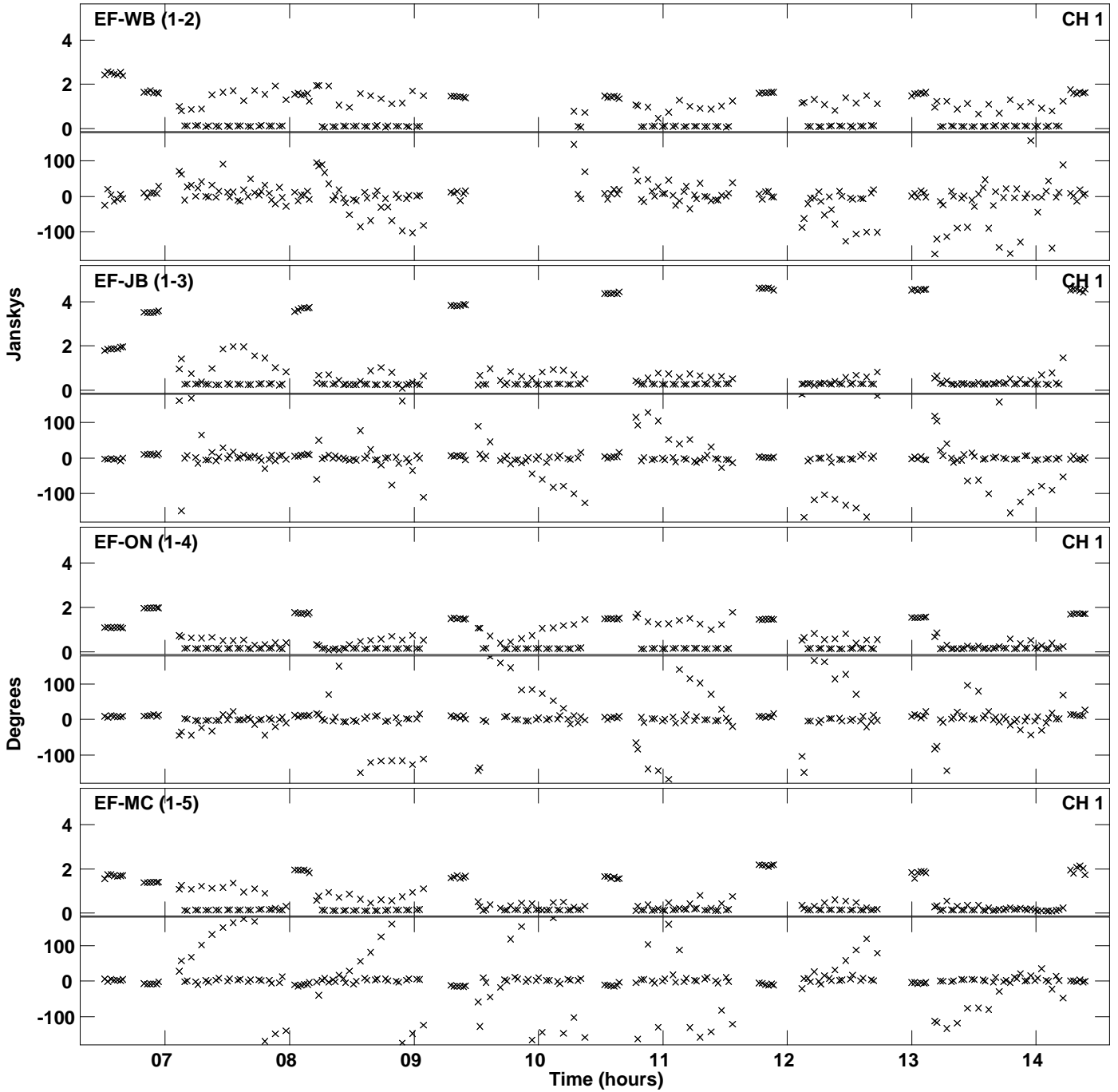
PLot file version 19 created 15-JAN-2016 16:46:16
Amplitude andPhase vs Time for ES071C 1.UVDATA.1 Vect aver. CL # 3
IF 2 CHAN 1 - 128 STK RR



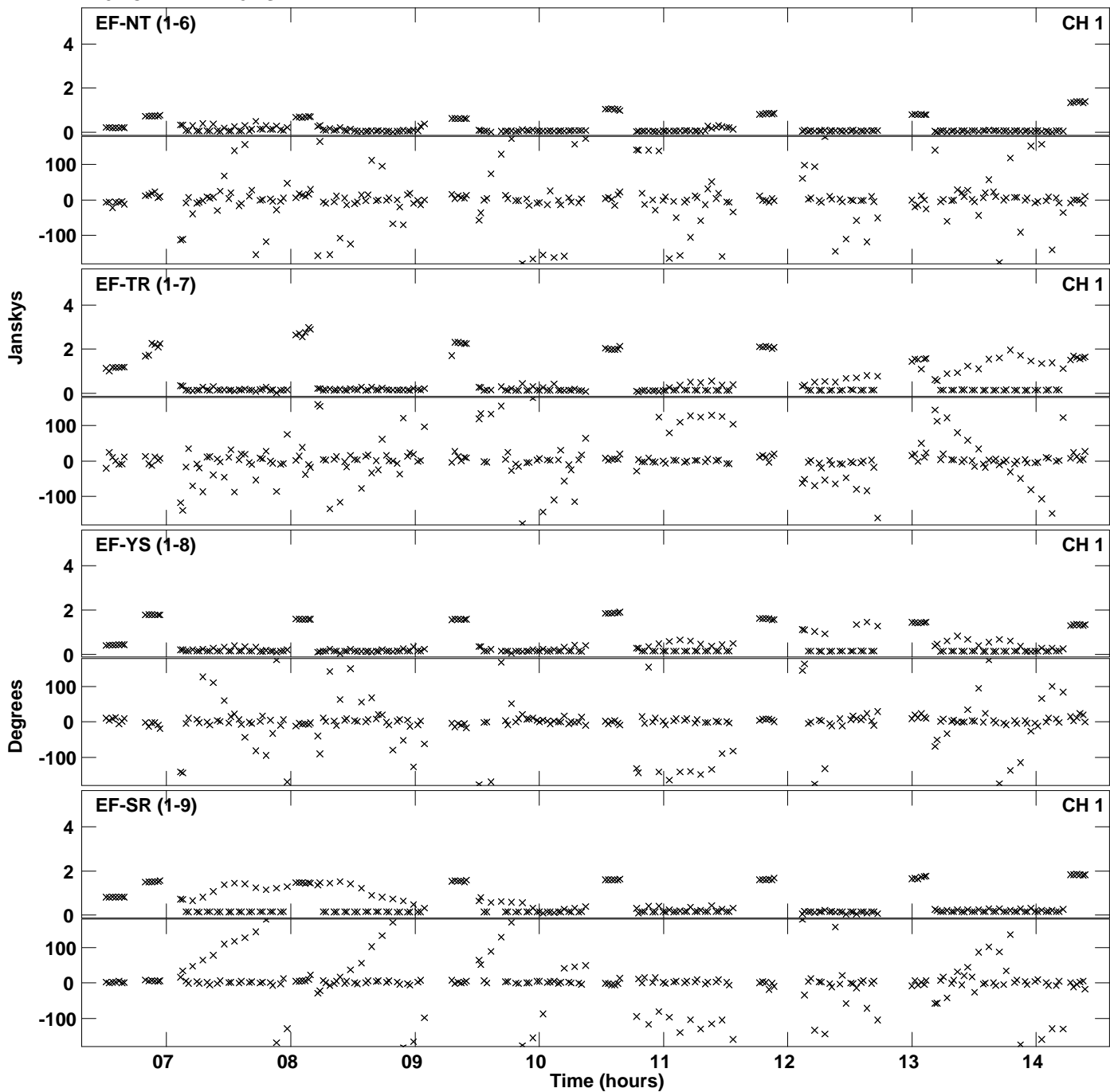
PLot file version 20 created 15-JAN-2016 16:46:16
Amplitude andPhase vs Time for ES071C 1.UVDATA.1 Vect aver. CL # 3
IF 2 CHAN 1 - 128 STK RR



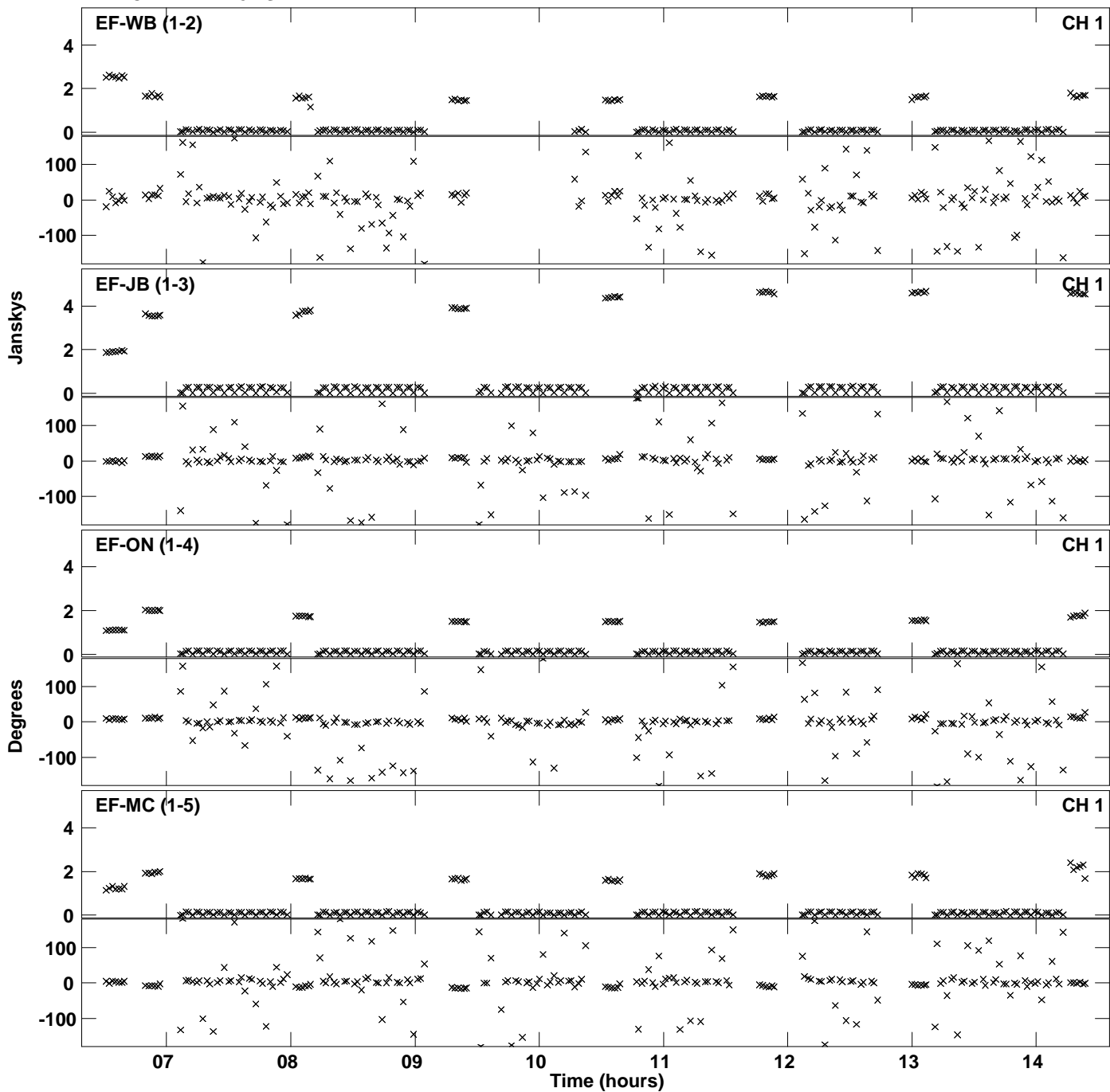
PLot file version 21 created 15-JAN-2016 16:46:35
Amplitude andPhase vs Time for ES071C 1.UVDATA.1 Vect aver. CL # 3
IF 3 CHAN 1 - 128 STK RR



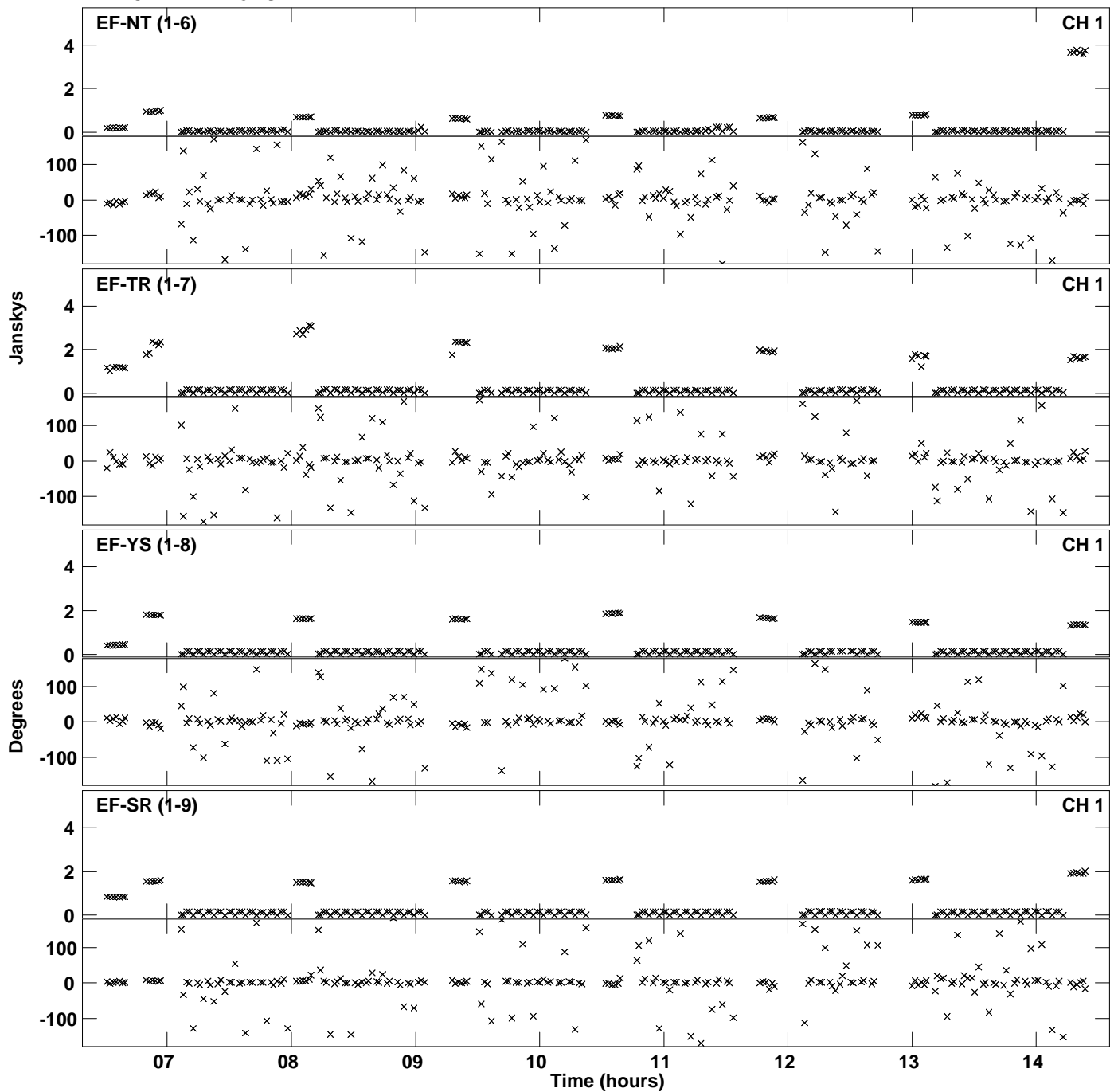
Plot file version 22 created 15-JAN-2016 16:46:35
Amplitude and Phase vs Time for ES071C 1.UVDATA.1 Vect aver. CL # 3
IF 3 CHAN 1 - 128 STK RR



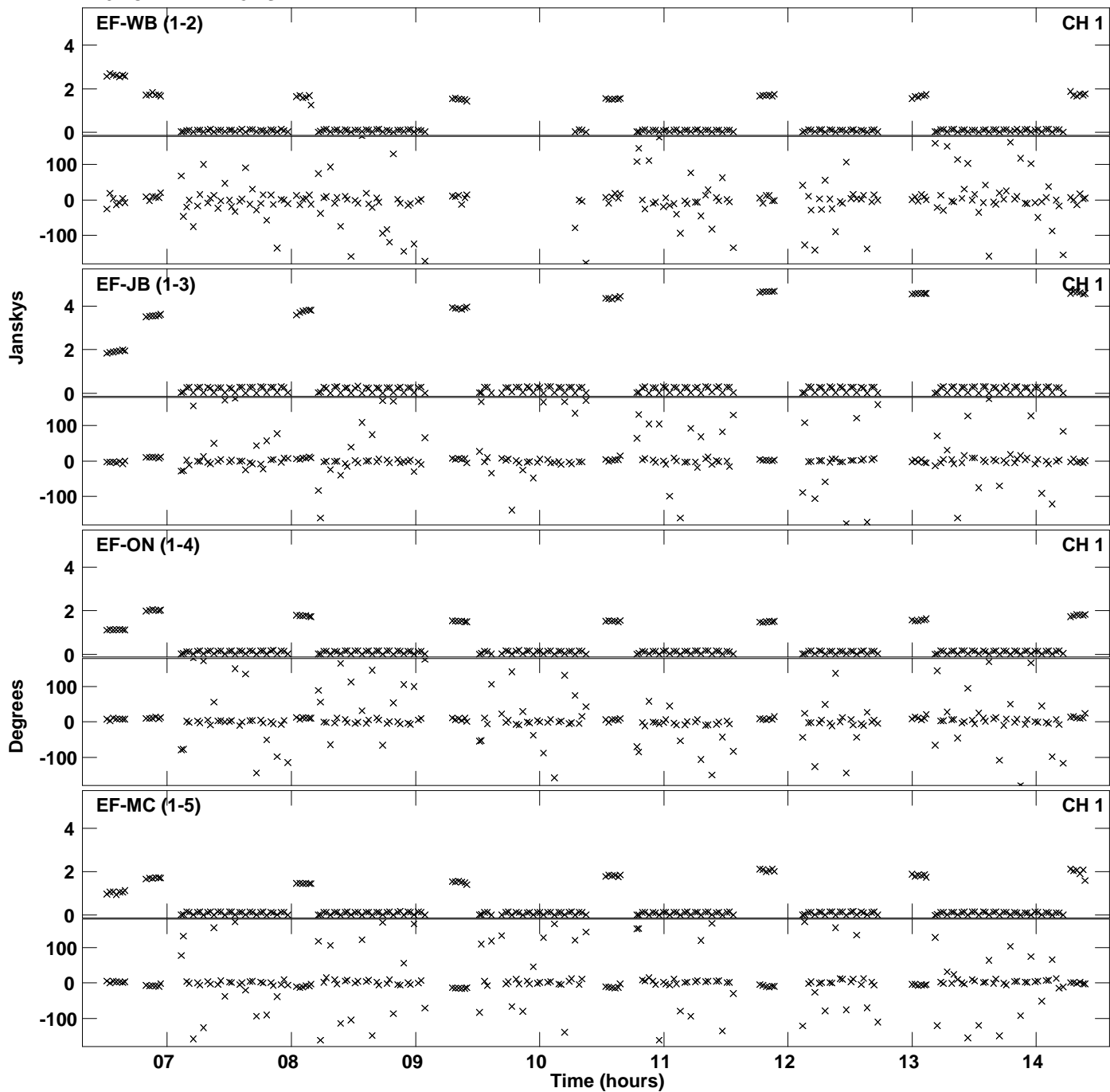
PLot file version 23 created 15-JAN-2016 16:46:55
Amplitude andPhase vs Time for ES071C 1.UVDATA.1 Vect aver. CL # 3
IF 4 CHAN 1 - 128 STK RR



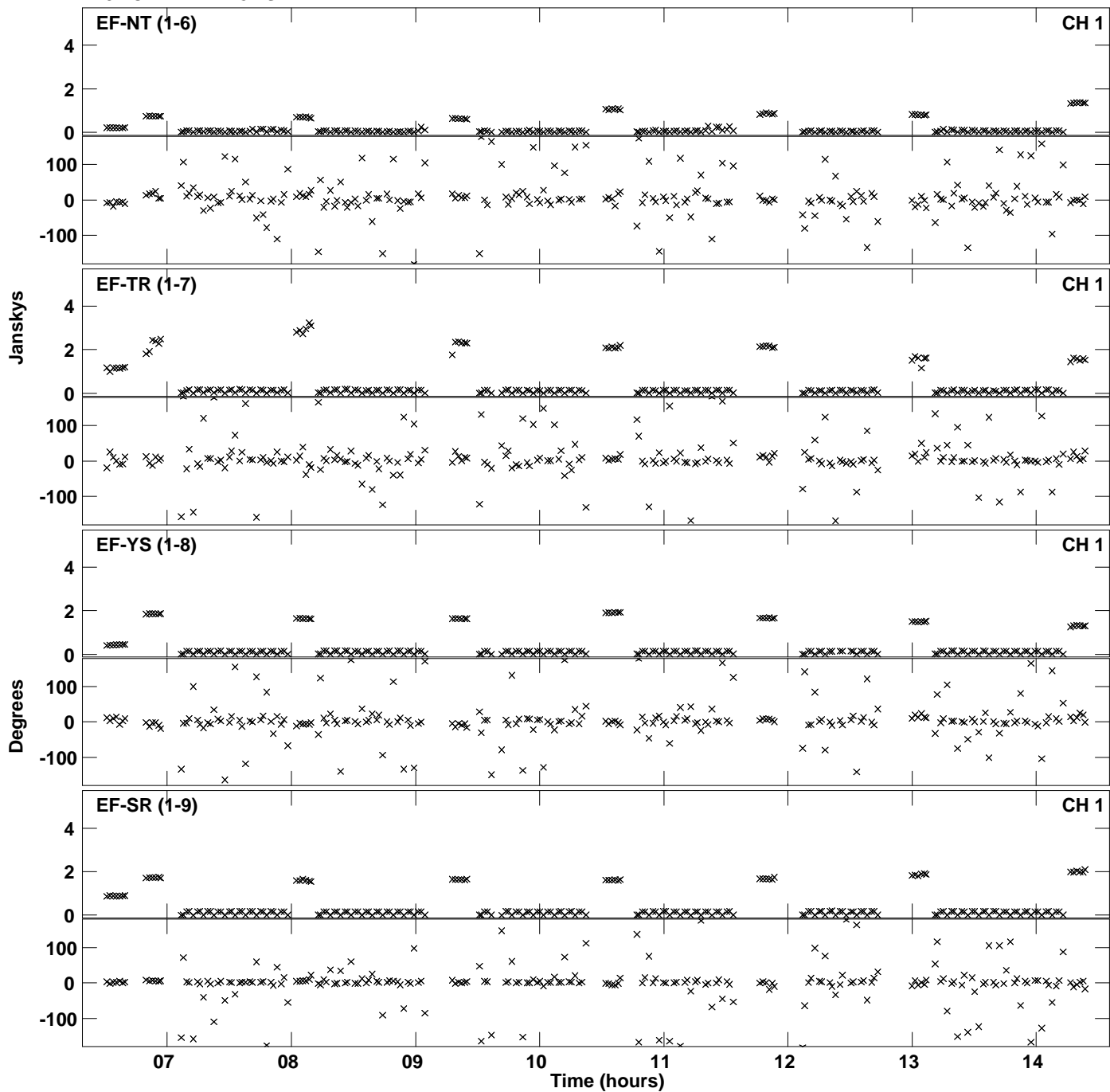
Plot file version 24 created 15-JAN-2016 16:46:55
Amplitude and Phase vs Time for ES071C 1.UVDATA.1 Vect aver. CL # 3
IF 4 CHAN 1 - 128 STK RR



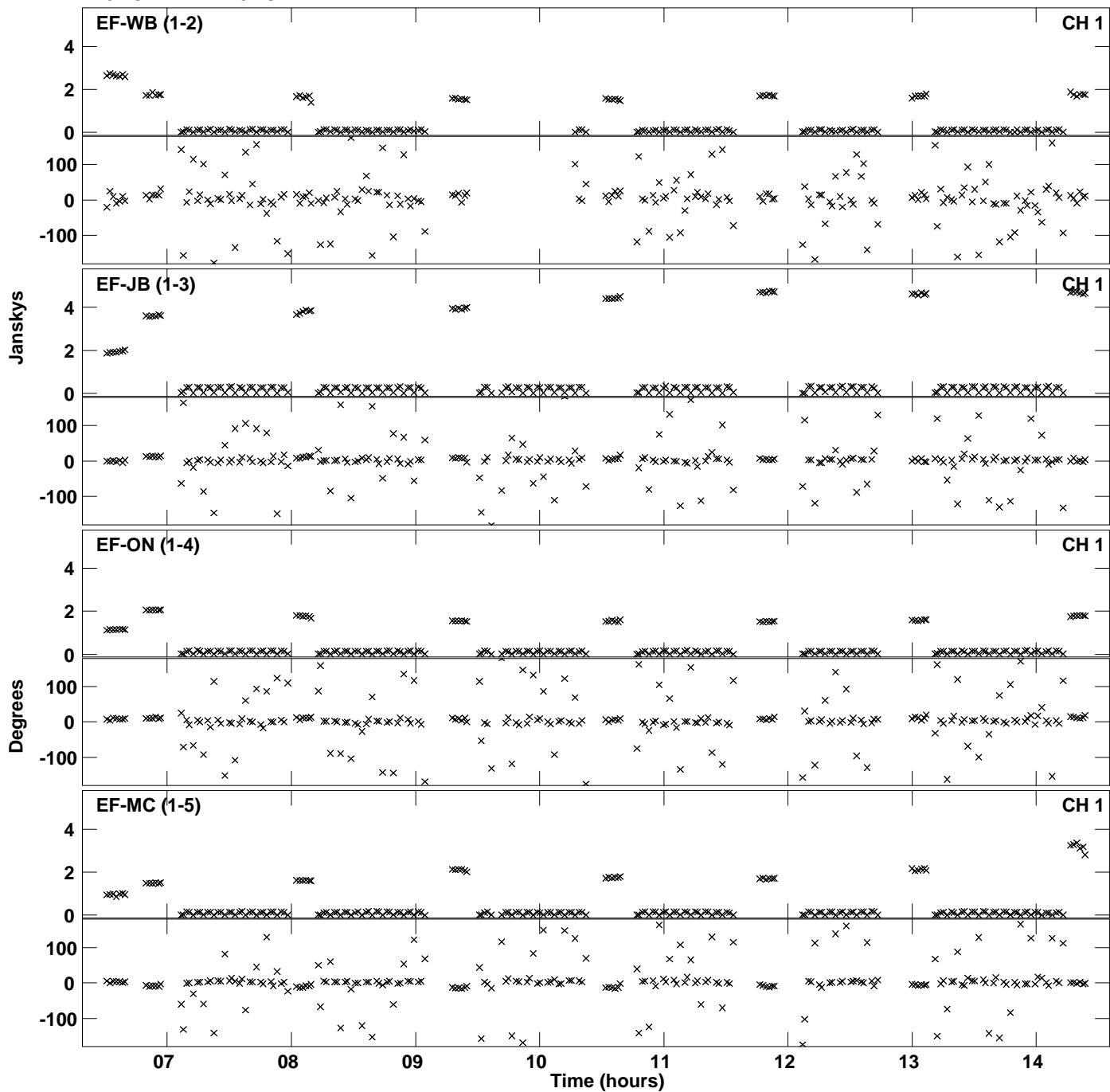
Plot file version 25 created 15-JAN-2016 16:47:14
Amplitude andPhase vs Time for ES071C 1.UVDATA.1 Vect aver. CL # 3
IF 5 CHAN 1 - 128 STK RR



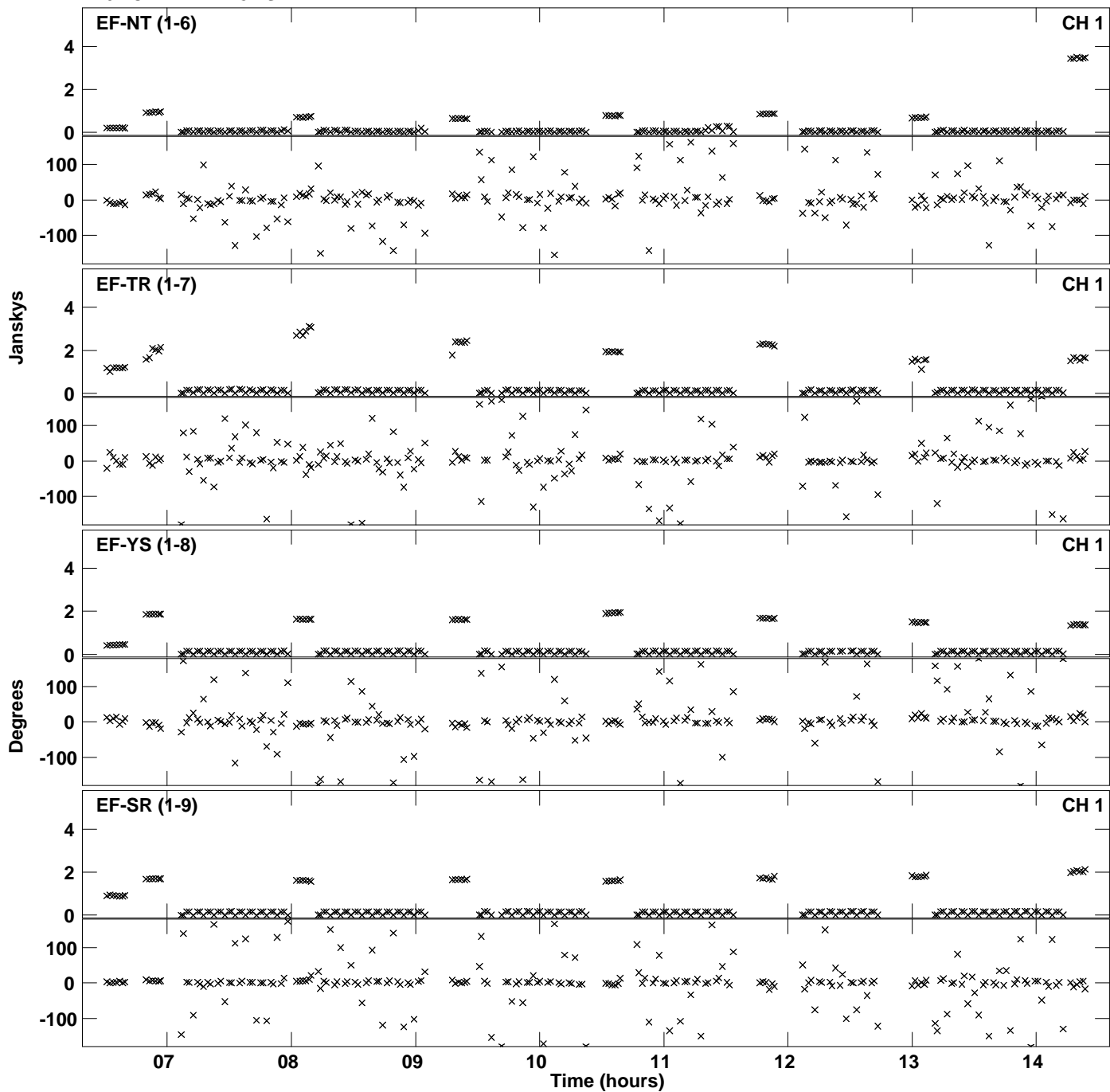
Plot file version 26 created 15-JAN-2016 16:47:14
Amplitude and Phase vs Time for ES071C 1.UVDATA.1 Vect aver. CL # 3
IF 5 CHAN 1 - 128 STK RR



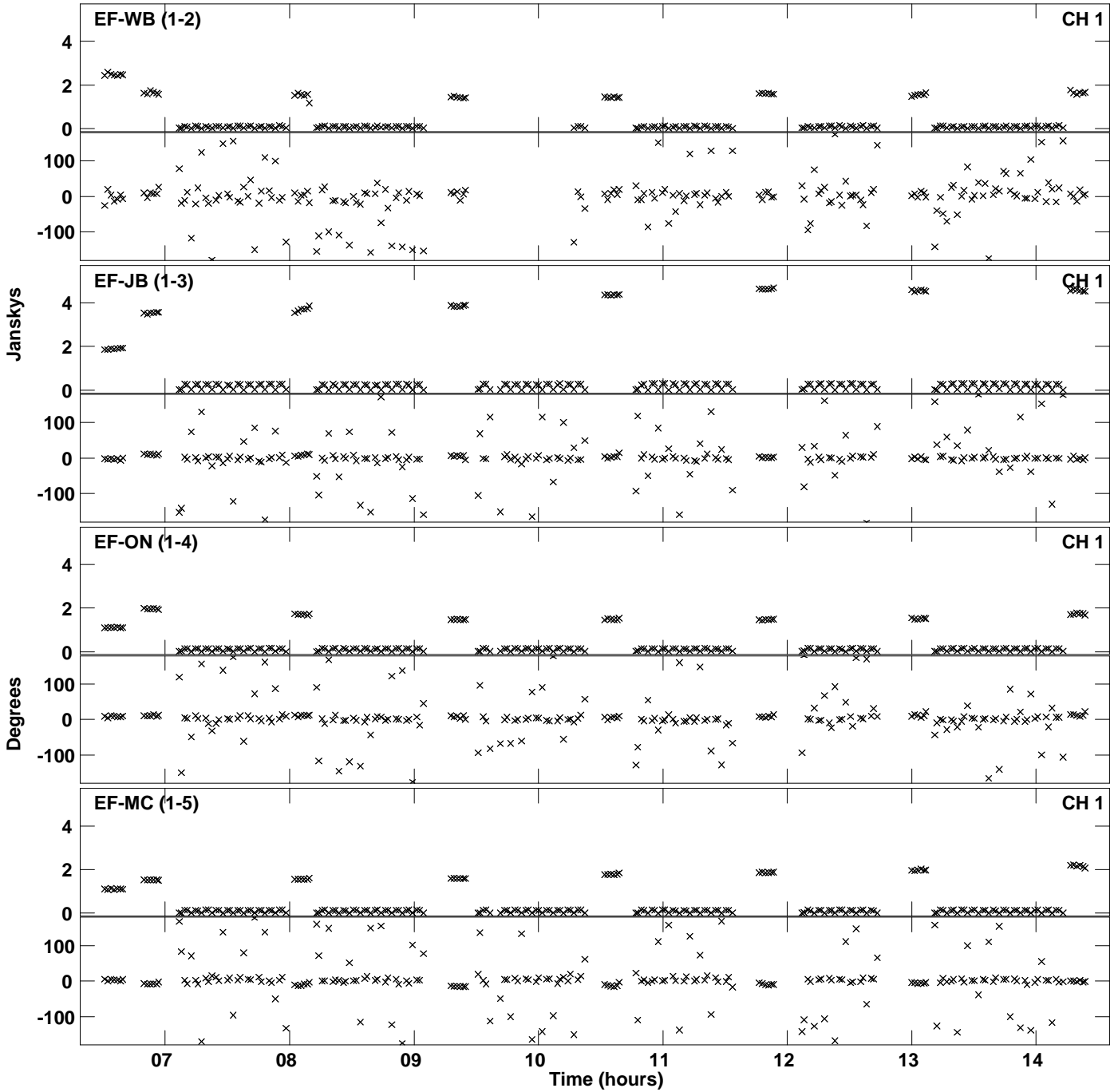
Plot file version 27 created 15-JAN-2016 16:47:34
Amplitude andPhase vs Time for ES071C 1.UVDATA.1 Vect aver. CL # 3
IF 6 CHAN 1 - 128 STK RR



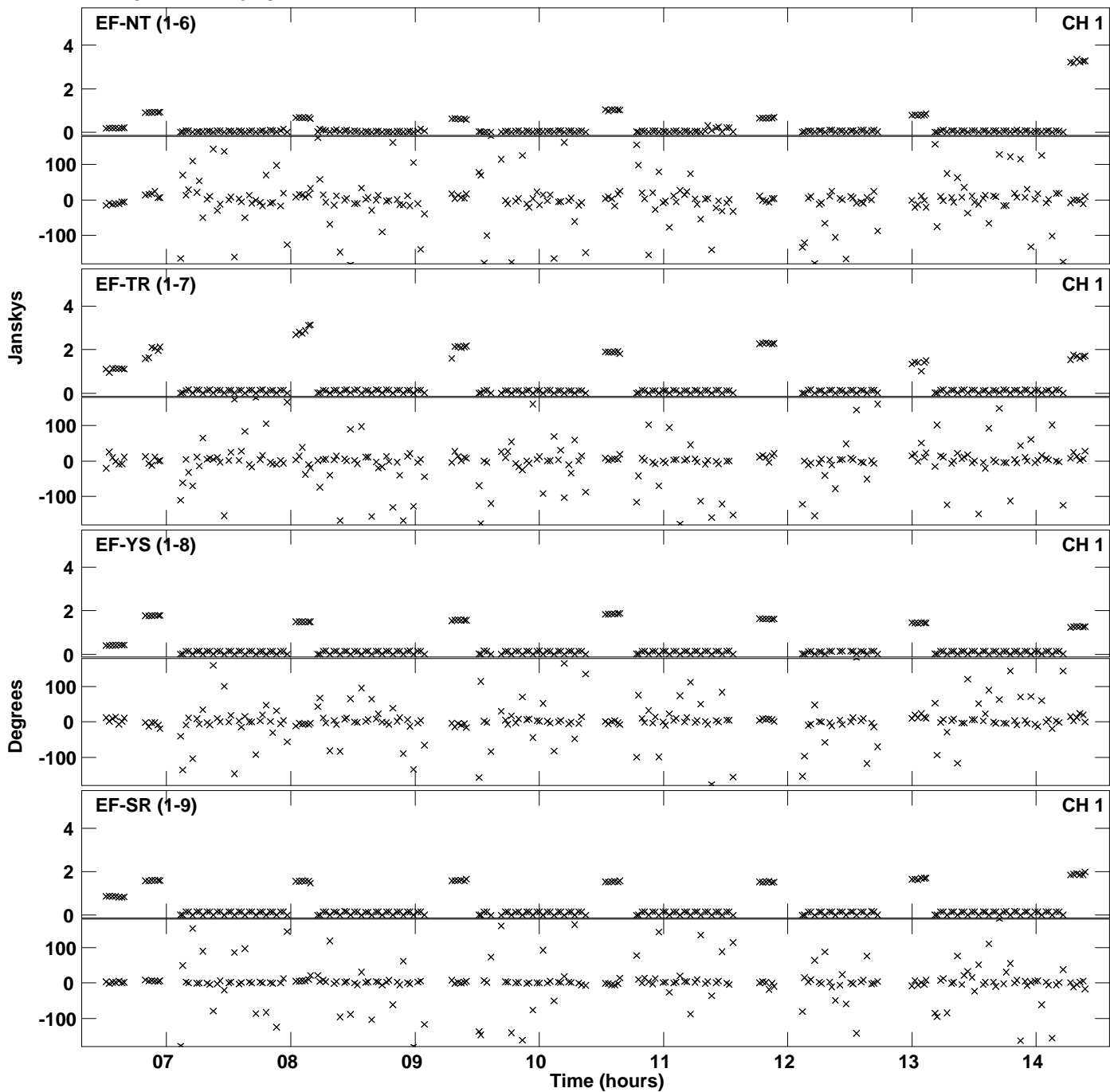
Plot file version 28 created 15-JAN-2016 16:47:34
Amplitude andPhase vs Time for ES071C 1.UVDATA.1 Vect aver. CL # 3
IF 6 CHAN 1 - 128 STK RR



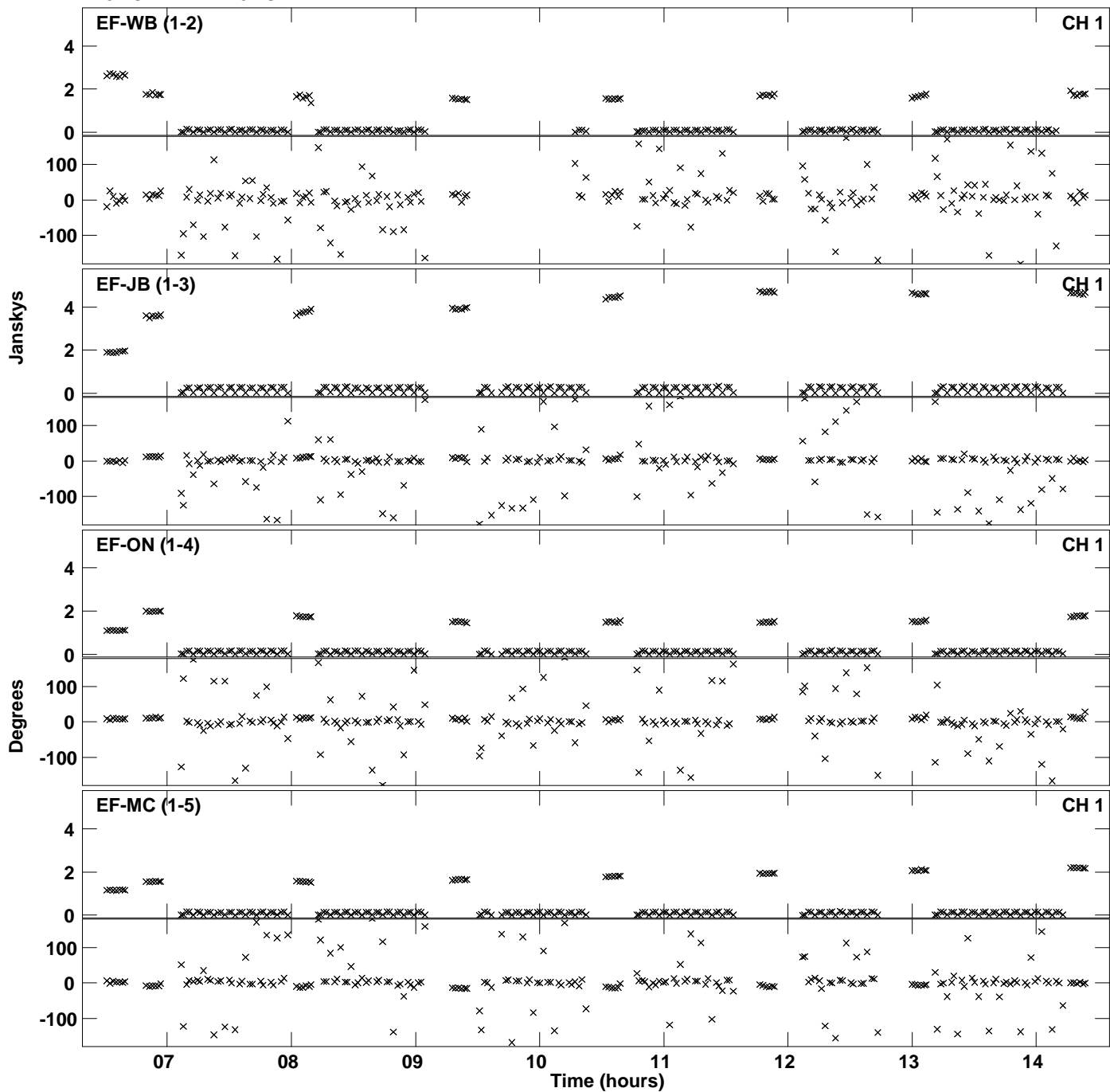
PLot file version 29 created 15-JAN-2016 16:47:53
Amplitude andPhase vs Time for ES071C 1.UVDATA.1 Vect aver. CL # 3
IF 7 CHAN 1 - 128 STK RR



Plot file version 30 created 15-JAN-2016 16:47:53
Amplitude andPhase vs Time for ES071C 1.UVDATA.1 Vect aver. CL # 3
IF 7 CHAN 1 - 128 STK RR



PLot file version 31 created 15-JAN-2016 16:48:12
Amplitude andPhase vs Time for ES071C 1.UVDATA.1 Vect aver. CL # 3
IF 8 CHAN 1 - 128 STK RR



Plot file version 32 created 15-JAN-2016 16:48:12
Amplitude and Phase vs Time for ES071C 1.UVDATA.1 Vect aver. CL # 3
IF 8 CHAN 1 - 128 STK RR

