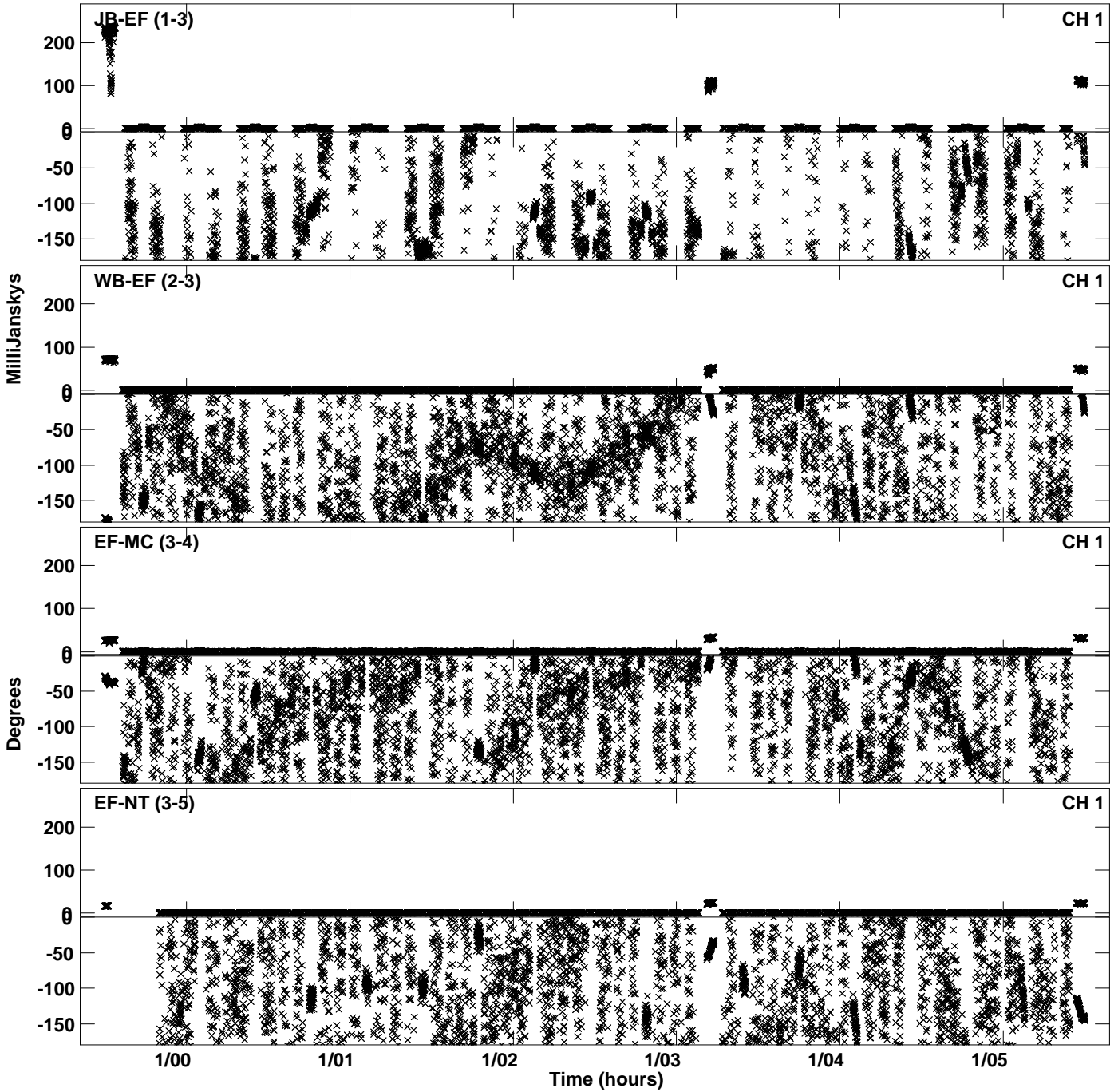
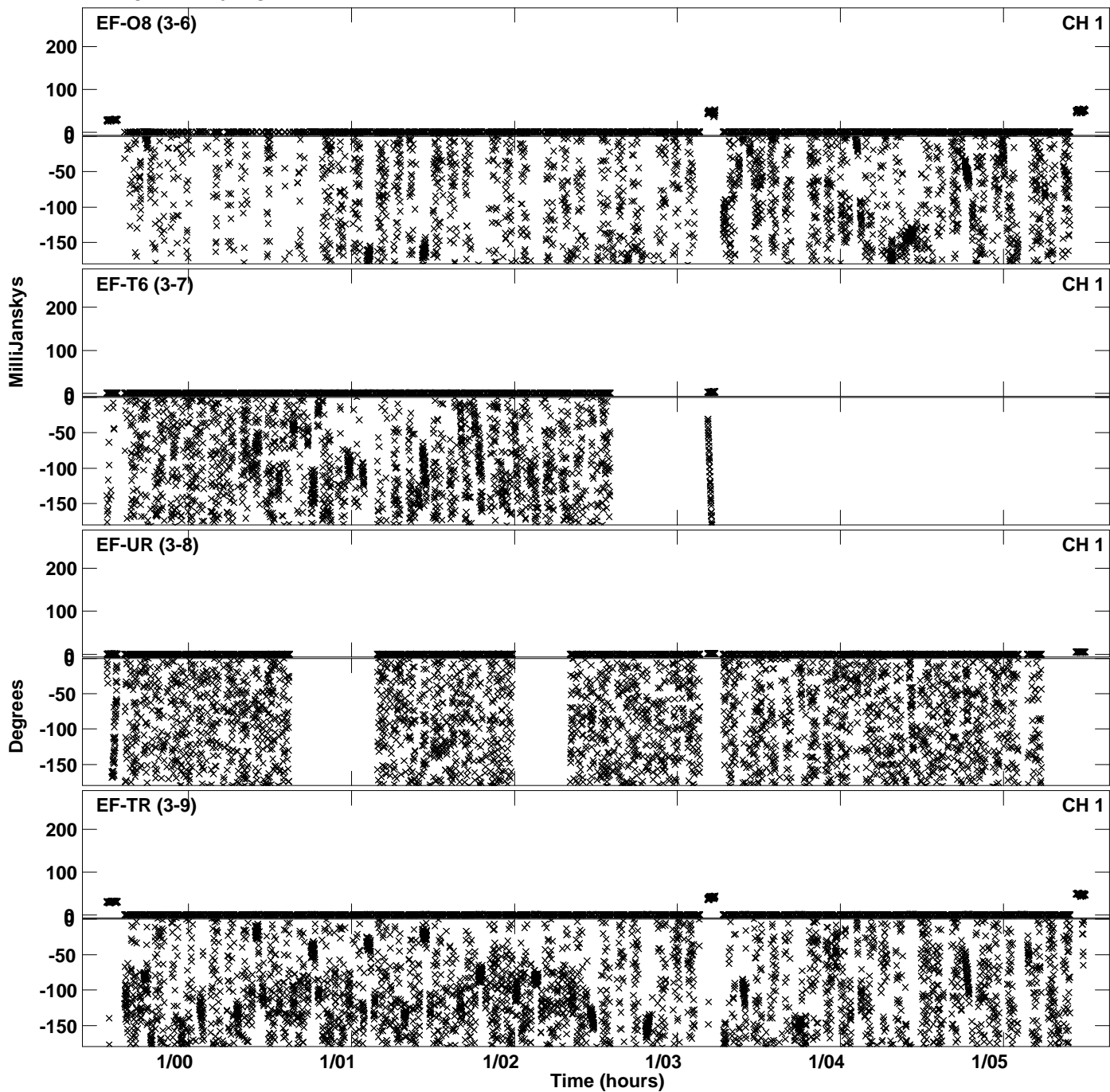


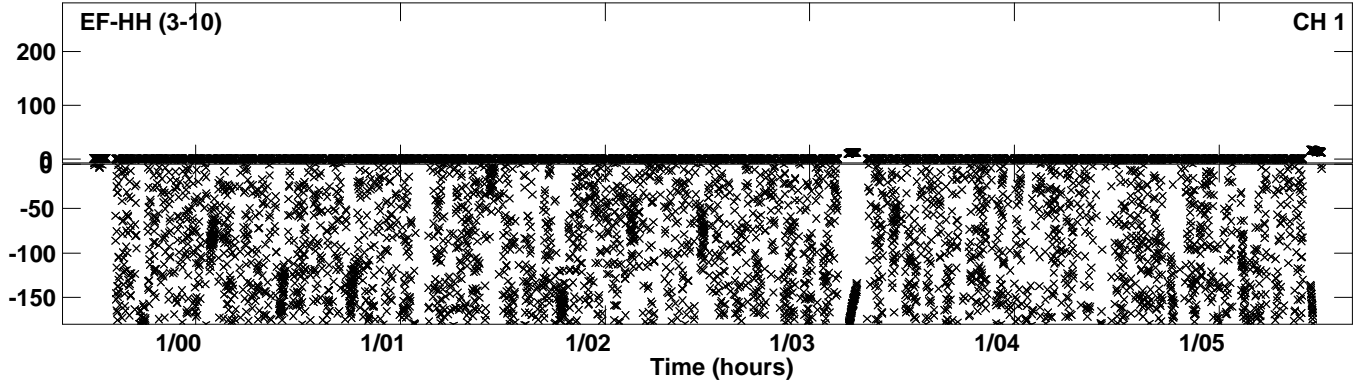
Plot file version 1 created 12-JUN-2023 14:39:41
Amplitude andPhase vs Time for ES106B.UVDATA.1 Vect aver.
IF 1 CHAN 1 - 64 STK LL



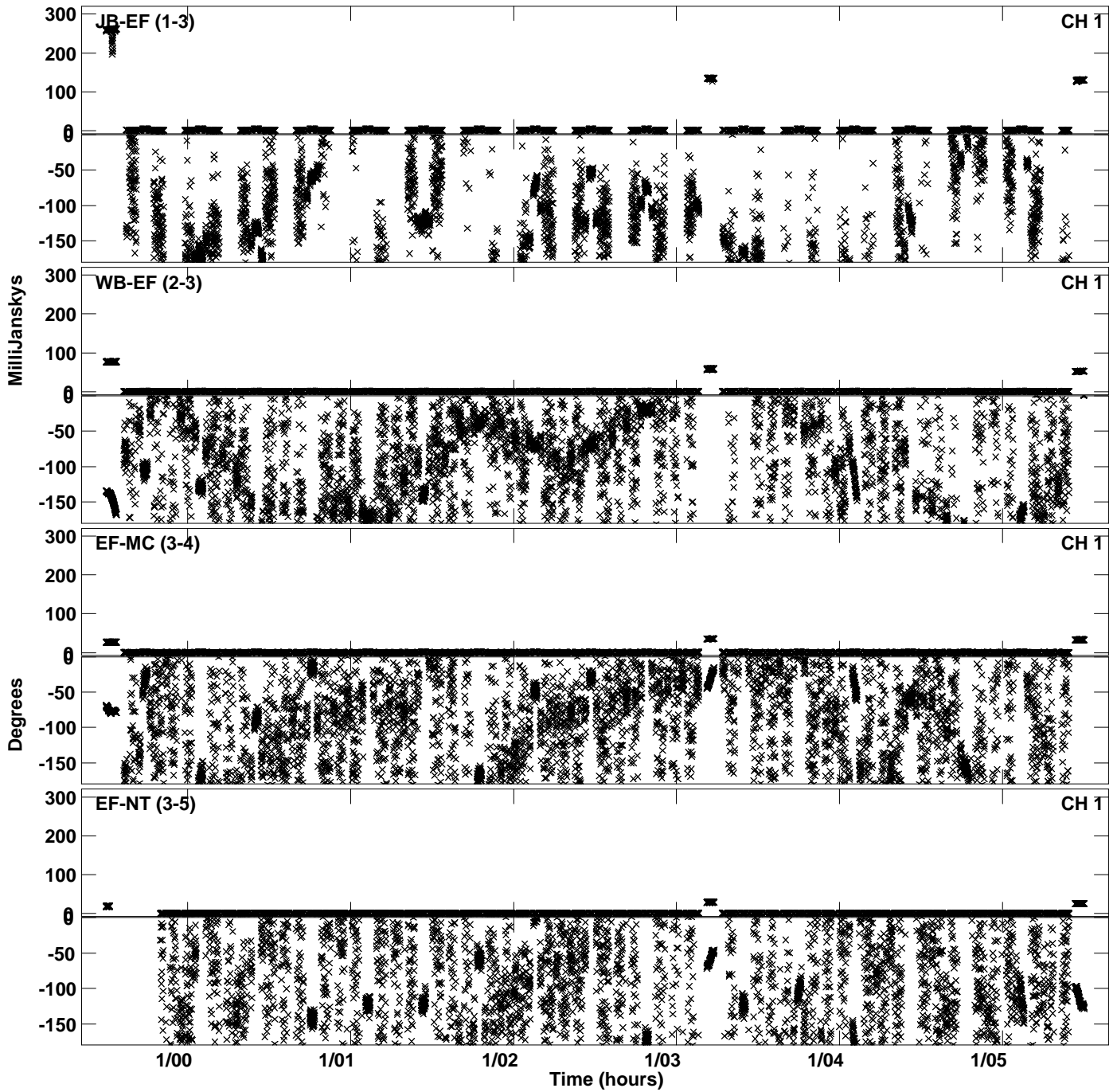
Plot file version 2 created 12-JUN-2023 14:39:41
Amplitude andPhase vs Time for ES106B.UVDATA.1 Vect aver.
IF 1 CHAN 1 - 64 STK LL



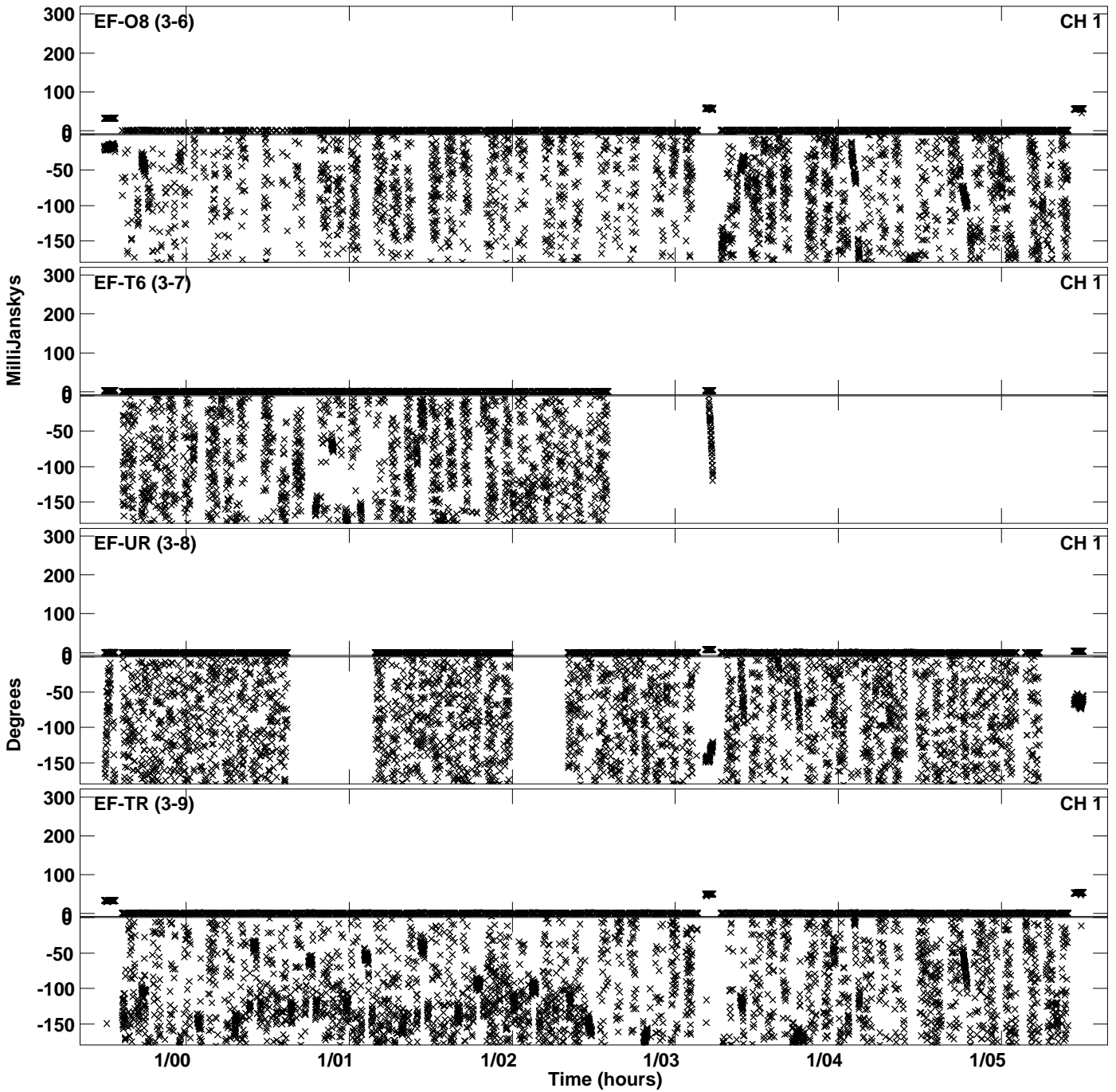
PLot file version 3 created 12-JUN-2023 14:39:41
Amplitude andPhase vs Time for ES106B.UVDATA.1 Vect aver.
IF 1 CHAN 1 - 64 STK LL



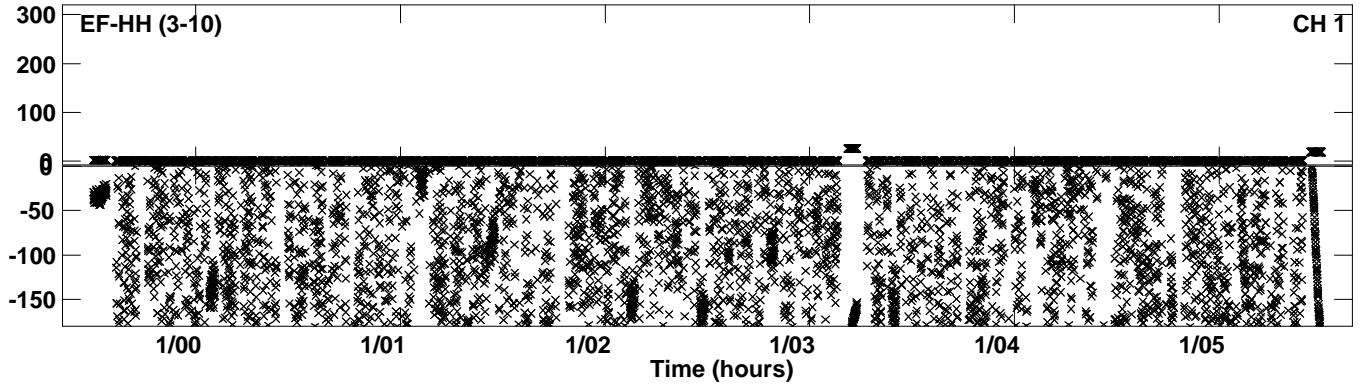
Plot file version 4 created 12-JUN-2023 14:39:46
Amplitude andPhase vs Time for ES106B.UVDATA.1 Vect aver.
IF 2 CHAN 1 - 64 STK LL



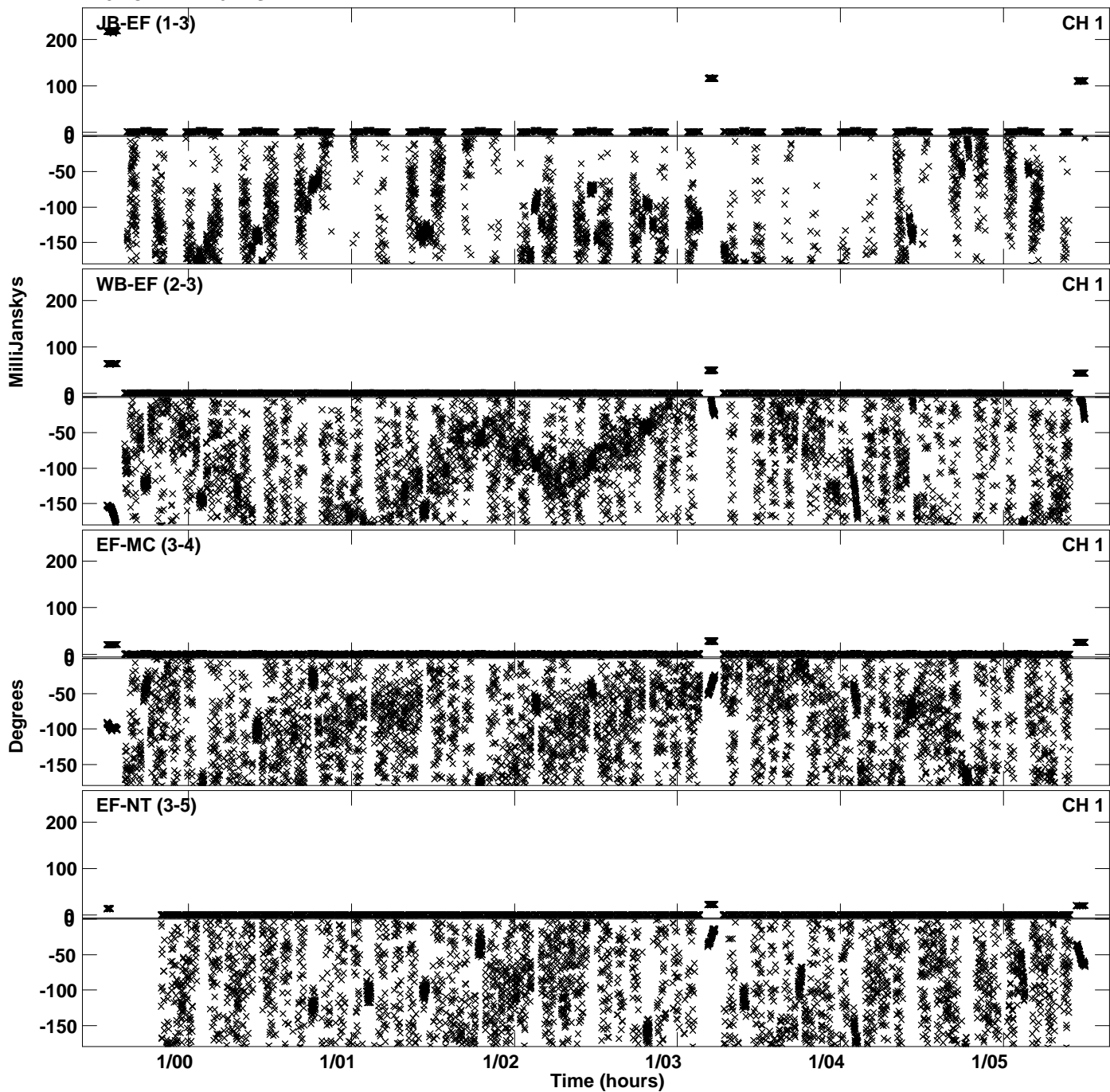
Plot file version 5 created 12-JUN-2023 14:39:46
Amplitude and Phase vs Time for ES106B.UVDATA.1 Vect aver.
IF 2 CHAN 1 - 64 STK LL



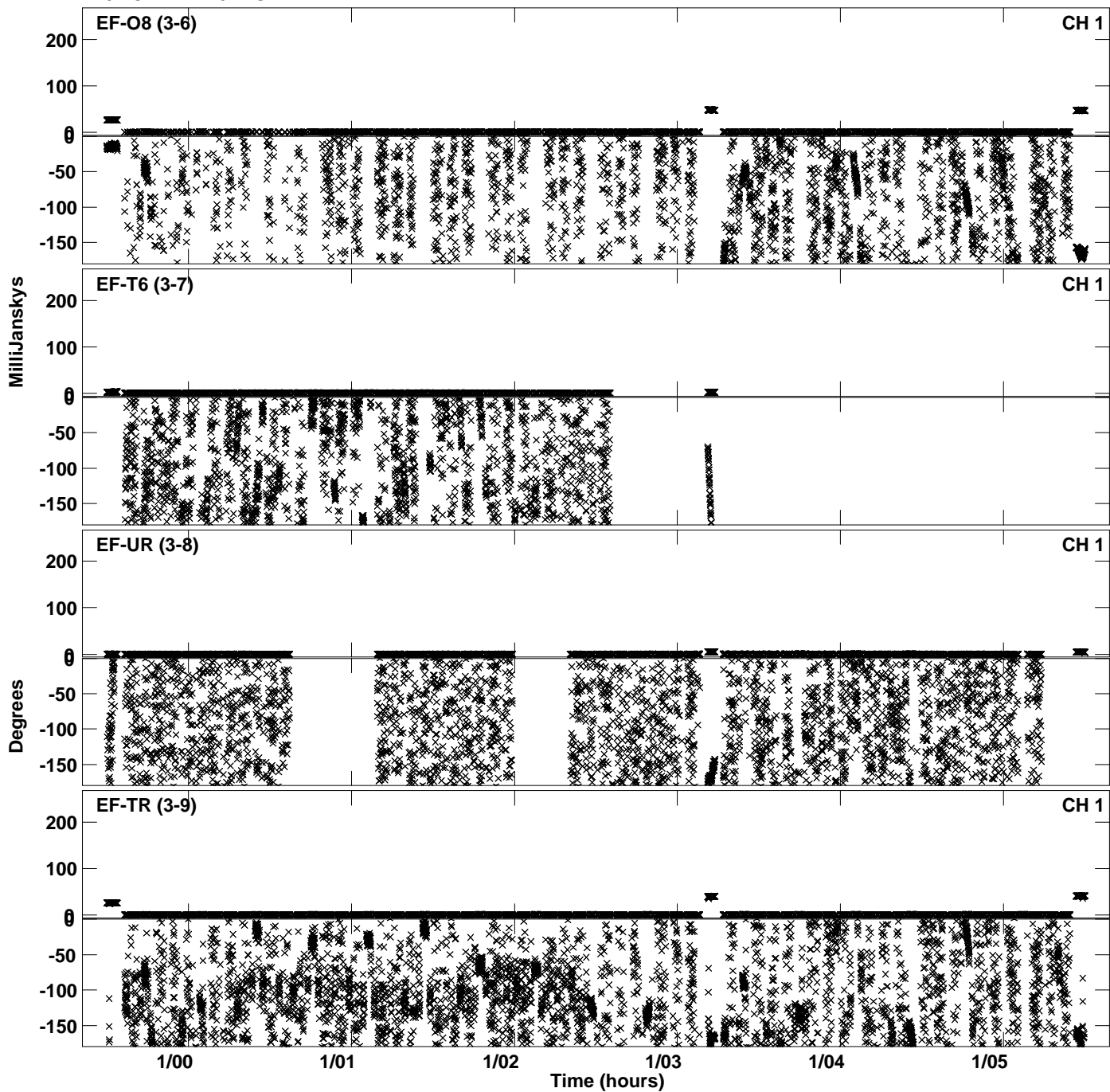
PLot file version 6 created 12-JUN-2023 14:39:46
Amplitude andPhase vs Time for ES106B.UVDATA.1 Vect aver.
IF 2 CHAN 1 - 64 STK LL



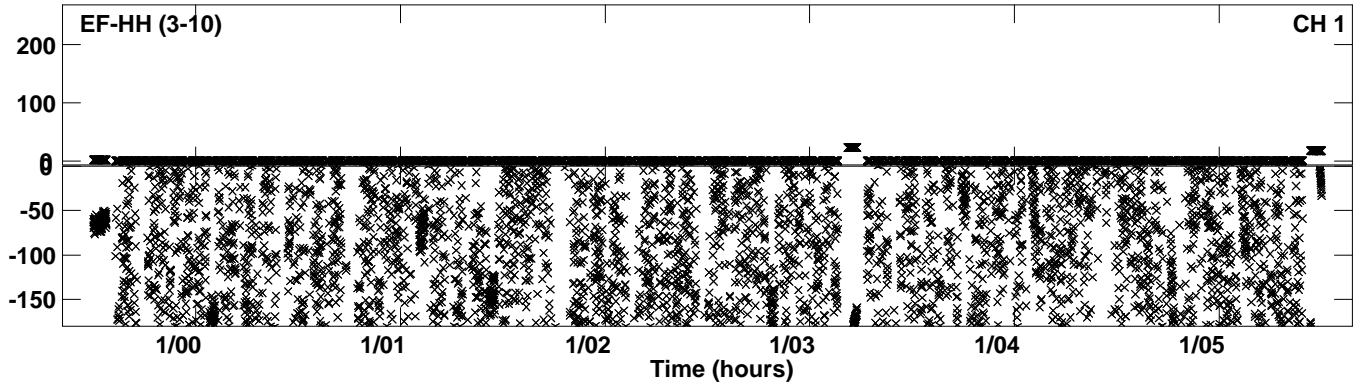
Plot file version 7 created 12-JUN-2023 14:39:52
Amplitude andPhase vs Time for ES106B.UVDATA.1 Vect aver.
IF 3 CHAN 1 - 64 STK LL



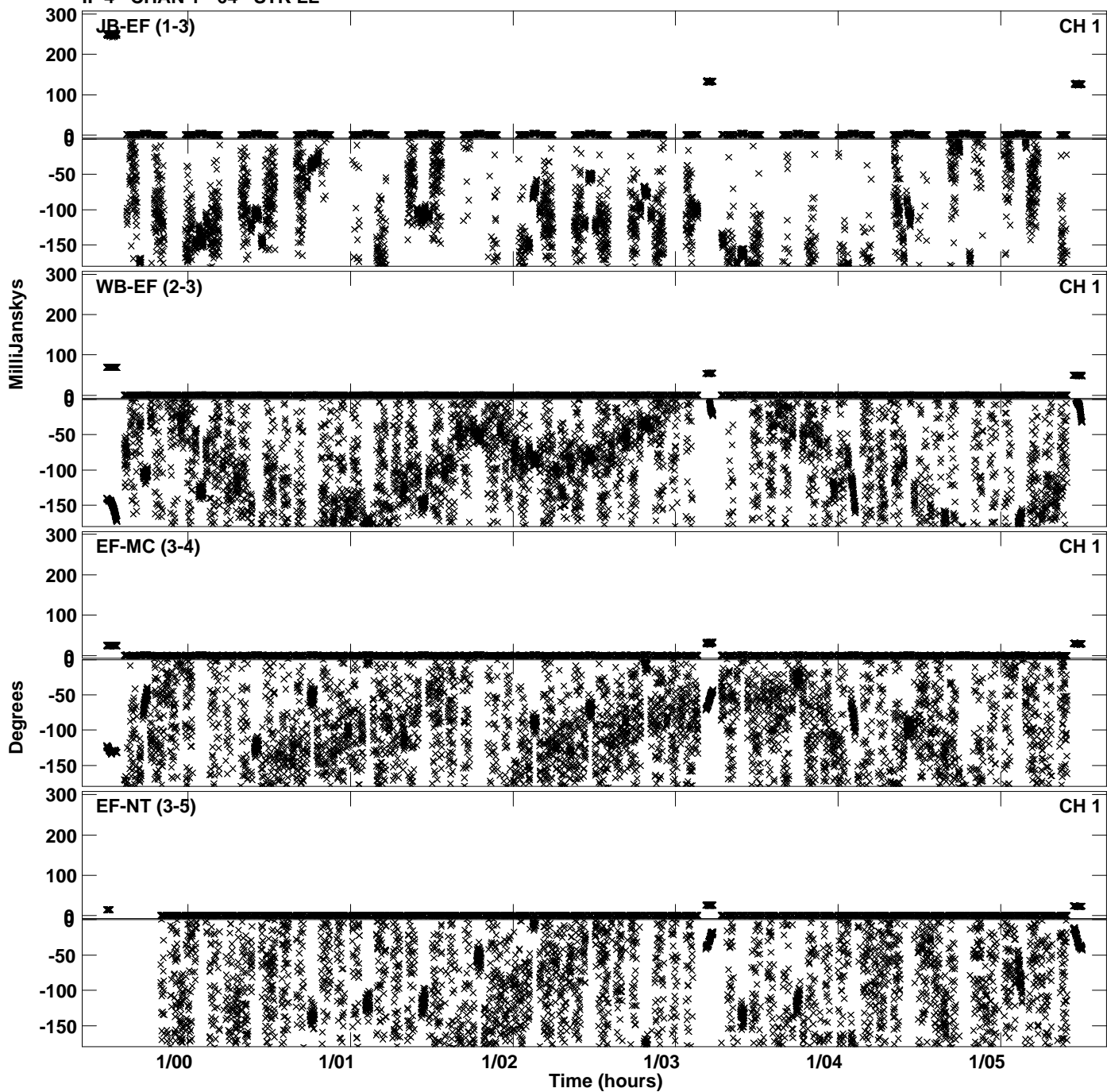
Plot file version 8 created 12-JUN-2023 14:39:52
Amplitude andPhase vs Time for ES106B.UVDATA.1 Vect aver.
IF 3 CHAN 1 - 64 STK LL



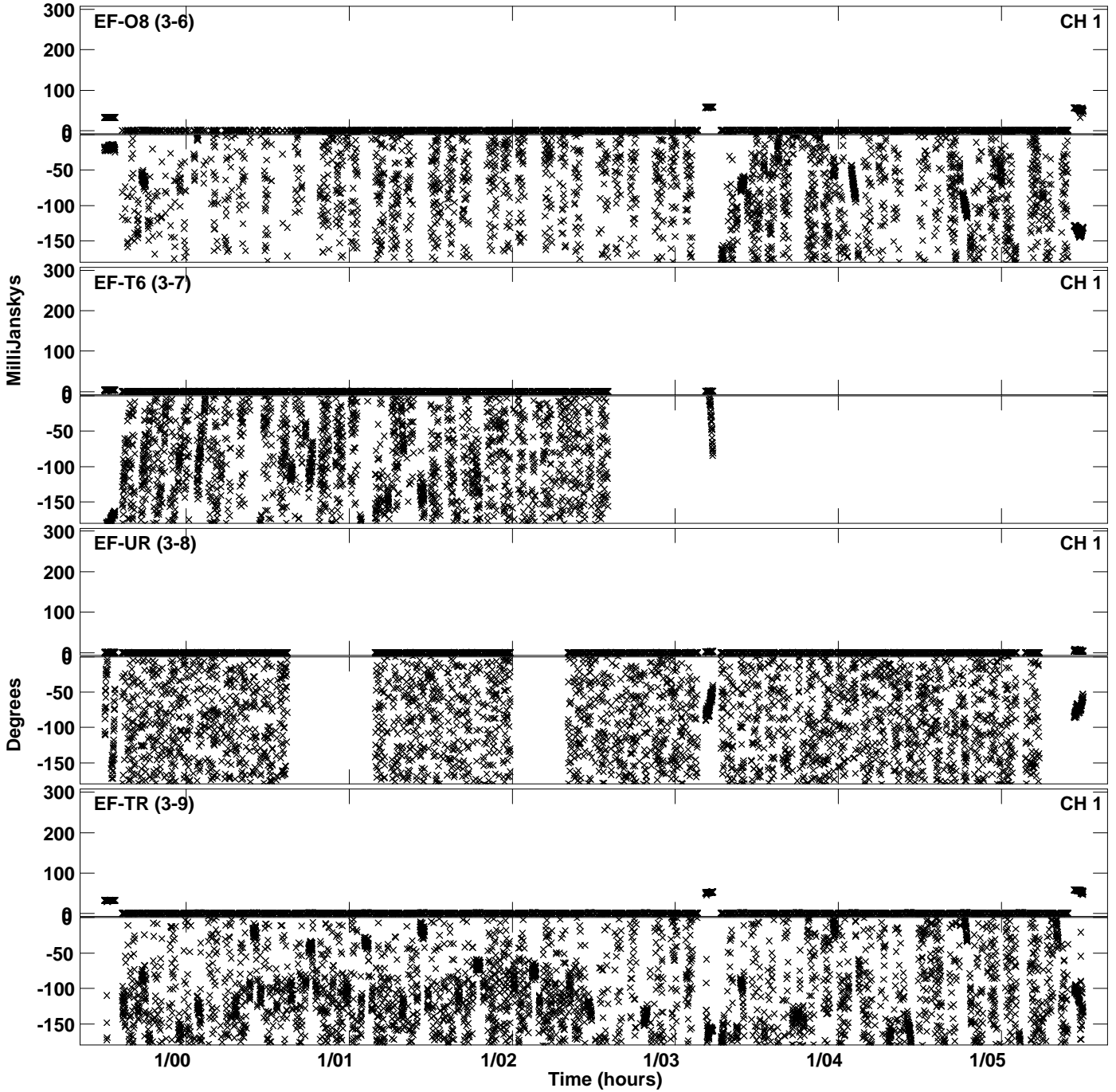
PLot file version 9 created 12-JUN-2023 14:39:52
Amplitude andPhase vs Time for ES106B.UVDATA.1 Vect aver.
IF 3 CHAN 1 - 64 STK LL



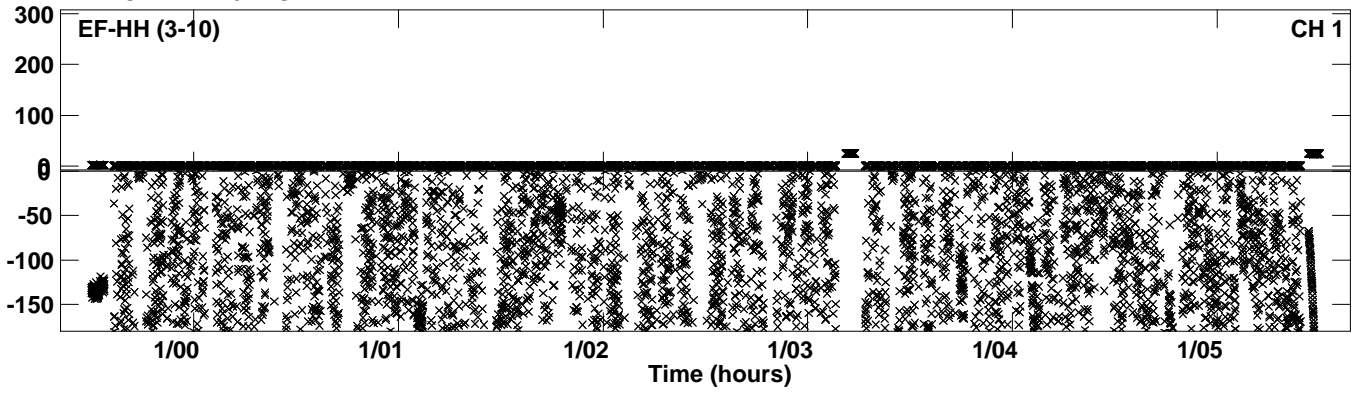
Plot file version 10 created 12-JUN-2023 14:39:59
Amplitude andPhase vs Time for ES106B.UVDATA.1 Vect aver.
IF 4 CHAN 1 - 64 STK LL



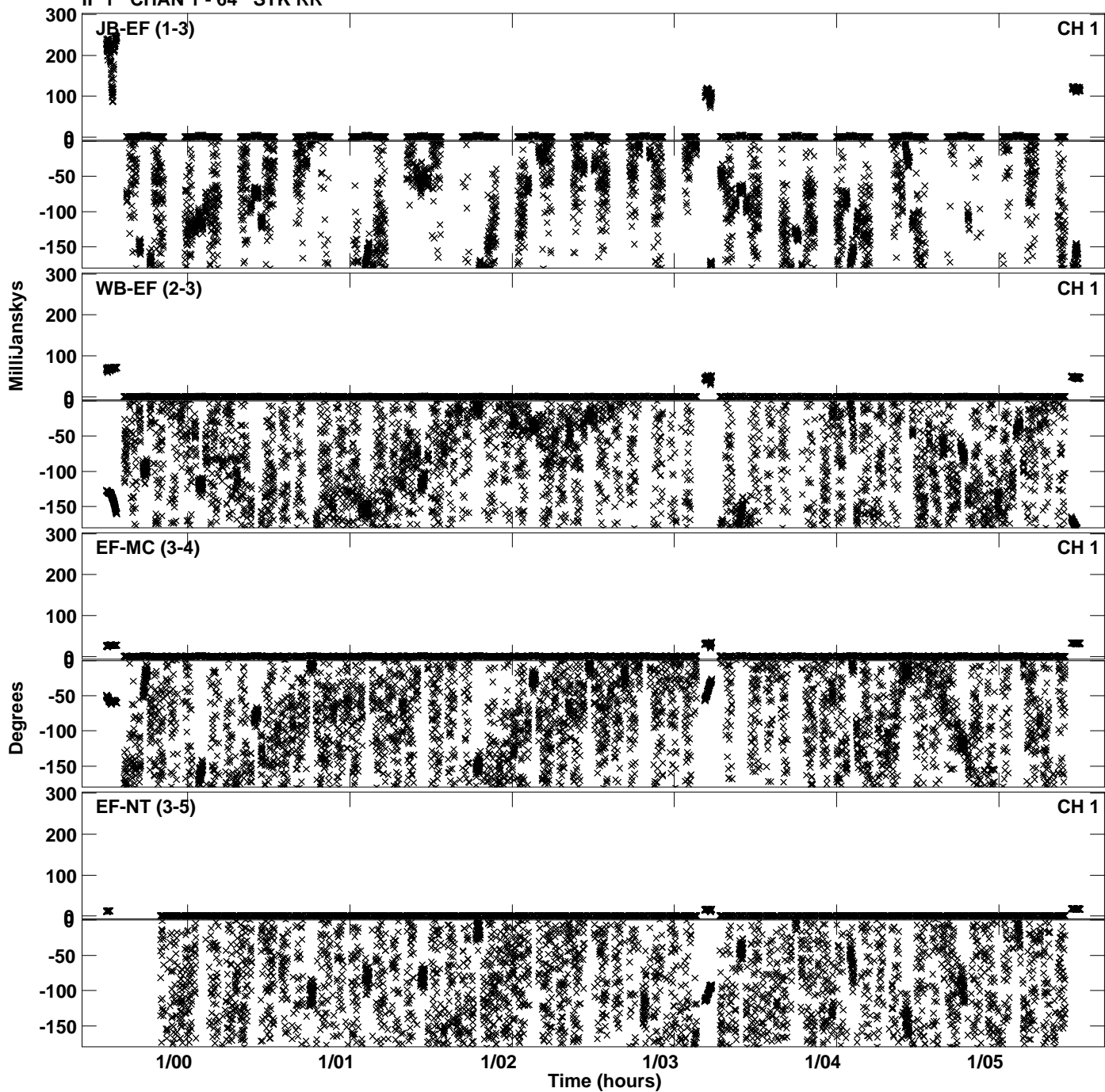
Plot file version 11 created 12-JUN-2023 14:39:59
Amplitude andPhase vs Time for ES106B.UVDATA.1 Vect aver.
IF 4 CHAN 1 - 64 STK LL



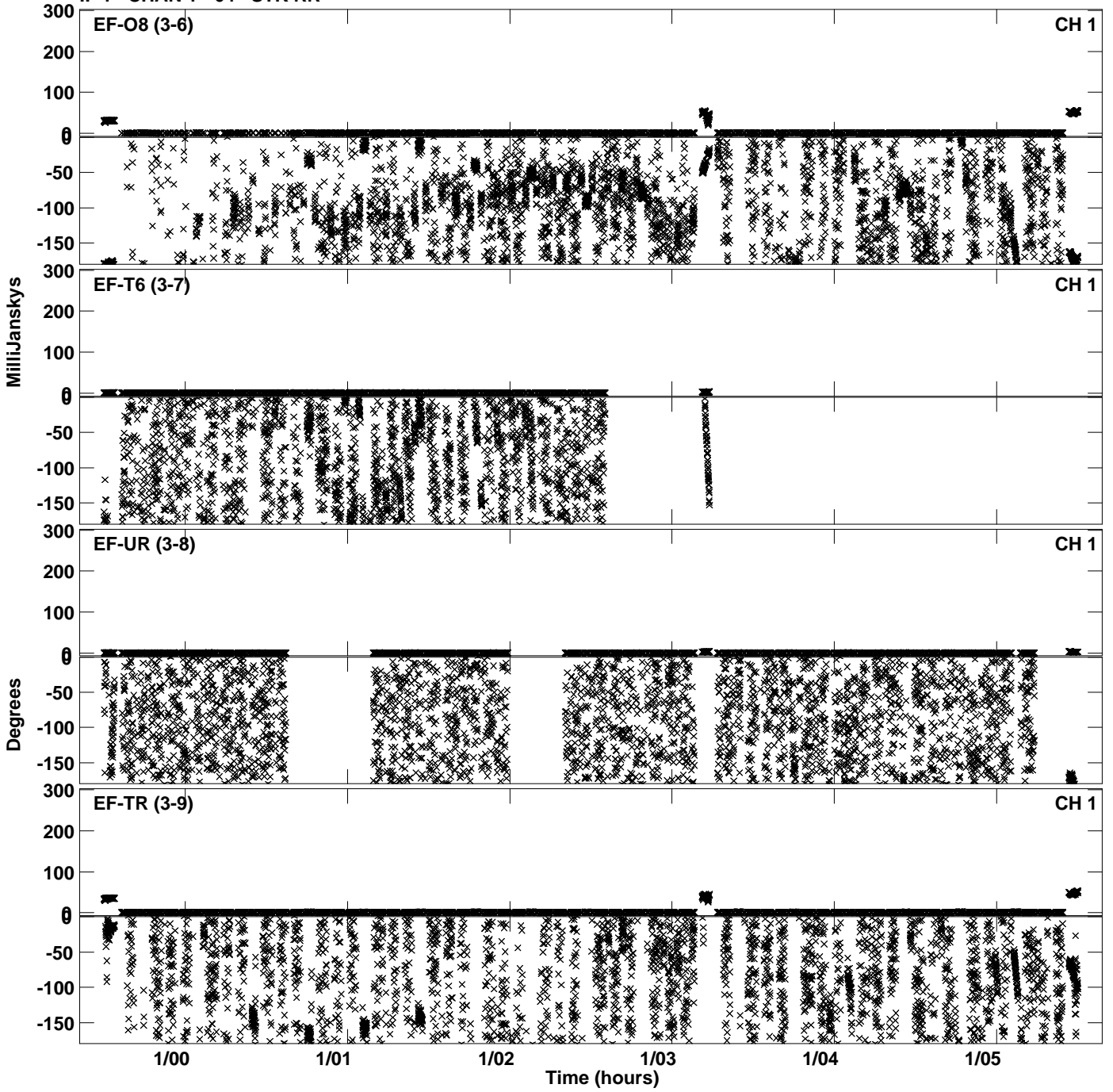
PLot file version 12 created 12-JUN-2023 14:39:59
Amplitude andPhase vs Time for ES106B.UVDATA.1 Vect aver.
IF 4 CHAN 1 - 64 STK LL



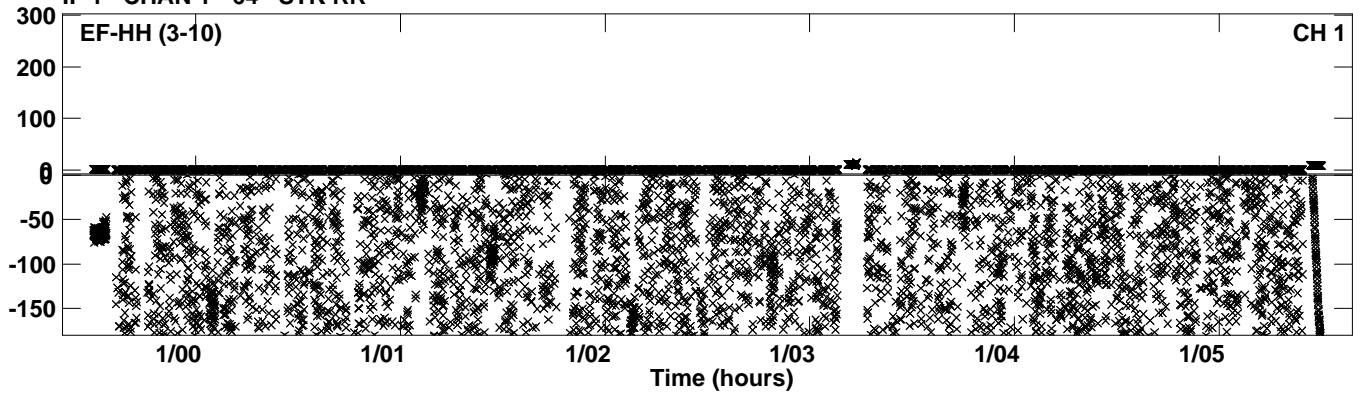
Plot file version 13 created 12-JUN-2023 14:40:05
Amplitude andPhase vs Time for ES106B.UVDATA.1 Vect aver.
IF 1 CHAN 1 - 64 STK RR



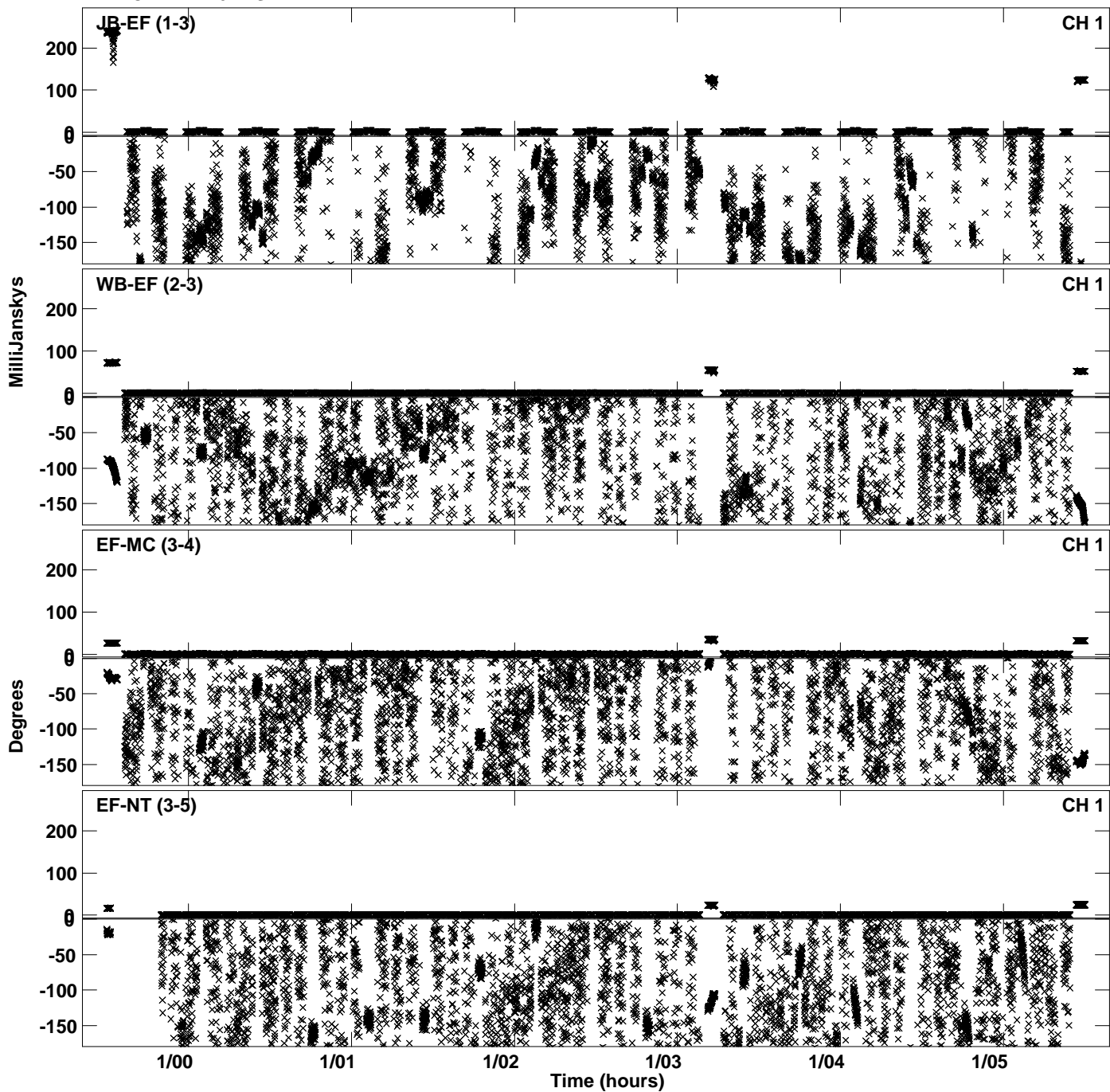
Plot file version 14 created 12-JUN-2023 14:40:05
Amplitude andPhase vs Time for ES106B.UVDATA.1 Vect aver.
IF 1 CHAN 1 - 64 STK RR



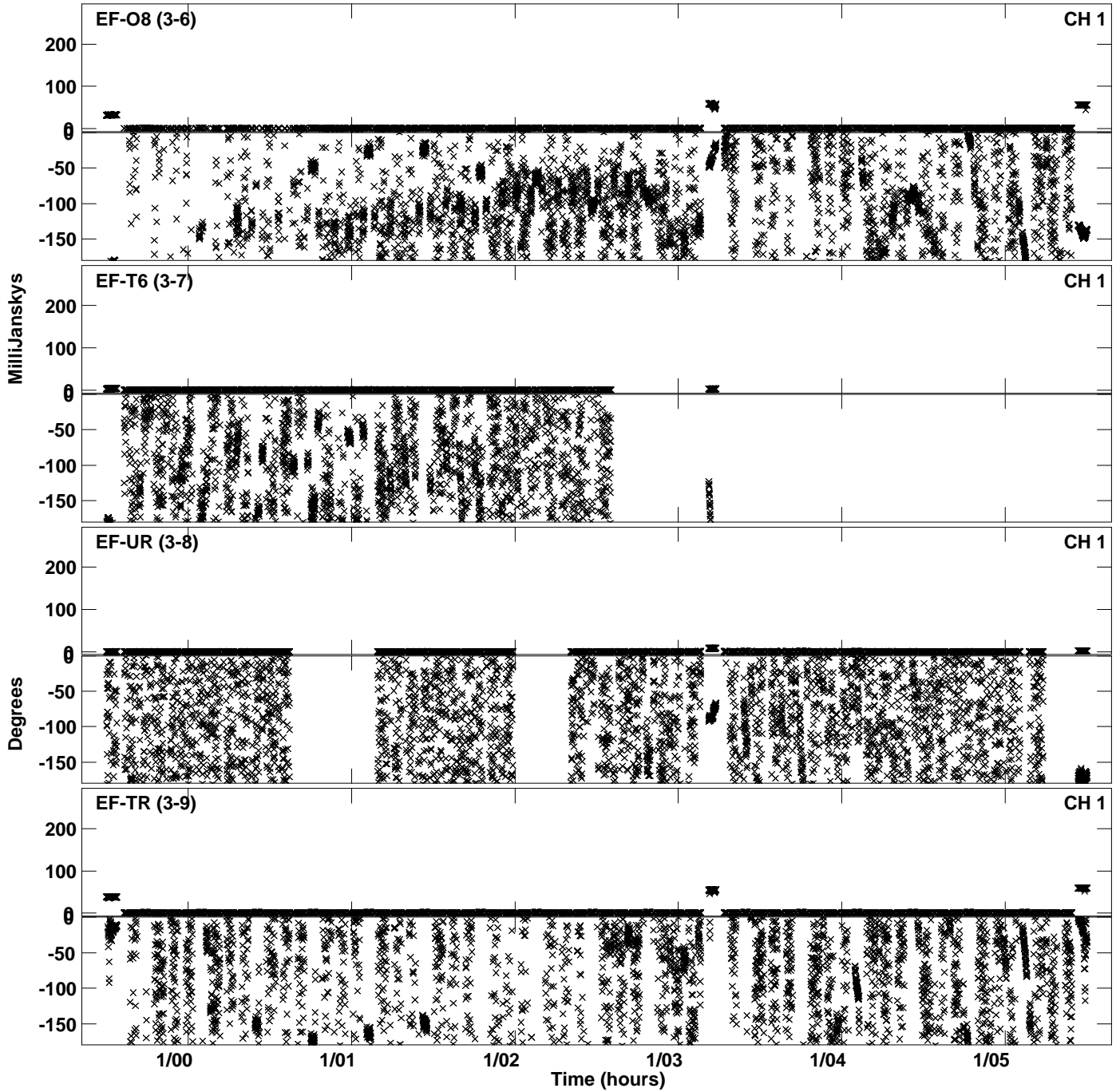
PLot file version 15 created 12-JUN-2023 14:40:05
Amplitude andPhase vs Time for ES106B.UVDATA.1 Vect aver.
IF 1 CHAN 1 - 64 STK RR



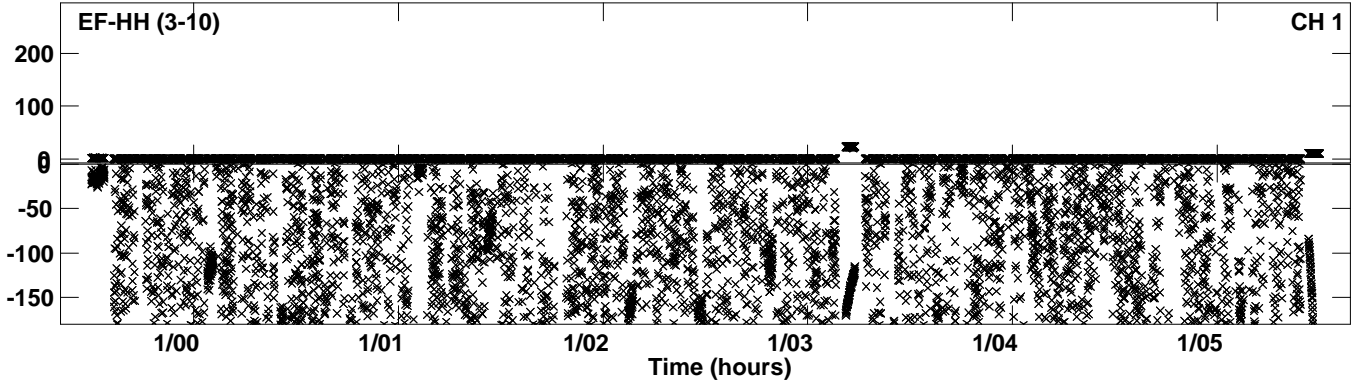
PLot file version 16 created 12-JUN-2023 14:40:12
Amplitude andPhase vs Time for ES106B.UVDATA.1 Vect aver.
IF 2 CHAN 1 - 64 STK RR



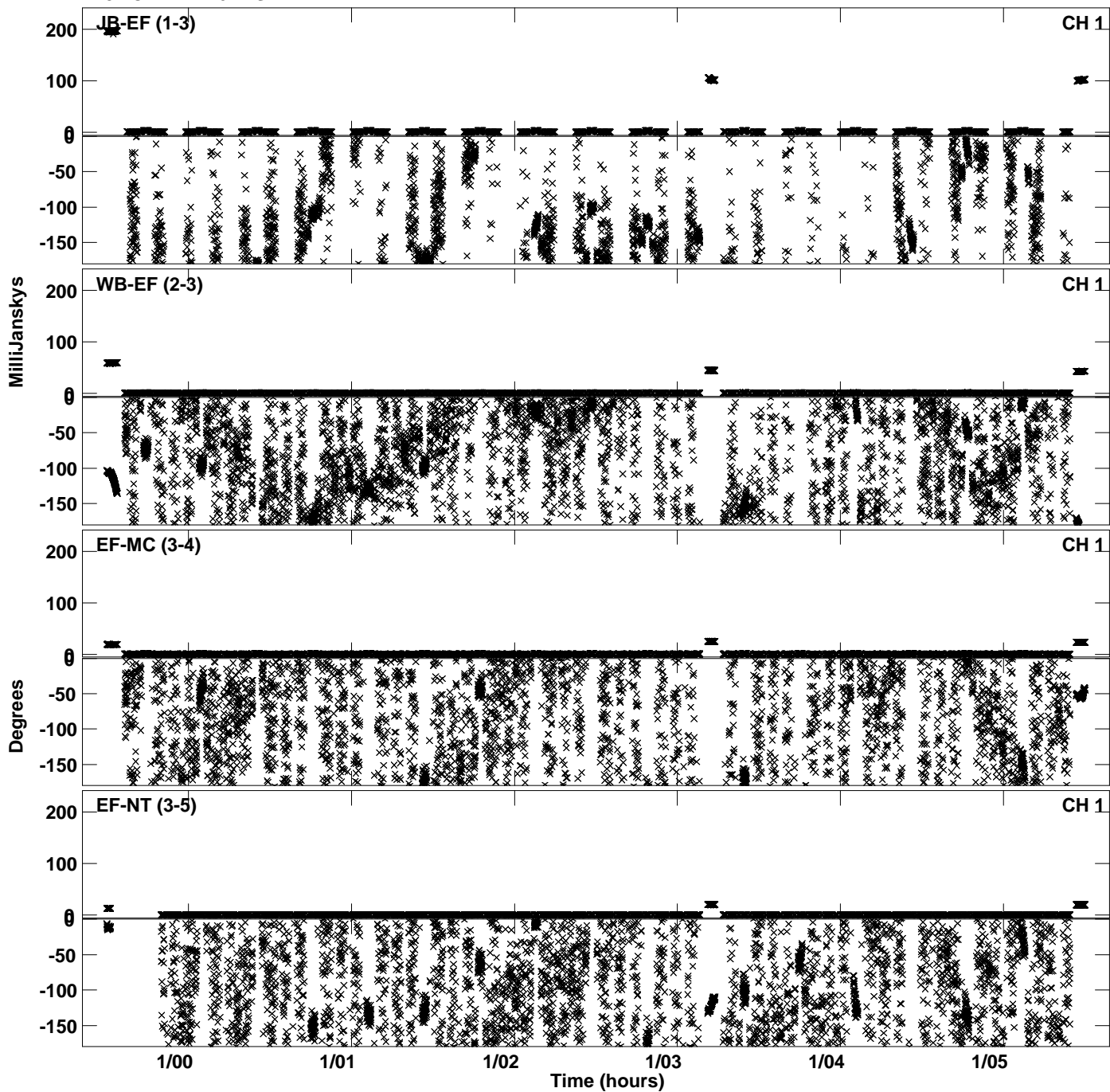
Plot file version 17 created 12-JUN-2023 14:40:12
Amplitude andPhase vs Time for ES106B.UVDATA.1 Vect aver.
IF 2 CHAN 1 - 64 STK RR



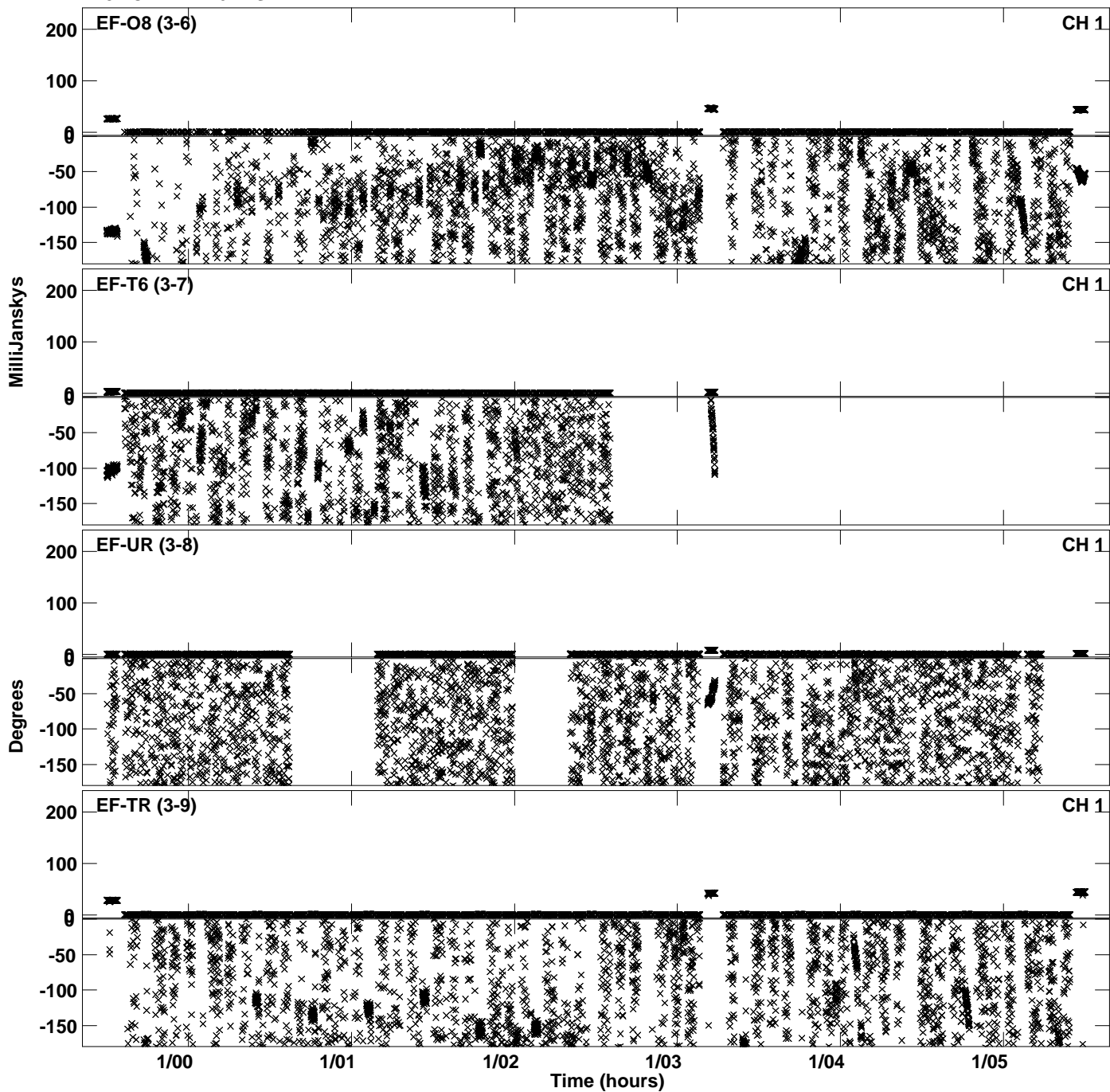
PLot file version 18 created 12-JUN-2023 14:40:12
Amplitude andPhase vs Time for ES106B.UVDATA.1 Vect aver.
IF 2 CHAN 1 - 64 STK RR



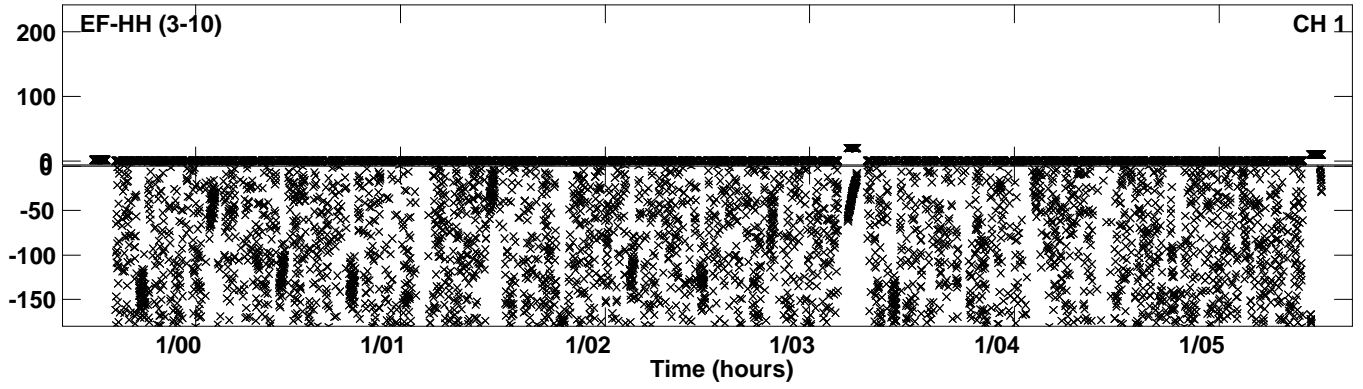
Plot file version 19 created 12-JUN-2023 14:40:19
Amplitude andPhase vs Time for ES106B.UVDATA.1 Vect aver.
IF 3 CHAN 1 - 64 STK RR



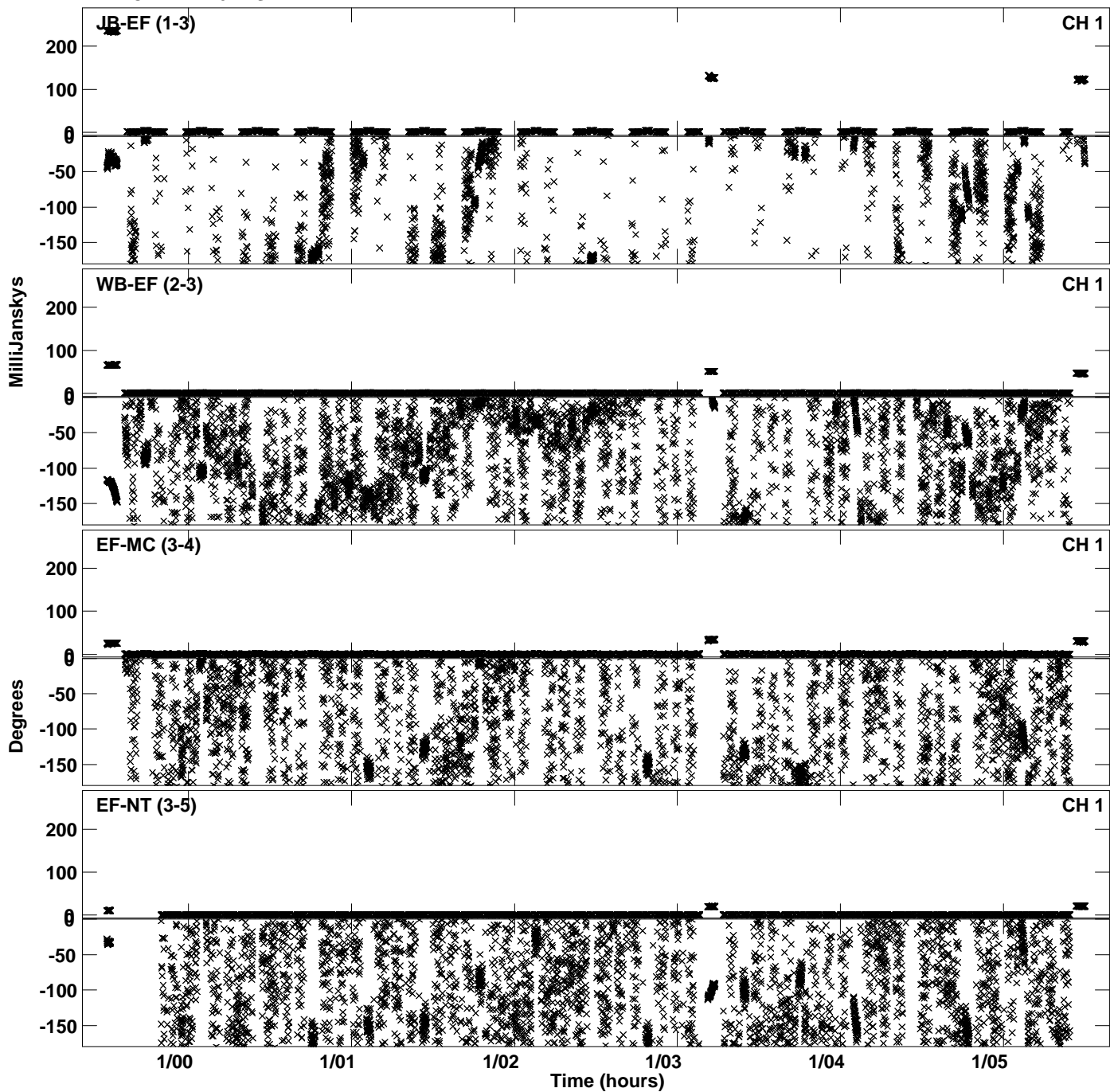
Plot file version 20 created 12-JUN-2023 14:40:19
Amplitude andPhase vs Time for ES106B.UVDATA.1 Vect aver.
IF 3 CHAN 1 - 64 STK RR



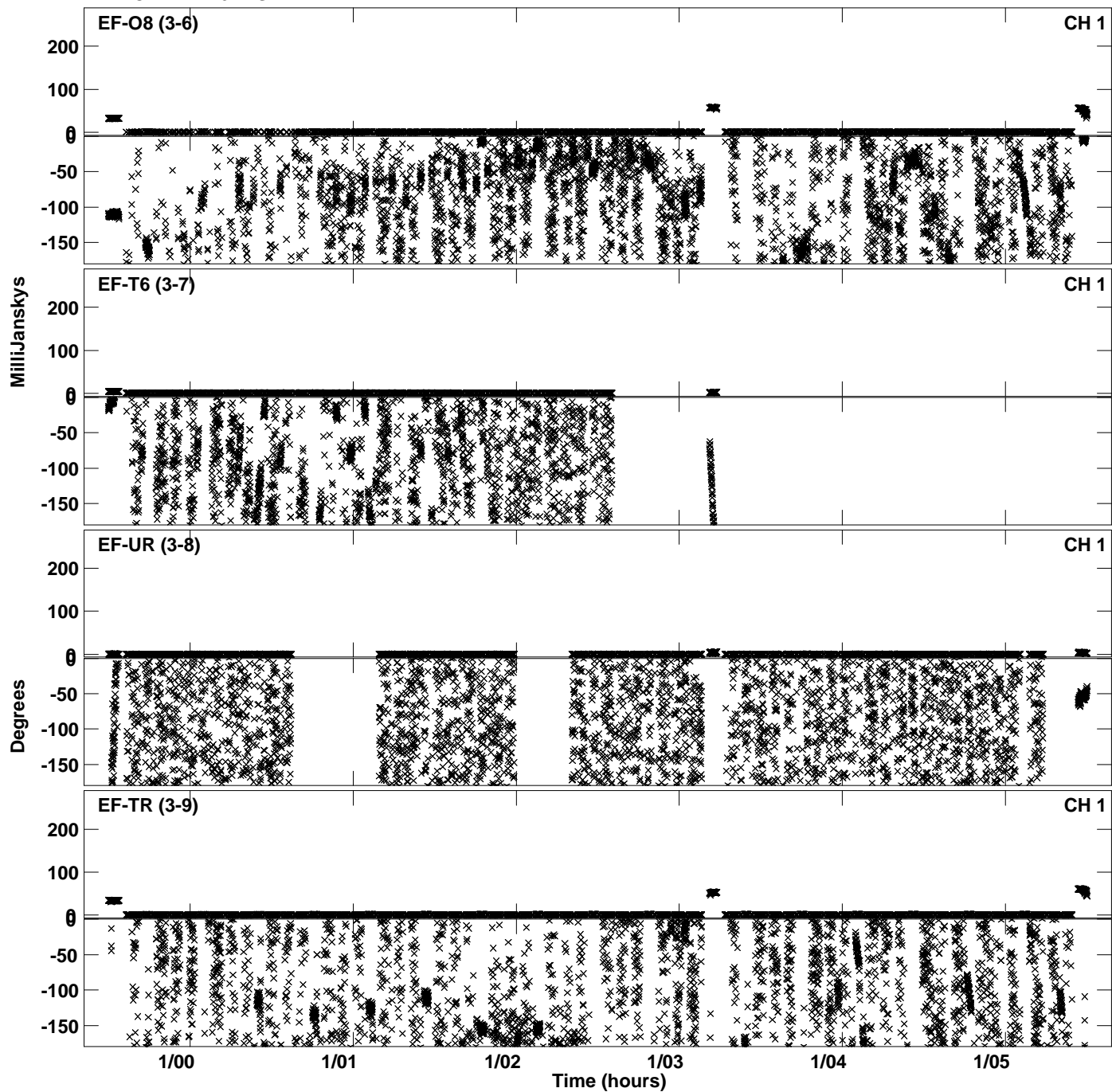
PLot file version 21 created 12-JUN-2023 14:40:19
Amplitude andPhase vs Time for ES106B.UVDATA.1 Vect aver.
IF 3 CHAN 1 - 64 STK RR



Plot file version 22 created 12-JUN-2023 14:40:25
Amplitude andPhase vs Time for ES106B.UVDATA.1 Vect aver.
IF 4 CHAN 1 - 64 STK RR



Plot file version 23 created 12-JUN-2023 14:40:25
Amplitude andPhase vs Time for ES106B.UVDATA.1 Vect aver.
IF 4 CHAN 1 - 64 STK RR



PLot file version 24 created 12-JUN-2023 14:40:25
Amplitude andPhase vs Time for ES106B.UVDATA.1 Vect aver.
IF 4 CHAN 1 - 64 STK RR

