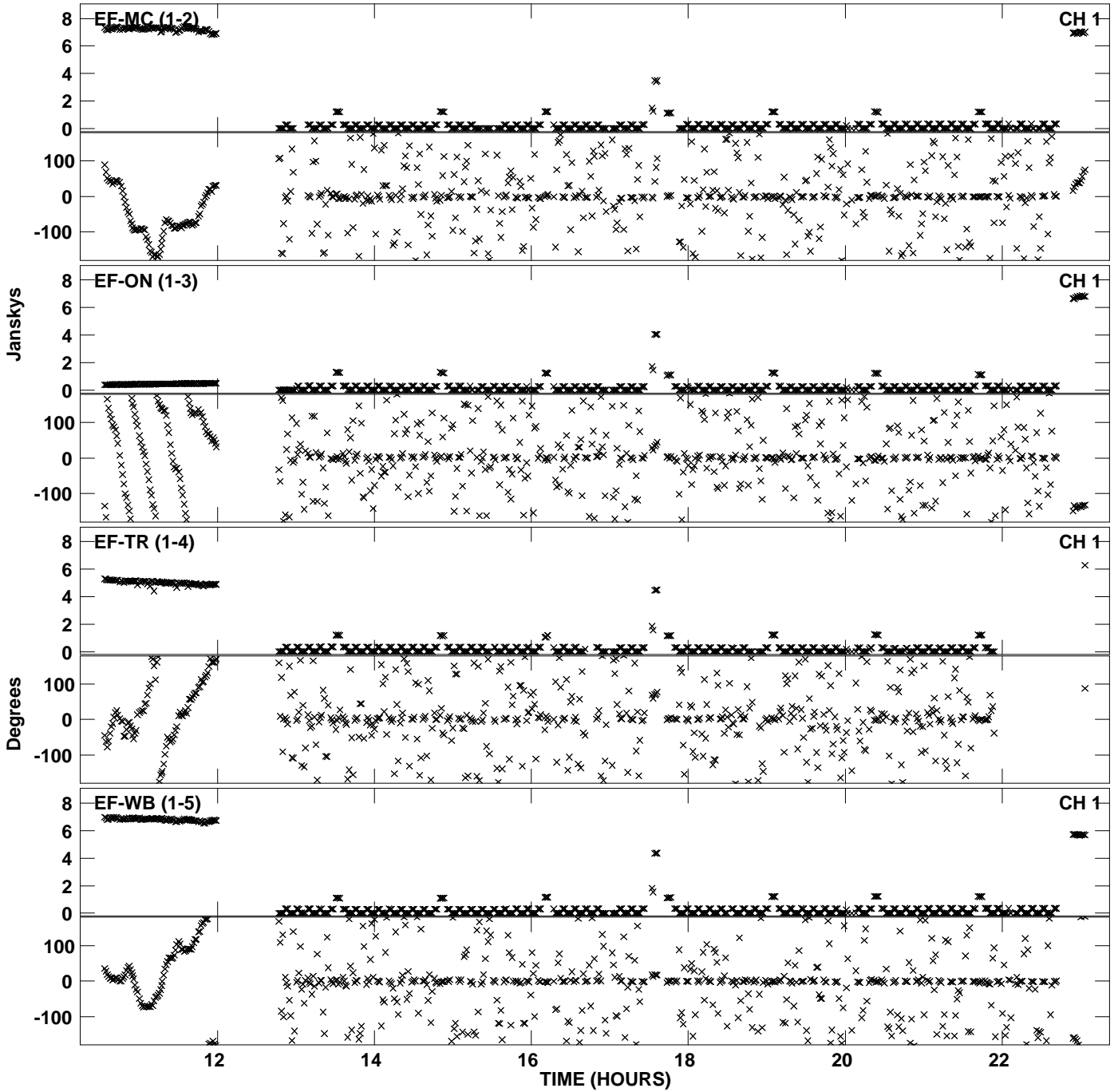
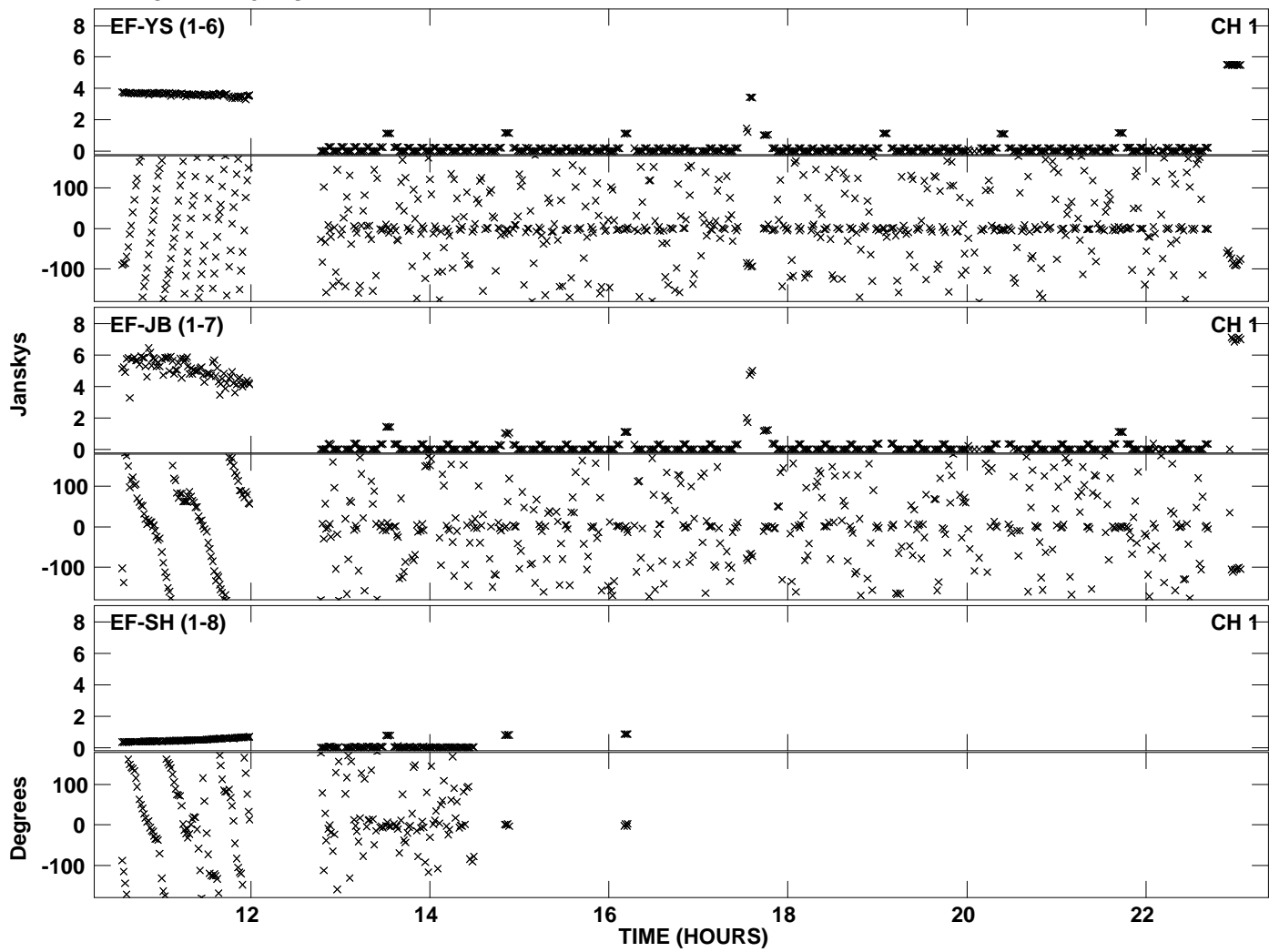


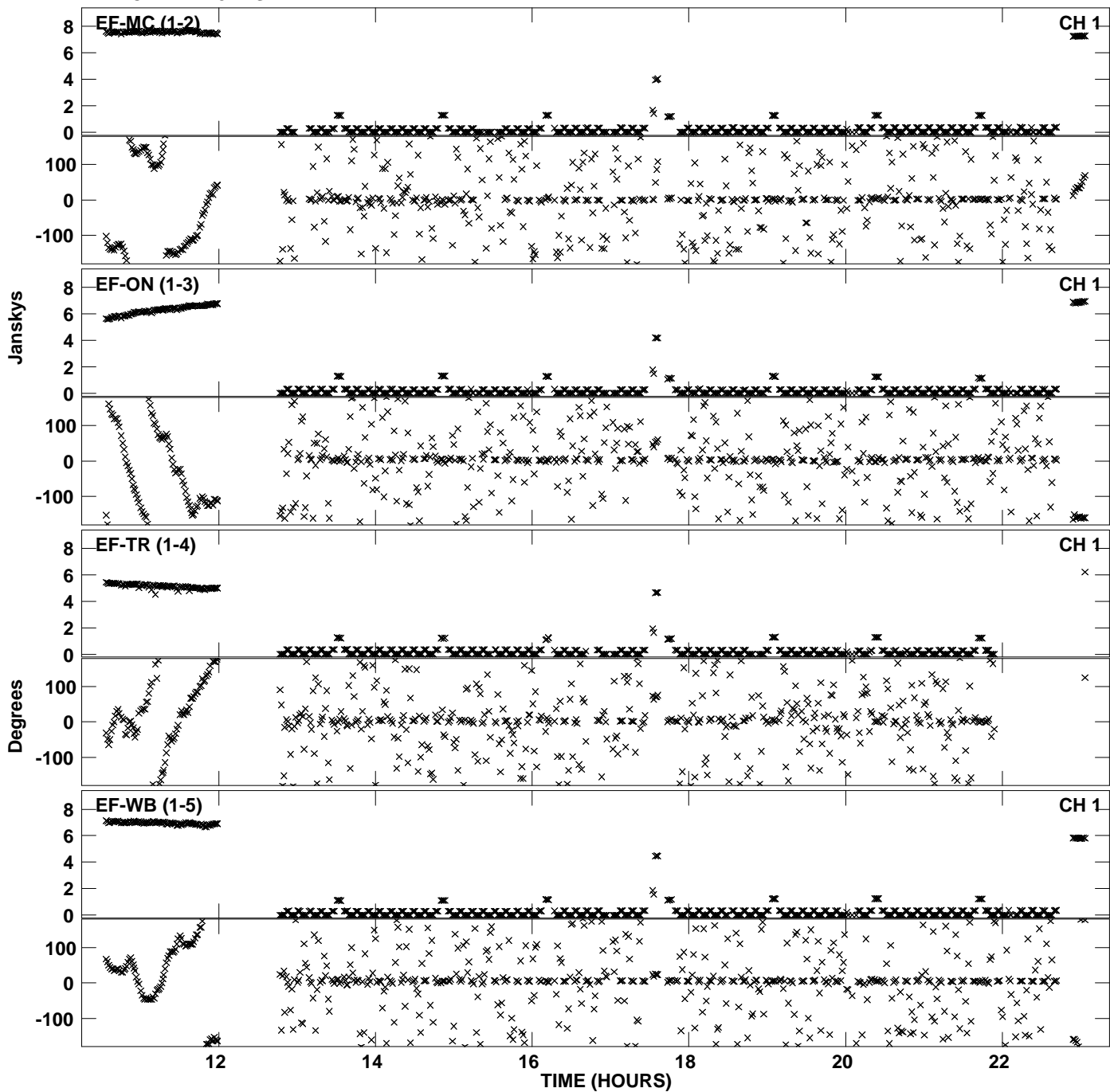
Plot file version 1 created 05-DEC-2011 17:37:49  
Amplitude and Phase vs Time for ET018B.UVDATA.1 Vect aver. CL # 3  
IF 1 CHAN 1 - 32 STK LL



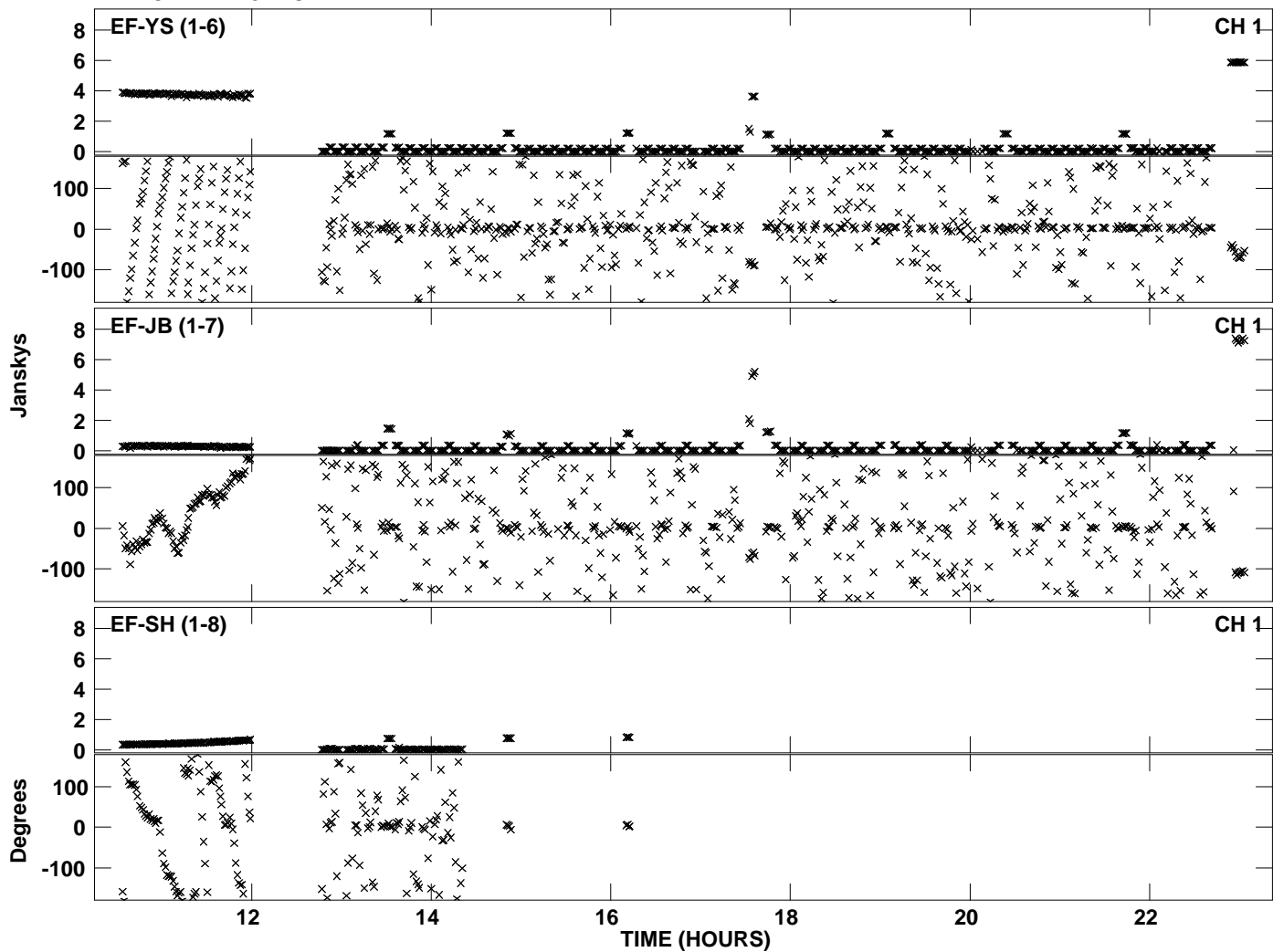
Plot file version 2 created 05-DEC-2011 17:37:49  
Amplitude and Phase vs Time for ET018B.UVDATA.1 Vect aver. CL # 3  
IF 1 CHAN 1 - 32 STK LL



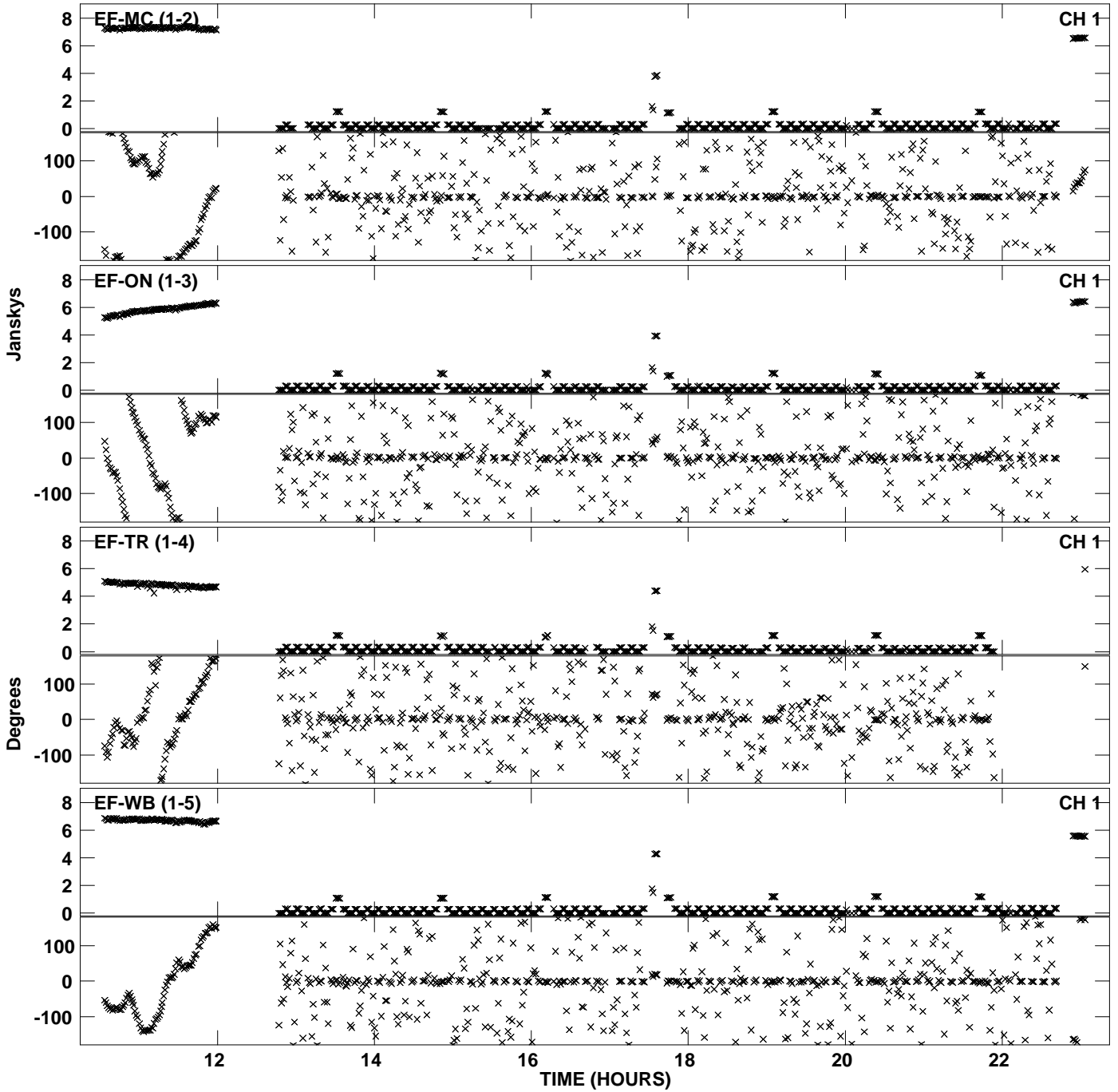
Plot file version 3 created 05-DEC-2011 17:38:42  
Amplitude and Phase vs Time for ET018B.UVDATA.1 Vect aver. CL # 3  
IF 2 CHAN 1 - 32 STK LL



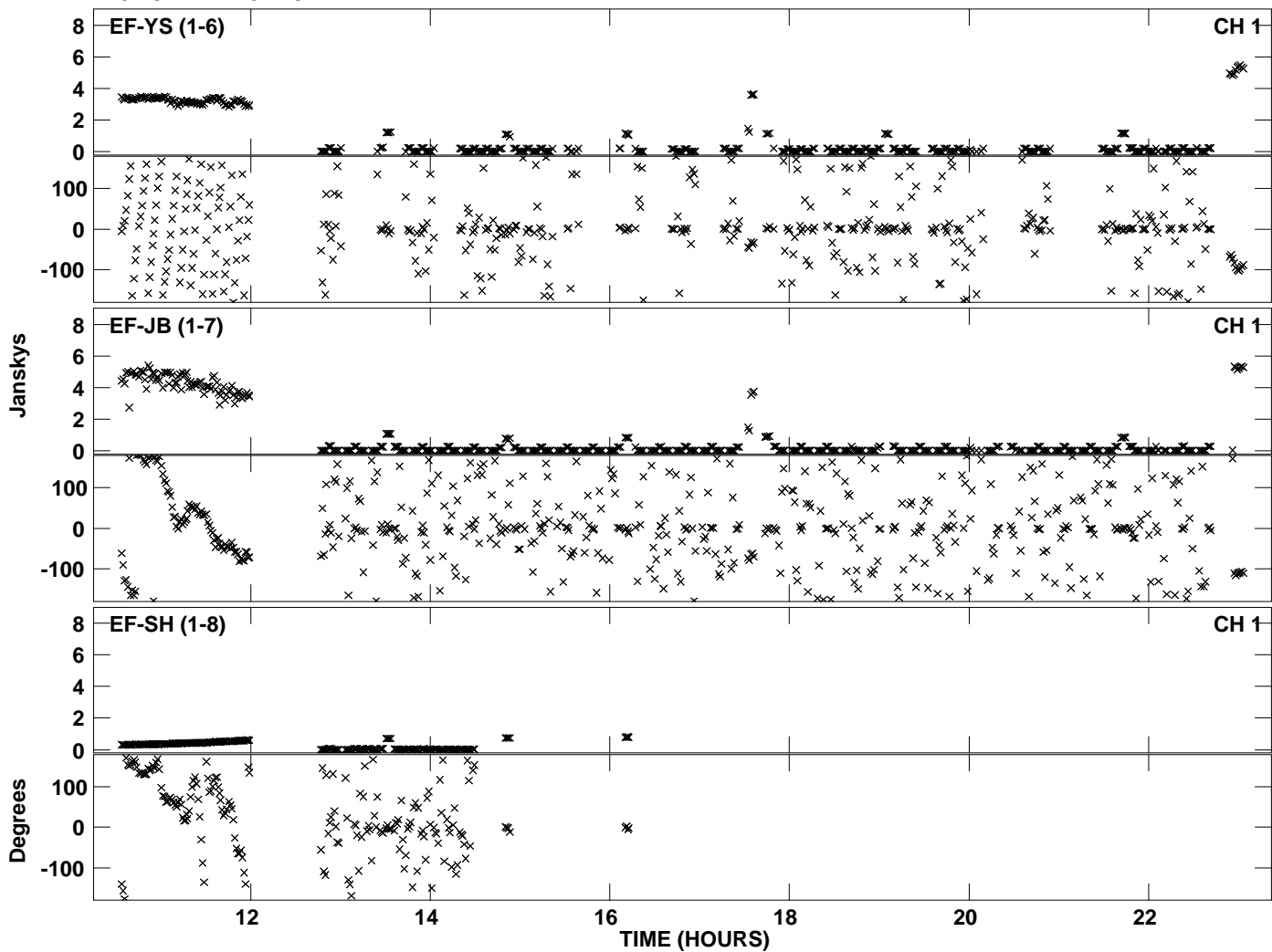
Plot file version 4 created 05-DEC-2011 17:38:42  
Amplitude andPhase vs Time for ET018B.UVDATA.1 Vect aver. CL # 3  
IF 2 CHAN 1 - 32 STK LL



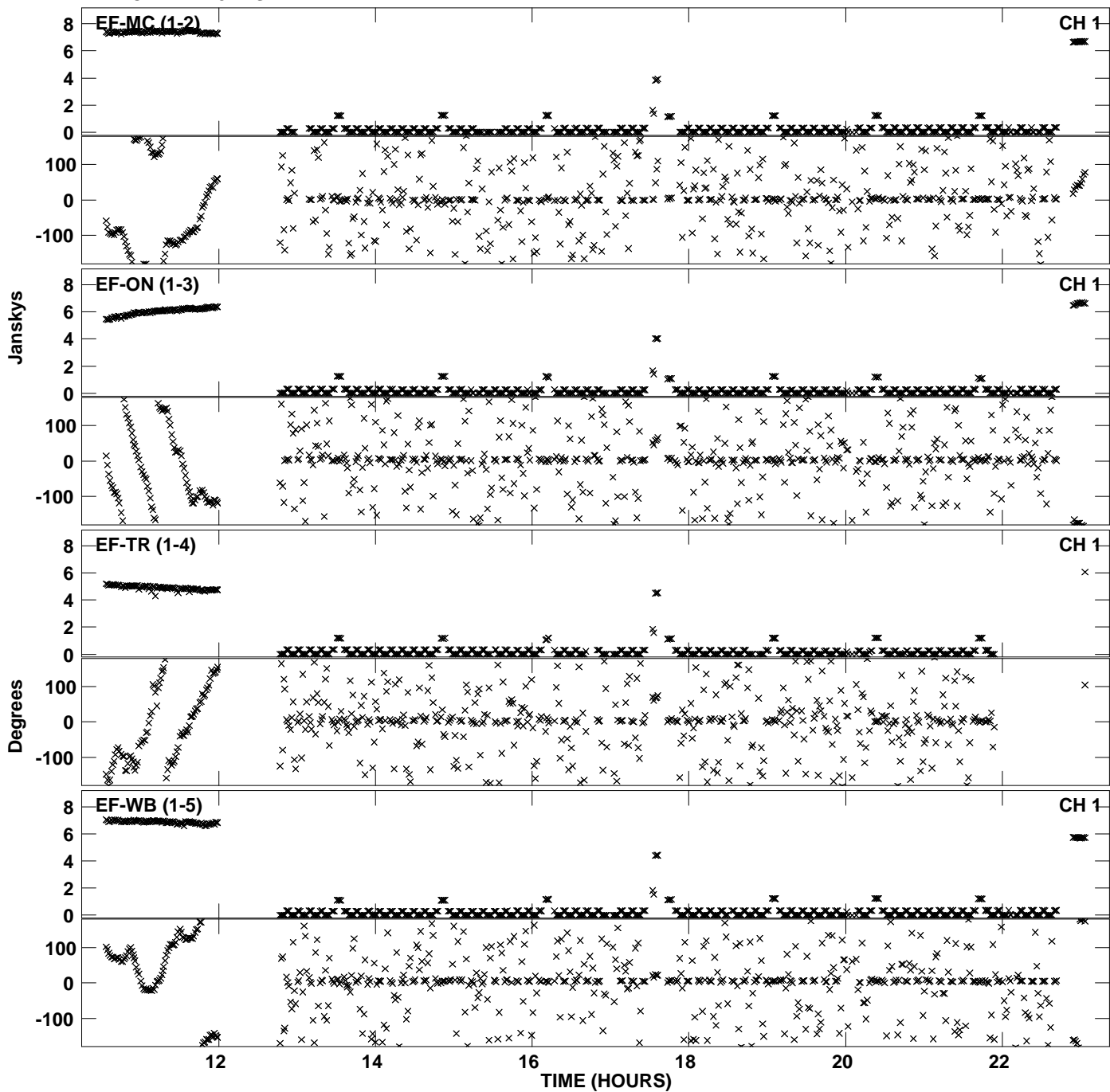
PLot file version 5 created 05-DEC-2011 17:39:35  
Amplitude and Phase vs Time for ET018B.UVDATA.1 Vect aver. CL # 3  
IF 3 CHAN 1 - 32 STK LL



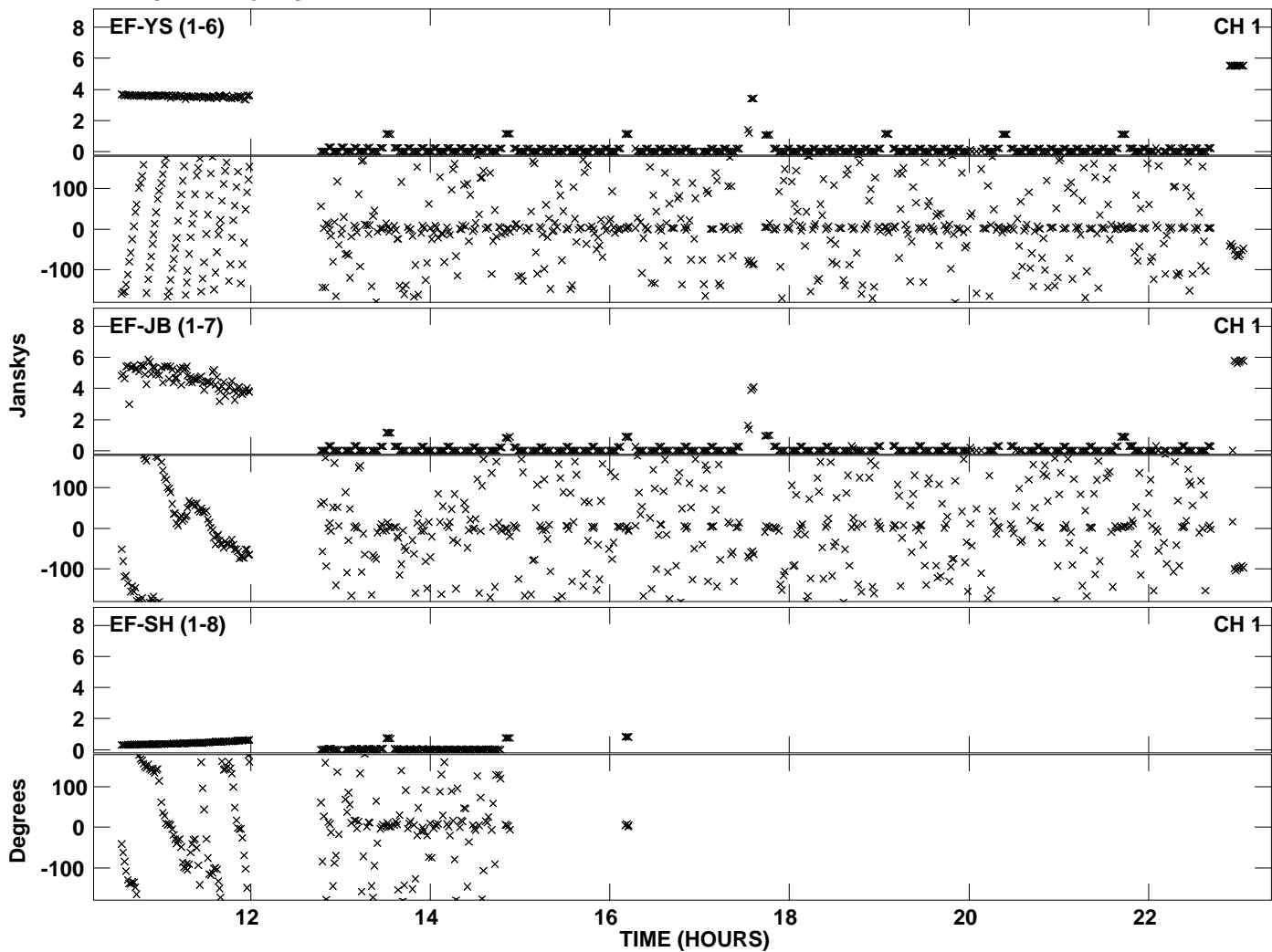
Plot file version 6 created 05-DEC-2011 17:39:35  
Amplitude and Phase vs Time for ET018B.UVDATA.1 Vect aver. CL # 3  
IF 3 CHAN 1 - 32 STK LL



PLot file version 7 created 05-DEC-2011 17:40:28  
Amplitude andPhase vs Time for ET018B.UVDATA.1 Vect aver. CL # 3  
IF 4 CHAN 1 - 32 STK LL

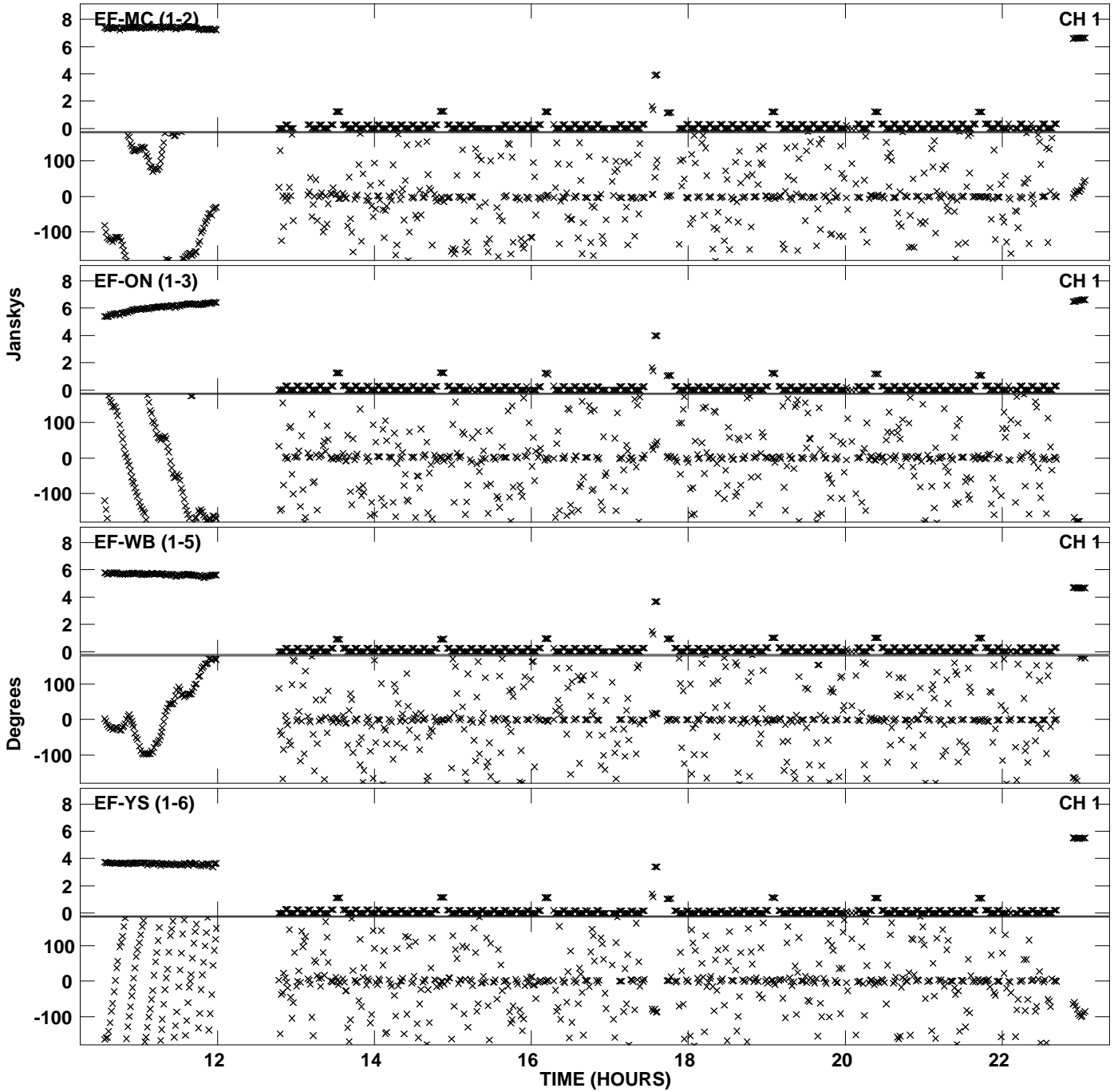


PLot file version 8 created 05-DEC-2011 17:40:28  
Amplitude andPhase vs Time for ET018B.UVDATA.1 Vect aver. CL # 3  
IF 4 CHAN 1 - 32 STK LL

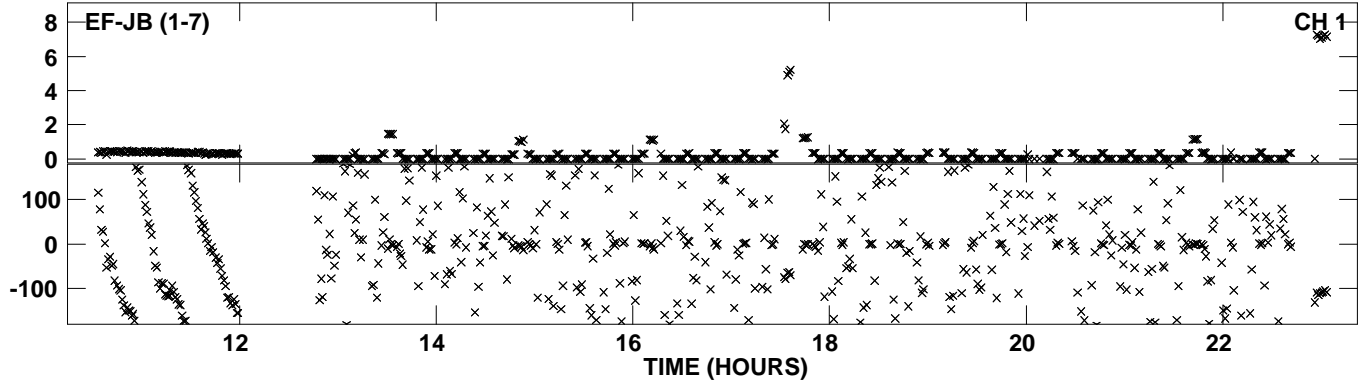




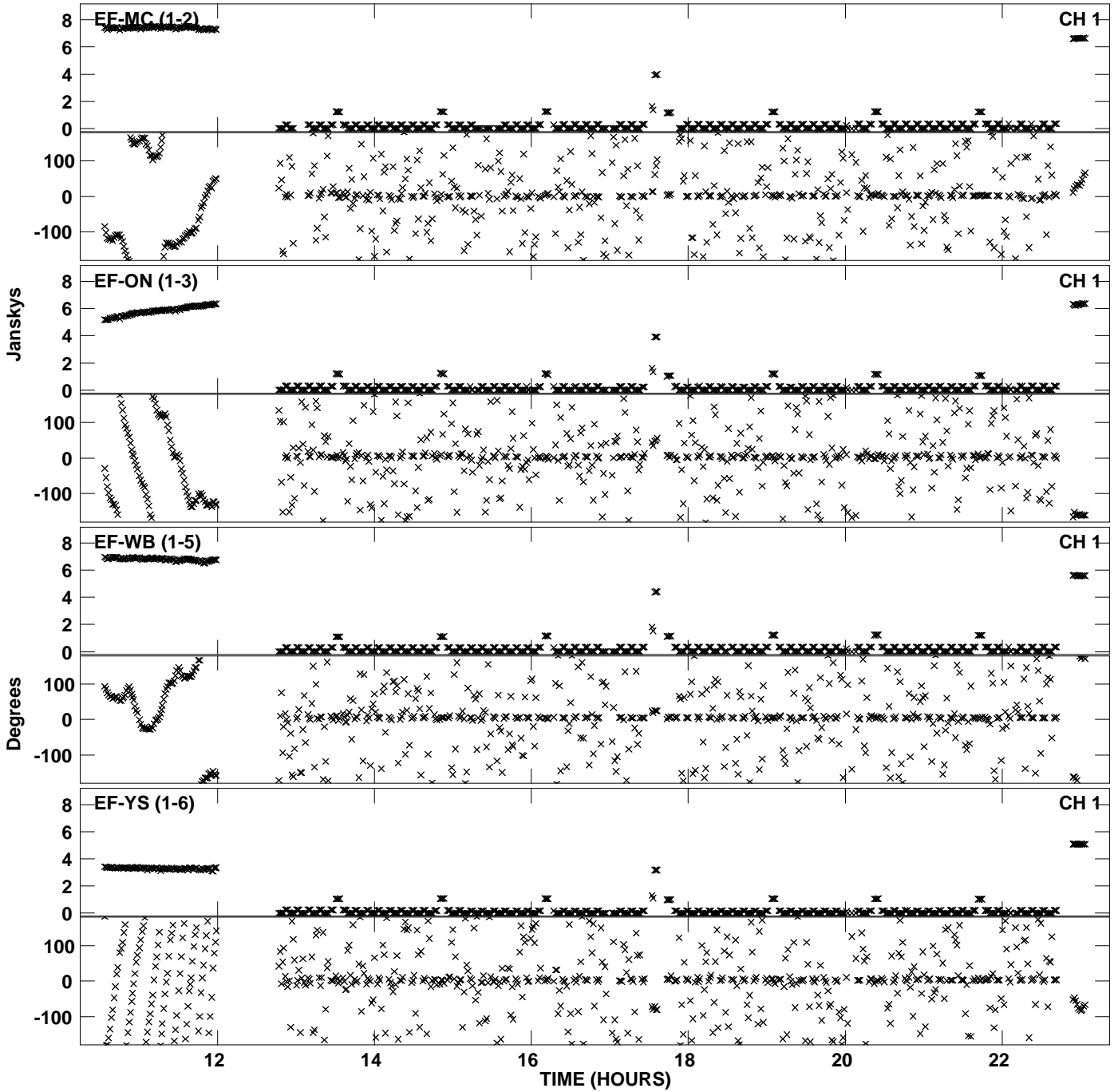
Plot file version 9 created 05-DEC-2011 17:41:19  
Amplitude andPhase vs Time for ET018B.UVDATA.1 Vect aver. CL # 3  
IF 5 CHAN 1 - 32 STK LL



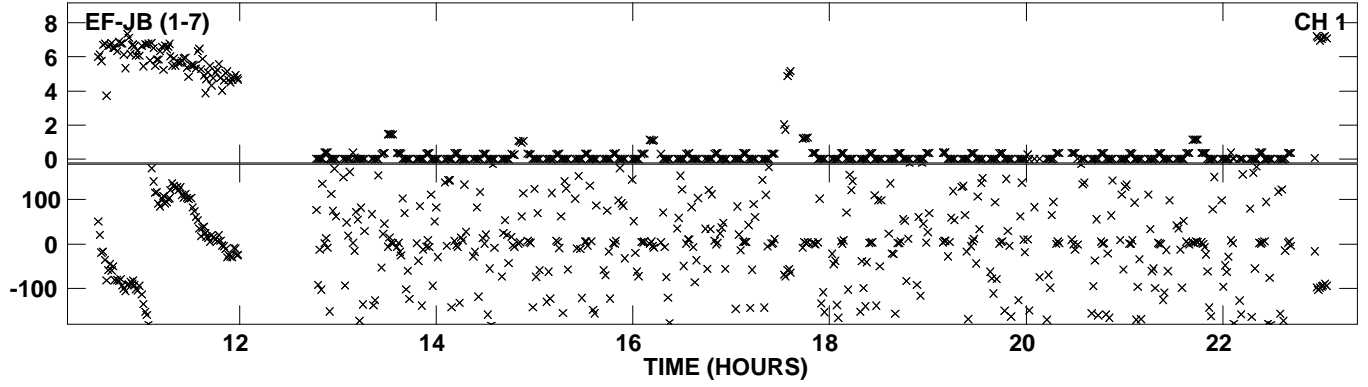
Plot file version 10 created 05-DEC-2011 17:41:19  
Amplitude and Phase vs Time for ET018B.UVDATA.1 Vect aver. CL # 3  
IF 5 CHAN 1 - 32 STK LL



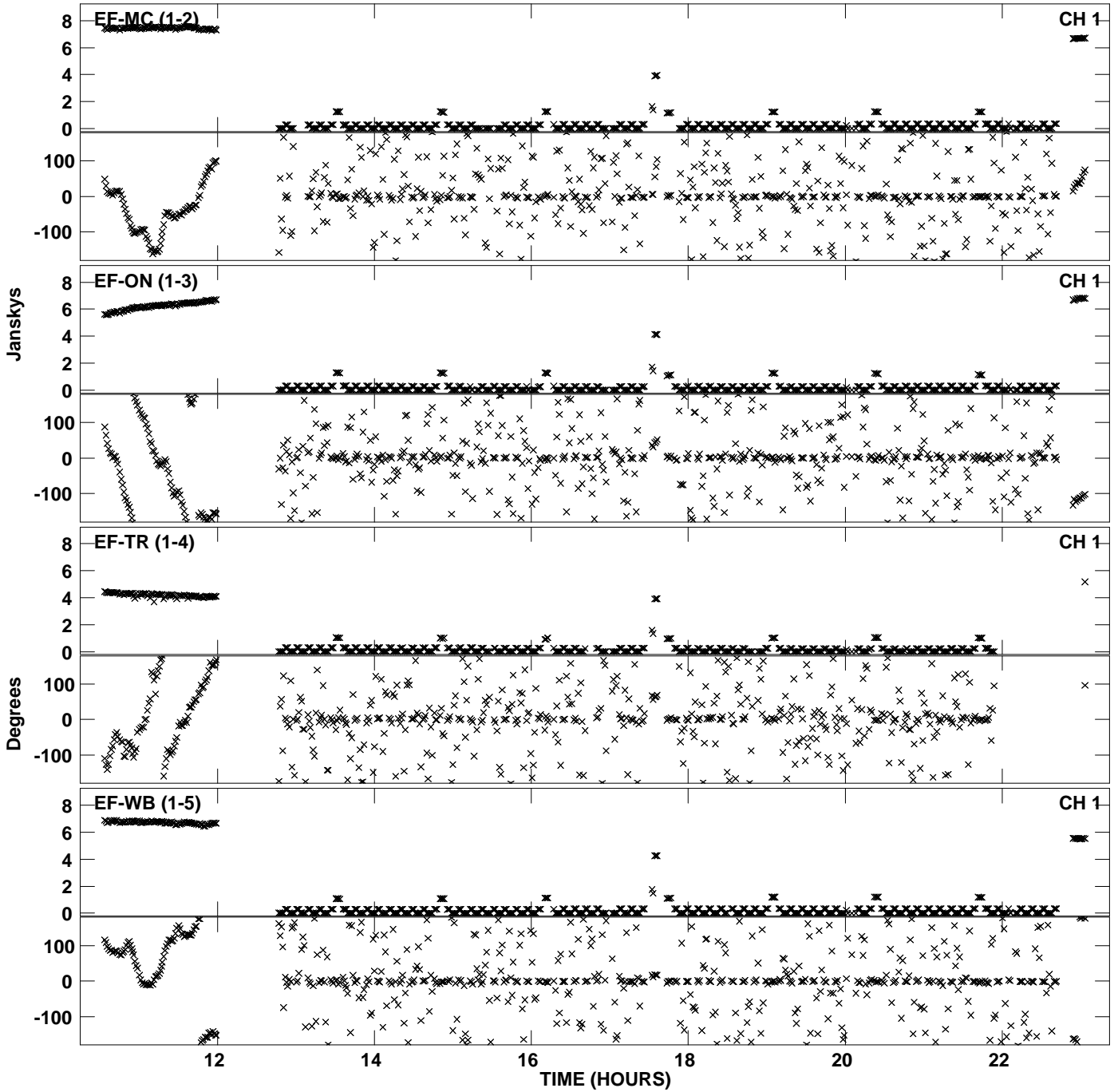
Plot file version 11 created 05-DEC-2011 17:42:10  
Amplitude and Phase vs Time for ET018B.UVDATA.1 Vect aver. CL # 3  
IF 6 CHAN 1 - 32 STK LL



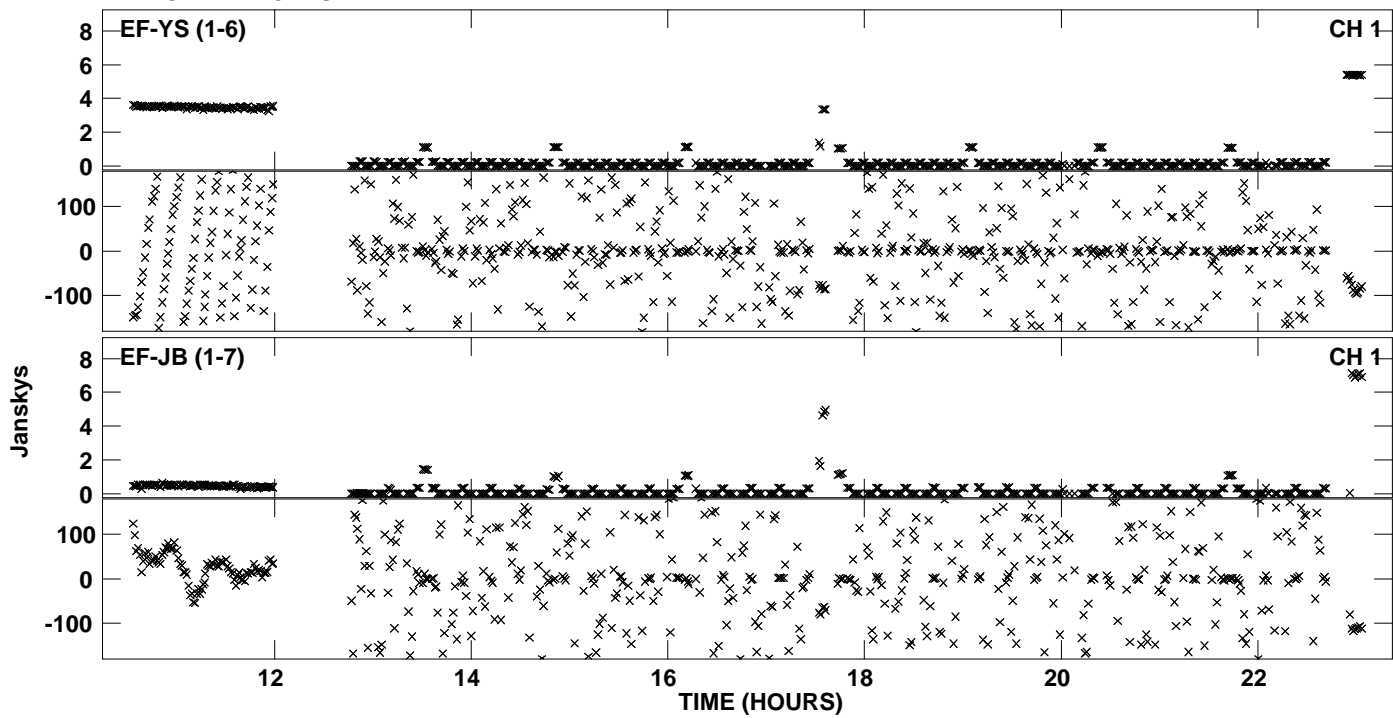
Plot file version 12 created 05-DEC-2011 17:42:10  
Amplitude and Phase vs Time for ET018B.UVDATA.1 Vect aver. CL # 3  
IF 6 CHAN 1 - 32 STK LL



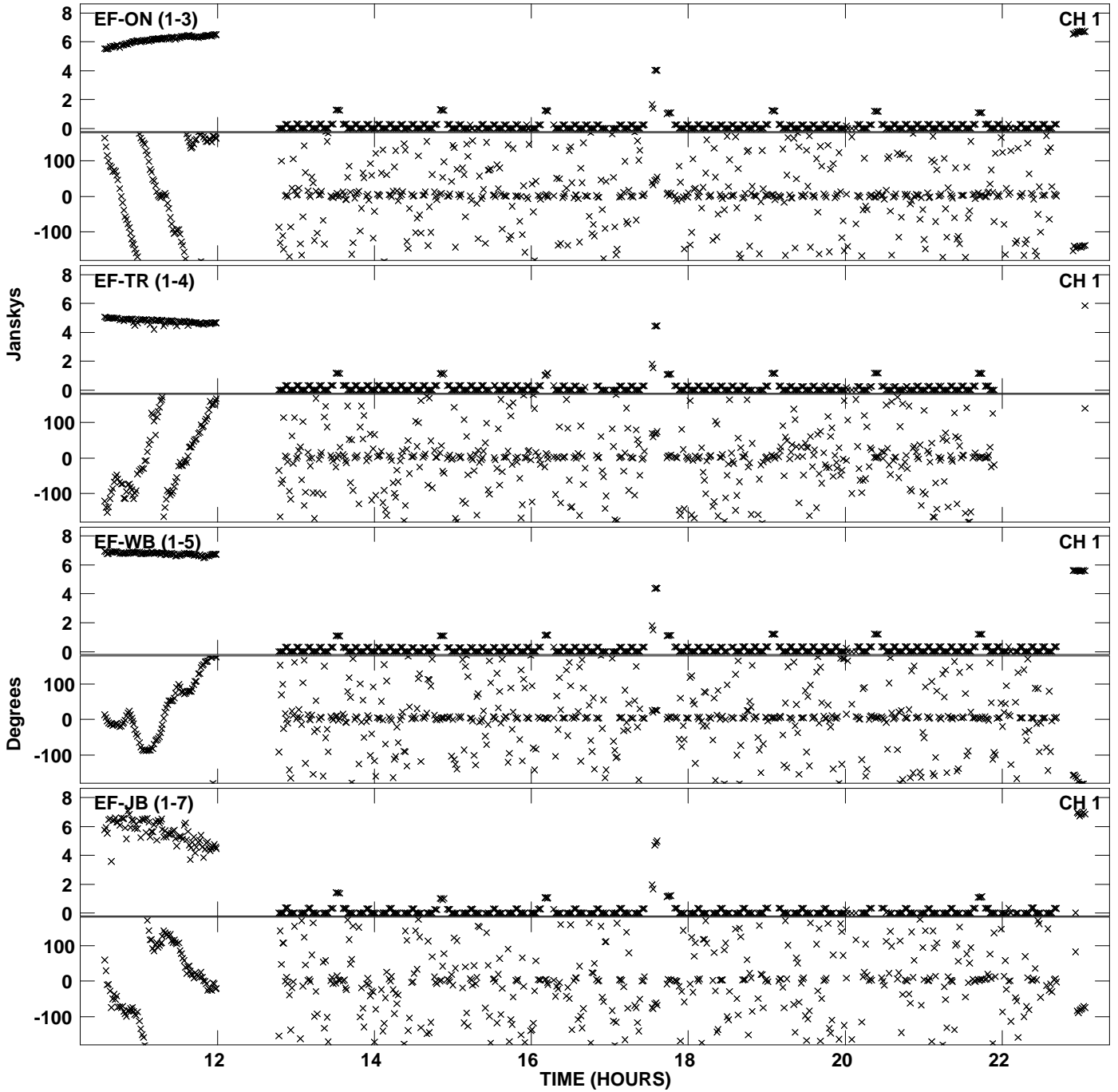
Plot file version 13 created 05-DEC-2011 17:43:03  
Amplitude andPhase vs Time for ET018B.UVDATA.1 Vect aver. CL # 3  
IF 7 CHAN 1 - 32 STK LL



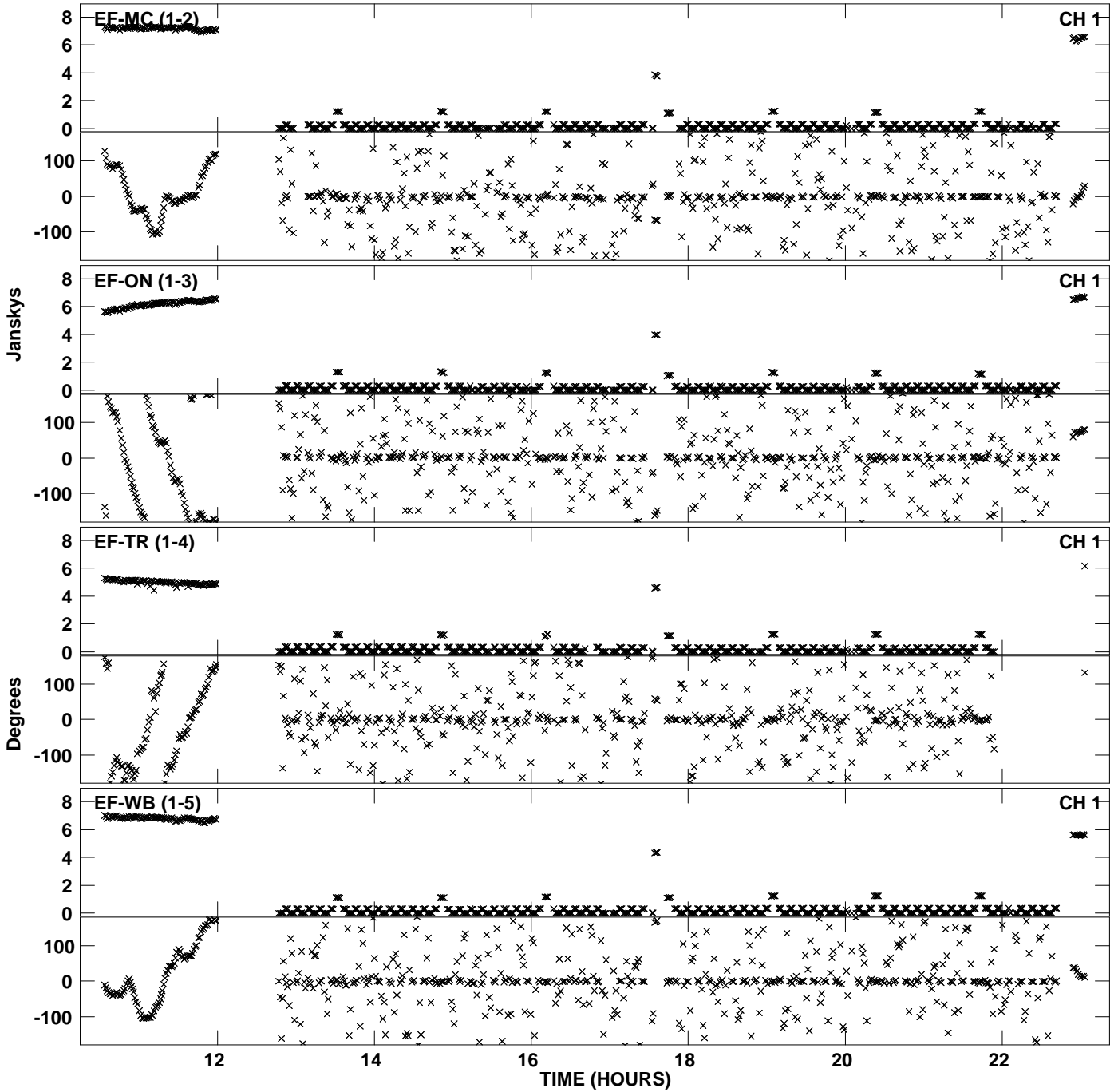
Plot file version 14 created 05-DEC-2011 17:43:03  
Amplitude and Phase vs Time for ET018B.UVDATA.1 Vect aver. CL # 3  
IF 7 CHAN 1 - 32 STK LL



Plot file version 15 created 05-DEC-2011 17:43:50  
Amplitude andPhase vs Time for ET018B.UVDATA.1 Vect aver. CL # 3  
IF 8 CHAN 1 - 32 STK LL

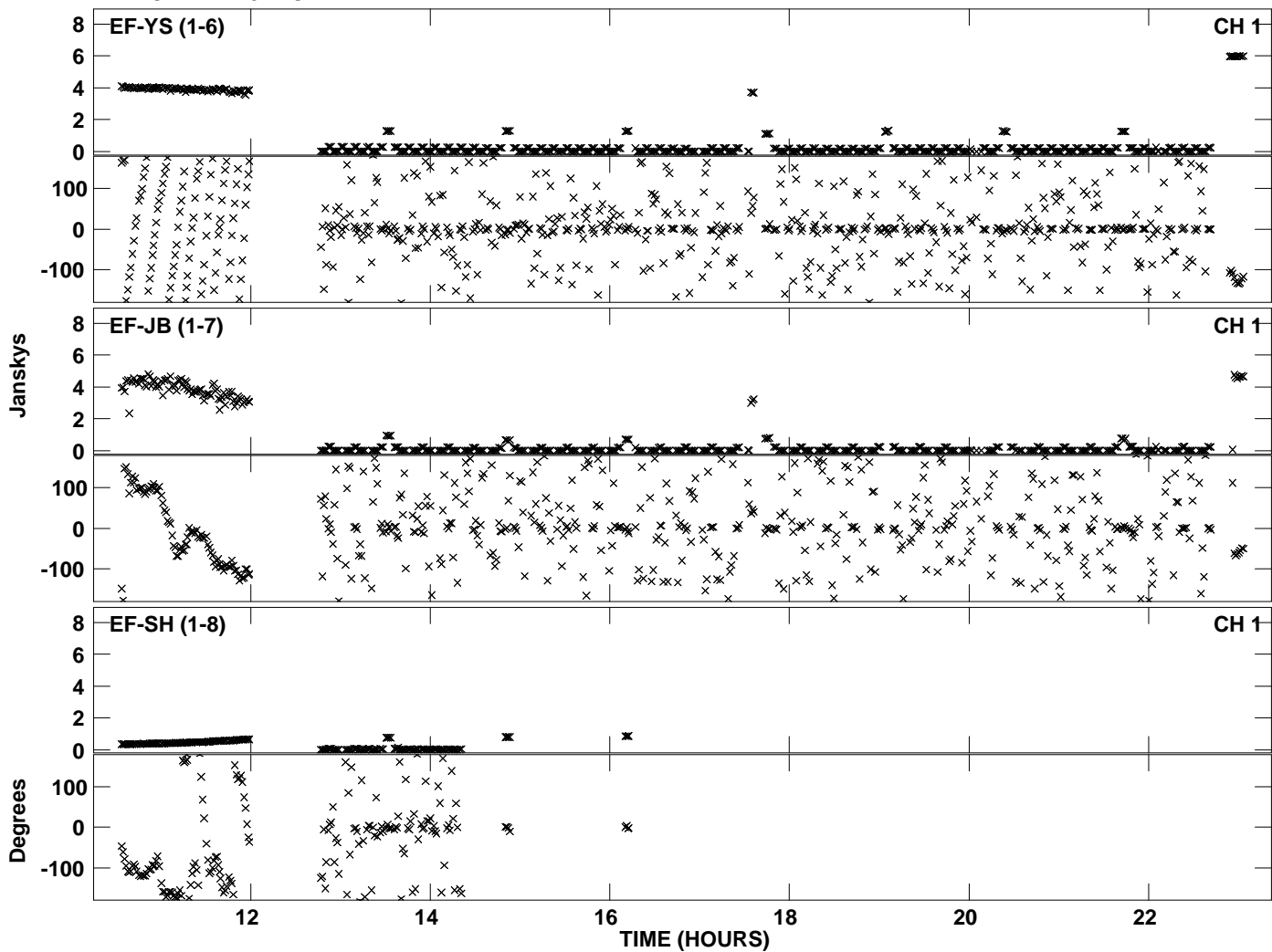


PLot file version 16 created 05-DEC-2011 17:44:41  
Amplitude andPhase vs Time for ET018B.UVDATA.1 Vect aver. CL # 3  
IF 1 CHAN 1 - 32 STK RR

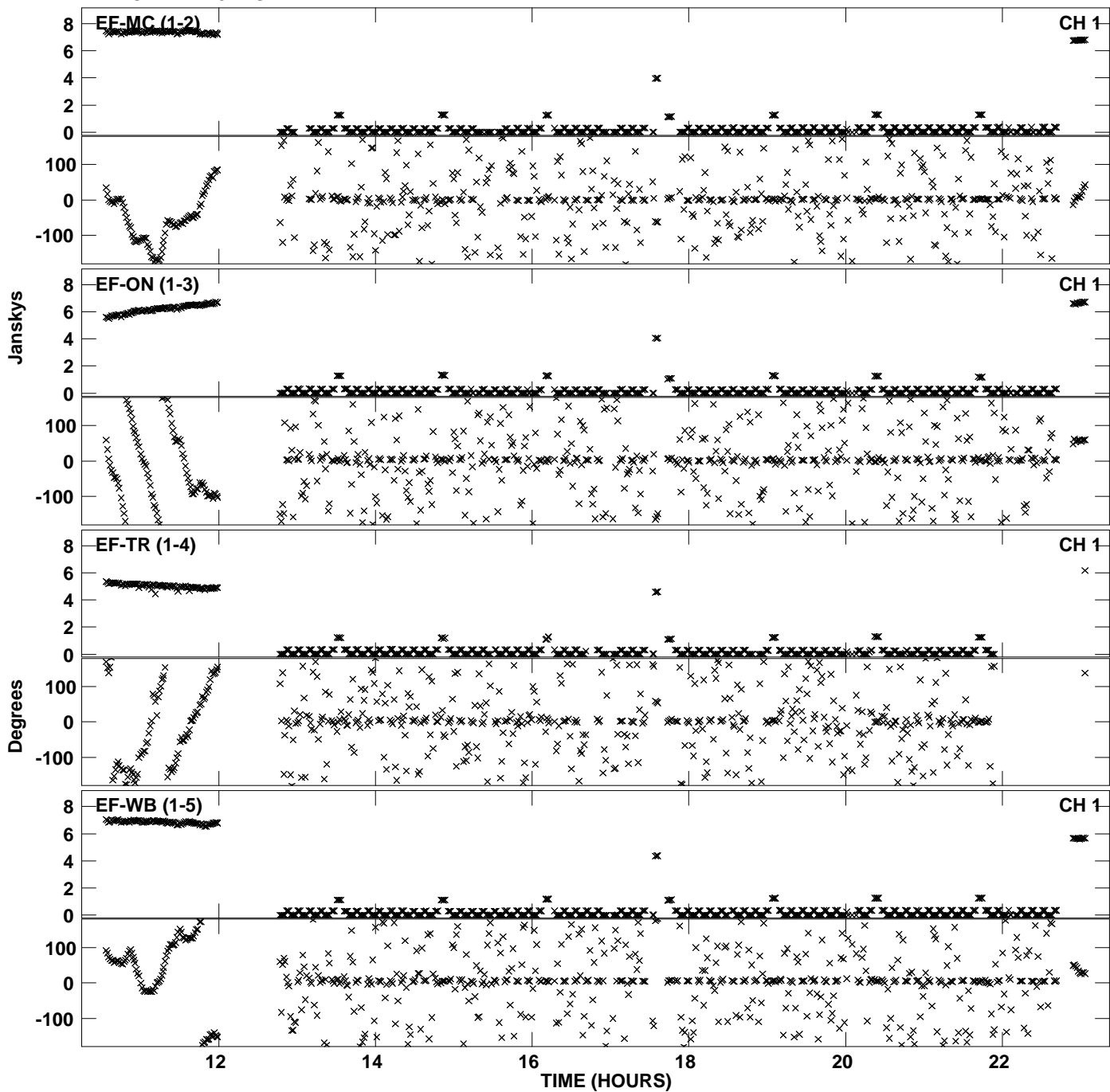




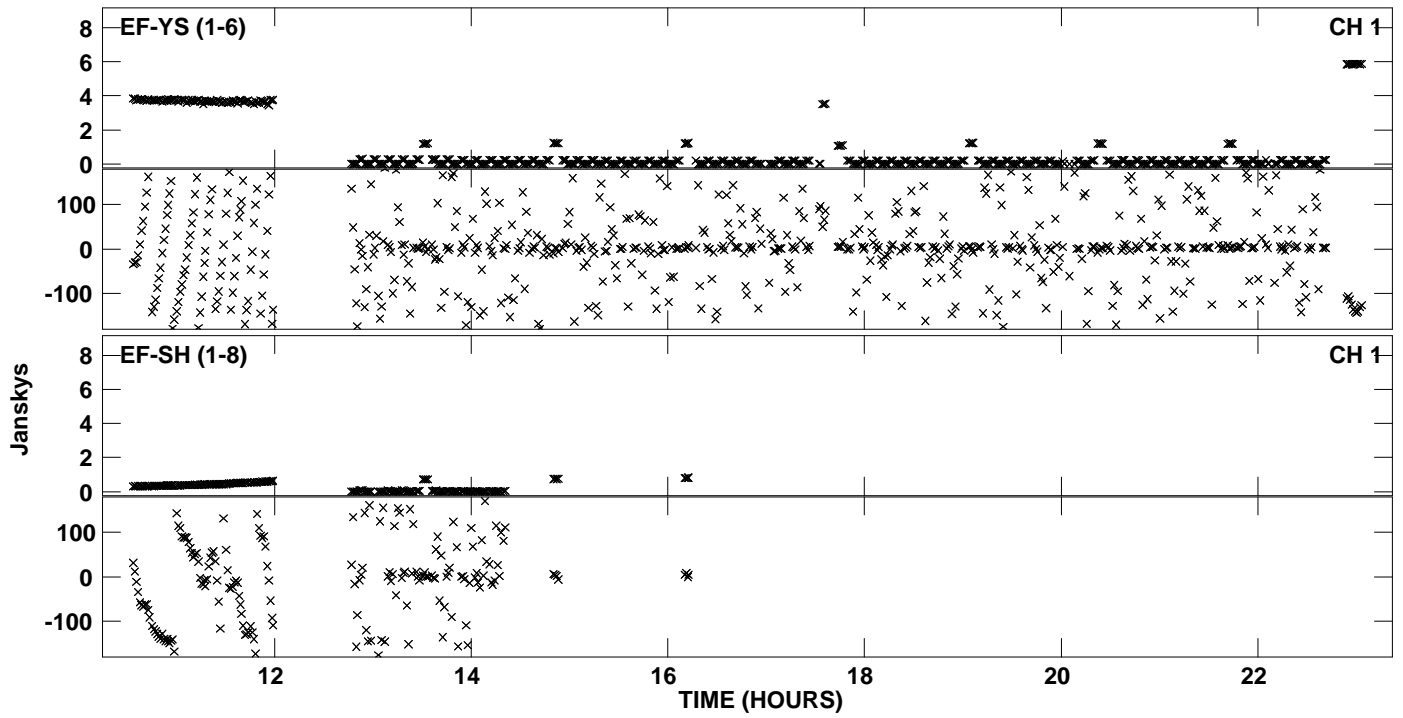
PLot file version 17 created 05-DEC-2011 17:44:41  
Amplitude andPhase vs Time for ET018B.UVDATA.1 Vect aver. CL # 3  
IF 1 CHAN 1 - 32 STK RR



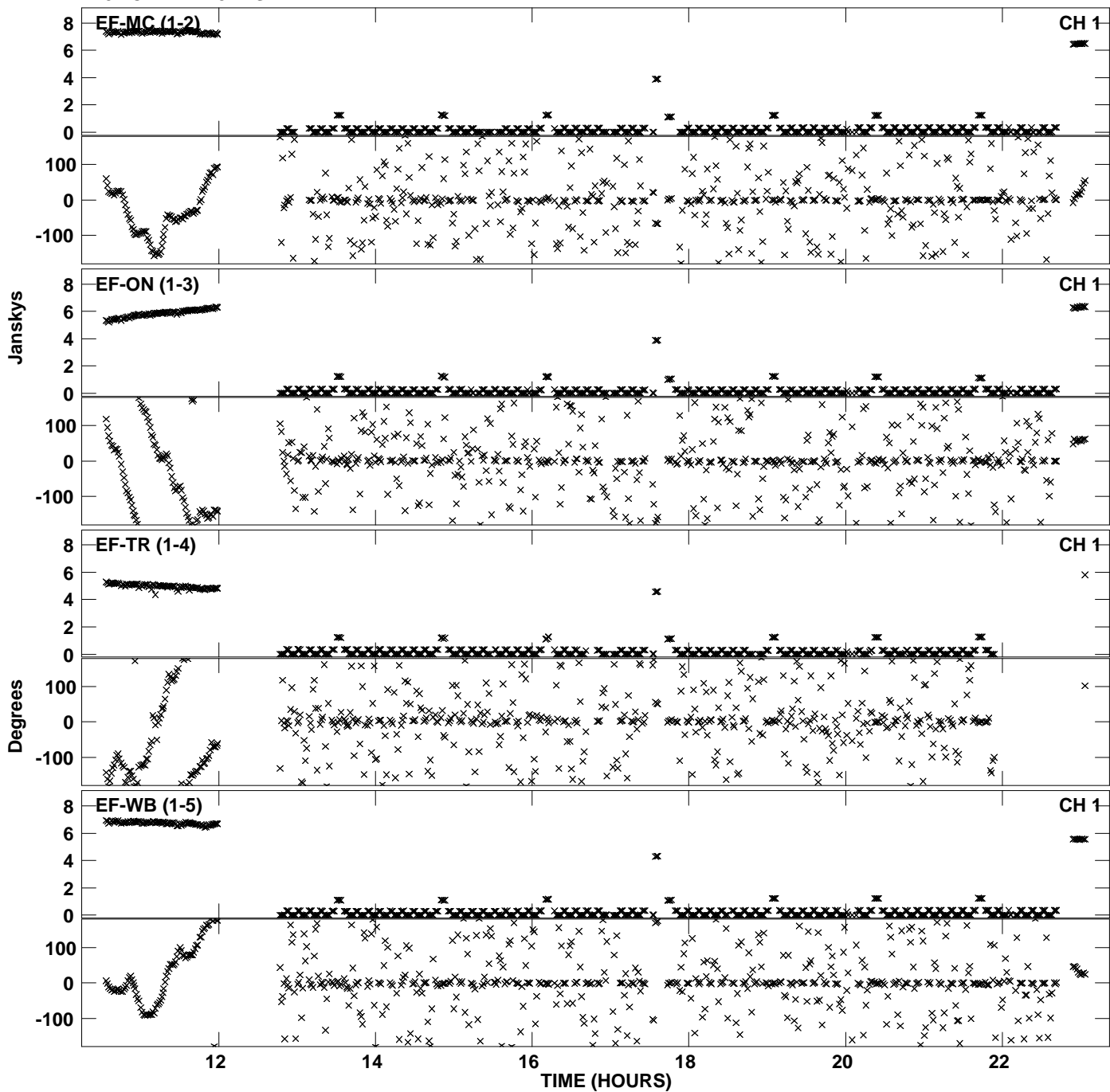
PLot file version 18 created 05-DEC-2011 17:45:31  
Amplitude andPhase vs Time for ET018B.UVDATA.1 Vect aver. CL # 3  
IF 2 CHAN 1 - 32 STK RR



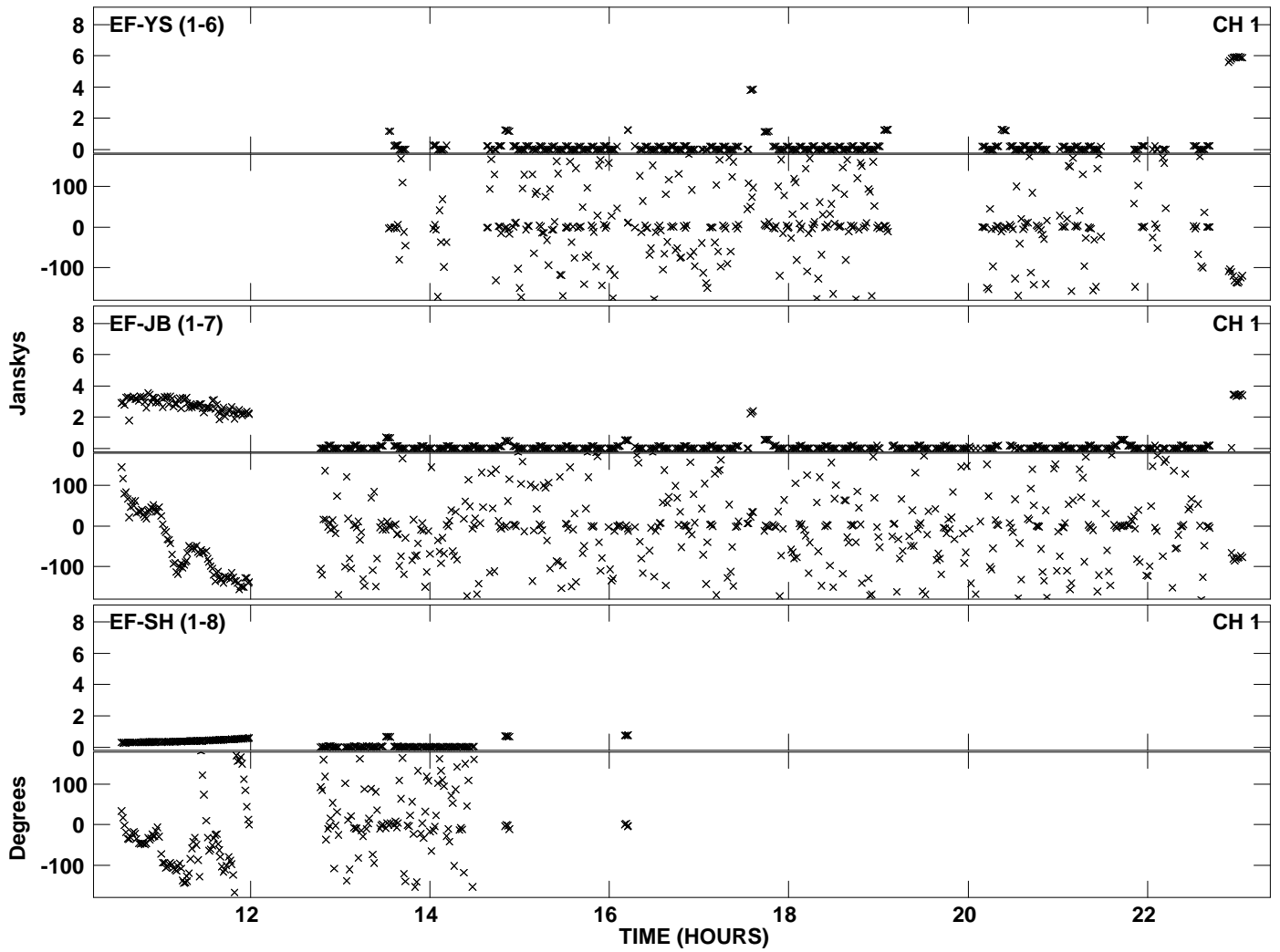
Plot file version 19 created 05-DEC-2011 17:45:31  
Amplitude and Phase vs Time for ET018B.UVDATA.1 Vect aver. CL # 3  
IF 2 CHAN 1 - 32 STK RR



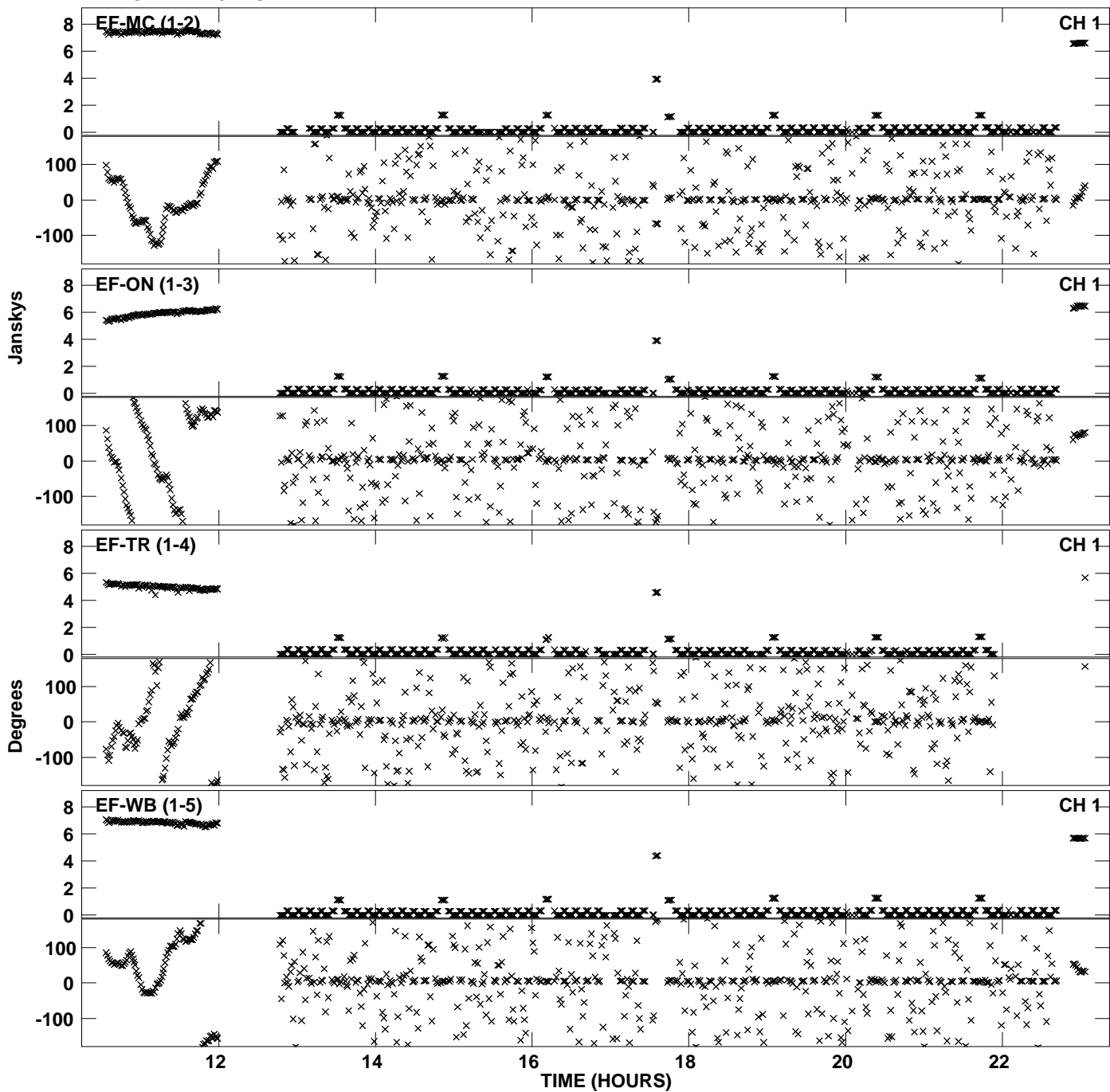
Plot file version 20 created 05-DEC-2011 17:46:23  
Amplitude andPhase vs Time for ET018B.UVDATA.1 Vect aver. CL # 3  
IF 3 CHAN 1 - 32 STK RR



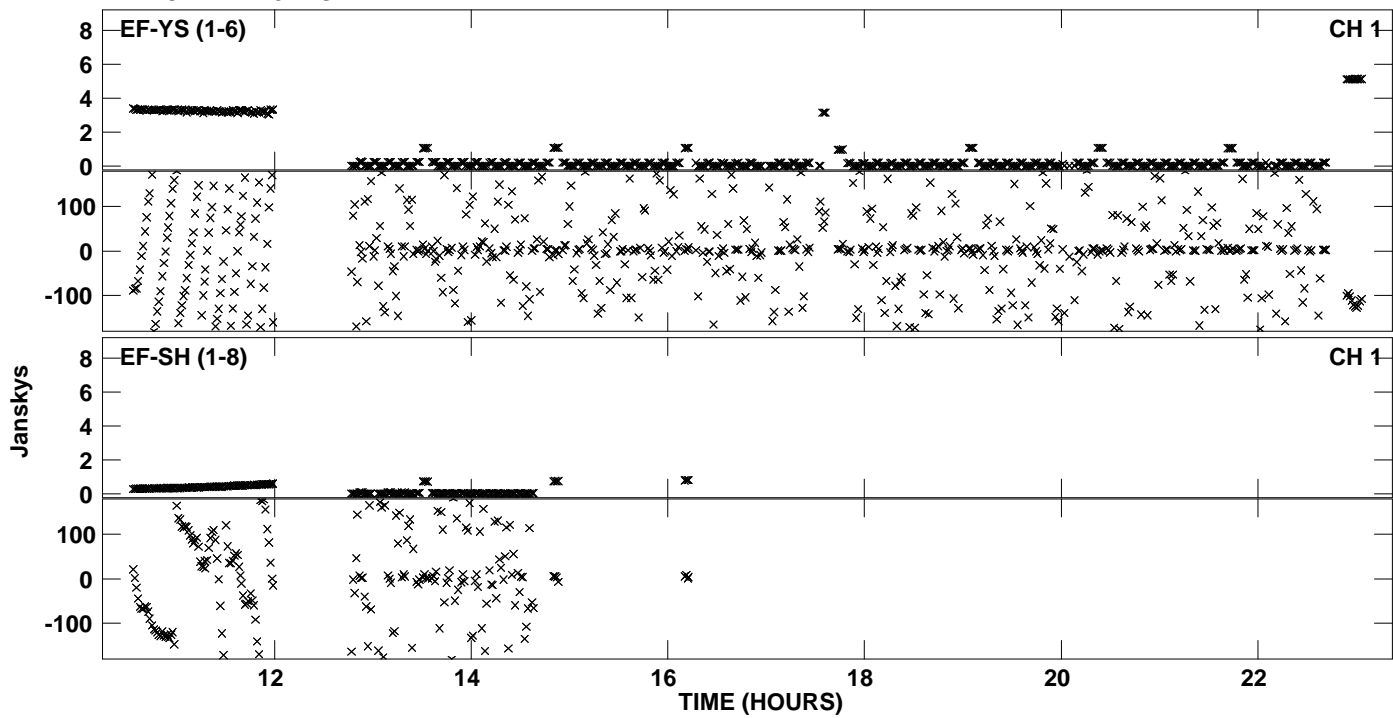
PLot file version 21 created 05-DEC-2011 17:46:23  
Amplitude andPhase vs Time for ET018B.UVDATA.1 Vect aver. CL # 3  
IF 3 CHAN 1 - 32 STK RR



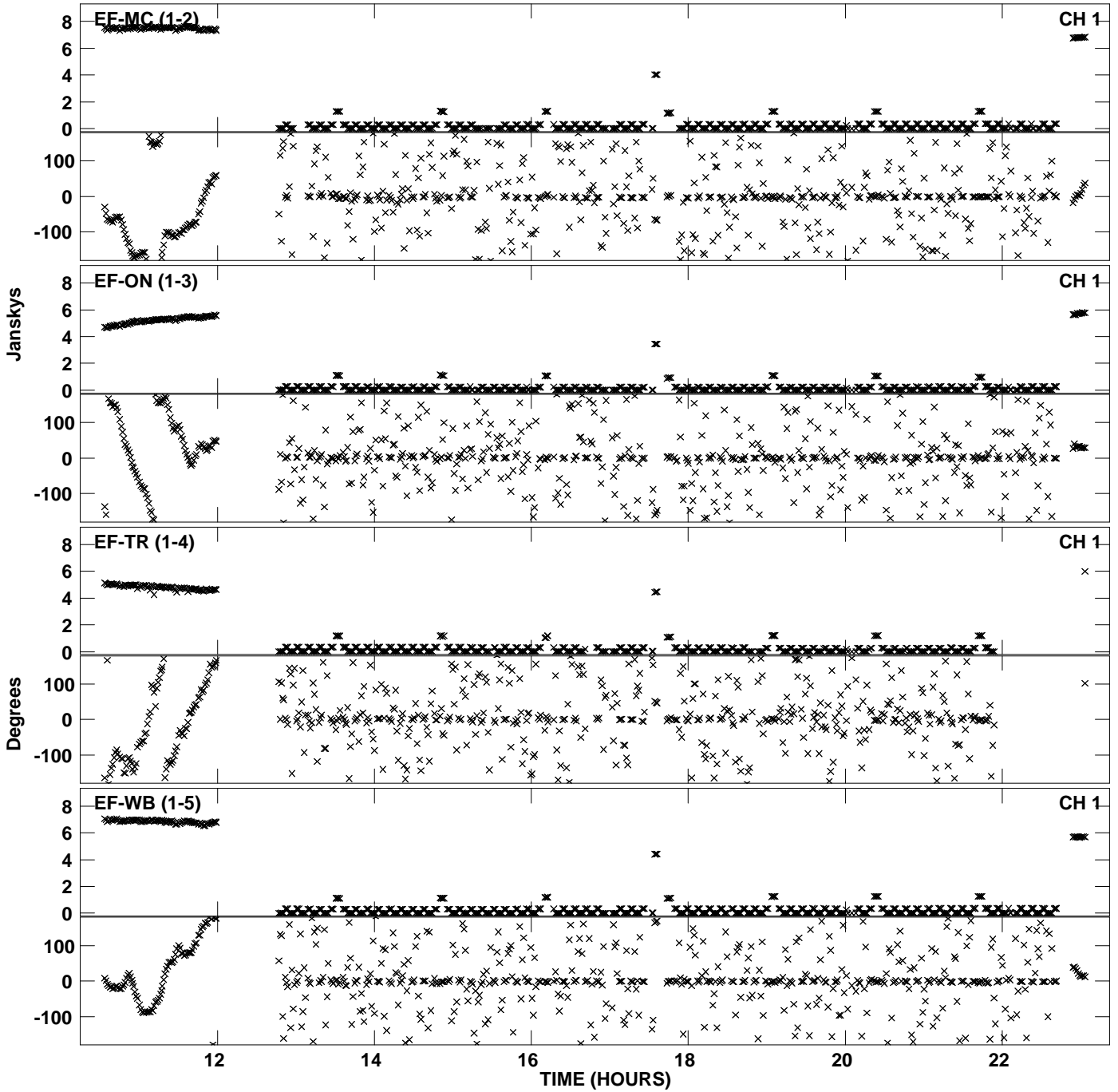
Plot file version 22 created 05-DEC-2011 17:47:12  
Amplitude andPhase vs Time for ET018B.UVDATA.1 Vect aver. CL # 3  
IF 4 CHAN 1 - 32 STK RR



PLot file version 23 created 05-DEC-2011 17:47:12  
Amplitude andPhase vs Time for ET018B.UVDATA.1 Vect aver. CL # 3  
IF 4 CHAN 1 - 32 STK RR

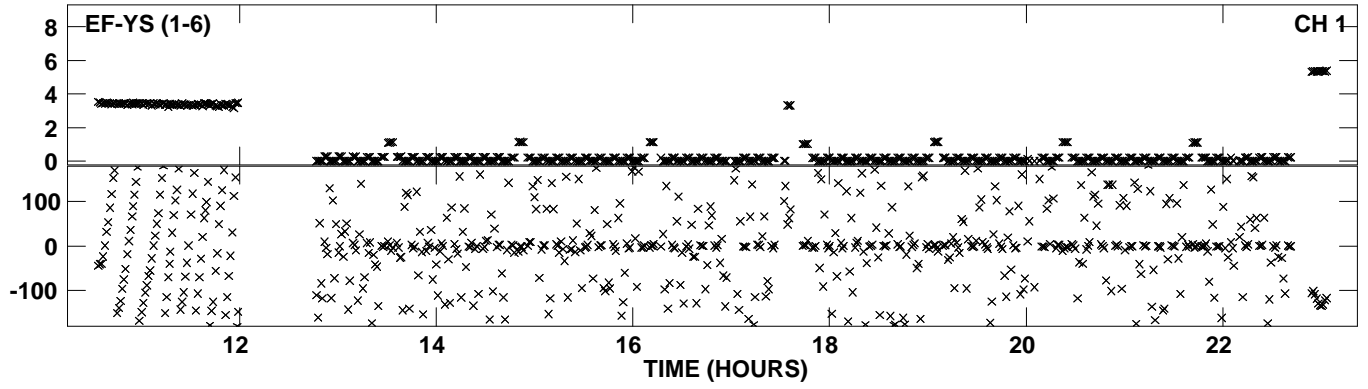


PLot file version 24 created 05-DEC-2011 17:48:01  
Amplitude andPhase vs Time for ET018B.UVDATA.1 Vect aver. CL # 3  
IF 5 CHAN 1 - 32 STK RR

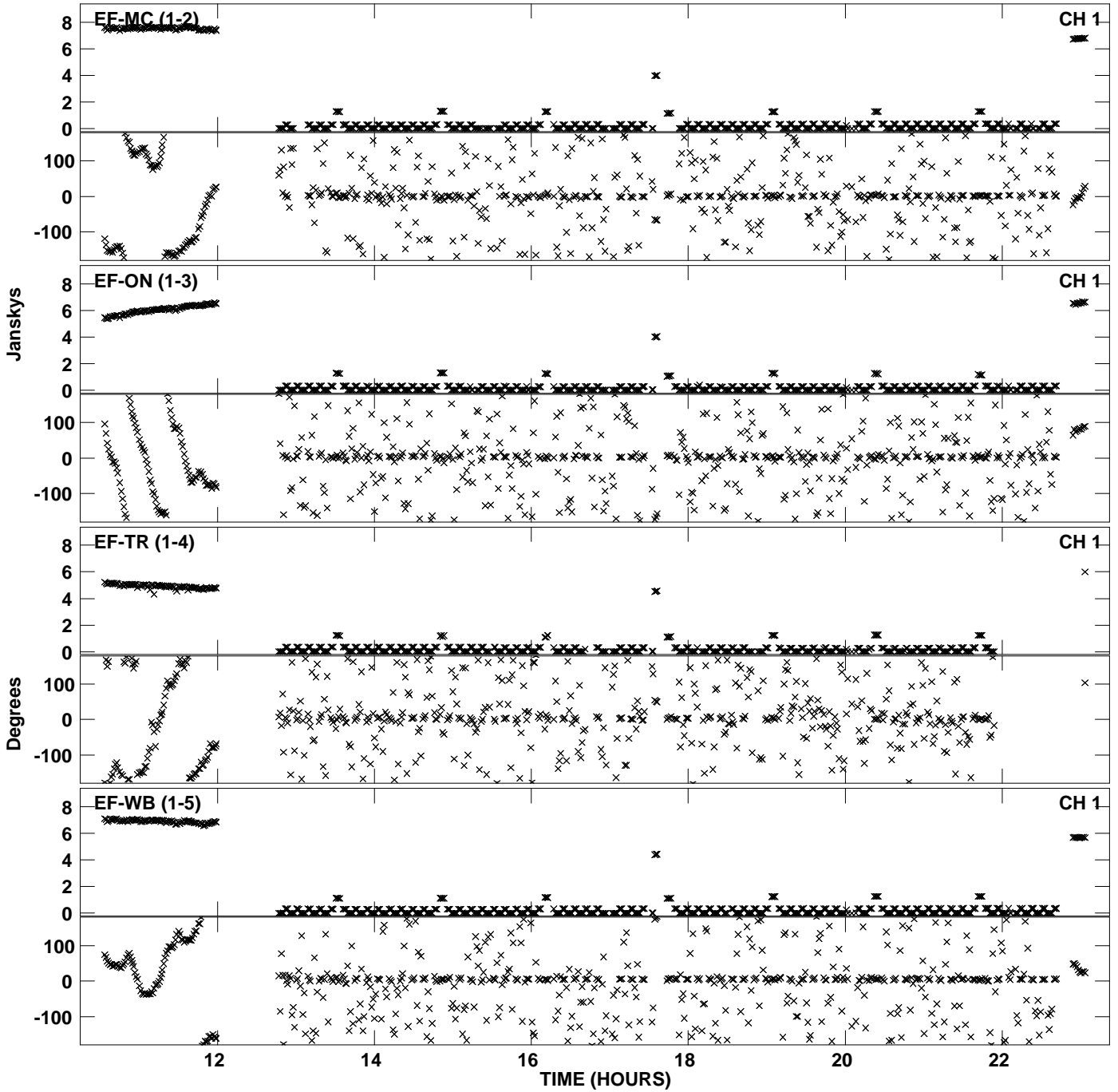




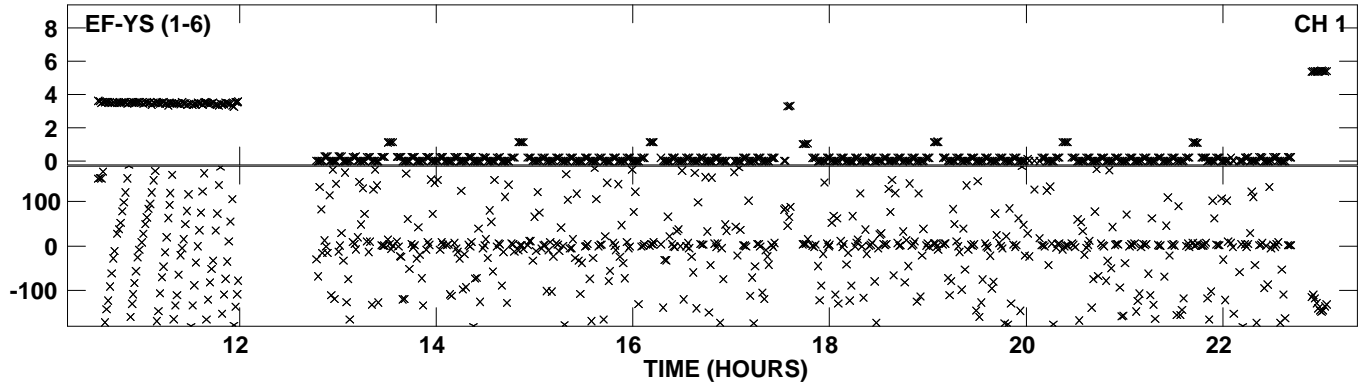
PLot file version 25 created 05-DEC-2011 17:48:01  
Amplitude andPhase vs Time for ET018B.UVDATA.1 Vect aver. CL # 3  
IF 5 CHAN 1 - 32 STK RR



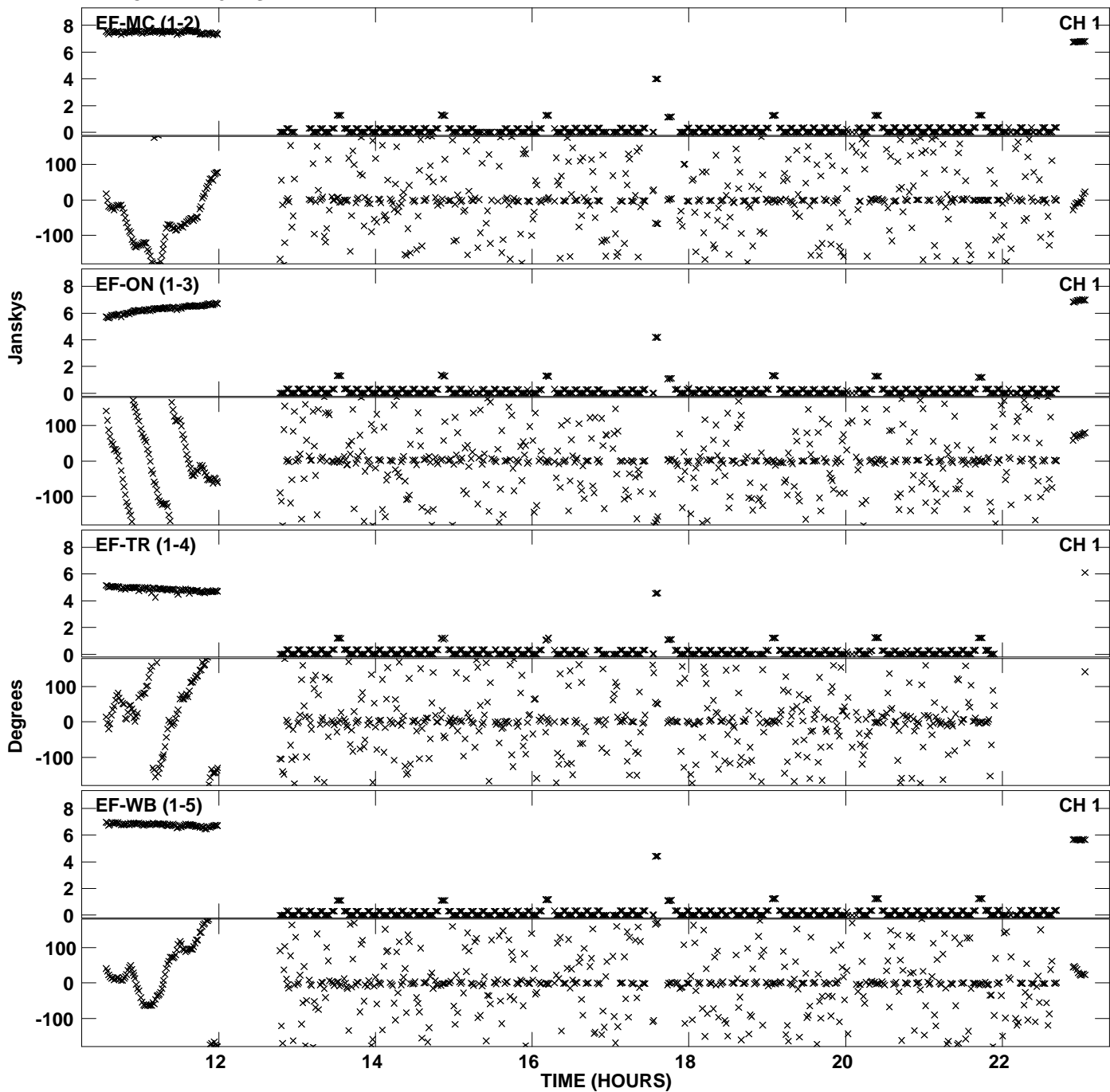
PLot file version 26 created 05-DEC-2011 17:48:50  
Amplitude andPhase vs Time for ET018B.UVDATA.1 Vect aver. CL # 3  
IF 6 CHAN 1 - 32 STK RR



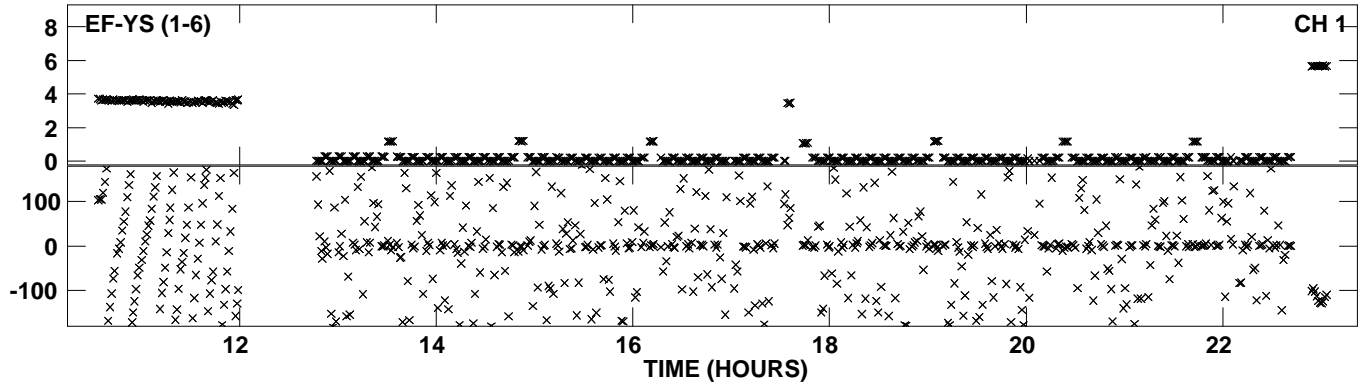
PLot file version 27 created 05-DEC-2011 17:48:50  
Amplitude andPhase vs Time for ET018B.UVDATA.1 Vect aver. CL # 3  
IF 6 CHAN 1 - 32 STK RR



PLot file version 28 created 05-DEC-2011 17:49:39  
Amplitude andPhase vs Time for ET018B.UVDATA.1 Vect aver. CL # 3  
IF 7 CHAN 1 - 32 STK RR



PLot file version 29 created 05-DEC-2011 17:49:39  
Amplitude andPhase vs Time for ET018B.UVDATA.1 Vect aver. CL # 3  
IF 7 CHAN 1 - 32 STK RR



PLot file version 30 created 05-DEC-2011 17:50:25  
Amplitude and Phase vs Time for ET018B.UVDATA.1 Vect aver. CL # 3  
IF 8 CHAN 1 - 32 STK RR

