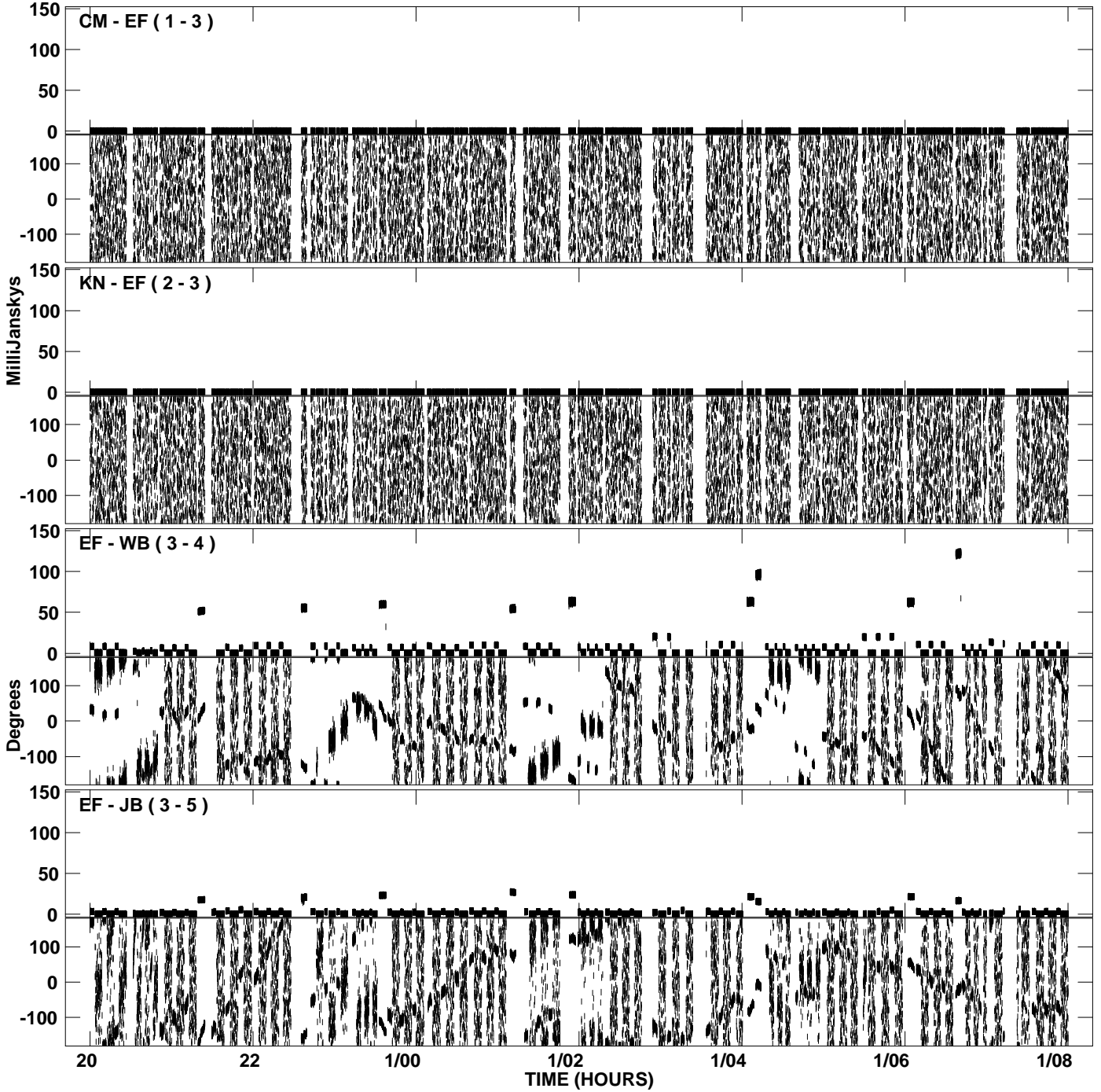
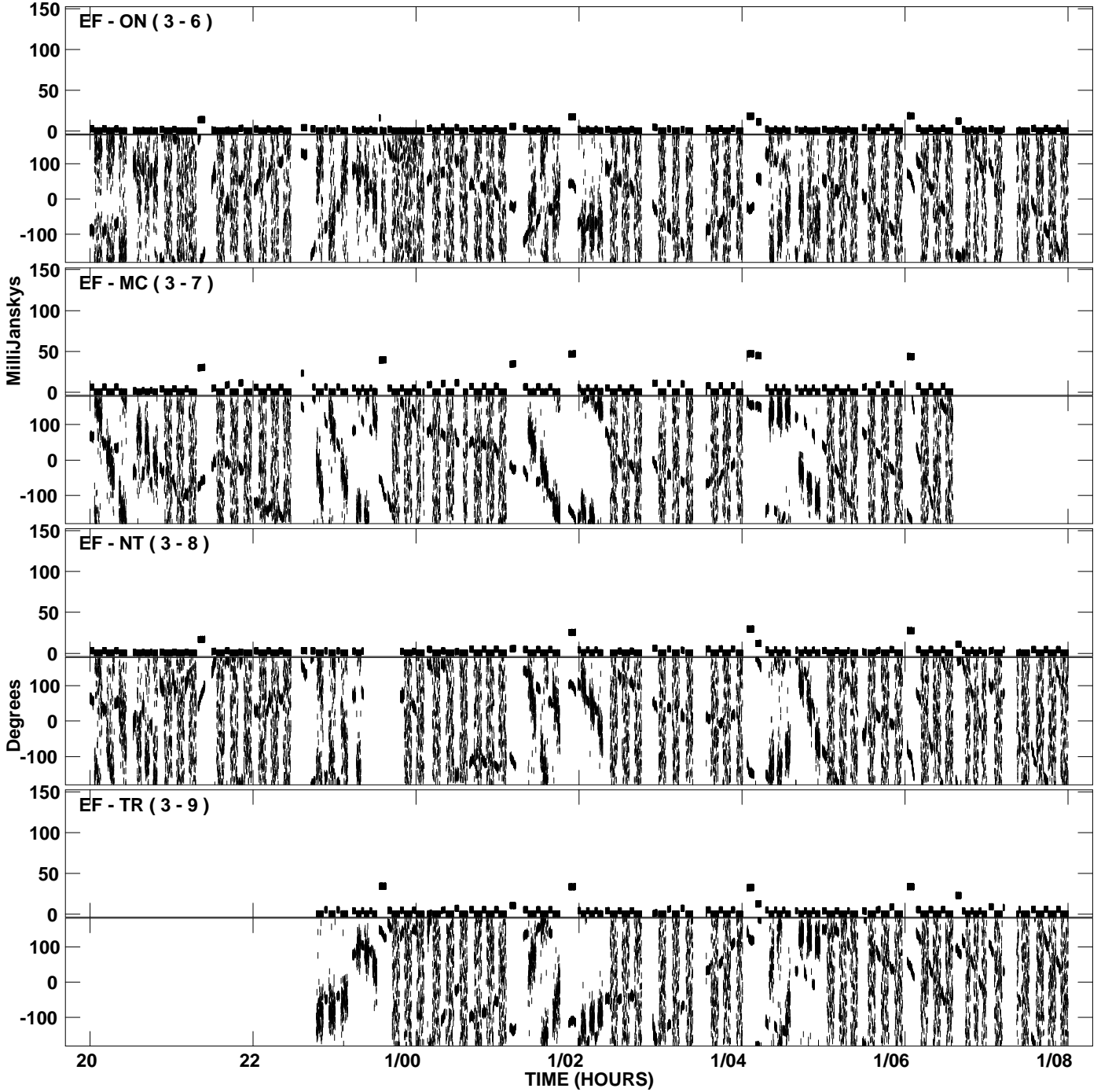


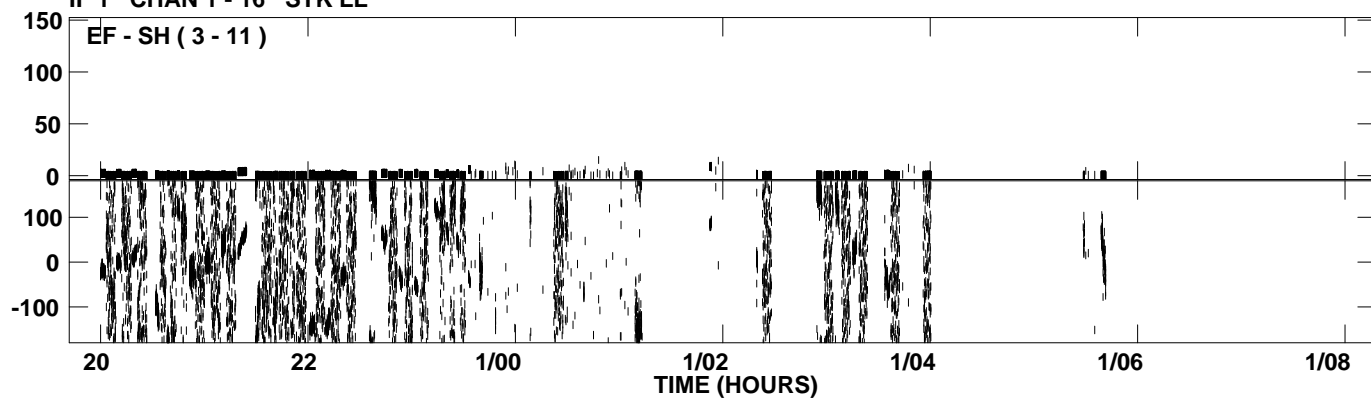
PLot file version 1 created 27-APR-2009 13:48:04  
Amplitude andPhase vs Time for EW012B.UVDATA.1 Vect aver.  
IF 1 CHAN 1 - 16 STK LL



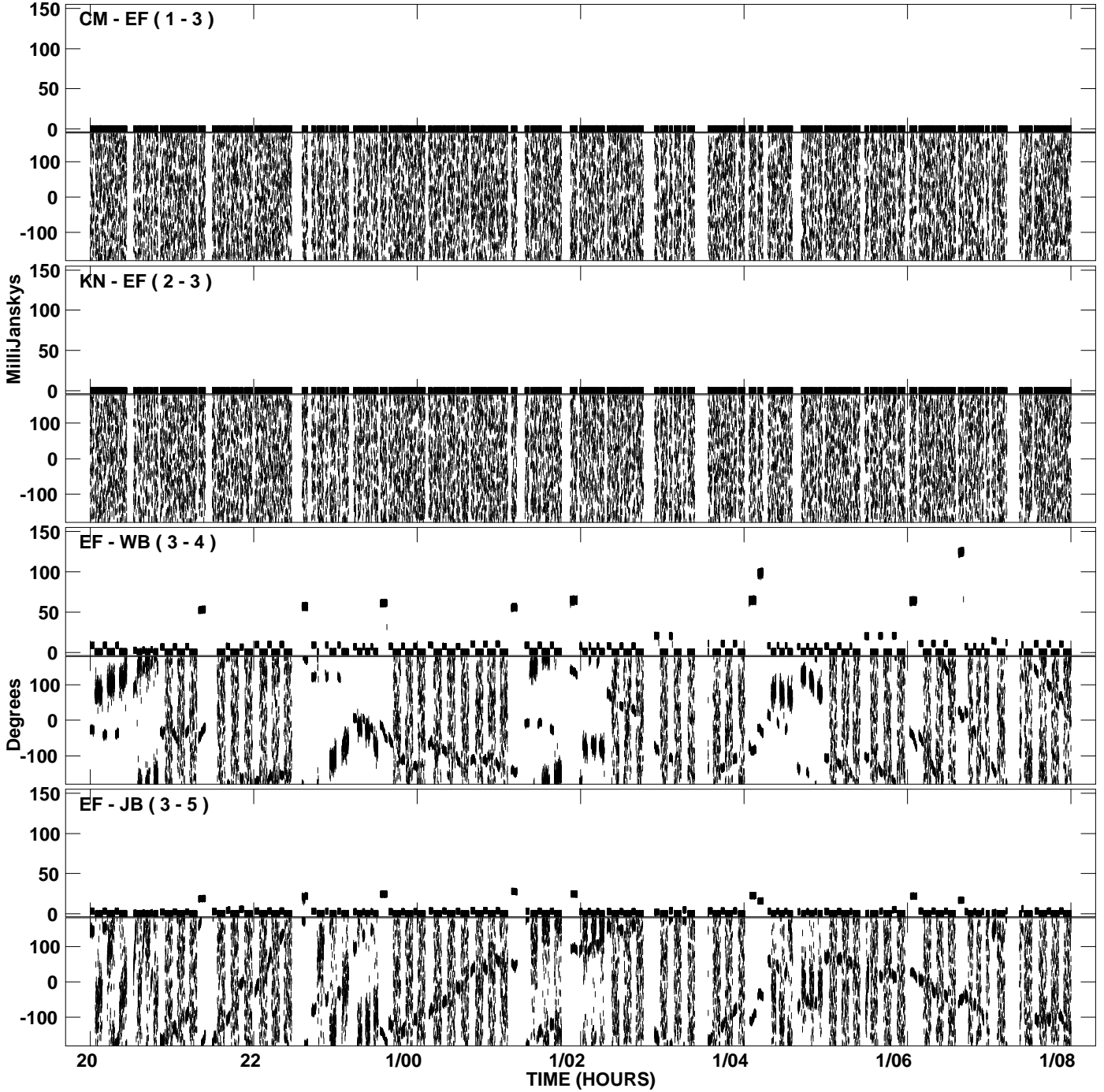
PLot file version 2 created 27-APR-2009 13:48:04  
Amplitude andPhase vs Time for EW012B.UVDATA.1 Vect aver.  
IF 1 CHAN 1 - 16 STK LL



PLot file version 3 created 27-APR-2009 13:48:04  
Amplitude andPhase vs Time for EW012B.UVDATA.1 Vect aver.  
IF 1 CHAN 1 - 16 STK LL

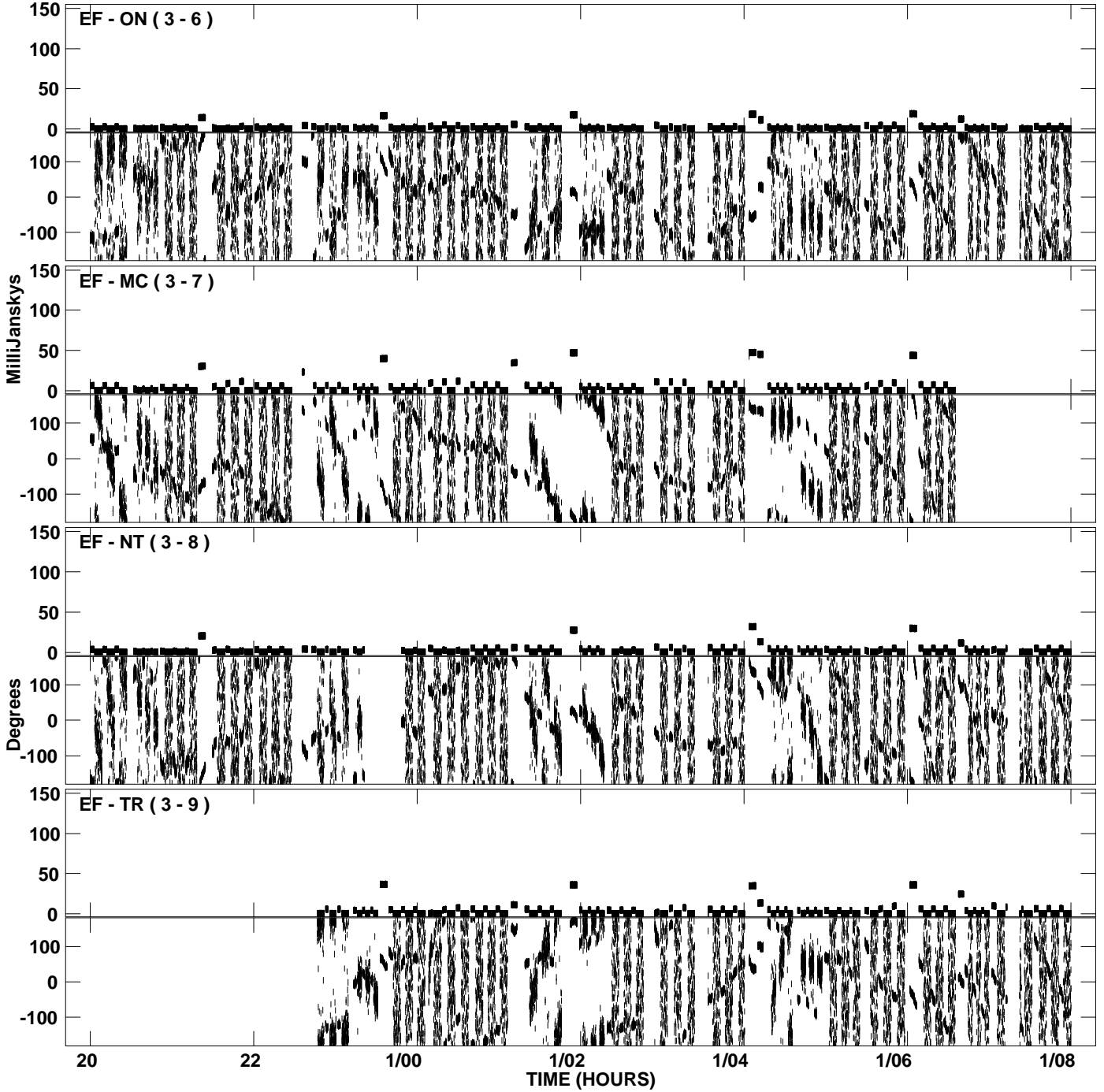


PLot file version 4 created 27-APR-2009 13:48:14  
Amplitude andPhase vs Time for EW012B.UVDATA.1 Vect aver.  
IF 2 CHAN 1 - 16 STK LL

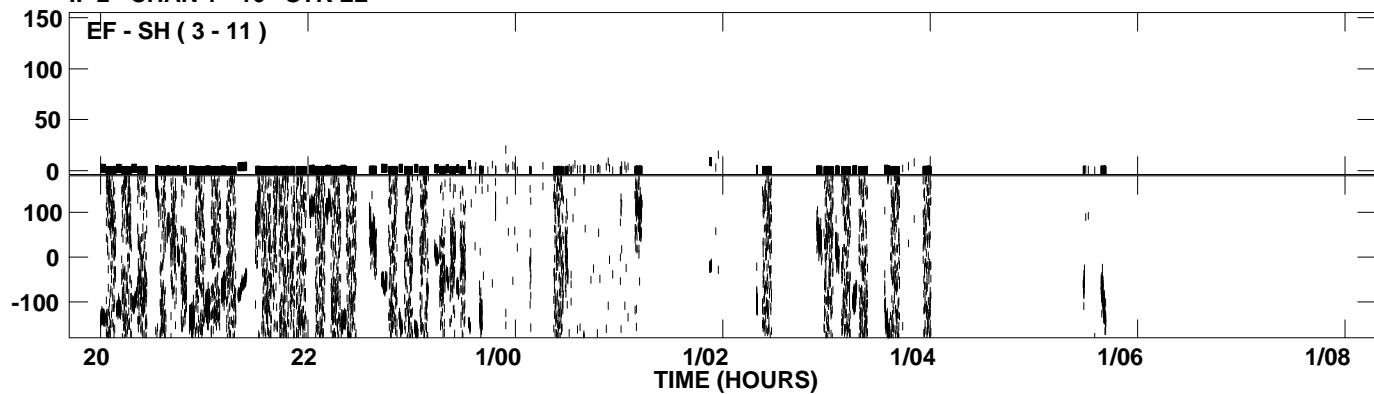




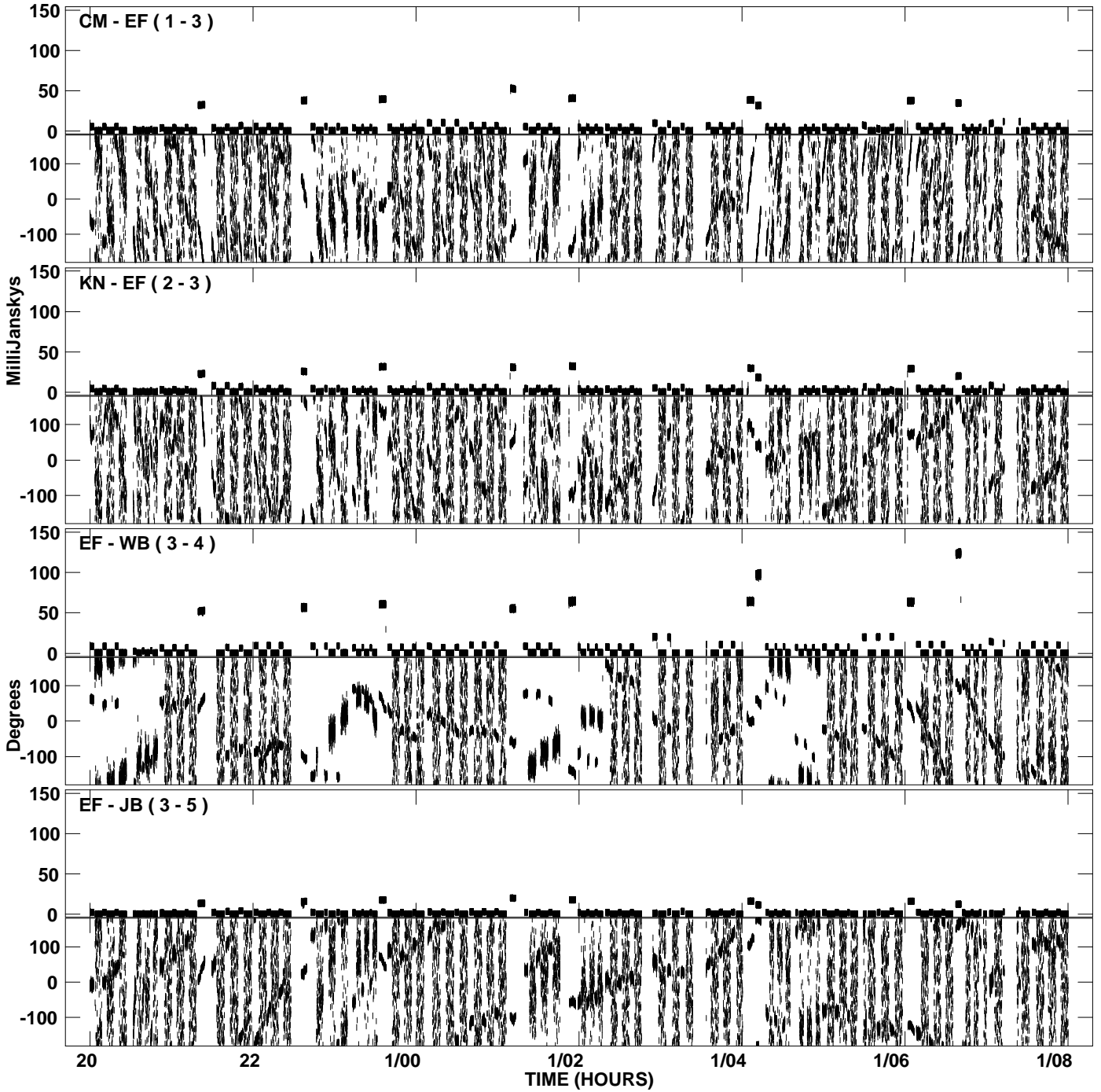
PLot file version 5 created 27-APR-2009 13:48:15  
Amplitude andPhase vs Time for EW012B.UVDATA.1 Vect aver.  
IF 2 CHAN 1 - 16 STK LL



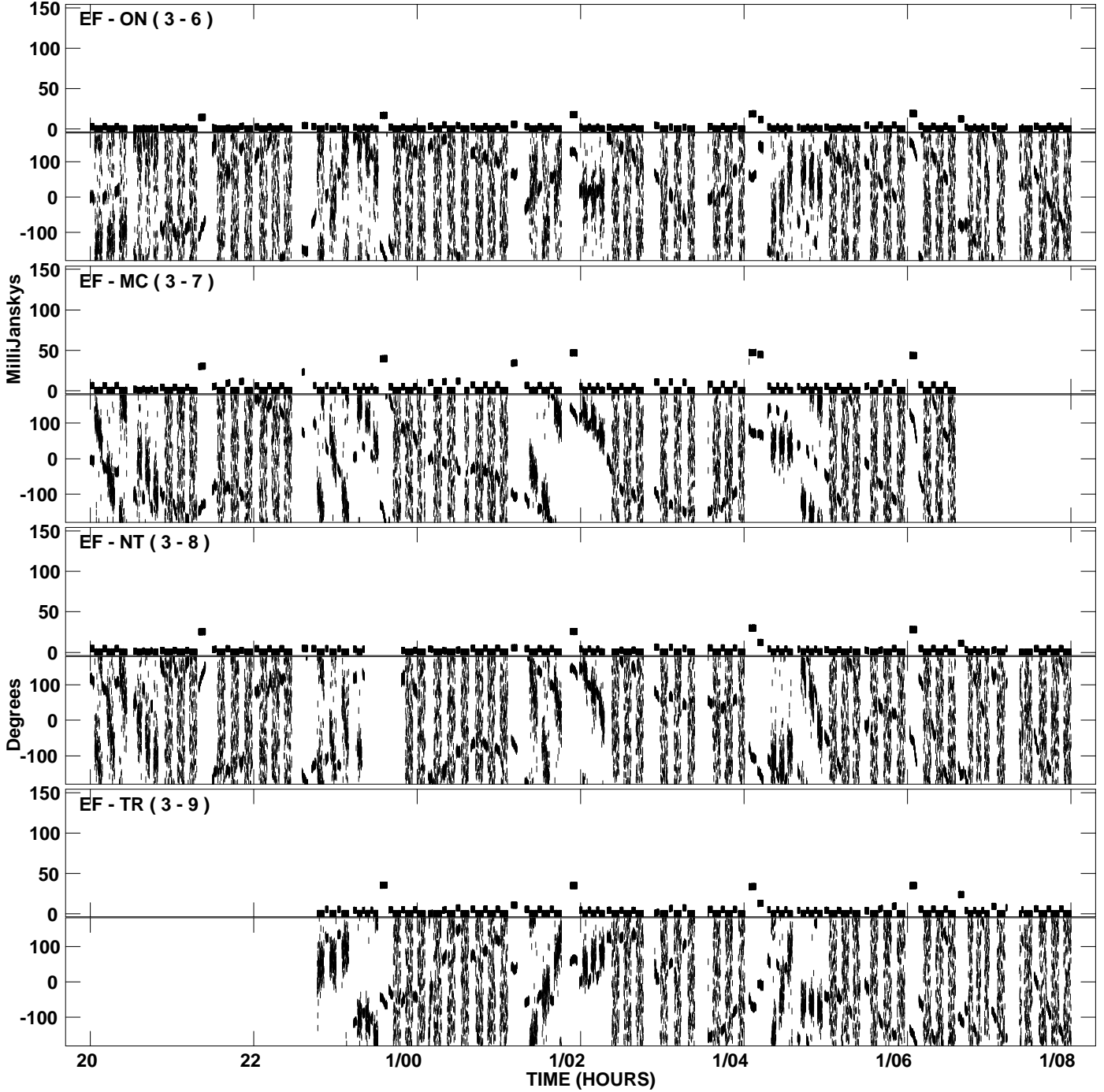
PLot file version 6 created 27-APR-2009 13:48:15  
Amplitude andPhase vs Time for EW012B.UVDATA.1 Vect aver.  
IF 2 CHAN 1 - 16 STK LL



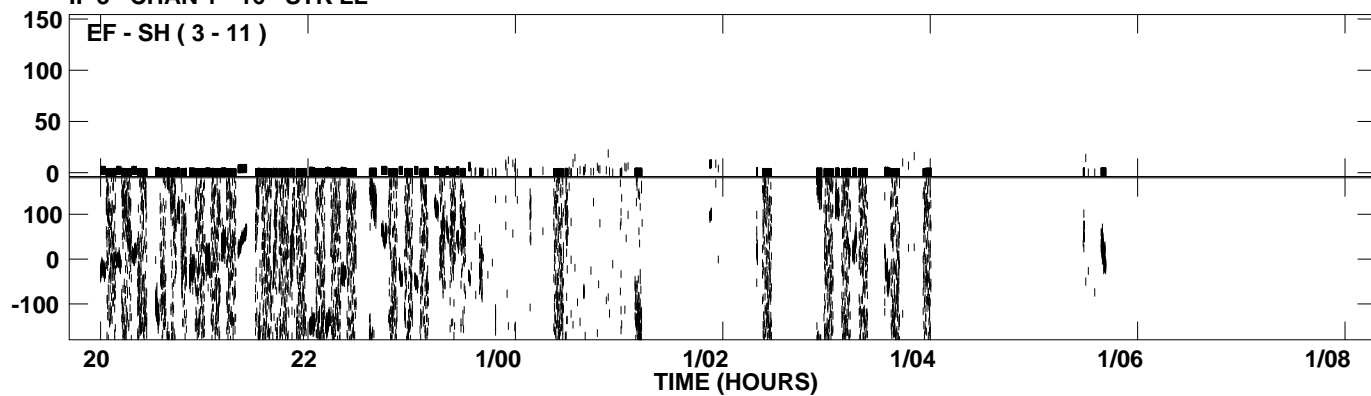
PLot file version 7 created 27-APR-2009 13:48:24  
Amplitude andPhase vs Time for EW012B.UVDATA.1 Vect aver.  
IF 3 CHAN 1 - 16 STK LL



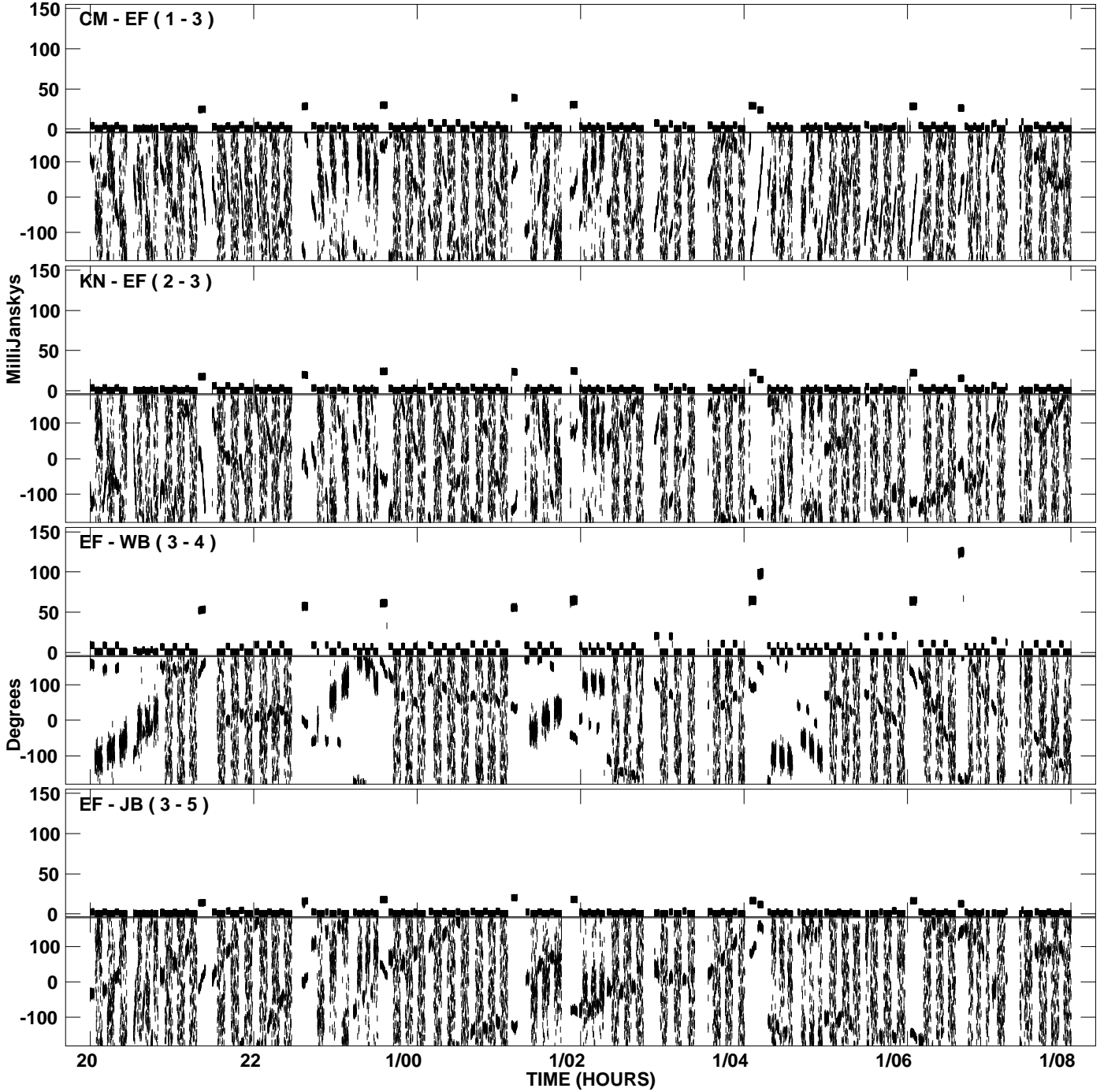
PLot file version 8 created 27-APR-2009 13:48:25  
Amplitude andPhase vs Time for EW012B.UVDATA.1 Vect aver.  
IF 3 CHAN 1 - 16 STK LL



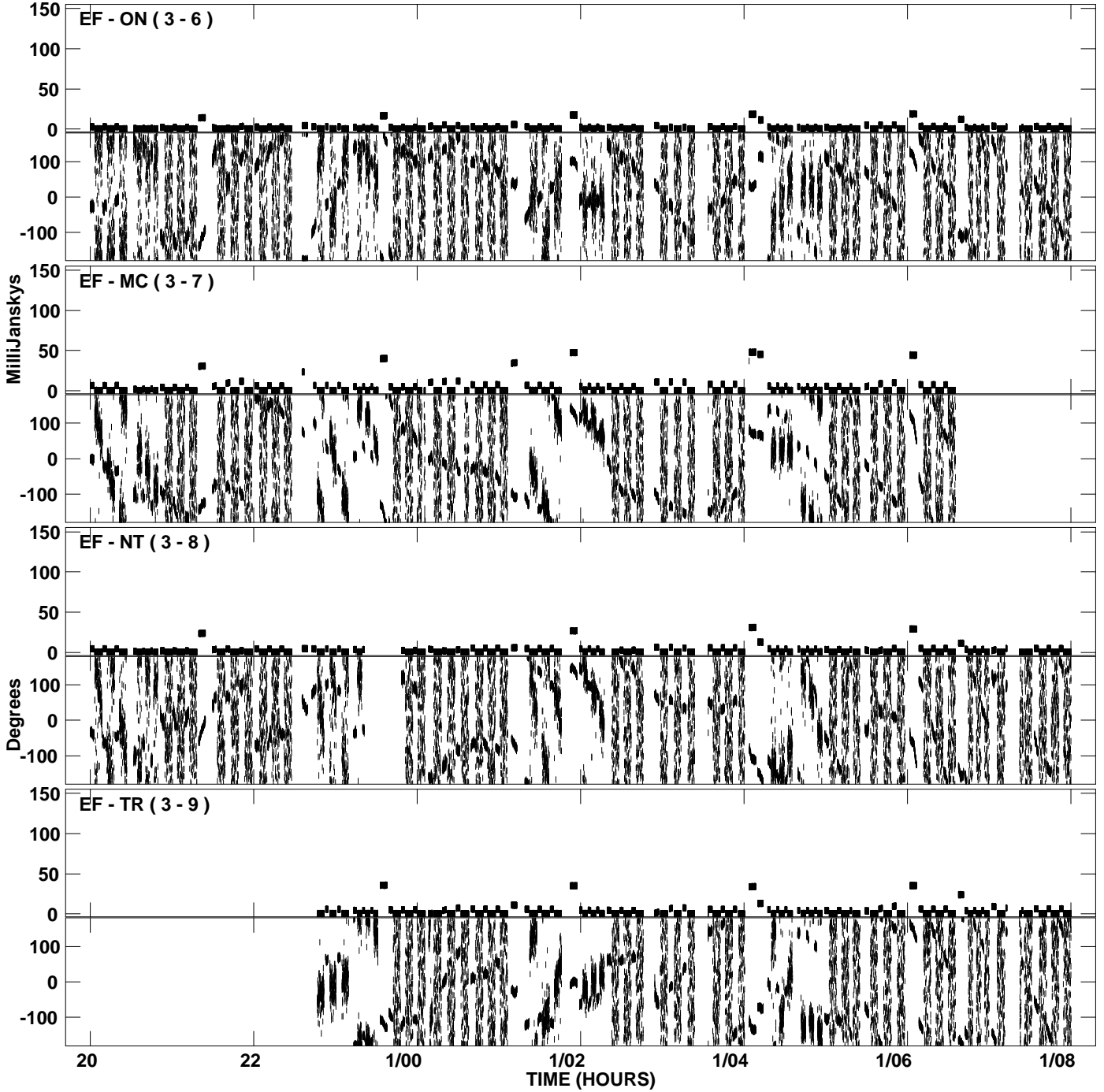
PLot file version 9 created 27-APR-2009 13:48:25  
Amplitude andPhase vs Time for EW012B.UVDATA.1 Vect aver.  
IF 3 CHAN 1 - 16 STK LL



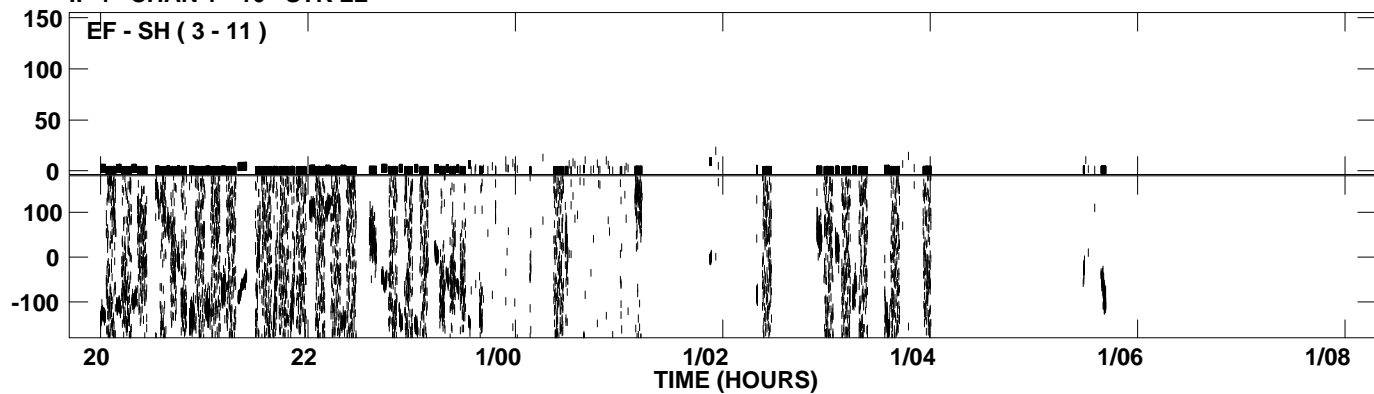
PLot file version 10 created 27-APR-2009 13:48:35  
Amplitude andPhase vs Time for EW012B.UVDATA.1 Vect aver.  
IF 4 CHAN 1 - 16 STK LL



PLot file version 11 created 27-APR-2009 13:48:35  
Amplitude andPhase vs Time for EW012B.UVDATA.1 Vect aver.  
IF 4 CHAN 1 - 16 STK LL

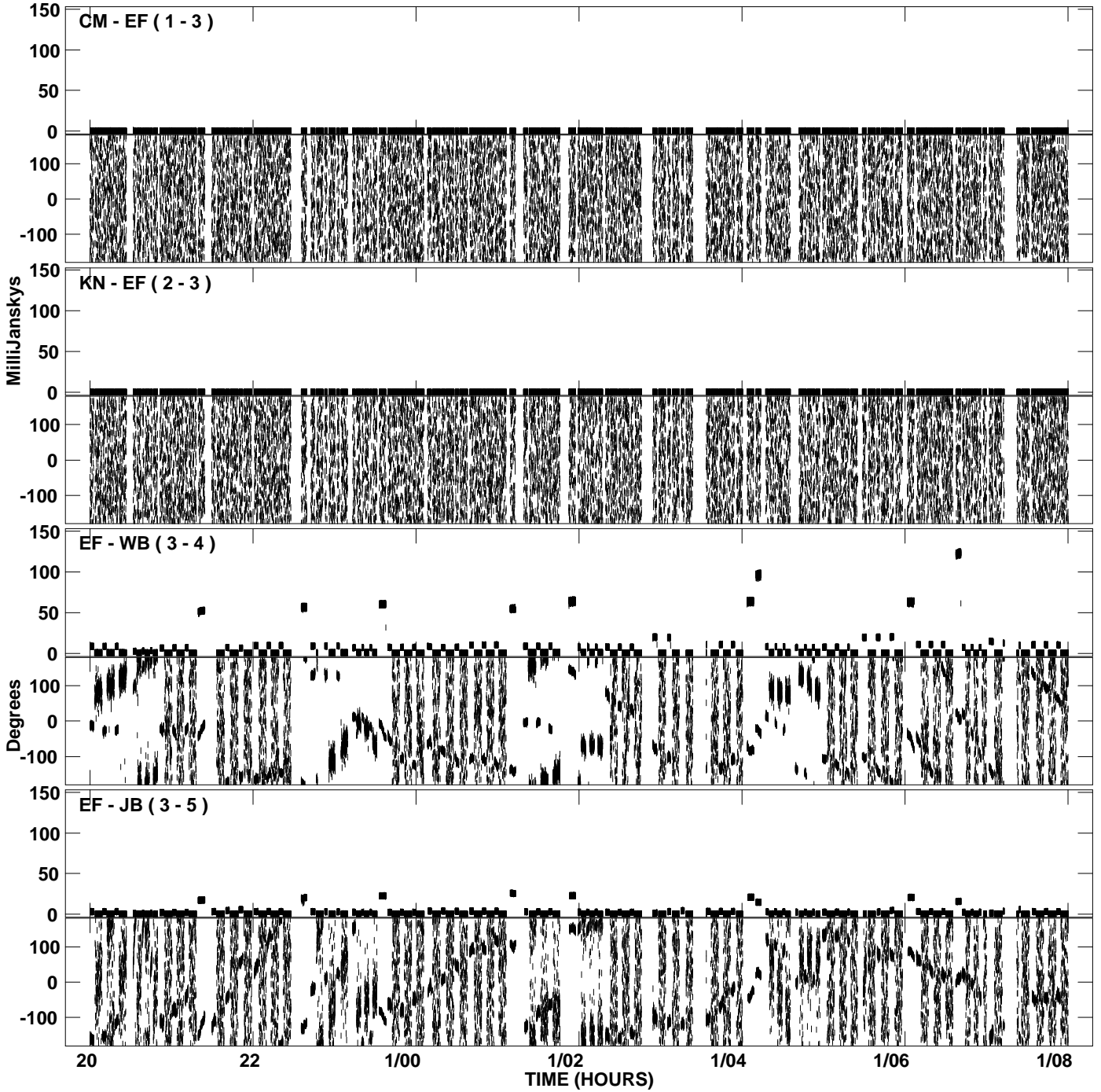


PLot file version 12 created 27-APR-2009 13:48:35  
Amplitude andPhase vs Time for EW012B.UVDATA.1 Vect aver.  
IF 4 CHAN 1 - 16 STK LL

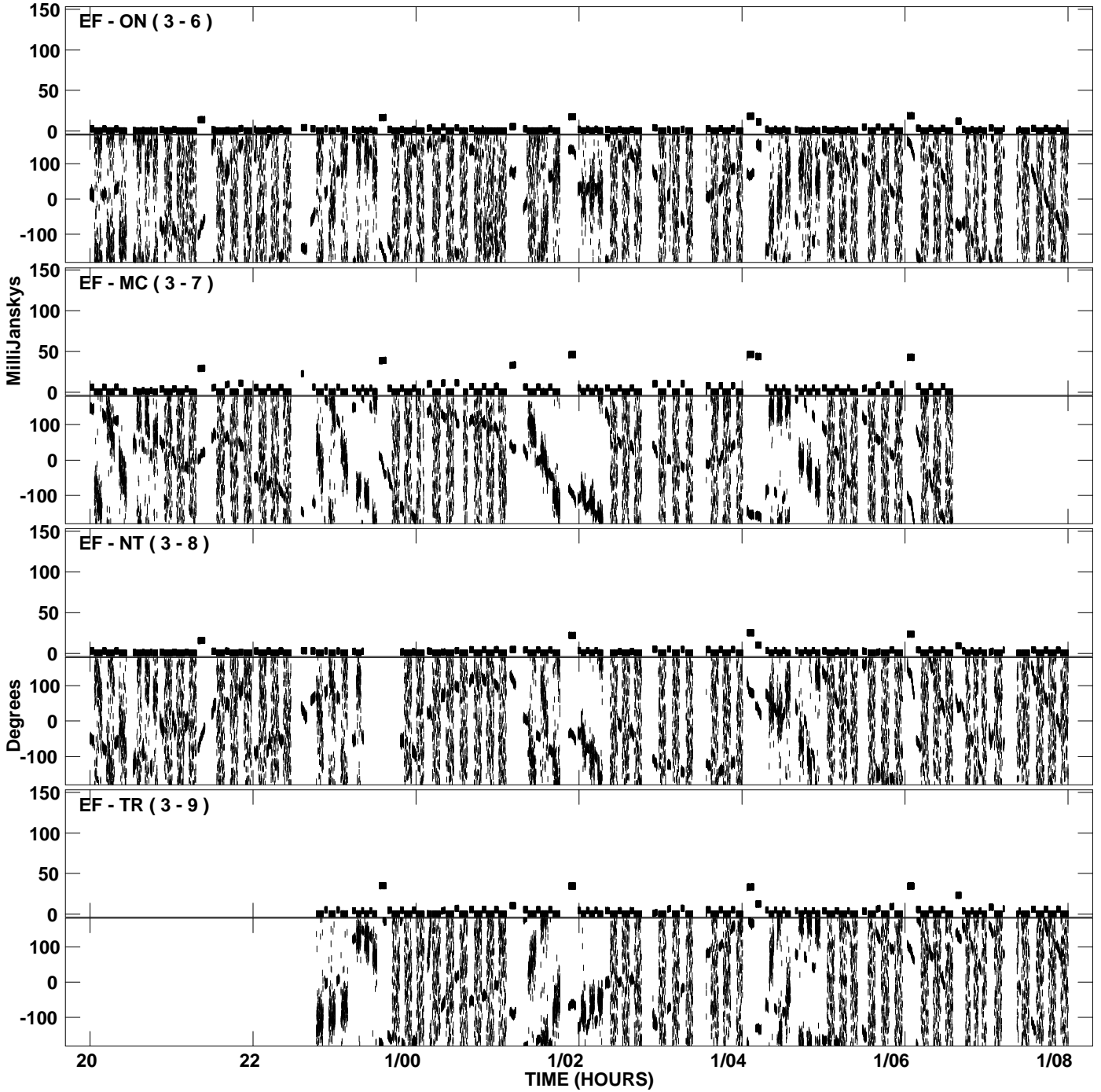




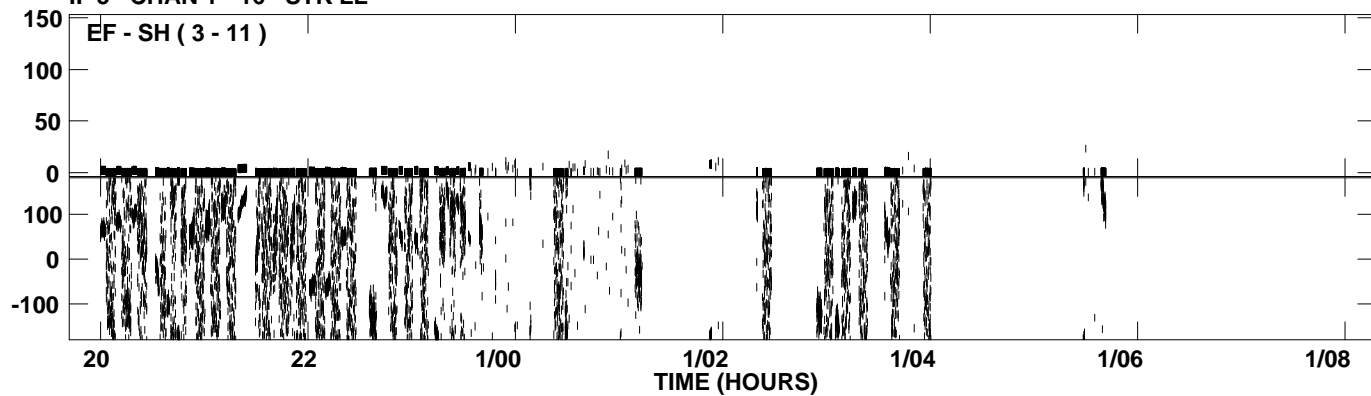
PLot file version 13 created 27-APR-2009 13:48:45  
Amplitude andPhase vs Time for EW012B.UVDATA.1 Vect aver.  
IF 5 CHAN 1 - 16 STK LL



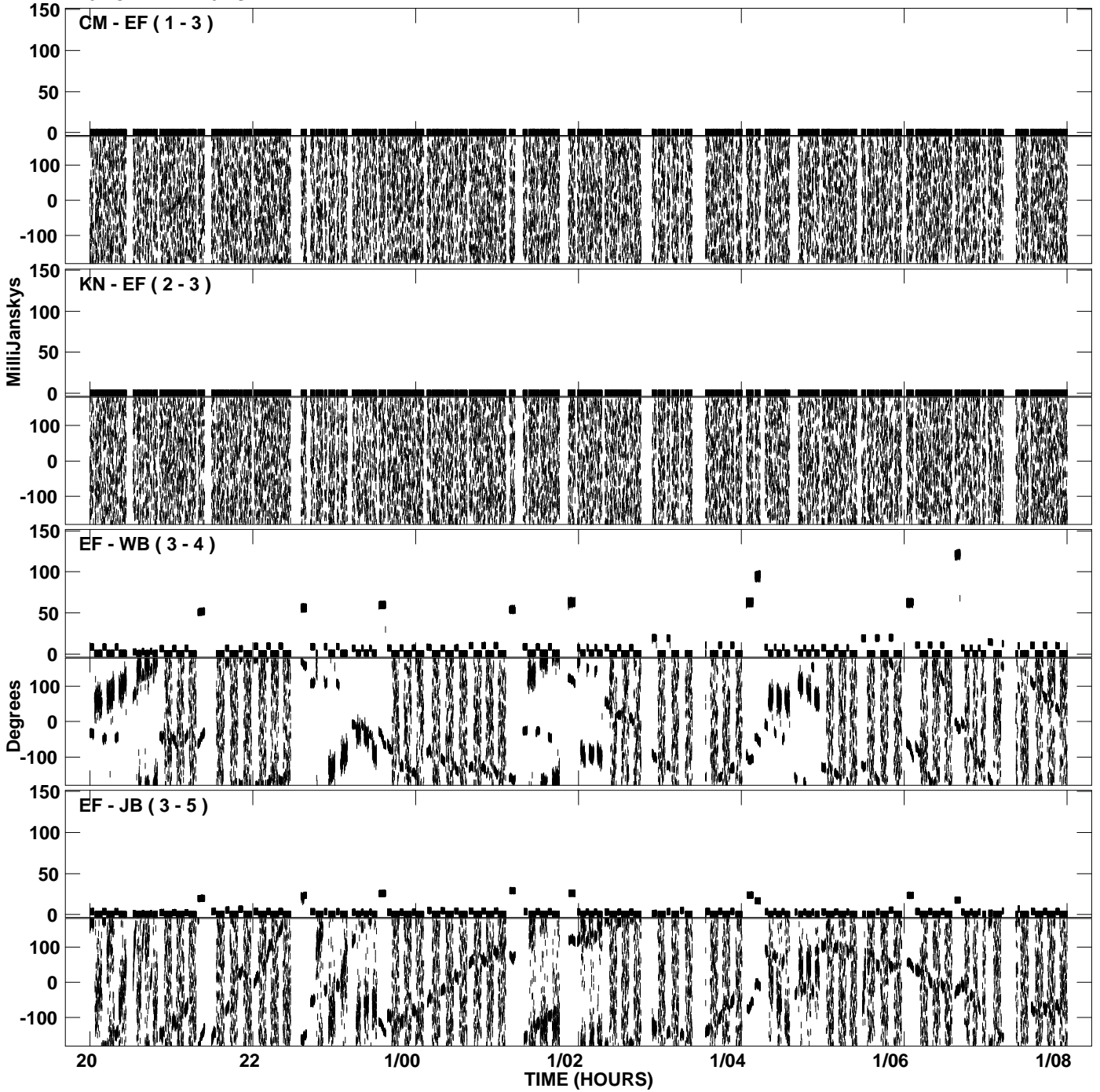
PLot file version 14 created 27-APR-2009 13:48:45  
Amplitude andPhase vs Time for EW012B.UVDATA.1 Vect aver.  
IF 5 CHAN 1 - 16 STK LL



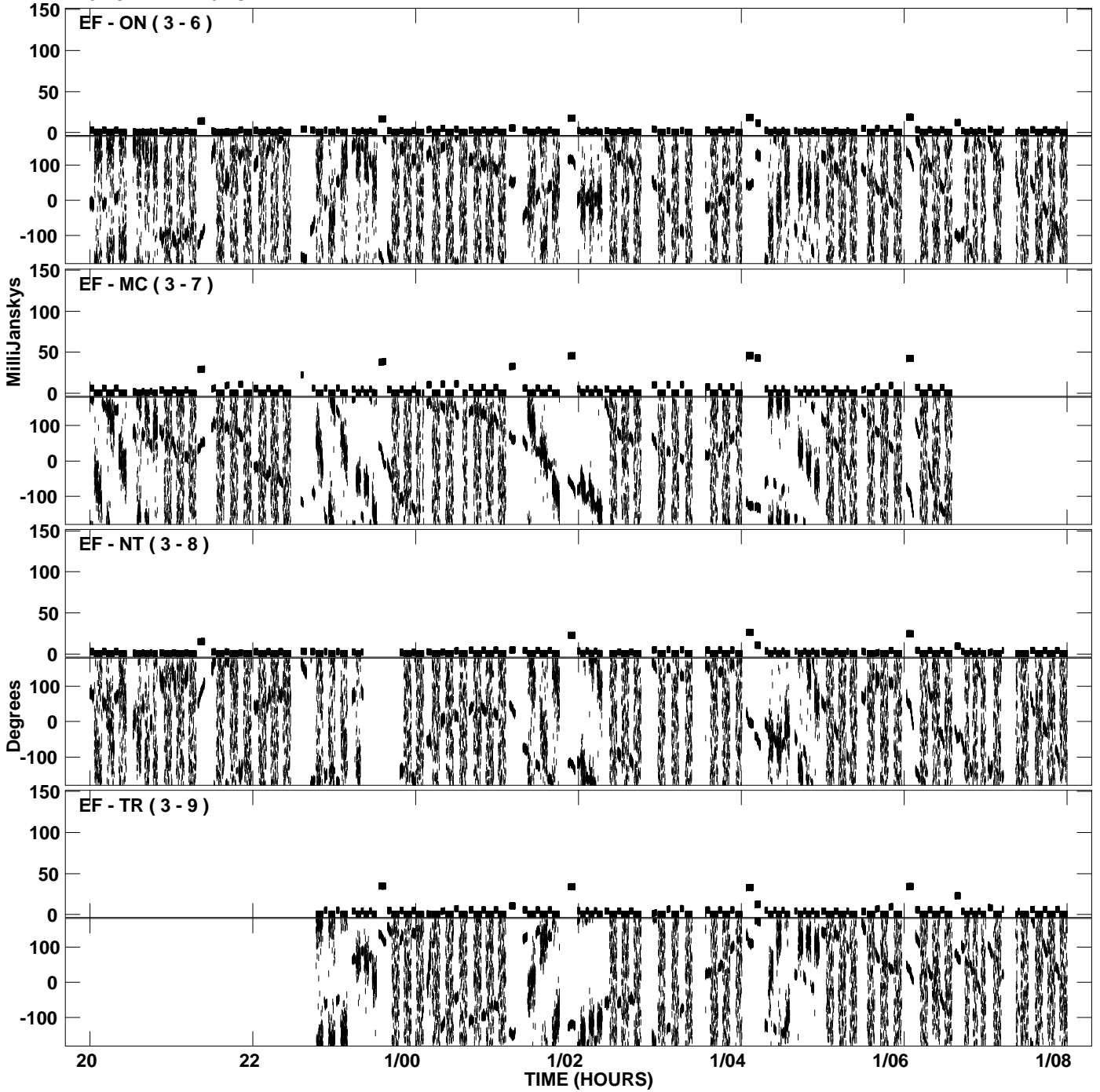
PLot file version 15 created 27-APR-2009 13:48:45  
Amplitude andPhase vs Time for EW012B.UVDATA.1 Vect aver.  
IF 5 CHAN 1 - 16 STK LL



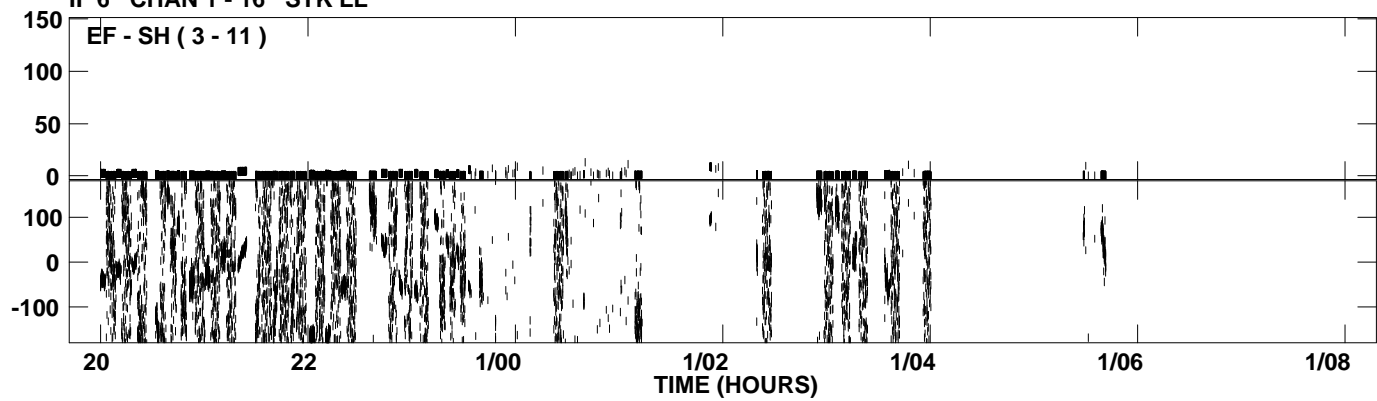
PLot file version 16 created 27-APR-2009 13:48:55  
Amplitude andPhase vs Time for EW012B.UVDATA.1 Vect aver.  
IF 6 CHAN 1 - 16 STK LL



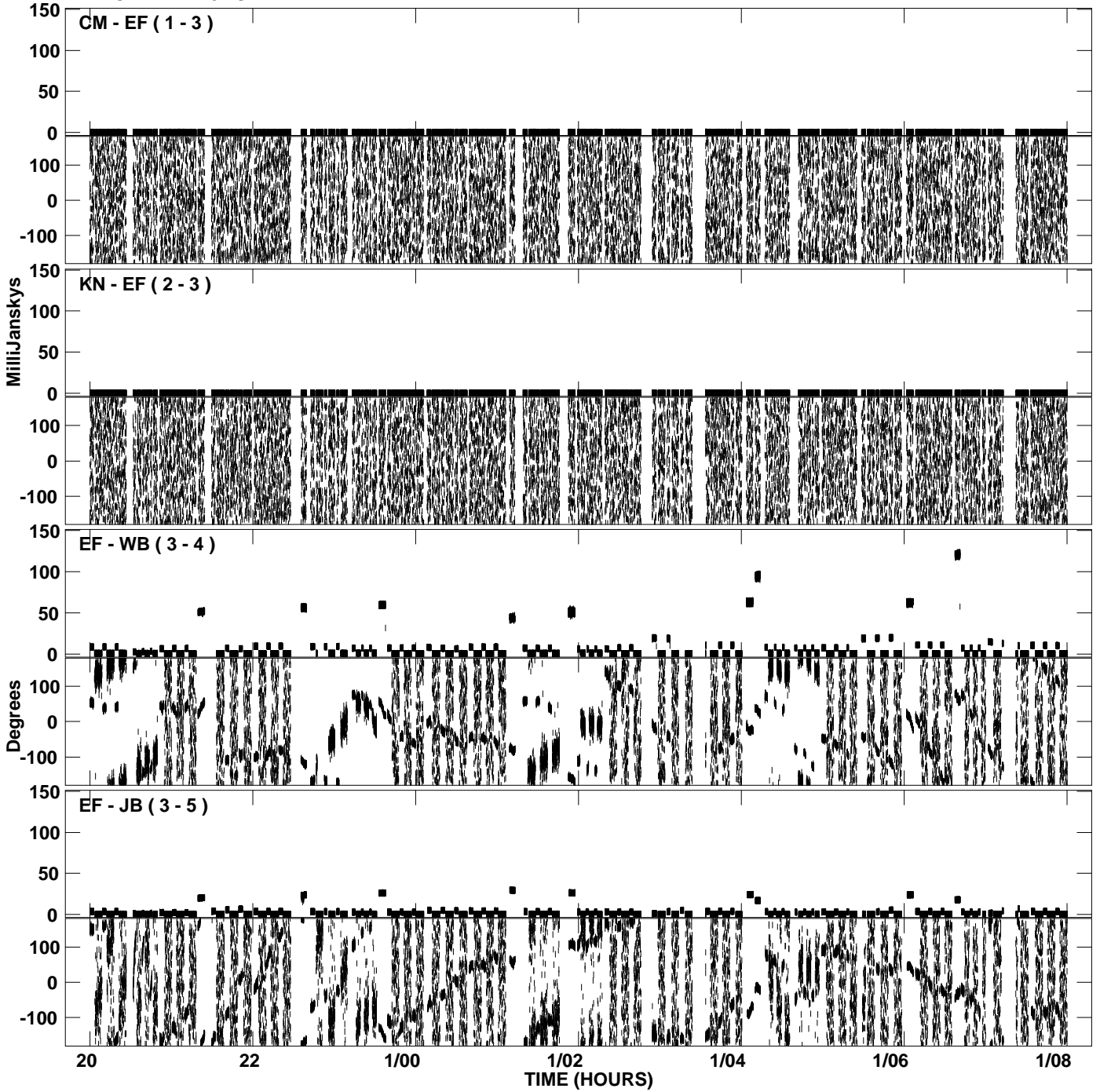
PLot file version 17 created 27-APR-2009 13:48:55  
Amplitude andPhase vs Time for EW012B.UVDATA.1 Vect aver.  
IF 6 CHAN 1 - 16 STK LL



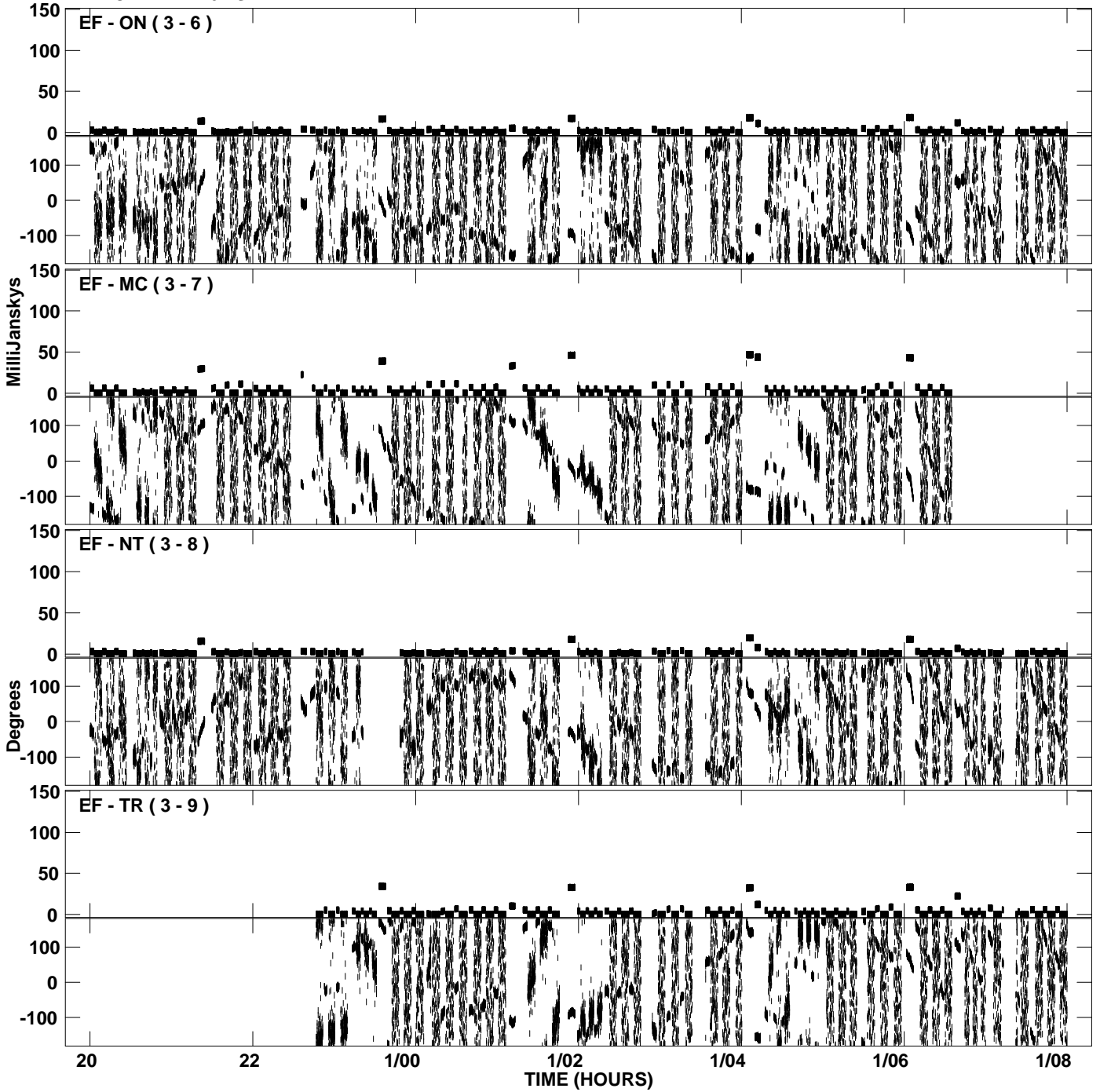
PLot file version 18 created 27-APR-2009 13:48:55  
Amplitude andPhase vs Time for EW012B.UVDATA.1 Vect aver.  
IF 6 CHAN 1 - 16 STK LL



PLot file version 19 created 27-APR-2009 13:49:05  
Amplitude andPhase vs Time for EW012B.UVDATA.1 Vect aver.  
IF 7 CHAN 1 - 16 STK LL

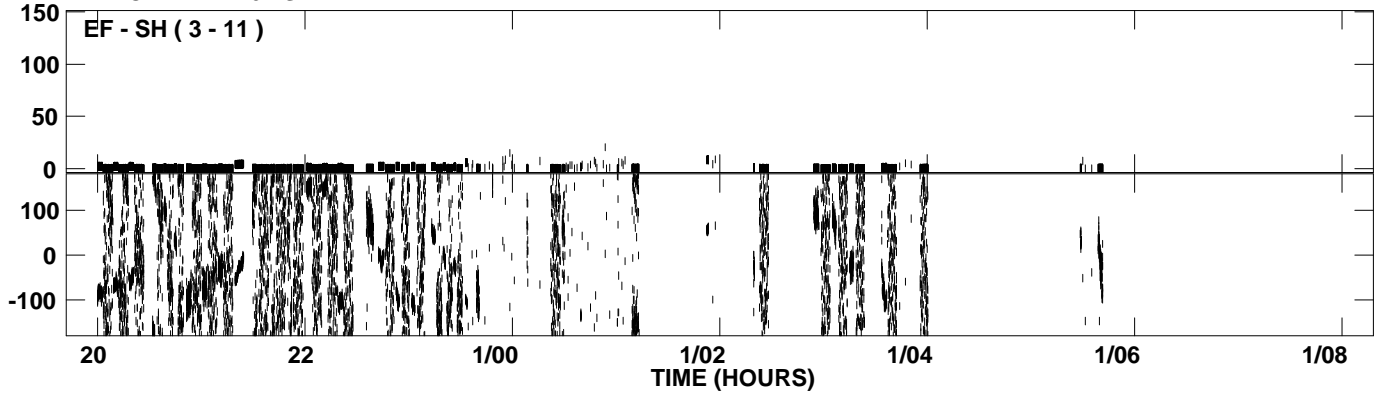


PLot file version 20 created 27-APR-2009 13:49:05  
Amplitude andPhase vs Time for EW012B.UVDATA.1 Vect aver.  
IF 7 CHAN 1 - 16 STK LL

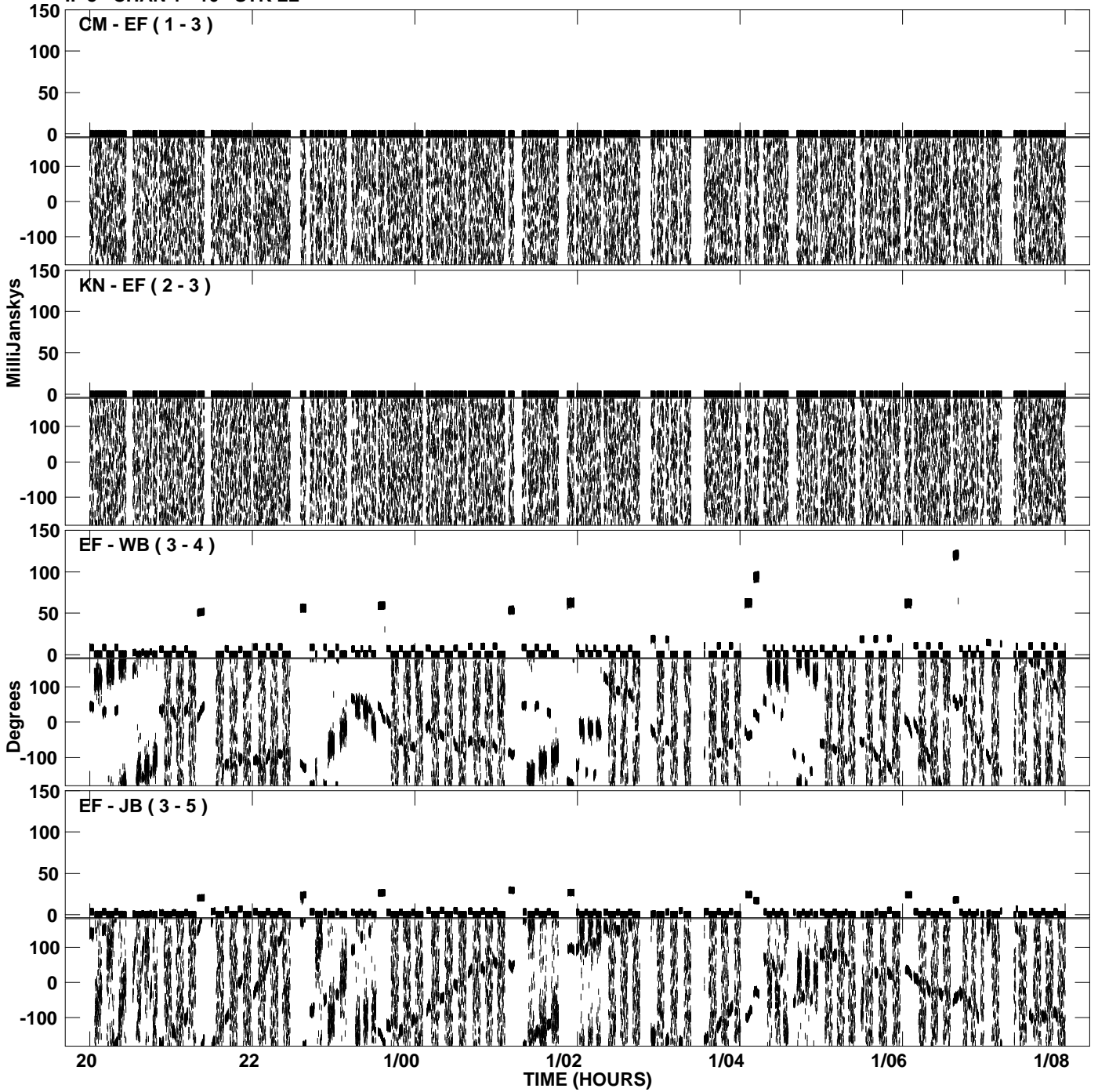




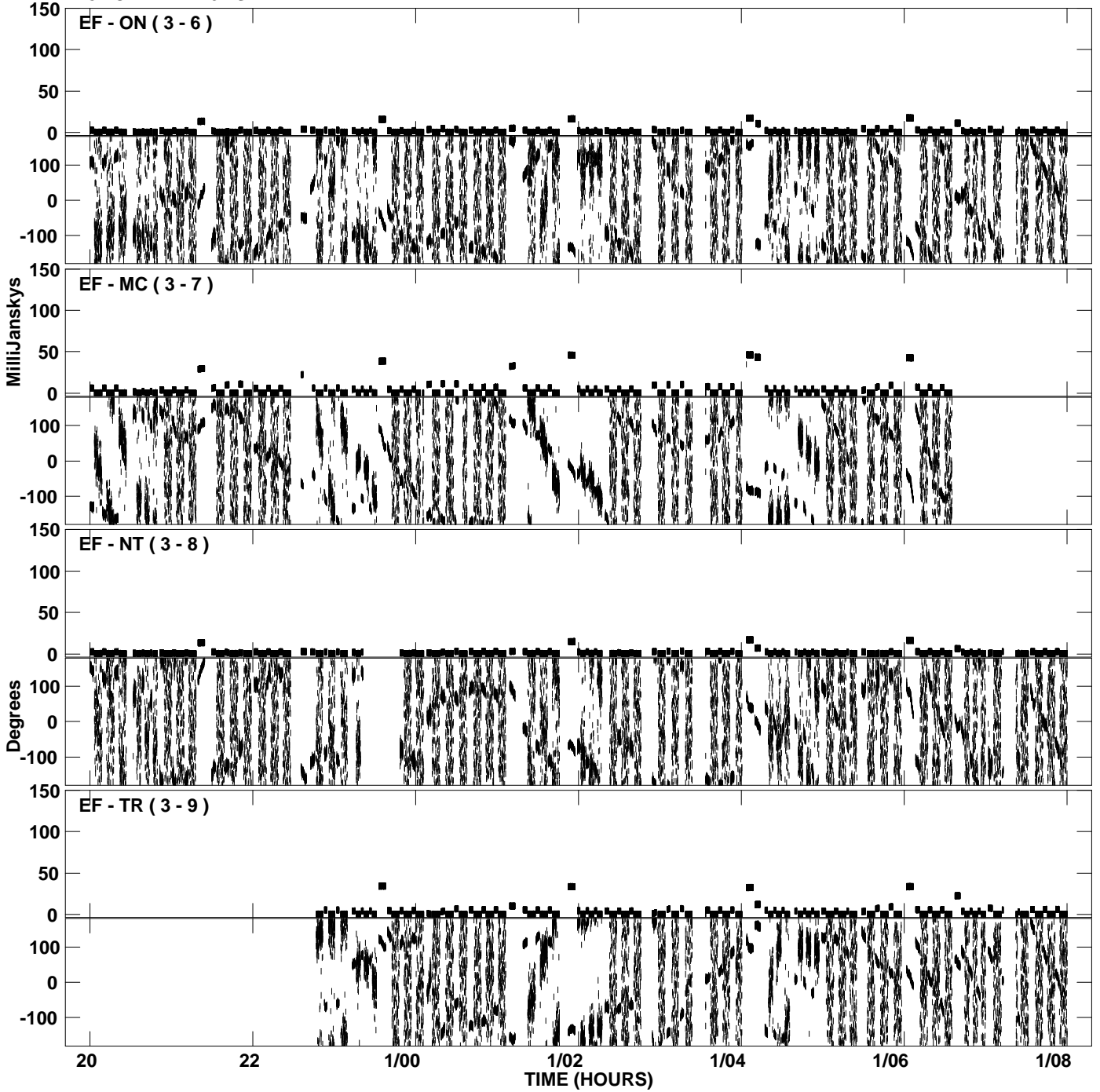
PLot file version 21 created 27-APR-2009 13:49:05  
Amplitude andPhase vs Time for EW012B.UVDATA.1 Vect aver.  
IF 7 CHAN 1 - 16 STK LL



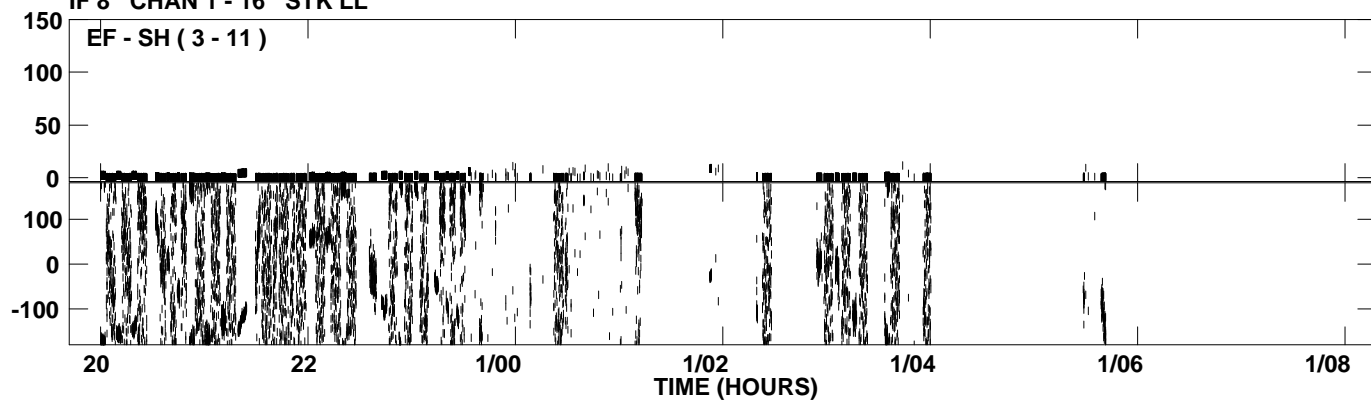
PLot file version 22 created 27-APR-2009 13:49:15  
Amplitude andPhase vs Time for EW012B.UVDATA.1 Vect aver.  
IF 8 CHAN 1 - 16 STK LL



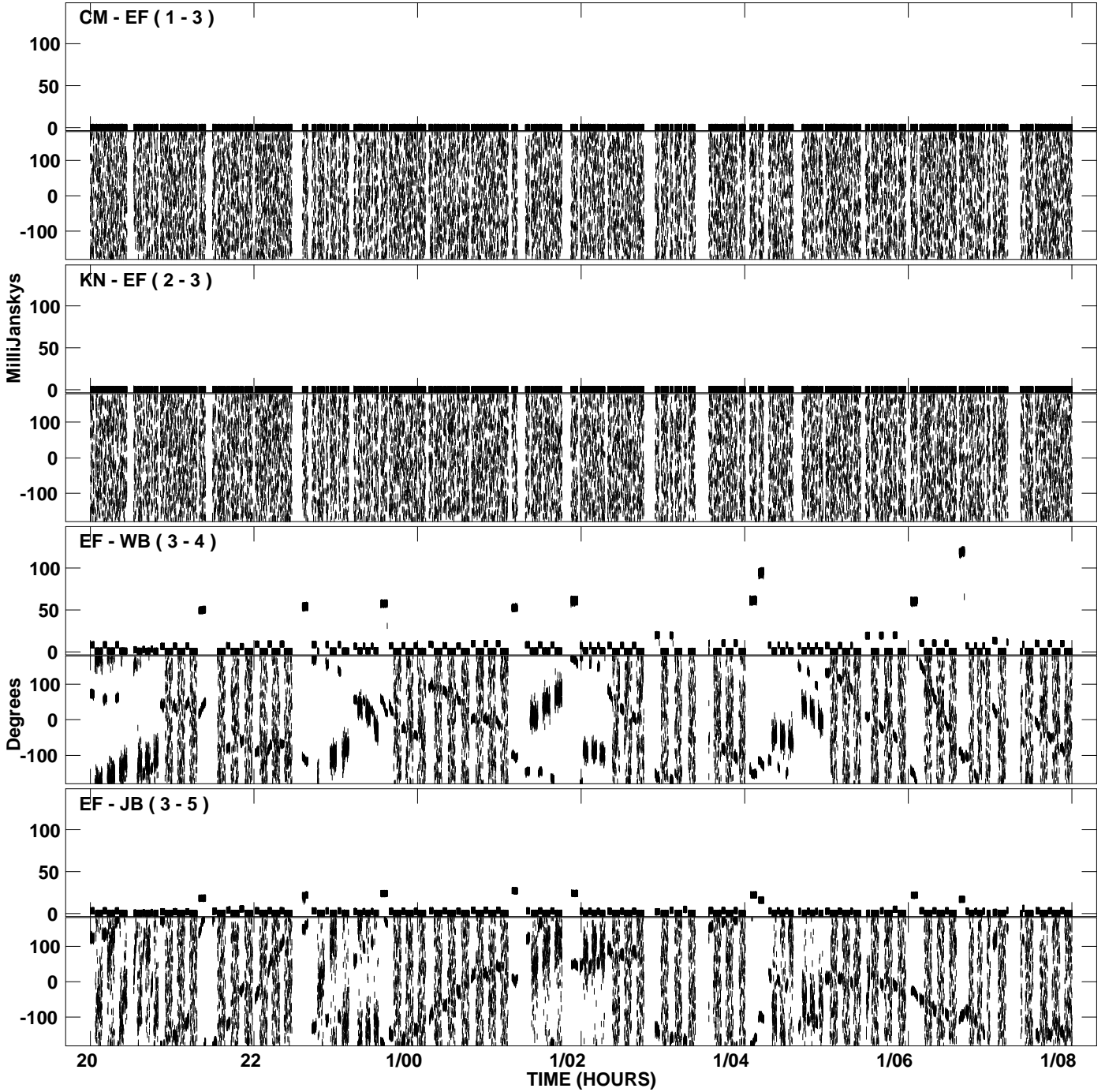
PLot file version 23 created 27-APR-2009 13:49:15  
Amplitude andPhase vs Time for EW012B.UVDATA.1 Vect aver.  
IF 8 CHAN 1 - 16 STK LL



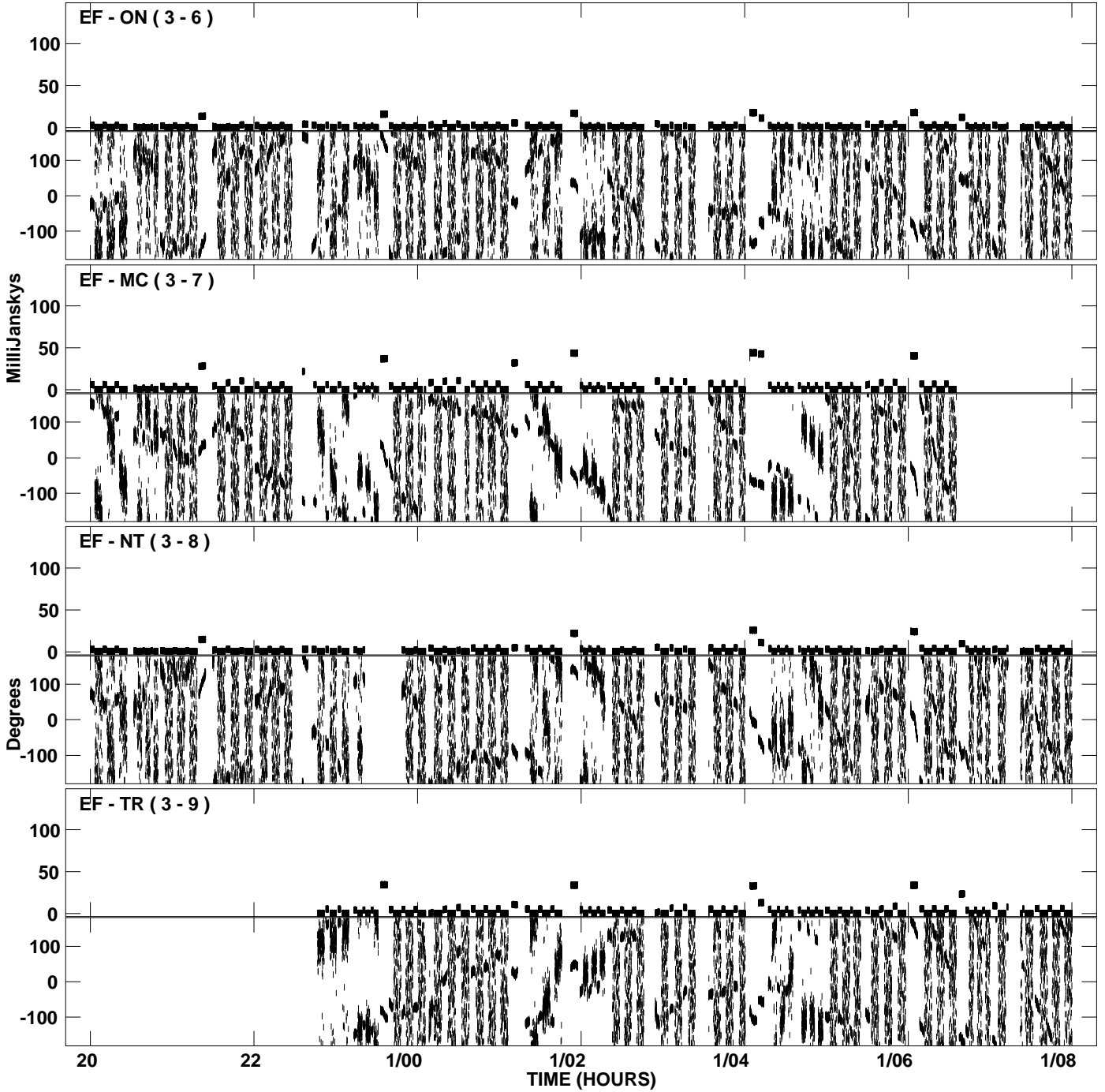
PLot file version 24 created 27-APR-2009 13:49:15  
Amplitude andPhase vs Time for EW012B.UVDATA.1 Vect aver.  
IF 8 CHAN 1 - 16 STK LL



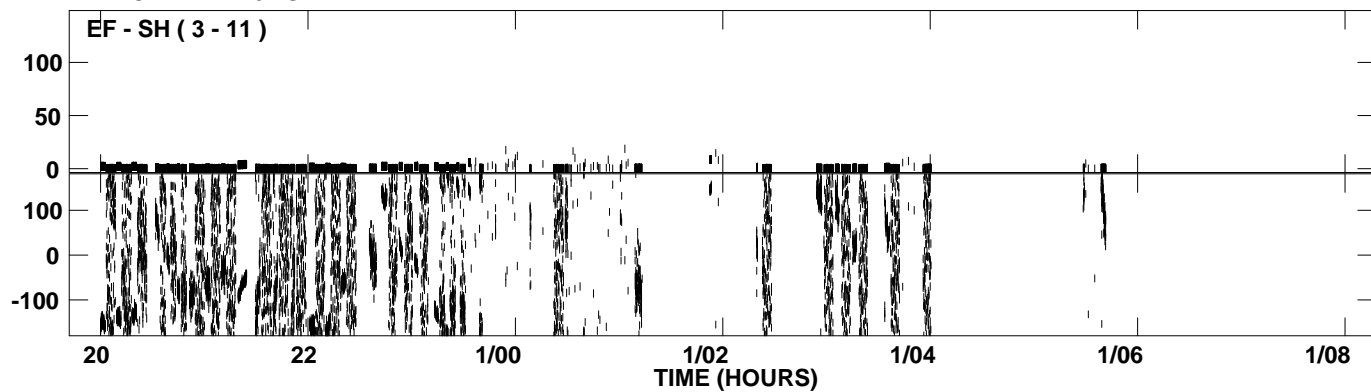
PLot file version 25 created 27-APR-2009 13:49:24  
Amplitude andPhase vs Time for EW012B.UVDATA.1 Vect aver.  
IF 1 CHAN 1 - 16 STK RR



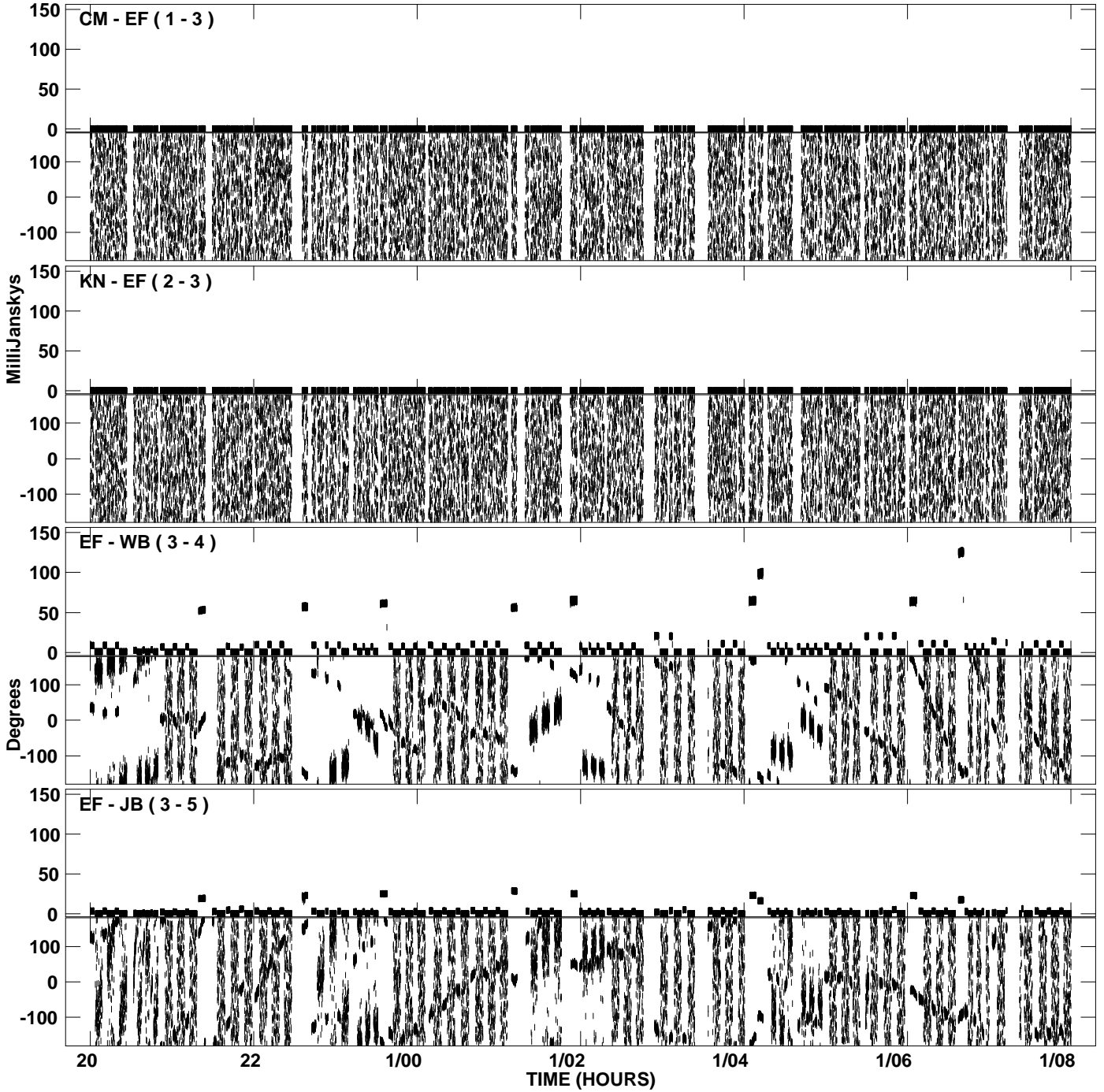
PLot file version 26 created 27-APR-2009 13:49:24  
Amplitude andPhase vs Time for EW012B.UVDATA.1 Vect aver.  
IF 1 CHAN 1 - 16 STK RR



PLot file version 27 created 27-APR-2009 13:49:24  
Amplitude andPhase vs Time for EW012B.UVDATA.1 Vect aver.  
IF 1 CHAN 1 - 16 STK RR

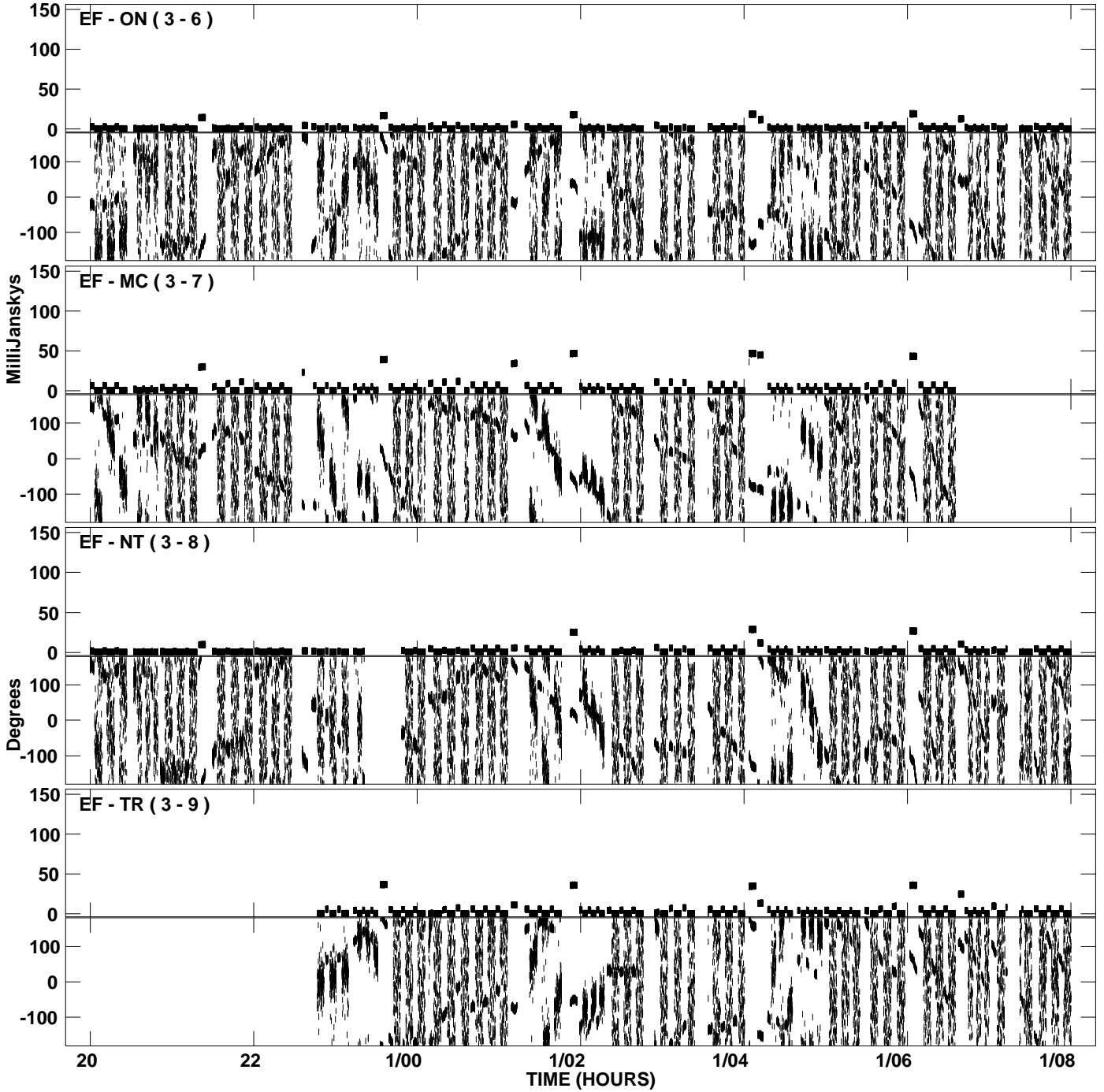


PLot file version 28 created 27-APR-2009 13:49:34  
Amplitude andPhase vs Time for EW012B.UVDATA.1 Vect aver.  
IF 2 CHAN 1 - 16 STK RR

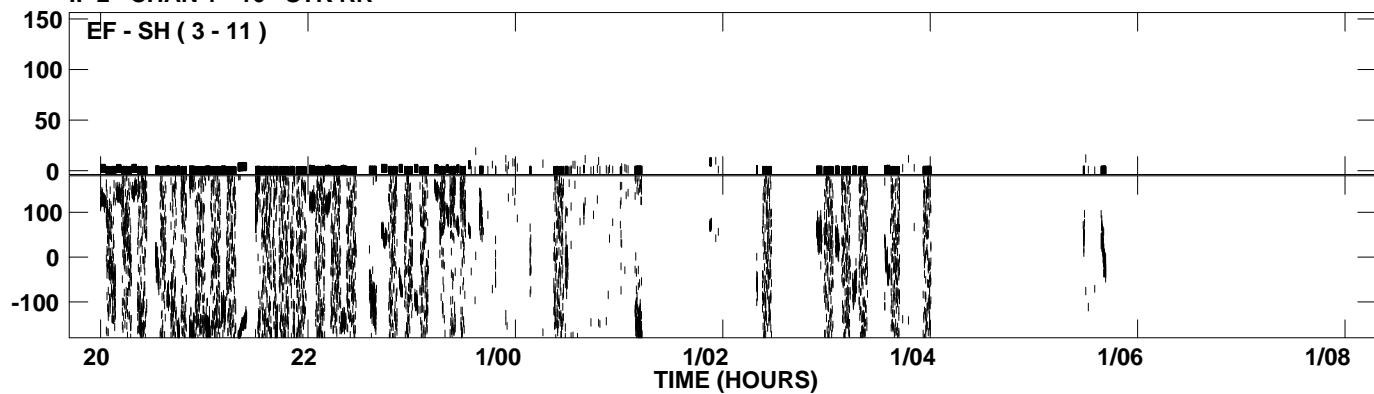




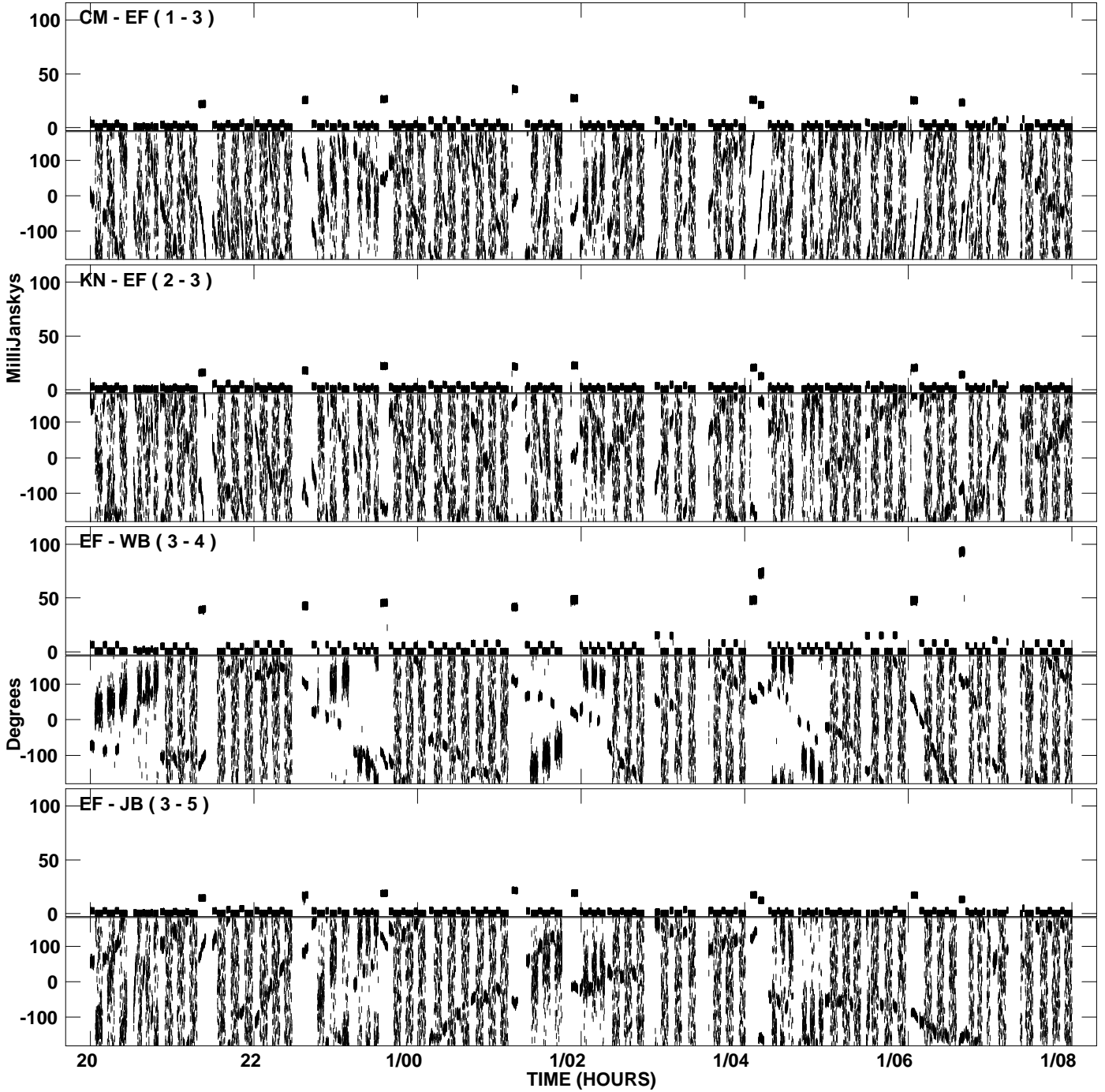
PLot file version 29 created 27-APR-2009 13:49:34  
Amplitude andPhase vs Time for EW012B.UVDATA.1 Vect aver.  
IF 2 CHAN 1 - 16 STK RR



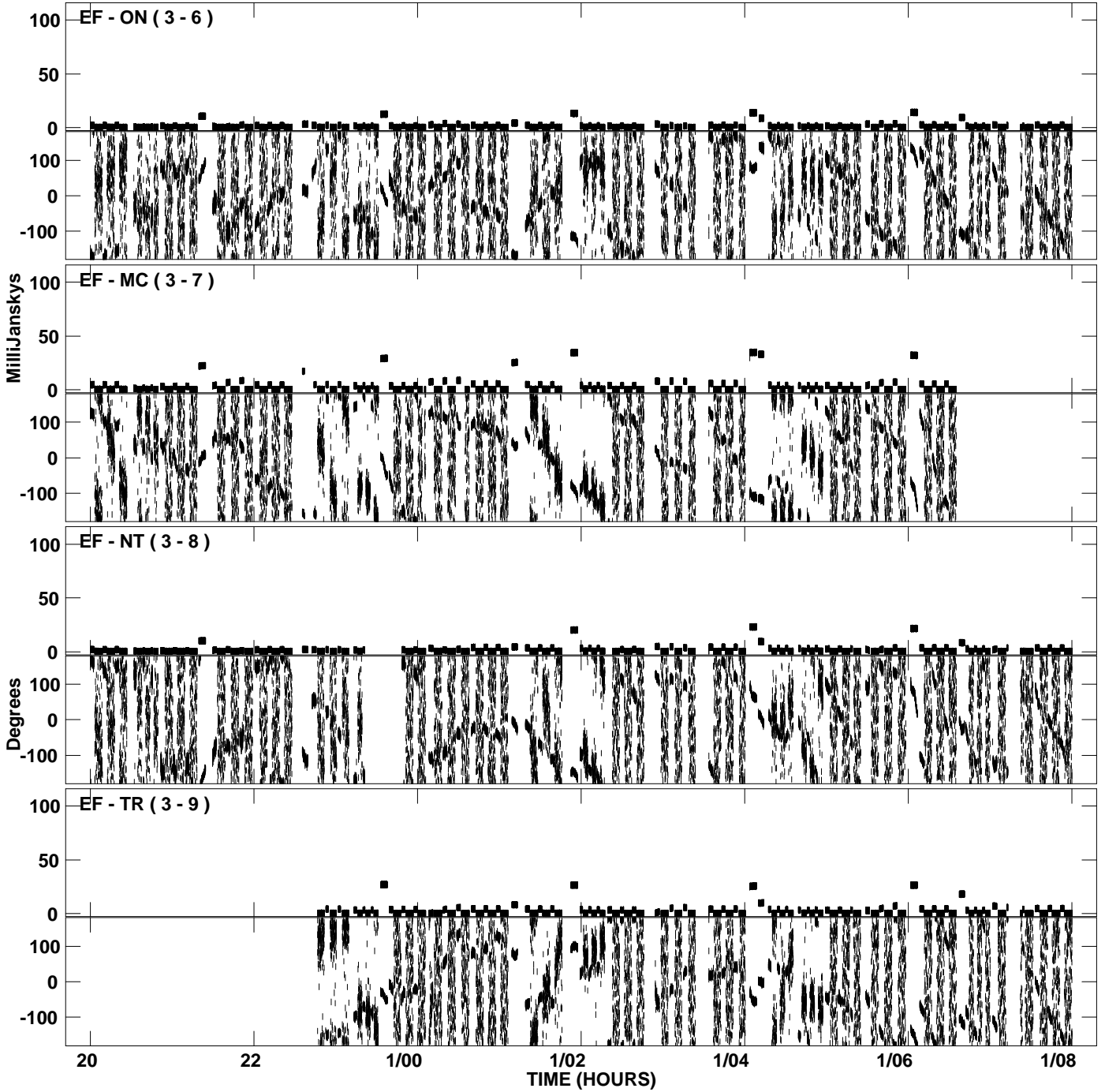
PLot file version 30 created 27-APR-2009 13:49:34  
Amplitude andPhase vs Time for EW012B.UVDATA.1 Vect aver.  
IF 2 CHAN 1 - 16 STK RR



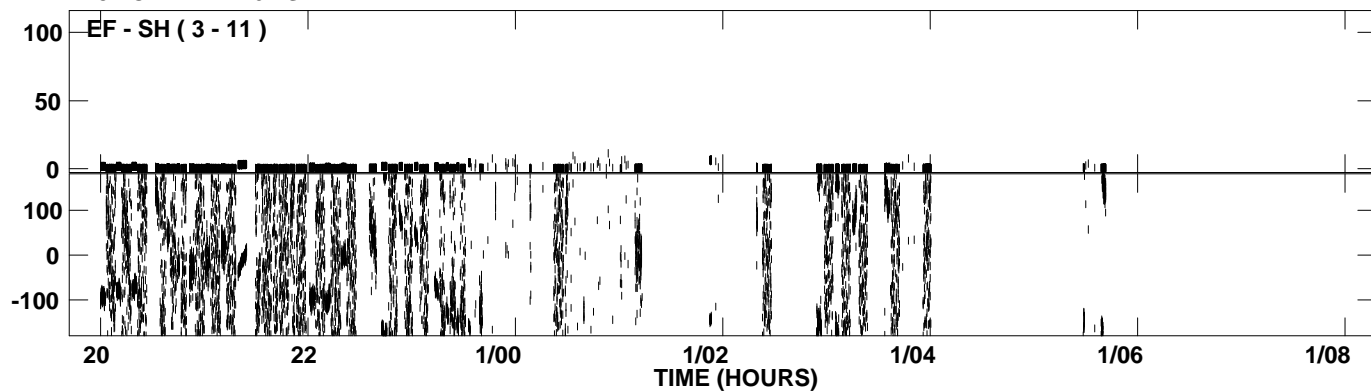
PLot file version 31 created 27-APR-2009 13:49:43  
Amplitude andPhase vs Time for EW012B.UVDATA.1 Vect aver.  
IF 3 CHAN 1 - 16 STK RR



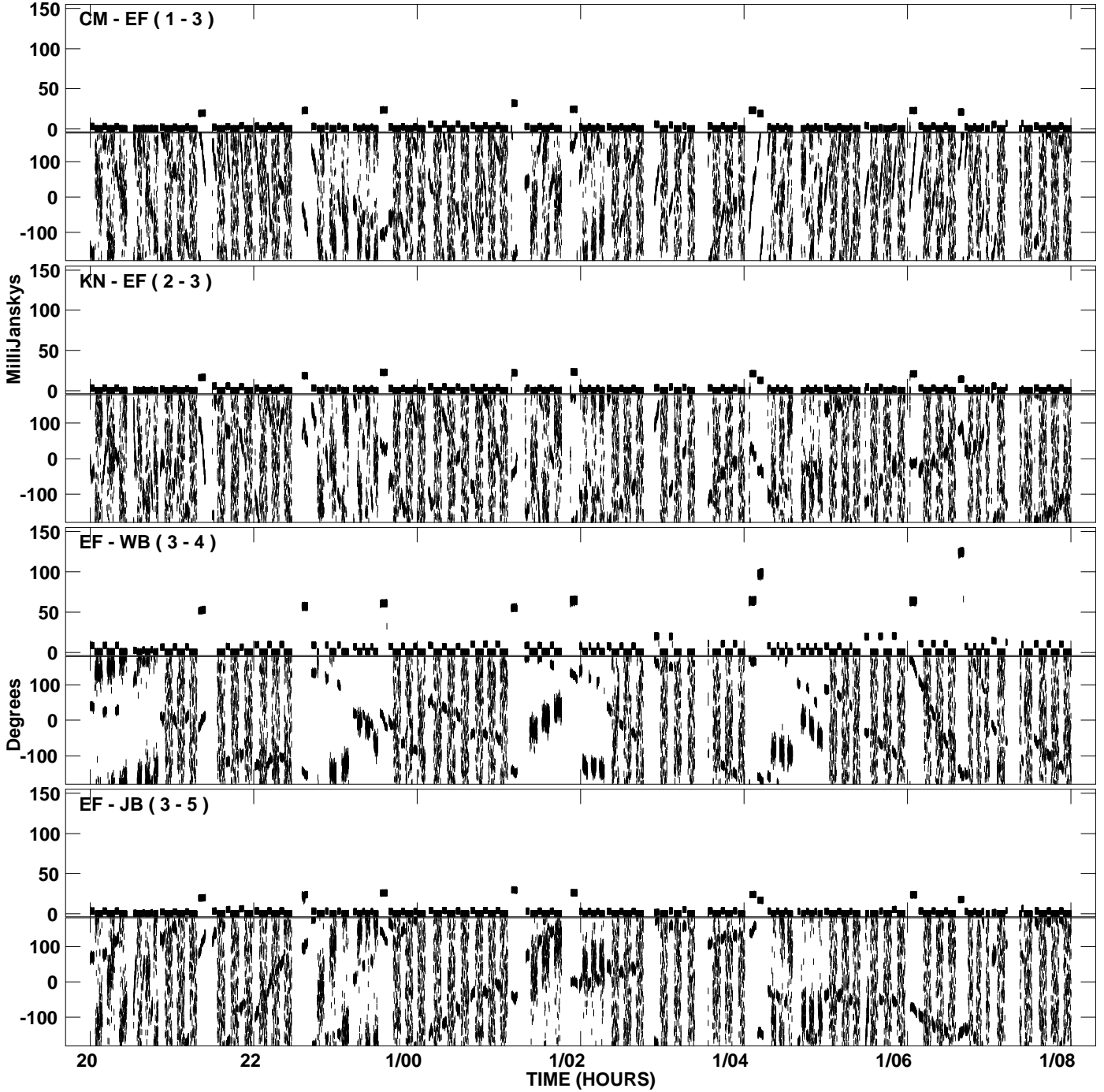
PLot file version 32 created 27-APR-2009 13:49:43  
Amplitude andPhase vs Time for EW012B.UVDATA.1 Vect aver.  
IF 3 CHAN 1 - 16 STK RR



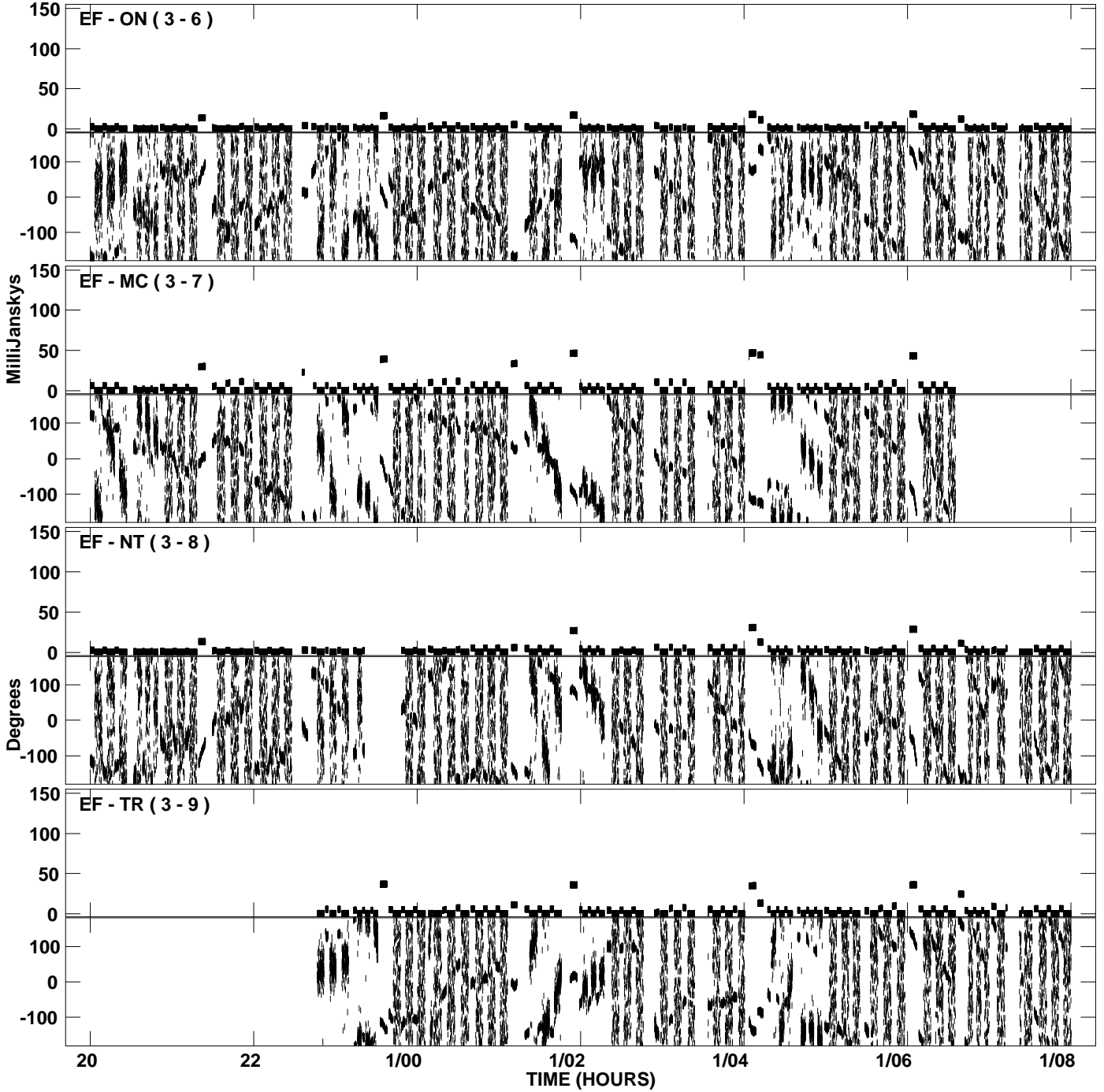
PLot file version 33 created 27-APR-2009 13:49:43  
Amplitude andPhase vs Time for EW012B.UVDATA.1 Vect aver.  
IF 3 CHAN 1 - 16 STK RR



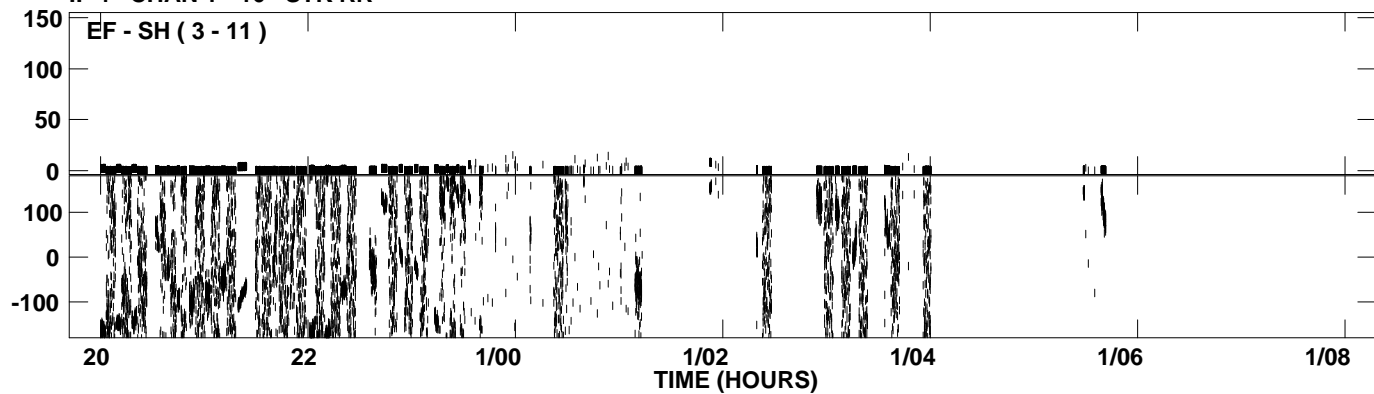
PLot file version 34 created 27-APR-2009 13:49:53  
Amplitude andPhase vs Time for EW012B.UVDATA.1 Vect aver.  
IF 4 CHAN 1 - 16 STK RR



PLot file version 35 created 27-APR-2009 13:49:53  
Amplitude andPhase vs Time for EW012B.UVDATA.1 Vect aver.  
IF 4 CHAN 1 - 16 STK RR

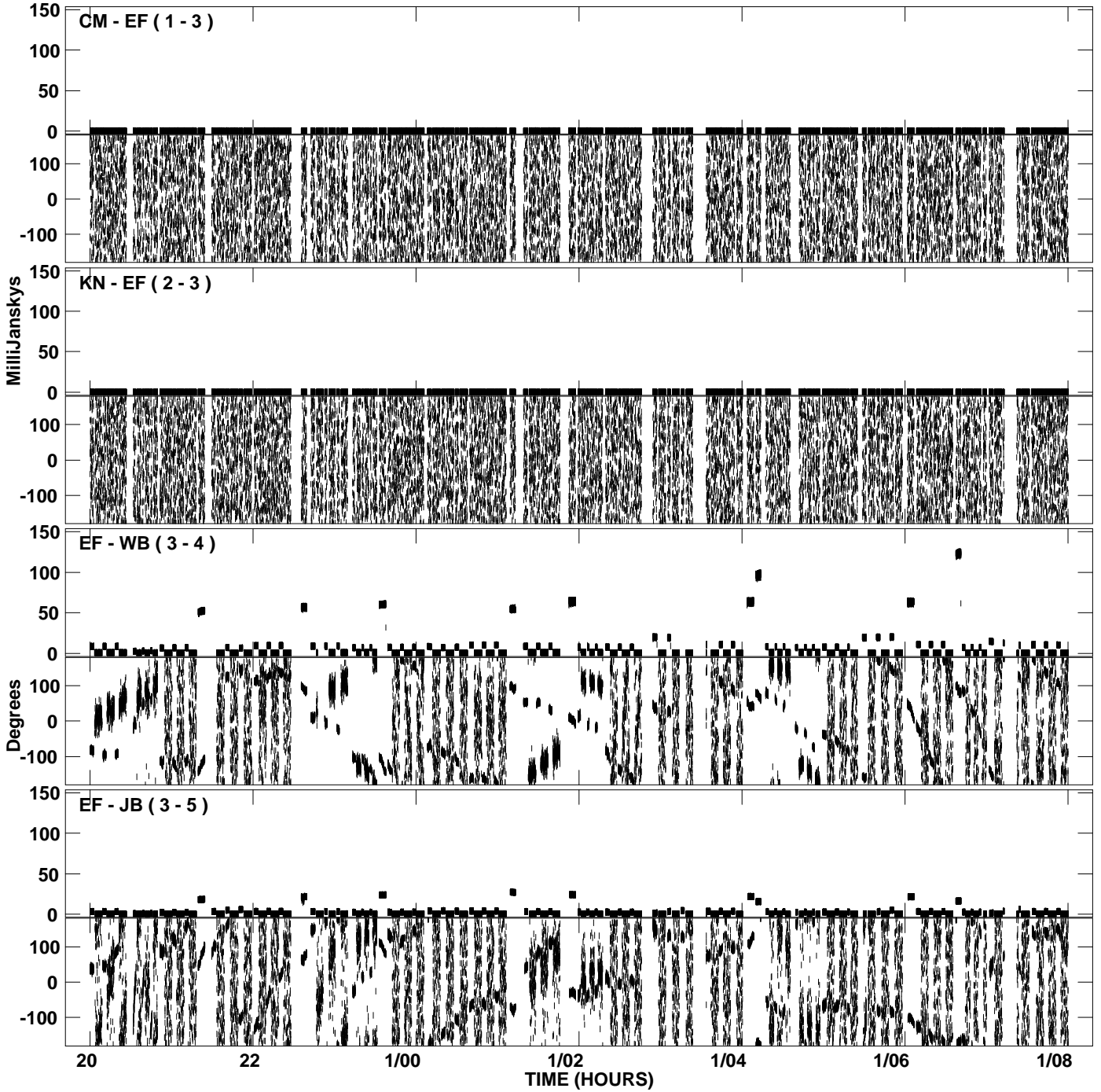


PLot file version 36 created 27-APR-2009 13:49:53  
Amplitude andPhase vs Time for EW012B.UVDATA.1 Vect aver.  
IF 4 CHAN 1 - 16 STK RR

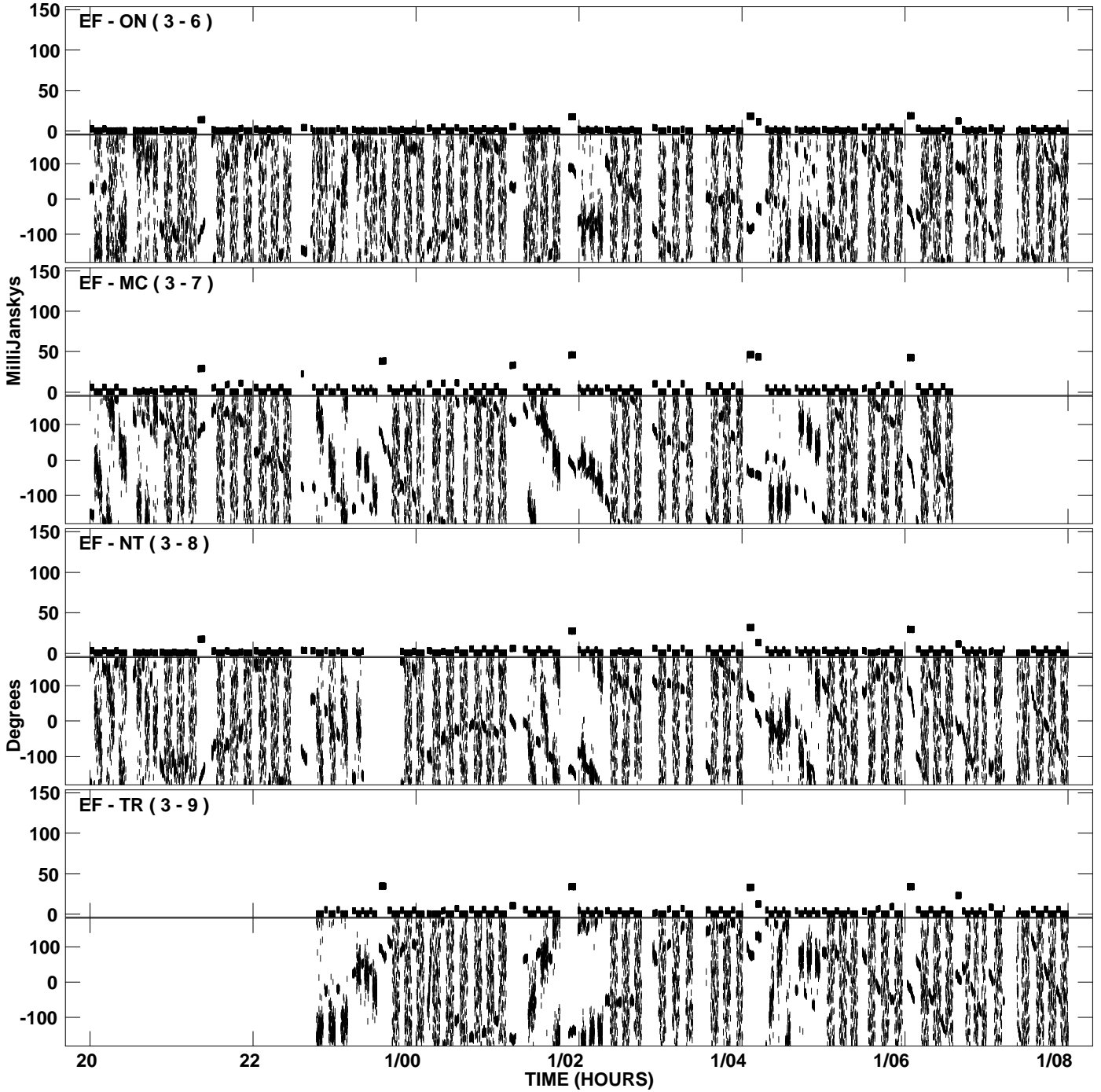




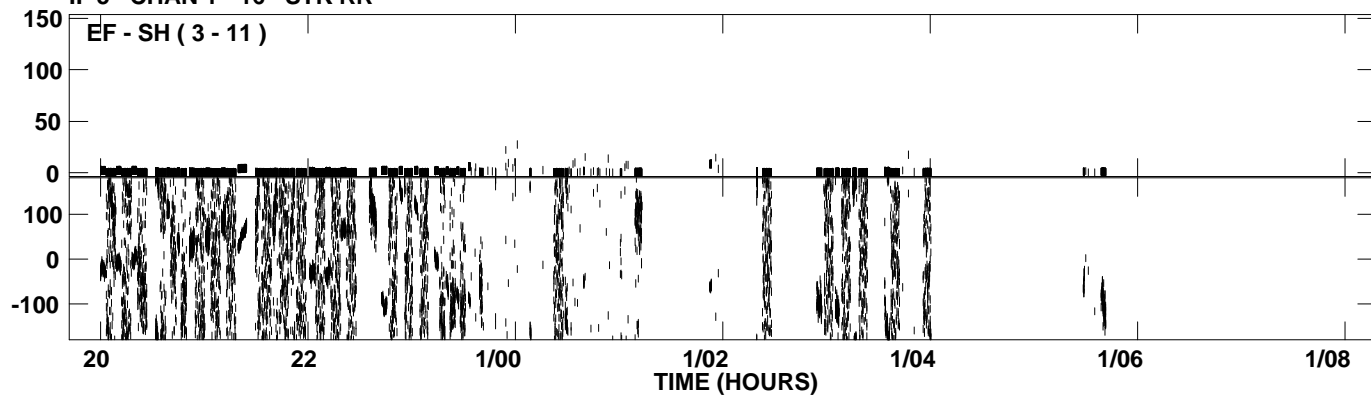
PLot file version 37 created 27-APR-2009 13:50:02  
Amplitude andPhase vs Time for EW012B.UVDATA.1 Vect aver.  
IF 5 CHAN 1 - 16 STK RR



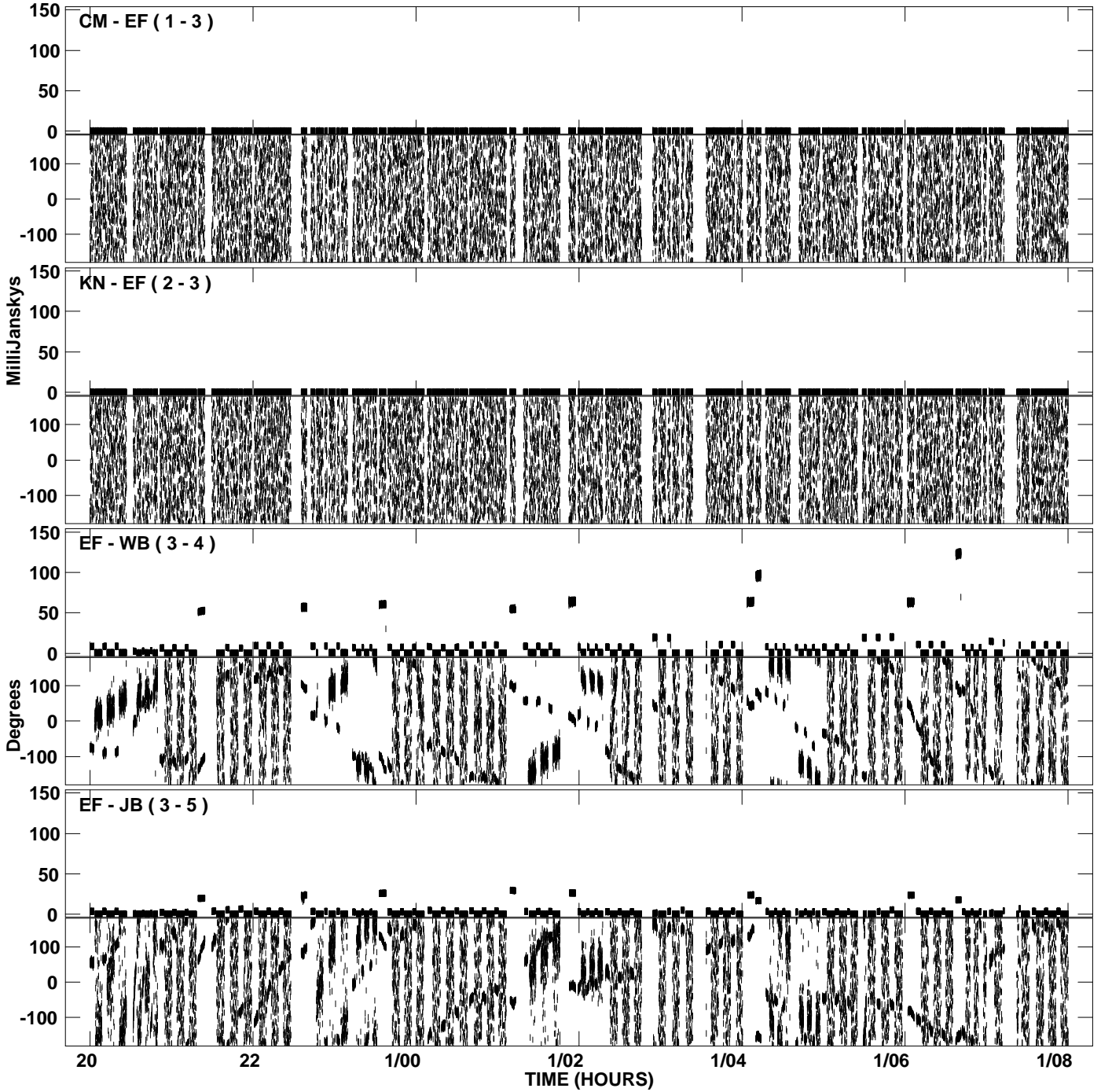
PLot file version 38 created 27-APR-2009 13:50:02  
Amplitude andPhase vs Time for EW012B.UVDATA.1 Vect aver.  
IF 5 CHAN 1 - 16 STK RR



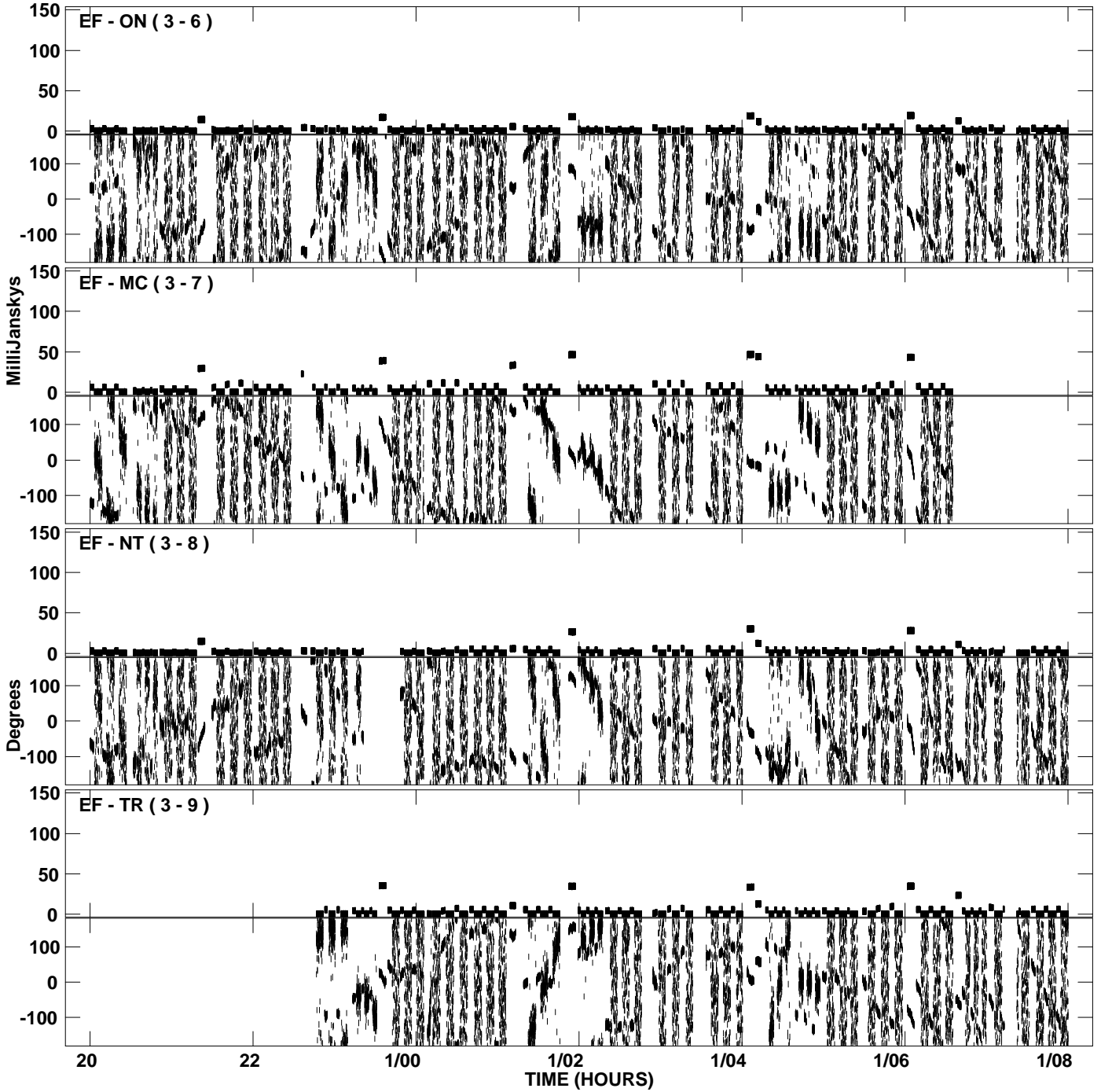
PLot file version 39 created 27-APR-2009 13:50:02  
Amplitude andPhase vs Time for EW012B.UVDATA.1 Vect aver.  
IF 5 CHAN 1 - 16 STK RR



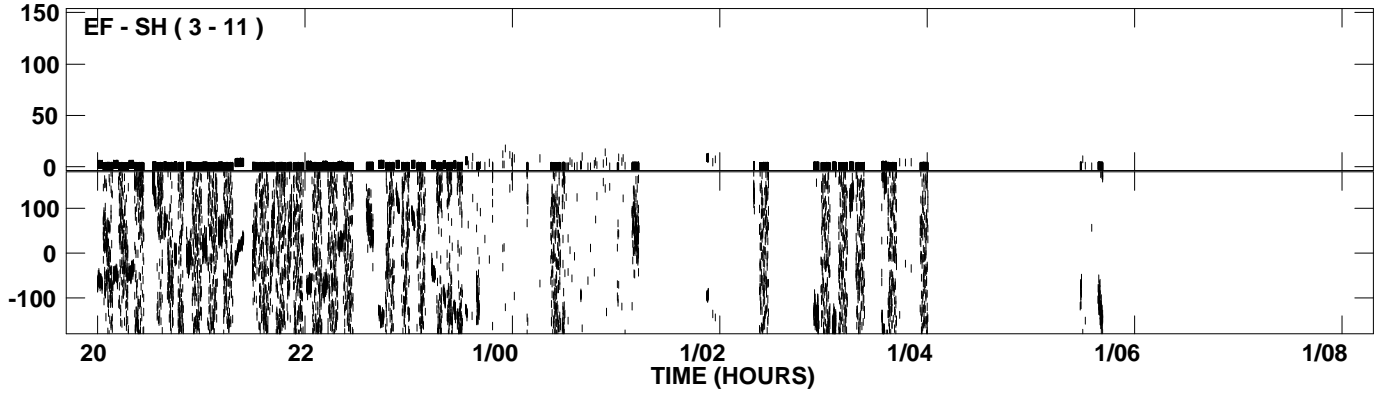
PLot file version 40 created 27-APR-2009 13:50:12  
Amplitude andPhase vs Time for EW012B.UVDATA.1 Vect aver.  
IF 6 CHAN 1 - 16 STK RR



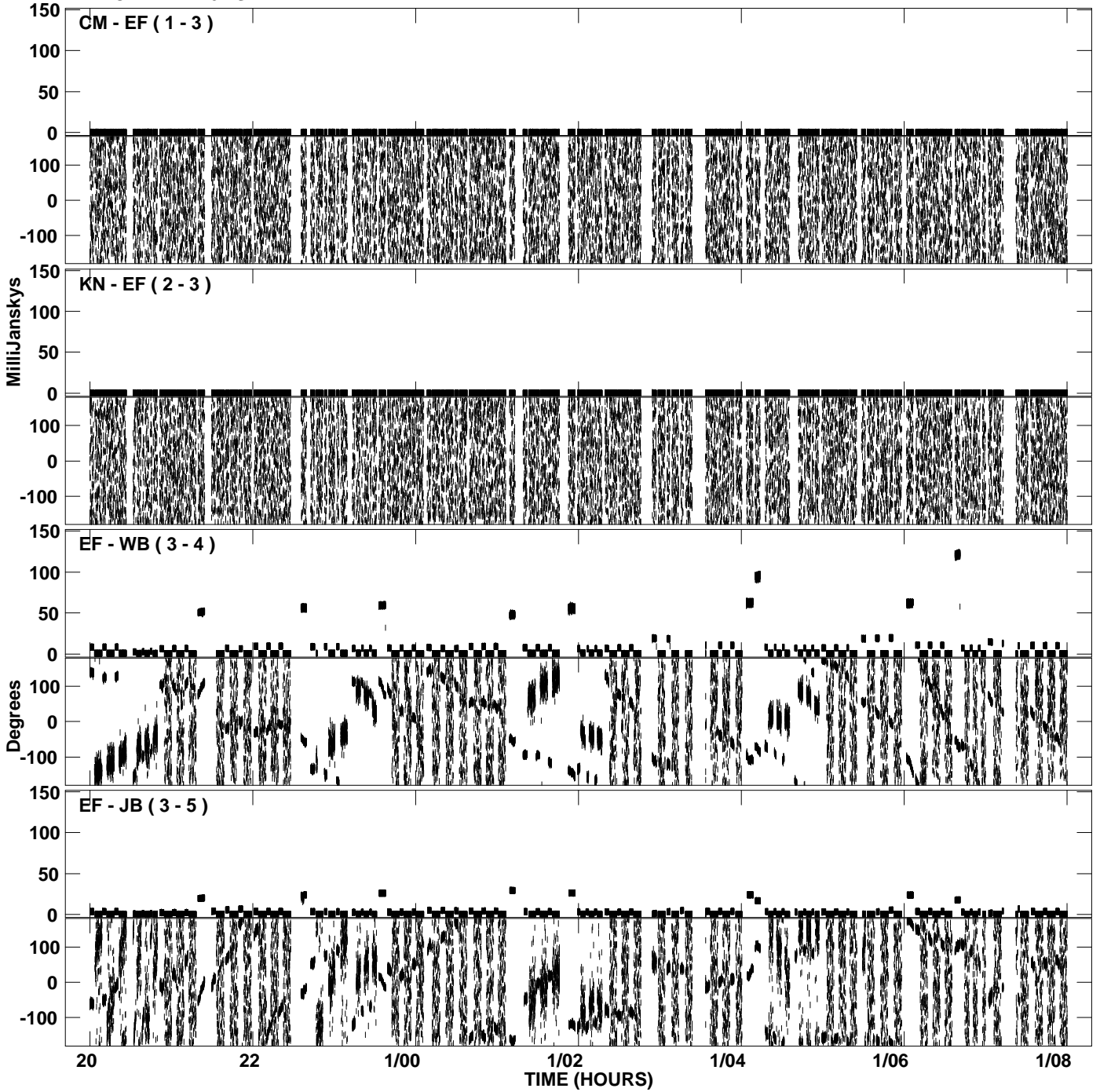
PLot file version 41 created 27-APR-2009 13:50:12  
Amplitude andPhase vs Time for EW012B.UVDATA.1 Vect aver.  
IF 6 CHAN 1 - 16 STK RR



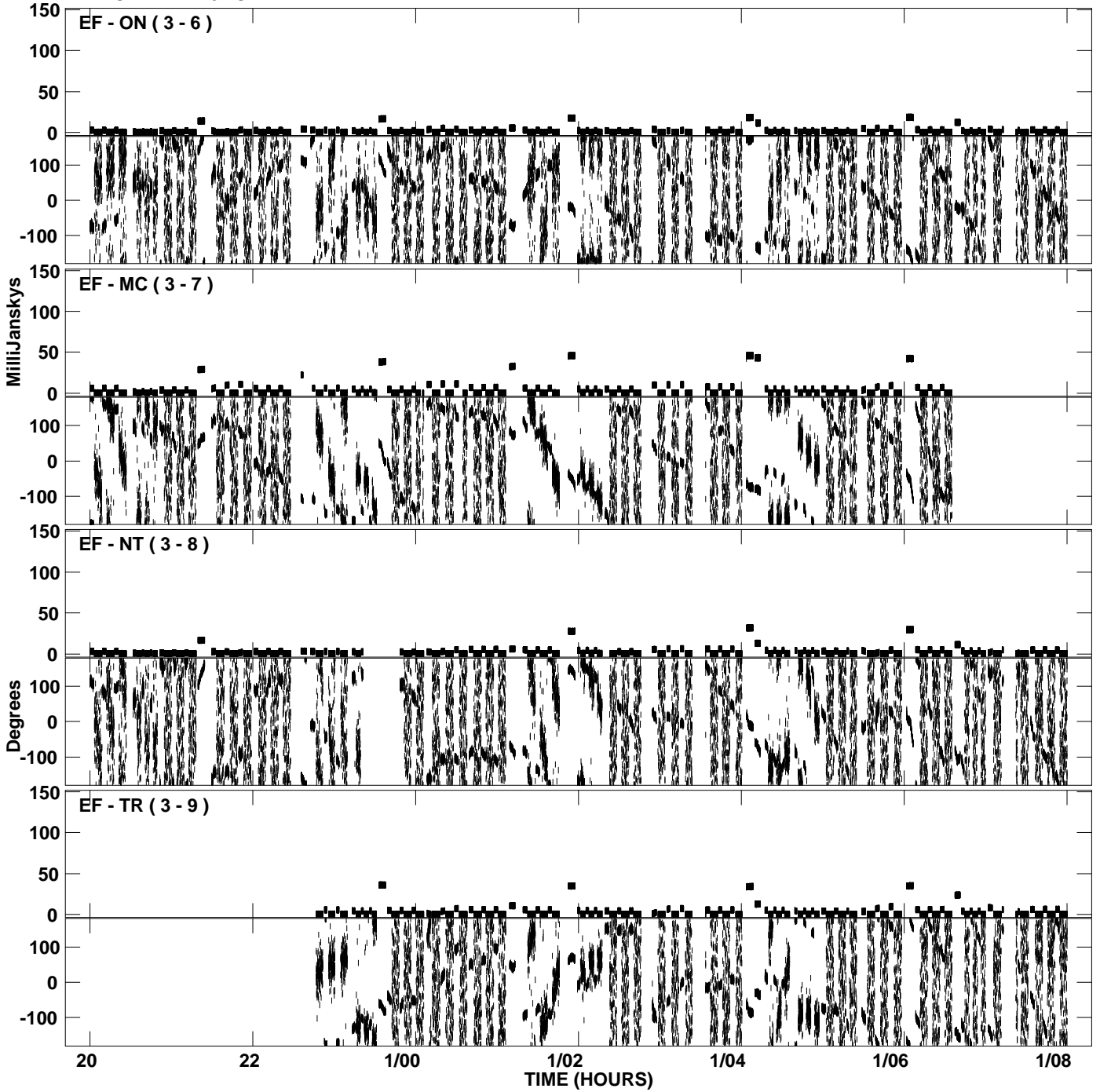
PLot file version 42 created 27-APR-2009 13:50:12  
Amplitude andPhase vs Time for EW012B.UVDATA.1 Vect aver.  
IF 6 CHAN 1 - 16 STK RR



PLot file version 43 created 27-APR-2009 13:50:21  
Amplitude andPhase vs Time for EW012B.UVDATA.1 Vect aver.  
IF 7 CHAN 1 - 16 STK RR

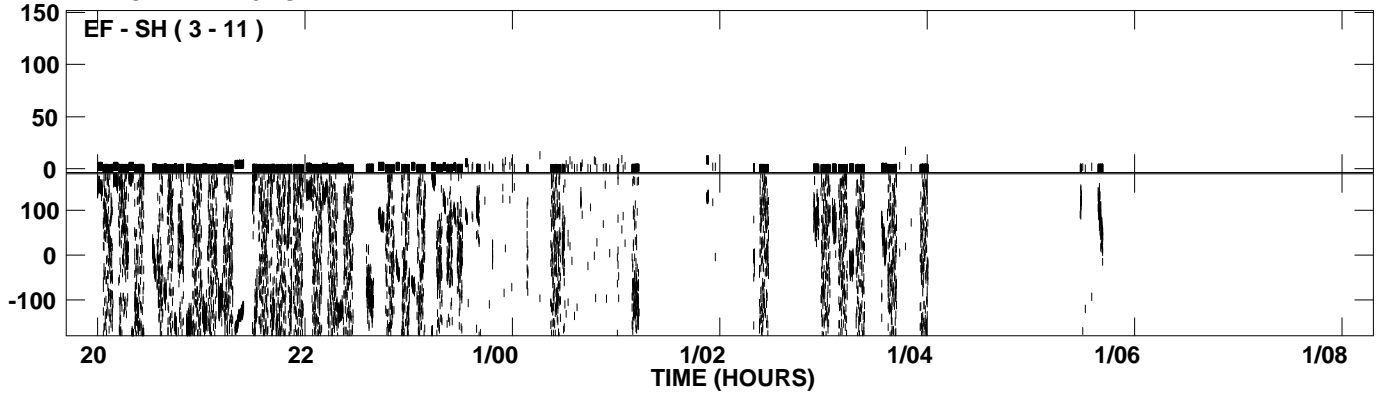


PLot file version 44 created 27-APR-2009 13:50:21  
Amplitude andPhase vs Time for EW012B.UVDATA.1 Vect aver.  
IF 7 CHAN 1 - 16 STK RR

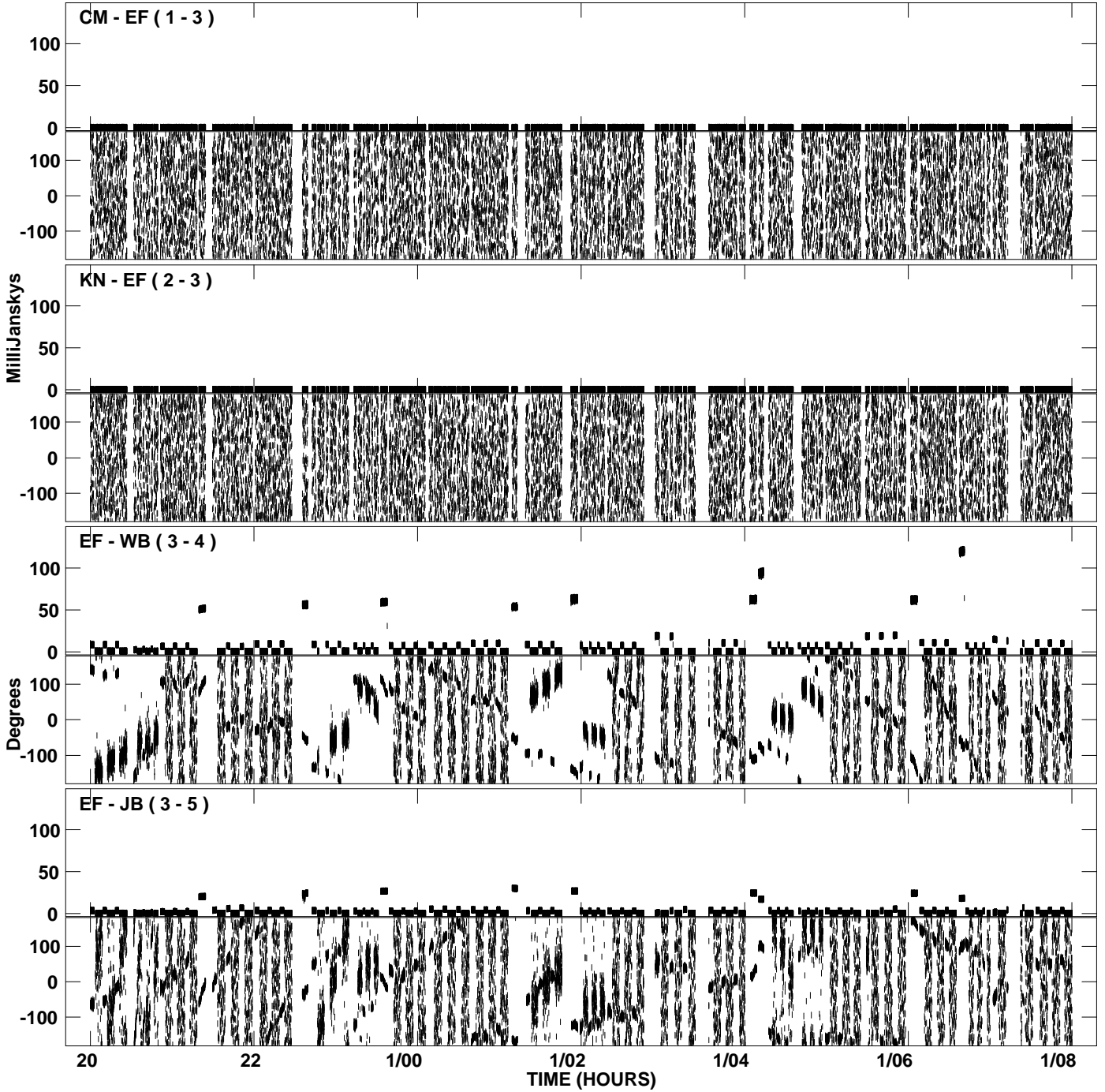




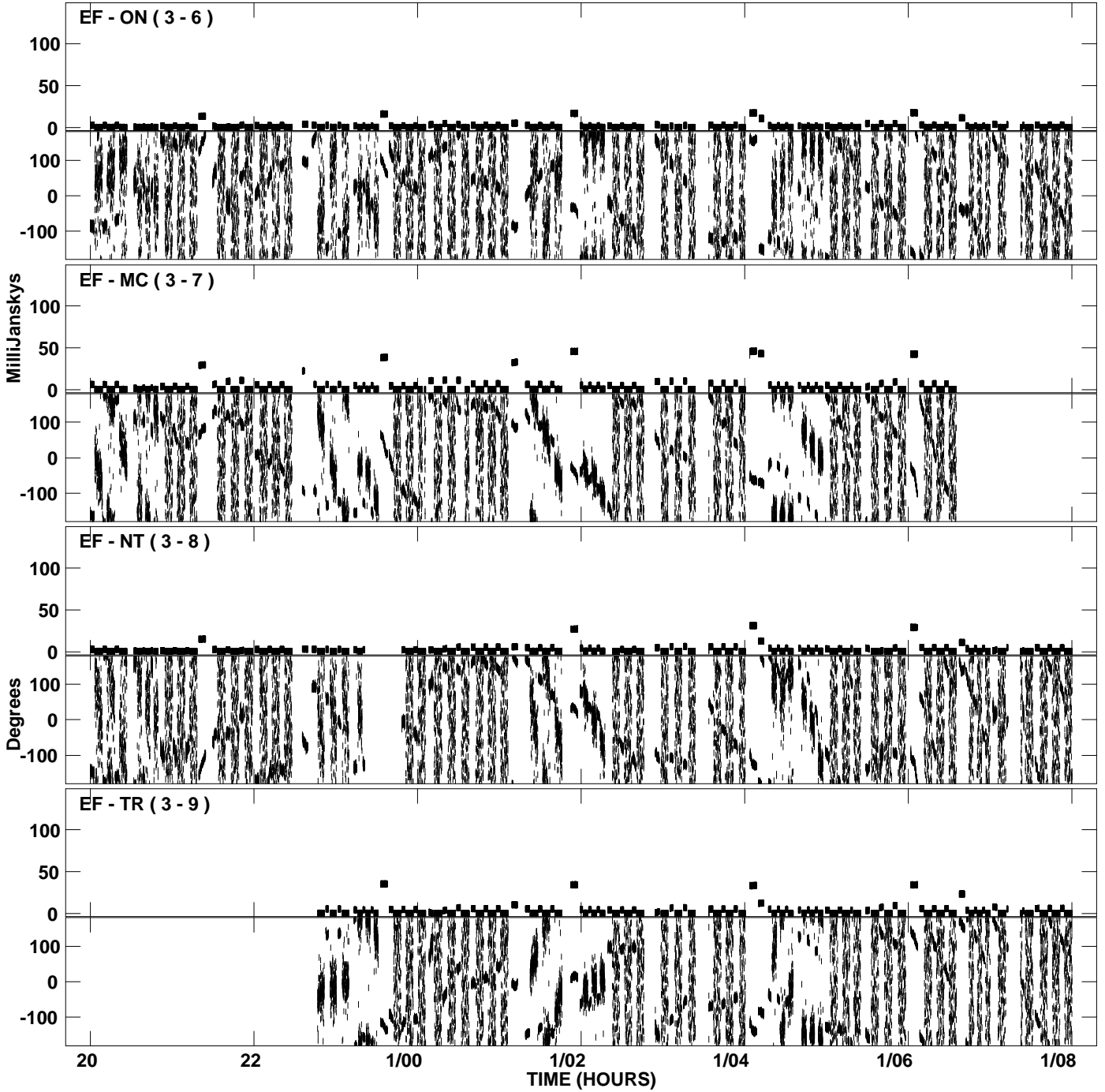
PLot file version 45 created 27-APR-2009 13:50:21  
Amplitude andPhase vs Time for EW012B.UVDATA.1 Vect aver.  
IF 7 CHAN 1 - 16 STK RR



PLot file version 46 created 27-APR-2009 13:50:30  
Amplitude andPhase vs Time for EW012B.UVDATA.1 Vect aver.  
IF 8 CHAN 1 - 16 STK RR



PLot file version 47 created 27-APR-2009 13:50:31  
Amplitude andPhase vs Time for EW012B.UVDATA.1 Vect aver.  
IF 8 CHAN 1 - 16 STK RR



PLot file version 48 created 27-APR-2009 13:50:31  
Amplitude andPhase vs Time for EW012B.UVDATA.1 Vect aver.  
IF 8 CHAN 1 - 16 STK RR

