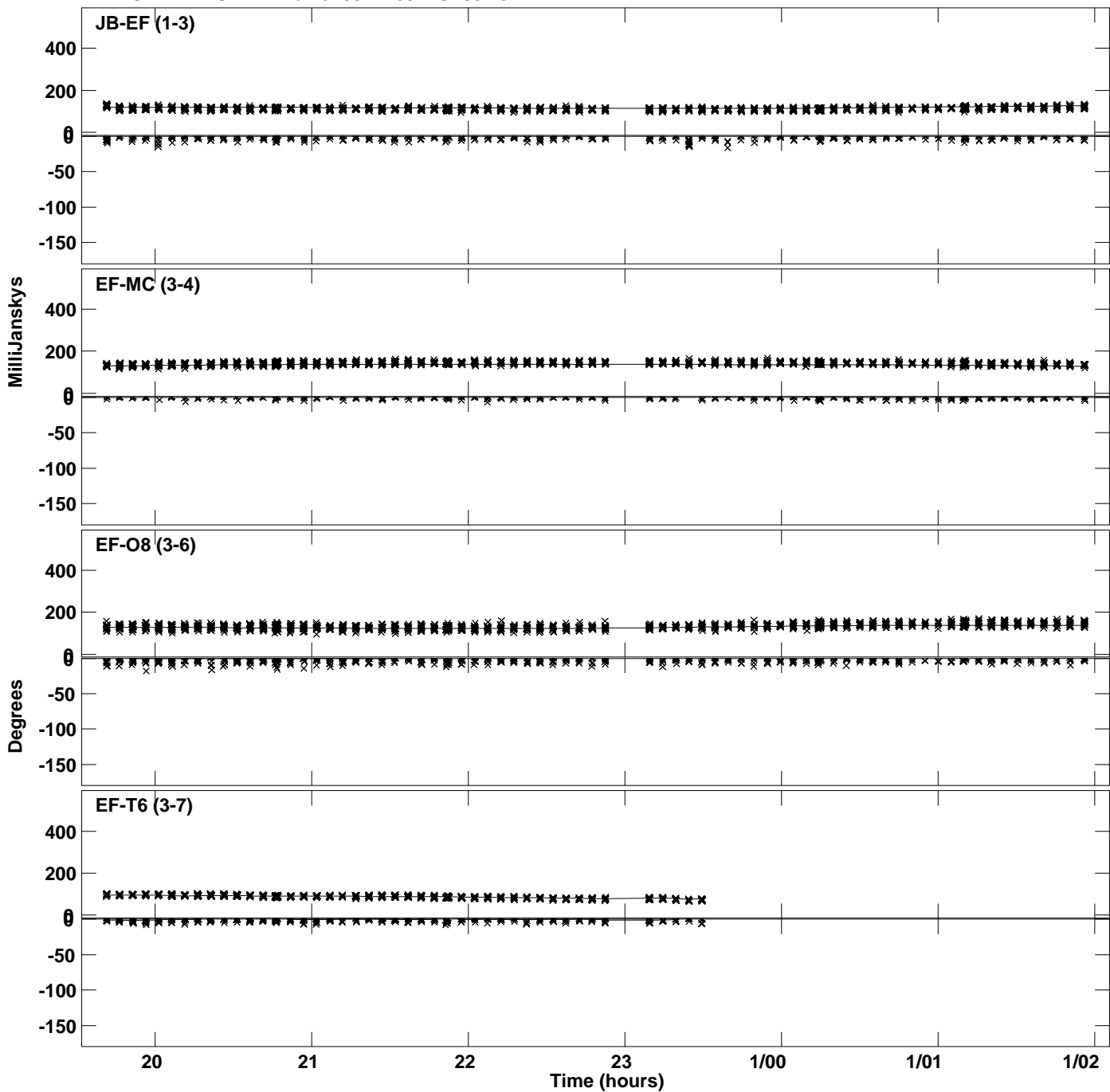
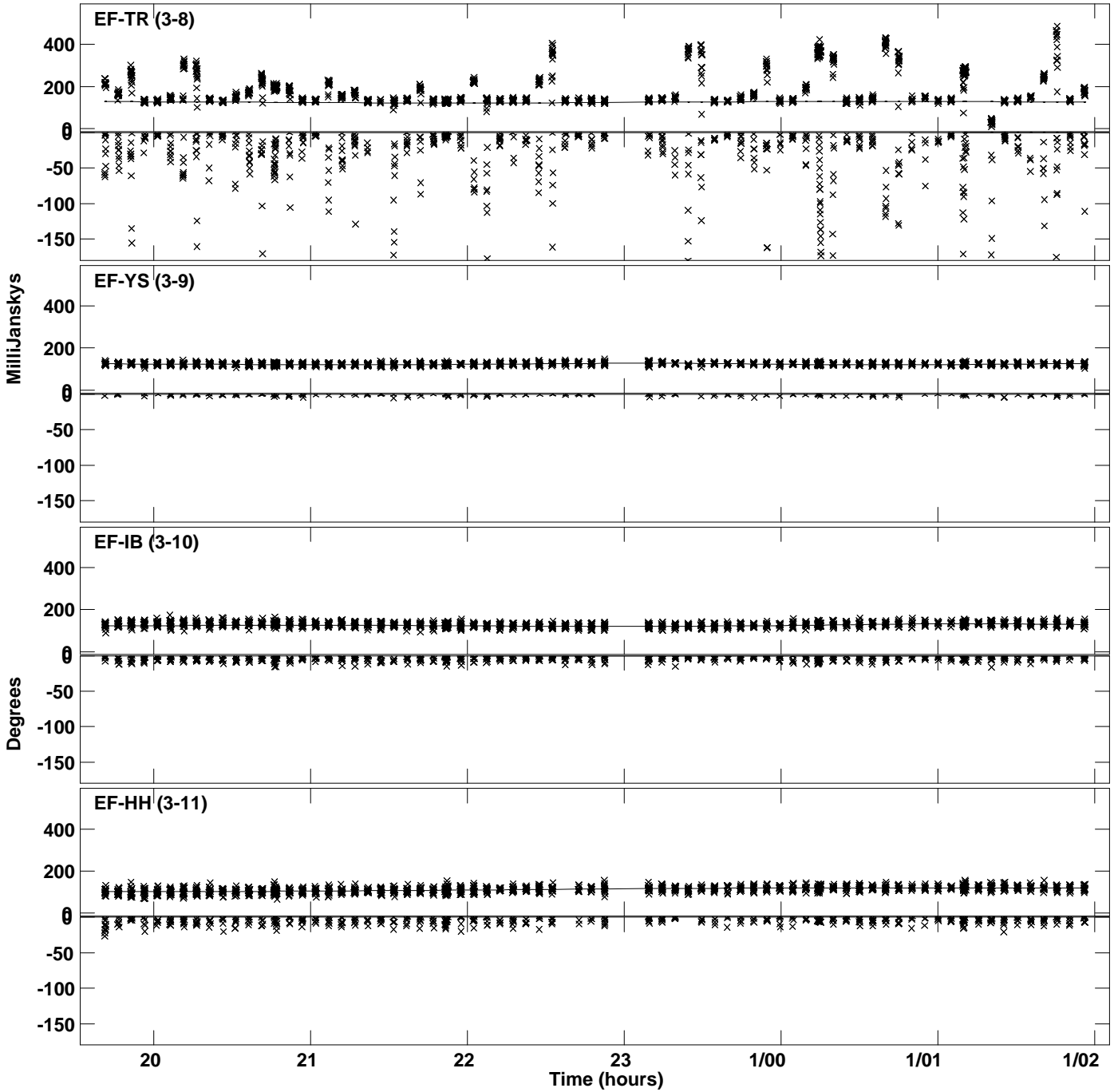


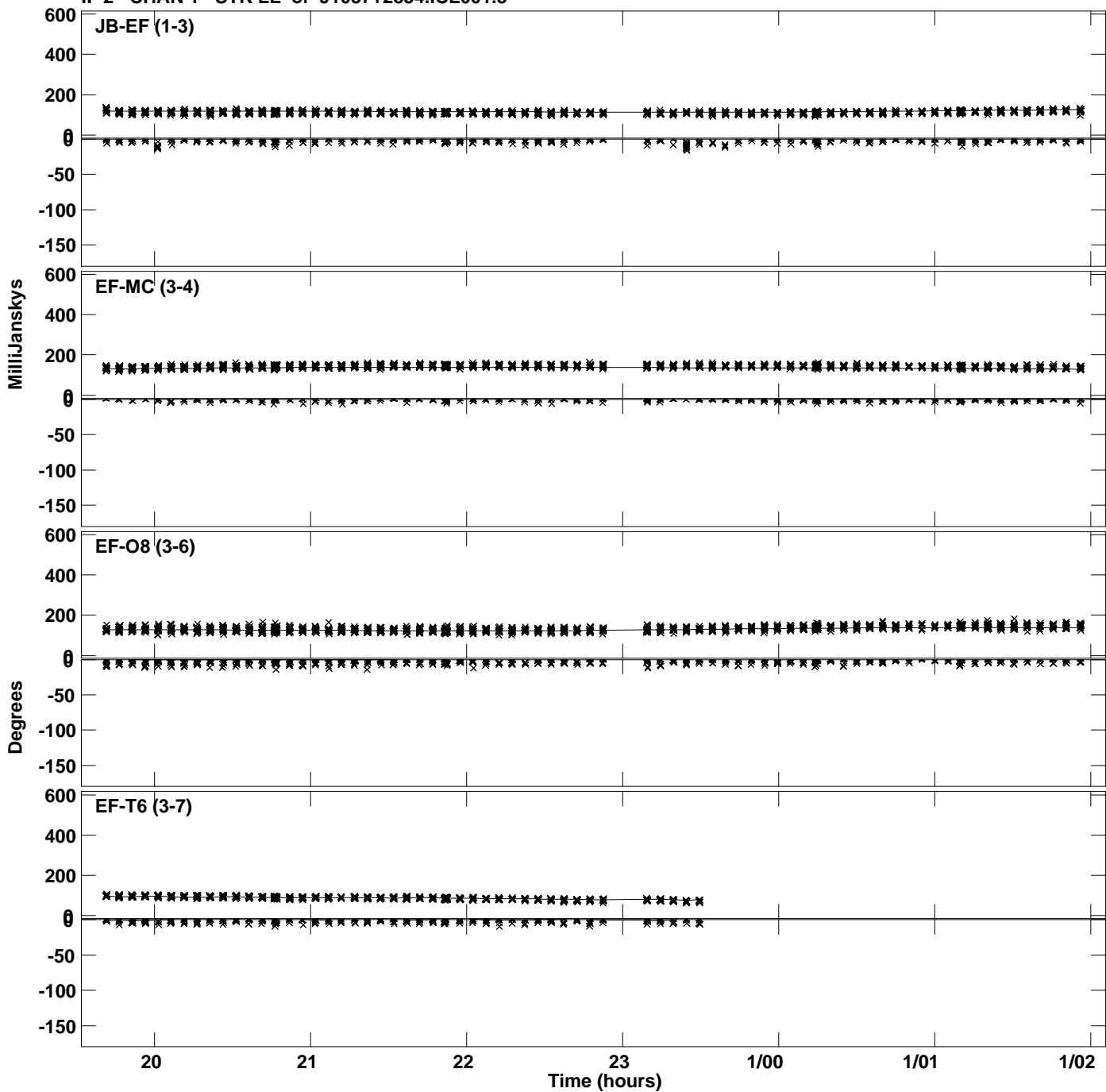
Plot file version 1 created 17-FEB-2023 14:34:02  
Amplitude and Phase vs Time for J1037+2834.MULTI.1 CL # 3  
IF 1 CHAN 1 STK LL of J1037+2834.ICL001.3



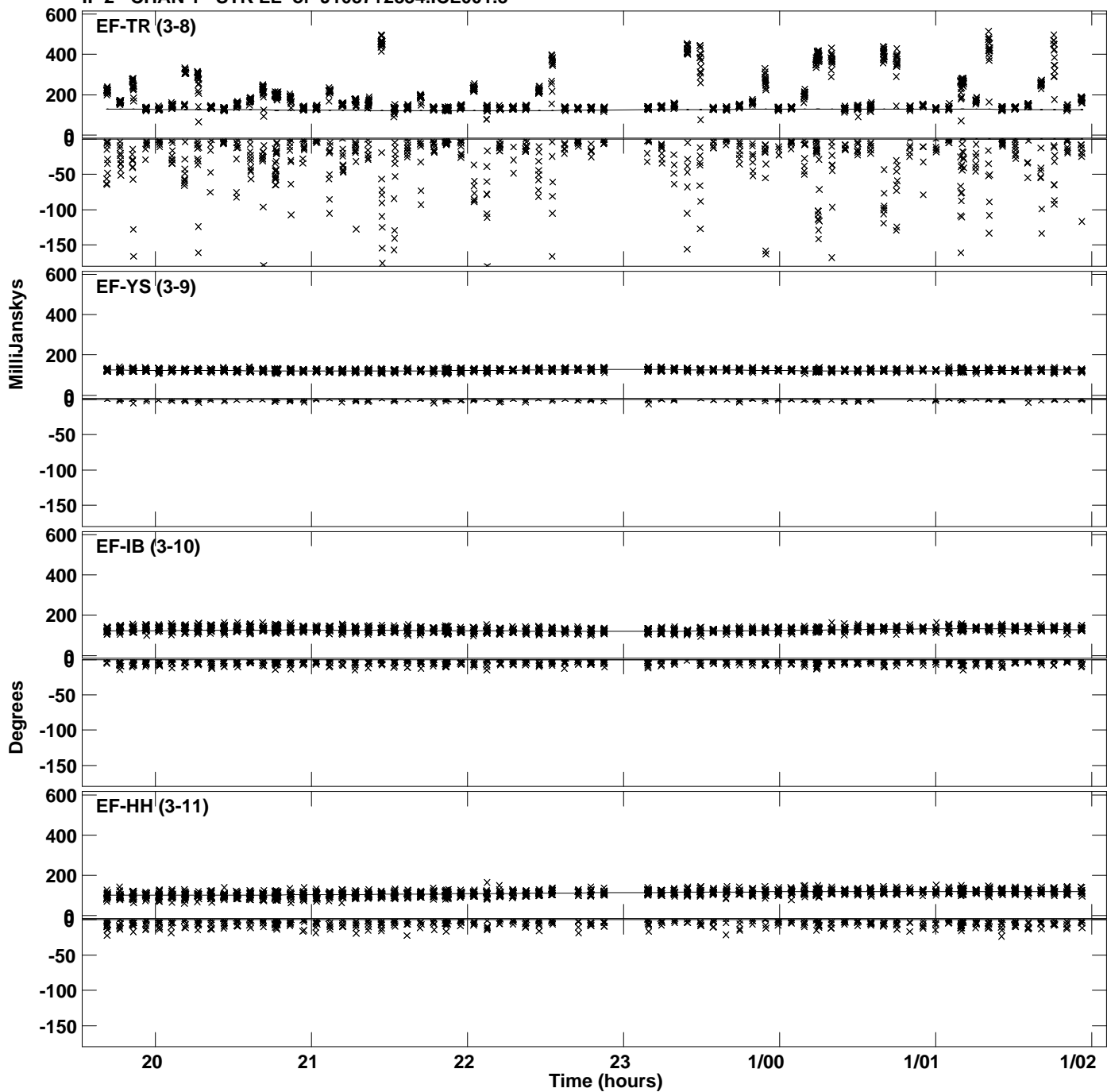
Plot file version 2 created 17-FEB-2023 14:34:02  
Amplitude and Phase vs Time for J1037+2834.MULTI.1 CL # 3  
IF 1 CHAN 1 STK LL of J1037+2834.ICL001.3



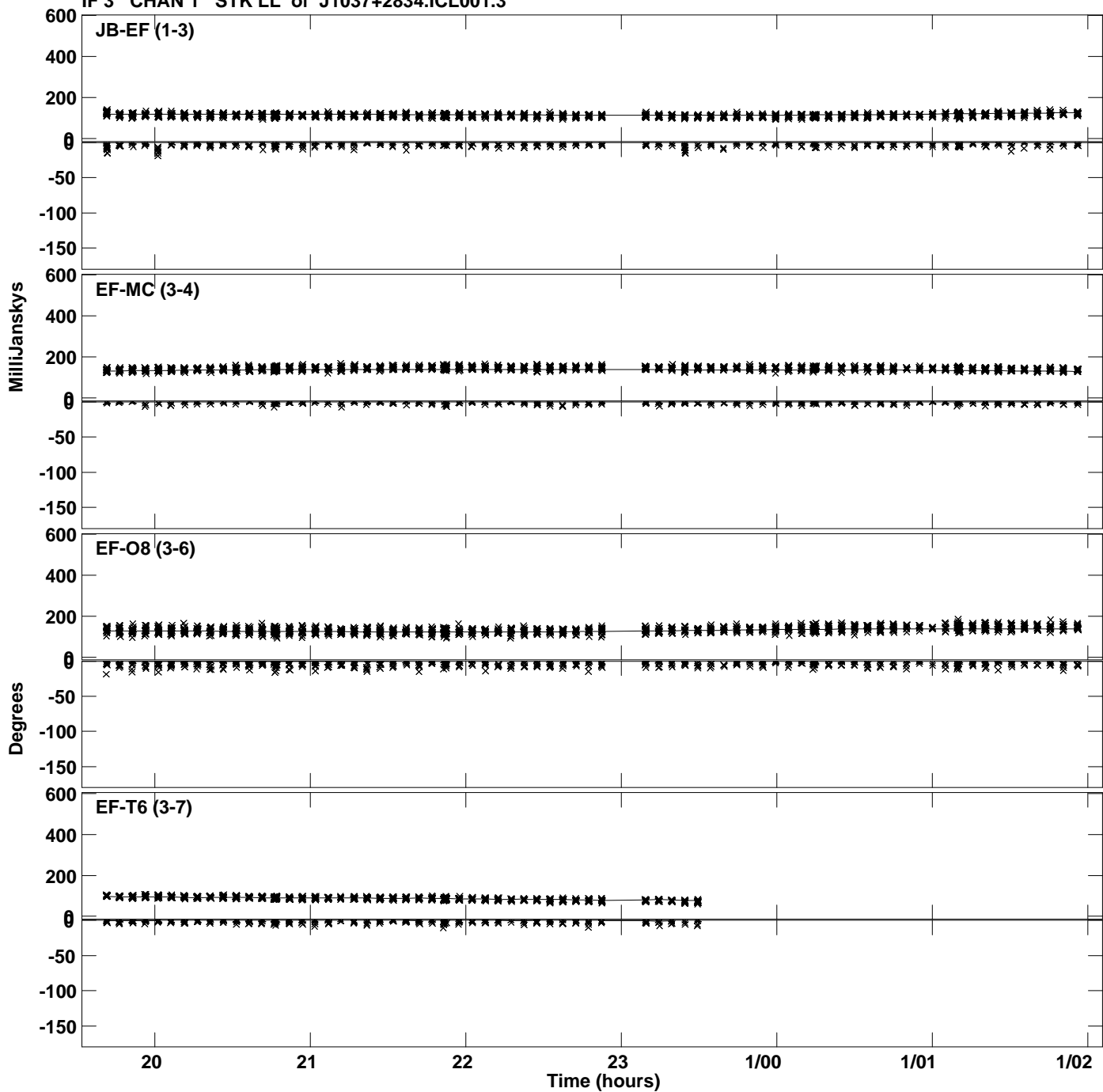
Plot file version 3 created 17-FEB-2023 14:34:02  
Amplitude and Phase vs Time for J1037+2834.MULTI.1 CL # 3  
IF 2 CHAN 1 STK LL of J1037+2834.ICL001.3



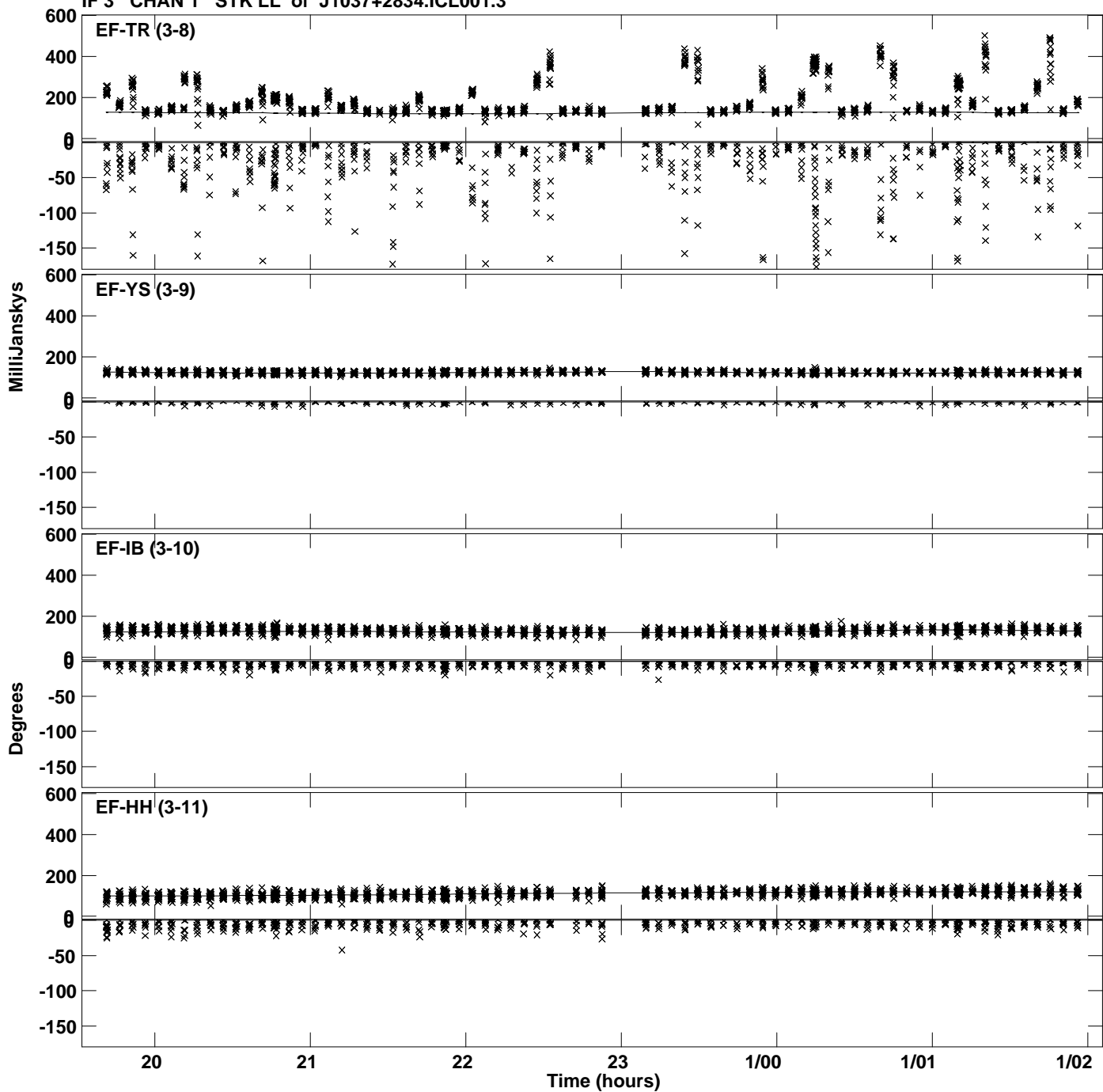
Plot file version 4 created 17-FEB-2023 14:34:02  
Amplitude and Phase vs Time for J1037+2834.MULTI.1 CL # 3  
IF 2 CHAN 1 STK LL of J1037+2834.ICL001.3



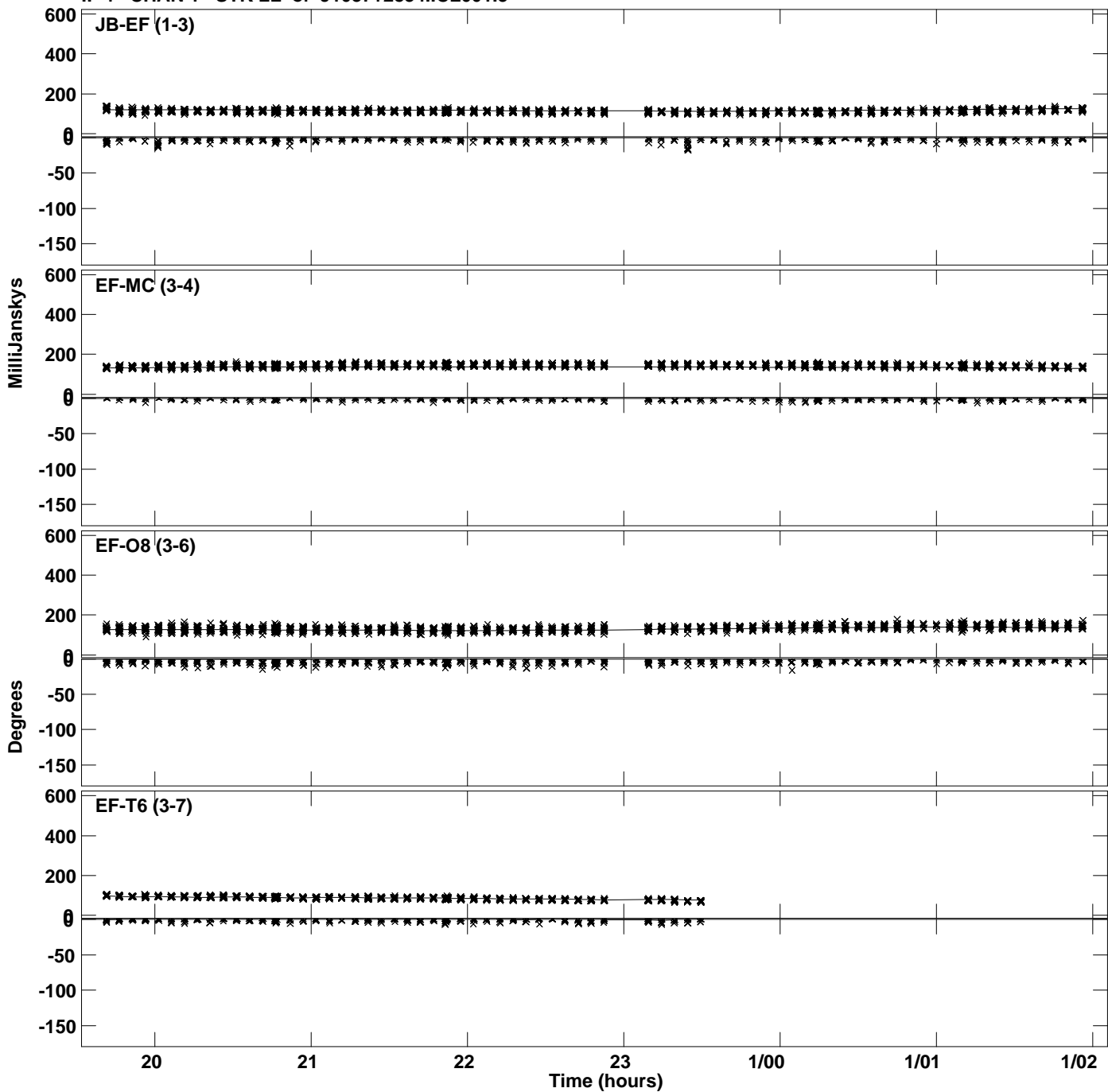
Plot file version 5 created 17-FEB-2023 14:34:02  
Amplitude and Phase vs Time for J1037+2834.MULTI.1 CL # 3  
IF 3 CHAN 1 STK LL of J1037+2834.ICL001.3



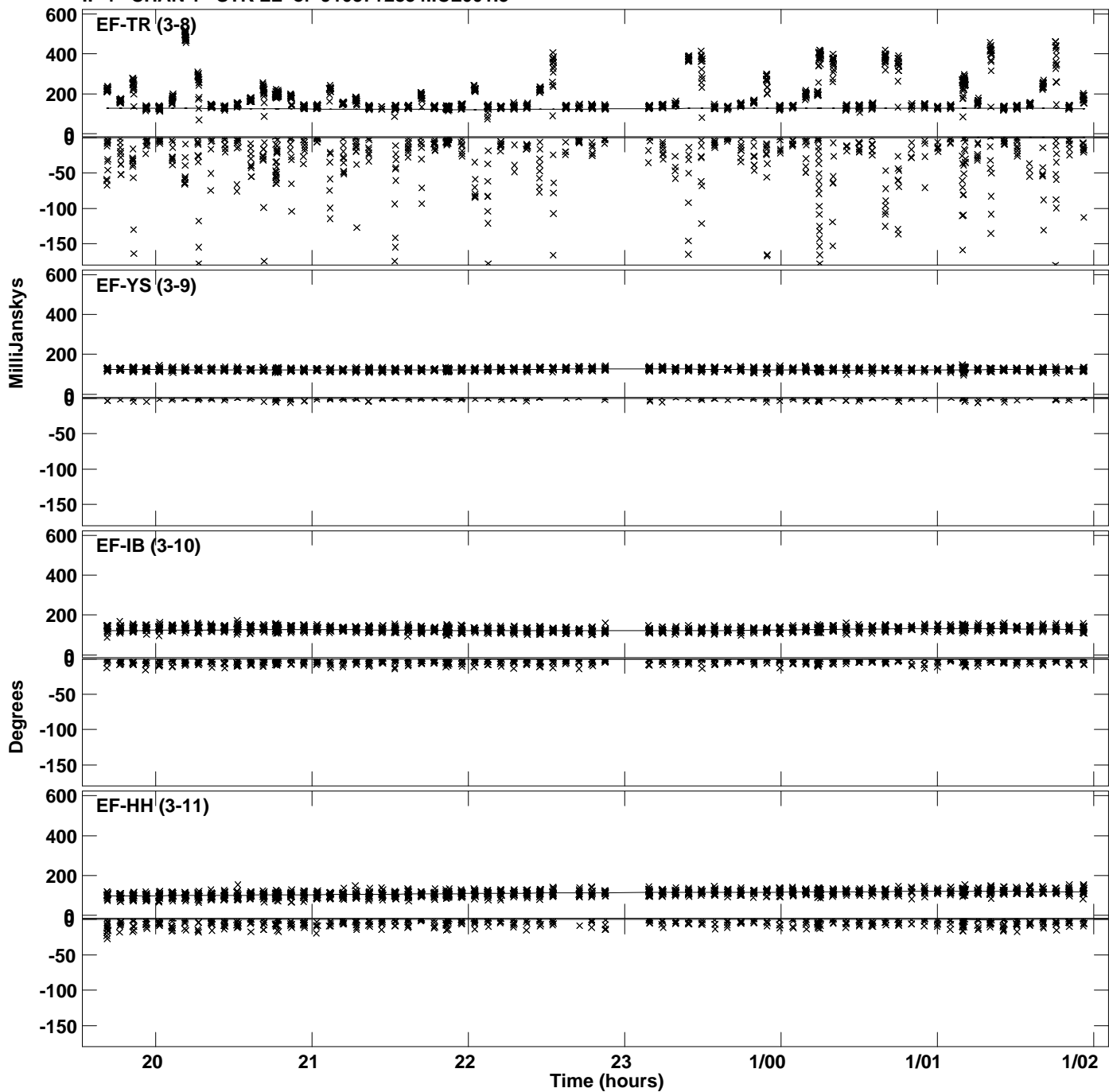
Plot file version 6 created 17-FEB-2023 14:34:02  
Amplitude and Phase vs Time for J1037+2834.MULTI.1 CL # 3  
IF 3 CHAN 1 STK LL of J1037+2834.ICL001.3



Plot file version 7 created 17-FEB-2023 14:34:02  
Amplitude and Phase vs Time for J1037+2834.MULTI.1 CL # 3  
IF 4 CHAN 1 STK LL of J1037+2834.ICL001.3

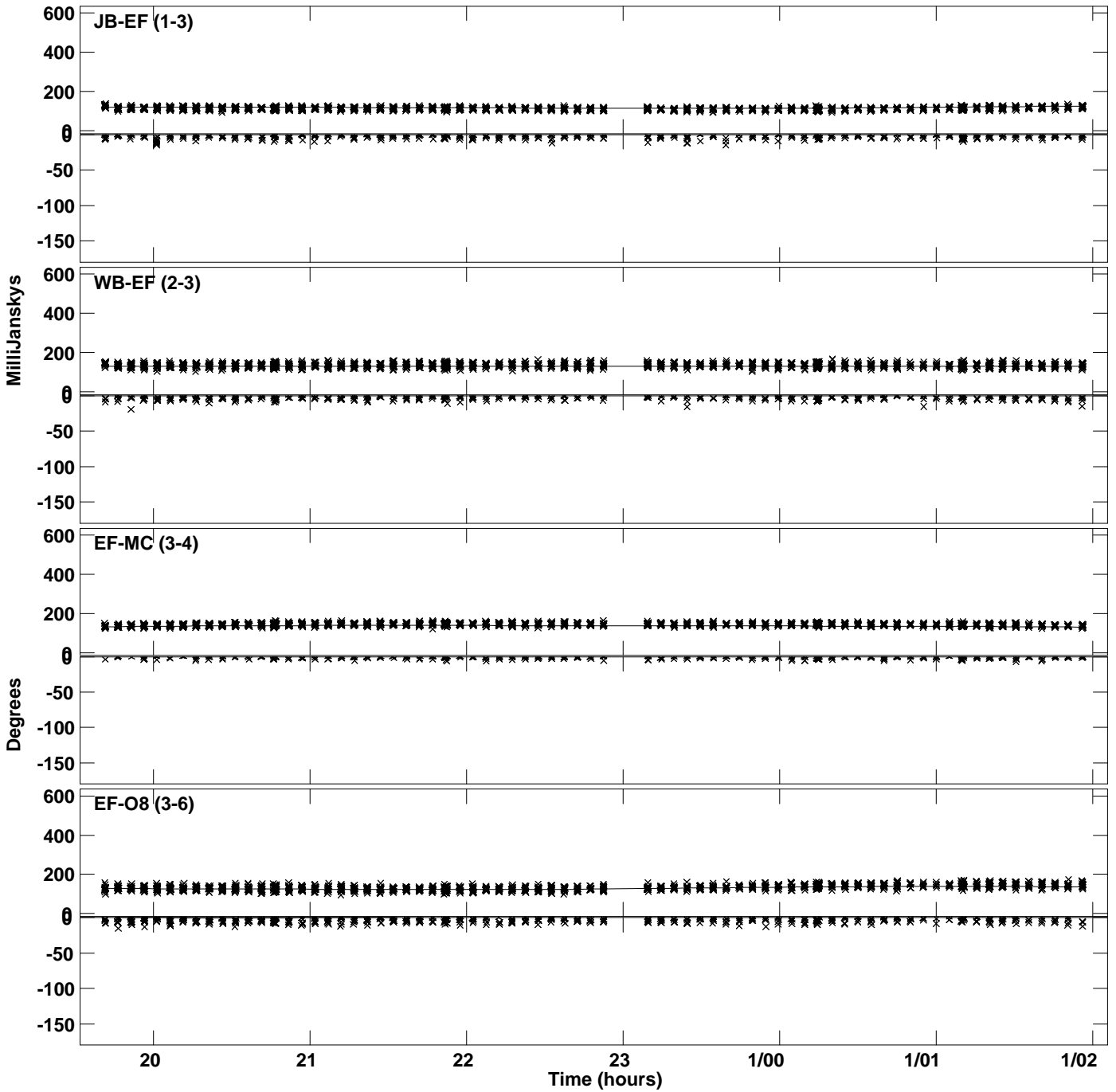


Plot file version 8 created 17-FEB-2023 14:34:02  
Amplitude andPhase vs Time for J1037+2834.MULTI.1 CL # 3  
IF 4 CHAN 1 STK LL of J1037+2834.ICL001.3

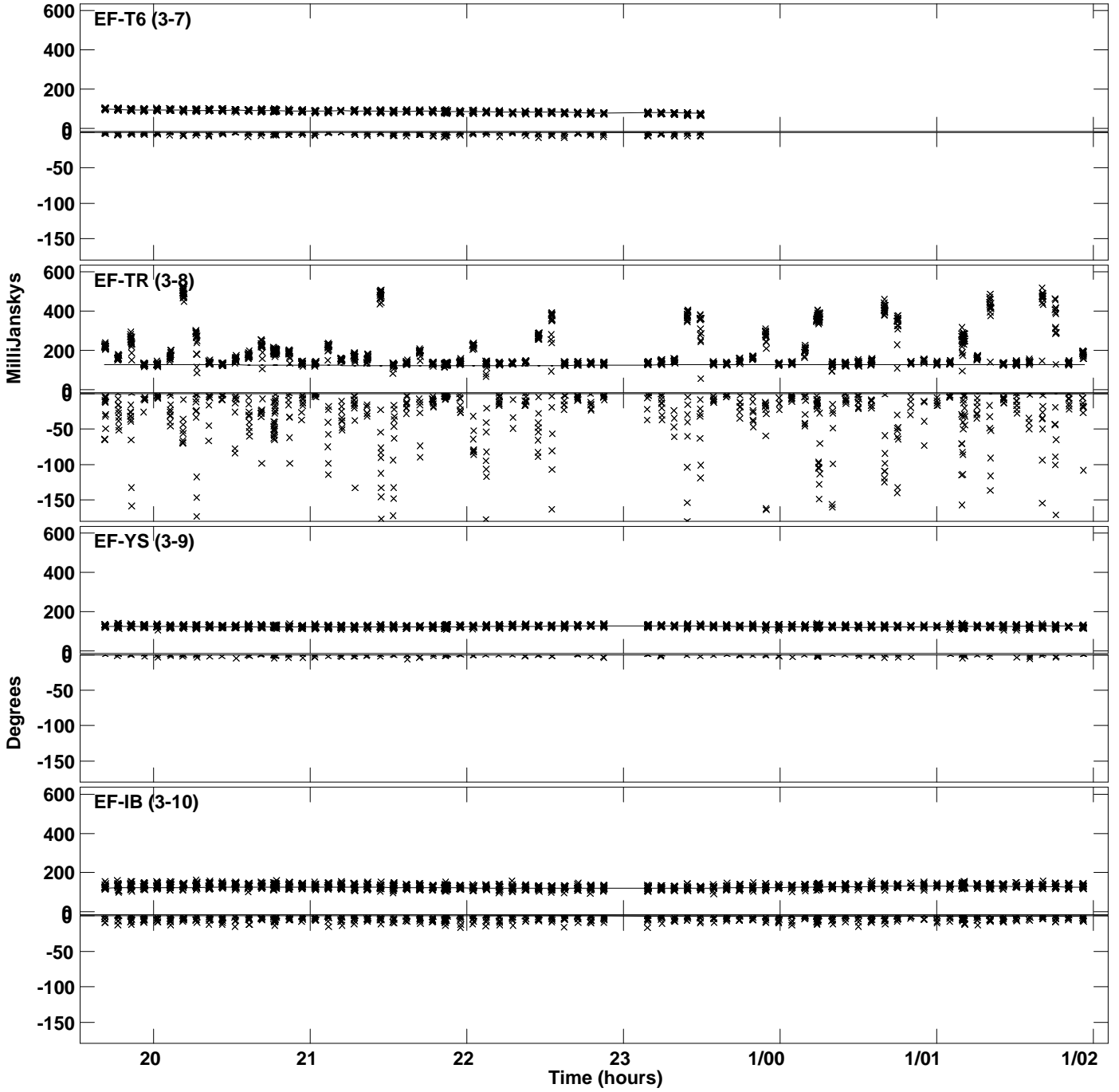




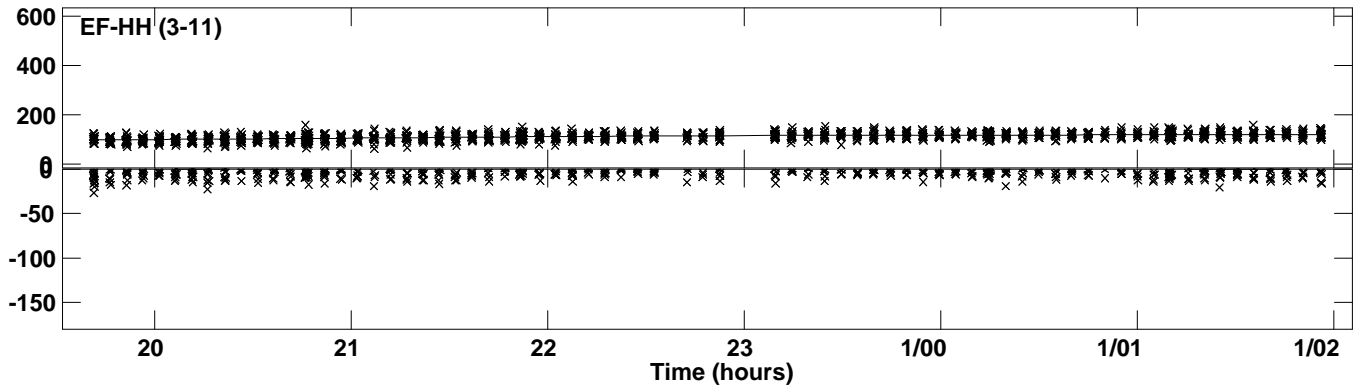
Plot file version 9 created 17-FEB-2023 14:34:03  
Amplitude and Phase vs Time for J1037+2834.MULTI.1 CL # 3  
IF 5 CHAN 1 STK LL of J1037+2834.ICL001.3



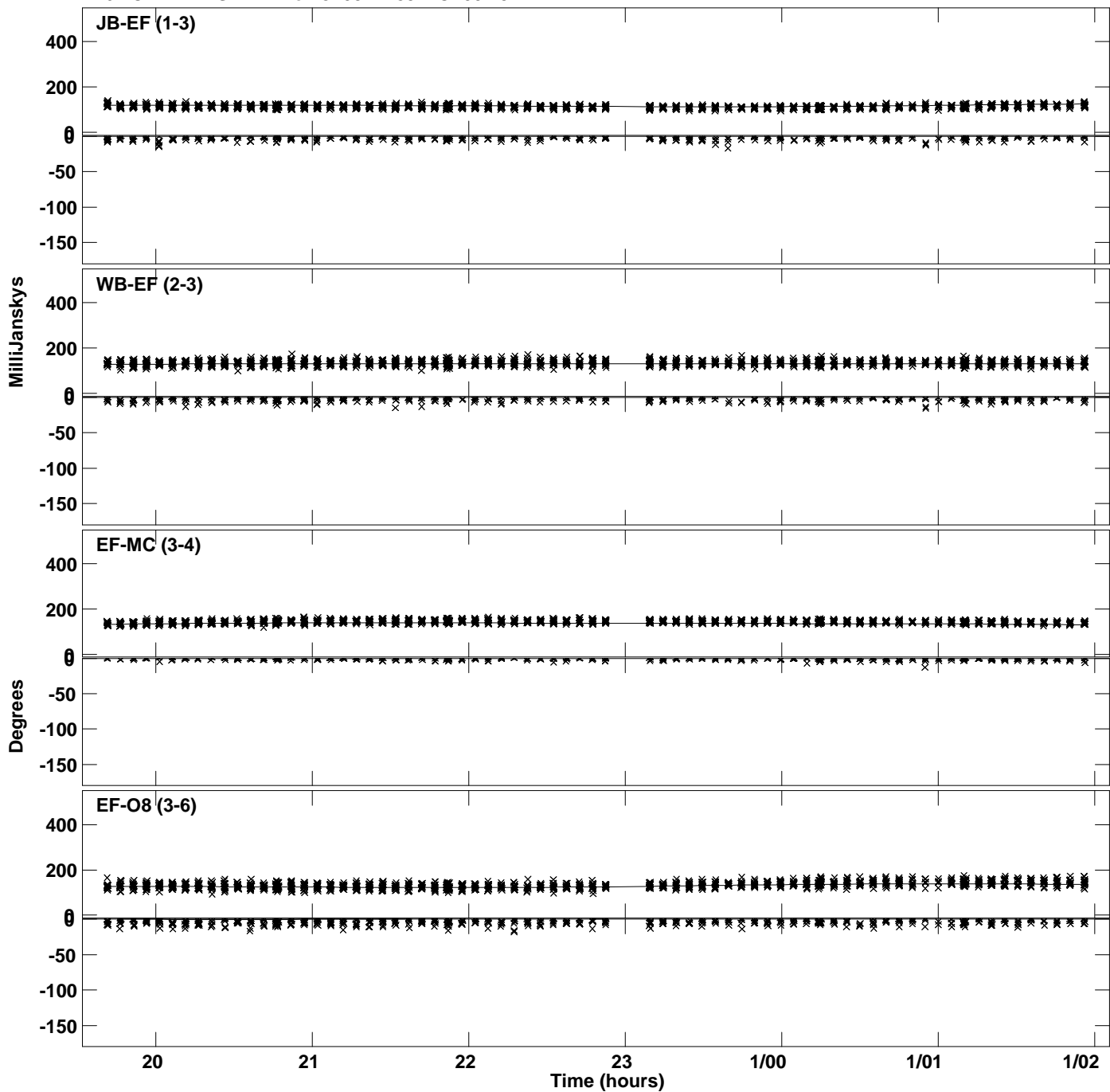
Plot file version 10 created 17-FEB-2023 14:34:03  
Amplitude and Phase vs Time for J1037+2834.MULTI.1 CL # 3  
IF 5 CHAN 1 STK LL of J1037+2834.ICL001.3



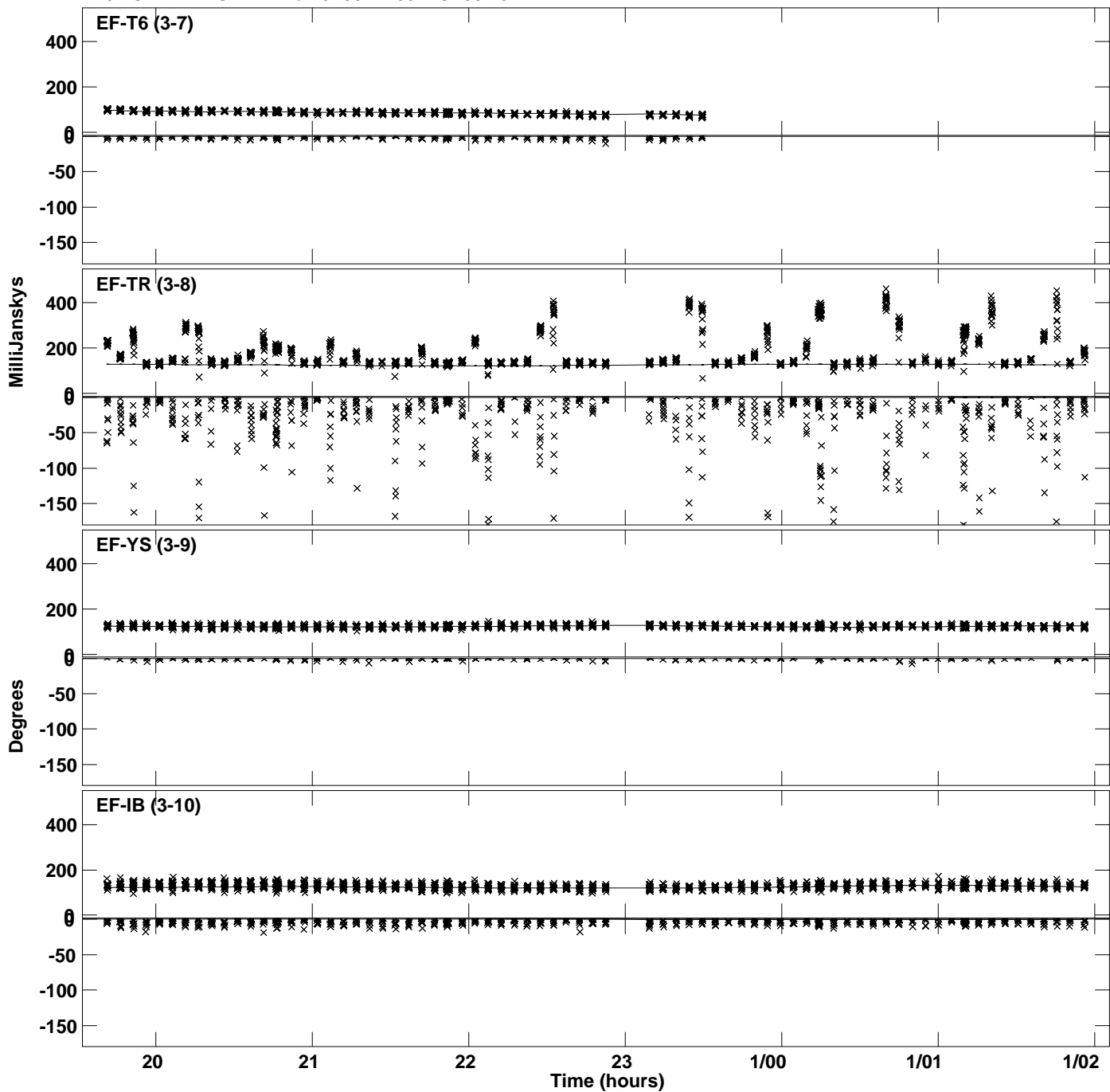
PLot file version 11 created 17-FEB-2023 14:34:03  
Amplitude andPhase vs Time for J1037+2834.MULTI.1 CL # 3  
IF 5 CHAN 1 STK LL of J1037+2834.ICL001.3



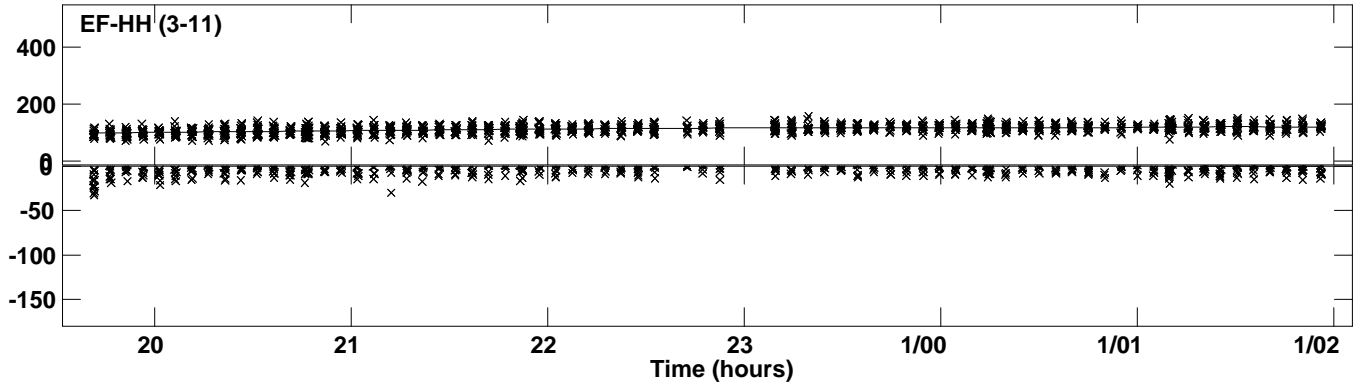
Plot file version 12 created 17-FEB-2023 14:34:03  
Amplitude and Phase vs Time for J1037+2834.MULTI.1 CL # 3  
IF 6 CHAN 1 STK LL of J1037+2834.ICL001.3



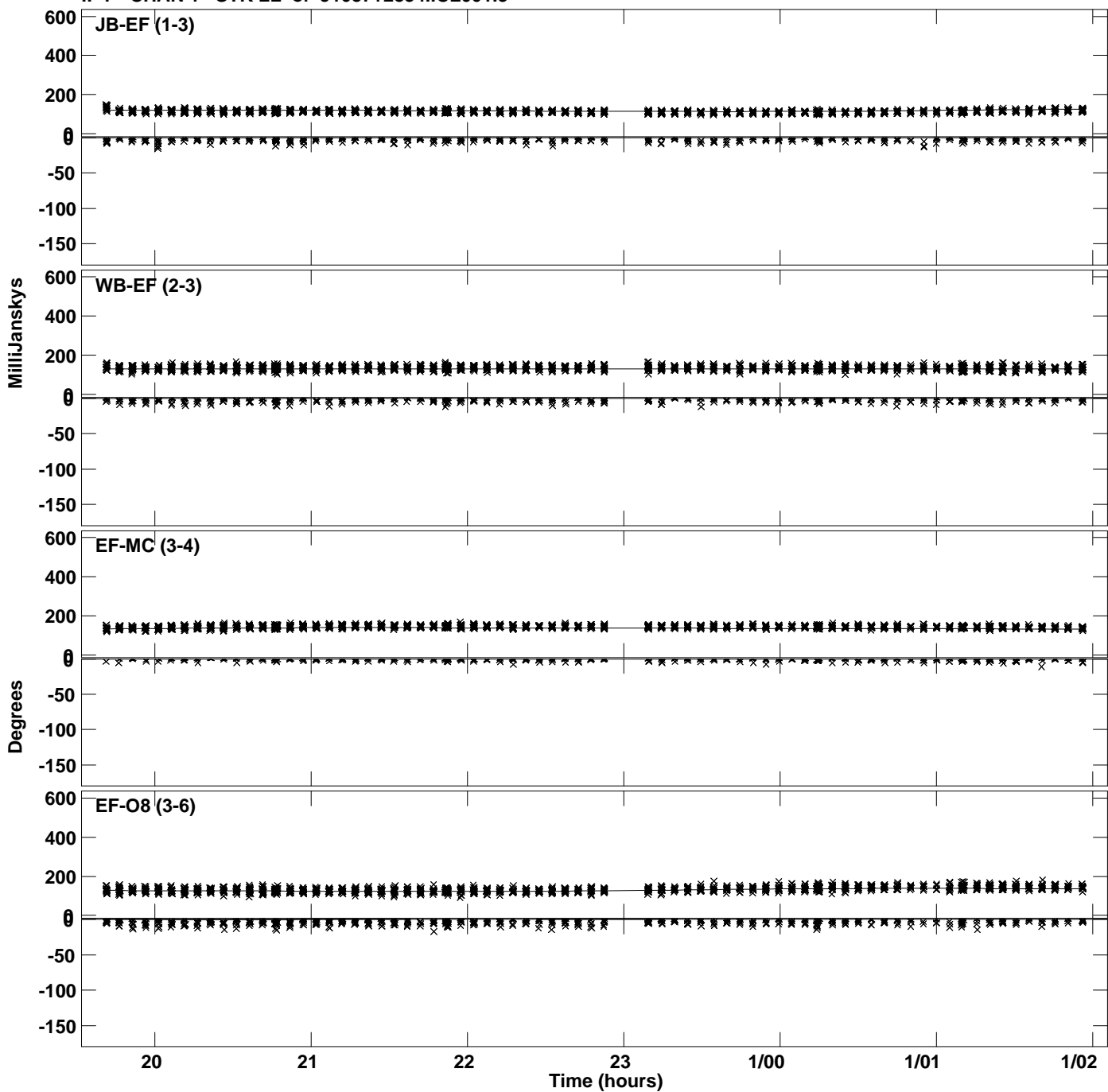
Plot file version 13 created 17-FEB-2023 14:34:03  
Amplitude and Phase vs Time for J1037+2834.MULTI.1 CL # 3  
IF 6 CHAN 1 STK LL of J1037+2834.ICL001.3



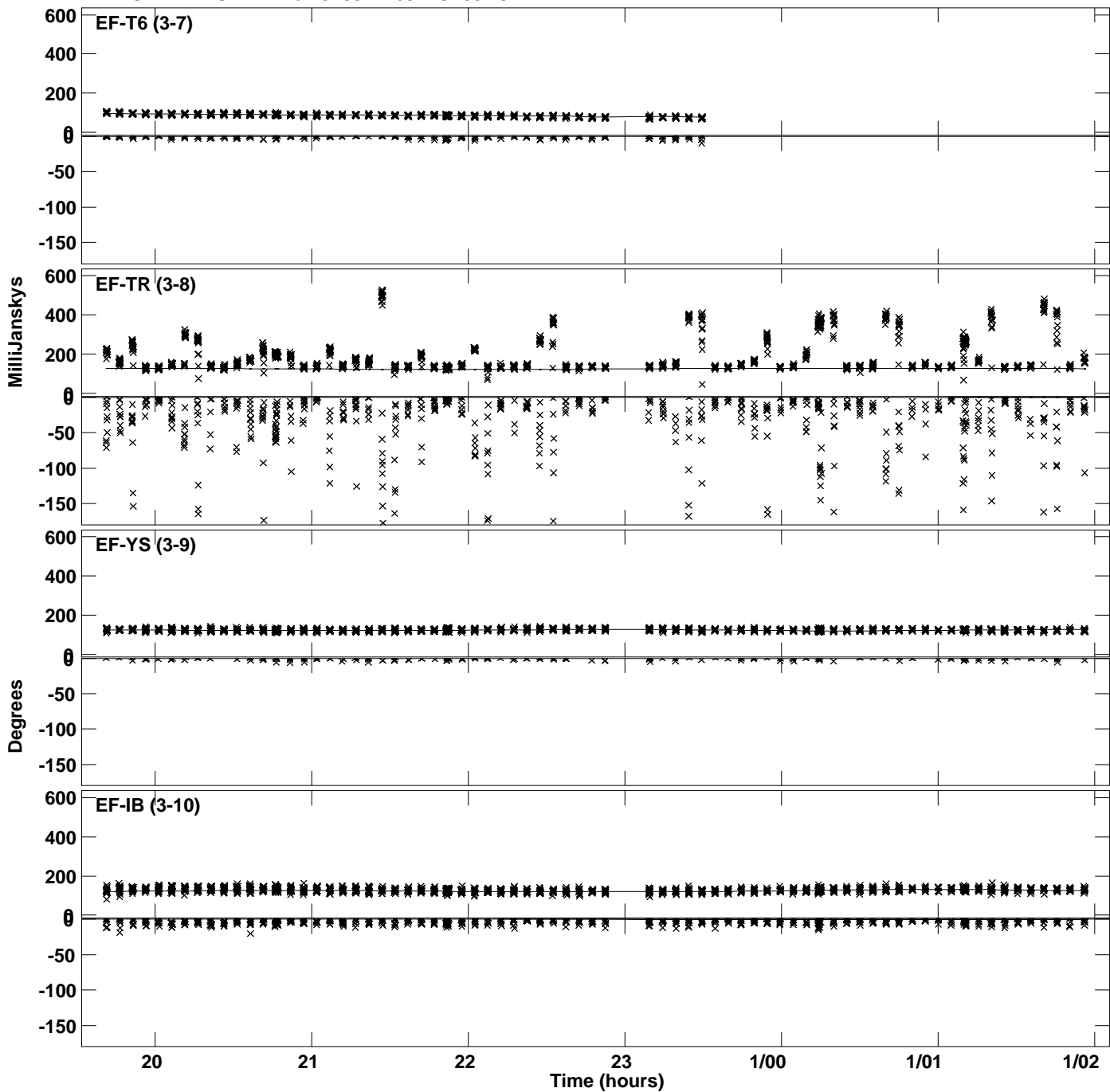
PLot file version 14 created 17-FEB-2023 14:34:03  
Amplitude andPhase vs Time for J1037+2834.MULTI.1 CL # 3  
IF 6 CHAN 1 STK LL of J1037+2834.ICL001.3



Plot file version 15 created 17-FEB-2023 14:34:03  
Amplitude andPhase vs Time for J1037+2834.MULTI.1 CL # 3  
IF 7 CHAN 1 STK LL of J1037+2834.ICL001.3

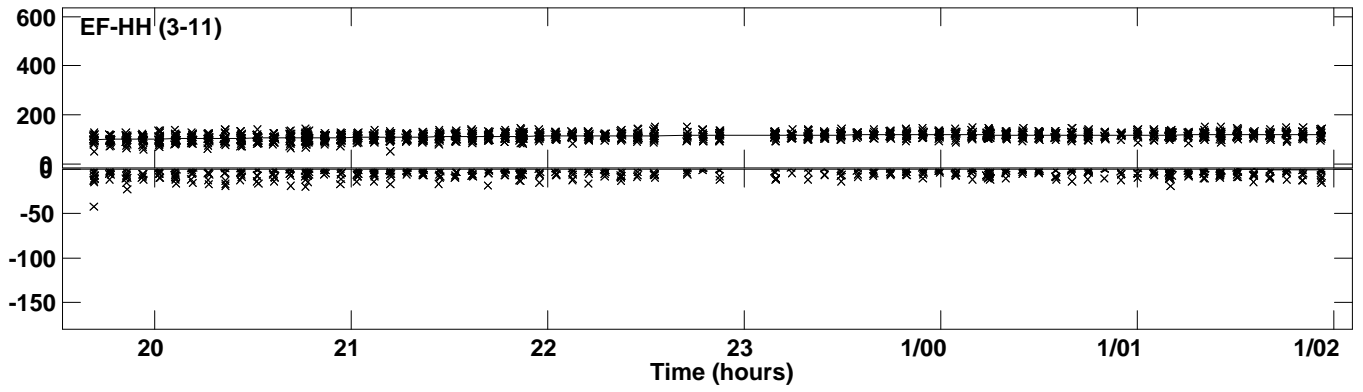


PLot file version 16 created 17-FEB-2023 14:34:03  
Amplitude andPhase vs Time for J1037+2834.MULTI.1 CL # 3  
IF 7 CHAN 1 STK LL of J1037+2834.ICL001.3

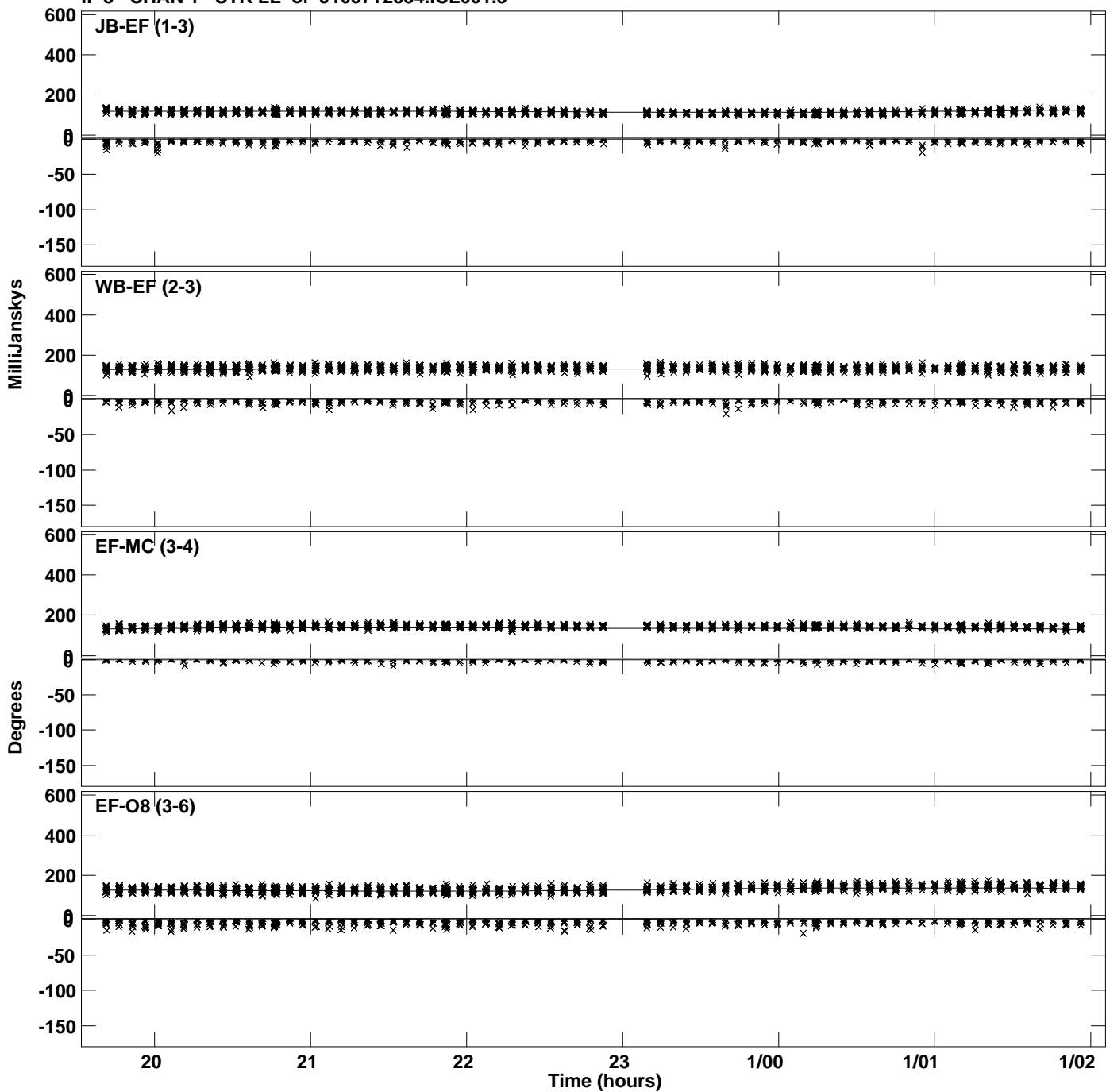




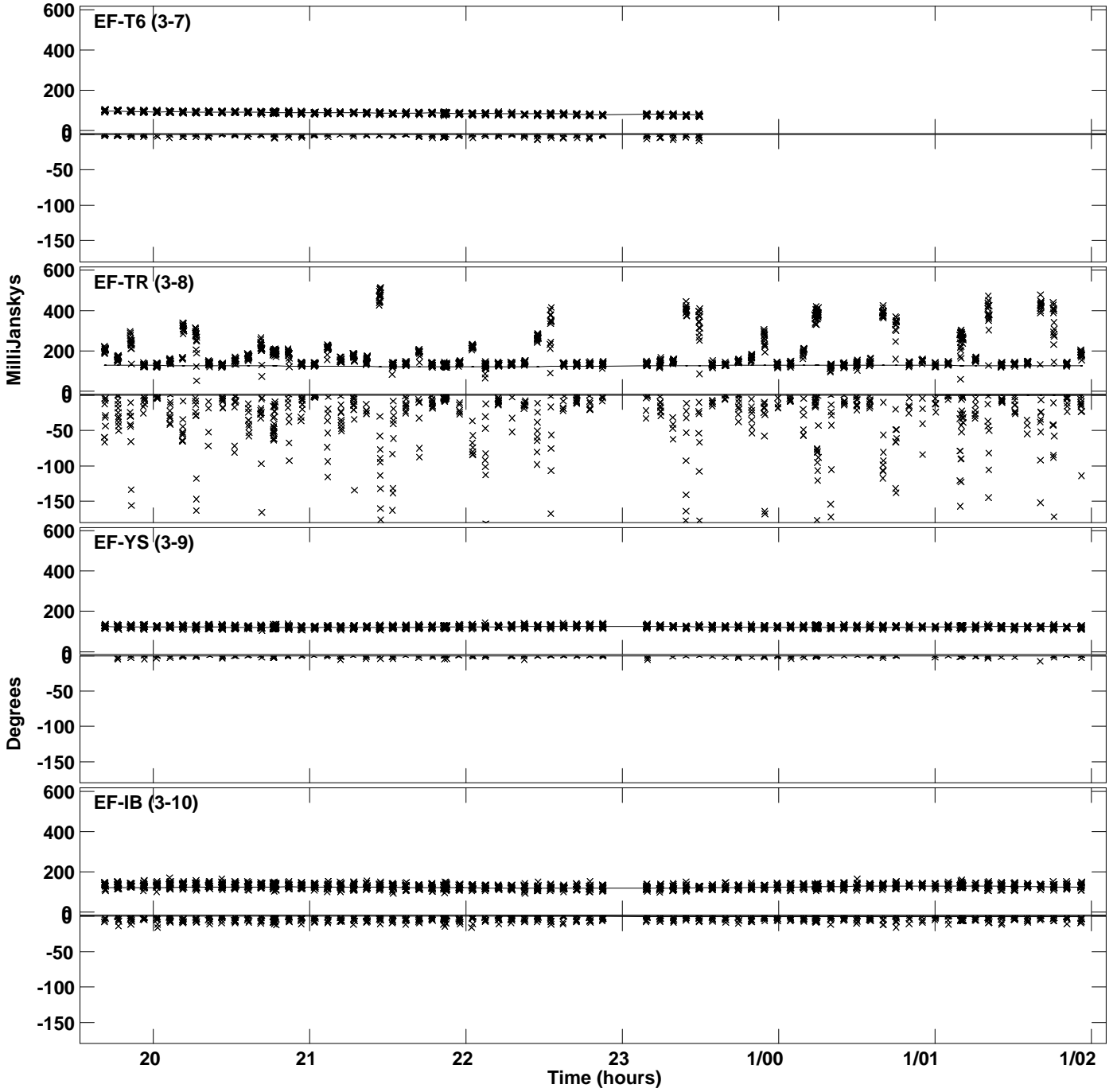
PLot file version 17 created 17-FEB-2023 14:34:03  
Amplitude andPhase vs Time for J1037+2834.MULTI.1 CL # 3  
IF 7 CHAN 1 STK LL of J1037+2834.ICL001.3



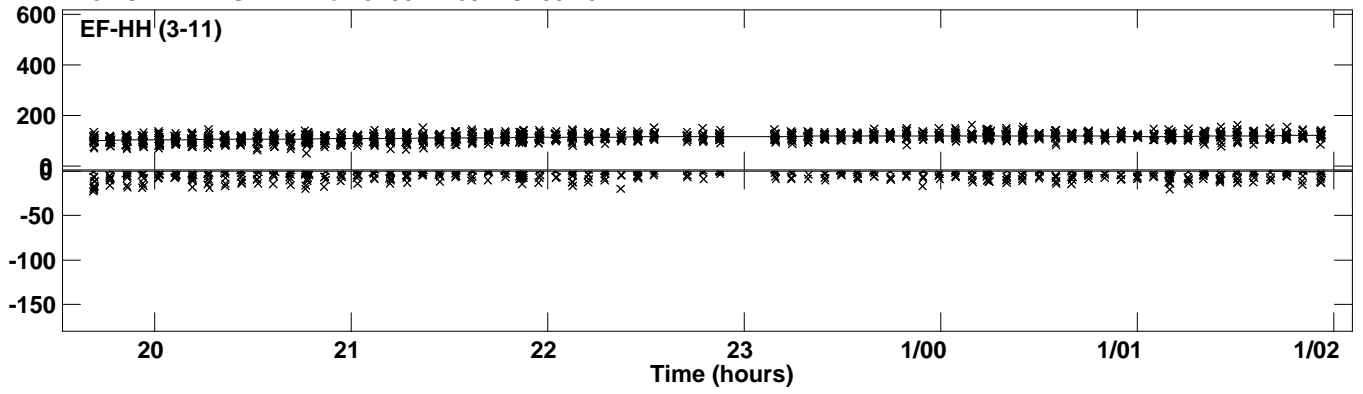
Plot file version 18 created 17-FEB-2023 14:34:04  
Amplitude and Phase vs Time for J1037+2834.MULTI.1 CL # 3  
IF 8 CHAN 1 STK LL of J1037+2834.ICL001.3



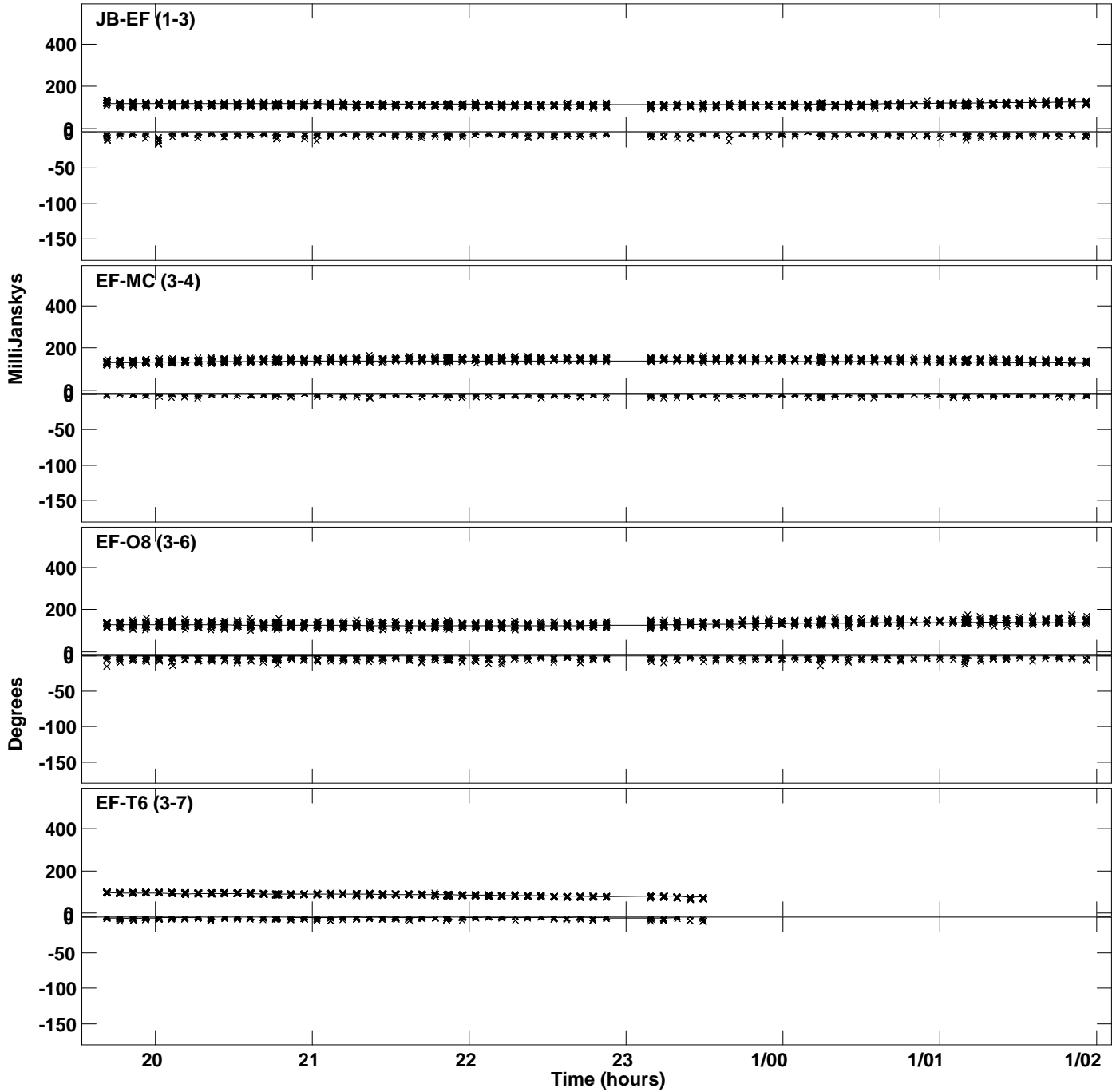
Plot file version 19 created 17-FEB-2023 14:34:04  
Amplitude and Phase vs Time for J1037+2834.MULTI.1 CL # 3  
IF 8 CHAN 1 STK LL of J1037+2834.ICL001.3



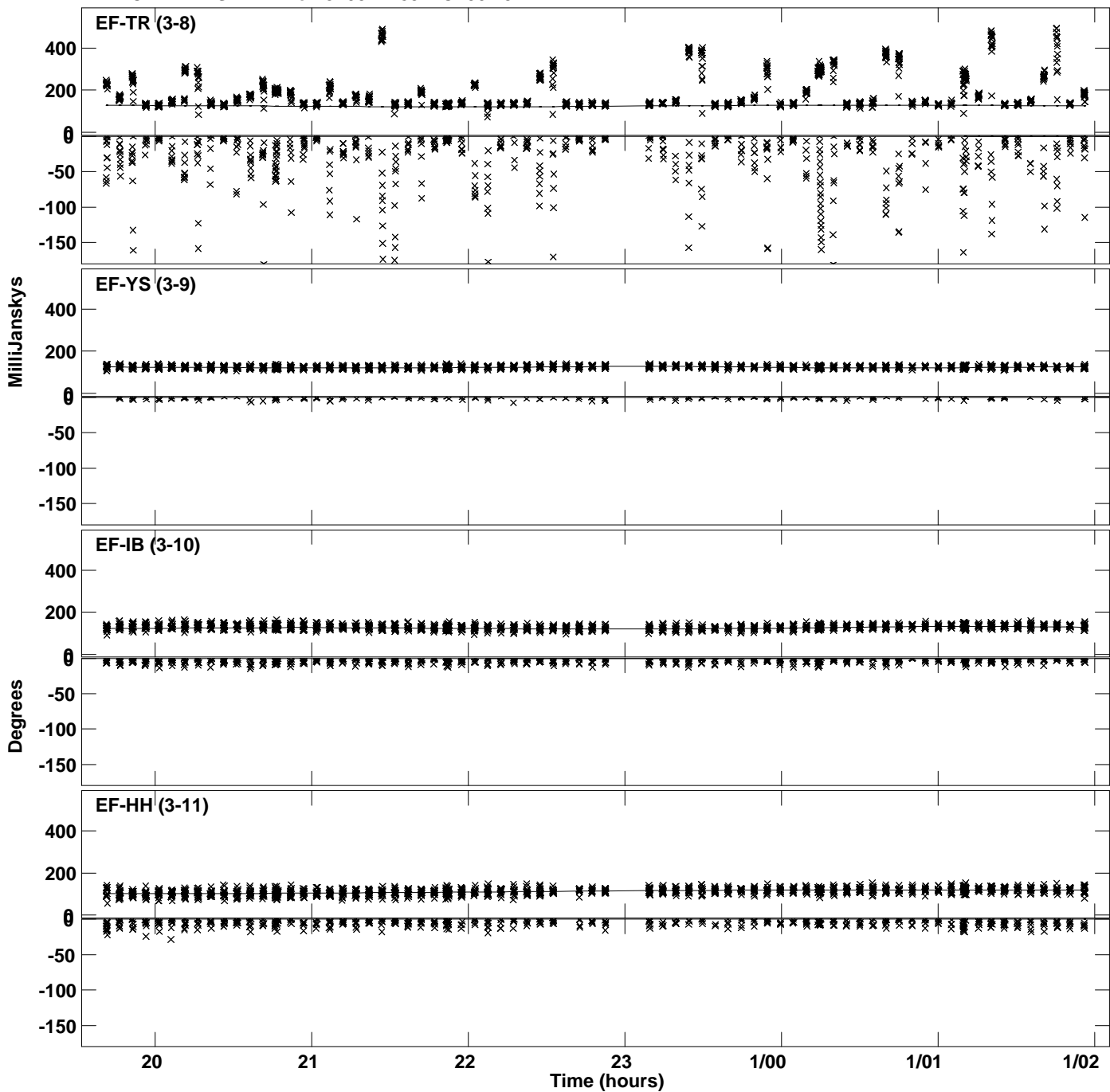
PLot file version 20 created 17-FEB-2023 14:34:04  
Amplitude andPhase vs Time for J1037+2834.MULTI.1 CL # 3  
IF 8 CHAN 1 STK LL of J1037+2834.ICL001.3



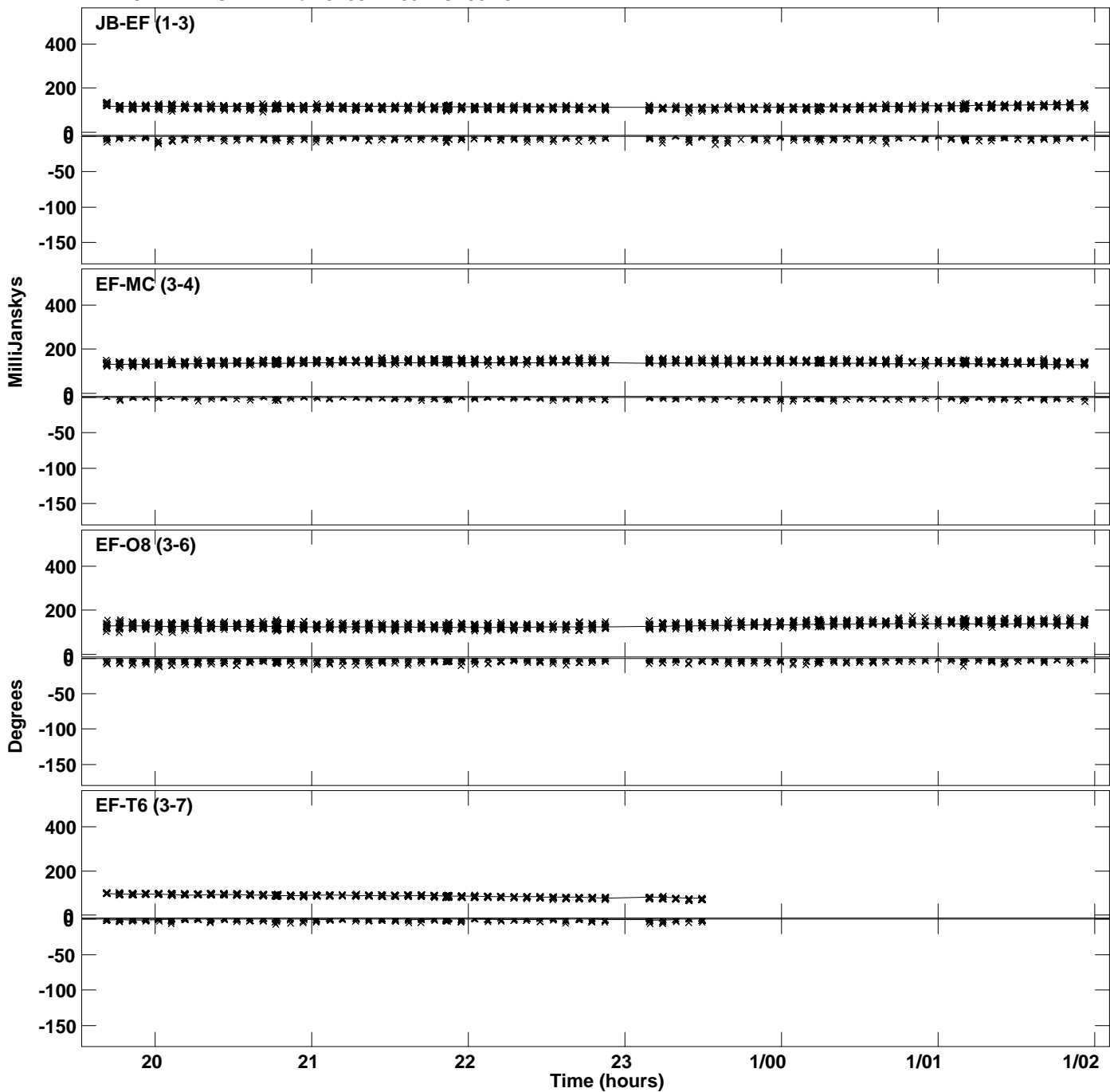
Plot file version 21 created 17-FEB-2023 14:34:04  
Amplitude and Phase vs Time for J1037+2834.MULTI.1 CL # 3  
IF 1 CHAN 1 STK RR of J1037+2834.ICL001.3



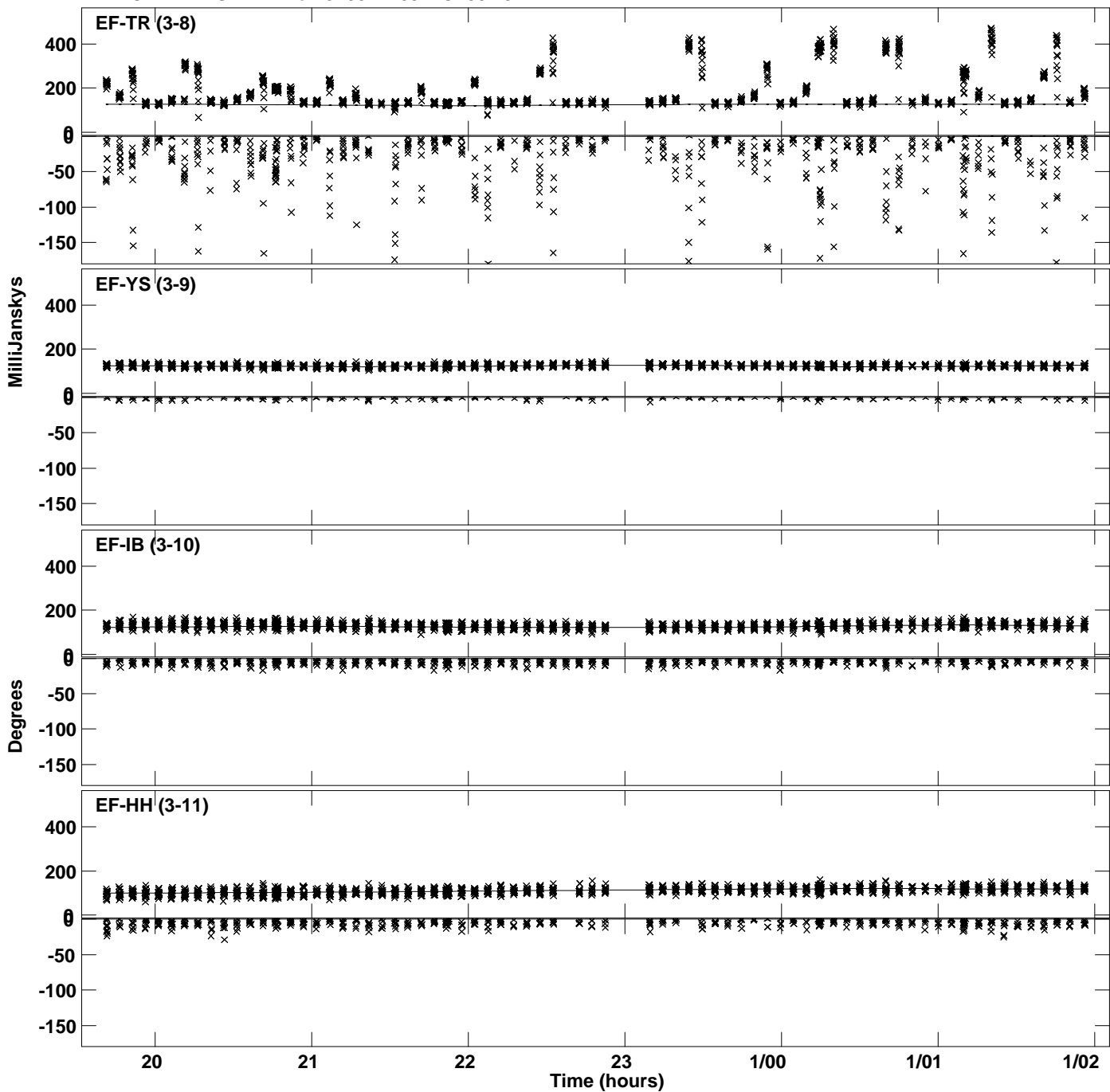
Plot file version 22 created 17-FEB-2023 14:34:04  
Amplitude and Phase vs Time for J1037+2834.MULTI.1 CL # 3  
IF 1 CHAN 1 STK RR of J1037+2834.ICL001.3



PLot file version 23 created 17-FEB-2023 14:34:04  
Amplitude andPhase vs Time for J1037+2834.MULTI.1 CL # 3  
IF 2 CHAN 1 STK RR of J1037+2834.ICL001.3

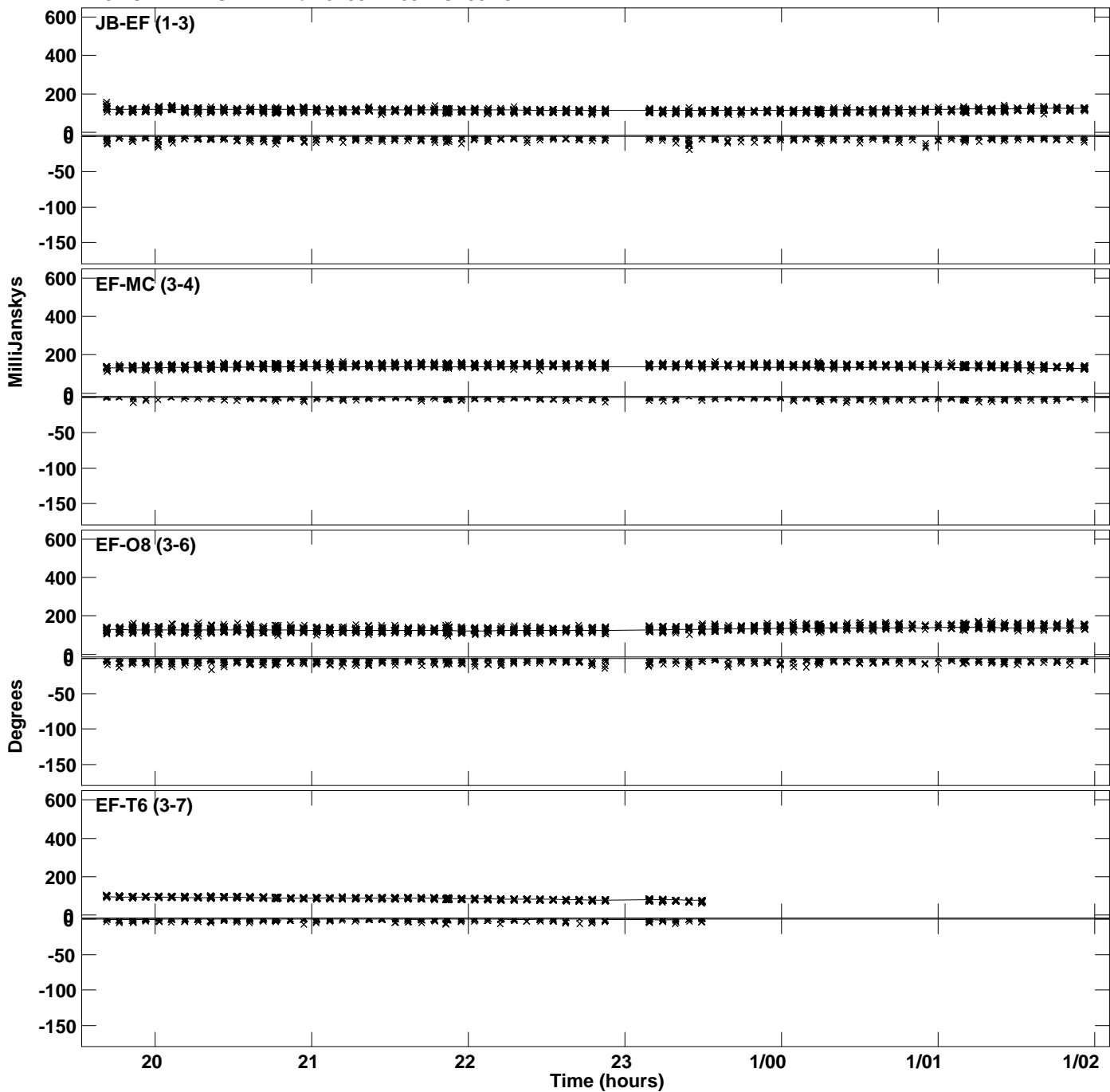


Plot file version 24 created 17-FEB-2023 14:34:04  
Amplitude andPhase vs Time for J1037+2834.MULTI.1 CL # 3  
IF 2 CHAN 1 STK RR of J1037+2834.ICL001.3

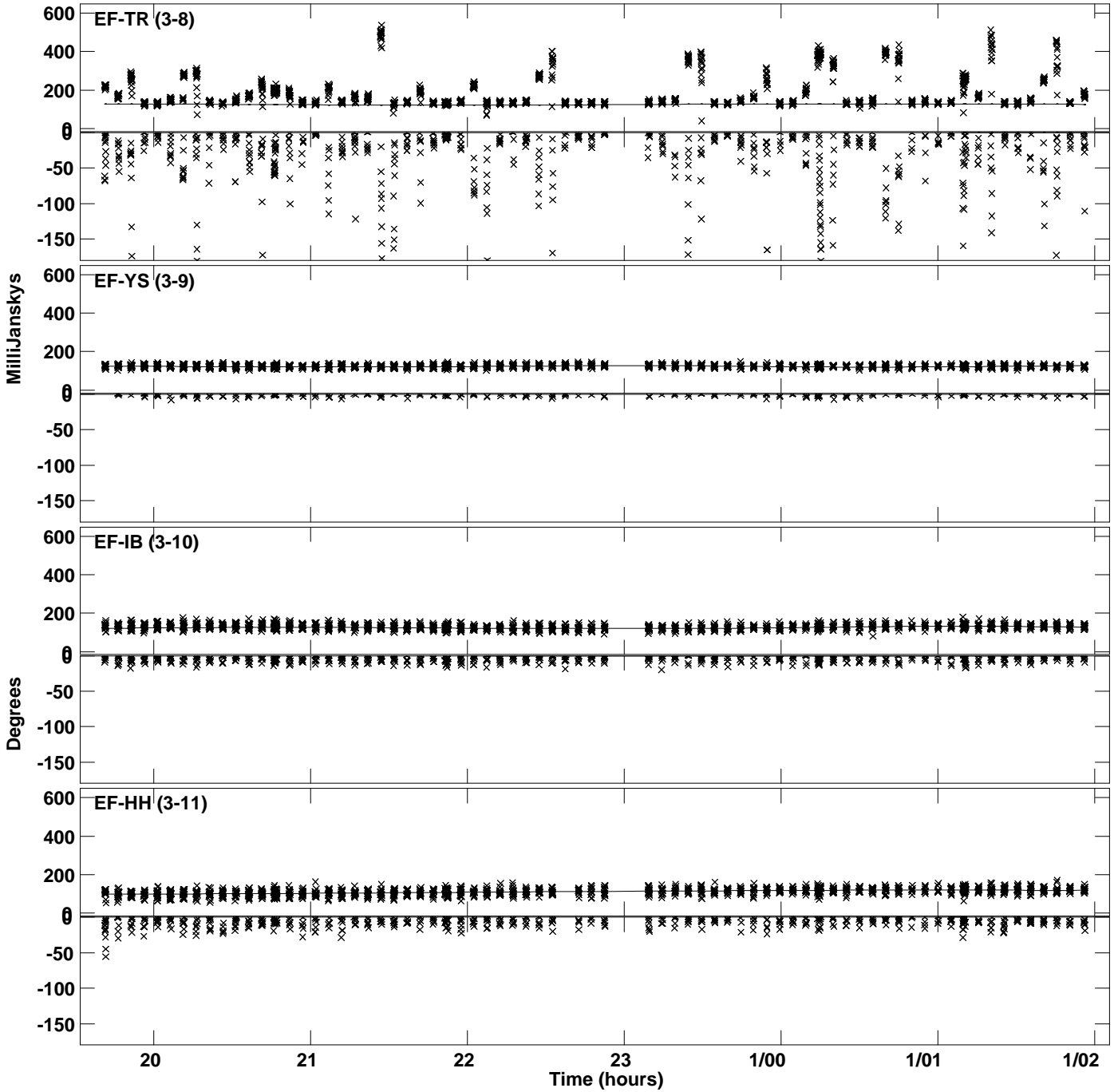




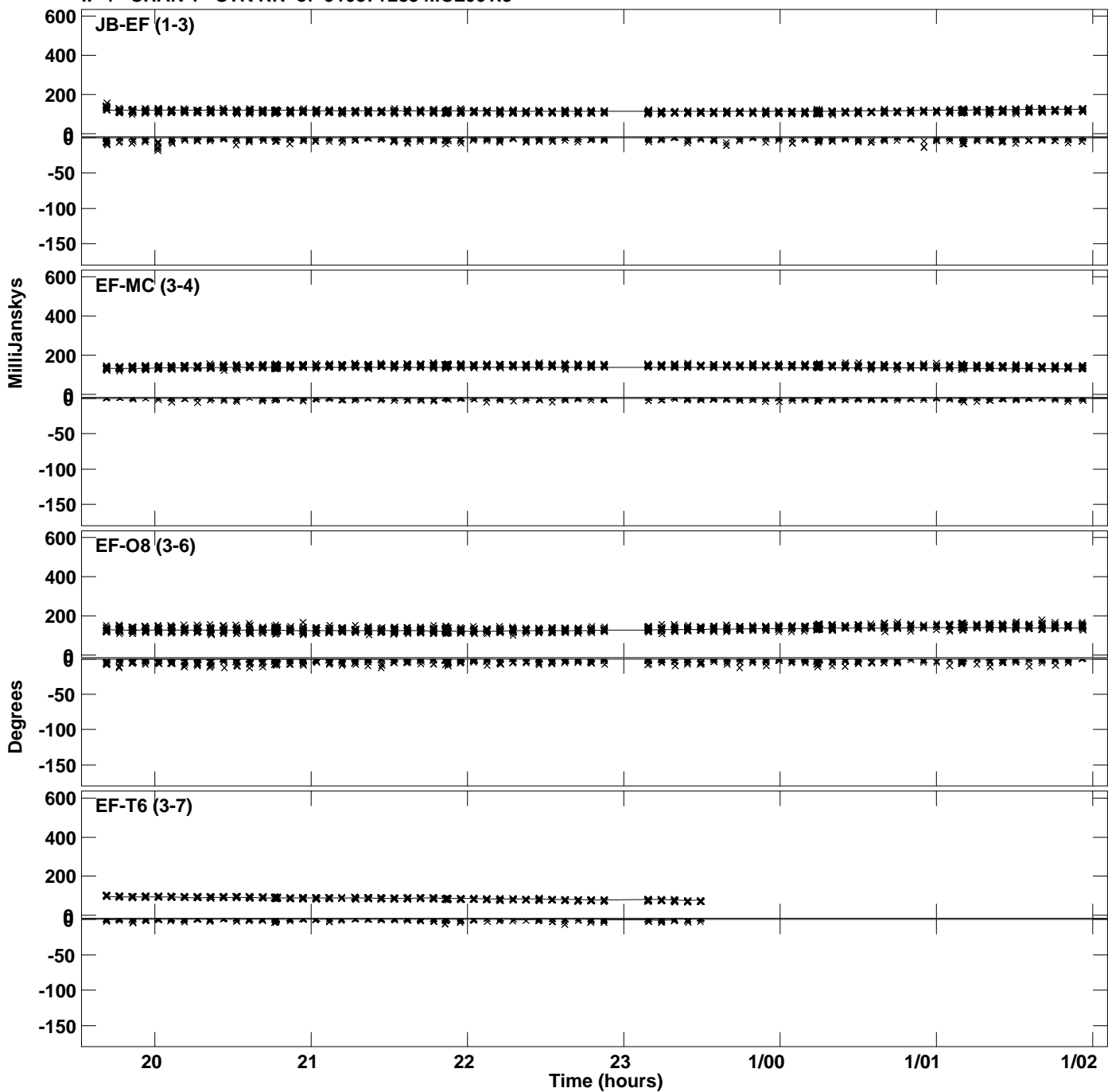
PLot file version 25 created 17-FEB-2023 14:34:04  
Amplitude andPhase vs Time for J1037+2834.MULTI.1 CL # 3  
IF 3 CHAN 1 STK RR of J1037+2834.ICL001.3



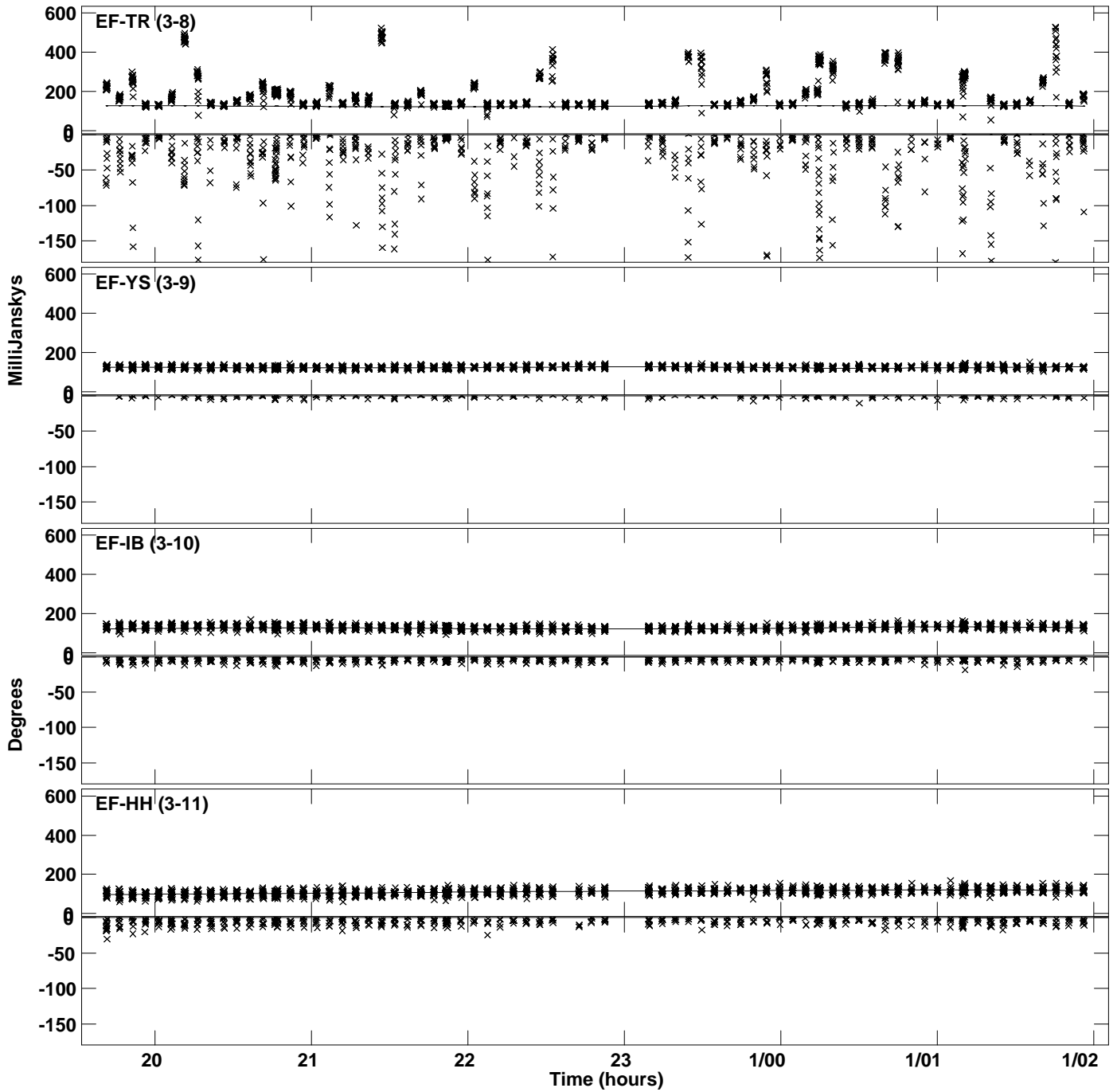
Plot file version 26 created 17-FEB-2023 14:34:04  
Amplitude and Phase vs Time for J1037+2834.MULTI.1 CL # 3  
IF 3 CHAN 1 STK RR of J1037+2834.ICL001.3



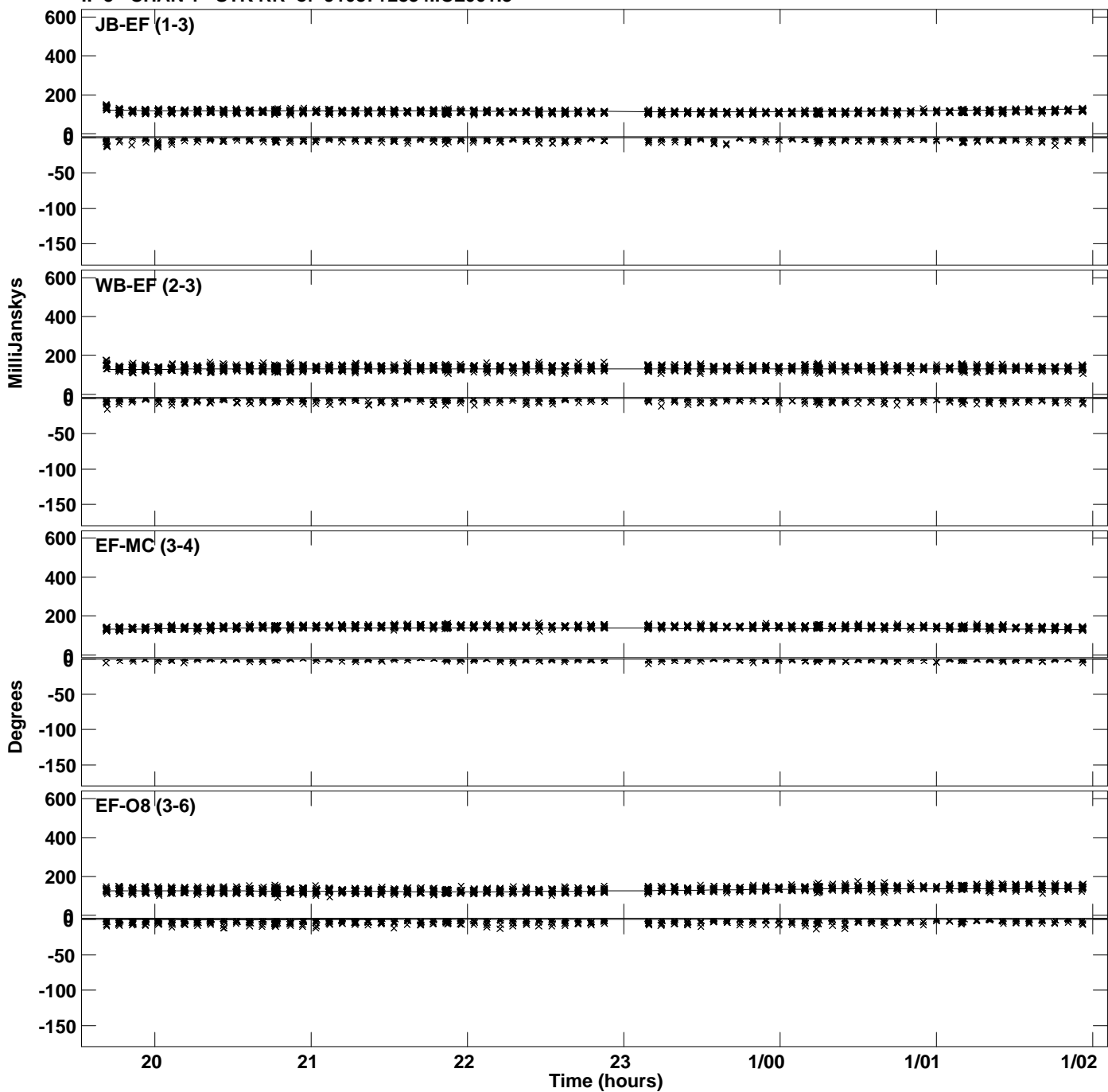
PLot file version 27 created 17-FEB-2023 14:34:05  
Amplitude andPhase vs Time for J1037+2834.MULTI.1 CL # 3  
IF 4 CHAN 1 STK RR of J1037+2834.ICL001.3



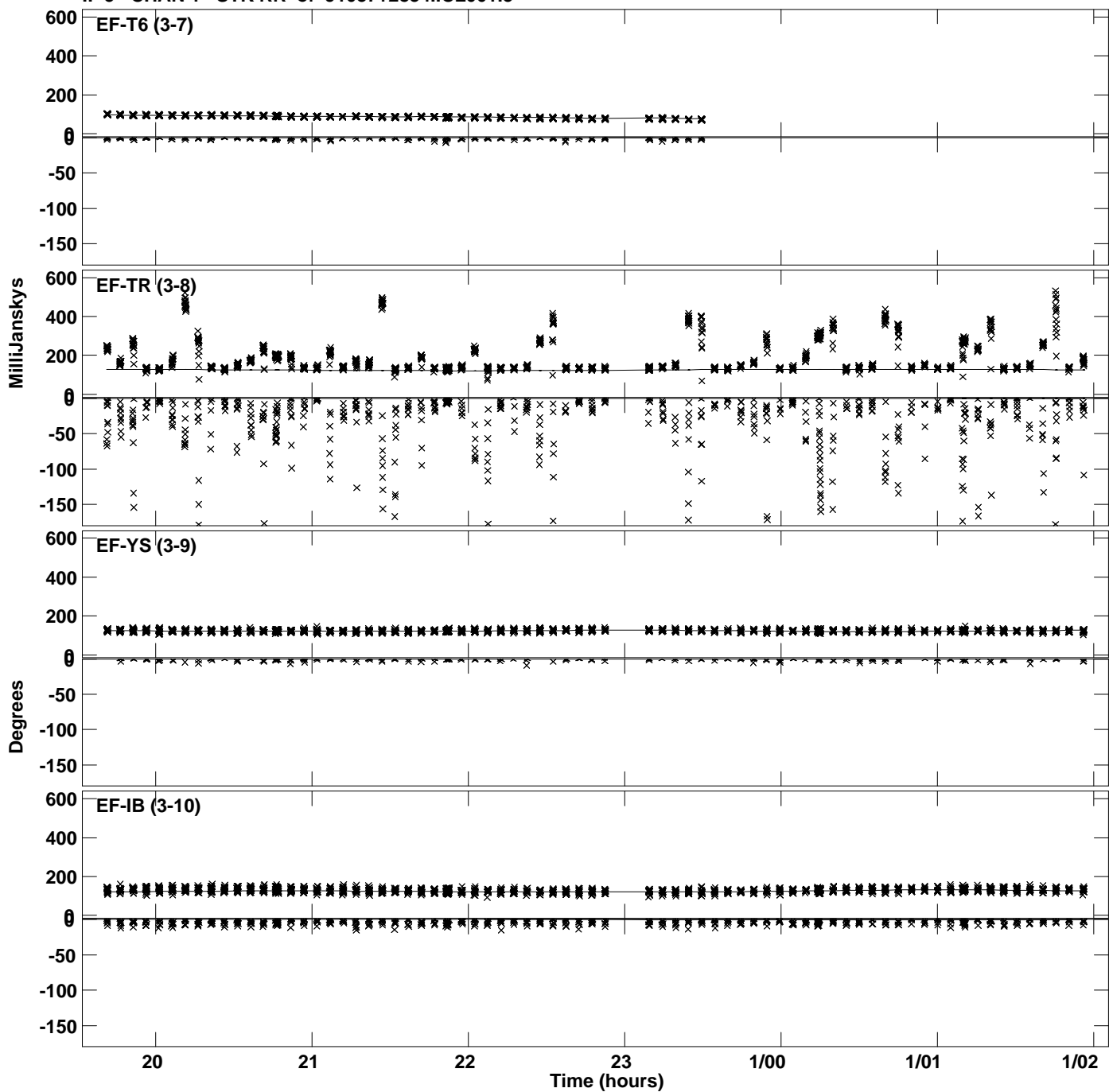
Plot file version 28 created 17-FEB-2023 14:34:05  
Amplitude and Phase vs Time for J1037+2834.MULTI.1 CL # 3  
IF 4 CHAN 1 STK RR of J1037+2834.ICL001.3



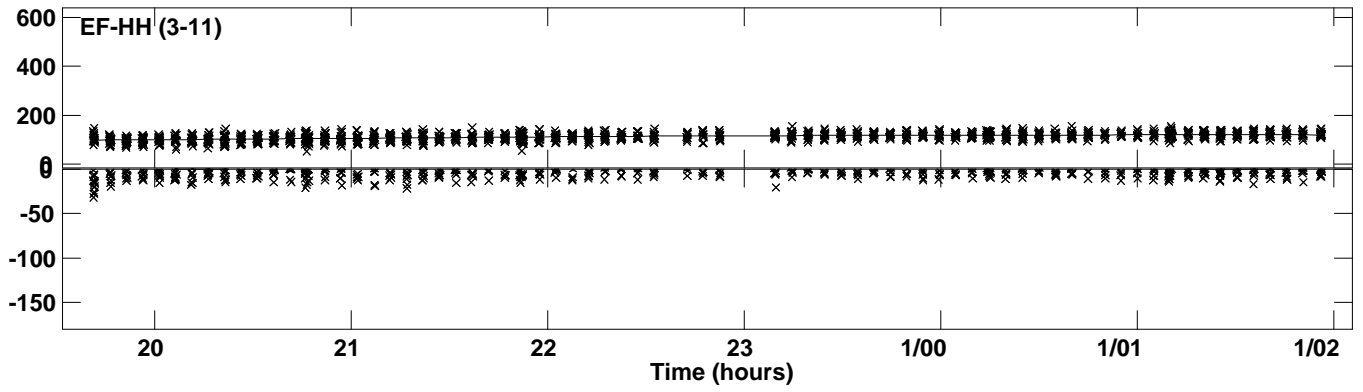
Plot file version 29 created 17-FEB-2023 14:34:05  
Amplitude and Phase vs Time for J1037+2834.MULTI.1 CL # 3  
IF 5 CHAN 1 STK RR of J1037+2834.ICL001.3



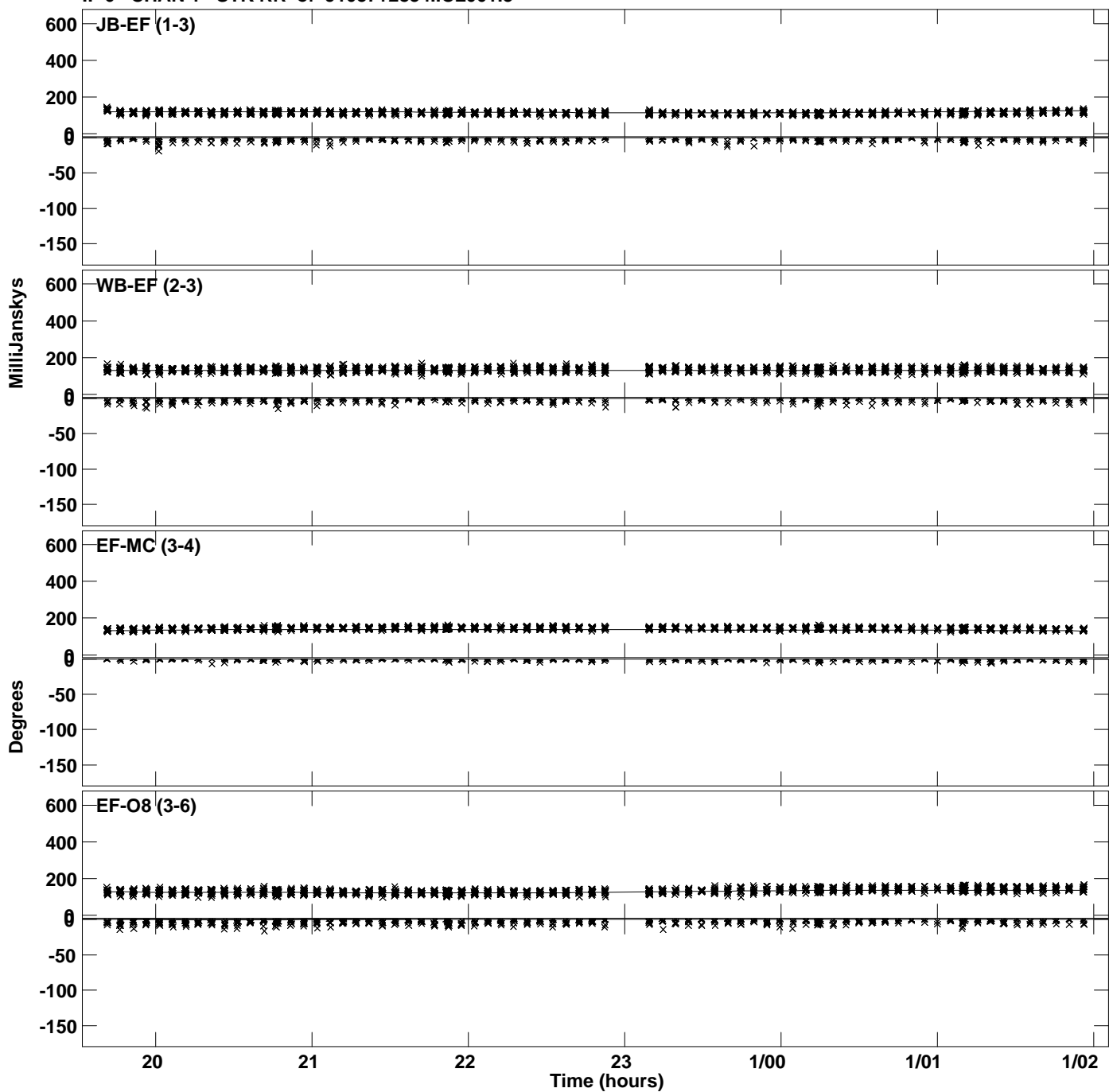
Plot file version 30 created 17-FEB-2023 14:34:05  
Amplitude and Phase vs Time for J1037+2834.MULTI.1 CL # 3  
IF 5 CHAN 1 STK RR of J1037+2834.ICL001.3



PLot file version 31 created 17-FEB-2023 14:34:05  
Amplitude andPhase vs Time for J1037+2834.MULTI.1 CL # 3  
IF 5 CHAN 1 STK RR of J1037+2834.ICL001.3

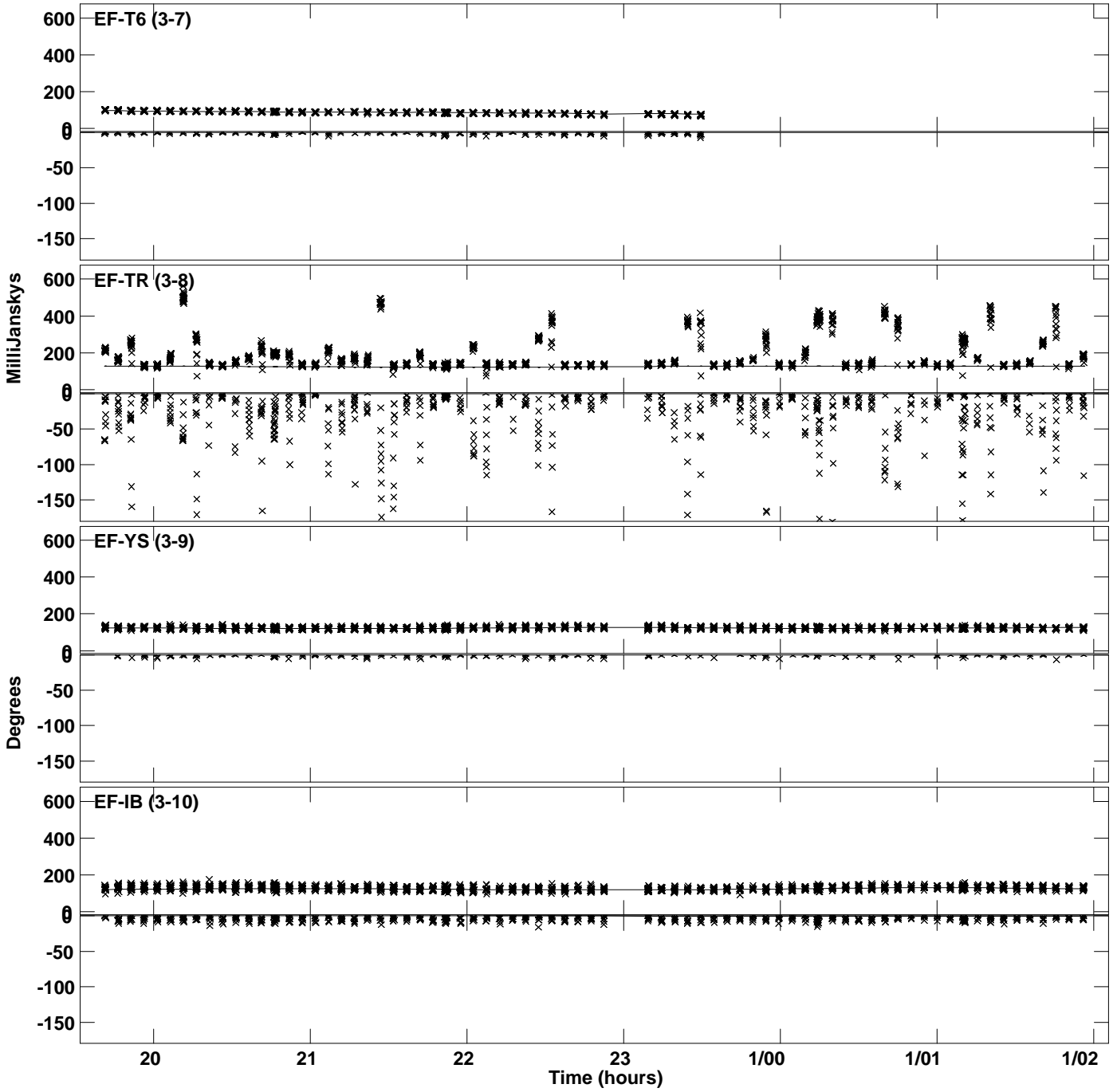


Plot file version 32 created 17-FEB-2023 14:34:05  
Amplitude and Phase vs Time for J1037+2834.MULTI.1 CL # 3  
IF 6 CHAN 1 STK RR of J1037+2834.ICL001.3

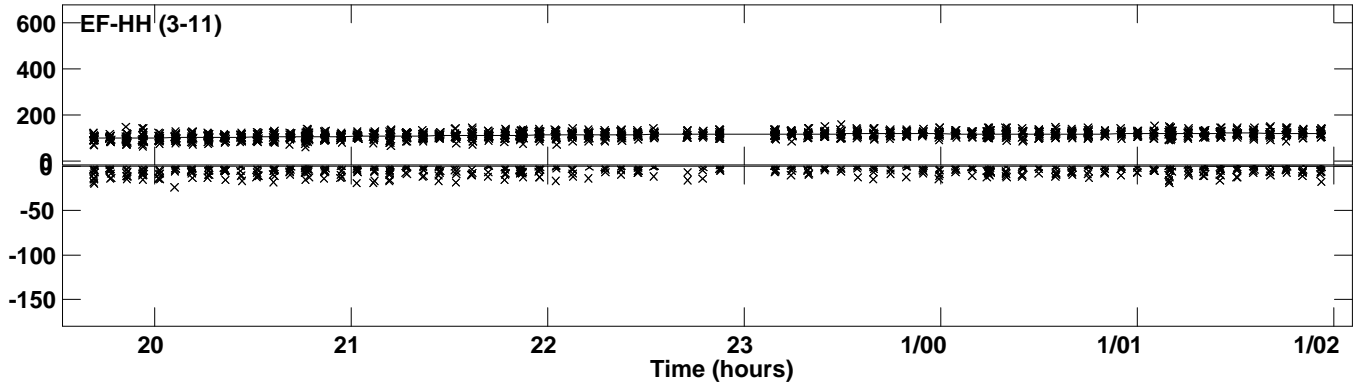




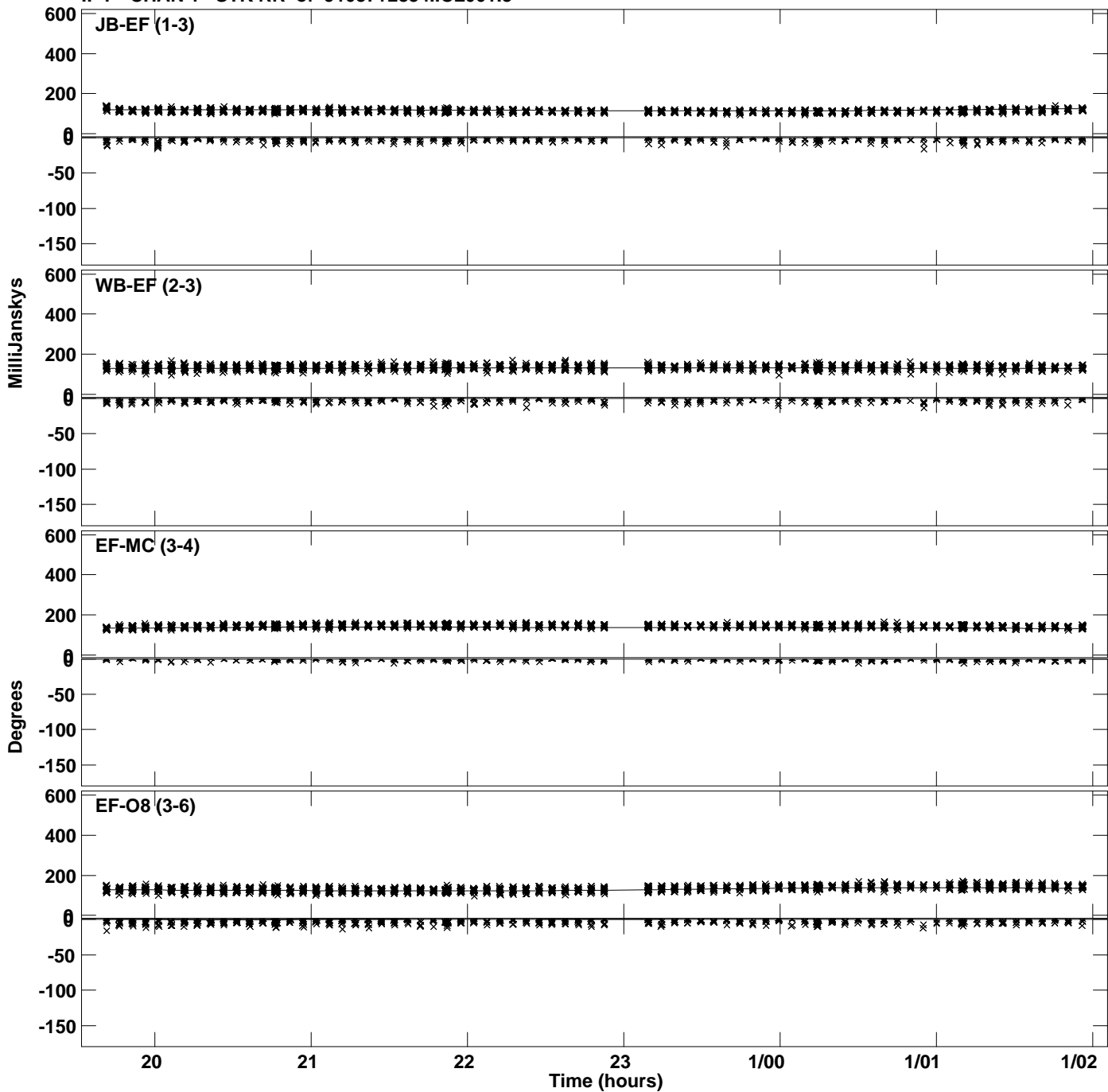
Plot file version 33 created 17-FEB-2023 14:34:05  
Amplitude and Phase vs Time for J1037+2834.MULTI.1 CL # 3  
IF 6 CHAN 1 STK RR of J1037+2834.ICL001.3



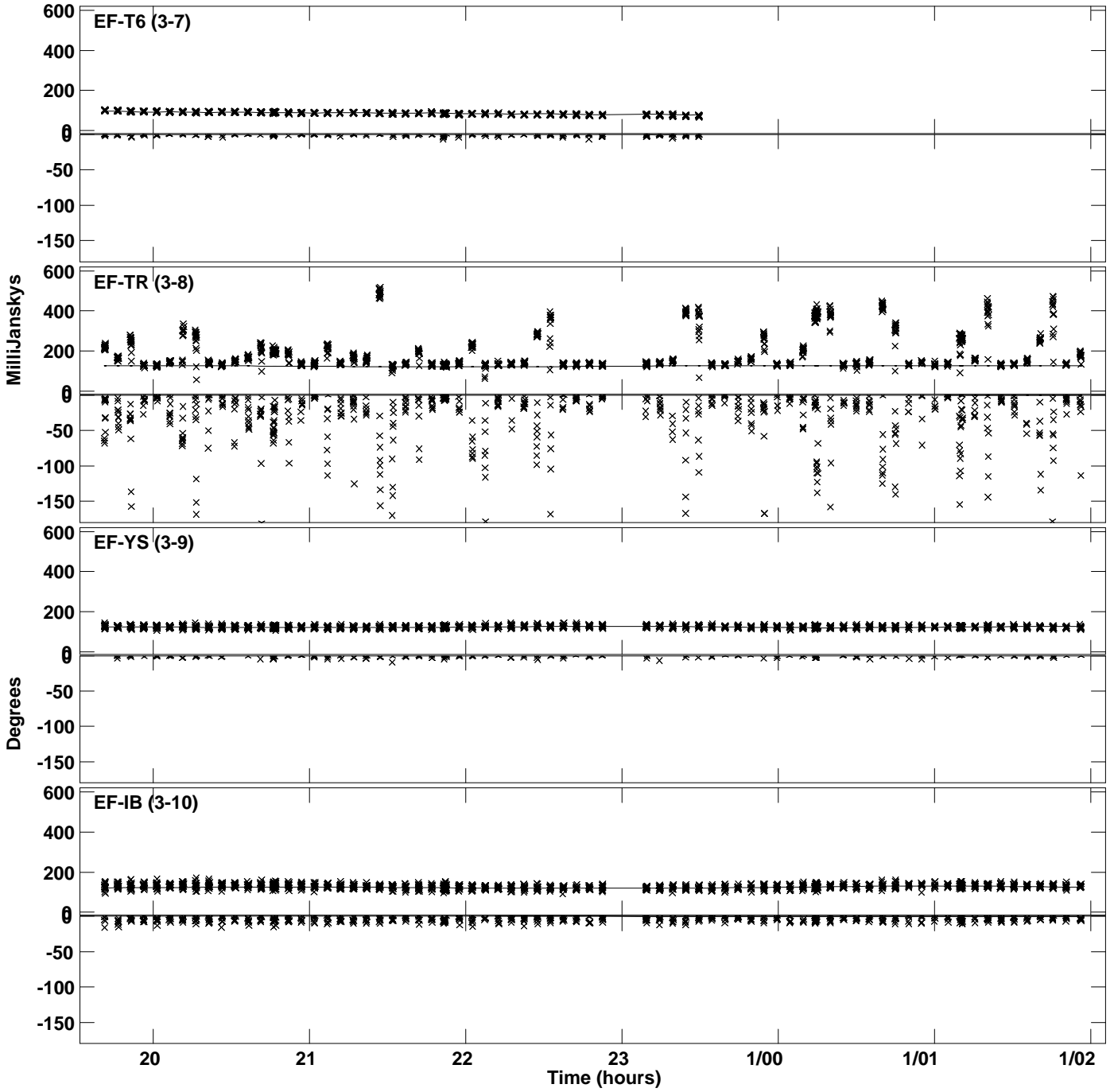
PLot file version 34 created 17-FEB-2023 14:34:05  
Amplitude andPhase vs Time for J1037+2834.MULTI.1 CL # 3  
IF 6 CHAN 1 STK RR of J1037+2834.ICL001.3



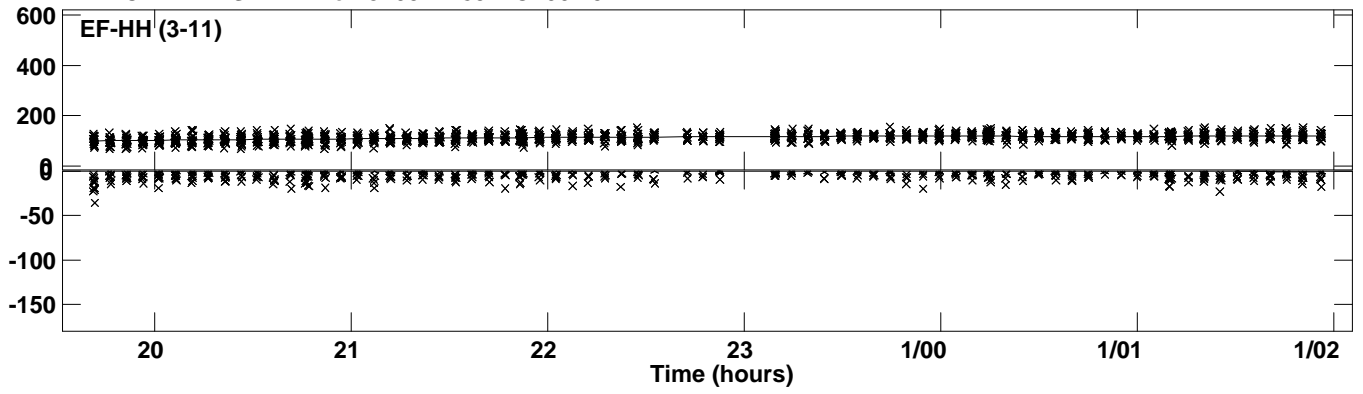
PLot file version 35 created 17-FEB-2023 14:34:06  
Amplitude andPhase vs Time for J1037+2834.MULTI.1 CL # 3  
IF 7 CHAN 1 STK RR of J1037+2834.ICL001.3



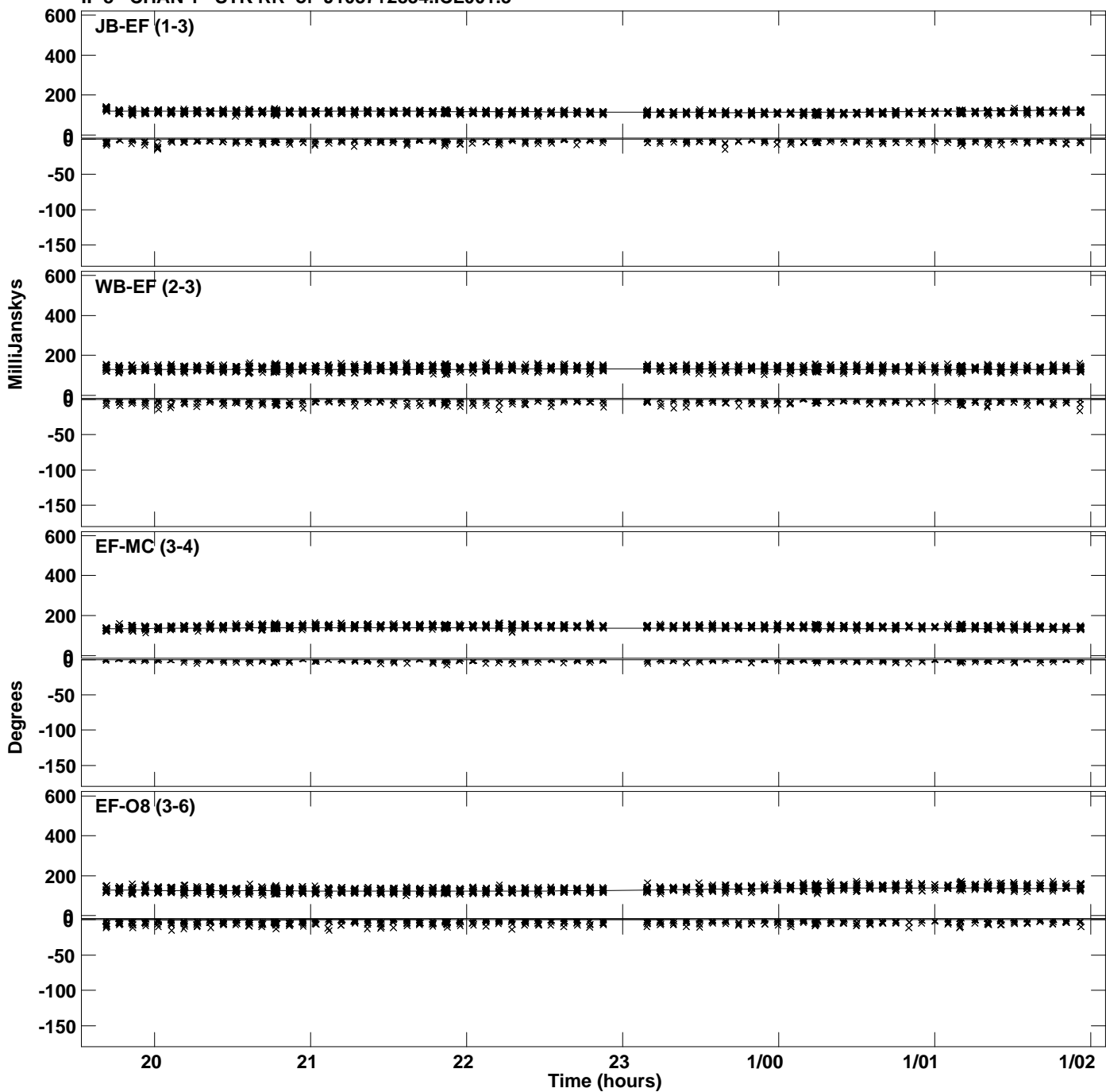
PLot file version 36 created 17-FEB-2023 14:34:06  
Amplitude andPhase vs Time for J1037+2834.MULTI.1 CL # 3  
IF 7 CHAN 1 STK RR of J1037+2834.ICL001.3



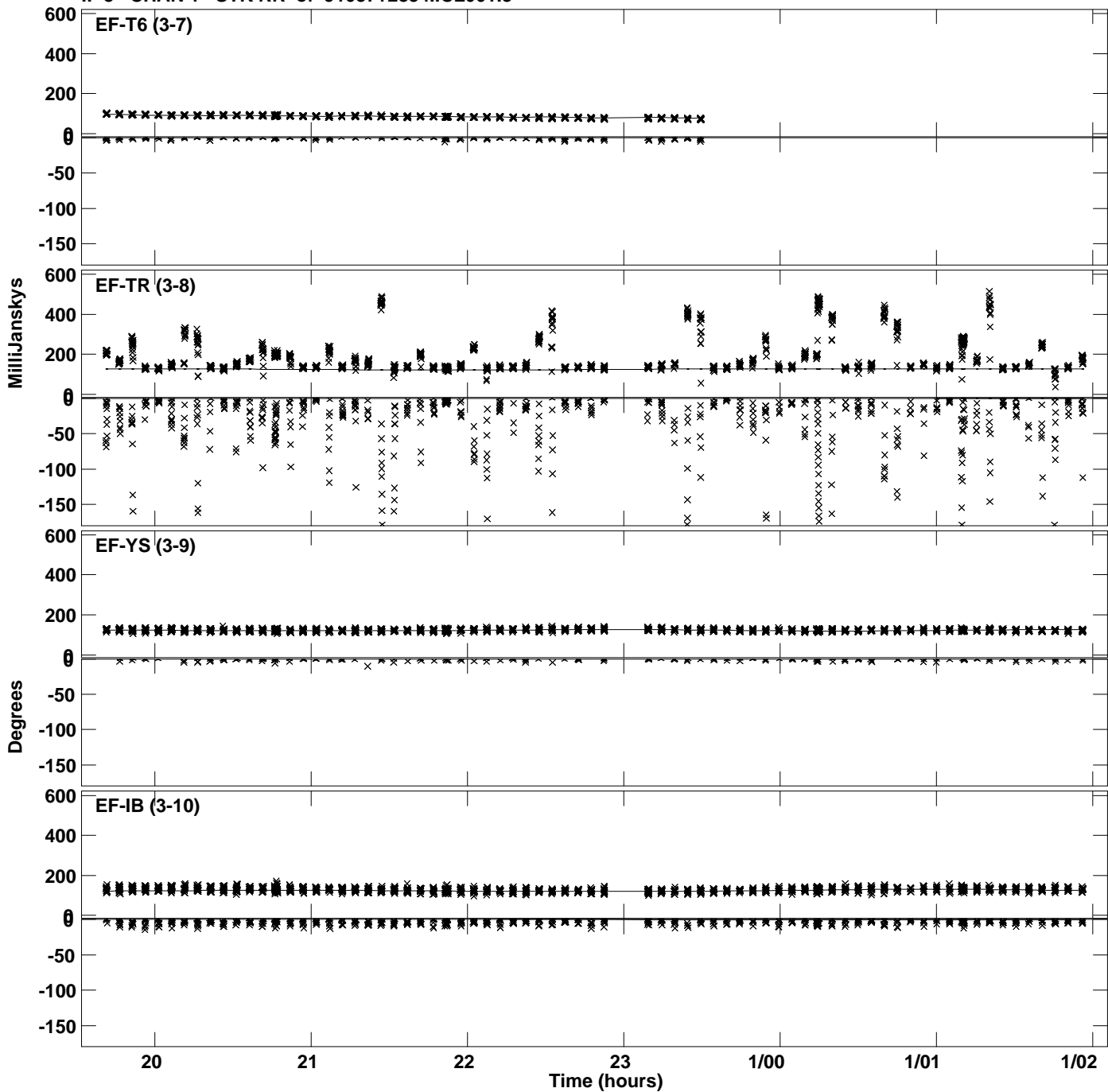
PLot file version 37 created 17-FEB-2023 14:34:06  
Amplitude andPhase vs Time for J1037+2834.MULTI.1 CL # 3  
IF 7 CHAN 1 STK RR of J1037+2834.ICL001.3



PLot file version 38 created 17-FEB-2023 14:34:06  
Amplitude andPhase vs Time for J1037+2834.MULTI.1 CL # 3  
IF 8 CHAN 1 STK RR of J1037+2834.ICL001.3



Plot file version 39 created 17-FEB-2023 14:34:06  
Amplitude and Phase vs Time for J1037+2834.MULTI.1 CL # 3  
IF 8 CHAN 1 STK RR of J1037+2834.ICL001.3



PLot file version 40 created 17-FEB-2023 14:34:06  
Amplitude andPhase vs Time for J1037+2834.MULTI.1 CL # 3  
IF 8 CHAN 1 STK RR of J1037+2834.ICL001.3

