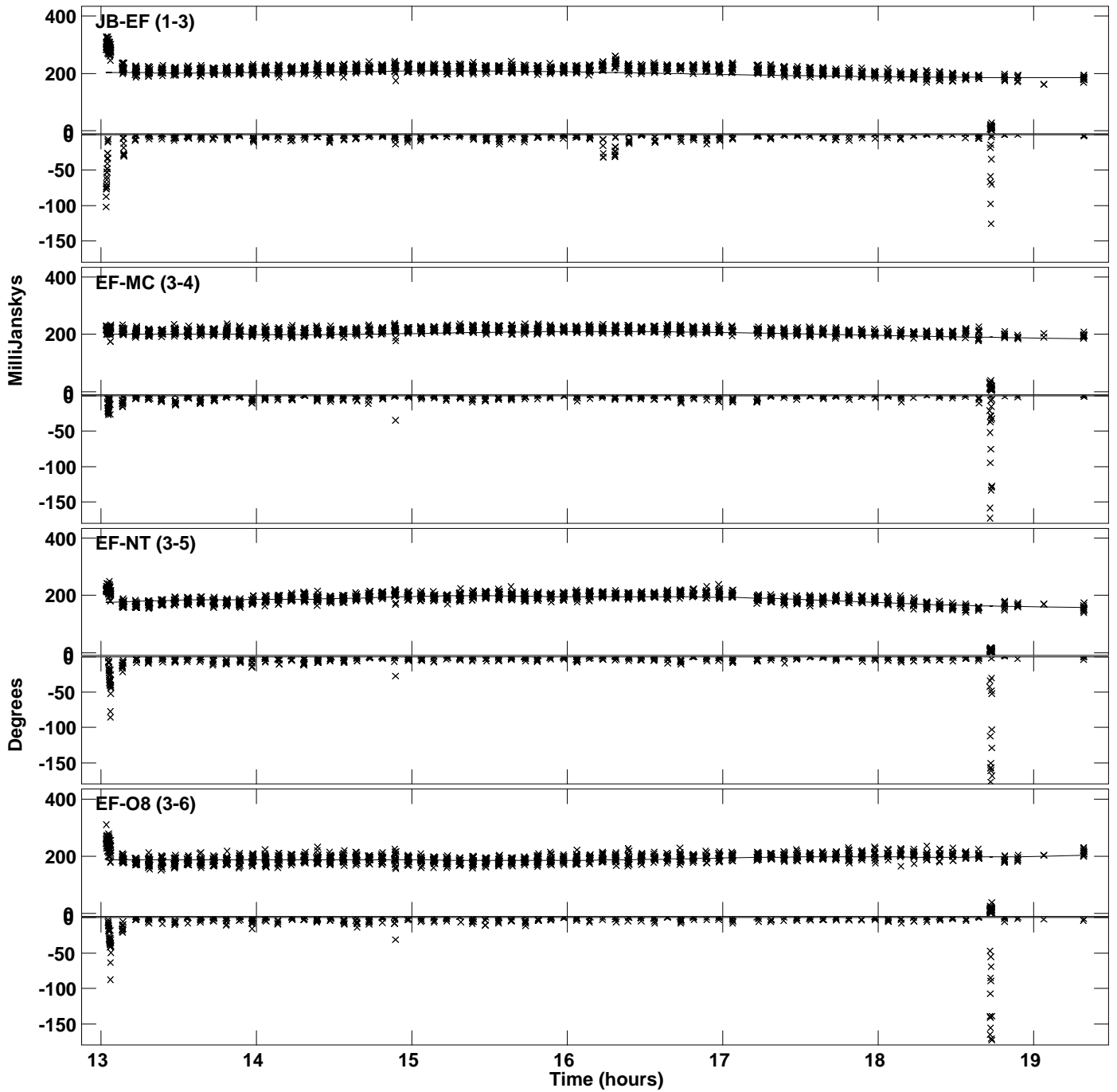
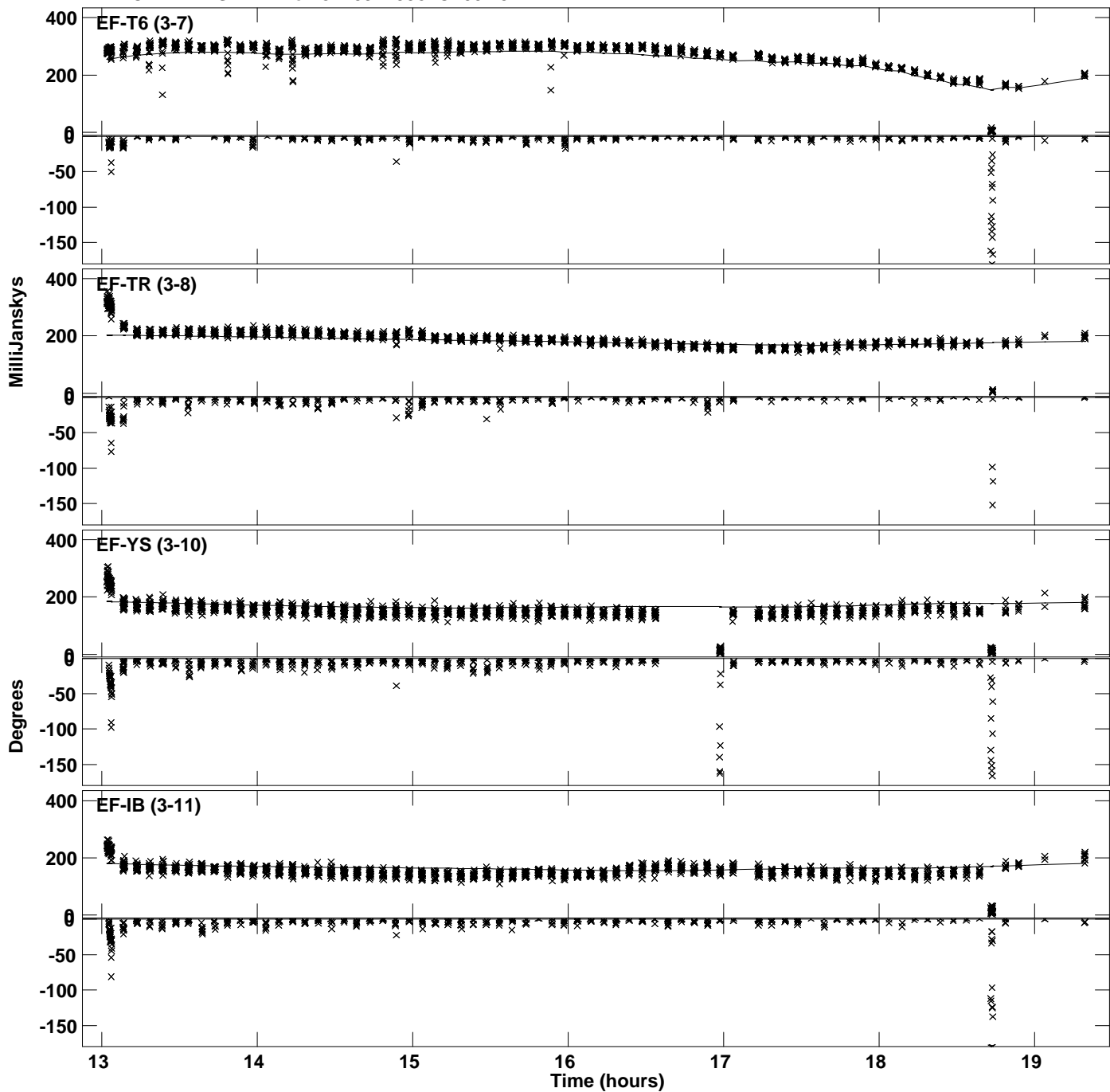


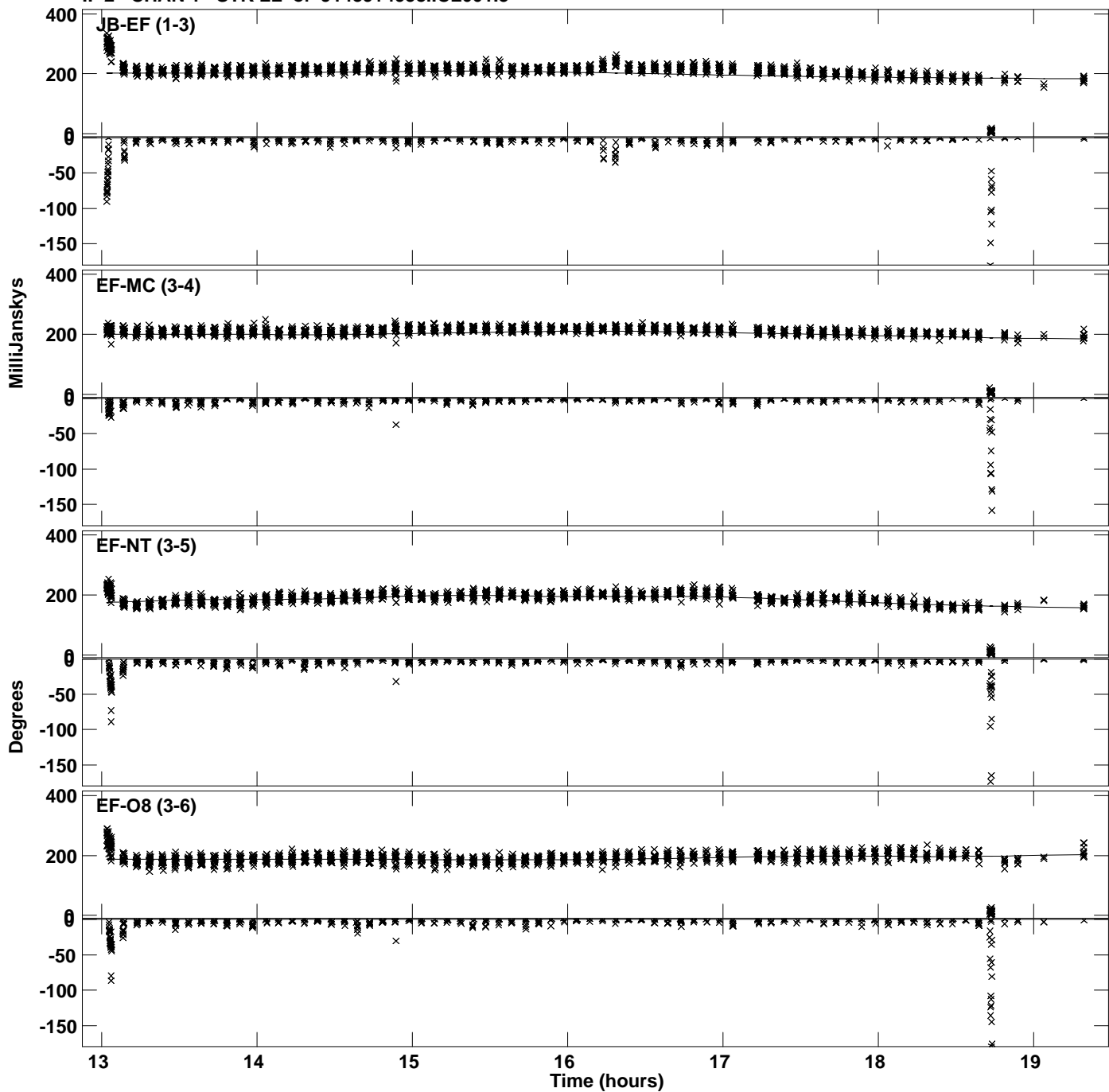
Plot file version 1 created 29-JUN-2023 15:57:17
Amplitude and Phase vs Time for J1439+4958.MULTI.1 CL # 3
IF 1 CHAN 1 STK LL of J1439+4958.ICL001.3



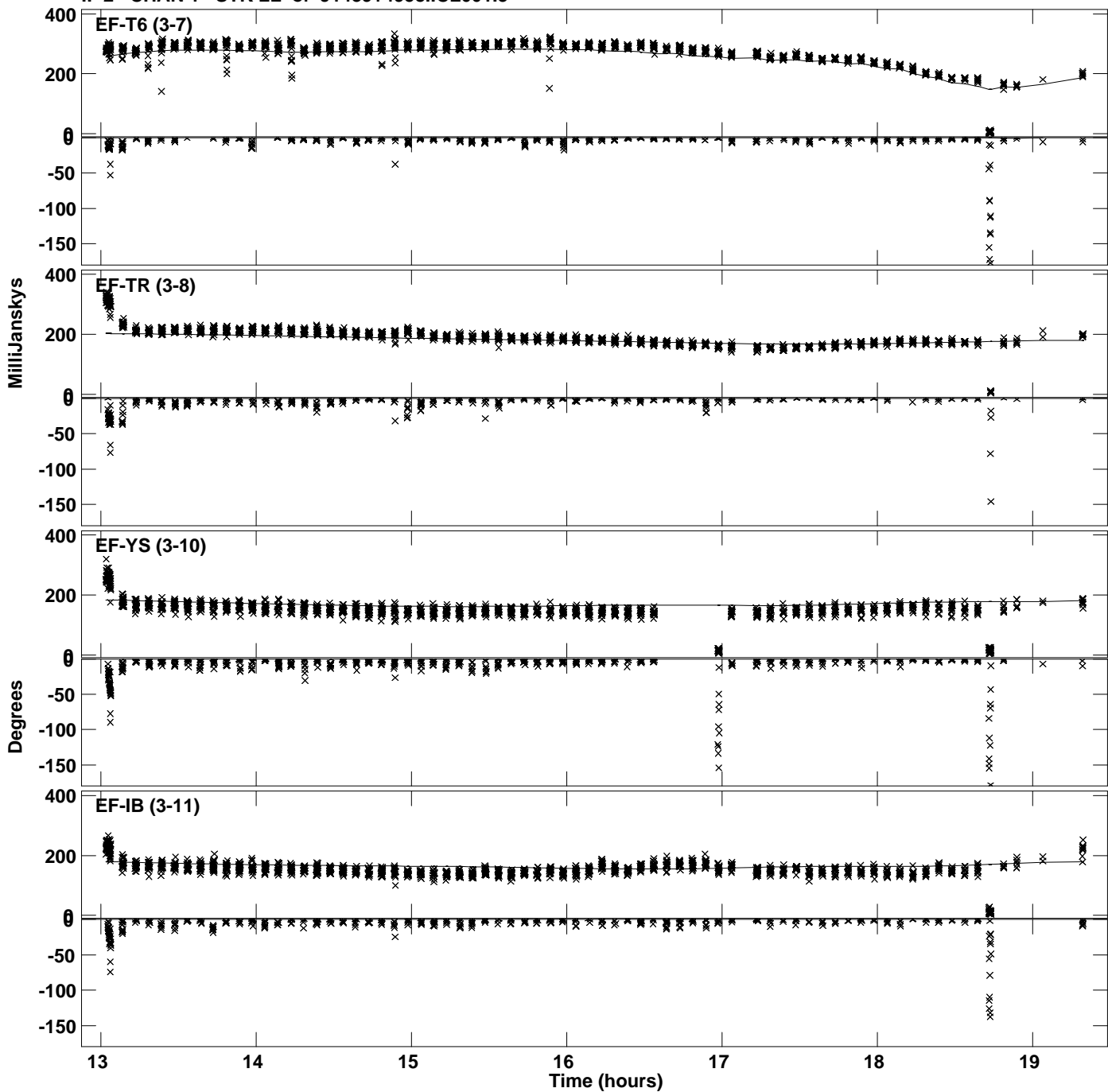
Plot file version 2 created 29-JUN-2023 15:57:17
Amplitude and Phase vs Time for J1439+4958.MULTI.1 CL # 3
IF 1 CHAN 1 STK LL of J1439+4958.ICL001.3



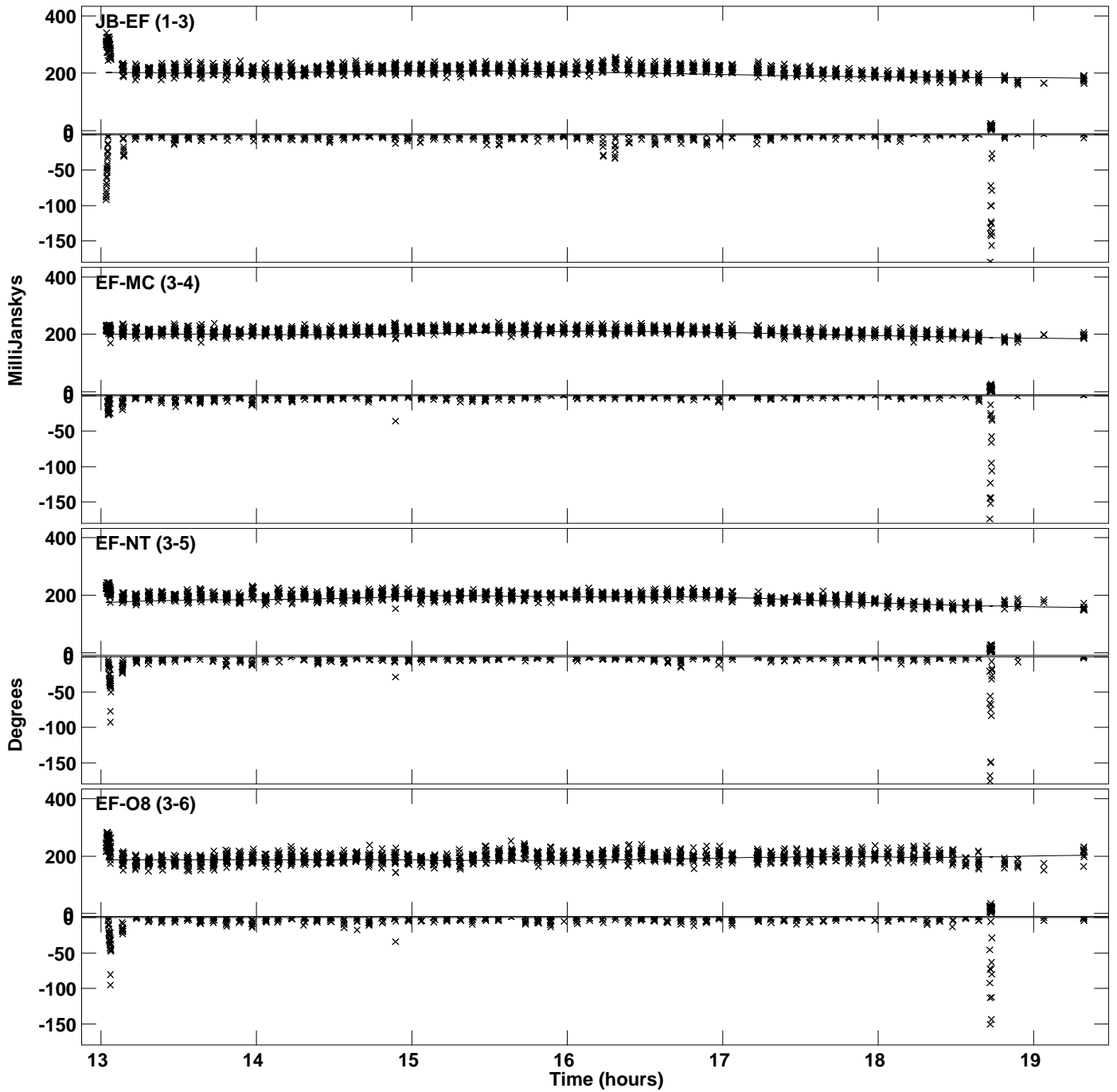
Plot file version 3 created 29-JUN-2023 15:57:17
Amplitude and Phase vs Time for J1439+4958.MULTI.1 CL # 3
IF 2 CHAN 1 STK LL of J1439+4958.ICL001.3



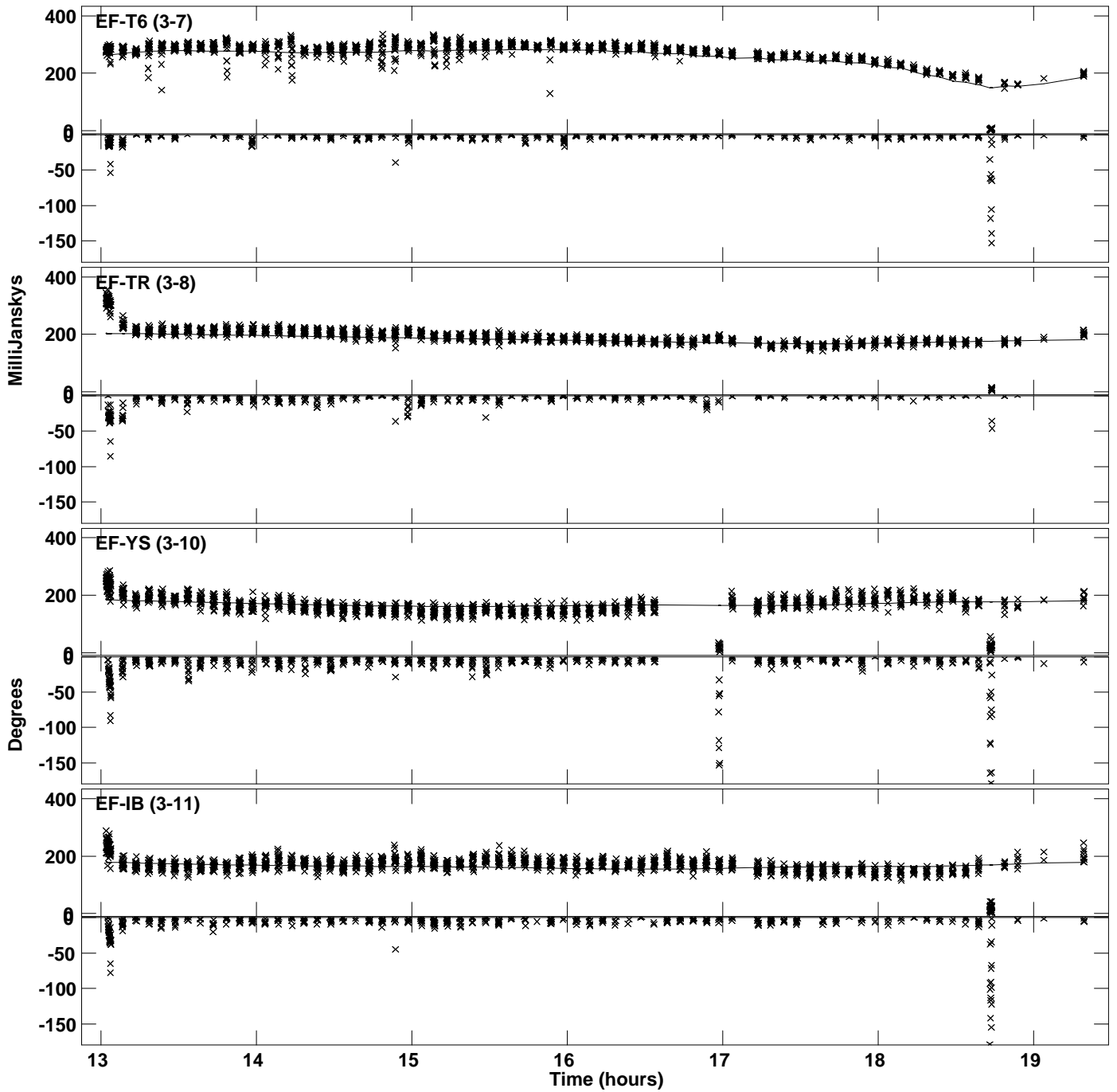
Plot file version 4 created 29-JUN-2023 15:57:17
Amplitude and Phase vs Time for J1439+4958.MULTI.1 CL # 3
IF 2 CHAN 1 STK LL of J1439+4958.ICL001.3



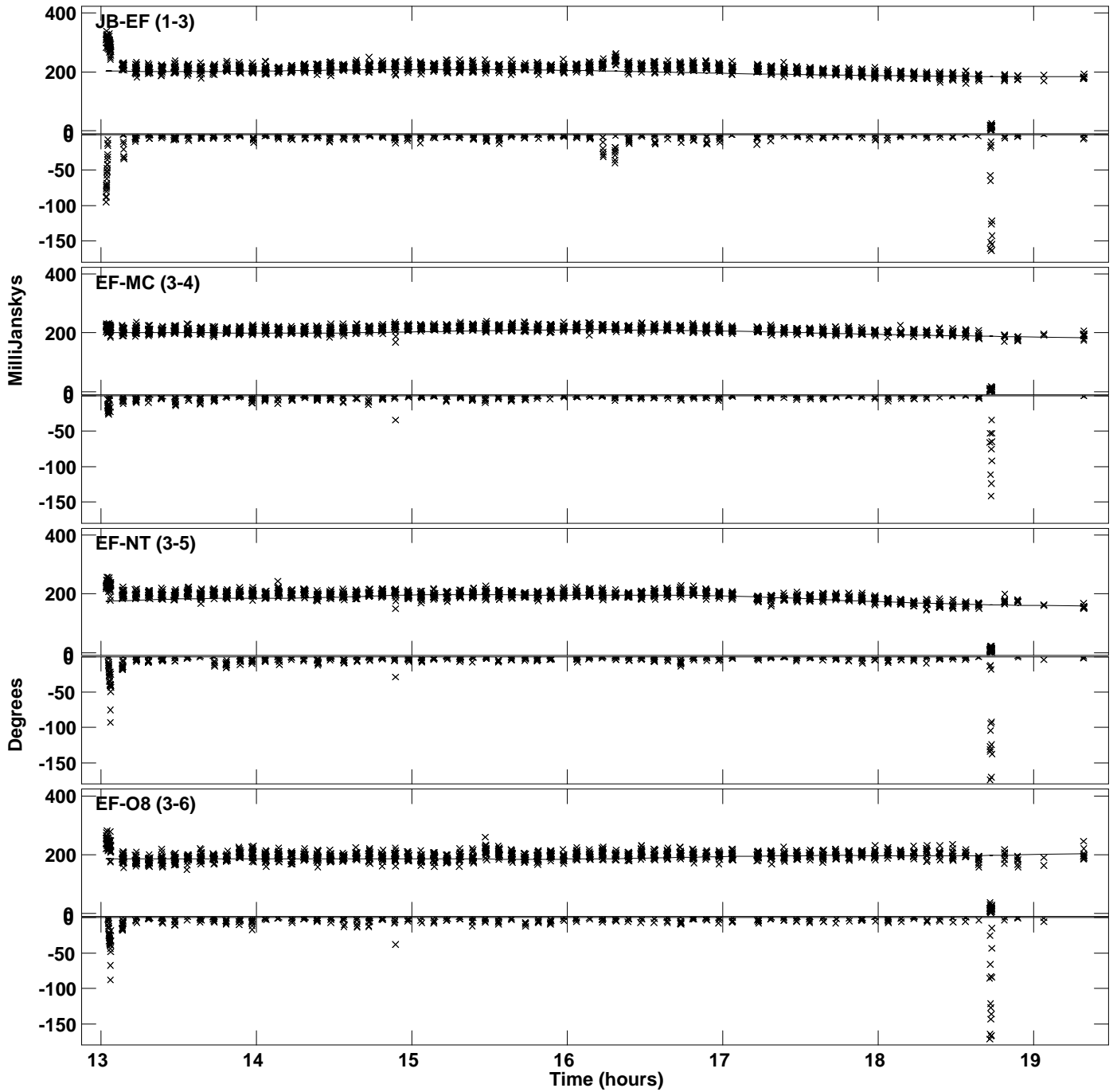
Plot file version 5 created 29-JUN-2023 15:57:17
Amplitude and Phase vs Time for J1439+4958.MULTI.1 CL # 3
IF 3 CHAN 1 STK LL of J1439+4958.ICL001.3



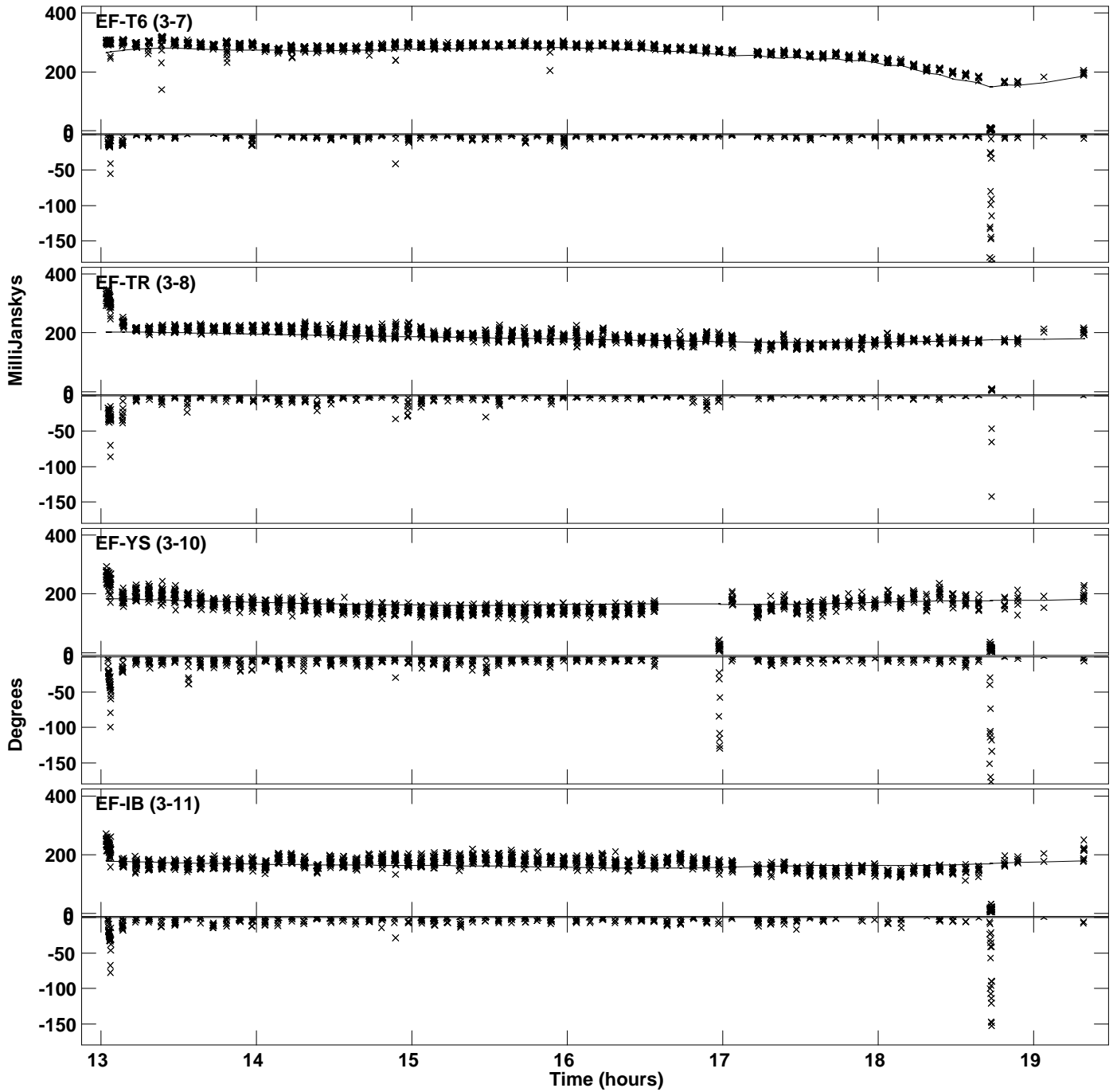
Plot file version 6 created 29-JUN-2023 15:57:17
Amplitude and Phase vs Time for J1439+4958.MULTI.1 CL # 3
IF 3 CHAN 1 STK LL of J1439+4958.ICL001.3



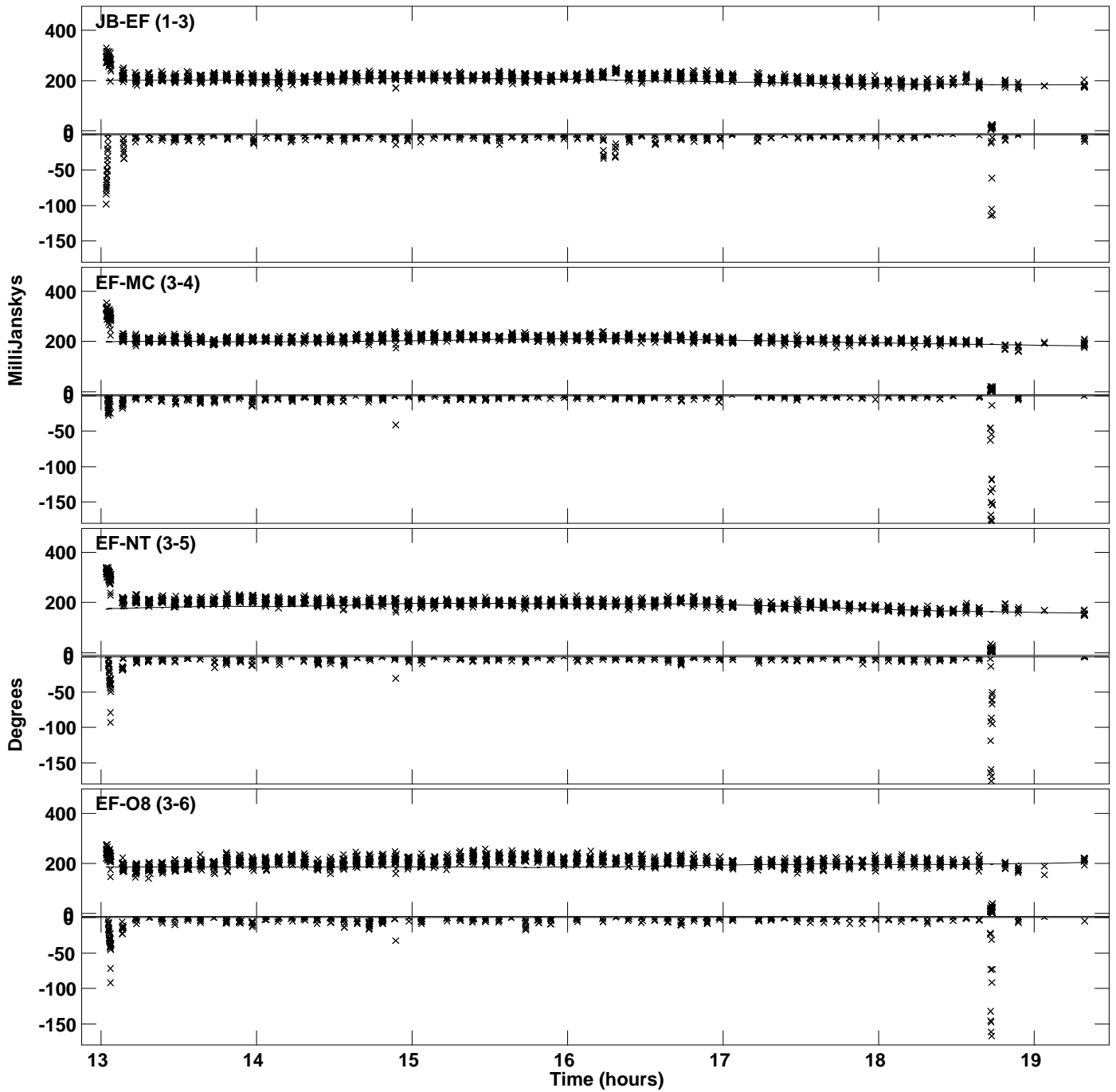
Plot file version 7 created 29-JUN-2023 15:57:18
Amplitude andPhase vs Time for J1439+4958.MULTI.1 CL # 3
IF 4 CHAN 1 STK LL of J1439+4958.ICL001.3



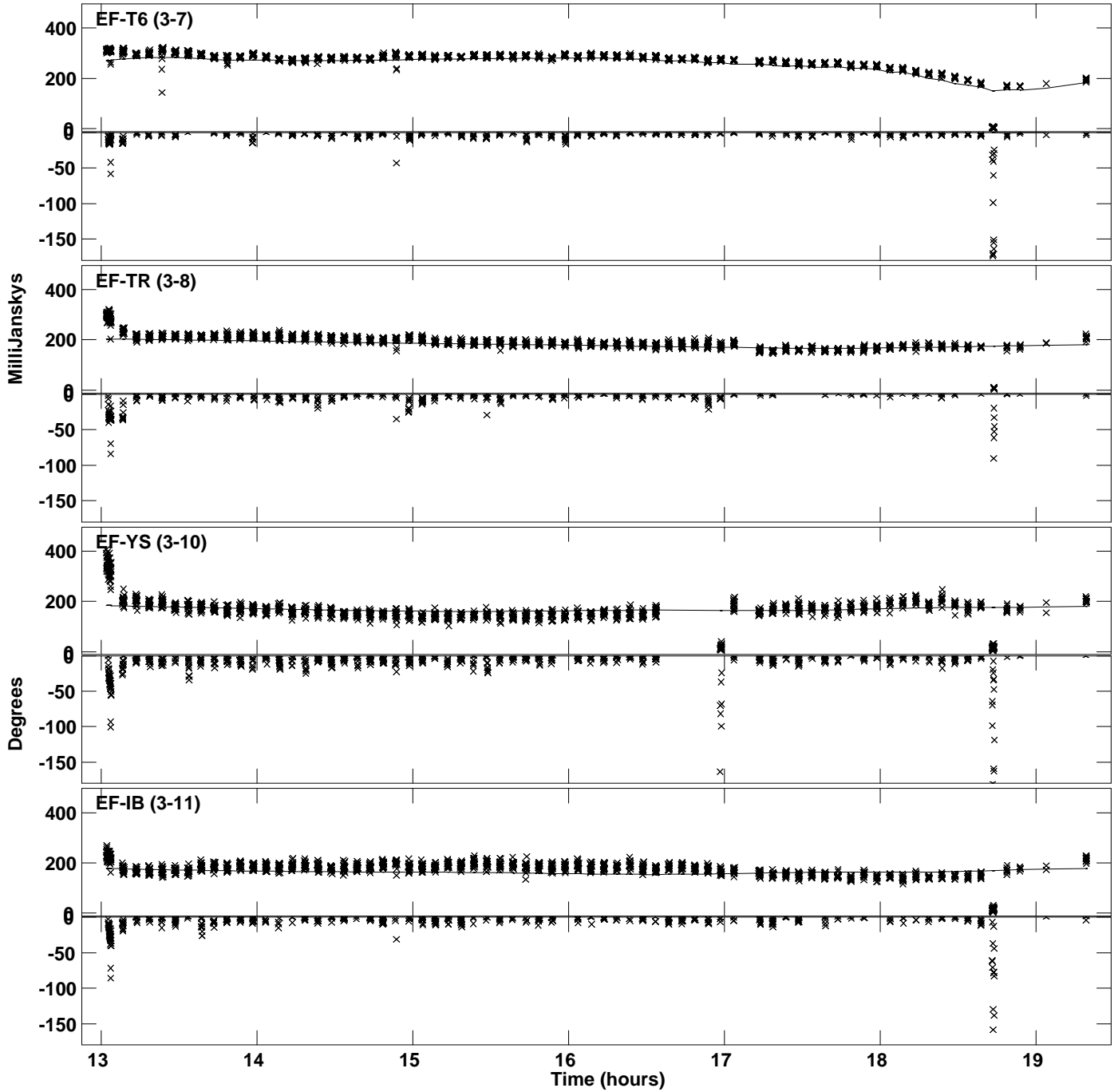
Plot file version 8 created 29-JUN-2023 15:57:18
Amplitude and Phase vs Time for J1439+4958.MULTI.1 CL # 3
IF 4 CHAN 1 STK LL of J1439+4958.ICL001.3



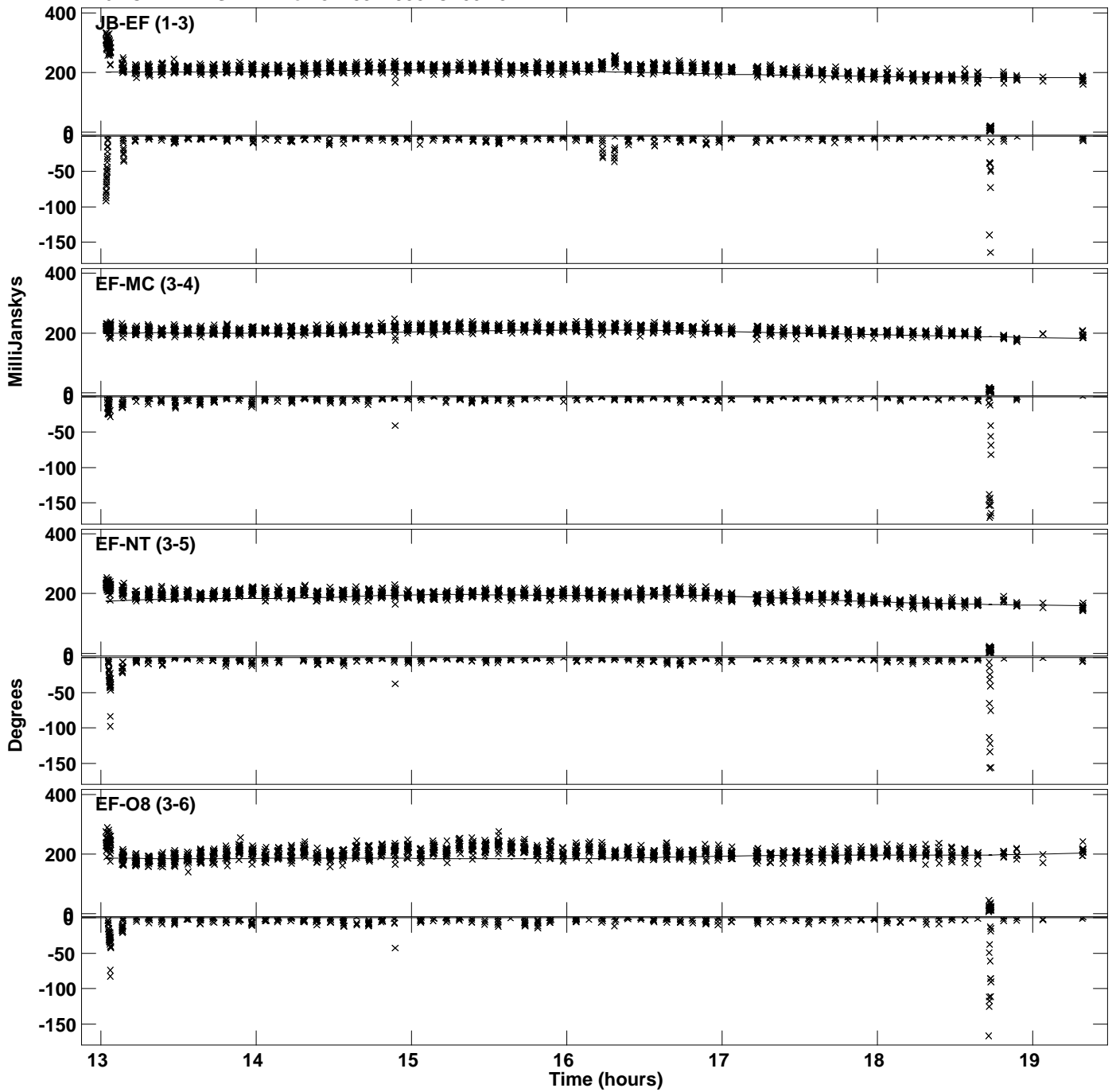
Plot file version 9 created 29-JUN-2023 15:57:18
Amplitude andPhase vs Time for J1439+4958.MULTI.1 CL # 3
IF 5 CHAN 1 STK LL of J1439+4958.ICL001.3



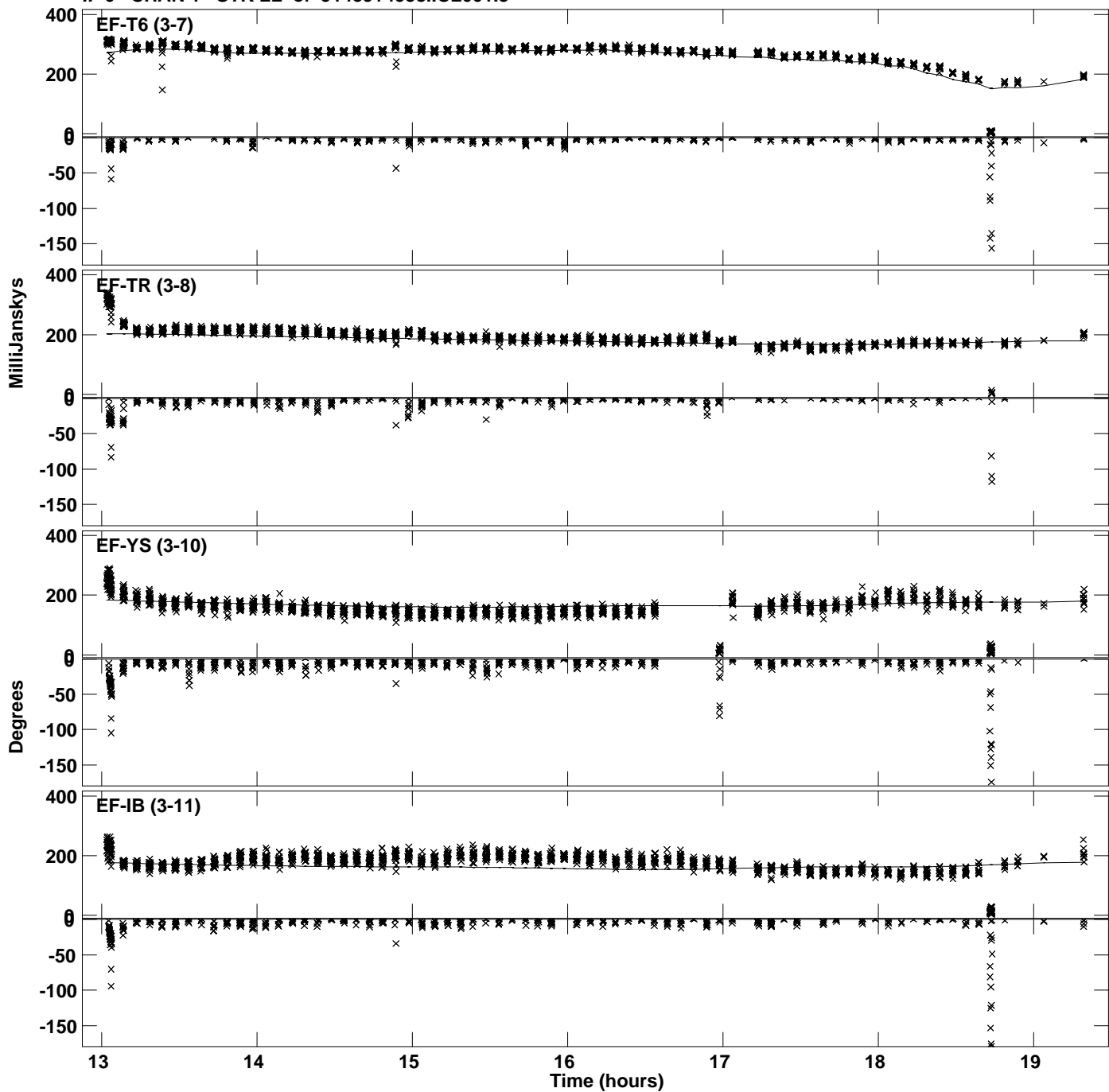
Plot file version 10 created 29-JUN-2023 15:57:18
Amplitude and Phase vs Time for J1439+4958.MULTI.1 CL # 3
IF 5 CHAN 1 STK LL of J1439+4958.ICL001.3



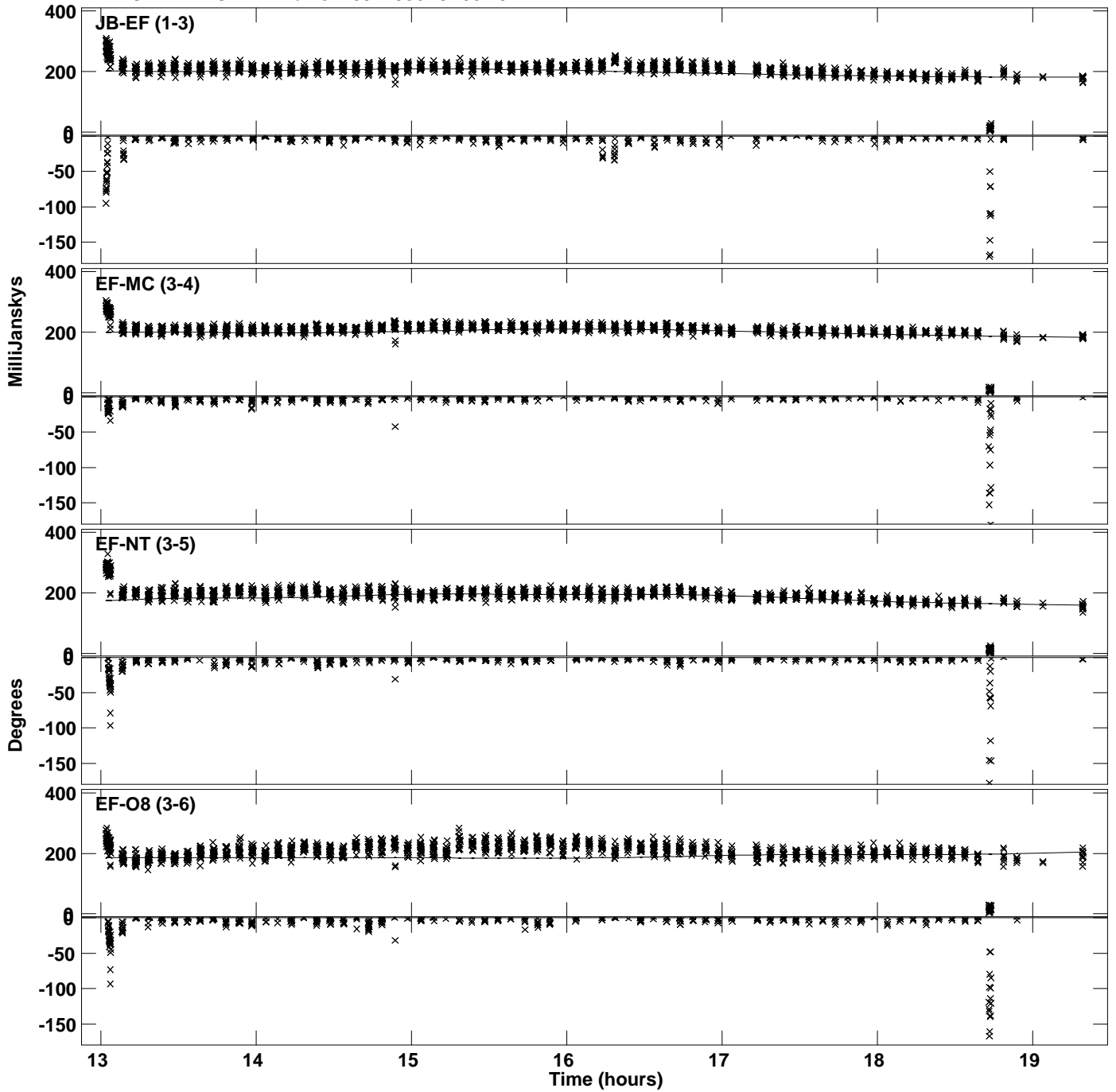
Plot file version 11 created 29-JUN-2023 15:57:18
Amplitude and Phase vs Time for J1439+4958.MULTI.1 CL # 3
IF 6 CHAN 1 STK LL of J1439+4958.ICL001.3



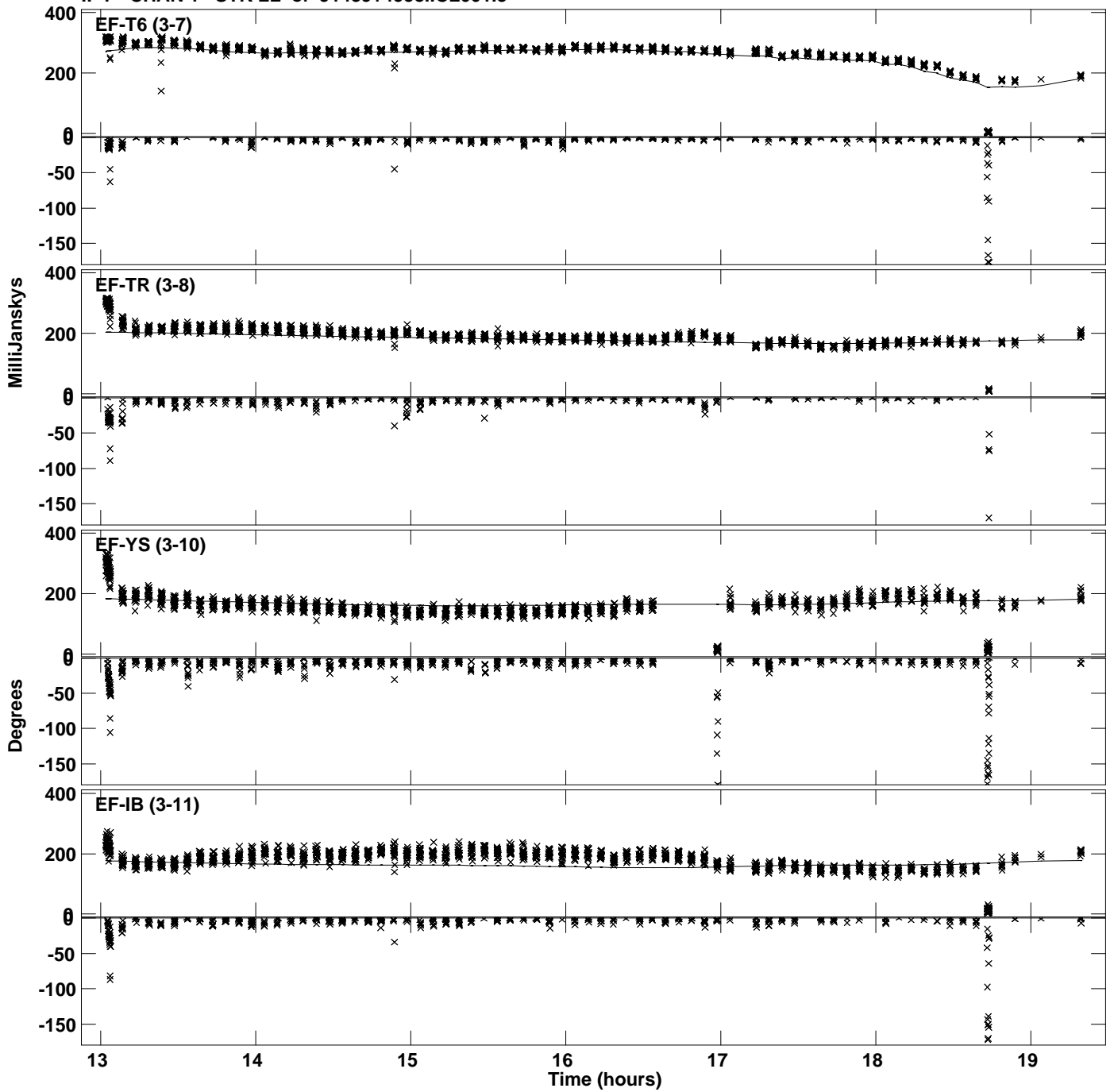
Plot file version 12 created 29-JUN-2023 15:57:18
Amplitude and Phase vs Time for J1439+4958.MULTI.1 CL # 3
IF 6 CHAN 1 STK LL of J1439+4958.ICL001.3



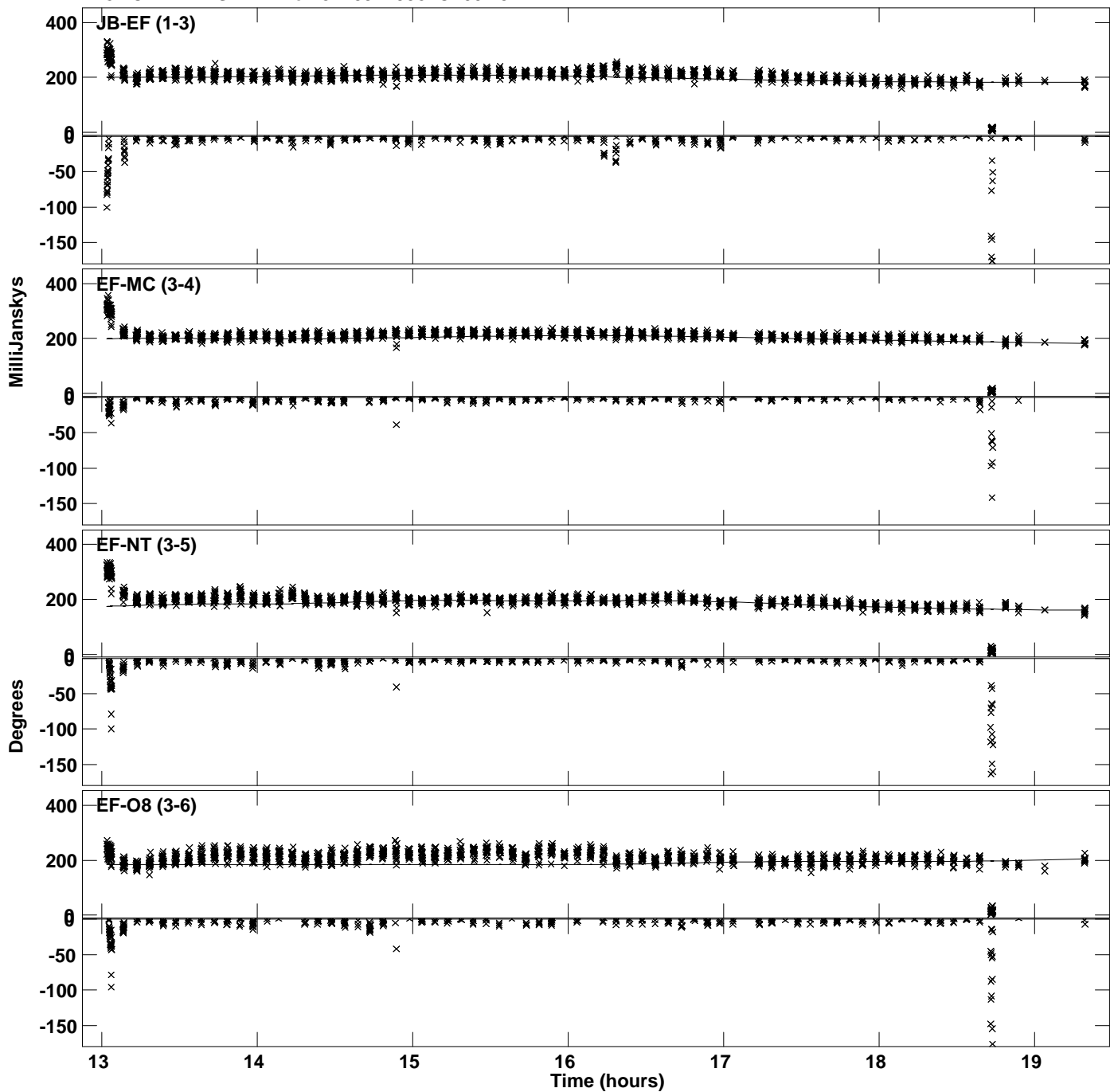
Plot file version 13 created 29-JUN-2023 15:57:18
Amplitude andPhase vs Time for J1439+4958.MULTI.1 CL # 3
IF 7 CHAN 1 STK LL of J1439+4958.ICL001.3



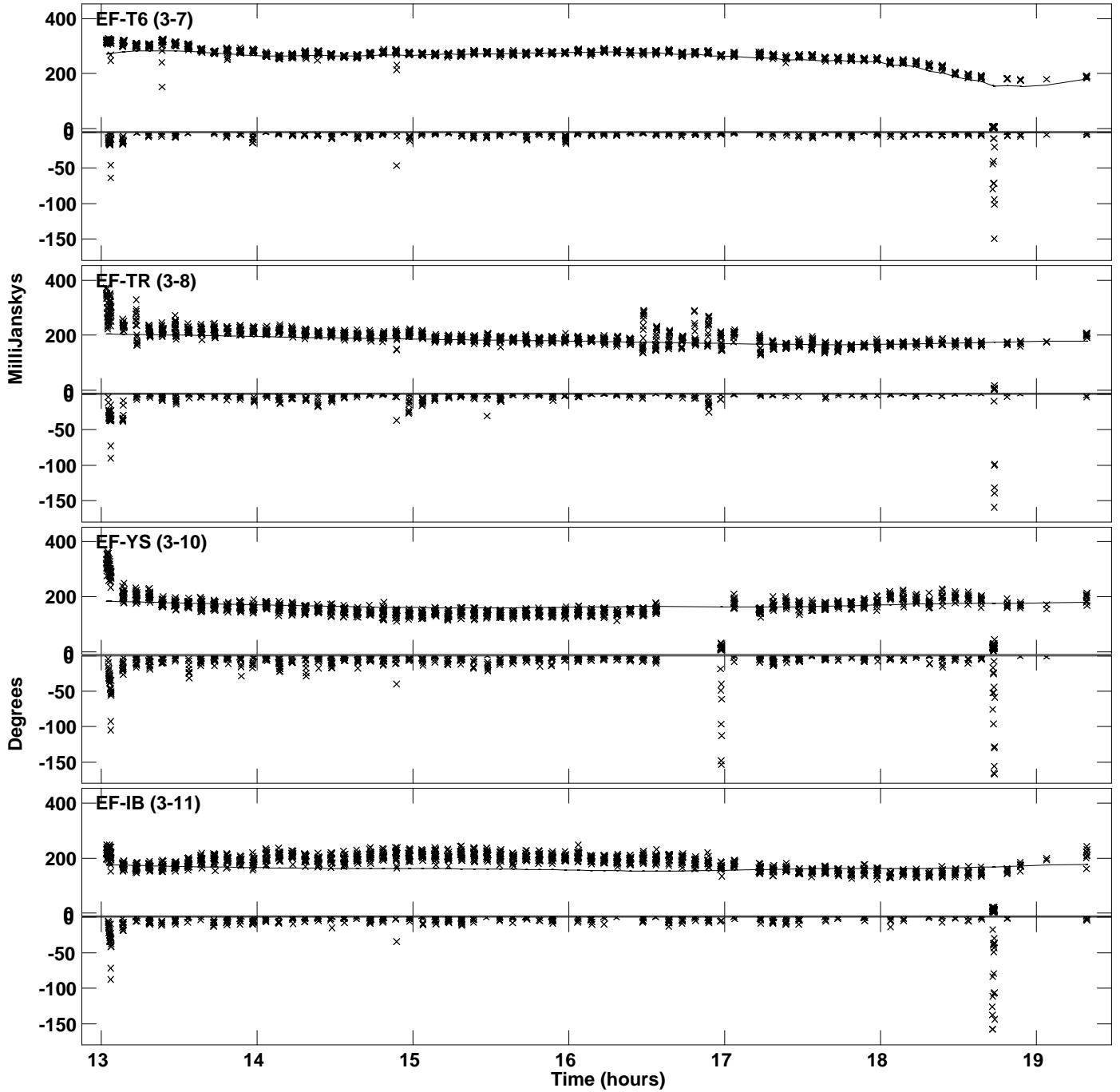
Plot file version 14 created 29-JUN-2023 15:57:18
Amplitude andPhase vs Time for J1439+4958.MULTI.1 CL # 3
IF 7 CHAN 1 STK LL of J1439+4958.ICL001.3



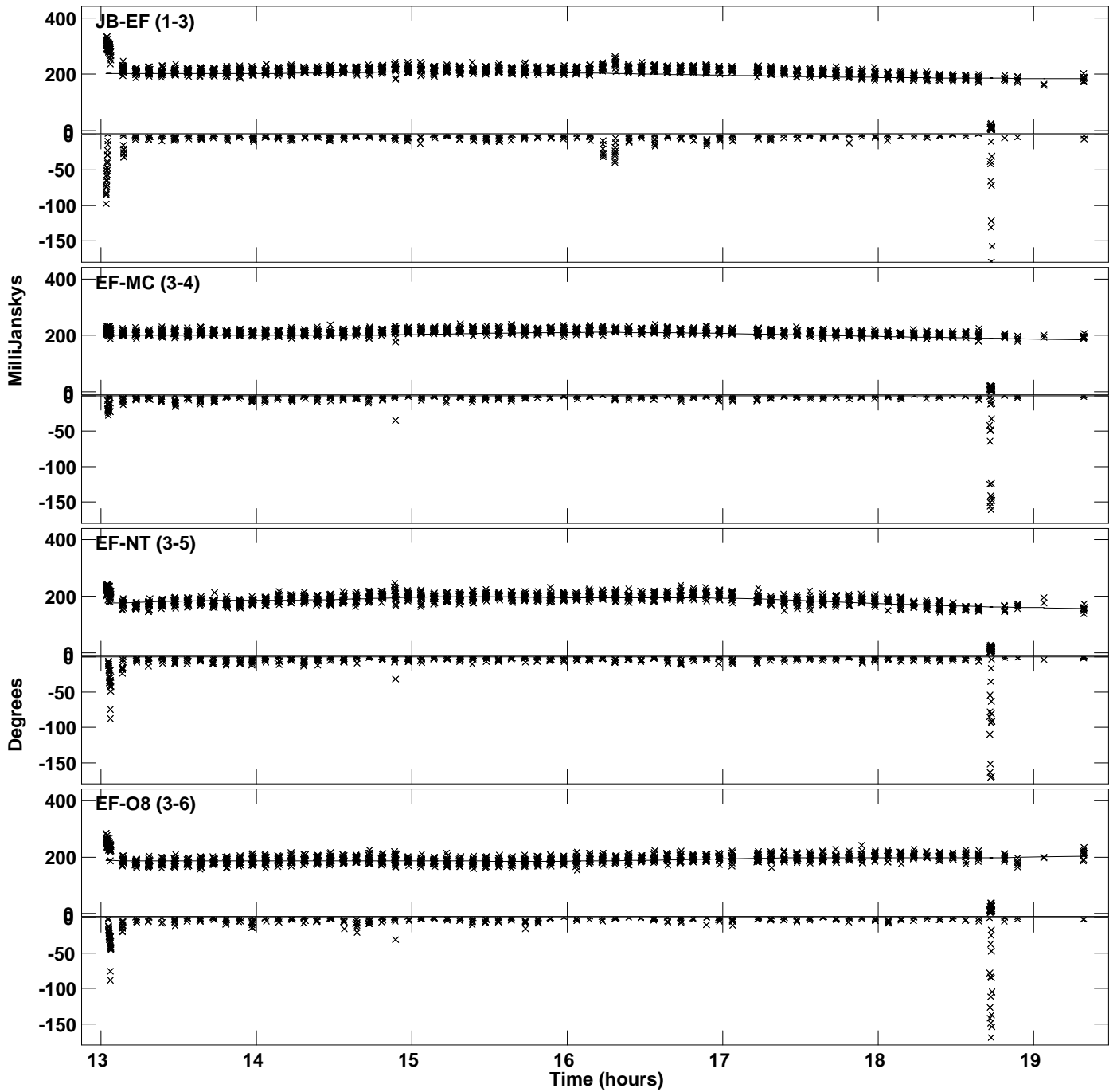
Plot file version 15 created 29-JUN-2023 15:57:19
Amplitude and Phase vs Time for J1439+4958.MULTI.1 CL # 3
IF 8 CHAN 1 STK LL of J1439+4958.ICL001.3



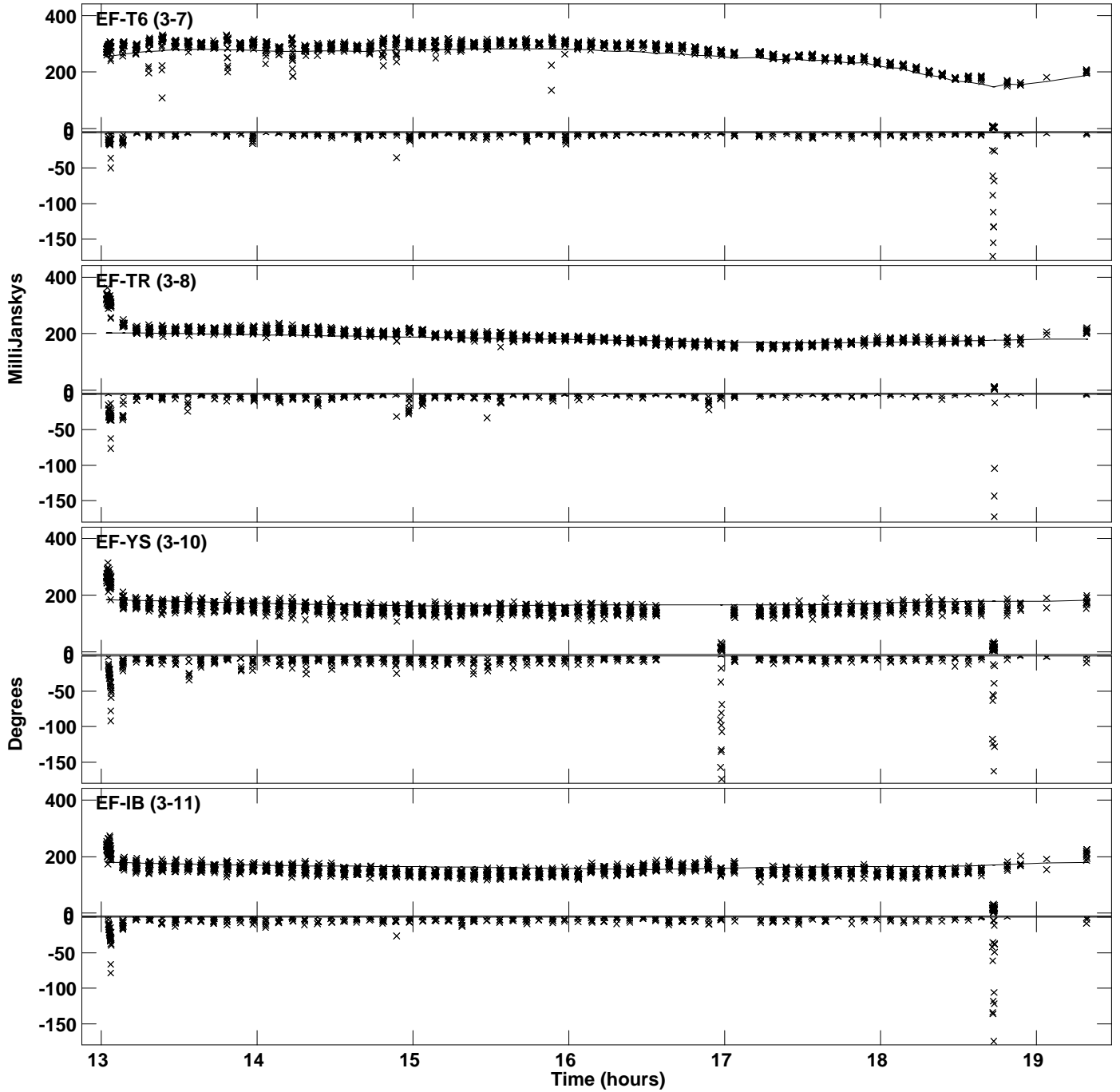
Plot file version 16 created 29-JUN-2023 15:57:19
Amplitude andPhase vs Time for J1439+4958.MULTI.1 CL # 3
IF 8 CHAN 1 STK LL of J1439+4958.ICL001.3



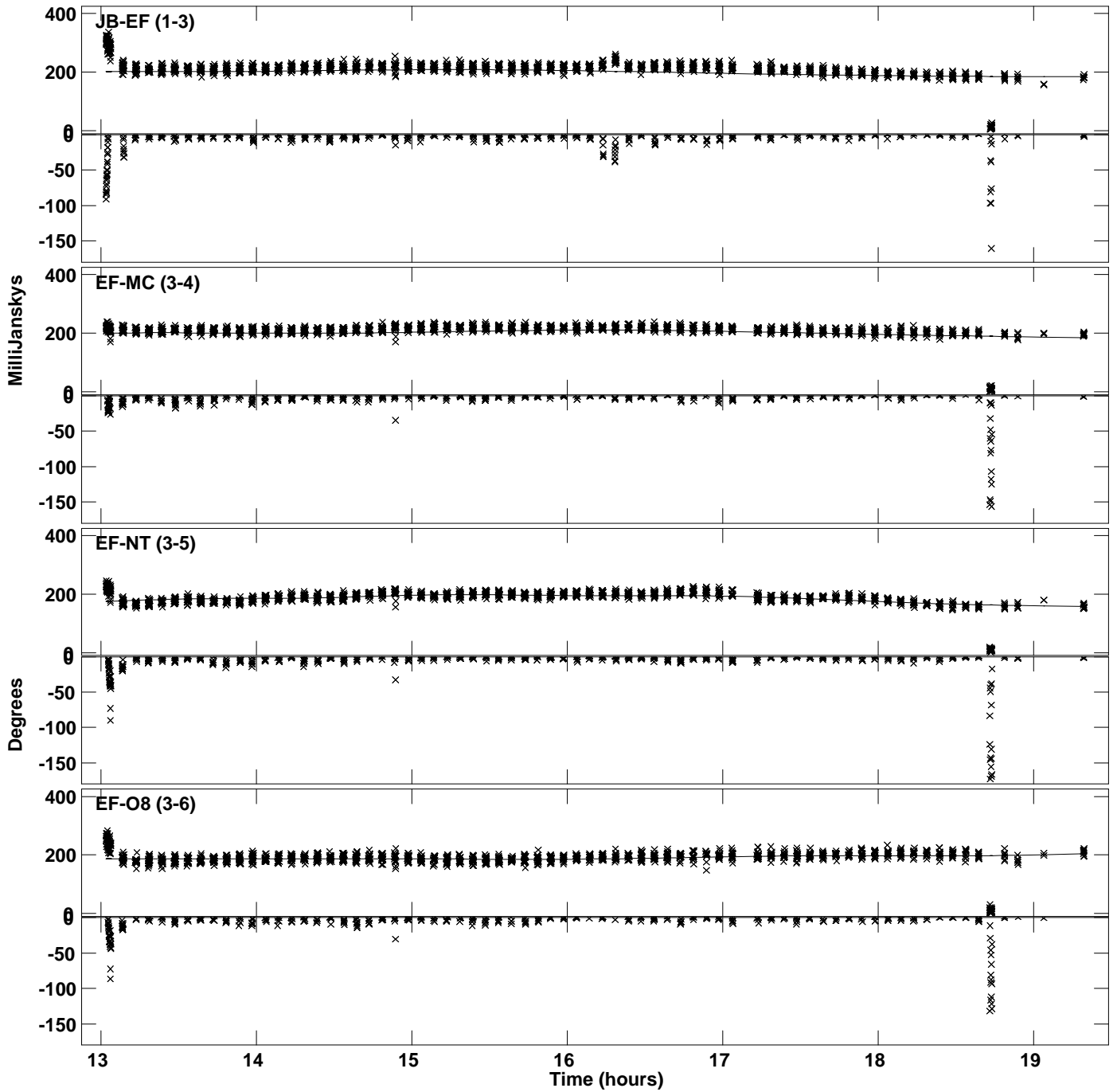
Plot file version 17 created 29-JUN-2023 15:57:19
Amplitude and Phase vs Time for J1439+4958.MULTI.1 CL # 3
IF 1 CHAN 1 STK RR of J1439+4958.ICL001.3



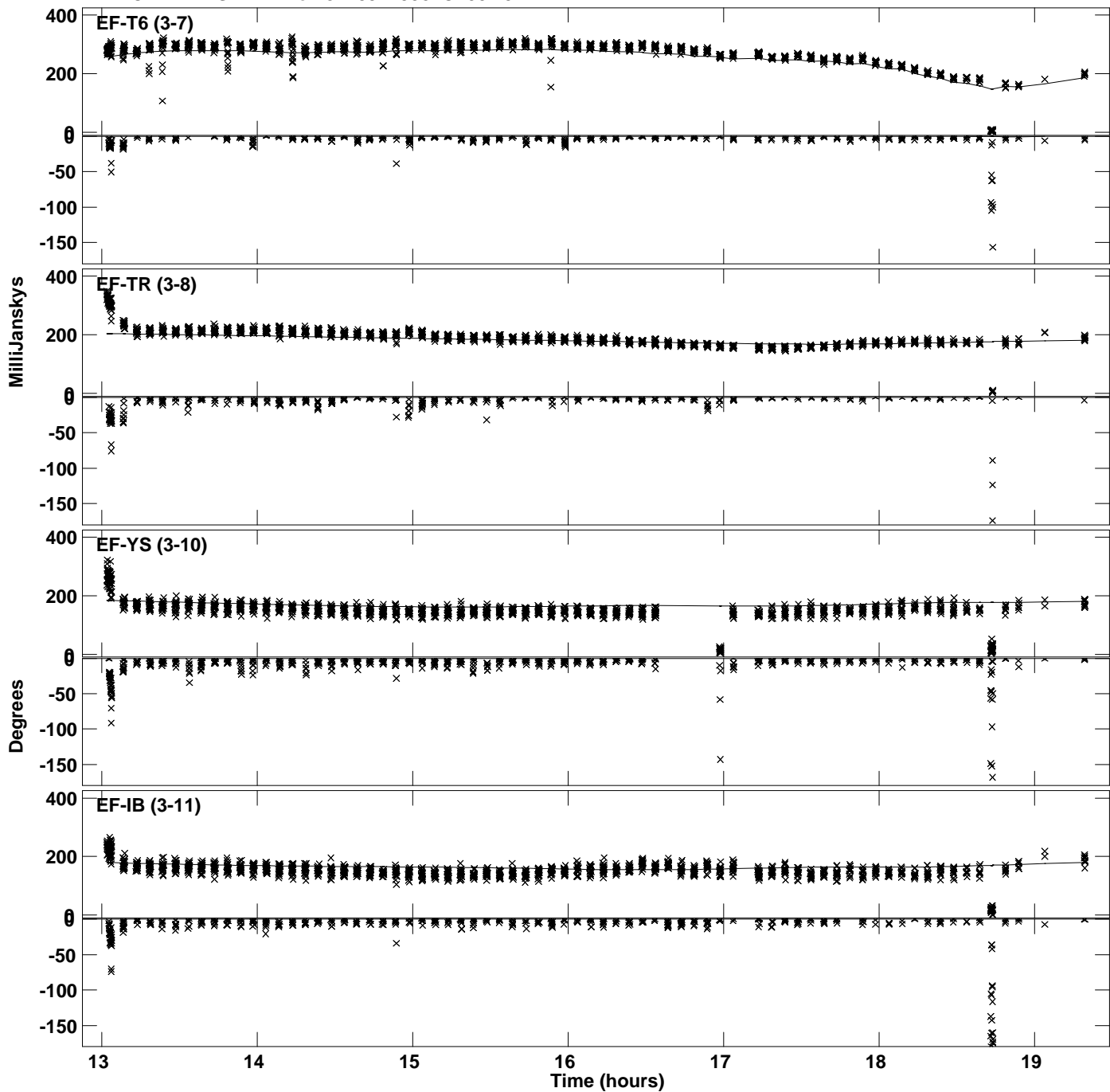
Plot file version 18 created 29-JUN-2023 15:57:19
Amplitude and Phase vs Time for J1439+4958.MULTI.1 CL # 3
IF 1 CHAN 1 STK RR of J1439+4958.ICL001.3



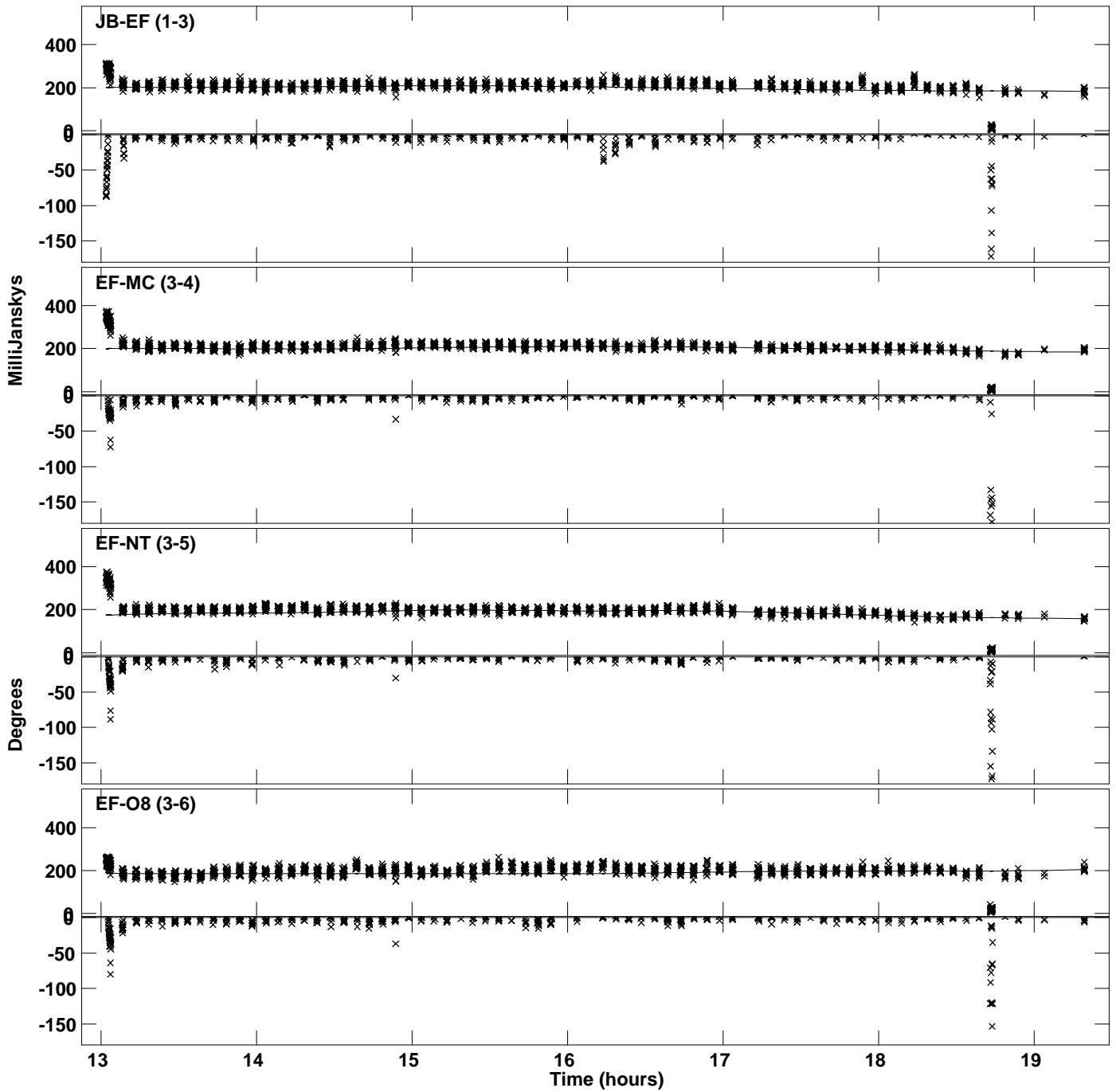
Plot file version 19 created 29-JUN-2023 15:57:19
Amplitude and Phase vs Time for J1439+4958.MULTI.1 CL # 3
IF 2 CHAN 1 STK RR of J1439+4958.ICL001.3



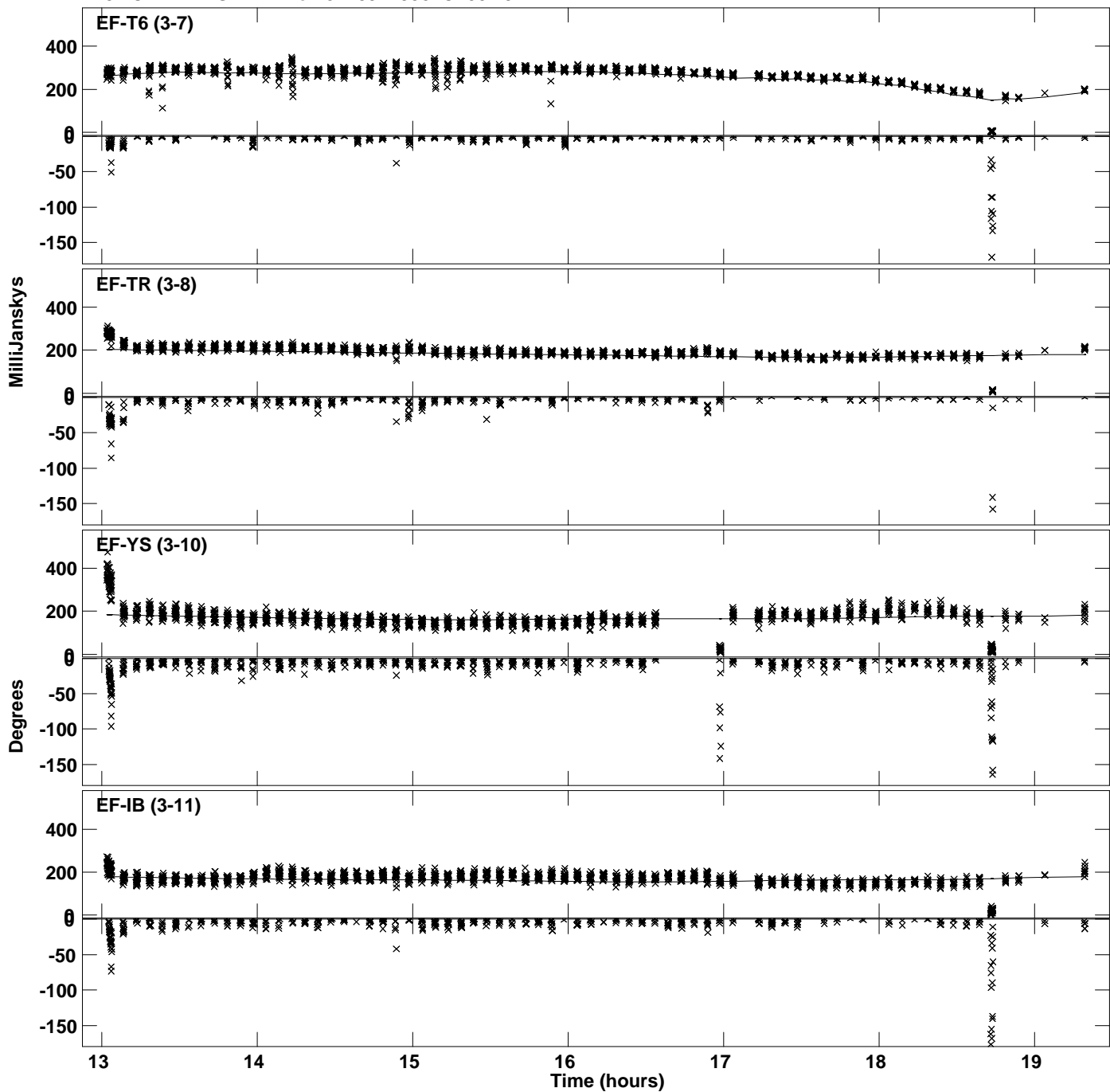
Plot file version 20 created 29-JUN-2023 15:57:19
Amplitude andPhase vs Time for J1439+4958.MULTI.1 CL # 3
IF 2 CHAN 1 STK RR of J1439+4958.ICL001.3



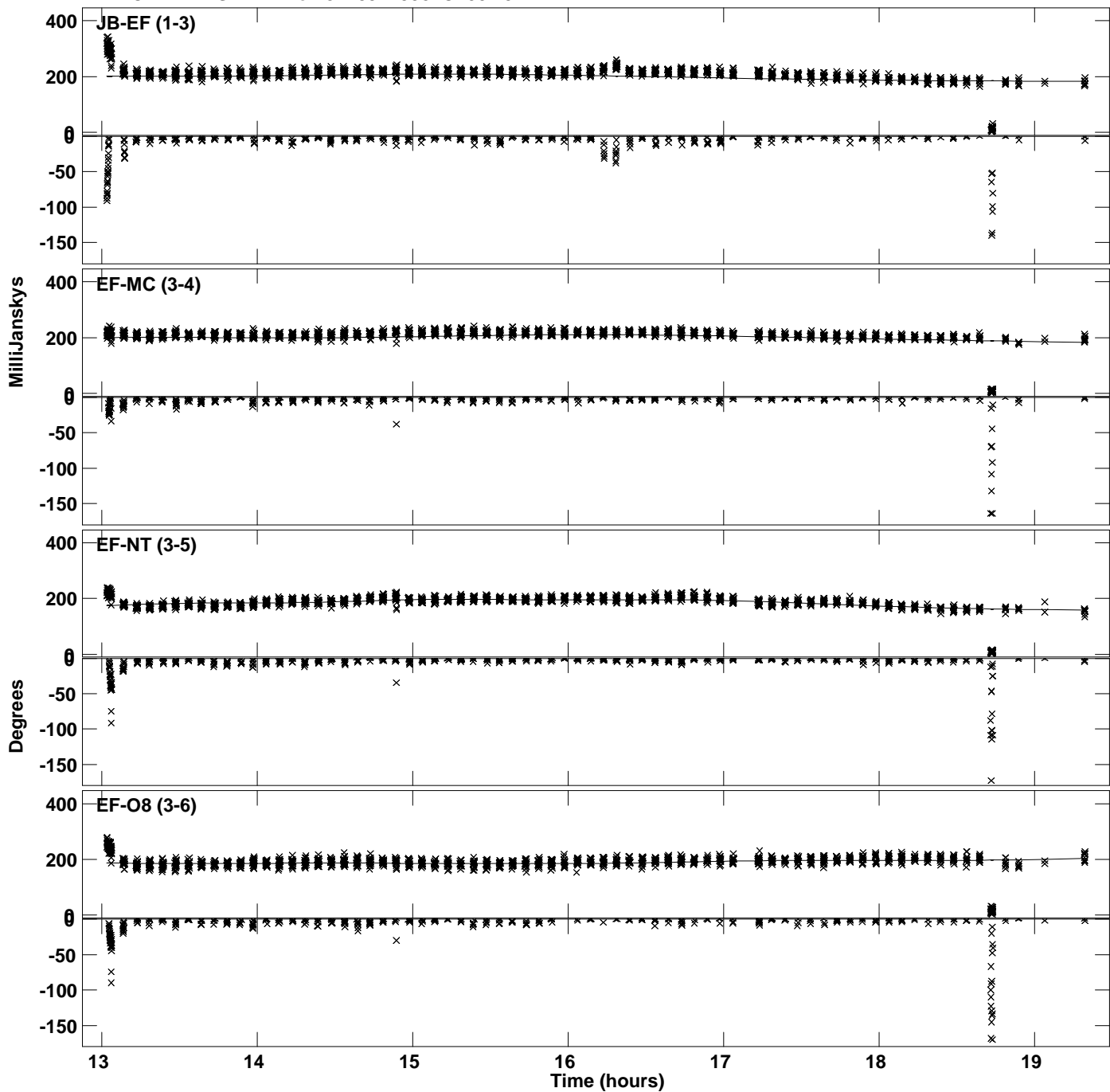
Plot file version 21 created 29-JUN-2023 15:57:19
Amplitude and Phase vs Time for J1439+4958.MULTI.1 CL # 3
IF 3 CHAN 1 STK RR of J1439+4958.ICL001.3



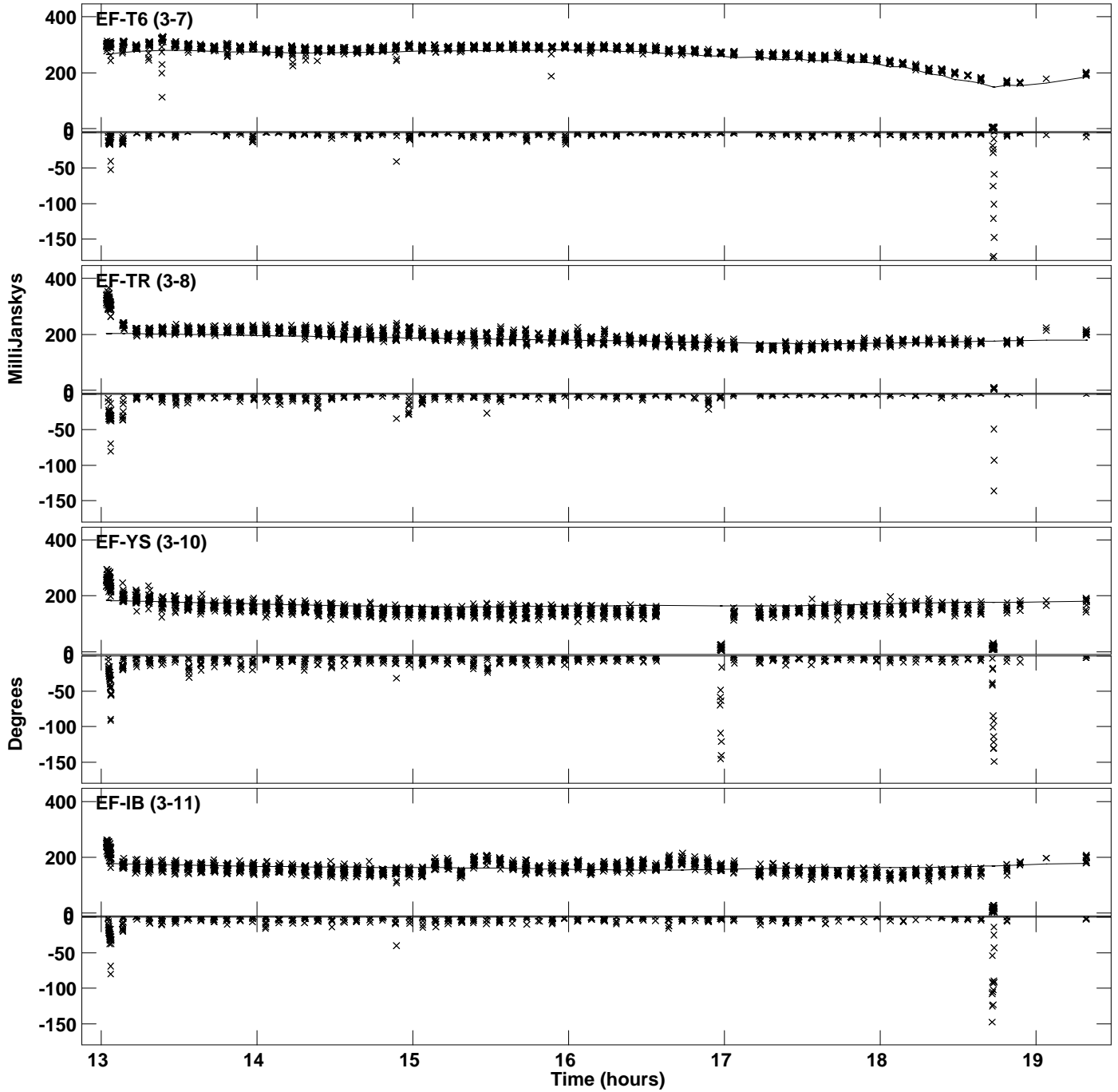
Plot file version 22 created 29-JUN-2023 15:57:19
Amplitude andPhase vs Time for J1439+4958.MULTI.1 CL # 3
IF 3 CHAN 1 STK RR of J1439+4958.ICL001.3



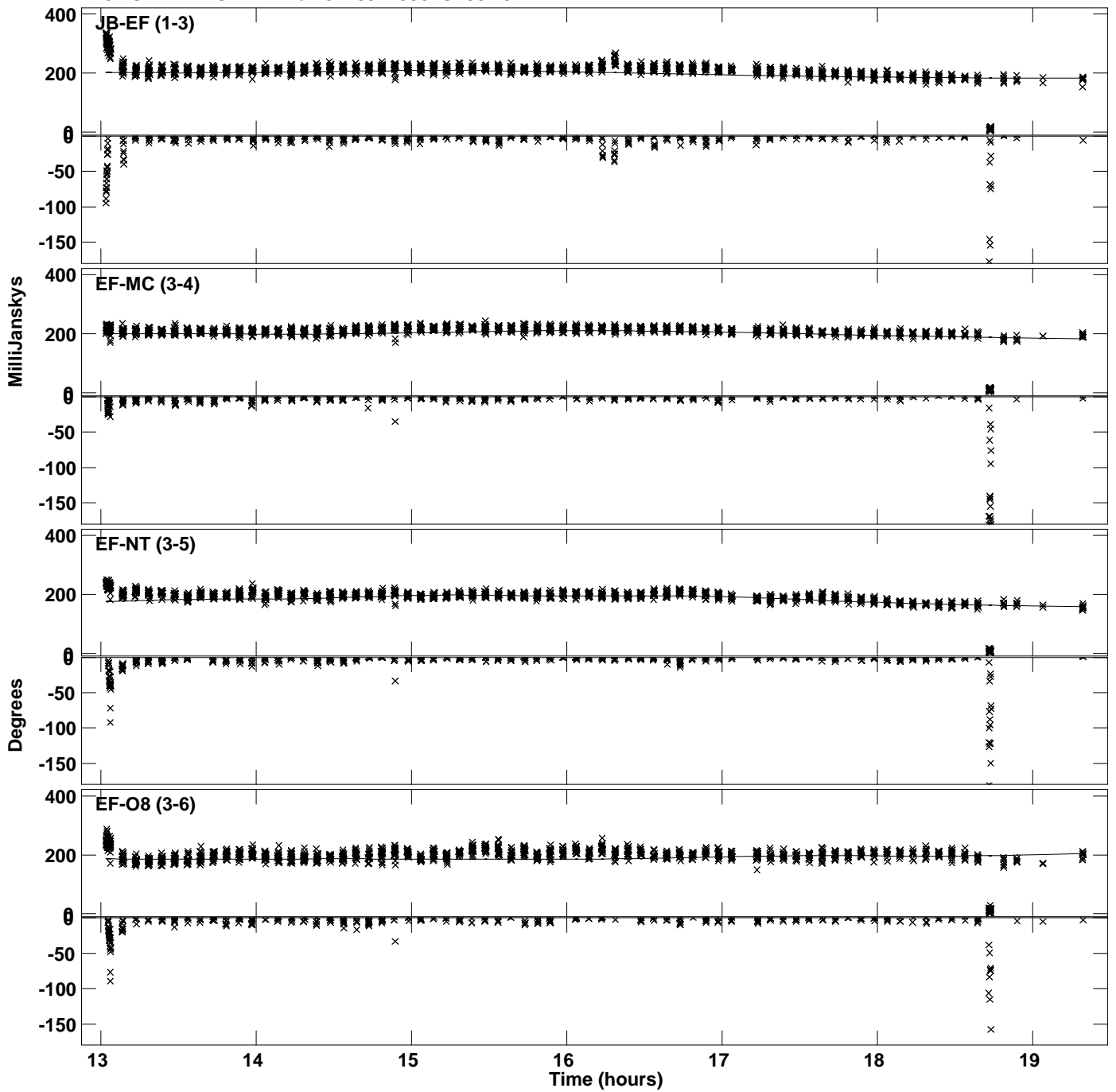
Plot file version 23 created 29-JUN-2023 15:57:20
Amplitude andPhase vs Time for J1439+4958.MULTI.1 CL # 3
IF 4 CHAN 1 STK RR of J1439+4958.ICL001.3



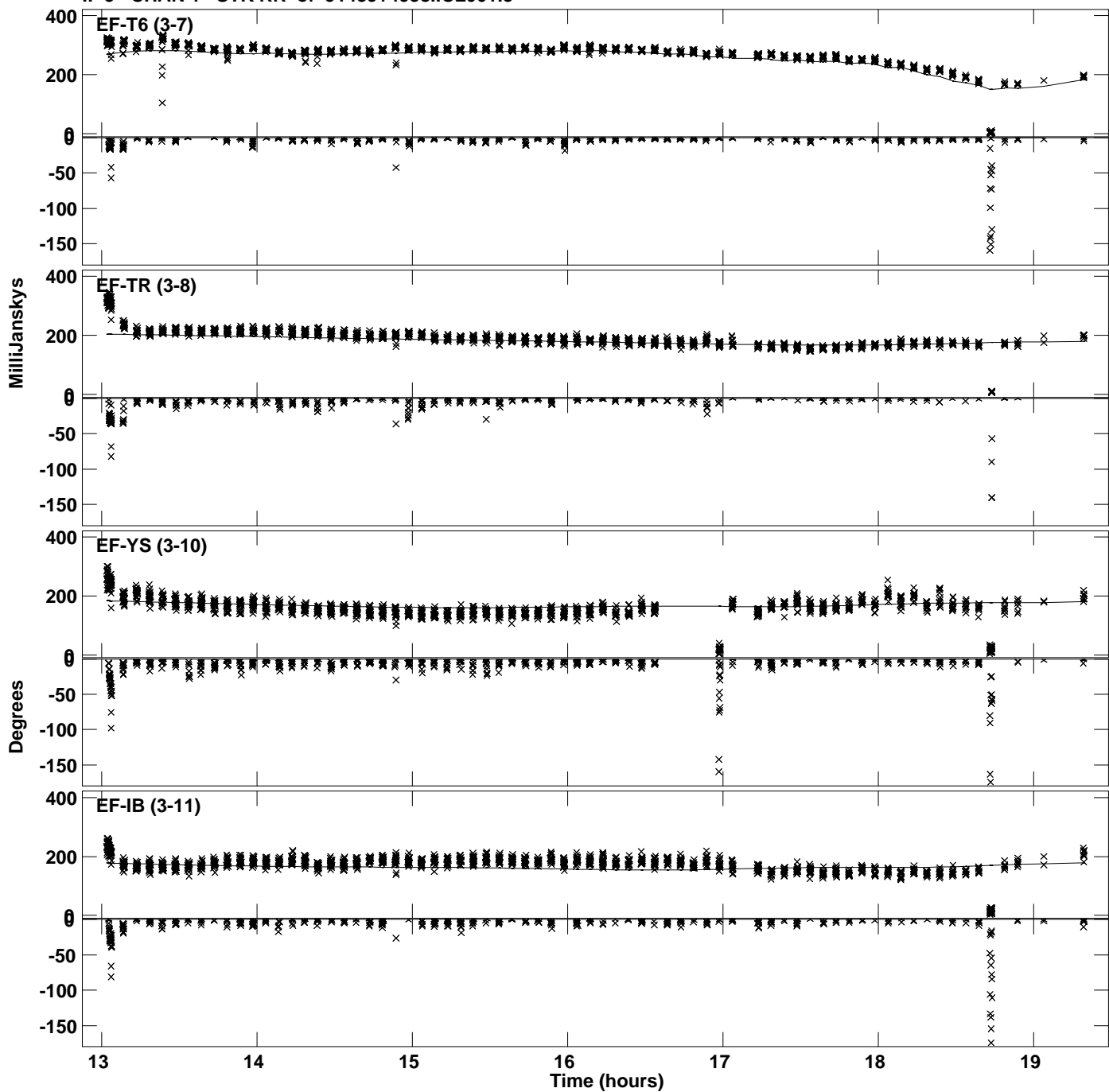
Plot file version 24 created 29-JUN-2023 15:57:20
Amplitude andPhase vs Time for J1439+4958.MULTI.1 CL # 3
IF 4 CHAN 1 STK RR of J1439+4958.ICL001.3



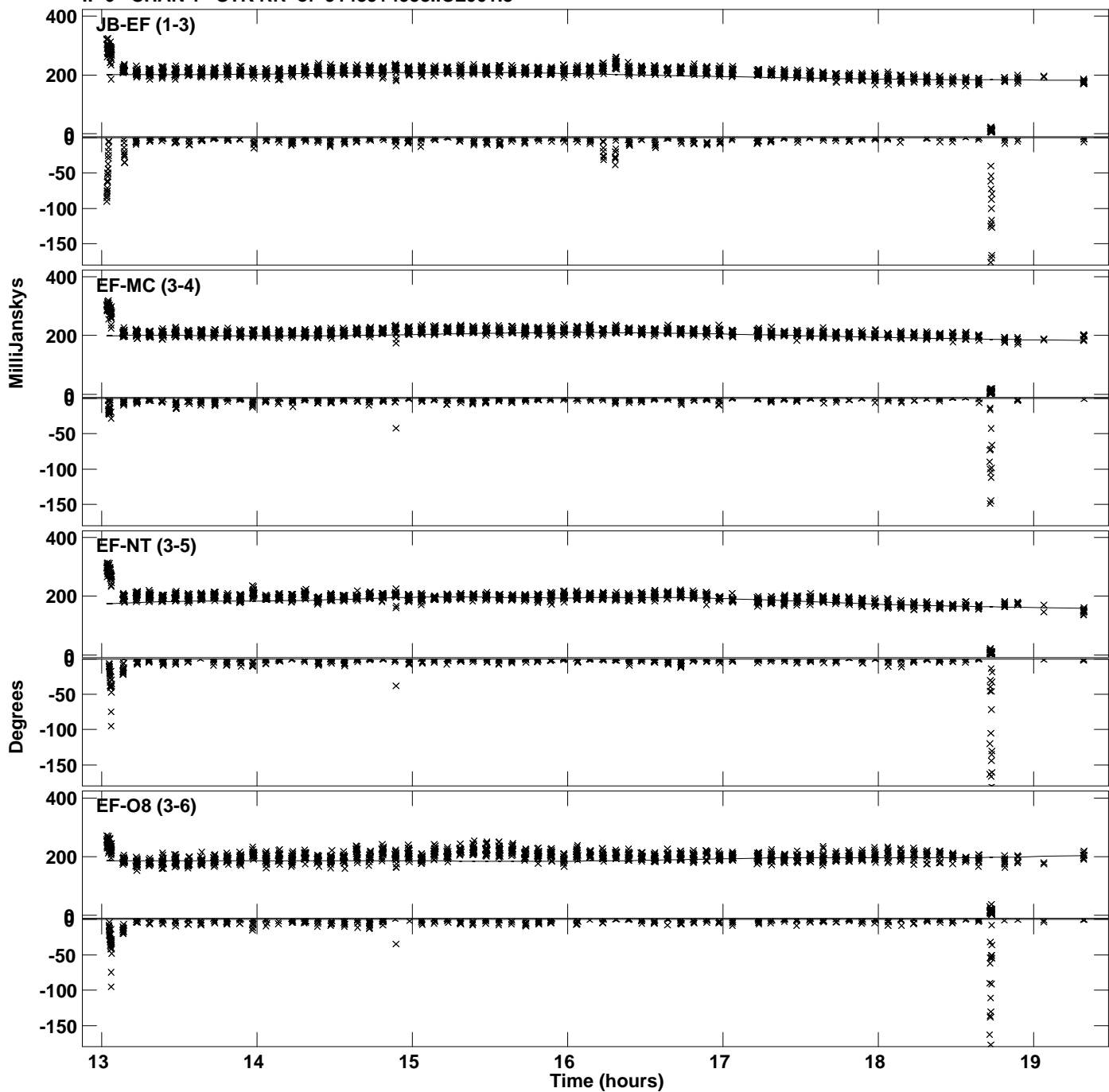
Plot file version 25 created 29-JUN-2023 15:57:20
Amplitude andPhase vs Time for J1439+4958.MULTI.1 CL # 3
IF 5 CHAN 1 STK RR of J1439+4958.ICL001.3



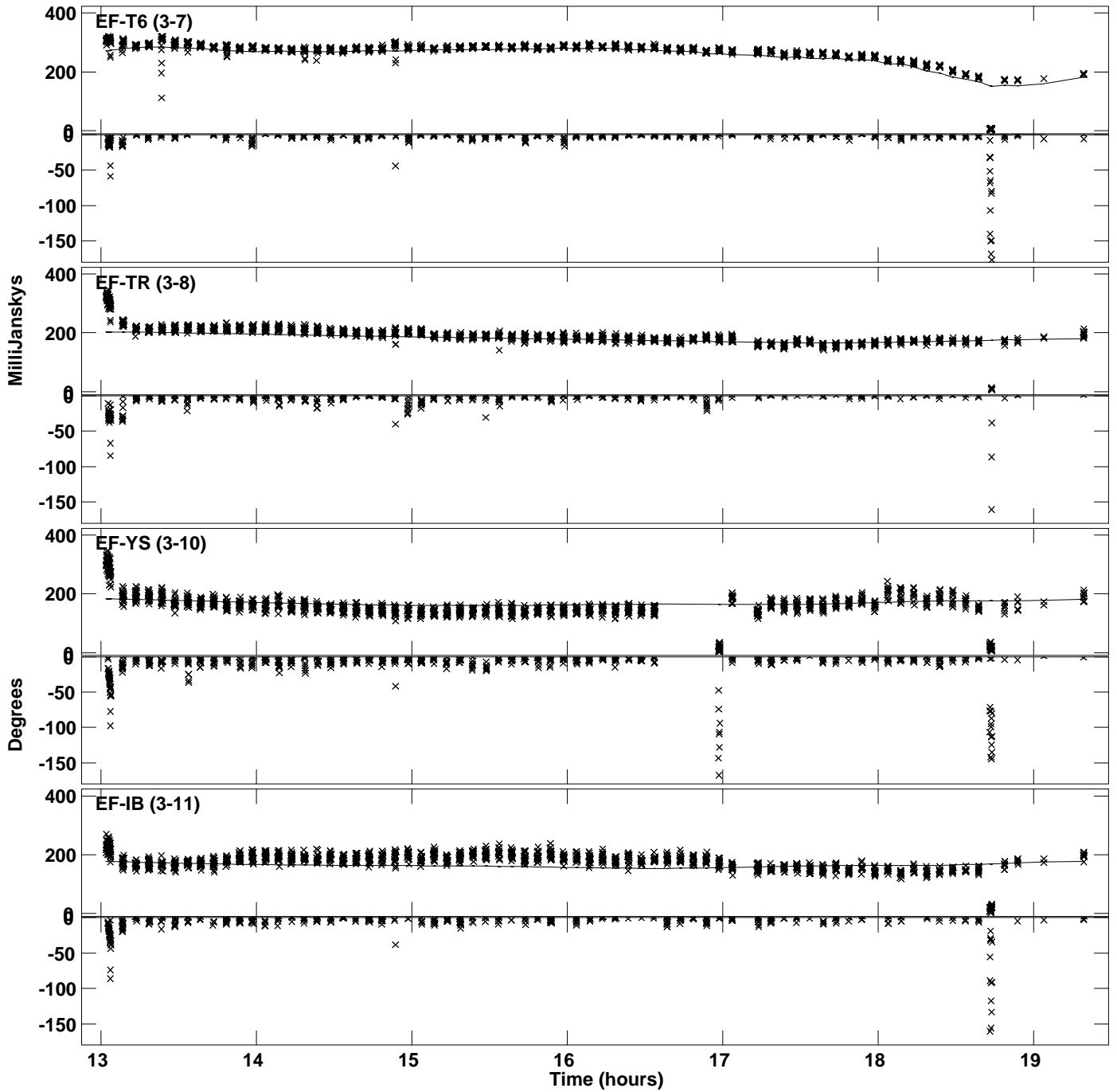
Plot file version 26 created 29-JUN-2023 15:57:20
Amplitude andPhase vs Time for J1439+4958.MULTI.1 CL # 3
IF 5 CHAN 1 STK RR of J1439+4958.ICL001.3



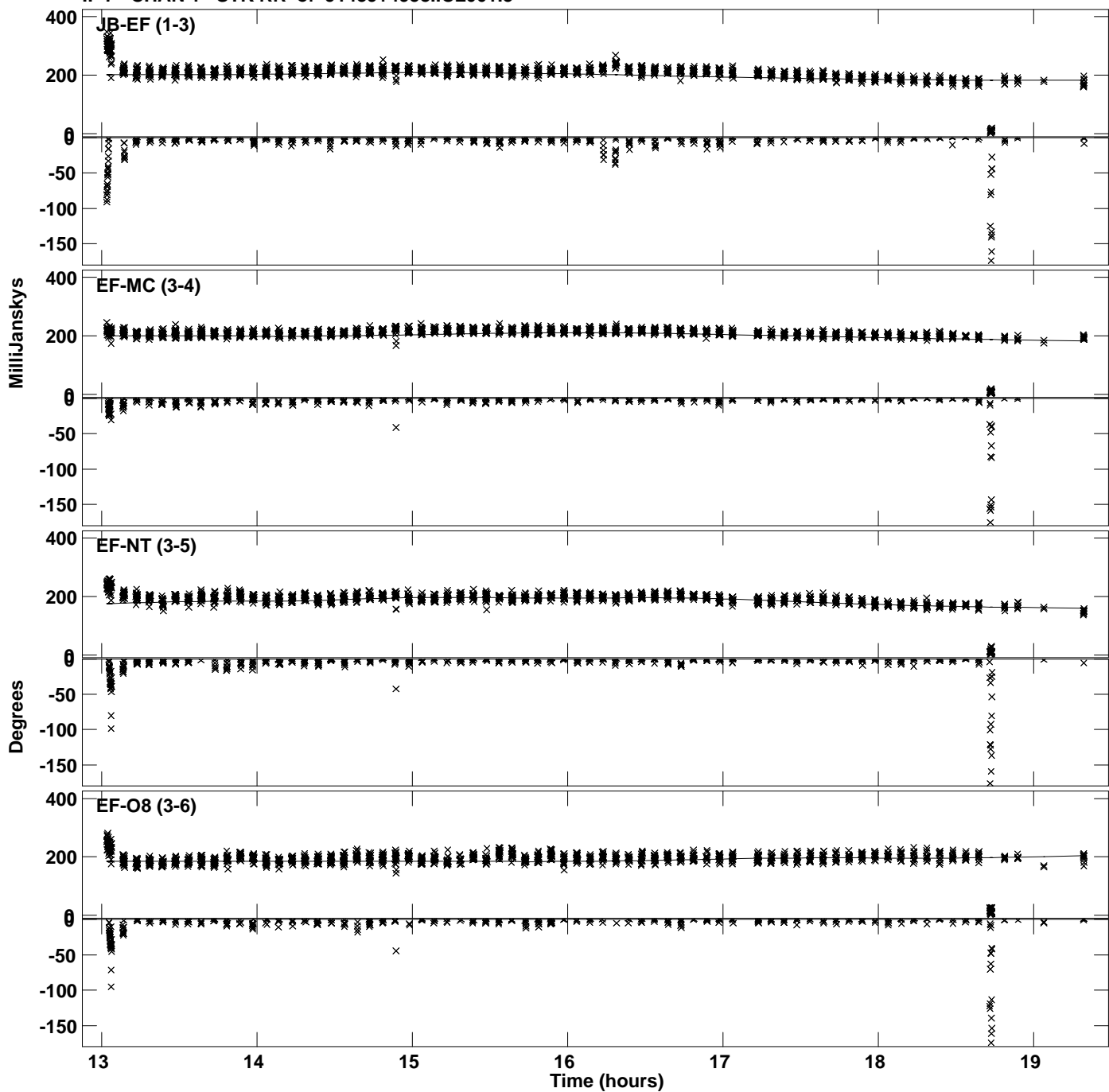
Plot file version 27 created 29-JUN-2023 15:57:20
Amplitude and Phase vs Time for J1439+4958.MULTI.1 CL # 3
IF 6 CHAN 1 STK RR of J1439+4958.ICL001.3



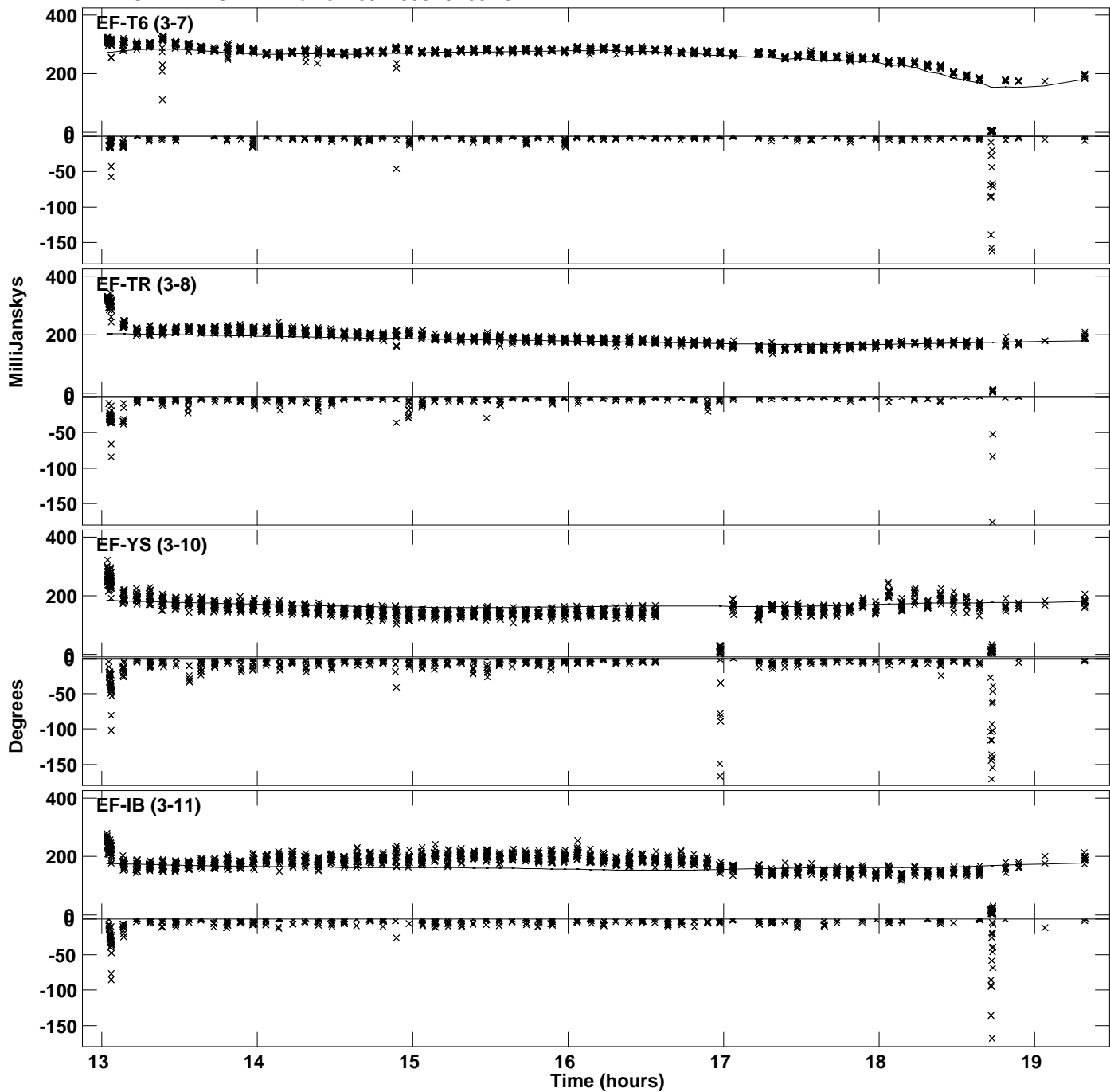
Plot file version 28 created 29-JUN-2023 15:57:20
Amplitude andPhase vs Time for J1439+4958.MULTI.1 CL # 3
IF 6 CHAN 1 STK RR of J1439+4958.ICL001.3



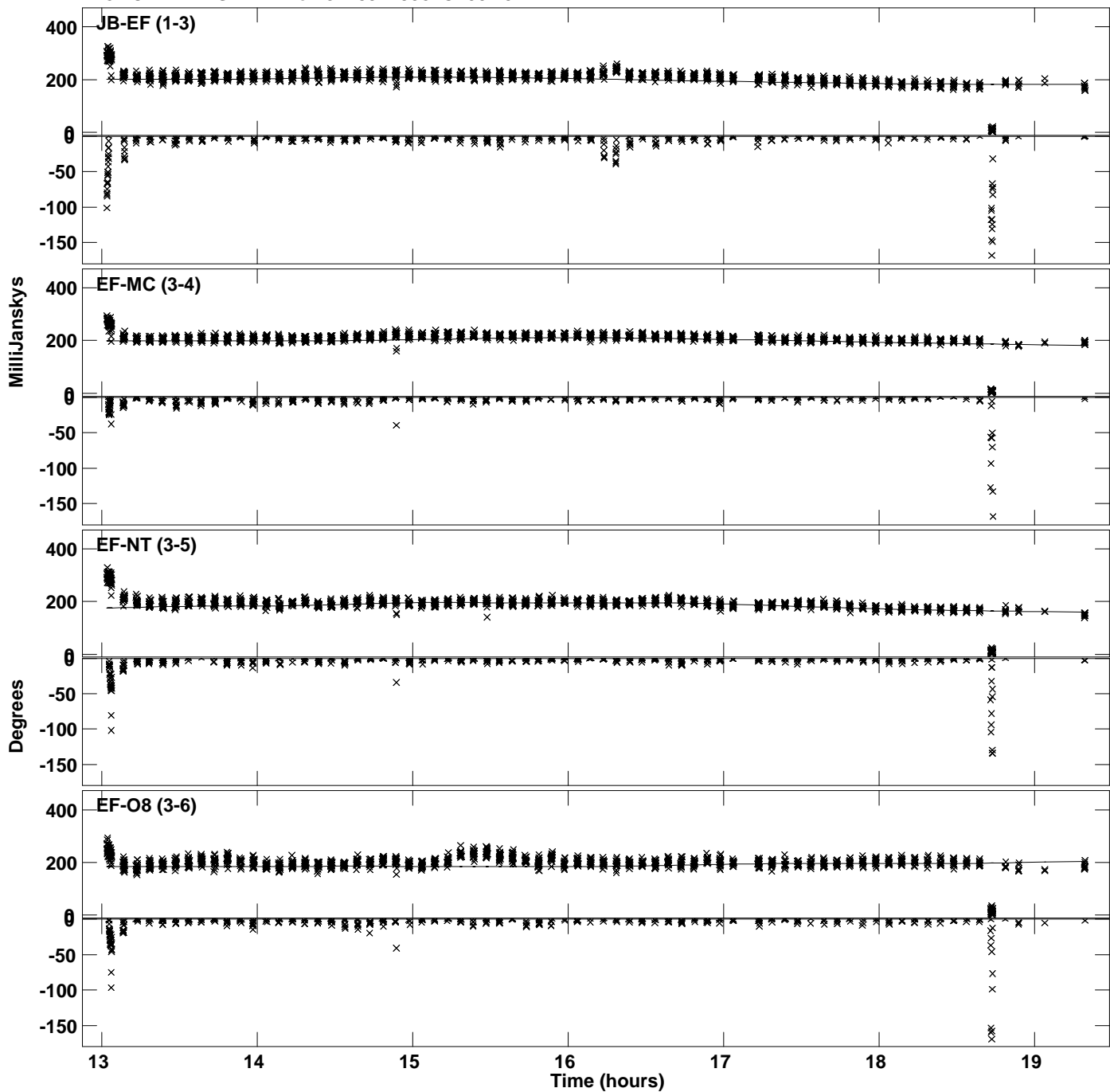
Plot file version 29 created 29-JUN-2023 15:57:20
Amplitude and Phase vs Time for J1439+4958.MULTI.1 CL # 3
IF 7 CHAN 1 STK RR of J1439+4958.ICL001.3



Plot file version 30 created 29-JUN-2023 15:57:20
Amplitude andPhase vs Time for J1439+4958.MULTI.1 CL # 3
IF 7 CHAN 1 STK RR of J1439+4958.ICL001.3



Plot file version 31 created 29-JUN-2023 15:57:21
Amplitude andPhase vs Time for J1439+4958.MULTI.1 CL # 3
IF 8 CHAN 1 STK RR of J1439+4958.ICL001.3



Plot file version 32 created 29-JUN-2023 15:57:21
Amplitude and Phase vs Time for J1439+4958.MULTI.1 CL # 3
IF 8 CHAN 1 STK RR of J1439+4958.ICL001.3

