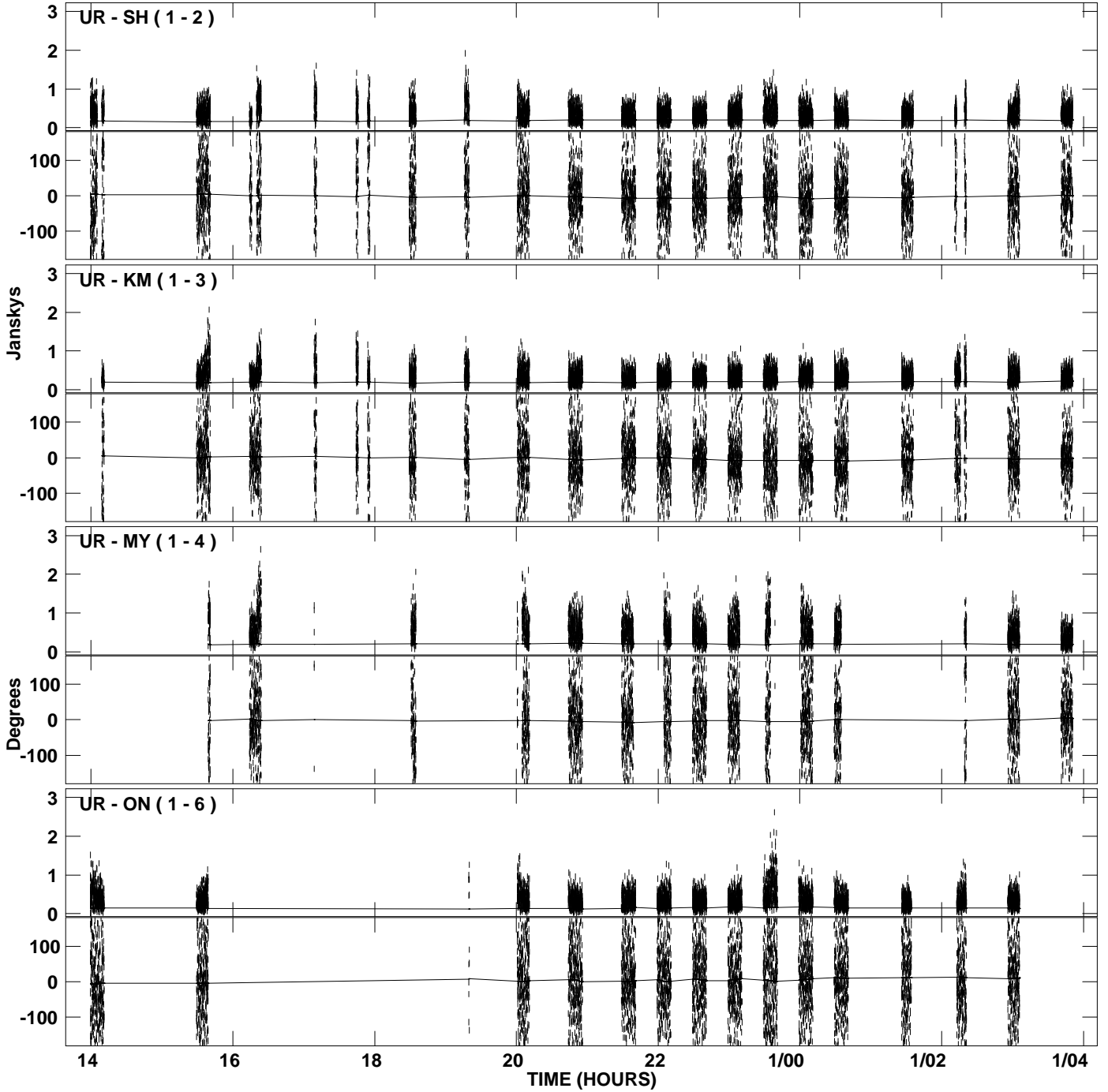
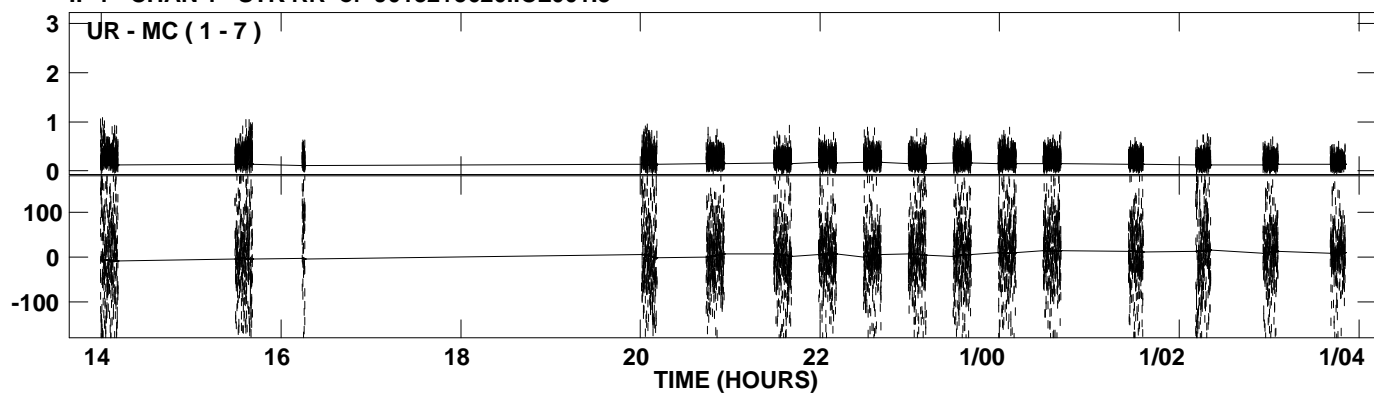


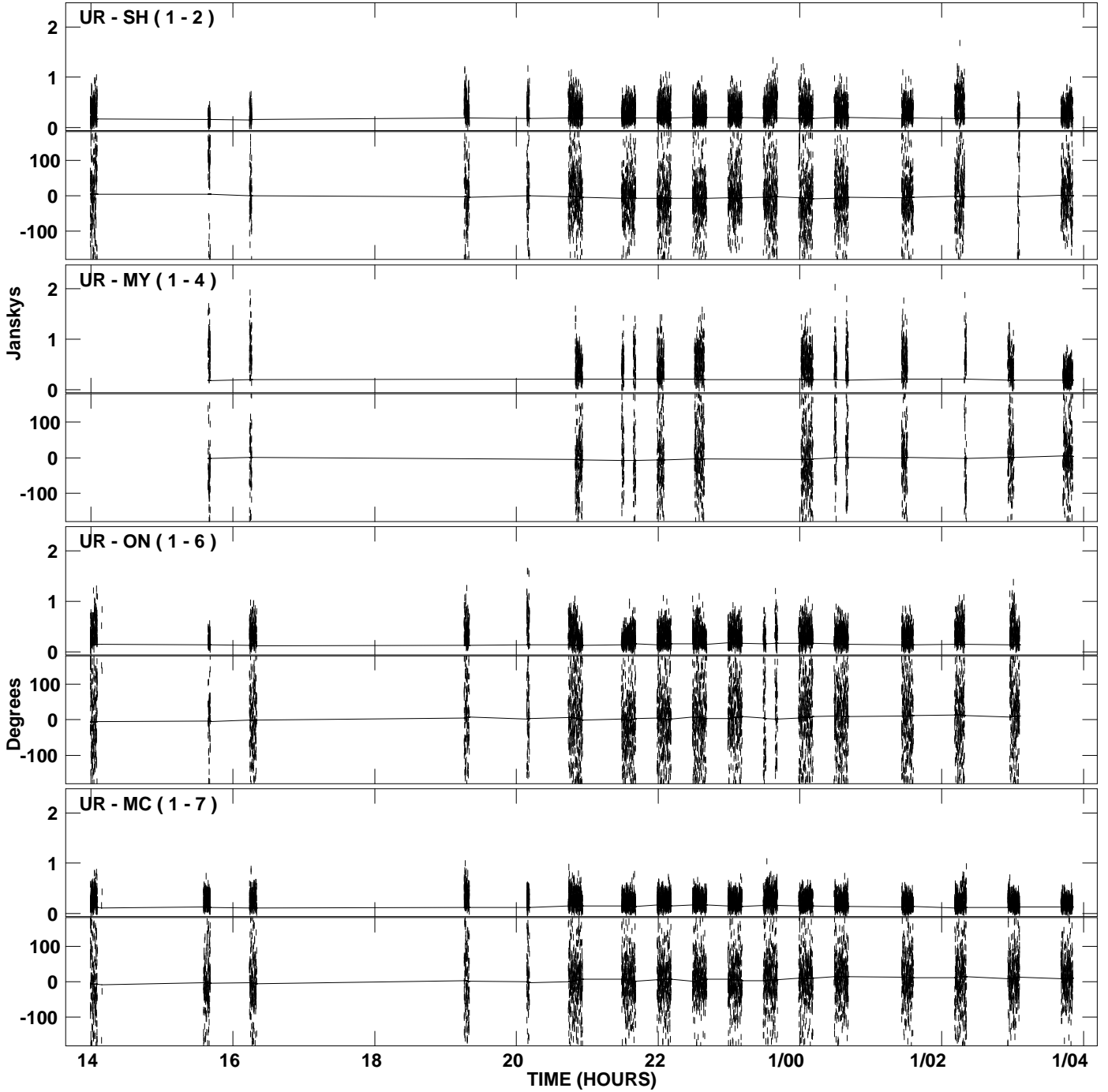
PLot file version 1 created 10-SEP-2009 17:52:41
Amplitude and Phase vs Time for J0132+5620.MULTI.1 CL # 3
IF 1 CHAN 1 STK RR of J0132+5620.ICL001.3



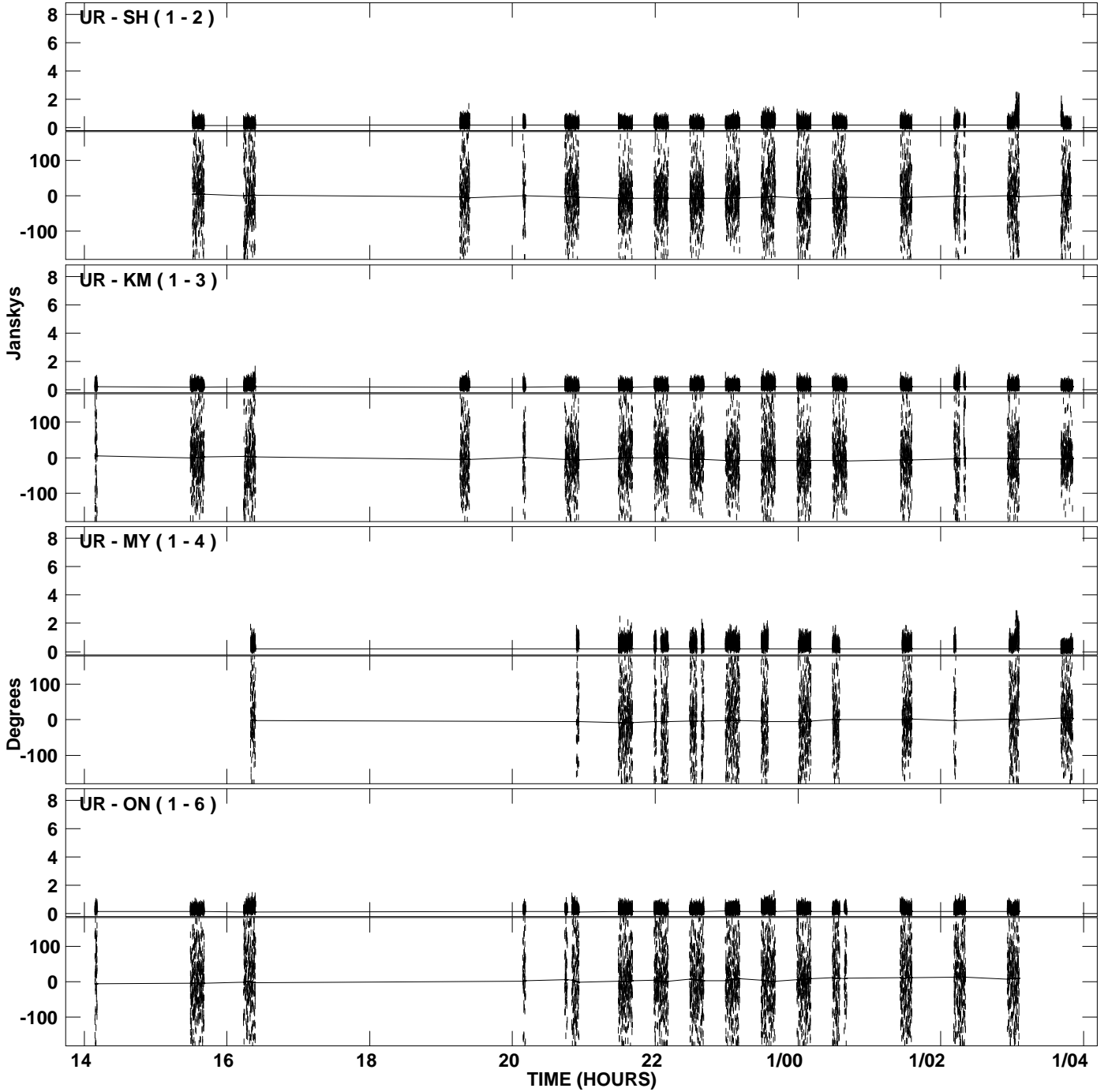
PLot file version 2 created 10-SEP-2009 17:52:41
Amplitude andPhase vs Time for J0132+5620.MULTI.1 CL # 3
IF 1 CHAN 1 STK RR of J0132+5620.ICL001.3



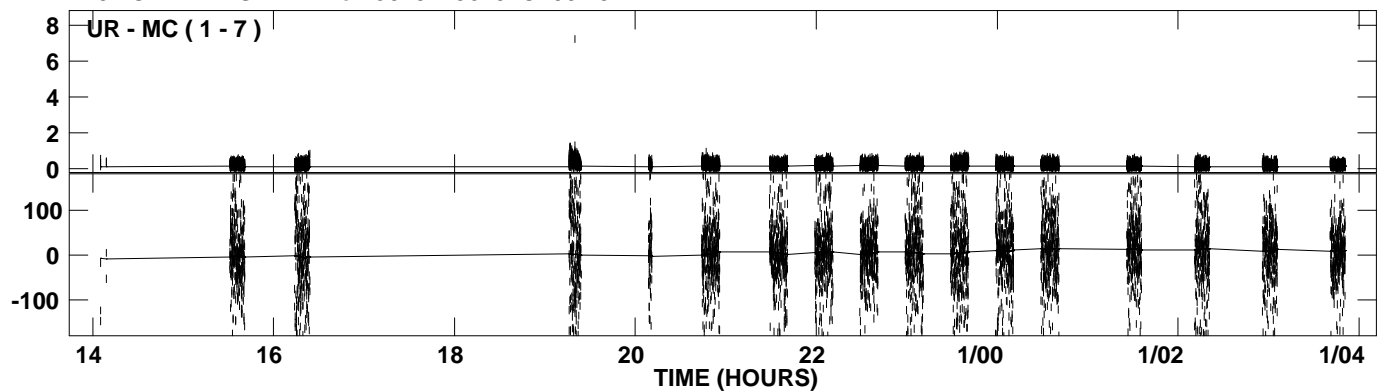
PLot file version 3 created 10-SEP-2009 17:52:42
Amplitude and Phase vs Time for J0132+5620.MULTI.1 CL # 3
IF 2 CHAN 1 STK RR of J0132+5620.ICL001.3



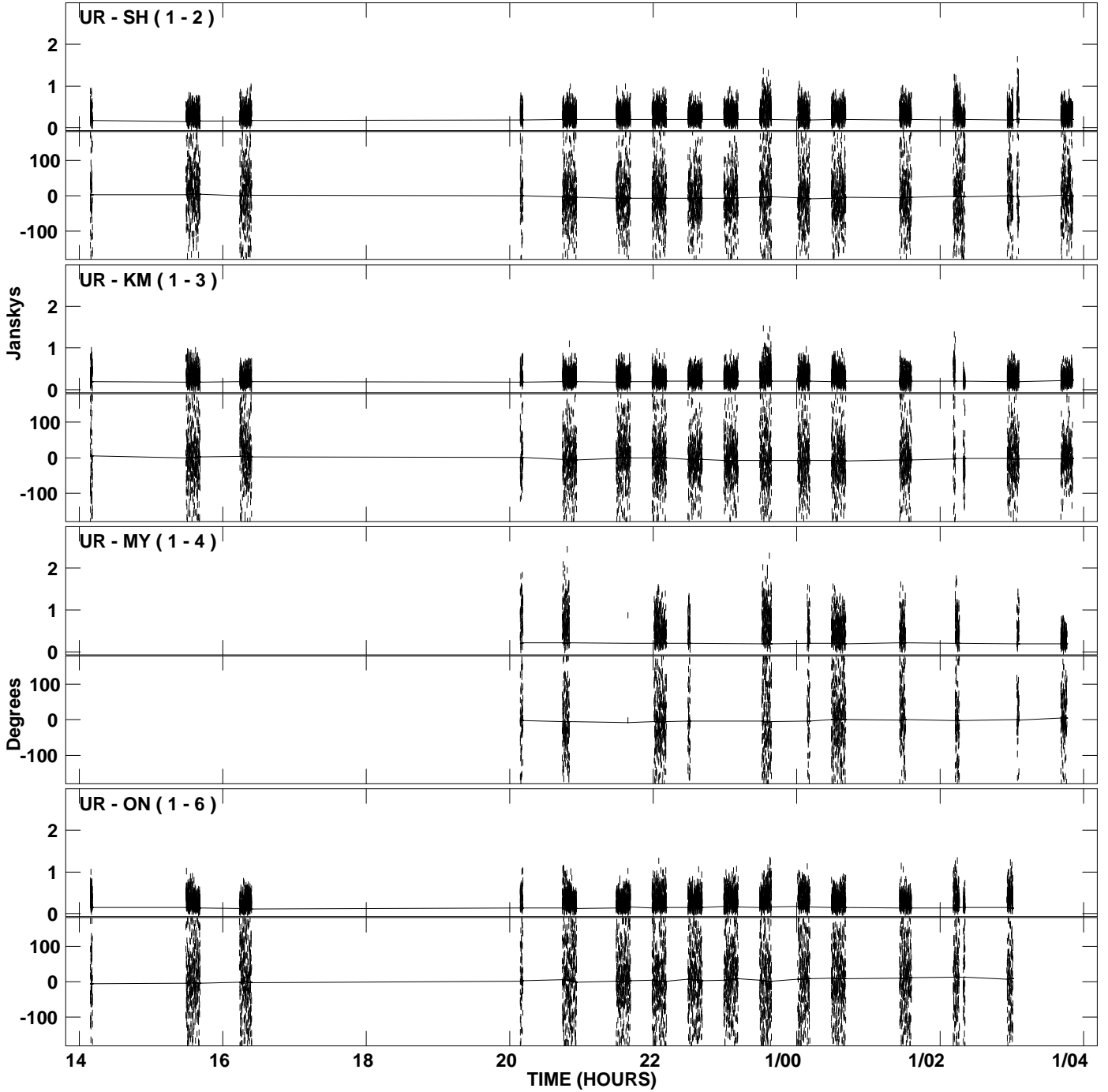
PLot file version 4 created 10-SEP-2009 17:52:42
Amplitude and Phase vs Time for J0132+5620.MULTI.1 CL # 3
IF 3 CHAN 1 STK RR of J0132+5620.ICL001.3



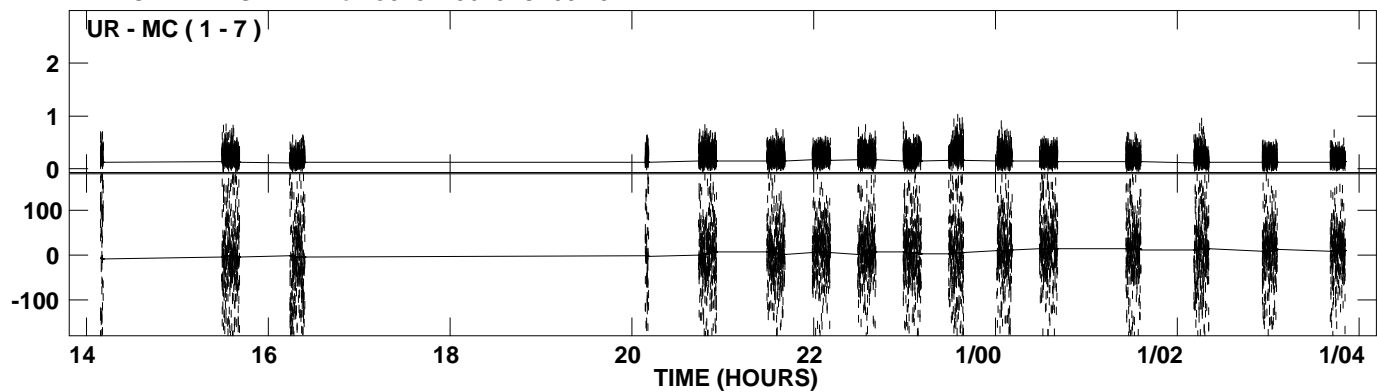
PLot file version 5 created 10-SEP-2009 17:52:42
Amplitude andPhase vs Time for J0132+5620.MULTI.1 CL # 3
IF 3 CHAN 1 STK RR of J0132+5620.ICL001.3



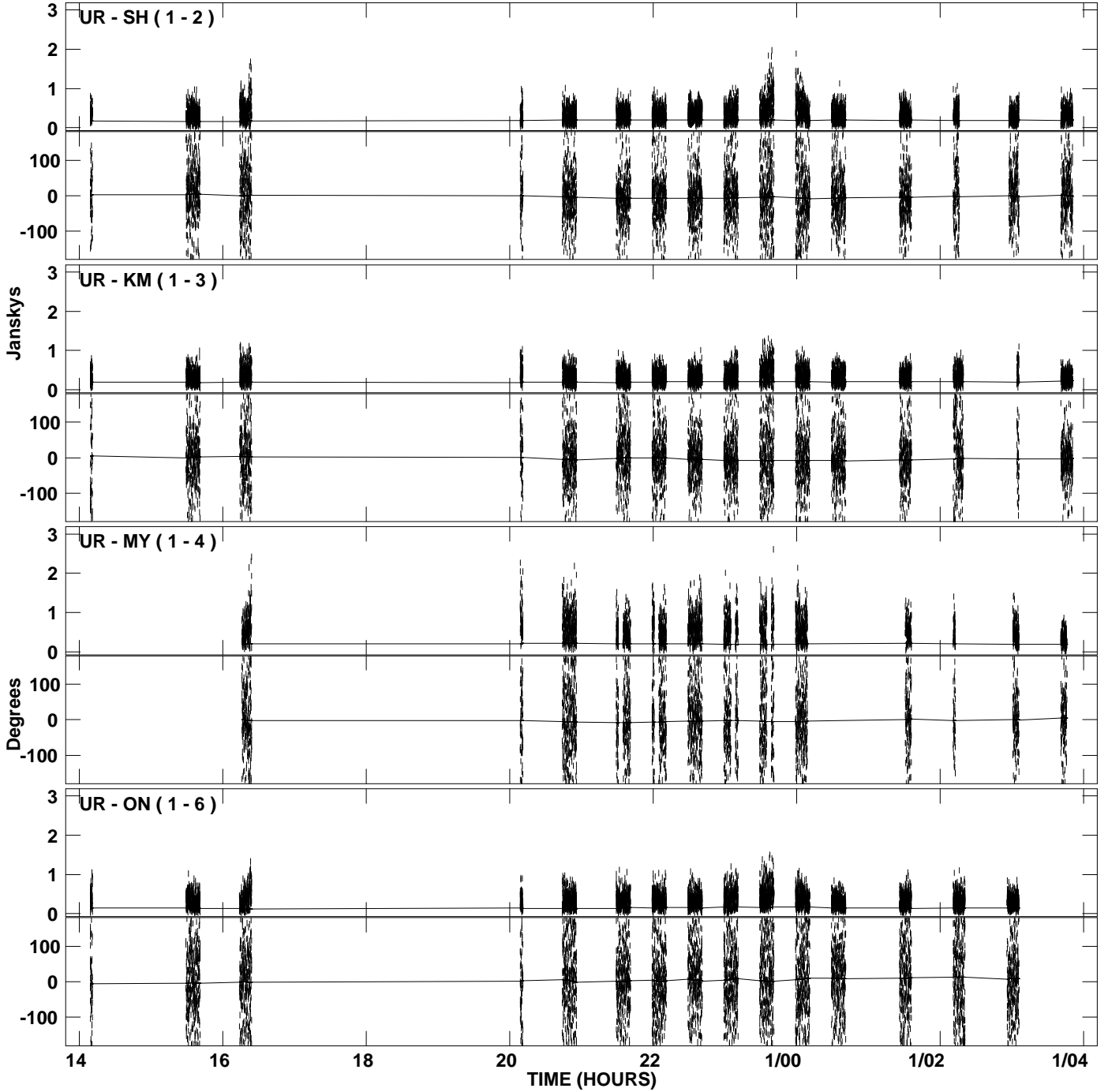
PLot file version 6 created 10-SEP-2009 17:52:43
Amplitude and Phase vs Time for J0132+5620.MULTI.1 CL # 3
IF 4 CHAN 1 STK RR of J0132+5620.ICL001.3



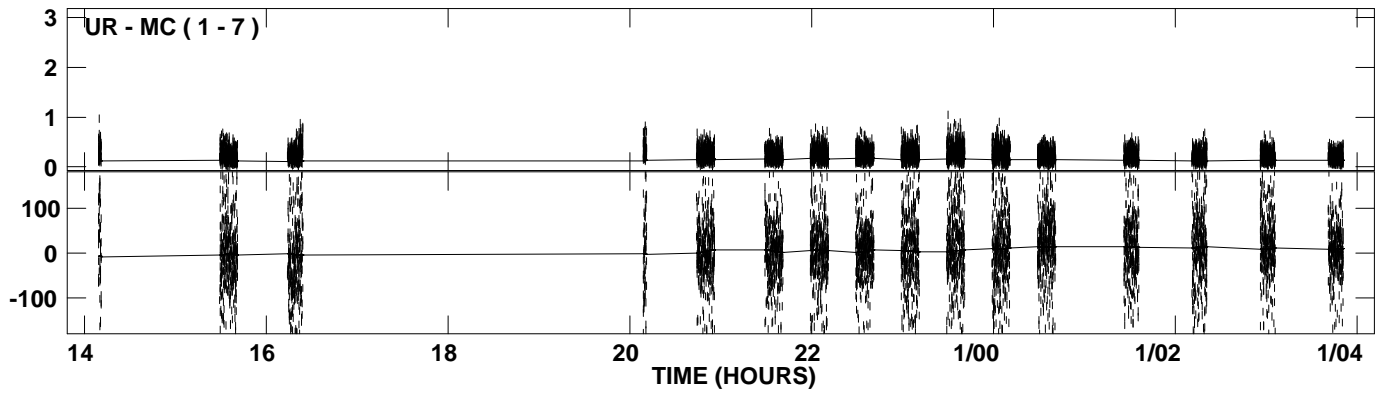
PLot file version 7 created 10-SEP-2009 17:52:43
Amplitude andPhase vs Time for J0132+5620.MULTI.1 CL # 3
IF 4 CHAN 1 STK RR of J0132+5620.ICL001.3



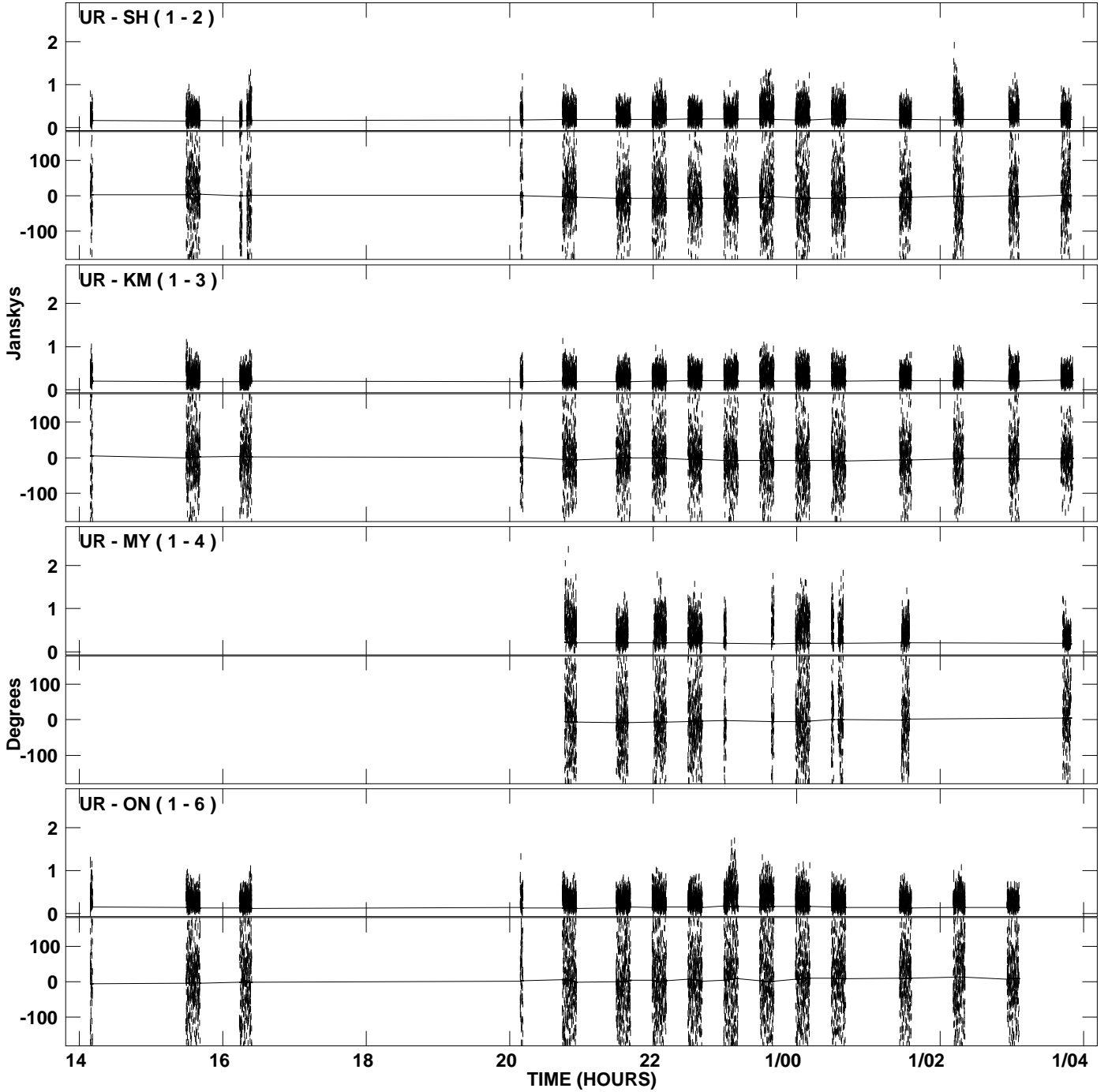
PLot file version 8 created 10-SEP-2009 17:52:43
Amplitude and Phase vs Time for J0132+5620.MULTI.1 CL # 3
IF 5 CHAN 1 STK RR of J0132+5620.ICL001.3



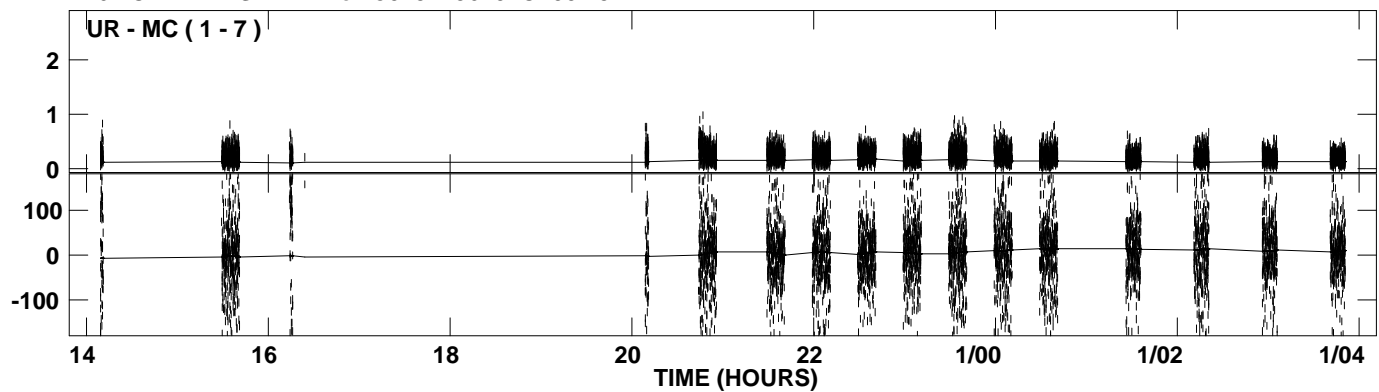
PLot file version 9 created 10-SEP-2009 17:52:43
Amplitude andPhase vs Time for J0132+5620.MULTI.1 CL # 3
IF 5 CHAN 1 STK RR of J0132+5620.ICL001.3



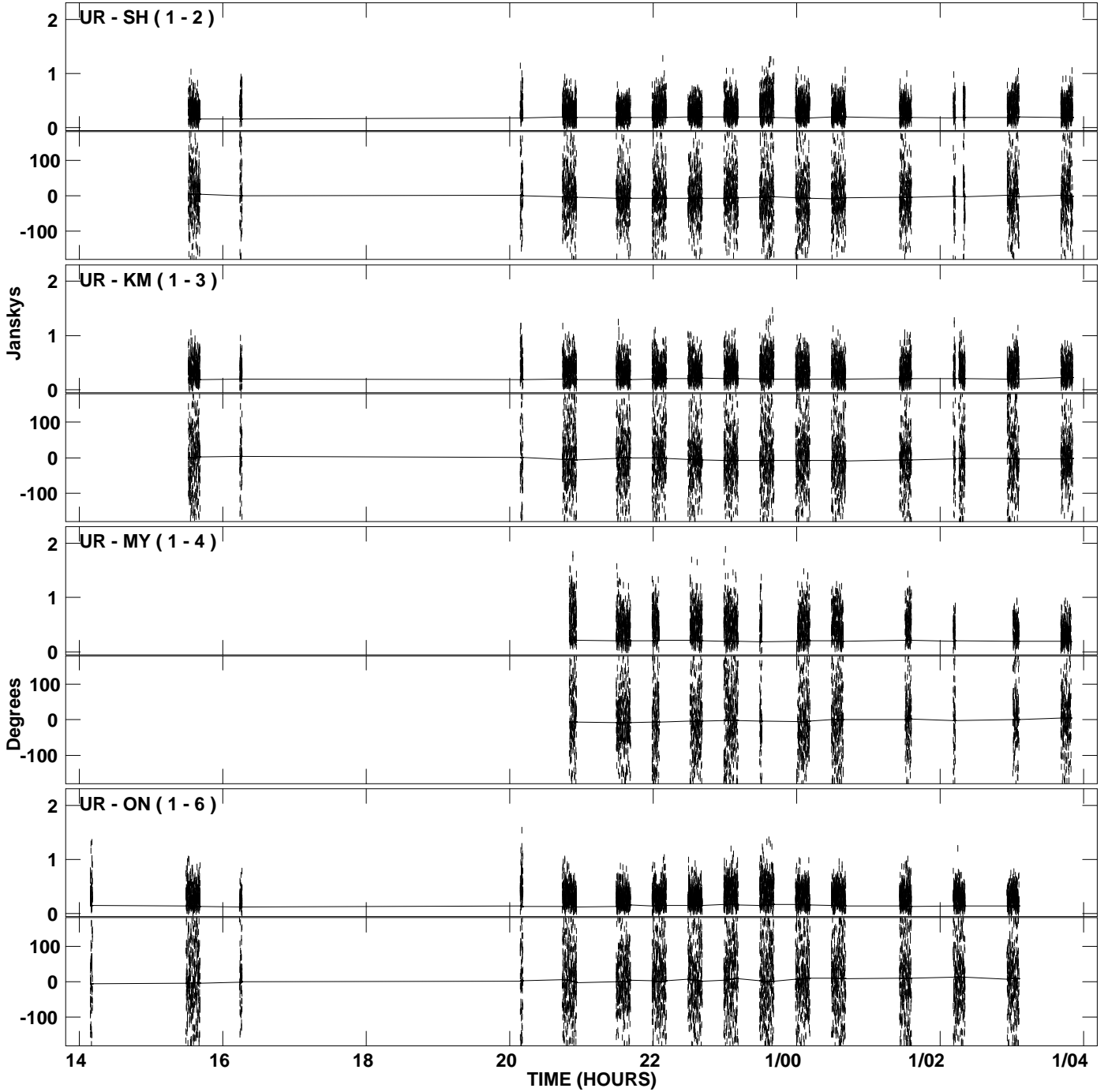
PLot file version 10 created 10-SEP-2009 17:52:44
Amplitude andPhase vs Time for J0132+5620.MULTI.1 CL # 3
IF 6 CHAN 1 STK RR of J0132+5620.ICL001.3



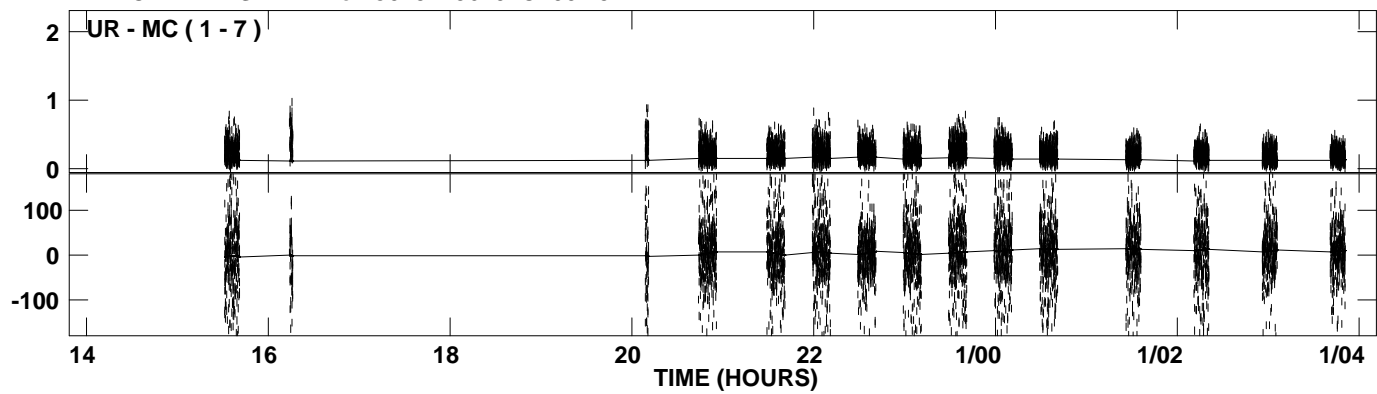
PLot file version 11 created 10-SEP-2009 17:52:44
Amplitude andPhase vs Time for J0132+5620.MULTI.1 CL # 3
IF 6 CHAN 1 STK RR of J0132+5620.ICL001.3



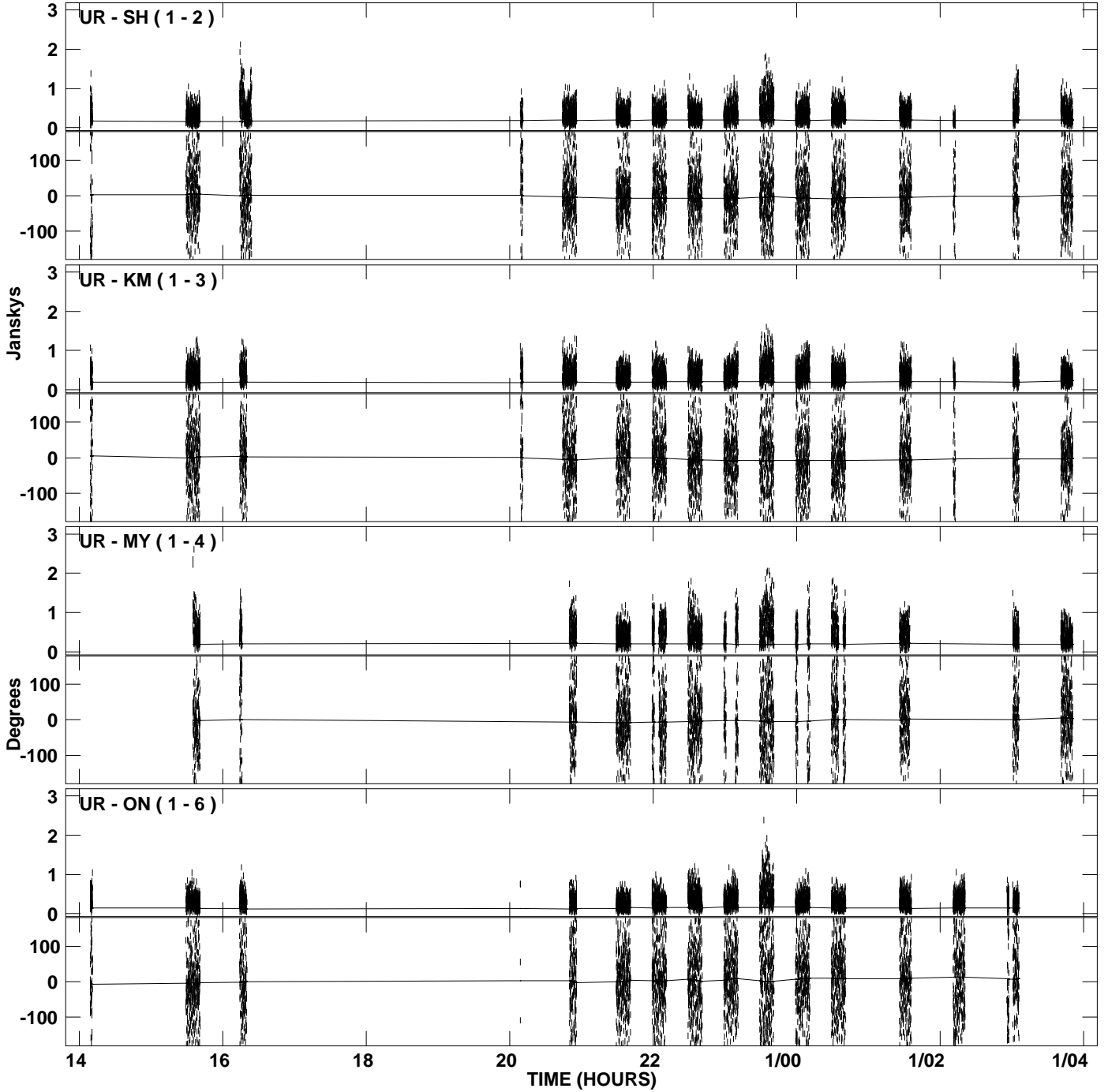
PLot file version 12 created 10-SEP-2009 17:52:44
Amplitude and Phase vs Time for J0132+5620.MULTI.1 CL # 3
IF 7 CHAN 1 STK RR of J0132+5620.ICL001.3



PLot file version 13 created 10-SEP-2009 17:52:45
Amplitude andPhase vs Time for J0132+5620.MULTI.1 CL # 3
IF 7 CHAN 1 STK RR of J0132+5620.ICL001.3



PLot file version 14 created 10-SEP-2009 17:52:45
Amplitude and Phase vs Time for J0132+5620.MULTI.1 CL # 3
IF 8 CHAN 1 STK RR of J0132+5620.ICL001.3



PLot file version 15 created 10-SEP-2009 17:52:45
Amplitude andPhase vs Time for J0132+5620.MULTI.1 CL # 3
IF 8 CHAN 1 STK RR of J0132+5620.ICL001.3

