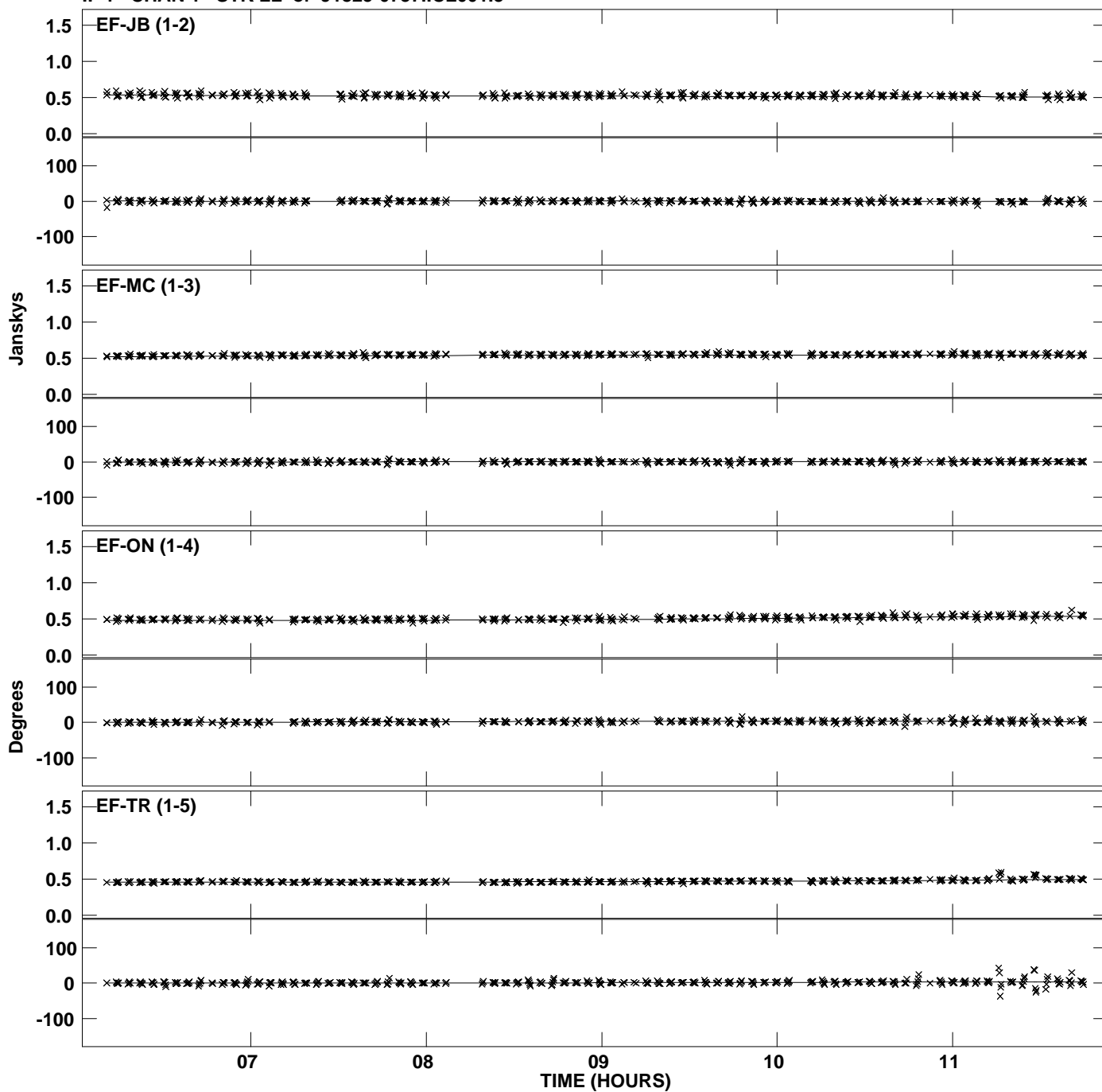
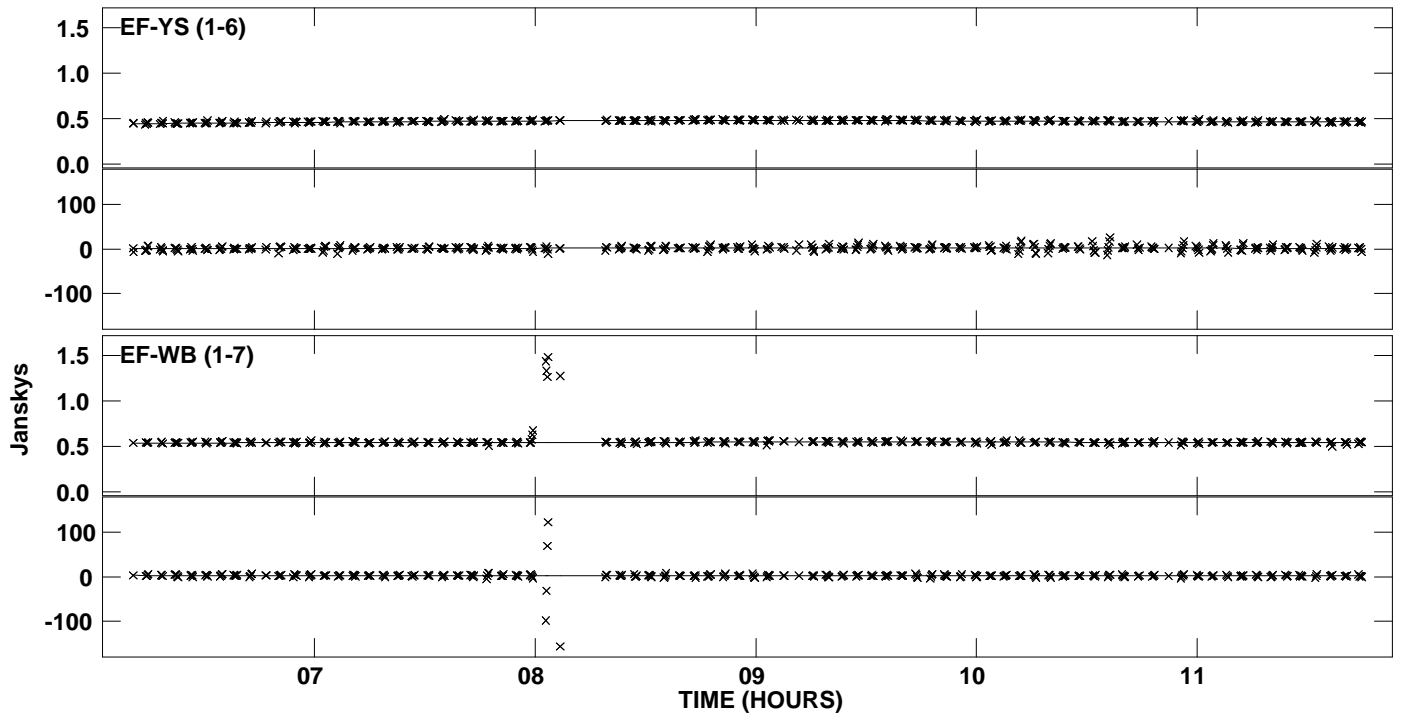


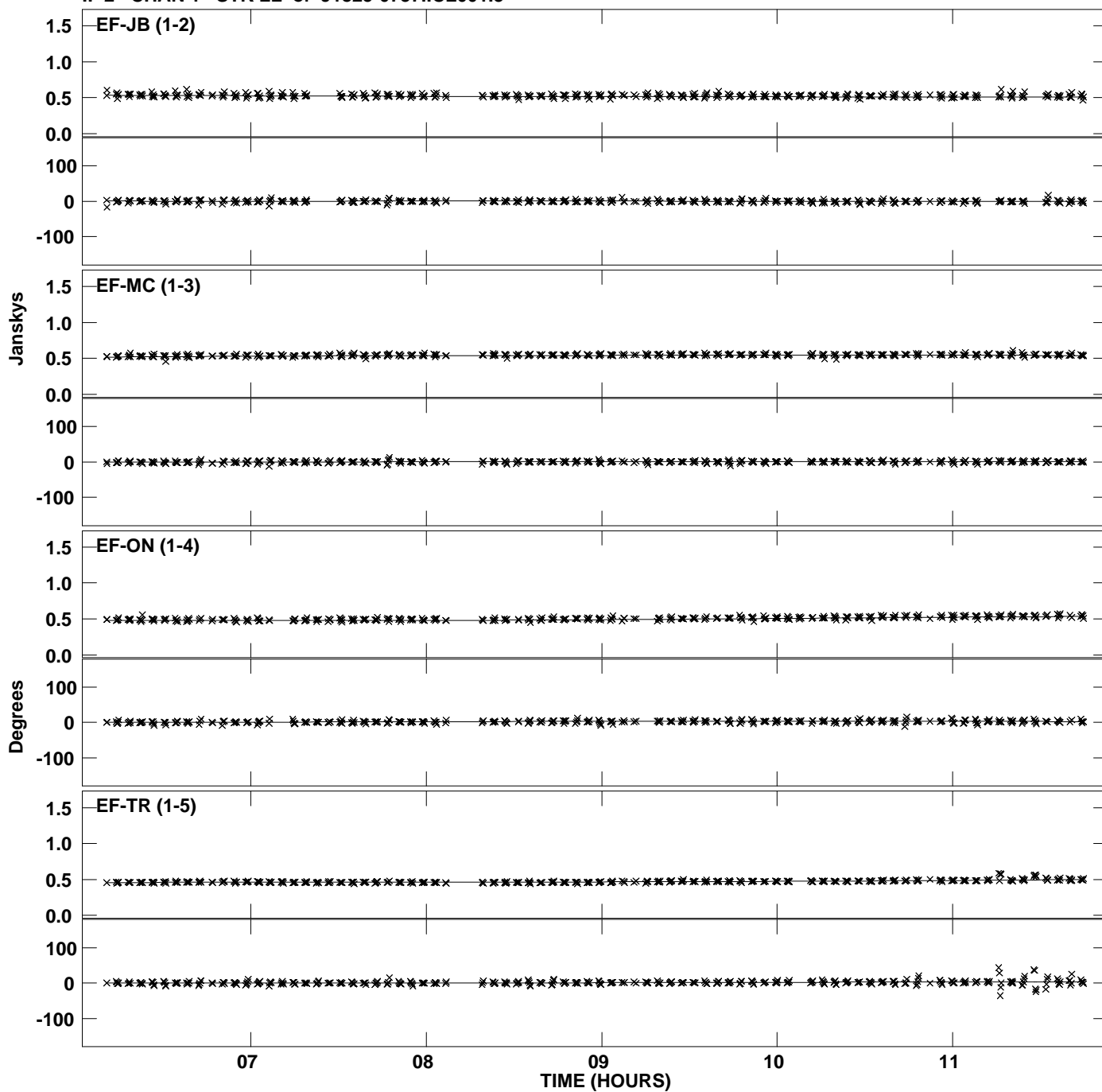
PLOT file version 1 created 16-FEB-2012 15:17:28
 Amplitude and Phase vs Time for J1825-0737.MULTI.1 Vect aver. CL # 3
 IF 1 CHAN 1 STK LL of J1825-0737.ICL001.3



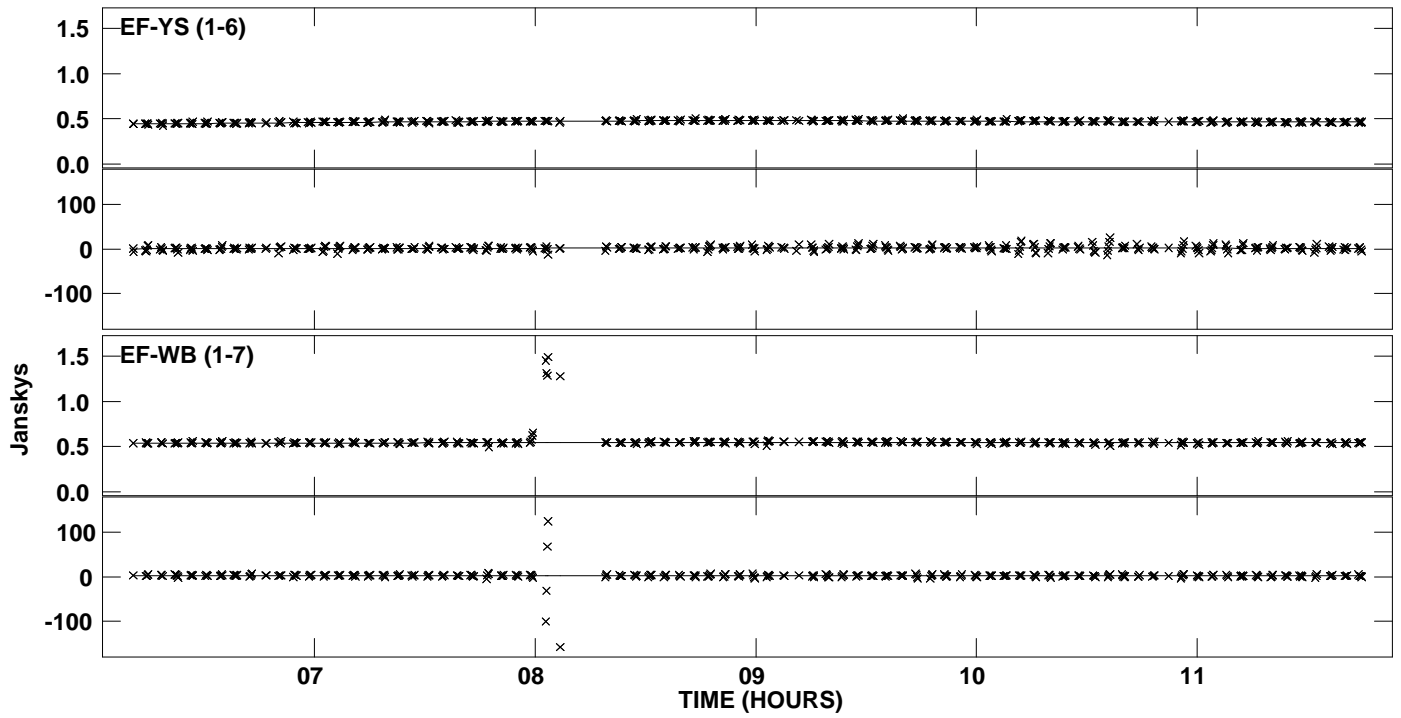
PLot file version 2 created 16-FEB-2012 15:17:28
Amplitude and Phase vs Time for J1825-0737.MULTI.1 Vect aver. CL # 3
IF 1 CHAN 1 STK LL of J1825-0737.ICL001.3



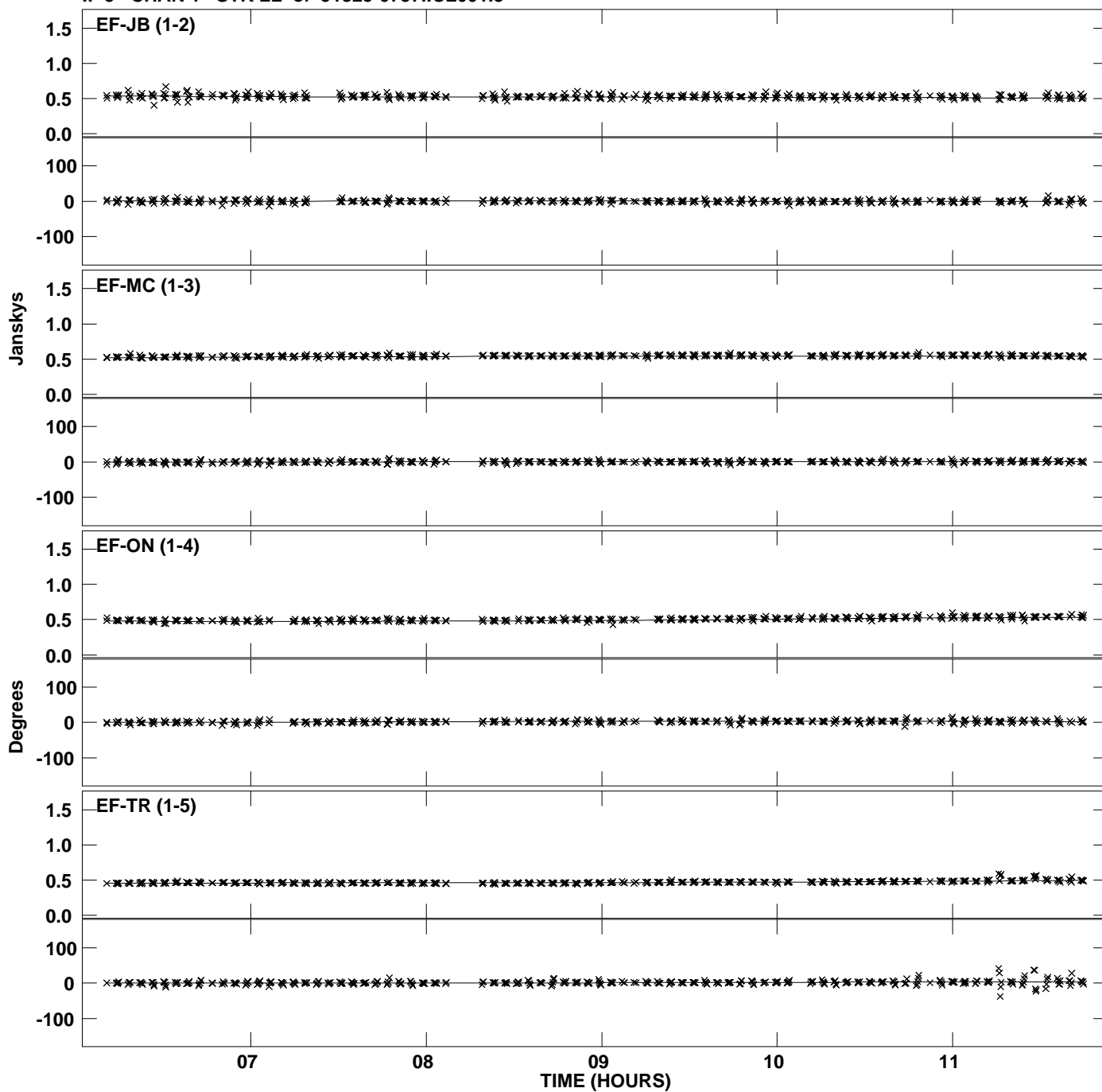
PLot file version 3 created 16-FEB-2012 15:17:33
Amplitude and Phase vs Time for J1825-0737.MULTI.1 Vect aver. CL # 3
IF 2 CHAN 1 STK LL of J1825-0737.ICL001.3



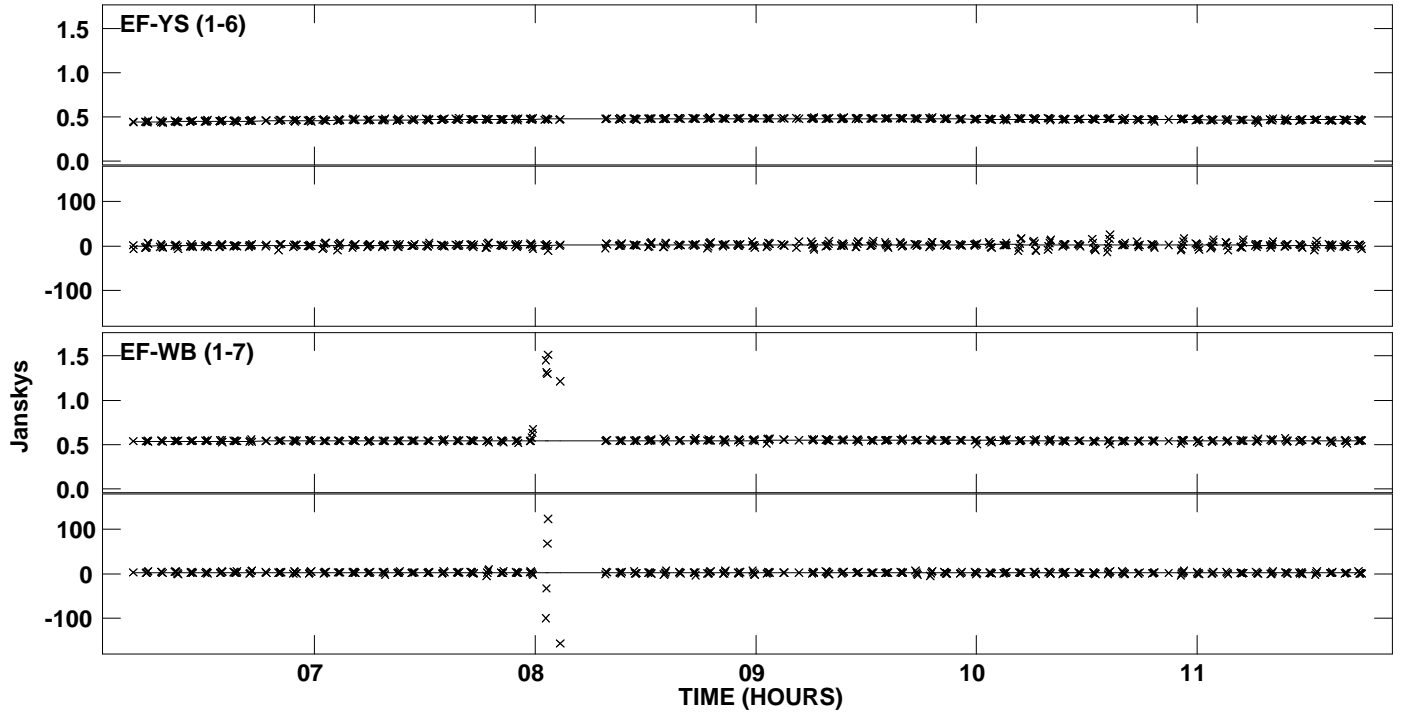
Plot file version 4 created 16-FEB-2012 15:17:33
Amplitude and Phase vs Time for J1825-0737.MULTI.1 Vect aver. CL # 3
IF 2 CHAN 1 STK LL of J1825-0737.ICL001.3



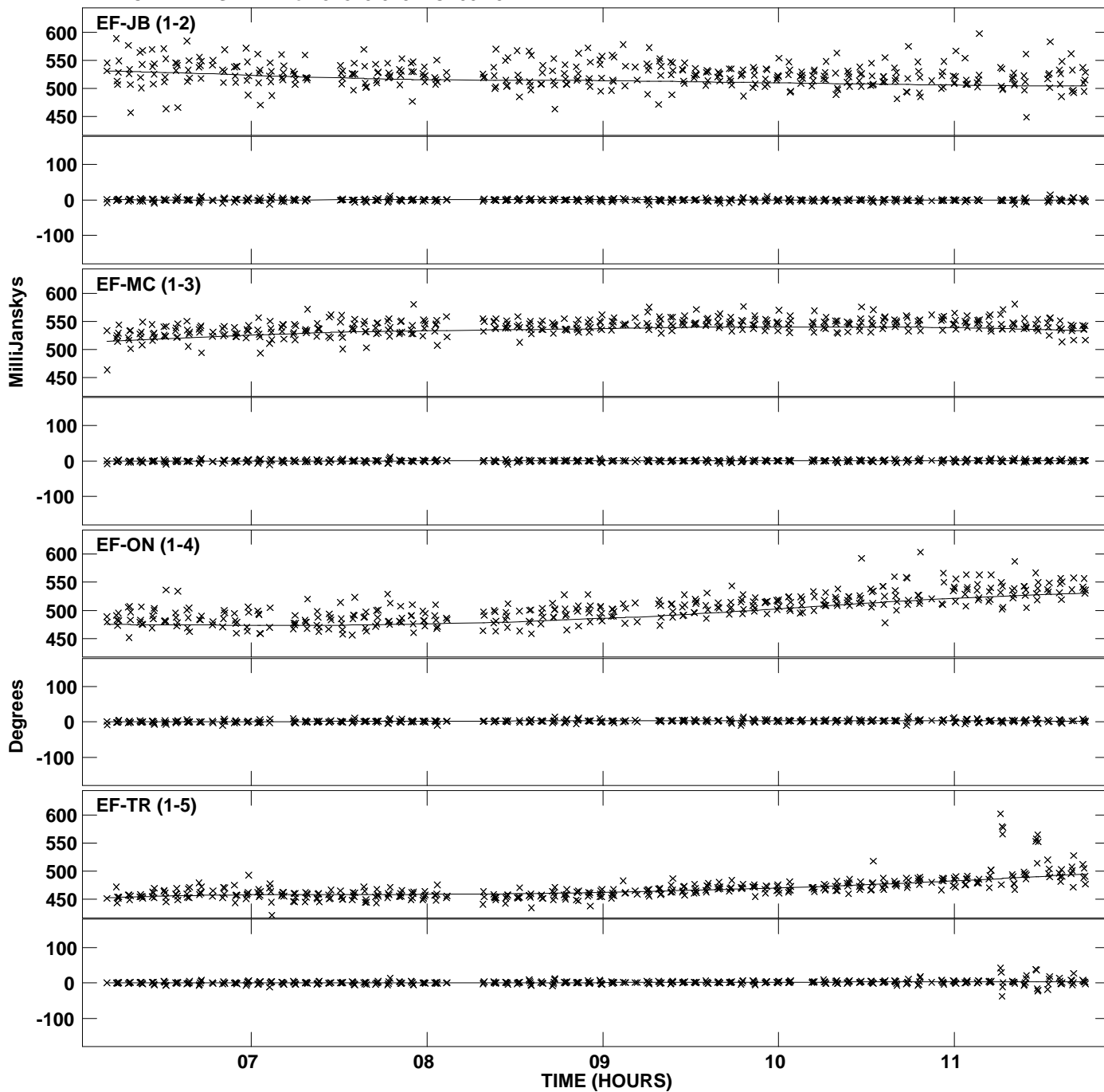
PLOT file version 5 created 16-FEB-2012 15:17:38
 Amplitude and Phase vs Time for J1825-0737.MULTI.1 Vect aver. CL # 3
 IF 3 CHAN 1 STK LL of J1825-0737.ICL001.3



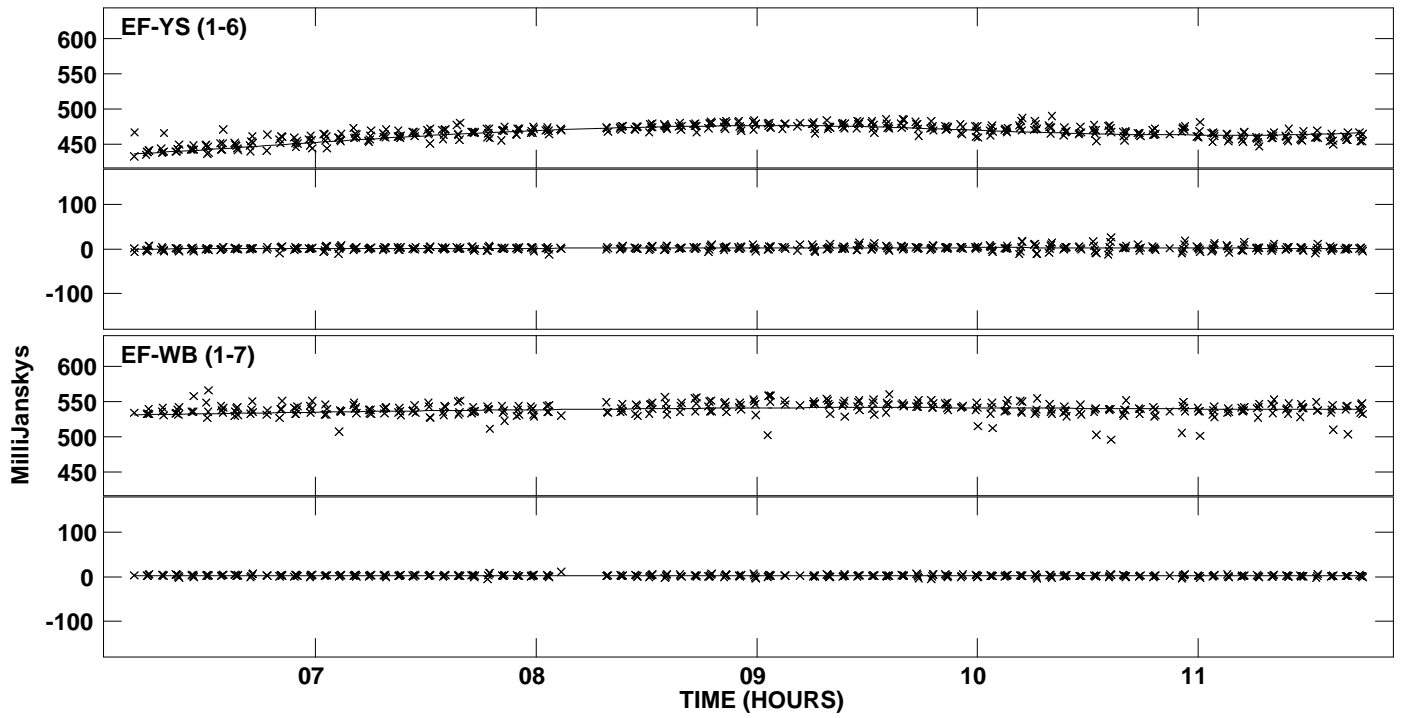
PLot file version 6 created 16-FEB-2012 15:17:38
Amplitude and Phase vs Time for J1825-0737.MULTI.1 Vect aver. CL # 3
IF 3 CHAN 1 STK LL of J1825-0737.ICL001.3



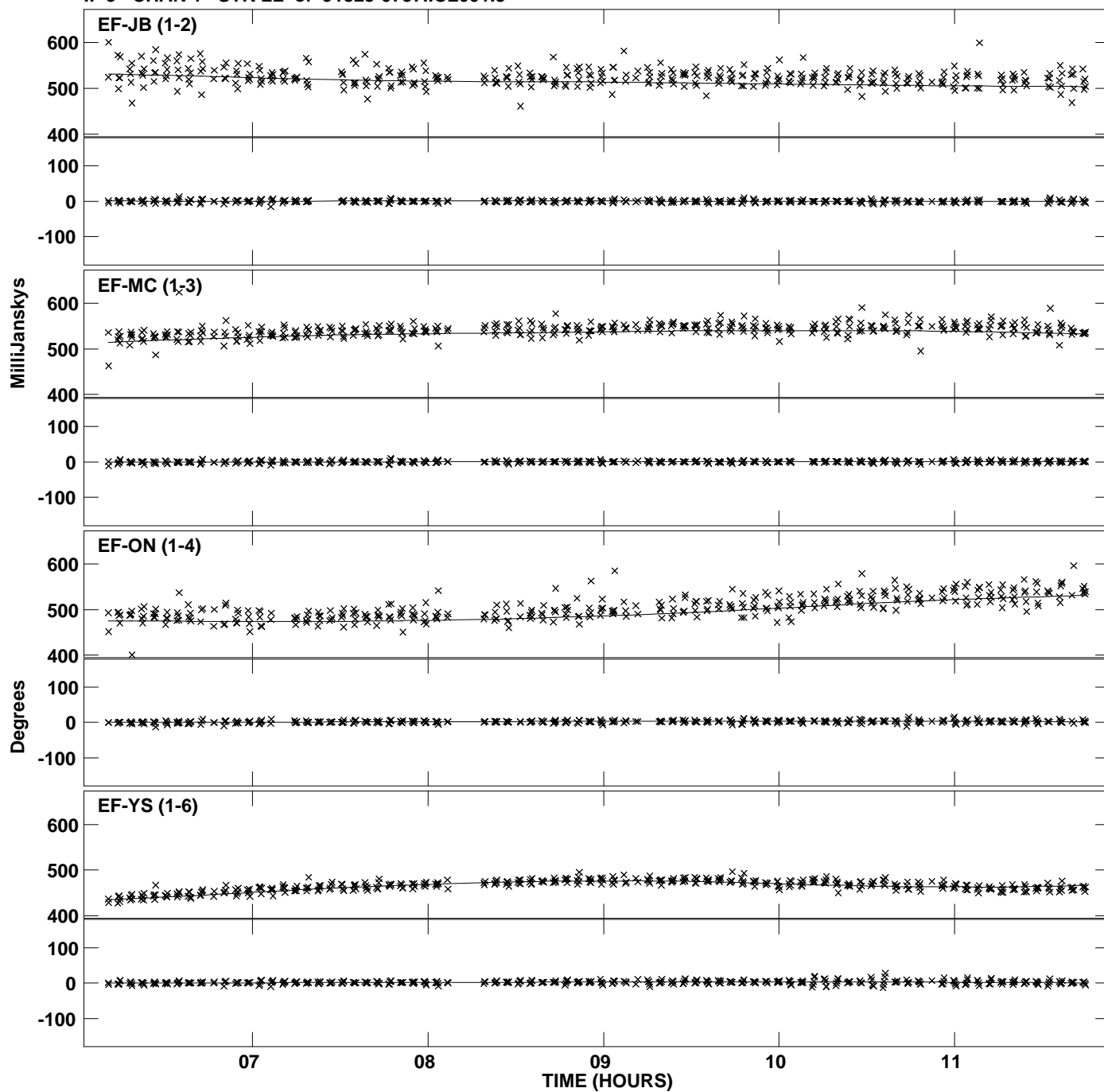
PLOT file version 7 created 16-FEB-2012 15:17:43
 Amplitude and Phase vs Time for J1825-0737.MULTI.1 Vect aver. CL # 3
 IF 4 CHAN 1 STK LL of J1825-0737.ICL001.3



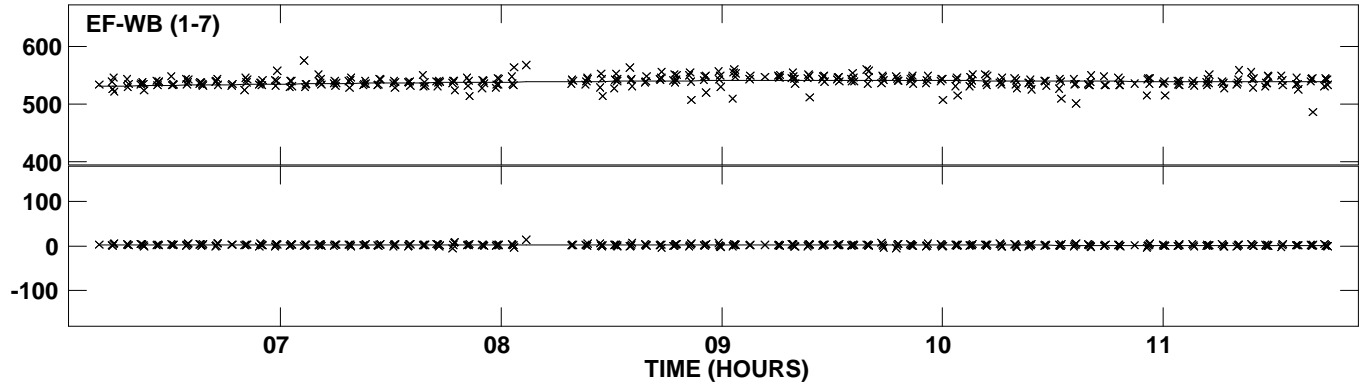
PLot file version 8 created 16-FEB-2012 15:17:44
Amplitude and Phase vs Time for J1825-0737.MULTI.1 Vect aver. CL # 3
IF 4 CHAN 1 STK LL of J1825-0737.ICL001.3



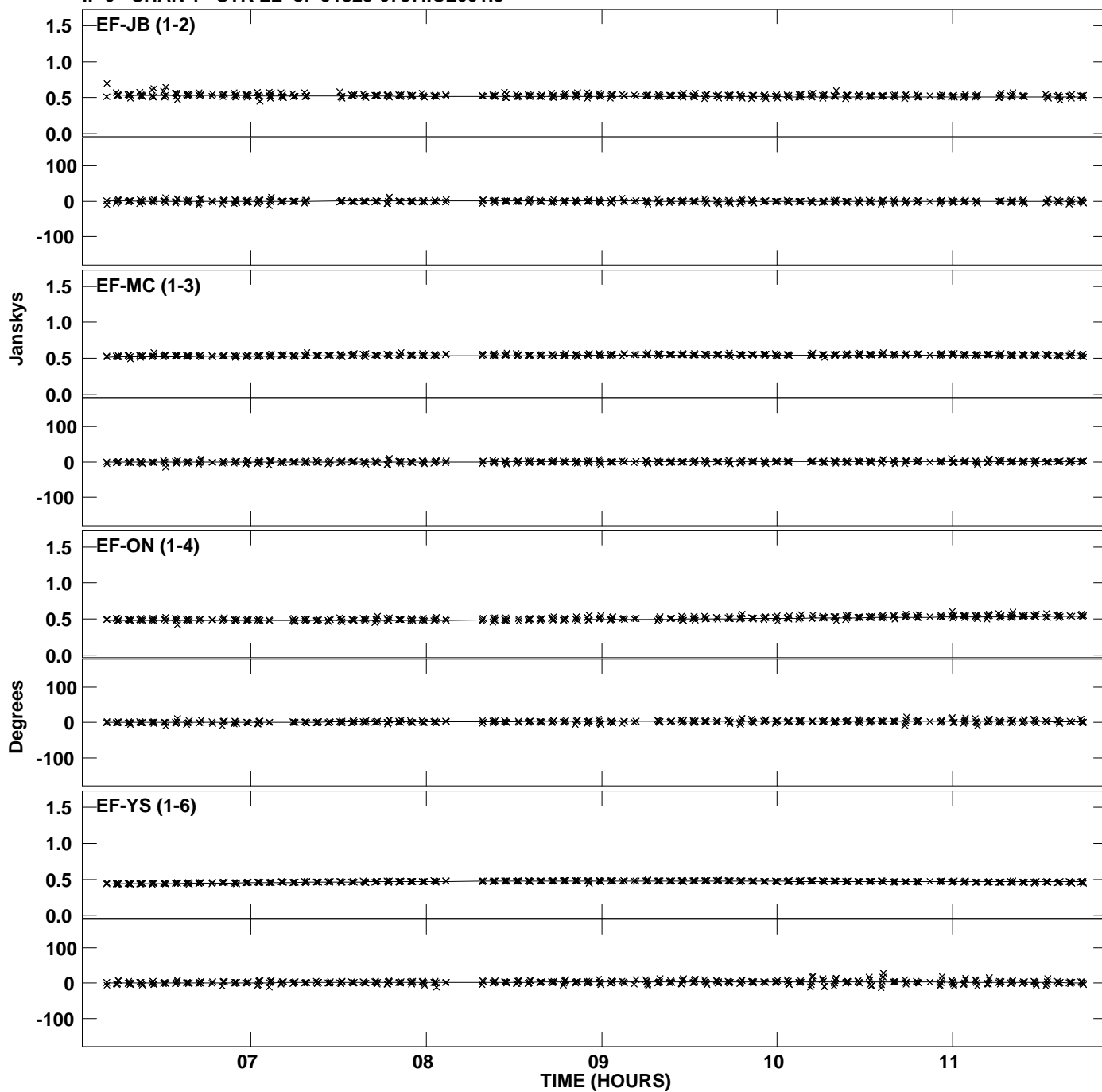
Plot file version 9 created 16-FEB-2012 15:17:47
Amplitude and Phase vs Time for J1825-0737.MULTI.1 Vect aver. CL # 3
IF 5 CHAN 1 STK LL of J1825-0737.ICL001.3



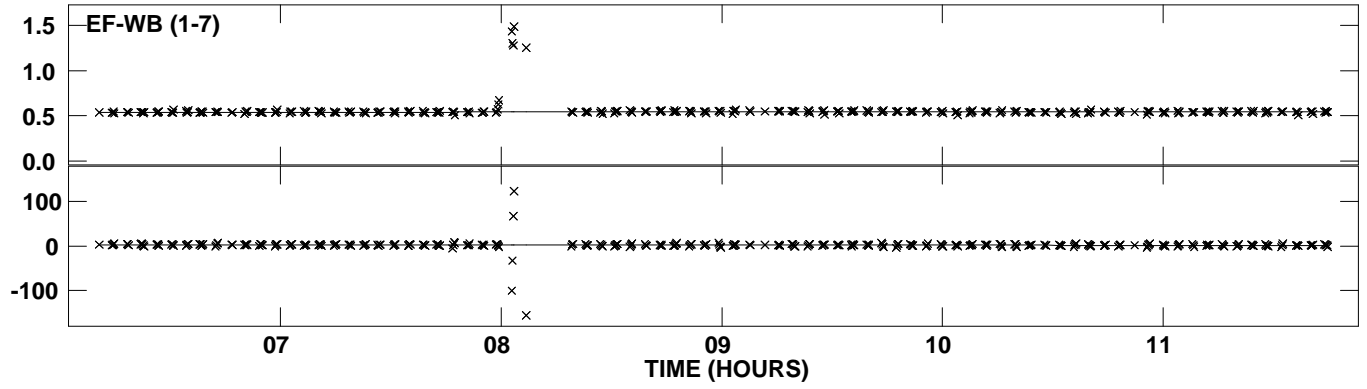
PLot file version 10 created 16-FEB-2012 15:17:47
Amplitude and Phase vs Time for J1825-0737.MULTI.1 Vect aver. CL # 3
IF 5 CHAN 1 STK LL of J1825-0737.ICL001.3



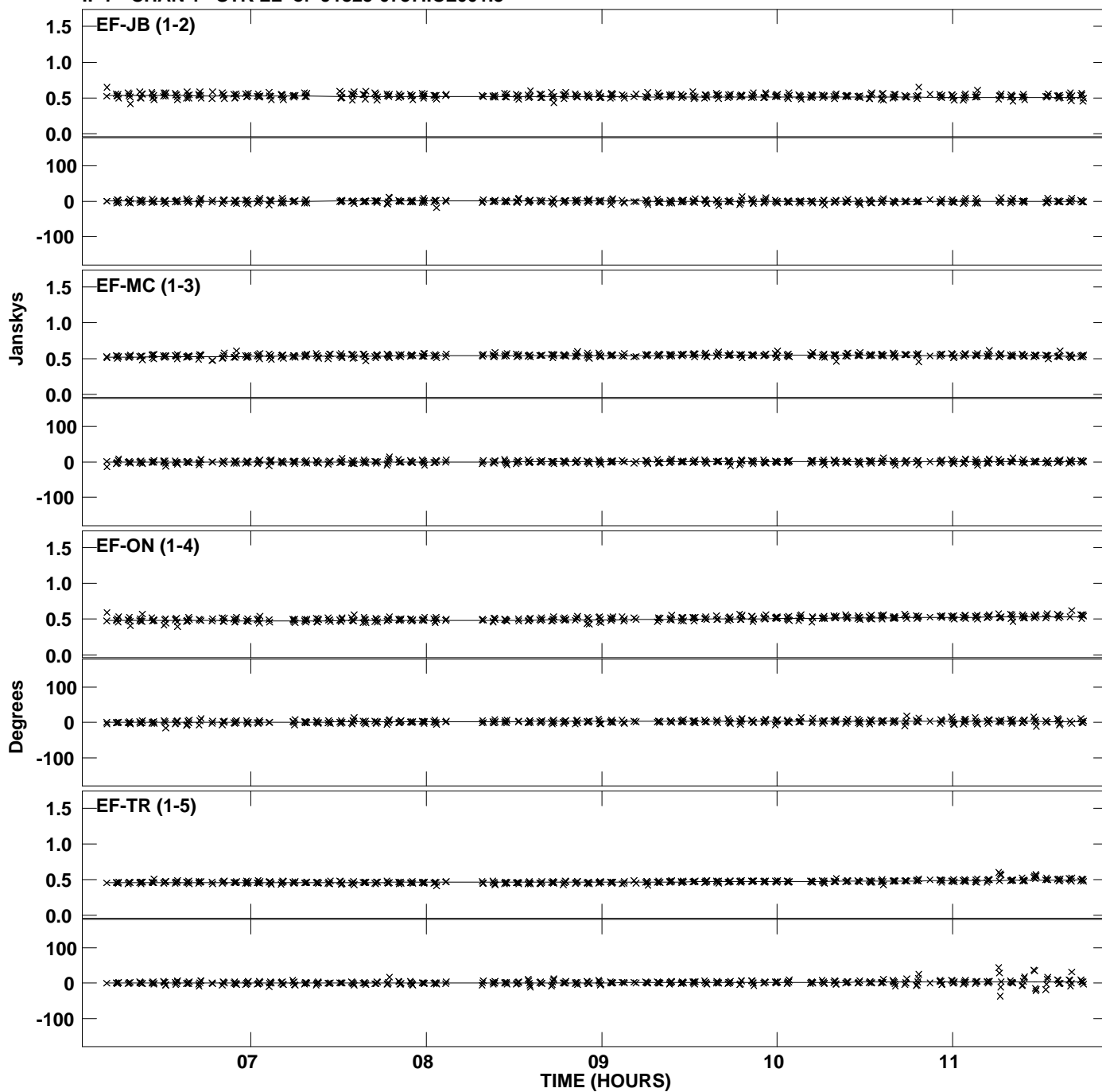
PLot file version 11 created 16-FEB-2012 15:17:51
Amplitude and Phase vs Time for J1825-0737.MULTI.1 Vect aver. CL # 3
IF 6 CHAN 1 STK LL of J1825-0737.ICL001.3



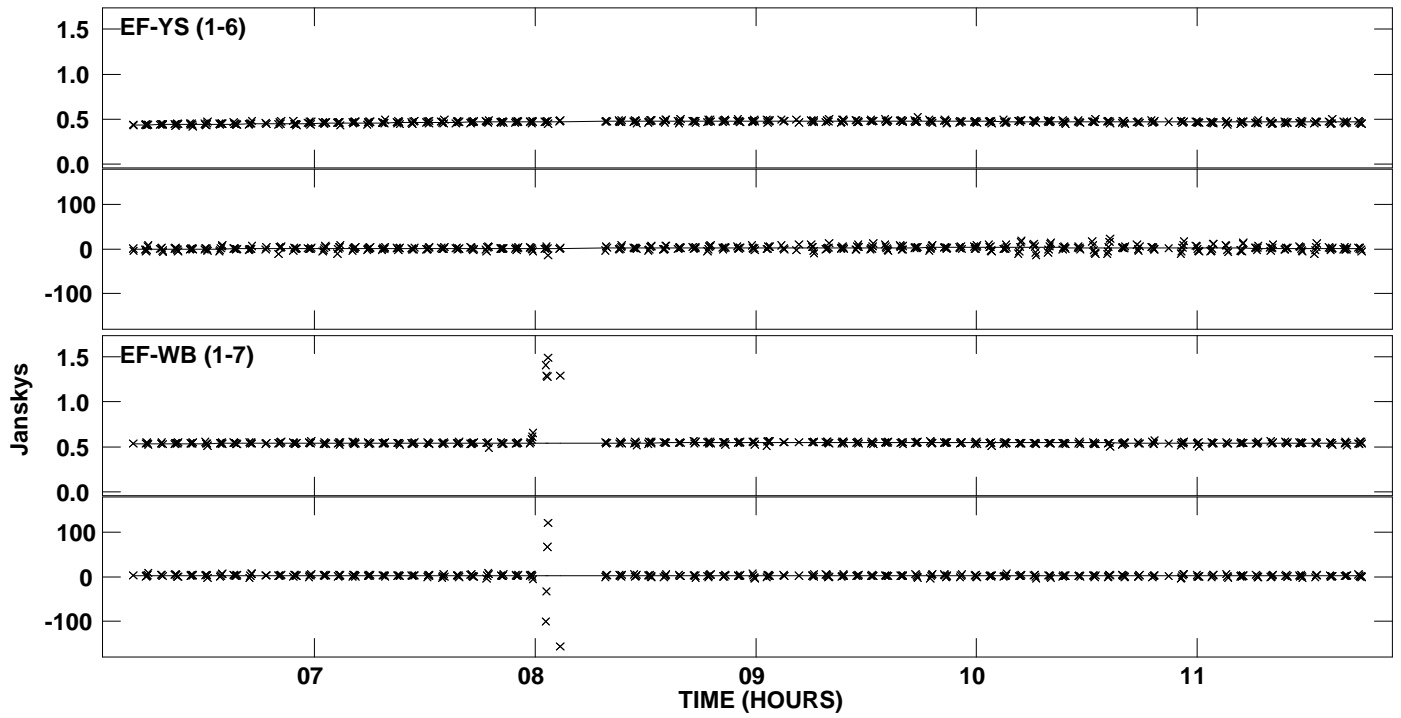
PLot file version 12 created 16-FEB-2012 15:17:51
Amplitude and Phase vs Time for J1825-0737.MULTI.1 Vect aver. CL # 3
IF 6 CHAN 1 STK LL of J1825-0737.ICL001.3



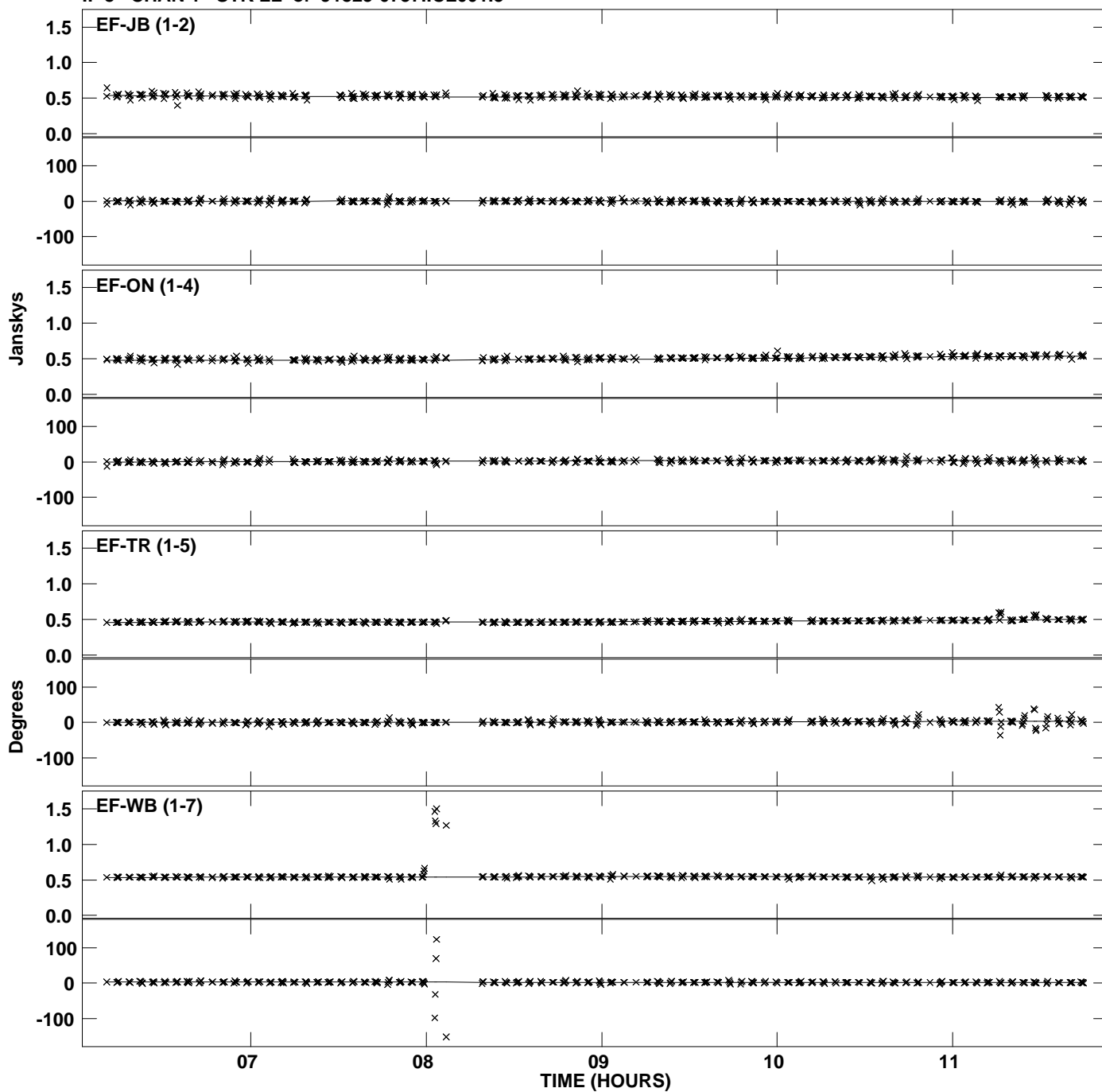
PLot file version 13 created 16-FEB-2012 15:17:51
Amplitude and Phase vs Time for J1825-0737.MULTI.1 Vect aver. CL # 3
IF 7 CHAN 1 STK LL of J1825-0737.ICL001.3



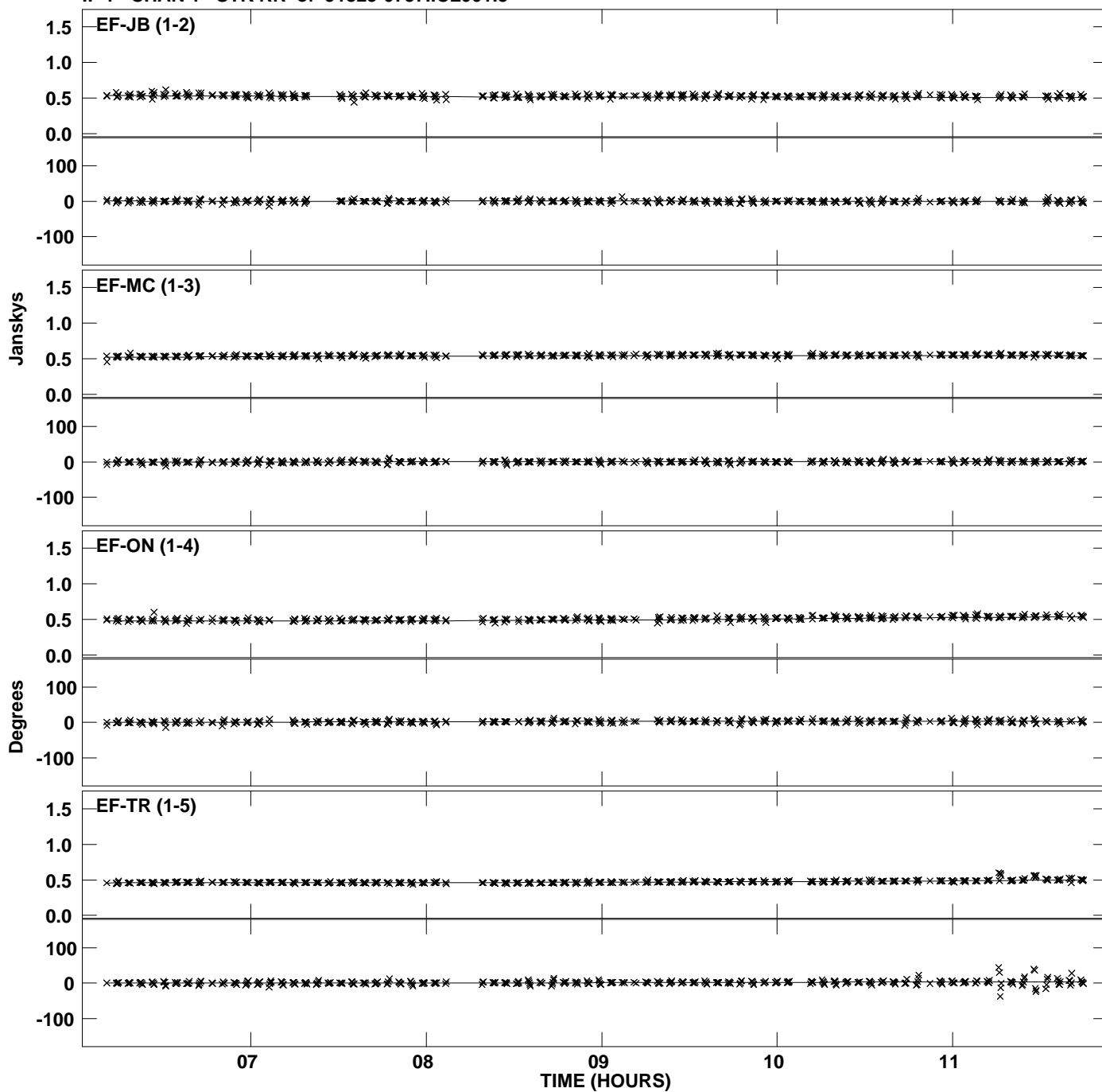
Plot file version 14 created 16-FEB-2012 15:17:51
Amplitude and Phase vs Time for J1825-0737.MULTI.1 Vect aver. CL # 3
IF 7 CHAN 1 STK LL of J1825-0737.ICL001.3



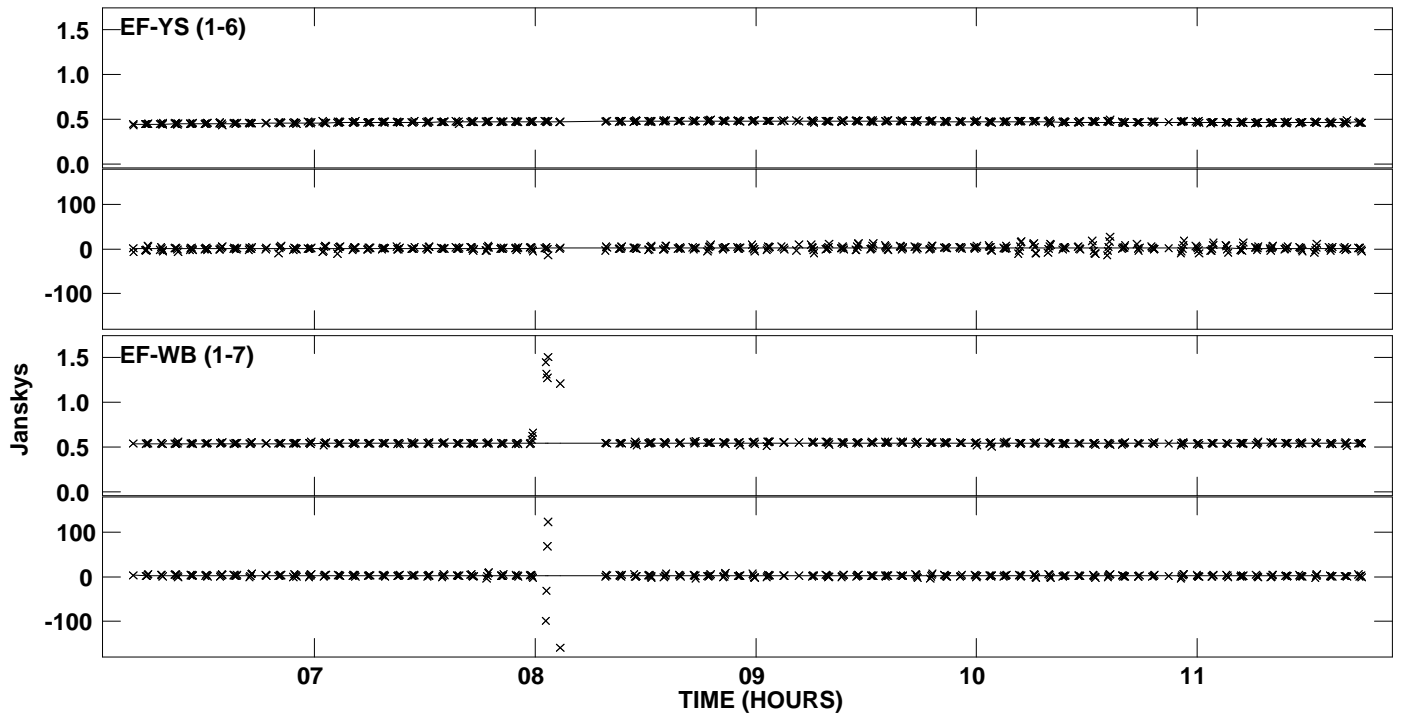
PLOT file version 15 created 16-FEB-2012 15:17:53
 Amplitude and Phase vs Time for J1825-0737.MULTI.1 Vect aver. CL # 3
 IF 8 CHAN 1 STK LL of J1825-0737.ICL001.3



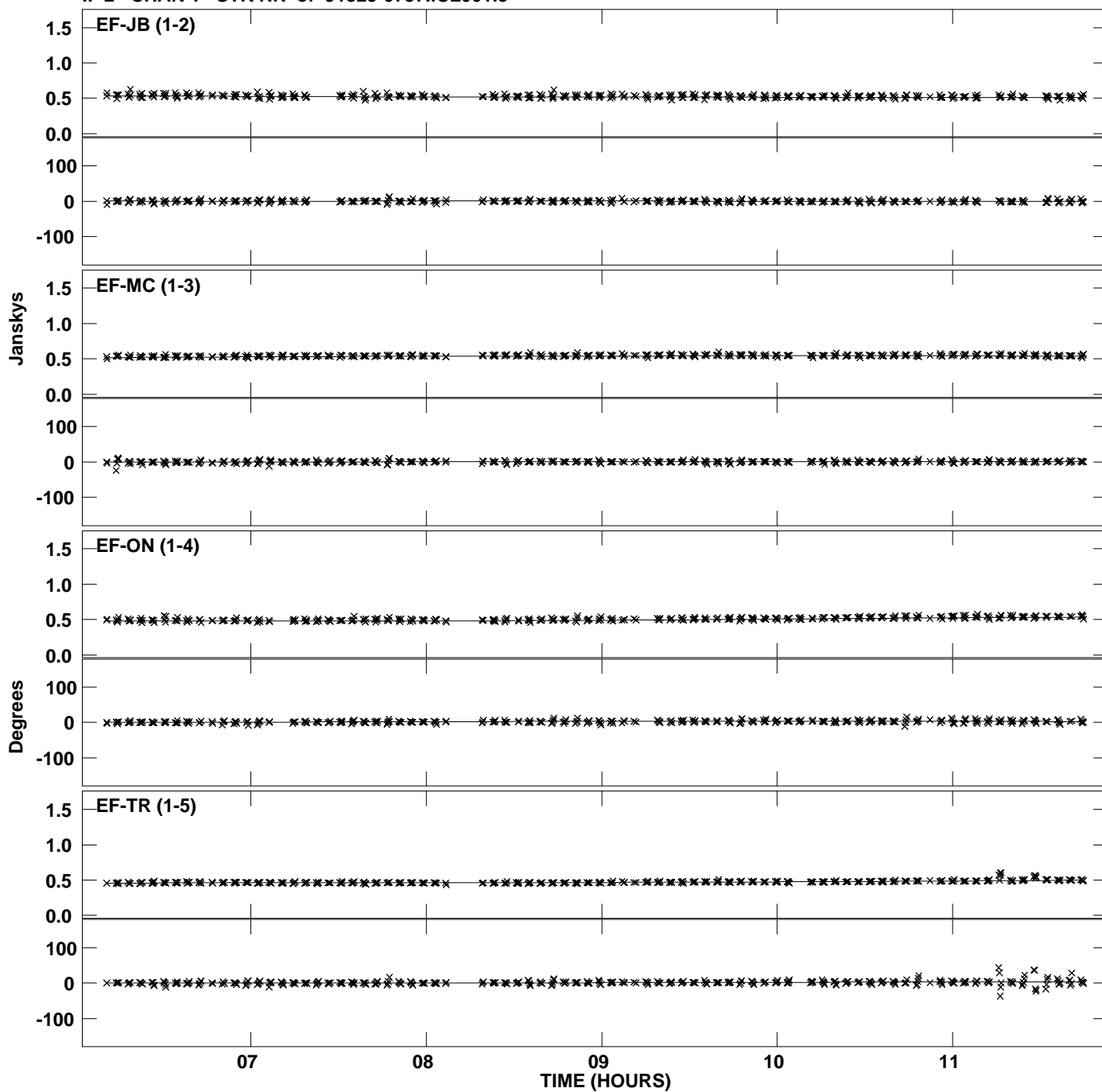
PLot file version 16 created 16-FEB-2012 15:17:53
Amplitude and Phase vs Time for J1825-0737.MULTI.1 Vect aver. CL # 3
IF 1 CHAN 1 STK RR of J1825-0737.ICL001.3



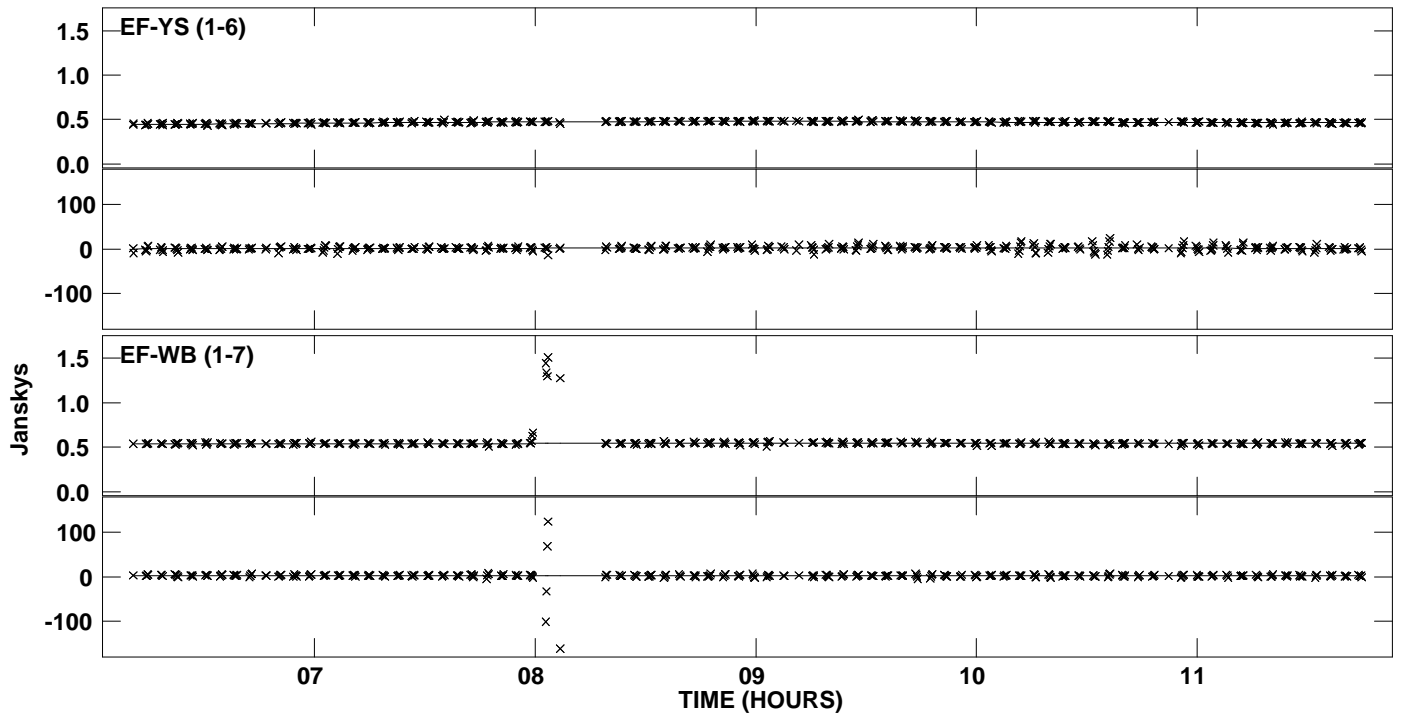
PLot file version 17 created 16-FEB-2012 15:17:53
Amplitude and Phase vs Time for J1825-0737.MULTI.1 Vect aver. CL # 3
IF 1 CHAN 1 STK RR of J1825-0737.ICL001.3



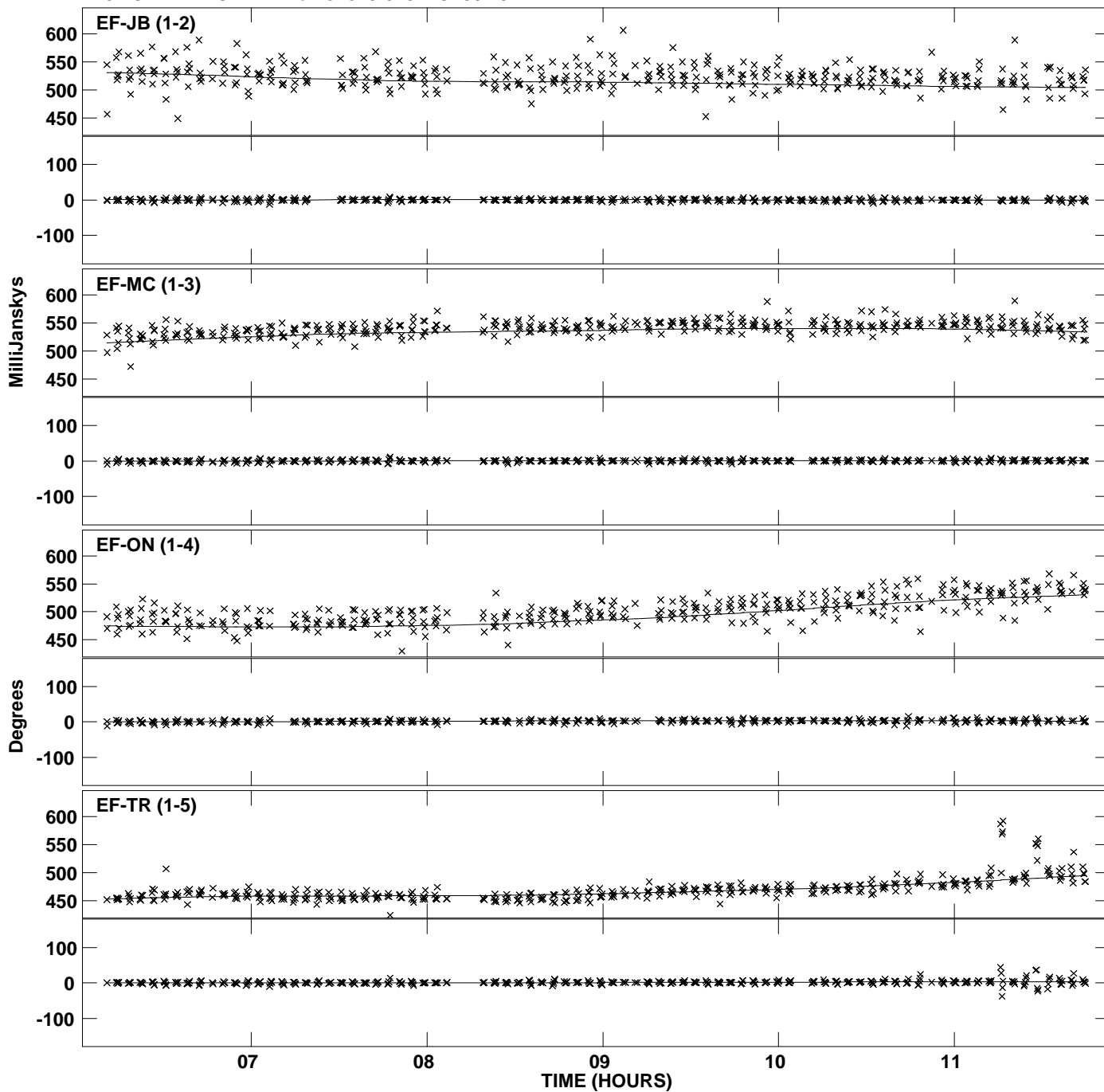
PLOT file version 18 created 16-FEB-2012 15:17:54
 Amplitude and Phase vs Time for J1825-0737.MULTI.1 Vect aver. CL # 3
 IF 2 CHAN 1 STK RR of J1825-0737.ICL001.3



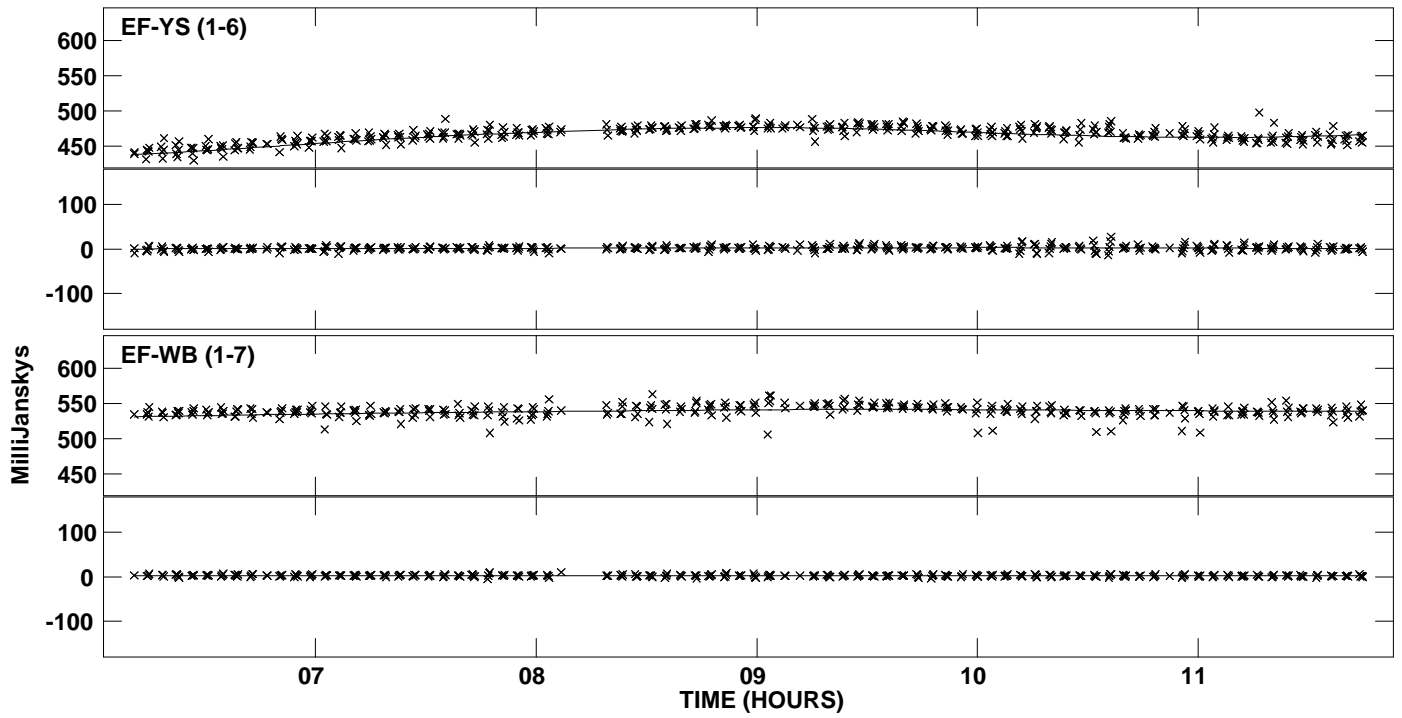
PLot file version 19 created 16-FEB-2012 15:17:54
Amplitude and Phase vs Time for J1825-0737.MULTI.1 Vect aver. CL # 3
IF 2 CHAN 1 STK RR of J1825-0737.ICL001.3



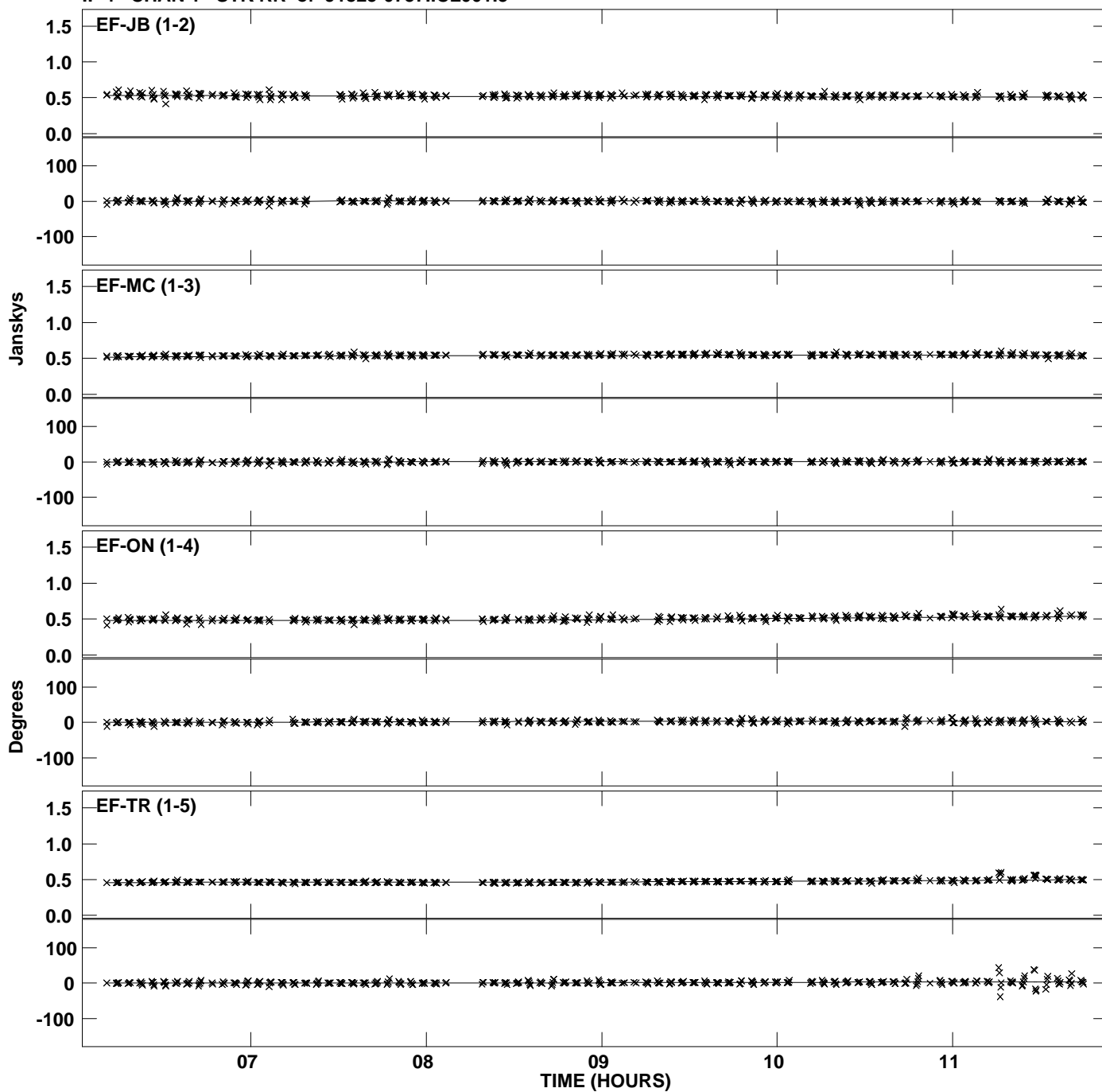
PLOT file version 20 created 16-FEB-2012 15:17:54
 Amplitude and Phase vs Time for J1825-0737.MULTI.1 Vect aver. CL # 3
 IF 3 CHAN 1 STK RR of J1825-0737.ICL001.3



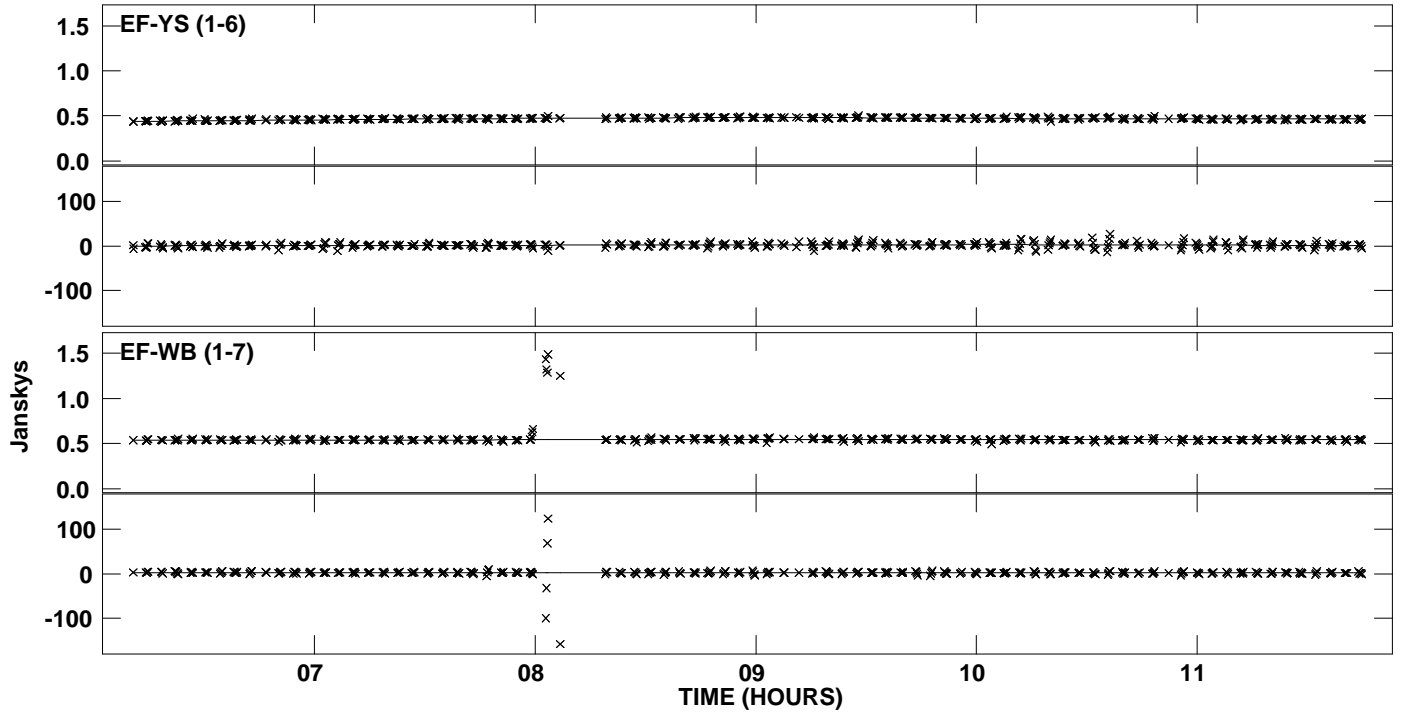
Plot file version 21 created 16-FEB-2012 15:17:54
Amplitude and Phase vs Time for J1825-0737.MULTI.1 Vect aver. CL # 3
IF 3 CHAN 1 STK RR of J1825-0737.ICL001.3



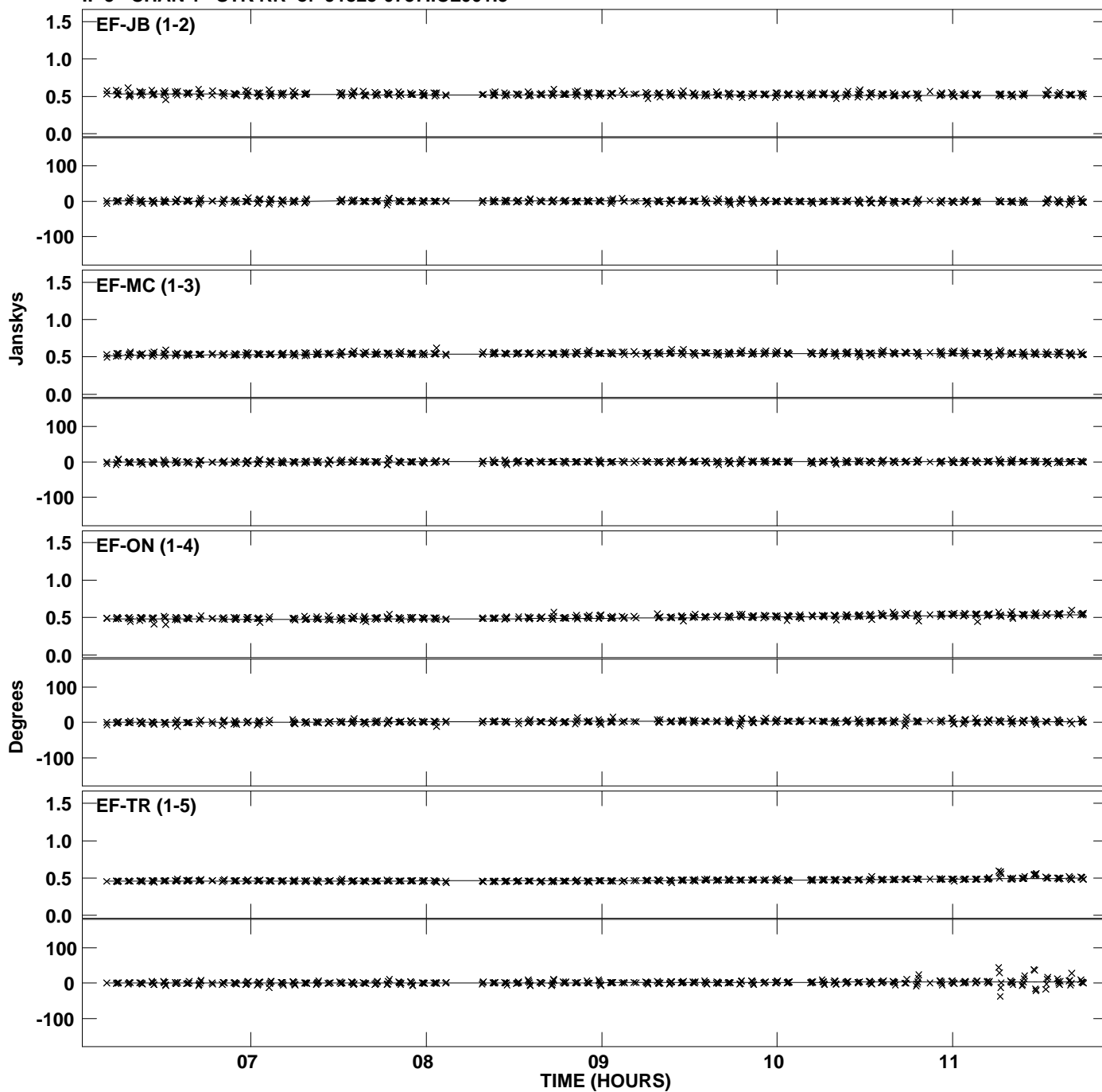
PLot file version 22 created 16-FEB-2012 15:17:54
Amplitude and Phase vs Time for J1825-0737.MULTI.1 Vect aver. CL # 3
IF 4 CHAN 1 STK RR of J1825-0737.ICL001.3



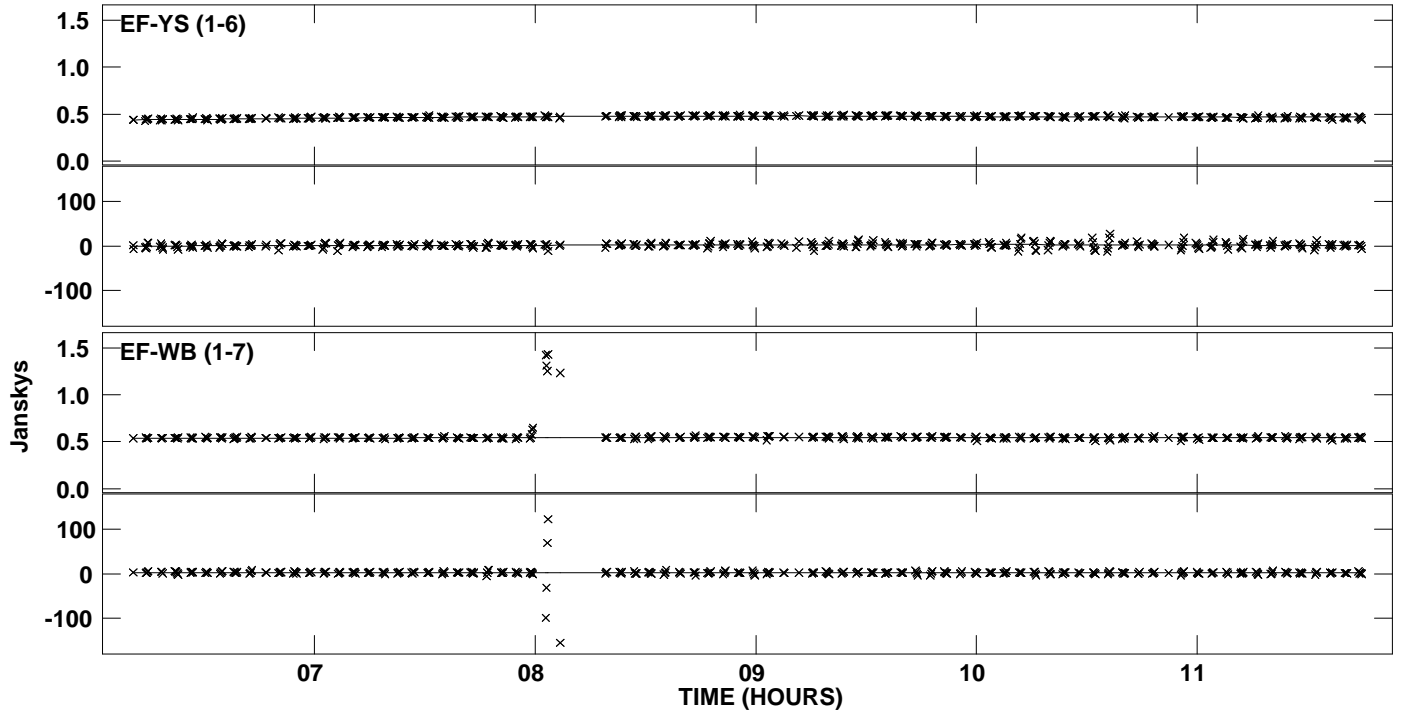
PLot file version 23 created 16-FEB-2012 15:17:54
Amplitude and Phase vs Time for J1825-0737.MULTI.1 Vect aver. CL # 3
IF 4 CHAN 1 STK RR of J1825-0737.ICL001.3



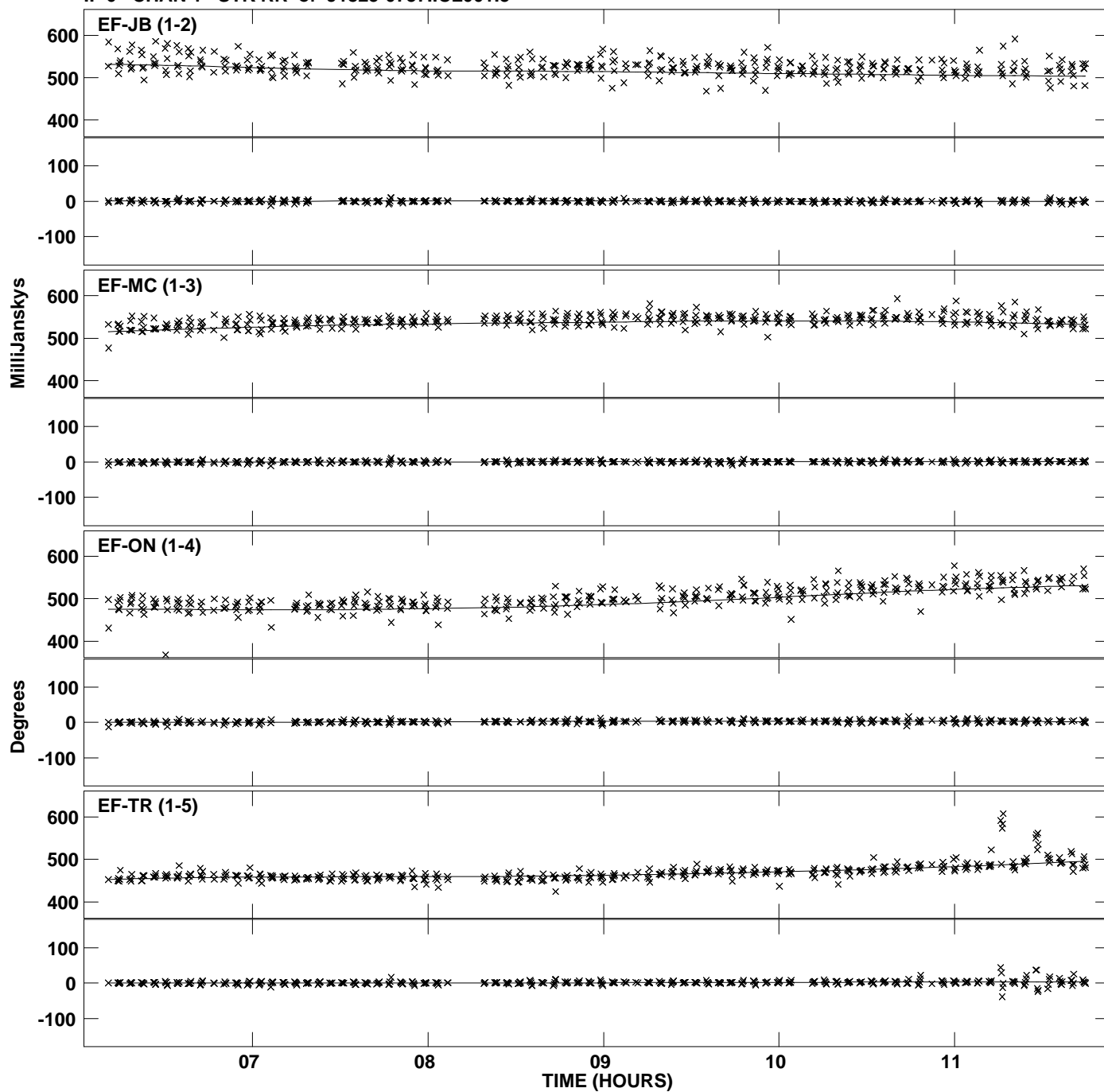
PLOT file version 24 created 16-FEB-2012 15:17:55
 Amplitude and Phase vs Time for J1825-0737.MULTI.1 Vect aver. CL # 3
 IF 5 CHAN 1 STK RR of J1825-0737.ICL001.3



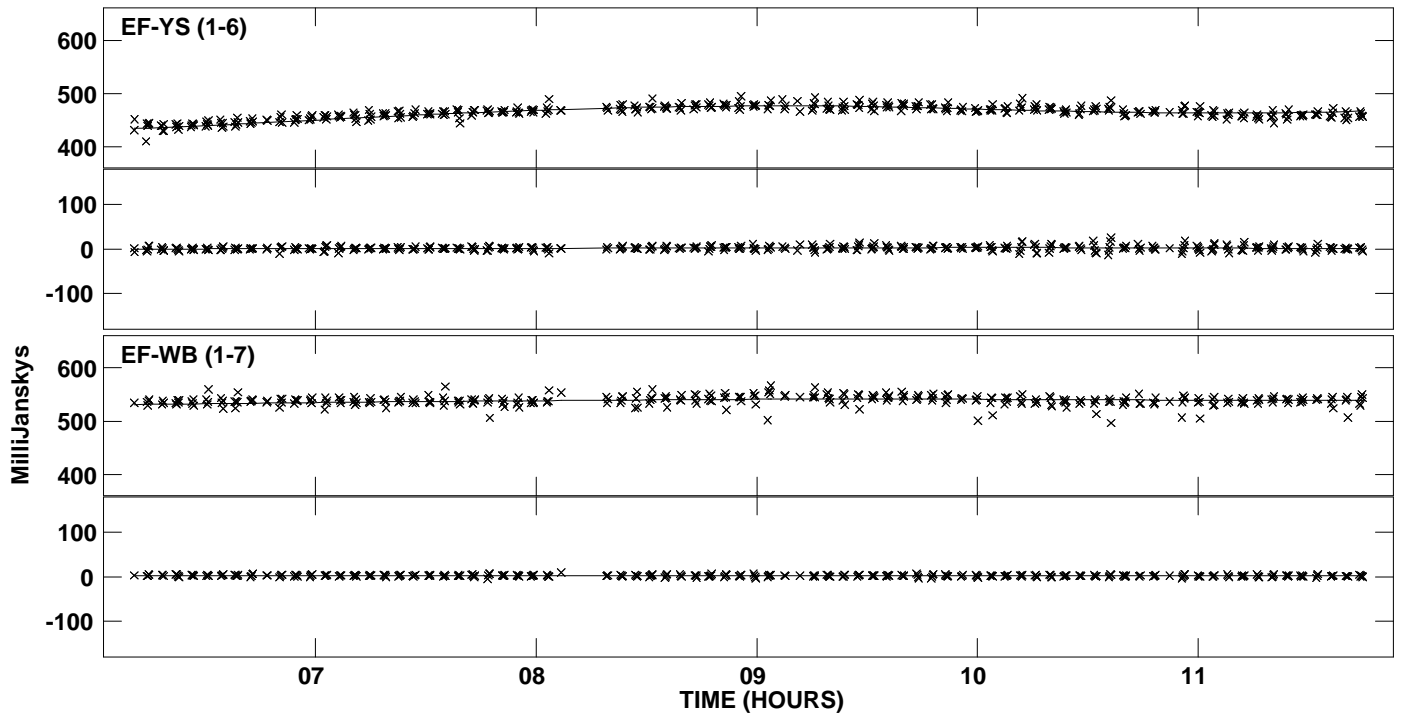
PLot file version 25 created 16-FEB-2012 15:17:55
Amplitude and Phase vs Time for J1825-0737.MULTI.1 Vect aver. CL # 3
IF 5 CHAN 1 STK RR of J1825-0737.ICL001.3



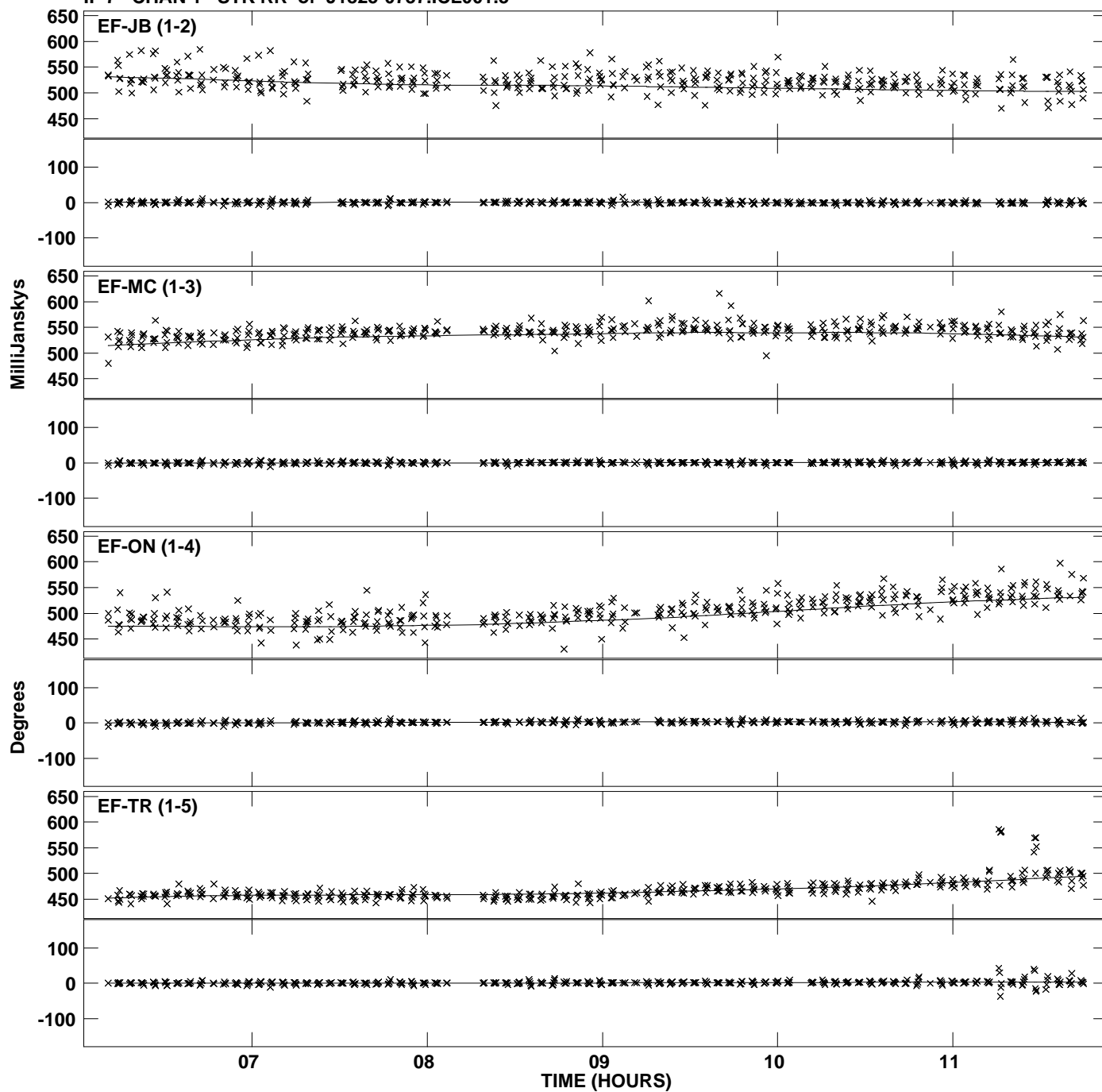
PLot file version 26 created 16-FEB-2012 15:17:55
Amplitude and Phase vs Time for J1825-0737.MULTI.1 Vect aver. CL # 3
IF 6 CHAN 1 STK RR of J1825-0737.ICL001.3



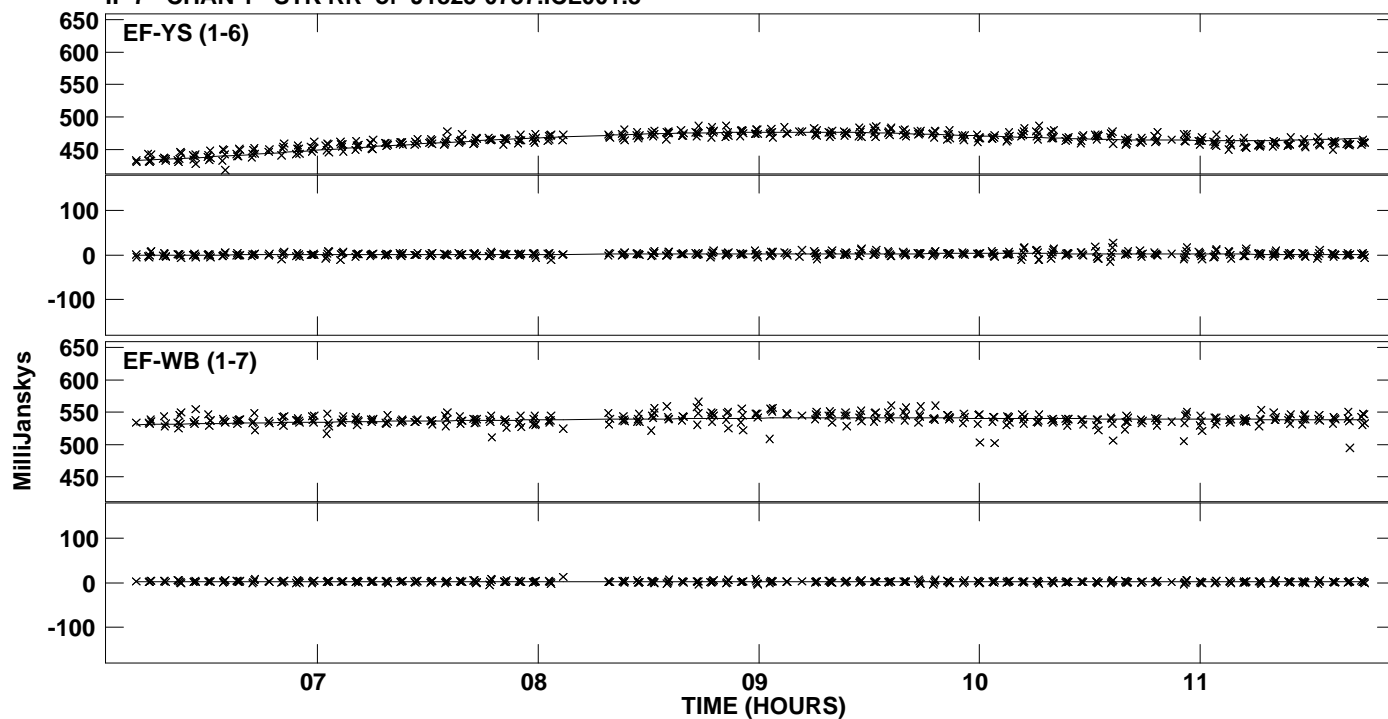
PLot file version 27 created 16-FEB-2012 15:17:55
Amplitude and Phase vs Time for J1825-0737.MULTI.1 Vect aver. CL # 3
IF 6 CHAN 1 STK RR of J1825-0737.ICL001.3



Plot file version 28 created 16-FEB-2012 15:17:55
Amplitude and Phase vs Time for J1825-0737.MULTI.1 Vect aver. CL # 3
IF 7 CHAN 1 STK RR of J1825-0737.ICL001.3



PLot file version 29 created 16-FEB-2012 15:17:55
Amplitude and Phase vs Time for J1825-0737.MULTI.1 Vect aver. CL # 3
IF 7 CHAN 1 STK RR of J1825-0737.ICL001.3



PLot file version 30 created 16-FEB-2012 15:17:55
Amplitude and Phase vs Time for J1825-0737.MULTI.1 Vect aver. CL # 3
IF 8 CHAN 1 STK RR of J1825-0737.ICL001.3

