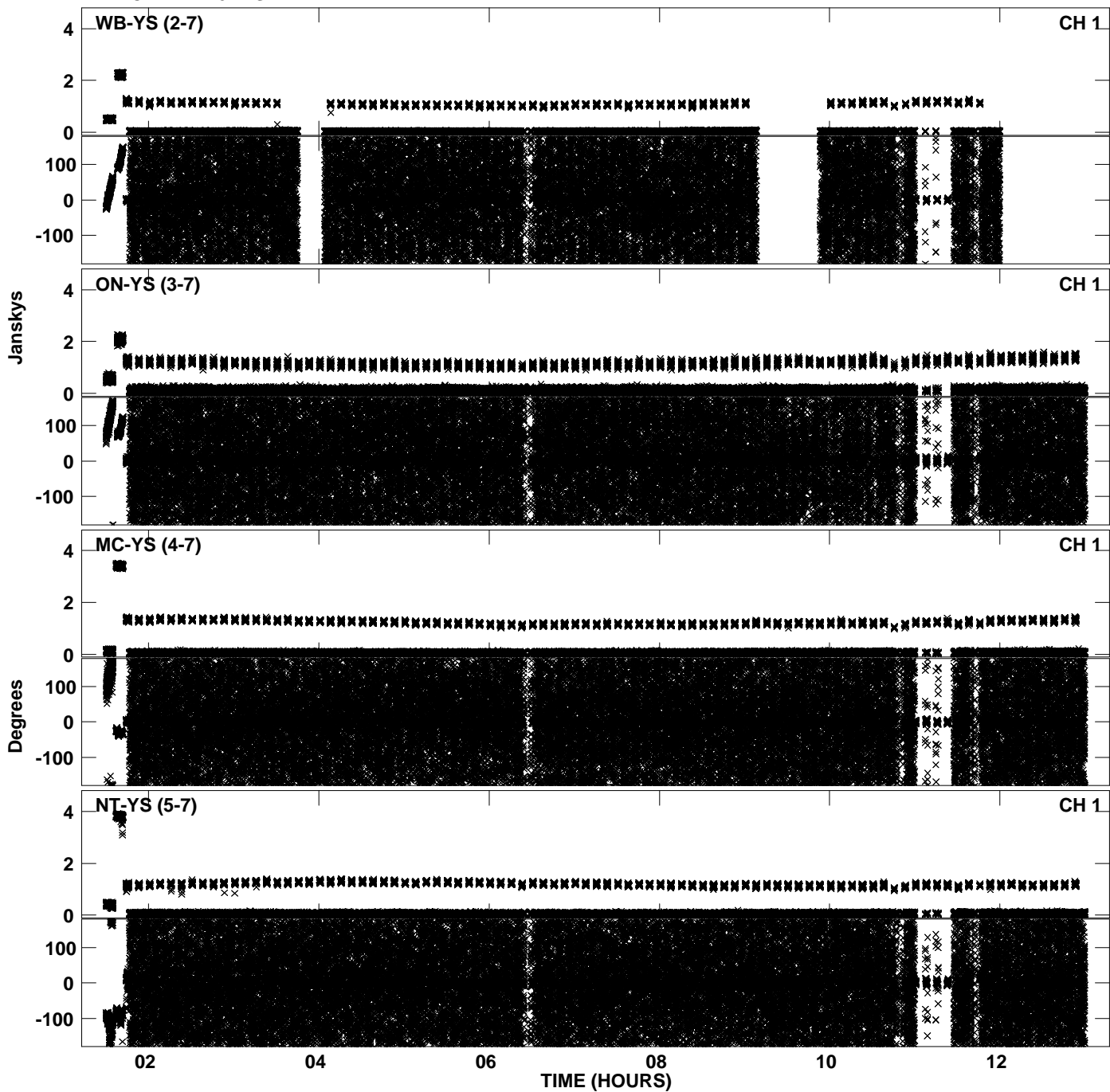
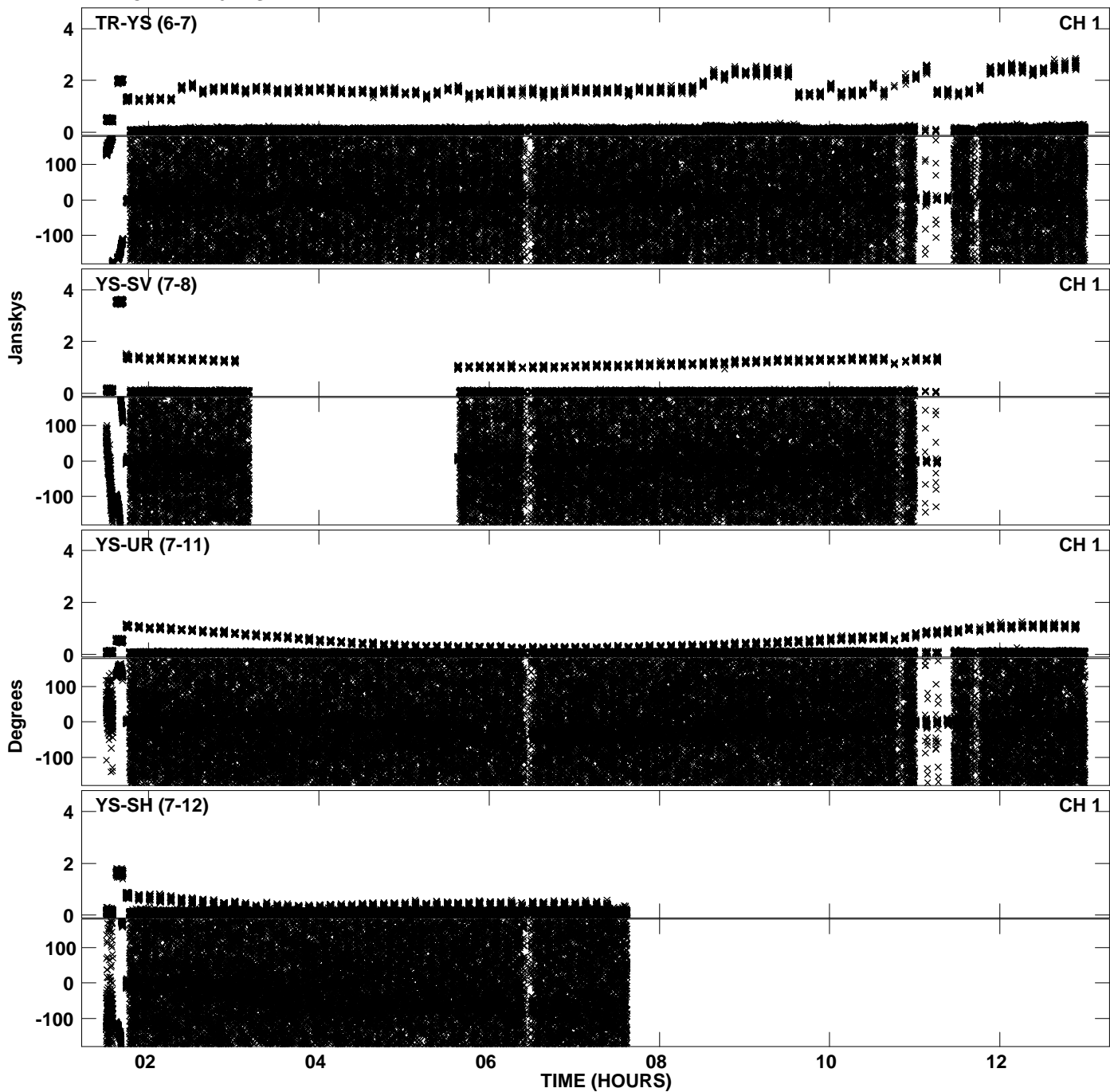


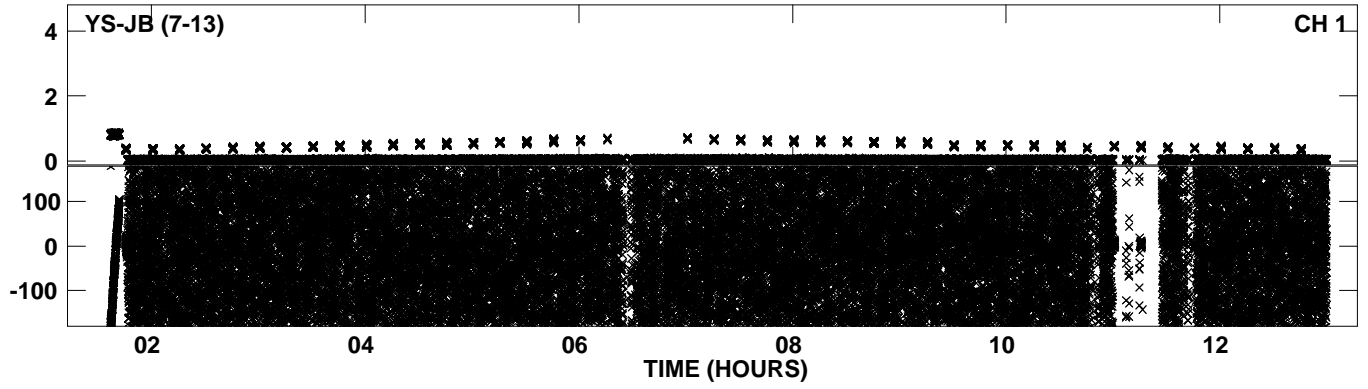
PLot file version 1 created 10-JAN-2014 21:43:56
Amplitude andPhase vs Time for EY019 2.UVDATA.1 Vect aver. CL # 3
IF 1 CHAN 1 - 64 STK LL



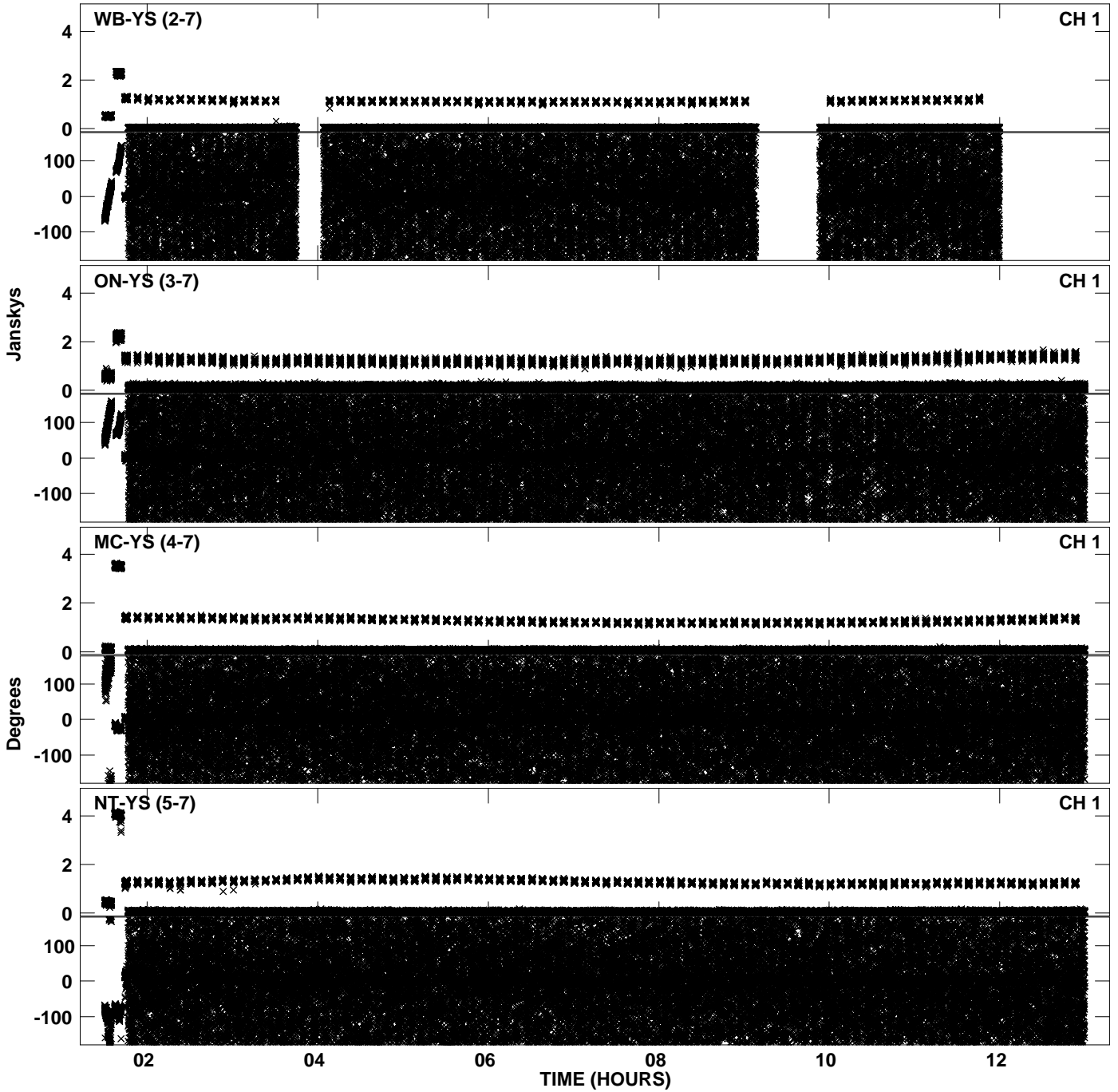
PLot file version 2 created 10-JAN-2014 21:43:56
Amplitude andPhase vs Time for EY019 2.UVDATA.1 Vect aver. CL # 3
IF 1 CHAN 1 - 64 STK LL



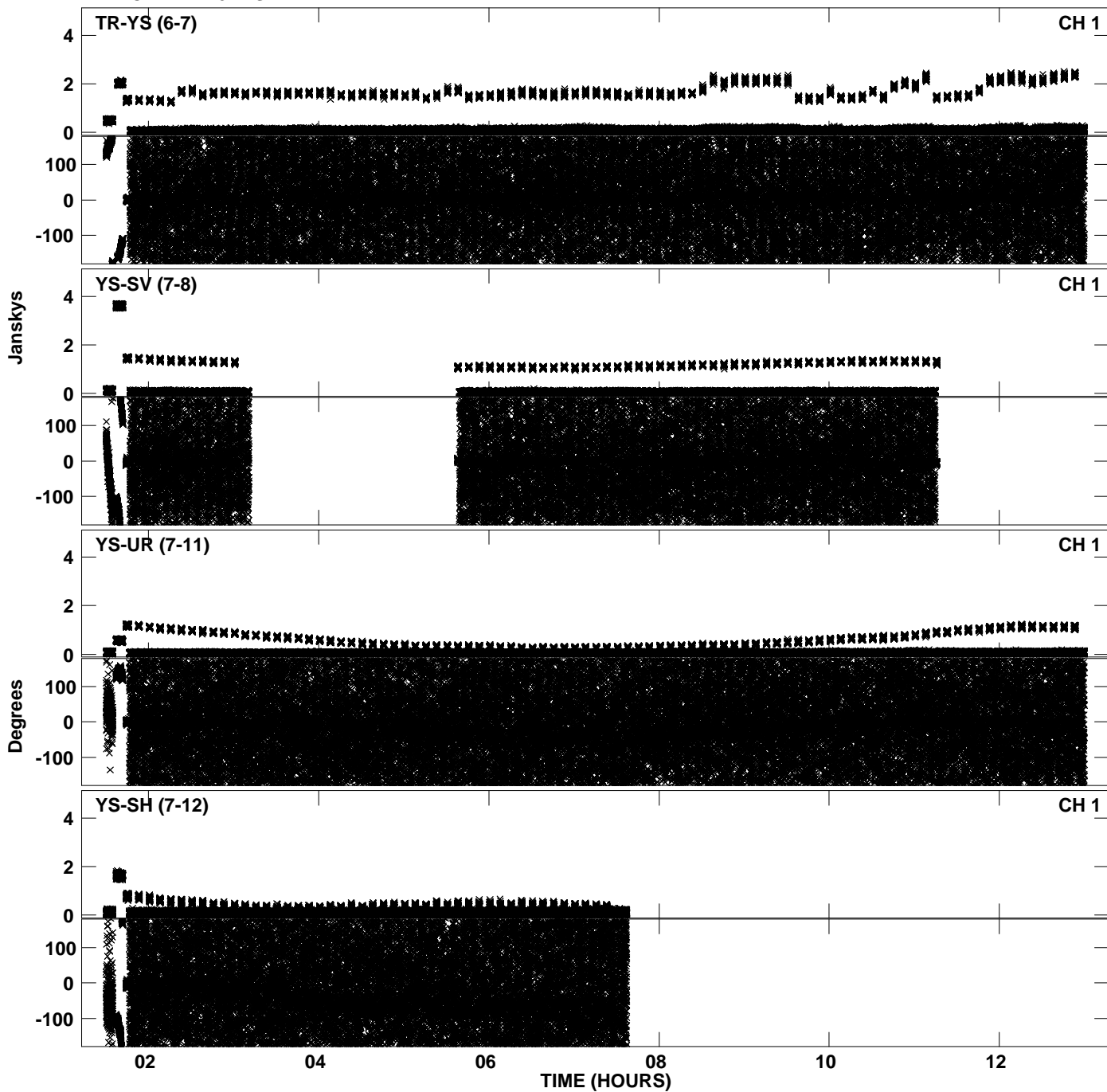
Plot file version 3 created 10-JAN-2014 21:43:56
Amplitude andPhase vs Time for EY019 2.UVDATA.1 Vect aver. CL # 3
IF 1 CHAN 1 - 64 STK LL



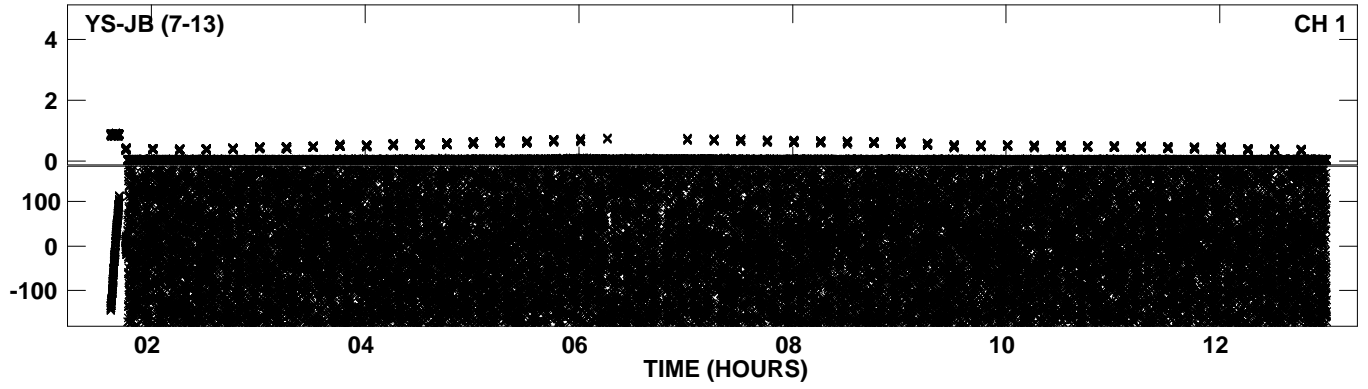
PLot file version 4 created 10-JAN-2014 21:44:32
Amplitude andPhase vs Time for EY019 2.UVDATA.1 Vect aver. CL # 3
IF 2 CHAN 1 - 64 STK LL



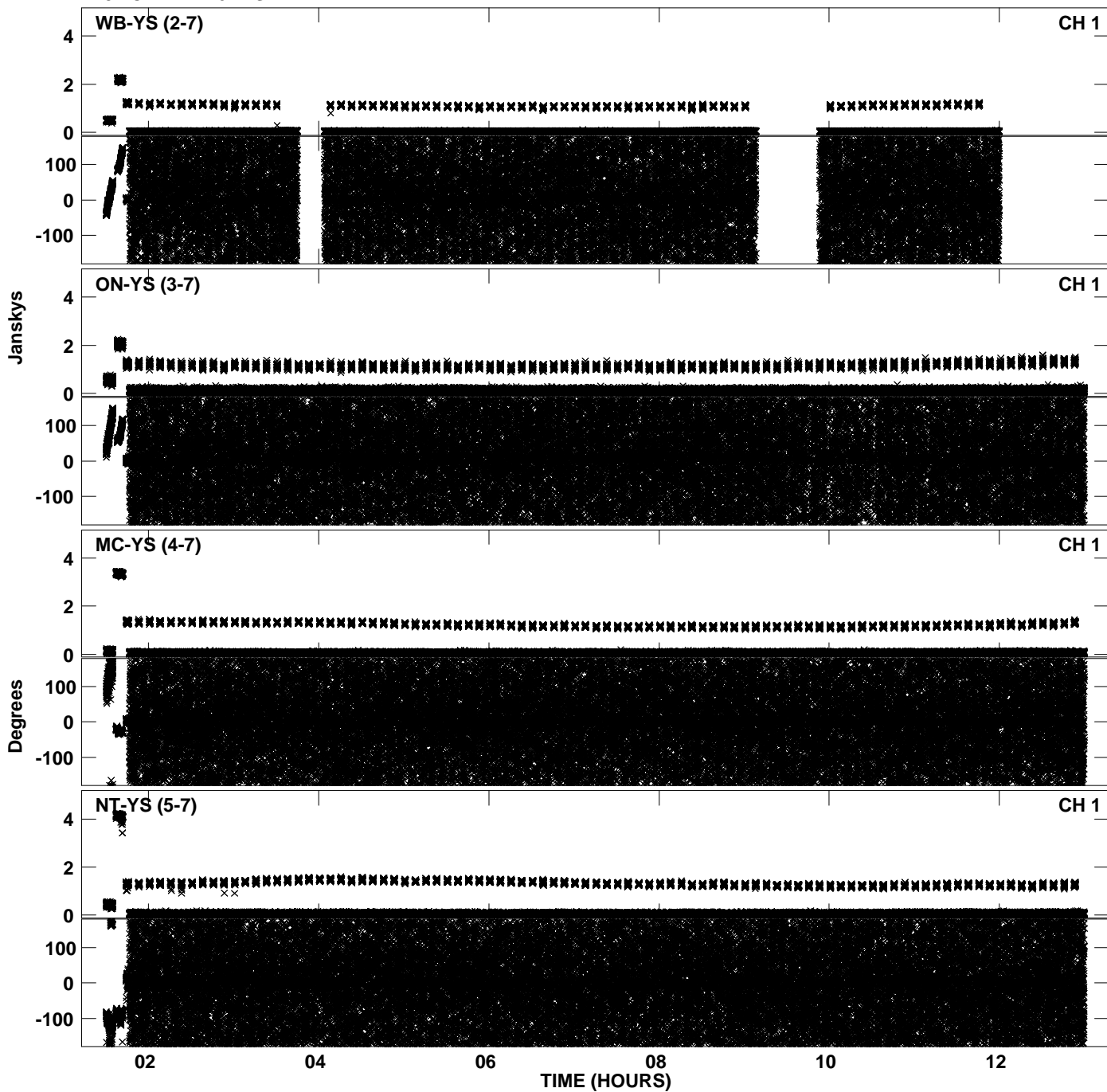
PLot file version 5 created 10-JAN-2014 21:44:33
Amplitude andPhase vs Time for EY019 2.UVDATA.1 Vect aver. CL # 3
IF 2 CHAN 1 - 64 STK LL



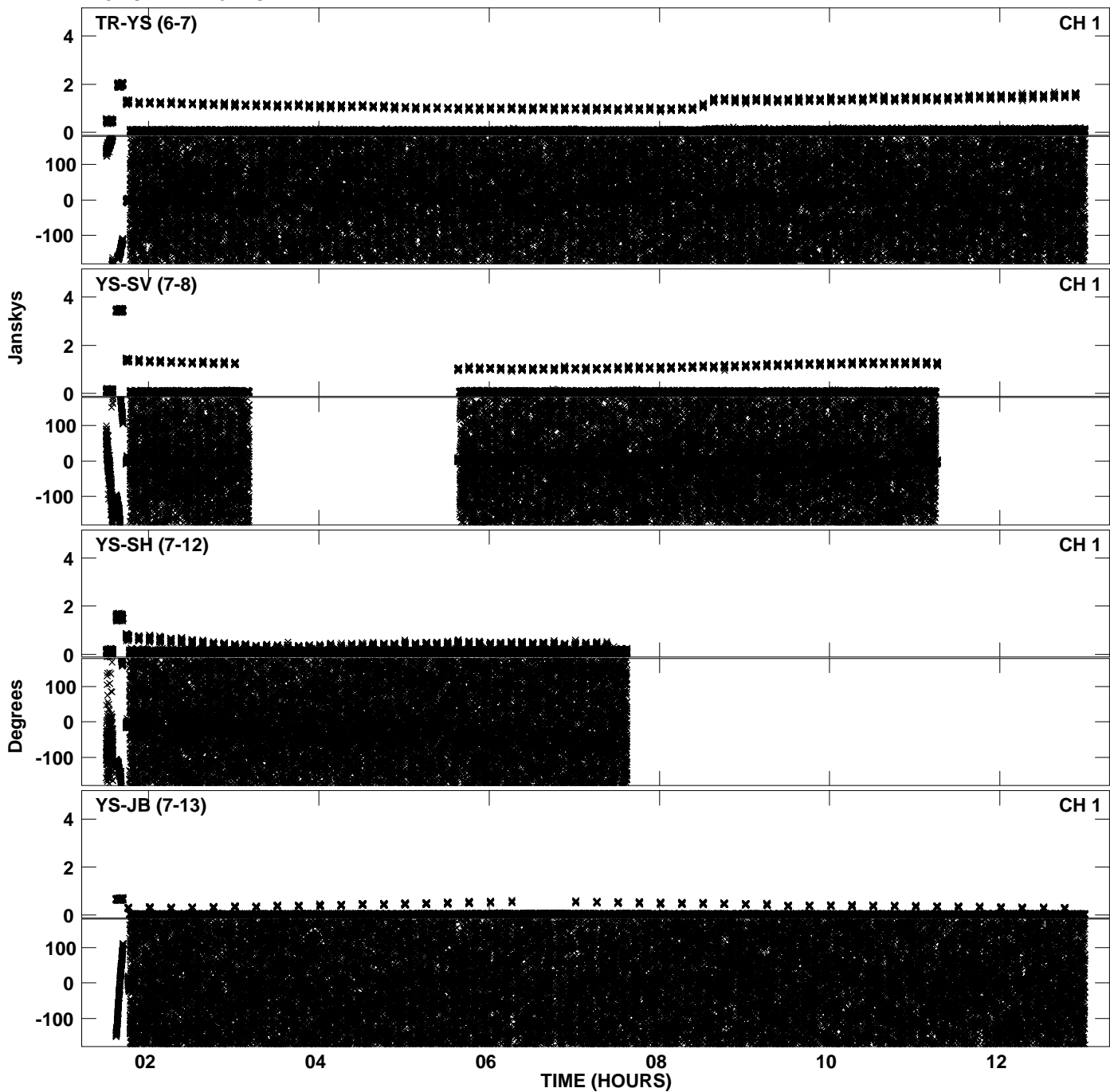
Plot file version 6 created 10-JAN-2014 21:44:33
Amplitude andPhase vs Time for EY019 2.UVDATA.1 Vect aver. CL # 3
IF 2 CHAN 1 - 64 STK LL



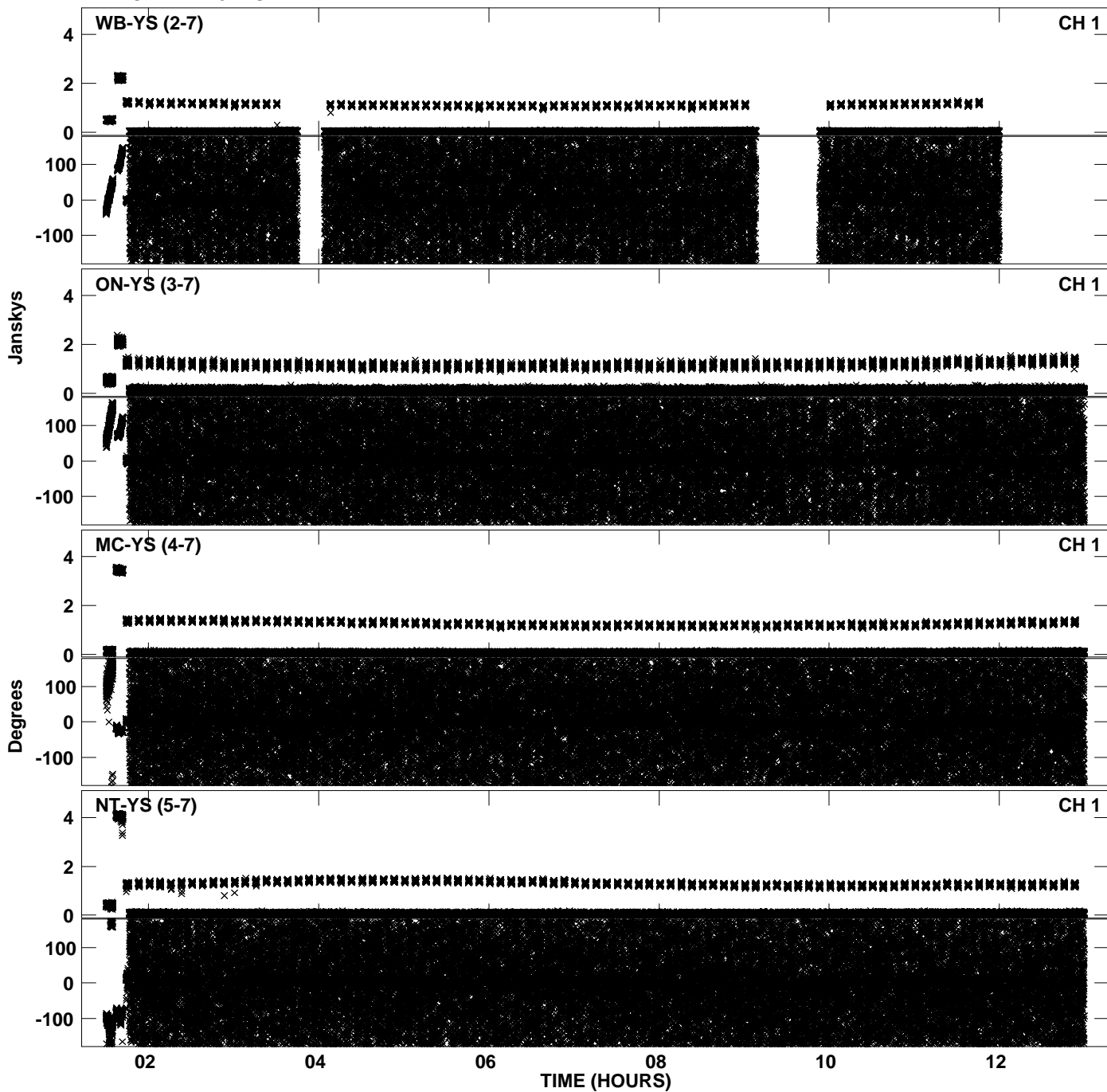
PLot file version 7 created 10-JAN-2014 21:45:07
Amplitude andPhase vs Time for EY019 2.UVDATA.1 Vect aver. CL # 3
IF 3 CHAN 1 - 64 STK LL



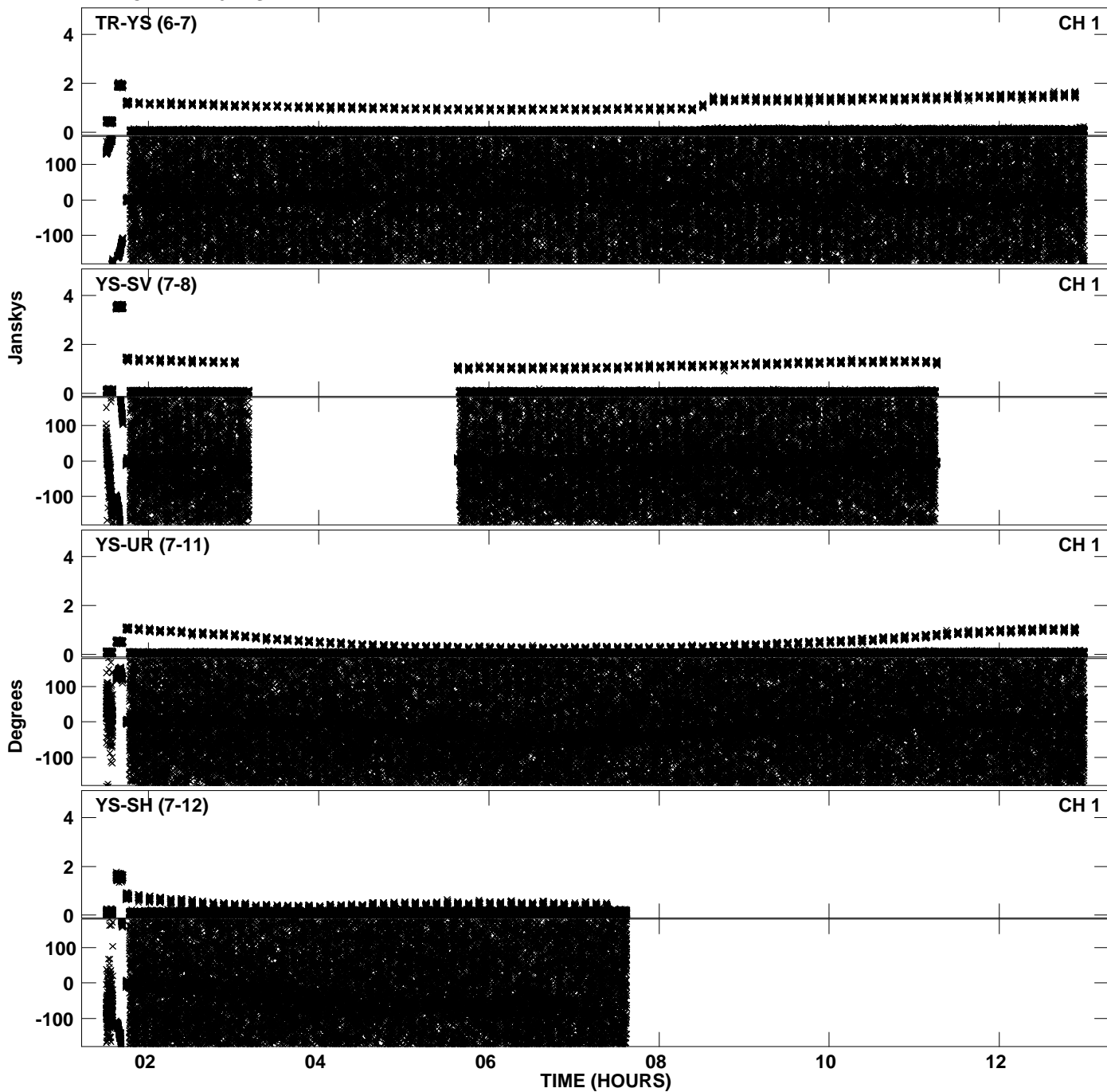
PLot file version 8 created 10-JAN-2014 21:45:07
Amplitude andPhase vs Time for EY019 2.UVDATA.1 Vect aver. CL # 3
IF 3 CHAN 1 - 64 STK LL



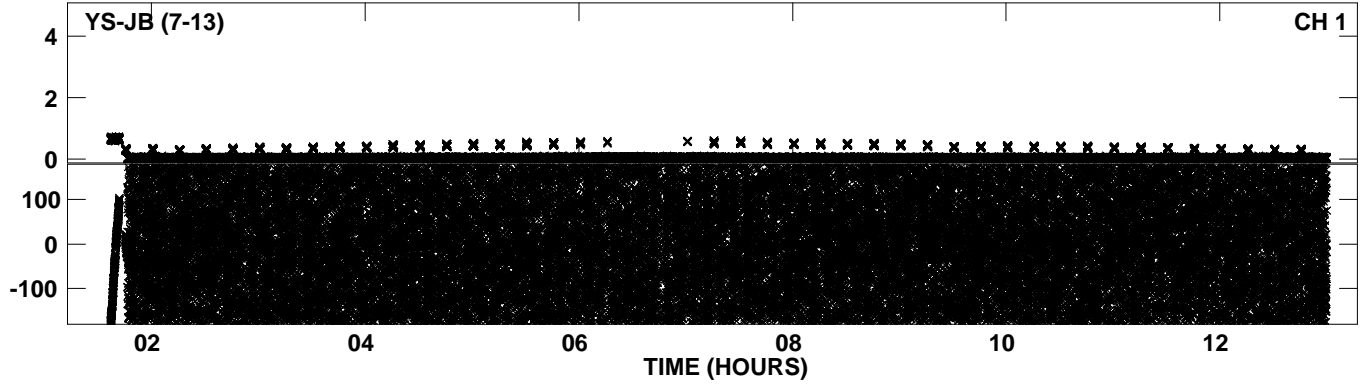
PLot file version 9 created 10-JAN-2014 21:45:43
Amplitude andPhase vs Time for EY019 2.UVDATA.1 Vect aver. CL # 3
IF 4 CHAN 1 - 64 STK LL



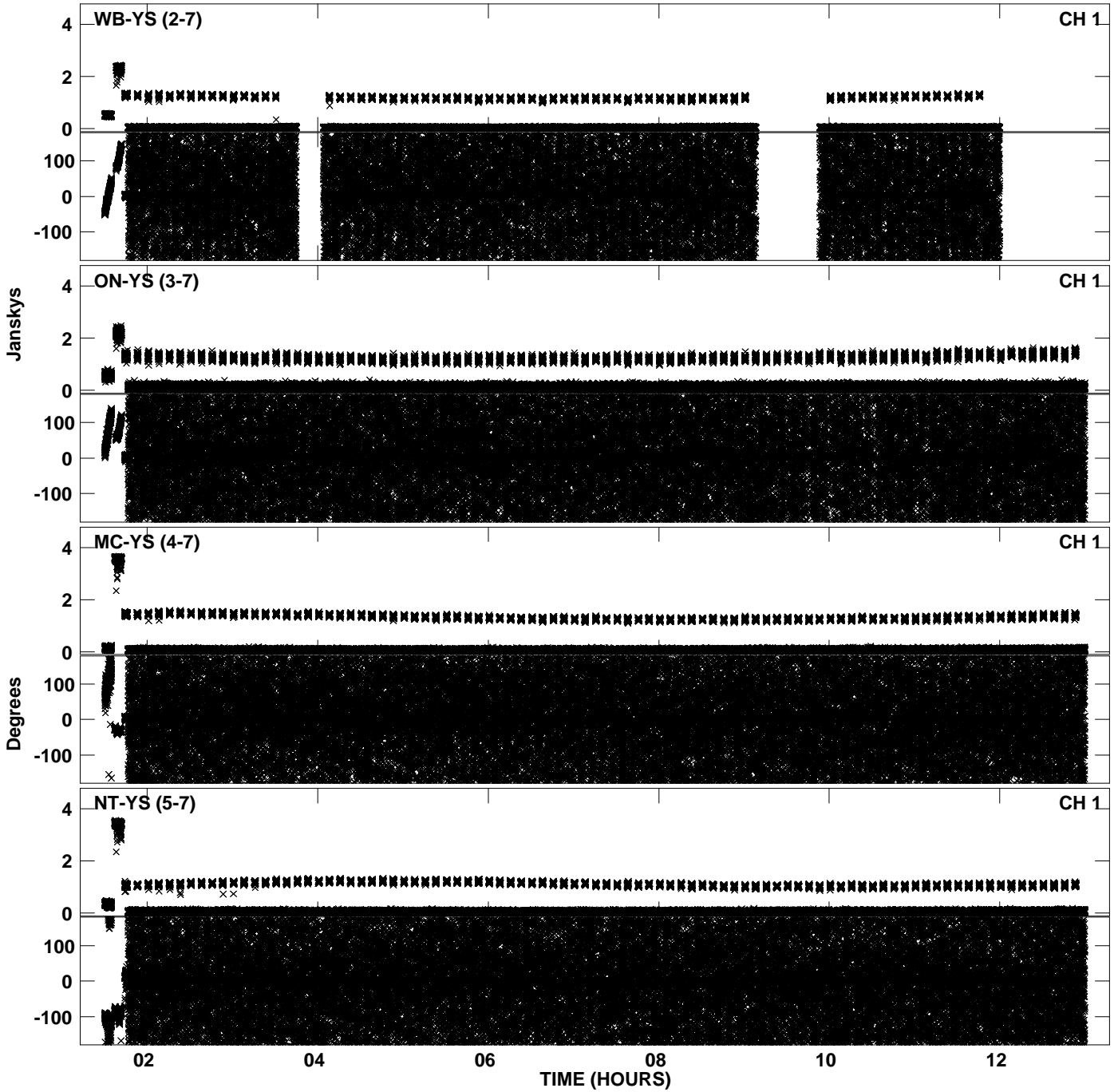
Plot file version 10 created 10-JAN-2014 21:45:43
Amplitude andPhase vs Time for EY019 2.UVDATA.1 Vect aver. CL # 3
IF 4 CHAN 1 - 64 STK LL



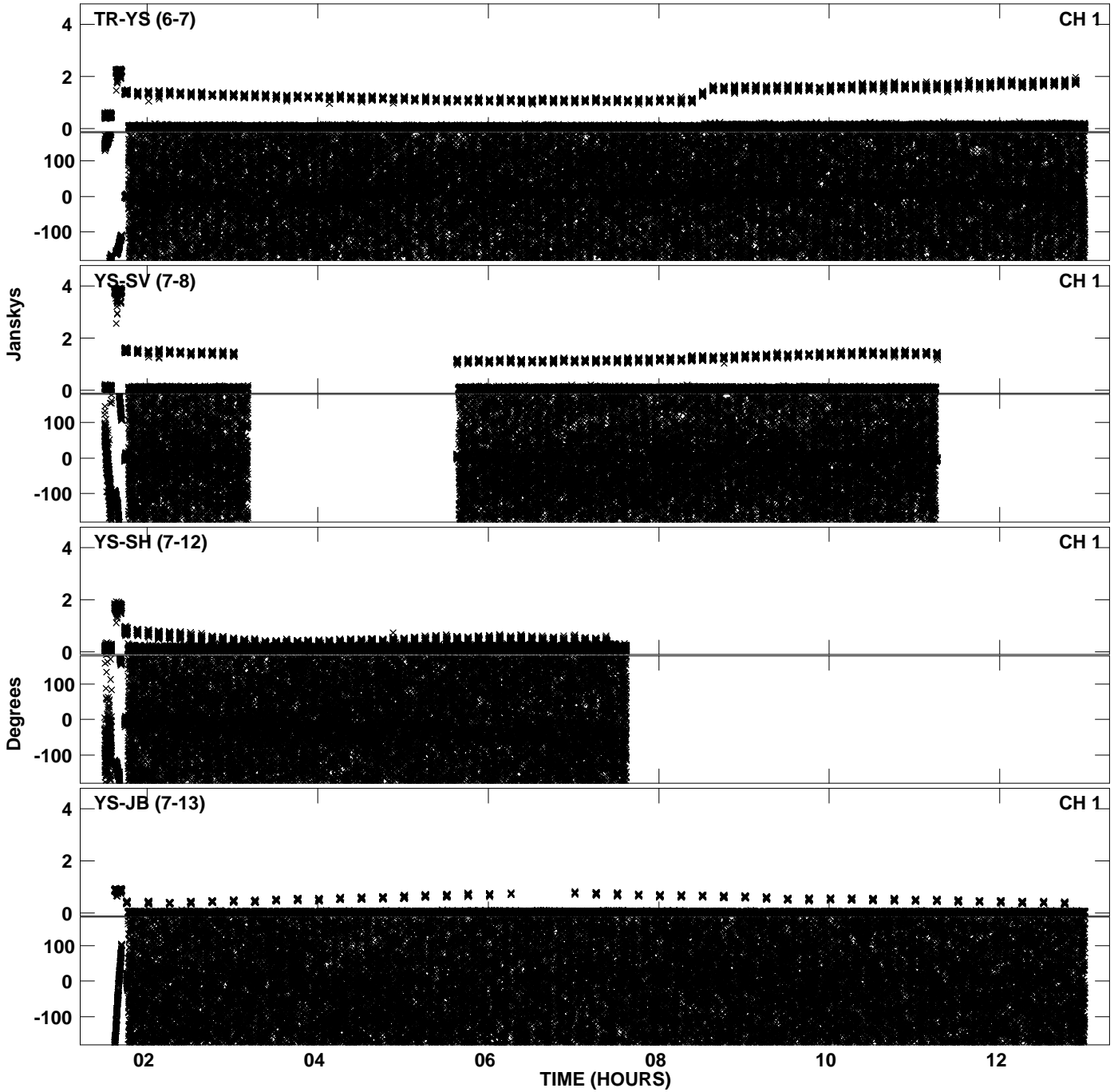
PLot file version 11 created 10-JAN-2014 21:45:43
Amplitude andPhase vs Time for EY019 2.UVDATA.1 Vect aver. CL # 3
IF 4 CHAN 1 - 64 STK LL



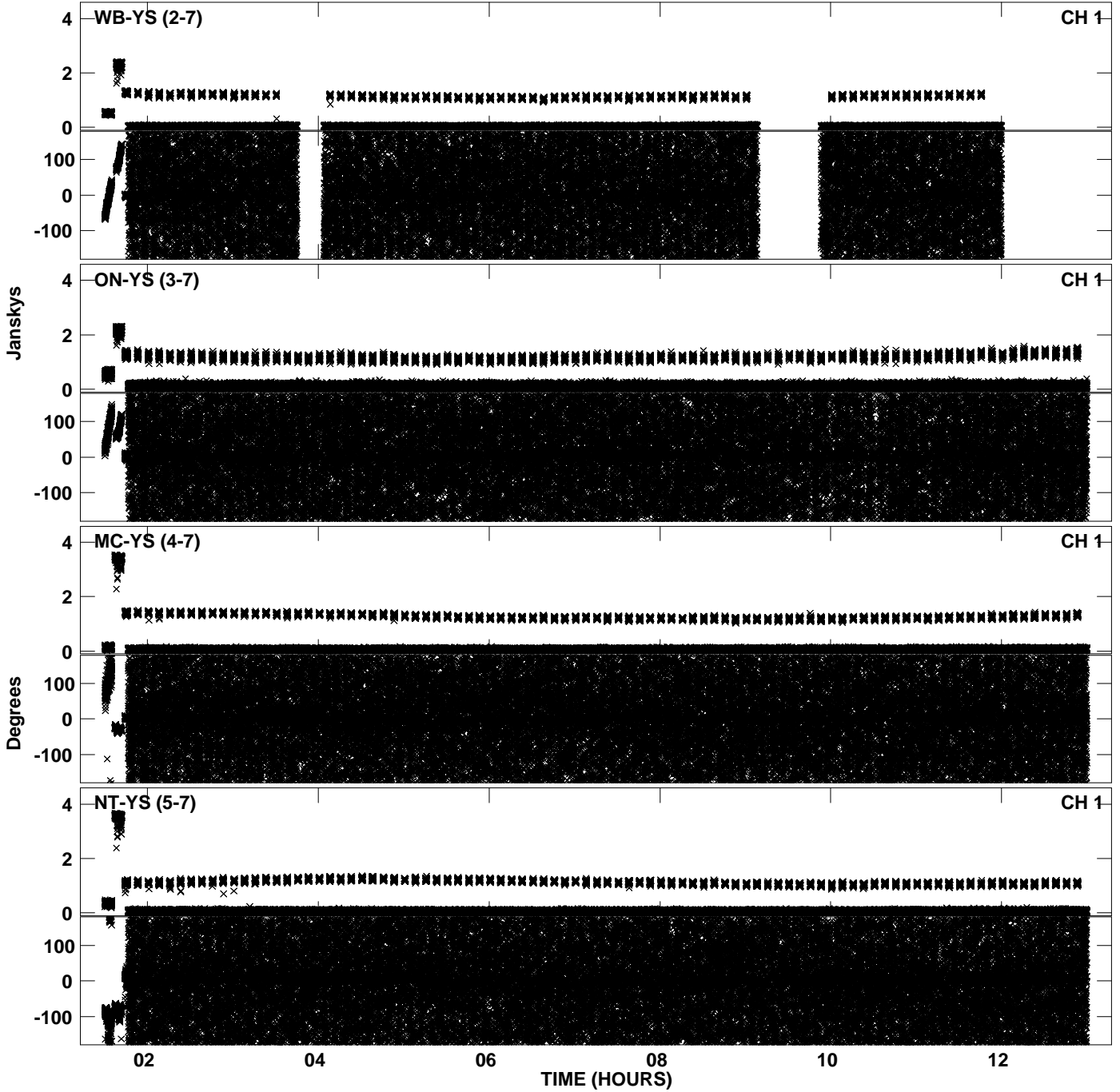
PLot file version 12 created 10-JAN-2014 21:46:18
Amplitude andPhase vs Time for EY019 2.UVDATA.1 Vect aver. CL # 3
IF 5 CHAN 1 - 64 STK LL



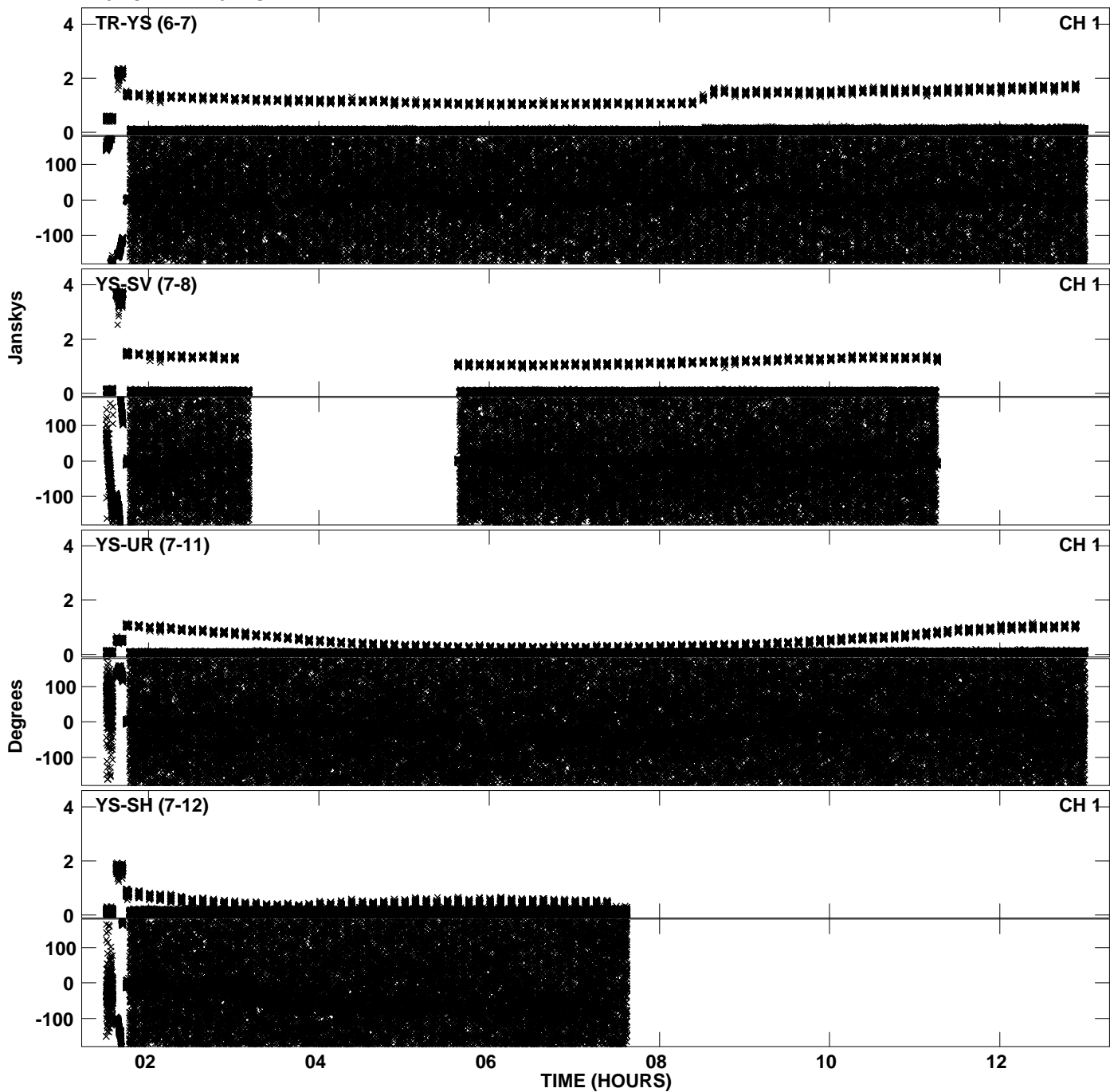
PLot file version 13 created 10-JAN-2014 21:46:18
Amplitude andPhase vs Time for EY019 2.UVDATA.1 Vect aver. CL # 3
IF 5 CHAN 1 - 64 STK LL



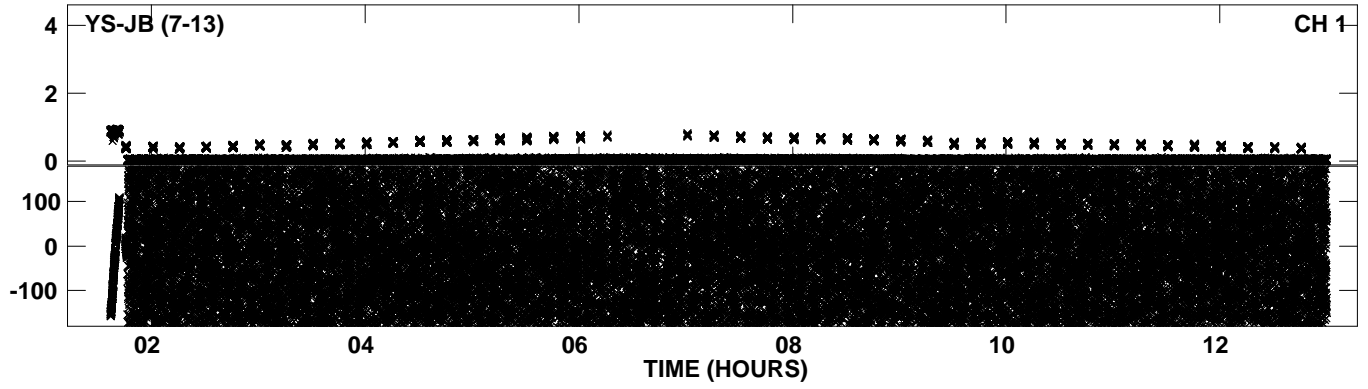
PLot file version 14 created 10-JAN-2014 21:46:55
Amplitude andPhase vs Time for EY019 2.UVDATA.1 Vect aver. CL # 3
IF 6 CHAN 1 - 64 STK LL



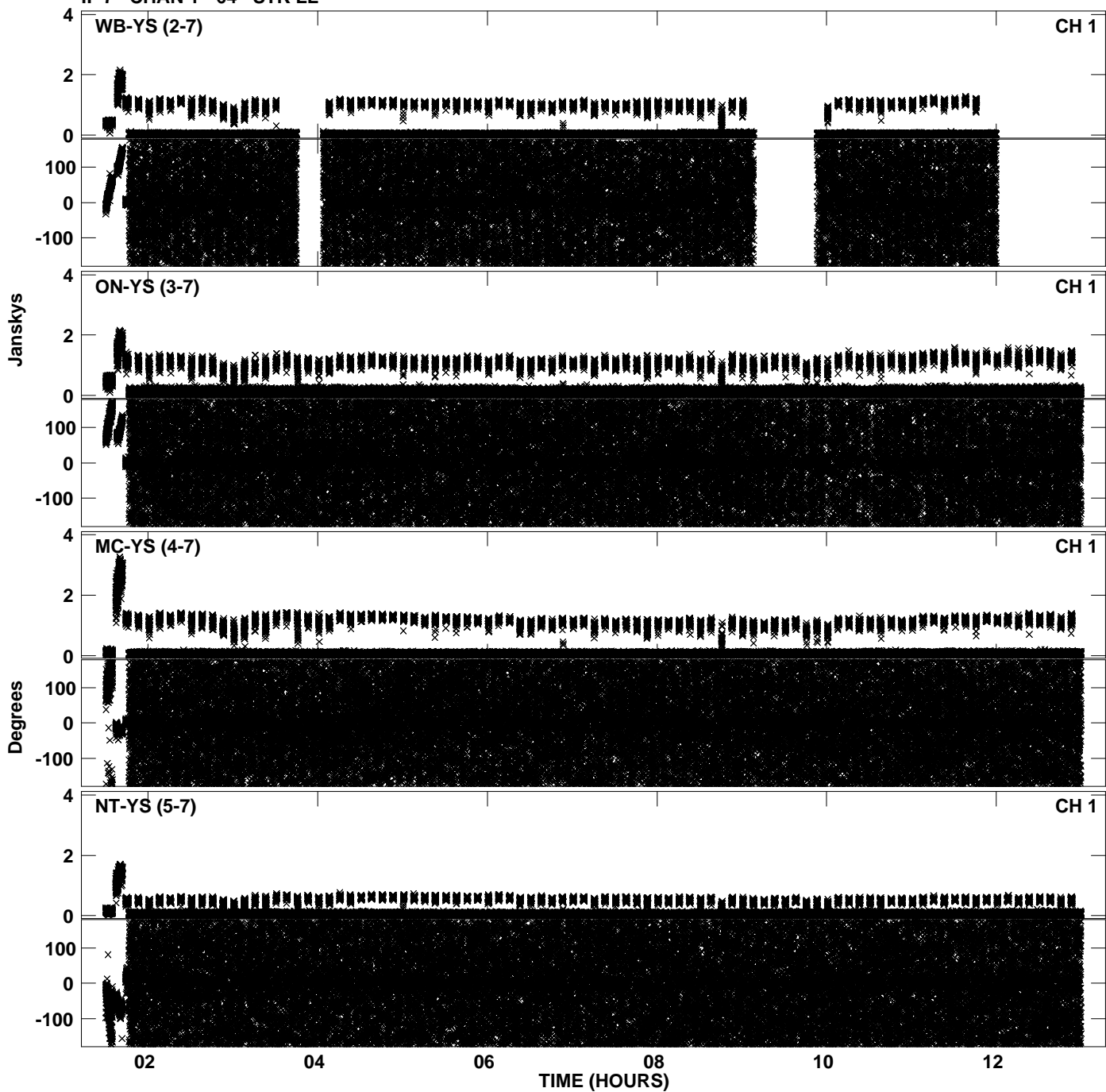
PLot file version 15 created 10-JAN-2014 21:46:55
Amplitude andPhase vs Time for EY019 2.UVDATA.1 Vect aver. CL # 3
IF 6 CHAN 1 - 64 STK LL



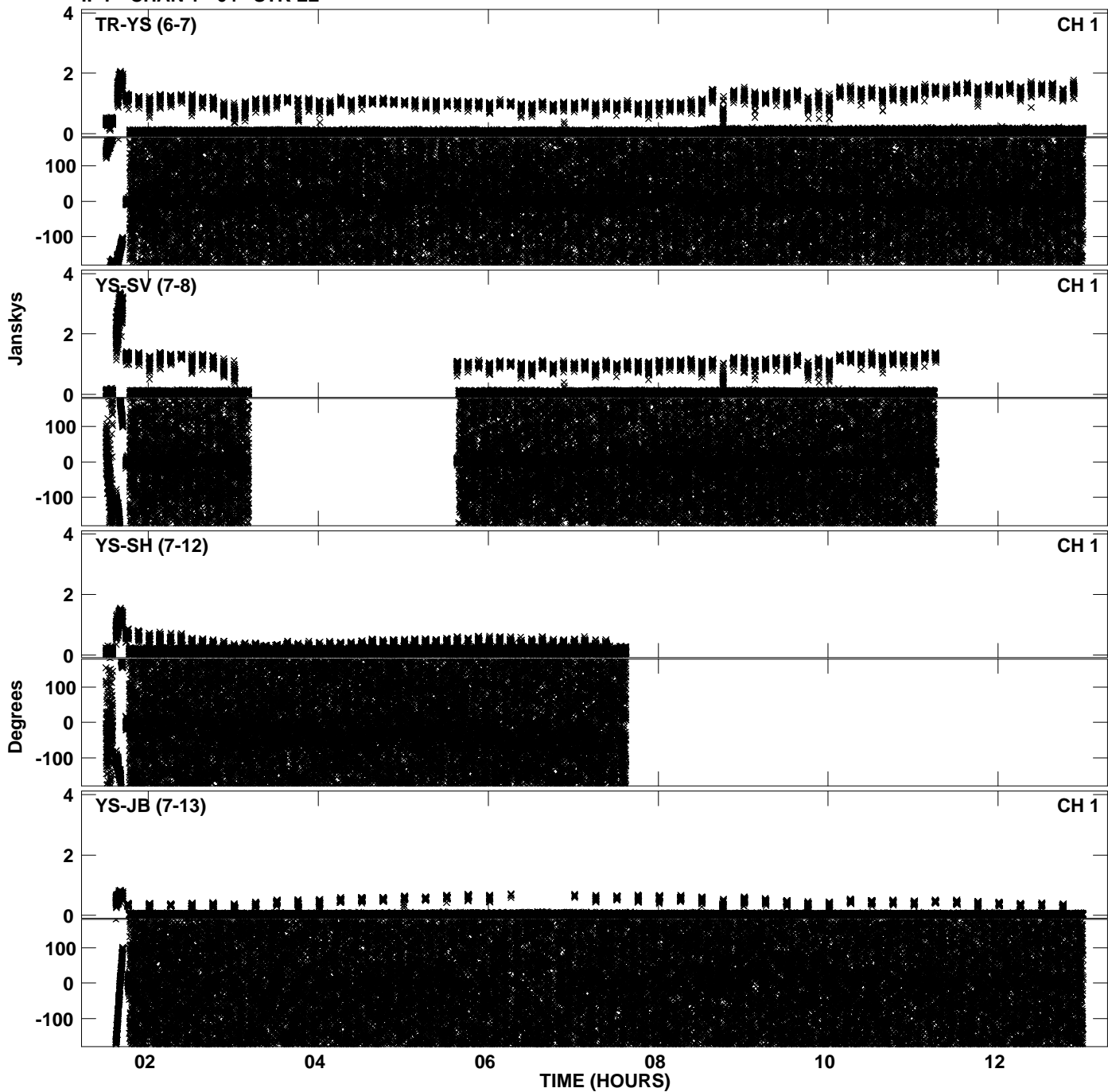
Plot file version 16 created 10-JAN-2014 21:46:55
Amplitude andPhase vs Time for EY019 2.UVDATA.1 Vect aver. CL # 3
IF 6 CHAN 1 - 64 STK LL



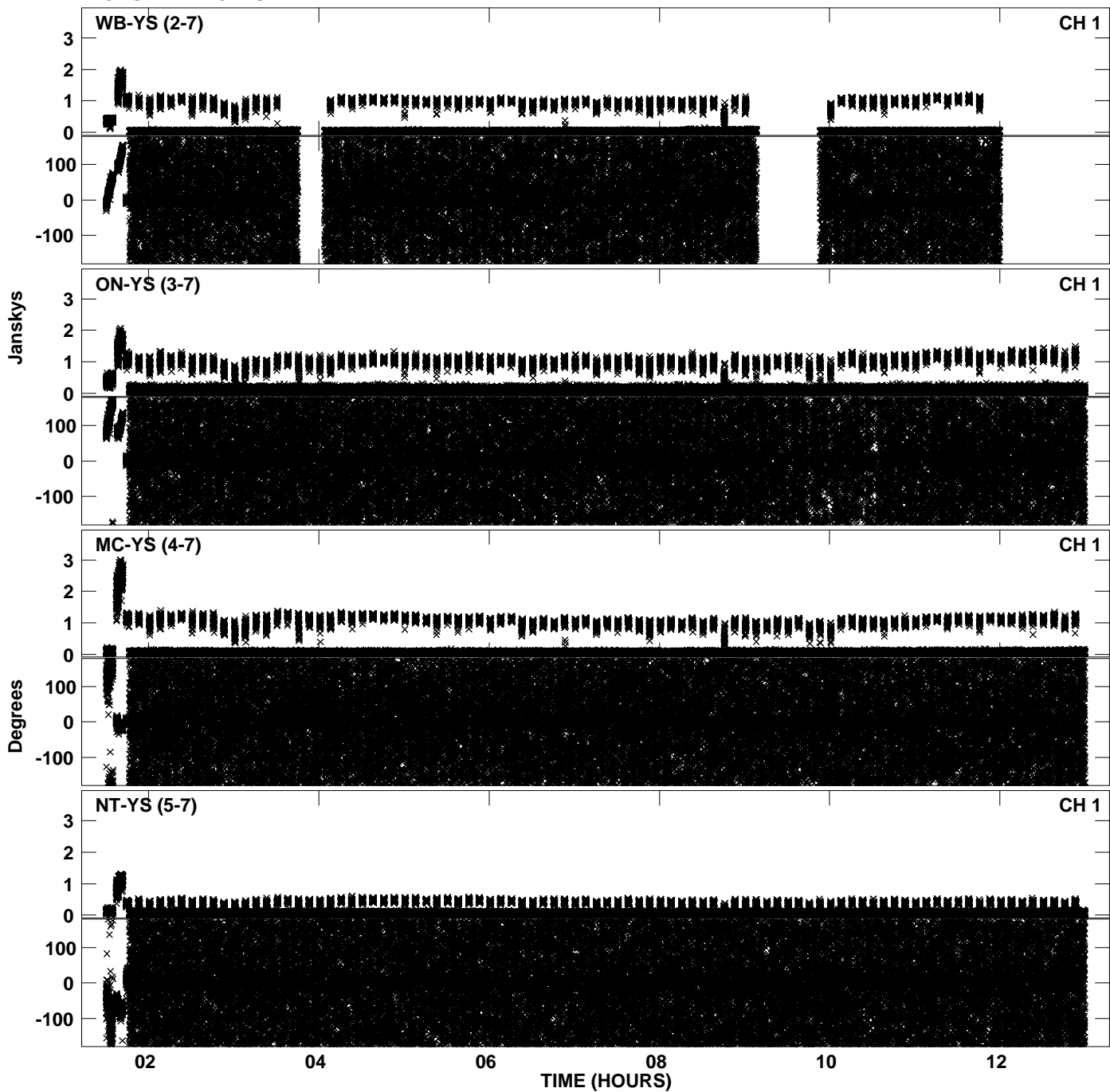
PLot file version 17 created 10-JAN-2014 21:47:30
Amplitude andPhase vs Time for EY019 2.UVDATA.1 Vect aver. CL # 3
IF 7 CHAN 1 - 64 STK LL



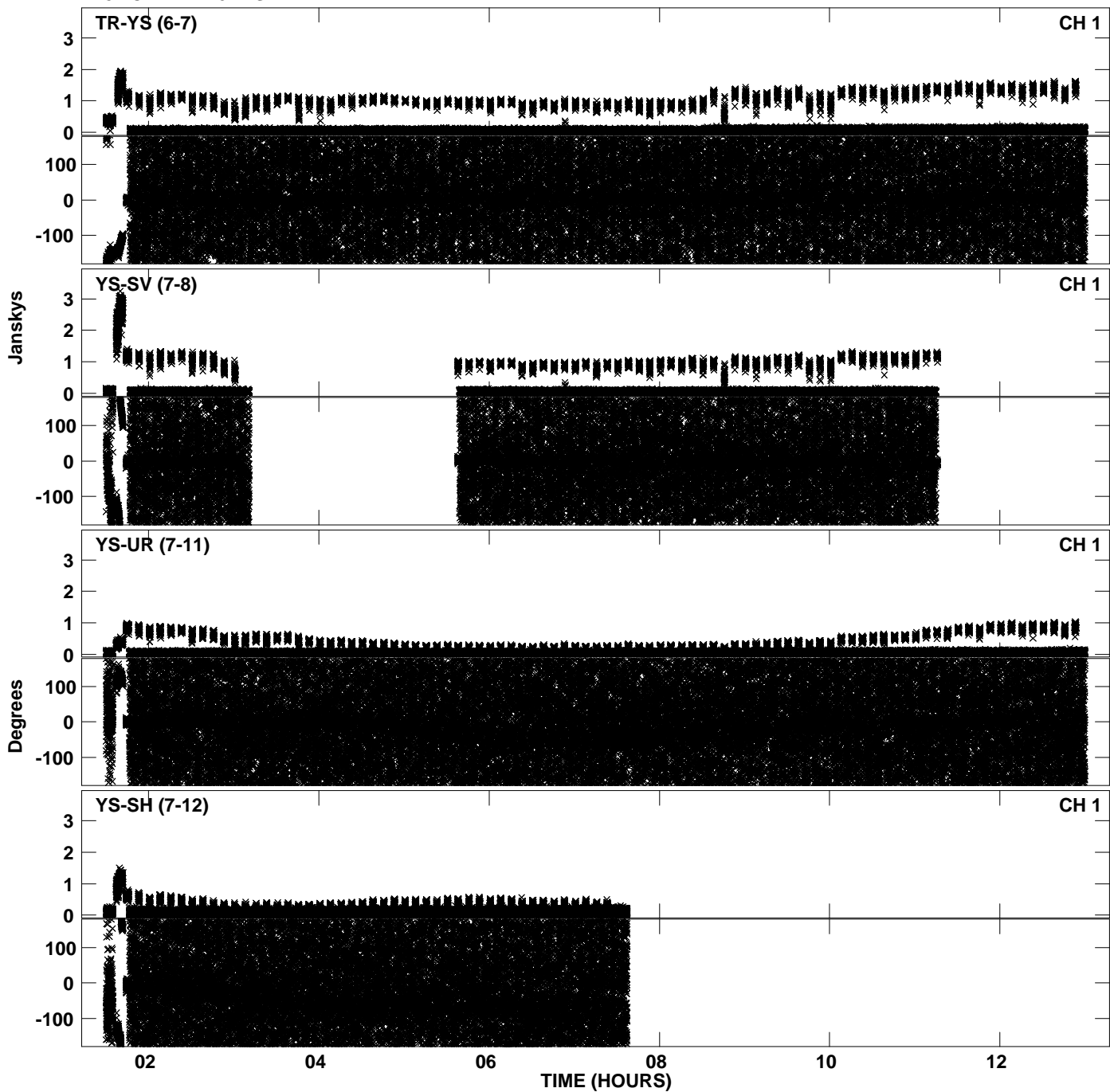
PLot file version 18 created 10-JAN-2014 21:47:30
Amplitude andPhase vs Time for EY019 2.UVDATA.1 Vect aver. CL # 3
IF 7 CHAN 1 - 64 STK LL



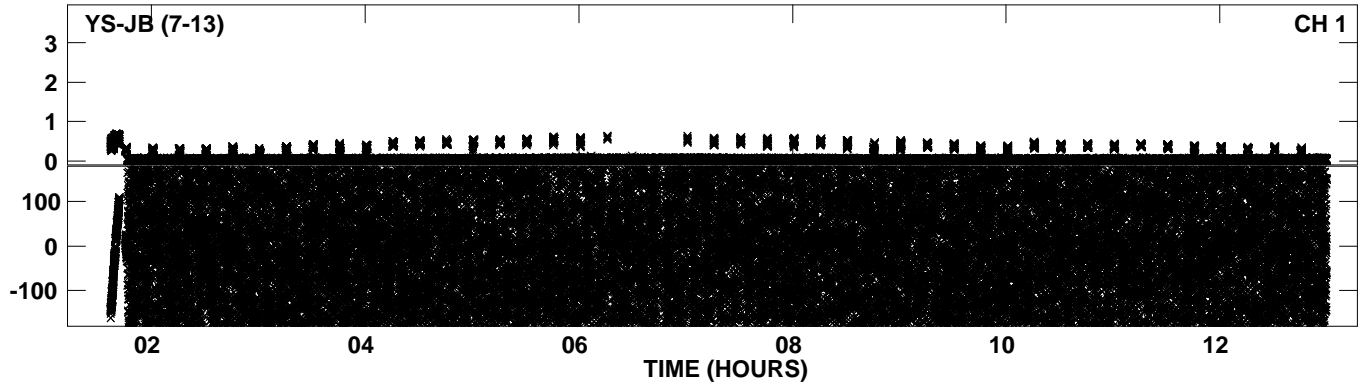
PLot file version 19 created 10-JAN-2014 21:48:07
Amplitude andPhase vs Time for EY019 2.UVDATA.1 Vect aver. CL # 3
IF 8 CHAN 1 - 64 STK LL



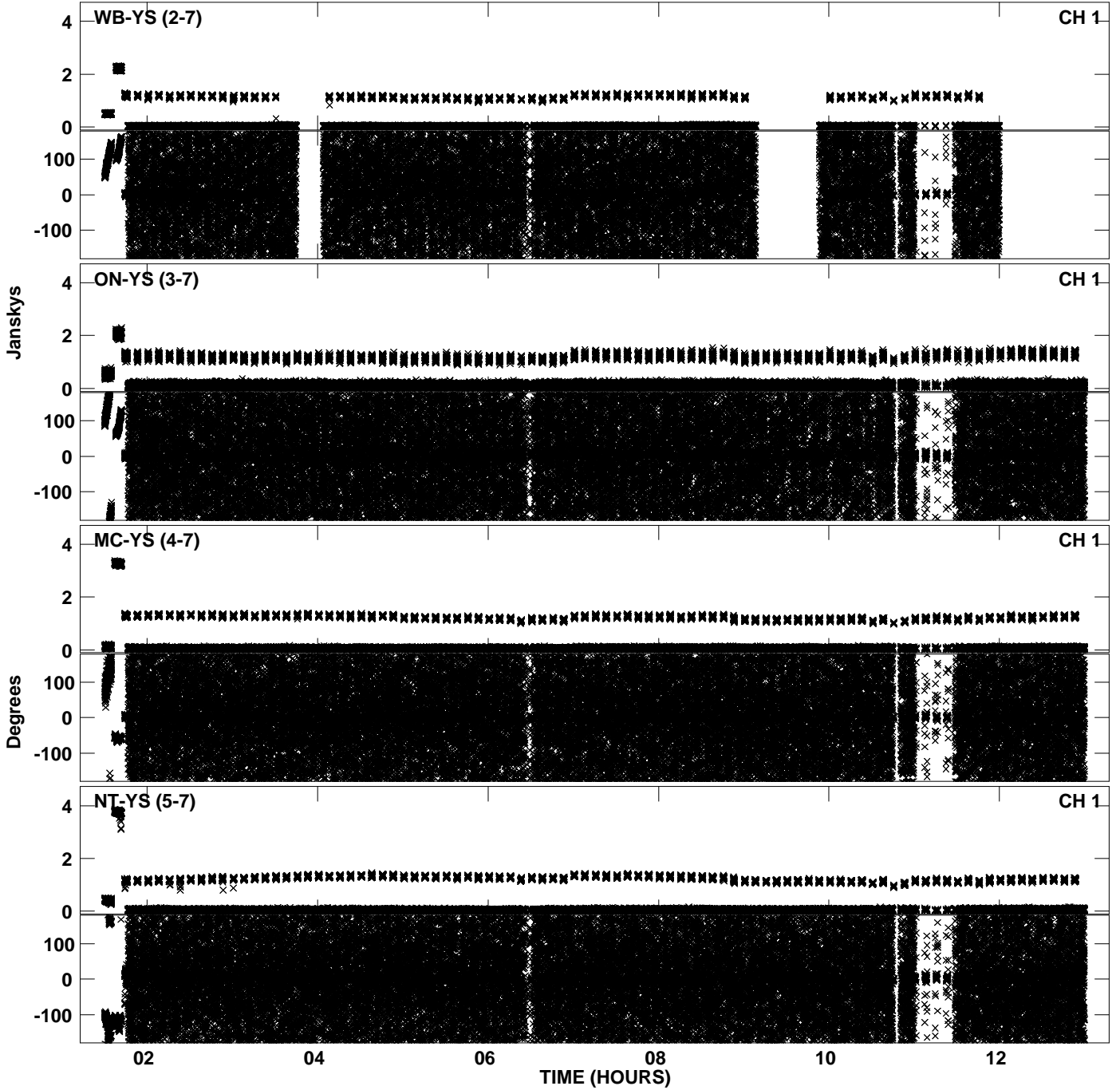
PLot file version 20 created 10-JAN-2014 21:48:07
Amplitude andPhase vs Time for EY019 2.UVDATA.1 Vect aver. CL # 3
IF 8 CHAN 1 - 64 STK LL



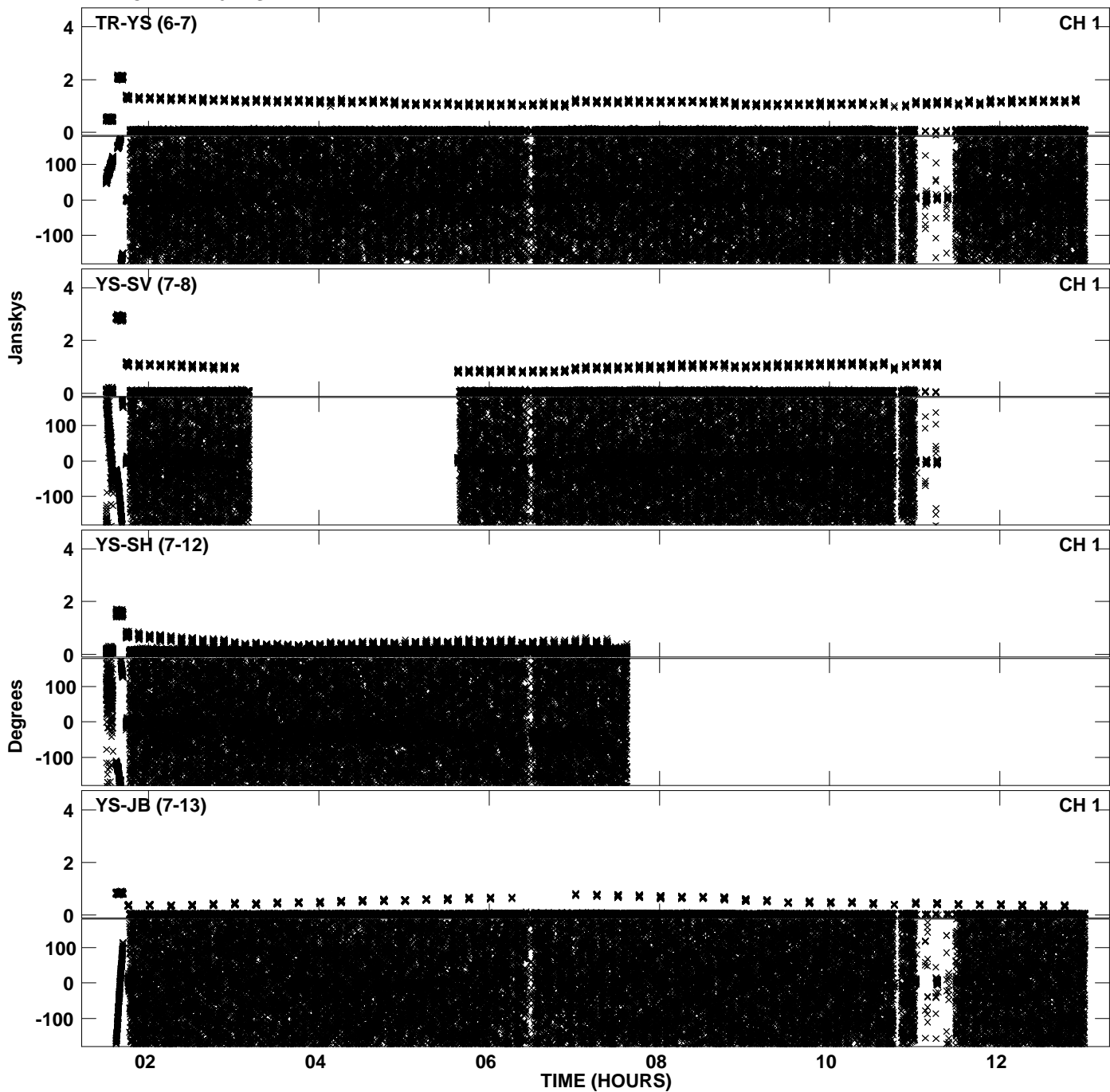
PLot file version 21 created 10-JAN-2014 21:48:07
Amplitude andPhase vs Time for EY019 2.UVDATA.1 Vect aver. CL # 3
IF 8 CHAN 1 - 64 STK LL



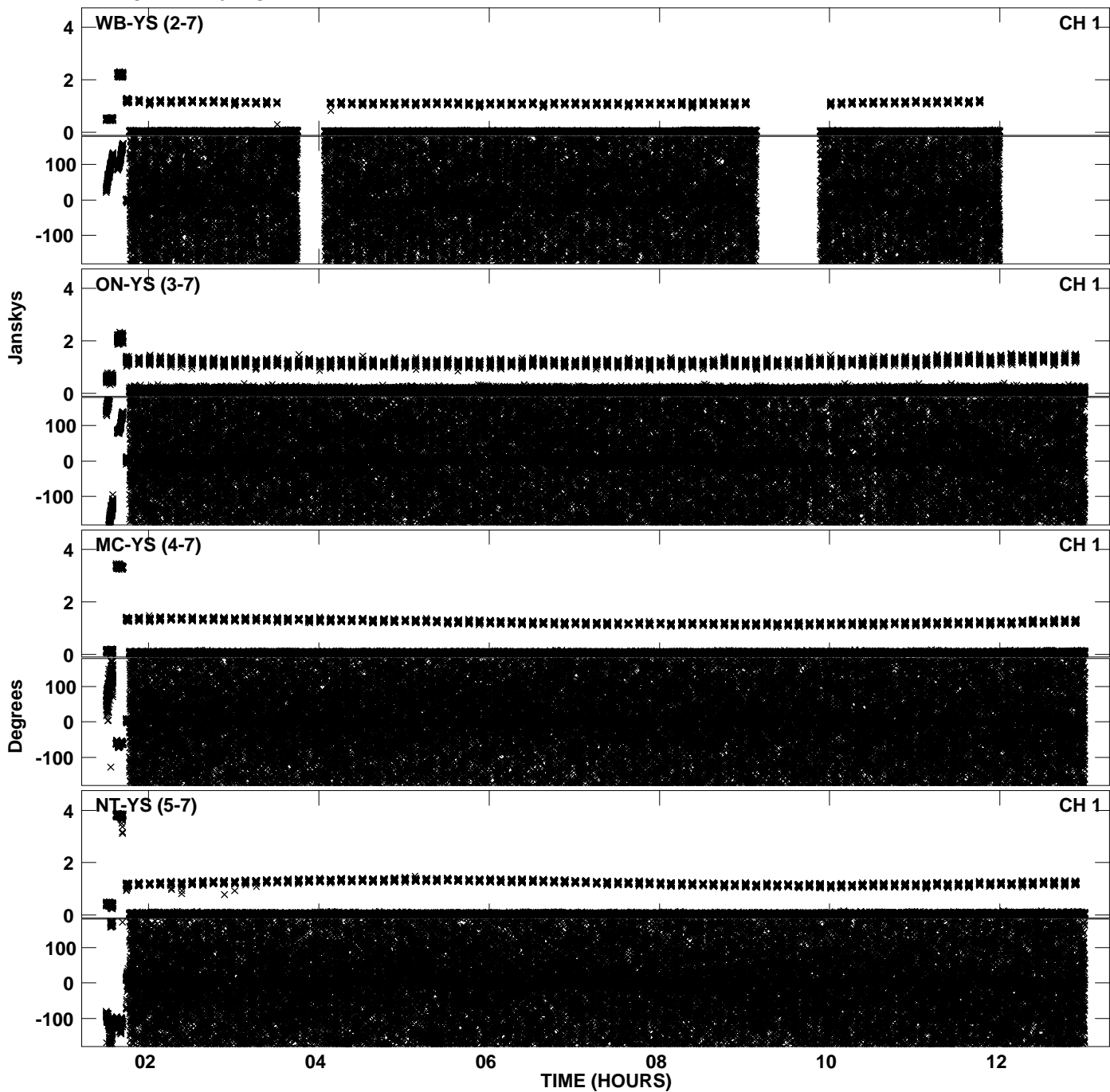
PLot file version 22 created 10-JAN-2014 21:48:40
Amplitude andPhase vs Time for EY019 2.UVDATA.1 Vect aver. CL # 3
IF 1 CHAN 1 - 64 STK RR



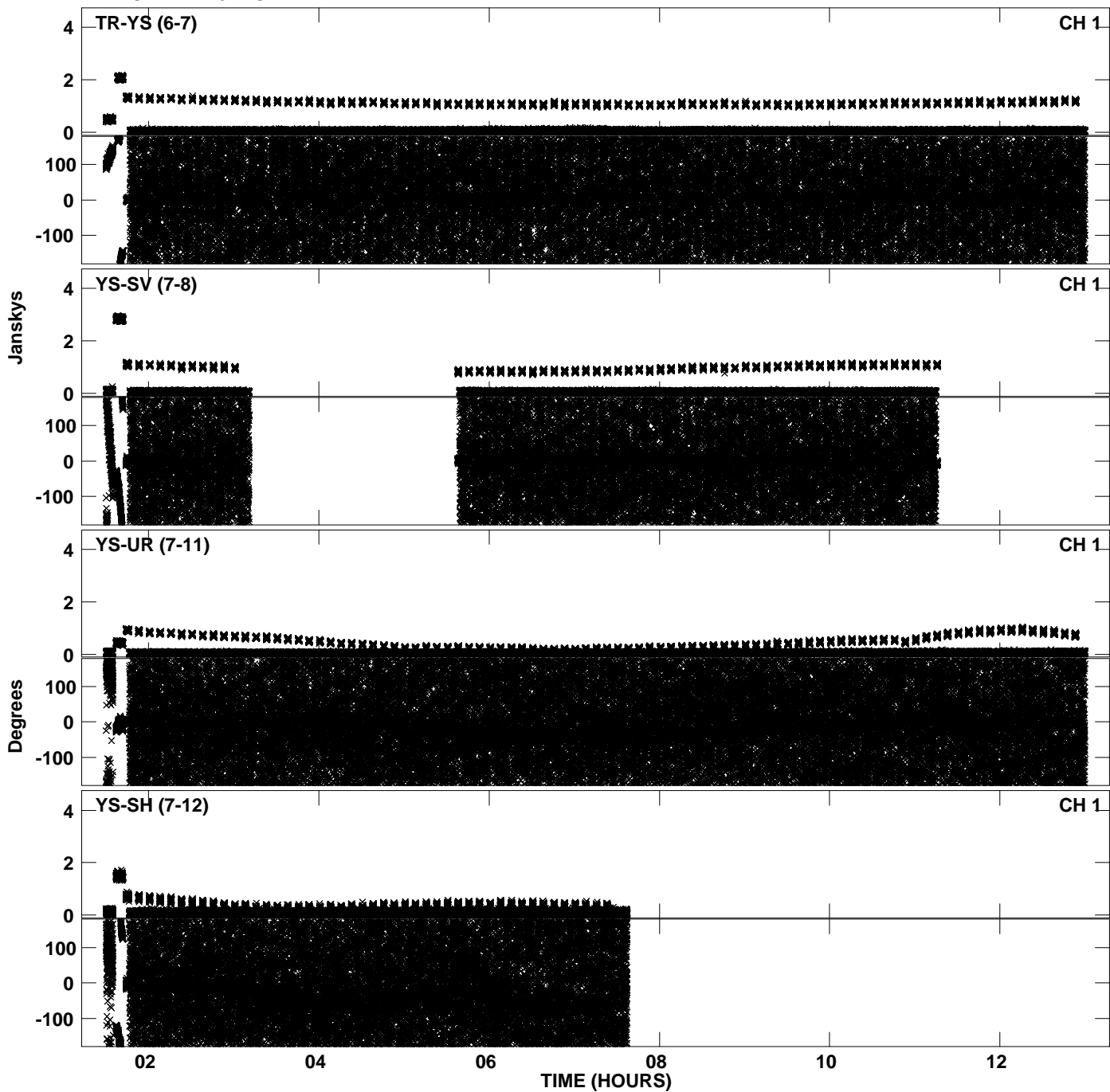
PLot file version 23 created 10-JAN-2014 21:48:40
Amplitude andPhase vs Time for EY019 2.UVDATA.1 Vect aver. CL # 3
IF 1 CHAN 1 - 64 STK RR



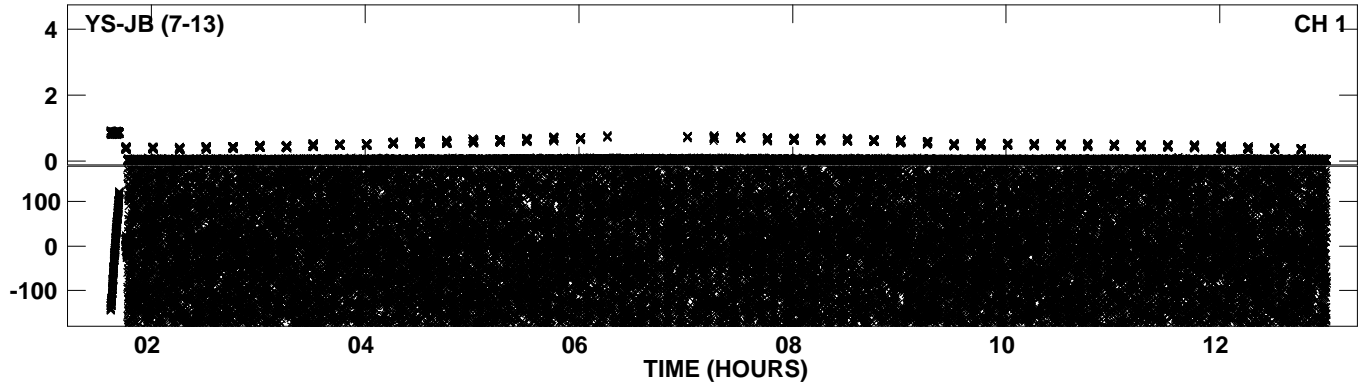
PLot file version 24 created 10-JAN-2014 21:49:15
Amplitude andPhase vs Time for EY019 2.UVDATA.1 Vect aver. CL # 3
IF 2 CHAN 1 - 64 STK RR



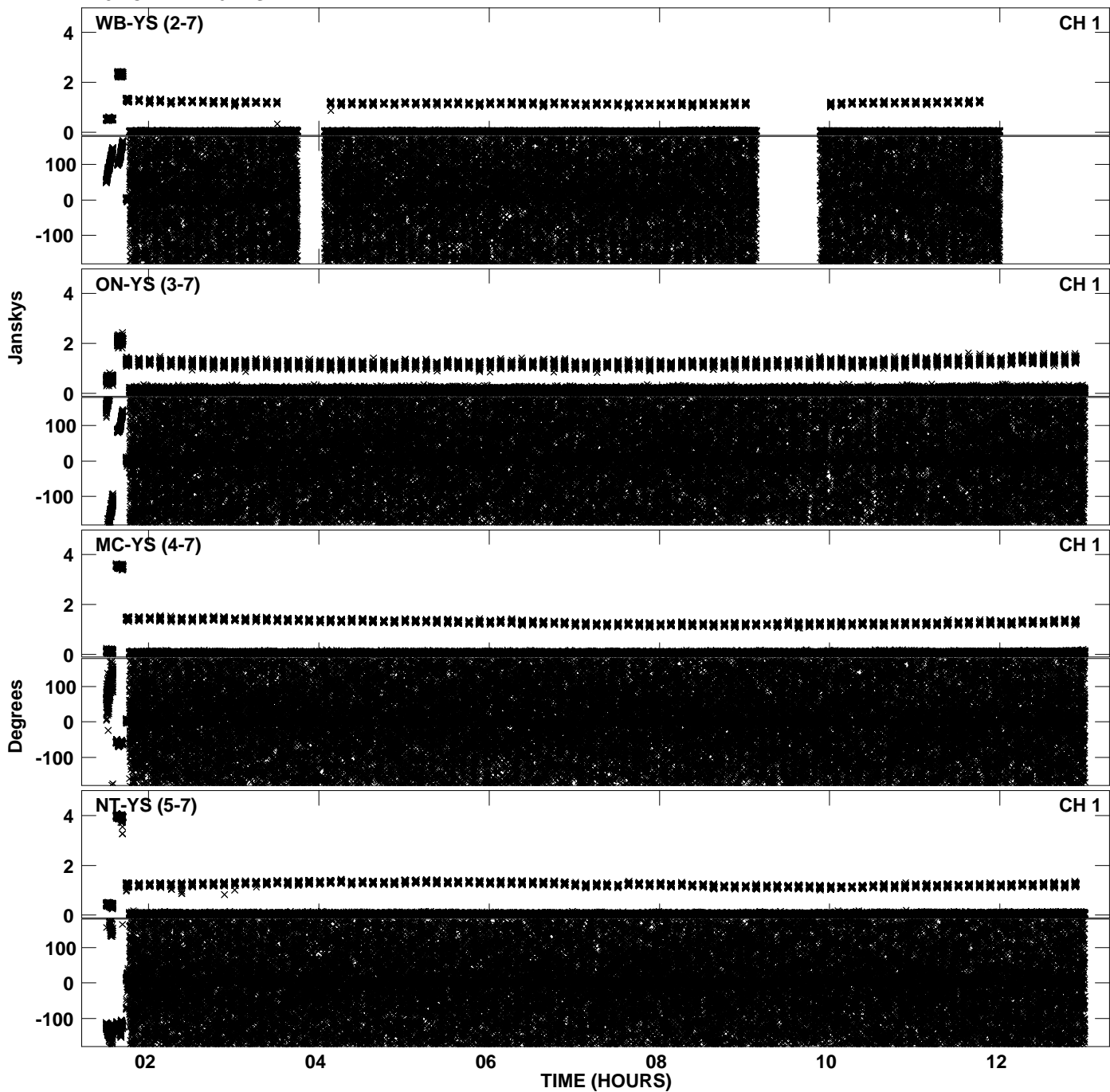
PLot file version 25 created 10-JAN-2014 21:49:15
Amplitude andPhase vs Time for EY019 2.UVDATA.1 Vect aver. CL # 3
IF 2 CHAN 1 - 64 STK RR



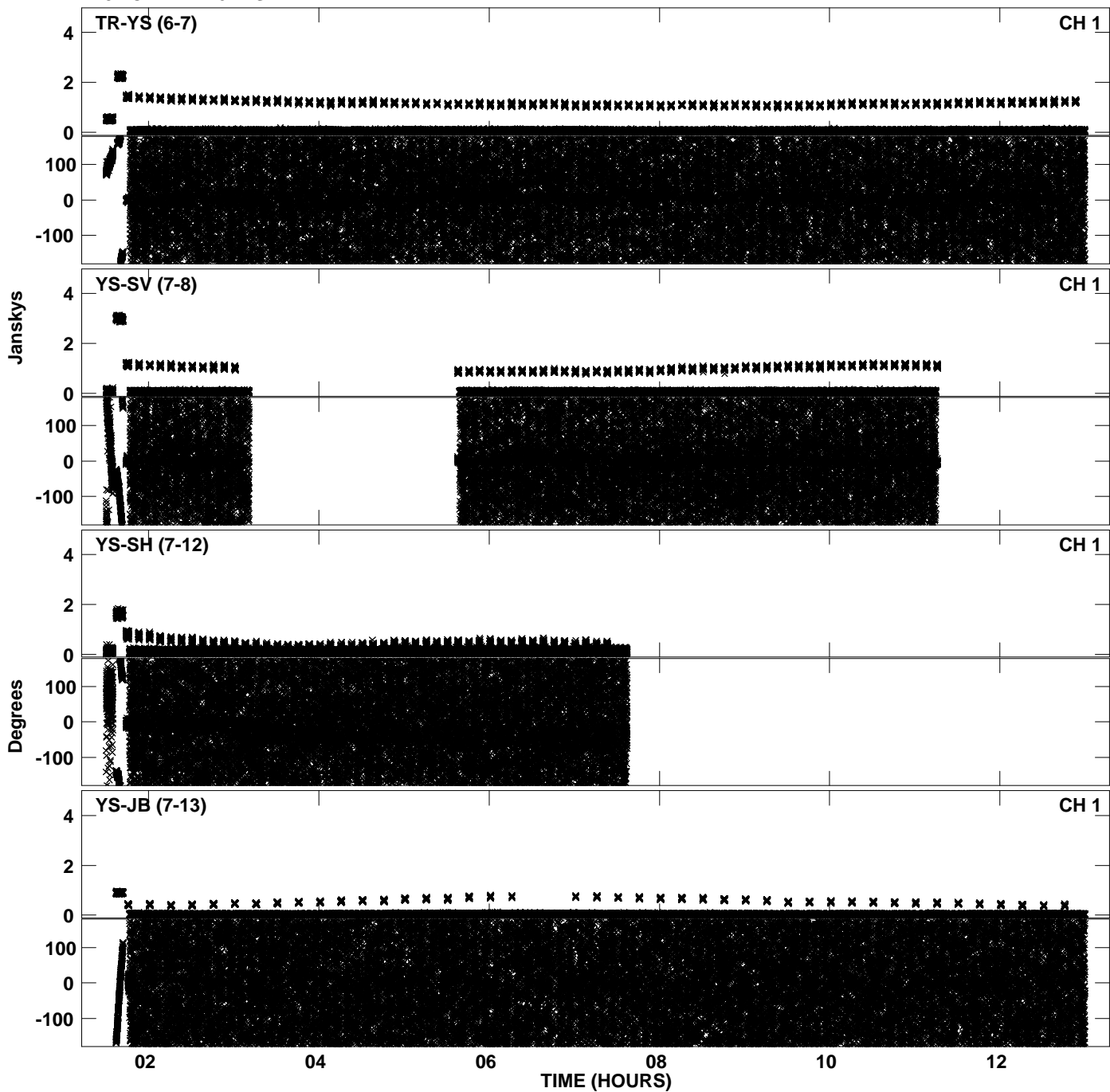
PLot file version 26 created 10-JAN-2014 21:49:15
Amplitude andPhase vs Time for EY019 2.UVDATA.1 Vect aver. CL # 3
IF 2 CHAN 1 - 64 STK RR



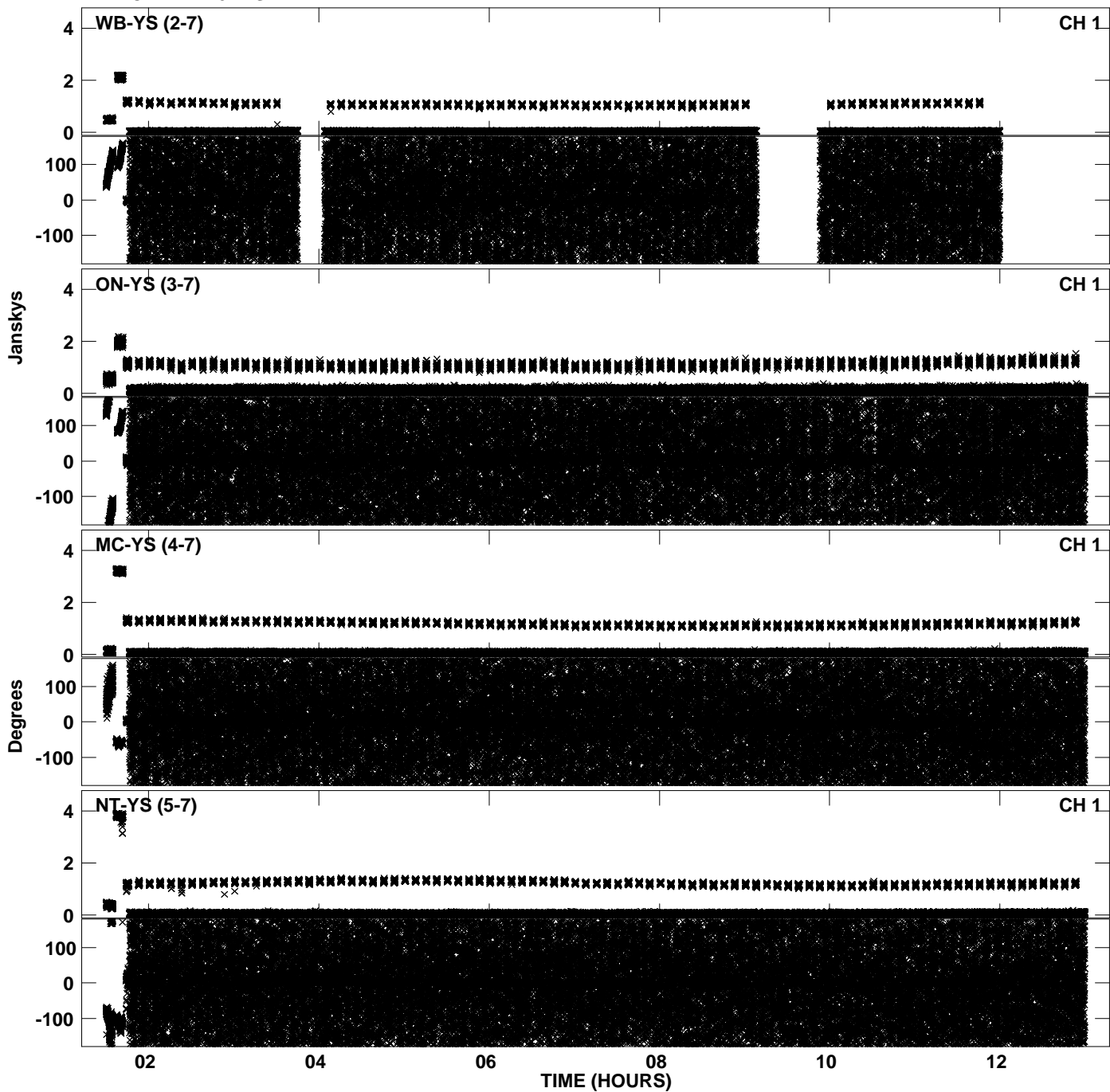
PLot file version 27 created 10-JAN-2014 21:49:48
Amplitude andPhase vs Time for EY019 2.UVDATA.1 Vect aver. CL # 3
IF 3 CHAN 1 - 64 STK RR



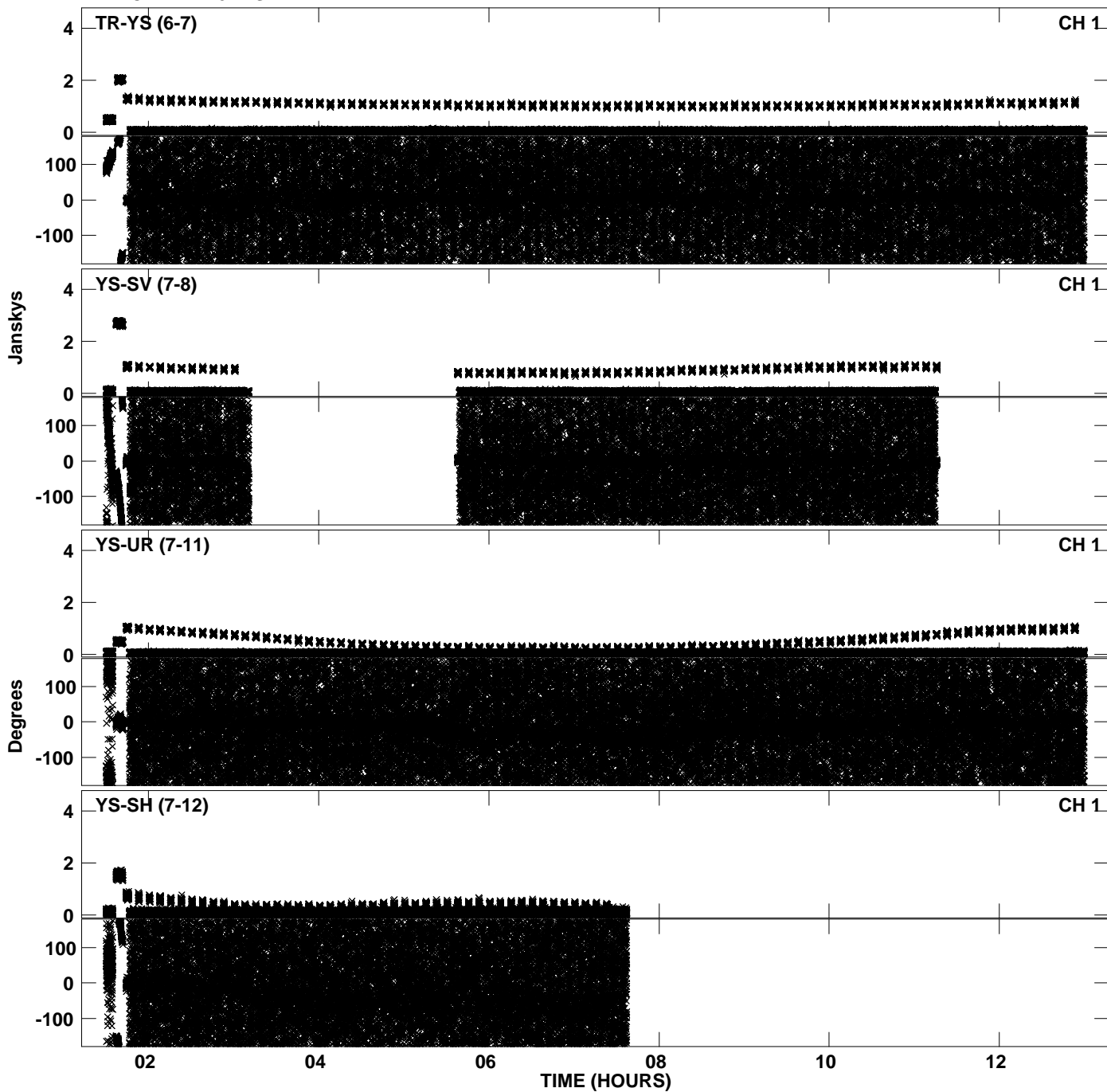
PLot file version 28 created 10-JAN-2014 21:49:49
Amplitude andPhase vs Time for EY019 2.UVDATA.1 Vect aver. CL # 3
IF 3 CHAN 1 - 64 STK RR



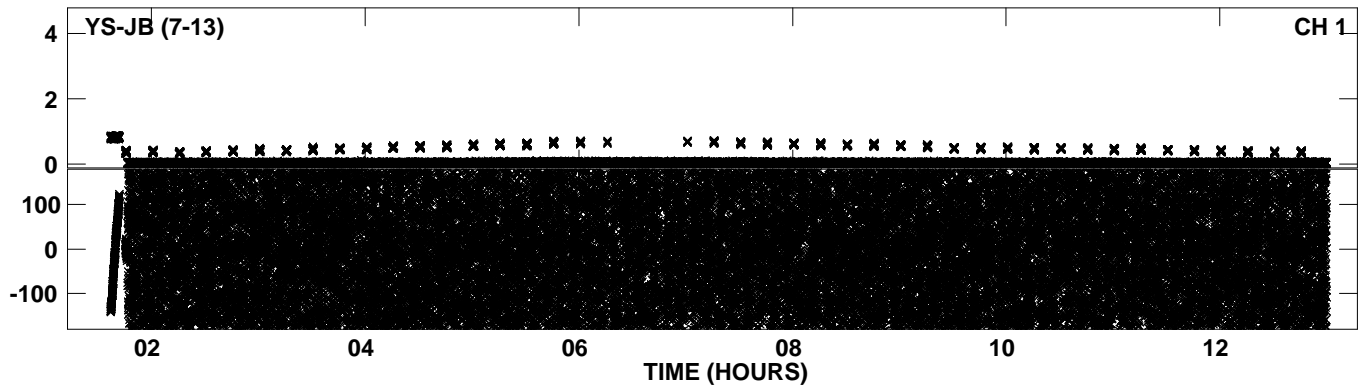
PLot file version 29 created 10-JAN-2014 21:50:23
Amplitude andPhase vs Time for EY019 2.UVDATA.1 Vect aver. CL # 3
IF 4 CHAN 1 - 64 STK RR



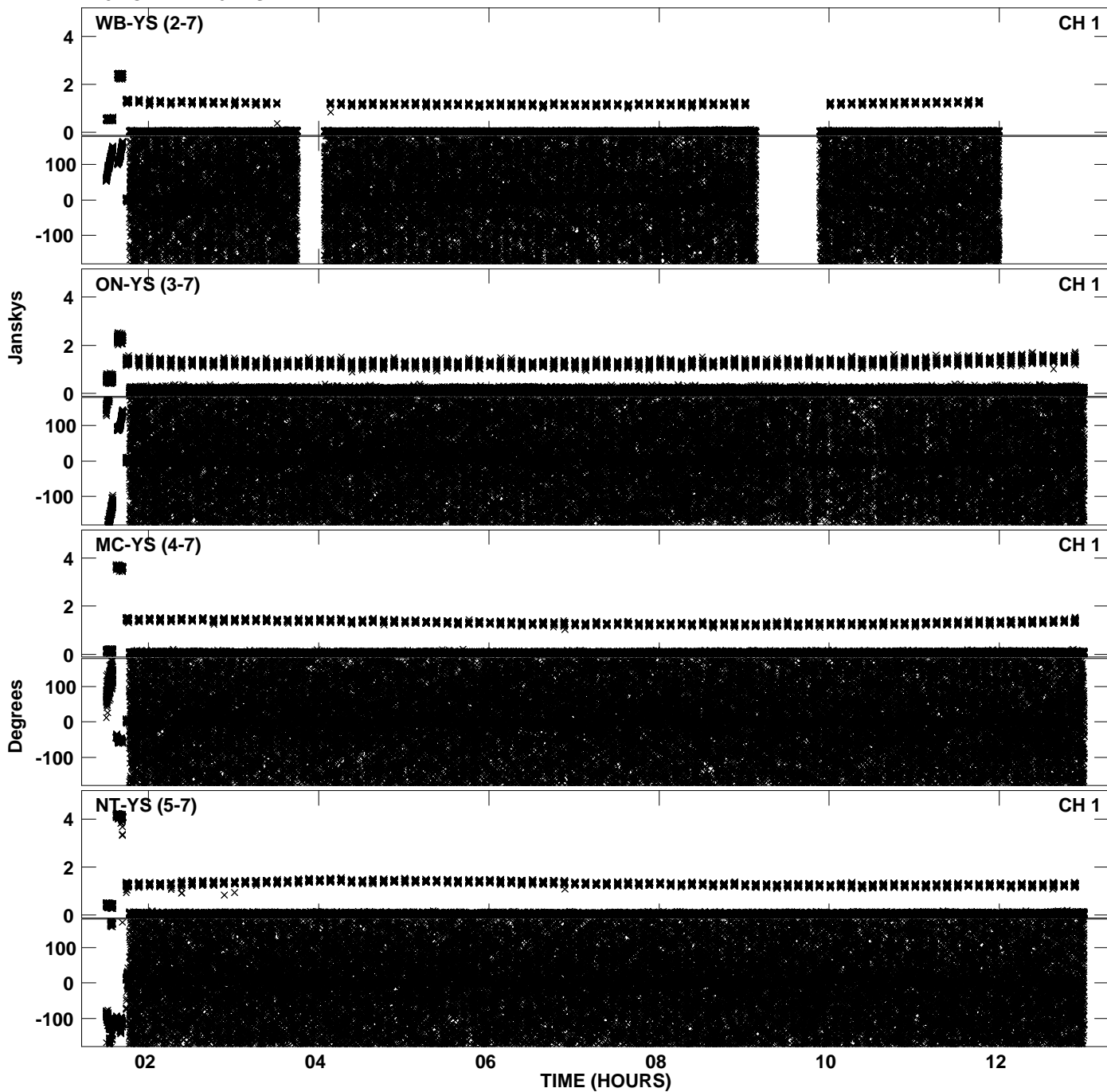
PLot file version 30 created 10-JAN-2014 21:50:23
Amplitude andPhase vs Time for EY019 2.UVDATA.1 Vect aver. CL # 3
IF 4 CHAN 1 - 64 STK RR



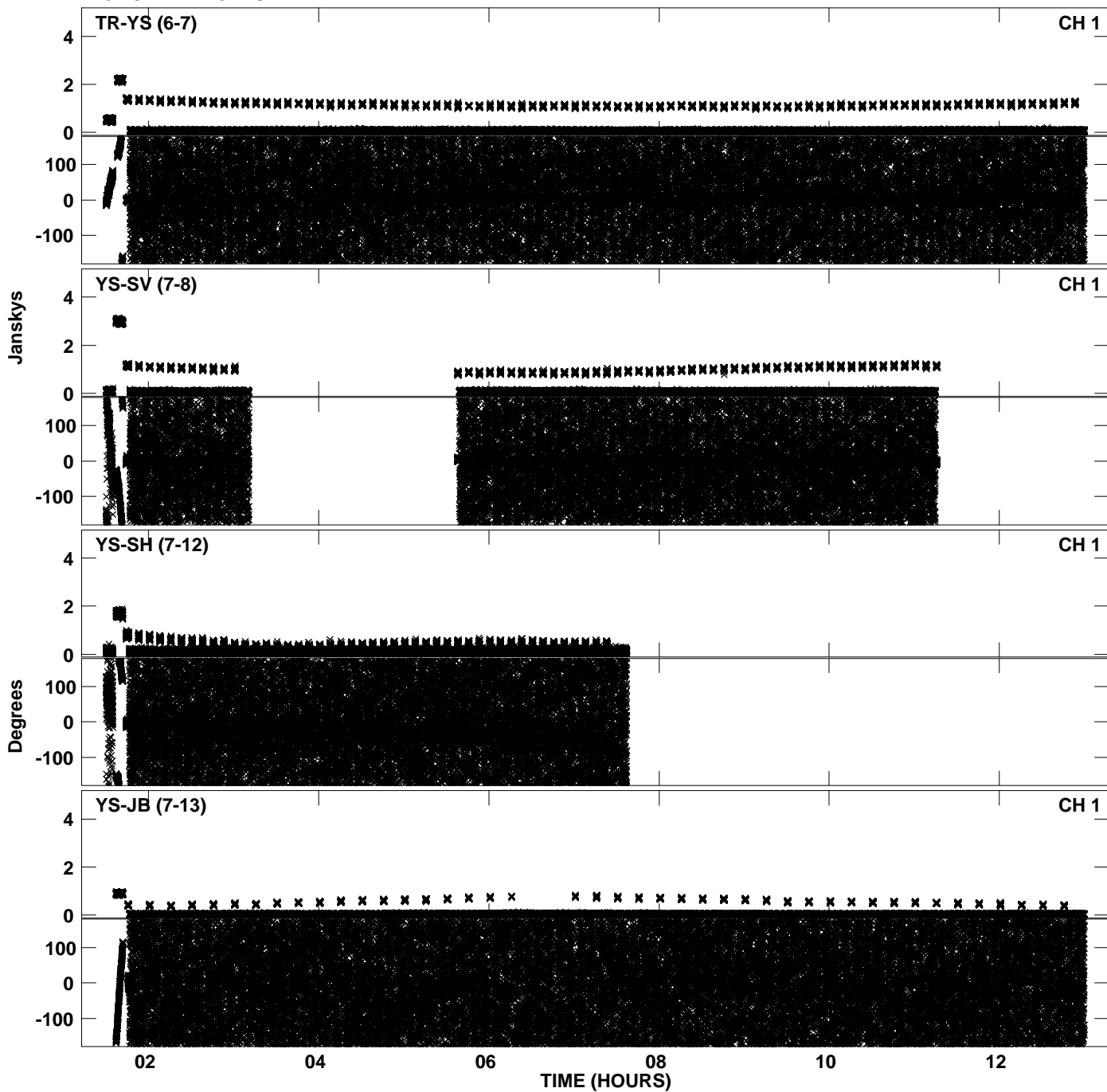
PLot file version 31 created 10-JAN-2014 21:50:23
Amplitude andPhase vs Time for EY019 2.UVDATA.1 Vect aver. CL # 3
IF 4 CHAN 1 - 64 STK RR



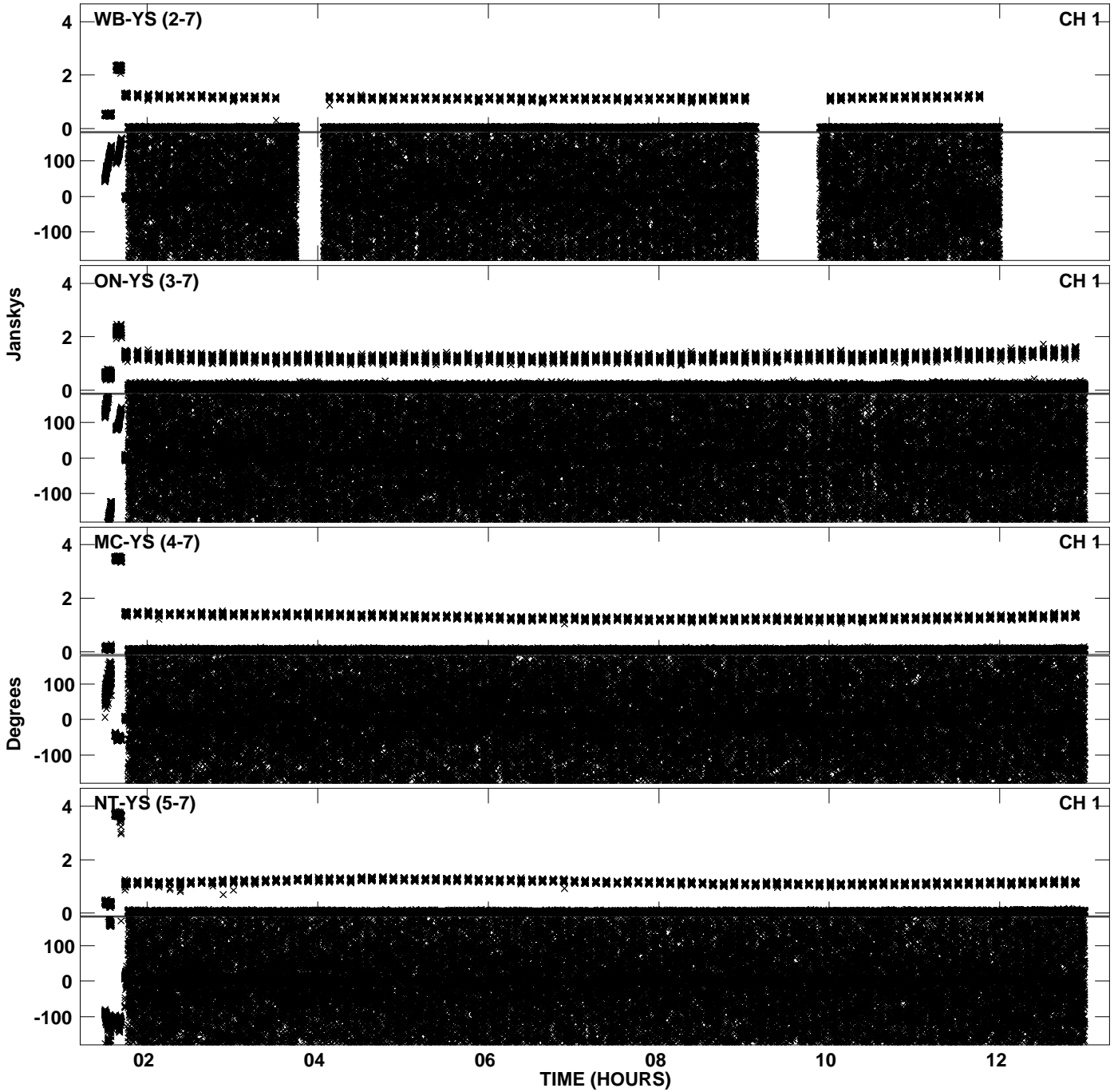
PLot file version 32 created 10-JAN-2014 21:50:56
Amplitude andPhase vs Time for EY019 2.UVDATA.1 Vect aver. CL # 3
IF 5 CHAN 1 - 64 STK RR



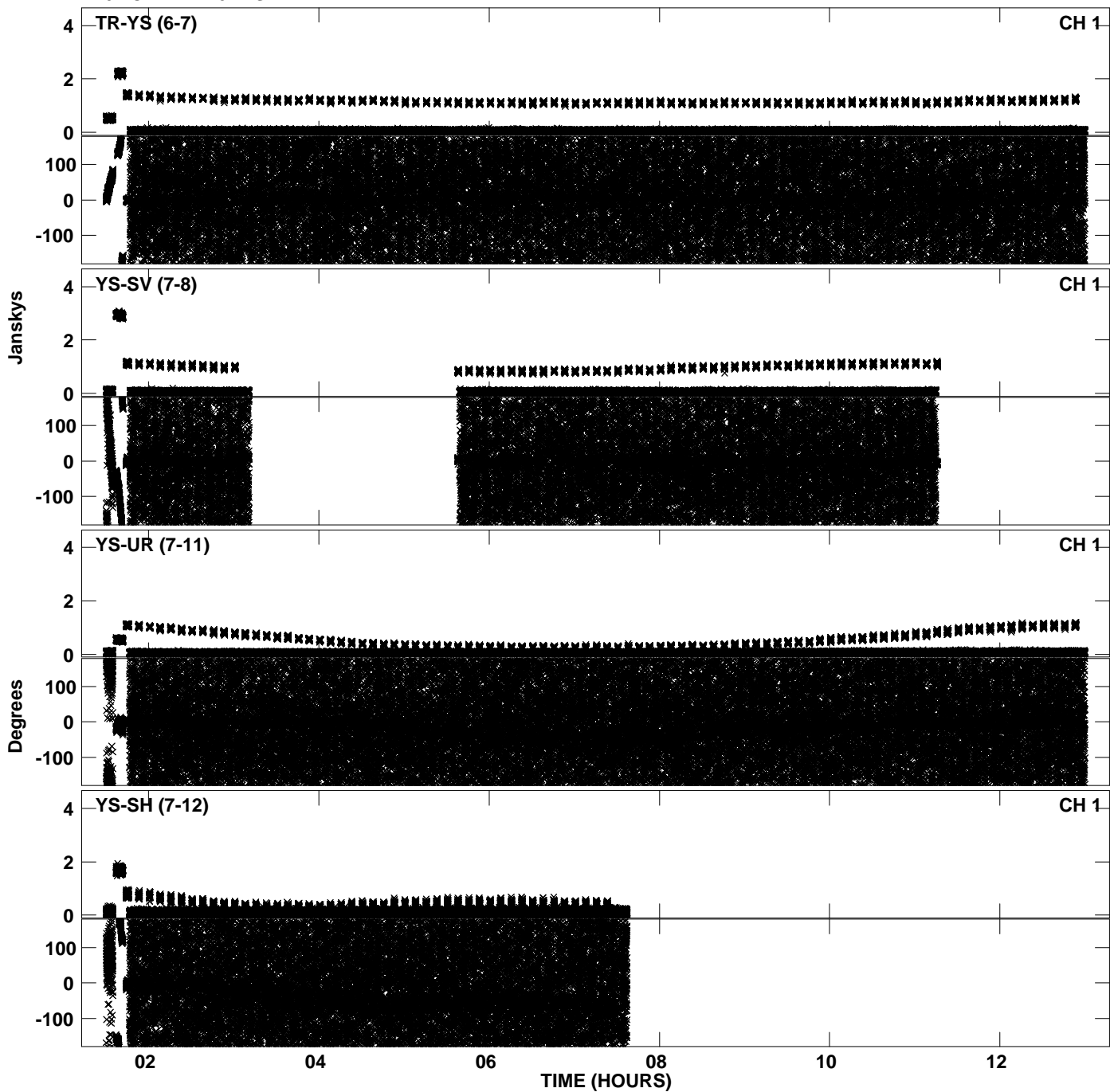
PLot file version 33 created 10-JAN-2014 21:50:56
Amplitude andPhase vs Time for EY019 2.UVDATA.1 Vect aver. CL # 3
IF 5 CHAN 1 - 64 STK RR



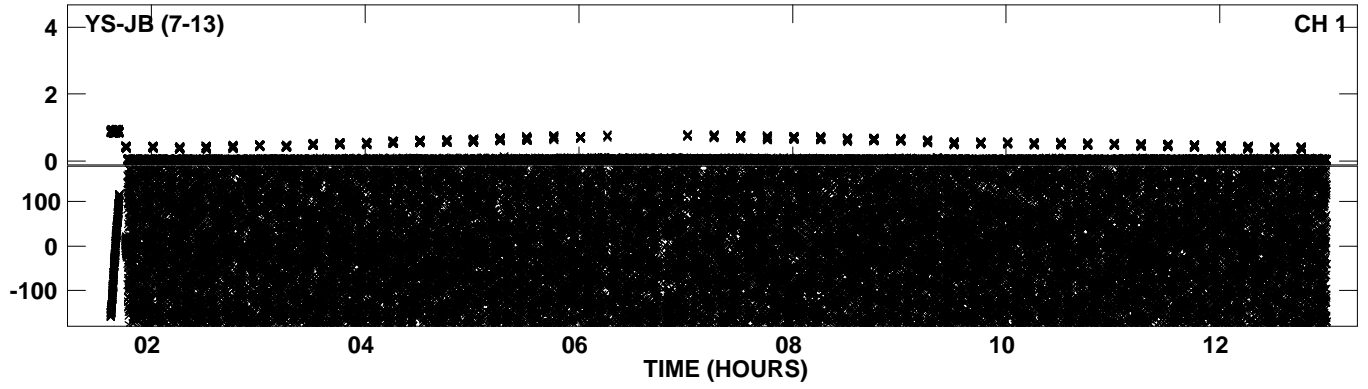
PLot file version 34 created 10-JAN-2014 21:51:31
Amplitude andPhase vs Time for EY019 2.UVDATA.1 Vect aver. CL # 3
IF 6 CHAN 1 - 64 STK RR



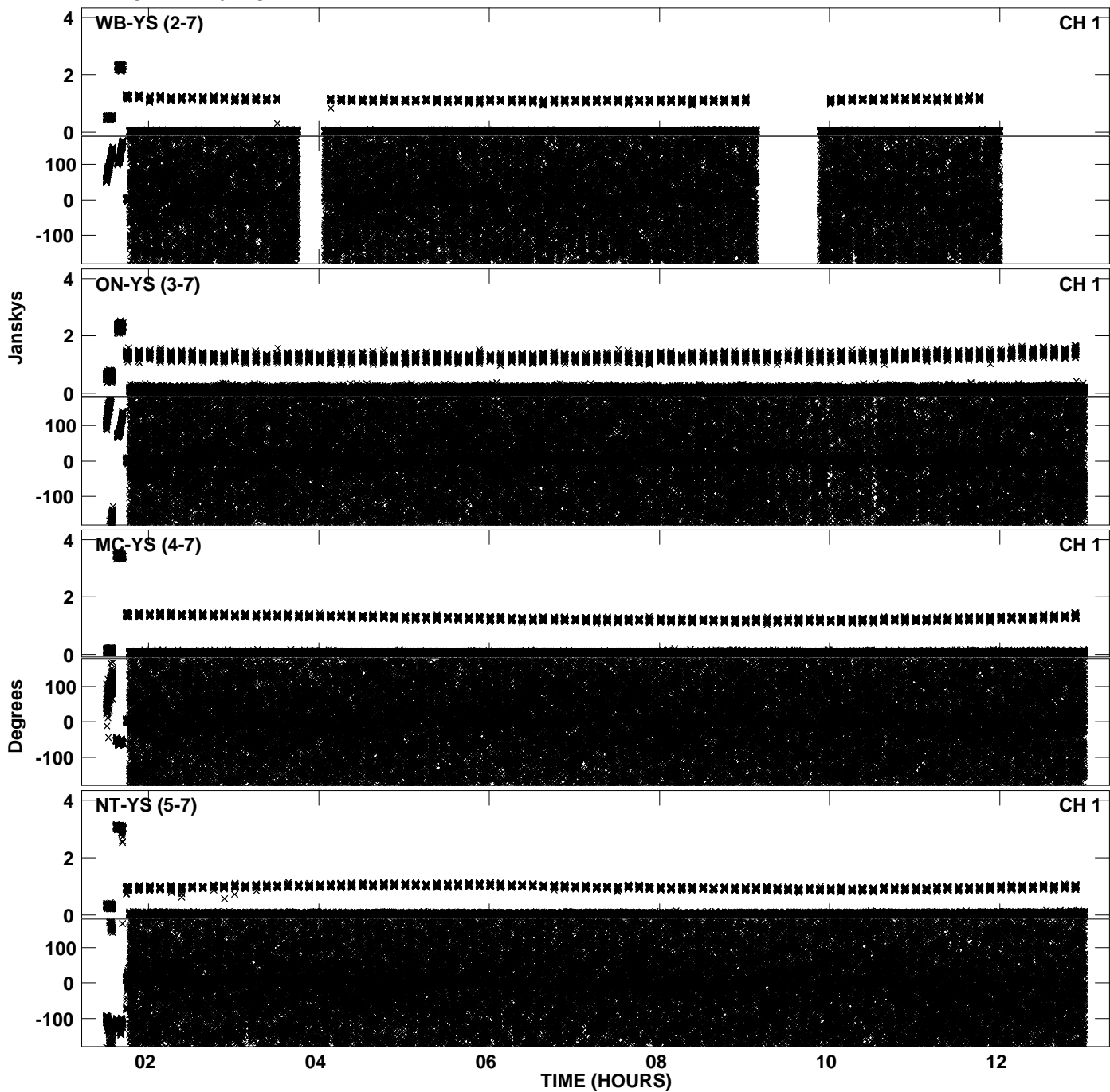
PLot file version 35 created 10-JAN-2014 21:51:31
Amplitude andPhase vs Time for EY019 2.UVDATA.1 Vect aver. CL # 3
IF 6 CHAN 1 - 64 STK RR



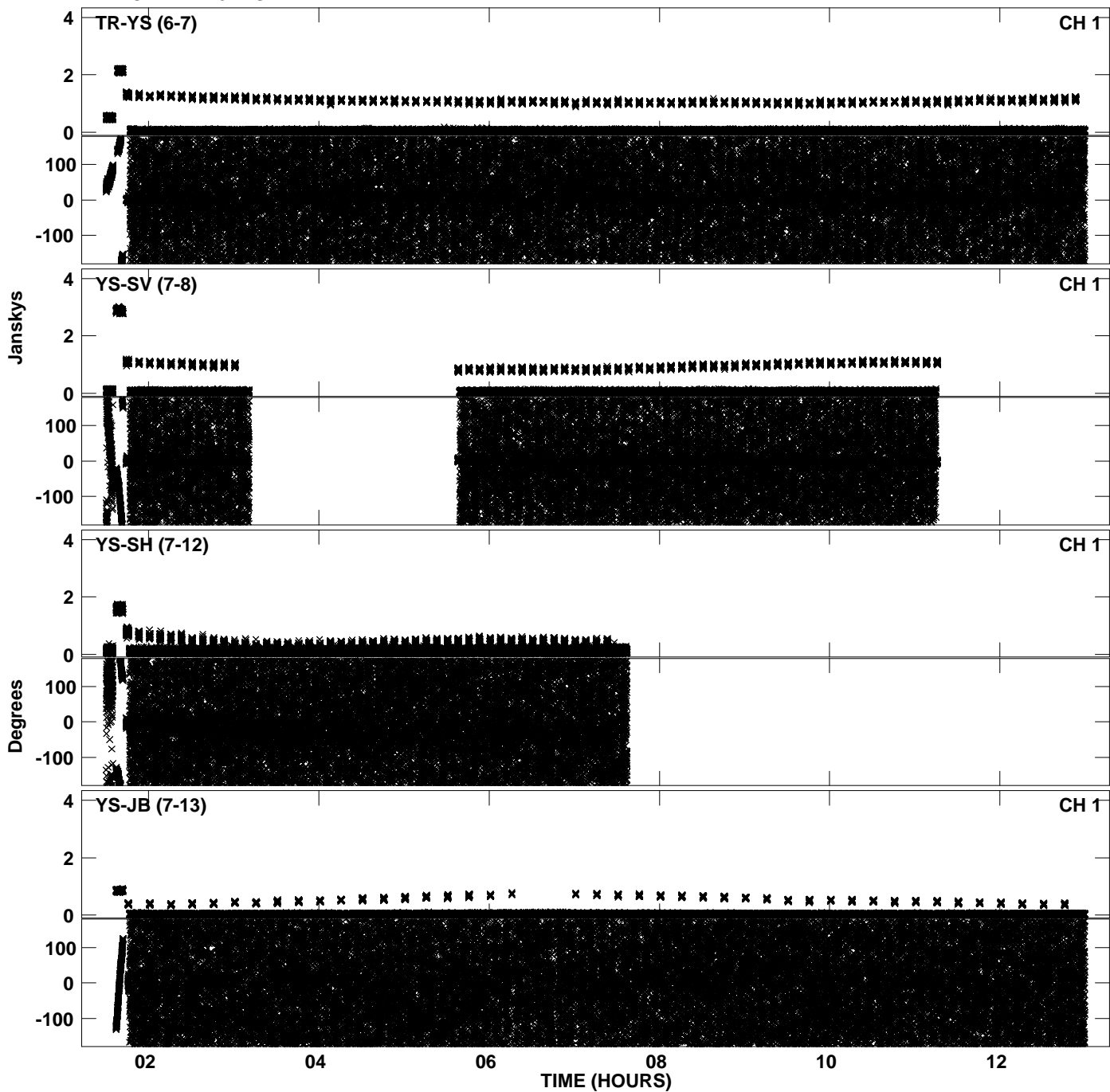
PLot file version 36 created 10-JAN-2014 21:51:31
Amplitude andPhase vs Time for EY019 2.UVDATA.1 Vect aver. CL # 3
IF 6 CHAN 1 - 64 STK RR



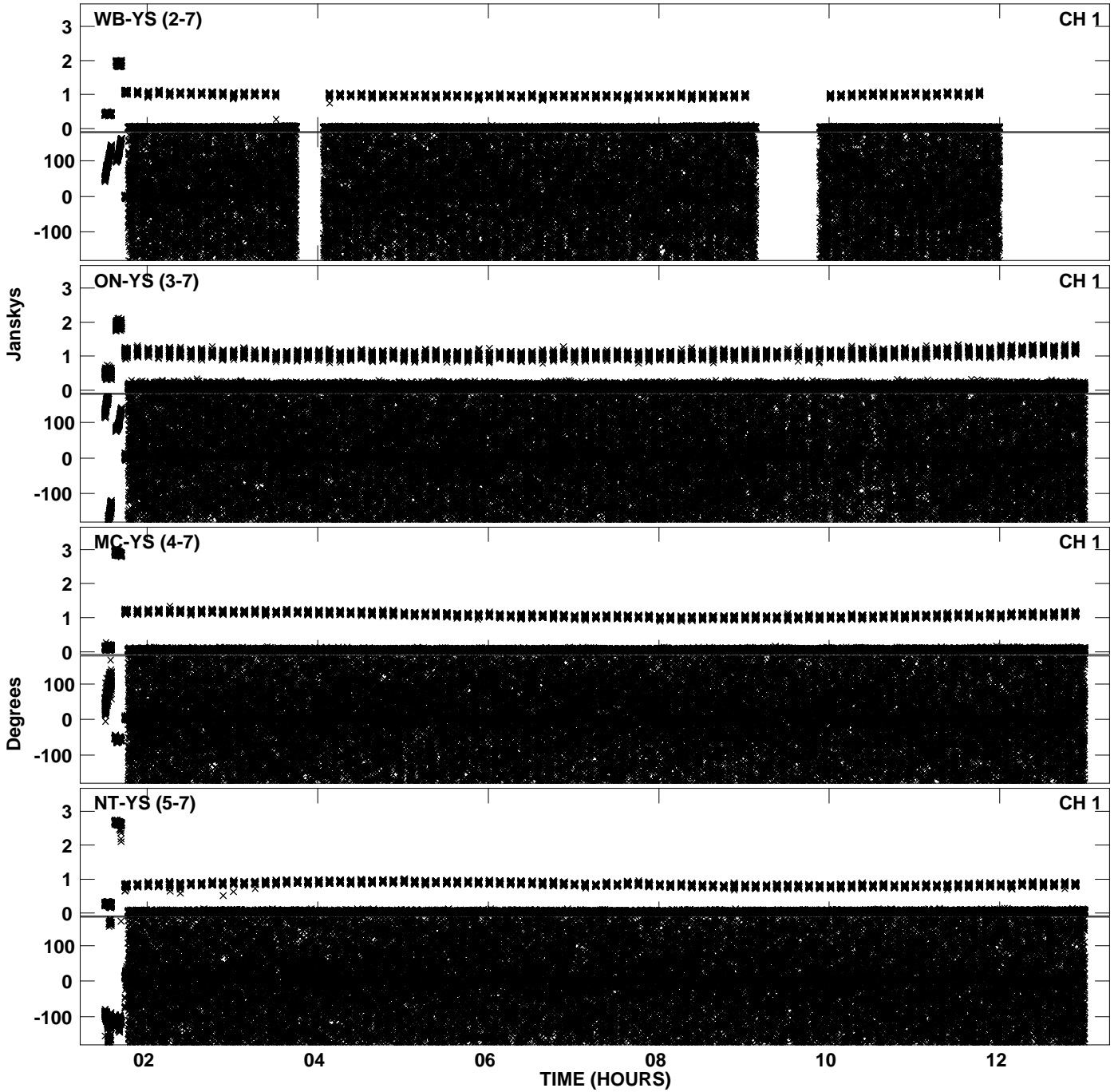
PLot file version 37 created 10-JAN-2014 21:52:04
Amplitude andPhase vs Time for EY019 2.UVDATA.1 Vect aver. CL # 3
IF 7 CHAN 1 - 64 STK RR



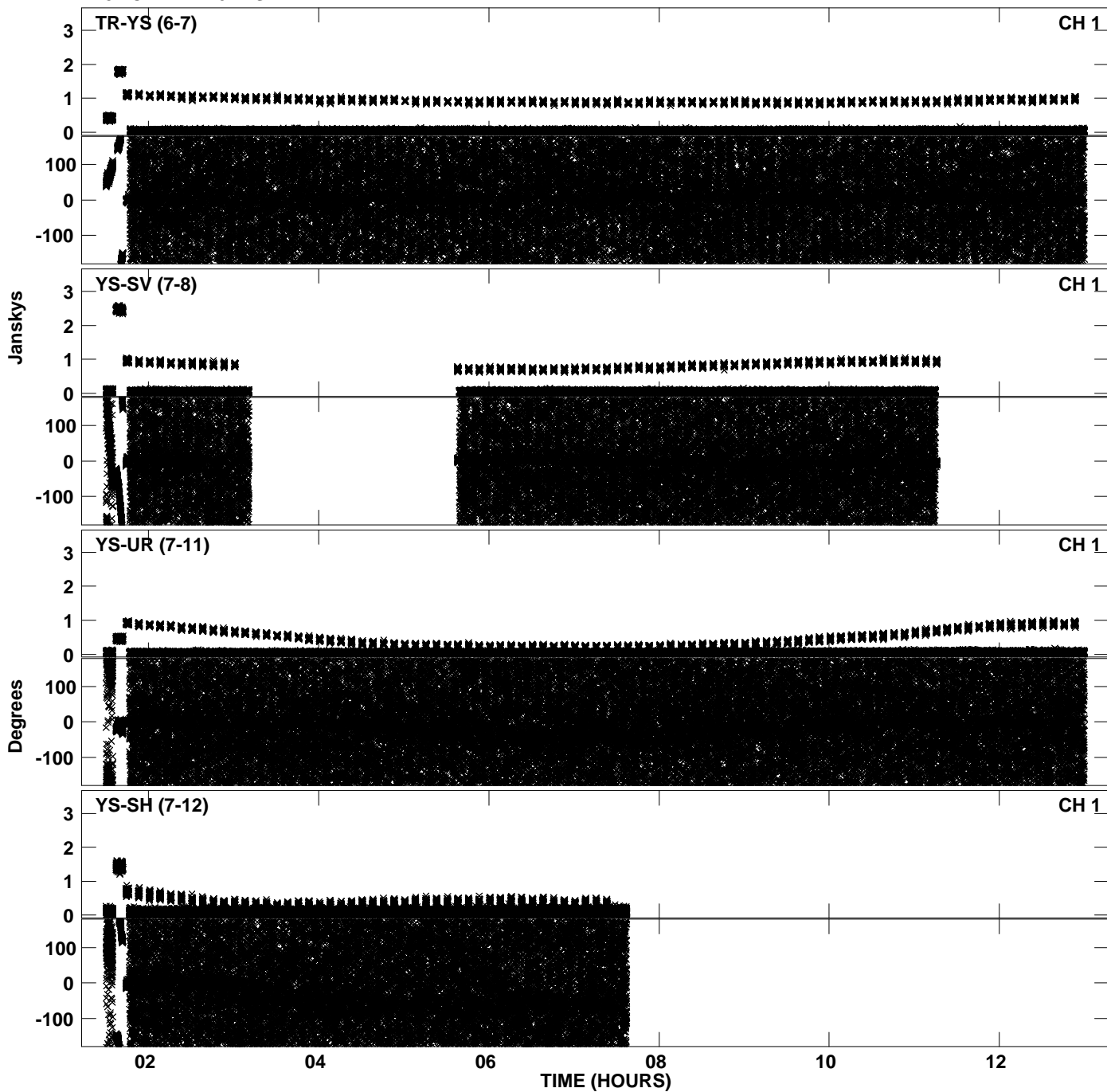
PLot file version 38 created 10-JAN-2014 21:52:04
Amplitude andPhase vs Time for EY019 2.UVDATA.1 Vect aver. CL # 3
IF 7 CHAN 1 - 64 STK RR



PLot file version 39 created 10-JAN-2014 21:52:39
Amplitude andPhase vs Time for EY019 2.UVDATA.1 Vect aver. CL # 3
IF 8 CHAN 1 - 64 STK RR



PLot file version 40 created 10-JAN-2014 21:52:39
Amplitude andPhase vs Time for EY019 2.UVDATA.1 Vect aver. CL # 3
IF 8 CHAN 1 - 64 STK RR



PLot file version 41 created 10-JAN-2014 21:52:39
Amplitude andPhase vs Time for EY019 2.UVDATA.1 Vect aver. CL # 3
IF 8 CHAN 1 - 64 STK RR

