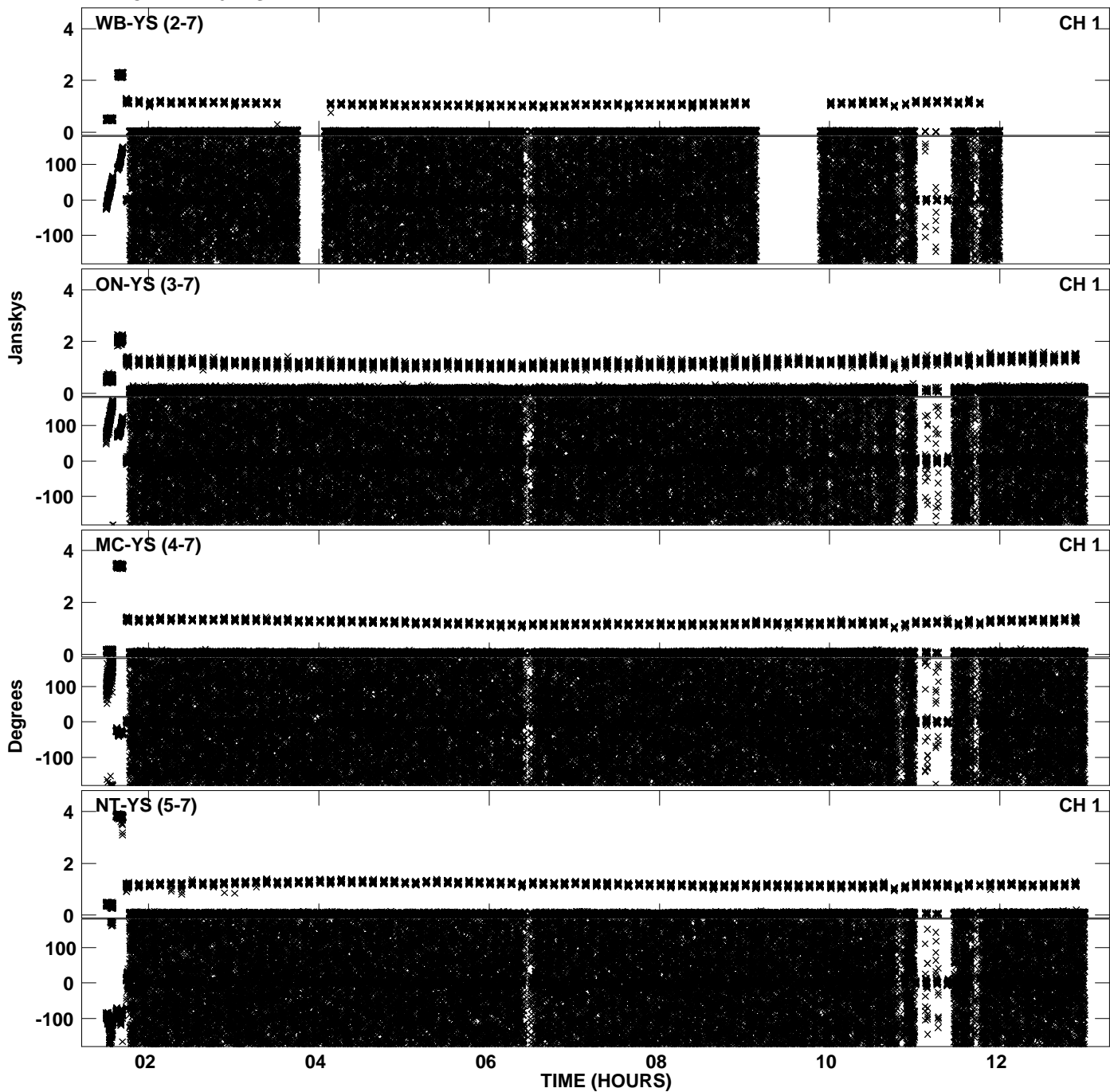
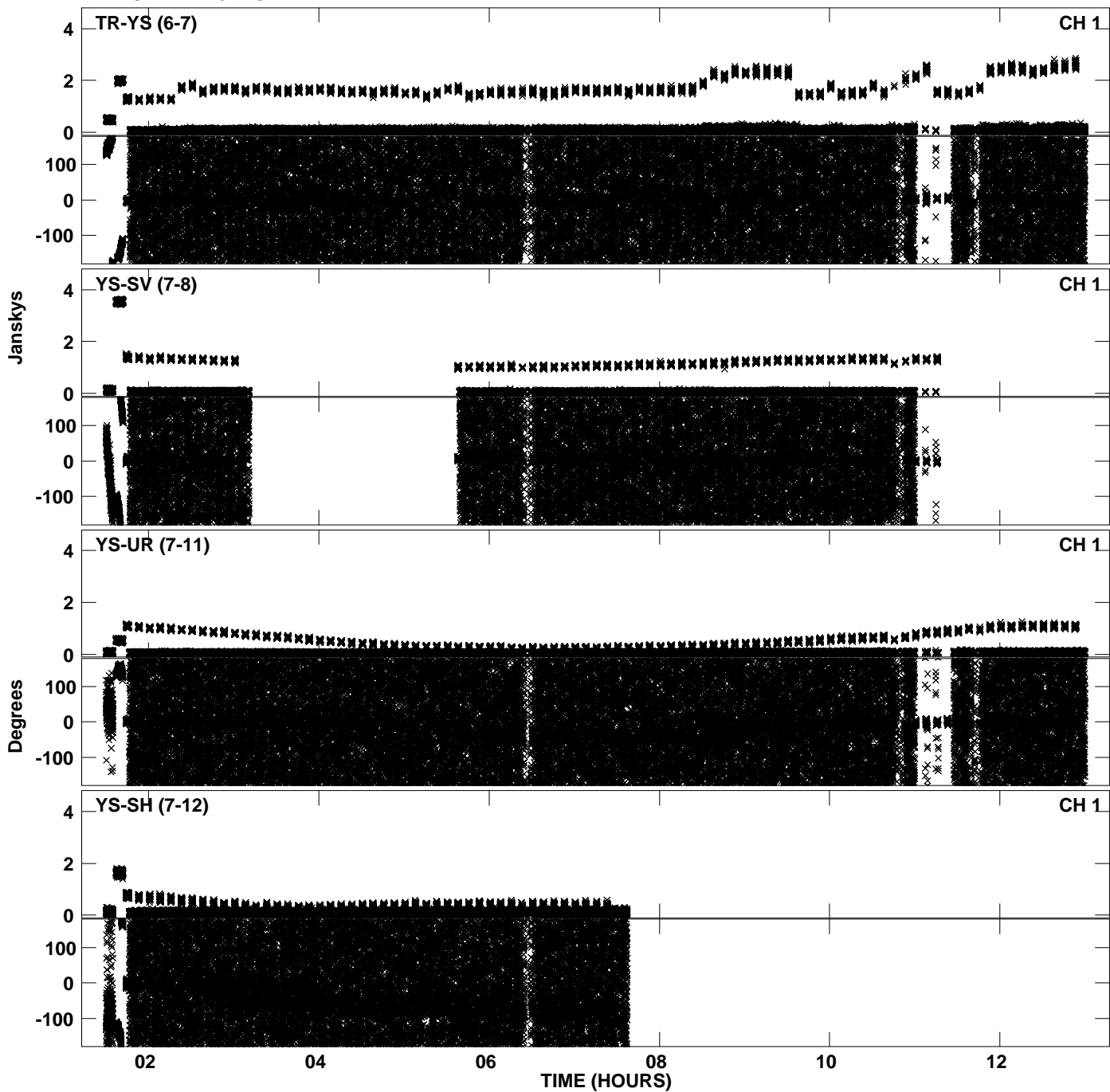


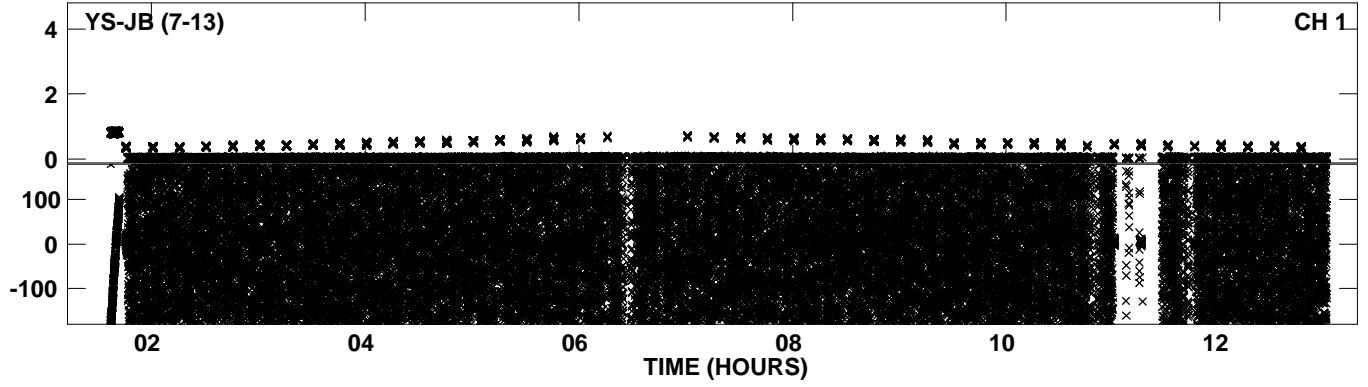
PLot file version 1 created 10-JAN-2014 21:45:58
Amplitude andPhase vs Time for EY019 3.UVDATA.1 Vect aver. CL # 3
IF 1 CHAN 1 - 64 STK LL



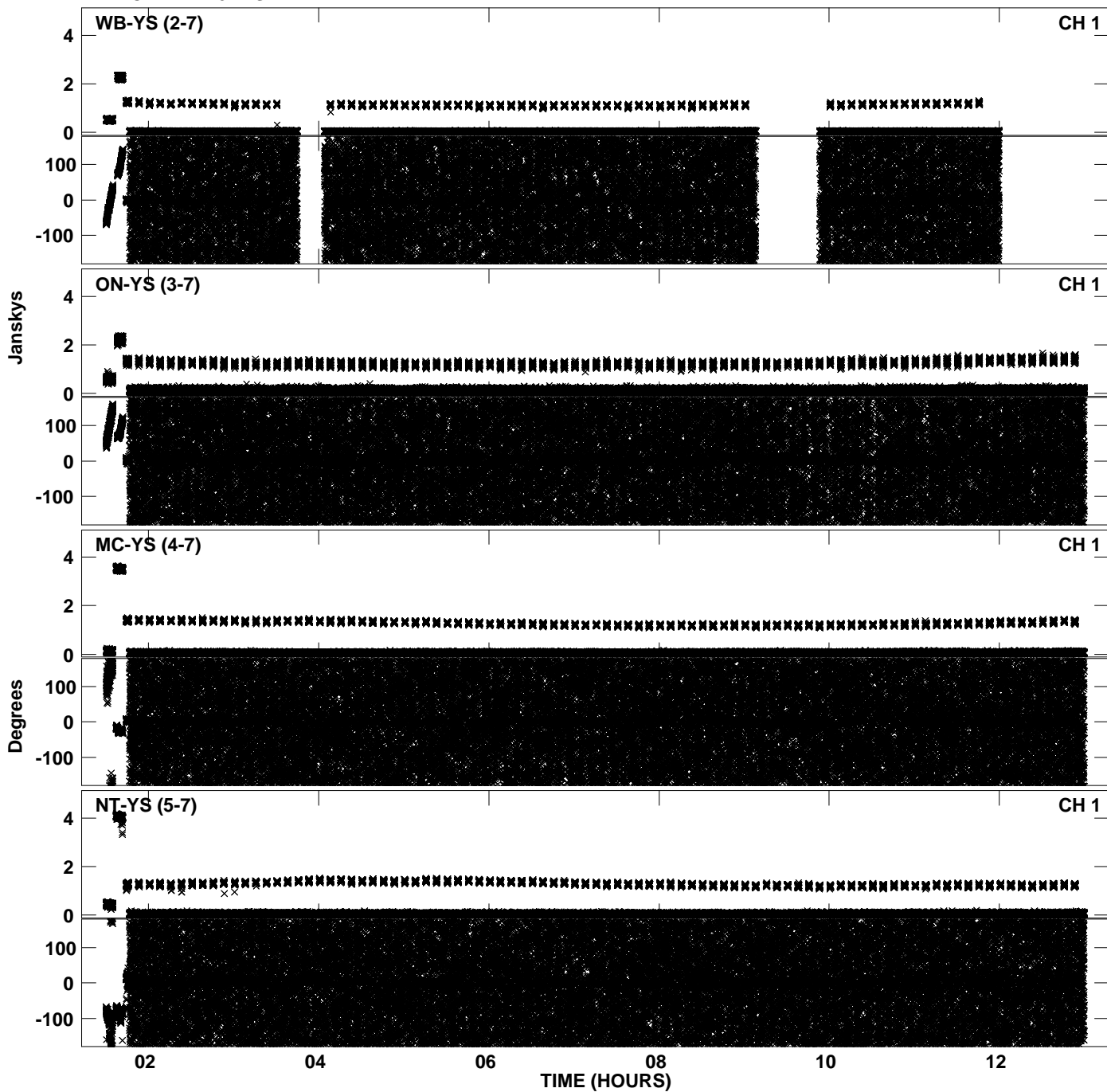
PLot file version 2 created 10-JAN-2014 21:45:59
Amplitude andPhase vs Time for EY019 3.UVDATA.1 Vect aver. CL # 3
IF 1 CHAN 1 - 64 STK LL



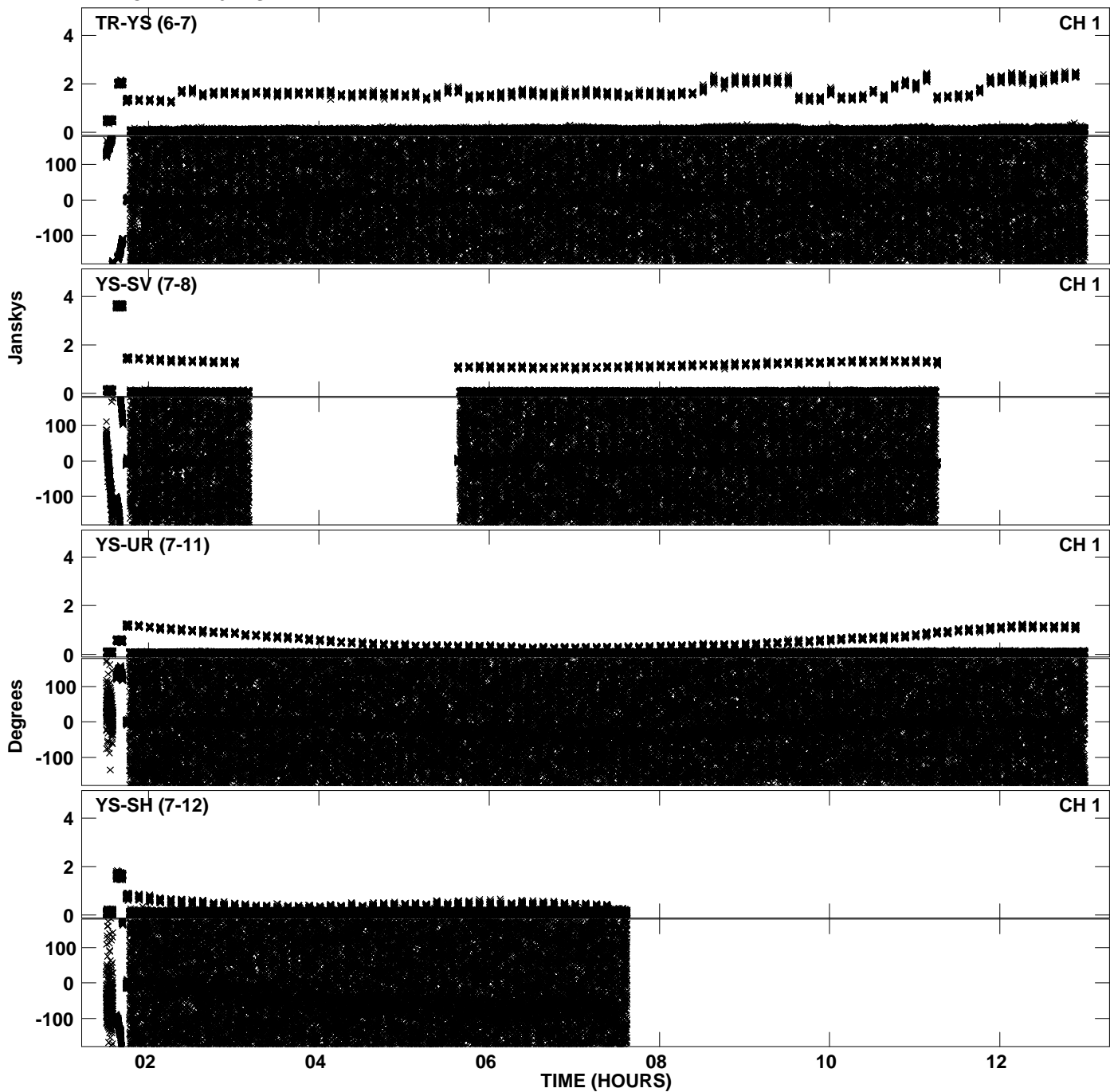
Plot file version 3 created 10-JAN-2014 21:45:59
Amplitude andPhase vs Time for EY019 3.UVDATA.1 Vect aver. CL # 3
IF 1 CHAN 1 - 64 STK LL



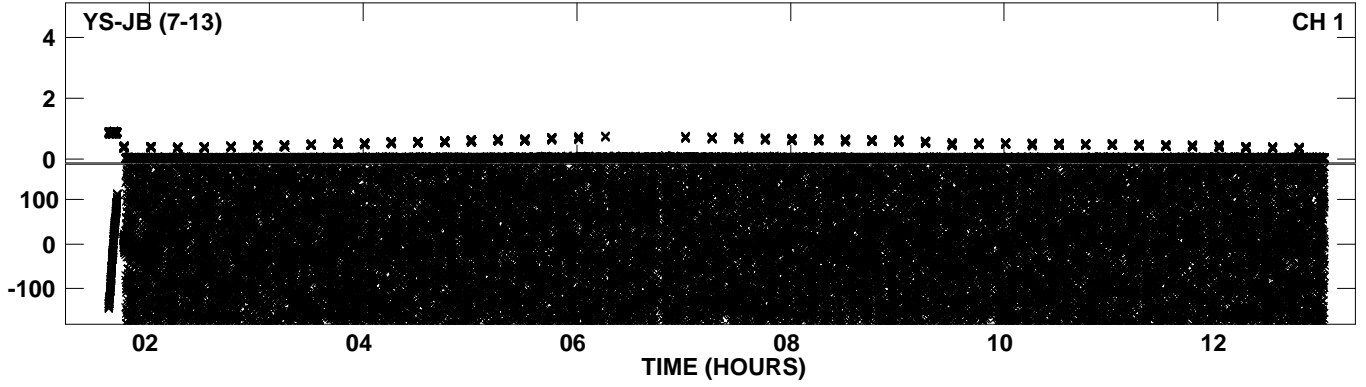
PLot file version 4 created 10-JAN-2014 21:46:35
Amplitude andPhase vs Time for EY019 3.UVDATA.1 Vect aver. CL # 3
IF 2 CHAN 1 - 64 STK LL



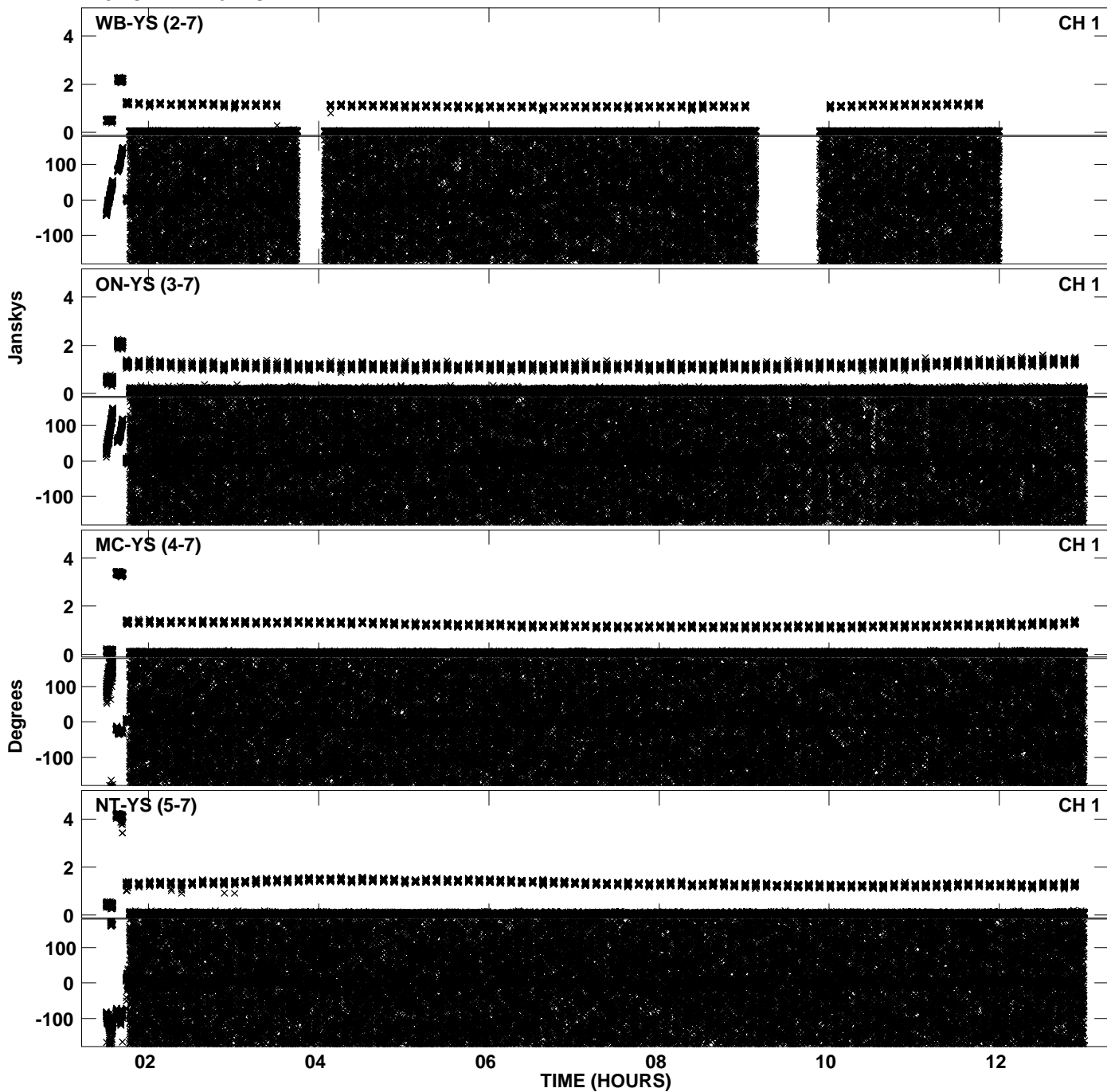
PLot file version 5 created 10-JAN-2014 21:46:36
Amplitude andPhase vs Time for EY019 3.UVDATA.1 Vect aver. CL # 3
IF 2 CHAN 1 - 64 STK LL



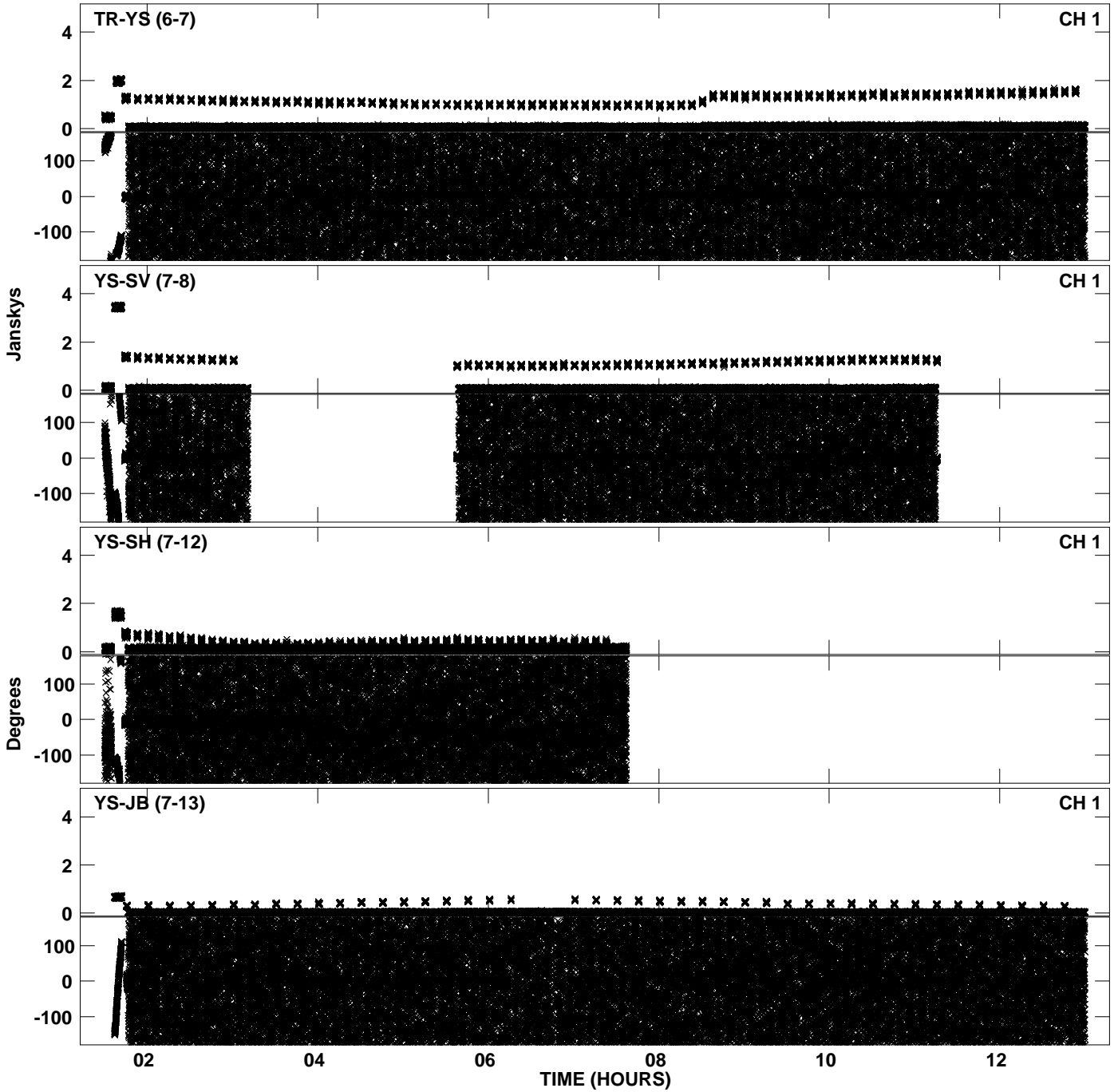
PLot file version 6 created 10-JAN-2014 21:46:36
Amplitude andPhase vs Time for EY019 3.UVDATA.1 Vect aver. CL # 3
IF 2 CHAN 1 - 64 STK LL



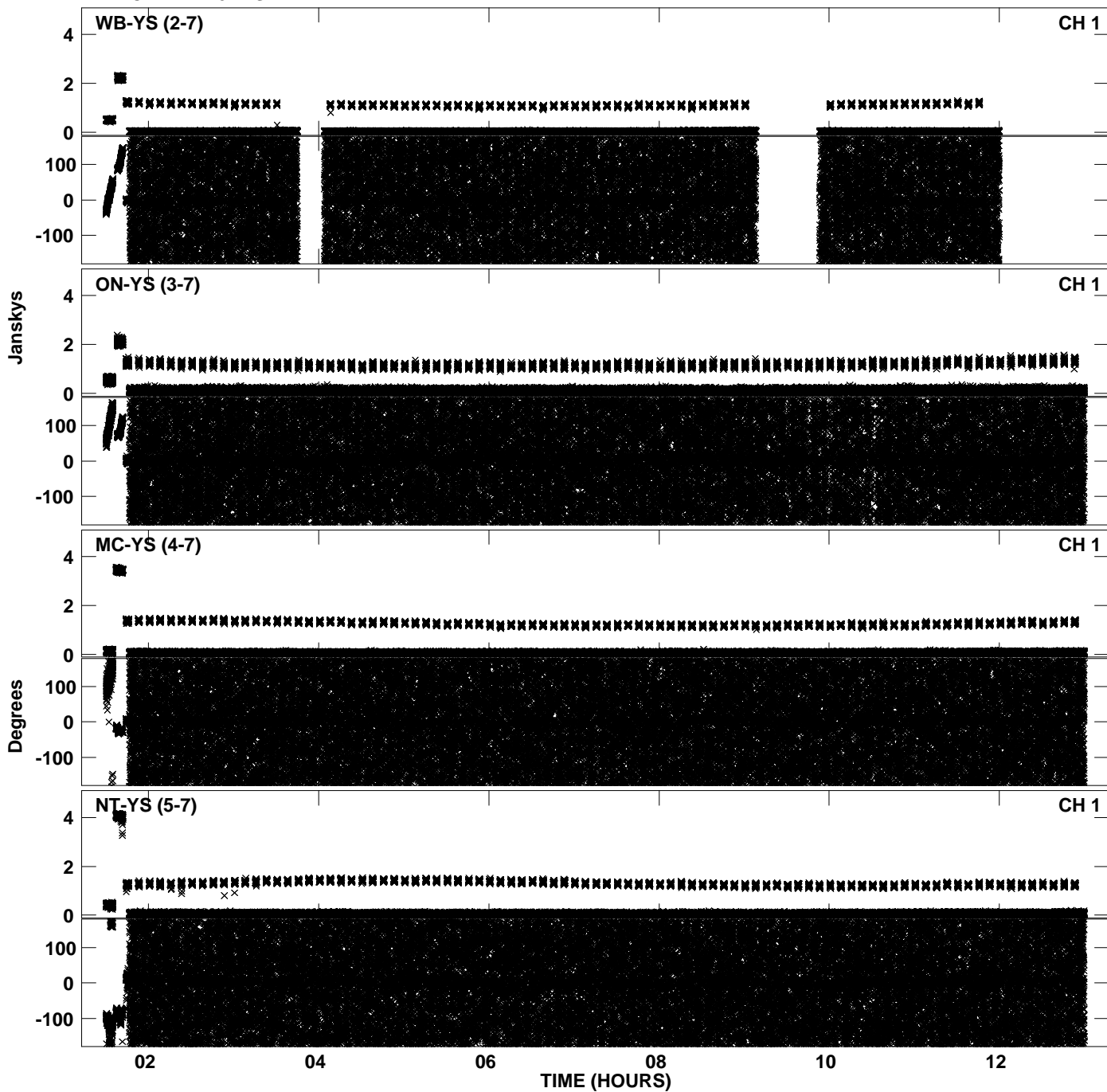
PLot file version 7 created 10-JAN-2014 21:47:11
Amplitude andPhase vs Time for EY019 3.UVDATA.1 Vect aver. CL # 3
IF 3 CHAN 1 - 64 STK LL



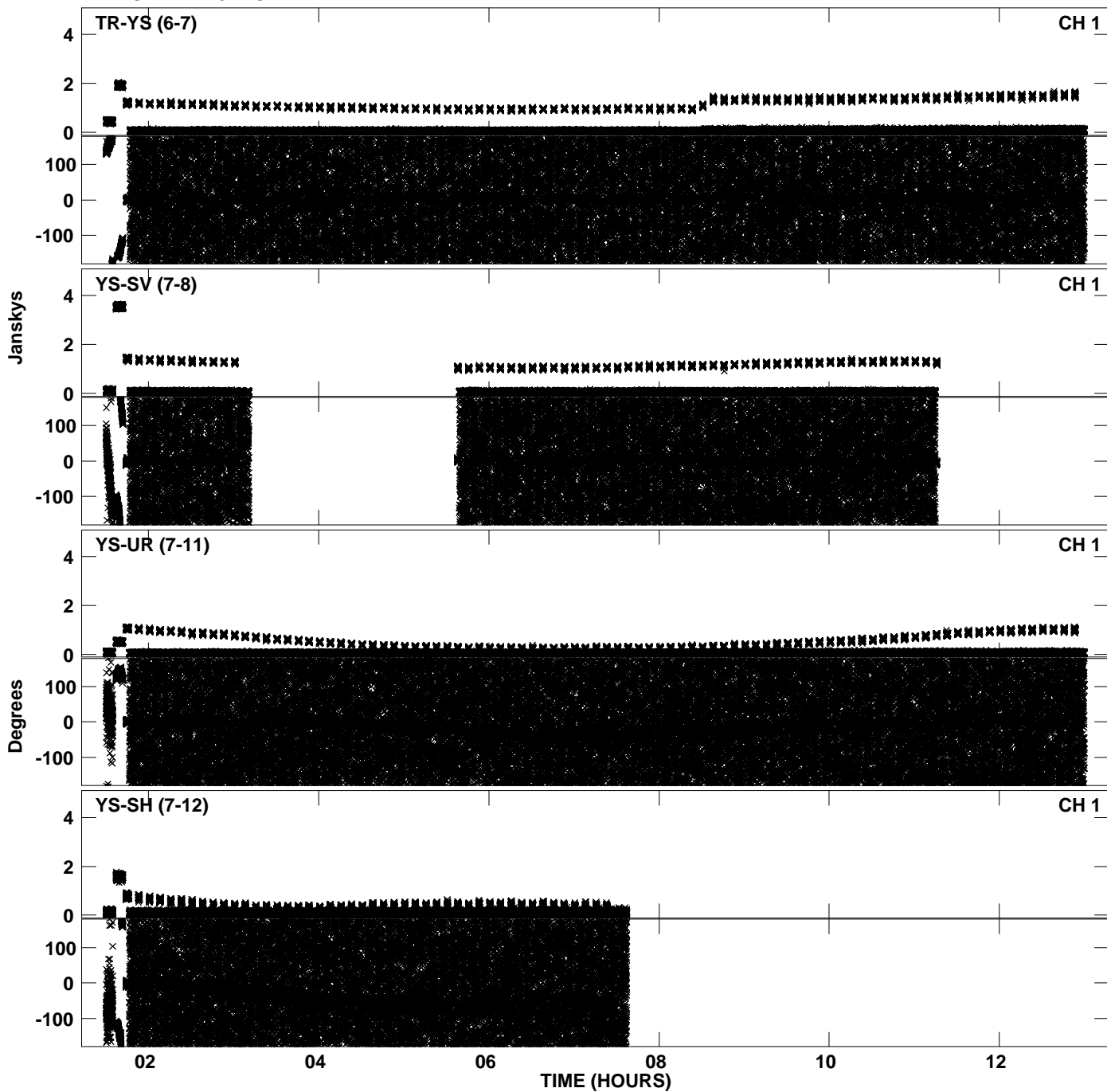
PLot file version 8 created 10-JAN-2014 21:47:11
Amplitude andPhase vs Time for EY019 3.UVDATA.1 Vect aver. CL # 3
IF 3 CHAN 1 - 64 STK LL



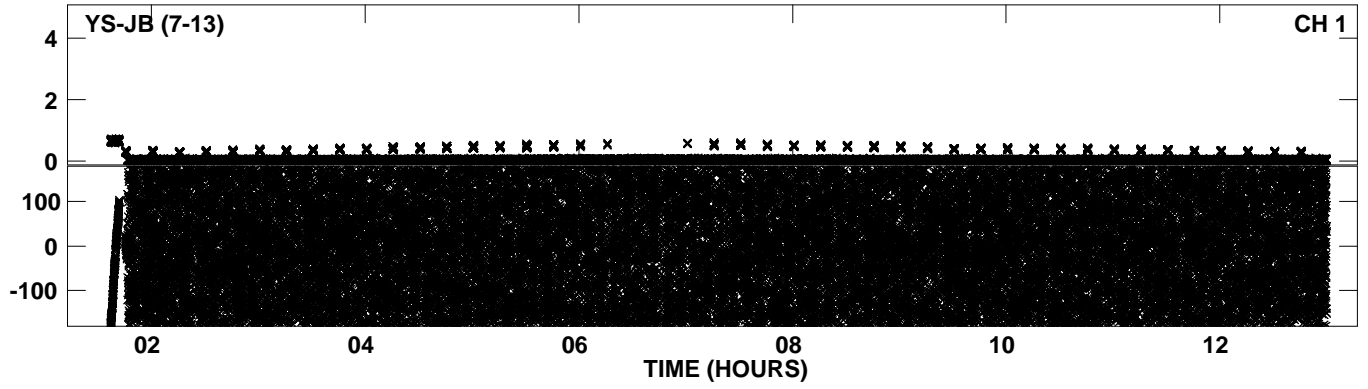
PLot file version 9 created 10-JAN-2014 21:47:48
Amplitude andPhase vs Time for EY019 3.UVDATA.1 Vect aver. CL # 3
IF 4 CHAN 1 - 64 STK LL



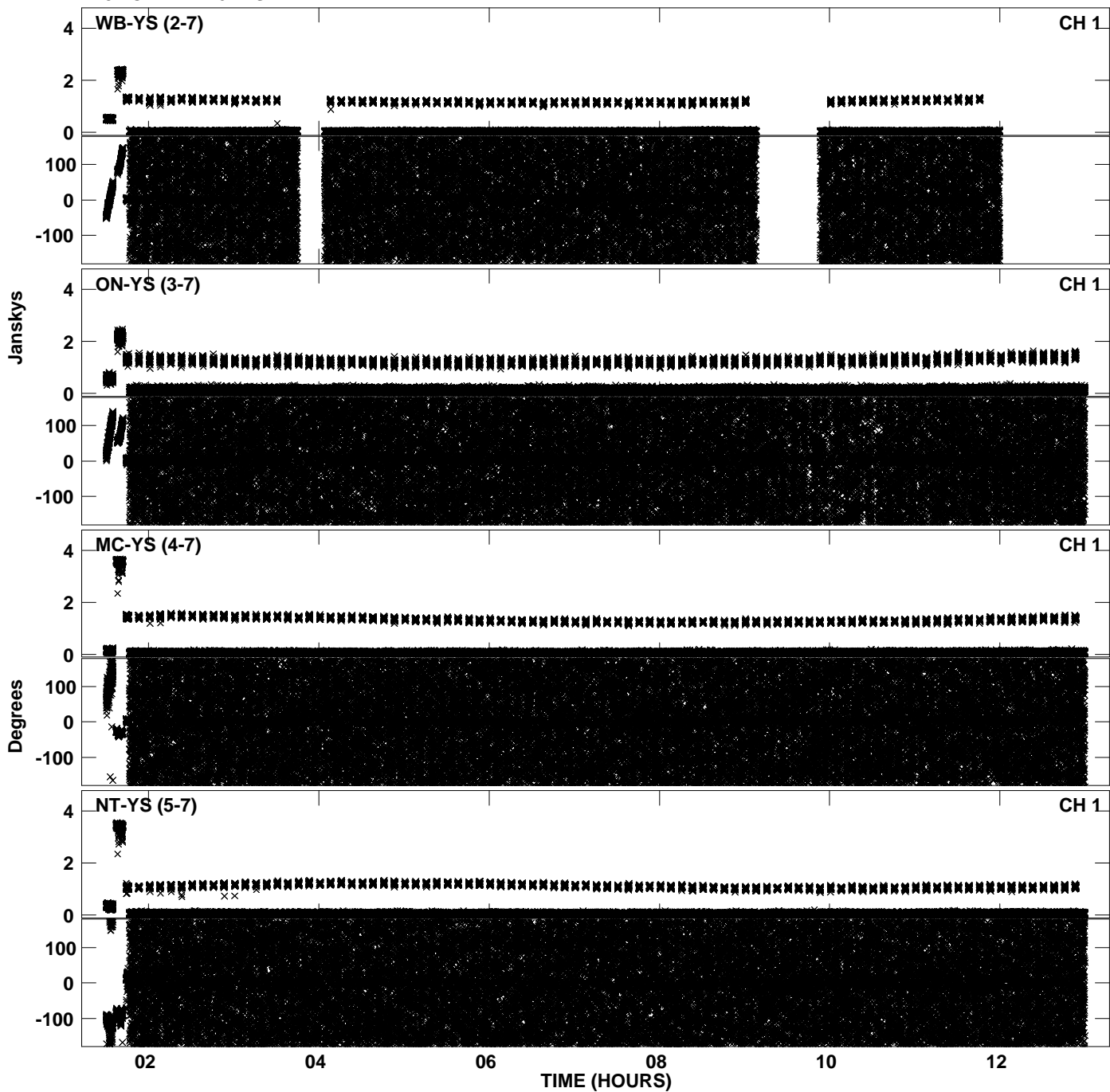
PLot file version 10 created 10-JAN-2014 21:47:48
Amplitude andPhase vs Time for EY019 3.UVDATA.1 Vect aver. CL # 3
IF 4 CHAN 1 - 64 STK LL



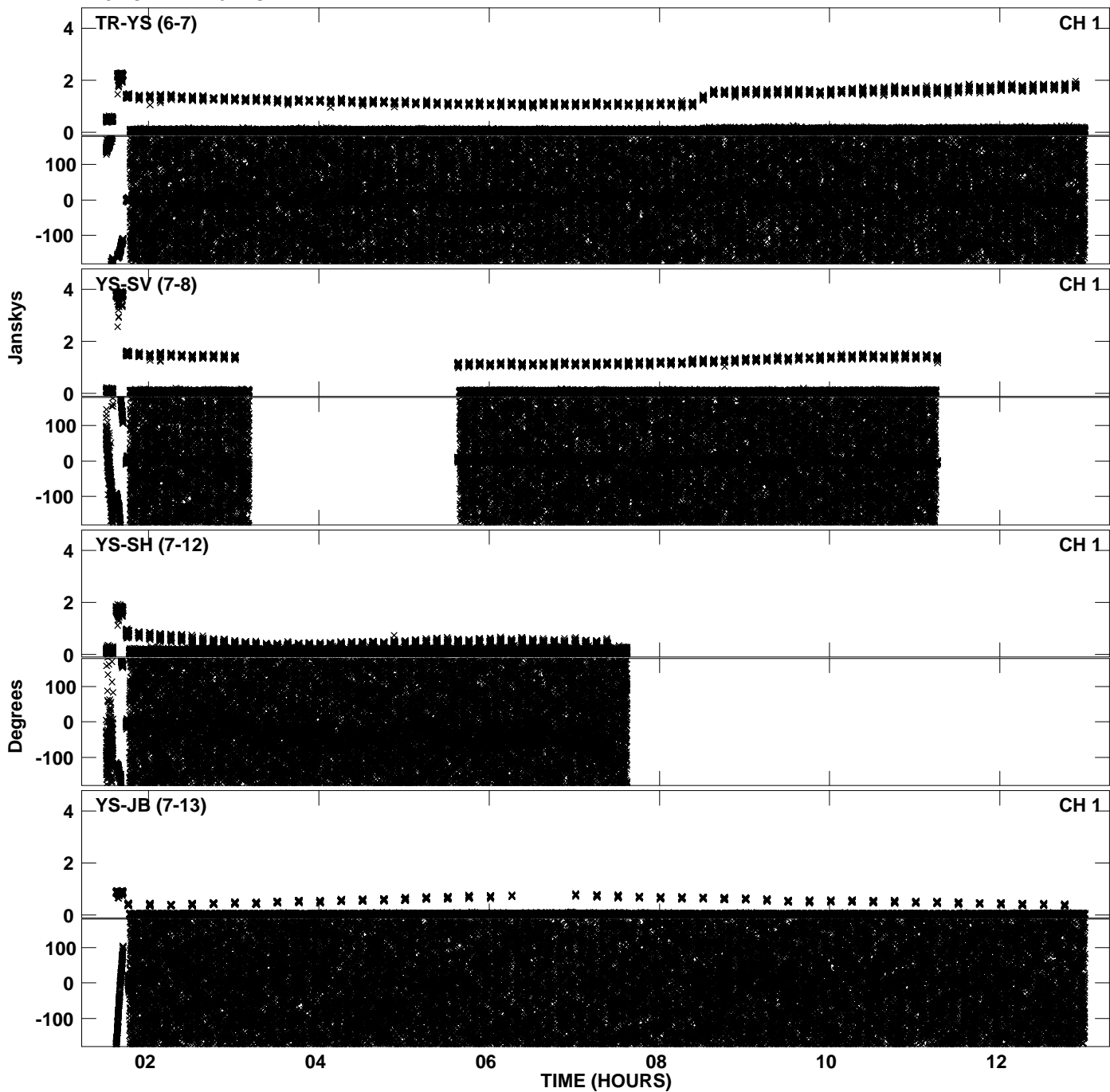
Plot file version 11 created 10-JAN-2014 21:47:48
Amplitude andPhase vs Time for EY019 3.UVDATA.1 Vect aver. CL # 3
IF 4 CHAN 1 - 64 STK LL



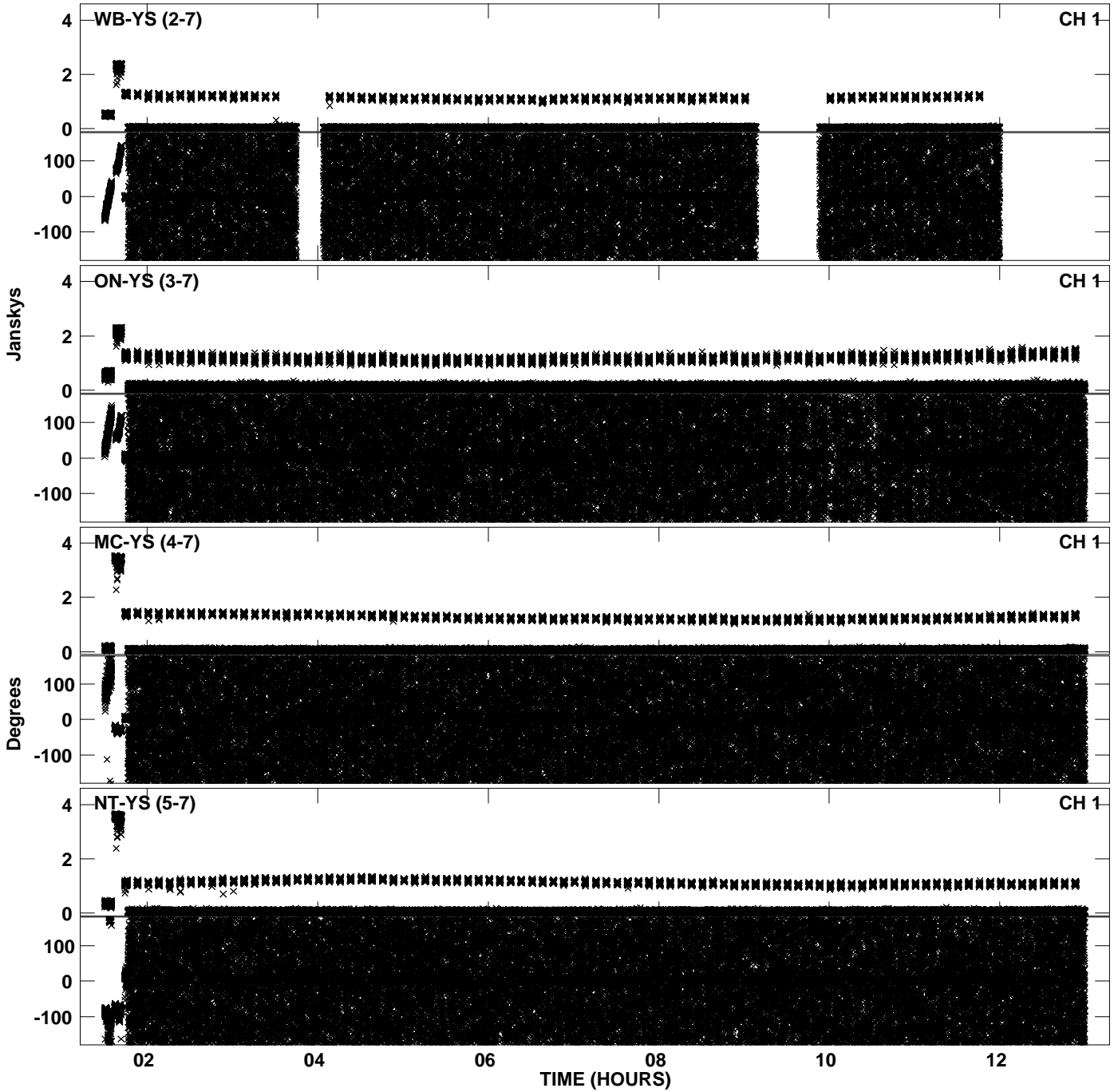
PLot file version 12 created 10-JAN-2014 21:48:23
Amplitude andPhase vs Time for EY019 3.UVDATA.1 Vect aver. CL # 3
IF 5 CHAN 1 - 64 STK LL



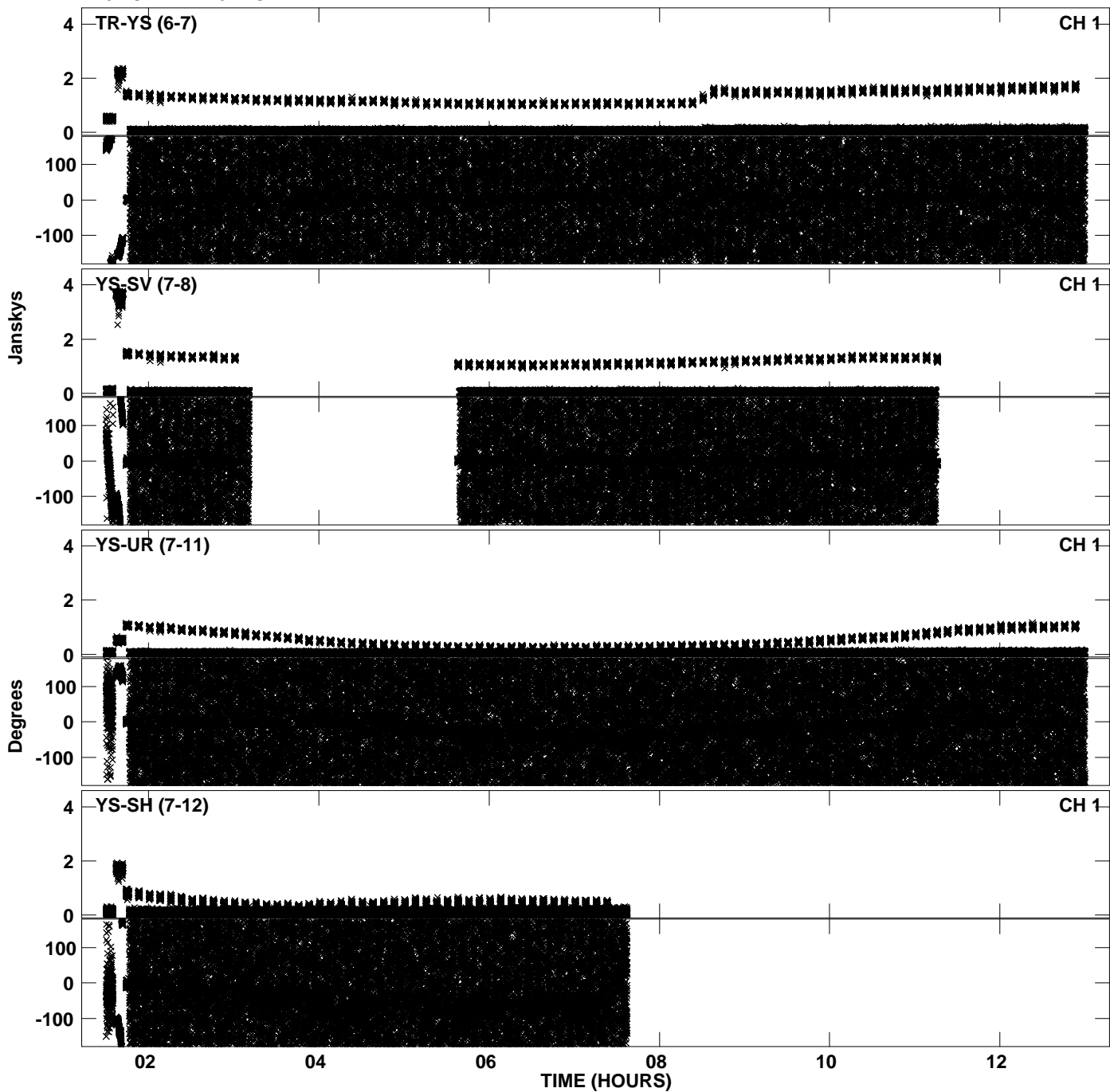
PLot file version 13 created 10-JAN-2014 21:48:23
Amplitude andPhase vs Time for EY019 3.UVDATA.1 Vect aver. CL # 3
IF 5 CHAN 1 - 64 STK LL



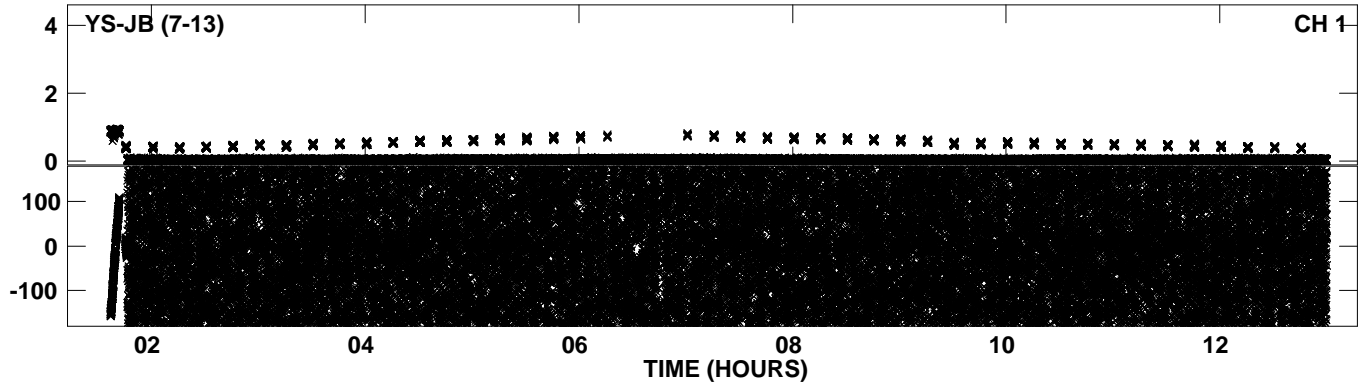
PLot file version 14 created 10-JAN-2014 21:49:00
Amplitude andPhase vs Time for EY019 3.UVDATA.1 Vect aver. CL # 3
IF 6 CHAN 1 - 64 STK LL



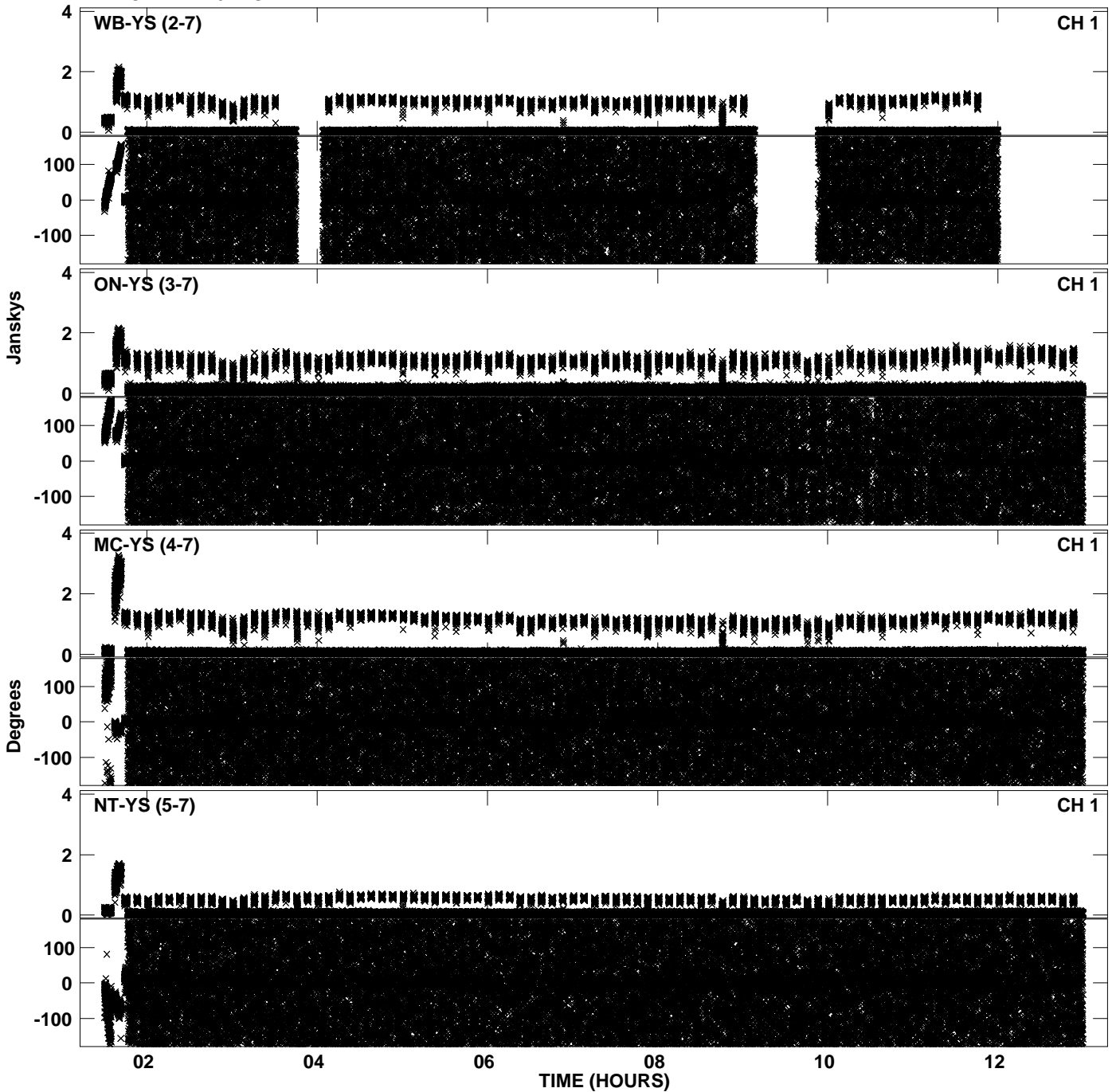
PLot file version 15 created 10-JAN-2014 21:49:00
Amplitude andPhase vs Time for EY019 3.UVDATA.1 Vect aver. CL # 3
IF 6 CHAN 1 - 64 STK LL



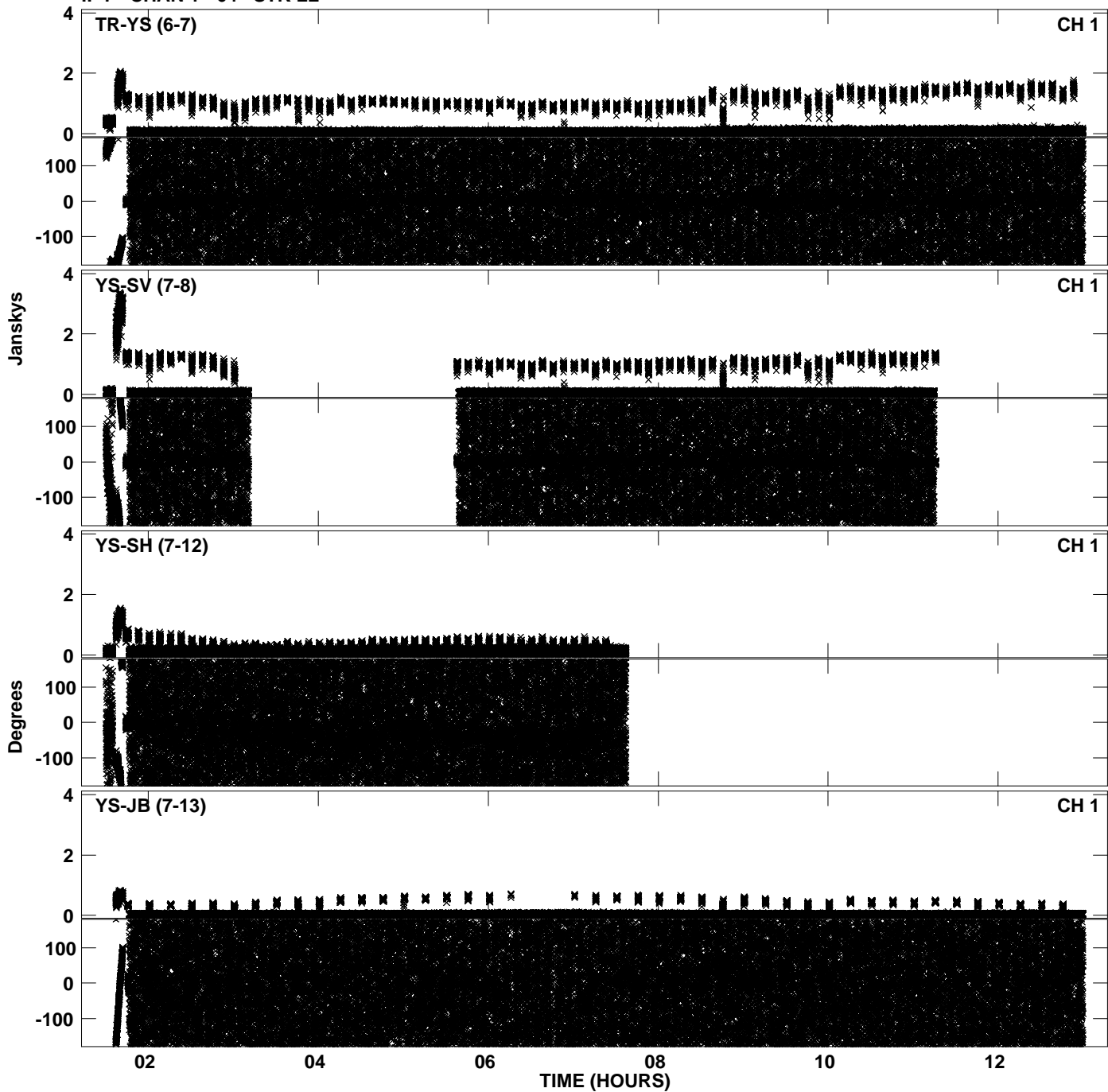
PLot file version 16 created 10-JAN-2014 21:49:00
Amplitude andPhase vs Time for EY019 3.UVDATA.1 Vect aver. CL # 3
IF 6 CHAN 1 - 64 STK LL



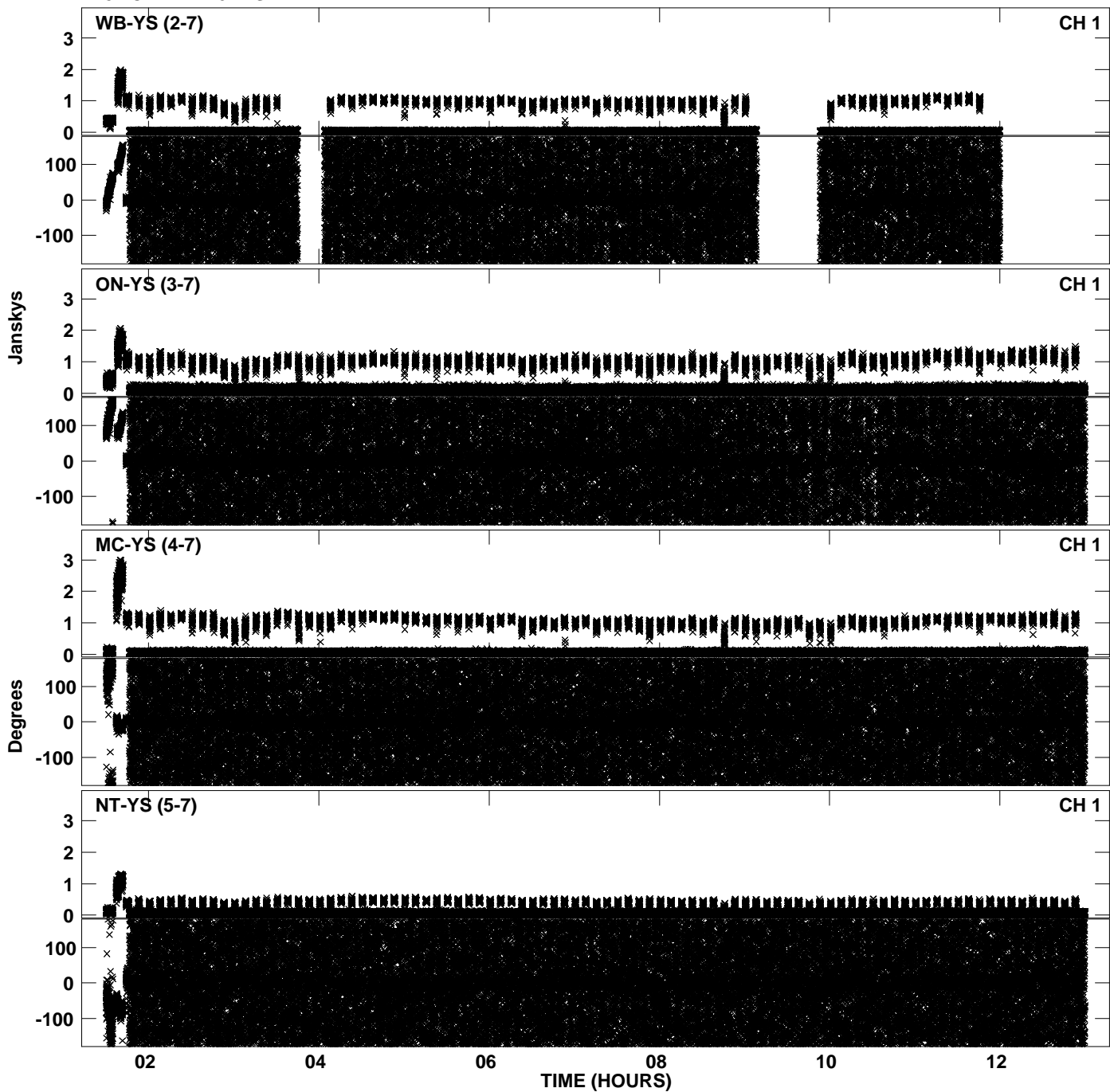
PLot file version 17 created 10-JAN-2014 21:49:35
Amplitude andPhase vs Time for EY019 3.UVDATA.1 Vect aver. CL # 3
IF 7 CHAN 1 - 64 STK LL



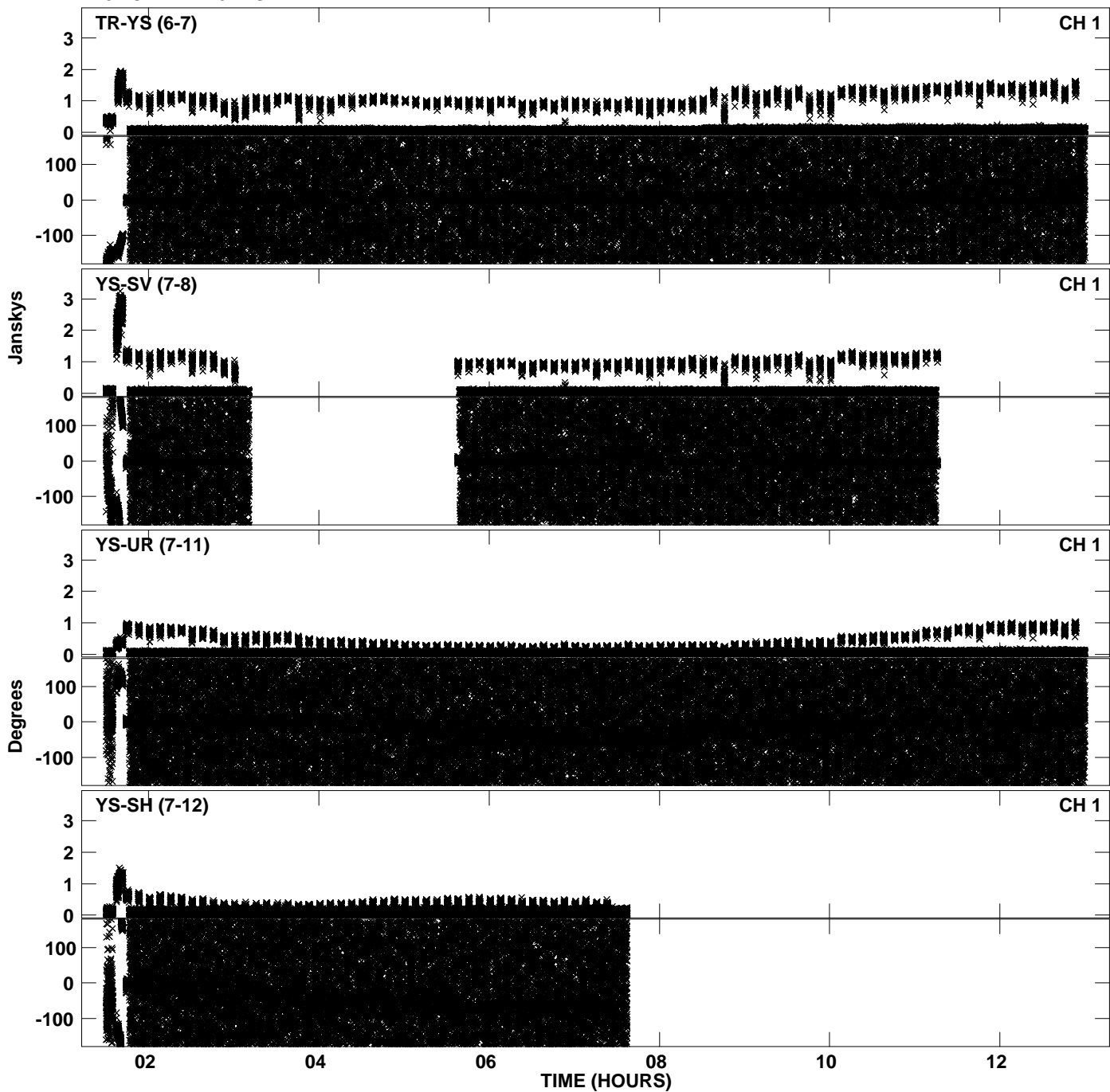
Plot file version 18 created 10-JAN-2014 21:49:35
Amplitude andPhase vs Time for EY019 3.UVDATA.1 Vect aver. CL # 3
IF 7 CHAN 1 - 64 STK LL



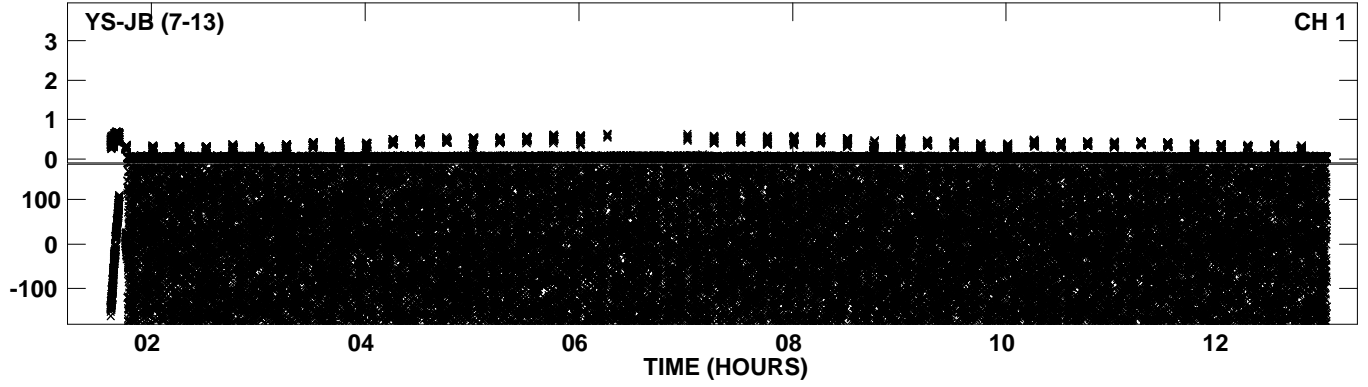
PLot file version 19 created 10-JAN-2014 21:50:12
Amplitude andPhase vs Time for EY019 3.UVDATA.1 Vect aver. CL # 3
IF 8 CHAN 1 - 64 STK LL



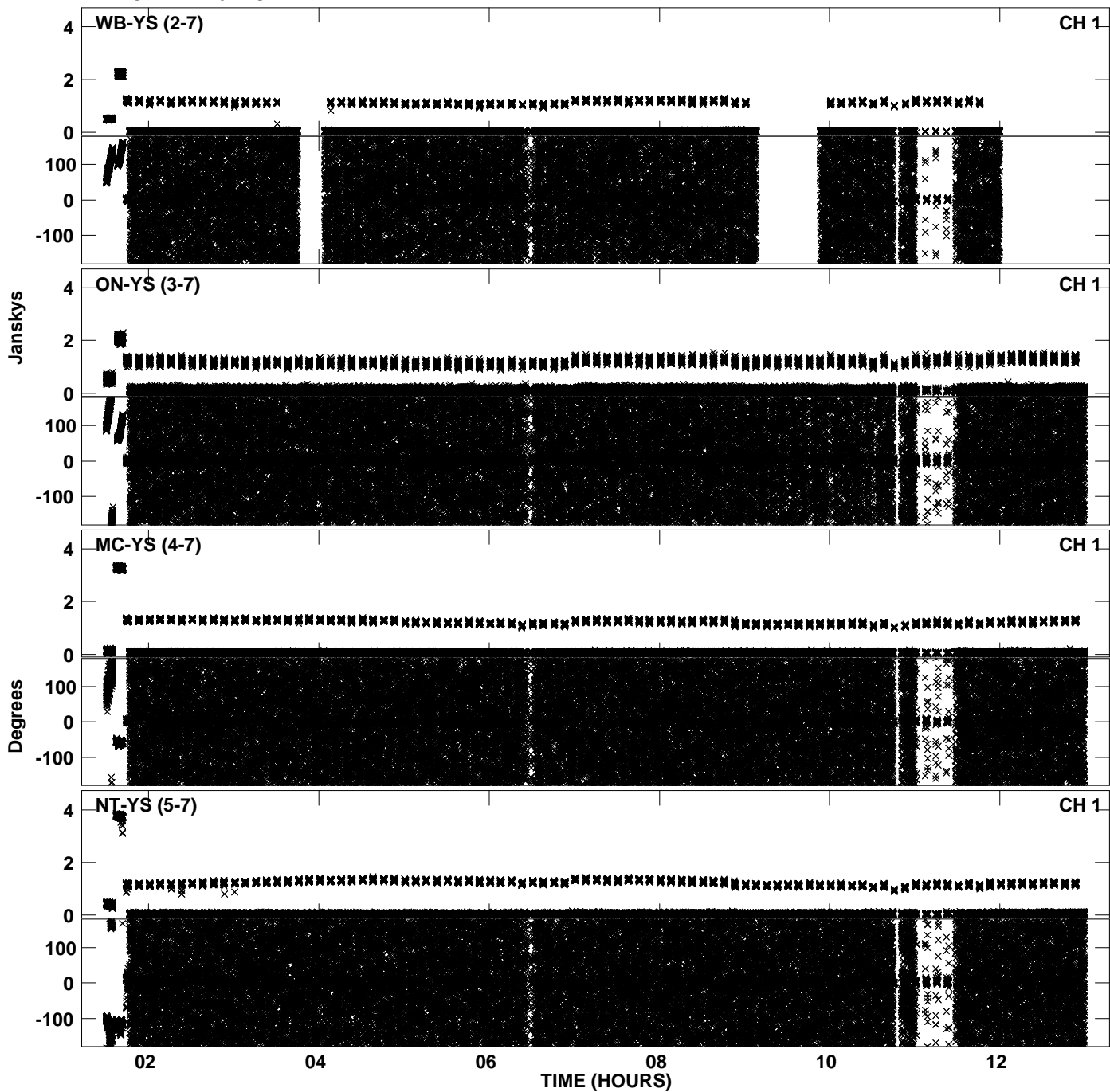
PLot file version 20 created 10-JAN-2014 21:50:12
Amplitude andPhase vs Time for EY019 3.UVDATA.1 Vect aver. CL # 3
IF 8 CHAN 1 - 64 STK LL



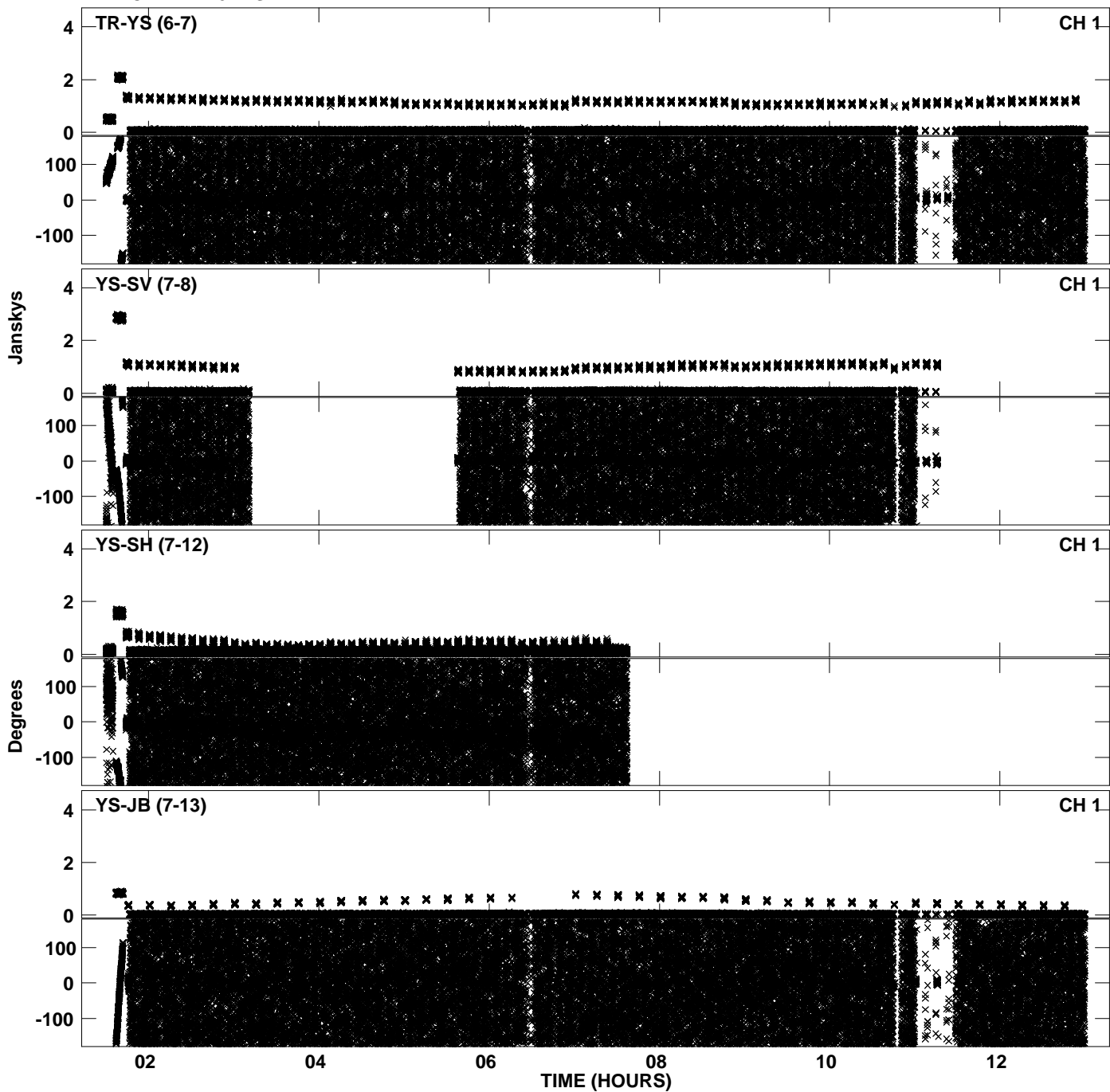
PLot file version 21 created 10-JAN-2014 21:50:12
Amplitude andPhase vs Time for EY019 3.UVDATA.1 Vect aver. CL # 3
IF 8 CHAN 1 - 64 STK LL



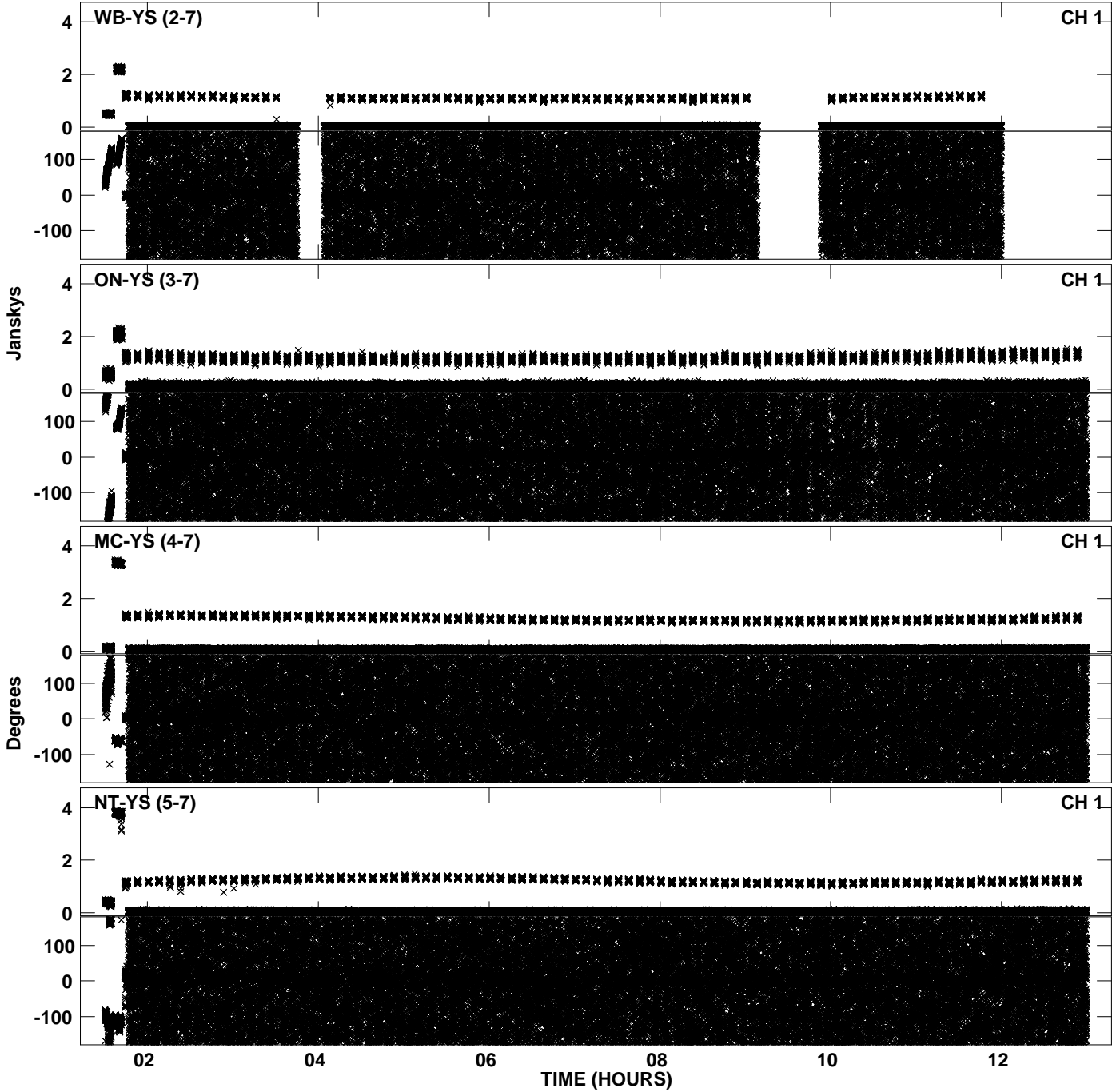
PLot file version 22 created 10-JAN-2014 21:50:45
Amplitude andPhase vs Time for EY019 3.UVDATA.1 Vect aver. CL # 3
IF 1 CHAN 1 - 64 STK RR



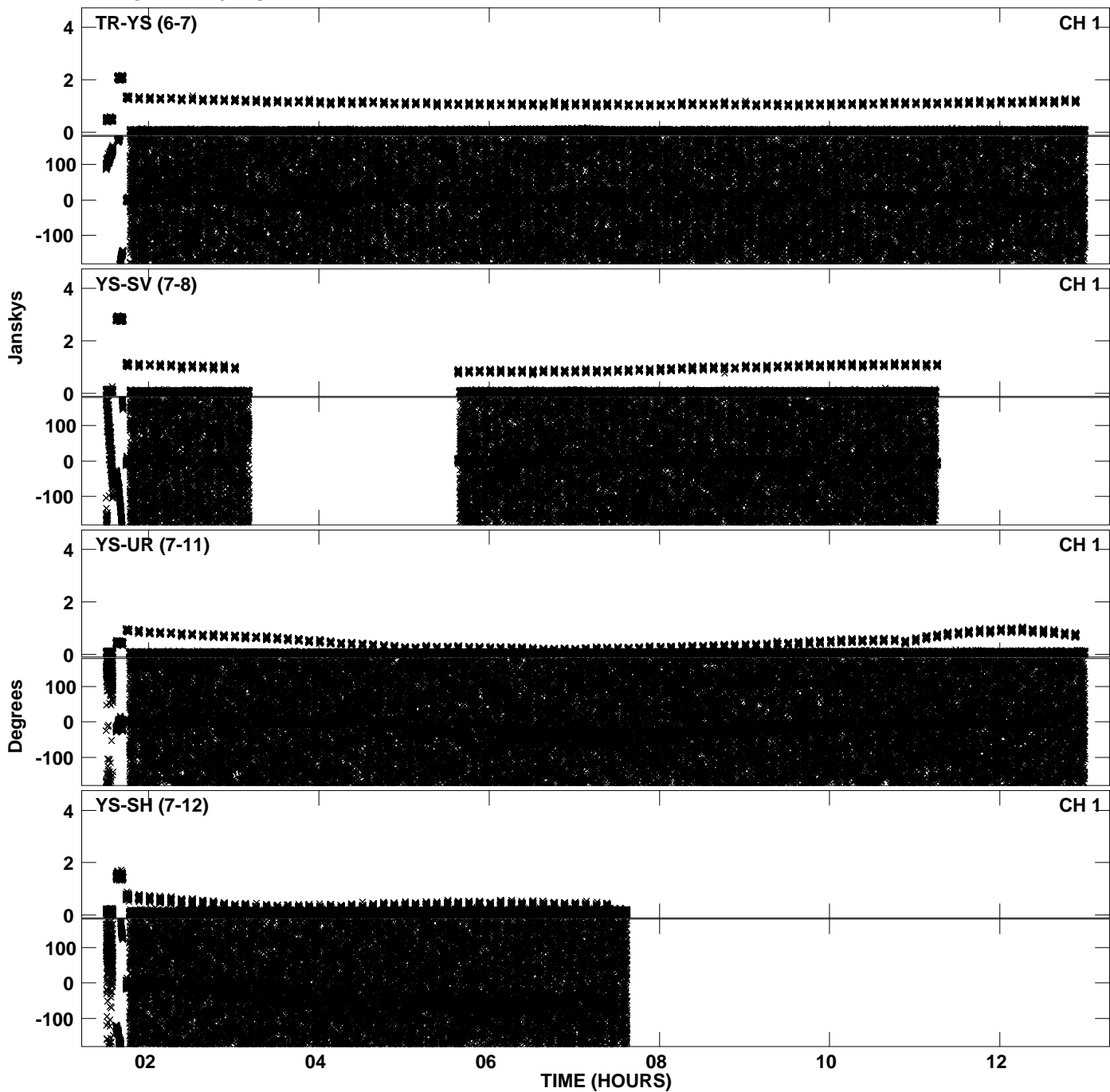
PLot file version 23 created 10-JAN-2014 21:50:45
Amplitude andPhase vs Time for EY019 3.UVDATA.1 Vect aver. CL # 3
IF 1 CHAN 1 - 64 STK RR



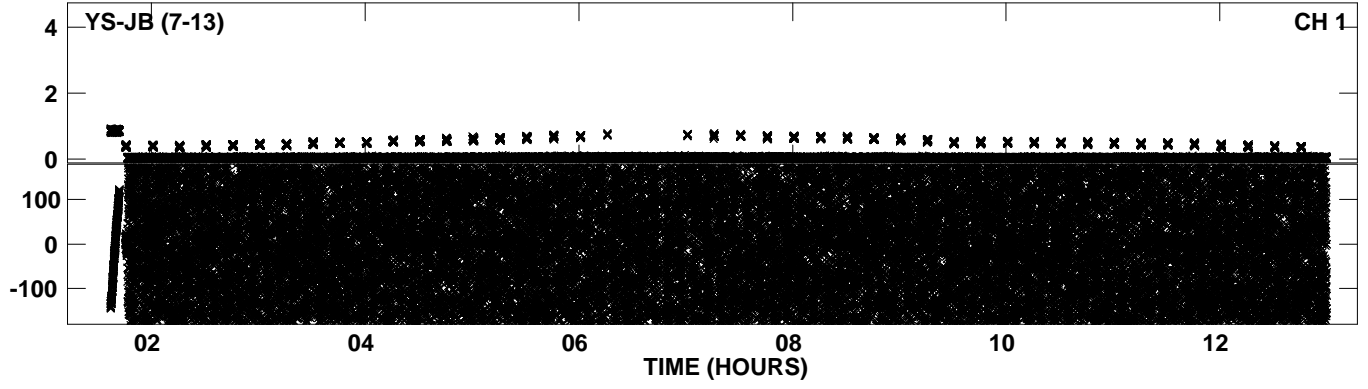
PLot file version 24 created 10-JAN-2014 21:51:20
Amplitude andPhase vs Time for EY019 3.UVDATA.1 Vect aver. CL # 3
IF 2 CHAN 1 - 64 STK RR



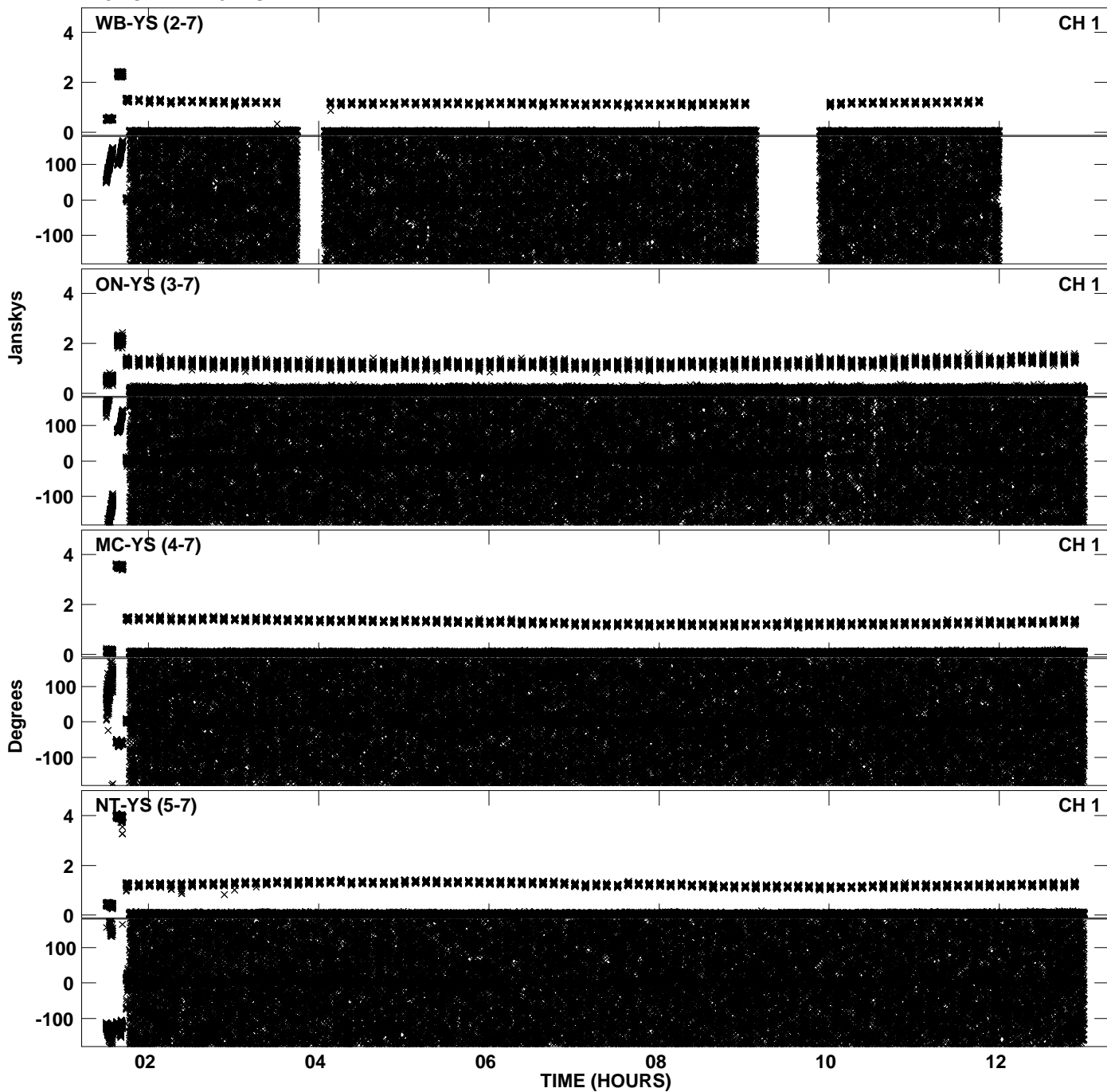
PLot file version 25 created 10-JAN-2014 21:51:20
Amplitude andPhase vs Time for EY019 3.UVDATA.1 Vect aver. CL # 3
IF 2 CHAN 1 - 64 STK RR



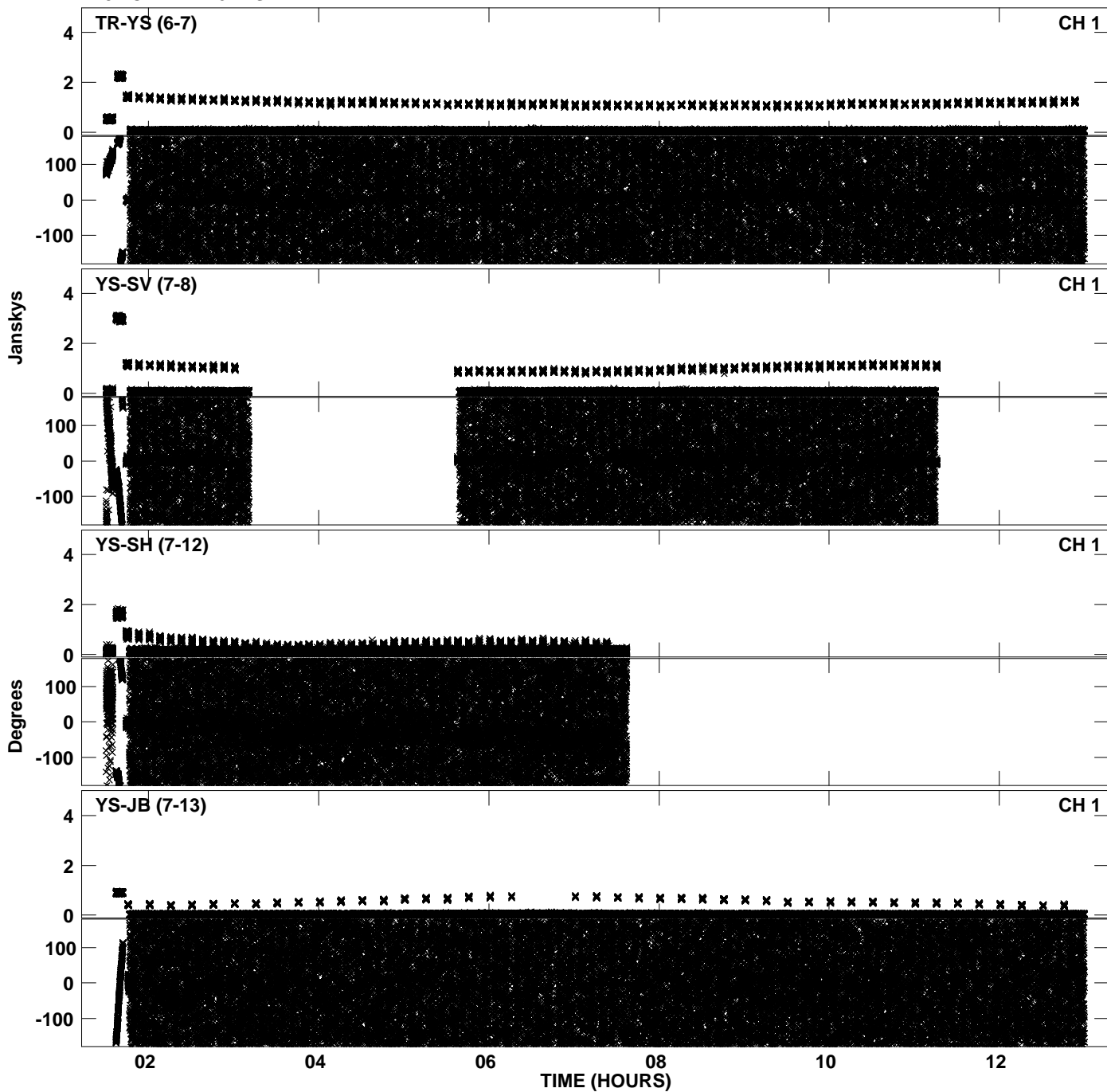
PLot file version 26 created 10-JAN-2014 21:51:20
Amplitude andPhase vs Time for EY019 3.UVDATA.1 Vect aver. CL # 3
IF 2 CHAN 1 - 64 STK RR



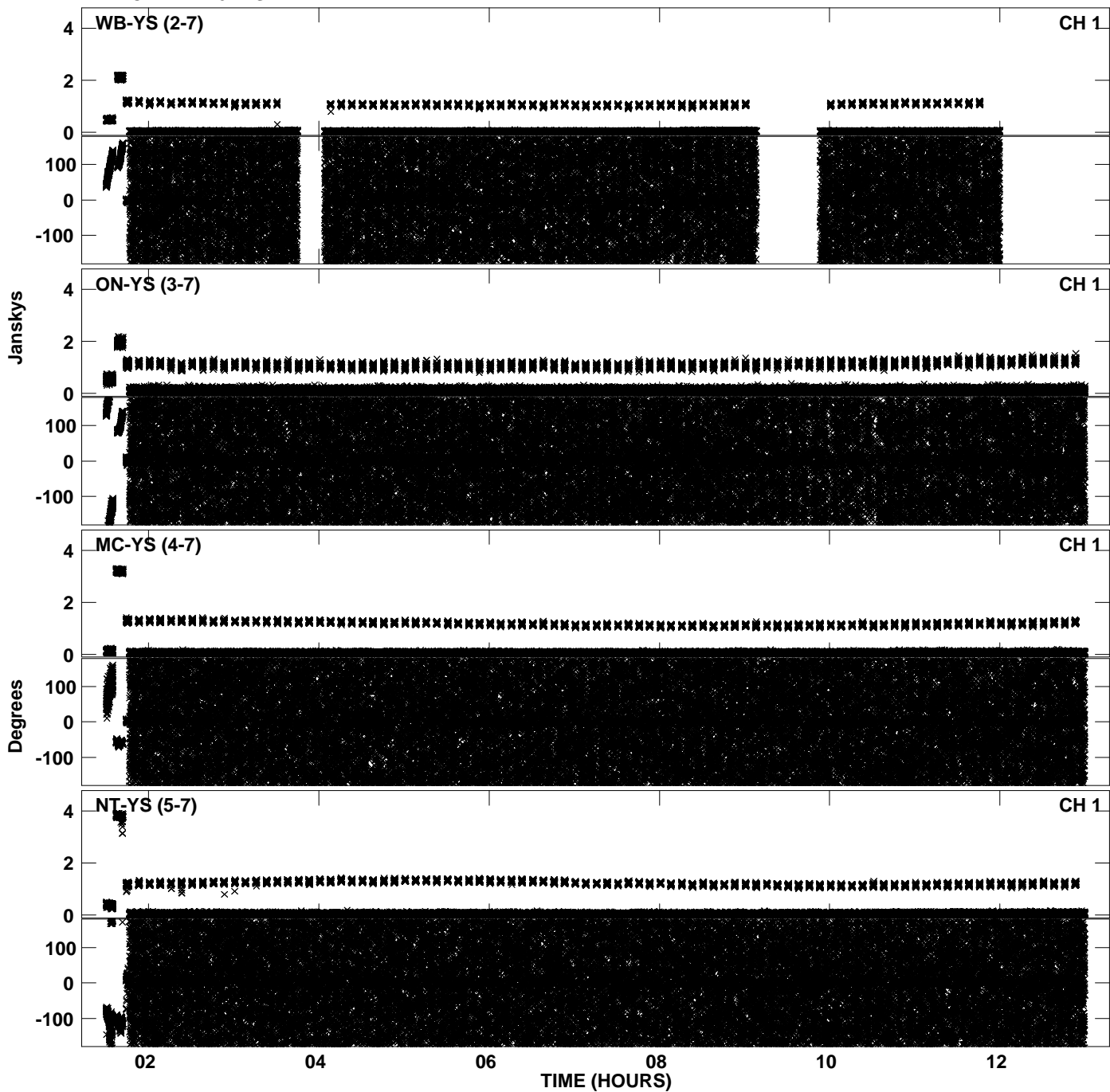
PLot file version 27 created 10-JAN-2014 21:51:54
Amplitude andPhase vs Time for EY019 3.UVDATA.1 Vect aver. CL # 3
IF 3 CHAN 1 - 64 STK RR



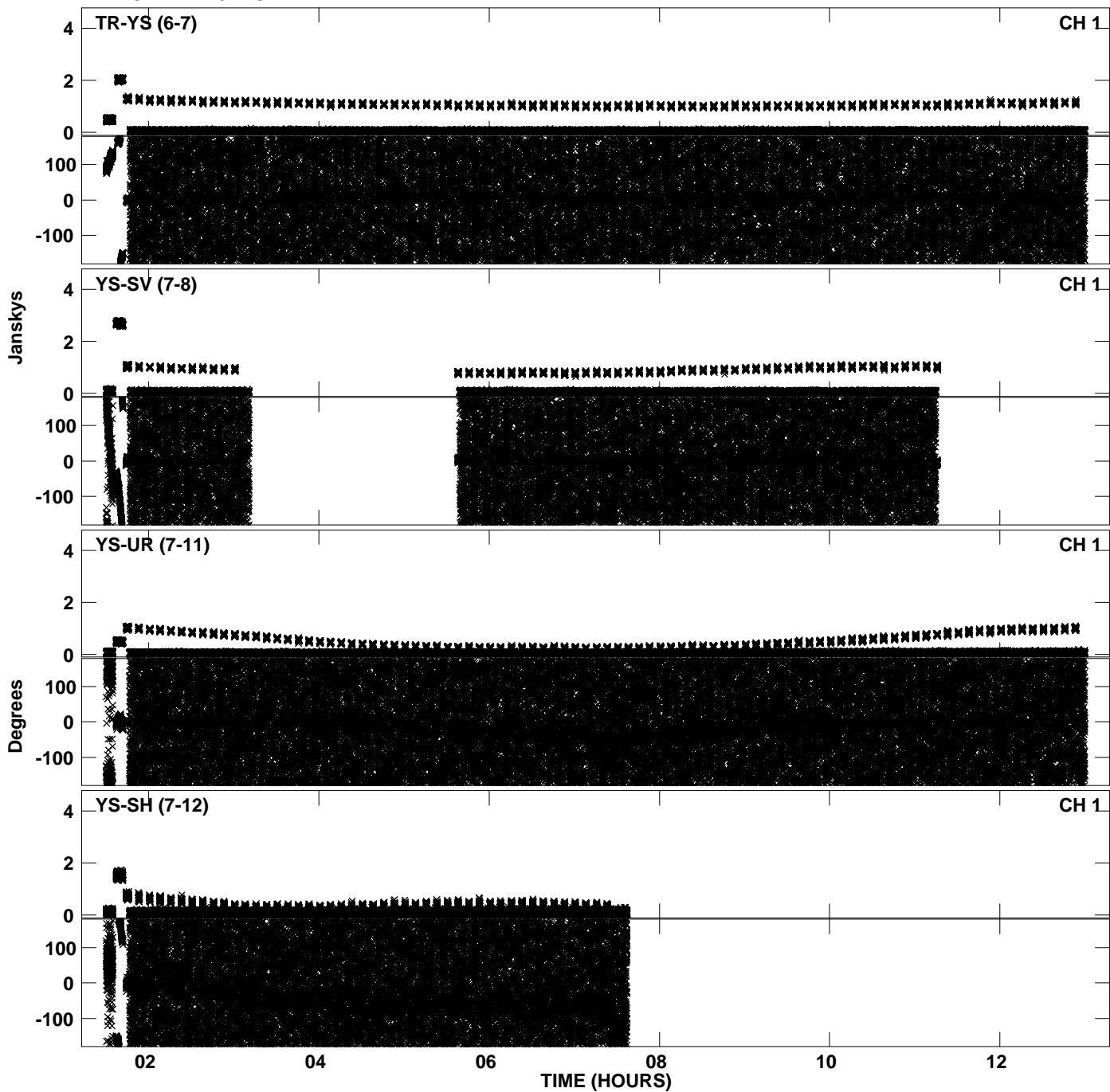
PLot file version 28 created 10-JAN-2014 21:51:54
Amplitude andPhase vs Time for EY019 3.UVDATA.1 Vect aver. CL # 3
IF 3 CHAN 1 - 64 STK RR



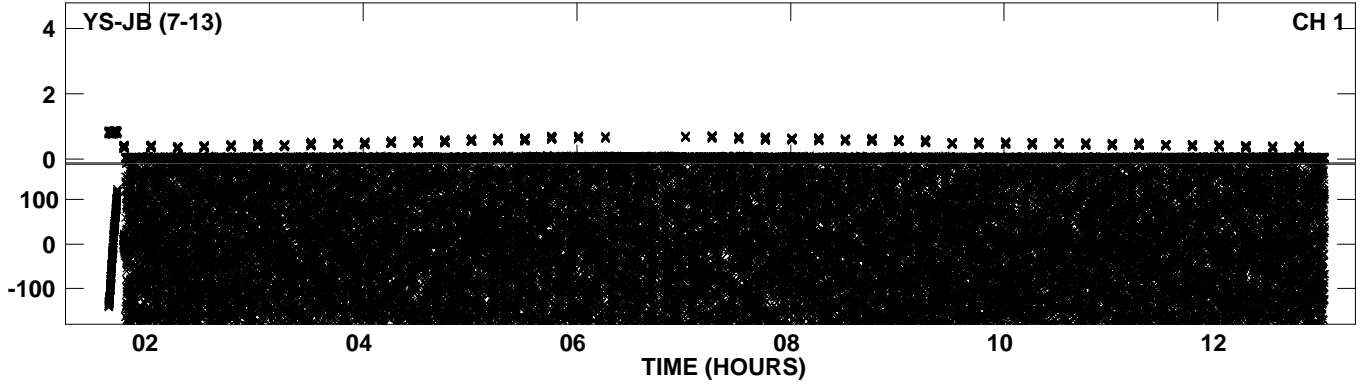
PLot file version 29 created 10-JAN-2014 21:52:28
Amplitude andPhase vs Time for EY019 3.UVDATA.1 Vect aver. CL # 3
IF 4 CHAN 1 - 64 STK RR



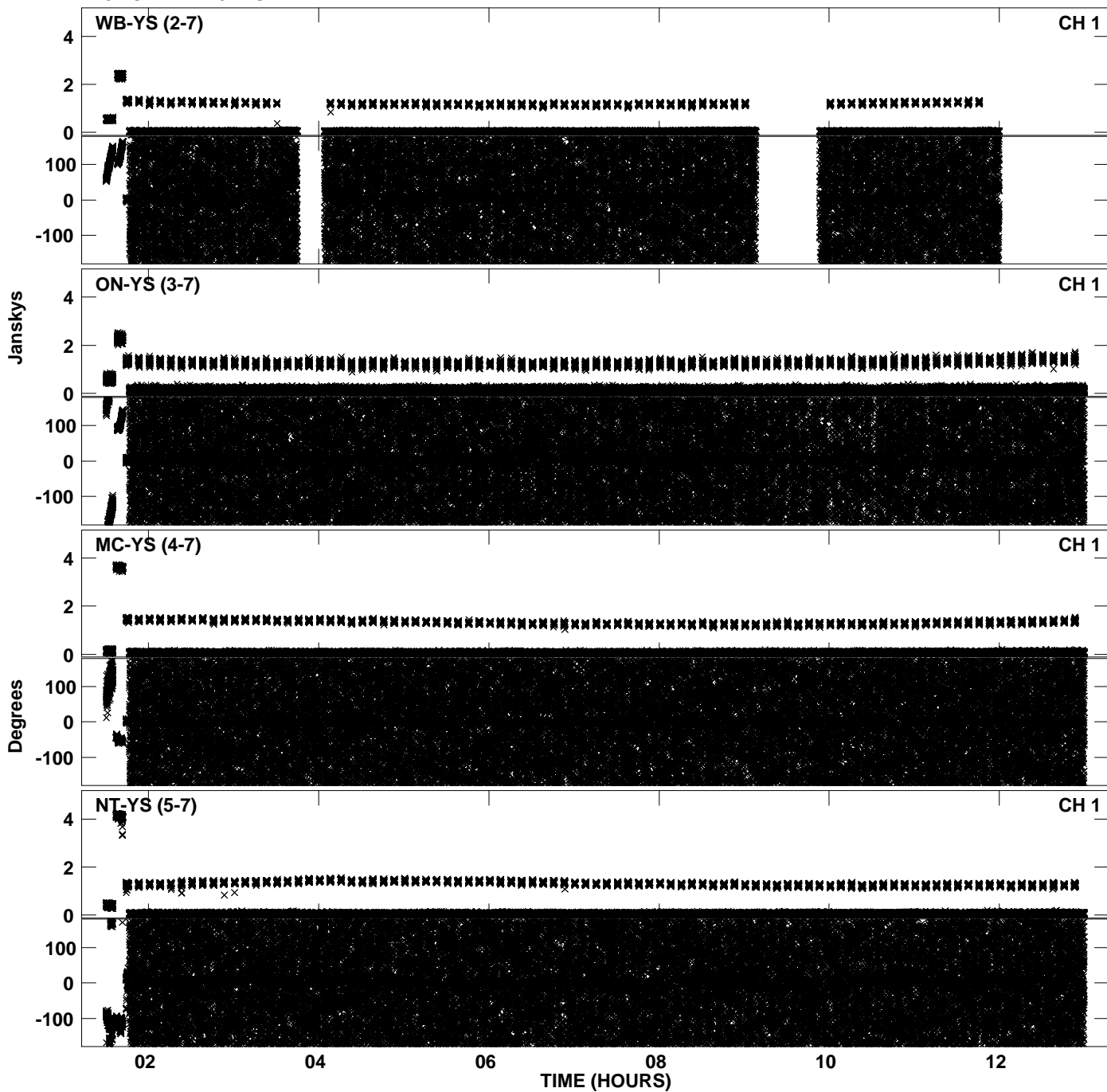
PLot file version 30 created 10-JAN-2014 21:52:28
Amplitude andPhase vs Time for EY019 3.UVDATA.1 Vect aver. CL # 3
IF 4 CHAN 1 - 64 STK RR



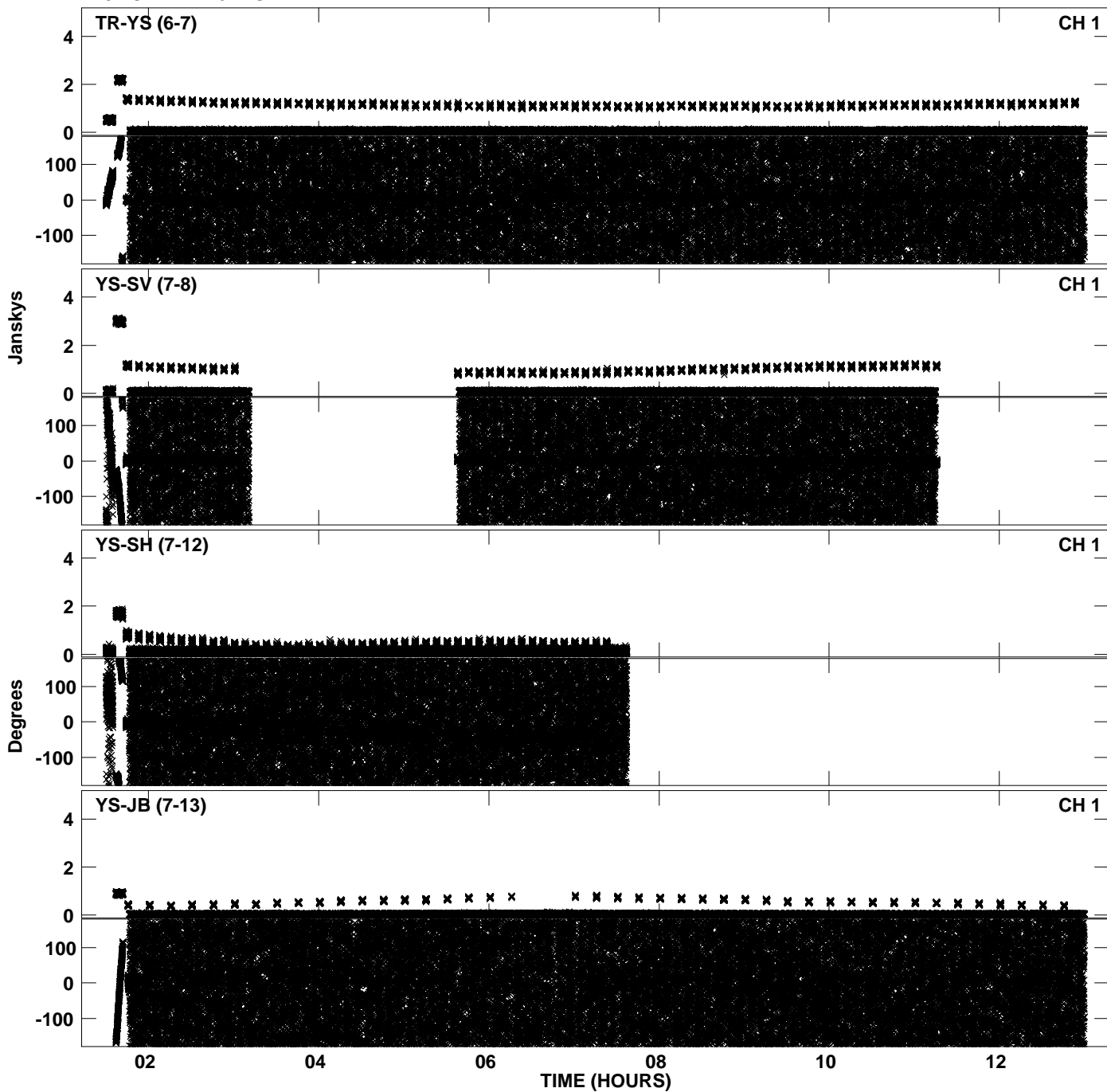
PLot file version 31 created 10-JAN-2014 21:52:28
Amplitude andPhase vs Time for EY019 3.UVDATA.1 Vect aver. CL # 3
IF 4 CHAN 1 - 64 STK RR



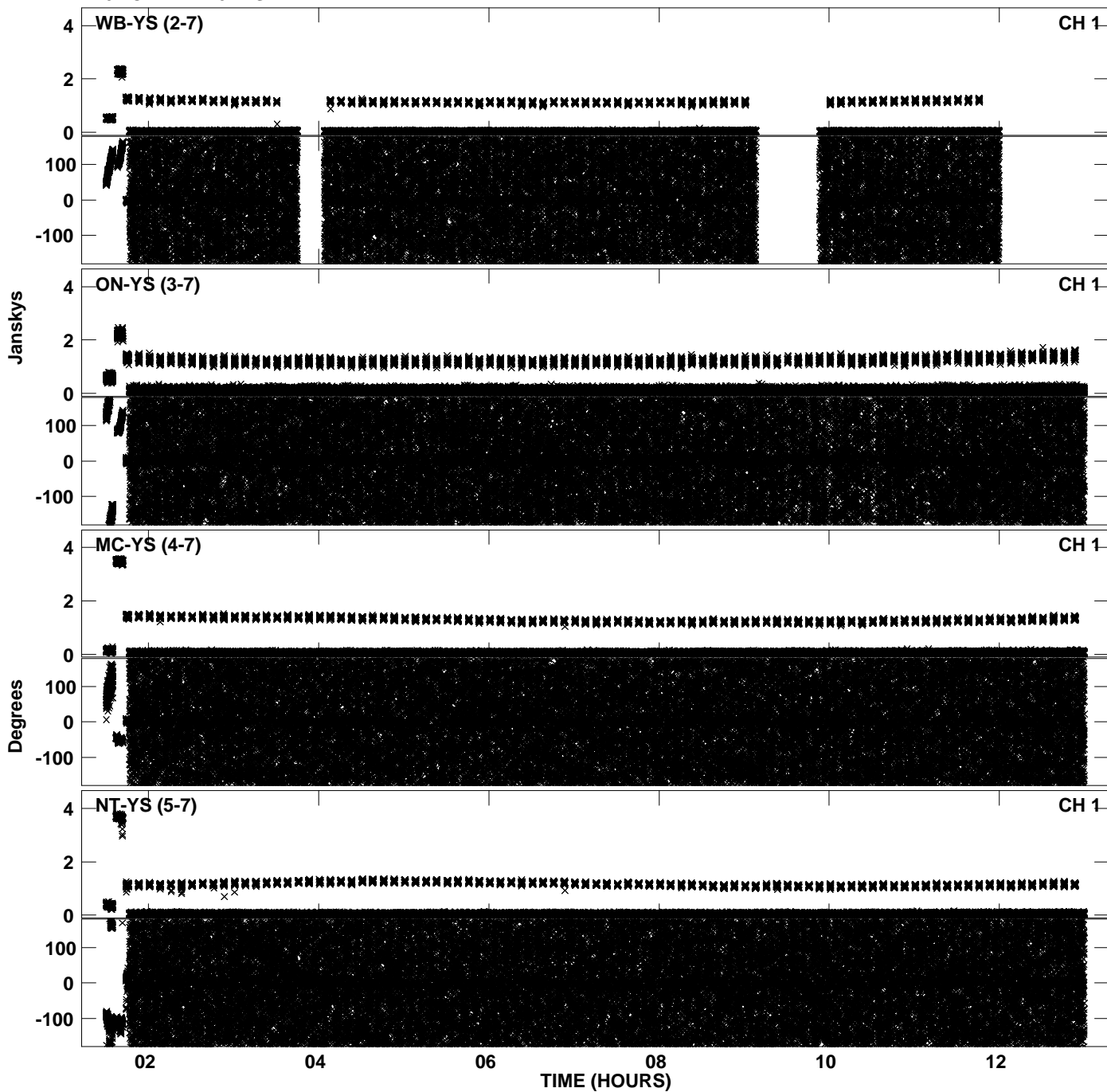
PLot file version 32 created 10-JAN-2014 21:53:01
Amplitude andPhase vs Time for EY019 3.UVDATA.1 Vect aver. CL # 3
IF 5 CHAN 1 - 64 STK RR



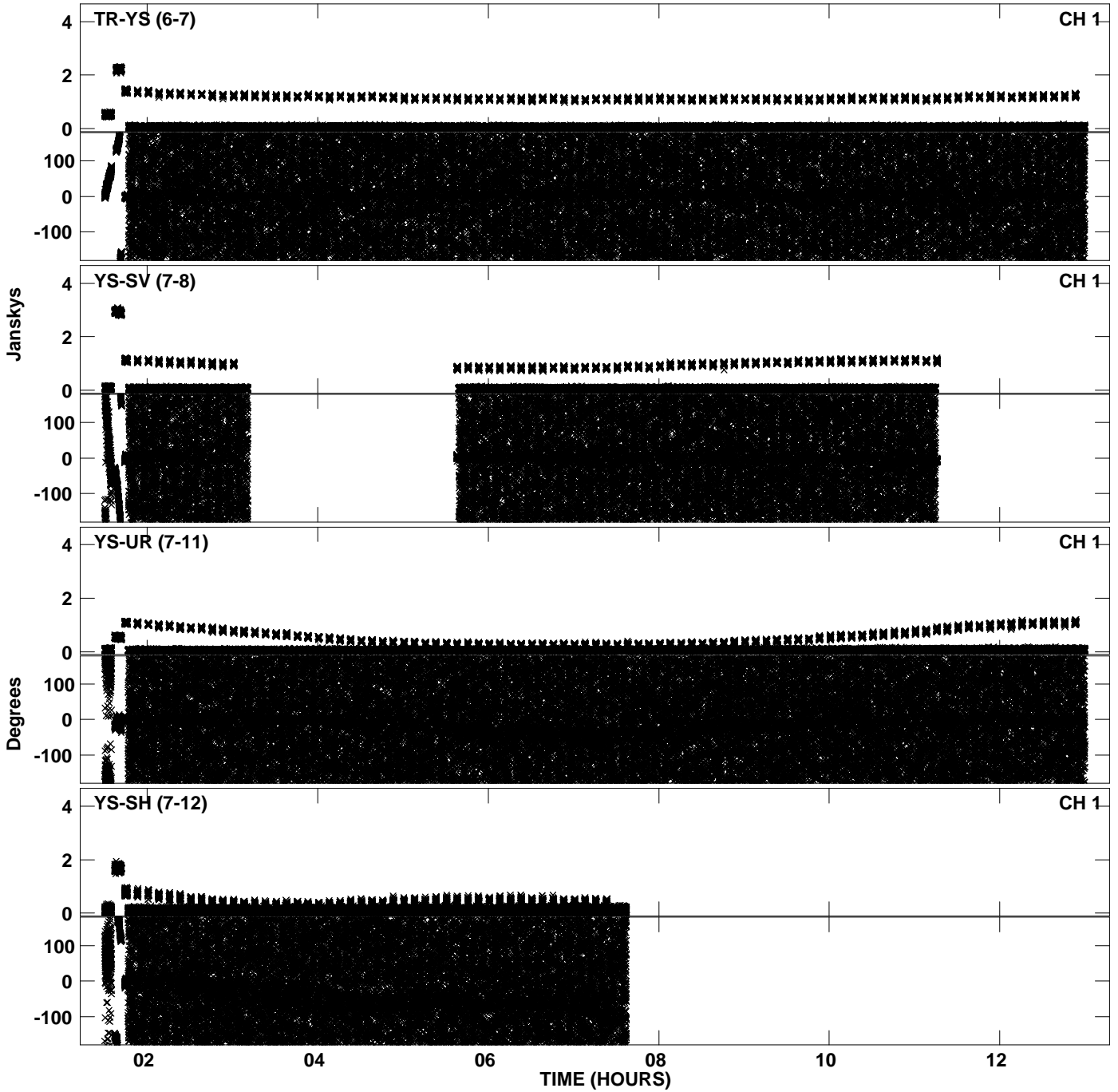
PLot file version 33 created 10-JAN-2014 21:53:02
Amplitude andPhase vs Time for EY019 3.UVDATA.1 Vect aver. CL # 3
IF 5 CHAN 1 - 64 STK RR



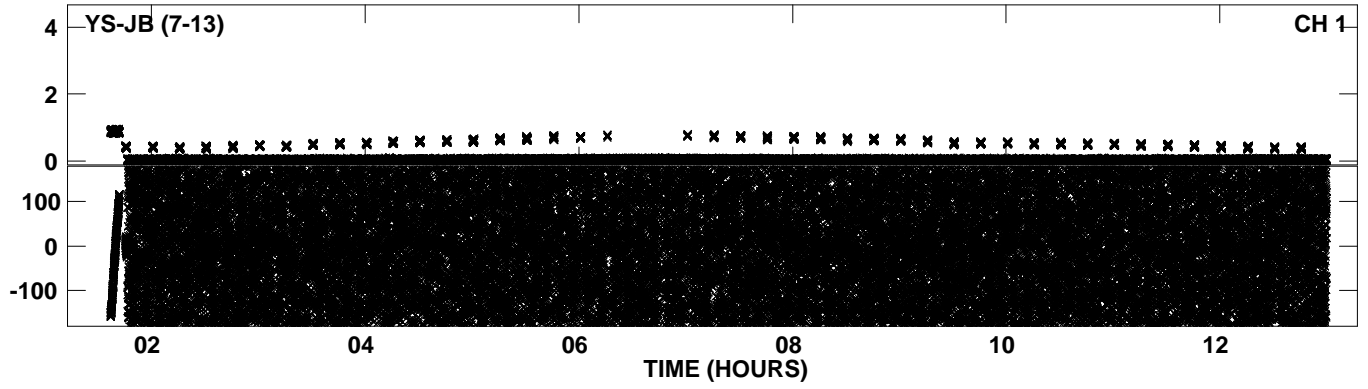
PLot file version 34 created 10-JAN-2014 21:53:37
Amplitude andPhase vs Time for EY019 3.UVDATA.1 Vect aver. CL # 3
IF 6 CHAN 1 - 64 STK RR



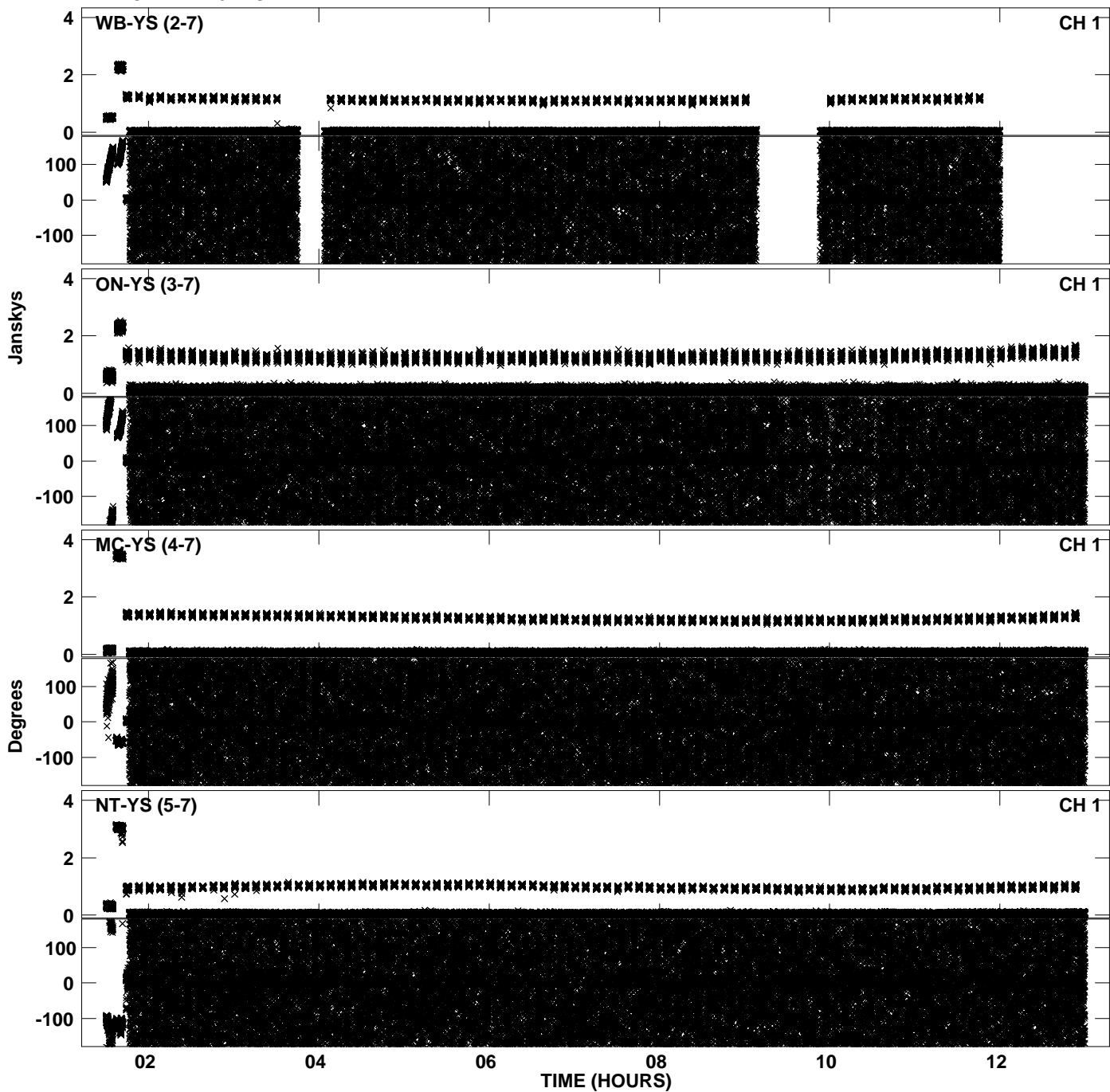
PLot file version 35 created 10-JAN-2014 21:53:37
Amplitude andPhase vs Time for EY019 3.UVDATA.1 Vect aver. CL # 3
IF 6 CHAN 1 - 64 STK RR



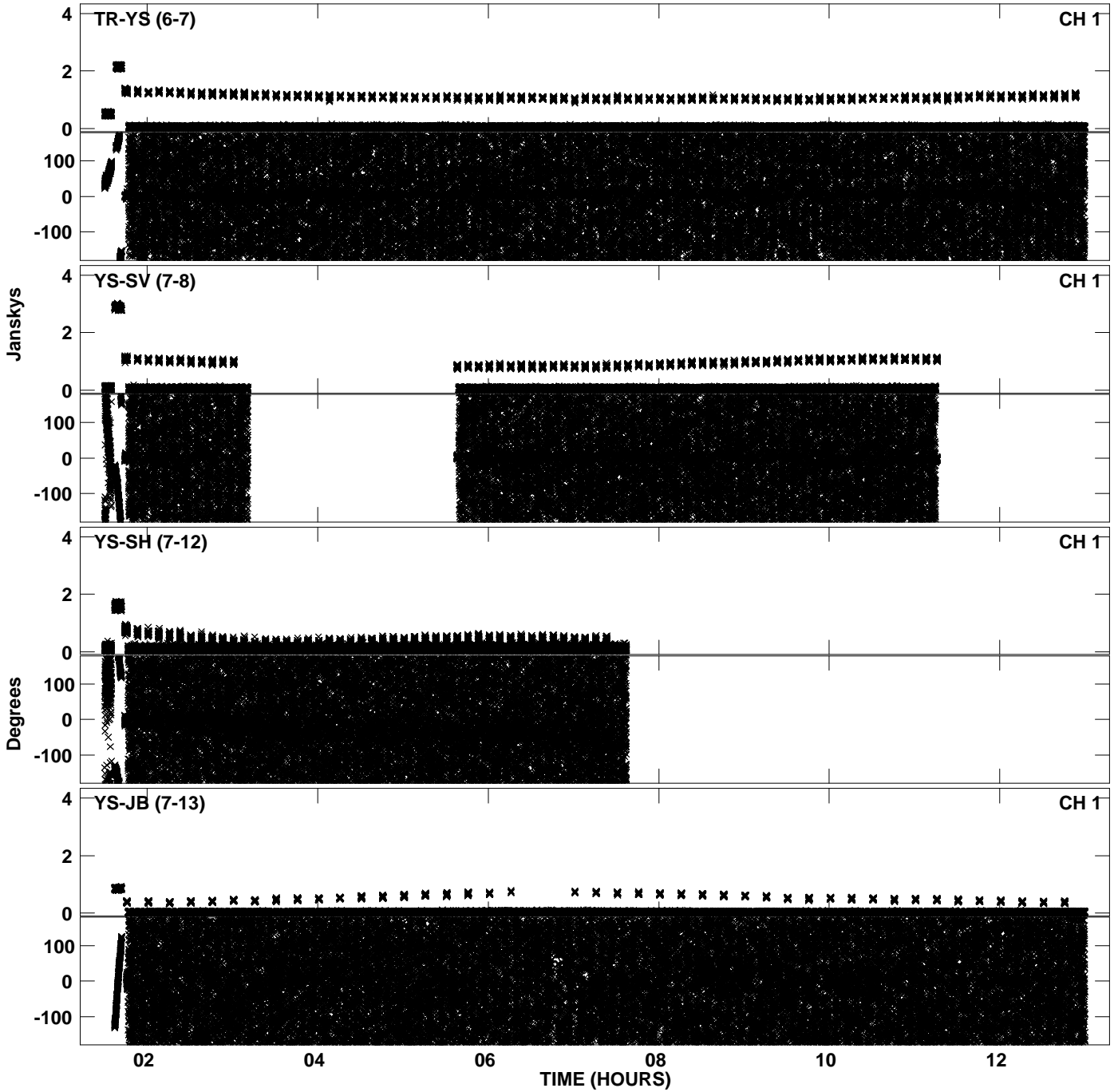
PLot file version 36 created 10-JAN-2014 21:53:37
Amplitude andPhase vs Time for EY019 3.UVDATA.1 Vect aver. CL # 3
IF 6 CHAN 1 - 64 STK RR



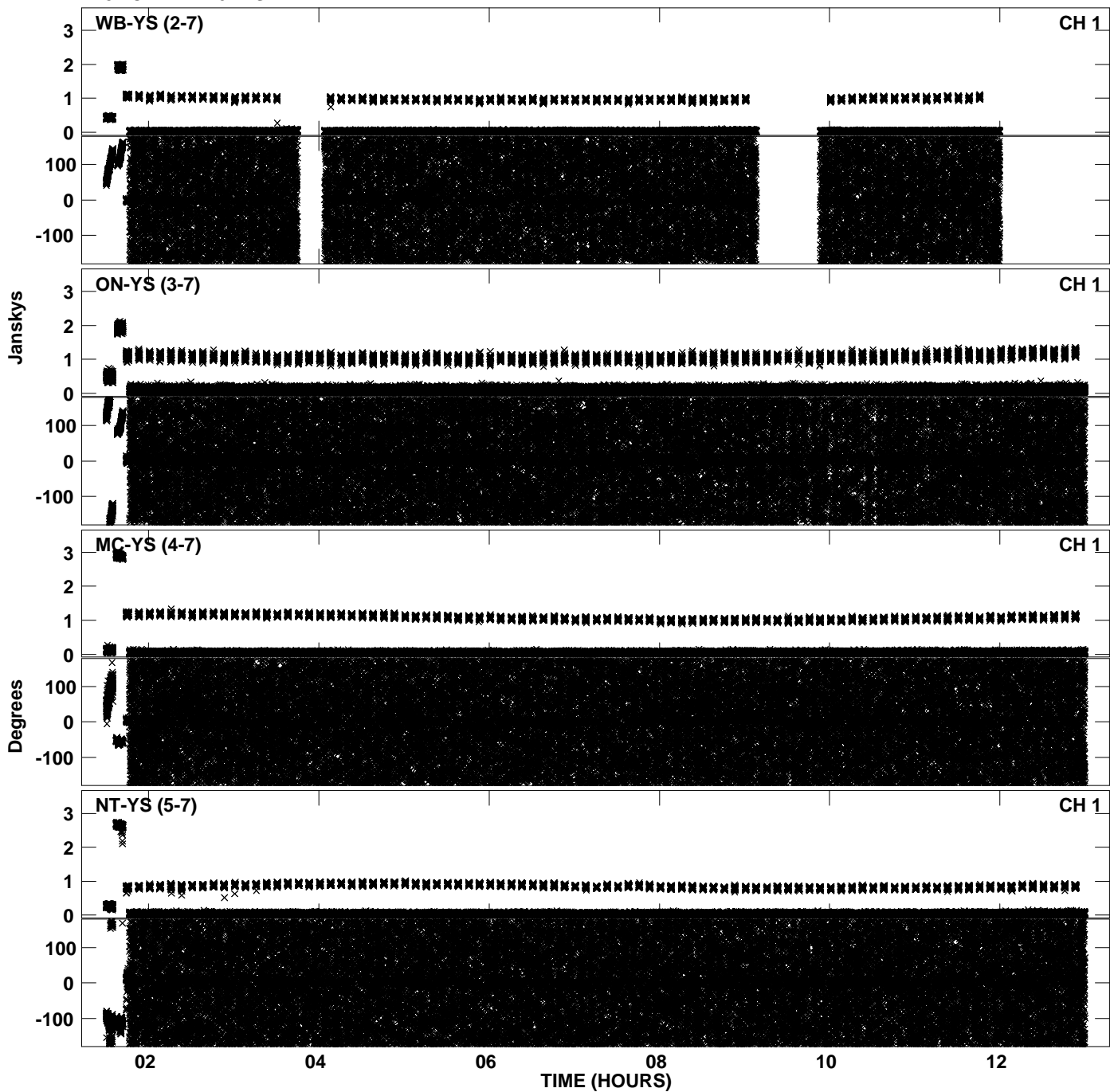
PLot file version 37 created 10-JAN-2014 21:54:10
Amplitude andPhase vs Time for EY019 3.UVDATA.1 Vect aver. CL # 3
IF 7 CHAN 1 - 64 STK RR



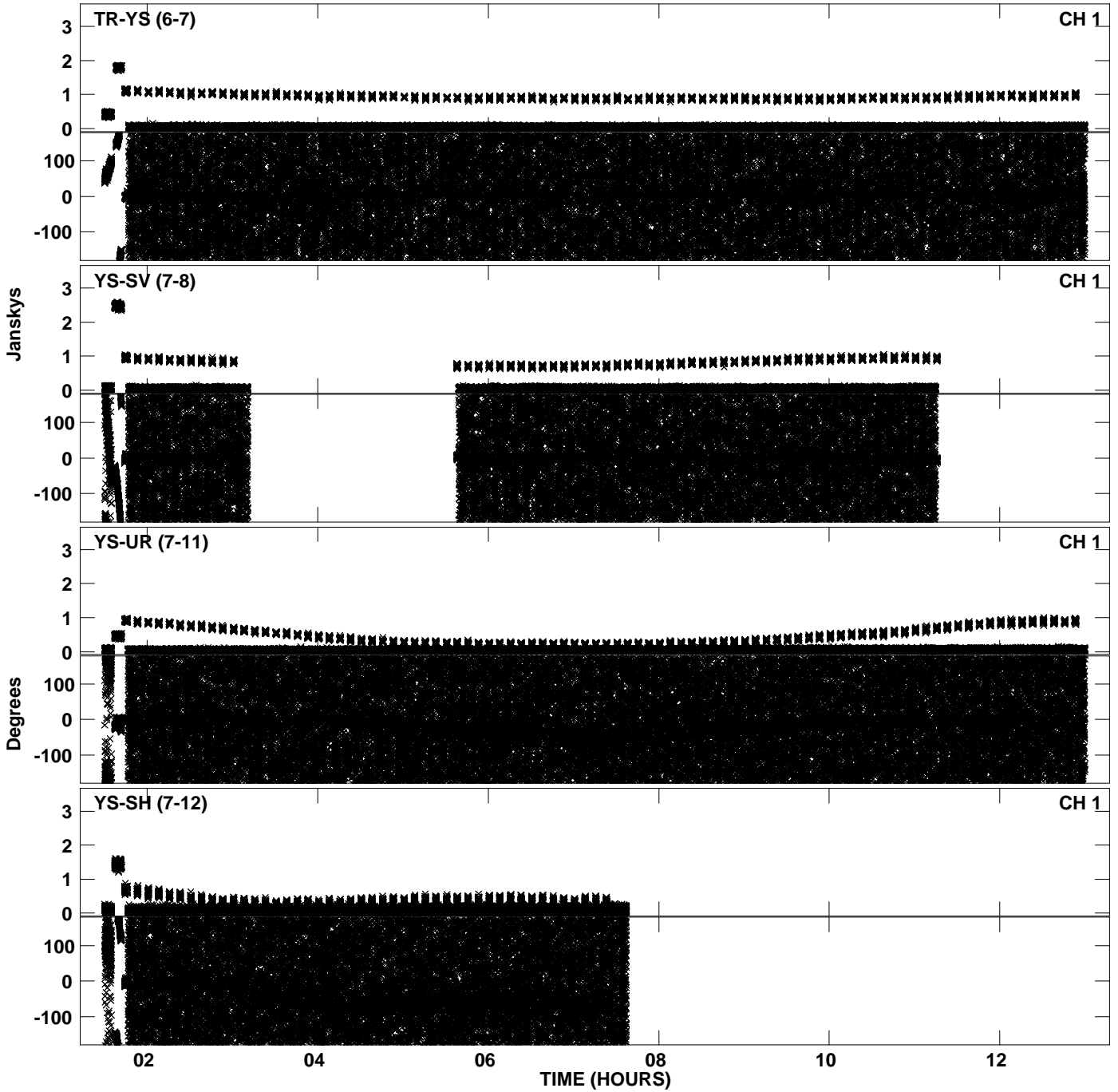
PLot file version 38 created 10-JAN-2014 21:54:10
Amplitude andPhase vs Time for EY019 3.UVDATA.1 Vect aver. CL # 3
IF 7 CHAN 1 - 64 STK RR



PLot file version 39 created 10-JAN-2014 21:54:45
Amplitude andPhase vs Time for EY019 3.UVDATA.1 Vect aver. CL # 3
IF 8 CHAN 1 - 64 STK RR



PLot file version 40 created 10-JAN-2014 21:54:45
Amplitude andPhase vs Time for EY019 3.UVDATA.1 Vect aver. CL # 3
IF 8 CHAN 1 - 64 STK RR



PLot file version 41 created 10-JAN-2014 21:54:45
Amplitude andPhase vs Time for EY019 3.UVDATA.1 Vect aver. CL # 3
IF 8 CHAN 1 - 64 STK RR

