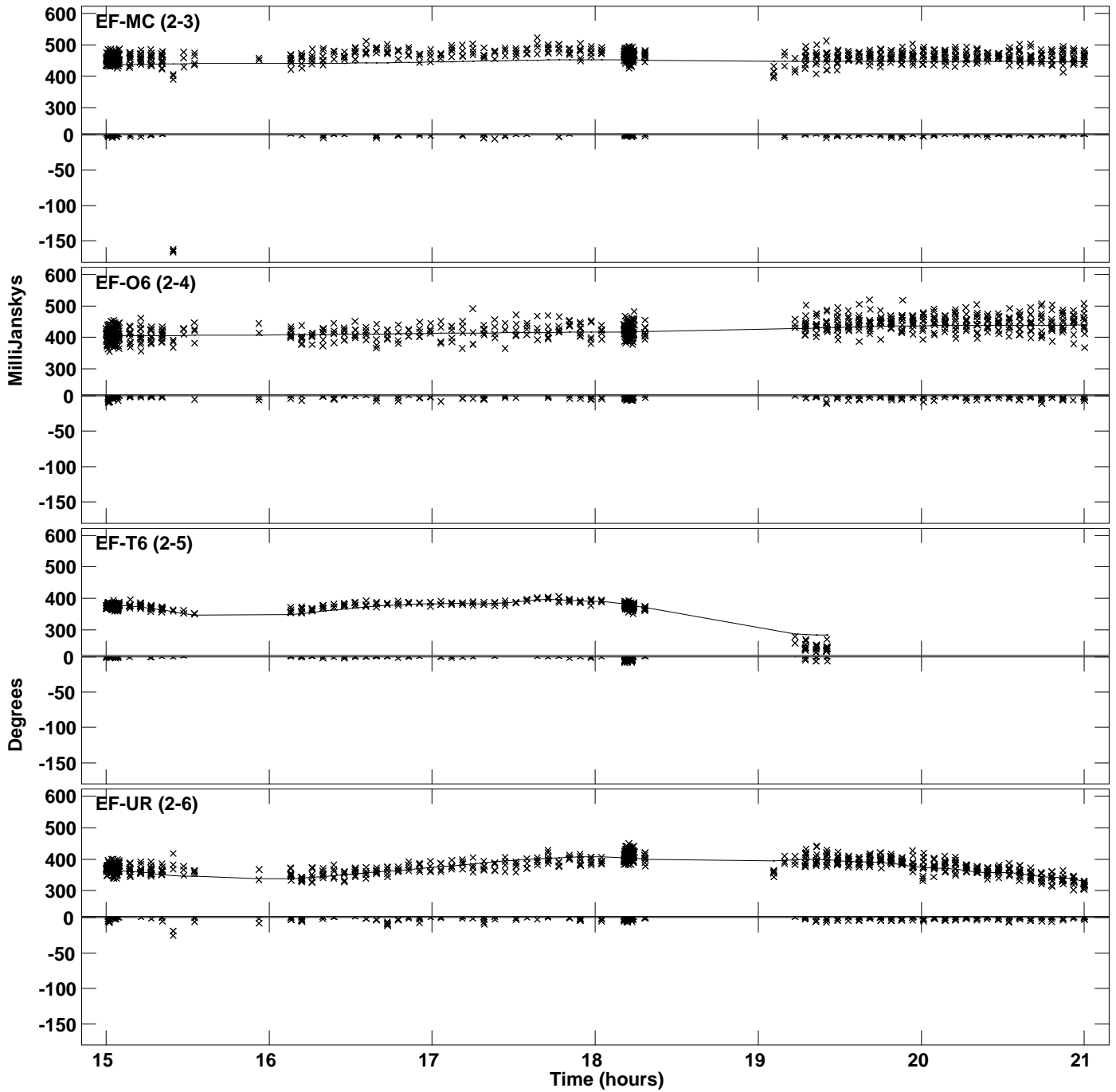
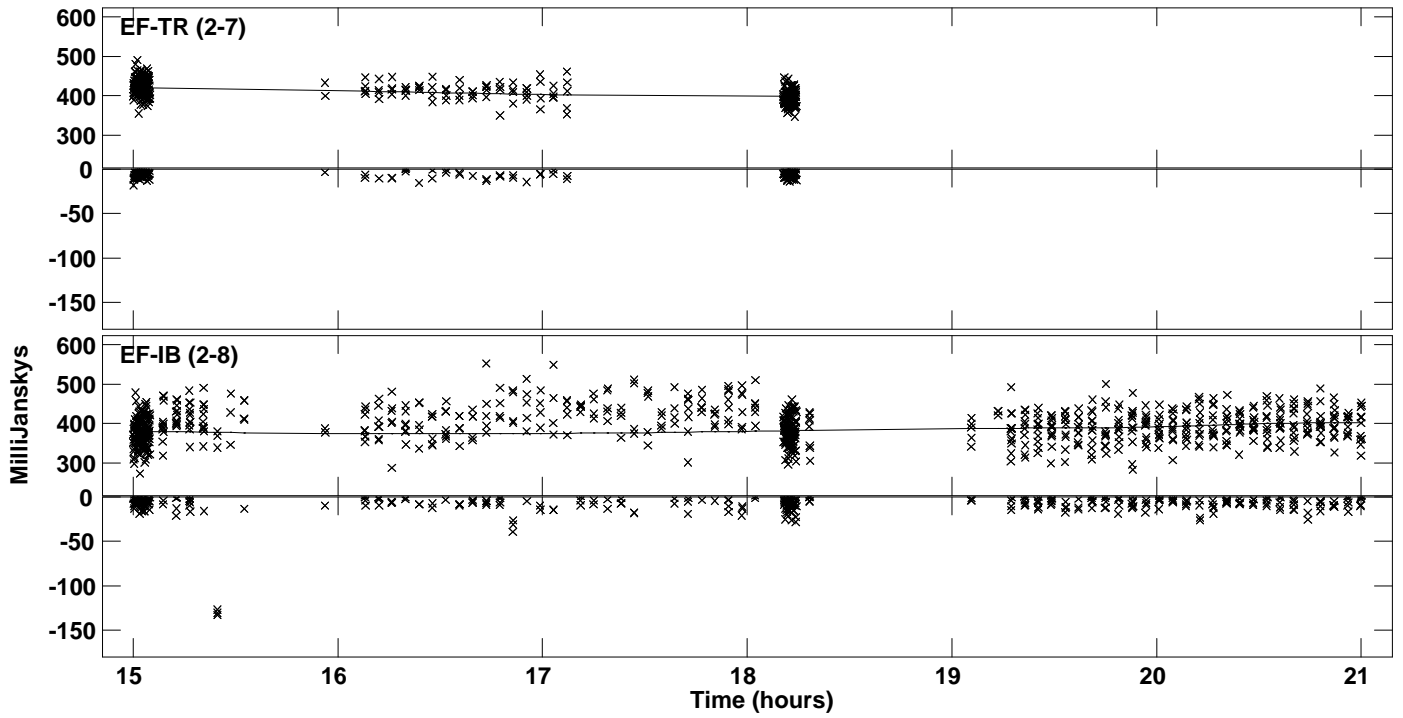


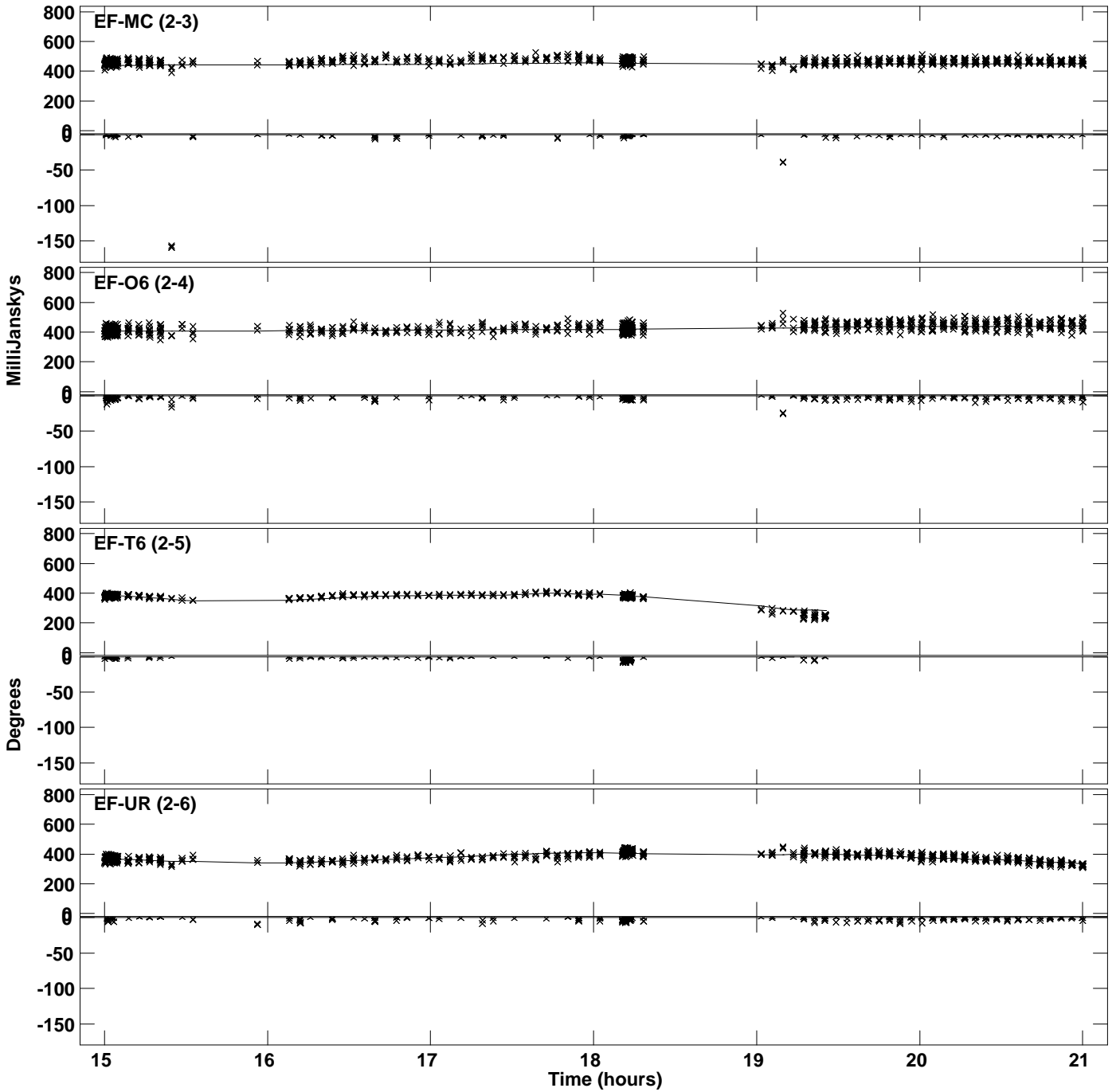
Plot file version 1 created 08-APR-2024 14:58:12
Amplitude andPhase vs Time for 1933+655.MULTI.1 CL # 3
IF 1 CHAN 1 STK LL of 1933+655.ICL001.3



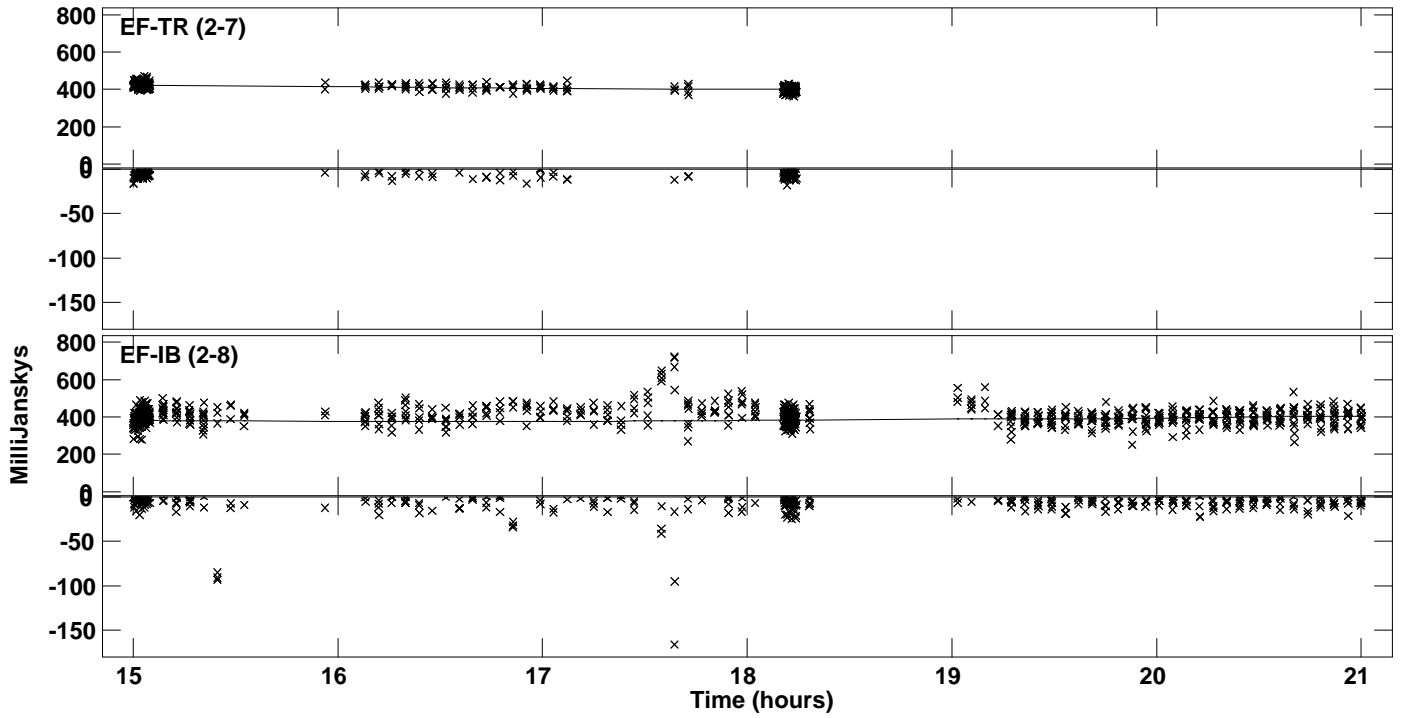
PLot file version 2 created 08-APR-2024 14:58:12
Amplitude andPhase vs Time for 1933+655.MULTI.1 CL # 3
IF 1 CHAN 1 STK LL of 1933+655.ICL001.3



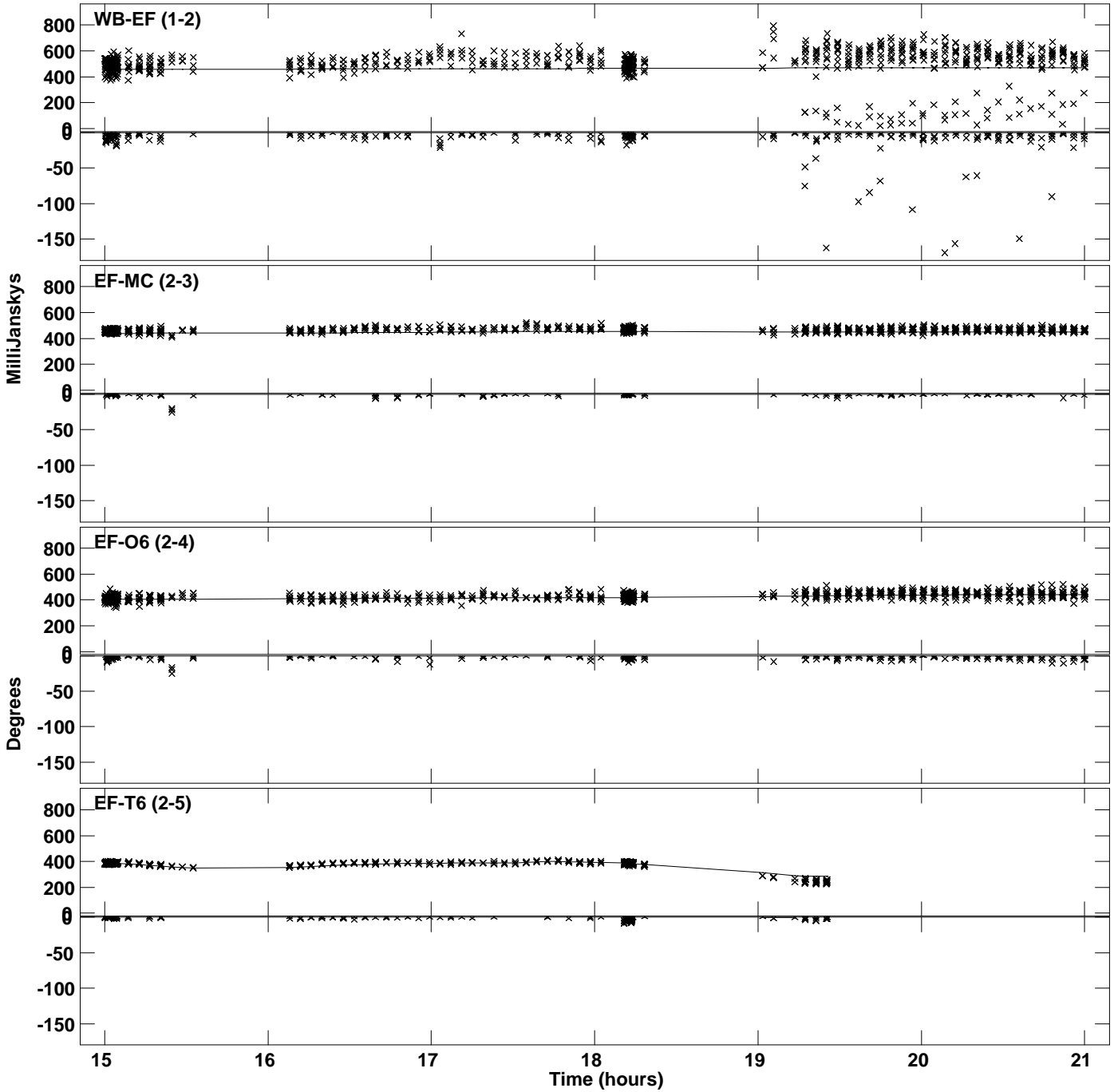
Plot file version 3 created 08-APR-2024 14:58:12
Amplitude andPhase vs Time for 1933+655.MULTI.1 CL # 3
IF 2 CHAN 1 STK LL of 1933+655.ICL001.3



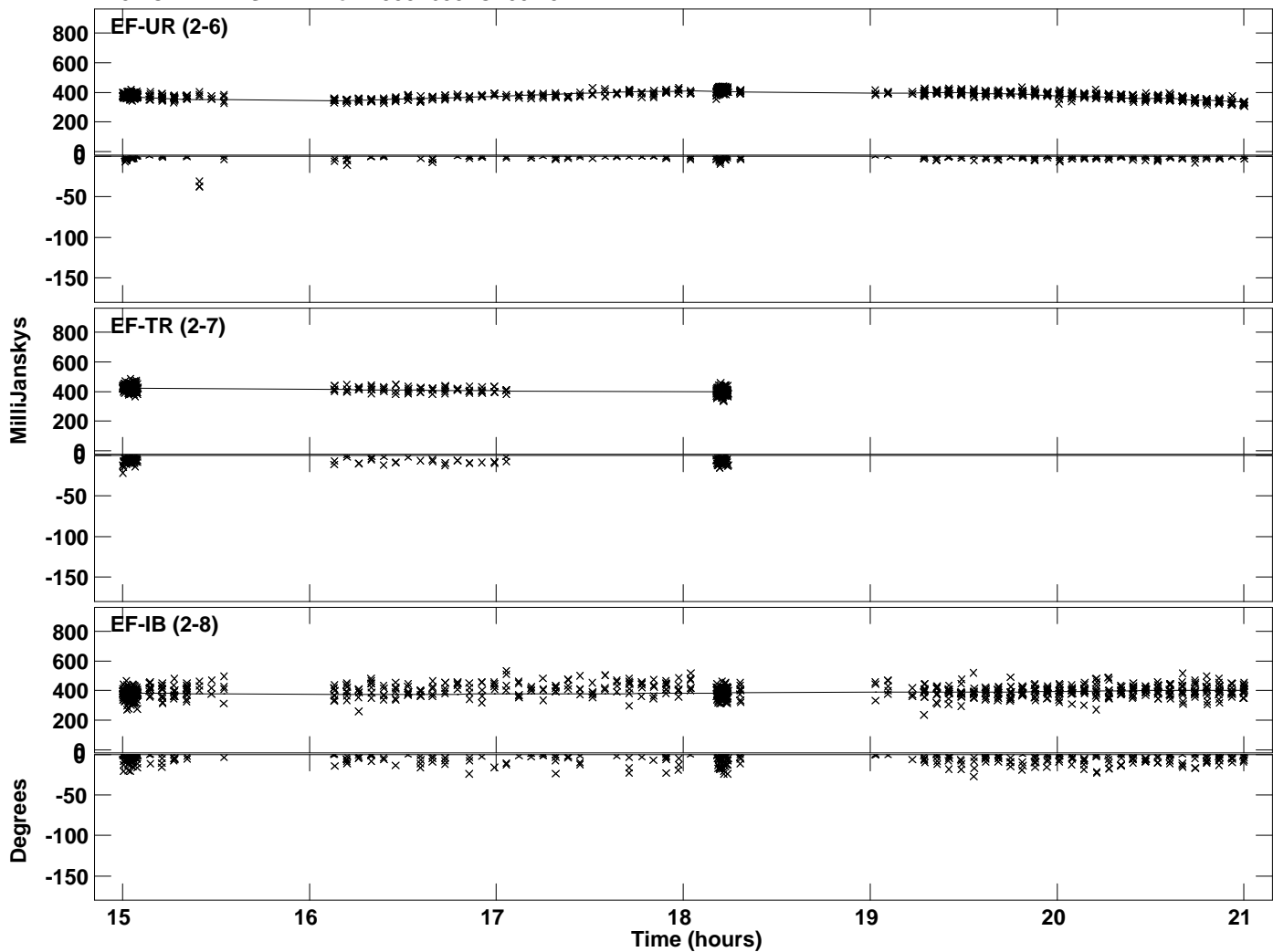
PLot file version 4 created 08-APR-2024 14:58:12
Amplitude andPhase vs Time for 1933+655.MULTI.1 CL # 3
IF 2 CHAN 1 STK LL of 1933+655.ICL001.3



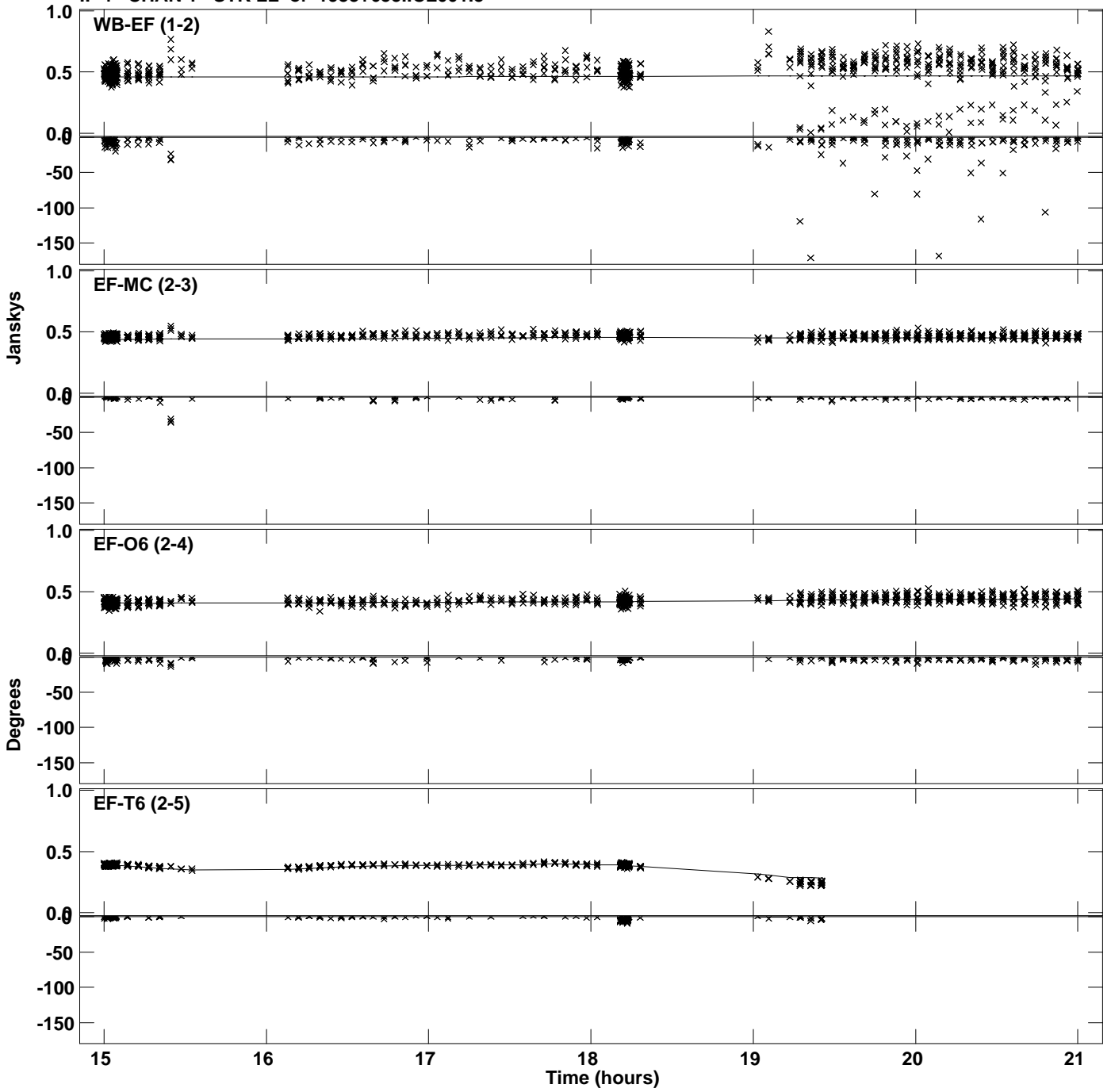
Plot file version 5 created 08-APR-2024 14:58:12
Amplitude andPhase vs Time for 1933+655.MULTI.1 CL # 3
IF 3 CHAN 1 STK LL of 1933+655.ICL001.3



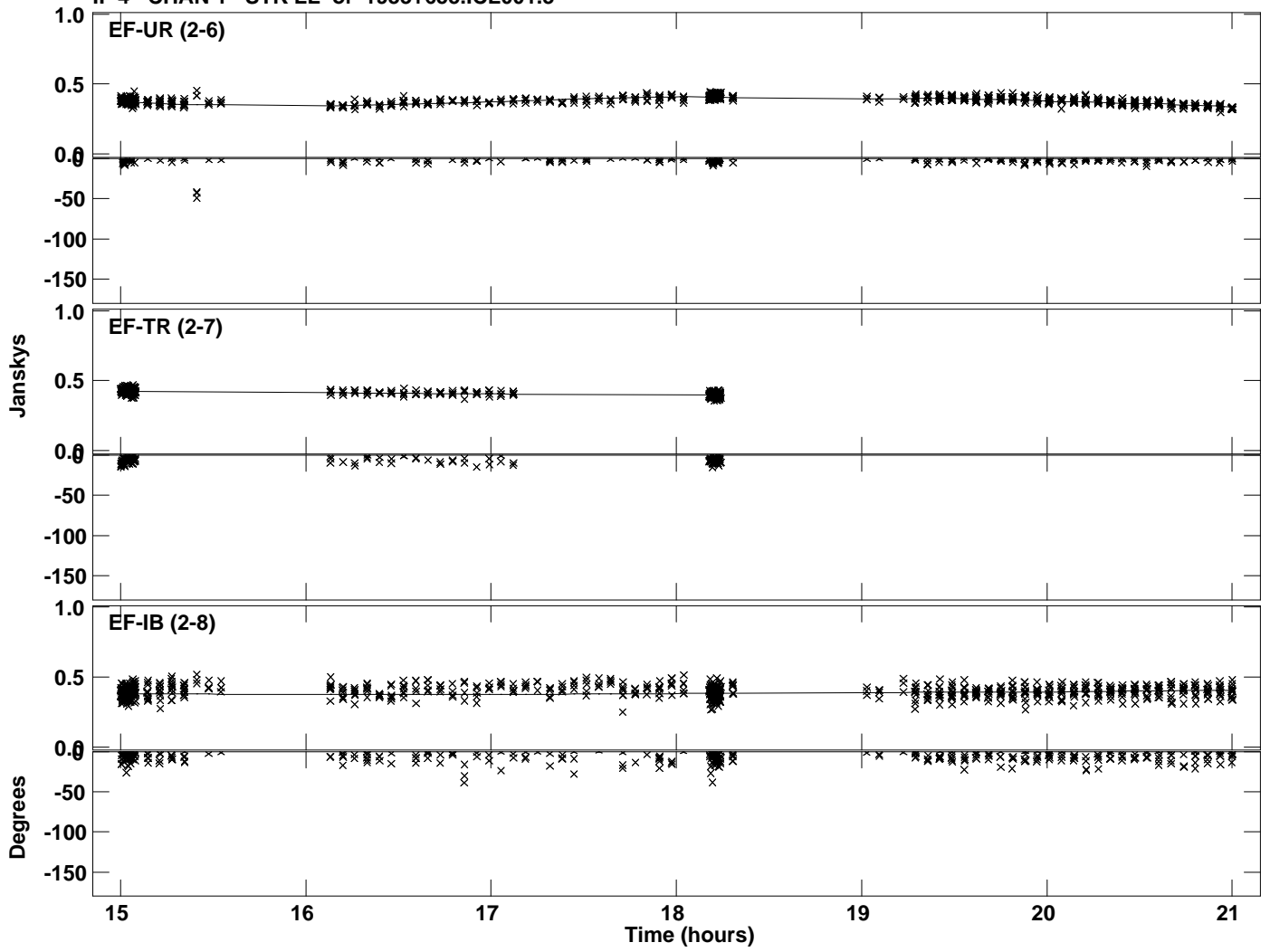
PLot file version 6 created 08-APR-2024 14:58:13
Amplitude andPhase vs Time for 1933+655.MULTI.1 CL # 3
IF 3 CHAN 1 STK LL of 1933+655.ICL001.3



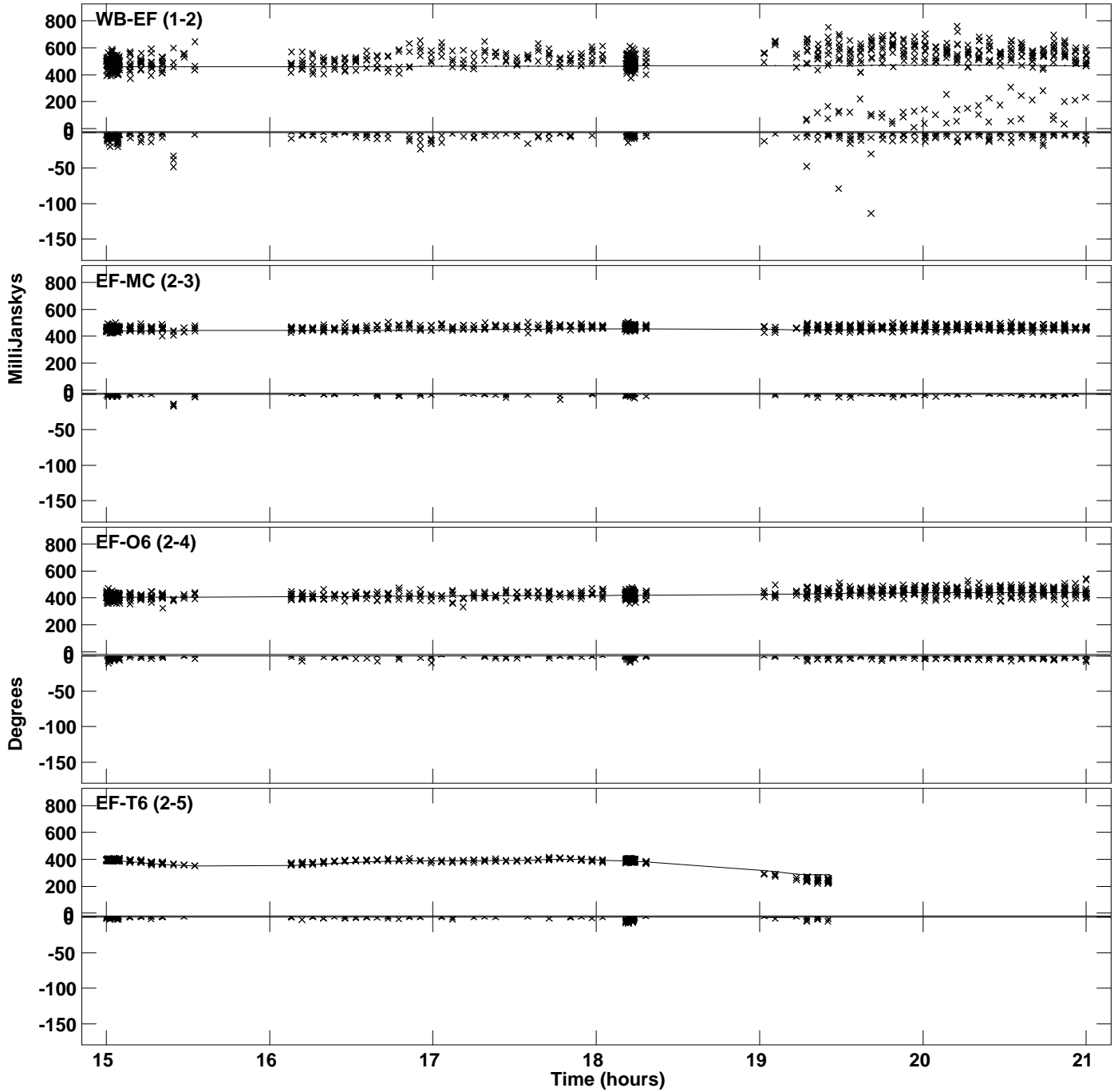
Plot file version 7 created 08-APR-2024 14:58:13
Amplitude andPhase vs Time for 1933+655.MULTI.1 CL # 3
IF 4 CHAN 1 STK LL of 1933+655.ICL001.3



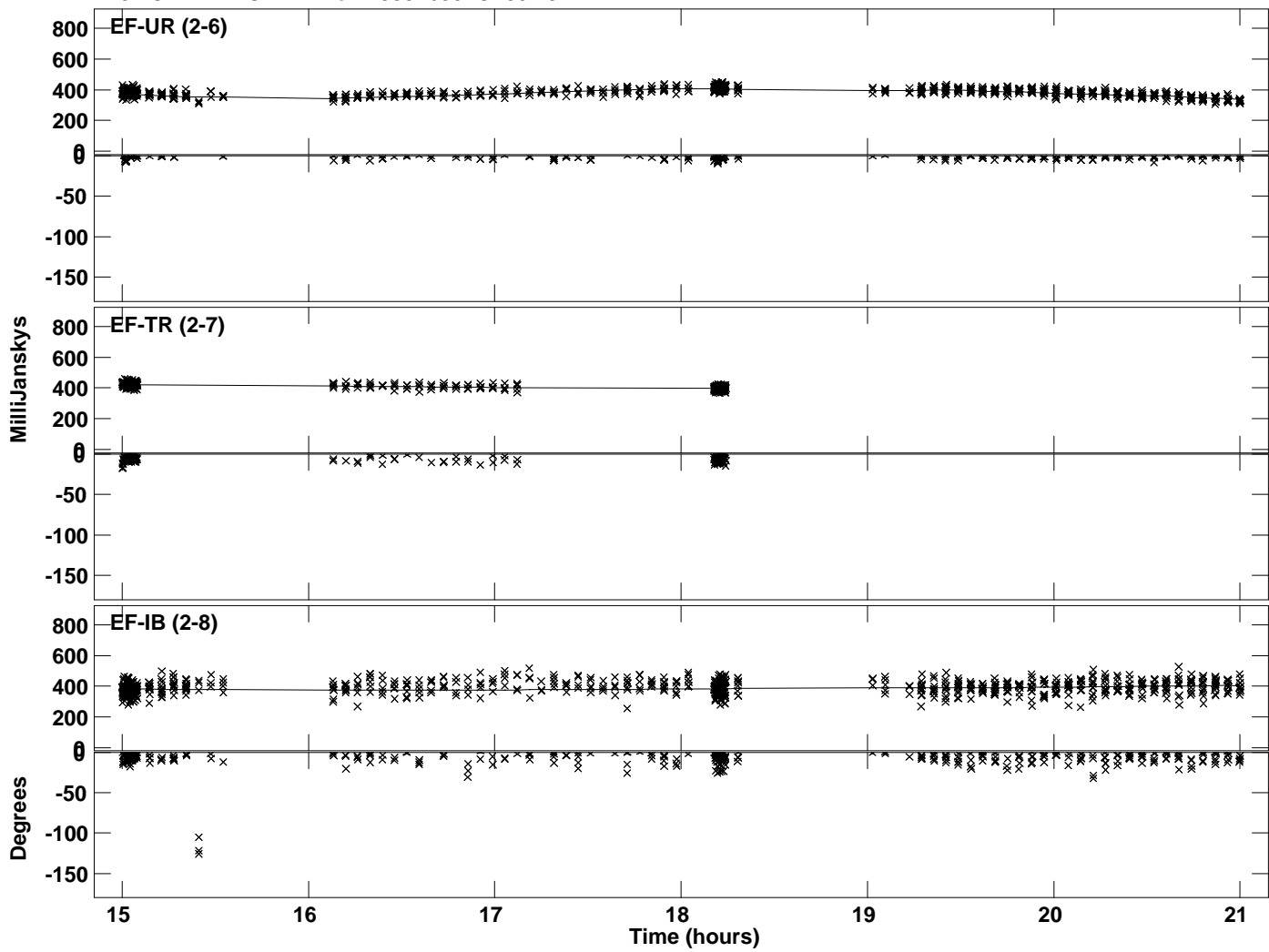
PLot file version 8 created 08-APR-2024 14:58:13
Amplitude andPhase vs Time for 1933+655.MULTI.1 CL # 3
IF 4 CHAN 1 STK LL of 1933+655.ICL001.3



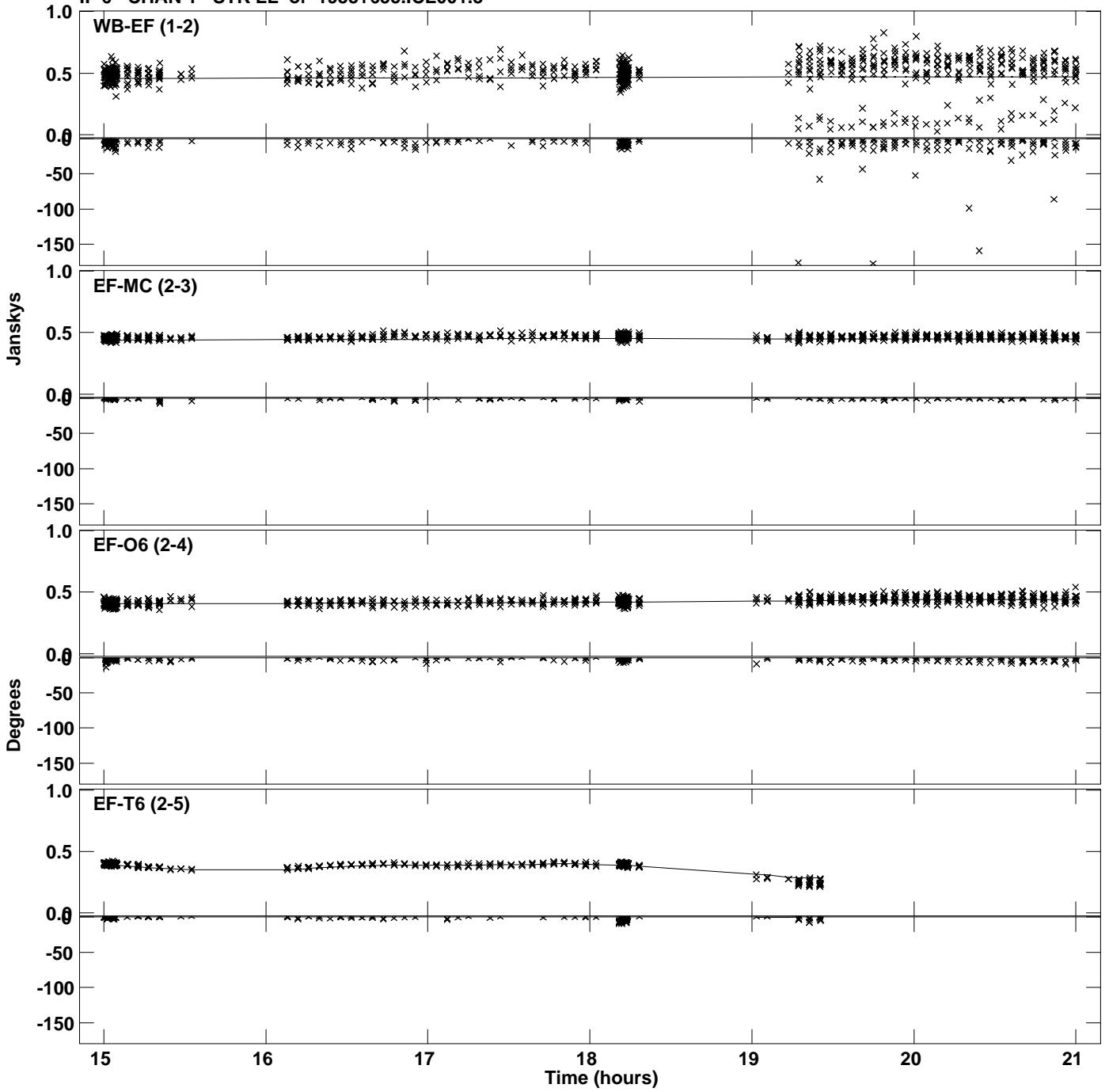
Plot file version 9 created 08-APR-2024 14:58:13
Amplitude andPhase vs Time for 1933+655.MULTI.1 CL # 3
IF 5 CHAN 1 STK LL of 1933+655.ICL001.3



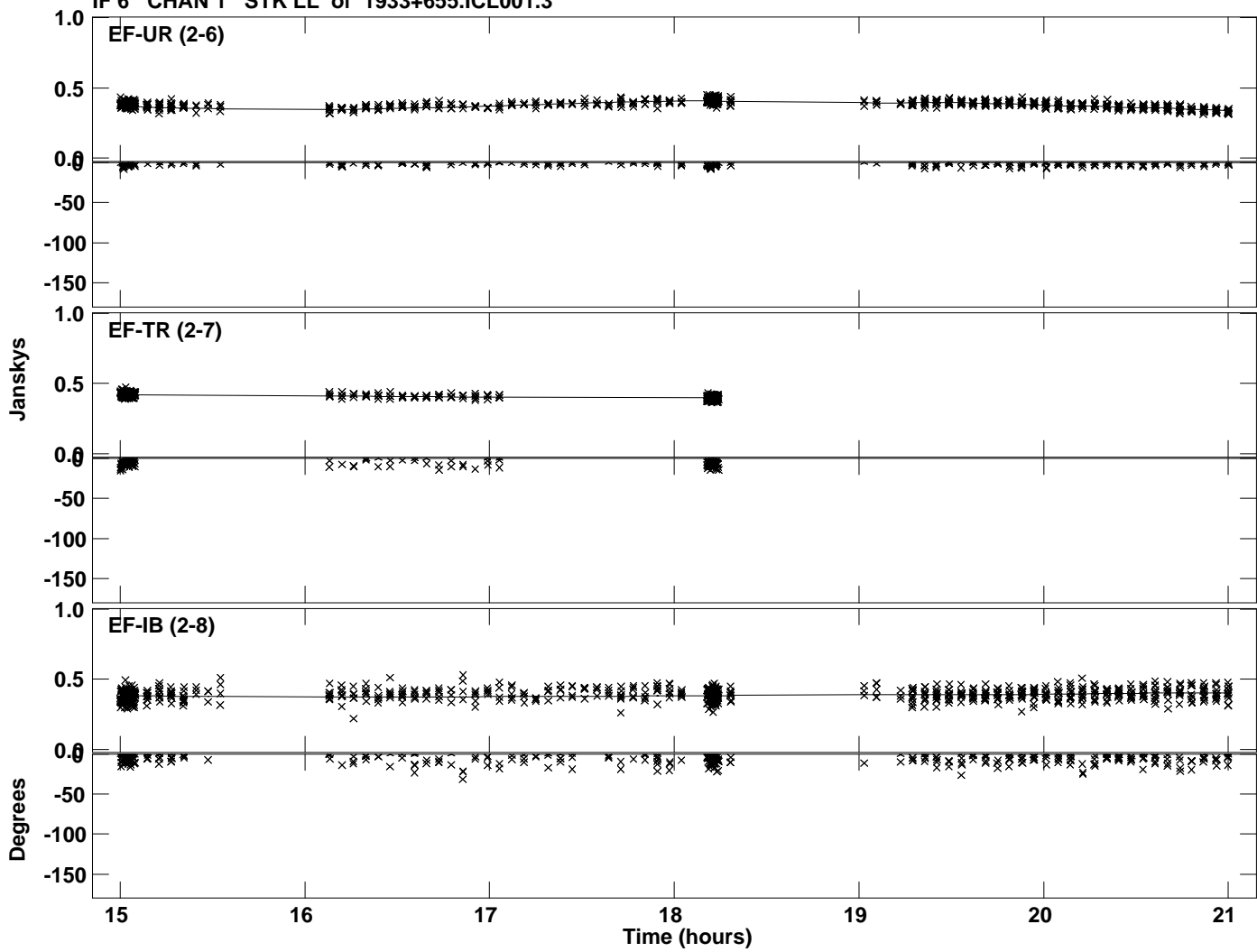
PLot file version 10 created 08-APR-2024 14:58:13
Amplitude andPhase vs Time for 1933+655.MULTI.1 CL # 3
IF 5 CHAN 1 STK LL of 1933+655.ICL001.3



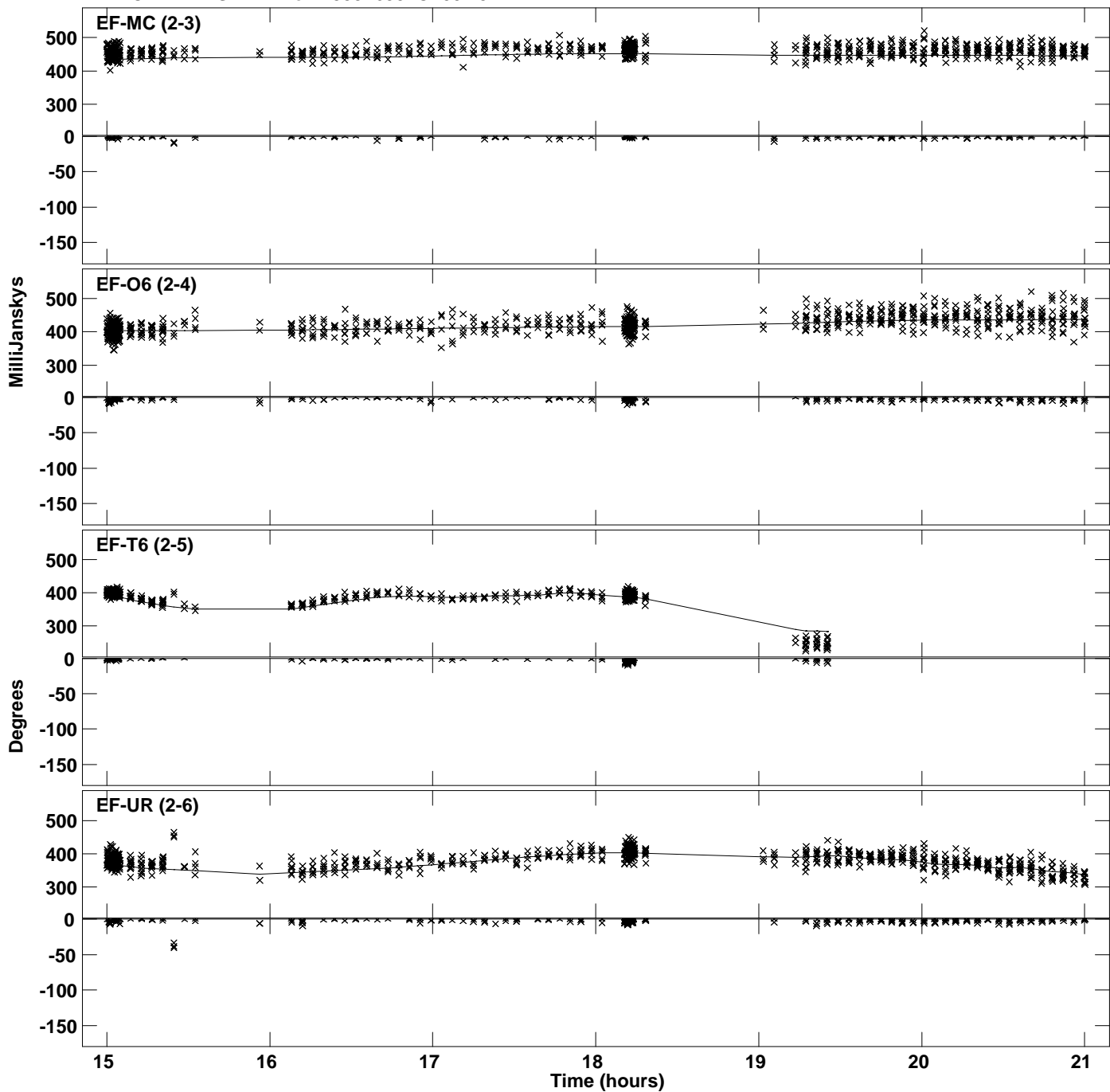
Plot file version 11 created 08-APR-2024 14:58:13
Amplitude and Phase vs Time for 1933+655.MULTI.1 CL # 3
IF 6 CHAN 1 STK LL of 1933+655.ICL001.3



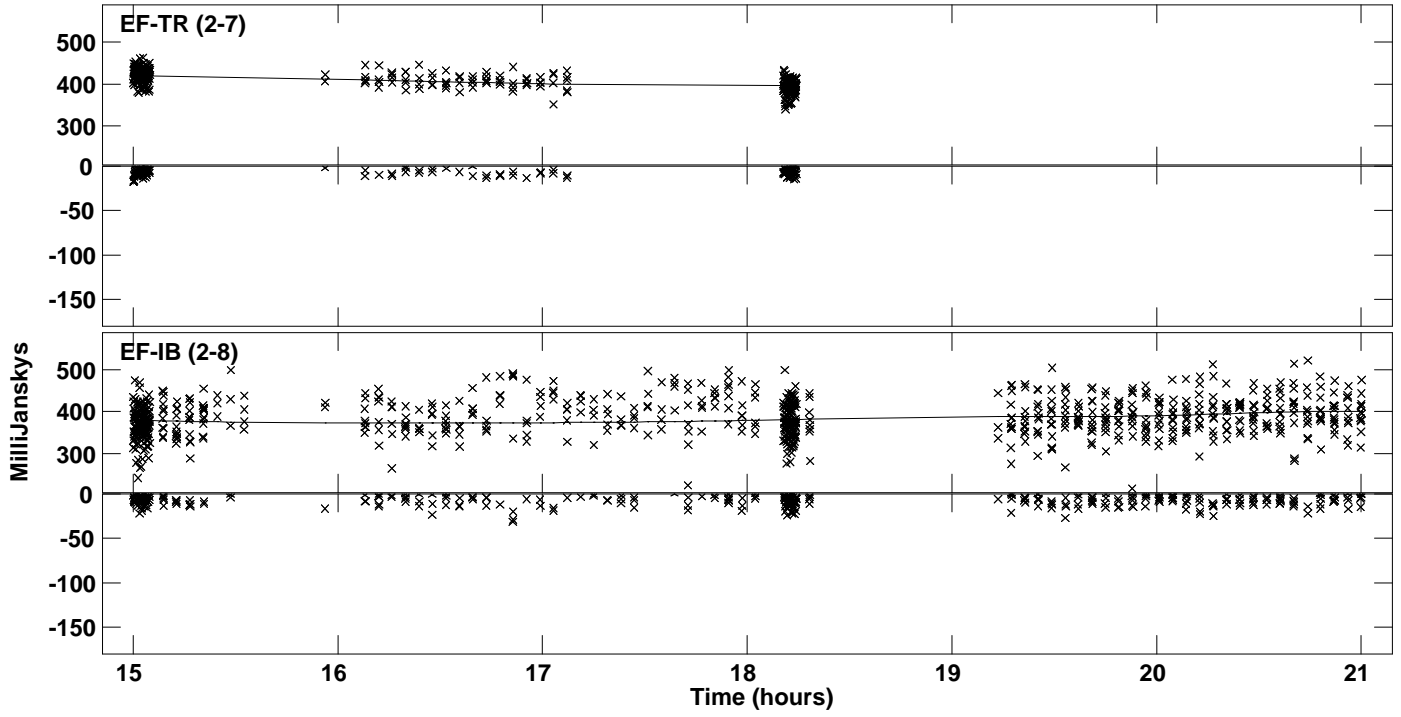
PLot file version 12 created 08-APR-2024 14:58:13
Amplitude andPhase vs Time for 1933+655.MULTI.1 CL # 3
IF 6 CHAN 1 STK LL of 1933+655.ICL001.3



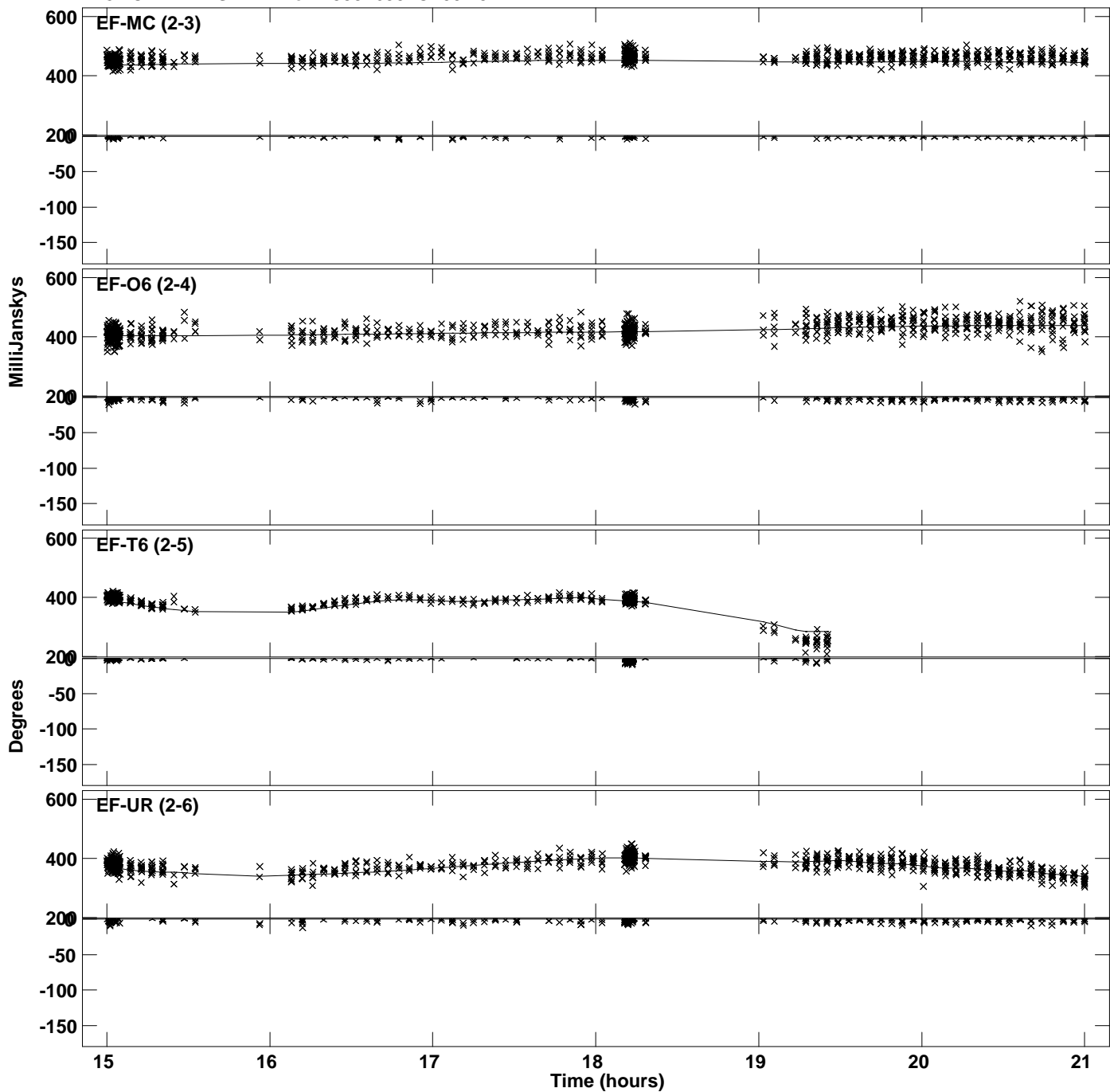
Plot file version 13 created 08-APR-2024 14:58:13
Amplitude andPhase vs Time for 1933+655.MULTI.1 CL # 3
IF 7 CHAN 1 STK LL of 1933+655.ICL001.3



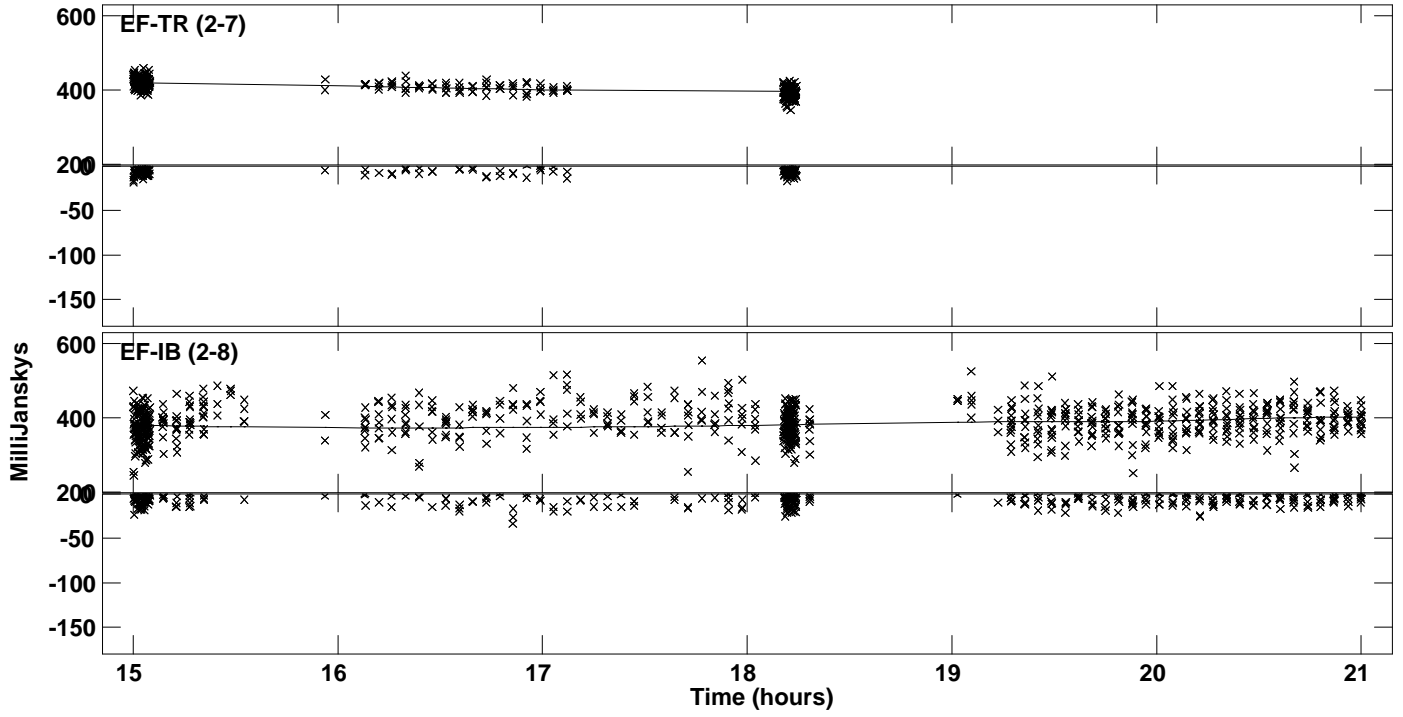
Plot file version 14 created 08-APR-2024 14:58:13
Amplitude andPhase vs Time for 1933+655.MULTI.1 CL # 3
IF 7 CHAN 1 STK LL of 1933+655.ICL001.3



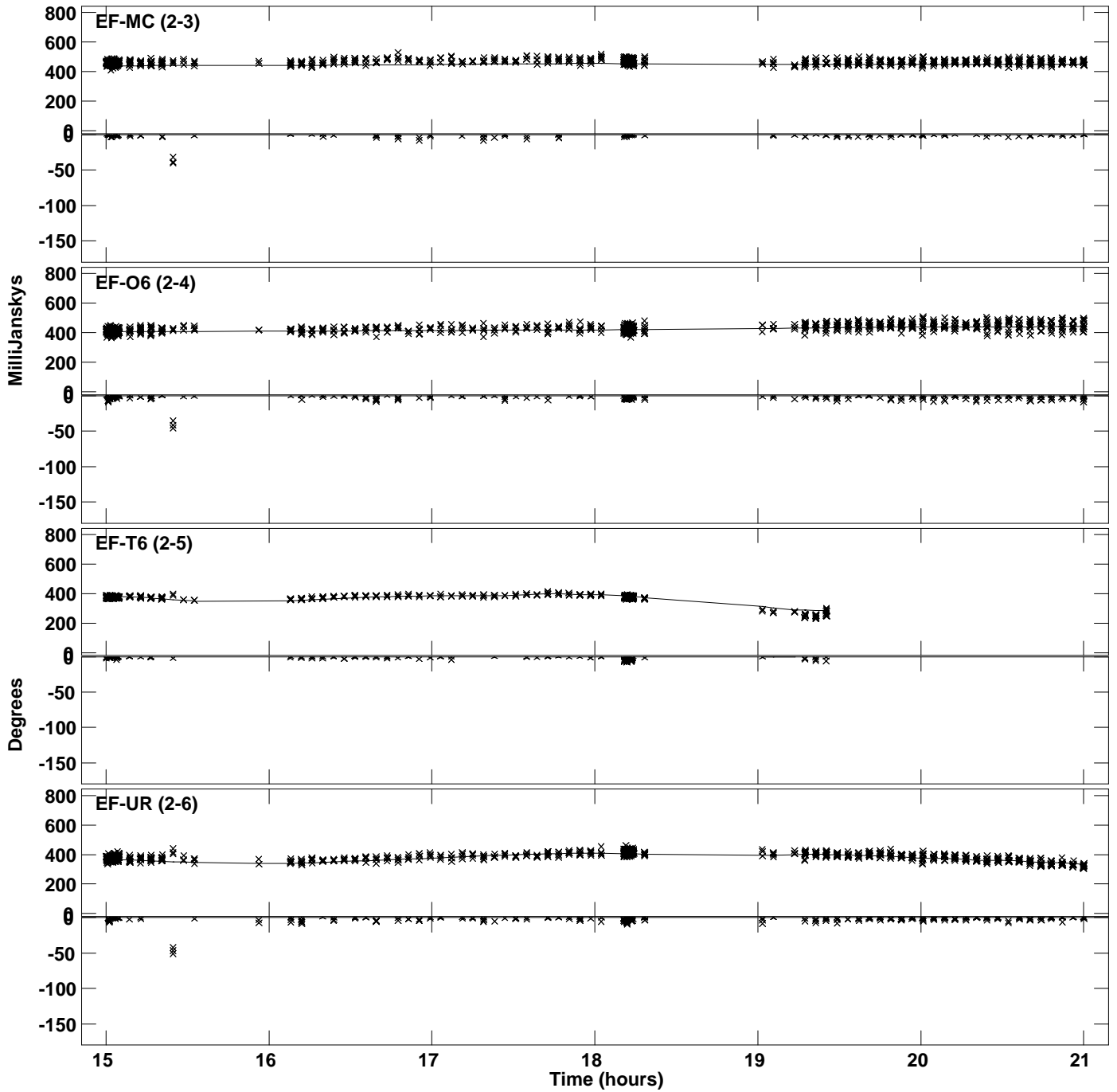
Plot file version 15 created 08-APR-2024 14:58:14
Amplitude andPhase vs Time for 1933+655.MULTI.1 CL # 3
IF 8 CHAN 1 STK LL of 1933+655.ICL001.3



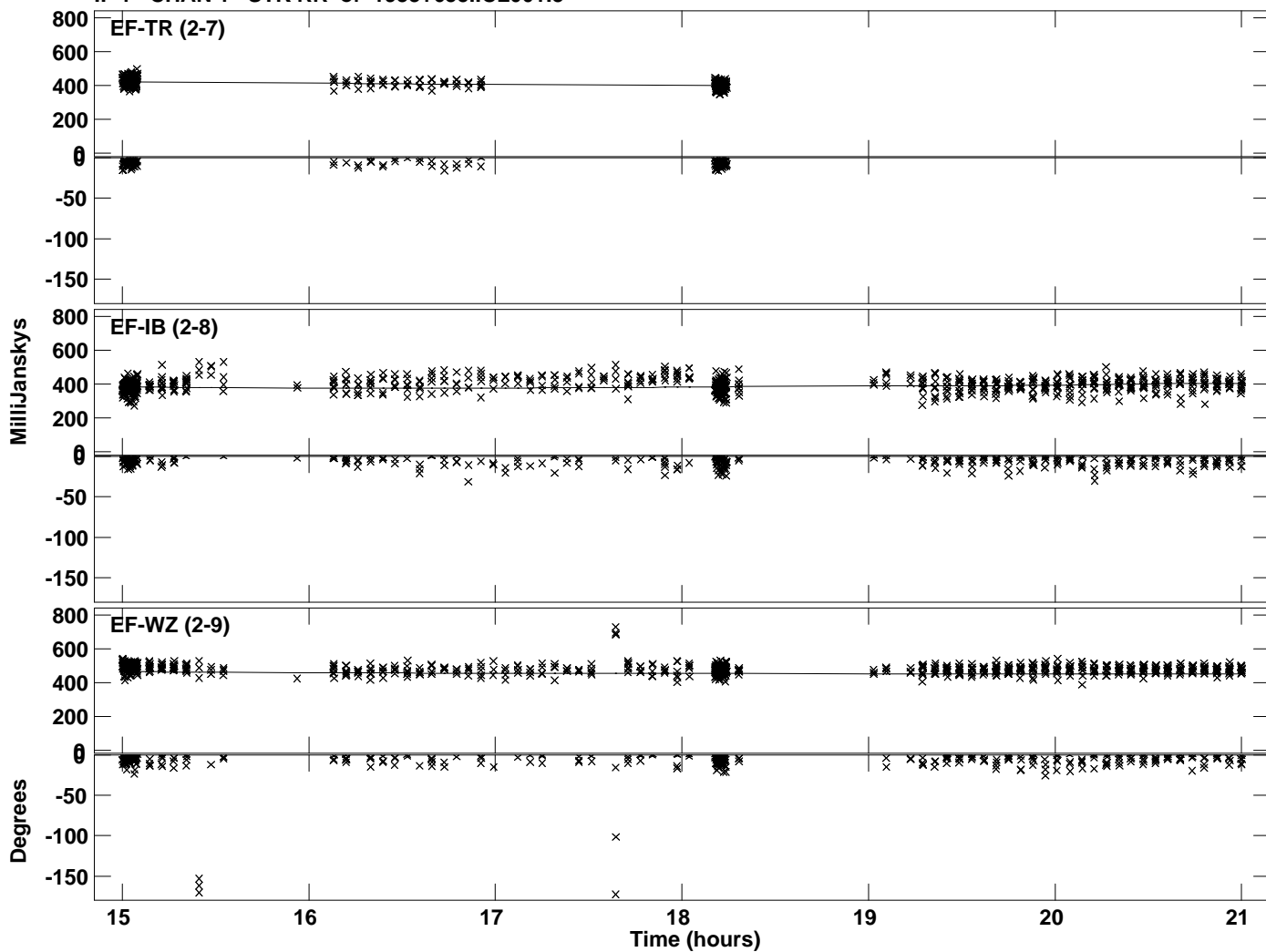
PLot file version 16 created 08-APR-2024 14:58:14
Amplitude andPhase vs Time for 1933+655.MULTI.1 CL # 3
IF 8 CHAN 1 STK LL of 1933+655.ICL001.3



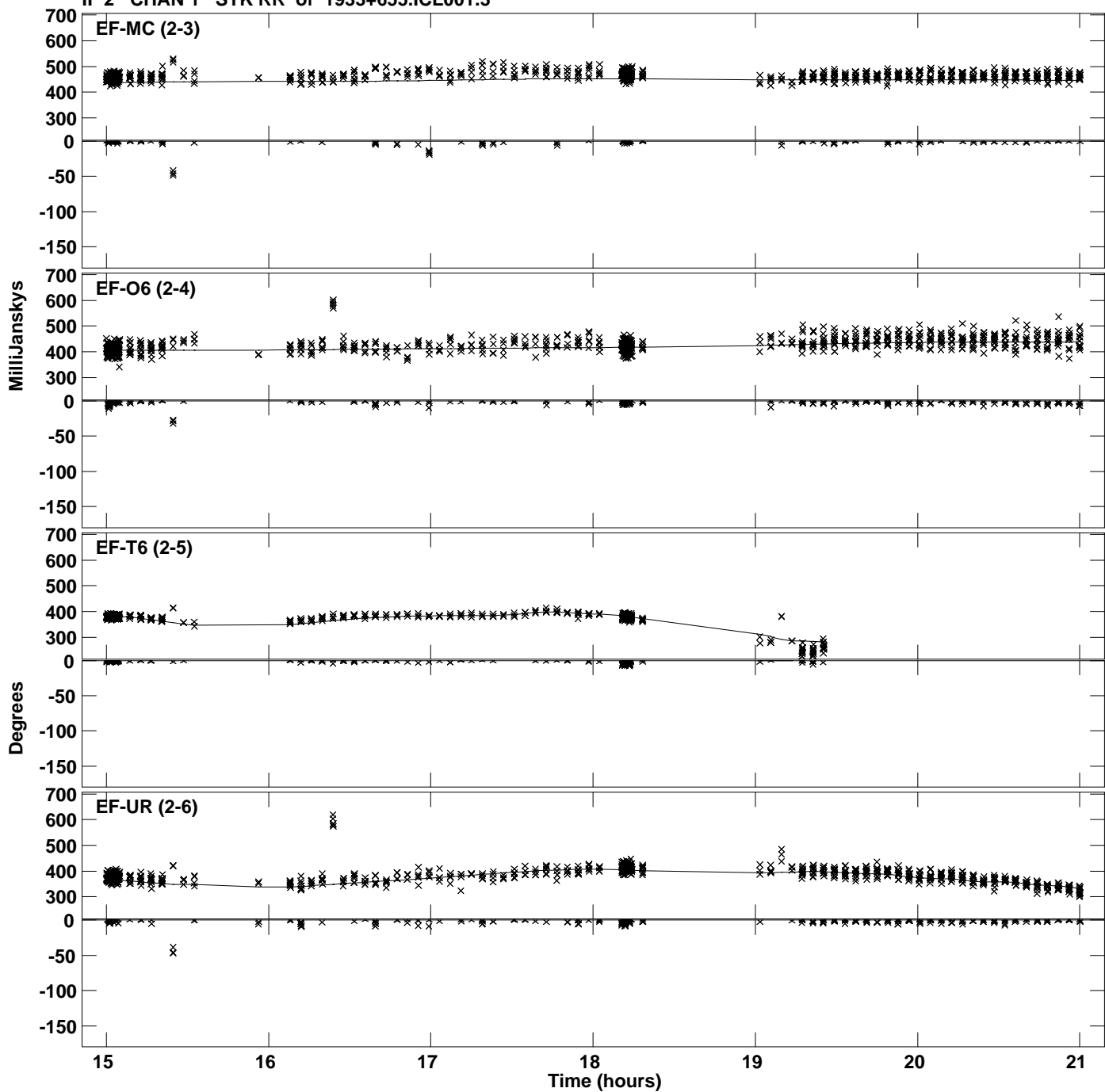
Plot file version 17 created 08-APR-2024 14:58:14
Amplitude andPhase vs Time for 1933+655.MULTI.1 CL # 3
IF 1 CHAN 1 STK RR of 1933+655.ICL001.3



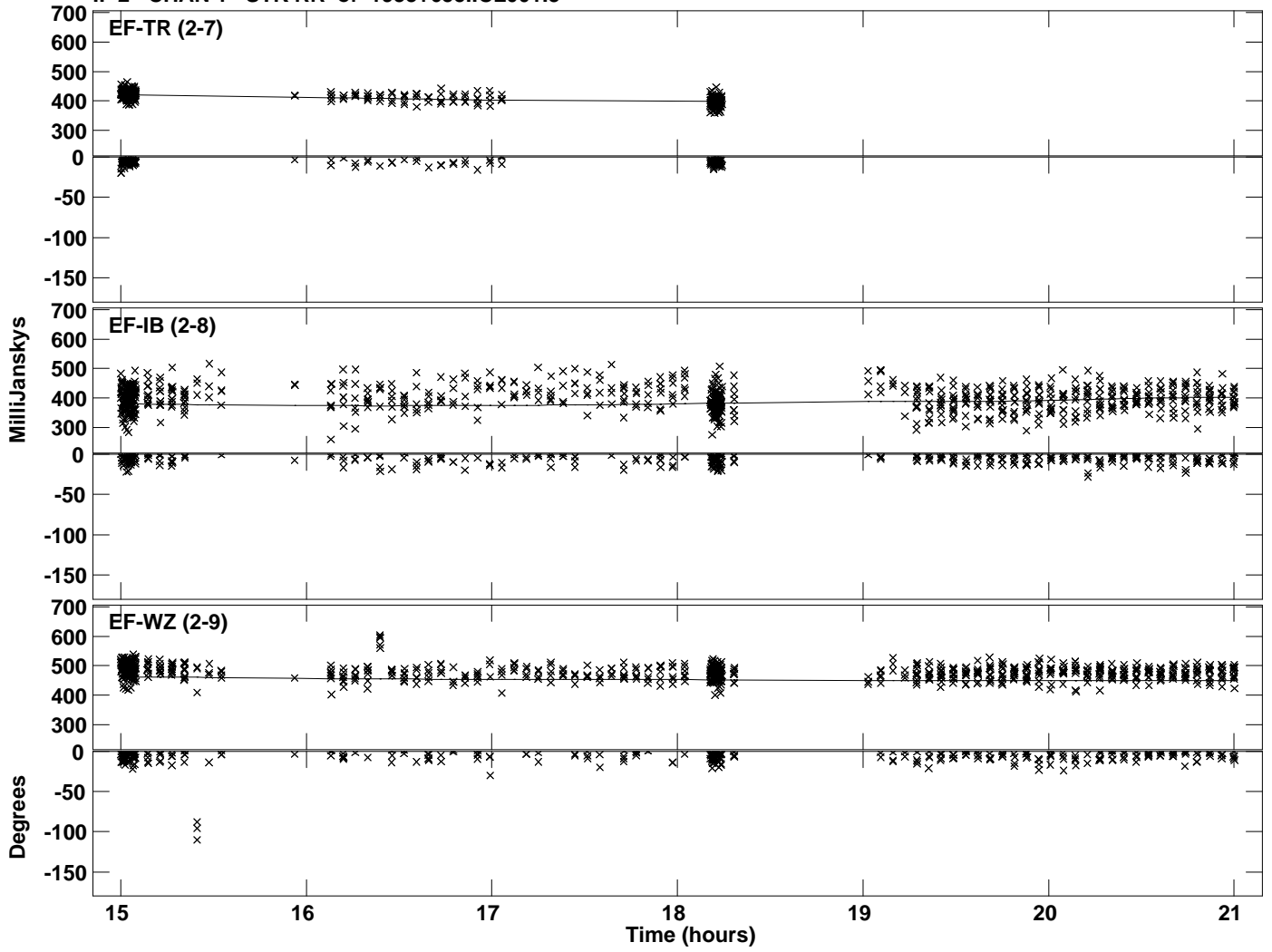
Plot file version 18 created 08-APR-2024 14:58:14
Amplitude andPhase vs Time for 1933+655.MULTI.1 CL # 3
IF 1 CHAN 1 STK RR of 1933+655.ICL001.3



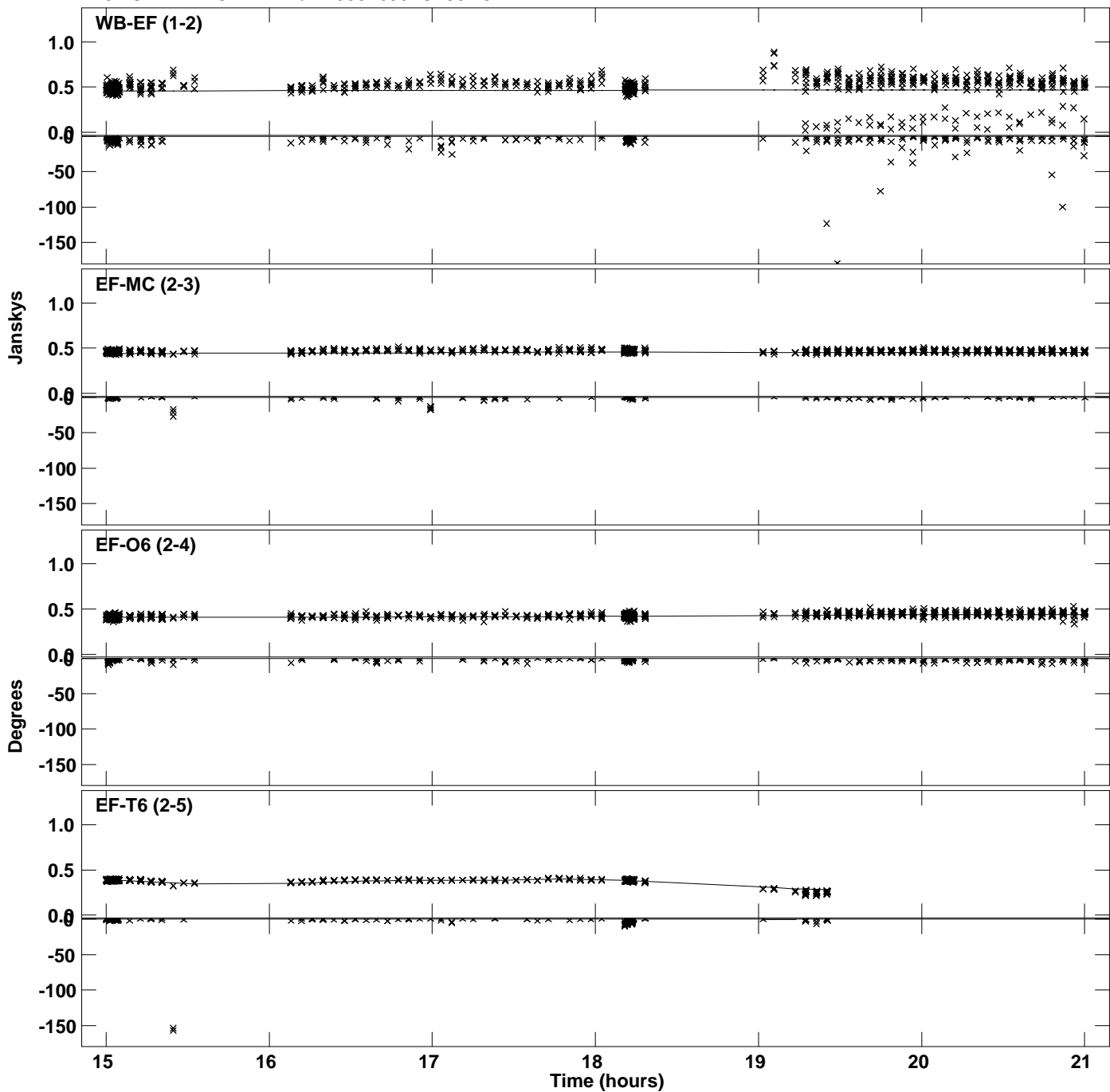
Plot file version 19 created 08-APR-2024 14:58:14
Amplitude andPhase vs Time for 1933+655.MULTI.1 CL # 3
IF 2 CHAN 1 STK RR of 1933+655.ICL001.3



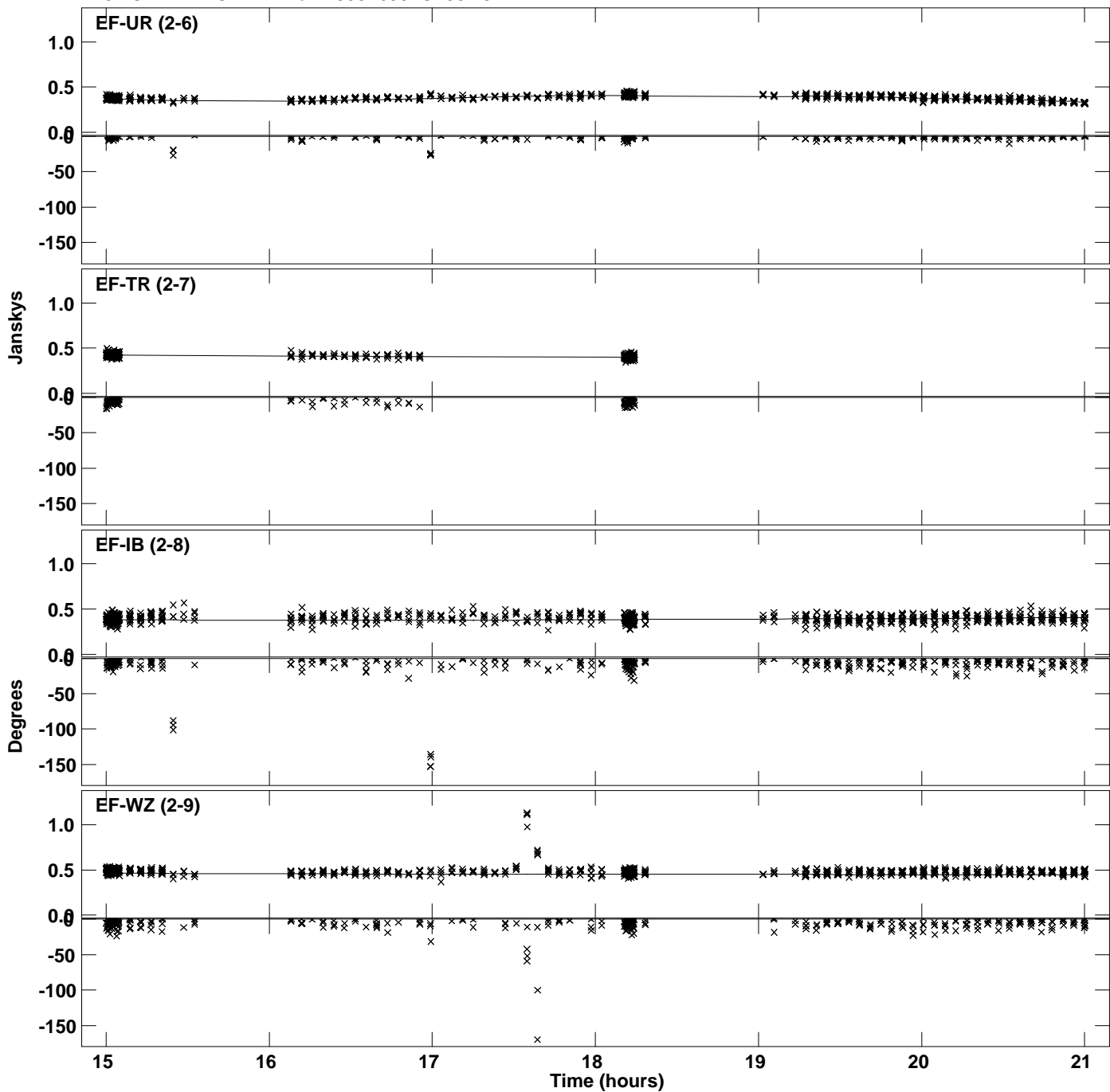
PLot file version 20 created 08-APR-2024 14:58:14
Amplitude andPhase vs Time for 1933+655.MULTI.1 CL # 3
IF 2 CHAN 1 STK RR of 1933+655.ICL001.3



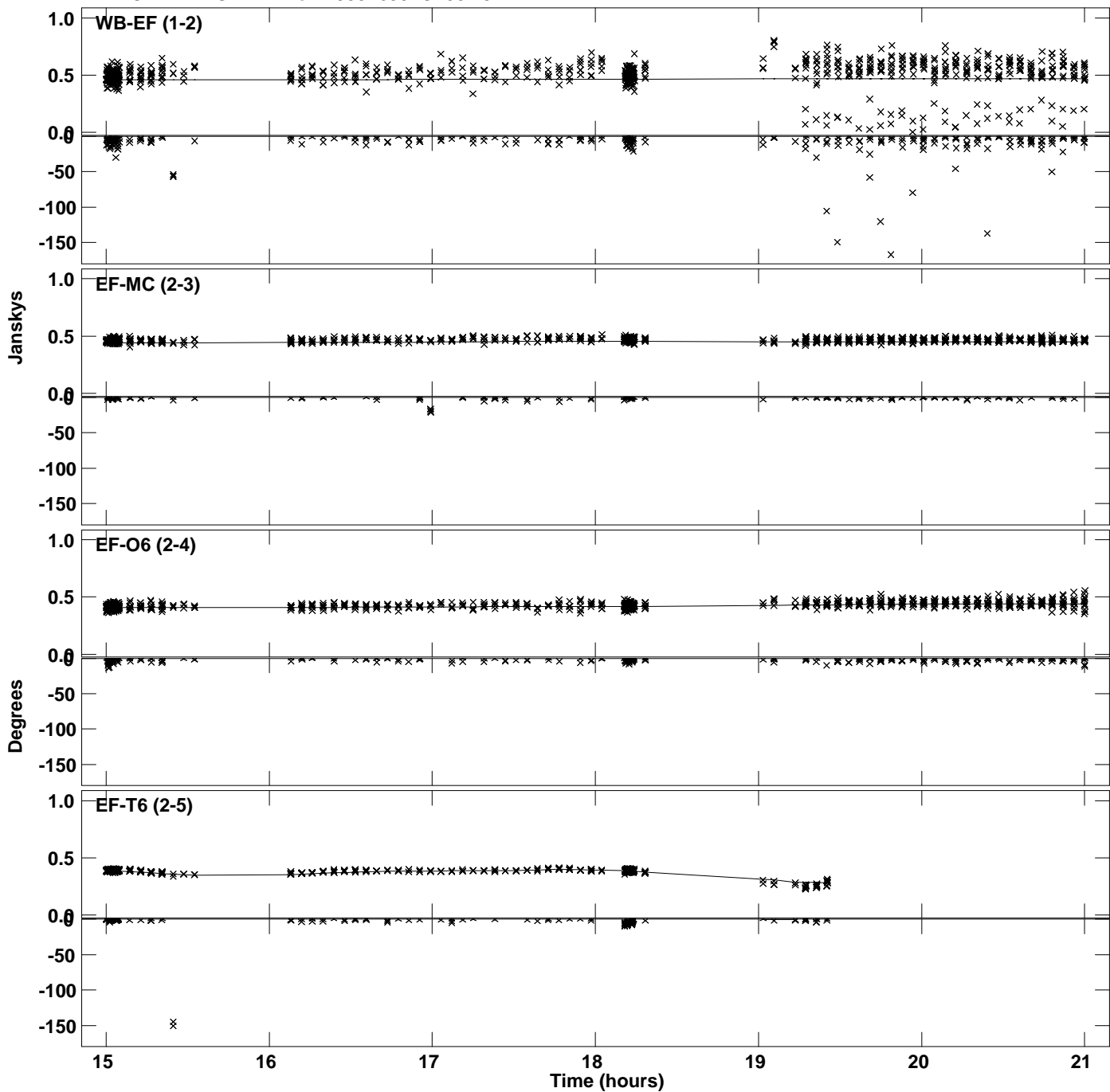
Plot file version 21 created 08-APR-2024 14:58:14
Amplitude and Phase vs Time for 1933+655.MULTI.1 CL # 3
IF 3 CHAN 1 STK RR of 1933+655.ICL001.3



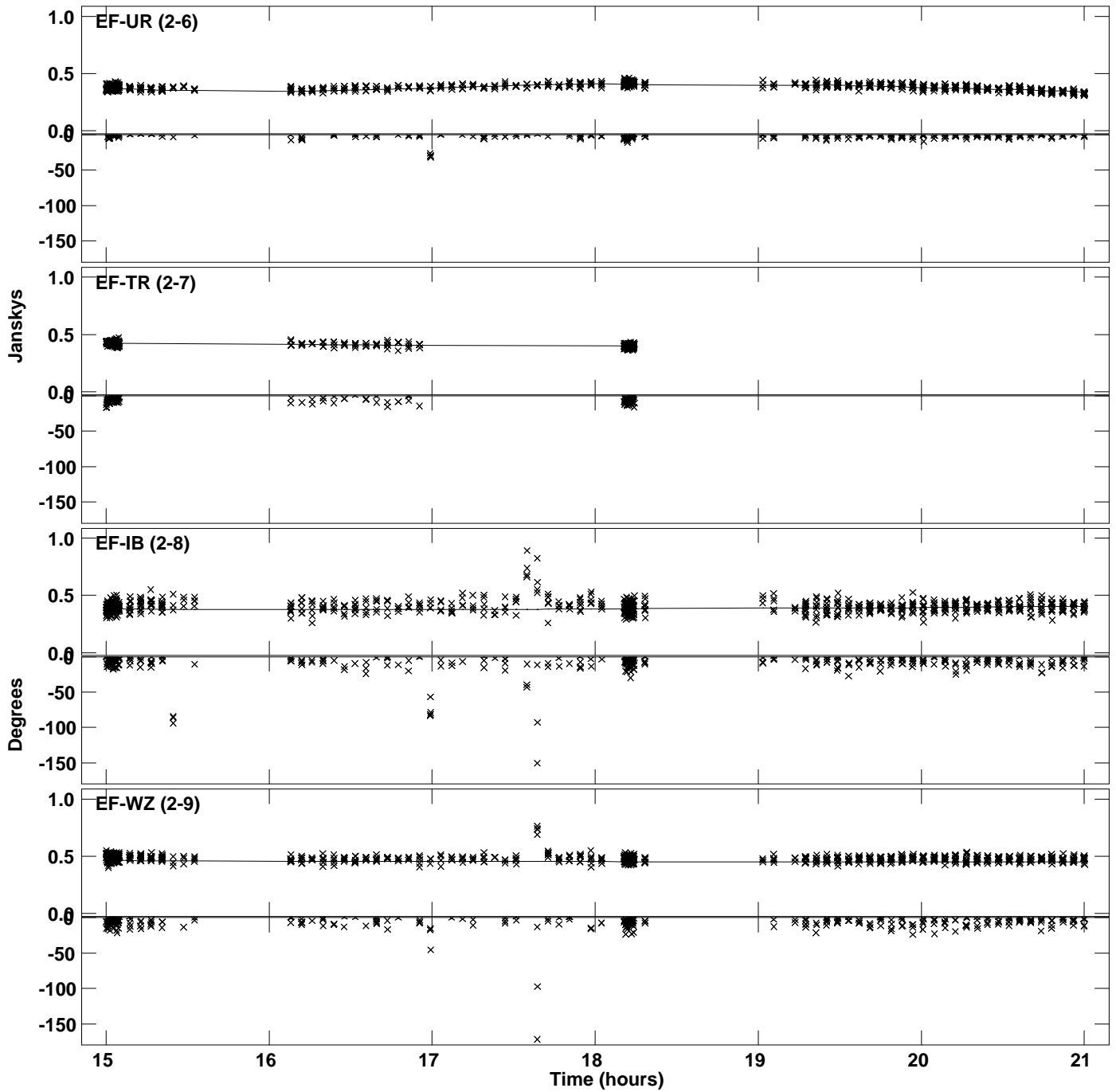
PLot file version 22 created 08-APR-2024 14:58:14
Amplitude andPhase vs Time for 1933+655.MULTI.1 CL # 3
IF 3 CHAN 1 STK RR of 1933+655.ICL001.3



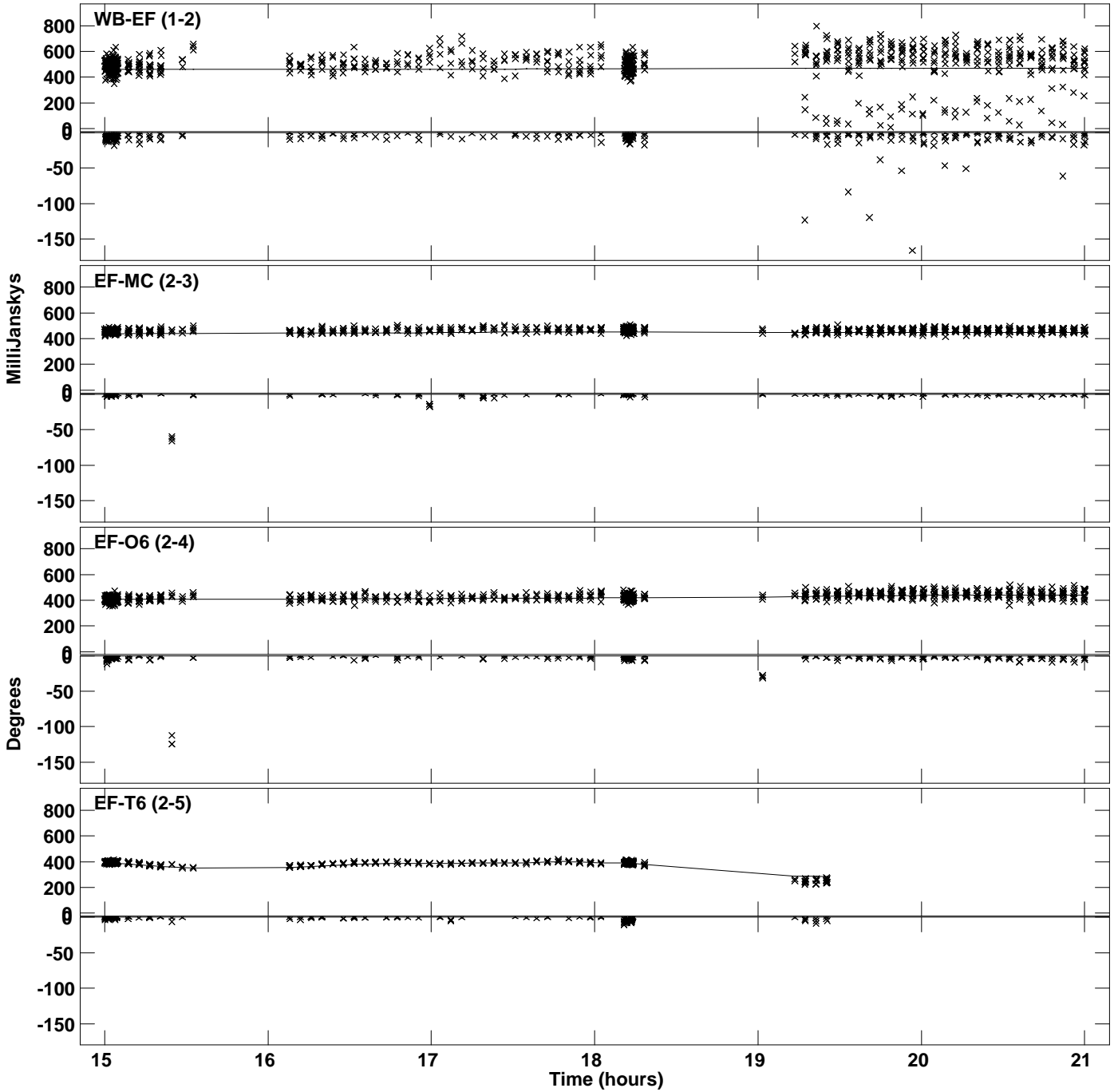
Plot file version 23 created 08-APR-2024 14:58:14
Amplitude andPhase vs Time for 1933+655.MULTI.1 CL # 3
IF 4 CHAN 1 STK RR of 1933+655.ICL001.3



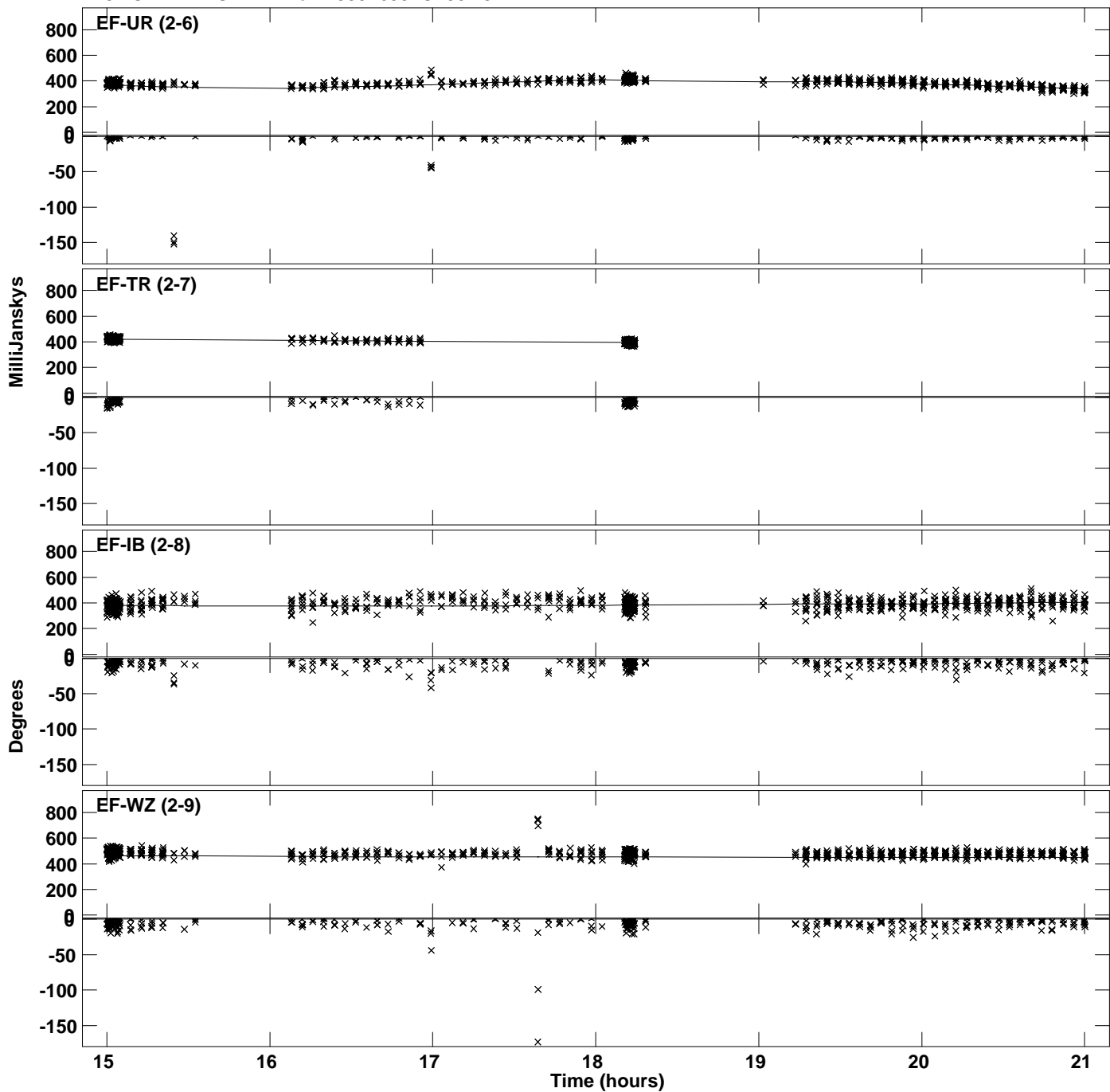
Plot file version 24 created 08-APR-2024 14:58:14
Amplitude andPhase vs Time for 1933+655.MULTI.1 CL # 3
IF 4 CHAN 1 STK RR of 1933+655.ICL001.3



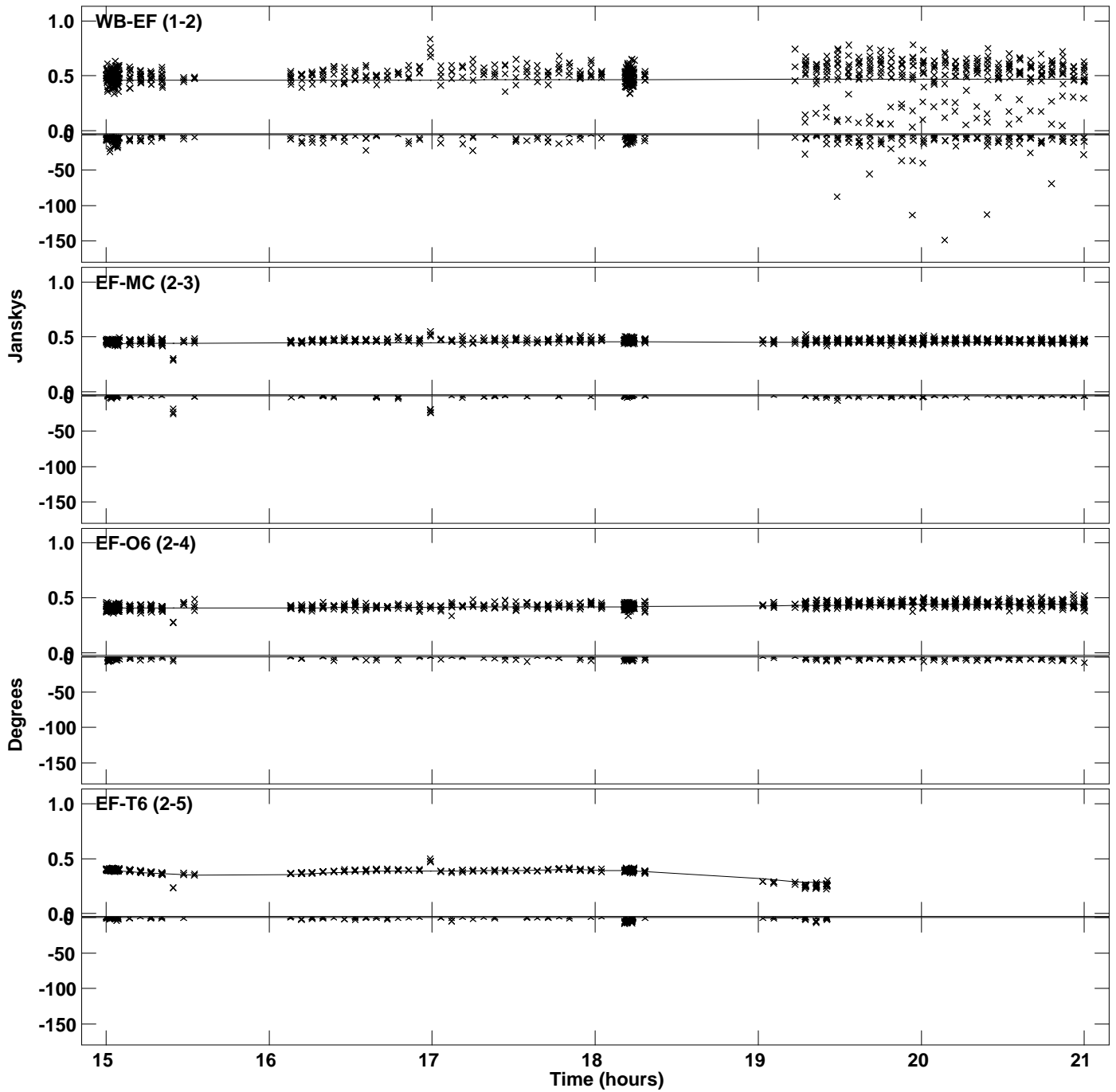
Plot file version 25 created 08-APR-2024 14:58:15
Amplitude andPhase vs Time for 1933+655.MULTI.1 CL # 3
IF 5 CHAN 1 STK RR of 1933+655.ICL001.3



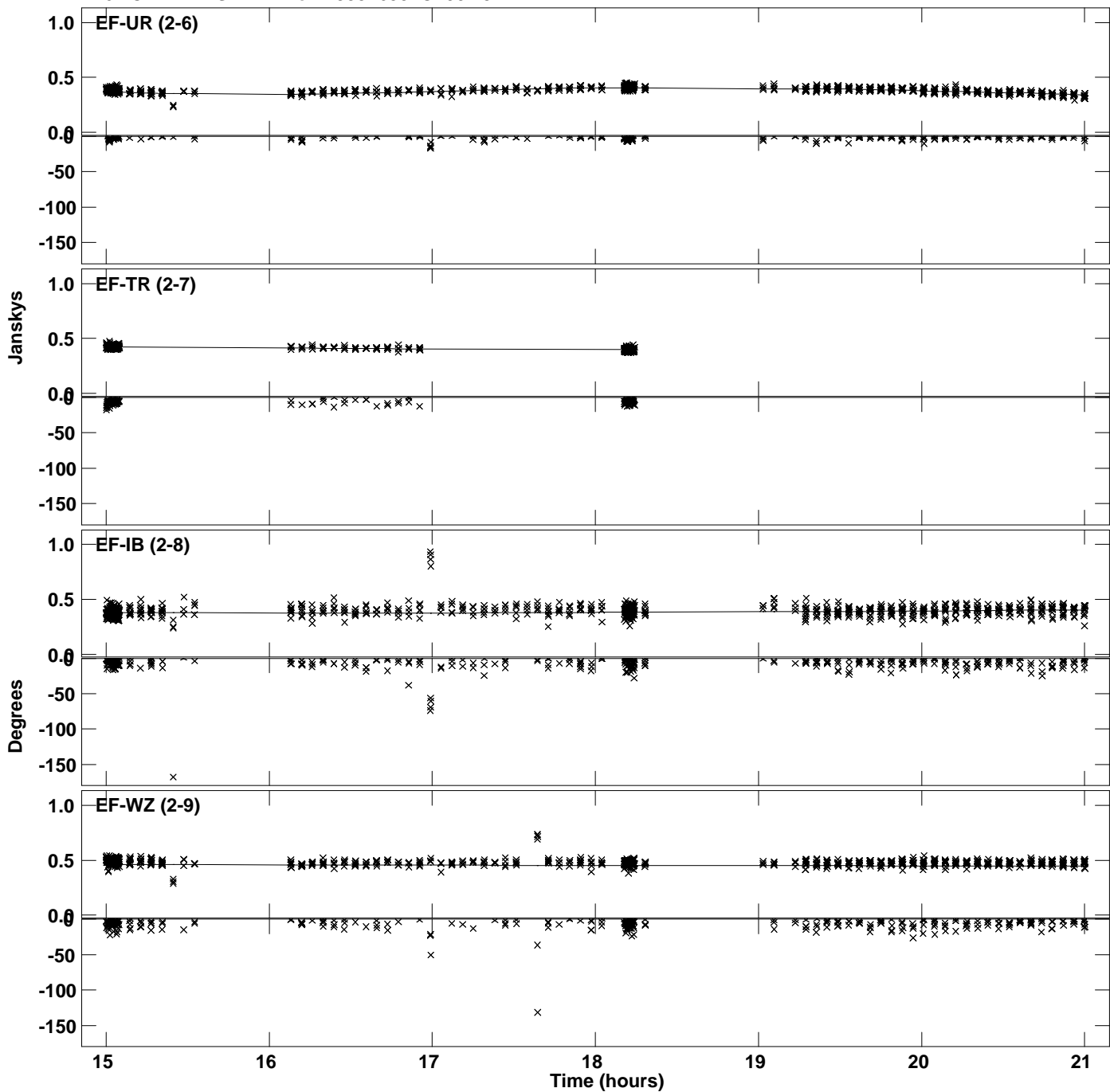
PLot file version 26 created 08-APR-2024 14:58:15
Amplitude andPhase vs Time for 1933+655.MULTI.1 CL # 3
IF 5 CHAN 1 STK RR of 1933+655.ICL001.3



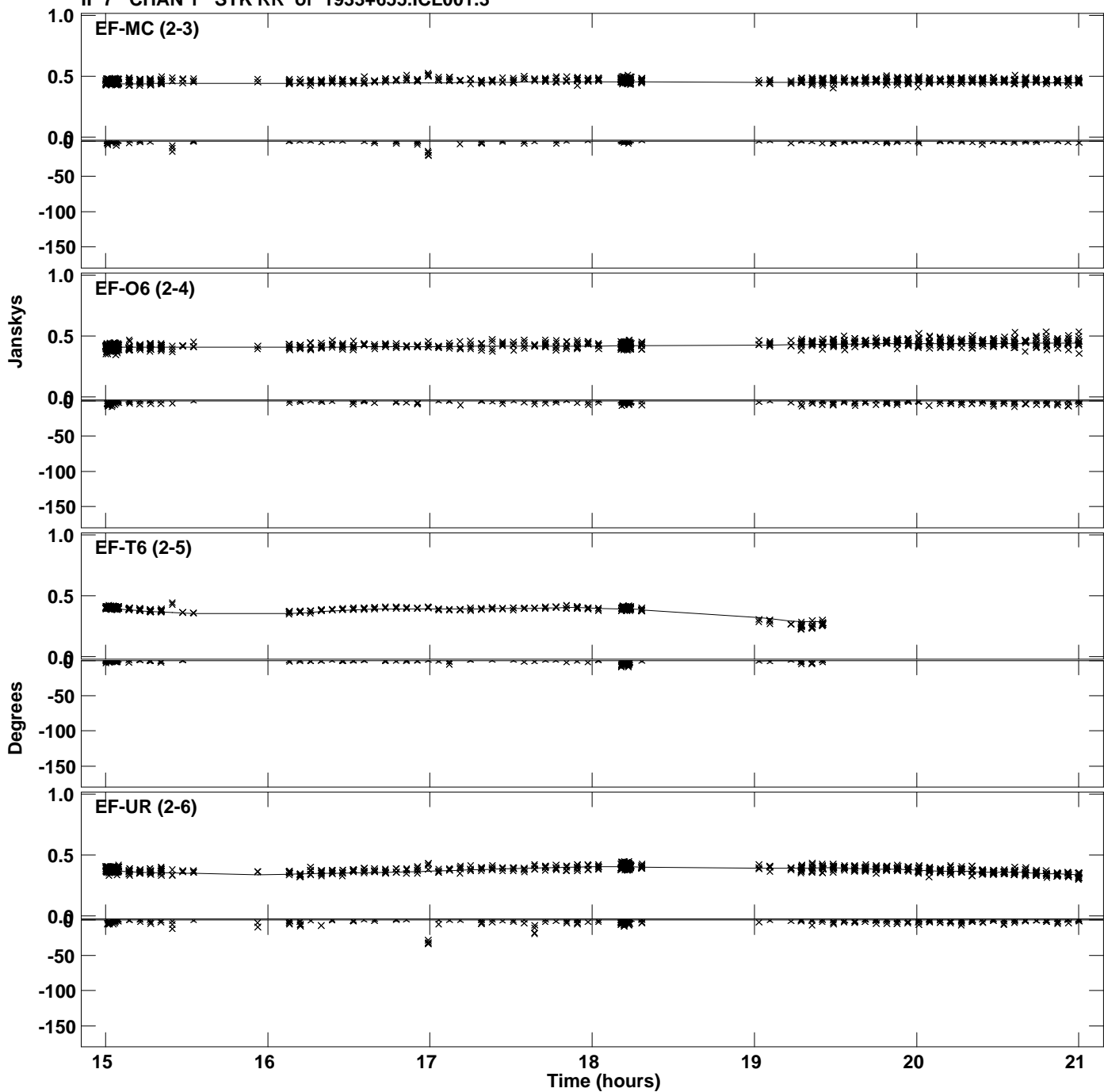
Plot file version 27 created 08-APR-2024 14:58:15
Amplitude and Phase vs Time for 1933+655.MULTI.1 CL # 3
IF 6 CHAN 1 STK RR of 1933+655.ICL001.3



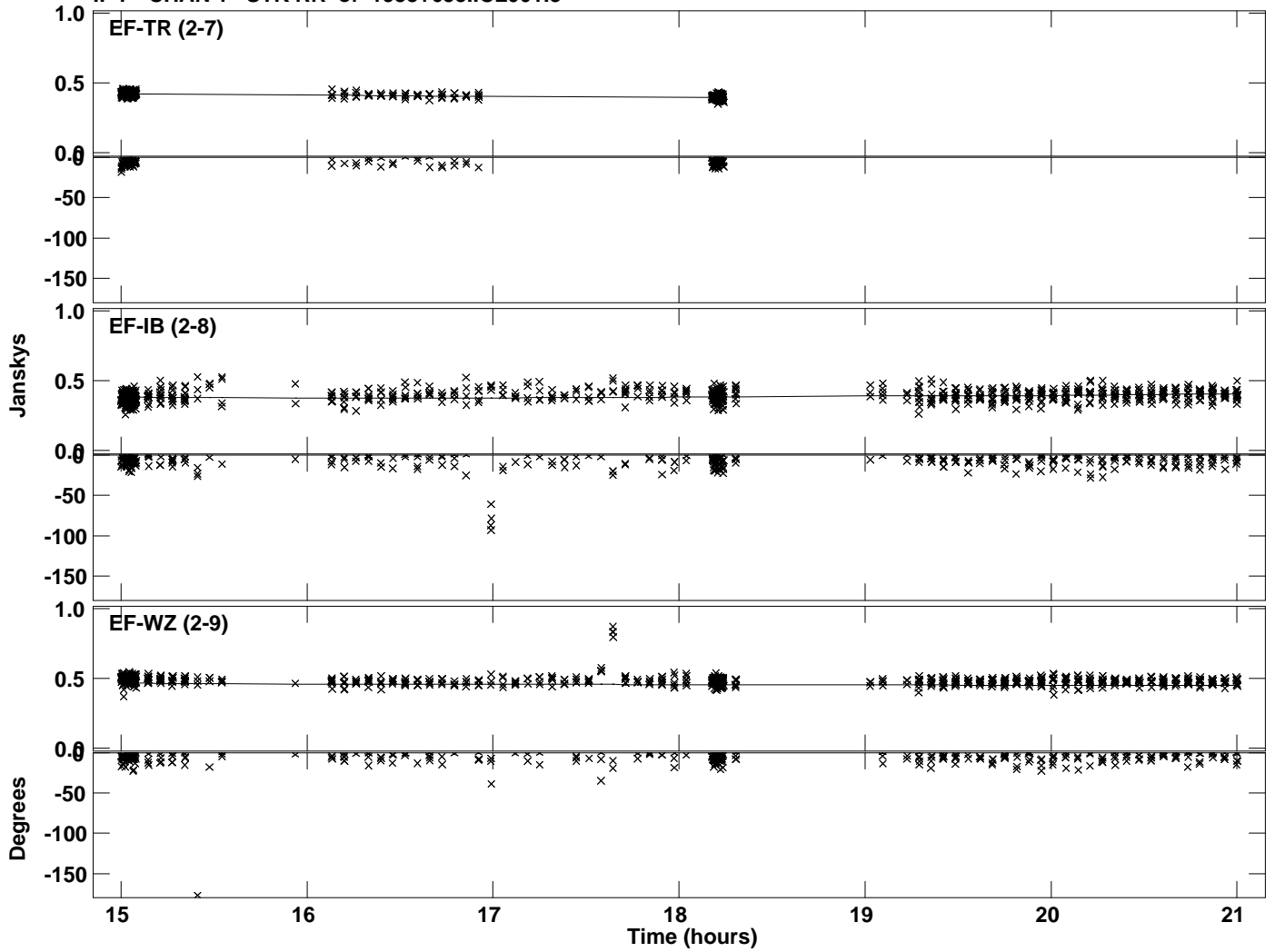
Plot file version 28 created 08-APR-2024 14:58:15
Amplitude and Phase vs Time for 1933+655.MULTI.1 CL # 3
IF 6 CHAN 1 STK RR of 1933+655.ICL001.3



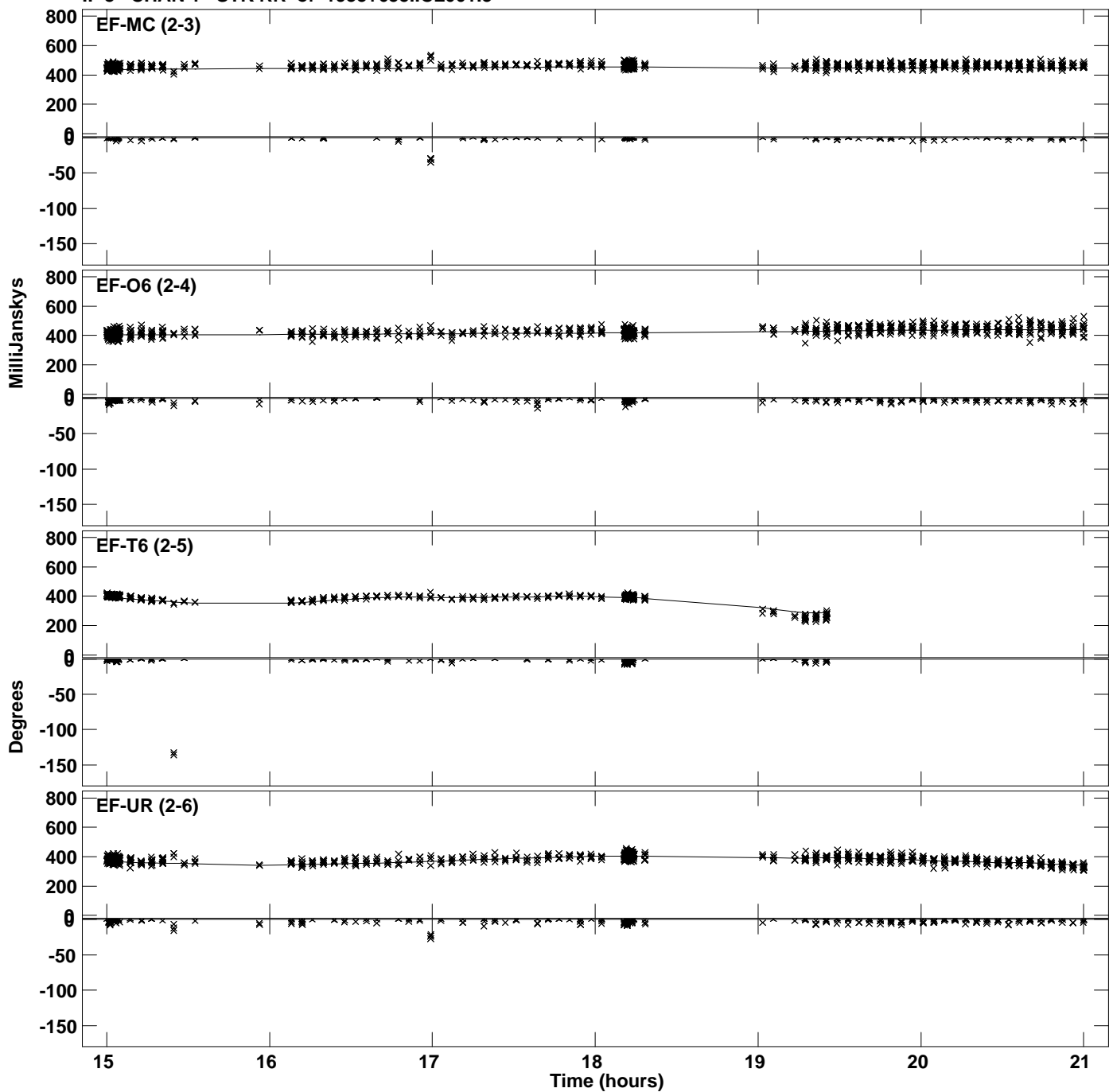
Plot file version 29 created 08-APR-2024 14:58:15
Amplitude andPhase vs Time for 1933+655.MULTI.1 CL # 3
IF 7 CHAN 1 STK RR of 1933+655.ICL001.3



Plot file version 30 created 08-APR-2024 14:58:15
Amplitude andPhase vs Time for 1933+655.MULTI.1 CL # 3
IF 7 CHAN 1 STK RR of 1933+655.ICL001.3



PLot file version 31 created 08-APR-2024 14:58:15
Amplitude andPhase vs Time for 1933+655.MULTI.1 CL # 3
IF 8 CHAN 1 STK RR of 1933+655.ICL001.3



PLot file version 32 created 08-APR-2024 14:58:15
Amplitude andPhase vs Time for 1933+655.MULTI.1 CL # 3
IF 8 CHAN 1 STK RR of 1933+655.ICL001.3

