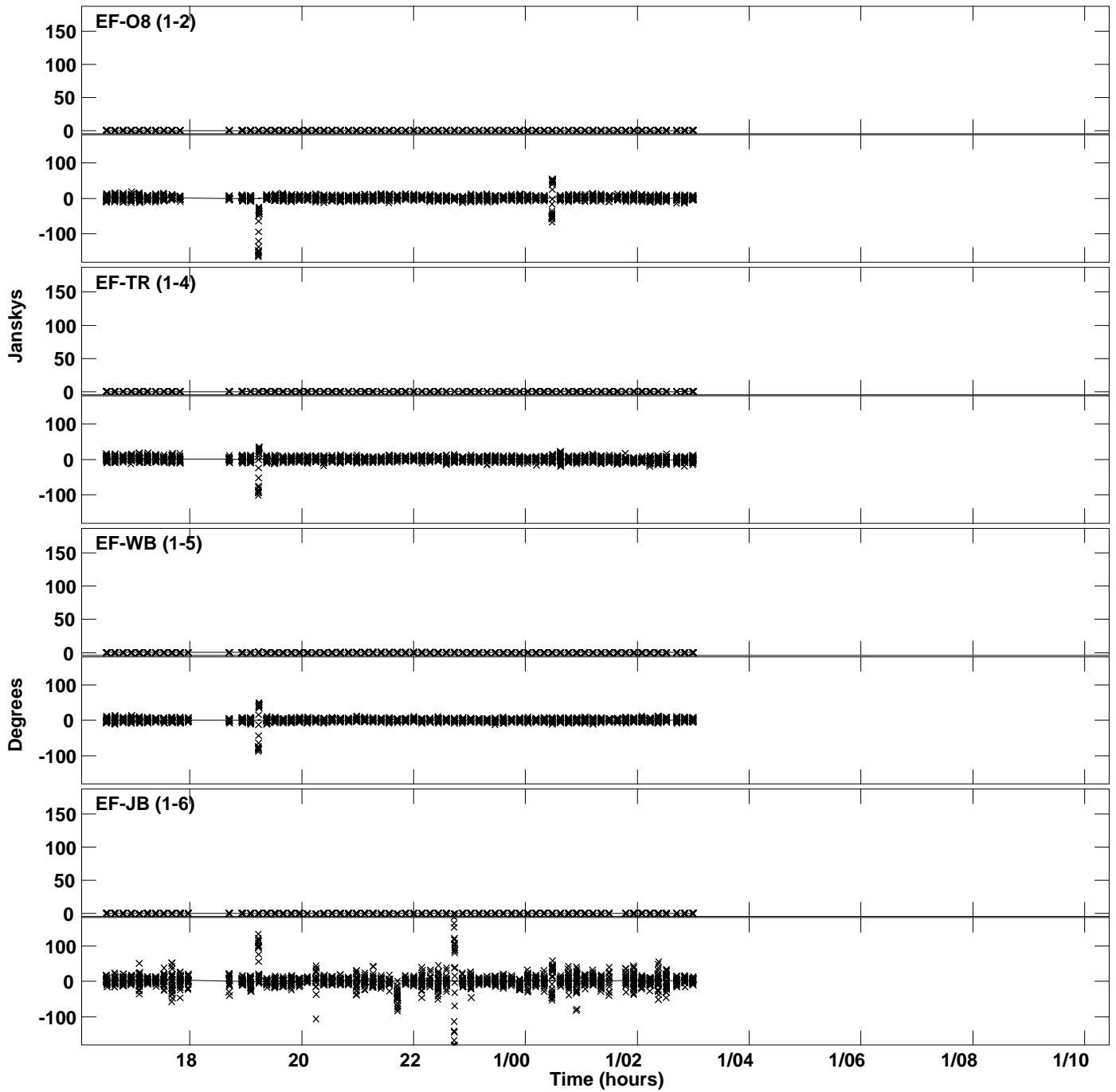
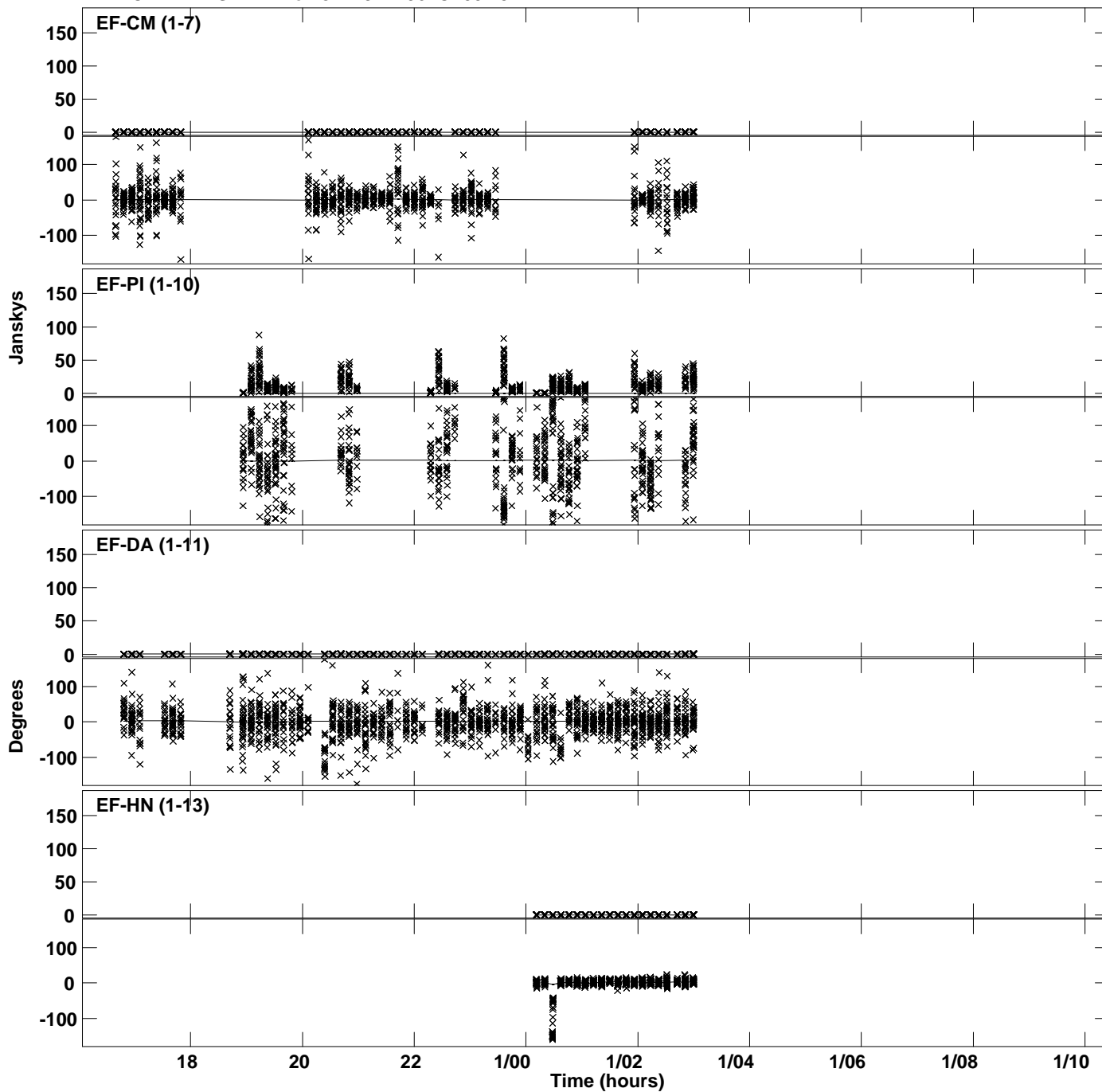


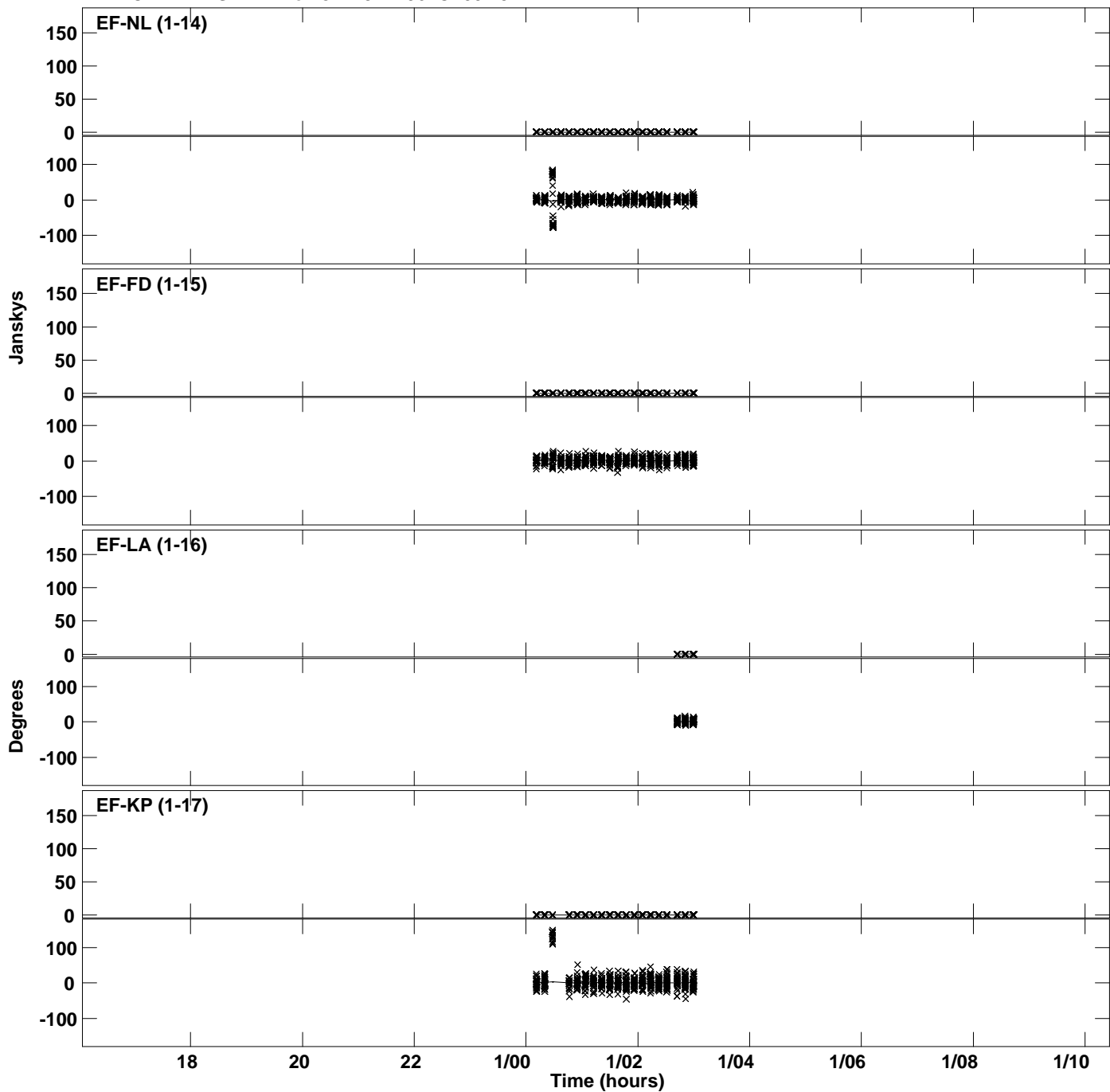
Plot file version 1 created 08-NOV-2019 12:09:12
Amplitude andPhase vs Time for J1419+2706.MULTI.1 CL # 3
IF 1 CHAN 1 STK LL of J1419+2706.ICL001.3



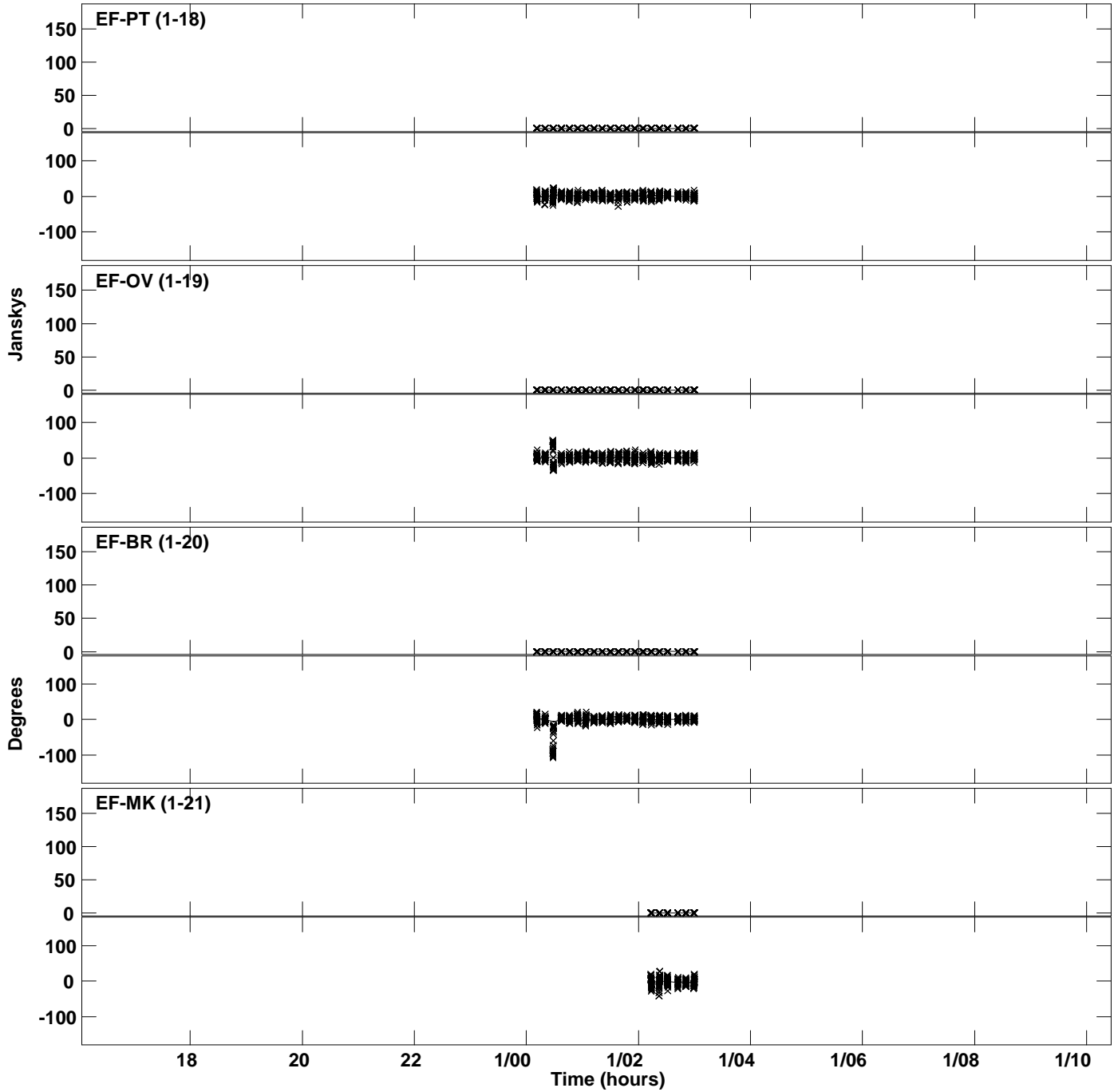
Plot file version 2 created 08-NOV-2019 12:09:12
Amplitude and Phase vs Time for J1419+2706.MULTI.1 CL # 3
IF 1 CHAN 1 STK LL of J1419+2706.ICL001.3



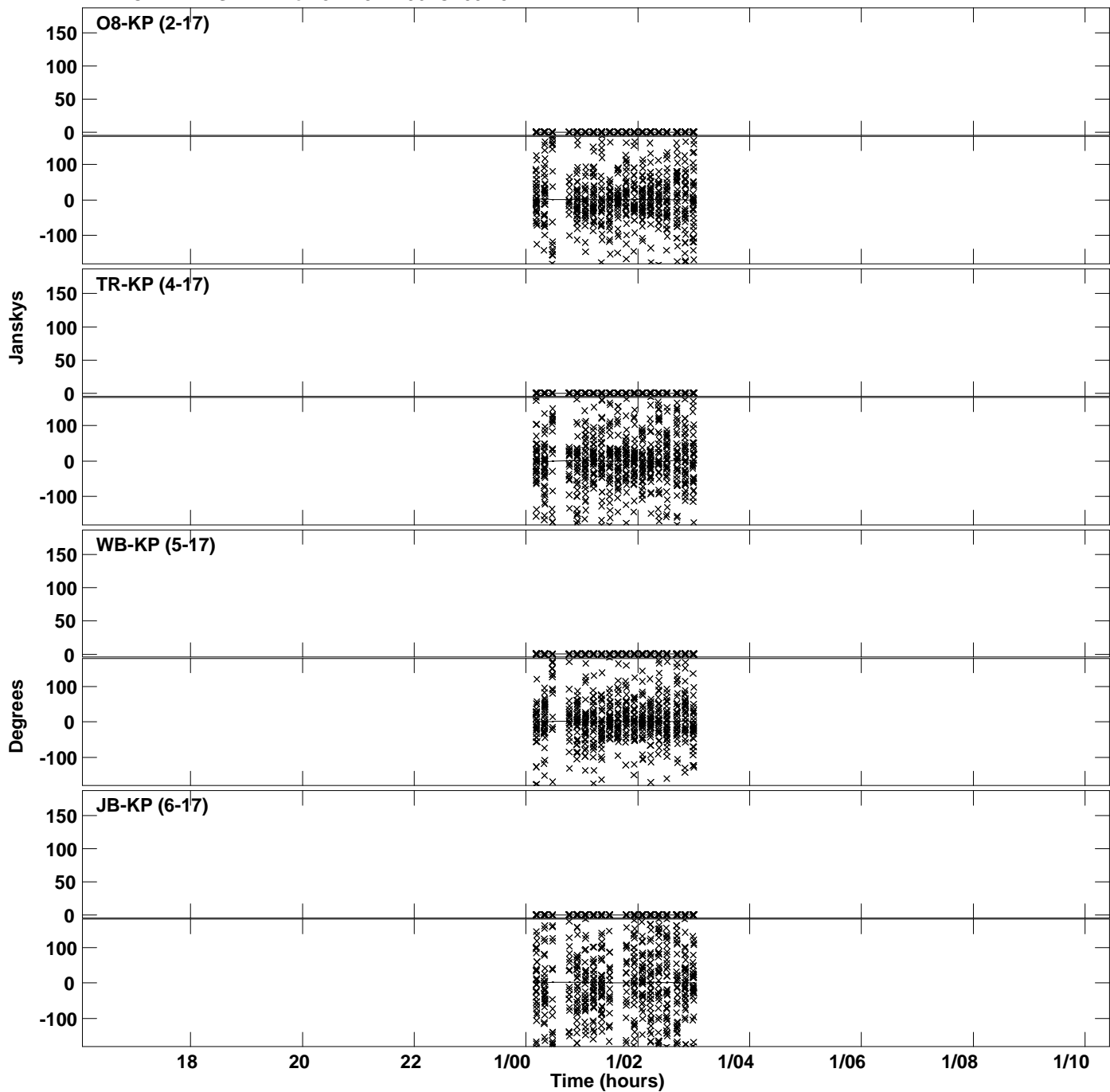
PLot file version 3 created 08-NOV-2019 12:09:12
Amplitude andPhase vs Time for J1419+2706.MULTI.1 CL # 3
IF 1 CHAN 1 STK LL of J1419+2706.ICL001.3



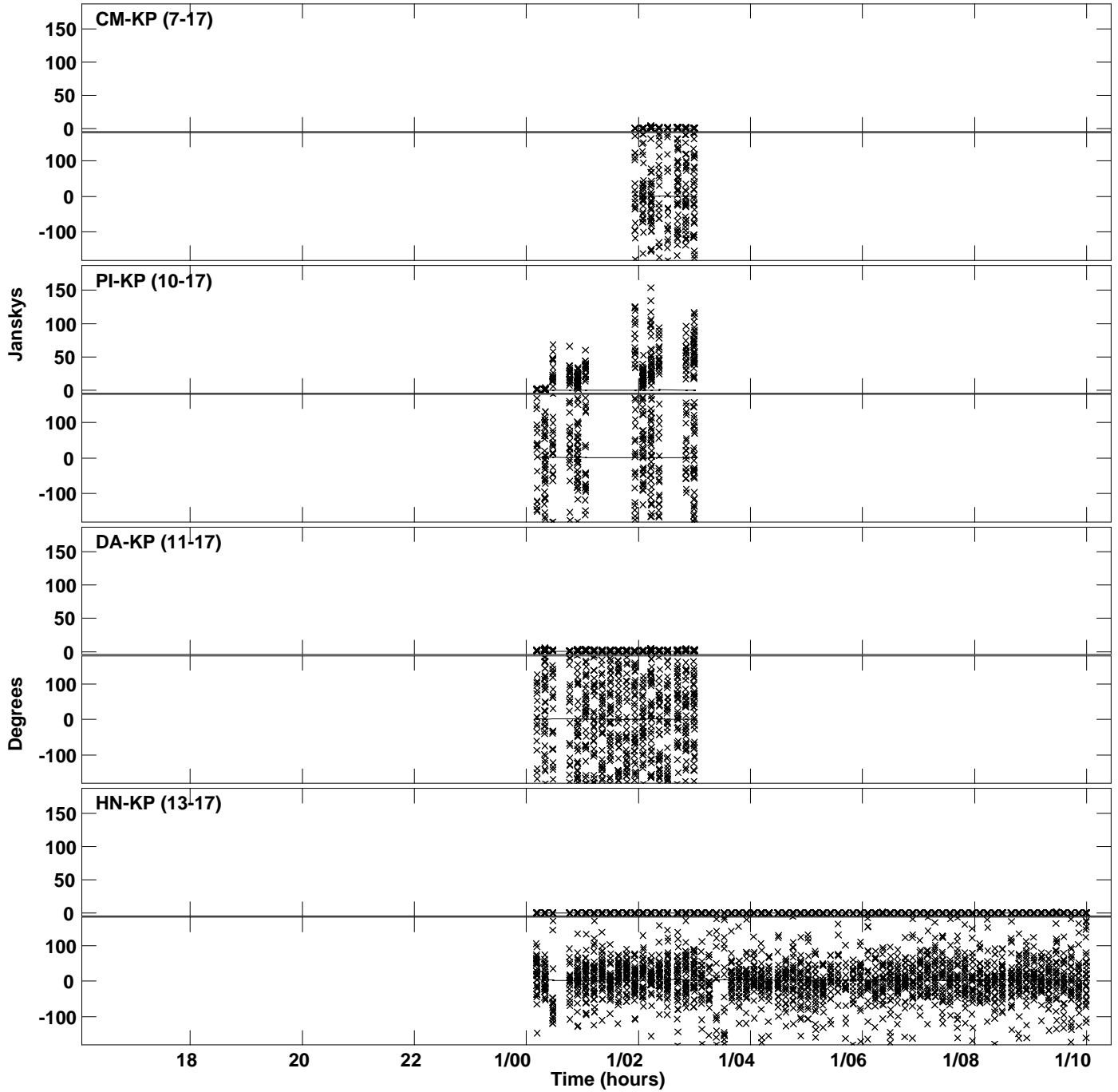
PLot file version 4 created 08-NOV-2019 12:09:12
Amplitude andPhase vs Time for J1419+2706.MULTI.1 CL # 3
IF 1 CHAN 1 STK LL of J1419+2706.ICL001.3



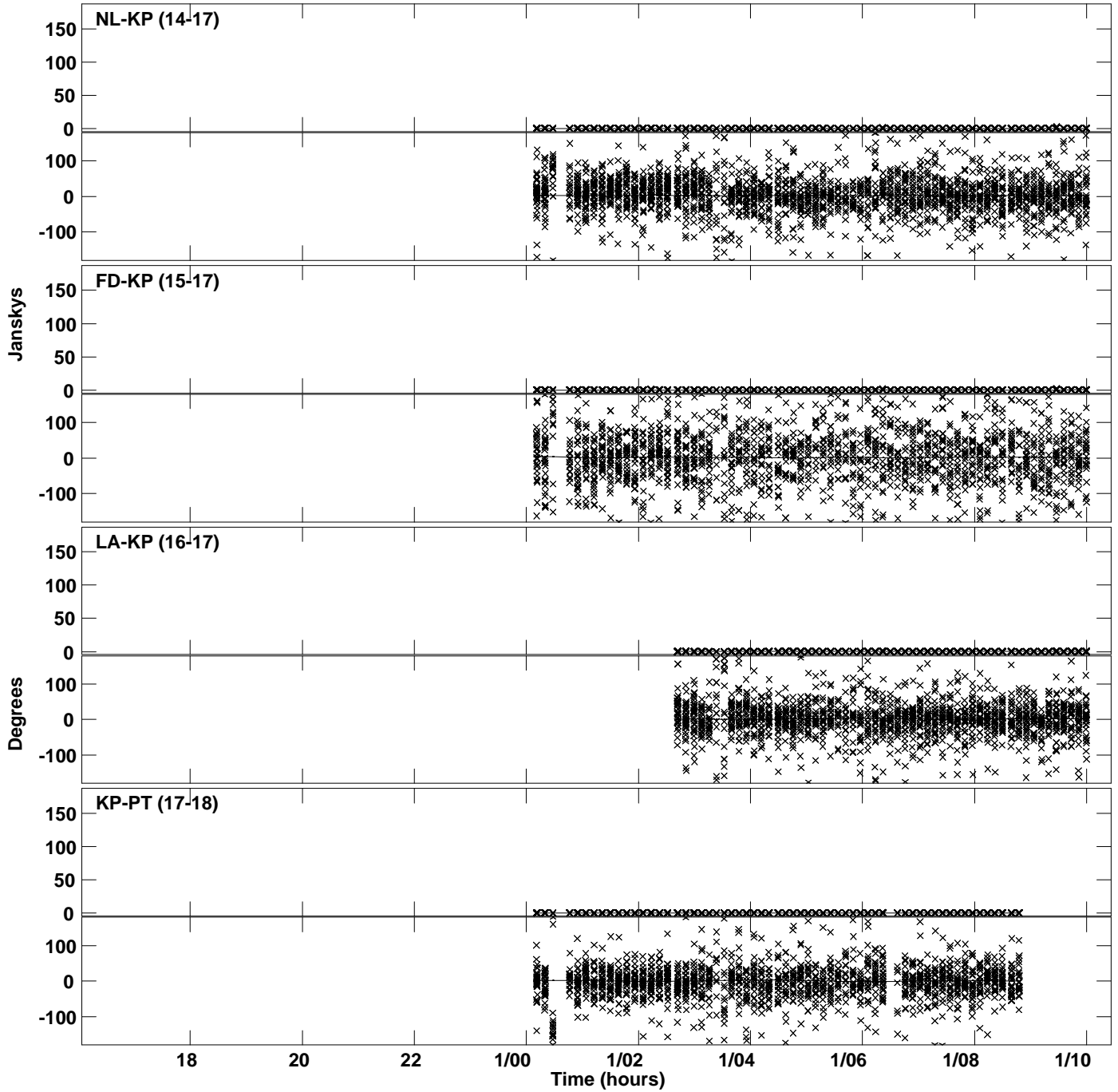
PLot file version 5 created 08-NOV-2019 12:09:12
Amplitude andPhase vs Time for J1419+2706.MULTI.1 CL # 3
IF 1 CHAN 1 STK LL of J1419+2706.ICL001.3



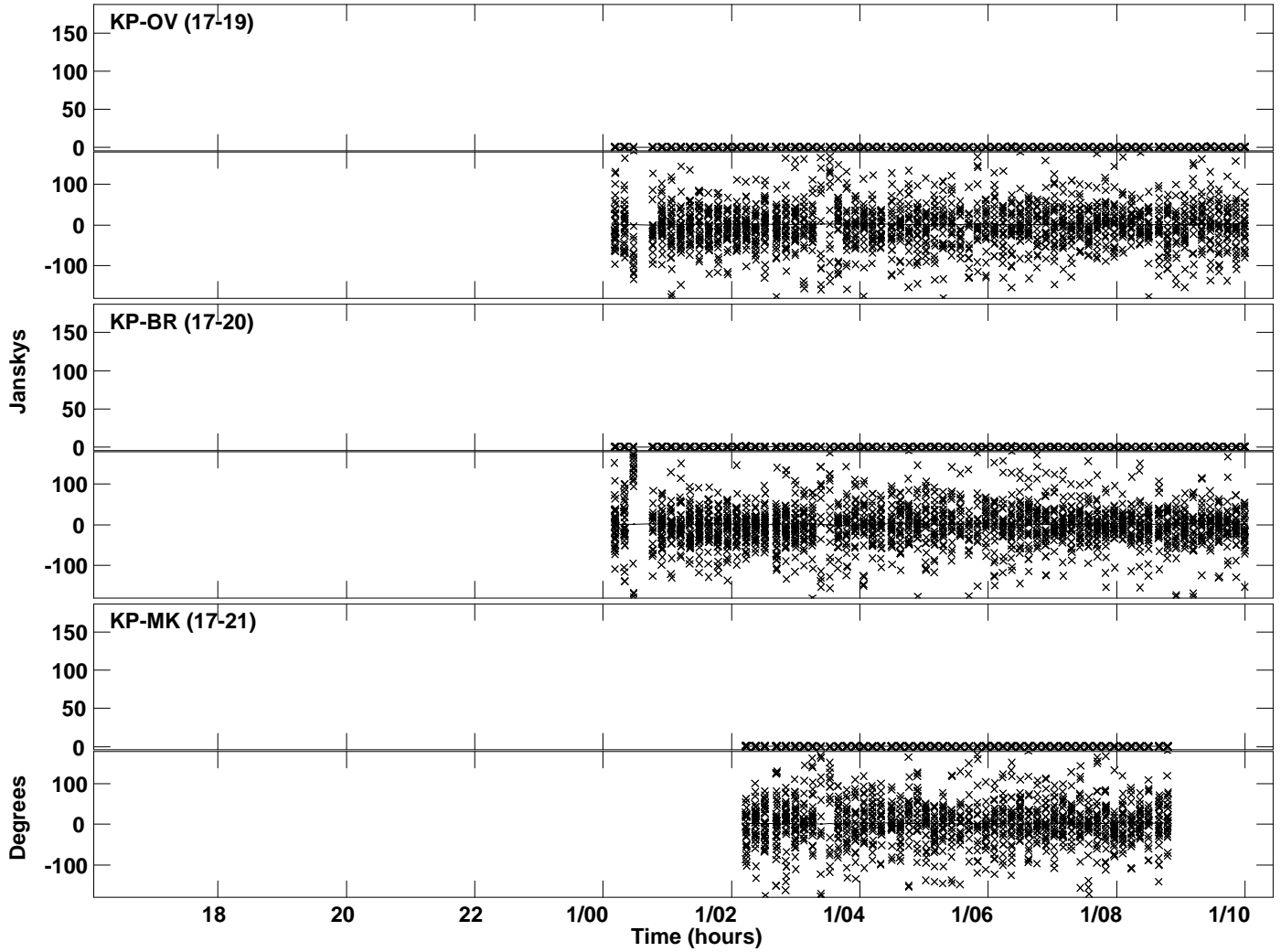
PLot file version 6 created 08-NOV-2019 12:09:12
Amplitude andPhase vs Time for J1419+2706.MULTI.1 CL # 3
IF 1 CHAN 1 STK LL of J1419+2706.ICL001.3



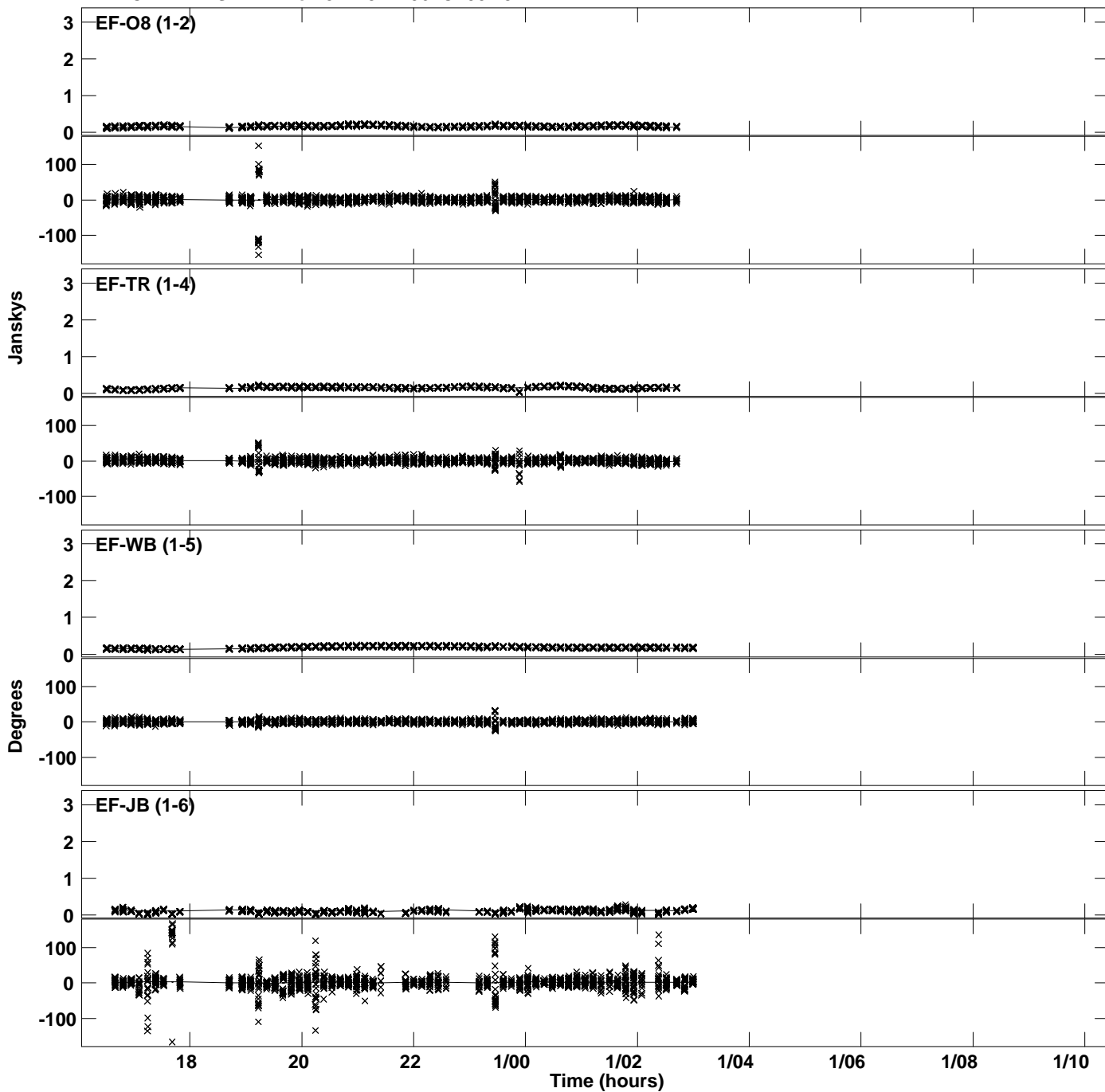
Plot file version 7 created 08-NOV-2019 12:09:12
Amplitude and Phase vs Time for J1419+2706.MULTI.1 CL # 3
IF 1 CHAN 1 STK LL of J1419+2706.ICL001.3



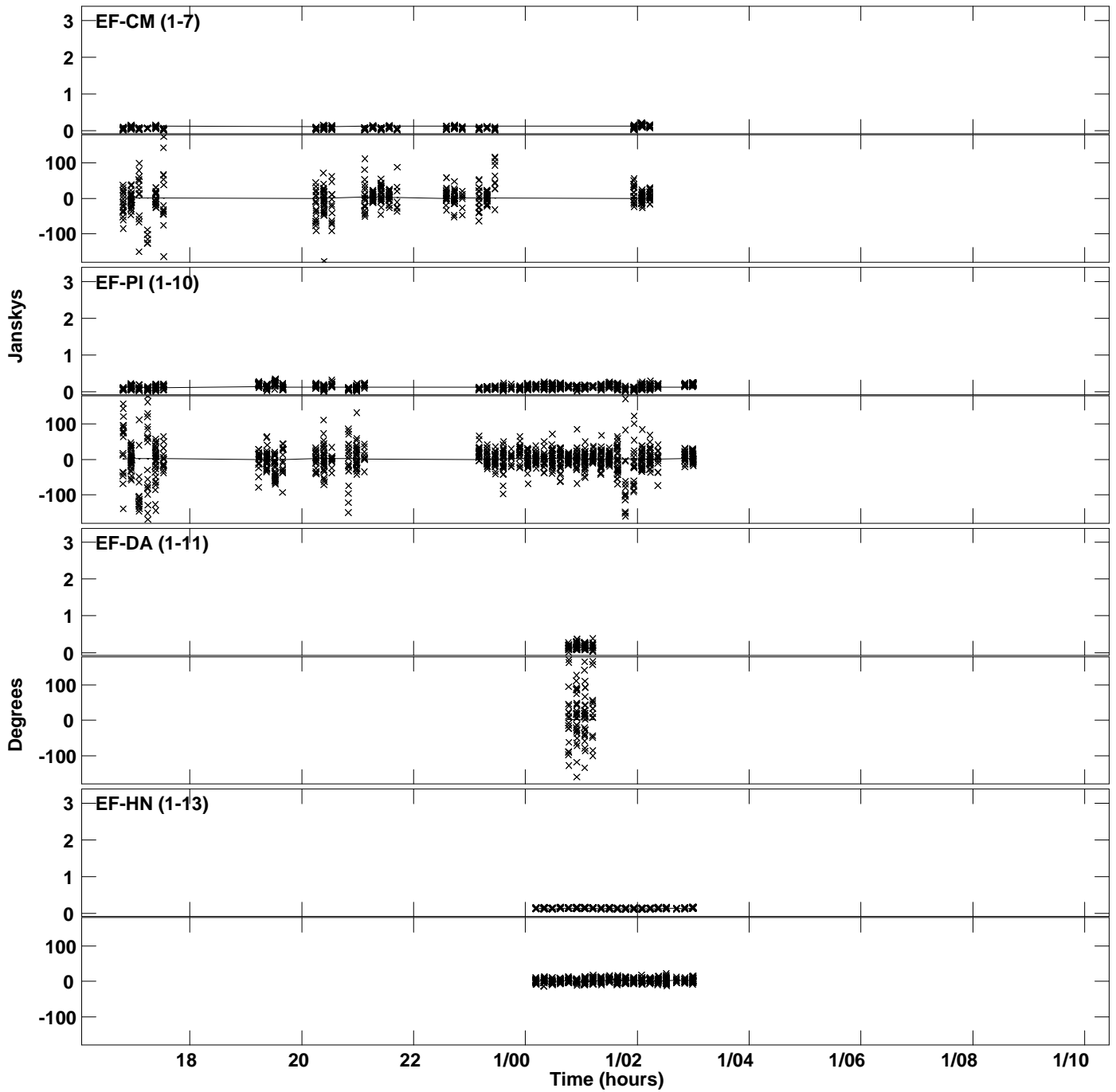
PLot file version 8 created 08-NOV-2019 12:09:12
Amplitude andPhase vs Time for J1419+2706.MULTI.1 CL # 3
IF 1 CHAN 1 STK LL of J1419+2706.ICL001.3



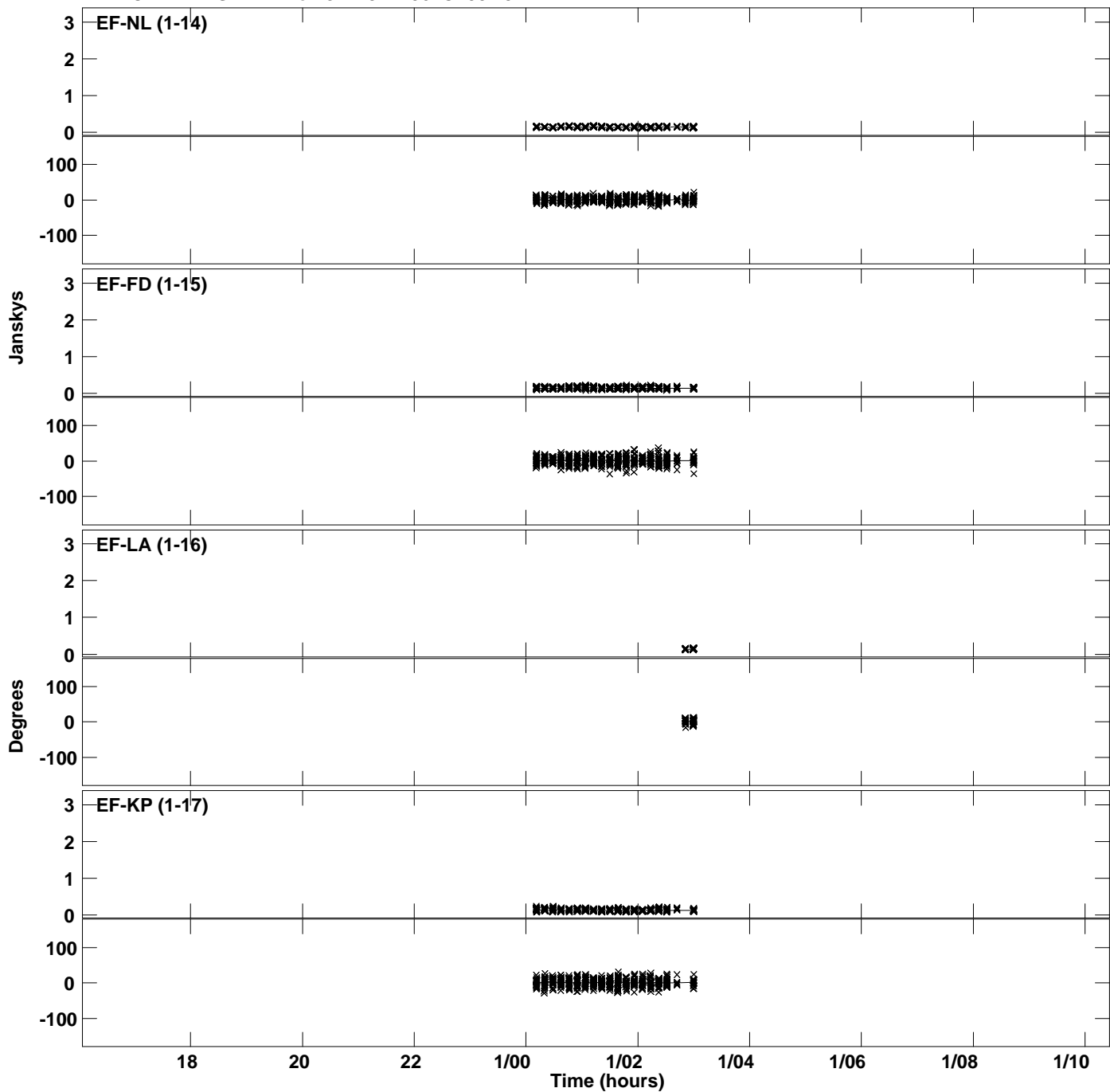
Plot file version 9 created 08-NOV-2019 12:09:12
Amplitude andPhase vs Time for J1419+2706.MULTI.1 CL # 3
IF 1 CHAN 1 STK RR of J1419+2706.ICL001.3



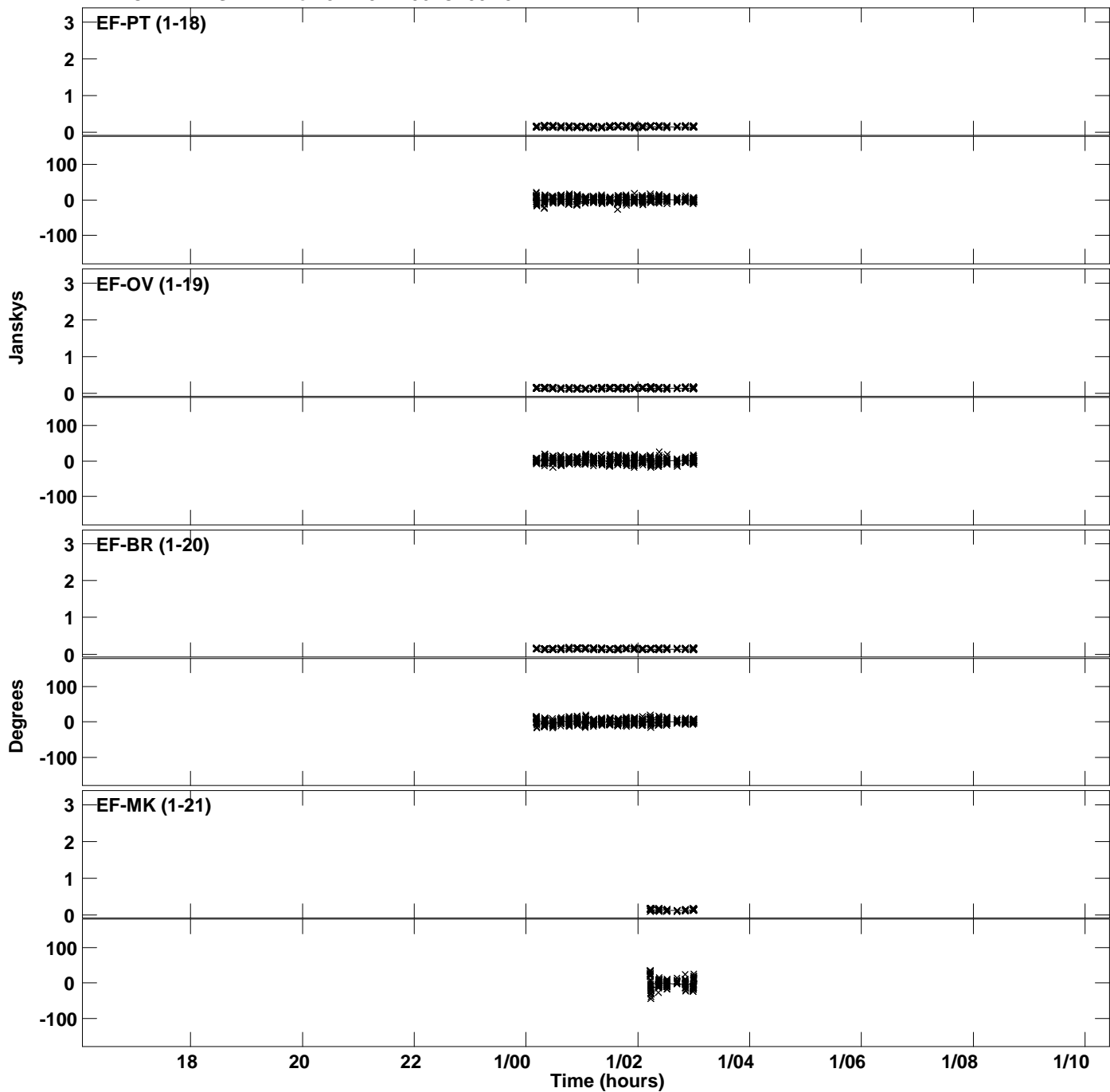
Plot file version 10 created 08-NOV-2019 12:09:12
Amplitude andPhase vs Time for J1419+2706.MULTI.1 CL # 3
IF 1 CHAN 1 STK RR of J1419+2706.ICL001.3



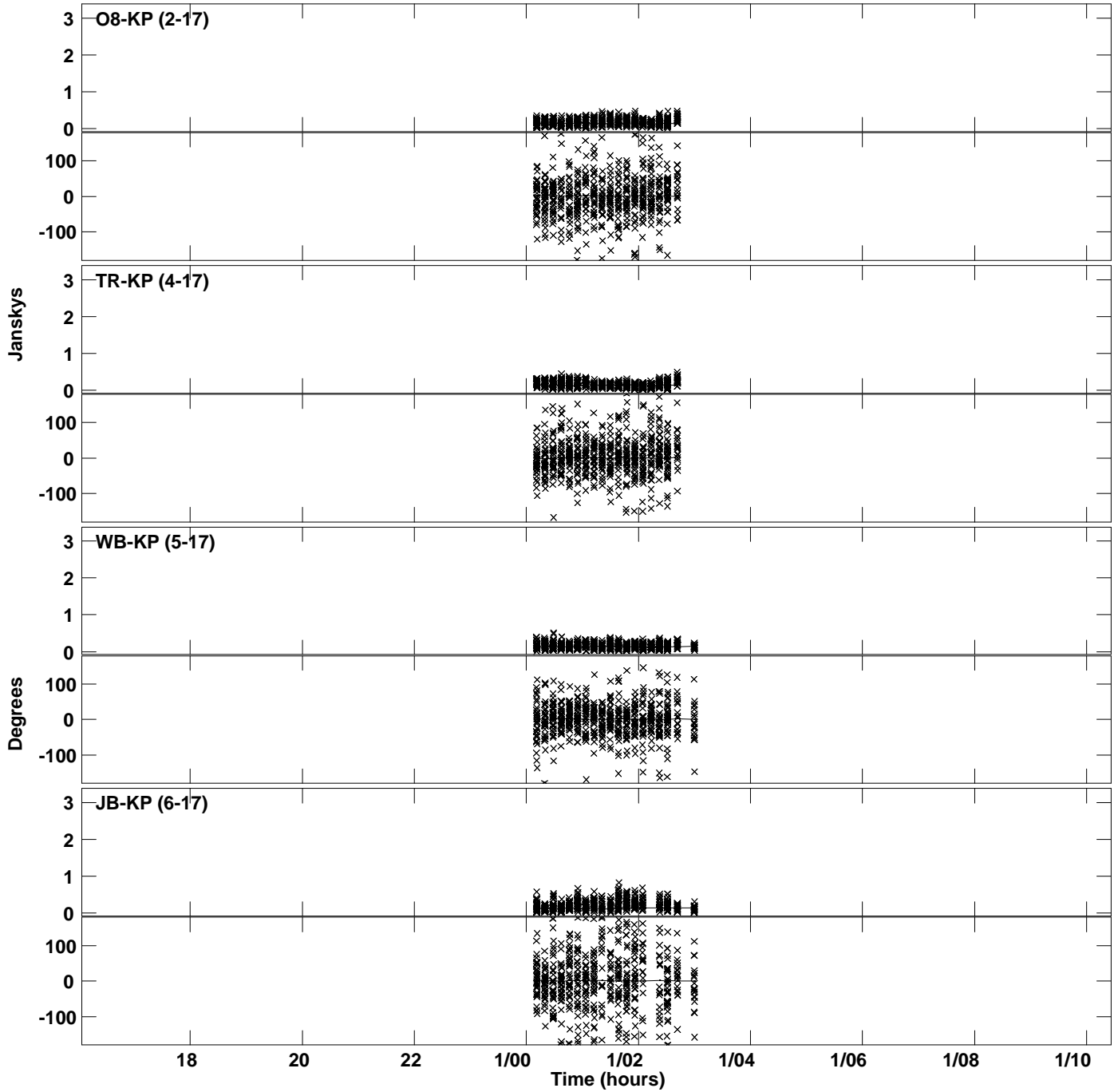
Plot file version 11 created 08-NOV-2019 12:09:12
Amplitude and Phase vs Time for J1419+2706.MULTI.1 CL # 3
IF 1 CHAN 1 STK RR of J1419+2706.ICL001.3



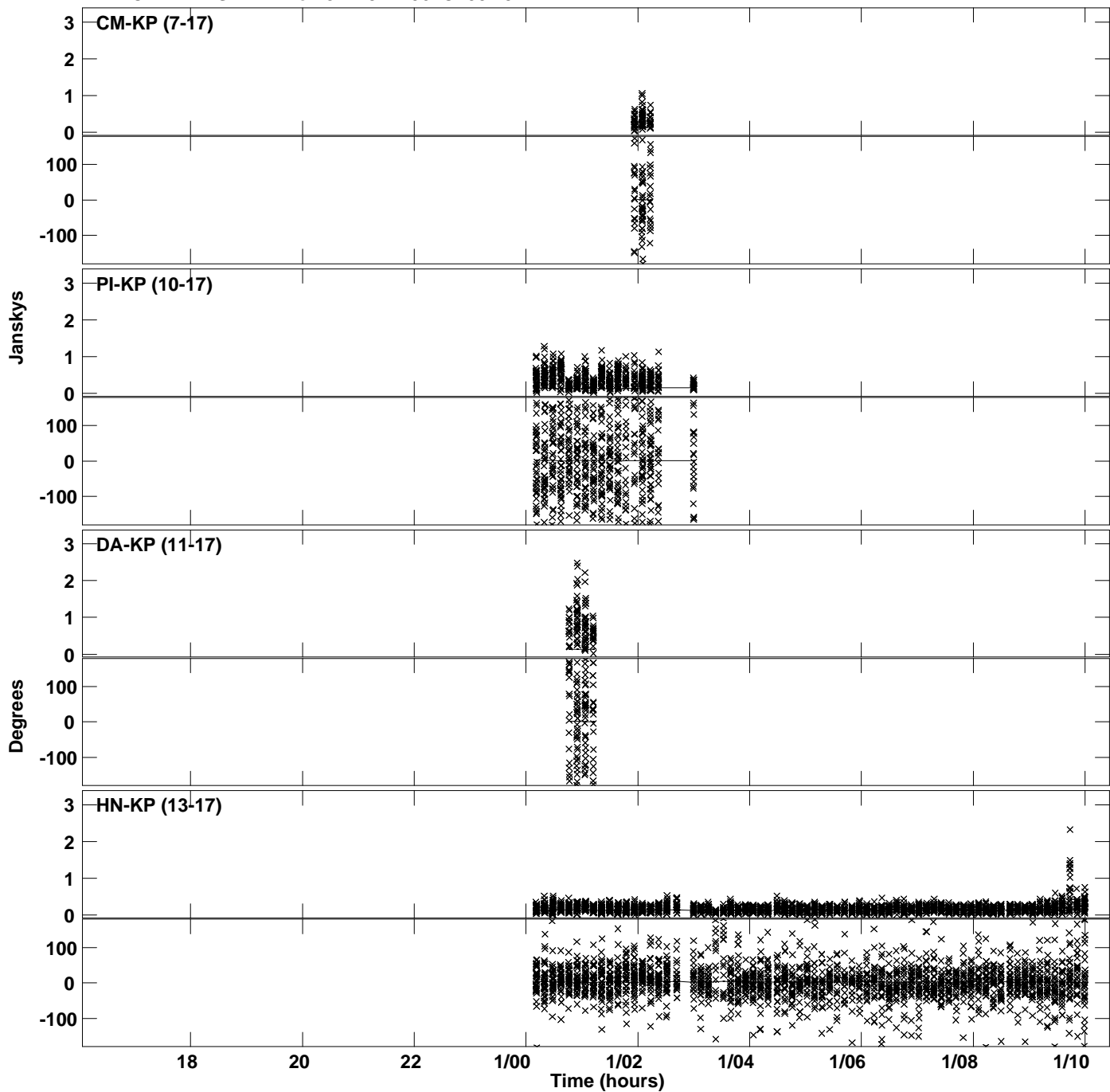
Plot file version 12 created 08-NOV-2019 12:09:12
Amplitude and Phase vs Time for J1419+2706.MULTI.1 CL # 3
IF 1 CHAN 1 STK RR of J1419+2706.ICL001.3



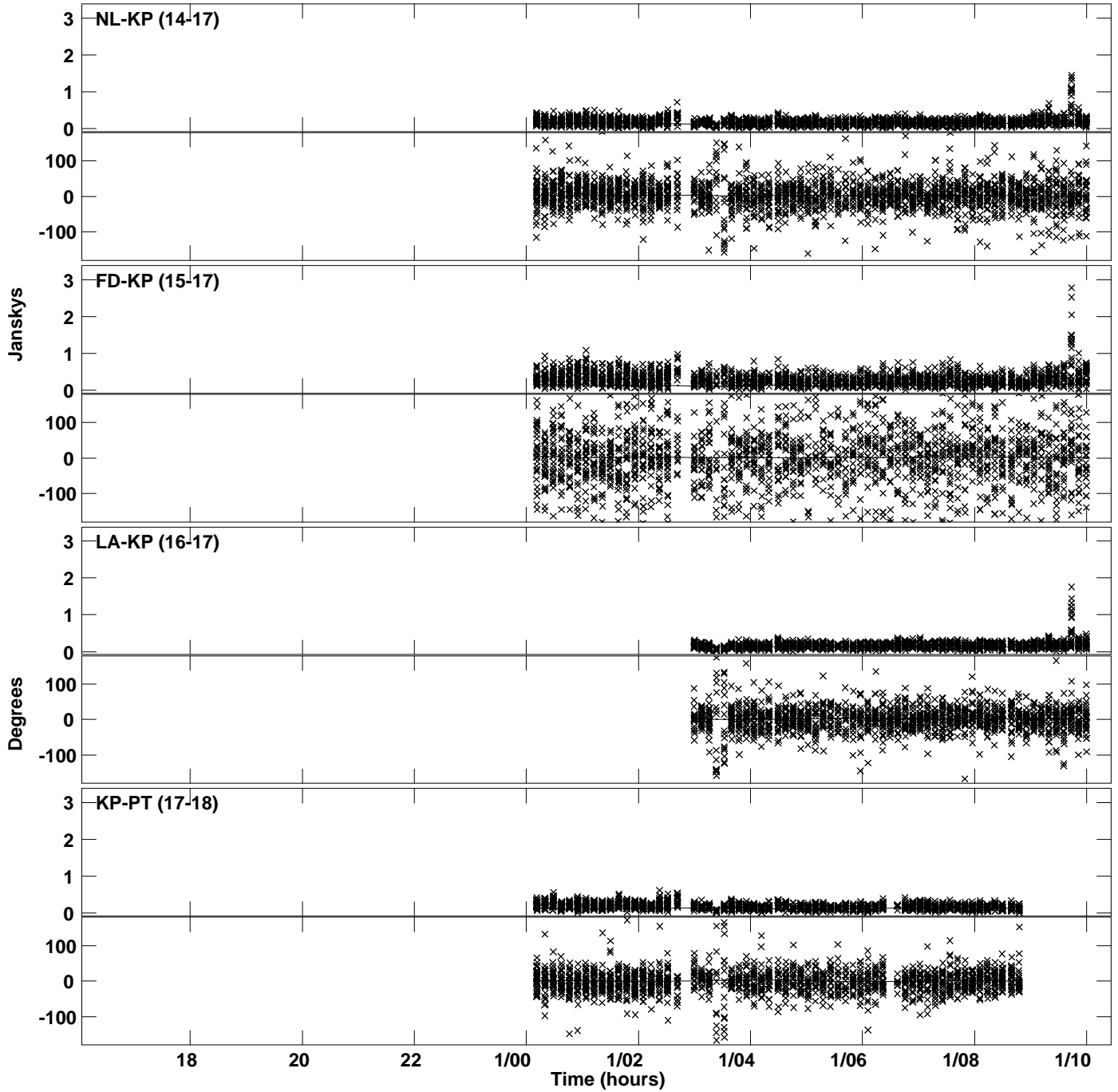
PLot file version 13 created 08-NOV-2019 12:09:12
Amplitude andPhase vs Time for J1419+2706.MULTI.1 CL # 3
IF 1 CHAN 1 STK RR of J1419+2706.ICL001.3



PLot file version 14 created 08-NOV-2019 12:09:12
Amplitude andPhase vs Time for J1419+2706.MULTI.1 CL # 3
IF 1 CHAN 1 STK RR of J1419+2706.ICL001.3



PLot file version 15 created 08-NOV-2019 12:09:12
Amplitude andPhase vs Time for J1419+2706.MULTI.1 CL # 3
IF 1 CHAN 1 STK RR of J1419+2706.ICL001.3



PLot file version 16 created 08-NOV-2019 12:09:12
Amplitude andPhase vs Time for J1419+2706.MULTI.1 CL # 3
IF 1 CHAN 1 STK RR of J1419+2706.ICL001.3

