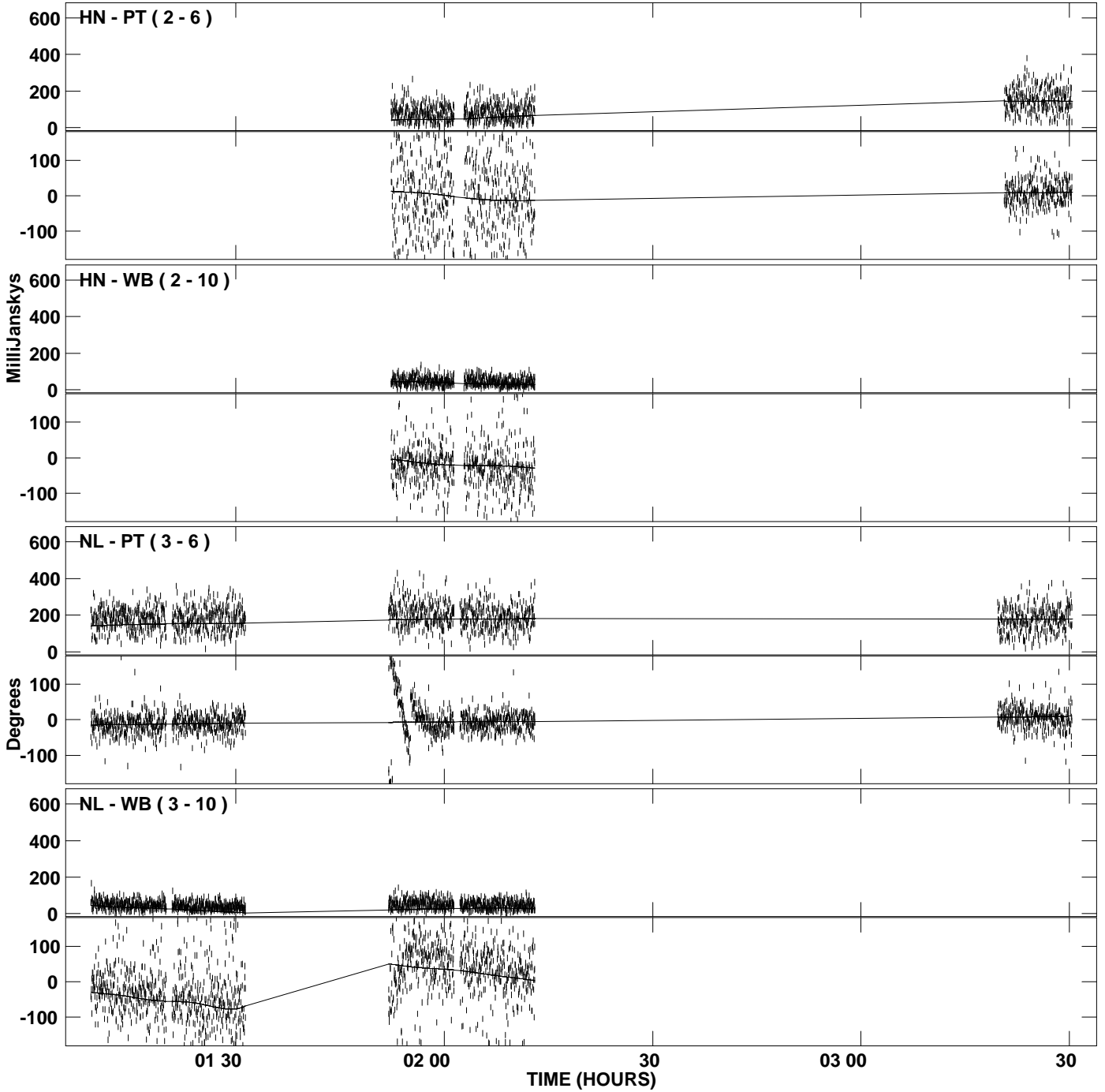
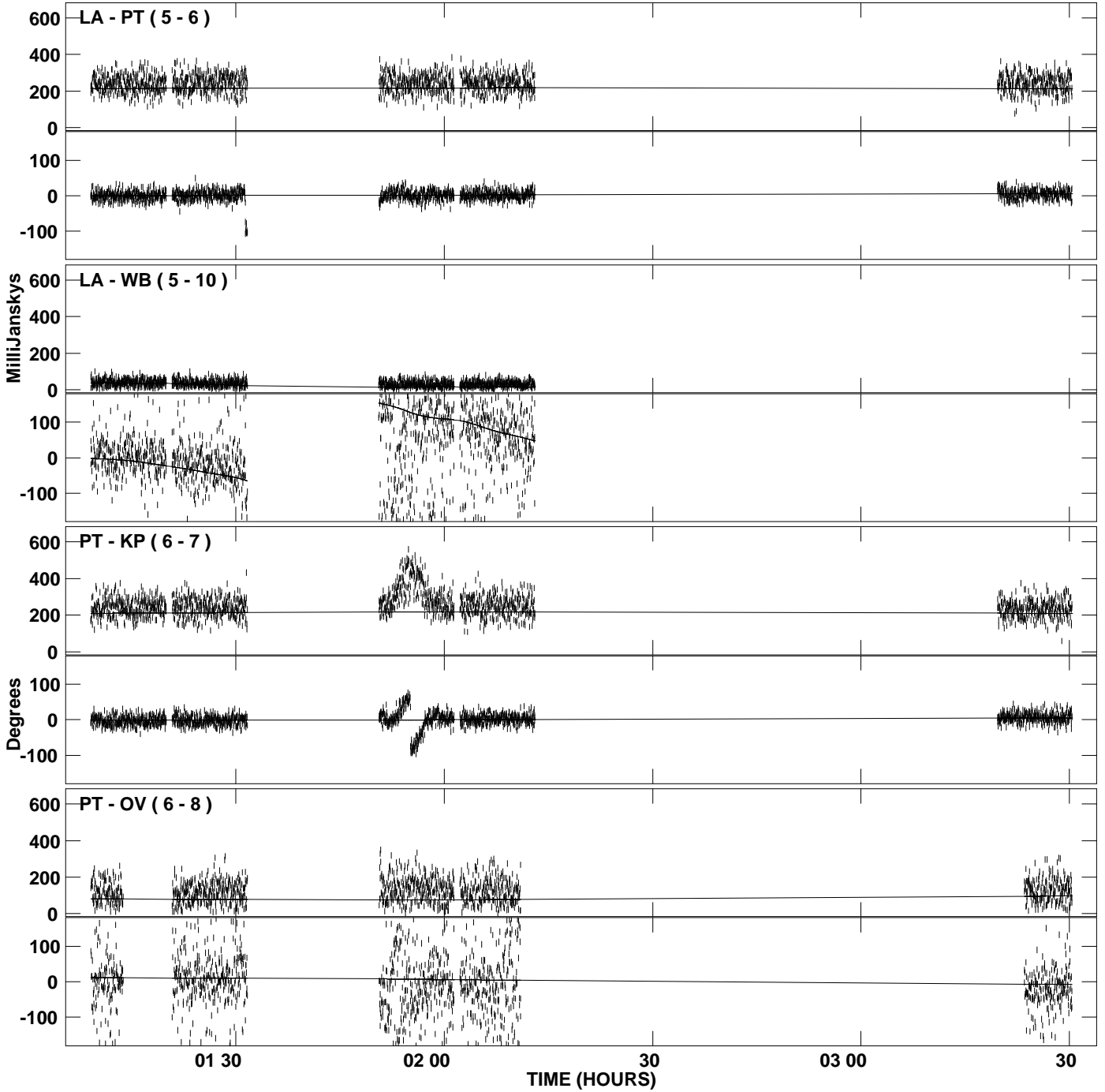


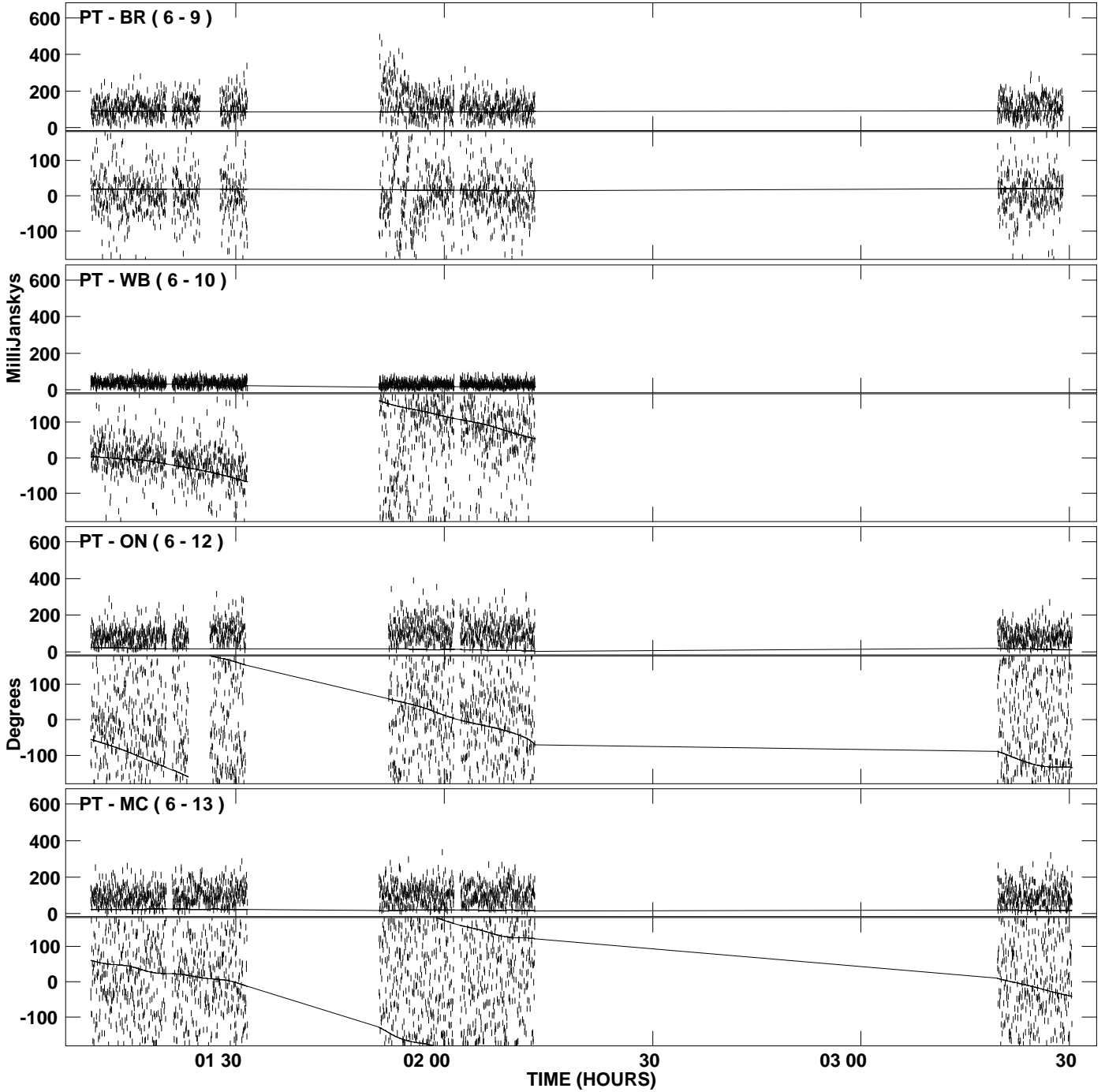
PLot file version 1 created 03-JUL-2008 20:36:07  
Amplitude andPhase vs Time for J0733+5605.MULTI.1 CL # 3  
IF 1 CHAN 1 STK LL of J0733+5605.ICL001.3



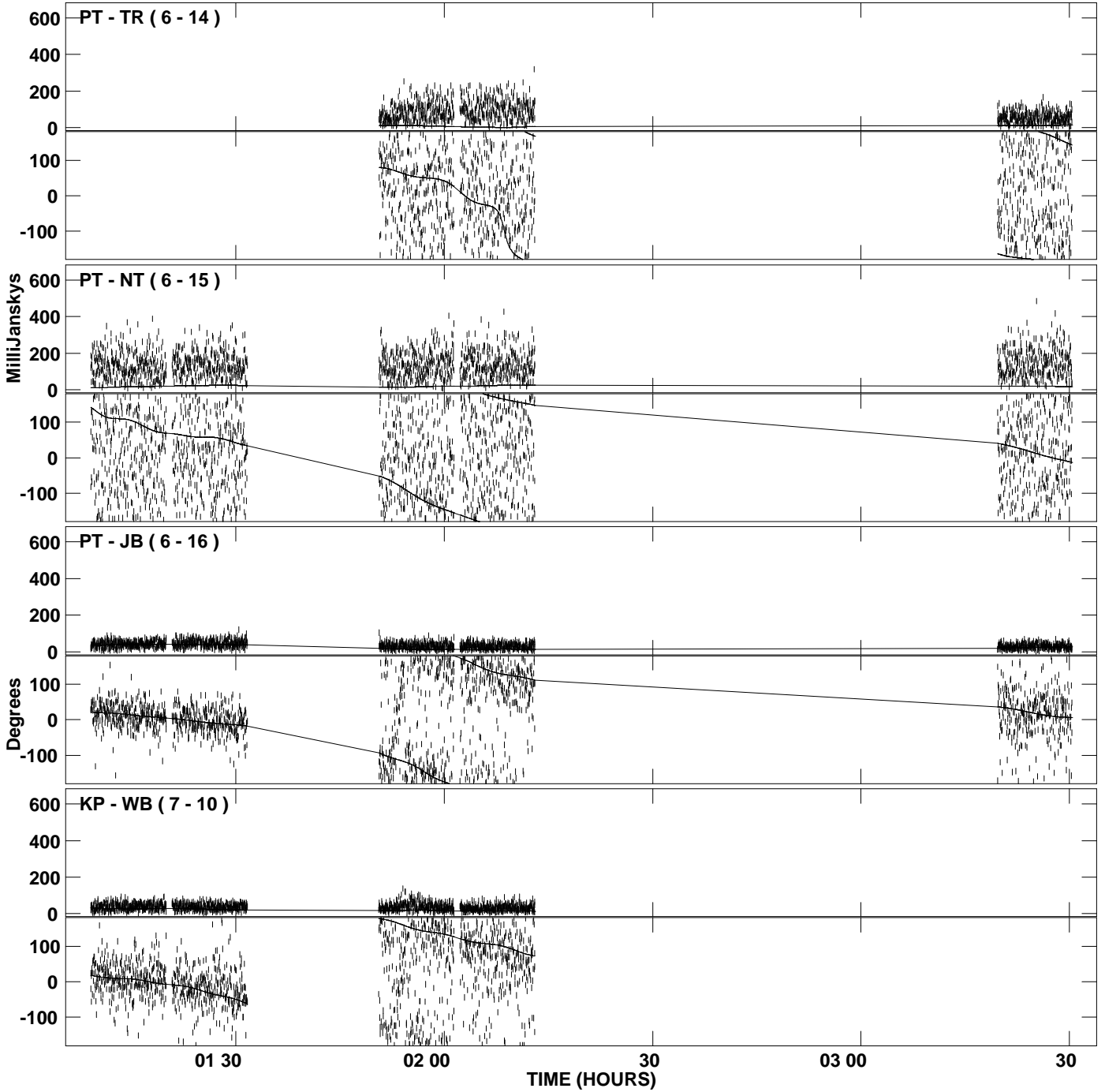
PLot file version 2 created 03-JUL-2008 20:36:07  
Amplitude andPhase vs Time for J0733+5605.MULTI.1 CL # 3  
IF 1 CHAN 1 STK LL of J0733+5605.ICL001.3



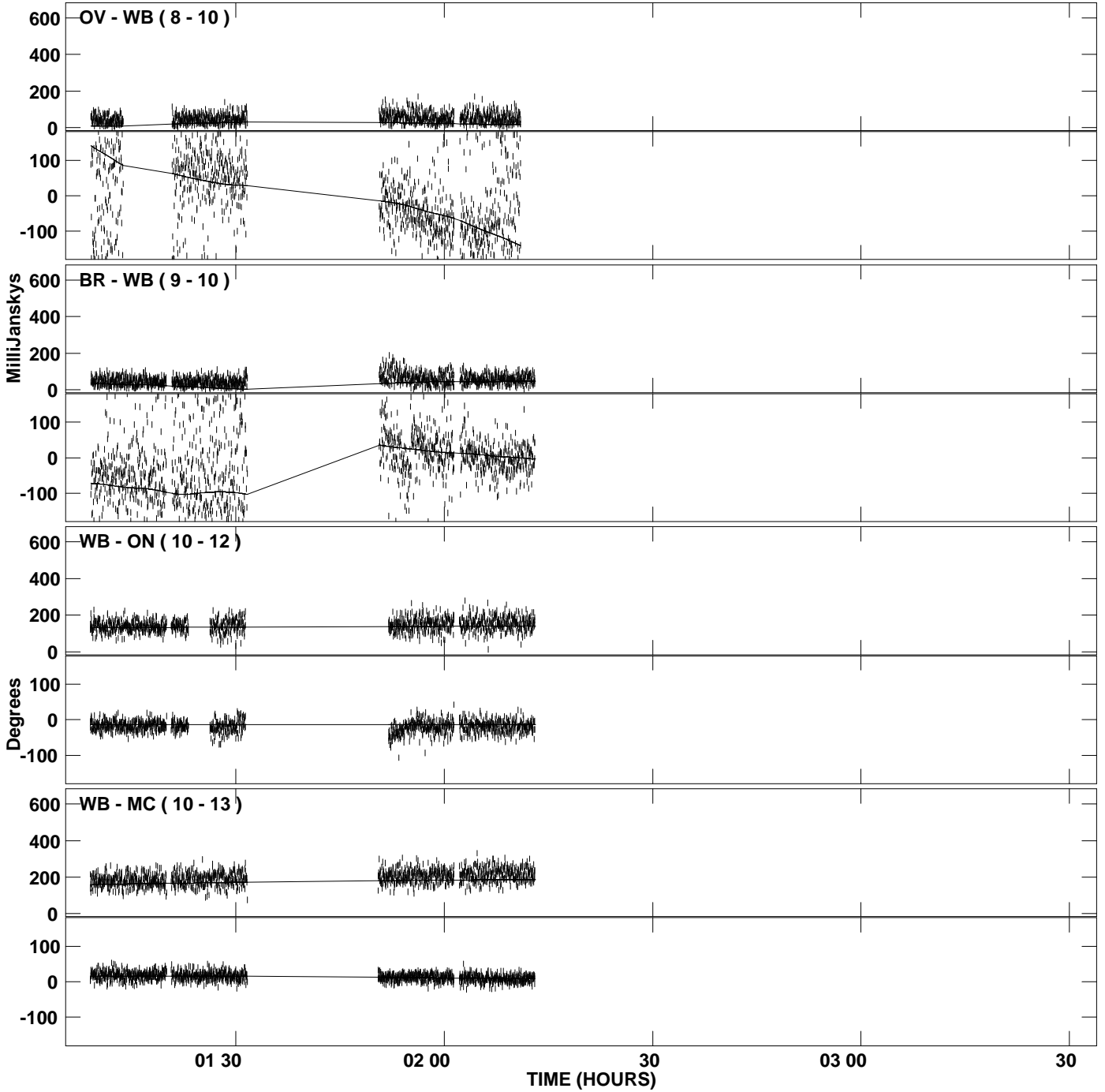
PLot file version 3 created 03-JUL-2008 20:36:07  
Amplitude andPhase vs Time for J0733+5605.MULTI.1 CL # 3  
IF 1 CHAN 1 STK LL of J0733+5605.ICL001.3



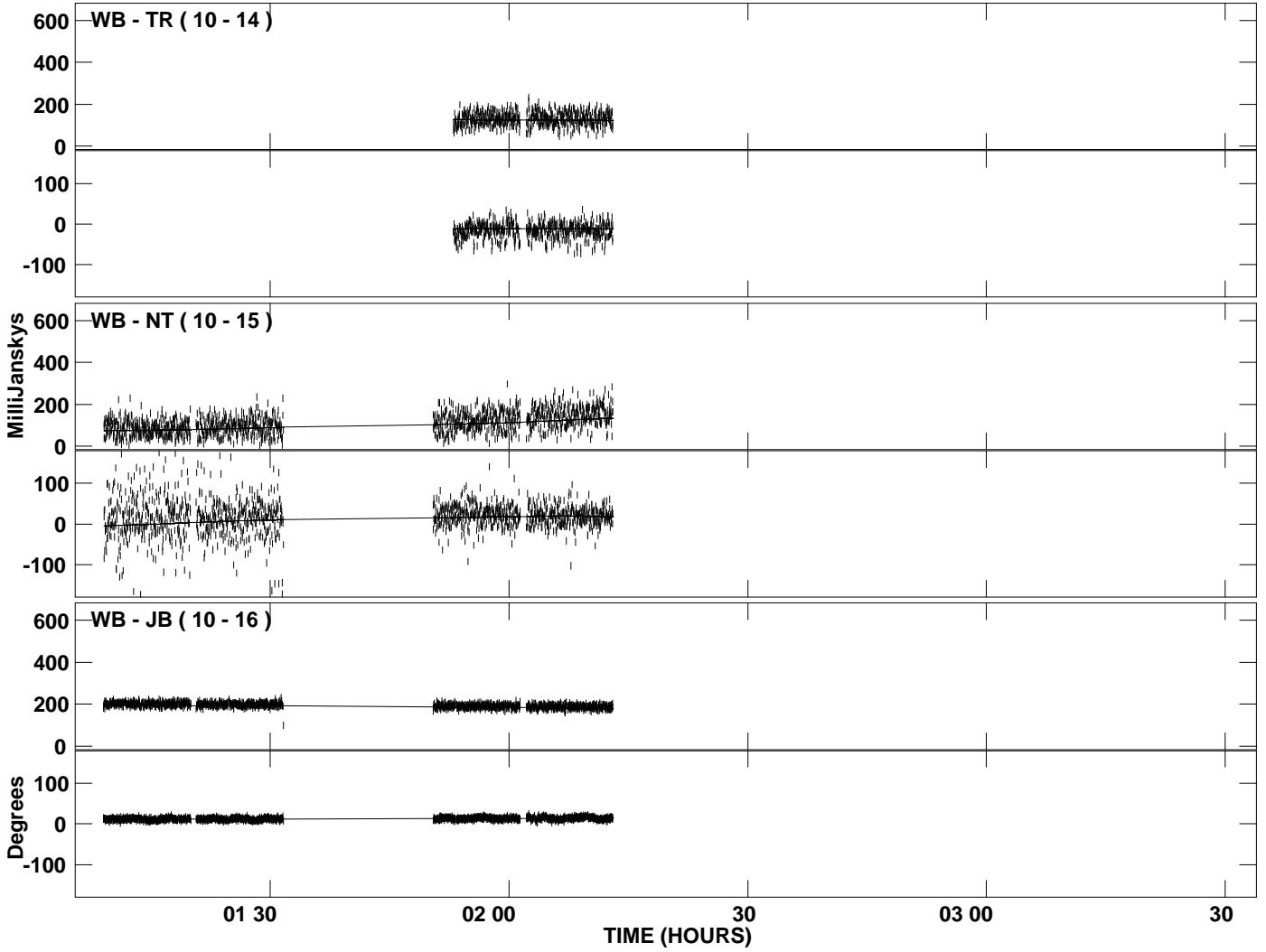
PLot file version 4 created 03-JUL-2008 20:36:07  
Amplitude andPhase vs Time for J0733+5605.MULTI.1 CL # 3  
IF 1 CHAN 1 STK LL of J0733+5605.ICL001.3



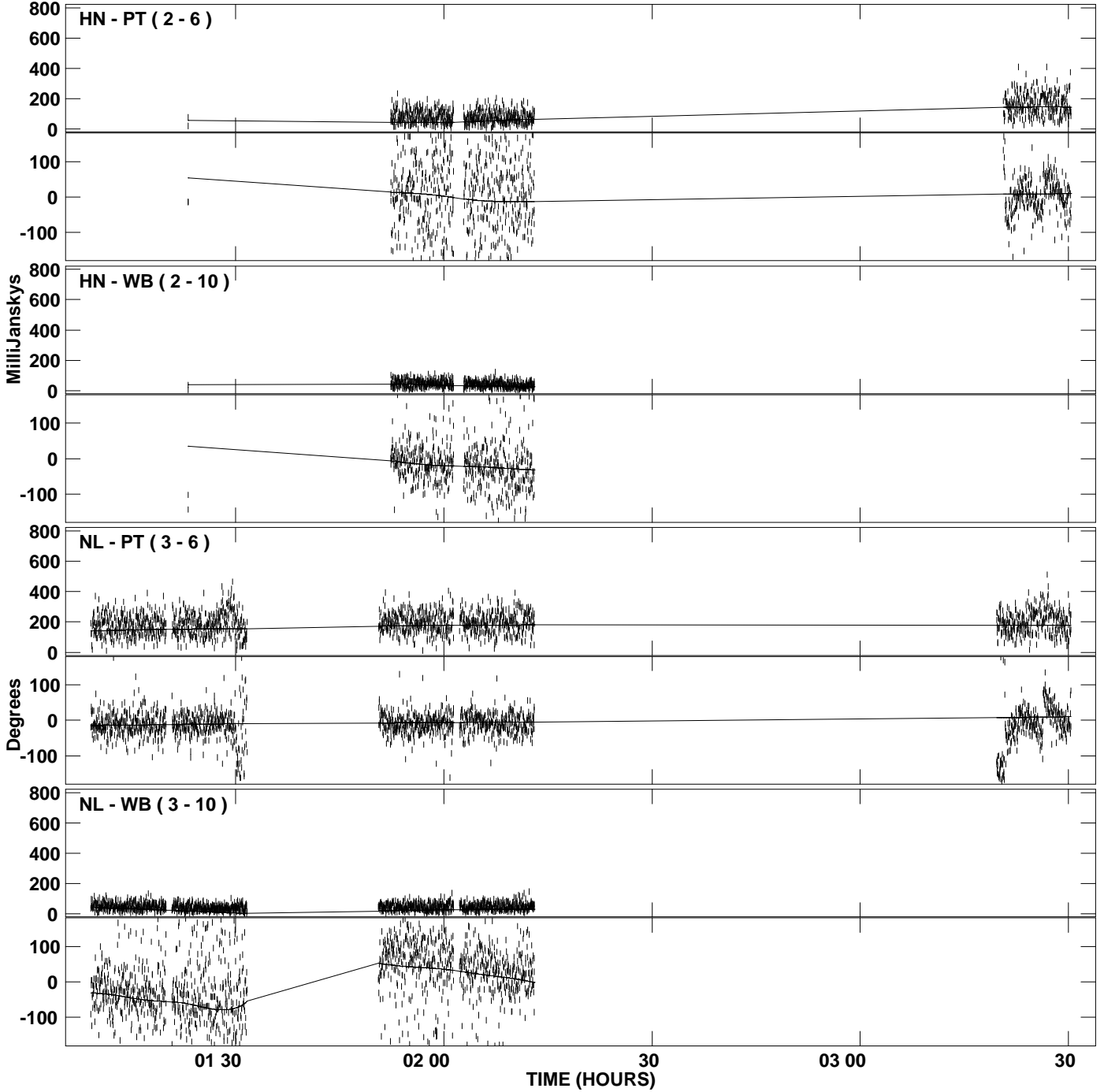
PLot file version 5 created 03-JUL-2008 20:36:07  
Amplitude and Phase vs Time for J0733+5605.MULTI.1 CL # 3  
IF 1 CHAN 1 STK LL of J0733+5605.ICL001.3



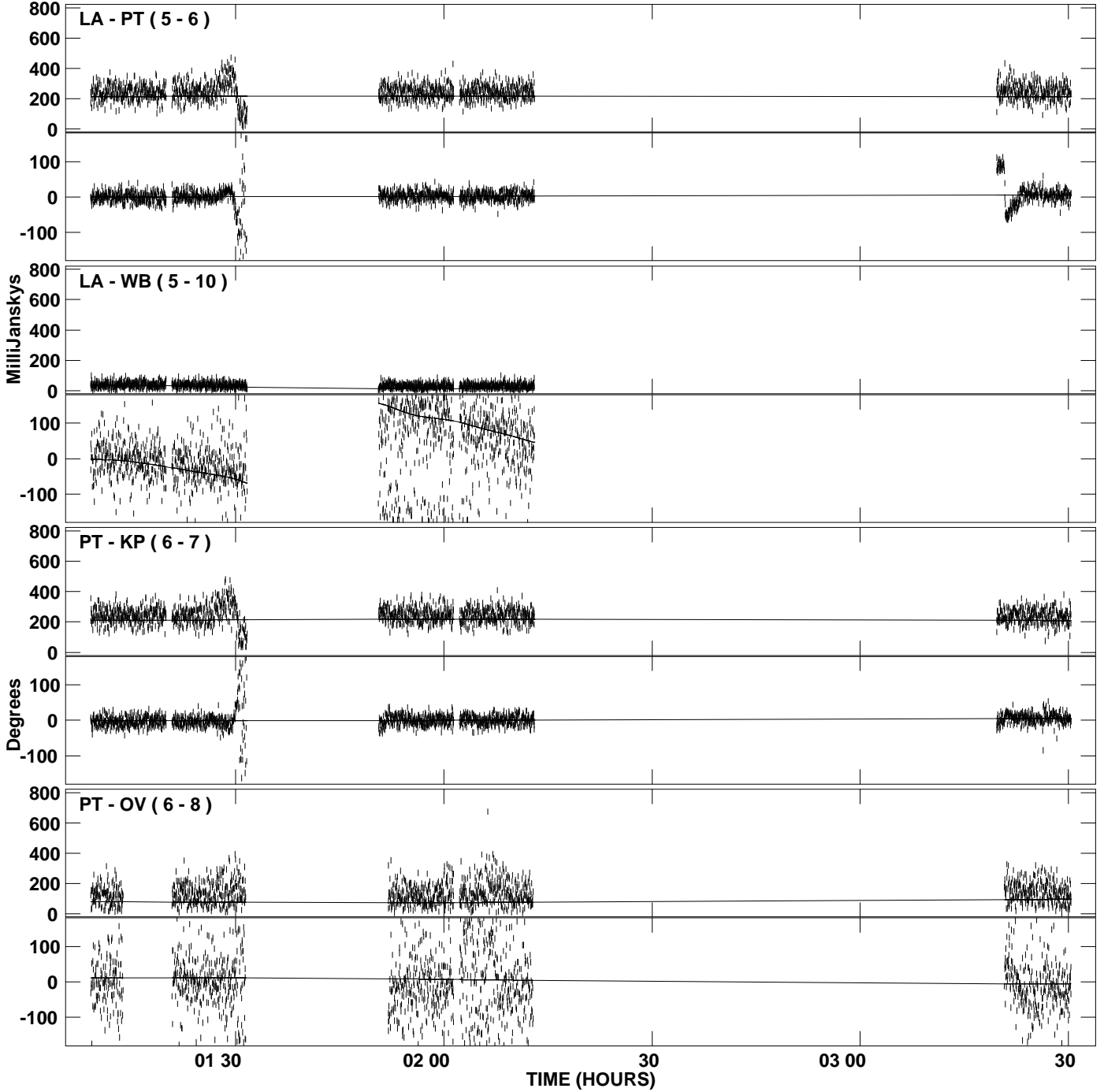
PLot file version 6 created 03-JUL-2008 20:36:07  
Amplitude and Phase vs Time for J0733+5605.MULTI.1 CL # 3  
IF 1 CHAN 1 STK LL of J0733+5605.ICL001.3



PLot file version 7 created 03-JUL-2008 20:36:09  
Amplitude and Phase vs Time for J0733+5605.MULTI.1 CL # 3  
IF 2 CHAN 1 STK LL of J0733+5605.ICL001.3

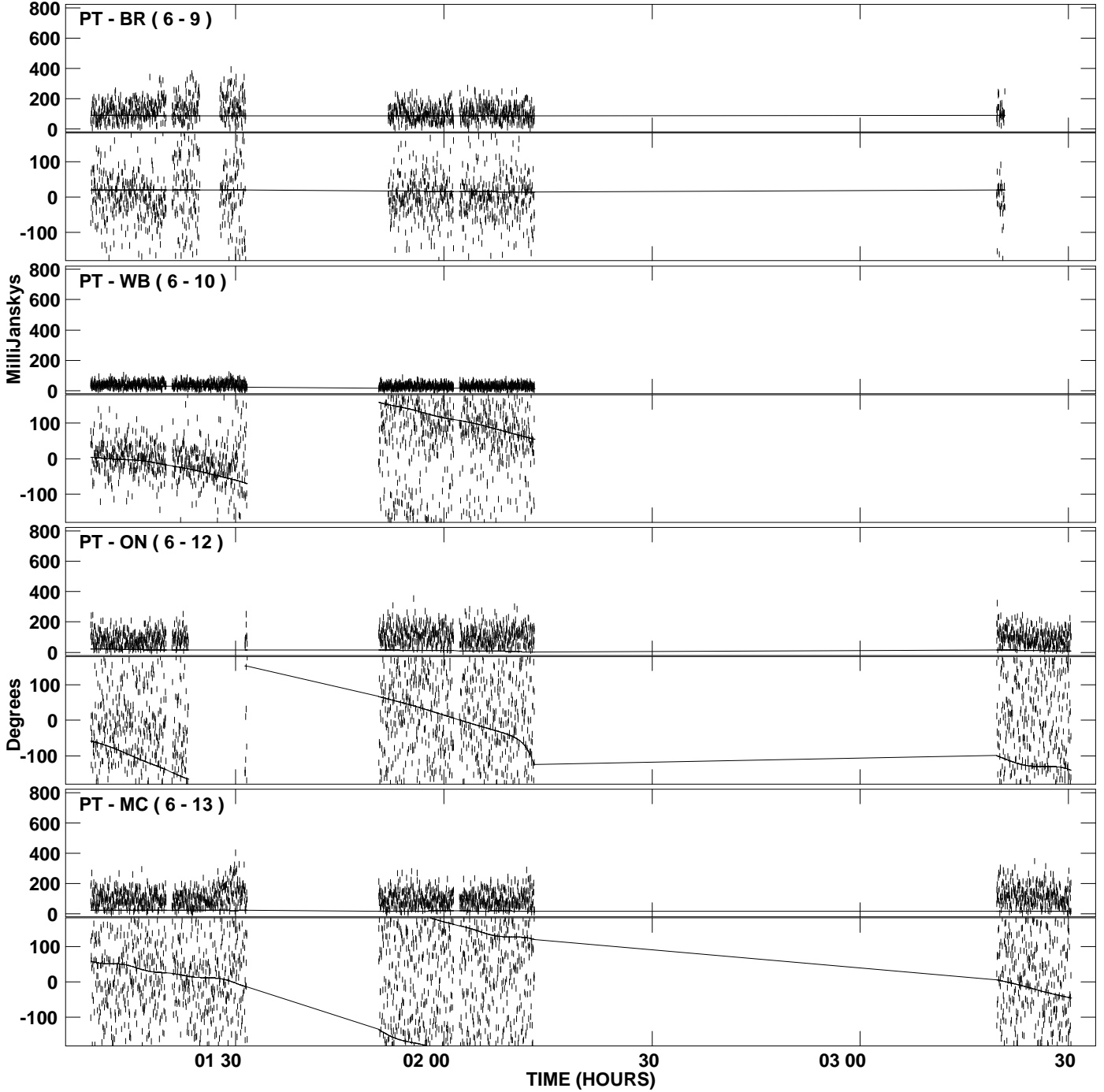


PLot file version 8 created 03-JUL-2008 20:36:09  
Amplitude and Phase vs Time for J0733+5605.MULTI.1 CL # 3  
IF 2 CHAN 1 STK LL of J0733+5605.ICL001.3

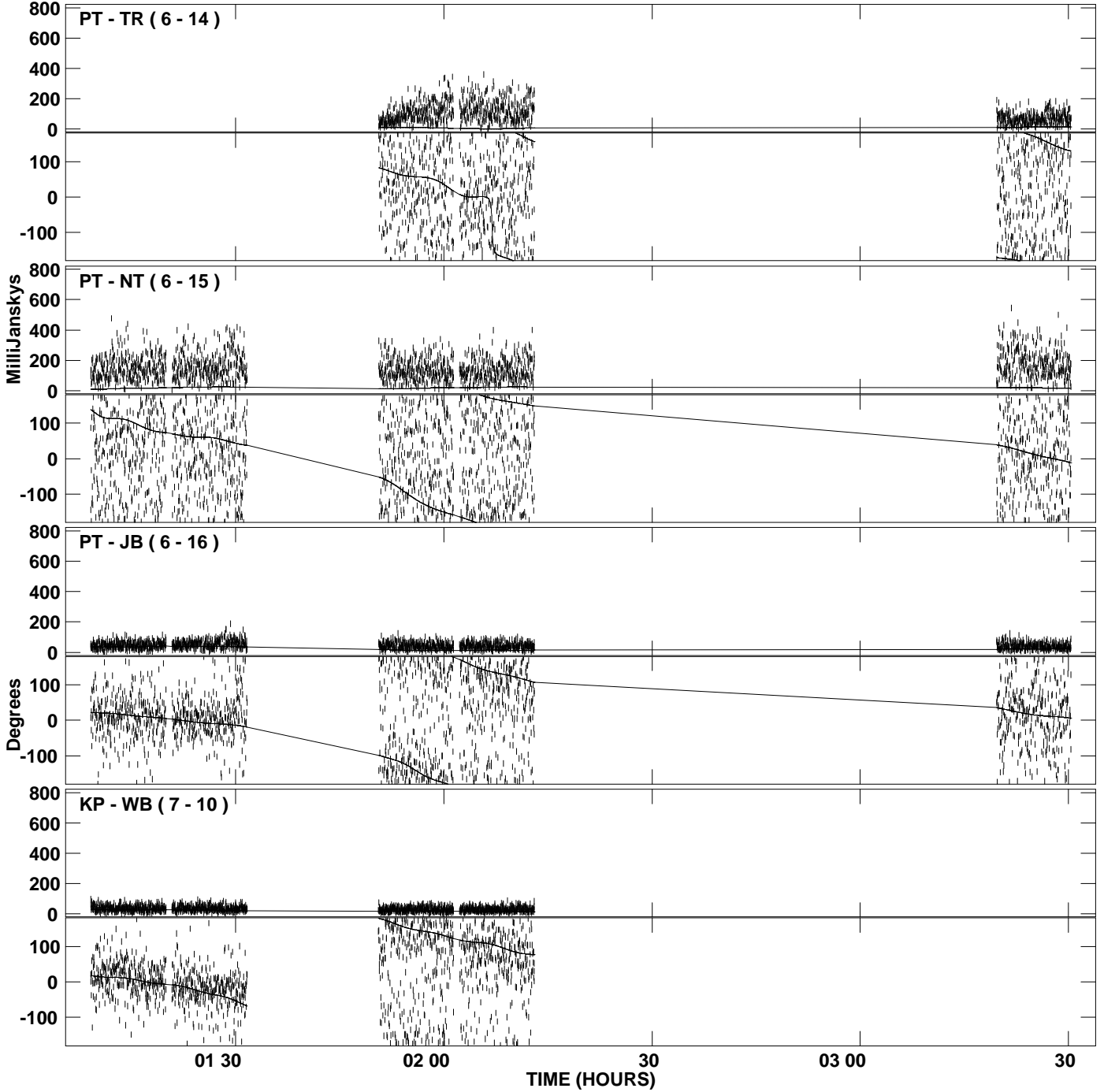




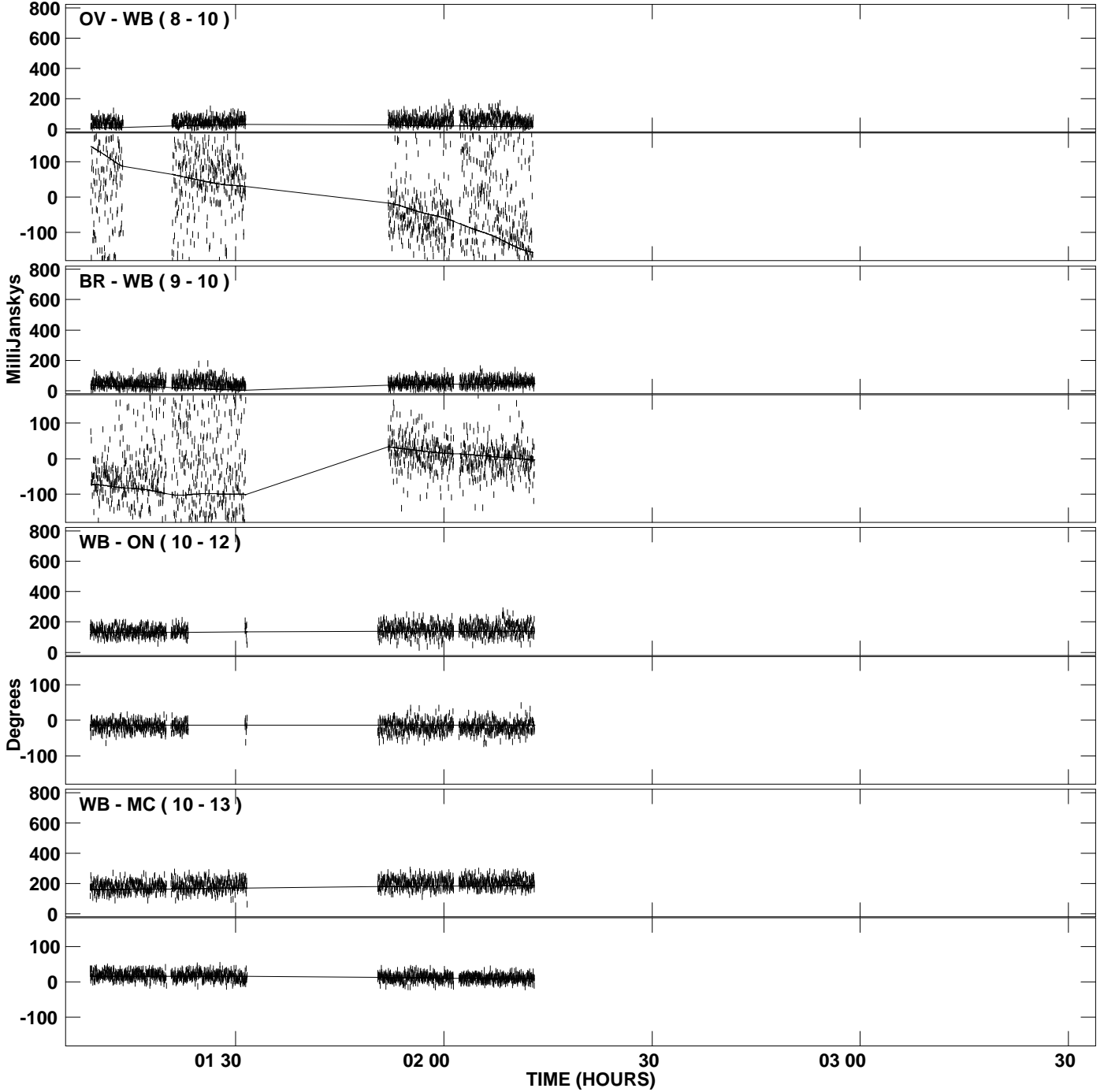
PLot file version 9 created 03-JUL-2008 20:36:09  
Amplitude and Phase vs Time for J0733+5605.MULTI.1 CL # 3  
IF 2 CHAN 1 STK LL of J0733+5605.ICL001.3



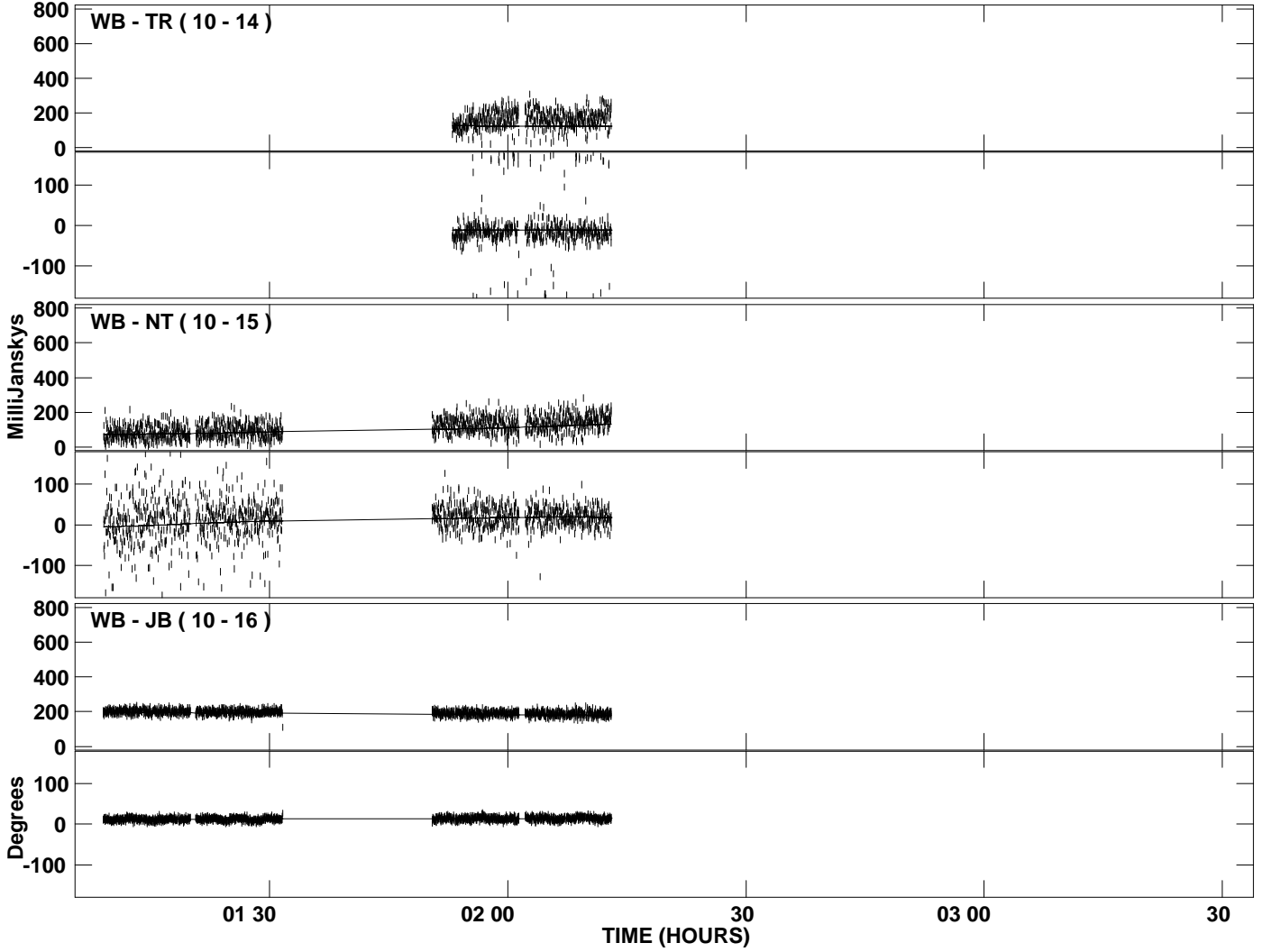
PLot file version 10 created 03-JUL-2008 20:36:09  
Amplitude andPhase vs Time for J0733+5605.MULTI.1 CL # 3  
IF 2 CHAN 1 STK LL of J0733+5605.ICL001.3



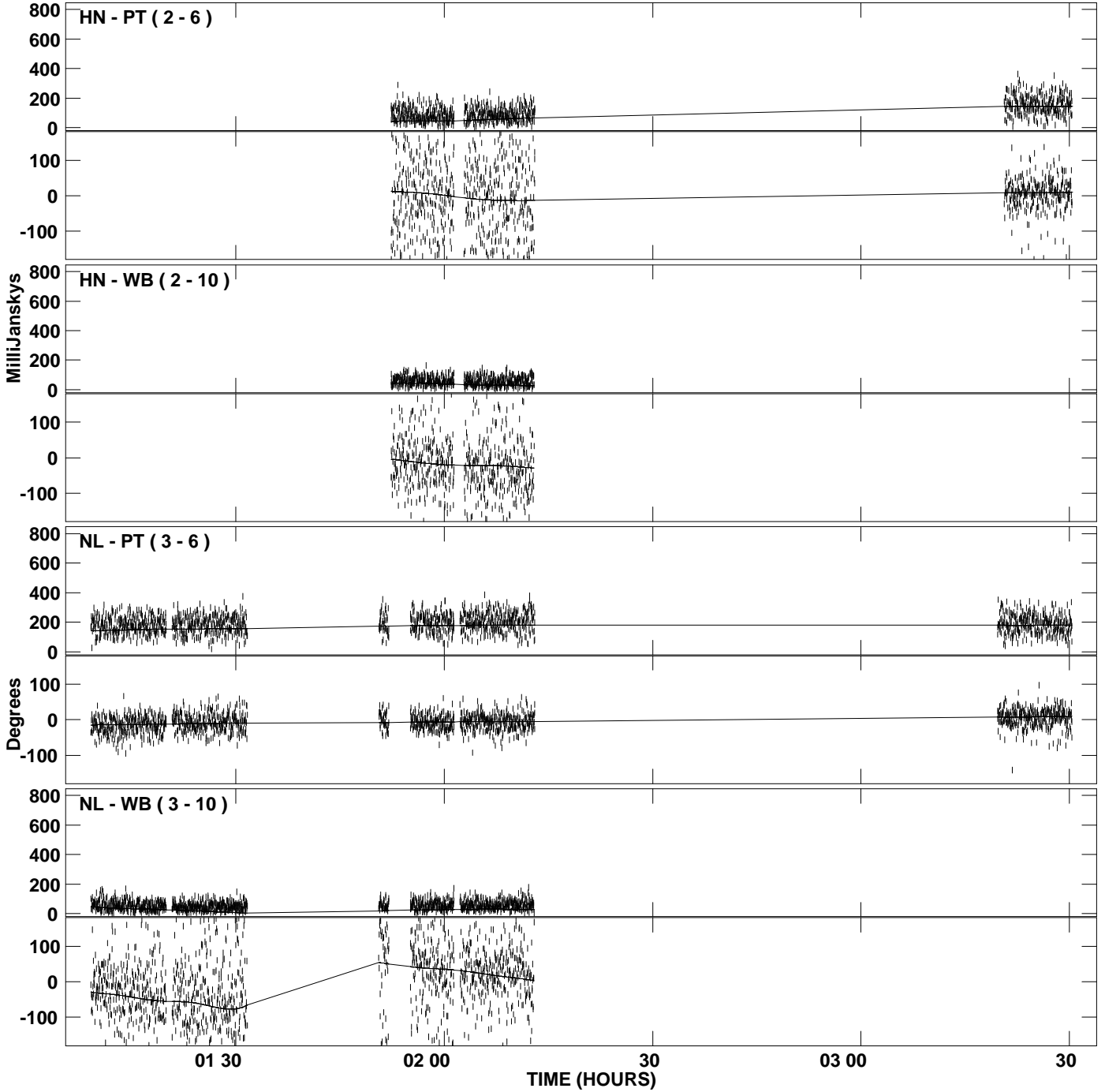
PLot file version 11 created 03-JUL-2008 20:36:09  
Amplitude and Phase vs Time for J0733+5605.MULTI.1 CL # 3  
IF 2 CHAN 1 STK LL of J0733+5605.ICL001.3



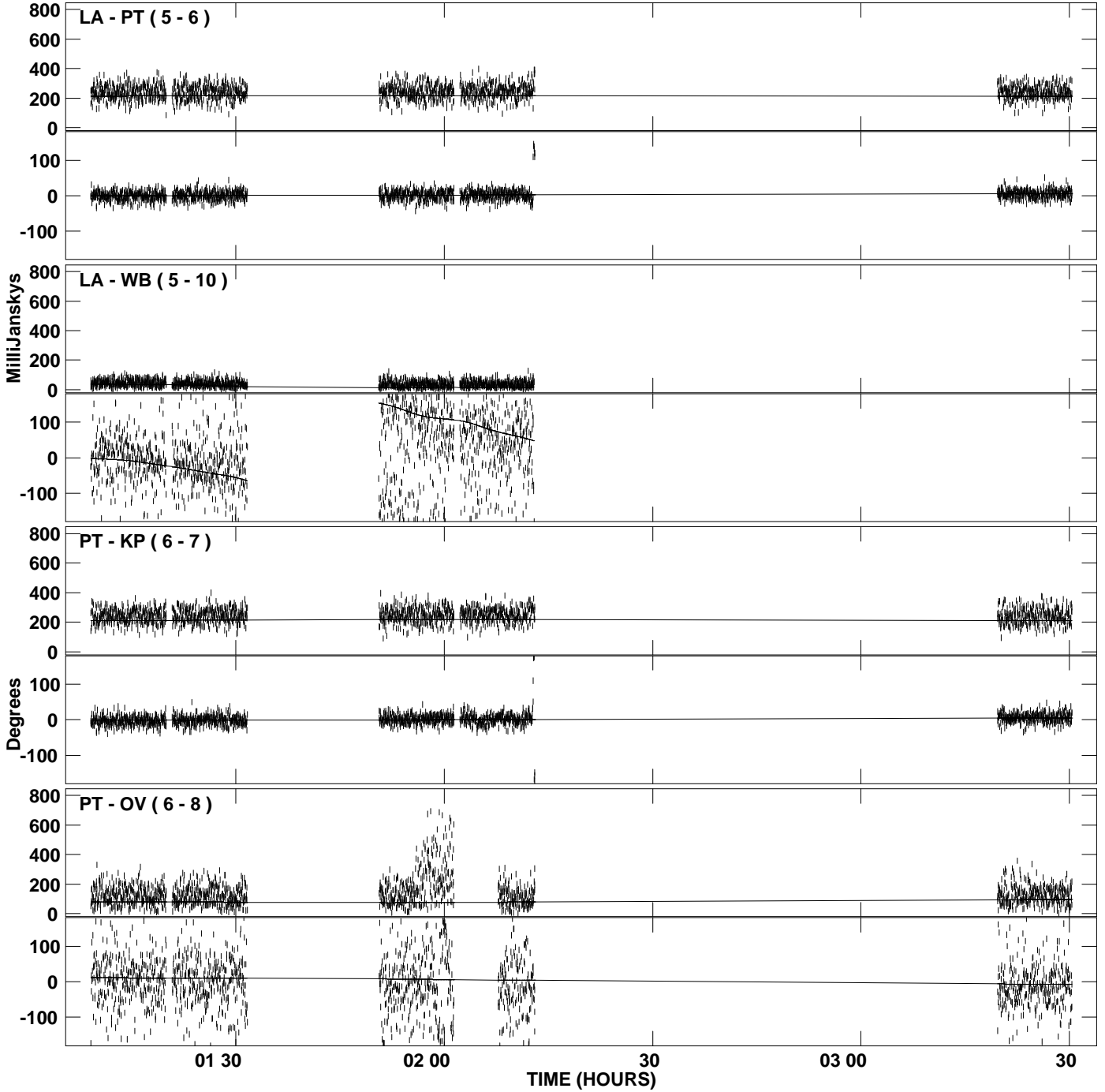
PLot file version 12 created 03-JUL-2008 20:36:09  
Amplitude andPhase vs Time for J0733+5605.MULTI.1 CL # 3  
IF 2 CHAN 1 STK LL of J0733+5605.ICL001.3



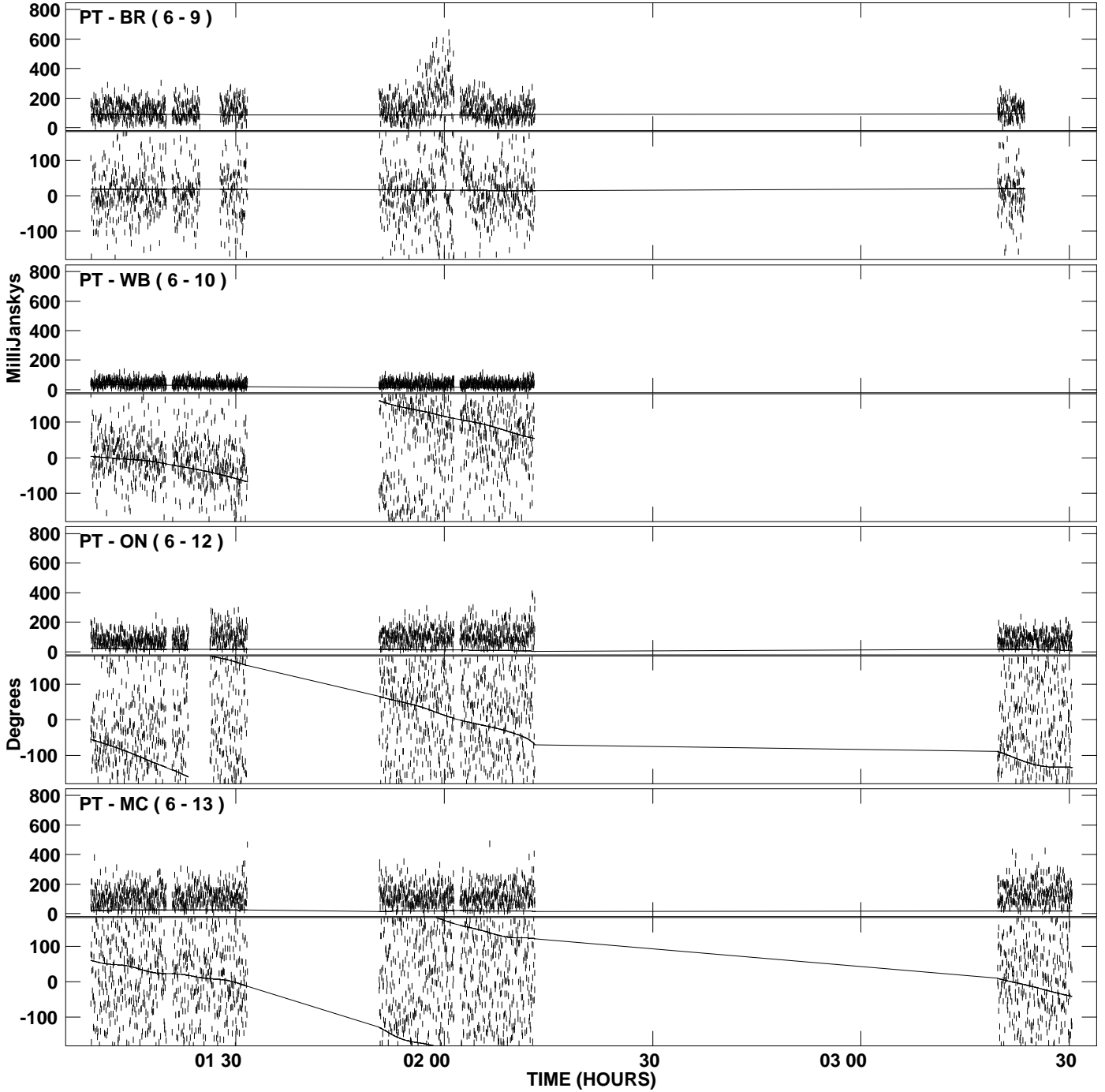
PLot file version 13 created 03-JUL-2008 20:36:10  
Amplitude and Phase vs Time for J0733+5605.MULTI.1 CL # 3  
IF 1 CHAN 1 STK RR of J0733+5605.ICL001.3



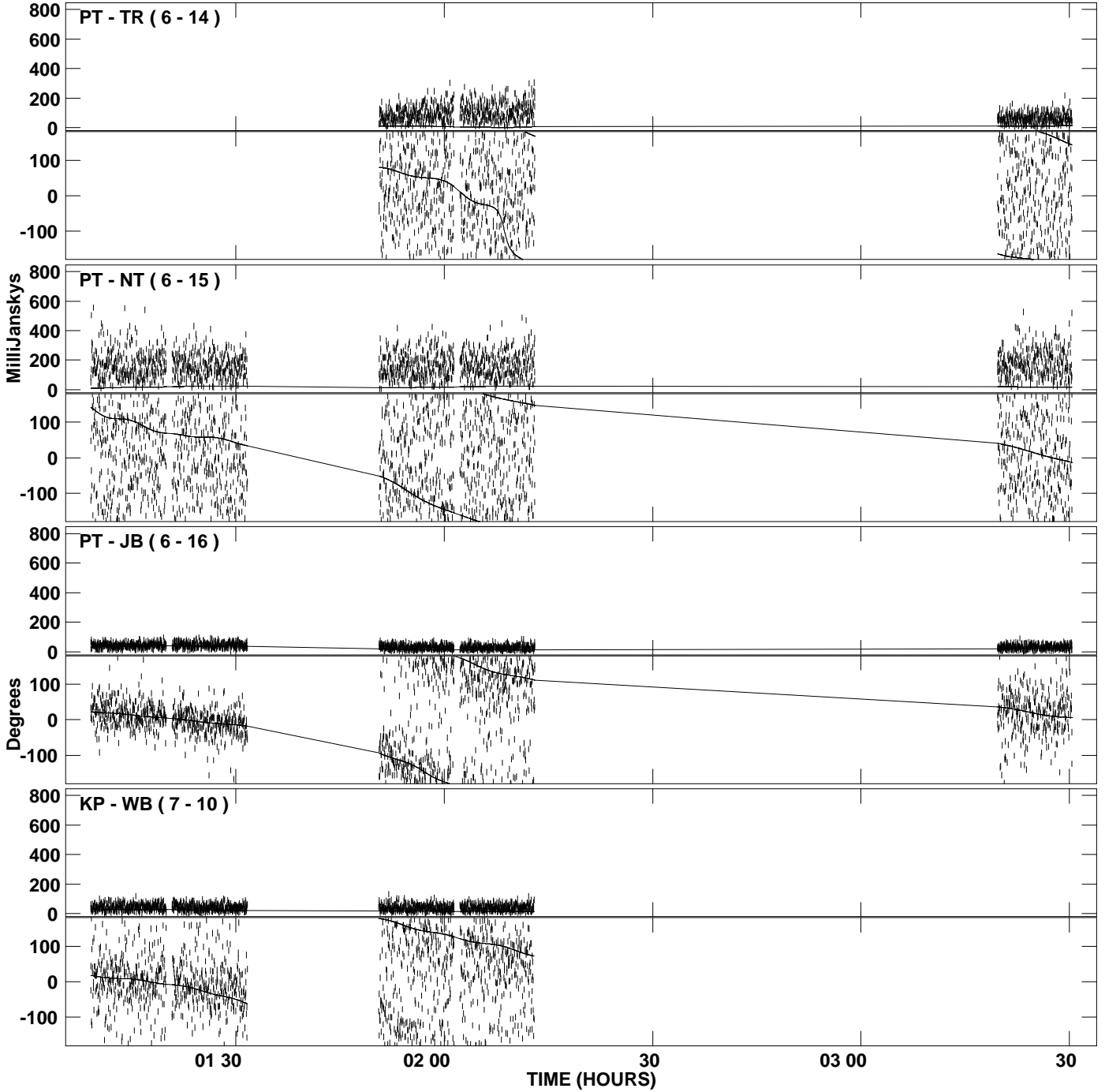
PLot file version 14 created 03-JUL-2008 20:36:10  
Amplitude andPhase vs Time for J0733+5605.MULTI.1 CL # 3  
IF 1 CHAN 1 STK RR of J0733+5605.ICL001.3



PLot file version 15 created 03-JUL-2008 20:36:11  
Amplitude and Phase vs Time for J0733+5605.MULTI.1 CL # 3  
IF 1 CHAN 1 STK RR of J0733+5605.ICL001.3

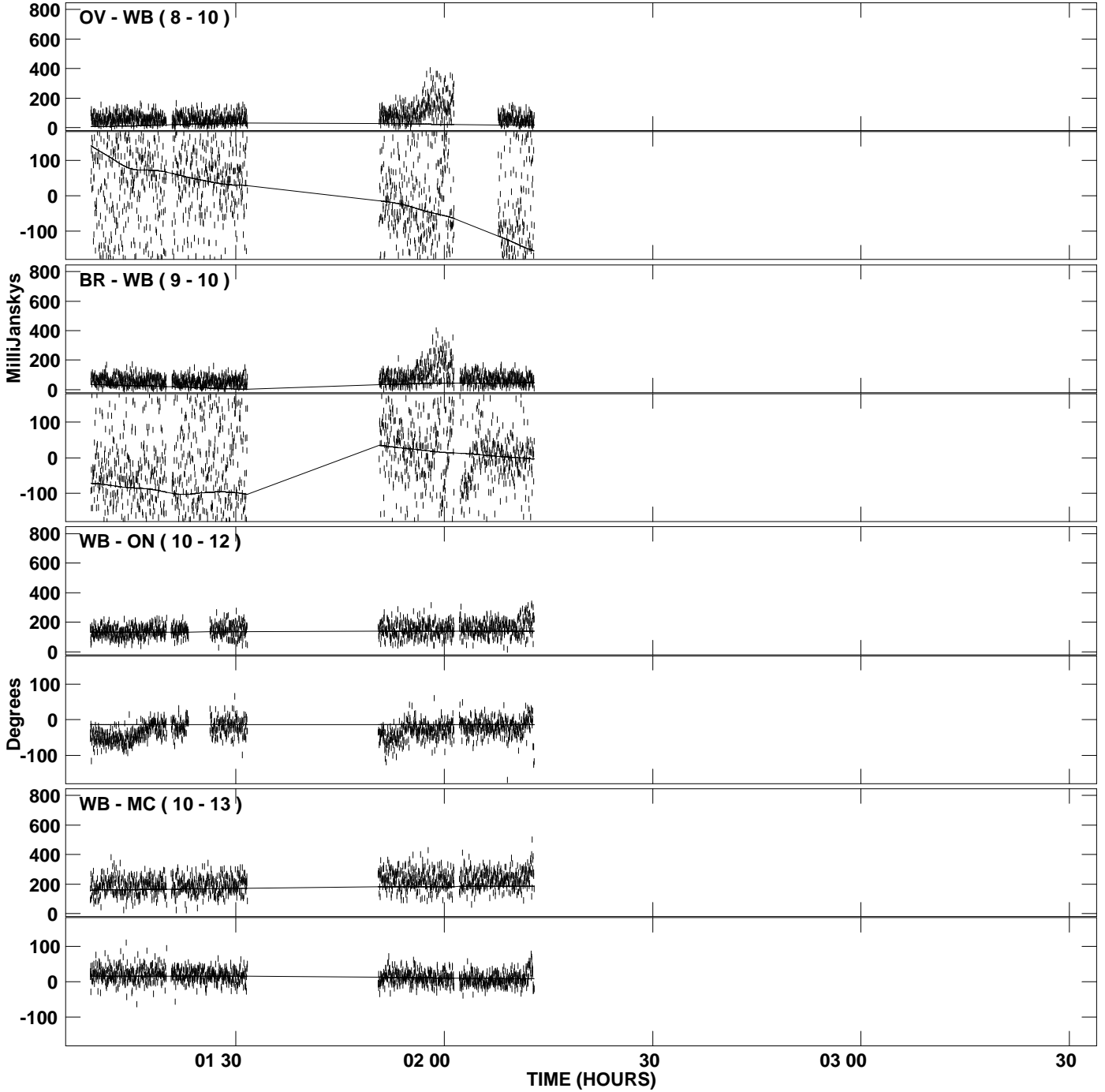


PLot file version 16 created 03-JUL-2008 20:36:11  
Amplitude and Phase vs Time for J0733+5605.MULTI.1 CL # 3  
IF 1 CHAN 1 STK RR of J0733+5605.ICL001.3

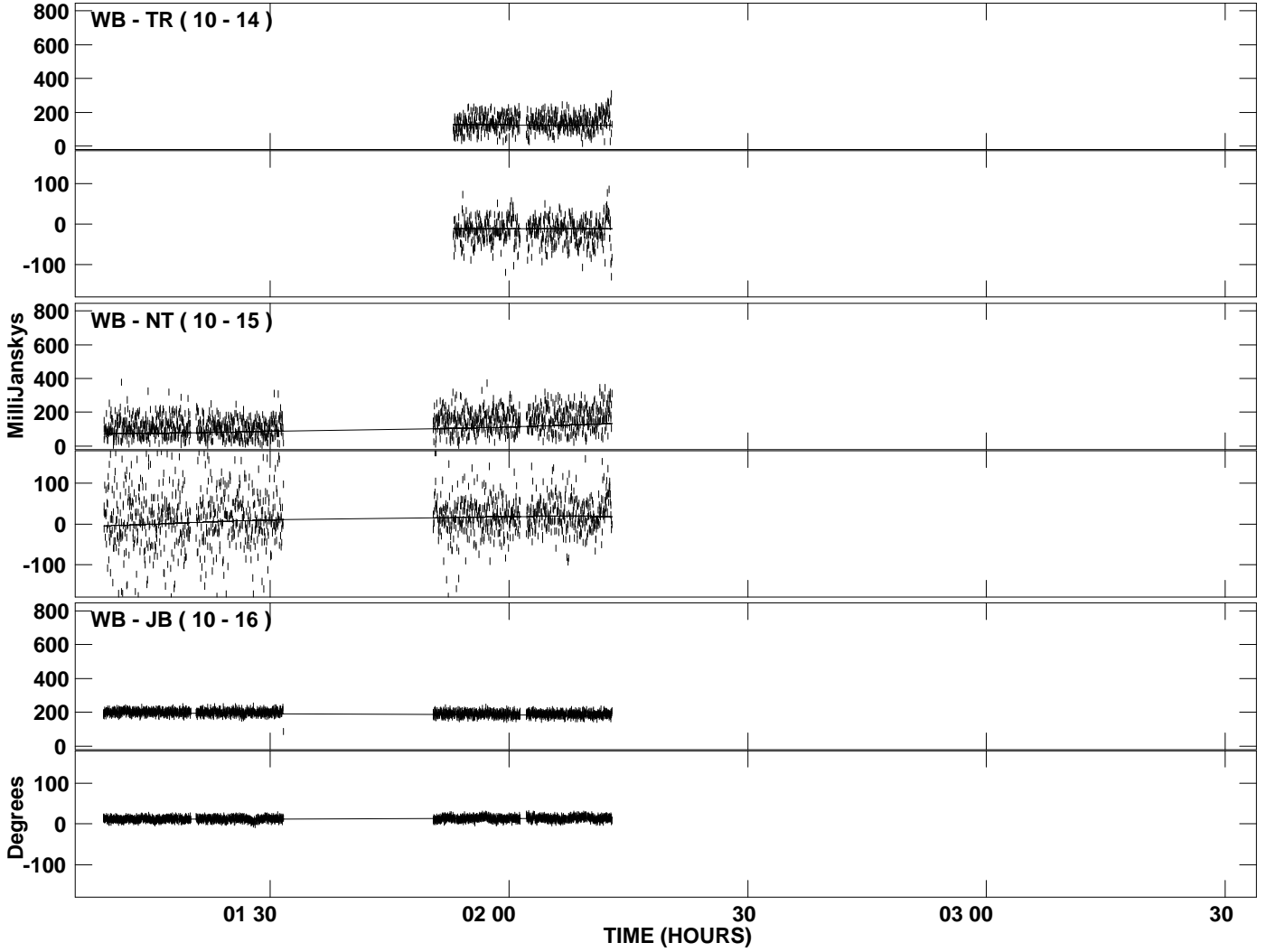




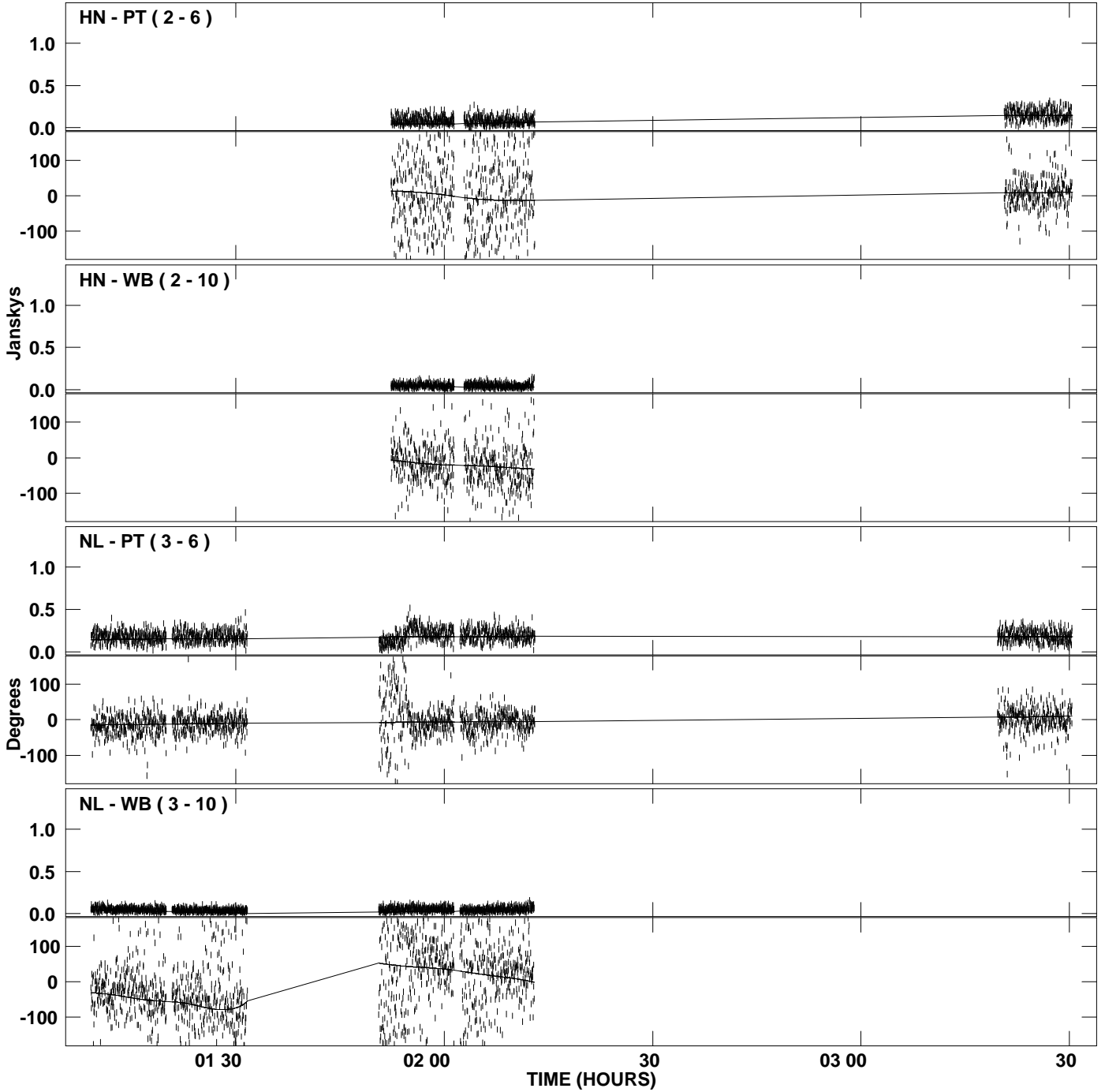
PLot file version 17 created 03-JUL-2008 20:36:11  
Amplitude and Phase vs Time for J0733+5605.MULTI.1 CL # 3  
IF 1 CHAN 1 STK RR of J0733+5605.ICL001.3



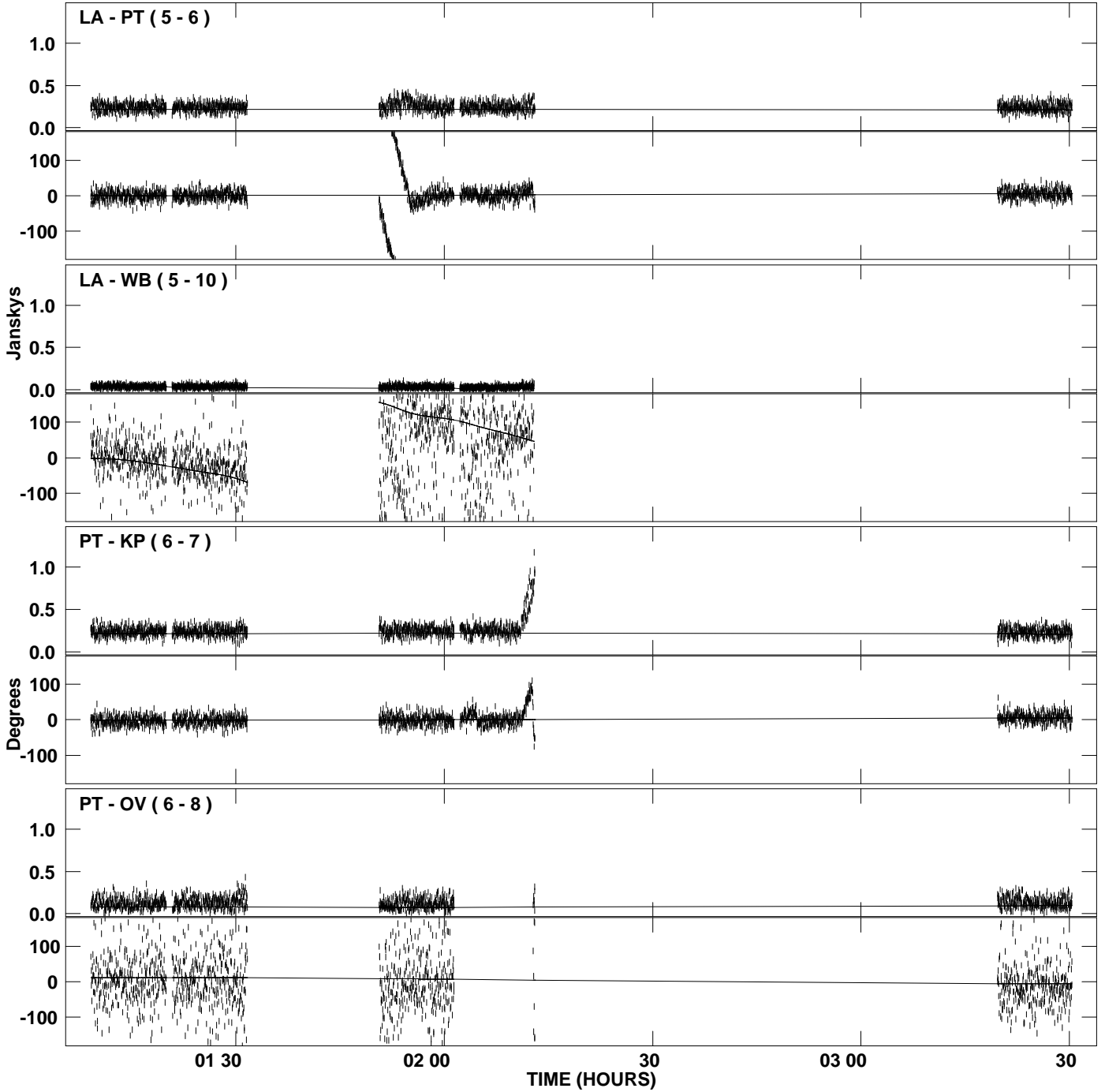
PLot file version 18 created 03-JUL-2008 20:36:11  
Amplitude andPhase vs Time for J0733+5605.MULTI.1 CL # 3  
IF 1 CHAN 1 STK RR of J0733+5605.ICL001.3



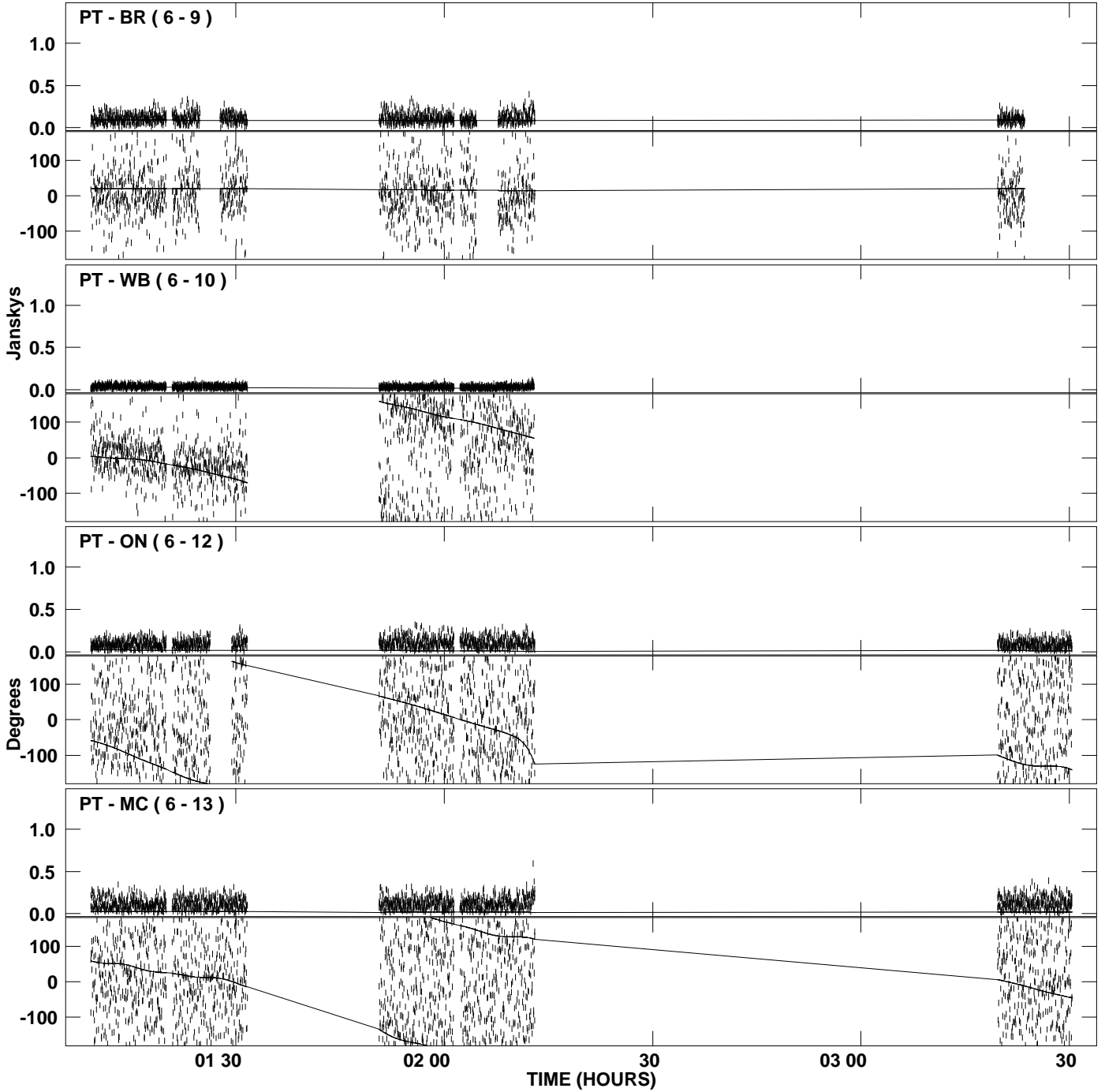
PLot file version 19 created 03-JUL-2008 20:36:12  
Amplitude andPhase vs Time for J0733+5605.MULTI.1 CL # 3  
IF 2 CHAN 1 STK RR of J0733+5605.ICL001.3



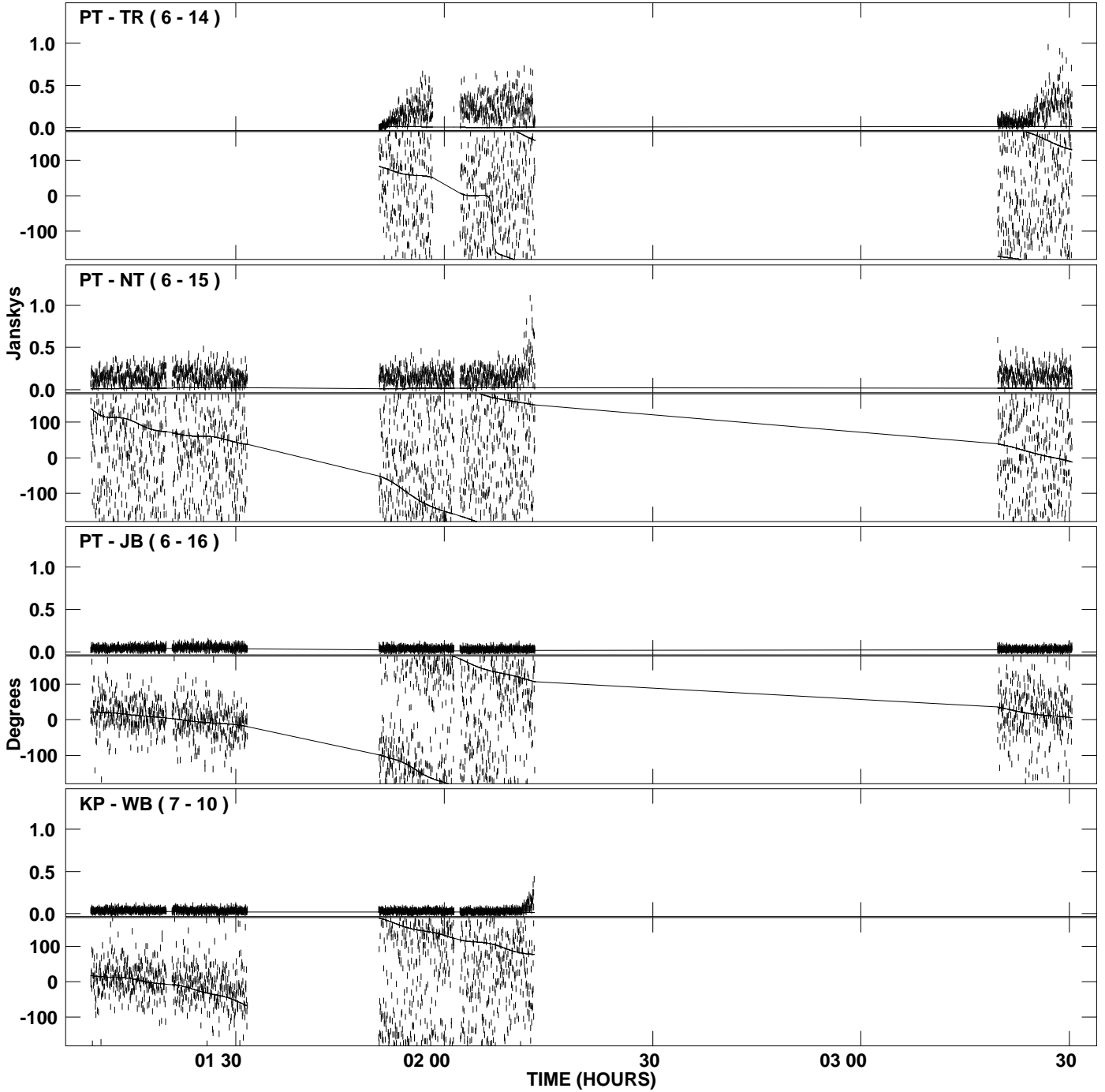
PLot file version 20 created 03-JUL-2008 20:36:12  
Amplitude and Phase vs Time for J0733+5605.MULTI.1 CL # 3  
IF 2 CHAN 1 STK RR of J0733+5605.ICL001.3



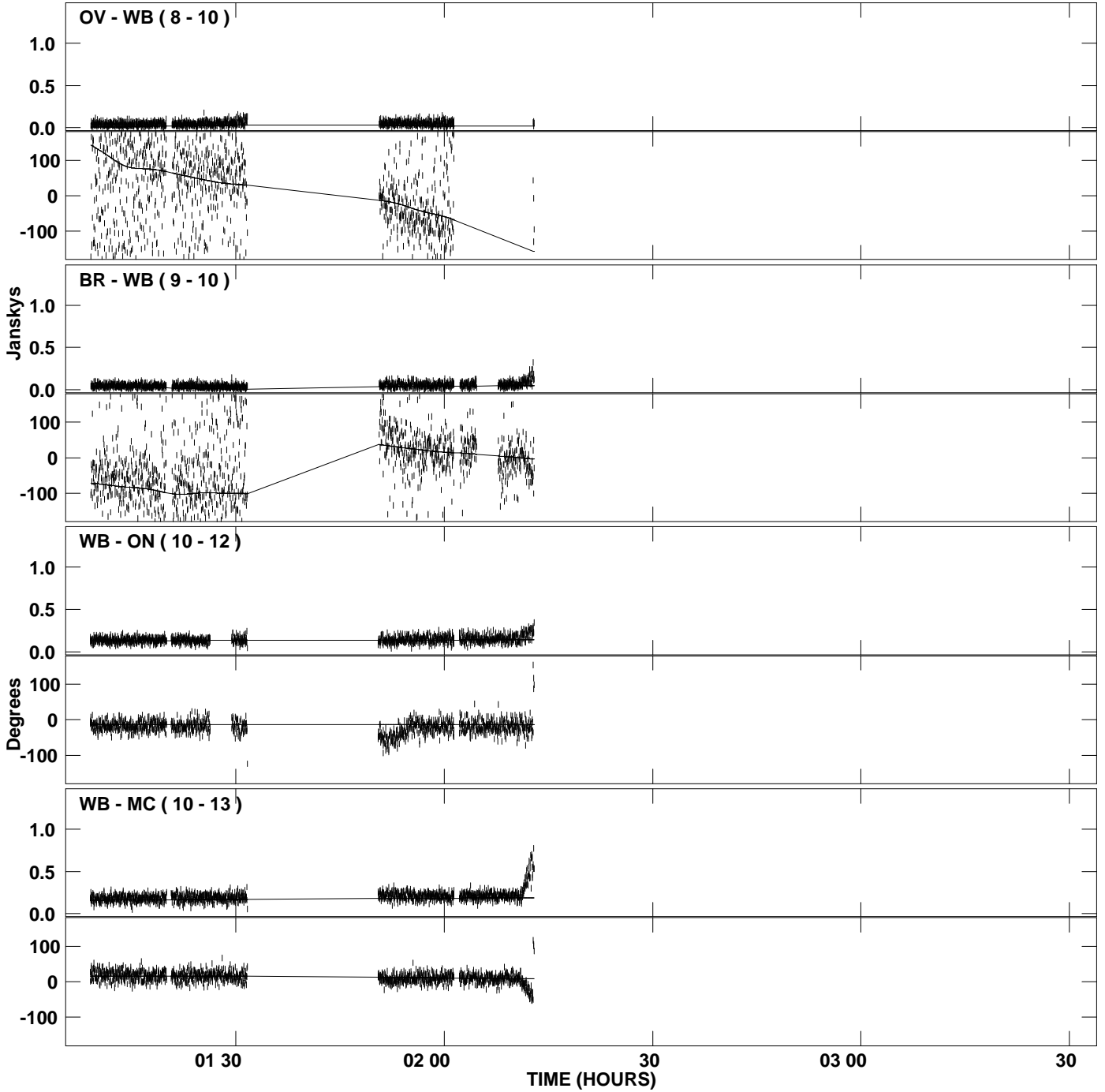
PLot file version 21 created 03-JUL-2008 20:36:12  
Amplitude and Phase vs Time for J0733+5605.MULTI.1 CL # 3  
IF 2 CHAN 1 STK RR of J0733+5605.ICL001.3



PLot file version 22 created 03-JUL-2008 20:36:12  
Amplitude andPhase vs Time for J0733+5605.MULTI.1 CL # 3  
IF 2 CHAN 1 STK RR of J0733+5605.ICL001.3



PLot file version 23 created 03-JUL-2008 20:36:12  
Amplitude and Phase vs Time for J0733+5605.MULTI.1 CL # 3  
IF 2 CHAN 1 STK RR of J0733+5605.ICL001.3



PLot file version 24 created 03-JUL-2008 20:36:12  
Amplitude andPhase vs Time for J0733+5605.MULTI.1 CL # 3  
IF 2 CHAN 1 STK RR of J0733+5605.ICL001.3

