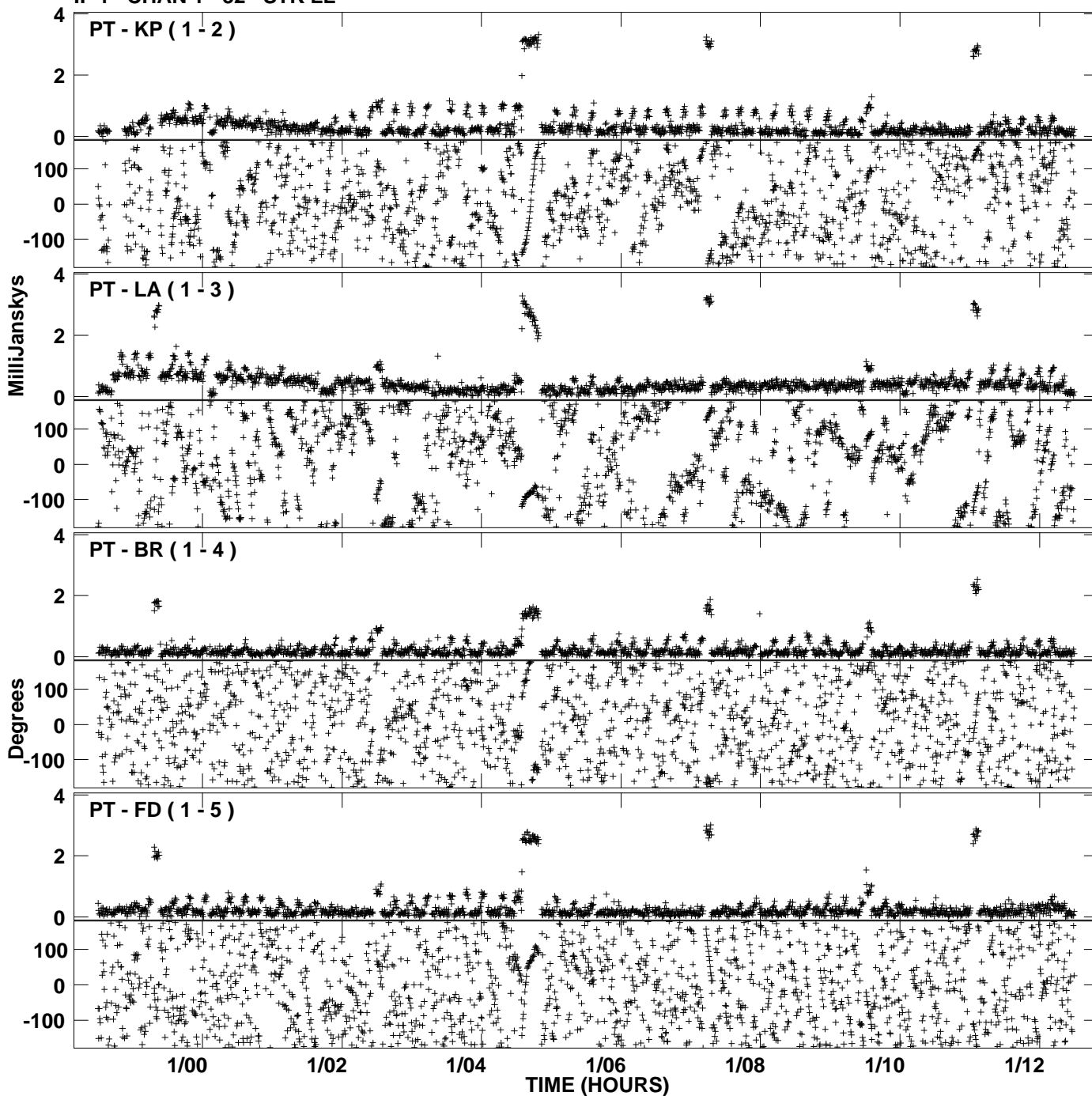
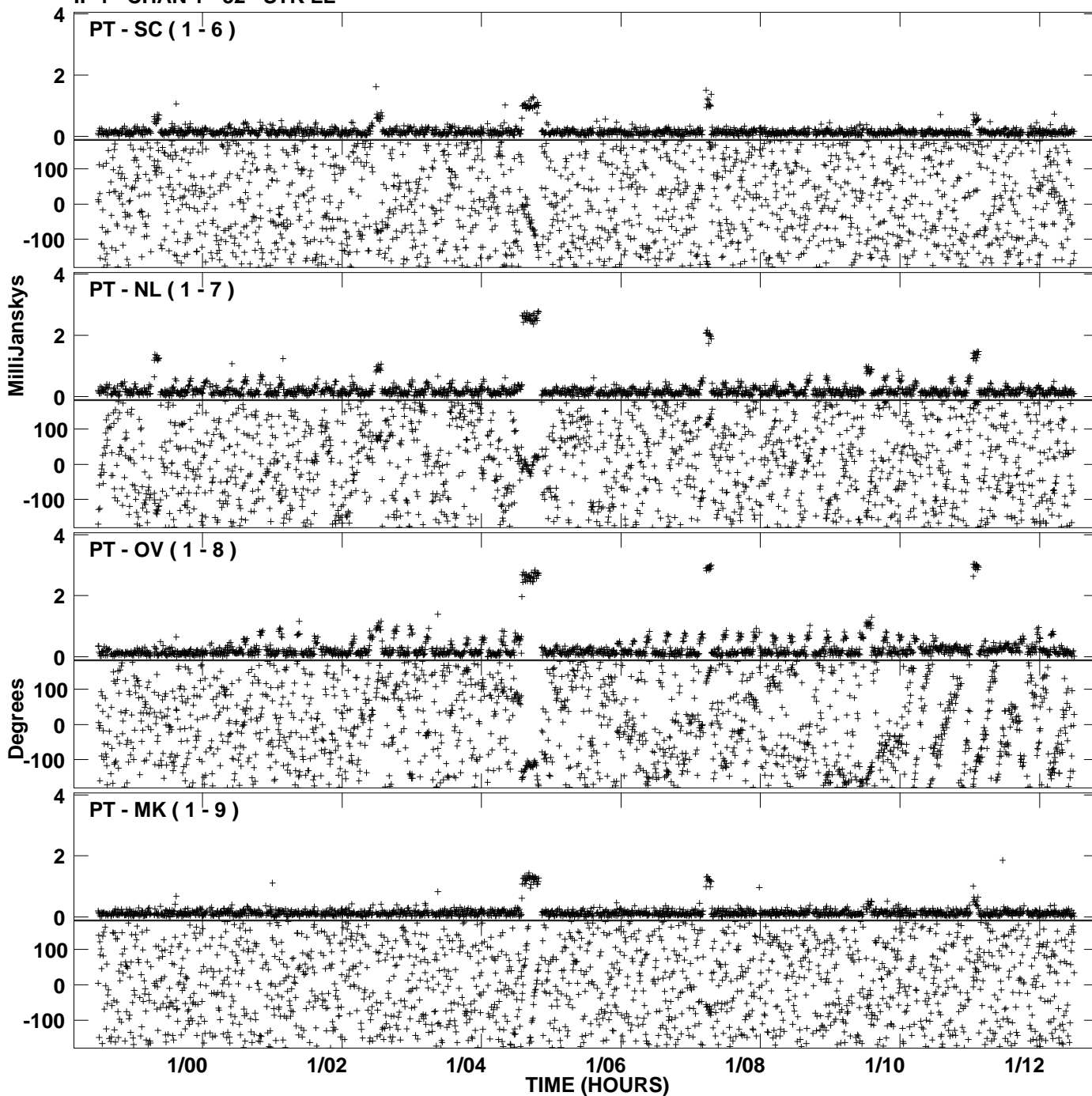


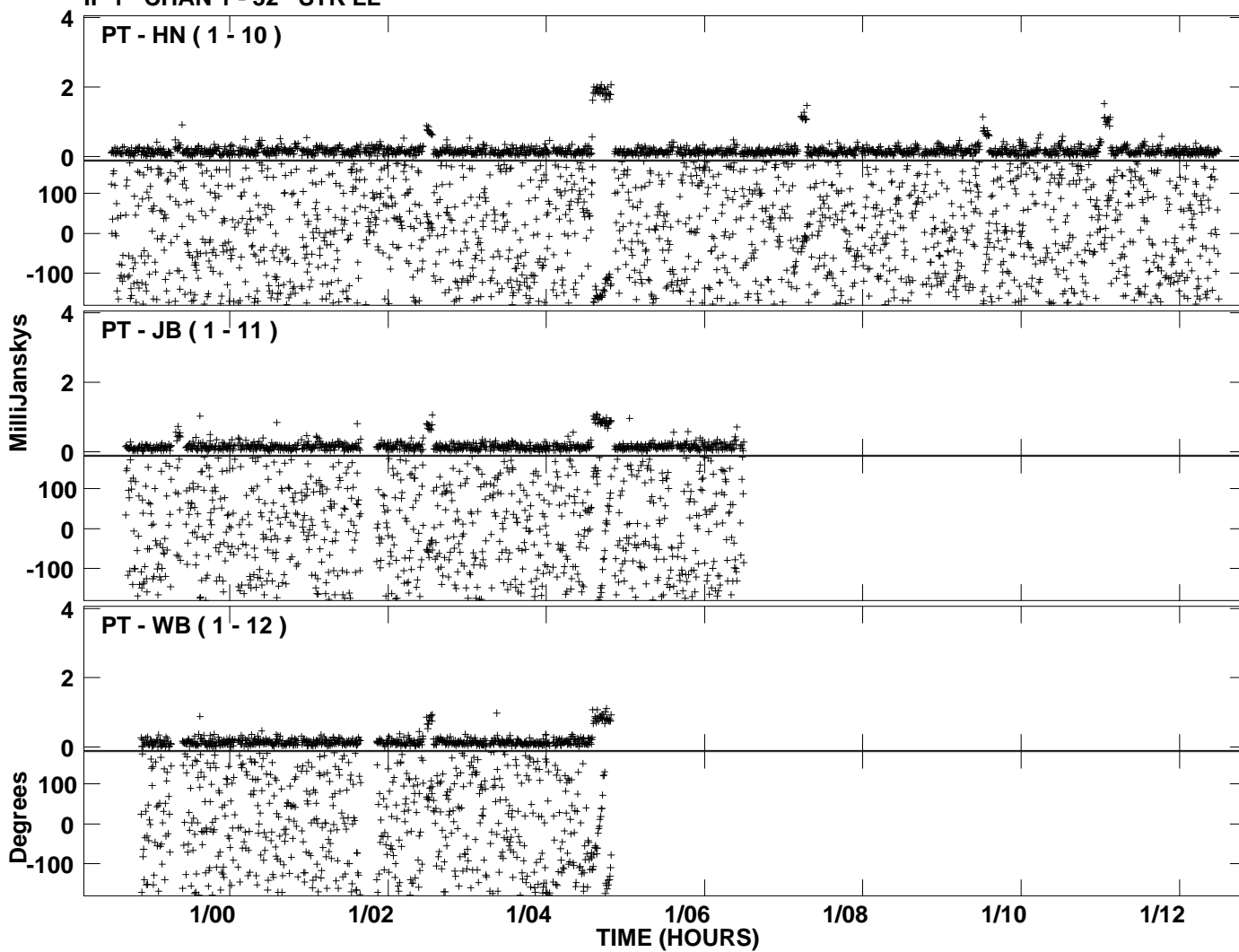
PLot file version 1 created 24-FEB-2006 16:57:25  
Amplitude and Phase vs Time for GW017 1.UVDATA.1 Vect aver.  
IF 1 CHAN 1 - 32 STK LL



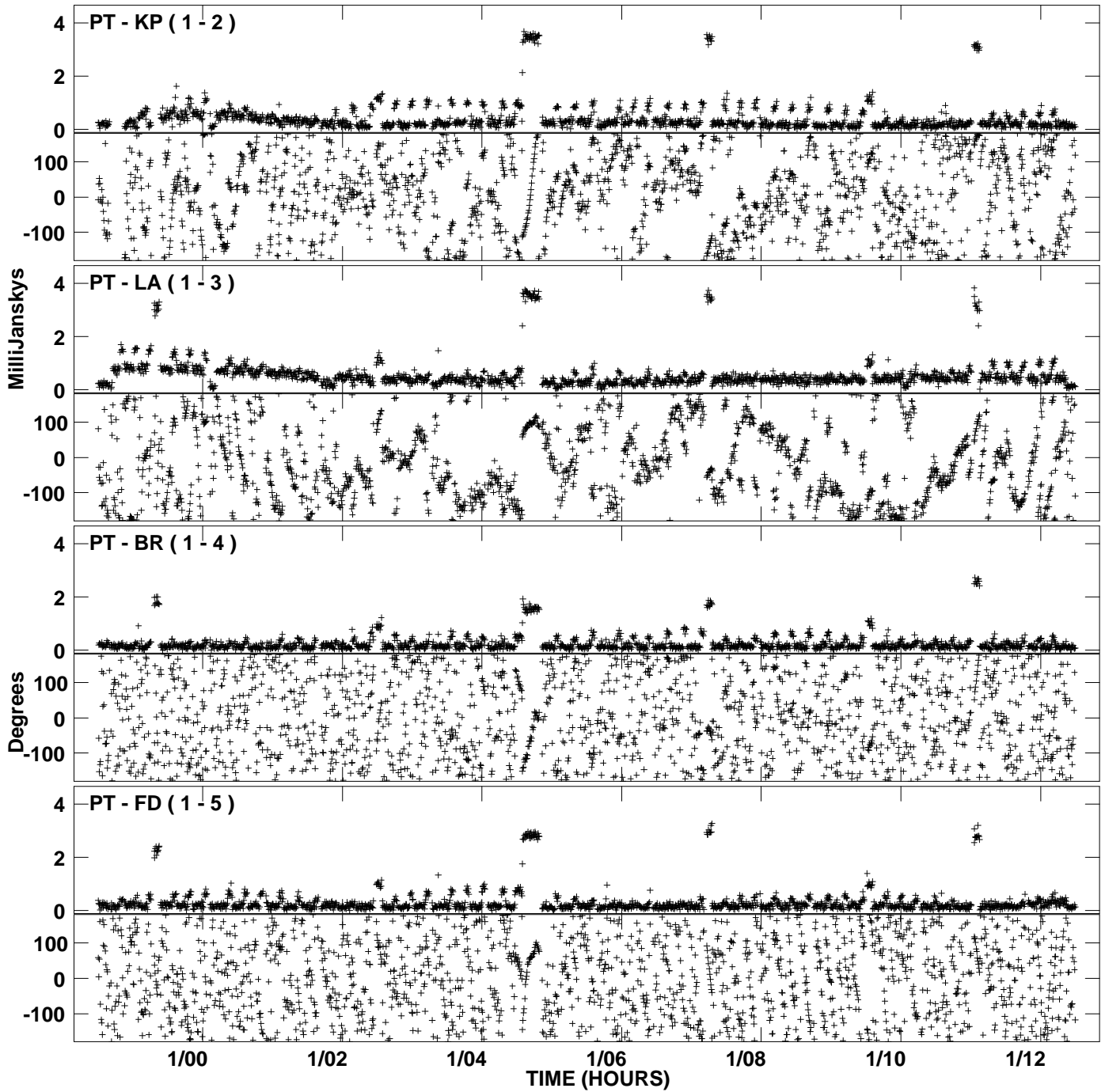
PLot file version 2 created 24-FEB-2006 16:57:25  
Amplitude andPhase vs Time for GW017 1.UVDATA.1 Vect aver.  
IF 1 CHAN 1 - 32 STK LL



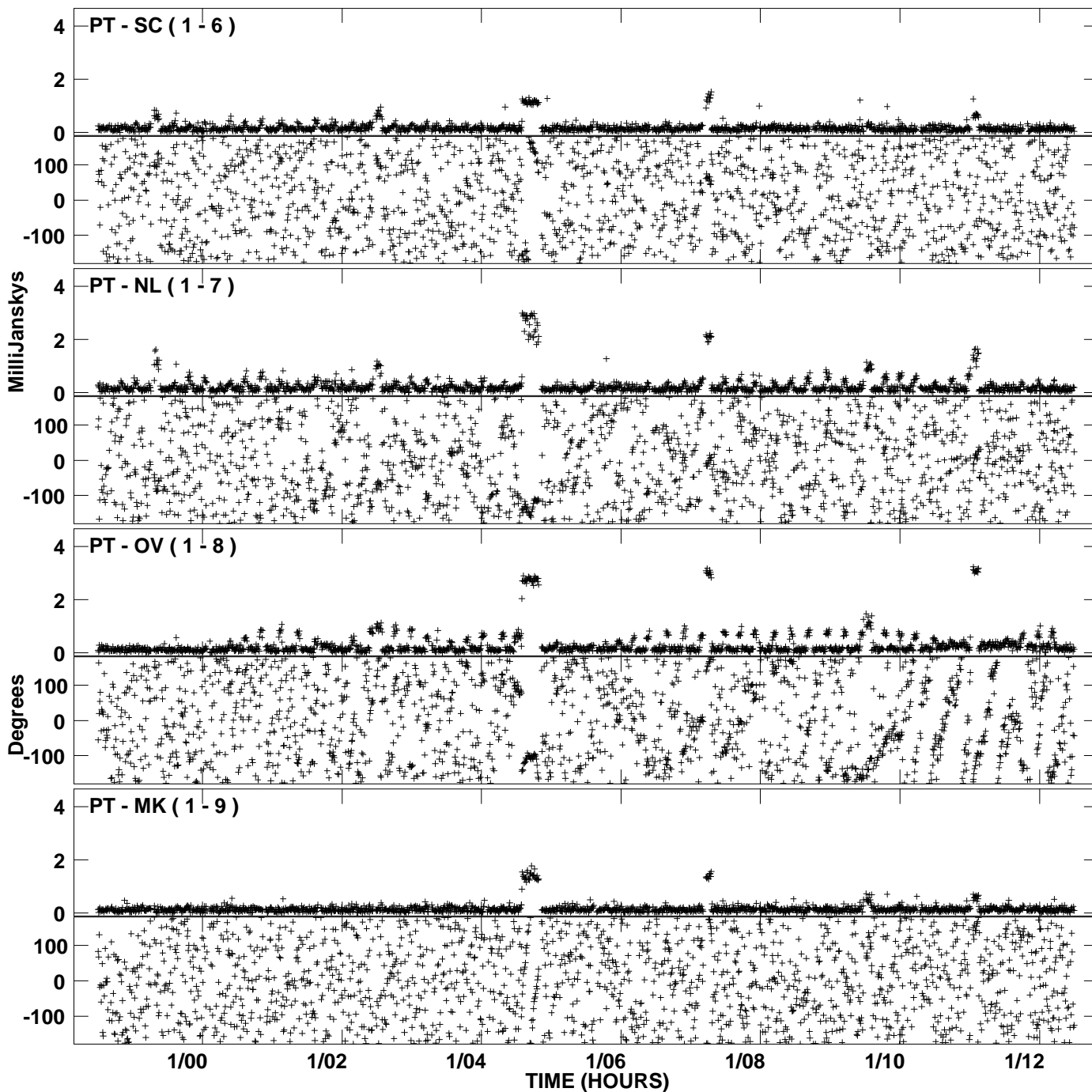
PLot file version 3 created 24-FEB-2006 16:57:25  
Amplitude andPhase vs Time for GW017 1.UVDATA.1 Vect aver.  
IF 1 CHAN 1 - 32 STK LL



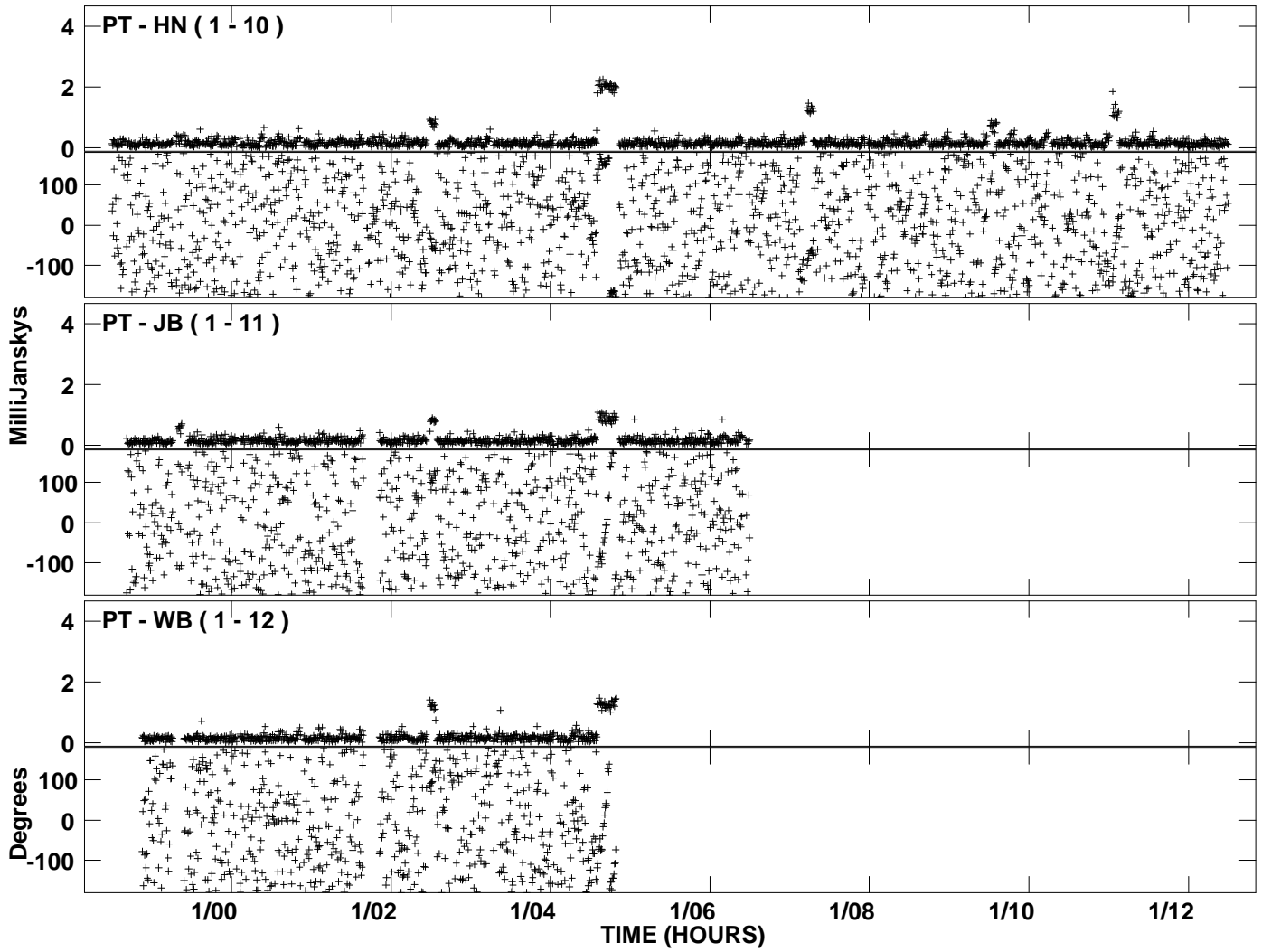
PLot file version 4 created 24-FEB-2006 17:00:38  
Amplitude and Phase vs Time for GW017 1.UVDATA.1 Vect aver.  
IF 2 CHAN 1 - 32 STK LL



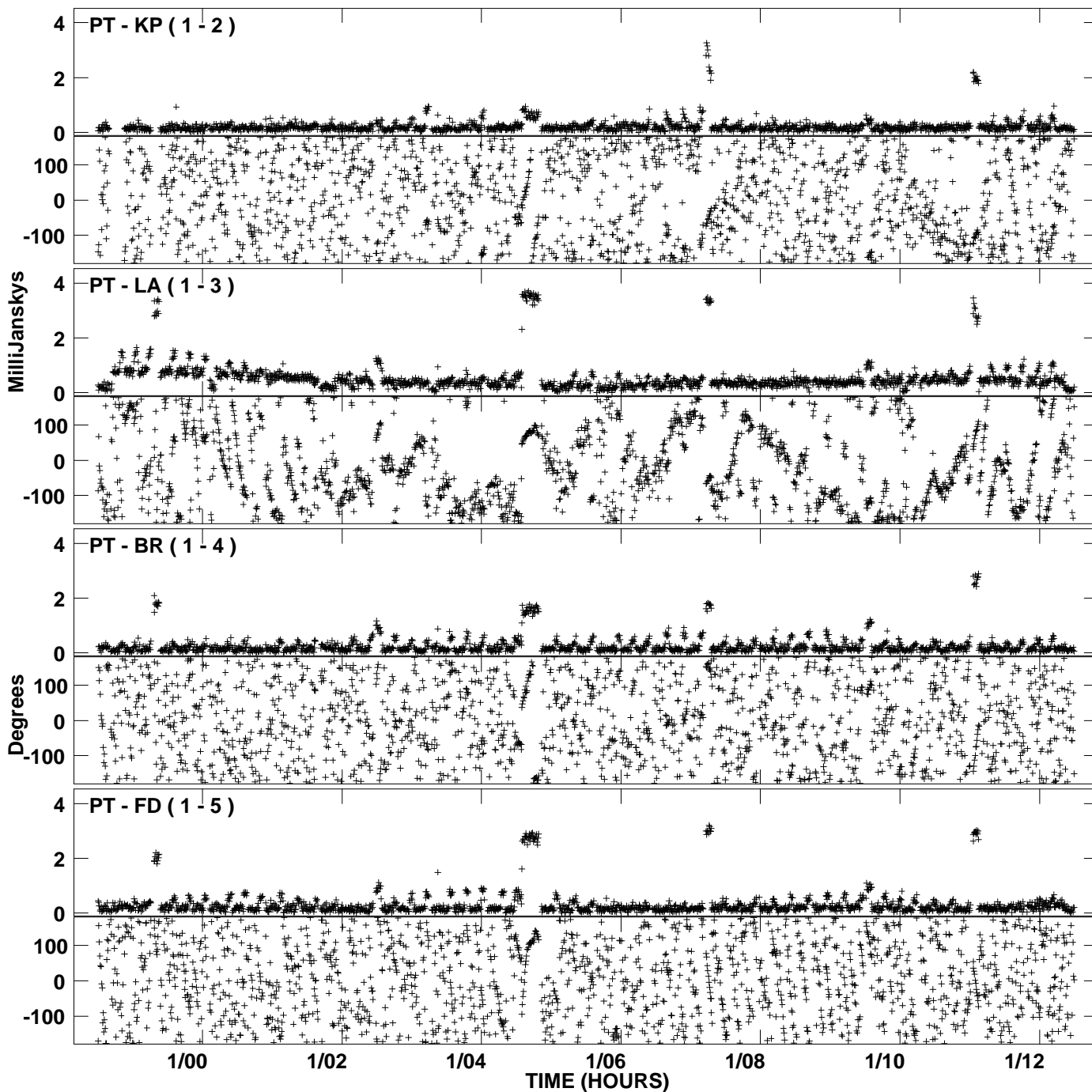
PLot file version 5 created 24-FEB-2006 17:00:38  
Amplitude and Phase vs Time for GW017 1.UVDATA.1 Vect aver.  
IF 2 CHAN 1 - 32 STK LL



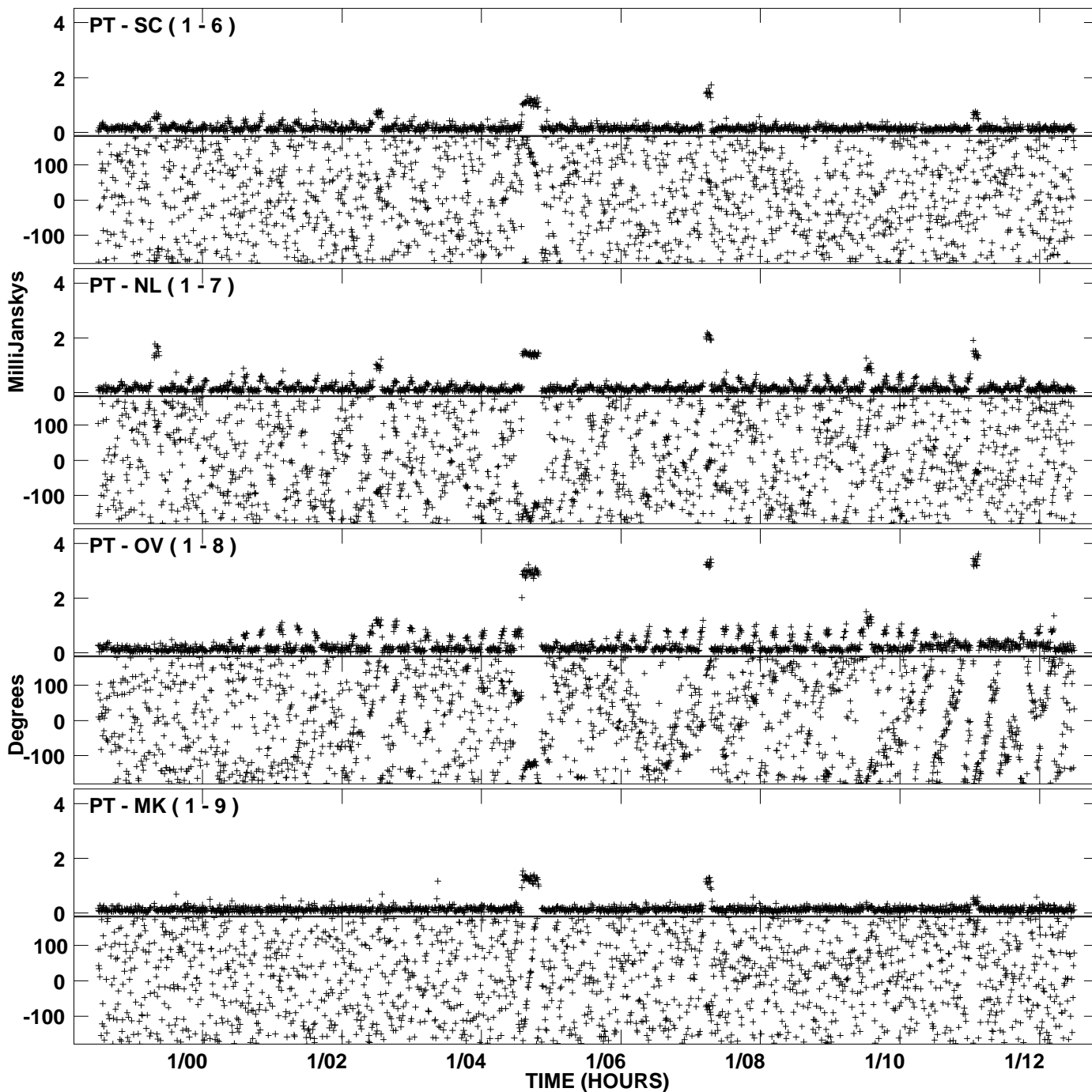
PLot file version 6 created 24-FEB-2006 17:00:38  
Amplitude andPhase vs Time for GW017 1.UVDATA.1 Vect aver.  
IF 2 CHAN 1 - 32 STK LL



PLot file version 7 created 24-FEB-2006 17:03:47  
Amplitude and Phase vs Time for GW017 1.UVDATA.1 Vect aver.  
IF 3 CHAN 1 - 32 STK LL

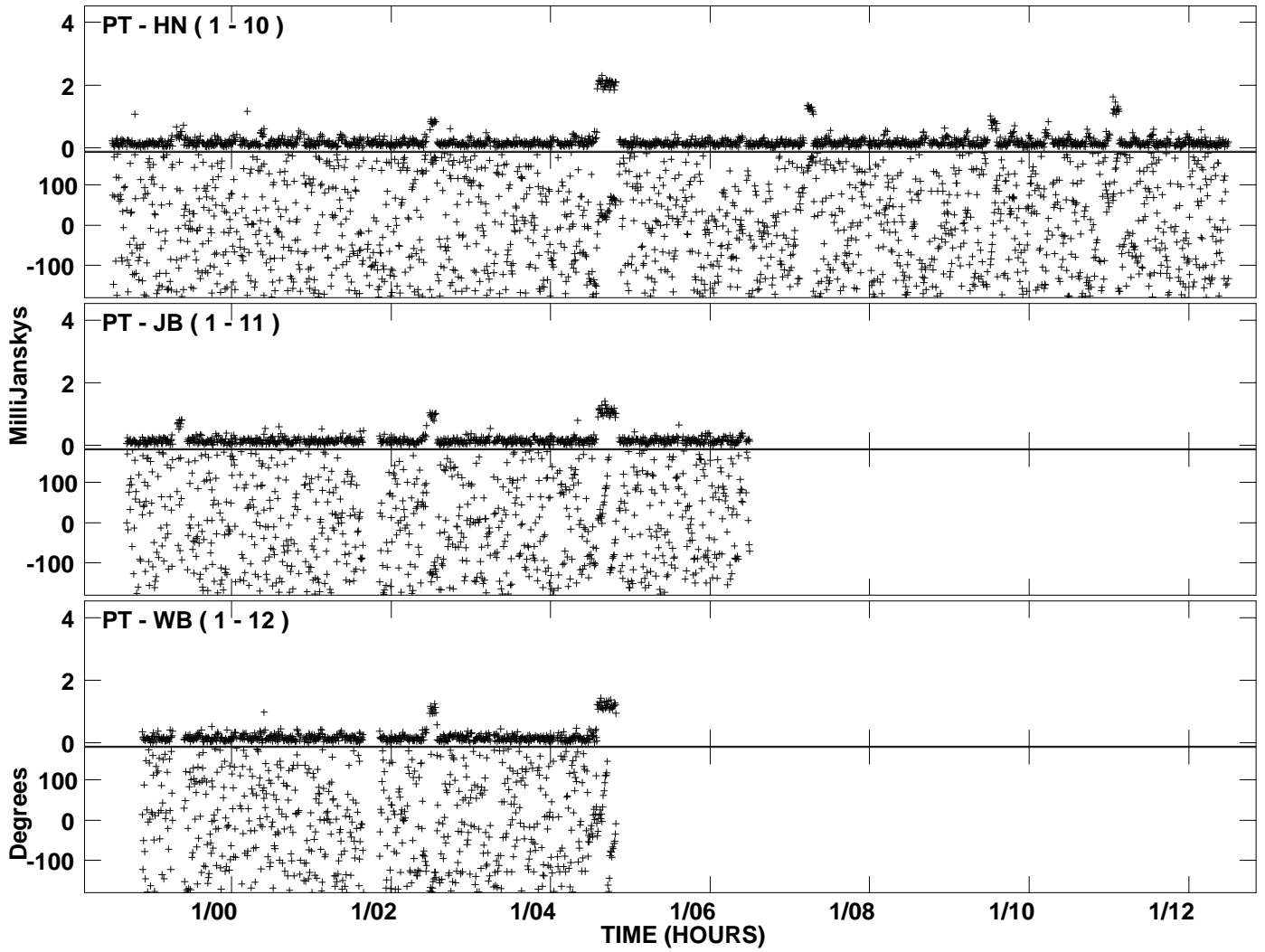


PLot file version 8 created 24-FEB-2006 17:03:47  
Amplitude and Phase vs Time for GW017 1.UVDATA.1 Vect aver.  
IF 3 CHAN 1 - 32 STK LL

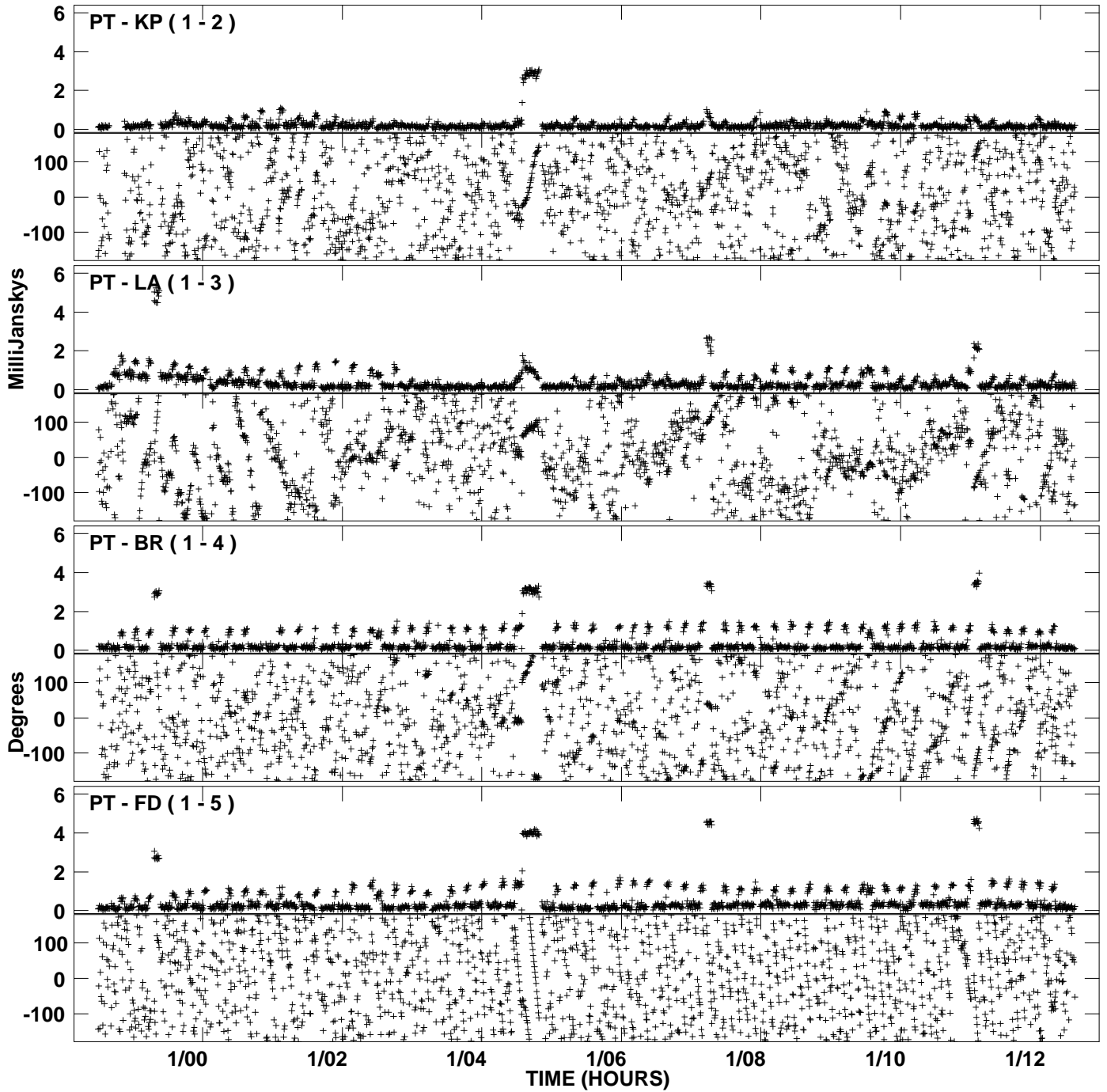




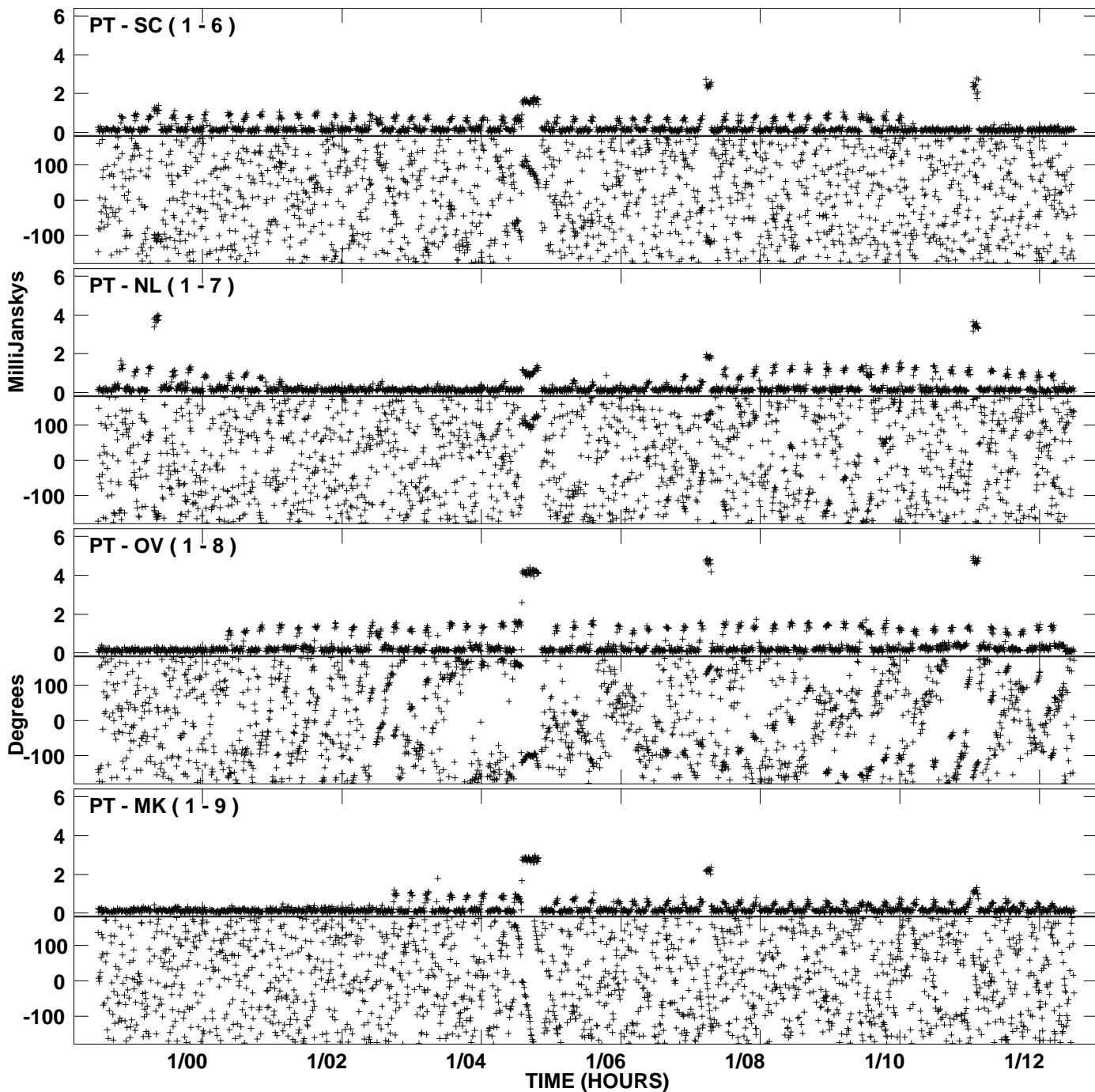
PLot file version 9 created 24-FEB-2006 17:03:47  
Amplitude andPhase vs Time for GW017 1.UVDATA.1 Vect aver.  
IF 3 CHAN 1 - 32 STK LL



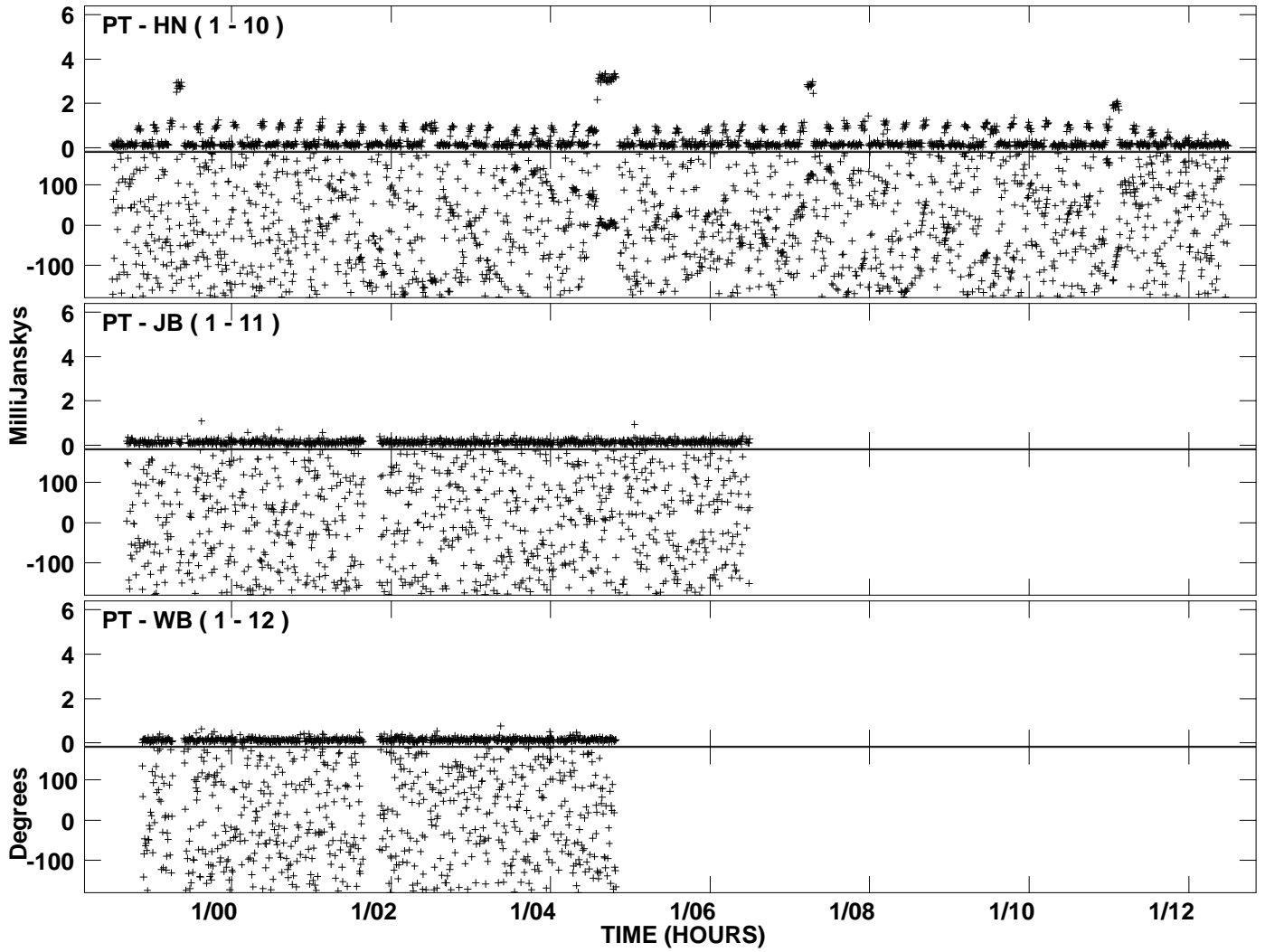
PLot file version 10 created 24-FEB-2006 17:07:01  
Amplitude and Phase vs Time for GW017 1.UVDATA.1 Vect aver.  
IF 4 CHAN 1 - 32 STK LL



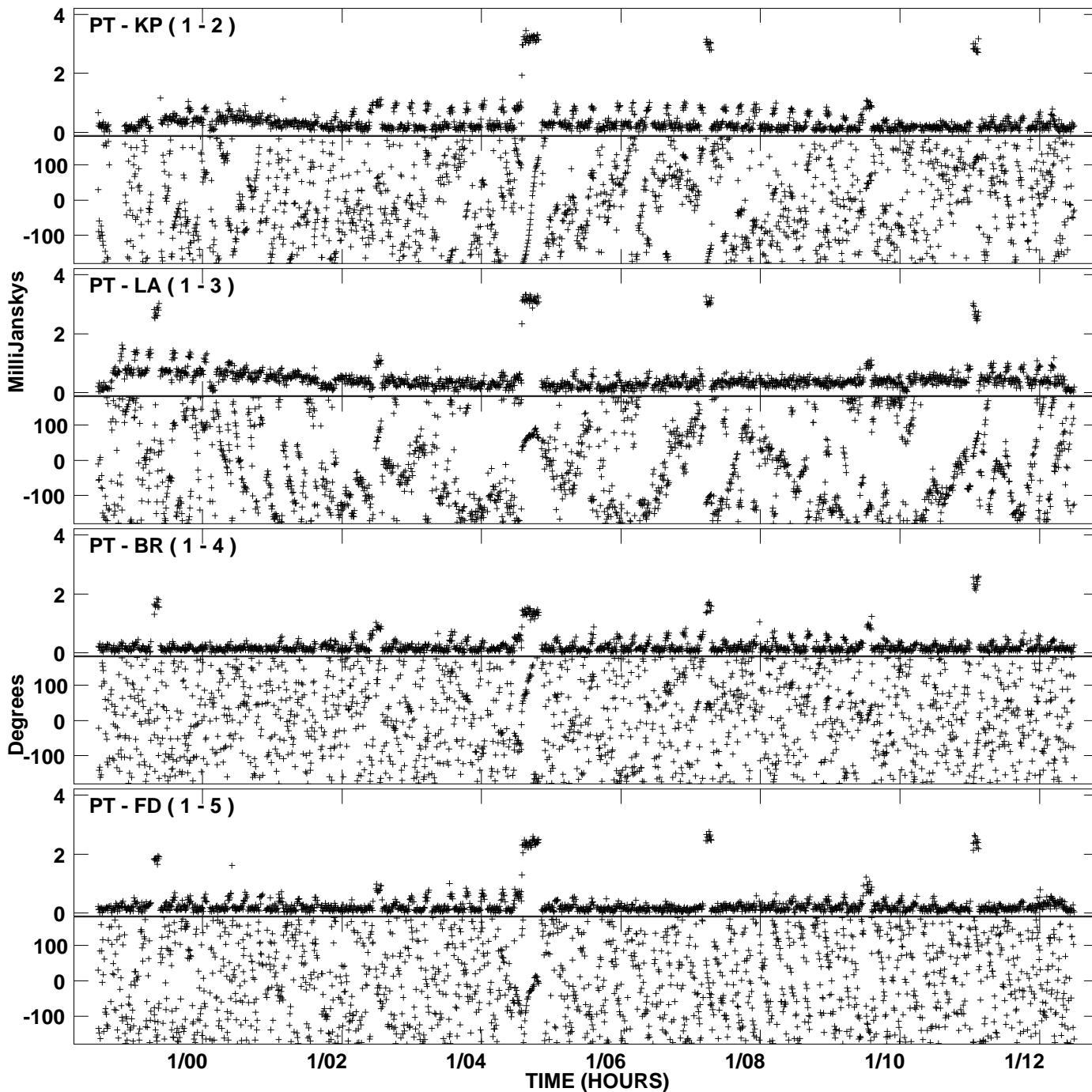
PLot file version 11 created 24-FEB-2006 17:07:01  
Amplitude andPhase vs Time for GW017 1.UVDATA.1 Vect aver.  
IF 4 CHAN 1 - 32 STK LL



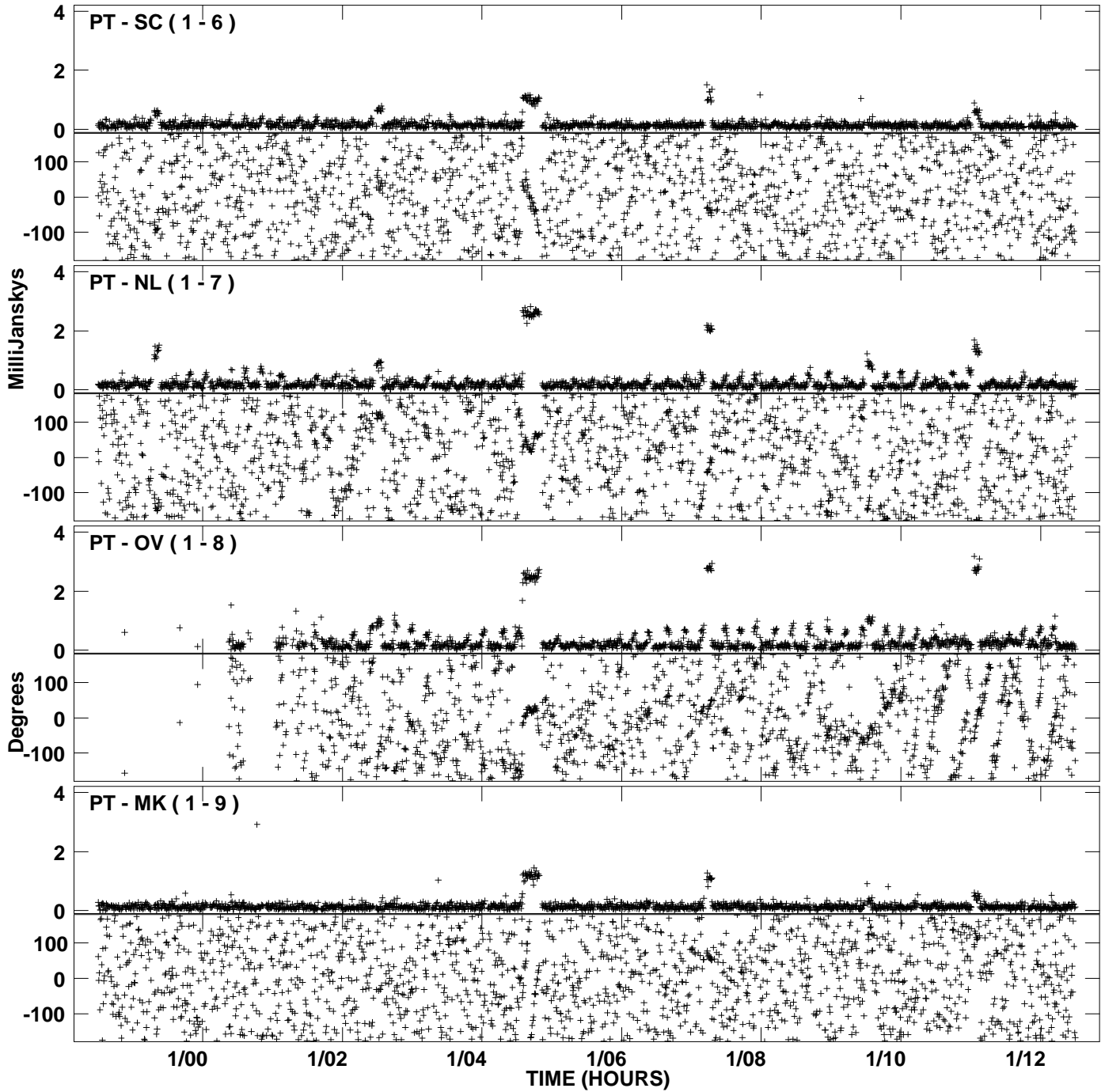
PLot file version 12 created 24-FEB-2006 17:07:01  
Amplitude and Phase vs Time for GW017 1.UVDATA.1 Vect aver.  
IF 4 CHAN 1 - 32 STK LL



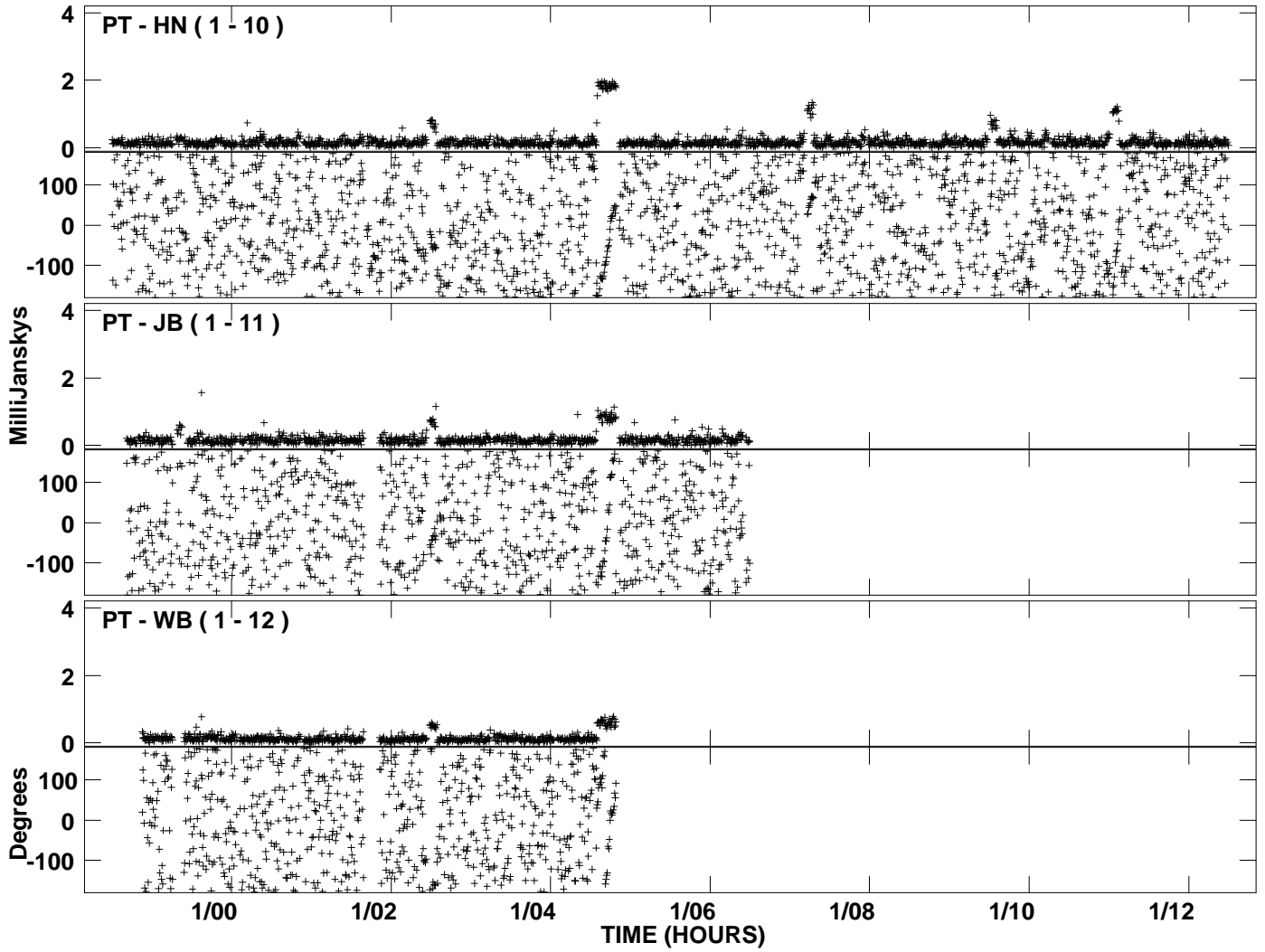
PLot file version 13 created 24-FEB-2006 17:10:09  
Amplitude and Phase vs Time for GW017 1.UVDATA.1 Vect aver.  
IF 1 CHAN 1 - 32 STK RR



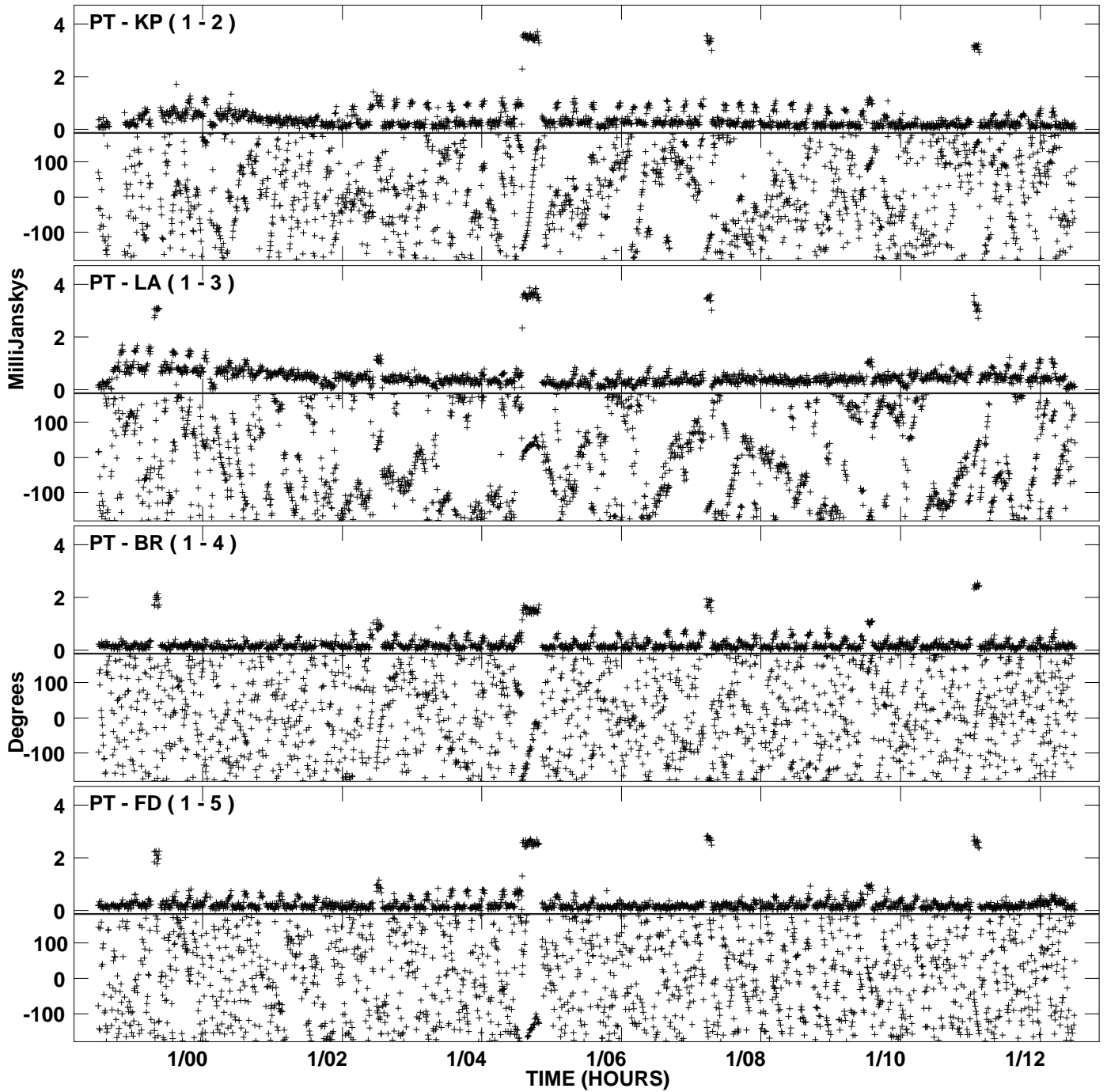
PLot file version 14 created 24-FEB-2006 17:10:09  
Amplitude andPhase vs Time for GW017 1.UVDATA.1 Vect aver.  
IF 1 CHAN 1 - 32 STK RR



PLot file version 15 created 24-FEB-2006 17:10:09  
Amplitude and Phase vs Time for GW017 1.UVDATA.1 Vect aver.  
IF 1 CHAN 1 - 32 STK RR

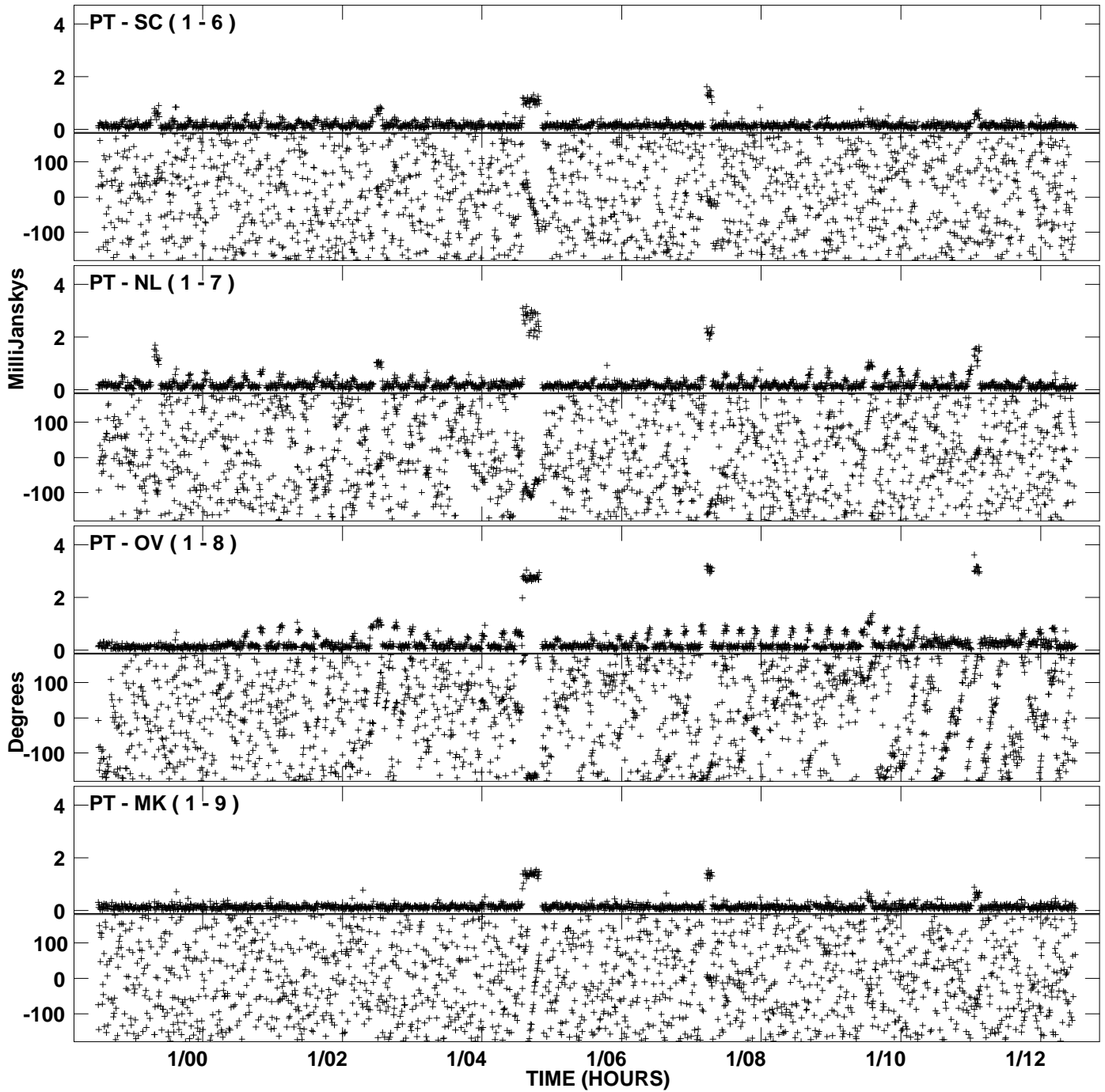


PLot file version 16 created 24-FEB-2006 17:13:53  
Amplitude andPhase vs Time for GW017 1.UVDATA.1 Vect aver.  
IF 2 CHAN 1 - 32 STK RR

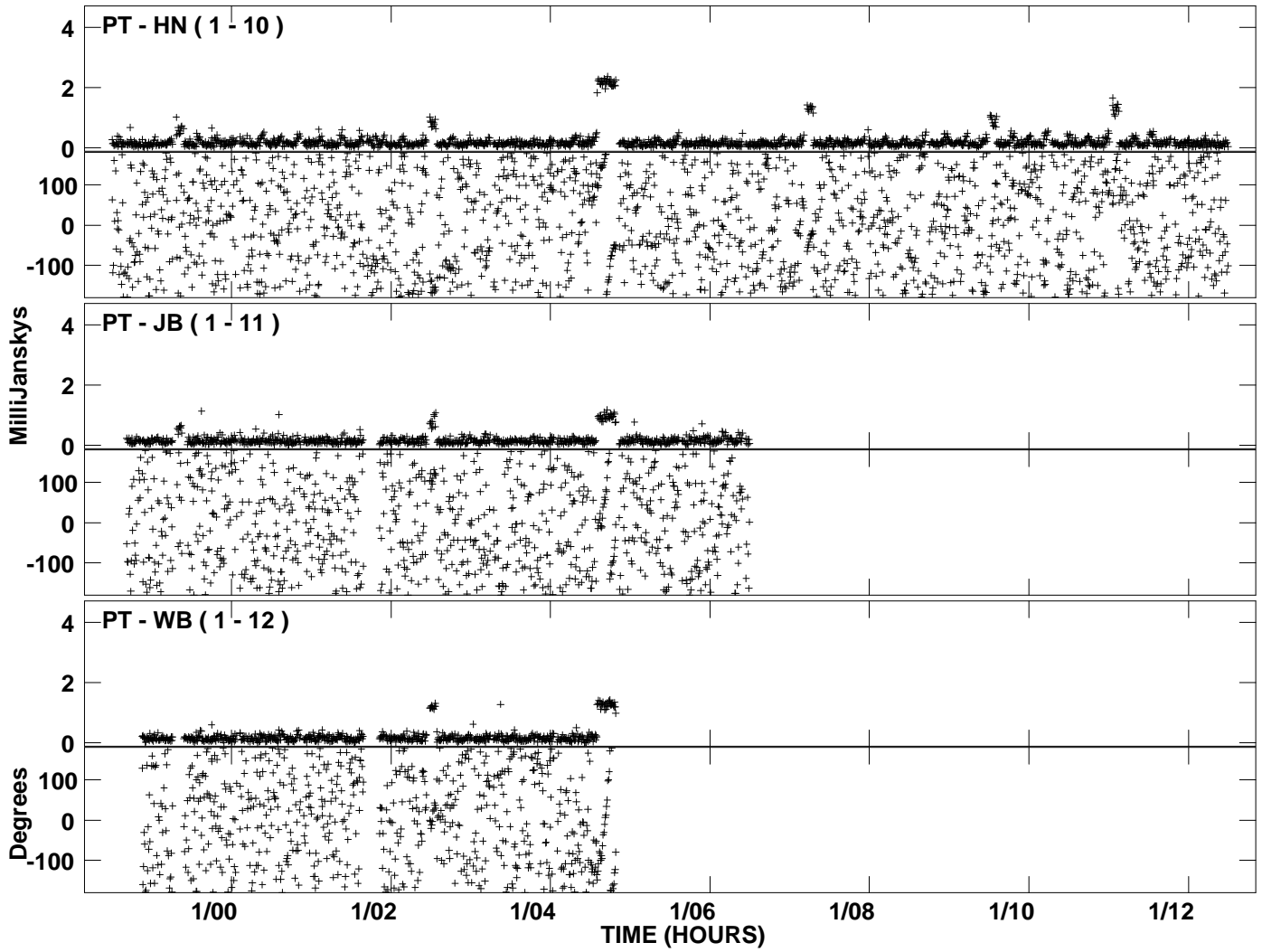




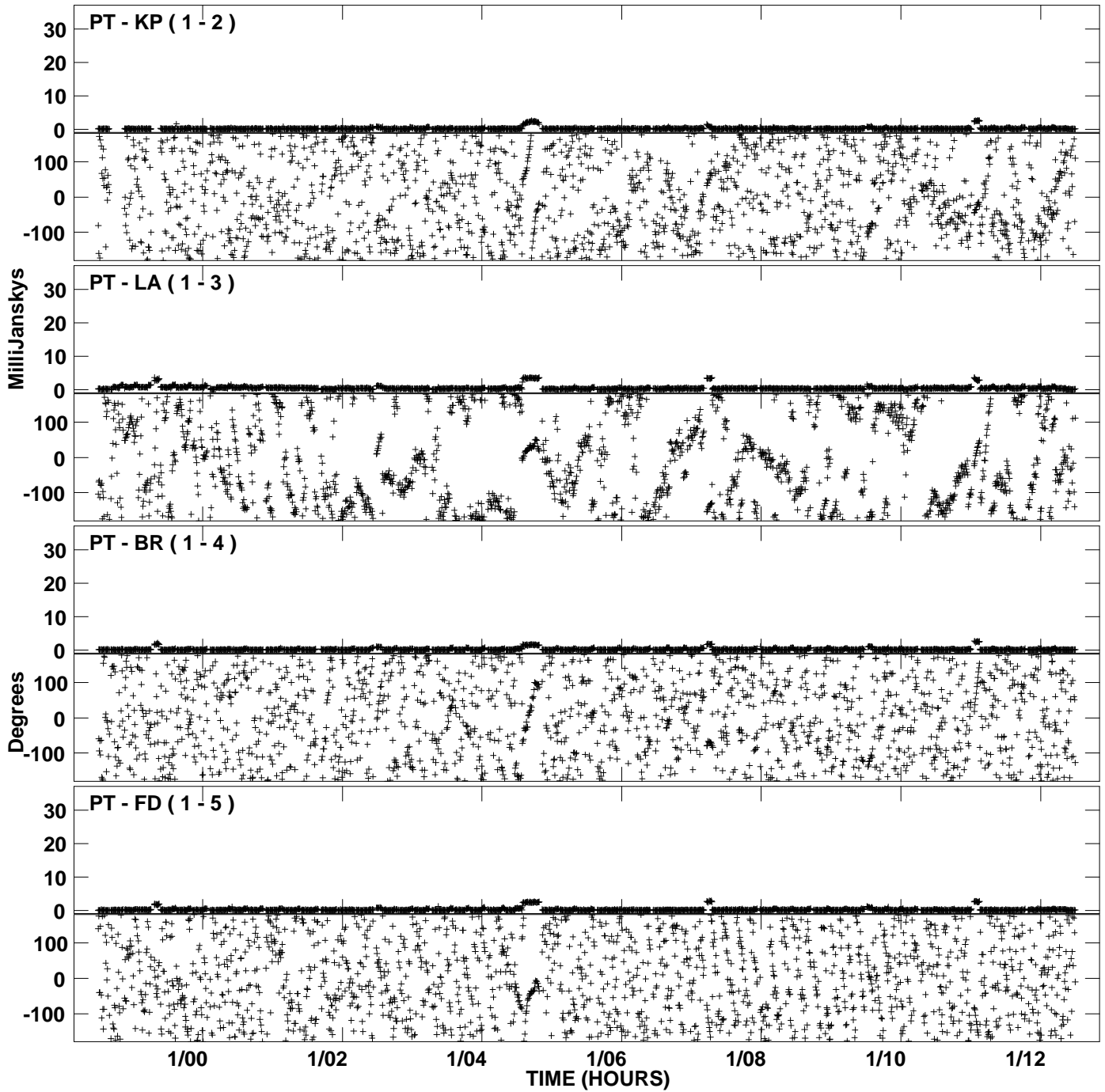
PLot file version 17 created 24-FEB-2006 17:13:53  
Amplitude and Phase vs Time for GW017 1.UVDATA.1 Vect aver.  
IF 2 CHAN 1 - 32 STK RR



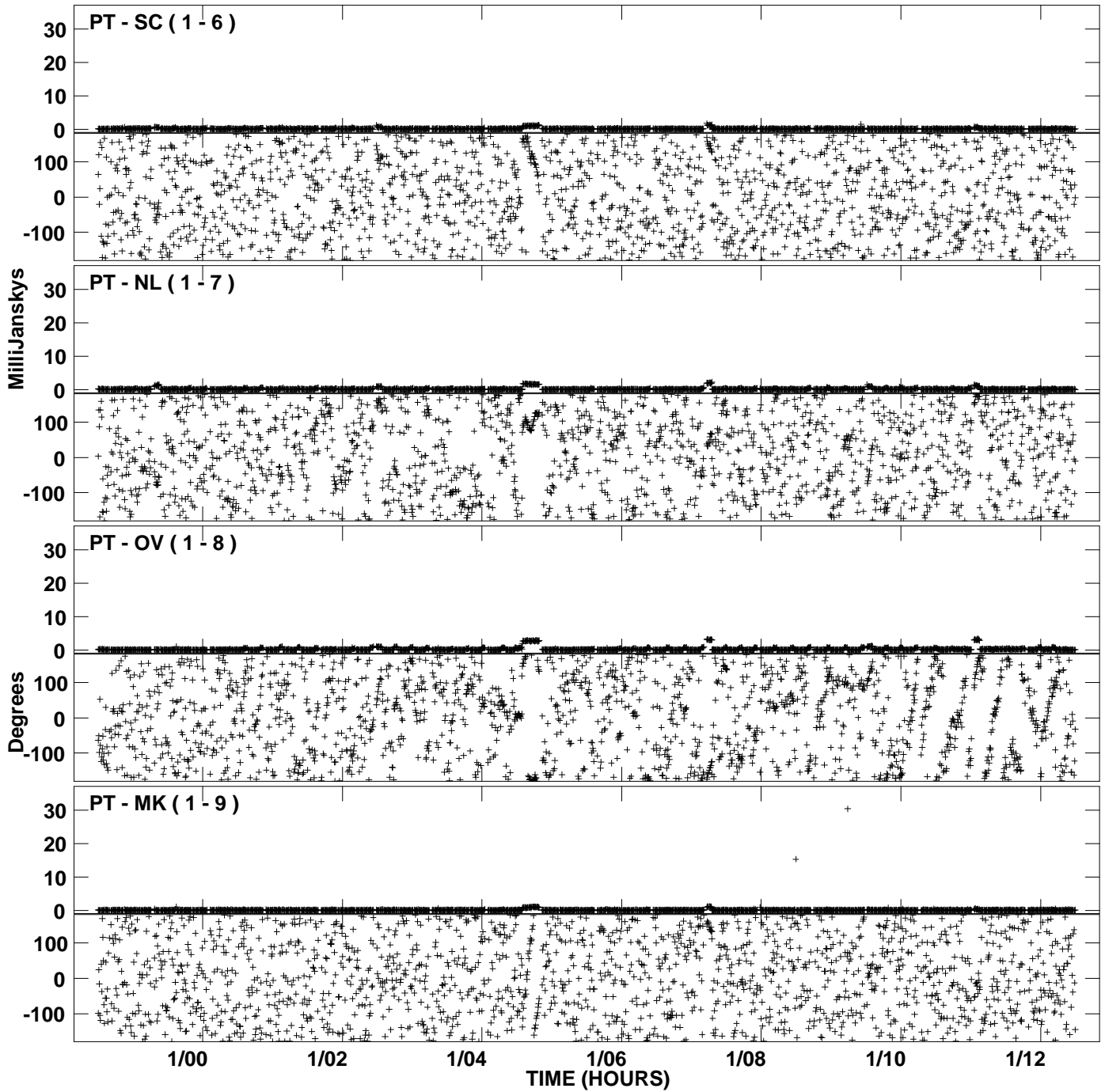
PLot file version 18 created 24-FEB-2006 17:13:53  
Amplitude and Phase vs Time for GW017 1.UVDATA.1 Vect aver.  
IF 2 CHAN 1 - 32 STK RR



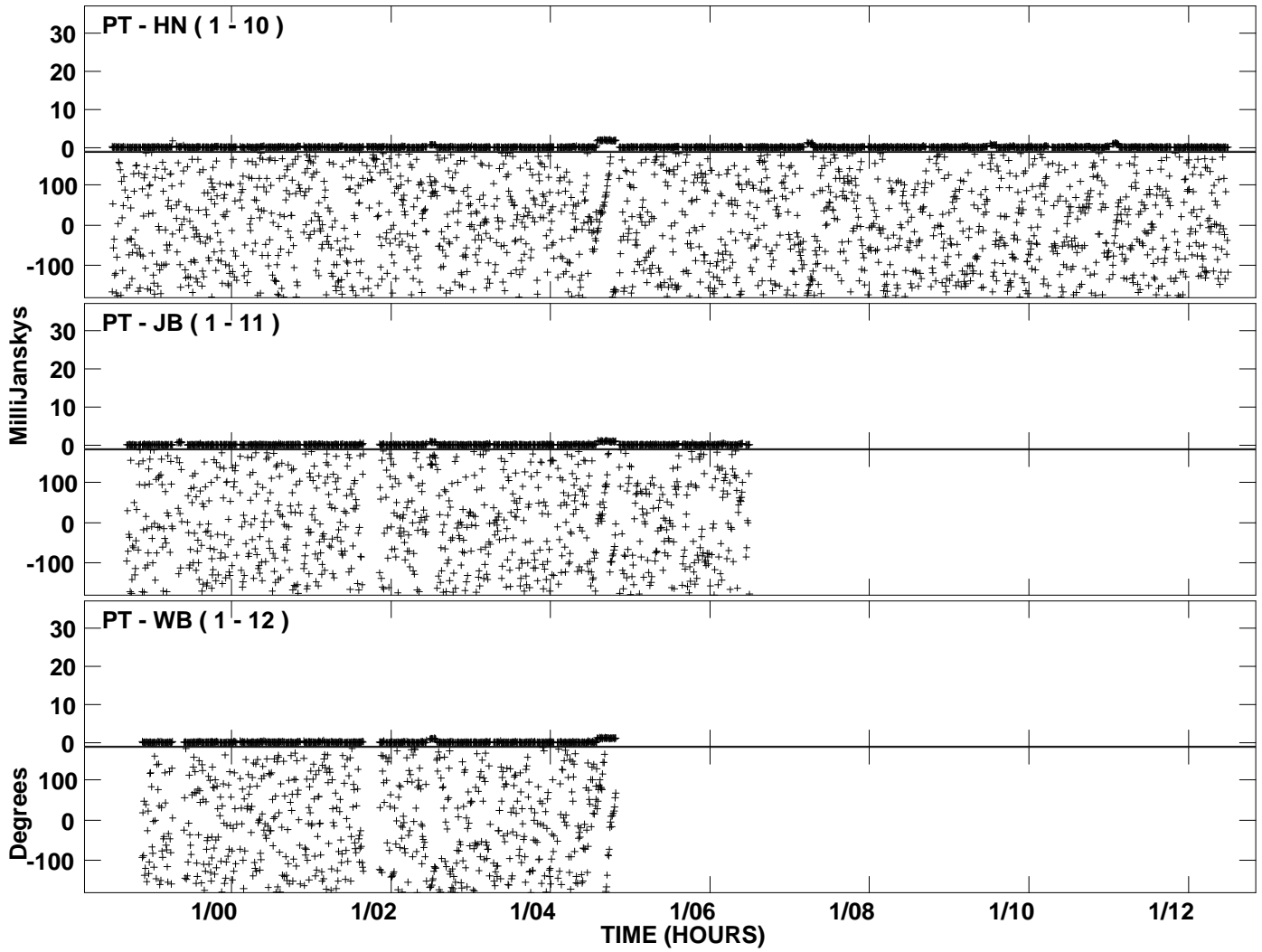
PLot file version 19 created 24-FEB-2006 17:17:01  
Amplitude and Phase vs Time for GW017 1.UVDATA.1 Vect aver.  
IF 3 CHAN 1 - 32 STK RR



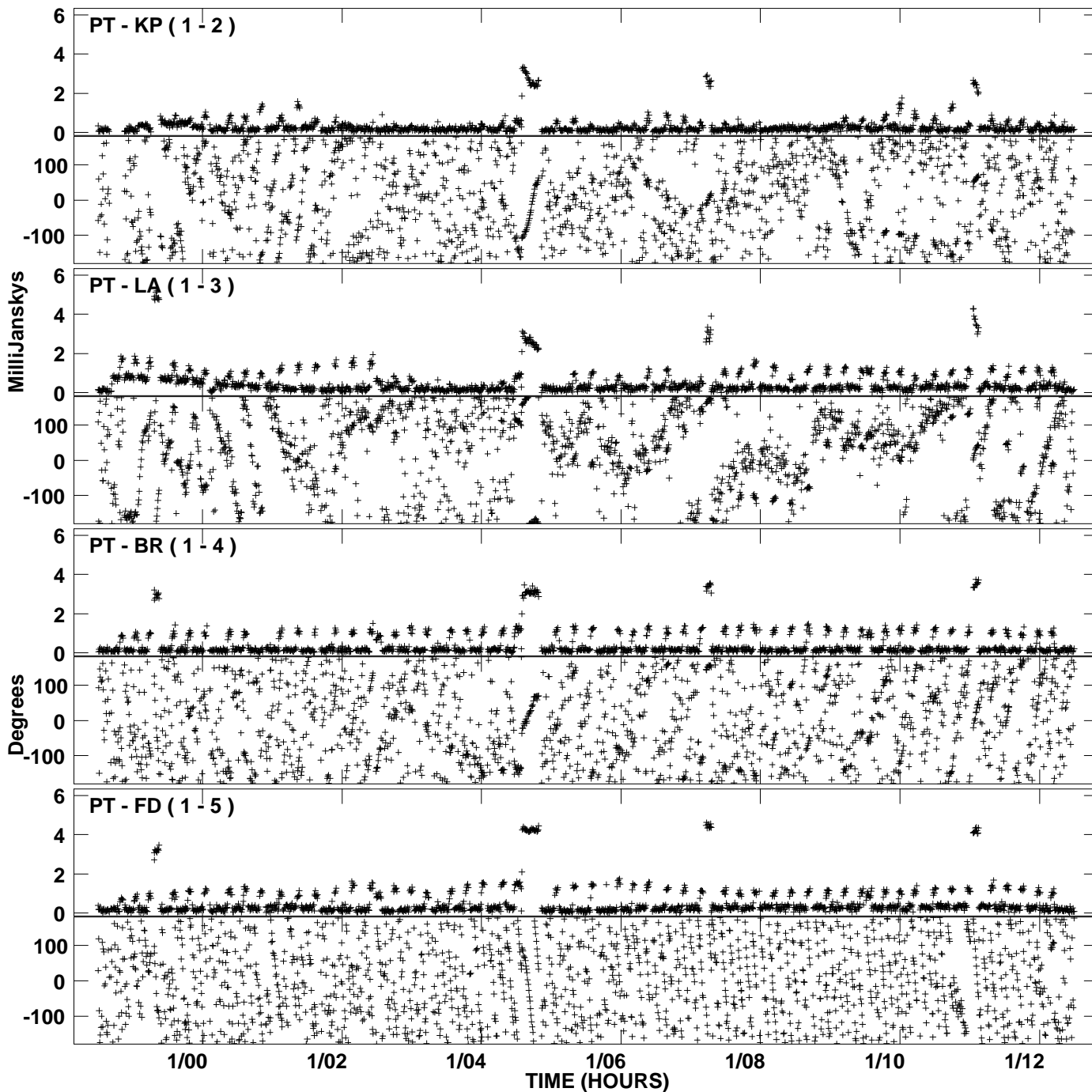
PLot file version 20 created 24-FEB-2006 17:17:02  
Amplitude and Phase vs Time for GW017 1.UVDATA.1 Vect aver.  
IF 3 CHAN 1 - 32 STK RR



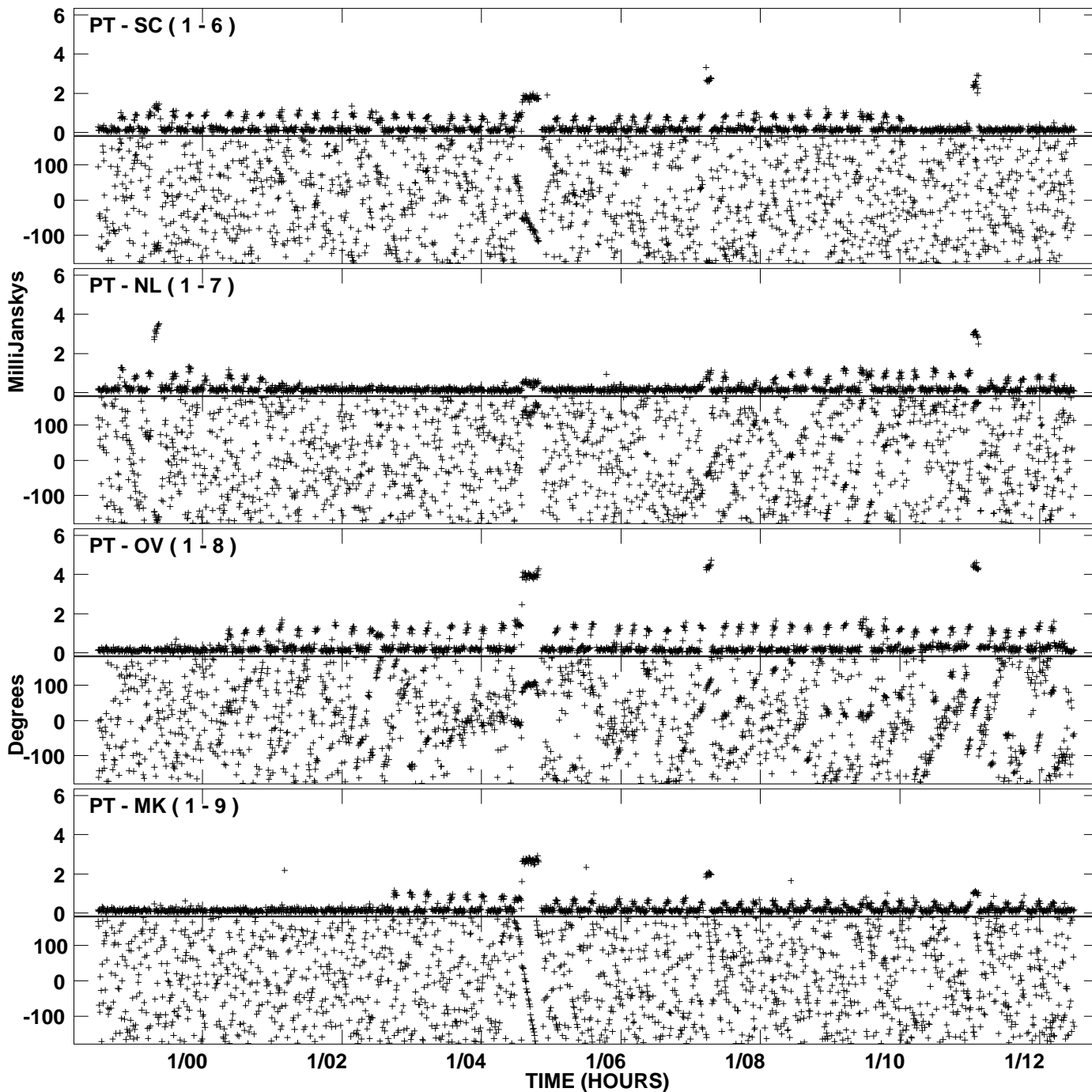
PLot file version 21 created 24-FEB-2006 17:17:02  
Amplitude andPhase vs Time for GW017 1.UVDATA.1 Vect aver.  
IF 3 CHAN 1 - 32 STK RR



PLot file version 22 created 24-FEB-2006 17:20:09  
Amplitude andPhase vs Time for GW017 1.UVDATA.1 Vect aver.  
IF 4 CHAN 1 - 32 STK RR



PLot file version 23 created 24-FEB-2006 17:20:09  
Amplitude and Phase vs Time for GW017 1.UVDATA.1 Vect aver.  
IF 4 CHAN 1 - 32 STK RR



PLot file version 24 created 24-FEB-2006 17:20:09  
Amplitude andPhase vs Time for GW017 1.UVDATA.1 Vect aver.  
IF 4 CHAN 1 - 32 STK RR

